

Annual report on the ophthalmic section.

Contributors

Egypt. Maṣlaḥat al-Ṣiḥḥah al-'Umūmīyah. Ophthalmic Section.

Publication/Creation

Cairo : Govt. Press, [1928]

Persistent URL

<https://wellcomecollection.org/works/mm6cuuhq>

License and attribution

This work has been identified as being free of known restrictions under copyright law, including all related and neighbouring rights and is being made available under the Creative Commons, Public Domain Mark.

You can copy, modify, distribute and perform the work, even for commercial purposes, without asking permission.



Wellcome Collection
183 Euston Road
London NW1 2BE UK
T +44 (0)20 7611 8722
E library@wellcomecollection.org
<https://wellcomecollection.org>

The Director, Ophthalmic Hospitals of Egypt, on behalf of Dr. Shahin Pasha, the Under Secretary of State, Department of Public Health, begs to present with best compliments this copy for the Thirteenth International Ophthalmological Congress.

The Director, Psychiatric Hospital of Egypt, on behalf
of the Standing Board, the Public Secretary of State, Depart-
ment of Public Health, begs to present with best compliments
the copy for the Twentieth International Ophthalmological
Congress.

MINISTRY OF THE INTERIOR, EGYPT.

Department of Public Health.

SIXTEENTH
ANNUAL REPORT OF THE
OPHTHALMIC SECTION, 1928.

Government Press, Cairo, 1929.

Government Publications are on sale at the "Sale Room",
Ministry of Finance. Correspondence relating to these
publications should be addressed to the "Publications
Office," Government Press, Bâllâq, Cairo.

Price - - - - - P.T. 10

MINISTRY OF THE INTERIOR, EGYPT.

Department of Public Health.

SIXTEENTH
ANNUAL REPORT OF THE
OPHTHALMIC SECTION, 1928.

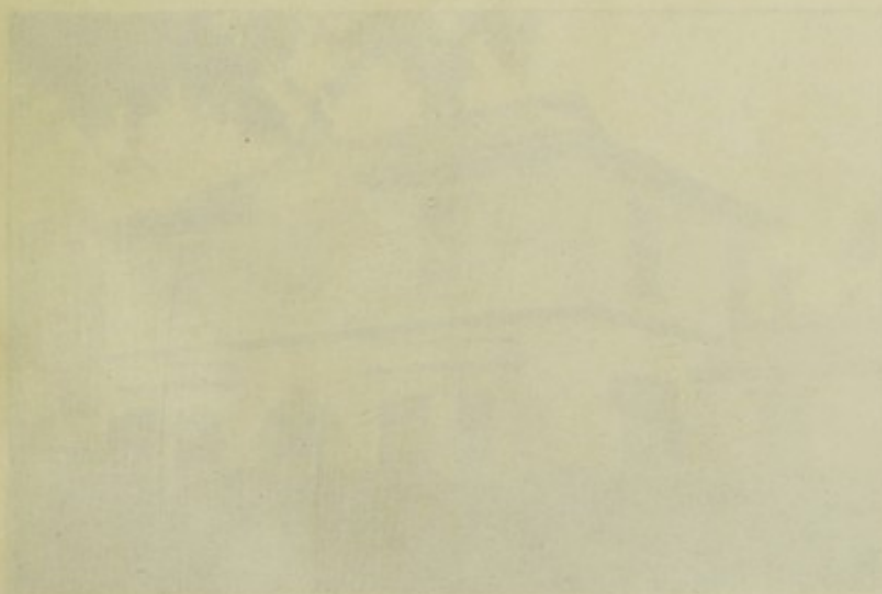
Government Press, Cairo, 1929.

Price - - - - - P.T. 10



No. 1 Travelling Ophthalmic Hospital

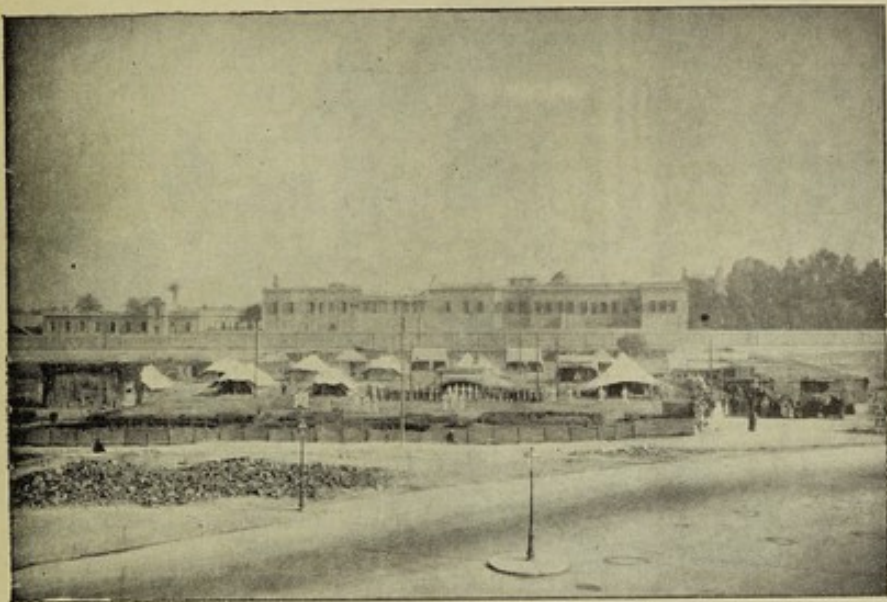
The following are the photos, of some Ophthalmic Units (Permanent and Travelling), which were possible to obtain locally with dates of their opening below each.



First Ophthalmic Hospital

1901

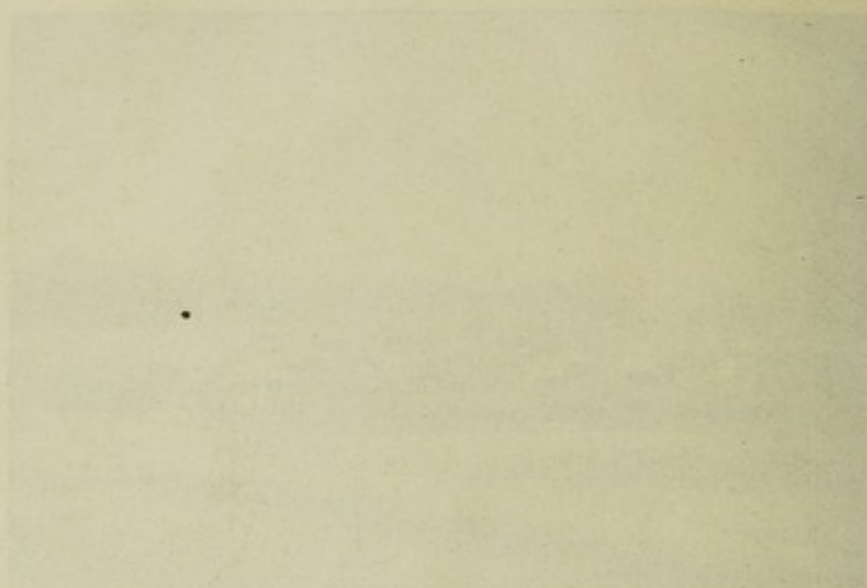
The following are the names of some of the persons
(Permanent and Temporary) who were possible to obtain results
with those of their opening below each.



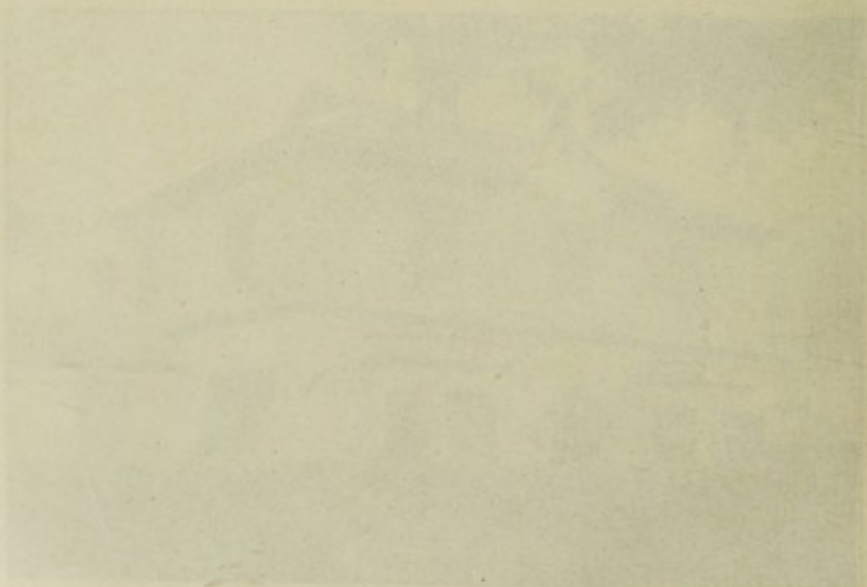
NO. 1 TRAVELLING OPHTHALMIC HOSPITAL
(1904).



TANTA OPHTHALMIC HOSPITAL
(1905).



THE UNIVERSITY OF CHICAGO
LIBRARY



THE UNIVERSITY OF CHICAGO
LIBRARY



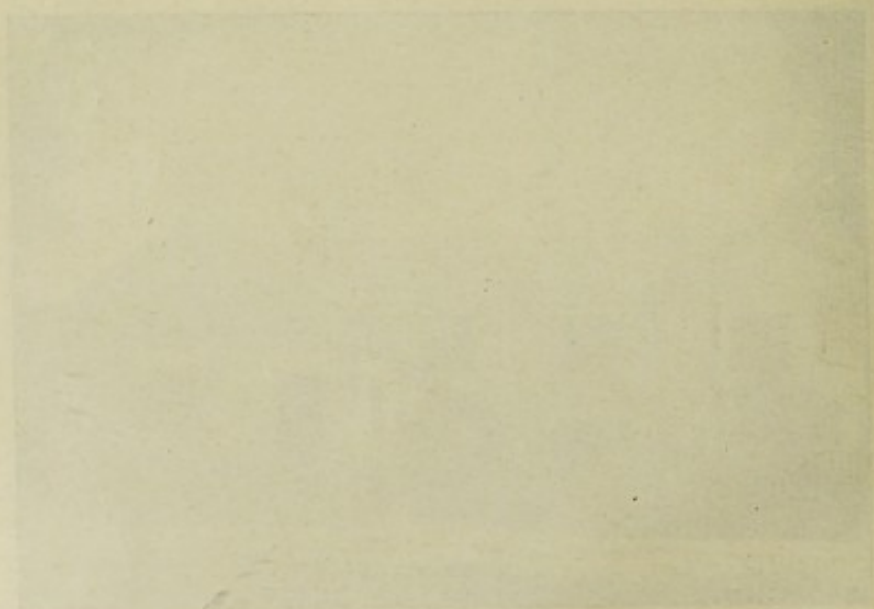
ASYÛT OPHTHALMIC HOSPITAL
(1911).



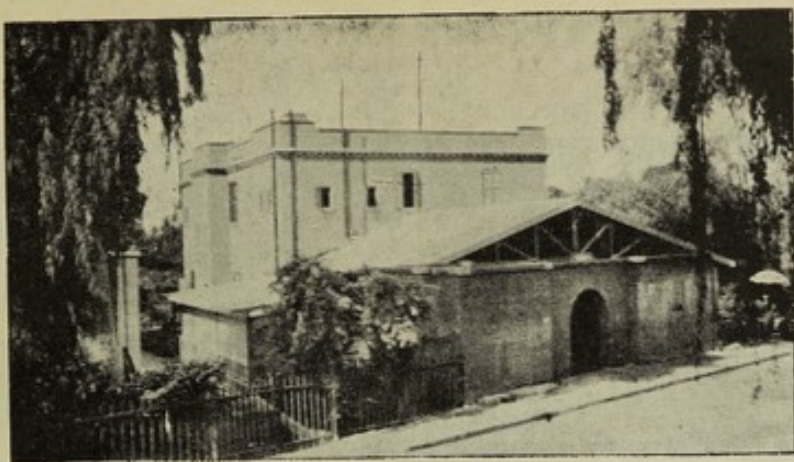
MANSOURA OPHTHALMIC HOSPITAL
(1912).



THE WHITE HOUSE
WASHINGTON



THE WHITE HOUSE
WASHINGTON



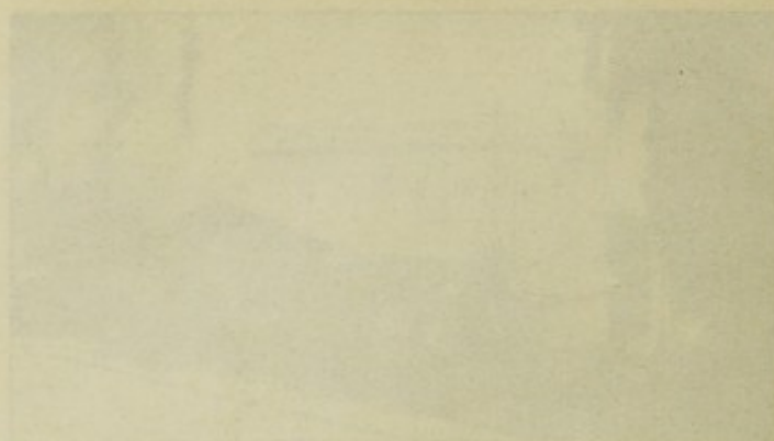
BENI SUEF OPHTHALMIC HOSPITAL
(1912).



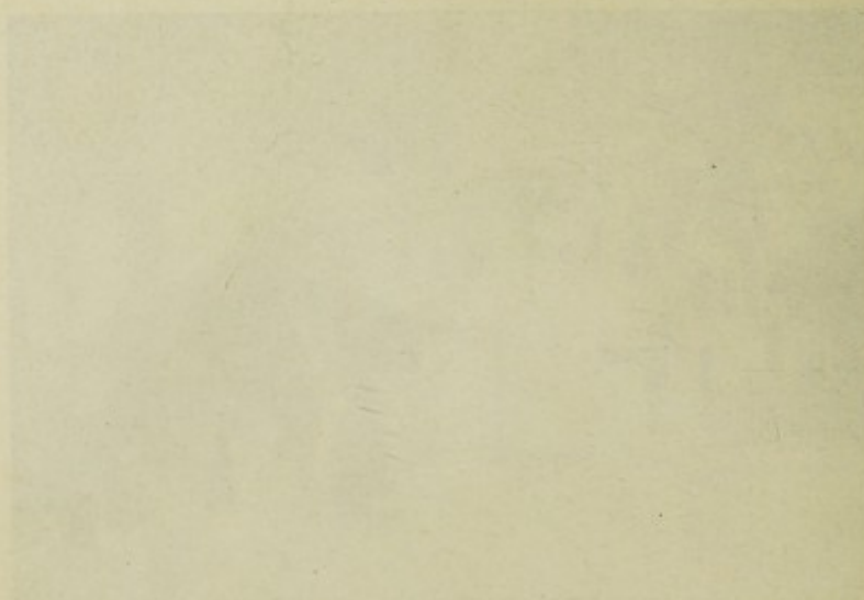
ZAGAZIG OPHTHALMIC HOSPITAL
(1913).



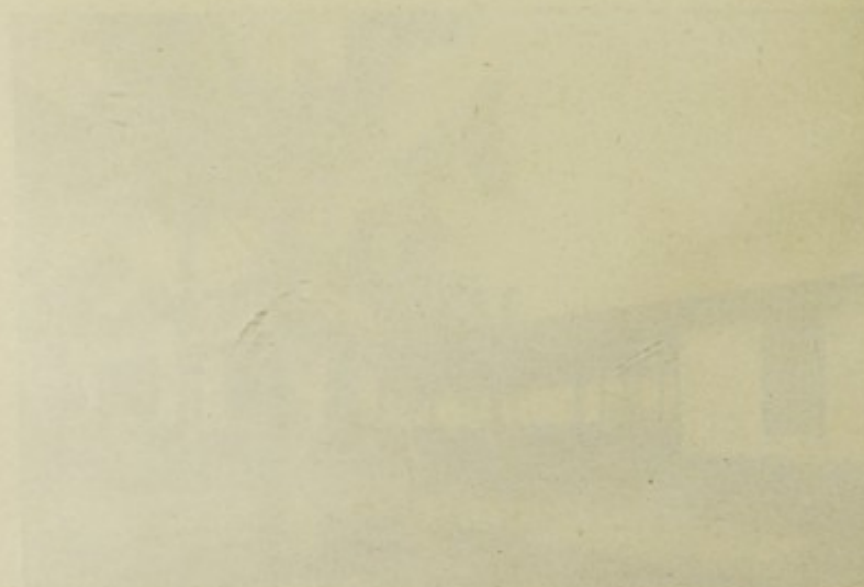
MEHALLA EL KUBRA OPHTHALMIC HOSPITAL
(1913).



THE HOUSE OF THE FUTURE
(1911)



THE HOUSE OF THE FUTURE
(1911)



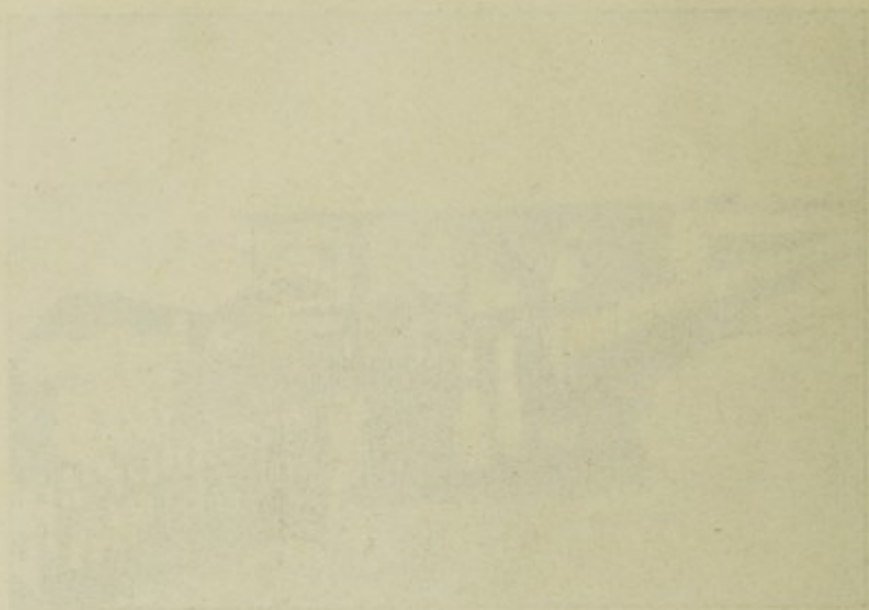
THE HOUSE OF THE FUTURE
(1911)



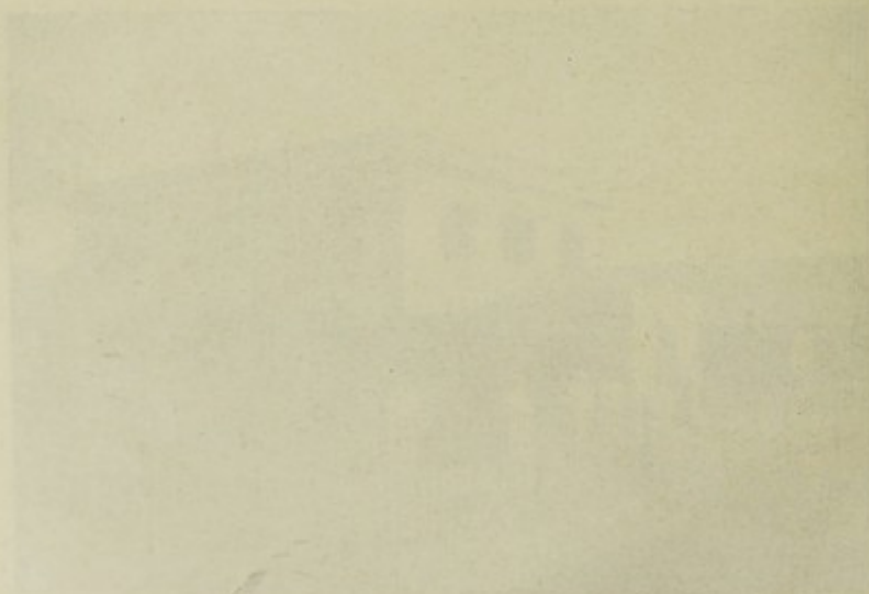
DAQAHLIYA TRAVELLING OPHTHALMIC HOSPITAL
(1913).



DAMANHOUR OPHTHALMIC HOSPITAL
(1914).



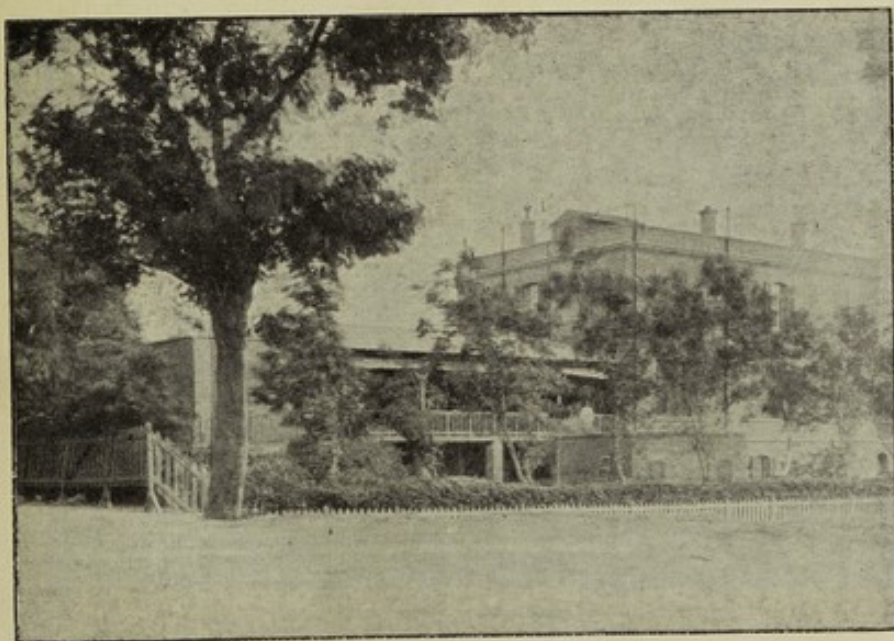
THE GREAT HALL OF THE HOUSE OF COMMONS
(1812)



THE GREAT HALL OF THE HOUSE OF COMMONS
(1812)



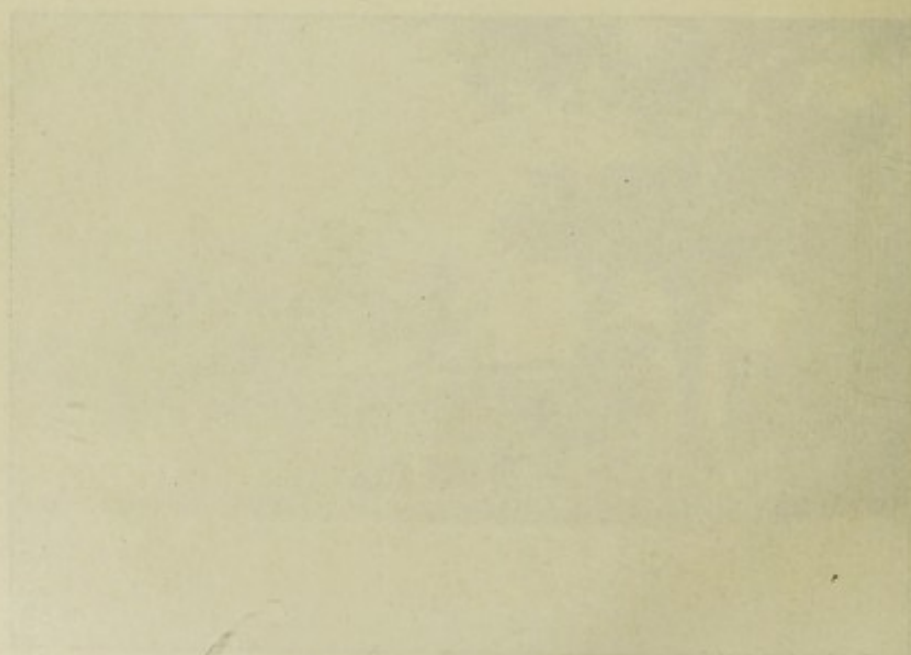
SHEBIN EL KOM OPHTHALMIC HOSPITAL
(1914).



SOHAG OPHTHALMIC HOSPITAL
(1914).



THE UNIVERSITY OF CHICAGO
LIBRARY



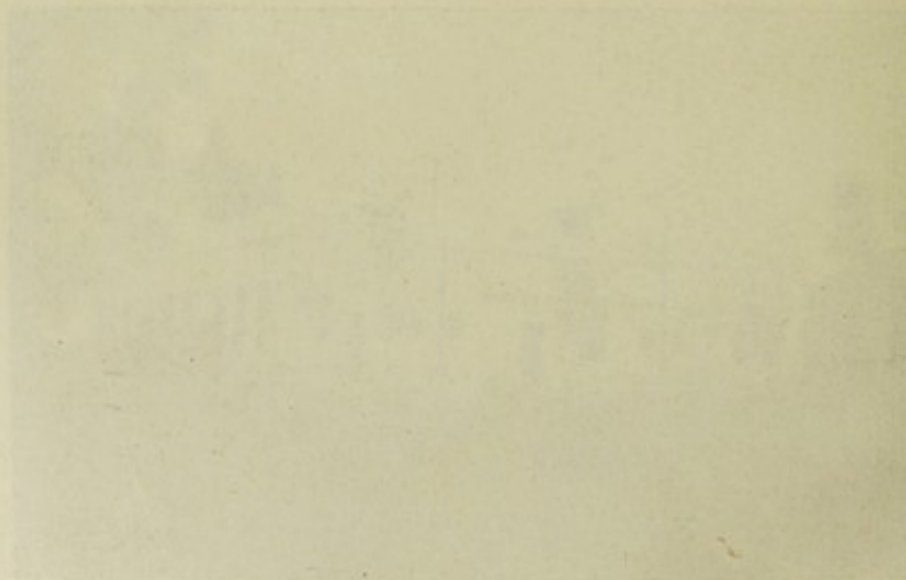
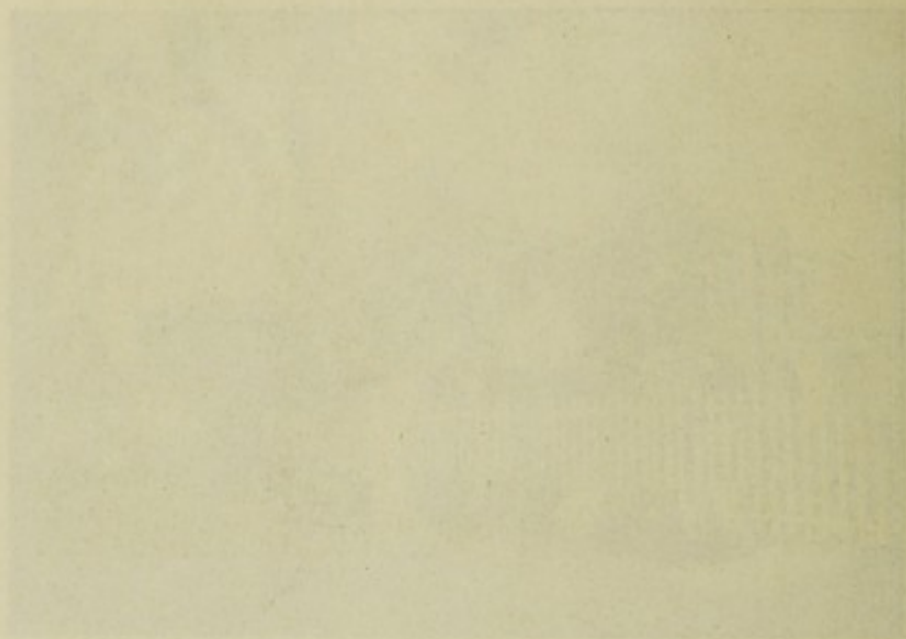
THE UNIVERSITY OF CHICAGO
LIBRARY



MINIA OPHTHALMIC HOSPITAL
(1915).

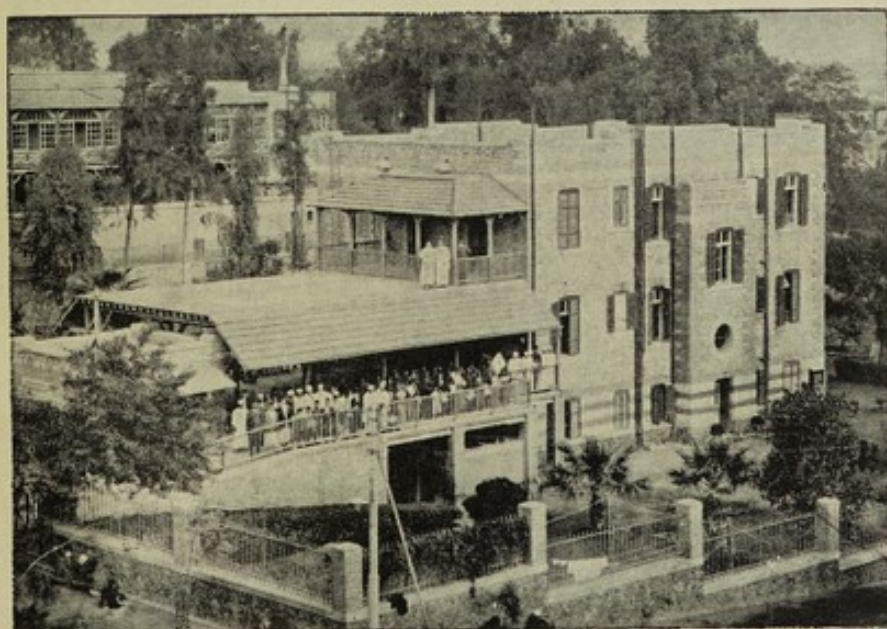


SANTA OPHTHALMIC HOSPITAL
(1915).

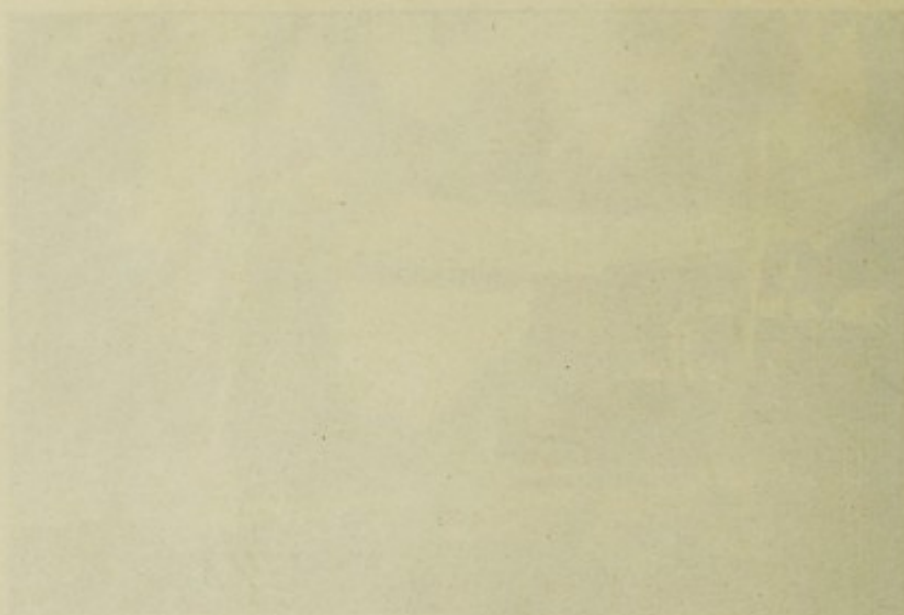




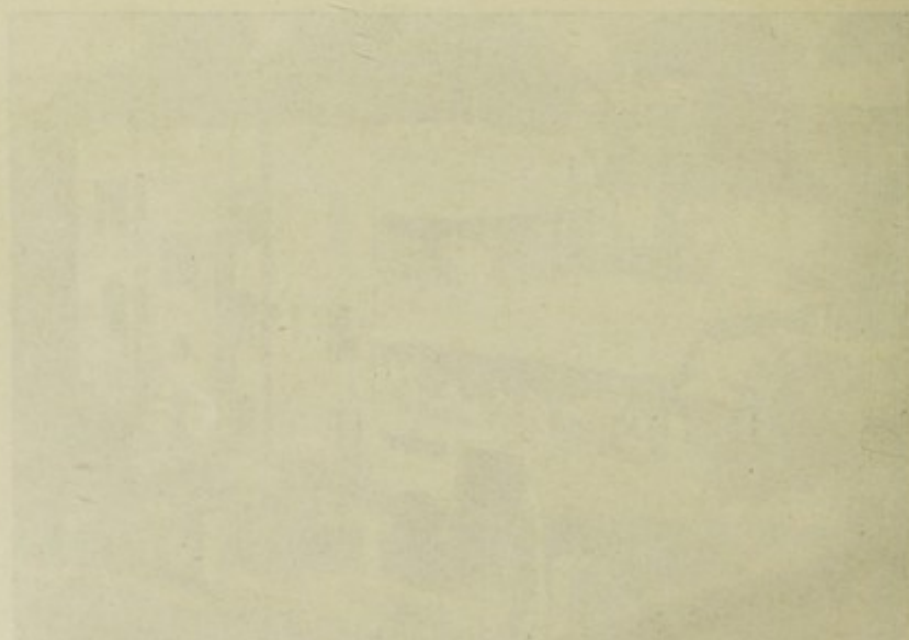
FAYOUM OPHTHALMIC HOSPITAL
(1916).



BENHA OPHTHALMIC HOSPITAL
(1920).



BRITISH MUSEUM
(1862)



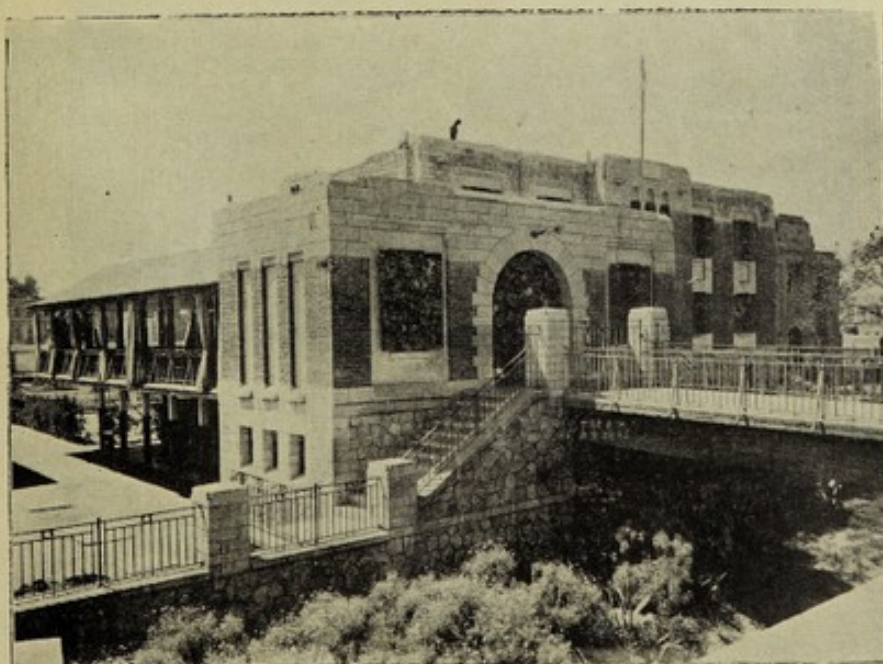
BRITISH MUSEUM
(1862)



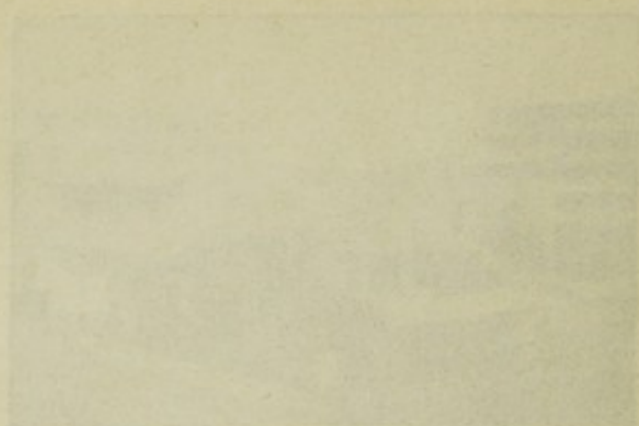
PORT SAID OPHTHALMIC HOSPITAL
(1921).



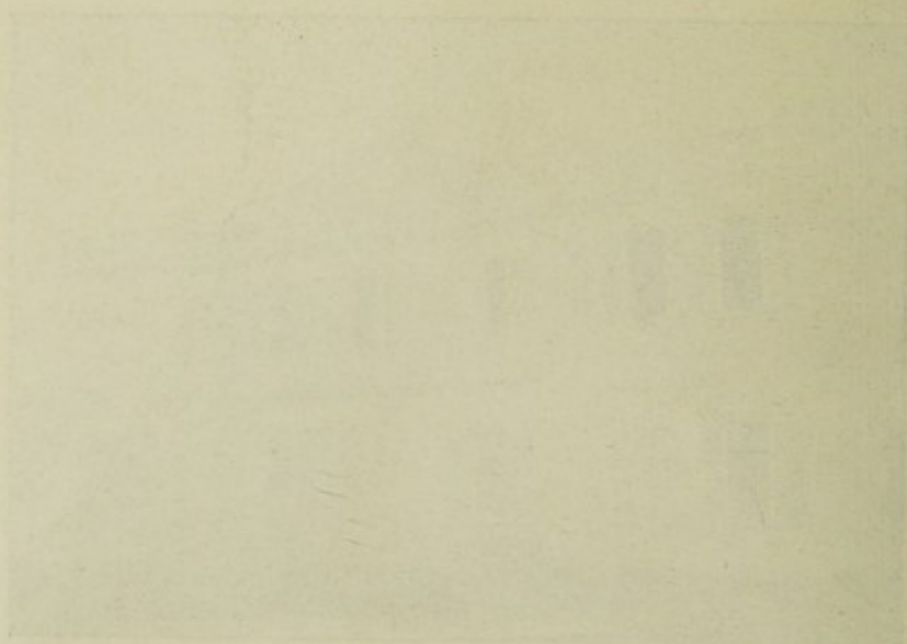
QENA OPHTHALMIC HOSPITAL
(1923).



FOUAD I OPHTHALMIC HOSPITAL, GIZA
(1924).



THE UNIVERSITY OF CHICAGO
LIBRARY



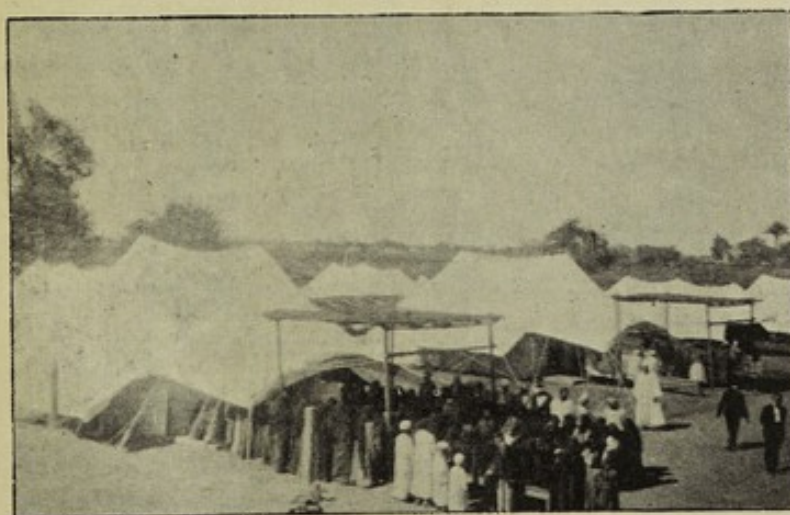
THE UNIVERSITY OF CHICAGO
LIBRARY



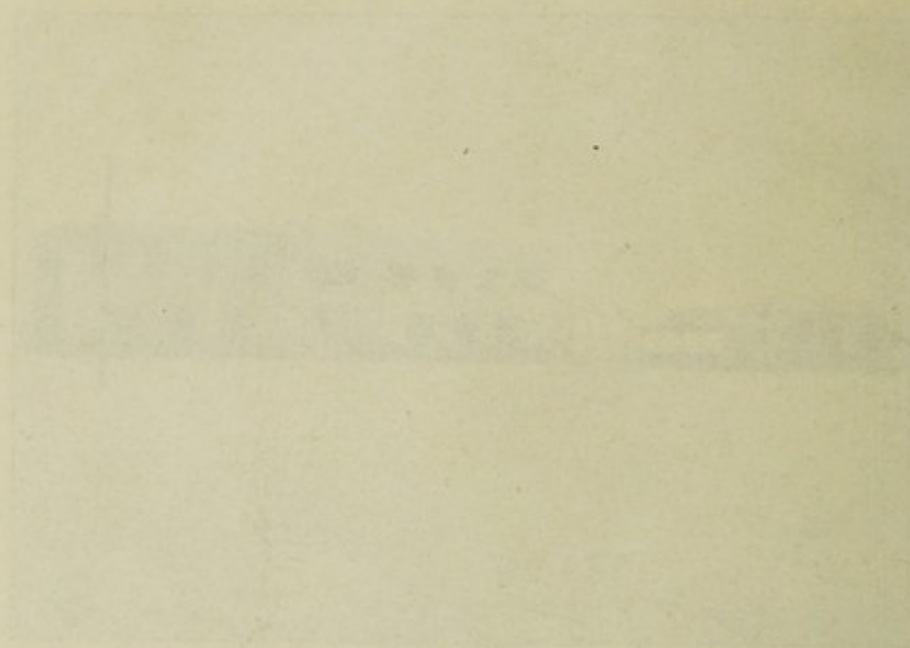
THE UNIVERSITY OF CHICAGO
LIBRARY



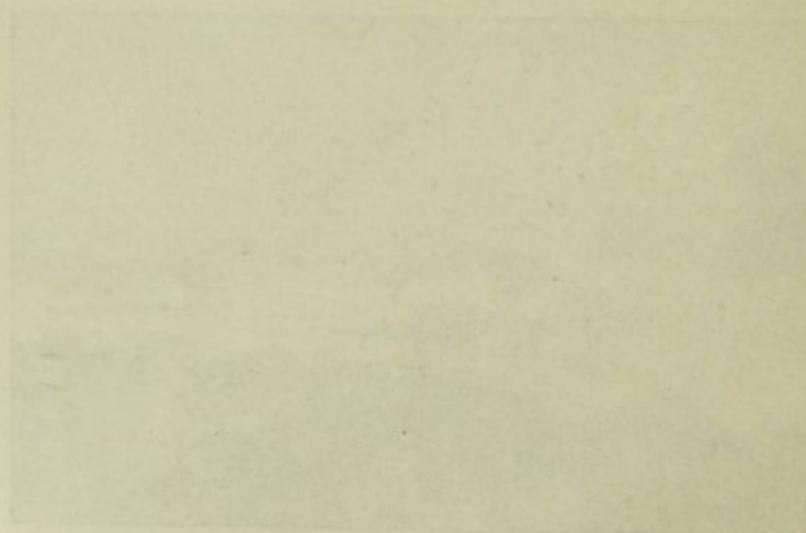
SUEZ OPHTHALMIC HOSPITAL
(1924).



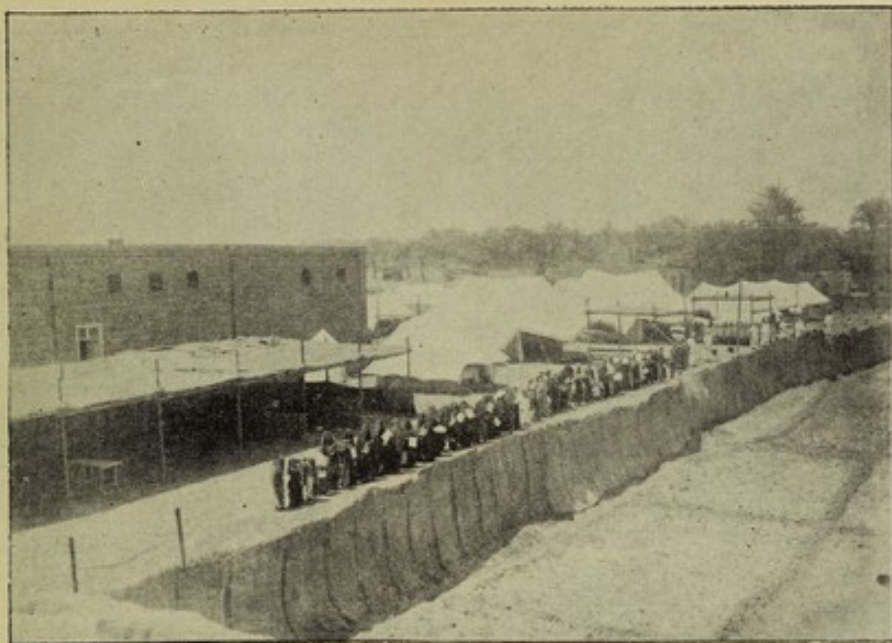
NO. 4 TRAVELLING OPHTHALMIC HOSPITAL
(1925).



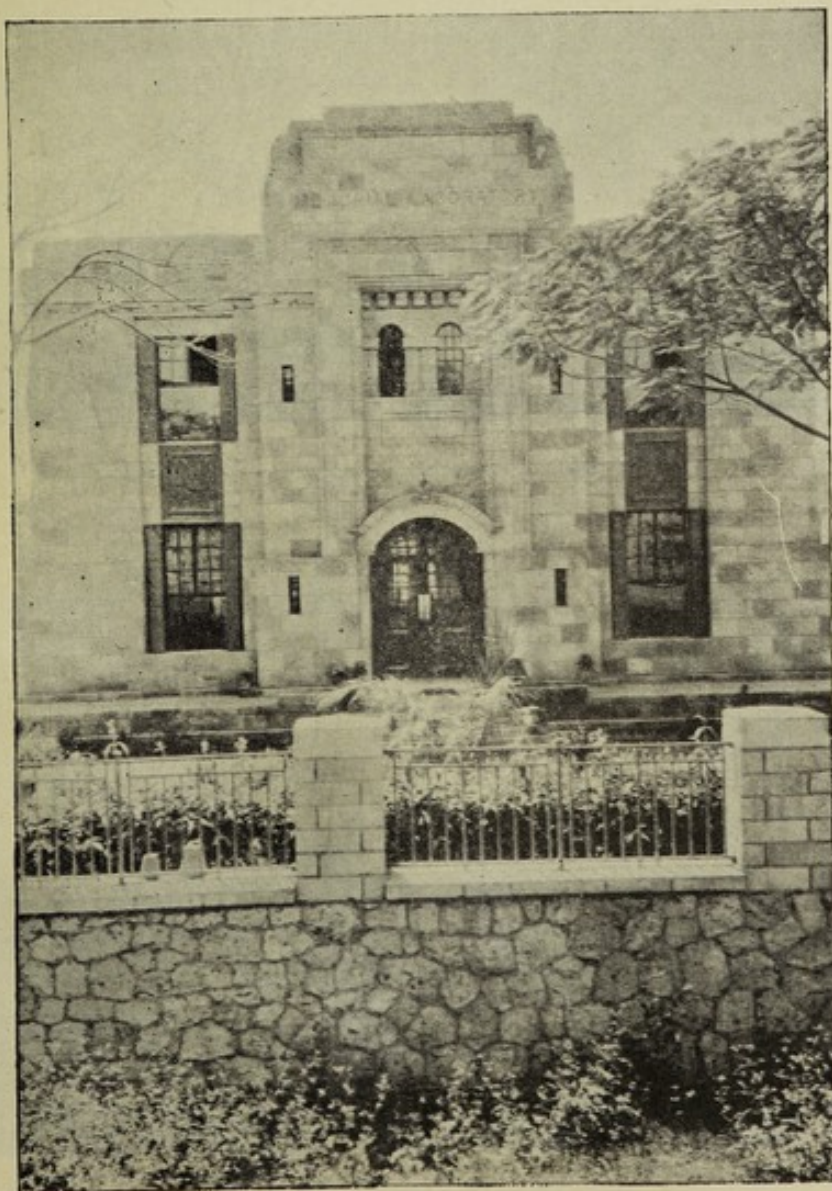
THE UNIVERSITY OF CHICAGO
LIBRARY



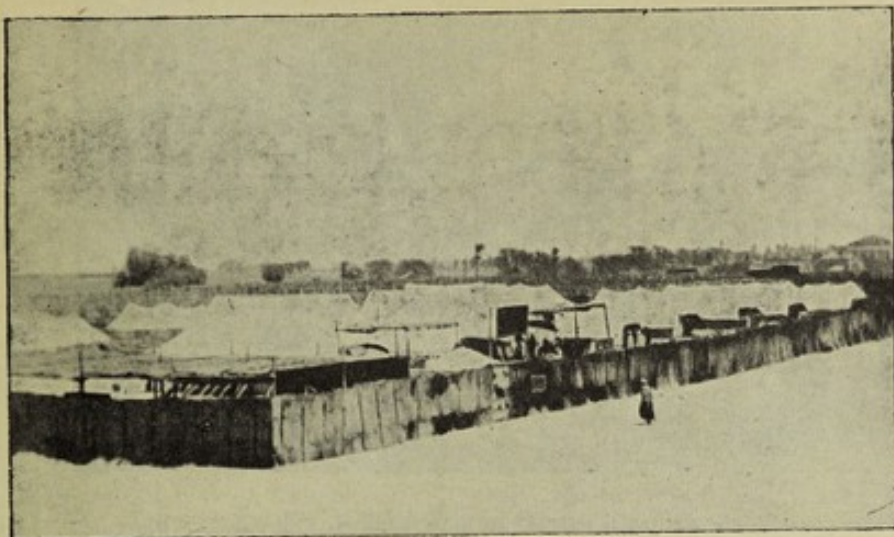
THE UNIVERSITY OF CHICAGO
LIBRARY



NO. 5 TRAVELLING OPHTHALMIC HOSPITAL
(1925).



MEMORIAL OPHTHALMIC LABORATORY, GIZA
(1925).



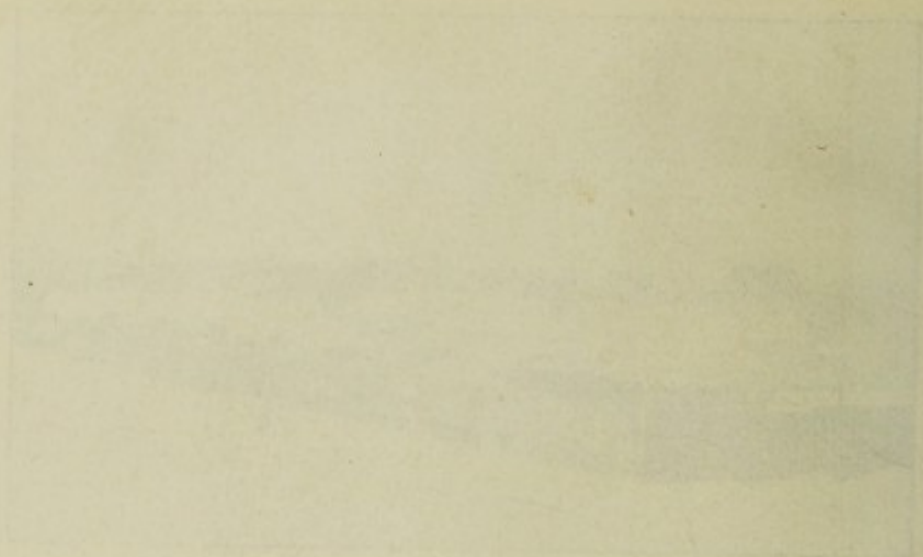
NO. 6 TRAVELLING OPHTHALMIC HOSPITAL
(1927).



GHARBIA TRAVELLING OPHTHALMIC HOSPITAL
(1927).



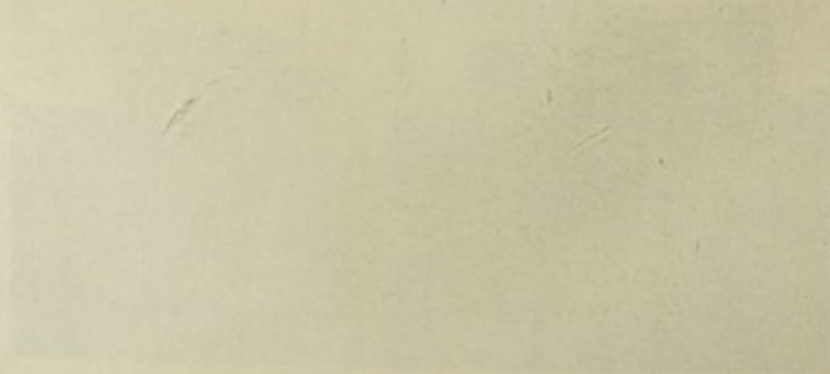
MAGHAGHA OPHTHALMIC HOSPITAL
(1927).



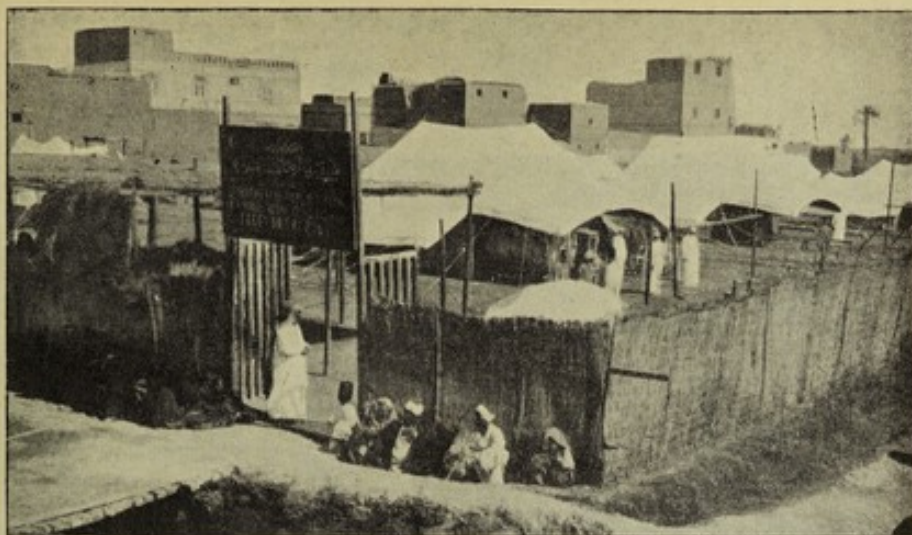
THE UNIVERSITY OF CHICAGO
LIBRARY



THE UNIVERSITY OF CHICAGO
LIBRARY



THE UNIVERSITY OF CHICAGO
LIBRARY



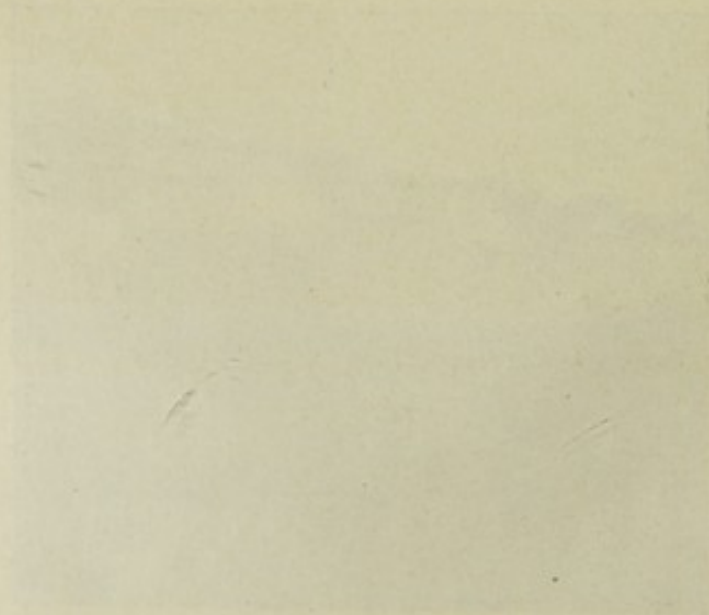
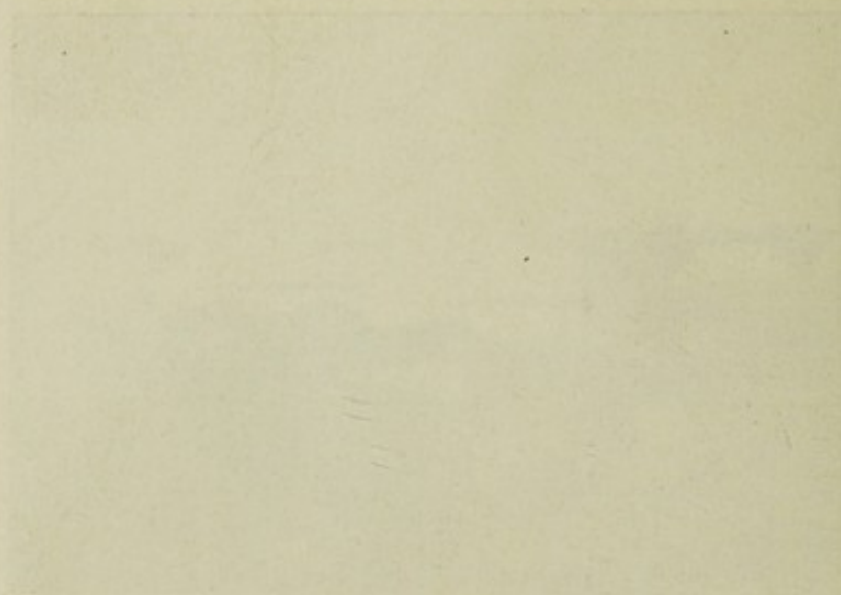
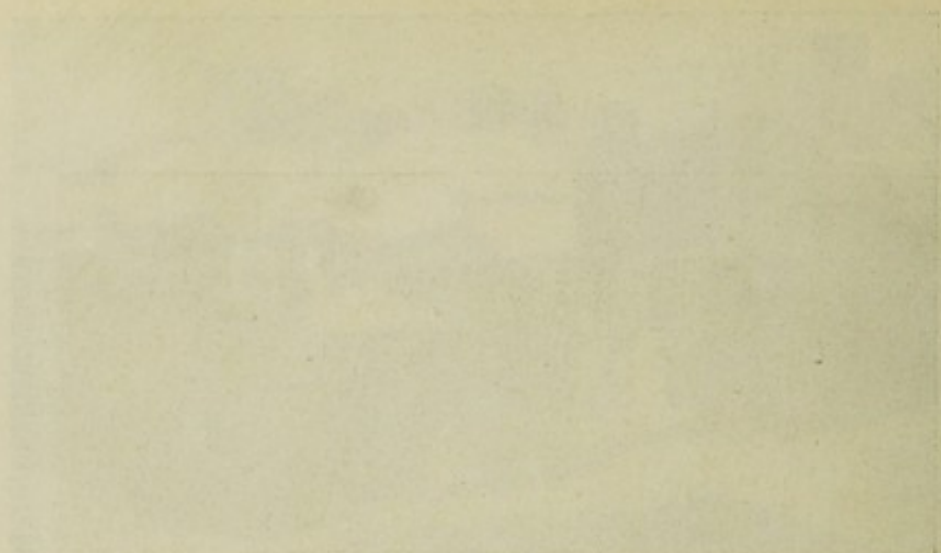
NO. 8 TRAVELLING OPHTHALMIC HOSPITAL
(1928).

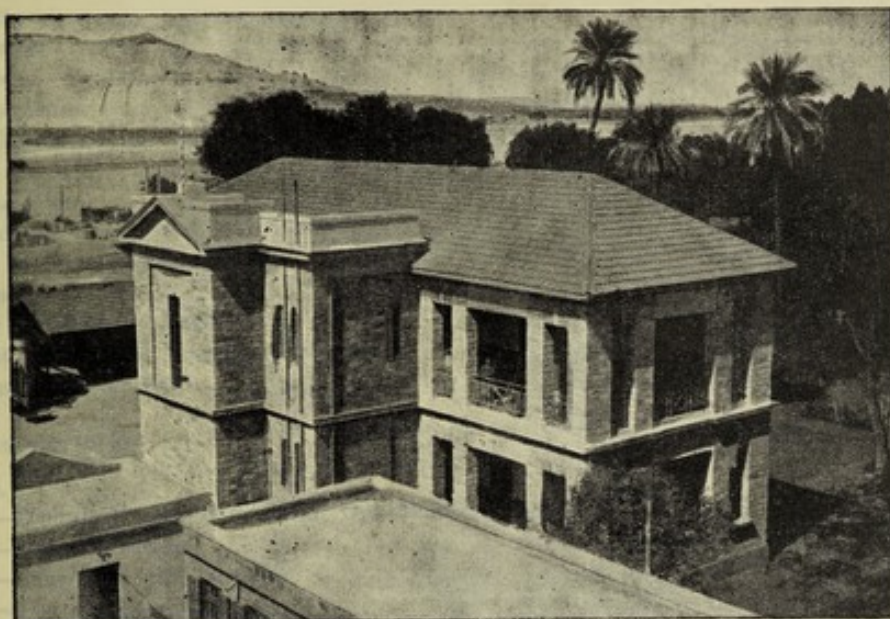


NO. 9 TRAVELLING OPHTHALMIC HOSPITAL
(1928).



NO. 10 TRAVELLING OPHTHALMIC HOSPITAL
(1928).





ASWAN OPHTHALMIC HOSPITAL
(1929).



PRINCESS FAWKIA OPHTHALMIC HOSPITAL, ROD EL FARAG, CAIRO
(1929).



ASWAN OPHTHALMIC HOSPITAL
(1930)



PRINCESS FAWZIA OPHTHALMIC HOSPITAL, ROYAL FARAF, CAIRO
(1932)

CONTENTS.

FOREWORD :—	PAGE
New Units	1
Clinical work	1
Blindness	1
Age of patients	1
School Clinics	1
Finance	2
Accommodation	2
Post graduate course of Ophthalmology	2
Diploma in Ophthalmology	2
Propaganda	2
El Arish Ophthalmic Mission	2
The Ophthalmological Society of Egypt	2
Interesting cases in 1928	3

HOSPITALS STATISTICS :—

Table.

I—Technical work done at all Ophthalmic Hospitals	4
II—List of diseases	5
III—Causes of optic atrophy	9
IV—List of operations... ..	10
V—Number of new patients treated and operations performed at all Ophthalmic Hospitals during 1928	12
VI—Average number of operations per month at all Ophthalmic Hospitals during the year 1928	13
VII—New patients treated according to the age at which they sought treatment ..	13
VIII—New patients treated per month	14
IX—Temperature and number of new patients treated	15
X—Average temperature	17
XI—Synopsis of work of Ophthalmic Hospitals since 1925	17
XII—Causes of blindness	17
XIII—Total percentage of blindness in one or both eyes	18
XIV—Blindness among out-patients since 1909	20
XV—Yearly percentage of blindness among Ophthalmic Hospitals patients since 1909	20
XVI—Primary Glaucoma	20
XVII—Pathological Report	21
XVIII—Wassermann Test... ..	22
XIX—Result of examination for diphtheria specimens	22
XX—Number of beds at the Ophthalmic Hospitals	23
XXI—Cost of uniform diets for the in-patients of the Ophthalmic Hospitals during 1928, excluding cost of rations of employés	24
XXII—Sources of provision of Ophthalmic Hospitals	25
XXIII—Actual expenditure 1927-1928—Central Administration	26
XXIV—Actual expenditure 1927-1928—Government Ophthalmic Hospitals	26
XXV—Actual expenditure 1927-1928—Government Ophthalmic Hospitals (per unit) ...	27
XXVI—Actual expenditure 1927-1928—Provincial Council Ophthalmic Hospitals	27
XXVII—Comparison of the cost of maintenance of a permanent Ophthalmic Hospital in 1914 and 1928	28

SCHOOLS STATISTICS (SCHOOL SESSION 1928-1929) :—

Table.

I— <i>a.</i> Condition of conjunctiva—beginning of the year... ..	29
I— <i>b.</i> Condition of conjunctiva—end of the year	30
II— <i>a.</i> Effect of treatment on serious stages of trachoma	31
II— <i>b.</i> Stages of trachoma at beginning and end of school year	31
III— <i>a.</i> Trachoma and its relation to school years	32
III— <i>b.</i> Comparison of serious stages of trachoma I and II (beginning of the year)	33
IV—Vision of all pupils without spectacles	33
V—Spectacles ordered	34
VI—Number of pupils ordered spectacles who by use of spectacles not greater in strength than ± 6 dioptries can get good or fair vision	35
VII—Condition of cornea before treatment	35
VIII—Comparison of corneal opacity among pupils of Tanta Primary School in the year 1914-1915 and 1928-1929	35

Report of the Ophthalmic Section, 1928.

Foreword.

NEW UNITS.

During 1928, four Government Travelling Ophthalmic Hospitals Nos. 8, 9, 10 and 11 as well as an Ophthalmic Branch at Fikria (Abu Kerkas) Government Hospital, were opened. Early in the beginning of 1929, an Ophthalmic Branch at Aswân General Hospital and a large Permanent Ophthalmic Hospital at Rod El Farag (Cairo), were also opened.

The number of Ophthalmic Units in the country till the end of 1928 reached 41 of which 27 are permanent and 14 travelling. This number shows an increase of 5 Ophthalmic Units over that of 1927, but in June 1929, time at which this report is prepared, the number of Ophthalmic Units reached 44 of which 30 are permanent and 14 travelling.

Another Ophthalmic Branch has also been established at Isna Government Hospital and will shortly be opened for treatment.

CLINICAL WORK.

The following table shows the clinical work done in 1928 as compared with that of 1927:—

	1927	1928	Increase in 1928.
			Per cent.
New patients... ..	317,742	381,790	10
In-patients	10,810	12,967	20
Operations	158,989	171,487	8
Out-patients attendances	3,239,159	3,464,425	7

BLINDNESS.

37,408 or 9·3 per cent of all patients examined were found blind in one or both eyes. This percentage is less than that of 1927 which was 9·8 per cent and it is satisfactory to mention that it is gradually falling since 1919.

The pathological causes of blindness are detailed in table 12 where it is shown that acute ophthalmias form about 79 per cent of all causes. The gonococcus is still the predominant factor of infection with acute ophthalmias, its percentage to total of microbes being 39 per cent.

AGE OF PATIENTS.

Out of 381,790 new patients treated in 1928,—23,114 were under the age of one year or 6·1 per cent and 121,431 from one to fifteen years of age or 31·9 per cent. This fact shows that the mass of people recognise the importance of seeking ophthalmic treatment for infants and children.

SCHOOL CLINICS.

Ophthalmic examination, inspection, and treatment are, at present, carried out at 30 primary Government schools. Details of ophthalmic work in schools are given in a special section at the end of this report.

12,346 pupils were examined, of whom 91 per cent were found to be suffering from trachoma in its various stages. More than 21 per cent of these were in the serious stages of the disease: Trachoma I and II. As a result of Ophthalmic treatment, the latter percentage fell to 6 per cent.

Pupils of other 23 primary schools and kuttabs belonging to the Provincial Councils in Markazes (Districts), where permanent or travelling hospitals exist, received ophthalmic treatment at hospitals.

FINANCE.

The annual cost of maintenance during the financial year 1927-1928, including the cost of administration and expense of ophthalmic clinics in primary schools amounted to L.E. 63,874 as shown in the detailed tables appended to this report which are significant of proper economical management. The expense per day for the out-patient was about 14.4 mills. The in-patient costs in addition about 33 mills. for his food.

The source of provision for all ophthalmic units is shown in table 22.

ACCOMMODATION.

The number of beds in 1927 was 610. 111 beds were added to this number in 1928 of which 88 beds were in the new units and 23 in the other hospitals.

POST-GRADUATE COURSE OF OPHTHALMOLOGY.

The number of medical officers undergoing post-graduate teaching in ophthalmology was 12 during April 1928 and 18 during October.

DIPLOMA IN OPHTHALMOLOGY.

The diploma in Ophthalmology referred to in last year's report (1927) has now been sanctioned as one of the diplomas delivered by the Egyptian University.

PROPAGANDA.

Although the Ophthalmic Hospitals are considered to be an important, but indirect, factor of propaganda against eye diseases, a direct means of propaganda is being used by the projection, throughout the country, of cinematographic films, illustrating all sorts of eye diseases, their methods of propagation, prophylaxis and treatment.

EL ARISH OPHTHALMIC MISSION.

Owing to the prevalence of purulent ophthalmia among inhabitants of El Arish Governorate, at the north eastern frontiers of Egypt, an ophthalmic surgeon was detailed to this desert area for about two months which expired at the end of February 1928.

It is worthy of mention that out of 1,106 patients treated, there were only 677 or 61 per cent suffering from trachoma at various stages.

THE OPHTHALMOLOGICAL SOCIETY OF EGYPT.

The annual meeting of this Society has been held on Friday March 29th, 1929, at Giza Memorial Ophthalmic Laboratory. The following are the titles of communications delivered at the meeting:—

1. Egyptian Ophthalmia by an Egyptian Ophthalmologist seventy-five years ago.
2. The slit lamp in a few doubtful cases.
3. Phenolaine in the treatment of corneal nebulae.
4. Phenolaine.
5. An easy and successful operation for over-eversion.
6. Some suggestions regarding the examination of visual acuity in the Medical Commission of Egypt.
7. Proptosis.
8. Enormous distention of the R. Orbit.

9. Traumatic omphysema of the conjunctiva.
10. Phlyctenular conjunctivitis.
11. Eye complications in dengue fever.
12. Two cases of injury at the limbus.
13. Episcleritis.
14. A case of glaucoma developing after cataract extraction due to presence of vitreous in anterior chamber.
15. An unusual case of sympathetic ophthalmitis.
16. Huge multiple fibromata of upper lid and forehead and their removal.
17. Hysterical eye disorders.
18. An investigation into the cultural and serological characters of the gonococcus isolated from cases of gonococcal ophthalmia.
19. A case of post diphtheritic paralysis of accommodation, soft palate and lower limbs.
20. Tuberculosis.
21. Trachoma in the orient, its distribution according to the age of patients and how to control it in Egypt.

The following cases have been exhibited at the meeting :—

- (a) Présentation d'un malade blessé à l'œil par un éclat de verre.
- (b) A case of cicatricial ectropion of the lower lid successfully treated.

INTERESTING CASES IN 1928.

A monthly list of interesting cases seen at the various units of the Section is drawn up. About 708 cases have been recorded as interesting during 1928. The following list shows such cases that are not frequently seen in every day's work in Egypt :—

1. Diabetic cataract.
2. Retinitis punctata albescens.
3. Fibro-angioma of conjunctiva.
4. Cavernous angioma of conjunctiva.
5. Successful couching operation—vision with + 10 sph. = 6/18.
6. Microphthalmos with cyst.
7. Malignant epithelioma of limbus.
8. Streptothrix infection of conjunctiva.
9. Fuchs' coloboma of optic nerve.
10. Epithelioma of lid.
11. Glioma retinae.
12. Bilateral absolute glaucoma in a boy of 15 years of age with high myopia (−12).
13. Cysticercus of orbit.
14. Anophthalmos.
15. Advanced chronic primary glaucoma in a patient 24 years old.
16. Mikulicz's disease.
17. Base-celled epithelioma of conjunctiva.
18. Late infection after trephining.
19. Embolism of central artery of retina.
20. Congenital accessory lachrymal gland in an infant.
21. Traumatic subretinal hæmorrhage.

- 22.—Transient hysterical amaurosis.
- 23.—Tay's choroiditis.
- 24.—Tick infection "Ixodidae."
- 25.—Retinitis proliferans.
- 26.—Tuberculosis of lid.
- 27.—Congenital bilateral ptosis with nevus of L. face.
- 28.—Squamous called carcinoma of globe.
- 29.—Dendritic ulcer of cornea, post febrile.
- 30.—Fibro-angioma of caruncle.
- 31.—Papilloedema after brain tumour.
- 32.—Essential gangrene of lids.
- 33.—Carcinoma of conjunctiva.
- 34.—Double acute dacryocystitis.
- 35.—A piece of stone in anterior chamber.
- 36.—Retinitis pigmentosa.
- 37.—Spindle cell sarcoma of orbit.
- 38.—Trichophthal blepharitis.
- 39.—Adenocarcinoma of meibomian gland.
- 40.—Bilateral hysterical ptosis.
- 41.—Varicose vein of L. lower lid.
- 42.—Scleritis and sclerosing keratitis, tubercular.
- 43.—Distichiasis of 4 lids.

TABLE I.—WORK DONE AT ALL GOVERNMENT AND PROVINCIAL COUNCILS OPHTHALMIC HOSPITALS
DURING 1928.

1.—IN-PATIENTS : TOTAL NUMBER	12,967
(Number of available beds 721)	
Number of diets issued	226,679
2.—OPERATIONS :—	
I. Major :—	
(a) Senile cataract	1,749
(b) Soft cataract	401
(c) Trichiasis or entropion	62,255
(d) Other operations	16,233
TOTAL	80,638
II. Minor (including mechanical treatment of trachoma)	90,849
GRAND TOTAL, major and minor operations	171,487
3.—OUT-PATIENTS :—	
I.—Incurable	3,891
II.—Postponed	15,849
III.—Tickets issued, i.e. new cases	381,790
IV.—Old cases	3,062,895
V.—Visits made by patients for treatment (equal I+II+III+IV)	3,464,425
VI.—Average number of visits made to hospital by each patient under regular treatment (old cases + tickets issued) ÷ tickets issued. The factor of incurable cases is neglected	9
VII.—Discharges :—	
(a) Cured	107,440
(b) Relieved	24,234
(c) Incurable	1,333
(d) Spontaneously ceased to attend after having attended only once	52,967
(e) Spontaneously ceased to attend after having attended more than once	101,583
VIII.—Trichiasis cases seen among new out-patients :—	
(a) No previous operation having been performed	51,813
(b) Previous operation performed unsuccessfully (not at an Ophthalmic Hospital, but probably by some charlatan)	4,215

N.B.—3. 1. Incurable cases do not receive tickets, but are recognized as soon as seen by the surgeon as both incurable and devoid of surgical interest.

VII(c) Incurable cases include those which are recognized as soon as seen by the surgeon as incurable but are given tickets for statistical or other purposes.

TABLE I.—WORK DONE AT ALL OPHTHALMIC HOSPITALS DURING 1928 (*continued*).

3.—OUT-PATIENTS (<i>con'd.</i>):—		
IX.—Spectacles ordered		1,110
X.—Constant wash cases (number of days' treatment)		625,700
XI.—Ages of patients examined:—		per cent.
Under one year	6.05	23,114
From 1 to 5 years	12.20	46,576
" 6 " 10 "	10.20	38,950
" 11 " 15 "	9.41	35,905
" 16 " 20 "	7.97	30,429
" 21 " 25 "	7.53	28,732
" 26 " 30 "	8.99	34,307
" 31 " 35 "	8.46	32,314
" 36 " 40 "	6.71	25,661
" 41 " 45 "	6.43	24,591
" 46 " 50 "	4.83	18,639
" 51 " 55 "	3.45	13,198
" 56 " 60 "	3.08	11,789
" 61 " 65 "	2.12	8,112
" 66 " 70 "	1.47	5,583
Over 70 years	1.01	3,890
TOTAL		381,790
XII.—Origin of patients:—		
Patients from:—		
(a) Town in which hospital is situated	35.87	136,968
(b) Markaz in which hospital is situated	39.73	151,688
(c) Other Markazes of same Mudiriya	15.08	57,605
(d) Other Mudiriyas or Governorates	9.33	35,529
TOTAL		381,790

TABLE II.—LIST OF DISEASES.

<i>Ametropia</i> :—		
Hypermetropia		682
Myopia		1,157
Astigmatism		756
Presbyopia... ..		141
<i>Conjunctiva</i> :—		
Conjunctivitis, gonococcal		16,555
" Morax-Axenfeld		2,447
" Koch-Weeks		8,088
" Pneumococcal		1,661
Other organisms or negative and unclassified... ..		13,525
Trachoma I		29,784
" IIa		58,341
" IIb'		6,726
" IIb"		99

TABLE II.—LIST OF DISEASES (*continued*).

Conjunctiva (contd.):—

Trachoma IIc	2,027
„ III including post-trachomatous degeneration	237,392
„ IV	21,213
Phlyctenule	10,401
Pterygium	3,722
Pinguecula	806
Xerosis	986
Symblepharon	230
Dermoid	32

Other conditions:—

Argyrosis	425
Colloid and hyaline degeneration... ..	60
Hypertrophied caruncle	164
Injuries (foreign bodies, burn, etc.)	244
Cyst	122

Eyelids:—

Pediculus ciliaris	955
Trichiasis and entropion	57,648
Distichiasis	117
Ectropion	762
Lagophthalmos	780
Blepharitis	25,756
Hordeolum	1,704
Wart	314
Chalazion	1,546
Eczema	320
Rodent ulcer	25
Dermoid	80
Ptosis	250
Erysipelas	7
Herpes	45
Chancre	—
Epithelioma	15
Other tumours	66
Leucoderma	19

Lacrimal Apparatus:—

Lacrimal fistula	189
Stenosis of the duct	207
Dacryocystitis, acute	106
„ chronic	3,450

Cornea:—

Ulceration, simple	19,131
„ hypopyon	969
„ perforation	5,061
„ special forms	132
Paunus	58,566
Keratitis, interstitial	18
„ trachomatous	1,684
Nebula or leucoma	124,109
Adherent leucoma	19,481
Totally opaque cornea	11,596

TABLE II.—LIST OF DISEASES (*continued*).

Cornea (contd.):—

Staphyloma	4,108
Xerosis of cornea	797
Abscess of cornea	50
Conical cornea	1,142
Injuries (burn, foreign bodies, etc.)	1,219

Limbus:—

Tumours	42
----------------	----

Iris:—

Anterior synechia	2,487
Posterior „	1,509
Inflammation	756
Iris bombé	37
Irido-dialysis	141
Congenital coloboma	45
Aniridia	11
Persistent pupillary membrane	17
Iridodonesis	393
Various	159

Sclerotic:—

Ciliary staphyloma	1,219
Episcleritis	26
Injuries	77

Choroid:—

Coloboma	13
Rupture	13
Disseminated choroiditis	24
Choroido-retinitis	25
Atrophy of choroid	125
Tumours	2
Albinismus	8

Retina:—

Retinitis, Albuminuric and diabetic	15
„ syphilitic	8
„ pigmentosa	52
Detachment of retina	128
Embolism and thrombosis of retinal vessels	1
Glioma	9
Other conditions	7
Night blindness (in which retinitis pigmentosa is absent)	92

Optic Nerve:—

Neuritis	37
Atrophy (<i>see</i> table III, causes of Optic Atrophy)	201
Opaque nerve fibres	19
Other conditions	6

Lens:—

Cataract, senile	4,767
„ soft	358

TABLE II.—LIST OF DISEASES (*continued*).

<i>Lens (contd.) :—</i>		
Cataract, traumatic	149	
" lamellar	19	
" anterior polar	1,496	
" posterior "	95	
" dislocated, traumatic	204	
" " operative	29	
" " congenital	30	
Aphakia	1,148	
Secondary cataract	530	
Ectopia lentis	17	
<i>Vitreous :—</i>		
Opacities	155	
Foreign bodies	16	
<i>Muscles :—</i>		
Strabismus, alternating	1,153	
" convergent	6,925	
" divergent	6,490	
Heterophoria	151	
Nystagmus	1,361	
Paralysis	31	
<i>Glaucoma :—</i>		
Primary, acute	} Including absolute glaucoma caused by acute, sub-acute or chronic glaucoma.	37
" sub-acute		326
" chronic		4,320
Secondary		7,400
<i>Globe :—</i>		
Shrunken globe	11,780	
Buphthalmos	43	
Exophthalmic goitre	8	
Panophthalmitis	358	
Microphthalmos... ..	24	
Anophthalmos	—	
Injury	116	
<i>Orbit :—</i>		
Tumours	28	
Cellulitis	21	
Tenonitis	—	
Periostitis	8	
Injuries	10	
Cyst, frontal	9	
" ethmoidal	2	
Contracted socket	76	
Fly-blown	4	
<i>Blind : —</i>		
In one eye =Monocular	28,816	
In both eyes* =Binocular	8,592	

* Patients are accounted blind who cannot count fingers at one metre.

TABLE IV.—LIST OF OPERATIONS.

Eyelids:—

For Trichiasis and entropion:—

Snellen's	53,055
Anagnostakis	122
Snellen-Anagnostakis	253
Canthoplasty	1,812
Grafting mucous membrane	6,425
Electrolysis (minor)	3,049
Excision of lash (minor)	930
Other operations	588

For Ectropion:—

Plastic	42
MacCallan's	—
Kenneth Scott's	—
Kuhnt's	13
Other operations	76
For ptosis	25
For symblepharon	97
For hordeolum and chalazion (minor)	2,406
Cyst removed	157
Wart excised (minor)	198
Restitching wounds (minor)	59
Opening abscesses (minor)	660

Conjunctiva:—

For trachoma:—

Expression or Mechanical Treatment (minor)	50,915
Combined excision of Heistrath	476
Post-trachomatous degeneration (minor)	29,705
Other operations } (minor)	430
} (major)	298
Pterygium	2,184

Cornea:—

Foreign body removed (minor)	902
Semisch's section	99
Cautery	157
Various	6

Iris:—

Iridectomy for adherent leucoma	5,994
„ visual	623
„ for glaucoma	877
„ preliminary for cataract	175
Cystoid cicatrix	9
Division of anterior synechia	17
Various	92

Lacrimal Sac:—

Excision	1,437
Various (minor)	1,595

Lens:—

For senile cataract:—

Extraction with iridectomy	1,608
„ after previous iridectomy	141
For membrane after extraction: Discission	768

TOTAL, (carried forward) 168,475

TABLE IV.—LIST OF OPERATIONS (*continued*).

TOTAL, brought forward												168,475
<i>Lens (contd.):—</i>												
For soft cataract:—												
Extraction												4
Discission												83
Curette evacuation												301
Paracentesis												13
For membrane after evacuation:—												
Discission												86
Capsulotomy												7
<i>Globe:—</i>												
Trephining of cornea-sclera with iridectomy												1,190
Trephining												51
Excision												518
Evisceration												338
Paracentesis												116
<i>Orbit:—</i>												
Exenteration												12
For tumour												23
„ dermoid												42
„ cellulitis												8
„ cyst, frontal												3
„ „ ethmoidal... ..												1
Tenotomy and advancement... ..												42
Other major operations												157
Trial with magnet:—												
Positive												—
Negative												17
TOTAL												171,487

**TABLE V.—NUMBER OF NEW PATIENTS TREATED AND OPERATIONS PERFORMED
AT ALL OPHTHALMIC HOSPITALS DURING 1928.**

HOSPITALS.	NUMBER OF PATIENTS.	HOSPITALS.	NUMBER OF OPERATIONS.
Giza	32,186	Giza	10,592
No. 1, T.O.H.	29,175	No. 1, T.O.H.	9,812
Alexandria	18,131	Tanta	6,994
Tanta	14,279	No. 5, T.O.H.	6,961
No. 5, T.O.H.	13,865	Asyût	6,360
Asyût	13,215	Beni Suef	6,301
Beni Suef	13,155	Sohâg	5,922
Faiyûm	12,184	No. 6, T.O.H.	5,563
Sohâg	11,781	No. 4, T.O.H.	5,550
Port Said	11,338	No. 10, T.O.H.	5,258
Shibin el Kôm	10,285	Benha	5,204
No. 6, T.O.H.	10,223	Alexandria	5,100
No. 9, T.O.H.	9,633	No. 7, T.O.H.	4,716
Benha	9,107	No. 9, T.O.H.	4,580
Minya	8,927	Shibin el Kôm	4,541
Zagazig	8,787	Qena	4,134
Daqahliya, P.C., T.O.H.	8,691	Faiyûm	4,118
Mansûra	8,592	Minya	4,101
No. 4, T.O.H.	8,315	Maghagha	3,985
Mallawi	8,202	Mansûra	3,728
Damanhûr	8,168	Zagazig	3,655
No. 7, T.O.H.	7,550	Mit Ghamr	3,454
Mit Ghamr	7,402	Daqahliya, P.C., T.O.H.	3,333
Maghagha	7,312	No. 3, T.O.H.	3,330
No. 10, T.O.H.	6,881	Kafr el Zaiyât	3,165
Suez	6,841	No. 2, T.O.H.	3,121
Damietta	6,734	Asyût, P.C., T.O.H.	3,086
Mahalla el Kubra	6,725	Damanhûr	3,076
Qena	6,442	Port Said	2,999
Gharbia, P.C., T.O.H.	5,854	Ashmoun	2,985
No. 8, T.O.H.	5,783	Mahalla el Kubra	2,938
Santa	5,755	Gharbia, P.C., T.O.H.	2,925
Asyût, P.C., T.O.H.	5,755	Damietta	2,861
No. 3, T.O.H.	5,420	Minûf	2,659
No. 2, T.O.H.	5,267	Mallawi	2,658
Kafr el Zaiyât	5,103	No. 8, T.O.H.	2,615
Ashmûn	4,924	Barrim	2,531
Minûf	4,771	Santa	2,479
El Fekria	4,187	Suez	1,930
Barrim	4,049	El Fekria	1,858
No. 11, T.O.H.	796	No. 11, T.O.H.	311

N.B.—Number of working months :—

	Months.	Days.
No. 11, T.O.H. (Opened on December 12th, 1928)	—	20
El Fekria (" October, 13th, 1928)	2	19
No. 8, T.O.H. (" March 12th, 1928)	8	23
" 10, T.O.H. (" " 20th, 1928)	9	12
" 9, T.O.H. (" " 12th, 1928)	9	20
" 3, T.O.H.	10	29
" 5, T.O.H.	11	1
Daqahliya, P.C., T.O.H.	11	7
Gharbia, P.C., T.O.H.	11	8
No. 4, T.O.H.	11	12
Asyût P.C., T.O.H.	11	12
No. 7, T.O.H.	11	13
" 6, T.O.H.	11	14
" 2, T.O.H.	11	16
" 1, T.O.H.	12	—
Other Ophthalmic Hospitals	12	—

TABLE VI.—AVERAGE NUMBER OF OPERATIONS PER MONTH AT ALL
OPHTHALMIC HOSPITALS DURING THE YEAR 1928.

MAJOR OPERATIONS.		MINOR OPERATIONS.	
HOSPITALS.	No.	HOSPITALS.	No.
No. 1, T.O.H.	433	Giza	487
Giza	396	No. 5, T.O.H.	387
ElFekria	317	ElFekria	387
Sohâg	297	No. 1, T.O.H.	385
Asyût	290	No. 10, T.O.H.	339
Tanta	289	Beni Suef	318
No. 5, T.O.H.	244	No. 4, T.O.H.	304
No. 6, T.O.H.	221	No. 11, T.O.H.	301
Benha	221	No. 9, T.O.H.	300
No. 10, T.O.H.	220	Tanta	294
Beni Suef	208	No. 6, T.O.H.	264
Qena	195	Alexandria	252
Faiyûm	191	Asyût	240
Shibîn el Kôm	184	No. 7, T.O.H.	237
Asyût, P.C., T.O.H.	183	Benha	213
No. 4, T.O.H.	182	Daqahliya, P.C., T.O.H.	197
Minya	182	Sohâg	196
Mansûra	180	Shibîn el Kôm	194
No. 7, T.O.H.	175	Port Said	184
No. 9, T.O.H.	174	Maghagha	165
Alexandria	173	Gharbia, P.C., T.O.H.	163
No. 3, T.O.H.	172	Mit Ghamr	162
Maghagha	167	Minya	160
No. 11, T.O.H.	160	Ashmûn	159
Zagazig	150	Damietta	157
No. 2, T.O.H.	149	Zagazig	155
No. 8, T.O.H.	146	No. 8, T.O.H.	152
Mallawi	141	Fayoum	152
Barrim	134	Qena	150
Mit Ghamr	126	Kafr el Zayât	149
Damanhûr	117	Damanhûr	139
Kafr el Zaiyât	115	Mahalla el Kubra	133
Minûf	114	No. 3, T.O.H.	131
Mahalla el Kubra	112	Mansûra	130
Daqahliya, P.C., T.O.H.	99	No. 2, T.O.H.	122
Gharbia, P.C., T.O.H.	97	Suez	116
Santa	94	Santa	113
Ashmûn	90	Minûf	108
Damietta	82	Asyût, P.C., T.O.H.	88
Port Said	66	Mallawi	80
Suez	45	Barrim	77

TABLE VII.—NEW PATIENTS TREATED ACCORDING TO THE AGE
AT WHICH THEY SOUGHT TREATMENT.

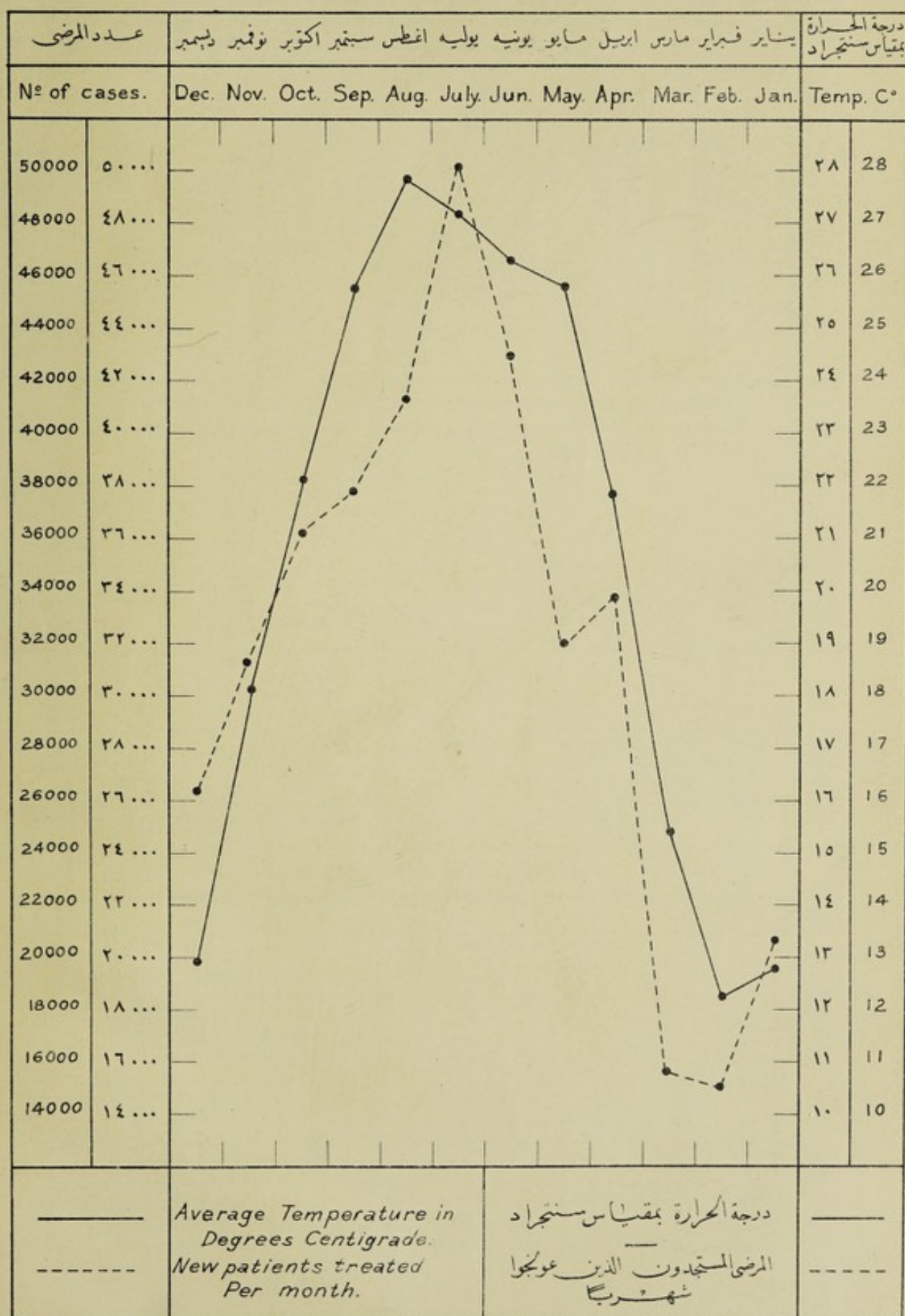
AGE.	NO. OF PATIENTS.
Under one year	23,114
From 1 to 5 years	46,575
" 6 to 10 "	38,950
" 11 to 15 "	35,905
" 16 to 20 "	30,429
" 21 to 25 "	28,732
" 26 to 30 "	31,307
" 31 to 35 "	32,314
" 36 to 40 "	25,661
" 41 to 45 "	24,591
" 46 to 50 "	18,639
" 51 to 55 "	13,198
" 56 to 60 "	11,789
" 61 to 65 "	8,112
" 66 to 70 "	5,583
Over 70 years	3,890
TOTAL	381,790

Table N° 9

جدول رقم ٩

Temperature & Number of New patients treated.

الطقس وعدد المرضى الذين عولجوا



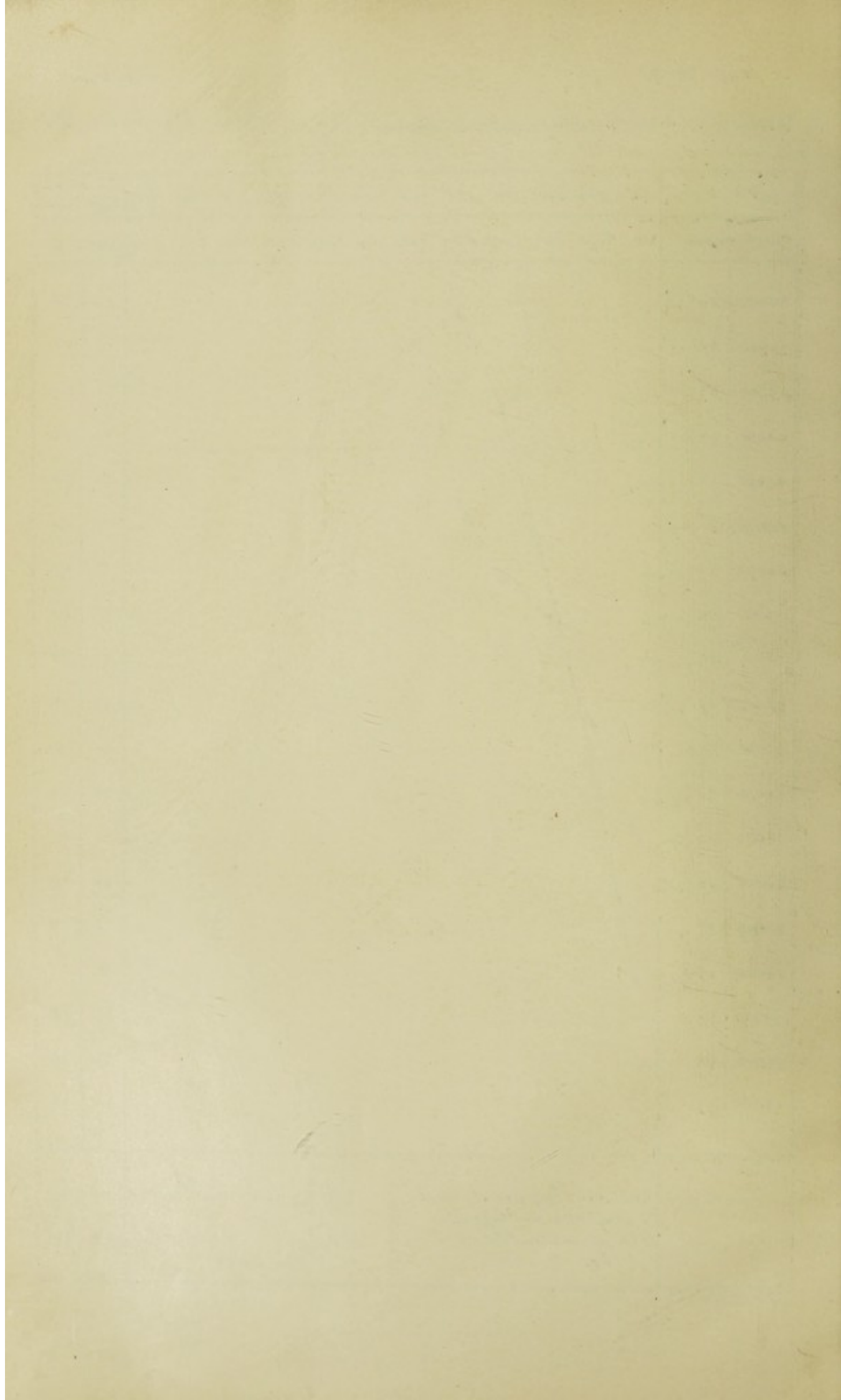


TABLE X.—AVERAGE TEMPERATURE.

The average temperature was arrived at by taking one place in Lower Egypt (Qurashîya) one place in Cairo (Giza), and one place in Upper Egypt (Asyût) and obtaining an average, figure from the mean temperature at each place on each month. This is shown in appended table, the reading being in degrees centigrade.

MONTH.	QURASHÎYA.	GIZA.	ASYÛT.	AVERAGE.
January	12.2	12.5	13.6	12.8
February	11.5	12.2	12.9	12.2
March	14.0	14.8	17.4	15.4
April	20.4	21.4	24.0	21.9
May	23.9	25.1	28.3	25.8
June	25.1	25.8	28.0	26.3
July	26.1	27.0	28.6	27.2
August	26.6	27.4	29.7	27.9
September	25.0	25.0	27.3	25.8
October	21.3	21.6	23.4	22.1
November	17.8	17.8	18.6	18.1
December	12.4	13.0	13.2	12.9

TABLE XI.—SYNOPSIS OF WORK OF OPHTHALMIC HOSPITALS SINCE 1925.

	1925	1926	1927	1928
Hospitals in existence :—				
Travelling	8	8	10	14
Permanent	21	23	26	27
New patients treated	236,903	272,777	347,742	381,790
Total attendances of out-patients	2,276,735	2,628,463	3,239,159	3,464,425
Operations performed	126,254	140,788	158,989	171,487
In-patients	7,925	8,745	10,810	12,967
Details :—				
Patients examined	246,771	283,602	361,577	401,530
Patients regularly treated	236,903	272,777	347,742	381,790
Incurable cases	6,445	5,243	6,115	5,224
Blind in one eye	19,422	21,979	26,591	28,816
" both eyes	6,137	6,702	8,689	8,592
Trichiasis cases examined	41,716	50,572	53,794	56,028
" eyes operated on and cured	47,988	53,044	60,878	62,255

TABLE XII.—CAUSES OF BLINDNESS.

A.—Congenital	18
B.—Acquired :—	
I.—Conjunctivitis resulting in :—	
(a) Total corneal opacity	11,596
(b) Shrunken globe	11,780
(c) Secondary glaucoma	6,582
(d) Other conditions	1,287
II.—Fundus :—	
(a) Optic atrophy	186
(b) Optic neuritis	2
(c) Retinitis pigmentosa	40
(d) Detachment of retina	126
(e) Other diseases of fundus	195
III.—Glaucoma, Primary :—	
Monocular (including absolute No. 1414)	1,943
Binocular (" " " 1323)	1,717
IV.—Cataract	3,246
V.—Injury	249
VI.—Operation	78
VII.—Infectious disease	38
VIII.—Iritis endogenous	501
IX.—Various	496
TOTAL	40,080

TABLE XIII.—TOTAL PERCENTAGE OF BLINDNESS IN ONE OR BOTH EYES.

	1925	1926	1927	1928
	Per Cent.	Per Cent.	Per Cent.	Per Cent.
<i>Permanent Ophthalmic Hospitals :—</i>				
Tanta	8.22	6.33	6.32	7.50
Asyût	7.87	8.82	8.92	9.28
Mansûra	16.07	15.42	15.35	14.66
Beni Suef	15.16	13.28	11.58	11.30
Zagazig	13.16	5.39	6.51	4.49
Damanhûr	8.55	7.74	8.53	7.16
Shibîn el Kôm	8.59	7.76	8.67	8.20
Sohâg	22.20	19.60	18.72	17.50
Minya	13.14	10.75	14.67	21.03
Faiyûm	10.33	11.40	11.35	11.00
Benha	9.06	8.04	7.24	6.51
Alexandria	6.99	5.99	5.67	4.99
Port Said	4.64	3.43	2.52	3.64
Qena... ..	14.70	17.92	15.65	14.17
Damietta	5.67	7.07	4.00	4.66
Giza	8.16	8.11	8.21	8.10
Suez	8.33	7.55	4.10	4.04
Barrim... ..	—	19.01	7.12	7.35
Mallawi	—	14.17	7.67	9.68
Mit Ghamr... ..	—	—	10.27	9.46
Maghagha	—	—	17.38	12.04
El Fikria	—	—	—	9.60
Mahalla el Kubra	7.91	9.73	8.74	8.37
Kafr el Zaiyât	7.17	7.64	6.99	5.95
Santa	7.32	9.06	8.28	8.98
Minûf	5.93	8.08	6.88	5.54
Ashmoun	14.70	9.85	8.55	8.40
<i>Travelling Ophthalmic Hospitals :—</i>				
No. 1. Travelling :—				
Rôd el Farag	11.42	11.11	11.12	—
Abbassia	—	—	11.02	10.72
No. 2. Travelling :—				
Fâkûs	21.27	—	—	—
Desûq	10.48	—	—	—
Dilingât	—	20.07	—	—
Shubrakhît... ..	—	21.44	16.76	—
Rasheed	—	—	6.5	—
Rahmania	—	—	2.61	0.44
Teh El Baroud	—	—	—	4.17
No. 3. Travelling :—				
Aswân	12.73	11.14	10.71	13.02
Isna	21.28	—	—	—
Idfû	—	15.84	—	7.24
Kom Ombo... ..	—	—	10.02	9.32
No. 4. Travelling :—				
El Saff	16.00	13.79	—	—
Bilbeis... ..	—	14.64	—	—
Ismalia	—	—	8.70	—
Kafr Sakr	—	—	8.32	12.23
Minia El Kamh	—	—	—	7.36
No. 5. Travelling :—				
Beni Mazâr	11.16	12.04	—	—
Girga	—	14.31	15.20	—
Tabta	—	—	13.47	14.15
Baliana... ..	—	—	—	11.53
Akhmim	—	—	—	7.80

TABLE XIII (contd).—TOTAL PERCENTAGE OF BLINDNESS IN ONE OR BOTH EYES.

	1925	1926	1927	1928
	Per Cent.	Per Cent.	Per Cent.	Per Cent.
No. 6. Travelling :—				
Sherbin	—	—	14.70	—
Quesna	—	—	14.94	9.90
Tala	—	—	—	13.80
No. 7. Travelling :—				
Itsa (Fayoum)	—	—	14.51	—
Biba	—	—	7.97	6.78
Sinnouris	—	—	—	5.02
No. 8. Travelling :—				
Samalut	—	—	—	12.90
El Fashn	—	—	—	11.78
No. 9. Travelling :—				
Embaba	—	—	—	12.30
No. 10. Travelling :—				
Nag Hamadi	—	—	—	9.00
No. 11. Travelling :—				
Shebin El Qanater	—	—	—	11.96
Asyût Provincial Council :—				
Manfalût	6.41	—	11.20	—
Dairût	10.44	—	9.00	—
Mallawi	16.00	10.19	—	—
Abnûb	—	10.29	—	—
Abu Tig	9.61	11.10	11.72	—
Badâri	—	10.67	—	11.90
Deir Moas	—	—	—	13.16
Daqahliya Provincial Council :—				
Mit Ghamr	—	7.46	—	—
Matarîya	—	—	9.00	—
Dikirnis	10.7	11.28	14.35	—
Fârî-kûr	—	—	11.51	7.90
Aga	9.09	15.98	5.19	11.85
Simbillâwein	10.72	7.91	—	12.50
Manzala	9.73	—	—	—
Gharbia Provincial Council :—				
Kafr El Sheikh	—	—	10.84	—
Zifta	—	—	—	9.69
Shirbin	—	—	—	10.00

TABLE XIV.—BLINDNESS AMONG OUT-PATIENTS SINCE 1909.

YEAR.	TOTAL NUMBER OF PATIENTS EXAMINED.	ONE EYE.		BOTH EYES.		ONE EYE AND BOTH EYES.	
		Number.	Per Cent.	Number	Per Cent.	Number.	Per Cent.
1909	22,373	2,116	9.4	1,385	6.1	3,501	15.6
1910	25,506	2,438	9.5	2,010	7.8	4,448	17.4
1911	31,274	3,196	10.2	2,811	8.9	6,007	19.2
1912	43,668	4,115	9.4	2,824	6.4	6,939	15.8
1913	62,233	5,360	8.6	3,878	6.2	9,238	14.8
1914	75,398	6,425	8.5	3,591	4.7	10,016	13.2
1915	71,930	5,637	7.8	2,992	4.2	8,629	12.0
1916	94,447	7,042	7.4	3,504	3.7	10,546	11.2
1917	100,410	9,385	9.3	4,611	4.6	13,996	13.9
1918	90,668	8,969	9.9	4,261	4.7	13,230	14.6
1919	83,577	8,537	10.2	4,278	5.1	12,815	15.3
1920	108,113	9,833	9.1	5,154	4.7	14,987	13.8
1921	127,223	10,566	8.3	5,053	3.9	15,619	12.2
1922	147,492	12,524	8.5	4,850	3.3	17,374	11.8
1923	174,004	14,394	8.3	5,146	2.9	19,540	11.2
1924	206,342	16,535	8.0	5,716	2.8	22,251	10.8
1925	246,771	19,422	7.9	6,137	2.5	25,559	10.4
1926	283,602	21,979	7.7	6,702	2.6	28,681	10.1
1927	361,577	26,591	7.4	8,689	2.4	35,280	9.8
1928	401,530	28,816	7.2	8,592	2.1	37,408	9.3
TOTAL	2,758,138	223,880	8.1	92,184	3.3	316,064	11.4

N.B.—The definition of blindness adopted here is that proposed by Trousseau, that is to say, inability to count fingers held up at a distance of one metre.

TABLE XV.—YEARLY PERCENTAGE OF BLINDNESS AMONG
OPHTHALMIC HOSPITALS PATIENTS SINCE THE YEAR 1909.

YEAR.	Per Cent of Blindness in one or both Eyes.	YEAR.	Per Cent of Blindness in one or both Eyes.
1909	15.6	1919	15.3
1910	17.4	1920	13.8
1911	19.2	1921	12.2
1912	15.8	1922	11.8
1913	14.8	1923	11.2
1914	13.2	1924	10.8
1915	12.0	1925	10.4
1916	11.2	1926	10.1
1917	13.9	1927	9.8
1918	14.6	1928	9.3

TABLE XVI.—PRIMARY GLAUCOMA.

Acute	37)
Subacute	326*
Chronic	4,320)
TOTAL	4,683
Total number of patients examined	401,530
Per cent of glaucoma cases	1.16
Per cent of absolute glaucoma cases	0.68
Operations:—	
Iridectomy	877
Trephine with iridectomy	1,190

* Including 2,727 absolute monocular and binocular.

TABLE XX.—NUMBER OF BEDS AT THE OPHTHALMIC HOSPITALS.

HOSPITAL.	First.	Second.	Third.
No. 1 Travelling	—	—	30
" 2 "	—	—	20
" 3 "	—	—	20
" 4 "	—	—	20
" 5 "	—	—	20
" 6 "	—	—	20
" 7 "	—	—	20
" 8 "	—	—	20
" 9 "	—	—	20
" 10 "	—	—	20
" 11 "	—	—	20
Tanta	—	—	31
Asyût	1	—	43
Mansûra	—	—	34
Beni Suef	—	—	22
Zagazig	—	—	29
Damanhûr	—	—	28
Shibîn el Kômî	—	—	20
Sohâg	—	—	20
Minia	—	—	23
Fayûm	—	—	10
Benha	—	—	22
Alexandria	—	—	31
Port Said	—	—	6
Qena	—	—	23
Damietta	—	—	22
Giza	—	—	43
Suez	—	—	25
Mit Ghamr	—	—	8
Maghagha	—	—	10
Fekria	—	—	8
Daqahlia Provincial Council Travelling Ophthalmic Hospital	—	—	12
Santa	—	—	10
Gharbia Provincial Council Travelling Ophthalmic Hospital	—	—	10
TOTAL	1	—	720

TABLE XXI.—COST OF UNIFORM DIETS FOR THE IN-PATIENTS OF THE OPHTHALMIC HOSPITALS DURING 1928, EXCLUDING COST OF RATIONS OF EMPLOYÉES.

HOSPITALS.	Number of Diets issued.	Total Cost.*	Cost per Day per Head.
		L.E.	Mills.
Daqahlia Travelling-Aga, Faraskour, Sembellawein†	3,660	83	22·79
Asyût	15,270	379	24·83
No. 4 Camp—Kafr Sakr, and Minia El Qamh	6,228	169	27·08
Benha	7,121	195	27·43
Giza	15,706	436	27·78
No. 6 Camp—Quesna and Tala	6,796	204	30·06
Tanta	10,334	324	31·34
Fayoum	4,152	133	32·11
Santa	3,148	104	33·11
Damanhour	9,332	310	33·20
Zagazig	9,406	320	33·97
Mansoura	11,456	391	34·09
Qena	8,049	279	34·70
Beni Suef	7,649	266	34·80
Minia	7,864	278	35·40
No. 5 Camp—Tahta, Baliana and Akhmim	6,290	227	36·15
No. 1 Camp—Abbassia	10,168	368	36·17
Sohag	7,204	271	37·66
No. 7 Camp—Beba and Sinnouris	6,423	242	37·69
No. 3 Camp—Aswân, Kom Ombo and Edfu	6,073	191	37·71
No. 2 Camp—Rahmania and Teh El Baroud	5,820	236	40·52
Shebin el Kom	6,698	274	40·90
Damietta... ..	6,679	278	41·60
TOTAL... ..	180,526	5,961	33·02

* Fuel excluded.

† Bought locally .

Scale of Full Diet as given to all In-patients at all Ophthalmic Hospitals.

	Grammes.
Bread	600
Beef	150
Vegetables	150
Lentils... ..	75
Rice	75
Milk	200
Native butter (<i>Samna Baladi</i>)	15
Sugar	30
Salt	20

TABLE XXII.—SOURCES OF PROVISION OF OPHTHALMIC HOSPITALS.

HOSPITALS.	Date at which opened.	Government Grant.	Public Subscription or Private Benediction.	Provincial Councils or Municipalities.
		L.E.	L.E.	L.E.
No. 1 Travelling (retained at Cairo for provision of clinical facilities for teaching)	1904	—	1,000	—
No. 2 Travelling	1905	—	1,000	—
Tanta	1908	8,463	—	—
Asyût	1911	8,817 and site	5,004	—
Mansûra	1912	—	5,000	—
Beni Suef		—	4,000	—
Asyût Travelling		—	—	720
Zagazig		—	—	4,280
Mahalla el Kubra... ..		—	—	2,400
Kafr el Zayat... ..	1913	—	—	2,200
Daqahlia Travelling		—	—	720
Damanhour		—	—	5,000
Shebin el Kom		—	5,422	—
Sohag		960	4,000	—
Minia	1915	—	—	5,500
Santa		—	—	2,600
Fayoum	1916	Site	—	4,000
No. 3 Travelling for South Egypt (Aswân Province) ...	1918	—	—	1,500
Banba	1920	—	14,000	—
Alexandria (Oph. Branch) ...		Annexed to General Hospital.	—	1,000
Port Said... ..	1921	1,000	—	2,800
Qena... ..	1923	—	12,400	—
Damietta (Oph. Branch) ...		1,000	240	—
"Fuad I" Oph. H., Giza. ...	1924	Annexed to General Hospital.	8,668	600
Suez (Oph. Branch)		3,000 and site	—	—
No. 4 Travelling		Annexed to General Hospital.	—	—
" 5 "	1925	2,000	—	—
Menuof		2,000	—	950
Ashmoun... ..		—	—	950
Memorial Ophthalmic Laboratory, Giza		2,000	6,600	—
Berrim		Annexed to General Hospital.	—	—
Mellawi	1926	Annexed to General Hospital.	—	—
No. 6 Travelling		2,280	—	—
" 7 "	1927	2,280	—	—
Mit Ghamr (Oph. Branch)		Annexed to General Hospital.	—	1,500
Gharbia Travelling		—	1,000	5,000
Maghagha	1928	—	—	—
No. 8 Travelling		2,500	—	—
" 9 "		2,500	—	—
" 10 "		2,500	—	—
Fikria (Branch)		Annexed to General Hospital.	—	—
No. 11 Travelling		2,500	—	—
TOTAL		43,800	68,334	41,726

TABLE XXIII.—ACTUAL EXPENDITURE 1927-1928.—(A) CENTRAL ADMINISTRATION.

CHAPTER.	Grant.	Expenditure.
	L.E.	L.E.
Pensionable Staff	5,412	5,074
Hors Cadre Staff	332	322
Transport, Transfer and Travelling Allowance	1,200	343
Telephones	23	—
Telegraphs	10	—
TOTAL	6,977	5,745

* Included in the general expenditure of the various units of the whole Department.

TABLE XXIV.—ACTUAL EXPENDITURE 1927-1928.—(B) GOVERNMENT OPHTHALMIC HOSPITALS.

CHAPTER.	Grant.	Total Actual Expenditure.
	L.E.	L.E.
Pensionable Staff	22,092	18,033
Hors Cadre Staff	15,713	11,937
Ophthalmic allowance	—	144
Transport, transfer and travelling allowance	2,317	1,148
Food	9,858	8,973
Forage	—	35
Water	461	512
Light	385	333
Disposal of sewage	131	60
Heating	—	297
Rent	110	73
Telegrams and Telephones	221	140
Stores :—		
General equipment	}	4,504
Surgical „		803
Instruments		930
Drugs		3,237
Dressings		676
Transport of Stores	1,000	361
Petty Expenses... ..	740	268
TOTAL		52,463 †

* No special grant for the Ophthalmic Hospitals. The grant is for the various units of the whole Department.

† Excluding repairs, being omitted as the credit is at the disposal of the Public Works Ministry.

TABLE XXV.—ACTUAL EXPENDITURE 1927-1928, GOVERNMENT OPHTHALMIC HOSPITALS (per Unit).

	L.E.
No. 1 Camp	2,807
" 2 "	1,637
" 3 "	1,528
" 4 "	1,962
" 5 "	1,991
" 6 "	1,791
" 7 "	1,992
" 8 "	459
" 9 "	405
" 10 "	396
Tanta	2,549
Assiut	2,771
Mansoura	2,470
Beni Suef	2,237
Zagazig	2,421
Damanhour	1,944
Shebin El Kom	2,148
Sohag	2,097
Minia	2,128
Fayum	1,848
Benha	1,899
Alexandria Branch and Schools	830
Port Said	1,191
Qena	1,961
Damietta Branch	1,236
Giza	3,164
Suez Branch	508
Berrim Branch	656
Mellawi Branch	535
Mit Chamr Branch	396
Maghagha	1,121
Cairo Schools	1,365
TOTAL	62,463

* These camps were opened shortly before the end of the financial year 1927-1928.

TABLE XXVI.—ACTUAL EXPENDITURE 1927-1928, PROVINCIAL COUNCIL OPHTHALMIC HOSPITALS (per Unit)

<i>Gharbia Provincial Council :—</i>	L.E.
Mahalla El Kubra	848
Kafr el Zayat	676
Santa	888
Gharbia Travelling	638
<i>Asyut Provincial Council :—</i>	
Travelling Hospital	588
<i>Daqahlia Provincial Council :—</i>	
Travelling Hospital	956
<i>Menoufia Provincial Council :—</i>	
Menouf	536
Ashmoun	*

* Its expenditure registration is carried out by the Provincial Council.

TABLE XXVII.—COMPARISON OF THE COST OF MAINTENANCE OF A PERMANENT
OPHTHALMIC HOSPITAL IN 1914 AND 1928.

	Number.	1914	TOTAL	Number.	1928	TOTAL
		L.E.	L.E.		L.E.	L.E.
ART. 1.—Salaries, Wages, and Allowances :—						
A.—Pensionable Staff :—						
Medical Officer	2	336		2	420	
Clerk	1	60		1	90	
Moawin	—	—		1	90	
	3		396	4		600
B.—Hors Cadre Staff :—						
Moawin	1	48		—	—	
Chief attendant	1	36		2	84	
Attendants (male)	2	42		5	150	
Attendants (female)	2	36		2	42	
Cook "	1	24		1	42	
Sai	1	18		1	30	
Gardener	—	—		1	30	
Boab	1	18		—	—	
Sundry subordinate staff	3	54		—	—	
	12		276	12		378
E.—Allowances...		72	72		—	—
ART. 2.—Transport, Transfer and Travelling Allowances :—						
Transport	}	50	50	}	10	80
Transfer					20	
Travelling allowance... ..					50	
ART. 3.—Food			139			371
ART. 5.—Rent, Water, Lighting, etc. :—						
Water		30			60	
Lighting		40			40	
Heating		20			30	
Sewage		12			—	
			102			130
ART. 6.—Books and Periodicals			1			—
ART. 7.—Telegrams and Telephones :—						
Telegrams	}	9	9	}	2	12
Telephones					10	
ART. 8.—Petty Expenses			12			20
ART. 11.—Stores			300			500
TOTAL			1,357			2,091

Statistics of Ophthalmic Treatment in Schools, 1928-1929.

Ophthalmic treatment has been carried out at the Primary Government Schools of Tanta, Asyût, Mansûra, Beni Suef, Zagazig, Damanhûr, Shibîn el Kôm, Suhâg, Minya, Faiyûm, Giza, Benha, Moharram Bey and Ras el Tin at Alexandria, Abbâsiya, Mohammad Aly, Munîra, Mohammadiya, Gamaliya, Abbas, Bab el Shaaria, Shubra, Abdin, Kerabia, Nasria and Nahasin at Cairo, Qena, Port Said, Damietta and Suez.

TABLE I.—CONDITION OF CONJUNCTIVA.—(a) BEGINNING OF THE YEAR.

SCHOOLS.	No Trachoma.	Non-trachomatous conjunctivitis.	TRACHOMA.				TOTAL.
			I.	II.	III.	IV.	
Tanta	47	1	75	24	319	192	658
Per cent	7.14	0.15	11.39	3.64	48.51	29.17	
Asyût	35	—	107	69	249	107	567
Per cent	6.17	—	18.87	12.17	43.92	18.87	
Mansûra	36	—	162	39	93	366	696
Per cent	5.17	—	23.28	5.60	13.36	52.59	
Beni Suef	39	—	75	75	191	115	495
Per cent	7.88	—	15.15	15.15	38.59	23.23	
Zagazig	32	—	14	87	231	271	635
Per cent	5.04	—	2.20	13.70	36.38	42.68	
Damanhûr	21	—	31	46	159	75	332
Per cent	6.32	—	9.34	13.86	47.89	22.59	
Shibîn el Kôm	6	—	18	33	56	70	183
Per cent	3.28	—	9.84	18.03	30.60	38.25	
Suhâg	5	—	2	29	140	115	291
Per cent	1.72	—	0.69	9.96	48.11	39.52	
Minya	33	—	9	35	135	105	317
Per cent	10.41	—	2.84	11.04	42.59	33.12	
Faiyûm	7	—	18	59	141	82	307
Per cent	2.28	—	5.86	19.22	45.93	26.71	
Giza	18	—	31	47	171	64	331
Per cent	5.44	—	9.37	14.20	51.66	19.33	
Benha	20	—	53	38	197	69	377
Per cent	5.31	—	14.06	10.08	52.25	18.30	
Moharram Bey	73	—	22	11	42	152	300
Per cent	24.33	—	7.33	3.67	14.00	50.67	
Abbâsiya	69	—	80	26	171	259	605
Per cent	11.40	—	13.22	4.30	28.26	42.81	
Mohammad Aly	44	—	109	34	242	209	638
Per cent	6.90	—	17.08	5.33	37.93	32.76	
Ras el Tin	64	—	40	21	115	314	554
Per cent	11.55	—	7.22	3.79	20.76	56.68	
Qena	3	—	36	46	74	28	187
Per cent	1.60	—	19.25	24.60	39.57	14.97	
Munîra	61	—	82	43	121	220	527
Per cent	11.57	—	15.56	8.16	22.96	41.75	
Mohammadiya	33	—	32	63	145	205	478
Per cent	6.90	—	6.70	13.18	30.33	42.89	
Gamaliya	18	—	21	8	59	91	197
Per cent	9.14	—	10.66	4.06	29.95	46.19	
Abbâs	65	—	64	34	134	203	500
Per cent	13.00	—	12.80	6.80	26.80	40.60	
Bab El Shaaria	38	—	45	18	53	115	269
Per cent	14.13	—	16.73	6.69	19.70	42.75	
Shubra	111	—	71	22	153	311	668
Per cent	16.61	—	10.63	3.30	22.90	46.56	
Abdin	47	—	71	26	113	130	387
Per cent	12.14	—	18.35	6.72	29.20	33.59	
Qerabia	3	—	38	84	161	219	305
Per cent	0.59	—	7.52	16.63	31.88	43.36	
Nasria	45	—	22	36	50	115	268
Per cent	16.79	—	8.21	13.43	18.66	42.91	
Nahassin	3	—	8	59	80	79	229
Per cent	1.31	—	3.49	25.76	34.93	34.49	
Port Said	33	—	39	13	71	161	317
Per cent	10.41	—	12.30	4.10	22.40	50.79	
Damietta	14	—	21	29	56	148	268
Per cent	5.22	—	7.84	10.82	20.90	55.22	
Suez	3	—	27	47	112	71	260
Per cent	1.15	—	10.38	18.08	43.08	27.31	
TOTAL	1,026	1	1,423	1,201	4,034	4,661	12,316
Per cent	8.31	0.01	11.53	9.73	32.67	37.75	

TABLE I.—CONDITION OF CONJUNCTIVA.—(b) END OF THE YEAR.

SCHOOL.	No Trachoma.	Non-trachomatous conjunctivitis.	TRACHOMA.				TOTAL.
			I.	II.	III.	IV.	
Tanta	53	1	23	2	235	244	558
Per cent	9.48	0.18	4.12	0.35	42.11	43.72	
Asyût	34	—	57	16	301	117	525
Per cent	6.47	—	10.86	3.04	57.33	22.28	
Mansûra	26	—	119	—	96	412	653
Per cent	3.98	—	18.22	—	14.70	63.0	
Beni Suef	38	—	28	10	262	129	467
Per cent	8.13	—	6.0	2.14	56.10	27.62	
Zagazig	24	—	—	—	187	397	608
Per cent	3.94	—	—	—	30.75	65.29	
Damanhûr	22	—	9	—	194	121	346
Per cent	6.36	—	2.6	—	56.07	34.97	
Shibin el Kôm	5	—	1	8	47	104	165
Per cent	3.03	—	0.60	4.84	28.48	63.03	
Sohâg	7	—	1	—	110	147	265
Per cent	2.64	—	0.37	—	41.50	55.47	
Minya	36	—	7	4	121	150	318
Per cent	11.32	—	2.26	1.25	38.01	47.17	
Faiyûm	7	—	15	1	129	138	290
Per cent	2.41	—	5.17	0.34	44.48	47.58	
Giza	18	—	5	5	178	111	317
Per cent	5.68	—	1.58	1.58	56.12	35.01	
Benha	20	—	47	11	196	84	358
Per cent	5.58	—	13.10	3.07	54.74	23.46	
Moharram Bey	75	—	—	1	59	160	295
Per cent	25.42	—	—	0.33	20.0	54.27	
Abbâssiya	70	—	52	3	208	245	578
Per cent	12.11	—	9	0.52	35.99	42.39	
Mohammad Aly	41	—	13	—	322	263	642
Per cent	6.85	—	2.02	—	50.15	40.96	
Râs el Tin	67	—	—	2	163	320	552
Per cent	12.13	—	—	0.36	29.53	57.97	
Qena	11	—	2	—	72	102	187
Per cent	5.88	—	1.06	—	38.50	54.54	
Munira	64	—	55	1	181	219	520
Per cent	12.34	—	10.57	0.19	34.80	42.11	
Mohammadiya	23	—	—	—	193	196	412
Per cent	5.58	—	—	—	46.34	47.57	
Gamâliya	20	—	8	—	75	89	192
Per cent	10.42	—	4.16	—	39.06	46.35	
Abbâs	67	—	54	3	190	196	510
Per cent	13.13	—	10.58	0.58	37.25	38.43	
Bab el-Shaaria	35	—	34	—	78	124	271
Per cent	12.91	—	12.54	—	28.78	45.75	
Shubra	115	—	41	1	180	349	686
Per cent	16.76	—	5.97	0.14	26.24	50.87	
Abdin	45	—	31	—	172	141	389
Per cent	11.57	—	7.97	—	44.21	36.22	
Qerabia	3	—	—	—	261	241	505
Per cent	0.59	—	—	—	51.68	47.72	
Nasria	48	—	—	—	88	130	266
Per cent	18.04	—	—	—	33.09	48.87	
Nahassin	4	—	—	—	130	78	212
Per cent	1.88	—	—	—	61.32	36.79	
Port Said	26	—	45	4	65	171	311
Per cent	8.36	—	14.46	1.28	20.90	54.98	
Damietta	15	—	—	—	27	215	257
Per cent	5.83	—	—	—	10.50	83.65	
Suez	3	—	—	3	163	84	253
Per cent	1.18	—	—	1.18	64.42	33.20	
TOTAL	1,025	1	647	75	4,683	5,477	11,908
Per cent	8.61	—	5.43	0.63	39.32	45.99	

TABLE II a.—EFFECT OF TREATMENT ON SERIOUS STAGES OF TRACHOMA.

YEAR.	BEGINNING OF THE YEAR.			END OF THE YEAR.	
	Pupils with any stage of Trachoma.	Pupils with serious stages of Trachoma I and II.		Pupils with serious stages of Trachoma I and II.	
	No.	No.	Per Cent.	No.	Per Cent.
1907-1908	464	289	62.3	—	—
1914-1915	1,553	342	23.0	61	4.0
1916-1917	1,528	327	21.4	48	3.0
1917-1918	1,699	282	16.6	71	4.2
1919-1920	2,454	410	16.7	201	8.2
1920-1921	3,363	643	19.1	290	8.6
1921-1922	5,036	1,369	27.2	580	11.5
1922-1923	6,140	1,982	32.3	892	14.5
1923-1924	6,820	2,115	31.0	835	12.2
1924-1925	7,107	2,442	34.4	722	10.2
1925-1926	7,337	1,865	25.4	374	5.1
1926-1927	9,053	2,160	23.9	582	6.4
1927-1928	12,057	2,819	23.4	830	6.9
1928-1929	11,319	2,624	23.2	722	6.4

TABLE II b.—STAGES OF TRACHOMA AT BEGINNING AND END OF SCHOOL YEAR.

STAGES OF TRACHOMA.		BEGINNING OF THE YEAR.		END OF THE YEAR.	
		No.	Per Cent.	No.	Per Cent.
Trachoma	I	1,423	12.6	647	6.0
"	II	1,201	10.6	75	0.7
"	III	4,034	35.6	4,683	43.0
"	IV	4,661	41.2	5,477	50.3

TABLE III a.—TRACHOMA AND ITS RELATION TO SCHOOL YEARS (Beginning of the Year).

SCHOOL.	1ST YEAR.				2ND YEAR.				3RD YEAR.				4TH YEAR.			
	Trachoma.				Trachoma.				Trachoma.				Trachoma.			
	I.	II.	III.	IV.	I.	II.	III.	IV.	I.	II.	III.	IV.	I.	II.	III.	IV.
	Non-Trachomatus.				Non-Trachomatus.				Non-Trachomatus.				Non-Trachomatus.			
Tanta ...	23	25	15	49	17	30	6	84	25	16	2	121	70	4	1	80
Asyût ...	5	53	20	9	—	28	27	49	13	19	13	102	49	7	9	45
Mansûra ...	10	63	22	16	53	51	4	25	92	38	12	30	118	11	1	103
Beni Suef ...	16	30	32	20	13	26	23	34	24	13	8	81	40	6	12	38
Zagazig ...	15	10	43	25	25	3	25	62	64	1	13	86	97	—	6	85
Damanhûr ...	5	14	19	23	7	7	10	47	12	5	10	44	27	4	7	29
Shibin el Kôm ...	—	8	10	8	6	3	8	11	17	5	8	14	24	2	7	23
Sohâg ...	—	1	7	26	8	—	9	35	32	1	8	33	35	—	5	46
Minia ...	7	3	11	33	22	2	10	29	35	4	9	45	23	—	5	28
Fayoum ...	2	4	10	13	7	6	15	41	18	6	19	53	29	2	15	34
Giza ...	3	15	23	37	4	12	12	31	12	2	8	51	26	2	4	52
Benha ...	5	14	13	15	4	19	11	31	10	15	11	69	17	5	3	82
Moharram Bey ...	9	9	3	6	17	7	2	9	31	4	4	14	49	2	2	13
Abbâsiya ...	12	32	11	21	18	25	5	45	42	14	6	48	112	9	4	57
Mohammad Aly ...	12	58	9	24	22	38	11	54	26	10	10	95	75	3	4	69
Râs el Tîn ...	15	2	11	13	45	12	5	16	62	10	3	47	128	17	2	86
Qena ...	1	8	17	20	1	15	8	10	6	9	7	29	10	4	14	79
Munira ...	14	45	10	18	21	13	10	26	55	17	19	47	76	11	10	11
Mohammadiya ...	12	20	18	22	37	2	19	31	42	7	16	59	66	3	10	68
Gamâliya ...	6	12	1	6	19	2	3	11	23	5	1	31	31	2	3	60
Abbâs ...	13	28	15	20	14	18	14	25	52	7	2	41	47	11	3	18
Bab el Shaaria ...	8	21	7	14	12	10	4	15	44	11	3	13	31	3	4	90
Shoubra ...	31	32	8	31	34	25	5	36	79	17	8	50	113	10	1	28
Abdin ...	8	30	12	16	8	11	6	25	26	12	5	35	43	13	3	85
Qerabia ...	—	15	24	10	46	2	16	23	38	1	15	75	63	—	2	53
Nasria ...	9	11	4	4	13	2	8	9	28	6	15	17	29	19	19	72
Nahassin ...	1	4	18	9	19	1	15	21	21	3	10	33	25	—	16	45
Port Said ...	18	13	7	10	29	13	2	13	36	10	3	21	52	3	1	14
Damietta ...	3	7	10	6	31	5	5	15	30	8	7	17	48	1	7	44
Suez ...	—	16	15	7	8	6	9	14	13	4	16	50	23	1	7	39
TOTAL ...	263	602	425	531	560	392	307	877	1,008	248	392	307	1,451	230	188	1,517

TABLE III b.—COMPARISON OF SERIOUS STAGES OF TRACHOMA I and II (Beginning of the Year).

CLASS.	Total number of pupils.	Total number of serious stages of Trachoma I and II.	Per Cent.
First Year	2,381	1,027	43.13
Second Year	2,832	699	24.68
Third Year... ..	3,887	575	14.78
Fourth Year	3,245	323	9.95

TABLE IV.—VISION OF ALL PUPILS WITHOUT SPECTACLES.

	TOTAL	GRAND TOTAL	Per Cent.
Good Vision :—			
(a) Normal vision in each eye 6/6 and 6/6	2,145		
(b) Vision 6/6 and 6/9 or 6/9 and 6/9	3,426	5,571	45.12
Fair Vision :—			
(a) Vision 6/6 and 6/12, 6/9 and 6/12 or 6/12 and 6/12	2,608		
(b) Vision 6/6 and 6/18	325	2,933	23.76
Bad Vision :—			
Fails to attain any of the above standards	3,842	3,842	31.12
TOTAL	12,346	12,346	

TABLE V.—SPECTACLES ORDERED.

	Tanta.	Asyut.	Mansura.	Beni Suef.	Zagazig.	Damanhur.	Shibin el Khai.	Sohag.	Minya.	Faiyum.	Giza.	Benha.	Moharrem Bey.	Abbasiya.	Mohammed Ali.	Ras el Tin.	Qena.	Mantra.	Mohammed- diya.	Gambliya.	Abbas.	Bab El Sharia.	Shubra.	Abdin.	Qernbia.	Nasria.	Nahhasin.	Port-Said.	Damietta.	Suez.	Total.
Number of pupils now attending ob- tained spectacles in previous years	28	25	15	25	40	14	9	28	18	23	20	20	8	21	12	34	10	10	8	3	14	6	31	5	21	12	2	18	6	10	496
Number of pupils now attending ob- tained spectacles this year	17	5	8	12	8	2	9	4	2	9	2	1	6	5	9	9	5	8	15	6	13	11	9	8	10	1	7	6	2	2	211
Number of pupils now attending or- dered spectacles but not yet ob- tained	—	—	—	2	—	—	—	—	—	—	—	—	—	—	—	—	—	—	—	—	—	—	—	—	—	—	—	—	—	—	2
TOTAL	45	30	23	39	48	16	18	32	20	32	22	21	14	26	21	43	15	18	23	9	27	17	40	13	31	13	9	24	8	12	709
Spectacles on order or under repair ...	—	—	—	4	—	—	—	—	—	—	—	—	—	—	—	—	—	—	—	—	—	—	—	—	—	—	—	—	—	—	4
Number of pupils wearing spectacles on date of gene- ral inspection ...	43	22	19	30	42	16	18	32	20	32	21	21	12	25	21	39	15	18	23	9	26	15	39	12	31	13	9	20	6	12	661
Net number not wearing spectacles which were pre- viously ordered	2	8	4	5	6	—	—	—	—	—	1	—	2	1	—	4	—	—	—	—	1	2	1	1	—	—	—	4	2	—	44

TABLE VI.—NUMBER OF PUPILS ORDERED SPECTACLES WHO BY USE OF SPECTACLES NOT GREATER IN STRENGTH THAN ± 6 DIOPTRES CAN GET GOOD OR FAIR VISION.

	TOTAL.	GRAND TOTAL.	Per Cent.*
Good Vision :—			
(a) Normal vision in each eye 6/6 and 6/6	46	177	24.97
(b) Vision 6/6 and 6/9, or 6/9 and 6/9	131		
Fair Vision :—			
(a) Vision 6/6 and 6/12, or 6/9 and 6/12 or 6/12 and 6/12... ..	191	215	30.32
(b) Vision 6/6 and 6/18... ..	24		

* The percentage is taken in relation to the number of all pupils ordered spectacles (i.e. 709). See Table V.

TABLE VII.—CONDITION OF CORNEA BEFORE TREATMENT.

SCHOOL.	Both Corneæ clear.	One Cornea clear the other showing Opacity.	Opacity of both Corneæ.
Tanta	582	57	19
Asyût	543	18	6
Mansûra	630	47	19
Beni Suef	462	27	6
Zagazig	591	33	11
Damanhûr	296	29	7
Shibîn el Kôm	158	19	6
Suhâg	169	42	80
Minya	302	13	2
Faiyûm	275	19	13
Giza	298	23	10
Benha... ..	340	24	13
Moharram Bey	295	3	2
Abbasiya	584	13	8
Mohammad Aly	617	15	6
Râs el Tin... ..	540	11	3
Qena	165	11	11
Munîra	483	24	20
Mohammadiya	445	25	8
Gamâliya	185	10	2
Abbâs	479	14	7
Bab el Shaaria	256	7	6
Shubra	660	8	—
Abdin	370	11	6
Qerabia	483	14	8
Nasria	255	12	1
Nahhasin	215	9	5
Port Said	311	4	2
Damietta	260	8	—
Suez	236	18	6
TOTAL	11,485	568	293
Per cent	93.03	4.6	2.37

TABLE VIII.—COMPARISON OF CORNEAL OPACITY AMONG PUPILS OF TANTA PRIMARY SCHOOL IN THE YEARS 1914-1915 AND 1928-1929.

YEAR.	Both Corneæ clear.	One Cornea clear, the other showing Opacity.	Opacity of both Corneæ.
1914-1915	173	54	33
1927-1928	582	57	19

TABLE VI—NUMBER OF FINGERPRINTS SUBMITTED AND BY DATE OF RECEIPT NOT
CREDITED IN FINGERPRINT YEAR 1914-1915 FOR FIVE YEARS

Year	Total	Not Credited
1914-1915	177	18
1915-1916	177	18
1916-1917	177	18
1917-1918	177	18
1918-1919	177	18
1919-1920	177	18

* The percentage is taken in relation to the number of all fingerprints submitted in 1914-1915.

TABLE VII—EXAMINATION OF FINGERPRINTS SUBMITTED

Year	Not Credited	Not Credited	Not Credited
1914-1915	177	18	10
1915-1916	177	18	10
1916-1917	177	18	10
1917-1918	177	18	10
1918-1919	177	18	10
1919-1920	177	18	10
1920-1921	177	18	10
1921-1922	177	18	10
1922-1923	177	18	10
1923-1924	177	18	10
1924-1925	177	18	10
1925-1926	177	18	10
1926-1927	177	18	10
1927-1928	177	18	10
1928-1929	177	18	10
1929-1930	177	18	10
1930-1931	177	18	10
1931-1932	177	18	10
1932-1933	177	18	10
1933-1934	177	18	10
1934-1935	177	18	10
1935-1936	177	18	10
1936-1937	177	18	10
1937-1938	177	18	10
1938-1939	177	18	10
1939-1940	177	18	10
1940-1941	177	18	10
1941-1942	177	18	10
1942-1943	177	18	10
1943-1944	177	18	10
1944-1945	177	18	10
1945-1946	177	18	10
1946-1947	177	18	10
1947-1948	177	18	10
1948-1949	177	18	10
1949-1950	177	18	10
1950-1951	177	18	10
1951-1952	177	18	10
1952-1953	177	18	10
1953-1954	177	18	10
1954-1955	177	18	10
1955-1956	177	18	10
1956-1957	177	18	10
1957-1958	177	18	10
1958-1959	177	18	10
1959-1960	177	18	10
1960-1961	177	18	10
1961-1962	177	18	10
1962-1963	177	18	10
1963-1964	177	18	10
1964-1965	177	18	10
1965-1966	177	18	10
1966-1967	177	18	10
1967-1968	177	18	10
1968-1969	177	18	10
1969-1970	177	18	10
1970-1971	177	18	10
1971-1972	177	18	10
1972-1973	177	18	10
1973-1974	177	18	10
1974-1975	177	18	10
1975-1976	177	18	10
1976-1977	177	18	10
1977-1978	177	18	10
1978-1979	177	18	10
1979-1980	177	18	10
1980-1981	177	18	10
1981-1982	177	18	10
1982-1983	177	18	10
1983-1984	177	18	10
1984-1985	177	18	10
1985-1986	177	18	10
1986-1987	177	18	10
1987-1988	177	18	10
1988-1989	177	18	10
1989-1990	177	18	10
1990-1991	177	18	10
1991-1992	177	18	10
1992-1993	177	18	10
1993-1994	177	18	10
1994-1995	177	18	10
1995-1996	177	18	10
1996-1997	177	18	10
1997-1998	177	18	10
1998-1999	177	18	10
1999-2000	177	18	10
2000-2001	177	18	10
2001-2002	177	18	10
2002-2003	177	18	10
2003-2004	177	18	10
2004-2005	177	18	10
2005-2006	177	18	10
2006-2007	177	18	10
2007-2008	177	18	10
2008-2009	177	18	10
2009-2010	177	18	10
2010-2011	177	18	10
2011-2012	177	18	10
2012-2013	177	18	10
2013-2014	177	18	10
2014-2015	177	18	10

Government Press
2253-1929-1,470 ex.

TABLE VIII—EXAMINATION OF FINGERPRINTS SUBMITTED
TABLE FINGERPRINTS SUBMITTED IN THE YEARS 1914-1915 AND 1916-1917

Year	Not Credited	Not Credited	Not Credited
1914-1915	177	18	10
1916-1917	177	18	10

For the year 1914-1915
For the year 1916-1917

