

## **Annual report of the Medical Department / Colony of the Gambia.**

### **Contributors**

Gambia. Medical Department.

### **Publication/Creation**

London : printed by Waterlow, [1929]

### **Persistent URL**

<https://wellcomecollection.org/works/rpzaxxhw>

### **License and attribution**

This work has been identified as being free of known restrictions under copyright law, including all related and neighbouring rights and is being made available under the Creative Commons, Public Domain Mark.

You can copy, modify, distribute and perform the work, even for commercial purposes, without asking permission.



Wellcome Collection  
183 Euston Road  
London NW1 2BE UK  
T +44 (0)20 7611 8722  
E [library@wellcomecollection.org](mailto:library@wellcomecollection.org)  
<https://wellcomecollection.org>

# COLONY OF THE GAMBIA.

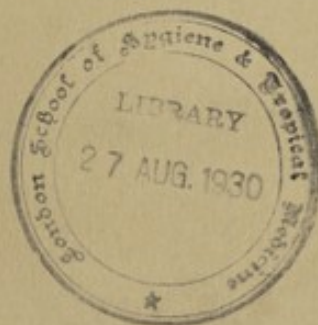
---

## THE ANNUAL MEDICAL & SANITARY REPORT FOR THE YEAR 1929.

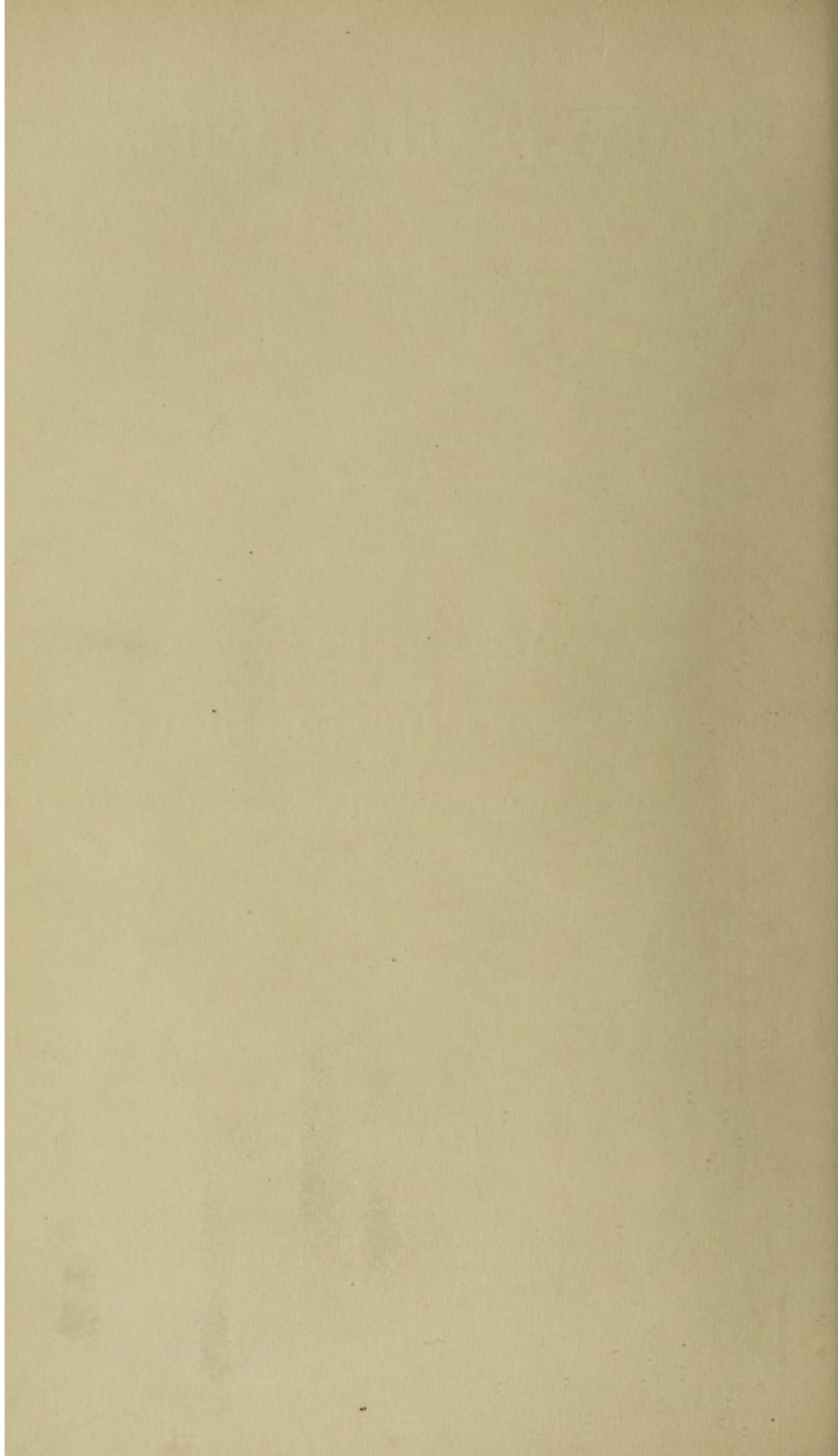
---

Price 5/-

---



PUBLISHED BY THE CROWN AGENTS FOR THE COLONIES,  
4, MILLBANK, LONDON, S.W.1.  
1930.



# COLONY OF THE GAMBIA.

EXAMINED IN GAMBIA DEPARTMENT No. 127 of 20th May, 1930.

RECEIVED

MOHAR, MEDICAL AND SANITARY REPORT, 1929.

1930.

1930.

I have the honour to acknowledge the receipt of the enclosed the  
Gambia and for transmission to the Hon. Secretary of the  
Colonies, the Medical Report on the Health and Sanitary Condition of the  
Gambia Colony for the year 1929, together with the following, viz., appended  
Tables.

## THE ANNUAL MEDICAL & SANITARY REPORT FOR THE YEAR 1929.

THE HONORABLE,

THE COLONIAL SECRETARY.

Price 5/-

PUBLISHED BY THE CROWN AGENTS FOR THE COLONIES,  
4, MILLBANK, LONDON, S.W.1.  
1930.



COLONY OF THE GAMBIA.

THE ANNUAL  
MEDICAL & SANITARY REPORT  
FOR THE YEAR 1930.

Printed by the  
Government of the Colony of the Gambia  
at the Press of the Government of the Colony of the Gambia  
in the year 1931.

ENCLOSURE IN GAMBIA DESPATCH NO. 103 OF 2ND MAY, 1930.

MODEL MEDICAL AND SANITARY REPORT, 1929.

14th April, 1930.

SIR,

I have the honour to submit for the information of His Excellency the Governor and for transmission to the Right Honourable the Secretary of State, the Medical Report on the Health and Sanitary Conditions of The Gambia Colony for the year 1929, together with the Returns, etc., appended thereto.

I have the honour to be,

Sir,

Your obedient servant,

D. T. BIRT,

*Senior Medical Officer.*

THE HONOURABLE,

THE COLONIAL SECRETARY.



ENCLOSURE IN GAMBIAN DIPLOMAT No. 108 OF 2ND MAY, 1950

MODEL MEDICAL AND SANITARY REPORT 1950

LAM 2.5.1950

Sir,  
I have the honour to acknowledge the receipt of the letter of the  
Government and for transmission to the Right Honourable the Secretary of  
State, the Medical Report on the Health and Sanitary Conditions of The  
Gambia Colony for the year 1949, together with the Report on the  
Sanitary Conditions of the Colony for the year 1949.

I have the honour to be,

Sir,

Yours obedient servant,

D. E. BRYAN

Senior Medical Officer

The Honorable,

The Secretary of State,



(Signed)

# ANNUAL MEDICAL AND SANITARY REPORT

FOR THE  
YEAR ENDED 31ST DECEMBER, 1929.

---

## 1. ADMINISTRATION.

### (a) STAFF.

#### (i). APPOINTMENTS.

Dr. C. E. G. Nunns, Medical Officer, March 15th.  
Dr. D. T. Birt, Senior Medical Officer, July 11th.  
Dr. Helen Hendrie, Honorary Physician, Maternity and Child Welfare Clinics, August 12th.

#### (ii). TRANSFERS.

Dr. K. B. Allan, Senior Medical Officer, to the Gold Coast, October 8th.

#### (iii). PROCEEDED ON LEAVE.

Dr. A. M. W. Rae, Medical Officer, April 13th.  
Miss J. Roberts, Nursing Sister, May 20th.  
Dr. K. B. Allan, Senior Medical Officer, June 3rd.  
Miss T. Grant, Nursing Sister, October 19th.  
Dr. J. C. Cruickshank, Medical Officer, November 23rd, and to be transferred to Nigeria.  
Mr. F. A. Wilford, Assistant Sanitary Inspector, December 7th.  
Mr. A. F. V. Vaughan, Sanitary Inspector, June 9th.

#### (iv). RESUMPTION OF DUTY.

Miss M. Thompson, Senior Nursing Sister, April 26th.  
Dr. A. M. W. Rae, Medical Officer, August 30th.  
Miss J. Roberts, Nursing Sister, October 10th.  
Mr. A. F. V. Vaughan, Sanitary Inspector, November 8th.

### (b) LIST OF RULES AND REGULATIONS AFFECTING PUBLIC HEALTH ENACTED DURING THE YEAR 1929.

#### RULES AND REGULATIONS.

No. 15. The Bathurst Market, December 1st.



## (c) FINANCIAL.

## MEDICAL DEPARTMENT.

	Estimated.			Actual.			Deficit.		
	£			£ s. d.			£ s. d.		
Revenue ... ..	350			222 2 8			127 17 4		
Expenditure ... ..	16,973			17,211 10 3			—		
Saving ... ..	Nil.								

## PUBLIC HEALTH DEPARTMENT.

	Estimated.			Actual.			Excess.		
	£			£ s. d.			£ s. d.		
Revenue ... ..	1,560			1,734 1 1			174 1 1		
Expenditure ... ..	11,132			10,649 8 7			—		
Saving ... ..	£482 11s. 5d.								

## MISCELLANEOUS SERVICES.

	Estimated.			Actual.		
	£			£		
Contributions to Medical Funds ... ..	£265			£260		
Saving ... ..	£5					

## COLONY.

	Estimated.			Actual.		
	£			£ s. d.		
Total Revenue ... ..	258,406			235,265 14 3		
Total Expenditure ... ..	299,788			289,506 15 10		

The actual expenditure of the Medical and Sanitary Departments is approximately 10.39 per cent. of the total actual expenditure of the Colony. The estimated expenditure is approximately 10.66 per cent.—this does not include Miscellaneous Services.

	MEDICAL DEPARTMENT.				PUBLIC HEALTH DEPARTMENT.			
	Actual Revenue.		Actual Expenditure.		Actual Revenue.		Actual Expenditure.	
	£	s. d.	£	s. d.	£	s. d.	£	s. d.
1925 ... ..	253	12 7	12,955	8 11	1,201	13 11	9,466	13 11
1926 ... ..	324	1 3	14,168	5 10	1,222	7 10	9,329	18 3
1927 ... ..	332	14 2	14,204	10 5	1,517	1 0	9,982	1 11
1928 ... ..	274	17 5	15,093	13 4	1,583	14 11	10,155	14 10
1929 ... ..	222	2 8	17,211	10 3	1,734	1 1	10,649	8 7



## II. PUBLIC HEALTH.

### (a) GENERAL REMARKS.

#### (1) *General Diseases.*

Diseases of the Respiratory and Digestive Systems remain the most prevalent. The Respiratory diseases occurring mostly during the cold season, January to April and the Digestive System diseases during the rains June to October.

Rheumatism remains a prevalent complaint; 1,122 patients having been under treatment.

#### (2) *Communicable Diseases.*

##### (1) *Mosquito or Insect-Borne.*

- (i) *Malaria*.—2,138 recorded cases treated, and is most prevalent during the wet season—June to December.
- (ii) *Trypanosomiasis*.—122 cases recorded and all acquired infection in the Protectorate—of this number 15 died. The recorded cases are double those of 1928—but this probably means that those affected having the advantages of modern treatment present themselves more readily.
- (iii) *Yellow Fever*.—No cases occurred in 1929.
- (iv) *Blackwater Fever*.—Three cases and all recovered.
- (v) *Filariasis*.—42 cases recorded in the form of Elephantiasis.

##### (2) *Infectious Diseases.*

- (i) *Influenza*.—508 cases recorded; and these occurred throughout the year.
- (ii) *Measles*.—173 cases reported: a large increase on last year—it is of a mild type and no deaths were reported.
- (iii) *Dysentery, Amœbic*.—Is not a prevalent disease in the Gambia 26 cases only were under treatment: no death.
- Dysentery, Bacillary*.—Four cases with one death were recorded.
- (iv) *Tuberculosis*.—Pulmonary and other tissues—67 cases with 7 deaths.
- (v) *Leprosy*.—38 cases were reported: it is likely that all sufferers from this complaint do not report themselves.
- (vi) *Yaws*.—146 cases have been treated in the Hospitals and 309 by the Medical Officer, Protectorate, in various villages.
- (vii) *Tetanus*.—17 cases with three deaths.
- (viii) *Septicæmia*.—7 cases were noted and all were fatal.
- (ix) *Syphilis*.—74 cases treated.
- (x) *Gonorrhœa*.—156 cases treated.
- (xi) *Small Pox*.—5 cases treated in the Infectious Diseases Hospital, Bathurst; other cases occurred in the Protectorate in sporadic form.

##### (3) *Helminthic Diseases.*

- (i) *Ascariasis*.—537 cases presented themselves for treatment and all were treated as Out-Patients.
- (ii) *Tæniasis*.—42 cases were treated in the Out-Patient Department.
- (iii) *Dracunculus*.—Only one case recorded during the year.

The cases reported above are only those treated at the Government Hospitals. Cases dealt with in Government Dispensaries by African Dispensers are not included.

## DEATHS.

March Quarter.	June Quarter.	September Quarter.	December Quarter.
1928 ... .. 88	101	124	118
1929 ... .. 88	98	156	116
PREVALENT DISEASES.			
1928—Dyspepsia. Constipation, Bronchitis, Influenza, Malaria.	Bronchitis, Diarrhoea, Constipation, Rheumatism, Pneumonia.	Influenza, Diarrhoea, Malaria, Constipation, Bronchitis, Pneumonia.	Bronchitis, Influenza, Constipation, Malaria, Rheumatism.
1929—Influenza, Malaria,	—	Gastro-intestinal ailments.	Nothing special.
PRINCIPAL CAUSES OF DEATHS.			
1928—Diseases of Respiratory System ... 30	Diseases of Respir- atory System ... 27	Diseases of Respir- atory System ... 46	Diseases of Res- piratory System 45
Diseases of Circulatory System ... 12	Diseases of Circula- tory System ... 11	Diseases of Circula- tory System ... 12	Diseases of Circula- tory System ... 35
		Malaria ... 7	Diseases of Diges- tive System ... 11
			Malaria ... 9
			Yellow Fever ... 4
1929—Diseases of Respiratory System ... 33%	Diseases of Respir- atory System ... 31%	Diseases of Respir- atory System ... 18%	Diseases of Respir- atory System 25%
Diseases of Digestive System ... 12%	Diseases of Circula- tory System ... 14%	Diseases of Circula- tory System ... 13%	Diseases of Circu- latory System 42%
		Diseases of Ali- ments ... 44%	Diseases of Ali- ment ... 28%

## VITAL STATISTICS.

## (1) GENERAL NATIVE POPULATION (BATHURST ONLY).

Estimated population 10,664.

Total births 315.

Birth rate = 29.53 per mille.

Total deaths, 458.

Death rate = 42.94 per mille.

Infant mortality rate = 333 per mille.

Note i. Excess of deaths over births = 143.

ii. Still births, 44 (not included in any rate or total).

iii. Registration is compulsory and not reliable for Bathurst.

## ACTUAL DEATHS 1929, EXCLUDING STILL BIRTHS.

	Adult.	Infant.	Total.
January—March ... ..	68	20	88
April—June ... ..	79	19	98
July—September ... ..	121	35	156
October—December ... ..	85	31	116
JULY ALONE ... ..	42	15	57
AUGUST ALONE ... ..	42	13	55



## (2) GENERAL EUROPEAN POPULATION.

(Excluding Government Officials.)

Estimated ...	...	...	...	...	...	116
Total Births...	...	...	...	...	...	Nil
Birth Rate ...	...	...	...	...	...	Nil
Total Deaths	...	...	...	...	...	1
Death Rate	...	...	...	...	...	8.6 per mille.
Percentage of Deaths to Population	...	...	...	...	...	.86 per cent.
Total Invalidings	...	...	...	...	...	Nil.
Percentage of Invalidings to Population	...	...	...	...	...	Nil.
Total Sick ...	...	...	...	...	...	34
Percentage of Sick to Population	...	...	...	...	...	29.3 per cent.
Causes of Invalidings	...	...	...	...	...	Nil.
Causes of deaths	...	...	...	...	...	Malaria Nephritis (1)

## Prevalent Diseases :—

Of the 34 patients under treatment 14 were suffering from Malaria.

The greatest number of cases of sickness occurred in the October to December quarter—13; of these 6 were Malaria and one was Blackwater, Fever, the latter was still in Hospital at the end of the year.

There were 13 cases of sickness in the October to December quarter, 9 during July to September quarter, 7 during January to March quarter, and 5 during the April to June quarter.

## (3) EUROPEAN OFFICIALS.

There were 61 Officials on the sick list; Malaria and Influenza again accounted for most of the sickness—22 cases of malaria and 17 of Influenza.

The greater number of cases occurred in September, August, November, with 11, 8, and 8 patients respectively. Eight Officials were admitted to Hospital and 53 were under treatment in quarters.

There was 1 case carried forward from 1928, and 1 case remaining on 31st December, 1929.

The longest period any one official was on the sick list was 22 days.

Malaria occurred in September, 7 cases; October, 4 cases; January 3 cases; July, August, November and December, 2 cases each.

Influenza occurred in March, 5 cases; January 3 cases; February, May, December, 2 cases each; June, September, November, 1 case each.

TABLE SHOWING THE SICK, INVALIDING AND DEATH RATES OF  
EUROPEAN OFFICIALS.

	1927.	1928.	1929.
Total number of Officials resident ... ..	72	72	82
Average number resident ... ..	53	48	54
Total number on Sick List ... ..	60	38	61
Total number of days on Sick List ... ..	462	336	455
Average daily number on Sick List ... ..	1.26	0.91	1.25
Percentage of Daily sick to average number resident ...	2.37	1.89	2.31
Average number of days on Sick List for each Patient ...	7.70	8.84	7.46
Average sick time to each resident ... ..	8.71	7.00	6.23
Total number invalided ... ..	6.00	1.00	2.00
Percentage of Invalidings to total residents ... ..	8.33	1.39	2.74
Total deaths ... ..	—	—	—
Percentage of Deaths to total residents ... ..	—	—	—
“ “ “ average number resident ...	—	—	—
Number of cases of sickness contracted away from residence	—	—	—

## (4) AFRICAN OFFICIALS.

Reported Sick ... ..	1,292
Total on Sick List ... ..	463
“ „ Medicine and Duty ... ..	829
“ Treated in Hospital ... ..	63
“ „ „ Quarters ... ..	400
Number of Sick remaining from 1928 ... ..	4
Hospital ... ..	2
Quarters ... ..	2
Number of Sick remaining on 31st December, 1929 ... ..	2
Hospital ... ..	1
Quarters ... ..	1
Out of the above totals	
Female African Officials reported Sick ... ..	64
Total on Sick List ... ..	32
„ Medicine and Duty ... ..	32
The longest number of days any one Official was on Sick List ... ..	90

The greatest number of cases on the Sick List occurred in October, 100; September, 61; August, 55; November, 47; June, 37.

The least in January, 27.

Prevalent Diseases.—Malaria, 163; Bronchitis, 81; Influenza, 46; Diarrhoea, 45.

Malaria was most common in October, 52 cases; in September, 26 cases; in August, 23 cases; in December, 3 cases.

Influenza occurred chiefly in March, 12 cases.

Bronchitis most prevalent during October, 18 cases; May, 13 cases; August, 11 cases.

Diarrhoea occurred in February, 10 cases; April, 7 cases; August, 5 cases.



TABLE SHOWING THE SICK, INVALIDING AND DEATH RATES OF  
AFRICAN OFFICIALS.

	1927.	1928.	1929.
Total number of Officials resident ... ..	324	317	328
Average number resident ... ..	295	287	303
Total number on Sick List ... ..	669	712	463
Total number of days on Sick List ... ..	2,948	2,708	2,394
Average daily number on Sick List ... ..	8.07	7.39	6.60
Percentage of Daily sick to average number resident ...	2.73	2.56	2.20
Average number of days on Sick List for each Patient ...	4.40	3.80	5.20
Average sick time to each resident ... ..	9.99	9.43	7.00
Total number invalided ... ..	6.00	1.00	4.00
Percentage of Invalidings to total residents ... ..	1.85	0.31	1.17
Total deaths ... ..	—	4.00	1.00
Percentage of Deaths to total residents ... ..	—	1.26	0.29
" " " average number resident ... ..	—	1.35	0.33
Number of cases of sickness contracted away from residence	—	—	—

### III. HYGIENE AND SANITATION.

#### A.

*Malaria.* Two adults and seventeen children under 5 years old are returned as having died from malaria in 1929, Anophelines figure amongst prosecutions for mosquito breeding in native yards to the extent of 0.74 per cent. Such facts by themselves give an entirely erroneous impression of the prevalence of malaria and its carrier in Bathurst. Records divulge the informative details that days lost by European Officials through malaria numbered 146: and that malaria necessitated 48 per cent. of all the African Officials' sick attendance at Hospital, involving an aggregate loss of 2 years 3 months and 16 days in consequence.

Taking the general out-patient department, some 16,506 visits were recorded, and of all these 1,685 were treated for malaria, *i.e.* 10.2 per cent.

Evidences of the prevalence of malaria and its serious consequences are also furnished by the work of the Mother and Child Welfare Clinics.

Again, the carrier in Bathurst is *A. costalis*. Its breeding places are inconspicuous but ubiquitous. Crabholes by swamp edges and along the slopes of grass-blocked drains, cart ruts and erosions on roadways, isolated shallow pools in badly graded brick drains, and even broken bottles hidden amongst grass furnish frequent nurseries for this carrier.

If the situation could be presented in terms of the financial and economic losses through malaria Government would require no other incentive for the early application of remedial sanitary measures on a suitably large scale.

It should be added that it appears somewhat questionable if the Public Health Departments' activities can do much more towards control of malaria and its carrier than in past years. The requirements are not increased issues of oil and paris green so much as well planned and carefully executed work by a Sanitary Engineer. The Public Health Department must conserve the present position and can advise on further policy but is not itself equipped for any notable advance.



*Yellow Fever.*—Throughout the year no case has appeared. In September a whole family of five was isolated in a screened ward and observed for three days owing to a suspicious illness in one member which turned out to be not Yellow fever.

The position with regard to this disease, though not serious, is not secure. Of all mosquitoes breeding in Bathurst *Aedes argenteus* reaches 70 per cent. (1929): it is undoubtedly the vector here. We have, in much lesser numbers however, *A. luteocephalus*: and there also occur as possible carriers, *A. vittatus*, *A. irritans*, *A. simpsoni*, and *Eretmopodites chrysogaster*.

In controlling this disease the work of the Inspectors of Nuisances by adequate yard and house examination is of course crucial, continuous, and fortunately, effective. Any relaxation however would permit of rapid increase of carriers and most likely reappearance of the disease from fresh introduction or from presently dormant foci.

*Plague.*—Examinations of immigrants from Senegal was resumed whenever reports (or even rumours) seemed to indicate its necessity. No case however has been reported in Gambia. Purchase of rats is continued and 8,950 household rodents were received at the Public Health Office. No plague infected rat has at any time been found.

*Trypanosomiasis.*—Fourteen deaths are returned in Bathurst from this disease, the average age at death being 30 years. A tsetse fly is rarely seen or caught in town: but by mangrove covered creeksides just over a mile distant they are present and attack oyster gatherers and firewood cutters. The necessity therefore remains for keeping a wide area of swamp free of all mangrove bush between those creeks and the town.

*Gastro-enteritis.*—During the July-September quarter there occurred thirty-seven deaths of children under 5 years old, and of nine adults from epidemic disease, characterised by the acute symptoms of vomiting, diarrhoea (with hæmorrhage), rapid wasting, and collapse. The mortality rate was 3.4 per cent. in 1,333 cases, including several Europeans. Clinically the disease resembled the paratyphoids, but standard cultures could not be procured in time for trying agglutination reactions. Twenty cases occurred in the Prison.

*Tuberculosis.*—Twenty-two deaths have occurred, being 4.8 per cent. of all deaths. The ages range from 3 to 61 years, with an average of 31 years at death.

This disease figures prominently in returns from the Protectorate: 74 cases have been notified within the year.

Notes were specially prepared and sent to all the Travelling Commissioners so that as they have opportunity they may educate the people to its dangers and chiefly its prevention. This may have some effect in checking its progress.

*Smallpox.*—Five cases of Smallpox were treated in the Infectious Diseases Hospital and of these one proved fatal—a lad of 9 years old. One severe case of measles (in a policeman) was isolated, with recovery. Among 23 cases of chicken-pox there was one death—a man suffering from advanced leprosy.

From the Protectorate 78 cases of Smallpox had been notified up till June, but very few thereafter. From its fairly wide distribution it is evident there is need for careful vaccination work to be continued.

*Frambæsia.*—Two cases received treatment in the Victoria Hospital and 11 others are recorded among out-patients. An unusually large number were reported from the Protectorate, some 430 cases, and were found willing to submit too intravenous and intramuscular treatment with gratifying results.



## B.

## GENERAL MEASURES OF SANITATION.

*Night Soil.*—A little over two hundred pails are cleared every night by Government labourers for which service the users pay. But considering that the allotments in town number over 1,500, this is a very inadequate provision. A considerable section of the community avail themselves of the public latrines (pail system also) but unfortunately these form a species of nuisance that it is most difficult to manage. The foreshores, beaches and wharf sides are disgracefully polluted, and a gang has to be kept constantly at work collecting and burying ordure.

*Scavenging.*—Town Yards are systematically cleared of general rubbish twice weekly, except in the principal street where trade waste necessitates more frequent removal. A motor dust cart has been added to the horse carts, but its running expense threatens to exceed the cost of horse and cart work. At the tips burning of all combustible material is carried out.

*Water Supply.*—Our pipe-borne water from Lamin, which is the town's supply of potable water, contains an unwholesome amount of iron both in solution and as deposit. Perfectly clear (and even filtered) samples have shown an iron content of 0.21 to 0.68 grains per gallon. The sediment is often very heavy, and this as well as the incrustation from service pipes consists of hydrated oxides.

The iron content at the source is as it has always been, nil.

As *B. coli* had been reported present in a water sample sent home, a sample taken from the source was examined in Bathurst with the following result. *B. coli* was found present even in 0.5 cc. Two colonies were selected from one plate, A a large lactose fermenting colony, and B a small, pale non-lactose fermenter.

The sugar reaction came out thus.

A.	Lactose acid gas (slow)	Glucose acid gas	Dulcitol acid (slow) —	Inositol — —	Adonitol. — —
B.	acid —	acid —	— —	— —	— —

The slow fermenter also gave a positive indol reaction. I am not of opinion however that this *coli* organism is of human origin. There are crocodiles and fairly large fishes in the reservoir area; various birds also have free access all times.

These findings of home and local examinations of course call for adequate treatment of this question, without any unnecessary delay. The service-pipe system requires renewal *in toto*: and filtration, which does not at present take place, must be carried out at Lamin.

## IV. PORT HEALTH WORK AND ADMINISTRATION.

Inspection of all incoming vessels (284) has been carried out; prophylactic measures, like use of rat guards, have been insisted on. Legal action for breach of regulations was taken in several cases: in one of which the maximum penalty of £10 was inflicted.

(Signed) F. A. INNES,  
Medical Officer of Health.



# V.—REPORT OF CHILD AND MOTHER WELFARE WORK FOR THE YEAR 1929.

## BATHURST, GAMBIA.

Month.	Ante-natal Visits.	Weighing.	Sick Clinic.	Births.
January ... ..	157	364	232	17
February ... ..	79	226	171	26
March ... ..	69	380	258	21
April ... ..	84	510	309	25
May ... ..	77	569	377	23
June ... ..	59	528	362	17
July ... ..	85	640	402	12
August ... ..	326	604	1,351	12
September ... ..	699	563	2,125	23
October ... ..	317	517	353	20
November ... ..	460	399	1,410	27
December ... ..	468	481	668	43
1929 Total ... ..	2,880	5,781	7,918	266
1928 Total ... ..	1,358	5,400	3,379	192

Live Births ... ..	252
Still „ ... ..	14
Tetanus ... ..	1
Ophthalmia... ..	1
Spleen Index in Children over 3 months ...	68% in December.

Death of Infants under Supervision of Clinic not known owing to the fact that Clinic was at various times without European supervision. This also accounts for marked variation in attendance during October.

*Ante-natal Work.*—The marked prevalence of Albuminuria among pregnant women in Bathurst was noted. Whether this was due to syphilitic infection, and malaria or previous general illnesses such as Round Worm or Pneumonia leaving the kidney in a condition unable to withstand the added strain I was unable to ascertain—there being no means at hand to do a Wassermann or other similar test for Syphilis and owing to lack of time sufficient work was not done to justify attributing the majority of the cases to malaria. Recently women attending have shown signs of tertiary Yaws which disease being closely allied to Syphilis may in a similar manner produce an Albuminuria of pregnancy and account for the prevalence of recurrent abortions. Many of the cases of abortion are, however, undoubtedly due to Malarial fever. The condition of the Placentæ examined and the fact that the majority of abortions take place during the early months as against the tendency to miscarriage rather than abortion in Syphilis would point to Malaria being the chief factor. (See Prof. Blacklock's work on this point).

The above facts render Ante-natal work properly carried out a bigger item in the work of the Clinic than it would be say, in England.

Albuminuric cases numbering 58, were being treated in December with Salines, etc. daily. The temperature of every woman entering the Clinic has to be taken.

There is much work to be done also in teaching the women the ordinary hygienic measures special to the Ante-natal period. Correction of malpresentations has to be done almost daily and indicates the necessity of a Medical Officer in the Clinic.



*Post-natal Work.*—In regard to both Mother and Child, this work is rendered much more difficult by the following facts:—

1. Ignorance of the mother regarding treatment of child.

2. Attitude of the father towards the necessity for the mother to have some days' rest. This affects the infant Morbidity and Mortality very much. Many of the mothers are poor nurses, partly because they resume their household duties immediately after the birth of the child and so get no opportunity to establish a good flow of milk. Secondly, they have not the time to bestow on the child necessary to setting it properly under way as regards feeding. Many, apparently healthy babies at birth, go back during the first few weeks, but, on being admitted to the clinic for a few days, make weight steadily. I am quite certain that the high infant mortality is due to the fact that at the very beginning of its life the infant is wrongly treated.

The importance of rest to the mother cannot be too strongly emphasised.

3. The prevalence of Cardiac disease amongst the community. This is not only a cause of Morbidity, but also of Mortality amongst the mothers. Again, the necessity for absolute rest after parturition arises.

*Infant Clinic.*—The section devoted to the weighing of the babies, I consider, the most important in the Clinic if the information thereby gained is acted upon. Ailments, in their beginnings slight and to the ordinary individual quite unnoticeable, are discovered merely through the fact of the child not putting on sufficient weight, not gaining or losing weight. In any tropical country by the time an infant is decidedly ill it is often too late to save it. The prevailing diseases amongst the infants are malaria, Pulmonary complaints, and diarrhoea. A child over 6 months not gaining weight and with nothing definitely wrong is often found to have an enlarged Spleen. Before diarrhoea is fully established in a breast-fed infant some irregularity in the weight is often noticed. I regard the attaining of full weight for its age one of the surest signs of complete recovery in an infant from pneumonia or lung trouble of any kind. I stress these points because the value of the Weighing Clinic is not generally recognised any more than the fact infants can be below normal in health without showing definite signs.

It is to be hoped that during the coming year more in the way of giving instruction to the mothers may be possible.

(Signed) H. McD. HENDRIE,  
Hon. Phys. M. & C.W.C.

## VI. HOSPITALS, DISPENSARIES.

### (a) RECORD OF WORK AND PREVAILING DISEASES.

#### (1) VICTORIA HOSPITAL.

##### (a) *In-Patients.*

Remaining in Hospital from 1928	...	...	...	38
Admissions	...	...	...	723
Total cases treated	...	...	...	761
Total Deaths	...	...	...	98
Remaining in Hospital at end of 1929	...	...	...	37
Operations performed	...	...	...	246

*Prevalent Diseases*:—Malaria, 83; Influenza, 27; Pneumonia, 44; Hernia, 35.

(b) *Out-Patients.*

Total Treated	...	...	...	...	...	...	16,506
<i>Prevalent Diseases :—</i>							
Malaria	...	...	...	...	...	...	1,685
Bronchitis	...	...	...	...	...	...	3,394
Diarrhoea	...	...	...	...	...	...	1,333
Injuries	...	...	...	...	...	...	1,135

			In-Patients.	Out-Patients.	Operations.
1924	...	...	597	13,591	60
1925	...	...	750	16,502	82
1926	...	...	761	*9,142	110
1927	...	...	788	13,799	144
1928	...	...	793	16,740	162
1929	...	...	723	16,506	224

\*Figures in Out-Patient Register incorrect.

(c) Official Visits by Appointment	...	...	...	Several.
(d) Autopsies performed	...	...	...	17

## (2) PRISON HOSPITAL—BATHURST.

In-Patients	...	...	...	...	...	25
Out-Patients	...	...	...	...	...	190

## (3) MATERNITY AND CHILD WELFARE CLINIC—BATHURST.

Ante-natal	...	...	...	...	...	2,880
Weighing	...	...	...	...	...	5,781
Sick Infants' Attendance	...	...	...	...	...	7,918
Live Births	...	...	...	...	...	266
Still Births	...	...	...	...	...	14

## CLINIC ATTENDANCES.

Years.	Ante-natal.	Sick Infants.	Weighing Clinic.	Births.	Live Births.	Still Births.	Tetanus.	Ophthalmic.	Sepsis.
1925	818	1,601	963	102	87	15	Nil	Nil	Nil
1926	864	2,651	1,275	161	148	13	—	—	1
1927	939	4,231	2,248	191	171	20	1	—	—
1928	1,358	5,400	3,379	213	192	21	Nil	1	1
1929	2,880	7,918	5,781	280	266	14	1	1	—
	6,859	21,801	13,646	947	864	83	2	2	2



## COMPARATIVE STATEMENT OF BIRTHS AND DEATHS.

Years.	Total Live Births.	Total Deaths.	Births in Excess.	Deaths in Excess.	Deaths under 5 years.	Deaths under 1 year.	Deaths under 1 week.	Deaths under 24 hours.	Still Births.	Infantile Mortality rate per mille.	Birth Rate per mille.	Death Rate per mille.	Total Population.
1911	306	318	—	12	29	43	15	1	28	127	23.26	24.17	13,157
1912	303	336	—	33	42	66	6	—	26	354	23.02	25.54	13,157
1913	292	335	—	43	20	50	22	3	29	295	22.19	25.46	13,157
1914	306	342	—	36	27	59	16	5	27	263	23.10	25.99	13,157
1915	249	266	—	17	40	58	18	1	30	308	18.92	22.49	13,157
1916	292	284	8	—	46	54	10	9	22	253	37.92	36.88	7,700
1917	307	332	—	25	22	59	13	—	30	237	36.22	39.12	8,474
1918*	218	617	—	399	89	140	17	—	45	724	25.72	72.31	8,474
1919	216	257	—	41	30	64	18	4	42	402	25.48	30.32	8,474
1920	205	369	—	164	59	92	15	5	44	546	24.19	43.54	8,474
1921	222	337	—	115	60	80	25	6	62	504	24.05	36.52	9,227
1922	295	437	—	142	56	117	22	9	50	502	31.38	46.51	9,395
1923	255	412	—	157	35	98	24	5	52	598	26.65	43.06	9,567
1924	291	513	—	222	115	108	28	1	57	471	29.87	52.66	9,741
1925	262	329	—	67	No Record	112	No Record	No Record	48	427	22.41	33.17	9,919
1926	281	335	—	54		100			42	355	27.82	33.16	10,100
1927	278	357	—	79		88			45	316	27.03	34.71	10,283
1928	263	407	—	144	104	104	15	6	56	395	25.11	38.86	10,473
1929	315	458	—	143	98	68	15	6	44	333	29.53	42.94	10,664

\* Influenza Epidemic.

## (4) INFECTIOUS DISEASES HOSPITAL—BATHURST.

Admissions ... 35

## (5) QUARANTINE COMPOUND.

Admissions ... NIL

## (6) HOME FOR THE INFIRM.

	Males.	Females.	Total.
Remaining in Home from 1928	9	4	13
Admissions	30	4	34
Discharges	15	3	18
Ran away	5	—	5
Died	12	2	14
Remaining on 31/12/29	7	3	10
Average daily number	8.08	1.87	9.95

## (7) GAMBIA COMPANY, ROYAL WEST AFRICAN FRONTIER FORCE.

## DISPENSARY CAPE ST. MARY.

Out-Patients Morning Sick Parade ... 1513  
 Patients sent to Bathurst Hospital ... 22

Attendances greatest during months of January, February, September, October.

PREVALENT DISEASES:—Bronchitis, Malaria and Leg Ulcers.

## (b) IMPROVEMENTS EFFECTED AND RECOMMENDED.

1. *Victoria Hospital, Bathurst.*—The renovation and reconditioning of the main block have been approved for 1930, as also has the conversion of the old Out-Patient Department into African Wards. The present Store is inconveniently situated; is too small and too dark and might well be replaced by a new building.

In October a new Out-Patient building was completed and has proved a very useful addition.

2. *The Home for the Infirm.*—On a pleasant site near the Prison twelve detached cottages are being built for the reception of those who may become destitute as a result of old age or sickness. This Home will afford much better accommodation than the present Home, which it will replace.

3. *Maternity and Child Welfare Clinic.*—The building at 54, Leman Street has been much improved by internal structural alterations and by the conversion of the upper floor into a Ward in which very useful work is being done. In August, a Lady Doctor, the wife of an Official stationed in Bathurst, was retained by the Government to take charge of the Welfare Clinics.

4. *Infectious Diseases Hospital.*—The new Hospital was completed and taken over during the year.

5. *Gambia Company, Royal West African Frontier Force, Cape St. Mary.*—Approval has been received for the building of a Dispensary on a site midway between the R.W.A.F.F. lines and Bakau Village.

6. *Georgetown.*—Sanction has been obtained for the replacement of the Medical Officer's house by a better temporary structure and the building of a permanent bungalow may be undertaken in 1931. The Georgetown Hospital will soon require enlargement with provision of a Mortuary, Operating Theatre, Dispensary, and Consulting Room. Two schemes have been considered and provision may be made in the Estimates of 1931.

7. *Kau-ur Dispensary.*—The building has been repaired and rain water tanks have been provided.

8. *Basse Dispensary.*—The original building was flooded during the rains and so the Dispensary was removed to the former Rest Compound at Santa Su.

9. *Increase of Medical Officers.*—In the near future it may become necessary to consider the appointment of a Lady Medical Officer to the Mother and Child Welfare Clinic.

At present we have the temporary services of Dr. Hendrie, but these will of necessity cease when her husband returns to his substantive appointment in the Gold Coast.

## (c) AVERAGE COST PER HEAD OF PATIENTS.

*Bathurst.*—One shilling and sevenpence per diem.

*Georgetown.*—One shilling and threepence per diem.



## VII. PRISONS AND ASYLUMS.

## MEDICAL REPORT ON BATHURST PRISON, 1929.

The average daily number of prisoners was 44.88. The number of Out-Patients examined at the daily sick parade was 215 and of these 25 were admitted to the Prison Infirmary.

There were two deaths during the year; one from Auricular Fibrillation and Cirrhosis of the Liver, the other from Endocarditis.

The general health of the prisoners was good; the commonest diseases being Bronchitis and minor maladies of the alimentary tract.

The Diet is satisfactory both as regards quantity and quality.

The sanitary arrangements are efficient, Night soil being disposed of by burial in the bush; the association cells are well ventilated and cleanly.

(Signed) C. NUNNS,  
M.O.

N.B.—There is no Asylum in the Gambia but in this connection a cell was especially set apart and prepared for the confinement of dangerous lunatics. It has since been found unsuitable and has therefore been discarded.

## VIII. METEOROLOGY.

										BATHURST.
1.	Highest Shade Maximum	...	...	...	...	...	...	...	...	99° in February.
2.	Lowest " "	...	...	...	...	...	...	...	...	88° in May.
3.	Highest Shade Minimum	...	...	...	...	...	...	...	...	65° in Sept. & Oct.
4.	Lowest " "	...	...	...	...	...	...	...	...	55° in December.
5.	Greatest Range of Temperature was	...	...	...	...	...	...	...	...	36° in February.
6.	Lowest " "	...	...	...	...	...	...	...	...	24° in July & Sept.
7.	Total Rainfall	...	...	...	...	...	...	...	...	52.26 Inches.
8.	Most rain fell in August	...	...	...	...	...	...	...	...	20.63 "
9.	Highest degree of Relative Humidity.	...	...	...	...	...	...	...	...	85% in December.
10.	Lowest " "	...	...	...	...	...	...	...	...	49% in February.

## RAINFALL FOR LAST FIVE YEARS.

	1925	1926	1927	1928	1929
Bathurst ... ..	44.77	30.05	60.58	57.02	52.26
Georgetown ... ..	49.11	31.47	45.42	35.89	40.28

## IX. SCIENTIFIC.

NOTES BY DR. F. A. INNES, MEDICAL OFFICER OF HEALTH.

1. Two large open fresh water tanks each 75,000 gallons capacity have been continuously found free of mosquito larvæ for years. This falls to be attributed to the presence in the water of numbers of *Anisops pelluceus* (determined at Liverpool Trop. Schl. of Medicine). One of these insects in captivity between August 3 and November 2 destroyed 475 mosquito larvæ (and few pupæ).

The usefulness of these aquatic insects in such circumstances seems worth recording.

2. Larvæ found in rain water in a dust bin lid under some garden bushes were bred out in the laboratory and proved to be *Eretmopodites chrysogaster* which must now be added to the list of local Culicidæ.

3. Several small tumours were removed by Dr. J. C. Cruickshank from the trochanter region of a Private in the Royal West African Frontier Force. The tumour when incised showed *onchocerca volvolus*, which is now recorded for the first time in Bathurst.

D. T. BIRT,

*Senior Medical Officer.*



TABLE I.

## RETURN OF STATISTICS OF POPULATION FOR THE YEAR 1929.

	Europeans and Whites.	Africans.	East Indians.	Chinese and Malays.	Mixed and Coloured.	
Number of inhabitants in 1928...	180	10,473	—	—	—	Bathurst only (estimated)
Number of Births during the year 1929 ... ..	—	315	—	—	—	
Number of Deaths during the year 1929 ... ..	1	458	—	—	—	
Number of Immigrants during the year 1929 ... ..	—	—	—	—	—	
Number of Emigrants during the year 1929 ... ..	—	—	—	—	—	
Number of inhabitants in 1929	198	10,664	—	—	—	
Increase, or ... ..	18	191	—	—	—	
Decrease ... ..	—	—	—	—	—	

TABLE II.

## METEOROLOGICAL RETURN FOR THE YEAR 1929—(BATHURST).

	TEMPERATURE.						RAINFALL.		WINDS.		Remarks.
	Solar Maxi- mum.	Mini- mum on Grass.	Shade Maxi- mum.	Shade Mini- mum.	Range.	Mean.	Amount in Inches.	Degree of Hu- midity.	General Direc- tion.	Average Force.	
January ...	—	—	90	58	27	72.5	—	52%	N.E.	—	
February ...	—	—	99	56	36	74.0	—	49%	Var.	—	
March ...	—	—	97	57	33	73.3	—	56%	do.	—	
April ...	—	—	93	56	28	72.2	—	59%	do.	—	
May ...	—	—	88	60	25	72.5	0.08	56%	do.	—	
June ...	—	—	93	63	25	77.0	5.66	85%	do.	—	
July ...	—	—	94	64	24	78.1	9.68	80.6%	do.	—	
August ...	—	—	90	60	26	76.4	20.63	78.6%	do.	—	
September ...	—	—	89	65	24	77.8	13.12	80%	do.	—	
October ...	—	—	91	65	26	78.4	3.09	76%	do.	—	
November ...	—	—	91	57	25	76.05	—	59%	do.	—	
December ...	—	—	89	55	34	75.7	—	—	do.	—	
	—	—	—	—	—		52.26	—	—	—	



TABLE III.

## VICTORIA HOSPITAL, BATHURST.

RETURN OF DISEASES AND DEATHS (IN-PATIENTS) FOR THE YEAR 1929.

Diseases.	Remaining in Hospital at end of 1928.	Yearly Total.		Total Cases Treated.	Remain- ing in Hospital at end of 1929.	Remarks.
		Admissions.	Deaths.			
I.—EPIDEMIC, ENDEMIC, AND INFECTIOUS DISEASES.						
1. Enteric Group—						
(a) Typhoid Fever ...	...	...	...	...	...	
(b) Paratyphoid A. ...	...	...	...	...	...	
(c) Paratyphoid B. ...	...	...	...	...	...	
(d) Type not defined ...	...	...	...	...	...	
2. Typhus ...						
3. Relapsing Fever ...						
4. Undulant Fever ...						
5. Malaria—						
(a) Tertian ...	...	...	...	...	...	
(b) Quartan ...	...	...	...	...	...	
(c) Aestivo-autumnal ...	...	83	1	83	...	
(d) Cachexia ...	...	...	...	...	...	
(e) Blackwater ...	...	3	...	3	1	
6. Smallpox—						
Alastrim ...	...	...	...	...	...	
7. Measles ...						
8. Scarlet Fever ...						
9. Whooping Cough ...						
10. Diphtheria ...						
11. Influenza ...						
12. Miliary Fever ...						
13. Mumps ...						
14. Cholera ...						
15. Epidemic diarrhoea ...						
16. Dysentery—						
(a) Amoebic ...	...	11	5	11	...	
(b) Bacillary ...	...	1	...	1	...	
(c) Undefined or due to other causes ...	...	...	...	...	...	
17. Plague—						
(a) Bubonic ...	...	...	...	...	...	
(b) Pneumonic ...	...	...	...	...	...	
(c) Septicæmic ...	...	...	...	...	...	
(d) Undefined ...	...	...	...	...	...	
18. Yellow Fever ...						
19. Spirochaetosis ictero-hæmor- rhagica ...						
20. Leprosy ...						
21. Erysipelas ...						
22. Acute Poliomyelitis ...						
23. Encephalitis Lethargica ...						
24. Epidemic Cerebro-spinal Fever ...						
25. Other Epidemic Diseases—						
(a) Rubeola (German Measles) ...	...	...	...	...	...	
(b) Varicella (Chicken-pox) ...	...	1	...	1	...	
(c) Kala-azar ...	...	...	...	...	...	
(d) Phlebotomus Fever ...	...	...	...	...	...	
(e) Dengue ...	...	...	...	...	...	
(f) Epidemic Dropsy ...	...	...	...	...	...	
(g) Yaws ...	...	2	...	2	...	
(h) Trypanosomiasis ...	2	21	5	23	1	
Total carried forward ...	2	151	12	153	2	

TABLE III.—*continued.*VICTORIA HOSPITAL, BATHURST—*continued.*RETURN OF DISEASES AND DEATHS (IN-PATIENTS) FOR THE YEAR 1929—*continued.*

Diseases.	Remaining in Hospital at end of 1928.	Yearly Total.		Total Cases Treated.	Remain- ing in Hospital at end of 1929.	Remarks.
		Admissions.	Deaths.			
Brought forward ...	2	151	12	153	2	
I.—EPIDEMIC, ENDEMIC AND INFECTIOUS DISEASES— <i>contd.</i>	...	...	...	...	...	
26. Glanders ... ..	...	...	...	...	...	
27. Anthrax ... ..	...	...	...	...	...	
28. Rabies ... ..	...	...	...	...	...	
29. Tetanus ... ..	...	8	3	8	2	
30. Mycosis ... ..	...	...	...	...	...	
31. Tuberculosis, Pulmonary and Laryngeal ... ..	...	16	6	16	4	
32. Tuberculosis of the Meninges or Central Nervous System	...	2	...	2	...	
33. Tuberculosis of the Intestines or Peritoneum ... ..	...	1	...	1	...	
34. Tuberculosis of the Vertebral Column ... ..	...	...	...	...	...	
35. Tuberculosis of Bones and Joints ... ..	...	3	...	3	1	
36. Tuberculosis of other organs— (a) Skin or Subcutaneous Tissue (Lupus) ... ..	...	...	...	...	...	
(b) Bones ... ..	...	...	...	...	...	
(c) Lymphatic System ... ..	...	...	...	...	...	
(d) Genito-urinary ... ..	...	...	...	...	...	
(e) Other Organs ... ..	...	...	...	...	...	
37. Tuberculosis disseminated— (a) Acute ... ..	...	...	...	...	...	
(b) Chronic ... ..	...	1	1	1	...	
38. Syphilis— (a) Primary ... ..	2	14	1	16	2	
(b) Secondary ... ..	...	...	...	...	...	
(c) Tertiary ... ..	...	5	1	5	...	
(d) Hereditary ... ..	...	...	...	...	...	
(e) Period not indicated ... ..	...	...	...	...	...	
39. Soft Chancre ... ..	...	...	...	...	...	
40. A.—Gonorrhœa and its com- plications ... ..	...	1	...	1	...	
B.—Gonorrhœal Ophthalmia ... ..	...	...	...	...	...	
C.—Gonorrhœal Arthritis ... ..	...	...	...	...	...	
D.—Granuloma Venereum ... ..	...	...	...	...	...	
41. Septicæmia ... ..	...	6	6	6	...	
42. Other Infectious Diseases— Trypanosomiasis ... ..	...	...	...	...	...	
II.—GENERAL DISEASES NOT MEN- TIONED ABOVE.						
43. Cancer or other malignant Tumours of the Buccal Cavity	...	...	...	...	...	
44. Cancer or other malignant Tumours of the Stomach or Liver... ..	...	...	...	...	...	
45. Cancer or other malignant Tumours of the Peritoneum Intestines, Rectum ... ..	...	3	1	3	1	
Total carried forward ...	4	211	31	215	12	



TABLE III.—*continued.*VICTORIA HOSPITAL, BATHURST—*continued.*RETURN OF DISEASES AND DEATHS (IN-PATIENTS) FOR THE YEAR 1929—*continued.*

Diseases	Remaining in Hospital at end of 1928.	Yearly Total.		Total Cases Treated.	Remain- ing in Hospital at end of 1929.	Remarks.
		Admissions.	Deaths.			
Brought forward ...	4	211	31	215	12	
II.—GENERAL DISEASES NOT MENTIONED ABOVE— <i>contd.</i>						
46. Cancer or other malignant Tumours of the Female Genital Organs ...	...	...	...	...	...	
47. Cancer or other malignant Tumours of the Breast ...	...	...	...	...	...	
48. Cancer or other malignant Tumours of the Skin ...	...	...	...	...	...	
49. Cancer or other malignant Tumours of Organs not specified ...	...	...	...	...	...	
50. Tumours non-Malignant ...	1	6	1	7	...	
51. Acute Rheumatism ...	...	3	2	3	...	
52. Chronic Rheumatism ...	...	7	...	7	...	
53. Scurvy (including Barlow's Disease) ...	...	...	...	...	...	
54. Pellagra ...	...	...	...	...	...	
55. Beri-Beri ...	2	9	2	11	1	
56. Rickets ...	...	1	1	1	...	
57. Diabetes (not including Insipidus) ...	...	...	...	...	...	
58. Anæmia—						
(a) Pernicious ...	...	...	...	...	...	
(b) Other Anæmias and Chlorosis ...	...	2	...	2	...	
59. Diseases of the Pituitary Body ...	...	...	...	...	...	
60. Diseases of the Thyroid Gland—						
(a) Exophthalmic Goitre ...	...	...	...	...	...	
(b) Other diseases of the Thyroid Gland, Myxœdema ...	...	...	...	...	...	
61. Diseases of the Para-Thyroid Glands ...	...	...	...	...	...	
62. Diseases of the Thymus ...	...	...	...	...	...	
63. Diseases of the Supra-Renal Glands ...	...	...	...	...	...	
64. Diseases of the Spleen ...	...	1	...	1	...	
65. Leukæmia—						
(a) Leukæmia ...	...	2	1	2	...	
(b) Hodgkin's Disease ...	...	...	...	...	...	
66. Alcoholism ...	...	...	...	...	...	
67. Chronic poisoning by mineral substances (lead, mercury, etc.) ...	...	...	...	...	...	
68. Chronic poisoning by organic substances (Morphia, Cocaine, etc.) ...	...	...	...	...	...	
69. Other General Diseases—						
Auto-intoxication ...	...	2	...	2	...	
Purpura Hæmorrhagica ...	...	...	...	...	...	
Hæmophilia ...	...	...	...	...	...	
Diabetes Insipidus ...	...	...	...	...	...	
Total carried forward	7	244	38	251	213	

TABLE III.—*continued.*VICTORIA HOSPITAL, BATHURST—*continued.*RETURN OF DISEASES AND DEATHS (IN-PATIENTS) FOR THE YEAR 1929.—*continued.*

Diseases.	Remaining in Hospital at end of 1928.	Yearly Total.		Total Cases Treated.	Remain- ing in Hospital at end of 1929.	Remarks.
		Admissions.	Deaths.			
Brought forward ...	7	244	38	251	13	
III.—AFFECTIONS OF THE NERVOUS SYSTEM AND ORGANS OF THE SENSES.						
70. Encephalitis (not including En- cephalitis Lethargica) ...	...	...	...	...	...	
71. Meningitis (not including Tuber- culous Meningitis or Cerebro- spinal Meningitis) ...	...	2	2	2	...	
72. Locomotor Ataxia ...	...	1	...	1	...	
73. Other affections of the Spinal Cord ...	...	1	...	1	...	
74. Apoplexy—						
(a) Hæmorrhage ...	...	1	1	1	...	
(b) Embolism ...	...	1	1	1	...	
(c) Thrombosis ...	...	6	4	6	...	
75. Paralysis—						
(a) Hemiplegia ...	...	2	...	2	1	
(b) Other Paralyzes ...	...	...	...	...	...	
76. General Paralysis of the Insane	...	...	...	...	...	
77. Other forms of Mental Alienation	...	...	...	...	...	
78. Epilepsy ...	...	2	...	2	...	
79. Eclampsia, Convulsions (non- puerperal) 5 years or over ...	...	...	...	...	...	
80. Infantile Convulsions ...	...	...	...	...	...	
81. Chorea ...	...	...	...	...	...	
82. A.—Hysteria ...	...	...	...	...	...	
B.—Neuritis ...	...	...	...	...	...	
C.—Neurasthenia ...	...	2	...	2	...	
83. Cerebral Softening ...	...	...	...	...	...	
84. Other affections of the Nervous System, such as Paralysis Agitans ...	...	1	...	1	...	
85. Affections of the Organs of Vision—						
(a) Diseases of the Eye ...	...	4	...	4	...	
(b) Conjunctivitis ...	1	1	...	2	...	
(c) Trachoma ...	...	...	...	...	...	
(d) Tumours of the Eye ...	...	...	...	...	...	
(e) Other affections of the Eye ...	...	3	...	3	...	
86. Affections of the Ear or Mastoid Sinus ...	...	4	...	4	...	
IV.—AFFECTIONS OF THE CIRCU- LATORY SYSTEM.						
87. Pericarditis ...	...	...	...	...	...	
88. Acute Endocarditis or Myocar- ditis ...	1	9	2	10	...	
89. Angina Pectoris ...	...	...	...	...	...	
90. Other Diseases of the Heart—						
(a) Valvular—						
Mitral ...	...	18	2	18	1	
Aortic ...	...	2	2	2	...	
Tricuspid ...	...	...	...	...	...	
Pulmonary ...	...	...	...	...	...	
(b) Myocarditis ...	1	21	4	22	2	
Total carried forward ...	10	325	56	335	17	



TABLE III.—*continued.*VICTORIA HOSPITAL, BATHURST—*continued.*RETURN OF DISEASES AND DEATHS (IN-PATIENTS) FOR THE YEAR 1929—*continued.*

Diseases.	Remaining in Hospital at end of 1928.	Yearly Total.		Total Cases Treated.	Remain- ing in Hospital at end of 1929.	Remarks.
		Admissions.	Deaths.			
Brought forward ...	10	325	56	335	17	
IV.—AFFECTIONS OF THE CIRCULA- TORY SYSTEM— <i>contd.</i>						
91. Diseases of the Arteries—						
(a) Aneurism ...	...	...	...	...	...	
(b) Arterio-Sclerosis ...	...	1	...	1	1	
(c) Other diseases ...	...	...	...	...	...	
92. Embolism or Thrombosis (non- cerebral) ...	...	...	...	...	...	
93. Diseases of the Veins—						
Hæmorrhoids ...	...	...	...	...	...	
Varicose Veins ...	...	1	...	1	1	
Phlebitis ...	...	...	...	...	...	
94. Diseases of the Lymphatic System—						
Lymphangitis ...	1	...	...	1	...	
Lymphadenitis, Bubo (non- specific) ...	...	1	...	1	...	
95. Hæmorrhage of undetermined cause ...	...	...	...	...	...	
96. Other affections of the Circula- tory System ...	...	...	...	...	...	
V.—AFFECTIONS OF THE RESPIR- ATORY SYSTEM.						
97. Diseases of the Nasal Passages—						
Adenoids ...	...	...	...	...	...	
Polypus ...	...	...	...	...	...	
Rhinitis ...	...	...	...	...	...	
Coryza ...	...	1	...	1	1	
98. Affections of the Larynx—						
Laryngitis ...	...	...	...	...	...	
99. Bronchitis—						
(a) Acute ...	...	...	...	...	...	
(b) Chronic ...	1	26	...	27	1	
100. Broncho-Pneumonia ...	...	3	...	3	...	
101. Pneumonia—						
(a) Lobar ...	1	44	18	45	1	
(b) Unclassified ...	...	...	...	...	...	
102. Pleurisy, Empyema ...	1	10	...	11	...	
103. Congestion of the Lungs ...	...	...	...	...	...	
104. Gangrene of the Lungs ...	...	...	...	...	...	
105. Asthma ...	...	1	...	1	...	
106. Pulmonary Emphysema ...	...	...	...	...	...	
107. Other affections of the Lungs— Pulmonary Spirochaetosis...	...	...	...	...	...	
VI.—DISEASES OF THE DIGESTIVE SYSTEM.						
108. A.—Diseases of Teeth or Gums—						
Caries, Pyorrhœa, etc.	...	...	...	...	...	
B.—Other affections of the Mouth—						
Stomatitis ...	...	...	...	...	...	
Glossitis, etc. ...	...	2	1	2	...	
Total carried forward ...	14	415	75	429	22	

TABLE III.—*continued.*VICTORIA HOSPITAL, BATHURST—*continued.*RETURN OF DISEASES AND DEATHS (IN-PATIENTS) FOR THE YEAR 1929—*continued.*

Diseases.	Remaining in Hospital at end of 1928.	Yearly Total.		Total Cases Treated.	Remain- ing in Hospital at end of 1929.	Remarks.
		Admissions.	Deaths.			
Brought forward ...	14	415	75	429	22	
VI.—DISEASES OF THE DIGESTIVE SYSTEM— <i>contd.</i>						
109. Affections of the Pharynx or Tonsils—						
Tonsillitis ... ..	...	...	...	...	...	
Pharyngitis ... ..	...	1	...	1	...	
110. Affections of the Œsophagus	...	...	...	...	...	
111. A.—Ulcer of the Stomach ...	...	...	...	...	...	
B.—Ulcer of the Duodenum...	...	...	...	...	...	
112. Other affections of the Stomach—						
Gastritis ... ..	...	...	...	...	...	
Dyspepsia, etc. ... ..	...	...	...	...	...	
113. Diarrhœa and Enteritis—						
Under two years ... ..	...	...	...	...	...	
114. Diarrhœa and Enteritis—						
Two years and over—...	...	22	8	22	...	
Colitis ... ..	...	2	...	2	...	
Ulceration ... ..	...	...	...	...	...	
114a Sprue ... ..	...	...	...	...	...	
115. Ankylostomiasis ... ..	...	1	...	1	...	
116. Diseases due to Intestinal Para- sites—						
(a) Cestoda (Tænia) ... ..	...	...	...	...	...	
(b) Trematoda (Flukes) ... ..	...	...	...	...	...	
(c) Nematoda (other than Ankylostoma)—						
Ascaris ... ..	...	...	...	...	...	
Trichocephalus dispar	...	...	...	...	...	
Trichina ... ..	...	...	...	...	...	
Dracunculus ... ..	...	...	...	...	...	
Strongylus ... ..	...	...	...	...	...	
Oxyuris . ... ..	...	...	...	...	...	
(d) Coccidia... ..	...	...	...	...	...	
(e) Other parasites ... ..	...	...	...	...	...	
(f) Unclassified ... ..	...	...	...	...	...	
117. Appendicitis ... ..	...	...	...	...	...	
118. Hernia... ..	2	35	...	37	3	
119. A.—Affections of the Anus, Fistula, etc. ... ..	1	...	...	1	...	
B.—Other affections of the Intestines—						
Enteroptosis ... ..	...	...	...	...	...	
Constipation ... ..	...	...	...	...	...	
120. Acute Yellow Atrophy of the Liver ... ..	...	...	...	...	...	
121. Hydatid of the Liver... ..	...	...	...	...	...	
122. Cirrhosis of the Liver—						
(a) Alcoholic ... ..	...	...	...	...	...	
(b) Other forms ... ..	...	2	1	2	...	
123. Biliary Calculus ... ..	...	...	...	...	...	
124. Other affections of the Liver—						
Abscess ... ..	...	1	1	1	...	
Hepatitis ... ..	...	1	...	1	...	
Cholecystitis... ..	...	1	...	1	...	
Jaundice ... ..	...	4	...	4	...	
Total carried forward ...	17	488	86	505	25	



TABLE III.—*continued.*VICTORIA HOSPITAL, BATHURST—*continued.*RETURN OF DISEASES AND DEATHS (IN-PATIENTS) FOR THE YEAR 1929—*continued.*

Disease.	Remaining in Hospital at end of 1928.	Yearly Total.		Total Cases Treated.	Remain- ing in Hospital at end of 1929.	Remarks.
		Admissions.	Deaths.			
Brought forward ...	17	488	86	505	25	
VI.—DISEASES OF THE DIGESTIVE SYSTEM— <i>contd.</i>						
125. Diseases of the Pancreas ...	...	...	...	...	...	
126. Peritonitis (of unknown cause) ...	...	...	...	...	...	
127. Other affections of the Digestive System ...	...	...	...	...	...	
VII.—DISEASES OF THE GENITO-URINARY SYSTEM (NON-VENEREAL).						
128. Acute Nephritis ...	1	11	4	12	...	
129. Chronic ...	...	...	...	...	...	
130. A.—Chyluria ...	...	...	...	...	...	
B.—Schistosomiasis ...	...	1	...	1	...	
131. Other affections of the Kidneys—						
Pyelitis, &c. ...	...	...	...	...	...	
132. Urinary Calculus ...	...	1	...	1	...	
133. Diseases of the Bladder—						
Cystitis ...	...	1	...	1	...	
134. Diseases of the Urethra—						
(a) Stricture... ...	1	6	1	7	...	
(b) Other ...	...	1	...	1	...	
135. Diseases of the Prostate—						
Hypertrophy ...	...	...	...	...	...	
Prostatitis ...	...	...	...	...	...	
136. Diseases (non-Venereal) of the Genital Organs of Man—						
Epididymitis ...	...	1	...	1	...	
Orchitis ...	...	...	...	...	...	
Hydrocele ...	4	18	...	22	2	
Ulcer of Penis ...	...	2	...	2	...	
137. Cysts or other (non-malignant) Tumours of the Ovaries ...	...	...	...	...	...	
138. Salpingitis—						
Abscess of the Pelvis ...	...	2	...	2	...	
139. Uterine Tumours (non-malignant) ...	...	1	...	1	...	
140. Uterine Hæmorrhage (non-puerperal) ...	...	2	...	2	...	
141. A.—Metritis ...	...	3	...	3	...	
B.—Other affections of the Female Genital Organs—						
Displacements of Uterus ...	...	3	...	3	...	
Amenorrhœa ...	...	...	...	...	...	
Dysmenorrhœa ...	...	...	...	...	...	
Leucorrhœa ...	...	...	...	...	...	
142. Diseases of the Breast (non-puerperal)—						
Mastitis ...	...	2	...	2	1	
Abscess of Breast ...	...	...	...	...	...	
Total carried forward ...	23	544	91	567	28	

TABLE III.—*continued.*VICTORIA HOSPITAL, BATHURST—*continued.*RETURN OF DISEASES AND DEATHS (IN-PATIENTS) FOR THE YEAR 1929—*continued.*

Diseases.	Remaining in Hospital at end of 1928.	Yearly Total.		Total Cases Treated.	Remain- ing in Hospital at end of 1929.	Remarks.
		Admissions.	Deaths.			
Brought forward ...	23	544	91	567	28	
VIII.—PUERPERAL STATE.						
143. A.—Normal Labour ...	...	6	...	6	...	
B.—Accidents of Pregnancy—						
(a) Abortion ...	...	9	...	9	...	
(b) Ectopic Gestation ...	...	...	...	...	...	
(c) Other accidents of Pregnancy ...	1	5	...	6	...	
144. Puerperal Hæmorrhage ...	...	...	...	...	...	
145. Other accidents of Parturition ...	...	5	2	5	1	
146. Puerperal Septicæmia ...	...	1	1	1	...	
147. Phlegmasia Dolens ...	...	...	...	...	...	
148. Puerperal Eclampsia ...	...	1	1	1	...	
149. Sequelæ of Labour ...	...	...	...	...	...	
150. Puerperal affections of the Breast ...	...	...	...	...	...	
IX.—AFFECTIONS OF THE SKIN AND CELLULAR TISSUES.						
151. Gangrene ...	1	...	...	1	...	
152. Boil—	...	3	...	3	...	
Carbuncle ...	...	...	...	...	...	
Ulcer ...	...	...	...	...	...	
153. Abscess—	1	15	1	16	...	
Whitlow ...	...	...	...	...	...	
Cellulitis ...	4	16	...	20	1	
154. A.—Tinea ...	...	...	...	...	...	
B.—Scabies ...	...	...	...	...	...	
155. Other Diseases of the Skin—						
Erythema ...	...	2	...	2	...	
Urticaria ...	...	...	...	...	...	
Eczema ...	...	...	...	...	...	
Herpes ...	...	...	...	...	...	
Psoriasis ...	...	...	...	...	...	
Elephantiasis ...	1	10	...	11	1	
Myiasis ...	...	...	...	...	...	
Chigoes ...	...	...	...	...	...	
Cutaneous Leishmaniasis ...	...	...	...	...	...	
Dermatitis... ..	...	...	...	...	...	
X.—DISEASES OF BONES AND ORGANS OF LOCOMOTION (OTHER THAN TUBERCULOUS).						
156. Diseases of Bones—						
Osteitis ...	2	1	...	3	2	
157. Diseases of Joints—						
Arthritis ...	...	10	...	10	1	
Synovitis ...	...	2	...	2	...	
158. Other Diseases of Bones or Organs of Locomotion ...	...	1	...	1	...	
XI.—MALFORMATIONS.						
159. Malformations—						
Hydrocephalus ...	...	...	...	...	...	
Hypospadias... ..	...	...	...	...	...	
Spina Bifida, etc. ...	...	...	...	...	...	
Total carried forward ...	33	631	96	664	34	



TABLE III.—*continued.*VICTORIA HOSPITAL, BATHURST—*continued.*RETURN OF DISEASES AND DEATHS (IN-PATIENTS) FOR THE YEAR 1929—*continued.*

Diseases.	Remaining in Hospital at end of 1928.	Yearly Total.		Total Cases Treated.	Remain- ing in Hospital at end of 1929.	Remarks.
		Admissions.	Deaths.			
Brought forward ...	33	631	96	664	34	
XII.—DISEASES OF INFANCY.						
160. Congenital Debility ...	..	...	...	...	...	
161. Premature Birth ...	..	...	...	...	...	
162. Other affections of Infancy ...	...	...	...	...	...	
163. Infant neglect (infants of three months or over) ...	...	...	...	...	...	
XIII.—AFFECTIONS OF OLD AGE.						
164. Senility—						
Senile Dementia ...	...	1	...	1	...	
XIV.—AFFECTIONS PRODUCED BY EXTERNAL CAUSES.						
165. Suicide by Poisoning...	...	...	...	...	...	
166. Corrosive Poisoning (intentional)	...	...	...	...	...	
167. Suicide by Gas Poisoning ...	...	...	...	...	...	
168. Suicide by Hanging or Strangu- lation...	...	...	...	...	...	
169. Suicide by Drowning...	...	...	...	...	...	
170. Suicide by Firearms ...	...	...	...	...	...	
171. Suicide by cutting or stabbing Instruments...	...	...	...	...	...	
172. Suicide by jumping from a height ...	...	...	...	...	...	
173. Suicide by crushing ...	...	...	...	...	...	
174. Other Suicides...	...	...	...	...	...	
175. Food Poisoning—						
Botulism ...	...	...	...	...	...	
176. Attacks of poisonous animals—						
Snake Bite ...	...	...	...	...	...	
Insect Bite ...	...	...	...	...	...	
177. Other accidental Poisonings...	...	1	...	1	...	
178. Burns (by Fire) ...	...	3	2	3	1	
179. Burns (other than by Fire) ...	...	...	...	...	...	
180. Suffocation (accidental) ...	...	...	...	...	...	
181. Poisoning by Gas (accidental) ...	...	...	...	...	...	
182. Drowning (accidental) ...	...	...	...	...	...	
183. Wounds by Firearms (war ex- cepted) ...	...	1	...	1	...	
184. Wounds (by cutting or stabbing Instruments) ...	...	2	...	2	...	
185. Wounds (by Fall) ...	...	...	...	...	...	
186. Wounds (in Mines or Quarries)	...	...	...	...	...	
187. Wounds (by Machinery) ...	...	...	...	...	...	
188. Wounds (crushing, <i>e.g.</i> , rail- way accidents, etc.) ...	...	1	...	1	...	
189. Injuries inflicted by Animals, Bites, Kicks, etc. ...	...	2	...	2	...	
190. Wounds inflicted on Active Service ...	...	...	...	...	...	
191. Executions of civilians by belligerents ...	...	...	...	...	...	
192. A.—Over fatigue ...	...	...	...	...	...	
B.—Hunger or Thirst ...	...	1	...	1	...	
Total carried forward ...	33	643	98	676	35	

TABLE III.—*continued.*VICTORIA HOSPITAL, BATHURST—*continued.*RETURN OF DISEASES AND DEATHS (IN-PATIENTS) FOR THE YEAR 1929—*continued.*

Diseases.	Remaining in Hospital at end of 1928.	Yearly Total.		Total Cases Treated.	Remain- ing in Hospital at end of 1929.	Remarks.
		Admissions.	Deaths.			
Brought forward ...	33	643	98	676	35	
XIV.—AFFECTIONS PRODUCED BY EXTERNAL CAUSES ( <i>contd.</i> ).						
193. Exposure to Cold, Frost bite, etc. ...	...	...	...	...	...	
194. Exposure to Heat—						
Heatstroke ...	...	...	...	...	...	
Sunstroke ...	...	...	...	...	...	
195. Lightning Stroke ...	...	...	...	...	...	
196. Electric Shock... ..	...	...	...	...	...	
197. Murder by Firearms ...	...	...	...	...	...	
198. Murder by cutting or stabbing Instruments... ..	...	...	...	...	...	
199. Murder by other means ...	...	...	...	...	...	
200. Infanticide (Murder of an infant under one year) ...	...	...	...	...	...	
201. A.—Dislocation ...	...	1	...	1	...	
B.—Sprain ...	...	1	...	1	...	
C.—Fracture ...	...	9	...	9	1	
202. Other external Injuries ...	1	45	...	46	2	
203. Deaths by Violence of unknown cause... ..	...	...	...	...	...	
XV.—ILL-DEFINED DISEASES.						
204. Sudden Death (cause unknown)	...	...	...	...	...	
205. A.—Diseases not already speci- fied or ill-defined—	4	22	...	26	...	
Ascites ...	...	...	...	...	...	
Œdema ...	...	...	...	...	...	
Asthenia ...	...	...	...	...	...	
Shock ...	...	...	...	...	...	
Hyperpyrexia ...	...	...	...	...	...	
B.—Malingering ...	...	2	...	2	...	
XVI.—DISEASES, THE TOTAL OF WHICH HAVE NOT CAUSED 10 DEATHS.						
Total ... ..	38	723	98	761	38	





TABLE IV.

## VICTORIA HOSPITAL, BATHURST.

RETURN OF DISEASES (OUT-PATIENTS) FOR THE YEAR 1929.

Diseases.							Male.	Female.
I.—EPIDEMIC, ENDEMIC, AND INFECTIOUS DISEASES.								
1. Enteric Group—								
(a) Typhoid Fever	...	...	...	...	...	...	...	...
(b) Paratyphoid A.	...	...	...	...	...	...	...	...
(c) Paratyphoid B.	...	...	...	...	...	...	...	...
(d) Type not defined	...	...	...	...	...	...	...	...
2. Typhus								
3. Relapsing Fever								
4. Undulant Fever								
5. Malaria—								
(a) Tertian	...	...	...	...	...	...	...	...
(b) Quartan	...	...	...	...	...	...	...	...
(c) Aestivo-autumnal	...	...	...	...	...	...	1048	637
(d) Cachexia	...	...	...	...	...	...	...	...
(e) Blackwater	...	...	...	...	...	...	...	...
(f) Unclassified	...	...	...	...	...	...	...	...
6. Smallpox—								
Alastrim...	...	...	...	...	...	...	4	1
7. Measles								
8. Scarlet Fever								
9. Whooping Cough								
10. Diphtheria								
11. Influenza								
12. Miliary Fever								
13. Mumps								
14. Cholera								
15. Epidemic diarrhoea								
16. Dysentery—								
(a) Amoebic	...	...	...	...	...	...	7	5
(b) Bacillary	...	...	...	...	...	...	...	...
(c) Undefined or due to other causes...	...	...	...	...	...	...	...	...
17. Plague —								
(a) Bubonic	...	...	...	...	...	...	...	...
(b) Pneumonic	...	...	...	...	...	...	...	...
(c) Septicæmic	...	...	...	...	...	...	...	...
(d) Undefined	...	...	...	...	...	...	...	...
18. Yellow Fever								
19. Spirochaetosis ictero-hæmorrhagica								
20. Leprosy								
21. Erysipelas								
22. Acute Poliomyelitis								
23. Encephalitis Lethargica								
24. Epidemic Cerebro-spinal Fever								
25. Other Epidemic Diseases—								
(a) Rubeola (German Measles)	...	...	...	...	...	...	...	...
(b) Varicella (Chicken-pox)	...	...	...	...	...	...	14	2
(c) Kala-azar	...	...	...	...	...	...	...	...
(d) Phlebotomus Fever	...	...	...	...	...	...	...	...
(e) Dengue	...	...	...	...	...	...	...	...
(f) Epidemic Dropsy	...	...	...	...	...	...	...	...
(g) Yaws...	...	...	...	...	...	...	7	4
(h) Trypanosomiasis	...	...	...	...	...	...	44	11
26. Glanders								
27. Anthrax								
28. Rabies								
29. Tetanus								
30. Mycosis								
Total carried forward							1,539	920



TABLE IV.—*continued.*VICTORIA HOSPITAL, BATHURST—*continued.*RETURN OF DISEASES (OUT-PATIENTS) FOR THE YEAR 1929—*continued.*

Diseases.	Male.	Female.
Brought forward ... ..	1,539	920
I.—EPIDEMIC, ENDEMIC AND INFECTIOUS DISEASES— <i>contd.</i>		
31. Tuberculosis, Pulmonary and Laryngeal... ..	39	15
32. Tuberculosis of the Meninges or Central Nervous System ... ..	...	...
33. Tuberculosis of the Intestines or Peritoneum ... ..	...	...
34. Tuberculosis of the Vertebral Column ... ..	...	...
35. Tuberculosis of Bones and Joints ... ..	9	4
36. Tuberculosis of other organs—		
(a) Skin or Subcutaneous Tissue (Lupus) ... ..	...	...
(b) Bones ... ..	...	...
(c) Lymphatic System ... ..	...	...
(d) Genito-urinary ... ..	...	...
(e) Other Organs ... ..	...	...
37. Tuberculosis disseminated—		
(a) Acute ... ..	...	...
(b) Chronic ... ..	...	...
38. Syphilis—		
(a) Primary ... ..	12	...
(b) Secondary ... ..	16	9
(c) Tertiary ... ..	...	...
(d) Hereditary ... ..	...	...
(e) Period not indicated ... ..	...	...
39. Soft Chancre ... ..	...	...
40. A.—Gonorrhœa and its complications ... ..	93	4
B.—Gonorrhœal Ophthalmia ... ..	...	...
C.—Gonorrhœal Arthritis ... ..	...	...
D.—Granuloma Venereum ... ..	...	...
41. Septicæmia ... ..	...	...
42. Other Infectious Diseases—		
Trypanosomiasis ... ..	...	...
... ..	...	...
II.—GENERAL DISEASES NOT MENTIONED ABOVE.		
43. Cancer or other malignant Tumours of the Buccal Cavity ... ..	...	...
44. Cancer or other malignant Tumours of the Stomach or Liver ... ..	4	2
45. Cancer or other malignant Tumours of the Peritoneum Intestines, Rectum ... ..	...	...
46. Cancer or other malignant Tumours of the Female Genital Organs ... ..	...	...
47. Cancer or other malignant Tumours of the Breast ... ..	...	...
48. Cancer or other malignant Tumours of the Skin ... ..	...	...
49. Cancer or other malignant Tumours of Organs not specified... ..	...	...
50. Tumours non-Malignant ... ..	20	17
51. Acute Rheumatism ... ..	...	...
52. Chronic Rheumatism ... ..	518	353
53. Scurvy (including Barlow's Disease) ... ..	...	...
54. Pellagra ... ..	...	...
55. Beri-Beri ... ..	6	1
56. Rickets ... ..	...	...
57. Diabetes (not including Insipidus) ... ..	...	...
58. Anæmia—		
(a) Pernicious ... ..	...	...
(b) Other Anæmias and Chlorosis ... ..	37	62
59. Diseases of the Pituitary Body ... ..	...	...
60. Diseases of the Thyroid Gland—		
(a) Exophthalmic Goitre ... ..	1	3
(b) Other diseases of the Thyroid Gland, Myxœdema ... ..	...	...
Total carried forward ... ..	2,294	1,390

TABLE IV.—*continued.*VICTORIA HOSPITAL, BATHURST—*continued.*RETURN OF DISEASES (OUT-PATIENTS) FOR THE YEAR 1929—*continued.*

Diseases.	Males.	Females.
Brought forward ... ..	2,294	1,390
II.—GENERAL DISEASES NOT MENTIONED ABOVE— <i>contd.</i>		
61. Diseases of the Para-Thyroid Glands ... ..	...	...
62. Diseases of the Thymus ... ..	...	...
63. Diseases of the Supra-Renal Glands ... ..	...	...
64. Diseases of the Spleen ... ..	...	...
65. Leukæmia—		
(a) Leukæmia ... ..	...	1
(b) Hodgkin's Disease ... ..	...	...
66. Alcoholism ... ..	...	...
67. Chronic poisoning by mineral substances (lead, mercury, &c.)	...	...
68. Chronic poisoning by organic substances (Morphia, Cocaine, &c.) ... ..	...	...
69. Other General Diseases—		
Auto-intoxication ... ..	...	...
Purpura Hæmorrhagica ... ..	...	...
Hæmophilia ... ..	...	...
Diabetes Insipidus ... ..	...	...
III.—AFFECTIONS OF THE NERVOUS SYSTEM AND ORGANS OF THE SENSES.		
70. Encephalitis (not including Encephalitis Lethargica) ... ..	...	...
71. Meningitis (not including Tuberculous Meningitis or Cerebro-spinal Meningitis) ... ..	...	...
72. Locomotor Ataxia ... ..	2	...
73. Other affections of the Spinal Cord ... ..	...	...
74. Apoplexy—		
(a) Hæmorrhage ... ..	...	...
(b) Embolism ... ..	...	...
(c) Thrombosis ... ..	...	...
75. Paralysis—		
(a) Hemiplegia ... ..	6	2
(b) Other Paralyzes ... ..	...	...
76. General Paralysis of the Insane ... ..	...	...
77. Other forms of Mental Alienation ... ..	1	...
78. Epilepsy ... ..	...	1
79. Eclampsia, Convulsions (non-puerperal) 5 years or over ... ..	...	...
80. Infantile Convulsions ... ..	...	...
81. Chorea ... ..	...	...
82. A.—Hysteria ... ..	...	...
B.—Neuritis ... ..	165	89
C.—Neurasthenia ... ..	7	15
83. Cerebral Softening ... ..	...	...
84. Other affections of the Nervous System, such as Paralysis Agitans ... ..	...	...
85. Affections of the Organs of Vision—		
(a) Diseases of the Eye ... ..	97	28
(b) Conjunctivitis ... ..	268	180
(c) Trachoma ... ..	...	...
(d) Tumours of the Eye ... ..	...	...
(e) Other affections of the Eye ... ..	8	5
86. Affections of the Ear or Mastoid Sinus ... ..	57	41
Total carried forward ... ..	2,905	1,752



TABLE IV.—*continued.*VICTORIA HOSPITAL, BATHURST—*continued.*RETURN OF DISEASES (OUT-PATIENTS) FOR THE YEAR 1929—*continued.*

Diseases.	Male.	Female.
Brought forward...	2,905	1,752
IV.—AFFECTIONS OF THE CIRCULATORY SYSTEM.		
87. Pericarditis ...	...	...
88. Acute Endocarditis or Myocarditis ...	58	68
89. Angina Pectoris ...	...	...
90. Other Diseases of the Heart—		
(a) Valvular—		
Mitral ...	43	29
Aortic ...	5	3
Tricuspid...	...	...
Pulmonary ...	...	...
(b) Myocarditis ...	...	...
91. Diseases of the Arteries—		
(a) Aneurism ...	...	...
(b) Arterio-Sclerosis ...	1	1
(c) Other diseases ...	...	...
92. Embolism or Thrombosis (non-cerebral) ...	...	...
93. Diseases of the Veins—		
Hæmorrhoids ...	23	3
Varicose Veins ...	11	8
Phlebitis...	...	...
94. Diseases of the Lymphatic System—		
Lymphangitis ...	...	...
Lymphadenitis, Bubo (non-specific) ...	37	20
95. Hæmorrhage of undetermined cause ...	...	...
96. Other affections of the Circulatory System ...	...	...
V.—AFFECTIONS OF THE RESPIRATORY SYSTEM.		
97. Diseases of the Nasal Passages—		
Adenoids...	...	...
Polypus ...	...	...
Rhinitis ...	4	1
Coryza ...	139	53
98. Affections of the Larynx—		
Laryngitis ...	1	1
99. Bronchitis—		
(a) Acute ...	1,749	1,212
(b) Chronic ...	254	179
100. Broncho-Pneumonia ...	...	...
101. Pneumonia—		
(a) Lobar ...	55	18
(b) Unclassified ...	...	...
102. Pleurisy, Empyema ...	36	15
103. Congestion of the Lungs ...	...	...
104. Gangrene of the Lungs ...	...	...
105. Asthma ...	4	...
106. Pulmonary Emphysema ...	...	...
107. Other affections of the Lungs—		
Pulmonary Spirochætosis ...	...	...
VI.—DISEASES OF THE DIGESTIVE SYSTEM.		
108. A.—Diseases of Teeth or Gums—		
Caries, Pyorrhœa, etc. ...	161	37
B.—Other affections of the Mouth—		
Stomatitis ...	45	33
Glossitis, etc. ...	119	92
Total carried forward ...	5,650	3,525

TABLE IV.—*continued.*VICTORIA HOSPITAL, BATHURST—*continued.*RETURN OF DISEASES (OUT-PATIENTS) FOR THE YEAR 1929—*continued.*

Diseases.	Male.	Female.
Brought forward ... ..	5,650	3,525
VI.—DISEASES OF THE DIGESTIVE SYSTEM— <i>contd.</i>		
109. Affections of the Pharynx or Tonsils—		
Tonsillitis ... ..	33	34
Pharyngitis ... ..	...	2
110. Affections of the Oesophagus ... ..	...	...
111. A.—Ulcer of the Stomach ... ..	1	...
B.—Ulcer of the Duodenum ... ..	...	...
112. Other affections of the Stomach—		
Gastritis ... ..	97	94
Dyspepsia, &c. ... ..	224	410
113. Diarrhoea and Enteritis—		
Under two years ... ..	93	82
114. Diarrhoea and Enteritis—		
Two years and over ... ..	486	344
Colitis ... ..	221	107
Ulceration ... ..	...	...
114a Sprue ... ..	...	...
115. Ankylostomiasis ... ..	1	...
116. Diseases due to Intestinal Parasites—		
(a) Cestoda (Tænia) ... ..	7	3
(b) Trematoda (Flukes) ... ..	...	...
(c) Nematoda (other than Ankylostoma)—		
Ascaris ... ..	244	253
Trichocephalus dispar ... ..	...	...
Trichina ... ..	...	...
Dracunculus ... ..	1	...
Strongylus ... ..	...	...
Oxyuris ... ..	...	...
(d) Coccidia ... ..	...	...
(e) Other parasites ... ..	...	...
(f) Unclassified ... ..	...	...
117. Appendicitis ... ..	...	...
118. Hernia ... ..	57	2
119. A.—Affections of the Anus, Fistula, &c. ... ..	2	1
B.—Other affections of the Intestines ... ..	...	...
Enteroptosis ... ..	...	...
Constipation ... ..	1,046	690
120. Acute Yellow Atrophy of the Liver ... ..	...	...
121. Hydatid of the Liver ... ..	...	...
122. Cirrhosis of the Liver—		
(a) Alcoholic ... ..	...	...
(b) Other forms ... ..	1	...
123. Biliary Calculus ... ..	...	...
124. Other affections of the Liver—		
Abscess ... ..	1	...
Hepatitis ... ..	3	4
Cholecystitis ... ..	...	...
Jaundice ... ..	3	3
125. Diseases of the Pancreas ... ..	...	...
126. Peritonitis (of unknown cause) ... ..	1	...
127. Other affections of the Digestive System ... ..	...	...
Total carried forward ... ..	8,072	5,454



TABLE IV.—*continued.*VICTORIA HOSPITAL, BATHURST—*continued.*RETURN OF DISEASES (OUT-PATIENTS) FOR THE YEAR 1929—*continued.*

Diseases.	Male.	Female.
Brought forward ... ..	8,072	5,454
VII.—DISEASES OF THE GENITO-URINARY SYSTEM (NON-VENEREAL).		
128. Acute Nephritis ... ..	...	...
129. Chronic ... ..	34	18
130. A.—Chyluria ... ..	...	...
B.—Schistosomiasis ... ..	...	...
131. Other affections of the Kidneys—		
Pyelitis, etc. ... ..	...	...
132. Urinary Calculus ... ..	...	...
133. Diseases of the Bladder—		
Cystitis ... ..	24	37
134. Diseases of the Urethra—		
(a) Stricture ... ..	18	...
(b) Other... ..	55	...
135. Diseases of the Prostate—		
Hypertrophy ... ..	1	...
Prostatitis... ..	...	...
136. Diseases (non-Venereal) of the Genital Organs of Man—		
Epididymitis ... ..	30	...
Orchitis ... ..	9	...
Hydrocele ... ..	26	...
Ulcer of Penis ... ..	...	...
137. Cysts or other (non-malignant) Tumours of the Ovaries ...	...	4
138. Salpingitis—		
Abscess of the Pelvis ... ..	...	1
139. Uterine Tumours (non-malignant) ... ..	...	...
140. Uterine Hæmorrhage (non-puerperal) ... ..	...	17
141. A.—Metritis ... ..	...	9
B.—Other affections of the Female Genital Organs—	...	45
Displacements of Uterus ... ..	...	69
Amenorrhœa ... ..	...	72
Dysmenorrhœa ... ..	...	10
Leucorrhœa ... ..	...	...
142. Diseases of the Breast (non-puerperal)—		
Mastitis ... ..	...	10
Abscess of Breast ... ..	...	...
VIII.—PUERPERAL STATE.		
143. A.—Normal Labour ... ..	...	...
B.—Accidents of Pregnancy—	...	60
(a) Abortion ... ..	...	...
(b) Ectopic Gestation ... ..	...	...
(c) Other accidents of Pregnancy ... ..	...	...
144. Puerperal Hæmorrhage ... ..	...	...
145. Other accidents of Parturition ... ..	...	...
146. Puerperal Septicæmia ... ..	...	...
147. Phlegmasia Dolens ... ..	...	...
148. Puerperal Eclampsia ... ..	...	...
149. Sequelæ of Labour ... ..	...	...
150. Puerperal affections of the Breast ... ..	...	...
Total carried forward ... ..	8,269	5,806





TABLE IV.—*continued.*VICTORIA HOSPITAL, BATHURST—*continued.*RETURN OF DISEASES (OUT-PATIENTS) FOR THE YEAR 1929—*continued.*

Diseases.	Male.	Female.
Brought forward ... ..	9,245	6,094
XIV.—AFFECTIONS PRODUCED BY EXTERNAL CAUSES.		
165. Suicide by Poisoning ... ..	...	...
166. Corrosive Poisoning (intentional) ... ..	...	...
167. Suicide by Gas Poisoning ... ..	...	...
168. Suicide by Hanging or Strangulation ... ..	...	...
169. Suicide by Drowning ... ..	...	...
170. Suicide by Firearms ... ..	...	...
171. Suicide by cutting or stabbing Instruments ... ..	...	...
172. Suicide by jumping from a height ... ..	...	...
173. Suicide by crushing ... ..	...	...
174. Other Suicides ... ..	...	...
175. Food Poisoning—		
Botulism ... ..	...	...
176. Attacks of poisonous animals—		
Snake Bite ... ..	...	...
Insect Bite ... ..	...	...
177. Other accidental Poisonings ... ..	...	...
178. Burns (by Fire) ... ..	...	...
179. Burns (other than by Fire) ... ..	...	...
180. Suffocation (accidental) ... ..	...	...
181. Poisoning by Gas (accidental) ... ..	...	...
182. Drowning (accidental) ... ..	...	...
183. Wounds by Firearms (war excepted) ... ..	...	...
184. Wounds (by cutting or stabbing Instruments) ... ..	5	...
185. Wounds (by Fall) ... ..	...	...
186. Wounds (in Mines or Quarries) ... ..	...	...
187. Wounds (by Machinery) ... ..	...	...
188. Wounds (crushing, <i>e.g.</i> , railway accidents, &c.) ... ..	...	...
189. Injuries inflicted by animals, Bites, Kicks, &c. ... ..	7	3
190. Wounds inflicted on Active Service ... ..	...	...
191. Executions of civilians by belligerents ... ..	...	...
192. A.—Over fatigue ... ..	...	...
B.—Hunger or Thirst ... ..	...	...
193. Exposure to Cold, Frost Bites, &c. ... ..	...	...
194. Exposure to Heat—		
Heatstroke ... ..	...	...
Sunstroke ... ..	...	...
195. Lightning Stroke ... ..	...	...
196. Electric Shock ... ..	2	...
197. Murder by Firearms ... ..	...	...
198. Murder by cutting or stabbing Instruments ... ..	...	...
199. Murder by other means ... ..	...	...
200. Infanticide (Murder of an infant under one year) ... ..	...	...
201. A.—Dislocation ... ..	1	...
B.—Sprain ... ..	49	9
C.—Fracture ... ..	15	1
202. Other external Injuries ... ..	881	162
203. Deaths by Violence of unknown cause ... ..	...	...
Total carried forward ... ..	10,205	6,269

TABLE IV.—*continued.*VICTORIA HOSPITAL, BATHURST—*continued.*RETURN OF DISEASES (OUT-PATIENTS) FOR THE YEAR 1929—*continued.*

Diseases.						Male.	Female.
Brought forward ... ..						10,205	6,269
XV.—ILL-DEFINED DISEASES.							
204. Sudden Death (cause unknown) ... ..						...	...
205. A.—Diseases not already specified or ill-defined—							
Ascites ... ..						...	...
Edema ... ..						25	7
Asthenia ... ..						...	...
Shock ... ..						...	...
Hyperpyrexia ... ..						...	...
B.—Malingering ... ..						...	...
XVI.—DISEASES, THE TOTAL OF WHICH HAVE NOT CAUSED 10 DEATHS.							
Total ... ..						10,230	6,276
						16,506	



## APPENDIX I.

## ANNUAL MEDICAL REPORT

## FOR GEORGETOWN AND THE PROTECTORATE FOR 1929.

## (A) HOSPITALS AND DISPENSARIES.

## (a) Record of Work and Prevailing Diseases.

(1) *Georgetown Hospital.*

## (a) In-Patients.

Remaining in Hospital from 1928	...	...	...	...	...	...	18
Admissions	...	...	...	...	...	...	292
Total Cases treated	...	...	...	...	...	...	310
Total Deaths	...	...	...	...	...	...	37

Prevalent Diseases :—Ulcer, 30 ; injuries, 27 ; trypanosomiasis, 26 ; malaria, 25 ; pneumonia, 18.

## (b) Out-Patients.

Total treated	...	...	...	...	...	...	3,856
---------------	-----	-----	-----	-----	-----	-----	-------

Prevalent Diseases :—Constipation, 732 ; bronchitis, 432 ; malaria, 354 ; injuries, 343 ; chronic rheumatism, 251 ; goitre, 178 ; ulcer, 154 ; yaws, 126.

(2) *Georgetown Prison.*

In-Patients treated in Prison Infirmary	...	...	...	...	...	8
Prisoners treated as Out-Patients	...	...	...	...	...	146

(3) *Basse Dispensary.*

Total cases treated	...	...	...	...	...	3,385
---------------------	-----	-----	-----	-----	-----	-------

(4) *Kau-ur Dispensary.*

Total cases treated	...	...	...	...	...	2,112
---------------------	-----	-----	-----	-----	-----	-------

## (B) IMPROVEMENTS EFFECTED AND SUGGESTIONS.

(1) *Georgetown Hospital.*

Two mud and krinting leper huts, a krinting latrine for dysentery cases and a bathroom for patients have been added. Six mud huts were also constructed for the use of ulcer and similar patients coming from long distances, but these have not proved satisfactory, as it was impossible to use them during the rains, and even in the dry season the patients were found to prefer the main Hospital building.

The provision of additional In-Patient accommodation for Africans is becoming a matter of urgency.

(2) *Kau-ur Dispensary.*

The building has been thoroughly repaired, and is now in satisfactory condition. Rain-water tanks have been provided. A kitchen, latrine and bathroom for the Dispenser are still needed.

(3) *Basse Dispensary.*

The original building was flooded during the rains and the Dispensary has been moved to the former rest compound at Santa Su. Shelves are required in the Dispensary and Store.

## (C) AVERAGE COST PER HEAD OF PATIENTS.

In Georgetown is one shilling and threepence per diem.

## PRISONS AND ASYLUMS.

## MEDICAL REPORT ON GEORGETOWN PRISON.

The Prison was closed and the prisoners transferred to Bathurst on June 9th, 1929.

The health of the prisoners was good. Eight were admitted to the Prison Infirmary, chiefly for bronchitis and other diseases of the respiratory system. 146 were treated as Out-Patients at the Hospital, the prevailing complaints being minor injuries, constipation, diarrhoea and bronchitis.

There were no deaths in the Prison this year.

The general sanitary condition of the Prison was always satisfactory, and the prisoners' food sufficient and of good quality. Pan latrines were used, the pans being emptied and the contents buried in the bush by prison labour.

(Signed), S. G. HARRISON,

M.O. Protectorate.

## APPENDIX II.

## ANNUAL SANITARY REPORT

## FOR GEORGETOWN AND THE PROTECTORATÉ FOR 1929.

## 1. HYGIENE AND SANITATION.

*Malaria*.—354 cases were treated at Georgetown Hospital during the year, an increase of 98 over the figure for 1928, due no doubt to the heavier floods experienced during the rains of 1929.

*Trypanosomiasis*.—26 cases with 10 deaths treated as In-Patients at the Hospital, and 18 as Out-Patients. The latter figure is exactly double that of last year, so that there is reason to believe that this disease is on the increase in Georgetown and the surrounding district.

*Yellow Fever*.—Has not been reported in the Protectorate during the year.

*Relapsing Fever*.—Is not known to have occurred in 1929.

*Smallpox*.—Has been present in various parts of the Protectorate during the year, but it has been possible to keep the number of cases within reasonably small limits in the three Upper Provinces, the largest number in any one village being 15 (8 of which occurred at the end of 1928). Chiefs and Headmen appear to be gradually awakening to the value of vaccination and early notification of cases. The majority of the cases (22) occurred in several villages in the Fulladu Central District of South Bank Province. There is little doubt that most of these outbreaks owe their origin to cases imported from French territory. Two Dresser-Vaccinators were added to the Protectorate Staff in April. The total vaccinations performed by the Medical Staff in 1929 were 5,177—an increase of 3,742 over last year, but much more remains to be done before freedom from Smallpox can be expected.

*Dysentery*.—Five cases admitted to the Hospital with one death. As in 1928, Dysentery was most prevalent in December in the Protectorate.

*Tuberculosis*.—12 cases with 3 deaths treated at the Hospital in 1929.

*Yaws*.—An investigation into the prevalence of this disease was commenced in October, and 303 cases had been treated in the Upper River Province by the end of the year. A further 39 cases were treated at bush surgeries prior to October, and 126 as Out-Patients at Georgetown Hospital during the year. Total injections = 484. (Novarsenobillon 63, Luatol 391, Bistoval, 11, Sodium Potassium Bismuth Tartrate 19.) The investigation is still proceeding.

*Leprosy*.—Eight cases were treated by "Alepol" injections in the leper huts at Georgetown during the year, but no cures can be claimed, as none of the patients could be induced to remain for more than a few weeks. This applies also to the eleven cases treated as Out-Patients.

*Helminthic Diseases*.—Especially infections with Ascaris and Tapeworms continue prevalent all over the Protectorate. Ankylostome infestations are far more common than is indicated by the number of cases actually returned as Ankylostomiasis, being frequently found as a complication in patients suffering from other diseases.

*Schistosomiasis*.—Is being investigated coincidently with Yaws, but results so far obtained do not indicate any large incidence of this disease in the Protectorate. It appears to be endemic in the villages of Gambissara (Kantora) and Tuba Kuta in the Upper River Province, where 19 cases of Hæmaturia were seen in November, eggs of *S. Hæmatobium* being found in the urines of seven of these patients. Both these villages are situated on the Shima Simong Creek, and it is possible that this and other creeks may act as sources of infection.



## 2. GENERAL MEASURES OF SANITATION.

*Night Soil Disposal.*—Pan latrines are in general use amongst the European community, the pans being emptied by sanitary labourers in Government quarters, whilst the firms make their own arrangements for this work. Burial is the usual method of disposal of excreta, except at Kunta-ur, where this is impracticable owing to the swampy nature of the ground and the pans are emptied in mid-river from a punt. Cesspits in the yards are used by most of the African population in the wharf towns. There are public latrines at Georgetown and Kunta-ur, the pan system being employed.

Owing to the withdrawal of the prisoners, who formerly did most of the sanitary work in Georgetown, the sanitary labourers in this station have been increased from six to twelve.

*Scavenging.*—Markets and Government Stations in Georgetown, Kunta-ur, Kau-ur, Basse and Fattoto are provided with dustbins, emptied by sanitary gangs.

*Refuse Disposal.*—Mud incinerators are used in Georgetown, Bermuda incinerators in the other large wharf towns. So far as possible non-combustible refuse is used for filling in borrow pits and swampy ground.

*Water Supplies.*—Rain water tanks are provided at nearly all European quarters for storage of drinking water. Wells form the main source of drinking water for the native population.

## 3. SCHOOL HYGIENE.

## (A) ARMITAGE SCHOOL.

There has been little serious illness amongst the boys during the year. One death occurred, the first since the opening of the school, an unusual case of death from hyperpyrexia in the early stage of trypanosomiasis. Two other boys were admitted to Hospital for trypanosomiasis, and each received a course of 5 gms. of tryparsamide. Neither has relapsed as yet. Mumps broke out in the school during the last two months of the year, but so far the outbreak has not assumed serious dimensions. Minor injuries and chronic ulcers have been the chief cause of lesser unfitness. The boys' diet is being investigated, and recommendations for its improvement are to be submitted.

The spleen rate at the November inspection was found to be 8.7 per cent. a reduction from 20.5 per cent. at the inspection in November 1928. All the boys have now been successfully vaccinated.

## (B) WESLEYAN SCHOOL.

Of 25 children inspected in November, 8 (32 per cent.) had enlarged spleens and 5 required vaccination. The high spleen rate is partly accounted for by the entry of a number of new pupils who had had no previous treatment.

## 4. FOOD IN RELATION TO HEALTH AND DISEASE.

Four cases of beri-beri occurred in the Protectorate during the year, there being no apparent connection between the cases. It is difficult to explain their occurrence on a purely dietetic basis, as all the patients were people in comparatively good circumstances who had apparently been getting an adequate diet. Three advanced cases of rickets were seen during the year, all the patients being bush children of the Sarahuli race. Minor injuries of rickets are by no means rare in both bush and town children.

Large meat rooms have replaced the old gauze safes in the larger wharf towns, but the gauze has not been protected from damage from outside. Until this is done there is little prospect of the rooms remaining fly-proof.

(Signed), S. G. HARRISON,

M.O. Protectorate.

## APPENDIX III

## TABLE V.

## GEORGETOWN HOSPITAL.

RETURN OF DISEASES AND DEATHS (IN-PATIENTS) FOR THE YEAR 1929.

Diseases.	Remaining in Hospital at end of 1928.	Yearly Total.		Total Cases Treated.	Remain- ing in Hospital at end of 1929.	Remarks.
		Admissions.	Deaths.			
I.—EPIDEMIC, ENDEMIC, AND INFECTIOUS DISEASES.						
1. Enteric Group—						
(a) Typhoid Fever ...	...	1	1	1	...	
(b) Paratyphoid A. ...	...	...	...	...	...	
(c) Paratyphoid B. ...	...	...	...	...	...	
(d) Type not defined ...	...	...	...	...	...	
2. Typhus ...	...	...	...	...	...	
3. Relapsing Fever ...	...	...	...	...	...	
4. Undulant Fever ...	...	...	...	...	...	
5. Malaria—						
(a) Tertian ...	...	...	...	...	...	
(b) Quartan ...	...	...	...	...	...	
(c) Aestivo-autumnal ...	1	24	1	25	...	
(d) Cachexia ...	...	3	...	3	...	
(e) Blackwater ...	...	...	...	...	...	
6. Smallpox—						
Alastrim ...	...	...	...	...	...	
7. Measles ...	...	1	...	1	...	
8. Scarlet Fever ...	...	...	...	...	...	
9. Whooping Cough ...	...	...	...	...	...	
10. Diphtheria ...	...	...	...	...	...	
11. Influenza ...	2	7	...	9	...	
12. Miliary Fever ...	...	11	...	11	5	
13. Mumps ...	...	...	...	...	...	
14. Cholera ...	...	...	...	...	...	
15. Epidemic diarrhoea ...	...	...	...	...	...	
16. Dysentery—						
(a) Amœbic ...	1	1	...	2	...	
(b) Bacillary ...	...	3	1	3	1	
(c) Undefined or due to other causes ...	1	...	...	1	...	
17. Plague—						
(a) Bubonic ...	...	...	...	...	...	
(b) Pneumonic ...	...	...	...	...	...	
(c) Septicæmic ...	...	...	...	...	...	
(d) Undefined ...	...	...	...	...	...	
18. Yellow Fever ...	...	...	...	...	...	
19. Spirochaetosis ictero-hæmor- rhagica ...	...	...	...	...	...	
20. Leprosy ...	...	8	...	8	...	
21. Erysipelas ...	...	...	...	...	...	
22. Acute Poliomyelitis ...	...	...	...	...	...	
23. Encephalitis Lethargica ...	...	...	...	...	...	
24. Epidemic Cerebro-spinal Fever ...	...	...	...	...	...	
25. Other Epidemic Diseases—						
(a) Rubeola (German Measles) ...	...	...	...	...	...	
(b) Varicella (Chicken-pox) ...	...	...	...	...	...	
(c) Kala-azar ...	...	...	...	...	...	
(d) Phlebotomus Fever ...	...	...	...	...	...	
(e) Dengue ...	...	...	...	...	...	
(f) Epidemic Dropsy ...	...	...	...	...	...	
(g) Yaws ...	...	7	...	7	2	
(h) Trypanosomiasis ...	2	24	10	26	2	
Total carried forward ...	7	90	13	97	10	



TABLE V.—*continued.*GEORGETOWN HOSPITAL—*continued.*RETURN OF DISEASES AND DEATHS (IN-PATIENTS) FOR THE YEAR 1929—*continued.*

Diseases.	Remaining in Hospital at end of 1928.	Yearly Total.		Total Cases Treated.	Remain- ing in Hospital at end of 1929.	Remarks.
		Admissions.	Deaths.			
Brought forward ...	7	90	13	97	10	
I.—EPIDEMIC, ENDEMIC AND INFECTIOUS DISEASES— <i>contd.</i>						
26. Glanders ... ..	...	...	...	...	...	
27. Anthrax ... ..	...	...	...	...	...	
28. Rabies ... ..	...	...	...	...	...	
29. Tetanus ... ..	...	...	...	...	...	
30. Mycosis ... ..	...	1	...	1	1	
31. Tuberculosis, Pulmonary and Laryngeal ... ..	...	4	1	4	1	
32. Tuberculosis of the Meninges or Central Nervous System	...	1	1	1	...	
33. Tuberculosis of the Intestines or Peritoneum ... ..	...	1	1	1	...	
34. Tuberculosis of the Vertebral Column ... ..	...	...	...	...	...	
35. Tuberculosis of Bones and Joints ... ..	...	...	...	...	...	
36. Tuberculosis of other organs— (a) Skin or Subcutaneous Tissue (Lupus) ... ..	...	...	...	...	...	
(b) Bones ... ..	...	...	...	...	...	
(c) Lymphatic System ... ..	...	...	...	...	...	
(d) Genito-urinary ... ..	...	...	...	...	...	
(e) Other Organs ... ..	...	...	...	...	...	
37. Tuberculosis disseminated— (a) Acute ... ..	...	...	...	...	...	
(b) Chronic ... ..	...	...	...	...	...	
38. Syphilis— (a) Primary ... ..	...	3	...	3	1	
(b) Secondary ... ..	...	2	...	2	...	
(c) Tertiary ... ..	...	1	...	1	...	
(d) Hereditary ... ..	...	...	...	...	...	
(e) Period not indicated ... ..	...	...	...	...	...	
39. Soft Chancre ... ..	...	1	...	1	...	
40. A.—Gonorrhœa and its com- plications ... ..	...	2	...	2	...	
B.—Gonorrhœal Ophthalmia...	...	...	...	...	...	
C.—Gonorrhœal Arthritis ... ..	...	...	...	...	...	
D.—Granuloma Venereum ... ..	...	1	...	1	...	
41. Septicæmia ... ..	...	1	1	1	...	
42. Other Infectious Diseases— Trypanosomiasis ... ..	...	...	...	...	...	
II.—GENERAL DISEASES NOT MEN- TIONED ABOVE.						
43. Cancer or other malignant Tumours of the Buccal Cavity	...	...	...	...	...	
44. Cancer or other malignant Tumours of the Stomach or Liver... ..	...	...	...	...	...	
45. Cancer or other malignant Tumours of the Peritoneum Intestines, Rectum ... ..	...	...	...	...	...	
Total carried forward ...	7	108	17	115	13	

TABLE V.—*continued.*GEORGETOWN HOSPITAL—*continued.*RETURN OF DISEASES AND DEATHS (IN-PATIENTS) FOR THE YEAR 1929—*continued.*

Diseases.	Remaining in Hospital at end of 1928.	Yearly Total.		Total Cases Treated.	Remain- ing in Hospital at end of 1929.	Remarks.
		Admissions.	Deaths.			
Brought forward ...	7	108	17	115	13	
II.—GENERAL DISEASES NOT MENTIONED ABOVE— <i>contd.</i>						
46. Cancer or other malignant Tumours of the Female Genital Organs ...	...	...	...	...	...	
47. Cancer or other malignant Tumours of the Breast ...	...	...	...	...	...	
48. Cancer or other malignant Tumours of the Skin ...	...	...	...	...	...	
49. Cancer or other malignant Tumours of Organs not specified ...	...	...	...	...	...	
50. Tumours non-Malignant ...	1	2	...	3	..	
51. Acute Rheumatism ...	...	...	...	...	...	
52. Chronic Rheumatism ...	...	7	...	7	1	
53. Scurvy (including Barlow's Disease) ...	...	...	...	...	...	
54. Pellagra... ..	...	...	...	...	...	
55. Beri-beri ... ..	...	3	1	3	...	
56. Rickets ... ..	...	...	...	...	...	
57. Diabetes (not including Insipidus) ... ..	...	...	...	...	...	
58. Anæmia—						
(a) Pernicious ... ..	...	...	...	...	...	
(b) Other Anæmias and Chlorosis ... ..	...	...	...	...	...	
59. Diseases of the Pituitary Body	...	...	...	...	...	
60. Diseases of the Thyroid Gland—						
(a) Exophthalmic Goitre ...	...	...	...	...	...	
(b) Other diseases of the Thyroid Gland, Myxœdema ... ..	...	1	...	1	...	
61. Diseases of the Para-Thyroid Glands ... ..	...	...	...	...	...	
62. Diseases of the Thymus ...	...	...	...	...	...	
63. Diseases of the Supra-Renal Glands ... ..	...	...	...	...	...	
64. Diseases of the Spleen... ..	...	...	...	...	...	
65. Leukæmia—						
(a) Leukæmia ... ..	...	...	...	...	...	
(b) Hodgkin's Disease ...	...	...	...	...	...	
66. Alcoholism ... ..	...	...	...	...	...	
67. Chronic poisoning by mineral substances (lead, mercury, etc.) ... ..	...	...	...	...	...	
68. Chronic poisoning by organic substances (Morphia, Cocaine, etc.) ... ..	...	...	...	...	...	
69. Other General Diseases—						
Auto-intoxication ... ..	...	...	...	...	...	
Purpura Hæmorrhagica ...	...	...	...	...	...	
Hæmophilia... ..	...	...	...	...	...	
Diabetes Insipidus ... ..	...	...	...	...	...	
Total carried forward	8	121	18	129	14	



TABLE V.—*continued.*GEORGETOWN HOSPITAL—*continued.*RETURN OF DISEASES AND DEATHS (IN-PATIENTS) FOR THE YEAR 1929—*continued.*

Diseases.	Remaining in Hospital at end of 1928.	Yearly Total.		Total Cases Treated.	Remain- ing in Hospital at end of 1929.	Remarks.
		Admissions.	Deaths.			
Brought forward ...	8	121	18	129	14	
III.—AFFECTIONS OF THE NERVOUS SYSTEM AND ORGANS OF THE SENSES.						
70. Encephalitis (not including En- cephalitis Lethargica) ...	...	...	...	...	...	
71. Meningitis (not including Tuber- culous Meningitis or Cerebro- spinal Meningitis) ...	...	...	...	...	...	
72. Locomotor Ataxia ...	...	...	...	...	...	
73. Other affections of the Spinal Cord ...	...	1	1	1	...	
74. Apoplexy—						
(a) Hæmorrhage ...	...	...	...	...	...	
(b) Embolism ...	...	...	...	...	...	
(c) Thrombosis ...	...	...	...	...	...	
75. Paralysis—						
(a) Hemiplegia ...	...	1	...	1	1	
(b) Other Paralyzes ...	...	...	...	...	...	
76. General Paralysis of the Insane ...	...	...	...	...	...	
77. Other forms of Mental Alienation ...	...	1	...	1	1	
78. Epilepsy ...	...	...	...	...	...	
79. Eclampsia, Convulsions (non- puerperal) 5 years or over ...	...	...	...	...	...	
80. Infantile Convulsions ...	...	...	...	...	...	
81. Chorea ...	...	...	...	...	...	
82. A.—Hysteria ...	...	...	...	...	...	
B.—Neuritis ...	...	1	...	1	...	
C.—Neurasthenia ...	...	...	...	...	...	
83. Cerebral Softening ...	...	...	...	...	...	
84. Other affections of the Nervous System, such as Paralysis Agitans ...	...	...	...	...	...	
85. Affections of the Organs of Vision—						
(a) Diseases of the Eye ...	...	...	...	...	...	
(b) Conjunctivitis ...	...	1	...	1	...	
(c) Trachoma ...	...	...	...	...	...	
(d) Tumours of the Eye ...	...	...	...	...	...	
(e) Other affections of the Eye ...	...	...	...	...	...	
86. Affections of the Ear or Mastoid Sinus ...	...	...	...	...	...	
IV.—AFFECTIONS OF THE CIRC- ULATORY SYSTEM.						
87. Pericarditis ...	...	...	...	...	...	
88. Acute Endocarditis or Myocar- ditis ...	...	...	...	...	...	
89. Angina Pectoris ...	...	...	...	...	...	
90. Other Diseases of the Heart—						
(a) Valvular... ..	...	...	...	...	...	
Mitral ...	...	1	...	1	...	
Aortic ...	...	...	...	...	...	
Tricuspid ...	...	...	...	...	...	
Pulmonary ...	...	...	...	...	...	
(b) Myocarditis ...	...	6	2	6	1	
Total carried forward ...	8	133	21	141	17	

TABLE V.—*continued.*GEORGETOWN HOSPITAL—*continued.*RETURN OF DISEASES AND DEATHS (IN-PATIENTS) FOR THE YEAR 1929—*continued.*

Diseases.	Remaining in Hospital at end of 1928.	Yearly Total.		Total Cases Treated.	Remain- ing in Hospital at end of 1929.	Remarks.
		Admissions.	Deaths.			
Brought forward ...	8	133	21	141	17	
IV.—AFFECTIONS OF THE CIRCULATORY SYSTEM— <i>contd.</i>						
91. Diseases of the Arteries—						
(a) Aneurism ...	...	...	...	...	...	
(b) Arterio-Sclerosis ...	...	...	...	...	...	
(c) Other diseases ...	...	...	...	...	...	
92. Embolism or Thrombosis (non-cerebral) ...	...	...	...	...	...	
93. Diseases of the Veins—						
Hæmorrhoids ...	...	...	...	...	...	
Varicose Veins ...	...	...	...	...	...	
Phlebitis ...	...	...	...	...	...	
94. Diseases of the Lymphatic System—						
Lymphangitis ...	...	...	...	...	...	
Lymphadenitis, Bubo (non-specific) ...	...	1	...	1	...	
95. Hæmorrhage of undetermined cause ...	...	...	...	...	...	
96. Other affections of the Circulatory System ...	...	...	...	...	...	
V.—AFFECTIONS OF THE RESPIRATORY SYSTEM.						
97. Diseases of the Nasal Passages—						
Adenoids ...	...	...	...	...	...	
Polypus ...	...	...	...	...	...	
Rhinitis ...	...	...	...	...	...	
Coryza ...	...	2	...	2	...	
98. Affections of the Larynx—						
Laryngitis ...	...	...	...	...	...	
99. Bronchitis—						
(a) Acute ...	...	6	...	6	...	
(b) Chronic ...	...	...	...	...	...	
100. Broncho-Pneumonia ...	...	2	1	2	...	
101. Pneumonia—						
(a) Lobar ...	...	18	7	18	...	
(b) Unclassified ...	...	...	...	...	...	
102. Pleurisy, Empyema ...	...	2	...	2	...	
103. Congestion of the Lungs ...	...	...	...	...	...	
104. Gangrene of the Lungs ...	...	...	...	...	...	
105. Asthma ...	...	...	...	...	...	
106. Pulmonary Emphysema ...	...	...	...	...	...	
107. Other affections of the Lungs—						
Pulmonary Spirochæetosis ...	...	...	...	...	...	
VI.—DISEASES OF THE DIGESTIVE SYSTEM.						
108. A.—Diseases of Teeth or Gums—						
Caries, Pyorrhœa, etc. ...	...	...	...	...	...	
B.—Other affections of the Mouth—						
Stomatitis ...	...	...	...	...	...	
Glossitis, etc. ...	...	...	...	...	...	
Total carried forward ...	8	164	29	172	17	



TABLE V.—*continued.*GEORGETOWN HOSPITAL—*continued.*RETURN OF DISEASES AND DEATHS (IN-PATIENTS) FOR THE YEAR 1929—*continued.*

Diseases.	Remaining in Hospital at end of 1928.	Yearly Total.		Total Cases Treated.	Remain- ing in Hospital at end of 1929.	Remarks.
		Admissions.	Deaths.			
Brought forward ...	8	164	29	172	17	
VI.—DISEASES OF THE DIGESTIVE SYSTEM— <i>contd.</i>						
109. Affections of the Pharynx or Tonsils—						
Tonsillitis ... ..	...	...	...	...	...	
Pharyngitis ... ..	...	1	...	1	...	
110. Affections of the Œsophagus	...	...	...	...	...	
111. A.—Ulcer of the Stomach ...	...	...	...	...	...	
B.—Ulcer of the Duodenum...	...	...	...	...	...	
112. Other affections of the Stomach—						
Gastritis ... ..	...	4	...	4	...	
Dyspepsia, etc. ... ..	...	1	...	1	...	
113. Diarrhœa and Enteritis—						
Under two years ... ..	...	...	...	...	...	
114. Diarrhœa and Enteritis—						
Two years and over ... ..	...	2	...	2	...	
Colitis ... ..	...	...	...	...	...	
Ulceration ... ..	...	...	...	...	...	
114a Sprue ... ..	...	...	...	...	...	
115. Ankylostomiasis ... ..	...	6	...	6	...	
116. Diseases due to Intestinal Para- sites—						
(a) Cestoda (Tænia) ... ..	...	...	...	...	...	
(b) Trematoda (Flukes) ... ..	...	...	...	...	...	
(c) Nematoda (other than Ankylostoma)—						
Ascaris ... ..	...	...	...	...	...	
Trichocephalus dispar ... ..	...	...	...	...	...	
Trichina... ..	...	...	...	...	...	
Dracunculus ... ..	...	...	...	...	...	
Strongylus ... ..	...	...	...	...	...	
Oxyuris... ..	...	...	...	...	...	
(d) Coccidia... ..	...	...	...	...	...	
(e) Other parasites ... ..	...	...	...	...	...	
(f) Unclassified ... ..	...	...	...	...	...	
117. Appendicitis ... ..	...	...	...	...	...	
118. Hernia... ..	...	...	...	...	...	
119. A.—Affections of the Anus, Fistula, etc. ... ..	...	...	...	...	...	
B.—Other affections of the Intestines—						
Enteroptosis ... ..	...	...	...	...	...	
Constipation ... ..	...	1	...	1	...	
120. Acute Yellow Atrophy of the Liver ... ..	...	...	...	...	...	
121. Hydatid of the Liver... ..	...	...	...	...	...	
122. Cirrhosis of the Liver—						
(a) Alcoholic ... ..	...	...	...	...	...	
(b) Other forms ... ..	...	1	...	1	...	
123. Biliary Calculus ... ..	...	...	...	...	...	
124. Other affections of the Liver—						
Abscess ... ..	...	...	...	...	...	
Hepatitis ... ..	...	...	...	...	...	
Cholecystitis... ..	...	...	...	...	...	
Jaundice ... ..	...	1	...	1	...	
Total carried forward ...	8	181	29	189	17	

TABLE V.—*continued.*GEORGETOWN HOSPITAL—*continued.*RETURN OF DISEASES AND DEATHS (IN-PATIENTS) FOR THE YEAR 1929—*continued.*

Diseases.	Remaining in Hospital at end of 1928.	Yearly Total.		Total Cases Treated.	Remain- ing in Hospital at end of 1929.	Remarks.
		Admissions.	Deaths.			
Brought forward ...	8	181	29	189	17	
VI.—DISEASES OF THE DIGESTIVE SYSTEM— <i>contd.</i>						
125. Diseases of the Pancreas ...	...	...	...	...	...	
126. Peritonitis (of unknown cause) ...	...	...	...	...	...	
127. Other affections of the Digestive System ...	...	...	...	...	...	
VII.—DISEASES OF THE GENITO-URINARY SYSTEM (NON- VENEREAL).						
128. Acute Nephritis ...	...	...	...	...	...	
129. Chronic ...	...	6	2	6	1	
130. A.—Chyluria ...	...	...	...	...	...	
B.—Schistosomiasis ...	...	4	...	4	...	
131. Other affections of the Kidneys— Pyelitis, &c. ...	...	...	...	...	...	
132. Urinary Calculus ...	...	...	...	...	...	
133. Diseases of the Bladder— Cystitis ...	...	...	...	...	...	
134. Diseases of the Urethra— (a) Stricture... ...	...	3	...	3	...	
(b) Other ...	...	2	...	2	...	
135. Diseases of the Prostate— Hypertrophy ...	...	...	...	...	...	
Prostatitis ...	...	...	...	...	...	
136. Diseases (non-Venereal) of the Genital Organs of Man— Epididymitis ...	...	1	...	1	...	
Orchitis ...	...	2	...	2	...	
Hydrocele ...	...	...	...	...	...	
Ulcer of Penis ...	...	...	...	...	...	
137. Cysts or other (non-malignant) Tumours of the Ovaries ...	...	...	...	...	...	
138. Salpingitis— Abscess of the Pelvis ...	...	1	...	1	...	
139. Uterine Tumours (non-malignant) ...	...	...	...	...	...	
140. Uterine Hæmorrhage (non- puerperal) ...	...	...	...	...	...	
141. A.—Metritis ...	...	...	...	...	...	
B.—Other affections of the Female Genital Organs— Displacements of Uterus ...	...	...	...	...	...	
Amenorrhœa ...	...	...	...	...	...	
Dysmenorrhœa ...	...	...	...	...	...	
Leucorrhœa ...	...	...	...	...	...	
142. Diseases of the Breast (non- puerperal)— Mastitis ...	...	...	...	...	...	
Abscess of Breast ...	...	...	...	...	...	
Total carried forward ...	8	200	31	208	18	



TABLE V.—*continued.*GEORGETOWN HOSPITAL—*continued.*RETURN OF DISEASES AND DEATHS (IN-PATIENTS) FOR THE YEAR 1929—*continued.*

Diseases.	Remaining in Hospital at end of 1928.	Yearly Total.		Total Cases Treated.	Remain- ing in Hospital at end of 1929.	Remarks.
		Admissions.	Deaths.			
Brought forward ...	8	200	31	208	18	
VIII.—PUERPERAL STATE.						
143. A.—Normal Labour ...	...	...	...	...	...	
B.—Accidents of Pregnancy—						
(a) Abortion ...	...	...	...	...	...	
(b) Ectopic Gestation ...	...	...	...	...	...	
(c) Other accidents of Pregnancy ...	...	...	...	...	...	
144. Puerperal Hæmorrhage ...	...	...	...	...	...	
145. Other accidents of Parturition ...	...	...	...	...	...	
146. Puerperal Septicæmia ...	...	...	...	...	...	
147. Phlegmasia Dolens ...	...	...	...	...	...	
148. Puerperal Eclampsia ...	...	...	...	...	...	
149. Sequelæ of Labour ...	...	...	...	...	...	
150. Puerperal affections of the Breast ...	...	...	...	...	...	
IX.—AFFECTIONS OF THE SKIN AND CELLULAR TISSUES.						
151. Gangrene ...	...	2	2	2	...	
152. Boil—						
Carbuncle ...	...	...	...	...	...	
153. Abscess—						
Whitlow ...	...	...	...	...	...	
Cellulitis ...	...	9	...	9	...	
154. A.—Tinea ...	...	...	...	...	...	
B.—Scabies ...	...	2	...	2	...	
155. Other Diseases of the Skin—	5	25	1	30	2	
Erythema ...	...	...	...	...	...	
Urticaria ...	...	...	...	...	...	
Eczema ...	...	9	...	9	...	
Herpes ...	...	...	...	...	...	
Psoriasis ...	...	...	...	...	...	
Elephantiasis ...	2	4	...	6	...	
Myiasis ...	...	...	...	...	...	
Chigoes ...	...	...	...	...	...	
Cutaneous Leishmaniasis ...	...	...	...	...	...	
X.—DISEASES OF BONES AND ORGANS OF LOCOMOTION (OTHER THAN TUBERCULOUS).						
156. Diseases of Bones—						
Osteitis ...	...	9	...	9	1	
157. Diseases of Joints—						
Arthritis ...	1	3	1	4	1	
Synovitis ...	...	...	...	...	...	
158. Other Diseases of Bones or Organs of Locomotion ...	...	1	...	1	...	
XI.—MALFORMATIONS.						
159. Malformations—						
Hydrocephalus ...	...	...	...	...	...	
Hypospadias... ...	...	...	...	...	...	
Spina Bifida, etc. ...	...	...	...	...	...	
Total carried forward ...	16	264	35	280	22	

TABLE V.—*continued.*GEORGETOWN HOSPITAL—*continued.*RETURN OF DISEASES AND DEATHS (IN-PATIENTS) FOR THE YEAR 1929—*continued.*

Diseases.	Remaining in Hospital at end of 1928.	Yearly Total.		Total Cases Treated.	Remain- ing in Hospital at end of 1929.	Remarks.
		Admissions.	Deaths.			
Brought forward ...	16	264	35	280	22	
XII.—DISEASES OF INFANCY.						
160. Congenital Debility ...	...	...	...	...	...	
161. Premature Birth ...	...	...	...	...	...	
162. Other affections of Infancy ...	...	...	...	...	...	
163. Infant neglect (infants of three months or over) ...	...	...	...	...	...	
XIII.—AFFECTIONS OF OLD AGE.						
164. Senility—						
Senile Dementia ...	...	...	...	...	...	
XIV.—AFFECTIONS PRODUCED BY EXTERNAL CAUSES.						
165. Suicide by Poisoning...	...	...	...	...	...	
166. Corrosive Poisoning ... (intentional)	...	...	...	...	...	
167. Suicide by Gas Poisoning ...	...	...	...	...	...	
168. Suicide by Hanging or Strangu- lation...	...	...	...	...	...	
169. Suicide by Drowning...	...	...	...	...	...	
170. Suicide by Firearms ...	...	...	...	...	...	
171. Suicide by cutting or stabbing Instruments...	...	...	...	...	...	
172. Suicide by jumping from a height ...	...	...	...	...	...	
173. Suicide by crushing ...	...	...	...	...	...	
174. Other Suicides...	...	...	...	...	...	
175. Food Poisoning—						
Botulism ...	...	...	...	...	...	
176. Attacks of poisonous animals	...	...	...	...	...	
Snake Bite ...	...	...	...	...	...	
Insect Bite ...	...	1	...	1	...	
177. Other accidental Poisonings...	...	...	...	...	...	
178. Burns (by Fire) ...	...	2	1	2	...	
179. Burns (other than by Fire) ...	...	...	...	...	...	
180. Suffocation (accidental) ...	...	...	...	...	...	
181. Poisoning by Gas (accidental)	...	...	...	...	...	
182. Drowning (accidental) ...	...	...	...	...	...	
183. Wounds by Firearms (war ex- cepted) ...	1	1	...	2	...	
184. Wounds (by cutting or stabbing Instruments) ...	1	5	...	6	1	
185. Wounds (by Fall) ...	...	6	...	6	1	
186. Wounds (in Mines or Quarries)	...	...	...	...	...	
187. Wounds (by Machinery) ...	...	...	...	...	...	
188. Wounds (crushing, e.g., rail- way accidents, etc.) ...	...	...	...	...	...	
189. Injuries inflicted by Animals, Bites, Kicks, etc. ...	...	...	...	...	...	
190. Wounds inflicted on Active Service ...	...	...	...	...	...	
191. Executions of civilians by belligerents ...	...	...	...	...	...	
192. A.—Over fatigue ...	...	...	...	...	...	
B.—Hunger or Thirst ...	...	...	...	...	...	
Total carried forward ...	18	279	36	297	24	



TABLE V.—*continued.*GEORGETOWN HOSPITAL—*continued.*RETURN OF DISEASES AND DEATHS (IN-PATIENTS) FOR THE YEAR 1929—*continued.*

Diseases.	Remaining in Hospital at end of 1928.	Yearly Total.		Total Cases Treated.	Remain- ing in Hospital at end of 1929.	Remarks.
		Admissions.	Deaths.			
Brought forward ...	18	279	36	297	24	
XIV.—AFFECTIONS PRODUCED BY EXTERNAL CAUSES— <i>contd.</i>						
193. Exposure to Cold, Frost bite, etc. ...	...	...	...	...	...	
194. Exposure to Heat—						
Heatstroke ...	...	...	...	...	...	
Sunstroke ...	...	...	...	...	...	
195. Lightning Stroke ...	...	...	...	...	...	
196. Electric Shock... ..	...	...	...	...	...	
197. Murder by Firearms ...	...	...	...	...	...	
198. Murder by cutting or stabbing Instruments... ..	...	...	...	...	...	
199. Murder by other means ...	...	...	...	...	...	
200. Infanticide (Murder of an infant under one year) ...	...	...	...	...	...	
201. A.—Dislocation ...	...	1	...	1	...	
B.—Sprain ...	...	2	...	2	...	
C.—Fracture ...	...	7	1	7	1	
202. Other external Injuries ...	...	3	...	3	...	
203. Deaths by Violence of unknown cause... ..	...	...	...	...	...	
XV.—ILL-DEFINED DISEASES.						
204. Sudden Death (cause unknown)	...	...	...	...	...	
205. A.—Diseases not already speci- fied or ill-defined—						
Ascites ...	...	...	...	...	...	
Edema ...	...	...	...	...	...	
Asthenia ...	...	...	...	...	...	
Shock ...	...	...	...	...	...	
Hyperpyrexia ...	...	...	...	...	...	
B.—Malingering ...	...	...	...	...	...	
XVI.—DISEASES, THE TOTAL OF WHICH HAVE NOT CAUSED 10 DEATHS.						
	...	...	...	...	...	
Total ... ..	18	292	37	310	25	

## APPENDIX IV.

TABLE VI

GEORGETOWN HOSPITAL.

RETURN OF DISEASES (OUT-PATIENTS) FOR THE YEAR 1929.

Diseases.	Males.	Females.
1.—EPIDEMIC, ENDEMIC, AND INFECTIOUS DISEASES.		
1. Enteric Group—		
(a) Typhoid Fever ... ..	...	...
(b) Paratyphoid A. ... ..	...	...
(c) Paratyphoid B. ... ..	...	...
(d) Type not defined ... ..	...	...
2. Typhus ... ..	...	...
3. Relapsing Fever ... ..	...	...
4. Undulant Fever ... ..	...	...
5. Malaria—		
(a) Tertian ... ..	...	...
(b) Quartan ... ..	...	...
(c) Aestivo-autumnal ... ..	253	92
(d) Cachexia ... ..	6	3
(e) Blackwater ... ..	...	...
6. Smallpox—		
Alastrim... ..	...	1
7. Measles ... ..	1	...
8. Scarlet Fever ... ..	...	...
9. Whooping Cough ... ..	2	1
10. Diphtheria ... ..	...	...
11. Influenza ... ..	16	7
12. Miliary Fever ... ..	...	...
13. Mumps ... ..	7	...
14. Cholera ... ..	...	...
15. Epidemic diarrhœa ... ..	...	...
16. Dysentery—		
(a) Amœbic ... ..	1	...
(b) Bacillary ... ..	...	...
(c) Undefined or due to other causes... ..	4	...
17. Plague—		
(a) Bubonic ... ..	...	...
(b) Pneumonic ... ..	...	...
(c) Septicæmic ... ..	...	...
(d) Undefined ... ..	...	...
18. Yellow Fever ... ..	...	...
19. Spirochaetosis ictero-haemorrhagica ... ..	...	...
20. Leprosy ... ..	7	4
21. Erysipelas ... ..	...	...
22. Acute Poliomyelitis ... ..	...	...
23. Encephalitis Lethargica ... ..	...	...
24. Epidemic Cerebro-spinal Fever ... ..	...	...
25. Other Epidemic Diseases—		
(a) Rubella (German Measles) ... ..	...	...
(b) Varicella (Chicken-pox) ... ..	...	...
(c) Kala-azar ... ..	...	...
(d) Phlebotomus Fever ... ..	...	...
(e) Dengue ... ..	...	...
(f) Epidemic Dropsy ... ..	...	...
(g) Yaws... ..	98	28
(h) Trypanosomiasis ... ..	15	3
26. Glanders ... ..	...	...
27. Anthrax ... ..	...	...
28. Rabies ... ..	...	...
29. Tetanus ... ..	...	...
30. Mycosis ... ..	1	...
Total carried forward ... ..	411	139



TABLE VI.—*continued.*GEORGETOWN HOSPITAL—*continued.*RETURN OF DISEASES (OUT-PATIENTS) FOR THE YEAR 1929—*continued.*

Diseases.	Males.	Females.
Brought forward ... ..	411	139
I.—EPIDEMIC, ENDEMIC AND INFECTIOUS DISEASES— <i>contd.</i>		
31. Tuberculosis, Pulmonary and Laryngeal... ..	1	4
32. Tuberculosis of the Meninges or Central Nervous System ... ..	...	...
33. Tuberculosis of the Intestines or Peritoneum ... ..	...	...
34. Tuberculosis of the Vertebral Column ... ..	...	...
35. Tuberculosis of Bones and Joints ... ..	...	...
36. Tuberculosis of other organs—		
(a) Skin or Subcutaneous Tissue (Lupus) ... ..	...	...
(b) Bones ... ..	...	...
(c) Lymphatic System ... ..	1	...
(d) Genito-urinary ... ..	...	...
(e) Other Organs ... ..	...	...
37. Tuberculosis disseminated—		
(a) Acute ... ..	...	...
(b) Chronic ... ..	...	...
38. Syphilis—		
(a) Primary ... ..	3	...
(b) Secondary ... ..	2	...
(c) Tertiary ... ..	...	3
(d) Hereditary ... ..	...	1
(e) Period not indicated ... ..	1	...
39. Soft Chancre ... ..	3	...
40. A.—Gonorrhœa and its complications ... ..	52	1
B.—Gonorrhœal Ophthalmia ... ..	1	...
C.—Gonorrhœal Arthritis ... ..	2	...
D.—Granuloma Venereum ... ..	...	...
41. Septicæmia ... ..	...	...
42. Other Infectious Diseases—		
Trypanosomiasis ... ..	...	...
II.—GENERAL DISEASES NOT MENTIONED ABOVE.		
43. Cancer or other malignant Tumours of the Buccal Cavity ... ..	...	...
44. Cancer or other malignant Tumours of the Stomach or Liver ... ..	...	...
45. Cancer or other malignant Tumours of the Peritoneum		
Intestines, Rectum ... ..	...	...
46. Cancer or other malignant Tumours of the Female Genital		
Organs ... ..	...	...
47. Cancer or other malignant Tumours of the Breast ... ..	...	...
48. Cancer or other malignant Tumours of the Skin ... ..	...	...
49. Cancer or other malignant Tumours of Organs not specified ..	...	...
50. Tumours non-Malignant ... ..	3	2
51. Acute Rheumatism ... ..	...	...
52. Chronic Rheumatism ... ..	162	89
53. Scurvy (including Barlow's Disease) ... ..	...	...
54. Pellagra ... ..	...	...
55. Beri-Beri ... ..	...	...
56. Rickets ... ..	...	1
57. Diabetes (not including Insipidus) ... ..	...	...
58. Anæmia—		
(a) Pernicious ... ..	...	...
(b) Other Anæmias and Chlorosis ... ..	13	3
59. Diseases of the Pituitary Body ... ..	...	...
60. Diseases of the Thyroid Gland—		
(a) Exophthalmic Goitre ... ..	...	...
(b) Other diseases of the Thyroid Gland, Myxœdema ... ..	39	139
Total carried forward ... ..	694	382

TABLE VI.—*continued.*GEORGETOWN HOSPITAL—*continued.*RETURN OF DISEASES (OUT-PATIENTS) FOR THE YEAR 1929—*continued.*

Diseases.	Males.	Females.
Brought forward ... ..	694	382
II.—GENERAL DISEASES NOT MENTIONED ABOVE— <i>contd.</i>		
61. Diseases of the Para-Thyroid Glands ... ..	...	...
62. Diseases of the Thymus ... ..	...	...
63. Diseases of the Supra-Renal Glands ... ..	...	...
64. Diseases of the Spleen ... ..	...	...
65. Leukæmia—		
(a) Leukæmia ... ..	...	...
(b) Hodgkin's Disease ... ..	...	...
66. Alcoholism ... ..	...	...
67. Chronic poisoning by mineral substances (lead, mercury, &c.)	...	...
68. Chronic poisoning by organic substances (Morphia, Cocaine, &c.)	...	...
69. Other General Diseases—		
Auto-intoxication ... ..	...	...
Purpura Hæmorrhagica ... ..	...	...
Hæmophilia ... ..	...	...
Diabetes Insipidus ... ..	...	...
III.—AFFECTIONS OF THE NERVOUS SYSTEM AND ORGANS OF THE SENSES.		
70. Encephalitis (not including Encephalitis Lethargica) ... ..	...	...
71. Meningitis (not including Tuberculous Meningitis or Cerebro-spinal Meningitis) ... ..	...	...
72. Locomotor Ataxia ... ..	...	...
73. Other affections of the Spinal Cord ... ..	...	...
74. Apoplexy—		
(a) Hæmorrhage ... ..	...	...
(b) Embolism ... ..	...	...
(c) Thrombosis ... ..	...	...
75. Paralysis—		
(a) Hemiplegia ... ..	...	...
(b) Other Paralyzes ... ..	1	...
76. General Paralysis of the Insane ... ..	...	...
77. Other forms of Mental Alienation ... ..	...	...
78. Epilepsy ... ..	...	...
79. Eclampsia, Convulsions (non-puerperal) 5 years or over	...	...
80. Infantile Convulsions ... ..	...	...
81. Chorea ... ..	...	...
82. A.—Hysteria ... ..	...	...
B.—Neuritis ... ..	5	2
C.—Neurasthenia ... ..	1	...
83. Cerebral Softening ... ..	...	...
84. Other affections of the Nervous System, such as Paralysis		
Agitans ... ..	6	...
85. Affections of the Organs of Vision—		
(a) Diseases of the Eye ... ..	2	...
(b) Conjunctivitis ... ..	41	25
(c) Trachoma ... ..	2	...
(d) Tumours of the Eye ... ..	...	...
(e) Other affections of the Eye ... ..	14	4
86. Affections of the Ear or Mastoid Sinus ... ..	18	12
Total carried forward ... ..	784	425



TABLE VI.—*continued.*GEORGETOWN HOSPITAL—*continued.*RETURN OF DISEASES (OUT-PATIENTS) FOR THE YEAR 1929—*continued.*

Diseases.	Males.	Females.
Brought forward... ..	784	425
IV.—AFFECTIONS OF THE CIRCULATORY SYSTEM.		
87. Pericarditis ... ..	1	...
88. Acute Endocarditis or Myocarditis ... ..	...	...
89. Angina Pectoris ... ..	...	...
90. Other Diseases of the Heart—		
(a) Valvular—		
Mitral ... ..	4	...
Aortic ... ..	1	...
Tricuspid ... ..	...	...
Pulmonary ... ..	...	...
(b) Myocarditis ... ..	5	4
91. Diseases of the Arteries—		
(a) Aneurism ... ..	...	...
(b) Arterio-Sclerosis ... ..	...	...
(c) Other diseases ... ..	...	...
92. Embolism or Thrombosis (non-cerebral) ... ..	...	...
93. Diseases of the Veins—		
Hæmorrhoids ... ..	3	...
Varicose Veins ... ..	...	...
Phlebitis... ..	...	...
94. Diseases of the Lymphatic System—		
Lymphangitis ... ..	6	...
Lymphadenitis, Bubo (non-specific) ... ..	12	3
95. Hæmorrhage of undetermined cause ... ..	...	...
96. Other affections of the Circulatory System ... ..	...	...
V.—AFFECTIONS OF THE RESPIRATORY SYSTEM.		
97. Diseases of the Nasal Passages—		
Adenoids ... ..	...	...
Polypus... ..	1	5
Rhinitis... ..	1	...
Coryza ... ..	33	14
98. Affections of the Larynx—		
Laryngitis ... ..	2	...
99. Bronchitis—		
(a) Acute ... ..	324	108
(b) Chronic ... ..	2	2
100. Broncho-Pneumonia ... ..	...	...
101. Pneumonia—		
(a) Lobar ... ..	12	2
(b) Unclassified ... ..	...	...
102. Pleurisy, Empyema ... ..	6	2
103. Congestion of the Lungs ... ..	...	...
104. Gangrene of the Lungs ... ..	...	...
105. Asthma ... ..	...	...
106. Pulmonary Emphysema ... ..	...	...
107. Other affections of the Lungs—		
Pulmonary Spirochæstosis ... ..	...	...
VI.—DISEASES OF THE DIGESTIVE SYSTEM.		
108. A.—Diseases of Teeth or Gums—		
Caries, Pyorrhœa, &c. ... ..	28	13
B.—Other affections of the Mouth—		
Stomatitis ... ..	16	7
Glossitis, &c. ... ..	10	1
Total carried forward ... ..	1,251	586

TABLE VI.—*continued.*GEORGETOWN HOSPITAL—*continued.*RETURN OF DISEASES (OUT-PATIENTS) FOR THE YEAR 1929—*continued.*

Diseases.							Males.	Females.
Brought forward ... ..							1,251	586
VI.—DISEASES OF THE DIGESTIVE SYSTEM— <i>contd.</i>								
109. Affections of the Pharynx or Tonsils—								
Tonsillitis ... ..							11	7
Pharyngitis ... ..							19	4
110. Affections of the Oesophagus ... ..							...	...
111. A.—Ulcer of the Stomach ... ..							...	...
B.—Ulcer of the Duodenum ... ..							...	...
112. Other affections of the Stomach—								
Gastritis ... ..							14	12
Dyspepsia, &c. ... ..							51	53
113. Diarrhoea and Enteritis—								
Under two years ... ..							8	11
114. Diarrhoea and Enteritis—								
Two years and over ... ..							83	8
Colitis ... ..							...	...
Ulceration ... ..							...	...
114a Sprue ... ..							...	...
115. Ankylostomiasis ... ..							11	1
116. Diseases due to Intestinal Parasites—								
(a) Cestoda (Tænia) ... ..							30	2
(b) Trematoda (Flukes) ... ..							...	...
(c) Nematoda (other than Ankylostoma)—								
Ascaris ... ..							26	14
Trichocephalus dispar ... ..							...	...
Trichina ... ..							...	...
Dracunculus ... ..							...	...
Strongylus ... ..							...	...
Oxyuris ... ..							...	...
(d) Coccidia ... ..							...	...
(e) Other parasites ... ..							...	...
(f) Unclassified... ..							...	...
117. Appendicitis ... ..							...	...
118. Hernia ... ..							10	...
119. A.—Affections of the Anus, Fistula, &c. ... ..							...	...
B.—Other affections of the Intestines—								
Enteroptosis ... ..							...	...
Constipation ... ..							500	232
120. Acute Yellow Atrophy of the Liver ... ..							...	...
121. Hydatid of the Liver ... ..							...	...
122. Cirrhosis of the Liver—								
(a) Alcoholic ... ..							...	...
(b) Other forms ... ..							...	...
123. Biliary Calculus ... ..							...	...
124. Other affections of the Liver—								
Abscess ... ..							...	...
Hepatitis ... ..							...	...
Cholecystitis ... ..							...	...
Jaundice ... ..							2	1
125. Diseases of the Pancreas ... ..							...	...
126. Peritonitis (of unknown cause) ... ..							...	...
127. Other affections of the Digestive System ... ..							4	2
Total carried forward ... ..							2,020	943



TABLE VI.—*continued.*GEORGETOWN HOSPITAL—*continued.*RETURN OF DISEASES (OUT-PATIENTS) FOR THE YEAR 1929—*continued.*

Diseases.	Males.	Females.
Brought forward ... ..	2,020	943
VII.—DISEASES OF THE GENITO-URINARY SYSTEM (NON-VENEREAL).		
128. Acute Nephritis ... ..	...	...
129. Chronic ... ..	4	2
130. A.—Chyluria ... ..	...	...
B.—Schistosomiasis ... ..	5	1
131. Other affections of the Kidneys—		
Pyelitis, etc. ... ..	...	...
132. Urinary Calculus ... ..	...	...
133. Diseases of the Bladder—		
Cystitis ... ..	26	14
134. Diseases of the Urethra—		
(a) Stricture ... ..	10	...
(b) Other... ..	2	...
135. Diseases of the Prostate—		
Hypertrophy ... ..	...	...
Prostatitis... ..	...	...
136. Diseases (non-Veneraeal of the Genital Organs of Man)—		
Epididymitis ... ..	3	...
Orchitis ... ..	5	...
Hydrocele ... ..	3	...
Ulcer of Penis ... ..	...	...
137. Cysts or other (non-malignant) Tumours of the Ovaries ...	...	...
138. Salpingitis—		
Abscess of the Pelvis ... ..	...	...
139. Uterine Tumours (non-malignant) ... ..	...	...
140. Uterine Hæmorrhage (non puerperal) ... ..	...	...
141. A.—Metritis ... ..	...	4
B.—Other affections of the Female Genital Organs—		
Displacements of Uterus ... ..	...	...
Amenorrhoea ... ..	...	9
Dysmenorrhœa ... ..	...	8
Leucorrhœa ... ..	...	...
142. Diseases of the Breast (non-puerperal)—		
Mastitis ... ..	...	1
Abscess of Breast ... ..	...	1
VIII.—PUERPERAL STATE.		
143. A.—Normal Labour ... ..	...	...
B.—Accidents of Pregnancy—		
(a) Abortion ... ..	...	6
(b) Ectopic Gestation ... ..	...	...
(c) Other accidents of Pregnancy ... ..	...	6
144. Puerperal Hæmorrhage ... ..	...	1
145. Other accidents of Parturition ... ..	...	...
146. Puerperal Septicæmia ... ..	...	1
147. Phlegmasia Dolens ... ..	...	...
148. Puerperal Eclampsia ... ..	...	...
149. Sequelæ of Labour ... ..	...	1
150. Puerperal affections of the Breast ... ..	...	2
Total carried forward ... ..	2 078	1,000

TABLE VI.—*continued.*GEORGETOWN HOSPITAL—*continued.*RETURN OF DISEASES (OUT-PATIENTS) FOR THE YEAR 1929—*continued.*

Diseases.	Males.	Females.
Brought forward...	2,078	1,000
IX.—AFFECTIONS OF THE SKIN AND CELLULAR TISSUES.		
151. Gangrene ...	...	...
152. Boil—	15	...
Carbuncle ...	...	...
153. Abscess—	...	...
Whitlow ...	16	4
Cellulitis ...	49	11
154. A.—Tinea ...	5	2
B.—Scabies ...	27	1
155. Other Diseases of the Skin—	113	41
Erythema ...	...	...
Urticaria... ..	...	...
Eczema ...	43	12
Herpes ...	4	...
Psoriasis ...	...	...
Elephantiasis ...	4	1
Myiasis ...	...	...
Chigoes ...	...	...
Cutaneous Leishmaniasis ...	...	...
X.—DISEASES OF BONES AND ORGANS OF LOCOMOTION (OTHER THAN TUBERCULOUS).		
156. Diseases of Bones—	...	...
Osteitis ...	13	3
157. Diseases of Joints—	...	...
Arthritis ...	11	3
Synovitis... ..	...	...
158. Other Diseases of Bones or Organs of Locomotion ...	1	1
XI.—MALFORMATIONS.		
159. Malformations—	1	...
Hydrocephalus ...	...	...
Hypospadias ...	...	...
Spina Bifida, &c. ...	...	...
XII.—DISEASES OF INFANCY.		
160. Congenital Debility ...	...	...
161. Premature Birth ...	...	...
162. Other affections of Infancy ...	3	1
163. Infant neglect (infants of three months or over) ...	...	...
XIII.—AFFECTIONS OF OLD AGE.		
164. Senility—	...	...
Senile Dementia ...	...	...
Total carried forward ...	2,383	1,080



TABLE VI.—*continued.*GEORGETOWN HOSPITAL—*continued.*RETURN OF DISEASES (OUT-PATIENTS) FOR THE YEAR 1929—*continued.*

Diseases	Males.	Females.
Brought forward ... ..	2,383	1,080
XIV.—AFFECTIONS PRODUCED BY EXTERNAL CAUSES.		
165. Suicide by Poisoning ... ..	...	...
166. Corrosive Poisoning (intentional) ... ..	...	...
167. Suicide by Gas Poisoning ... ..	...	...
168. Suicide by Hanging or Strangulation ... ..	...	...
169. Suicide by Drowning ... ..	...	...
170. Suicide by Firearms ... ..	...	...
171. Suicide by cutting or stabbing Instruments ... ..	...	...
172. Suicide by jumping from a height ... ..	...	...
173. Suicide by crushing ... ..	...	...
174. Other Suicides ... ..	...	...
175. Food Poisoning—		
Botulism ... ..	...	...
176. Attacks of poisonous animals—		
Snake Bite ... ..	...	...
Insect Bite ... ..	5	...
177. Other accidental Poisonings ... ..	...	...
178. Burns (by Fire) ... ..	7	3
179. Burns (other than by Fire) ... ..	...	...
180. Suffocation (accidental) ... ..	...	...
181. Poisoning by Gas (accidental) ... ..	...	...
182. Drowning (accidental) ... ..	...	...
183. Wounds by Firearms (war excepted) ... ..	...	...
184. Wounds (by cutting or stabbing Instruments) ... ..	117	8
185. Wounds (by Fall) ... ..	7	1
186. Wounds (in Mines or Quarries) ... ..	...	...
187. Wounds (by Machinery) ... ..	...	...
188. Wounds (crushing, <i>e.g.</i> , railway accidents, &c.) ... ..	...	...
189. Injuries inflicted by animals, Bites, Kicks, &c. ... ..	2	...
190. Wounds inflicted on Active Service ... ..	...	...
191. Executions of civilians by belligerents ... ..	...	...
192. A.—Over fatigue ... ..	...	...
B.—Hunger or Thirst ... ..	...	...
193. Exposure to Cold, Frost Bites, &c. ... ..	...	...
194. Exposure to Heat—		
Heatstroke ... ..	...	...
Sunstroke ... ..	...	...
195. Lightning Stroke ... ..	...	...
196. Electric Shock ... ..	...	...
197. Murder by Firearms ... ..	...	...
198. Murder by cutting or stabbing Instruments ... ..	...	...
199. Murder by other means ... ..	...	...
200. Infanticide (Murder of an infant under one year) ... ..	...	...
201. A.—Dislocation ... ..	1	...
B.—Sprain ... ..	67	5
C.—Fracture ... ..	...	...
202. Other external Injuries ... ..	123	12
203. Deaths by Violence of unknown cause ... ..	...	...
Total carried forward ... ..	2,712	1,109

TABLE VI.—*continued.*GEORGETOWN HOSPITAL—*continued.*RETURN OF DISEASES (OUT-PATIENTS) FOR THE YEAR 1929—*continued.*

Diseases.					Males.	Females.
Brought forward ... ..					2,712	1,109
XV.—ILL-DEFINED DISEASES.						
204. Sudden Death (cause unknown) ... ..					...	...
205. A.—Diseases not already specified or ill-defined—						
Ascites ... ..					1	...
Edema ... ..					8	2
Asthenia ... ..					20	4
Shock ... ..					...	...
Hyperpyrexia ... ..					...	...
B.—Malingering ... ..					...	...
XVI.—DISEASES, THE TOTAL OF WHICH HAVE NOT CAUSED 10 DEATHS.						
Total... ..					2,741	1,115
					3,856	



## APPENDIX V.

## RETURN OF PATIENTS TREATED AT KAU-UR DISPENSARY, 1929.

Total for the year	...	...	...	...	...	...	...	2,112
January	...	...	...	...	...	...	...	161
February	...	...	...	...	...	...	...	201
March	...	...	...	...	...	...	...	171
April	...	...	...	...	...	...	...	207
May	...	...	...	...	...	...	...	189
June	...	...	...	...	...	...	...	121
July	...	...	...	...	...	...	...	159
August	...	...	...	...	...	...	...	172
September	...	...	...	...	...	...	...	92
October	...	...	...	...	...	...	...	261
November	...	...	...	...	...	...	...	239
December	...	...	...	...	...	...	...	139

The figures are for first attendances only.

Average daily number of patients, 6.

Prevalent diseases :—Malaria, ulcers, constipation, injuries and helminthic disorders.

(Signed) S. G. HARRISON,

M.O. Protectorate.

## APPENDIX VI.

## RETURN OF PATIENTS TREATED AT BASSE DISENSARY, 1929.

Total for the Year	...	...	...	...	...	...	...	3,385
January	...	...	...	...	...	...	...	412
February	...	...	...	...	...	...	...	316
March	...	...	...	...	...	...	...	326
April	...	...	...	...	...	...	...	293
May	...	...	...	...	...	...	...	217
June	...	...	...	...	...	...	...	199
July	...	...	...	...	...	...	...	248
August	...	...	...	...	...	...	...	209
September	...	...	...	...	...	...	...	293
October	...	...	...	...	...	...	...	346
November	...	...	...	...	...	...	...	291
December	...	...	...	...	...	...	...	235

Average daily number of Patients ... 9

Prevalent Diseases were bronchitis, ulcer, injuries, constipation and malaria.

First Attendances only are included in the above figures.

(Signed) S. G. HARRISON,

M.O. Protectorate.

## APPENDIX VII.

## RETURN OF PATIENTS TREATED AT BUSH SURGERIES, 1929.

Total for the year	...	...	...	...	...	...	...	2,841
January	...	...	...	...	...	...	...	125
February	...	...	...	...	...	...	...	231
March	...	...	...	...	...	...	...	104
April	...	...	...	...	...	...	...	298
May	...	...	...	...	...	...	...	357
June	...	...	...	...	...	...	...	77
July	...	...	...	...	...	...	...	217
August	...	...	...	...	...	...	...	95
September	...	...	...	...	...	...	...	166
October	...	...	...	...	...	...	...	173
November	...	...	...	...	...	...	...	753
December	...	...	...	...	...	...	...	245

These figures include 303 cases treated during a Yaws investigation, October-December, 1929.

(Signed) S. G. HARRISON,

M.O. Protectorate.

## APPENDIX VIII.

12, CLARKSON STREET,

BATHURST, GAMBIA,

*April 24th, 1929.*

THE HON.

THE SENIOR MEDICAL OFFICER,

BATHURST.

SIR,

I have the honour most respectfully to submit my report for 1929 as follows :—

Number of School Children inspected and treated	...	...	...	326
„ „ Government Officials and Clerks	...	...	...	64
			Total	390

This shows an increase of 131 over last year's attendance.

The School Children are definitely getting to appreciate the benefits of Dental Treatment and have made more use this year of the facility granted them by the Government. Although the number has increased the average work for each individual has been less, as should be the case, particularly when one considers that many had received treatment before.

A small percentage of the School Children treated last year presented themselves for inspection, and I am happy to state that their teeth were very well looked after. I would suggest that all the School Children treated present themselves yearly to me for inspection; it would involve more time and work but there would be the satisfaction of seeing that there is little or no set-back in the work amongst them.

I shall endeavour to visit Dental School Clinics in Europe this summer, and introduce any new idea gained during my next tour.

A detail report of the work done is given in the book and charts forwarded.

I have the honour to be, Sir,

Your obedient Servant,

(Signed) UEL. M. JOHN,

*Dental Surgeon.*



ALFRED D. WILSON

DIRECTOR, BUREAU OF PLANT INDUSTRY

WASHINGTON, D. C.

Dear Sir:

I have the honor to acknowledge the receipt of your letter of the 15th inst. regarding the matter of the ...

The ... of the ... is ...

I am, Sir, very respectfully,  
 Yours very truly,  
 Alfred D. Wilson



# GAMBIA



Geographical Institute, Berlin, 1887.

**Legend**

Capital	St. Louis
Provincial Capital	St. Louis
Other Towns	St. Louis, St. Louis, St. Louis
Rivers	St. Louis, St. Louis, St. Louis
Coastal Features	St. Louis, St. Louis, St. Louis

Scale: 1:100,000

Notes: The map is based on the latest available data. The names of the towns and rivers are given in French. The map is published by the Geographical Institute, Berlin.





