

Medical Officer's annual report [to] Durban Corporation.

Contributors

Durban (South Africa). Public Health Department.

Publication/Creation

[Durban] : [The Corporation], [1917]

Persistent URL

<https://wellcomecollection.org/works/d8xfzecd>

License and attribution

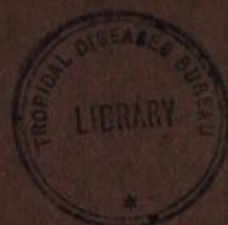
This work has been identified as being free of known restrictions under copyright law, including all related and neighbouring rights and is being made available under the Creative Commons, Public Domain Mark.

You can copy, modify, distribute and perform the work, even for commercial purposes, without asking permission.



Wellcome Collection
183 Euston Road
London NW1 2BE UK
T +44 (0)20 7611 8722
E library@wellcomecollection.org
<https://wellcomecollection.org>

DURBAN CORPORATION



Medical Officer's REPORT

FOR THE

Municipal Year ended 31st July, 1917

DURBAN

P. DAVIS & SONS, LIMITED, Printers, Grey and Saville Streets.

1918.



MEDICAL OFFICER'S REPORT.

Municipal Buildings,

Durban. 1st August, 1917.

TO HIS WORSHIP THE MAYOR

AND TOWN COUNCILLORS OF THE BOROUGH OF DURBAN.

GENTLEMEN,

I have the honour to submit to you my Fifteenth Annual Report relating to the Health and Sanitary Conditions of the Borough of Durban, for the year ended 31st July, 1917.

P. MURISON, M.D., B.Sc., D.P.H.,

Medical Officer of Health.

POPULATION.

The following table shows the estimated population for 1916-17, and previous Census of the Borough for comparison are shown.

	1910 Borough Census	1911 Government Census	1913 Borough Census	1917 Estimate
Europeans ...	30,030	31,896	33,428	37,400
Coloured ...	2,039	19,535	2,420	3,350
Asiatics ...	16,131		18,010	19,900
Natives ...	16,489	17,756	20,302	22,000
	64,689	69,187	74,160	82,650

TABLE SHOWING ESTIMATED POPULATION IN WARDS
(EUROPEANS). 1916-17.

Wards ...	1	2	3	4	5	6	7	Total.
Population ...	4,757	5,535	7,900	3,986	7,879	3,380	7,313	40,750

For Public Health Purposes, the "Coloured" population is included with the European, and the Birth Rates, Death Rates, etc., shown in this Report as European are calculated on the combined figures.

BIRTHS.

1.—TABLE SHOWING MONTHLY DISTRIBUTION OF ALL BIRTHS
FOR RACE AND SEX, 1916-17.

MONTHS.	MALES.			FEMALES.			TOTALS.		
	Europeans	Natives	Asiatics	Europeans	Natives	Asiatics	Europeans	Natives	Asiatics
1916									
August ...	49	1	30	41	2	17	90	3	47
September ...	35	4	27	40	5	22	75	9	49
October ...	37	5	25	37	1	19	74	6	44
November ...	33	1	31	34	2	26	67	3	57
December ...	20	6	22	35	4	18	55	10	40
1917									
January ...	46	5	34	40	3	34	86	8	68
February ...	29	3	30	34	2	18	63	5	48
March ...	43	5	25	37	6	37	80	11	62
April ...	41	9	11	34	3	18	75	12	29
May ...	37	2	25	40	6	46	77	8	71
June ...	42	5	15	35	5	14	77	10	29
July ...	42	6	20	41	5	17	83	11	37
Totals ...	454	52	295	448	44	286	902	96	581

2.—TABLE OF BIRTHS OCCURRING AMONGST NON-RESIDENTS
IN MONTHS.

1914-15	108
1915-16	133
1916-17	161

1916										1917															
Aug.		Sept.		Oct.		Nov.		Dec.		Jan.		Feb.		Mar.		April.		May.		June.		July.		Total.	
M	F	M	F	M	F	M	F	M	F	M	F	M	F	M	F	M	F	M	F	M	F	M	F	M	F
8	10	6	7	15	7	7	3	1	2	6	7	4	5	10	12	7	9	5	3	6	7	8	6	83	78

European Birth Rate (gross)	26.09	per 1,000
European Birth Rate (corrected) for non-residents	22.13	„
Asiatic Birth Rate	29.2	„
Native Birth Rate	4.4	„
Birth Rate England and Wales, 1916	21.6	„

3.—TABLE SHOWING TOTAL REGISTERED EUROPEAN BIRTHS
AND BIRTH RATES FOR THE PAST SEVEN YEARS.

	1911	1912	1913	1914	1915	1916	1917	1917
No of Births	952	1030	1015	1030	1025	1054	1063	902
Birth Rate	27.7	28.3	28.3	28.1	27.4	26.7	26.09	22.13

[Corrected]

4.—TABLE SHOWING LEGITIMATE AND ILLEGITIMATE BIRTHS,
EXCLUDING IMPORTED BIRTHS, 1916-17.

	Males.	Females.	Total.
Legitimate	439	430	869
Illegitimate	15	18	33
	454	448	902

5.—MARRIAGES CONTRACTED IN DURBAN BOROUGH, 1916-17.

During the past Municipal Year 499 European Marriages were contracted in Durban. The following table shows the distribution as to domicile of contracting parties:—

Of whom one party domiciled in Durban.		Of whom both parties domiciled in Durban.		Of whom neither party domiciled in Durban.	
M.	F.	M.	F.	M.	F.
21	41	397	397	40	40

Gross Marriage Rate for Durban	12.2	per 1,000
Corrected Marriage Rate for Durban	11.3	per 1,000

DEATHS.

1.—TABLE SHOWING RACE AND SEX DISTRIBUTION OF DEATHS
DURING THE PAST YEAR.

Race.	Male.	Female.	Total.
European	216	180	396
Native	87	27	114
Asiatic	128	97	225
Totals	431	304	735

2.—AGE DISTRIBUTION OF DEATHS (EUROPEANS).

	Male.	Female.	Total.
Under 1 year	44	33	77
1—5 years	27	33	60
5—10 „	5	2	7
10—15 „	3	4	7
15—20 „	5	4	9
20—25 „	5	4	9
25—35 „	9	8	17
35—45 „	19	17	36
45—55 „	25	22	47
55—65 „	30	11	41
65—75 „	24	22	46
75—85 „	17	15	32
85 and over	3	5	8
Totals	216	180	396

3.—TABLE SHOWING CHIEF STATISTICS OF DEATHS OF ALL
RACES IN THE BOROUGH DURING THE PAST FIVE YEARS.

Race.	1912-13	1913-14	1914-15	1915-16	1916-17
European ...	311	314	328	351	396
Native ...	129	123	127	145	114
Asiatic ...	235	189	177	180	225
Totals ...	675	626	632	676	735
Rate per 1,000					
European ...	8.7	8.6	8.8	8.9	9.7
Native ...	6.4	5.9	6.2	7.0	5.2
Asiatic ...	13.0	10.3	9.4	9.3	11.3

4.—TABLE FOR COMPARISON SHOWING RECORDED DEATH RATES
PER 1,000 IN ENGLAND AND WALES IN 1916.

England and Wales	14.0
96 Great Towns, including London	14.4
148 Smaller Towns	13.0
London	14.3

5.—TABLE SHOWING MONTHLY DISTRIBUTION OF DEATHS
AMONGST RESIDENTS (EUROPEANS), 1916-17.

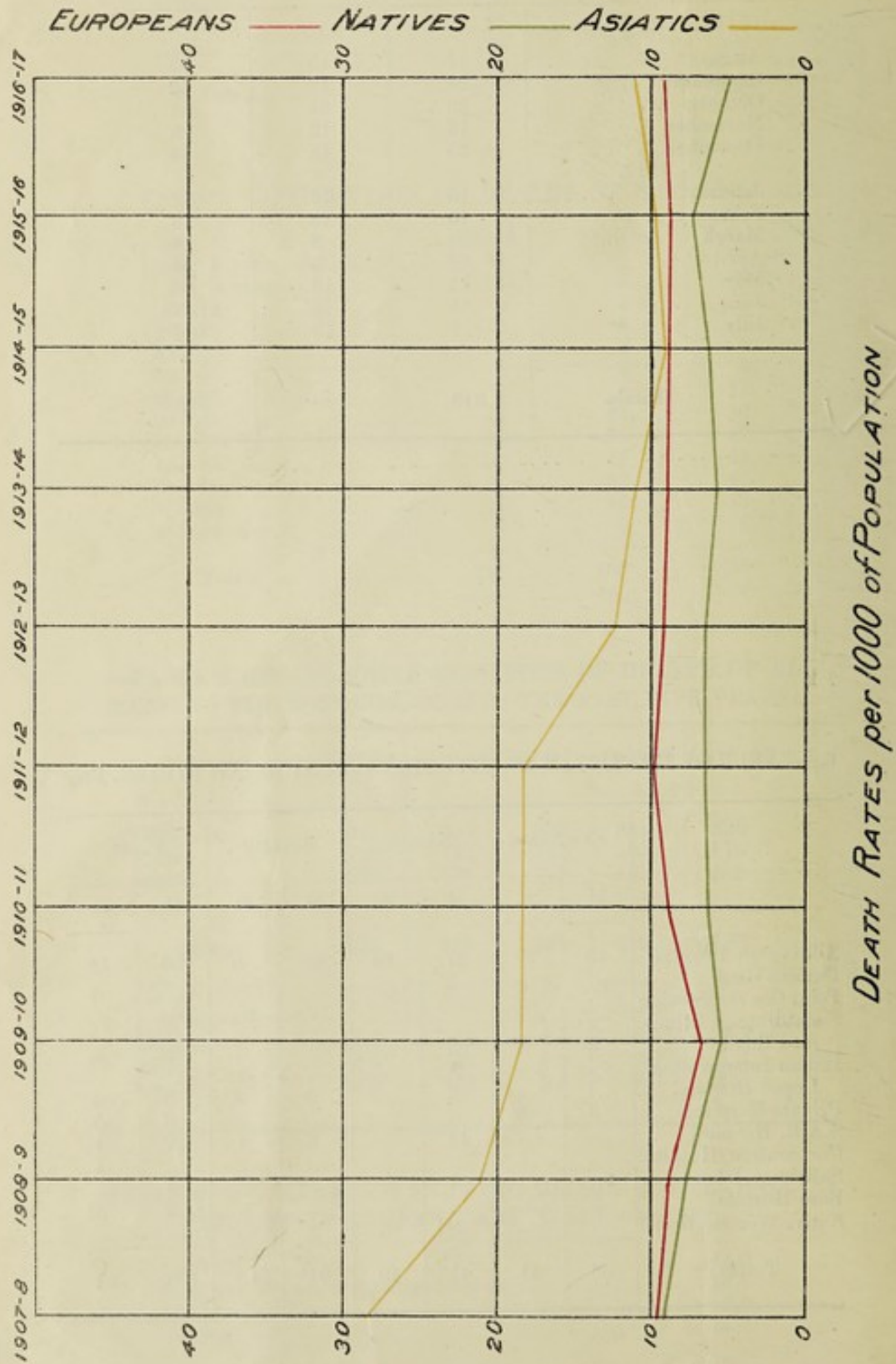
MONTHS.	MALES.	FEMALES.	TOTAL.
1916.			
August ...	17	15	32
September ...	24	18	42
October ...	20	24	44
November ...	16	12	28
December ...	25	18	43
1917.			
January ...	16	16	32
February ...	10	13	23
March ...	20	8	28
April ...	19	5	24
May ...	15	18	33
June ...	15	18	33
July ...	19	15	34
Totals ...	216	180	396

6.—TABLE OF DEATHS IN INSTITUTIONS OR NURSING HOMES, Etc.

	EUROPEAN.		NATIVE.		ASIATIC.		TOTAL.	
	M.	F.	M.	F.	M.	F.	M.	F.
Addington Hospital	49	27	27	10	20	5	96	42
Durban Gaol	2	2	...
Point Convict Station
Sanatorium, Chelmsford Road	9	8	9	8
Indian Immigration Depot Hospital	5	4	5	4
Private Hospitals ...	3	5	3	5
S.A.R. Hospital	11	...	6	1	17	1
Corporation Hospital	...	1	1
Salisbury Island	1	1	...
Base Hospital ...	2	2	...
Native Womens Hostel
Totals ...	63	41	41	10	31	10	135	61

CHART 1.

Chart showing Death Rate of the different Races during the past ten years:



7.—TABLE OF NON-RESIDENT DEATHS IN DURBAN NOT
INCLUDED IN TABLE 3.

	1916.					1917.							Total
	Aug.	Sept.	Oct.	Nov.	Dec.	Jan.	Feb.	Mar.	April	May	June	July	
European	14	18	17	18	16	28	11	16	17	15	11	20	201
Native	6	4	10	13	18	12	18	15	128	51	36	26	337
Asiatic	12	9	17	9	20	5	2	8	2	5	7	11	107
Totals	32	31	44	40	54	45	31	39	147	71	54	57	645

8.—TABLE SHOWING CAUSES OF NON-RESIDENT DEATHS.

	European	Native	Asiatic	Total
Dysentery	5	65	11	81
Enteric Fever	8	2	2	12
Diphtheria	—	—	—	—
Scarlet Fever	—	—	—	—
Measles	3	—	7	10
Whooping Cough	1	—	—	1
Tetanus	—	—	—	—
Malaria	31	184	—	215
Venereal Diseases	—	1	2	3
Puerperal Fever	1	—	1	2
Septic Diseases	2	1	—	3
Phthisis	8	21	23	52
Other Forms of Tuberculosis	4	4	5	13
Other Infectious Diseases	4	1	—	5
Influenza	1	—	—	1
Cancer	29	—	—	29
Diseases of Birth and Development	1	—	3	4
Old Age	—	1	3	4
Diseases of Nervous System	7	3	4	14
Diseases of Heart and Circulatory System	26	5	6	37
Pneumonia	8	16	16	40
Bronchitis	1	3	2	6
Other Diseases of Respiratory System	6	1	3	10
Diarrhoea and Catarrh	7	13	8	28
Other Diseases of Liver and Alimentary Tract	18	4	3	25
Diseases of Urinary System	9	5	3	17
Diseases of Childbirth	1	—	—	1
Diseases of Reproductive System	1	—	—	1
Accidents	8	6	3	17
Homicide	—	—	—	—
Suicide	6	—	—	6
Execution	—	—	—	—
All other Causes	5	1	2	8
Totals	201	337	107	645

CHART 2.

Table of Columns showing the European Monthly Deaths for past five years:—

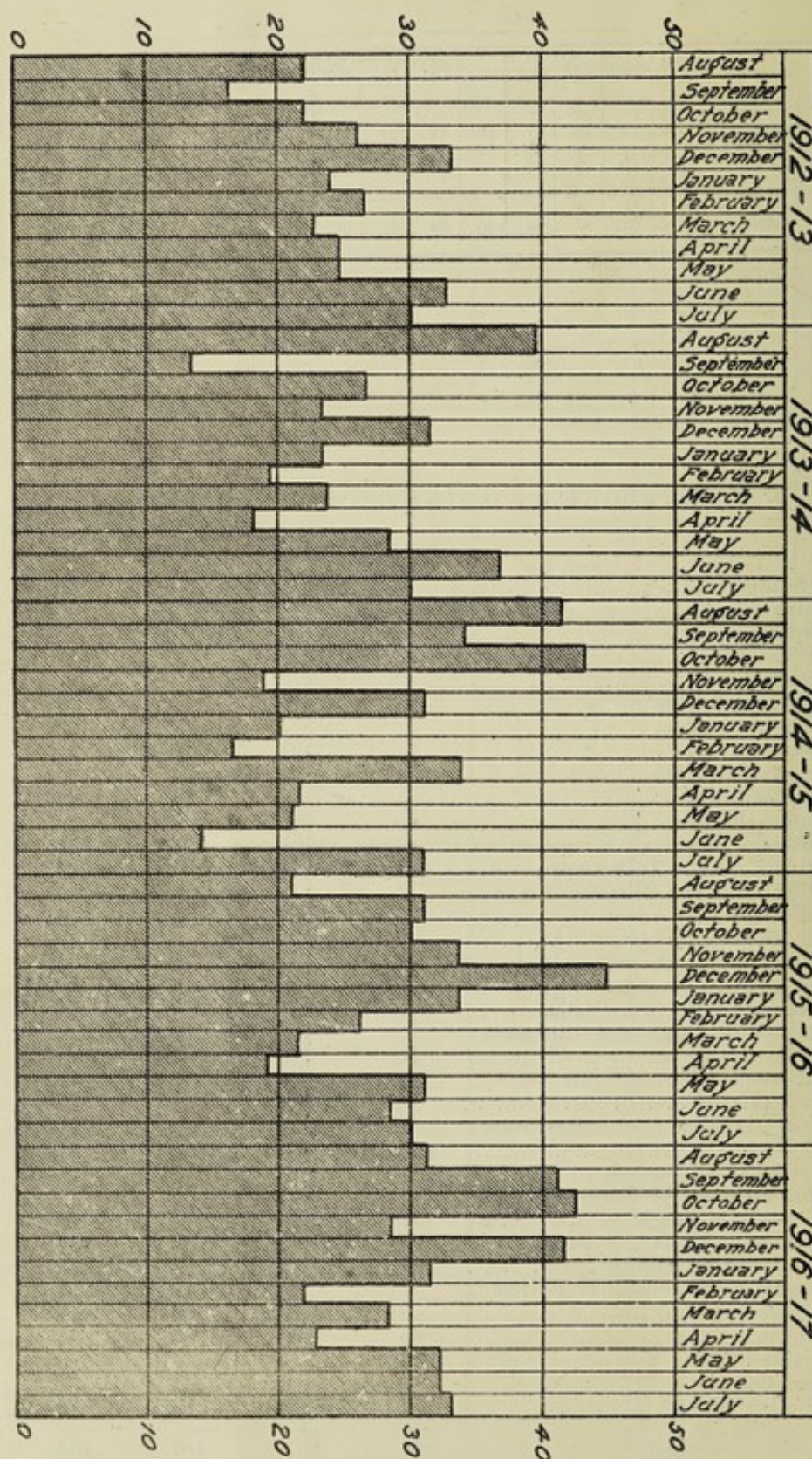
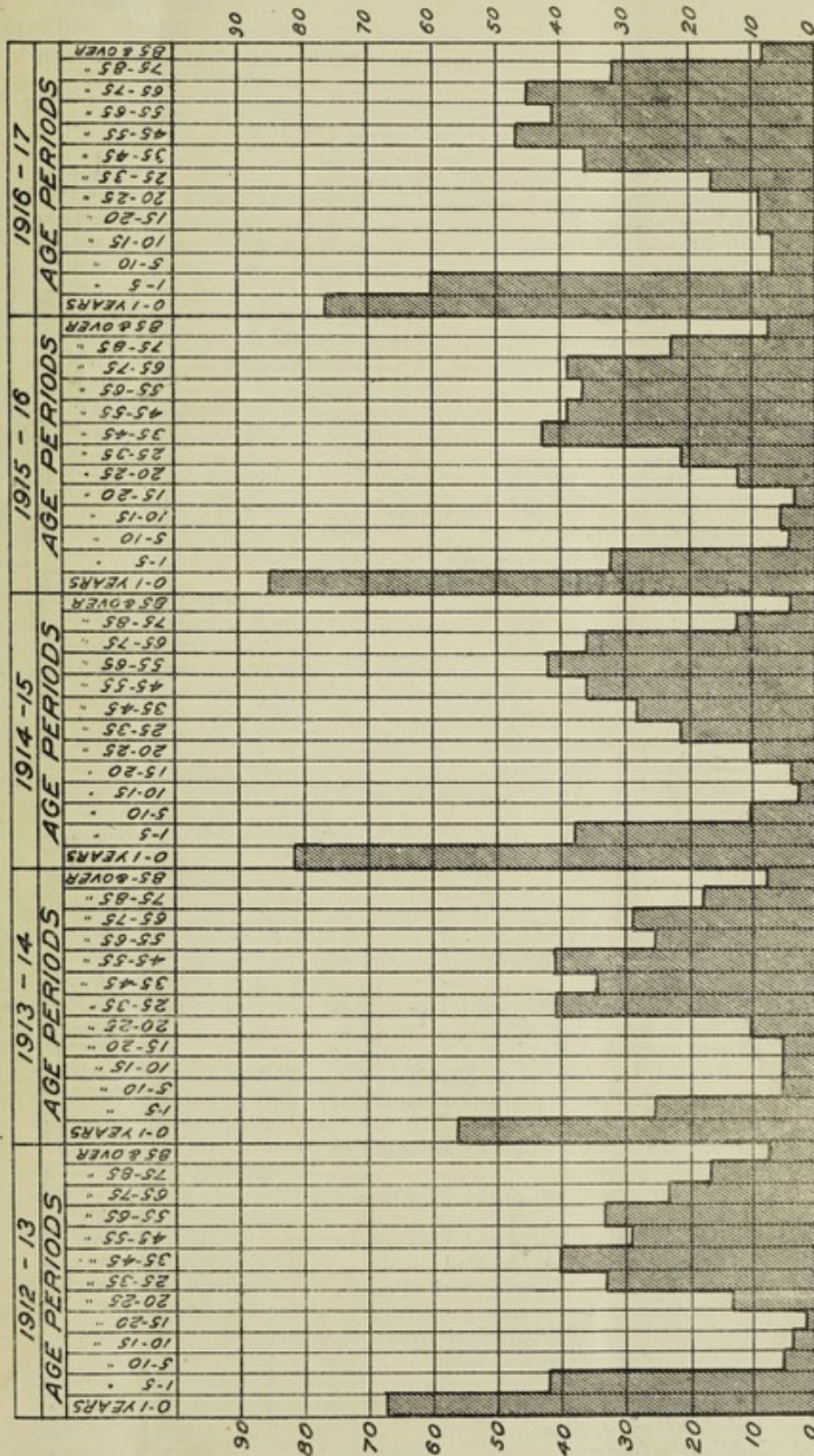


CHART 3.

Table of Columns showing the European Total Deaths occurring at various ages during the past five years:—



CLASSIFICATION OF DEATHS.

Deaths classified according to the International Classification of Causes of Sickness and Death:—

	Europeans.		
	1914-15.	1915-16.	1916-17.
1. Typhoid Fever	4	8	10
2. Typhus Fever	—	—	—
3. Relapsing Fever	—	—	—
4. Malaria	2	—	4
5. Small-pox	—	—	—
6. Measles	—	3	7
7. Scarlet Fever	—	—	—
8. Whooping Cough	3	2	3
9. Diphtheria and Croup	6	4	1
10. Influenza	1	3	7
11. Biliary Fever	—	—	—
12. Asiatic Cholera	—	—	—
13. Cholera Nostras	—	—	—
14. Dysentery	6	6	22
15. Plague	—	—	—
16. Yellow Fever	—	—	—
17. Leprosy	—	—	—
18. Erysipelas	—	1	—
19. Other Epidemic Diseases	—	—	—
20. Purulent Infection and Septicæmia	—	—	1
21. Glanders	—	—	—
22. Anthrax	—	1	—
23. Rabies	—	—	—
24. Tetanus	—	—	1
25. Mycoses	—	—	—
26. Pellagra	—	—	—
27. Beri-beri	—	—	—
28. Tuberculosis of the Lungs	13	20	22
29. Acute Military Tuberculosis	2	—	2
30. Tuberculous Meningitis	1	3	4
31. Abdominal Tuberculosis	—	1	—
32. Pott's Disease	—	1	—
33. White Swelling	—	—	—
34. Tuberculosis of other Organs	—	—	1
35. Disseminated Tuberculosis	—	—	—
36. Rickets	—	—	—
37. Syphilis	2	1	—
38. Gonococcus Infection	—	—	—
39. Cancer and other Malignant Tumours of Buccal Cavity	3	6	2
40. Cancer and other Malignant Tumours of Stomach and Liver	4	5	8
41. Cancer and other Malignant Tumours of Peritoneum, Intestines, Rectum	7	4	—
42. Cancer and other Malignant Tumours of Female Genital Organs	5	3	4
43. Cancer and other Malignant Tumours of Breast	2	2	4
44. Cancer and other Malignant Tumours of Skin	—	—	—
45. Cancer and other Malignant Tumours of other Organs not specified	4	4	7
46. Other Tumours (Tumours of Female Genital Organs excepted)	1	—	1
47. Acute Articular Rheumatism	2	2	—
48. Chronic Rheumatism and Gout	1	1	—
49. Scurvy	1	—	1
50. Diabetes	1	9	4
51. Exophthalmic Goitre	3	—	—
52. Addison's Disease	—	1	1

Europeans.

	1914-15.	1915-16.	1916-17.
53. Leucæmia	1	1	—
54. Anæmia, Chlorosis	2	1	—
55. Other General Diseases	7	2	—
56. Alcoholism (Acute or Chronic)	—	1	—
57. Chronic Lead Poisoning	—	—	—
58. Other Chronic Occupation Poisonings	—	—	—
59. Other Chronic Poisonings	—	—	—
60. Encephalitis	1	—	1
61. Simple Meningitis	6	3	2
61a. (Including Cerebrospinal Fever)	—	—	—
62. Locomotor Ataxia	1	1	—
63. Other Diseases of Spinal Cord	1	2	2
64. Cerebral Hæmorrhage, Apoplexy	10	15	11
65. Softening of Brain	1	4	—
66. Paralysis without specified cause	3	1	4
67. General Paralysis of Insane	—	—	—
68. Other Forms Mental Alienation	—	—	—
69. Epilepsy	—	1	1
70. Convulsions (Non-Puerperal)	—	—	—
71. Convulsions of Infants	4	7	5
72. Chorea	—	—	—
73. Neuralgia and Neuritis	—	—	—
74. Other Diseases of Nervous System	2	—	3
75. Diseases of Eyes and their Annexa	—	—	—
76. Diseases of the Ears	1	—	—
77. Pericarditis	—	—	—
78. Acute Endocarditis	2	1	1
79. Organic Diseases of Heart	19	45	37
80. Angina Pectoris	1	—	3
81. Diseases of Arteries, Atheroma, Aneurysm	3	2	3
82. Embolism and Thrombosis	1	—	1
83. Diseases of Veins (Varices, Hæmorrhoids, Phlebitis, etc.)	—	—	—
84. Diseases of Lymphatic System (Lymphangitis, etc.)	—	—	—
85. Hæmorrhage: Other Diseases of Circulatory System	—	—	—
86. Diseases of Nasal Fossæ	—	—	—
87. Diseases of Larynx	1	—	—
88. Diseases of Thyroid Body	1	1	—
89. Acute Bronchitis	3	3	3
90. Chronic Bronchitis	3	7	7
91. Broncho-Pneumonia	6	4	8
92. Pneumonia	12	6	15
93. Pleurisy	—	2	2
94. Pulmonary Congestion, Pulmonary Apoplexy	—	1	—
95. Gangrene of the Lung	—	—	—
96. Asthma	—	2	2
97. Pulmonary Emphysema	—	—	—
98. Other Diseases of Respiratory System (Tuberculosis excepted)	2	1	1
99. Diseases of Mouth and Annexa	—	1	—
100. Diseases of Pharynx	—	—	—
101. Diseases of Œsophagus	—	1	1
102. Ulcer of the Stomach	—	2	2
103. Other Diseases of Stomach (Cancer excepted)	1	5	8
104. Diarrhœa and Enteritis (under 2 years)	43	32	29
105. Diarrhœa and Enteritis (over 2 years)	12	10	14
106. Ankylostomiasis	—	—	—
107. Intestinal Parasites	—	—	—
108. Appendicitis and Typhlitis	4	3	3

Europeans.

	1914-15.	1915-16.	1916-17.
109. Hernias, Intestinal Obstructions	2	3	5
110. Diseases of the Intestines	2	—	—
111. Acute Yellow Atrophy of the Liver	—	—	—
112. Hydatid Tumour of Liver	—	1	—
113. Cirrhosis of Liver	1	3	2
114. Biliary Calculi	1	—	—
115. Other Diseases of Liver	—	1	1
116. Diseases of Spleen	—	—	—
117. Simple Peritonitis (Non-Puerperal)	2	1	1
118. Other Diseases of Digestive System (Cancer and Tuberculosis excepted)	—	2	1
118a. Abscess of Liver	3	1	2
119. Acute Nephritis	1	—	2
120. Bright's Disease	11	9	13
121. Chyluria	—	—	—
122. Other Diseases of Kidneys and Annexa	1	—	3
123. Calculi of Urinary Passages	2	—	—
124. Diseases of Bladder	—	1	—
125. Diseases of the Urethra, Urinary Abscess	1	—	—
126. Diseases of Prostate	—	1	2
127. Non-Venereal Diseases of Male Genital Organs	—	—	—
128. Uterine Hæmorrhage (Non-Puerperal)	—	—	—
129. Uterine Tumour (Non-Cancerous)	—	—	1
130. Other Diseases of Uterus	—	1	—
131. Cysts and other Tumours of Ovary	—	—	—
132. Salpingitis and other Diseases of Female Genital Organs	—	—	—
133. Non-Puerperal Diseases of Breast (Can- cer excepted)	—	—	—
134. Accidents of Pregnancy	—	1	1
135. Puerperal Hæmorrhage	—	—	—
136. Other Accidents of Labour	—	1	—
137. Puerperal Septicæmia	1	2	—
138. Puerperal Albuminuria and Convulsions	1	—	2
139. Puerperal Phlegmasia, Alba Dolens, Embolus, Sudden Death	—	—	1
140. Following Child-Birth (not otherwise defined)	—	—	—
141. Puerperal Diseases of Breast	—	—	—
142. Gangrene	—	—	—
143. Furuncle	1	—	—
144. Acute Abscess	1	—	3
145. Other Diseases of Skin and Annexa	1	—	—
146. Diseases of Bones (Tuberculosis ex- cepted)	1	—	1
147. Diseases of the Joints (Tuberculosis and Rheumatism excepted)	—	—	—
148. Amputations	—	—	—
149. Other Diseases of Organs of Locomotion	—	—	—
150. Congenital Malformations (Still-Births not included)	3	6	3
151. Congenital Debility, Icterus and Sclerema	22	19	28
152. Other Diseases peculiar to Early In- fancy	2	1	3
153. Lack of Care	—	—	—
154. Senility	14	9	13
155. Suicide by Poison	1	—	2
156. Suicide by Asphyxia	—	—	—
157. Suicide by Hanging or Strangulation	1	—	—
158. Suicide by Drowning	—	—	—

Europeans.

	1914-15.	1915-16.	1916-17.
159. Suicide by Firearms	2	—	—
160. Suicide by Cutting or Piercing Instruments	1	1	2
161. Suicide by Jumping from High Places	—	—	—
162. Suicide by Crushing	—	—	—
163. Other Suicides	1	—	—
164. Poisoning by Food	—	—	—
165. Other Acute Poisonings	4	—	1
166. Conflagrations	1	—	—
167. Burns (Conflagration excepted)	—	2	1
168. Absorption of Deleterious Gases (Conflagration excepted)	—	—	1
169. Accidental Drowning	2	2	2
170. Traumatism by Firearms	1	—	—
171. Traumatism by Cutting or Piercing Instruments	—	—	—
172. Traumatism by Fall	—	2	1
173. Traumatism in Mines or Quarries	—	—	—
174. Traumatism by Machines	1	—	—
175. Traumatism by other Crushing (Vehicles, Railways, Landslides, etc.)	5	2	6
176. Injuries by Animals	—	—	—
177. Starvation	—	—	—
178. Excessive Cold	—	—	—
179. Effects of Heat	—	—	—
180. Lightning	1	—	—
181. Electricity (Lightning excepted)	—	—	—
182. Homicide by Firearms	—	—	—
183. Homicide by Cutting or Piercing Instruments	—	—	—
184. Homicide by other means	—	—	—
185. Fractures (cause not specified)	—	2	—
186. Other External Violence	—	—	2
187. Ill-defined Organic Disease	—	—	—
188. Sudden Death	1	—	—
189. Cause of Death not specified or ill-defined	7	18	4
Totals	328	351	396

EUROPEAN DEATHS—ARRANGED ACCORDING TO
MONTHS AND CERTAIN DISEASES

Diseases.	August.	September.	October.	November.	December.	January.	February.	March.	April.	May.	June.	July.	Total 1916-17.	Total 1915-16.
1. Plague ...	0	0	0	0	0	0	0	0	0	0	0	0	0	0
2. Smallpox ...	0	0	0	0	0	0	0	0	0	0	0	0	0	0
3. Dysentery ...	1	4	2	4	3	3	0	0	0	2	2	1	22	6
4. Enteric Fever ...	0	1	1	0	2	3	2	1	0	0	0	0	10	8
5. Diphtheria ...	0	0	0	0	0	0	0	0	0	0	0	1	1	4
6. Scarlet Fever ...	0	0	0	0	0	0	0	0	0	0	0	0	0	0
7. Measles ...	2	0	3	1	0	1	0	0	0	0	0	0	7	3
8. Whooping Cough ...	0	0	0	0	2	1	0	0	0	0	0	0	3	2
9. Tetanus ...	1	0	0	0	0	0	0	0	0	0	0	0	1	0
10. Malaria ...	0	0	0	0	0	2	0	0	0	0	1	1	4	0
11. Venereal Diseases ...	0	0	0	0	0	0	0	0	0	0	0	0	0	1
12. Puerperal Fever ...	0	0	0	0	0	0	0	0	0	0	0	0	0	1
13. Septic Diseases ...	1	0	0	0	0	0	2	0	0	0	1	0	4	1
14. Phthisis ...	1	5	2	0	0	1	1	4	0	1	3	4	22	20
15. Other Forms of Tuberculosis ...	0	0	5	0	0	1	0	0	0	0	1	0	7	5
16. Other Infectious Diseases ...	1	2	0	0	0	0	0	0	0	0	0	0	3	1
17. Influenza ...	0	0	0	0	0	0	0	1	0	0	3	4	4	3
18. Cancer ...	2	2	1	3	1	4	2	2	0	3	4	2	26	24
19. Diseases of Birth and Development ...	3	4	2	2	4	2	2	2	4	5	2	1	33	26
20. Old Age ...	1	1	0	2	1	0	0	1	2	2	2	1	13	9
21. Diseases of Nervous System ...	5	2	4	2	2	2	2	2	2	2	2	2	29	34
22. Diseases of Heart and Circulatory System ...	2	9	4	1	7	2	2	3	5	5	3	2	45	48
23. Pneumonia ...	1	1	5	0	5	1	0	1	2	3	1	3	23	11
24. Bronchitis ...	1	1	1	1	0	0	1	0	1	0	4	0	10	10
25. Other Diseases Respiratory System ...	0	1	1	1	1	0	1	0	0	0	0	0	5	6
26. Diarrhœa and Catarrh, ...	3	3	5	7	5	4	1	3	0	3	5	4	43	42
27. Other Diseases of Liver and Alimentary Track ...	3	2	4	0	3	2	4	0	2	4	1	2	27	24
28. Diseases of Urinary System ...	2	1	1	1	2	1	1	5	2	1	0	2	19	11
29. Diseases of Child-Birth ...	0	0	1	0	0	0	0	1	0	1	0	1	4	3
30. Diseases of Reproductive System ...	0	1	0	0	0	0	0	0	0	0	0	0	1	1
31. Accidents ...	0	0	1	2	3	1	1	2	3	0	0	2	15	10
32. Homicide ...	0	0	0	0	0	0	0	0	0	0	0	0	0	0
33. Suicide ...	0	0	0	0	1	0	1	0	0	0	1	1	4	1
34. Execution ...	0	0	0	0	0	0	0	0	0	0	0	0	0	0
35. All other Causes ...	2	2	1	1	1	1	0	1	0	1	0	1	11	36
TOTALS ...	32	42	44	28	43	32	23	28	24	33	33	34	396	351

NATIVE DEATHS ARRANGED ACCORDING TO
MONTHS AND CERTAIN DISEASES.

Diseases.		August	September	October	November	December	January	February	March	April	May	June	July	Total 1916-17	Total 1915-16
1.	Plague ...	0	0	0	0	0	0	0	0	0	0	0	0	0	0
2.	Smallpox ...	0	0	0	0	0	0	0	0	0	0	0	0	0	0
3.	Dysentery ...	0	1	2	2	0	0	3	1	1	2	1	0	13	11
4.	Enteric Fever ...	0	0	0	0	0	2	0	1	0	0	0	0	3	2
5.	Diphtheria ...	0	0	0	0	0	0	0	0	0	0	0	0	0	0
6.	Scarlet Fever ...	0	0	0	0	0	0	0	0	0	0	0	0	0	0
7.	Measles ...	0	0	0	0	0	0	0	0	0	0	0	0	0	0
8.	Whooping Cough ...	0	0	0	0	1	0	0	0	0	0	0	0	1	2
9.	Tetanus ...	0	0	0	0	0	0	0	0	1	0	0	0	1	6
10.	Malaria ...	0	0	0	0	0	0	0	0	0	0	0	0	0	0
11.	Venereal Diseases ...	0	0	0	0	0	0	0	0	0	0	0	0	0	1
12.	Puerperal Fever ...	0	0	0	0	0	0	0	0	0	0	0	0	0	0
13.	Septic Diseases ...	0	0	0	1	0	1	0	0	0	0	0	0	2	5
14.	Phthisis ...	1	0	0	1	0	2	0	1	0	0	1	0	6	8
15.	Other forms of Tuberculosis ...	0	0	0	1	0	0	0	0	0	0	0	0	1	4
16.	Other Infectious Diseases ...	0	0	0	0	0	0	0	0	0	0	0	0	0	0
17.	Influenza ...	0	0	0	0	0	0	0	0	0	0	0	0	0	0
18.	Cancer ...	0	0	0	0	0	0	0	0	0	0	0	0	0	0
19.	Diseases of Birth and Development ...	2	0	2	0	0	0	2	0	0	0	0	0	6	12
20.	Old Age ...	0	0	0	0	0	0	0	0	0	1	0	0	1	1
21.	Diseases of Nervous System ...	0	0	0	0	1	0	0	1	0	0	0	0	2	7
22.	Dis. of Heart & Circulatory System ...	0	1	2	0	3	0	1	0	0	2	1	0	10	10
23.	Pneumonia ...	1	3	4	2	1	1	2	1	5	4	3	3	30	20
24.	Bronchitis ...	0	0	0	0	0	0	0	0	0	1	0	1	2	5
25.	Other Ds. of Respiratory System ...	0	1	0	0	0	0	0	0	0	0	0	0	1	1
26.	Diarrhoea and Catarrh ...	0	1	2	1	0	1	0	1	0	1	2	0	9	21
27.	Other Dis. of Liver and Alimentary Track ...	1	0	0	0	1	0	0	1	1	1	1	0	6	3
28.	Diseases of Urinary System ...	0	2	0	0	0	0	0	0	2	0	1	0	5	4
29.	Diseases of Child Birth ...	0	0	0	0	0	0	0	0	1	0	0	0	1	0
30.	Diseases of Reproductive System...	0	0	0	0	0	0	0	0	0	0	0	0	0	0
31.	Accidents ...	0	1	0	0	2	0	1	0	1	1	0	1	7	16
32.	Homicide ...	0	0	0	0	0	0	0	1	0	0	0	0	1	2
33.	Suicide ...	0	0	1	0	0	0	0	0	0	0	0	0	1	1
34.	Execution ...	0	0	0	0	0	0	0	0	0	0	0	0	0	0
35.	All Other Causes ...	0	0	0	0	0	1	1	0	0	0	0	0	2	3
36.	Cerebro Spinal Meningitis ...	0	0	2	0	1	0	0	0	0	0	0	0	3	0
Totals ...		5	10	15	8	10	8	10	8	12	13	10	5	114	145

ASIATIC DEATHS ARRANGED ACCORDING TO MONTHS
AND CERTAIN DISEASES.

Diseases.		August	September	October	November	December	January	February	March	April	May	June	July	Total, 1916-17.	Total, 1915-16.
1.	Plague	0	0	0	0	0	0	0	0	0	0	0	0	0	0
2.	Smallpox	0	0	0	0	0	0	0	0	0	0	0	0	0	0
3.	Dysentery	2	1	0	0	0	0	1	0	0	1	1	0	6	6
4.	Enteric Fever	0	0	0	0	0	0	0	0	1	0	0	0	1	0
5.	Diphtheria	0	0	0	0	0	0	0	0	2	0	0	0	2	0
6.	Scarlet Fever	0	0	0	0	0	0	0	0	0	0	0	0	0	0
7.	Measles	0	0	0	1	1	0	0	0	0	0	0	0	2	0
8.	Whooping Cough	0	0	0	0	0	0	0	0	0	0	0	0	0	1
9.	Tetanus	0	1	0	0	0	0	0	0	0	0	0	0	1	3
10.	Malaria	0	0	0	0	0	0	0	0	0	0	0	0	0	0
11.	Venereal Disease	0	0	0	0	0	0	0	0	0	1	1	0	2	1
12.	Puerperal Fever	0	1	0	0	0	0	0	0	1	0	0	0	2	1
13.	Septic Diseases	1	0	0	0	0	1	0	0	0	0	0	0	2	5
14.	Phthisis	1	2	3	4	1	0	1	3	0	1	1	3	20	13
15.	Other forms of Tuberculosis	0	0	0	1	0	2	1	0	0	0	0	3	7	9
16.	Other Infectious Diseases	0	0	0	0	0	0	0	0	0	0	0	0	0	0
17.	Influenza	0	0	0	0	0	0	0	0	0	0	0	0	0	0
18.	Cancer	0	0	0	0	0	0	0	0	0	0	0	0	0	1
19.	Diseases of Birth and Development	4	1	1	2	2	0	1	1	2	3	1	0	18	14
20.	Old Age	1	1	1	1	0	0	0	0	2	1	1	0	8	3
21.	Diseases of Nervous System	1	0	2	2	7	0	0	3	2	0	1	2	20	7
22.	Dis. of Heart and Circulatory System	1	1	1	2	0	1	2	0	1	0	1	0	10	13
23.	Pneumonia	5	2	6	6	2	0	2	0	1	0	2	0	26	26
24.	Bronchitis	0	1	3	0	0	1	0	1	3	2	0	5	16	7
25.	Other Dis. of Respiratory System	0	2	0	1	0	0	0	0	0	0	0	0	3	1
26.	Diarrhoea and Catarrh	3	0	3	7	2	5	0	1	2	0	2	1	26	23
27.	Other Diseases of Liver and Alimentary Track	0	2	4	2	3	0	0	1	2	1	5	1	21	10
28.	Diseases of Urinary System	1	0	0	1	1	0	0	2	0	1	0	0	6	5
29.	Diseases of Child-Birth	0	0	0	0	0	0	0	0	0	0	0	0	0	5
30.	Dis. of Reproductive System	0	0	0	0	0	0	0	0	0	0	0	0	0	0
31.	Accidents	0	4	0	0	2	3	0	1	0	1	2	1	14	16
32.	Homicide	0	0	0	0	0	0	0	0	0	0	0	1	1	0
33.	Suicide	1	0	0	0	0	0	1	0	1	0	0	0	3	0
34.	Execution	0	0	0	0	0	0	0	0	0	0	0	0	0	0
35.	All other Causes	0	0	1	0	2	0	1	0	1	1	0	2	8	10
Totals		21	19	25	30	23	13	10	13	21	13	18	19	225	180

INFANTILE MORTALITY.

	Male.	Female.	Total.
Infantile Deaths during 1916-17	44	33	77
Registered Births	454	448	902
Infantile Deaths	44	33	77

This equals 85.4 infantile deaths per 1,000 births and represents the "Infantile Mortality Figure" for Durban, 1916-1917.

The following table shows the Infantile Mortality Figure for England and Wales during 1916:—

All England and Wales	91
96 Great Towns, including London	98
148 Smaller Towns	90
LONDON	87

TABLE I.—INFANTILE DEATHS GROUPED ACCORDING TO AGES
IN WEEKS AND MONTHS.

Weeks and Months	Under 1 Week	1-2 Weeks	2-3 Weeks	3-4 Weeks	Total under 1 month	1-2 Months	2-3 Months	3-4 Months	4-5 Months	5-6 Months	6-7 Months	7-8 Months	8-9 Months	9-10 Months	10-11 Months	11-12 Months	Total under 1 year
Deaths	16	4	1	2	23	5	5	7	3	3	6	11	1	7	3	3	77
Previous Year	15	9	5	0	29	9	5	8	4	3	8	3	4	4	2	6	85

TABLE 2.—INFANTILE DEATHS GROUPED ACCORDING TO
MONTHLY INCIDENCES.

Months	1916					1917							Total
	Aug.	Sept.	Oct.	Nov.	Dec.	Jan.	Feb.	Mar.	April	May	June	July	
Deaths	8	8	6	8	8	7	5	3	4	8	6	6	77
Previous Year	1	10	9	7	13	8	10	4	5	9	7	2	85

TABLE 3.—MONTHLY DISTRIBUTION OF SOME OF THE MORE
COMMON CAUSES OF INFANT DEATHS.

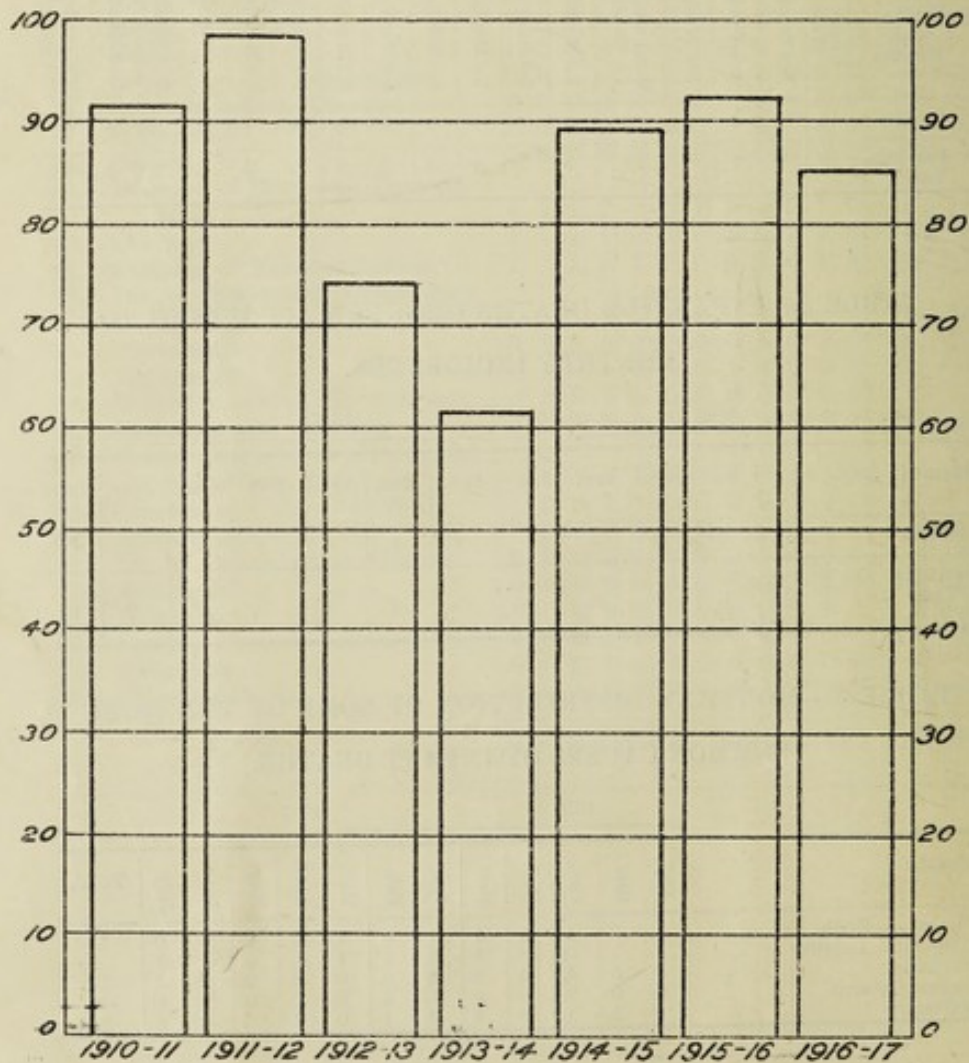
Months	1916					1917							Total.
	Aug.	Sept.	Oct.	Nov.	Dec.	Jan.	Feb.	Mar.	April	May	June	July	
Premature Birth	1	0	1	1	1	1	0	1	2	3	0	0	11
Congenital Debility	1	1	0	0	1	0	1	1	0	0	1	1	7
Enteritis	1	5	1	2	2	2	0	0	0	2	2	2	19
Gastric Catarrh	0	0	2	0	0	1	2	0	0	0	1	0	6
Marasmus	1	2	1	0	2	0	1	0	1	0	0	2	10

TABLE 4.—SHOWING INFANTILE DEATHS IN WARDS FOR THE PAST FIVE YEARS.

YEARS.	WARDS.							TOTAL.
	1	2	3	4	5	6	7	
1912-13	6	5	8	16	10	10	13	68
1913-14	5	8	8	11	7	9	8	56
1914-15	13	7	10	17	12	11	12	82
1915-16	5	8	19	18	10	10	15	85
1916-17	3	11	9	17	8	14	15	77

INFANTILE MORTALITY.
CHART.

The following columns and table exhibit the Infantile Mortality Figure for the past seven years:—



	YEAR.						
	1910-11	1911-12	1912-13	1913-14	1914-15	1915-16	1916-17
No. of Infant Deaths ...	86	87	68	56	82	85	77
Infantile Mortality Figure	90.3	98.5	74.8	60.9	89.4	92.3	85.4

The following table shows the comparative rates (Europeans) from the principal towns of South Africa:—

	Population	Birth Rate.	Death Rate.	Infantile Mortality.	Phthisis Death Rate.
Johannesburg ...	140,000	29.19	12.10	116.71	0.53
Pretoria ...	30,000	26.7	12.6	87.28	.38
Bloemfontein
Capetown, City ...	87,430	27.68	13.11	96.28	1.41
East London	29.1	9.06	78.1	.51
Maritzburg	28.3	9.27	38.54	...
Durban ...	82,650	22.13	9.1	85.4	.54

TABLE OF CASES OF NOTIFIABLE INFECTIOUS DISEASES
ARRANGED ACCORDING TO RACES, 1916-17.

Disease.	Europeans.		Natives.		Asiatics.		Total.	
	Boro'.	Imp.	Boro'.	Imp.	Boro'.	Imp.	Boro'.	Imp.
Diphtheria ...	30	2	1	0	4	0	0	0
Scarlet Fever ...	20	4	0	0	0	0	0	0
Enteric Fever ...	73	56	4	0	9	0	0	0
Puerperal Fever ...	2	1	0	0	1	1	3	2
Phthisis ...	22	36	11	17	30	31	63	84
Anthrax ...	1	1	0	0	0	0	1	1
Leprosy ...	0	0	0	0	0	2	0	2
Cerebro Spinal Meningitis ...	1	7	3	3	0	0	4	10
Totals ..	149	107	19	20	44	34	212	161
Treated in Hospital	76	70	8	18	18	23	102	111
Treated at home or privately ...	73	37	11	2	26	11	110	50

The following also are Notifiable Infectious Diseases, but there have been no cases during the past year:—

Plague, Cholera, Membranous Croup, Typhus Fever, Relapsing Fever, Glanders, Rabies, Malta Fever, Yellow Fever, Sleeping Sickness.

TABLE SIMILAR TO THE FOREGOING FOR COMPARISON CONTAINING NUMBER OF NOTIFICATIONS OF PREVIOUS YEAR, 1915-16.

Disease.	Europeans.		Natives.		Asiatics.		Total.	
	Boro'.	Imp.	Boro'.	Imp.	Boro'.	Imp.	Boro'.	Imp.
Smallpox ...	0	0	0	1	0	0	0	1
Diphtheria ...	81	4	0	0	4	0	85	4
Scarlet Fever ...	13	2	0	0	0	0	13	2
Enteric Fever ...	90	38	2	2	2	1	94	41
Puerperal Fever ...	2	0	0	0	2	0	4	0
Anthrax ...	1	0	0	0	0	0	1	0
Phthisis ...	25	35	10	16	19	18	54	69
Totals ..	212	79	12	19	27	19	251	117
Treated in Hospital	85	51	3	12	7	12	95	75
Treated at home or privately ...	127	28	9	7	20	7	156	42

ENTERIC FEVER.

The following table shows the total number of cases of Enteric Fever notified and deaths recorded during the past six years:—

Year	1911-12	1912-13	1913-14	1914-15	1915-16	1916-17	
						Borough	Imported
Cases	123	188	174	95	135	86	56
Deaths	18	19	34	9	13	14	12

Case Mortality, 16.3 per cent.

Case Incidence per 1,000 of population = 1.04.

RACE AND SEX DISTRIBUTION.

	Male.	Female.	Total.	Deaths.
European	36	37	73	10
Native	4	—	4	3
Asiatic	5	4	9	1
	—	—	—	—
	45	41	86	14
	—	—	—	—

WARD DISTRIBUTION.

Wards	1	2	3	4	5	6	7	Impt.	Total.
Cases	17	13	7	10	8	17	14	56	142

SIZE OF HOUSE.

Rooms	1	2	3	4	5	6	7	Over 7	Institution.	Total
European	14	5	6	11	18	11	2	2	4	73
Native	1	0	0	0	0	0	0	0	3	4
Asiatic	7	1	0	0	0	0	0	0	1	9
Totals	22	6	6	11	18	11	2	2	8	86

The houses of 80 cases were provided with water closets, and at 6 the pail system was in use.

WIDAL REACTION.

During the year 130 specimens of blood from suspected cases of Enteric and Paratyphoid have been submitted to me for examination. Of these 39 were positive and 91 negative,

AGE DISTRIBUTION—EUROPEANS.

Age ...	0-5	5-10	10-15	15-20	20-25	25-35	35-45	45-55	55-65	Total.
Male	2	5	6	3	3	5	6	4	2	36
Female	0	11	7	5	7	4	1	2	0	37
Totals	2	16	13	8	10	9	7	6	2	73

SANITARY CONDITIONS.—The sanitary conditions existing at houses where cases resided were:—

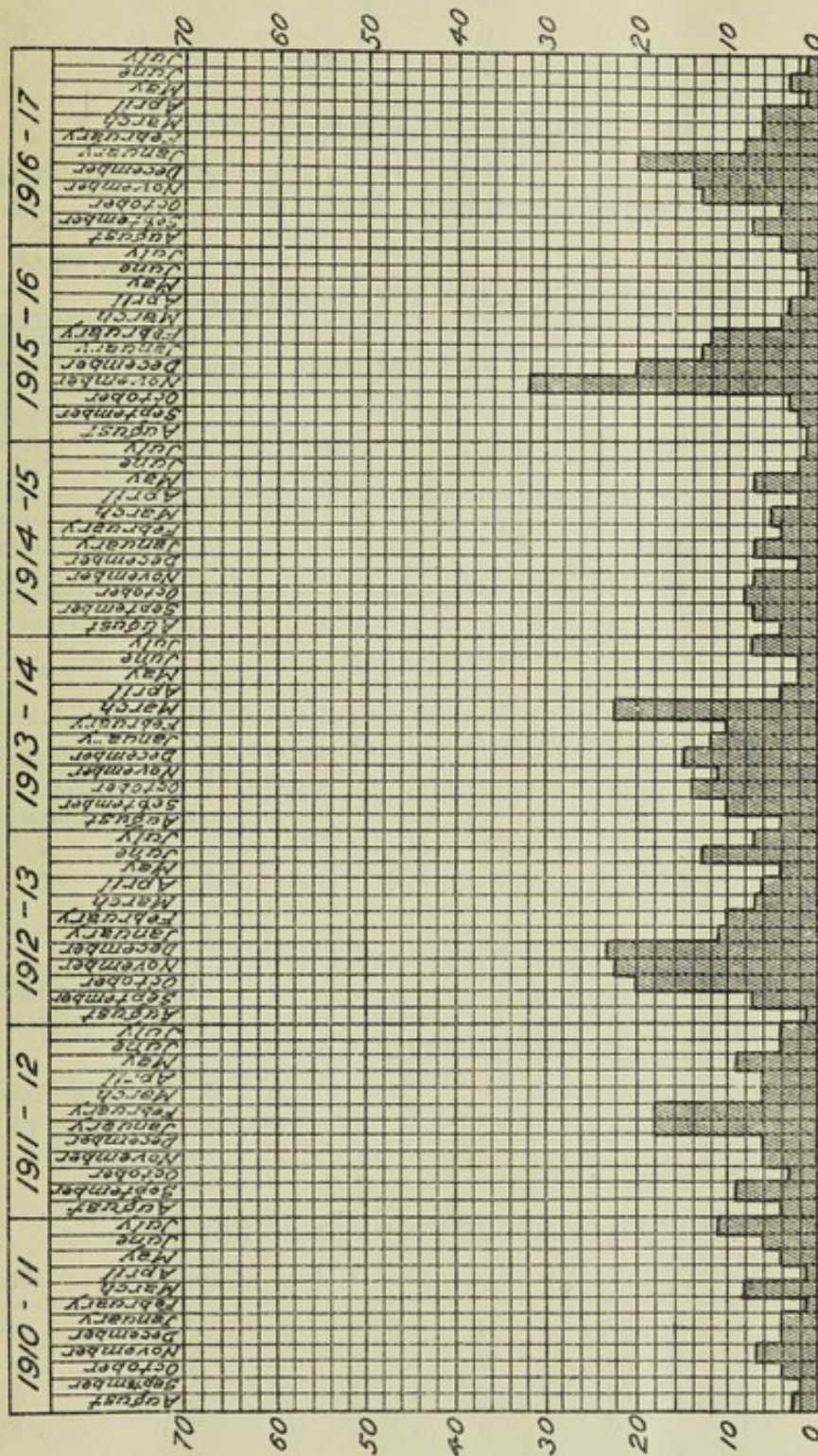
Good.	Fair.	Poor.	Bad.	Total.
13	59	14	—	86

CLEANLINESS.—So far as cleanliness of the dwellings and the surroundings was concerned, they might be classed as:—

Clean.	Fair.	Dirty.	Total.
63	20	3	86

The subjoined Chart shows the Monthly Distribution of Enteric during the past seven years:—

ENTERIC FEVER NOTIFICATIONS.



SCARLET FEVER.

The following table shows the cases notified and deaths from Scarlet Fever registered during the past six years:—

Year.	1911-12	1912-13	1913-14	1914-15	1915-16	1916-17	
						Borough	Imported
Cases	12	27	65	23	15	20	9
Deaths	0	0	0	0	0	0	0

WARD DISTRIBUTION.

Wards	1	2	3	4	5	6	7	Impt.	Total.
Cases	3	6	4	0	3	0	4	4	24

AGE AND SEX DISTRIBUTION (EUROPEANS).

Age	Under 1-5	5-10	10-15	Total
Male	5	4	1	10
Female	3	4	3	10
Totals	8	8	4	20

DIPHTHERIA.

The following table shows the cases notified and deaths from Diphtheria registered during the past six years:—

Year	1911-12	1912-13	1913-14	1914-15	1915-16	1916-17	
						Borough	Imported
Cases	130	160	127	119	89	35	2
Deaths	11	11	6	9	5	3	0

RACE DISTRIBUTION.—Europeans, 30; Asiatics, 4; Natives, 1.

WARD DISTRIBUTION.

Wards	1	2	3	4	5	6	7	Impt.	Total.
Cases	4	3	7	7	4	1	9	2	37

NUMBER OF ROOMS IN INFECTED HOUSES.

Rooms.	1	2	3	4	5	6	7	Over 7	Institution.	Total.
European	3	1	3	3	4	6	2	2	2	26
Coloured	0	1	0	0	2	1	0	0	0	4
Native	1	0	0	0	0	0	0	0	0	1
Asiatic	1	1	0	1	0	0	1	0	0	4
Totals	5	3	3	4	6	7	3	2	2	35

MONTHLY DISTRIBUTION OF CASES AND DEATHS.

	1916					1917							
	Aug.	Sept.	Oct.	Nov.	Dec.	Jan.	Feb.	March.	April.	May.	June.	July.	Total.
Cases	6	3	5	2	3	2	1	4	3	1	2	3	35
Deaths	0	0	0	0	0	0	0	0	2	0	0	1	3

AGE DISTRIBUTION OF CASES.

Age	0—5	5—10	10—15	15—20	20—25	25—35	35—45	45—85	TOTAL
European Males	3	2	2	1	2	1	1	0	12
European Females	9	4	2	0	1	2	0	0	18
Native and Asiatic Males	0	0	0	0	0	3	0	0	3
Native and Asiatic Females	1	1	0	0	0	0	0	0	2
TOTALS	13	7	4	1	3	6	1	0	35

SANITARY CONDITIONS.—The sanitary conditions existing at houses where cases resided were:—

Good.	Fair.	Poor.	Bad.	Total.
13	15	7	—	35

CLEANLINESS.—So far as cleanliness of the dwellings and surroundings was concerned, they may be classed as:—

Clean.	Fair.	Dirty.	Total.
21	11	3	35

TUBERCULOSIS.

TABLE 1.

YEAR.	EUROPEANS.				NATIVES				ASIATICS.			
	All Tuberculosis.		Phthisis.		All Tuberculosis.		Phthisis.		All Tuberculosis.		Phthisis.	
	Deaths.	Rate per 1,000 of Pop.	Deaths.	Rate per 1,000 of Pop.	Deaths.	Rate per 1,000 of Pop.	Deaths.	Rate per 1,000 of Pop.	Deaths.	Rate per 1,000 of Pop.	Deaths.	Rate per 1,000 of Pop.
1910-11	21	·61	18	·52	7	·40	2	·11	28	1·64	25	1·47
1911-12	26	·71	23	·63	5	·27	5	·27	54	3·09	49	2·8
1912-13	19	·53	18	·50	7	·34	5	·25	31	1·72	26	1·44
1913-14	22	·6	20	·55	6	·27	2	·1	27	1·47	19	1·03
1914-15	16	·43	13	·35	13	·62	9	·43	23	1·22	15	·8
1915-16	25	·66	20	·51	12	·58	8	·38	22	1·13	13	·68
1916-17	29	·71	22	·54	7	·32	6	·27	27	1·36	20	1·01

TABLE 2.—DEATHS FROM ALL FORMS OF TUBERCULOSIS
SINCE 1910.

	1910-11	1911-12	1912-13	1913-14	1914-15	1915-16	1916-17	Total Deaths for 7 Years.	Annual Average Mortality
European ...	21	26	19	22	16	25	29	158	22
Native ...	7	5	7	6	13	12	7	57	8
Asiatic ...	28	54	31	27	23	22	27	212	30
Totals ...	56	85	57	55	52	59	63	427	61

PHTHISIS.

EUROPEANS.

TABLE 3.—DISTRIBUTION OF NOTIFIED CASES AND DEATHS
IN WARDS.

Wards ...	1	2	3	4	5	6	7	Imported.	Total.
Cases ...	4	4	2	1	4	2	5	36	58
Deaths ...	3	6	3	3	5	1	1	8	30

TABLE 4.—AGE AND SEX DISTRIBUTION OF NOTIFIED CASES AND DEATHS.

EUROPEANS.

Years	5—10		10—15		15—20		20—25		25—35		35—45		45—55		55—65		65—85		Total.	
	M	F	M	F	M	F	M	F	M	F	M	F	M	F	M	F	M	F	M	F
Cases	0	0	1	1	2	1	1	0	4	2	3	3	1	1	0	0	0	2	12	10
Deaths	0	0	2	0	1	0	0	0	1	3	1	3	3	3	2	1	0	2	10	12

TABLE 5.—DISTRIBUTION OF NOTIFIED CASES AND DEATHS IN WARDS.

NATIVES.

Wards	1	2	3	4	5	6	7	Imported.	Total.
Cases notified	0	1	3	2	2	3	0	17	28
Deaths	1	0	1	0	1	3	0	21	27

TABLE 6.—DISTRIBUTION OF NOTIFIED CASES AND DEATHS IN WARDS.

ASIATICS.

Wards	1	2	3	4	5	6	7	Imported.	Total.
Cases notified	3	0	0	9	2	14	2	31	61
Deaths	0	1	0	6	3	9	1	23	43

TABLE 7.—SIZE OF HOUSE.

Rooms	1	2	3	4	5	6	7	Over 7	Institution.	Total.
European	4	3	2	3	8	1	0	1	0	22
Native	9	1	0	0	0	0	0	0	1	11
Asiatic	20	3	0	2	0	0	0	0	2	27
Totals	33	7	2	5	8	1	0	1	3	60

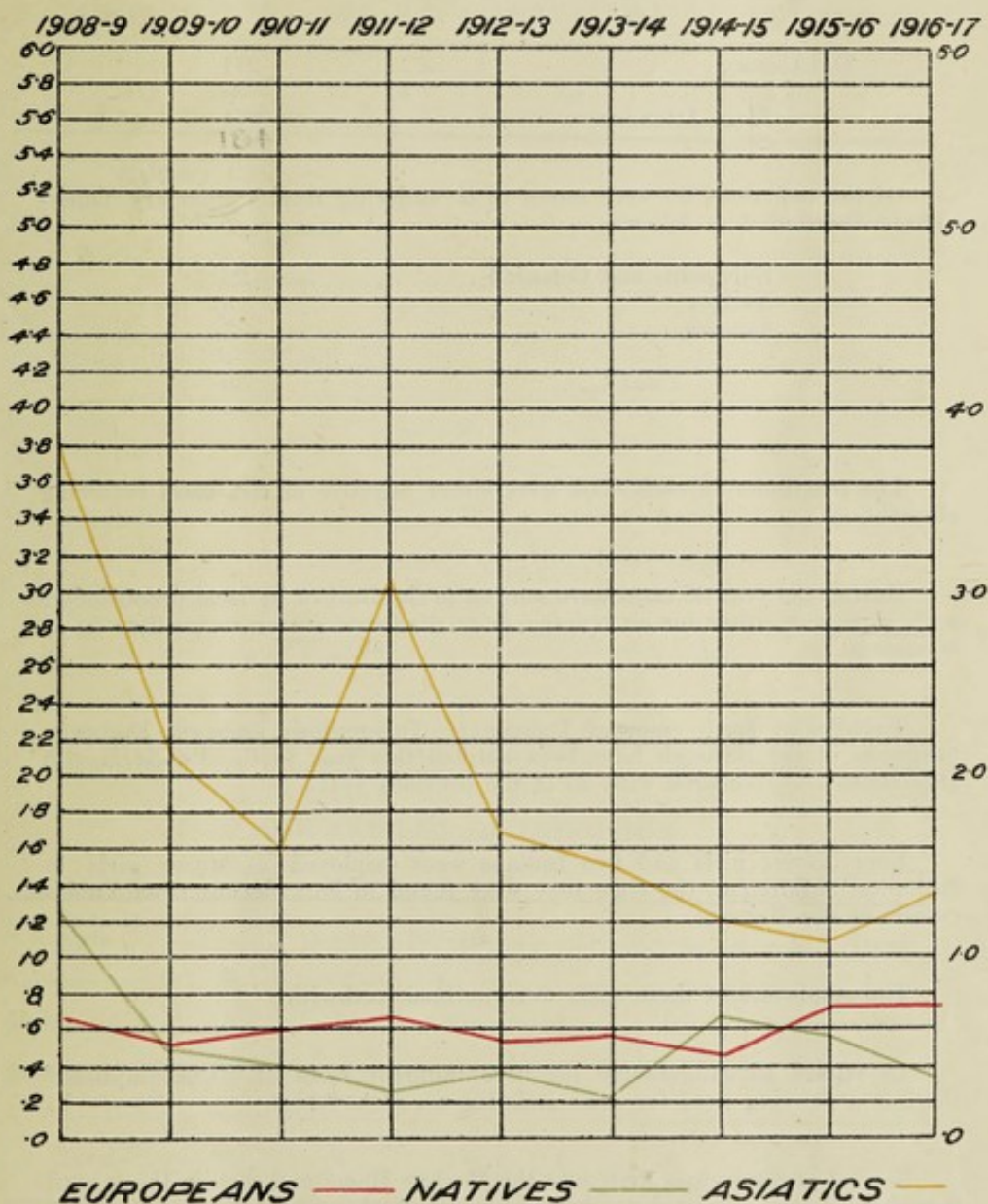
The houses of three notified Asiatic cases were not found.

TABLE OF NOTIFICATIONS OF TUBERCULOSIS ARRANGED IN
MONTHS AND RACES.

	Europeans.		Natives.		Asiatics.		TOTAL.	
	Boro.	Imp.	Boro.	Imp.	Boro.	Imp.	Boro.	Imp.
1916								
August ...	0	7	2	1	3	1	5	9
September ...	4	1	0	0	1	6	5	7
October ...	2	2	1	0	2	2	5	4
November ...	1	3	2	5	7	2	10	10
December ...	1	5	0	2	1	2	2	9
1917								
January ...	1	2	0	3	2	2	3	7
February ...	1	4	2	1	3	3	6	8
March ...	3	2	1	2	3	1	7	5
April ...	0	1	0	1	1	4	1	6
May ...	4	2	1	0	2	6	7	8
June ...	3	3	1	1	2	0	6	4
July ...	2	4	1	1	3	2	6	7
Totals ...	22	36	11	17	30	31	63	84

DEATH RATE FROM TUBERCULOSIS.

Chart showing the Death Rate per 1,000 from Tuberculosis amongst Europeans, Asiatics and Natives during the past nine years:—



TUBERCULOSIS BUREAU.

The following are the figures for the Attendances at the Bureau during the past year ended 31st July, 1917:—

New Patients :	
Europeans	95
Coloured	6
Natives	15
Asiatics	44
	<hr/>
	160
	<hr/>
Old Cases	271
	<hr/>
Total Attendances	271
	<hr/>
	431

Of the new cases 36 were found to be suffering from Pulmonary Tuberculosis distributed as follows:—

Europeans and Coloured	23
Natives	6
Asiatics	7
	<hr/>
Total	36

The remainder in each class were either negative or else cases requiring observation.

During the year 38 cases were sent on to the Bureau by local practitioners with a request either for an opinion as to diagnosis or for suggestions as to treatment.

Twenty-two fresh cases of Pulmonary Tuberculosis amongst European burgesses of the Borough have been notified this year to the Public Health Department, as compared with 25 in the previous year.

Four Native girls and two Indians were employed as nurse girls to European children at the time they were found to be suffering from Tuberculosis at the Bureau.

The employers of these cases were notified forthwith.

In regard to dangerously infective indigent cases of "Consumption," there is a pressing need for some isolation accommodation.

Several of these cases drift into the Durban Home and remain there until they have to be admitted to Addington Hospital, often in a practically dying condition.

The disease kills slowly as a rule, hence the large number of contacts likely to be infected by any one case. Isolation of these dangerously infective cases would without doubt greatly lessen the number of contacts infected and the inmates of the Durban Home, and members of other homes would be protected as well.

INFECTIOUS DISEASES HOSPITAL.

DISEASES	European		Coloured		Native		Asiatic		Total	
	B.	I.	B.	I.	B.	I.	B.	I.	B.	I.
Scarlet Fever	7	3	0	0	0	0	0	0	7	3
Diphtheria	5	0	2	0	1	0	0	0	8	0
Chicken Pox	0	0	0	0	18	1	0	0	18	1
Measles	0	2	3	0	10	0	0	0	13	2
Mumps	0	0	0	0	1	0	0	0	1	0
Total	12	5	5	0	30	1	0	0	47	6

Military Cases—

Europeans	4
Natives	1
Total	5

SCARLET FEVER.

AGE AND SEX DISTRIBUTION.

Ages	0—5	5—10	10—15	15—20	20—25	40—45	Total
Male	3	1	1	1	0	1	7
Female	0	2	1	0	0	0	3
Total	3	3	2	1	0	1	10

DEATHS.—No deaths from Scarlet Fever have taken place during the year.

The average length of stay in hospital for the above 10 cases was 33 days.

One patient was found to be suffering from Phthisis,

DIPHTHERIA.

AGE AND SEX DISTRIBUTION.

Ages ...	0—5	5—10	10—15	15—20	20—25	40—45	Total
Male ...	2	1	0	0	1	1	5
Female ...	2	0	1	0	0	0	3
Total ...	4	1	1	0	1	1	8

One patient died from Nasal Diphtheria after being in hospital three days.

The average length of stay in hospital for the above eight patients was 17 days.

During the previous year 25 cases of Diphtheria were isolated at the hospitals.

The various types of this disease from which the patients were found to be suffering were:—Faucial, 6; Laryngeal, 1; Nasal and Faucial, 1.

All cases show three successive negative swabs before discharge. For 53 days during the past year, there were no patients under treatment at the hospital.

BACTERIOLOGICAL LABORATORY.

The following examinations have been made in the Laboratory attached to the Public Health Department during the past year:—

TABLE 1.

	Negative.	Positive.	Total
Tubercle Bacilli ...	237	60	297
Diphtheria Bacilli ...	224	51	275
Widal Reaction for Enteric Fever and Paratyphoid Fever ...	91	39	130
Gonococci ...	23	10	33
Malaria ...	34	1	35
Bilharzia ...	2	1	3
Amoeba Histolytica ...	4	0	4
Ringworm ...	1	5	6
Anthrax ...	1	1	2
Totals ...	617	168	785

TOTAL EXAMINATIONS FOR THE PAST EIGHT YEARS.

1909-10	1910-11	1911-12	1912-13	1913-14	1914-15	1915-6	1916-17
226	323	*1,970	1,367	1,324	1,266	1,171	785

* Chiefly Plague Examinations.

The considerable drop in the total examinations made this year is due to the decrease in the case of Diphtheria specimens. In 1915-16, 460 more Diphtheria examinations were carried out than was the case this year.

TABLE 2.

Showing number of examinations carried out each month and the results in certain diseases during the past two years.

1915-1916		Aug.	Sept.	Oct.	Nov.	Dec.	Jan.	Feb.	March	April	May	June	July
Tubercle Bacilli	N	20	22	16	16	9	13	14	16	12	14	13	22
	P	5	7	3	4	4	2	5	5	6	7	12	4
Diphtheria	N	87	32	37	28	26	20	13	78	74	40	37	52
	P	40	9	11	9	14	10	13	33	28	19	14	11
Enteric and Paratyphoid Fever	N	1	4	1	30	13	18	19	9	3	4	1	3
	P	0	1	0	0	0	2	5	1	1	0	1	1
1916-1917		Aug.	Sept.	Oct.	Nov.	Dec.	Jan.	Feb.	March	April	May	June	July
Tubercle Bacilli	N	27	26	18	26	14	26	5	26	14	20	16	19
	P	4	5	2	3	2	4	3	3	8	6	9	11
Diphtheria	N	44	17	27	15	10	19	16	9	10	24	5	28
	P	16	3	5	2	5	6	0	2	3	0	2	7
Enteric and Paratyphoid Fever	N	6	16	6	4	17	15	7	6	7	3	2	2
	P	3	2	2	1	7	8	1	5	6	0	2	2

N. = Negative. P. = Positive.

The figures given above for this year do not show in any one month a large proportion of negative blood examinations in the case of Enteric and Paratyphoid Fever as occurred in November last year. They cannot, however, be taken as evidence against the suggestion thrown out in last year's report, that there occurs in Durban a febrile illness of cause unknown which resembles Enteric and Paratyphoid Fever and is not Malta Fever, Dengue Fever or Malaria.

WATER EXAMINATIONS.

Seventy samples of water from various parts of the system have been examined throughout the year and reports from time to time submitted thereon.

POLICE, TRAMWAYS AND FIRE BRIGADE CANDIDATE EXAMINATIONS, ETC., 1916-17.

The following are the numbers of Candidates medically examined this year:—

Tramways	201
Police	22
Fire Brigade	28
	<hr/>
	251

Owing to the War, continual changes in the Staff of the Tramway Department are taking place and the number of examinations has been very much increased.

In 1914-15 there were 30 medical examinations.
In 1915-16 there were 126, and
In 1916-17 there were 251 as shown above.

The treatment of members of the Fire Brigade and Borough Police reporting sick has been carried out as usual by this Department.

DISINFECTING STATION.

The following is a summary of the work performed at the Disinfecting Station during the past year:—

DISINFECTIONS.

Months	Houses or Rooms	Mattresses	Blankets	Sheets	Articles of Clothing	General Articles	Totals
1916							
August ...	47	75	148	155	638	1028	2091
September ...	44	70	136	108	876	612	1846
October ...	63	85	155	146	504	732	1685
November ...	52	87	79	64	215	562	1059
December ...	56	80	82	60	205	560	1043
1917							
January ...	58	88	86	99	255	508	1094
February ...	48	60	58	50	114	278	608
March ...	29	40	49	70	398	494	1080
April ...	29	45	56	55	247	508	940
May ...	17	194	61	55	208	490	1025
June ...	46	77	121	66	322	700	1332
July ...	50	136	297	190	656	1298	2629
Totals ...	539	1039	1328	1118	4638	7770	16432
Previous Year's Work ...	484	674	1089	1792	6764	7908	18711

List of Articles Washed and Disinfected for various

CORPORATION DEPARTMENTS.

Departments.	Towels	Blankets	Felts	Bandages	Coats	Trousers	Cushion Covers	Table Cloths.	Totals
Main Police Station	68	275	455	798
Sanitary Department	17,694	17,694
Borough Engineer ...	348	348
Electrical Engineer	480	480
Water Department...	196	196
Municipal Abattoir...	169	254	156	581
Mayor's Motor Car...	57	58	66	...	181
Fire St'n Ambulance	...	278	...	39	317
Town Council ...	500	500
Totals ...	19,455	553	455	39	311	216	66	...	21,095
Previous Year ...	6,622	645	466	28	317	163	526	108	8,875

The following tables show the WASHING DONE during the past year in connection with the Public Baths, West Street, and the Beach Bathing Enclosure and Swimming Baths:—

PUBLIC BATHS, WEST STREET.

Months.	Towels.	Ladies' Costumes.	Drawers.	Ladies' Sheets.	Plain Sheets.	Other Articles.	Totals.
1916							
August ...	3945	118	...	108	25	54	4250
September ...	3811	67	...	92	23	52	4045
October ...	3543	23	...	58	27	57	3708
November ...	3859	33	...	61	18	49	4020
December ...	3715	34	...	64	19	37	3869
1917							
January ...	2993	23	...	57	24	61	3158
February ...	3023	18	...	35	19	34	3129
March ...	3532	49	...	80	23	116	3800
April ...	2433	40	...	69	19	57	2618
May ...	2676	41	...	55	12	19	2803
June ...	4893	88	...	96	17	85	5179
July ...	6787	162	...	172	25	44	7190
Totals ...	45210	696	...	947	251	665	47769
Previous Year	33045	854	236	937	266	531	35869

OCEAN BEACH BATHING ENCLOSURE AND OPEN AIR
SWIMMING BATHS.

Months.	Towels.	Ladies' Costumes.	Gent's Costumes.	Drawers.	Totals.
1916					
August ...	8660	1116	5454	5117	20347
September ...	8980	881	6107	5686	21654
October ...	9040	863	6444	5875	22222
November ...	15849	1073	16916	11239	45077
December ...	23806	1499	20674	12843	58822
1917					
January ...	21083	2260	16376	9946	49665
February ...	16665	1126	11849	7980	37620
March ...	17133	1343	10748	5830	35054
April ...	16909	1761	9963	5135	33768
May ...	10539	1271	5581	4520	21911
June ...	13170	3995	14222	2780	34167
July ...	13409	6651	2386	1520	23966
Totals ...	175243	23839	126720	78471	404273
Previous Year ...	116820	16585	68305	58194	259904

INFECTIOUS DISEASE PATIENTS REMOVED BY AMBULANCE
TO HOSPITALS.

The following table shows the number of patients removed to Hospitals during the past year:—

Hospitals.	Europe'n	Coloured	Native	Asiatic	Total.
Infectious Diseases Hospital	18	2	31	—	51
Addington Hospital	29	—	2	1	32
The Sanatorium	13	—	—	—	13
Military Base Hospital... ..	11	—	4	—	15
Other Hospitals	3	—	—	1	4
	74	2	37	2	115

MEDICAL OFFICER OF HEALTH.

STAFF.

The constitution of the Staff is as follows:—

Medical Officer of Health	P. Murison.
Assistant Medical Officer of Health	N. H. Walker.
Chief Inspector of Nuisances	W. C. Daugherty.
Special Sanitary Inspector	R. Walker.
Lady Sanitary Inspector	P. G. Salmon.
Assistant Inspectors of Nuisances	<div> J. Kendall. T. Hyslop. W. Thomson. J. Wood. A. Kelso. W. G. Pearce. W. G. Smith. F. W. Holmes. </div>
Clerk	E. Posner.
Clerk	A. McIver.
Clerk	F. W. Burne.
Office Messenger	J. Kirk.
Superintendent, Disinfecting Station	C. D. Morning.
Assistant Disinfecter	P. W. Anderson.
Municipal Nurse, Congella Hospital	A. Mieville.
Housekeeper	K. Salmon.

P. MURISON, M.D., B.Sc., D.P.H.,

Medical Officer of Health.

REPORT OF THE COMMISSIONER OF THE GENERAL LAND OFFICE

STATE

The following is a list of the lands owned by the State of

Alabama, and the amount of the same, as reported by the
Commissioner of the General Land Office, for the year ending
March 31, 1881.

NAME OF LAND.	AMOUNT OF LAND.
State of Alabama	1,000,000
County of Alabama	1,000,000
City of Alabama	1,000,000
Town of Alabama	1,000,000
Village of Alabama	1,000,000
Hamlet of Alabama	1,000,000
Plantation of Alabama	1,000,000
Manor of Alabama	1,000,000
Barony of Alabama	1,000,000
Viscountcy of Alabama	1,000,000
Marquessate of Alabama	1,000,000
Dukedom of Alabama	1,000,000

Witness my hand and seal, at the City of Montgomery, this 1st day of January, 1881.



