

Annual report / City of Calgary, Department of Public Health.

Contributors

Calgary (Alta.). Health Department.

Publication/Creation

[Place of publication not identified] : [s.n], [1958]

Persistent URL

<https://wellcomecollection.org/works/hf3spf58>

License and attribution

This work has been identified as being free of known restrictions under copyright law, including all related and neighbouring rights and is being made available under the Creative Commons, Public Domain Mark.

You can copy, modify, distribute and perform the work, even for commercial purposes, without asking permission.

**wellcome
collection**

Wellcome Collection
183 Euston Road
London NW1 2BE UK
T +44 (0)20 7611 8722
E library@wellcomecollection.org
<https://wellcomecollection.org>



CITY OF CALGARY

DEPARTMENT OF PUBLIC HEALTH

Annual Report for the Year 1958

LOCAL BOARD OF HEALTH FOR THE CITY OF CALGARY

His Worship Mayor D. H. Mackey, Chairman.

William A. Prowse, M. D. — 1958-61.

Frank L. Woodman — 1957-60.

Fred Kenny — 1956-9.

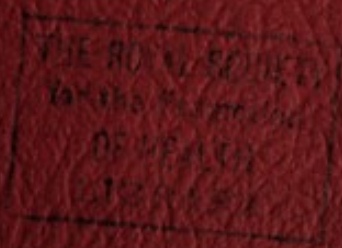
A. H. Nicholson, City Engineer, Ex-officio.

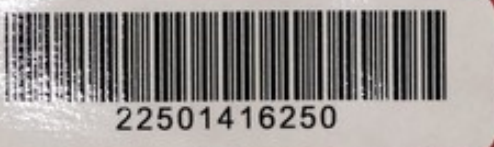
W. H. Hill, Medical Officer of Health, Ex-officio.

Medical Officer of Health, W. H. Hill, B.A., M.D., C.M., D.P.H.

Asst. Medical Officer of Health, L. C. ALLAN, M.B., C.S.B., D.P.H.

Asst. Medical Officer of Health, AGNES O'NEIL, M.D., D.P.H.





22501416250

C O N T E N T S

COMMUNICABLE DISEASES - Cases and Deaths	3, 9, 10, 12
Tuberculosis - Cases and Deaths	10
Diphtheria, Measles, Scarlet Fever and Whooping Cough - Cases and Deaths	10
Financial Statement	43, 44
Immunization	20, 21
Infant and Pre-School Clinics	29, 30
Meat and Food Inspection	24
Milk and Dairy Inspection	25, 26
Quarantine	23
REPORTS OF: Medical Officer of Health	2 - 4
Assistant Medical Officer of Health	31 - 35
Chief Sanitary Inspector	23 - 28
Director of Dental Services	36 - 37
Nurse in Charge of Baby Clinics	29 - 30
Sanitation	23
School Medical, Dental and Nursing Services	29 - 37
Sera and Vaccine Distributed	20
Supervisor of Nursing Homes report	22
Tuberculosis Association (Kinsmen's Club) Chest Clinic	38 - 39
Tuberculosis Association (Kinsmen's Club) X-Ray Clinic	40
Victorian Order of Nurses	41 - 42
VITAL STATISTICS	2 - 19
Births	2, 5, 6
Stillbirths	2, 6
Illegitimate births	2, 5
Deaths	2, 3, 6 - 11, 13 - 19
Chief Causes of	7
International List of Causes	13 - 19
By Age and Sex	11
Of Infants	3, 7 - 8
Maternal	3, 8 - 9
From Communicable Diseases	3, 9 - 10
Marriages	2
Population	2 & 44

WELLCOME
LIBRARY
Ann Rep
WAZ8
.GC2
C15
1958

His Worship the Mayor, Commissioners,
and Members of the City Council.

Ladies and Gentlemen:

I beg, herein, to submit the annual report of the activities of the City's Health Department for the year 1958.

The population as shown by civic enumeration for 1958 was 206,831, an increase of 14,254 over the figure reported for 1957. The natural increase for 1958 or the difference in number between births and deaths was 5,174, which figure subtracted from the overall increase, (14,254), would serve to show that 9,080 came to live in the City from elsewhere. The rates appearing in the several statistical tables as shown in this reporting are based on the population figure as shown above and established by civic enumeration in 1958.

The number of marriages solemnized during the year numbered 2,307, with a corresponding rate of 11.2 per 1,000 of population. It has been pointed out in previous reports that marriage rates show little variation in peace time years. The rates for the last three years are shown as a matter of information.

1956	-	11.5
1957	-	11.3
1958	-	11.2

The gross number of births registered during the year was 7,986, with a corresponding rate of 38.6 per 1,000 of population. The gross figure includes births to parents non-resident in the City. The net figure or the births to residents only numbered 6,587, or a rate of 31.8 per 1,000 of population. Included in the gross figure, as above, are 475 illegitimate births, 5.9% of the gross total. Four sets of twins were born to mothers in this group. The records in this regard show that 172 of these mothers were of teen age, 33 being in the 14 to 16 age group. Sixty-two of the illegitimate mothers gave a history of previous marriage.

The number of stillbirths registered throughout the year was 102, gross, and 81, net; the corresponding rates being 0.49 and 0.39, computed on the basis of so many per 1,000 of population. Over the past fifteen years there has been a marked improvement in the stillbirth problem, nevertheless regarding the situation as it is today, there is room for much in the way of consideration and study. The question as to why what appears to be a well developed baby should be born dead, still remains to be answered.

Gross deaths registered in the City throughout the year numbered 1,690, which number includes 277 non-resident deaths. The gross death rate was 8.2. The net figures, or those applying specifically to the City, were 1,413 in number, with a corresponding rate of 6.8. The rates are calculated on the basis of the number of deaths per 1,000 of population. From the table of causes, it is not possible to differentiate between City and Non-city deaths and, as a consequence, the following listing as it appears is based on the gross number of deaths.

Six chief causes of death are:

1. Associated diseases of the heart and Circulatory System

2. Cancer - all forms	320
3. Violent and Accidental Deaths	86
4. Pneumonia	45
5. Diabetes	15
6. Communicable Disease	4

Violent and accidental deaths showed an increase of ten as compared with the reporting for 1957. A large percentage of these deaths are, without doubt, due to carelessness or irresponsibility on the part of others and, having in mind motor accidents, it could be that the one responsible is the one who survives. It is plainly evident, however, that deaths due to violent and accidental causes continue to show an increase from year to year, seemingly, in spite of the time and money being spent on programs and other educational measures stressing 'Safety'. In 137 deaths, the cause was given as unknown.

The number of infant deaths registered during 1958 was 185, or an increase of one over the number reported for 1957. The infant death rate, however, shows as being slightly less than that for 1957; this due to the difference in the population figure as between the present and the last annual reporting. It has been pointed out in previous reports, and having reference to the causes of infant deaths, that pre-maturity, congenital debility and malformations, and injuries at birth, accounting as they do for the large percentage of infant deaths, have constituted a problem that has defied solution. There are many facets to the overall consideration of the causes for infant deaths and collectively these need to be the subject for most intensive study. Of interest regarding Table No. 6, (Infant Mortality by Causes), is a footnote further qualifying infant deaths during 1958.

The number of maternal deaths reported throughout the year was two, with a corresponding rate of 0.25 per 1,000 live births. In this regard, the rate has shown a gradual decrease over the last five years; the current reporting being the lowest in the last five years. Both deaths were of mothers resident in the City and the causes are given in Table No. 8.

The number of communicable disease cases reported to the Department during the year was 1,977. The deaths reported under this heading numbered 53 and are as follows:

Chicken pox, complication Encephalitis	1
Influenza	3
Pneumonia - all forms	45
Scarlet Fever and Strep Throat	1
Tuberculosis - pulmonary	1
Poliomyelitis - paralytic	2
	<hr/>
	53
	<hr/>

The Annual Report for 1957 pointed out the urgency for the complete decentralization of the Health Department and it is to be hoped that the administration does not lose sight of the importance attaching in this matter. The City is growing and the increase in the Department's work keeps pace with the growth. Our premises are far too small. We are most inconveniently situated as a Health Department. Privacy is, at times, definitely indicated in the handling of some of the phases of our work and we are fast reaching out to the point where privacy is utterly

impossible. The last session of the Legislative Assembly authorized an entirely new schedule which grants were to be made to Health Units. From the regulations governing the Act, the Provincial Government will make a grant to municipalities with population over 50,000, on the basis of 95 cents per capita. No decision seems to have been made as to the amount in grant to be made to the Cities of Edmonton and Calgary. Should it ever be that such aid be given to the City, possibly one Branch Unit could be built each year.

Grants from the Senior Governments received during the year amounted to \$80,493.30. In this regard, it is pointed out that a very nice contribution is made towards the salaries of approximately 45% of our staff. We are, indeed, grateful to the Senior Governments for their generosity.

A very considerable amount of work beyond that usually considered as part of Public Health practice has been undertaken for other Departments, especially Welfare, Children's Aid, Police and the Safety Division of the Personnel Department. In addition, we have undertaken to conduct pre-employment medical examinations for the Personnel Department. The Medical Staff, also, undertakes to examine St. John's Ambulance First Aid groups for Civil Defence, the Police and Fire Departments.

The Health Department is most appreciative of the constructive help, advice and guidance given throughout the year by the following:

His Worship the Mayor, the Commissioners, and Members of the
City Council,

Members of the Calgary Public and Separate School Boards,

Superintendents and Staffs of the Provincial Sanatoria,

Superintendent and Staffs of the Provincial Mental
Hospitals and Institutions,

Alberta and Calgary (Kinsmen's Club) Tuberculosis Assoc.,

Provincial Cancer Clinics,

Metropolitan Life Insurance Company,

Victorian Order of Nurses,

The Calgary General and Holy Cross Hospital Staffs, and

The Calgary Press, Radio Broadcasting and T.V. Stations.

The Medical Officer takes this opportunity to express his sincere thanks to each and every member of this Staff. Their loyalty and co-operation additionally to the very excellent and competent manner in which their duties have been discharged, are responsible for the completion of a most satisfactory year's operations. Reports from the several divisions of the Health Department follow.

Respectfully submitted,

WILLIAM H. HILL, M.D., C.M., D.P.H.,
MEDICAL OFFICER OF HEALTH.

ILLEGITIMATE BIRTHS - 1958

Date	City	Out of Town	14	15	16	17	18	19	20-24	25-30	31 Plus	1st Child	2nd & Over	Prev. Mrge	Total
Jan.	31	20			3	4	7	4	15	11	7	37	14	9	51
Feb.	28	8	2			1	5	5	9	10	4	19	17	11	36
Mar.	22	12		2		2	5	4	12	3	6	26	8	5	34
Apr.	23	13		1	1	4	3	4	13	8	2	24	12	2	36
May	27	18			2	4	7	7	15	4	6	37	8	5	45
June	21	7				2	3	1	13	6	3	20	8	4	28
July	25	9			2	2	4	3	10	7	6	23	11	5	34
Aug.	31	9			1	3	4	3	14	11	4	33	7	4	40
Sept	34	11		1	3	4	4	10	19	2	2	36	9	4	45
Oct.	29	18		1	5	3	1	5	16	9	7	27	20	9	47
Nov.	23	13			2	7	2	3	16	5	1	33	3	1	36
Dec.	26	17	1		6	3	3	3	17	6	4	37	6	4	43
TOTAL	320	155	3	5	25	39	48	52	169	82	52	352	123	63	475

4 sets of twins

Total Births - 7,986

62 previous marriage

Illegitimates - 475 or 5.9%

Vital Statistics Tables, in accordance with the form approved by the Canadian Public Health Association, follow.

VITAL STATISTICS REPORT

Population as shown by Civic Enumeration of 1958 was 206,831.

Live Births - 7,986: Rate per 1,000 population - 38.6

Stillbirths - 102: Rate per 1,000 live births - 12.8

Included in the above were 1,399 non-resident births & 21 non-resident stillbirths.

TABLE No. 1

Live Births 1954 - 1958

Year	Population	No. Including non-residents	Rate per 1,000 population	No. Residents only	Rate per 1,000 population
1958	206,831	7,986	38.6	6,587	31.8
1957	192,577	7,555	39.2	6,243	32.4
1956	180,092	6,978	38.7	5,709	31.7
1955	156,748	6,763	43.1	5,461	34.8
1954	156,748	6,279	40.0	4,943	31.5

TABLE No. 11

Stillbirths 1954 - 1958

Year	Population	No. including non-residents	Rate per 1,000 population	No. Residents only	Rate per 1,000 population
1958	206,831	102	0.49	81	0.39
1957	192,577	89	0.45	68	0.35
1956	180,092	78	0.43	63	0.35
1955	156,748	75	0.41	60	0.38
1954	156,748	92	0.59	73	0.47

MARRIAGES

Number performed in 1958 was 2,307. Rate per 1,000 population - 11.2.

DEATHS

From all causes a total of 1,690 deaths were reported, being a rate of 8.2 per thousand population, including 277 deaths of non-residents.

TABLE No. 3

MORATLITY RATE (Exclusive of Stillbirths) - 1954 - 1958

Year	No. deaths including non-residents	Rate per 1,000 population	No. residents only	Rate per 1,000 population
1958	1,690	8.2	1,413	6.8
1957	1,651	8.6	1,355	7.0
1956	1,541	8.6	1,241	6.9
1955	1,627	10.4	1,323	8.4
1954	1,458	9.3	1,188	7.6

TABLE No. 4

Chief Causes of Deaths, 1956, 1957 & 1958
(total number including non-residents)

Causes of Death	Number of Deaths			Rate per 100,000		
	1958	1957	1956	1958	1957	1956
Diseases of the heart, arteries and kidneys, including apoplexy	522	563	556	252.4	292.3	308.7
Cancer - all forms	320	295	293	154.7	153.2	162.7
Pneumonia	45	57	37	21.8	29.6	20.5
Violent & Accidental Deaths	86	73	82	41.6	37.9	45.5
*Tuberculosis - all forms	1	1	1	0.5	0.5	0.6
Diabetes	15	23	14	7.3	11.9	7.8
Influenza	3	5	-	1.5	2.6	-
Communicable diseases (other than tuberculosis, pneumonia and influenza)	4	7	2	1.9	3.6	1.1
All other causes	694	627	556	335.5	325.6	308.7
Totals	1,690	1,651	1,541			

* See Table No. 10 and Deaths in Sanatorium

INFANT MORTALITY

The infant mortality rate for the municipality, including deaths of non-residents, is presented in the following tables for the year 1958 and the preceding four years.

TABLE No. 5

Deaths of Infants in the First Year of Life 1954-1958

	1958	1957	1956	1955	1954
Number of infant deaths	185	184	130	159	165
Rate per 1,000 live births	23.2	24.4	18.6	23.5	26.3

Number of deaths of non-residents included in the above:

1958 - 29 1957 - 40 1956 - 39 1955 - 40 1954 - 33

TABLE No. 6

Infant Mortality by Causes of Deaths 1954 - 1958

Causes of Deaths	1958	1957	1956	1955	1954
1. Diarrhoea and enteritis	4	4	2	1	-
2. Pneumonia and influenza	14	10	5	8	3
3. Prematurity	87	72	65	69	77
4. Congenital debility and malformations	42	51	22	36	29
5. Injuries at birth	6	10	9	13	15
6. Acute communicable diseases (whooping cough, diphtheria, measles, scarlet fever, etc.)	-	-	-	1	1
7. Other Causes	32	37	27	31	40

Of the 185 infant deaths registered this year, 85 occurred within the first twenty-four hours, 37 within the first week, and 13 died under the age of 1 month, representing 73.0 per cent of the total.

MATERNAL DEATHS

The number of deaths of mothers from puerperal causes was 2. There were no non-resident deaths. The rate for the municipality is 0.30 per 1,000 live births.

TABLE No. 7

Maternal Mortality, (Including non-residents) 1954 - 58

Year	Live Births	Number of maternal Deaths	Rate per 1,000 Live Births
1958	7,986	2	0.25
1957	7,555	2	0.26
1956	6,978	2	0.28
1955	6,763	3	0.44
1954	5,799	3	0.50

Number of deaths of non-residents included in above:

1958 - 0
 1957 - 1
 1956 - 0
 1955 - 1
 1954 - 2

TABLE No. 8

Causes of Maternal Deaths - 1958

Cause of Death	Number including non-residents	Residents only
Abortions (septic and non-septic)	1	1
Puerperal Toxaemias	-	-
Puerperal Sepsis	-	-
Other puerperal causes	1	1

From the following table, the part played by certain diseases is at once evident.

TABLE No. 9

Communicable Diseases (Residents only)

Reported Cases and Deaths from Communicable Diseases in 1958

Disease	Cases		0 - 4 Years		5 - 14 yrs		15 & Over		Totals	
	M	F	Cases	Dths	Cases	Dths	Cases	Dths	Cases	Dths
*Chicken Pox						1				1
Diphtheria	1		1						1	
Dysentery (Bacillary)		2			2				2	
*Infectious Hepatitis	4	16	1		5		14		20	
*Influenza								3		3
Measles	526	493	215		789		15		1,019	
Paratyphoid Fever 'B'	1				1				1	
*Pneumonia (all forms)				15				30		45
Poliomyelitis-paralytic	2	5	1		1		5	2	7	2
-non-para.	2	7	1		5		3		9	
Rubella	158	161	26		289		4		319	
Scarlet Fever & Strep Throat	206	194	63		322		15	1	400	1
Smallpox										
Tuberculosis-pulmonary	26	16	2		5		35	1	42	1
-non-pul.	7	9	2				14		16	
Typhoid Fever										
Whooping cough	66	75	51		87		3		141	
Totals	999	978	363	15	1,506	1	108	37	1,977	53

* Not Notifiable in 1958

TABLE No. 10

Reported Cases and Deaths from Tuberculosis 1954-58

Year	New Active Cases	Number of Deaths in City	Number of Deaths in Sanatoria	Total Deaths	Rate per 100,000 population
1958	58	1	6	7	3.4
1957	59	1	10	11	5.7
1956	60	1	-	1	0.6
1955	33	3	7	10	6.4
1954	46	5	5	10	6.4

TABLE No. 11

Reported Cases and Deaths From Diphtheria, Measles, Scarlet Fever and Whooping Cough, 1956 - 1958

	Cases			Deaths			Mortality rate per 100,000 population		
	1956	1957	1958	1956	1957	1958	1956	1957	1958
Diphtheria	-	2	1	-	-	-	-	-	-
Measles	53	1,329	1,019	-	2	-	-	1.0	-
Scarlet Fever	83	127	400	-	-	1	-	-	.48
Whooping Cough	78	262	141	-	-	-	-	-	-

There was one (1) death from the above diseases in 1958.

COMMUNICABLE DISEASES REPORTED 1958

CITY:

	Jan	Feb	Mar	Apr	May	Jun	Jul	Aug	Sep	Oct	Nov	Dec	Totals
Diphtheria												1	1
Dysentery (Bacillary)									2				2
Infectious Hepatitis	5	7		1	2				1	2	2		20
Measles	277	200	168	75	72	30	9	5	6	45	35	97	1,019
Paratyphoid 'B'									1				1
Poliomyelitis - paralytic	2							3	1	1			7
- non-paralytic		1					1	1	5	1			9
Rubella (German Measles)	57	96	52	18	29	12	1	5	6	5	17	21	319
Scarlet Fever, Strep Throat	9	18	32	54	38	37	4	2	2	31	50	123	400
Tuberculosis - pulmonary	2	7	4	5	3	2	2	3	1	2	6	5	42
- non-pulmonary	4	2	1	1	1	1	1	1		1	2	1	16
Whooping cough	23	10	6	1	1	12	3	16	16	14	22	17	141
Totals	379	341	263	155	146	94	21	36	41	102	134	265	1,977

FROM OUT OF TOWN:

	Jan	Feb	Mar	Apr	May	Jun	Jul	Aug	Sep	Oct	Nov	Dec	Totals
Measles	1		1										2
Poliomyelitis - paralytic								2		1		1	4
Scarlet Fever, Strep Throat				2									2
Whooping cough			2		1	2	2	1			1		9
Totals	1		3	2	1	2	2	3		1	1	1	17

INTERNATIONAL STATISTICAL CLASSIFICATION OF DISEASE,
INJURIES AND CAUSES OF DEATH

	<u>M</u>	<u>F</u>	<u>City</u>	<u>Out</u>	<u>Totals</u>
002. Pulmonary tuberculosis	1		1		1
022. Aneurysm of aorta	1		1		1
050. Scarlet Fever		1		1	1
053.0 Septicaemia and pyaemia:streptococcus		1		1	1
053.1 Septicaemia and pyaemia:staphylococcus		2	2		2
080.0 Acute Poliomyelitis: specified as bulbar or polio-encephalitis	1	1	1	1	2
082. Acute Infections encephalitis	1		1		1
087. Chicken pox		1	1		1
144. Malignant neoplasm of other parts of mouth and mouth unspecified	1		1		1
146. Malignant neoplasm of nasopharynx	1		1		1
150. Malignant neoplasm of oesophagus	5	1	6		6
151. Malignant neoplasm of stomach	27	11	28	10	38
152. Malignant neoplasm of small intestine, including duodenum	2		1	1	2
153. Malignant neoplasm of large intestine, except rectum	15	18	29	4	33
154. Malignant neoplasm of rectum	12	3	13	2	15
155. Malignant neoplasm of biliary passages and of liver (stated to be primary site)	3	3	4	2	6
156. Malignant neoplasm of liver (secondary and unspecified)	2	2	4		4
157. Malignant neoplasm of pancreas	11	8	15	4	19
160. Malignant neoplasm of nose, nasal cavi- ties, middle ear and accessory sinuses		1	1		1
161. Malignant neoplasm of larynx	3	1	3	1	4
162. Malignant neoplasm of trachea and of bronchus and lung, specified as primary	11	2	8	5	13
163. Malignant neoplasm of lung	17	1	12	6	18
164. Malignant neoplasm of mediastinum	1		1		1
170. Malignant neoplasm of breast	1	22	20	3	23
171. Malignant neoplasm of cervix uteri		11	10	1	11
172. Malignant neoplasm of corpus uteri	2		2		2
173. Malignant neoplasm of other parts of uterus including chorionepithelioma		2		2	2
174. Malignant neoplasm of uterus, unspecified		3	3		3
175. Malignant neoplasm of ovary, Fallopian tube and broad ligament		13	9	4	13
177. Malignant neoplasm of prostate	17		15	2	17
178. Malignant neoplasm of testis	1		1		1
180. Malignant neoplasm of kidney	5	2	3	4	7
181. Malignant neoplasm of bladder and other urinary organs	8	2	7	3	10
190. Malignant neoplasm of skin		5	5		5
191. Other malignant neoplasm of skin	2			2	2
193. Malignant neoplasm of brain and other parts of nervous system	4	4	5	3	8
194. Malignant neoplasm of other Thyroid glands		1	1		1
196. Malignant neoplasm of bone (including jaw bone)		1		1	1
CARRIED FORWARD	155	123	215	63	278

	<u>M</u>	<u>F</u>	<u>City</u>	<u>Out</u>	<u>Totals</u>
BROUGHT FORWARD	155	123	215	63	278
197. Malignant neoplasm of connective tissue	3	1	3	1	4
198. Secondary and unspecified malignant neoplasm of lymph nodes	1	1	2		2
199. Malignant neoplasm of other and unspecified sites	9	9	15	3	18
200.1 Lymphosarcoma and reticulosarcoma: lymphosarcoma	4		4		4
201. Hodgkin's Disease	4		4		4
203. Multiple myeloma		1	1		1
204.0 Leukemia and aleukemia: lymphatic leukemia	5	2	6	1	7
204.1 Leukemia and aleukemia: myeloid leukemia	5	3	6	2	8
204.4 Leukemia and aleukemia: other and unspecified type	2	2	4		4
214. Uterine fibromyoma		1	1		1
216. Benign neoplasm of ovary		1	1		1
223. Benign neoplasm of brain and other parts of nervous system	3	1	1	3	4
224. Benign neoplasm of endocrine glands	1			1	1
241. Asthma	3	2	4	1	5
252.0 Thyrototoxicosis with or without goitre: toxic diffuse goitre		1	1		1
253. Myxoedema and cretinism		1	1		1
260. Diabetes mellitus	9	6	15		15
287. Obesity: not specified as of endocrine origin		1	1		1
289.2 Other metabolic diseases: other	1			1	1
290.0 Pernicious and other hyperchromic anaemias: pernicious anaemia		2	2		2
292.2 Other Haemoytic Anaemias		1	1		1
292.4 Other anaemias of specified type: aplastic anaemia		1	1		1
292.6 Sickle cell anaemia	1		1		1
293. Anaemia of unspecified type		2	2		2
296. Pupura and other hemorrhagic conditions	1	1	2		2
297. Agranulocytosis					
298.0 Diseases of spleen: Hepatolienal fibrosis	1		1		1
307. Alcoholic psychosis	1		1		1
311. Hysterical reaction without mention of anxiety reaction		1	1		1
315.0 Neurocirculatory asthemia	1		1		1
322. Alcoholism: 322.0 Acute	2			2	2
Alcoholism: 322.1 Chronic	2	2	4		4
Alcoholism: 322.2 Unspecified	1		1		1
325.4 Mental Deficiency: Mongolism		1		1	1
331. Cerebral hemorrhage	12	10	17	5	22
332. Cerebral embolism and thrombosis	13	12	21	4	25
334. Other and ill-defined vascular lesions affecting central nervous system	31	25	47	9	56
342. Intercranial and intraspinal abscess	1		1		1
345. Multiple sclerosis	1	3	3	1	4
350. Paralysis agitans	2	1	3		3
CARRIED FORWARD	275	218	395	98	493

	<u>M</u>	<u>F</u>	<u>City</u>	<u>Out</u>	<u>Totals</u>
BROUGHT FORWARD	275	218	395	98	493
352. Other cerebral paralysis	1		1		1
353.3 Epilepsy: other and unspecified		1	1		1
356.0 Motor neurone disease and muscular atrophy: progressive muscular atrophy	1		1		1
356.1 Amyotrophic lateral sclerosis	3		3		3
361. Trigeminal neuralgia		1	1		1
364. Polyneuritis and polyradiculitis	1		1		1
400. Rheumatic fever without mention of heart involvement	1	1	1	1	2
401.2 Rheumatic fever with heart involvement: active rheumatic myocarditis		1	1		1
410. Diseases of mitral valve	2	1	3		3
411. Diseases of aortic valve specified as rheumatic	2		2		2
416. Other heart disease specified as rheumatic	12	6	13	5	18
420.0 Arteriosclerotic heart disease, so described	51	32	69	14	83
420.1 Heart disease specified as involving coronary arteries	98	51	139	10	149
420.2 Angina pectoris without mention of coronary disease	1	1	1	1	2
421.0 Chronic endocarditis not specified as rheumatic: of mitral valve, specified as non-rheumatic	1		1		1
421.1 Chronic endocarditis not specified as rheumatic: of aortic valve	3		3		3
421.4 Chronic endocarditis not specified as rheumatic: other and ill-defined not specified as rheumatic	2	1	2	1	3
422.1 Other myocardial degeneration: with arteriosclerosis	4	4	8		8
422.2 Other myocardial degeneration: other	10	4	12	2	14
431. Acute myocarditis not specified as rheumatic	1	1	2		2
432. Acute pericarditis specified as non- rheumatic		1	1		1
433.1 Functional disease of heart	1		1		1
434.1 Other and unspecified diseases of heart: congestive heart failure	12	10	14	8	22
434.3 Other and unspecified diseases of heart: other and unspecified diseases of heart	2	1	2	1	3
440. Essential benign hypertension with heart disease	10	10	17	3	20
442. Hypertensive heart disease with arteriolar nephrosclerosis	6	2	7	1	8
443. Other and unspecified hypertensive heart disease	5	5	8	2	10
444. Essential benign hypertension without mention of heart	18	30	42	6	48
445. Essential malignant hypertension without mention of heart	1	3	4		4
446. Hypertension with arteriolar nephrosclerosis mention of heart		1		1	1
CARRIED FORWARD	524	386	756	154	910

	<u>M</u>	<u>F</u>	<u>City</u>	<u>Out</u>	<u>Totals</u>
BROUGHT FORWARD	524	386	756	154	910
447. Other hypertensive disease without mention of heart		1	1		1
450.0 General arteriosclerosis: without mention of gangrene	67	59	102	24	126
451. Aortic aneurysm specified as nonsyphilitis and dissecting aneurysm	5	1	6		6
452. Other aneurysm, except of heart and aorta	2	1	3		3
454. Arterial embolism and thrombosis	2		2		2
456. Other diseases of arteries		1	1		1
463. Phlebitis and thrombophlebitis of lower extremities	2		1	1	2
464. Phlebitis and thrombophlebitis of other sites	2	1	2	1	3
465. Pulmonary embolism and infarction	5	2	5	2	7
466.. Other venous embolism and thrombosis	2		1	1	2
467.2 Other and unspecified circulatory diseases		1	1		1
480. Influenza with pneumonia	2	1	3		3
490. Lobal pneumonia	6	2	8		8
491. Bronchopneumonia	19	12	29	2	31
492. Primary atypical pneumonia	1		1		1
493. Pneumonia, other and unspecified	3	2	4	1	5
502.0 Chronic bronchitis: bronchitis with emphysema	3		2	1	3
502.1 Chronic bronchitis: other	2		4		4
517. Other diseases of upper respiratory tract		1	1		1
521. Abscess of lung		1		1	1
522. Pulmonary congestion and hypostasis		1	1		1
525. Other chronic interstitial pneumonia	3		3		3
526. Bronchiectasis	7		5	2	7
527.1 Other diseases of lung & pleural cavity: Emphysema without mention of bronchitis	7		5	2	7
527.2 Other diseases of lung & pleural cavity:other	1		1		1
539.1 Diseases of osophagus: other	1		1		1
540.0 Ulcer of stomach: without mention of perforation	4	2	4	2	6
540.1 Ulcer of stomach: with perforation		2	2		2
541.0 Ulcer of duodenum: without mention of perforation	5		4	1	5
541.1 Ulcer of duodenum: with perforation	4		3	1	4
545. Other diseases of stomach and duodenum	1		1		1
550.1 Acute appendicitis: with perintonitis	1	1	2		2
570.0 Intestinal obstruction, without mention of hernia: Intussusception		2	2		2
570.2 Intestinal obstruction, without mention of hernia: Mesentiric infarction	1		1		1
570.3 Intestinal obstruction, without mention of hernia: Volvulus	1		1		1
570.5 Intestinal obstruction, without mention of hernia: Other	1	1		2	2
571.0 Gastric-enteritis and colitis, except ulcerative, 4 weeks & over: between 4 weeks and 2 years	2	2	3	1	4
571.1 Gastric-enteritis and colitis, except ulcerative, 4 weeks & over: 2 years and over		2	1	1	2
572.1 Chronic enteritis and ulcervive colitis: Diverticulitis	2		1	1	2
CARRIED FORWARD	688	487	974	201	1175

	<u>M</u>	<u>F</u>	<u>City</u>	<u>Out</u>	<u>Totals</u>
BROUGHT FORWARD	688	487	974	201	1175
572.2 Chronic enteritis and ulcerative colitis: ulcerative colitis	3		1	2	3
578. Other diseases of intestines and peritoneum	1	1	1	1	2
581.0 Cirrhosis of liver: without mention of alcoholism	11	3	13	1	14
582. Suppurative hepatitis and liver abscess	2			2	2
584. Cholelithiasis	1	1	1	1	2
585. Cholelithiasis without mention of calculi	1	1	2		2
587.0 Diseases of pancreas: Acute pancreatitis		3	3		3
590. Acute nephritis	1		1		1
591. Nephritis with odema, including nephrosis	1	1	2		2
592. Chronic nephritis	2	4	6		6
593. Nephritis, not specified as acute or chronic	2	1	3		3
600.0 Infection of kidney: pyelitis, pyelocystitis and pyelonephritis	2	1	3		3
601. Hydronephrosis	1	1	2		2
602. Calculi of kidney and ureter	2	1	3		3
603. Other diseases of kidney and ureter	2		2		2
608. Stricture of urethra	1		1		1
610. Hyperplasia of prostate	5		1	4	5
633. Other diseases of uterus		1		1	1
650.2 Abortion induced for other reasons		1	1		1
670. Delivery complicated by placenta praevia or antepartum haemorrhage		1	1		1
692.1 Other cellulitis and abscess without mention of lumphantitis: of trunk	1			1	1
715. Chronic ulcer of skin		1	1		1
722.0 Rheumatoid arthritis and allied conditions: rheumatoid arthritis	1	1	1	1	2
735. Displacement of intervertebral disc	2		1	1	2
744.0 Myasthenia gravis		1	1		1
744.1 Inborn defect of muscle (other diseases of muscle tendon and fascis	1		1		1
750. Monstrosity	1	5	4	2	6
751. Spina bifida and meningocele	3		1	2	3
752. Congenital hydrocephalus	2	2	2	2	4
753.1 Other congenital malformations of nervous system and sense organs: other	2		2		2
754.2 Congenital malformations of circulatory system: Interventricular septal defect	1	1	2		2
754.4 Congenital malformations of circulatory system: Other and unspecified malformations of heart	10	1	8	3	11
754.5 Congenital malformations of circulatory system: Coarctation of Aorta	1		1		1
754.6 Congenital malformations of circulatory system: Other circulatory malformations	1	2	3		3
755. Cleft palate and harelip		1	1		1
756.0 Congenital malformations of digestive system: congenital pyloric stenosis	1			1	1
756.2 Congenital malformations of digestive system: Other	1	4	4	1	5
757.1 Congenital malformations of genito-urinary system: Polycystic disease of kidney	1	1	2		2
CARRIED FORWARD	755	528	1056	227	1283

	<u>M</u>	<u>F</u>	<u>City</u>	<u>Out</u>	<u>Totals</u>
BROUGHT FORWARD	755	528	1056	227	1283
758.2 Congenital malformations of bones and joints: Congenital malformations of skull	2		2		2
758.6 Congenital malformations of bones and joints: Other congenital malformations of bone & joint	1		1		1
759.0 Other and unspecified congenital malformations, not elsewhere classified: of respiratory system		1	1		1
759.3 Other and unspecified congenital malformations, not elsewhere classified: other and unspecified		1	1		1
760.0 Intercranial and spinal injury at birth: without mention of immaturity	2	1	3		3
761.0 Other birth injury: without mention of immaturity	3	1	3	1	4
762.0 Postnatal asphyxia and atelectasis: without mention of immaturity	4	1	3	2	5
763.0 Pneumonia of newborn: without mention of immaturity	1	1	1	1	2
764.0 Diarrhoea of newborn: without mention of immaturity	2		2		2
770.0 Haemolytic disease of newborn: Erythroblastosis without mention of nervous affection or immaturity	2		2		2
771.0 Hemorrhagic disease of newborn: without mention of immaturity	1	1	2		2
773.0 Ill-defined diseases peculiar to early infancy: without mention of immaturity	1	2	2	1	3
774. Immaturity with mention of any other subsidiary	13	21	30	4	34
776. Immaturity, unqualified	33	20	46	7	53
782.4 Symptoms referable to cardiovascular and lymphatic system: acute heart failure, undefined	1		1		1
783.2 Haemoptysis		1	1		1
794. Senility without mention of psychosis	37	30	55	12	67
795.5 Ill-defined and unknown causes of morbidity and mortality: other unknown and unspecified causes	106	31	128	9	137
E800 Railway accidents involving railroad employees	2		2		2
E810 Motor vehicle traffic accident involving collision with train	1		1		1
E812 Motor vehicle traffic accident involving pedestrian	6	1	5	2	7
E816 Other motor vehicle traffic accident involving two or more motor vehicles	6	3	5	4	9
E819 Motor vehicle traffic accident involving collision with fixed or unspecified object	3		2	1	3
E823 Motor vehicle traffic accident involving running off roadway	1	1	2		2
E830 Motor vehicle non-traffic accident to pedestrian	2		2		2
E835 Motor vehicle non-traffic accident of other and unspecified nature	1		1		1
E872 Accidental poisoning by aspirin or salicylates	1		1		1
CARRIED FORWARD	987	645	1361	271	1632

	<u>M</u>	<u>F</u>	<u>City</u>	<u>Out</u>	<u>Totals</u>
BROUGHT FORWARD	987	645	1361	271	1632
E890 Accidental poisoning by utility (illuminating) gas	1		1		1
E891 Accidental poisoning by motor vehicle exhaust gas	1			1	1
E892 Accidental poisoning by other carbon monoxide gas	1		1		1
E900 Accidental falls: fall on stairs	3		2	1	3
E902 Other falls from one level to another	1	1	1	1	2
E903 Fall on same level	4	1	3	2	5
E904 Unspecified falls	1		1		1
E912 Accident caused by machinery	2		1	1	2
E914 Accident caused by electric current	1	1	2		2
E916 Accident caused by fire and explosion of combustible material	2	1	2	1	3
E917 Accident caused by hot substance, corrosive liquid and steam	1		1		1
E921 Inhalation and ingestion of food causing obstruction or suffocation	1	2	3		3
E925 Accidental mechanical suffocation in other and unspecified circumstances	2		2		2
E929 Accidental drowning and submersion	3		2	1	3
E935 Lightning	1	1	2		2
E936 Other and unspecified accidents	3		3		3
E972 Suicide and self-inflicted poisoning by gases in domestic use		1	1		1
E973 Suicide and self-inflicted poisoning by other gases	1	1	2		2
E974 Suicide and self-inflicted injury by hanging and strangulation	4	1	5		5
E975 Suicide and self-inflicted injury by submersion (drowning)	2	1	3		3
E976 Suicide and self-inflicted injury by firearms and explosives	7		7		7
E977 Suicide and self-inflicted injury by cutting and piercing instruments	2		2		2
E978 Suicide and self-inflicted injury by jumping from high place	1		1		1
E983 Assault by other means	2		2		2
	<hr/>	<hr/>	<hr/>	<hr/>	<hr/>
TOTAL	1034	656	1411	279	1690
	<hr/> <hr/>	<hr/> <hr/>	<hr/> <hr/>	<hr/> <hr/>	<hr/> <hr/>

IMMUNIZATION REPORT 1958

	Number of persons given complete treatment by Health Department (Schools not included).	Reinforcing doses given
Diphtheria, Pertussis and Tetanus	3,674	2,703
Diphtheria and Tetanus Toxoid	110	54
Rocky Mountain Spotted Fever	25)	-
Smallpox Vaccine	4,033)	
T. A. B. T.	70)	Included in
Tetanus Toxoid	22)	Totals
Typhoid and Paratyphoid Vaccine	182)	
Cholera - not issued by Prov. Gov't	90)	
Typhus - not issued by Prov. Gov't	20)	
T. A. B. T. D. - not issued by Prov. Gov't	53)	

SERA AND VACCINE DISTRIBUTED FOR USE IN CALGARY

Diphtheria Antitoxin, 40,000 units	2
Diphtheria Antitoxin, 20,000 units	6
Diphtheria Antitoxin, 1,000 units	4
Diphtheria Toxoid - singles	41
Diphtheria Toxoid - diluted, 4 c.c.	14
Diphtheria Toxoid, Pertussis Vaccine and Tetanus Toxoid - singles	2,280
Diphtheria Toxoid, Pertussis Vaccine and Tetanus Toxoid - 36 c.c. pkge....	546
Diphtheria Toxoid and Tetanus Toxoid - singles	341
Diphtheria Toxoid and Tetanus Toxoid - 36 c.c. pkge.....	167
Diphtheria Toxoid and Pertussis Vaccine, singles	63
Gas Gangrene Antitoxin, vials of 10,000 units	97
Immune Serum Globulin, c.c.'s	1,075
Influenza Virus Vaccine, Type 'A'. Asian 1957, 10 c.c. pkge.....	4
Materials for Schick Tests	90
Anti-Measles Serum - 5 c.c. pkge.....	849
Pertussis Vaccine - 3 c.c. pkge.....	49
Rocky Mountain Spotted Fever Vaccine, c.c.'s	63
Smallpox Vaccine, individual capillary tubes	12,465
Staphylococcus, Toxoid - 2 c.c. pkge.....	135
Staphylococcus Antitoxin - 10,000 units	3
Staphylococcus Antitoxin - 20,000 units	27
Tetanus Antitoxin - 20,000 units	7
Tetanus Antitoxin - 1,500 units	989
Tetanus Toxoid - 3 c.c. pkge.....	209
Tetanus Toxoid, Paratyphoid and Typhoid Vaccine, 3 c.c. pkge.....	200
Typhoid and Paratyphoid Vaccine - singles	136
Typhoid and Paratyphoid Vaccine - 10 c.c. pkge.....	98

(All the above material supplied free by the Provincial Government, Department of Health, Edmonton, and all are products of the Connaught Laboratories, University of Toronto, Ontario.)

SALK VACCINE Polio Program - refer to report of Dr. L. C. Allan.

REPORT OF INOCULATION CLINICS FOR
1958

	Jan	Feb	Mar	Apr	May	Jun	Jul	Aug	Sep	Oct	Nov	Dec	Totals
Inoculations	1816	1201	1302	1362	1392	1485	1373	1173	1305	1528	1205	903	16,045
Vaccinations	437	358	434	509	457	264	100	143	350	370	387	224	4,033
Schick Tests	48	2	29	33	17	15	21	31	38	2	3	2	241
Tuberculin Tests	160	190	18	15			14		21	175	215	150	958
Investigations made	3	4	5	4	2	3			3	2	3	3	32
Swabs Taken												5	5
Total Visits made	61	49	56	50	45	59	58	30	42	42	36	42	570
Totals	2525	1804	1844	1973	1913	1826	1566	1377	1759	2119	1849	1329	21,884

The Inoculations Clinics have had a very busy and strenuous year. With many more adults receiving inoculations and vaccinations for overseas work and travel, together with the increasing baby population, the clinics are usually overcrowded. The facilities in the Health Department itself are no longer adequate to meet this increased demand for service and the staff is working under difficulties. It is hoped that in the near future suitable accommodation can be provided for these Clinics.

W. H. Hill, Esq., M.D., C.M., D.P.H.,
Medical Officer of Health,
City of Calgary, Alberta.

Dear Sir:

I, herewith, submit the report of the Nursing Homes Division for the year 1958.

The new By-law respecting the licensing, regulating and controlling of homes for the aged or infirm came into effect on June 1st, 1958; except for Section 33 dealing with fire alarm systems, which came into force on January 1st, 1959.

In keeping with the requirements of the By-laws, we have paid special emphasis on the availability of medical records. Measuring for bed space was carried out in order to avoid overcrowding, as well as to allow for more accommodation.

We have worked in co-operation with the Calgary Nursing Home Association, with the aim of supplying the best possible service to the community.

An inspection report form, including both the nurse's and sanitary inspector's section, was compiled and is presently in use.

A statistical report follows.

	Jan	Feb	Mar	Apr	May	Jun	Jul	Aug	Sep	Oct	Nov	Dec	Total
Nursing Home Inspections	33	34	38	36	34	36	38		21	31	29	12	342
Licenses revoked													
Complaints received	2	2	3		1	3	3		1	3	2	4	24
Complaints justified	1		1		1	2	1		1	1	1	2	11
Licenses transferred				1									1
T. B. Visits	18			18	18	10	10		5	8	7	4	98
TOTALS	54	36	42	55	54	51	52		28	43	39	22	476

Respectfully submitted,

(Miss) Lillian Frank, P.H.N.,
Inspector of Nursing Homes.

W. H. Hill, Esq., M.D., C.M., D.P.H.,
 Medical Officer of Health,
 City of Calgary, Alberta.

Dear Sir:

Herewith a report of the activities of the Divisions of Sanitary Inspection, Quarantine, Food Control, Meat Inspection, Milk and Dairy Inspection and the Laboratory for the year 1958.

GENERAL SANITARY INSPECTION

Sanitary conditions throughout the City have been satisfactorily controlled by the District Inspectors. Emphasis is placed on adequate sanitary standards in restaurants.

The statistical report follows:

	Jan	Feb	Mar	Apr	May	Jun	Jul	Aug	Sep	Oct	Nov	Dec	Total
Inspections made	1752	1066	2283	1962	1737	1578	2508	1234	1705	1698	1585	1644	20752
Notices Issued - written	7	5	3	7	6	8	7	13	10	10	10	5	91
Notices Issued - verbal	426	401	259	385	475	422	429	360	448	447	343	422	4817
Complaints received	48	27	27	52	57	73	44	69	63	56	34	29	579
Complaints justified	38	24	24	41	47	54	28	113	45	46	30	27	517
Prosecutions	-	-	-	-	-	-	-	-	-	-	-	-	-
TOTALS	2271	1523	2596	2447	2322	2135	3016	1789	2271	2257	2002	2127	26756

QUARANTINE

Communicable Disease investigations were approximately the same number as the previous year. The report follows:

	Jan	Feb	Mar	Apr	May	Jun	Jul	Aug	Sep	Oct	Nov	Dec	Total
Houses Quarantined	26	24	34	35	54	52	9	12	15	27	16	23	327
Houses released from quarantine	28	38	35	45	67	53	13	-	4	32	15	21	351
TOTALS	54	62	69	80	121	105	22	12	19	59	31	44	678

FOOD CONTROL

Foodstuffs condemned were as follows:

3 lbs. delicatated steaks	100 lbs. meal
5 lbs. sausages	50 lbs. assorted candies
150 lbs. bread	3½ gallons ice cream
106 cases Easter Chocolate Eggs, etc.	

MEAT INSPECTION

Anti and post mortem examinations were made at the two abattoirs that operate under city supervision. The number of examinations made were somewhat higher than during the previous year. The statistics are as follows:

	Jan	Feb	Mar	Apr	May	Jun	Jul	Aug	Sep	Oct	Nov	Dec	Total
<u>Submitted:</u>													
Beef	707	532	680	621	579	608	527	496	508	612	540	452	6862
Veal	724	606	491	482	368	407	371	358	401	476	459	475	5618
Hogs	145	96	129	106	112	124	80	90	123	170	212	157	1544
Sheep and Lamb	37	66	74	85	17	73	103	230	160	221	111	38	1215
TOTALS	1613	1300	1374	1294	1076	1212	1081	1174	1192	1479	1322	1122	15239
<u>Condemned:</u>													
Beef	6½	4	1½	4¾	1½	6½	7½	4	3½	8½	7½	5½	60½
Veal	3	-	¼	-	2½	-	1½	-	-	-	2	1	9¾
Hogs	1	1	4	1½	1	2	1½	-	3	-	5½	1	21½
Sheep and Lamb	-	-	-	-	2	½	-	3	1	4	-	-	10½
TOTALS	10½	5	5½	6½	6½	8½	10	7	7½	12½	14½	7½	101½
<u>Portions Condemned:</u>													
Beef heads and tongues	27	21	31	12	15	17	14	11	22	36	38	30	274
Beef hearts	28	5	18	12	9	9	9	7	17	22	9	10	155
Beef livers	114	103	115	138	103	130	151	22	85	78	63	81	1183
Veal heads and tongues	17	8	8	7	3	-	6	4	6	1	16	12	88
Veal hearts	8	9	4	5	1	5	2	3	3	5	5	8	58
Veal livers	37	47	39	51	41	54	57	24	14	19	20	43	446
Hog heads and tongues	8	4	4	7	7	10	4	10	7	21	17	22	121
Hog hearts	5	2	3	6	6	7	1	3	12	8	10	10	73
Hog livers	30	21	22	16	17	18	32	6	23	31	25	14	255
Sheep livers	2	3	9	9	7	13	2	11	4	57	4	3	124
Sheep hearts	1	-	-	-	1	3	16	-	9	7	13	-	50
TOTALS	277	223	253	263	210	266	294	101	202	285	220	233	2827

DAIRIES AND MILK CONTROL

The Dairy Inspectors have given adequate supervision to the production, processing, handling and sale of fluid milk and cream for ultimate consumption within

the limits of the City. The statistical report follows.

	Jan	Feb	Mar	Apr	May	Jun	Jul	Aug	Sep	Oct	Nov	Dec	Total
Dairy Farm Inspections	70	89	72	110	152	145	74	75	155	82	93	49	1166
Milk Plant Inspections	42	44	40	50	48	50	38	44	48	45	38	32	519
Permits issued to Dairymen	351	2	3	4	3	2	-	3	-	4	5	6	383
Permits issued to Cowkeepers	8	-	-	-	-	-	-	-	-	-	-	-	8
Permits issued to Distributors	4	-	-	-	-	-	-	-	-	-	-	-	4
Permits issued to Milk Plants	4	-	-	-	-	-	-	-	-	-	-	-	4
Permits issued to Collectors	-	-	-	-	-	-	20	-	-	-	-	-	20
Complaints received	2	-	4	3	5	1	4	5	3	-	3	2	32
Complaints justified	-	-	1	2	3	1	2	2	1	-	2	2	16
Notices issued	101	87	94	114	198	190	150	144	190	106	125	41	1540
Permits suspended	3	2	1	2	6	4	4	5	5	1	2	1	36
Dairymen's Sediment Tests	694	674	677	680	694	696	348	688	689	355	695	345	7235
Dairymen's Reduc-tase Tests	694	674	677	680	694	696	348	688	689	355	695	345	7235
Special Tests on producers Samples	3	1	4	6	3	-	-	4	2	3	4	-	30
TOTAL Dairymen's Samples Collected	1391	1349	1358	1366	1391	1392	696	1380	1380	713	1394	690	14500
TOTAL Distributors Samples Collected	77	68	74	80	80	89	48	88	94	86	91	82	957
TOTAL Samples Collected	1468	1417	1432	1446	1471	1481	744	1468	1474	799	1485	772	15457
Milk Condemed - pounds	400	160	280	380	240	180	240	320	180	570	420	-	3370
Milk Cans Con-demned - number	9	7	12	18	7	14	16	12	9	6	8	-	118

METHYLENE BLUE TESTS

	Jan	Feb	Mar	Apr	May	Jun	Jul	Aug	Sep	Oct	Nov	Dec	Total
Grade I	616	610	608	619	479	534	202	408	618	323	632	305	5954
Grade II	39	44	33	31	61	69	71	206	29	12	37	28	660
Grade III	39	20	36	30	54	93	75	74	42	20	26	12	521

SEDIMENT TESTS

	Jan	Feb	Mar	Apr	May	Jun	Jul	Aug	Sep	Oct	Nov	Dec	Total
Grade I	337	380	349	253	348	276	143	302	234	92	253	101	3068
Grade II	321	281	312	390	311	387	190	366	413	233	423	242	3869
Grade III	36	13	16	37	35	33	15	20	42	30	19	2	298

AVERAGE OFFICIAL PLATE COUNT

Standard	-	8,514	Jersey	-	8,125
Homogenized	-	4,348	Sub Standard Cream	-	7,940
Skim Milk	-	4,115	Whipping Cream	-	12,848

AVERAGE BUTTERFAT CONTENT

Standard	-	3.46%	Jersey	-	4.62%
Homogenized	-	3.45%	Sub Standard Cream	-	10.59%
Cream	-			-	34.65%

Total Milk Sales in quarts - 22,549,934

Total Cream Sales in quarts - 1,744,239

Per capita, per day consumption:

Milk - .5974 pints

Cream - .0329 pints

LABORATORY

The bacteriological examination of water, milk, food and drink, and restaurant utensils have been routinely made throughout the year.

The statistical report is as follows:

Examination of Water Supplies

Water Sample	Number Received	Presum. Lactose 100 c.c.	Presum. Lactose 10 c.c.	Presum. Lactose 1 c.c.	Agar Plate Count	Confirmation (BGB)	Completion	Total
City Water	859	2577	2577	2577	2577	874	4	12045
Glenmore Plant	743	2229	2229	2229	2229	68		9727
Swimming Pool	138	414	414	414	414	19		1813
Well Water	231	693	693	693	693	398	21	3422
Miscellaneous	644	1932	1932	1932	1932	976	8	9356
Total	2615	7845	7845	7845	7845	2335	33	36363

Examination of Milk and Milk Products

Dairy	Babcock	Phosphate	Specific Gravity	Total Solids Test	Total Solid not Fat Test	TGEM Plate Count	BGB Coliforms	Reductase (raw)	Distributors Samples	Special tests on Producers Samples
#1 Alpha #2 Model #3 Palm #4 Union	632	634	632	632	632	2709	4520	6977	29	16
Army	20	20	20	20	20	60	100			
Total	652	654	652	652	652	2769	4620	6977	29	16
Total										17673

Food and Drink Examinations

Frozen Egg	Bacteria Count	Solids	Miscellaneous	Total
Sheinen	66	22		88
A. P. M.	175	34		209
C. A. D. P.	-	-		-
Burns	36	12		48
Total	277	68		345

Restaurant Utensils

Restaurants or Beverage Rooms	Plate Count	Microscopic	Miscellaneous	Total
Restaurants	192			192
Miscellaneous		16	12	28
Total	192	16	12	220

GRAND TOTAL 54,601

CONCLUSIONS

It is felt that a satisfactory measure of Public Health control has been accomplished, with particular reference to places of public accommodation. The Inspectional and Laboratory Staffs join me in offering our thanks and appreciation to you, Sir, for your guidance and assistance in the performance of our duties.

Respectfully submitted,

W. PILLIDGE, C.S.I.(C),
CHIEF INSPECTOR

W. H. Hill, M.D., C.M., D.P.H.,
Medical Officer of Health,
Calgary, Alberta.

Dear Dr. Hill:

I herewith submit the report of the Infant and Pre-School Clinics for the year 1958.

ATTENDANCE:

Infants	-	18,547	
Pre-School	-	6,584	<u>Total - 25,131</u>

There was an increase of 2,500 over that of last year: 165 of these were from out of town.

NEW CASES:

Infants	-	3,825	
Pre-School	-	1,131	<u>Total - 4,956</u>

ATTENDANCE BY CLINICS:

City Hall	-	8,958	
Scarboro	-	7,415	
Killarney	-	1,854	
North Hill	-	4,518	
Renfrew	-	885	
Maude Riley			
Home	-	501	<u>Total - 25,131</u>

All figures are included in the main report.

PRESENT ENROLMENT AT ALL CLINICS:

Infants	-	11,872	
Pre-School	-	15,983	<u>Total - 27,855</u>

Total number interviewed by Doctors - 5,032.

Of 3,322 complete examinations in the three to six age group, 1,904 were found to be O.K., and 902 missed appointments.

Total number of visits to homes - 4,125.

INFANT FEEDING COMPARISONS:

Breast	-	1,901
Bottle	-	13,117
Others	-	3,529

DEFECTS:

Skin	-	517	Hernia	-	78
Ears	-	24	Chest	-	64
Eyes	-	159	Orthopaedic-		78

Nutrition	-	29	Nose & Throat	-	52
Anaemic	-	22	Tonsils &		
Phimosis	-	45	Adenoids	-	117
Intestinal	-	56	Heart	-	9
Congenital	-	18	Teeth	-	765
Malformations			Mental Defects	-	2

276 of the above cases were referred to the Family Physician.

Ninety-two students from the Calgary General Hospital have attended the Clinics with the Public Health Nurse they are assigned with for a given period.

VOLUNTARY WORKERS:

406 for a half day each

LETTERS:

12,757 letters have been forwarded in connection with clinic work.

I would like to thank the Junior Service League members for their help in our Clinics. We are greatly indebted to the ladies for the time which they gave.

We, again, give a very special thank you to the ladies of the Hounsfield Heights Sewing Club for the lovely quilts which they so generously donate.

We are, also, indebted to the various firms for vitamin samples and other Infant Food products.

Respectfully submitted,

(Miss) Marjorie C. Hulbert, B.Sc., R.N.,
Child Hygiene Clinic,
City of Calgary, Alberta.

W. H. Hill, Esq., M.D., C.M., D.P.H.,
Medical Officer of Health,
City of Calgary, Alberta.

Dear Sir:

The following report sets out the work accomplished by the School Health Division in the City Schools during the year 1958. It is presented for your information.

The rapid expansion of the City necessitated a reorganization of Health Service Districts for 1958. This resulted in the creation of an additional two districts, bringing the total to thirty-one. Each district was allocated to a Public Health Nurse who is responsible for carrying out within her area Departmental policy relating to schools, community home visiting and infant health centres. The reorganization of districts represents an increase of two over the previous year and an overall increase of seven in the past two years. It is inevitable that 1959 will show a still further considerable increase in view of the vast amount of project building already planned and approved.

During the ten months of the school year, a total of 10,509 school children received a full medical examination designed to assess their health status. In addition, a further 676 were examined for competitive sports. The overall average school enrollment within the City School System numbered, approximately, 40,000; thus 25% of the pupils enrolled received a medical examination by one of the school physicians. All pupils in Grade I and Grade VII were given a routine examination, together with all new entrants to the school system in any grade. Grade X pupils are examined on a screen system, though all pupils in this grade are given a health counselling interview with the school nurse. Special request examinations by teachers totalled only 196. Parents were invited to be present during the physical examination of 10,013 children: 5,479 or 55% accepted the invitation. Any physical defects or short comings are discussed with the parent, together with advice on seeking treatment or corrective through the family physician. Where no parent is present, a brief summary of the physical state is recorded on a special form and sent home with the child to the parent. Any defect requiring attention is recorded on a special form, also, and sent home with the child. The immunization state of each child is checked at the time of the examination and, in addition, the school nurse reviews the Medical History Sheets routinely in certain grades looking for children who have either never been previously immunized or whose immunizations are outdated. Special inoculation sessions are carried out by the nurses during January to June of each school year to insure that every child and family are given every opportunity of keeping protective inoculations up to date. Parental consent for every inoculation, whether primary or repeat, is always obtained. During the school year of 1958, some 7,856 children were given booster doses of Diphtheria and Tetanus Toxoid. A further 4,444 smallpox vaccinations were done in the school age group. A total of 9,710 children were awarded an arbitrary health rating of 'A' from the result of their physical examination, or 92.5%; 741 or 7% were awarded a 'B' standing and 58 or 0.5% had a 'C' grade. The general health standard of school pupils is considered to be extremely satisfactory.

The defects noted by the examining physicians are summarized in the following table.

Defects	Number	% of total examined
Eyes	443	4.2%
Ears	125	1.2%
Dental	3,421	32.6%
Nose	69	0.6%
Tonsils & Adenoids	319	3.1%
Cardiac	75	0.7%
Pulmonary	64	0.6%
Abdominal	36	0.3%
Hernia	40	0.4%
Genital	69	0.6%
Feet	521	5.1%
Orthopaedic	175	1.7%
Endocrine	53	0.5%
Glands	108	1.0%
Speech	87	0.8%

From these examination, 463 or 4.4% were referred to their own family physician, either on account of some specific defect noted for which treatment was warranted or for further investigations. The Health Department wishes to express thanks to the private physicians of the City of Calgary for the information furnished on the referral slips completed on behalf of their patients.

On Monday and Thursday afternoons, a Minor Ailments Clinic is held at the City Hall. Nurses and teachers refer cases from the schools to this centre for medical opinion. A total of 926 children were seen at this centre with 178 further referred to their own private doctor for treatment.

The Public Health Nursing Staff have had a very busy year and performed a vast amount of constructive health supervision both in and out of the schools. The nurse is a very vital person in the school and pupils, parents and teachers alike make a great deal of use of her services.

The following tables record in summary form some of the nursing activities accomplished during the school year.

Communicable Diseases Investigated	
Measles	655
Scarlet Fever	204
Whooping cough	113
Chicken pox	495
Mumps	1,484
Rubella	253
Infestations	47
Other Causes	342

Exclusions from School	
Suspect Communicable Disease	215
Impetigo	187
Infestations	47
Other reasons warranting exclusions	399
Inoculations	
Diphtheria & Tetanus Toxoid	7,856
Vaccinations	4,444
Mantoux Tests Grade X	1,640
Positive Mantoux Tests	137
Salk Polio Inoculation Program	
School Pupils	18,470
Pre-School Children	20,400
Adults and Expectant mothers	47,500
Total	86,370

Inspections	
Pupils examined by Nurse	20,892
Referred to physicians	1,299
Medical Examinations assisted at	11,381
Vision Tests	25,856
Referred re vision defects	2,738
Dental Inspections	11,385
Ref requiring dental attention	5,399
First Aid Treatments	9,737
Home Visits regarding pupils	2,355
Post Natal Visits	5,925
Infant & Pre-School Visits	4,957
Adult Visits	5,941
Conferences regarding Health With:	
Pupils	16,111
Parents	10,571
Teachers	15,035
Doctors	1,742
Other Agencies	1,713
Audiometer Tests:	
Grade III Pupils	4,031
No. failing routine test	276

During 1958 great emphasis was laid on the Poliomyelitis Inoculation Programme. All pupils in Grades VII to XII, whose parents wished this inoculation, had been given two doses of the vaccine in 1957. Early in 1958, all these school pupils were given their third and final dose. A total of some 28,870 doses of vaccine was administered in the schools. Many parents who had been hesitant about accepting Salk Vaccine in earlier years, consented to have this inoculation given to their children. It is considered that 95% of the City School children have received the full series for Salk Poliomyelitis Vaccine. Excellent co-operation received from the Press and Radio kept the campaign before the public. The Vaccine was made available to all children six months of age and older, starting in September. Any adult up to forty years of age was invited to accept the inoculation, emphasis being placed on the importance of adults with children completing the series. In order to give every opportunity to the business people, and particularly parents, evening clinics for Salk Vaccine were conducted at Paget Hall in the central business district of the City of Calgary. The Clinic was open from 7 to 9 p.m., Thursday and Friday, once per month. Response was excellent and more than 57,000 adults and babies received two doses of Vaccine at the standard interval. An overall total of 86,370 doses of Salk Vaccine were administered during 1958. The Health Department was, again, assisted in its special Polio Inoculation Campaign by volunteer groups and other agencies active in the City. To those members of the Central Volunteer Bureau, The Home and School Associations, the Y. W. C. A., the C. G. I. T. and Girl Guides, and the Kappa Alpha Theta Alumni Club, who acted as recorders at public inoculation sessions, the Health Department wishes to acknowledge its grateful thanks for a job

well done. It is interesting to note that some 300,000 polio inoculations have been administered to City residents, both young and old, since polio vaccine became available in 1955.

The incidence of poliomyelitis amongst city residents amounted to 16 during 1958. Of the 16 cases, 12 had had Salk Vaccine, either two or three doses. In this group, 10 were cases of non-paralytic polio and six had actual paralysis. There was one death from Bulbar Polio in an uninoculated young man. Two pre-school children were diagnosed as poliomyelitis, both non-paralytic. In the school age population, there were six cases, all non-paralytic. In the adult population, there were eight cases, six of whom had paralysis.

The Grade X pupils in the various High Schools were all offered a Mantoux Test in the Tuberculosis programme. Of the 2,180 pupils in this grade, 1,894 accepted the test. 147 were found to be positive reactors and were all given a routine x-ray by the miniature x-ray machine at the City Hall. 67 pupils were known positive reactors from a previous test. In no instance was any active tubercular disease discovered. It is disappointing to note that 217 pupils refused or were absent or did not return the consent slip in this survey series. All positive reactors back in school from the previous year's survey, were again x-rayed before being released. It should be recorded that the interpretation of these films is made possible by the help and co-operation of the medical staff of the Baker Memorial Sanatorium.

Grade 111 pupils were all given a routine group hearing test by the school nurse. 4,031 pupils were given the Massachusetts Group Hearing Test, with 276 failures. All pupils who failed on this test were given an individual test. Some 117 children were found to have no loss of hearing on further individual testing: the other 159 pupils had varying loss from minimal to severe.

In the period 1958 under review, 44 children were provided with glasses, free of charge. In all cases, the economic circumstances of the family were carefully checked before the charge was made to the City. The cost of the service amounted to \$386.00. At the discretion of the school nurse, certain families were selected to receive extra milk delivered to the home for the benefit of their children. An amount of \$2,690.50 was expended on this service.

The Department made its special formula Vitamin Tablet supplement available to school children for purchase in the schools. This service continues to grow each year and is a very popular means of presenting a vitamin supplement. The Health Department provided instructional facilities for the undergraduate nurses at the General Hospital in the way of field work in Public Health. 71 third-year undergraduate nurses each spent 5 days with staff members of the Health Department. The student nurses received an insight into public health practices relating to school health work, infant welfare interviews, home visiting and communicable disease control. In addition, they took part in the program relating to tuberculosis control and preventive inoculation procedures. The Public Health Nurses and Sanitary Inspectors attempt to arrange as interesting and varied a schedule within their districts as possible for these girls. In addition, six nurses from the University of Alberta were assigned to the Health Department for their two week's field training and a further six girls from the Calgary Branch of the University of Alberta taking their B.Sc., Degree, each spent one half a day in the Department. To those nurses who acted as tutors for student nurses is expressed the sincere thanks of all for their efforts and time.

The Department wishes to express grateful thanks for professional

advice and services received by certain Ophthalmologists and Optometrists in connection with several eye disabilities referred to them during the year.

I should like to express sincere thanks to all members of the Infant Welfare and School Health Divisions for the excellence of the work done during the year. The excellent 'esprit de corps' that exists amongst all staff members is in every way responsible for the high standard and great volume of work accomplished throughout the year.

Respectfully submitted,

LESLIE C. ALLAN, M.B., ChB., D.P.H.,
Assistant Medical Officer of Health.

STATISTICAL TABLES

Year	Number of cases treated	Number of cases referred	Total
1941	1,000	2,000	3,000
1942	1,200	2,200	3,400
1943	1,500	2,500	4,000
1944	1,800	2,800	4,600
1945	2,000	3,000	5,000
1946	2,200	3,200	5,400
1947	2,500	3,500	6,000
1948	2,800	3,800	6,600
1949	3,000	4,000	7,000
1950	3,200	4,200	7,400
1951	3,500	4,500	8,000

Year	Number of cases treated	Number of cases referred	Total
1952	3,800	4,800	8,600
1953	4,000	5,000	9,000
1954	4,200	5,200	9,400
1955	4,500	5,500	10,000
1956	4,800	5,800	10,600
1957	5,000	6,000	11,000
1958	5,200	6,200	11,400
1959	5,500	6,500	12,000
1960	5,800	6,800	12,600
1961	6,000	7,000	13,000

The above figures are continuing steady in spite of the fact that the number of cases referred has increased during the last five years. This is due to the fact that the number of cases referred has increased during the last five years. This is due to the fact that the number of cases referred has increased during the last five years.

W. H. Hill, Esq., M.D., C.M., D.P.H.,
 Medical Officer of Health,
 City of Calgary, Alberta.

Dear Sir:

The following is a report and summary of the Pre-School and School Dental Services Division for the year 1958.

During the year 1958, the School Dental Clinic policy remained much the same, offering dental inspection to Grades I and II and treatment to pre-schoolers and Grades I and II children.

The Public Health Nurses continue to be concerned with educational efforts relating to dental health and work mainly through parent and teacher counselling. The nurses, also, inspect pre-school children and counsel with parents in the Well-Baby Clinics.

SCHOOL DENTAL CLINIC STATISTICS

Total Fillings	7,320	Number of Teeth Treated	10,491
Permanent	2,926	Permanent	2,863
Deciduous	4,394	Deciduous	7,628
Total Extractions	3,449	Completed Cases	2,229
Permanent	125	Appointments made	5,435
Deciduous	3,324	Appointments kept	4,890
Bases	2,326	Appointments not kept	545
Prophylaxis	4	Emergencies	149
X-rayed	58		

YEARLY COMPARISONS

	1956	1957	1958
Total Fillings	7,927	7,323	7,320
Total Extractions	2,687	2,962	3,449
Number of Teeth Treated	10,552	10,310	10,491
Completed Cases	1,898	2,100	2,229
Lost Chair Time	388 Hrs.	270 Hrs.	278 Hrs.

The above figures are remaining steady in spite of the fact that we have had difficulties obtaining and keeping full time staff.

Much time was still lost by missed appointments - a total of 521 hours was lost. In spite of our attempts to cut this loss to a minimum, we are still plagued by it.

PRE-SCHOOL DENTAL STATISTICS

Total Fillings	5,390	Number of Teeth Treated	6,766
Permanent	85	Completed Cases	1,366
Deciduous	5,305	Appointments kept	4,711
Total Extractions	1,022	Appointments not kept	486
Permanent	3	Emergencies	181
Deciduous	1,019	Space Maintainers	129
Miscellaneous	700		

The simple type of space maintainer is still the main type being used and it may be noted that we more than doubled the output of these appliances over the last year.

COMPARATIVE STATISTICS

	1957	1958
Total Fillings	4,876	5,390
Total Extractions	847	1,022
Number of Teeth Treated	5,717	6,766
Completed Cases	1,292	1,366
Space Maintainers	52	129
Lost Chair Time	210 Hrs	243 Hrs

Some changes in equipment have been made. Four new airdriven handpieces, together with a new compressor to handle increased air demands, have been bought and installed. Although some new equipment is still needed, we are approaching a time when we will be very adequately equipped. The service is still inadequately housed; the physical conditions surrounding the operation are not good and continue to contribute to child management problems, operator fatigue and, also, loss of staff. Professional staff will not continue to endure bad working conditions and staffing will continue to be a problem.

The staff of the Dental Division wishes to thank all members of the Department who helped in so many ways to contribute to the progress of the Dental Division, and to express thanks to you, Sir, for your confidence and counsel.

Respectfully submitted,

J. A. DUNCAN, D.D.S., D.D.P.H.,
 Director of Dental Services,
 City of Calgary, Alberta.

W. H. Hill, Esq., M.D., C.M., D.P.H.,
Medical Officer of Health,
Calgary, Alberta.

Dear Sir:

I am pleased to, again, report on the work of the Kinsmen nursing service for the year ending February 28th, 1959.

No. of persons visiting the office	1,324		
No. of home visits made	1,061	(107 by Miss Frank, Health Department)	
No. of co-operative & other calls	143		
Number of clinic sessions	18	(70 in attendance)	
No. of streptomycin injections	224		
No. of tuberculin tests (Mantoux)	3,339	Pos. reactors	593
(a) In office	684	Pos. reactors	186
(b) Outside office	2,655	Pos. reactors	407
(1) Grade X students	1,822	Pos. reactors	153
(2) Nursing Aides	602	Pos. reactors	225
(3) Staffs & group contacts	82	Pos. reactors	20
(4) Booth Home, Children & Staff	76	Pos. reactors	5
(5) Contacts at home	13	Pos. reactors	4

The regular Wednesday afternoon clinics with a doctor from the Sanatorium, have been greatly reduced. A number of people that previously attended clinics are now reporting to the X-ray Unit, only. Those requiring follow-up examinations from the City Hall Unit and the Mobile Unit, are asked to report to Sanatorium Clinics. It was decided during the year, due to the failing attendance to hold the clinic sessions on the 2nd and 4th Wednesday, only. Contacts reporting to the Unit instead of the Clinic, are skin tested.

Home visits are made to all admission and discharges, with supervision of the home during the patient's stay in Sanatorium. There is frequent referral to the Welfare Department and consultation with our Rehabilitation Officer at the Sanatorium. A mother is not willing to be admitted until adequate arrangements for the care of the children is assured. The father must know that the care of the family will be provided. Advice and health teaching in the home during this emotionally upsetting time is, for the most part, welcome and, also, rewarding.

Patients failing to report for x-ray, as requested, are still a problem. Every effort should be made to encourage the patients to report changes of address to the Health Department. Recalls not reporting from both units, require home visits in an endeavour to have them examined. Contacts of all cases are tuberculin tested with the reactors x-rayed. This assists with case finding. The families of the Grade X reactors are tested in an attempt to locate the source of infection.

Welfare problems have appeared to a lesser extent this year. The extension of mother's allowance to cover Tuberculosis families, has been most beneficial.

Assistance with milk is presently received by twenty-two families. Eighteen bottles of cod liver oil and sixteen bottles of vitamin pills were distributed. Five families were driven to the Sanatorium for the Clinic. Used clothing was delivered to six families. Admission requirements were purchased for one patient and the Kinettes provided the admission needs for three children. The Kinettes,

again, provided gifts for thirty children and these were delivered to twelve families receiving our Christmas Hampers.

We are most fortunate to be located in the Health Department and the help and continued support received from you and your staff, is sincerely appreciated.

Yours very truly,

IRENE WALTON, R. N.,
Nurse-In-Charge,
Chest Clinic.

Dr. W. H. Hill, C.M., D.P.H.,
Medical Officer of Health,
City of Calgary, Alberta.

Dear Sir:

It is with pleasure that we report the activities of the Chest X-Ray Clinic for the year 1958. This Clinic is sponsored by the Alberta Tuberculosis Association and located in the Health Department, Third Floor, City Hall. The Clinic is staffed by a Technician and a Receptionist, provided by the Alberta Tuberculosis Association and the films are processed and interpreted by the Provincial Department of Public Health at Baker Memorial Sanatorium.

The following is a summary of the work undertaken at this Clinic:

No. x-rayed	7,768
Probably TB -	
Active	4
Inactive	109
Hilar &/Or Paren. Calif.	-
Further examination requested	167
Pleurisy Inactive	2
Non-TB Conditions	203
Total Abnormalities	485

During the month of July, a new x-ray unit was installed by the Alberta Tuberculosis Association. This unit utilizes the newest type of equipment available in x-ray techniques.

The survey of the Civic Employees was completed and all new employees entering the Civic Service now are x-rayed under the pre-employment program.

We wish to thank the City of Calgary and your Department, as well as the Provincial Department of Public Health and the Calgary Tuberculosis Association, for their excellent co-operation throughout the year.

Respectfully submitted,

M. S. Holme,
Technician, Chest X-Ray Clinic,
City Hall.

VICTORIAN ORDER OF NURSES
CALGARY BRANCH

It is my privilege to present the report of the nursing service of the Calgary Branch of the Victorian Order of Nurses for the year 1958.

When the new year arrives, we look to the future and wonder what will be our role in the coming year, but we must look back on the past year and try to measure our accomplishments if we are to see our goal for the future. And so we propose in this report to give you a picture of what has been done in the nursing service of this branch.

We know from the diligent work done by our eight staff nurses that more has been achieved in the year 1958, but for tangible proof we must resort to our statistics, and here we find that our total visits show an increase of 22% over the total for last year, or a grand total of 17,631 visits for the year 1958 to 2,402 patients. I will not confuse you by listing here the distribution of these visits but will refer you to the last section of this report where it is set forth.

By nursing care we must think of the many injections given, the many surgical dressings done and the many families assisted in caring for an ill member. We know that many valuable hospital beds have been freed and doctors' valuable time saved, but more important, we know that many sick people in the community received skilled nursing care in their own home.

We are only a part of the community and depend heavily on the help given us by the many other community agencies, both official and voluntary. It is impossible for us to name each one, so we must thank them all collectively.

Rehabilitation is a community concern, for by rehabilitation we mean helping the patient regain as far as possible his ability to lead a full, active and independent life. The nurse is only one member of the rehabilitation team, but in home nursing she plays a bit part, in teaching the patient proper use of muscles, how to help himself as much as possible, and the family how to care for the patient. To help our Alberta nurses play this part, Miss Christine MacArthur from our National Office staff presented in Calgary a course on rehabilitation nursing. We feel this was of great benefit to both our nurses and to our patients.

Of course, the main objective of the Victorian Order of Nurses is to supply skilled nursing care to all members of the community, and this we have done to the best of our ability. However, we have not forgotten that another aim of our organization is to aid in the prevention of disease and in the maintenance of health. This we try to do through our health instruction program which may be follow-up visits to medical and surgical cases where we consider health teaching is most important, but many visits are made to expectant mothers or mothers with new born infants where the anxious mother is so eager to start her new baby on the road to health. Too, we must not forget our pre-natal classes where expectant mothers learn to understand their pregnancy and to prepare for the new baby.

And what are our plans for 1959? We hope to be able to provide Calgary with the same skilled nursing care, perhaps even playing a greater part in

the release of hospital beds, and care of the sick person in his own home; and endeavouring, through our nursing care and health instruction program, to contribute to the well-being of the citizens of Calgary.

Statistics for the Year 1958:

	<u>Nursing Care</u>	<u>Health Inst.</u>
Medical and surgical	12,077 visits	429 visits
Prenatal	15 visits	47 visits
Postnatal	56 visits	1,442 visits
Newborn and infant	665 visits	2,603 visits
Miscellaneous		287 visits
Home deliveries attended - two, equivalent to	10 visits	
	<hr/>	<hr/>
	12,823 visits	4,808 visits
	<hr/>	<hr/>

Pre-natal classes:

205 expectant mothers attended 42 sessions, with a total attendance of 981.

Respectfully submitted,

(Miss) Isobel Simister,
Supervisor of Nurses,
Victorian Order of Nurses.

FINANCIAL STATEMENT

HEALTH DEPARTMENT (General)

	<u>1958</u>	<u>1957</u>
Salaries	\$117,601.07	\$103,818.90
Travelling Expenses	228.52	
Private Car Allowances	4,113.38)	
Rental - Passenger Cars and Light Trucks	6,398.60)	9,051.90
Employees' Transit Tickets and Passes	1,130.00	946.50
Maintenance and Repair - Equipment	349.15	
Printing	869.50)	
Stationery and Office Supplies	1,304.27)	2,248.67
Milk Inspection	1,263.12	635.17
Meat Inspection	69.45	72.67
Utilities - Gas, Light, Water and Power	349.15)	
Telephones, Telegrams, Teletype	192.05)	1,664.13
Laundry Service	453.90)	
Fly, Insect and Rodent Control	5,570.62	3,686.02
Insurance	542.06	51.26
Postage and Sundries	621.33	601.34
Disinfectants	198.69	240.60
Serums	228.53	270.79
Laboratory Supplies and Materials	1,093.36	1,049.65
Equipment - Laboratory	410.02	3,732.10
Enlargement of Laboratory	--	1,294.87
Office Equipment	750.00	344.45
X-Ray Room for Chest Clinic	--	200.00
Milk to Undernourished & Sickly (incl. school children)	5,589.01	3,578.64
Mechanical Accounting - Payroll	328.44	498.38
Revolving Fund - annual payments for automobiles	--	783.54
	<hr/>	<hr/>
	\$149,654.22	\$134,769.58
	<hr/>	<hr/>

SCHOOL MEDICAL AND DENTAL SERVICES

Salaries	\$188,131.23	\$158,491.53
Travelling Expenses	291.96	
Private Car Allowances	3,293.32)	
Rental - Passenger Cars and Light Trucks	2,510.87)	4,518.60
Employees' Transit Tickets and Passes	3,320.00	2,741.00
Printing	1,688.71)	
Stationery and Office Supplies	1,125.81)	2,565.06
Miscellaneous Supplies	291.95	80.12
Medical Supplies (\$2,730.50 less credits)	1,158.04 Cr.	373.59
Dental Supplies (1957 - \$4,286.85 less credits)	4,309.96	560.85
Moderize Dental Clinic Equipment	2,062.53	2,113.14
Equipment - Medical	312.04	379.97
Glasses to Underprivileged Children	445.55	242.35
Mechanical Accounting - Payroll	436.07	738.98
Revolving Fund - annual payments for automobiles	--	391.77
	<hr/>	<hr/>
	\$207,061.96	\$173,196.96
	<hr/>	<hr/>

INFANT AND PRE-SCHOOL CLINICS

	<u>1958</u>	<u>1957</u>
Salaries	\$15,144.94	\$14,915.84
Private Car Allowances	479.55)	1,269.50
Rental - Passenger Cars and Light Trucks	1,220.70)	
Employees' Transit Tickets and Passes	290.00	334.50
Rental - Buildings and Property	535.00	325.00
Miscellaneous Supplies	373.27	443.88
	<u>\$18,043.46</u>	<u>\$17,288.72</u>

SCARBORO HEALTH UNIT

Salaries - Caretaker	\$600.00	\$625.00
Rental - Buildings and Property	250.00	140.00
Maintenance and Repair - equipment	165.30)	446.32
Janitorial and Housekeeping Supplies	165.30)	
Miscellaneous Supplies	206.65)	
Laundry Service	165.30)	
Furniture and Furnishings	82.65)	
Utilities - Gas, Light, Water and Power	231.92)	332.57
Telephones, Telegrams, Teletype	77.30)	
	<u>\$1,944.42</u>	<u>\$1,543.89</u>

SUMMARY

Health Department - General	\$149,654.22	\$134,769.58
School Medical and Dental Clinics	207,061.96	173,196.96
Infant and Pre-School Clinics	18,043.46	17,288.72
Scarboro Health Unit	1,944.42	1,543.89
	<u>\$376,704.06</u>	<u>\$326,799.15</u>

	<u>1958</u>	<u>1957</u>
Population	206,831	192,577
Per Capita Expenditure - not including Grants	\$1.82	\$1.70
RECEIPTS from Federal and Provincial Grants	\$80,493.30	\$72,038.86

EXPENDITURE FOR PAST FIVE YEARS

	<u>1958</u>	<u>1957</u>	<u>1956</u>	<u>1955</u>	<u>1954</u>
Total	\$376,704.06	\$326,799.15	\$295,853.50	\$274,445.89	\$259,253.43
Per Capita (not including Grants)	1.82	1.70	1.64	1.75	1.65

