

Quarterly report of the Mysore Department of Health.

Contributors

Mysore (India : State). Department of Health.

Publication/Creation

Bangalore : printed at the Mysore Government Press, [1938]

Persistent URL

<https://wellcomecollection.org/works/zvvzsygc>

License and attribution

This work has been identified as being free of known restrictions under copyright law, including all related and neighbouring rights and is being made available under the Creative Commons, Public Domain Mark.

You can copy, modify, distribute and perform the work, even for commercial purposes, without asking permission.



Wellcome Collection
183 Euston Road
London NW1 2BE UK
T +44 (0)20 7611 8722
E library@wellcomecollection.org
<https://wellcomecollection.org>

Public Health is Purchasable. Within Natural Limitations any Community
can Determine its own Death-rate.

Vol. X]

[No. 1

QUARTERLY REPORT

OF THE

MYSORE STATE DEPARTMENT OF HEALTH

JANUARY—MARCH, 1938

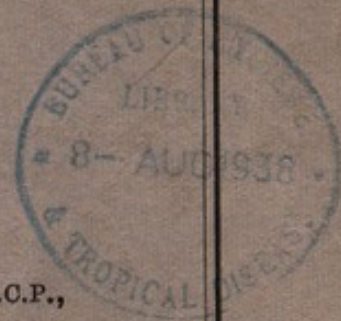
P. PARTHASARATHY, L.M.S., B.S.Sc., L.R.C.P.,
L.R.C.S., D.T.M., D.P.H.,
Director of Public Health.



BANGALORE :

PRINTED BY THE SUPERINTENDENT AT THE GOVT. PRESS

1938



AC.242

No. 3 missing, with H.S. 41
NOT TO BE TAKEN AWAY.

**"Search for the Truth is the noblest occupation
of Mankind, its publication a Duty."**



22501291982

CONTENTS.

	PAGE.
1. General	1
2. Bureau of Administration—	
(a) City Health Organisations—	
(i) Bangalore City	3
(ii) Mysore City	5
(iii) Kolar Gold Fields	7
(b) District Health Organisations—	
(i) Mysore District	9
(ii) Shimoga District	10
(c) Voluntary Organisations—	
3. Bureau of Epidemiology—	
(i) Malaria Stations	15
(ii) Central Laboratory	17
(iii) Special Surveys	17
(iv) Hookworm Campaign	18
(v) Guineaworm Unit	19
(vi) Control of Epidemics	19
4. Bureau of Laboratories—	
(a) Public Health Institute—	
(i) Bacteriological Section	23
(ii) Chemical Section	24
(iii) Medico-legal Section	24
(iv) Vaccines Issued	24
(v) Fees	25
(b) Vaccine Institute—	
(i) General	25
(ii) Health of Calves	25
(iii) Summary Statistics	25
(iv) Model Range	26
5. Bureau of Health Education—	
(i) Cinema Publicity	27
(ii) Health Lectures	27
(iii) Health Exhibitions	27
(iv) Newspaper Publicity	27
(v) The Mysore Arogya	28



6. Bureau of Rural Health.—

(a) Health Training Centre, Closepet—				PAGE.
(i)	Personnel	28
(ii)	Infectious Diseases	29
(iii)	House Survey	29
(iv)	Chlorination	29
(v)	Vital Statistics	30
(vi)	Vaccination	30
(vii)	Maternity and Childwelfare	30
(viii)	Midwives	30
(ix)	Health League	31
(x)	Laboratory	33

(b) Rural Health Unit, Mandya—

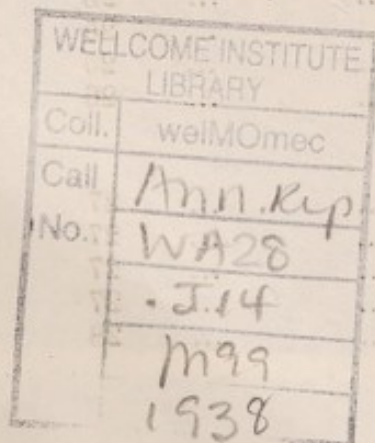
(i)	Personnel	33
(ii)	Infectious Diseases	33
(iii)	Vaccination	34
(iv)	Midwives	34
(v)	General Sanitation	34
(vi)	Chlorination	35
(vii)	Vital Statistics	35
(viii)	Malaria	35
(ix)	Health Education	35
(x)	Laboratory	36

7. Bureau of Sanitary Engineering—

(i)	Water Supply	37
(ii)	Moffussil Drainage and Town Planning	37
(iii)	Sanitary Fittings and Installations	37
(iv)	Drainage Works	39
(v)	Bore-wells	39
(vi)	Summary Statistics	40

8. Bureau of Vital Statistics—

(i)	Centralization of Compilations	45
(ii)	Births Reported	46
(iii)	Deaths Reported	48
(iv)	Marriages Reported	50
(v)	Population	52
(vi)	Epidemic Diseases	53
(vii)	Vital Statistics of the Previous Quarter	55
(viii)	Statistical Tables	57



QUARTERLY REPORT
OF THE
MYSORE STATE DEPARTMENT OF HEALTH.

—♦—
GENERAL.

The state of public health in the quarter under report was satisfactory.

The position of the Vaccinators employed under the Malnad Improvement Scheme being far from satisfactory, Government in their Order No. G. 5725-35—P. H. 78-36-10, dated 24th January 1938, ordered, on the recommendation of the Director, the absorption of these Vaccinators in the vacancies among the District Board Vaccination Staff.

The following rules for the supply of vaccines from the Public Health Institute are approved by Government in Government Order No. G. 7744-65—P. H. 95-37-2, dated 24th March 1938:—

(1) Vaccines supplied to the local bodies cannot be taken back.

(2) No refunds can be made to a local body on unused vaccine.

(3) As far as possible bulbs are carefully packed. No rebate will therefore be allowed on account of breakages.

With a view to prevent the spread of cholera into the State from the Mahadeswara Betta Jatra in the Coimbatore District, Government in their Order No. G. 7368-71—P. H. 109-37-6, dated 8th March 1938, approved of the appointment of six Sub-Assistant Surgeons on Rs. 50 each per mensem temporarily for about a month up to March 15, 1938, for cholera inoculation duty in six places in the border of the Mysore District.

Mr. G. M. Dominick was deputed to Bombay to study the method of manufacture of plague vaccine for a period of one and a half months as per Government Order No. G. 6073-4—P. H. 5-37-7, dated 31st January 1938. During

this period Mr. B. Parthasarathy Iyengar was in charge of the duties of the Superintendent, Public Health Institute, in addition to his own duties.

Government Order No. G. 7381-2—P. H. 99-37-7, dated 10th March 1938, sanctioned the deputation of Mr. E. R. Sundararajan as a delegate to attend the All-India Population and Family Hygiene Conference held in Bombay in April 1938. The following five papers read at the Conference are published in the Proceedings of that Conference:—

(1) Morbidity Statistics in Mysore State—By Parthasarathy, P. and Sundararajan, E. R.

(2) Periodicity of Plague in Mysore State—By Parthasarathy, P. and Sundararajan, E. R.

(3) Recent changes in the Reporting of Vital Statistics in Mysore State—By Sundararajan, E. R.

(4) Is Registration of Marriages in India Desirable?—By Sundararajan, E. R.

(5) A Cheap and Accurate method of taking the Census—By Sundararajan, E. R.

Mr. E. Anantha Rao was deputed to Coonoor and Madras for two months and seven days from February 1, 1938, for training in nutrition work as per Government Order No. G. 6450-51—P. H. 91-37-6, dated 12th February 1938, arranged by the Indian Research Fund Association.

According to the Report of the Mysore Committee on Vital Statistics approved by Government, the Registrar-General of Births, Deaths and Marriages is the Director of Public Health and he issues the certificates of births, deaths and marriages. A specific Government Order on this matter is awaited. Meantime several requisitions for the granting of birth and death certificates, received by the Director, had to be returned to the taluks and municipalities with the intimation that, pending Government Order in the matter, the certificates may be issued as under the old system.

Doctors W. A. Sawyer, G. K. Strode and W. P. Jacocks of the Rockefeller Foundation inspected the Closepet Health Centre and the Malaria Stations at Mandya, Nagenhalli and Bangalore City. Professor Buxton of the London School of Tropical Medicine and Mr. Dyer, Sanitary Engineer, Rockefeller Foundation, visited Mysore, Mandya, Nagenhalli and Hiriya in connection with a malaria study tour. Dr. Rafi of the

Punjab Public Health Service, who was on a Fellowship from the Rockefeller Foundation, underwent training in Malaria field work for a period of six weeks in the three malaria study stations and in Mandya and Bangalore City.

Government are pleased to nominate the following gentlemen as non-official members of the Central Health Committee, constituted under para 4 of the Government Order No. G. 6680-730—San. 55-27-34, dated 28th November 1929 :—

- (1) Mr. J. V. Karve, M.B., Ch.B., D.P.H.,
- (2) Fakhr-ul-Hukama Mr. B. Mohamed Usmon,
L.M.S.,
- (3) Mr. M. C. Linge Gowda from the Legislative Council,
- (4) Mr. K. Shama Iyer from the Representative Assembly.

They hold office for a period of two years.

During the quarter the Director of Public Health was out of headquarters for 21 days visiting 21 towns and 21 villages in Bangalore, Mysore, Kolar and Kadur Districts, in connection with the inspection of vaccination, water-supply, etc. He attended the meetings of the Trust Board of Mysore, and presided over the Public Health Section of the Medical and Sanitary Conference held at Hassan.

BUREAU OF ADMINISTRATION.

(a) City Health Organisations.

(1) BANGALORE CITY.

M. G. SRINIVASA PEIDPET, L.M.S., B.S.SC.,

Health Officer.

In the quarter under report 2,144 births were reported, of which 1,306 were conducted in the maternity hospital. The number of deaths reported during the quarter was 1,296, of which 466 occurred in the hospitals. Of these deaths 398 were under one year of age.

Under plague 7 attacks and 3 deaths were reported; 89 anti-plague inoculations were done.

The City was free from cholera.

The incidence of small-pox was very low as shown by the occurrence of only 4 cases. As a preventive measure 1,862 primary and 809 re-vaccinations were done.

Eleven attacks and 11 deaths were reported under typhoid and 39 anti-typhoid inoculations were performed.

One fatal case of measles was reported.

Two deaths from child-birth and 6 deaths due to puerperal fever were registered.

During the quarter 44 houses were disinfected.

A total of 562 stray dogs and 37 rats were destroyed.

Four hundred and ten pits were got filled up, 43 D. C. latrines in Cubbon main road were converted into flush out ones, one public fountain was put up in Chowlagalli and some 'V' shaped drains were re-set and pointed with cement on the sides and at the bottom to overcome stagnation.

During the quarter 37 eating houses, 5 aerated water factories, 181 coffee clubs and sweetmeat shops and 20 bakeries were inspected. Of 533 notices issued, 114 were complied with and the rest were pending disposal.

Health cinema shows were held in Munireddipalya, Deena Seva Sangha, Sri Rampur and the Milk Centre in the IV and V Divisions.

Samples of food-stuffs analysed and action taken against people responsible for adulteration in the City Municipality, Bangalore, during the quarter are detailed below :—

No.	Nature of sample	Number of samples examined	Number of samples found genuine	Number of samples found adulterate	Number of cases prosecuted	Number of cases convicted	Number of cases pending
1	Cow's milk ...	2	1	1	1	...	1
2	Buffalo's milk ...	5	3	2	2	...	2
3	Mixed milk
4	Pasteurised milk
5	Ghee ...	54	27	27	27	3	24
6	Butter ...	13	13
7	Coffee powder ...	6	6
8	Soji ...	1	1
	Total ...	81	51	30	30	3	27

(2) MYSORE CITY.

S. SESHAGIRI RAO, B.SC., M.B.B.S., D.P.H.,

Health Officer.

During the quarter 1,146 births and 773 deaths were reported as compared with 1,230 and 910 respectively in the previous quarter. Of the deaths 145 were under one year of age.

There were 14 attacks and 10 deaths from plague, of which 2 attacks with 1 death were imported. A total of 1,508 anti-plague inoculations were performed.

The City was free from cholera in the quarter under report.

One solitary case of small-pox was reported. As a preventive of small-pox 1,590 primary and 1,365 re-vaccinations were done.

Influenza accounted for 8 cases.

During the quarter 21 fatal cases of typhoid were reported; 82 anti-typhoid inoculations were done among the contacts.

A total of 1,036 stray dogs were destroyed. There was one case of dog-bite reported.

During the quarter 104 houses were disinfected.

As an anti-rat campaign 7,079 rat traps were distributed to 3,771 houses and 3,239 rats were captured and destroyed.

During the quarter 110 visits were paid to hotels, 238 to coffee clubs, 53 to aerated water factories, 44 to bakeries and 210 to mutton stalls. Decomposed fruits and vegetables of about 140 basketful were destroyed in different parts of the City with a view to improve their condition in conformity with the Municipal Regulation. Of 883 notices issued under the different sections of the Municipal Regulation, 158 were complied with. The mohallas were inspected regularly to dispose of routine papers and see to their sanitation. The Engineer was appraised of defective drains as and when noticed during the inspection. Three building papers were systematically inspected and suggestions to improve their ventilation and lighting were given, and pucca internal drainage and a good latrine were in all cases made conditional to the grant of licenses.

Each Overseer has been asked to make a systematic survey of every house as to the condition of the latrine, internal drainage, cleanliness, etc., and notices for improving all the defects noticed are served on the parties. As a result of this 111 flush out latrines were constructed during the quarter.

Most of the restaurants, hotels, tea-shops and aerated water factories were inspected during the quarter. Provision of glass cases has been insisted on.

House connections were recommended in respect of all the new sullage outlets in the City. When there was any delay in giving house connections the pools were drained off to prevent the breeding of mosquitoes. The gambusia fish are being distributed to all the wells and ponds to prevent mosquito breeding and paris-green is being sprayed every week to prevent anopheline breeding in all the breeding places, and malarial is being used to prevent culex breeding.

The following statement describes the samples of food-stuffs analysed:—

No.	Nature of sample	Number of samples examined	Number of samples found genuine	Number of samples found adulterated	Number of cases prosecuted	Number of cases convicted	Number of cases pending
1	Cow's milk ...	12	7	5	2	3	...
2	Mixed milk (cow's and buffalo's.)	2	...	2	2	3	...
3	Buffalo's milk ...	28	14	14	6	5	1
4	Ghee ...	1	1	...	3	3	...
5	Butter ...	1	1
6	Cream ...	3	3
7	Coffee powder	1	1	...
	Total ...	47	26	21	14	15	1

At the office laboratory the following specimens were examined:—

<i>Particulars.</i>	<i>Number of samples.</i>
1. Bacteriological examination of water :	
Well ...	34 samples
Tap ...	124 ,,
River ...	5 ,,
	163
2. Water for Chemical analysis ...	40
3. Water for free chlorine test ...	84
4. Bacteriological test for milk ...	1
5. Sewage effluent examined ...	1
6. Urine for Albumin test (Negative) ...	1
7. Blood smear for M. P. (Negative) ...	1
8. Specimen for Cholera (Negative) ...	1
9. Rodents for plague (Positive 8) ...	39
10. Other samples examined ...	4

(3) KOLAR GOLD FIELD.

M. RAMACHANDRA RAO, B.A., M.B.B.S., C.P.H.,

Health Officer.

A total of 1,306 births were reported during the quarter. Of 684 deaths registered 206 were of infants under one year of age.

Under plague, 97 attacks with 64 deaths were reported, and 27,773 anti-plague inoculations were done. Three cases of small-pox were reported. As a routine preventive measure 1,253 primary and 627 re-vaccinations were done. The area was free from cholera.

Two fatal cases of hydrophobia and one fatal case of typhoid were reported.

Influenza accounted for 17 deaths.

During the quarter 2,809 houses were disinfected.

A total of 665 dogs and 14,788 rats were destroyed.

At the office laboratory the following specimens were examined:—

<i>Particulars.</i>	<i>No. of samples.</i>
1. Water examination ...	7
2. Sputum for T. B. ...	1
3. Blood smear for Malaria ...	4
4. Servix smear for G. C. ...	18

<i>Particulars.</i>	<i>No. of samples.</i>
5. Motion for amœba ...	1
6. Spleen and Liver for anthrax ...	13
7. Urine for albumin and sugar ...	8
8. Rats examined for plague ...	50
9. Number of dogs' brains sent to Coonoor ...	7
10. Smear for Staphylococci ...	1

Under the general improvements the following were attended to by the Health Officer:—

I. Consolidation of Roads.—

- (1) Road in front of Beef-stall, Robertsonpet.
- (2) Road in front of arrack and toddy shop with side pitching.
- (3) Road in front of Jain Bhajanmandir, 4th Block, Robertsonpet.
- (4) Peddapalli Road.
- (5) Bocquet Road.
- (6) Balaghat-Marikuppam Road—Andersonpet Section.
- (7) Road to the South of Post Office at Andersonpet.
- (8) Main Bazaar Road, Andersonpet.
- (9) Road inside Robertsonpet Market.
- (10) Putting up of silt dams in Oorgaum Village Road.

II. Drains.—

- (1) Improving the existing drains at Oorgaum village by removing and resetting the slabs and increasing the depth of the drains wherever found necessary.
- (2) Removal of cess-pits and construction of 'V' shaped slab drains by 6 private individuals, connecting them with the Sanitary Board drains (to the West of Health Office).
- (3) Construction of lead-off drain inside the Health Office compound and connecting the same with the Sanitary Board drain.
- (4) Construction of a lead-off drain behind the house of Mr. T. Kuppuswamy.
- (5) Construction of number of house drains connecting the same with the Sanitary Board drains in I block, Robertsonpet and Someswara Block, Hindu Colony and Mohammedan Colony.
- (6) Construction of a 'V' shaped slab drain to the south of O'danell Road, Andersonpet, connecting number of houses and hotels with the existing Sanitary Board drains.

III. Buildings.—

- (1) Construction of a room in Health Office compound for the use of the Work Inspector.
- (2) Construction of a Motor Shed in the Health Office compound to serve as a store room for D. P. W. section.
- (3) Construction of a verandah with terrace in front of C. W. C., Robertsonpet.

During the quarter 412 visits were paid to hotels, 309 to mutton and fish stalls, 248 to chakna stalls, 378 to coffee clubs, 218 to aerated water factories, 255 to bakeries, 36 to markets and 36 to slaughter houses.

Eighty-one wells in 21 villages were chlorinated.

(b) District Health Organisations.

(1) MYSORE DISTRICT.

A. S. VENKATACHALAM, L.M.S., D.P.H.,

Health Officer.

There was prevalence of plague, small-pox and cholera in this district in the quarter under report. Under plague, 114 attacks with 75 deaths were reported from 12 places. As a preventive measure 3,749 anti-plague inoculations were done.

A total of 26 attacks with 3 deaths from cholera were reported from 4 places, and 2,804 anti-cholera inoculations were done.

Small-pox accounted for 47 attacks with 16 deaths in 4 places. A total of 7,514 primary and 1,932 re-vaccinations were done.

The District Health Officer visited 26 villages and 23 towns in connection with cholera, plague and small-pox outbreaks, and to supervise the work of the Sub-Assistant Surgeons, Sanitary Inspectors and the Vaccinators in the district, and also in connection with the shifting of the villages, arranging for Baby Shows, routine inspections and Malaria Survey.

During the quarter two Baby Shows were held at Mandya and Bilikere. Necessary arrangements were made for the same. A Health Exhibition was also arranged at Mandya.

The borehole latrine work in Periyapatna Taluk was continued during the quarter and 1,539 houses in 38 villages were visited by the Assistant Sanitary Inspectors for propaganda work.

(2) SHIMOGA DISTRICT.

G. N. SESHADRI, L.M.S., D.P.H.,

Health Officer.

During the quarter 15 attacks with 15 deaths from plague were reported in 8 places. As a preventive measure 788 anti-plague inoculations were done. The district was free from cholera. Small-pox prevailed in only two places and accounted for 3 attacks. A total of 4,880 primary and 1,613 re-vaccinations were done.

The District Health Officer visited 18 places on routine inspection, 8 places for vaccination verification, 4 places for water supply examination, 7 for plague, 2 for small-pox, 1 for influenza, 3 in connection with the Jatras and 2 for Baby Shows. He also visited two schools and examined 177 children. The defects noted were enlarged spleens and malnutrition. The teachers were advised to send pupils to the nearest hospital.

Baby Shows were held at Devangi, Tirthahalli Taluk and in Bhadravati New Town, where 62 and 107 babies respectively were examined and judged. Lectures were delivered to mothers on maternity and child welfare.

Three lectures with magic lantern slides and six without were delivered to the people assembled at the Jatras.

Samples of water from 20 different wells in Sagar Town were analysed and chimneys were introduced for the first time in 27 hotels in that town.

(c) Voluntary Organisations.**RED CROSS SOCIETY.**

The Executive Committee met on the 7th February 1938.

District Branches.—Four new branches were formed at the following places:—

- (1) Seringapatam, (2) Konanur, (3) Chitaldrug and
- (4) Honnudiike.

Donations.—The President, District Board, Tumkur and the Presidents of Municipal Councils, Hassan and Hole-Narsipur have donated Rs. 100, Rs. 50 and Rs. 10 respectively towards the Red Cross Society funds.

The following grants were sanctioned by the State Branch during the quarter:—

(a) A sum of Rs. 1,000 towards the purchase of a deep X-Ray Therapy apparatus for use in the Victoria Hospital, Bangalore.

(b) A sum of Rs. 100 towards the Relief Fund of the sick and wounded in the Sino-Japanese conflict in China.

(c) A sum of Rs. 40 towards the renewal of equipment of the Maternity Home at Nonavinkere.

(d) A sum of Rs. 2,000 towards the construction of a Child Welfare Centre at Chikmagalur.

(e) A sum of Rs. 100 each per annum towards the appointment of additional midwives in the following villages:—

(1) Chelur, (2) Thovinkere, (3) Bellavi (Tumkur District).

(f) A sum of Rs. 100 towards the salary of the additional midwife at Maralvady (Bangalore District).

The following equipment grants were sanctioned during the quarter:—

(a) A sum of Rs. 300 to the Maternity Home at Saligrama.

(b) A sum of Rs. 100 to the Tyamagondlu Maternity Home.

(c) A sum of Rs. 300 to the Maternity Home at Ravandur.

The following building grants were sanctioned during the quarter:—

(a) A sum of Rs. 300 towards the construction of a Maternity Ward at Bukkambudhi (Kadur District).

(b) A sum of Rs. 300 towards the construction of a Maternity Ward at Ripponpet (Shimoga District).

HEAD-QUARTERS GRANT.

(a) A sum of Rs. 2,000 was received towards the Anti-Tuberculosis Campaign in the City of Mysore for the year 1938.

(b) A sum of Rs. 137-8-0 was received, being the second half-yearly instalment of grant for 1937 to the Shimoga Baby Clinic, Shimoga.

OTHER CENTRES.

Maternity and Child Welfare work done in the following 48 centres are detailed in the accompanying statement. Of the 52 centres listed in the preceding quarterly report there appear to be no centres working at present in the following four places.

1. Attibele.
2. Harnahalli.
3. Mysore Spinning and Manufacturing Company.
4. Marikuppam Mines.

No	Place	Name of Centre	No. of Clinics held		
			Ante-natal	Post-natal	Children
1	Anekal	Maternity and Child Welfare Centre
2	Bangalore	Beli-mut Creche	11
3	Do	Civic and Social Progress Association, Chamarajpet.	8	7	12
4	Do	Deena Seva Sangha, Malleswaram
5	Do	Mahila Seva Samaj, Basavangudi	12	12	12
6	Do	Hebbal Child Welfare Centre	4	...	13
7	Do	Child Welfare Centre (Bangalore W. C. and Silk Mills Creche).	8
8	Bethlur	Bethlur Baby Clinic, Methodist Mission.	11
9	Bowringpet	Maternity and Child Welfare Centre
10	Bhadravati	Bhadravati Iron Works Child Welfare Centre.
11	Channapatna	Maternity and Child Welfare Centre	4
12	Chitaldrug	Do do	12	8	6
13	Chikballapur	Do do
14	Chikmagalur	Do do	12	...	12
15	Davangere	Do do
16	French-Rocks.	Do do	12
17	Kengeri	Gurukula Ashram
18	Hassan	Methodist Mission combined Dispensary and C. W. Centre.	13	...	11
19	Kolar	Champion Reefs Mines
20	Do	Mysore Mines
21	Do	Nandidroog Mines
22	Do	Oorgaum Mines
23	Do	Sanitary Board area Child Welfare Centre, Robertsonpet.	120	142	13
24	Do	Kolar Town Maternity and Child Welfare Centre.
25	Koppa	Maternity and Child Welfare Centre	13	13	13
26	Mysore	Civic and Social Progress Association	5	...	1
27	Do	Devaraj Centre
28	Do	Gajasala Centre
29	Do	Krishnarajendra Mills Creche
30	Do	Mahila Seva Samaj, Ante-natal and Child Welfare Centre.
31	Do	Mallamma Centre
32	Do	Savoy Centre
33	Do	Subramanyam Centre
34	Do	Sri Vani Vilas Milk Centre, Vani Vilas Hospital.	18	...	13
35	Do	Sisuvihar Nursery School
36	Do	Vocational Institute for Women
37	Do	Toddler's School in Gajasala Centre
38	Do	Do in Nanjaraja Bahadur Chattram.
39	Do	Do in Kantharaj Urs Chowk.
40	Mandagadde	Maternity and Child Welfare Centre.
41	Nanjangud	Do do	11	...	10
42	Sarjapur	Do do
43	Shimoga	Ante-natal and Baby Clinic, Methodist Mission.
44	Do	Lady Mirza Ismail Milk Centre
45	Do	Mary Immaculate Convent Child Welfare Centre.
46	Sivasamudram	Maternity and Child Welfare Centre.	12	12	12
47	Tarikere	Do do	14	...	14
48	Yarnahalli	Do do	12	12	12
Total (Mysore State)			301	206	165

No. of Cases examined								No. of Children that were			No. of House Visits paid		No. of deliveries attended	Remarks
Pregnant women				Children				Weighed	Bathed	Given milk	First visit	Re-visits		
First Examination	Re-Examination	No. treated	No. referred to Hospital	First Examination	Re-Examination	No. treated	No. referred to Hospital							
9	1	1	1	10	...	20	20	20
6	5	...	1	3	41	41	41	300	300	4	...
48	42	120	2	1,090	409	...	1,499	...	1160	...	1,070	1,105
23	...	23	...	124	118	187	3	195	30	...	64	52	30	...
28	59	6	...	11	224	106	...	257	...	79	1,477	102	12	...
...	5	5	5	...	5	5	5	2	...	1	...
...	8	24	21	1	13	...	10
...	Not received.
...	Do
29	12	31	10	10	18	28	...	28	10	...
138	184	32	110	52	34	52	...	48	48	48	2,332	2,332	36	...
44	86	130	130	39	180	213	213	23	23	23	81	141
...	Not received.
35	7	10	...	51	40	7	3	57	...	7	4	15	25	...
...	Not received.
15	72	87	...	14	206	220	16	45	45	...	69	87
...	Not received.
...	Do
...	Do
48	75	8	13	10	42	14	8	22	25	22	124	304	23	...
...	Not received.
48	214	262	4	35	103	138	1	138	20	18	15	...
5	5	16	21	31	21	3	3	3	...
...	Not received.
...	Do
...	Do
...	Do
425	260	635	..	78	13	91	...	91	559	...
...	Not received.
...	Do
...	Do
...	Do
62	49	38	32	20	40	15	15	40	40	40
...	Not received.
...	Do
...	Do
46	63	62	60	59	90	72	72	102	67	62	23	...
269	486	269	269	32	117	74	74	32	310	295	96	...
28	24	26	1	40	32	23	28	30	12
1,306	1,649	1,790	633	1,691	1,695	1,253	1,905	1,178	1,496	344	5,953	4,828	837	...

BUREAU OF EPIDEMIOLOGY.

B. ANANTHASWAMI RAO, B.SC., M.B.B.S., M.P.H.,

Superintendent.

The Superintendent visited 20 places in six Districts during the quarter. The visits were made in connection with malaria and plague investigations. The malaria survey of the Bhadra Reservoir Project area had to be temporarily suspended as per Government Notification No. G. 5466—P. H. 92-37-2, dated 18th January 1938, as the Officer conducting the survey was posted to Mysore as District Health Officer.

The following places were visited :—

<i>Places visited.</i>	<i>Purpose of visit.</i>
Ghati Subramanya Jatra ...	Inspection of Sanitary arrangements.
Shimoga ...	In connection with sub-soil drainage of the town.
Bhadravati ...	In connection with sub-soil drainage and inspection of malaria work.
Chikmagalur ...	In connection with anti-malaria scheme.
Closepet, Mysore, Nagenhalli, Palahalli, Krishnarajsagar, Mandya.	Took Prof. Buxton and Mr. Dyer on study tour.
Sivasamudram, Shimshapura, Gamahalli along the Cauvery Branch works.	Preliminary investigation of Shimshapura in connection with Shimsha Project.
Saklespur ...	Inspection of Cyanogas work with the President.
Mudigere ...	Inspection of Malaria Station and explaining the work to Dr. Rafi.
Chikmagalur ...	To attend the Officers' meeting under instruction of Second Member of Council.
Mysore ...	Lectures on Malariology to the Medical College Students.
Chikballapur, Nandi Hills.	Investigation of plague on hill-top.
Hiriyur ...	Inspection of Malaria Station and joint inspection of the work turned out by the elephant.
Chitaldrug ...	Inspection of Guinea worm Unit.
Markonhalli ...	Inspection of Malaria work.
Mandya ...	Took R. F. Entomologist from Guindy on a study tour.

Malaria Stations.

The quarterly spleen and parasite surveys were done in all the stations as usual. The survey in Mudigere Station was done by the Officer-in-charge, Malaria Stations, as the Health Officer in charge of the Station was transferred on other duty. The blood smears were examined in the Central Laboratory.

A study of the effect of shade on the water courses on the anopheline fauna in running waters was started. Lengths of channel and river with different degrees of shade were selected and the density of anopheline breeding in shaded and exposed areas are being determined. A record of the species of anophelines found breeding under the shade is being maintained.

In Hiriya the elephant continued to work on the clearing of weeds in the Vedavathi river bed. A considerable amount of weeds was cleared by the elephant. A detailed examination of the work turned out showed that the elephant could pull out only the well grown weeds in swampy areas and could not tackle the fresh shoots and those on hard ground. Besides it was evident that the entire root system was not removed by the elephant with the result that fresh and vigorous shoots were in plentiful evidence in the area cleared by the elephant.

Further the cost of maintaining one elephant works out to a minimum of Rs. 900 per year and it is felt that the cost is disproportionate to the results achieved. It has been decided to withdraw the elephant.

The spleen and parasite rates for the quarter under report for the Nagenhalli area were 20.0 and 6.2 respectively as against 25.0 and 7.6 respectively for the corresponding quarter of the previous year and 82.2 and 27.4 respectively in 1928 before the start of control work.

The spleen and parasite rates for Mudigere for the quarter under report were 28.2 and 2.3 respectively as against 32.4 and 1.8 respectively for the corresponding quarter of the previous year.

The rates for Hiriya for this quarter were 35.0 and 8.5 respectively as against 47.0 and 29.0 respectively for the corresponding quarter of the previous year.

Bangalore City.—The Health Officer in charge of Malaria work in the City was transferred to the Malaria Station, Nagenhalli and the Officer-in-charge of the Rural Health Unit, Mandya was posted in his place. There was

considerable mosquito nuisance during the quarter and a thorough investigation of all the breeding places showed enormous culex breeding in the channels in the Sunkal Farm the main sewage drain leading to Koramangala Tank and the Koramangala Tank itself. The main drain and the tank were found to be completely overgrown with water hyacinth. This entire area was outside the zone of control but on account of the prevailing wind and the continuous oiling of other favourable breeding places within the City, the culicines breeding in this area were finding their way in enormous number to Mavalli, Basavangudi and Visweswarapuram.

A special gang in addition to the regular anti-mosquito staff was temporarily appointed and the water hyacinth was cleared from the entire length of the main drain and in the margins of the tanks. The whole area was heavily oiled and after two weeks the situation was brought fairly under control.

Malarial was continued to be used throughout the quarter. The supervision staff examined 2,581 wells during the quarter and stocked fish in 2,117 wells.

Besides the routine oiling and check inspection, the gang were engaged in clearing old drains and cutting new ones to drain off stagnant water. A considerable amount of culex breeding was found in small collections of water in between the leaves of aloe hedging on either side of the Bangalore-Poona Railway line. These holes were all filled in with mud.

The collections of adult mosquitoes in the catching stations for the quarter were 64 anophelines and 593 culicines as against 87 and 593 respectively for the corresponding quarter of the previous year.

The examination of the blood smears taken during annual spleen survey were completed during the quarter. Out of a total of 296 slides examined from different wards of the City 205 were negative, giving a parasite rate of 0.5.

Mysore City.—Anti-malaria work in the City was continued during the quarter. There was no change in the staff. Both oil and paris-green were used as the larvicide. The staff examined and restocked with fish, 921 wells. The anophelines collected in the catching stations were 207 as against 257 for the corresponding quarter of the previous year.

CENTRAL LABORATORY.

The studies on *A. Stephensi* were closed with the publication of the last paper reported in the previous quarter.

Routine examination of blood smears from the stations were done and the adult collections from the Markonhalli were regularly identified. A statement of the number of slides examined and the anophelines identified is given below :—

Blood examined		Total Ex.	Pos.	Per cent	Remarks
Mudigere	... Control	97	*5	2'3	*(Non-residents)
	Peripheral	29	5	17'2	
Sundahalli	30	3	10'0	
Bevinahalli	31	4	12'9	
Kyathangere	30	4	13'3	

		Adults identified.	No.
Markonhalli	Dangerous	10
		Non-dangerous	55
		Total	65

SPECIAL SURVEYS.

A preliminary malaria survey of the Shimsha Project area was done with a view to select the sites for the labour camps and the permanent bluff colony as also to suggest measures for the control of malaria during the period of construction. The following recommendations were made :—

(1) The original limits for malaria control work in Sivasamudram to be extended to include the extensive new camps for housing the labour engaged on the extension works.

(2) The Handihalla, Huluhalla and Yerekatte colonies have to be protected by paris-greening the water courses up to a half mile from the periphery of each of camps.

(3) For the protection of the Generating Station Colony it has been suggested that—

- (a) adequate arrangements should be made for the provision of a safe water supply ;
- (b) sufficient number of borehole latrines should be provided with proper superstructures both for males and females ;
- (c) anti-larval measures to be started under the supervision of a trained Assistant Sanitary Inspector.

(4) With regard to Shimshapura, the future bluff colony, it is suggested—

- (a) all the valleys within half a mile of the colony be properly graded and bottom provided with subsoil drainage to avoid the formation of pools ;
- (b) screening of houses ;
- (c) anopheline control within the half mile zone.

Belur.—A detailed malaria survey of the Belur Town was done and the following measures have been recommended for the control of malaria.

(1) *Permanent measures.*—The two major tanks have to be kept dry during the summer months, *i.e.*, from January to June, by putting in scouring sluices ;

(2) The waste weir valley of the Kalasankere tank has to be properly graded and automatic syphons installed for intermittent flushing ;

(3) The bed of the most round the town where water is now stagnating has to be filled up and has to be properly graded with vent ways for storm water to drain into tanks on either side of the town ;

(4) Clearing of scrub jungle within the immediate surroundings of the town so as to prevent shelter for mosquitoes.

Temporary measures.—A trained staff for systematic paris-greening of the areas which do not admit of permanent treatment within the half mile zone has to be maintained. The annual recurring cost for effective control of malaria by paris-greening will be Rs. 1,650.

HOOKWORM CAMPAIGN.

The Assistant Sanitary Inspectors visited in connection with the propaganda for the introduction of borehole latrines 1,539 houses in 38 villages. The response has been practically negligible ; only one person agreeing to have a borehole latrine which was under construction and six others having promised to have them at a later date.

GUINEAWORM UNIT.

The Guineaworm Staff visited 235 villages during the quarter out of which 113 villages were visited for the first time. During these visits 171 step wells were examined, 30 wells were newly stocked with fish, fish renewed in 34 wells and 9 wells were treated with perchloron. New fish nurseries were established in five places and active guineaworm infection was detected in 25 villages.

CONTROL OF EPIDEMICS.

Cholera.—The State was practically free from cholera with only 26 attacks and 3 deaths reported from four villages in Mysore District. The other districts remained free of infection.

Plague.—Plague was reported from five out of eight districts. The total number of attacks were 657 and deaths 373. Infection was reported from 166 villages in the five districts. Kolar District reported the maximum number of attacks and deaths, 277 and 191 respectively from 103 villages. A total of 21,719 anti-plague inoculations were done.

Fumigation of houses by cyanogas was undertaken during the quarter in Saklespur in Hassan District, in two villages of Mandya Rural Health Unit, Mysore District, and in three places in Kolar District, where plague infection had been reported. The details of houses fumigated with cyanogas are given below :—

<i>Places.</i>	<i>No. of houses fumigated with cyanogas.</i>
Saklespur Town	279
<i>Mandya.</i> —	
Hanakere (77)	95
Tavarekeredoddi (18)	
<i>Kolar District.</i> —	
Nandi Hills top (10)	230
Kuduvathi village (100)	
Nandi village (120)	
Total	604

Small-pox.—Small-pox was reported from all the districts except Kadur. There were 126 attacks and 20 deaths for the whole State.

TABLE I.
Spleen and Blood Examination made in the Experimental Malaria Stations during the Quarter.

Spleens	0-9			10-19			20 and over			All ages		
	No. Ex.	No. Inf.	% Inf.	No. Ex.	No. Inf.	% Inf.	No. Ex.	No. Inf.	% Inf.	No. Ex.	No. Inf.	% Inf.
	Spleens not examined
Spleen Negative	166	5	3.1	34	1	2.9	18	1	7.7	213	7	3.2
Palpable	16	2	12.5	2	1	19	2	10.5
1	13	1	7.7	2	1	16	1	12.5
2	9	4	44.4	7	1	14.3	1	17	5	29.4
3	9	1	11.1	4	13	1	7.7
4
5
All persons with palpable Spleen.	47	8	17.0	15	1	7.1	3	65	9	13.8
Grand Total—All Spleens ...	213	13	6.1	49	2	3.9	16	1	6.3	278	16	5.7
Spleen Rate ...	213	47	22.0	49	15	30.6	16	3	18.7	278	65	23.3

TABLE II.
Adult Catches in Control and Peripheral Areas.

Species	Nagenhalli		Mudgere		Hiriyur		Nagoonhalli	
	Pd. zn.	Pl. zn.	Pd. zn.	Pl. zn.	Pd. zn.	Pl. zn.	Pd. zn.	Pl. zn.
<i>A. aconitus</i>	3	9	..	10	13	..	3	..
<i>A. annularis</i>	15	49	25	63	4	10	16	..
<i>A. barbirostris</i>
<i>A. culficacioides</i>	8	186	10	..	41	94	15	..
<i>A. fluviatilis</i>	18	46	..	12	84	162	2	..
<i>A. hyrcanus</i>	2	5	..	2	1	..
<i>A. jamesii</i>	4	16	5	23	1	..
<i>A. jeyporiensis</i>	..	2	71	413	..	2	1	..
<i>A. karwari</i>	1	..
<i>A. lencosphrous</i>
<i>A. maculatus</i>
<i>A. minimus</i>
<i>A. majidi</i>
<i>A. pallidus</i>	1	..	4
<i>A. splendidus</i>	1	2	..	16	1	1	1	..
<i>A. stephensi</i>	5
<i>A. subpictus</i>
<i>A. tessalatus</i>	30	103	34	115	36	102
<i>A. turkudi</i>	..	1	2	6	561	747	35	..
<i>A. vsgus</i>	1	4
<i>A. varuna</i>	11	88	13	81	14	13	12	..
..	2

TABLE III.

Statement of Species of Malaria Parasites for the quarter ending March 1938.

Control Zone.

Age		Nagenhalli						
		Total No. Inf.	B. T.		M. T.		Q.	
			No. Inf.	% Inf.	No. Inf.	% Inf.	No. Inf.	% Inf.
1		2	3	4	5	6	7	8
0-9	...	4	4	100.0
10-19
20 and over	...	1	1	100.0
All ages	...	5	5	100.0
Age		Mudgere						
		Total No. Inf.	B. T.		M. T.		Q.	
			No. Inf.	% Inf.	No. Inf.	% Inf.	No. Inf.	% Inf.
		9	10	11	12	13	14	15
0-9	...	2	2	100.0
10-19
20 and over
All ages	...	2	2	100.0
Age		Hiriyur						
		Total No. Inf.	B. T.		M. T.		Q.	
			No. Inf.	% Inf.	No. Inf.	% Inf.	No. Inf.	% Inf.
		16	17	18	19	20	21	22
0-9	...	3	2	66.6
10-19	...	2	1	50.0	1	50.0
20 and over
All ages	...	5	1	20.0	3	60.0

BUREAU OF LABORATORIES.

(a) Public Health Institute.

G. M. DOMINICK, M.R.C.S., D.P.H.,

Superintendent.

1. *Bacteriological Section.*—A total of 2,967 specimens were examined during the quarter as compared with 2,732 in the previous quarter as shown below:—

No.	Particulars	Number Positive	Number Negative	Special samples	Total
1	Blood for Wassermann test ...	849	1,366	...	2,215
2	Do Widal test ...	23	56	...	79
3	Do Malaria Parasites ...	1	3	...	4
4	C. S. Fluid	3	3
5	Motion for Amœba ...	3	6	...	9
6	Do Ova	4	...	4
7	Do Cholera	5	...	5
8	Pus for microscopic examination.	5	5
9	Sputum for T. B. ...	5	7	...	12
10	Smear for G. C. ...	2	9	...	11
11	Catheter specimen for B. Coli ...	1	1
12	Urine	17	17
13	Milk	1	1
14	Section cutting	2	2
15	Water for Typhoid	6	...	6
16	Water for general	589	589
17	Sewage	4	4
	Total ...	889	1,462	616	2,967

2. *Chemical Section.*—During the quarter 558 specimens were examined as compared with 551 in the previous quarter :—

<i>Particulars.</i>		<i>Number.</i>	
1	Water for Residual Chlorine	484	
2	Water for potable purposes	61	
3	Pyridine	2	
4	Sewage	5	
5	Ghee	2	
6	Pyroligneous acid	1	
7	Liquor	1	
8	Wash	2	
Total		558	

3. *Medico-legal Section.*—In the quarter under report 58 cases with 195 articles were examined as against 54 cases with 197 articles in the previous quarter :—

No.	Particulars	No. of cases	No. of articles
1	Mammalian Blood	23	88
2	Suspected Human poisoning	23	77
3	Abortion	1	4
4	Rape	6	13
5	Explosives	3	8
6	Plastic material	2	5
Total		58	195

In 22 Cases Mammalian blood was detected.

„ 3 „ Arsenic was detected.

„ 3 „ Yellow sulphide of arsenic and Potassium Chlorate was detected.

„ 1 Case Acetic acid was detected.

„ 1 „ Croton Oil was detected.

„ 1 „ Oxalic acid was detected.

„ 1 „ Spermatozoa was detected.

4. *Vaccines Issued.*—The total quantities of vaccines issued during the quarter were :—

1.	Cholera Vaccine	...	12,365 cc.
2.	T. A. B. Vaccine	...	330 cc.

5. *Fees.*—The total amount collected towards the examination of specimens and supply of vaccines :—

No.	Item	Jan. to March 1938			Oct. to Decr. 1937		
		Rs.	a.	p.	Rs.	a.	p.
1	Bacteriological section ...	21	8	0	9	8	0
2	Chemical section ...	70	0	0	10	0	0
3	T. A. B. Vaccine ...	46	4	0	102	1	0
4	Cholera Vaccine ...	1,410	4	0	2,386	10	0
5	Other Receipts
	Total ...	1,548	0	0	2,508	3	0

(b) **Vaccine Institute.**

J. A. ISWARAMURTHY, B.A., L.M.S., B.S.Sc.,

Superintendent.

General.—The standards adopted for potency and the sterility of lymph issued for use remained unchanged during the quarter. Forty-four samples of vaccine lymph were examined bacteriologically 417 times. Their potency was tested in serial dilutions on the rabbit and clinically in the Model Range prior to issue.

Health of Calves.—The health of calves was satisfactory in the quarter under report.

The demand for vaccine lymph was met in full during the quarter.

Summary of work done at the Institute is given below :—

<i>Particulars.</i>	<i>Number.</i>
Calves waiting on January 1, 1938 ...	12
„ replaced against those returned during the previous quarter
„ purchased ...	30
„ waiting died
„ available for vaccination ...	42
„ waiting on April 1, 1938 ...	7
„ vaccinated ...	35
„ vaccinated and uncollected ...	1
„ vaccinated and rejected ...	1
„ vaccinated and died (uncollected)
„ vaccinated and whose pulp was collected.	34

Calves vaccinated and remained over for collection of lymph on April 1, 1938	...		
Lymph produced during the quarter was 14,690 grains of pulp equivalent to	...	1,99,175	cases.
„ remained on January 1, 1938 enough for	...	1,38,460	„
„ produced during the quarter enough for	...	1,99,175	„
„ available enough for	...	3,37,635	„
„ issued during the quarter enough for	...	78,990	„
„ discarded due to defective potency from storage enough for	...	16,875	„
„ utilised for 'seed' test, etc., enough for	...	21,020	„
„ issued, discarded for defective potency from storage, and utilised for seed and test enough for	...	1,16,885	„
„ remained over on April 1, 1938	...	2,20,750	„
			Rs. a. p.
Income realised, including arrears as per accounts of this office	...	1,677	7 0
Expenditure during the quarter	...	4,988	14 0

Model Range.—A total of 311 primary vaccinations were done in the Model Range with the lymph of varying age periods, for clinical test on children before releasing for general issue, with a success rate of 98·6 per cent. The oldest lymph used in this Range was preserved for six months and 20 days from the date of production before use and the freshest for about two months and twenty-seven days, the average period being four months and twenty-three days.

The percentages of successful primary vaccinations reported during the quarter, by random sampling, work out as under:—

Rural Health Unit	...	83·4	per cent.
Bangalore City	...	89·3	„
Mysore	...	94·8	„
Rest of the State	...	84·1	„

BUREAU OF HEALTH EDUCATION.

E. ANANTHA RAO, B.SC., M.B.B.S., D.P.H.,

Superintendent.

During the quarter under review, Mr. E. Anantha Rao, Superintendent, Bureau of Health Education, was deputed to Coonoor for a period of two months and seven days from 1st February 1938 to undergo training in

nutrition work at the Nutrition Research Institute. Mr. E. R. Sundararajan, Superintendent, Bureau of Vital Statistics, was placed in charge of the Bureau in his absence, in addition to his own duties.

Cinema Publicity.—During the quarter 33 cinema shows were organised in the districts of Bangalore, Mysore, Kolar, Chitaldrug and Hassan. A total approximate audience of 30,050 persons attended these shows. The cinema staff, as usual, travelled in the Departmental Motor Van, covering a total distance of 2,100 miles.

Details of shows held are given below:—

<i>Particulars.</i>	<i>No. of shows held.</i>
1. In connection with Cattle Fairs and Jatras in Bangalore, Kolar, Hassan and Chitaldrug Districts	13
2. In connection with the Medical and Sanitary Conference at Hassan Town	2
3. In connection with Health and Baby Weeks at Mandya Town and C. & M. Station, Bangalore	4
4. In connection with the Hospital Day at the Mission Hospital, Kolar	2
5. In connection with the Scout Training Camp at Sivaganga and Hoskote	2
6. Shows in different localities of Bangalore City.	5
7. Shows in selected villages of Hassan, Bangalore, Mysore and Chitaldrug Districts	5

Health Lectures.—The Publicity Officer, during his tours, delivered 10 lectures on health subjects.

Health Exhibitions.—Ten (10) poster exhibitions were organised in the following places:—

1. Hassan.	6. Varthur.
2. Kulkurke.	7. Mandya.
3. Vasanthapur.	8. Kurugahalli.
4. Devanhalli.	9. Bilikere.
5. Mahimapura.	10. Harihar.

A set of departmental illustrated posters and charts on health subjects were lent to the Health Officer, C. & M. Station, Bangalore, for being put in at the Health Exhibition organised in connection with the Health and Baby Week.

Newspaper Publicity.—An article on 'Hygiene of Pregnancy' was contributed in English and Kanarese to local newspapers. Weekly bulletins in Kanarese in regard to the state Public Health in the State and the weekly

reports of activities of the Health Training Centre, Closepet, were also issued to Press. Convictions secured in Mysore and Bangalore Cities, under Food Adulteration Prevention Regulation were given publicity.

The Mysore Arogya.—The December 1937 issue of 'The Mysore Arogya' on Maternity and Child Welfare was printed and published.

Distribution of Health Propaganda Material.—A total of 421 illustrated posters, 4,696 leaflets and 108 picture pamphlets on health subjects published by the Department were distributed during the quarter.

Red Cross Propaganda.—Ten (10) lectures on the aims and objects of the Red Cross Movement were delivered.

BUREAU OF RURAL HEALTH.

(a) Health Training Centre, Closepet.

T. CHANDRASEKHARAIYA, B.A., M.B.B.S., M.P.H.,

Health Officer.

Personnel.—Mr. T. Chandrasekharaiya, who continued to be in charge of the Unit, was on privilege leave for about a month during the early part of the quarter. The Assistant Health Officer, Mr. C. Ramaswami, was transferred to the Mandya Rural Health Unit and in his place Mr. K. R. Venkatesan was posted from the Nagenhalli Malaria Station.

The post of the Midwife who resigned in the previous quarter was filled during the Month of January. As per Government Order No. G. 5457-8—P. H. 17-36-47, dated 18th January 1938, five extra peons were entertained and the five Public Health Nurses were each given the services of a peon. The Staff, therefore, consisted of:—

1. Health Officer	...	1
2. Assistant Health Officer	...	1
3. Clerks	...	2
4. Sanitary Inspectors	...	5
5. Public Health Nurses	...	5
6. Midwives	...	10
7. Vaccinators	...	3
8. Peons	...	15

Infectious Diseases.—No major epidemic was reported during the quarter. One death due to bubonic plague which was reported in the month of February was imported from Maddur Taluk. Necessary precautions were, however, taken to disinfect the place where the patient was kept and all the contacts, numbering 8, were immunized.

There was a noticeable increase in the number of dysentery cases, 68 cases with 12 deaths being registered as against 34 with 2 in the previous quarter. The month of January contributed the largest number of these cases, 48 attacks with 9 deaths having occurred during this month. The number fell rapidly during the succeeding 2 months, 15 attacks with 2 deaths and 5 attacks with 1 death being registered during the months of February and March respectively. The disease prevailed in an epidemic form among infants in Kudlur village in C Division during the last week of December and the 1st week of January, 31 attacks with 8 deaths being reported from this village. All the precautions were taken to prevent the spread of the disease and the Assistant Surgeon in charge of the Local Fund Dispensary at Channapatna attended on these cases. All the wells were chlorinated. One sample of stool was sent for bacteriological examination at the Public Health Institute and it was reported that no dysentery group of organisms was isolated.

Thirty-five (35) cases of measles with no death were reported as against 10 cases with no death during the previous quarter. Three cases of tuberculosis were registered as against 18 suspected cases during the previous quarter. Five attacks with 1 death due to enteric fever as against 18 attacks with 1 death in the previous quarter were reported. Four cases of pneumonia with 3 deaths as against 2 attacks with no death during the previous quarter were registered. Typhoid prevailed sporadically and Byrapatna contributed 3 attacks out of the 5 reported; 17 anti-typhoid inoculations were given to contacts.

House-Survey.—The re-survey of houses that was started in November 1937, for noting the improvements required for individual houses, was practically completed by the end of this quarter. A total of 3,352 houses were surveyed as against 3,620 during the previous quarter.

Chlorination.—According to routine, all the drinking water wells were chlorinated.

Vital Statistics.—The checking of births and deaths registers was satisfactorily carried out according to routine; 51 births out of 647 (7·9 per cent) and 23 deaths out of 241 (9·5 per cent) had escaped registration as against 14·7 per cent and 11·3 per cent respectively, during the previous quarter. The lists of the detected births and deaths were sent to the Revenue Sub-Division Officer as usual for taking necessary action. A total of 87 infant deaths were recorded, giving an infant mortality rate of 134·5; 86 of these deaths have been investigated by the Public Health Nurses. Six maternal deaths, giving a maternal mortality of 9·0, were recorded. All these deaths were investigated by the Public Health Nurses. Nineteen stillbirths were reported.

Vaccination.—Intensive vaccination work was carried on as usual in A and B Divisions; 3,879 vaccinations as against 3,006 vaccinations during the previous quarter were done. Of these, 548 were primary and 3,331 re-vaccinations. The primary vaccinations gave a success rate of 90·8 per cent and the percentage of these whose reaction proceeded to the pustular stage among the re-vaccinations was 23·6.

Maternity and Child Welfare.—The work of the Public Health Nurses in the Divisions was satisfactory. The clinics at Bannikuppe and Ankanahalli in the B Division, which were till now on a weekly basis, were taken up on a fortnightly basis as adequate attention could not be given to two clinics on the same afternoon. The fortnightly clinic at Kailancha was discontinued as the response from the people was not satisfactory. A new clinic was started at Thimmasandra in the C Division towards the end of the quarter and the two clinics in the Division are now being run on a fortnightly basis. A weekly clinic at Pattalu was also started during the quarter. In all 67 clinics were held and 127 pre-natals, 348 infants, 352 pre-school children and 128 others attended these clinics. The figures for the previous quarter were 52 clinics, 100 pre-natals, 300 infants, 349 pre-school children and 90 others.

The five Nurses during their 7,521 home-visits, examined and registered 2,448 pre-natals, 3,984 infants and 3,764 pre-school children. The Nurses examined 843 samples of Urine.

Midwives.—The Midwives attached to the Unit conducted 340 deliveries during the quarter. A total of

2,737 post-natal visits were given by the Health Unit Staff, giving an average visit of 4.1 per case as against 4.6 in the previous quarter.

Health League.—The intensive village improvement work progressed satisfactorily in the villages previously selected as detailed in the following statement:—

Village	1934		1935		Total	Remarks
	Jan. to Dec.	Jan. to Dec.	Jan. to Dec.	Jan. to Dec.		
1	100	100	100	100	400	
2	111	111	111	111	444	
3	122	122	122	122	488	
4	133	133	133	133	532	
5	144	144	144	144	576	
6	155	155	155	155	620	
7	166	166	166	166	664	
8	177	177	177	177	708	
9	188	188	188	188	752	
10	199	199	199	199	796	
11	210	210	210	210	840	
12	221	221	221	221	884	
13	232	232	232	232	928	
14	243	243	243	243	972	
15	254	254	254	254	1016	
16	265	265	265	265	1060	
17	276	276	276	276	1104	
18	287	287	287	287	1148	
19	298	298	298	298	1192	
20	309	309	309	309	1236	
21	320	320	320	320	1280	
22	331	331	331	331	1324	
23	342	342	342	342	1368	
24	353	353	353	353	1412	
25	364	364	364	364	1456	
26	375	375	375	375	1500	
27	386	386	386	386	1544	
28	397	397	397	397	1588	
29	408	408	408	408	1632	
30	419	419	419	419	1676	
31	430	430	430	430	1720	
32	441	441	441	441	1764	
33	452	452	452	452	1808	
34	463	463	463	463	1852	
35	474	474	474	474	1896	
36	485	485	485	485	1940	
37	496	496	496	496	1984	
38	507	507	507	507	2028	
39	518	518	518	518	2072	
40	529	529	529	529	2116	
41	540	540	540	540	2160	
42	551	551	551	551	2204	
43	562	562	562	562	2248	
44	573	573	573	573	2292	
45	584	584	584	584	2336	
46	595	595	595	595	2380	
47	606	606	606	606	2424	
48	617	617	617	617	2468	
49	628	628	628	628	2512	
50	639	639	639	639	2556	
51	650	650	650	650	2600	
52	661	661	661	661	2644	
53	672	672	672	672	2688	
54	683	683	683	683	2732	
55	694	694	694	694	2776	
56	705	705	705	705	2820	
57	716	716	716	716	2864	
58	727	727	727	727	2908	
59	738	738	738	738	2952	
60	749	749	749	749	2996	
61	760	760	760	760	3040	
62	771	771	771	771	3084	
63	782	782	782	782	3128	
64	793	793	793	793	3172	
65	804	804	804	804	3216	
66	815	815	815	815	3260	
67	826	826	826	826	3304	
68	837	837	837	837	3348	
69	848	848	848	848	3392	
70	859	859	859	859	3436	
71	870	870	870	870	3480	
72	881	881	881	881	3524	
73	892	892	892	892	3568	
74	903	903	903	903	3612	
75	914	914	914	914	3656	
76	925	925	925	925	3700	
77	936	936	936	936	3744	
78	947	947	947	947	3788	
79	958	958	958	958	3832	
80	969	969	969	969	3876	
81	980	980	980	980	3920	
82	991	991	991	991	3964	
83	1002	1002	1002	1002	4008	
84	1013	1013	1013	1013	4052	
85	1024	1024	1024	1024	4096	
86	1035	1035	1035	1035	4140	
87	1046	1046	1046	1046	4184	
88	1057	1057	1057	1057	4228	
89	1068	1068	1068	1068	4272	
90	1079	1079	1079	1079	4316	
91	1090	1090	1090	1090	4360	
92	1101	1101	1101	1101	4404	
93	1112	1112	1112	1112	4448	
94	1123	1123	1123	1123	4492	
95	1134	1134	1134	1134	4536	
96	1145	1145	1145	1145	4580	
97	1156	1156	1156	1156	4624	
98	1167	1167	1167	1167	4668	
99	1178	1178	1178	1178	4712	
100	1189	1189	1189	1189	4756	

Statement showing the nature of work done under the Health League Activities in the villages of the Health Training Centre.

Month	Latrines	Soakpits	White-washing	Introduction of windows	Improvement of cattle sheds	Removal and closing of manure pits	Cleaning of backyard and forming of kitchen garden	Closing of other insanitary pits	Road repairs and opening of new roads	Removal of encroachments and dilapidated structures	Removal of rank vegetation in carts	Drainage	House-flooring, fencing and roofing	General cleaning of the villages
January	14**	9	75	8	22	8	24	...	1½ Fr	30	33	3 Fr	51	1 well
February	4*	32	67	10	48	6	53	1	1½	58	43	8½	11	7/8 do
March	14+65*	75	204	89	62	7	111	43	1½	51	46	...	3	...
Total (Jan-Mar.)...	** 14+69*+14	116	344	107	132	21	188	44	4½ Fr	139	129	6½ Fr	65	...

*In complete ** Started Fr-Furlongs

Spleen Survey.—Spleen survey was done in 20 villages during the quarter. The villages situated along the river Arkavathi continued to give spleen rates of over 10.

Laboratory.—Five blood samples were sent to the Public Health Institute for wassermann reaction; 40 blood smears were examined at the Office Laboratory for malarial parasites; four sputum smears for T. B., five samples of stools for hookworm ova and 15 urine samples were also examined at the Office Laboratory.

At the office 84 patients turned up for consultation. After examination they were all given needful advice. For minor ailments 2,215 patients were treated at the office and in the villages by the Health Unit Staff.

Visitors.—Dr. Brian R. Dyer, R. F., Dr. P. A. Buxton, London School of Hygiene and Tropical Medicine, Dr. W. R. Aykroyd, Director, Nutrition Research, Coonoor, with a batch of 15 Health Officers from various States and Provinces, Dr. W. A. Sawyer, Dr. G. K. Strode, Dr. W. P. Jacocks of the Rockefeller Foundation, and Dr. K. K. Shenai, Health Officer, Health Unit, Poona-mallee, visited this Unit during the quarter.

(b) Rural Health Unit, Mandya.

C. RAMASWAMI, L.M.P.,

Officer in Charge.

Personnel.—Mr. M. Narayaniengar, Health Officer, was transferred to Bangalore City Municipality in the last week of January, and Mr. C. Ramaswami, Assistant Health Officer, Health Training Centre, Closepet, was posted in his place.

Plague.—Infection of plague was prevalent in Maskar-doddi, Kilara, Cooly Block of the Sugar Factory, Mandya, and Cheernalli, causing a total of 14 attacks with 13 deaths as against nil in the previous quarter. Immediate preventive measures, such as anti-plague inoculations, evacuation of the infected villages, and disinfection of the infected houses were undertaken and the disease was brought under control. A total of 1,198 anti-plague inoculations were given to the people of the infected villages.

Rat falls having occurred in Hanakere and Thavarekere, immediate steps were taken to cyanogas the rat

burrows to prevent the rat menace. A total of 95 houses were treated with cyanogas dusting. There were no further rat falls or human cases.

Small-pox.—The infection of small-pox started in A. K. Colony of Halahalli village, the source of infection of the first case being traced to Kabbanahalli, Malvalli Taluk, where the party attended a Mari festival. Subsequently, four more cases occurred in the village, making a total of 5 attacks with nil deaths. Vaccination work was immediately taken up as a preventive measure in the infected village and 23 primary and 119 re-vaccinations were done.

Cholera.—The Unit area was free from cholera during the quarter.

Influenza.—An epidemic form of influenza started in the village of Siddyyanakoppal, Dakle of Sundahalli, in March. A major portion of the population suffered from the malady. Eleven of them had complications with pneumonia and seven died. The village was visited immediately and necessary advice given regarding medical aid. No further reports were received regarding fresh attacks.

Vaccination.—A total of 704 primary and 213 re-vaccinations were done by the staff during the quarter as against 440 and 179 respectively, in the previous quarter.

Midwives' Work.—The two midwives attached to the Unit paid 148 visits to 28 villages in their jurisdiction. They paid 733 pre-labour, 301 after-labour, and 59 miscellaneous visits; they conducted 14 deliveries and examined 4 samples of urine. They had 735 pre-natals under their care as against 841 in the previous quarter.

Dog Destruction.—Dog destruction was undertaken by the Unit Staff in both Mandya and Maddur towns till the end of last quarter. Now that these municipalities have entertained a Sanitary Supervising Staff of their own, this work was entrusted to them in the beginning of the present quarter.

General Sanitation.—The Unit staff continued to give suggestions to the Village Panchayets, and to individuals as well, regarding improvement of village sanitation, such as closing up of manure-pits, provision of latrines to individual houses, proper disposal of sullage from houses, improvements of cattle-sheds, white-washing of houses, introduction of windows to ill-ventilated

houses, etc. Attempts are being made to create a civic conscience in the minds of these people by frequent visits and propaganda.

The following villages were greatly improved during the quarter:—

Kadalur.—The approach and interior roads were formed afresh. All the houses were got white-washed. The manure-heaps in the vicinity of the village were got removed and the pits closed with earth. Three drinking water-wells, devoid of parapet walls, were provided with new stone-parapet walls and pulleys. The sullage of houses that was deviated to the streets was led into freshly formed soakage pits.

Vaidyanathapura.—The approach road was repaired. All the houses were got white-washed. The manure-heaps were got removed and the pits closed with earth.

Chlorination Work.—The routine work of chlorinating the water supplies by the Unit staff continued during the quarter. A total of 476 wells were got chlorinated as against 524 in the previous quarter.

Vital Statistics.—The Assistant Sanitary Inspectors verified 77 births and 38 deaths during the quarter.

Spleen Survey.—The monthly spleen survey of Dodda-Byderahalli, Nodekoppal and Gejjalgere which was suspended during the previous quarter due to the prevalence of cholera, was started again in January.

Malaria.—Malaria in the Unit area seems to have had a slight decline as there were not many active cases of malaria brought to the notice of the staff during their visits to the villages.

The distribution of Totaquina pills to the sufferers from active malaria was taken up by the Unit staff in January. During the quarter 5,199 pills were distributed to 370 patients in 89 villages, and 2,530 pills were left with the patels, chairmen of village panchayets and school masters for emergency distribution to patients, with proper instructions.

The malaria control work is being continued in the ten villages of the Unit area by the special staff appointed and the people of these villages are finding it a great relief.

The malaria control work of Mandya Town was also continued during the quarter. The work of the two field-men was supervised by the Unit staff.

Health Education.—The staff gave 1,540 talks on different health subjects to an audience of about 7,060 as

against 1,502 talks to 7,450 persons in the previous quarter.

Baby Show and Health Exhibition.—Under the auspices of the Indian Red Cross Society, Mandya Branch, a Baby Show and Health Exhibition was organised in Mandya Town on the 11th, 12th and 13th March. The Unit staff organised the Health Exhibition which was opened by the Director of Public Health. The Superintendent, Bureau of Epidemiology, Bangalore, spoke on Malaria and its prevention. There were 97 entries of children of which nine were awarded prizes. The chief judges were Dr. (Mrs.) Rathnamma Isaac and the District Health Officer, Mysore. Three cinema shows were organised by the Department of Health and about 1,800 persons had the benefit of the shows.

Laboratory.—The Unit laboratory made examination of different specimens got from patients in rural areas and from the local medical people.

Six blood smears for M.P., 4 sputum smears for T.B., 3 spleen smears for B.P., 2 stools for ova, and 4 urines were examined during the quarter. One sample of blood for W. R. was sent to the Public Health Institute, Bangalore, for examination.

Conferences.—Five conferences of the staff were held during the quarter at which the work of the staff was discussed.

BUREAU OF SANITARY ENGINEERING.

N. KRISHNIENGAR, B.E.,

Sanitary Engineer.

The Bureau consists of five sections in addition to the two sub-divisions, one at Mysore for the City water distribution and another at Bethamangala for Kolar Gold Field water-supply.

The five Sections are as follows :—

- I. Water Supplies including original construction works and annual maintenance of existing installations all over the State except Bangalore City.
- II. Drainage works throughout the State and Town Planning.
- III. Sanitary fittings including house connections and Bore-hole Latrines.

IV. Bangalore City Drainage.

V. Deep Bore-wells for supply of protected water in town and minor municipalities.

I. WATER SUPPLY.

Water-supply works were under progress in Madhugiri, Hoskote, Vokkaleri, Hiriyur, Yedyur, Saklespur, Arkalgud and Nagamangala. The works at Attibele and Ganjam are completed and Ganjam has been given the service of water-supply. Improvements to water-supply at Chitaldrug town are completed.

II. MOFFUSIL DRAINAGE AND TOWN PLANNING.

(a) Drainage works in Magadi, Anekal and Chintamani are completed. Drainage works in Tumkur, Dodballapur, Chikballapur, Kankanballi, Closepet, Channapatna, Jagalur and Arsikere are under progress. Drainage works in Hassan, Kolar, Nanjangud, Chamaraj-nagar and Goribidnur have also been started.

(b) Drainage projects of Chikmagalur and Hassan were prepared. Part schemes of Hassan, Chikmagalur, Kolar, Anekal, Sarjapur, Closepet, Kankanballi and Channapatna were also prepared for working out the grants before the official year.

(c) *Town Planning Schemes.*—Plans for the Improvement of junction at Bazaar Street, Closepet, and layout of Yesavanthapur village were prepared.

Modified layout of the junction opposite to market at Tumkur and type designs with estimates of labour Colony Houses were prepared.

Layout of an extension for Byatrayapur, Bangalore Taluk, was prepared.

Type designs for two Slaughter-houses and houses with rat-proof arrangements were also got done.

Village surveys of Neelakantanahalli, Settihalli, Govindanahalli, Doddamudagere, Lalaghatta, Thimmasandra, Thagatigere, Neelasandra, Chakkere, Belikere, Sanhalagere in Channapatna Taluk are made in connection with the Closepet Health Unit Improvement Works.

III. SANITARY FITTINGS AND INSTALLATIONS.

1. *Works in Bangalore.*—The sanitary installation of Mental Hospital main building, treatment rooms,

quarters of the staff and nurses and special wards, dirty patient wards are all completed. Works were also measured finally.

2. *Intermediate College*.—(1) The sanitary fittings to the office of the Superintendent, and (2) sanitary arrangements to the students' general latrine have been completed.

3. *Victoria Hospital*.—Sanitary fittings to Wards Nos. 9 and 10 have been completed.

4. *Chief Electrical Engineer's Office*.—Sanitary fittings to the latrine for the workmen are completed.

5. *Serum Institute*.—Sanitary fittings and water supply to the Superintendent's quarters are in progress.

6. *Race View*.—Sanitary fittings to three bath-rooms in the main building are completed.

7. *Engineering College*.—Flushing arrangements for the students' latrine and urinals are completed.

8. Forty boreholes were excavated to test the sub-soil water near Sankey's Reservoir at Malleswaram.

Works in Mysore.

1. *Railway Offices*.—The sanitary installation of B and C Blocks is in progress. The drainage lines have been laid.

2. *Medical College*.—Providing laboratory fittings for improvements to Chemistry Section completed.

3. *Echo Bank*.—Providing additional sanitary fittings to the building completed.

4. *White House*.—Improvements to sanitary fittings and providing a storage tank for water-supply are completed.

5. *Krishnarajendra Hospital*.—(1) Sanitary fittings to Dr. Aga's quarters completed, (2) Sanitary fittings to kitchen block in progress.

6. *Cheluvamba Maternity Hospital*.—The work of outer drainage was in progress.

7. Maintenance and repairs of sanitary fittings in Government buildings and hospitals in Mysore and Bangalore were attended to.

Chintamani.

Chintamani Hospital.—Drainage and sewage disposal arrangements were completed. All sanitary fittings and

connections with installation of water-supply storage tanks have also been done. Fixing of sanitary fittings has to be done after the building work is completed.

IV. DRAINAGE WORKS.

Bangalore City Drainage.—The works of laying the main sewer line upto the Sunkal Farm and street sewers in Arlepet and Akkipet areas are completed and the final measurements of work done in Arlepet and Akkipet areas were taken.

The estimates for portions of the City that had been submitted to Government for sanction were returned with certain observations. Out of 13 estimates so returned, five estimates aggregating to Rs. 3,50,760 were revised and resubmitted, which were also duly received sanctioned. The remaining estimates are under various stages of revision.

Besides, surveys and levels wherever necessary are being made to facilitate the preparation of a comprehensive scheme of drainage for the whole City.

As resolved by the Drainage Committee in their meetings, action is also being taken in respect of several points regarding the scheme.

V. BORE-WELLS.

Thirteen Drills worked during the quarter and four bore-wells were completed. Two bore-wells were started afresh.

Analysis of Water Samples.—During the quarter 118 samples of water from 32 towns for analysing bacteriologically and 20 samples of water from 17 towns for chemical analysis were collected and examined.

List of places where works are under progress in various stages during the quarter ending March 1938.

No.	Places	Amount of estimate in rupees	Outlay to the end of March 1938 in rupees	Remarks
(1) WATER SUPPLY.				
(a) Capital Works.—				
1	Davangere ...	1,99,000	1,98,399	Work completed.
2	Vidhuraswatha Jatra	3,630	...	
3	Construction of filter for Chitaldrug town.	20,700	19,710	do
4	Hoskote ...	17,440	10,333	
5	Chikmagalur ...	71,381	7,873	
6	Settling tank at Nanjangud.	8,000	7,915	
7	Melkote ...	10,000	5,934	
8	Laying mains from Chamaraja Road to Krishnaraja Road, Mysore.	8,830	7,435	
9	Jatra at Chunchankatte.	7,222	3,611	do
10	Mudukatore Jatra ...	8,013	7,704	do
11	Hemagiri Jatra ...	7,007	4,159	do
12	Fig cultivation at Ganjam.	13,708	15,715	
13	Fire Hydrants to the Carriage Workshop at Railway Station, Mysore.	2,024	1,706	
14	Erecting three tanks of the top terrace of Medical College.	1,208	735	
15	Erecting a galvanized tank on the terrace of Park House, Mysore.	349	289	
16	Water connection to Parsi Burial Ground, Mysore.	700	392	
17	Water-supply to Attibele village.	8,000	5,499	
18	Improving water-supply distribution system in Mysore City.	48,985	10,929	
19	Improving water-supply at Hassan.	1,26,210	...	
20	Improving water-supply at Saklespur.	29,125	16,429	

No.	Places	Amount of estimate in rupees	Outlay to the end of March 1938 in rupees	Remarks
21	Additional taps to Chikballapur Town.	2,575	2,132	
22	Foundation and erection for deep well pump to bore-well at Dobb's Bungalow at Tumkur.	1,890	691	
23	Extending water-supply to main block No. IV, Vani Vilas Mohalla.	2,325	2,448	
24	Arsikere ...	33,110	27,233	Work completed.
25	Closepet ...	25,850	25,636	
26	Chikballapur water-supply.	3,930	3,968	
27	Water-supply to Begur and Hangala village.	3,200	2,002	do
28	Water-supply to Jagalur town.	2,700	2,289	
29	Improving water-supply to the portion in Erangere, Rajpur block, to the east and west of Dodpet, Lashkar Mohalla, Mysore.	6,775	1,724	
30	Laying 6" C. I. main erecting tank, Narasimharaja Mohalla, Mysore.	21,055	11,749	
31	Fixing meter in Mysore City.	25,000	18,964	
32	Extending water-supply main to block No. 3, Vani Vilas Mohalla, Mysore.	6,880	2,174	
33	Giving water connection and tap to the Sewage Farm, Mysore.	1,776	1,053	
34	Laying pipe line to individual plots for fig cultivation at Ganjam.	4,800	...	
35	Water-supply to Adikarnataka Colony at Mandya.	1,460	1,385	
36	Water-supply to Arkalgud.	6,000	4,111	

No.	Places	Amount of estimate in rupees	Outlay to the end of March 1938 in rupees	Remarks
37	Providing a deep well pump to the well near Jail Extension at Tumkur.	3,500	2,273	
38	Constructing a settling tank and filter at Harihar.	45,175	1,560	
39	Water Supply to Whitefield.	3,060	1,380	
40	Purchase of two tons of travelling crane and erection of engine pump, etc., at Harihar for Davangere Water Supply.	15,000	13,438	
41	Water Supply to Kambahalli near Nanjangud Extension.	1,148	1,091	Work Completed.
<i>(b) Annual Maintenance.—</i>				
1	A. M. of Vani Vilas Water Works, Mysore.	1,75,920	1,07,635	
2	K. G. F. Water Works, Bethamangala.	82,500	61,161	
3	Water Works at Shimoga.	23,997	7,346	
4	„ Dodballapur.	3,343	2,025	
5	„ Robertsonpet and Andersonpet.	28,700	23,585	
6	„ Hole-Narsipur	4,124	4,002	
7	„ French-Rocks	1,912	173	
8	„ Channapatna	4,725	2,782	
9	„ Ghati Subramanyam.	730	500	
10	„ Konanur ...	2,813	1,175	
11	„ Kolar ...	4,156	2,853	
12	„ Chitaldrug ...	3,430	2,169	
13	„ Santhemarahalli.	1,233	834	
14	„ Seringapatam	3,150	130	
15	„ Krishnarajnagar.	2,493	2,136	
16	„ Arsikere ...	5,230	1,943	
17	„ Kunigal ...	2,025	691	

No.	Places	Amount of estimate in rupees	Outlay to the end of March 1938 in rupees	Remarks
18	Water Works at Mandya.	3,000	1,226	
19	Road watering in Mysore.	2,400	1,455	
20	Road watering of Saturnur.	660	348	
21	Road watering, Ganjam Fig cultivation.	1,800	417	
22	Road watering, Closepet.	2,644	1,401	
23	Road watering, Chikmagalur.	2,652	497	

(2) DRAINAGE.

1	Bangalore ...	2,61,385	2,63,041	Completed.
2	Goribidnur ...	6,854	6,506	
3	Dodballapur ...	6,250	5,798	
4	Magadi ...	4,000	1,526	
5	Dodballapur, "2nd stage."	12,805	1,385	
6	Tumkur ...	1,54,700	143	
7	Closepet ...	2,025	769	

(3) SANITARY FITTINGS AND INSTALLATIONS.

1	Sanitary fittings to new Mental Hospital at Bangalore.	14,600	6,853
2	Constructing flushing latrine in Government Soap Factory, Bangalore.	432	381
3	Constructing a latrine in the Government Soap Factory, Bangalore.	538	418
4	Providing flushing arrangement to the existing latrine at the College of Engineering, Bangalore.	440	361
5	Sanitary fittings at Inspection Lodge at Marconahalli.	1,780	1,358

No.	Places	Amount of estimate in rupees	Outlay to the end of March 1938 in rupees	Remarks
6	Providing sanitary fittings with drainage arrangements to the laboratory, kitchen, maternity block in Narasimharaja Hospital, Kolar.	1,590	584	
7	Laboratory fittings for improving Chemistry Section of the Medical College, Mysore.	500	457	
8	Providing sanitary fittings for the Nurses' quarters, New Mental Hospital, Bangalore.	670	669	
9	Providing sanitary installation of B. and C. Block of New Railway Offices, Mysore.	7,750	1,628	
10	Sanitary installation in the 2nd floor of New Railway Offices, Mysore.	2,720	793	
11	Providing sanitary fitting for the latrine of the Porcelain Factory, Bangalore.	728	758	
12	Providing urinal under the staircase at the residential block of the Central College Hostel, Bangalore.	959	957	
13	Providing sanitary installation in the New Railway offices, first ground floor, Mysore.	4,200	4,652	
14	Providing sanitary fittings to the Inspection Lodge at Sivasamudram.	1,780	1,577	
15	Providing bath-tub and erecting storage tank, staging and making hot and cold water connection for treatment room in the Mental Hospital, Bangalore.	1,216	729	

No.	Places	Amount of estimate in rupees	Outlay to the end of March 1938 in rupees	Remarks
16	Providing sanitary fittings in the bathroom, Ward No. 10 in the Victoria Hospital, Bangalore.	815	556	
17	Providing flushing arrangements for the students in the compound of Intermediate College, Bangalore.	940	932	
18	Providing sanitary fittings in the bathroom of Victoria Hospital, Bangalore.	802	527	
19	Constructing a bathroom adjoining the existing one at the Office of the Superintendent, Government Soap Factory, Bangalore.	1,710	627	

BUREAU OF VITAL STATISTICS.

E. R. SUNDARARAJAN, M.A. (Hons.),

Superintendent.

Centralization of compilations.

As per Government Order No. G. 2990-3016—P. H. 154-36-4, dated 7th October 1937, the new system of registration and compilation of vital statistics has been introduced in Bangalore and Shimoga Districts from 1st January 1938. Returns are being made from all the taluks in these two districts in respect of births, deaths and marriages. The following statement giving the percentages of returns made for January, February and March shows the great improvement effected in the submission of these returns.

Returns of Births, Deaths and Marriages made in January, February and March 1938. (Under the New System.)

Taluku	No. of villages			January								
	Total	Not populated	Populated	No. of villages from which reports are received			Percentage of reports received					
				B	D	M	B	D	M			
1	2	3	4	5	6	7	8	9	10			
Bangalore District...	2,780	308	2,472	1,850	1,868	1,201	74.8	75.6	48.6			
1 Anekal ...	206	23	183	146	145	68	79.8	79.2	37.1			
2 Bangalore ...	434	40	394	275	282	269	69.8	71.5	68.2			
3 Channapatna ...	143	13	130	104	105	...	80.0	80.8	0.0			
4 Closepet ...	127	9	118	106	107	100	89.8	90.7	84.7			
5 Devanhalli ...	279	38	241	137	146	82	56.8	60.6	34.0			
6 Dodballapur ...	304	33	271	232	233	168	85.6	86.0	62.0			
7 Hoskote ...	368	51	317	205	206	105	64.7	65.0	33.1			
8 Kankanhalli ...	268	34	234	216	216	67	92.3	92.3	28.6			
9 Magadi ...	236	37	299	187	185	186	62.5	61.9	62.2			
10 Nelamangala ...	315	30	285	242	243	156	84.9	85.3	54.7			
Shimoga District ...	2,035	322	1,713	1,327	1,326	780	77.5	77.4	45.5			
1 Channagiri ...	246	60	186	165	165	105	88.7	88.7	56.4			
2 Honnali ...	170	25	145	116	117	101	80.0	80.7	69.7			
3 Kumsi ...	95	29	66	33	33	34	50.0	50.0	51.5			
4 Nagar ...	207	8	199	184	184	135	94.0	92.5	69.3			
5 Sagar ...	273	21	252	178	177	186	70.6	70.2	73.8			
6 Shikarpur ...	178	42	136	109	107	102	80.1	78.7	75.0			
7 Shimoga ...	306	75	231	150	150	...	64.9	64.9	0.0			
8 Sorab ...	312	57	255	177	177	...	69.4	69.4	0.0			
9 Tirthahalli ...	248	5	243	212	216	114	87.2	88.9	46.9			
	February						March					
Taluku	No. of villages from which reports are received			Percentage of reports received			No. of villages from which reports are received			Percentage of reports received		
	B	D	M	B	D	M	B	D	M	B	D	M
	11	12	13	14	15	16	17	18	19	20	21	22
Bangalore District...	1,897	1,892	1,528	76.7	76.5	61.8	1,823	1,813	1,534	73.7	73.3	62.1
1 Anekal ...	151	152	110	82.5	83.1	60.1	155	152	137	84.6	83.0	74.8
2 Bangalore ...	337	338	317	85.5	85.7	80.4	317	317	299	80.4	80.4	75.8
3 Channapatna ...	104	105	...	80.0	80.8	0.0	0.0	0.0	0.0
4 Closepet ...	117	117	117	99.1	99.1	99.1	114	113	113	96.6	95.8	95.8
5 Devanhalli ...	143	121	78	59.3	50.2	32.4	149	147	88	61.8	61.0	36.5
6 Dodballapur ...	219	218	183	80.8	80.4	67.5	216	217	188	79.7	80.1	69.4
7 Hoskote ...	167	169	93	52.7	53.3	29.3	206	201	113	65.0	63.4	35.7
8 Kankanhalli ...	191	194	114	81.6	82.9	48.7	205	207	156	87.6	88.5	66.7
9 Magadi ...	233	233	230	77.9	77.9	76.9	229	229	231	76.6	76.6	77.2
10 Nelamangala ...	235	245	156	82.5	86.0	54.7	232	230	209	81.4	80.7	73.3
Shimoga District ...	1,453	1,444	945	84.8	84.3	55.2	1,398	1,385	866	81.6	80.9	50.5
1 Channagiri ...	150	149	111	80.6	80.1	59.7	155	152	111	83.3	81.7	59.7
2 Honnali ...	126	125	116	86.9	86.2	80.0	123	124	121	84.8	85.5	83.5
3 Kumsi ...	49	50	51	74.2	75.7	77.3	49	49	50	74.2	74.2	75.7
4 Nagar ...	183	180	155	91.9	90.5	77.9	176	170	141	88.4	85.4	70.7
5 Sagar ...	239	240	237	94.8	95.2	94.0	215	211	209	85.3	83.7	82.9
6 Shikarpur ...	118	117	115	86.8	86.0	84.5	116	116	114	85.3	85.3	83.8
7 Shimoga ...	157	151	...	68.0	65.4	0.0	143	146	9	61.9	63.2	3.9
8 Sorab ...	219	219	...	85.9	85.9	0.0	223	222	...	87.4	87.0	0.0
9 Tirthahalli ...	212	213	160	87.2	87.6	65.8	198	195	111	81.5	80.2	45.7

Excluding Channapatna Taluk, which has not sent in any returns for March, the percentage of returns sent exceeds 50 in all taluks, the percentage in one taluk reaching as high as 99. It will thus be seen that because of establishing personal contact with the Amildars and through circulars and reminders sent from this department every now and then and constant watch kept of returns made, the percentage of villages reporting events has increased from the stationary old level of 50 to as high a stage as 80 to 90 per cent.

Closepet Taluk takes the first place in point of completeness, the percentages of returns sent being 84 to 90 in January, 99 in February and 96 in March, perhaps due to the influence of the Health Centre Staff. In the case of the other taluks the percentage of marriage returns sent in is very much below those for births and deaths and in the case of Channapatna and Sorab no returns of marriages were made during the whole quarter.

Taluks.—So far as the taluks are concerned the compilations are being made and the figures will be published as soon as possible.

Municipalities.—So far as the municipalities are concerned the returns are made daily and by the issue of constant reminders these returns have been collected more or less completely. The figures collected from these returns are given in Tables 1 and 2.

Cities.—In the case of cities the new arrangement was introduced in Bangalore and Mysore Cities from January 1, 1938, whilst in Kolar Gold Field it is proposed to be started from July 1, 1938. The figures in respect of each mohalla or division are given in Tables 3 and 4.

Births.

Bangalore District.—In the 13 municipalities of the Bangalore District, 442 live-births were reported, of which 261 were male and 181 female, giving a birth-rate of 22·8 per mille of population. Of 22 still-births recorded 16 were male and 6 female. Detailed particulars are given in Table 1.

Shimoga District.—In the 12 municipalities in Shimoga District, 583 live-births were reported during the quarter, of which 291 were male and 292 female, giving a

birth-rate of 35·2 per mille of population. A total of 29 still-births were recorded. The details in respect of the mother as to community, occupation, age, order of birth, the number of living children and the number of years after consummation of marriage, etc., are given in Table 1.

Bangalore City.—In Bangalore City figures were collected in respect of each of the nine divisions and from Vani Vilas Hospital and the Maternity Home. The statistics are given in Table 3. It will be seen that during the quarter, 2,093 live-births were reported in Bangalore City, giving a birth-rate of 39·5 per thousand of population. A total of 134 still-births were recorded.

Mysore City.—In Mysore City statistics were collected from 11 mohallas and institutions as detailed in Table 3. Of 1,246 live-births reported 619 were male and 627 female, giving a birth-rate of 40·1 per 1,000 of population. Fifty still-births were reported.

Plural Births.

During the quarter 47 pairs of twins and one case of triplets were reported. Of these 23 occurred in Bangalore City, 16 in Mysore City, 7 in Shimoga District and 1 in Bangalore District. The triplets were recorded in Mysore City.

Deaths.

Bangalore District.—In the 13 municipalities of this district 296 deaths were reported, giving a death-rate of 15·3 per mille of population. Of these deaths 144 were male and 152 female. Forty deaths of infants under one year of age were reported, giving an infant mortality rate of 90·5 per 1,000 live-births. Of these 16 (or 40·0 per cent) were under one week, 21 (or 52·5 per cent) under one month and 31 (or 77·5 per cent) under 6 months.

Eight maternal deaths were reported giving a maternal mortality rate of 17·2 per 1,000 births.

Shimoga District.—During the quarter 359 deaths were reported in the 12 municipalities, giving a death-rate of 21·7 per 1,000 of population. Of these 199 were male and 160 female. It is important to observe that of 54

deaths of infants under one year of age, 25 (or 46·3 per cent) were under one week, 35 (or 64·8 per cent) under one month, 45 (or 83·3 per cent) under 6 months. The computed rate of infant mortality was 92·6 per 1,000 live-births.

Fifteen deaths of mothers at child-birth were reported, giving a maternal mortality of 24·5 per 1,000 births.

Particulars as to community, occupation, age and cause of death, etc., are given in Table 2.

Bangalore City.—In Table 4, particulars are given of deaths in Bangalore and Mysore Cities. During the quarter 1,295 deaths occurred in Bangalore City, giving a death-rate of 24·4 per 1,000 of population. Of these 667 were male and 628 female. A total of 392 deaths of infants under one year of age were reported, giving an infant mortality rate of 187·3 per 1,000 live-births. Of these 107 (or 27·3 per cent) were under one week, 211 (or 53·8 per cent) under 1 month and 302 (or 77·0 per cent) under 6 months.

Ten deaths of mothers from child-birth were reported during the quarter, giving a maternal mortality rate of 4·5 per 1,000 births.

Mysore City.—In the quarter under report 800 deaths were reported in Mysore City, giving a death-rate of 25·8 per 1,000 of population. Of these 407 were male and 393 female. Of 161 deaths reported of infants under one year of age, 44 (or 27·3 per cent) were under one week, 81 (or 50·3 per cent) under one month and 124 (or 77·0 per cent) under 6 months. The computed infant mortality rate was 129·2 per 1,000 live-births.

Maternal deaths numbered 10 during the quarter, giving a maternal mortality rate of 7·7 per thousand births.

1	1
1	1
1	1
1	1
7	8	11	Total

Marriages.

The number of marriages reported in the months of January, February and March are given below for each of the municipalities in Bangalore and Shimoga Districts and in Bangalore and Mysore Cities.

Division				No. of Marriages reported			
				Jan.	Feb.	Mar.	Total
BANGALORE CITY.							
I.	4	4	8	
II.	2	1	3	
III.	1	1	2	
IV.	
V.	1	...	1	
VI.	1	2	3	
VII.	3	3	
VIII.	26	26	
IX.	3	4	7	
Total				0	12	41	53
MYSORE CITY.							
Lashkar	mohalla	7	7	11	25
Mandy	do	3	6	10	19
Devaraj	do	1	2	2	5
Chamaraj	do	2	9	11
Krishnaraj	do	3	3	6
Fort	do	1	1
Nazarbad	do	1	1	2
Sowar & Bar	Lines	1	1
Total				11	21	38	70

Municipality	No. of Marriages reported.			
	Jan.	Feb.	Mar.	Total
BANGALORE DISTRICT.				
1. Anekal	4	2	6
2. Channapatna ...	3	2	5	10
3. Closepet ...	1	...	4	5
4. Devanhalli	1	1
5. Dodballapur	2	2	4
6. Hoskote
7. Kankanhalli	4	4
8. Magadi	3	3
9. Nelamangala	1	...	1
10. Sarjapur	1	1
11. Tyamagondlu ...	1	2	2	5
12. Vadigenhalli	3	3
13. Yelahanka	2	2
Total ...	5	11	29	45
SHIMOGA DISTRICT.				
1. Bhadravati	3	...	3
2. Channagiri
3. Honnali ...	1	3	...	4
4. Kumsi	2	2
5. Hosnagar
6. Nyamathi ...	2	...	1	3
7. Sagar
8. Shikarpur	5	3	8
9. Shimoga ...	3	3	2	8
10. Shiralkoppa	5	5
11. Sorab	1	...	1
12. Tirthahalli	2	...	2
Total ...	6	17	13	36

(a) Population.

The estimated populations of the districts and cities as on 1st July 1938 are:—

<i>District or City.</i>	<i>Estimated Population.</i>
Bangalore (Excluding Bangalore City) ...	9,96,415
Chitaldrug ...	7,17,394
Hassan ...	6,06,519
Kadur ...	3,58,178
Kolar (Excluding K. G. F.) ...	8,07,695
Mysore (Excluding Mysore City) ...	14,66,454
Shimoga ...	5,40,238
Tumkur ...	9,26,583
<hr/>	
Mysore State (Excluding Cities) ...	64,19,476
<hr/>	
Bangalore City... ..	2,12,080
Mysore City	1,24,265
Kolar Gold Fields	83,201
<hr/>	
Mysore State (Including Cities) ...	68,39,022
<hr/>	

(b) Parturition Statistics.

The statistics of parturation cases conducted in the Maternity Hospitals and Female Dispensaries are given below :—

*Parturition Cases conducted in Maternity Hospitals
and Female Dispensaries.*

No.	Place	Institutions	Number of Labour cases conducted	Number of Maternal Deaths	Maternal Mortality rate
					Per 1,000 births.
1	Bangalore City	Vani Vilas Hospital	1,240	10	8.1
2	Mysore City	Do	559	7	12.5
3	Do	Holdsworth Memorial Hospital.	146	3	20.5
4	Kolar Gold Fields	Maternity Hospital	319	1	3.1
5	Anekal	Female Dispensary	80	1	12.5
6	Channapatna	Do	25
7	Chikballapur	Do	1
8	Chikmagalur	Maternity Hospital	70	10	142.8
9	Chintamani	Female Dispensary	5
10	Chitaldrug	Do	24	1	...
11	Davangere	Maternity Hospital and Female Dispensary.	146	1	6.8
12	Hassan	Female Dispensary and Maternity.			Not reported.
13	Do	B. F. Memorial Hospital.	25	1	...
14	Hebbal	Female Dispensary	5
15	Hole-Narsipur	S. N. Maternity Hospital			Not reported.
16	Hunsur	Female Dispensary	4	1	...
17	Kolar	Female Dispensary			Not reported.
18	Do	E. T. C. Memorial Hospital.			Do
19	Koppa	Female Dispensary	4
20	Krishnarajnagar	Female Dispensary and Maternity.	40
21	Mudgere	Combined Dispensary	2
22	Mandagadde	Maternity Hospital	20	2	...
23	Nanjangud	Female Dispensary	51
24	Sagar	Do	5
25	Saklespur	Women and Children Hospital.	7
26	Shimoga	Maternity Hospital	84	8	95.2
27	Sira	Female Dispensary	39	2	...
28	Tarikere	Do	96	4	41.7
29	Tiptur	Maternity Hospital	31
30	Tirthahalli	Do	24
31	Tumkur	Do	72	1	13.9
		Total (Mysore State)	3,124	53	17.0

It will be seen that out of 3,124 labour cases conducted in these institutions 53 maternal deaths were reported giving a maternal mortality rate of 17.0 per 1000 births, as compared with 19.5 in the previous quarter.

(c) Epidemic Diseases.

Attacks and deaths from plague, small-pox and cholera reported during the quarter are given below :—

Attacks and Deaths from Plague, Small-pox and Cholera in the Districts and Cities during the quarter January-March 1938.

District or City	Plague		Population affected	Small-pox		Number of Places affected	Population affected	Cholera		Number of Places affected	Population affected
	A.	D.		A.	D.			A.	D.		
Bangalore (Excluding City) ...	118	44	20,610	19	0	4	10,504
Chitaldrug	40	1	4	951
Hassan ...	126	45	36,556	8	1	1
Kadur
Kolar (Excluding K. G. F.) ...	180	127	58,740	1	0	1	389
Mysore (Excluding City) ...	100	65	21,339	46	16	3	2,383	26	3	4	1,200
Shimoga ...	15	15	6,608	3	0	2	26,048
Tumkur	1	1	1	1,901
Mysore State (Excluding Cities)	539	296	1,43,853	118	20	16	42,126	26	3	4	1,200
Bangalore City ...	7	3	2,12,080	4	0	1	2,12,080
Mysore City ...	14	10	1,24,265	1	0	1	1,24,265
Kolar Gold Fields ...	97	64	83,201	3	0	1	83,201
Mysore State (Including Cities) ...	657	373	5,63,393	126	20	19	4,61,672	26	3	4	1,200

Plague.—Under plague 657 attacks and 373 deaths were reported in 166 places as compared with 947 attacks and 487 deaths in the previous quarter. Of these 118 attacks and 77 deaths occurred in City areas, *viz.*, 97 attacks and 64 deaths in Kolar Gold Field, 14 attacks and 10 deaths in Mysore City and 7 attacks and 3 deaths in Bangalore City.

Small-pox.—A very low incidence of small-pox was reported during the quarter, 126 attacks and 20 deaths in 19 places being reported. No death from small-pox was reported in city areas.

Cholera.—Twenty-six attacks and 3 deaths from cholera were reported from 4 places in Mysore District, as compared with 21 attacks and 16 deaths in 9 places in Bangalore, Hassan and Shimoga Districts in the previous quarter. The cities were free from this disease.

(d) Vital Statistics reported in the previous quarter
October-December 1937.

The following are the compiled statistics for the quarter October-December 1937.

	Previous quarter	Current quarter	Corresponding quarter of previous year
	July-Sept. 1937.	Oct.-Dec. 1937.	Oct.-Dec. 1936.
Births	38,433	38,935	35,271
Still-births	568	677	529
Deaths, all causes	22,836	29,311	26,307
Plague	1,500	2,126	602
Small-pox	196	183	391
Cholera	307	165	1,153
Malaria	6,989	9,645	8,495
Typhoid	1,131	1,518	1,396
Other Fevers	2,553	3,280	3,067
Dysentery and Diarrhœa	1,585	1,826	1,892
Respiratory Diseases	1,029	1,296	1,294
Consumption	1,271	1,393	1,319
Leprosy	205	268	240
Child-birth	564	636	616
Suicide	60	53	78
Drowning	211	239	236
Wounds and Accidents... ..	168	177	186
Killed by Wild Beasts	27	17	9
Snake-bite	43	44	54
Rabies	15	31	13
All other causes	4,982	6,414	5,266

Births.—During the quarter 38,935 births were reported with a birth-rate of 23·0 as compared with 22·7 in the previous quarter. Excluding cities the birth-rate for the State was 21·5 per thousand of population. The rates in the districts varied from 15·8 in Kadur District to 25·0 in Chitaldrug District.

The computed birth-rate in Bangalore City was 39·8, in Mysore City 40·0 and in Kolar Gold Field 67·2 respectively.

Still-births.—A total of 677 still-births were reported giving a still-birth-rate of 17·1 per 1,000 births as against 14·6 in the previous quarter. Exclusive of cities the rate was 15·2. In the district the rate varied from 4·2 in Bangalore District to 30·9 in Shimoga District. The rates in the cities were: Bangalore City 49·0, Mysore City 18·5 and Kolar Gold Field 12·7.

Deaths.—During the quarter under report 29,311 deaths were recorded giving a death-rate of 17·3 per mille of population as compared with 13·5 in the previous quarter. The rate exclusive of cities was 16·5. The rates varied in the districts from 12·9 in Bangalore and Tumkur Districts to 24·2 in Shimoga District. The city rates were: Bangalore City 26·9, Mysore City 29·8 and Kolar Gold Field 31·7.

Infant Mortality.—The number of infant deaths reported during the quarter was 4,943 giving an infant mortality rate of 127·0 per 1,000 live births as against 91·9 in the previous quarter. Exclusive of cities the rate was 121·7. The rates in the districts varied from 94·5 in Bangalore District to 160·5 in Kolar District. The city rates were: Bangalore City 191·6, Mysore City 137·0 and Kolar Gold Field 152·5.

Maternal Mortality.—During the quarter 636 deaths of mothers at child-birth were reported giving a maternal mortality rate of 16·1 per 1,000 births as compared with 14·5 in the previous quarter.

TABLE I.
Detailed statistics of births reported in the Municipalities of Bangalore and Shimoga Districts in the quarter
January to March 1938.

Name of municipality	Births		Particulars of mother																								
	Born alive		Born dead		Permanent residence		Community										Occupation										
	M.	F.	M.	F.	At village	Outside	Lingayet	Vokkaliga	Vaiya	Kshatriya	Brahmin	Adikarnataka	Mussalman	Jain	Christian	European	Others	Farmer	Trader	Labourer	Housewife	Official	Student	Beggar	Other occupations		
BANGALORE DISTRICT.																											
1. Anekal ...	24	11	85	...	2	2	...	1	5	2	8	...	1	...	14	8	1	1	30	
2. Channapatna ...	46	26	3	...	68	...	5	5	...	1	8	2	43	2	14	2	72	1	
3. Closepet ...	26	19	1	...	46	...	2	2	1	1	3	8	19	12	3	43	
4. Devanahalli ...	7	13	1	...	20	...	2	2	2	...	2	...	5	10	21	
5. Doddballapur ...	25	22	...	3	42	8	5	5	1	2	8	1	6	22	60	
6. Hoskote ...	23	19	2	...	42	2	1	1	1	1	12	23	44	
7. Kankanhalli ...	23	14	2	...	34	6	4	4	1	...	7	...	5	18	40	
8. Magadi ...	23	12	16	19	1	1	5	...	9	...	3	14	34	
9. Nelamangala ...	20	14	1	...	27	8	5	5	2	1	7	4	5	8	1	34	
10. Sarjapur ...	11	8	3	...	17	2	3	2	10	14	
11. Tyamagondlu ...	17	13	3	...	35	...	4	...	3	...	2	...	10	15	35	
12. Vadigenahalli ...	10	5	14	1	1	1	1	12	2	12	
13. Yelahanka ...	6	10	16	...	4	4	1	2	7	15	
Total ...	261	151	16	6	412	52	36	15	7	54	92	121	5	1	2	174	6	2	11	444	1	

TABLE I—*COVID*.

Name of municipality	Particulars of mother											Order of birth										
	Age											Order of birth										
	Not stated	Below 15	15-20	20-25	25-30	30-35	35-40	40-45	45 and over	Not stated	1	2	3	4	5	6	7	8	9	10	Over 10	
BANGALORE DISTRICT.																						
1. Anekal	..	10	3	14	2	4	1	1	..	8	2	6	2	2	4	3	1	..	1	3		
2. Channapatna	1	14	18	19	12	11	1	16	8	14	8	9	6	3	2	..	1	1		
3. Closepet	..	13	11	13	7	2	8	7	7	1	3	2	5	3	..	2	1		
4. Devanahalli	..	5	7	5	2	1	1	5	4	1	1	4	4	2	1	1		
5. Doddballapur	..	10	12	15	9	1	1	12	9	6	5	5	4	5	1		
6. Hoskote	..	11	7	13	10	3	7	7	9	5	7	1	4	3		
7. Kankanhalli	..	7	16	7	4	4	4	9	11	4	2	4	1		
8. Magadi	..	11	9	4	4	4	4	8	3	2	2	2	2		
9. Nelamangala	..	10	17	2	5	4	8	10	8	5	2	1	1	2	4		
10. Sarjapur	..	6	1	6	3	1	4	4	1	2	1		
11. Tyamagondlu	..	9	6	7	5	5	3	7	4	4	..	1	2	1	2	3		
12. Vadigenahalli	..	4	..	4	2	1	4	3	2	2	1	1	3	1		
18. Yelahanka	..	6	7	2	..	1	2		
Total	1	2	114	111	65	39	15	1	30	95	68	67	45	43	33	28	18	16	7	14		

TABLE I—contd.

Name of municipality	Number of living children										Number of years after consummation of marriage						Particulars of mother						
	0	1	2	3	4	5	6	7	8	9	10	Over 10	Not stated	1	2	3		4	5	6-10	10-20	20-30	30 and over
BANGALORE DISTRICT.																							
1. Anekal	3	2	2	4	8	4	2	2	3	1	1	1	35	2	7	6	6	4	18	20	4	...	
2. Channarayana	3	14	12	16	11	5	2	2	3	1	1	8	8	2	4	2	4	8	17	13	1	...	
3. Closepet	3	3	6	4	8	4	4	3	1	1	1	1	2	1	2	2	2	13	1	...	
4. Devanahalli	2	5	4	4	2	2	1	1	2	1	2	...	2	11	
5. Doddaballapur	7	14	9	5	7	2	2	26	4	5	1	6	7	
6. Hoskote	...	11	9	9	6	4	3	1	1	1	1	4	2	4	3	2	9	23	1	...	
7. Kankanhalli	...	5	15	9	3	4	3	1	1	1	3	4	3	9	13	1	...	
8. Magadi	...	10	10	1	4	4	4	1	6	3	3	3	9	18	6	...	
9. Nelamangala	...	14	6	8	3	3	3	1	6	5	6	2	9	11	3	...	
10. Sarjapur	...	3	3	1	2	1	1	1	1	6	5	1	3	3	10	2	...	
11. Tyamagondlu	...	8	8	4	2	1	1	1	2	0	1	12	...	1	1	3	2	1	1	1	13	2	...
12. Vadigenahalli	...	3	4	4	1	1	1	1	1	1	1	1	2	4	3	10	3	...
13. Yelahanka	...	5	4	4	3	...	2	1	1	2	1	1	6	3	1	...	
Total	23	19	107	64	49	49	31	11	10	3	2	4	81	13	35	31	33	18	98	128	84	3	

TABLE I -- contd.

Name of municipality	Births		Particulars of mother											Occupation												
	Born alive		Born dead		Permanent residence		community											Occupation								
	M.	F.	M.	F.	At village	Outsid	Lingayet	Vokkaliga	Vaisya	Kshatriya	Brahmin	Adikarnataka	Musalman	Jain	Christian	European	Others	Farmer	Trader	Labourer	Housewife	Official	Students	Beggar	Other occupations	
SHIMOGA DISTRICT.																										
14. Bhadravati	12	12	24	..	1	3	10	..	1	24
15. Channagiri ...	32	18	51	..	4	4	..	1	15	..	1	51
16. Honnali ...	17	19	32	5	7	36
17. Kumsi ...	5	9	14	2	13
18. Hosanagar ...	3	1	..	1	4	1	2	6
19. Nyamathi ...	23	19	..	1	42	..	22	2	..	3	2	46
20. Sagar ...	24	35	..	1	55	9	60
21. Shikarpur ...	18	21	..	1	41	..	6	3	12	41
22. Shimoga ...	91	102	..	5	152	..	10	4	..	23	..	4	41	..	9	209
23. Shiralkoppa...	16	26	41	..	9	4	..	5	16	41
24. Sorab ...	14	8	..	1	22	..	2	10	2	19
25. Thirthahalli...	36	22	..	1	56	11	6	..	2	59
Total ...	291	292	21	8	534	78	55	4	14	7	59	10	122	..	15	..	326	7	605

TABLE I—contd.

Name of municipality	Particulars of mother										Order of birth										Total ...				
	Age										Order of birth														
	Not stated	Below 15	15-20	20-25	25-30	30-35	35-40	40-45	45 and over	Not stated	1	2	3	4	5	6	7	8	9	10		Over 10			
SHIMOGA DISTRICT.																									
14. Bhadravati	4	8	8	1	2	1	7	4	6	3	2	2	...	1	1	5	2	...
15. Channagiri	6	14	20	6	3	2	6	11	8	4	1	1	...	4	4	1	1	...
16. Honnali	7	9	7	5	5	3	6	3	5	4	4	4	...	4	1
17. Kamsi	3	4	6	1	3	3	4	2	1	1
18. Hosanagar	1	1	2	2	7	1
19. Nyamathi	9	18	17	3	1	10	7	7
20. Sagar	8	25	16	6	11	11	7	14	6	5	...	2	2
21. Shikarpur	12	7	8	3	4	10	5	4	7	2	7	...	2	1
22. Shimoga	43	67	49	25	18	47	31	4	24	17	18	...	2	7
23. Shiralkoppa	1	1	1	1	1	9	13	3	18	...	2	...	1	1
24. Sorab	6	5	7	3	4	4	5	8	...	4	...	2
25. Thirthahalli	10	16	18	8	5	14	7	12	3	6	2	...	5	2
Total ...	2	4	124	184	167	64	48	17	2	9	99	92	85	47	47	26	25	18	17	20					

TABLE I—concl'd.

Name of municipality	Particular of mother										Number of years after consummation of marriage													
	Number of living children										Not stated	1	2	3	4	5	5-10	10-20	20-30	30 and over				
	0	1	2	3	4	5	6	7	8	9											10	Over 10		
SHIMOGA DISTRICT.				
14. Bhadravati ...	1	5	6	3	1	1	1	1	1	1	1	1	1	1	1	1	1	1	1	1				
15. Channagiri ...	1	9	10	3	3	3	3	3	3	3	3	3	3	3	3	3	3	3	3	3				
16. Honnali	8	4	4	5	5	5	5	5	5	5	5	5	5	5	5	5	5	5	5				
17. Kumsi ...	1	6	1	4	1	1	1	1	1	1	1	1	1	1	1	1	1	1	1	1				
18. Hosanagar ...	1	1	4	...	6	6	6	6	6	6	6	6	6	6	6	6	6	6	6	6				
19. Nyamathi ...	1	13	8	7	7	7	7	7	7	7	7	7	7	7	7	7	7	7	7	7				
20. Sagar ...	2	14	11	9	6	6	6	6	6	6	6	6	6	6	6	6	6	6	6	6				
21. Shikarpur ...	2	12	6	8	3	3	3	3	3	3	3	3	3	3	3	3	3	3	3	3				
22. Shimoga ...	112	22	18	13	6	6	6	6	6	6	6	6	6	6	6	6	6	6	6	6				
23. Shiralkoppa	13	5	7	1	1	1	1	1	1	1	1	1	1	1	1	1	1	1	1				
24. Sorab	8	2	2	1	1	1	1	1	1	1	1	1	1	1	1	1	1	1	1				
25. Thirthahalli ...	1	14	11	7	6	6	6	6	6	6	6	6	6	6	6	6	6	6	6	6				
Total ...	113	18	125	106	94	67	67	86	25	12	6	6	2	2	119	2	23	39	37	14	152	179	45	2

TABLE II—contd.

Serial No.	Name of district	Sex	Occupation							Age at death																		
			Farmer	Trader	Labourer	Housewife	Official	Student	Beggar	"Other occupations"	Not stated	Under 1 week	1 week to 1 month	1 month to 6 months	6 months to 1 year	1-5 years	5-10	10-15	15-20	20-30	30-40	40-50	50-60	60 and over				
BANGALORE DISTRICT.																												
1	Anekal	M	8	...	7	...	1	...	1
2	Channapatna	F	5	...	4
3	Closepet	M	0	...	17
4	Devanhalli	M	3	...	1
5	Dodballapur	F	1	...	2
6	Hoskote	M	2	...	1
7	Kankanhalli	F	3	...	2
8	Magadi	M	6	...	1
9	Nelamanga	F
10	Sarjapur	M	1	...	1
11	Tyamsongndlu	F
12	Vadigenahalli	M	2
13	Yelahank	F	1	...	2
Total		M	22	17	24	71	3	5	5	68	1	9	4	9	17	10	3	6	9	25	11	10	7	44				
		F	10	2	28	2	2	1	1	36	0	7	1	1	10	5	5	10	10	25	14	10	6	53				

TABLE II—contd.

Serial No.	Name of district	Sex	Causes of death														All other causes					
			Plague	Small-pox	Cholera	Malaria	Typhoid	Other fevers	Dysentery and diarrhoea	Respiratory diseases	Consumption	Leprosy	Child-birth	Suicide	Drowning	Wounds and accidents		Killed by wild beasts	Snake-bite	Rabies		
BANGALORE DISTRICT.																						
1	Anekal ...	M	3	1	8	
2	Channapatus	F	7	7
3	Closepet	M	10
4	Devanahalli	F	6
5	Dodballapur	M	3
6	Hoskote	F	3
7	Kankanhalli	M	3
8	Magadi	F	2
9	Nelamangala	M	4
10	Sarjapur	F	6
11	Tyamagondlu	M	4
12	Vadigenahalli	F	2
13	Yelahanka	M	1
	Total	M	7	0	1	2	2	2	37	7	13	6	6	0	0	0	0	0	0	0	3	63
		F	4	2	1	1	40	5	6	13	2	8	1	4	0	1	52

TABLE III—*contd.*
Detailed statistics of births reported in each Division of the Cities of Bangalore and Mysore in the quarter January to March 1938.

	Particulars of mother										Total										
	Age					Order of birth															
	Below 15	15-20	20-25	25-30	30-35	35-40	40-45	45 and over	Not stated	1		2	3	4	5	6	7	8	9	10	Over 10
Bangalore City																					
Division I	...	1	14	24	18	3	...	2	...	18	7	16	8	7	4	5	...	1	...	1	...
II	...	1	21	37	23	16	5	1	...	19	11	27	17	7	6	5	4	3	2	...	3
III	26	51	55	15	12	3	...	23	36	24	23	20	12	8	5	6	3	...	6
IV	20	21	25	8	7	1	...	21	11	10	10	14	4	2	3	1	2	...	1
V	5	9	15	6	1	4	9	4	6	3	4	2	4
VI	16	38	28	14	7	12	14	23	14	14	7	5	3	2	2	...	2
VII	8	19	26	13	5	2	...	8	11	15	12	8	7	6	6	4	1	...	1
VIII	1	33	21	18	6	16	17	15	16	10	5	6	12	1	1	...	1
IX	28	27	17	15	11	2	...	23	17	16	12	11	4	3	4	3	2	...	5
Vani Vilas Hospital.	...	9	306	427	328	181	51	17	25	1	323	204	140	121	91	79	46	47	23	24	...
Maternity Home	12	20	18	4	3	10	9	13	8	7	6	3	1	1
Total	...	15	480	701	574	293	108	28	27	1	477	366	266	322	150	124	88	69	36	43	...

TABLE III—*contd.*
Detailed statistics of births reported in each Division of the Cities of Bangalore and Mysore in the quarter January to March 1938.

Division	Particulars of mother											Number of years after consummation of marriage										
	Number of living children											Number of years after consummation of marriage										
	0	1	2	3	4	5	6	7	8	9	10	Over 10	Not stated	1	2	3	4	5	6-10	10-20	20-30	30 and Over
Bangalore City
Division I	...	16	11	20	5	7	3	9	5	2	4	1	20	18	3	...
II	...	2	30	23	12	11	4	1	1	8	5	6	1	37	38	8	1
III	...	2	41	26	17	14	7	1	1	24	2	13	47	65	11	...
IV	...	3	28	17	9	3	5	2	...	1	5	7	4	31	31	4	...
V	...	1	5	3	9	3	2	...	1	2	1	...	14	19
VI	...	2	16	25	13	9	4	1	1	...	1	3	6	8	3	33	38	7	...
VII	...	4	14	15	13	6	5	4	2	4	4	3	4	13	43	7	...
VIII	...	3	22	12	16	15	5	4	2	6	2	6	...	32	45	8	1
IX	31	14	15	4	4	3	5	1	8	4	6	...	24	28	11	...
Vani Vilas Hospital.	...	57	478	196	121	95	47	29	14	6	6	2	23	480	415	210	67	35	103	13	1	...
Maternity Home	...	2	14	12	5	1	3	8	...	14	15	3	4	11	1	...	1
Total	...	76	695	505	361	238	168	89	48	27	10	8	2	502	463	279	113	65	365	339	60	3

TABLE III—contd.

Detailed statistics of births reported in each Division of Cities of Bangalore and Mysore in the quarter January to March 1938.

Mysore City	Sex	Birth				Permanent residence		Particulars of mother										Occupation							
		Born alive		Born dead		At village	Outside	Community										Farmer	Trader	Labourer	Housewife	Official	Student	Beggar	Other occupa-tions
		M	F	M	F			Lingayet	Vokkaliga	Vaiya	Kshatriya	Brahmin	Adikarnataka	Musalman	Jain	Christian	European								
		M	F	M	F	88	1	2	3	8	2	2	5	10	21	..	5	..	41	..	1	88			
Lashkar Mohalla	..	41	47	1	..	88	1	2	3	2	..	5	10	21	..	5	..	41	..	1	88				
Mandi Mohalla	..	67	78	127	18	4	31	3	2	11	12	43	..	12	2	43	2	4	141				
Devaraja	..	18	31	..	1	44	6	..	4	5	5	11	..	6	..	2	..	17	50				
Chamaraja	..	140	127	3	2	253	19	..	34	..	2	63	45	15	..	11	..	102	272				
Krishnaraja	..	39	42	..	1	81	1	3	5	1	3	22	..	20	..	1	..	27	82				
Fort	..	12	4	..	1	17	..	2	2	..	4	5	..	2	2	16				
Nazarbad	..	29	24	50	3	1	18	..	2	..	2	5	25	53				
Vani Vilas Hospital.	..	200	205	24	14	424	19	22	42	10	9	97	24	49	..	22	..	168	443				
Palace Dispensary.	..	2	1	3	1	2	3				
Sawar and Barr Lines.	..	2	6	..	1	8	1	1	4	..	1	..	3	9				
Holdsworth Memorial Hospital.	..	69	62	2	..	117	16	8	7	..	3	19	6	40	..	15	..	35	133				
To a	..	619	627	30	20	1,212	84	42	129	21	31	233	99	205	..	69	2	465	5	5	1,290				

TABLE III—*contd.*
Detailed statistics of births reported in each Division of the Cities of Bangalore and Mysore in the quarter January to March 1938.

Mysore City	Particulars of mother													Order of birth					
	Age													10	Over 10				
	Below 15	15-20	20-25	25-30	30-35	35-40	40-45	45 and over	Not stated	1	2	3	4			5	6	7	8
Lashkar Mohalla	29	25	18	14	2	1	...	20	18	12	8	8	10	5	3	4	3	1
Mandi Mohalla	39	43	29	24	9	1	6	31	29	23	16	16	12	2	6	4	6	1
Devarsaja	1	16	5	11	4	1	...	8	7	7	8	8	3	3	5	1	2	2
Channaraja	1	69	82	25	27	5	...	62	57	28	39	24	21	10	16	6	5	4
Krishnaraja	22	16	13	6	2	...	19	17	13	6	7	10	2	4	2	2	...
Fort	8	3	4	1	6	3	2	2	2	2	1	...	1
Nazarbad	15	6	16	5	10	1	...	18	4	7	8	8	3	2	4	3	...	1
Vani Vilas Hospital	...	76	141	123	71	31	...	1	100	79	76	49	88	30	20	23	15	6	7
Palace Dispensary	1	1	1	1	1
Sawar and Barr Lines	...	1	4	4	1	2	4	2	2
Holdsworth Memorial Hospital.	...	34	44	32	13	8	2	...	38	23	28	13	10	16	3	2	2	1	2
Total	...	2	374	329	181	98	13	6	304	240	196	151	109	98	48	63	38	25	18

TABLE IV.
Detailed statistics of deaths reported in each Division of the Cities of Bangalore and Mysore in the quarter January to March 1938.

Serial No.	Name of municipality	Sex	Permanent residence		Conjugal condition at time of death					Community										
			At village	Outside	Single	Married	Widowed	Divorced	Not stated	Tingayot	Vokhigga	Vaisya	Kshatriya	Brahmin	Adikarna-taka.	Musallman	Jain	Christian	European	Others
BANGALORE CITY.																				
1	Division I	M	32	...	21	4	3	...	4	...	1	3	3	8	9	15
2	Division II	F	24	...	13	5	6	6	6
3	Division III	M	66	...	45	14	7	2	41
4	Division IV	F	77	...	43	24	9	...	3	4	45
5	Division V	M	124	...	76	45	8	2	53
6	Division VI	F	103	...	52	51	8	27
7	Division VII	M	29	...	14	17	6	...	1	40
8	Division VIII	F	60	...	23	17	20	...	2	4	37
9	Division IX	M	28	...	19	6	1	...	2	14
10	Vani Vilas Hospital	F	29	...	13	10	6	1	15
11	Victoria Hospital	M	47	...	38	6	3	3	16
12	E. D. Hospital	F	54	...	26	18	10	...	1	2	12
13	Mental Hospital	M	36	...	23	7	6	7	19
14	St. Martha's Hospital	F	52	...	25	13	14	4	12
		M	32	...	20	4	8	1	9
		F	27	...	16	3	8	2	10
		M	35	...	19	10	4	...	2	1	12
		F	33	...	15	5	13	1	20
		M	104	...	77	16	2	58
		F	78	...	43	78	7	56
		M	43	41	4	73
		F	13	...	10	1	3	2	40
		M	7	...	2	4	2	1	8
		F	8	...	2	6	2	1	5
		M	11	...	3	6	1	3
		F	11	...	5	6	7
		M	14	...	7	3	3
		F	14	...	7	3	3
	Total	M	664	3	411	123	43	90	14	25	19	20	82	46	78	8	17	8	850	
		F	627	1	315	77	91	45	17	30	18	21	88	38	76	5	21	5	811	

TABLE IV—contd.

Serial No.	Name of municipality	Sex	Causes of death											Total						
			Plague	Small-pox	Cholera	Malaria	Typhoid	Other fevers	Dysentery and diarrhoea	Respiratory diseases	Consumption	Leprosy	Child-birth		Suicide	Drowning	Wounds & accidents	Killed by Wild beasts	Snake-bite	Rabies
BANGALORE CITY.																				
1	Division I	M	18
2	Division II	F	11
3	Division III	M	45
4	Division IV	F	1	34
5	Division V	M	75
6	Division VI	F	1	68
7	Division VII	M	87
8	Division VIII	F	34
9	Division IX	M	18
10	Vani Vilas Hospital	M	14
11	Victoria Hospital	F	24
12	E. D. Hospital	M	17
13	Mental Hospital	F	80
14	St. Martha's Hospital	M	21
	Total	M	1	3	6	26	66	88	18	1	10	447
		F	1	..	1	1	2	31	54	89	51	2	10	1	6	378

TABLE IV—contd.

Serial No.	Name of municipality	Sex	Permanent residence		Conjugal condition at time of death					Community												
			At village	Outside	Single	Married	Widowed	Divorced	Not stated	Lingayet	Vokkaliga	Vaisya	Kshatriya	Brahmin	Adikarnataka	Musallman	Jain	Christian	European	Others		
MYSORE CITY.																						
15	Lashkar Mohalla	M	58	..	82	19	7	2	4	1	1	1	1	3	3	14	1	5	..	16
16	Mandy Mohalla	F	64	..	27	20	17	4	1	1	1	1	1	8	4	22	..	2	..	21
17	Devaraj Mohalla	M	66	..	38	29	19	9	6	1	1	1	1	9	3	36	..	3	..	23
18	Chamaraj Mohalla	F	60	..	26	6	6	3	6	1	1	1	1	9	7	5	..	3	..	81
19	Krishnaraj Mohalla	M	43	..	20	10	6	1	1	1	1	1	1	9	7	5	19
20	Fort	F	61	..	88	12	11	6	1	1	1	1	1	9	7	5	10
21	Nazar-Bad	M	49	..	20	18	11	1	1	1	1	1	1	9	7	5	6
22	Vani Vilas Hospital	F	35	..	18	12	5	1	1	1	1	1	1	9	7	5	13
23	Palace Dispensary	M	45	..	18	14	13	1	1	1	1	1	1	9	7	5	22
24	K. R. Hospital	F	6	..	2	4	4	1	1	1	1	1	1	9	7	5
25	E. D. Hospital	M	9	..	1	4	4	1	1	1	1	1	1	9	7	5
26	P. K. T. Sanitorium	F	17	..	7	4	5	1	1	1	1	1	1	9	7	5
27	Sawar and Barr Lines	M	10	..	10	4	4	1	1	1	1	1	1	9	7	5
28	Holdsworth Memorial Hospital.	F	10	..	7	3	3	1	1	1	1	1	1	9	7	5
Total			405	2	196	82	38	1	90	6	4	4	7	26	6	8	8	71	2	15	..	186
			390	3	147	124	80	1	41	6	8	7	29	6	8	8	8	78	3	12	..	164

TABLE IV—concl'd.

Serial No.	Name of municipality	Sex	Causes of death														Total			
			Plague	Small-pox	Cholera	Malaria	Typhoid	Other fevers	Dysentery and diarrhoea	Respiratory diseases	Consumption	Leprosy	Child-birth	Suicide	Drowning	Wounds and accidents		Killed by wild beasts	Snake-bite	Rabies
15	MYSORE CITY. Leshkar Mohalla	M	1	2	..	2	10	2	1	30
16	Mandy Mohalla	F	1	6	2	35
17	Devaraj Mohalla	F	4	1	4	28	3	46
18	Chamaraj Mohalla	M	1	2	3	22	5	31
19	Krishnaraj Mohalla	F	1	1	1	9	1	14
20	Fort	M	3	2	1	1	13	6	2	38
21	Nazar-Bad	F	1	1	16
22	Vani Vilas Hospital	M	1	17
23	Palace Dispensary	F	8
24	K. R. Hospital	M	6	1	1	9	5
25	E. D. Hospital	F	4	1	..	4	14
26	P. K. T. Sanitorium	M	1	8	2
27	Sawar and Barr Lines	F	2	8
28	Holdsworth Memorial Hospital.	M
	Total	M	2	8	10	10	8	46	80	4	3	10	2	2	7	241
		F	5	5	13	15	5	36	81	18	1	10	1	1	10	196

TABLE V.

Reported number of births, deaths and infant deaths in the districts and cities of the Mysore State in the quarter October-December 1937

District	Estimated population as on 1st July 1937	Reported births (Excluding Still-births)			Reported deaths (Excluding Still-births)			Reported deaths of infants under one year			Reported Still-births						
		Oct.	Nov.	Dec.	Crude birth rate	Oct.	Nov.	Dec.	Crude death rate	Oct.	Nov.	Dec.	Infant mortality	Oct.	Nov.	Dec.	Still birth rate
Bangalore District (Excluding City).	9,84,381	2,062	1,754	1,688	22.4	1,039	1,039	1,106	12.9	155	156	202	94.5	9	4	10	4.2
Chitaldrug District	7,09,110	1,565	1,399	1,461	25.0	759	726	828	13.0	194	179	180	125.0	36	40	19	21.0
Hassan do	6,05,214	1,088	1,038	1,032	20.9	968	1,033	1,305	21.8	133	160	165	145.0	14	16	21	15.9
Kadur do	3,56,752	503	448	462	15.8	541	519	580	18.4	71	78	58	143.0	14	13	7	23.5
Kolar do (Excluding K. G. F.).	8,01,735	1,667	1,392	1,189	21.2	1,109	1,295	1,601	20.0	182	241	259	160.5	20	30	19	16.0
Mysore District (Excluding City).	14,57,946	2,557	2,270	2,216	19.3	1,785	1,866	2,043	15.6	195	230	264	97.8	16	33	37	12.1
Shimoga District	5,37,480	973	999	1,130	23.1	951	1,096	1,198	24.2	133	172	187	153.6	28	30	41	30.9
Tumkar do	9,17,707	1,811	1,792	1,761	23.4	893	986	1,082	12.9	166	186	220	106.6	23	17	33	13.4
Mysore State (Excluding Cities).	63,70,325	12,226	11,092	10,939	21.5	8,045	8,562	9,743	16.5	1,299	1,397	1,542	121.7	160	183	187	15.2
Bangalore City	2,06,670	687	655	714	39.8	430	430	530	26.9	101	132	161	191.6	32	34	40	49.0
Mysore do	1,21,938	370	446	408	40.0	267	284	358	29.8	40	52	75	137.0	9	5	9	18.5
Kolar Gold Field	63,460	395	490	518	67.2	178	218	266	31.7	44	76	94	152.5	8	5	5	12.7
Mysore State (Including Cities).	67,82,388	13,678	12,683	12,574	23.0	8,920	9,494	10,897	17.3	1,414	1,657	1,872	127.0	209	227	241	17.1

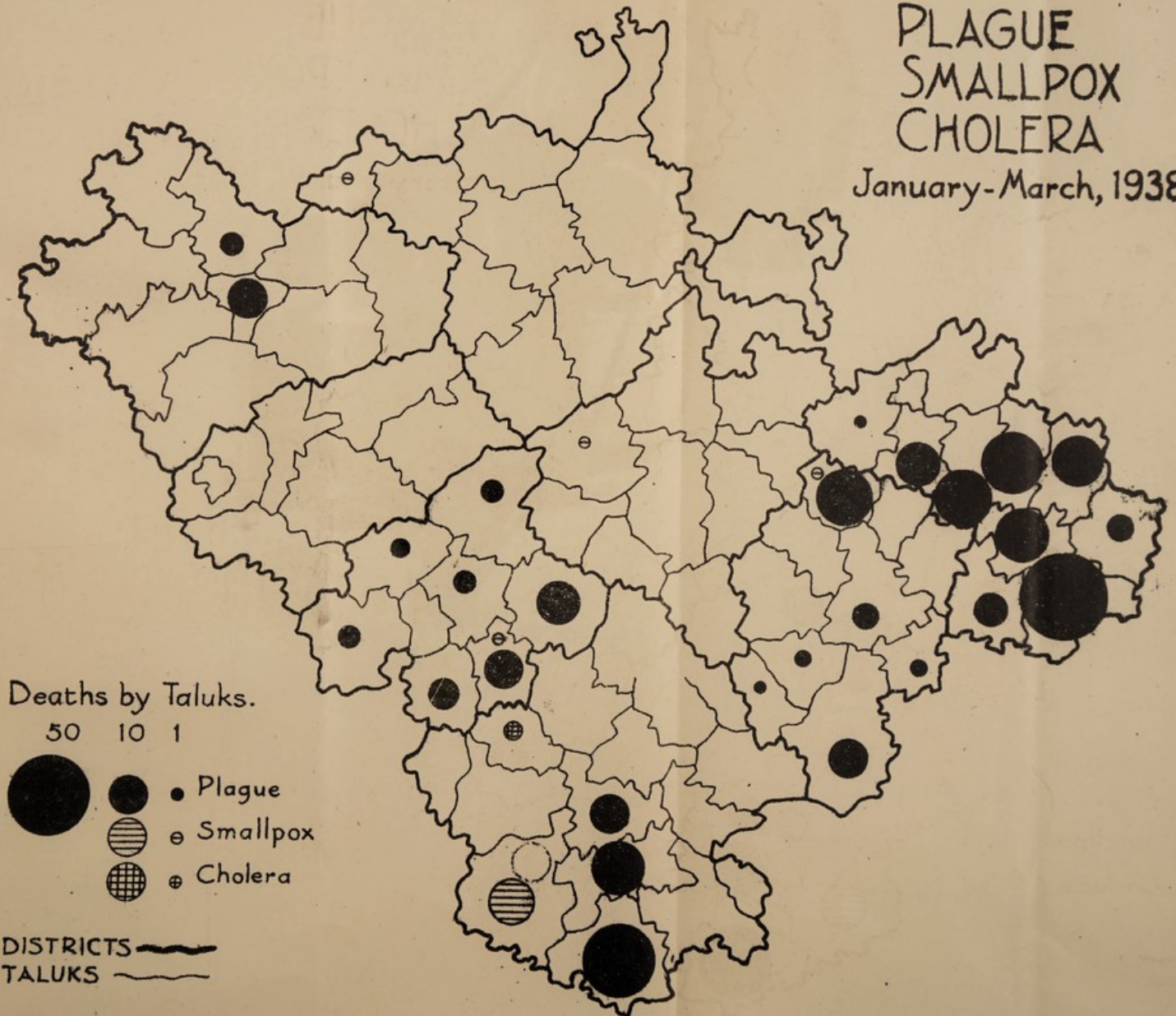
TABLE VI.

Reported deaths in the districts and cities of the Mysore State in the quarter October-December 1937, classified according to the chief causes of death.

District	Plague	Small-pox	Cholera	Malaria	Typhoid	Other fevers	Dysentery and diarrhoea	Respiratory diseases	Consumption	Leprosy	Child-birth	Suicide	Drowning	Wounds and accidents	Killed by wild beasts	Snake-bite	Rabies	All other causes	Total death	
																			Oct.-Dec. 1937	July-Sept. 1937
Bangalore District (Excluding City).	371	10	15	727	155	414	182	138	217	30	56	13	35	34	2	6	..	779	3,184	2,744
Chitaldrug District	..	19	9	845	135	340	147	115	104	20	62	4	24	16	2	4	..	467	2,313	1,893
Hassan do	214	15	24	1,683	136	398	121	61	72	17	66	1	19	8	1	3	1	466	3,306	2,373
Kadur do	2	1,004	86	79	94	62	29	17	41	2	7	7	1	2	..	207	1,640	1,363
Kolar do	613	29	14	1,069	205	545	217	119	216	39	58	10	32	24	..	10	3	802	4,005	3,037
(Excluding K. G. F.).	824	101	39	1,969	359	509	394	256	258	44	88	12	48	26	3	8	3	753	5,694	4,126
Mysore District (Excluding City).	49	..	10	1,314	263	437	156	172	53	25	130	8	22	14	4	3	1	586	3,247	2,266
Shimoga District	4	9	52	978	143	390	210	76	274	63	95	2	39	25	4	4	2	591	2,961	2,353
Tumkur District
Mysore State (Excluding Cities).	2,075	188	165	9,589	1,482	3,112	1,521	999	1,223	255	596	52	226	154	17	40	10	4,651	26,350	20,215
Bangalore City	15	4	18	77	163	170	79	11	1	..	7	2	21	822	1,390	1,237
Mysore City	21	40	16	59	79	48	82	1	34	..	1	5	..	1	..	522	909	783
Kolar Gold Field	15	12	2	32	63	79	9	1	5	1	5	18	..	1	..	419	662	601
Mysore State (Including Cities).	2,126	188	165	9,645	1,518	3,280	4,826	4,296	1,393	268	636	53	239	177	17	44	31	6,414	29,311	22,936

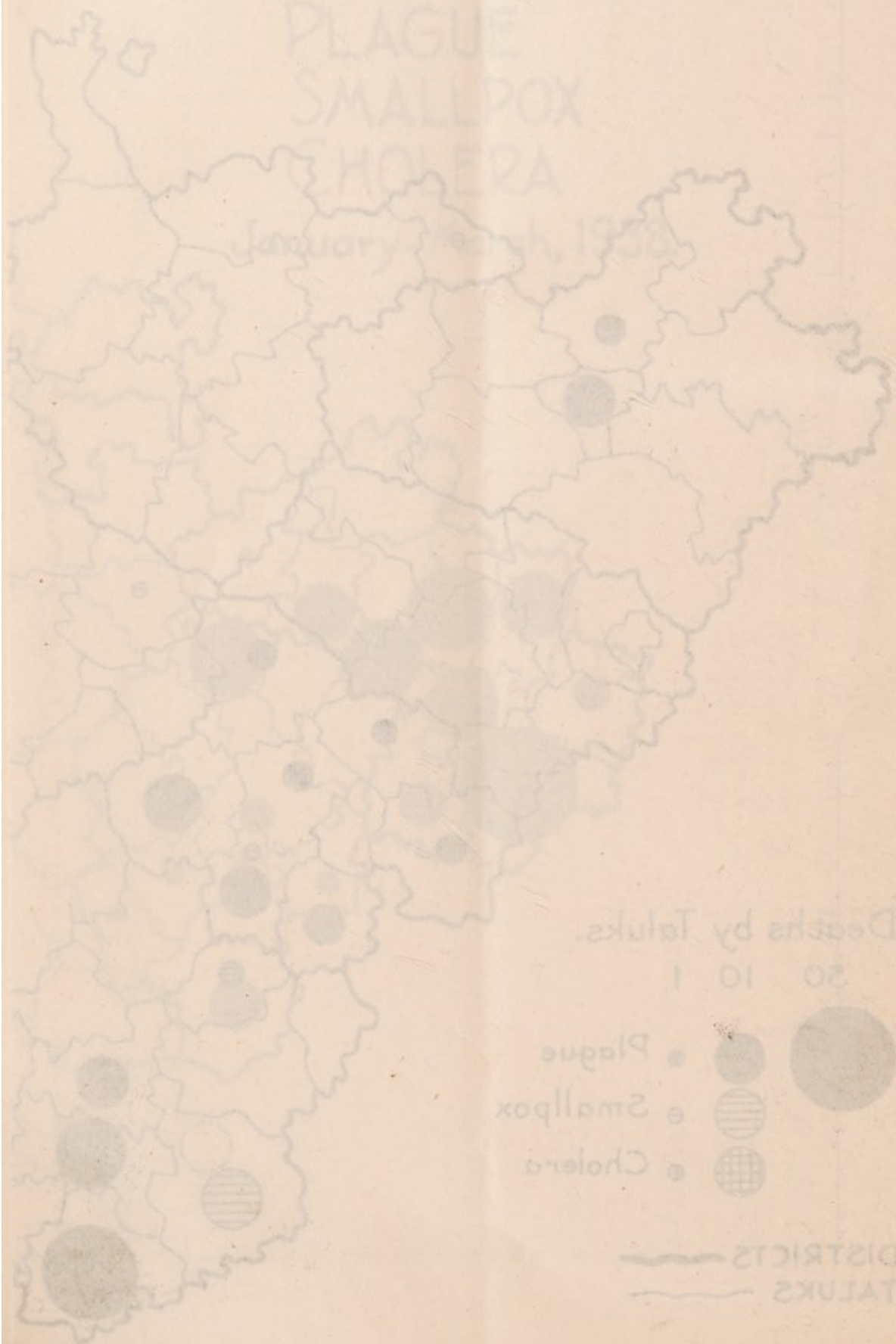
MYSORE STATE

PLAGUE
SMALLPOX
CHOLERA
January-March, 1938.



PLAGUE
SMALLPOX
CHOLERA

January to March, 1938



Deaths by Taluks.

20 10 1

- Plague
- ◐ Smallpox
- ◑ Cholera

———— DISTRICTS
———— TALUKS

Preserve your Health and Live Long

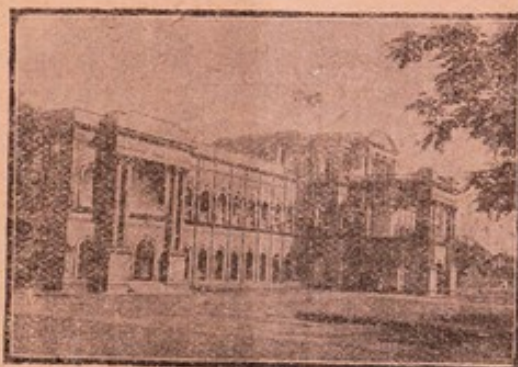
☞ But do not forget to Ensure
Happiness and Comfort for your Old Age
By Taking out a Policy Immediately

WITH

THE MYSORE GOVT. LIFE INSURANCE DEPARTMENT

PUBLIC BRANCH.

THE BEST
INSTITUTION
FOR A
MYSOREAN
TO INSURE
HIS LIFE.



EVERY POLICY
IS
GUARANTEED
BY THE
STATE
REVENUES
OF
MYSORE.

Mysore Govt. Life Insurance Department, Bangalore.

Bonus last Declared, Rs. 20 per thousand per annum.

Next Bonus Year 1938.

For particulars, please apply to—

THE SECRETARY,
MYSORE GOVT. LIFE INSURANCE DEPARTMENT,
BANGALORE.

MYSORE STATE DEPARTMENT OF HEALTH.

The following Bulletins are published by Government:—

- No. 1. **Report on a Health Survey of Mysore—**
By W. C. SWEET, B.Sc., M.D., Dr.P.H., Consultant in Health in Mysore, Bangalore, 1928.
- No. 2.* **Report on Tuberculosis in Mysore State—**
By P. S. CHANDRASEKHAR, M.D., sometime Officer-in-charge of Tuberculosis Survey in Mysore, 1928.
- No. 3.* **Report on a Sanitary Survey of the City of Bangalore for the Year 1927—**
By MOHAMED USMAN, L.M.S., Retired Senior Surgeon and Sanitary Commissioner, Bangalore, 1928.
- No. 4.* **Guineaworm Disease in Mysore State—**
By J. V. KARVE, M.B., CH.B., D.P.H., Retired Director of Health in Mysore, Bangalore, 1929.
- No. 5. **Report of the Delegation of the British Social Hygiene Council (Inc.), to the Government of Mysore, 1929.**
- No. 6. **Report on the Present Status of Birth, Death and Epidemic Diseases Reports in Mysore District, Bangalore City and Kolar Gold Fields, with Suggestions for Improvement—**
By E. R. SUNDARARAJAN, M.A. (Hons.), Superintendent, Bureau of Vital Statistics, Bangalore, 1929.
- No. 7. **A Survey of Mysore State for Enlarged Spleens and for Hook-worm and other Helminthic Infections—**
By W. C. SWEET, B.Sc., M.D., Dr.P.H., Consultant in Health in Mysore, Bangalore, 1929.
- No. 8. **Physician's Pocket Reference to the International List of Causes of Death, 1932.**
- No. 9. **Handbook of the Mysore State Department of Health—**
By J. V. KARVE, M.B., CH.B., D.P.H., Retired Director of Health in Mysore, Bangalore, 1933.
- No. 10. **Notes on Malaria in Mysore State—**
By W. C. SWEET, B. A. RAO and D. NURSING, 1934.
- No. 11. **Organic Manure from Street Refuse and Night Soil at Mysore City, India—**
By J. J. MIELDAZIS, B.Sc., C.E., M.A.S.C.E., Former Honorary Sanitary Engineer, 1936.
- No. 12. **Periodicity of Cholera in Mysore State—**
By P. Parthasarathy, L.M.S., B.S.Sc., L.R.C.P., L.R.C.S., D.T.M., D.P.H., Director of Public Health and E. R. Sundararajan, M.A. (Hons.), 1937.

* Not available.