

Sales catalogue: Bonham & Sons

Publication/Creation

29th September 1933

Persistent URL

<https://wellcomecollection.org/works/cy6gedwf>

License and attribution

This work has been identified as being free of known restrictions under copyright law, including all related and neighbouring rights and is being made available under the Creative Commons, Public Domain Mark.

You can copy, modify, distribute and perform the work, even for commercial purposes, without asking permission.



Wellcome Collection
183 Euston Road
London NW1 2BE UK
T +44 (0)20 7611 8722
E library@wellcomecollection.org
<https://wellcomecollection.org>

Lot No. 29th ~~of the~~ 1933
September

ck

W. & F. C. Bonham & Sons
14 New Burlington Street

WA/HMM/M/CM/Sol/1/361

DATE	Picnicilly	REMARKS (West Side)
SALE	29. ix. 33	Shon
PURCHASE		
CHECKED	10. x. 33	Ch.
COLLECTED	12. 10. 33	mp
RECEIVED	12. X. 33	Nov 1933. X.
ACCESSED		
PASSED		



AND OTHER WORKS OF ART

Attributed to or after Artists of the Old and Modern Schools

Which will be Sold by Auction by Messrs.

W. & F. C. BONHAM & SONS
CHARLES BONHAM LEONARD BONHAM

AT THEIR SPACIOUS GALLERIES AS ABOVE

On Friday, Sept. 29th; 1933
at TWO o'clock

On view Thursday and until 12 o'clock on the day of Sale. Catalogues may be obtained at the Galleries, 14 NEW BURLINGTON ST., W.1.

Lot No 29 = £ 63. 8. 0.

clear. 11. x. 33

CONDITIONS OF SALE.

First—That the highest bidder shall be the purchaser; and if any dispute shall arise between two or more bidders, the lot or lots shall, at the discretion of the Auctioneer, be put up again; the Auctioneer's decision to be final.

Second—The advance in the bidding to be regulated by the Auctioneer.

Third—The purchasers to give in their names and places of abode, and pay down 25 per cent., if required, in part payment of the purchase money such deposit to be applicable to all or any of the lots purchased.

Fourth—In the case of lots upon which there is a reserve, the Auctioneer shall have the right to bid on behalf of the seller.

Fifth—The lots to be paid for and taken away, whether genuine and authentic or not, with all faults and errors of every description, at the Buyer's expense, within one day after the sale, the Auctioneers not being responsible for the correct description, genuineness or authenticity of, or any fault or defect in any lot, and making no warranty or guarantee whatever.

Sixth—Upon failure of complying with the above conditions, the money deposited in part payment shall be forfeited. All lots uncleared within the time aforesaid, shall be re-sold by public or private sale, and the deficiency (if any) attending such re-sale shall be made good by the defaulter at this sale.

Lastly—W. & F. C. BONHAM & SONS, while taking every reasonable care fall of the hammer, the purchaser taking all the risks. responsible for any loss or damage that may arise to any such lots after the to protect the respective lots after they are sold, do not hold themselves

NOTICES

All goods sent to these rooms are considered by the Auctioneers as sent for unreserved sale, and unless written instructions to the contrary are left in the office before the sale commences, such property will be absolutely sold without any reserve.

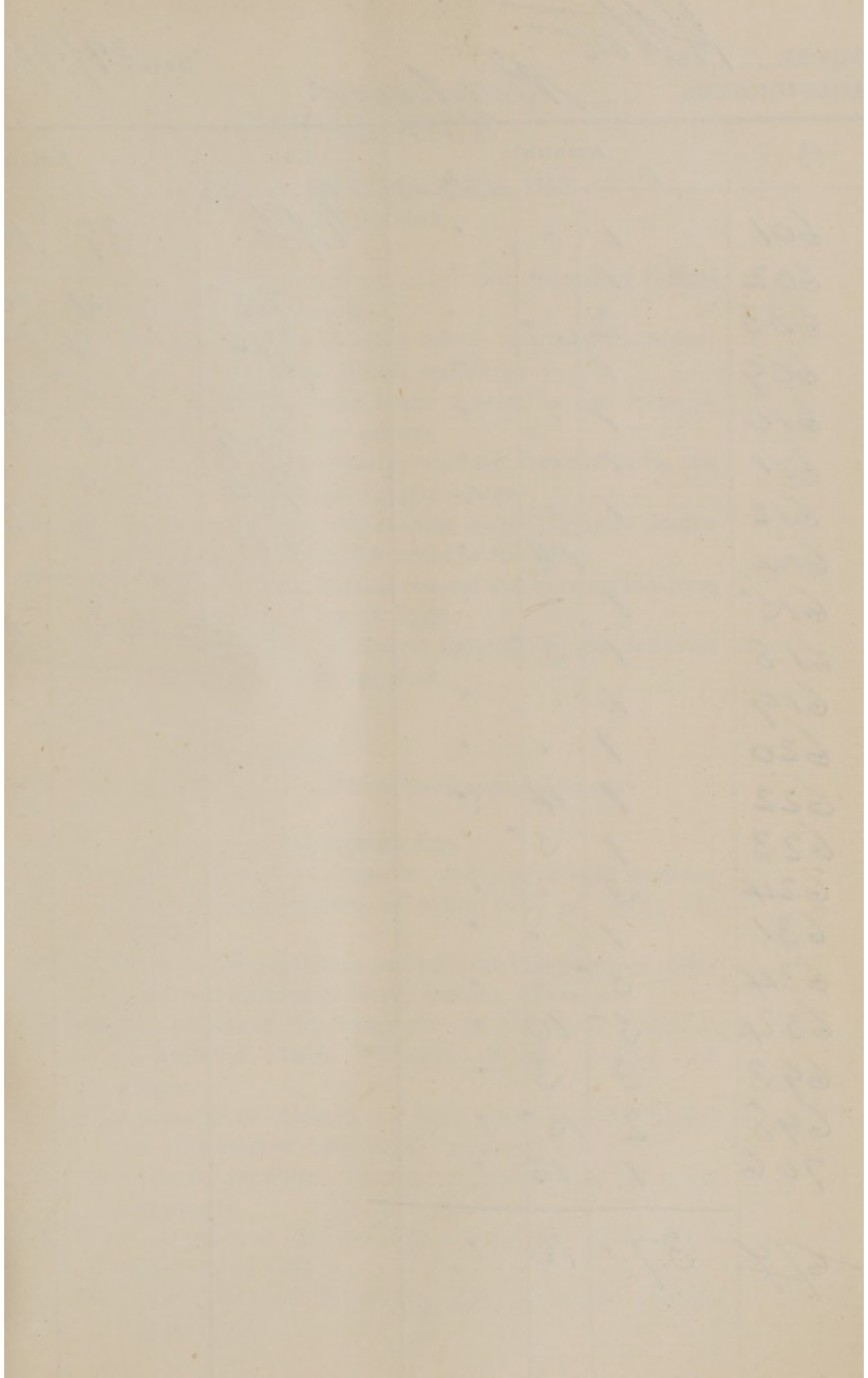
No verbal instructions will in any case be attended to after any lot or lots have been offered for sale once and not sold, and should any such lots be left in the Auctioneer's possession after the day of sale, they will not, in any case, be answerable for any damage, loss or deterioration whatsoever, the Auctioneers reserving to themselves the right of selling all, or any such unclaimed lots at their convenience, without regard to any instructions they may have previously received, written or otherwise.

N.B.—Cheques will not be accepted in payment of Accounts.

Payment for goods sold—Cheques in settlement of accounts are forwarded on the Monday following the Sales, but Clients requiring small accounts paid in cash are requested to attend at the Offices on Saturday, between 11 and 1, or on Monday, between 12 and 6.

SPECIAL NOTICE—The Auctioneers do not hold themselves liable to pay for any lot or lots knocked down until they have received the money for same.

The pictures included in this Catalogue are in many cases copies, and Messrs. BONHAM & SONS do not hold themselves responsible for the correct description, genuineness of authenticity of any picture.



BUYER
AUCTIONEERS

Atlow
Berkham

Date *29/9/33*

Lot	Amount			Lot	Amount			
	£	s.	d.		£	s.	d.	
601	1	-	-	<i>B/4</i>	37	16	-	
602	1	-	-		715	4	4	-
603	2	-	-		716	4	-	-
609	1	-	-		736	5	-	-
610	1	-	-		749	5	-	-
611	1	-	-		770	5	-	-
612	1	-	-		771	2	8	-
614		18	-		<u><u>£ 63 8</u></u>			
615	1	-	-					
618	1	5	-					
619	1	-	-					
620	1	-	-					
622	1	4	-					
623	1	5	-					
624	3	-	-					
631	1	-	-					
634	5	-	-					
654	5	10	-					
693	3	3	-					
698	2	15	-					
706	1	16	-					
<i>B/4</i>	37	16	-					

CATALOGUE

on FRIDAY, SEPTEMBER 29th, 1933
at TWO o'clock

LOT

4. 601 An album of wood cuts of native life and customs of Central Africa and North America
- 357 602 An album of old prints of native habits—marriage, ceremonies, etc., of the Sandwich Islands and Africa
- 70 603 A highly finished old water colour drawing in case frame of Chinese Tartars in war costume
- 604 A curious water colour drawing showing Egyptian King and God, etc., from ancient Egyptian temple
- 605 An old water colour drawing showing ancient Egyptian designs and hieroglyphics from the tombs of the Kings
- 606 A water colour drawing showing pictures and hieroglyphics from the tombs of the Kings of Egypt
- 607 A water colour drawing of ancient Egyptian Temple decorated with drawings and hieroglyphics

Attributed to or after

GEORGE EARL.

- 608 Unusual painting of an Eskimo Settlement in Summer

Engravings, Etc.

- 40 609 A parcel of coloured lithographs and engravings depicting ceremonies and customs of native tribes of Africa and America
- 250 610 An album of 100 engravings and coloured lithographs of native figures and customs of North America, Africa, etc.
- 40 611 Another, containing 100 lithographs and wood cuts relating to the natives of Eastern Countries, British Colonies and America
- 40 612 A large parcel of coloured and other prints of native figures and ceremonies of Eastern and American tribes
- 613 Four volumes on Egypt, Palestine, etc., containing many fine engravings
- 60 614 Parcel of prints of the Discovery, Alert and Pandora Arctic expeditions of 1876
- 757 615 Six framed prints of the Dervish War of 1889 after Caton Woodville, etc.

LOT

- 616 A Baxter licensee coloured print of Canadian Trappers and Indians and a fine old coloured print of the Naval Press Gang in 1790 *20/-*
- 617 An old album containing views of African Natives, etc. *14/-*
- 25/-* *40/-* 618 Four framed prints—Selling Slaves in Kentucky, etc.
- 20/-* *60/-* 619 A parcel of prints of various native races, customs, etc.
- 20/-* *50/-* 620 A ditto lot
- 621 A portfolio containing water colours and prints of the American Civil War, etc. *10/-*
- 24/-* *4.* 622 A fine volume published 1768 containing many plates by Grignon of views and native customs throughout the world
- 25/-* *75/-* 623 Three framed prints of Arctic Expeditions
- 60/-* *4.* 624 Six coloured prints, framed—Battle Scenes, 1870, 1871
- 625 Silver bound book of Chinese drawings on rice paper
- 626 An old Church Register in carved cover

**The following 13 lots form one collection removed from
warehouse**

Attributed to or after

E. STAMFORD.

- 627 Oil painting—An old English Press Gang, Recruiting a Crew in Nelson's Time

F. HOLL, R.A.

- 628 Oil painting—Pinel at Saltpetriere, releasing the Insane from their Manacles

- 629 Three old coloured military prints—2nd. Dragoon Guards, etc., published 1840 *21/-*

SIMKINS.

- 20/-* *60/-* 630 Three coloured prints—Regimental Type *20/-*

- 20/-* *60/-* 631 Three old coloured military prints dated 1844—Artillery Exercises and Rocket Practice

R. SIMKINS.

- 632 Three fine water colour drawings—2nd. Dragoon Guards, Period 1839, Lifeguards and Field Marshall of the Grenadiers *32/-*

E. STAMFORD.

- 633 Oil painting—Close Action in the Lower Deck During the Battle of Trafalgar *28/-*

E. STAMFORD.

- 57/-* *6* 634 An oil—Incident in the Battle of Trafalgar

*Follow up
and put
it forward
sale*

Attributed to or after

E. STAMFORD.

635 An Incident During the Battle of the Nile *48/- Bill*
LA-ROCHE.

636 An important painting—An Incident During the March on
Moxon, Napoleonic Wars *3/9/-*
R. CATON WOODVILLE.

637 Three paintings—Military Types *38/- Lovinor*
R. HILLINGFORD.

638 A painting—Wellington at Waterloo, with print of same *3/6/-*
E. STAMFORD.

639 The Defeat of De Grasse, by Lord Rodney's Fleet, 1782 *48/-*

40/- 640 Flore Medicale, 4 vols., 1828/1830, with fine coloured plates *2/17/6*

641 Ten Chinese coloured prints in five frames and three others

642 Six ivory and mother-o'-pearl figures in lac frames

A. DE BREANSKI, R.B.A., and S. PALMER, R.I

643 Two drawings—Lake Scene and River Scene and Lock

W. DENDY SADLER and SEVONOWSKI.

644 Two paintings—The Party and Russian Winter Landscape

T. SIDNEY COOPER, R.A. and F. W. WATTS.

645 Two paintings—Landscape, Barn and Sheep and River Scene,
Suffolk

F W. WATTS.

646 An old painting—Landscape with Mill, Suffolk

WILKIE and GREUZE.

647 Two paintings—A Street Scene, Figures, and Child in Bath *25/- Bill*
PAWANTEAH.

648 An old Eastern Tomb and a Portrait of Napoleon III. *34/-*
VICAT COLE, R.A.

649 Looking Across Hindhead, Surrey—Figures, etc. *17/-*
WILKIE and GREUZE.

650 Two paintings—A Street Scene, Figures, and Child in Bath *passed*
J. R. WARD.

651 Oil—Explorers Attacked by Polar Bears *2/15/-*
PETER GRAHAM.

652 Oil—Landscape and Cattle, in English gold frame *28/-*
BIRKET FOSTER.

653 Pair water colours—Landscape and Figures, in extra polished
cases *2/17/6*

Attributed to or after

LOT

A. LOHR.

5/10/90
7. 654 Two water colours—Water Carrier of Kintampo, Ashanti, and Companion

P. C. DOMMERSEN.

655 An oil painting—Dutch Coast Scene with Boats and Figures *30/-*
SOLOMON A. HART.

656 A ditto—The Favourite of the Harem *28/-*
PAUL POTTER.

657 A ditto—Dutch Landscape with Cattle *36/-*
ST. J. MULLHOLLAND.

658 An important painting—Venetian Scene with Boats and Figures *36/-*
VERESTCHAGEN and JONKIND.

659 An old Russian painting—Figures and Sleigh and a Figure Subject *23/-*
GEO. COLE, R.A.

660 Landscape and Figures (signed) 50 x 30 *32/-*
ROBERT KEMM, R.A.

661 An important oil painting—Temptation. Exhibited at Royal Academy *2/17/6*
P. P. RUBENS.

662 Portrait of a Gentleman (on panel) *32/-*
JOHN LINNELL, R.A.

663 Two clever architectural water colours after Michael Angelo *24/- Hill*
Decorations in the Sistine Chapel
HENRY C. FOX, R.B.A.

664 A very fine water colour drawing—Lane Scene, Cattle and Figures. Exhibited *48/-*
FREDK. GOODALL, R.A. 1896.

665 A very fine oil painting—Water Carriers by the River Nile, Egypt. Exhibited at the Royal Academy *2/15/-*
W. MULREADY, V. COLE and LEADER.

666 Three water colour drawings, framed—Figure Subject and Landscapes *25/-*
W. W. CAFFYN, R.B.A.

667 View at Holmwood, Surrey, in swept frame *38/-*
EDGAR BUNDY, A.R.A.

668 Interior and Cavaliers, in swept frame. Exhibited at Royal Academy *38/-*
TURNER, R.A.

669 Large oil painting—Wind and Steam, Shipping on the Medway *21/- Hill*

Attributed to or after

LOT

- G. H. DUFOUR. 1902.
- 670 A French River with Buildings, etc. Exhibited, Paris 48/-
BUTTERY.
- 671 Pair of oil paintings—Portraits and a coloured print 5/-
A. DE BREANSKI.
- 672 Oil painting—Landscape and Lake Scene 19/-
PARINI.
- 673 Oil painting—Landscape and River, in carved Florentine frame
SARGENT, R.A. 2/15/-
- 674 Oil painting—Portrait of a Lady 38/-
UNKNOWN.
- 675 Three large oil paintings—Landscapes with Stags] 5/- beam
UNKNOWN.
- 676 Four smaller ditto
MELVILLE.
- 677 Oil painting—The Timber Wagon] 380 G.S.
UNKNOWN.
- 678 Two ditto—Portraits, one in carved frame
D. JAMES. 10/6
- 679 Oil painting—Seascape
F. ROYBET.
- 680 A very fine example—Figures with interior and Figures in 38/-
swept gold frame (signed)
EDWIN HAYES, R.H.I.
- 681 An exhibited painting—Boats off Scarborough, Yorks., signed 28/-
A. CARDERIAL.
- 682 A fine drawing—Venice—Buildings, Boats and Figures 32/-
T. GAINSBOROUGH, R.A.
- 683 A fine old lined painting—Extensive Landscape and Figures, 58/-
Inverary, dated 1774
CAMPO TOSTI.
- 684 An exhibition painting—The Hunt for the Villain, signed 32/-
HUGHTENBURGH.
- 685 A very fine speculation painting—Battle Scene, numerous 36/-
Figures
P. H. WOUVERMANS.
- 686 An old painting—Dutch Landscape and Figures, signed 28/-
OLD CROME (of Norwich).
- 687 Two old paintings—Landscape, Cottage and Landscape, Figures 57/-
- 688 A topographical painting of Naples with Vesuvius in background 20/-

Attributed to or after

LOT

ALFRED DE BREANSKI, R.B.A.

- 689 A fine pair of paintings—The Coast at Inverness, Figures and Companion *2/17/6*

CHARLES EMILE JACQUE.

- 690 An important oil painting—Peasant and Sheep in a Barn, signed SYDNEY HERBERT, A.R.A. *6/280 Hill*

- 691 The Old Tower, Riviera (since destroyed by earthquake) *28/-*

WILLIAM ELTY, R.A.

- 692 A very fine example oil painting—Sussanah and the Elders *48/-*

PAUL FARR.

- 380* *4.* *693* An Australian Aborigine of the Gilbert River District

EUGENE VERBOEKHOVEN.

- 694 A highly finished small panel work—Dutch Meadow Scene and Sheep (signed) *32/-*

YEEND KING. *408.*

- 695 Oil—Going to Market *34/-*

B. W. LEADER, R.A.

- 696 Welsh Valley, English gold swept frame *2/10/-*

UNKNOWN.

- 697 Water colour—Nude Figure Subject *26/-*

H. HERMANN.

- 2/15/7* *757* *698* Oil—An Abor Girl

G. CATERMOLE.

- 699 Water colour—Columbus describing his Adventures *3/6/-*

TOM MOYSTON.

- 700 Oil—Garden Scene *40/-*

RICHARD WILSON, R.A.

- 701 A fine old lined painting—Landscape, River, etc., signed *34/-*

JOSE WEISS.

- 702 The Meadows leading to the Village *24/-*

J. B. PYNE, R.A.

- 703 An important example—Italian View and Figures, etc., exhibited *3/12/-*

GEO. COLE, R.A.

- 704 A panel—A Barn Scene, Cattle, etc., signed and dated *26/-*

TITIAN.

- 36/* *757* *705* A finished painting—The Concini Family *30/-*

UNKNOWN.

- 706* A Native Warrior in extra frame case

Attributed to or after

LOT

SAMUEL SCOTT, R.A.

- 707 A very fine old English Landscape with Village Scene, Cottages, Figures, etc. *36/-*

SAM BOUGH, R.S.A.

- 708 A Scotch Landscape with Cottage, Figures, etc. *24/-*

N. PORISSIN.

- 709 An Old speculation painting—Landscape, Cattle and Figures *36/-*
TIEPOLO. *Specimen*

- 710 Curious old painting of Roman Queen Embarking on State Barge *38/-*

E. C. WILLIAMS.

- 711 Landscape, Figures, etc. *1/12/-*

TITIAN.

- 712 A very fine panel painting—Portrait of a Lady, in carved Florentine gold frame *3/9/-*

C. R. LESLIE, R.A.

- 713 An engraved work—Toby and the Widow Wadham *40/-*

JAMES HOLLAND, SENR., R.A.

- 714 A very fine example painting—The Rialto Bridge, Venice, Figures, etc. *3/6/-*

PEDRO ALVAREZ.

- 48* 4. 715 An oil painting—The Dance of a Guelve Fire-Worshipper *48/-*
SPANISH SCHOOL. *Locimia*

- 7* 7. 716 A painting on zinc—Portrait of G. Guerrero, Dictator of Mexico, 1823 *11/20/-*
R.S.A.

UNKNOWN.

- 717 An oil painting—The Crucifixion of Aztecs by Cortes' Soldiers in the Conquest of Mexico (Description on back) *48/-*

- 718 A similar painting *28/-*

ALFRED DE BREANSKI, R.B.A.

- 719 An exhibition painting—Near Arrachar, Loch Long *11/20/-*
A. JACAMEN. *R.S.A.*

- 720 A clever painting—Interior with Figures, in swept frame *34/-*
CHAS. SIMS, A.R.A.

- 721 A Pastoral, exhibited at The New Gallery, 1906 *3 passed*
W. CRUICKSHANK, R.U.S.

- 722 A highly finished drawing—Apples and Grapes. See label at back *26/-*
T. R. MILES, R.A.

- 723 Blowing Hard off Gorleston Harbour, exhibited at The Royal Academy of Arts *48/-*

Attributed to or after

LOT

ALFRED A. GLENDENING, R.I.

- 724 A pair of paintings—Views at Evesham, Bucks., and Companion,
exhibited at Royal Society of Arts *2/15/*

ALEXANDER NASMYTH.

- 725 A fine old speculation painting—Landscape with Church, Cattle,
etc. *3/12/*

A. BERRETTINI, 1596-1669.

- 726 An important oil painting—Father Neptune and the Nymphs
from the Belgium Art Gallery *2/15/*

A. AMNIKHAT.

- 727 An exhibition painting—A Dutch Landscape and Figures,
Early Morning *3/7/6*

F. W. WATTS.

- 728 A Suffolk Cottage, Landscape and Figures *1/12/*

DAVID TENIERS.

- 729 An old Dutch painting—An Exterior and Figures *3/4/*

A. DE LISSO.

- 730 An exhibited water colour drawing—Italian Figure Subject *24/*

GUIDO BACH, R.A., & BOMPIANI.

- 731 Three paintings, signed, Figure Subject, exhibited *passed*

J. B. GREUZE.

- 732 An old speculative work—Mother and Child *3/4/*

H. HERMANN.

- 733 Oil—African Chief *2/17/6*

CLAYTON ADAMS

- 734 Landscape and Cattle *48/- Clark*

A. SHEERBOOM, 1879.

- 70/* 735 Important Oil Painting, Venice, 50in. x 30in. in English gold *5/1/*
frame

J. M. LEE.

- 5/1/6* 736 Pair oil—Nubian Girls

MARCUS STONE, R.A.

- 737 A fine example—Grecian Maidens Resting *2/17/6*

TERMULEN.

- 738 A very clever picture—Sheep in a Dutch Meadow, signed

A. VAN OSTADE. *24/*

- 739 An old panel painting, numerous figures seated *27/- Hill*

THOS. GAINSBOROUGH, R.A.

- 740 A pair of old paintings—Landscape, etc., and Companion *36/- do*

Attributed to or after

LOT

CLAUDE OF LORRAINE.

- 741 A fine old speculation painting—Italian Landscape, River and Figures *48/-*

PHILIP H. WOUVERMANS.

- 742 An old Dutch painting—Figures and Landscape *26/-*
THOS. CRESWICK, R.A.

- 743 A Quiet Corner, Dovedale, Derbyshire, Figures, etc., (signed and dated) 1846 *3/7/6 Hall*

BIRKET FOSTER, R.A.S.

- 744 A highly finished water colour—In the Height of Glory, Surrey, in extra case frame *2/15/-*

BERONETTE.

- 745 An old French painting—Numerous Figures in Landscape *34/-*
A. AMNIKHAT.

- 746 A fine oil painting—Dutch Landscape, Cottage and Figures, Evening *3/7/6 Hall*

PIOT.

- 747 A Figure painting from The Paris Exhibition, 1901 *36/- do*
A. VIVIAN.

- 748 A finished painting—On the Grand Canal, Venice, Buildings, etc. *28/-*

PAUL FARR.

- 57/1* 6. *6.* 749 A Congo Native with Primitive Stringed Instrument *28/-*
T. GAINSBOROUGH, R.A.

- 750 A view of Inverary Lake, etc., (signed)

ALFRED DE BREANSKI, R.B.A.

- 751 An exhibition painting at Glen Esk, Argyleshire
CATON SMITH

- 752 Water colour—Water colour of Sunny Tangier
J. THORS.

- 753 Pair oil—Landscape

J. WAINWRIGHT.

- 754 Oil—Landscape and Cattle

SIR H. HERKHOMER.

- 755 An oil painting—Lady with Fan

C. E. JOHNSTON, R.I.

- 756 A fine oil painting—Surrey Landscape with Sheep

C. FRANKVILLE.

- 757 An oil painting—An Indian Courtship on Red River, Louisiana

Attributed to or after

LOT

UNKNOWN.

- 758 Very old painting—Seascape with Shipping
ASCENZI.
- 759 A very fine water colour drawing—Punch and Judy Show in
swept frame
H. H. BARKER, R.I.
- 760 A view at Bray on Thames with Church, exhibited at Royal
Society B.A.
HORACE VERNET.
- 761 A very fine engraved work—Napoleon as First Consul Turning
out the National Assembly
ROSA BONHEUR. *2/15/-*
- 762 Landscape with Gipsy encampment, in Black frame *34/-*
E. ROLDEN. (Sevillas).
- 763 A very finely finished painting—The Courtyard of a Palace,
Seville *2/4/- Full*
THOS. IRELAND, R.I.
- 764 A Park Scene, Kent *36/-*
SANDERSON WELLS, R.A.
- 765 A clever, signed painting—Hunting Subject *2/17/6 Full*
B. W. LEADER, A.R.A.
- 766 At Bettws-y-coed, N. Wales, in swept gold frame *34/-*
D. WOLSTENHOLME.
- 767 A clever exhibited oil—In Full Cry *36/-*
VAN-DYKE.
- 768 Portrait of a Lady with Pearl Necklace and Red Cloak *38/-*
SIR J. E. MILLAIS, R.A.
- 769 A Spanish Beauty in Ornamental Frame *36/-*
E. MARNER.
- 5/11/-* 7. *70/* 770 A Fiji War Dance with Clubs
CATON SMITH.
- 48/-* *70/* 771 Water colour—Canada Free Rangers of the Prairie
B. W. LEADER, R.A.
- 772 Oil—Landscape in English gold frame
W. J. CARROLL.
- 773 Oil on panel—Figure Subject
BIRKET FOSTER, R.A.S.
- 774 A pair of very highly finished drawings—In the Fields and
Happy Times

Attributed to or after

LOT

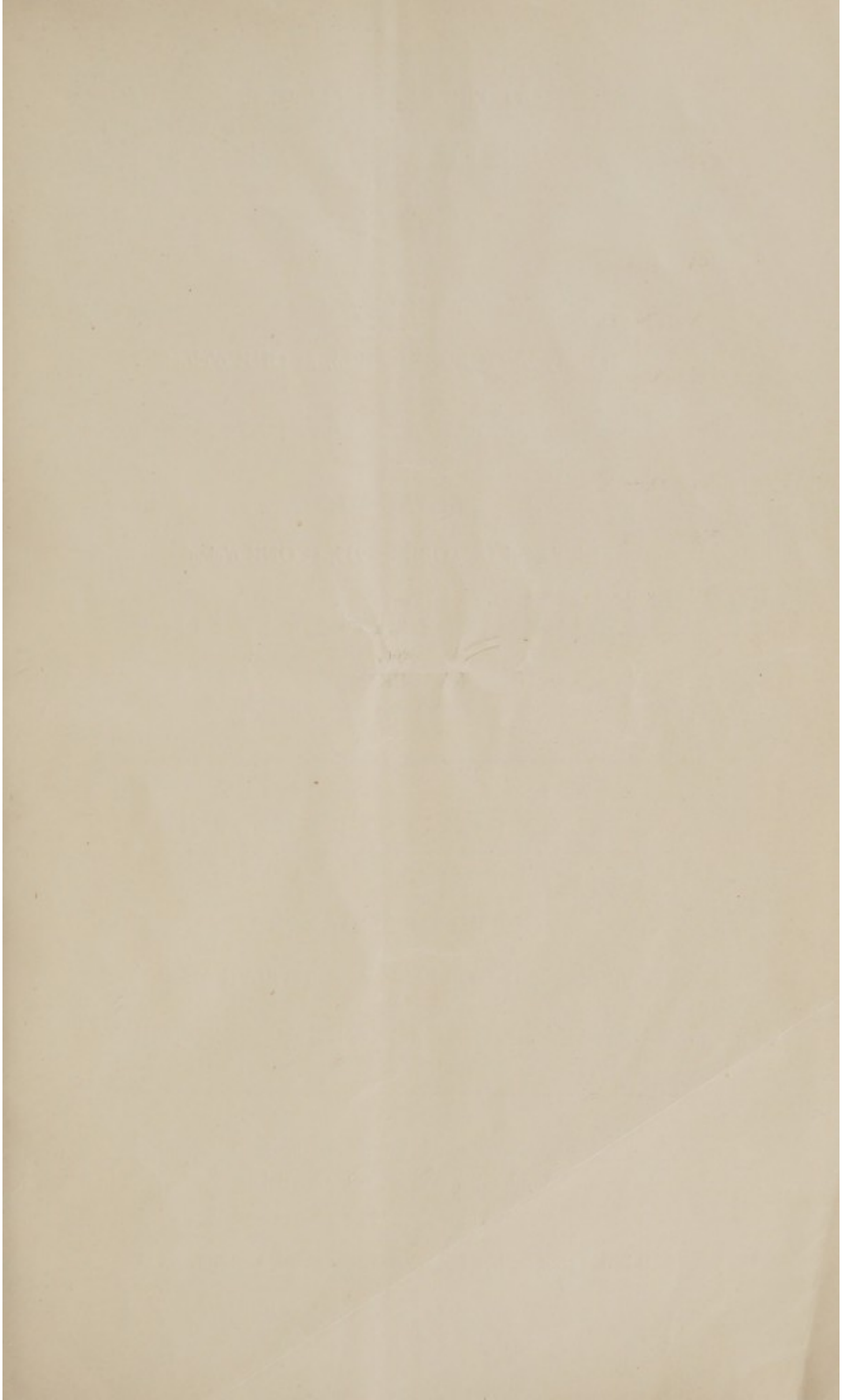
JOSE WEISS.

- 775 A signed exhibition work—Farm Scene, Bucks. exhibited at the Central Art Galleries Exhibition
H. J. SCHLESINGER.
- 776 Portrait of a Queen from the Berlin Art Gallery
A. NORMANN.
- 777 A very fine oil—A Norwegian River View, Buildings, etc., in fine frame, signed
A. CARDINAL.
- 778 A very fine drawing—Venice with Buildings, Figures, etc.
VICAT COLE, R.A., 1876
- 779 A very fine painting—Looking Across Haslemere, Surrey, in handsome swept frame, 30in. x 20in.
STANHOPE FORBES, A.R.A.
- 780 A Normandy Fishwife
AUGUSTUS PEPLOE, A.R.A.
- 781 A clever study painting of Flowers
F. ROYBET.
- 782 A fine example painting—Interior and Figures, in swept frame, signed
EDWIN HAYES, R.H.A.
- 783 A panel painting—Boats off the Coast of Filey, Yorkshire, signed
RICHARD AUSDELL, R.A.
- 784 An important painting—The Vicar of Wakefield calling at the Cottage, engraved, signed and dated
TALBOT HUGHES, R.I.
- 785 An important exhibition work—Joan of Arc with Flock in fine carved gilt frame exhibited at Institution
F. INDONI.
- 786 Indian Native Peasants at Work in the Fields
J. C. IBBETSON, R.A.
- 787 A panel Cottage and Figures at the Village of Swinton
YEEND KING, A.R.A.
- 788 A fine example painting—Springtime
T. GAINSBOROUGH, R.A.
- 789 A very fine example—Landscape with River, etc., N. Britain
W. SHAYER, SENR.
- 790 An old panel—Landscape with Figure and Donkey
B. B. MACHON.
- 791 A clever portrait painting of Sir H. Barker, Surgeon, (exhibited)

Attributed to or after

LOT

- EDMUND GILL, R.A. & G. W. HORLOR, R.S.A.
- 792 Two paintings—On the Clyde and Landscape, Evening
F. W. WATTS.
- 793 A clever oil—Landscape, River and Cattle Subject
LOUIS HAGHI, R.A.
- 794 The Throw of the Dice, a clever exhibition oil painting
J. F. HERRING, SENR.
- 795 An original panel with Landscape and Horses
DUTCH SCHOOL.
- 796 An old Floria painting on panel in Carved Dutch frame
A. CUYP.
- 797 Dutch Figure and Sheep on panel
W. SHAYER.
- 798 A Farm Scene, Figure, Cattle, etc., signed and dated
A. MIGNOT.
- 799 Evening River Scene from the Toronto Art Gallery
ALEXANDER NASMYTH.
- 800 A fine old painting—Lake Scene, Inverary, N.B.
EUGENE VERBOECKHOVEN.
- 801 Landscape with Figure and Sheep (signed)



AT THE NEW GALLERIES,
14 NEW BURLINGTON STREET
W.1

TUESDAY

3rd day of OCTOBER, 1933, at ONE o'clock

Household Furniture

THURSDAY

5th day of OCTOBER, 1933, at ONE o'clock

Household Furniture

AND EFFECTS.

67 OXFORD STREET, W.1.

(OPPOSITE RATHBONE PLACE)

WEDNESDAY

4th day of OCTOBER, 1933, at TWELVE o'clock

DOMESTIC AND SECONDARY FURNITURE

Advertisements of above will appear in the Telegraph
and other papers, prior to Sale.

B.L.S. Printers, 124-126 Clerkenwell Road, London, E.C. 1