

Specification of Alexander Melville Clark : alimentary preparations.

Contributors

Clark, Alexander Melville.

Publication/Creation

London : Great Seal Patent Office, 1872 (London : George E. Eyre and William Spottiswoode)

Persistent URL

<https://wellcomecollection.org/works/qu3bxjpc>

License and attribution

This work has been identified as being free of known restrictions under copyright law, including all related and neighbouring rights and is being made available under the Creative Commons, Public Domain Mark.

You can copy, modify, distribute and perform the work, even for commercial purposes, without asking permission.



Wellcome Collection
183 Euston Road
London NW1 2BE UK
T +44 (0)20 7611 8722
E library@wellcomecollection.org
<https://wellcomecollection.org>



A.D. 1871, *4th OCTOBER.* N^o 2631.

S P E C I F I C A T I O N

OF

ALEXANDER MELVILLE CLARK.

ALIMENTARY PREPARATIONS.

L O N D O N :

PRINTED BY GEORGE E. EYRE AND WILLIAM SPOTTISWOODE,
PRINTERS TO THE QUEEN'S MOST EXCELLENT MAJESTY:.

PUBLISHED AT THE GREAT SEAL PATENT OFFICE,
25, SOUTHAMPTON BUILDINGS, HOLBORN.

Price 4d.

1872. .





A.D. 1871, 4th OCTOBER. N^o 2631.

Alimentary Preparations.

LETTERS PATENT to Alexander Melville Clark, of 53, Chancery Lane, in the County of Middlesex, Patent Agent, for the Invention of "**AN IMPROVEMENT IN ALIMENTARY PREPARATIONS.**"—A communication from abroad by Jean Marie Onésime Tamin, of 13, Boulevard St. Martin, Paris, Doctor of Medicine.

Sealed the 15th March 1872, and dated the 4th October 1871.

PROVISIONAL SPECIFICATION left by the said Alexander Melville Clark at the Office of the Commissioners of Patents, with his Petition, on the 4th October 1871.

I, ALEXANDER MELVILLE CLARK, of 53, Chancery Lane, in the County
5 of Middlesex, Patent Agent, do hereby declare the nature of the said
Invention for "**AN IMPROVEMENT IN ALIMENTARY PREPARATIONS,**" to be as
follows :—

This Invention relates to improved alimentary hygienic preparations,
valuable more particularly to those engaged in mental pursuits, and for
10 medical and pharmaceutical purposes.

Clark's Improvement in Alimentary Preparations.

The Invention consists in the employment of a substance of an albuminous nature containing phosphorus either alone or mixed with sulphur or iodine. This substance is found in 1st, all kinds of pulse, such as haricots, peas, beans, lentils, lupines, and coffee berries; 2ndly, birds' eggs; 3rdly, fish eggs, such as those of the salmon, skate, herring, or 5 cod; 4thly, eggs of reptiles, such as those of the tortoise, testudo mauritanica, cistudo Europœa, and others; 5thly, brains of animals, such as of the ox, sheep, or calf; 6thly, zoophytes, such as the various kinds of sponges.

Of the above substances birds' eggs contain a small proportion and 10 the leguminous substances and eggs of reptiles a considerable proportion, of a substance of an albuminous nature containing as its essential feature phosphorus in various proportions and sometimes mixed with sulphur. The organic molecular combination of this substance resembles the phosphuretted elements found in the nervous tissue and the human brain, 15 and thus affords in a readily assimilable and convenient form a means of imparting nutriment to the cerebral and nervous systems; and it is proposed to extract this substance in any suitable manner and to apply it as a cerebral and nervous aliment either alone or mixed with various articles of food. 20

I term the preparation according to its derivation,—

1st. Legumine.	4thly. Emydine.
2ndly. Vitelline.	5thly. Cerebrine.
3rdly. Ichtiline and Ichtidine.	6thly. Epongine.

The latter contains a small quantity of iodine. 25

I give these substances, whatever their base, the general name of phosphorine or sulphurine, although I may retain the more precise appellations above indicated, viz., those of the substances or of the plants and animals from which they are derived. I not only reserve the application of phosphorine or sulphurine as an alimentary preparation, 30 but also of mixing the same in variable proportions with chocolate, bread, biscuits, dough, lozenges, jellies, extracts of meat and vegetables, tapioca, pastry, and generally in all alimentary preparations. The phosphorine or sulphurine is extracted, purified, and preserved by known means from one or more of the substances of an albuminous nature 35 before specified in variable proportions whose essential characteristic is

Clark's Improvement in Alimentary Preparations.

to contain phosphorus, sometimes in combination with phosphurets of sulphur or of iodine.

I also reserve the right of associating the phosphorine with an organic phosphuret, for example, the phosphuret of acetyl or of chloracetyl, in
5 order to quicken its action. Said phosphuret or phosphurets instead of being mixed with the phosphorine may also be made into pills, syrups, lozenges, or other form usual in pharmaceutical preparations, and taken separately with the same object.

SPECIFICATION in pursuance of the conditions of the Letters Patent,
10 filed by the said Alexander Melville Clark in the Great Seal Patent Office on the 1st April 1872.

TO ALL TO WHOM THESE PRESENTS SHALL COME, I, ALEXANDER MELVILLE CLARK, of 53, Chancery Lane, in the County of Middlesex, Patent Agent, send greeting.

15 **WHEREAS** Her most Excellent Majesty Queen Victoria, by Her Letters Patent, bearing date the Fourth day of October, in the year of our Lord One thousand eight hundred and seventy-one, in the thirty-fifth year of Her reign, did, for Herself, Her heirs and successors, give and grant unto me, the said Alexander Melville Clark, Her special
20 licence that I, the said Alexander Melville Clark, my executors, administrators, and assigns, or such others as I, the said Alexander Melville Clark, my executors, administrators, and assigns, should at any time agree with, and no others, from time to time and at all times thereafter during the term therein expressed, should and lawfully might make, use,
25 exercise, and vend, within the United Kingdom of Great Britain and Ireland, the Channel Islands, and Isle of Man, an Invention for "**AN IMPROVEMENT IN ALIMENTARY PREPARATIONS,**" a communication to me from abroad by Jean Marie Onésime Tamin, of 13, Boulevard St. Martin, Paris, Doctor of Medicine, upon the condition (amongst others) that I, the
30 said Alexander Melville Clark, my executors or administrators, by an instrument in writing under my, or their, or one of their hands and seals, should particularly describe and ascertain the nature of the said Invention, and in what manner the same was to be performed, and cause the same to be filed in the Great Seal Patent Office

Clark's Improvement in Alimentary Preparations.

within six calendar months next and immediately after the date of the said Letters Patent.

NOW KNOW YE, that I, the said Alexander Melville Clark, do hereby declare the nature of the said Invention, and in what manner the same is to be performed, to be particularly described and ascertained in and 5 by the following statement (that is to say):—

This Invention relates to improved alimentary hygienic preparations valuable more particularly to those engaged in mental pursuits, and for medical and pharmaceutical purposes.

The Invention consists in the employment in the said preparations of a 10 substance of an albuminous nature containing phosphorous, either alone or mixed with sulphur or iodine. This substance is found in, first, all kinds of pulse, such as haricots, peas, beans, lentils, lupines, and coffee berries; secondly, birds' eggs; thirdly, fish eggs, such as those of the 15 salmon, skate, herring, or cod; fourthly, eggs of reptiles, such as those 15 of the tortoise, testudo mauritanica, cistuda Europœa, and others; fifthly, brains of animals, such as of the ox, sheep, or calf; sixthly, zoophytes, such as the various kinds of sponges.

Of the above substances birds' eggs contain a small proportion, and the leguminous substances and eggs of reptiles a considerable proportion of 20 a substance of an albuminous nature containing as its essential feature phosphorus in various proportions, and sometimes mixed with sulphur. The organic molecular combination of this substance resembles the phosphuretted elements found in the nervous tissue and the human brain, and thus affords in a readily assimilable and convenient form a means of 25 imparting nutriment to the cerebral and nervous systems; and it is proposed to extract this substance in any suitable manner and to apply it as a cerebral and nervous aliment either alone or mixed with various articles of food.

I term the preparation according to the source from which it is 30 derived,—

1st. Legumine.

4thly. Emydine.

2ndly. Vitelline.

5thly. Cerebrine.

3rdly. Ichtiline and Ichtidine.

6thly. Epongine.

The latter contains a small quantity of iodine.

Clark's Improvement in Alimentary Preparations.

I give this substance, whatever its base, the general name of phosphorine, phosphoreine, or sulphurine, although I may retain the more precise appellations above indicated, or those of the substances or of the plants and animals from which it is derived. I not only reserve the
5 application of phosphorine or sulphurine as an alimentary preparation, but also of mixing it in variable proportions with chocolate, bread, biscuits, dough, lozenges, jellies, extracts of meat and vegetables, tapioca, pastry, and generally in all alimentary and pharmaceutical preparations. The phosphorine or sulphurine is extracted, purified, and
10 preserved by known means from one or more of the substances before designated, whose essential characteristic is to contain phosphorus, sometimes in combination with sulphur or iodine.

Each alimentary preparation may be distinguished either by adding
1st, the name phosphorine, phosphoreine, or sulphurine, as for example
15 phosphorine chocolate; 2ndly, by giving it the special name of each substance, such as legumine, emydine, or other appellation, according to its derivation; 3rdly, by adding the name of the animal or vegetable substance from which the extract is obtained, such as tortoise egg biscuits, salmon egg biscuits, or animal brain biscuits.

20 I also reserve the right of associating the phosphorine with an organic or mineral phosphuret; for example, the phosphuret of acetyl or of chloracetyl, in order to quicken its action. Said phosphuret or phosphurets instead of being mixed with the phosphorine, may also be made into pills, syrups, lozenges, or other form usual in pharmaceutical
25 preparations, and taken separately with the same object.

The substance above designated, separated more or less from the animal or vegetable matters before mentioned, may also be made up in various forms of alimentary and pharmaceutical preparations for the cure of maladies of the nervous system as a cerebral aliment.

30 Having described the nature of the Invention, and the manner of performing the same, I declare that what I claim as the Invention, to be protected by the herein-before in part recited Letters Patent is, the application of a matter extracted from the different natural products containing phosphorus (sometimes mixed with sulphur and iodine),
35 herein-before designated as an alimentary preparation, and more

Clark's Improvement in Alimentary Preparations.

especially in medicine and pharmacy, as a cerebral and nervous aliment, either alone or mixed with various articles of food, all as herein-before described.

In witness whereof, I, the said Alexander Melville Clark, have hereunto set my hand and seal, this First day of April, in the 5 year of our Lord One thousand eight hundred and seventy-two.

A. M. CLARK. (L.S.)

Witness,

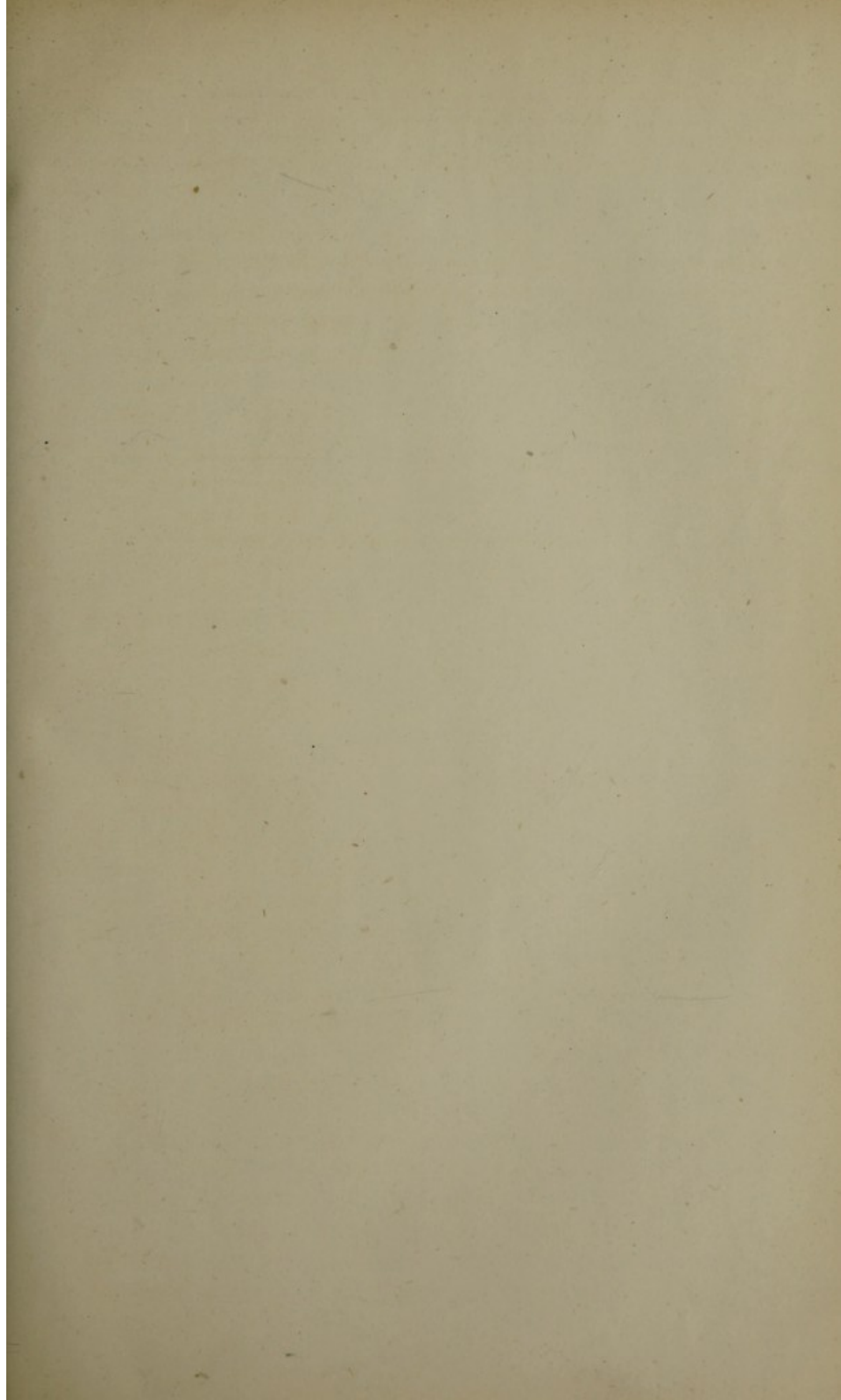
W^M. CLARK,

53, Chancery Lane.

10

LONDON:

Printed by GEORGE EDWARD EYRE and WILLIAM SPOTTISWOODE,
Printers to the Queen's most Excellent Majesty. 1872.



THE
JOURNAL OF THE
ROYAL ANTHROPOLOGICAL INSTITUTE
OF GREAT BRITAIN AND IRELAND
VOLUME 18
PART 1
1888

Published by the Royal Society of London
at the Royal Society's Office, 1, BEDFORD SQUARE, W.C.
and at the Royal Society's Office, 1, BEDFORD SQUARE, W.C.
and at the Royal Society's Office, 1, BEDFORD SQUARE, W.C.

Printed by the Royal Society of London
at the Royal Society's Office, 1, BEDFORD SQUARE, W.C.
and at the Royal Society's Office, 1, BEDFORD SQUARE, W.C.
and at the Royal Society's Office, 1, BEDFORD SQUARE, W.C.

LONDON:
Printed by the Royal Society of London
at the Royal Society's Office, 1, BEDFORD SQUARE, W.C.
and at the Royal Society's Office, 1, BEDFORD SQUARE, W.C.
and at the Royal Society's Office, 1, BEDFORD SQUARE, W.C.