

## **Specification of Alfred Ellis Harris : palates for artificial teeth.**

### **Contributors**

Harris, Alfred Ellis.

### **Publication/Creation**

London : Great Seal Patent Office, 1869 (London : George E. Eyre and William Spottiswoode)

### **Persistent URL**

<https://wellcomecollection.org/works/g9srp5au>

### **License and attribution**

This work has been identified as being free of known restrictions under copyright law, including all related and neighbouring rights and is being made available under the Creative Commons, Public Domain Mark.

You can copy, modify, distribute and perform the work, even for commercial purposes, without asking permission.



Wellcome Collection  
183 Euston Road  
London NW1 2BE UK  
T +44 (0)20 7611 8722  
E [library@wellcomecollection.org](mailto:library@wellcomecollection.org)  
<https://wellcomecollection.org>



A.D. 1869, 2nd FEBRUARY. N° 317.

SPECIFICATION

OF

ALFRED ELLIS HARRIS.

PALATES FOR ARTIFICIAL TEETH.

LONDON:

PRINTED BY GEORGE E. EYRE AND WILLIAM SPOTTISWOODE,  
PRINTERS TO THE QUEEN'S MOST EXCELLENT MAJESTY:

PUBLISHED AT THE GREAT SEAL PATENT OFFICE,  
25, SOUTHAMPTON BUILDINGS, HOLBORN.

Price 6d.

1869.

## THE HISTORY OF THE

1847





---

A.D. 1869, *2nd FEBRUARY.* N° 317.

---

### Palates for Artificial Teeth.

---

**LETTERS PATENT** to Alfred Ellis Harris, of 136, Mile End Road, in the County of Middlesex, Dentist, for the Invention of "**AN IMPROVED METHOD OF MAKING PLATES OR PALATES FOR ARTIFICIAL TEETH.**"

Sealed the 23rd July 1869, and dated the 2nd February 1869.

---

**PROVISIONAL SPECIFICATION** left by the said Alfred Ellis Harris at the Office of the Commissioners of Patents, with his Petition, on the 2nd February 1869.

I, ALFRED ELLIS HARRIS, of 136, Mile End Road, in the County of Middlesex, Dentist, do hereby declare the nature of the said Invention for "**AN IMPROVED METHOD OF MAKING PLATES OR PALATES FOR ARTIFICIAL TEETH,**" to be as follows :—

It being a well-known fact to all dentists or people wearing artificial teeth, and whom I shall call the patients, that the metals or other substances which fit exactly over the gums, and on which the artificial teeth are fixed, and which are commonly called by dentists the "plates," and which I shall continue to call by that name in the course of this Provisional Specification, by covering the top of the upper palate and



*Harris' Improved Method of Making Palates for Artificial Teeth.*

the bottom of the lower jaw of the mouth prevent those parts of the mouth from coming in contact with the solid food and liquids the patients eat or drink, and prevent also the patients from placing their tongues on the top of their palates or the bottom of their lower jaws, and thereby from enjoying the taste or flavour of the food they eat or the 5 liquids they drink, and therefore impair generally the tasting powers of the patients.

Now I obviate this, firstly, by cutting away the parts of the plates which correspond to the top of the upper palate or the bottom of the lower jaw where the tongue would naturally rest in the act of tasting, 10 and by inserting in the space so cut a piece of perforated platinum of exactly the same shape as the piece cut away, and consequently filling up its place entirely.

Secondly. Or by perforating the plates with small holes.

Thirdly. Or by cutting away the plates as in the first process, but 15 without inserting the piece of perforated platinum; but in this latter case the plate has not the suction that it possesses in the two other processes, and the gums would protrude through the open space; and from personal experience I prefer the first process as being the most effectual. 20

---

**SPECIFICATION** in pursuance of the conditions of the Letters Patent, filed by the said Alfred Ellis Harris in the Great Seal Patent Office on the 30th July 1869.

**TO ALL TO WHOM THESE PRESENTS SHALL COME, I, ALFRED ELLIS HARRIS, of 136, Mile End Road, in the County of Middlesex, 25** Dentist, send greeting.

**WHEREAS** Her most Excellent Majesty Queen Victoria, by Her Letters Patent, bearing date the Second day of February, in the year of our Lord One thousand eight hundred and sixty-nine, in the thirty-second year of Her reign, did, for Herself, Her heirs and successors, give 30 and grant unto me, the said Alfred Ellis Harris, Her special licence that I, the said Alfred Ellis Harris, my executors, administrators, and assigns, or such others as I, the said Alfred Ellis Harris, my executors, administrators, and assigns, should at any time agree with, and no others, from



---

*Harris' Improved Method of Making Palates for Artificial Teeth.*

---

time to time and at all times thereafter during the term therein expressed, should and lawfully might make, use, exercise, and vend, within the United Kingdom of Great Britain and Ireland, the Channel Islands, and Isle of Man, an Invention for "**AN IMPROVED METHOD OF MAKING PLATES**  
5 **OR PALATES FOR ARTIFICIAL TEETH,**" upon the condition (amongst others) that I, the said Alfred Ellis Harris, my executors or administrators, by an instrument in writing under my, or their, or one of their hands and seals, should particularly describe and ascertain the nature of the said Invention, and in what manner the same was to be performed, and  
10 cause the same to be filed in the Great Seal Patent Office within six calendar months next and immediately after the date of the said Letters Patent.

**NOW KNOW YE**, that I, the said Alfred Ellis Harris, do hereby declare the nature of my said Invention, and in what manner the same  
15 is to be performed, to be particularly described and ascertained in and by the following statement:—

It being a well-known fact to all dentists or people wearing artificial teeth, and whom I shall call the patients, that the metals or other substances which fit exactly over the gums, and in which the artificial teeth are  
20 fixed, and which are commonly called by dentists the plates, and which I shall continue to call by that name in the course of this Specification, by covering the palate and the bottom of the lower jaw of the mouth prevent these parts of the mouth from coming in contact with the solid food and the liquids the patients eat or drink, and prevent also the  
25 patients from placing their tongues on their palates or the bottom of their lower jaws, and thereby from enjoying the taste or flavor of the food they eat or the liquids they drink, and therefore impair generally the tasting powers of the patients.

Now I obviate this by cutting away the parts of the plates which  
30 correspond to the palate or the bottom of the lower jaw where the tongue would naturally rest in the act of tasting, and by inserting in the space so cut away a piece of perforated platinum of exactly the same shape as the piece cut away, and consequently filling up its place entirely.

35 In my Provisional Specification I stated that I arrived at a similar result by a second process of merely perforating the "plates," and also by a third process of cutting away the plates as in the first process but



---

*Harris' Improved Method of Making Palates for Artificial Teeth.*

---

without inserting the perforated platinum, with a preference for the first process as being more effectual.

Having found since that the first process was far preferable, I will confine myself entirely to it in the description of the manner in which it is to be performed, and which is as follows :—When a “plate” for 5 an “upper piece” is to be made in metal I cut a piece of metal of the proper shape, as is well understood by dentists, and represented in the accompanying Drawing at Fig. 1; I then cut out of it the part marked A, A, A, and having cut a piece of perforated platinum of exactly the same shape and sizes, see Fig. 2, I insert it in the space A, A, A, and 10 solder it all round at the edges, as represented, Fig. 3. The “plate” being so prepared is ready to be struck up in the ordinary way. When a “plate” for an upper piece is to be made of a soft plastic substance, such as is called vulcanite or dental rubber, then the piece of perforated 15 platinum having been cut, as in Fig. 2, is first to be fitted to the plaster model of the mouth by being struck up on a zinc model in the ordinary way known to dentists; then being fixed in its proper place on the plaster model the dental rubber in the plastic state is moulded round it and hardened by the ordinary process, so that the piece of perforated 20 platinum is inserted in the dental rubber “plate,” and embedded all round at its edges, whilst nearly the whole of its surface is perfectly free, so as to be in contact on one side with the palate or roof of the mouth and on the other side with the tongue.

I find in practice that the maximum of efficiency is obtained when the holes of the perforated platinum are about one twenty-fifth part of 25 an inch in diameter, as in that case the gum cannot in any way protrude through them. Therefore what I claim to be my Invention is, the insertion of a piece of perforated platinum in the plates or palates for artificial teeth in the manner here above described.

In witness whereof, I, the said Alfred Ellis Harris, have hereunto 30 set my hand and seal, this 30th day of July, in the year of our Lord One thousand eight hundred and sixty-nine.

A. E. HARRIS. (L.S.)

---

LONDON:

Printed by GEORGE EDWARD EYRE and WILLIAM SPOTTISWOODE,  
Printers to the Queen's most Excellent Majesty. 1869.



FIG. 1.

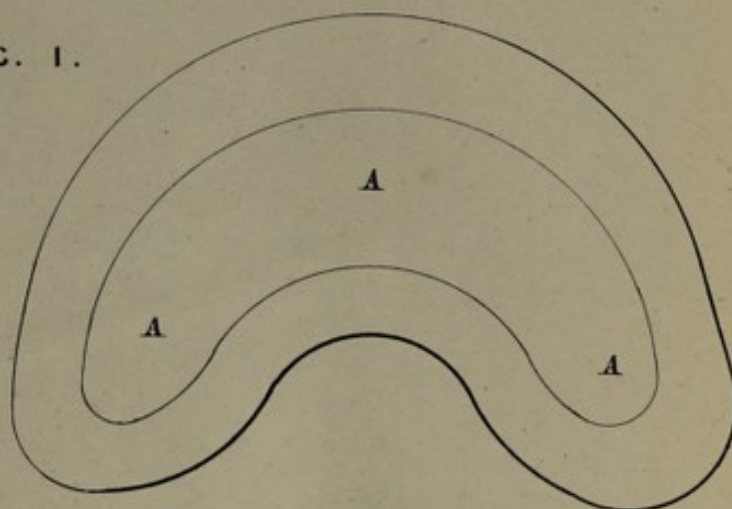


FIG. 2.

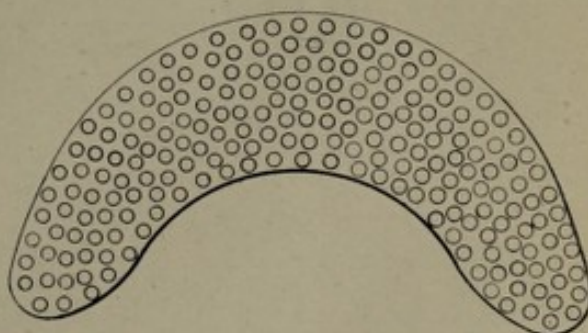
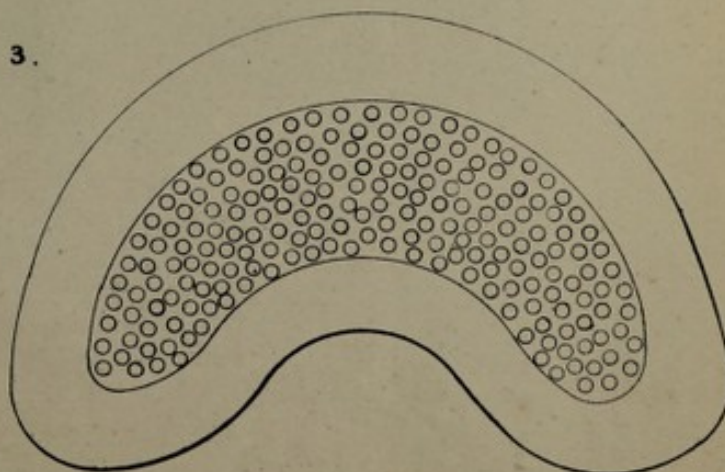


FIG. 3.



*The filed drawing is not colored.*

Drawn on Stone by Malby & Sons



