

## **Specification of Charles Reader : truss.**

### **Contributors**

Reader, Charles.

### **Publication/Creation**

London : Great Seal Patent Office, 1866 (London : George E. Eyre and William Spottiswoode)

### **Persistent URL**

<https://wellcomecollection.org/works/p5te2g8t>

### **License and attribution**

This work has been identified as being free of known restrictions under copyright law, including all related and neighbouring rights and is being made available under the Creative Commons, Public Domain Mark.

You can copy, modify, distribute and perform the work, even for commercial purposes, without asking permission.



Wellcome Collection  
183 Euston Road  
London NW1 2BE UK  
T +44 (0)20 7611 8722  
E [library@wellcomecollection.org](mailto:library@wellcomecollection.org)  
<https://wellcomecollection.org>



---

A.D. 1865, 24th NOVEMBER. N<sup>o</sup> 3017.

---

S P E C I F I C A T I O N

OF

CHARLES READER.

—  
TRUSS.  
—

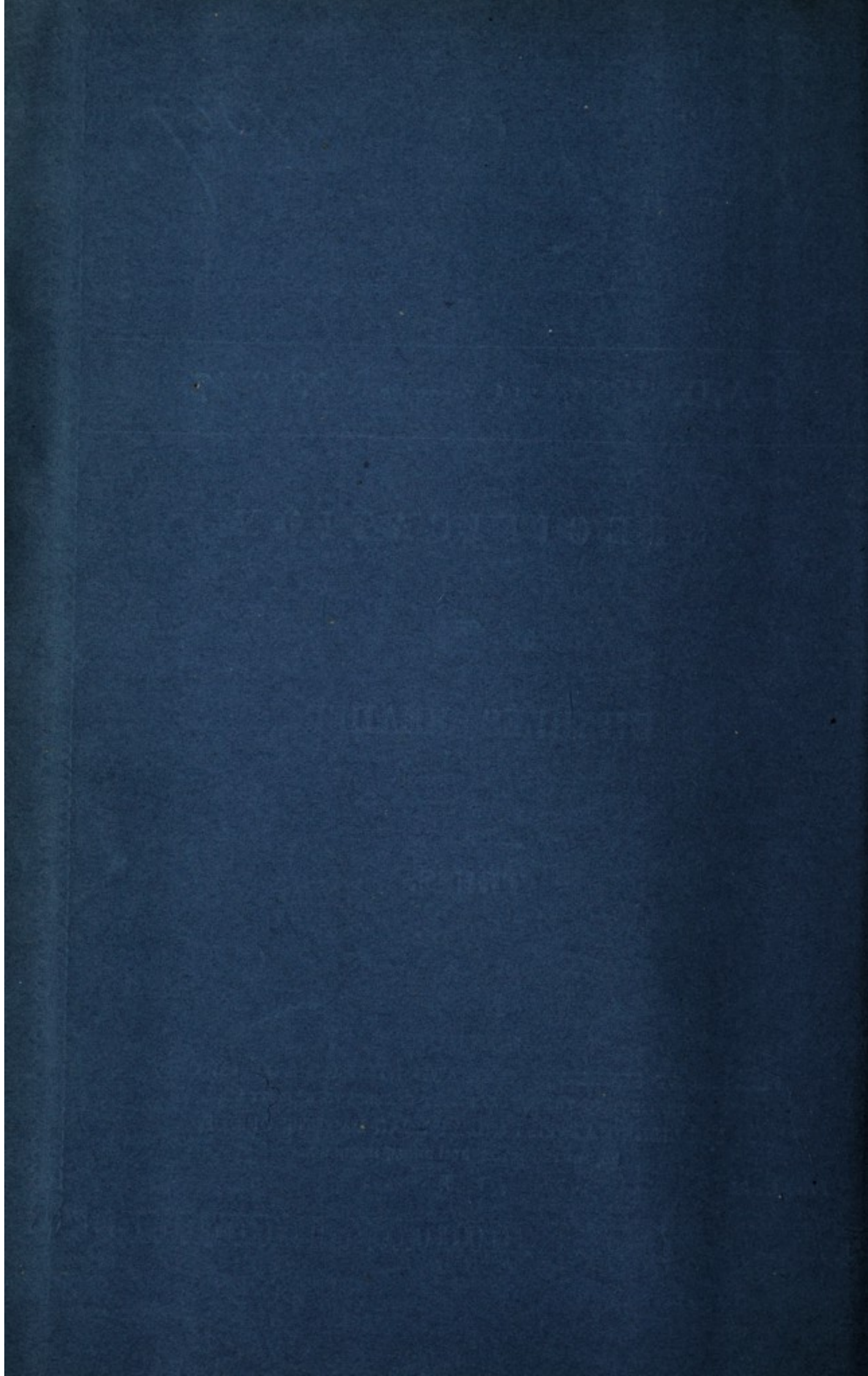
LONDON:

PRINTED BY GEORGE E. EYRE AND WILLIAM SPOTTISWOODE,  
PRINTERS TO THE QUEEN'S MOST EXCELLENT MAJESTY:

PUBLISHED AT THE GREAT SEAL PATENT OFFICE,  
25, SOUTHAMPTON BUILDINGS, HOLBORN.

1s. 4d.

1866.





A.D. 1865, 24th NOVEMBER. N° 3017.

**Truss.**

**LETTERS PATENT** to Charles Reader, of Derby, in the County of Derby,  
Elastic Belt Truss Manufacturer, for the Invention of "A NEW OR  
IMPROVED ELASTIC BELT OR BAND TRUSS."

Sealed the 22nd May 1866, and dated the 24th November 1865.

**PROVISIONAL SPECIFICATION** left by the said Charles Reader at the  
Office of the Commissioners of Patents, with his Petition, on the 24th  
November 1865.

I, CHARLES READER, of Derby, in the County of Derby, Elastic Belt  
5 Truss Manufacturer, do hereby declare the nature of the said Invention for  
"A NEW OR IMPROVED ELASTIC BELT OR BAND TRUSS," to be as follows:—

This Invention has for its object the prevention, relief, and cure of hernia,  
prolapsus uteri, uterine hemorrhage, and hernia humoralis, and as a general  
support for enlargement of the abdomen. It consists of an elastic belt or  
10 band which is passed round the body and lies in such position that the hole of  
the spring of the elastic material will tend to keep a pad pressed upon the  
ruptured part or other part required. The elastic belt or band is restrained  
and kept from getting lower on the body than where placed by its elasticity,  
and it is prevented from rising by two other narrower elastic belts or bands  
15 stitched at one end to the pad. The other ends of the two elastic belts or  
bands are provided with pieces of leather, india-rubber, or other material  
suitably attached, and of such form that each may be cut to form a button

*Reader's Improved Elastic Belt or Band Truss.*

hole to be passed over buttons, or studs, or equivalent contrivances secured to leather or other material. On other parts of the first elastic belt or band the position of the buttons or studs is such that the two narrower elastic belts or bands (which are passed between the legs) lie across the thighs, and do not get more soiled by wearing than do under garments usually worn. The first- 5 mentioned pad may be formed of one or more pieces; if formed of two pieces they are attached to each other by buttons, studs, or other attachments. When this pad is of leather the leather is on the outer side thereof and is prevented from chafing the skin by a larger piece of flannel, cloth, or other soft substance stitched to the side of the belt or band next the wearer, the 10 leather being on the outer side. In each case where the leather is used, a softer substance somewhat larger than the leather is stitched or otherwise secured to the inner side of the belt or band. In each case a number of holes is punched in the leather to assist ventilation. These trusses or bands are compact and ventilated and they are never too hot, and whatever be 15 the exertions of the wearer, pain is prevented in the affected part.

This Invention is applicable to single and double ruptures and affords great support where most needed.

**SPECIFICATION** in pursuance of the conditions of the Letters Patent, filed by the said Charles Reader in the Great Seal Patent Office on the 24th 20 May 1866.

**TO ALL TO WHOM THESE PRESENTS SHALL COME, I, CHARLES READER, of Derby, in the County of Derby, Elastic Belt Truss Manufacturer, send greeting.**

**WHEREAS** Her most Excellent Majesty Queen Victoria, by Her Letters 25 Patent, bearing date the Twenty-fourth day of November, in the year of our Lord One thousand eight hundred and sixty-five, in the twenty-ninth year of Her reign, did, for Herself, Her heirs and successors, give and grant unto me, the said Charles Reader, Her special licence that I, the said Charles Reader, my executors, administrators, and assigns, or such others as I, the 30 said Charles Reader, my executors, administrators, and assigns, should at any time agree with, and no others, from time to time and at all times thereafter during the term therein expressed, should and lawfully might make, use, exercise, and vend, within the United Kingdom of Great Britain and Ireland, the Channel Islands, and Isle of Man, an Invention for "A 35 **NEW OR IMPROVED ELASTIC BELT OR BAND TRUSS,**" upon the condition (amongst

---

*Reader's Improved Elastic Belt or Band Truss.*

---

others) that I, the said Charles Reader, my executors or administrators, by an instrument in writing under my, or their, or one of their hands and seals, should particularly describe and ascertain the nature of the said Invention, and in what manner the same was to be performed, and cause the same to  
5 be filed in the Great Seal Patent Office within six calendar months next and immediately after the date of the said Letters Patent.

NOW KNOW YE, that I, the said Charles Reader, do hereby declare the nature of the said Invention, and in what manner the same is to be performed, to be particularly described and ascertained in and by the following  
10 statement thereof, reference being had to the accompanying Drawings, and to the letters and figures marked thereon, that is to say:—

This Invention has for its object the prevention, relief, and cure of hernia, prolapsus uteri, uterine hemorrhage, and hernia humoralis, and as a general support for enlargement of the abdomen. It consists of an elastic belt  
15 or band which is passed round the body and lies in such position that the whole of the spring of the elastic material will tend to keep a pad pressed upon the ruptured part or other affected part or part required. The elastic belt or band is restrained and kept by its elasticity from getting lower on the body than where originally placed, and it is prevented from rising by two  
20 other narrower elastic belts or bands stitched at one end to the pad. The other ends of the two elastic belts or bands are provided with leather, india-rubber, or other like material suitably attached, and of such form that each may be cut to form a button hole to be passed over buttons, or studs, or equivalent contrivances, secured to other pieces of leather or of other like  
25 material on various parts of the first-mentioned elastic belt or band. The position of the buttons or studs is such that the two narrower elastic belts or bands (which are passed between the legs) lie across the thighs so that they do not get more soiled by wearing than do under garments generally worn. The first mentioned pad may be formed of one or more pieces, if it is formed  
30 of two pieces the pieces are attached to each other by buttons, or studs, or other equivalent attachments. When the pad is formed of leather the leather is on the outer side thereof and is prevented from chafing or exciting the skin or body by a larger piece of flannel, cloth, or other soft substance, stitched to the side of the belt or band next the wearer's person, the leather being on  
35 the outer side. In each case where the leather is used a piece of some substance softer and somewhat larger than the leather is stitched or otherwise secured to the inner side of the belt or band. In each case a number of holes is punched in the leather to assist ventilation.

Having thus set forth the nature of my Invention, I proceed more par-

*Reader's Improved Elastic Belt or Band Truss.*

particularly to describe the manner of performing the same with reference to the accompanying Drawings.

## DESCRIPTION OF THE DRAWINGS.

Figures 1 to 7 inclusively, Sheets 1 and 2, represent several modifications or arrangements of truss constructed according to my improvements. Figures 1 and 2 represent respectively the outside and inside of one such truss. A is an elastic belt or band passed round the body in such a position that the whole of the spring of the elastic material will tend to keep a pad B, or pads B and B<sup>1</sup> pressed upon the ruptured or other affected part or parts required. The elastic belt or band is restrained and kept by its elasticity from getting lower on the body than where placed, and it is prevented from rising by two other narrower elastic belts or bands D, D<sup>1</sup>, stitched at one end to the pads, and provided at their other ends with pieces of leather, india-rubber, or other like material, E, suitably attached, and of such form that each may be cut to form a button hole to be passed over buttons, or studs, or equivalent contrivances, secured to other leather or other material F on other parts of the belt A; the position of buttons or studs is such that the bands D, D<sup>1</sup>, (which are passed between the legs) lie across the thighs and do not get more soiled by wearing than do under garments usually worn. The pad may be formed of one piece or of two or more pieces; in the Drawings it is shown formed of two pieces attached to each other by buttons or studs. Of course I do not confine myself to the position of the pad or pads shewn in the Drawings, as their position will vary according to requirement. When the pad is formed of leather the leather is on the outer side thereof, and is prevented from chafing the skin by a larger piece of flannel, linen, cloth, or other soft substance, G, stitched to the side of the belt or band next the wearer. Always where leather is used a softer piece of material and somewhat larger than the leather is stitched or otherwise secured to the inner side of the belt or band, and such leathers have a number of holes C punched in them to assist ventilation.

Figure 3 represents a truss belt folded so as to shew the outside of the pads B, B<sup>1</sup>, and the softer substance G on the inner side, the punched ventilated leather F is shown at Figure 3<sup>A</sup>. In some cases I find it necessary to place one or more thicknesses of soft substance G in several places on the inner side of a truss belt, portions of such a belt is shewn in outside view at Figure 4, and an edge view at Figure 5, where two thicknesses of the soft substance G are seen, and the thickness (which may be made greater or less as required) of the pad or pads B, B<sup>1</sup>, is also shown.

---

*Reader's Improved Elastic Belt or Band Truss.*

---

At Figure 6 is shewn in edge view a portion of a truss belt having four thicknesses of a softer substance to afford support or comfort to the spine or other part where required, and sometimes instead of using a thick elastic band or belt I form the belt of two or more thicknesses of elastic material, and I 5 make the two other narrow elastic bands D, D<sup>1</sup>, used therewith of two or more thicknesses of elastic material.

Figure 7 represents a broader and stronger truss belt or band, the parts of which are secured together as in the truss belts before described. The corresponding parts of all the trusses are lettered alike. Figure 3 shows the truss 10 belt folded to show the outside leathers. In all the Figures the thick black lines represent the stitching. These trusses or bands are suitable for adults of either sex, and also for infants, and they may be worn both night and day without inconvenience. They are compact and ventilated, and although they are always sufficiently warm to the body they are never too hot, but they 15 impart much comfort and thoroughly fulfil every requirement, and whatever be the exertions of the wearer pain will be prevented in the ruptured part. This Invention is applicable to single and double ruptures, and affords great support where it is most needed.

Having now described the nature of my said Invention, and in what 20 manner the same may be performed, I declare that I claim the arrangement and combination of parts constituting the new or improved elastic belt or band truss, substantially as herein-before described.

In witness whereof, I, the said Charles Reader, have hereunto set my hand and seal, this Nineteenth day of May, in the year of our Lord 25 One thousand eight hundred and sixty-six.

CHARLES READER. (L.S.)

Witness,

GEO. JON. ROBINSON,

Patent Office,

30

Nottingham.

---

LONDON:

Printed by GEORGE EDWARD EYRE and WILLIAM SPOTTISWOODE,  
Printers to the Queen's most Excellent Majesty. 1866.



At Figure B is shown in side view a portion of a transverse band having the thickness of a rubber substance to afford support or contact to the spine or other part when required, and sometimes instead of using a thick elastic band or belt I form the belt of two or more thicknesses of elastic material, and I make the two other narrow elastic bands B, C, and D, and the width of the or more thicknesses of elastic material.

Figure 7 represents a broader and stronger transverse belt or band, the parts of which are secured together as in the transverse before described. The corresponding parts of all the transverse are lettered alike. Figure 8 shows the transverse belt folded to show the outside leather. In all the Figures the thick black lines represent the stitching. These transverse bands are suitable for adults of either sex, and also for infants, and they may be worn both night and day without inconvenience. They are compact and ventilated, and although they are always sufficiently warm to the body they are never too hot, but they impact much comfort and thoroughly toll every requirement, and whatever be the exertions of the wearer pain will be prevented in the required part. This invention is applicable to single and double support, and affords great support where it is most needed.

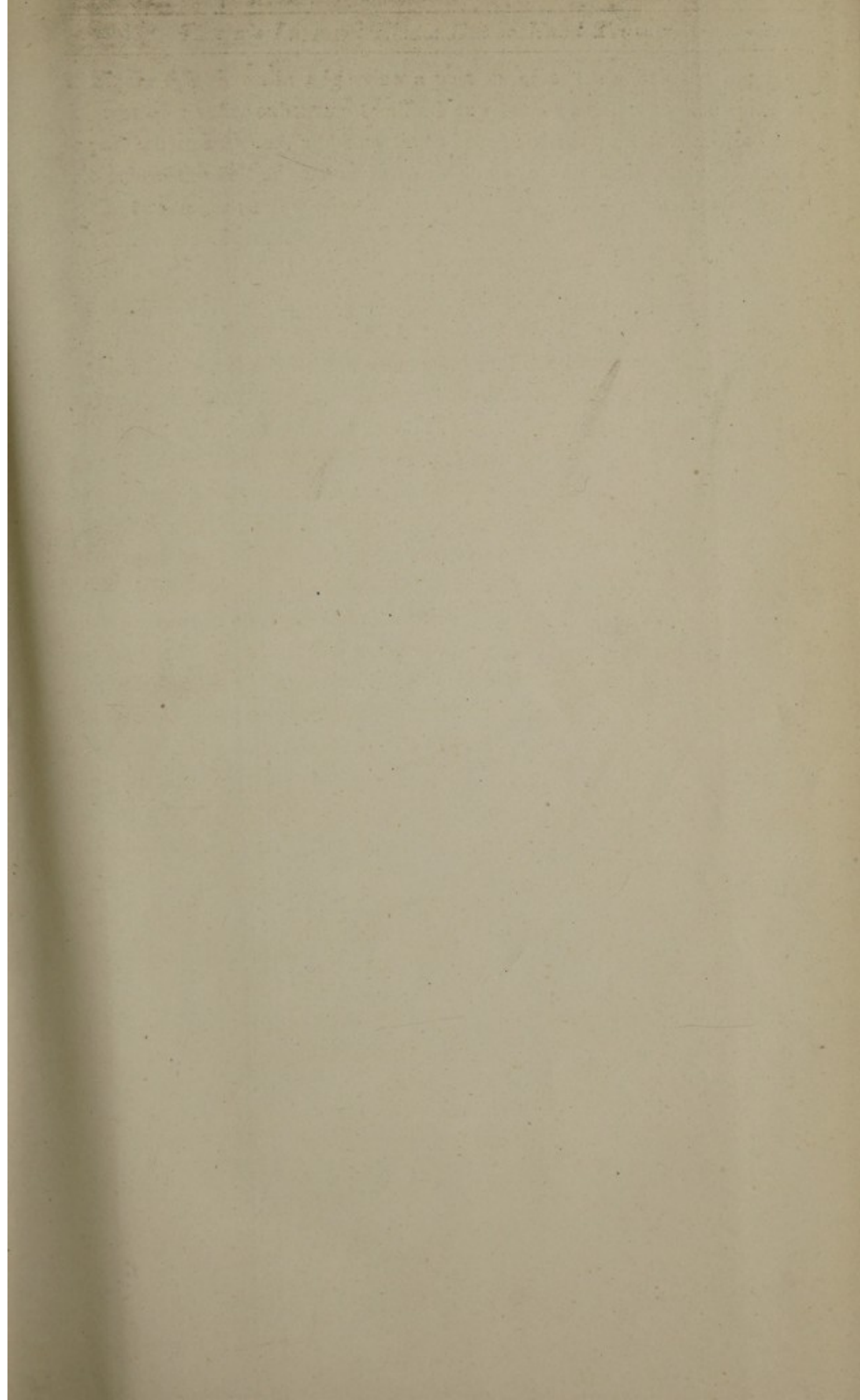
Having now described the nature of my said invention, and in what manner the same may be performed, I declare that I claim the arrangement and combination of parts constituting the now or improved elastic belt or band, and similarly as herein-before described.

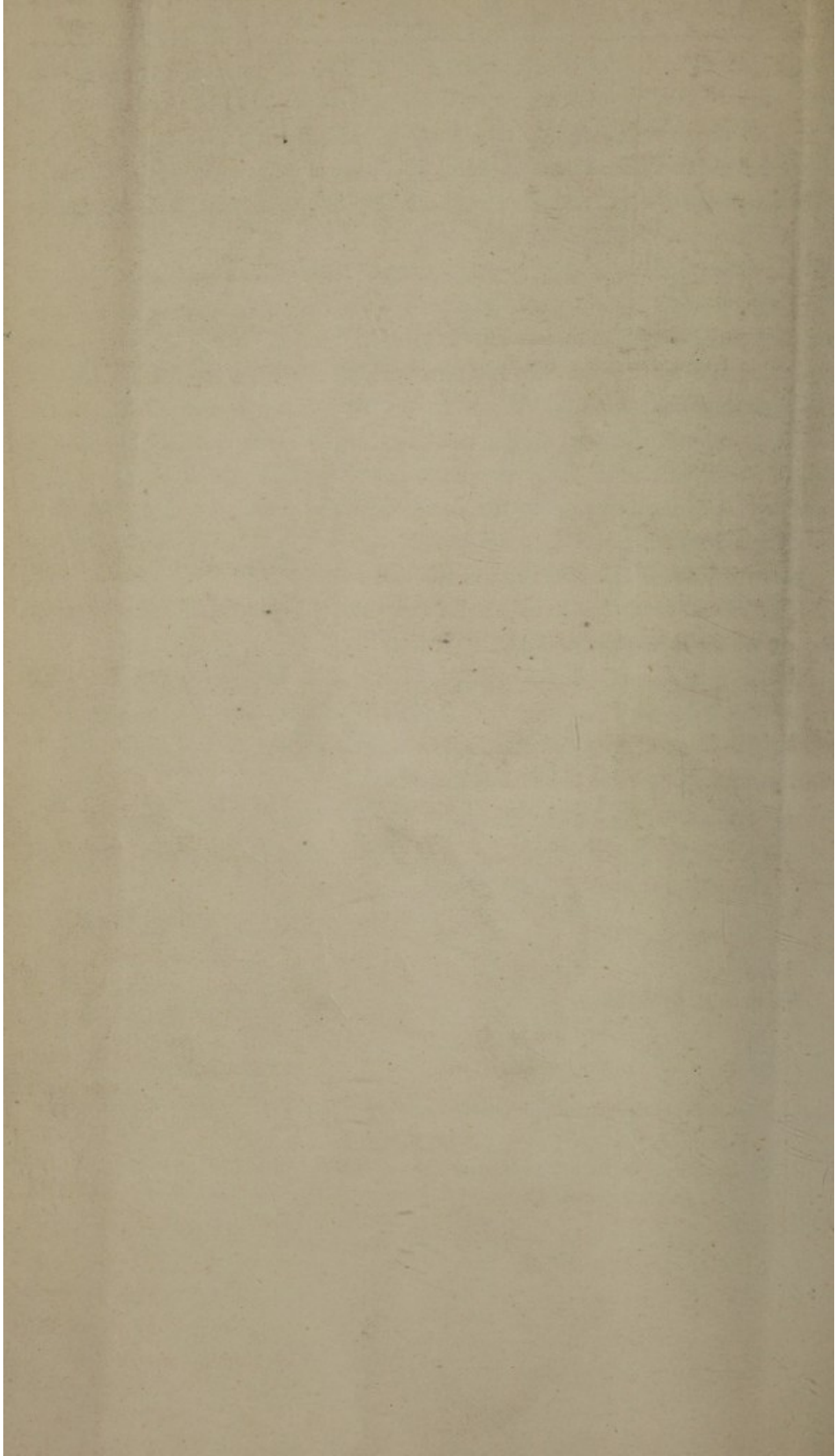
In witness whereof, I, the said Charles Charles, have hereunto set my hand and seal, this nineteenth day of May, in the year of our Lord One thousand eight hundred and sixty-six.

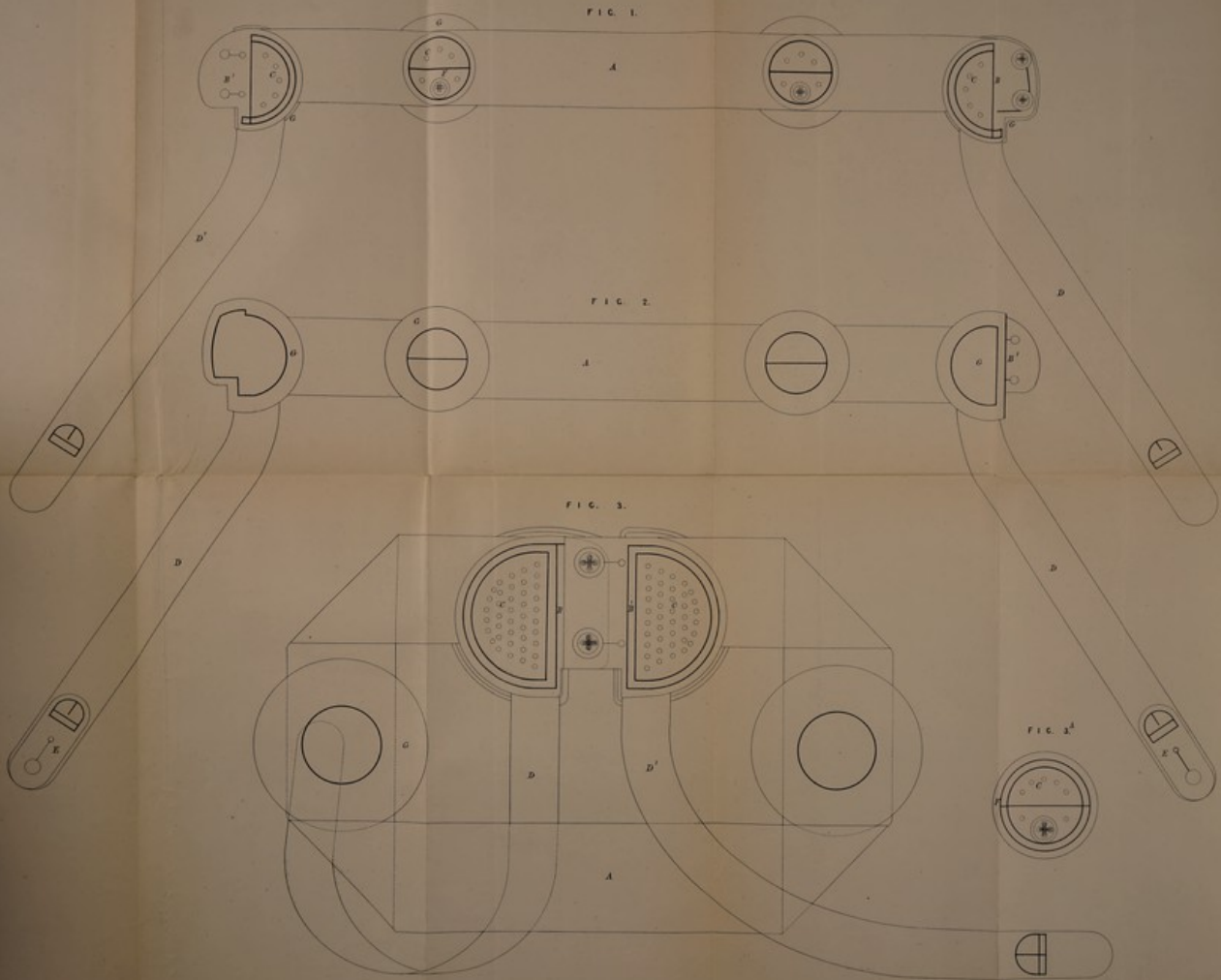
CHARLES CHARLES (S)

Witness  
Geo. Wm. Robinson  
Patent Office  
No. 10, Oldbath.

LONDON:  
Printed by George Rowan and William Rowan,  
Printers to the Government, Fleet Street, 1866.

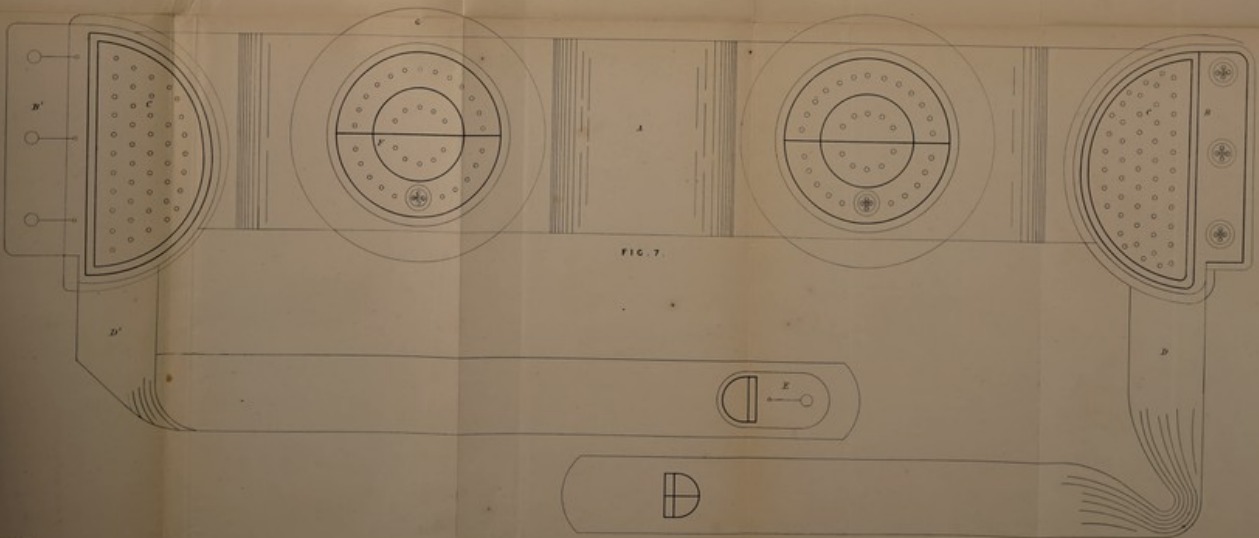
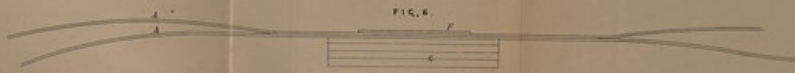
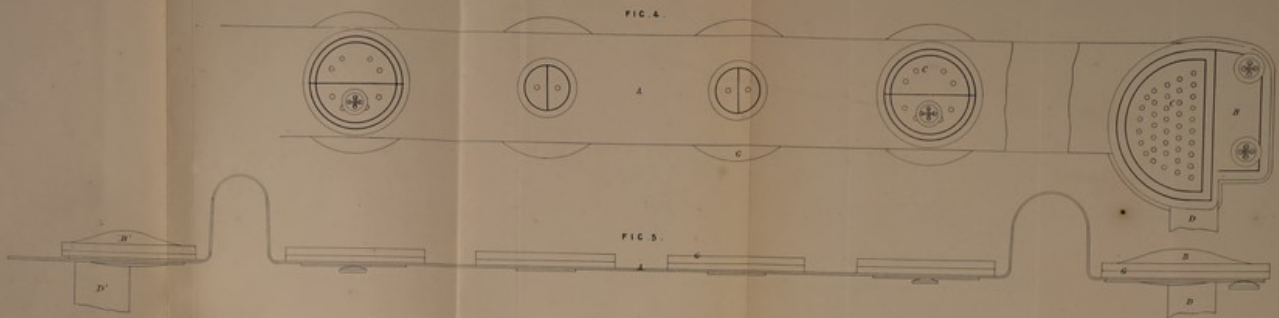






The steel drawing is not colored.





The first drawing is not colored.

