

Specification of John Cutler : fire-places, stoves, &c.;

Contributors

Cutler, John.

Publication/Creation

London : Queen's Printing Office, 1854 (London : George E. Eyre and William Spottiswoode)

Persistent URL

<https://wellcomecollection.org/works/jw4a253p>

License and attribution

This work has been identified as being free of known restrictions under copyright law, including all related and neighbouring rights and is being made available under the Creative Commons, Public Domain Mark.

You can copy, modify, distribute and perform the work, even for commercial purposes, without asking permission.



Wellcome Collection
183 Euston Road
London NW1 2BE UK
T +44 (0)20 7611 8722
E library@wellcomecollection.org
<https://wellcomecollection.org>



A.D. 1815 N^o 3873.

S P E C I F I C A T I O N

OF

JOHN CUTLER.

FIRE-PLACES, STOVES, &c.

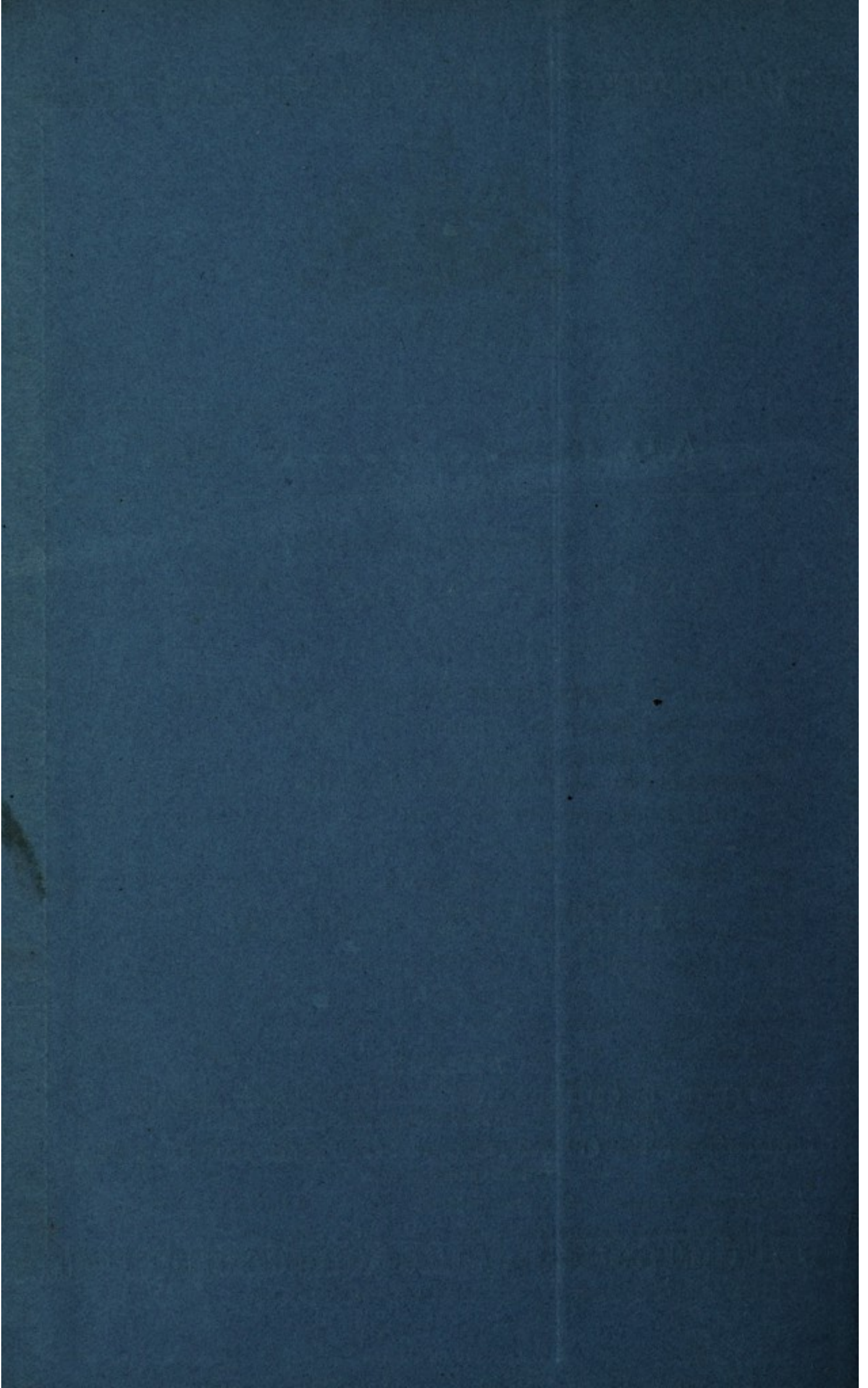
L O N D O N :

PRINTED BY GEORGE E. EYRE AND WILLIAM SPOTTISWOODE,
PRINTERS TO THE QUEEN'S MOST EXCELLENT MAJESTY :

PUBLISHED AT THE QUEEN'S PRINTING OFFICE, EAST HARDING STREET,
NEAR FLEET STREET.

Price 6d.

1854.





A.D. 1815 N^o 3873.

Fire-places, Stoves, &c.

CUTLER'S SPECIFICATION.

TO ALL TO WHOM THESE PRESENTS SHALL COME, I, JOHN CUTLER, of Great Queen Street, Lincolns Inn Fields, in the County of Middlesex, Iron Founder, send greeting.

WHEREAS His most Excellent Majesty King George the Third, did, by
5 His Letters Patent under the Great Seal of the United Kingdom of Great Britain and Ireland, bearing date at Westminster, the Sixth day of January, in the fifty-fifth year of our reign, give and grant unto me, the said John Cutler, my exors, admors, and assigns, His especial licence, full power, sole privilege and authority, that I, the said John Cutler, my exors, admors, and
10 assigns, should and lawfully might, during the term of years therein mentioned, make, use, exercise, and vend, within England, Wales, and the Town of Berwick upon Tweed, my Invention of "**CERTAIN IMPROVEMENTS APPLICABLE TO FIRE-PLACES, STOVES, &c.;**" in which said Letters Patent there is contained a proviso that if I, the said John Cutler, shall not particularly describe and
15 ascertain the nature of my said Invention, and in what manner the same is to be performed, by an instrument in writing under my hand and seal, and cause the same to be inrolled in our High Court of Chancery within six calendar months next and immediately after the date of the said Letters Patent, that then the said Letters Patent, and all liberties, and advantages whatsoever
20 hereby granted, shall utterly cease, determine, and become void, as in and by the same, relation being thereunto had, may more fully and at large appear.

Cutler's Improvements in Fire-places, Stoves, &c.

NOW KNOW YE, that in compliance with the said proviso, I, the said John Cutler, do hereby declare that the nature of my said Invention, and manner in which the same is to be performed, are particularly described and ascertained in manner following, that is to say:—

Firstly, with regard to the nature of the same, it doth consist in the offering 5 fuel for combustion in a more beneficial and oeconomical manner, which is effected by means of my said improvements applicable to fire-places, stoves, &c.; and, secondly, with regard to the method of performing it, is clearly set forth herein-after, and by the Drawings or Designs hereunto annexed, and figured 1, 2, 3, 4, of and in which the same parts are universally distinguished 10 by the same numerical characters or letters of the alphabet; and Fig. 1 represents a front view of a stove similar in appearance to those well known by the name of register stoves, with my said improvements herein-after described. Fig. 2 represents a top view of the same; Fig. 3, a view of the nature of a section; and Fig. 4, a back view of the same, and the parts marked with 15 A, B, C, D, and E, are parts similar to those in common use, and constitute no part of my said improvements; and in reference to the separate parts, 1 represents the end of the axis of the pinion 2 passing through a circular hole in the plate A, with a square hole in the said axis (which may be concealed by fastening on by means of two small holes on each side an ornament like that 20 seen in the similar situation on the other side) for receiving a square pin or keying piece affixed to a winch or other lever 18, and capable of being turned thereby. 3 is a contrate wheel, taking in and receiving motion from the pinion 2, and fixed on the axis 4, 4, to which are fastened the chains 5, 5, 5, 5, capable of being wound thereon by the rotation thereof, and to the other end 25 of the said chains 5, 5, 5, 5, is affixed the bar 6, capable of passing freely up and down in certain grooves in the side plates 8, 8, as seen in the section, Fig. 3, where one of the said grooves are represented at 15, 15; and 7 is a plate of iron placed and fastened upon the bar 6, and of such dimensions, as with its surface horizontal to pass freely up and down the chamber formed by 30 the plate 8, 8, and 12, 13, with and upon the said bar 6, and acts in the situation of a moveable bottom to the said chamber. 9 is a pin leading through the plate B, and joined to 14, 14, a pall taking in the pinion 2, and keeping the same motionless whilst locked therein. 10 is a plate of iron formed of such dimensions as to leave between the said plate and the back D the open 35 space 17, having communication with a flue or chimney, and of such capacity as to cause across the top of and through the fire or part ignited, hereafter mentioned, a draft or current of air by experiment or otherwise found to be necessary to support the combustion required. 11, 11, 11, 11, is a plate of iron

Fig. 2.

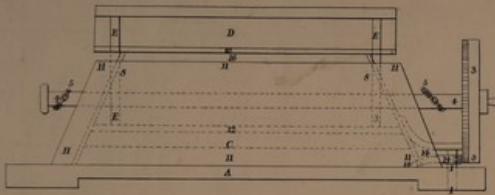


Fig. 1.

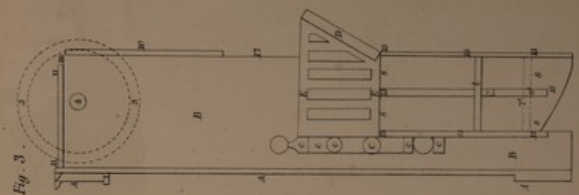
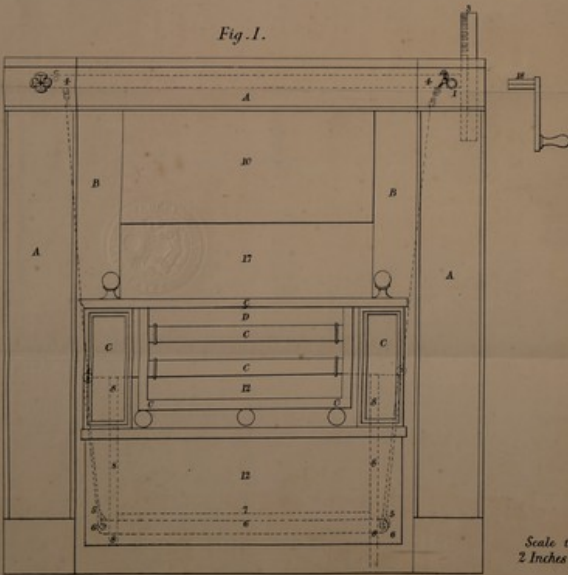


Fig. 3.

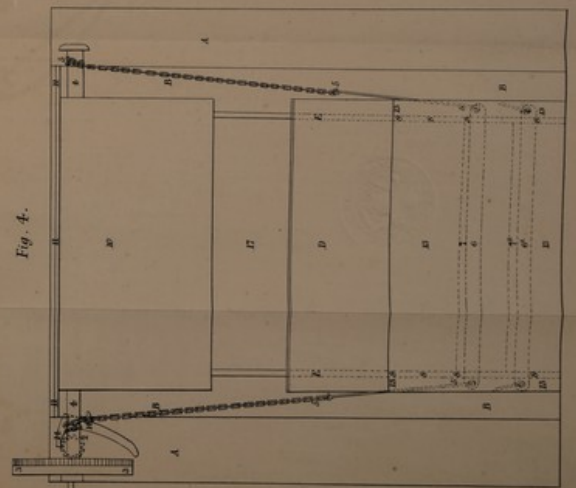
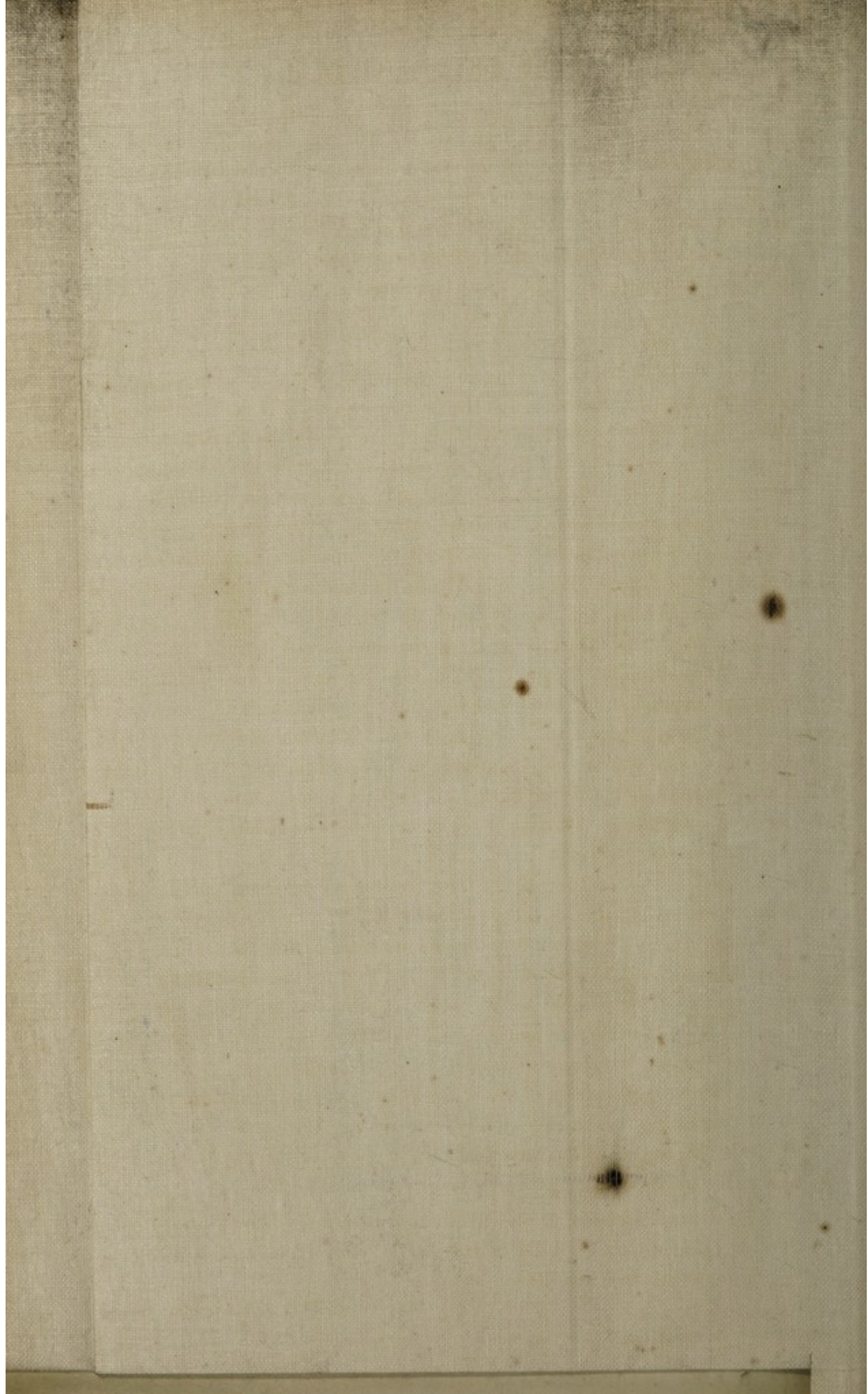


Fig. 4.

Scale throughout
2 Inches to a Foot.

The Engraved Drawing is colored.



Cutler's Improvements in Fire-places, Stoves, &c.

in a similar situation to the cover or flap of a register stove fastened or by its weight remaining stationary on the bevel cheeks B, B, and leaving the small opening 16, likewise having communication with the flue or chimney, and allowing a small current of air to pass through the same, and I do lower my said moveable bottom 7
5 to the situation seen at 7¹, Fig^s 3 and 4, and do fill my said chamber formed by the same and the plates 8, 8, 12, 13, with coal or other suitable fuel, and likewise my stove or fire-place above the same, and do light the said coal or other suitable fuel at the top thereof, the same being kept in ignition by the draft or current of air passing through the space 17, and the draft or current of air passing through the
10 space 16 serving to carry off any dust, and thereby keep the parts above in better preservation, and as the said fire or part ignited consumes the said coal or other suitable fuel, I do press upon the pin 9, and lift the pall 14, 14, and by means of the winch or other lever 18 taking in the axis of the pinion 2, turn the said pinion, and thereby, by the before-described connection, cause the said bar 6
15 and the plate thereon 7 to move and raise the said coal or other suitable fuel in the said chamber, and thereby supply the fire or part ignited, or I do, should the same have been raised, lower it by the same means into the said chamber, where the part ignited becomes extinguished for want of free communication with the atmosphere. And moreover know ye, that the said means of pro-
20 ducing a draught or current of air at 17 and 16 do not constitute part of my said Invention, but are only requisites in the performance thereof, the same having been well known long since; but that the amount of my said Invention doth consist in the constructing of fire-places and stoves in such manner as that the fuel necessary to support or assist the combustion required shall be given
25 or afforded to the part or place in combustion at the lower part of or from beneath the same, either directly, perpendicular, or in an oblique direction, and in the lowering by the same means the said fire or part ignited into a chamber, so that the same shall become extinguished, and that my said Invention of certain improvements is applicable to fire-places, stoves, &c., by which I mean any
30 situation whatsoever where fuel is to be successively applied or offered for the means of supporting combustion for the purpose of heat, and as to the form, dimensions, or construction of and in the same, they may be varied and adapted to the situation or other circumstances governing them, and which variations and adaptations any competent workman in works of this and the like nature
35 can devise and execute.

In witness whereof, I, the said John Cutler, have hereunto set my hand and seal, this First day of July, in the year of our Lord One thousand eight hundred and fifteen.

JOHN CUTLER. (L.S.)

Cutler's Improvements in Fire-places, Stoves, &c.

STRATFORD.

AND BE IT REMEMBERED, that on the First day of July, in the year of our Lord 1815, the aforesaid John Cutler came before our said Lord the King in His Chancery, and acknowledged the Specification aforesaid, and all and every thing therein contained and specified, in form above written. And also the Specification aforesaid was stampd according to the tenor of the 5 Statute made for that purpose.

Inrolled the Sixth day of July, in the year of our Lord One thousand eight hundred and fifteen.

LONDON :

Printed by GEORGE EDWARD EYRE and WILLIAM SPOTTISWOODE,
Printers to the Queen's most Excellent Majesty. 1854.