

## **Specification of John Slater : steam boiler and washing apparatus.**

### **Contributors**

Slater, John.

### **Publication/Creation**

London : Queen's Printing Office, 1854 (London : George E. Eyre and William Spottiswoode)

### **Persistent URL**

<https://wellcomecollection.org/works/j9utdkn6>

### **License and attribution**

This work has been identified as being free of known restrictions under copyright law, including all related and neighbouring rights and is being made available under the Creative Commons, Public Domain Mark.

You can copy, modify, distribute and perform the work, even for commercial purposes, without asking permission.



Wellcome Collection  
183 Euston Road  
London NW1 2BE UK  
T +44 (0)20 7611 8722  
E [library@wellcomecollection.org](mailto:library@wellcomecollection.org)  
<https://wellcomecollection.org>



---

A.D. 1814 . . . . . N° 3790.

---

S P E C I F I C A T I O N

OF

JOHN SLATER.

---

STEAM BOILER AND WASHING APPARATUS.

---

LONDON:

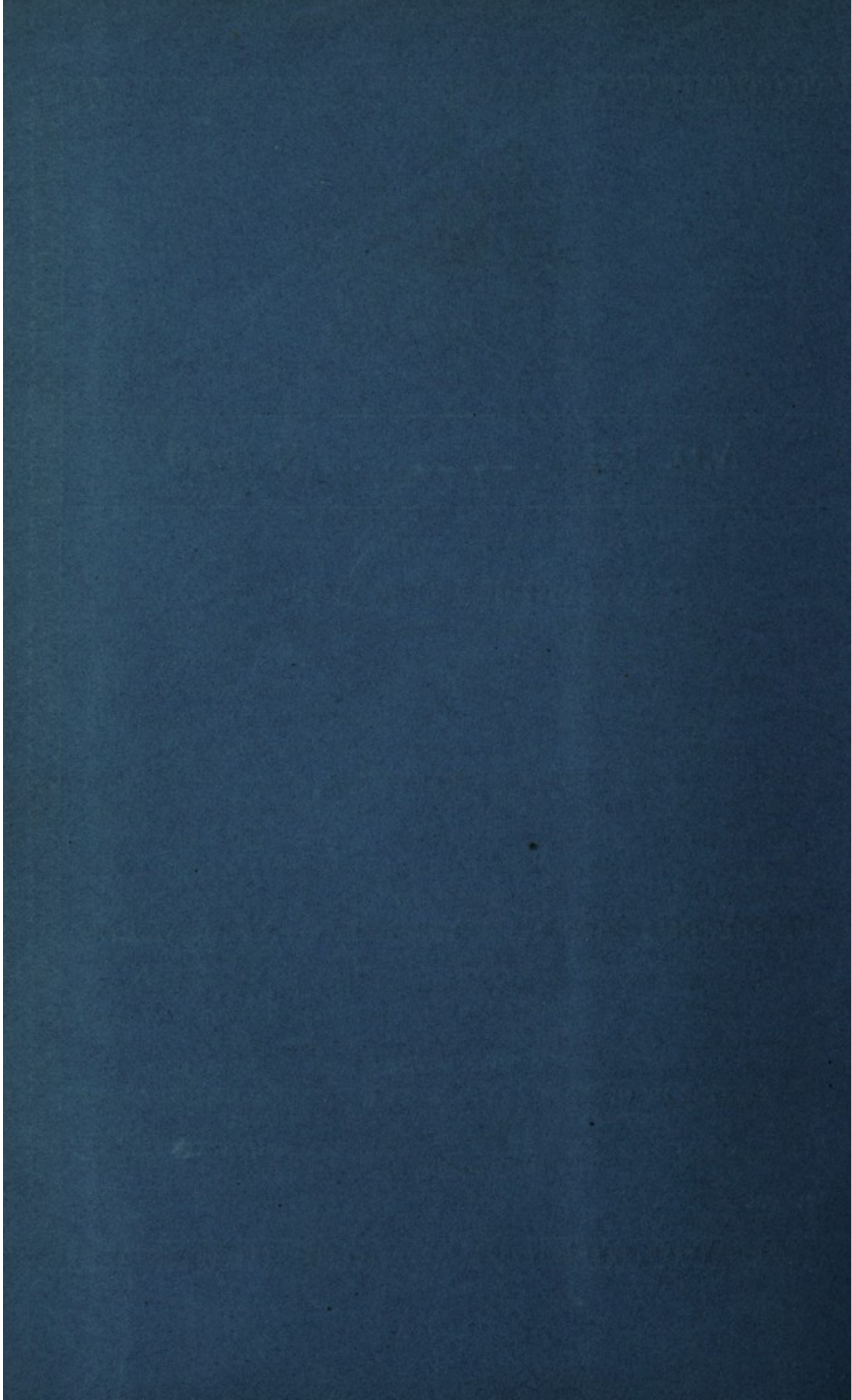
PRINTED BY GEORGE E. EYRE AND WILLIAM SPOTTISWOODE,  
PRINTERS TO THE QUEEN'S MOST EXCELLENT MAJESTY:

PUBLISHED AT THE QUEEN'S PRINTING OFFICE, EAST HARDING STREET,  
NEAR FLEET STREET.

*Price 7d.*

1854.









---

A.D. 1814 . . . . . N<sup>o</sup> 3790.

---

Steam Boiler and Washing Apparatus.

---

SLATER'S SPECIFICATION.

TO ALL TO WHOM THESE PRESENTS SHALL COME, I, JOHN SLATER, of Birmingham, in the County of Warwick, send greeting.

WHEREAS His most Excellent Majesty King George the Third did, by His Letters Patent under the Great Seal of His United Kingdom of Great Britain  
5 and Ireland, bearing date at Westminster, the Twelfth day of March, in the fifty-fourth year of His reign, give and grant unto me, the said John Slater, my exors, adñors, and assigns, His especial licence, full power, sole privilege and authority, that I, the said John Slater, my exors, adñors, and assigns, should and lawfully might, during the term of years therein mentioned, make,  
10 use, exercise, and vend, within England, Wales, and the Town of Berwick upon Tweed, my Invention of "AN IMPROVEMENT IN A STEAM BOILER AND APPARATUS FOR THE PURPOSE OF WASHING, CLEANING, AND WHITENING CLOATHS, CLOATHING, AND CLOTHS, AND FOR WARMING AND HEATING CLOSETS, LAUNDRIES, AND OTHER ROOMS BY SAME;" in which said Letters Patent there is contained  
15 a proviso that if I, the said John Slater, shall not particularly describe and ascertain the nature of my said Invention, and in what manner the same is to be performed, by an instrument in writing under my hand and seal, and cause the same to be inrolled in His Majesty's High Court of Chancery within six calendar months next and immediately after the date of the said Letters Patent,  
20 that then the said Letters Patent, and all liberties and advantages whatsoever thereby granted, shall utterly cease, determine, and become void, as in and by the same (relation being thereunto had) may more fully and at large appear.



*Slater's Improvements in a Steam Boiler and Apparatus for Washing, &c.*

NOW KNOW YE, that in compliance with the said proviso. I. the said John Slater, do hereby declare that my said Invention is described and ascertained in the Drawings hereunto annexed, and in the following description thereof, that is to say:—

A, in the annexed Drawing, represents the steam boiler as it appears when 5  
made complete and ready for fixing in the brick or masonry work, and which  
work or fixing is to be after the usual manner of fixing or setting common  
boilers or furnaces; the steam boiler represented by A, I make in the following  
manner, round, as is shewn by the Drawing, or of any other form or forms, and of  
any size or sizes as may be convenient, the steam boiler having a groove round its 10  
top part, with a hole in the groove through into the inside of the steam boiler,  
and which groove contains a loose metal ring covered with wadding, which ring  
and wadding are together fitted into the said groove and secured in their place  
by a pin or spike attached to the under side of the said metal ring, being placed  
in the hole in the groove, and on one side of the steam boiler near to its top is 15  
a projection made as represented by the letters H, H, in the Drawing, and  
which projection is open to the inside of the body of the steam boiler, but  
covered on its outward top part by a fast or closed lid, so as to cause the pro-  
jection to be covered independently of the steam boiler's lid or cover, which is  
a separate lid or cover, by which means the steam boiler may be used occa- 20  
sionally as a common boiler for ordinary purposes; and into and upon the said pro-  
jection of the said steam boiler are fixed the steam pipes and safety valve, and to  
the outward edge or edges of the steam boiler are attached ears or loops or fasten-  
ings made so as that all or any one or part of them may occasionally be moved,  
and which ears, loops, or fastenings receive and hold each an end of what I call 25  
bearing bars, and at the same time the other ends of the bearing bars having  
screws do with the screws together act and screw upon the lid or cover of the  
steam boiler, as shewn by letters I, I, I, in the Drawing, the said lid or cover  
resting upon the wadded ring, and thereby making the whole sufficiently steam-  
tight. Upon and into the before-mentioned projection on the side and near to 30  
the top of my steam boiler are fixed five steam pipes and a safety valve, but a  
greater or less number of steam pipes may be affixed or inserted as may be  
most convenient; and to the body of the steam boiler are attached two water  
cocks, one being placed above the other; the uppermost cock is for the purpose  
of drawing water off, so that the water in the steam boiler may not be higher 35  
than the level of the said cock, and the lower is for the purpose of proving that  
the water is not below the level of the said lowest cock, it being necessary that  
the water in the steam boiler should rise above the level of the lower cock



---

*Slater's Improvements in a Steam Boiler and Apparatus for Washing, &c.*

---

and be not much above the level of the upper cock ; and a pipe is fixed into or by the side of the barrel of the said lower cock for the purpose of supplying water to the lower part of the steam boiler from the reservoir, as shewn by letters G, G, in the Drawing, and from the before-named projection  
5 of the steam boiler the steam pipes (each of which has a cock or cocks attached) are to be conducted into tubs or any kind of vessels, closets, laundries, or other kind of rooms, to supply them with steam, heat, and hot water, as separately or jointly necessary for warming laundress rooms or closets, or vessels, and for washing, steaming, cleaning, or whitening of cloaths, clothing, or cloths.

10 The above-described steam boiler, together with its lid or cover ring, bearing bars, loops, fastenings or ears, screws, nuts, pipes, cocks, and pins or spikes, and also its projection, I make of iron or copper, or of any other metal or metals, the wadding of the ring excepted, which wadding is made of any soft or yielding substance proper for the purposes of wadding. The above-described steam  
15 boiler is to be set with a fire grate door and brickwork in the usual way of fixing common washing or brewing pans or boilers ; and from the projection of the above-described steam boiler are five steam pipes, which I make of copper or of any other metal or metals, one of the said steam pipes being brought to or having connection with the tub or other kind of vessel at or near to its  
20 bottom, as shewn by the tub marked B in the Drawing, and which is for the purpose of washing with steam, the said tub or vessel containing a loose drain to support the clothes, clothing, or cloths about two inches from the bottom of the tub or vessel, the lid or cover of which has an iron support on its top, which is acted upon by a screw on or near its centre from a bearing bar acting  
25 from loops or fastenings, which are fixed to the sides of the tub or vessel to make it sufficiently steam-tight ; the tub or vessel marked C is made and secured in the same manner as that marked B, and is for the purpose of boiling water in by the power of steam to wash with, and the tub or other vessel for the purpose of whitening clothes, clothing, and cloths, as marked D ; the  
30 steam from the steam boiler A, must act into in a similar way in which it acts into those marked B and C, the lid or cover being fastened down by loops or fastenings which are fixed near to the top of the said vessel, in the same manner as the lid or cover is fastened down upon the steam boiler A, and for a large sized vessel the screws and bearing bars represented by O must be used, and  
35 the said vessel is to be supplied with water from the reservoir in like manner as the steam boiler A is supplied. And for heating laundries or closets I make a frame resembling a common clothes horse, but made of hollow railles or tubes, into which the steam is conducted from the projection of steam

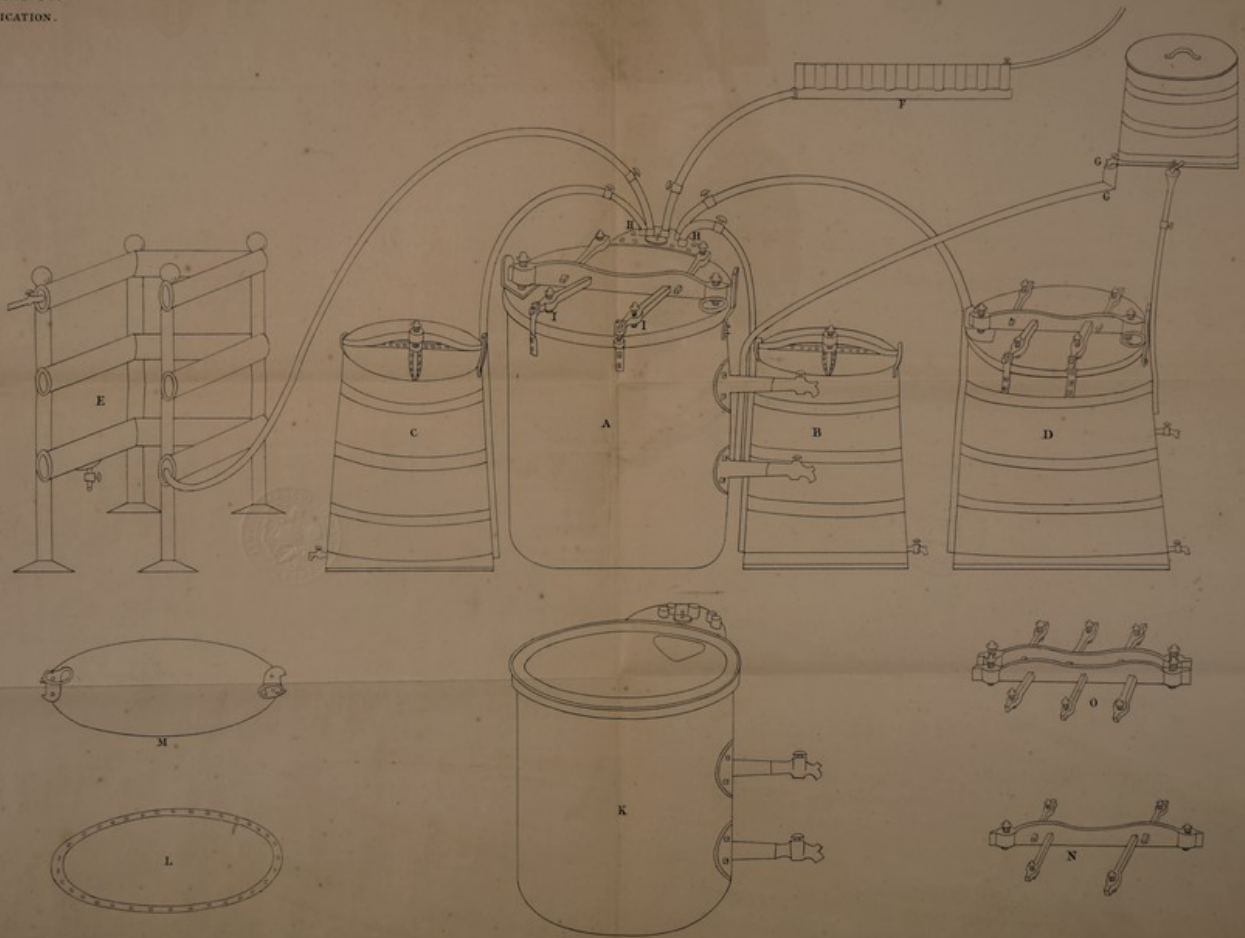


*Slater's Improvements in a Steam Boiler and Apparatus for Washing, &c.*

boiler A by a steam pipe, and which frame I make of any size as convenient for its situation, and it has a cock at its lower part for the purpose of drawing off condensed steam, and it has also a cock and small pipe at the top part to pass into the open air, or a chimney for the purpose of carrying off the cold air and to regulate the heat; the whole may be made of tin or copper or any other metal or metals. And for warming of rooms I make tubes represented by the Drawing F, the lower part of which is in an horizontal position, from which branch out upright tubes, at the top of which is a cock and small pipe to pass into the open air or into a chimney to carry off the cold air and to regulate the heat; and by the same means I warm or heat chimney pieces and ornamental furniture whereby rooms may be warmed. All the steam pipes from the projection of the steam boiler A have each a cock whereby to regulate the steam to any part or parts of or through the whole apparatus at the same time; and near to each end of each steam pipe, is what I call a moveable joint, which joint being made air-tight by having its parts ground one into the other, and thereby becoming a continued and regular steam pipe, may be separated at pleasure; by which means any part of the apparatus can be moved from the other part or parts thereof without inconvenience. A, the steam boiler complete ready for fixing. B, the tub or vessel for washing by steam. C, the tub or vessel for boiling the water for washing. D, the tub or vessel for whitening of clothes, clothing, or cloths. E, the frame for warming closets and laundries. F, the tubes for warming rooms. G, G, the reservoir and pipes for supplying cold water. H, H, the projection on the side of the steam boiler. I, I, I, the bearing bars and screws that act on the lid or cover of the steam boiler to make it steam-tight. K, the open steam boiler shewn without a cover. L, the metal ring for wadding. M, the steam boiler cover. N, the small size bearing bars and screws. O, the large and more powerful bearing bars or screws.

In witness whereof, I, the said John Slater, have hereunto set my hand and seal, this Sixth day of September, in the year of our Lord One thousand eight hundred and fourteen.

JOHN SLATER. (L.S.)

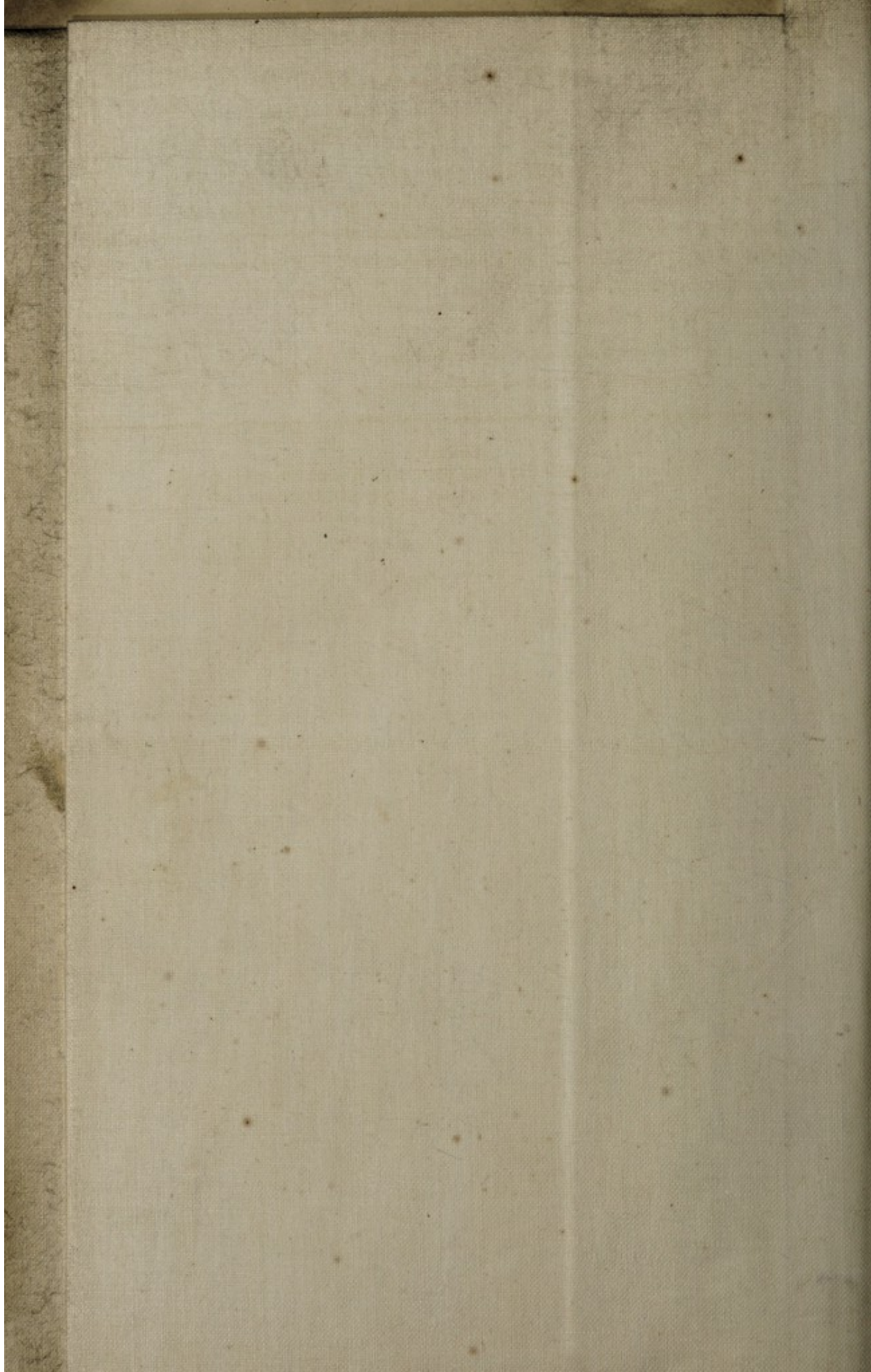


The enrolled drawing is referred.

LONDON: Printed by GEORGE EDWARD EYRE and WILLIAM SPOTTISWOODE,  
Printers to the Queen's most Excellent Majesty. 1814.

Maitly & Sons Lith.







---

*Slater's Improvements in a Steam Boiler and Apparatus for Washing, &c.*

---

**AND BE IT REMEMBERED**, that on the sixth day of September, in the year of our Lord 1814, the aforesaid John Slater came before our said Lord the King in His Chancery, and acknowledged the Specification aforesaid, and all and everything therein contained and specified, in form above written. And  
5 also the Specification aforesaid was stampd according to the tenor of the Statute made for that purpose.

Inrolled the Tenth day of September, in the year of our Lord One thousand eight hundred and fourteen.

---

LONDON :

Printed by GEORGE EDWARD EYRE and WILLIAM SPOTTISWOODE,  
Printers to the Queen's most Excellent Majesty. 1854.



...

...

...

...