

Specification of George Bodley : portable culinary stove.

Contributors

Bodley, George.

Publication/Creation

London : Queen's Printing Office, 1854 (London : George E. Eyre and William Spottiswoode)

Persistent URL

<https://wellcomecollection.org/works/urneq4pz>

License and attribution

This work has been identified as being free of known restrictions under copyright law, including all related and neighbouring rights and is being made available under the Creative Commons, Public Domain Mark.

You can copy, modify, distribute and perform the work, even for commercial purposes, without asking permission.



Wellcome Collection
183 Euston Road
London NW1 2BE UK
T +44 (0)20 7611 8722
E library@wellcomecollection.org
<https://wellcomecollection.org>



A D. 1802 N° 2585.

S P E C I F I C A T I O N

OF

GEORGE BODLEY.

—
PORTABLE CULINARY STOVE.
—

L O N D O N :

PRINTED BY GEORGE E. EYRE AND WILLIAM SPOTTISWOODE,
PRINTERS TO THE QUEEN'S MOST EXCELLENT MAJESTY:

PUBLISHED AT THE QUEEN'S PRINTING OFFICE, EAST HARDING STREET,
NEAR FLEET STREET.

Price 5d.

1854.





A.D. 1802 N° 2585.

Portable Culinary Stove.

BODLEY'S SPECIFICATION.

TO ALL TO WHOM THESE PRESENTS SHALL COME, I, GEORGE BODLEY, of Exeter, in the County of Devon, Iron Founder, send greeting.

WHEREAS His most Excellent Majesty King George the Third, by His Letters Patent under the Great Seal of His United Kingdom of Great Britain and Ireland, bearing date at Westminster, the Twenty-seventh day of February, in the forty-second year of His reign, did, for Himself, His heirs and successors, give and grant unto me, the said George Bodley, His special licence that I, the said George Bodley, my executors, administrators, and assigns, or such others as I, the said George Bodley, my executors, administrators, and assigns, should at any time agree with, and no other, from time to time and at all times during the term of years therein expressed, should and lawfully might make, use, exercise, and vend, within that part of the United Kingdom of Great Britain and Ireland called England, His said Majesty's Dominion of Wales, and the Town of Berwick upon Tweed, my Invention of "A CERTAIN PORTABLE STOVE OR KITCHEN FOR THE PURPOSE OF DRESSING VICTUALS;" in which said Letters Patent there is contained a proviso obliging me, the said George Bodley, by an instrument in writing under my hand and seal, particularly to describe and ascertain the nature of my said Invention, and in what manner the same is to be performed, and to cause the same to be inrolled in His said Majesty's High Court of Chancery within one calendar month next and immediately after the date of the said recited Letters Patent, as in and by the same, reference being thereunto had, will more fully and at large appear.

Bodley's Improved Portable Stove or Kitchen for Dressing Victuals.

NOW KNOW YE, that in compliance with the said proviso, I, the said George Bodley, do hereby declare that the nature of my said Invention consists in the mode of constructing the portable stove or kitchen, and the manner of communicating the heat to the oven and fountain, or hot closet, and that my said Invention, together with the manner in which the same is to be performed, are particularly described 5 and ascertained in and by the several Plans or Drawings hereunto annexed, marked respectively Figure 1, Figure 2, Figure 3, Figure 4, and the several explanations or descriptions thereof herein-after mentioned and referring thereto, that is to say:—

Figure 1 represents the view and external parts of a portable stove or 10 kitchen, which may be placed, as shewn, in a chimney. M, M, M, represent the mantle and jambs of the chimney; A, A, A, the front of the stove; B, B, the top of the stove, forming a hot plate; C, the door of the oven; D, blank door before a fountain or space for a hot closet; E, top of the fountain or hot closet; F, the cock of the fountain; G, the fire-place; H, the door for 15 introducing the fuel; I, the ash hole; K, the cover of the fire-place; L, L, L, holes with plates fitted to clean the flue. Figure 2 represents the internal parts of a portable stove or kitchen. A, the oven; B, the hot closet or space for the fountain, to which steamers may with great advantage be applied at discretion; C, the fire-place; D, the ash hole; E, E, the sides of the fire-place and ash 20 hole; F, F, F, F, the course or direction of the smoak and heat in the flue, which ascending from the fire passes over the oven, descends by its outer side, returns under the oven, the ash hole and fountain or hot closet, and ascends on the outer side of the latter through the upper part of the flue F into the chimney. Figure 3 represents the front and external parts of the stove without a fountain 25 or hot closet. A, A, the front; B, B, the top, forming a hot plate; C, the door of the oven; D, the fire-place; E, the door for introducing the fuel; F, the ash hole; G, the cover of the fire-place; H, H, H, places for cleaning the flue. Figure 4 represents the internal parts of Figure 3. A, the oven; B, the fire-place; C, the ash hole; D, D, the sides of the fire-place and ash hole; 30 E, E, E, E, the course and direction of the smoak and heat through the flue, by means of which the whole heat is conveyed, with the greatest advantage, in a single stream round the oven and fountain, or hot closet, as represented in Figure 2, or round the oven and under the ash hole, ascending through the upper part of the flue E into the chimney, as represented in Figure 4. The course of 35 this flue may be reversed, as will appear by comparing Figure 2 with Figure 4, the construction of some chimnies requiring such change of position. This portable stove or kitchen is made of cast iron plates, fixed together with wrought iron screws, or any other convenient fastenings, or it may be made wholly of

FIG. 3.

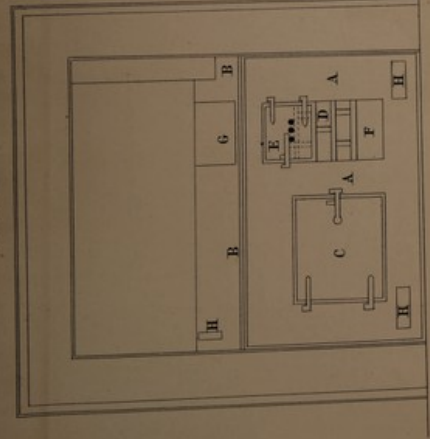


FIG. 4.

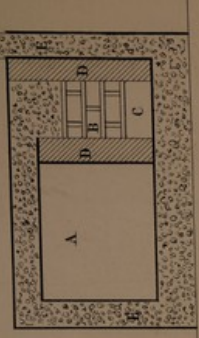


FIG. 1.

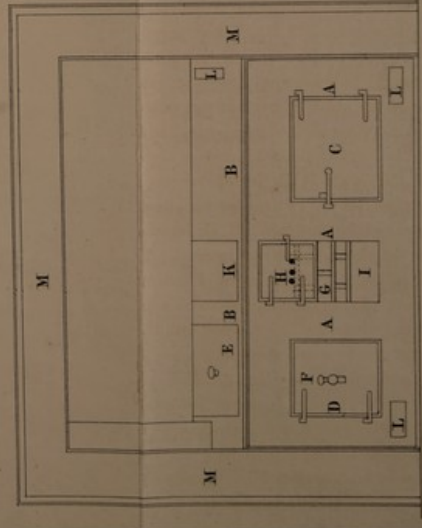
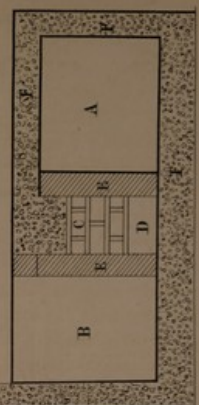


FIG. 2.

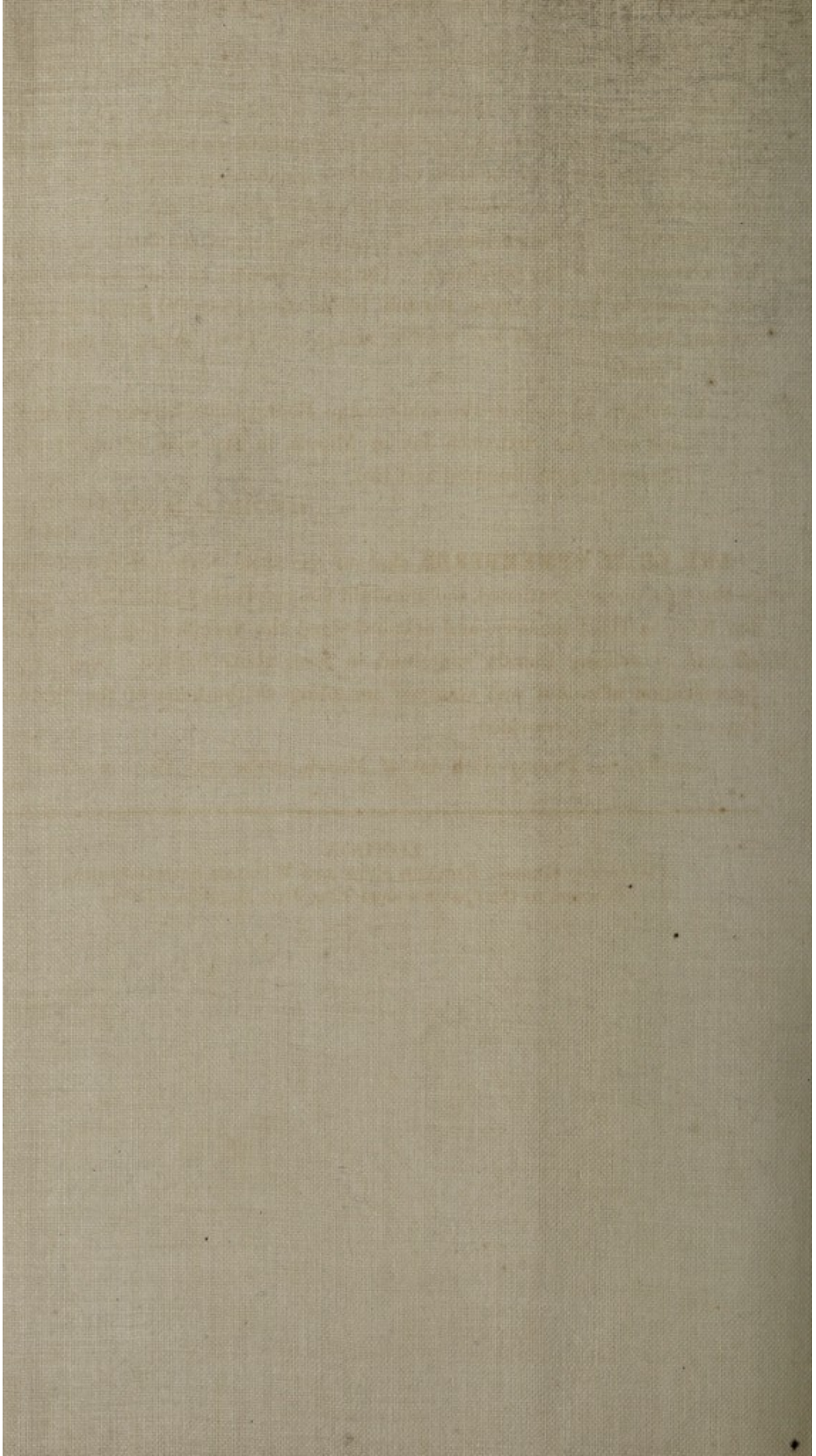


Scale of Feet

The engraved drawing is colored

Printed by GEORGE ERSKINE and WILLIAM NOTTENDON.
Printers to the Queen's most Excellent Majesty. 1802

Malby & Smalldale



Bodley's Improved Portable Stove or Kitchen for Dressing Victuals.

wrought iron, except the sides and back of the fire-place and sides of the ash hole, which are lined with brick or stone set in mortar or loam, and the external sides or ends and back of the stove or kitchen are also commonly made of wrought or cast iron, and when so made it may be used in the open air, or it may be fixed
 5 in a chimney. Its dimensions may be varied and made smaller or larger to suit the convenience of the purchasor. The meat dressed in this oven is equal if not superior in flavor to meat roasted before the fire in the common way; the cooking is attended with less trouble, and a very great saving is made in the article of fuel.

10 In witness whereof, I, the said George Bodley, have hereunto set my hand and seal, the Sixteenth day of March, in the year of our Lord One thousand eight hundred and two.

GEORGE BODLEY. (L.S).

AND BE IT REMEMBERED, that on the same Sixteenth day of March,
 15 in the year above mentioned, the aforesaid George Bodley came before our Lord the King in His Chancery, and acknowledged the Specification aforesaid, and all and everything therein contained, in form above written. And also the Specification aforesaid was stamped according to the tenor of the Statute in that case made and provided.

J. CAMPBELL.

20 Inrolled the Twenty-sixth day of March, in the year above written.

LONDON :

Printed by GEORGE EDWARD EYRE and WILLIAM SPOTTISWOODE,
 Printers to the Queen's most Excellent Majesty. 1854.

