

Specification of George Stratton : grate, range, or stove for economizing fuel, &c.;

Contributors

Stratton, George.

Publication/Creation

London : Queen's Printing Office, 1854 (London : George E. Eyre and William Spottiswoode)

Persistent URL

<https://wellcomecollection.org/works/yv349dfa>

License and attribution

This work has been identified as being free of known restrictions under copyright law, including all related and neighbouring rights and is being made available under the Creative Commons, Public Domain Mark.

You can copy, modify, distribute and perform the work, even for commercial purposes, without asking permission.



Wellcome Collection
183 Euston Road
London NW1 2BE UK
T +44 (0)20 7611 8722
E library@wellcomecollection.org
<https://wellcomecollection.org>



A.D. 1794 N° 1985.

SPECIFICATION

OF

GEORGE STRATTON.

GRATE, RANGE, OR STOVE FOR ECONOMIZING
FUEL, &c.

LONDON:

PRINTED BY GEORGE E. EYRE AND WILLIAM SPOTTISWOODE,
PRINTERS TO THE QUEEN'S MOST EXCELLENT MAJESTY:

PUBLISHED AT THE QUEEN'S PRINTING OFFICE, EAST HARDING STREET,
NEAR FLEET STREET.

Price 9d

1854.

30





A.D. 1794 N° 1985.

Grate, Range, or Stove for Economizing Fuel, &c.

STRATTON'S SPECIFICATION.

TO ALL TO WHOM THESE PRESENTS SHALL COME, I, GEORGE STRATTON, of Cheapside, in the City of London, Ironmonger, send greeting.

WHEREAS His most Excellent Majesty King George the Third did, by His Letters Patent under the Great Seal of Great Britain, bearing date at Westminster, the Seventh day of May, in the thirty-fourth year of His reign, give and grant unto me (together with Samuel Griswold Dorr, formerly of Albany, in America, but late of Walcot Place, in the Parish of Saint Mary, Lambeth, in the County of Surrey, Clothier) His especial licence that I, the said George Stratton, together with the said Samuel Griswold Dorr, during the term of years therein mentioned, should and lawfully might use, exercise, and vend, within England, Wales, and Town of Berwick upon Tweed, our Invention of "AN IMPROVED GRATE, RANGE, OR STOVE, WITH CERTAIN MACHINERY OR APPARATUS TO BE APPLIED THERETO, WHICH WILL EFFECTUALLY PREVENT ANY CHIMNEY FROM SMOKING, AND WILL DRESS AS GREAT A NUMBER OF DISHES IN ANY SPECIES OF COOKERY WITH ONE SMALL FIRE AS HATH HITHERTO BEEN DONE BY THE PRESENT MODES WITH SEVERAL FIRES, AND WITHOUT THE USE OF THAT NOXIOUS ARTICLE CALLED CHARCOAL, AND WHICH IS ALSO ADVANTAGEOUSLY ADAPTED FOR ALL THE OPERATIONS OF A WASH-HOUSE AND LAUNDRY, BEING FREE FROM DUST OR SOOT, AND A MUCH

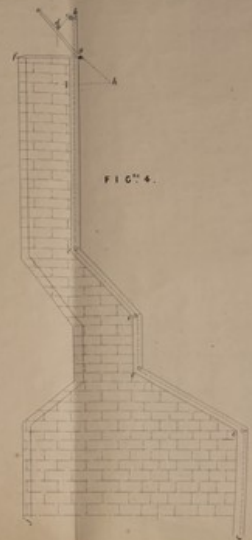
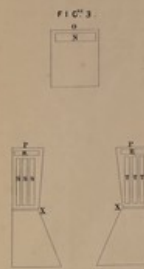
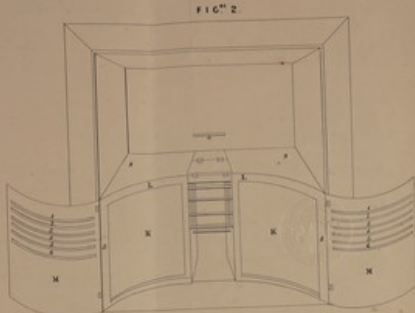
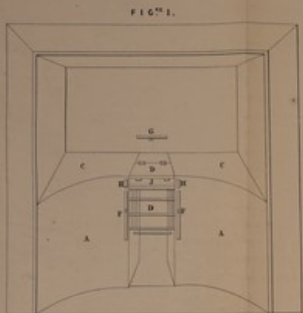
Stratton's Improved Grate, Range, or Stove for Economizing Fuel, &c.

GREATER DEGREE OF HEAT IS OBTAINED IN THE ROOM OR PLACE WHERE USED, AND EVERY PURPOSE FULLY ANSWERED, WITH MUCH LESS CONSUMPTION OF FUEL, AND LESS EXPENCE OF ERECTION, THAN HATH HITHERTO BEEN EFFECTED;" in which said Letters Patent there is contained a proviso obliging us, the said George Stratton and Samuel Griswold Dorr, by an instrument in writing under our hands and 5 seals, to cause a particular description of the nature of our said Invention, and in what manner the same is to be performed, to be inrolled in His Majesty's High Court of Chancery within one calendar month after the date of the said recited Letters Patent (as in and by the same, relation being thereunto had, may more fully and at large appear); and whereas since the passing of the 10 said Letters Patent, that is to say, on or about the Ninth day of May last, the said Samuel Griswold Dorr departed this life; and whereas I, the said George Stratton, have, since the passing of the said Letters Patent, tried various experiments on that part of the said Invention discovered and communicated by the said Samuel Griswold Dorr, consisting of machinery to 15 supply the place of a jack in the operation of roasting, but find that such machinery will not answer the intended effect; and whereas also, upon examining the Rolls of Specifications inrolled in His Majesty's High Court of Chancery, I, the said George Stratton, have found out and discovered amongst such Rolls the Specification of an Invention of principles exactly similar to 20 that invented by the said Samuel Griswold Dorr: For which reasons such part of the Invention is not claimed, and the description thereof is omitted.

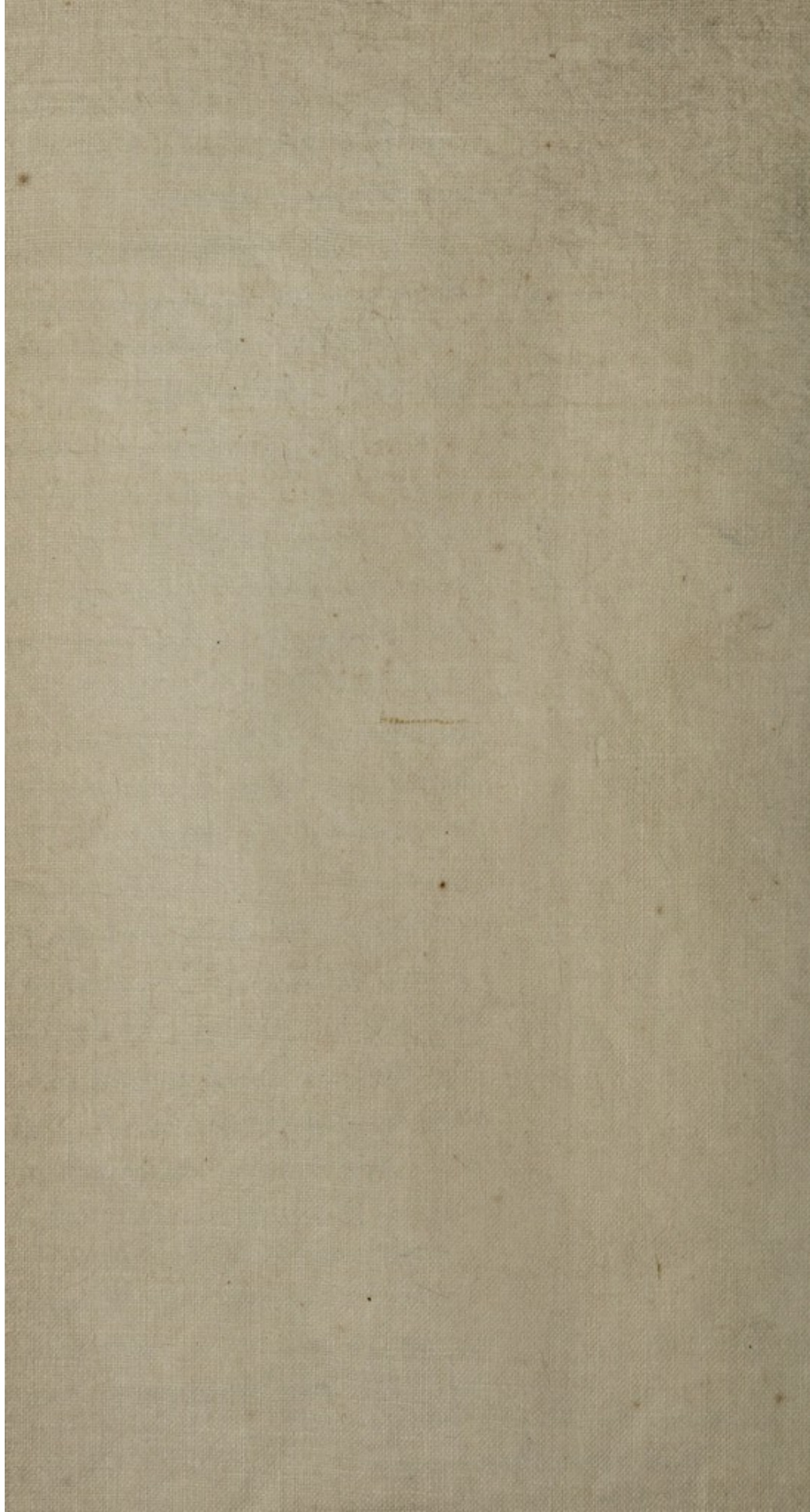
NOW KNOW YE, that in compliance with the before-mentioned proviso, I, the said George Stratton, do hereby declare that such part of the said Invention as belongs to and was discovered by me, is described in the plan or 25 Drawings and explanations thereof hereunto annexed.

In witness whereof, I, the said George Stratton, have hereunto set my hand and seal, this Seventh day of June, One thousand seven hundred and ninety-four.

GEORGE STRATTON. (L.S.) 30



The nature of this Invention is an improvement upon Fire places by which very great heat may be derived from a very small fire, by means of a flue or flues connected immediately with the fronts, the sides, the back, and if necessary, the bottom of such fire places or with any one of them as well as with the top. It contains also a contrivance for immediately extinguishing fire in Chimneys as will be hereafter particularly shown. viz: FIG. 1 is a front view of a range &c. fixed in a Chimney A.A. are the fronts upon the right and left hand side of the fire place. B. is the grate or fire place. C.C. is a plate which lays flat upon and entirely covers over the top. D. is a flue in the plate immediately over the fire place. E.F.G. and H.H. are registers or dampers. I. is a flue suspended to the top plate, and there may be a plate at the bottom which will serve as a fourth plate upon which the machine or stove may stand. FIG. 2 is another front view of a range &c. fixed in a chimney with the fronts A.A. FIG. 1, opened to show the front flues K.K. to brick work which when the Doors are shut is flush with the edge of the front flues or a Boiler or Bakers or an Oven or Stove or Iron or Stone or any other proper material may be used to fill the space instead of the brickwork. L.L. are flues proceeding from the top of each check, underneath the top plate to the Chimney. M.M. is the inside of the fronts A.A. FIG. 1. 1. 2. 3. 4. 5. 6. are the flues. FIG. 3 is the front view of the back and of the two checks of the grate or fire place. O. is the back and P.P. are the right and left hand checks. X. is an aperture in the back, and R.R. S.S.S. T.T.T. are apertures in the checks. This machine or stove may be made of wrought iron or of any other metal, or composition of metals or of stone or brickwork or of any other material, or artificial production that may be eligible or parts of one substance and parts of another. Its shape may be square, circular, semicircular, elliptical or any other equally or more convenient. And the size of the whole proportioned to the chimney or place in which it is intended to stand, and the size of the parts proportioned to the whole. If it is intended to be fixed as in the Drawing and the width of the whole stove to be four feet, each front may be nineteen inches and the fire place ten inches or any other proportion may be used according to the quantity of heat required. Instead of carrying the smoke and hot air &c. directly up the chimney as usual. They are by this invention carried through the apertures in the checks R.R. FIG. 3, to the flues L.L. FIG. 2, underneath the top plate, and likewise through the apertures, S.S.S. T.T.T. FIG. 3, to the flues 1. 2. 3. 4. 5. 6. FIG. 2, and thence through 5. 6. along the sides and then into the Chimney by a flue or flues in the most convenient place, or in any other way the workman may prefer. So that these flues may be carried over the whole or part of the inside of the fronts, sides, back, and if necessary underneath the bottom, afterwards up the back, and into the Chimney by a flue or flues in the most convenient place, or in any other way the workman may prefer. So that these flues may be carried over the whole or part of the inside of the fronts, sides, back, and if necessary underneath the bottom, afterwards up the back, and into the Chimney by a flue or flues in the most convenient place, or in any other way the workman may prefer. In the drawing there are six flues but if more eligible the same space may be divided into more or less than 6, or it may contain one only. The partitions forming the flues 1. 2. 3. 4. 5. 6. may be revolved on or cast to the fronts, sides, back, and if necessary the bottom, as well as the top, or formed by any other proper materials, in any other eligible mode. When heat is required from the sides as well as from the fronts and top the machine or stove may be fixed in the chimney flush with the back, leaving a sufficient space between each side of the machine or stove and each joint of the chimney. And if heat be required from the back, as well as from the fronts top and sides, the machine or stove may be made to stand out in the room building or place in the manner of a Brazier stove. Or in other case it may be placed in any other convenient situation. The fronts top sides and back may be made to open in the most convenient manner, either by means of hinges, centres or pivots in rollers or in any other convenient mode to clear the flues and ash pits. Or small doors may be made at convenient places in the fronts top sides and back, to open by the same means for the same purpose. Or if thought more eligible the whole may be fixed. The register G. FIG. 1 is intended to prevent a draft through the aperture X. FIG. 2. The registers H.H. FIG. 1 to prevent a draft through the apertures R.R. FIG. 3, and underneath the top plate L.L. FIG. 2, and the registers E.F. FIG. 1, to prevent a draft through the apertures S.S.S. T.T.T. FIG. 3, and so through those immediately connected with the fronts, sides, back and if necessary the bottom. Or registers may be placed in or in any other convenient part of the flues or in the chimney itself. In the above the whole of the machine or stove is described but the improvements in it consist in conveying the small hot air &c. through a flue or flues immediately connected with the fronts, sides and back, or any one of them as well as with the bottom. Amongst the advantages attached to this invention are 1st The great saving in the article of Fuel. For as the flame and hot air circulates through the flues of this machine, as before described, consequently heating it intensely, a very small fire will answer every purpose of a very large one in the common way. 2nd Its cleanliness, which arises from the flues being carried behind the back of chimney, and by a Register and Brickwork or other proper materials being placed from the inside of the breast of the Chimney to the back thereof. So that the whole is enclosed and the chimney has the appearance of a recess by which no dust or soot can fall upon the top plate C. and 3rd by its draft it will prevent the chimney from smoking. The next part of this Invention to be described is the mode of extinguishing fire in Chimneys. FIG. 1 is the section of a Chimney. a. is a plate of iron, copper or lead, or any other proper material fixed on one side of the chimney, to move up and down in a post and collar or centres, or upon hinges, or in any other convenient manner, and of a sufficient size to cover the aperture of the chimney. b. is a rod which may be made of iron, or of any other proper material, rising perpendicularly a sufficient height above the top of the chimney. c. c. c. c. are pulleys, through which a wire, string chain or other proper material may pass from the plate a. to which it is fixed at d, or at any other convenient place down the chimney to e, or any other convenient place, so that by tightening the wire or whatever other material may be used, the plate a. may be suspended between the rod b. and the top of the chimney f, or by becoming it sufficiently be made to fall down upon the top of the chimney, and should the chimney be on fire by obstructing the circulation of the air presently extinguishing it, which may likewise be effected by closing in the Registers at the bottom of the Chimney before described. Or the plate instead of being made to fall down upon, may lift up, or slide over the top of the chimney, or any other eligible mode may be used, and instead of pulleys, cranks may be used, and instead of being placed as in the Drawing they may be placed in any convenient part, and more or less may be used, as required, or instead of being suspended by the wire or other material passing through the pulley fastened to the rod, b. there may be a Lever fixed to the plate a. at g, which the dotted line g. h. represents to which the wire string or other material may be fixed at h, and after passing a hole in the Chimney pass through the pulley i down the chimney.



Stratton's Improved Grate, Range, or Stove for Economizing Fuel, &c.

AND BE IT REMEMBERED, that on the same Seventh day of June, in the year above mentioned, the aforesaid George Stratton came before our Lord the King in His Chancery, and acknowledged the Specification aforesaid, and all and everything therein contained, in form above written. And also the
5 Specification aforesaid was stamped according to the tenor of the Statute in that case made and provided.

Inrolled the same Seventh day of June, in the year above written.

LONDON :

Printed by GEORGE EDWARD EYRE and WILLIAM SPOTTISWOODE,
Printers to the Queen's most Excellent Majesty. 1854.

...the ... of ...
...the ... of ...
...the ... of ...
...the ... of ...
...the ... of ...
...the ... of ...
...the ... of ...
...the ... of ...
...the ... of ...
...the ... of ...

Printed by G. & J. ...
...the ... of ...