

An improved catamenial pad or appliance / [Charles Edward Cramp].

Contributors

Cramp, Charles Edward.
Fell & James.

Publication/Creation

Redhill : Printed for His Majesty's Stationery Office by Malcomson & Co., Ltd, 1901.

Persistent URL

<https://wellcomecollection.org/works/qr7q4bn7>

License and attribution

This work has been identified as being free of known restrictions under copyright law, including all related and neighbouring rights and is being made available under the Creative Commons, Public Domain Mark.

You can copy, modify, distribute and perform the work, even for commercial purposes, without asking permission.



Wellcome Collection
183 Euston Road
London NW1 2BE UK
T +44 (0)20 7611 8722
E library@wellcomecollection.org
<https://wellcomecollection.org>

N^o 18,553



A.D. 1900

Date of Application, 18th Oct., 1900

Complete Specification Left, 8th Feb., 1901—Accepted, 30th Mar., 1901

PROVISIONAL SPECIFICATION.

An Improved Catamenial Pad or Appliance

CHARLES EDWARD CRAMP 10 Denzil Terrace Westcombe Hill Blackheath London. S.E. Accountants Clerk do hereby declare the nature of this invention to be as follows:—

A loosely woven or knitted pad or appliance preferably of woollen yarn or
5 worsted of suitable dimensions to each end of which I introduce drawing strings or tapes and tie the ends to form loops, which serve two purposes—firstly the pulling of the said loops makes the appliance assume a semi-tubular or boat shape most comfortable for ladies to wear during the menstrual periods and possessing absorbing power of a surprising degree—secondly the said loops offer
10 a ready means of fastening the appliance to the usual suspender or band

Dated this Seventeenth day of October 1900

C. E. CRAMP.

COMPLETE SPECIFICATION.

An Improved Catamenial Pad or Appliance.

15 I, CHARLES EDWARD CRAMP, of 10 Denzil Terrace, Westcombe Hill, Blackheath, London, S.E. Accountant's Clerk, do hereby declare the nature of this invention, and in what manner the same is to be performed to be particularly described and ascertained in and by the following statement.

This invention relates to appliances used by women at their menstrual periods,
20 and is designed to provide an appliance which shall have the greatest absorbing qualities in the smallest size, shall be warm and comfortable without chafing to the wearer, and which, as a consequence of its attachment to the person, takes mechanically a boat or pouch shape, whilst for cleansing purposes on removal it may be returned to its original perfectly flat form, with its fibres as widely
25 separated as possible, which is most essential for a thorough and sanitary cleansing for further use.

Ordinary appliances for the purpose, such as cloths of diaper or similar material, have the following serious disadvantages; bad power of absorption, coldness to the person, bulky in volume, and tendency to chafe, by the said bulk, and by
30 the stiffening of the texture when in use. Those appliances of cotton, wool, or similar flocculent material have to be in whole or part destroyed by fire after once using.

Fig. 1 shows my improved appliance in its original flat form before or after use

Fig. 2 shows my improved appliance as it is drawn together in a boat or pouch
35 form when attached to the person

Fig. 3 shows diagrammatically a convenient mode of weaving the said pad.

I make the appliance or pad of loosely woven or knitted woollen yarn, worsted, or similar large sized and hairy strands or fibres, not closely woven into a texture, but chiefly of longitudinal and parallel strands *a* held together at intervals by

[Price 8d.]

Cramp's Improved Catamenial Pad or Appliance.

cross yarns *b*; or equivalently the strands may be loosely knitted together & the pad may be of any suitable size.

Through the looped ends of the longitudinal strands at each end I pass drawing cords *c* of the same woollen strands, or of string, or tape; and tie the ends of these drawing cords *c* to form endless loops.

When the pad is therefore to be applied it is convenient to attach the pad by the looped drawing cords *c* to the usual waist band or suspender. The pull upon the drawing cords *c* to attach the pad, draws the longitudinal strands *a* close together, to a closer absorptive surface, and causes the appliance to form a semi-tubular or boat shape.

This pad is most comfortable in wear, and possesses absorbing power to a surprising degree, and when removed for cleansing, at once it is returned to its original flat form, with all parts accessible for thorough sanitary cleansing.

The said pad may be conveniently woven in quantities in the following cheap and simple manner, which provides for the insertion of the drawing strings at the same time with the weaving of the body of the pad.

In producing the pad in a loom, the cross threads *b* may conveniently be the warp threads, and the outside threads of the warp would consist conveniently of several threads together, for the ultimate purpose of forming the loops *c* Fig: 1.

A pad *a* would then be loosely woven on the warp threads, and then a space left of unwoven warp *d* Fig: 3. When the length of warp is thus woven with alternating pads and spaces, the warp is cut, mid-way between the pads *a*, the adjoining ends of the warp threads *b* are tied, the outside threads *c* having their cut ends of such a length clear of the pad, so as to be brought together and tied to form the drawing and suspending loops *c*.

Otherwise, the pads may be loosely knitted, woven, or loosely made, in any way in separate pieces, and the drawing strings, tapes, or loops *c* may be afterwards introduced, with the same effect, producing an article within the scope of the present invention.

Having now particularly described and ascertained the nature of my said invention and in what manner the same is to be performed I declare that what I claim is:—

1st A catamenial pad or appliance formed of loosely woven, knitted or made up fibres, having a drawing string or tape at each end, substantially as described

2nd A catemenial pad or appliance formed of loosely woven, knitted or made up woollen fibres having drawing strings or tapes introduced through the ends of said body fibres to form loops at the ends of the pads, substantially as described

3rd A catamenial pad of rectangular form, formed of loosely woven knitted or made up woollen strands of large size, terminated at either end in loops, and having drawing strings or tapes passing through the loops of the longitudinal strands at either end, the drawing cords being themselves united into loops, forming attachments to a waist-band or suspender, and by the tension of such attachment, drawing the rectangular pad into an elongated pouch or boat shape, substantially as described

Dated this 7th day of February 1901

FELL & JAMES

Agents for the Applicant 1 Queen Victoria Street, London. E.C.

Redhill: Printed for His Majesty's Stationery Office, by Malcomson & Co., Ltd.—1901.



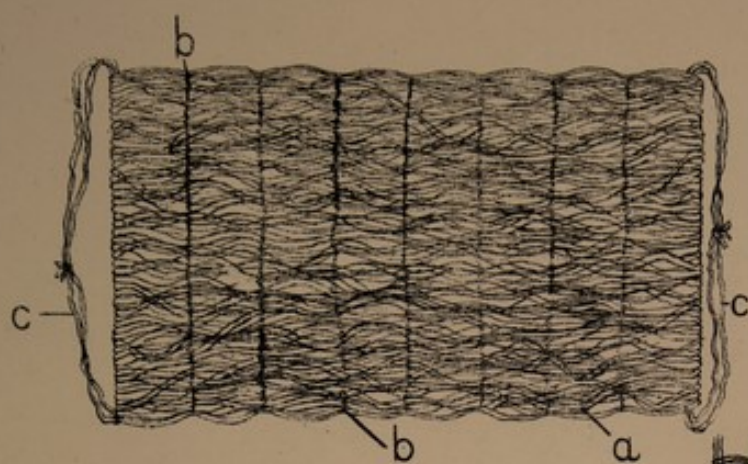


FIG. 1.

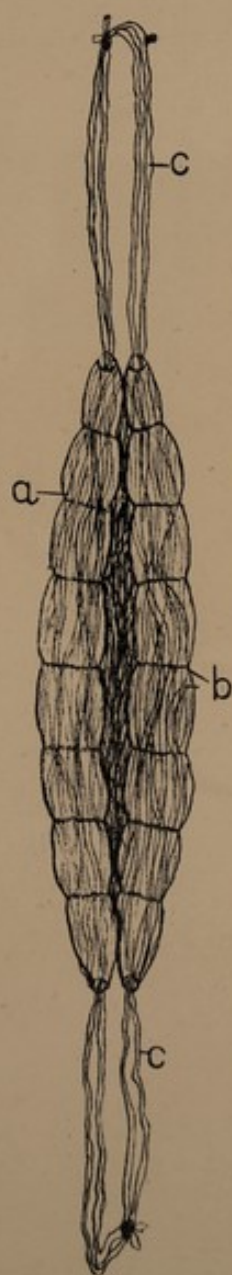


FIG. 2.

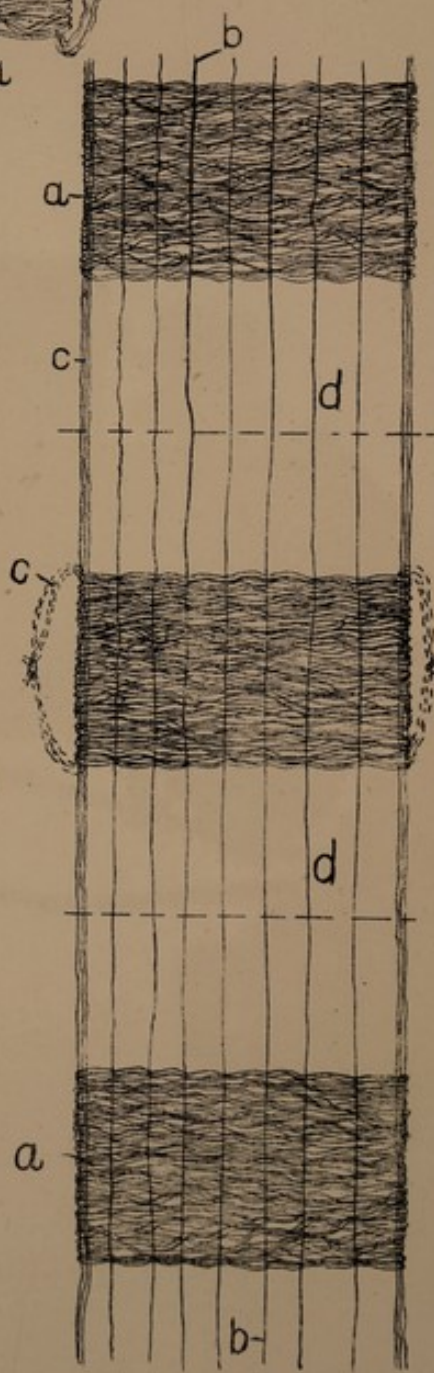


FIG. 3.

[This Drawing is a reproduction of the Original on a reduced scale.]

