

[E. & T. Pink's prices current]. No. 234, January 25, 1896 / E. & T. Pink. / E. & T. Pink.

Contributors

E. & T. Pink (Firm)

Publication/Creation

London : E. & T. Pink, 1896.

Persistent URL

<https://wellcomecollection.org/works/pzwc5exj>

License and attribution

This work has been identified as being free of known restrictions under copyright law, including all related and neighbouring rights and is being made available under the Creative Commons, Public Domain Mark.

You can copy, modify, distribute and perform the work, even for commercial purposes, without asking permission.



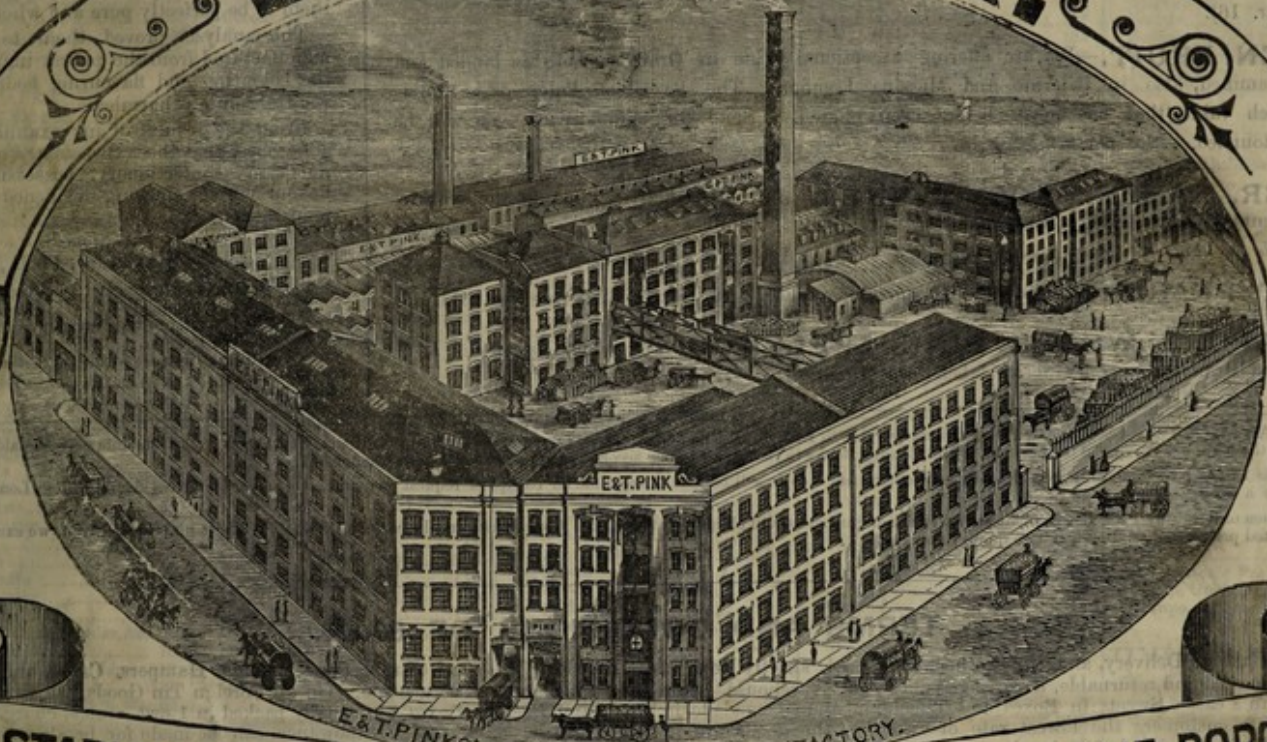
Wellcome Collection
183 Euston Road
London NW1 2BE UK
T +44 (0)20 7611 8722
E library@wellcomecollection.org
<https://wellcomecollection.org>

No. 234.

This Issue 9,000 Copies.

JANUARY 25, 1896.

E. & T. PINK.



STAPLE STREET

E. & T. PINKS' STAPLE STREET MANUFACTORY.

LONG LANE, BORO'

LONDON

Postal Address—LONDON, S.E.

Telegrams—PINK, LONDON.

Telephones—4509 and 4868.

Manufacturers of

**MARMALADE.
JAMS.
CONFECTIONERY.
JELLIES.
PICKLES.
SAUCES.
BOTTLED FRUITS.
CANDIED PEEL.**

&c., &c.

City Saleroom: 7, EASTCHEAP.

MANCHESTER EXCHANGE, F Row, No. 19,
TUESDAYS
BIRMINGHAM „ nearly opposite Carr's
Lane entrance, WEDNESDAYS
FRUIT PLANTATIONS: KINGSOWN, STANSTED, ASH
FARNINGHAM, AND FAWKHAM, KENT.

Bankers: London and Westminster, London and County,
and National Provincial Banks.

Wholesale Agents for Lea & Perrins'
Worcestershire Sauce, the Yorkshire Relish,
Mellor's Sauce, and Peneau's Sardines.

General Warehousemen
AND IMPORTERS OF

**SALMON.
LOBSTERS.
SARDINES.
OYSTERS.
CAPERS.
OLIVE OIL.
ANCHOVIES.**

&c., &c.

SPICE, RICE, AND GENERAL
PRODUCE MERCHANTS.

A careful perusal and comparison of Prices in this List will well repay the trouble,
as Buyers will find quotations much to their advantage.

SALMON.—Our stock of the Comet is all sold, but we have by the "Eudora," due here on Monday next, a consignment of New Season Red Alaska Moose Head Brand.

NEW MARMALADE.—The quality is perfection, and we quote at low prices for prompt delivery (see par. 1).

SWEETS.—We specially call attention to our prices for Boiled Goods, but every line quoted shows such good value that any competition is out of the question (see par. 16).

GREEN FRUIT.—We are offering exceptional value in Oranges, both as landed and examined, also in Palermo and Messina Lemons. The Parcel of Palermos at 6/6 is such value that has never before been offered. Send for sample case—you will be astounded. See par. 73.

PAPER, PAPER BAGS, TWINES, &c. particularly suited to the requirements of the Grocery trade, for very low prices. Samples on application. See pars. 115 to 117.

SPLIT PEASE.—We are offering splendid quality 3 qr. lots at 32/6 (see par. 31).

SINGAPORE WHOLE PINE APPLES.—We have added to our list Lyre Bird Brand. Very attractive label. See par. 68.

THE LABORATORY,

Bow & Bromley Institute, London, E.

November 9th, 1895.

I have submitted to a careful chemical analysis and dietetical examination various samples of Sweets manufactured by Messrs. E. & T. PINK, Staple St., Borough, and found them to be perfectly pure and wholesome.

The analysis proved them to have been manufactured from the purest ingredients, and the colouring and flavouring bodies employed were absolutely harmless.

From the results of my examination I am able to say that these Sweets are palatable and nutritious confectionery, possessing pleasant flavours and showing evidence of careful preparation.

(Signed)

JOHN GOODFELLOW, Ph.D., F.R.M.S.

Professor of Hygiene and Director of the Laboratory at the Bow and Bromley Institute, London.

Official Analyst to the International Confectioners' Exhibitions, London.

Consulting Chemist to the "Practical Confectioner and Baker."

PAYMENTS.—Cheques and Postal Orders payable to E. & T. PINK, and crossed "London and Westminster Bank, Southwark"; or amounts may be paid to any of the branches of the National Provincial or the London and County Banks to the Credit of our account at their head offices in London.

This List is posted monthly to our country customers, but a copy will be sent at any time on receipt of request for same. Our representatives should call on London customers at least once a week.

When ordering by Post, it will facilitate execution if customers will oblige by affixing the Conveyance and Price to all Orders. Where no price is given, we execute orders at our last quoted prices, and send best, if two qualities are quoted.

TERMS AND CONDITIONS OF SALE.

All Goods Cash on Delivery, and, if not otherwise quoted, strictly Nett. Jars, Bottles, Oil Cans, Citrate Bottles, Bags, Hampers, Casks, and all outside packages charged and returnable, if carriage paid to our Warehouse. Jam Tins not charged or returnable. On all Foreign Tin Goods, 2d. per dozen extra for less than a case; Sweets in Boxes and Tins, Jam and Marmalade in Tins, and Peel in Boxes, are usually packed in 1 cwt. crates, charged 3d. each. To secure to customers the lowest rate of carriage, the goods are not described as glass, and no allowance can be made for breakage. Goods are always ready for Carriers before invoices are posted. All the Railway Carriers, Grand Junction Canal, Stanton's and Harrison's Wharfingers collect from our Warehouses daily; but on goods ordered otherwise cartage is charged. We do not hold ourselves responsible for quality of proprietary articles, but will submit any complaint to the proprietors. On Foreign Canned Goods not bearing our name, there is no redress for quality. All case goods are examined before delivery, and all goods have gross weight marked on the packages. Customers are requested to weigh on receipt, otherwise claims for deficiency cannot be entertained. Onions and Green Fruits are sold with all faults. 3d. per cwt. charged for delivery to London customers within four miles, with an additional ½d. per cwt. per mile beyond that distance on original packages of Rice, Meal, Pease, Fruit, Onions, Corn, and Seed. Not more than 1/0 in bronze coin can be accepted in payment. In case of a reduction, goods of our own manufacture or bearing our label are charged at the list price at time of delivery, but on other goods we expect customers to take risk of any reduction in price.

The quotations in this List are the prices at which we are selling (to our regular customers) at the time of printing, but we do not bind ourselves to these figures for any stated time, neither do we undertake to sell any article in an unlimited quantity, but only so far as our stock may allow. These Conditions apply to all orders, whether sent by post or given to travellers.

ALLOWANCE FOR RETURNED EMPTIES BEARING OUR NAME ON BOTTLES OR LABELS.

(TO BE DELIVERED FREE AND IN GOOD CONDITION AT THE MANUFACTORY.)

1/3 per doz.	1/0 per doz.	10d. per doz.	8d. per doz.	7d. per doz.	6d. per doz.	2d. each.	5d. each.	9d. each.
4 lb. Citrate Bottles. Quart Stone Pickle Jars.	1 lb. Sweet or Sherbet Bottles. 4 lb. Stone Jars. 3 lb. Glass Jars. 3 lb. Stone Jars.	White Pots. Salt Jars without lids. 2 lb. Glass Jars.	Qt. Pickle Bottles. Qt. Jelly or Vinegar Bottles. 1 lb. Flint Glass Jars. Lime and Lemon Juice Quarts.	Glass Tumblers. Pint Pickle Bottles.	1 lb. Glass Jam Bottles. 1 lb. Stone Jam Jars. 1 lb. Tie-over Jars. ½ pint Pickle Bottles. Golden Syrup Bottles. Pint Jelly or Vinegar Bottles. Sauce, Olive, and Anchovy Bottles. Lime & L. Juice Pints. Fruit Bottles, not exceeding 1½ in. Mouths.	2 lb. Glycerine Bottles. 1 lb. Citrate Bottles. 2½d. each. 4 lb. Sherbet Bottles.	4 lb. Citrate Bottles. 6d. each.	1 gall. Cans or Bottles.
1/2 per doz.	11d. per doz.	9d. per doz.				3d. each.	9 lb. Glycerine Bottles. 7 lb. Castor Oil Bottles. ½ gall. Cans or Bottles.	Oil Drums 1s. per Gall.
2 lb. Salt Jars or Bottles. 2 lb. Sherbet or Drop Bottles.	2 lb. Flint Jars.	2 lb. Stone Jars.				Mustard Kegs. 2 lb. Castor Oil Bottles. 2 lb. Citrate Bottles.		

Allowance for returns not bearing our name, but exactly the same size, shape, and colour—3 lb. Glass Jars, 11d. per doz.; 2 lb., 9d.; 1 lb. Glass Bottles, 5d.; 1 lb. Tie-over Jars, 5d.; flints, 1 lb., 8d.; 2 lb., 11d.; pots, 10d. per doz.; 3 lb. stone, 10d.; 2 lb. stone, 8d.; 1 lb. stone, 5d. per doz.; Drop Bottles, 2 lb., 1d. each; Sherbet Bottles, 1 lb., ½d.; 2 lbs., 1d. each; 4 lbs., 2d. each. Fruit Bottles, not exceeding 1½ in. mouths, 6d. per doz. Lime or Lemon Juice Pints, 5d. per doz.; Quarts, 7d. per doz. Pickle Bottles, pints, 6d. per doz.; ½ pints, 5d. per doz. Quart Stone Jars, 1½d. each. Those having any other name impressed upon them, or that are not the same size, shape, and colour cannot be received.

RETURNS CANNOT BE CREDITED UNTIL ACTUALLY RECEIVED.

name of senders should be stated on direction card, and a post card sent to us advising same.

For Index—see page 3

2500351357

INDEX.

WELLCOME
LIBRARY

W.A. 695

1896

P 65 e

[illegible]

ILLUSTRATIONS OF FANCY PACKAGES.



BLACK GLAZED JUGS.

Marmalade	per doz.	9/4
Raspberry Flavour	"	9/4
Black Currant Flavour	"	9/4

Contains about 2 lbs.

EARTHENWARE PRINTED
JUG.

In various Colours. Cream Ground.

Marmalade	per doz.	6/11
Black Currant Flavour	"	6/11
Raspberry Flavour	"	6/11

Contains about 2 lbs.



ENGRAVED TUMBLER.

 $\frac{1}{2}$ Pint.

Marmalade	per doz.	3/1
Plum Jam	"	3/2

Contains about 13 ozs.



BUTTER COOLER.

Marmalade	per doz.	6/7
Plum Jam	"	6/8

Contains about 21 ozs.



GLASS SALT-CELLAR.

Marmalade	per doz.	1/8
Plum Jam	"	1/9

Contains about 5 ozs.



GLASS CUSTARD CUP.

Black Currant Jelly	per doz.	3/1
Red Currant Jelly	"	3/1

Contains about $3\frac{1}{2}$ ozs.OVAL GLASS BUTTER
DISH.

Marmalade	per doz.	5/8
-----------------	----------	-----

Contains about $1\frac{1}{2}$ lbs.

DECORATED TEA POT.

Marmalade	per doz.	10/9
Plum Jam	"	10/10

Contains about $2\frac{1}{2}$ lbs.

GLASS CREAM JUG.

Marmalade	per doz.	3/2
Black Currant Flavour	"	3/3
Raspberry Flavour	"	3/3

Contains about 9 ozs.



OVAL GLASS JELLY MOULD.

Apple Jelly	per doz.	6/5
Marmalade	"	3/9
Plum Jam	"	3/9
Apricot	"	4/1
Black Currant Flavour	"	3/10
Raspberry Flavour	"	3/10

Contains about 16 ozs.



GLASS PICKLE JAR.

Marmalade	per doz.	4/10
-----------------	----------	------

Contains about 11 ozs.

FLUTED
CHINA CUP AND SAUCER.

Marmalade	per doz.	5/6
Plum Jam	"	5/6

Contains about 13 ozs.



BROWN TEA POT.

Marmalade	per doz.	7/7
Plum Jam	"	7/8

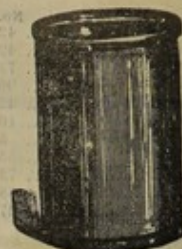
Contains about 2 lbs.



BOHEMIAN MUG.

Marmalade	per doz.	2/8
Plum Jam	"	2/8

Contains about 9 ozs.



FLINT GLASS JARS.

Marmalade	per doz.	1 lb.
Raspberry and Currant	"	2/8
Raspberry and Gooseberry	"	4/2
Black Currant	"	3/9
Red Currant	"	4/2
Damson	"	2/8
Raspberry	"	4/2
Apricot	"	3/1
Apricot Marmalade	"	3/3
Apple Jelly	"	3/10
Greengage	"	3/6
Strawberry	"	2/8
Plum	"	3/4
Gooseberry	"	3/6
Assorted	"	2/11
Blackberry	"	2/11
Blackberry and Apple	"	2/11
Strawberry and Plum	"	2/11
Raspberry and Apple	"	2/11

 $\frac{1}{2}$ PINT GOBLET.

Marmalade	per doz.	2/3
Raspberry Flavour	"	2/4
Black Currant Flavour	"	2/4
Plum Jam	"	2/3
Black Currant	"	3/6
Strawberry and Plum	"	2/6
Red Currant	"	3/4
Damson	"	2/3
Greengage	"	3/1
Raspberry	"	3/6
Gooseberry	"	2/11
Raspberry and Currant	"	3/4
Raspberry and Gooseberry	"	3/4
Apricot	"	2/11
Assorted	"	2/11
Blackberry and Apple	"	2/6
Blackberry	"	3/1
Raspberry and Apple	"	2/6

Contains about 13 ozs.



GLASS JUG WITH LIP.

Marmalade	per doz.	4/2
Black Currant Flavour	"	4/3
Raspberry Flavour	"	4/3

Contains about 18 ozs.



LARGE

GLASS SUGAR BASIN.

Marmalade	per doz.	6/4
Black Currant Flavour ..	"	6/5
Raspberry Flavour	"	6/5
Plum	"	6/4½

Contains about 1½ lbs.



SMALL

GLASS SUGAR BASIN.

Marmalade	per doz.	3/10
Black Currant Flavour ..	"	3/11
Raspberry Flavour	"	3/11

Contains about 14 ozs.



SAXON JUG (Earthenware).

Marmalade	per doz.	6/9
Plum Jam	"	6/9

Contains about 30 ozs.



REPUTED 1 lb. JARS

PRESERVED CHINA GINGER.

Cheong Kong, not caned down, per doz.	5/3
Ditto, caned as above	6/3



EARTHENWARE

(3 Gold Lines)

CUPS AND SAUCERS.

Marmalade	per doz.	3/9
Plum Jam	"	3/9

Contains about 11 ozs.



FLINT BOTTLES.

Cream Oil	per doz., Small	4/7
Salad Cream	"	4/6
Raspberry Vinegar	"	3/6

Contains about 6 ozs.



SQUARE GLASS JUG.

Marmalade	per doz.	4/1
-----------------	----------	-----

Contains about 13½ ozs.



OVAL BLACK GLAZED JUG.

Marmalade	per doz.	9/9
Plum Jam	"	9/9

Contains about 2 lbs.



GLASS TANKARD.

Marmalade	per doz.	4/1
Raspberry Flavour	"	4/2
Black Currant Flavour ..	"	4/2

Contains about 15½ ozs.



CHINA CUPS AND

SAUCERS.

Marmalade	per doz.	5/6
Plum Jam	"	5/6

Contains about 15 ozs.



QUART MAJOLICA JUG.

Marmalade	per doz.	9/11
Plum Jam	"	10/1

Contains about 4 lbs.



MALAKITE MUG.

Plum Jam	per doz.	—
Marmalade	"	3/10
Raspberry Flavour	"	3/11
Black Currant Flavour ..	"	3/11

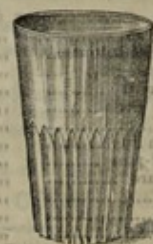
Contains about 13 ozs.



CELERY GLASS.

Marmalade	per doz.	8/1
Plum Jam	"	8/1

Contains about 2 lbs.



PINT TUMBLER.

POLISHED BOTTOMS.

Marmalade	per doz.	2/3½
Black Currant Flavour	"	2/4
Raspberry Flavour	"	2/4
Black Currant	"	3/6
Strawberry and Plum	"	2/6
Red Currant	"	3/4
Damson	"	2/3½
Greengage	"	3/1
Plum Jam	"	2/4
Raspberry	"	3/6
Raspberry and Currant	"	3/6
Gooseberry	"	2/11
Raspberry and Gooseberry ..	"	3/4
Apricot	"	2/9
Assorted	"	2/11½
Blackberry and Apple	"	2/6
Blackberry	"	3/1
Raspberry and Apple	"	2/6

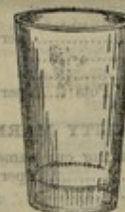
Contains about 13 ozs.

SMALL TUMBLER.

SAME PATTERN. POLISHED BOTTOMS.

Marmalade	per doz.	1/10
Red Currant Jelly	"	2/8
Black Currant Jelly	"	2/8

Contains about 5 ozs.



SODA TUMBLER.

Marmalade	per doz.	3/5
Plum Jam	"	3/6

Contains about 1 lb.



TABLE JELLIES.

½ pint Wide Mouth Glasses.

Flavoured	per doz.	7/0
Plain, without wine	"	6/6

1 NEW MARMALADE.

White Pots.....per doz.	2/6
1-pt. Goblets.....	2/3
Tumblers, polished bottoms...	2/3
" small "	1/10
" engraved "	3/1
" small Soda "	3/5
Tankards.....	4/1
Jug, Glass, with lip	4/2
" half-pint "	3/5
" square "	4/1
Pickle Jars	4/10
Cream Jugs	3/2
Sugar Basins	3/10
" large "	6/4
Butter Dishes, oval	5/8
" Cooler, hold about 21 oz. "	6/7
Jelly Moulds, oval.....	3/9
Earthenware Cups and Saucers,	
three gold lines	3/9
China Cups and Saucers	6/6
Russet Tobacco Jars, hold	
about 1 1/2 lbs. each	8/2
Flower Vases, hold about 1 lb. "	3/5
Malakite Mugs	3/10
Toby Glass Jugs, hold about 26 oz. "	6/3
Oval Russet Jugs	10/4
Round "	9/11
Bohemian Mug	2/8
Salt Cellars	1/8
Saxon Earthenware Jugs	6/9
Celery Glasses	8/1
Quart Pitcher Shaped Glass	
Jugs (decorated), hold about	
3 1/2 lbs. "	10/10
Quart Majolica Jugs.....	9/11
Fluted China Cups & Saucers	5/6
Jugs, printed pattern	6/11
" Black, glazed, abt. 1 pt. "	9/4
" Oval, Black, glazed, 1 pt. "	9/9
Tea Caddies, hold about 2 lbs. "	8/9
Decorated Teapots.....	10/9
Brown Teapots	7/7
1-lb. Flint Glass Jars	2/8
1-lb. Glass Jars	2/7
2-lb. "	4/6
3-lb. "	6/2
1-lb. Stoneware Jars.....	2/6
2-lb. "	4/4 1/2
3-lb. "	6/1
4-lb. "	7/8
3-lb. Tins	5/5
2-lb. "	3/10
7 or 14-lb. Jars	per cwt. 15/0
14-lb. Tins	15/8
7-lb. "	16/4
Lemon Marmalade Pots	per doz. 3/1

SECOND QUALITY MARMALADE.

Not bearing our name.	
7 or 14-lb. Jars	per cwt. 14/6
14-lb. Tins	15/2
7-lb. "	15/10
3-lb. "	per doz. 5/4
7-lb. Jars charged 3d.; 14-lb. Jars, 6d. each; Casks 6d.,	
and Cases 3d. each. Tins free.	

2 NEW JAMS.

White Pots.....per doz.	—
1-pt. Goblets.....	—
1-lb. Flint Glass Jars	—
1-lb. Stoneware Jars	—
2-lb. "	—
3-lb. "	—

White Pots.....per doz.	3/4
1-pt. Goblets.....	3/1
1-lb. Flint Glass Jars	3/6
1-lb. Glass Jars	3/5
2-lb. "	6/2
3-lb. "	8/10
1-lb. Stoneware Jars	3/4
2-lb. "	6/0 1/2
3-lb. "	8/8
7 or 14-lb. Jars, per cwt.	23/0
14-lb. Tins	23/8
7-lb. "	21/4

Raspberry	White Pots.....per doz.	3/11
Raspberry	1-pt. Goblets.....	3/6
and	1-pt. Tumblers,	
Currant	polished bottoms	3/6
	1-lb. Flint Glass Jars	4/2
	1-lb. Glass Jars	4/1
	2-lb. "	7/6
	3-lb. "	10/9
	1-lb. Stoneware Jars	4/1
	2-lb. "	7/4 1/2
	3-lb. "	10/7
	7 or 14-lb. Jars, per cwt.	29/0
	14-lb. Tins	29/8
	7-lb. "	30/4

Strawberry	White Pots.....per doz.	2/9
and	1-pt. Goblets.....	2/6
Plum.	1-pt. Tumblers,	
	polished bottoms	2/6
	1-lb. Flint Glass Jars	2/11
	1-lb. Glass Jars	2/10
	2-lb. "	4/11
	3-lb. "	6/8
	1-lb. Stoneware Jars	2/9
	2-lb. "	4/9 1/2
	3-lb. "	6/6
	7 or 14-lb. Jars, per cwt.	16/6
	14-lb. Tins	17/2
	7-lb. "	17/10

Plum	Id. Covered Tins, per grs.	8/0
	In 1/2 gross Wood Boxes.	
	White Pots.....per doz.	2/7
	1-pt. Goblets.....	2/4
	1-pt. Tumblers,	
	polished bottoms	2/4
	Do. do. engraved	3/2
	Butter Coolers.....	6/8
	Tumblers, Small	
	Soda	3/6
	Earthenware Cups	
	and Saucers, 3	
	gold lines.....	3/9
	China Cups and	
	Saucers	5/6
	Fluted China Cups	
	and Saucers.....	5/6
	Bohemian Mug	2/8
	Salt Cellars	1/9
	Saxon Earthen-	
	ware Jugs	6/9
	Quart Majolica	
	Jugs	10/1
	1 1/2-pt. Glass Tan-	
	kard Jugs, hold	
	about 2 1/2 lbs.	9/8
	Celery Glasses.....	8/1
	Quart Pitcher-	
	shaped Glass	
	Decorated Jugs,	
	hold about 3 1/2 lbs.	11/0
	Jelly Moulds, oval	3/9 1/2
	Brown Tea Pots.....	7/8
	Decorated "	10/10
	1-pt. Oval Black	
	Glazed Jugs	9/9
	Russet Tobacco Jars	
	hold about 1 1/2 lbs.	8/3
	Oval Russet Jugs	10/5
	Rnd. Russet Jugs	10/0
	Sugar Basins, large	6/4 1/2
	1-pt. Glass Jugs	3/5 1/2
	1-lb. Flint Glass Jars	2/8 1/2
	1-lb. Glass Jars	2/7 1/2
	2-lb. "	4/7
	3-lb. "	6/4 1/2
	1-lb. Stoneware Jars	2/6 1/2
	2-lb. "	4/5 1/2
	3-lb. "	6/2 1/2
	4-lb. "	8/1
	3-lb. Tins	5/7
	2-lb. "	3/11
	7 or 14-lb. Jars, per cwt.	15/6
	14-lb. Tins	16/2
	7-lb. "	16/10

Gooseberry	White Pots.....per doz.	3/2
	1-pt. Goblets.....	2/11
	1-pt. Tumblers,	
	polished bottoms	2/11
	1-lb. Flint Glass Jars	3/4
	1-lb. Glass Jars	3/3
	2-lb. "	5/11
	3-lb. "	8/6
	1-lb. Stoneware Jars	3/2
	2-lb. "	5/9 1/2
	3-lb. "	8/4
	7 or 14-lb. Jars, per cwt.	22/0
	14-lb. Tins	22/8
	7-lb. "	23/4

Blackberry	White Pots.....per doz.	2/9
and	1-pt. Goblets.....	2/6
Apple	1-pt. Tumblers,	
	polished bottoms	2/6
	1-lb. Flint Glass Jars	2/11
	1-lb. Glass Jars	2/10
	2-lb. "	5/0
	3-lb. "	6/11
	1-lb. Stoneware Jars	2/9
	2-lb. "	4/10 1/2
	3-lb. "	6/9
	7 or 14-lb. Jars, per cwt.	17/0
	14-lb. Tins	17/8
	7-lb. "	18/4

Damson and	1-lb. Glass Jars, per doz.	2/6
Apple	2-lb. "	4/5 1/2
	3-lb. "	6/3
	1-lb. Stoneware Jars	2/5
	2-lb. "	4/4
	3-lb. "	6/1
	7 or 14-lb. Jars, per cwt.	15/0
	14-lb. Tins	15/8
	7-lb. "	16/4

Red Currant	White Pots.....per doz.	3/7
Raspberry	1-pt. Goblets.....	3/4
and	1-pt. Tumblers,	
Gooseberry	polished bottoms	3/4
	1-lb. Flint Glass Jars	3/9
	1-lb. Glass Jars	3/8
	2-lb. "	6/8
	3-lb. "	9/10
	1-lb. Stoneware Jars	3/7
	2-lb. "	6/6 1/2
	3-lb. "	9/8
	7 or 14-lb. Jars, per cwt.	26/0
	14-lb. Tins	26/8
	7-lb. "	27/4

Damson	White Pots.....per doz.	2/6 1/2
	1-pt. Goblets.....	2/3 1/2
	1-pt. Tumblers,	
	polished bottoms	2/3 1/2
	1-lb. Flint Glass Jars	2/8
	1-lb. Glass Jars	2/7
	2-lb. "	4/5 1/2
	3-lb. "	6/3
	1-lb. Stoneware Jars	2/6
	2-lb. "	4/4
	3-lb. "	6/1
	7 or 14-lb. Jars, per cwt.	15/0
	14-lb. Tins	15/8
	7-lb. "	16/4

Apricot	White Pots.....per doz.	3/3
Marmalade	1-lb. Flint Glass Jars	3/3

Apricot	White Pots.....per doz.	3/0 1/2
	1-pt. Goblets.....	2/9 1/2
	1-pt. Tumblers,	
	polished bottoms	2/9 1/2
	Jelly Moulds, oval	4/1
	1-lb. Flint Glass Jars	3/10 1/2
	1-lb. Glass Jars	3/9 1/2
	2-lb. "	5/6
	3-lb. "	7/8
	1-lb. Stoneware Jars	2/11 1/2
	2-lb. "	5/4
	3-lb. "	7/6
	7 or 14-lb. Jars, per cwt.	19/6
	14-lb. Tins	20/2
	7-lb. "	20/10

ASSORTED JAMS.

1 1/2 Raspberry	White Pots.....per doz.	3/2 1/2
1 Blk. Currant	1-pt. Goblets.....	2/11 1/2
1 1/2 Raspberry	1-pt. Tumblers,	
& Currant	polished bottoms	2/11 1/2
1 1/2 Raspberry &	1-lb. Flint Glass Jars	2/11 1/2
Gooseberry	1-lb. Glass Jars	3/3 1/2
1 Red Currant	2-lb. "	6/0
1 Gooseberry	3-lb. "	8/7
1 1/2 Apricot	1-lb. Stoneware Jars	3/2 1/2
2 1/2 Plum	2-lb. "	5/10 1/2
1 Greengage	3-lb. "	8/5
1 Damson		

IMPERIAL JAM.

(Genuine.)

(Labelled THOMAS & Co.)

Raspberry or Black Currant Flavour.

White Pots	Per doz.	2/7
1-pt. Goblets		2/4
1-pt. Tumblers, plshd. bms.		2/4
Malakite Mugs		3/11
Tankards		4/2
Jelly Moulds, oval		3/10
Jugs, with lips		4/3
Cream Jugs, new pattern		3/3
Sugar Basins		3/11
" large		6/5
Jugs, Printed		6/11
Round pt. Black Glazed Jugs		9/4
1-lb. Glass Jars		2/8
2-lb. "		4/7
3-lb. "		6/5
1-lb. Stoneware Jars		2/7
2-lb. "		4/5 1/2
3-lb. "		6/3

7 or 14-lb. Jars	Per cwt.	15/6
14-lb. Tins		16/2
7-lb. "		16/10

3-lb. Tins	Per doz.	5/8
2-lb. "		4/0

	7 or 14-lb. Jars, per cwt.	14/0
	14-lb. Tins ...	14/8
	7-lb. " ...	15/4
Fruit	3-lb. " ...per doz.	5/4
Preserve	2-lb. " ...	3/11
	3-lb. Glass Jars	6/0
	3-lb. Stone "	5/10
	4-lb. " "	7/2
	Pitman's cans, abt. 3-lbs.	6/4

7-lb. Jars charged 3d.; 14-lb., 6d. each; Casks 6d. and Crates 3d. each. Tins free.

If less than a gross of 1-lb., 6 doz. 2-lb., or 4 doz. 3-lb., of Jam and Marmalade, 3d. per doz. extra; and if less than 1 cwt. 7-lb. and 14-lb. Jam and Marmalade, 2/0 per cwt. extra.

For 5 cwt. Jam and Marmalade, in 7-lb. and 14-lb., 3d. per cwt. less; 5 gross 3-lb. 1d. per doz. less, or 5 gross smaller packages, 1/4 per doz. less.

3 FRUIT JELLIES.

	1-Pots.....per doz.	2/3
	1 "	3/9
Blk. Currant	1 "	6/1 1/2
Red Currant	Custard Cups...	3/1
	Small Tumblers,	
	polished bottoms	2/8
	7-lb. Jars.....per cwt.	43/0

2/0 per cwt. extra for less than 1 cwt. in Jars.

Apple Jelly, Plain, Lemon or Orange—	
Oval Glass Jelly Moulds.....per doz.	5/5
1-lb. Flint Glass Jars	3/9 1/2
7-lb. Jars.....per cwt.	31/0

Apricot Pulp, 10-lb. Tins—	
10 Tins, in case, finest quality, per tin	1/4
" fine "	1/2
Less than a case, 3d. per tin extra.	

4 PICKLES.

(FINEST QUALITY.)

	Rnd. tall 1-pnt.	Rnd. pta.	Rnd. qts.
Per doz.	Per doz.	Per doz.	Per doz.

Mixed	4/2	6/6	12/0
Piccalilli			
Onions			
Gherkins			
Cauliflowers			
Walnuts			
Cabbage, New	1/9		7/0

PICKLES.

(Labelled THOMAS & Co.)

Mixed	16-oz.	per doz.	3/4
Piccalilli	Pints, rnd. or sq.		3/6
Cauliflower	Quarts		7/0
Onions, Walnuts and Gherkins, 3d. on pints; 6d. on Quarts, extra.			
Mixed	1/2	1/4	5/3
Piccalilli	1/3	1/5	5/6
Cabbage New	1/0	1/2	4/9
Onions	1/6	1/7	6/1
Walnuts	1/8	1/10	6/9

In Glass or Stone Jars, charged—gallons 6d. each, half gallons, 3d. each. Quarts free.
Bunged Jars, for Country, 1d. per Jar extra.

PICKLES.

(Labelled STAPLE, STRONG & Co.)

Mixed	16-oz., round or hexagon	per doz.	2/6
Piccalilli	20-oz., round pints		2/11
Cabbage	Quarts		5/8
Cabbage, in gal. Jars	per gal.		
Onions, Walnuts, and Gherkins 3d. on pints; 6d. on Quarts, extra.			
Less than a gross, 3d. per doz. extra.			
Less than 12 gallons, 1d. per gallon extra.			

4* CHUTNEY.

Bengal Club, reputed	1-pint	3/9
"	pints	7/0
"	quarts	10/0

5 SAUCES.

PINK'S RELISH.

Reputed 1-pints, per doz.	2/7 1/2	2/10 1/2
" pints	5/3	5/6

PINK'S OXFORD & CAMBRIDGE SAUCE.

Reputed 1-pints, doz.	3/6	Pints, doz.	6/0
-----------------------	-----	-------------	-----

WATKIN'S DIGESTIVE RELISH.

1-pints, per doz.	5/2 1/2	Pints, per doz.	8/9
-------------------	---------	-----------------	-----

LEA & PERRINS' WORCESTERSHIRE SAUCE.

Small, per doz.	9/6	Medium, per doz.	16/10
Large, per doz.	28/8		

Quantities of 3 doz. large, 6 doz. medium, or 12 doz. small, at Manufacturers' prices, viz.—large, 36/0; medium, 21/0; and small, 12/0 per doz., less 20 per cent. discount and an extra 2 1/2 per cent. discount. Packages charged, but returnable at same price. Carriage paid to any railway station in Great Britain. All packages to be returned to Worcester.

YORKSHIRE RELISH.

Per gross, small	48/0	49/4	50/8
large	96/0	98/8	101/4
For less than 1 gross, per doz. 4/3. Cases free.			
Carriage paid to any railway station in Great Britain, on 1 gross and upwards.			

ASSORTED SAUCES.

	1st quality.	2nd quality.
Per doz.	Per doz.	Per doz.
Reading		
Harvey		
John Bull		
Beef Steak	Reputed	
Browning	1-pints	3/6
King of Oude	pints	6/0
Ess. Anchovies	per gallon	4/6
Walnut Catsup	Rptd. 1-pints	3/6
India Soy, Old	pints	5/3
	per gallon	2/3

SAUCES—continued.

India Soy, in hoghead—	
New	per gall. 1/4
Old	1/7
Soy in hogheads is sold at the Wharf or Dock, and buyers have to pay loading charge, but the hoghead is free.	

Genuine Mushroom Catsup, 1st quality—	
Reputed 1-pints	per doz. 3/6
" pints	6/0
Per gallon	3/6

Catsup, 2nd quality—	
Reputed 1-pints	per doz. 2/6
" pints	4/0
Per gallon	2/6

Bottles charged—1 galls, 6d. each; 1-galls, 6d. each. First quality in round or flat bottles, as required.

1d. Bottles of Sauce—Harvey's Reading, Catsup, and Anchovy, extra large, 8/4 per gross. Less than 1 gross, 4d. per gross extra. Not less than 3 dozen of one kind supplied.

BURGESS' ESSENCE ANCHOVIES.

2 1/2 per cent. discount.	3 doz. Less quantity.
Reputed 1-pints	per doz. 9/6
	10/0

LAZENBY'S HARVEY'S SAUCE.

2 1/2 per cent. discount.	
Reputed 1-pints	per doz. 8/0
" pints	14/6
1 gross carriage paid and package free.	

MELLOR'S SAUCE.

Piquant (Green Labels outside).

Mild (Red Labels outside).

Equivalent to 1 gross small.

Small bottles	per doz. 4/1 1/2
Medium "	8/3
Large "	16/6
Equivalent to 3 gross small.	
Small bottles	per doz. 4/0
Medium "	8/0
Large "	16/0

For less than 1 gross:—

Small bottles	per doz. 4/2 1/2
Medium "	8/6
Large "	16/9
Carriage paid on 1 gross and upwards. Orders may be assorted with Crown Relish in any proportion.	
1 gross cases charged 6d. each; not returnable.	

MELLOR'S CROWN RELISH.

In parcels of 1 gross.

Reputed 1-pints	per doz. 3/0
Imperial "	4/1 1/2

In parcels of 3 gross.

Reputed 1-pints	per doz. 2/10 1/2
Imperial "	4/0

For less than 1 gross, 3d. per doz. extra.
Carriage paid on 1 gross and upwards. Orders may be assorted with Mellow's Sauce in any proportion.
1 gross cases charged 6d. each; not returnable.

For Bottled Fruits and Tomatoes, see page 12.

6 CAPERS.

	Capota.	Capucine.	Supr.	Xomp.
2-oz.per doz.	1/6	1/9	2/1	2/4
4-oz.	2/3	2/6	3/4	3/9
Rptd. 1-pint	3/6	4/0	5/0	5/6
" pints	6/6	7/3	9/6	10/6
Per lb.	0/5	0/6	0/8	0/11
Fines				per lb. 0/4

Jars charged and returnable. Gallons 6d. each, half-gallons 3d. each.

In Hogheads.

Fines	per cwt.	25/0
Capota	"	38/0
Capucine	"	44/0
Superfines	"	56/0
Nonpareils	"	90/0
If in barrels, about 1 cwt., 2/0 per cwt. extra.		

7 OLIVES.

French, reputed pints	per doz. 5/0
" " 1-pints	3/0
Spanish " pints	6/0
" " 1-pints	3/9

8 RASPBERRY VINEGAR.

Reputed 1-pints	per doz. 2/6
" 1-pints	3/6
" pints	6/0
" quarts	10/0
Flint bottles	3/6
per gall.	4/3

9 TABLE VINEGAR.

Malt Vinegar, Imperial quarts	per doz. 5/9
" " pints	3/2

This is the very finest Vinegar than can possibly be made.

Distilled Crystal Vinegar, same prices as above.

Table Vinegar, Imperial quarts

per doz. 4/3

Quarts 6d. per doz., and pints 3d. per doz. extra for less than equivalent to 6 doz. pints.

Vinegar in casks of 25 or 12 1/2 gallons each, No. 14, 6d.; No. 16, 7d.; No. 18, 10d.; No. 20, 1/1; No. 22, 1/4; No. 24, 1/9 per gallon. Casks charged.

1st qty. 2nd qty.
Chili Vinegar..... reputed— per doz.

Garlic 1-pints 3/6 2/3

Tarragon Vinegar pints 6/0 4/0

Eschalot " per gall. 3/3 2/4

10 ANCHOVIES.

Dutch, reputed 1-lb. bottles	per doz. —
French " 1-lb. "	4/6
Gorgona " 1-lb. "	7/0
" " 1-lb. "	13/0
" " in drums, about 1 1/2 cwt.,	
gross weights	per cwt. 80/0
French, barrels about 100 lbs.	32/0
Spanish " " "	32/0

11 LIME & LEMON JUICE.

West India Lime Juice—	
Reputed quarts	per doz. 5/6
" pints	3/3
In stone bottles, filtered	per gall. 1/9
In puncheons, as imported	1/3
In 12 1/2-gall. casks	1/6
Lemon Juice, English, our squeezing—	
Reputed quarts	per doz. 5/6
" pints	3/3
Stone bottles, filtered	per gall. 1/8
12 1/2-gall. casks, not filtered	1/6
Pipes	1/5

Bottles and Casks charged.
1d. per doz. extra for less than 6 doz. quarts or 12 doz. pints.

LEMON SQUASH.

Reputed pints	per doz. 3/9
" quarts	6/0
Labelled THOMAS & Co.	
Reputed quarts	per doz. 5/3

LIME JUICE CORDIAL.

Reputed pints	per doz. 4/0
" quarts	6/0
In 25 gallon casks	per gall. 2/6
In stone bottles	2/9
Casks and stone bottles charged.	
Lime and Lemon Juice should be kept in a cool place, and not exposed to the sun.	

12 ICING AND CASTOR SUGAR.

2 cwt. bags, resifted, cwt.	15/9	16/3	18/9
-----------------------------	------	------	------

If not resifted, 3 bags, per cwt. 14/4 1/2.

Less than 3 bags, per cwt. 15/4 1/2.

Castor, French, 2 cwt. bags ...per cwt. 14/10 1/2

" German " " " " " " 14/3

Less than 1 bag, 1/8 per cwt. extra.

Delivery in London charged.

13 CURRY POWDER.

1-oz. packets, in cardboard boxes, per lb.	2/0
2-oz. bottles	per doz. 2/9
3-oz. "	3/9
5-oz. "	6/0
10-oz. "	9/6
1-lb. tins	per lb. 1/0
4 or 7-lb. tins	0/11
Paper parcels	0/10
1d. packets, 1 gross boxes	per gross 5/3
" 3-gross boxes	per box 2/9
Second quality, 7-lb. tins	per lb. 0/8
Paper parcels	0/7

14 CANDIED PEEL.

	7-lb. boxes	56-lb. cases
Lemon, best	per cwt. 24/0	23/0
" broken	21/0	20/0
Orange, best	21/0	23/0
" broken	19/0	18/0
Citron, best	44/0	43/0
" small	40/0	39/0
" very extra large	47/0	46/0
Mixed—Orange, Lemon and Citron	30/6	29/6

PEEL, in 1-lb. Boxes.

Orange per doz. 3/5

Lemon 3/5

Citron 5/4

Mixed 4/0

Turned down Candied Peel can be supplied at 2/0 per cwt. extra.

Drained Peel, for Confectioners' use, same price as Candied; or in 1 cwt. cases, same price as 56-lb. cases.

Less than 1 cwt., 2/0 per cwt. extra. 1 cwt. or more Cut Peel for Confectioners, Orange or Lemon, in 1 cwt. cases, same price as Candied in 56-lb. cases.

Casks for Drained Peel are charged 6d. each, and not returnable.

Mixed and Broken Peel cannot be supplied cut.

15 TABLE JELLIES.

In Bottles.
Prepared for immediate use.

Flavoured with Wine.

Calf's Foot	Quarts	per doz. 16/0
Lemon	Pints	9/0
Orange	1-pints	5/9
Noyeau	1-pints, wide mouth	7/0
Vanilla	Glasses	5/9
Madeira	1-pint wide mouth Glasses	5/9

Without Wine.

Quarts	per doz. 12/9	
Calf's Foot	Pints	7/6
Lemon	1-pints	4/9
Orange	1-pints, wide mouth	6/6
" Glasses	5/9	
1-pint wide mouth Glasses	4/9	

PACKET TABLE JELLIES.

In wood boxes (with handsome label), holding 3 doz. pints or 6 doz. 1-pints.

Smaller quantities in paper parcels.

Black Currant, Red Currant, Calf's Foot

Lemon, Orange, Noyeau, Vanilla, Rasp-

berry, Pineapple, Tangerine, Champagne,

Madeira, Punch, Apricot, Cherry and

Strawberry—

Quart size..... per doz. 4/6

Pint size..... 2/4

1-pint size..... 1/3

The same Jelly in bulk for Confectioners' use..... per cwt. 42/6

Not less than 7 lbs. of any one flavour supplied.

Blanc Marge in packets, Almond, Lemon,

Raspberry, or Vanilla flavour—

Quart size..... per doz. 4/6

Pint size..... 2/4

1-pint size..... 1/3

For Index—see page 3.

LOZENGES (unstamped)—continued

Any Goods quoted in 7-lb. boxes can be supplied in 4-lb. boxes at 2/6 per cwt. extra.

GELATINE SUGAR GOODS.—contd.

Crystallized Gums	7-lb. boxes	29/0
Gum Dates	50-lb. cases	39/0
Jube Cuttings	7-lb. boxes	24/0
Rose and Lemon Jubes	per cwt. No. 1, 33/0; No. 2, 30/0	
Jube Delight	7-lb. boxes	25/0
Special Pastilles	56-lb. cases	20/0
"	7-lb. boxes	21/0
Orange Pastilles	7-lb. boxes	18/0
Bogie Babies	7-lb. boxes	24/0
Fruit Pastilles, made from fresh fruit	7-lb. boxes	37/0
Apricot Pastilles, Crystallized		40/0
Camberwell Babies		27/0
Coloured Pigs		27/0
Berkshire Pigs, Crystallized		24/0
Clear Liquorice Jujubes	7-lb. boxes	26/0
Imitation Gums		19/0
"	fancy shape	23/0
Barnum's Elephants		28/0
Nonpareil Pastilles		20/0
Voice Jubes		40/0

SUNDRIES.

Nut Fondants	4-lb. boxes	35/0
French Fondants, No. 1		38/0
Princesses Fondants		38/0
"Noix de Coco" Creme		34/0
Chocolate Macaroons	7-lb. boxes	36/0
Swiss Fondants, all shapes, assorted	7-lb. boxes	27/6
Acidulated Pyramid Jellies	4-lb. boxes	40/0
"	Raspberry Jellies	40/0
"	Strawberry Jellies	40/0
"	Fondant	40/0
Fondant Cream Paste, for decorating		
Cakes, in 7-lb. tins (tins free)		29/0
Almonds and Raisins	7-lb. boxes	32/0
Cocoa Nut Jube	7-lb. boxes, No. 1	31/0
"	No. 2	28/0
Chocolate Cream Chips	7-lb. boxes	36/0
Primrose Jellies, a very attractive sweet in	7-lb. boxes, per cwt. 30/0, or if 5 cwt. 29/0	
English Fruits	4-lb. boxes	44/0
Japanese Naggets	7-lb. boxes	36/0
Liquorice Pastilles		24/0
Turkish Delight		32/0
Fruit Macaroons		28/0
Apricot		36/0

NEW GOODS.

Mixed Comfits	7-lb. bags	per cwt. 22/0
Football Mixture	6-lb. glass jars	
"	or 7-lb. tins	21/0
Nut Toffee	7-lb. tins	20/0
Xmas Mixture	4-lb. glass jars	23/0
"	7-lb. tins	23/0
Toffee Rock	7-lb. tins	18/6
"	2-lb. bottles	per doz. 6/0
Wild Strawberries	7-lb. boxes	per cwt. 28/0
"	screw top bds. 4d.	prdz. 2/6
"	"	6d. 4/0
Fizz Balls	1-lb. bottles	per doz. 4/0
Sherbet Twist	1 1/2-lb. jars	4/3
Mixed Boiled Sweets, in 1-lb.	bottles (bottles free)	3/6
Mikado Mixtures, same size bds.		
"	containing 14 oz.	3/5
Sultana Comfits	7-lb. boxes	per cwt. 30/0
Cut Rock	7-lb. tins	20/6
"	2-lb. bottles	per doz. 6/2
Black Currant Crescents	4-lb. bxs. per cwt.	28/0
Jubes	7-lb. boxes	23/0
Egg Almonds, various flavours	7-lb. boxes	30/0
Queen's Twist	1 1/2-lb. jars	per doz. 4/0
"	6-lb. tins	per cwt. 19/0
Mikado Mixtures	1 1/2-lb. bottles	per doz. 4/3
"	7-lb. tins	per cwt. 17/0
Barley Sugar	1 1/2-lb. jars	per doz. 5/0
Sugar Sticks		5/0
Marzipan Walnuts	4-lb. boxes	per lb. 0/7
Butter Scotch	1/2 d. cakes, 1-gross	
"	boxes	per gross 4/6
Praline Rock		4/6
Almond		4/6
Everton Toffee		4/6
Caramels, a delicious sweet, packed in	4-gross boxes	per box 4/6
Ditto, No. 2	7-lb. boxes	per cwt. 35/0
"	Unwrapped	25/0
Medicated Cough Tablets	2-lb. bottles	per doz. 10/3
Liquorice Jujubes	7-lb. boxes	per cwt. 20/0

SPECIAL LINES.

1/0 Thick Mints, stamped extra strong, in 56-lb. cases or barrels,	per cwt. 23/6
In 7-lb. boxes	24/6
Oval Cough Lozenges, stamped "Cough no More," in 56-lb. cases or barrels, or 7-lb. parcels	per cwt. 20/6
Mixed Lozenges, 6d. size, in barrels only	per cwt. 23/6
The following are in 7-lb. free tins—	
Striped Mint Bulls' Eyes	per cwt. 15/0
All sorts, part brown sugar goods	14/0
No. 3 Mixed Drops	14/9
No Acids.	
Crystallized Pears, Pine Apples, Mixed Fruits, Raspberry	
Shapes, Love Hearts or Tablets	per cwt. 16/6
Wagga Toffee	19/0
Light Bulls' Eyes	16/6

SUGAR CANDY.

Boxes, about 35-lb. each.	
Pale	10 Boxes 16/6, Less quantity 17/0
Straw	16/9 17/3
Light Brown	17/9 18/3
Dark	18/6 19/0
White	15/6 16/0
White, very fine	18/6 19/0
Alum White	22/0 22/6
Pink	23/6 24/0

17 GLUCOSE.

44 per cent. "Buffalo H.," finest quality,	per cwt. 7/10
44 per cent. Chicago xxx	7/7
5-cwt. casks, at 4/haft.	
Delivery in London charged. If less than 5 casks, 6d. per cwt. extra.	

18 DESICCATED COCOANUT.

FOR MANUFACTURING PURPOSES.	
Granulated, No. 1	per lb. 0/3
Long Strips, No. 1	0/3
1/2 lb. extra for less than a chest.	
In chests of about 100 lbs.	
Ceylon Cocoa Nut, as imported, in chests of about 1 cwt.—	
Long Strips	per cwt. 30/0
Medium	28/0
Fine	29/6
Flake	30/0
Coker Nut Chips, either pink or white in 5-lb. boxes, per lb. 3 1/2 d., if 1 cwt. 3 1/2 d.	

19 SWEETMEATS.

CALLARD & BOWSER'S.	
Boxes containing 1 doz. 6d., or 2 doz. 3d.	
Butter Scotch	per box 4/3
Everton Toffee, in tin boxes	4/3
Almond Rock	4/3
Everton Toffee, in boxes, containing 72 1d. pieces	3/9
Praline Rock, in boxes, containing 72 1d. pieces	3/9

20 OILS.

SALAD AND OLIVE OIL.	
Sublime Salad, full size	8/0 8/3 8/4
Extra Sublime Salad, full size	10/7 10/8 10/10
Sublime Olive, full size	14/6 14/7 14/9
Pink's Cream Olive, full size	16/0 16/1 16/3
E. & T. Pink's Cream Pyramids (Olive), full size	16/0 16/1 16/3
All 1/2-chests Oil examined and made perfect before delivery	
Olive Oil in bottles	per gall. 5/0
" in pipes	4/6
" in 4-casks	4/9

FINEST BUTI LUCCA OIL.

GUARANTEED GENUINE OLIVE.

Flint bottles, reputed 1/2-pints, per doz.	4/6
Stopped	7/6
"	quarts 14/0
Spiral stoppered	2/6
"	1-pints 4/0
"	2-pints 7/6
"	quarts 13/0
Stone bottles	per gall. 6/6
4-casks	6/3
Pipes	6/0
For less than 6 doz. bottles, 1d. per doz. extra.	

SALAD OIL.

Labelled THOMAS & Co.

Stopped reputed 1/2-pints	per doz. 2/3
"	1-pints 3/5
"	quarts 5/8
"	10/6
In stone bottles	per gall. 3/0
In casks, about 36 gallons each	2/9
Olive Oil is sold as pure. Salad Oil is not pure Olive Oil	

HAIR OIL.

Highly scented, reputed 1/2-pints, per doz.	2/4
"	1-pints 3/8
"	tall 5/3
"	quarts 6/6
Pints, Imperial	5/4 1/2
Quarts	7/9
For less than 6 doz. bottles, 1d. per doz. extra.	
1d. bottles, in 3-doz. boxes	per gross 6/9
Panel bottles, in 3-doz. boxes, small	9/0
Less than a gross, 6d. per gross extra.	

In cans	per gall. 2/11
If 12 gallons or more	2/10
In cans, not scented	2/7
If 12 gallons or more	2/6
For less than 6 doz. bottles, 1d. per doz. extra.	
1-gallon cans charged 9d. each, 2-gallons 1s. 6d. each, 1-gallon bottles 9d. each, 2-gallon bottles 6d. each. Drums, 4 to 12 gallons, 1/0 per gallon, and returnable at same price if in good condition.	
Compound Scent for Hair Oil, per lb. 4/0 & 5/0	

COD LIVER OIL.

FINEST NORWEGIAN.

Reputed 1/2-pints	per doz. 2/10
"	1-pints 3/9
"	quarts 7/3
"	10/9
Per gallon	7/6
For less than 4 doz. bottles, 1d. per doz. extra.	

CASTOR OIL.

BEST MEDICINAL.

Reputed 1/2-pints	per doz. 2/0
"	1-pints 3/3
"	quarts 5/6
"	8/6
In 2d. phials, 4-doz. boxes	per gross 8/6
For less than doz. bottles, 1d. per doz. extra.	
In 2-lb. blue bottles	per lb. 0/4 1/2
Bottles charged 3d. each	
In 7-lb. blue bottles	0/4
Bottles charged 6d. each	
In original tins, about 45-lbs.	0/3 1/2

COCOA NUT OIL.

Reputed 1/2-pints	per doz. 3/11
"	pints 5/9
"	quarts 10/0
For less than 4 doz., 1d. per doz. extra.	

COLZA OIL.

Best English, in pipes (100 galls.)	per gall. 1/11
"	hhd. (45 galls.) 1/11 1/2
"	4-casks (25 galls.) 2/0
"	cans 2/1 1/2
"	2/5

COTTON OIL.

Extra refined, pipes	per gall. 1/7
"	hhd. 1/8
"	4-casks 1/10
"	cans 2/2

VEGETABLE OIL.

Finest refined, pipes	per gall. 1/9
"	hhd. 1/10
"	4-casks 2/0
"	cans 2/4

HARNESS OIL.

Harness and Boot Oil, for rendering	
Leather soft and waterproof, 6d.	
bottles	per doz. 4/0; per gall. 4/0

21 POMADE, Finest Quality.

1 1/2-oz. oval black cap bottles	per doz. 2/2
2 1/2-oz. round wood top bottles	2/9
The 1 1/2-oz. oval are supplied in 3-doz. boxes, the 2 1/2-oz. in 2-doz. boxes, with good counter label.	

22 PURE GLYCERINE.

5-oz. bottles, finest	per doz. 4/9
Not less than 1 doz. supplied.	
If in 1 gross quantity, 3d. per doz. less.	
Small bottles, finest	per gross 8/9
Only supplied in 1-gross boxes.	
In 2-lb. bottles, finest	per lb. 0/11 1/2
"	fine 0/10
Bottles charged 2d. each.	
In 9-lb. bottles, finest	per lb. 0/10 1/2
"	fine 0/9
Bottles charged 6d. each.	
In original tins, abt. 56-lbs., finest	per lb. 0/9 1/2
"	fine 0/8 1/2

23 PINK'S CORN FLOUR.

Best Package out.

In 1-lb. packets, 14-lb. boxes	per cwt. 26/0
In 1-lb. " "	25/0
In 1-lb. " "	24/0
For less than 1 cwt., 1s. per cwt. extra.	
For less than 28-lbs., 2s. per cwt. extra.	
In bags, about 2 1/2 cwt. each	per cwt. 15/0
In paper parcels	17/0
Less than 28-lbs., 2s. per cwt. extra.	
Thomas & Co.'s.	
In 1-lb. packets, 14-lb. boxes	per cwt. 17/6
In 1-lb. " "	18/0
In 1-lb. " "	18/6
For less than 1 cwt., 1s. per cwt. extra.	
For less than 28-lbs., 2s. per cwt. extra.	
Superior Corn Flour, in 2 1/2-cwt. sacks	per cwt. 11/0
In paper parcels	13/0
Less than 28-lbs., 2s. per cwt. extra.	

Brown & Polson's.

In 1-lb., 1/2-lb., and 1-lb. packets, per cwt.	47/6
Carriage paid on 2 cwt. and upwards.	

Johnston's.

In 2 or 4-oz. packets, 7 and 14-lb. boxes.	
In 1-lb., 1/2-lb., or 1-lb. packets, 14-lb. boxes	per cwt. 41/10
In 3-lb. tins, 1 doz. in box, 1/0 tins	
If in 16-oz. pkts. & 56-lb. bxs. per cwt.	40/5
2 cwt. and upwards supplied carriage paid.	

24 EFFERVESCENT POWDERS.

In 3-doz. Glass Top Boxes, or 1-doz. Cardboard Boxes.	
Seidlitz	per gross 4/6
Lemonade	4/6
Ginger Beer	4/6
Soda Water	4/0

25 SPICES.

PICKLING SPICE.

Mixed, best	per lb.	0/6
" 2nd quality	"	0/4

GINGER.

	Per cwt.
African, fair, per cwt.	27/6; finest 30/6
" Washed	31/0 33/0
" Bleached	33/6 36/0
Bags about 90 lbs.	
Cochin, unbleached	30/0 35/0 40/0
" medium to good, bags	45/0 50/0
" fair, cases	55/0 60/0
" good	65/0 70/0
" fine	75/0 80/0
" finest	85/0 90/0
" finest selected	95/0 100/0
" bleached, small bags	40/0 45/0 47/6
" fair, cases	50/0 60/0
" medium	65/0 70/0
" fine bold, cases	75/0 80/0
" finest	85/0 90/0 100/0
Jamaica, unbleached, small	72/0 78/0 82/0
" " good bold, bris.	87/0 92/0 102/0
" " fine	122/0 137/0
" " bleached, sml.	80/0; gd. bls. 82/0 87/0
" " fine, good, bls.	92/0 102/0 122/0
" " finest	132/0 142/0
Le than an original package, 2/0 per cwt. extra.	

CLOVES.

	Per lb.	ordinary	Per lb.
Zanzibar, bales, common	0/12	good	0/2
" " fair	0/2	fine	0/3
" " fine	0/3	finest	0/4
Amboyna, bags, fair	0/4	good	0/4
" " fine	0/5	finest	0/6
Penang, cases, fair	0/7	good	0/8
" " fine	0/9	finest	0/11
" " extra finest, 1/1			
jd. per lb. extra for less than an original package.			
jd. per lb. extra for less than 4 lbs.			

MACE.

Broken, common	per lb.	1/4
" fair	"	1/8
Good, small	"	1/9
" fair	"	2/3
" medium	"	2/6
Fine	"	3/0
Finest, bold	"	3/6
Extra picked, bold	"	3/9

NUTMEGS.

Fair, round	170 to lb.	per lb.	1/2
"	150	"	1/2
"	130	"	1/3
"	120	"	1/5
Fine	112	"	1/6
"	105	"	1/7
"	96	"	1/8
"	90	"	1/8
"	85	"	1/10
Bold	80	"	1/11
Finest picked	75	"	2/2
"	70	"	2/6
"	68	"	2/10
"	64	"	3/0
"	60	"	3/4
jd. per lb. extra for less than a case of about 70 lbs.			
jd. per lb. extra for less than 4 lbs.			

CINNAMON.

Broken	per lb.	0/7 1/2 to 0/10
Third sort	"	0/8 1/2 0/10 1/2 0/11 1/2
Second sort	"	0/11 1/3 1/5
First sort	"	1/5 1/6 1/8 2/0
Finest	"	2/4
Fine short	"	1/8
Chips	"	0/3 1/2 0/3 1/2 0/3 1/2 0/4

PIMENTO.

Fine bright	per lb.	0/3 1/2, fair per lb.	0/3
Ordinary	"	0/2 1/2, dusty	0/2 1/2
jd. per lb. extra for less than 1 bag.			
jd. per lb. extra for less than 14 lbs.			

CHILLIES.

Fair to finest, bright, pr lb.	0/3 1/2 0/4 1/2 0/5 1/2 0/6 1/2
" " by bale per cwt.	31/0 36/0 42/0 48/0

PEPPER.

Black, finest heavy	per lb.	0/2 1/2
" finest	"	0/2 1/2
" fine	"	0/2 1/2
" fair	"	0/2
" good	"	0/1 1/2
" ordinary	"	0/1 1/2
" light	"	0/1 1/2
White, finest, bleached	"	0/4 1/2
" fine	"	0/3 1/2
" extra finest unbleached	"	0/6 1/2
" finest unbleached	"	0/5
" fine	"	0/4 1/2
" good	"	0/4 1/2
" fair	"	0/3
" long pepper	per lb.	0/1 1/2 and 0/2
" long bleached	per lb.	0/2 1/2
jd. per lb. extra for less than a bag of Pepper.		
jd. per lb. extra for less than 14 lbs.		

CASSIA.

Fine, quill, per cwt.	37/0; good, 35/0; fair, 33/6; ordinary, 32/6
Broken	per cwt. 18/6
Buds	" 80/0
Less than a case, 2/0 per cwt. extra.	
Less than 7 lbs., 4/0 per cwt. extra.	

GROUND SPICES.

All Ground Spices are guaranteed genuine.

Mace	per lb.	1/7 2/2 2/6 3/1
Cassia	"	0/3 1/2 0/4 1/2
Nutmegs	"	0/8 1/2 1/2 1/6 2/1
Cloves	"	0/4 1/2 0/5 0/6
Cinnamon	"	0/5 1/2 0/7 0/9 1/2
Carraways	"	0/4 1/2 0/5 1/2 0/6
Pimento	"	0/2 1/2 0/3 1/2 0/3 1/2
Coriander	"	0/2 1/2 0/5 0/6
In paper parcels. In 1-lb. tins 3d.; 1-lb. 1d.; 1-lb. 1d.; 2-lbs. 1d.; 4-lbs. 1d.; 7-lbs. and 14-lbs.		
jd. per lb. extra. Barrels 1/6 each.		

GROUND GINGER.

Our own grinding. Guaranteed free from spent Ginger.

No. 1. Ginger, fair	per lb.	0/4
" 2.	"	9/5
" 3.	"	0/6
" 4.	"	0/7
" 5.	"	0/8 1/2
" 6.	"	0/9 1/2
Ground Ginger in barrels, 1d. per lb. less.		
Barrels charged 1/6 each.		
In 1-lb. tins, 1d. per lb. extra.		

MIXED SPICE.

FINEST QUALITY.

1-oz. packets.

In 2-lb. cartons	per lb.	0/11	
" 1-lb. fancy box	"	0/10	
" 1-lb. glass top ditto	"	0/11	
" 7-lb. wood ditto	"	0/10	
1-oz. pkts. 1d. per lb.; 1-oz. pkts. 1d. per lb. extra.			
1-oz. tins per lb.	1/1	4-lb. tins per lb.	0/8
2-oz. " " "	0/10	7-lb. " " "	0/7
4-oz. " " "	0/9	Paper parcels	0/6
1-lb. " " "	0/8		
Barrels, 1-cwt. or 1/2-cwt. kegs ... per lb. 0/6			

SECOND QUALITY.

Labelled Thomas & Co. 1-oz. packets.

In 2-lb. cartons	per lb.	0/8
„ 1-lb. fancy box	„	0/7
„ 1-lb. glass top ditto.....	„	0/8½
„ 7-lb. wood ditto	„	0/7
½-oz. pkts. 1d. per lb., 1-oz. pkts. 1½d. per lb. extra.		
1-oz. tins per lb. 0/11	1-lb. tins per lb.	0/6½
2-oz. „ „ 0/9	4 & 7-lb. tins „	0/5½
4-oz. „ „ 0/7½	Paper parcels „	0/4
Flour, barrels (1-cwt. and ½-cwt. kegs) „		0/3½

CAYENNE PEPPER.

Fine quality, 1-oz. castors	per doz.	2/3
" reputed 2-oz. castors	"	3/0
" 1-lb. tins	per lb.	1/4
" paper parcels	"	1/1
Finest Nepaul, 1-oz. castors	per doz.	3/0
" reputed 2-oz. castors	"	4/6
" 1-lb. tins	per lb.	2/0
Soluble Cayenne, bottles	per doz.	4/6
Genuine good quality Cayenne,		
paper parcels	per lb.	0/9
Ditto, 1-lb. tins	"	0/10 1/2
Ditto, fair quality, paper parcels	"	0/6
Ditto	"	0/8 1/2

GROUND PEPPER.

All Ground Peppers supplied by us are ground at our own Mills, under our personal superintendence, and are guaranteed genuine.

Pepper in barrels, 1-cwt.; kegs, 1-cwt. and 1/2-cwt. each; and 7, 14, or 28-lb. parcels.

No. 1. Black, fair	per lb.	0/1 1/2
" 2. " fine	"	0/2
" 3. " finest	"	0/2 1/2
" 3a. " extra finest	"	0/2 1/2
" 4. White, fair	"	0/2 1/2
" 5. " fine	"	0/3 1/2
" 6. " finest	"	0/4
" 6a. " "	"	0/4 1/2
" 7. " extra finest	"	0/5 1/2
" 7a. " "	"	0/6 1/2
" 8. " superior	"	0/7 1/2
" 9. " "	"	0/8 1/2
" 10. " extra superior	"	0/9 1/2
jd. per lb. extra for less than a barrel, keg, or 1-cwt. in paper parcels. Less than 14 lbs. 1d. per lb. extra.		
Barrels and 1-cwt. kegs charged 1/6 each; 1/2-cwt. kegs 1/3 each.		
In 1-lb. tins 3d.; 1-lb. 2d.; 1-lb. 1d.; 2-lb. 1d.; 4-lb. 1d.; 7 and 14-lb. 3d. per lb. extra.		
In 1-oz. packets, 1 gross boxes.		
White, No. 5, per gross 7/3; Black, No. 3, 5/3		
In 2-oz. packets, 1 gross boxes.		
White, per gross 14/0; Black, per gross 10/0		
In 1-lb. packets, 1 gross boxes.		
White, per gross 27/0; Black, per gross 19/0		

In 1-lb. tins 3d.; 1-lb. 2d.; 1-lb. 1d.; 2-lb. 1d.; 4-lb. 1d.; 7 and 14-lb. 3d. per lb. extra.

In 1-oz. packets, 1 gross boxes.

White, No. 5, per gross 7/3; Black, No. 3, 5/3

In 2-oz. packets, 1 gross boxes.

White, per gross 14/0; Black, per gross 10/0

In 1-lb. packets, 1 gross boxes.

White, per gross 27/0; Black, per gross 19/0

26

PINK'S PERFECT PEPPER.

In 2, 4 and 8 oz. tins only.

2-oz. Tins, 6 doz. in box	per doz.	2/2
4-oz. " 3	"	4/0
8-oz. " 2	"	7/6
The perfection of Ground Pepper.		

27

ARROWROOT.

Bermuda, fair to finest, per lb.	1/0 1/4 1/6 1/9
Natal, fine to finest	0/7 0/8
Natal kind, in cases	per lb. —
St. Vincent, good to fair, lb.	0/1 1/2 0/2 1/2 0/3
Ditto, fine ... per lb.	0/3 1/2 0/4 1/2 0/5 0/6
Ditto, finest	per lb. 0/6
In paper parcels, 1d. per lb. extra. In 2-lb. tins 1d. per lb. extra. In 4, 7, or 14-lb. tins, 1d. per lb. extra.	
St. Vincent, fine quality, original tins, about 28-lbs. each	
per lb.	0/3 0/4 0/6 0/7 0/7 1/2
Crown brand, fine St. Vincent, in 7-lb. tins only (tins free)	per lb. 0/7
Atlas brand, finest Arrowroot, 7-lb. tins only (tins free)	per lb. 0/6 1/2
Attractive 1-lb. packets finest Arrowroot	per doz. 5/6

28

SAGO.

Good, small pearl, bags	per cwt.	8/6
Fair	"	9/3
Finest	"	10/6
Fair medium	"	10/0
Finest	"	11/6
Fine large	"	12/3
Finest large	"	12/6
For less than a bag, 2/0 per cwt. extra; less than 14 lbs., 4/0 per cwt. extra.		
Attractive 1-lb. packets finest small pearl Sago	per doz.	2/6

29

TAPIOCA.

Good flake, Singapore	per lb.	0/1
Fair	"	0/1 1/2
Finest	"	0/1 1/2
Extra finest	"	0/1 1/2
Fair flake, Penang	"	0/1 1/2
Fine flake	"	0/1 1/2
Finest flake	"	0/1 1/2
Extra finest, Malakoff	"	0/1 1/2
Fair quality, Malakoff	"	0/1 1/2
Pearl bullets, fair	per cwt.	10/4
" finest	"	11/6
Pearl medium, fair	"	8/9
" fine	"	10/9
Extra finest	"	11/0
Pearl seed, fair	"	9/9
" fine	"	10/10 1/2
Extra finest seed	"	11/6
jd. per lb. extra for less than a bag. Less than 14 lbs., 1d. per lb. extra.		
Attractive 1-lb. packets finest flake		
Tapioca	per doz.	2/9

30 OATMEAL & BARLEY.

Guaranteed genuine.

Finest Scotch Oatmeal, fine round, or extra coarse, 2½-cwt. bags, per cwt.	9/10½
Finest do., 1½-cwt. bags.....	10/1½
Finest do., fine, attractive 1-lb. pkts.	per doz. 2/4
Flaked Oats, finest, 1-cwt. bags per cwt.	10/4½
Pearl Barley, good, 2½-cwt. bags „	8/0
„ „ fair.....	10/3
„ „ fine.....	12/0
„ „ finest.....	18/0
Scotch Barley, good „	7/3
„ „ fine.....	8/9
Delivery in London charged on bags.	
Less than 5 bags, 3d. per cwt. extra. Less than 1 bag, 2/0 per cwt. extra.	
Less than 14lbs, 3/0 per cwt. extra.	
Attractive 1-lb. packets finest	
Pearl Barley.....	per doz. 3/0

30 PREPARED PEA FLOUR.

Large 1d. packets, 6 doz. wood boxes	per gross	6/10
In 3 doz. wood boxes, 3d. per gross extra.		
If 5 gross, 2d. per gross less.		
2 1/2-cwt. sacks, 1 gross	per cwt.	9/6
Less than 1 sack, 2/0 per cwt. extra.		

31 SPLIT & WHOLE PEASE.

	Per Peck	Per Bush.	Per qr.	Per 504 lbs.
White Pease	1/2	3/10	27/6	27/0
Split	1/5	4/6	33/0	32/6
" Pearl	1/7	5/5	40/9	39/3
" do. finest	1/10	6/6	49/3	47/9
" ex mills Liverpool (not less than 1 qr. supplied)			per qr.	37/0
Blue Pease, ordinary	1/5	4/6	33/6	32/6
" English, good	1/6	4/10	36/0	35/0
" " fine	1/10	6/6	50/0	49/6
" " finest	2/5	8/9	67/0	66/0
Delivery in London charged on sacks.				

32 HARICOT BEANS.

	Per Peck	Per Bush.	Per qr.	Per 504 lbs.
Ordinary, new	1/9	6/3	46/0	46/0
Fair	1/11	6/11	51/6	51/6
Good	2/1	7/4	55/6	55/6
Fine	2/2	7/8	58/0	58/0
Finest	2/4	8/3	63/0	63/0
Giant, finest new	2/5	8/6	66/0	66/0
Delivery in London charged on sacks.				

For Index—see page 3.

54 CANNED FISH.

NEW LOBSTERS.

Victoria Flats, E. & T. Pink's per case	38/6
Portland Bay, Tall Tins	34/0
Nag's Head	34/0
" 96 tins per case	44/6
Norfolk Island Packing Com-	
pany's 1-lb. Tall Tins	31/6
Ditto, 1-lb. Flat Tins	35/0
J. & R. Young's, Tall Tins	31/6
Loggie's Golden Crown	32/6
Gloucester Packing Com-	
pany's 1-lb. Tall Tins	32/0
Good Brands, Tall Tins	30/0
2d. per doz. extra for less than 1 case.	

SALMON.

Red Alaska, Our Taste Brand, per case	18/6
" Sea Horse Brand	19/1
Fraser River, Atlas Brand,	
E. & T. Pink's	21/4
Columbia River, Commerce	
Brand, 1-lb. Flat Tins	24/6
Columbia River, Crown Brand,	
E. & T. Pink's, 1-lb. Flat Tins	25/6
Fraser River, Flat Tins,	
Salmon Steak, Atlas Brand,	
E. & T. Pink's	27/0
Columbia Salmon, Spring	
Catch, 1-lb. Flat Tins	21/0
"Tally Ho" Brand, 1-lb. Tall	
Tins	17/0
2d. per doz. extra for less than 1 case.	
25 cases, 1d. per case less.	
50 cases, 2d. per case less.	

SARDINES.

1-tins Libertad	per doz.	1/11
2-tins Marius Driscoll	"	2/3
2-tins Fabrique St. Jean	"	2/6
2-tins Trefavenne's	"	2/11
18-oz. Felix Onillon	"	5/9
18-oz. Marie Elizabeth	"	6/3
*Peneau's 1/2-tins	"	6/4
" small halves	"	"
" large	"	12/6
Peneau's 1/2, 1/4 to Tomato	"	5/8
" small halves	"	10/0
* M. Peneau fixes his price for Sardines monthly, whether he can make delivery or not, so we can only book orders on same conditions, namely, these quotations hold good only so far as we get supplies. Less than a case, 2d. per doz. extra, except on Peneau's. 5 cases, 1d. per doz. less, except on Peneau's.		

FRESH HERRINGS.

	1 lb. tins.	
160 tins in case, Atlas Brand,		
E. & T. Pink	per doz.	2/7½
100 tins in case, Smart's	"	2/6
If less than a case, 2d. per doz. extra.		

OYSTERS.

Eagle Packing Company's ... per doz.	3/3
2d. per doz. extra for less than 1 case.	
All Canned Goods are carefully examined immediately before delivery, therefore no claims can be entertained.	

55 POTTED MEATS & PASTE.

Yarmouth 4-oz. tins	per doz.	1/7
Bloater 1d. tins	per gross	8/3
Paste In 1/2 gross boxes	"	8/4
" Do. 20 gross lots	"	8/0
Not less than 1 gross supplied.		
Less than 6 doz. 4 oz. tins, 2d. per doz. extra.		
Anchovy Paste, 4-oz. tins	per doz.	3/6
Potted Ham		
" Ox Tongue	"	
" Hambro' Beef	"	3/0
" Strasbourg Meat	"	
" Ham & Tongue	"	
Half-gross wood boxes.		

56 MINCE MEAT.

1-lb. (about) Glass Jars	per doz.	6/4
1 " Flint Glass Jars	"	6/5
2 " Glass Jars	"	12/0
3 " "	"	17/6
4 " Stone Jars	"	23/4
7 and 14-lb. Jars	per cwt.	60/0
SECOND QUALITY		
Label—STABLE, STRONG & Co.		
1 lb. (about) Glass Jars	per doz.	4/11
1 " Flint Glass Jars	"	5/0
2 " Glass Jars	"	9/2
3 " "	"	13/4
4 " Stone Jars	"	17/9
7, and 14-lb. Jars	per cwt.	37/0

57 CONDENSED MILK.

"Lion" Brand Swiss Milk (best quality).		
Cases of 4 doz. 1-lb. tins.....	per case	15/6
If 5 cases at Wharf	"	15/3
"Clover Leaf" Brand, Dutca Full Cream.		
Cases 4 doz. tins	per case	14/6
If 5 cases at Wharf	"	14/3
We are Sole Agents for the above Brands, and can confidently recommend them.		

58 OPENING KNIVES.

Sardine Opening Knives, cast steel.....	per doz.	0/8
Ditto, wrought steel	"	0/10
Provision Opening Knives...	"	2/1
Bull's Head, wood handles...	"	3/3
Ditto large, metal handles...	"	3/4

59 BRANSON'S COFFEE

EXTRACT.

	In 6d.	1/0	2/0	4/0 bts.
Per doz.	4/4	7/9	15/6	28/10
Carriage paid on any part of the United Kingdom, on 1 gross 1/0 or its equivalent.				
Essence of Coffee and Chicory—				
6d. bottles, in cases of 6 doz. per doz.				4/4
1s. bottles, in cases of 3 doz. „				7/9
Carriage paid.				

60 GOODALL'S HOUSEHOLD

SPECIALITIES.

BAKING POWDER.

1d. Pkts.	6d. Tins.	1s. Tins.	2s. Tins.
6/6 gross.	3/3 doz.	6/6 doz.	13/0 doz.

CUSTARD POWDER.

2d. Pkts.	6d. Boxes.	1s. Boxes.
1/1 doz.	3/3 doz.	6/6 doz.

GINGER BEER POWDER.

2d. Pkts.	6d. Boxes.
18/3 gross.	36/6 gross.

BLANC MANGE POWDER.

6d. Boxes.	1s. Boxes.
3/3 doz.	6/6 doz.

Made in the following flavours—Almond, Vanilla, Lemon, Strawberry, Raspberry.

BRUNSWICK BLACK.

6d. Bottles.	1s. Bottles.
3/9 doz.	7/6 doz.

Carriage paid on orders value £3 and upwards of Household Specialities, assorted or otherwise, to any Railway Station in Great Britain.

61 BISCUITS.

In free boxes, about 28-lbs.

Delivered in London or carriage paid in country on 2 cwt. lots.

Mixed	per cwt.	18/9
Ginger Snaps	"	20/0
Tea	"	16/9
Cocoa Nut Ices	"	22/6
Fruit	"	20/0
Less than 2 cwt., 1/0 per cwt. extra.		

62 EXTRACT OF BEEF.

LEIBER COMPANY'S.

Supplied in boxes, each containing—6 16-oz., 12 8-oz., 12 4-oz., 12 2-oz., or 12 1-oz. jars.

1-lb.	1/2-lb.	1-lb.	2-oz.	1-oz.	1/2-oz.
7/4	7/10	8/4	8/10	10/0	11/3

Or for quantities of 50 lbs.

1-lb.	1/2-lb.	1-lb.	2-oz.	1-oz.	1/2-oz.
7/1	7/7	8/1	8/7	9/9	11/0

Also in 2-lb. tins at 6 1/2 per lb.

63 BAKING, EGG, AND CUSTARD POWDER.

E. & T. PINK'S BAKING POWDER.

Guaranteed free from Alum or any other adulteration.

In paper parcels	per cwt.	35/0
" No. 2	"	28/0

For less than 28-lbs., 2/6 per cwt. extra.

Large 1d. packets, in 1/2 gross wood

boxes

Large packets, in gross and 1/2-gross boxes 4/5

In cartons, ea. containing 6 pkts., per doz. 3/2

E. & T. Pink's Egg Powder, large pkts.,

in gross and 1/2-gross boxes, per gross 4/5

Large 1d. packets, in 1/2-gross wood

boxes

Borwick's Baking Powder,

1d. packets

Ditto 1/0 barrels

Ditto 6d. barrels

Ditto Custard Powder, 1d. pkts., per gross 6/6

Ditto Egg Powder, 1d. pkts.

Carriage paid on 10 gross Borwick's.

64 FREEMAN'S SPECIALITIES.

Lemon Cream Cheese Cakes,

1/2-lbs., 2 doz. boxes

Ditto 1-lbs., 1 doz. boxes

Baking Powder, 1d. packets

Ditto 2d. drums, 1/2-gross boxes

Ditto 6d., 1/0, and 2/6 canisters,

per doz.

Ditto Egg Powder, 1d. pkts., per gross 4/11

Ditto Custard Powder, 1d. pkts.

Ditto Custard Powder, in boxes,

containing 1/2 doz. pkts., per doz. 3/5

Ditto Pudding Powder (6 flavours

assorted, in 3 doz. wood boxes)

per gross packets 11/10

Ditto Pudding Powder, Almond,

Lemon, Vanilla, Peach, Chocolate,

Nectarine, Strawberry, Raspberry,

or assorted (3 packets in fancy

box)

Ditto (6 packets assorted in fancy

box)

Ditto Fancy Boxes (to retail 2/6 each)

16 assorted packets

Ditto Table Jellies, in packets,

Lemon, Orange, Raspberry, Plain,

Red Currant, or Vanilla, assorted,

Quarts, 5/10; Pints, 3/1; 1/2-Pints, 1/8 per doz.

For Freeman's Baking, Egg, Custard, and Pudding

Powders and Jellies, 5 per cent. discount on 30/0,

and 7 1/2 per cent. on £5 orders.

65 GLAESER'S ENAMELS.

In 1 doz. boxes.

All Colours, separate or assorted.

Tins, 3 1/2 x 2 1/2

4-tins, 2 1/2 x 2 1/2

Tinlets, 2 x 1 1/2

Artists', Tins

Bath Quality, Tins

" 1-tins

" Tinlets

" 3/9

" 3/9

" 3/9

" 3/9

" 3/9

" 3/9

" 3/9

" 3/9

" 3/9

" 3/9

" 3/9

" 3/9

" 3/9

" 3/9

" 3/9

" 3/9

" 3/9

" 3/9

" 3/9

" 3/9

68 PRESERVED FRUITS.

PEACHES.

Crawford (Anglo-Californian Co.), 3's,	2 doz. cases	8/7 1/2
Lemon Cling, Paradise Brand (E. and	T. Pink), 3's, 2 doz. cases	10/0
Lemon Cling (Anglo-Californian Co.),	3's, 2 doz. cases	10/0
Columbina, 2 doz. cases		6/9

APRICOTS.

Californian, Paradise Brand (E. and	T. Pink), 3's, 2 doz. cases	9/0
Anglo-Californian Co., 3's,	"	9/0
Good Brands	"	5/10 1/2
Criterion	"	4/3

SINGAPORE WHOLE PINE APPLES.

Atlas Brand (E. & T. Pink) 2 1/2's, 2 doz. cases 4/6

Paradise Brand

"

Lyre Bird Brand

Oriental Brand

Fernoverance Brand

Whittington

Indo-Chine

"

Tan Twa Hee Brand

"

"

"

"

"

"

"

"

"

"

"

"

"

"

"

"

"

"

"

"

"

"

"

"

"

"

"

"

"

"

"

"

"

"

"

"

"

"

"

"

"

"

73 GREEN FRUIT, &c.

Green Fruit is bought and sold on sample. We do our best to insure a uniform delivery, but in a perishable article such as this we cannot take any responsibility after delivery.

GRAPES.

All full weights.

Selected Almeria.....	per brl.	—
Finest	"	—
Fine	"	10/0 & 12/0

ORANGES.

As landed.

Denia, ex. selected	per case 420's	18/0
" selected	" 420's, 12/0	15/0
" fine	" 420's	10/0
" selected, extra large	" 714's	15/0
Valencia	" 420's	14/0
" finest	" 420's	11/6
" fine	" 420's, 9/6 & 10/6	—
" fine, extra large	" 714's	13/0
" finest	" 714's	14/6
" ordinary size	" 714's	11/6
Jaffa's, very choice	per box	9/6
Murcia Bloods, very fine, 240's	"	8/6
5 cases and upwards, 3d. per case less.		
Examined 420's, 1/0 extra.		
" 714's, 1/6		

LEMONS.

New Messina, selected, 360's, per case 17/6		
" or Palermo, finest, 360's		
" per case 12/0 & 15/0		
" fine, 360's		
" per case 6/6 & 8/6		
Messina, ordinary, for cheap trade, about 400's	per case	5/9
Fine Messina, 300's or 360's	per box	5/6
Finest	" 100's	4/9
"	" 50's	2/6
Fine	" 100's	4/0
5 cases and upwards, 3d. per case less.		

APPLES.

Bordeaux (Dieu Donne), very pretty cases	about 84-lb. gross	8/9
--	--------------------	-----

ONIONS (as landed).

Fine Bordeaux	per box	3/9
Finest Valencia (small)	per case	6/3
Ordinary	"	5/6
5 cases and upwards, 3d. per case less.		

NUTS.

Finest new Spanish Nuts, per brl. sack	23/0
" " " " " cwt.....	18/0
Fine new Spanish Nuts, per barrel sack	20/9
(Sacks 6d. each.)	

Barcelona Nuts, finest new	per bag	18/9
Bags about 120 lbs.		
Less than 5 bags, 6d. per bag extra.		

Ditto, in 56-lb. or 28-lb. bags	per cwt.	18/0
Bags charged.		

Brazil Nuts, finest new	per cwt.	34/0
" fine	"	29/0

Redon Chestnuts, ordinary, about 108 lbs.	per bag	5/0
" selected do., special	"	8/0
For less than 1 bag, 2/0 per cwt. extra.		

Finest New Kent Cob Nuts	per lb.	0/4
For less than 1 bag, 1d. per lb. extra.		

Kila Dried Walnuts, sacks about 110 lbs.	per sack	16/0
" finest	"	12/0
" small, do. do.	"	12/0
Less than 1 sack, per lb. 2 1/2d.		

Ground or Monkey Nuts, finest new, in bags, about 1 1/2 cwt.	per cwt.	15/0
For less than 1 bag, 2/0 per cwt. extra.		
Original bags free.		
Cartage in London charged on all Nuts.		

GREEN FRUIT, &c.—continued.**ALMONDS.**

Tarragona, new, in bales about 108 lbs.	per bale	26/0 and 30/0
Finest French, in bales about 108 lbs.	per bag	30/0
very pretty	"	24/0
Fine French	"	24/0
Canary Bitter	per cwt.	67/0
Barbary	"	39/0
For less than a bale, 2/0 per cwt. extra.		
Ground Almonds, 7-lb. tins (tins free),	per lb.	0/9 1/2
" 1-lb. tins	per doz.	10/0

74 HONEY.

Earthenware Pots, finest	per doz.	5/7
" 1-lb.	"	3/7
Flint Glass Jars, 17-oz.	"	7/0
In 7-lb. Jars	per lb.	0/5
Transparent Honey, in glass jars, nickel-plated screw top	per doz.	6/6
Ditto, in tie over glass jars, containing 17-oz.	"	6/6
Ditto, 1/2-tie over jars	"	4/0
Californian, in original Tins, about 56 lbs.	per cwt.	40/0
Chilian, finest quality, 1-cwt. kegs,	per cwt.	37/0
" fine quality, 1-cwt. kegs	"	30/0
1d. per doz. extra for less than 6 doz.		
7-lb. Jars charged 3d. each.		

75 SACKS.

Corn Sacks, 4 bushels, 3 lb.	per doz.	7/0
------------------------------------	----------	-----

76 GOLDEN SYRUP.

1-lb. Glass Jars	per doz.	2/4 1/2
2-lb.	"	3/7 1/2
Not less than 1 doz. supplied.		
In Barrels, about 5 cwt.	per cwt.	6/10 1/2 7/3 8/0 8/9
Casks free.		
Delivery in London charged on barrels.		

77 TABLE SALT.

Best Table Salt, 2-lb. bottles	per doz.	3/3
" 2-lb. stone jars	"	3/3
For less than 6 doz., 3d. per doz. extra.		
Best Table Salt, 1-lb. packets	per gross	5/9
" 1 1/2-lb.	"	7/6
" 2-lb.	"	11/3
Less than 1 gross packets, 3d. per gross extra.		
Salt of Celery, 1-lb. bottles	per doz.	3/3
" small	"	2/0
Bay Salt, by 1 1/2-cwt. bags	per cwt.	5/3
Less quantity, 2/0 per cwt. extra.		
Bags, 3d. each.		
Delivery in London charged for Bay Salt.		

78 SYRUPS FOR ICES, FLAVOURING PUNCH, &c.

Capillaire	Reputed 1/2-pints	per doz.	4/0
Strawberry	" pints	"	7/0
Orange	Flint Bottles	"	4/3
Raspberry	Per gallon	"	5/0
D'Orgeant	Reputed 1/2-pints	per doz.	3/0
" pints			
Lemon Syrup			
Flint Bottles			
Per gallon			
Gallon bottles charged and returnable.			

79 DRIED CULINARY HERBS.

Parsley	Per doz.	—
Thyme	Rpd 1/2-pts.	1/3
Lemon Thyme	"	3/0
Mint	pts.	3/0
Savory	qts.	5/0
Sage	"	5/0
Mixed Sweet Herbs for Pork, Goose, or Sausage Seasoning		

DRIED CULINARY HERBS—continued.

Mixed Herbs for Soup, Veal, or Poultry Seasoning	Per doz.	2/6
Marjoram	pts.	4/0
Basil	qts.	6/0
Celery Seed	per doz. reputed 1/2-pints, 2/7 1/2	
reputed pints, 4/7 1/2; per lb., 0/7.		
Dried Herbs in paper parcels—		
Thyme	per lb.	0/3
Savory	"	0/3
Marjoram	"	0/7 1/2
Mint	"	1/0
Parsley, English	"	1/2
Sage, Foreign	"	0/4 1/2
Basil	"	1/6
Veal or Poultry Stuffing	"	0/9
Mixed, for Soups	"	0/7 1/2
Mixed, for Pork, Goose, &c.	"	0/10
For less than 7-lb., 2d. per lb. extra.		
Herbs, in 1d. packets, 1/2-gross boxes, assorted, unless otherwise ordered,		
per gross 6/0		

80 MUSTARD.

(FINCH, RICKMAN & CO.'S.)

Genuine Brown	per lb.	1/1 1/2
Double Superfine	"	1/0
Superfine	"	0/10 1/2
Pure	"	0/9
Fine	"	0/7 1/2
Good	"	0/6
2-oz. tins, in 6-lb. boxes, Double	"	1/4
2-oz. tins, in 6-lb. boxes, Superfine	"	1/2 1/2
All the above are genuine.		
1d. tin, in 6-lb. boxes of 36 tins, per lb. 11d.		
Seconds (not genuine)	per lb.	0/4 1/2
In 9, 12 and 18-lb. casks, or 4 and 6-lb. tins. No charge for casks or tins. If in 2-lb. tins 1 1/2d. in 1 or 1 1/2-lb. tins 2d., in 1 1/2-lb. tins 3d. per lb. extra.		
Boxes, containing 2 doz. 1-lb. tins	"	—
" 3 " 1-lb. tins	"	—
" 4 " 1-lb. tins	"	—
9, 12 or 18-lb. casks allowed 3d. each, if returned.		

81 FLAVOURING ESSENCES.

Vanilla, Lemon, Almond, Ratafia, Prepared Cochineal—		
In cardboard boxes	per doz.	2/4 4/3
In wood boxes	"	2/7 4/6
The wood boxes are handsomely labelled.		
Not less than 1 doz. supplied.		
Essence of Lemons	per lb.	3/6
Essential Oil of Lemons, finest	"	4/6
" in original coppers, 3d. per lb. less.	"	—

82 PASTE, &c.

Genoa Macaroni and Vermicelli, finest, in 4-lb. boxes	per lb.	0/3
Fine	"	0/2 1/2
For 25 boxes 1d. per lb. less, and for an original case, containing 26 boxes Macaroni, and 48 boxes Vermicelli, 1d. per lb. less.		
Naples Macaroni, finest boxes, 28 lbs.	per lb.	0/2 1/2
Ditto, fine	per cwt.	17/3 & 19/0
Ditto, French	"	13/9 & 15/0

83 BLACK LEAD, &c.

Nixey's Refined, net cash prices—		
New Sizes. 25 Bxs. 15 Bxs. Less.		
1-gross boxes, 1d.	per box 3/9 1/2	3/10 1/2 3/11 1/2
" 1d.	"	—
Old Sizes.		
1-gross boxes, 1d.	"	5/1 1/2 5/2 1/2 5/3 1/2
12 x 1d., 1 doz. bxs.	"	—
1-gross boxes, 2d.	"	—
1 doz.	"	1/0
15 boxes and upwards carriage paid.		
Extra Pencil Lead	per cwt.	30/0
Genuine Pencil Lead	"	20/0
Servants' Friend	"	12/0
In 2-oz. packets, 7-lb. parcels.		
If in 1-oz. packets, 1/0 per cwt. extra; less than 1 cwt., 3/0 per cwt., extra.		

BLACK LEAD—continued.

Venetian Red, 2-oz., 1-lb., 1-lb. packets,	per cwt.	12/9
Rotten Stone	"	13/6
Emery Flour	"	16/0
Red Lead, in packets	"	34/0
If less than 1 cwt. of any of above, 2/0 per cwt. extra.		

BOHEMIAN.

Polished Block, 2-oz. blocks, 1-gross boxes, 6 boxes	per box	2/0
Ditto ditto, less quantity	"	2/3
" 4-oz. blocks, 1-gross boxes, 6 boxes	per box	1/10
Ditto ditto, less quantity	"	2/0
Round Blocks, 1 doz. 2-oz. in box, 6 gross lots	per gross blocks	2/7 1/2
Ditto ditto, less quantity	"	2/8

84 STARCH.

Having special rates to most places, we shall be pleased to give carriage paid quotations on application.

Royal Rice Starch, French.

56 lb. cases—		
4/5-lb. Papers, White or Blue	per cwt.	20/0
1-lb. Boxes, White only	"	23/0
1-lb. "	"	24/0
1-lb. "	"	25/0

Kingfisher Rice Starch, Dutch.

56-lb. cases—		
4/5-lb. Papers, White or Blue	per cwt.	18/0
1-lb. Boxes, White	"	21/0
1-lb. "	"	22/0
1-lb. "	"	23/0

Cockatoo Pure Starch, French.

56-lb. cases—		
4/5-lb. Papers, White or Blue	per cwt.	16/6
1-lb. Fancy Boxes, White only	"	19/6
1-lb. "	"	20/6
1-lb. "	"	21/6
For 10 cwt. lots, 3d. per cwt. less.		
For 1 ton lots, 6d. per cwt. less.		
Not less than 1 cwt. starch supplied.		

85 BLUE.

Patent Ball Blue, in 7-lb. boxes, 1 and 1-oz., per lb. 3d.	per cwt.	21/0
Extra quality ditto, per lb. 3 1/2d.	"	26/0
Superior Ultramarine ditto, per lb. 4 1/2d.	"	37/0
Thumb Blue, 1/2, 1 and 1-oz.	per lb. 3d., 6d., 7d., 8d., 10d., 1/0	
Square Blue, 4-oz. square wrapped, in gross boxes	per gross	2/0
Liquid Blue, in 1d. bottles, 3 doz. parcels	"	6/0
Albert Blue Balls	from per cwt.	26/0
" Squares	"	42/0
*Nixey's Carvas Bag Blue—		
1-Gross Boxes 1-oz. Bags, to retail at 1d.		
1 Box 5 Bxs. 10 Bxs. 20 Bxs.		
Per Box	3/10 3/9 3/8 3/7	
1-Gross Boxes 1-oz. Bags, to retail at 1d.		
1 Box 5 Bxs. 10 Bxs. 20 Bxs.		
Per Box	6/10 6/7 6/6 6/3 1/2	
1-Gross 1/2d. Bags, 12 Bags in Fancy Box, to retail at 6d.		
1 Box 5 Bxs. 10 Bxs. 20 Bxs.		
Per Box	4/4 4/3 4/2 4/0	
1-Gross 1d. Bags, 6 Bags in Fancy Box, to retail at 6d.		
1 Box 5 Bxs. 10 Bxs. 20 Bxs.		
Per Box	7/10 7/7 7/4 7/2	
*23 worth, or with 12 boxes Nixey's Lead, carriage paid.		

86 EAU DE COLOGNE.**JOHANN ANTON FARINA.**

2-oz. Bottles, Double, Red and Blue label,	per doz.	8/7
4-oz. ditto, with corkscrews	"	16/0
2-oz. Bottles, prime quality, White labels,	per doz.	7/1
4-oz. ditto ditto	"	13/4

ZUR STADT MAILAND.

2-oz. Bottles, good quality	per doz.	4/9
3d. per doz. extra for less than 1 doz.		

87 BLACKING.

Day & Martin's Real Japan,	per doz. 2/10, 5/8, 8/6
Ditto, 1/2 d. Paste, 1/2-gross boxes, roll or flat,	per gross 2/5
Ditto ditto, 1 " " " "	2/4
Ditto 1d. ditto, 1 " " " "	4/6
Ditto ditto, 1 " " " "	4/5

Or in quantities equal to 6 doz. large size bottles or 12 gross Paste, carriage paid to any station in the United Kingdom, and packages free at following quotations—

Day & Martin's ... per doz. 2/11, 5/10, 8/8	
1-gross boxes, 1/2 d., roll or flat, per gross 2/6	
1 " " " " " " " "	2/7
1 " " " " " " " "	4/11
1 " " " " " " " "	5/0
Waterproof Blacking, 1/2 size per doz. 5/6	
Kid Renovating Polish, 6d. size " 2/10	
In cartons and packed in boxes of 1 doz. each.	

Day & Martin's Oil Paste Blacking—	
1d. tins " " " " " " " "	per gross 7/0
2d. " " " " " " " "	per gross 11/3 or 12/6

Berry's Blacking—	
1d. Paste, 1 doz. parcels " " " "	per gross 2/5
1d. " " " " " " " "	2/6
1d. " " " " " " " "	2/7

Packages free, and carriage paid on 10 gross and upwards.

89 SYMINGTON'S PREPARATIONS.

PEA SOUP SEASONED AND FLAVOURED.	
1d. packets " " " " " "	per gross 7/9
1/10 tins " " " " " "	per doz. 8/0
PATENT PREPARED PEA FLOUR.	
Packets 1d. 2d. 4d. 6d.	
Per gross " " " " " "	7/5 14/9 29/0 43/0
Tins 1/2 1/4 1/8 3/16	
Per doz. " " " " " "	7/5 11/0 22/0
£2 worth carriage paid.	

90 DR. RIDGE'S FOOD.

Tins 1/2 2/5 5/6 10/6	
Per doz. " " " " " "	5/8 19/1 41/6 84/0
1/10 packets, 1/2-gross boxes " " " "	per doz. 7/8
6d. " " " " " "	3/10 1/4
2d. " " " " " "	1/4
2d. " " " " " "	1/5

91 THOMAS & CO.'S FURNITURE POLISH.

Stone Jars, to sell at 2d. " " " "	per doz. 1/5
" " " " " " " "	1/9
" " " " " " " "	2/8
" " " " " " " "	4/6

92 PIGOU, WILKS AND LAURENCE'S GUNPOWDER

Quantities of 15 lbs. and upwards delivered free in London. Less quantity may be had by customers paying for London delivery.

Carriage not paid to the country.	
Per 100 lbs.	
(Barrels 50 or 100lb. 210/0	
10 or 5 lbs.	
The Alliance, 1 to 6 " In cans " " " "	230/0
The Challenge " " " " " "	1 lb.
Rifle, ex. strong, " " In Japanned flasks 250/0	
" " " " " " " "	1 lb.
T S (Treble Strong) 1 to 6 " " " "	275/0
Loose. In cans containing each—	
10 or 5-lbs. 2-lbs. 1-lb. 1/2-lb.	
160/0 180/0 190/0 195/0 205/0	
T P (Tower Proof) " " " " " "	125/0 135/0
In Papers or Card Boxes, containing each	
Loose 1-lb. 1/2-lb. 1-lb. 1/2-lb.	
FFF " " " " " "	60/0 75/0 90/0 110/0
FF " " " " " "	65/0 70/0 85/0 105/0
F " " " " " "	60/0 65/0 80/0 100/0
Quality 1. Quality 2. Quality 3.	
Meal (Loose) " " " " " "	55/0 65/0 75/0
F. O. in 1 lb. Card Boxes, 50/0 for 100 lbs.	
Blasting Powders of every description at Market Prices. Terms by arrangement.	
No allowance for empties.	
Gunpowder will be sent direct from the Manufactory, and cannot be packed with other goods.	

93 JOB LOTS.

6 gross set Bass Heads, 9 x 4 per doz. 6/3	
5 " " " " " " " "	7/3
5 " " " " " " " "	8/10
5 " Drawn " " " " " "	7/6
8 " " " " " " " "	8/9
All the above are very full.	

94 KNIFE POLISH.

Pink's Knife Polish, 6d. canisters,	
1 doz. boxes " " " " " "	per doz. 3/3
OAKEY'S WELLINGTON.	
1d. canisters 6 doz. boxes per box	3/6
2d. " " " " " "	3/6
3d. " " " " " "	3/6
6d. " " " " " "	3/6
1/0 " " " " " "	7/0
2/6 " " " " " "	8/9
4/0 " " " " " "	14/0
Oakey's Silversmiths' Soap " " " "	per doz. 3/2

95 WOOD TAPS.

Not less than 1 doz. each size supplied.	
Superior Wood Taps—	
5 1/2 inch " " " " " "	per doz. 0/9
6 " " " " " "	per gross 7/9
6 1/2 " " " " " "	0/10 8/6
7 " " " " " "	0/11 9/6
7 1/2 " " " " " "	1/0 11/0
8 " " " " " "	1/3 13/3
8 1/2 " " " " " "	1/5 15/9
9 " " " " " "	1/10 19/3
9 1/2 " " " " " "	2/3 24/0
10 " " " " " "	3/0 30/0

Best Boxwood Taps—	
per doz. per gross per doz. per gr.	
5 1/2 inch 1/5 16/0 7 1/2 inch 3/0 32/0	
6 " 1/8 19/0 8 " 3/6 37/0	
6 1/2 " 2/2 24/0 8 1/2 " 4/6 48/0	
7 " 2/6 27/0 9 " 5/6 69/0	
Polished Cherry Wood Taps—	
(With Metal Keys)	
No. 2a 3 4 5	
inches 8 7 1/2 7 6 1/2	
per doz. 3/0 2/6 2/4 2/0	

Cherry Wood Taps, perforated ends,	
assorted, 12 on a card " " " "	per doz. 2/9
Water Butt Taps— No. 1 2 3 4	
per doz. 6/0 5/0 3/6 2/6	
Square Cork Taps—	
per doz. per gross per doz. per gr.	
5 1/2 inch 0/11 10/0 7 1/2 inch 1/6 16/0	
6 " 1/0 11/0 8 " 1/9 19/0	
6 1/2 " 1/1 12/0 8 1/2 " 2/4 25/0	
7 " 1/3 14/0 9 " 3/0 34/0	

96 WOOD GOODS.

American Clothes' Pegs, 5 gross boxes—	
50 Boxes at Wharf " " " "	per box 1/11
25 " " " " " "	2/0
5 " delivered free (to London customers) " " "	2/0 1/2
Less quantity " " " " " "	2/1
Or at same prices as above can be put free on rail at either Bristol, Hull or Manchester.	
Washboards, American, full size, 10 doz.	
lots at wharf " " " " " "	per doz. 3/3
Single dozen " " " " " "	3/6
Not less than 1 dozen supplied.	
American Broom Handles—	
No. 1 per doz. 1/4; per gross 14/0	
No. 2 " " " " " "	12/0
Swedish Broom Handles, best quality, full size " " " " " "	per doz. 1/1; per gross 11/0
Swedish Broom Handles 50 x 1—	
Gross lots " " " " " "	per gross 7/6
Less quantity " " " " " "	8/6
English Alder Broom Handles—	
per doz. 1/4; per 100 10/6	
Thick ditto " " " " " "	1/8; 12/0
Not less than 3 dozen Broom Handles supplied.	
Deal Mop Handles, per doz. 1/8; per gr. 19/0	

97 CORKS.

Wine " " " " " "	per gross 1/2 1/6 1/9 2/0 2/6 3/0
Ginger Beer " " " " " "	0/6 1/2 0/8 0/10 1/2 1/6
Ale and Porter " " " " " "	per gross 1/1 1/4 1/8
Claret " " " " " "	3/0
1 and 2 gall. Bung " " " " " "	1/8 2/0
2d. per gross extra for less than 5 gross.	

98 CHAMOIS LEATHER.

Mark. Doz. Kip. Mark. Doz. Kip.	
00 " " " " " "	3/0 6/9 5 " 12/6 30/6
0 " " " " " "	4/3 10/0 6 " 13/9 32/0
1 " " " " " "	5/6 13/0 7 " 15/6 38/0
2 " " " " " "	6/9 16/0 8 " 18/0 44/9
3 " " " " " "	7/6 18/0 9 " 20/0 48/0
4 " " " " " "	9/3 22/0 Small, per kip
4 " " " " " "	10/0 24/0 1/10 2/6 3/9
5 " " " " " "	11/3 27/0
2nd Quality, same size as best, not quite so heavy.	
Mark. Doz. Kip. Mark. Doz. Kip.	
2 " " " " " "	5/6 13/0 4 " 9/0 21/0
3 " " " " " "	6/6 15/3 5 " 10/3 24/0
4 " " " " " "	8/0 19/0 6 " 11/9 27/0
Chamois Leather Cuttings, per lb. 0/7 1/2	
Not less than 1 doz. supplied.	

99 GLOVES.

Wash Leather Gloves, No. 1 " " " "	per doz. 6/6
" " " " " " " "	2 " " 5/9
" " " " " " " "	3 " " 5/2
No. 1, Gauntlet " " " "	9/0
Extra Soft Gauntlets " " " "	9/6
Tan House " " " " " "	6/3 7/0
Harvest " " " " " "	per doz. 9/9 11/9 12/9
Gauntlet " " " " " "	per doz. 10/0 12/9
Not less than 1 doz. Gloves supplied.	

100 EMERY CLOTH AND GLASS PAPER.

Emery Cloth " " " " " "	per ream 11/6
Glass Paper " " " " " "	7/0
2/0 extra for less than 1 ream.	

101 HOUSE FLANNEL.

WHITE.	
About 45 yards.	
18 in. wide, about 17 lbs. weight per piece 9/3	
20 " " " " " "	10/3
22 " " " " " "	11/3
24 " " " " " "	12/3
" " " " " " " "	GREY.
24 " " " " " "	9/6 12/3
" " " " " " " "	CHECK.
21 " " " " " "	13/6
23 " " " " " "	16/9
" " " " " " " "	MEDIUM WHITE.
20 " " " " " "	13/9
24 " " " " " "	16/9
" " " " " " " "	SUPERFINE WHITE.
22 " " " " " "	20/0
24 " " " " " "	21/0
In judging House Flannel, the weight and quality should be studied more than the width.	

102 CHAMOIS DUSTERS.

Size 24 x 24.	
Plain " " " " " "	per doz. 2/4 2/8
Check " " " " " "	2/8
Not less than 1 doz. supplied.	

102* POLISHING CLOTHS.

Pink's Perfect Polisher.	
An excellent substitute for Chamois Leathers.	
Very durable, and will wash. Made in the following sizes:—	
14 by 14 per doz. 3/3	21 by 21 per doz. 6/6
17 by 17 " " " " " "	4/6 24 by 24 " " " "

103 SPONGE CLOTHS.

Size 22 by 12 " " " " " "	per gross 5/6
" " " " " " " "	6/3
" " " " " " " "	9/3
" " " " " " " "	11/6
Less quantity than 1 gross, 6d. per gross extra.	

104 DRESSING COMBS.

No. Doz. No. Doz.	
32, 1/2-do. on Card, 1/4	74, 1/2-do. on Card, 3/6
36 " " " " " "	1/7 710 " " " "
44 " " " " " "	2/0 129 " " " "
54 " " " " " "	2/5 128 " " " "
62 " " " " " "	2/10 127 " " " "
184, Small Tooth Comb, 1-do. on Card, 1/2	
197 " " " " " "	1/8
199 " " " " " "	2/6
201, 1d. Pocket Comb in case, 1-do. on Cd. 0/7	
214 1/2, 1d. " " " " " "	large, 1 " " " "

105 MARKET BAGS.

STRIPED.	
No. 0. 1 2 3 4 5	
9 by 12 10 by 14 11 by 16 12 by 15 13 by 17 14 by 19	
Best 1/1 1/6 1/10 2/3 2/4 2/9	
BLACK, LINED WATERPROOF.	
No. 1. 2 3 4 5	
11 1/2 by 9 14 by 11 17 1/2 by 12	
3/5 4/6 5/9	
Brown Canvas, Leather Bound (3 in a nest)	per nest 1/0
Brown Canvas School Satchels, with Leather Straps " " " "	per doz. 3/7 1/2

106 BEST WHITE WOOL MOPS.

8-oz. " " " " " "	per doz. 5/6
10 " " " " " "	4/1 16 " " " "
12 " " " " " "	5/0 6/0
Handled, 2/0 per doz. extra.	

107 COLOURED JUTE MOPS.

12-oz. " " " " " "	per doz. 3/1 1/2
14 " " " " " "	3/6
16 " " " " " "	4/1
16 " Coloured Wool " " " "	8/0
16 " Cotton Thread " " " "	5/2
12 " " " " " "	4/3
14 " " " " " "	4/7 1/2
Handled, 2/0 per doz. extra.	

108 SUPER PARAFFIN and BENZOLINE LAMP COTTON.

All sizes " " " " " "	per lb. 0/10 1/2
" " " " " " " "	7-lb. quantities " " " "
" " " " " " " "	14-lb. " " " "
Stove Wick, from 2 to 6-in. " " " "	1/1
" " " " " " " "	thick, 4-in. " " " "
" " " " " " " "	thick, spirit. " " " "

109 NOSE BAGS.

Superior Strong Cocoa Fibre " " " "	each 3/0
-------------------------------------	----------

110 TACKS.

In half-gross wooden Boxes.	
Iron, 1d. boxes, 200 in box " " " "	per gross 6/4
Tinned " " " " " "	7/8
Iron, ordinary size, 1d. boxes " " " "	4/4
Tinned " " " " " "	4/11
Not less than 1 box supplied.	

111 KAMPTULICON KNIFE BOARDS.

No. Inches. To retail at Per doz.	
0 24 by 4 " " " "	2/6
1 19 by 4 1/2 " " " "	3/0
2 24 by 4 1/2 " " " "	4/0
3 24 by 6 " " " "	5/3
4 27 by 5 1/2 " " " "	6/3
5 27 by 6 " " " "	7/0
6 36 by 6 " " " "	12/0
7 42 by 7 " " " "	16/0

112 SUNDRIES.

Juniper Berries " " " " " "	per lb. 0/1 1/2
Ground Turmeric " " " " " "	per cwt. 36/0
Paper parcels, 2/0 per cwt. extra.	
Less than 7-lbs., 4/0 per cwt. extra.	
Violet Powder, in handsome 1d. packets	
and 1/2-gross glass top boxes, per gross 5/0	
Prepared Fuller's Earth, ditto " " " "	4/6
Ditto ditto, 3-do. wood boxes " " " "	4/3
*Ditto ditto, in 1-cwt. bags, per cwt. 8/0	
* Delivery in London charged.	
Camomile Flowers (new) " " " "	per lb. 0/5 1/2
Or by bale, 4jd.	
Gum Arabic, per lb. 0/8, if 1 cwt., per lb. 0/7	
Best Wax, per lb. 1/3 1/2, if 1 cwt., " " " "	1/3 1/2
Do., 1-oz. Blocks, 1/2-gross boxes, per gross 13/0	
Earth Wax " " " " " "	per lb. 0/5
" " " " " " " "	if 1 cwt. " " " "
Brunswick Black, stone jars, per doz.	
3d. size, 2/0; 6d. size, 3/0; 1/0 size 5/0	
Harris's Harness Composition, 1/0 " " " "	5/3
" " " " " " " "	6d. " " " "
" " " " " " " "	Size 6d. 1/0
Harris's Polishing Paste " " " " " "	per doz. 2/8
" Plate Powder " " " " " "	2/3 4/7
Manby's Cleansing Crystal " " " " " "	per gross 3/7
" " " " " " " "	1-lb. id. pkts. " " " "
25-lb. boxes " " " " " "	per box 3/9
For 10 boxes " " " " " "	3/8
Disinfecting Fluid, Red, imperial pint bottles " " " " " "	per doz. 6/9
In 1-gall. bottles (bott. charged) per gall. 3/6	
Abraham Davis's Electro-plate, Silver, Brass, and Metal Polish, large size 1d. packets " " " " " "	1 gross 2/6
Ditto " " " " " " " "	5 " " " "
Ditto, gross and 1/2-gross boxes, 10 " " " "	2/2

113 NIGHT LIGHTS.

	Per doz. Boxes.
Ogleby's National Wax	3/8
Star	3/8
Price's New Patent, 5, 7, or 9 hours	4/0
Glasses given with each dozen boxes.	
Royal Castle	3/8
Improved Child's	3/8
Patent, 6, 8, or 10 hrs.	3/8
1 gross carriage paid.	
Clarke's Pyramid, 9 hour, 8 in box	6/10
Ditto with 4 lamps	7/4
Summer, 6 hour, 12 in box	7/4
Ditto with 4 lamps	7/11
6 hour, 6 in box	3/8 1/2
Ditto with 2 lamps	4/0 1/2
Fairy Pyramid, 10 hr., 8 in box	6/5
Ditto with 4 lamps	6/11
Fairy Lights, 10 hour, 6 in box	9/8
Ditto with 2 lamps	10/5
Wee Fairy, 4 hour, 11 in box	4/3
Ditto with 2 lamps	4/5
Extra Lamps, Pyramid	3/0
" Fairy	8/0
1 gross Night Lights, carriage paid at 4d. per dozen extra.	
Ornamental Bronze Brackets	2/6

TAPERS.

Wax Tapers, for lighting candles, &c., thick, 22 in. long, in 1-lb. papers...per lb.	0/8 1/2
Ditto, thin, 12 in. long	0/8 1/2
If 1 cwt.	0/8
Less than 7 lbs., per lb. 10d.	

114 SOAPS.**HOUSEHOLD SOAP.**

Free at our Warehouse. In 1 cwt. cases.

	Per cwt.	No. 5A, Brown	Per cwt.
Genuine Primrose	17/0	Twin Tablets	15/0
Silver Pale	19/0	6 Primrose	15/0
Best Primrose	18/3	7 Pale	14/0
No. 1 Cowslip	17/3	8 Scouring	14/0
" 2	16/9	8a Pale	12/3
" 3	16/3	9 Grey Mtd.	16/6
" 4 Strong	17/0	9a Grey Mtd.	12/3
Brown	17/0	10 Blue Mtd.	16/6
" 5 Pale	15/9	10a Blue Mtd.	12/3
		11 Best Mtd.	17/9
Real Cold Water, 1-lb. tabs., 1 cwt. cases	19/0		
Carbolic, 1-lb. tablets	19/0		
Washing, 1-lb. twin tablets	15/0		

SOAP (Carriage Paid).

Direct from the manufactory, in not less than 2-cwt. lots, 3d. per cwt. extra for less than 5-cwt. Not less than 2-cwt. either Mottled or Yellow supplied.

Customer's name stamped on each bar if required in quantities of one kind, not less than 5 cwt.

Or can be supplied in twin 1/2-lb. tablets at 6d. per cwt. extra, or in 1/2-lb. twin tablets 1s. per cwt. extra. If in 56-lb. cases, 6d. per cwt. extra.

	Per cwt.	No. 6 Primrose	Per cwt.
Genuine Primrose	17/6	7 Pale	14/6
Silver Pale	19/6	8 Scouring	14/6
Best Primrose	18/9	8a Pale	12/9
No. 1 Cowslip	17/9	9 Grey	Mottled 16/0
" 2	17/3	9a Grey	12/9
" 3	16/9	10 Blue	16/0
" 4 Strong	17/6	10a	12/9
Brown	17/6	11 Best	18/3
" 5 Pale	16/3		
" 5a Brown	15/6		

Real Cold Water, 1-lb. tabs., 1 cwt. cases	19/6
Carbolic, 1-lb. tablets, 1 cwt. cases	19/6
Washing, 1-lb. bars, 1 cwt. cases	15/6

SCENTED SOAPS.

7 lb. boxes, tablets 6 to the lb.

Glycerine, Honey, Brown Windsor, Skin, Glycerine and Almond, Carbolic, assorted	
No. 1	38/0
No. 2	36/0
Tar (No. 1 only)	38/0
For less than 1 cwt., 20 cwt. extra.	
Transparent Glycerine, in tablets, 7-lb. wood boxes, 5 or 6 to lb.	0/4 1/2

SOAP—continued.**SOFT SOAP.**

Genuine	per firkin, 64-lb. net	8/3
"	per 1/2-firkin, 32-lb. net	4/4 1/2
"	in 1-lb. tins, packed 6 doz in	
"	case...per doz.	3/0
"	2-lb. tins, 3 doz. in case	5/0
"	3-lb. " 3 " " " "	7/0
"	7-lb. " 1 " " " "	13/0
Cases free.		
For less than a case, 3 or 2-lb. tins, 5d. per doz. extra.		
"	3 or 7-lb. tins, 6d. " "	
"	2 by 1/2-firkin, 3d. extra.	

CHISWICK SOFT SOAP.

Imperial Soft Soap, Odourless, New Metallic Canister, attractively enamelled.

7-lb. 4-lb. 3 1/2-lb. 3-lb. 2-lb. 1-lb. nett.	
16/6 10/3 9/3 8/3 6/0 3/3 per doz.	
Packed in cases of 1 doz. 7 lbs.; 2 doz. each 4 lbs.; 3 1/2 lbs., 3 lbs.; and 3 doz. each 2 lbs. and 1 lb. sizes.	
Cases free.	
Brooke's "Monkey" Brand Soap—	
10 Tablets	per parcel 2/7
300	per case 24/8
5 Case Lots	" 24/3
60 Tablets	" 14/10
48 1/2	" 6/2

115 PAPER & STATIONERY.**ROYAL HAND.**

About 75lbs. 65lbs. 60lbs. 64lbs. 60lbs. 60lbs.	
Grey, per cwt. 6/7 1/2 8/3 9/0 10/0 13/6 15/0	
About 75lbs. 65lbs. 60lbs. 64lbs. 60lbs. 60lbs.	
Blue, per cwt. 7/0 8/6 9/6 11/0 13/0 15/6	
10 ream lots, 1 1/2d. per cwt. less.	

FRUIT ROYAL.

In 5 Colours—Mauve, Buff, White, Pink, and Blue

Fruit Royal can be sent in 5 cwt. lots carriage paid direct from Mill at above prices.

BUTTER ROYAL.

Per cwt. 15/0 17/0 20/0

DEMY.

Good. Fine Quality.

White, per rm. 1/6 1/2 2/0 2/3 3/0 3/6 4/0 5/0 5/6	
Blue, for Seidlitz. Powders, &c., per ream	5/0

DOUBLE CROWN.

Good. Fine Quality.

White	per ream 2/6 3/0 4/0 5/0 6/0
White Demy, or Double Crown, in 1-cwt. lots	per cwt. 12/6 & 13/6

SMALL HAND (Grey).

Reams, abt. 3 1/2 lb., 10 ream. bndls., per rm.	0/9
Less than a bundle	0/10

DOUBLE SMALL HAND or KITCHEN PAPER.

About 9 to 10 lbs. 14 lbs. 15 lbs. 18 lbs. 20 lbs.	
Per ream... 1/4 2/0 2/6 3/0 3/6	
Brown Double Small Hand, Glazed,	
14 to 15 lbs., per ream	1/10 1/2
1d. per ream less for 20 reams; 1d. per ream less for 100 reams.	

A special cheap Double Small Hand, 20 by 30, 15/16 lbs. to ream, per ream 2/1

Bale of 20 reams 2/0; or 3 bale lots,

per ream	1/11 1/2
White Glazed Double Small Hand,	
16 lb. to ream, very strong, per ream	2/9
Parchment Brown, 30lbs. Imperial,	
per ream	3/9
" 23lbs. bag cap	3/0

VEGETABLE PARCHMENT AND GREASE PROOF PAPERS.

For wrapping Butter, &c.

Vegetable Parchment, 20 by 30, reams about 17 lbs.	per lb. 0/4 1/2
By bale of 10 reams, 25 per cent. discount.	
Imitation Parchment, 20 by 30, about 19 lbs. to ream	per lb. 0/2 & 0/2 1/2
By bale of 10 reams, per cwt. 18/0 and 20/0.	

Pink's Evolution Grease Proof Paper, in reams 17/18 lbs. each, best preparation for Butter, by ream, per lb. 0/3 1/2; by bale of 10 reams

per lb. 0/3 1/2	
Evolution Grease Proof can also be supplied in reams 23lb. weight, 20 by 30, same price as above.	
Grease Proof Paper, a good useful line, 17/18 lbs.; by ream, per lb. 0/3 1/2; by bale of 10 reams	per lb. 0/3

CURLING PAPER.

Sixpenny Packets, per doz. 2/3; per gross 25/6	
" 1/8	19/6
About 500 sheets	
Toilet Rolls	per doz. 2/0; per gross 23/0

PAPER & STATIONERY—continued.**BROWN PAPER.**

Sizes Bag Cap, 30 or 40 lbs.	Per cwt.
Imperial, 50 or 60 lbs.	8/3 10/0
Double Imperial, 120 lbs.	
Double Bag Cap, 80 lbs.	

No. 2 Rope, sizes as above	per cwt. 13/6
" 1 " best	17/0
Ochre Brown Glazed Parcelling	11/3
Paper, sizes as above	
No. 2 Rope 13/6, and Brown 10/0 can be supplied in casing size, 26 by 46.	

PAPER BAGS, SATCHEL.

Grey, Raw, or Loaf, 1, 2, 3, 4, and 6 lbs.	11/6
Grey, Raw, or Loaf, 1, 2, 3, 4, and 6 lbs.	14/0
White, ditto, 1, 2, 3, 4, and 6 lbs.	19/0
Ditto, ditto, 1, 2, 3, 4, and 6 lbs., best	21/0
Blue, Raw, 2, 3, 4 and 6 lbs.	11/6, 14/0
Blue, Loaf, 1, 2, 3, 4 and 6 lbs.	11/6, 14/0, 16/0
Pink, Raw Bags, 2, 3, and 4 lbs.	14/0
Strong Thin Soda Bags, 1, 2, 3, 4, 5, & 6 lbs.	13/0

HAND MADE FLAT OR MACHINE MADE BLOCK BOTTOM.

Raw, Grey, 2, 3, 4 and 6 lbs.	per cwt. 15/6 and 21/0
Ditto, Blue, 2, 3, 4 and 6 lbs.	per cwt. 12/0 14/0 16/0 18/0 & 20/0
Ditto, Grey (Block Bottom), 2, 3, 4, and 6 lbs.	per cwt. 15/6 and 21/0
Raw, Purple, 2, 3, 4 & 6 lbs., cwt. 11/0 & 15/6	
Loaf " Glazed, 1, 2, 3, 4 and 6 lbs., per cwt.	15/6 and 21/0
Lilac Raw Bags, 2, 3 and 4 lbs. per cwt.	14/0
Pink, Raw Bags, 2, 3, and 4 lbs.	14/0

GLAZED BISCUIT FLOUR AND SWEET BAGS.

Biscuit Bags, flat, 1-oz. 2-oz. 4-lb. 1-lb. 2-lb.	per 1,000 0/10 1/3 1/6 2/6 3/9 6/0
Sweet ditto	per 1,000 0/8 0/10 1/3 — —
Biscuit ditto, Block Bottoms, all sizes.	25/0
Biscuit or Flour, flat, stout paper	26/0
" " special value	24/0
Bun, Cake or Fruit Bags (wide mouth)	1-pt. 1-pt. 2-pt. per 1,000 1/2 1/8 2/9 4/6

BROWN BAGS, BLOCK BOTTOM OR FLAT.

All sizes, very strong	per cwt. 12/6
Rope	per cwt. 16/0, 18/0, 20/0
For Loaf Sugar or Fruit, Block Bottoms.	
7's, 14's, 28's	per cwt. 16/6
Thin, for Soda, 1's, 2's, 3's, 4's, 7's	per cwt. 11/6, 13/0, 14/6
For parcelling (wide mouth), 7's, 14's, 21's, 28's	per cwt. 13/0
Good Useful Brown Bags, Block Bottoms, 4's, 7's, 14's, 28's	per cwt. 11/3

GLAZED CARTRIDGE TEA BAGS.

1/2 s., 1-lb., 2-lb.	per cwt. 24/0
1/0 per cwt. extra for less than 1 cwt.; and 2/0 per cwt. extra for less than 25 lbs.	

The undermentioned Bags are carriage paid in 5 cwt. parcels—

Any size Grey, Satchel or Block Bottom, Loaf or Raw	per cwt. 12/6
Blue or Pink, Loaf or Raw, Block Bottom, Hand Made or Satchel	per cwt. 12/6
Strong Brown, Block Bottom or Hand Made	per cwt. 12/6
Thin Soda, Hand Made or Satchel	13/6
Brown Parcelling Bags, wide mouth, 7, 14, 21 & 28 lbs.	per cwt. 13/6
SPECIAL LINE. (Carriage Paid as above.) Blue and Grey, Raw or Loaf Bags, Satchel or Block Bottoms	per cwt. 11/3
These are from one Mill, so can be sent assorted.	

NOTE PAPER.

No. 1 1s 2s 3s 4s 5s	
Cream Laid, per ream 1/3 1/6 2/0 2/6 3/0 3/6	
Vellum	3/0
For less than 5 reams, 1d. per ream extra.	
Cream Laid, 1-lb. pkts., very superior, doz. 4/0	

ENVELOPES COMMERCIAL.

No. 1 2s 3s 4s 5s	
Cream Laid, per 1,000 1/8 2/4 2/10 3/8 4/3	
Vellum	2/6 3/7 —

ENVELOPES SQUARE.

No. 1 2s 3s	
Cream Laid	per 1,000 2/6 3/2 3/8
Vellum	5/0

ENVELOPES PALACE.

No. 1 2s 3s	
Cream Laid	per 1,000 4/3 5/0 6/0
Vellum	2/6 3/7
For less than 5,000, 1d. per 1,000 extra.	

NEW FASHIONABLE COURT MOURNING STATIONERY.

Note Paper	per ream 4/0
Envelopes, 250 in box	per 1,000 8/6

PAPER & STATIONERY—continued.**PINK AND WHITE BLOTTING PAPER**

5-quire parcels	per lb. 0/6
Less quantity	" 0/8

PENS.

No. 1 2 3 Turned Points.	
Per gross box	0/6 0/8 0/10 1/0 1/3

PENHOLDERS.

No. 1 per gross	1/6
No. 2 per gross	3/0

BLACK LEAD PENCILS.

1 doz. bundles, 1 gross boxes.	
Plain Cedars	per gross 3/0
Polished	" 3/3
Stained " Drawing	" 5/3
Protective Pencils, with India rubber gross	3/3
Less than one gross, 6d. per gross extra.	

PACKETS STATIONERY.

1d., each containing 6 sheets Note Paper, 6 Court Envelopes, 1 sheet Blotting, in gross boxes	per gross 6/3
1d., each containing 3 sheets Note Paper, 3 Court Envelopes, in gross boxes, gross	3/4

MEMORANDUM BOOKS.

12 leaves	per gross 2/11
28 " "	5/5
34 " interleafed with Blotting, doz.	2/0
Counter Books	7/6
Ledgers (4 quires)	each 4/6
Pocket Order Books, about 100 leaves, per doz.	2/3

WRITING INKS.

1d. bottles, Black	per gross 4/0
" Red, Blue, and Mauve	" 6/9

GUM.

1d. bottles, 1/2-gross boxes	per gross 6/0
------------------------------	---------------

116 DISH AND DESSERT PAPERS.**EMBOSSED OVAL DISH PAPERS.**

Inches.	Per gross
8 1/2 x 6 1/2	0/7
10 1/2 x 8	0/9
12 1/2 x 10	1/0
14 1/2 x 11 1/2	1/6
16 x 13	2/0
18 x 14	2/6

EMBOSSED ROUND PLATE PAPERS.

Diameter.	Per gross
6 1/2	0/8
7 1/2	0/10
8 1/2	1/2
10 1/2	2/0

1/0 boxes, containing 96 Oval Dish Papers, assorted

1/0 boxes, containing 72 Dessert Papers, assorted

0/6 boxes, containing 48 Oval Dish Papers, assorted

THIN LACED DESSERT AND BOUQUET PAPERS.

Diameter.	Per gross
6 1/2	1/0
7 1/2	1/1
8 1/2	1/3
9 1/2	1/6
10 1/2	1/9

PIE DISH COLLARS

7/0

HAM FRILLS (PINK OR WHITE).

Inches.	Per gross
18 x 2 1/2	2/0
18 x 4	2/3
18 x 5	2/8

CUTLET FRILLS

1/0

No less than 1 gross of each size supplied</

117 STRING (All Hemp).

By bale of 12 doz. lbs., carriage paid.
13d. per doz. extra for less than a bale, and 2d. per
doz. extra for less than 3 doz. of one kind or 6 doz.
assorted. Bales may be assorted, if wished.

343 x Blue and White Tea Twine		per doz. lbs.
344 x	Red and White	9/4
345 x	Green	9/4
346 x	Puce	9/4
C. Colours		
"	Red	7/3
"	Blue	7/3
"	Puce	7/3
210	Cream Tea Twine	10/6
306	White	8/6
206	"	8/7
207	"	10/0
406	"	8/6

Pink
very attractive " 10/6
Dutch Twine, in hanks to
retail at 1d., about 48
in a bundle, per bundle 1/6

206 x Dutch Twine per doz. lbs. 6/0
90C Fine Fine " 5/9

228 Fine Sealing " 11/0
229 " " " 11/0
231 " " " 11/0
230 " " " 11/0

206 Italian 1-lb. balls " 6/9
204R " 1-lb. " 6/7 1/2
202 Fine Fine " 4/9

804R " " " 6/6
404R " " " 6/6
402 Laid Cord " 4/9

49 " " " 4/9
130 " " " 6/6
45 " " " 7/0

41 " " " 4/9
34 Middle Cord " 4/9
30 Fine Fine " 5/3

String, 1d. and 1d. balls " 7/3
Whip Cord, Brown, per lb. 1/2 to 2/0
" Green " 1/10 to 2/4

304, 404, 90C, 30 and 202 fine fine, 402, 130, and 45
Laid Cord can be supplied in 1-lb. balls.

JUTE.

Coloured Tea Twine		per doz. lbs.
P95303 Laid Cord	"	4/6
Thick Laid Cord, 1-lb. Balls	"	3/0
5303 Middle Cord	"	4/0
5207 1/2 Dutch Twine	"	4/4
Fillis in Balls	"	7/0
Skeined	"	6/3

Fine Fine Laid Cord and Middle Cord in 1-lb. balls, only, other kinds 1-lb. balls.

Hemp Laid Cord, 1d. & 2d. balls, doz. lbs. 7/3
Cotton Twine, White, fine or medium " 7/9

Cotton Laid Cord " 7/6
Cotton Twine cannot be sent in the Country carriage paid.

Monster 1d. balls String, any size, largest balls in the trade, per gross 7/0
Medical or Chemists' Twine, assorted colours, 2-oz. balls, in 1-lb. boxes, per doz. lbs. 18/6 or if all pink, 20/0.

BOX CORD & CLOTHES LINE.

Box Cord, all sizes, coils about 30 lbs., or balls about 18 lbs. per cwt. 19/0
Ditto superior " 23/6

Clothes' Lines, Handspun, all sizes, in coils or balls " 39/0
No. 1 Clothes' Lines, Millspun, all sizes, in coils or balls " 27/0

No. 2 Clothes' Lines, Millspun, in coils or balls, all sizes " 19/0
If 5 cwt. of either kind, 6d. per cwt. less.

BLIND CORD.

Green or Red " per gross yards 1/6
Not less than 1 gross of either colour supplied.

118 VASELINE PREPARATIONS.
CHESEBROUGH MANUFACTURING COMPANY.

Blue Seal Vaseline, regular 6d. size, without card cases or wrappers, packed in wooden boxes of 3-doz. each " per gross 20/6

VASELINE PREPARATIONS—contd.

Pure " 4d. bottles, per doz. 2/0
" No. 1 size 6d. " " 3/0
" No. 2 " 1/0 " " 5/9

1-lb. Tins, " " " 10/9
1-lb. " " " 6/9
1d., 2d., and 3d. Tins, per gross, 6/3 11/6 15/9

Pomade—
No. 1 size, 6d. bottles " per doz. 3/8
No. 2 " 1/0 " " 7/2

5-lb. Tins, square " per lb. 1/1
Cold Cream, No. 1 size, 9d. " per doz. 4/6
" No. 2 " 1/3 " " 6/8

Veterinary, 1-lb. tins " 8/4
Superfine Toilet Soap, 1/0 " 7/4
Toilet Soap, No. 1, 3d. " 1/7

Vaseline Tar, 3d. tab., card boxes of 6 tabs. " per doz. tabs. 2/0
Perfumed superfine, White, collapsible tubes, boxes of 1 doz. " per doz. 4/8

Ditto, No. 1 size, 2-oz. bots. in cardboard case " per doz. 7/3
Cosmetic, No. 1 size, metal tubes, boxes of 1 doz. " per doz. 5/3

119 MATCHES.
All 50 gross cases.
Good Reliable Brands.

If carted to rail or wharf, or delivered in London within 4 miles, 1/0 per case extra.
We have special rates to most places, and will send carriage paid quotations on application.
Matches supplied with customer's name or trade mark on labels, in lots of 5 cases.
Prices on application.

SAFETIES.
Pepper advt. (Belgian) " per gross 0/8 1/2
Clifton Suspension Bridge " 0/9 1/2
Brand (Belgian) " 0/10 1/2
Pink's Label (Dutch) " 0/10 1/2
Kopkoping's " 0/10 1/2

120 CLOTH BRUSHES.
Roach Back Round Ends, Veneered.

No. Rows. Cut. Length. Centre. Edge. Wood. Finish. per doz.

1 6 med. 7 1/2 white & blk. black satin 3/0
No. Rows. Cut. Length. Centre. Edge. Finish. per doz.

8 high 6 1/2 blk. bristle veneered 6/9
No. Rows. Cut. Length. Centre. Edge. Finish. per doz.

8 1/2 x 3 1/2 all bristle satin veneered 14/6
Roach Back Grooved.

No. Rows. Cut. Length. Materials. Wood. Finish. per doz.

101 10 short 6 1/2 black bristles rosewood pinned 12/8
DUMB BELL.

No. Rows. Cut. Length. Materials. Wood. Finish. per doz.

112 high oval 9 black bristle satin solid 20/0
100 " " black and white rosewood 6/10

HANDLED CLOTH BRUSHES.

All Bristle, with or without Splash.

No. Rows. Cut. Wood. French Polished. Finish. per doz.

16 1 1/2 Satin, screwed back with splash 18/0
18 " Mahogany " " 24/0
118 " Satin " " 26/0
127 " Olive " " 32/0
116 " Olive " wht. splash 19/6
118* " Satin " " 21/6
127* " Satin " " 26/0
133 Double. Handled Cloth " 15/0
134 " " " " 30/0

COMPO BRUSHES.
Grooved Sides, Round End. All French Polished.

No. Rows. Soft. Hard. Backs. Finish. per doz.

1 7 blk. hair mixed imit. rosewd. veneered 7/6
5 7 " stiff bristle " 19/7
7 7 " black " mahogany 13/0
9 7 " stiff " bevelled bks. 19/0

AFRICAN BASS HEADS. "SET."

8 x 4 " per doz. 4/8
9 x 4 " " 6/6
10 x 4 " " 7/6
11 x 4 " " 9/0

TOOTH BRUSHES (best French make).

No. 1 2 3 4 5 6 7
Per doz. 1/5 1/10 2/9 3/0 3/9 4/0 4/6
Not less than a dozen of either size supplied.

WATER BRUSHES.
Warranted Solid Screwed, Backs cannot come off.

No. Rows. Knots long. Size of Backs. Whisk. per doz.

66—White fibre, plain back " 6/0
69—Hair outside, grey middle " 8/0
11—Grey fibre, plain " 9/0
12—White hair outside " 12/0
13— " " 17/7
16—Grey bristles " 25/6
23— " " 47/0

NAIL BRUSHES.
White Fibre, flat back, 4 rows " per doz. gross. 0/9 8/0
" " 5 " 1/2 13/0
" " polished flat back, 5 rows " 1/4 15/6
Roach Back " 1/8 17/6
Oval pattern, 6 rows " 1/11 22/0
" " 6 " White centre, Cocoa Fibre edge " 2/1 23/0
" " 6 " Figured back " 2/3 25/0
Oval, polished, screwed back " 2/6 29/0
Birchwood, White Fibre, French polished—
6 rows, per doz. 4/3; 7 rows " 4/9 —
Not less than 1 dozen supplied.

DUTCH BROOMS, HANDLED.

No. 1.—30 knots round, red varnished " per doz. 13/0
" 2.—34 " " " 17/0
" 3.—38 " " " 20/6
" 4.—42 " " " 23/6
Without handles, 2/0 per doz. less.

MATCHES—continued.

SPECIAL IMPREGNATED.
Red sticks, yellow heads, glowless after flame
extinguished, and the burnt heads will not
drop off—

Kingfisher Brand (Dutch) " per gross 1/2
Queen Wilhelmina " " 1/1
Dove and Rose (Belgian) " 1/0
Clifton Bridge " "

PARAFFINS.
Pink's (Dutch) " per gross 0/10 1/2
Ice Boat " 0/10 1/2
Clifton Suspension Bridge " 0/9 1/2
(Dutch) " 0/10
Glow Worm (Dutch) " 0/10
Ice Boat, large size, 30 gross cases, " per gross 1/7

TANTALUMS (Sulphur).
Clifton Suspension Bridge (Swedish) " per gross 0/10 1/2

WAX VESTAS.
Vulpes' Brand (Belgian), 10 gross cases, per gross 4/7
Clifton Brand (English) " 4/10

MIXED.
No. 1 Cases, each containing 25 gross Ice
Boat Paraffins, and 25 gross Kopkoping's
Safeties, " per case £2/2/0
No. 2 Cases, each containing 25 gross Ice
Boat Paraffins, 25 gross Queen Brand Im-
pregnated Safeties, " per case £2/9/0
Any other Mixture can be supplied at 1/6 per case
extra to the quoted prices.
The following are delivered in London free.

SAFETIES.
Belgian, 10 gross lots " per gross 0/9 1/2
" 5 " " 0/10
Dutch, 10 " " 0/10 1/2
" 5 " " 0/11

Impregnated (Dove and Rose) " 1/0 1/2
" 10 gross lots " 1/0 1/2
" 5 " " 1/2
" Kingfisher " 1/2
" 5 " " 1/2
Wax Vestas, less than 10 gross " 4/8

CRUMB BRUSHES.
All French Polished. Wood. per doz.

1..... Mixed hair..... Satin..... 10/6
2..... White hair outside, dark centre Mahogany 12/6
3..... " " outside, dark centre Ebony 15/0
4..... " " superior quality Rosewood 17/0
7..... " " " 23/0

DANDY BRUSHES.
Warranted Wire Drawn and Solid Screwed Backs.

No. Rows. Knots long. Size of Backs. Whisk. per doz.

22 9 24 10 x 3 good colour quality 10/0
23 10 28 11 x 3 " 9/7
27 9 25 10 x 2 1/2 fine " 8/10
21 9 25 10 x 2 1/2 stiff " 8/0

Extra Spreading, very Full.
31 8 20 9 1/2 x 2 1/2 very stiff very high 9/0
best colour

32 10 24 10 1/2 x 3 1/2 " " 10/0
33 12 28 11 x 3 1/2 " " 12/0

Solid Roach Back and Flat Face.

No. Rows. Knots long. Size. Whisk. per doz.

0 — 20 9 1/2 x 2 1/2 Pain (good quality) 4/0
1 — 20 9 1/2 x 2 1/2 Wood " 5/0
2 — 22 10 1/2 x 2 1/2 Pinned " 6/8
3 — 22 10 1/2 x 2 1/2 F. Polished, best " 8/3

Bass Dandy.

No. Rows. Knots long. Size. Whisk. per doz.

Per doz. 4/6 5/3 6/6 7/6

SPOKE BRUSHES.
Grey Fibre, Solid Pinned, Backs cannot come off.

No. Knots long. Inches. Wood. Quality. per doz.

1 35 16 plain good 6/0
2 35 17 varnished " 6/6
3 35 17 polished " 7/0
4 36 17 plain best 7/1
5 36 17 varnished " 8/3
6 36 17 polished " 8/10
7 36 17 plain very best 8/10

Mixed, Solid Screwed.

No. Knots long. Inches. Wood. Quality. per doz.

15 43 16 French polished yellow mxd. 26/4
17 43 16 " stiff grey 39/9

Orders of £5 worth, 2½ per cent. less.

For Index--see page 3.

BROWN & POLSON'S

PATENT
CORN FLOUR

First produced and designated CORN FLOUR by BROWN & POLSON in 1856; not till some time afterwards was any other Corn Flour anywhere heard of, and none has now an equal claim to the confidence of the trade and the public.

TRY
PINK'S JAMS.

CAUTION.

As under the Merchandise Marks Act it has been decided (see Court of Queen's Bench Wood v. Burgess) that it is illegal to sell goods filled in the Bottles, Pots, or other receptacles bearing the name of another Manufacturer or Firm, whether such Bottle or other receptacle bears the Label of the re-user or not.

^ We hereby give notice that we shall take legal proceedings against anyone selling Jams, Jellies, Pickles, Sauces, or other Articles not of our manufacture sent out in packages bearing our name.



Marmalade and Jams should be unpacked as soon as received, kept in a dry place (not underground), and stacked as shown at side, which allows a portion of each cover to remain exposed to the atmosphere.



E. & T. PINK'S
PACKET

TABLE JELLIES

Surpass



all Others.

DELICIOUS FLAVOUR.

This can readily be proved by trying a Sample Packet, which will be sent Post Free on Application.

FLAVOURS—CALF'S FOOT, LEMON, ORANGE, VANILLA, NOYEAU, RASPBERRY, PINE APPLE, CHAMPAGNE, TANGERINE, MADEIRA, PUNCH, APRICOT, AND CHERRY.

For Quotations—see Body of List.

BORWICK'S

BAKING POWDER.

THE BEST THAT MONEY CAN BUY.

SOLD BY E. & T. PINK
ON THE BEST WHOLESALE TERMS.

10 gross and upwards carriage paid. See Quotations No. 64.



Manufacturers to Her Majesty the Queen and H.R.H. the Prince of Wales. Contractors to the Army and Navy.

DAY & MARTIN'S

REAL JAPAN LIQUID AND OIL PASTE

BLACKING.

SEVERAL PRIZE MEDALS, 1st ORDER OF MERIT, and Special Mention Melbourne Exhibition, 1883.

KID RENOVATING POLISH. JAPANESE WATERPROOF BLACKING. BRUNSWICK AND BERLIN BLACK, FOR STOVES.

Universal Harness Composition, in Tins. Harness Oil, in Bottles and in Bulk.

KID REVIVER, IN TINS (3 SIZES). PATENT LEATHER POLISH (2 SIZES). POLISHING CREAM (2 SIZES). BRASS BURNISHING PASTE (4 SIZES).
FURNITURE POLISH (2 SIZES). RUSSET CREAM (3 SIZES). DUBBIN, INK, ECLIPSE GLOSS, and POUCH BLACKING.
ALL OF SUPERIOR QUALITY.

LONDON AND LIVERPOOL.



IMPROVED AND ECONOMIC COOKERY.

Liebig "Company's" Extract of Beef.

The Finest Meat Flavouring Stock. USE it for Soups, Sauces, and Made Dishes.

MAKES THE PUREST, CHEAPEST, AND BEST BEEF TEA.

When ordering, ask for THE "COMPANY'S" EXTRACT
And see that it bears the

Signature
in BLUE INK across
the Label.

For Liebig

SITUATIONS WANTED, &c.

For the accommodation of Employers and Employed, the following Advertisements are Inserted Free.

SITUATION VACANT.

GROCERY, DRAPERY AND GENERAL.—Young man, 17 or 18, wanted as assistant. Competent in postal and telegraph duties, S.N. To solicit and make himself generally useful. In or out.—Full particulars, with references, to "Grocer," c/o E. & T. Pink, Staple Street, Boro', S.E.

SITUATIONS WANTED.

GROCERY AND PROVISIONS.—As working manager or first. Permanent engagement. 18 years' experience in town and country. Fully competent and keen buyer. Married. No family. Wife can assist or would act as housekeeper if required. Age 32. Highest references.—Address, "Grocer," 182, London Road, East Grinstead, Sussex.

GROCERY AND PROVISION.—As assistant. Take country journeys, drive, solicit. Deliver if required. Well up both counters. Good window dresser. Would manage branch. Age 30. Permanency. Out. Good references. Disengaged when suited.—D, c/o Mrs. Charlwood, London Road, East Grinstead, Sussex.

GROCERY AND PROVISIONS.—As round man or branch manager. 17 years' experience. First-class reference.—T. Day, Thurlow, Suffolk.

OIL AND COLOUR.—As manager or first hand. Age 23. 8 years' experience. Well up in colours, stains, &c., also lamps and stoves. Exceptional references.—E. Morey, 15, Hartfield Road, Wimbledon.

GROCERY AND PROVISIONS.—As junior. Drive and solicit. Good references. Age 18.—P. M., Brent View Terrace, The Hyde, N.W.

OIL AND COLOUR.—As assistant. Indoors. Good second. Age 21. H., 43, George Street, N.W.

GROCERY AND PROVISIONS.—Re-engagement as manager or good first. 18 years' experience. Married. Good references. In or out. Disengaged.—G., 102, Shrubland Road, Dalston.

GROCERY OR GENERAL.—Age 23. Indoors. 4½ years last situation. Disengaged.—P. Wood, 9, Cromwell Hill, Maldon, Essex.

GROCERY AND OIL.—As manager. By young married man. Experienced in all branches. Good window dresser and ticket writer. Family or ready-money trade.—H. L., 7, Inver Road, Upper Clapton, N.

CHEMISTS OR DRYSALTRY.—As assistant. 5½ years in mixed Chemist's shop. Age 23. Height 5 ft. 7 in.—CAIRNS, Alison Place, Alnwick.

BUSINESSES FOR DISPOSAL.

OILS.—To be sold cheap, if bought at once. Stock, fittings, and fixtures all at. Genuine. Small going concern. Could be much improved under proper management. No agents.—Apply, on premises, 44, Nottingham Street, Waterloo Town, E.

GROCERY AND PROVISIONS.—Branch business in East London. Good position. Trade all cash.—J. H., 229, Blackstock Road, Highbury.



THE PERFECTION OF GROUND PEPPER.

IN REGISTERED TINS.

2 oz. Tins	=	6 dozen in Box	=	per doz.	2/2
4 oz. "	=	3 " "	=	" "	4/-
8 oz. "	=	2 " "	=	" "	7/6

SUPERIOR TO ALL FOR STRENGTH & PURITY.

E. & T. PINK,

Merchants and Manufacturers, Staple Street, Boro', London, S.E.

What's the trend of trade

as times go now? Towards buying only Blended Tea. We know it, because so many more of the biggest Grocers, who had always mixed their own, have been compelled by cutting competition to come to us for tea, in the year just ended. They had been buying easily on credit from the old-fashioned Houses all their lives. They would never have come, cash-in-hand, to us, if they hadn't been obliged, at last, to search everywhere for better value and better profit, and, so, had found that we alone could give it, but—for 'cash.' Now they say they wish they had but known before—how much capital and time and trouble, anxiety and profit, they save by ordering of us. And whither will many other worried Grocers turn

in New Year '96?

Why, undoubtedly towards BROOKE, BONDS' BLENDS. Truth is: the busy Grocer cannot price, and buy, and blend the ever-varying qualities of Indian and Ceylon Originals, without devoting too many years to tasting tea, and without the ruinous necessity of over-buying those originals at too high a price through middlemen. Time was, when profit on the lb. was bigger, and 'garden-marks' and rivals fewer, that he could afford to follow his father's practice and blend his own, but that time has now gone by and won't come back again.

So you, too, can't do better than try the New Year's plan of your shrewdest fellow-traders and compare what we can do for you. It will cost you but a minute and a post-card

STANDARD BLENDS (Duty Paid).

Bro. Lf																														
X	XX	O	OO	1A	1	2A	2	3A	3	4	5	6A	6	7	8	9														
9½	10	10	10½	11	11½	1-	1/1	1/2	1/3	1/4	1/5	1/6	1/7	1/9	1/11	2 2														
CEYLON BLENDS (Duty Paid.)																														

PURE CEYLON in ¼-lb., ½-lb. & 1-lb. Lead Packets, 1/-, 1/2, 1/3, 1/4, 1/5, 1/6, 1/10 & 2/2 per lb. with your name & address on 20 lbs.

BROOKE, BOND & Co., LTD

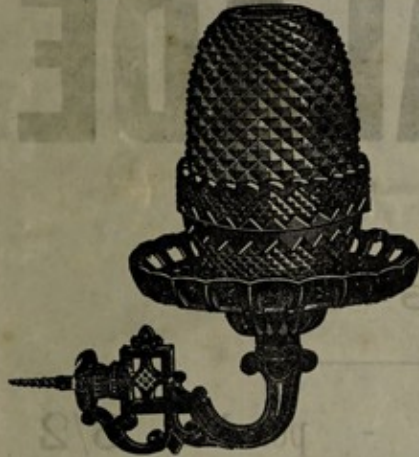
Wholesale Tea Blenders to the Trade.

17 & 18, ST. DUNSTON'S HILL, GREAT TOWER STREET, LONDON, E.C.

TELEGRAPHIC ADDRESS: "ASSAM BROOKE, LONDON."

THE "BURGLAR'S" HORROR.

Two "Fairy Lamps" can be had with every dozen boxes of "Fairy Lights," at 4d. each, i.e., half the Wholesale Prices until further Notice.
One Lamp in each packet of Lights.



8 Lights in a Box, burn 9 hours.
12 " " " " " "
6 " " " " " "

Four "Pyramid Lamps" can be had with every dozen boxes of "Pyramid Lights," at 1½d. each.
Two Lamps packed in each packet of Lights.

EXTRA LAMP.

No. 1890. Equal to Cut Glass. In various Colours. 8/9 per doz.
Each Lamp packed in a Box.

ARTISTIC BRONZE BRACKETS, 2/6 per dozen, will take either "Pyramid" or "Fairy" Lamps.
See Quotations No. 113.

Gold Medal (Highest Award) London, 1884; Gold Medal, London, 1885;
Silver Medal, Antwerp, 1885.

WALKER & HARRISON'S MEAT BISCUITS

THE BEST AND CHEAPEST FOOD FOR DOGS.

"PHENIX" (Carbonated), containing 20 per cent. Meat.
"CITY MEAT" " " " 10
CHARCOAL (Pet Dog Biscuits, without Meat), in ½ cwt. cases.
Also Makers of Game and Poultry Food, &c.

PHENIX BISCUIT WORKS, RATCLIFF CROSS, LONDON, E.

TO SHIPPERS AND THE HOME TRADE.

For EXCELLENT WASHING SQUARE BLUE

1 oz. or ½ oz., at 4½d. per lb.,

Apply to Messrs. E. & T. PINK,

OR THE

Albert Laundry Blue Manufacturing Company,

132, UPPER THAMES ST., LONDON; and ST. JUDE'S, BRISTOL.

Also BALL & THUMB BLUE. | MAKERS TO THE TRADE.

PAPER

AND

STATIONERY

See Page 15.

WEEKLY SPECIAL OFFER IF UN SOLD.

This offer is strictly net cash with order, quotations on credit terms forwarded on receipt of trade references.

Sides, fresh landed Continental BACON, No. 2, stout; in perfect condition, 34/0 smoked (1/0 less green).

C. H. HARVEY, 4, 6 & 8, OLD SWAN LANE, UPPER THAMES STREET, LONDON, E.C.

Importer and Wholesale Dealer in Tea, Sugar, Dried Fruit, and Provisions.

Telegraphic Address—"UNFLAGGING, LONDON."

Weekly Circular posted on application.

Jan. 24th, 1896.

SCHWEITZER'S COCOATINA.

GUARANTEED PURE SOLUBLE COCOA.

The *Lancet* says this is "GENUINE COCOA, contains no SUGAR, STARCH, or other ADULTERATION. Is very SOLUBLE. AN EXCELLENT ARTICLE."

MOST NUTRITIOUS AND ECONOMICAL.

The "ECLIPSE" SELF-RAISING FLOUR.

Guaranteed Pure by Analysis by Lawrence Briant, F.C.S., F.R.M.S.
Member of the Society of Public Analysts, &c.

FREE SAMPLES ENCLOSED WITH FIRST ORDER.

TERMS ON APPLICATION TO—

ALFRED THORNE,

MANUFACTURER,

EATON BRAY, DUNSTABLE.



DR. RIDGE'S PATENT COOKED FOOD is certified to contain all the essentials of a Pure Dietary necessary to secure a healthy and natural development of bone and muscle, a vital necessity to growing infants and comfort to all.

RIDGE'S PATENT COOKED FOOD has the LARGEST SALE in the WORLD.

Pamphlets on the Management of Children, and Show Cards, &c., Post Free on application to Ridge's Royal Food Mills, London, N.

WESTON & WESTALL, LTD.,

115, LOWER THAMES STREET, LONDON, E.C.

Agents for the Worcestershire Salt Works, Stoke Prior and Droitwich.

DELIVERED IN LONDON—LOOSE.

TABLE SALT.

2-lb. packets.....	per gross	11/6
1-lb. ".....	"	6/4
2-lb. jars and bottles.....	per doz.	3/3
1-lb. linen bags.....	per gross	6/9
2-lb. ".....	"	11/0
7-lb. ".....	per doz.	3/0
1½-lb. cardboard drums, 4 doz. in case.....	per gross	12/0

Packages Extra—Not Returnable.

SALTUNIA,

The new Scented Bath Salt,
in cardboard drums, 4
doz. in case..... per doz. 4/6

Do., very superior, selected
and perfumed... per doz. 9/0

Special Terms for Large Quantities.

For Quotations—see Body of List,

A PERFECT PRESERVE.

PINK'S MARMALADE

(SEASON 1895-6)
Finest Bitter Oranges and Sugar only.

White Pots - - - per doz.	2/6 $\frac{1}{2}$	3-lb. Glass Jars - - - per doz.	6/2
Goblets - - - - - "	2/3 $\frac{1}{2}$	3-lb. Stone " - - - - - "	6/1
1-lb. Glass Jars - - - - - "	2/7	7 or 14-lb. " - - - per cwt.	15/0
2-lb. " - - - - - "	4/6	14-lb. Tins - - - - - "	15/8

Beware of Spurious Imitations.



None Genuine Without this Label.

E. & T. PINK.