

## **Sales catalogues: Knight, Frank & Rutley**

### **Publication/Creation**

19th- 20th November 1931

### **Persistent URL**

<https://wellcomecollection.org/works/m4kngteq>

### **License and attribution**

This work has been identified as being free of known restrictions under copyright law, including all related and neighbouring rights and is being made available under the Creative Commons, Public Domain Mark.

You can copy, modify, distribute and perform the work, even for commercial purposes, without asking permission.



Wellcome Collection  
183 Euston Road  
London NW1 2BE UK  
T +44 (0)20 7611 8722  
E [library@wellcomecollection.org](mailto:library@wellcomecollection.org)  
<https://wellcomecollection.org>

*Commis*  
*original*

*in Commis 19<sup>th</sup> November. 1931*  
*7 A 4*

WA/HMM/CM/501/12/2 +8

K.F.R.	DATE	INITIALS
106.1.6		
SALE	19.XI.31	W.M.N.S.
PURCHASE		
CHECKED	23.XI.31	th
COLLECTED	23.XI.31	188
RECEIVED	23.XI.31	188
ACCESSED		
PASSED		



# ENGLISH AND FRENCH FURNITURE

KNIGHT, FRANK & RUTLEY

*th m 123. 106.1.6*

BUYER *Corrino*Date *19<sup>th</sup> 20<sup>th</sup> 7<sup>th</sup> 1931*AUCTIONEERS *K. F. R.*

Lot	Amount			Lot	Amount		
	£	s.	d.		£	s.	d.
25	9	9	.	13/4.	67	15	-
42	3	13	6	171	6	16	6
43	3	3	.	283	9	19	6
44	6	16	6	313	6	16	6
61	7	7	.	314	6	16	6
62	7	7	.	366	4	4	.
63	2	-	.	368	3	13	6
68	2	-	.				
103	19	19	-				
120	2	-	.				
121	2	-	.				
123	2	-	.				
	6	7	15				

Srv. No. 3



**20. HANOVER SQUARE, W.**

---

CATALOGUE

OF

ENGLISH AND FRENCH  
FURNITURE,

Tapestries, Carpets, Porcelain, &c.

*To be Sold by Auction, owing to the cancellation of  
American purchases, by Messrs.*

**KNIGHT, FRANK & RUTLEY**

SIR HOWARD FRANK, BART., G.B.E., K.C.B.  
ARTHUR H. KNIGHT, F.A.I.

ALFRED J. BURROWS, F.S.I., P.P.A.I.  
WILLIAM GIBSON, D.S.O., F.S.I.

**AT THEIR ROOMS,**

20, HANOVER SQUARE, W. 1

**On THURSDAY, 19th NOVEMBER, 1931, and following Day,**

AT TWO O'CLOCK PRECISELY EACH DAY.

---

On View Tuesday and Wednesday prior, from 10 to 5 o'clock.  
Illustrated Catalogues of the Auctioneers, at their Offices,

20, Hanover Square, London, W.

Telephone—Mayfair 3771 (ten lines)

Telegrams—Galleries Wesdo. London

## CONDITIONS OF SALE.

---

I.—The highest bidder to be the purchaser, and if any dispute arise between two or more bidders, the lot in dispute shall immediately be put up again and re-sold as the auctioneer may decide.

II.—No person to advance less than 2s. 6d., above Five Pounds 5s., and so on in proportion.

III.—In the case of lots upon which there is a reserve the auctioneer shall have the right to bid on behalf of the vendor.

IV.—The purchaser to give in name and address, and if required, to pay down 5s. in the £, or more, in part payment of the purchase-money, in default of which the lot or lots so purchased to be immediately put up again and re-sold.

V.—The lots to be taken away at the purchaser's expense and risk the day after the sale, in default of which Messrs. Knight, Frank & Rutley will not hold themselves responsible if the lots be lost, stolen, damaged or destroyed; but they will be left at the sole risk of the purchaser. Messrs. Knight, Frank & Rutley require immediate removal of goods after the sale, and in default, they reserve the right to store them at a public depository to await clearance or re-sale, and, subject to the usual conditions of the depository proprietors, at the entire cost of the purchaser.

VI.—The lots are sold with all faults, imperfections, and errors of description, the Auctioneers not being responsible for the correct description, genuineness, or authenticity of, or any fault or defect in any lot, and making no warranty whatever. The Auctioneers reserve the right of refusing any bidding or of withdrawing any lot or lots from the sale.

VII.—To prevent inaccuracy in delivery, and inconvenience in the settlement of the purchases, no lot can be transferred nor can any lot be removed during the time of sale, and the remainder of the purchase-money must absolutely be paid on the delivery. After one week from date of sale, interest at bank rate will become payable on uncleared goods from date of purchase to time of clearance or re-sale.

VIII.—Upon failure of complying with the above conditions, the money deposited in part payment shall be forfeited; all lots uncleared within the time aforesaid shall be re-sold by public or private sale, and the deficiency (if any) attending such re-sale, together with warehouse and other charges, shall be made good by the defaulter at this sale.

KNIGHT, FRANK & RUTLEY.

---

NOTE.—Attention is called to No. V, as Messrs. Knight, Frank & Rutley cannot, after the Auction, undertake to warehouse uncleared Goods.

GOODS are received and delivered at the Rear Entrance in DERING YARD (between 67 and 68, New Bond Street) from 9.30 to 11.30 a.m. and 4.30 to 6 p.m., and on Saturdays from 9.30 a.m. to 12.30 p.m.



CATALOGUE  
OF  
Messrs. KNIGHT, FRANK & RUTLEY'S  
FIRST DAY'S SALE  
OF  
MODERN  
English & French Furniture,  
Tapestries, Porcelain, Etc.

On THURSDAY, the 19th day of NOVEMBER, 1931,  
AT **TWO** O'CLOCK PRECISELY.

LOT

- |   |  |               |
|---|--|---------------|
| 1 | A decorated tortoiseshell pattern bureau, with sloping writing-flap, two drawers, and cabriole legs, 20 in. wide   | 5½ gns,       |
| 2 | A mahogany tip-up table with circular pie-crust top, claw and ball feet, 2 ft. 2 diam.   | £3.           |
| 3 | A similar lot  | £3            |
| 4 | A SET OF SEVEN HEPPLEWHITE PATTERN MAHOGANY DINING-CHAIRS with carved vase-shaped splats, square tapered legs, loose seats in red striped cotton (two with arms) | 21 gns.       |
| 5 | A Queen Anne pattern walnut writing-table with seven drawers and knee recess with cupboard, 2 ft. 6 wide   | 8 gns.        |
| 6 | A walnut side-table with four drawers and cabriole legs, 3 ft. wide  | 5 gns<br>Lee. |
| 7 | A ditto, of William and Mary design, with two drawers and cross stretchers, 3 ft. wide   | 4/10/-        |
| 8 | A walnut display cabinet with two glazed doors, panel doors below, and cabriole legs, 3 ft. wide   | 14 gns.       |
| 9 | A similar dwarf cabinet with two glazed doors, 3 ft. 6 wide  | 12 gns,       |

- 10 A pair of William and Mary pattern walnut chairs with high carved and pierced backs, seats in lining *8 lbs*  
*Edwards*
- 11 A pair of similar chairs *8 lbs do*
- 12 A walnut chest of four drawers, with folding top, 2 ft. 6 wide *8 1/2 lbs*
- 13 A walnut parqueterie bureau, with sloping top, three drawers and cabriole legs, 2 ft. 6 wide *5 lbs*  
*5 1/2 lbs*
- 14 A similar bureau *5 1/2 lbs*
- 15 A SET OF EIGHT CHIPPENDALE PATTERN MAHOGANY DINING-CHAIRS with fluted rail splats, carved honeysuckle, square legs, seats in blue lining (two with arms) *33 1/2 lbs*  
*Cowl*
- 16 A carved walnut arm-chair of Stuart design, square back and seat in blue lining *5 lbs*
- 17 A pair of walnut bergères of tub shape, with cane panel sides, back and seat in blue cotton *6 1/2 lbs*
- 18 A mahogany chest of four drawers and slide, of Chippendale design, with serpentine front, 2 ft. 6 wide *5 1/2 lbs*  
*Bucknell*
- 19 A walnut chest of four drawers, 2 ft. wide *4 lbs do*
- 20 A decorated scarlet lacquer card-table with folding top and straight legs, 2 ft. 4 wide *2 1/2 lbs*
- 21 A similar bureau with sloping flap, two drawers and cabriole legs, 2 ft. wide *7 lbs*  
*Harman*
- 22 A mahogany galleried-top table, on tripod, 18 in. diam. *1/15/-*
- 23 A similar table *1/15/-*
- 24 A walnut gate-leg table of William and Mary design, 22 in. diam. *2/15/-*
- 25 A pair of Chippendale pattern mahogany ladder back chairs, seats in red brocade *9 lbs*  
*8.*
- 26 A walnut sofa table with two end flaps, two drawers and end supports, 3 ft. wide *26.*
- 27 A Sheraton inlaid mahogany wardrobe with two panel doors enclosing trays, four drawers below, 4 ft. wide *19 lbs*  
*Cowl*
- 28 A SET OF EIGHT CHIPPENDALE PATTERN MAHOGANY DINING-CHAIRS with vase-shaped rail splats, square tapered legs, loose seats in blue lining (two with arms) *19 1/2 lbs*
- 29 A William and Mary pattern walnut side-table with one drawer, 2 ft. 3 wide *3 1/2 lbs*
- 30 A similar table with two drawers, 2 ft. 6 wide *3 1/2 lbs*



- 31 A Chippendale pattern mahogany stool, in printed linen, with cabriole legs, claw and ball feet *2 lbs*
- 32 A similar stool *2 lbs western*
- 33 A SET OF EIGHT MAHOGANY DINING-CHAIRS of Chippendale style, with rail splats carved honeysuckle, square tapered legs, seats in brown brocade (two with arms) *16 1/2 lbs*
- 34 A pair of Italian carved walnut arm-chairs, with square backs and seats in green silk damask *9 lbs Collier*
- 35 A mahogany circular coffee-table, with revolving top and cabriole legs, 27 in. diam. *2 lbs*
- 36 A similar table *2 lbs*
- 37 An inlaid mahogany occasional table, with square tapered legs, 30 in. diam. *4 lbs*
- 38 A similar table *4 lbs*
- 39 A double chair-back settee in mahogany, of Hepplewhite design, square tapered legs, seat in black and gold damask, 3 ft. 10 wide *10 lbs Cannon*
- 40 A decorated scarlet lacquer card-table, with folding top and square legs, 2 ft. 9 wide *5 lbs do*
- 41 A pair of Spanish walnut arm-chairs with carved front stretchers, stamped hide back and seat *7 1/2 lbs*
- (3 1/2 lbs) 42 A monk's seat in oak, with hinged top and drawer, 2 ft. 8 wide
- (3 1/2 lbs) 43 An oak winged-back chair with inlaid top
- (6 1/2 lbs) 44 A settee, 3 ft. 6 wide, and a pair of arm-chairs with winged linen fold panel backs
- 45 A pair of oak stools with hide tops, 20 in. *2/5-*
- 46 A pair of ditto *2/5-*
- 47 A CHINESE BLACK LACQUER EIGHT-FOLD SCREEN, painted in brilliant colours with tea houses and figures, 9 ft. high *15 lbs*
- 48 A French kingwood and parqueterie occasional table, with ormolu beadings and mounts, 25 in. diam. *10 1/2 lbs*
- 49 A carved walnut bedstead of Louis XVI design, with rounded ends and cane panels, 5 ft. wide *5 1/2 lbs*
- 50 A pair of Louis XV pattern black and gilt lacquer commodes with two drawers, marble tops and metal mounts, 3 ft. 3 wide *12 lbs*



- 51 A Louis XVI pattern mahogany bedstead, with cane panelled ends, 5 ft. wide 3 1/2 gns ✓
- 52 A similar walnut bedstead with flutes, 5 ft. wide 3 1/2 gns -
- 53 A decorated black lacquer chest of two drawers, on stand, with cabriole legs, 2 ft. 6 wide 4 gns
- 54 A decorated scarlet lacquer chest of four drawers, with bow front, 2 ft. 7 3 1/2 gns
- 55 A decorated black lacquer dwarf cabinet, with three glazed doors, 5 ft. 3 wide 9 1/2 gns
- 56 A similar cabinet 9 gns Collier
- 57 A scarlet and gilt lacquer toilet glass, with six drawers, 18 in. wide 5 1/2 gns
- 58 A SCARLET LACQUER CABINET with black lacquer panels, designed with birds and foliage, on stand, with cabriole legs, 3 ft. 2 wide 7 gns
- 59 A black decorated lacquer commode of two drawers, with straight legs, marble top, 2 ft. 6 wide 4 1/2 gns
- 60 A ditto oblong stool with pierced stretchers and brackets, in blue and gold damask, 24 in. wide 2 gns
- 7 gns 8 61 A pair of Jacobean pattern inlaid oak chairs, with arched panel backs and bulbous-shaped supports
- 7 gns 8 62 A pair of similar chairs
4. 73 4 63 An oak box stool with fluted sides, 20 in. wide
- 4 64 A similar stool Passed
- 65 A pair of oak arm-chairs, oblong panel backs and seats in hide 4 gns
- 66 A pair of similar chairs 4 gns
- 67 Ditto 4 gns
- 6 6 68 ~~A pair of~~ <sup>one stool only.</sup> Jacobean pattern oak stools with spirally turned legs, 17 in. wide
- 82 69 A pair of similar stools Passed
- 70 A French pietra dura dwarf cabinet of ebony, with chased ormolu mounts, 4 ft. 6 wide 8 1/2 gns
- 71 A French parqueterie kingwood card-table, with folding top, 2 ft. 9 wide 7 gns
- 72 A CHINESE BROWN LACQUER EIGHT-FOLD SCREEN, designed with figures and continuous landscape, 7 ft. high 20 gns Collier

- 73 A wall mirror with divided plate, in carved gilt wood frame, 4 ft. 8 wide *6½ gms*
- 74 An Italian carved and gilt chandelier with six scrolled branches and imitation candles, 3 ft. 9 high *5 gms*
- 75 A similar sixteen-light chandelier, with scrolled figure branches and carved leafage, 4 ft. 6 high, wired for electricity *5 gms*
- 76 A French mahogany occasional table, the frieze inlaid with trellis work, ormolu mounts, 2 ft. 10 diam. *6 gms*
- 77 A ditto music cabinet, with wire panel door, lined with green curtain, marble top, 21 in. wide *4½ gms*
- 78 A Louis XIV pattern ebonised dwarf cabinet, with pietra dura panels, two doors and chased ormolu mounts, 4 ft. 8 wide *9 gms*
- 79 An Empire mahogany two-tier tea table, with gilt metal caryatid figures and mounts, 2 ft. 9 wide *Harman 11½ gms*
- 80 A mahogany writing-table of Louis XVI design, with three drawers, fluted legs and ormolu mounts, 3 ft. 10 wide *7½ gms*
- 81 A Louis XVI pattern mahogany card-table with folding top, one drawer and ormolu mounts, 2 ft. 8 wide *6½ gms*
- 82 A kingwood writing-table of Louis XV design, with two drawers, ormolu mounts, 4 ft. 6 wide *8½ gms*
- 83 An Italian carved and gilt wood chandelier, with eight scrolled branches, 3 ft. 6 high *5 gms*
- 84 A ditto, with six lights, 3 ft. 9 high *9 gms*
- 85 A French kingwood display cabinet, with glazed and Vernis Martin panels, 3 ft. 2 wide *14 gms*
- 86 A French kingwood and parqueterie tea-table, with tray top and ormolu mounts, 2 ft. 9 wide *8½ gms*
- 87 A PAIR OF LOUIS XV PATTERN MARQUETERIE COMMODOES, three drawers, ormolu mounts and marble top, 3 ft. wide *38 gms*
- 88 A walnut tête-a-tête double seat of Louis XVI design, 3 ft. 10 *5½ gms*
- 89 A pair of French walnut fauteuils, with cane panels *7 gms*
- 90 A Louis XV pattern walnut fauteuil with winged back in petit-point needlework of floral design *13½ gms*
- 91 A pair of French carved walnut fauteuils, with cane panels *8½ gms*
- 92 A wall mirror of Queen Anne design, in cream lacquer frame *45/-*
- 93 A ditto, in decorated black lacquer frame, 2 ft. 7 high *40/-*



- 94 A wall mirror, in tortoiseshell pattern lacquer frame, 3 ft. 7 high <sup>5 1/2 gms</sup>
- 95 A similar mirror, in black lacquer frame, 3 ft. 7 high <sup>1 1/2 gms</sup>
- 96 A QUEEN ANNE PATTERN WALNUT CABINET, with engraved metal hinges and lock plates, on carved and gilt wood stand, 3 ft. 6 wide <sup>32 gms</sup>
- 97 An upright wall mirror of Queen Anne style, in gilt gesso frame, 4 ft. 11 high <sup>7 gms</sup>
- 98 A SET OF SIX QUEEN ANNE PATTERN CHAIRS, with walnut framework, on cabriole legs and club feet, in *petit-point* needlework with figures and flowers <sup>50 gms</sup>  
See Illustration. Plate I.
- 99 A mahogany small table, with two drawers and cross stretcher, 16 in. wide <sup>3 1/10 -</sup>
- 100 A similar table <sup>70 -</sup>
- 101 An inlaid mahogany library table with cloth-lined circular top, four drawers and quadruple support, 2 ft. 8 diam. <sup>7 1/2 gms</sup>
- 102 A carved mahogany surprise cabinet, with hinged top enclosing tray, 22 in. square <sup>6 1/2 gms</sup>
- <sup>19 gms / 6</sup> 103 A mahogany double pedestal writing-table, with cloth-lined top, twelve drawers and two cupboards, 5 ft. 6 wide
- 104 A mahogany cabinet, inlaid ebony lines, with panel doors, serpentine base with drawer and square tapered legs, 3 ft. 6 wide <sup>12 gms</sup>
- 105 A pair of terrestrial and celestial table globes, 11 in. diam., on stands <sup>8 gms</sup>
- 106 A walnut bureau, sloping flap and four drawers, 3 ft. 6 wide <sup>10 1/2 gms</sup>
- 107 A Sheraton pattern marqueterie sideboard, with shaped front, one drawer, cellarette and cupboard, 5 ft. wide <sup>2 gms</sup>
- 108 A mahogany card-table of Chippendale design, with fret pattern frieze, folding top and shaped legs, 2 ft. 9 wide <sup>6 1/2 gms</sup>
- 109 A Chippendale pattern mahogany tea-table, with tip-up octagonal galleried top, on tripod, 2 ft. 8 wide <sup>8 gms</sup>
- 110 A similar table with mahogany top, 2 ft. 8 diam. <sup>8 gms</sup>
- 111 A PAIR OF HEPPLEWHITE PATTERN MAHOGANY ARM-CHAIRS, with oval backs carved Prince of Wales' plumes and flutes, upholstered seats in red damask <sup>9 1/2 gms</sup>  
See Illustration. Plate II.
- 112 A pair of similar chairs <sup>9 gms</sup>

PLATE I



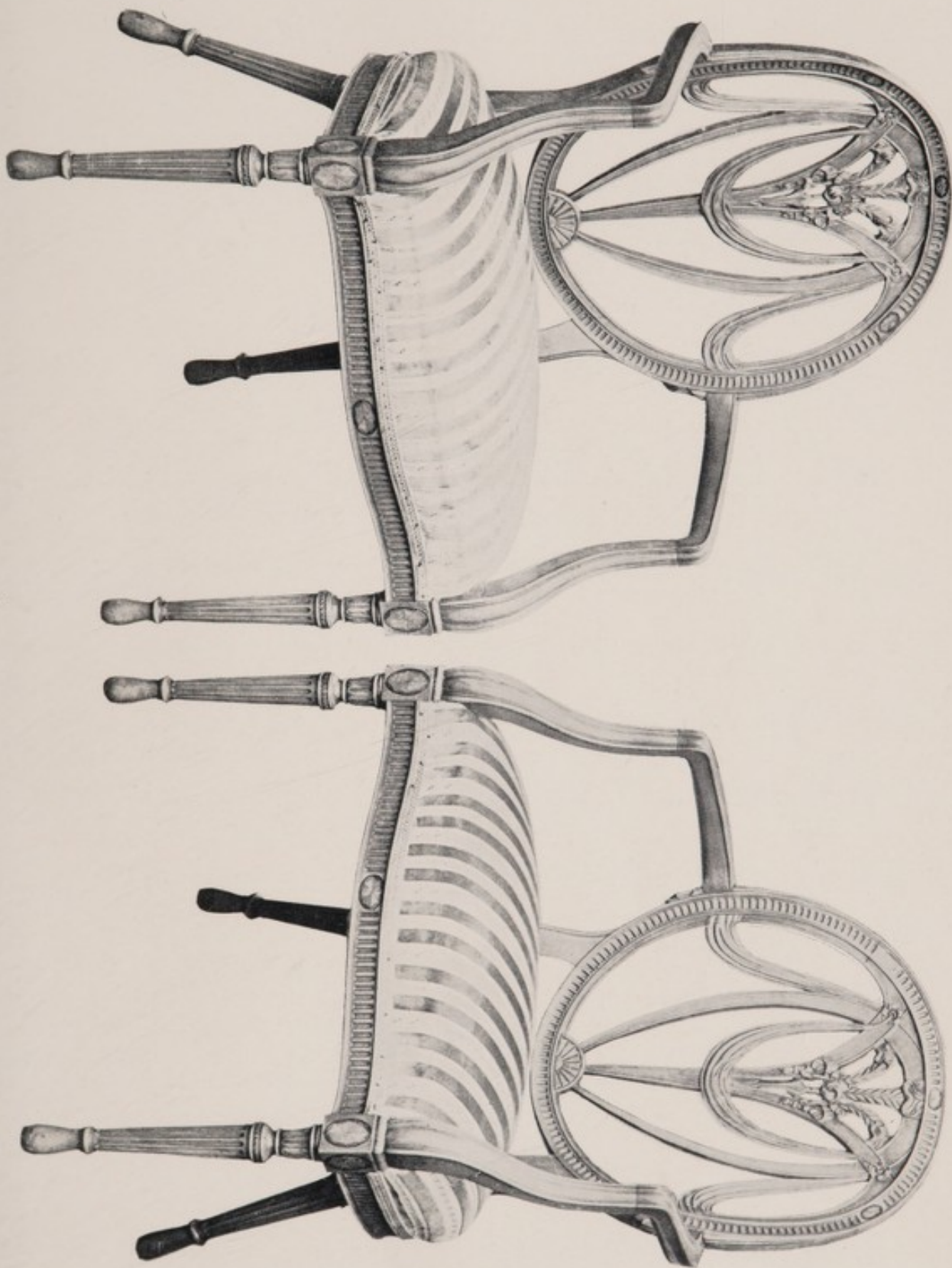




- 113 A walnut bureau bookcase, with two glazed doors, sloping writing flap and five drawers, 2 ft. wide 13 1/2 gms
- 114 A mahogany dwarf display cabinet of Adam design, with shaped front, panel door painted oval medallion, glazed doors at ends, 3 ft. 6 wide 15 gms.
- 60/115 A celestial globe, 15 in. diam., on mahogany stand with spirally-turned legs 4 1/2 gms  
no name.
- 4/116 A pair of terrestrial and celestial globes, 18 in. diam., on stands 6 1/2 gms  
no name.
- 117 A painted four-fold screen, 6 ft. high 10 gms,
- 118 A mahogany bureau, with sloping writing flap and four drawers, 3 ft. 6 wide 11 1/2 gms.
- 119 A wall mirror of Queen Anne style, in walnut frame with arched top, 3 ft. 6 high 7 1/2 gms.
- 120 A stamped leather triangular waste paper basket, book pattern 40/120
- 121 A similar lot 40/121
- 122 A ditto 12-
- 123 Ditto 40/123
- 124 A French carved walnut bergère with cane panels 5 gms.
- 125 A smaller bergère 3 1/2 gms.
- 126 A ditto seat with cane panels, 2 ft. 3 wide 2 gms.
- 127 A similar lot 42/-
- 128 A Queen Anne pattern wall mirror, in walnut frame, 18 in. by 21 in. 12-
- 129 A wall mirror in walnut and gilt frame, 2 ft. 9 high 5-37-
- 130 A ditto, with walnut frame and painted panel of flowers, 3 ft. 11 high 4/15/-
- 131 A painted and embossed leather four-leaf screen, 6 ft. high 7/10/-
- 132 A similar screen 7 gms.
- 133 A French kingwood and tulipwood writing-table of kidney shape, with three drawers and ormolu mounts, 4 ft. wide 8 gms.
- 134 A walnut bureau with sloping writing flap, serpentine front and four drawers, 3 ft. wide 16 1/2 gms
- 135 An amboyna wood bureau, with sloping flap and four drawers, 3 ft. wide 16 1/2 gms



- 136 A white and gilt glass liqueur set of nine pieces, in stamped leather box with sham book front 3 1/2 gms.
- 137 A similar lot 3 gms. Bluntton
- 138 A FRENCH TULIPWOOD AND MAHOGANY COMMODOE of three drawers, with marble top and ormolu mounts, 4 ft. 2 wide 7 1/2 gms.
- 139 An octagonal stamped leather waste paper basket 3 7/6.
- 140 A similar lot 1/22 Lewis,
- 141 A ditto 1/22 do,
- 142 A wall mirror of Queen Anne design in decorated green lacquer frame, 2 ft. 7 high 1/22
- 143 A similar mirror in cream lacquer frame 2 gms.
- 144 A ditto, in decorated green painted frame, 22 in. high 1/22
- 145 An inlaid satinwood surprise cabinet, with folding top enclosing tray, 22 in. wide 8 1/2 gms.
- 146 A pair of carved mahogany side-tables of Adam design, semi-circular, square tapered legs, 3 ft. 9 wide 12 gms.
- 147 A mahogany sofa table with end flaps, two drawers and amboyne wood borders, 2 ft. 8 wide 11 gms.
- 148 AN ELIZABETHAN STYLE OAK BUFFET, inlaid floral design in mother-o'-pearl and ivory, with two doors and one drawer, 4 ft. 4 wide 19 gms.
- 149 A mahogany tallboy with eight drawers and slide, fluting at angles, 3 ft. 6 wide 14 gms.
- 150 A ditto of Chippendale style, with fret pattern cornice, eight drawers, 3 ft. 7 wide 11 1/2 gms.
- 151 A coromandel wood display cabinet, with splayed top and glazed door, 2 ft. 3 wide 5 1/2 gms.
- 152 An ivory painted upright nest of seven drawers, with grained marble top 11 gms.
- 153 A similar lot 11 gms.
- 154 A walnut two-flap table with oval top, cabriole legs and hoof feet, 3 ft. 3 wide 6 1/2 gms.  
Bluntton
- 155 A mahogany bureau with sloping flap and four drawers, 2 ft. 4 wide 9 gms.







- 156 A mahogany bureau bookcase with two glazed doors, sloping flap and four drawers, 3 ft. 6 wide  $18\frac{1}{2}$  gms.
- 157 A mahogany torchère with reeded stem and circular base, 4 ft. 9 high 37/6.
- 158 A winged-back easy-chair in floral tapestry, with carved mahogany legs, claw feet 7 gms.
- 159 A ditto, with cabriole legs, club feet, in trellis pattern brocade 7 gms.
- 160 A mahogany canterbury, with lyre at sides 2/5/-
- 161 A similar lot 2/5/-
- 162 A ditto 2/5/-
- 163 An oval wall mirror in carved gilt wood frame, with scrolled leafage, 5 ft. 3 high 7 gms  
Blumton
- 164 A QUEEN ANNE PATTERN OYSTER WALNUT CABINET, with two panel doors, enclosing drawers, spirally turned legs and cross stretchers, 3 ft. 6 wide  $18\frac{1}{2}$  gms.
- 165 A Sheraton pattern inlaid mahogany sideboard with serpentine front, one door and three drawers, 3 ft. 4 wide  $11\frac{1}{2}$  gms.
- 166 A rosewood circular table with inlaid border, on quadruple support, 3 ft. 3 diam.  $6\frac{1}{2}$  gms.
- 167 A Dutch marqueterie oblong table with drawer, square tapered legs and cross stretchers, 3 ft. 6  $6\frac{1}{2}$  gms.
- 168 A walnut semi-circular commode with one drawer and panel door, 3 ft. wide  $10\frac{1}{2}$  gms.
- 169 A mahogany library table with octagonal cloth-lined top, four drawers, on quadruple support, 2 ft. 8 wide 9 gms.
- 170 A mahogany pedestal writing-table with nine drawers, 4 ft. wide  $15\frac{1}{2}$  gms.
- 6 1/2 gms  
8  
171 Two yew arm-chairs with railed backs and sides
- 172 A barometer and thermometer, in mahogany banjo-shaped case
- 173 A ditto, in oak case
- 174 A pair of Venetian shield-shaped wall mirrors, in carved gilt wood frames, 4 ft. 6 high
- 175 A ditto octagonal wall mirror, in carved gilt wood frame, 4 ft. 6 high



## Samarkand Carpets.

- 176 A Samarkand carpet, with geometrical medallion and rose ground, 14 ft. 8 by 7 ft. 3
- 177 A similar carpet, 8 ft. 3 by 4 ft. 5
- 178 A ditto, 10 ft. 8 by 5 ft. 9
- 179 Ditto, 12 ft. 9 by 6 ft. 6
- 180 Ditto, 12 ft. 10 by 6 ft. 6
- 181 Ditto, 13 ft. 1 by 6 ft. 6
- 182 Ditto, 13 ft. 8 by 6 ft. 7
- 183 Ditto, 13 ft. 11 by 6 ft. 7
- 184 A Samarkand carpet, panelled with formal flowers, blue key pattern borders, 13 ft. 5 by 7 ft.
- 185 A similar carpet, 14 ft. 3 by 6 ft. 9
- 186 A Samarkand carpet, with formal figuring and medallions on blue ground, 7 ft. 4 by 4 ft.
- 187 A similar carpet, 14 ft. 4 by 6 ft. 10
- 188 A ditto, 12 ft. by 6 ft. 4
- 189 Ditto, 11 ft. by 5 ft.
- 190 A Samarkand carpet, with three rose medallions, blue ground, 14 ft. 9 by 7 ft. 5
- 191 A ditto, with Oriental pattern design, blue ground, 10 ft. 7 by 5 ft. 6
- 192 A Samarkand carpet, with pale green ground, figured border, 11 ft. 7 by 5 ft. 7
- 193 A Samarkand carpet, with medallion figuring on yellow ground, 10 ft. 8 by 5 ft. 9
- 194 A similar carpet, 10 ft. 6 by 5 ft. 11
- 195 A ditto, 12 ft. 10 by 6 ft. 7
- 196 Ditto, 6 ft. 10 by 4 ft. 7
- 197 Ditto, 8 ft. 6 by 4 ft. 3
- 198 A ditto, with striped border, 10 ft. 2 by 5 ft. 1

CATALOGUE  
OF  
Messrs. KNIGHT, FRANK & RUTLEY'S  
SECOND DAY'S SALE  
OF  
Tapestries, Needlework, Porcelain  
AND  
Modern English & French Furniture.

---

ON FRIDAY, the 20th day of NOVEMBER, 1931,  
AT **TWO** O'CLOCK PRECISELY.

---

**Tapestries and Embroideries.**

LOT		
201	A BRUSSELS PANEL OF VERDURE TAPESTRY, the border with fruit and flowers, 10 ft. 3 by 12 ft. 11	90 gns.
202	A panel of Aubusson tapestry, designed with figures in a garden gathering fruit, 6 ft. 2 by 7 ft. 5	32 gns.
203	A similar panel, with youth and maiden in landscape, 6 ft. 9 by 7 ft. 5	32 gns.
204	An Aubusson panel of tapestry, woven with a pastoral scene, 7 ft. 9 by 7 ft. 7	33 gns.
205	A <i>petit point</i> needlework panel—Pastoral Scene with seated figures, 5 ft. by 3 ft. 4	5½ gns.
206	A ditto, with three medieval figures and sprays of flowers, 4 ft. 7 by 3 ft. 4	7½ gns.



- 207 An Aubusson panel of tapestry—Huntsman and Hound in landscape, 7 ft. by 5 ft. 6 30 gms
- 208 A ditto oblong panel of verdure tapestry, 5 ft. by 6 ft. 5 13 gms
- 209 A similar panel, 6 ft. 6 by 5 ft. 10 gms
- 210 A WINDSOR TAPESTRY PANEL—Romeo and Juliet, by Herbert Bone, 1886, 9 ft. 6 by 6 ft. 2 21 gms
- 211 An Aubusson rug, with shaped centre panel, enclosed bouquet of flowers, green ground, 7 ft. 8 by 4 ft. 4 23 gms
- 212 An Aubusson tapestry panel—The Bird Catchers, 10 ft. by 6 ft. 4 28 gms
- 213 AN AUBUSSON TAPESTRY CARPET, the centre with a bouquet of flowers and white ground, maroon, pale green and brown surround, 8 ft. 8 by 11 ft. 36 gms
- 214 A ditto, with huntsman and hound in landscape, 7 ft. 4 by 5 ft. 4 12 gms
- 215 A panel of tapestry, woven with a scriptural subject, 7 ft. 9 by 8 ft. 2 26 gms
- 216 An Italian appliqué work altar cloth with leafed scrolls on ruby velvet, 9 ft. 3 by 2 ft. 9 1/2 gms
- 217 An Aubusson tapestry carpet, with floral designs, maroon ground, green and red, white angles, 8 ft. 7 by 6 ft. 4 23 gms
- 218 AN AUBUSSON CARPET, centred with a bouquet of flowers, surround of leafage on maroon ground, brown scrolled border, 12 ft. 4 by 8 ft. 6 33 gms
- 219 A PAIR OF AUBUSSON LAMBREQUINS, worked with leafed scrolls and pendants of flowers, maroon borders, 12 ft. 4 by 8 ft. 9 25 gms
- 220 An Italian embroidered altar frontal, worked in coloured silks with floral design on pink ground, 7 ft. 8 by 3 ft. 9 gms
- 221 A striped ivory and pink silk brocade altar frontal, silver thread edging, 5 ft. 2 by 3 ft. 5 4 gms
- 222 A Persian panel of appliqué embroidery, worked in silver thread and coloured silk on ruby ground, 4 ft. 5 by 2 ft. 9 10 gms
- 223 A silk embroidered terra-cotta bedspread with oval wreath of flowers, 5 ft. 6 by 7 ft. 6 12 gms

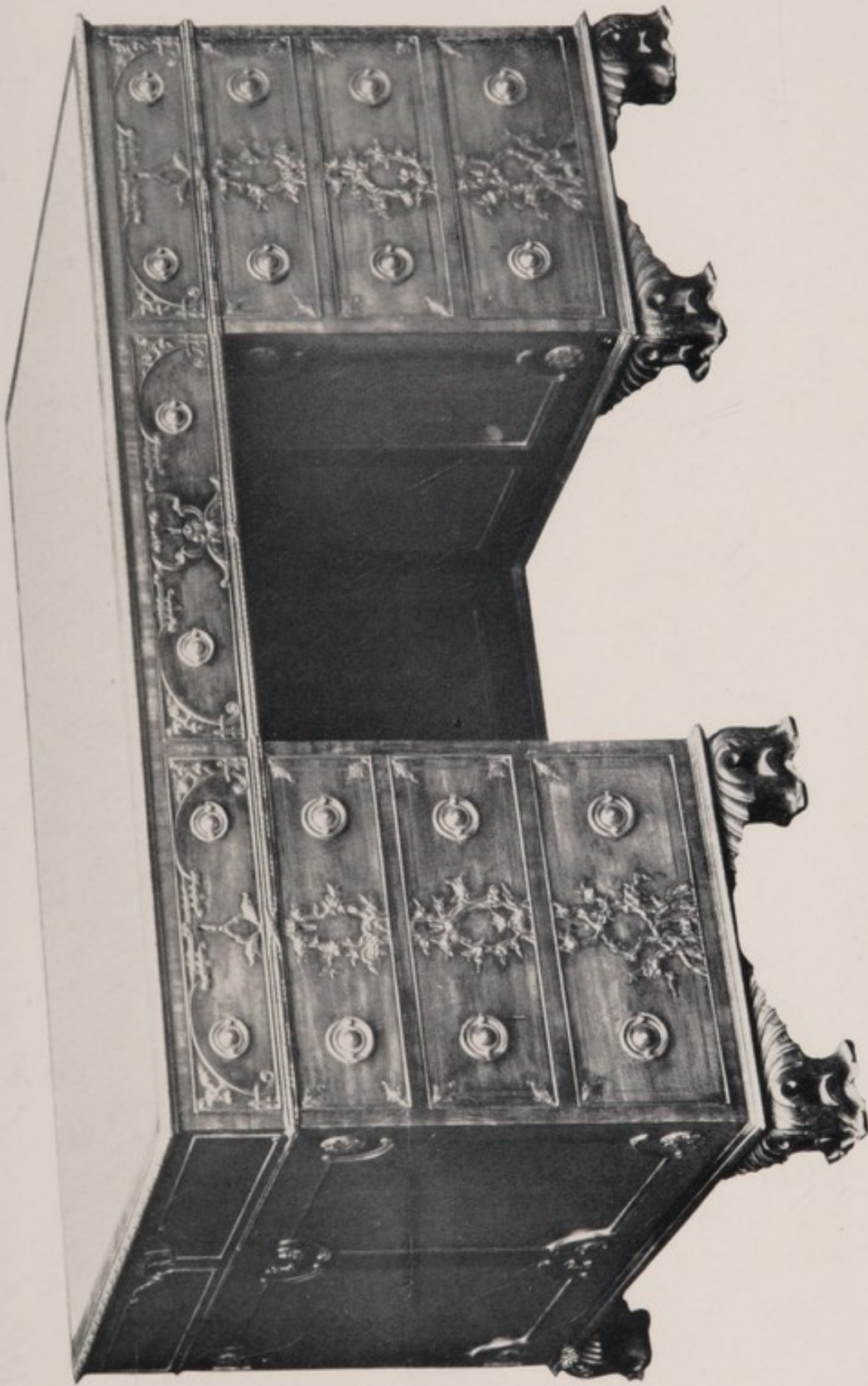
- 224 An Italian ruby velvet panel of appliqué work designed with vase of flowers flanked by bold acanthus scrolls, 8 ft. 11 by 3 ft. 10 1/2 yrs.
- 225 Two Italian panels of silk embroidery with flowers in natural colours on ivory ground, 3 ft. 3 by 2 ft. 4 13 yrs.
- 226 A grey silk brocade panel, edged with silver thread galon, 6 ft. by 3 ft. 11 6 1/2 yrs.
- 227 An Italian white silk brocade chasuble, bordered with gilt galon 2 1/2 yrs.
- 228 A Spanish altar frontal with three appliqué medallions of coats-of arms and saints on green velvet, bordered with silk, embroidery with a zig-zag design, 6 ft. 4 by 3 ft. 9 12 yrs.
- 229 A cream silk brocade chasuble with pink floral silk panels 1 1/2 yrs.
- 230 A similar dalmatic, with oblong panels 5 1/2 yrs.
- 231 A Portuguese ruby velvet bedspread, embroidered with Renaissance arabesques in coloured silks, silver and gilt threads, the centre with double-headed eagle, 8 ft. by 7 ft. 24 yrs.  
Blanton
6. 232 An Italian ruby velvet cloak, richly worked, braided in silver thread 13 1/2 yrs.  
Morris
6. 233 A similar cloak 13 1/2 yrs.  
Morris
- 234 An Italian silk brocade chasuble with pink panel 4 1/2 yrs.
- 235 A Spanish embroidered silk altar frontal, worked with scattered sprays of flowers and birds, gilt galon, 7 ft. by 2 ft. 8 13 Blanton
- 236 A panel of embroidery with reserved sprays of flowers in gilt trellis design, 5 ft. by 3 ft. 4 4 1/2 yrs.
- 237 An Italian floral silk brocade chasuble 4 1/2 yrs.
- 238 A ditto, with mauve panel centre 3 yrs. Blanton
- 239 An ivory silk brocade dalmatic, with pink floral panels 2 yrs.
- 240 An Italian appliqué-work panel, worked with a bold design in silver thread and coloured silks on ruby and black velvet, 4 ft. 2 by 2 ft. 7 13 1/2 yrs.  
Collins
- 241 A silk embroidered cloth panel, arched centre with vase of flowers, floral borders, 5 ft. 10 by 3 ft. 9 13 yrs.
- 242 An Italian pink floral silk brocade chasuble 2 1/2 yrs.
- 243 AN AUBUSSON CARPET with medallion centre and lambrequin panel borders, maroon ground, 6 ft. 7 by 6 ft. 6 4 1/2 yrs.  
Collins



## Furniture, Etc.

- 244 A walnut gate-leg table with oval top, open twisted legs, 3 ft. 6 wide *11 lbs.*
- 245 A carved mahogany settee with cane panel back and sides, squab seat cushion, and four back cushions in rose velvet, 7 ft. wide *24 lbs.*
- 246 A Chippendale pattern mahogany tip-up table with carved border, on tripod, 2 ft. 9 diam. *8 1/2 lbs.*
- 247 A LONGCASE CLOCK with brass dial, mounted with pierced angle enrichments, inscribed "Wm. Rudd, Warminster," lunar movement, in Chippendale mahogany case, 7 ft. 4 high *13 lbs.*
- 248 A walnut two-flap table, 22 in. wide *2 1/2 lbs.*
- 249 A similar table *2 1/2 lbs.*
- 250 A ditto *Passed*
- 251 A walnut bureau with sloping flap, one drawer, on stand, with cabriole legs, claw and ball feet, 2 ft. 2 wide *12 1/2 lbs.*
- 252 A PAIR OF ADAM PATTERN MAHOGANY URNS AND PEDESTALS, carved with paterae and flutes, 20 in. wide *16 lbs.*
- 253 A Spanish walnut seat with panel seat, red damask back, 4 ft. 9 wide *5 1/2 lbs.*
- 254 A walnut chest of three drawers, with floral marqueterie panels, on stand, with cross stretchers, 3 ft. wide *16 lbs.*
- 255 The companion chest *16 lbs.*
- 256 A small chest *en suite*, with folding top enclosing well, and four drawers, 2 ft. 6 wide *16 lbs.*
- 257 An inlaid satinwood dwarf cabinet with four glazed doors, 5 ft. wide *13 1/2 lbs.*
- 258 A ditto cabinet, with four panel doors, 5 ft. wide *12 lbs. Blunt*
- 259 An inlaid mahogany bureau bookcase with two glazed doors, sloping writing-flap and five drawers, 4 ft. wide *13 1/2 lbs.*
- 260 A four-leaf needlework screen, worked in Gothic design with niched figures, birds and flowers, 6 ft. high *20 lbs.*
- 261 A CHIPPENDALE PATTERN CARVED MAHOGANY DOUBLE WRITING-TABLE, with pedestals, twelve drawers and two cupboards, 5 ft. by 3 ft. *60 lbs. Abraham*

See Illustration. Plate III.



Lot 261

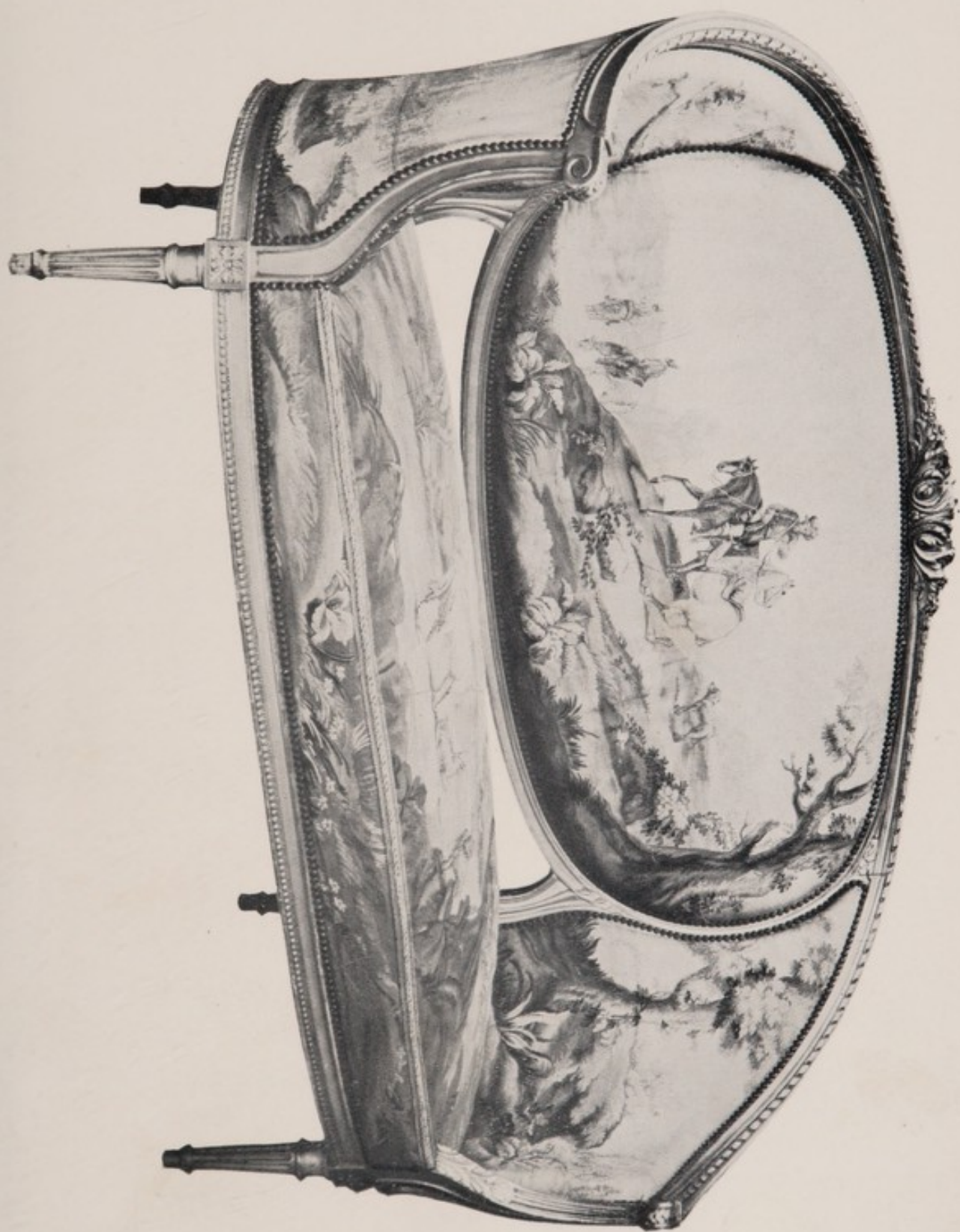




- 262 A ditto galleried oblong table, with carving and undertier, 3 ft. 5 1/2 ft. wide 5 1/2 ft.
- 263 A walnut secretaire cabinet, with double arched top, two panel doors, sloping writing-flap, four drawers, 3 ft. wide 4 1/2 ft.
- 264 A French carved and gilt stool, in green silk damask, 3 ft. 2 1/2 ft. wide 7 1/2 ft. Bluntton
- 265 A LOUIS XVI PATTERN SETTEE, AND FOUR FAUTEUILS of carved and gilt wood, with fluted legs, seat and backs in Aubusson tapestry woven with equestrian figures and cattle in landscape 65 1/2 ft.  
See Illustration. Plate IV.
- 266 A pair of Louis XVI pattern carved and gilt fauteuils, seats, backs and arm-pads in tapestry, with oval medallions and flowers 19 1/2 ft. Bradshaw
- 267 A LOUIS XVI CARVED AND GILT SUITE, of canapé, 4 ft., and four fauteuils an Aubusson tapestry, designed with figures and landscape 50 1/2 ft. do.
- 268 A French kingwood display cabinet with splayed sides, glazed panels, ormolu mounts, and rouge marble top, 3 ft. 9 wide 11 1/2 ft.
- 269 An octagonal wall mirror, in carved gilt wood frame, 3 ft. 8 wide 4 1/2 ft.
- 270 A Queen Anne pattern gesso pier glass, the frame decorated with plume and scrolled leafage, 5 ft. 6 high 7 1/2 ft. Bradshaw
- 271 A triple toilet glass with folding ends, in gilt frame, 2 ft. 10 high 5 1/2 ft.
- 272 A kingwood and tulipwood writing-table of Louis XV design, with three drawers and ormolu mounts, 3 ft. wide 7 1/2 ft.
- 273 A pair of Chinese famille noire vases of square tapered form, enamelled with dieties and pagodas, 2 ft. 8 high, and stands 7 1/2 ft.
- 274 A pair of Chinese pear-shaped vases, enamelled with blossom, 13 in. high 2 1/2 ft.
- 275 A Worcester two-handled vase, ivory and gilt, 10 1/2 in. high, a similar vase and cover, with festoons of drapery, 14 in., and a ditto bottle, 7 in. 2 1/2 ft.
- 276 A ditto urn-shaped vase, with mask handle, 13 1/2 in. high 4 1/2 ft.
- 277 A Dresden compotier, basket pattern, the base with four standing figures of Cupids, and encrustation of flowers, 12 in. high 13 1/2 ft.



- 278 A pair of Chinese ovoid jars, with flowers on yellow ground,  $9\frac{1}{2}$  in. high, and carved wood covers and stands 52/6.
- 279 A pair of K'ang-hsi pear-shaped vases and covers, pencilled in gilt on mazarine blue ground,  $12\frac{1}{2}$  in. high 3/51-Bucknell
- 280 A pair of Canton ovoid jars and covers, 10 in. high 3/101-Blunt
- 280A A pair of similar vases and covers, 9 in. high 4/151-do.
- 
- 281 A decorated green lacquer bureau with sloping writing-flap, two drawers and cabriole legs, 20 in. wide 52/9mo.
- 282 A pair of walnut bergères, tub-shape, with cane panelled sides, seats and backs in blue lining 6 1/2 9mo.
- 9 1/2 9mo. 283 A pair of Spanish walnut arm-chairs, oblong backs and seats in blue damask
- 284 A carved mahogany tip-up table with pie-crust border, claw and ball feet, oval top, 2 ft. 6 wide 2 1/2 9mo.
- 285 A similar table 2 1/2 9mo.
- 286 A SET OF EIGHT MAHOGANY DINING CHAIRS OF CHIPPENDALE DESIGN, with Gothic pattern rail splats, cabriole legs, claw and ball feet, upholstered seats in blue damask (two with arms) 24 9mo.
- 287 A walnut bureau with sloping flap, four drawers, and William and Mary supports, 2 ft. wide 4 9mo.
- 288 A similar bureau 5 9mo.
- 289 A pair of mahogany arm-chairs of Chippendale design, with rail splats, and loose seat in lining 4 1/2 9mo.
- 290 An embossed painted leather three-fold screen, with quartrefoil shaped panels, 5 ft. 6 high 4/151-
- 291 A painted leather three-fold screen, with fruit and flowers on gilt ground, 5 ft. 9 high 5 9mo.
- 292 A mahogany bureau bookcase, with two glazed doors, sloping writing flap and five drawers, 3 ft. 3 wide 16 9mo.
- 293 A Chippendale pattern winged-back easy-chair in tapestry, with carved mahogany cabriole legs 6 1/2 9mo.
- 294 A winged-back easy-chair in green damask, on mahogany cabriole legs 6 1/2 9mo.
- 295 A mahogany canterbury, with drawer 6 1/2 9mo.
- 296 A similar lot 2 9mo.
- 297 A ditto 2 9mo.





٤٧

- 298 A William and Mary pattern walnut table, with four drawers, 3 ft. wide 49ms.
- 299 A similar table 49ms.
- 300 A mahogany toilet glass, with two drawers and serpentine front, 20 in. wide 2110/-
- 301 A mahogany tallboy of Chippendale design, with secretaire and nine drawers, fluting at angles, 3 ft. 4 wide 199ms.
- 302 A SHERATON MAHOGANY SECRETAIRE CABINET, with two glazed doors, fall flap and three drawers, 3 ft. 6 wide 21½ms  
ny 2ms
- 303 A William and Mary pattern walnut table, with three drawers, 2 ft. 9 49ms
- 304 A similar table 79ms
- 8 305 A pair of Italian walnut arm-chairs, with carved stretchers and marqueterie panel backs 119ms  
no name
- 306 A Sheraton mahogany tallboy with bow front, eight drawers, inlaid satin lines, 4 ft. 4 wide 139ms.
- 307 A ditto toilet glass, with swing mirror and three drawers, 23 in. wide 29ms.
- 308 A ditto, with bow front 29ms.
- 309 A Sheraton mahogany secretaire bookcase, with two glazed doors, fall writing flap and three drawers, 3 ft. 6 wide 18½ms.
- 310 A rosewood centre table with satinwood band and lines, four drawers, quadruple splayed support and ormolu mounts, 4 ft. diam. 149ms.
- 311 An inlaid walnut chest of three drawers, on cabriole legs, 3 ft. 6 wide 8½9ms
- 6½9ms 312 A similar chest, 3 ft. wide 8½9ms
- 8 313 Two yew arm-chairs with railed back and side
- 8 314 A similar lot
- 6½9ms 315 A set of three mahogany tables, 19½ in. wide 49ms.
- 316 A walnut bureau with marqueterie panels, sloping flap and four drawers, 22 in. wide 69ms.
- 317 A WILLIAM AND MARY BLACK AND GILT LACQUER CABINET with two panel doors enclosing twelve drawers, on carved and gilt stand, 3 ft. wide 489ms  
Harmon

See Illustration. Plate V.



- 318 A longcase clock with Wellington and Westminster chimes, steel and brass dial, in carved mahogany case of Chippendale design, 8 ft. 4 high
- 319 A LOUIS XVI PATTERN KINGWOOD WRITING-TABLE, with red morocco lined top, three drawers and inlaid panels, 4 ft. 3 wide  
*See Illustration. Plate VI.*
- 320 A barometer and thermometer in rosewood banjo-shaped case, with convex mirror
- 321 A ditto, in mahogany case
- 322 A Dutch ebony wall mirror in moulded frame, 3 ft. wide
- 323 A similar mirror
- 324 A mahogany bureau cabinet, with two panel doors, sloping flap and four drawers, 3 ft. 6 wide
- 325 Two needlework pictures—St. Jerome, and Figures before a Cottage
- 326 A Sheraton pattern inlaid mahogany bureau, with sloping flap and five drawers, 3 ft. 6 wide
- 327 A mahogany octagonal table, with undertier and carved legs, 3 ft. 8 wide
- 328 A Flemish walnut armoire, the centre and ends with ebonised pilasters mounted with carved caps, two moulded panel doors and two drawers, 6 ft. wide 13½ lbs.
- 329 A Sheraton pattern decorated cream commode, semi-circular, with panel door, painted medallion and festoons, 3 ft. 6 wide 10½ lbs.
- 330 A painted satinwood wardrobe, with bow front and two panelled doors, 3 ft. 6 wide 17 lbs.
- 331 A Dutch marqueterie display cabinet, with splayed ends, glazed door and sides, three drawers under, 3 ft. 6 wide 10½ lbs.
- 332 A satinwood and marqueterie writing-table, with raised back, nine drawers and square tapered legs, 4 ft. wide 10 lbs.
- 333 An Empire mahogany secretaire, with cylindrical front, five drawers, and square tapered legs, 5 ft. 6 wide 14½ lbs.
- 334 A decorated satinwood writing-table, with raised back, folding flap, two small cupboards, and one drawer, 2 ft. 4 wide 7 lbs.
- 335 A Chippendale pattern mahogany chest of four drawers, carved with gadroon moulding and leafage, 3 ft. 6 wide 30 lbs.  
Couch.
- 336 A set of four amboyna wood tables, 20 in. wide 4/10/-



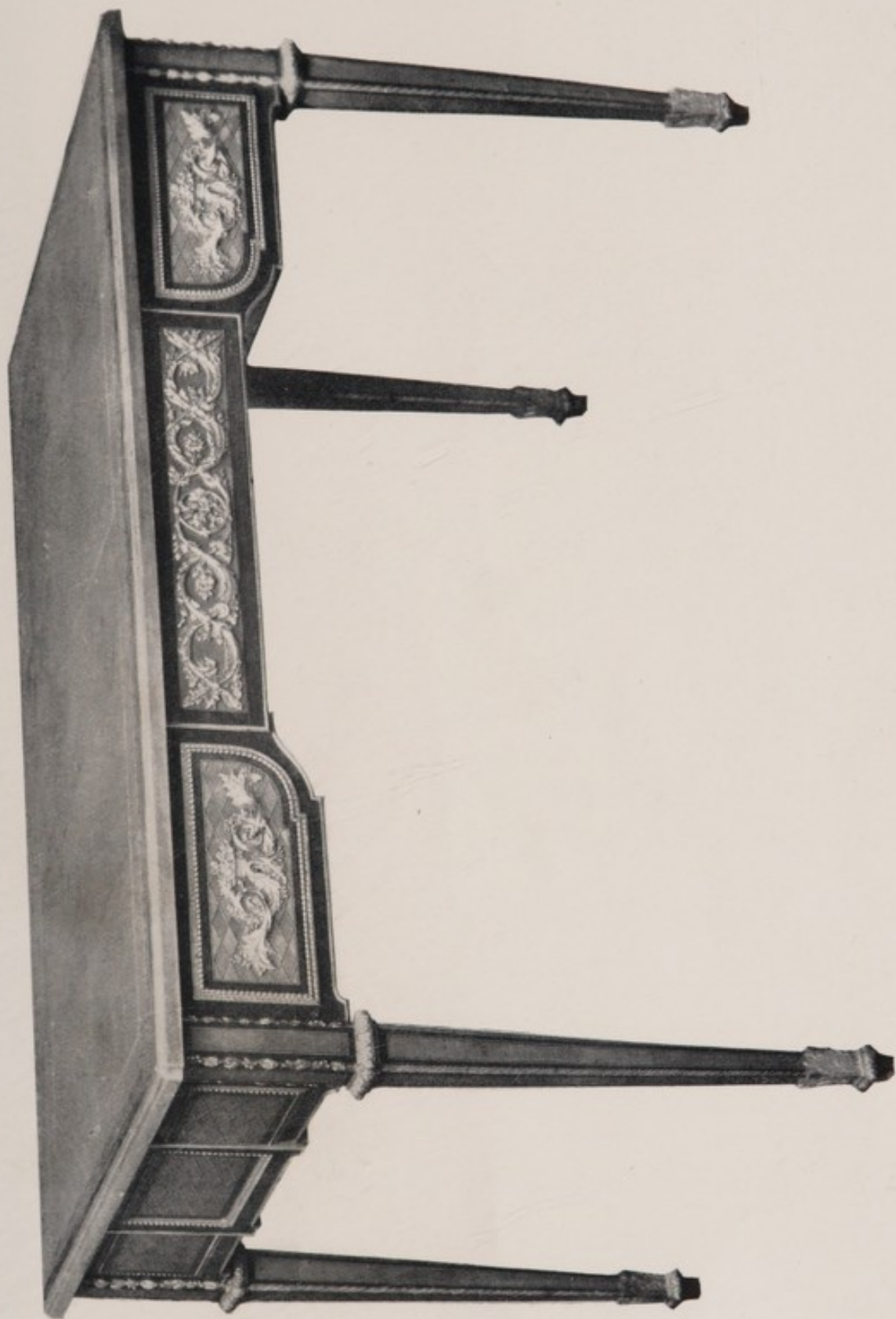




- |      |   |                           |
|------|---|---------------------------|
| 337  | A Chinese carved gilt wood panel, pierced with scrollings and painted glass and Canton enamel panels, 35 in. by 38 in.                  | 49mo                      |
| 338  | A similar panel   | 49mo                      |
| 339  | A ditto   | 49mo.                     |
| 340  | Ditto   | 49mo.                     |
| 341  | A Louis XV pattern marqueterie commode, with ormolu mounts and marble top, 3 ft. 8 wide   | 28 1/2 mo.,<br>28 1/2 mo  |
| 342  | A similar commode   |                           |
| 343  | A pair of K'ang-hsi pear-shaped vases and covers, blue and white, 14 1/2 in. high   | 3 1/2 mo.                 |
| 344  | A pair of Canton ovoid vases and covers, 9 in., and carved wood stands  | 4/10/-                    |
| 345  | A pair of K'ang-hsi pear-shaped vases and covers, designed with blossom and seaweed in blue on white ground, 19 in.                     | 27/6.                     |
| 346  | A pair of Canton ovoid vases and covers, 8 in. high   | 55/-                      |
| 347  | A ditto, with numerous figures, and cover, 8 in. high, and wood stand   | £2 -                      |
| 347A | A pair of Continental pot-pourri vases and covers, encrusted with flowers, triangular bases, 13 in. high                                | 59mo.                     |
| 347B | A pair of Chinese vases, enamelled with raised figures, 18 in. high, and wood stands  | 59mo.                     |
| 347C | A pair of famille rose ditto, with figures on balconies, 18 1/2 in. high, and wood stands   | 39mo<br><del>Harmon</del> |
| 348  | A pair of K'ang-hsi mazarine blue beakers with cylindrical necks, pencilled in gilt, 18 1/2 in. high                                    | 59mo.                     |
| 349  | A pair of Chinese ovoid vases and covers, brown glazed, 13 in. high   | 45/-                      |
| 350  | A pair of Chinese cylindrical vases, enamelled in famille verte 18 in. high   | 2 1/2 mo.                 |
| 351  | A walnut and marqueterie commode, with shaped front and sides, one drawer, four panel doors, cabriole legs, claw and ball feet, 3 ft. 6 | 249mo.                    |
| 352  | A walnut commode of three drawers, with shaped front  | 249mo.                    |
| 353  | A mahogany wig stand, with two small drawers, and a similar   | £2                        |



6. 354 A winged-back easy-chair in blue lining, with carved stretcher *8 1/2 lbs*  
*no name*  
*8 1/2 lbs*
- 355 A similar chair
6. 356 A ditto *8 1/2 lbs*  
*no name*
6. 357 A mahogany dining-table in two sections, each on pillar and tripod, one leaf 3 ft. wide, opening to 8 ft. 6 *6 1/2 lbs*
- 358 A decorated black lacquer commode, with serpentine front and sides, two drawers and marble top, 2 ft. 5 wide *6 1/2 lbs.*
- 359 A SET OF SIX HEPPLEWHITE PATTERN CARVED MAHOGANY ARM-CHAIRS, with shield-shaped backs, guilloche carving, upholstered seats in red plush *37 lbs.*  
*Haxley*
- 360 A walnut cabinet with small cupboard and eight drawers, on stand, with spirally turned legs and cross stretchers, 3 ft. wide *139 lbs.*
- 361 A painted leather four-fold screen, designed with sportsmen and trophies, 5 ft. 9 high *5 1/2 lbs.*
- 362 A ditto, designed with parrots perched on branches, 6 ft. 3 high *7 lbs.*
- 363 A MAHOGANY DINING-TABLE in three sections, centre on pillar and quadruple support, the end on tripods, and two leaves, 13 ft. by 3 ft. 8 *20 lbs.*
- 364 A mahogany wig stand, with two small drawers *30/-*
- 365 A similar lot *30/-*
- (4 lbs)* 5. *(366)* 1 An oak arm-chair, with hide seat and back
- 367 A carved mahogany corner chair of Chippendale design, with panel splats and cabriole legs *4 lbs.*
- (3 1/2 lbs)* *(368)* 1 A Jacobean pattern carved oak arm-chair, with arched panel back
- 369 Five Spanish walnut chairs, with shaped splats and panel seats
- 370 A Queen Anne pattern wall mirror in red and gold lacquer frame, 31 in. high
- 371 A Stuart design walnut arm-chair, seat and back in blue lining
- 372 A wall mirror in gilt frame, with arched top and divided border, 3 ft. 6 high
- 373 A MAHOGANY DINING-TABLE in three sections, each on pillar and reeded tripod, 8 ft. 10 by 3 ft. 7
- 374 A MAHOGANY DINING-TABLE in four sections, with pillar and tripod supports, inlaid with bands of satinwood, 12 ft. by 3 ft. 8



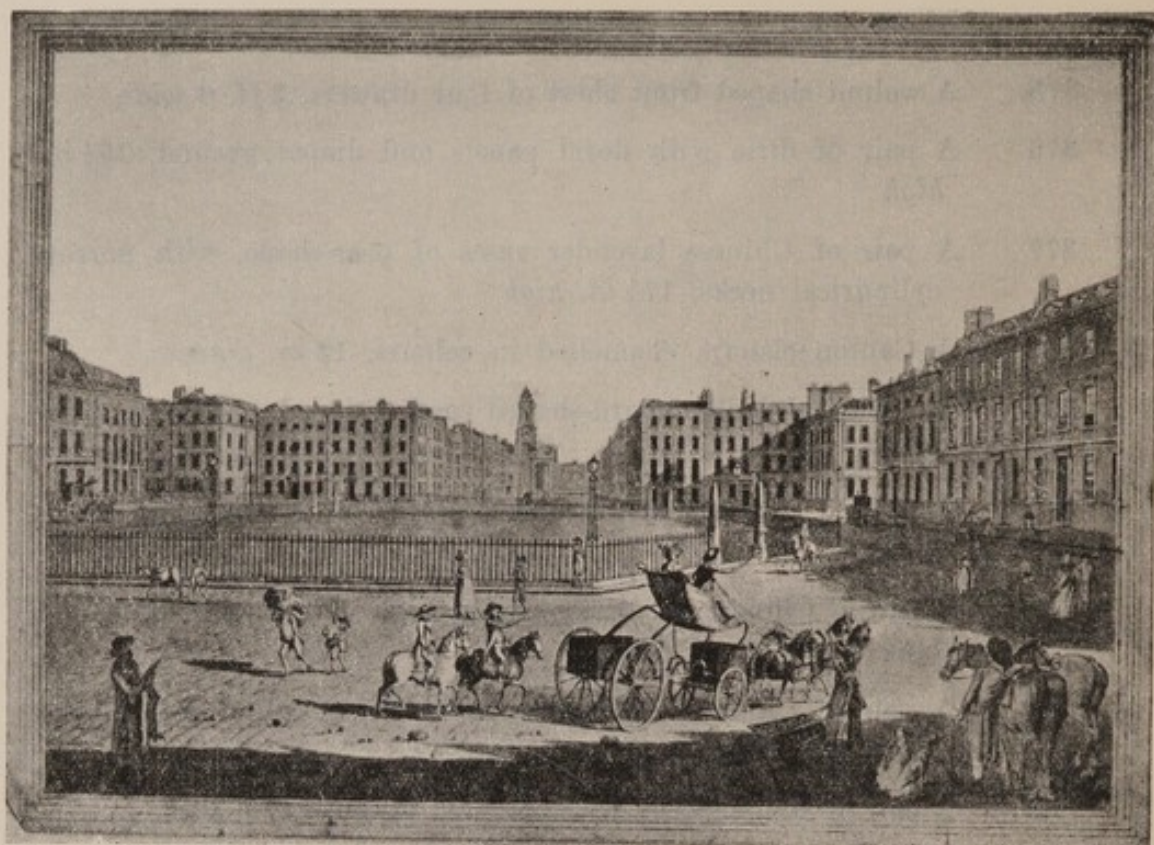




- 375 A walnut shaped front chest of four drawers, 2 ft. 6 wide
- 376 A pair of ditto with floral panels and diaper ground, 16½ in. high
- 377 A pair of Chinese lavender vases of pear-shape, with narrow cylindrical necks, 17½ in. high
- 378 A Canton cistern, enamelled in colours, 12 in. diam.
- 379 An Oriental double gourd-shaped vase, with red scrollings, 11 in. high
- 380 A pair of Satsuma bronze and gilt vases of bottle shape, 8½ in. high
- 381 A pair of Chinese flat bottle-shaped vases with sang-de-bœuf and blue flambé glaze, 8½ in.
- 382 A pair of Chinese blue and white vases of cylindrical tapered form, 16 in.
- 383 A pair of similar vases with coloured bloom, 14 in. high
- 384 A pair of ditto square beakers, 15½ in. high, and wood stands
- 385 A pair of Chinese flat bottle-shaped vases, blue and white, 18 in. high
- 386 A pair of French bronze and ormolu candelabra, each with branches for eight lights supported by a figure of a bacchante, 4 ft. 6 high
- 387 A pair of Japanese painted glass vases, 9½ in. high
- 388 A pair of K'ang-hsi powder blue vases and covers, of pear shape, 18½ in.
- 389 A Chinese hexagonal vase, with red scrollings, blossom and figures, 20 in. high
- 390 A Dresden centrepiece, with oval-shaped ribbon work top, rustic stem with three standing figures of ladies and gallants supporting garlands, 28½ in. high
- 391 A Chinese vase, enamelled in colours with immortals, 11 in. high
- 392 A ditto, with landscape panels and incised ground, 13 in. high

FINIS.





HANOVER SQUARE IN THE EIGHTEENTH CENTURY.

## THE HANOVER SQUARE SALE ROOMS

---

OWNERS DESIROUS OF INCLUDING  
WORKS OF ART  
ENGLISH AND FRENCH FURNITURE, PICTURES  
TAPESTRIES, JEWELS, ANTIQUE PLATE  
BOOKS, COINS, MEDALS, ETC.,  
IN FORTHCOMING SALES

SHOULD COMMUNICATE WITH  
THE AUCTIONEERS

**KNIGHT, FRANK & RUTLEY**

**20, HANOVER SQUARE, LONDON, W. 1**

Telephone: MAYFAIR 3771  
(10 lines)

Telegrams:  
GALLERIES, WESDC, LONDON.

