

Sales catalogues: Knight, Frank & Rutley

Publication/Creation

28th May 1931

Persistent URL

<https://wellcomecollection.org/works/nm272hw9>

License and attribution

This work has been identified as being free of known restrictions under copyright law, including all related and neighbouring rights and is being made available under the Creative Commons, Public Domain Mark.

You can copy, modify, distribute and perform the work, even for commercial purposes, without asking permission.



Wellcome Collection
183 Euston Road
London NW1 2BE UK
T +44 (0)20 7611 8722
E library@wellcomecollection.org
<https://wellcomecollection.org>

Bourne 28th May 1931

WATFORD/CHISWICK 7227

Bourne Original
20. H

K.F.R.	DATE	INITIALS
28.4 SALE 73.80	25.5.31	BOURNE
PURCHASE
CHECKED	29.5.31
COLLECTED	2/6/31
RECEIVED	2/6/31
ACCESSED
PASSED



OLD EN

By direct
 deceased, also the Property of a Gentleman, removed from
 Afton Manor, Freshwater, Isle of Wight, and from other
 Sources.

To be Sold by Auction by Messrs.

KNIGHT, FRANK & RUTLEY

SIR HOWARD FRANK, BART., G.B.E., K.C.B. ALFRED J. BURROWS, F.S.I., P.P.A.I.
 ARTHUR H. KNIGHT, F.A.I. WILLIAM GIBSON, D.S.O., F.S.I.

AT THEIR ROOMS

20, HANOVER SQUARE, W. 1

On THURSDAY, the 28th of MAY, 1931,
 AT ONE O'CLOCK PRECISELY.

On View Tuesday and Wednesday prior, from 10 to 5 o'clock.
 Catalogues of the Auctioneers, at their Offices,

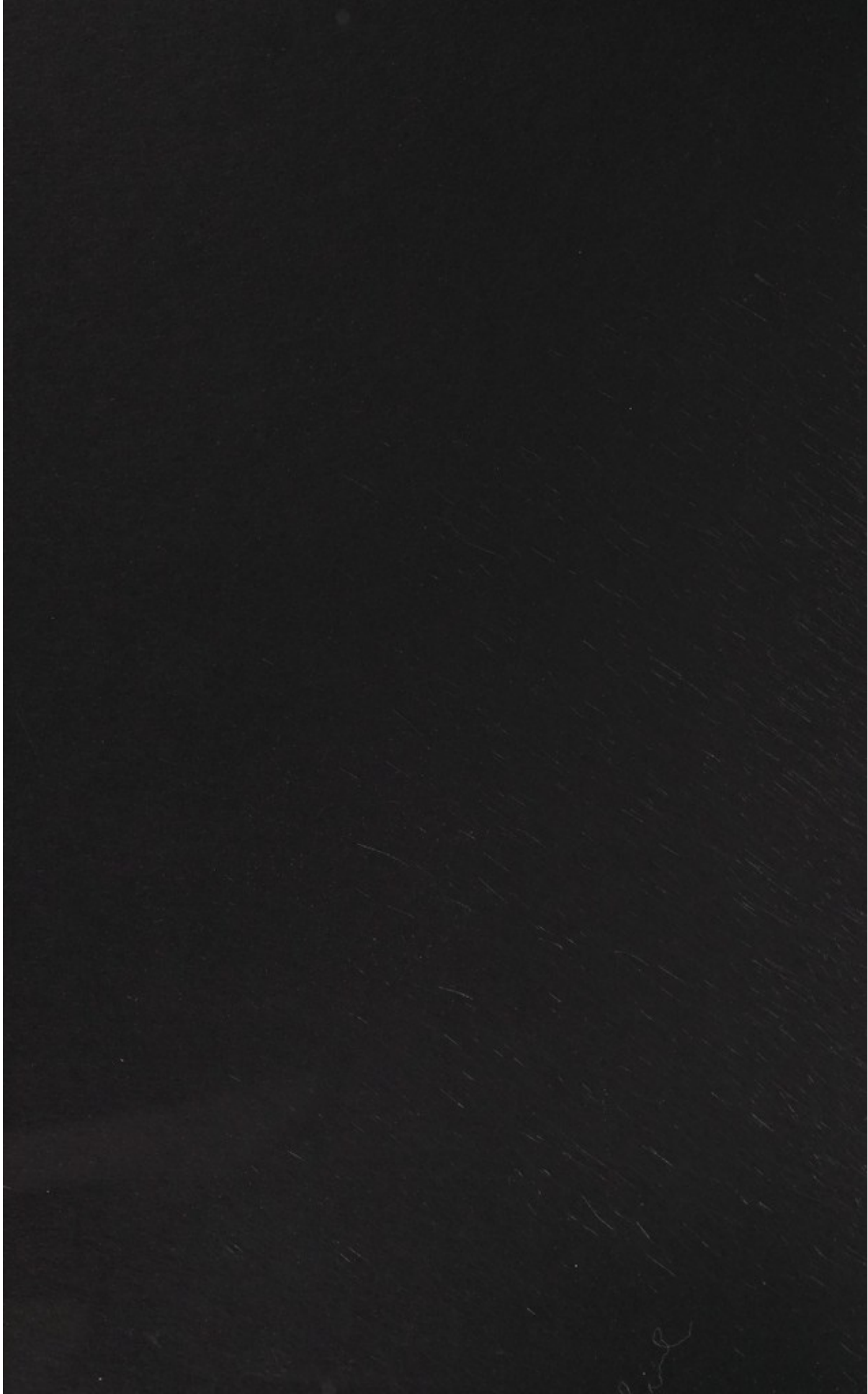
20, Hanover Square, London, W. 1

Telephone—Mayfair 3771 (10 lines).

Telegrams—"Galleries Wesdo. London."

J. Davy & Sons, Ltd., Dryden Press, 8-9, Frith-street, Soho-square, W. 1.

Handwritten: 185. £73. 8. 0



Bourne
Original
20. H

CATALOGUE

OF

OLD ENGLISH, CONTINENTAL & ORIENTAL
PORCELAIN,

Pottery, Bronzes and Bric-a-Brac

*By direction of the Executors of LT. COL. S. M. CASTLE,
deceased, also the Property of a Gentleman, removed from
Afton Manor, Freshwater, Isle of Wight, and from other
Sources.*

To be Sold by Auction by Messrs.

KNIGHT, FRANK & RUTLEY

SIR HOWARD FRANK, BART., G.B.E., K.C.B. ALFRED J. BURROWS, F.S.I., P.P.A.I.
ARTHUR H. KNIGHT, F.A.I. WILLIAM GIBSON, D.S.O., F.S.I.

AT THEIR ROOMS

20, HANOVER SQUARE, W. 1

On THURSDAY, the 28th of MAY, 1931,

AT ONE O'CLOCK PRECISELY.

On View Tuesday and Wednesday prior, from 10 to 5 o'clock.
Catalogues of the Auctioneers, at their Offices,

20, Hanover Square, London, W. 1

Telephone—Mayfair 3771 (10 lines).

Telegrams—"Galleries Wesdo. London."

J. Davy & Sons, Ltd., Dryden Press, 8-9, Frith-street, Soho-square, W. 1.

Wm W 185. £73. 8. 0

CONDITIONS OF SALE.

I.—The highest bidder to be the purchaser, and if any dispute arise between two or more bidders, the lot in dispute shall immediately be put up again and re-sold as the auctioneer may decide.

II.—No person to advance less than 2s. 6d., above Five Pounds 5s., and so on in proportion.

III.—In the case of lots upon which there is a reserve the auctioneer shall have the right to bid on behalf of the vendor.

IV.—The purchaser to give in name and address, and if required, to pay down 5s. in the £, or more, in part payment of the purchase-money, in default of which the lot or lots so purchased to be immediately put up again and re-sold.

V.—The lots to be taken away at the purchasers expense and risk the day after the sale, in default of which Messrs. Knight, Frank & Rutley will not hold themselves responsible if the lots be lost, stolen, damaged or destroyed; but they will be left at the sole risk of the purchaser. Messrs. Knight, Frank & Rutley require immediate removal of goods after the sale, and in default, they reserve the right to store them at a public depository to await clearance or re-sale, and, subject to the usual conditions of the depository proprietors, at the entire cost of the purchaser.

VI.—The lots are sold with all faults, imperfections, and errors of description, the Auctioneers not being responsible for the correct description, genuineness, or authenticity of, or any fault or defect in any lot, and making no warranty whatever. The auctioneers reserve the right of refusing any bidding or of withdrawing any lot or lots from the sale.

VII.—To prevent inaccuracy in delivery, and inconvenience in the settlement of the purchases, no lot can on any account be removed during the time of sale, and the remainder of the purchase-money must absolutely be paid on the delivery. After one week from date of sale, interest at bank rate will become payable on uncleared goods from date of purchase to time of clearance or re-sale.

VIII.—Upon failure of complying with the above conditions, the money deposited in part payment shall be forfeited; all lots uncleared within the time aforesaid shall be re-sold by public or private sale, and the deficiency (if any) attending such re-sale, together with warehouse and other charges, shall be made good by the defaulter at this sale.

KNIGHT, FRANK & RUTLEY.

NOTE.—Attention is called to No. V, as Messrs. Knight, Frank & Rutley cannot, after the Auction, undertake to warehouse uncleared goods.

GOODS are received and delivered at the rear entrance in DERING YARD (between 67 and 68, New Bond Street) from 9.30 to 11.30 a.m. and 4.30 to 6 p.m., and on Saturdays from 9.30 a.m. to 12.30 p.m.

BUYER

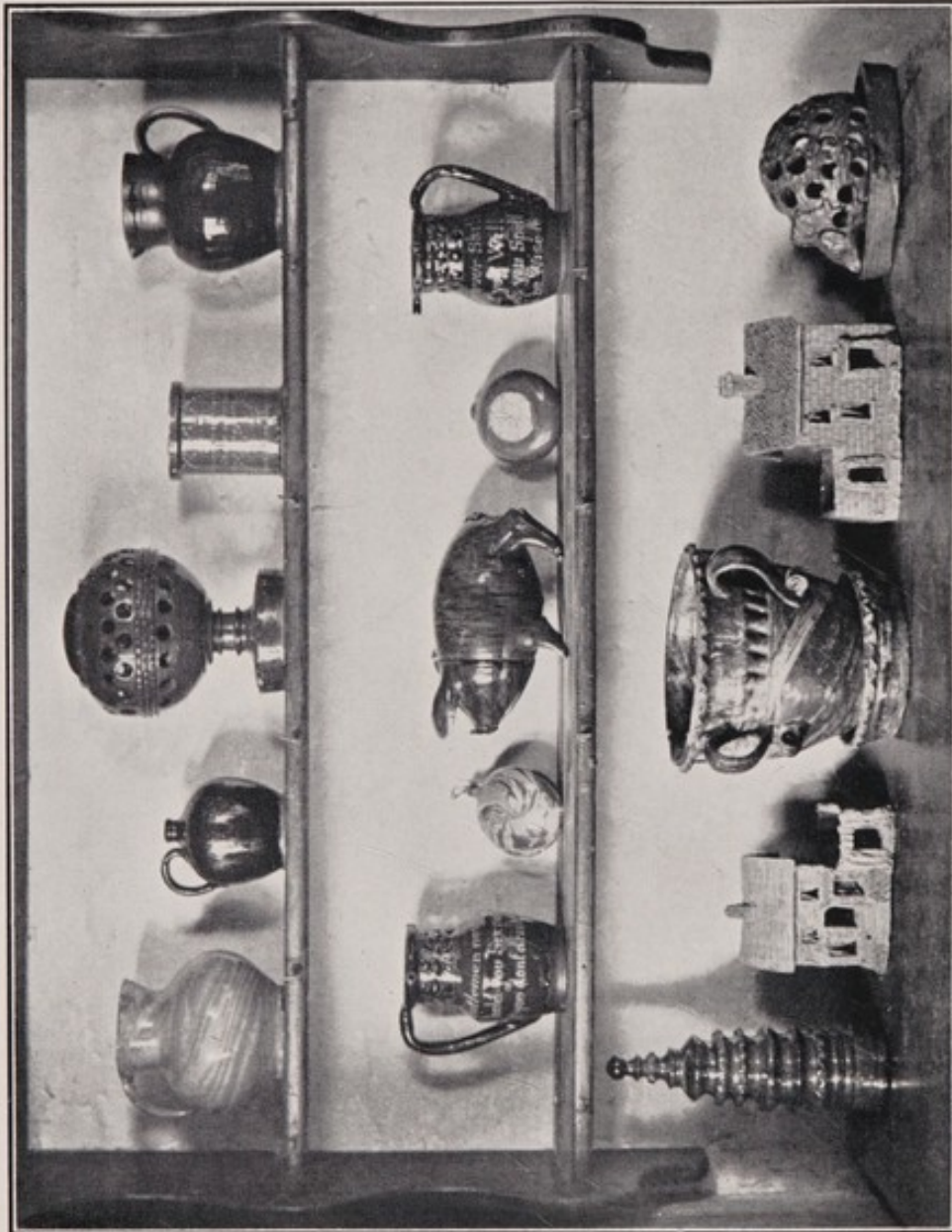
J. C. Bourne
17 1/2 St

Date

28th May 31

AUCTIONEERS

Lot	Amount				Lot	Amount		
	£	s.	d.			£	s.	d.
11	2	15	.	✓				
14	2	.	.	✓				
15	4	5	.	✓				
16	2	2	6	✓				
20	3	5	.	✓				
33	3	5	.	✓				
84	10	10	.	✓				
119	1	17	6	✓				
143	3	13	6	✓				
148	1	10	.	✓				
150	4	5	.	✓				
162	1	10	.	✓				
166	7	14	6	✓				
168	9	19	6	✓				
171	2	12	6	✓				
179	3	5	.	✓				
204	2	.	.	✓				
230	1	10	.	✓				
238	5	5	"	✓				
= 73 8 "								



THE SUSSEX POTTERY.

MESSRS. KNIGHT, FRANK & RUTLEY'S
CATALOGUE

OF

PORCELAIN,

Pottery, Bronzes and Bric-a-Brac.

On THURSDAY, the 28th of MAY, 1931

AT ONE O'CLOCK PRECISELY.

All *Ag*
The following 208 Lots, by direction of the Executors of
LT.-COL. S. M. CASTLE, deceased.

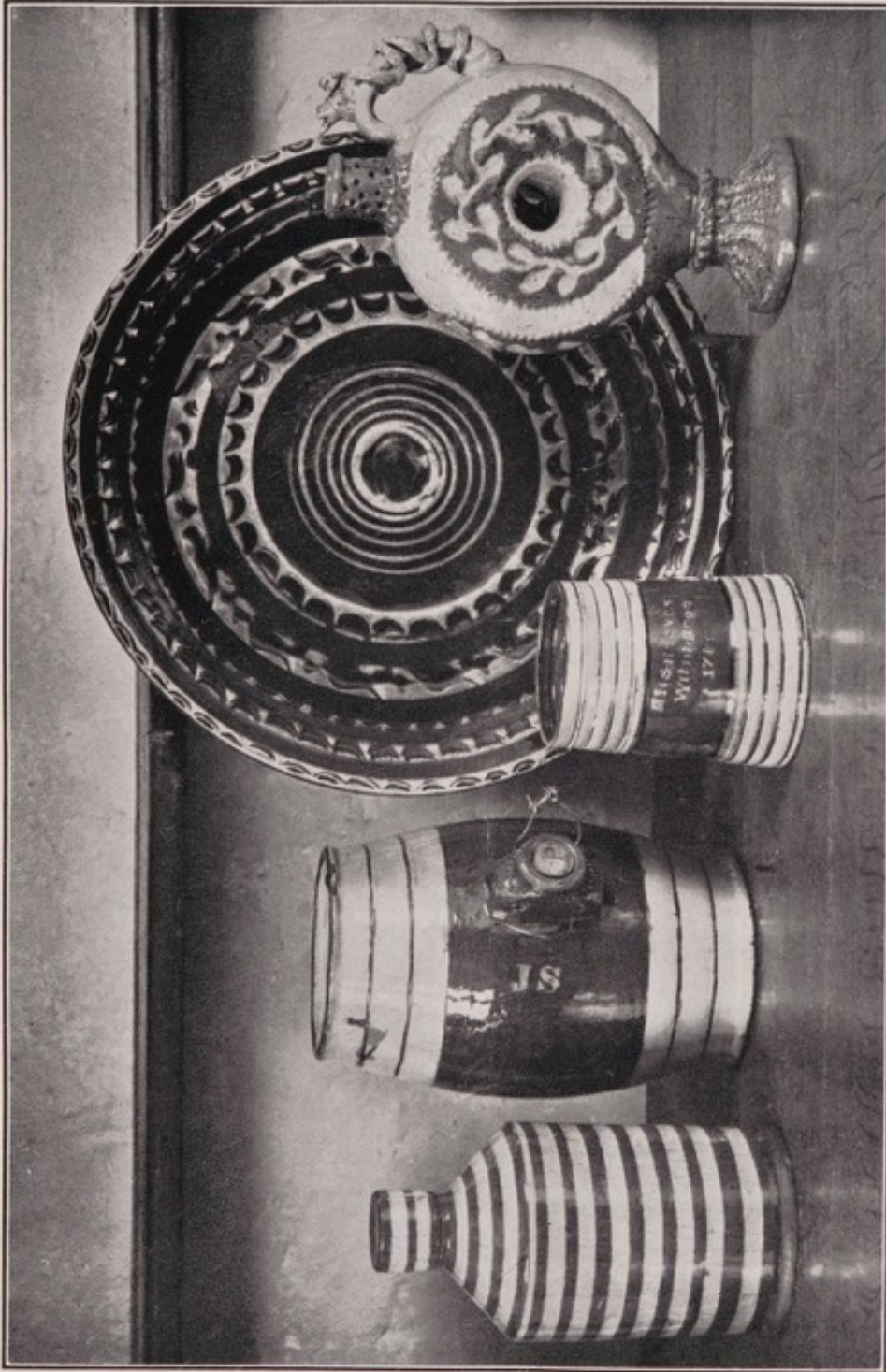
A COLLECTION OF SUSSEX POTTERY.

LOT

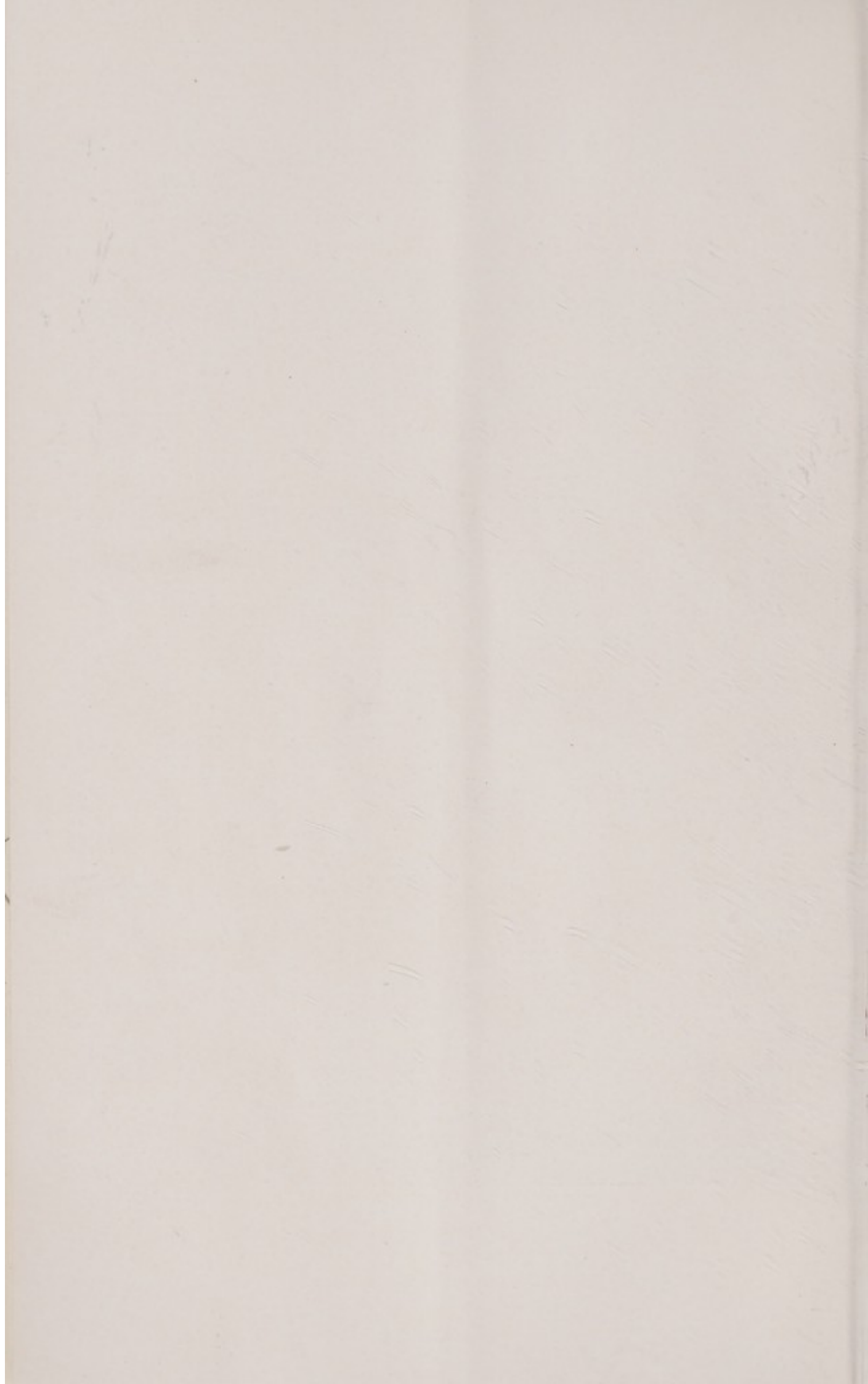
- 1 A puzzle jug, inscribed "P. E. H., 1794," a large mug with slip decoration, $5\frac{1}{2}$ in. high, and a tobacco jar with encaustic design inscribed "S. S., August 31, 1810," $6\frac{1}{2}$ in. high, from the Solan collection *60/2*
- 2 An early 17th Century jug painted with imitation agate, $4\frac{1}{2}$ in., an agate pattern money box, hen and chicken type, $6\frac{1}{2}$ in. high, a part figure of a pig, a cow's head pattern whistle, a cream jug, inscribed "C. M., July 7, 1855," and "W. Meads, maker" *42/2*
- 3 A pair of agate design doves, $5\frac{1}{2}$ in. high *of Cannon*
- 4 A dish with slip decoration, $15\frac{1}{2}$ in. diam., and two heraldic tiles *50/2*
- 5 A paper weight model of a spaniel, lead glaze, $6\frac{1}{4}$ in. wide, a puzzle jug of pilgrim bottle shape, 10 in. high, and a canister, inscribed "Mrs. Reeves, Willingdon, 1759," 5 in. high *50/2*
- 6 A cream jug, plain, 3 in. high, an egg cup with plain lead glaze, a money box, hen and chicken type, $5\frac{1}{2}$ in. high, a figure of a pig, inscribed "Won't be druv," a cup, 3 in. high, and a saucer *32/60*
- 7 A puzzle jug with slip decoration, inscribed "Gentlemen now try your skill" and "John Taylor drink and be wise, 1827," $6\frac{3}{4}$ in. high, and a similar jug *21/60*

** See Illustration. PLATE I.

- 8 Two pagoda-shaped money boxes, lead glaze and splash decoration, 12 in. high, and a globular crocus vase and cover, 9½ in. high 70/- 2.
- 9 A brush pot, 2½ in. high, and a cream jug 10/- 2.
- 9A A tea-pot with incised slip border, 1714, W. R., "John Boot" on lid 20/- .
- 10 A pair of spill vases, arboreal style decoration, 6½ in. high, a vase with snake handles, 7 in. high, and a money box, vase shape, 6½ in. high 21/6 2.
- 11 A globular money box, plain lead glaze, 4¼ in. high, a soup mug, inscribed "Booth," 4¾ in. high, and a jar and cover with striped brown and yellow design, 8¾ in. high 4. 55/-
- 12 A pair of whistle figures of hens, 6½ in. high 65/- 2.
- 13 A globular money box, 4½ in., a harvest bottle, 4 in. high, and a plain mug, 4¾ in. high 45/- 2.
- 14 A tobacco jar, encaustic decoration, inscribed "W. W., August 1, 1810," a puzzle jug with slip decoration, inscribed "Gentlemen try your skill," and a mug, 4¾ in. high 60/-
- 15 A cradle, decorated in slip with raised figures of deer, 12½ in. wide 5. 85/-
- 16 A puzzle jug, 6½ in. high, and two cottages, unglazed, 7 in. and 8 in. wide 4. 42/6
- 17 Two cream jugs, 2¾ in. and 3 in., two globular money boxes, 3 in. and 4 in. high, and a cradle with lead glaze, 11¾ in. wide 55/- 2.
- 18 A pig-shaped money box with plain pipe clay slip, lead glaze, 14 in. long 10/- 2.
- 19 A jug of unusual shape, 6¾ in. high, a jar of ovoid shape, 10 in. high, and a harvest bottle with encaustic decoration, inscribed "W. Crossland, Whitehorse," 10½ in. high 42/6 2.
- 20 A harvest barrel jug, banded in yellow slip, inscribed "J. S." (John Segrey, the Wiston potter), a harvest jug, 5½ in., and a tobacco jar and cover, 7½ in. high 4. 65/-
- 21 An agate money box, hen and chicken type 32/6
- 22 An agate ware flower vase in shape of a four-handled tyg, 17th Century, 9¼ in. high 55/- 2.
- ** See Illustration. PLATE I.
- 23 A Coronation George IV jug, with slip decoration, 13 in. high 40/- 2.
- 24 A harvest bottle, splashed, 5½ in. high, another, with manganese splashing, 6¼ in., a flower cup and saucer, and a cup 22/6 2.
- 25 A jug with raised decoration of busts, 7¾ in. high, and another, yellow slip lined with figures and sprays, 9½ in. high 60/- 2.
- 26 A crocus holder, shaped as hedgehog, 9½ in. wide 20/- 2.
- ** See Illustration. PLATE I.



THE SUSSEX POTTERY.



- 27 Two vases or ginger jars with slip borders, $6\frac{3}{4}$ in. high, and an agate ware jar, $7\frac{1}{4}$ in. high 30/2
- 28 A bird bath with cistern, plain lead glaze, 18 in. high 32/6 2
- 29 A churn with encaustic decoration, inscribed "Wm. Parker, Butter Box Farm, 1796," 15 in. high, and a harvest jug with manganese splashing, $13\frac{1}{2}$ in. 21/6 ?
- 30 A soup mug with encaustic decoration, inscribed "J. W. Wells," another "Mutton," an agate ware jug, $7\frac{1}{4}$ in. high, and a game dish and cover, arboreal style decoration, $7\frac{1}{4}$ in. diam. 35/ ?
- 31 A pair of candlesticks, arboreal style, $18\frac{1}{2}$ in. high 32/6 2
- 32 A pagoda-shaped money box, inscribed on base "H. Bridges," a harvest jug inscribed "C. M. Dennis, Faygate," and a pig drinking vessel, $9\frac{1}{2}$ in. 60/ ?
- 33 65 A pig-shaped drinking vessel, 17 in. long, a potato ring, 7 in. diam., and a flask, encaustic decoration, inscribed "Sarrah Starr, July 2, 1792"
- 34 An agate ware flask, 5 in. high, a lion mask plaque, a flask, decorated stars, and an agate ware ditto 35/ 2
- 35 A costerel flask, slip covered with incised decoration, 8 in. 45/ 2
- 36 A jug, plain, $9\frac{1}{2}$ in. high, a flour pot with cream bands, 10 in. high, and a jar with manganese splashing, $6\frac{1}{2}$ in. 45/- 2
- 37 A bowl, plain glazed, $9\frac{1}{2}$ in. diam., a two-handled jar and cover, inscribed "M. A., 1797," and a jar and cover with slip decoration and initials "E. B., 1817" 45/

A RARE COLLECTION OF MEN TOBY JUGS.

- 38 A Toby jug, in biscuit coat with translucent colours, white, yellow, black and green, by Ralph Wood, Senior, $9\frac{3}{4}$ in. high 16/9
 - 39 A similar jug, green, yellow, white, black and stone colours, by Ralph Wood, Senior, $10\frac{1}{2}$ in. high 18/9
 - 40 A ditto with blue, yellow, white, black, green and brown translucent colours, by Ralph Wood, Senior, $9\frac{3}{4}$ in. 12/9
 - 41 A ditto with underglaze colours of white, brown, blue and yellow, in white flowered coat, $9\frac{3}{4}$ in. high 12/9
 - 42 A Toby jug, attributed to Walton, formed of a man in blue coat and holding a jug inscribed "Sack," enamel colours of red, yellow, black and grey, 10 in. high 5/12
 - 43 A ditto, attributed to Dixon Austin, Sunderland, with underglaze colours and orange coat, $7\frac{1}{2}$ in. high 4/6
 - 44 A ditto, by Ralph Wood, Senior, with translucent colours of green, white, yellow and brown, 10 in. high 8/12
 - 45 A Whieldon ditto with underglaze colours, the coat of white and light brown manganese sponging, blue, white and brown, 10 in. high 5/12
- Robeck
Cole
Brook
Cole
Brook

All A's

46 A Toby jug, by Enoch Wood, "The Drunken Parson," in black coat and enamel colours of black and white stripes, 6 $\frac{3}{4}$ in. high

1/3 Co
code

47 A ditto, formed of a standing figure painted in puce, brown, white and black, 6 $\frac{1}{2}$ in. high

2 1/2

48 A Toby jug, by Enoch Wood, Senior, "The Publican," in green coat with translucent colours of white, brown and mottled, 9 $\frac{1}{2}$ in. high

15 Co
code

** See Illustration. PLATE III.

49 A ditto with mottled blue coat and yellow, grey, white, mottled and brown underglaze colours, 10 $\frac{1}{4}$ in. high

5/6 Co
code

50 A ditto with blue coat and underglaze colours, yellow, blue and white, 10 $\frac{1}{4}$ in. high

51 A ditto in blue coat, green, grey and white underglaze colours and high grooved, 10 $\frac{3}{4}$ in. high

5/6 Co
code

52 A ditto, "Country Gentleman," probably by Pratt, in blue coat with underglaze colours of yellow, white, brown and mottled, 7 in. high

3/8

53 A Toby jug, by Ralph Wood, Senior, and cover, with translucent colours of white, yellow, black and stone, and green coat, 10 in. high

15 Co
code

** See Illustration. PLATE V.

54 A ditto, "The Sailor," probably by Pratt, in underglaze colours of brown, orange, blue and white, 11 $\frac{1}{2}$ in. high

1/2 Co
code

55 A ditto, attributed to Walton, in enamel colours of yellow, white, black, red and spotted brown, in pink coat, 10 in. high

4/6

56 A Toby jug, probably by Ralph Wood, Junior, in green coat with blue, stone, black, brown and manganese underglaze, 10 $\frac{1}{4}$ in. high

1/2 Co
code

57 A ditto, attributed to Walton or Neale, in brown coat, red, black and stone speckled enamel colours, 10 in. high

1/2 Co
code

58 A ditto, probably by Pratt, yellow, brown and white flowered, in blue coat, underglaze, 9 $\frac{3}{4}$ in. high

1/2 Co
code

59 A ditto, with all brown glaze with cover, 13 in. high

2 1/2

4-60

A ditto, by Whieldon, "Thin Man," mottled coat, blue, red and grey, 9 $\frac{3}{4}$ in. high

1/4 Co
code

61 A ditto, by Ralph Wood, with puce coat and yellow breeches 10 in. high

24 Co
code

** See Illustration. PLATE III.

62 A ditto in translucent colours and green coat, barrel feet, 9 $\frac{3}{4}$ in.

15 Co
code

63 A Toby jug, in blue coat, brown and green, 9 $\frac{1}{2}$ in. high

1/2 Co
code

64 A similar jug with green coat, blue and grey, 9 $\frac{3}{4}$ in. high

1/2 Co
code

65 A Toby jug, by Ralph Wood, "The Squire," white glaze, holding a brown jug

1/2 Co
code



Lot 48

Lot 79

Lot 61



WOMEN TOBY JUGS.

- 66 A Davenport jug and cover, "Drunken Sally," green, pink, brown and grey underglaze, $12\frac{1}{4}$ in. high 6 2/2 Weller
 ** See Illustration. PLATE V.
- 67 A teapot, attributed to Pratt, "Mrs. Weller" or "Martha Gunn," striped blue, yellow, white and brown, $8\frac{3}{4}$ in. high 2 1/2 2/2
 ** See Illustration. PLATE V.
- 68 A Rockingham ware jug, "The Crinoline Woman," all brown glaze, $5\frac{3}{4}$ in. high 2 1/2 - 2/2
- 69 A "Thin Woman" jug, attributed to Pratt, with blotches, yellow, red and blue, 10 in. high 1 1/2 2/2

70 A jug, attributed to Pratt, with boy playing bagpipes, blue, orange, green, brown, yellow and aubergine with mermaid handle, underglaze, $8\frac{1}{2}$ in. high 1 1/2 2/2

71 A group, by Ralph Wood, Senior "The Vicar and Moses," blue and aubergine, translucent, with "Model No. 62" impressed 18 2/2

72 A Staffordshire group, by Ralph Wood, Senior—St. George and the Dragon, green and aubergine, underglaze, $11\frac{3}{4}$ in. high 5 1/2 2/2
 ** From the collection of R. Soden-Smith.

73 A ditto Toby jug, modelled with woman in chair, yellow, black, brown, green and blue, underglaze, attributed to Pratt, 5 in. high 40/1 Weller

** See Illustration. PLATE V.

74 A ditto, sailor on barrel, green and brown, underglaze 40/1 "

75 A ditto, by Pratt, boy seated on barrel, underglaze, $6\frac{1}{2}$ in. high 50/1 "

76 A Staffordshire oval plaque, by Pratt, with figure of Diana, blue, green, brown and orange, underglaze, 7 in. by $4\frac{3}{4}$ in. 50/1 2/2

77 A ditto portrait medallion, blue and brown, underglaze, 9 in. by $6\frac{1}{2}$ in. 50/1 2/2

78 A Swansea large transfer printed jug, taken from contemporary prints of "The Vicar and Moses" and "Toby Fillpot," which were illustrations to Francis Fawkes rhyme "The Brown Jug," published in London in 1761, 13 in. high 4 1/2 2/2

79 A Bacchus jug, by Ralph Wood, Junior, in enamel colours, 12 in. high 10 2/2

** See Illustration. PLATE III.



THE TOBY JUGS



- 98 A Bristol plate with polychrome landscape by Edkins, "Bianco" border by Joseph Flower, $8\frac{1}{2}$ in. diam., another of Imari pattern, and a ditto with blue panels and aubergine marbling, $9\frac{1}{2}$ in. diam.
- 99 A pair of Bristol polychrome plates with bamboo and flowers, $8\frac{3}{4}$ in. diam., another with flowers, $8\frac{3}{4}$ in. diam., and a Liverpool blue and white ditto with stags and birds, $8\frac{3}{4}$ in. diam.
- 100 A Bristol blue and white plate with Oriental design by Edkins, a polychrome ditto, painted with bunch of grapes, a blue and white ditto with serrated edge, 9 in. diam., and another, painted lilac and blue by Joseph Flower, $8\frac{3}{4}$ in. diam.
- 101 A Bristol polychrome deep dish, painted with a bunch of grapes, a Liverpool plate, painted in the Chinese manner, and a Bristol blue and white punch bowl, $10\frac{1}{4}$ in. diam.
- 102 A Bristol blue and white punch bowl with sprays of flowers, $11\frac{1}{2}$ in. diam.
- 103 A Brislington "blue dash" charger with vase of tulips, 14 in. diam., a polychrome ditto, painted with Adam and Eve, $12\frac{1}{2}$ in. diam., and a similar dish, 11 in. diam.
- 104 A Brislington or Lambeth "blue dash" charger, with coloured design of Adam and Eve, 17 in. diam.
- 105 Two Brislington ditto, painted in colours with tulips, 13 in. diam.
- 106 A Bristol blue and white dish with asters, $13\frac{1}{2}$ in. diam., and another with Oriental design, $13\frac{1}{2}$ in. diam.
- 107 A Liverpool or Bristol octagonal plate with blue and white designs, $12\frac{1}{2}$ in., and another with flowers, 14 in. diam.
- 108 A Liverpool blue and white dish with Chinese decoration, 15 in. diam., and a Brislington polychrome ditto, painted flowers, 13 in. diam.
- 109 A Bristol coloured deep dish with birds and bamboo, $13\frac{1}{2}$ in. diam.
- 110 A Liverpool blue and white dish with flowers, $13\frac{1}{2}$ in. diam., and another with Chinese landscape, 12 in. diam.
- 111 A Bristol dish with blue floral design on bluish enamel, 11 in. diam., a polychrome ditto, red and blue decoration by Niglett, and a Lambeth blue and white dish, 13 in. diam.
- 112 A Bristol plate with river scene in blue, $10\frac{1}{2}$ in. diam., a Temple Back, Bristol "blue dash" charger, Adam and Eve design, 13 in. diam., and another, painted tulips, 12 in. diam.
- 113 A Brislington "blue dash" charger, painted with standing figure of the Duke of Marlborough, and another, painted with building, $12\frac{1}{4}$ in. high
- 114 A dish, painted with carnations in green and yellow, "blue dash" border, $17\frac{1}{2}$ in. diam., and a Bristol "blue dash" charger, painted with Adam and Eve, $12\frac{1}{2}$ in.

50/92
 23/90
 11/2 en
 11/2 en
 30/1
 25/1
 32/1
 21/6
 80
 198
 5/50

- 115 A Bristol blue and white plate, $11\frac{1}{2}$ in. diam., a Liverpool octagonal ditto with terrace scene, $10\frac{3}{4}$ in., and a Bristol ditto, 10 in. 2/6 a
- 116 A Bristol pear-shaped vase, blue and white with panels of figure subjects and flowers, 8 in. high, a ditto saucer dish, 9 in. diam., and another with Oriental river scene, 9 in. diam. 2/6 a
- 117 A Faenza Rhodian pattern dish with flowers in red, green and blue, $11\frac{1}{4}$ in. diam., and another with geometrical design in green and black 5/2 a
- 118 A Bristol polychrome plate, 9 in. diam., a ditto, blue and white, painted by Flower, 9 in. diam., a Temple Back, Bristol dish, painted in colours with a parrot, $13\frac{1}{2}$ in. diam. 2/6 a
- 119 A Temple Back, Bristol plate, painted in colours by Thos. Frank, $8\frac{3}{4}$ in. diam., a blue and white shaving dish, 10 in. diam., and a Liverpool polychrome plate, 9 in. diam. 2/6 a
- 120 A Lambeth puzzle jug, painted in colours, $6\frac{1}{4}$ in. high, and another with marbled design, 6 in. high 2/6 a
- 121 Three Lambeth blue and white jugs, 5 in., $6\frac{1}{2}$ in. and 7 in. 2/6 a
- 122 A Bristol blue and white punch bowl, painted by Flower, $10\frac{1}{2}$ in. diam., and another 4/6 a
- 123 A Bristol ditto, 9 in. diam., and a ditto dish "Orion," painted by John Bowen (Lime Kiln Lane), 12 in. diam. 6/6 a
- 124 A Bristol blue and white plate, 9 in. diam., a Brislington ditto dish with Chinese design, 12 in. diam., and a ditto plate 5/6 a
- 125 A ditto, 8 in. diam., a pair of ditto, $8\frac{1}{2}$ in. diam., and another, 9 in. diam. 2/6 a
- 126 A Bristol blue and white plate with figures in landscape, 9 in. diam., another, painted by Niglett, a Liverpool octagonal ditto, 9 in. diam., and a Bristol blue and white plate, 9 in. diam. 2/6 a
- 127 Two Bristol blue and white bowls, $6\frac{3}{4}$ in. diam., and a polychrome ditto 2/6 a
- 128 A Bristol plate, painted in colours, 9 in. diam., two ditto blue and white wine labels, a ditto sweetmeat dish, $8\frac{1}{2}$ in. square, and a ditto dish, painted with river scene by Flower 2/6 a
- 129 A ditto blue and white octagonal dish, 13 in., a ditto, $19\frac{1}{2}$ in., and a ditto dish, $13\frac{1}{2}$ in. diam. 2/6 a
- 130 A Bristol blue and white plate, painted with river scene by Flower, 9 in. diam., another, and two polychrome ditto 2/6 a
- 131 A Bristol blue and white punch bowl, 10 in. diam., a polychrome ditto, $8\frac{3}{4}$ in. diam., and two ditto 2/6 a
- 132 A polychrome dish with peony design by Niglett, 11 in. diam., and a blue and white ditto, $13\frac{1}{4}$ in. diam. 2/6 a
- 133 A Bristol blue and white dish, $13\frac{1}{4}$ in. diam., a ditto with vase of flowers by Niglett, and a similar dish 2/6 a

2/6
5

PLATE V



Lot 53

Lot 66

Lot 73

Lot 67



- 134 A Brislington plate with effigy of Queen Anne, $8\frac{3}{4}$ in. diam., a Lambeth polychrome ditto, $8\frac{3}{4}$ in. diam., a Bristol ditto, and another with aubergine figuring, 9 in. diam. 6/1/2 a.
- 135 A Brislington plate with polychrome decoration of vase of flowers, another, and two blue and white ditto 2/1/2 a.
- 136 A Lambeth blue and white plate, $10\frac{1}{4}$ in. diam., a Bristol polychrome ditto, a Brislington ditto, and a Lambeth ditto, painted by Niglett 4/1/2 a.
- 137 A Bristol polychrome plate, $8\frac{3}{4}$ in. diam., a Lambeth ditto, a blue and white ditto, and a Bristol polychrome ditto, $8\frac{3}{4}$ in. diam. 1/6 a.
- 138 A Lambeth blue and white plate, $8\frac{3}{4}$ in. diam., a Bristol ditto, a Brislington plate, painted in blue by Ward, Senior, $8\frac{3}{4}$ in. diam., and a Bristol ditto 3/2/6 a.
- 139 A Brislington blue and white plate, painted by Niglett, a Bristol ditto, and another, inscribed "L. I. E., 1733," 9 in. diam., signed C. (only piece by Cantle that is known) 2/2/1/2 a.
- 140 A Bristol blue and white oval bowl on three ball feet, $12\frac{3}{4}$ in. wide, and a ditto polychrome punch bowl, painted flowers, 10 in. diam. 4/2/1/2 a.
- 141 A ditto punch bowl with Oriental landscape by Edkins, $11\frac{3}{4}$ in. diam., and a Brislington sugar bowl and cover, painted by Niglett, $7\frac{1}{4}$ in. high 5/2/1/2 Cole
- 142 A Bristol blue and white sugar bowl and cover, by T. Boddy, 6 in. high, a Lambeth white fuddling cup, and a polychrome punch bowl, $10\frac{1}{2}$ in. diam. 5/1/2 a.
- 143 A Lambeth white drug bowl, and three Bristol blue and white crocus stands, $6\frac{1}{2}$ in. 3/1/2 a.
- 144 A Wincanton honey pot with blue and white panels on puce ground, $3\frac{1}{2}$ in. high, a Lambeth Venus and dolphin puzzle bottle, $6\frac{1}{2}$ in. high., and a ditto blue and white jar, 6 in. high 5/1/2 a.
- 145 A Bristol blue and white bowl with aubergine powdering on sides, $4\frac{3}{4}$ in. diam., a ditto plate, by E. Wood, Senior, a Brislington ditto, and a Lambeth ditto with scalloped edge and bleu-de-Perse decoration, $8\frac{1}{2}$ in. diam. 2/5/1/2 Cole
- 146 A Lambeth polychrome plate with portraits of William and Mary, $8\frac{1}{2}$ in. diam., a Bristol plate of Oriental design, by Niglett, another, painted by Frank, and a polychrome ditto with balloon in ascent, $8\frac{3}{4}$ in. 6/1/2 a.
- 147 A Bristol blue and white plate, painted in the Oriental manner by Flower, $8\frac{1}{2}$ in. diam., a Lambeth powder brown ditto, and another, inscribed "A. F., 1728" 3/1/2 a.
- 148 Four small drug jars, a Brislington polychrome dish with Oriental figures in landscape, 14 in. diam., and a Bristol blue and white ditto with vase of flowers, 12 in. diam. 3/1/2 a.

- 149 A Brislington blue and white plate with lion and Oriental figures, 10 in. diam., a ditto, 8 $\frac{3}{4}$ in. diam., and another with sprays of flowers, 9 in. diam.
- 150 A Bristol barber's dish, painted in blue and white by Frank, 8 $\frac{1}{2}$ in. diam., and a ditto deep dish with Chinese figure, 12 in. diam.
- 151 A pair of Bristol polychrome dishes with sprays of flowers, 13 $\frac{1}{2}$ in. diam.
- 152 A Liverpool ditto plate, 8 $\frac{3}{4}$ in. diam., a Bristol blue and white plate, 9 in. diam., and a Brislington blue and white plate, 8 $\frac{1}{2}$ in. diam.
- 153 A Bristol dish with Oriental blue and white panels and lilac powder ground, probably by Wm. Pottery (Lime Kiln Lane), 13 $\frac{1}{4}$ in. diam.
- 154 A Bristol polychrome dish with peony design by Niglett, 13 in. diam., a Lambeth dish with portraits of William and Mary, and a Bristol dish, blue and white, 13 $\frac{1}{2}$ in. diam.
- 155 A Lambeth polychrome dish, 8 $\frac{1}{2}$ in. diam., and a Brislington ditto with tulip, 13 $\frac{1}{2}$ in. diam.
- 156 A Lambeth dish with blue Oriental design on puce ground, 13 $\frac{3}{4}$ in. diam.
- 157 A blue and white plate, 9 in. diam., a Jacobite ditto, 9 in. diam., and a Bristol polychrome punch bowl, 9 $\frac{1}{4}$ in. diam.
- 158 A Bristol polychrome punch bowl, 9 $\frac{1}{2}$ in. diam., and a blue and white ditto, 10 $\frac{1}{4}$ in. diam.
- 159 A Bristol blue and white bottle-shaped vase by Edkins, 11 in. high, and a similar vase, painted by Flower, 11 in. high
- 6 160 A Lambeth blue and white punch bowl, painted with Oriental patterns by L. Fietoor, inscribed "S. S. E., 1718," marked with painter's initials V.E., 13 $\frac{1}{2}$ in. diam.
- 161 A Bristol polychrome punch bowl, painted with flowers, probably by T. Frank, 13 $\frac{1}{2}$ in. diam.

** See Illustration. PLATE VII.

- 757-162 A Lambeth figure of a cat with mouse, 6 in. high
- 163 A Bristol blue and white two-handled vase, 4 in. high, a ditto tea-pot and cover, and two small bowls
- 164 A Lambeth blue and white punch bowl, 12 in. diam., and a Bristol ditto, painted by Frank
- 40-165 A Lambeth bleu-de-Perse cistern, 6 $\frac{1}{2}$ in., a ditto jug, and a pair of Bristol inkstands
- 10-166 A Brislington polychrome posset pot and cover, painted with floral sprays by Niglett, 7 $\frac{1}{2}$ in. high, and a ditto blue and white punch bowl, painted by Niglett, 11 in. diam.



THE ENGLISH DELFT POTTERY.



- 167 A Bristol (Temple Back) polychrome jar with two handles, $5\frac{1}{2}$ in. high, and a Brislington blue and white posset pot, $5\frac{1}{2}$ in.
- 168 A Lambeth blue and white sack bottle dated 1646, a Bristol (Redcliff) blue and white bottle with Chinese landscapes by Edkins, $10\frac{1}{2}$ in. high, a pair of Lambeth small bowls, and a Bristol blue and white crocus stand
- 169 A ditto drug jar, inscribed "C. Lujulae," $7\frac{1}{2}$ in. high, and another, inscribed "E. Diacantho," $7\frac{1}{4}$ in. high
- 170 A ditto, inscribed "T. Gordoni," another, "Ther. Lond.," 5 in. high, and a ditto, "Ther. Andro," 7 in. high
- 171 A Bristol blue and white pap warmer, 7 in. high, a Brislington dish, painted peacock by Niglett, 12 in. diam., and a ditto, $10\frac{1}{4}$ in. diam.
- 172 A Lambeth white posset pot, 6 in. diam.
- 173 A Bristol blue and white punch bowl with Oriental designs by Edkins, $13\frac{1}{2}$ in. diam., and a ditto shallow bowl, 9 in. diam.
- 174 A Bristol blue and white dish, 14 in. diam., a Brislington ditto, painted by Niglett, $13\frac{1}{2}$ in. diam., and a polychrome ditto, $13\frac{1}{2}$ in.
- 175 A Lambeth blue and white jug, $4\frac{1}{2}$ in. high, and a ditto ovoid-shaped vase, 10 in. high
- 176 A Brislington blue and white punch bowl, $10\frac{1}{2}$ in. diam., a Bristol ditto, and another with leaf design, $7\frac{1}{2}$ in. diam.
- 177 A ditto punch bowl with dancing boy and "Long Eliza" by Niglett, 9 in. diam., a Bristol ditto, 9 in. diam., and another (Lime Kiln Lane)
- 178 Two Brislington polychrome dishes, painted with storks, 13 in. diam., and a similar dish, $12\frac{1}{2}$ in. diam.
- 179 A ditto with figure and bird, 13 in. diam., and a blue and white shallow bowl, 12 in. diam.
- 180 A Bristol blue and white dish, painted by Flower, 13 in. diam., and a ditto, bird and floral design by Niglett
- 181 A Brislington blue and aubergine plate of Ming style, by E. Ward, Senior, $9\frac{1}{4}$ in. diam., a Bristol polychrome plate, probably decorated by Flower, 9 in. diam., and another, 8 in. diam.
- 182 A Bristol polychrome plate, painted by Niglett, $8\frac{1}{2}$ in. diam., a Brislington blue and white ditto, and a Bristol ditto, $8\frac{3}{4}$ in. diam.
- 183 Two Brislington ditto, decorated by Ward and Frank, a Bristol ditto, and a Wincanton blue and white ditto
- 184 A Brislington octagonal blue and white plate, 8 in., a Wincanton polychrome ditto, and a Bristol ditto with blue and white panels and manganese border, 9 in. diam.

Hills
Wallace
Storks

30/6 ?
Hill ?

60
Hills
Cole

84 ✓
5/6 ?

5/6 ?
Hills ?

2/6 ?
Hills ?

10/6
Andrews

32/6
Hills ?

22/6
Hills ?

- 185 A Bristol polychrome plate, $8\frac{1}{2}$ in. diam., a Brislington ditto, $8\frac{3}{4}$ in. diam., and a Bristol ditto $4\frac{1}{6}$?
- 186 A Brislington polychrome plate with peacock, $8\frac{1}{2}$ in. diam., a ditto, 9 in. diam., and another, $8\frac{1}{2}$ in. diam. $5\frac{1}{2}$?
- 187 A ditto with house and tree, $8\frac{3}{4}$ in. diam., and two ditto with pheasants, $8\frac{1}{2}$ in. diam. $3\frac{1}{6}$ Mangold
- 188 A Brislington blue and white dish, $13\frac{1}{2}$ in. diam., and a Bristol polychrome ditto with floral design by Frank, $13\frac{1}{2}$ in. diam. $2\frac{2}{6}$
- 189 A ditto polychrome dish, 13 in. diam., and a Bristol blue and white ditto, $13\frac{1}{2}$ in. diam. $4\frac{2}{6}$
- 190 A Dublin blue and white octagonal dish, 11 in., a Bristol polychrome plate, $8\frac{3}{4}$ in., a blue and white ditto, and a Wincanton ditto $2\frac{0}{6}$
- 191 A Bristol polychrome octagonal plate, $7\frac{1}{2}$ in., two ditto, and two others, fan pattern, $8\frac{3}{4}$ in. diam. $1\frac{0}{6}$ Walnut
- 192 A Bristol blue and white dish, painted by Edkins, 12 in. diam., another of mimosa design, 12 in. diam., and a Brislington ditto with birds and flowers, $13\frac{1}{2}$ in. diam. $3\frac{0}{6}$?
- 193 A Bristol ditto with bird and flowers, $13\frac{1}{4}$ in. diam., and a Brislington ditto "Long Eliza," $13\frac{3}{4}$ in. diam. $4\frac{0}{6}$?
- 194 A Bristol polychrome punch bowl, decorated by Edkins, a Liverpool ditto, blue and white, $10\frac{1}{2}$ in. diam., and another, probably decorated by John Robinson, 12 in. diam. $7\frac{0}{6}$?
- 195 A polychrome dish with red and blue floral sprays, $13\frac{1}{2}$ in. diam., and a Brislington dish with blue and aubergine flowers by Niglett, 13 in. diam. $2\frac{2}{6}$ Jansen
- 196 A Bristol dish with parakeet, and a blue and white ditto, $13\frac{1}{4}$ in. diam. $5\frac{0}{6}$?
- 197 A Brislington blue and white dish, $13\frac{1}{4}$ in. diam., and a Bristol ditto, 13 in. diam. $1\frac{5}{6}$?
- 198 Three ditto plates, and a Bristol ditto, decorated by Flower $4\frac{2}{6}$?
- 199 A Brislington polychrome plate, 9 in. diam., two Bristol ditto, and a Wincanton blue and white plate $4\frac{0}{6}$?
- 200 A Spanish faience dish with leopard, bird and flowers in blue, 19 in. diam. $3\frac{2}{6}$?
- 201 An Italian faience dish with bossed centre, painted with Venus and Actæon, 18 in. diam., 17th. Century $4\frac{2}{6}$?
** See Illustration. PLATE VI.
- 202 Two Dutch polychrome tankards with pewter mounts $6\frac{0}{6}$ 7 Basin
- 203 An Italian majolica jug formed of a naiad
- 204 A ditto bénitier with sacred monogram and angels, 13 in. high } $3\frac{0}{6}$
- 205 A Rodney mug with underglaze colours, $6\frac{1}{4}$ in. high, and a harvest jug, "God Speed the Plough"

$4\frac{0}{6}$ 4 } $2\frac{0}{6}$



THE ENGLISH DELFT POTTERY.



- 206 A Delft dish with polychrome decoration, $13\frac{1}{2}$ in. diam., and a similar dish, $12\frac{1}{4}$ in. diam.
- 207 A Bristol blue and white pot and cover, 5 in. diam., a Brislington blue and white ewer, 9 in. high, and a ditto vase, $6\frac{1}{2}$ in.
- 208 A Dutch plaque, painted in colours with bird in cage, 17th Century

** See Illustration. PLATE VI.

The following 84 Lots, the Property of a Gentleman, and removed from Afton Manor, Freshwater, Isle of Wight.

- 209 A Spode blue and white part dinner service, 35 pieces
- 210 A Crown Derby figure of Falstaff, $11\frac{1}{2}$ in. high
- 211 A ditto—David Garrick as Richard III, $11\frac{1}{2}$ in. high
- 212 A Chinese kylin electric table lamp, with brass standard, six glass cylindrical glasses, and an Old English wine glass with cotton twist stem
- 213 A Coalport part tea and coffee service, blue and gilt with flowers, 39 pieces
- 214 A Minton part breakfast service, painted sprays of flowers and birds, 52 pieces
- 215 Eight Rockingham tea cups and eight saucers, Royal Crown Derby ware, 8 pieces, and Wedgwood ditto, 9 pieces
- 216 A Worcester dessert service, the centre and border panels painted with roses, blue gilt bands, comprising: a pair of square dishes, a pair of oval ditto, a pair of shell-shaped ditto, and eighteen plates
- 217 A blue, white and gilt china inkstand, painted flowers, with taper stick, two ink wells and covers, $13\frac{1}{2}$ in. wide, and a Spode blue and white dish, 17 in. wide
- 218 A service of cut table glass, 60 pieces, comprising: seventeen champagnes (two sizes), eight clarets, eight sherries, eight ports, eight liqueurs, eight finger bowls, a water bottle, and two tumblers
- 219 Four Leeds blue and white plates, 8 in. diam., and a Davenport Salopian plate
- 220 A Worcester blue and white bowl and cover, crescent mark, 4 in. diam., a ditto bowl and saucer, a Leeds blue and white jug, $6\frac{1}{4}$ in. high
- 221 A Whieldon Salopian dessert basket, mottled in grey and green, 9 in. wide
- 222 A Bristol Delft polychrome plate, $8\frac{1}{2}$ in. diam., a pair of Salopian cornucopie moulded with infant Bacchus, under glaze colours of green and aubergine, 9 in. high

30/10
42/10
15/10
Widmore
44/6 Edwards

45/- Lady
35/- ?
5/- G
40/- Lady
65/-
Widmore
3/6 ?
30/-
21/-
Widmore
45/-
Payne
4 1/2 G
40/-
Main
2/6 ?
3/6 ?

- 223 A Salopian medallion, moulded with a Bacchante in relief, 8 in. high, and a Whieldon cornucopiæ, mottled design, with leafage and cartouche, 12 in. high 20/-
- 224 A Sunderland lustre dish, with transfer design Man O' War, 9 in. wide, and a Bellarmine stoneware jug, 10 in. high 20/-
- 225 A Fulham stoneware cup on stem, with raised decoration of huntsmen and hounds, 9 in. high 20/-
- 226 A Castleford blue and white dish, 8½ in., a Staffordshire plaque, by Samuel Alcock, "Prometheus," 6 in. by 6½ in. 20/-
- 227 A Staffordshire plaque, the Lamp of Knowledge, 8½ in. diam 20/-
- 228 A pair of Astbury wall pockets, moulded with female heads and cream glaze, 6 in., and a Staffordshire wall pocket, designed with a satyr mask and brown and cream glaze, 7½ in. 21/6 Payne
- 229 A Staffordshire medallion, Queen Caroline, 5 in., a Chinese blue and white plate, with flowers and cracked ice ground, 8½ in., and a pair of copper lustre cups and saucers 20/- main
- 20/- + 230 A Lambeth Delft drug jar, 7½ in., and a Bristol Delft ditto with spout
- 231 A pair of Staffordshire ware groups, by Voyez, with sheep and and flower holders, 7¼ in. high 31/6 Maister
- 232 A Salopian group—The Contest, 6½ in., and a Bristol copper lustre jug and cover, 9½ in. high 25/- main
- 233 Three Swansea plaques with transfer designs, and a Sussex pottery jug with cross handles, 10 in. high 57/6
- 234 A pair of Staffordshire rustic groups, by Ralph Wood—Boys Birdnesting, with flower holders, 9½ in. high main
- 235 A Brislington Delft harvester's barrel, powder blue, and a Sunderland cornucopiæ 57/6
- 236 A Wedgwood basalt tea pot and cover, and a Salopian bowl, mottled brown with white festoons, 9 in. diam. main
- 237 A Bristol Delft polychrome plate, 9 in. diam., a ditto dish, by John Niglett, 11½ in. diam., and a polychrome ditto, 13 in. diam. 21/6
- 55/- 8 238 A Bristol Delft polychrome dish, designed with bird and flowers, by John Niglett, and a Lambeth blue and white plaque, with coat-of-arms, 10 in.
- 239 A Bristol Delft dish, painted with balloon in ascent, 6¾ in. diam., a ditto plate, with river scene, 9 in. diam., and a Swansea plate, painted in the Oriental manner with figures on a terrace
- 240 A pair of Bristol Delft plates, with blue and white panels with coast scene and flowers, stipple puce ground, 9 in. diam.
- 241 A Whieldon plate, mottled, with moulded border, 9 in. diam., a Staffordshire oval plaque, with lions moulded in relief, 12 in. wide, and a ditto medallion with regal figure

- 242 A Staffordshire oval plaque, with naiad, and a ware model of a grandfather's clock, $8\frac{1}{2}$ in. *high*
- 243 A Staffordshire figure of a ram, *by Ralph Wood*, $5\frac{1}{2}$ in. *high*
- 244 A Rockingham brown ware Toby jug, 10 in. *high*, and four stoneware figures of cattle, 3 in.
- 245 A pair of Chinese figures of kylins, green, yellow and aubergine, $6\frac{1}{4}$ in. *high*
- 246 A Chinese pottery tomb figure of a horse
- ** Found in 1866 in cutting a trench for irrigation purposes at Po Shan Hsien in the province of Shantung, and supposed to be either Tang or Sung dynasty, presented to Dr. Griffiths, a missionary, by the Mandarin Tai Wang.
- 247 A pair of flowering plants in jade and semi-precious stones, in onyx jardinière, $20\frac{1}{2}$ in.,
- 248 A pair of Chinese powder blue and gilt vases, 10 in. *high*
- 249 A pair of Chinese figures of llamas, enamelled in yellow, blue, green and aubergine, $6\frac{1}{2}$ in. *high*, and wood stands
- 250 A pair of Dresden three-light table candelabra, mounted with winged figures and flowers, 8 in. *high*
- 251 A pair of Chinese beakers, enamelled in colours, 10 in. *high*
- 252 A pair of ditto bulbous shaped ginger jars, 6 in. *high*, and carved wood cover
- 253 A pair of ditto bowls, $8\frac{1}{2}$ in. *diam.*
- 254 A Dresden group—Music, $10\frac{1}{2}$ in. *high*
- 255 A pair of Chinese turquoise figures of storks, $9\frac{1}{2}$ in. *high*
- 256 A Chinese figure of a mandarin, purple and blue, $10\frac{1}{2}$ in. *high*
- 257 A pair of Chinese pottery figures of Ho-ho birds, yellow, brown and green, 9 in. *high*
- 258 A pair of Chinese "famille verte" plaques, painted with flowers, 7 in. *by* 10 in., *framed*
- 259 A pair of Chinese pottery figures of pigeons, with mottled colours, $6\frac{1}{4}$ in. *high*
- 260 A pair of Chinese cylindrical vases, with dragons on yellow ground, $9\frac{1}{2}$ in. *high*
- 261 A Chinese stoneware figure of a hawk, glazed in aubergine, on rockwork base, $7\frac{1}{2}$ in. *high*
- 262 A ditto jadeite figure of a parrot, 6 in. *high*
- 263 A Chinese green jade basket and cover, 3 in. *high*, and wood stand
- 264 A Chinese bottle-shaped vase, with flowers and yellow ground, 13 in. *high*

- 265 A pair of ditto, with dragons and yellow ground, $8\frac{3}{4}$ in. *high*
- 266 A pair of Chien Lung sang-de-bœuf vases, 8 in. *high*
- 267 A Kang Hsi group of grotesque sea dragons in green, yellow and aubergine, $11\frac{1}{2}$ in. *high*, and wood stand
- 268 A pair of Chinese figures of boys, 11 in. *high*, and a ditto yellow glazed figure of a dog, $5\frac{1}{2}$ in.
- 269 A Chinese engraved blue glass vase, bottle shape, $11\frac{1}{2}$ in. *high*
- 270 A pair of Chinese rose quartz kylins, 3 in. *high*
- 271 A pair of Chinese blanc-de-chine flowering plants in jardinières, 8 in. *high*
- 272 A pair of ditto mottled jade figures of kylins, 3 in. *high*
- 273 A Chinese turquoise koro and cover, 6 in. *high*, a ditto pottery equestrian figure of a warrior, 14 in. *high*
- 274 A pair of Kang Hsi kylins, green and aubergine, 4 in.
- 275 A Chinese pottery figure of a Dog of Fo, $8\frac{1}{2}$ in. *high*
- 276 A ditto green bottle-shaped vase, moulded with mask and ring handles, 8 in. *high*, and a grey pottery vase, with dragon in relief, 17 in.
- 277 A pair of Chinese turquoise Dogs of Fo, $8\frac{1}{2}$ in. *high*
- 278 A pair of ditto, yellow and green, $4\frac{1}{2}$ in.
- 279 A Chinese pot, with kylin, $4\frac{3}{4}$ in. *high*, and a Whieldon pilgrim-shaped bottle
- 280 An Italian majolica oval dish, with snake handles and dolphin feet, 15 in. *wide*
- 281 A Chinese carved carnelian group of bird and dog, 4 in. *high* and stand
- 282 A Chinese baluster-shaped vase, splashed blue and brown, 9 in., a ditto bottle-shaped vase, enamelled in colours, 8 in. *high*
- 283 A Chinese pottery turquoise figure of a hare, 5 in. *wide*, and wood stand, and a ditto of a cat
- 284 A Chinese blanc-de-chine figure of a deity, 9 in.
- 285 A Chinese pottery figure of a mandarin, 7 in. *high*
- 286 A Chinese smoked jade figure of a goddess, 5 in. *high*
- 287 A crystal figure of a fish
- 288 A Chinese pottery figure of kylin, yellow, green and aubergine, $8\frac{1}{2}$ in.
- 289 A Bristol Delft vase, blue and white, 10 in. *high*, a Dutch Delft octagonal vase, $10\frac{1}{2}$ in. *high*, a Wincanton blue and white vase, 7 in. *high*

- 290 A Chinese blanc-de-chine figure of a goddess, $8\frac{1}{2}$ in. high, and a pair of Japanese embroidered silk fans
- 291 A ruby engraved glass decanter and stopper, a pottery jug, two Spode blue and white plates, a Waterford dish and cover, 5 in. diam., and four glass stands
- 292 A Chinese carved jade ornament, with figures and flowers in relief, 6 in., on wood stand
-
- 293 A French walnut and marqueterie liqueur cabinet, interior fitted four decanters and stoppers and eight glasses, with gilt decoration, the rising top fitted mirror, 14 in. wide

FINIS.

Handwritten numbers and a diagonal line:

24
 46
 73
 12
 16
 8



HANOVER SQUARE IN THE EIGHTEENTH CENTURY.

THE HANOVER SQUARE SALE ROOMS

OWNERS DESIROUS OF INCLUDING
WORKS OF ART
ENGLISH AND FRENCH FURNITURE, PICTURES
TAPESTRIES, JEWELS, ANTIQUE PLATE
BOOKS, COINS, MEDALS, Etc.,
IN FORTHCOMING SALES

SHOULD COMMUNICATE WITH
THE AUCTIONEERS

KNIGHT, FRANK & RUTLEY

20, HANOVER SQUARE, LONDON, W. 1

Telephone: MAYFAIR 3771
(10 lines)

Telegrams
GALLERIES WESDO, LONDON