

Sales catalogues: Hurcomb

Publication/Creation

26th June 1931

Persistent URL

<https://wellcomecollection.org/works/p5xvb48r>

License and attribution

This work has been identified as being free of known restrictions under copyright law, including all related and neighbouring rights and is being made available under the Creative Commons, Public Domain Mark.

You can copy, modify, distribute and perform the work, even for commercial purposes, without asking permission.



Wellcome Collection
183 Euston Road
London NW1 2BE UK
T +44 (0)20 7611 8722
E library@wellcomecollection.org
<https://wellcomecollection.org>

Comins
original

Mr. Comins

26th June 1931

WALTHAM CHAMBERS 174

HUR.	DATE	INITIALS
19.3.0	26 VI 31	COMINS
SALE		
PURCHASE		
EXCHG.	29. VI. 31	RZ
COLLECTED	7. 7. 31	gfb
RECEIVED	7. 7. 31	dy
ACCUSED		
PASSED		duph

Old En

Cut Gla



Hurcombs, Grafton Galleries, W. 1.

On Friday, 26th June, 1931, at 1 p.m.

to be preceded by Sale of Books at 12 noon

On View Day Prior

kmw. 220. 32-80
up. 95 26.15

Phone:- Gerrard 5971-4

19.3.0



Comins
original

31

Old English, Oriental & Continental
China,

Cut Glass, Ivories, Bronzes, Bracket & Mantel Clocks,
Needlework, Embroideries, &c.

to be sold at

Hurcombs, Grafton Galleries, W. 1.

On Friday, 26th June, 1931, at 1 p.m.

to be preceded by Sale of Books at 12 noon

On View Day Prior

Khaw. 220. 32-80
Up. 95 26.15

Phone:- Gerrard 5971-4

1930

CONDITIONS OF SALE.

1. The highest bidder shall be the Purchaser, and if any dispute arise between two or more bidders the lot shall be put up again and re-sold, the Auctioneer being the sole Arbitrator in such disputes.
2. No person to advance less than one shilling; above five pounds, five shillings, and so on, in proportion, or less, at the discretion of the Auctioneer.
3. The Auctioneer to have the right to refuse a bidding at his discretion, and to bid on behalf of the Vendor in the case of lots upon which there is a reserve.
4. The Purchaser to give his name and address, and to pay a deposit of five shillings in the pound, or more, or the whole of the purchase-money, if required.
5. The lots to be taken away and paid for, with all faults, imperfections and errors of description, at the Purchaser's risk and expense the day after the sale, W. E. HURCOMB not being responsible for the correct description, genuineness, or authenticity of, or any fault or defect in, any lot, and making no warranty whatever; and in default W. E. HURCOMB is not to be held responsible if the lots, or any of them, are lost, damaged, or destroyed, and whether the purchase-money, or any part thereof, has been paid or not. In cases where a buyer purchases more than one lot the whole must be paid for before any one lot is delivered.
6. Any Purchaser neglecting to pay for and take away any lot or lots purchased within one day after the sale (not having been re-sold in accordance with the seventh condition) shall pay, in addition to the purchase-money, the sum of one shilling per week for warehouse-room, and also at the rate of five per cent. per annum interest on the purchase-money, to be reckoned from this day.
7. On failure of complying with the above Conditions, the money deposited shall be forfeited, and all lots remaining uncleared shall be re-sold by public or private sale, without notice, and the deficiency (if any) attending such re-sale, together with all incidental charges, shall be made good by the defaulter at this sale.
8. The Auctioneer will not recognise the transfer of any lot from one buyer to another. All lots at purchaser's risk on the fall of the hammer.

The only way in which goods can be cleared is by an Order issued from the Office. Any other clearance is not allowed or recognised.

Telephone: Gerrard 5971-4.

44.

87

24

2

10

BUYER *Comins*Date *26.6.31*AUCTIONEERS *Hurcombe*

Lot	Amount			Lot	Amount		
	£	s.	d.		£	s.	d.
9	1	5	.	1317.	43	15	6
44	24	.	.	210	1	2	6
55	1	.	.	219	3	10	.
87	2	15	.	222	2	5	.
107		18	.	255	3	.	.
122		17	6	302	4	10	.
158	3	5	.	324	1	.	.
173	2	5	.		<u>£59</u>	3	.
174	1	10	.				
178	6	.	.				
	43	15	6				

STY. Mo. 3

CATALOGUE

On FRIDAY, 26th JUNE, 1931

OLD ENGLISH, ORIENTAL & CONTINENTAL CHINA

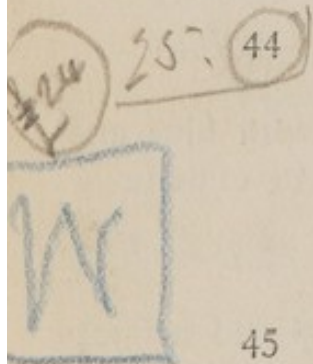
- 1 A Bow figure of a Girl carrying flowers, 7½" high *£8.*
- 2 Six Spode decorated cups and 6 saucers *£4 Corbett*
- 3 Fifteen various famille rose plates, (some faulty) and
3 Nankin plates *25/-*
- 4 Two antique glass goblets, on spiral stems, 2 cut ale
glasses, 2 celery glasses and 2 other pieces of glass
- 5 Two silhouettes, 3 various jugs, a pomade pot and
cover, a wax seal, 3 fans and a Toby salt cellar *7/6.
20/-
Wray*
- 6 Two antique Persian miniature pictures *10/- Churchill*
- 7 A pair of French figures of a Boy and Girl carrying
flowers *Passard*
- 8 A Satsuma cylindrical vase, a pair of Chinese vases
and a vase and cover *10/-*
- 9 A Japanese inlaid jewel cabinet, 6 lacquer trays and
a china figure of a Dancing Girl
- 10 A pair of Italian carved wood and ivory figures, a
pair of carved ivory figures, a Chinese ivory glove
box and a fan *25/-*
- 11 A Copeland and Garrett dessert service with buff and
gilt borders, the centres painted views, comprising a
centre dish, 14 side dishes and 24 plates *20/-
Wichers*

25/- 50/- 9

- 12 A ditto tea service with gilt decoration, of 12 cups, 10 coffee cups and 10 saucers *withdrawn*
- 13 An Indian engraved plated tea set of 3 pieces and a tray *40/-*
- 14 Two Whieldon figures of a Sailor, (faulty) and a Shepherdess, 8" high *2/15/-*
- 15 A Delft dish, a Nankin ditto, 2 blue and white *my* tureens and 1 cover, 8 ditto plates, and 14 various plates and 1 dish (faulty) *12/-*
- 16 A plated kettle on stand, a Wedgwood biscuit barrel, 5 various decorated jugs, a pair of spill vases, a bronze tazza and 22 pieces of ornamental china *20/-*
- 17 A carved ivory model of a Chinese boat, 2 fans (faulty) a seal, a horn beaker and 2 small soapstone carvings *28/- Charles*
- 18 A pair of Empire ormolu 4-light candelabra, supported by caryatid figures, on marble bases, 30" high *4/15/-*
- 19 An old Staffordshire ware cow cream jug and an engraved cordial glass *25/-*
- 20 Two Derby plates, a Dresden decorated plate with pierced border and 2 others *my* *25/-*
- 21 A 16th Century Chinese jade kylin, $3\frac{3}{4}$ " wide *6/10/-*
- 22 A Worcester plate with panels of flowers, on scale blue ground and gilt, square mark, $9\frac{1}{2}$ " wide *Walter* *£8.*
- 23 A Chelsea 2-handled fluted vase, the panels painted with a scene emblematic of Peace & Plenty and flowers, the handles pierced and encrusted with flowers, gold anchor mark, $11\frac{1}{2}$ " high *£11 white*

- 24 A Chelsea figure of Mars, the God of War, 11" high 6/10/-
- 25 A Chelsea design figure of a Lady seated and holding flowers, $5\frac{1}{4}$ " high 18/-
- 26 A pair of Nankin bowls, painted in blue with figures of Ladies, $4\frac{3}{4}$ " high 3/15/-
Homer
- 27 A pair of 14" famille rose dishes 5/10/-
- 28 An Astbury cow cream jug with cream and manganese glaze, on green base 7/10/-
- 29 A Chinese famille rose teapot with cover and stand, enamelled a cock and flowers 6/5/- Katto
- 30 A Chinese jug with famille verte decoration, $5\frac{1}{4}$ " high and a ditto hexagonal plate 12
- 31 A pair of Delft cows and a Chinese decorated teapot 12/6.
- 32 A Chelsea 2-handled bowl with pierced border, painted flowers, 7" high 2/15/-
- 33 A brass jug, a copper kettle, a stewpan, a saucepan and 3 frying pans 10/-
- 34 A Worcester china tea set, painted rose with blue and gilt borders, comprising teapot, 2 plates, 12 cups (2 shapes) and 12 saucers 47 with them
- 35 A copper box 3 brass candlesticks, a lamp and a lamp stand 8/-
Bentley
- 36 A pair of antique Irish cut glass candelabra with shaped branches and cut drops, 25" high 164-
- 37 A pair of decorated oviform vases with goat mark handles and pierced covers, 14" high 30/-

- 38 An 11" Chinese famille rose bowl, decorated with figures, in panels, on scale ground, 10½" high 15/10/-
- 39 A Nankin blue and white pear-shaped vase and cover and 2 ginger jars and covers 20/-
- 40 A Chinese vase and cover, the reserved panels decorated with figures in landscapes, salmon scale ground and blue and white borders, 20" high 30/- Hindel
- 41 An Empire timepiece, in ormolu case with a figure of a Boy standing on a decorated base, under glass shade 5/-
- 42 A pair of Dresden bowls, the panels painted a continuous seascape and gilt borders with mask head handles, 4½" high 56/-
- 43 A Chinese decorated mug, 4 various Oriental cups and 2 saucers, an onyx and cloisonne cup, a Worcester jug, a Chinese enamel hand mirror, 2 brass candlesticks, an inkstand, a marble figure of a Boy and Dog, 4 other pieces of china, a set of chessmen and Life of Laetitia Probyn, 6 copies 30/-
- 44 A Stone ware dinner service, decorated with Egyptian figures, comprising 2 soup tureens, covers and stands, 6 sauce boats and covers, 8 vegetable dishes and 6 covers, 5 other sauce boats, 64 meat plates, 24 soup plates, and 12 meat dishes - 122 pieces 25/-
- 45 Two Chinese famille rose bowls and 2 Imari ditto 5/10/-
- 46 A pair of 12" ditto dishes and a pair of 14" ditto 24/-
- 47 A pair of 14" ditto dishes, painted a Phoenix, another decorated a Kylin and 2 Imari dishes 4/10/-



- 48 A Delft blue and white dish, 5 Imari plates, a fluted dish, 2 Imari stands, a sauce boat, and 5 Oriental bowls (faulty) *2 1/2 lbs Katts*
- 49 Nine various Oriental plates, 2 others, 6 Oriental bowls, an armorial jug, and 12 Nankin blue and white plates (faulty) *2 1/2 lbs.*
- 50 An Oriental teapot, 5 milk jugs, 30 cups, 22 saucers, 2 teapot stands and 2 others, (faulty) *3 1/9 1/- Hurst*
- 51 A Nankin soup tureen and cover, an English stone ware ditto, 6 Nankin dishes, 4 large circular ditto, a fruit dish and 2 stands, 7 plates and a Delft horn *£3 13/- Bentley*
- 52 Seventy pieces of ornamental china (faulty)
- 53 A Bohemian glass vase, 2 smaller ditto, a green glass scent bottle, a ruby glass goblet, a Persian hookah vase, a Bow figure of a Man and 2 Spode decorated plates *32/- 5-5/- Hurst*
- 54 Sixteen pieces of Wedgwood leaf pattern dessert ware and 17 plates of Amherst stone ware ditto *35/-*
- (20/- 24)* 55 An old cream glazed pottery model of a Lion, (faulty)
- 56 A Leeds soup tureen and cover, 8 Oriental bowls (faulty), 8 coffee cups, 11 saucers, 16 pieces of odd tea ware and 9 various plates (faulty) *£3 15/-*
- 57 A pair of Chinese plates decorated with European subjects, a famille rose bowl, 2 Delft plates, a famille rose plate and an Imari dish, (faulty) *15/- Tinsley*
- 58 Eleven cut ale glasses and a pair of Old English decanters *2/15/-*

- 59 Two pairs of cut decanters, 24 engraved wines and
32 various glasses *3/6/- way-*
- 60 Two Chinese teapots and stands, painted in monochrome,
2 jugs, 2 tea caddies, 5 cups, 2 saucers, a bowl and a
plate (faulty) and 24 pieces of Nankin tea ware *30/-*
- 40/-* 61 Two miniature musical boxes, a telescope in shagreen
case, 2 papier mache boxes, a carved case, a pair of
clogs, 2 small boxes and 12 oddments *4/5/- Parry*
- 62 Thirtyfive pieces of various ware. 8 fulproof dishes, 4
copper moulds, a pair of bronze candlesticks and a
small framed picture *15/-*
- 63 A pair of ruby glass pickle jars, a pair of antique cut
glass candlesticks (one faulty), 9 pieces of antique glass,
a small needlework picture, a Persian bowl with cover
and stand, a bone box, an ivory fan, 3 paper knives, an
Ardente hearing apparatus and sundries *2/5/-*
Hurst-
- 64 A pair of Chinese shaped 2-handled vases and covers,
a famille rose ditto and 2 Imari beakers, (faulty) *20/- way-*
- 65 Thirteen brass candlesticks, a jug, 2 Oriental bowls
and 1 stand
- 66 A pair of Worcester vases, 3 Mason's jugs, 4 other
ornaments, 2 bells and 11 pieces of brass *20/-*
- 67 Two brass skeleton mantel clocks *4/12/6.*
- 68 An Empire clock in rosewood and inlaid case, a tea
caddy and a pair of French 2-handled vases *2/10/-*
- 69 A pair of Japanese bronze beaker vases, a pair of
pot pourri vases and covers and a pair of square ditto *24/-*

- 70 Thirteen Coalport red and gilt cups and saucers, a milk jug, slop bowl, 2 sauce tureens and covers and 17 pieces of dinner ware 20/-
- 71 A tortoiseshell inlaid box, a filigree work box, 2 carved card cases, 2 snuff boxes and 5 fans 2/17/- Perry-
- 72 An enamel box, a faence ditto, a card case, a jade ornament, a Persian ditto, and a Russian enamel miniature 2/5/-
- 73 A Rockingham blue, gilt and white part tea service comprising sugar basin, cover and stand, milk jug, slop basin, 11 cups, 9 saucers, and 2 plates 12/-
- 74 An early 18th Century chiming bracket clock, in ebonised case with pierced ormolu basket top, silvered dial with cupid spandrels, by John Harris, London 20/- Wm. Chaswick
- 75 Four cloisonne 2-handled vases 2/15/-
- 76 A wooden watch case and bracket, a painting on panel, an ivory brooch, a coin box, and a lace collar 12/-
- 77 Sixteen Minton dessert plates, painted flowers 35/- Wm. Chaswick
- 77a An antique brass chestnut roaster, 5 Oriental vases, 9 brass candlesticks, 3 brass bells, 2 powder horns and 6 brass ornaments 32/-
- 78 A pair of Japanese beaker shaped vases and a pair of Chinese ditto (faulty) 25/-
- 79 Two old Worcester modelled leaf jugs painted with flowers in panels on scale blue ground, square mark 152/-
- 80 A pair of Chinese blue jardiniere with embossed decoration of apple blossom and a crackle glaze jardiniere 25/-

- 81 Twelve Damascus ware tiles, a Cantagalli jug and 30 pieces of ornamental china *3/9*
- 82 An ebonised jewel cabinet with Niello panels, 3 Chelsea plates and an ivory octagonal tea caddy *6/10/-*
- 83 Ten Nankin cups, 9 saucers, 8 plates, 6 various Dresden figures, 2 embossed metal plaques, 2 Worcester cups and 3 saucers, 17 green glass ice plates and 12 ditto finger bowls *3/10/-*
- 84 Four various Chinese vases, (faulty) a Delft dish, 4 Nankin plates, 3 pieces of Persian enamel, a Spanish pottery stoup, a Delft candlestand, 2 fruit dishes and stands, a sauce tureen and 2 brown ware teapots *30/-*
- 85 Three cut glass decanters and a honey jar and cover *30/-*
- 86 An antique marquetry oblong box, 3 lacquer boxes, a red lacquer ditto and 2 stands *20/-*
- 2/15/-* 87 Twentyfour table knives, 24 dessert ditto and a set of carvers with ivory handles, in mahogany case
- 88 Six cut beer glasses, a water jug, a flower vase, a scent bottle, 2 salt cellars and a pair of 5" china figures, (faulty) *22/-*
- 89 A pair of 11" Chelsea candlesticks of Mars and a Nymph and Cupid *£10-*
- 90 Six carved meerschaum pipes *22/6*
- 91 A Derby figure group, a small decorated china ewer and 12 various ivory and other netsukies *8/15/-*
- 92 A green leaf and gilt tea and dessert service, comprising 12 dishes, 35 plates, 6 breakfast cups and saucers, 28 tea and coffee cups, 29 saucers, a milk jug, sucriere and cover and a slop basin *£3*

- 93 A Canton enamel 2-handled vase and cover, a pair of ditto beaker vases, a pair of boxes and covers, 2 spill vases, 2 small vases and a small box and cover 2/5/-
- 94 A green glass decanter, 21 wine ditto and 11 ruby engraved wine glasses 30/- way
- 95 Fifteen old green hock glasses Passed
- 96 Eighteen engraved champagne glasses, 10 cut drinking glasses and 14 others 3/5/-
- 97 A 9" Chinese famille rose bowl and a 10" French china figure 5/10/-
- 98 A French china tea set of 11 cups, 12 saucers, 7 various plates and a bowl 2/10/-
- 99 A pair of Celadon ware barrel shaped garden seats Hurst 2/4/-
- 100 A pair of 24" Canton vases with enamelled decoration and reptilian ornament £4.
-
- 57 101 A bronze figure signed by R. Kuchler and 3 other bronze figure groups 7/10/- Nixon
- 102 A pair of small cloisonne enamel vases, a blue ground ditto and a bronze vase 32/-
- 103 A pair of 15" Satsuma decorated vases 2/- Bentley
- 104 An Old English dessert service painted with roses, comprising 7 dishes, a sauce tureen and cover and 11 plates, (faulty) 4/10/-
- 105 A service of cut glass, comprising a pair of thistle-shaped decanters, a pair of engraved ditto, 18 ditto champagne glasses, 12 beer glasses, 12 ports and 12 liqueurs £8-

- 106 A cut glass decanter and 4 octagonal salt cellars
- 107 Six various Old English blue and white dishes,
3 plates and 2 Imari plates
- 108 A pair of cut glass bowls and covers and a water jug
- 109 Two 8" ditto dishes, a 7" ditto and a pair of 4 $\frac{3}{4}$ "
sugar basins
- 110 A Battersea enamel box, decorated with flowers
- 111 A French enamel oval box and 2 smaller ditto, 2
miniature portraits, an ash tray and an Indian
marble box
- 112 A 28" japanned tray with pierced border
- 113 A Spode Felspar dessert service with buff and gilt
borders, the centres painted flowers, comprising a
centre dish, 10 side dishes and 18 plates
- 114 A SET OF 5 CHINESE FAMILLE VERTE
HEXAGONAL VASES AND COVERS, enamelled
with flowers and utensils
- 115 A 7" ditto bowl enamelled a farming scene, (faulty)
- 116 Two Chinese yellow glazed circular dishes, 8 $\frac{1}{2}$ " wide
and a 7" ditto
- 117 A 7" ditto bowl, a pair of 4" libation cups with
incised decoration and a 4" shallow bowl
- 118 A Chinese famille verte bowl and cover, enamelled
with flowers and insects in panels, (faulty)
- 119 A 14 $\frac{1}{2}$ " famille verte bowl, enamelled with flowers
and utensils in panels and diaper borders, (faulty)

£2 Churchill

3/5/- Charlie

4/5/- Hurst

2/5/- Perry

3/15/- Hurst

35/-

£25/-

£32.

4/10/-

5/10/- white

5/10/-

£5-

£2

18/- 5/- 107

II

I20 A 15" famille rose deep dish, the centre decorated a ceremonial scene, (faulty) and a 9" lotus leaf bowl and 4 ditto plates *7/10/- Thorne*

I21 A 6" famille rose bowl, enamelled utensils and flowers *22/6.*

17/6 357 I22 A bronze plaque of Caesar and a small Japanese bronze

I23 A Derby red and gilt bordered tea set, comprising teapot and cover, bowl, milk jug, 2 plates, 8 cups and 8 saucers *£4 Hurst*

I24 A Derby jug painted a view "In Italy," a ditto urn shaped vase and cover and a pair of spill vases, (1 faulty) *3/15/- Mylton*

I25 A Worcester china plaque, the reserved panel painted with flowers, gilt borders, on apple green ground *4/9ms Weller*

I26 A Bloor Derby vase, the oval panels painted baskets of flowers, on olive green ground with gilt borders *2/10/- Hurst*

I27 A pair of brass and china candlesticks, an inkstand, a bronze incense burner, 4 brass circular trays, an engraved ditto, a set of postal scales and weights, a bronze inkstand, a pipe, 2 bronze medallions and a marble paper weight *17/6.*

I28 An alabaster electric light bowl, a Japanese lacquer box and a decorated tea caddy *12/6.*

I29 A pair of plated pillar candlesticks, an old verge watch and Blunt's Works, (3) *35/-*

I30 Six pewter hot water dishes *25/- Parnell.*

- 131 Three 20" pewter dishes and three 18" ditto
- 132 Twelve pewter 9" plates
- 133 Twelve ditto
- 134 Twelve ditto
- 135 An engraved shell needlework case and fittings 2/2/-
- 136 A Worcester dessert service of 11 plates, 4 square dishes, 2 oval ditto and a sauce tureen with cover and stand 4/12.
- 137 A Chamberlain Worcester part dessert service, painted with flowers and green and gilt borders, comprising 11 plates, 4 shell dishes and 2 oval ditto 4/4 Cooper
- 138 Two mahogany miniature chests of drawers and 2 ditto clock cases 30/- way-
- 139 A French clock in ormolu case and a small clock in rosewood case 27/6. *Swist*
- 140 Two sets of ivory chessmen and a set of draughtsmen 22/-
- 141 A set of 3 papier mache decorated shaped trays and 2 ditto bread trays 6/15/-
- 142 A Worcester part tea service of 30 pieces and a blue dragon breakfast set of 32 pieces 26/-
- 143 A red and blue bordered tea service of 50 pieces 2/14/6. *Brinkley*
- 144 A rose pattern tea set of 40 pieces, 3 glass dishes and 10 various saucers 30/-
- 145 A 9" Chinese famille rose bowl *Bentley*

- 146 An Old English bracket clock with pull repeater movement, by John Birnie, Templepatrick £15-
- 146a Nineteen cut wine glasses, 15 jelly glasses, 9 rummers, 4 salts, 4 candle sconces and 3 tumblers 32/-
Marbo,
- 147 Twelve Old English wine glasses, on knopped stems 5/10/-
- 148 A drawn glass goblet, 4 ditto glasses, 3 tear bubble glasses and 4 cotton twist ditto £6.
- 149 Fourteen various cotton twist stem glasses 6/10/-
Marbo,
- 150 Two 6 $\frac{3}{4}$ " sweetmeat glasses, on folded feet 2/5/-
- 151 Seven cordial glasses with folded feet and 13 various ditto £3.
- 152 A Chamberlain Worcester chrysanthemum pattern dessert set, comprising 11 plates, 8 side dishes, 2 tureens, a cover and a centrepiece, (faulty) 16/10/-
Hurst
- 153 A Bow candlestick, in bocage with cupid and dog
- 154 A pair of pink opaque lustre vases with drops 3/10/-
- 155 A Spode Felspar dessert set, transfer decoration, on buff ground, comprising a centrepiece, 12 side dishes and 24 plates 11/10/-
- 156 A Chinese model of an ostrich, (faulty) £10.
- 157 A 15" pewter dish, a 13 $\frac{1}{2}$ " ditto and ten 9" plates
- 3/5/74. 158 Twentytwo old legal documents, a letter, 2 books, a brass jar and cover, and a small framed plaque 7/15/-
15/- *Strong room*

- 159 A Salopian dessert service, comprising a centre dish,
10 side dishes, a sauce tureen and cover, 2 stands
and 23 plates *£16 Hasley.*
- 160 A pair of cut glass decanters *20/- Wey.*
- 161 Two curious wax pictures *32/6 Chadwick.*
- 162 An antique miniature globe, in shagreen case
Passed.
- 163 A musical box, in rosewood case *22/6.*
- 164 A Castellani marble figure "Repose" *18/- Ward.*
- 165 A box containing specimens of quartz *10/-*
- 166 A brass telescope in case and a microscope in box
Passed
- 167 A part of a Rockingham tea service with green and
gilt borders, comprising 8 tea cups, 8 coffee cups,
8 saucers, a sucriere and cover, a bowl and 2 plates
Passed.
- 168 Eighteen pieces of decorated dessert ware and a
small scent bottle *20/-*
- 169 Four bottles of liqueur whisky *2/14/- Spencer.*
- 170 Six bottles of sherry and 9 bottles of Madeira *2/8/-*
Charles.
- 171 A French clock in ormolu mounted case *30/-*
- 172 Three Satsuma teapots, 2 sugar bowls and covers,
2 jugs, a bowl and cover, 2 pairs of vases, 2 cups,
2 saucers and 2 plates *15/-*
- 2/5/7* *4.* (173) Two shaped faience plaques, 7 various Oriental
vases, 21 ditto cups and 15 saucers, 2 French pipes
and sundries

3076 174 A bronze bust, a pewter vase and cover, a pair of candlesticks and 3 other pieces of pewter

8. 175

A globe decanter stand, supported by a bronze figure and a glass water jug *Passed*

176

Two tall cut glass goblets (1 faulty), 4 cordial glasses and 4 wines, engraved with the initials and crown of Louis Philippe (These are specimens of a service specially made on the occasion of a dinner given in honour of Louis Philippe) *12*

177

A pair of cut decanters, another and 5 cut wine glasses

8. 178

An antique carved wood figure of the Virgin Mary, 3'9" high

179

Five plated dish covers, a Lowestoft decorated jug, and an embroidered 18th Century silk waistcoat

180

A Worcester blue and floral decorated tea set of 39 pieces

181

A pewter coffee pot and a fish dish, by Loux

182

A French china figure group "The Artist"

183

Two Coalport meat dishes and 4 plates painted with roses and 2 Old English blue and white meat dishes

184

A pair of bronze 6-light candelabra supported by figures of Cherubs, with marble bases, 32" high

185

A pair of 15" Chinese oviform vases and covers, the panels painted figures with blue borders, on matting ground

- 186 A marquetry picture by C. Spendler, "A Village Scene"
- 187 A 10½" Chinese bowl, painted exteriors with figures in panels, on matting ground (faulty)
- 188 A Chinese powder blue coffee pot, painted with birds and flowers, in gilt
- 189 A Worcester jug and a Bohemian amber glass tumbler
- 190 Part of an Ironstone dinner service, comprising 12 soup plates, 12 meat plates, 23 pudding plates and 12 cheese plates
- 191 Part of a Worcester tea service with panels of flowers in yellow, gilt and blue ground, comprising 9 tea cups, 4 coffee cups, 5 saucers, a bowl and 3 plates, (faulty) and a Worcester tea set, white with blue and gilt borders, comprising a teapot, cover and stand, a bowl, sugar basin, 17 cups and 6 saucers
- 192 A Crescent china breakfast set of 45 pieces and a Copeland dessert set of 6 dishes and 12 plates
- 193 A plated fruit stand with green glass liner, 3 ginger jars and 1 cover, a fruit set of 7 pieces and 2 small trays
- 194 Part of a table service of cut glass, comprising a pair of decanters, 9 champagnes, 5 clarets, 6 ports, 3 sherries, 10 finger bowls and 9 ice plates
- 195 Six cut beer goblets, 12 wine glasses, a decanter, a claret jug, 2 water jugs (1 faulty), a fruit bowl and 3 liqueurs

- 196 Four various decorated china plates, a Swansea cup and saucer, a Derby cup and saucer, a Chelsea Derby cup and cover and another cup and saucer
- 197 A lacquer tray, 2 tea caddies, a blotter, a cribbage board and a beadwork stand
- 198 Three antique mahogany tea caddies, a rosewood ditto and an Egyptian ditto
- 199 Two carved ivory Japanese swords
- 200 A set of 3 French vases, 2 Mason jugs, a frog mug, a plated teapot and a coffee pot
- 201 A pair of Niderville green and gilt 2-handled vases, a cream glazed vase, another and a Chinese pilgrim bottle
- 202 A pair of Chinese tall crackle glazed vases, 21" high
- 203 A pair of 10" crackle vases, a pair of decanters, a cut ditto, 2 goblets, a pottery jug, a buhl inkstand, a pomade pot and cover, a Satsuma bowl, 2 small ornaments and 2 picture frames
- 204 A stoneware willow pattern dinner service, comprising 2 soup tureens, a cover and stand, 7 meat dishes, a cheese dish, 6 vegetable dishes and 4 covers, 3 sauce tureens and 2 covers, 42 meat plates, 26 soup ditto and 20 pudding plates and stands,
- 205 A 12½" Imari bowl, 5 ditto plates, 2 Canton jugs and a mug (faulty)
- 206 A 7½" Chinese famille rose bowl (faulty), an 8" powder blue vase, a Faience bowl and 3 Chinese white figures of Kwan Yin

- 207 The floral decorated tea and coffee ware, comprising 36 pieces and a Dresden dessert set, comprising 12 plates and 4 dishes
- 208 A rosewood and inlaid tea caddy with cut glass liner, a Wedgwood blue jasper 2-handled vase and a blue cut glass scent bottle
- 209 A bronze figure of a Chinaman, a ditto incense burner, a vase, an engraved Dutch brass oval box, an ivory tusk and 5 hardstone carvings
- 210 A Stoneware tankard, a terra cotta ware figure, 50 pieces of odd china, (faulty) and a needlework sampler
- 211 The service of bayonet cut table glass, comprising 15 champagnes, 11 clarets, 17 ports, 14 sherries, 10 liqueurs, 9 tumblers, and 5 finger bowls - 81 pieces
- 212 A pair of antique cut glass decanters, a claret jug, and 3 square decanters
- 213 Two decanters, a cut water jug, 2 fluted decanters and 3 cut glass flower vases
- 214 Twenty various cups and 20 saucers, (matched)
- 215 Twentyfour ditto, (matched)
- 216 Thirtyeight various cups and 21 saucers, (all odd)
- 217 Thirtyeight various cups and 21 saucers, (all odd)
- 218 Thirty various dessert plates, (faulty)
- 219 A Parian figure group, a white china candelabra, a Paris inkstand, 5 china figures and candlesticks, 2 Sevres and ormolu inkstands and a Copenhagen figure of a Sleeping Child

30/-

Chadwick

3/15/- Way

36/-

22/6 50/- 210

27/6.

2/15/- Marks

30/- Horst

4/5/- Way

4/10/- Hooper

6/10/- Hooper

22/6.

3/10/- 6 219

- 220 Six Worcester buff and gilt plates, a sauce tureen complete and 19 various dessert plates 25/-
- 221 A tea set of 24 pieces, 3 decorated teapots and 50 pieces of ornamental china 32/6. Chadwick
- 45/4 222 A Copeland Parian centrepiece, a Satsuma vase and 40 pieces of ornamental china and glass
- 223 An Old English glass picture "Connubial Happiness"
- 224 A "Vista" or scenic picture "Sports & Pastimes", Music, Shooting, Falconry, Hunting. The intermediate planes are painted in talc. Flemish or Dutch 17th Century 20/- Chadwick £16.
- 225 A plated stand containing 3 glass bottles Passed
- 226 A Minton dessert service with red borders and painted flowers, comprising 24 plates and 6 dishes 5/15/-
- 227 A French mantel clock in ormolu case with Sevres panels Passed
- 228 Twelve Imari 8" plates, painted with chrysanthemums, in red and green and blue borders, (3 faulty) Passed
- 229 A mahogany tea caddy with cut glass liner 15/-
- 230 A 17½" Italian ebony casket, with marble panels, inlaid panels of flowers and birds, chased ormolu mounts, (faulty) 50/-
- 231 Two paintings, on glass, portraits of Ladies 10/-
- 232 An 18½" old pewter plate (4 mark) Chadwick £3.

- 233 Seven wax portraits "General Abercromby," "War,"
"Lord Nelson," "Admiral St. Vincent," "Sir T. Picton"
and "Julius Caesar," in 1 frame 18/- Chadwick
- 234 An old Stafford Toby jug and a Delft puzzle ditto,
decorated flowering plant, (faulty) 17/6.
- 235 A Stafford Toby jug and a female ditto (faulty) 15/-
- 236 The blue and gilt Worcester tea and coffee service,
decorated garden scenes, comprising teapot, slop basin,
sugar basin, milk jug, 2 plates, 17 cups and 9 saucers 8/10/-
- 237 A Sheffield plated centrepiece with glass dish 1/-
- 238 A blue and white Wedgwood wine cooler and a
Sheraton design tea caddy 2/- marks
- 239 The Chamberlain Worcester blue and white dessert
ware, decorated flowers, comprising 8 dishes and
20 plates (faulty) 30/-
- 240 A pair of 12" cloisonne jardinières and a pair of 10½"
vases decorated flowers and birds 2/15/-
- 241 A pair of 9" cut glass candlesticks with star drops 12/- West.
- 242 A 15½" blue and white Chinese circular dish, 8 ditto
plates, 2 others, 4 Delft ditto and a Canton oval
dish, decorated flowers and butterflies, (faulty) 30/- Wang
- 243 A 10" Chinese Lowestoft bowl decorated figures on
terraces (faulty) 20/- do.
- 244 The apple green and gilt Old English dessert ware,
decorated flowers, comprising centre dish, 6 side
ditto and 15 plates (faulty) 12/-

- 245 An ebony and ivory flute and a satinwood ditto 10/-
- 246 The pink and gilt Minton dinner ware with crests, comprising 2 meat dishes, 2 strainers, 2 vegetable dishes, 2 covers, a salad bowl and 143 plates, various
- 247 A blue and white Chinese long neck vase decorated dragons 4/10/- *Worke*
12/6.
- 248 The blue and yellow gilt bordered Rockingham dessert ware, decorated flowers, comprising 4 dishes, 2 stands and 12 plates, and 12 pieces of ditto tea and coffee ware, (faulty) £2/10/-
- 249 A modern brass lantern clock 22/6. *Weller*
- 250 A 12½" French vase, decorated sporting subject and a cornucopia of fruit, and a pair of majolica 3-light candelabra 25/- *Chadwick*
- 251 A pair of blue and gilt marbled Sevres circular butter coolers with covers and stands, decorated panels of flowers £30, *Huxley*
- 252 An antique bracket striking clock with circular dial, in mahogany case, by Finer and Newland, London £8 *Hurst*
- 253 A 14" red and gilt jar decorated dragons and a 9" blue and white ditto ginger jar with hawthorn blossoms (faulty) 20/- *Bentley*
- 254 Seven 9" Chinese famille rose plates, decorated flowering plants and river scenes, a French ditto, a Satsuma dish, a floral cup and saucer, 11 Limoges coffee cups and 10 saucers
- ⑬ 4 255 A pair of ditto candle stands with 1 shade, a figured teapot, a famille rose cup, 2 Oriental jars, a famille verte design scroll pattern wine ewer and a brown and green glaze teapot, (faulty) *Brought away bowl.*
very fragile AF

- 255a A 16" Persian pottery dish with raised centre and pierced border with green, blue, aubergine and yellow glazes
- 256 The French orange and gilt dessert ware, decorated historical figure subjects in black transfer, comprising 4 dishes, 20 plates, and 11 custard cups with covers (faulty) *40/- marks.*
- 257 The yellow, pink and red floral gilt French tea and coffee ware, comprising teapot, coffee pot, milk jug, sugar basin, slop basin, 8 cups and 11 saucers, (faulty) *50/-*
- 258 The floral and cream gilt dinner ware of 98 pieces *2/10/-*
- 259 A 5½" Dresden group of 2 cupids with flowers and a 5½" Continental actor with mask *22/6*
- 260 A 5" old Italian bronze classical figure of a man, on marble plinth, (faulty) *25/-*
- 261 Two 9½" Chinese long neck vases with ring handles, decorated flowering plants on green and gilt grounds
- 262 A pair of 7" lignum vitae vases, a Bristol floral glass paper weight, and a large Paisley shawl (faulty) *17/6*
- 263 Two bronze chased ewers, 19" high, two 11½" ditto, a 9" ditto Warwick vase, a 5" ditto pot with brass liner and a 4½" ditto mug, (faulty) *20/-*
- 264 The Spode tea and coffee service, decorated in the Japanese taste, comprising teapot, milk jug, slop basin, sugar basin, 14 plates, 24 cups and 12 saucers, (faulty)
- 265 A tortoiseshell and ostrich feather fan, 5 pewter dish covers and 3 parian jugs, (1 decorated battle scene) *432/-*
10/-

- 266 A pair of Victorian cut glass candlesticks with long drops, 16" high and 6 ditto 2-lipped finger bowls, (faulty) 2/12/6.
- 267 A ditto water jug, a claret ditto, 4 ditto decanters, a fluted bottle, a frosted water jug, and 2 goblets (faulty) 15/-
- 268 Thirteen ditto tall champagne glasses, 37 wine ditto, various, 6 others and oddments 25/-
- 269 An old Scotch wood tankard, lid carved a lion 30/- Hurst
- 270 A 16" Coromandel wood box, fitted numerous compartments, inlaid with ivory and tortoiseshell 18/-
- 271 A French mantel striking clock, in ormolu case and a pair of ditto 5-light candelabra 25/-
- 272 A 31" red and gilt papier mache shaped tray with Chinese decorations 37/6 Pearson
- 273 An antique Italian ivory bureau, engraved views, (faulty) 2/15/- Hurst
- 274 A Sunderland pink lustre jug, decorated view of Iron Bridge and verse 29/- Weller
- 275 A Bristol glass mug and 2 Old English cauliflower pattern plates (faulty) 26/-
- 276 The Old English dessert ware with Japanese decorations, comprising centre dish, 6 side ditto, a tureen and 12 plates, (faulty) 2/5/- Weller
- 277 A Worcester teapot decorated Chinese figures 35/-

- 278 A miniature portrait of a Military Officer and a ditto of a Lady, (faulty) (The Hon. Charlotte Anstruther and her Husband) 10/- marks
- 279 Two 5½" Chinese ivory figures, 2 silver hair brushes, a ditto hand mirror and a white lace collar (faulty) 10/- marks
- 280 The blue and white gilt Salopian fluted tea and coffee service, decorated flowers, comprising slop basin, milk jug, plate, 16 cups and 8 saucers 2/7/6 Pearson
- 281 A 12½" cream Wedgwood bowl with crest, 4 blue and gilt Swansea dessert dishes and 8 ditto plates 7/6 Hurst
- 282 Two Dresden pierced dishes and 7 ditto plates, a Derby teapot, 5 Copeland coffee cups and 6 saucers, (faulty) 20/-
- 283 The Spode dessert service, decorated flowering plants and peacocks, in the Oriental taste, comprising centre dish, 6 side ditto, 2 tureens complete and 18 plates
- 284 The ditto dinner, tea and breakfast ware, decorated flowers, comprising soup tureen complete, 4 sauce ditto, a salad bowl, a strainer, 20 meat and pie dishes, 4 vegetable ditto with covers, 2 others, 1 cover, 57 plates, 2 broth bowls complete, a slop basin, 8 cups and 3 saucers (faulty) £9.4s.6d. Hurst
- 285 The white and gilt ditto tea and coffee service, comprising slop basin, sugar ditto, milk jug, 2 plates, 23 cups and 12 saucers, (faulty) 3/10/-
- 286 Four cut glass salt cellars, 4 oval ditto, 3 small ditto circular dishes and two 10½" star cut oblong ditto 2/17/6.

MUSICAL INSTRUMENTS

- 287 A VIOLIN BY RUGGERI, IN SHAPED LEATHER CASE WITH MESSRS. W. E. HILL AND SONS CERTIFICATE £54.
- 288 An Old English violin and 2 bows, in case 10/- Hurst
- 289 A German violin with carved head and bow 12/-
- 290 A violin and bow, in shaped case 27/6 Harms.
- 291 A violin and bow, in case 2/15/- white
- 292 An antique violin and 2 bows, in black case 10/- Hurst

NEEDLEWORK, EMBROIDERIES, ETC.

- 293 A Chinese embroidered skirt, 7 panels of ditto embroidery and a quantity of oddments of Chinese embroidery 32/6.
- 294 A printed Indian shawl and a Victorian needlework panel 20/-
- 295 A Japanese embroidered large portiere curtain, a needlework sampler, dated 1847 and a Victorian mantel screen 15/-
- 296 An Old English needlework picture, a pair of Queen Anne embroidered gloves and a ditto pouch 32/6 Pearson
- 297 A Lady's short sable cape £32 King
- 298 A Queen Anne petit and gros point needlework picture, worked with "Rebecca at the Well," in shaped panel with floral border £48 Bentley

- 299 A Stuart needlework panel, worked with figures, animals and trees in a landscape in petit point
- 300 A framed sampler and 6 unframed ditto *25/-*
- 301 Two Indian pattern Paisley shawls *£4*
- (4/10/-) 10* 302 An Indian gold thread and tinsel portiere
- 303 Three machine made tapestry panels and a Victorian screen *20/-*
- 304 An Old English needlework picture representing "The Destruction of the Spanish Fleet before Gibraltar, 1782" *5/10/- white*
- 305 An Indian white silk shawl and a mauve ditto *25/-*
- 306 An embroidered silk shawl, a lace veil and a collar *2/5/-*
- 307 An embroidered Rhodian panel *22/6 -*
- 308 A Victorian silk patchwork quilt *32/6 -*
- 309 Two Old English needlework pictures, "Abraham and Isaac" and "Christ and Rebecca" *Marche Passed*
- 310 A Kashmir shawl with fur collar, a sketch by F. Reynolds and a Polyglot Bible *15/-*
- 311 Three Old English silk needlework pictures, oval
- 312 Four ditto unframed needlework Maps of England and Wales, Ireland, Europe and The World, and 3 samplers
- 313 A large printed Indian shawl

- 314 Three pairs of lined floral tapestry curtains £3
- 315 An Albanian embroidered bedspread and 2 pillow covers, a table centre, 3 panels of Albanian embroidery and a shawl 3/15/-
- 316 Eleven Albanian gold thread embroidered panels, 6 other embroidered panels, 2 waistcoats, 2 pairs of cuffs and a short dress £2-
- 317 An Indian woven shawl 20/-
- 318 Two Kashan silk velvet panels 1/4-
- 319 A sealskin coat and collar 2/10/-
- 320 Two Persian pile saddlebags 2/10/-
6. 321 An Indian crimson cashmere shawl embroidered in gold threadwork with seed pearl and bead ornamentation 8/10/-
no name
- 322 A sable stole with 14 tails
- 323 A Russian silk and gold threadwork panel, The Crucifixion, framed 20/-
- 20/- 4. 324 An old crimson velvet and gold embroidered threadwork circular table cover
- 325 A Victorian needlework picture, Royal Coat of Arms, and a ditto, Flowers, in high relief, walnut frame (circular) 15/-
- 326 A Chinese crepe de chine fringed shawl and a silk embroidered ditto 20/-
- 327 An 18th Century needlework picture, "Front View of a Castle," (oval) 30/-

5. 329

Two old Persian cloth panels, embroidered figures,
flowers, foliage and birds in coloured silk and silver
threadwork

£17-

Thaine

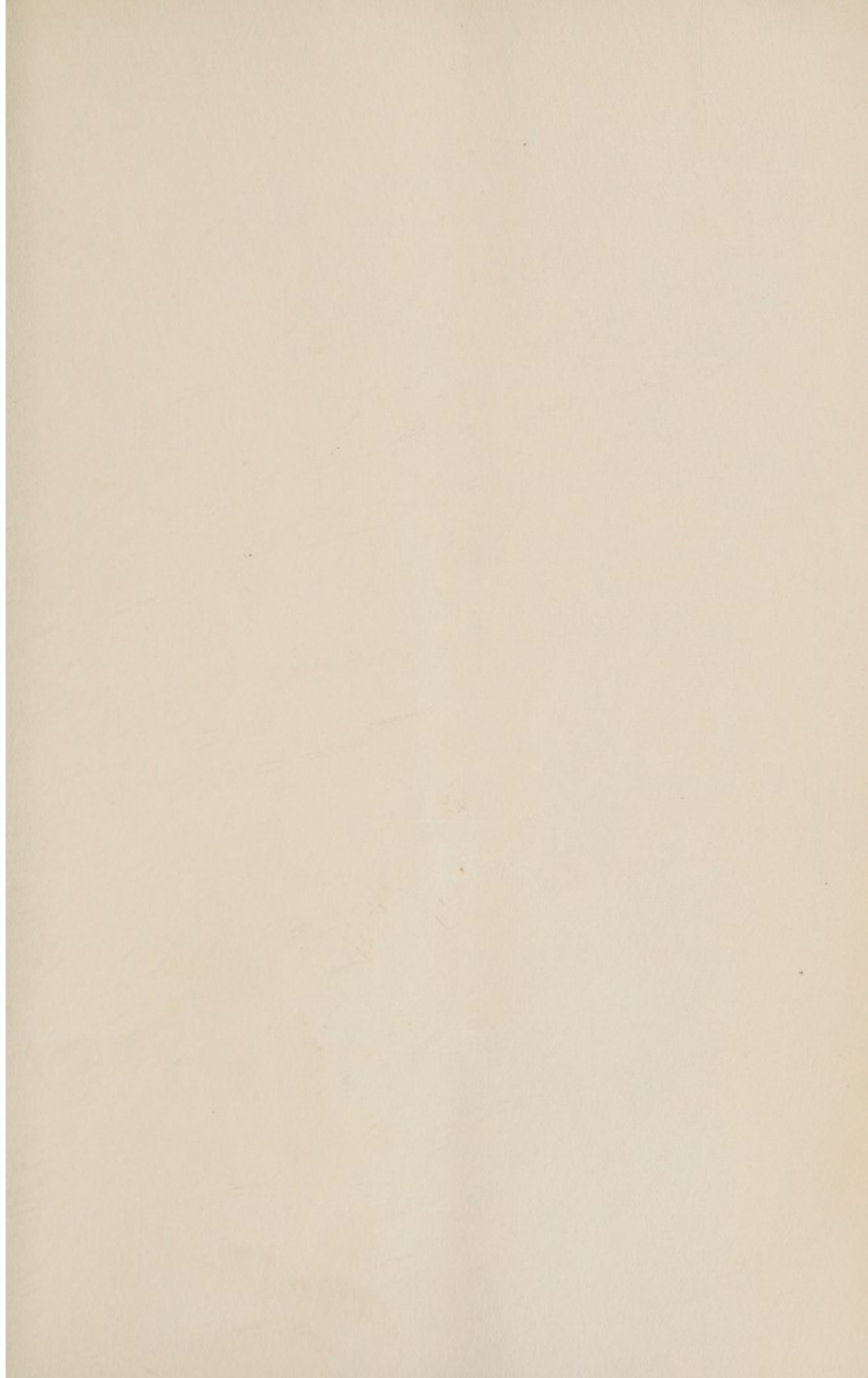
330

Two ditto

331

A Persian pink silk panel embroidered flowers and
foliage in colours

END OF SALE



SALES OF JEWELS AND SILVER
EVERY FRIDAY

. . Fortnightly Sales of . .
Antique Furniture, China, Books,
Armour, Tapestries, Ivories,
Miniatures, Clocks, Persian and
other Carpets and Rugs.
Oil Paintings, Drawings, Prints
and Engravings.

Property can be included in any sale
at short notice

INVENTORIES & VALUATIONS FOR PROBATE,
DIVISION, INSURANCE AND OTHER PURPOSES

Sales of Furniture, etc., on
Owner's Premises a Speciality
Town or Country

Commissions Executed. Moderate Terms

HURCOMBS, Grafton Galleries, W.1.

Telephone:
GERRARD 5971-4 (4 lines)