

Sales catalogues: Hurcomb

Publication/Creation

20th April 1931

Persistent URL

<https://wellcomecollection.org/works/jv8bw93k>

License and attribution

This work has been identified as being free of known restrictions under copyright law, including all related and neighbouring rights and is being made available under the Creative Commons, Public Domain Mark.

You can copy, modify, distribute and perform the work, even for commercial purposes, without asking permission.



Wellcome Collection
183 Euston Road
London NW1 2BE UK
T +44 (0)20 7611 8722
E library@wellcomecollection.org
<https://wellcomecollection.org>

in Comms 20th April 1931

*Comms
original*

Hurcom

Galleries W.1.
WALLHAM / CH / SOL / 11 / 6d

OLD

CON

Cut Glass, E
N

HUR.	DATE	INITIALS
26.10.0		
SALE	20. IV. 31	COMINS
PURCHASE		
CHECKED	22. IV. 31	KL
COLLECTED	24. 4. 31	YLB
RECEIVED	24. 4. 31	DP
ADJUDGED		
PASSED		LWGM



IN THE END GALLERY

On Monday, 20th April, 1931

to be sold immediately after Sale of Books

Sale of Furniture, Books, Pictures, Silver and Jewellery same day

ON VIEW THURSDAY, FRIDAY AND THE SATURDAY MORNING PRIOR

Hurcombs, Grafton Galleries, W. 1.

26.10.0
123.
87

18.00
8
26.10.0

Phone:- Gerrard 5971-4



original
in
Hurcom

OF

OLD ENGLISH, ORIENTAL
&
CONTINENTAL CHINA,

Cut Glass, Bronzes, Ivories, Bracket and Mantel Clocks,
Needlework and Embroideries, Etc.

TO BE SOLD BY AUCTION

IN THE END GALLERY

On Monday, 20th April, 1931

to be sold immediately after Sale of Books

Sale of Furniture, Books, Pictures, Silver and Jewellery same day

ON VIEW THURSDAY, FRIDAY AND THE SATURDAY MORNING PRIOR

Hurcombs, Grafton Galleries, W. 1.

Am m 123.
up 87

18.00

8
26.00.0

Phone:- Gerrard 5971-4

CONDITIONS OF SALE.

1. The highest bidder shall be the Purchaser, and if any dispute arise between two or more bidders the lot shall be put up again and re-sold, the Auctioneer being the sole Arbitrator in such disputes.
2. No person to advance less than one shilling; above five pounds, five shillings, and so on, in proportion, or less, at the discretion of the Auctioneer.
3. The Auctioneer to have the right to refuse a bidding at his discretion, and to bid on behalf of the Vendor in the case of lots upon which there is a reserve.
4. The Purchaser to give his name and address, and to pay a deposit of five shillings in the pound, or more, or the whole of the purchase-money, if required.
5. The lots to be taken away and paid for, with all faults, imperfections and errors of description, at the Purchaser's risk and expense the day after the sale, W. E. HURCOMB not being responsible for the correct description, genuineness, or authenticity of, or any fault or defect in, any lot, and making no warranty whatever; and in default W. E. HURCOMB is not to be held responsible if the lots, or any of them, are lost, damaged, or destroyed, and whether the purchase-money, or any part thereof, has been paid or not. In cases where a buyer purchases more than one lot the whole must be paid for before any one lot is delivered.
6. Any Purchaser neglecting to pay for and take away any lot or lots purchased within one day after the sale (not having been re-sold in accordance with the seventh condition), shall pay, in addition to the purchase-money, the sum of one shilling per week for warehouse-room, and also at the rate of five per cent. per annum interest on the purchase-money, to be reckoned from this day.
7. On failure of complying with the above Conditions, the money deposited shall be forfeited, and all lots remaining uncleared shall be re-sold by public or private sale, without notice, and the deficiency (if any) attending such re-sale, together with all incidental charges, shall be made good by the defaulter at this sale.
8. The Auctioneer will not recognise the transfer of any lot from one buyer to another. All lots at purchaser's risk on the fall of the hammer.

The only way in which goods can be cleared is by an Order issued from the Office. Any other clearance is not allowed or recognised.

Telephone: Gerrard 5971-4.

Name	Age	Sex	Profession	Remarks
John Smith	25	M	Farmer	Wife and 3 children
Mary Jones	30	F	Homemaker	Husband and 2 children
Robert Brown	18	M	Student	Attending school
Elizabeth White	45	F	Teacher	Working in school
James Wilson	22	M	Blacksmith	Working in shop
Sarah Davis	35	F	Homemaker	Husband and 4 children
Thomas Miller	15	M	Student	Attending school
Anna Taylor	28	F	Homemaker	Husband and 2 children
George Clark	20	M	Student	Attending school
Margaret Lewis	40	F	Homemaker	Husband and 3 children
William Hall	12	M	Student	Attending school
Elizabeth King	32	F	Homemaker	Husband and 2 children
Charles Green	16	M	Student	Attending school
Frances Adams	24	F	Homemaker	Husband and 1 child
Henry Baker	19	M	Student	Attending school
Isabella Nelson	38	F	Homemaker	Husband and 3 children
David Phillips	14	M	Student	Attending school
Sophia Young	26	F	Homemaker	Husband and 2 children
Benjamin Wright	17	M	Student	Attending school
Charlotte Scott	33	F	Homemaker	Husband and 3 children
Richard Turner	13	M	Student	Attending school
Lucy Carter	29	F	Homemaker	Husband and 2 children
Edward Evans	11	M	Student	Attending school
Mary Ann	31	F	Homemaker	Husband and 3 children
George	15	M	Student	Attending school
Elizabeth	27	F	Homemaker	Husband and 2 children
Thomas	12	M	Student	Attending school

BUYER

Comins

Date

20.24.31

AUCTIONEERS

Hutchinson

Lot	Amount			Lot	Amount		
	£	s.	d.		£	s.	d.
21	1	.	.				
56	1	.	.				
58	1	10	.				
81	5	.	.				
85	3	.	.				
105	5	.	.				
116	5	.	.				
117	3	.	.				
201	2	.	.				
	£26	10					

CATALOGUE

On ~~MON~~DAY, 20~~th~~ APRIL, 1931

OLD ENGLISH, ORIENTAL & CONTINENTAL CHINA

- 1 A French mantel striking clock in buhl and tortoiseshell
 inlaid case with ormolu mounts

- 2 A 12" red ground Vernis Martin oblong box painted
 views, figures and flowers, 18th Century

- 3 A 7½" green ground ditto box fitted 4 compartments,
 decorated landscapes, interior and figures

- 4 A pair of Louis xv. ormolu candlesticks with convertible
 tops, satyr heads and festoons in relief, 10" high

- 5 A ditto fluted crystal hand bell with ormolu ring
 handle

- 6 A pair of brass and enamel stands, surmounted by
 storks

- 7 A Stuart floral needlework snuff box, and 4 others various

- 8 Ten pieces of English and French green dessert ware, a
 Kaga ware vase and cover, 2 ditto bottles, a papier
 mache tobacco jar and a white and gilt hot water jug

- 9 Two Crown Derby figures, "Parson" and "Gentleman",
 a white and gilt Derby vase, painted panel of flowers,
 and 2 hobnail cut decanters, (faulty)

- 10 A Sheffield plated oblong cake basket, a ditto 7-bottle
 cruet and a butter cooler, (faulty)

- 11 A blue and gilt Derby mug, painted panels of flowers, (faulty)
- 12 Two miniature portraits of Ladies, unframed
- 13 A floral cut glass water jug, and a Chinese rustic wood figure of a man
- 14 Two 11½" Chinese famille rose circular dishes, decorated female figures crossing a bridge (faulty)
- 15 A tortoiseshell 10-sided tea caddy with silver mounts, (faulty)
- 16 An amboyna and inlaid oblong tea caddy with cut glass sugar basin 20/-
- 17 A 13" Chinese bowl, decorated medallions of flowers and interlaced borders £13.
- 18 A miniature portrait of a Gentleman in gold frame, signed T. H. 25/-
- 19 Two 10" Oriental plaques, decorated figures, birds and flowers, and a 23" Stafford hexagonal pot pourri vase and cover with Chinese decorations (faulty) 25/-
- 20 A blue and gilt Jacob Petit inkstand, decorated flowers, a small figure of a Shepherd, and an 11" Wedgwood pot pourri jar with flowering plants, (faulty)
- 21 A 10" Eastern bronze elephant with howdah on wheels
- 22 A satinwood and inlaid oblong tea caddy with cut glass sugar basin
- 23 Two Rockingham male and female figures with bird and nest and 2 Chelsea Derby cupids (faulty)
- 24 A pair of 13" Canton vases decorated birds and butterflies

20/- (21)

- 25 Two old flintlock pistols and 10 Eastern daggers with wood and bone handles
- 26 An 11" ditto bronze figure of a Nobleman, on olive wood plinth
- 27 An engraved ivory workbox, a copper urn, a cut glass decanter, 2 Coalport plates, and a blue and white Chinese hot water ditto (faulty)
- 28 An Old English bracket striking clock, in mahogany and brass inlaid Gothic case, by French, Royal Exchange
- 29 An old stained glass panel with portrait of Nicholas Brindley, a cut glass water jug, and 4 pomade pot lids
- 30 A Canton toilet basin, vase, brush box and soap dish
- 31 The buff and gilt Coalport tea and coffee ware decorated flowers, comprising slop basin, a plate, 19 cups and 11 saucers
- 32 A 19" bronze group of Racehorse and Jockey, signed P. Comalera
- 33 An 18" ditto group of bloodhounds, (Menelas & Grondeur) signed L. Bureau
- 34 An Old English bracket repeater (9 bells,) with arch dial, in mahogany case, by George Graham, London
- 35 A ditto repeater (9 bells,) with arch dial, in ebonised and ormolu mounted case, by J. Herring, London, (faulty)
- 36 A Battersea enamel circular snuff box, gold mounts, decorated statuary and flowers, interior of lid painted miniature portrait of a young man

- 37 Two agate oval ditto, a black and white cameo portrait, and an Old English porcelain thimble painted flowers
- 38 A Bilston enamel needle case decorated views
- 39 Two Chinese carved ivory card cases, a ditto spillikin case, a blue and white glass scent bottle and 2 others with gold mounts
- 40 A miniature portrait of Miss Austin, and a Duke of Wellington autograph letter
- 41 An Old English dessert service decorated flowers, comprising 8 comports, 2 tureens complete, 4 side dishes and 21 plates, (faulty)
- 42 Two Greek and Latin ivory medallion portraits
- 43 Two Whieldon tortoiseshell and splashed plates
- 44 A horn walking stick and a Deane & Son pistol
- 45 A Tibetan sword, 3 English ditto and 2 walking sticks
- 46 A chicken skin and tortoiseshell fan decorated wedding scene
- 47 The apple green and gilt Old English dessert ware, decorated flowers, comprising centre dish, 6 side ditto, and 15 plates (faulty)
- 48 A hobnail and star cut claret jug
- 49 An engraved water jug and 2 ditto goblets
- 50 A diamond cut decanter and 2 pint ditto (faulty)

- 51 A panel cut ditto, a spirit ditto, a pickle jar, and 4 ice plates (faulty)
- 52 Six blown 2-lipped finger bowls, a sugar basin, and a fruit stand
- 53 Fourteen wine glasses various, a fluted butter cooler, a pink and floral vase, and a pewter teapot
- 54 The green and white marbled dessert ware of 4 dishes, 17 plates, and a meat dish
- 55 A 12" Delft fluted circular dish, decorated view in colours, a 13" blue and yellow ditto with cupid, and a blue and white ditto plate decorated river scene, (faulty) 25/
- 20/ 60/ 56 A blue and white Chinese sauce boat and a Spode ditto *womens annual*
- 57 The white and gilt seaweed pattern Barr, Flight and Barr Worcester dessert service, comprising centre dish, 4 side ditto, 2 sucrieres complete and 16 plates, (faulty) 4/15/-
- 30/ 70/ 58 Two Italian gold damascened rapiers with ivory handles, a plated cheese scoop and a bread fork
- 59 A 19" blue and white Chinese circular dish with panelled border, centre decorated jardiniere of flowering plants
- 60 A 9" Dresden sleeping lion, on rustic and scroll base, (faulty)
- 61 An Old English mahogany grand piano work box, partly fitted, and 4 books, Juvenile Forget Me Not, (faulty)

- 62 A 9" Imari bowl, and a ditto mug decorated flowering plants
- 63 The Worcester dessert ware, decorated in the Japanese taste, comprising tureen, 5 dishes and 6 plates, (faulty)
- 64 A papier mache inlaid shaped tray, a printed muslin shawl in colours, a plated teapot, coffee pot, cruet, 3-tier cake stand, and a jam ditto with 2 dishes
- 65 A pair of blue and floral glass lustres, 6 cut decanters various, and a ditto 2-handled biscuit jar, (faulty)
- 66 A pair of floral vases, five 2-handled ditto, 4 ditto jugs, a coffee pot, 5 cups, 5 saucers, 10 plates and a luncheon dish, (faulty)
- 67 A Worcester oval soup tureen with cover decorated in the Chinese taste
- 68 A pair of blue and white Chinese octagonal seats, decorated flowers and foliage
- 69 The Spode tea and coffee ware decorated roses, comprising 19 cups and 21 saucers, (faulty)
- 70 A Dresden wine cooler decorated fruit and flowers, and a blue and white Chinese tureen, cover and stand
- 71 A French sucriere complete, decorated sprigs of flowers, a blue and white Wedgwood tea set of 4 pieces and 10 Japanese plates, (faulty)
- 72 A plated biscuit box, a ditto preserve jar, a cruet and 2 dish covers

- 73 A 16" Japanese ivory and bone male figure, a ditto spill vase, and an Italian ivory figure of a man with raised hand, (faulty)
- 74 A miniature portrait of Lord Nelson and a ditto of a Gentleman, signed P. Mayr, Augsburg, 1818
- 75 A set of red and white Chinese carved ivory chessmen with folding games board
- 76 A shell and brass casket, 2 ivory and lace parasols, 3 riding swishes with coral and ivory dogs' heads, a pair of field glasses, a pair of opera ditto and a spiral coloured glass stick, (faulty)
- 77 A 30" japanned oval tray, painted historical figure subject "Death of General Wolfe"
- 78 A set of red and white Indian carved ivory chessmen and an ivory dressing table set of hand mirror, glove stretchers, 3 brushes and a powder box
- 79 A pink lustre jug, decorated sporting dogs, a Stafford floral ditto, a decanter and 2 salt cellars 35/-
- 80 A satinwood oblong tea caddy with 2 compartments and glass beaker 20/-
- 81 An Empire mantel clock, in ormolu drum case, on pillar supports, cupid in relief, on circular plinth *WV*
- 82 A wax portrait of Lord C. Maynard, a walnut and inlaid writing desk, an ivory shoe horn, a paper knife and an inlaid ditto 35/-
- 83 A blue and gilt Dresden oval soup tureen with cover and stand, decorated panels of figures in gardens, (faulty) *Passed*

1/5 4. 81

- 84 A Dutch meerschaum pipe with silver mount, in leather case and a pair of bird design plated spurs
- 57 85 An engraved ivory combined work and writing desk W
- 86 An equestrian figure of a man in armour, on marble plinth and wood base
- 87 A Chelsea cabbage bowl and cover, (faulty)
- 88 A 6" blue and gilt French flower vase, decorated panels of flowers
- 89 A pair of Louis xv. ormolu 2-light candelabra, on foliated scroll bases
- 90 A French mantel striking clock in ormolu case, surmounted by sheaves of arrows, Lepaute, Paris, under glass shade
- 91 A Sheraton mahogany and inlaid oblong shaped tea caddy, fitted 3 marble canisters and a cut glass sugar basin, (faulty)
- 92 An ivory and chicken skin fan, painted river scene with figures and flowers, a silver threadwork pouch, a book "Loss of the Royal George" (relic) and a pinchbeck etui
- 93 A 31" antique mahogany and inlaid oval 2-handled tray and a set of red and white bone chessmen, (faulty)
- 94 Two blue and white Oriental dragon circular dishes, a 15½" floral ditto, 2 Japanese ditto, 2 ditto with eagle and dragon in colours and 1 other
- 95 A pair of 4½" Worcester design apple green bowls, decorated panels of exotic birds

- 96 The blue and white Spode dinner ware, decorated sprays of flowers, comprising 2 soup tureens complete with ladles, 4 sauce ditto, (3 stands only) a cheese dish, a strainer, 7 meat dishes, 4 vegetable ditto, 2 covers and 75 plates various, (faulty)
- 97 The red and blue floral Stafford dessert ware, comprising centre dish, 6 side ditto and 15 plates, (faulty)
- 98 Six cut glass decanters and 2 others
- 99 An antique bracket clock with circular dial, in mahogany case (no pendulum)
- 100 A 10½" Chinese bowl, decorated English battleships and flowers £30.
- 101 Six 10" pewter plates, (battleship mark) 2/10/- marks.
- 102 A pair of bronze figures of Mercury and Venus, on marble plinths, 33" high £5.
- 103 A 9" group of ormolu female figures seated on winged horse (plated) with military accoutrements in relief
- 104 A green glaze long neck vase with ormolu handles and mounts, 13½" high (faulty) 30/-
- 105 A white marble head of a man and 2 ditto plaques, "Tiberius" and "Caligola"
- 106 An Indian miniature painting, landscapes with mosques, tower, figures and horses, etc., (Kutab-Minar, Delhi) Passed,

45 7. 105

- 107 Seven blue and white Japanese fern pots, 4 ditto teapots, 3 basins, 6 vases, 2 cups, 2 saucers, a jar, 2 others, a Chinese milk jug and 2 cups, (faulty)
- 108 Four glass decanters, a claret jug, a cake stand, 33 wine glasses, 12 coloured ditto, 2 tumblers, 6 custard cups and a sweetmeat glass *18/- mark*
- 109 Two Chinese famille rose teapots, decorated cockerels, 2 Imari floral ditto and a ditto oblong jar with vase surmount, (faulty) *15/- Walker 20/-*
- 110 Five Oriental plates (red and blue), 5 ditto vases, a cover, a teapot, 2 cups, a tray, 4 jars, 2 Canton ditto and 4 ditto cups, (faulty) *20/-*
- 111 Three floral pottery vases, a lustre ditto jar, 3 white flower holders, a pair of green and gilt Bloor Derby vases, a floral teapot and a dish and saucer, (faulty) *10/-*
- 112 The Old English dessert ware, decorated flowers, comprising centre dish, 6 side ditto and 16 plates, (faulty) *marks 30/- do.*
- 113 The Coalport dinner ware, decorated flowers, comprising 2 tureens, 3 covers, 2 sauce ditto, 3 stands, a sauce boat, 3 vegetable dishes, 2 covers, a salad bowl, 20 meat dishes and 50 plates, various, (faulty) *24/10/-*
- 114 The white dinner ware of 32 pieces, (faulty) *15/- marks*
- 115 A 10" bronze group of cupids with turtle doves etc., on marble base

(15) 7 (116)

A ditto group of Venus and satyr, on marble base, after Clodion

①3 5. 117

- A gilt ditto group of 2 Cupids with wheat sheaves and water can, on marble plinth, 16" high
- 118 A pair of Chelsea Derby figures of Shepherd and Shepherdess with dog and sheep
- 119 An Old English bracket repeater with circular dial, in mahogany and inlaid case, by Catherwood & Son, London
- 120 A blue and gilt Chinese armorial coffee pot (no lid)
- 121 Two miniature portraits of Ladies, in ivory frames
- 122 Seven pieces of Chinese tea ware, decorated flowering trees, 5 wine glasses, a goblet, a floral pot pourri basket and 9 ornaments
- 123 A set of red and white ivory chessmen, a set of ditto draughtsmen with dice boxes, in leather and velvet lined case and a coromandel wood games box
- 124 An old foreign bracket repeater with arch dial, in ebonised case, by A. Braum, Wienn
- 125 A Japanese ivory and gold lacquer fan, decorated flowering trees, bird, figures and landscape
- 126 A 5½" pottery figure of a girl seated with rabbit, by Mrs Shenley
- 127 A pair of flintlock pistols by Fenton, London, and one other (faulty)
- 128 A miniature painting on enamel, female baby and man playing a flute by candlelight, attributed to N. Bone

- 129 An ebonised liqueur cabinet containing 4 decantera and 5 glasses
- 130 The white and gilt Worcester tea and coffee service comprising teapot with stand, sugar basin, milk jug 2 plates, 10 cups and 6 saucers, (faulty)
- 131 A blue and white Chinese cup and saucer, decorated utensils
- 132 The red and white modern Worcester dinner ware, comprising soup tureen complete, 2 sauce ditto, 3 vegetable dishes and covers, 8 meat ditto and 36 plates
- 133 A Louis xv. design mantel striking clock, in ormolu foliated case, by C. Frodsham and Co.
- 134 A mantel striking clock, in ormolu drum case supported by bronze elephant and Indian figure surmount, Howell and James
- 135 A miniature portrait of Mrs. Pelham and a ditto of a Lady in low neck dress, signed Derval
- 136 A 10" blue and white Chinese globular vase, decorated landscapes and flowers, and a 9" oviform ditto with flowers and foliage (faulty)
- 136a A 13" red and gilt Vienna 2-handled vase and cover decorated figures, a white and gilt Moore centrepiece supported by Cupids and a marble inlaid chess top panel
- 137 A red and gilt Old English dessert service, comprising centre dish, 8 side ditto, and 18 plates, (faulty)

- 138 The Old English dessert ware with embossed borders, decorated figures of peasants and butterflies, comprising centre dish, 12 side ditto, 2 tureens, 1 cover, 2 stands and 15 plates, (faulty)
- 139 A Dresden vase of flowers supported by female figures, on circular base, 24" high (faulty)
- 140 A French majolica tureen and cover, decorated flowers and lobster surmount, (faulty)
- 141 A pair of diamond cut and ringed decanters
- 142 A Chinese famille verte plate, a famille rose ditto, a small floral ditto, and 12 pieces of Old English tea ware decorated sea shells, (faulty)
- 143 The red and gilt foliated Worcester tea and coffee service of 30 pieces, (faulty)
- 144 The blue and white Spode dinner ware, decorated vases of fruit and flowers, comprising soup tureen complete, 2 sauce ditto, 4 vegetable dishes, 3 covers, 9 meat dishes, a cheese ditto and 66 plates, various (faulty)
- 145 The green and gilt Old English tea ware, decorated medallions of roses, comprising slop basin, 2 plates, 16 cups and 16 saucers
- 146 Two 6" Chinese vases decorated figures and gardens
- 147 An ormolu 3-light candelabra supported by bronze female figure, on blue and white plinth
- 148 A pair of Imari coffee pots, decorated poultry and trees

- 149 The green and yellow gilt Rockingham tea service comprising 36 pieces (faulty)
- 150 A set of 3 Derby 2-handled vases, painted river scenes and views, signed W. B.
- 151 Two 4½" Chinese carved and gilt kyilins
- 152 A pair of Chelsea figures of shepherd and shepherdess with dog, sheep, bird and cage, beneath floral bonnet fitted candleholders, 11" high (faulty)
- 153 A ditto figure of Britannia with lion, 12½" high
- 154 A pair of Dresden nodding figures in Eastern dress, 8½" high
- 155 A pair of Oriental groups of storks on rockeries
- 156 A set of 4 Berlin male and female figures "The Seasons," 6" high
- 157 A pair of Chinese parroquets in colours, (faulty) 6½" high
- 158 A Ludwigsburg family, 9" high
- 159 A pair of Imari oviform vases and covers, decorated with river and garden scenes
- 160 Two French gilt 2-handled vases, decorated figures and views and a Wemyss floral jardiniere, (faulty)
- 161 Sixteen pieces of Oriental tea ware, 21 salad dishes, 2 white fruit stands, 4 shell ditto and a ditto candelabra, (faulty)
- 162 The blue and brown bordered modern Worcester dinner ware of 93 pieces

- 163 A black and gilt papier mache oblong tray decorated figures
- 164 Two miniature portraits of Ladies in brass frame, (faulty)
- 165 The yellow and brown Copeland and Garrett dessert service, decorated game, comprising centre dish, 7 side ditto, and 16 plates
- 166 Twentyfour pieces of blue and white Salopian tea and coffee ware and a rosewood tea caddy, (faulty)
- 167 The blue and green floral Stafford dessert ware, comprising centre dish, 6 side ditto and 9 plates
- 168 An 18" Chinese oviform vase and cover and a 13½" ditto beaker, decorated views, flowers and river scenes
- 169 The Old English tea ware, decorated roses, comprising 41 pieces (faulty)
- 170 A miniature portrait of a Gentleman wearing wig, brown vest, blue coat, attributed to Sir J. Reynolds
- 171 An Italian bronze oil lamp and a Continental tobacco jar
- 172 A Dutch meerschaum and horn pipe with silver mount
- 173 A green and gilt Flight, Barr and Barr Worcester 2-handled urn shaped vase, 7" high and a pair of ditto vases with snake handles, painted panels of flowers, 5½" high, (faulty)
- 174 A 5" royal blue and gilt ditto vase, decorated portrait of Telemachus

- 175 An 11½" Coalbrookdale 2-handled vase and two 10½" ditto, encrusted flowers, under glass shades, (faulty)
- 176 A small porcelain panel, painted garden scene with flowers and fruit etc.
- 177 A pair of 11" Kaga ware long neck vases, decorated figures, a pomade pot, a walrus tusk, engraved marine subject and a box containing about 440 pea counters and 2 lead tokens
- 178 Fifteen Nailsea glass flasks in colours, on wood stand
- 179 Four twin ditto, an engraved ditto and 2 Venetian single ditto in colours, on wood stands *40/-*
- 180 A Nailsea ditto ball, a long stem pipe, a pistol flask, Bristol rolling pins and a green twisted walking stick *2/10/-*
- 4.* 181 Two green and white ditto bottles, 5 plain green ditto various and a dark ditto jug *WV 16/5/-*
- 182 An 8" Bristol opaque ditto vase, decorated flowers, a 7½" 2-handled ditto, a pair of gilt ditto jars, a Nailsea spiral ditto in colours, 15 ditto specimen glasses various, a ruby flask and a ditto liqueur glass *4/10/-*
- 183 A blue and white Chinese long neck vase, decorated dragons *3/5/-*
- 184 A 15" Chinese cloisssonne jardiniere, decorated flowering trees and fishes
- 185 The green and gilt Coalport tea, coffee and breakfast ware, decorated flowers, comprising 88 pieces various

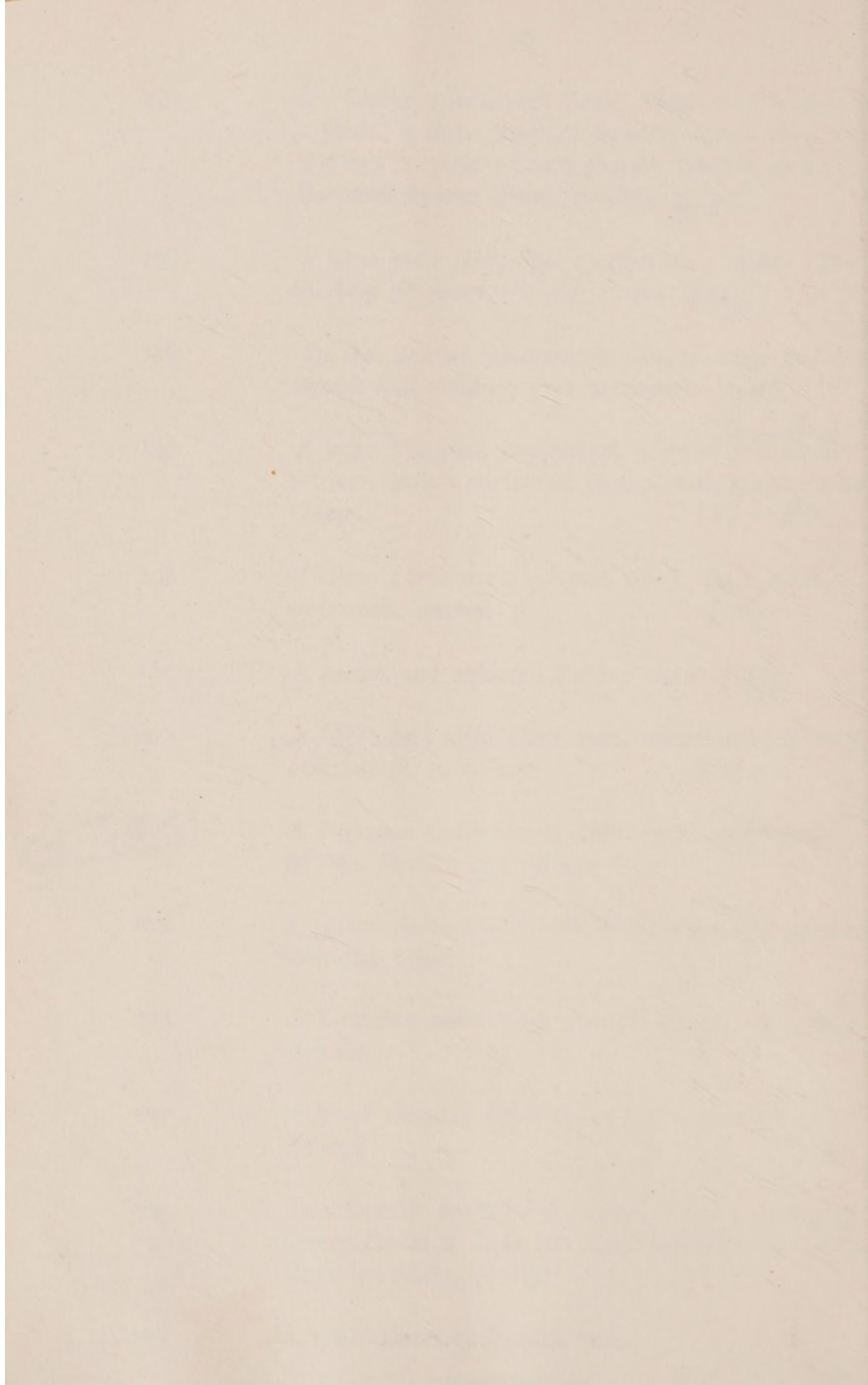
- 186 The Canton dinner ware, decorated figures in gardens, comprising soup tureen with cover, 4 vegetable dishes and covers, 4 pie dishes, 5 meat ditto, 2 sauce tureens complete, a salad bowl, 2 hot water dishes with covers and 89 plates various, (faulty)
- 187 The Davenport tea ware decorated roses and gilt, comprising teapot, milk jug, slop basin, 16 cups, 12 saucers and 2 plates, (faulty)
- 188 The red and gilt foliated scroll Derby tea and coffee ware, comprising teapot with stand, sugar basin, slop ditto, 16 cups and 10 saucers, (faulty)
- 188a A Victorian cut glass chandelier, fitted for 8 lights
- 188b Fourteen Canton floral dessert plates, 19 green and gilt French ditto, a black and white pottery Portland vase and a Ridgway dish, (faulty)

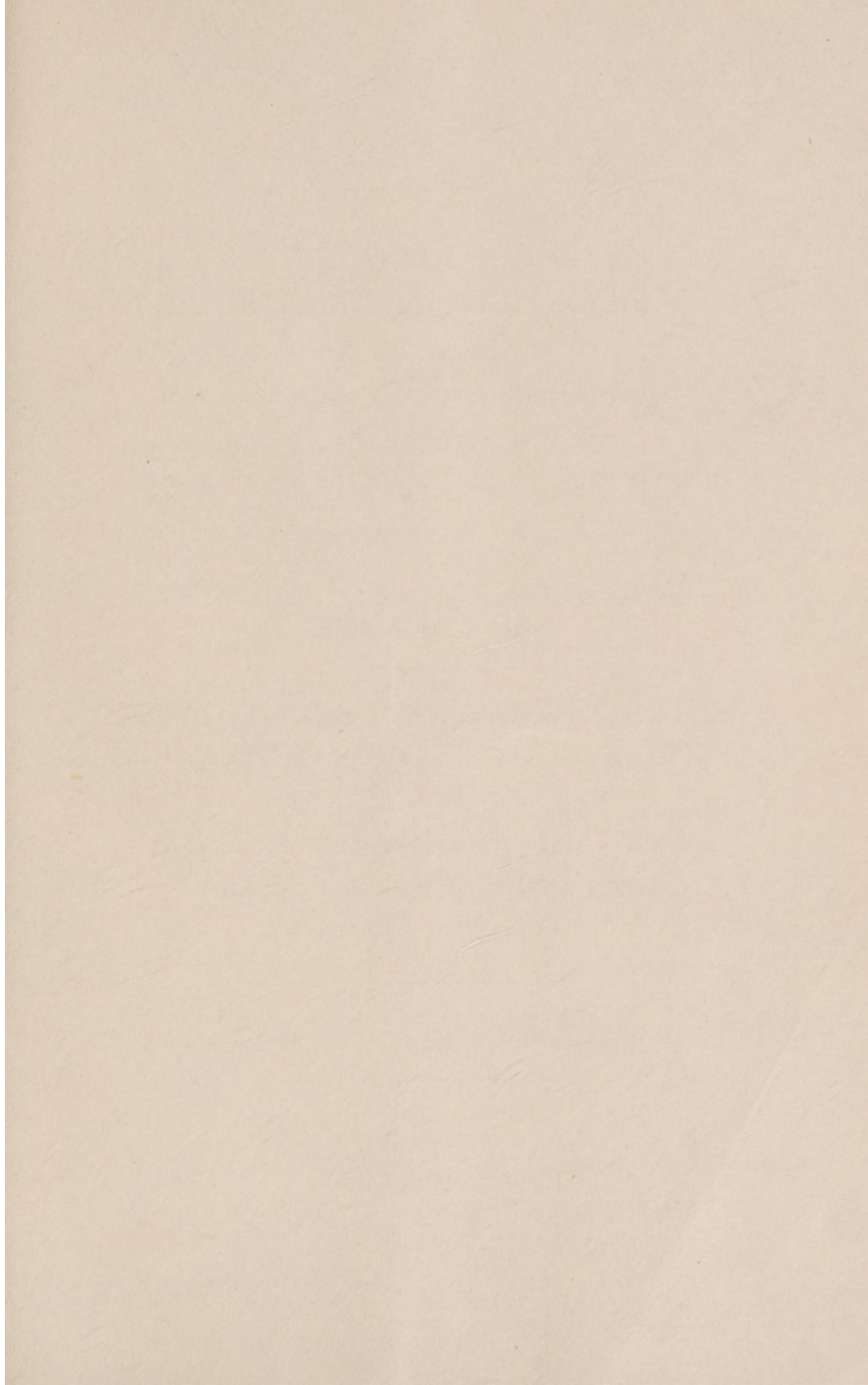
NEEDLEWORK, EMBROIDERIES, ETC.

- 189 A sable stole with 2 tails
- 190 An old needlework picture, Blind Man, female and dog (oval)
- 191 A Chinese white satin cover, embroidered peacocks and flowers, a ditto with butterflies etc. in silver threadwork, a cream ditto with flowers in gold threadwork, a crimson figured and floral ditto and an orange ditto with kyilins in gold threadwork
- 192 Five smaller satin panels, a crimson ditto, a mauve ditto and a yellow silk ditto, embroidered flowers, figures, birds and animals
- 193 A small Queen Anne needlework panel, a vase of flowers

- 194 An Italian needlework panel, Virgin and Angels in a cloud, a ditto panel of flowers, surmounted by a crown, a piece of odd French brocade and a Burmese figured panel, (faulty) 4/5/-
- 195 A large early Victorian needlework picture, "The Finding of Moses," in gilt frame 22/6.
- 196 An Old English needlework picture, male and female figures and children in a earthquake 30/-
- 197 A large Victorian needlework picture, scriptural subject, male and female figures with shepherd and sheep *Joshua* 15/- do.
- 198 A ditto needlework sampler, by J. Peck, 1840, unframed, stained 30/-
- 199 A cream and coloured Paisley shawl 17/6.
- 200 A black and satin chair seat, embroidered flowers and foliage, in colours 20/-
- (12) 7. (201) A Burmese embroidered cloth panel, decorated figures, flowers and foliage
- 202 A Queen Anne needlework bed pocket, embroidered flowering plant
- 203 A Victorian needlework picture, soldier and female drummer
- 204 A floral tapestry table cover and a small brown fur rug
- 205 Two English needlework pictures "Lady gathering flowers," and a Lady and Girl beneath a tree with floral garlands, (faulty)
- 206 A small parcel of French lace







SALES OF JEWELS AND SILVER EVERY FRIDAY

. . . Fortnightly Sales of . . .
Antique Furniture, China, Books,
Armour, Tapestries, Ivories,
Miniatures, Clocks, Persian and
other Carpets and Rugs.
Oil Paintings, Drawings, Prints
and Engravings.

Property can be included in any sale
at short notice

INVENTORIES & VALUATIONS FOR PROBATE,
DIVISION, INSURANCE AND OTHER PURPOSES

Sales of Furniture, etc., on
Owner's Premises a Speciality
Town or Country

Commissions Executed. Moderate Terms

HURCOMBS, PICCADILLY, W.1

Telephone:
GERRARD 5971-4 (4 lines)