

## **Sales catalogues: Hurcomb**

### **Publication/Creation**

23rd March 1931

### **Persistent URL**

<https://wellcomecollection.org/works/b7dmzcp>

### **License and attribution**

This work has been identified as being free of known restrictions under copyright law, including all related and neighbouring rights and is being made available under the Creative Commons, Public Domain Mark.

You can copy, modify, distribute and perform the work, even for commercial purposes, without asking permission.



Wellcome Collection  
183 Euston Road  
London NW1 2BE UK  
T +44 (0)20 7611 8722  
E [library@wellcomecollection.org](mailto:library@wellcomecollection.org)  
<https://wellcomecollection.org>

*Commiss. Original*  
Mr Comins 23<sup>rd</sup> March 1931  
 WAHMHICHISOI 11155

Hurco

*Handwritten mark*

HOR.	DATE	INITIALS
4.10.0	23. <u>III</u> 31	COMINS
SALE		
PURCHASE		
CHECKED	27. <u>III</u> 31	Kh
COLLECTED	7. 4. 31	y/b
RECEIVED	7. 4. 31	df
ACCESSED		
PASSED		<u>Lign</u>



ANTI

**TO BE SOLD BY AUCTION**

On Monday, 23rd March, 1931, at 1.30 p.m.

Preceded by Sale of Oil Painting, Prints, Drawings, etc.  
 at 12 o'clock

On View Friday Prior

Hurcombs, Grafton Galleries, W. 1.

AP. 84. 4.100  
*Handwritten signatures*  
 Phone:- Gerard 5971-4



*Comments  
Original*

**Hurco**

CATALOGUE

OF

**ANTIQUÉ AND MODERN  
FURNITURE**

TO BE SOLD BY AUCTION

On Monday, 23rd March, 1931, at 1.30 p.m.

Preceded by Sale of Oil Painting, Prints, Drawings, etc.  
at 12 o'clock

On View Friday Prior

Hurcombs, Grafton Galleries, W. 1.

*MP. 84. 74.100*

*Handwritten signature*

Phone:- Gerard 5971-4

## CONDITIONS OF SALE.

1. The highest bidder shall be the Purchaser, and if any dispute arise between two or more bidders the lot shall be put up again and re-sold, the Auctioneer being the sole Arbitrator in such disputes.
2. No person to advance less than one shilling; above five pounds, five shillings, and so on, in proportion, or less, at the discretion of the Auctioneer.
3. The Auctioneer to have the right to refuse a bidding at his discretion, and to bid on behalf of the Vendor in the case of lots upon which there is a reserve.
4. The Purchaser to give his name and address, and to pay a deposit of five shillings in the pound, or more, or the whole of the purchase-money, if required.
5. The lots to be taken away and paid for, with all faults, imperfections and errors of description, at the Purchaser's risk and expense the day after the sale, W. E. HURCOMB not being responsible for the correct description, genuineness, or authenticity of, or any fault or defect in, any lot, and making no warranty whatever; and in default W. E. HURCOMB is not to be held responsible if the lots, or any of them, are lost, damaged, or destroyed, and whether the purchase-money, or any part thereof, has been paid or not. In cases where a buyer purchases more than one lot the whole must be paid for before any one lot is delivered.
6. Any Purchaser neglecting to pay for and take away any lot or lots purchased within one day after the sale (not having been re-sold in accordance with the seventh condition) shall pay, in addition to the purchase-money, the sum of one shilling per week for warehouse-room, and also at the rate of five per cent. per annum interest on the purchase-money, to be reckoned from this day.
7. On failure of complying with the above Conditions, the money deposited shall be forfeited, and all lots remaining uncleared shall be re-sold by public or private sale, without notice, and the deficiency (if any) attending such re-sale, together with all incidental charges, shall be made good by the defaulter at this sale.
8. The Auctioneer will not recognise the transfer of any lot from one buyer to another. All lots at purchaser's risk on the fall of the hammer.

The only way in which goods can be cleared is by an Order issued from the Office. Any other clearance is not allowed or recognised.

Telephone: Gerrard 5971-4.



BUYER *Comis.*

Date *23.3.31*

AUCTIONEERS *Hurcombs*

Lot	Amount			Lot	Amount		
	<i>£</i>	<i>s.</i>	<i>d.</i>		<i>£</i>	<i>s.</i>	<i>d.</i>
<i>63.</i>	<i>4</i>	<i>10</i>	<i>'</i>				

## CATALOGUE

On MONDAY, 23rd MARCH, 1931

### FURNITURE

- I A Chippendale mahogany circular table, on carved tripod supports and claw and ball feet
- 2 A mahogany tray top table, on tripod supports, 19" wide, and another
- 3 A set of 6 Heppel-white mahogany rail back dining chairs with padded seats, on tapering legs
- 4 A mahogany corner cupboard in 2 parts, fitted with glazed door above and cupboard below, 30" wide
- 5 A Queen Anne walnut and inlaid writing table fitted 3 drawers, on cabriole legs and club feet
- 6 A Jacobean oak coffer with 3 panels, 4' wide
- 7 A mahogany 3-fold screen with needlework panels, and a mahogany specimen cabinet, 17" wide
- 8 A Sheraton mahogany dining table with 2 extra leaves, on 3 pedestals, 9'4" x 4'6"
- 9 A Chippendale mahogany oblong stool, on carved square legs, 22" wide
- 10 A Sheraton mahogany corner washstand fitted a drawer, 26" wide
- 11 A Sheraton mahogany and inlaid pedestal sideboard, fitted with 3 drawers and cupboards, 5'9" wide



- 12 A mahogany bureau with bookcase over, fitted 3 drawers, sloping front and 4 drawers under, 37" wide
- 13 A Chippendale mahogany concertina card table with folding top, on cabriole legs and club feet
- 14 A pair of Chippendale mahogany dining chairs with vase shaped splat backs, on square legs
- 15 A Hepplewhite mahogany rail back armchair, on tapering legs
- 16 A mahogany and inlaid bureau with sloping front and 4 drawers under, 3'9" wide
- 17 A Chippendale mahogany armchair with open splat back, on fluted legs
- 18 A Chippendale mahogany dining chair with open splat back, on tapering legs, and another with rail back, on cabriole legs and club feet
- 19 A set of 6 Hepplewhite painted oval back dining chairs with padded seats, on tapering legs
- 20 A pair of carved oak hall chairs
- 21 A Hepplewhite painted wingside easy chair covered in floral tapestry, on tapering legs
- 22 A Chippendale mahogany side table with fluted frieze, on square legs, 40" wide
- 23 A SET OF 4 ADAM MAHOGANY DINING CHAIRS with vase shaped splat backs, carved with urns and feathers, loose seats, on square legs, AND A PAIR OF ARMCHAIRS NEARLY SIMILAR

- 25 A rosewood 4-tier whatnot fitted a drawer
- 26 A Grandfather clock with painted arch dial, in Sheraton mahogany and inlaid case, by Blackwood, N. Shields
- 27 A French kingwood and satinwood inlaid china cabinet with ormolu mounts and porcelain plaques, 6' wide
- 28 A carved oak sideboard, fitted with drawers and cupboards, and mirror panel back, 5' wide
- 29 A Chippendale mahogany ladder back armchair with padded seat, on fluted legs
- 30 A mahogany waiter, 24" wide
- 31 A rosewood inlaid specimen cabinet, and an antique spinning wheel
- 32 Two painted and ormolu mounted jardiniere stands with gallery tops
- 33 A wall mirror in mahogany and gilt frame with eagle pediment, 36" x 16"
- 34 A Sheraton mahogany tip up breakfast table, on claw base, 4'4" wide
- 35 A Grandfather clock with painted arch dial, striking movement, in Sheraton mahogany and inlaid case
- 36 A Chippendale wall mirror in gilt frame carved with scroll and foliage, 38" x 18"
- 37 A Jacobean oak settle with carved panel back, 4' wide
- 38 An antique stick back Windsor armchair, and a mahogany wine table

- 39 A Jacobean oak gate leg table, fitted a drawer, on turned legs, 31" wide
- 40 A rosewood high back chair with seat and back in woolwork
- 41 A Jacobean oak coffer with carved frieze and drawers below, 4'3" wide
- 42 A Queen Anne walnut inlaid chest of 5 drawers, on stand, 35" wide
- 43 A French walnut and inlaid china cabinet with shaped front and 3 glazed doors, 6'6" wide
- 44 A Louis xv. kingwood and satinwood inlaid oval shaped writing table with gallery top, on tapering legs, 19" wide
- 45 A set of 4 and 2 arm Hepplewhite mahogany shield back dining chairs with padded seats, on tapering legs and 2 armchairs similar
- 46 A Sheraton mahogany D-end dining table with 4 extra leaves, on turned and fluted legs, 10'7" x 4'6"
- 47 A pair of Empire mahogany and ormolu mounted armchairs, and 1 standard chair covered in red plush
- 48 A pair of painted Empire pole screens with octagonal silkwork banners
- 49 An Adam mahogany side table, the frieze carved in relief with urns and foliage festoons, on 6 fluted and carved legs, 5'6" wide
- 50 An Aubusson carpet designed with rose centre medallion on pink ground, figured and bordered, 9'4" x 8'10", and a panel similar, 4'3" x 3'4"

- 51 A Sheraton mahogany and satinwood banded break-front sideboard, fitted cupboard, 2 drawers and celerette, brass rail back fitted electric light, on turned legs, 6' wide
- 52 A Louis xv. walnut and gilt carved chair, the seat and back covered in old embroidered and cut velvet, on cabriole legs
- 53 A CHIPPENDALE MAHOGANY TRIPLE BACK SETTEE with carved and pierced vase shaped splat back, arms carved with acanthus leaves, on square legs and stretchers, 6' wide
- 54 A Chippendale mahogany bookcase, the upper half enclosed by 3 lattice panelled glazed doors, fitted secretaire, 11 drawers under and carved dental cornice, 5'3" wide
- 55 An antique mahogany corner cupboard enclosed by 2 panelled doors, and 3 small drawers under, 3'9" wide
- 56 A mahogany bookcase enclosed by 2 glazed trellis doors, dental cornice and architrave top, 3'10" wide
- 57 A Sheraton mahogany folding card table, on turned fluted legs
- 58 A pair of Hepplewhite dining chairs with square backs and pierced splats, on square tapering legs
- 59 A narrow mahogany bookcase with glazed panel door over and cupboard under, 22" wide
- 60 A Chinese Mandarin carved and lacquered cabinet with small drawers enclosed by folding pierced and carved doors, on hardwood stand, 21" wide

5/10/-

5/10/-  
2/10/-

4/10/-

£3 Bunt.

7/10/-

- 61 Five antique carved oak Yorkshire chairs, 2 with woolwork seat pads
- 62 Five ditto with shorter backs, and extra woolwork seat pads
- 63 A pair of elm spindle back chairs with rush seats and a carved oak low cross frame armchair
- 64 A carved folding Glastonbury chair, a painted hanging book rack, a carved oak oblong stool, a pair of Victorian circular ditto with beadwork tops and a 3-fold carved gilt screen with glazed panels
- 65 A Jacobean design oak sideboard, fitted 2 drawers, on turned legs, 41" wide
- 66 An antique oak colfer with carved panel front, 4' wide
- 67 An antique oak refectory table, on heavy bulbous turned end supports and centre stretcher, 7' long
- 68 A Chippendale mahogany flap table, fitted a drawer, on carved cabriole legs and scroll feet, 3' wide
- 69 A Georgian gilt convex mirror with carved dolphin and sea horse ornamentation, candle brackets and cut glass lustre drops
- 70 A Chippendale mahogany 2-flap table on spindle legs
- 71 A Chippendale mahogany hexagonal wine cooler, on square fluted legs, 15" wide
- 72 A Georgian mahogany 2-tier dumb waiter and a Victorian carved walnut screen with silkwork panel
- 73 An antique wingside easy chair, upholstered in blue rep., on carved walnut cabriole legs

£23

4/10/7  
7

- 74 Two oak Chippendale armchairs and a mahogany ditto dining chair with pierced splat back
- 75 A Hepplewhite tub shape easy chair, on mahogany cabriole legs
- 76 An antique gilt oblong mirror, 34" x 48" (faulty)
- 76a A pair of antique square frame armchairs with stuffed seats and backs, covered in cretonne
- 77 A Sheraton mahogany bow-front chest of 5 drawers, 39" wide
- 78 A ditto mahogany and inlaid display table, on square tapering legs, 3' wide
- 79 An antique oak and inlaid corner cupboard, fitted a small drawer, 30" wide
- 80 A Chippendale mahogany square frame winged easy chair
- 81 A set of 6 and 2 arm Hepplewhite mahogany chairs with vase shape splat backs and arms carved with acanthus leaves, seats in leather, on fluted square legs
- 82 A Louis XVI. kingwood and ormolu mounted writing table, fitted 3 drawers, leather lined top, 5' wide
- 83 An oak armchair with cane seat and back
- 84 A PAIR OF CHIPPENDALE WALL MIRRORS in gilt frames carved with scrolls and foliage, 5' x 31"
- 85 A carved walnut armchair with seat and back covered in silk tapestry
- 86 A ditto nearly similar

- 87 An oak coffer with carved frieze and panels, 4' wide
- 88 A Chinese lacquer cabinet fitted with numerous drawers, enclosed by folding doors with raised figures and landscapes and 4 drawers under, 39" wide
- 89 A similar cabinet on carved gilt stand, 41" wide
- 90 A 3-fold gilt screen with glazed panels above and silkwork panels below
- 91 A ditto
- 92 A set of 6 Chippendale mahogany dining chairs with carved pierced splat backs and loose seats, on square legs
- 93 A satinwood and inlaid revolving book stand, 24" wide
- 94 A child's Hepplewhite mahogany shield back armchair with padded seat, on tapering legs
- 95 A set of 6 and 1 arm Hepplewhite mahogany dining chairs with pierced backs and loose seats, on square legs
- 96 A Chippendale mahogany armchair with carved rail and open splat back, on carved cabriole legs and claw and ball feet, (faulty)
- 97 A set of 4 Chippendale mahogany rail back dining chairs, with loose seats, on square legs (1 seat missing)
- 98 A satinwood oval shape 2-tier what-not and a ditto inlaid shaped top table with shelf under, 20" wide (faulty)
- 99 A rosewood and inlaid sofa table, fitted 2 drawers, on claw base, 34" wide

- 100 A rosewood and brass inlaid cabinet with gallery and shelf over, 40" wide
- 101 A pair of mahogany shield back armchairs with seats and backs in leathers
- 102 A mahogany Pembroke table, on cabriole legs and club feet, 36" wide
- 103 A ditto, fitted a drawer, on turned legs, 20" wide
- 104 A carved Stuart high back chair with cane seat and back, on shaped legs and stretchers
- 105 A Louis xv. kingwood and parqueterie inlaid commode, fitted 3 drawers and marble top, 3'9" wide
- 106 Two blackwood jardiniere stands with marble tops and a mahogany oval shape wine table
- 107 A set of 4 mahogany shield back dining chairs with padded seats, on tapering legs
- 108 A painted mahogany and satinwood half circular card table with folding top, on tapering legs
- 109 An Italian walnut and ivory inlaid cabinet, on stand, 23" wide
- 110 A walnut and inlaid knee-hole writing desk with folding top, fitted 11 drawers and cupboard, 39" wide
- 111 A Chippendale mahogany armchair with pierced splat back and loose seat, on square legs
- 112 A Sheraton mahogany settee, the back and sides covered in saddlebags, loose squab to match, on turned legs, 5'8" wide



- 113 A Chippendale mahogany 3-tier dumb waiter, on tripod supports
- 114 A convex mirror, in ebonised and gilt frame with eagle pediment, 24" wide
- 115 A Sheraton mahogany and inlaid oval shape swing toilet mirror, fitted 3 drawers
- 116 A Queen Anne wall mirror in walnut frame with painted panel over, 42" x 14"
- 117 A set of 7 Hepplewhite mahogany rail back dining chairs with padded seats, on tapering legs
- 117a Six Hepplewhite chairs and 2 armchairs with needlework seats, (1 incomplete)
- 118 An ebonised and ormolu mounted cabinet, on stand with porcelain placque, 30" wide
- 119 An ebonised and gilt pole screen with painted panel
- 120 A Dutch marquetry inlaid dining chair on carved cabriole legs and claw and ball feet
- 121 A Grandfather clock with painted arch dial in oak and inlaid case, by Berkeley, Halifax
- 122 A Queen Anne walnut and inlaid chest of 4 drawers, 33" wide
- 123 A pair of French painted wardrobes enclosed by folding doors carved with musical instruments, 4' wide
- 124 A boudoir grand pianoforte in ebonised case, by C. Bechstein

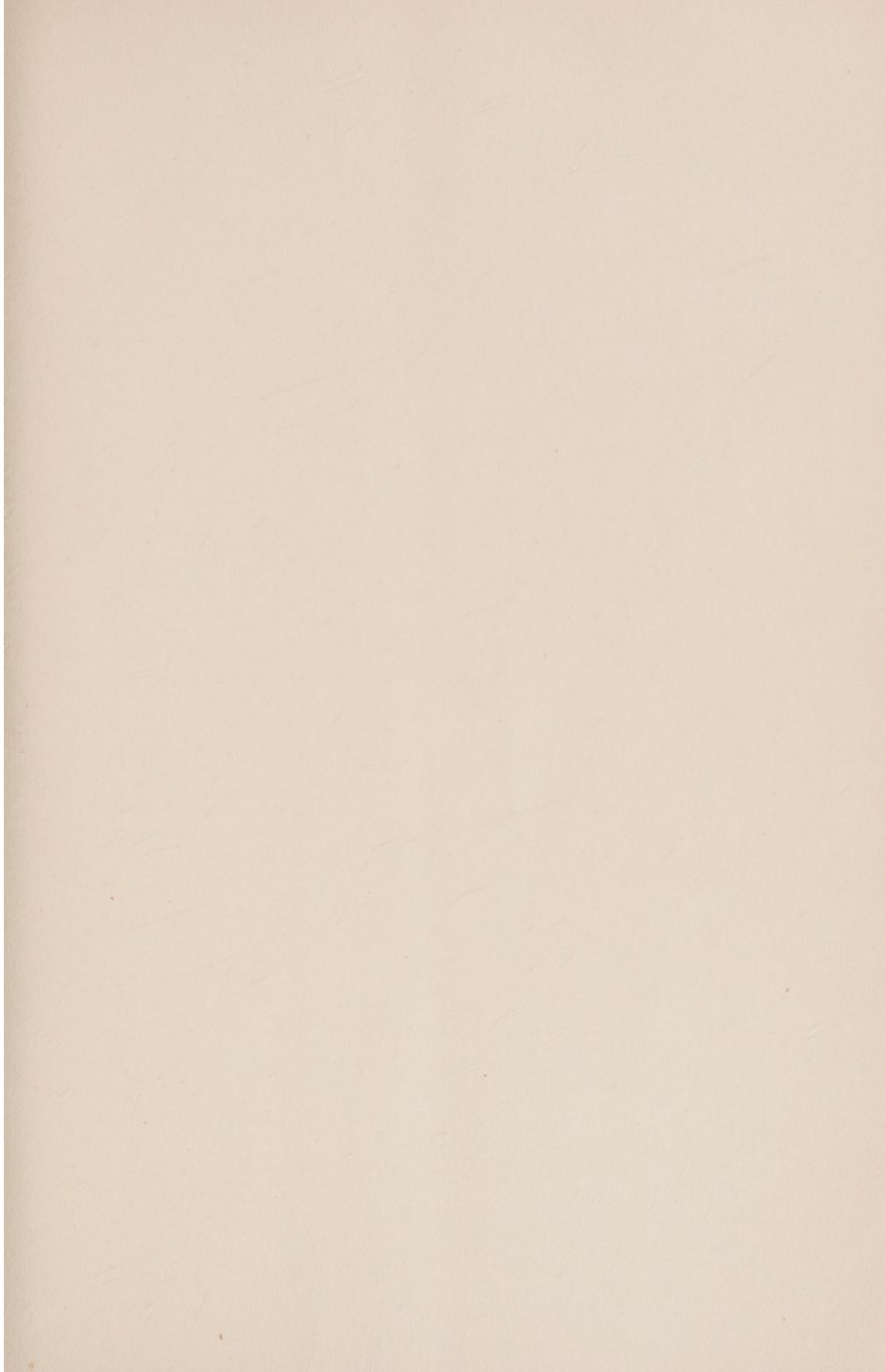
- 125 An upright grand pianoforte in ebonised case, by C. Bechstein
- 126 A SET OF THREE FLEMISH TAPESTRY PANELS woven with subjects from Aesop's Fables with landscapes and floral design borders, sizes of panels, 15'3" x 9'5", 13'10" x 8'9" and 10'10" x 9'3"
- 127 TWO FRENCH TAPESTRY PANELS, woven with lion and boar hunting scenes, landscapes and castles and floral and figured borders, 14'5" x 8'10" and 12'6" x 9'
- 127a A Queen Anne lacquer toilet mirror on bureau shaped stand
- 128 A Jacobean oak 3-tier dinner wagon, fitted 2 drawers, 3' wide
- 129 A Persian rug with 3 lozenge shaped panels, 6'6" x 4'6"
- 130 A Baluchistan rug, 4'3" x 3'6"
- 131 A Persian silk rug with shaped panel on yellow ground, 6'9" x 4'9"
- 132 A Persian coridor rug with 3 diamond shaped panels, 8'10" x 4'
- 133 A Baluchistan rug with oblong panel, 6' x 4'
- 134 A Persian rug woven with animals, trees, etc., 8'1" x 5'9"
- 135 An oak chest with panelled front, fitted 4 drawers, 35" wide
- 136 A Sheraton mahogany and inlaid bow-front corner cupboard, 32" wide

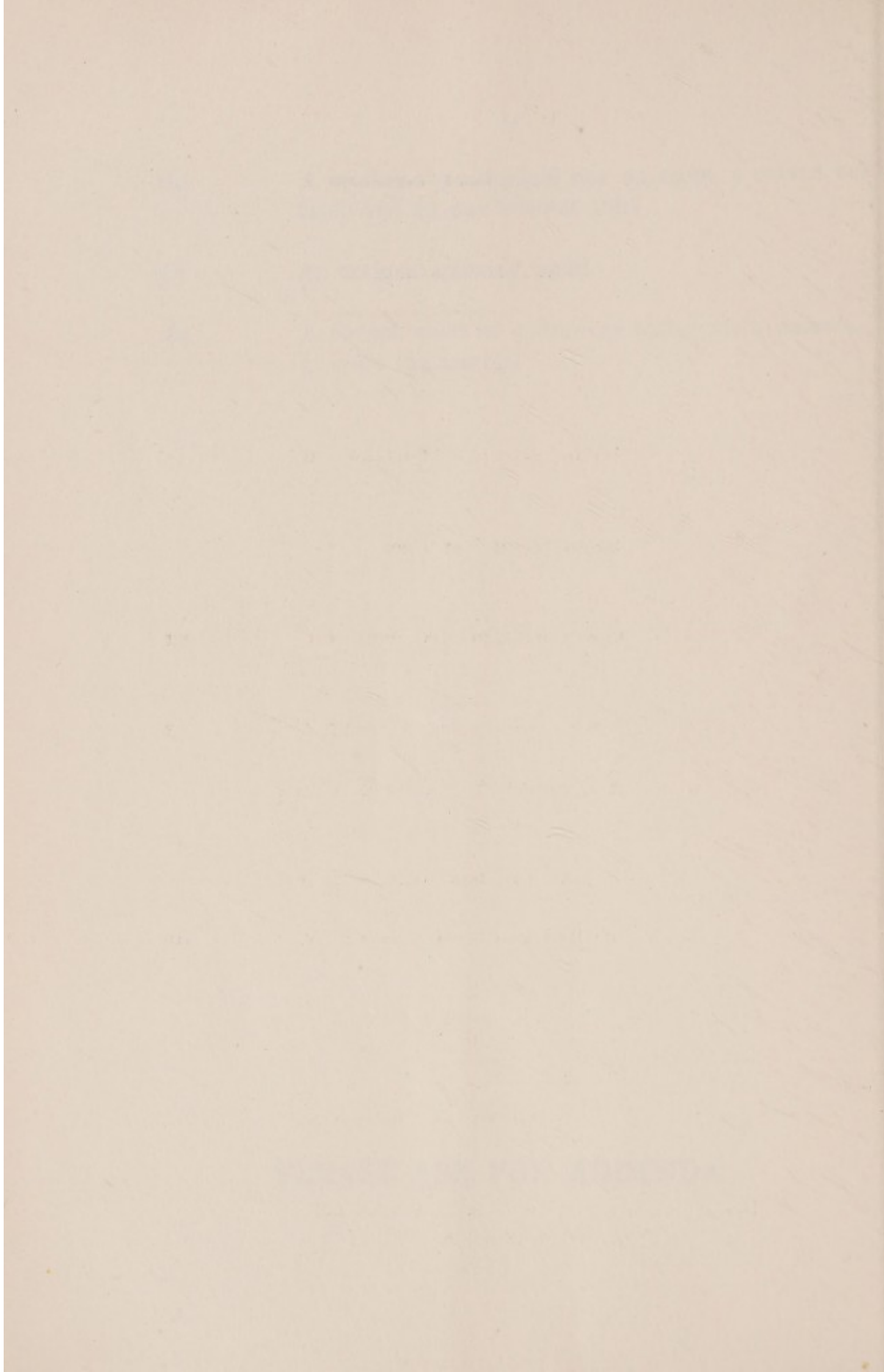
- 137 A Grandfather clock with painted arch dial, in oak and inlaid case, by Watson, Skipton
- 138 An oak gate leg table on turned supports, 3'6" wide
- 139 A fumed oak pedestal writing desk with roll top and 6 drawers under, 4' wide
- 140 A dial barometer, in rosewood case and 2 antique copper warming pans
- 141 A Grandmother clock with silvered and ormolu arch dial, in mahogany case
- 142 A mahogany 2-flap table with pierced stretchers and sliding top
- 143 An antique mahogany 2-flap table, fitted a drawer, on square legs, and a ditto dressing table, fitted 2 drawers, on turned legs
- 144 A monks' oak bench with cupboard in seat, 4'3" wide
- 145 A carved oak cupboard enclosed by panelled doors, on stand fitted a drawer, 2'6" wide
- 146 A Grandfather clock with brass and silvered arch dial, in mahogany and inlaid case, by T. Pearson, Newcastle
- 147 A mahogany dwarf bookcase fitted with glazed lattice doors, 3'6" wide
- 148 A Sheraton mahogany and inlaid bookcase, the upper part fitted with glazed lattice doors, sloping front and carved cornice, and 5 drawers under, 44" wide

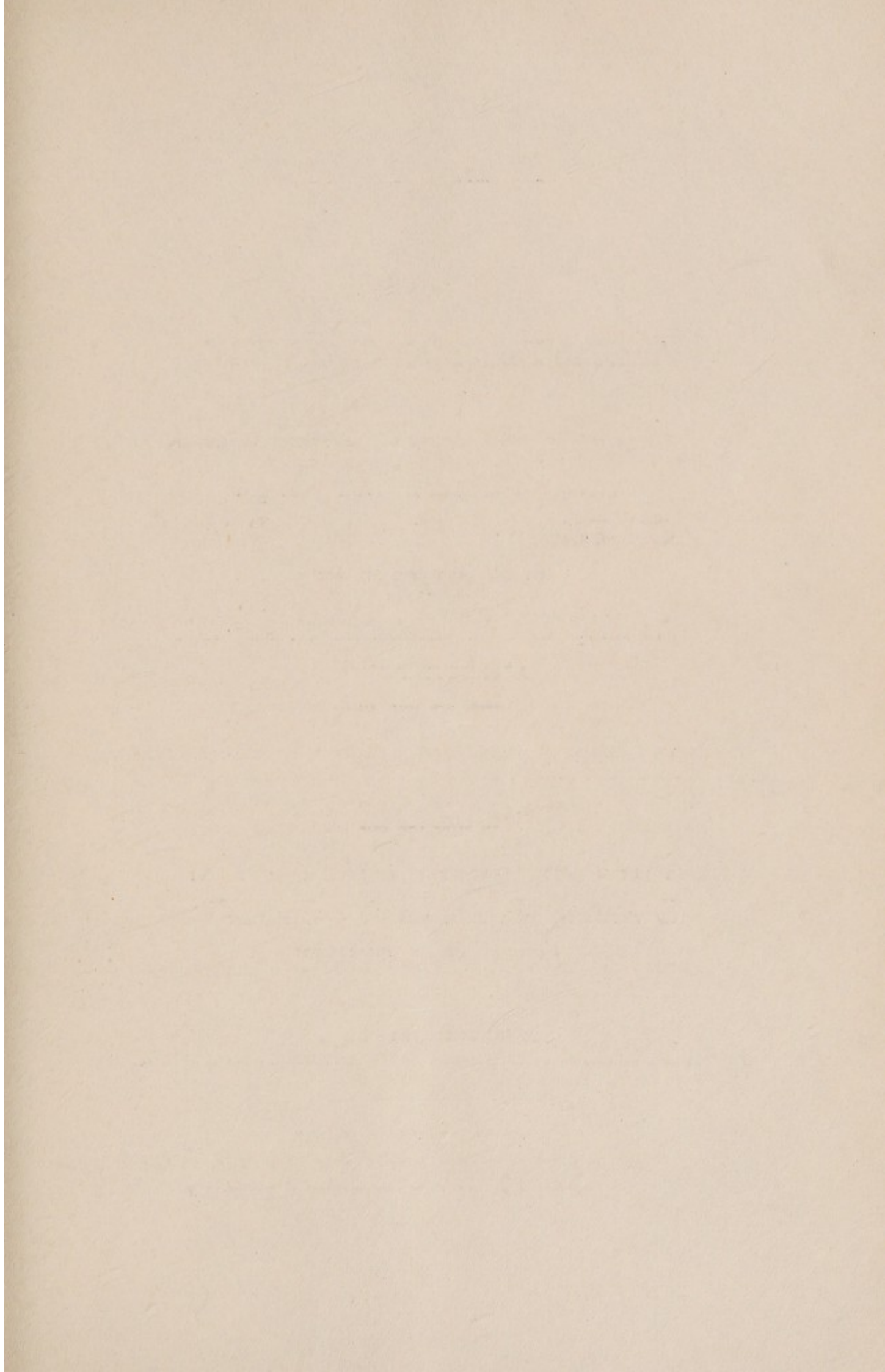
- 149 A mahogany and inlaid bedroom suite comprising, a 6' wardrobe with centre mirror panelled door, a dressing table with mirror over and 5 drawers, a washstand with marble top, 2 drawers and cupboard, a bedside cupboard, 3 chairs and a towel airer
- 150 A 4'6" mahogany bedstead, a wire spring mattress and a hair overlay mattress
- 151 Three rolls of 36" Turkey stair carpet, 12 yds. and two pieces of red pile carpet, 13' x 3'
- 152 An oak open bookcase with cupboard below, 25" wide
- 153 A boudoir grand pianoforte in ebonised case, by C. Bechstein
- 154 A walnut circular table with marble top, on carved cabriole legs and paw feet
- 155 A mahogany and inlaid envelope top card table, on tapering legs
- 156 A Grandfather clock with brass and silver arch dial and striking movement, in mahogany and inlaid case, by Goodall, Abberford
- 157 A ditto, by Benjamin Peers of Chester
- 158 A set of 6 Victorian dining chairs with padded seats
- 159 A pair of antique stick back Windsor armchairs
- 160 An oak coffer with carve frieze and panels, 5' wide
- 161 An antique oak gate leg table, fitted 2 drawers, 4' wide (faulty)

- 162            A mother-o'-pearl inlaid box on stand, a carved oak table and an oak circular stool
- 163            An antique spinning wheel
- 164            A French chest of 3 drawers with ormolu mounts, 3' wide (no marble)

**PLEASE ASK FOR ADDENDA**









SALES OF JEWELS AND SILVER  
EVERY FRIDAY

---

. . . Fortnightly Sales of . . .  
Antique Furniture, China, Books,  
Armour, Tapestries, Ivories,  
Miniatures, Clocks, Persian and  
other Carpets and Rugs.  
Oil Paintings, Drawings, Prints  
and Engravings.

Property can be included in any sale  
at short notice

---

INVENTORIES & VALUATIONS FOR PROBATE,  
DIVISION, INSURANCE AND OTHER PURPOSES

---

Sales of Furniture, etc., on  
Owner's Premises a Speciality  
Town or Country

---

*Commissions Executed. Moderate Terms*

---

HURCOMBS, PICCADILLY, W. 1

Telephone:  
GERRARD 5971-4 (4 lines)