

Sales catalogues: Hurcomb

Publication/Creation

13th January 1931

Persistent URL

<https://wellcomecollection.org/works/rhr5t3cs>

License and attribution

This work has been identified as being free of known restrictions under copyright law, including all related and neighbouring rights and is being made available under the Creative Commons, Public Domain Mark.

You can copy, modify, distribute and perform the work, even for commercial purposes, without asking permission.



Wellcome Collection
183 Euston Road
London NW1 2BE UK
T +44 (0)20 7611 8722
E library@wellcomecollection.org
<https://wellcomecollection.org>

W. Wilkins 13th January 1931

WALHMM/CM/501/11/46

Hurcom

Original

HUR	DATE	INITIALS
J. J. O.		
SALE	13. 1. 31	WILKINS
PURCHASE		
CHE	16. 1. 31	Kh
COLLECTED	<i>W</i>	Jan 20/31
RECEIVED	20. 1. 31	<i>HJ</i>
ACCESSED	21 / 1 / 31	<i>HJ</i>
PASSED		<i>W. J.</i>

Old Eng



TO BE SOLD BY AUCTION

On Tuesday, 13th January, 1931, at 1.45 p.m.

preceeded by sale of Books at 12.30

On View Day Prior

Hurcombs, Grafton Galleries, W. 1.

W. Wilkins 13th January 1931

W. Hurcombs
Original
Hurcom

9
CATALOGUE

OF

Old English, Oriental & Continental
China

WIA
TO BE SOLD BY AUCTION

On Tuesday, 13th January, 1931, at 1.45 p.m.

preceeded by sale of Books at 12.30

On View Day Prior

Hurcombs, Grafton Galleries, W. 1.

Wm. S. Grafton

3. The Auctioneer to have the right to refuse a bidding at his discretion, and to bid on behalf of the Vendor in the case of lots upon which there is a reserve.
4. The Purchaser to give his name and address, and to pay a deposit of five shillings in the pound, or more, or the whole of the purchase-money, if required.
5. The lots to be taken away and paid for, with all faults, imperfections and errors of description, at the Purchaser's risk and expense the day after the sale, W. E. HURCOMB not being responsible for the correct description, genuineness, or authenticity of, or any fault or defect in, any lot, and making no warranty whatever; and in default W. E. HURCOMB is not to be held responsible if the lots, or any of them, are lost, damaged, or destroyed, and whether the purchase-money, or any part thereof, has been paid or not. In cases where a buyer purchases more than one lot the whole must be paid for before any one lot is delivered.
6. Any Purchaser neglecting to pay for and take away any lot or lots purchased within one day after the sale (not having been re-sold in accordance with the seventh condition) shall pay, in addition to the purchase-money, the sum of one shilling per week for warehouse-room, and also at the rate of five per cent. per annum interest on the purchase-money, to be reckoned from this day.
7. On failure of complying with the above Conditions, the money deposited shall be forfeited, and all lots remaining uncleared shall be re-sold by public or private sale, without notice, and the deficiency (if any) attending such re-sale, together with all incidental charges, shall be made good by the defaulter at this sale.
8. The Auctioneer will not recognise the transfer of any lot from one buyer to another. All lots at purchaser's risk on the fall of the hammer.

**The only way in which goods can be cleared
is by an Order issued from the Office. Any
other clearance is not allowed or recognised.**

Telephone: Gerrard 5971-4.

CATALOGUE

On TUESDAY, 13th JANUARY, 1931

OLD ENGLISH, ORIENTAL & CONTINENTAL CHINA

- 1 Twentyfour blue and gilt bordered Spode meat and pie dishes various, (faulty) .
- 2 A set of red and white ivory chessmen and a set ditto chessmen
- 2a An 11" alabaster bust of a Girl
- 3 A pair of old flintlock pistols inlaid silver, by Manton, London
- 4 A 15" ivory model of a fully rigged battleship, in glazed case
- 5 A plated spirit stand with 3 cut glass bottles, a pair of ditto decanters, and a modern Worcester floral and gilt biscuit jar
- 6 A copper and brass urn and sundry books
- 7 A pair of antique gilt candlesticks fitted for electric light, with 1 silk shade
- 8 A pair of pewter ditto with vellum shades, (faulty)
- 9 Two green and gilt papier mache oblong trays, decorated flowers
- 10 A pair of Worcester design scale blue hexagonal vases and covers, decorated panels of exotic birds and flowers, 17" high

CONDITIONS OF SALE.

1. The highest bidder shall be the Purchaser, and if any dispute arise between two or more bidders the lot shall be put up again

BUYER *M. Williams*
AUCTIONEERS *Hammonds*

Date *Jan 13/31*

Lot	Amount			Lot	Amount		
	£	s.	d.		£	s.	d.
				31	2	5	0
				35	3	-	-
				36	5	5	0

- 11 A cut glass jar with silver mounts, 4 ditto circular covers, ormolu eagle surmounts, an opaque glass panel decorated female and cupids, and a blue and white ditto with figures and swans in relief
- 12 A 6" antique papier mache oval box with silver mount
- 13 Thirteen Worcester plates decorated panels of flowers, gold and other fish in the Imari taste, two 12½" Imari ditto, and four 11½" ditto with similar decorations
- 14 A shaped gilt ormolu shield studded with coloured stones in panels
- 15 A 16½" Coalbrookdale 2-handled vase with cover, and a pair of 12" ditto vases decorated views, encrusted flowers (faulty)
- 16 A pair of 15" French vases encrusted flowers and gilt
- 17 A brass skeleton striking clock. under glass shade
- 18 The Crown Derby tea and coffee part service, decorated in the Japanese taste, comprising teapot, sugar basin, slop basin, milk jug, 2 plates, 11 cups, and 6 saucers, (faulty)
- 19 A 14" Japanese lacquer cabinet inlaid birds and flowers in mother-o'-pearl, and a ditto tea caddy painted flowers
- 20 A ditto ivory cockerel and hen on tree trunk stand, (faulty)
- 21 The red white and blue Stafford dessert ware, decorated named views, comprising centre dish, 5 side ditto, 2 tureens complete, and 12 plates, (faulty)

- 22 An Old English walnut and inlaid oblong dressing case, fitted
- 23 The buff and gilt ditto dessert service, decorated exotic birds and butterflies, comprising centre dish, 8 side ditto and 17 plates, (faulty)
- 24 The Chinese and Spode dinner ware decorated figures in gardens, comprising soup tureen with cover, 2 vegetable dishes and covers, a sauce boat with stand, 7 meat dishes, and 40 plates various
- 25 A diamond cut glass decanter, 3 panel cut ditto, 8 others, a water jug and a butter dish with cover
- 26 / A French boat shaped basin and ewer, decorated flowers and scrollwork, coloured and gilt (faulty)
- 27 / A pair of 14" Chinese cloisonne long neck vases decorated flowers and animals
- 28 / A 6½" Chinese group of 2 figures
- 29 / An antique panel cut glass fruit stand
- 30 / A gold and shell necklet and a pair of ditto earrings
- 31 / A pair of Sioux Indian leather gauntlets embroidered flowers in coloured silkwork
- 32 / Four Chelsea figures, Europa and the Bull, (11"), Minerva, (12"), Justice, (13") and Britannia (13") (faulty)
- 33 / A blue and white Wedgwood panel with classical figures, "Sacrifice of Tphigenia" by Pacelli, in relief, framed

15/-

737-31

34

A ditto medallion portrait of Lord Nelson (oval) and an octagonal ditto, female figures

36

A pair of ditto black basalt Roman lamps. (faulty)

A black and white ditto 2-handled vase and cover, 8½" high and a brass card tray with blue and white festooned centre and embossed figure medallions (faulty)

37

A pair of 18" Oriental crackle vases, decorated warriors in colours

38

Two pewter tankards with lids and 4 others various

39

Four Spode plates, painted and embossed flowers

40

An 8½" Chinese famille rose deep plate, enamelled flowers and scroll, a bell shaped wine glass with white spiral stem, and 2 air spiral ditto

41

A blue and white Wedgwood cheese dish and cover

42

A 17" Italian bronze Satyr on circular base

43

The blue and gilt Bloor Derby dessert ware, painted panels of fruit, on stone plinths, comprising 4 dishes and 6 plates

44

The blue and gilt Old English tea ware painted oval panels of flowers, comprising slop basin, 2 plates, 13 cups and 13 saucers

45

The ditto tea and coffee ware, decorated flowers on gilt ground comprising slop basin, 2 plates, 21 cups, and 11 saucers

46

Two 13½" blue and white Delft plates, 7 smaller ditto decorated flowers, and a ditto figured tile teapot stand

- 47 Two blue and white Chinese oval dishes, a 16" ditto plaque, 5 ditto plates, a 6" oviform vase, a spoon tray and 6 cups various (faulty)
- 48 A pair of 10" ditto bordered vases, decorated flowers in colours, a ditto armorial plate and Canton figured oval dish and stand, (faulty)
- 49 The grey and gilt Old English dessert ware, comprising 7 dishes, 5 plates, a salt glaze pierced dish, a ditto embossed teapot and a pierced cream pottery 2-handled mask head jar
- 50 A blue and white ditto meat dish, a ditto tureen stand, 2 baskets, 3 dessert dishes, a water jug, a bowl, a leaf dish, a pierced circular Worcester basket, a ditto cup and 3 saucers various (faulty)
- 51 A 5" Worcester design scale blue jar and cover, decorated exotic birds, an 8½" white and gilt Grainger ditto pierced vase and cover, an Old English jug with peacocks and hens in relief, a ditto decorated pastoral scenes and a floral teapot
- 52 A blue and yellow gilt Stafford plate, a foreign red lustre long neck vase, a 6" Crown Derby design female and deer, 2 Chelsea ditto cupids and a carved wood vampire, (faulty)
- 53 A 12" Dresden floral plate, 2 ditto cups, 1 cover and stand, 2 Berlin oval dishes, 2 Continental sucrieres with covers, a ditto cup and a Worcester design red and blue cup and saucer, (faulty)
- 54 A diamond and panel cut glass jar with cover, 12" high and a 9" flower vase
- 55 A pair of boat shaped salt cellars and 6 custard cups

- 56 Two Wedgwood design figured panels, 2 relief paper costume ditto, a drawing, "Pheasant", (framed) and 4 illustrated books various
- 57 A musical box playing 8 tunes, in walnut case
- 58 A Swansea miniature tea set on tray, 6 pieces, painted roses and gilt, trident mark, (faulty)
- 59 The red and white floral Weesp tea ware of 8 pieces. (faulty)
- 60 A pair of 9" Chinese famille verte bottles, decorated flowering plants on trellis ground
- 61 The floral and gilt Spode tea and coffee ware of 41 pieces, and the green dragon ditto dessert ware of 6 pieces
- 62 A 15" old ivory and tortoiseshell cabinet, fitted drawers enclosed by fall front, (faulty)
- 63 The green floral Coalport dessert service comprising centre dish, 6 side ditto and 16 plates
- 64 The crimson and yellow gilt ditto tea ware of 10 pieces, (faulty) and a set of red and white ivory chessmen in ebonised case
- 65 The Old English pink lustre tea ware decorated views, comprising teapot, slop basin, sugar basin, 3 jugs, 2 plates, 12 cups and 12 saucers, (faulty)
- 66 The Spode ditto with Chinese decorations, comprising 31 pieces, (faulty)
- 67 A blue and gilt Bristol glass decanter, 3 engraved ale glasses, 7 wine and liqueur ditto and 2 salt cellars, (faulty)

- 68 Four old leather pocket books, a ditto metal lock, handcuffs, 3 keys, bullet mould, nut crackers, 4 pipes various, 3 candlesticks and 5 oddments
- 69 An old sweetmeat glass on dome foot
- 70 A 9" French biscuit group, The Chess Players, (faulty)
- 71 A 14" carved wood figure of a Beggar, and a 13" ditto
- 72 A pair of 13" blue and white Delft long neck vases, (faulty)
- 73 An old wine glass with cut stem, engraved hare-hunting
- 74 A marone and gilt bordered Nantgarw plate with view of Belvoir Castle
- 75 A 7" oblong tortoiseshell tea caddy
- 76 A Chinese mug decorated battleship
- 77 A horn beaker engraved foxhunting scenes
- 78 A pair of 10½" Chinese famille noir vases and covers, decorated panels of figures and flowers, (faulty)
- 79 An engraved silver oblong snuff box, a pewter tobacco ditto and a sword with ormolu mounts
- 80 The buff and gilt Old English dessert ware decorated views, comprising 2 comports, 2 dishes, and 12 plates
- 81 The Stafford stone china ditto, Indian tree pattern, comprising centre dish, 5 side ditto, and 11 plates, (faulty)

- 82 A pair of 13" French vases decorated flowers and gilt, a pair of pewter candlesticks, a ditto helmet cream jug and a pair of ditto greyhounds
- 83 A pair of 10" green and gilt Bohemian glass tazzae with medallion portraits, 3 cut glass decanters and 28 ditto wine glasses various
- 84 A 20" bronze figure of a dog and snail, on ebonised plinth
- 85 A 7½" Chinese ivory figure of a female muscian and a ditto wood and ivory Warrior, on oblong plinth, 18" high
- 86 An Irish cut glass jar and cover, on square base, 8½" high, and a 6" scale blue Worcester bowl, painted panels of exotic birds and insects, square mark (faulty)
- 87 A 16" papier mache oval tray, painted and inlaid flowers, a ditto card tray, a ditto photo album, front cover decorated monkey in kitchen and a Chinese lacquer tea caddy fitted
- 88 An old mahogany tea caddy fitted, a ditto hour glass and 3 embossed brass Indian jardinières
- 89 A Sheffield plated oval shaped hot water dish, and a pair of ditto decanter stands
- 90 A Worcester teapot decorated figures and 2 ditto coffee cups (Dr. Wall period)
- 91 A pair of green and gilt Bloor Derby candlesticks, a Copeland and Garrett biscuit bust of Locke, an old Stafford figure of a man, and a green and floral gilt japanned plate, (faulty)

- 92 The Booth floral tea, dinner and breakfast ware of 116 pieces
- 93 A 13" bronze figure of Venus on marble plinth
- 94 A 14½" ditto seated figure reading a book
- 95 A ditto seated figure, on marble base, 12" high
- 96 A ditto figure of a strong man splitting a tree trunk, on marble base, 14" high
- 97 A ditto classical figure on wood base, 11" high
- 98 A pair of Empire bronze and marble 2-handled tazzae, 12½" high
- 99 A 9½" gilt ormolu Idol and a 9" ditto
- 100 A 19" green and brown Chinese glaze male Idol, and an 18" female ditto (faulty)
- 101 A mauve Rockingham cottage encrusted flowers, a floral Lowestoft teapot and 2 nursery plates (faulty)
- 102 An Old English cow cream jug
- 103 The ditto black and white transfer tea and coffee service decorated views, comprising teapot with stands, a sugar basin, 2 slop ditto, a milk jug, a butter cooler, 24 cups, 14 saucers and 3 plates
- 104 A blue and white Old English willow pattern supper set on mahogany tray, (faulty)
- 105 A 2' Spanish mahogany and brass banded jewel cabinet fitted compartments and drawers

- 106 A 22" Sheraton mahogany and inlaid oval tray and a ditto oblong tea caddy
- 107 A 20" Empire bronze and ormolu 4-light candelabra with cupids in relief
- 108 An Old English walnut table mirror painted Chinese river scene with female seated on a bank, floral border (faulty)
- 109 A pair of 23" Canton vases, decorated figures and flowers, (faulty) on wood stands
- 110 A white and gilt Sevres stand and cover decorated panels of river scenes and figures with cut glass bowl chased ormolu mounts
- 111 A Jacobean design woolwork panel embroidered fruit tree, grape vine and peacock, 8'8" x 4'9"
- 112 An Old English salt glaze teapot with Chinese decorations, (faulty)
- 113 A blue and yellow gilt Rockingham dessert service, comprising 3 comports and 2 dishes, (faulty)
- 114 A white and gilt ditto Toby jug, (faulty)
- 115 A Coalport goat and bee jug in colours
- 116 A 7" Chantilly 2-handled vase, decorated exotic birds and insects, encrusted flowers and fruit
- 117 A Battersea enamel candlestick, decorated flowers and gilt, (faulty)
- 118 Three Stafford foxhead cups

- 119 Two Dog's head ditto
- 120 Four Whieldon tortoiseshell plates and 6 Imari ditto, decorated utensils and flowers, (faulty)
- 121 An 8½" Chinese famille rose bowl, decorated flowering tree and birds, a ditto lotus pattern teapot and a 6" Chinese design powder blue bowl and cover with ormolu mounts and floral panels, (faulty)
- 122 A Whieldon teapot with vine leaves and grapes, in relief, (faulty)
- 123 A 7" dark brown Martin ware vase with mythological animal handles and a ditto grotesque animal cream jug, (faulty)
- 124 A ditto grotesque animal begging cup and an 11½" brown and grey ewer, (faulty)
- 125 An antique bracket striking clock with circular dial, in mahogany case, by Henning, Lymington (faulty)
- 126 An antique carved oak panel, Abraham offering Isaac in sacrifice
- 127 The blue and gilt Old English tea and coffee ware, decorated views, comprising slop basin, milk jug, 9 plates, 21 cups and 11 saucers
- 128 A 9" Chelsea figure of a Shepherdess with sheep beneath a floral bower, and a 7" ditto cupid candlestick, (faulty)
- 129 A blue and white Worcester mug decorated flowers and butterflies and a ditto cup and saucer with birds on trees (crescent mark)

- 130 The blue and gilt Old English tea and coffee ware, painted flowers, comprising teapot, sugar basin slop basin, milk jug, 11 plates, 18 cups, 21 saucers, (faulty and odd)
- 131 A set of 5 Worcester circular baskets, decorated sprays of flowers, exterior with flowers on yellow ground
- 132 The green and white Davenport tea and coffee ware of slop basin, 2 plates, 14 cups, and 13 saucers
- 133 The black and floral 3-piece tea set, a Chinese famille rose plate, an Old English floral cup and saucer and 2 Stafford ditto dishes
- 134 A set of red and white carved ivory chessmen and 5 sea shells under 3 glass shades
- 135 A 15" Chinese ivory boat with 5 male and female figures in relief
- 136 The red and gilt Derby dinner ware comprising 99 pieces (faulty)
- 137 Two 9" Chelsea male and female sporting figures signed R(oubiliac), and a 9" Chelsea Derby female figure with bird (faulty)
- 138 A 6½" Ralph wood figure of a lion
- 139 An 8" blue and white Chinese bowl decorated landscape and figures
- 140 A Chelsea hen on nest dish and cover, (faulty)
- 141 An Old English bracket clock with arch dial, in ebonised case, by R. Threlkeld, London

- 142 The Old English dinner ware painted sprays of flowers, comprising soup tureen complete, 2 sauce ditto, 2 vegetable ditto with covers, a salad bowl, 5 meat dishes and 29 plates various, (faulty)
- 143 A 12" Chinese bowl decorated figures on terraces, and a ditto bowl 9" diameter, (faulty)
- 144 A 10½" Chinese famille verte plate decorated flowering trees, and a 9½" deep ditto with panelled border of kyilins, birds, flowers, etc.
- 145 A 13" old Stafford group of Madonna and Child
- 146 An 11½" Chinese bowl decorated figures on terraces
- 147 A pair of 8" Bow white male and female figures with birds in nest and cage (faulty)
- 148 A 6½" Chelsea Derby figure of a young Skater
- 149 The red and blue gilt Spode dessert service, decorated in the Japanese taste, comprising centre dish, 12 side ditto, 2 tureens with covers, and 12 plates, (faulty)
- 150 A Dresden oval soup tureen with cover, decorated birds and flowers, with blue and white stand, festoons in relief
- 151 A pair of Tibetan brass klyins
- 152 A Chamberlain Worcester tea and coffee service with painted flower decorations, comprising teapot with stand, sugar basin, slop basin, milk jug, 12 cups and 9 saucers

- 153 The red and blue ditto floral dinner ware comprising 2 vegetable dishes with covers, 4 meat dishes, 3 sauce tureens complete and 59 plates various
- 154 A leather dressing case few fittings
- 155 The brown and blue Staffordshire dessert ware of centre dish, 6 side ditto, and 8 plates, (faulty)
- 156 An Indian marble Buddha, and 4 blue and white Worcester willow pattern dessert dishes
- 157 A set of 11" blue and white Chinese plates decorated flowers and foliage, and four 9" ditto with figures, river scenes and dragons
- 158 A 6" white Chelsea figure of a musician, a 7" ditto The Snuff Taker, and a 6½" ditto of a Man with scroll
- 159 A blue and gilt Worcester fluted tea and coffee service, comprising teapot, sugar basin, slop basin, milk jug, 2 plates, 18 cups and 9 saucers
- 160 The Old English white and gilt trellis bordered dessert service painted flowers, comprising centre dish, 8 side ditto and 12 plates
- 161 A pair of 11" Chelsea design group of male and female figures, and a pair of 11" Crown Derby design groups fitted candleholders
- 162 A blue and gilt Worcester egg cruet fitted 6 cups, decorated flowers (faulty)
- 163 A set of 3 ditto 2-handled vases decorated figures and flowers, (faulty)
- 164 A pair of 10" Derby figures of Shakespeare and Milton

- 165 A Chinese famille verte cream jug with lizards in relief, (faulty)
- 166 The fluted and panel cut glass table service, comprising 2 decanters, 4 water bottles, 12 tumblers, 9 sherry, 9 ports, and 11 champagne glasses (faulty)
- 167 Four engraved rummers, 5 ditto wine glasses with spiral stems, and a ditto with tear drop and corn baluster stem
- 168 A pair of 13" red and gilt French urn shaped 2-handled vases decorated flowers, and a pair of 11" Sevres ditto vases with pastoral and harbour scenes
- 169 A small Stuart needlework picture, male and female figures in park, signed H.H., 1678, in carved gilt frame
- 170 A French mantel striking clock in ormolu and painted Eastern design case, on gilt stand
- 171 A pair of blue Bristol diamond cut salt cellars (faulty)
- 172 The blue and gilt bordered Old English dessert service, painted flowers, comprising centre dish, 7 side ditto and 12 plates (faulty)
- 173 An Old English walnut table mirror painted Chinese river scene, with female seated on the bank, floral border, (faulty)
- 174 A pair of 23" Canton vases decorated figures and flowers, (faulty) (wood stands)
- 175 A 38" royal blue and gilt Sevres 2-handled vase and cover, and a pair of 29" ditto with festoons in relief, (faulty)

- 176 A blue and gilt part dessert service, decorated flowers, comprising 2 comports, 4 dishes, and 12 plates
- 177 A pair of blue and gilt Sevres 2-handled vases, painted panels of cupids, flowers and fruit, ormolu bases and fitted as 3-light candelabra
- 178 A French mantel striking clock in carved and gilt foliated case, ormolu foliage and porcelain flowers in relief, on gilt stand under shade by Bienayme, Paris
- 179 Two 9" Dresden female figures, a Capo di Montee sucriere complete, and a papier mache card tray, decorated flowers and gilt
- 180 A pair of 9½" Oriental long neck vases, decorated birds and flowers, (wood stand,) an 11" ditto vase, a 5" green ground oviform ditto, ormolu mounts, and 1 other
- 181 A Canton card tray supported by 3 bronze female figures, ormolu mounts, a set of 4 Japanese fern pots, a pierced ditto, 4 Oriental cups, a ditto scented bottle, 4 white fern pots and an ebonised and brass inkstand fitted
- 182 A Chinese figured cup, a Worcester floral ditto, 3 Oriental saucers, a Canton plate, teapot, spoon, a shell plate, and a Spode dish cover
- 183 A white and gilt French tea set in case, with Chinese decorations, comprising teapot, teapoy, sugar basin, milk jug, 6 cups, 6 saucers, and 2 sucrieres

- 184 The Chinese tea and coffee ware, decorated panels of figures on matting ground, comprising teapot with stand, teapoy, milk jug, sugar basin, slop basin, plate, 6 cups and 6 saucers (faulty)
- 185 Two brown and white Delft plates, decorated female figures and landscapes
- 186 An old German violin with 2 bows, in black case
- 187 A diamond and hobnail cut glass bowl and cover, on square base, 10" high, and a globular hobnail cut preserve jar with cover
- 188 A miniature portrait of a Lady, a Royal Derby white pierced cup and saucer, and Joseph Hall's Works
- 189 An 11" Continental oval basket encrusted flowers
- 190 A pair of blue and white gilt Derby male and female figures, Dresden mark
- 191 A foreign enamel ewer and stand, decorated classical figures
- 192 A 9" ditto enamel and silver model sailing ship supported by figure of a Mermaid
- 193 A ditto silver and enamel oval snuff box, decorated cupids and festoons
- 194 A pair of ditto silver sugar tongs, and a royal blue and gilt glass and enamel scent bottle in case
- 195 Six miniature portraits of Ladies, various
- 196 A ditto of a Gentleman wearing full wig, seascape background, a ditto Napoleon, and a ditto of Empress Maria Theresa and son, ormolu frames

- 197 An antique bracket striking clock with square dial, in ebonised case, by J. Ebsworth, London, (faulty)
- 198 A 5½" Chinese ivory figure, a 4" ditto group, an Indian male figure, 2 decorated beakers fitted glass scent bottles, a cigar cutter, a card case and a miniature portrait of a Lady
- 199 An ivory female figure on plinth, 7" high, two 3½" ditto figures of Ladies, and two 4½" male ditto on ebonised plinths
- 200 Two ditto circular boxes with miniature portraits of Ladies, an ivory and enamel ditto, a ditto with Spa lid, and a miniature portrait of a Lady
- 201 A set of red and white ivory chessmen, a ditto set of draughtsmen, 2 dice boxes, a ditto with dice, a ditto peg board and 2 whist markers
- 202 A pair of field glasses by Steward, London and 1 other pair, in leather cases
- 203 Two tortoiseshell trinket boxes, 3 horn and tortoiseshell snuff boxes, a Chinese bronze tobacco ditto, a pewter ditto, a gilt medal in case, a pair of goggles, 2 leather purses, a steel ditto, 2 letter wallets and a cigarette case
- 204 A Chinese black and gilt lacquer tea caddy fitted, 2 brass pestles and mortars, 2 pewter mugs, and 4 framed coloured prints, birds and fish
- 205 A pair of Imari fluted oviform vases and covers, 17" high
- 206 A French mantel timepiece with watch movement, in tortoiseshell and ormolu case

- 207 A pair of 6½" Chinese green ground and decorated vases, and 2 Vienna cups and saucers with figure subjects
- 208 A rosewood inlaid workbox, containing a floral embroidered pocket vanity bag and oddments
- 209 A white and brown Adam's tankard with figures in relief, a Turner ditto, 2 small framed panels of Victorian needlework, and 2 ditto chair seats embroidered figure subjects and flowers
- 210 An Old English white milk jug with Dutch figures in relief
- 211 A Sheffield plated 3-light candelabra
- 212 A velvet pile handbag with silver mounts, a pink silk and steel tinsel ditto, 2 coloured glass scent bottles, and a tortoiseshell purse
- 213 An Old English silver lustre jug, decorated foxhunting scene in blue and white, (faulty)
- 214 A papier mache snuff box decorated figure subject, a Scotch horn snuff mull, and a Victorian floral wool and beadwork chair seat
- 215 A pair of Old English silver lustre semi-circular flower holders decorated birds and flowers in white (1 faulty)
- 216 A Limoges framed panel, The Crucifixion
- 217 An Italian majolica ditto decorated chariot, horses and figures, (Iltriones di Guiseppe) and 4 red and white Liverpool transfer tiles, (Aesops Fables) framed

- 218 An ivory panel engraved Stuart interior with musicians, and a black glass ditto, decorated group of goats in gold, signed J. D.
- 219 The brown and white Stafford doll's dinner ware, decorated views, comprising 68 pieces
- 220 An 11½" Chinese black and white gilt bowl decorated flowers and festoons, and a 13½" Delft plate decorated river scene and floral panelled border, (faulty)
- 221 Two copper lustre jugs, a pink and gold lustre ditto with flowers in relief, 2 Stafford floral ditto, and a ditto with Chinese decorations
- 222 A mahogany oblong tea caddy, a carved meerschaut pipe, a miniature portrait of a military Officer, a tinsel ditto of an Actor and the pink lustre tea ware decorated views, etc., 8 pieces
- 223 The blue and gilt Austrian tea ware, decorated figures (40 pieces)
- 224 A Chinese armorial octagonal soup tureen, an Oriental hexagonal bowl, 3 cups, a saucer, a tray, a Mason plate, 2 Old English basins, 6 cups, 6 saucers various, and a blue floral inkpot
- 225 A large antique bronze mortar with iron pestle, an old pewter flagon, 2 tankards, a teapot, a coffee pot, 2 sugar basins and a milk jug
- 226 An engraved rummer on square base, a gilt wine glass, a Venetian bowl, a brown claret jug, and 2 lustres
- 227 The yellow and blue gilt Davenport tea and coffee service decorated flowers, comprising slop basin, sugar ditto, milk jug, 2 plates, 16 cups and 10 saucers

- 228 A 7" Chinese lotus pattern bowl, a 7" Imari floral ditto, 3 ditto Chinese cups, 4 saucers, a figured teapot, a famille rose plate, and a Canton ditto, (faulty)
- 229 Two ditto blue and white milk jugs, a spoon tray, a Worcester ditto sauce boat, and 12 pieces of Old English ditto dessert and tea ware
- 230 A French mantel striking clock in gilt ormolu case, with painted porcelain panels, and a pair of ditto vases en suite, under glass shades
- 231 The green and gilt bordered Coalport dessert ware, decorated garlands of flowers, comprising centre dish, 8 side ditto and 17 plates
- 232 Six cut glass decanters, a pair of Continental wall ornaments encrusted flowers, and a pair of 16" Satsuma vases decorated figures
- 233 A Worcester teapot with Chinese figures, a Newhall floral bowl, and a plate
- 234 The Old English tea and coffee service decorated flowers comprising teapot with stand, sugar basin, slop ditto, milk jug, 2 plates, 19 cups and 12 saucers, (faulty)
- 235 A long Japanese sword in carved ivory scabbard
- 236 Four ebonised mahogany Biblical figures, 28" high, and 2 ditto groups, The Birth and Death of Christ (faulty), 26" high
- 237 The brown and white figured Copeland dinner ware of 49 pieces, (faulty)

- 238 A cut glass cellery vase, a ditto fruit stand, a moulded ditto in 2 parts, and 2 white spiral stem wine glasses
- 239 A Continental female figure, a Stafford ditto with lamb, a ditto sheep, a Continental cup and saucer, a tortoiseshell card case, a pocket ditto, a brass tobacco box, 2 ditto curios and a pen tray
- 240 A pair of Frankenthal vases and covers decorated flowers, 12" high, a Japanese figured ditto (12½"), and 2 small Canton ditto, (1 faulty)
- 241 A Chinese mirror panel painted 7 figures of Mandarins and others
- 242 A 12" rosewood and mother-o'-pearl inlaid work and writing cabinet and an old glass ship's decanter
- 243 A brown glazed Chinese pottery figure of a Horse, (Tang period) 24" wide
- 244 A 16½" Chinese circular dish, decorated panels of flowers and foliage in red and green, (wood stand) Kang Hsi
- 245 A 13½" ditto dish decorated flowers and foliage, (Kang Hsi)
- 246 A set of red and white Chinese carved ivory chessmen a ditto set of draughtsmen with dice boxes and a lacquered games box
- 247 A Louis xv. mantel striking clock with circular dial, in marble case, surmounted by ormolu female figures and cupid satyr, signed Clodion, 39" high

NEEDLEWORK, EMBROIDERIES ETC.

- 251 A Victorian needlework Sampler, by A. Brown, (1830)
- 252 A Chinese red silk fringed shawl embroidered flowers in black
- 253 An Old English sampler by M. Eling, 1799 and a ditto map of Gr. Britain by A. Macro, 1786, (faulty)
- 254 A ditto sampler A. H. I. H., 1691
- 255 Five ditto unframed, S. E. Daniels 1848, E. Howard, 1832, D. B. Chaplin, 1838, E. M. Jones, 1792 and 1 other
- 256 Two antique silkwork pictures, Minerva in a Landscape and female with anchor on coast and a pair of ditto pictures, sprays of flowers, (faulty)
- 257 A Stuart stump work picture, decorated Shepherd seated in a landscape with female figure, figures and chuerbs overhead, birds, animals and insects, castle in the background
- 258 A ditto picture, decorated figures of King Charles and Queen followed by attendants with symbol, birds, insects and borders of flowers
- 259 A Queen Anne petit point picture, "The Finding of Moses, (faulty)
- 260 An antique silkwork picture, females in a landscape with military encampment and buildings
- 261 A Chinese pink fringed shawl, embroidered flowers in colours

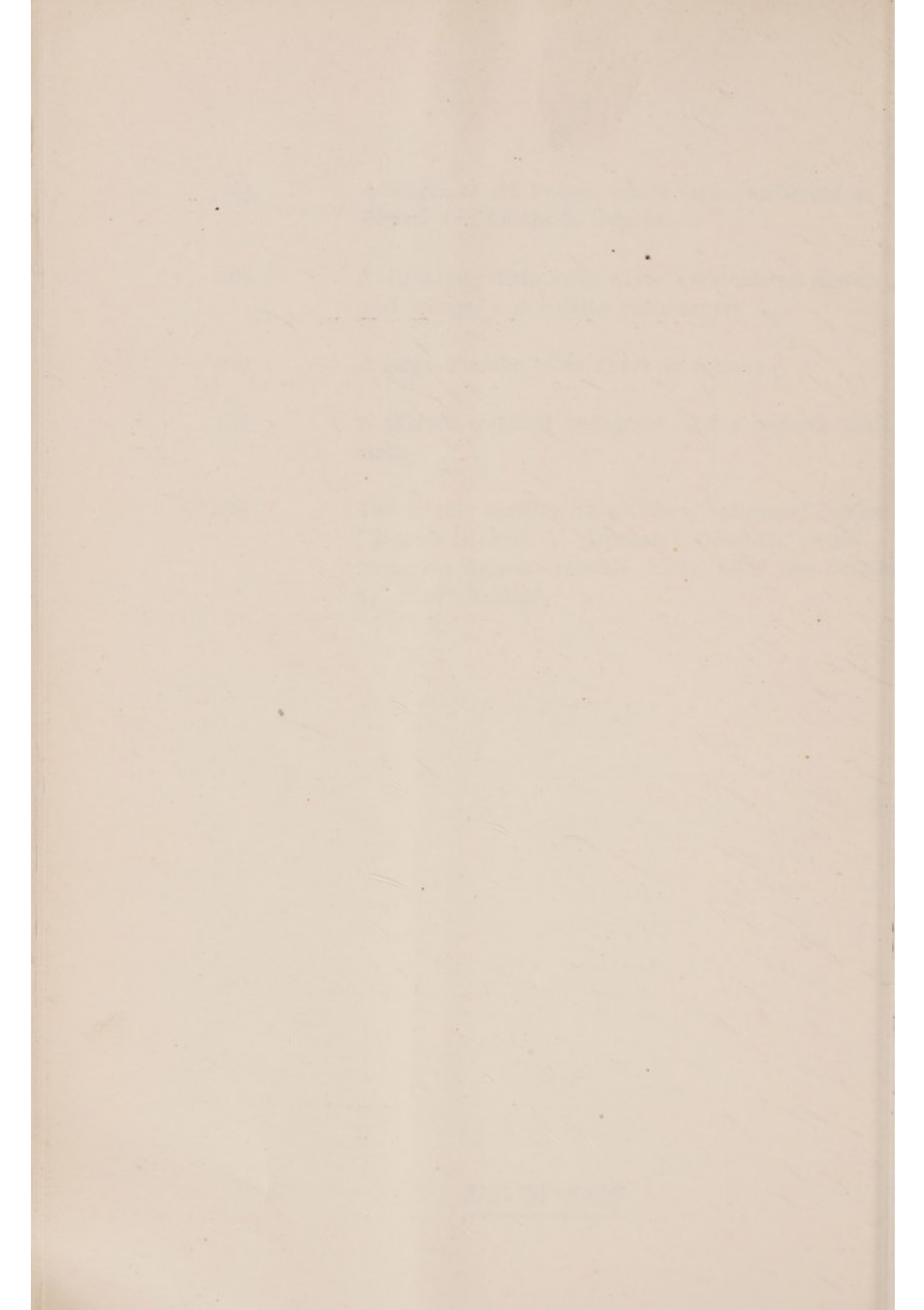
- 262 A ditto crepe de chine shawl, embroidered flowers in red silkwork, a black silk kimona, a blouse and a pair of trousers
- 263 A pair of Old English needlework pictures, male and female figures in landscapes, ovals
- 264 A small Casmere table centre, embroidered flowers and foliage in coloured silkwork
- 265 A crimson and bordered Paisley shawl
- 266 A Flemish tapestry panel, Daniels in lions den, (petit point) with scroll borders, female figures, child, fruit trees etc., in gros point, 4'3½" x 1'9" (17th Century)
- 267 A Queen Anne ditto, vase of flowers with parrot in foreground, sign, Canty, carved frame
- 268 A patchwork and floral cretonne bedspread, a printed ditto with flowering trees and birds
- 269 A Chinese crimson satin ditto, embroidered figures in coloured silk and gold threadwork and a blue ditto panel with gold threadwork embroidery
- 270 Four French tapestry chair seats, decorated landscapes, rivers, birds, buildings and flowers
- 271 Two Jacobean needlework curtains with valance, embroidered flowers and foliage, in colours
- 272 A Maltese lace parasol cover, a black and floral silk shawl and a painted lace fan
- 273 A Chinese silk mandarin coat, embroidered flowers, birds and insects and a black and red Indian shawl, embroidered figures, etc.

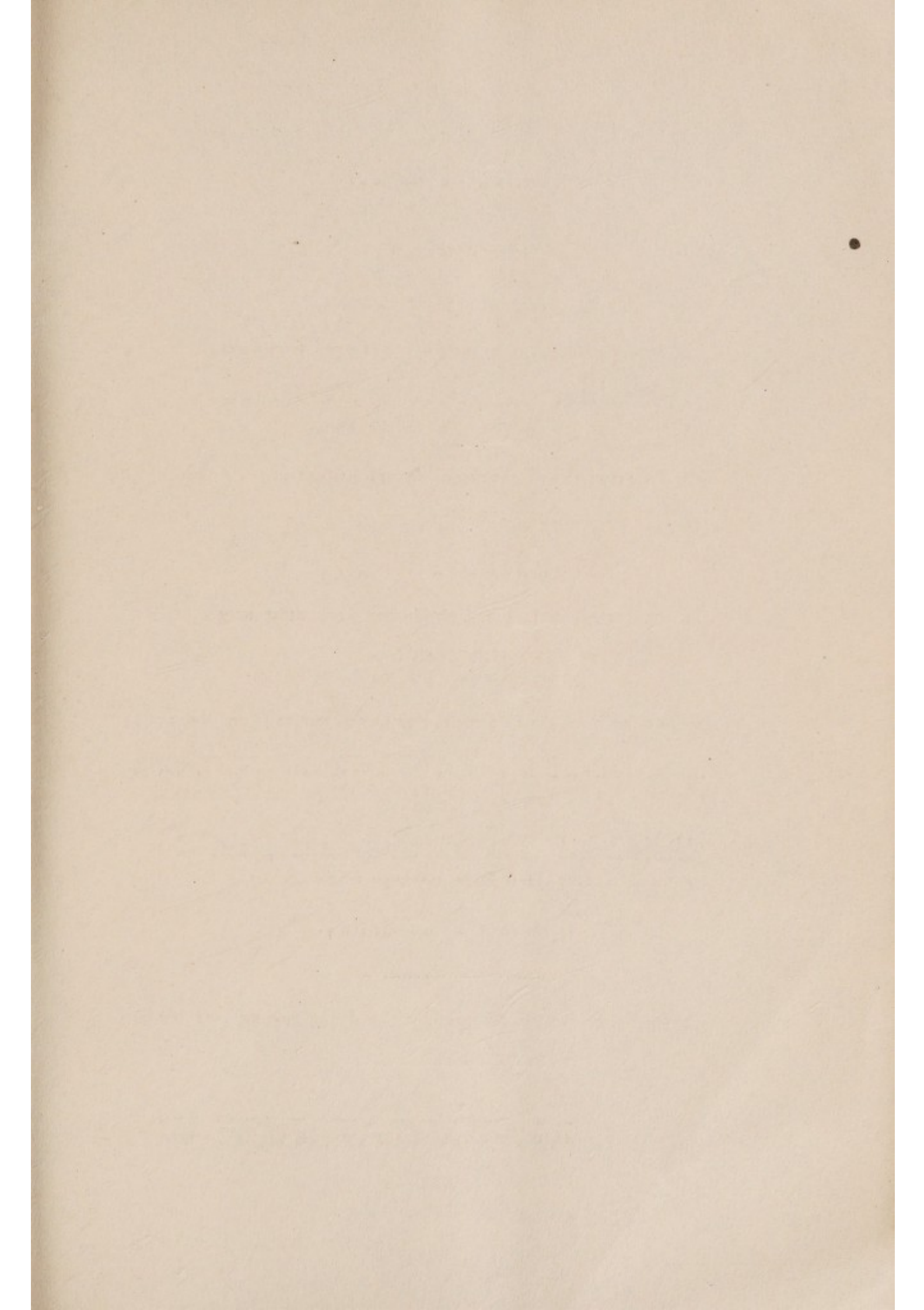
- 274 Three small panels of Stuart stump work, decorated Royal and other figures, stag hunting, shepherd, shepherdess and sheep, (faulty)
- 275 An old black and white silkwork picture, pastoral scene, (oval)
- 276 Three Victorian needlework ditto, Interior of a Church with figures, ditto of a study and interior of a cottage and figures
- 277 A needlework sampler, by H. Reach, 1808
- 278 A Stuart needlework picture, landscape with cottage, male and female figures, trees, birds, flowers and animals
- 279 Two antique ditto pictures, "Christ and the Woman at the Well", "Interior of a Cottage"
- 280 A panel of Russian embroidery, A Bishop seated in a palace, carved oak frame
- 281 Two antique black and white silkwork pictures, river scene with mansion, church in background, and "Ruins of Rome"
- 282 A crimson velvet English frieze, embroidered foliated scrollwork, in gold threads, (17th Century)
- 283 A Stuart stump work picture, King Charles and Queen in a garden with trees, animals and birds, castle in background
- 284 A crimson cashmere embroidered shawl

- 285 A length of old French white satin, embroidered flowers and foliage in colours
- 286 A Tonkinise ditto table cover embroidered flowers and foliage, and a ditto table centre
- 287 A large chenille table cover in colours
- 288 A printed cretonne bedspread, and a damask table cloth
- 289 Two Stuart needlework pictures, Scriptural Subjects "Jacob's Dream" & "Jepthah's Daughter" with numerous figures, animals, birds, trees and buildings 21" x 17" (faulty)

END OF SALE







SALES OF JEWELS AND SILVER
EVERY FRIDAY

∴ Fortnightly Sales of . .
Antique Furniture, China, Books,
Armour, Tapestries, Ivories,
Miniatures, Clocks, Persian and
other Carpets and Rugs.
Oil Paintings, Drawings, Prints
and Engravings.

Property can be included in any sale
at short notice

INVENTORIES & VALUATIONS FOR PROBATE,
DIVISION, INSURANCE AND OTHER PURPOSES

Sales of Furniture, etc., on
Owner's Premises a Speciality
Town or Country

Commissions Executed. Moderate Terms

HURCOMBS, PICCADILLY, W.1

Telephone:
GERRARD 5971-4 (4 lines)