

Sales catalogues: Hurcomb

Publication/Creation

26th September 1930

Persistent URL

<https://wellcomecollection.org/works/pva6k8p2>

License and attribution

This work has been identified as being free of known restrictions under copyright law, including all related and neighbouring rights and is being made available under the Creative Commons, Public Domain Mark.

You can copy, modify, distribute and perform the work, even for commercial purposes, without asking permission.



Wellcome Collection
183 Euston Road
London NW1 2BE UK
T +44 (0)20 7611 8722
E library@wellcomecollection.org
<https://wellcomecollection.org>

Michael . 26th September 1930

W A I T M A C H I S A I / 11 / 34

CATALOGUE

H. V. R.	DATE	INITIALS
SALE	26. IX. 30	W E B B.
PURCHASE		
CHECKED	29. IX. 30	Kh
COLLECTED	14. X. 30	F. W.
RECEIVED	16. X. 30	W (pant)
ACCESSED		
PASSED	17. 10. 30	L W G M

OLD

CO

C

BR

NEEDLE

two rare and valuable 16th Century needlework panels

TO BE SOLD AT

HURCOMBS, PICCADILLY, W. 1

On FRIDAY, 26TH SEPTEMBER, 1930

AT 1 p.m. PRECISELY

SALE OF BOOKS SAME DAY AT 12.30 p.m

On View Day Prior

Kh m. 139. 7 7
Wp 20 4 5
11. 12 - 0

Phone:- Gerrard 5971-4



W. H. Bell
9
OLD

&

CONTINENTAL CHINA
CUT GLASS, IVORIES, BRONZES,
BRACKET AND MANTEL CLOCKS,
NEEDLEWORK, EMBROIDERIES, TAPESTRIES

including

two rare and valuable 16th Century needlework panels

TO BE SOLD AT

HURCOMBS, PICCADILLY, W. 1

On FRIDAY, 26TH SEPTEMBER, 1930

AT 1 p.m. PRECISELY

SALE OF BOOKS SAME DAY AT 12.30 p.m

On View Day Prior

known 139 7 7
up 20 4 5
11 12 0

Phone:- Gerrard 5971-4

CONDITIONS OF SALE.

1. The highest bidder shall be the Purchaser, and if any dispute arise between two or more bidders the lot shall be put up again and re-sold, the Auctioneer being the sole Arbitrator in such disputes.
2. No person to advance less than one shilling; above five pounds, five shillings, and so on, in proportion, or less, at the discretion of the Auctioneer.
3. The Auctioneer to have the right to refuse a bidding at his discretion, and to bid on behalf of the Vendor in the case of lots upon which there is a reserve.
4. The Purchaser to give his name and address, and to pay a deposit of five shillings in the pound, or more, or the whole of the purchase-money, if required.
5. The lots to be taken away and paid for, with all faults, imperfections and errors of description, at the Purchaser's risk and expense the day after the sale, W. E. HURCOMB not being responsible for the correct description, genuineness, or authenticity of, or any fault or defect in, any lot, and making no warranty whatever; and in default W. E. HURCOMB is not to be held responsible if the lots, or any of them, are lost, damaged, or destroyed, and whether the purchase-money, or any part thereof, has been paid or not. In cases where a buyer purchases more than one lot the whole must be paid for before any one lot is delivered.
6. Any Purchaser neglecting to pay for and take away any lot or lots purchased within one day after the sale (not having been re-sold in accordance with the seventh condition) shall pay, in addition to the purchase-money, the sum of one shilling per week for warehouse-room, and also at the rate of five per cent. per annum interest on the purchase-money, to be reckoned from this day.
7. On failure of complying with the above Conditions, the money deposited shall be forfeited, and all lots remaining uncleared shall be re-sold by public or private sale, without notice, and the deficiency (if any) attending such re-sale, together with all incidental charges, shall be made good by the defaulter at this sale.
8. The Auctioneer will not recognise the transfer of any lot from one buyer to another. All lots at purchaser's risk on the fall of the hammer.

**The only way in which goods can be cleared
is by an Order issued from the Office. Any
other clearance is not allowed or recognised.**

Telephone: Gerrard 5971-4.



v. M

BUYER F. Webb.

Date 26th Sept. 1930.

AUCTIONEERS Hurcombs

Lot	Amount			Lot	Amount		
	£	s.	d.		£	s.	d.
39	1	.	.				
87	1	9	.				
106		14	.				
169	1	.	.				
204	4	5	.				
228	3	5	.				
	£ 11	12	.				

CATALOGUE

ON FRIDAY, 26th SEPTEMBER, 1930

OLD ENGLISH, ORIENTAL & CONTINENTAL CHINA

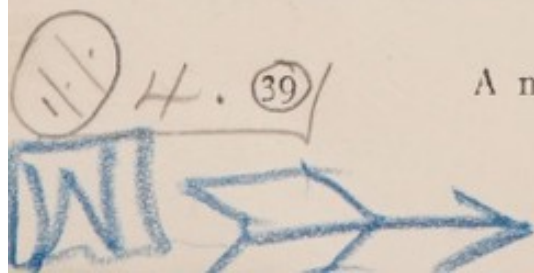
- 1 An Old English figure of a milkmaid, and a pair of
 modern Continental female figures
- 2 A 6" antique tortoiseshell casket with silver mounts,
 a gold and pearl tie clip, a wax portrait of a
 man in armour and a coloured portrait of a
 girl, (print) oval
- 3 A scroll illustrating the Coronation of George II.,
 (faulty)
- 4 An antique carved wood figure of a musician
- 5 A red and gilt Venetian glass basket encrusted
 flowers, 4 ditto bowls, a pair of ditto jugs with
 coloured stones in relief, and a pair of ditto
 scent bottles with ormolu mounts, (faulty)
- 6 A Sunderland pink lustre 2-handled mug, decorated
 figures in black transfer, dog and can interior
- 7 A Chinese painting on mirror panel, interior and
 figures, carved and gilt frame
- 8 A 10½" Martin ware marrow shaped vase
- 9 The blue and brown Copeland dessert ware,
 comprising 2 comports, 3 dishes and 13 plates

- 10 The green and yellow floral Old English tea and coffee ware of 35 pieces
- 11 Six panel cut glass decanters, a pair of moulded candlesticks and 4 semi-circular flower holders, (faulty)
- 12 A pair of ruby and gilt glass lustres with long drops, a pair of ground and gilt ditto and a ditto vase
- 13 An old brass pestle with mortar, and a pair of ditto candlesticks
- 14 An old violin with bow, in black case
- 15 A 17" antique mahogany oblong box and a Victorian bead and woolwork footstool
- 16 The Worcester tea and coffee service decorated birds, poultry, (Fables) and gilt, comprising teapot with stand, sugar basin, slop basin, milk jug, plate, 13 cups and 7 saucers, (faulty)
- 17 Three Chelsea octagonal shaped plates, decorated exotic birds and flowers (gold anchor) (faulty)
- 18 A Dresden teapot, decorated peasants in marone
- 19 A 21" Egyptian design bronze ewer
- 20 The floral Mason dinner and dessert ware, comprising soup tureen complete, 3 sauce ditto, 2 sauce boats with stands, 4 vegetable dishes and covers, 12 meat ditto, 9 dessert ditto, 68 plates various, a white hot water plate, and 2 covers, (faulty)

UYI
UC
—
Lo

- 21 Seven early Worcester powder blue and white octagonal plates, decorated Chinese river scenes, (faulty)
- 22 The pink and gilt Old English dessert ware decorated flowers, comprising centre dish, 4 side ditto and 11 plates
- 23 The black and gilt foliated Crown Derby dessert ware, comprising 8 dishes and 13 plates, (faulty)
- 24 A 5½" antique tortoiseshell octagonal tea caddy with carved panels (faulty)
- 25 A ditto staff with gold mount
- 26 Two Old English male and female figures with fruit, a brass mounted box with glass top and liner, decorated figures, a pair of earrings, 2 hair and gold watch chains, 2 Chinese carved wood frames, a medal, a Coronation box, 5 ditto programmes, a Royal silk handkerchief, 3 books and 2 oddments, (faulty)
- 27 The Royal Derby dessert ware with Japanese decorations, comprising 2 comports, 6 dishes and 12 plates (faulty)
- 28 A Moore centrepiece with Cupids and flowers in relief, a 12" leaf shaped glass dish and a Stafford poodle, (faulty)
- 29 A 15" fluted brass jardiniere, an embossed ditto flagon, a plain ditto canister, a copper 2-handled beaker, and a brass and copper pot

- 30 A Continental ivory pottery figure of a musician,
a ditto Nubian female water carrier, 2 ditto
male and female busts, a pair of brackets
with birds in relief, and a Zsolnay pierced
and fluted jardiniere *5/- Joshua*
- 31 An antique cut glass chandelier with triangular drops
fitted for 12 lights *10/- Brooks*
- 32 The blue and white gilt Chinese and Old English tea
and coffee service, comprising teapot, sugar
basin, slop basin, milk jug, spoon tray, basin,
plate, 26 cups and 14 saucers, (faulty)
4/5/- Kals
- 33 The Meigh dessert ware with Chinese decorations,
comprising 8 dishes and 15 plates, (faulty)
2/10/-
- 34 A blue and white Plymouth shell sweetmeat stand
on ebonised plinth *3/15/-*
- 35 An Indian marble Buddha and 4 blue and white
Worcester willow pattern dessert dishes
3/-
- 36 Six 11" blue and white Chinese plates decorated
flowers and foliage, and four 9" ditto with
figures, river scene and dragons
3/5/-
- 37 A 15" Imari ditto, three 12½" ditto, and 2 smaller
ditto decorated figures on terraces (faulty)
3/1/- Kals
- 38 The Derby pattern Davenport breakfast ware,
comprising teapot, sugar basin, 2 others,
egg cruet, butter dish and breakfast cruet
with plated mounts, (faulty) *1/1/-*
4. (39) A mother-o'-pearl and Brussels lace fan, a ditto
fan painted figures (Louis xiv.) and a
tortoiseshell ditto with miraboux feather
Brie 5 shill.



- 40 A blue and white Adams mug with Liverpool arms
in relief, a carved ivory tusk under glass shade,
and Bunyan's Works (3) 5/-
- 41 A 7" antique Italian ebony cabinet fitted drawers,
with Limoges enamel panels decorated
allegorical figure subjects, etc. 10/- *Partridge*
- 42 A 10" black and floral Oriental fruit stand, and a
miniature oil painting, portrait of a Lady
7/6
- 43 An 8" Chinese bowl decorated figure, and 2 ditto
famille rose plates 35/-
- 44 Three green Bristol glass spirit decanters, and 12
ditto wine glasses 4/-
- 45 A set of wood chessmen in ornamental ebonite case
1/-
- 47 A pair of 10½" Chelsea male and female figures of
Shepherd and Shepherdess, (faulty)
10/-
- 48 Two pairs of Mason floral jugs, a set of 3 grey
Stafford ditto with cameo of Sir W. Scott
in relief, and a blue and white dish, (faulty)
32/6
- 49 The grey and gilt Rockingham dessert ware painted
flowers, comprising centre dish, 4 side ditto,
and 6 plates, (faulty) 6/10/-
- 50 A pair of 7" Battersea enamel candlesticks decorated
flowers, (faulty) 6/- *Thorne*
- 51 A 15½" Chinese powder blue and gilt bowl with
stand, decorated flowers, (faulty) 6/-
- 52 Two Indian ivory palanquins with attendants, a
ditto temple and horses, 3 camels, an elephant,
oxen and figures, and 9 other pieces, (faulty)
3/10/- *Booker*

50/- 52

- 53 A pair of old Stafford figures of Cobbler and Wife,
a ditto of an old woman with basket and
a ditto cottage, (faulty)
6/5/-
- 54 A mauve and white ditto mask lip jug with
classical figures in relief, a figured ditto,
a floral ditto, a ditto basin, a teapot, a
ditto Newhall milk jug, 7 ditto cups and
5 saucers, (faulty)
17/6 Pearson.
- 55 The white and gilt Worcester fluted tea and coffee
ware of 29 pieces, and the blue and white
willow pattern ditto of 20 pieces, (faulty)
15/-
- 56 A pair of 12" modern Sevres blue and gilt vases
with covers, ornamented in colours
4/5/-
- 57 A pair of 13½" bronze figures of Gentlemen, on
circular bases
4/1/-
- 58 A 9" Imari bowl with cover and stand, a 9½"
ditto bowl, a ditto deep plate and 2
saucers, (faulty)
3/1/-
- 59 An old Irish cut glass jug, 4 small diamond cut
ditto dishes and an odd glass, (faulty)
10/-
- 60 An antique mahogany tea caddy, with diamond
cut glass sugar basin, (faulty)
14/-
- 61 A 5½" Chinese famille verte jar decorated vases
of flowers, 2 ditto cups and saucers encrusted
flowers, a tea caddy with European figures
and a Chinese Lowestoft plate, (faulty)
25/- Kato
- 62 A blue and gilt Derby fern pot with stand, a blue
and floral gilt Worcester basin, a green and
gilt Old English cup, a pink and gilt ditto
teapot with stand, 2 ditto dishes, and a
French gilt vase with view, (faulty)
30/- Hirst

- 63 A miniature portrait of a young lady, a ditto of a Gentleman, a white biscuit ditto "Napoleon" and 2 silhouette portraits of a lady and Gentleman (black frames) 3/15/-
- 64 Two ditto portraits of Gentleman and 2 dagguerotypes (gilt frames) 25/-
- 65 An antique Irish cut glass and ormolu chandelier with shaped and star drops, fitted for 6 lights, (faulty) 6/10/-
- 66 A Chinese blue and white soup tureen with cover, a ditto preserve jar and cover, 2 stands, 13 plates with pierced borders, 6 octagonal ditto, 3 ditto dishes, an oval ditto, an 18" ditto plate and saucer, (faulty) 6/10/- Kals.
- 67 The white and gilt Crown Derby dessert ware comprising 2 wine coolers, 6 dishes, a tureen with 2 covers and a pair of ditto wine coolers and covers, (faulty) 3/1/- N.S.
- 68 A 10" Worcester square shaped bowl, decorated fan shaped panels in the Japanese taste, a blue and white Spode oval dish, and a blue and brown Persian pottery tazza, (faulty)
- 69 An Old English bracket clock with square dial, in ebonised case, ormolu mounted, and basket top, by Nat. Hodges, London
- 70 An antique bracket repeater with circular dial, in ebonised and brass inlaid case 8/10/-
- 71 A 10 1/4" Chinese bowl decorated flowers and utensils, a 10 1/2" Imari ditto, 2 small bowls, and a blue and gilt armorial teapot stand, (faulty) 2/15/-

- 72 A pair of Canton hexagonal jardinières with stands 1/-/-
- 73 A Chinese floral teapot, a pair of French female figures seated, on gilt stand, glass shade, a white hand and vase, and a blue and gilt cup, (faulty) 30/-
- 74 A set of red and white bone chessmen, (1 missing) 1/-/-
- 75 A pair of Sheffield plated Corinthian column candlesticks 25/-
- 76 A large copper warmer, 3 ditto jugs, a coffee maker and a pint mug 25/-
- 77 A 9" Chinese famille verte bowl and a 7" famille rose ditto (faulty) 15/- *Reason*
- 78 Three engraved wine glasses with air spiral stems 1/-/-
- 79 A pair of embossed copper buckets with coin and stud yoke, and 2 brass Roman lamps 24/-
- 80 The decorated Japanese tea ware of 25 pieces, and a Victorian wool and beadwork picture, Church scene, (faulty) 15/- *Bray*
- 81 A blue and white Adams flower vase and stand in 3 parts with birds and figures in relief, 13" high 7/10/-
- 82 A pair of 9" ditto Wedgwood 2-handled pot pourri vases, (faulty) 32/- *Bray*
- 83 A pair of 17" Continental figures of Cupids supporting candleholders 2/5/-
- 84 A 10" antique Italian Pietra Dura Casket, with engraved ivory panels, encrusted coloured stones and ormolu mounts 2/-/-

Kato

- 85 A pair of carved and gilt Nubian figure brackets
decorated in colours *3/- Talbot*
- 86 A Continental centrepiece supported by female
figures, a Japanese bronze vase, a pair of
blue and white Persian bottles, a Venetian
glass jug and sundry snake skins (faulty)
- 11/-*
An antique mahogany and ivory inlaid Dulcimer,
(faulty)
- 18/- 4. (87)*
W. H. M. M.
88 Three 17" Indian copper plaques, with idols in silver
and ormolu in relief *10/- Joshua*
- 89 A modern Toby jug
- 90 A bronze female reclining figure on marble base
- 91 A black Wedgwood teapot, a copper lustre milk jug,
and a French gilt oval basket *6/-*
- 92 A copper coffee maker *3/-*
- 93 A pair of antique brass pillar candlesticks, 2 chamber
ditto, a Dutch oval tobacco box, an egg shaped
ditto and a petrol lighter *12/-*
- 94 Three Chinese ditto 2-handled bowls, a ditto female
head, a hand bell, 2 seal boxes, 2 idols, 2 cups
with covers, and 4 wood stands *9/- Joshua*
- 95 A ditto carved ivory box containing tortoiseshell,
mother-o'-pearl and cedarwood fans, (faulty)
32/-
- 96 A 24" Chinese Celadon cistern with foliage in relief
8/10/-

- 97 An antique cut glass chandelier with shaped drops
and spangle chains, fitted for 6 electric lights *35/-*
- 98 The green and brown bordered Coalport dessert
ware decorated flowers, comprising 2 compotss,
4 dishes, and 12 plates *2/-*
- 99 Two diamond cut glass oval dishes, and a ditto
butter cooler with cover *3/10/-*
- 100 An antique serpentine tortoiseshell tea caddy
3/12/6 buy
- 101 A Sheraton design satinwood oval tray, painted
flowers and festoons *17/6*
- 102 Six Crown Derby plates, with Japanese decorations
35/- buy
- 103 Six diamond cut glass goblets
7/5/- Davis
- 104 Three engraved thick stem wine glasses, and 7 air
spiral ditto *3/5/- Davis*
- 105 An 8" old Chinese bronze and enamel elephant with
cover, and 3 ditto circular incense burners
12/6
- 14/-* *50/-* *106* *W.H.M.M.*
A large ditto leather collar with cornelian and
pierced brass medallions, and a ditto bronze
bust of a warrior, on wood plinth
- 107 The Derby dessert ware decorated in the Japanese
taste, comprising wine cooler, 1 odd cover,
tureen complete, 6 dishes, and 7 plates, (faulty)
8/10/-
- 108 An old plain glass rummer, 6 engraved goblets,
19 wine glasses, and 2 sweetmeat stands
30/- Davis
- 109 Three large Spanish earthenware figure head ewers,
a ditto funnel, a twin ditto bottle, an oil
lamp and a shaped tray, (faulty)
2/- Pallett

- 110 A pair of 11" Chinese papier mache hexagonal
vases inlaid mother-o'-pearl *30/- Thiel*
- 111 A 12" ditto black lacquer cabinet, inlaid mother-
o'-pearl, fitted interior, (faulty)
- 112 Two Old English cups and saucers decorated
flowers (faulty) *5/- Pallett*
- 113 A 13" Chinese Celadon fluted deep plate (faulty)
1/-
- 114 A 9" ditto crackle ware vase *30/-*
- 115 A 7" ditto pale blue vase *17/6*
- 116 A 9½" ditto Celadon bowl on 3 feet, decorated
foliage (faulty) *31/-*
- 117 A 13" ditto bowl with trellis designs *4/-*
- 118 A 13½" ditto white crackle beaker, (faulty)
2/-
- 119 A 3½" ditto glazed incense burner on 3 feet (faulty)
~~15/-~~ *15/-*
- 120 The green and gilt Davenport dessert service,
comprising centre dish, 7 side ditto, and
14 plates, (faulty) ~~15/-~~ *31/-*
- 121 A pair of old flintlock pistols, a foreign ditto.
2 short swords, a foreign ditto, and 2 daggers
1/- Booken
- 124 The floral Haviland dinner ware of 87 pieces, (faulty)
2/5/- Pallett
- 125 The green and gilt Bloor Derby ditto of 5 vegetable
dishes, 2 covers, salad bowl, and 46 plates
various (faulty) *4/- Kato*

- 126 The ditto Old English dessert ware, comprising
centre dish, 10 side ditto, 2 tureens, 2 covers,
1 stand and 14 plates, (faulty)
3/- Kato
- 127 Three modern Worcester floral and gilt jugs, a
green and floral Spode vase, a French figure
and 2 wood snuff boxes
22/- 1. Hoffman
- 128 A 14½" alabaster figure of a man, and a 4½"
bronze ditto of Wm. Pitt
- 129 An ivory temple with figure of Napoleon and an
Old English wood goblet with silver rim
- 130 A tortoiseshell cigar case, and match box inlaid gold
- 131 A Chinese blanc de chine Buddha, and a French
female seated figure
- 132 A blue Bohemian glass jug embossed silver, and a
French china, pearl and ormolu inkstand
- 133 A 12" Bloor Derby 2-handled vase decorated
flowers, gilt, and a pair of Crown Derby
inkpots, (faulty)
- 134 A 13½" Delft plate decorated flowers in colours,
and a pair of cloisonne floral jars with covers
- 135 A pair of 7" antique ivory figures of Cavalier and
Lady, on ebonised plinths
- 136 A Chinese bronze vase and cover with dragon
handles, 19" high
- 137 A Sevres Napoleonic tea service, pink and white
borders, decorated flowers, comprising teapot,
sugar basin, milk jug, 6 cups and 6 saucers,
in case

- 138 A Garniture de Cheminee of onyx, bronze and ormolu, comprising clock surmounted by female and eagle, signed Carrier, 1858, and a pair of 7-light candelabra en suite
- 139 A pair of French rouge marble vases, with ormolu medallions and festoons in relief, floral sprays fitted as 7-light candelabra
- 140 A set of 12 plates decorated foxhunting scenes, oak framed, (faulty)
- 141 An antique mahogany tea caddy with blue Bristol glass sugar basin, and a ditto caddy
- 142 An antique bracket striking clock with painted arch dial, in mahogany inlaid case
- 143 The Chamberlain Worcester breakfast ware with Japanese decorations, comprising muffineer, 2 covers and 13 plates
- 144 An antique diamond cut glass jug (faulty)
- 145 The blue and gilt bordered Chamberlain Worcester dessert ware, painted flowers and crests, comprising dish and 8 plates, (faulty)
- 146 A Chinese circular bowl with cover and stand, decorated and encusted flowers (faulty)
- 147 A 7½" French white biscuit group of classical figures and reptiles, under glass shade
- 148 The buff bordered Coalport dessert ware decorated flowers, comprising 2 comports, 4 dishes, and 12 plates

- 149 Two antique brass hexagonal hall lantern with
clear glass panels 2/10/- Perry.
- 150 Two 10½" Chinese bowls decorated flowers, a 5½"
ditto, a 5½" famille rose ditto, a figured
ditto, 2 Imari ditto and an Old English
ditto, (faulty) 30/-
- 151 A 8½" gilt Worcester pastille burner, painted flowers
on figure supports and marbled base 2/15/- Wade
- 152 Two Spode 2-handled vases decorated named birds
and a Royal Worcester long neck floral
ditto, (faulty) 2/-/-
- 153 The Old English blue and white dinner ware
decorated views and river scenes, 25 pieces, a
ditto foot bath and a ditto transfer plate
with an American battleship, (faulty) 9/6/- Booker
- 154 A set of three 12½" Chinese blanc de chine
hexagonal pierced vases (faulty) 30/-
- 155 A Chinese famille rose oval shaped vase with wood
cover, and a pair of ditto octagonal plates,
decorated flowering plants (faulty) 35/-
- 156 Two Canton enamel circular boxes and a ditto
patch box 22/6 Bray
- 157 An Old English bracket repeater with arched dial
in mahogany case by Brockbank, London
with bracket (faulty) 7/15/- Robinson
- 158 A japanned oblong tray painted lady feeding
swan, a ditto tray decorated flowers, a shaped
ditto, and a small ditto with village scene

- 159 A 29" antique mahogany oval ditto, a 17" ditto,
a 19" ditto circular supper tray and a 22"
ditto table top, (faulty) 35/-
- 160 An antique mahogany inlaid oblong tea caddy,
a satinwood inlaid ditto, a mahogany ditto,
a kingwood parqueterie ditto, and a buhl
tortoiseshell and brass ditto (faulty) 2/15/-
Robinson
- 161 Nine Chinese famille rose plates, 4 others, 3 Imari,
ditto and a Chinese deep ditto, (faulty) 3/-
- 162 A pair of blue and white Chinese bottles, a ditto
Delft plate and a ditto fluted dish, (faulty)
2/10/- *Kals*
- 163 A pair of bronzed cupids on green marble bases,
~~fitted for electric light, 3'10" high and~~
the marble pedestals
- 164 A bronze figure of a Young Girl, signed Martin, 28"
high with green marble pedestal
- 165 A powder blue and white Oriental circular seat, and
a Canton ditto
- 167 A blue and white Worcester circular basket, an
oval ditto (crescent mark)
- 168 The red and blue Spode floral gilt dessert service,
comprising centre dish, 12 side ditto, tureen,
and 18 plates (faulty) 15/- *John*
- 169 A pair of German cutlasses, 2 Swahili spears, 2
swords, a Spanish powder horn and a case
of native arrows
- 170 A 26" Somerset brass milk pan and a 21" Spanish
embossed charcoal burner with stirrer 10/-

16/10/- 169
W. H. M. M.

- 171 The white and gilt Worcester tea and coffee ware,
decorated roses, comprising 36 pieces (faulty) *7/15/-*
- 172 A pair of Canton bowls with covers and stands, a
famille verte bowl, an Imari ditto, a red
and blue Chinese ditto and a blue and white
ditto (faulty) *22/6 Kent*
- 173 The red and white Worcester fluted tea and coffee
ware of 14 pieces, decorated flowers
- 174 An 8" Old English bowl and cover on dolphin
supports, decorated flowers and foliage (faulty) *1/-/-*
- 175 A blue and gilt bordered Derby pattern mask lip
jug, decorated river scene and flowers *22/6 L. Hoffman*
- 176 An Old Stafford Toby jug *2/5/-*
- 177 A 16" Chinese mandarin bowl, decorated figures,
animals and birds, on matting ground (faulty) *2/5/-*
- 178 An antique moulded glass taperstick on dome
foot (faulty) *13/10/- Hughes*
6/6/- Brooke
- 179 A ditto boat shaped salt cellar, & a circular ditto *30/-*
- 180 A green Bristol cut glass pedestal *1/-/-*
- 181 A pair of 25" Chinese bronze vases and covers with
figures and foliage in relief (faulty) *15/- William*
- 182 Two Chinese famille rose plates, and 2 Derby dessert
dishes, with cornflowers (faulty) *15/-*
- 183 An 8" blue and white Chinese bottle shaped vase,
decorated leaf shaped panels *1/-/-*

- 184 A 10" ditto bottle, decorated dragon and bird 1/-/-
- 185 A 4½" Canton enamel oblong box, decorated flowers (faulty) 2/-/- Brown.
- 186 A 9½" Coalbrookdale vase encrusted flowers and an 8½" ditto vase 3/1/-
- 187 A ditto 2-handled bowl with cover 3/12/6
- 188 A 6" Chelsea figure of a Shepherdess and sheep, and a 5" Derby ditto with mandoline (faulty) 3/10/-
- 189 A Vienna pot pourri vase with cone shaped cover, decorated flowers 1/-/-
- 190 Four blue and white gilt Dresden cups and saucers, and a pink ditto (faulty) 17/6
- 191 A pair of 11" Japanese bronze vases, and a bronzed Nubian figure supporting a fern pot 12/6
- 192 A 17" royal blue and gilt Stafford 2-handled jardiniere decorated flowers and birds 4/1/-
Brookes
- 193 The red and blue gilt Mason dinner ware of soup tureen complete, 2 sauce ditto, 2 vegetable dishes with covers, 5 meat dishes, a strainer and 23 plates, (faulty) 4/10/-
- 194 A pair of buff and gilt Flight, Barr and Barr Worcester wine coolers with coats of arms (1 liner missing) (faulty) 11/10/-
- 195 A pair of 3½" Chinese green speckled vases, decorated figures in colours, ormolu handles and mounts and a pair of ditto water jugs with covers, decorated cornflowers. (faulty) 10/10/-
Joshua.

- 208 A ditto plain rummer, and 4 ditto drinking glasses,
various *25/- Weale*
- 209 Two Chelsea pattern plates decorated flowers,
2 cream Turner oval basket stands, 2 Old
English pink and floral gilt cups and saucers
10/- b. Hadwick
- 210 A small Whieldon basket, an Old English floral
chamber candlestick, a miniature portrait of a
lady in buhl frame, and a ditto in black frame
1/12/- b. Hadwick
- 211 A 5" Bow figure of a young man seated on tree
trunk *5/- Perry*
- 212 A set of 3 blue and white Turner jugs, with
~~foxhunting~~ scenes in relief
- 213 An 18" French blue and gilt 2 handled vase,
decorated figures and flowers (faulty)
- 214 An 11" ditto royal blue porcelain and ormolu
2-handled vase *17/6*
- 215 An 18" Chinese oviform vase and cover decorated
river scene, flowers, etc. and a 13½" ditto
beaker with panels of views and flowers,
(faulty) *2/11/-*
- 216 Four Eastern swords (~~1~~ silver mounted), 2 ditto
daggers, a knobkerry, and 3 battle axes,
various
- 217 A mantel clock in alabaster case, under glass
shade, a leather writing case, and a pair of
brass candlesticks *10/- b. Hadwick*
- 218 A violin with 2 bows, in black case *2/2/-*

- 219 A French kingwood and tulipwood oval shaped
jardiniere with cover, and decorated porcelain
panels 2/-/- Chadwick
- 220 A birch miniature chest of drawers, a mahogany
tea caddy fitted, a ditto box, a rosewood
ditto, an inlaid ditto, and a Chinese lacquer
ditto inlaid mother o'-pearl 2/5/- Hurst
- 221 A 31" papier mache shaped tray decorated exotic
birds and flowers, 2 black and gilt oval ditto,,
and 8 biscuit china medallions with figures
in relief, framed, (faulty) 5-2/- Pearson.
- 222 A pair of cut glass lustres, 2 ditto decanters, a
ditto claret jug with plated mounts, a red
and white engraved spirit bottle, and 2
sugar basins 2/10/- Brooks.
- 223 A green and white Wedgwood jug, a brown Doulton
ditto, an alabaster fish bowl, 5 green
Wedgwood plates, a Chinese crackle ware
dish and a Canton ditto, (faulty) 15/-/- Chadwick
- 224 A pair of Voigtlander prismatic binoculars, (faulty) 2/-/- Hurst.
- 224a Two Chinese fans, 8 samplers and 7 oddments 1/-/- Chadwick
- 225 The pink and gilt Coalport tea ware of 40 pieces 7/10/-/- Heyne
- 226 The red and blue Wedgwood dessert ware decorated
in the Japanese taste, comprising 6 dishes
and 12 plates 3/3/-/- Bray
- 227 An old Stafford Toby jug and a Punch and Judy
ditto, (faulty) 2/-/- Chadwick

228

A Rockingham cottage, a Stafford ditto, a ditto group Cow and Calf, 2 ditto Zebras, 2 groups of figures, and a ditto Toby (faulty)

229

The blue and white Chinese tea and coffee ware (odd) comprising 35 pieces (faulty) 3/5/- Kato

230

The Japanese tea ware, 19 pieces, the Satsuma ditto, 8 pieces, a ditto jar, a spill vase, and the red and white Copeland tea ware of 11 pieces (faulty) 25/-

231

The pink and gilt Crown Derby tea ware, 9 pieces, the Bloor and Crown Derby ditto ware, decorated in the Japanese taste, 12 pieces, and a yellow and gilt Billingsley sugar basin with cover and stand. (faulty) 3/-/- Chadwick

232

A Dresden oval bowl and cover with coronet and cupid pediment, decorated military subjects, a red floral ditto cup and saucer, and a ditto with cover, marine views 3/-/- Chadwick

233

Four ditto 6" female figures "The Seasons", a ditto Roman Warrior, and Man with Eagle (faulty) 2/15/- Chadwick

234

A blue and white Chinese jar, fitted for electric light, and a mahogany and inlaid spirit case fitted 4 bottles 2/5/- Chadwick

235

A 6" Chinese black and gilt lacquer box, fitted tray, a ditto writer's case, a small ditto tray, a roll of Chinese crimson silk embroidery, and 2 small Kakemonos 7/12/6

- 236 An Indian ivory mosaic inkstand, a ditto box,
a paper knife, a pair of Chinese inlaid
sandals, a red and gilt ditto lacquer shield
and a decorated letter rack 1/-/-
- 237 A Chelsea pattern oval dish, decorated exotic
birds, 3 Old English plates, 3 Canton ditto,
5 majolica ditto with figures and flowers,
and an oval plaque 2/-/- blackwick
- 238 The green leaf Bretly dessert ware of 2 dishes,
5 plates and an asparagus dish 1/-/-
- 239 An old brass lantern, 2 ditto coffee pots, a
chocolate pot, a water jug, lamp timekeeper,
2 salt boxes, a foreign casket and a copper
spirit measure, (faulty) 27/6
- 240 A ditto verge watch and pierced stand, an electric
table lamp, a stork and tortoise candlestick,
2 chamber ditto, a roaster, a charcoal burner,
a toasting fork, 2 brush pots, a pair of postail
scales and oddments 30/- blackwick
- 241 A cut glass claret jug with plated mount, a ditto
celery vase, 2 spirit bottles and 1 other 25/- Brooks
- 242 Two yellow and white ditto oblong dishes, 2 red
and white scent bottles, 2 ditto liqueur jugs,
1 other, 6 green wine glasses, a gilt sweetmeat
stand, and 7 coloured glasses 27/6
Wade
- 243 A pair of cut glass decanters, 12 ditto wine glasses,
6 cocktail ditto, and 5 custard ditto 30/- Brooks
- 244 A pair of 9½" blue and gilt Rockingham 2-handled
vases, decorated views and flowers 3/15/- Wade

40 / 245 /

- A green and gilt Old English leaf shaped basket with view, and a ditto oblong pierced dish decorated view of Stonehenge, encrusted acorns, (faulty) 3 / - / - Chadwick
- 246 A Leeds ware jug decorated battleship, coats of arms and monogram
- 247 An Old English silver resist mug, a ditto mask head milk jug, and a floral and gilt cream ditto
- 248 A copper lustre teapot, 2 ditto salt cellars, 2 Old English cups with saucers, a Davenport vase, a pair of Derby pattern shoes, and 5 pieces of blue and white china
- 249 A pair of Chinese famille verte kylins, and a ditto jar decorated flowers and cockerel, (faulty)
- 250 A pair of yellow ground ditto long neck vases decorated flowers, a pair of floral Oriental ditto, a pair of small blue and white ditto with covers, 3 Canton ditto, a Chinese figured mug, a ditto cream jug, and a Japanese pottery teapot, (faulty)
- 251 A soapstone inkpot, a fan, a pistol, a dagger, sundry mother-o'-pearl counters and oddments
- 252 A blue and white Delft ginger jar, a ditto jug, a green glazed pottery wine ewer, 3 Canton enamel cups and 1 saucer, (faulty)
- 253 Four Chinese famille rose plates, 3 others, a Chinese figured bowl, 3 ditto cups and 3 saucers various, (faulty)

- 254 A Chinese carved mother-o'-pearl card case, an ivory ditto, a puzzle box, a needlecase, a cross, a lacquer and gilt medicine case and 4 oddments
- 255 A miniature portrait of a Lady, and 4 ditto prints
- 256 The Copeland dinner ware with Chinese decorations, 48 pieces, and the Stafford floral ditto of 18 pieces (faulty)
- 257 A pair of 7½" cloisonne floral vases, a ditto ware bottle, a ditto jar and a pair of blue and white crackle vases, (faulty)
- 258 A Crown Derby gilt inkstand, decorated panels of land and marine views, (faulty)
- 259 The blue and white Roger's supper service with Chinese decorations, rose borders, bowl and cover, 4 dishes with covers, an Old English willow pattern milk jug, pap boat, and 23 ditto Mason and other plates
- 260 A pair of Chelsea Derby figures of cupids with statuary on rustic bases (faulty)
- 261 A Bristol glass mug decorated male and female figures, and a floral encrusted Dresden cup and saucer
- 262 Five Chinese famille rose plates, decorated birds and flowers, a ditto bowl, and 3 others various (faulty)
- 263 Ten ditto red and gilt deep plates, decorated warriors, male and female figures

- 264 Two 13" Imari circular dishes, a ditto cup and cover, and 6 blue and white Chinese deep plates
- 265 Three blue and white gilt Chinese mugs decorated river scenes
- 266 The ditto tea and coffee ware of 27 pieces (faulty)
- 267 An 11" Chinese bowl decorated garlands and flowers, a 7" floral ditto, and a 9" Oriental figured ditto (faulty)
- 268 A leather dressing case, few fittings
- 269 The red and blue Mason dinner ware of 56 pieces, and the ditto tea and breakfast ware of 30 pieces
- 270 An antique walnut inlaid tea caddy, a mahogany ditto, and a cut glass claret jug with plated mount
- 271 The Chinese armorial tea ware, of milk jug, plate, 2 cups and 4 saucers various, (faulty)
- 272 The green and buff gilt Old English dessert service, decorated flowers, comprising centre dish, 12 side ditto, 2 tureens complete, and 24 plates, (faulty)
- 273 A 13" Chelsea group of "Una and Lion", a 12" ditto figuree of "Justice", and an 11½" ditto "Diana at the Chase" (faulty)
- 274 The blue scroll and floral Coalport dessert service, comprising centre dish, 6 side ditto, 2 tureens with ladles, and 12 plates, (faulty)

- 275 A white Dresden box, a carved wood casket, and a horn picnic set in a leather case
- 276 A 9" blue and white Wedgwood 2-handled vase with cover, two 3½" ditto floral Chinese vases, and a Worcester ditto sauce boat
- 277 Two Sevres cups and saucers, decorated landscapes, pastoral and river scenes, by Rosset, and a Lille majolica heart shaped box, (faulty)
- 278 Three cut glass sugar basins, a moulded ditto, a funnel, 3 jelly glasses, 4 custard cups, 3 salt cellars and a blue wine glass
- 279 A 13" antique cut glass oval dish, a ditto mug, 6 wine glasses, 2 jelly and 5 custard ditto
- 280 An old Stafford group of sheep and lambs on tree trunk base, a pair of Chelsea sheep and a ditto deer, (faulty)
- 281 A 40" ormolu oval mirror plateau with chased and pierced gallery rail, decorated foliated scrollwork, cupids in relief
- 282 A Japanese bronze cheval screen with sliding panels, surmounted by eagle, dragons and other animals in relief
- 283 The green and brown Neale transfer dessert and supper service, decorated seashells, comprising 42 pieces
- 284 The yellow and sepia Copeland and Garrett dessert service decorated game, comprising centre dish, 7 side ditto and 16 plates

- 285 Twenty-four pieces of blue and white Salopian tea and coffee ware, and rosewood tea caddy, fitted (faulty)
- 286 A spiral stem wine glass, a Bona Fide cut stem drinking ditto, 2 engraved ale ditto, and 2 others
- 287 A 13" Oriental sang de boeuf gourd shaped vase, and a 16" long neck ditto, decorated flowering plants, etc.
- 288 The Old English pink lustre tea ware of 28 pieces, (faulty)
- 289 An antique pewter oval tobacco box, a papier mache blotter, a mahogany tea caddy, and a walnut shaving mirror
- 290 An Old English dish with views, a ditto floral inkstand, a spill vase, a taperstick, a pomade pot and 2 blue and white dishes, (faulty)
- 291 Two cut glass decanters, 2 plated grape spoons and scissors in case, and French glass bottle
- 292 A 16" Chinese powder blue plate decorated flowers, a 12½" blue and white ditto, a cup and saucer, and 7 Canton plates with figures on yellow ground, (faulty)
- 293 A Chelsea design melon, a Whieldon ditto (no cover), a Leeds plate, and a blue and white Liverpool ditto (faulty)
- 294 Two Castelle majolica cups, 2 fluted saucers, and 2 plates decorated figures, river scenes, (faulty)

- 295 A blue and white Chinese Hawk on rustic base,
(12" high) a 10" ditto spill vase, a pair of
tree trunk ditto with animals in relief, and
a 5" yellow and green vase, (faulty)
- 296 Six Berlin fern pots decorated roses
- 297 The Worcester transfer tea and coffee ware decorated
Italian views, comprising 10 pieces (faulty)
- 298 The grey and gilt Davenport tea and coffee ware
decorated flowers, comprising 31 pieces (faulty)
- 299

NEEDLEWORK, EMBROIDERIES & TAPESTRIES

- 300 A 17th Century needlework sampler, 1685
- 301 A pair of antique chamois leather gauntlets
embroidered in gold threadwork, and a
small sampler
- 302 An Old English silkwork panel embroidered flowers
in colours, plain centre
- 303 A white Indian embroidered shawl and a brown
ditto
- 304 An antique silkwork picture "Christ and the Woman
at the Well (faulty)
- 305 A pair of Jacobean design tapestry curtains
decorated birds and flowers, and a papier
mache workbox (faulty)

- 306 A box of Maltese, Irish and French white and black lace, flounces, scarves, table mats, etc.
- 307 A RARE AND VALUABLE 16TH CENTURY NEEDLEWORK PANEL, THE CENTRE MEDALLION DECORATED COAT OF ARMS, THE SIDE MEDALLIONS WITH STAGS IN LANDSCAPES BENEATH OAK TREES, ENCLOSED BY BORDERS OF FLOWERS, OAK LEAVES & ACORNS ON TRELIS GROUND WITH GEOMETRICAL PANELS, THE EXTERIOR BORDERS OF PANELLED FOLIAGE, about 216" x 56" (faulty)
- 308 A DITTO NEEDLEWORK PANEL, THE CENTRE DECORATED COAT OF ARMS, O.S, E.S, J.D, ENCLOSED BY CIRCULAR BORDER OF FLOWERS & FOLIAGE, SURROUNDED BY VINE LEAVES, GRAPES, ACORNS & OAK LEAVES, ON BLUE GROUND WITH EXTERIOR BORDERS OF CRESTS, FLOWERS & FOLIAGE, about 160" x 85" (faulty)

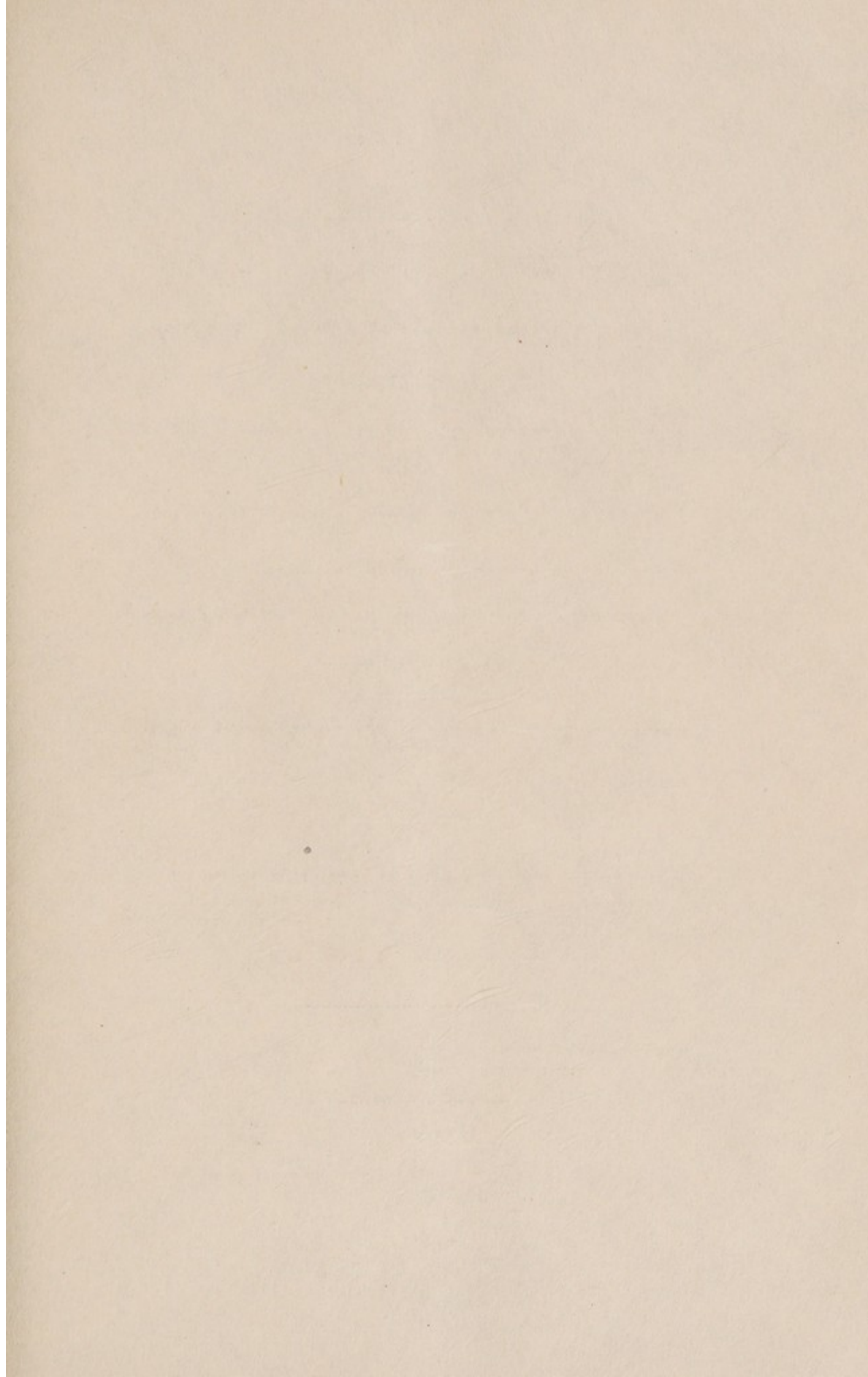
(One panel was begun by Margaret Beaufort, mother of Henry VII. and finished by the Court Ladies in the 16th Century. The other panel was worked a few years later to commemorate the marriage of Oliver St. John, Earl of Bolingbroke with Elizabeth Paulet. History tells of a visit of King James I. to Bletso Castle to inspect the panels)

- 309 A Chinese crepe de chine silk embroidered wrap
- 310 Three Indian brown satin panels, embroidered flowering trees, peacocks, in coloured silk, gold and silver threadwork, and a Chinese crimson silk scroll embroidered flowers

- 311 A Chinese blue silk and gold threadwork Kimono,
a pink and floral silk embroidered ditto,
and a white Cashmere and gold threadwork
coatee
- 312 A brown silk cover, embroidered flowers in colours
(faulty)
- 313 A blue cashmere shawl, embroidered in white
silkwork, and a needlework Sampler,
E. Anderson 1879 (faulty)
- 315 A Chinese white silk fringed shawl, embroidered
flowers
- 316 A Chinese yellow and white silk embroidered scarf
and sundry black and white lace
- 317 A large Paisley shawl, and a piece of brown cloth
- 318 Three Chinese crimson silk and gold threadwork
scrolls with mirror medallions, and 2 ditto
crimson cloth and silk embroidered panels
- 319 A ditto old gold satin bedspread embroidered
flowering plants, ducks, birds, and
chrysanthemums
- 320 An Indian satin picture, embroidered Peacock on
a flowering tree in colours, gold and silver
threadwork
- 321 Three old Needlework Samplers, S. F. Jacob, 1736,
S. Garrett, 1743, and M. Bow, 1791 (faulty)
unframed

- 322 A 17th Century Flemish tapestry panel, Queen seated beneath a canopy, with figures and buildings in background enclosed by borders of flowers, fruit and foliage 8'9" x 7'4" (faulty)
- 323 A 17th Century needlework Sampler embroidered figures, flowers, and birds
- 324 A crimson ground Persian panel, embroidered flowers in silk and silver threadwork, a plaid silk scarf, a striped ditto, and 1 other
- 325 Three Old English silkwork pictures, "Birds on a Tree" and a spray of flowers (2) (in 2 frames)
- 326 A ditto picture Female seated in a landscape with animals, oval (faulty)
- 327 An Old English needlework Sampler, by E. Cowper, 1735 (faulty)

END OF SALE



SALES OF JEWELS AND SILVER EVERY FRIDAY

. . Fortnightly Sales of . .
Antique Furniture, China, Books,
Armour, Tapestries, Ivories,
Miniatures, Clocks, Persian and
other Carpets and Rugs.
Oil Paintings, Drawings, Prints
and Engravings.

Property can be included in any sale
at short notice

INVENTORIES & VALUATIONS FOR PROBATE,
DIVISION, INSURANCE AND OTHER PURPOSES

Sales of Furniture, etc., on
Owner's Premises a Speciality
Town or Country

Commissions Executed. Moderate Terms

HURCOMBS, PICCADILLY, W.1

Telephone:
GERRARD 5971-4 (4 lines)