

Sales catalogues: Hurcomb

Publication/Creation

29th August 1930

Persistent URL

<https://wellcomecollection.org/works/ntrqgqn9>

License and attribution

This work has been identified as being free of known restrictions under copyright law, including all related and neighbouring rights and is being made available under the Creative Commons, Public Domain Mark.

You can copy, modify, distribute and perform the work, even for commercial purposes, without asking permission.



Wellcome Collection
183 Euston Road
London NW1 2BE UK
T +44 (0)20 7611 8722
E library@wellcomecollection.org
<https://wellcomecollection.org>

Howard
Original

OF
OLD ENGLISH, ORIENTAL,
&
CONTINENTAL CHINA

CUT GLASS, IVORIES, BRONZES,
BRACKET AND MANTEL CLOCKS,
NEEDLEWORK AND EMBROIDERIES
TO BE SOLD AT

HURCOMBS, PICCADILLY, W. 1.

On FRIDAY, 29TH AUGUST, 1930
AT 1 O'CLOCK PRECISELY
SALE OF BOOKS SAME DAY AT 12.15. p.m.

On View Day Prior

Phone:- Gerrard 5971-4

K.M.M. 135. 14. 8.
hp. 67 3 4 6
17. 12. 6

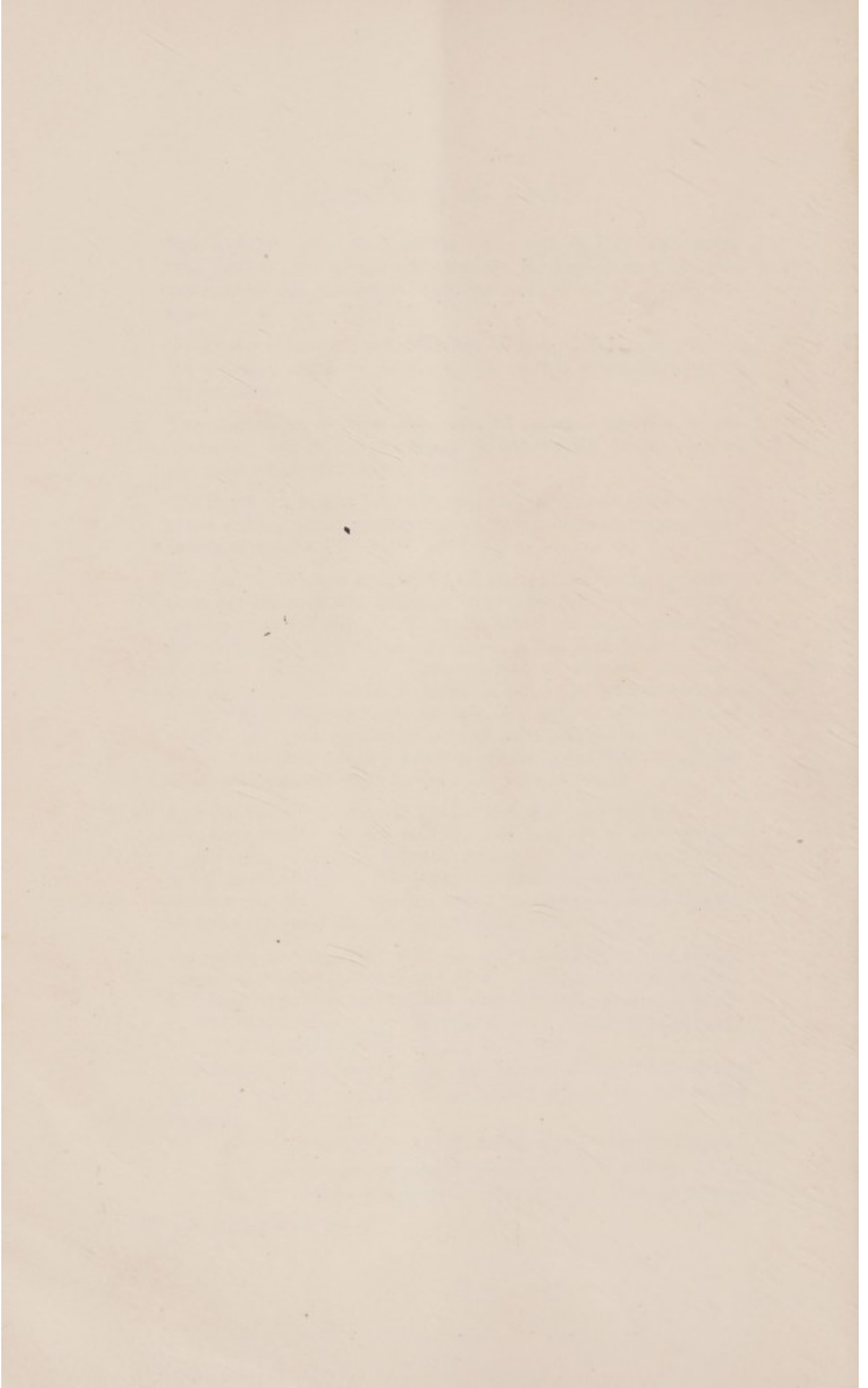
CONDITIONS OF SALE.

1. The highest bidder shall be the Purchaser, and if any dispute arise between two or more bidders the lot shall be put up again and re-sold, the Auctioneer being the sole Arbitrator in such disputes.
2. No person to advance less than one shilling ; above five pounds, five shillings, and so on, in proportion, or less, at the discretion of the Auctioneer.
3. The Auctioneer to have the right to refuse a bidding at his discretion, and to bid on behalf of the Vendor in the case of lots upon which there is a reserve.
4. The Purchaser to give his name and address, and to pay a deposit of five shillings in the pound, or more, or the whole of the purchase-money, if required.
5. The lots to be taken away and paid for, with all faults, imperfections and errors of description, at the Purchaser's risk and expense the day after the sale, W. E. HURCOMB not being responsible for the correct description, genuineness, or authenticity of, or any fault or defect in, any lot, and making no warranty whatever ; and in default W. E. HURCOMB is not to be held responsible if the lots, or any of them, are lost, damaged, or destroyed, and whether the purchase-money, or any part thereof, has been paid or not. In cases where a buyer purchases more than one lot the whole must be paid for before any one lot is delivered.
6. Any Purchaser neglecting to pay for and take away any lot or lots purchased within one day after the sale (not having been re-sold in accordance with the seventh condition) shall pay, in addition to the purchase-money, the sum of one shilling per week for warehouse-room, and also at the rate of five per cent. per annum interest on the purchase-money, to be reckoned from this day.
7. On failure of complying with the above Conditions, the money deposited shall be forfeited, and all lots remaining uncleared shall be re-sold by public or private sale, without notice, and the deficiency (if any) attending such re-sale, together with all incidental charges, shall be made good by the defaulter at this sale.
8. The Auctioneer will not recognise the transfer of any lot from one buyer to another. All lots at purchaser's risk on the fall of the hammer.

The only way in which goods can be cleared is by an Order issued from the Office. Any other clearance is not allowed or recognised.

Telephone : Gerrard 5971-4.





$$\begin{array}{r}
 40 \quad 12 \quad 6 \\
 17 \quad 12 \quad 6 \\
 \hline
 58 \quad 5'
 \end{array}$$

BUYER

Howard

Date

29-8-

AUCTIONEERS

Hurcombs

Lot

Amount

£

s.

d.

Lot

Amount

£

s.

4.
97.
115.
130
133
156.
167.
177.
184

4 8 0.
1 0 0.
1 15 0.
1 2 0.
2 10 0.
2 0 0.
2 15 0.
17 6.
1 5 0.

17 12 6.

14 78
3 4 6
189 12 6

Srv. Mu. 3

CATALOGUE

ON FRIDAY, 29th AUGUST, 1930

OLD ENGLISH, ORIENTAL & CONTINENTAL CHINA

- 1 An Old English silver resist lustre jug decorated
flowers and foliage 2.15
- 2 A Chinese circular bowl with cover and stand, 3.5
decorated and encrusted flowers, (faulty)
- 3 An 8" Indian pierced brass and silver inlaid casket 10/- Joshua.
- 4 A large wood pipe carved with Coat of Arms,
surmounted by eagle and military trophies 88/- 3.4
W.H.M.M.
- 5 Two Delft hexagonal caddies decorated figures,
birds and flowers 35/-
- 6 An old violin with bow, in black case 7/6
- 7 An Old English brass timepiece case by Muncaster,
Pomfret, and a ditto candle clock with
metal stand, (faulty) 40/- 7 3. Webster.
- 8 Six old cut glass goblets, 6 ditto wine glasses and
2 blown sugar basins, (faulty) 25/-
- 9 Twenty pieces of floral tea ware, a print, Venetian
Lady, a measuring instrument in case, a ditto
compass, a ditto spectacles, 3 leather cases
and a Japanese cover, (faulty) 10/-
- 10 An antique violin with bow, in black case 6/6

- 11 Two copper lustre goblets, a ditto jug, a gold
lustre ditto, and 2 pink lustre mugs decorated
fruit *55/- Churchill*
- 12 An 18" Oriental basin decorated landscapes, birds
and animals *32/6*
- 13 A pewter kettle on stand, a ditto teapot, an olive
wood and inlaid box, sundry native curios
and early American flints *10/-*
- 14 Four stained glass panels *5/- Joshua*
- 15 The Copeland dinner ware, decorated flowers,
comprising 98 pieces (faulty) *6/- Wey*
- 16 A 10" Imari bowl decorated flowers and foliage
2/- Hooker
- 17 A 5½" Imari bowl, 4 ditto cups and saucers, an
Oriental teapot, a 12" green glass goblet
and a plain ditto (faulty) *20/- Bate*
- 18 A 13" Irish star cut oval glass bowl
- 19 A 6" strawberry cut 2-handled circular ditto, and
a 6½" ditto panel cut dish
- 20 A 7" ditto star cut and fluted oval butter cooler
with cover, (faulty)
- 21 A pair of diamond ditto salt cellars, a ditto with
stand, and a set of 4 fluted oblong ditto
- 22 A ditto hobnail cut decanter, and a ditto claret
jug (faulty)
- 23 A diamond cut water bottle, a ditto wine glass and
a pair of fluted long neck decanters (faulty)

passed

passed

- 24 A pair of 5" ditto fluted rummers on square bases
- 25 Two 17" antique pewter plates and 12 smaller ditto
(faulty) 6 - 10 - 0
- 26 The Dresden dinner service, decorated fruit and
flowers, comprising 2 soup tureens complete,
3 sauce boats with stands, sucriere and cover,
2 salad bowls, 19 dishes, 77 plates various,
and 15 dessert ditto with pierced borders
- 27 A 5½" Chinese famille verte bleeding bowl, decorated
flowering plants and fishes, (faulty) £30.
5-5 Joshua
- 28 A pair of 8½" antique ivory figures of Venus and
Cupids, on ebonised plinths 16 gns.
Bernard
- 29 A pair of 7" ditto figures of Cavalier and Lady (ditto)
7½ gns.
- 30 A pair of tall green glass decanters with silver mounts,
and a plated hot water jug 20/- Wether.
- 31 A 13" Japanese inlaid cabinet fitted drawers, a
parqueterie inlaid oblong box, and 2 photo
albums 20/- Bentley
- 32 Twelve wax portraits, Dickens characters, a porcelain
ditto of a Lady, and a pomade pot lid 10/- Joshua
- 33 An old engraved ivory panel decorated "The
Crucifixion", a mother-o'-pearl painted Street
Scene with college, and a circular wall mirror
in blue and gilt frame 26/- do.
- 37 An antique bracket striking clock with circular dial
in mahogany case (faulty) 5/- Bentley
- 38 A mantel ditto clock, in Egyptian design ormolu case
10/-

- 39 A small Old English bracket ditto with arch dial,
fitted calendar, in ebonised case, with brackets
by J. & H. Jump, London 25. Berry
- 40 The green and gilt Coalport dessert ware, decorated
flowers, comprising 4 dishes and 11 plates
3-10 Wap.
- 41 The blue and gilt bordered Minton breakfast ware
of 46 pieces (faulty) 2.
- 42 Four engraved spirit glasses, 3 tall diamond cut thistle
shaped champagne ditto, and 4 wine ditto
30/- Bentley.
- 43 Twelve fluted tumblers, and 2 ground glass and gilt
fruit stands, ornamented with green stones
2. 5 Churchill
- 44 A Continental majolica mantel clock with gryphon
supports and cupid surmount, and a 21"
ditto figure of a Huntsman supporting a
candleholder (faulty) 30/-
- 45 The Crown Derby dinner service, painted flowers
and gilt, comprising 2 soup tureens with
covers, 2 sauce ditto complete, salad bowl,
2 vegetable dishes with covers, 11 meat
dishes and 94 plates various (faulty)
£60 W. S.
- 46 A Chelsea vase and cover with bird surmount,
pierced panels, mask heads and flowers in
relief, 12½" high (faulty) 3-12 Berry
- 47 An 8" Chinese design powder blue vase and cover,
decorated panels of flowering plants, (faulty)
27/6
- 48 A blue and gilt Minton tea and coffee set, decorated
grey flowers and foliage, comprising sugar
basin, slop basin, milk jug, 2 plates, 20 cups
and 22 saucers (faulty) 22.

- 49 A Cromwellian brass lantern clock with oak bracket *2-10 Webster*
- 50 The blue and white Worcester tea ware of 8 pieces *3-5 Withers*
- 51 A pair of 11" Crown Derby design figures of Shakespeare and Milton *32/6*
- 52 A 8" Chelsea figure of Mars and an 11" old Stafford ditto "Diana" (faulty) *40/- Withers*
- 53 An 8½" Chinese 2-handled vase, a 6½" ditto, a 9" ditto jar with cover and handle, and a ditto group of Man and Stag *16/-*
- passed* { 54 The green and gilt Davenport dessert service comprising centre dish, 7 side ditto, and 14 plates (faulty)
- 55 A pair of old flintflock pistols, a foreign ditto, 2 short swords, a foreign ditto, and 2 daggers
- 56 An 8" Chinese famille rose oval shaped vase with wood cover, and a pair of ditto octagonal plates, decorated flowering plants (faulty) *25/-*
- 57 Six modern Worcester plates decorated flowers and fruit *30.*
- 58 A brass travelling alarm clock *32/6 Money*
- 59 An old copper urn, a brass trivet, a pewter teapot, milk jug, and 3 tankards *37/6 King*
- 60 Two ditto mahogany and inlaid tea caddies, a plain ditto, 2 glass rummers, 2 Old English dogs, and a French box, surmounted by figures, (faulty) *35/-*

40/. 61]

An old leather mug with silver mount and monogram, and a Stafford china mug decorated foxhunting, (faulty)

5. Webster.

- 62 The Spode tea and coffee ware, decorated flowers in colours and gilt, comprising teapot with stand, sugar basin, slop basin, milk jug, 2 plates, 18 cups, and 12 saucers, (faulty)

13.

- 63 The Old English dessert ware painted flowers and gilt, comprising tureen, 2 dishes, 5 plates, and a Stafford jug and plate, (faulty)

45/-

- 64 A purple and gilt Sevres Napoleonic inkstand

2.

- 65 An antique pewter plate, 19" diam., four ditto 17" diam., and a ditto, 15" diam.

3 Bently

- 66 A 13½" Chinese famille verte plate with shaped edge, panelled border, decorated garden scenes

8-15 Sporo.

- 67 A pair of Chelsea figures with flowers and fruit floral bowers, scroll bases *5/5*

- 68 A Chinese bronze vase and cover with dragon handles 19" high

- 69 A Sevres Napoleonic tea service, pink and white borders, decorated flowers, comprising teapot, sugar basin, milk jug, 6 cups and 6 saucers in case

- 70 A Garniture de Cheminee of onyx, bronze and ormolu comprising clock surmounted by female and Eagle, signed Carrier, 1858, and a pair of 7-light candelabra en suite

Passed

present

71

A pair of French rouge marble vases, green veined, with bases, ormolu medallions and festoons in relief, floral sprays, fitted as 7-light candelabra

72

A pair of Sevres vases (Louis Phillipe)

4. Homer.

73

A Capo di Monte sucriere, a ditto jar with figure cover, a ditto gilt oval bowl, mermaid handles, a blue and white Oriental eggshell cup and saucer, and 2 glass goblets engraved birds and foliage

17/6.

74

A French mantel clock with figure of Napoleon in relief on mahogany base, fitted musical box, and a set of red and white Indian ivory chessmen, on velvet stand, under glass shades

3 5 Nap.

75

The buff and gilt Rockingham tea and coffee ware, comprising slop basin, 18 plates, 24 cups and 12 saucers

6. 10.

76

The Copeland dessert ware decorated flowers and insects, comprising 2 comports, 4 dishes and 12 plates

5.

77

Two blue and gilt bordered Derby mugs, painted flowers and monograms, with glass bases (faulty)

10/

78

The green and gilt Old English tea ware decorated flowers, comprising 4 cups and 6 saucers, and the Chinese tea and coffee ware of 4 teapots, 13 cups, 7 saucers and a teapot stand, (faulty)

25. Buxton.

79

A pair of 20" opaque glass vases decorated foliated scrollwork (faulty)

2. 10 Buxton

- 80 The green and gilt bordered French dinner ware with monograms, Napoleon III., comprising soup tureen, sauce ditto complete, salad bowl, and 66 plates (faulty) *3.*
- 81 The brown and blue gilt Stafford ditto, comprising soup tureen complete, a sauce ditto, 2 lids, 2 stands, 4 vegetable dishes, 3 covers, 4 meat dishes and 50 plates various *Bentley 2. do.*
- 82 The Old English tea ware of 15 pieces with Chinese decorations, and the Sunderland lustre ditto of 18 pieces *25/- Weller.*
- 83 Five blue and white Worcester cups, 8 ditto saucers, 2 Old English dishes and 6 ditto plates decorated green foliage *20/- do.*
- 84 A Nelson Toby-jug, a John Bull ditto, and a Robin Hood ditto *20/- Bentley.*
- 85 A pink and shell pattern Wedgwood dessert service comprising 8 dishes and 12 plates *35/-*
- 86 The green and gilt Rockingham tea service decorated roses, comprising teapot, sugar basin, slop basin, milk jug, 2 plates, 12 cups and 12 saucers *H. Withers*
- passed* 87 Three star cut oblong glass dishes (faulty).
- 88 An Agra marble inlaid chess top table *14/- Catnach*
- 89 A pair of French china groups of male and female figures, 2 Dresden oval shaped bowls and covers encrusted flowers, 3 ditto baskets decorated flowers and birds, and 2 French inkstands, (faulty) *2.5*

- 90 The Chelsea Derby coffee ware decorated green
floral festoons, comprising coffee pot, 6 cups
and 6 saucers *4.*
- 91 A small French enamel shaped box decorated flowers
10/- Weller.
- 92 An Old English tortoiseshell and silver oval shaped
etui *55/-*
- 93 Two Chinese bronze and enamel birds *30/- King.*
- 94 A 15" Chinese bowl decorated figures, a 10" ditto
bowl, and a 10" ditto with animals (faulty)
2-10 Wey.
- 95 A pair of Coalbrookdale bottles encrusted flowers,
and a Dresden oval tureen with cover and
stand, decorated flowers, (faulty) *45.*
- 96 Four tall thick stem wine glasses and a moulded
long neck decanter *30/- Churchill*
- (20/-) 3 (97)*
Military Section
101 The antique armour comprising a steel dome helmet,
a chain mail coat, and a steel and gold
damascened armlet
- 102 A 3½" Chelsea deer, a pair of ditto Cupids, 2 glass
bottles, and a medal in case *45/-*
- 103 A Sheffield plated spirit stand with 4 cut glass
bottles and labels, a ditto cruet fitted 4
bottles, and a toast rack (faulty) *12/- Goshy*
- The Old English dessert service, decorated panels
of flowers on mayflower ground, comprising
centre dish, 6 side ditto, 2 tureens and 11
plates (faulty) *11-10 Goshy.*

- 104 Three Turner ware meat dishes and 1 cover in colours 20/-
- 105 A set of 5 Chinese vases (3 with covers), decorated figures in colours, blue and white borders (faulty) 12. 10.
- 106 The buff and gilt Old English dessert service, decorated flowers, comprising centre dish, 6 side ditto, and 12 plates (faulty) 6. 10 Way.
- 107 A pair of gilt Bohemian glass vases with female portraits, a ditto fruit stand, a ribbed floral epergne, 3 green flower vases, a brass Roman lamp and a musical box (faulty) 25/-
- 108 An Old English bracket striking clock with arch dial, in ebonised case, by T. Benneworth, St. Albans 8 Way.
- 109 A French mantel striking clock in buhl and tortoiseshell case 45/-
- 110 A pair of cut glass long neck decanters, a pair of engraved ditto, and a pair of old ditto ale glasses 10/-
- 111 Two blue and gilt Worcester dessert dishes and 4 ditto plates decorated views 4. 10.
- 113 An antique hexagonal tea caddy with rolled paper panels of flowers and foliage 25/-
- 114 The buff and white gilt Old English tea and coffee service, comprising teapot with stand, sugar basin, slop basin, milk jug, 2 plates, 17 cups and 9 saucers (faulty) 9. 10

all for except
W pap boat

II

25/-

(35/-) 3 (115)

A brown and white Turner ware teapot and milk jug with cupids in relief, a Davenport ditto jug, and 2 Stafford pap boats (faulty)

10/- W H M M

116 A 13½" Delit deep plate decorated peacock, a 13½" ditto plate with flowers and foliage, and 1 other (faulty) 15/-

117 Two Bristol glass mugs and 3 ditto saucers, decorated figure, dog, birds, and flowers (faulty) 12/-

118 Three 9" Chinese design famille rose plates decorated birds and flowers 20/- W H M

119 Two ditto plates decorated flowers and a Chinese famille rose ditto 22/- do

120 An 11" brown and white Turner ware bowl with classical figure in relief 20/-

121 The Stafford red and floral lustre tea service comprising teapot, sugar basin, slop basin, cream jug, milk jug, 11 cups and 10 saucers (faulty) 30/-

122 Three blue and white Chinese octagonal dishes, a ditto tureen, a basket with stand, 3 plates, 2 small bowls, 2 cups, a cover and a saucer (faulty) 22/-

123 A blue and white Worcester teapot, 3 ditto English mugs, a measure, a pepperette, 2 sauce boats, 3 basins, a large cup, 7 smaller ditto, a basket, a dish, 3 plates, a saucer, a small vase and a cream jug (faulty) 14/-

- 124 A pink lustre cup, 3 ditto saucers, 2 other cups,
5 saucers, a teapot, 2 plates, a mug, 2 basins,
a plate, 4 cups, 2 saucers, and a glass cup
(faulty) 14/-
- 125 Four Stafford Toby jugs, (faulty) 10/-
- 126 A ditto, a female ditto, a ditto snuff taker and
a male ditto 18/-
- 127 A Nelson ditto, a Robin Hood ditto, a Whieldon
ditto and a sailor teapot, (faulty) 25/- broken
- 128 A brown stone ditto, a copper lustre ditto, a silver
lustre ditto and a pair of monk ditto (faulty) 30/-
- 129 Five small ditto various, a ditto inkpot and 6 ditto
pepperettes 18/-
- 130 An old Stafford brown pottery puzzle jug, a white
and gold lustre ditto, 8 others various, a blue
Delft 2-handled pot, a blue glass, and a
claret jug (faulty)
- 131 Four engraved long neck decanters and 36 ditto
wine glasses, various 35/-

- 132 The green and gilt Worcester dessert service
painted flowers, comprising centre dish,
8 side ditto, 2 tureens complete and 18 plates.
\$30 Wap.
- 133 A pair of heavy ormolu foliated chandeliers fitted
12 lights each

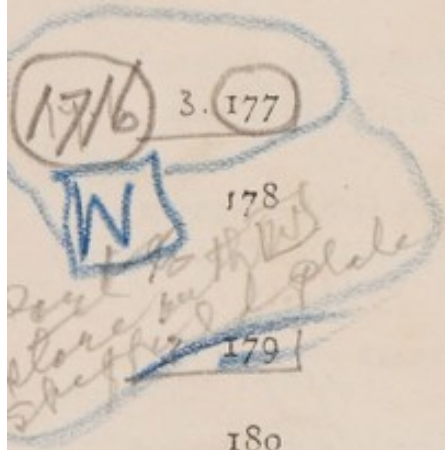
- 134 A 9" antique diamond cut glass circular stand
and a 9" hobnail cut oval dish
- 135 A Parian bust of Apollo

- 136 A French brass figure of Venus on marble base,
19" high 20/-
- 137 A pair of Empire bronze 2-light candelabra 10/-
- 138 A 15" blue and white Oriental bowl and cover
(faulty) 14/-
- 139 A pair of 11" Chinese papier mache hexagonal
vases inlaid mother-o'-pearl, decorated figures,
animals and trees 35/-
- 140 The blue and white gilt Chinese tea ware of
10 pieces 20/-
- 141 Six ditto cups and saucers in colours, 2 Japanese
bottles and a vase (faulty) 10/-
- 142 A set of 10" Crown Derby design male and female
groups, (faulty) 35/-
- 143 A pair of 9" Dresden male and female musicians 25/-
- 144 Five Continental ditto figures various and 2 Stafford
cows and milk maids, (faulty) 20/- Bentley.
- 145 The Stafford Canton dinner ware of 44 pieces and
2 blue and white dishes 25/-
- 146 A maple and rosewood inlaid box and a ditto
tea caddy 5/-
- 147 A 29" black and gilt japanned tray decorated
flowers and butterflies 12/- Way
- 148 An Old English mahogany serpentine knife box
and a papier mache snuff box 28/- Way.

- 149 *passed* Two miniature portraits of Gentlemen in metal frames, a ditto portrait in black frame, and 3 ditto silhouette portraits
- 150 A 26" Della Robbia panel, with scriptural figures in relief, The Adoration, (faulty) *60/-*
- 151 A French mantel striking clock in pink and gilt case encrusted flowers, painted portrait and cupids, on wood stand *35/- Brooke*
- 152 A pair of 17½" Dresden vases with lion mask and snake handles, decorated figures, and a pink and gilt French vase and cover, decorated flowers, etc. (faulty) *2.*
- 153 A pair of bronze ⁵ 4-light candelabra with cupids in relief *20/-*
- 154 The red and blue gilt Spode tea and coffee ware with Chinese decorations, comprising teapot, stand and cover, sugar basin, slop ditto, milk jug, 2 plates, 14 cups, and 7 saucers (faulty) *5.*
- 155 A panel cut and fluted glass jug *25/- Brooke*
- (40/-) 4. 156*
W H M M
- 156 A Victorian silver vinaigrette, a filigree basket, a foreign oval box, and 2 Chinese carved ivory card cases
- 157 The blue and gilt Old English tea ware decorated flowers, comprising 12 pieces (faulty) *5/-*
- 158 Two brass electric pendants with cut glass shades, a parchment ditto, and 3 ditto wall lights with tinted and embossed glass sides (faulty)

- 159 The red and gilt scroll Davenport tea ware,
comprising teapot with stand, milk jug, sugar
basin, slop basin, 2 plates, 9 cups and 11
saucers (faulty) *4-5 Withers*
- 160 An Old English bracket repeater with circular dial,
in mahogany and inlaid case, by J. Bancroft,
Scarborough, with bracket *12.*
- 161 A Satsuma tea set of 6 cups and 6 saucers in case,
a black and gilt papier mache oval tray, and
a Madagascan floral bridal wreath (faulty) *10/- Bantley*
- 162 An 11" Delft oval shaped bowl, decorated flowers
and fruit, a ditto tankard with figures, a
ditto ewer decorated flowers, and a 10"
majolica 2-handled apothecary jar with
figure of a Bishop (faulty) *25/- Spuro*
- 164 An antique bracket striking clock with painted
arch dial, in mahogany and inlaid case *6/10*
- 165 A pair of 6½" Chelsea male and female figures
with floral bowers and candleholders (faulty) *10.*
- 166 A pair of 4" cloisonne floral vases *5/-*
- 55/- 15- 167*
*Bring to
official for
inspection
and instructions*
168 An antique scent case containing 4 ruby glass
bottles and bowl, a silver gilt funnel and
3 mounts (faulty) *medicine* *medicine case. antique*
- 169 A pair of Chelsea pigeon dishes and covers (faulty) *6.*
- 170 A pewter mug, a foreign metal bowl, a copper
kettle, and a tortoiseshell comb *10/-*
- A composition oval panel "The Holy Family",
(faulty) *30/- Joshua*

- 171 A small French mantel striking clock in inlaid case *30/-*
- 172 The blue and white Wedgwood tea and coffee ware of 29 pieces (faulty) *1/-*
- 173 A pair of 7" Chelsea cupid candlesticks (faulty), and a Worcester transfer (R.H.) cup and saucer *2-5 Reason.*
- 174 A Chinese lacquer games box with mother-o'-pearl and ivory counters, a set of bone chessmen, a model guitar, a green pottery candlestick, 2 Continental tankards, and an Algerian pendant (faulty) *15/- Batterick*
- 175 A Chinese carved rhinoceros horn cup *37/6*
- 176 A pair of Dutch green glass decanters and a Continental engraved beaker (faulty) *10/-*
- 17/6* 3. 177 A copper urn with Prince of Wales feathers in relief *[W]*
- 178* Two Old English cups and saucers, decorated flowers (odd) *20/-*
- 179* Three antique cut glass oval cruet bottles (faulty) *[W] 4-5 Hurst*
- 180 A 12" Bloor Derby 2-handled vase, decorated flowers and gilt, and a pair of Crown Derby inkpots (faulty)
- 181 A 13½" Delft plate decorated flowers in colours and a pair of cloisonné floral jars with covers *22/-*
- 182 A pair of Sheraton mahogany and inlaid serpentine knife boxes, containing 63 ivory handled knives and forks *£50*



183

An antique cut glass octagonal caddy lid, silver mounted, and a shell spoon *207 Hester*

(25/6) 184

A Whieldon pattern Toby jug, 2 Stafford figures, and a needlework picture "Battleship"

For Naval Section

185

A blue and white Spode footbath, a ~~Stafford~~ *WHM* figure of Napoleon, 2 cut glass water bottles, 2 brass candlesticks, and a pewter mug

186

An Empire mantel striking clock in ormolu case with female and cupid, on marble base, under glass shade, Drouot, Paris

187

A soapstone group of 9 figures on rockery and a copper urn

188

A pair of blue and gilt Sevres vases and covers, ormolu mounts, decorated battle and river scenes

189

Three Continental groups of male and female figures, and 3 Capo di Monte ditto figures

190

A pair of cut glass decanters, a green and gilt glass vase, and a needlework picture of a Battleship

191

A pair of Chelsea Derby figures of Shepherd and Shepherdess, 7" high, and a ditto group of cupids with grindstone, and arrows (faulty) 9" high

192

An antique mahogany and inlaid tea caddy, a plated soft metal coffee set, a Jackfield milk jug, and a French floral vase

- 193 A 17" blue and white Chinese vase, decorated
kylins, a 14" flambe long neck ditto, and
a blue and white dragon jar with cover
(faulty), wood stands
- 194 The blue and gilt bordered Chamberlain Worcester
dessert ware, painted flowers and crests,
comprising 1 dish and 8 plates (faulty)
- 195 Three white Stafford embossed jugs
- 196 An antique mahogany tea caddy fitted
- 197 Three 14" blue and white Chinese plates, three
12½" ditto, 2 Delft ditto, and a French
armorial majolica ditto (faulty)
- 198 Two ditto floral plates in colours and a piece of
Victorian needlework (faulty)
- 199 A 15" Chinese famille verte plaque, decorated
flowering tree and bird, mounted on 3 feet
(faulty)
- 200 The Old English tea and coffee service, painted
flowers and gilt, comprising teapot, sugar
basin, slop ditto, 3 plates, 19 cups and 12
saucers (faulty) 23.
- 201 The Davenport dinner ware with Chinese decorations
of 10 pieces, and the Chinese black pottery
and pewter tea set of 4 pieces (faulty) 35
- 202 The Chamberlain Worcester dessert service decorated
crests and gilt foliage, comprising centre dish,
11 side ditto, 2 sucrieres with covers, 1 stand,
and 23 plates, and the ditto tea ware of
teapot with stand, sugar basin, slop basin,
milk jug, 17 cups and 6 saucers (faulty)
30-

- 203 The breakfast ware with Japanese decorations,
comprising muffineer, 2 covers, and 13 plates
311
- 204 The green Wedgwood dessert ware of 2 dishes,
and 11 plates, 2 Stafford dishes in colours,
4 small Mason plates, and a blue and white
dish
2.4.6 Jarvis
- 205 Two Chinese famille rose octagonal plates, an Imari
ditto, and an 11" mazarin blue bowl (faulty)
2.10
- 206 A set of 3 Stafford ironstone octagonal pot pourri
vases with covers a pair of ditto Cottages,
and 5 ruby and amber Bohemian liqueur
glasses
4. Weller.
- 207 A French majolica inkstand, a ditto jug, 3 dishes,
a Persian vase, a Continental majolica dish,
2 vases, 2 jars, 6 cups, 5 covers, 2 cups and
2 saucers
12.6. Joshua.
- 208 A set of 5 blue and white Delft octagonal vases,
a Vienna decorated cup with saucer, and 3
ditto jars and stands
2.
- 209 Three blue and white Chinese mugs with river
scenes, and a Oriental ditto dragon bowl
2.10 King.
- 210 A 9" ditto floral jardiniere, an Oriental ditto vase,
and a Canton ditto with cover (faulty)
25 Hancock.
- 211 Twelve ditto famille rose saucers, a floral teapot,
a figured milk jug, a ditto bowl, an Oriental
cup with saucer, and a Canton jar and cover
(faulty)
50 Hancock.
- 212 The blue and white gilt ditto tea and coffee ware
of 38 pieces, and the blue and white ditto
of 20 pieces (faulty)
50

- 213 The Hispano Muresque lustre ware comprising a 15" alms dish, 2 small dishes, 2 jars, and a long neck vase *301-Bentley*
- 214 A Chinese carved ivory trinket box, a ditto ornament "Gymnasts", 2 model tortoiseshell mandolines, a wood carving and an oddment *251-Bentley*
- 215 The blue and white Worcester tea and coffee ware decorated flowers, of 34 pieces, a large ditto deep plate, and a dish *615*
- 216 An Old English coffee pot, decorated flowers and blue borders, a carved bamboo spill vase, a Belleek oval basket and 3 white flower holders with figures in relief *201-Bentley*
- 217 The blue and gilt porcelain and ormolu writing set, decorated flowers and cupids, comprising inkstand, pen tray, and a pair of candlesticks in leather case *3-Brooks*
- 218 A Dresden figured inkstand, 16 pieces of ditto floral tea ware, a ditto 2-handled bowl with cover and an armorial plate *201*
- 219 The blue and white willow pattern tea ware of 14 pieces, the French white eggshell ditto of 26 pieces, the Minton seaweed ditto of 12 pieces, and the harlequin coffee ware of 15 pieces (faulty) *107*
- 220 The grey and gilt Rockingham tea ware, comprising teapot with stand, milk jug, sugar basin, slop ditto, 2 plates, 24 cups and 12 saucers (faulty) *15*

- 221 The blue and gilt Crown Derby tea and coffee
ditto of 2 plates, 15 cups, 10 saucers, slop
basin, and milk jug 3-10
- 222 The pale green bordered dessert ware of 3 dishes,
12 plates and a willow pattern dish 10/-
- 223 The blue and white gilt dinner ware comprising
soup tureen with cover, 2 sauce ditto, 2 dishes
and covers, and a salad bowl (faulty) 10/-
- 224 A 10½" cut glass oblong dish, and 2 oval ditto
Passell
- 225 Three ditto spirit bottles, 11 hollow stem champagne
glasses and 2 hock ditto 25/-
- 226 Two Spode 2-handled vases decorated named birds
and gilt and a Royal Worcester long neck floral
ditto (faulty) 10/-
- 227 A blue and white Old English sauce boat, a ditto jug,
a tureen, 2 dishes, 6 plates, 2 bowls, a ditto
Delft plate and 2 Japanese ditto, (faulty).
- 228 A 9" Imari bowl decorated flowers and trees, a
Chinese shell tray, and a French timepiece
in green and floral case (faulty) 25
- 229 A blue and gilt Crown Derby dish and cover with
flowers, 14 Old English ornamental plates
various, 5 ditto dishes and stands, (faulty) 30/-
- 230 A Worcester transfer figured teapot, a blue and
floral gilt Derby coffee pot, 15 pieces of
Belleek tea ware, and 3 Old English cups
various (faulty) 10/-

- 231 Two Coalport jugs with views, a harvest mug,
a silver lustre milk jug, a teapot, a Wedgwood
milk jug, and 5 old pomade pot lids (faulty) 20/-
- 232 A pair of 16" Satsuma figured and gilt vases and
a pair of cut and moulded glass decanters 20/-
- 232a The green and floral gilt Coalport coffee set of 6
cups and 6 saucers in case 25/-
- 233 The blue and gilt Coalport tea ware, decorated
views, comprising 2 plates, 12 cups and
6 saucers (faulty) 5. 5.
- 234 A small Sheraton inlaid tea caddy and a papier
mache ditto, decorated flowers, with spoon 22
- 235 An antique mahogany tea caddy with blue Bristol
glass sugar basin and a ditto caddy passed.
- 236 Two cut glass scent bottles, 2 ditto claret jugs
with plated mounts, and an amber glass ditto 15/- Weber.
- 237 The Old English tea ware decorated views in sepia,
comprising teapot with stand, milk jug,
sugar basin, slop ditto, 2 plates, 11 cups
and 12 saucers 2. 17. 6 Weber.
- 238 Two Chinese famille rose plates enamelled flowers,
and scroll borders (faulty) 18/-
- 239 The blue and white Old English willow pattern
tea and coffee ware of 34 pieces 6. 5.
- 240 The floral festooned Minton tea ware of 36 pieces 2. 5.

- 241 A pair of Chelsea design male and female figures with floral bowers and candleholders, and a pair of Dresden bottles decorated figures and flowers *2-10 Bentley.*
- 242 A 5" pink and gilt Sevres jardiniere, decorated figures and flowers, a 7" ditto with flowers (faulty) and a blue and white Oriental ginger jar *2 of Hurst.*
- 243 A Chinese crystal glass parrot and 3 small jade hangers (faulty) *25/- Joshua.*
- 244 A blue and white Worcester teapot, milk jug, 2 cream ditto, a fluted teapoy, and 2 ditto transfer cups and saucers with views (faulty) *22/6 Weller.*
- 245 A 12" Chinese black lacquer cabinet inlaid mother-o'-pearl, fitted interior (faulty) *20/-*
- 246 The buff bordered Coalport dessert ware, decorated flowers, comprising 2 comports, 4 dishes and 12 plates *2. 10.*
- 247 An Old English mahogany serpentine knife box, fitted for stationery *3.5 Weller*
- 248 A wall mirror in ornamental silvered frame *18/- Bentley*
- 249 A cut glass pillar electric table lamp, an engraved vase shaped ditto, and a French purple globular ditto with green silk and vellum shades *2-15 Hurst.*
- 250 An embossed ground glass ditto, and 2 globular ditto with buff vellum shades *4 10-00.*
- 251 A plated 3-light ditto, a green jadeite single glass vase ditto, and an oblong shaped pottery 2-light ditto with 2 vellum shades *20/-*
- 252 A 6" cut glass bowl with cover and stand, a 5½" ditto bowl and cover *22/- Latham*

- 253 A 9" ditto rose bowl, 2 thistle shaped liqueur jugs,
4 ditto hollow stem glasses, and a cut cruet
bottle 10/-
- 254 A Chinese carved amber figure of a Man with fish,
a green jadeite paste pot, an ormolu magnifying
glass (in cases) and a mother-o'-pearl etui
2. 15 Joshua.
- 255 A 6½" Dresden serpentine casket, decorated views
etc., and a Sevres castor with flowers
35/- Bentley.
- 256 A pair of Chinese deep blue parrots, on wood stands
10/-
- 257 An 8½" ditto famille verte deep plate, decorated
flowers, a Canton ditto and a blue and white
ditto 2. 10 Frome.
- 258 A 9" Delft floral ditto in colours, 7 pieces of red
and blue dinner ware, and the cream and
brown Wedgwood ditto of 8 pieces (faulty)
15/- Bentley.
- 259 A 9½" blue and white Chinese bottle, and a 12"
Celadon crackle oval 2-handled vase
25/- Clarke.
- 260 An 11½" ditto Celadon bowl on feet, a 12½" cream
crackle ware basin, and a 6½" alabaster
2-handled bowl 30/-
- 261 An old Stafford figure of a dog, and a ditto mask
head cup (faulty) 2.
- 262 A ditto Toby jug, (faulty) 3.
- 263 An 8" ditto figure of Neptune on shell encrusted
base (faulty) 2.
- 264 A Queen Anne mahogany wall mirror and a 21"
Sheraton inlaid circular tray (faulty)
35/-

- 265 A 14½" alabaster figure of a Man, and a 4½" bronze ditto of Wm. Pitt 207
- 266 An ivory temple with figure of Napoleon, and an Old English wood goblet with silver rim 2-15 Scott.
- 267 A tortoiseshell cigar case and a ditto match box inlaid gold 2-10 do
- 268 A 7½" Chinese blanc de chine Buddha and a French female seated figure 15/-
- 269 A blue Bohemian glass jug embossed with silver and a French china, pearl and ormolu inkstand 35.
- ~~270~~ A 7½" French white biscuit group of ^{very fragile} classical figures and reptiles, under glass shade 6-10 H.M.M. Harper
- 271 A tall floral and gilt Copeland and Garrett flower vase, a ditto ewer and 2 Oriental basins with European figures
- 272 A Sevres diamond shaped casket, decorated figures and views, a floral and figured cigarette box with silver gilt mounts, and an old pewter tobacco jar
- 273 A blue and floral gilt Berlin cup with cover and stand, and 6 blue and gilt modern Worcester coffee cups with saucers
- 274 A blue and gilt Minton cup and saucer, decorated baskets of roses, a Vienna decorated ditto, and a Sevres 2-handled bowl with cover and stand, flowers and festoons
- 275 The pink and gilt Copeland tea ware comprising sugar basin, hot water jug, 12 cups and 12 saucers

- 276 The blue and gilt modern Worcester dessert service, decorated fruit, comprising 2 comports, 6 dishes and 12 plates
- 277 The ditto tea ware, decorated flowers, comprising sugar basin, milk jug, 12 cups, 12 saucers, and 12 plates
- 278 The powder blue and floral bordered ditto dinner ware of sauce tureen complete, sauce boat, 2 stands, 4 dishes and 47 plates
- 279 An antique diamond cut glass jug (faulty)
- 280 Six ditto double lipped and fluted finger bowls, a plain ditto, and 6 panel cut wine glasses
- 281 Eight panel cut 2-lipped finger bowls and 7 others
- 282 An old Stafford Toby jug, (faulty)
- 283 A pair of 9" Chinese famille verte vases, decorated panels of flowering trees and baskets of flowers
- 284 Seven ditto famille rose plates, decorated flowers and birds
- 285 The white and gilt fluted Crown Derby tea ware of 17 pieces (faulty)
- 286 A Sheraton design satinwood oval tray, painted flowers and festoons
- 287 Six Crown Derby plates with Japanese decorations
- 288 Six diamond cut goblets

- 289 Three engraved thick stem wine glasses, and 7
air spiral ditto
- 290 An antique walnut inlaid tea caddy, a mahogany
ditto, and a cut glass claret jug with plated
mount
- 291 The Chinese armorial tea ware of milk jug, plate,
2 cups and 4 saucers various (faulty)
- 292 A 13" Chelsea figure of "Una and Lion", a 12"
ditto figure of "Justice", and a 11½" ditto
"Diana at the Chase" (faulty)
- 293 A pair of 14½" Chinese oval vases and covers,
decorated figures, encrusted berries and
foliage (faulty)
- 294 A 7" ditto group of Chinamen with peacock and
dog, and two 11½" ditto female figures holding
lotus flowers (faulty)
- 295 A green and gilt, Old English miniature jug and
basin painted flowers, a ditto mug, and a ditto
screw top jar decorated view of Tintern Abbey
- 296 Nine ditto harlequin cups and saucers various,
decorated flowers and birds gilt
- 297 A set of ivory draughtsmen, with dice boxes, a set
of bone chessmen, and a lacquer games box
- 298 A pair of 4" Old English figures of Girls with
lambs, a pair of silk fans embroidered female
figures, and 2 dagguerotypes (faulty)
- 299 A set of 3 Ccalbrookdale vases, encrusted flowers,
and a ditto chamber candlestick

- 300 Two Bristol glass paper weights
- 301 A pair of French ormolu candleholders with covers,
on goat head and feet supports
- 302 An 18" Oriental plaque decorated chrysanthemums
- 303 A pair of 18½" Imari vases, decorated figures and
flowers, and a blue and white English ditto
with Chinese decorations
- 304 A pair of 15½" Chinese white and gilt 2-handled urn
shaped vases with covers, decorated medallions
of harbour scenes in black (faulty)
- 305 A large bracket clock with Cambridge chimes of 8
bells, in ebonised case, heavily mounted in
ormolu, in mahogany and glazed outer case
- 306 The Stafford dinner ware, decorated flowers and
ribbons comprising 121 pieces (faulty)
- 307 The red and blue gilt Davenport tea ware of 31
pieces (faulty)
- 308 Eleven blown jelly g'asses
- 309 The Indian hardwood and ivory writing set with
miniature views, comprising desk, inkstand,
blotter, stationery case, and bookslide, and
1 other (faulty)
- 310 A ditto ivory work basket, and an ivory and horn
ditto (faulty)
- 311 A ditto ivory mosiac writing desk, a porcupine quill
box, and a green morocco and ormolu
stationery case (faulty)

- 312 Two large Brannam pottery jardinieres, a smaller ditto dish and an 18" ditto vase
- 313 A walnut circular case of butterflies on horn tripod stand, and another case of ditto
- 314 Two Eastern swords (1 with silver mounts), an English ditto with leather case, and a plated scabbard
- 315 Three decorated trinket sets, 4 blue and white Japanese ornaments, and a quantity of flower holders and odd china
- 316 A pair of cut glass decanters, 6 long neck ditto, and 3 water bottles (faulty)
- 317 Two cut glass pickle jars, 5 cruet bottles, an engraved beaker, 15 flower holders, a cream jug, and 12 oddments
- 318 Four cut and ground glass fruit stands, and 7 others various (faulty)
- 319 Three cut powder jars with covers, 4 finger bowls, 15 ice plates various, an oval dish, and an amber and white centrepiece (faulty)
- 320 The opaque and gilt Bohemian glass dessert ware, comprising centrepiece and 7 comports various
- 321 Twelve gilt ditto deep plates, a water jug, and 2 goblets
- 322 A frosted glass barrel, a ditto jar, and 12 ditto finger bowls with gilt rims (faulty)

- 323 A 14" ruby and gilt Bohemian flower vase, a green and gilt ditto scent bottle, a pair of gilt liqueur decanters, 3 green flower holders with mirror plateaux, a red ditto, 2 red and white tazzas, a scent bottle, 2 vases, and another (faulty)
- 324 Two ground glass tankards with plated mounts and mirror plateaux, a blue and white Delft plate, a foreign pottery ditto, 9 white tea ditto, and 6 meat dishes various, (faulty)
- 325 A Dresden globular inkstand encrusted flowers and birds, a pair of green and white gilt Bloor Derby candlesticks, 2 other pairs, and a pair of 10½" cloisonne pattern long neck vases with covers (faulty)
- 326 The red and gilt Coalport tea and coffee ware, decorated flowers, comprising 45 pieces (faulty)
- 327 The blue and white gilt Old English tea ware of 12 pieces, and the white Belleek shell ditto of 24 pieces
- 328 The green and white Stafford child's dessert ware of centre dish, 6 side ditto and 12 plates
- 329 The floral Haviland dinner ware of 87 pieces (faulty)
- 330 The green and gilt Bloor Derby ditto, comprising 5 vegetable dishes, 2 covers, salad bowl, and 46 plates various, (faulty)
- 331 The ditto Old English dessert service, comprising centre dish, 10 side ditto, 2 tureens, 2 covers, 1 stand, and 14 plates, (faulty)

- 332 An antique hobnail cut glass service comprising 7 large circular dishes, 4 smaller ditto, 12 small ditto, 2 oval ditto, (not en suite), and a diamond cut milk jug, in oak fitted case (faulty)
- 333 A set of 12 plates decorated foxhunting scenes, oak framed
- 334 A French mantel striking clock in ormolu and painted Eastern design case on gilt stand
- 335 A box of 94 La Eminencia cigars
- 336 Three modern Worcester floral and gilt jugs, a Spode green and floral gilt vase, a figure, and 2 wood snuff boxes
- 337 The Canton dessert ware, comprising centre dish 4 side ditto, 6 plates, and 3 blue and white Chinese dishes (faulty)
- 338 The Old English blue and white dinner ware decorated views, and river scenes, comprising 25 pieces, and a ditto transfer plate with American battleship (faulty)
- 339 A 13" Chinese Celadon fluted deep plate (faulty)
- 340 A 9½ ditto crackle ware vase
- 341 An 8½" Celadon ditto
- 342 An 8½" ditto long neck vase, foliage in relief
- 343 A 7" ditto pale blue vase
- 344 An 8½" ditto Celadon vase with trellis designs

- 345 An 8" ditto Celadon crackle vase
- 346 A 9½" ditto bowl on 3 feet, decorated foliage (faulty)
- 347 A 16" ditto Celadon crackle vase, decorated foliage
- 348 A 13½" ditto bowl on 3 feet with trellis designs
- 349 A 6" ditto pale Celadon twin flower vase
- 350 A 13½" ditto white crackle beaker (faulty)
- 351 A 3½" ditto glazed incense burner on 3 feet (faulty)
- 352 Four 9" Chinese famille rose plates decorated
octagonal panels of flowers (faulty)
- 353 Four deep ditto decorated vases of flowers
- 354 A pair of 10½" deep ditto decorated vases of
flowers, the backs with flowers on brown
ground (faulty)
- 355 A pair of 10½" famille verte deep octagonal plates,
decorated animals, birds and flowers (faulty)
- 356 A pair of 8½" ditto plates with fan shaped panels
of flowers
- 357 A 10½" ditto plate decorated temples, figures,
animals and scrolls
- 358 A pair of 9" famille noir ditto plates, decorated
flowers and scrolls
- 359 Three 9" ditto plates with figures and pink matting
borders

- 360 Four 9" deep ditto, decorated flowering plants
- 361 An 11" ditto plate and two 10" ditto decorated
vases of flowers
- 362 A set of five 9" ditto, plates, decorated figures,
rockery, and flowers
- 363 A pair of 12" Chinese deep ditto, decorated
chrysanthemums (faulty)
- 364 Seven 9" ditto famille rose plates, decorated flowers
and birds
- 365 Ten 9" ditto plates enamelled and decorated flowers
- 366 Three 9" ditto plates with vases of flowers, a ditto
flowers and scroll, a ditto decorated view,
and 3 shaped ditto enamelled flowers
- 367 Nine 9" ditto plates decorated flowers and birds
and an octagonal ditto (faulty)
- 368 Ten 9" ditto plates, decorated figures, etc.
- 369 Three 9" ditto, decorated baskets of flowers, a ruby
ground deep ditto, and a pink bordered
octagonal ditto with figures
- 370 Eight 9" ditto deep plates decorated figures, flowers
and birds
- 371 Five floral ditto various, 2 Imari ditto, an Oriental
ditto, and 2 Delft ditto in colours
- 372 A Sunderland pink lustre jug, decorated view of
Iron Bridge and verse

- 373 A Bristol glass mug, and 2 Old English cauliflower pattern plates (faulty)
- 374 The Old English dessert ware, with Japanese decorations, comprising centre dish, 6 side ditto, tureen, and 12 plates (faulty)
- 375 A 15½" antique Hispano Muresque lustre dish, a 13" ditto, and a 13" ditto with blue flowers (faulty)
- 376 An 8½" Derbyshire Spa vase and a pair of ditto obelisks, 15½" high
- 377 A 14½" antique pewter dish, 2 ditto goblets, a 9" foreign metal bowl, and miniature portrait of Napoleon by Countess of Bertrand
- 378 A pair of 14" Chinese bronze 2-handled vases with birds in relief

379

NEEDLEWORK, & EMBROIDERIES

- 380 An Old English Sampler, by E. Wise, 1722
- 381 An Eastern embroidered silk panel in colours and 3 pieces of Egyptian silk and gold threadwork
- 382 A large brown opossum fur rug
- 383 A Queen Anne needlework panel, Shepherd and Shepherdess in a landscape, unframed
- 384 An antique silkwork picture, lady seated with spinning wheel (oval)

- 385 A ditto needlework sampler, 1784 (unframed)
- 386 A large Persian tapestry curtain in colours
- 387 An antique brocade Cope with views and flowers (faulty)
- 388 A ditto silkwork picture, Christ and the Woman at the Well (faulty)
- 389 An Indian black and gold embroidered table centre, and 2 blue and white silkwork covers
- 390 A crimson ground Persian panel, embroidered flowers in silk and silver threadwork
- 391 A black lace and white silk embroidered scarf, a plaid silk ditto, a striped ditto, and 1 other
- 392 A Chinese red satin and silk embroidered panel, a white satin and gold threadwork ditto, a black and gold stork table centre, a red and embroidered Indian cover, and a floral silk table centre with green velvet borders
- 393 A silk embroidered peacock feather frieze, a pink and gold ditto cover, 4 printed cotton covers, various and a floral brocade table cover
- 394 A Chinese mauve satin panel, painted birds and flowers, a brown and floral silk and gold threadwork ditto, a yellow and floral satin ditto, and a striped brocade ditto
- 395 A floral silk brocade padded cover, and 4 pieces of Chinese silkwork (faulty)
- 396 Four large amber silk and velvet curtains, and 28 hangings and holders

- 397 An antique quilted linen and silk embroidered cover, a blue and silk ditto, an amber silk and floral ditto, and a brown cloth and silk embroidered oddment
- 398 An antique needlework picture, "Setter and Pheasant in a landscape"
- 399 A Chinese black silk embroidered and fringed shawl
- 400 A crimson Indian cashmere ditto embroidered in gold threadwork, a white ditto with coloured borders, and a crimson and embroidered table cover (faulty)
- 401 A floral crepe de chine table cover, and 5 Indian black, crimson and striped silk embroidered scarves (faulty)
- 402 A black silk Coatee with gold and silk threadwork, a black and gold tassel flounce, a black silk tab centre, a silver gilt and pearl pendant, and sundry scarf and other pins
- 403 An 18th century embroidered picture Scriptural subject Lot beckoning to the Angels to enter building, with fruit trees, and The Finding of Moses, unfinished
- 404 An Eastern brocade table cover in colours, and 3 pieces of silkwork and 2 oddments
- 405 A Chinese pink satin table cover, embroidered flowering tree, stork, stag, and birds
- 406 An 18th Century French tapestry picture, a bird in a land-cape, beneath a scrollwork canopy

- 407 An Old English silkwork panel embroidered flowers in colours, plain centre
- 408 An antique gold threadwork piano cover (faulty)
- 409 A pair of ditto silkwork pictures, "Lady placing flowers on tomb", and "Lady seated beneath a tomb", ovals
- 410 Two large Indian embroidered shawls in colours
- 411 A white ditto shawl, and a brown ditto
- 412 A black and white ditto shawl, and a Paisley ditto in colours
- 413 A ditto table cover embroidered figures in colours, a ditto floral table centre, 12 painted linen and lace bordered d'oyleys, 2 fans embroidered birds, and 2 oddments, (faulty)
- 414 An Old English needlework picture, Christ and the Woman at the Well
- 415 An antique silkwork ditto, river scene with figures and cottages (oval)
- 416 A ditto Sampler by E. Evans, 1730, and Victorian needlework picture, "Girl and black Nurse" (faulty)
- 417 Eight Chinese silkwork pictures, flowers and insects
- 418 An antique yellow and blue floral silk brocade chasuble, with silver braid
- 419 A yellow and white striped ditto

- 420 A blue and green striped floral ditto
- 421 A red and white ditto brocade cover, with velvet borders, a grey circular ditto, and a red silk and floral embroidered table centre
- 422 A Chinese blue crepe de chine kimono embroidered flowers and birds in coloured silk and gold threadwork, and a yellow and blue silk brocade table centre
- 423 A red and blue floral Eastern rug (faulty)
- 424 A ditto Italian panel of green and yellow stamped velvet, with flowers and foliage in mauve
- 425 Two small Persian silk panels in colours, and a Chinese printed cotton ditto, with battle scenes



SALES OF JEWELS AND SILVER
EVERY FRIDAY

. . . Fortnightly Sales of . . .
Antique Furniture, China, Books,
Armour, Tapestries, Ivories,
Miniatures, Clocks, Persian and
other Carpets and Rugs.
Oil Paintings, Drawings, Prints
and Engravings.

Property can be included in any sale
at short notice

INVENTORIES & VALUATIONS FOR PROBATE,
DIVISION, INSURANCE AND OTHER PURPOSES

Sales of Furniture, etc., on
Owner's Premises a Speciality
Town or Country

Commissions Executed. Moderate Terms

HURCOMBS, PICCADILLY, W.1

Telephone:
GERRARD 5971-4 (4 lines)