

Sales catalogue: Christies

Publication/Creation

1st May 1931

Persistent URL

<https://wellcomecollection.org/works/k2w54pws>

License and attribution

This work has been identified as being free of known restrictions under copyright law, including all related and neighbouring rights and is being made available under the Creative Commons, Public Domain Mark.

You can copy, modify, distribute and perform the work, even for commercial purposes, without asking permission.



Wellcome Collection
183 Euston Road
London NW1 2BE UK
T +44 (0)20 7611 8722
E library@wellcomecollection.org
<https://wellcomecollection.org>

In Commis 1st May 1931

*Commins
original*

MO

CHR.	DATE	INITIALS
33.12.0 SALE	1. v. 31	COMINS
PURCHASE		
CHECKED	2. v. 31	<i>h</i>
COLLECTED	5.5.31	<i>h</i>
RECEIVED	5.5.31	<i>h</i>
ACCESSED	MAY	
PASSED		<i>h</i>

THE PROPERTY OF

R. WALTER, ESQ., C.M.G.

Of 58 Redcliffe Gardens, S.W.10

ALSO

MODERN PICTURES AND DRAWINGS

From Other Sources

WHICH

Will be Sold by Auction by

MESSRS. CHRISTIE, MANSON & WOODS

(L. HANNEN, C.B.E., GORDON HANNEN, T. M. McKENNA,
CAPT. SIR HENRY FLOYD, BART., ALIC MARTIN AND C. BROCKLEHURST)

AT THEIR GREAT ROOMS

**8 KING STREET, ST. JAMES'S SQUARE.
LONDON**

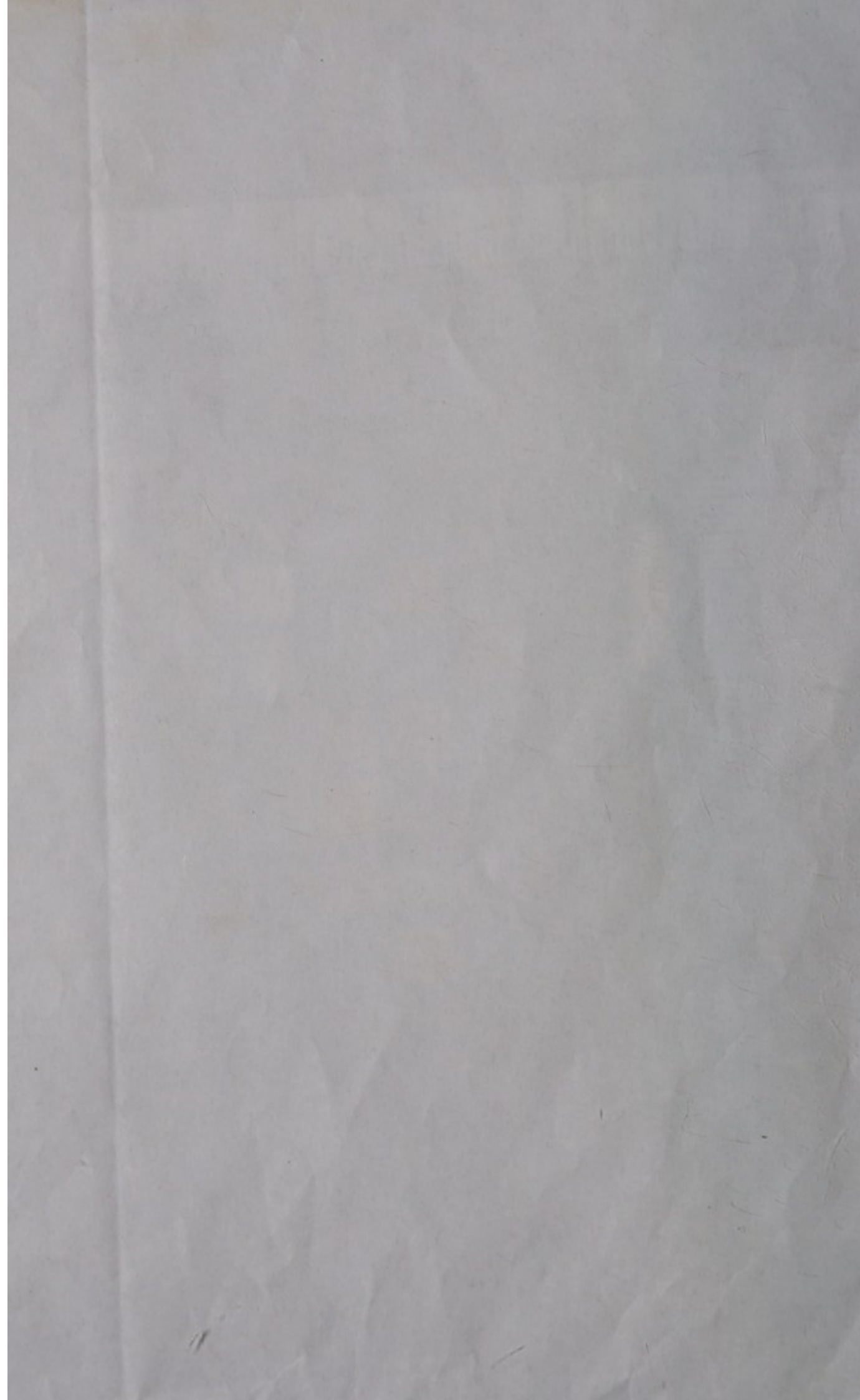
On FRIDAY, MAY 1, 1931

AT ONE O'CLOCK PRECISELY

May be viewed Three Days preceding, and Catalogues had, at
Messrs. CHRISTIE, MANSON AND WOODS' Offices, 8 King Street,
St. James's Square, London, S.W.1

TELEPHONE: WHITEHALL 5056 (5 LINES). TELEGRAMS: CHRISTIART, PICCY, LONDON.

WP 89. 33.12-0



Examinis original

MODERN PICTURES

AND

W

Water Colour Drawings

THE PROPERTY OF

MALCOLM R. AIRD, ESQ.

Sold in consequence of his having disposed of his residence,
Woolton House, Newbury

THE PROPERTY OF

W. H. WOODWARD, ESQ.

Removed from 39 Harley House, N.W.1

THE PROPERTY OF

R. WALTER, ESQ., C.M.G.

Of 58 Redcliffe Gardens, S.W.10

ALSO

MODERN PICTURES AND DRAWINGS

From Other Sources

WHICH

Will be Sold by Auction by

MESSRS. CHRISTIE, MANSON & WOODS

(L. HANNEN, C.B.E., GORDON HANNEN, T. M. McKENNA,
CAPT. SIR HENRY FLOYD, BART., ALEC MARTIN AND C. BROCKLEHURST)

AT THEIR GREAT ROOMS

8 KING STREET, ST. JAMES'S SQUARE
LONDON

On FRIDAY, MAY 1, 1931

AT ONE O'CLOCK PRECISELY

May be viewed Three Days preceding, and Catalogues had, at
Messrs. CHRISTIE, MANSON AND WOODS' Offices, 8 King Street,
St. James's Square, London, S.W.1

TELEPHONE: WHITEHALL 5056 (5 LINES). TELEGRAMS: CHRISTIART, PICCOY, LONDON.

W 89. 33.12-0

CONDITIONS OF SALE.

- I. THE highest Bidder to be the Buyer ; and if any dispute arise between two or more Bidders, the Lot so in dispute shall be immediately put up again and re-sold.
- II. No person to advance less than 1s. ; above Five Pounds, 5s. ; and so on in proportion.
- III. In the case of Lots upon which there is a reserve, the Auctioneer shall have the right to bid on behalf of the Seller.
- IV. The Purchasers to give in their Names and Places of Abode, and to pay down 5s. in the Pound, or more, in part of payment, or the whole of the Purchase-Money, *if required* ; in default of which, the Lot or Lots so purchased to be immediately put up again and re-sold.
- V. The Lots to be taken away and paid for, whether genuine and authentic or not, with all faults and errors of description, at the Buyer's expense and risk, within Two Days from the Sale; Messrs. CHRISTIE, MANSON AND WOODS not being responsible for the correct description, genuineness, or authenticity of, or any fault or defect in, any Lot, and making no warranty whatever.
- VI. To prevent inaccuracy in delivery, and inconvenience in the settlement of the Purchases, no Lot can on any account be removed during the time of Sale ; and the remainder of the Purchase-Money must absolutely be paid on the delivery.
- VII. Upon failure of complying with the above Conditions, the Money deposited in part of payment shall be forfeited ; all Lots uncared within the time aforesaid may be re-sold by public or private Sale, and the deficiency (if any) attending such re-sale shall be made good by the defaulter at the Sale, but this shall be without prejudice to any other rights or remedies.

Date	Lot	Amount	Loc	Buyer
1890	1	33.12	20	J. C. ...
1891	2
1892	3
1893	4
1894	5
1895	6
1896	7
1897	8
1898	9
1899	10

BUYER

Comins

AUCTIONEERS

Christies

Date 1st May 1931

Date _____

2 May 1931

20

33

12

1

Lot

Amount

£

S.

d.

Take great
care of the picture
to prevent damage

CATALOGUE.

On FRIDAY, MAY 1, 1931,

AT ONE O'CLOCK PRECISELY.

*The following are the Property of
MALCOLM R. AIRD, Esq.,
and are Sold in consequence of his having disposed of
his residence, Woolton House, Newbury.*

DRAWINGS.

W. AFFLECK

- 1 MOON DAISIES
24½ in. by 16½ in.

HAL LUDLOW, 1903

- 2 WELL AWAY
23 in. by 16½ in.

H. STACY MARKS, R.A., 1884

- 3 THE CAPTIVE PRINCESS
29 in. by 23½ in.

A. M. ROSSI

- 4 WHICH SHALL I HAVE?
35 in. by 23½ in.

J. PARKER

- 5 LILAC; and THE CHURCH DOOR, by H. W.—(two)

2

B

PICTURES.

SIR LAWRENCE ALMA-TADEMA, R.A.

6 ORANTE

Half-figure of a girl, dressed in white, her hands raised in an attitude of prayer; a window in the background.

Op. 383

Painted in 1907 for Sir John Aird, Bart.

On panel, oval—15½ in. by 13 in.

Exhibited at Burlington House, 1913, No. 188

SIR LAWRENCE ALMA-TADEMA, R.A.

7 BACCHANTE

Half-figure of a girl, playing on cymbals, wearing a leopard-skin and amber beads; another figure in the background. Op. 384

Painted in 1907 for Sir John Aird, Bart.

On panel, oval—15½ in. by 13 in.

Exhibited at Burlington House, 1913, No. 178

C. BAXTER, 1874

8 A GIRL AT NEEDLEWORK

23½ in. by 19½ in.

P. H. CALDERON, R.A., 1882

9 JOYOUS SUMMER

"Pleasant it was when woods were green,
And winds were soft and low."

80½ in. by 64½ in.

Exhibited at the Royal Academy, 1883, No. 241

P. H. CALDERON, R.A., 1884

10 MORNING: "Hark! hark! the lark at heaven's gate sings";
and NIGHT: "Empress of silence and the queen of sleep"
—a pair 2

67 in. by 48½ in.

*Exhibited at the Royal Academy, 1885, No. 774, and
1884, No. 340*

P. H. CALDERON, R.A., 1883

- 11 CHERRIES; and CURRANTS—decorative panels for a dining-room—a pair 2 12 *gms*
 80 in. by 30 $\frac{3}{4}$ in.
Exhibited at the Royal Academy, 1884, No. 462, and No. 588

P. H. CALDERON, R.A., 1882

- 12 THE CORNFIELD; and THE HOPFIELD—a pair 2 2 *gms*
 80 in. by 24 in.

P. H. CALDERON, R.A., 1880

- 13 THE OLIVE
 55 in. by 43 $\frac{1}{4}$ in.
Exhibited at the Royal Academy, 1880, No. 16 9 *gms*,

P. H. CALDERON, R.A., 1880

- 14 THE VINE
 55 in. by 43 in.
Exhibited at the Royal Academy, 1880, No. 25 15 *gms*
Mitchell

J. R. DICKSEE

- 15 DOUBT; and PEARLS—(two) 2 6 *gms*
Roy-

DOLCI

- 16 THE VIRGIN
 Oval—10 in. by 7 $\frac{1}{2}$ in. 1 *gms*

HEYWOOD HARDY, 1875

- 17 GAINING HEALTH
 On panel—11 in. by 17 $\frac{1}{2}$ in. 4 $\frac{1}{2}$ *gms*

B. W. LEADER, R.A., 1883

- 18 A DEVONSHIRE VILLAGE
 10 in. by 13 $\frac{3}{4}$ in. 21 *gms*

B. W. LEADER, R.A., 1883

- 19 THE ROAD TO ROSENLAUI
 10 in. by 13 $\frac{1}{2}$ in. 12 *gms*

LORD LEIGHTON, P.R.A.

20 AN EGYPTIAN SLINGER

A nude figure, standing on a raised platform in a field of wheat, in the act of slinging; moon rising in the background. The original title, when it was exhibited in 1875, was "Eastern Slinger scaring birds in harvest-time: Moonrise"

59½ in. by 43 in.

Exhibited at the Royal Academy, 1875, No. 398

Exhibited at Manchester, 1884

Exhibited at Burlington House, 1897, No. 53

Exhibited at Burlington House, 1901, No. 83

LORD LEIGHTON, P.R.A., 1890

21 THE ARAB HALL

32½ in. by 16 in.

Exhibited at Burlington House, 1897, No. 34

C. S. LIDDERDALE, 1865

- 22 ASKING ALMS; AN ITALIAN MOTHER AND CHILD—*oval, on panel*; and SERIOUS THOUGHTS, by J. B. BURGESS, R.A., 1877—(three) 3

LEOPOLD LIDDETTE

23 THE TRUMP CARD

On panel—15½ in. by 20 in.

GUY LIPSCOMBE

- 24 THE PICTURE BOOK; and HEADS OF LADIES, by G. A. S., 1879-80—a pair—(three) 3

CLARA MONTALBA

25 THE ISLAND OF SAN GIORGIO, MAGGIORE, VENICE

52 in. by 29½ in.

FRED MORGAN, 1868

- 26 A HALFPENNY SHORT; and A VENETIAN BEAUTY, by J. B. BURGESS, R.A.—*on panel*—(two) 2

J. MORRIS, 1850

27 THE RETURN FROM STALKING

12½ in. by 38½ in.

A. E. MULREADY, 1874

- 28 A DULL DAY; A COTTAGE INTERIOR, with figures; and
NINA, by J. H. S. MANN—(three) 3

L. C. NIGHTINGALE

- 29 A FORETASTE OF SUMMER
24½ in. by 49¾ in.

JOHN R. REID, 1903

- 30 THE FISHERMAN'S WIFE
17½ in. by 23½ in.

J. HANSON WALKER

- 31 CONTEMPLATION
14½ in. by 11½ in.

*The following are the Property of
W. H. WOODWARD, Esq.,
and have been removed from 39 Harley House, N.W.1*

DRAWINGS.

SIR E. BURNE-JONES

- 32 STUDIES OF FEMALE FIGURES
*Red chalk—18½ in. by 9¾ in.
Given by the Artist to S. Norton, Esq., of Rome*

SIR GEORGE CLAUSEN, R.A.

- 33 AUTUMN MOONLIGHT
11½ in. by 16 in.

T. S. COOPER, R.A., 1853

- 34 CATTLE ON THE BANKS OF THE STOUR: Sunset
15½ in. by 21½ in.
From the Collection of William Woodward, Esq., 1913

ALBERT GOODWIN

- 35 CHAMONIX
10¾ in. by 15 in.

JAMES HOLLAND

- 36 VENETIAN COURTSHIP: The Guidecca
 14½ in. by 20½ in.
From the Collection of William Woodward, Esq., 1913

J. H. MARIS

- 37 ON THE TOWING-PATH
 A peasant, in blue blouse, riding a bay horse, and
 towing a barge on a canal
 12½ in. by 9½ in.
From the Collection of P. G. B. Westmacott, Esq.

GUILLAUME ROGER

- 38 DUTCH PASTURES
Pastel—20½ in. by 28 in.

J. S. SARGENT, R.A.

- 39 PALMA, MAJORCA: A clump of pine-trees
 15 in. by 21 in.
From the Artist's Sale, 1925

P. WILSON STEER, O.M., 1924

- 40 A SEPTEMBER EVENING
 9 in. by 13 in.

PICTURES.

SIR D. Y. CAMERON, R.A.

- 41 SALACHAN
 24 in. by 35 in.

E. R. MÉNARD, 1907

- 42 THE TEMPLES OF PAESTUM
 41 in. by 55 in.
Exhibited at the Salon des Beaux-Arts, 1907

G. F. WATTS, R.A.

- 43 THETIS
 A small full-length nude female figure, standing in a
 garden, her left hand to her head
 26½ in. by 12 in.
Exhibited at Burlington House, 1905
Exhibited at the Watts Exhibition, Manchester, 1905
From the Collection of Sir William Agnew, Bart., 1911

*The following are the Property of
R. WALTER, Esq., C.M.G.,
of 58 Redcliffe Gardens, S.W.10*

DRAWINGS

BIRKET FOSTER

- 44 BRINGING HOME THE NETS: A fisherman leading a white horse drawing a cart, in which are his wife and child
8 $\frac{3}{4}$ in. by 13 $\frac{3}{4}$ in.

BIRKET FOSTER

- 45 A VIEW AT BRAEMAR
A river scene, with a peasant-girl seated with a dog in the foreground
8 in. by 11 in.

DIFFERENT PROPERTIES.

DRAWINGS.

T. M. RICHARDSON, 1870

- 46 HAYTIME IN SCOTLAND; and LOW TIDE: Sunset—(two) 2

B. J. BLOMMERS

- 47 CHILDREN PLAYING ON THE SEASHORE
17 $\frac{1}{2}$ in. by 26 $\frac{1}{2}$ in.

SIR FRANK DICKSEE, P.R.A., 1924

- 48 THE LAST PARTING
*Circular—14 $\frac{1}{2}$ in. diam.
Exhibited at the Royal Academy, 1925*

T. GIRTIN

- 49 THE OUTSKIRTS OF A VILLAGE, with figures and animals in
the foreground
12 in. by 31½ in.

W. EVANS

- 50 CURLING AT DUNKELD
18½ in. by 30½ in.
Exhibited at the International Exhibition, 1862

SIR D. Y. CAMERON, R.A.

- 51 ON THE AYRSHIRE COAST
5 in. by 10 in.

D. COX

- 52 BOLTON ABBEY
9½ in. by 13 in.

MARIE TENKATE

- 53 CHILDREN WITH GOATS BY A STREAM
14 in. by 20 in.

MARIAN CHASE

- 54 SINGLE DAHLIAS
14 in. by 17½ in.

V. CHEVILLIARD

- 55 IN FROM THE RAIN
8 in. by 6½ in.

W. SCOTT

- 56 ARUNDEL CASTLE, from the Brighton Road
20 in. by 29 in.

R. A. K. MARSHALL

- 57 RIVER TEST, HANTS
18 in. by 27 in.

SIR O. W. BRIERLY

- 58 A NAVAL ENGAGEMENT BEFORE A TOWN
18 in. by 24½ in.

P. DE WINT

- 59 ARUNDEL CASTLE : Cattle by a footbridge in the foreground
10 in. by 14 $\frac{1}{4}$ in.

H. ALLINGHAM

- 60 THE COTTAGE GATE
8 in. by 6 $\frac{3}{4}$ in.

R. ANNING BELL, R.A.

- 61 THE EAGER GIRLS
15 in. by 10 $\frac{1}{2}$ in.

S. PROUT

- 62 THE RUINS OF AN AMPHITHEATRE
12 $\frac{1}{2}$ in. by 9 $\frac{1}{2}$ in.

T. FAED, R.A., 1872

- 63 GOD'S ACRE
9 $\frac{1}{2}$ in. by 13 $\frac{1}{2}$ in.

H. G. HINE, 1865

- 64 LOW TIDE
9 $\frac{1}{2}$ in. by 28 in.

T. M. RICHARDSON, 1855

- 65 GILLIES RESTING
8 $\frac{3}{4}$ in. by 12 in.

G. BARRET

- 66 A LAKE SCENE, with a peasant on a road
12 in. by 18 in.

F. TAYLER, 1879

- 67 THE GAMEKEEPER'S DAUGHTER
13 in. by 11 in.

SKINNER PROUT, 1865

- 68 THE MARKET-PLACE, NUREMBERG
12 $\frac{1}{2}$ in. by 20 in.

F. L. GRIGGS, A.R.A., 1906

- 69 HOUSES IN CHURCH STREET, FARINGDON, BERKS
Pen and ink—3 $\frac{3}{4}$ in. by 6 $\frac{3}{4}$ in.

P. DE WINT

- 70 THE GLORY HOLE, LINCOLN
11 in. by $8\frac{1}{2}$ in.

G. D. ARMOUR, 1891

- 71 FULL CRY
8 in. by $10\frac{1}{2}$ in.

C. PEARSON, 1885

- 72 A VIEW NEAR PORTMADOC, NORTH WALES; and four other
River Scenes—(*five*) 5

G. F. ROBSON

- 73 ULLSWATER FROM CROWBORO' PARK
 $19\frac{1}{2}$ in. by $31\frac{1}{2}$ in.

A. BELL, 1872

- 74 VENETIAN PALACES, with figures—a pair 2
 $18\frac{1}{4}$ in. by $24\frac{1}{4}$ in.

P. DE WINT

- 75 BLACK GANG CHINE, ISLE OF WIGHT
 $7\frac{3}{4}$ in. by $10\frac{1}{2}$ in.

W. MÜLLER, 1840

- 76 KARNAC: A road scene, with palm-trees
 $10\frac{1}{2}$ in. by $17\frac{1}{2}$ in.

LEONARD R. SQUIRRELL, 1923

- 77 OLD HOUSES NEAR NOTRE DAME, PARIS
Pastel— $19\frac{1}{2}$ in. by 16 in.

PICTURES.

LEOPOLD RIVERS, 1892

- 78 THE DUCK-POND
 $23\frac{1}{2}$ in. by $35\frac{1}{2}$ in.

JULIUS OLSSON, R.A.

- 79 SUNSET AT SEA OFF ST. IVES
 $17\frac{1}{2}$ in. by $23\frac{1}{2}$ in.

HARRY WATSON

- 80 THE ESTUARY, NORTH WALES
On panel—11½ in. by 15½ in.

ALGERNON TALMAGE, R.A.

- 81 UNDER THE CLIFFS
14½ in. by 17½ in.

HARRY WATSON

- 82 A QUIET POOL
On panel—11½ in. by 15½ in.

E. BOUDIN, 1871

- 83 L'ALLÉE VERTE À BRUXELLES
 A view, looking along the Scheldt Canal, with barges anchored along a wooded bank on the left, and on the right a view of the quayside, with houses, boats and figures
18½ in. by 26 in.

E. BOUDIN, 1882

- 84 TROUVILLE: A view of the quay and town from the sea, with sailing-boats and small craft
19 in. by 23 in.

A. E. BOTTOMLEY

- 85 THE SANDPIT; and THAWING IN THE SUN—(two) 2
19½ in. by 23½ in.

F. OLIVA (VENETIA)

- 86 A HARD BARGAIN
On panel—13 in. by 10 in.

GILBERT MUNGER

- 87 NEAR MARLY: The watering place
On panel—8 in. by 12½ in.

GEORGE SMITH

- 88 FEEDING BABY
On panel—8 in. by 6½ in.

J. HILDER, 1837

- 89 THE FERRY
24½ in. by 29½ in.

DAVID ROBERTS, R.A., 1861

- 90 THE CHURCH OF S.S. GIOVANNI E PAOLA, VENICE
20 in. by 29 in.

J. DEARMAN, 1849

- 91 A PEASANT BOY, with cattle and sheep in a landscape;
A LANE, with shepherd and sheep, by J. PRICE, 1846;
and THE COMING STORM, by E. J. NIEMANN—(three) 3

E. W. COOKE, R.A., 1848

- 92 OFF THE COAST OF LEGHORN
40½ in. by 55 in.

HENRIETTE RONNER

- 93 A CAT ON A RED CUSHION
19½ in. by 16½ in.

STANFIELD

- 94 A SEAPORT, with old hulks and other shipping
19½ in. by 29 in.

WALTER GAY

- 95 THE DRAWING-ROOM
20½ in. by 24½ in.

JACK B. YEATS, R.H.A.

- 96 AN IRISH FISHERMAN
On panel—9 in. by 14½ in.

F. MUSIN

- 97 FISHING-BOATS IN A STORM
19 in. by 29½ in.

BURNET

- 98 THE FERRY
On panel—17½ in. by 23½ in.

E. C. WILLIAMS

- 99 A MILL-STREAM, with figures; and A LANDSCAPE, with
cottage, and sheep at a stream—a pair 2
20½ in. by 17½ in.

G. VINCENT, 1831

- 100 A COMMON SCENE, with peasants and cattle
On panel—9 in. by 13 in.

EM. CARTIER, 1860

- 101 THE WATERING-PLACE
26½ in. by 36½ in.

A. DE ANDREIS, 1923

- 102 A CAVALIER
31½ in. by 25 in.

HEYWOOD HARDY

- 103 THE MORNING RIDE
11½ in. by 15½ in.

DAVID MUIRHEAD, A.R.A.

- 104 GRAY'S ELEGY
20 in. by 24 in.

F. GOODALL, R.A., 1892-4

- 105 BY THE STILL WATERS OF THE OVERFLOW
37 in. by 58½ in.

A. C. GOW, R.A., 1916

- 106 THE SURVIVOR'S TALE
26½ in. by 36½ in.
Exhibited at the Royal Academy, 1916

HENRY MOORE, R.A., 1868

- 107 SNOWDON FROM THE COAST NEAR HARLECH; and WIN-
 CHELSEA, by FRED WHITEHEAD—(two) 2

H. W. B. DAVIS, R.A., 1882

- 108 SHEEP AND CATTLE NEAR LOCH MAREE
8½ in. by 16½ in.

E. HARRISON COMPTON, 1907

- 109 WINTER IN THE NORTH (LANCS.)
25 in. by 31½ in.

WILLIAM ESTALL

- 110 A SURREY POND; and ON THE MOORS—(two) 2

SIR H. HUGHES-STANTON, R.A.

- 111 THE ARRAS-LENS ROAD, FROM VIMY RIDGE
9 $\frac{3}{4}$ in. by 12 in.

L. MUNSCH, 1883

- 112 THE TOWING-PATH
Unframed, on panel—16 in. by 27 in.

H. KOEKKOEK

- 113 FISHING-BOATS IN A BREEZE OFF A JETTY
On panel—7 $\frac{1}{2}$ in. by 9 $\frac{1}{2}$ in.

SIR LUKE FILDES, R.A., 1889

- 114 SISTERS (the Misses Renton)
73 in. by 55 in.
Exhibited at the Royal Academy, 1889
Exhibited at Burlington House, 1928

HAROLD HARVEY, 1919

- 115 CHILDREN ON THE BEACH
16 in. by 15 $\frac{1}{2}$ in.

HAROLD HARVEY, 1919

- 116 THE PET BIRD
13 $\frac{1}{2}$ in. by 11 in.

HARRY WATSON

- 117 HOLIDAY NEWS
15 in. by 11 $\frac{1}{2}$ in.

WALLER H. PATON, R.S.A., 1855

- 118 THE RAVEN'S HOLLOW
28 in. by 35 $\frac{1}{2}$ in.

R. HERDMAN, R.S.A., 1860

- 119 BY THE SEA
On panel—11 in. by 13 $\frac{1}{2}$ in.

W. F. WITHERINGTON, R.A.

- 120 THE REAPERS
23 in. by 30 $\frac{1}{2}$ in.

ED. FRERE

- 121 ON THE ICE
On panel—14 in. by 17½ in.

RUBEN SANTORA

- 122 A CAPRI GIRL
 11 in. by 6½ in.

W. GOSLING, 1871.

- 123 HAYMAKING ON THE THAMES AT WARGRAVE
 18 in. by 33 in.

J. W. CARMICHAEL

- 124 BOATS BECALMED AT THE MOUTH OF A RIVER
 13½ in. by 21½ in.

H. DAWSON, 1878

- 125 THE DOCKYARD FROM WOOLWICH PIER; and STUDIES OF
 CATTLE, by T. BLINKS—*From the Artist's Sale, 1911—*
(three) 3

C. GOLDSBOROUGH ANDERSON

- 126 PORTRAIT OF ROBERT ARTHUR TALBOT GASCOYNE-CECIL,
 3RD MARQUESS OF SALISBURY, K.G., in dark coat
A study for presentation portrait
 29 in. by 24½ in.

G. WEBSTER

- 127 SHIPPING OFF CAPE SPARTEL, GIBRALTAR
On panel—17½ in. by 23½ in.

J. G. NAISH

- 128 FAITH
Oval—35 in. by 27½ in.

F. LEE BRIDELL, 1850

- 129 THE BATHS OF CARACALLA; and COSTUMES OF ROME,
 TEMPLE OF MINERVA, by P. JORIS (Roma), 1868—
(two) 2

R. P. BONINGTON

- 130 BOULOGNE SANDS, with fisherfolk
 23 in. by 35½ in.

HENRY WOODS, R.A., 1919

- 131 GOOD TIDINGS
28 in. by 18 in.

JOHN BURR, R.S.A.

- 132 NEWS FROM HER HUSBAND
23½ in. by 19½ in.

V. CORCOS

- 133 A BLONDE
21 in. by 14½ in.

HENRY DAWSON

- 134 THE OLD GUARD SHIP
19 in. by 29 in.

J. B. PYNE, 1870

- 135 SUNSET: Old Hastings
18 in. by 33½ in.

HENRY JUTSUM, 1853

- 136 ARRAN
15 in. by 24 in.

J. RITCHIE

- 137 THE CONTESTED ELECTION: A scene at the hustings, temp.
1750
28½ in. by 48 in.
Exhibited at the Society of Artists Exhibition, Birmingham, 1867

J. C. IBBETSON

- 138 A VALLEY SCENE, with cattle by a stream
On panel—14 in. by 20 in.
Exhibited at Nottingham Castle

C. TROYON

- 139 AT THE FIRESIDE
12½ in. by 18½ in.

J. M. SWAN, R.A.

- 140 THE WANDERER; and A DRAWING OF A MOUNTAIN GUIDE
AT A SHRINE, by SIR H. VON HERKOMER, R.A.—(two) 2.

JOSÉ WEISS

141 EVENING

On panel—10 in. by 14½ in.

H. BRELING

142 THE PACK-HORSE; and IN THE FEN COUNTRY, by C. MORRIS—(two) 2

On panel

A. H. DARGELAS

143 HIS FIRST SMOKE

23½ in. by 31½ in.

A. CALAME

144 A VIEW IN THE TYROL, with peasant and sheep on a road

On panel—21½ in. by 29½ in.

OTTO DE PENNE

145 HUNTSMEN AND HOUNDS IN THE SNOW—a pair 2

On panel—11 in. by 15½ in.

P. A. DE LASZLO, 1911

146 PORTRAIT OF MRS. HALDANE MACFALL, in black dress with blue veil

37½ in. by 29½ in.

R. ELMORE

147 NEWS FROM INDIA

On panel—18¾ in. by 23½ in.

WALTER HUNT, 1906

148 GLEANERS

19½ in. by 29 in.

WALTER HUNT, 1924

149 AN ANXIOUS MOMENT

11¾ in. by 15½ in.

R. ANSDELL, R.A., 1851

150 DEAD PARTRIDGES

9½ in. by 19 in.

JAMES CHARLES

151 A FARM-WAGGON

14½ in. by 16 in.

EDGAR BUNDY, A.R.A., 1894

- 152 THE GRAVE-DIGGER'S DREAM
 $25\frac{1}{2}$ in. by 20 in.
From the War Fund Sale, 1900

T. E. DUVERGER

- 153 GRANDFATHER'S BIRTHDAY
 14 in. by $17\frac{1}{2}$ in.

H. BRELING, 1873

- 154 ENQUIRING THE WAY
On panel— $7\frac{1}{2}$ in. by $9\frac{1}{2}$ in.

HENRY BRIGHT, 1849

- 155 THE OLD MILL
 $23\frac{1}{2}$ in. by $42\frac{1}{2}$ in.

CHARLES SIMS, R.A.

- 156 A MUSE OF SPRING
 $16\frac{1}{2}$ in. by $20\frac{1}{2}$ in.
Exhibited at the Grosvenor Gallery
From the Artist's Sale, 1928

MARK FISHER, R.A., 1881

- 157 THE HOME FIELDS, with cattle
 14 in. by $19\frac{1}{2}$ in.
From the Collection of B. W. Leader, R.A.

A. E. BOTTOMLEY

- 158 THE CHALK CLIFF, BETCHWORTH
 $18\frac{1}{2}$ in. by $23\frac{1}{2}$ in.

E. J. GREGORY, R.A.

- 159 CONTEMPLATION
 $11\frac{1}{2}$ in. by $8\frac{1}{2}$ in.

T. S. GOOD

- 160 THE LETTER
On panel— $11\frac{3}{4}$ in. by 10 in.

FINIS