

Sales catalogue: Christies

Publication/Creation

7th April 1919

Persistent URL

<https://wellcomecollection.org/works/dzrj7cq4>

License and attribution

This work has been identified as being free of known restrictions under copyright law, including all related and neighbouring rights and is being made available under the Creative Commons, Public Domain Mark.

You can copy, modify, distribute and perform the work, even for commercial purposes, without asking permission.



Wellcome Collection
183 Euston Road
London NW1 2BE UK
T +44 (0)20 7611 8722
E library@wellcomecollection.org
<https://wellcomecollection.org>

on LIST.

SPARE

CATALOGUE
 OF
MODERN PICTURES
 AND
WATER COLOUR DRAWINGS

W

Duplicate

The Property of a Gentleman

ALSO

MODERN PICTURES & DRAWINGS

From Other Sources

WHICH

Will be Sold by Auction by

MESSRS. CHRISTIE, MANSON & WOODS

(L. HANNEN, C.B.E., W. B. ANDERSON, AND CAPT. V. C. W. AGNEW)

AT THEIR GREAT ROOMS

8 KING STREET, ST. JAMES'S SQUARE
LONDON

On **MONDAY, APRIL 7, 1919**

AT ONE O'CLOCK PRECISELY

May be viewed Thursday and Friday preceding, and Catalogues had, at Messrs. CHRISTIE, MANSON AND WOODS' Offices, 8 King Street, St. James's Square, London, S.W. 1

CONDITIONS OF SALE.

- I. THE highest Bidder to be the Buyer ; and if any dispute arise between two or more Bidders, the Lot so in dispute shall be immediately put up again and re-sold.
- II. No person to advance less than 1s. ; above Five Pounds, 5s. ; and so on in proportion.
- III. In the case of Lots upon which there is a reserve, the Auctioneer shall have the right to bid on behalf of the Seller.
- IV. The Purchasers to give in their Names and Places of Abode, and to pay down 5s. in the Pound, or more, in part of payment, or the whole of the Purchase-Money *if required* ; in default of which, the Lot or Lots so purchased to be immediately put up again and re-sold.
- V. The Lots to be taken away and paid for, whether genuine and authentic or not, with all faults and errors of description, at the Buyer's expense and risk, within Two Days from the Sale ; MESSRS. CHRISTIE, MANSON AND WOODS not being responsible for the correct description, genuineness, or authenticity of, or any fault or defect in, any Lot, and making no warranty whatever.
- VI. To prevent inaccuracy in delivery, and inconvenience in the settlement of the Purchases, no Lot can on any account be removed during the time of Sale ; and the remainder of the Purchase-Money must absolutely be paid on the delivery.
- VII. Upon failure of complying with the above Conditions, the Money deposited in part of payment shall be forfeited ; all Lots un-cleared within the time aforesaid shall be re-sold by public or private Sale, and the deficiency (if any) attending such re-sale shall be made good by the defaulter at this Sale.

CATALOGUE.

On MONDAY, APRIL 7, 1919,

AT ONE O'CLOCK PRECISELY.

THE PROPERTY OF A GENTLEMAN.

DRAWINGS.

ADAM BUCK, 1823.

- 1 PORTRAITS OF TWO DAUGHTERS OF LIEUT.-GEN. ORDE, in
white muslin frocks, standing on a terrace
12½ in. by 9 in.

F. W. CARTWRIGHT.

- 2 FOLKESTONE HARBOUR; and ARUNDEL, by S. G. W. ROSCOE 2

ERNEST DADE, 1886.

- 3 WHITBY HARBOUR
15 in. by 23 in.

DAVIS.

- 4 GORLESTON
30 in. by 50 in.

ARTHUR HOPKINS.

- 5 REFUSING AN INVITATION; and ON THE BEACH, WHITBY 2

T. HUNN.

- 6 A SUSSEX FARM; and GATHERING DAFFODILS—a pair 2
9 in. by 14 in.

H. MATTHEWS, 1799.

- 7 REPRESENTATION OF THE TEMPLE BAR AND ST. PAUL'S
ASSOCIATION RECEIVING THEIR COLOURS IN FRONT OF
ST. PAUL'S ON THE 7TH DECEMBER, 1798
30 in. by 47 in.
Exhibited at the Royal Academy, 1799

J. MAURER.

- 8 OLD BLACKFRIARS BRIDGE ABOUT 1765
13 in. by 19 in.

C. ROBERTSON, 1888.

- 9 THE FAITHFUL AT PRAYER
30 in. by 52 in.

C. ROBERTSON.

- 10 FISHERMEN DRAWING IN A NET
13 in. by 20 in.

C. ROBERTSON.

- 11 WHEN THE BOATS COME HOME: WHITBY
13 in. by 20 in.

C. ROBERTSON.

- 12 A QUIET STREAM
6½ in. by 9½ in.

C. ROBERTSON.

- 13 LANDING NETS, LINCOLNSHIRE; THE PUNT; and WHERE IS
HIS HOME? by A. LUDOVICI 3

ROMNEY.

- 14 HEAD OF LADY HAMILTON—*from the Beckett Dennison
Collection*; HEAD OF A GENTLEMAN, in blue coat—*oval,
pastel*; and LOW TIDE, by C. ROBERTSON 3

G. S. SHEPHERD, 1864.

- 15 SMITHFIELD MARKET
12 in. by 7¾ in.

PICTURES.

H. WALKER D'ACOSTA.

- 16 NEWS FROM THE WAR: Time of Napoleon
39½ in. by 30 in.

F. DECKER.

- 17 A WOODY LANDSCAPE, with cottages and figures
On panel—14½ in. by 22 in.

OPIE.

- 18 A PEASANT-GIRL, holding a bowl of milk
25 in. by 19½ in.

RAEBURN.

- 19 PORTRAIT OF ALEX. DUNCAN, Esq., when a boy, in green coat
and yellow vest—*oval*; and HEAD OF JOHN H. MORTIMER 2

A. DE VRIES.

- 20 PORTRAIT OF A GENTLEMAN, in black dress, with white lawn
collar and tassels
26 in. by 23 in.

DIFFERENT PROPERTIES.

DRAWINGS.

In the Folio.

J. ORROCK.

- 21 NEAR BRADGATE PARK; NEAR BARDEN TOWER; SAND-
BANKS; and SAWLEY-ON-TRENT 4

J. ORROCK.

- 22 CLER VEAULX CASTLE; A ROCKY MOOR; THE RUINS; and
A COMMON 4

J. ORROCK.

- 23 LUMLEY CASTLE; A ROCKY LANDSCAPE; A ROUGH SEA;
and CONISCLIFFE 4

J. ORROCK.

- 24 HANING ROCKS, LEICESTERSHIRE; and BEAUMANOR PARK 2

J. ORROCK, 1890.

- 25 THE FORD; WARKWORTH CASTLE; and BRADGATE PARK 3
20 in. by 30 in.

J. ORROCK.

- 26 THE WINDMILL; THE OLD PRIORY; and IN BRADGATE
PARK 3
20 in. by 30 in.

J. ORROCK, 1881.

- 27 A WELSH RIVER; SHOOTING ON THE MOORS; RIVEAULX
ABBEY; &c. 4
20 in. by 30 in.

J. ORROCK.

- 28 TUTBURY CASTLE; THE STEPPING-STONES; BRADGATE
PARK; and IN LINCOLNSHIRE 4
20 in. by 30 in.

J. ORROCK.

- 29 THE ROAD BY THE WOOD; FIR-TREES; THE VILLAGE
CHURCH; and NEAR AYSGARTH 4
20 in. by 30 in.

J. ORROCK.

- 30 A TROUT-STREAM; and A WOODLAND STREAM 2

Framed.

W. L. LEITCH, 1876.

- 31 KILCHURN CASTLE; and CATTLE ON A MOUNTAIN ROAD 2

ROSE BARTON, 1904.

- 32 UNDER THE SHADOW OF THE CHURCH
22 in. by 17½ in.

E. A. WALTON.

- 33 IN THE LOWLANDS
15 in. by 19 in.

J. R. K. DUFF.

- 34 MILKING-TIME
Pastel—11 in. by 15 in.

J. R. K. DUFF.

- 35 CORFE CASTLE
Pastel—9¾ in. by 14 in.

A. W. RICH.

- 36 ON THE THAMES; and AT GREENWICH 2

D. S. MACCOLL.

- 37 ROBIN HOOD'S BAY
11 *in.* by 9 *in.*

DAVID COX.

- 38 THE TERRACE, HADDON HALL; and SHEEP ON A ROAD 2

W. HUNT, 1829.

- 39 AN OLD MAN
14 *in.* by 10½ *in.*

J. S. COTMAN.

- 40 A VIEW IN AN OLD TOWN
7½ *in.* by 10 *in.*

G. A. FRIPP.

- 41 A VIEW ON THE THAMES, with a man in a punt
12½ *in.* by 19½ *in.*

V. W. BROMLEY, 1873.

- 42 THE DUEL
12 *in.* by 18 *in.*

BRANEGAN.

- 43 OFF HASTINGS
11½ *in.* by 20 *in.*

W. LEE HANKEY.

- 44 A VILLAGE IN PICARDY
19½ *in.* by 29½ *in.*

C. E. JOHNSON.

- 45 A MOUNTAIN STREAM
14 *in.* by 20½ *in.*

H. ALLINGHAM.

- 46 THE CAMPAGNA DE TORCELLO
14 *in.* by 8½ *in.*

E. TUCKER.

- 47 A MOUNTAIN TORRENT
14½ in. by 21 in.

W. CRUICKSHANK.

- 48 DEAD PARTRIDGES; and A DEAD PIGEON 2

A. D. McCORMICK.

- 49 MIDSHIPMAN NELSON'S FIRST DAY IN THE NAVY; and
LIEUTENANT NELSON BOARDING A PRIZE IN A GALE—
a pair 2
17½ in. by 14 in.

A. D. McCORMICK.

- 50 CAPTAIN NELSON IN THE "AGAMEMNON" ENGAGING THE "CA
IRA"; and CAPTAIN NELSON CHALLENGING A MIDSHIPMAN
TO RACE TO THE MASTHEAD 2
14½ in. by 19½ in.

A. D. McCORMICK.

- 51 THE COMMENCEMENT OF THE BATTLE OF THE NILE
13½ in. by 20½ in.

A. D. McCORMICK.

65. 52 NELSON GOING ON BOARD THE "THESEUS" TO HAVE HIS ARM
AMPUTATED; NELSON BOARDING THE "SAN JOSEF" AT THE
BATTLE OFF CAPE ST. VINCENT; and NELSON SEALING
HIS LETTER TO THE CROWN PRINCE OF DENMARK 3
17 in. by 12½ in.

A. D. McCORMICK.

- 53 NELSON IN CHASE OF THE FRENCH FLEET; "BRAVE
EMMA"; and THE ESCAPE OF THE ROYAL FAMILY FROM
NAPLES 3
17 in. by 12½ in.

A. D. McCORMICK.

50. 54 NELSON IN AN OPEN BOAT IN THE BALTIC GOING TO JOIN
THE FLEET; NELSON HAS THE COFFIN PRESENTED TO
HIM BY CAPTAIN HALLOWELL PLACED AGAINST THE
BULKHEAD OF HIS CABIN; and NELSON DYING IN THE
COCKPIT OF THE "VICTORY" 3
12 in. by 17½ in.

A. D. McCORMICK.

130. (55) NELSON LOSES AN EYE AT CALVI; NELSON SEVERELY
WOUNDED AT THE NILE; and NELSON PUTTING THE
GLASS TO HIS BLIND EYE 3
17 in. by 12½ in.

A. D. McCORMICK.

- 56 NELSON AT TRAFALGAR
19 in. by 14 in.

CUTHBERT RIGBY.

- 57 ON THE FROME
7½ in. by 11 in.

T. COLLIER.

- 58 ARUNDEL
5 in. by 9 in.

H. HARPIGNIES, 1884.

- 59 MOONRISE
7 in. by 9¾ in.
From the Staat Forbes Collection

G. HENKES.

- 60 INDUSTRY
8½ in. by 10 in.

D. COX.

- 61 THE STORM
28½ in. by 39 in.

FRANK DICKSEE, R.A.

14. (62) ROMEO AND THE APOTHECARY
Monochrome—7½ in. by 6 in.

E. DUNCAN, 1880.

- 63 "As slow our ship her foaming track,
Against the wind was cleaving," &c.
T. More
31 in. by 26½ in.

J. F. D'EGVILLE, 1865.

- 64 ON THE RIVER TIBER
10¾ in. by 19¾ in.

H. S. MARKS, R.A.

- 65 ORPHEUS CHARMING THE BRUTES
 $6\frac{1}{4}$ in. by 28 in.
Exhibited at the Royal Jubilee Exhibition, 1887

J. H. MOLE.

- 66 HASTINGS; and HARVEST-TIME, by H. MAPLESTONE 2

SIR E. J. POYNTER, P.R.A.

- 67 MOSES HERDING JETHRO'S FLOCK
Pastel— $9\frac{3}{4}$ in. by $8\frac{1}{2}$ in.
From the Collection of E. Dalziel, Esq., 1886

A. M. ROSSI, 1899.

- 68 L'ARPEGIANTE
 27 in. by $21\frac{1}{2}$ in.

J. SYER, 1870.

- 69 WELSH RIVER SCENES—*a pair* 2
 12 in. by $18\frac{1}{2}$ in.

H. S. TUKE, R.A., 1904.

- 70 SUMMER-TIME
 10 in. by $17\frac{1}{2}$ in.

J. VARLEY.

- 71 AN EASTERN COURTYARD
 30 in. by 38 in.

E. WAKE COOK, 1889.

- 72 BELLAGIO: A Tourist's Life in Italy
 20 in. by $29\frac{1}{2}$ in.

W. L. LEITCH, 1875.

- 73 SMALLHOLME, ROXBURGH
 $8\frac{1}{2}$ in. by $12\frac{1}{2}$ in.

BERTRAM PRIESTMAN, A.R.A.

- 74 THE WINDMILL
Pastel—12 in. by $15\frac{1}{2}$ in.

R. MAINELLA.

- 75 ON THE LAGOONS ; and A REPRODUCTION, after OSTADE 2

W. H. PIKE, 1897.

- 76 CAPT. WILSON'S LAST RIDE
20 in. by 35½ in.

PICTURES.

J. E. MOSTYN.

- 77 THE GARDEN OF LOVE
21½ in. by 27½ in.

A. CHEVALLIER TAYLER, 1890.

- 78 REFLECTIONS
15½ in. by 20 in.

ALBERT GOODWIN.

- 79 WINCHESTER ABBEY
26 in. by 35½ in.

W. H. PIKE.

- 80 CONNOISSEURS ; and THE CAB-RANK 2

G. ARMFIELD.

- 81 RETRIEVERS ; and SETTERS 2

A. WINDMAIER.

- 82 MORNING ; and EVENING—a pair
8½ in. by 16½ in.

F. L. COUTERIER.

- 83 NO ADMITTANCE
On panel—17½ in. by 14½ in.

G. POGGENBECK.

- 84 RUE JERZUEL
12¼ in. by 20 in.

JAN BOGAERTS, 1912.

- 85 ROSES IN A VASE
19 in. by 19 in.

E. LADELL.

- 86 FLOWERS, FRUIT AND A BIRD'S-NEST
15½ in. by 13½ in.

N. LARGILLIÈRE.

- 87 PORTRAIT OF A GENTLEMAN, in brown coat with pink facings
and white frills
33 in. by 27 in.

K. HEFFNER.

- 88 THE FARMSTEAD
On panel—7½ in. by 12½ in.

J. ECHENG.

- 89 THE ARAB MUSICIAN
On panel—7 in. by 4 in.

STANHOPE A. FORBES, R.A.

- 90 A LAMP-LIGHT STUDY
14 in. by 10½ in.

F. BRETT, A.R.A.

- 91 SEAFORD
7 in. by 13½ in.

TH. WEBER.

- 92 SEASCAPES: Morning and evening—*a pair* 2
On panel—7 in. by 10 in.

W. A. ALMOND, 1888.

- 93 SALLY IN OUR ALLEY
On panel—9 in. by 5½ in.

SIR ALFRED EAST, A.R.A.

- 94 NEAR SOUTH DOWNS
9¾ in. by 14½ in.

D. VAN BERGEN.

- 95 A LANDSCAPE, with cattle and figures
16 in. by 21½ in.

JAMES BAYNES.

- 96 WYNDHAM ABBEY, NORFOLK
 26½ in. by 34½ in.
Exhibited at the Royal Academy, 1800

J. J. PALING.

- 97 CONVALESCENT
 30 in. by 22 in.

J. L. DYCKMANS.

- 98 THE TIRED MOUNTEBANK
 24 in. by 21 in.

JANSSENS.

- 99 PORTRAIT OF A GENTLEMAN, in black dress trimmed with
 fur, and white ruff
On panel—24½ in. by 20 in.

J. LINNELL, SEN., 1818.

- 100 EVENING AT HAMPSTEAD
On panel—15 in. by 22 in.

MORLAND.

- 101 BREAKING THE ICE
 17 in. by 22 in.

A. D. PEPPERCORN.

- 102 EVENTIDE
 12 in. by 8¼ in.

HAROLD KNIGHT.

- 103 LAMORNA COVE
 13 in. by 9¾ in.

BERTRAM PRIESTMAN, A.R.A., 1895.

- 104 A DUTCH CANAL
 12 in. by 16 in.

BERTRAM PRIESTMAN, A.R.A.

- 105 MONCKENDAM MEADOWS
 12 in. by 16¼ in.

W. ESTALL.

- 106 SHADY PASTURES
27 in. by 36 in.

A. D. PEPPERCORN.

- 107 CLAIRE DE LUNE
23 in. by 35 in.

E. DUEZ.

- 108 IN THE CONSERVATORY
38½ in. by 20 in.

ARTHUR TOMSON.

- 109 CAT AND KITTENS
19½ in. by 30 in.

J. ORROCK.

- 110 AYSGARTh, YORKSHIRE; and NEAR BOLTON 2
Unframed—24 in. by 36 in.

J. ORROCK.

- 111 RIVER SCENES—*a set of three* 3
Unframed—32½ in. by 51 in.

M. J. MOBERLY.

- 112 "She set hands to her hair of gold," &c.
W. Morris, "Earthly Paradise"
50 in. by 30 in.

SIR J. E. MILLAIS, P.R.A.

- 113 A LADY IN A RED DRESS: A sketch
29½ in. by 24½ in.

A HYNER.

- 114 PREPARING THE MEAL
21½ in. by 17½ in.

E. J. NIEMANN.

- 115 THE FOOTBRIDGE
24½ in. by 44½ in.

W. P. FRITH, R.A.

- 116 THE PET CANARY
On panel—9 in. by 11 in.

J. F. HERRING.

- 117 THE WATERING-PLACE
14 in. by 19 in.

J. F. HERRING, SEN.

- 118 HORSES IN A STABLE-YARD
Circular—20 in. diam.

R. H. MOORE.

- 119 COURSING SUBJECTS—*a set of four* 4
On panel—4¾ in. by 7 in.

T. F. WAINEWRIGHT, 1880.

- 120 THE WATERING-PLACE: Sunrise
23½ in. by 43 in.

C. E. HALLÉ.

- 121 THE GREY LADY
41½ in. by 21½ in.

C. E. HALLÉ, 1870.

- 122 EUROPA AND THE BULL
Arched top—29½ in. by 19½ in.

LELY.

- 123 PORTRAIT OF A LADY, in white dress, with green scarf. *In*
a painted oval
29½ in. by 24½ in.

LANCRET.

- 124 BLIND-MAN'S BUFF
22 in. by 26 in.

LEOPOLD RIVERS.

- 125 A MOUNTAINOUS LANDSCAPE, with a peasant driving cattle
along a road
28 in. by 42 in.

W. ESTALL.

- 126 SPRING-TIME

CHARLES BRITTAN.

- 127 AMONG THE TORS, NEAR PRINCETOWN
14 in. by 21 in.

W. WATSON, 1882.

- 128 HIGHLAND SHEEP
24 in. by 35 in.

W. WATSON, 1882.

- 129 HIGHLAND CATTLE
24 in. by 35 in.

W. LUKER, 1880.

- 130 IN THE HIGHLANDS ; ON THE MOORS ; and GLYNDE 3

F. GOODALL, R.A.

- 131 NEAR THE PYRAMIDS
15½ in. by 23½ in.

K. HEFFNER.

- 132 SUNSET ; and MOONRISE—*a pair* 2
8 in. by 13 in.

L. MUNTHE.

- 133 WINTER SUNSET
On panel—23 in. by 17 in.

JULES NOEL.

- 134 A FISHING VILLAGE
14½ in. by 21 in.

A. NOEMANN.

- 135 A NORWEGIAN FJORD
41 in. by 61 in.

K. HEFFNER.

- 136 ON THE NORFOLK BROADS
19 in. by 23½ in.

K. HEFFNER.

- 137 IN THE ROMAN CAMPAGNA : Twilight
55½ in. by 46½ in.

ERNEST PARTON.

- 138 WARGRAVE CHURCH ; and A THAMES BACKWATER—*a pair* 2
23½ in. by 16 in.

ERNEST PARTON.

- 139 THE PEACEFUL STREAM; and ST. MARGARETS, by D. MURRAY SMITH, 1905 2

J. J. WILSON.

- 140 OLD CALAIS PIER
12 in. by 22 in.

F. WHEATLEY, R.A.

- 141 THE CARELESS SERVANT
29 in. by 24½ in.

SIR E. LANDSEER, R.A.

- 142 THE FAVOURITE DOGS OF THE HON. WILLIAM PONSONBY
34 in. by 44 in.

TROUILLBERT.

- 143 THE LAKE
12½ in. by 17½ in.

JAMES CHARLES.

- 144 SANDS AT DAUNES, CAMIERS
18½ in. by 27 in.
Exhibited at Manchester, 1913

JAMES CHARLES.

- 145 MICHELINA
22 in. by 16 in.
Exhibited at Manchester

JAMES CHARLES.

- 146 ARABLE LAND
12½ in. by 26½ in.

F. CHAIGNEAU.

- 147 THE FLOCK
On panel—12½ in. by 15½ in.

D. D. DE LA MAR, 1873.

- 148 A MOORLAND ROAD
12 in. by 24 in.

G. HENKES.

- 149 A GRANARY
16 in. by 31½ in.

J. R. K. DUFF, 1904.

- 150 MOUNTAIN SHEEP
16 in. by 26½ in.

J. FARQUHARSON, R.A.

- 151 THE FLOWER GARDEN
16¾ in. by 11½ in.

E. VERNIER.

- 152 BOATS AT LOW TIDE
On panel—9¾ in. by 15½ in.

TACO MESDAG.

- 153 EFFET DE NIÈGE
15 in. by 20 in.

W. ESTALL.

- 154 TENDING CATTLE: Twilight
16¾ in. by 23 in.

W. ESTALL.

- 155 WILLOWS AND COWS
13 in. by 20 in.

W. ESTALL.

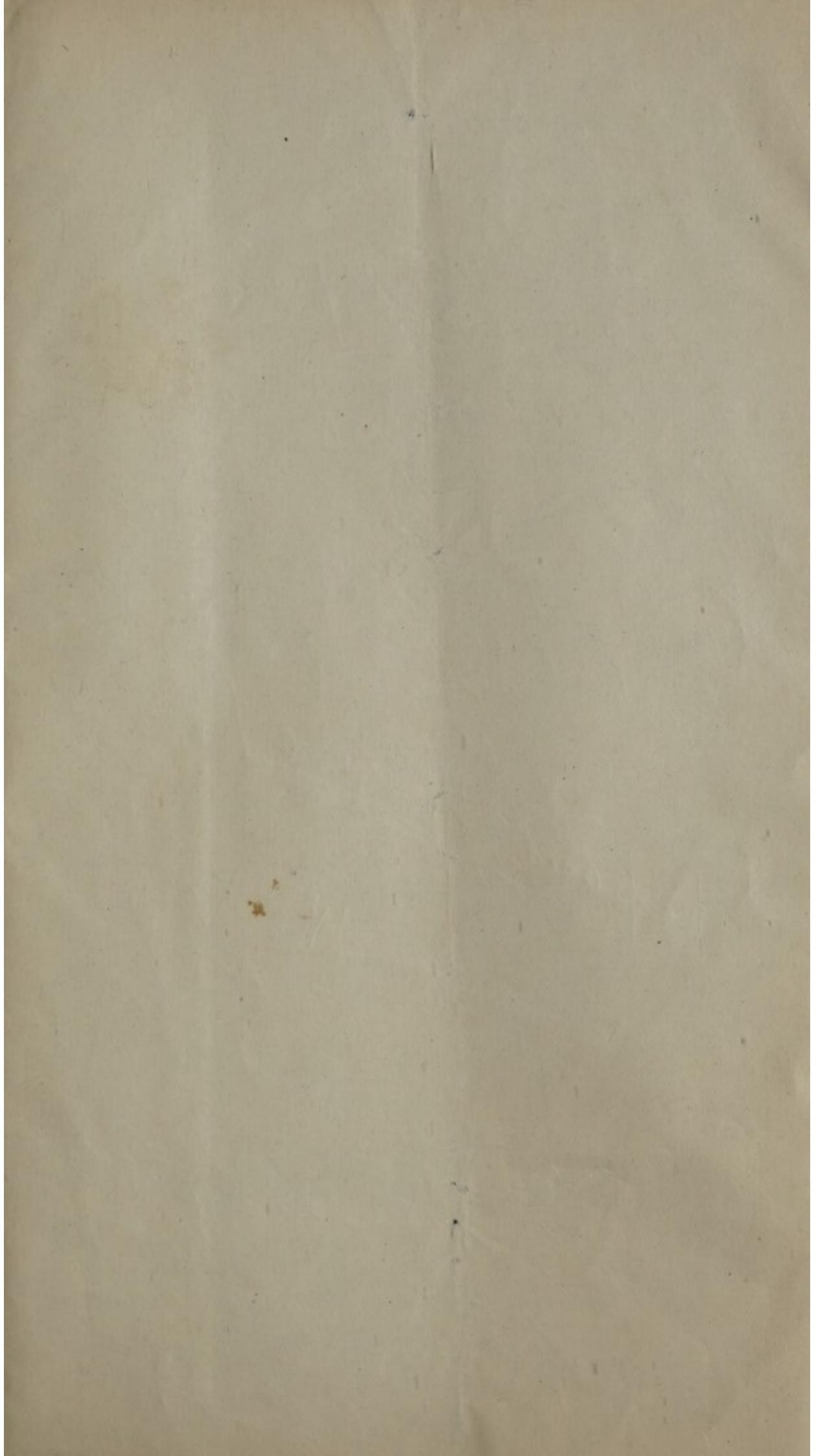
- 156 MORNING PASTORAL
13 in. by 20 in.

MISS DOLAN.

- 157 THE GREEN DRESS
60 in. by 40 in.

- 158 A COMPOSITE GILT PICTURE-FRAME
Sight measurement, 50 in. by 36 in.

FINIS



Lot. 52.	173	5.0
" 54.	84	.
55	136	10.0
62.	14	14.0
		<hr/>
		\$408.90

AM

Entered Feb 150

Deposit for 0.0