

Sales catalogues: Knight, Frank & Rutley

Publication/Creation

20th- 21st April 1920

Persistent URL

<https://wellcomecollection.org/works/zq59u6xw>

License and attribution

This work has been identified as being free of known restrictions under copyright law, including all related and neighbouring rights and is being made available under the Creative Commons, Public Domain Mark.

You can copy, modify, distribute and perform the work, even for commercial purposes, without asking permission.



Wellcome Collection
183 Euston Road
London NW1 2BE UK
T +44 (0)20 7611 8722
E library@wellcomecollection.org
<https://wellcomecollection.org>

Prance

In the Estate of the late Miss E. Prance

No Purchase 1st day
See list for 2^d "

THE FERNS, FROGNAL LANE,
HAMPSTEAD, N.W.

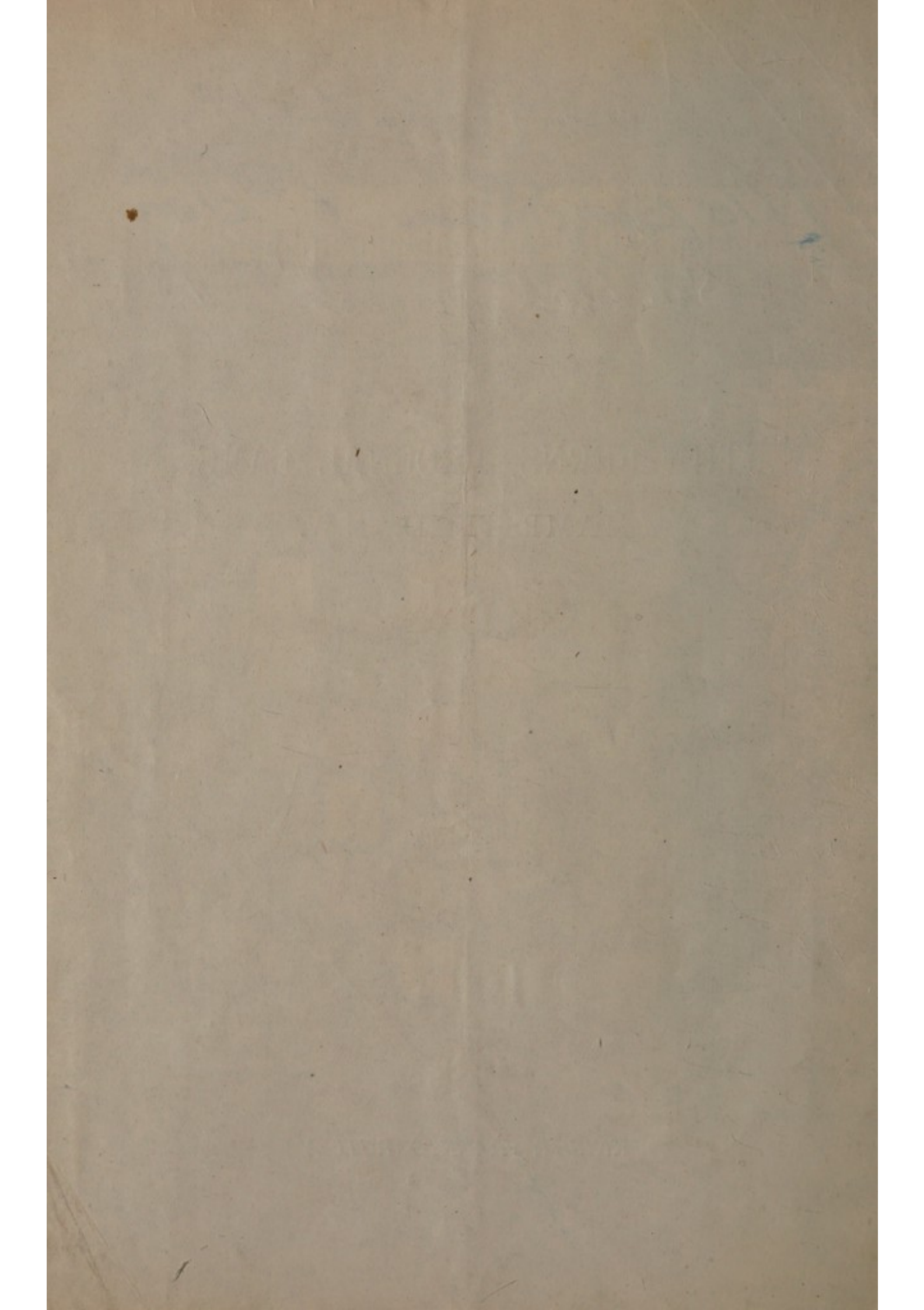



KNIGHT, FRANK & RUTLEY

H. E. 1/10
Original

49th
of month

out





In the Estate of the late Miss E. Prance

A
CATALOGUE
OF
THE CONTENTS OF

**THE FERNS, FROGNAL LANE,
HAMPSTEAD, N.W.**

TO BE SOLD BY AUCTION

BY MESSRS.

KNIGHT, FRANK & RUTLEY

(SIR HOWARD FRANK, K.C.B., JOHN FREDERICK KNIGHT
ALFRED J. BURROWS and ARTHUR H. KNIGHT)

On the Premises, as above

On TUESDAY, 20th APRIL, and following Day

AT ONE O'CLOCK PRECISELY EACH DAY

On View Saturday and Monday, April 17th and 19th, from 10 to 5 o'clock. Catalogues may be obtained of BERTRAM STURT, Esq., 8 Old Jewry, E.C.1; or of the Auctioneers, at their Offices,

20 HANOVER SQUARE, LONDON, W.1.

Telephone—Mayfair 3066

Telegrams—Galleries Wesdo, London.

CONDITIONS OF SALE.

I.—The highest Bidder to be the purchaser, and if any dispute arise between two or more bidders, the lot in dispute shall immediately be put up again and resold.

II.—No person to advance less than 1s.; above Five Pounds 2s. 6d., and so on in proportion.

III.—In the case of lots upon which there is a reserve the auctioneer shall have the right to bid on behalf of the vendor.

IV.—The purchaser to give in name and address, and, if required, to pay down 5s. in the £ or more, in part payment of the purchase-money; in default of which the lot or lots so purchased to be immediately put up again and re-sold.

V.—The lots to be taken away at the purchaser's expense and risk on the day following the completion of the sale, in default of which Messrs. KNIGHT, FRANK & RUTLEY will not hold themselves responsible if the lots be lost, stolen, damaged or destroyed; but they will be left at the sole risk of the purchaser. All damage done to the premises, or to any lots, by the removal of any goods shall be made good by the purchaser thereof; principals being considered responsible for the acts of their servants.

VI.—The lots are sold with all faults, imperfections, and errors of description, the auctioneers not being responsible for the correct description, genuineness, or authenticity of, or any fault or defect in, any lot; and making no warranty whatever. The auctioneers reserve the right of refusing any bidding or of withdrawing any lot or lots from the sale.

VII.—To prevent inaccuracy in delivery, and inconvenience in the settlement of the purchases, no lot can on any account be removed during the time of sale; and the remainder of the purchase-money must absolutely be paid on the delivery.

VIII.—Upon failure of complying with the above conditions, the money deposited in part of payment shall be forfeited; all lots uncleared within the time aforesaid shall be re-sold by public or private sale, and the deficiency (if any) attending such re-sale, together with warehouse and other charges, shall be made good by the defaulter at this sale.

KNIGHT, FRANK & RUTLEY.

Messrs. KNIGHT, FRANK & RUTLEY'S Sale at

The Ferns, Frogna! Lane, Hampstead,

N.W.

On Tuesday, April 20th, 1920,

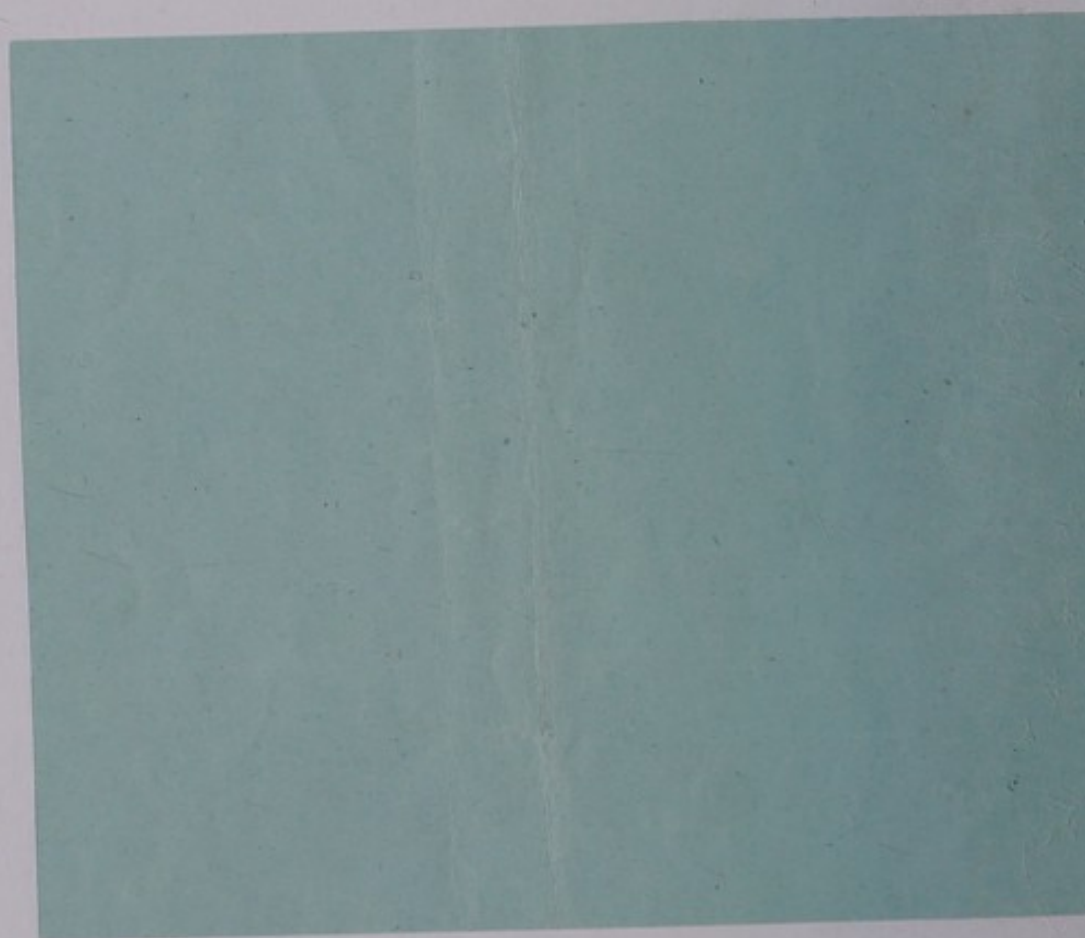
AND FOLLOWING DAY.

Purchasers are requested to fill up this slip and hand same to the
Sale Clerk, with deposit, on making the first purchase.

Name _____

Address in full _____

Lot purchased, No. _____



CATALOGUE

OF

MESSRS. KNIGHT, FRANK & RUTLEY'S

FIRST DAY'S SALE

AT

**The Ferns, Frognal Lane, Hampstead,
N.W.**

On TUESDAY, 20th of APRIL, 1920

AT ONE O'CLOCK PRECISELY.

THE WINE.

- 1 Burgundy, 14 half-bottles, and Chablis, 18 half-bottles
- 2 Vermouth, 2 bottles, Cherry Brandy, etc., 5 bottles, and various,
6 half-bottles
- 3 Sloe Gin, 15 bottles, and various, 3 bottles,
- 4 Old Cognac, 3 bottles
- 5 A similar lot
- 6 Ditto
- 7 Ditto
- 8 Ditto
- 9 Old Brandy, 3 bottles
- 10 A similar lot
- 11 Ditto
- 12 Ditto
- 13 Ditto
- 14 Ditto
- 15 Ditto
- 16 Ditto
- 17 Ditto
- 18 Champagne, Perrier Jouet 1893, 11 bottles
- 19 Sauterne, 1 dozen and 9 bottles
- 20 Curacao, 11 bottles
- 21 Peach Bitters, 4 bottles, and Gin, 2 bottles
- 22 Sauterne, Chateau d'Yquem, 2 dozen and 3 bottles
- 23 Champagne, Basil Wood and Co., 1895, 2 dozen and 1 bottles

- 24 Port, Kopke Roriz, 5 bottles, and Cyder, 11 bottles
- 25 Port, 1870, 22 bottles
- 26 Claret, Chateau Leoville, 1878, 14 bottles, and Chateau Mouton de Rothschild, 1889, 9 bottles
- 27 Hock, 10 bottles, Claret, 4 bottles, and Beaune, 4 bottles
- 28 Maraschino, 9 bottles, and Scotch Whisky, 1 bottle
- 29 Old Scotch Whisky, 2 bottles
- 30 A similar lot
- 31 Ditto
- 32 Ditto
- 33 Ditto
- 34 Ditto
- 35 Ditto
- 36 Ditto
- 37 Liqueurs, various, 14 bottles
- 38 Australian Hock, 11 bottles, and Bucelles, 19 bottles
- 39 Kummel, 12 bottles, and Maraschino, 6 bottles
- 40 Chartreuse, yellow, 12 half-bottles
- 41 Claret, Chateau Leoville, 1907, 6 bottles, and 1890, 20 bottles
- 42 Sherry, 4 dozen and 5 bottles
- 43 Ditto, 4 dozen bottles
- 44 Champagne, 3 dozen and 4 bottles
- 45 Claret, Chateau Maison Neuve, 2 dozen bottles
- 46 Sherry, *magnums*, 1 dozen and 7 bottles
- 47 Sherry, 3 dozen and 8 bottles
- 48 Ditto, 4 dozen and 8 bottles
- 49 Ditto, 4 dozen bottles
- 50 Ditto, 3 dozen bottles
- 51 Ditto, 2 dozen bottles
- 52 Champagne, Perrier Jouet, 2 dozen and 11 bottles
- 53 Ditto, 2 dozen bottles
- 54 Chartreuse, yellow, 6 bottles
- 55 Ditto, 6 bottles

THE INNER DRAWING ROOM.

- 56 Two pairs of crimson cloth curtains
- 57 A bordered green pile carpet, 14 ft. 9 in. by 10 ft.
- 58 A bamboo screen, with Japanese embroidered silk panel, 6 ft. 10 in. high

- 59 A set of ormolu mounted steel fire implements, a steel poker, a wastepaper basket, a long arm, 2 cushions, and a rug
- 60 A mahogany open bookcase, 5 ft. wide, 4 ft. 6 in. high
- 61 Two oak armchairs, of Louis XIII. design, the seats and backs in figured velvet, and 2 occasional chairs en suite
- 62 A carved rosewood table, with circular top, 4 ft. diam., and a tapestry table cover
- 63 Two cane armchairs
- 64 A cane deck chair, with adjustable back, extending leg rest, reading stand, and cushions
- 65 A bamboo writing table, with shelves and locker at back, and 3 drawers in frieze, 2 ft. 6 in. wide
- 66 A box ottoman, in silk tapestry, with loose cretonne cover
- 67 A MAHOGANY BREAK-FRONT BOOKCASE, the upper part enclosed by glazed doors, with cupboards below, 10 ft. wide, 9 ft. high
- 68 A carved rosewood portfolio stand
- 69 Two gilt frame chairs, the seats in silk tapestry, with loose covers, and 2 foot stools
- 70 A set of 6 tread steps
- 71 A wicker work-basket on tripod stand, a drawing board, a walnut blotting case, 3 book racks, a set of brass letter scales and weights, a kingfisher under glass shade, and 6 other articles
- 72 A rosewood frame settee, in silk tapestry, with two bolsters, cushion and loose covers, 6 ft. 6 in. wide
- 73 A bordered pile carpet, 15 ft. 3 in. by 10 ft.
- 74 Albums, newspaper cutting books, etc., 18 vols.
- 75 A fern table, with glazed sides and tops, on iron stand
- 76 A pair of plated pillar candlesticks, a pair of French china figures under glass shades, a pair of majolica girandoles, and 2 vases

THE DRAWING ROOM.

- 77 Two pairs of silk tapestry curtains, with cord holders
- 78 A brass kerb fender, 5 ft. wide, a set of brass fire implements, a pair of ditto rests, a brass coal helmet and scoop, and a pair of nippers
- 79 A gilt cheval fire screen, with clear glass panel, and a black skin hearth rug
- 80 A mahogany overmantel, with numerous shelves and bevelled mirror panels

6 1/2 £
7 1/2 £
2 1/2
14

- 81 An Oriental bordered light ground carpet, 17 ft. 3 in. by 14 ft. 9 in. 16 1/2 9
- 82 Another, 11 ft. 6 in. by 8 ft. 8 3 1/2
- 83 A quantity of Indian matting 3 1/2
- 84 A rosewood writing table, with 2 drawers in frieze, 3 ft. 4 in. wide 5
- 85 An inlaid rosewood work table, on lyre shaped support, 1 ft. 9 in. wide, and a carved walnut 2-tier table, on shaped supports 4
- 86 A carved rosewood cabinet, with shelf at back, and cupboard below enclosed by a pair of panelled doors, 3 ft. 5 in. wide 4 1/2
- 87 A walnut revolving bookcase 3 1/2
- 88 A walnut Sutherland table, 2 ft. 3 in. wide 7 1/2
- 89 A set of green and gilt lacquer quartette tables 4
- 90 A rosewood centre table, with octagonal shaped top, and carved quadruple support, 4 ft. 9 in. wide 5
- 91 A bentwood chaise-longue, with cane panels, and loose cushion in cretonne 4 1/2 9
- 92 Seven cushions 8 1/2 9
- 93 A set of 3 carved rosewood chairs, the seats and backs in silk tapestry, with loose covers 3
- 94 A cane armchair, with cushion 4 1/2 9
- 95 A FULL COMPASS CONCERT GRAND PIANOFORTE, by Erard, in rosewood case 5
- 96 A carved rosewood music Canterbury, a rosewood music stand, and a ditto music stool 10
- 97 A carved rosewood cabinet, with marble top, mirror back, shelves and cupboard below enclosed by a mirror panel door, 7 ft. wide 5 1/2
- 98 Two carved walnut occasional chairs, the seats and backs in silk tapestry, with loose covers 6 1/2
- 99 Two walnut chairs, with cane seats, a birch folding frame table with circular top, an olivewood 2-tier table, and an oak 2-tier table 6 1/2
- 100 A carved rosewood couch, in silk tapestry, with loose cover 4 1/2
- 101 Two carved rosewood frame easy chairs, upholstered en suite, with loose covers 5
- 102 A carved walnut easy chair, in crimson velvet 3
- 103 A mahogany easy chair, in silk tapestry, with loose cushion and loose cover 4
- 104 A brass electric floor lamp, with silk shade 5
- 105 Two pairs of brass girandoles, with bevelled mirror backs 3

- 106 A rosewood chair, the seat in silk tapestry, with loose cover, and a cushion in silk tapestry case, with loose cover $3\frac{1}{2} G$
- 107 A statuary marble figure of Mercury, 24 in. high, and a marble pedestal 10 "
- 40/- 108 A trefoil shaped tea table, a wastepaper basket, an electric table lamp, with silk shade, a Damascus photograph frame, 3 photographs framed, and a leg rest $3 G$
- 109 A French mantel clock, in ormolu case with figures of Amorini and infant Bacchanals in relief, ornamented with painted china plaques, 21½ in. high, and a glass shade 15 G
- 110 CANOVA (after)—A marble group, Cupid and Psyche, 22 in. high, and a marble pedestal 10 "
- 111 A set of brass letter scales and weights, a pair of gilt metal pillar candlesticks, a walnut stationery case, a metal jardinière, a thermometer in marble stand, 2 reading glasses, a blotting case, a telegram case, an olivewood ruler, 2 paper knives, a patience board, and 12 other articles 4 "
- 112 A stereoscope, in walnut case, in cabinet, and a number of slides 15/-
- 113 An olivewood blotting case, a paper knife, a circular silvered glass plateau in plated frame, a glass inkstand, a silver penholder, a ditto book marker, 9 Oriental mats, a leather writing case, 9 albums, 10 glass candle sconces, and 5 other articles 45/-
- 114 An Oriental table cover, a rug, and 2 portfolios containing 2 Arundel prints, maps, etc. 20/-
- 115 A quantity of music 8/-
- 116 An Imari bowl, 10 in. diam., and another, 8 in. diam. 35/-
- 117 A Chinese tea-pot and cover, painted with figures, a ditto bowl, 5½ in. diam., 6 cups and 4 saucers 75/-
- 118 Two Chinese mugs, with figure decoration 70/-
- 119 A pair of Chinese bottle-shaped vases, enamelled in figures, 5 in. high, 2 tea-pots and covers, an Imari jug, 3 ditto cups and a saucer } 3½ G
- 120 A Chinese bowl, the exterior painted with a lotus flower, 8 in. diam., a Nankin circular dish, and 3 plates
10. 121 A set of 12 Continental china figures, symbolical of the Signs of the Zodiac, 4½ in. high 12 G
- 122 A pair of Sèvres green and gilt bordered saucers, painted with the crown and cypher of Louis Philippe and flowers, 6 in. diam., or-molu mounted, 2 Sèvres plates, painted with Watteau figures, and 2 ditto saucers 7 G
- 123 A pair of Rockingham 2-handled vases, 10 in. high 7 G
- 124 A Venetian glass ewer, a ditto tazza, 15 finger bowls, and 2 liqueur glasses 3½ "

- 125 A Dresden wheel pattern bowl and cover, a Rockingham bowl and cover, encrusted with flowers, a Crown Derby watering can, and 2 small ornaments *7 1/2 G*
- 126 A pair of Sèvres pear-shaped vases, painted flowers on scale ground, gilt, 13 in. high, and a pair of 9-inch two-handled vases, painted flowers in panels *6 1/2*
- 127 A pair of old English figures of male and female gardeners, supporting candlesticks, on apple green and gilt bases, 9 in. high *13 G*
- 128 A pair of French figures of "Printemps" and "Automne," 13 1/2 in. high, a Worcester pot-pourri vase and cover, a green and gilt pen tray, 2 biscuit cups, and a biscuit copy of the Portland Vase *3 1/2*
- 129 A vase, painted in flowers, 10 1/2 in high, a pair of figure extinguishers, and a cloisonné vase *6 1/2*
- 130 A Continental biscuit china figure of Christ, and 4 ditto figures and groups *2 1/2*
- 131 A pair of Crown Derby pastille burners, with red, green, blue and gilt decoration, 4 in. high *5*
- 132 A repoussé copper tray, 12 1/2 in. wide, a copper tea caddy, a hammered copper coffee pot, with lamp and stand, and a ditto milk jug *2*

THE DINING ROOM.

- 133 Three pairs of crimson cloth curtains, with chain holders *5 1/2*
- 134 A steel mounted iron kerb fender, a set of steel fire implements, and a brass cheval fire screen, with leaded glass panel *40*
- 135 A walnut coal purdonium, with liner and scoop, a black skin hearth rug, and a wastepaper basket *2 1/2 G*
- 136 A chimney glass, in gilt frame, plate 50 in. by 42 in. *2 G*
- 137 A rosewood cheval fire screen, with clear glass and fretted panels *4*
8. 138 A Persian bordered rug, 5 ft. 4 in. by 3 ft. 8 in. *17 G*
- 139 An Oriental bordered red ground carpet, 17 ft. 9 in. by 12 ft. 3 in. *17 G*
- 140 A carved mahogany dining table, 4 ft. 10 in. wide, with 4 extra leaves, and a mahogany leaf stand
- 141 A set of 12 carved mahogany dining chairs, the seats in morocco leather
- 142 A carved mahogany easy chair, upholstered in morocco leather
- 143 A CARVED MAHOGANY PEDESTAL SIDEBBOARD, with mirror back, 3 drawers in frieze and cupboards below, 7 ft. 6 in. wide, and an oil baize cover

*Silk
Rose*

- 144 A carved oak 3-tier dinner waggon, 4 ft. 6 in. wide
- 145 An inlaid walnut Sutherland table, 2 ft. 8 in. wide
- 146 A carved mahogany secrétaire, the interior fitted with leather lined writing slide, lockers, small drawers and pigeon holes, enclosed by a fall front, with cupboard below, 3 ft. 6 in. wide
- 147 A mahogany table, with oblong top and 2 adjustable book rests, 3 ft. wide
- 148 Two walnut arm chairs, with cane seats, and an inlaid occasional table, with octagonal shaped top
- 149 A carved walnut footstool, a leg rest, and a crimson cloth table cover
- 150 An olive-wood book rack, an inlaid rosewood workbox, and an inlaid rosewood teacaddy
- 151 A pair of carved rosewood 3-tier whatnots
- 152 A mantel clock, by Parkinson and Frodsham, in bronze mounted black marble case of classical design, 11 in. high
- 153 A Continental china bust, 19 in. high
- 154 A bronze figure, "Meditation," after Michael Angelo, 11 in. high
- 155 A pair of bronze 3-light candelabra, a pair of 2-handled china vases, of Etruscan design, a carved sandalwood box, a date indicator, 5 photograph frames, 2 green glazed ware jardinières, and a small embroidered mat
- 156 A papier mâché tea tray, inlaid with mother-o'-pearl, 32 in. wide

PAINTINGS, DRAWINGS & ENGRAVINGS.

- 157 J. W. OAKES, A.R.A.—"Aberffraw Bay," 34 in. by 49 in.
"A sand-built ridge
 Of heaped hills that mound the sea."—Tennyson.
- 158 RAPHAEL (after)—"The Holy Family," 12 in. by 9 in.
- 159 FRA ANGELICO (after)—A set of 6 Angel musicians, on panels, 15 in. by 5½ in., in carved gilt frames of Gothic design
- 160 — The Virgin and Child, on panel, 13½ in. by 8 in., in carved gilt frame of Gothic design, painted with Saints, etc.
- 161 VENETIAN SCHOOL—The Virgin and Child, 31½ in. by 26 in.
- 162 An oval painting, 11 in. by 9 in., an Angel's head, and another
- 163 FRA ANGELICO (after, by R. Bonajuti)—"The Coronation of the Virgin," circular panel, 34 in. diam.
- 164 ITALIAN SCHOOL—The Virgin and Child with St. John, 35 in. by 34 in., Florentine carved gilt frame

- 165 ITALIAN SCHOOL—A painting, on panel, 8 in. by 20 in., The Death of a Saint
- 166 A XVIIth Century carved oak panel, "The Adoration of the Infant," 13 in. by 10½ in., carved frame
- 167 Another, "The Trinity," 16½ in. by 10½ in., carved frame
- 168 Two carved panels, "Boors Regaling," after Teniers, and a carved wood squirrel
- 169 F. POWELL—A water colour drawing, "Herring boats running before a morning breeze," 16 in. by 26 in.
- 170 ITALIAN SCHOOL—Saint Veronica, 8½ in. by 7 in.
- 171 A river scene, with figures and cattle, panel, 7 in. by 9 in.
- 172 H. A. HARKER, 1877—A lake and mountain scene, 5 in. by 8½ in., a painting on porcelain, "Psyche," after Beyschlag, and a drawing, Amorini
- 173 A pair of circular paintings, Coast and river scenes, 10½ in. diam.
- 174 An engraving, after Watts, "Sir Galahad," a print, "The Recital," and a photograph, "The Broken Pitcher"
- 175 Two engravings, by G. H. Phillips and Chas. Turner, after J. M. W. Turner, "Arundle Castle" and "More Park"
- 176 THOMAS DANBY—A water colour drawing, Hampstead Heath, 7 in. by 10 in.
- 177 A set of 6 engravings, by and after J. M. W. Turner. *Plates from the Liber Studiorum*
- 178 An engraving, "The Fighting Téméraire," after J. M. W. Turner, and four others
- 179 A signed proof etching, by Axel. H. Haig, "Assisi—October evening"
- 180 A signed proof, after W. Holman Hunt, "The Light of the World," and another, "The Lady of Shalott"
- 181 A signed proof etching, by Robert W. Macbeth, after F. Walker, "Marlow Ferry, 1870," and another, by Birket Foster, "The Street, Cookham"
- 182 A signed proof etching, after F. Walker, "Our Village," and two prints, "The Madonna and Child"
- 183 JOHN BRETT—A pair of watercolour drawings, "Highland Coast and Loch Scenes," 7 in. by 14 in.
- 184 A watercolour drawing, by F. E. J. Goff, "Westminster," and another, "Venice"
- 185 A signed proof engraving, by David Law, after J. MacWhirter, and a painting, by Niemann, "The Thames at Richmond"
- 186 An engraving, after J. M. W. Turner, by W. B. Cooke, "Minehead," and another

- 187 A signed proof engraving, after W. Holman Hunt, "Christ in the Temple," and a pair of small engravings, after J. M. W. Turner
- 188 A mezzotint engraving, by C. Turner, after J. M. W. Turner, "The Shipwreck"
- 189 Six engravings, after J. M. W. Turner
- 190 A similar lot
- 191 Ditto
- 192 Ditto
- 193 An engraving, by Saml. Cousins, after James Sant, "The Infant Samuel," a drawing, by J. Barret, a lithograph, and a coloured print
- 194 An engraving, after J. M. W. Turner, a remarque proof etching, by E. Burrow, "The Severn from Mythe Bridge"
- 195 REYNOLDS (after)—A painting, The Strawberry Girl, 23½ in. by 19½ in.
- 196 Two signed proof engravings, by Robt. W. Macbeth, after F. Walker, "The Haven of Refuge," and "The Fish-monger's Shop"

THE MORNING ROOM.

- 197 An Oriental bordered blue ground carpet, 11 ft. 6 in. by 8 ft. 9 in.
- 198 Two pairs of plush and tapestry curtains, with band holders, and 3 pairs of casement curtains
- 199 An iron kerb fender, 4 ft. wide, 2 cane seat chairs, a cocoa fibre slip mat, and a quantity of sundries
- 200 A mahogany writing table, with 2 drawers in frieze, 3 ft. 9 in. wide
- 201 A mahogany Sutherland table, 2 ft. 9 in. wide
- 202 A mahogany Pembroke table, with drawer, 3 ft. wide
- 203 A carved mahogany easy chair, upholstered in velvet, and an anti-macassar
- 204 A cane rocking chair, a cane armchair, 3 cushions, a foot stool, and a hassock
- 205 An oak library step chair, and an oak stool, with cane seat and loose cushion
- 206 An oak stationery case, an inlaid rosewood inkstand, with 2 glass receivers, a brass lantern, with ruby glass panels, a repoussé copper cup, and special constable's truncheon
- 207 LEVEQUE—A pair of French bronze groups of Amorini, supporting shell-shaped vases, 8 in. high

- 208 A pair of bronze candlesticks, with owl supports, 7 *in. high*, a bronze paper knife, an alabaster bust of Napoleon, 15½ *in.*, and a figure of "The Dying Gaul"
- 209 A timepiece, and an aneroid barometer, on ormolu stand
- 210 A carriage clock, by Walter & Co., in gilt metal case, an aneroid barometer, a thermometer, in case, and 2 riding whips
- 211 A marble bust, Apollo, 14 *in. high*
- 212 A carved oak letter rack, a reading glass, an olive wood paper knife, 10 frames, a circular majolica salver, 5 ornaments, and 6 other articles
- 213 Five cases of birds, etc.
- 214 An onyx circular dish, on gilt metal stand, a pair of plated fern pot holders, 8 Oriental metal bowls, and 4 pictures, framed
- 215 One hundred and twenty glass flower vases, and specimen holders
- 216 Fifty China and majolica bowls, vases and jardinières

THE ENTRANCE HALL.

- 217 Three cocoa fibre mats, an iron scraper, a brass stick and umbrella stand, and a brass dinner bell
- 218 A pierced iron fender, 3 *ft. wide*, a black skin hearth rug, and 3 ditto slip mats
- 219 A pair of plush and tapestry curtains, with chain holders, and a leopard skin, on cloth mount
- 220 An oak side table, 3 *ft. 6 in. wide*
- 221 An oak side table, with shaped top, on carved mask and dolphin supports, 4 *ft. wide*
- 222 A carved mahogany hall chair, and two oak chairs, with cane backs
- 223 A barograph, in oak case, with drawer
- 224 G. R. AILLORY—A terra cotta group, Peasants and Children, 14 *in. high*, and another, 9 *in. high*
- 225 An aneroid barometer, an oak stand, a thermometer, a small bronze group, pair of glazed ware vases, a ditto salver, and 6 jardinières
- 226 An invalid's wicker chair, on rubber tyred wheels, with 2 cushions
- 227 A barometer and thermometer, by Negretti and Zambra, in carved light oak case
- 228 Three vacuum flasks, a leather cushion, and 4 carriage rugs

THE FIRST FLOOR—THE STUDY.

- 229 An Oriental bordered green ground carpet, 9 ft. by 8 ft. 9 in.
- 230 A pair of silk tapestry and plush curtains, with band holders, a black skin hearth rug, and a set of brass mounted fire implements
- 231 An electric radiator
- 232 A carved oak coal cabinet, with cupboard, liner and scoop
- 233 A mahogany occasional table, with octagonal shaped top, 18 in. wide, 2 oxydized electric table lamps, with silk shades, a mahogany book trough, and 2 cushions
- 234 A Chesterfield settee, in cretonne, with adjustable end, 4 ft. 9 in. wide
- 235 A light oak portfolio stand
- 236 Stanford's London Atlas of Universal Geography, half morocco, folio
- 237 A light oak open book case, with cupboard in base, 4 ft. 6 in. wide, 8 ft. high
- 238 A similar book case, 3 ft. 6 in. wide, 8 ft. high
- 239 Two others, 3 ft. 3 in. and 3 ft. 2 in. wide, 8 ft. high
- 240 A light oak open book case, 7 ft. 5 in. wide, 3 ft. 8 in. high
- 241 A light oak pedestal writing table, with leather lined top, drawers and cupboards below, 4 ft. 3 in. wide
- 242 A walnut arm chair, upholstered in morocco leather
- 243 An inlaid mahogany work table, with hinged top, and shaped under tier, 20 in. wide
- 244 A walnut open book case, with cupboard, 2 ft. wide
- 245 A walnut chair, with rush seat, a brass newspaper rack, an oak 4-tier hanging book case, and an inlaid stool
- 246 Two easy chairs, upholstered in velvet
- 247 A plated oil reading lamp, with opal shade, a small oil reading lamp, and a candle ditto
- 248 A quilted coverlet, 2 hassocks, 2 wastepaper baskets, a set of brass letter scales and weights, a letter file, a box of microscope slides, and 6 other articles
- 249 An oak stationery case, 3 japanned cash boxes, and a portable copying press
- 250 A black and gilt lacquered travelling desk
- 251 A mantel clock, in inlaid marble case, 8 in. high
- 252 A repeater carriage timepiece, by Parkinson and Frodsham, in gilt metal case and leather outer case

- 253 Two cut-glass scent bottles, a reading glass, a small cloisonné bowl and cover, a small silver inkstand, a silver mounted bottle, and 26 ornaments
- 254 A leather travelling trunk

THE CORRIDOR AND STAIRS.

- 255 An oak side table, with spiral supports, drawer in frieze, and grey marble top, 3 ft. 6 in. wide
- 256 Two cases of stuffed birds
- 257 Nine black skin slip mats, and a wool mat
- 258 A Vienna regulator, by W. Schonberger, in walnut case
- 259 About 40 yds. of bordered blue ground stair carpet, of Morris design, 2 ft. 3 in. wide, and the underfelt
- 260 Two Willesden canvas trunks
- 261 A dress basket, a leather portmanteau, and a canvas ditto
- 262 A canvas hold-all, a kit bag, and sundries
- 263 A "Baby Daisy" vacuum cleaner, a "Ewbank" carpet sweeper, and sundry brooms and brushes
- 264 A portable oil stove, a foot warmer, 4 stone ware hot water bottles, a housemaid's box, papier mâché bowl, a can rack, an enamelled pail and cover, 4 cans, an oil filler, a cork bath mat, a thermometer, and a Windsor chair
- 265 About 20 yards of Axminster stair carpet, 2 ft. 3 in. wide, and underfelt
- 266 A wrought iron table lamp, with copper receiver and frosted glass shade, and a brass table lamp, with glass receiver and frosted glass shade

CHINA AND GLASS.

- 267 An old English china dessert service, with blue and gilt trellis pattern border, painted flowers, 40 pieces
- 268 A pink and gilt bordered part tea service, 35 pieces
- 269 A turquoise, pink and gilt bordered part tea and breakfast service, 64 pieces
- 270 A Royal Worcester Japanese pattern tea service, 15 pieces
- 271 A set of 6 cut and engraved glass compotières
- 272 Four cut decanters and stoppers, a ditto claret jug, 2 goblets, and 8 carafes and tops

- 273 Four fluted glass decanters and stoppers, 9 cut star bottom ice plates, and 13 Venetian glass finger bowls
- 274 Eighteen cut star bottom finger bowls, a goblet, 14 champagne glasses, 2 champagne jugs, 4 large tumblers, 2 tazze, 2 finger bowls, 2 pickle jars, a salad dressing bottle, and a cream jug
- 275 *A maroon and gilt banded dinner service: 94 pieces*
- 276 Twenty-one cut lozenge-pattern champagnes, 15 sherries, 14 liqueurs, a sugar tazza, and 4 carafes
- 277 Thirty-three cut sherry glasses
- 278 *A part service of cut hobnail pattern glass: a claret jug, 4 decanters, 3 carafes, 3 large tumblers, 10 custard cups, 16 champagnes, 24 claret and ports, 9 green hocks, 15 sherries, 12 liqueurs, and 8 finger bowls*
- 279 Three glass bowls, 5 moulded glass flower troughs, and sundries

END OF THE FIRST DAY'S SALE

**LAND & BUILDINGS
FACTORIES . . .**

PLANT . . .

MACHINERY . .

TRADE STOCKS .

MESSRS.

Knight, Frank & Rutley

UNDERTAKE

VALUATIONS

for Amalgamation, Insurance
and other purposes.

Offices: 20 HANOVER SQUARE, LONDON, W.

AND

100 PRINCES STREET, EDINBURGH.

78 ST. VINCENT STREET, GLASGOW.

41 BANK STREET, ASHFORD, KENT.

CATALOGUE

OF

MESSRS. KNIGHT, FRANK & RUTLEY'S

SECOND DAY'S SALE

AT

**The Ferns, Frogmal Lane, Hampstead,
N.W.**

On WEDNESDAY, 21st of APRIL, 1920

AT ONE O'CLOCK PRECISELY.

PLATE AND PLATED WARE.

- 301 A pair of candlesticks, 10½ in. high—46 ozs. 5 dwts.
302 A repoussé rose bowl—10 ozs. 6 dwts.
303 A Georgian embossed tea service, with floral decoration, comprising a tea pot, sugar basin and cream ewer—56 ozs.
304 A TANKARD AND COVER, with thumbpiece (Geo. II.)—26 ozs. 14 dwts.
305 A plain salver, with beaded edge (Geo. III.)—6 ozs.
306 A Georgian wine funnel—3 ozs. 4 dwts. 45/- add at
307 A chased and embossed cup—4 ozs. 10 dwts. 55/-
308 A Queen Anne pattern plain coffee pot—13 ozs. 6 dwts. 49/- 1/6 of
309 A plain coffee pot, with gadroon border (Geo. III.)—23 ozs. 12 dwts. 7/6 of
310 A plain cream ewer (Geo. III.)—3 ozs. 19 dwts. 45/- add at
311 A Georgian plain coffee pot—15 ozs. 6 dwts. 15/6 3 32/6 add at
312 An embossed miniature rose bowl, on ebonized base 24/6
313 Two Georgian skewers—4 ozs. 10 dwts.
314 Six chased dessert spoons (Geo. III.)—10 ozs. 4 dwts. 7/3 3
315 Twelve table spoons (Victorian)—35 ozs. 16 dwts. 6/4
316 Twelve ditto—28 ozs. 10 dwts. 6/10 6/6
317 Three gravy spoons—13 ozs. 16 dwts.

- 318 A soup ladle, and 4 sauce ladles—15 ozs. 6 dwts. $7/5.3$
- 319 Eleven tea spoons (*Victorian*)—9 ozs. 16 dwts. $8/3$
- 320 Thirteen tea spoons—9 ozs. 10 dwts. $7/10$
- 321 Six Georgian tea spoons, and 4 egg spoons—5 ozs. 16 dwts. $9/6$
- 322 A fish slice, a butter knife, and 3 pairs of sugar tongs—12 ozs. $6/3$
- 323 Twelve silver tea spoons, a silver toast rack, a silver flower vase, a serviette ring, and a pickle fork with mother-o'-pearl handle $57/6$ actual
- 324 Eighteen dessert spoons (*Victorian*)—21 ozs. $8/10$
- 325 Twelve ditto—17 ozs. 4 dwts. $8/5$
- 326 Seventeen large forks—44 ozs. 14 dwts. $7/6$
- 327 Nine ditto—22 ozs. 10 dwts. $6/10$
- 328 Ten ditto—24 ozs. 14 dwts. $7/2$
- 329 Twelve small forks—17 ozs. $6/8$
- 330 Thirteen ditto—18 ozs. 14 dwts. $1/4$
- 331 Eleven ditto (*Victorian*)—18 ozs. 10 dwts. $1/4$
- 332 A set of 4 plated chamber candlesticks, snuffers and extinguishers $50/-$
- 333 Eighteen silver fruit knives and 18 forks, with mother-o'-pearl handles, in case $22/-$
- 60/- 334 Twenty-four table knives, with silver ferrules, 16 small ditto, 3 carving knives, and 3 ditto forks, in oak knife box $57/2$ $7/2$ $10/2$
- 335 An oak case containing 36 large knives, 33 small knives, 4 pairs of carvers, and a steel $10/2$
- 336 A plated knife tray with gadroon edge, a bread knife with carved ivory handle, a horn-handled ham carver and fork, a pair of nutcrackers, and a nut pick—in case $37/2$
- 337 A set of 4 plated entrée dishes, with liners, covers and stands, floral and scroll decoration $15/-$
- 338 A set of 4 beaded edge dish covers $37/2$
- 339 A bacon dish, with revolving cover, liner and strainer, 2 beaded edge dish covers, and a plated ditto $7/-$
- 340 A chased tea-kettle, with lamp and stand $37/2$
- 341 A fluted and engraved tea-kettle, with lamp and stand, a thermos patent hot water jug, and a soufflé dish and liner $6/-$
- 342 An engraved 2-handled plated tea tray, 22 in. wide, and 3 engraved circular salvers $8/-$

- 343 Two engraved tea pots, a ditto biscuit barrel, a toast rack, and a preserve dish stand 4 1/2 G.
- 344 A travelling tea kettle, with lamp and folding stand, a ditto tea pot, sugar basin and cream jug 4 "
- 60/- 345 A set of 6 afternoon tea knives, with silver handles, a pair of gilt grape scissors, 2 pairs of nutcrackers, a bread fork, with mother-o'-pearl handle, and a silver butter knife 7 6 p. ad.
- 90/- 346 A pair of fish servers, a pair of salad servers, a pair of asparagus tongs, a crumb scoop, a cheese scoop, 3 meat skewers, a soup ladle, a sardine server, and a flask 5 1/2 G.
9 months
- 347 Two breakfast cruets, a toast rack, an egg stand and spoon, a china jam dish, on plated stand, a tea pot stand, an oak pepper mill, a silver mounted glass mustard pot, a spoon, a wine lable, and 2 corks 3 1/2 G.
- 348 A plated chamber candlestick, and extinguisher, two breakfast cruets, a jam spoon, 2 butter knives, 4 souvenir tea spoons, an Indian repoussé box, and a sieve 3 1/2 "
- 349 A repoussé bowl, inset with a Charles II. coin, 3 Georgian spoons, and a fish ornament 2 1/2 "
- 350 A pair of cut glass decanters, in plated stand, and 2 glass cream and sugar bowls, on plated stand 90/-
- 351 Twelve pairs of plated fish eaters, with ivory handles, in case 14 G.

THE BEDROOMS.—BEDROOM No. 1.

- 352 A Brussels carpet, about 16 ft. by 14 ft. 6 G.
- 353 A steel mounted iron kerb fender, 4 ft. wide, a wrought iron cheval fire screen, a Stormont hearth rug, and 2 pairs of cotton curtains 35/-
- 354 A carved mahogany half tester bedstead, 5 ft. wide, with chintz drapery and hangings, a box spring mattress, a wool and hair mattress, a feather bolster, and 2 pillows 6 G.
- 355 A mahogany wardrobe, fitted with drawers, sliding trays and hanging compartment, enclosed by a pair of panelled doors, 5 ft. wide 23 G.
- 356 A mahogany dressing table, fitted 7 drawers, 4 ft. wide, and a mahogany swing frame toilet glass, plate 19 in. by 15 in. 5 1/2 "
- 10/- 357 A mahogany washstand, with marble tray top, and 2 drawers in frieze, 3 ft. 3 in. wide, and a mahogany towel airer 17 G.
- 358 A MAHOGANY PEDESTAL WRITING TABLE, with leather lined top, drawers and cupboards below, 4 ft. wide

- 359 A walnut arm chair, with rush seat 6 9/-
- 360 A scroll end couch, upholstered in crimson rep, a tapestry throw-over, and a cushion 2 1/2-
- 361 A walnut arm chair, with cane seat and back, an oak reading table, and an oak bed table 6 10/-
- 362 A mahogany commode, with ware liner, 9 pieces of toilet ware, a Japanese 4-leaf screen, and a box ottoman in chintz 55/-
- 363 A box ottoman, in rep, and 2 walnut reading tables 3 1/6
- 364 A birch wardrobe, enclosed by a panelled door, 3 ft. 7 in. wide, and 8 dress hangers 8 9/-
- 365 An india rubber water bed, and an air cushion 9 1/6
- 366 An oak stationery rack, 2 china pen trays, a leather wallet, a ditto blotting case, a book rack, a waste paper basket, a mantel board and drapery, a telescopic walking stick, a painted wall bracket, and 12 other articles 30/-
- 367 A lithograph, and 11 drawings, photographs and prints, framed 25/-

BEDROOM No. 2.

- 368 A bordered carpet, of Morris design, 8 ft. 9 in. by 8 ft. 9 in. 6 9/-
- 369 A brass kerb fender, 3 ft. 6 in. wide, a set of brass fire implements, and a pair of brass coal nippers 9 0/-
- 370 A copper coal helmet 2 1/2 9/-
- 371 An electric radiator 25/-
- 372 An electric fan, and a copper electric kettle, 100 volts 55/-
7. 373 A birch wardrobe, fitted sliding trays enclosed by a pair of panelled doors, with 2 long drawers below, 4 ft. 3 in. wide 11 1/2 9/-
- 374 A birch dressing table, with 2 oval adjustable mirrors, 6 drawers and 2 cupboards, 4 ft. 9 in. wide 5 9/-
- 375 A birch washstand, with marble tray top and cupboard below, 2 ft. 9 in. wide 60/-
- 376 A birch writing-table, with drawer in frieze, on turned supports, 2 ft. 6 in. wide 50/-
- 377 A birch pedestal cupboard and commode combined 50/-
- 378 A mahogany occasional table, with drawer in frieze, 2 ft. wide 50/-
- 379 A walnut reading table, and an oak 3-tier book stand 45/-

- 380 A bird's-eye maple commode, a pair of cretonne curtains, with cord holders, 2 black skin mats, and a waste paper basket *63/-*
- 381 A set of Minton floral pattern toilet ware, 10 pieces, ware pail and cover, water bottle and top *65/-*
- 382 A folding work stand, 4 cushions, a thermometer in marble stand, 6 ornaments, and 8 frames containing photographs, etc. *35/-*
- 383 A birch half-tester bedstead, 3 ft. 6 in. wide, with cretonne curtains and drapery, a box spring mattress, wool mattress, feather bolster, and 2 pillows *5-9/-*
- 50/-* 384 Three blankets, and an eiderdown quilt *75/- Hart*
- 385 A scroll end couch, in green velvet *4 1/2 9/-*
- 386 A wall mirror, in painted frame, oval, plate 29 in. by 23 in. *4 1/2 9/-*
- 387 A walnut elbow chair, with rush seat and cushion, and a walnut chair, with cane seat *40/-*

BEDROOM No. 3.

- 388 A bordered pile carpet, 11 ft. 9 in. by 9 ft. 9 in. *8 9/-*
- 389 The linoleum surround, and a roll of underfelt *13/-*
- 5-* 390 A 3 ft. 6 in. iron kerb fender, a set of steel fire implements, a japanned coal purdonium, with liner and scoop, and 4 cane seat chairs *16 6/- Evans*
- 75/-* 391 A birch chest of 5 drawers, 3 ft. 4 in. wide *7 9/- Lonsdale*
- 392 A birch shaving table, with circular swing frame mirror *3 1/2 9/-*
- 4-* 393 A bird's-eye maple bidet, with ware liner, a ditto pedestal cupboard, with marble top, and a towel airer
- 394 A bird's-eye maple dressing table, with 3 jewel drawers, 3 drawers in frieze, and swing frame toilet glass, 3 ft. 6 in. wide *4 1/2 9/-*
- 395 A birch washstand, with marble tray top, and cupboard below, 2 ft. 9 in. wide *35/-*
- 396 A linen basket, a waste paper basket, 14 pieces of toilet ware, water bottle and top, a pair of tapestry curtains, with band holders, and a slip mat *55/-*
- 397 A bird's-eye maple writing table, on spiral supports, 3 ft. wide *5 9/-*
- 398 A cane arm chair and 4 cushions *100/-*
- 4-* 399 A birch wardrobe, enclosed by a panelled door, 3 ft. 6 in. wide, and 4 dress hangers *8 9/- Smith*

- 400 A birch half tester bedstead, 3 ft. 6 in. wide, with chintz hanging and drapery, a box spring mattress, a wool mattress, feather bolster and pillow *6/9*
- 75/-* 401 Three blankets *90/- Hart*
- 402 A scroll end couch, upholstered in rep, with loose cover *4/9*
- 403 An electric radiator *35/-*
- 404 A carved oak wardrobe, enclosed by a mirror panel door, with drawer in base, 3 ft. 9 in. wide *11 1/2/9*
- 405 An electric table lamp, with silk shade, an iridescent glass vase, a thermometer, a brush tray, and 3 ornaments *30/-*

THE SEWING ROOM.

- 406 A pair of rep curtains, a pile slip mat, a 3 ft. 3 in. iron kerb fender, a set of steel fire implements, a japanned coal purdonium, with liner and scoop, and a coal hod *4/5/-*
- 407 A pile carpet, 2 hassocks, and a waste paper basket *30/-*
- 30/-* 408 A 4 ft. deal table, with 2 drawers, the top in American cloth *65/- Smith*
- 6/9* 409 A "Singer" treadle sewing machine *13/9*
- 410 A box ottoman couch, in cretonne *50/-*
- 7/-* 411 A painted wardrobe, fitted shelves, 6 ft. 3 in. wide
- 50/-* 412 Five occasional chairs, a brass wire spark guard, and a mahogany folding towel airer
- 413 A mantel clock, by Bennett, 9 in. high, a "Salter's" parcel balance scales, two water colour drawings, a painting, an engraving, a coloured photograph, and a frame containing numerous photographs *90/-*

THE LINEN.

- 6/-* 414 Twelve linen sheets *12/9 Hart*
- 6/-* 415 A similar lot *12 1/2*
- 6/-* 416 Ditto *10*
- 7/-* 417 Twelve cotton sheets, and 42 linen and cotton pillow slips *8 1/2/9 Hart*
- 418 Four Marcella quilts, 2 coloured ditto, an embroidered bedspread *5/15/-*
- 75/-* 419 Thirty-six huckaback towels and 8 Turkish towels *5/9 Hart*
- 6/-* 420 Six damask tablecloths *10 1/2/9 Polwison*

60/- 421

Six damask tablecloths

7/- Weyburn

45/- 422

Three ditto, and 28 serviettes

46/- Saunders

75/- 423

Forty-eight serviettes

40/- 424

A drawn thread bedspread

3 1/2/- G. Smith

425

Seventy-two glass cloths, tea cloths, kitchen rubbers and dusters

1/10/-

60/- 426

Fourteen tea and tray cloths, and 48 finger bowl mats

80/- Farrer

BEDROOM NO. 4.

427

A bordered pile carpet, 11 ft. 6 in. by 7 ft. 6 in.

11 1/2/- G.

428

A pierced iron fender, a roll of underfelt, and a piece of Brussels carpet

35/-

8- 429

A bird's-eye maple wardrobe, with mirror panel in centre, the interior fitted with drawers, sliding trays and hanging compartment, 6 ft. 6 in. wide

13/- G.

M. and S.

7- 430

A birch dressing table, with 2 drawers, 4 ft. wide, and a ditto washstand, with marble tray top and 2 drawers, 4 ft. wide

5- 431

A birch swing frame toilet glass, plate 25 in. by 18 in., a birch bidet, with ware liner, a birch pedestal cupboard and commode combined, and a towel airer

75/- 432

A birch writing table, with drawer in frieze, 3 ft. wide

433

An easy chair, in tapestry, and 3 chairs, with cane seats and backs

6 1/2/- G.

434

A set of Mason's ironstone toilet ware: 11 pieces, ware pail and cover, water bottle and top

7 1/2/-

435

Eight framed photographs, and prints, a pair of ware vases, and 4 other articles

45/-

12- 436

A 3 ft. 6 in. French brass bedstead, a box spring mattress, a wool and hair mattress, feather bolster, and pillow

14 1/2/-

D. and S.

4- 437

An eider down quilt, a Marcella quilt, and 4 blankets

5 1/2/- G. Saunders

438

A mahogany wardrobe, with 7 long drawers in centre, and hanging compartments at sides, 7 ft. 6 in. wide

15/- G.

439

A 2 ft. 6 in. iron folding bedstead, with wire woven mattress, wool and hair mattress, and a feather bolster

2 1/2/-

4 1/2 Cts
90/- 440A painted wardrobe, enclosed by 2 pairs of panelled doors,
4 ft. 3 in. wide441 A box ottoman, in rep. a set of 8 tread steps, 3 framed photo-
graphs, and 2 tripod stands 30/-

4. 442 A painted dwarf cupboard, fitted sliding trays, 3 ft. 6 in. wide 100/-

443 A bordered tapestry carpet, a roll of underfelt, a pierced iron
fender, an Oriental mat, and a brass door porter 50/-

THE SECOND FLOOR—BEDROOM No. 5.

444 A Brussels carpet, about 13 ft. by 13 ft., a hearth rug, and a
pair of tapestry curtains 55/-445 An iron kerb fender, 2 ft. 10 in. wide, a japanned purdonium,
with liner and scoop, a brass guard, a Venetian blind, and
a dog basket 25/-446 A mahogany wardrobe, the upper part fitted with sliding trays,
enclosed by a pair of doors, with 4 drawers below, 4 ft.
3 in. wide 19/-447 A mahogany chiffonier, with drawer in frieze, shelf at back,
and cupboard below, 3 ft. wide 6 1/24. 448 A mahogany dressing-table, with 2 drawers, 3 ft. wide, and a
mahogany swing frame toilet glass, plate, 19 in. by 15 in. 5/-449 A bird's-eye maple washstand, with 2 drawers and marble
tray top, 3 ft. 6 in. wide, and a towel airer 30/-

450 A mahogany shaving stand, with circular swing frame mirror 4/-

451 A set of 8 carved rosewood chairs, with cane seats 16/-

452 An iron bedstead, 3 ft. wide, 2 wool mattresses, feather
bolster, pillow, and a cotton bedspread 45/-5. 453 A painted wardrobe, enclosed by 2 pairs of panelled doors,
4 ft. 3 in. wide 69/-454 A wicker easy chair, with cretonne cushions, and 6 cane seat
chairs455 A mahogany toilet glass, with circular mirror, 15 in. diam.,
a japanned pail and cover, 15 pieces of toilet ware, 2 ware
foot baths, water bottle, a tumbler, a bath blanket, and
4 cans

- 456 A pair of 11½ in. opal and blue glass vases, a wedge cushion, a 4-fold screen, 7 flags, a dress stand; 2 candlesticks, a wicker clothes basket, and a quantity of horsehair in tick case
- 457 Three japanned sponge baths, a painted pail and cover, a ditto foot bath, and a can
- 458 A leather portmanteau, and a leather hat-box
- 459 A crocodile leather bag

BEDROOM No. 6.

- 460 A Brussels carpet, about 13 ft. 6 in. by 13 ft., and a quantity of underfelt
- 461 A pierced iron fender, 3 ft. 3 in. wide, a wire spark guard, a japanned purdonium, with liner and scoop, and a pair of tapestry curtains
- 462 A mahogany bedstead, 3 ft. 6 in. wide, a box spring mattress, a wool and hair mattress, feather bolster and 2 pillows
- 463 A Marcella quilt, an eider down quilt, and 3 blankets
- 464 A mahogany wardrobe, the upper part fitted with sliding trays, with 4 drawers below, 5 ft. wide 19 00
- 465 A rosewood davenport, with leather-lined hinged top, and cupboard, fitted drawers at side 5 -
- 466 A mahogany shaving stand, with circular swing mirror 2 -
- 467 A mahogany dressing table, with 7 drawers, 4 ft. wide, and a mahogany washstand, with marble tray top and 2 drawers, 3 ft. 6 in. wide 4 ½ -
- 468 A mahogany pedestal cupboard, with marble top, a mahogany towel airer, and a swing frame toilet glass, plate 20 in. by 16 in. 3 -
- 469 A floral pattern toilet set: 11 pieces, a japanned pail and cover, water bottle and top 40/-
- 470 A pair of brass pillar candlesticks, an inkstand, en suite, 7 framed photographs, and 7 other articles 40/-
- 471 A carved rosewood easy chair, in velvet, a cushion and antimacassar, and a rosewood 4-tier whatnot, with drawer 6 ½ 00

BEDROOM No. 7.

- 472 A crimson ground carpet, about 14 ft. by 14 ft., and underfelt
- 473 A pair of chintz curtains, an iron fender, a linen basket, 3 cane seat chairs, and sundry carpet *65/-*
- 474 A bird's-eye maple bedstead, 5 ft. wide, a box spring mattress, a feather bolster and pillow *4 1/2 £*
- 475 A feather bed *15/-*
- 75/-* 476 Four blankets, a Marcella quilt, and a coloured blanket *£5 Goodman*
- 85/-* 477 A 3 ft. 5 in. painted chest of 5 drawers, a 2 ft. 6 in. ditto tray-top washstand, and a 3 ft. dressing table *8 1/2 £ - Good*
- 478 A mahogany pedestal cupboard, with marble top, a mahogany swing-frame toilet glass, a towel airer, 15 pieces of toilet ware, 2 cane seat chairs, 2 water bottles and 2 glasses, and a candlestick *15/-*
- 40/-* 479 A painted chest of 5 drawers, 3 ft. 6 in. wide *3 10/- Colman*
- 50/-* 480 A 3 ft. painted dressing table, with drawer, a painted tray-top washstand, a towel airer, and a mahogany swing-frame toilet-glass

BEDROOM No. 8.

- 40/-* 481 A 3-ft. French brass and iron bedstead, with wire woven mattress, a wool mattress, feather bed, bolster and pillow *6 1/2 £*
- 85/-* 482 A 3 ft. 6 in. painted iron bedstead, 2 wool mattresses, a feather bed, bolster and pillow
- 5/-* 483 Eight blankets, a Marcella quilt, and a cotton bedspread *6 10/- Harding*
- 6/-* 484 A 3-ft. painted dressing table, with drawer, a painted washstand with cupboard, a towel airer, a mahogany swing frame toilet glass, a mahogany pedestal cupboard with marble top, and 6 pieces of toilet ware
- 3 1/2 £* 70/- 485 A painted wardrobe, fitted shelves, enclosed by a pair of doors, 3 ft. 9 in. wide
- 486 Six cane seat chairs *9 2/6*

BEDROOMS No. 9 AND No. 10.

- 487 A mahogany bow fronted chest of 4 drawers, 3 ft. wide, and a mahogany swing frame toilet glass *10 1/2 £*
- 488 A 3 ft. 6 in. painted chest of 5 drawers *70/-*

- 489 A painted tray top washstand, 3 ft. 8 in. wide, a wall mirror, 16 pieces of toilet ware, japanned foot bath, 2 water bottles and tops, and 8 other articles 35/-
- 490 Two 3 ft. painted iron bedsteads, 3 wool mattresses, 2 feather beds, 2 feather pillows, and 2 bolsters 100/-
5. 491 Eight blankets, and 3 cotton bedspreads 8/- Saunders
- 75/- 492 A painted chest of 6 drawers, 3 ft. 6 in. wide 5/-
- 493 A painted dressing table, a ditto tray top washstand, a towel airer, and an oak swing frame toilet glass 2/-
- 494 A bordered pile rug, 2 slip mats, 4 pairs of curtains, and 8 pictures 65/-
- 495 A 3 ft. French brass and iron bedstead, wire woven spring mattress, a wool and hair mattress, feather bolster and pillow 5/-
- 496 Three coloured blankets 35/-

THE DOMESTIC OFFICES.—Ground Floor.—THE BUTLER'S PANTRY.

- 40/- 497 A deal table, with 2 drawers, 6 ft. long 85/- Wimbeth
- 50/- 498 Two butler's mahogany trays, a tray stand, a "Ewbank" carpet sweeper, 2 cocoa-fibre mats, a Stormont rug, a Windsor chair, a cane seat chair, a foot warmer, a fender, and a stool 65/- Wimbeth
- 499 A housemaid's box, a washing-up tub, and sundry brooms and brushes 17/6
- 500 A ware lamp, with red, blue and gilt decoration, 4 lamps, and sundry glass shades and chimneys 37/6
- 501 Two copper tea urns, an embroidered tea cosy, a beadwork ditto, a bread trencher, and a mahogany luncheon tray 50/-
- 502 An inlaid mahogany kidney-shaped tray, an inlaid walnut tray, 3 oak trays, and another 14/-
- 50/- 503 Seven tea trays, 3 flower baskets, a waste paper basket 60/- Evans
- 75/- 504 A painted cupboard, fitted shelves, enclosed by two pairs of panelled doors, 4 ft. 9 in. wide
- 50/- 505 Sundry tea and breakfast ware, etc., 108 pieces 80/- Saunders
- 60/- 506 Six ironstone pattern dessert dishes, 6 ditto plates, a blue floral pattern part dessert service: 40 pieces, a gilt edge part tea service: 34 pieces, and 11 salad plates 15/- Hart
- 40/- 507 Twelve large knives, 2 carving knives, 4 ditto forks, and a pickle fork 55/-

THE BASEMENT.—HOUSEKEEPER'S ROOM.

- 508 A pierced iron fender, a set of steel fire implements, a trivet, an ash pan, and 2 pairs of tapestry curtains *3 1/2*
- 509 A Persian bordered red ground rug, 8 ft. 6 in. by 4 ft. 6 in. *11 1/2*
- 510 An Oriental bordered crimson ground rug, and a length of carpet
- 511 A set of 6 carved mahogany chairs, the seats in serge *6 90*
- 512 A mahogany table, with circular top, 4 ft. diam., and a tapestry table cover *4 5/2*
- 513 A mahogany Pembroke table, with drawer, 3 ft. 2 in. wide *2 5/2*
- 514 A mahogany 3-tier dumb waiter *4 1/2 90*
- 515 A prie-dieu chair, a folding frame arm chair, in velvet, and a rocking chair, with rail back *6 5/2*
- 516 A Vienna regulator, in carved oak case *60p*
- 517 An engraving, after Leonardo da Vinci, "The Last Supper," and 6 frames, an alarm in walnut case, and 4 ornaments *2 90*

THE KITCHEN.

- 518 Linoleum as laid, about 20 sq. yds.
- 519 Nine Windsor chairs *4 1/2 90*
- 520 A deal table, with 2 drawers, 5 ft. 9 in. long *40p*
- 45p* 521 A deal table, 10 ft. long *60p*
- 30p* 522 A steel kerb fender, 5 ft. 6 in. wide, a large cocoa fibre mat, and 5 coal hods *5.*
- 523 A beech napkin press, with drawer
- 524 A grained refrigerator, by "The Wenham Lake Ice Co." *4 5/2*
- 40p* 525 A 4-hole knife cleaning machine, a chopping block, and a pestle and mortar *Smith 60p*
- 526 A dog basket, two cocoa fibre mats, a scraper, and sundry brooms and brushes *40p*
- 60p* 527 An ironing board, on folding stand, 3 clothes airers, and a warming pan *80p. Hart*
- 528 A 3 ft. 9 in. painted frame table, a standing board, a cocoa fibre mat, a fender, and a painted cupboard, 2 ft. 10 in. wide *2 90*
- 529 A deal 2-tier table, 5 ft. 6 in. long *2 2/2*

530 A timepiece, in circular case, 2 sets of scales and weights, a wall mirror, 2 box irons, a foot warmer, and 20 pieces of French fireproof china *70¢*

10¢ 531 Sundry culinary utensils *60¢*

532 A similar lot *30¢*

80¢ 533 Miscellaneous tea and dinner ware: 140 pieces

50¢ *80¢* 534 A large tin fish kettle, 3 milk saucepans, 3 enamelled bread bins, an ice cream maker, 3 earthenware crocks, a galvanized bath, 2 gas rings, and sundries

535 A 5-hole knife cleaning machine, a painted meat cover, a plate draining rack, a barrel stand, a cocoa pile mat, and 6 other articles *35¢*

40¢ 536 About 140 glass fruit bottling jars, a tin sterilizer, a thermometer, and 2 books *80¢*

COPPERS.

537 A 16 in. preserving pan *20¢*

538 A 14 in. ditto *65¢*

539 Four stewpans and covers *90¢*

540 A similar lot *85¢*

541 A kettle, 2 sauté pans, and a coffee roaster *55¢*

542 Nine moulds, and a pewter ice-mould *40¢*

THE OUTDOOR EFFECTS.

543 A terra-cotta birds' fountain *20¢*

544 Three terra-cotta jardinières, containing Aspedestrias *20¢*

545 Two terra-cotta jardinières, and 3 ditto troughs *3¢*

546 One rake, 1 spade, 2 Dutch hoes, 1 draw hoe, 2 shovels, and a cross cut saw *20¢*

547 Two pairs of edging shears, 1 pair of hedging shears, 4 watering cans, a hose reel, and 3 sieves *42¢*

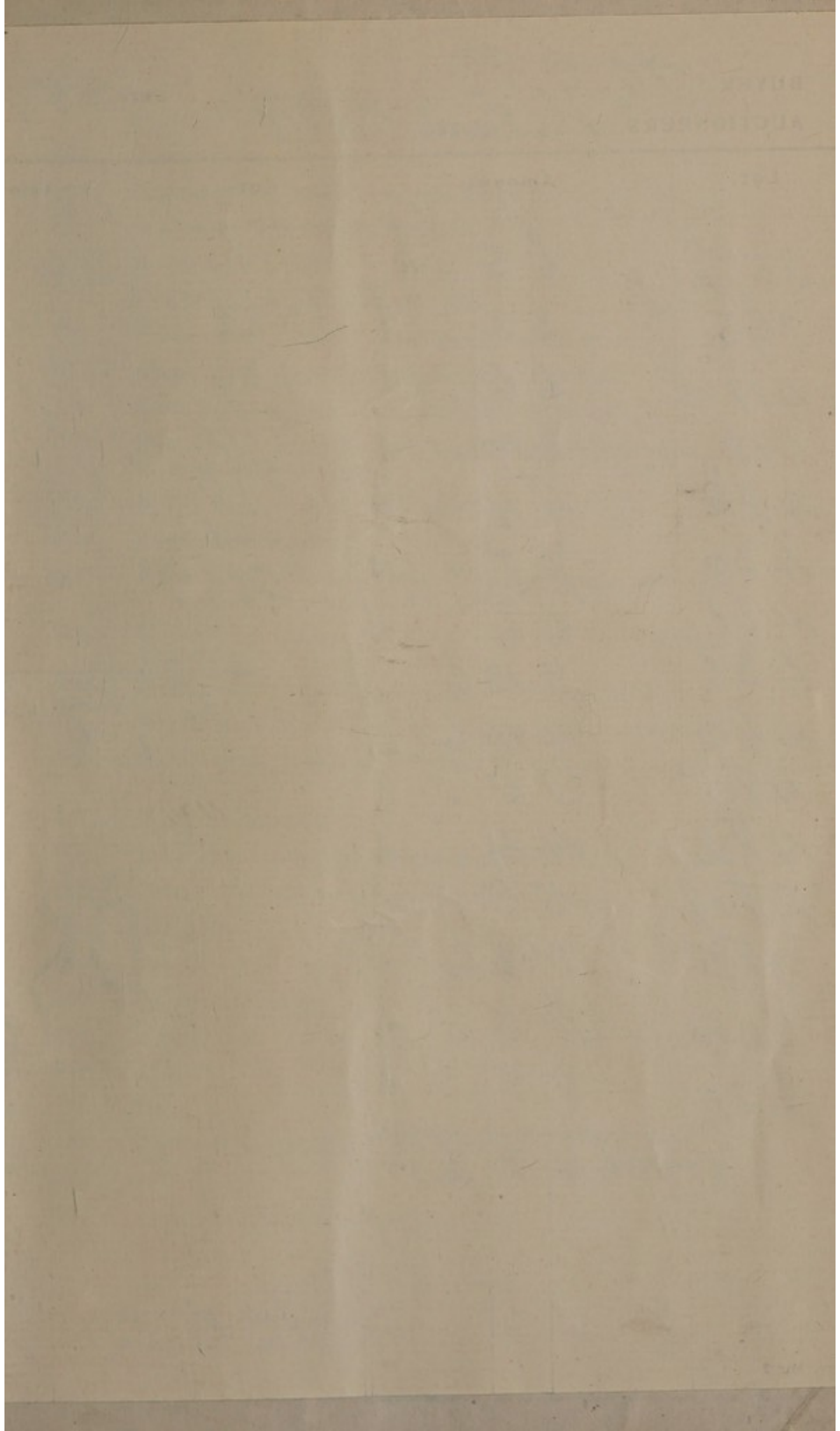
548 A quantity of peat *15¢*

549 A dung crate, 2 zinc-lined corn bins, and a galvanized corn bin *80¢*

18¢ 550 A 29-rung ladder, and a 16-rung ditto *60¢*

85¢ 551 A 425-lb. iron roller *55¢*

35¢ 551 A, a long palm pruning shears & 2 step ladders *50¢*



BUYER

H. E. 73

Date

21/4/20

AUCTIONEERS

The Firm K J V R

Lot	Amount			Lot	Amount		
	£	s.	d.		£	s.	d.
357	6	5	.	522	64	5	6
393	3	3	.	533	1	12	6
411	6	6	.	534	3	10	.
412	3	10	.	553	3	10	.
422	4	4	.	561	2	.	.
430	7	7	.	566	3	5	.
431	6	6	.	1	10	.	
432	2	12	6	<hr/> £ 79 13 0			
440	4	14	6	OK GR			
480	2	5	.				
482	4	4	.				
484	5	5	.				
485	3	13	6				
504	2	5	.				
521	2	5	.				
<hr/> over 64 5 6							
				J. E. 73			

Stv. Mu. 2

- 552 An iron roller, and a sprinkler *25/-*
 30/- 553 A plant trolley, on 3 wheels, and 6 fruit trays
 554 A Ransom 12-in. mowing machine *32/6*
 555 A Green 12-in. ditto
 556 Two lath blinds, and 4 bamboo ditto
 557 A 5 ft. bench, with two drawers, and a saddle horse } *11/6*
 558 About 2 cwt. of spar, and about 28 lbs. of fertilizer } *4/-*
 559 Seven Venetian blinds, and a quantity of sundries } *3/-*
 560 Four painted benches, on X-shaped supports, and a painted semi-circular staging } *10/-*
 90/- 561 A carrying chair, on 3-wheel trolley
 562 A quantity of sundries
 563 A REVOLVING RUSTIC PATTERN SUMMER HOUSE, with two windows and sun blind, 8 ft. by 6 ft.
 564 Three deck chairs, a cocoa fibre mat, and a roll of carriage matting } *45/-*
 565 Two folding frame chairs, a folding table, and a foot rest }
 37/- 566 Two large galvanized dust bins and lids, and 2 meat safes }
 567 Nine Begonia Hægeana, 1 Cerasus Waterii, and 3 Agapanthus
 568 Thirty-six Amaryllis
 569 Ten Phyllo Cactus, and 8 Hymenophyllum
 570 Twenty Maidenhair ferns, and 2 Aspedestrias
 571 A Camellia } *25/-*
 572 Two Camellias }
 573 Fifty plants, various
 574 A similar lot
 575 Ditto
 576 Ditto
 577 A quantity of seedlings
 578 A similar lot
 579 A quantity of flower pots
 580 A similar lot
 581 Ditto

- 582 A quantity of Violas
- 583 A quantity of firewood
- 584 A quantity of old iron
- 585 A galvanized tank, 4 ft. by 1 ft. 18 in. by 1 ft. 4 in.
- 586 Eight white Leghorn fowls
- 587 Six ditto
- 588 Six ditto
- 589 A 3-light $\frac{3}{4}$ span frame, 12 ft. by 6 ft.
- 590 A 3-light frame
- 591 A single light frame, 6 ft. by 4 ft.
- 592 Ditto

FINIS

By Order of the Executors of the late Miss EDITH PRANCE,

HAMPSTEAD

Midway between the Heath and Finchley Road, both about 5 minutes' walk distant

A COMFORTABLE OLD

FREEHOLD RESIDENCE

THE FERNS, 23 FROGNAL LANE

A Roomy Detached House, with Carriage Drive and Large Garden

ALSO AN

IMPORTANT FREEHOLD SITE

WITH FRONTAGES TO

REDINGTON ROAD AND FROGNAL LANE

Which will be Sold by Auction by

Messrs. KNIGHT, FRANK & RUTLEY

In conjunction with Messrs. POTTERS

At 20 HANOVER SQUARE, W.1

On THURSDAY, 20th MAY, 1920, at 2.30 p.m. precisely

Particulars may be obtained from—

*Solicitor—*BERTRAM STURT, Esq., 8 Old Jewry, E.C.1

*Estate Agents—*Messrs. POTTERS, 47 Heath Street, Hampstead, N.W.3

*Auctioneers—*Messrs. KNIGHT, FRANK & RUTLEY, 20 Hanover Square, W.1

London: Printed by WILLIAM CLOWES AND SONS, Limited,
Great Windmill Street, W.1, and Duke Street, Stamford Street, S.E.1