

## **Sales catalogues: Knight, Frank & Rutley**

### **Publication/Creation**

21st March 1919

### **Persistent URL**

<https://wellcomecollection.org/works/bj83msc6>

### **License and attribution**

This work has been identified as being free of known restrictions under copyright law, including all related and neighbouring rights and is being made available under the Creative Commons, Public Domain Mark.

You can copy, modify, distribute and perform the work, even for commercial purposes, without asking permission.



Wellcome Collection  
183 Euston Road  
London NW1 2BE UK  
T +44 (0)20 7611 8722  
E [library@wellcomecollection.org](mailto:library@wellcomecollection.org)  
<https://wellcomecollection.org>

Ent: on List.  
731 WAHMM 10/12/78  
£19.6.6  
20, HANOVER SQUARE, W.

all sold for [20]  
CATALOGUE

OF

DECORATIVE FURNITURE

Porcelain, Pictures, etc.

*The Property of a Lady of Title; also by  
Order of a Baronet, and by Direction of  
Executors, etc.*

To be Sold by Auction by Messrs.

**KNIGHT, FRANK & RUTLEY**

(SIR HOWARD FRANK, K.C.B., and JOHN FREDERICK KNIGHT)

**AT THEIR ROOMS**

20, HANOVER SQUARE, W. 1

**On FRIDAY, the 21st of MARCH, 1919**

**AT TWELVE O'CLOCK PRECISELY**

On View Two Days prior, from 10 to 5 o'clock. Catalogues of  
the Auctioneers, at their Offices,

Telephone—Mayfair 3066 (4 lines).

20, Hanover Square, London, W. 1

Telegrams—"Galleries Wesdo London."

Dryden Press: J. Davy & Sons, 8-9, Frith-street, Soho-square, W. 1



## Conditions of Sale.

---

I.—The highest bidder to be the purchaser, and if any dispute arise between two or more bidders, the lot in dispute shall immediately be put up again and re-sold.

II.—No person to advance less than one shilling, above Five Pounds 2s. 6d., and so on in proportion.

III.—In the case of lots upon which there is a reserve the auctioneer shall have the right to bid on behalf of the vendor.

IV.—The purchaser to give in name and address, and if required, to pay down 5s. in the £, or more, in part payment of the purchase-money; in default of which the lot or lots so purchased to be immediately put up again and resold.

V.—The lots to be taken away at the purchaser's expense and risk the day after the sale, in default of which Messrs. Knight, Frank & Rutley will not hold themselves responsible if the lots be lost, stolen, damaged or destroyed; but they will be left at the sole risk of the purchaser.

VI.—The lots are sold with all faults, imperfections, and errors of description, the Auctioneers not being responsible for the correct description, genuineness, or authenticity of, or any fault or defect in any lot; and making no warranty whatever. The auctioneers reserve the right of refusing any bidding or of withdrawing any lot or lots from the sale.

VII.—To prevent inaccuracy in delivery, and inconvenience in the settlement of the purchases, no lot can on any account be removed during the time of sale; and the remainder of the purchase-money must absolutely be paid on the delivery.

VIII.—Upon failure of complying with the above conditions, the money deposited in part payment shall be forfeited; all lots uncleared within the time aforesaid shall be re-sold by public or private sale, and the deficiency (if any) attending such re-sale, together with warehouse and other charges, shall be made good by the defaulter at this sale.

KNIGHT, FRANK & RUTLEY.

---

**NOTE.**—All Lots uncleared, by either Vendors or Purchasers, after a period of three days from day of sale, will be subject to a Warehouse Charge of Half-a-Crown each Lot per Week or portion thereof.

**GOODS** are received and delivered at the rear entrance in **DERING YARD** (between 67 and 68, New Bond Street) from 9.30 to 11.30 a.m. and 4.30 to 6 p.m.

MESSRS. KNIGHT, FRANK & RUTLEY'S  
CATALOGUE

OF

DECORATIVE FURNITURE.

Porcelain, Pictures, &c.

---

On FRIDAY, the 21st of MARCH, 1919,

AT TWELVE O'CLOCK PRECISELY.

---

In consequence of the large number of Lots included  
in this Catalogue, the Sale will commence at  
12 noon precisely.

---

NOTE.—The Secondary Bedroom Furniture and General  
Household Effects will be sold in the North Gallery  
Warehouse, at 10.30 a.m., on March 21st.

---

LOT

- 1 An oak pedestal writing desk, with revolving top, fitted with 9 drawers, slides and pigeon-holes, 4 ft., and a revolving office chair
- 2 An oak filing cabinet, on stand, 27 in. by 45 in.
- 3 A mahogany pedestal writing desk, leather-lined top, fitted with 9 drawers, 4 ft.

*The Property of a Lady.*

- 4 A white enamelled wardrobe, with hanging compartments at side, enclosed by glazed trellis-pattern doors, the centre fitted for shelves, enclosed by bevelled mirror panelled door, 7 ft. wide
- 5 An oak long-case clock, by J. CALVER, Woodbridge
- 6 A pair of bronze ewers, with embossed decoration, cherubs, fauns, etc., with figures of cupids seated on handles, 23 in.
- 7 A gentleman's mahogany dwarf wardrobe, 3 ft. 6, fitted large drawer, with sliding trays under, enclosed by a pair of panelled doors



- 8 A pair of oval wall mirrors, in ormolu frames, fitted with 3-light candelabra, 23 in. by 15 in.  
 9 A green cut-glass decanter and 6 ditto glasses  
 10 A carved mahogany easel

*The Property of a Lady.*

- 11 A mahogany writing table, with cylinder revolving top, fitted with 2 drawers and leather-lined writing slope, on tapered supports, 3 ft. 8 wide 45.  
 12 A mahogany shaped front side-table, fitted with drawer, 3 ft. 5 1/2.  
 13 A mahogany long-case clock, by ALEX. TELFERT, Paisley 12.  
 14 An etching, after B. W. Leader, by David Law, signed artist's proof 2.  
 15 A ditto, after B. W. Leader, by Camille Fonce, signed artist's proof 35/-  
 16 A ditto, after B. W. Leader, by David Law, signed artist's proof 21/-  
 17 A ditto, after B. W. Leader, by M. Chauvel, signed artist's proof 23.  
 18 A ditto, after W. Unger, by Vic. Hiffner, signed artist's proof } 21/-  
 19 A ditto, after Alma Tadema, by Charles O. Murray, signed artist's proof }  
 20 A coloured print—A Girl with doves, signed Fred. Miller } 15/-  
 21 Another, by the same artist }  
 22 An etching—Rydal Water, by Richard Winter, signed artist's proof; another—Trout Inn, Godstone; 7 other pictures, and 4 frames 10/6

*The Property of a Lady.*

- 23 A LOUIS XV PATTERN CARVED WALNUT SUITE, comprising a settee, 5 ft., with high shaped back and 2 arm chairs, upholstered in Aubusson tapestry with panels of pastoral figures and bouquets, 4 occasional chairs, seats and backs in flowered tapestry, and loose taffeta cover, and an oblong centre table, on cabriole legs and cross stretcher, 3 ft. 25.  
 24 A walnut refectory table, extending ends and 4 extra leaves, carved frieze, on vase-shaped legs and cross stretcher 11.

*The Property of a Gentleman.*

- 25 A chased tea kettle, stand and lamp, a ditto tea pot, and a coffee pot 3.
- 26 A chased coffee pot, a cream ewer, and a sugar basin 2½.
- 27 A chased sugar basin, and a set of 4 ditto salt cellars 30/-
- 28 A pair of green-ground Chinese long-neck bottle-shaped vases, decorated in flowers, etc., and grotesque figures, fitted for electricity, with pink lace trimmed silk shades, 25 in. high 14.
- 29 A silk covered and floral pattern writing set of stationery case, blotter, calendar frame and telegraph pad, and another set, of figured design 6.
- 30 A set of ivory billiard balls 2½.
- 31 An ebonized and rose-wood liqueur cabinet, containing 4 engraved and gilt decanters and 10 ditto glasses 3.
- 32 A French metal timepiece, with figure of circus girl and trophies of sport and musical instruments, signed Aug. Moireau, 23 in. high 6½.
- 33 A set of 4 ormolu wall lights 4½.
- 34 An ormolu 4-light electrolier, and a pair of 3-light wall brackets 1½.
- 35 A pair of gilt stands, decorated in cherubs, etc. 4½. 5/15/-
- 36 Three willow-pattern plates, a hand-painted lamp shade, and 2 lace-covered ditto 21/-
- 37 Thirty-six Vanity Fair Cartoons, after "Spy" 45/-
- 38 Three gilt picture frames 15/-
- 39 A PAIR OF EMBROIDERED GREEN SILK CURTAINS, 2 valances, pelmets and 4 holders 5. 15.
- 40 A pair of figured silk crimson curtains, 4 pelmets, and 2 holders 15.
- 41 A similar lot, 3 pelmets and 2 holders 15.
- 42 A PAIR OF FIGURED SILK CRIMSON CURTAINS, with cord holders 16.
- 43 A pair of striped pink silk curtains, valances, etc., 2 cord hangings, and 2 ditto holders 19.
- 44 A pair of green trellis-pattern bordered silk curtains and holders 14.
- 45 Five crimson silk and other hassocks, and 2 green plush ditto 2½.



1-12-6  
10-0  
1-12-0  
15-0  
4-14-6

- 46 Three floral-pattern silk cushions *9/10/-*
- 47 Six pairs of lace curtains *4.*
- 48 Three embroidered panels, with grey square plush centres, fringed edges *14.*
- 49 Seven pieces of Utrecht velvet, 6 pieces of embroidered silk, and a quantity of upholsterer's trimming *4.*
- 50 Twelve pieces of crimson velvet, 22 pieces of ditto plush, and 17 pieces of silk rep, a quantity of trimming, and 5 cord holders with tassels *31x20 18x17 39x34 619x5* W
- 51 A stained mahogany high-back settee, with rail back *44 long 10 pos*
- 52 A brown ground figured pattern Persian rug, 6 ft. by 4 ft. *14.*
- 53 Another, 6 ft. 2 by 4 ft. 1 *14.*
- 54 Another, 6 ft. 3 by 3 ft. 10 *12 1/2.*
- 55 A similar rug, 6 ft. 5 by 4 ft. 1 *12.*
- 56 An Oriental red ground ditto, 9 ft. 8 by 4 ft. 1 *19.*
- 57 A blue ground bordered Axminster pile carpet, 7 ft. 1 by 3 ft. 11 *7 1/2.*
- 58 A buff ground Oriental bordered rug, 8 ft. 10 by 6 ft. 10 *7 1/2.*
- 59 A cream ground figured pattern Oriental carpet, 16 ft. 3 by 9 ft. 8 *40.*
- 60 A floral pattern Axminster pile carpet, ft. by ft. *14.*
- 61 A wall settee, upholstered in crimson silk, floral pattern damask, and tasselled fringe border *20 1/2.*
- 612 Balance*
- 62 A mahogany elbow chair, cane seat, sides and back, with loose green cushion *11.*
- 63 A Chippendale wine pedestal, with cupboard and cellarette at base, and a brass-bound wine cooler and cover *14.*
- 64 A similar lot (no cover) *19.*
- 65 An inlaid satin-wood elbow chair, seat in silk damask *4.*
- 66 A mahogany fire screen, with glazed and silk panel of floral design *2 1/2.*
- 67 An Adam semi-circular gilt console table, with marble top, supported by 3 carved figures of fauns, 3 ft. 4 *19.*
- 68 A carved and gilt overmantel, with brackets at sides, 3 ft. 9 by 3 ft. *3 1/2.*
- 69 A ditto, with sphinx and medallion decoration, 4 ft. 3 by 2 ft. 9 *3 1/2.*

*4 1/2.*  
*12089 to 12093*  
*34 day*

9. 30/- 70 A Goa inlaid ivory writing desk, 23 in.
- 71 A gilt oval wall mirror, in the Chippendale style, 4 ft. 1 by 2 ft. 6 4.
- 72 A Georgian mahogany and gilt wall mirror, with carved pediment surmount, 5 ft. 6 by 5 ft. 3 10.
- 73 A CARVED OAK MANTEL PIECE AND OVERPART, in the Jacobean style, 8 ft. 5 by 7 ft. 3 20.
- 74 An ebonized 2-fold screen, with glazed Chinese panels of birds, foliage, etc., 5 ft. 10 9 1/2.
- 75 An inlaid mahogany chest of 3 long and 2 short drawers 11.
- 76 A steel torchère, with embossed and scroll decoration, fitted for electricity 35/-
- 77 A couch, stuffed with horse-hair, winged back and arm rests, and a lady's easy chair 25/-
- 78 A white painted mantel-piece, in the Adam style, 4 ft. 5 by 5 ft. 6 2 1/2.
- 79 A ditto, 4 ft. 8 by 6 ft. 6 2 1/2.
- 80 A high-back chair, in the Queen Anne style, seat in tapestry 4.

*The Property of a Lady.*

- 81 A MAHOGANY SECRETAIRE BOOKCASE, with interior fittings of 15 drawers and 4 pigeon-holes, 3 drawers below, the upper part enclosed by glass panelled doors, 3 ft. 10 wide 30.
- 82 Six French carved gilt chairs, upholstered in blue silk brocade 14.
- 83 A PAIR OF CARVED WOODEN NUBIAN FIGURES, coloured and gilded, on stands, 42 in. high 8.
- 84 A pair of large Satsuma jardinières, decorated in green and gold, with white chrysanthemums 2.
- 85 A pair of 13 in. Satsuma vases 25/-
- 86 A brass electric kettle, and a brass and copper 3-tier cake stand 50/-
- 87 A grès de Flandres jug 3.



*The Property of a Gentleman.*

- 88 A SHERATON PATTERN INLAID MAHOGANY TALLBOY CHEST  
OF DRAWERS
- 89 *An Old English mahogany chest of 5 drawers*
- 90 A ditto of 4 drawers
- 91 A GENTLEMAN'S INLAID MAHOGANY WARDROBE, fitted with  
shelves, enclosed by panelled doors, with 3 long and 2  
short drawers under
- 92 An old inlaid mahogany bureau, fitted with secretaire  
and drawers under
- 93 An old mahogany pedestal cupboard, on tapering legs
- 94 *A Sheraton pattern mahogany dressing table*, fitted with  
5 drawers and mirror
- 95 An inlaid mahogany occasional table
- 96 An inlaid mahogany music seat
- 97 A mahogany jardinière stand
- 98 A small easy chair, in red rep, with cushion
- 99 *An old oak gate-leg table*
- 100 An oak dinner waggon
- 101 An oak elbow chair, and 3 small ones
- 102 An Axminster carpet, old-rose ground, *about 17 ft. 6 by*  
*13 ft. 6*
- 103 An Axminster carpet, green ground, *about 25 ft. by*  
*16 ft. 6*
- 104 A dark green stair carpet, *2 ft. 3 wide, about 95 ft.*
- 105 Three pieces of landing carpet, and a bundle of underfelt
- 106 Three pairs of dark green chenille curtains, and 2 por-  
tières, with brass rods
- 107 A Chinese bowl, in red and blue
- 108 Two Continental vases
- 109 Two ditto, and another
- 110 A pair of Nankin blue and white ginger jars
- 111 *Two old blue and white vases*
- 112 Two ditto tea caddies, and 2 small vases

*The Property of a Lady of Title.*

- 113 *A Dutch marqueterie hanging wardrobe, 5 ft. 3* 25.  
 114 *A DUTCH MARQUETERIE WARDROBE, fitted with carved shaped cornice, interior fitted shelves and 3 small drawers, enclosed by panelled doors, 2 long and 2 short drawers under, 6 ft. wide* 48.

*The Property of a Baronet.*

- 115 *A mahogany display cabinet, on tapering legs and cross stretchers, 3 ft. 3 high, 12½ in. wide* 12.  
 116 *An inlaid mahogany folding writing table* 3½.  
 117 *An oak bookcase, enclosed by a pair of glazed doors, 3 ft. wide* 5½.  
 118 *An inlaid mahogany collapsible spirit stand on tray, with brass gallery rail* 1½.  
 119 *An inlaid mahogany revolving bookstand, 18 in. wide* 2.  
 120 *A walnut octagonal occasional table, an oak revolving bookstand, and an inlaid mahogany stool* 1½.  
 121 *An oak 2-flap gate-leg table, 32 in. wide* 4½.  
 122 *A gilt wall mirror, 29½ in. by 21 in.* 2½.  
 123 *A mahogany duet stool, on cabriole legs, seat in tapestry* 4.  
 124 *A mahogany drawing table, fitted with 5 drawers, 3 slides with rising top, 2 ft. 8* 18.  
 125 *An inlaid ebonized nest of 5 drawers, on stand, 24 in. wide* 2½.  
 126 *A mahogany envelope folding-top card table, inlaid satin-wood, on tapered legs, 21 in. wide* 5.  
 127 *A Chippendale chair, with wood seat* 30/-  
 128 *An inlaid oak writing table, fitted with 5 drawers, stationery cupboard in centre, rail surround at top, with shelf, 3 ft. 6* 8½.  
 129 *A MAHOGANY SIDEBOARD, banded ebony, shaped-end fitted with 2 cupboards at sides, with writing slope, a compartment in centre fitted as drawer, on 6 legs, 4 ft. 4 wide* 16.  
 130 *An oak sideboard, fitted with 2 drawers, ring handles, and 2 cupboards below, enclosed by 3 panelled doors, 6 ft. wide* 7.  
 131 *MARIA VERELDST—Portrait of James II, 30 in. by 24½ in.* 21/-



- 132 A coloured engraving, by R. Woodman, after J. Baringer  
—The Earl of Derby's Stag-hounds } 21/
- 133 Another—"The Merry Beaglers," and a mezzotint ditto,  
by V. Green—"Golfers" }
- 134 An etching, by David Law, *signed proof*—"The Armada  
sailing from Ferrol"; an engraving—A View of the  
Priory at Florence, etc., and another—"The Oxford  
Almanack" }
- 135 An engraving, by W. Hogarth — John Wilkes, Esq.;  
another—Bishop Bossuet, after Cipriani; a pencil draw-  
ing—"The New Protection Cabinet"; a coloured print—  
"The Champions of Reform," etc., and another—"The  
Apparition" }
- 136 Twenty-two Vanity Fair cartoons, and 5 others, after  
"Spy" }
- 137 A Japanese painting, on silk; a mezzotint engraving—  
"Dealing the Cards," and 6 others }
- 138 Two frames of Regulations—(Skittles and Cricket); 2  
water-colour drawings—Street Scene and a Landscape,  
and 14 others }
- 139 A white-painted 3-fold screen, with glazed panels at top  
and tapestry ditto below }
- 140 A brass coal cauldron, and a stained-wood hanging book-  
case } 1/2.
- 140A A Sheraton inlaid mahogany tea caddy, with 2 boxes and  
glass sugar basin } 30/.

*The Property of a Lady.*

- 141 AN ITALIAN INLAID CABINET OF EBONY,  
carved with griffins, satyrs and scrolls, and ornamented  
with 13 etched panels, on ivory, depicting scenes from  
Early French and English history, the interior fitted  
with cupboard, small drawers and mirror at back,  
enclosed by panelled doors, on stand, 6 ft. 9 wide, 9 ft.  
high, *signed MUNSINGER*

\* \* \* Exhibited Paris Exhibition, 1878.

- 142 An Italian ebony escritoire, inlaid ivory panels of cupids  
and scrolls, fitted with 3 drawers and spiral supports and  
stretcher, 2 ft. 11 wide } 30/
- 143 A ditto cabinet, *en suite*, fitted with shelves, enclosed by  
a pair of panelled doors and drawer above, 3 ft. wide } 22/

*Oliver*



- 144 A smaller ditto, 2 ft. 1 wide *L. Cook*
- 145 A ditto bureau, *en suite*, the upper part fitted with cupboard and 6 small drawers, the centre fitted with small drawers and pigeon-holes, and writing slide with 3 drawers, in frieze, on carved spiral tapered legs, 3 ft. wide *33 Jewel*
- 146 An oblong centre table, *en suite*, fitted with drawer, on fluted and applied supports and stretcher, 4 ft. 8 wide *14 1/2 Cook*
- 147 A card table, *en suite*, with cloth-lined folding top, 2 ft. 11 wide *12 1/2 Clark*
- 148 Two ditto occasional tables, *en suite*, on fluted tapered supports *7 1/2 "*
- 149 A circular revolving 3-tier book table, *en suite*, inlaid with birds and foliage, 20 in. diam. *35 1/2 "*
- 150 A carved ebonized stuffed-over settee, in green silk damask, and loose cover, 6 ft. 4 wide *14 1/2 "*
- 151 A pair of easy chairs, upholstered, *en suite*, and loose cover *12 1/2 "*
- 152 A pair of smaller ditto *8 1/2 "*
- 153 A pair of carved ebonized arm chairs, upholstered in green velvet *11. Mark*
- 154 A pair of footstools, *en suite* *25 1/2 Jewel*
- 155 A set of 4 ebonized occasional chairs, inlaid with ivory *6/15 1/2 Clark*
- 156 A carved walnut elbow chair, in floral tapestry
- 157 A ditto, with stuffed arms, and another, with circular back, upholstered, *en suite*
- 158 A mahogany frame easy chair, in lining, and another, in cretonne, and loose covers
- 159 A rose-wood bijouterie table, inlaid ivory, on square tapered legs
- 160 A pair of carved walnut occasional chairs, in black silk, and an ebonized stand
- 161 A pair of walnut jardinière stands, with liners
- 162 A carved walnut octagonal table, with mosaic marble top 22 in. wide
- 163 A mahogany music seat, in green silk damask
- 164 A Moorish coffee table, inlaid mother-o'-pearl, a Benares brass circular tray, a carved oak stool, and an ebonized ditto, with velvet seat
- 165 A mahogany hat and coat stand, a stained ditto shaped table, and a carved walnut low-seated chair



- 166 A carved tuzu-tuzan-wood oval table, inlaid mother-o'-pearl
- 167 An oak settle, with carved panelled back and locker seat, 4 ft. 2 wide
- 168 A rose-wood gaming table, with inlaid brass bands and moulding, folding top and fluted tapered legs, 3 ft. wide
- 169 A rose-wood 3-fold screen, with wool-work and tapestry panels
- 170 An ebonized 2-fold screen, with black silk needlework panels, a walnut ditto, and a white enamelled ditto
- 171 A mahogany 3-hole pedestal bureau, inlaid satin-wood, the interior fitted pigeon-holes and small drawers and 9 drawers in pedestals, brass gallery top, 3 ft. 9 wide 48.

### Painted Satin-wood Furniture.

- 172 A BEDROOM SUITE, of wardrobe, fitted 4 sliding trays and 4 drawers, enclosed by panelled doors and hanging compartment, enclosed by bevelled mirror-panelled door, 7 ft. wide, a pedestal dressing table, with swing mirror, 2 jewel drawers and mirror panels above, and 9 drawers under, 5 ft. 2 wide, a washstand, with white marble tray top, fitted drawer, on square tapered legs, 4 ft. wide, 2 chairs, in blue watered silk, a 3-rail towel airer, a pedestal cupboard, and a commode 250. Ketherway
- 173 A pedestal writing table, fitted 9 drawers and leather-lined top 14 1/2.
- 174 A davenport, the centre fitted small drawers and writing slope, locker above and 8 drawers in sides, 2 ft. 9 wide 29.
- 175 A bookcase, enclosed by panelled doors, fitted shelves and cupboard under, 4 ft. 2 wide 31.
- 176 A cabinet, of carved and gilt decoration, with shelf back and 3 bevelled mirrors, 3 cupboards under, fitted shelves, 6 ft. 2 wide 24.
- 177 An oval centre table, on square tapered legs, and plate-glass top, 3 ft. 6 wide 13 1/2.
- 178 A square 2-tier table, with circular top, 20 in. diam. 7 1/2.
- 179 A pier glass, *en suite*, bevelled mirror plate, 4 ft. 4 by 3 ft. 6.
- 180 A stuffed-over settee, in green silk tapestry, 6 ft. 6 wide, and loose cover 10.



- 181 Two easy chairs, upholstered, *en suite*, and loose covers 16½.
- 182 A satin-wood Sutherland table, 2 ft. 4 wide, an oval lamp table, and 2 rush-seat chairs 5.
- 
- 183 A stuffed-over couch, in old-gold silk tapestry and loose cover 5.
- 184 A. TOUSSAINT, 1850—A pair of bronze Egyptian figures holding a torch, fitted for electric light, on shaped scagliola pedestals, 7 ft. 6 high 82.
- 185 A timepiece, with striking and chiming movement, in walnut case, and stand 16.
- 186 A pair of bronze regulator lamps, chased and embossed with masks and figures, on stands, with lion caryatide figure supports, fitted for electric light, with glass shades, signed F. BARBEDIENNE, 27½ in. high 8/15/-
- 187 A bronze tazza, on tripod stand, 12 in. high, a ditto bell, and a plated electric table lamp 6.
- 188 A chased ormolu clock, with ram's head and floral decoration, striking movement, 19½ in. high 14½.
- 189 Another, in brass case and chased ormolu dial, with calendar movement 12/10/-
- 190 A bronze figure of a jester, signed ST. MARCEAUX, 1879, 18½ in. high 7.
- 191 A Japanese sword, in gilt lac sheath, and an Oriental oviform vase and cover 52/6
- 192 W. W. LEITCH, 1876 — A drawing: Lake Scene with figures, another: Fruit and flowers, another: Garden Scene, and 8 framed photographs, etc. 8/5/-
- 193 A Doulton ware jardinière, a silver-mounted pin cushion, a hoof inkstand, with plated mount, a soap box, a sovereign case, a spirit flask, a silver-mounted photo frame, a mosaic tile, a hand mirror, a sword paper knife, a whist set, a spirit lamp, 3 wood stands, 2 work baskets, and 7 other articles 75/-
- 194 A lady's brown crocodile leather dressing bag, a writing case, and a folding satin-wood mirror 5-4/6
- 195 Seven cushions, *various*, and 8 hassocks, in green velvet 8.
- 196 An embroidered white silk shawl 14½.
- 197 Twenty pieces of lace trimming, flounces, etc. 40/-
- 198 Seventeen embroidered and needlework table centres, tray cloths, etc., *various*, a hand painted velvet panel, and a velvet bag 75/-



- 199 A lace work bedspread, and 31 ditto toilet covers, mats, etc. *15/-*
- 200 150 toilet mats, doyleys, etc. *44/6*
- 201 Forty serviettes *40/-*
- 202 A lady's blue cloth coat, a rain-proof ditto, a travelling rug, and an eiderdown *4.*
- 203 Eighteen embroidered linen pillow cases *50/-*
- 204 Twenty-two others (various) *69/-*
- 205 A black lac circular table, on pillar and claw, inlaid mother-o'-pearl, bird and floral decoration, and loose cover *40/-*
- 206 An upholstered folding chair *17/6*
- 207 A mahogany 3-tier dinner wagon, 4 ft. wide *57/6*
- 208 A mahogany bureau, interior fitted small drawers and pigeon-holes and 4 drawers under, 3 ft. 6 wide *9 1/2.*
- 209 A crochet work coverlet *115/-*

*The Property of a Gentleman.*

- 210 A CARVED MAHOGANY PEDESTAL SIDBOARD, fitted with 2 cupboards and drawer, on cabriole feet, oxydized rail back, 6 ft. 6 wide *44/-*
- 211 Six lace and plush antimacassars, and 2 figured plush ditto *27/6*
- 212 Two mahogany hall chairs *35/-*
- 213 A mahogany 3-tier whatnot, with twisted frame and drawer in centre, and a walnut music cabinet, gallery surround and drawer at base *45/-*
- 214 A carved and gilt 3-fold screen, with tapestry panels *53/-*
- 215 A pair of window seats, upholstered in crimson plush *50/-*
- 216 A pair of white marble pedestals, ormolu mounts, on square bases, 43 in. high *12.*
- 217 A window seat, with scroll ends, upholstered in tapestry *60/-*
- 218 A figure pattern crimson velvet easy chair *76/-*
- 219 A white enamelled show cabinet, upper part fitted plate-glass shelves and mirror back, enclosed by bevelled glass doors in centre and glazed ends and sides, 12 drawers below and cupboard in centre, enclosed by mirror flap, 8 ft. 6 high, 8 ft. wide *20.*

- 219A A portable typewriter, in case, by THE FITCH COMPANY, London, and 12 pads *6/10/*
- 219B A French ebonized and ormolu mounted cabinet, decorated in Sèvres plaques in medallions, etc., fitted with 3 cupboards and glazed ends, mirror panels and shelf above, 6 ft. wide
- 219C A winged back easy chair, in cretonne, on cabriole legs and claw and ball feet
- 219D A mahogany secretaire bookcase, gadroon decoration, fitted with cylinder front, writing slide, 12 small drawers, pigeon-holes, etc., cupboard at base, top part enclosed by glazed doors
- 219E A walnut Bedroom Suite, comprising a wardrobe, 5 ft., fitted with hanging cupboard, enclosed by mirror panelled doors, and 4 drawers, a dressing chest with triple mirror, cupboard and drawers, a washstand with marble top and tiled back, a pedestal cupboard, and 3 cane seat chairs
- 219F A carved and gilt wall mirror, 5 ft. 9 by 3 ft. 2

*The Property of a Lady.*

- 220 A FRENCH CARVED AND GILT VITRINE, with cupids, cornucopia and floral decorations in relief, interior fitted 3 plate glass shelves and mirror backs, enclosed by 2 doors at sides and drawer at base, and fitted for electric light, 8 ft. high, 5 ft. wide *80.*
- 221 A Louis Seize pattern gilt bow front cabinet, with carved birds, laurel and wreath decoration, on fluted legs and stretcher, with vase centre under, 3 ft. 2 wide *13.*
- 222 A carved gilt mirror, with laughing mask and shell ornament at centre above, and applied floral decoration at sides, and shell centre at base, bevelled plate, 7 ft. 9 high, 4 ft. wide *20.*
- 223 A wall settee, in lining, with triple cushion back and 3 loose cushions, in loose blue floral silk damask covers, 7 ft. 2 wide *32.*
- 224 A similar settee, with grey watered silk covers, 7 ft. 2 wide *32.*
- 225 A wall settee, in striped figured brocade, 4 ft. 6, and a pair of easy chairs, *ensuite* *11 1/2.*



- 226 *A white enamelled carved and decorated Bed-room Suite, comprising a wardrobe, with mirror panelled door and a drawer, 4 ft., a chest of 6 drawers, 2 ft. 9 wide, 2 washstands, with white marble tops and backs, 3 ft., 2 pedestal bedside cupboards, 1 ft. 7, a box ottoman, seat with upholstered top, 3 ft. 8, 2 bedsteads, 4 ft., 2 box spring mattresses, 2 wool mattresses, in 6 sections, and 4 chairs, seats and backs in rep* 44/-
- 227 *A white enamelled dressing table, with oval swing mirror, 3 drawers and 2 cupboards, 3 ft. 6* 95/-
- 228 *A pair of linen sheets, 90 in. wide by 3 1/4 yds. long* 38/-
- 229 *A pair of ditto, 90 in. wide by 3 1/2 yds. long* 38/-
- 230 *An electric radiator, in copper frame, 210 volts* 16/-
- 231 *A Spanish carved wood figure of a coloured lady in a fancy costume, 3 ft. 11, on a carved pedestal, 1 ft. 7* 92/-
- 232 *A French gilt mantel clock, with Sèvres panels, cupids, birds and scrolls, 17 in., a plush lined plinth, a pair of vases, en suite, 12 in., 3 glass shades, and a plinth* 13 1/2/-
- 233 *A porcelain jardinière and pedestal, decorated roses and gilt, 3 ft. 3* 26/-
- 234 *Two Copeland china jardinières, 7 green glazed ditto, and 2 saucers* 99/-
- 235 *A liqueur decanter and 6 glasses, with solid bases and gilt tops, and 5 others* 34/-
- 236 *Two shaped glass decanters, with silver mounts, a cut-glass ditto, a miniature syphon, with plated mounts, and 4 tumblers* 32/-
- 237 *Six blue and white plates* 30/-
- 238 *An ebonized liqueur cabinet, containing 2 engraved decanters and 8 glasses* 47 1/6
- 239 *A combined umbrella and walking stick, a silver-mounted tennis racket, a stationery case and blotter, and a 3-fold miniature velvet screen* W
- 240 *Sixteen volumes of books, various, a parcel of pamphlets, a case containing writing requisites, a needlework writing tablet, a case of medical requisites, a lady's hand bag, a pair of aluminium opera glasses, a paste buckle, and a magnifying glass* 32/-
- 241 *A Cloisonné circular tray, a hanging jardinière, a rose bowl and stand, a painted ivory fan, 2 china figures, and a plated bowl* 25/-



- 242 A LOUIS XVI CARVED AND GILT SUITE DE SALON, upholstered in pink trellis figured silk, comprising a canapé, 5 ft., 6 chairs, with oval upholstered backs, and a gossip chair 24.

*The Property of a Gentleman.*

- 243 A Drawing-room Suite, in red morocco, comprising a couch, 2 arm chairs, and 6 occasional ditto £23
- 244 A marble mantel clock, by J. SEWELL, London 6/2.
- 245 A pair of bronzed equestrian figures, 10 in., and an oak cigar cabinet 4/6
- 246 F. G. KINNAIRD—Highland Lake Scene with figures in foreground, 27 in. by 35 in. 85/-
- 247 A walnut side table, fitted 2 drawers in frieze and 3 cupboards below, 5 ft. 87/-
- 248 A WALNUT BED-ROOM SUITE, comprising a wardrobe, 5 ft. 9 fitted sliding trays, drawers and hanging compartments, enclosed by 1 mirror and 2 panelled doors, a combination pedestal dressing table and washstand, marble top and swing mirror, a pedestal cupboard, towel airer, and 3 chairs with velvet seats 40.
- 249 A mahogany pedestal washstand, 4 ft., with drawer in centre, marble top and back, and 2 cane seat chairs 5.
- 250 A mahogany pedestal dressing table, fitted 11 drawers and swing frame mirror, 4 ft. 7.
- 251 A walnut sideboard, fitted cupboard and cellarette compartment at sides, cupboard in centre and 6 drawers, the top part with square mirror panel at back and cupboard at sides, 7 ft. 2 by 8 ft. 30.
- 252 An easy chair, in saddlebags, and cretonne cover 5.
- 253 Another and cover 5.

*The Property of a Gentleman.*

- 254 An ebony and inlaid ivory china cabinet, enclosed by glazed door, 3 ft. 3 12. Kinn
- 255 An open bookcase *en suite*, 3 ft. 3 4/16/-



*The Property of a Lady.*

- 256 A set of 4 Hepplewhite occasional chairs, with shield-shaped backs, seats in green morocco 30.
- 257 A carved and gilt oblong wall mirror, in the Chippendale style, 3 ft. 3 by 4 ft. 13.
- 258 An oak bureau, fall front enclosing pigeon-holes and numerous drawers, 2 short and 3 long drawers under, 3 ft. wide 10.
- 259 Two oak occasional chairs, with pierced backs 3.
- 260 Two pairs of lace curtains 2.
- 261 Two pairs of lace curtains, a bedspread, and 2 lace covers 2½.
- 262 A set of 3 painted frame occasional chairs, seats in yellow striped silk 4½.
- 263 A gilt chaise longue, in tapestry 8½.
- 264 A mahogany 3-tier dinner waggon 4½.
- 265 A crimson ground and figured Turkey carpet, 14 ft. 3 by 13 ft. 28.
- 266 A BOUDOIR GRAND PIANOFORTE, in rose-wood case, by GORS & KALLMAN 100.
- 267 An Old English oak buffet 48.
- 268 A life-size portrait of a Boy and rocking-horse, 57 in. by 42 in. 40.
- 269 A bronze urn-shaped vase, with embossed figures, on marble pedestal, 14 in. 2.
- 270 An easy chair, covered in old Persian rugs 5.
- 271 J. WOOTTON—A pair of paintings: Bay Bolton, and Pony Racing, unframed, 12 in. by 16 in. 2.
- 272 A pair of pink cretonne curtains, 5 ft. by 3 ft. 6, and 2 cord holders 2½.
- 273 A pair of marone brocade curtains, 13 ft. by 8 ft., and 2 cord and tasselled holders 13.
- 274 A pair of ditto, 12 ft. by 6 ft., and 2 cord and tasselled holders 10½.
- 275 A pair of green brocade curtains, 6 ft. 8 by 3 ft., and 2 cord holders 2.
- 276 A pair of ditto, 4 ft. 9 by 5 ft. 6, and 2 cord holders 2.
- 277 A pair of ditto, 6 ft. 6 by 3 ft. 8, and 2 cord holders 2.
- 278 A pair of ditto, 6 ft. 6 by 3 ft. 8, and 2 cord holders 2.

- 279 A pair of chenille curtains, 10 ft. by 4 ft. 6, and 2 cord holders *4 1/2*
- 280 A pair of plush curtains, 8 ft. by 4 ft. 4 *4 1/2*
- 281 A white enamelled mantel, 5 ft. *3*
- 282 AUGUSTINA TASSI—A Landscape, with cows standing in a river in the foreground, boats and figures, castle and buildings and mountainous background, 36 in. by 48 in. *11*
- 283 MORLAND—Sands End Cottage, Fulham, with a pony and figures in the foreground, 17 in. by 13 in. *20*
- 284 A PERSIAN PATTERN AXMINSTER CARPET, shaped to landing, about 11 yds.

*The Property of a Lady of Title.*

- 286 Mrs. Siddons, after T. Lawrence, R.A., by W. Say *2*
- 287 "Cottagers Going to Market," and "Cottagers Return from Market," by Jas. Ward *2*
- 288 "The Farmer's Boy," by Jas. Ward, and "The Cottage Fireside," by J. Burnard, after G. Morland *2*
- 289 "The Singing Lesson," and "Two Heads" *8 - 2 1/2*
- 290 "The Senses," by S. Schiavonetti
- 302 A gentleman's inlaid mahogany folding-top dressing table, with interior fittings and easel mirror, 2 ft. 3 wide *3*

*(291) 2 Pictures (engravings) 1 Fortune Teller & 1 by Burnard & 1 by Thomas*  
*with a drawing*  
*The Property of a Lady. + 10 other*

- 304 A half-length Portrait of a Lady, in white dress, 24 in. by 17 in. *2*
- 305 G. SAINTPIERRE, '66—A sleeping Female Figure in a Landscape, 40 in. by 72 in. *5 1/2*
- 306 A half-length Portrait of a Lady, in low white dress, 29 in. by 24 in., unframed *2 1/2*
- 307 C. B. PRESCOTT, 1905—A Portrait of a Lady in black dress and hair hanging on left shoulder, 20 in. by 16 in.
- 308 Oriental Lovers, 21 1/2 in. by 17 1/2 in. *2 1/2*
- 309 A water-colour drawing—A Landscape with hay-ricks and wheat-stacks, by S. BATE, 1843 *1*
- 310 A ditto—Cottages and figures *2 1/2*
- 311 A set of 4 ditto—Female figures, by WILLY MATHERBE, 1909 *1*



- 312 A portfolio of prints *17/6*
- 313 Madonna and Child,  $27\frac{1}{2}$  in. by  $21\frac{1}{2}$  in. *14.*
- 314 O. NIESMITH—A Norwegian Scene, 43 in. by 52 in. *70/-*
- 315 A three-quarter length Portrait of a Lady, in white dress and black sash, 29 in. by 24 in. *6.*
- 316 A Vase and Flowers, 29 in. by 24 in. *8 1/2.*
- 317 A pastel—A half-length Portrait of a Lady in low blue dress and hair hanging on left shoulder *8.*
- 318 A pair of mahogany high-back chairs, in the Queen Anne taste *9.*
- 319 An oak dresser, 5 ft. 10 wide, fitted 3 drawers in frieze *20.*
- 320 A gilt oval mantel mirror, 5 ft. 6 by 5 ft. *2 1/2*
- 321 A painting—Biblical Subject, on copper, 17 in. by 22 in. *6.*
- 322 A bronze equestrian figure, 15 in. high *6 1/2*
- 323 Another of a huntsman on horseback, 14 in. high *6 1/2*
- 324 An oak filing cabinet, by AMBERG, fitted drawers and cupboard, enclosed by revolving shutters, in 2 parts, 4 ft. wide *16.*
- 325 A mahogany dining table, on cabriole legs and 2 extra leaves, 4 ft. wide *17.*
- 326 A walnut chiffonnier, 3 ft. 7, shelves at top and open cupboard below *6.*
- 327 A walnut sideboard, 6 ft. 2, fitted shelves and cupboard in centre, enclosed by panelled doors *9 1/2 Cook*
- 328 A Copeland dinner service, floral design, 122 pieces *10.*
- 329 A Worcester yellow ground coffee service of 14 pieces, and 5 other china coffee cups and 6 saucers *30/-*
- 330 A quantity of ebonized and walnut panelling, inlaid mother-o'-pearl, for a room, comprising 2 door-ways, 3 doors, an overmantel, etc. *12.* *30.* *W*
- 331 A pair of old Sheffield sauce tureens *9 1/2.*
- 332 An old Sheffield soup tureen *8 1/2. 13 1/2.*
- 333 Four ditto sweetmeat dishes *12.*
- 334 Six ditto dish covers *7.*
- 335 Four ditto candlesticks *13.*
- 336 A pair of 3-light ditto candelabra *4 1/2. 6 1/2.*
- 337 A ditto vegetable dish
- 338 A ditto cheese dish



- 339 An antique toasting fork *4 1/2*  
 340 A pair of salt cellars and glass liners *2*  
 341 A pair of ditto ice pails *8 1/2*  
 342 A ditto tray *3 1/2*

*The Property of a Lady.*

- 343 An inlaid rose-wood cabinet, mirror panelled back, fitted shelves, cupboards at sides and 2 drawers, recess in centre and platform below *8*  
 344 A pair of paintings, on metal—Russian Cossacks, 14 in. by 17 in. *2*  
 345 T. F. WAINSWRIGHT—Cattle and Landscape, 12 in. by 15 1/2 in. *3 1/2*  
 346 A painting—Castle and River, figures of horsemen in foreground, 15 in. by 20 in. *2 1/2*  
 347 WOUVERMANS (*after*) — Landscape with ruins and cavaliers *4 1/2*  
 348 F. NIGER HIDALGO, 1901—A River Scene, buildings in background, 18 in. by 23 in. *2*  
 349 A painting—Figures of horsemen, etc., with mansion in background, 27 in. by 22 1/2 in., and another of a sleeping dog, by WALTER DULESS, 14 in. by 20 in. *7 1/2*  
 350 T. SPINKS, 1885—A Woodland and Stream, 36 in. by 27 1/2 in., and another—Waterfall with mill to the left, 19 1/2 in. by 27 1/2 in. *5*  
 351 WOUVERMANS (*after*)—Battle Scene, 19 in. by 23 1/2 in. *480*  
 352 A painting—Garden of Eden, 30 in. by 17 in.  
 353 A. WILLIAMS — Fairy Glen, Bettws-y-Coed, 36 in. by 26 in., and another—Waterfall Scene with mountainous background, 30 in. by 23 in.  
 354 LEGNA—A Continental River Scene, 29 in. by 40 in., and another, by F. SCHRAMKI ROMA—An Italian Road Scene with Roman ruins in the background, 23 in. by 43 in.  
 355 A Landscape with figures in foreground, 28 in. by 43 in.  
 356 E. J. DUVAL—Stream and Woodland Scene, 23 in. by 36 in.  
 357 A. A. G. 1876—Figures and Cattle by a Stream with woodland in background, 36 in. by 27 1/2 in.



- 358 An engraving—The Duke of Wellington, and another—  
Wellington and Nelson, after J. P. Knight, by S. W.  
Reynolds
- 359 An engraving—"Little Foxes," another—A Piper and  
a pair of Nutcrackers, and 2 other pictures
- 360 Five 3-light brass wall sconces, and two 4-light ditto

*The Property of a Lady of Title.*

- 361 A walnut 2-tier occasional table, shaped tiers and  
supports
- 362 A mahogany table, fitted 4 drawers, top lined baize, on  
pillar and claw supports
- 363 *A carved mahogany side table*, of Chippendale design, on  
cabriole legs and claw and ball feet, 5 ft.
- 
- 364 An ormolu mounted ebonized and burr-walnut china  
cabinet, decorated Sèvres plaques in medallions, etc.,  
the top part enclosed by glazed door, and cupboard  
below enclosed by panelled ditto, 6 ft. 3 high
- 365 An old brass and iron basket fire grate, shaped front  
and urn decoration, 30 in. wide

*The Property of a Gentleman.*

- 366 A mahogany bureau bookcase, fall front enclosing nume-  
rous drawers, pigeon-holes, etc., with 3 long and 2 short  
drawers below, top part enclosed by 2 glazed doors
- 367 *A carved and gilt settee*, upholstered in green figured silk  
tapestry, 7 ft.
- 368 An ormolu mounted burr-walnut 3-tier whatnot, with  
cupboard in centre, painted china plaques of Watteau  
subjects, 17 in. wide
- 369 An inlaid mahogany shaped top table, with rising top,  
on triple supports
- 370 *An elaborately carved and gilt banner screen*, with oval  
shaped mirror panel, in the Louis XIV style
- 371 A CARVED AND GILT SIDE TABLE, with veined marble top,  
fluted legs and cross stretchers, with basket of fruit in  
centre, in the Louis XVI style
- 372 *A French carved and white painted and gilt wood timepiece*,  
decorated flaming urns, cupid, etc., 19 in.
- 373 An easy chair in saddlebags
- 374 Another



375

376

377

378

379

380

381

382

383

384

385

386

387

388

389

390

391

392

393

An inlaid walnut folding top card table, on quadruple supports

A mahogany wardrobe, 6 ft., fitted sliding trays, hanging compartment, enclosed by 1 mirror and panelled doors, with 3 drawers under

A mahogany pedestal dressing table, 5 ft., fitted swing frame mirror and 9 drawers and well at base, and a ditto washstand, with marble top and back, fitted 5 drawers

Lot

50

239

330

4.14.6

2.0.0

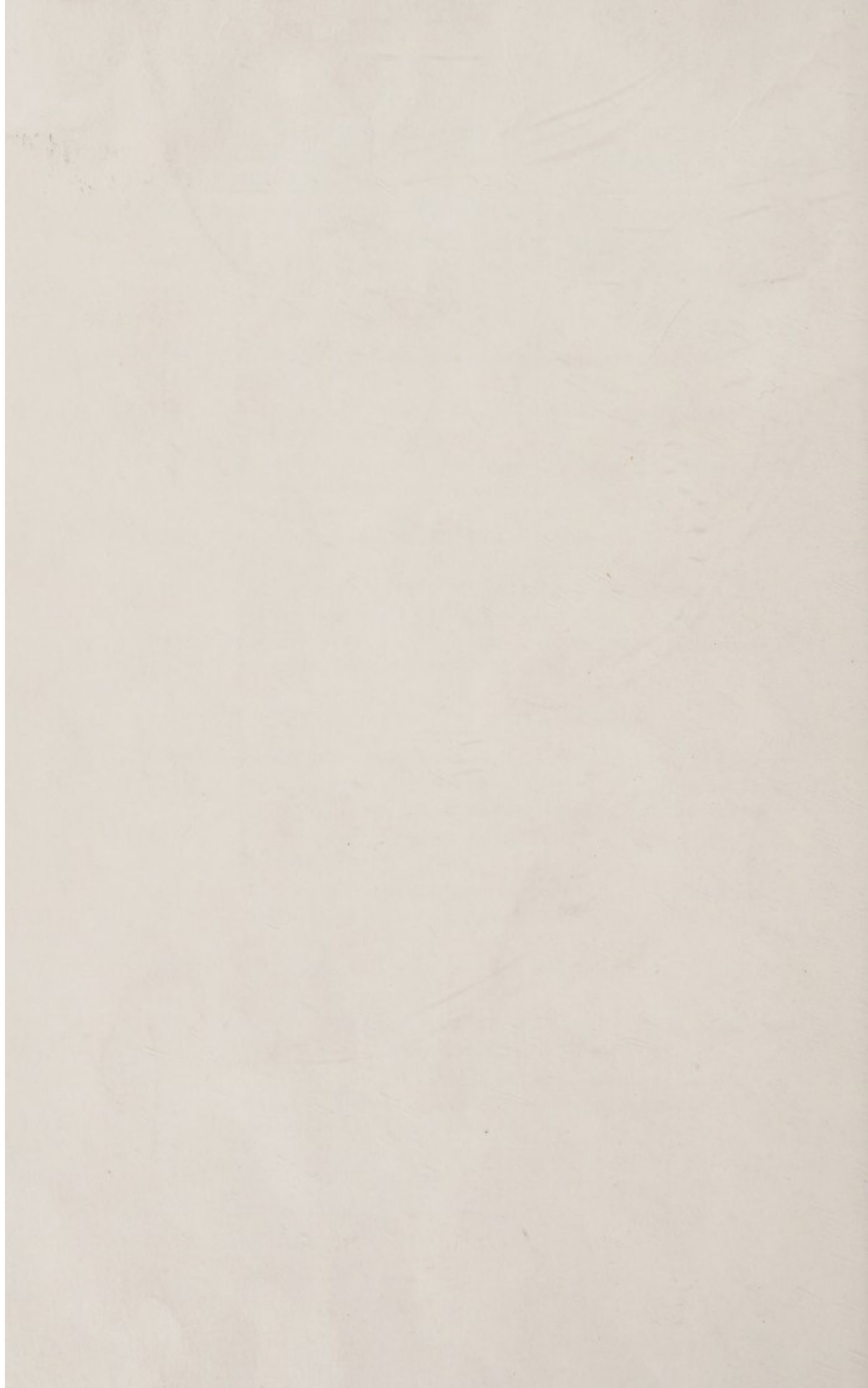
12.12.0

---

 19.16.6

H. C. 19





- 375 An oak overmantel, with 4 bevelled mirror panels and shelves
- 376 A walnut overmantel
- 377 A mahogany ditto
- 378 A 5-light brass electrolier
- 379 A carved walnut drawing-room suite, in marone tapestry, comprising 2 settees, 2 arm chairs and 6 occasional ditto
- 380 A set of 12 oak dining chairs, rail backs, seats in red morocco leather
- 381 An oak sideboard, 6 *ft.*, fitted 2 drawers in centre and cupboard under, cupboard and cellarette compartment at sides, mirror panels and shelf at back
- 382 An oak dinner waggon, fitted cupboard, enclosed by 2 panelled doors, 4 *ft.*
- 383 A burr-walnut oblong table, fluted legs and cross stretchers, 3 *ft.* 9 *wide*
- 384 A walnut hall stand, 3 *ft.* *wide*
- 385 A gilt mounted mirror, 4 *ft.* 6 *wide*
- 386 A burr-walnut dressing chest of 3 long and 2 short drawers, with swing mirror above, 3 *ft.* 5
- 387 An oak draw table, on shaped supports and cross stretchers
- 388 A Japanese lac panel, inlaid mother-o'-pearl, birds, foliage, etc. in high relief, a brass newspaper rack, and a walnut occasional table
- 389 A carved mahogany shaped front sideboard, 6 *ft.* 9, decorated festoons of flowers, boar's head, etc., fitted 3 drawers and 3 cupboards under, enclosed by 4 panelled doors and shelves at back
- 390 An upright pianoforte, in walnut case, by ALLISON & ALLISON
- 391 An inlaid walnut folding top card table, on quadruple supports
- 392 A mahogany wardrobe, 6 *ft.*, fitted sliding trays, hanging compartment, enclosed by 1 mirror and panelled doors, with 3 drawers under
- 393 A mahogany pedestal dressing table, 5 *ft.*, fitted swing frame mirror and 9 drawers and well at base, and a ditto washstand, with marble top and back, fitted 5 drawers



- 394 A mahogany dressing table, fitted swing frame mirror, 6 small drawers and cabinet in centre, a swing frame toilet mirror, and a pedestal cupboard with marble top
- 395 A mahogany chest of 2 short and 3 long drawers
- 396 A mahogany chest of 2 short and 2 long drawers
- 397 An inlaid walnut oval dining table, on pillar and claw
- 398 An oval wall mirror, in mahogany frame
- 399 A similar lot
- 400 A black marble mantel clock, and a barometer and thermometer, in oak frame
- 401 A black marble mantel clock, a plated sugar basin and cream ewer
- 402 A Moorish duet stool, inlaid mother-o'-pearl, seat in tapestry, and a Moorish stool
- 403 A blue and gilt tea service of 37 pieces
- 404 An oak side table, fitted 2 drawers, with drop handles, 4 *ft.*
- 404A Two lustre ware goblets, a ditto jardinière, a dish, a jug, a mug, and a saucer

*The Property of a Lady.*

- 405 A quantity of table glass (various), about 100 pieces
- 406 A black marble mantel clock
- 407 Six hock glasses, 3 flower holders, 2 fruit stands, a pair of painted glass vases and covers, 2 pairs of gilt wood brackets and 2 others, and 11 other articles (various)
- 408 A crimson ground figured pattern Turkey carpet, 16 *ft.* by 12 *ft.*
- 409 An Oriental ditto, 15 *ft.* 6 by 12 *ft.* 3
- 410 Three pairs of chenille curtains and holders, etc.
- 411 Three pairs of tapestry ditto and holders, etc.
- 412 G. SALVI—A set of 4 oil paintings: Landscapes
- 413 C. R., 1874—A pair of paintings: Landscapes, and 2 others
- 414 M. M., 1905—A half-length portrait of a Boy, and 2 others—Landscapes, etc.
- 415 An engraving—"Invited Out"; 2 prints—"Fruits of Industry" and "Beginning House Keeping," and 5 other pictures and photogravures

FINIS.