

## **Sales catalogues: Knight, Frank & Rutley**

### **Publication/Creation**

24th June 1909

### **Persistent URL**

<https://wellcomecollection.org/works/xs2tbnha>

### **License and attribution**

This work has been identified as being free of known restrictions under copyright law, including all related and neighbouring rights and is being made available under the Creative Commons, Public Domain Mark.

You can copy, modify, distribute and perform the work, even for commercial purposes, without asking permission.



Wellcome Collection  
183 Euston Road  
London NW1 2BE UK  
T +44 (0)20 7611 8722  
E [library@wellcomecollection.org](mailto:library@wellcomecollection.org)  
<https://wellcomecollection.org>

WALHMM/CM/Sol 112/121  
W

By Auction.

June 24th, 1909.

# Paintings,

DRAWINGS, ENGRAVINGS AND A FINE  
XIV CENTURY MANUSCRIPT,

BY ORDER OF

SIR WILLIAM THROCKMORTON, BART.;

also BOOKS, &c. (by Order of an Executor, &c.)

---

At Messrs. KNIGHT, FRANK & RUTLEY'S.





# The Conduit Street Galleries.

TELEPHONE NATIONAL, GERRARD 1942.  
P.O. MAYFAIR 497.

TELEGRAMS: GALLERIES, LONDON.

THE BUCKLAND COLLECTION, &c.

## A CATALOGUE

OF

## Pictures,

*Removed from BUCKLAND, BERKS,*

BY ORDER OF SIR WM. THROCKMORTON, Bart.

INCLUDING

### Interesting Old Portraits, Pastels & Drawings,

*and many characteristic Works attributed to*

ALBANO	DOMENICHINO	PATER	ANDREA DEL SARTO
BAROCCIO	CARLO MARATTI	PAGANI	SALVATOR ROSA
BERGHEM	OSTADE	PALAMEDES	SPAGNOLETTA
CIGNANO	OCHTERVELT	RYSBRACK	SNYDERS
CARAVAGGIO	PANNINI	MARIO RICCI	VANDYCK
CARLO DOLCI	POUSSIN	SASSOFERRATO	ZUCCARELLI

"THE FERRY," A FINE WORK BY S. RUYSDAEL;

A NOTABLE COMPOSITION OF FRUIT, GAME AND BIRDS BY SNYDERS; A FINE PORTRAIT OF A LADY BY PHILLIPPE; PASTELS BY HOARE AND KNAPTON; MEZZOTINT AND OTHER ENGRAVED PORTRAITS.

*A Few Papal and other Medals,*

*A FINE ENGLISH MSS. OF THE FOURTEENTH CENTURY,*

MISSALE AD USUM ECCLESIAE SARISBURIENSIS,

on over 400 leaves of Vellum, richly illuminated, used in the Parish Church of Buckland prior to the Reformation;

*also by Order of the Executor of a Gentleman,*

A SUPERB COPY OF S. W. REYNOLDS' "GRAPHIC WORKS OF SIR JOSHUA REYNOLDS," in 5 Folio Volumes, 1820-1836; A BRILLIANT PROOF IMPRESSION OF EARL OM'S MEZZOTINT AFTER ZOFFANY—THE ROYAL ACADEMY, 1773; TWO BOOK-CASES AND SUNDRY BOOKS ON ART;

*By Order of a Gentleman, a Collection of*

LANDSEER PROOF ENGRAVINGS,

*and by Order of the International Horse Show, Ltd.*

A FIGURE SUBJECT BY SIMONT.

WHICH WILL BE SOLD BY AUCTION BY MESSRS.

# Knight, Frank & Rutley

AT THEIR GALLERIES,

9, CONDUIT STREET, and 23a, MADDOX STREET, W.,

On THURSDAY, the 24th of JUNE, 1909,

AT ONE O'CLOCK PRECISELY.

On View Two Days prior from 10 to 5 o'clock.

Catalogues free.

*Dryden Press; J. Davy & Sons, 8-9, Frith-street, Soho-square, W.*



## CONDITIONS OF SALE.

---

I.—The highest bidder to be the purchaser, and if any dispute arise between two or more bidders, the lot in dispute shall immediately be put up again and re-sold.

II.—No person to advance less than 1s.; above Five Pounds 2s. 6d., and so on in proportion.

III.—In the case of lots upon which there is a reserve the auctioneer shall have the right to bid on behalf of the vendor.

IV.—The purchaser to give in name and address, and, if required, to pay down 5s. in the £. or more, in part payment of the purchase-money; in default of which the lot or lots so purchased to be immediately put up again and re-sold.

V.—The lots to be taken away at the purchaser's expense and risk the day after the sale, in default of which Messrs. KNIGHT, FRANK & RUTLEY, will not hold themselves responsible if the lots be lost, stolen, damaged or destroyed; but they will be left at the sole risk of the purchaser.

VI.—The lots are sold with all faults, imperfections, and errors of description, the auctioneers not being responsible for the correct description, genuineness, or authenticity of, or any fault or defect in, any lot; and making no warranty whatever. The auctioneers reserve the right of refusing any bidding or of withdrawing any lot or lots from the sale.

VII.—To prevent inaccuracy in delivery, and inconvenience in the settlement of the purchases, no lot can on any account be removed during the time of sale; and the remainder of the purchase-money must absolutely be paid on the delivery.

VIII.—Upon failure of complying with the above conditions, the money deposited in part of payment shall be forfeited; all lots uncleared within the time aforesaid shall be re-sold by public or private sale, and the deficiency (if any) attending such re-sale, together with warehouse and other charges, shall be made good by the defaulter at this sale.

*Gentlemen who cannot attend the Sale may have their Commissions faithfully executed by their obedient Servants,*

KNIGHT, FRANK & RUTLEY.

**NOTE.**—All Lots uncleared, by either Vendors or Purchasers, after a period of three days from day of sale, will be subject to a Warehouse Charge of One Shilling each Lot per Week or portion thereof.



*lot loose books in list*

**THE CONDUIT STREET AUCTION GALLERIES.**

**A CATALOGUE**  
OF  
**PICTURES, Etc.**

On **THURSDAY**, the 24th of **JUNE**, 1909,  
AT ONE O'CLOCK PRECISELY.

**THE BUCKLAND COLLECTION.**

LOT

- 1 VAN DYCK—A full-length figure of St. Sebastian, 76 in.  
by 51 in., in gilt carved frame
- 2 G. DE RYCK, 1688—The Crucifixion, in carved frame,  
93 in. by 56 in.
- 3 PANNINI—*A classical arch and ruins in landscape with  
horseman and figures, in carved frame, 48 in. by 68 in.*
- 4 THE COMPANION PICTURE
- 5 SNYDERS—A REMARKABLY FINE COMPOSITION OF STILL LIFE :  
GAME, FRUIT, FOLIAGE AND BIRDS ON PANEL, *in carved  
gilt frame, 48 in. by 49 in.*
- 6 SPAGNOLETTA—Charity, 56 in. by 47 in., in carved gilt  
frame
- 7 ANDREA DEL SARTO—ST. CATHARINE, 54 in. by  
36 in., in carved scroll gilt frame
- 8 CARAVAGGIO—St. Matthew, 41 in. by 48 in., in carved  
frame
- 9 MARIO RICCI—CLASSICAL RUINS AND FIGURES, 37 in. by  
51 in., *in carved gilt frame*
- 10 THE COMPANION PICTURE
- 11 VAN DER MEULEN—*The Meeting of the Duke of Lorraine  
and Marshal Turenne, 32 in. by 48 in.*
- 12 DOMENICHINO—Lot and his two Daughters, 46 in. by 62 in.,  
in carved frame
- 13 ITALIAN SCHOOL—A reading Madonna, oval, 29 in. by 24 in.
- 14 GUIDO—Lucretia, 34 in. by 28 in., in carved frame

*Parsons  
12gs 4  
16gs 5  
Parsons*

*8gs 5  
Parsons  
Thos 6  
Parsons  
53gs 15  
Thos 14*

- 15 SCHOOL OF TITIAN—The Madonna, Saviour and Children, with landscape and figures in background, 34 in. by 41 in., in carved frame
- 16 PIETRO DA CORTONA—Rebecca at the Well, 34 in. by 28 in., in carved frame
- 14gs 30. 17 JAN DE REYN *after* VAN DYCK—Portrait of Sir Kenelm Digby, 30 in. by 24 in., in carved frame
- 18 LOCATELLI (School of)—Landscape with castle, waterfall and bridge, peasants fishing, 31 in. by 42 in., in carved frame
- 19 DITTO—Horsemen crossing a bridge, and figures in landscape, 28 in. by 39 in., in carved frame
- 20 J. F. VAN BLOEMEN ("ORIZONTE")—A Classical Landscape and figures, 29 in. by 37 in., in carved frame
- 21 The companion picture
- 22 NICHOLAS POUSSIN—A Classical Landscape, 29 in. by 39 in., in carved frame
- 56gs 50/- 23 PALAMEDES—A CAVALRY SKIRMISH, 13 in. by 18 in., in carved frame
- 24 CIRO FERRI—"Noli Me Tangeri," 28 in. by 22 in., in carved frame
- 25 J. F. VAN BLOEMEN ("ORIZONTE")—Landscape with waterfall, 29 in. by 24 in., in carved frame
- 26 BARTOLOMEO, *after* SALVATOR ROSA—Landscape and figures, 28 in. by 24 in., in carved frame
- 10 1/2 65/- 27 The Coliseum at Rome, 29 in. by 45 in.
- 28 BONIFACIO, *after* TITIAN—Portraits of Cosmo de Medici and his Secretary Concini, 41 in. by 44 in., in carved frame
- 29 BARTOLOMEO—A Holy Family, on panel, 46 in. by 38 in., in carved frame
- 30 DOMENICHINO—St. Cecilia, 46 in. by 38 in., in carved frame
- 31 SASSOFERRATO—Madonna and Child with angels, 29 in. by 24 in., in carved frame
- 32 GRIDONA PAGANI—St. Jerome, 26 in. by 22 in.
- 33 ITALIAN SCHOOL—The Angel Gabriel, 28 in. by 24 in.

*Handwritten signature*

*56gs 50/-*  
*Perman*

*10 1/2 65/-*  
*Göken*



- 34 BREUGHEL—*Wild Beasts and prey*, 27 in. by 23 in.
- 35 CARLO DOLCI—*Madonna and Dead Christ*, 25 in. by 19 in.,  
in carved frame
- 36 DOMENICHINO—*A Madonna*, 26 in. by 21 in., in carved  
frame
- 37 BAROCCIO—*The Flight into Egypt*, 16 in. by 12 in., in  
carved frame
- 38 PATER—*A CAMP SCENE WITH MANY FIGURES*, 10 in. by  
13 in., in carved frame
- 39 *Landscape with figures and mules*, on copper, 13 in. by  
20 in., in carved frame
- 40 CARLO CIGNANO, *after* RAPHAEL—*Madonna, Child and St.*  
*John*, 13 in. by 16 in., in carved frame
- 41 CIRO FERRI—*A Marriage*, 29 in. by 24 in., in carved frame
- 42 VAN BALEN, *after* TITIAN—*Our Saviour washing the Feet*,  
17 in. by 20 in.
- 43 PALAMEDES—*A CAVALRY FIGHT*, 14 in. by 20 in., on panel,  
in carved frame
- 44 HUGHTENBERG—*A Battle Piece, on copper*, 15 in. by 18 in.
- 45 CARLO DOLCI—*St. Joseph and Child*, 25 in. by 18 in., in  
carved frame
- 46 *The Castle of St. Angelo at Rome*, 31 in. by 47 in.
- 47 OLD TENIERS—*Shepherd with cattle and sheep*, 16 in. by  
22 in.
- 48 ISAAC OSTADE—*A small circular painting: The Music*  
*Party*, on panel
- 49 THE COMPANION PICTURE—*The Smokers*
- 50 ALBANO—*Venus and Adonis*, on copper, 16 in. by 21 in.,  
in carved frame
- 51 OCHTERVELT—*Lady with guitar*, 11 in. by 9 in.
- 52 *Madonna holding a branch, with Christ and St. John*, 13 in.  
by 16 in.
- 53 *Figures and ruins in landscape*, on copper, 13 in. by 20 in.
- 54 YOUNG—*Birds, fruit, etc.*, 43 in. by 64 in., carved frame
- 55 S. RUYSDAEL—*THE FERRY BOAT*, with the ruins of  
a castle and group of cattle to the left, 31 in. by 42 in.,  
carved frame



- 56 "Still Life," 22 in. by 27 in., carved frame
- 57 J. SKIRVING, 1826—A view of Caughton Court, Warwickshire, 33 in. by 60 in.
- 58 KNELLER—Half-length portrait of a Lady, 45 in. by 36 in., unframed
- 59 IMPERIALI—A Scriptural group (in the roll), 78 in. by 60 in., and another, containing 5 panels of the Crucifixion, the Ascension, etc., 46 in. by 62 in., and 5 carved frames, in parts (A. F.)
- 289 431-251  
Vickers 307-4  
1609 June 60 NICHOLAS BERCHEM—Peasants driving cattle, 18 in. by 15 in., carved frame
- 61 BACKHUYSEN—A DUTCH QUAY, 15 in. by 22 in., carved frame
- 1609 June 62 An Italian Landscape with figures in foreground, 28 in. by 24 in., carved frame
- 62A PHILLIPE—PORTRAIT OF MARY CATHERINE GIFFORD, wife of Sir John Courtenay Throckmorton, *half-length, wearing a white dress with a shawl over the shoulders*, 29 in. by 24 in., carved frame
- 63 CARLO DOLCI—A Madonna, oval, 24 in. by 17 in., carved frame
- 509 657  
Vickers 64 DUTCH SCHOOL—The Cobbler, 29 in. by 24 in., carved frame
- 65 A group of Children's heads, 25 in. by 18 in.
- 66 ANGELO (IL CAMPIDOGGIO)—An old painting of turnips, cauliflowers, etc., 27 in. by 38 in., carved frame
- 67 A River View with bridge, figure bathing, 17 in. by 53 in., carved frame
- 68 ANGELO (IL CAMPIDOGGIO)—*A Cockerel, rabbit, and Still Life*, 28 in. by 37 in., carved frame
- 69 KNAPTON, after ROSALBA—A pair of pastel Heads of Nymphs, 13½ in. by 11 in., carved frame
- 70 A pair, similar
- 71 Ditto
- 72 Ditto
- 73 KNAPTON, after ROSALBA—A pastel, Head of Diana, 13½ in. by 11 in., carved frame

- 74 KNAPTON, after ROSALBA—Two Heads of Nymphs in pastels, 13½ in. by 11 in., carved frame
- 75 HOARE—A pastel half-length figure of a classic Nymph, 23 in. by 17 in., carved scroll frame
- 76 The companion drawing
- 77 HOARE—A pastel drawing of a sleeping Nymph, oval, 16 in. by 24 in.
- 78 The companion drawing
- 79 WORLIDGE, 1770—*Portrait of an Old Lady wearing a cap*, carved frame
- 80 A Boy feeding a dog, and the companion—A Boy with a bird in basket, 23 in. by 18 in., carved frame
- 81 HOARE—A Woman and Child holding a bird, in pastel, 25 in. by 20 in., carved frame
- 82 A pair of Italian Landscapes, 8 in. by 10 in.
- 83 Ditto
- 84 Ditto
- 85 Three Italian Landscapes, and 2 small paintings on copper
- 86 A Holy Family, 9 in. by 7 in., on panel, and a Hermit, 7½ in. by 5½ in., on copper
- 87 "The Annunciation," 11 in. by 9 in., and A Holy Family, 13 in. by 9½ in., on panel, carved frame
- 88 A Moonlight Cloister Scene, 10 in. by 14 in., and A Holy Family, 17 in. by 12 in.
- 109574-88A DANAFIOLI—A drawing: Diana and Actæon, carved frame
- 89 The companion drawing—The Rape of Europa
- 90 An old drawing—Venetian view, 12 in. by 20 in.
- 91 A pair of 10½ in. circular landscapes, on copper
- 257-309 92 An Italian Merrymaking, 6½ in. by 9½ in., an old drawing, and a pair of coloured lithographs
- 157-40f 93 Six old coloured prints—Continental views
- 50 94 RAPHAEL MENGES—Six old coloured prints: Classical Mural Subjects
- 40f 95 MARON—Six ditto
- 96 An oval portrait of a gentleman, and a coloured print







- 60/- 119 J. R. SMITH, after JOSHUA REYNOLDS — PORTRAIT OF  
MASTER CREWE AS HENRY VIII
- 53/- 120 Six engraved portraits (framed) *Dr. David Pittman*
- Pencil* 121 Four ditto, and the Death of Captain Cook
- 122 A proof portrait, by J. JACOB, after ROMNEY, 1771 — *? who*
- 123 Thirteen engraved portraits, mostly of the Bourbon  
Princes (framed)
- 124 Four old engraved Canadian views (framed)
- 125 Twelve framed engravings
- 126 RAPHAEL (after)—Six engravings: Vatican Frescoes, in  
gilt frames
- 127 Eleven engraved portraits of Poets and Dramatists, gilt  
frames
- 128 Two portraits of Boys, in water-colours, 1817
- 57/- 40/- 129 ~~Four~~ framed prints *2/- 2/- 1/- Three only*
- 130 BARON, after VAN DYCK—The Earl of Pembroke and  
Family, and a mezzotint portrait of Earl Fitzwilliam, by  
GROZER, after REYNOLDS
- Paget* 131 Four drawings in monochrome—The Seasons
- 53/- 10/- 132 Ten old drawings (framed)
- 40/- 50/- 133 Four old Italian coloured prints
- 33/- 60/- 134 Six ditto
- 20/- 20/- 135 Four ditto
- 136 Two designs for fans in water-colours, and a copy of a  
Roman fresco
- 27/- 137 MEYER, 1857—The Bay of Naples, and a drawing with  
birds' nest, by LESCOT
- 5/- 138 GOUPIE — WATER-COLOUR DRAWING: "THE DEATH OF  
DÍDO," 13½ in. by 10 in. *Hma*
- 3/17/6 139 AUG. GANNEREY, 1815—Miniature of a Child
- 140 An old coloured portrait, in gilt frame, and 7 drawings,  
framed
- 25/- 15/- 141 A cast of classic figures, in glazed case, and 22 photo-  
graphs, etc. *cc 4370*
- 40/- 60/- 142 A. MEYER—A water-colour drawing: The Bay of Naples *Quadr*  
*Victoria*
- 143 SCHOOL OF LELY—Portrait of a Lady, 50 in. by 40 in.,  
unframed
- fragile*



- 144 ITALIAN SCHOOL—"The Raising of Lazarus," 53 in. by 42 in., carved frame
- 145 DE HEEM—Fruit and Flowers, 49 in. by 49 in., unframed
- 146 A life-size portrait of a lady and a dog, inscribed JOAN B. VON VOLXSON, 1739, 50 in. by 42 in.
- 147 An unframed painting—"The Flight of Lot," 39 in. by 58 in.
- 148 AN OLD PAINTING—River Scene on the outskirts of a town and men fishing, 34 in. by 43 in., carved frame
- 149 W. J. SHAYER, 1866—Portrait of the Horse "Topaz," 16 in. by 20 in., unframed
- 150 An old painting of a group of cherubs, 22 in. by 18 in., carved frame
- 151 Eleven unframed engravings, 6 framed drawings, and 2 coloured prints
- 152 An engraved portrait of Louis XIV, one other, painting of a cow, and a circular table top
- 153 A gallery panoramic view of Rome, framed, 3 hatchments, 22 maps on stretchers, and a carved frame, 38 in. by 49 in.

LOT 154.

# FINE ENGLISH MANUSCRIPT ON VELLUM.

MISSALE AD USUM ECCLESIAE SARISBURIENSIS, CUM CALENDARIO; AN ENGLISH MANUSCRIPT ON UPWARDS OF 400 LEAVES OF VELLUM (16½ in. by 11½ in.), written in gothic letter in black and red inks, with very numerous painted and ornamental initials, many illuminated in gold and colours, including 12 large illuminated initials with very beautiful decorations of flowers, leaves, and grotesque figures extending round the page; old russia binding

SÆC. XIV

\* \* This fine old English Service Book was used in the parish church of Buckland, near Faringdon, Berks., and has the book-plate of Sir R. Throckmorton, Bart., of Buckland House. The Calendar and earlier portion of the Manuscript has unfortunately been damaged by damp.



- 155 A silver medal of Leo XII commemorating the burning of the Basilica of St. Paul
- 156 A collection of casts from antique gems
- 157 Three silver coins: a Quarter Scudo of Innocent XI, a Peso of Augustine Emperor of Mexico, and a Scudo of Clement XI
- 158 Four bronze medals of the Old and Young Pretenders, Prince James and Prince Charles Edward Stuart, and 4 coins
- 159 A collection of 115 Papal bronze medals, by Mercandetti, Parmense, F. Webb and other artists, of various sizes, including some restrikes and 2 cast medals of Pope Alexander VII
- 160 A collection of 208 casts of bronze medals of the early Popes

*By Order of the International Horse Show, Ltd.*

- 161 SIMONT—A FRENCH CAVALRY OFFICER AND A LADY, *original design for the well-known poster*
- 162 G. MORLAND—Landscape with sportsman and figures
- 163 An artist's proof engraving, after HUBERT SCHMALZ, by JULES JACQUET—"Her First Offering"
- 164 A lithograph—Lord Wellington
- 165 Nine sketches, &c., framed
- 166 SHIRLEY FOX—An oil painting: Boy fishing
- 167 VAN DYCK (*after*)—A half-length portrait of Lady Howard of Effingham, wearing a brown dress
- 168 DUTCH SCHOOL—Old Woman reading
- 169 An engraving, after J. E. MILLAIS—The Bride of Lammermoor, *open-letter proof*
- 14/7 257-170 Voyage en Italie, par J. Isabey, en 1822, *plates*, bound up with a number of interesting old lithographs of English Cathedrals and Landscapes, and "Illustrations of the Calendar," *with plates*, 1819 2
- 457-6-171 A collection of Autographs of well-known men, of about 1820 to 1830, and 59 coloured engravings

S.H.

S.H.



- 172 Murton's Selection of Ancient and Modern Sculptors;  
Painting of a Churchyard; Catalogue of Liber Studiorum,  
14 unframed engravings, 2 numbers of the Print Gallery,  
and 4 copies of "Peace," by the Marquis de Leuville

(64-757-173) 173 Two old coloured caricatures (1 framed) *1 at S. 4*

174 P. A. WILLE, 1780—Engraving: "The Promenade," and  
4 other unframed engravings

175 R. EARLOM, after ZOFFANY—The Royal Academy, 1773,  
*a remarkably brilliant proof impression, with key (un-  
framed)*

176 Two pairs of Japanese red and gilt lacquer album covers,  
in case

177 Three pairs of ditto

178 A framed engraving—Portrait of a Lady, a proof en-  
graving (unframed), after LANDSEER, and another

179 Three Chinese saucers, 2 cups, small blue and white vase,  
a shell shape dish, 2 ormolu lamp mounts, and a small  
glass, in case

(24-58-180) 180 Two water-colour drawings—*16.* Scenes from the Arabian  
Nights, and another *frances*

181 An old coloured print, after WIGSTEAD, by S. ALKEN—  
"The Married Man," and a water-colour drawing—  
Figure subject *13/-*

(26-58-182) 182 Two water-colour drawings—Figure subjects *13/-* *Astrakhan*

183 A cash box, 19 old blue and white tiles, an ebonized  
plinth, 3 canvases, 16 frames, and a writing pad

184 A painting—Landscape, *on panel*, by SWANEVELDT, with  
figures by TENIERS, 11 in. by 17 in.

*By Order of the Executors of the late Mrs. DOWDESWELL,  
of Pull Court, Tewkesbury.*

185 A pencil sketch of a girl, by SIR THOMAS LAWRENCE

186 A pencil sketch, by LORD LEIGHTON

187 A water-colour sketch, by CATTERMOLLE, and a water-  
colour drawing, DUTCH SCHOOL



- 188 A pen and ink drawing, after the engraving of FRANCIS  
HOGENBERG—Queen Mary
- 189 W. KNELL (1854)—A seascape
- 190 Two old proof engravings
- 191 "Love subduing Rage," after SMIRKE and CATTON, by  
R. POLLARD, and a pair of engravings, after R. WESTALL,  
R.A., by W. WARD—Historical subjects
- 192 Four old oil paintings—Sporting subjects, an oil painting  
—Sporting trophies, and 2 others
- 193 Two large photographs, in oak frames
- 194 An oil painting—"The Miner"
- 195 A. ROFFE—"The Death of Duncan"

*By Order of an Executor.*

- 196 THE GRAPHIC WORKS OF SIR JOSHUA REY-  
NOLDS, ENGRAVED BY S. W. REYNOLDS, 1820-1836,  
*folio, in 5 volumes*
- 197 J. VIVIAN (or MEADOWS)—A Venetian View, 29 in. by  
50 in., in gilt frame
- 198 CORREGGIO (*after*)—The Marriage of St. Catharine (the  
Louvre painting), 14 in. by 11 in., by CHAS. DUKES,  
*a frequent exhibitor at the Royal Academy about the  
middle of the 19th century*
- 199 RUBENS (*after*)—A large framed engraving: The Battle  
of the Amazons
- 200 DELAROCHE (*after*)—The large engraving, by DUPONT:  
The Hemicycle of the Palais des Beaux Arts, with a  
key to the portraits, *both framed*
- 201 HENRY MORLAND (*after*)—Proof engraving: "The  
Ironer," an engraved Female Head by CHAPMAN, after  
GREUZE, *proof, signed*, and a coloured lithograph of  
Landseer modelling the Nelson lions
- 202 An old needlework sampler, framed
- 203 SIR JOSHUA REYNOLDS—A mezzotint of the artist's Por-  
trait of Himself holding a palette, by S. W. REYNOLDS,  
framed

18/72/  
Parsents

*[Signature]*

24/30/

437-25/  
Rimel



- 204 J. R. SMITH's mezzotint of "The Musical Challenge," and  
"A Shepherdess," by J. SMITH, after KNELLER
- 205 A pair of gilt bronze chased scroll candlesticks, a bronze  
gondola inkstand, and 2 Oriental figures
- 206 GAULLION—A Classical Landscape with waterfall, 12½ in.  
by 18½ in., gilt frame
- 207 H. COLEMAN, 1877—A water-colour drawing: A Heath,  
framed
- 208 A mother-o'-pearl casket, a walnut stationery case, and  
a vellum bound scrap album
- 209 A figure of Alexander, on wood plinth, and a group—  
The Wrestlers
- 210 A FINE OLD BRACKET CLOCK, with repeating movement,  
striking on bells, with chased brass and silvered dial, in  
ebonized case, on brass feet, by JOHN RAINSFORD, *London*  
\* \* *Rainsford appears to have been admitted a Member of the  
Clockmakers' Company in 1689.*
- 211 A pair of satin-wood inlaid cabinets, each containing 10  
drawers, 18 in. wide, 32 in. high
- 212 Bryan's Dictionary of Painters, *whole calf*, and James's  
Painters and their Works, 3 4 vols.
- 213 Gréard's Meissonier, 1897, *large 4to, plates* 1 vol.
- 214 Michel's Rembrandt, *Hachette, Paris*, 1893, *plates* 1 vol.
- 37/6 23/- 215 Lady Dilke's French Decoration in the XVIIIth Century;  
*Scott* Soane's Architecture, Sculpture and Painting; and  
Catalogue of Portrait Miniatures, Kensington Museum,  
1865 3 vols.
- 216 The Burlington Magazine, 12, and a parcel of numbers  
of the same 12 vols.
- 216A The Connoisseur, vols. I-XIX, *bound*, and parcel of  
numbers, *unbound* 11 vols.
- 216B Treasury of Biography, History, Botany, etc. 9 vols.
- 29/ 35/- 216C Lowndes' Bibliographer's Manual, 4; Art Sales, 2; Book  
*Remel* Sales and Book Prices, 5 12 vols. *B.H.*
- 216D Forrer's Dictionary of Medallists, 2 (*one unbound*);  
British Museum Catalogue of Satirical Prints, 5; Brom-  
ley's Catalogue of British Portraits; and 5 others 13 vols.



- 216E Spinks' Numismatic Circular, vols I-XVI, bound, in 6 vols.; The Montague Collection, 3, and Humphrey's Coin Collectors' Manual, 2 11 vols.
- 216F Lodge's Portraits 6 vols.
- 216G Memorials of Christie's 2 vols.
- 216H Whitman's Samuel William Reynolds, 1903, and 4 autograph letters 1 vol.
- 
- 216J Old Masters' R.A. Exhibition Catalogues, in 3 vols., and Academy and other Notes, 6 9 vols.
- 32/6 257-216K King's Precious Stones; King's Gems; Westropp's Handbook of Archaeology; Billing's Science of Gems; Barrera's Gems and Jewels; Marvels of Glass Making, and Wonders of Engraving 7 vols.
- 216L Life of Charlet; Hogarth; Life of Turner, 2; Life of Linnell, 2; My Life, by T. S. Cooper, 2; and Vasari's Lives of the Painters, 5 13 vols.
- 216M British, South Kensington Museum, and other Catalogues a parcel
- 
- 216N The Great Artist Series 31 vols.
- 507-381-216O Artists' Lives and Works, in 2 vols., folio; Biography of Whistler; 12 others; Bushell's Chinese Art, 2, and Furnival's Leadless Glaze 17 vols.
- 24/6 350-216P Pilkington's Dictionary of Painters, 2, and 32 others 34 vols.
- 12/6 381-216R Turner's Rivers of England; Ward's Works; L'Ornement Polychrome, and Les Styles, by Rouaix 4 vols.
- 27/6 381-216S Goertner's De Fructibus et Seminibus Plantarum, Stuttgart, 1788, 2, and 6 others 8 vols.
- 32/6 257-216T Sutherland Collection, 2; Stafford Gallery, 2, and the Demidoff Collection 5 vols.
- 
- 216W Smith's Dictionary of the Bible, 3, and Greek and Roman Antiquities, 2 5 vols.
- 207-257-216X Icones Biblicae, and 2 others 3 vols.
- 17/6 216Y Portrait of an Officer, 2 prints, and 3 old engravings, unframed, parts of a Venetian mirror frame, and sundries

SA

SH

SH

SH



- 37/6  
357  
57/107-401
- 216Z Halliwell's Dictionary of Archaic and Provincial Words,  
2; Picture Collector's Manual, 2; Redgrave's Dictionary,  
and Crace's Catalogue of Maps of London 6 vols.
- 216AA Hadyn's Dates, and 28 others 29 vols. *64*
- 216BB Hamilton Catalogue; Hamilton's Reynolds; Mayo's  
Medals, 2; Slater's Engravings, and 6 others 11 vols.
- 216CC Academy Catalogues, 2; Litchfield's Pottery; 19 others,  
and 8 albums 30 vols.
- 216DD A 3 ft. 10 oak bookcase, with glazed doors
- 216EE A 5 ft. burr-walnut bookcase, the upper part enclosed by  
glazed doors, cupboard under

*W. E. Lodge Portrait 6762*  
By Order of a Gentleman.

### A Collection of Engravings.

AFTER SIR EDWIN LANDSEER, R.A.

- 217 "A Piper and a pair of Nut Crackers," by S. COUSINS,  
*open-letter proof*
- 218 "The Shepherd's Bible," *proof before letters*
- 219 "The Tethered Ram," *proof, first state*
- 220 "Bolton Abbey in the Olden Time"
- 221 "Jack in Office," *proof before letters*
- 222 "The Challenge," by C. MOTTRAM, *small plate*
- 223 "The Sentinel and Sleeping Bloodhound," *small plates*
- 224 "Hawking in the Olden Time," by LEWIS, *proof before  
letters*
- 225 "Ptarmigan Hill," *presentation proof*
- 226 Six artist's proof engravings of Landseer's Forest Works,  
in 2 frames
- 227 "Marmosets," *presentation proof, small plate*
- 228 "The Intruding Puppies," and "The Twa Dogs," *small  
plates*
- 229 "All that remains of the Glory of William Smith"
- 230 "An Event in the Forest," *presentation proof*
- 231 "The Lost Sheep," companion engraving
- 232 "The Deer Drive," *artist's proof*

- 233 "The Twins "
- 234 "The Challenge," and "The Sanctuary," by JOHN BURNETT
- 235 "The Random Shot," by THOMAS LANDSEER, *proof*
- 236 "The Return from Hawking," by S. COUSINS, *proof before letters*
- 237 "Not Caught Yet," by THOMAS LANDSEER, *proof before letters*
- 238 "The Stag at Bay," by THOMAS LANDSEER
- 239 "Peace" and "War," *proofs before letters* (a pair)
- 240 "The Departure to the South," by J. WATT, *proof before letters*
- 241 "There's Life in the Old Dog Yet," by RYALL, *proof before letters*
- 2/10-60-242 "The Order of Release," by S. COUSINS *Xme*
- 243 "The Otter Hunt," by C. LEWIS, *artist's proof*
- 244 "The Defeat of Comus," *lettered proof*
- 245 "The Monarch of the Glen," by J. PRATT, *remarque artist's proof*
- 246 A pair of engravings—Portraits, after BARRETT, by TOMKINS
- 247 Two engravings—"The Naughty Boy," after LANDSEER, by FINDEN, *first and second state*
- 12-3-248 A pair of engravings, after J. M. W. TURNER—Oberwesel, and Nemi
- 249 An etching, after HOFF, and another, after SALENTIN
- 250 A remarque proof etching, by J. M. HOOKE, and 2 portrait engravings
- 251 An etching—Market Scene, after SCHÖNN, and a print
- 252 A remarque proof etching—"The Breakfast," after MEISSONIER
- 253 A PROOF ETCHING—*The Portals of Rheims Cathedral*, by AXEL H. HAIG
- 254 "Derby Day," *artist's proof before letters*, after FRITH, R.A., by AMY BLANCHARD
- 255 An engraving—Portrait of a Girl, after G. D. LESLIE, by J. W. DAVIS, *presentation proof*



- 256 A Landscape, after CONSTABLE, by JOSEPH PRATT, *proof before letters*  
 257 The Horse Fair, after ROSA BONHEUR, *proof*  
 258 Portrait of Rosa Bonheur, after E. DUBUFE, by SAMUEL COUSINS, *proof before letters*  
 259 A Shipwreck, after J. M. W. TURNER, by THEODORE FIELDING  
 260 Three remarque proof etchings—Landscapes, after COROT, by COLLIN PAUL

FINIS.

---

## Forthcoming Sales.

AT THE CONDUIT STREET GALLERIES,  
*To-morrow, FRIDAY, JUNE 25th at 1 o'Clock,*  
 JEWELLERY, SILVER, &c.

*On FRIDAY, JULY 2nd,*

### **Oriental China,**

*By Order of Sir WM. THROCKMORTON, Bart.*

PICTURES. BRONZES. FURNITURE, &c.

---

AUCTION SALES ARE HELD FOR OWNERS AND EXECUTORS ON PRIVATE OR BUSINESS PREMISES IN ALL PARTS OF THE COUNTRY, AND COLLECTIONS OF PICTURES, BOOKS, CHINA, JEWELS, SILVER, FURNITURE, ETC., ARE RECEIVED DAILY BY MESSRS. KNIGHT, FRANK & RUTLEY, FOR INCLUSION IN EARLY PUBLIC SALES AT THEIR GREAT ROOMS,  
 THE CONDUIT STREET AUCTION GALLERIES,  
 9, CONDUIT STREET & 23A, MADDOX STREET, W.

---

*Solicitors and Executors may note that Messrs. KNIGHT, FRANK & RUTLEY, undertake Valuations of all classes of Property, at short notice, in any part of the Kingdom.*

---

REPORTS ON TOWN AND AGRICULTURAL PROPERTIES PREPARED FOR MORTGAGEES. FUNDS ALWAYS AVAILABLE FOR MORTGAGORS ON APPROVED SECURITIES.



*By Direction of the* RIGHT HONOURABLE THE EARL OF CHESTERFIELD.

## IMPORTANT ANNOUNCEMENT OF THE SALE BY AUCTION

On THURSDAY, JULY 29th, 1909, at Two o'Clock,

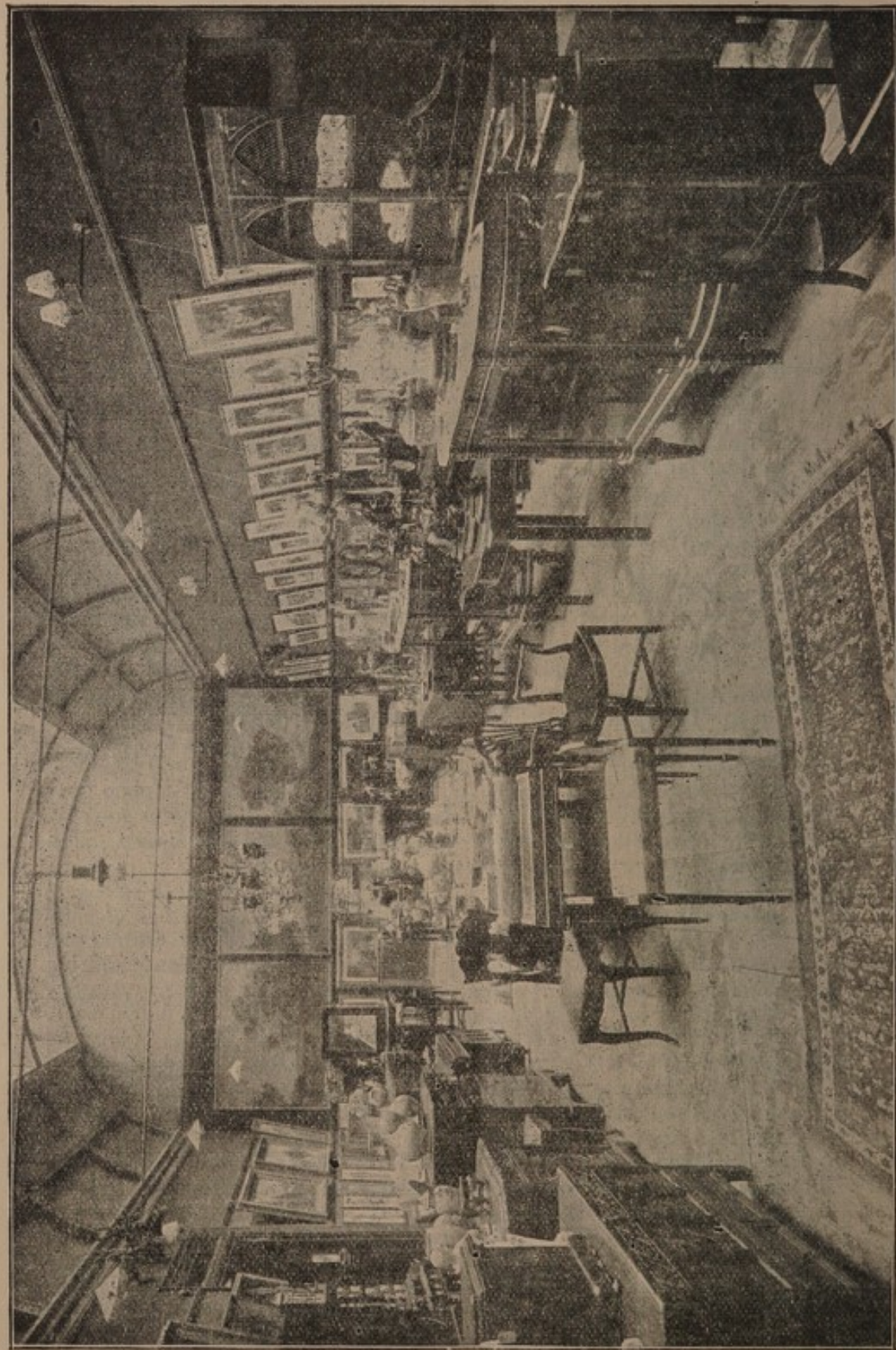
BY MESSRS. KNIGHT, FRANK & RUTLEY, OF THE

### **Historical Domain.**

"HOLME LACY" (between Ross and Hereford), for centuries the home of the Scudamores, and unquestionably one of the most beautiful seats in England. The Estate extends to about 5,594 ACRES, and is situated in the midst of the picturesque hills rising to 700 ft. above sea level and descending to the RIVER WYE, with NINE MILES of SALMON FISHING. The property will be divided as follows:—Holme Lacy portion, 5,018 acres. Outlying portion, 486 acres. Few estates possess the varied attractions of Holme Lacy, with its Mansion, beautiful in its simplicity, the gardens and grounds with their famous giant yew hedges and specimen forest trees, the exceptional shooting and fishing facilities, and the many historical associations connected with the property. Holme Lacy lies about five miles south-east of Hereford, in the parishes of Holme Lacy, Ballingham, Bolstone, Little Dewchurch, Hentland, Little Birch, and Aconbury, and has two railway stations on the estate. Placed on a plateau about 250 ft. above sea level, on gravel soil, with glorious views over the Wye Valley, and surrounded by the DEER PARK of ABOUT 250 ACRES, is the NOTABLE MANSION, built chiefly of red sandstone, in the semi-classic style, with advancing bays, and crowned with a white stone balustrade. Erected some 200 years ago, it is conveniently arranged and in good order. The suite of reception rooms is enriched with some of the finest examples of GRINLING GIBBONS CARVING, and includes Dining Room, the Salon 47 ft. by 26 ft., Ante Room and Drawing Room 47 ft. by 20 ft., all communicating, Billiard Room, Study, Boudoir, and Smoking Room. The principal Bed Rooms, including a Charming Private Suite, are about 20 in number, and there are Four Bath Rooms and some 20 Servants' Rooms. The Reception Rooms and nearly all the Bed Rooms have the most delightful Views. The Gardens at Holme Lacy are justly renowned. Three Lakes lie between the Gardens and the Park. The Stabling affords accommodation for 12 Horses. The Home Farm, with Agent's House, adjoins the park, and is in hand. The Woods, extending to 749 Acres, are conveniently placed to ensure high birds, and there is plenty of undercover. A large stock of partridges has been encouraged, and there is any quantity of rabbits and a few wild-fowl. THE FISHING is some of the best in England. During the last two seasons the catch of salmon has been 2,228lbs., averaging 18lbs. each, and including several fish from 25lbs. to 38lbs. each. Certain Manorial Rights and the Advowsons of Holme Lacy and Ballingham and Bolstone will go with the Estate. The Agricultural Portion of the property is divided into EIGHTEEN EXCELLENT FARMS in an efficient state of cultivation and farmed by a practical tenantry. The greater portion of the SEVERAL VILLAGES intersecting the Estate are included, with 65 Cottages and 11 Small Holdings, also KILFORGE HOUSE, with Stabling, the whole producing an Actual and Estimated Rent Roll of £7,010 PER ANNUM. It is seldom that any property comes into the market possessing the dignity and charm of Holme Lacy that can afford such variety of sport, whilst being comparatively inexpensive to maintain. Tithe, Land Tax, etc., £648. The Estate can only be seen by appointment. Particulars, with illustrations and plans (price 10s. 6d.), can be obtained of the Vendor's Solicitors:—Messrs. WOODHOUSE and DAVIDSON, 10 and 11, Lime Street, E.C.; or of the Auctioneers and Land Agents:—Messrs. KNIGHT, FRANK, and RUTLEY, 9, Conduit Street, London, W.



THE CONDUIT STREET GALLERIES.



Messrs. KNIGHT, FRANK & RUTLEY, 9, Conduit Street, W.

