

Sales catalogues: Knight, Frank & Rutley

Publication/Creation

9th-10th December 1915

Persistent URL

<https://wellcomecollection.org/works/n65azjsk>

License and attribution

This work has been identified as being free of known restrictions under copyright law, including all related and neighbouring rights and is being made available under the Creative Commons, Public Domain Mark.

You can copy, modify, distribute and perform the work, even for commercial purposes, without asking permission.



Wellcome Collection
183 Euston Road
London NW1 2BE UK
T +44 (0)20 7611 8722
E library@wellcomecollection.org
<https://wellcomecollection.org>

WA/AMM/CM/150/12/503

20, HANOVER SQUARE, W.

Prose
CATALOGUE

OF THE

**CONTENTS OF A
TOWN MANSION**

REMOVED FROM CADOGAN SQUARE, S.W.

*also the Property of a Lady of Title, by Order of
Executors, and from other Sources*

WHICH

Will be Sold by Auction by Messrs.

KNIGHT, FRANK & RUTLEY

AT THEIR ROOMS

20, HANOVER SQUARE, W.

On THURSDAY & FRIDAY, 9th & 10th of DECEMBER, 1915,

AT ONE O'CLOCK PRECISELY EACH DAY

On View Tuesday and Wednesday prior, from 10 to 5 o'clock.
Catalogues (free) of Messrs. KING, ADAMS & Co., Solicitors, 66,
Cannon Street, E.C.; or of the Auctioneers, at their Offices,

20, Hanover Square, W.

Telephone—Gerrard 1942 (5 lines).

Telegrams—"Galleries, London."

Dryden Press: J. Davy & Sons, 8-9, Frith-street, Soho-square, W.

Conditions of Sale.

I.—The highest bidder to be the purchaser, and if any dispute arise between two or more bidders, the lot in dispute shall immediately be put up again and re-sold.

II.—No person to advance less than one shilling, above Five Pounds 2s. 6d., and so on in proportion.

III.—In the case of lots upon which there is a reserve the auctioneer shall have the right to bid on behalf of the vendor.

IV.—The purchaser to give in name and address, and if required, to pay down 5s. in the £, or more, in part payment of the purchase-money; in default of which the lot or lots so purchased to be immediately put up again and resold.

V.—The lots to be taken away at the purchaser's expense and risk the day after the sale, in default of which Messrs. Knight, Frank & Rutley will not hold themselves responsible if the lots be lost, stolen, damaged or destroyed; but they will be left at the sole risk of the purchaser.

VI.—The lots are sold with all faults, imperfections, and errors of description, the Auctioneers not being responsible for the correct description, genuineness, or authenticity of, or any fault or defect in any lot; and making no warranty whatever. The auctioneers reserve the right of refusing any bidding or of withdrawing any lot or lots from the sale.

VII.—To prevent inaccuracy in delivery, and inconvenience in the settlement of the purchases, no lot can on any account be removed during the time of sale; and the remainder of the purchase-money must absolutely be paid on the delivery.

VIII.—Upon failure of complying with the above conditions, the money deposited in part payment shall be forfeited; all lots uncleared within the time aforesaid shall be re-sold by public or private sale, and the deficiency (if any) attending such re-sale, together with warehouse and other charges, shall be made good by the defaulter at this sale.

KNIGHT, FRANK & RUTLEY.

NOTE.—All Lots uncleared, by either Vendors or Purchasers, after a period of three days from day of sale, will be subject to a Warehouse Charge of One Shilling each Lot per Week or portion thereof.

GOODS are received and delivered at the rear entrance in **DERING YARD** (between 67 and 68, New Bond Street) from 9.30 to 11.30 a.m. and 4.30 to 6 p.m.

First Day's Sale.

Messrs. KNIGHT, FRANK & RUTLEY'S

CATALOGUE

OF

Furniture, Pictures, Tapestry, &c.

On THURSDAY, 9th of DECEMBER, 1915,

AT ONE O'CLOCK PRECISELY.

*The following Lots (the Contents of a Town Mansion),
removed from Cadogan Square, S.W.*

Books.

LOT

- | | | |
|---|--|----|
| 1 | Jesse (J. H.) London, its Celebrated Characters and Remarkable Places, illustrations, 1871, 3—Memoirs of Celebrated Etonians, <i>calf gilt</i> , 1875, 2; various, 6 | 11 |
| 3 | Scott (Clement) The Drama, with portraits, 1899, 2—Planché (J. R.) Recollections and Reflections, 1872, 2; various, 16 | 20 |
| 4 | Smythe (L. C.) The Guardian of Marie Antoinette, with portraits, etc., <i>half calf gilt</i> , 1902, 2—Bury (Lady Charlotte) The Diary of a Lady-in-Waiting, portraits, 1908, 2; various, 12 | 16 |
| 5 | Walpole (Horace) The Letters of, edited by Peter Cunningham, with 64 portraits, etc., <i>half calf, uncut, top edges gilt</i> , 1906 | 9 |
| 6 | Evelyn (John) Diary and Correspondence, portraits, <i>half calf, uncut; top edges gilt</i> , 1859, 4—Pepys (Samuel) Diary and Correspondence, portraits, <i>half calf, uncut, top edges gilt</i> , 1858, 4 | 8 |

- 16/- 7 Chaffers (W.) Marks and Monograms on Pottery and Porcelain, with over 5000 potters' marks, etc., 1912—Saglio (André) French Furniture, with 59 illustrations; various, 1 3
- 8 Las Cases, Journal of the Private Life of the Emperor Napoleon, *half calf*, 1823, 4—Dayot (Armand) Napoleon, illustrated, *half morocco, uncut, top edges gilt*, 1902; various, 2 7
- 9 Mémoires de Mme. de Motteville, *half calf*, 4—Souvenirs de Mme. Vigée Lebrun, *half calf*, 2; various, 37 43
- 10 Rossetti (D. G.) Ballads and Sonnets, 1882—Shelley's Poetical Works, portraits, 1853—Rossetti (Christina G.) Poems, 1895; various, 28 31
- 11 Douglas (R. B.) Life and Times of Madame du Barry, portrait, *half morocco, top edges gilt*, 1896—Wolsey (Vicomte) Le Déclin et la Chute de Napoleon, portraits, *half calf gilt*, 1894—Waliszewski (K.) Peter the Great, portrait, *half calf gilt*, 1898; various, 13 16
- 12 Clerici (G. P.) A Queen of Indiscretions, portraits, 1907—Fea (A.) James II and his Wives, portraits; various, 12 14
- 13 Ball (W.) Sussex, coloured plates—Moncrieff (A. R. H.) Surrey, coloured plates, 1906; various, 10 12
- 14 Lydekker (R.) The Royal Natural History, illustrated with 72 coloured plates and 1600 engravings, *half morocco*, 1893-96, 6—Lloyd's Natural History, with coloured and other illustrations, *half calf*, 1896, 16 22
- 15 Low (S. J.) Dictionary of English History, *half morocco*, 1889—Clifton and Grimaux, French and English Dictionary, *half morocco*, 2; various, 6 9
- 20/- 16 Furniture Designs of Chippendale, Hepplewhite and Sheraton, arranged by J. M. Bell, etc., illustrated, 1910—Singleton (Esther) Dutch and Flemish Furniture, illustrated, 1907; various, 2 4

- 17 De Boudeau, *Chronique Scandaleuse*, 5 vol. in 2, *half calf*, 1791; *Les Curiositez de Paris*, *half morocco gilt*, 1723, 2; various, 31 35
- 18 Memoirs of Monsieur D'Artagnan, portraits, 1893, 3—Smith (Albert) *The Marchioness of Brinvilliers*, with illustrations by John Leech, 1886; various, 1 5
- 19 David et Caillot, *Histoire de France*, illustrated, *half calf*, 1818, 3—Baker (H. B.) *French Society*, *half calf*, 1874, 2; various, 17 22
- 20 Œuvres du Comte Antoine Hamilton, portraits, *calf*, 1812, 3—Le Sage, *Histoire de Gil Blas*, *half calf*, 1832, 3; various, 26 32
- 21 Boswell, *Life of Johnson*, *half calf gilt, uncut, top edges gilt*, 1820, 4—Walpole (Horace) *Memoirs of George II*, portraits, *calf gilt*, 1847, 3; various, 8 15
- 22 Westermarck, *The History of Human Marriage*, 1895—Memoirs of Captain George Carleton, *calf*, 1808—Wilkins, *The Love of an Uncrowned Queen*, portrait, 1910; various, 10 13
- 65/ 23 Stanford, *Compendium of Geography*, with maps and illustrations, 12; various, 12 24
- 24 Chambers, *Encyclopædia*, illustrated, *half morocco*, 1906, 10—The Harmsworth Atlas and Gazetteer, with 500 maps, diagrams, etc., *half morocco gilt* 11
- 25 Thornbury, *Old and New London*, illustrated, *half calf*, 2—*Haunted London*, 1865—Rimmer, *Pleasant Spots round Oxford*, illustrated; various, 10 14
- 30/ 26 Hope (T.) *Costumes of the Ancients*, illustrated, 1809—*The Book of Costumes, or Annals of Fashions*, illustrated, 1847; various, 14 16
- 27 Fauchier-Magnan, *Lady Hamilton*, portraits, *half calf gilt*, 1910—Eckard, *Mémoires sur Louis XVII*, portraits, *half calf*, 1818—Haggard, *Louis XIV in Court and Camp*, portraits, 1904; various, 24 27

- 28 Davis (J. W.) Memoirs of the Duchesse de Goncourt, portrait, 1894, 2—A Duke and his Friends, by the Earl of March, portraits, 1911, 2; various, 21 25
- 29 Melville (Lewis) The First Gentleman of Europe, portrait, 1906, 2—Climenson, Elizabeth Montagu, 1720-1761, portraits, 1906, 2; various, 12 16
- 30 Liechtenstein (Princess Marie) Holland House, portrait, etc. 1875—Bruhl and Moncrieff, Essex, coloured illustrations, 1909; various, 12 14
- 31 Peake (R. B.) Snobson's Seasons, being Annals of Cockney Sports, with 92 illustrations by Seymour, *half calf gilt, uncut, top edges gilt*—Melville (L.) Life and Letters of William Beckford, illustrated, 1910; various, 2 4
- 32 Littré Dictionnaire de la Langue Francaise, *calf*, 1875, 4 — Webster, International Dictionary, new edition, 1907 5
- 16/- 33 Nash (J.) The Mansions of England in the Olden Time, with 104 beautiful illustrations, 1872 4
- 18/- 34 Illustrated Record of Important Events in the Annals of Europe, with the fine series of coloured illustrations and text, *boards* 3
- 15/- 35 Examples of Furniture and Decorations designed by Thomas Sheraton, with 16 illustrations, 1906—Humphries (S.) Oriental Carpets, etc., with 24 coloured and other illustrations 2
- 8/- 36 Beattie (W.) The Waldenses, with illustrations and text, *half russia*, 2; various, 2 4
- 7/- 37 A Series of magnificent Engravings to illustrate the Works of Shakespeare and Milton, *half bound*, 1818—Coney, Architectural Beauties in France, etc., *half bound*, 1831; various, 2 4
- 38 Gréard (M. O.) Meissonnier, Souvenirs et Entretiens, illustrated, *morocco*, 1897—Œuvres de Alfred de Musset, illustrated, 1867; various, 7 9

- 39 Cruikshank, Scraps and Sketches, coloured plates, *half morocco*—Eber's Egypt, Descriptive, Historical, etc., illustrated, 2; various, 2 5
- 40 Vitu (Auguste) Paris, with 450 illustrations, *half morocco gilt*—Pugin (A.) Paris, illustrated, 2 vol. in 1, *morocco*, 1833; various, 2 4
- 12/4 41 Kent. Thirty-six different Views of Noblemen's Seats, etc. in the County of Kent, designed by T. Badeslade, and engraved by Kip, etc., *half morocco*, 1720
- 42 Lodge (Edmund) Portraits of Illustrious Personages of Great Britain, LARGE PAPER COPY, with proof impressions of the portraits on india paper, *full crimson morocco extra gilt, gilt edges* 12
- 43 Nouveau Larousse Illustré—Dictionnaire Universel Encyclopédique, et Supplément, *half morocco gilt* 8
- 20/ 44 Lewis, Spanish Sketches, second series, with 14 coloured illustrations, *half morocco*—Roberts, Views in Spain, with 24 coloured illustrations, *half morocco*—Simpson (W.) Seat of War in the East, with 40 coloured illustrations, *half morocco* 3

Furniture.

- 45 A carved oak hall stand, with oval mirror and brush drawer, 3 ft. 10
- 46 A burr-walnut card table, with folding top, inlaid for chess, backgammon and cribbage, on carved standards, 25 in.
- 47 A rose-wood and marqueterie table, shaped top, with 4 fall-flaps, on turned legs and gallery platform, 34 in.
- 48 A Dutch mahogany and marqueterie oblong table, with tray top, and 2 drawers, on cabriole legs with club feet, 34 in.
- 49 A SHERATON SATIN-WOOD SOFA TABLE, painted in decoration of foliated scrolls, oval figure subject in centre, with peacock feather border, 2 fall-flaps, and 2 drawers, on standards, 64 in. by 27 in.

- 50 A mahogany circular library table, top lined in green cloth, carved acanthus moulding, fitted with 4 drawers, on carved square-tapered legs, 4 ft.
- 51 A pair of convex mirrors, in circular gilt frames, with candle branches, 18 in.
- 52 A mahogany card table, with square folding top, on hexagon pillar and carved scroll supports, 25 in.
- 53 A satin-wood serpentine-shaped console table, painted in decoration of floral garlands and figure subject in centre, on carved gilt frame, with tapered fluted legs and stretcher, 4 ft. 10
- 54 A carved and gilt console table, with pierced frieze, on 8 tapered fluted legs, with stretcher and flaming urn, and coloured marble slab, 8 ft.
- 55 A mahogany hall table, with carved back and veined marble top, on composite griffon supports, and shaped plinth with panelled back, 2 ft. 11
- 56 A mahogany reading table, with adjustable book rest, on square tapered legs, 3 ft.
- 57 A pair of stag's heads and antlers
- 58 A pair of ditto
- 59 A pair of ditto
- 60 A fine specimen ditto, and another
- 61 A gazelle head, 1 other, and a pair of antlers
- 62 A pair of very large antlers, and 2 clubs
- 63 A mahogany hanging corner china cabinet of Chippendale design, 19 in.
- 64 A black lac work table, with gilt decoration in the Chinese taste, lifting top enclosing compartment, with work well beneath, on lyre-shaped standards, 25 in.
- 65 A mahogany corner china cabinet, fitted with 4 shaped shelves, enclosed by trellis glass door, 2 ft. 9 wide, 6 ft. 6 high
- 66 A pair of gilt fluted columns, 3 ft. 6
- 67 An oak long case clock, with scroll pediment, inlaid stars, brass dial, and striking movement, by TURNBULL, *Whitby*

- 68 A carved and gilt waste-paper basket, with cane-work panels and laurel festoon handles, and a mahogany oblong foot-stool, on cabriole legs and club feet, top in crimson leather
- 69 Seven 46 in. brass triangular stair-bands, and seventeen 42 in. ditto
- 70 Fifty-eight ditto, various sizes
- 71 *A mahogany and marqueterie china cabinet*, the upper part with shaped cornice and carved centre, fitted with 2 shaped shelves, enclosed by a pair of glass doors and cupboard beneath, with 2 panelled doors, inlaid urns and flowers, 4 ft. 9 wide, 7 ft. high
- 72 A console mirror, in black and gilt frame, of Adam design, architectural pediment with draped urn and ram's-head, painted panel in frieze, and floral garlands in relief, the sides mounted with a pair of 3-light brackets, fitted with electric candles, 8 ft. high, 6 ft. wide
- 73 A console mirror, in carved gilt frame, surmounted by hymenal trophy, 7 ft. 10 high, 6 ft. 6 wide
- 74 *A stuffed-over Chesterfield settee*, in canvas, fitted with loose chintz cover, 6 ft. wide
- 75 *A Sheraton mahogany bergère*, with stuffed-over circular back, upholstered in green figured silk damask, and loose seat cushion
- 76 A Chippendale mahogany oval Pembroke table, with carved edge, on tapered legs with club feet, 3 ft. 2 by 3 ft. 10
- 77 A mahogany dwarf table, on turned pillar and claws, an oak knife box, and 2 cottage chairs, with curved wood seats
- 78 A MAHOGANY TALLBOY CHEST OF 2 SHORT AND 6 LONG DRAWERS, of Chippendale design, dentil cornice and sunk fret frieze and angles, drawers inlaid, satin lined, with brass drop handles, 3 ft. 6
- 79 A Sheraton mahogany bow-front chest of 2 short and 2 long drawers, banded satin-wood, with brass ring handles

- 80 A stuffed-over chaise-longue, with adjustable back, upholstered in green twill
- 81 A Chesterfield settee, upholstered, *en suite*, 5 ft. wide
- 82 A stuffed-over arm chair, in the Chippendale style, with high winged back, upholstered in crimson figured silk, on carved mahogany legs and stretcher rails
- 83 A carved and gilt china cabinet, with bevelled glass front and sides, fitted with 2 plate-glass shelves and mirror back, 3 ft. 2 wide, 5 ft. 2 high
- 84 A rose-wood writing table, with leather top, fitted 4 drawers, on standard, 3 ft.
- 85 A Carlton carved mahogany oval writing table, fitted with shelf and 4 small drawers, top lined with leather, 1 long drawer in frieze, on square tapered legs, 3 ft. 6
- 86 A Chippendale oval mahogany Pembroke table, with carved edge, 1 drawer, on square tapered legs, 2 ft. 2 by 2 ft. 9
- 87 A Sheraton mahogany frame arm chair, cane-seat, sides and back, with 2 loose cushions and arm pads, in marone leather
- 88 A mahogany oblong table, in the Chippendale style, sunk fret frieze, on cluster column legs, 2 ft. 9 by 21 in.
- 89 A chestnut and marqueterie upright secretaire, with front, long drawer above, lifting top, and 3 long drawers at base, 3 ft. 6
- 90 A 4 ft. pierced brass fender, with serpentine front
- 91 A 4 ft. 6 brass club fender, with upholstered top in marone morocco
- 92 An Adam pattern oval wall mirror, in carved gilt frame with open border, 33 in. by 45 in.
- 93 A console mirror, in elaborate carved gilt frame, with open scrolls, and surmounted by figure of an eagle, 8 ft. 9 high, 4 ft. wide
- 94 A carved and gilt console table, of rustic design, on ebonized plinth and marble slab

- 95 A chimney glass, with 3 plates, in walnut frame and carved gilt mouldings, 2 ft. 2 by 4 ft. 6
- 96 Two 3 ft. brass pierced fenders, 2 sets of implements, 2 pairs of rests, and 2 stops
- 97 A chimney glass, in white gilt frame, of Gothic design, surmounted by crest and motto, 5 ft. 3 by 4 ft. 8
- 98 A mahogany bookcase, carved beading, fitted with 2 shelves, lattice panelled glass door, and cupboard beneath, with panelled door, 2 ft. 6 wide
- 99 A MAHOGANY KNEE-HOLE PEDESTAL WRITING TABLE, carved acanthus moulding, fitted with 1 long and 6 short drawers, and cupboard in recess, 3 ft.
- 100 A walnut dwarf open bookcase, fitted shelves, with leather falls, 2 ft. 3
- 101 A carved and gilt 4-tier whatnot, with cane-work panels and marble slab, 2 ft.
- 102 A satin-wood bureau, inlaid lines, cylinder front, enclosing 2 drawers and pigeon-holes, extending writing slide, and 4 long drawers beneath
- 103 A satin-wood oblong table, painted decoration and inlaid lines, on square tapered legs and platform stretcher
- 104 A mahogany dwarf Sutherland table, banded satin-wood
- 105 A pair of carved mahogany lamp stands, on fluted pillars and claws, with claw and ball feet, 4 ft. 6
- 106 A ditto, with spiral pillar, 5 ft.
- 107 A ditto, 3 ft. 6
- 108 A CARVED AND GILT SUITE IN THE LOUIS XVI STYLE, upholstered in Aubusson tapestry, comprising a settee and 4 fauteuils, and the loose cretonne covers
- 109 A carved and gilt frame arm chair, high winged back, upholstered in yellow figured silk, on cabriole legs, and loose cretonne cover
- 110 A Louis XVI pattern carved and gilt fauteuil, oval back, upholstered en suite, and loose cretonne cover
- 111 A Louis XV style carved and gilt marquise chair, upholstered en suite, and loose cretonne cover

- 112 A carved and gilt sofa, upholstered *en suite*, and loose cretonne cover
- 113 A pair of Louis XVI pattern carved and gilt occasional chairs, cane-work seats and back
- 114 A carved and gilt window seat, with open arched ends, and loose cushion in yellow silk
- 115 A Queen Anne pattern walnut chair-back settee, with open arms, on carved cabriole legs, with claw and ball feet, loose seat in crimson figured damask
- 116 A SET OF 6 WALNUT AND MARQUETERIE CHAIRS, high open backs, inlaid with mask, birds and flowers, on cabriole legs, with club feet, loose seats in green figured silk tapestry
- 117 A Chippendale pattern carved mahogany corner chair of unique design, with high back and scroll pediment, lion mask arm terminals, on straight legs and cross stretcher and loose square seat
- 118 AN OAK OPEN ARM CHAIR, high square stuffed-over back and seat, upholstered in Genoa velvet, on baluster legs and stretcher
- 119 A SET OF 8 MAHOGANY CHAIRS in the Hepplewhite style, oval backs, carved wheat-ear and husk, and inlaid centre, on square tapered legs, seats upholstered in crimson damask, and 2 elbow ditto, *en suite*
- 120 A pair of Charles II pattern carved walnut chairs, high backs, with cupid and coronet, spiral pilasters, cane-work panel and seat
- 121 A pair of Italian carved and gilt torchères, scroll supports, with figures of boy and griffon, 3 ft. high
- 122 A stuffed-over divan arm chair, with loose down cushion seat, upholstered in rose du barri figured silk, and fringe back
- 123 A small ditto, with low square back, upholstered *en suite*
- 124 A STUFFED-OVER SETTEE, with 2 loose down cushions, upholstered *en suite*

- 125 A mahogany and satin-wood easy chair, inlaid with flowers, scroll-shaped base, upholstered in cretonne
- 126 *A Queen Anne walnut pattern corner chair*, circular back, with plain vase-shaped splats, loose square seat in crimson plush
- 127 A similar chair, with interlaced splats, and loose seat in crimson plush
- 128 A Queen Anne pattern walnut oblong stool, upholstered in imitation needlework, on cabriole legs and stretcher
- 129 A mahogany stool in the Chippendale style, on plain square legs and pierced stretchers, loose seat in crimson velvet, 2 ft. 9
- 130 A ditto, with sunk fret legs and stretchers, loose seat in crimson velvet, 3 ft.
- 131 A Chippendale pattern mahogany oval wine cooler, with hinged lid, brass bands and drop handles, on square legs and castors
- 132 A pair of mahogany oblong footstools, on carved cabriole legs, with claw and ball feet, loose tops, in crimson leather, and a mahogany dwarf table, on pillar and claws
- 133 A pair of Sheraton mahogany inlaid knife-boxes
- 134 A small mahogany table, with drawer, on turned legs, with 3 railed tiers
- 135 A French carved and gilt 2-tier whatnot, with dove marble top
- 136 A burr-walnut oblong loo table, on carved pillar and claws, 3 ft. by 2 ft. 6
- 137 *A mahogany winged bookcase*, the upper and lower parts enclosed by 8 octagonal panelled glazed doors, 8 ft. 6 high, by 11 ft. 6 wide
- 138 A MAHOGANY BOOKCASE, with carved moulding, upper part enclosed by 8 trellis-glazed doors, and cupboards beneath, with 8 panelled doors, 8 ft. high by 12 ft. wide

- 140 *A mahogany bow-fronted sideboard, with fluted and beaded edges, on fluted square legs, fitted with 3 drawers, 5 ft. wide*
- 141 A brass club fender, with pierced and raised ornamentation, and stuffed seats, in crimson morocco, 5 ft. 6 wide
- 142 A dark oak dwarf cabinet, with panelled doors, carved figures, masks, etc., 4 ft. 10 wide
- 143 A wall mirror, in black painted floral and scroll frame, 7 ft. high, 5 ft. 6 wide
- 144 An inlaid mahogany oval tea tray, with pierced brass gallery, and an embossed brass log vase
- 145 *A polished gun-metal yacht cannon, on oak carriage*
- 146 A mahogany circular dining table, with fluted edge, on carved square legs, 5 ft. diam., and 3 extra leaves
- 147 A tall hall clock, in carved oak case, brass dial, by G. GRAHAM, London
- 15/- 148 An old flint-lock carbine, stamped with Tower and the Royal Crown, and an engraved steel battle-axe
- 149 A carved and gilt palm stand, with marble top and scroll legs
- 150 A bronze model of a tiger, 20 in. high, and carved wood stand
- 151 An oak coffer, with applied ornament, 3 ft. wide, on table stand
- 152 *A carved mahogany table, with baskets of flowers in relief, festoons and foliage, on cabriole legs and claw feet, and coloured marble top, 5 ft. 6 by 2 ft. 9*
- 153 A carved mahogany frame oblong stool, seat in red damask, and a ditto circular folding top table, on club legs
- 154 Four Hepplewhite-pattern mahogany chairs, with oval backs, and open splat and wheat-ear ornaments
- 155 *A Charles II pattern suite of carved oak dining-room chairs (6 small and 2 arms), with crown and cupid ornamentation, spiral railed and caned backs and seats*

- 156 A pair of Charles II pattern oak oblong stools, with cane seats, and a small ditto with twisted rails
- 157 Two old oak stools, with stretcher rails, and a brass 2-handled jardinière
- 158 A walnut bureau, with fall-front and 3 drawers under, 2 ft. 6 wide
- 159 A pair of walnut 2-flap oval tables, on twisted under frames, fitted with drawers, 26 in. wide
- 160 Two carved oak elbow chairs, with panelled backs, figures and scrolls in relief
- 161 A hammered iron club fender, 4 ft. 9 wide
- 162 A mahogany duet stool, with fluted frieze and legs, plush seat, and a ditto foot-stool, with carved cabriole legs
- 163 An oak dresser, with shelves and cupboards in high back, drawers and cupboards under. 4 ft. wide
- 164 *An oak dresser*, with shelves and drawers, with applied ornament, and platform below, 6 ft. wide
- 165 A pair of oak chairs, with open splat backs, concave seats, with loose cushions
- 166 A carved walnut frame*elbow chair, with stuffed back, arms and seat, in red morocco
- 167 A carved inlaid oak hall cupboard, fitted with shelf and sliding hooks, umbrella holders and brackets at sides, 4 ft. wide
- 168 A lounge chair, in marone morocco, with turned legs
- 169 Another, with square legs
- 170 A pair of mahogany circular urn-shaped wine coolers, 34 in. high
- 171 *A mahogany pedestal writing table*, of Chippendale style, top lined green cloth and carved edges, fitted drawers and cupboards, with mask and ring handles, 4 ft. 3 by 3 ft. 9
- 172 *A carved mahogany pedestal sideboard*, with raised classic urn and wreath ornamentation in the Adam's style, fitted drawers and cupboards, with brass drop handles, 6 ft. wide

Pictures.

- 65/ 173 A pair of oval coloured prints, in gilt frames—"The Pleasures of Retirement," after Morland, and "The Nut Gatherers," after Gainsborough
- 174 A ditto—The Duke and Duchess of Cumberland, after Gainsborough
- 175 A set of 12 aquatints—Views of Paris
- 176 A pair of ditto—Seville Cathedral, and Church of St. Miguel
- 177 A pair of ditto—"Dancing the Bolero," and Interior of a Posada
- 178 A set of 4 ditto—Continental Scenes
- 179 Four ditto—Similar subjects
- 180 Four ditto
- 181 A set of 6 aquatints—Scenes in the Life of Queen Victoria
- 182 A pair of decorative mahogany panels, painted in Cupid subjects, with cornucopiae and flowers, 36 *in.* by 18 *in.*
- 183 CHRISTEN—A pair of water-colour drawings: Landscapes with trees and stream, in white and gilt frames
- 184 An aquatint—Landing of Missionaries in New Zealand, a ditto—Long Room, Customs House, and 8 others
- 185 G. COSENZA—An oil painting: Seapiece with boats, 8 *in.* by 6½ *in.*, and another: Monk in Monastery, 7½ *in.* by 6 *in.*
- 186 A set of 5 engravings, in bisque—Scènes Amoureuses, after Fragonard, by M. Desboutin
- 187 BERTRAN—A painting: Quay Scene with shipping, buildings and figures, 25 *in.* by 21 *in.*
- 188 J. C. THOM—A Coast Scene: Sunset, 22½ *in.* by 15½ *in.*
- 189 C. J. LEWIS—"Our Picnic," 25½ *in.* by 18½ *in.* (*the study for the large picture*)
- 190 PANNINI—An Italian Landscape with temple ruins, 25½ *in.* by 34 *in.*
- 65/ 191 KNELLER—The Duke of Monmouth, three-quarter length, standing, in a landscape, 44 *in.* by 35 *in.*

- 192 G. SHALDERS—Near Castle Otway: Evening, 29½ in. by 49½ in.
- 193 ITALIAN SCHOOL—A Landscape and Building, an archer and other figures, 23 in. by 67 in.
- 194 MURILLO (*School of*)—Two Boys, one eating mussels and the other holding a parsnip, 58½ in. by 44½ in.
- 195 A bas-relief, in electrotype—A Hunting Scene with figures of Diana and attendants, and a pair of plaster ditto—Queen Elizabeth and Courtiers, and 2 small water-colour drawings—Moorland Scenes
- 196 A square high-back settee, in green plush with gimp bands, 7 ft. 6 wide
- 197 A corner settee, *en suite*
- 198 A Japanese 2-fold screen, with inlaid mother-o'-pearl and ivory panels of bird and floral design
- 199 A pair of wall mirrors, in gilt frames of floral and festoon design, 6 ft. 6 high, 2 ft. 2 wide
- 200 A burr walnut hanging wardrobe, with panelled doors, 7 ft. 6 high, 4 ft. 6 wide
- 201 A burr walnut bedstead, with spring and bedding, 4 ft. 6 wide
- 202 A walnut wardrobe, fitted with sliding trays and drawers, 4 ft. 6 wide
- 203 A walnut duchesse dressing table, with full-length cheval mirror and 12 drawers, 5 ft. wide, and a ditto washstand, with marble top, 4 ft. 6 wide
- 204 A walnut bedside cupboard, a ditto towel airer, and a bed table
- 205 A French chased ormolu fender, with urn and festoon ornament, a pair of ditto dogs, a set of implements, and a stop
- 206 A similar lot
- 207 A brass kerb fender, 5 ft. wide, a pair of dogs, a set of implements, and a stop
- 208 Two sets of brass fire implements, 2 pairs of ditto dogs, and 2 trivets

- 209 A pierced brass kerb fender, *ft. wide*, a set of implements, a pair of dogs, a stop, a set of steel and brass implements, and a pair of dogs
- 210 A French chased ormolu and wire fire-guard, with festoon and floral ornament, and a brass 4-light electric lamp stand
- 211 *A spinet*, in mahogany and satin-wood case, with ormolu mounts, by FREG, PERE ET FILS, *Paris*, 1816
- 212 A FULL COMPASS CONCERT GRAND PIANOFORTE, by BECHSTEIN, in ebonised case
- 213 A bay shape settee, in figured old gold silk, *7 ft. wide*
- 214 A SATIN-WOOD BANDED MAHOGANY BEDROOM SUITE, comprising *a 7 ft. wardrobe*, with hanging cupboards, with mirror doors, bow-fronted cupboard in centre, recess and 5 drawers under, *a 4 ft. 6 dressing table*, with shield shape mirror, 9 drawers and plate-glass top, *a 4 ft. washstand*, with marble top and back and shelf over, fitted with 3 drawers and 2 cupboards, *a bedside cupboard*, *4 cane seat chairs*, and *a towel airer*
- 215 A *4 ft. 6 bedstead en suite*, with spring and bedding
- 216 An inlaid mahogany overmantel *en suite*
- 217 A SATIN-WOOD BEDROOM SUITE, *inlaid with king-wood bands, and lined with mahogany*, comprising *a wardrobe*, with bow-fronted centre cupboard with 4 drawers under, a hanging cupboard on either side with mirror panelled doors, *7 ft. 6 wide*, *a kneehole dressing table*, with swing and wing mirrors, 2 small drawers and trinket box, and 7 drawers under, and plate-glass top, *4 ft. 6 wide*, *a washstand*, with plate-glass top marble back, with swing and side mirrors over, fitted with 3 drawers and 2 cupboards, *4 ft. 6 wide*, *a bedside cupboard*, *towel airer*, and *3 chairs*, with stuffed seats, in tapestry
- 218 A *4 ft. bedstead, en suite*, with spring mattress and bedding

- 219 An inlaid satin-wood overmantel, with oval mirror and bracket, 4 ft. wide
- 220 An inlaid mahogany Bedroom Suite, comprising a 4 ft. 6 hanging wardrobe, with mirror door and drawer under, a 4 ft. dressing table, with swing mirror and 5 drawers, a ditto washstand, with marble top and back, fitted cupboards and brass towel rails, and an overmantel, with mirror panel
- 221 A 3 ft. bedstead, *ensuite*, with spring mattress and bedding
- 222 A square back easy chair, a walnut umbrella stand, and an inlaid tripod table
- 223 A mahogany corner cupboard, a ditto stool, with stuffed seat, and a square-back easy chair
- 224 Four carved mahogany frame chairs, with seats in figured pink silk, and an easy chair
- 225 An oak overmantel, with 3 mirror panels and shelf over, 5 ft. wide
- 226 Nine down cushions in silk cases
- 227 A tiger-skin rug on cloth mount, 7 ft. long

Old Persian Rugs and Carpets.

- 228 A silk blue ground rug, with red and yellow border, 5 ft. 10 by 4 ft.
- 229 A light ground rug, with blue border, 5 ft. by 3 ft. 5
- 230 A light ground rug, with conventional design in colours, 6 ft. 3 by 4 ft. 3
- 231 A red ground corridor rug, 14 ft. 8 by 2 ft. 10
- 232 A buff ground corridor rug, 13 ft. 3 by 3 ft. 2
- 233 A blue ground rug, 11 ft. by 3 ft. 10
- 234 A blue ground rug, 5 ft. 8 by 3 ft. 3, and another of red, green and black design, 4 ft. 9 by 3 ft. 8
- 235 A red and blue ground rug, 5 ft. 5 by 3 ft. 4, and another, 4 ft. 9 by 3 ft. 9
- 236 A red ground rug, 6 ft. 4 by 4 ft. 4, and another, 6 ft. 9 by 3 ft. 4
- 237 A red ground rug, 8 ft. 4 by 4 ft. 6

- 238 A red ground rug, with figured blue centre, 7 ft. 6 by 5 ft. 5
- 239 A brown ground corridor rug, 13 ft. by 3 ft. 3
- 240 A PERSIAN CARPET of red ground, with floral and scroll design, 18 ft. by 11 ft.
- 241 Another of red ground, with figured light centre and border, 15 ft. by 10 ft. 2
- 242 Another, with floral design on light ground, 13 ft. by 9 ft. 2
- 243 Another, with figured red ground, 13 ft. by 9 ft. 6
- 244 A Wilton pile blue ground carpet, 19 ft. by 9 ft. (cut)
- 245 A Wilton pile plain light blue carpet, 22 ft. by 13 ft. 6 (cut)
- 246 A Wilton pile figured blue carpet, 22 ft. by 13 ft. (cut)
- 247 A similar carpet, 13 ft. 9 by 20 ft. (cut)

Ornamental Items.

- 248 A large china vase, brown and blue ground, painted in Etruscan figures, with gilt scroll handles, 38 in. high
- 249 *The ormolu garniture de cheminée*, comprising a vase-shaped clock, with rotary movement, supported by caryatide figures, 28 in. high, and a pair of 9-light candelabra, composed of draped female figures, supporting lily and poppy branches, fitted with electric candles, 42 in.
- 250 An ormolu 5-light candelabrum, with foliage branches, fitted with electric candles, 29 in.
- 251 A pair of bronze candelabra for 8-lights, with lily branches, fitted with electric candles, 18 in.
- 252 A pair of bronze vases, on circular marble bases, 8 in., and a pair of bronze and gilt vases, with satyr figures in relief, 7 in.
- 253 A Japanese bronzed basket, with pierced cover and double handles, a black basalt tea-kettle, with wicker handles, and a bronzed 5-light candelabrum, on iron support

- 254 A pewter flagon, a leather wine-jack, a brass ladle, a chestnut roaster, and a copper tea urn
- 255 A clock, in mahogany case, with ormolu scroll mounts of Louis XV design, 19 *in.*
- 256 An Empire clock, in mahogany case, with turned columns and ormolu mounts, 20½ *in.*
- 257 A *bracket clock*, in mahogany case, with brass inlay, dome top, with cone terminals, chiming movement, *by* G. P. TODE, *Regent Street*, 31 *in. high*, and the mahogany bracket
- 258 A clock, in scroll-shaped bronze case, striking movement, 20 *in. high*
- 259 A clock, with brass crane action, with chased metal gilt eagle, brass pillar on inlaid rose-wood plinth, and glass shade
- 260 A FRENCH CLOCK, in ormolu case, with urn and flowers on top, and cupid figures at sides, on shaped white marble plinth, *by* MONBRO, *Paris*, 26 *in.*
- 261 A pair of Oriental blue and white pear-shaped bottles, with long necks, 18 *in.*
- 262 A pair of ditto, with raised lizards on neck, 14 *in.*
- 263 A pair of blue and white crackle ginger jars and covers, 8 *in.*
- 264 A pair of Canton china vases, with spreading tops, enamelled in colours with figure subjects, 25 *in. high*
- 265 A pair of blue and white beakers, 10½ *in.*, a pear-shaped vase, 10½ *in.*, a blue and gilt china bottle, 3 Mason's jugs, and 2 mugs
- 266 An old Stafford blue and white well dish, 2 Copeland Spode dishes and 2 plates, a coloured Delft plate, a blue and white vegetable dish and cover, and a small ditto dish
- 267 An Old English dinner service, blue and gilt scallop border, vase and flowers in centre, consisting of 2 soup tureens and covers, 3 vegetable dishes and 4 covers, 4 sauce tureens, covers and stands, a salad bowl, a fish drainer, 23 soup plates, 56 meat plates, 19 pudding plates, 2 cheese plates, and 19 dishes, in sizes

- 268 An Oriental dinner service, pink œil de perdrix border and detached flowers, comprising 9 dishes, 9 circular ditto, 13 plates, and 6 soup plates
- 269 A Chinese pear-shaped jar and cover, green scroll ground with panels of birds and flowers, ormolu base, 15 in., fitted for electric light
- 270 A larger ditto, 18 in.
- 65/- 271 A trophy of arms, consisting of 17 swords and daggers, a circular shield, and a skull and cross-bones ornament on cloth covered shield
- 30/- 272 An old blunderbuss, 2 flint-lock pistols, and 2 cutlasses
- 274 AN AUBUSSON CARPET, with floral scroll and festoon design, wreath centre and swans at corners, on green ground, 16 ft. 6 by 16 ft.
- 275 A white statuary marble group of Psyche and Cupid, 21 in. high, on green marble pedestal
- 276 A white marble figure of a Guitar Player, 23 in. high, on scagliola pedestal
- 277 A white marble figure of The Dying Gaul, 12 in. high, on green marble pedestal
- 280 A pair of Oriental jars and covers, blue decoration of clouds and dragons, and raised dragons on neck, kylin knobs to covers, 33 in. high
- 281 A semi-porcelain dinner service, with red, blue and gilt decoration, 86 pieces
- 282 An extra large Wedgwood soup tureen, cover and stand, and a Wedgwood salad bowl and stand
- 283 An Empire coffee service, richly gilt, painted in scriptural subjects in panels, comprising a coffee pot, a smaller ditto, and a milk jug
- 284 A Paris china tea and coffee set, painted in sepia views, comprising 9 cups, 5 mugs, and 7 saucers
- 285 A pair of modern Sèvres vases, turquoise ground, painted in Watteau groups and views, gilt entwined handles, 16 in.

- 286 A pair of Derby china campana-shaped vases, gros bleu ground and gilt, painted in river and quay scenes
- 287 A pair of Coalbrook Dale china vases and covers, encrusted with flowers, green lizard handles, 13 *in.*
- 288 A pair of cream and gilt vases, with mask handles, on circular bases, 12 *in.*, and a Lowestoft vase and cover, painted in coats-of-arms
- 289 Two Canton china basins, 15 *in.* and 16 *in.*
- 290 A ditto bowl, 15½ *in.*, and a ditto jardinière
- 291 A pair of Oriental barrel-shaped jugs, with twisted handles, 8½ *in.*
- 292 A pair of dove marble urns and covers, ormolu mounts and ram's head handles, 15½ *in.*
- 293 A pair of ormolu 2-light candelabra, dolphin supports, on circular marble bases, 10½ *in.*
- 294 A clock in brass drum case, on marble obelisk supports and plinth, and a pair of candlesticks, *en suite*
- 295 An ormolu clock, on dolphin and cupid support, oval marble base
- 296 A biscuit group of boy and girl figures with garlands of flowers, and fluted pedestal, on oval fleur-de-pêche marble plinth, fitted for electric light
- 297 An ormolu swan, on verde marble pedestal, fitted for electric light
- 298 A pair of Giallo marble oval tazze, on rouge and black marble pedestals
- 299 A tortoiseshell tea caddy, a black lac ditto, and a clock in mahogany case
- 300 A pair of bronze circular bas-reliefs of Napoleon, in black and gilt frames, 2 ditto in gilt frames, and a metal-gilt ditto of Maria of Navarre
- 301 A red ware oviform vase, a pair of Vista ware tankards, a gilt glass tazza, a silver and tortoiseshell trinket box, 2 metal-gilt ditto, a Cloisonné box, and a vesta box and cover

- 302 A pair of Oriental blue and white hawthorn pear-shaped jars, $12\frac{1}{2}$ in.
- 303 A pair of ormolu 3-light candelabra, 21 in.
- 304 A pair of 5-light ormolu candelabra, with cut-glass drops, fitted electric candles, 28 in. high
- 305 A red and green china trinket set, 9 pieces, a Japanese tea set, 10 pieces, a ditto, 11 pieces, a ditto, 10 pieces, 6 Worcester pattern coffee cups and saucers, and 2 willow-pattern coffee cups
- 306 Four painted china plaques, after Hogarth
- 307 A French china tea and breakfast service, painted in birds and flowers, on yellow ground, gilt, 176 pieces
- 308 A cut and engraved service of table glass, 108 pieces
- 309 A richly cut service of table glass, 110 pieces
- 310 A service of cut table glass, 73 pieces
- 311 A fluted glass toilet set, 9 pieces
- 312 Two cut-glass flower vases
- 313 A pair of cut-glass flower vases, a ditto jug, and a pair of decanters
- 314 Three cut-glass flower vases, and 2 engraved jugs
- 315 Four glass fruit dishes, and 2 jugs
- 316 Six gilt glass fruit dishes, a ditto compotier, and 3 engraved and cut decanters
- 317 A cut-glass trinket set of 10 pieces
- 318 A bronze classical figure, on marble base, 17 in. high
- 319 Another, 19 in. high
- 320 A pair of bronze figures—Apollo and Diana, 21 in. high
- 321 E. ROUSSEAU—A bronze figure of a lady playing guitar, 27 in. high
- 322 A bronze group of a Bacchante and child, 25 in. high
- 323 A bronze bust of a Philosopher, 10 in. high
- 324 A pair of French chased brass lyre-pattern 3-light candelabra, with cut-glass pendants, on figure supports, and marble bases
- 325 A blue John Spa vase, with chased ormolu mounts and scroll handles, on marble plinth, 11 in. high

Linen.

- 326 Three pairs of white net curtains, with crochet borders
- 327 Four pairs of white net curtains, with raised lace-work borders
- 328 Four pairs of frilled muslin curtains, a pair of lace ditto, and 8 short lace curtains
- 329 Eight white damask table cloths
- 330 Twenty-nine white damask serviettes, and 12 hem-stitched tray cloths
- 331 Twenty-five serviettes, and 20 toilet mats
- 332 Forty face towels
- 333 Twenty-four white aprons
- 334 Forty face towels
- 335 Twenty-three bath towels
- 336 Two pairs of large-size hemstitched linen sheets
- 337 Seven hemstitched linen sheets
- 338 Thirteen sheets
- 339 A pair of frilled muslin curtains, 2 cushion covers, and 4 table cloths
- 340 A parcel of dust sheets
- 341 Twenty pillow cases
- 342 A parcel of dusters, glass cloths, etc.
- 343 Two bath gowns, and 4 bath mats
- 344 Six white counterpanes
- 345 A metal gong, on ivory tusk stand
- 346 An electric table lamp, a door stop, a brass gong, a ditto cake stand, an electric iron and stand, a foot warmer, and a kettle and stand

END OF THE FIRST DAY'S SALE.

Second Day's Sale.

Messrs. KNIGHT, FRANK & RUTLEY'S

CATALOGUE

OF

DECORATIVE FURNITURE, ETC.

On FRIDAY, 10th of DECEMBER, 1915,

AT ONE O'CLOCK PRECISELY.

LOT

- 351 Two lustre jugs
- 352 Two Bohemian glass jars
- 353 Two old Sheffield shells
- 354 A bagatelle table, on stand, 8 balls, and 2 cues
- 355 An old walnut escritoire, with black marble top
- 356 An old Japanese bronze—Animal and man, in 2 parts
- 357 An Oriental tea pot
- 358 A figure candlestick
- 359 Three old pistols, 2 daggers, and 2 swords
- 360 Three circular boxes, and a coral necklace
- 361 Two tortoiseshell cases, 2 carved stands, sundry copper coins, an Egyptian pottery mummy, and a pin cushion
- 362 A carved wood head, a small picture, a small telescope, and a glass paper weight
- 363 An inlaid cabinet
- 364 An inlaid overmantel
- 365 Four pictures
- 366 A Swansea plate
- 367 A Whieldon pine-apple tea pot
- 368 Seventeen plates (various)
- 369 A reptile dish

- 370 A watch stand
- 371 Eight mugs
- 372 Six saucers
- 373 Thirty pieces of glass (various), including 6 green and gold glasses
- 374 A package of loose glass lustre drops
- 375 Eight cups (various)
- 376 A jug, with name
- 377 Eight small bowls
- 378 A Delft flower stand
- 379 A pair of spill vases
- 380 A bust, and a Stafford group
- 381 A brown tea pot, a small jug, and a pot
- 382 A black tray
- 383 An ormolu and glass lustre candelabrum
- 384 A tea caddy
- 385 Four framed samplers
- 386 Five decanters
- 387 A lac box and counters
- 388 An old copper urn, with silver shield
- 389 A large old glass goblet
- 390 A toby jug
- 391 Two papier maché trays
- 392 Two old Chinese wood carvings
- 393 A marble bust of a lady, with tiger skin head-dress,
27 in. high
- 394 Another, *29 in. high*
- 395 Another of a boy, *19 in. high*
- 396 Another
- 397 A terra-cotta figure of a clown and dolphin
- 398 A terra-cotta figure of a reclining child
- 399 A French ormolu clock, surmounted by figures, by
LAGRANGE, *13 in. high*
- 400 A French painted and gilt tureen and cover, 2 ditto butter dishes and stands, 4 decorative plates, and 15 other ornaments, etc.

- 401 A marble classical urn and cover, fluted scroll handles, 17 *in. high*, and a pair of black plaster busts
- 402 A white marble bust of a lady, 23 *in. high*
- 403 An iron grate and a pair of andirons, and a fire-back
- 404 AN OLD LOWESTOFT PUNCH BOWL, with medallions in landscapes, orange and blue border, 15½ *in.*
- 405 A Davenport china punch bowl, with floral decoration
- 406 AN OLD CHINESE PORCELAIN PUNCH BOWL, with Lowestoft rose decoration, 16 *in.*
- 407 *An old Chinese bottle-shaped vase*, with famille verte decoration
- 408 A CHINESE CIRCULAR DISH, with dragons, famille verte decoration, 20 *in.*

The Property of a Lady of Title.

- 409 *A Jacobean dresser*, fitted with 3 drawers, 6 *ft.*
- 410 A pair of painted and decorated elbow chairs, with cane seats, on turned tapered legs
- 411 *A Sheraton-pattern mahogany wardrobe*, with satin band and dentil cornice, bow front enclosed by a pair of doors, with oval sunk panels and sham drawers, and a long drawer at base, with brass drop handles
- 412 An inlaid mahogany long-case clock, with painted dial
- 413 A BOUDOIR GRAND PIANOFORTE, in mahogany case, by OBERMEIER, with pianola attachment
- 414 *A Continental china group of lovers*, in Watteau style, 8½ *in. high*
- 415 A painting—The Salutation, *oval*, 26 *in. by* 21 *in.*
- 416 A Landscape with figures and river, 16½ *in. by* 12½ *in.*
- 417 *An ormolu mounted Amboyna and ebonized cabinet*, with panelled china portraits and floral medallions, mirror panelled centre recess and small cupboards at sides, 3 drawers in frieze, with writing slope, platform and shelf below, mirror panelled back, 4 *ft. wide*

The Property of a Gentleman.

- 418 An Italian carved walnut shell-shaped music stool
- 419 A tall carved walnut china cabinet, with glass door and sides, the back and 4 shelves lined with crimson plush, 6 ft. 2 by 2 ft. 2
- 420 A carved and gilt vitrine, gallery top, with basket of flowers, glazed door and sides, with fluted columns, and a glass shelf, 33 in. by 21 in.
- 421 A mahogany cupboard, enclosed by a pair of doors with sunk panels, and a smaller cupboard, with 2 doors on top, and brass handles at sides, 6 ft. 2 high, 2 ft. 9 wide
- 422 A similar cupboard
- 423 A set of 3 satin-wood occasional chairs, painted in decoration, square backs and seats, upholstered in green velvet
- 425 *An ebonised cabinet*, fitted with 9 drawers and pediment, with ivory panels engraved with subjects from the "Miseries of War," after Jacques Callot, and a table stand *en suite*, 34 in. wide, 38 in. high
- 1980
- 426 A MAHOGANY AND INLAID SATIN-WOOD SIDEBOARD, brass rail back, on 6 square tapered legs, 6 ft. 4
- 1280
- 25/6 427 A pier glass, in carved gilt frame, plate 84 in. by 17 in.
- 16/- 428 A brass electrolier, with 5 branches
- 22/- 429 A wall mirror, in carved gilt frame, 4 ft. 11 by 3 ft. 2
- 22/- 430 A ditto, 4 ft. 8 by 3 ft.
- 20/- 431 A pair of old coloured prints—Historical figure subjects

The Property of a Gentleman.

- 432 A mahogany pedestal sideboard, with bow shaped centre and long drawer, and brass rail at back, pedestals fitted with 3 drawers and 2 cupboards, 7 ft.
- 680
- 433 A mahogany wardrobe, with scroll pediment and dentil cornice, bow shaped front with 2 doors, inlaid satin lines in oval panels, fitted with brass rail and a long drawer at base, 4 ft.
- 780

- 434 A pair of mosaic pedestals, 12 in.
- 435 A Castellina marble statuette—"Diana"
- 2 1/2 80 436 An antique crystal chandelier, found in a lake near Zurich
- 2 1/2 - 437 A marble bust of female, with lacework pattern, by J. S. VAN DEN KIRKHOVE, 1854, on marble plinth
- 2 1/2 - 438 A large marble bust of Madam Malibran, by PAPWORTH
- 5 80 35. 439 A marble bust of Sir Benjamin Brodie, Bart., by W. BEHNES, 1836, Sculptor in Ordinary to Queen Victoria
- 440 A marble bust of Ceres, by MILLIGAN
- 2 1/2 - 441 A heavy bronze tripod stand, ornamented with shells, etc., in the style of Paul Lamerie, circa 1720
- 442 The companion piece to the above, forming a pair

The Property of a Lady.

- 10 80 443 AN ELABORATELY CARVED JAPANESE RED-WOOD CABINET, ornamented with dragons and panels of gold lacquer, designed in birds and foliage in mother-o'-pearl, with carved ivory floral mounts, 7 ft. 6 high, 4 ft. wide

- 625 80 444 AN ANTIQUE PANEL OF FLEMISH TAPESTRY—
A Village Scene, in the Teniers style, with figures playing skittles, buildings and foliage in background, with a border of birds and flowers, 11 ft. high, 14 ft. 7 wide
- 100 80 445 A XVIIITH CENTURY FLEMISH TAPESTRY panel, depicting a harvesting scene, with buildings in the background, and border of foliage, 8 ft. high, 11 ft. wide

- 7 80 5. 446 A bear skin rug

Pictures.

Water-Colours.

BASIL BRADLEY, R.W.S.

- 447 "Waiting for Master" and "Full Cry," a pair, 18 in. by 14 in.

H. HUGHES STANTON, A.R.A.

- 448 "Among the Hills," 20 1/2 in. by 28 3/4 in.

HMM
1826

H. HUGHES STANTON, A.R.A.

- 449 Kirkstone Pass, Windermere, 19 in. by 13 in.

CONSTANCE PHILLOTT, A.R.W.S.

- 450 "A Fairy Dance," 26 in. by 18 in.

Oil Paintings.

ABBY ALTSON.

- 451 "An English Rose," 24 in. by 20 in.

F. ANDREOTTI.

- 452 "An Interesting Story," 34 in. by 25 in.

P. BEDINI.

- 453 "A Duet," 35 in. by 24 in.

TOM BLINKS.

- 454 "In Full Cry," a set of three, 18 in. by 12 in.

PROF. F. BRUNERY.

- 455 "The Surprise," 21 in. by 15 in.

JOHN BRETT, A.R.A.

- 456 Duchy Rocks, 14 in. by 7 in.

JOSEPH FARQUHARSON, R.A.

- 457 "Leaving the Hills," 60 in. by 41 in.

T. S. GOOD.

- 458 "Disturbed Slumbers," 17 in. by 13 in.

FRANK HOLL, R.A.

- 459 "Convalescent," 18 in. by 20 in.

* * Exhibited at the Royal Academy, 1867.
Exhibited at Burlington House, 1889.

G. A. HOLMES.

- 460 "Feeding the Pigs," 13½ *in.* by 9¾ *in.*

ARTHUR HACKER, A.R.A.

- 461 "A Summer's Day," 35½ *in.* by 23 *in.*

B. W. LEADER, R.A.

- 462 A Worcestershire Cottage: Evening, 13½ *in.* by 10½ *in.*

B. W. LEADER, R.A.

- 463 A Sheep Fold, 11½ *in.* by 7½ *in.*

B. W. LEADER, R.A.

- 464 The Church Pool, Bettwys-y-Coed, 10 *in.* by 8 *in.*

J. MACWHIRTER, R.A., AND TOM GRAHAM, R.S.A.

- 465 "A Fairy Well," 47 *in.* by 34 *in.*

* * * Exhibited at the Royal Academy, 1883.

J. W. OAKES, A.R.A.

- 466 At Selsey, Sussex, 29 *in.* by 19 *in.*

PROF. G. PAPPERITZ.

- 467 "Mother's Darling," 37 *in.* by 25 *in.*

R. SPENCER STANHOPE, R.I.

- 468 "The Mill," *on panel*, 32 *in.* by 47½ *in.*

EUGENE VERBOECKHOVEN.

- 469 Sheep in a landscape with sea in the distance, 52 *in.* by 39½ *in.*

HAYNES KING.

- 470 "Village Gossip," 28 *in.* by 36 *in.*

The Property of a Lady.

- 471 H. GASTINEAU -- Rushin Castle, and another: A. W. WILLIAMS—Pont y Pair, North Wales
- 472 G. NICHOLSON—Dolbadern Towers
- 473 THULSTRUP — Hungarian Infantry and Review of Mounted Troops
- 474 A water-colour drawing — “The Fern Gatherer,” and another—Neapolitan Peasant
- 475 J. MATTHEWS—Burnham Beeches
- 476 Neapolitan Peasants and Mules, and another—A River Scene
- 477 E. SMALLFIELD, 1856—A pair: Italian Peasants
- 478 E. DUNCAN, 1861—“The Storm”: a disabled ship
- 479 COPLEY FIELDING—Lake Scene, Tivoli
- 480 C. PEARSON, 1860—River Scene with abbey ruins
- 481 DAVID ROBERTS—At Bayeux, Normandy
- 482 ——— New Abbey, Dumfries-shire
- 483 A pen-and-ink drawing—French Cavalry, and a sepia ditto—The Death of Rienzi
- 484 A Coast Scene, and 2 others
- 485 A painting—Lake and Mountain Scene, 20 *in.* by 16 *in.*
- 486 A ditto—Female Figure in clouds, and a small Landscape, *on panel*
- 487 A series of 7 small Studies of Cloud and Sea
- 488 *A coloured print—Guinea Pigs*, after Morland, by T. Gaugain
- 489 Two stipple engravings—Cupid subjects, and 6 others
- 490 A Continental china group of Cupid attired as a parson, and 3 ladies
- 491 A Berlin china classical group of 3 figures, 8½ *in.* high
- 492 An Oriental china figure of a lady, 12 *in.*
- 493 A pair of Japanese Cloisonné salvers, 14 *in.* diam., and 2 pairs of ditto, 12 *in.*
- 494 A pair of ormolu single light candelabra, with bronze birds, 9 *in.*, and a white and gilt parian double ewer

- 495 Two pairs of bronze urns, with reversible covers forming candlesticks, 9 *in.*
- 496 A bracket clock, in rose-wood case, 10 *in.*
- 497 A Coalport china tea and coffee service, deep blue and gilt border, painted in bouquets, comprising 18 cups, 11 saucers, a basin and 2 cake plates
- 498 Six china dessert plates, with apple green border, painted bouquet in centre, and 6 Copeland plates, with grey and gilt border
- 499 Four Dresden dessert plates, painted in flowers, 2 plates with butterflies, and 6 Mason's plates
- 500 A Chinese lac box and cover, with gilt decoration, containing 7 small boxes and covers, 11 trays, and 124 engraved pearl counters
- 501 A burr walnut tea caddy, with arched lid, containing 2 boxes, and a diamond cut-glass sugar basin
- 502 A pair of large French china vases and covers, with white and gilt decoration on a pink ground, and gryphon handles, 36 *in. high*
- 503 A pair of Minton china vases and covers, with turquoise ground and white panels, painted in female figures, and richly gilt, 15½ *in.*
- 504 A pair of white and pink urn-shaped vases and covers, with raised husk festoons, and painted in Watteau groups and flowers, 14½ *in.*
- 505 An Empire china vase, entire gilt, with foliated handles, blue body, and painted in pastoral scene and figures, 11½ *in.*, and a white and gilt Derby china vase, with swan handles, and painted in birds on tree, 8 *in.*
- 506 A pair of Dresden circular dishes, painted in flowers, 13½ *in. diam.*, and a tortoiseshell tea caddy
- 507 A pair of heavy cut oval sweet dishes, 10½ *in.*
- 508 A ditto dish
- 509 Four oval épergne dishes, 8½ *in.*, and a ditto, 12 *in.*
- 510 Four oblong sweet dishes, 9 *in.*
- 511 A pair of finely cut celery glasses, and 3 butter dishes

- 512 Two Indian shawls
- 513 A wrought-steel pedestal electric heating stove
- 514 A crimson ground and bordered Turkey carpet, 16 *ft.* 6
by 11 *ft.* 6
- 515 A box couch in cretonne, and loose ditto cover
- 516 A Georgian mahogany washstand, with hinged top enclosing mirror, etc., with cupboard and drawer below,
2 *ft.* 2 *wide*
- 517 Three stuffed window-seat squabs
- 518 *A large oil painting*—Italian Scene, in massive gilt frame
- 519 AN OLD PERSIAN CORRIDOR RUG, 9 *ft.* *by* 3 *ft.* 6
- 520 THE COMPANION DITTO
- 521 *An old Chinese silk kimono*
- 522 Two stuffed heads—A wildebeeste and a kangaroo
-
- 523 Two pewter plates, 15 *in.*
- 524 Four small pewter plates
- 525 A pewter circular dish with handles, a tobacco jar, a jug,
an inkstand, and 2 funnels
- 526 Six parts of a suit of Japanese armour
- 527 An antique Persian prayer rug, with red centre, 4 *ft.*
by 4 *ft.*
- 528 A walnut cheval screen, with Spanish leather panel
- 529 A pair of painted and decorated bergère chairs, with
cane backs, sides and seats, and loose seat cushions in
pink striped silk
- 530 A pair of black lac stools, Chinese decoration, on square
legs, and loose seats in green silk
- 531 A pair of small Chinese paintings on glass, in lac frames
- 532 A large convex mirror, in gilt frame, with carved eagle
pediment, 38 *in.* *by* 24 *in.*
- 533 A French coloured print—Interior and female figures,
oval gilt frame
- 534 A set of 3 old papier-maché tea trays, with gilt
decoration

- 535 An oval papier-maché table, with gilt decoration, inlaid mother-o'-pearl and painted in flowers
- 536 A XVIIIth century grate, a bundle of balustrading, and a piece of ditto
- 537 A Venetian glass 6-light chandelier
- 538 A ditto
- 539 Six small paintings—Coast Scenes, etc., and 2 drawings—Landscapes
- 540 An engraving—"Charity," after Briton Riviere
- 541 A ditto—Portrait of a young Lady, by Saml. Cousins, after Millais, *artist's proof*
- 542 Two engravings—Landscapes and figures
- 543 Three ditto
- 543A An ivory oblong box, carved Chinese tea garden, and a lacquer cross-handled box with leaf decoration
- 543B A set of 6 lustre ware cups and saucers, and 2 ditto plates
- 543C An ivory bear, and a ditto monkey
- 543D An ivory chicken and frog, and a ditto elephant
- 543E JOHN SANTERRE—Allegory and Music, 29 in. by 41 in.
* * * From the Duke of St. Albans' collection.
- 543F Milton's Paradise Lost, in prose, plates, *calif*
- 543G Sixty glass and china ornaments
- 543H A pair of Old English portraits—Boy and Girl, on panel, 14 in. by 10 in.
- 543J A carved oak chest, on stand
- 543K A Jacobean chest of 6 drawers, 3 ft. 3 wide
- 544 An old carved oak altar
- 545 MÉNE (*after*)—A parian china group: Dogs ratting
- 546 A carved oak settle, with box seat, 4 ft. 6
- 547 An oak frame gate-leg table, with cherry-wood oval top, 3 ft. wide
- 548 A carved rose-wood portfolio stand
- 549 A French chased ormolu electric hall lantern, of floral, scroll, shell and trellis design

- 550 A pair of Empire chased ormolu wall lights, with 4 branches
- 551 A pair of Oriental china vases and covers, with floral decoration on green ground, 12 *in. high*, and wood stands
- 552 A mahogany round table, with carved feet, 2 *ft. 6 diam.*
- 553 A *Spode china dinner service*, with red, blue and gilt floral decoration, 146 *pieces*
- 554 An alabaster figure—Venus de Medici, 20 *in. high*, and another—Venus leaving the bath
- 555 A painting, an oak salver stand, and 2 japanned paint boxes
- 556 A. J. COX—A pair of drawings: Landscapes, and an engraving, by J. BROWN, after GAINSBOROUGH—Study from Nature
- 557 UNKNOWN—Seapiece: Unloading the Cargo
- 558 F. C. SMITH—A pair: River and Woodland Scenes, and another—A painting of Flowers
- 559 A pair of buffalo horns mounted on oak, a pair of small ditto, and a single antelope ditto, on oak
- 560 J. W. GARRETT SMITH, 1877—Mountain Scenery: View of Mont Blanc with Chamounix Valley
- 561 A pair of old engravings, by Le Bas, after Philip Wouvermans—"La Chasse à l'Italienne," and "Les Sangliers Forces," *in ebonized and gilt frames*
- 562 Four coloured proofs, by J. Grozer, after F. Wheatley "The Village School," "The Cottage Door," "Gathering Sticks," and "Caught Napping"
- 563 G. BUSCH (*signed*)—The Penn Ponds, Richmond Park, and two sketches—Designs for masks
- 564 UNKNOWN—The Old Mill at Bruges, Belgium
- 565 J. W. KETTLEWELL (*signed*)—Flowers
- 566 WILLIAM COLLINS, R.A. (*signed*)—Sea-shore, with ships, cart and figures
- 567 E. HEAPHEY—Small painting of a Lady, and another (GUIDO)—The Death of Cleopatra

- 568 W. M. MULLER (*signed*)—Landscape, with brook, figures and cattle
- 569 F. EARL (*signed*)—Oval portrait of a white dog, with vase of flowers at side
- 569A A 12-bore ejector hammerless gun, by CHAS. OSBORNE & Co., and leather case

The Property of a Gentleman.

- 570 A circular gilt table, with mosaic marble top, inlaid with pigeons drinking from a bowl, key pattern border, 27 *in. diam.*
- 571 An oak oblong table, inlaid parqueterie top, on 9 Gothic columns and cross stretcher
- 572 A male bust of coloured marble, with bronze head, 24 *in. high*
- 573 An old Chinese carved wood and lac figure of a God, on gilt stand, 30 *in. high*
- 574 A large old blue and white Chinese porcelain jar, with aster decoration, and original cover, 18 *in. high*
- 575 An old Indian coromandel wood casket, fitted with inlaid ivory drawers and recesses
- 576 An old bronze figure of a Goddess, on lotus base, 18 *in. high*
- 577 A *William and Mary* inlaid walnut long-case clock, by WITHERSTON, *Hereford*, with brass dial
- 578 A MAHOGANY BUREAU BOOKCASE of Chippendale design, the upper part enclosed by glazed doors, centre fitted with small drawers and pigeon-holes, with 5 drawers below, 3 *ft. 9 wide*
- 579 A PEDESTAL LACQUER WRITING TABLE, fitted with 12 drawers and 2 cupboards, with cloth lined top, 6 *ft. wide*
- 580 A bracket clock, in ebonized case, with ormolu mounts and dial, and striking movement, 22 *in. high*
- 581 A finely painted miniature on ivory of the Madonna, in velvet frame
- 582 A large Paisley shawl

- 583 A Chinese group of kylins, black and brown glaze, on massive carved wood base
- 584 An old Chinese vase, with numerous figures in rose, yellow, green and red decoration, 15 *in. high*
- 585 A mazarin blue jar, with incised medallions, and handles at side, 16 *in. high*
- 586 A lavender ground splashed peach bloom vase
- 587 A yellow ground Chinese vase, enamelled with flowers, 15 *in. high*
- 588 A *Bouille table*, with ormolu edge and mask ornament, oval top, scroll legs, fitted with drawer, 4 *ft. 10 wide*
- 589 Twenty white ostrich feathers, mounted in mother-o'-pearl as a fan
- 590 A blue Melton fur-lined overcoat, with frog buttons
- 591 An ottoman lounge, upholstered in green damask, 7 *ft. 6*
- 592 A stuffed-over settee, square back and arms, upholstered *en suite*, 7 *ft. 6*
- 593 Twenty-four stout brass stair-rods
- 594 An oval shaving mirror, in pierced brass frame, on adjustable pillar and tripod
- 595 A mahogany octagonal table, on shaped legs and platform stretcher
- 596 A mahogany coal cabinet, ledge back, fall front, with carved panel, liner and brass scoop
10. 597 An Empire ormolu centrepiece, with 3 winged female figures supporting a large cut-glass bowl, 26 *in. high*
- 128 598 A white china group of 5 figures and garlands of flowers, on a circular base, 16½ *in. high*
- 599 A Paris china coffee pot, 9 ditto cups, 2 saucers, a coffee pot, and 2 Dresden cream ewers
- 600 A sword, with engraved blade, in sheath
- 601 A Landscape with castle, figures in lake, 16½ *in. by* 12½ *in.*
- 602 A shaped wall mirror, in ornamental gilt frame, *plate* 90 *in. by* 54 *in.*
- 603 A similar mirror

- 604 AN ITALIAN EBONY BUREAU, with cabinet above, fitted with 11 drawers and 3 cupboards, inlaid with engraved ivory panels of classical figure subjects, fall front enclosing 8 drawers, a long drawer in frieze, on square tapered legs and stretcher rails, 5 ft. 4 wide, 7 ft. high
- 605 A SHERATON INLAID MAHOGANY SIDEBOARD, with high back with convex mirror and panels inlaid with figure subjects, and carved draped urn pediments, serpentine-shaped front with drawer in centre, and cellarette drawers at ends, on 6 square tapered legs, 6 ft.
- 606 *An Adam mahogany sideboard*, brass rail at back, shaped front and drawer, lion masks, on 6 square fluted legs, 7 ft.
- 607 *A side table, en suite*, 6 ft. 6
- 607A A similar table
- 608 *An Italian marqueterie bow-fronted commode*, enclosed by 3 doors with oval panels inlaid—Temple ruins, on square tapered supports, and verde antique marble slab
- 609 A French carved and gilt arm chair, circular panelled back and seat, upholstered in flowered and pink striped silk
- 610 A square winged-back ditto, with loose down cushion, seat upholstered in flowered and trellis-pattern silk, and loose cretonne cover
- 611 *A pair of Sheraton oval satin-wood tables*, painted decoration and figure subjects, on square tapered legs and cross stretcher
- 612 A Chippendale mahogany chair, carved open back, on square legs, and loose seat in marone velvet
- 613 A pair of Chippendale mahogany chairs, interlaced splats, wood seats, on carved cabriole legs with club feet
- 614 An Aubusson tapestry carpet
- 615 A Stuart elbow chair, cane-work panel back and seat, on baluster legs and stretchers

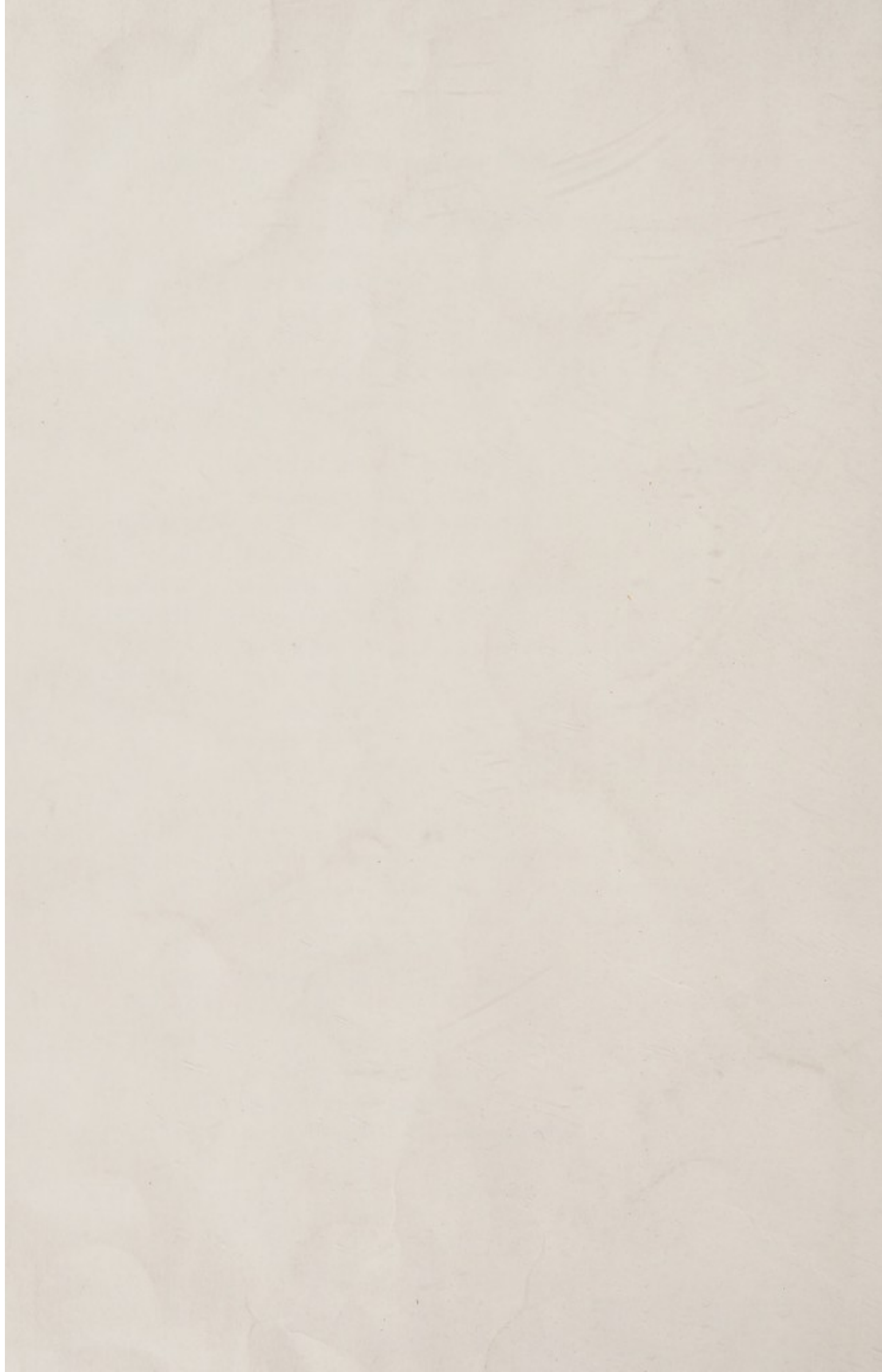
- 616 A pair of Louis Seize chased ormolu 2-branch electric wall lights
- 617 A 4 ft. 6 rose-wood circular table
- 618 A pair of carved rose-wood and folding-top card tables, lined with green cloth, on pillar supports
- 619 A copper 4-light electrolier
- 620 An oil painting, on panel—Landscape with cattle and ruins, $7\frac{1}{2}$ in. by $14\frac{1}{2}$ in.; M. SUNDERLAND—Four drawings: Landscapes, and a pair of coloured prints
- 621 A pair of 9 in. Limoges candlesticks, and 2 other pairs
- 622 ITALIAN SCHOOL—A Saint crowned with wreath, $16\frac{1}{2}$ in. by 21 in., carved Florentine frame
- 623 R. LADBROOKE—A Forest with figures and wood cart, 35 in. by $29\frac{1}{2}$ in.
- 624 A pair of Dutch interiors, on copper, 10 in. by 8 in.
- 625 A five-stone diamond half-hoop ring
- 626 A double-row diamond and sapphire ten-stone ring
- 627 A five-stone diamond half-hoop ring
- 628 A chased bronze and ormolu clock, surmounted by a group of boys, and a pair of candle-lights, *en suite*
- 629 An antique Derby spar vase, mounted with ormolu double candle-light, 14 in.
- 630 A pair of chased ormolu lily lights, inset with Sèvres plaques
- 631 An antique bronze 12 in. group—Satyr and leopard

Wines.

- 632 One dozen CHAMPAGNE
- 633 One dozen ditto
- 634 One dozen ditto
- 635 One dozen ditto
- 636 One dozen ditto
- 637 One dozen ditto
- 638 Two dozen ditto, pints
- 639 Two dozen ditto, pints
-

- 639A A mahogany swing frame toilet mirror, fitted with 2 drawers
- 640 Three bronze vases, a fan, a lot of counters, and a lacquer case
- 641 Four old flint-lock pistols
- 357 641A An oval mirror
- 642 A LOUIS SEIZE TALL KINGWOOD SECRETAIRE, elaborately inlaid with design of a writing table, utensils and accessories in coloured wood, ormolu mounts
- 253
not sold
487-643 A set of Chinese carved ivory chessmen, under a glass shade and stand
- 75-644 An old French gilt fauteuil
- 3 1/2 645 Another
- 22 1/2 646 A Georgian mahogany dining room fire screen
- 12 1/2 647 A bracket clock, *by* FRODSHAM
- 9 648 *Four white and gold Louis Seize elbow chairs*
- 3 1/2 649 *Two Louis XV elbow chairs, in red silk*
- 5 1/2 650 A mahogany kidney-shaped writing table, 4 ft.
- 1 1/2 651 *An old inlaid rose-wood writing table*
- 2 1/2 652 A mahogany extending dining table, 3 leaves, 4 ft. 6 by 10 ft.
- 357 653 A ditto, 4 ft. 6 by 10 ft.
- 357- 257 654 An old oil painting—Portrait
- not sold. 655 A MAHOGANY BOOKCASE, *by* GILLOW, with drawers, 6 ft.
- 656 An oak bookcase, with glass door and cupboard under
- 657 Five rout seats
- 658 A carved oak elbow chair
- 659 Two ditto
- 660 A marble group
- 661 A Chippendale corner whatnot
- 662 A Dresden china parrot
- 663 A Dutch marquetry dressing glass

FINIS.



MESSRS. KNIGHT, FRANK & RUTLEY'S
SALE ROOMS,
20, HANOVER SQUARE.

ARE OPEN DAILY FOR THE RECEIPT OF
JEWELS, FAMILY PLATE, FURNITURE, COINS, MEDALS,
MINIATURES, PICTURES, PRINTS, ETCHINGS, DRAWINGS,
LIBRARIES, CHINA, BRONZES, MUSICAL INSTRUMENTS, OLD
LACE, FURS, STATUARY, AUTOGRAPHS, STAMPS, GUNS,
CIGARS, WINES, AND OTHER VALUABLES INTENDED FOR
EARLY PUBLIC SALE.

Valuations for Estate Duty and Other Purposes.

*Messrs. Knight, Frank & Rutley undertake the management
of Agricultural Estates, Collection of Town and Country Rents
and Tithes. Also Tenant Right Settlements, Umpirage and
Arbitrations.*

*Timber Sales, Reports and Valuations in all parts of the
Kingdom.*

FIRE RISK. THE LEADING INSURANCE COMPANIES
ACCEPT OUR VALUATIONS FOR BASIS OF POLICIES,
INVENTORIES OF ART COLLECTIONS, FURNITURE AND
ALL OTHER VALUABLES SECURING PROTECTION TO
OWNERS ARE PREPARED IN ALL PARTS OF THE
KINGDOM.

KNIGHT, FRANK & RUTLEY,

20, Hanover Square, London, W.

THE WAR.

Messrs. KNIGHT, FRANK & RUTLEY will be pleased
to Sell without Charge,

Jewellery, Silber, China, Pictures, Bronzes,
Porcelain and other Valuables,

sent for disposal in aid of any of the War Relief
Funds. When sending, Donors are requested to name
the Fund to which the Auctioneers are to pay the
proceeds.

Offices and Sale Rooms: 20, HANOVER SQUARE, W.
