

## **Sales catalogues: Knight, Frank & Rutley**

### **Publication/Creation**

20th- 22nd September 1915

### **Persistent URL**

<https://wellcomecollection.org/works/teecxmvc>

### **License and attribution**

This work has been identified as being free of known restrictions under copyright law, including all related and neighbouring rights and is being made available under the Creative Commons, Public Domain Mark.

You can copy, modify, distribute and perform the work, even for commercial purposes, without asking permission.



Wellcome Collection  
183 Euston Road  
London NW1 2BE UK  
T +44 (0)20 7611 8722  
E [library@wellcomecollection.org](mailto:library@wellcomecollection.org)  
<https://wellcomecollection.org>

WA/HMH/CH/Sa1/12145

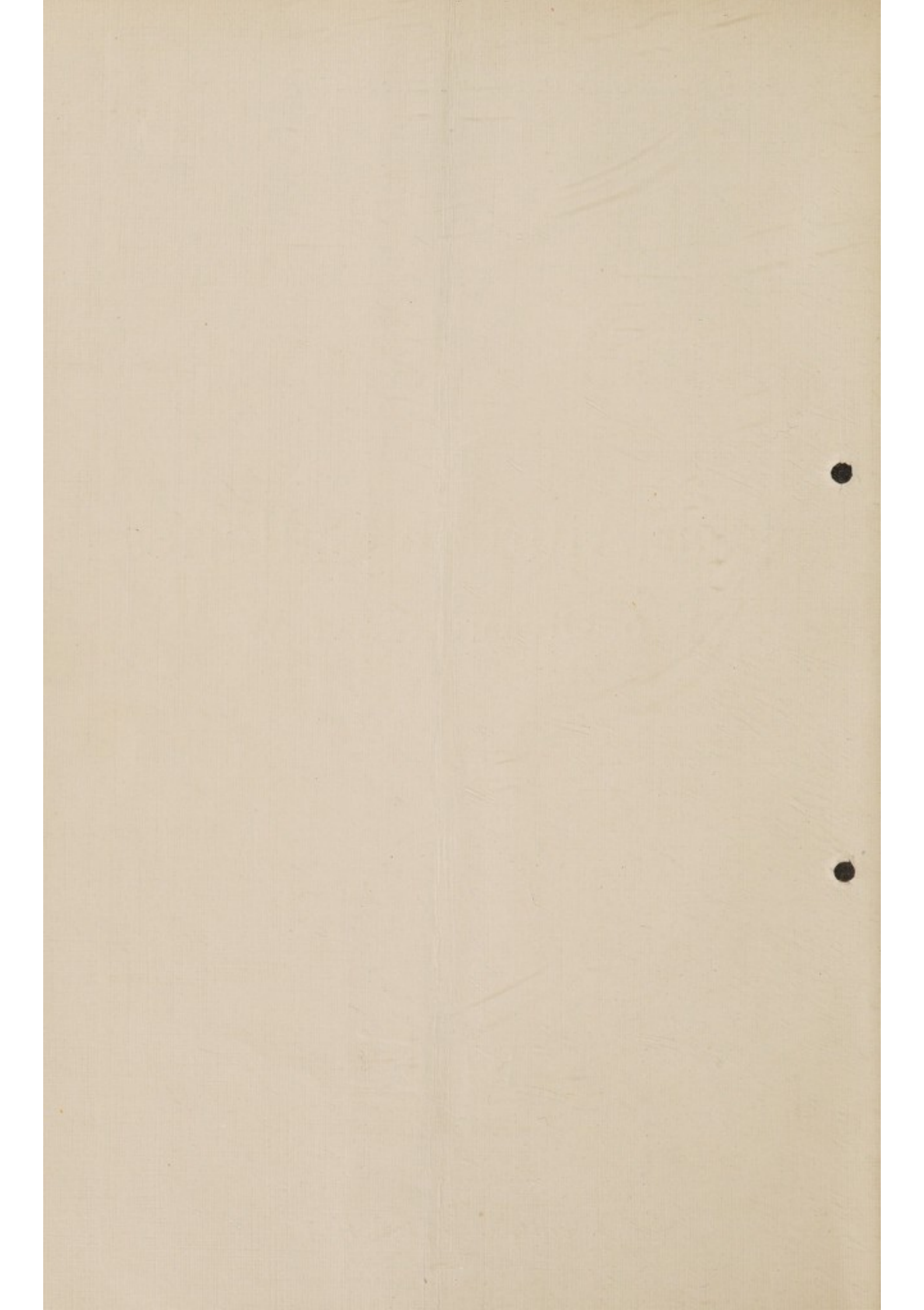
*By Direction of the Owner on Active Service.*

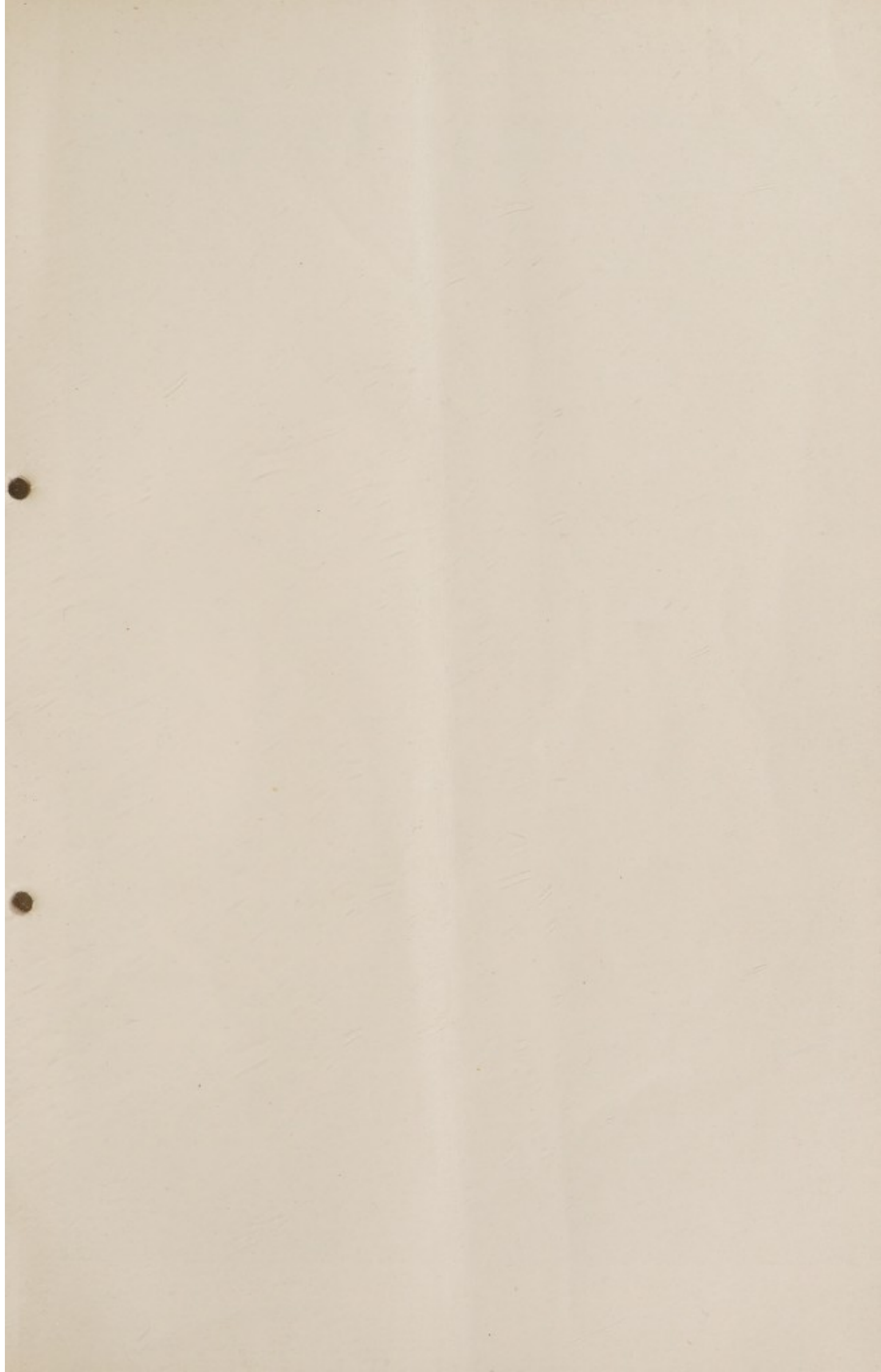
The  
**East Anglian Galleries**  
19, Orchard Street, W.



1915

**KNIGHT, FRANK & RUTLEY**





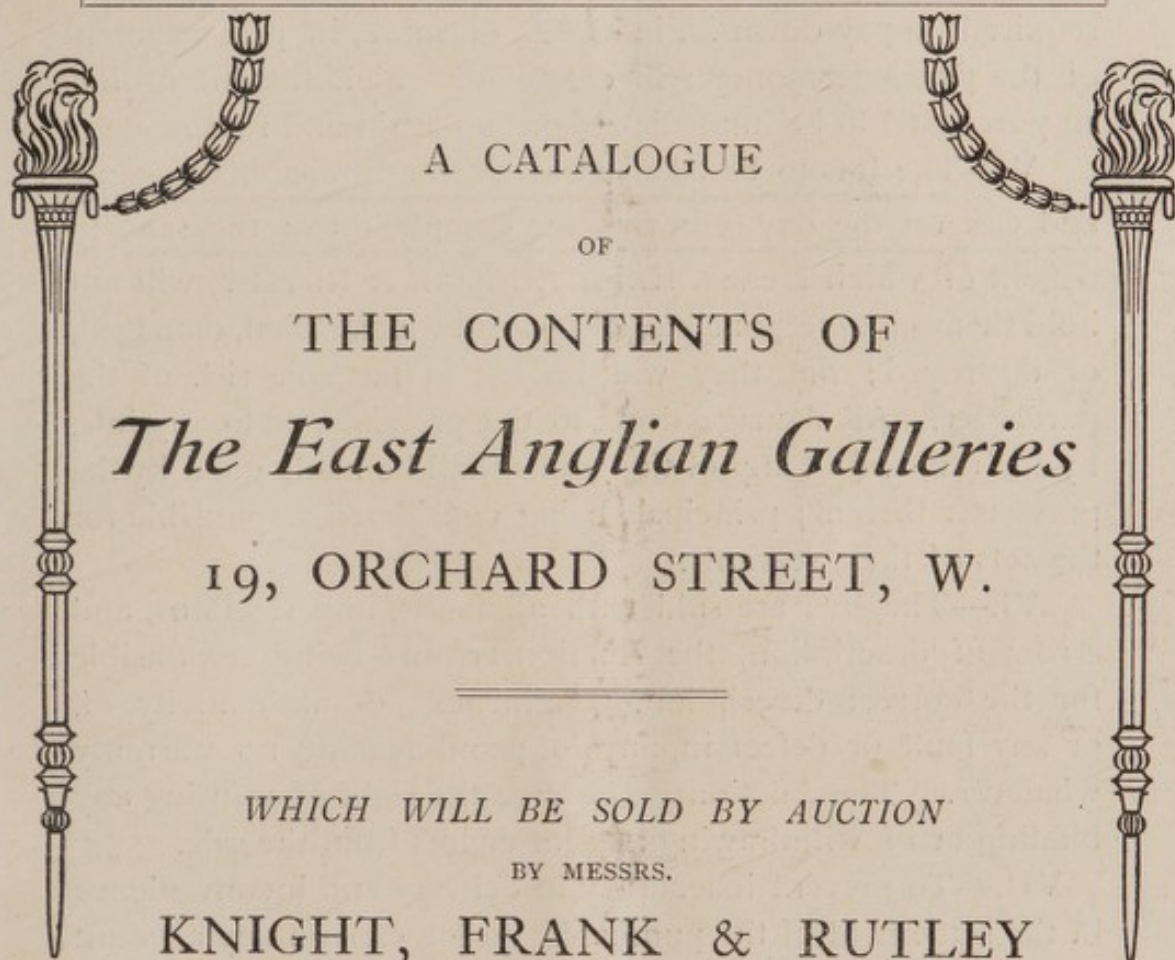








*By Direction of the Owner, on active service.*



A CATALOGUE

OF

THE CONTENTS OF

*The East Anglian Galleries*

19, ORCHARD STREET, W.

WHICH WILL BE SOLD BY AUCTION

BY MESSRS.

KNIGHT, FRANK & RUTLEY

*On the Premises, as above*

On MONDAY, 20th of SEPTEMBER, 1915, & Two following Days,

AT ONE O'CLOCK PRECISELY EACH DAY

*(immediately following the Sale of the Lease)*

May be Viewed the Friday and Saturday prior, between 10 and 5 o'clock.  
Illustrated Catalogues may be had of the Solicitors, Messrs. WARD, HUGH-JONES & WARD, Harwich, or of the Auctioneers, at their Offices:

20, HANOVER SQUARE, LONDON, W.

Telephone—Gerrard 1942 (5 lines).

Telegrams: Galleries Wesdo London.

*Dryden Press: J. Davy & Sons, 8-9, Frith-street, Soho-square, W.*



## Conditions of Sale.

I.—The highest bidder to be the purchaser ; and, if any dispute arise between two or more bidders, the lot in dispute shall immediately be put up again and re-sold.

II.—No person to advance less than 1s. ; above Five Pounds, 2s. 6d., and so on in proportion.

III.—In the case of lots upon which there is a reserve the Auctioneers shall have the right to bid on behalf of the vendor.

IV.—The purchaser to give in name and address, and, if required, to pay down 5s. in the £, or more, in part payment of the purchase-money ; in default of which the lot or lots so purchased to be immediately put up again and resold.

V.—The lots to be taken away at the purchaser's expense and risk on the day following the completion of the sale, in default of which Messrs. KNIGHT, FRANK & RUTLEY, will not hold themselves responsible, if the lots be lost, stolen, damaged, or destroyed ; but they will be left at the sole risk of the purchaser. All damage done to the premises, or to any lots, by the removal of any of the goods shall be made good by the purchaser thereof ; principals being considered responsible for the acts of their servants.

VI.—The lots are sold with all faults, imperfections, and errors of description, the Auctioneers not being responsible for the correct description, genuineness, or authenticity of, or any fault or defect in, any lot ; and making no warranty whatever. The Auctioneers reserve the right of refusing any bidding or of withdrawing any lot or lots from the sale.

VII.—To prevent inaccuracy in delivery and inconvenience in the settlement of the purchases, no lot can on any account be removed during the time of sale ; and the remainder of the purchase-money must absolutely be paid on the delivery.

VIII.—Upon failure of complying with the above conditions, the money deposited in part of payment shall be forfeited ; all lots uncleared within the time aforesaid shall be resold by public or private sale, and the deficiency (if any) attending such resale, together with warehouse and other charges, shall be made good by the defaulter at this sale.

*Gentlemen who cannot attend the sale may have their Commissions faithfully executed by their obedient Servants,*

KNIGHT, FRANK & RUTLEY.

# The East Anglian Galleries,

19, ORCHARD STREET, W.

MESSRS. KNIGHT, FRANK & RUTLEY'S

## CATALOGUE

OF THE

### First Day's Sale.

On MONDAY, 20th of SEPTEMBER, 1915,

AT ONE O'CLOCK PRECISELY.

LOT

- 1 THE LEASE OF THE PREMISES — *for which see separate Particulars and Conditions of Sale.* *£1800 Not Sold*

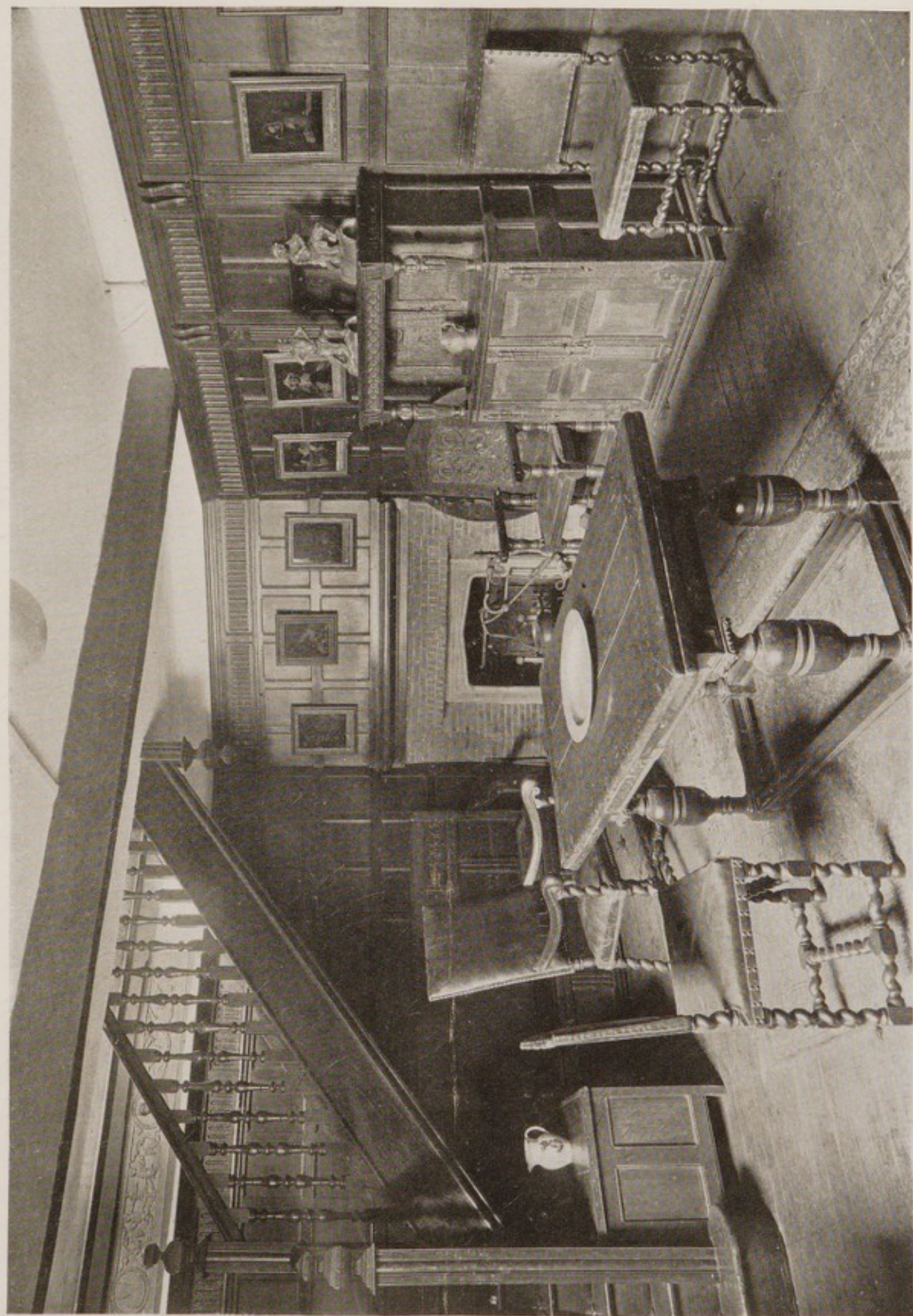
#### GROUND FLOOR—Front Gallery.

- 2 A 14 in. Early English Delft circular dish, and a 12 in. ditto, decorated in subject of Adam and Eve *2. Smith*
- 3 Two Delft tulip dishes *60/- Durrer*
- 4 A smaller ditto, and two 9 in. plates *15/- Durrer*
- 5 A 13 in. tulip dish, and an orange ditto *2.*
- 6 A 13 in. blue and white ditto, and a Bristol dish, flowering trees and balcony *20/- 13/-*
- 7 A Bristol Delft bowl, dated 1708, decorated landscape and figures, 11½ in. diam. *6.6.0*
- 8 A Delft posset pot and cover, painted in flowers and birds, 10½ in. high
- 9 A smaller ditto, red flowers and blue lines, 7 in. high *50/-*
- 10 Two Delft drinking mugs, decorated in colours, pewter hinged lids *2/10/- Smith*
- 11 A set of 5 Oriental blue and white octagonal plates, 7 in. *2 1/2/-*
- 12 A pair of Delft blue and white bottle-shape vases, 11 in.

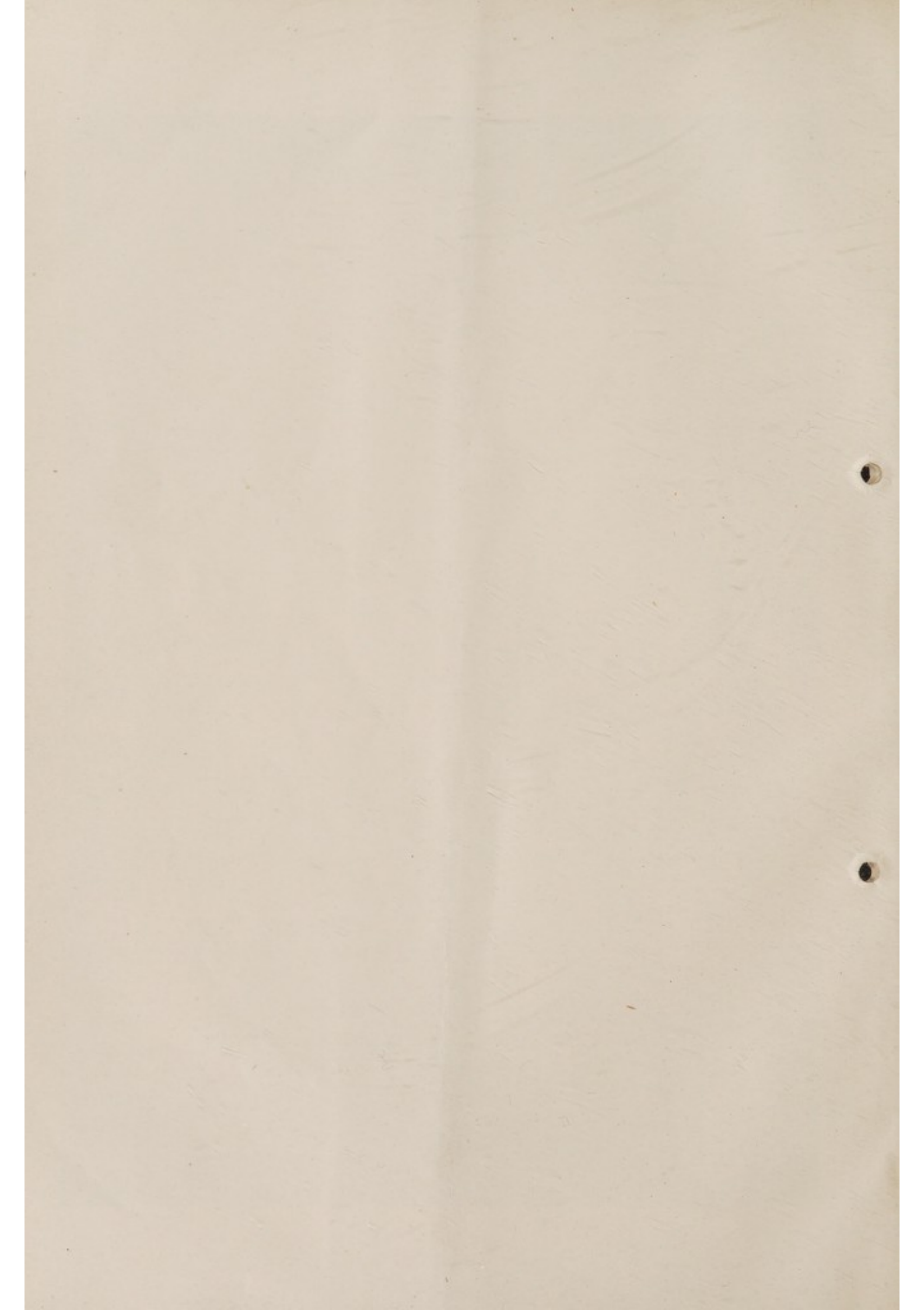


- 13 A Delft blue and white circular dish, with birds in centre
- 14 A pair of Lambeth salt cellars, blue and white
- 15 A pair of early Leeds ware pillar candlesticks, fluted stems and square bases,  $7\frac{1}{2}$  in.
- 16 A punch Toby jug
- 17 A lustre shell flower holder, *marked Wedgwood*
- 18 A brown ware Cadogan tea pot
- 19 Four blue and white Oriental squirrel plates
- 20 A Wedgwood black basalt bust of Robert Burns, on wood socle, 13 in.
- 21 A pair of turquoise blue Sèvres busts of Louis XVI and Marie Antoinette
- 22 A lustre silver resist jug, decorated doves and olive branch,  $5\frac{1}{2}$  in.
- 23 A ditto, decorated flowers,  $5\frac{1}{2}$  in.
- 24 A ditto mug, putty colour,  $3\frac{1}{2}$  in.
- 25 A splash lustre jug, a lavender mug with inscription 1805, and 2 blue and white Oriental plates
- 26 A silver lustre 2-handled goblet, 6 in.
- 27 A miniature purse-carrier Toby jug,  $3\frac{1}{2}$  in., and a small canary yellow mug
- 28 A large silver lustre tea pot, a ruby lustre grape cup and saucer, and a Delft blue and white oblong flower holder
- 29 A lobster claw snuff mull, with chased silver mount
- 30 A circular horn snuff box, relief figure subject on lid, and inscribed "Le Mérite récompense, Washington"
- 31 A Sheffield sugar vase, pierced sides, cross-hand on foot and blue glass liner
- 32 An Oriental bowl, enamelled figures in colours, puce scroll border, green interior, 7 in. diam.
- 33 A Rockingham pointer dog on green base, and a pair of white ditto greyhounds
- 34 A Salopian cream jug,  $3\frac{3}{4}$  in., a blue and white Worcester cream jug, 3 in., and a white fluted ditto, 3 in.





Basement—Back Gallery.





- 35 A white Worcester cream jug, painted Oriental figures, etc.,  $3\frac{3}{4}$  in., and a Lowestoft cream jug, painted flowers,  $3\frac{1}{2}$  in.
- 36 A Liverpool blue and white cream jug,  $3\frac{3}{4}$  in., a Caughley ditto,  $3\frac{3}{4}$  in., and a Bow cream jug, 3 in.
- 37 A Fishley Fremington brown glazed ware vase, with grapes and foliage in relief and mask handles,  $6\frac{1}{2}$  in.
- 38 A Whieldon wall pocket, with female mask and green foliage
- 39 A Wedgwood plate, black decoration of garden scene and figures,  $7\frac{1}{2}$  in.
- 40 Two Whieldon cows on green plinth, and a Staffordshire cow and milkmaid
- 41 A faience monkey, 11 in.
- 42 A salt-glaze bear jug,  $9\frac{1}{4}$  in.
- 43 A *Ralph Wood group*—Shepherd and Shepherdess with dog, lamb and goat, 10 in.
- 44 A pair of *Ralph Wood figures*—Boy with sheaf of corn, and girl with basket of flowers on square green bases,  $5\frac{3}{4}$  in.
- 45 A Whieldon pine-apple tea pot, 5 in.
- 46 A Ralph Wood cockerel, on green base, 8 in.
- 47 A Whieldon duck sauce boat
- 48 A Ralph Wood small green lamb, and a small bull baiting piece
- 49 A Salopian bowl, *marked numeral*, 6 in. diam., an oviform tea poy, *similar mark*, 5 in., a Salopian saucer, 8 in., a cup and saucer, and a coffee pot
- 50 A Salopian coffee cup and saucer, a small ditto bowl, a ditto cup, 5 handless cups and 1 saucer, a Worcester blue and white cup and saucer, and a coloured Lowestoft basin
- 51 A pair of Spode spill vases, gilt and painted figure subjects—The Fowler and the Partridge, The Serpent and the Man



- 52 A pair of Rockingham show girls,  $4\frac{1}{2}$  in., and a pair of ditto green and blue coated Asiatic figures,  $4\frac{1}{2}$  in.
- 53 A Crown Derby bouquet of flowers on circular gilt base,  $3\frac{1}{4}$  in.
- 55 A Worcester china supper set, red and blue decoration, richly gilt, comprising 4 shaped side dishes and covers and 1 centre ditto, fitted in mahogany oval tray with brass handles
- 56 A large Oriental blue and white circular dish, 20 in. diam. *2 1/2*
- 57 A Lowestoft bowl, red decoration,  $11\frac{1}{2}$  in. *2 1/2*
- 58 A large Oriental famille verte jar, enamelled in colours, rock scenes, flowering trees and birds, and cover with kylin knob *2 1/2*
- 59 A Fulham G.R. mug, with pewter rim,  $5\frac{3}{4}$  in. *5/13*
- 60 A Ralph Wood Toby jug, blue coat, 9 in. high *1/3* *Go Debon*
- 61 A ditto, in brown coat,  $9\frac{3}{4}$  in. *1/3* *Go Debon*
- 62 A Watchman Toby jug, 9 in. *1/2* *Go Debon*
- 63 A pair of Staffordshire male and female figures—Musicians, by WOOD & CALDWELL, Burslem,  $9\frac{1}{2}$  and 10 in. high *2 1/2*
- 64 A brown ware female figure—"The Lost Piece of Silver,"  $8\frac{1}{2}$  in. *10/6*
- 65 A Staffordshire bust—Alexander,  $11\frac{1}{4}$  in. *15/6*
- 66 A ditto—Locke, 12 in. *15/6*
- 67 A ditto—Washington,  $8\frac{1}{4}$  in. *15/6*
- 68 A ditto—Old Man in grey coat,  $7\frac{3}{4}$  in. *19/6* *Widder*
- 69 A ditto—Sterne, on lustre socle,  $7\frac{1}{2}$  in. *19/6* *Widder*
- 70 A Delft blue and white oblong cruet *5/7*
- 71 A Delft blue and white vase, decorated with man and woman in a garden, 9 in. *5/7*
- 72 A Delft oviform tobacco jar, decorated with figure smoking and sailing ship, 1671,  $10\frac{1}{2}$  in. high
- 73 Two Delft oviform jars, with inscriptions, 8 in.
- 74 A pair of pharmacy jars, dated 1684
- 75 Three ditto, undated

*28. Down*  
*42/10*  
*2/10/10*

*50/1*

*55/1*

- 76 A Ming grotesque figure standing on a semi-circular tile,  $15\frac{1}{2}$  in. high *3 1/2 G*
- 77 A ditto,  $14\frac{1}{4}$  in. *n*
- 78 A ditto figure of a Warrior on horseback,  $14\frac{1}{2}$  in.
- 79 A pair of Oriental kylins, 7 in.
- 80 An Oriental blue and white pear-shape vase,  $9\frac{3}{4}$  in.
- 81 A black Jackfield jug, with gilt decoration,  $7\frac{1}{2}$  in., and a brown Tunbridge ware vase, 7 in.
- 82 A Stafford jug, with embossed busts of Admiral Nelson and Captain Berry
- 83 A marked "Salt" sheep, and a sheep and lamb
- 84 A Lowestoft saucer dish, with red floral decoration,  $8\frac{1}{4}$  in.
- 85 An Oriental famille rose ginger jar, enamelled in colours, with flowers and birds, 9 in.
- 86 A Delft circular dish, decorated in tulips,  $14\frac{1}{4}$  in.
- 87 A lustre silver resist jug,  $6\frac{1}{2}$  in.
- 88 A lustre ruby jug, decorated in grapes and flowers,  $5\frac{1}{2}$  in.
- 89 A Mason's ware jug, decorated in flowers, 6 in.
- 90 A brown Dog Toby jug and lid,  $11\frac{1}{2}$  in.
- 91 A pigeon-on-nest entrée dish, and a dog's head drinking cup
- 92 Three Nankin blue and white squirrel plates, 9 in., and 3 small Delft plates
- 93 Two blue and white plates with views, a coloured ditto, a Pinxton plate with painted view of Bingen, and a Lowestoft bowl,  $9\frac{1}{4}$  in.
- 94 A Toft brown ware nesting vessel
- 95 A large Staffordshire group—Bull Baiting
- 96 A salt glaze jug, with embossed floral decoration,  $5\frac{3}{4}$  in.
- 97 A brown ware jug with Bacchanalian figures in relief,  $6\frac{1}{4}$  in., 2 mask jugs, and a cup with double mask
- 98 A satyr mask jug,  $6\frac{1}{4}$  in., a mask jug with cocked hat, 7 in., and another—"Who are you?"  $5\frac{3}{4}$  in.
- 99 A mask jug—Napoleon, a pair of pistol bottles, and a mug with stag hunt



- 100 A large brown mug—Victoria and Prince Albert, and another with sporting subject  
101 A ditto bottle—Napoleon and Dante, a ditto—Duchess of Kent, and a lady's head mirror support  
102 A cottage money box, a barrel-shape gin bottle, 5 others, and a dolphin sauce boat  
103 A large German beer mug, with hinged pewter lid, 11 in.

### OLD STAFFORDSHIRE FIGURES, &c.

- 104 Neptune standing on a dolphin,  $9\frac{1}{4}$  in.  
105 A Man, in blue jacket and trunks, blowing a hunting horn, 9 in.  
106 A draped female figure—Justice, 9 in.  
107 Dr. Pangloss, 7 in. 2.  
108 A Man playing hurdy gurdy,  $8\frac{3}{4}$  in.  
109 A Shepherd carrying a sheep,  $8\frac{3}{4}$  in.  
110 The Cobbler, 7 in.  
111 A Boy standing beside a tree stump, 8 in.  
112 A Female figure—Justice,  $8\frac{1}{2}$  in.  
113 A Walton group—Charity,  $8\frac{1}{2}$  in.  
114 A Walton figure—Faith, 8 in.  
115 An early Stafford figure—Sailor,  $7\frac{1}{2}$  in.  
116 A figure—Old Age, 7 in.  
117 A ditto—Mme. Vestris,  $5\frac{3}{4}$  in.  
118 A Boy with chanticleer,  $4\frac{3}{4}$  in.  
119 A small brown ware figure—Boy,  $4\frac{1}{2}$  in.  
120 A reclining figure—Child,  $3\frac{3}{4}$  in.  
121 A Stafford group—Vicar and Moses, 9 in.  
122 A group—Tailor on goat,  $6\frac{1}{2}$  in.  
123 A group—The Tithe Pig, 6 in.  
124 A Walton Sheep and Lamb,  $5\frac{1}{2}$  in.  
125 A group—Fox and Goose,  $6\frac{3}{4}$  in.  
126 A small group—Cow and Calf,  $3\frac{1}{2}$  in.  
127 A group—Bull Baiting,  $5\frac{1}{2}$  in.  
128 A seated Stag,  $7\frac{1}{4}$  in.  
129 A Delft Cow, decorated flowers

- 130 A Lion on cushion
- 131 An apple, and a canary-colour mug, painted flowers
- 132 A large Ming ware equestrian figure of a warrior, 19 *in.*
- 133 A Delft circular dish, orange and foliage, 13½ *in. diam.*
- 134 A ditto, tulips, 12 *in.*
- 135 A pair of large Bow blue and white jugs, 10½ *in.*
- 136 A Liverpool jug—"The Farmer's Arms," 9 *in.*
- 137 A blue and white jug—View of Mansion and Denton Park, 6½ *in.*, and a plate with View of Massachusetts State House
- 139 A lustre jug, with coloured cottage and cattle in relief
- 140 A blue and white jug, 2 Nankin plates, and a dish
- 141 A white ware figure of a lion passant, with forefoot on a ball
- 143 A Staffordshire group of St. George and the dragon, in brilliant colours, with lustre shield and helmet, 8½ *in.*
- 144 A Walton group of Songsters, with flowering tree and rock base, 8¾ *in.*
- 145 A small silver lustre purse carrier Toby, 4 *in.*
- 146 A SET OF FIVE TOBY JUGS—"VICAR AND MOSES," on mahogany plinth, inlaid silver title, *rare*
- 147 A pair of white parian Dickens figures—Ralph Nickleby and Smike
- 148 A white ware figure of a Girl and flowers, 5½ *in.*, and 2 blue and white plates
- 149 A Sunderland jug with tulip and sunflower, 5½ *in.*, another with inscription and beehive, 5 *in.*, and a brown ware vase with raised acorns
- 150 AN OLD CROWN DERBY DESSERT SERVICE, red, blue and gilt decoration with green dragons, comprising :—
  - a centre dish
  - a scalloped oval ditto
  - 3 lemon-shape ditto
  - 2 heart-shape ditto
  - 2 round ditto
  - 19 plates
  - 2 sugar tureens, covers and stands



- 151     *A Derby Breakfast and Tea Service*, red, blue and gilt, with medallions, comprising :—  
          9 cups and saucers  
          13 tea cups and 12 saucers  
          5 mugs  
          6 plates  
          sugar basin  
          milk jug  
          butter dish  
          teapot stand
- 152     *A WORCESTER TEA SERVICE*, gros bleu and gilt, painted band of flowers, comprising :—  
          9 cups and saucers  
          teapot and lid  
          sugar tureen and lid  
          milk jug  
          slop basin
- 153     A set of 12 Spode tea cups and saucers, with apple-green band and gilt lines
- 154     A pair of Oriental egg-shell china lanterns and stands, 12 *in.* high
- 155     Three blue and white Oriental plates, and 2 smaller ditto
- 156     A Pratt ware jug, with miser in relief, 5½ *in.*
- 157     A ditto, with national emblem of rose, shamrock and thistle, 6 *in.*
- 158     A ditto, with foliage decoration, 6½ *in.*
- 159     An Oriental bowl, flowers, etc., 10 *in.* diam.
- 160     A blue-coated Toby jug with dog, 10 *in.*
- 161     A red-coated ditto
- 162     A Neale & Co. porcelain Toby jug, 10 *in.*
- 163     A Swansea pottery Toby jug, 10 *in.* (*from the Sargent collection*)
- 164     A Bristol Delft Toby jug, green coat, 10 *in.*
- 165     A Neale & Co. white Toby jug, 10 *in.*
- 166     A Toby jug, with green hands, 10 *in.*

- 167 A brown ware Snuff-taker Toby jug, 10 *in.*
- 168 A Rockingham Toper Toby jug, 8 $\frac{3}{4}$  *in.*
- 169 A mottle-brown Falstaff Toby jug, 9 $\frac{1}{2}$  *in.*
- 170 A brown ware ditto, 10 *in.*
- 171 A brown George III Toby jug, 10 $\frac{1}{2}$  *in.*
- 172 A John Bull Toby jug, 9 $\frac{3}{4}$  *in.*
- 173 A Stafford figure of Diana, 11 $\frac{1}{2}$  *in.*
- 174 A ditto bust of Minerva, 12 *in.*
- 175 A blue and white Delft bottle, 9 $\frac{1}{2}$  *in.*, and an Oriental carved gilt wood wall bracket
- 176 An early Stafford figure of Harvester, 6 $\frac{1}{2}$  *in.*, and a leaf-shape tray, painted in flowers
- 177 Three Oriental cups and saucers, 10 cups and 3 saucers (various), and a Nankin blue and white dish
- 178 A brown ware coffee pot and lid, a Rockingham milk jug and small tea pot painted coat-of-arms and gilt, and a lozenge-cut-glass water jug
- 179 Fifteen Oriental blue and white plates, 2 dishes, and a Willow pattern jug
- 180 A Toby jug—The Unfrocked Parson, 8 *in.*
- 181 A small seated Toby jug, in puce coat, 6 $\frac{1}{2}$  *in.*
- 182 A Hawley Toby jug, in yellow coat, 8 *in.*
- 183 A fine green-coated Toby jug, with spotted face, 10 *in.*
- 184 A Wedgwood Toby jug, with pipe, pimple face, puce coat, 10 *in.*
- 185 A green-coated Toby jug, with pipe in mouth, 10 *in.*
- 186 A small purse-carrier Toby jug, in red coat, 4 $\frac{1}{2}$  *in.*
- 187 A ditto, in brown coat, 4 $\frac{1}{2}$  *in.*
- 188 Two early glass wine bottles, with impressed name and date 1787
- 189 An Oriental china salver, 13 $\frac{1}{2}$  *in.*, and a ditto jug, 7 $\frac{1}{2}$  *in.*
- 190 A Cromwellian lantern, and a lustre jug, with Oriental figures
- 191 A pair of Staffordshire figures—Cobbler and Wife, 6 $\frac{1}{2}$  *in.*
- 192 A pair of ditto figures—Sportsman and Lady, 7 *in.*
- 193 A figure of a Lady Archer, 7 *in.*



- 194 Two Stafford figures—Boy and Girl: Summer and Autumn,  $7\frac{1}{2}$  in.
- 195 Two ditto—Girls: Spring,  $7\frac{1}{2}$  in.
- 196 A Leeds group—Charity,  $7\frac{1}{2}$  in.
- 197 A Stafford figure—Virgin, 8 in.
- 198 A ditto—Simple Simon,  $8\frac{1}{4}$  in.
- 199 A pair of small figures—Showman and Wife,  $5\frac{1}{4}$  in.
- 200 A group—Musicians in an arbour, 6 in.
- 201 A pair of Sheffield circular entrée dishes and covers
- 202 Two Delft corner-pieces
- 204 A set of 8 glass syllabub bowls
- 205 An extra large silver twist glass, with folded foot,  $9\frac{1}{2}$  in.
- 206 A small dram glass,  $3\frac{3}{4}$  in.
- 207 A large cotton-twist glass,  $6\frac{3}{4}$  in., and a large bowl ditto,  $6\frac{1}{2}$  in.
- 208 A cotton-twist baluster stem glass, 6 in., and a similar glass with bell-shape bowl,  $6\frac{1}{4}$  in.
- 209 Two cotton-twist glasses with moulded bowls, 6 in., a plain cotton-twist drawn glass,  $6\frac{3}{4}$  in., and a dome foot ditto, 7 in.
- 210 An air-twist glass with moulded band,  $6\frac{3}{4}$  in., and a ditto with double knop and straight-sided bowl, 7 in.
- 211 An air-twist glass, bowl engraved with rose,  $7\frac{1}{2}$  in., and a smaller ditto with baluster stem and plain bowl, 6 in.
- 212 A set of 3 wine glasses with cut stems and engraved rose bowls, 6 in., and a ditto, engraved with Tudor rose
- 213 Two plain stem glasses, bowls engraved with rose and bird,  $5\frac{1}{2}$  in., and a large baluster and tear stem glass with engraved and cut bowl,  $7\frac{3}{4}$  in.
- 214 A baluster stem glass with tear and folded foot,  $5\frac{1}{8}$  in., a ditto with drawn bowl, 6 in., and a ditto with double knop and bell-shape bowl,  $6\frac{3}{4}$  in.
- 215 A small plain glass with baluster stem and folded foot, 5 in., a ditto,  $4\frac{1}{4}$  in., and a ditto, 5 in.
- 216 A plain stem glass with folded foot, 6 in., and a ditto with bell-shape bowl, 6 in.

- 217 A pair of large baluster stem glasses with engraved bell-shape bowls,  $7\frac{7}{8}$  in., and a ditto with plain bowl
- 218 A pair of engraved trumpet-shape wine glasses,  $5\frac{1}{4}$  in., and a drawn ditto with folded foot and plain bowl, 7 in.
- 219 A large ale glass with tear in stem,  $8\frac{1}{4}$  in.
- 220 An ale glass, engraved with S. E. and flowers, a ditto with barley and hop, a ditto with sunflower and bird, and a ditto mug with wreath and Tudor rose
- 221 A folded foot glass, engraved with barley and hop,  $6\frac{1}{2}$  in., and a cut trumpet glass,  $7\frac{3}{4}$  in.
- 222 Four old ale bottles, two 1788 and two 1783
- 223 A large ruby Bohemian glass vase, richly gilt, 11 in.
- 224 A barrel-shaped lozenge cut glass jug,  $7\frac{1}{2}$  in., and a Spanish glass tumbler, cut and gilt decoration
- 225 A large ale glass, with engraved festoon and ribbon border,  $8\frac{3}{4}$  in.
- 226 Four tall engraved wine glasses, 4 smaller ditto, and a cut trumpet-shaped ditto
- 227 A cut glass ale goblet, and 2 tall wines, engraved with barley and hop

END OF THE FIRST DAY'S SALE



# The East Anglian Galleries,

19, ORCHARD STREET, W.

MESSRS. KNIGHT, FRANK & RUTLEY'S

## CATALOGUE

OF THE

## Second Day's Sale.

On TUESDAY, 21st of SEPTEMBER, 1915,

AT ONE O'CLOCK PRECISELY.

LOT

- 228 A large circular pewter dish, 18 in. diam. *35/- Venn*
- 229 A ditto, 13 in., and a ditto, 13½ in. *15/- Cooper*
- 230 A ditto, 13¼ in., and 2 plates, 9 in. *20/- Beer*
- 231 A jug, with hinged lid *15/-*
- 232 A ditto *15/-*
- 233 A ditto *15/-*
- 234 A circular pewter dish, 15 in. *15/- Venn*
- 235 A pewter washing set of ewer, basin, brush vase and soap cup *25/-*
- 236 A pilgrim's leather costrel, 19 in. *35/- Newman*
- 237 An old leather Black Jack, 15 in. high *6/- Co Baker*
- 238 A small brass sundial *9/- LNK 10/- Grae*
- 239 An old brass knocker—A dog with a bone *4½/- Co*
- 240 A rapier, with wood handle and metal guard, with animal masks *20/- Baker*
- 241 Two horn drinking cups, engraved with racing subjects
- 242 Three halberds
- 243 A brass chandelier, with 6 branches *No bid*
- 244 A large Sheffield tankard, engraved with initials M. A. D. *10/-*



- 245 A pair of bronze figures of cupids, on white marble pedestals,  $9\frac{1}{2}$  in. *35/ Cook*
- 246 A set of 3 copper spirit jacks, varying sizes *15/ Cart*
- 247 A small brass lantern clock, and a glass picture—Portrait of George II *40/*
- 248 A circular mahogany waiter, 14 in., a damascened steel paper knife, an old flint lock, a Sheraton mahogany tea caddy, inlaid border, and a gilt medallion of William Pitt, in papier-maché frame *16/ Lister*
- 249 *Three old swords* *2/10/ W. L. H. M. M.* *25/-*
- 50/ 250 A leather water bottle, and a stone figure of a crocodile *25/-*
- 251 A large circular pewter dish,  $16\frac{1}{2}$  in., and a pewter jug *25/-*
- 252 Nine green handle dinner knives, 6 knives with black handles, and 6 steel 2-prong forks *28/ Lawrence*
- 253 Two iron fire bars, and a torch extinguisher *10/*
- 254 Two iron Punch door stops, a Wellington ditto, and 2 brass implement brackets *20/ Lister*
- 255 An iron hake, 2 rush-light stands, 2 iron hangers, and a lantern
- 256 A carved oak pilaster, and a joint stool *2/10/*
- 257 A bead needlework picture—Group of Three Figures and a Castle, dated 1657,  $8\frac{1}{2}$  in. by  $12\frac{1}{2}$  in., in painted frame *8/6 Willian*
- 258 A glass picture, in colours—Diana, in black and gilt frame *25/ Merton*
- 259 A ditto—George Prince of Wales and Prince Frederick *3/3 G. Mather*
- 260 A pair of ditto—"Happiness" and "Persuasion" *20/*
- 261 A pair of ditto—American Indians *25/ Frydland*
- 262 A stipple engraving, in colours—St. Cecilia *19/5*
- 263 A ditto—"Peace," after Peters *20/ Asford*
- 264 An engraving, in colours—Marian, by Tompkins, after Bunbury *35/*
- 265 An engraving, oval—Cottage Girl shelling peas *40/ Carver*
- 266 An engraving—The Farmer's Boy, by James Ward *20/*
- 267 ENGLISH SCHOOL—A three-quarter length Portrait of Mrs. Siddons, in carved gilt frame *5/6 Jacobs*



- 268 A painting—A three-quarter length Portrait of Milton,  $4\frac{1}{2}$  £  
 $39\frac{1}{2}$  in. by  $31\frac{1}{2}$  in., in gilt frame
- 269 ENGLISH SCHOOL—A half-length Portrait of the Earl of  $3\frac{1}{2}$  "  
 Bristol, 31 in. by 25 in. *W. Roscoe*
- 270 ——— A half-length Portrait of a Lady, 29 in. by 24 in.  $9\frac{1}{2}$  *Morton*
- 271 An engraving—"The Proposal," after Harlow, by Meyer  $2\frac{1}{2}$  *Sadler*
- 272 An Oriental glass picture—Head of a Lady  $5\frac{1}{2}$  *Robinson*
- 273 A pair of glass pictures—Woodcock and Duck Shooting, and a ditto—"Starting the Hare"  $2\frac{1}{6}$
- 274 Three ditto—Biblical Subjects, and another—Pastoral Subject  $30\frac{1}{2}$  *Lamb*
- 275 A painting—A half-length Portrait, 25 in. by 19 in.  $7\frac{1}{6}$  *Lamb*
- 276 A ditto—Gipsy Encampment, 16 in. by 21 in.  $1\frac{1}{6}$  *Lamb*
- 278 An oval engraving—Sappho, after A. Kauffman, and a coloured print — Jubilee Ball, Ranelagh Gardens, 1749  $1\frac{1}{4}$
- 279 A glass picture—Napoleon, and 2 spangle prints  $30\frac{1}{2}$
- 280 A mezzotint engraving—Elizabeth Countess of Derby, by W. Dickinson, after Sir J. Reynolds  $12\frac{1}{2}$
- 281 A coloured engraving—"Gamekeepers Refreshing," by Ryall, after Jones  $5\frac{1}{2}$  *Morton*
- 282 A pair of oval glass pictures—Portraits of Ladies, in gilt frames  $15\frac{1}{2}$  *Solomon*
- 283 A glass picture—The Spendthrift  $35\frac{1}{2}$
- 284 A ditto—George Prince of Wales, and a small ditto—Garrick  $12\frac{1}{6}$
- 285 Two ditto—Scriptural subjects  $45\frac{1}{2}$
- 286 A ditto—Queen of Denmark, and a small ditto—Garden Scene with fountain and figures  $4\frac{1}{2}$
- 287 A pair of glass pictures—The Battle of Trafalgar and The Death of Nelson, and a mezzotint portrait of the Duke of Cumberland  $2\frac{1}{6}$  *Sadler*
- 288 A pair of circular oil paintings—Landscapes, figures and cattle, panels, 12 in. diam., in gilt frames  $5\frac{1}{2}$
- 289 An engraving—Portrait of a Man in academic gown, by Samuel Cousins, after Boxall



- 290 An aquatint—"Evening," after Moucheron, and another  
—Wood Scene, after Breughel, in gilt frames *2/6*
- 291 An engraving—"Young Foresters," after R. Livesay *1/6*
- 292 A painting—Half-length portrait of a Divine, 29 in.  
by 23 in., in oak frame *20/-*
- 293 KNELLER (after)—A half-length portrait of a Man in  
flowing wig and red coat, 29 in. by 24 in., in gilt frame *3/6 L. Scott*
- 294 DITTO—Portrait of a Man in black flowing wig and  
drab and gold frogged coat, 30 in. by 25 in., in carved  
gilt frame *4/2*
- 295 DITTO—Portrait of a Man in flowing wig, white kerchief  
and brown coat, 29 in. by 24 in. *1/3 L. Scott*
- 296 ENGLISH SCHOOL—A half-length portrait of a Lady,  
blue dress with low neck, 29 in. by 24 in. *2/2*
- 297 VINCENT—A Landscape with river scene and ruins of  
castle, 27 in. by 35 in. *9/5 Springer*
- 298 ENGLISH SCHOOL—A half-length portrait of a Gentle-  
man in black coat and white kerchief, 30 in. by 24 in. *4/0 Norton*
- 299 A half-length portrait of a Man with flowing wig, steel  
breast-plate and red coat, 29 in. by 24 in., in black  
and gilt frame *2/15*
- 300 ENGLISH SCHOOL—A half-length portrait of a Girl,  
dated 1692, 29 in. by 21 in., in gilt frame *No bid*
- 301 A three-quarter length portrait of a Cavalier, slouch  
hat and feathers, steel breast-plate and crimson robe,  
holding a two-handed sword, 50 in. by 42 in., in carved  
gilt frame *3/2 L. Roberts*
- 302 A pair of small colour prints—View near Lymington,  
and a Cottage Scene near Colchester, after W. R.  
Bigg *15/- How*
- 303 A pair of 6½ in. brass pillar candlesticks, a poker, a pair  
of bellows, and part of an old spit movement *10/-*
- 304 An iron fire grate, with brass spindle sides and dogs  
with pierced bosses, and a brass and steel hanger *4/2 L. Norton*
- 305 THE OAK PANELLED WAINSCOTING, and the elaborately  
carved oak chimney-piece *4/5 L. Dever*



306 A William and Mary mirror, in walnut frame, with fret pediment, *bevelled plate* 16½ in. by 9½ in. *2. Warren*

307 AN OAK REFECTORY TABLE, with carved frieze and angle brackets, turned baluster legs and square stretcher rails, 8 ft. by 2 ft. 9 *Less*  
*Later on 9th*

308 An oak table, with inlaid frieze, on carved legs and square stretcher rails, 4 ft. 5 by 2 ft. 3 *5/10 of Griffiths*

*89*  
*Not New*  
*Proctor*  
5. 309 An oak octagonal table, with fall flap, on 3 baluster and gate legs, 2 ft. 9

310 An old oak Court cupboard, carved frieze on baluster columns, inlaid panelled doors and chequered border, 3 ft. 8 wide *2/6*  
*Drum*

*See Illustration.*

311 A set of four Yorkshire chairs, carved arched shape splats, wood seats, on baluster legs and stretcher rails *1/6*  
*Lunar*

312 An Italian carved hall chair, shaped back with heraldic shield, lions and dolphins, on turned legs and stretcher rails *2/1*

313 An oak arm chair, carved panelled back with flowers and grapes, shaped top, turned legs and square stretcher rails *3/15*  
*Lunar*

314 A square oak stool, inlaid frieze, on balled legs and stretchers *4/6*

315 A Cromwellian love seat, open back and arms upholstered in wool needlework, turned legs and stretcher rails, 2 ft. 7 wide *5/2*  
*Algerthorpe*

316 AN OAK ARM CHAIR, high carved back with arched top and panel inlaid with floral scroll *15/6*  
*Leyton*

*See Illustration.*

317 A Jacobean wainscot arm chair, square panelled back, inlaid with fleur-de-lys in heart-shaped lines *4/6*  
*Pager*

318 A 5 ft. 3 long oak stool, on carved frame and splayed turned legs and square stretcher rails *4/5*  
*Robinson*

319 A mahogany pole fire screen, on fluted pillar and claws, with heraldic needlework panel *2/6*





Lot 310.





- 320 A CHARLES II SETTEE, high square back and seat in verdure pattern Brussels tapestry, long open arms carved in acanthus leaves, on spiral legs and stretcher rails, 4 ft. 3 20 Gs

*See Illustration.*

- 321 An oak arm chair, open back with panel in centre, turned supports to arms, on square legs and stretcher rails 2 Gs

- 322 An oak panel, carved H. B. 1661 10/ Inclair 50/

- 323 A Persian rug, crimson ground and blue figuring, 8 ft. 6 by 6 ft. 3 30/

- 324 A ditto, crimson centre and green angles, 5 ft. 6 by 3 ft. 3 30/

### *Middle Gallery.*

- 325 AN ANTIQUE OAK CHIMNEY-PIECE, with carved and panelled overmantel, deep cornice and frieze, supported by turned columns 10 Gs Hammer

- 326 A steel fire-grate, with canopy and dog-irons 4 Gs

- 327 Three brass fire implements, a pair of mahogany fire bellows, and a brass door porter 14/-

- 328 A pair of black lac fire bellows

- 329 A pair of red lac ditto 11/-

- 330 Two oak doorways, with carved and fluted pillars 4 1/2 Gs

- 331 A WILLIAM AND MARY WALNUT AND MARQUETERIE CHINA CABINET, with double-arched top, fitted shelves, and enclosed by a pair of glass doors, on stand, with 4 drawers and 5 turned supports and stretcher rails, 5 ft. 38 Gs

- 332 A black lacquer chest of 2 short and 3 long drawers, decorated in gilt relief in the Chinese taste, brass drop knobs, on table stand, with 3 drawers, on eight turned legs and stretcher rails, 2 ft. 10 4/10 Vincent

- 333 A black lacquer chest of 2 short and 2 long drawers, similar decoration, with brass drop knobs, 3 ft. 2 5 1/2 Gs



334 A Queen Anne walnut chair, plain shaped splat, with carved shell above, loose seat in red damask, on cabriole legs with club feet

39

335 A similar table, canted corners, with 3 drawers, brass drop handles, 29 in.

4/10/-

336 An oak kneading trough, with hinged lid, on baluster supports and stretcher rails, 3 ft. 3

2/10/-

337 An oak circular table, on triple legs and stretcher rails, 24 in.

25/

338 A cherry-wood circular gate-leg table, on turned supports and square stretcher rails, 2 ft. 8

4/2 G.

339 A walnut oblong table, shaped frieze, with drawer, on black turned legs and shaped flat cross stretcher, 25 in.

2 G. R.

340 A William and Mary octagon table, on turned pillar and claws, 16 in.

2 G.

341 A hexagonal table, on spiral pillar and claws, 16 in.

Marble

342 An oak octagonal top dwarf table, on 4 turned legs and square stretcher rails, 24 in.

35/-

343 An oblong envelope table, on turned supports and square stretchers, 26 in.

35/-

344 AN OBLONG TABLE, in black lacquer, the top decorated rocks, tea-houses and figures in the Chinese taste, on cabriole legs with carved cloven-hoof feet, 4 ft.

1/10. Veneers

345 A WILLIAM AND MARY STOOL, on 8 turned legs and serpentine cross stretchers, seat upholstered in Hungarian needlework, 5 ft. 3

Par

346 A WALNUT SETTEE, stuffed-over square back, arm pads and seat upholstered in leather, finished brass nails, terminals of arms carved lions' heads, on 3 front carved cabriole legs, 4 ft.

14 G.

347 A high winged-back arm chair, upholstered in crimson figured silk damask, on stout carved cabriole legs, with claw and ball feet

14.

348 A WILLIAM AND MARY CARVED ARM CHAIR, high back, with double cane-work panels and open scroll and acanthus top, shaped open arms with acanthus terminals, cane seat, shaped legs and carved stretcher

15 G.

Marble

See Illustration.





Lot 320.



Lot 356.

Lot 348.

Lot 357.





- 349 A Queen Anne chair, open spoon back, on cabriole legs with shell shoulders and club feet, loose seat in wool needlework *3 1/2 Gs*  
*Allegiance*
- 350 A William and Mary oblong stool, turned legs and serpentine cross stretcher, seat covered in green figured brocade, 22 in. *3 1/2 Gs*
- 351 A Queen Anne walnut oblong stool, on cabriole legs and club feet, loose seat in worsted needlework, 21 in. *4 1/2*  
*Merle*
- 352 A pair of Charles II footstools, cane-work tops, on spiral legs and stretchers, 16 in. *2 1/2*
- 353 A pair of ditto, 20 in. *3 Gs*  
*Merle*
- 354 A pair of ditto, 20 in. *2 "*
- 355 A walnut corner chair, circular back with lyre-shaped splats, on square legs, and loose square seat in crimson twill *4 1/2*
- 356 A Cromwellian chair, spiral frame, square stuffed-over back and seat in leather and brass nails *5 Gs*  
*Bur*  
*See Illustration.*
- 357 A SET OF SIX QUEEN ANNE WALNUT CHAIRS, open back, railed splats, on cabriole legs, with carved shoulders and club feet, loose seats in wool needlework *44 Gs*  
*Merle*  
*See Illustration.*
- 358 A SET OF SIX QUEEN ANNE BLACK LACQUER CHAIRS, decorated in the Chinese taste in slight relief, cabriole legs with club feet, turned stretcher rails, loose seats in green figured silk damask *24 Gs*  
*Merle*  
*See Illustration.*
- 359 An elbow chair, with turned rail back and sides, carved splat and ball terminals, wood seat, turned legs and stretcher rails *26*
- 360 A pair of William and Mary walnut and marqueterie candle-stands *13 Gs*  
*Merle*
- 361 A mahogany wig stand *25 1/2*  
*Merle*
- 362 A black lacquer 3-tier étagère, with spiral columns, gilt decoration *5 1/2*



- 363 A long case clock, of black lacquer, gilt decoration in slight relief and glass bull's-eye in door, brass dial, striking and calendar movement, by ZAC. MOUNTFORT, *de St. Alban* 69
- 364 A WILLIAM AND MARY LONG CASE CLOCK, inlaid marqueterie, shaped cornice with spiked brass ball terminals, brass dial, with striking, calendar and lunar movements, by JNO. TOMILS, *London* 19 1/2
- 365 A pair of Queen Anne wall mirrors, carved gilt frames, with scroll and shell pediments, 52 in. by 24 in. 89 1/2
- 366 A CHIPPENDALE MIRROR, in gilt frame, carved open scrolls and flowers, 45 in. by 26 in. 6. 1/2
- 367 A bordered Persian rug, 8 ft. 9 by 4 ft. 6 2 1/2 1/2
- 368 A ditto, 7 ft. 1 by 4 ft. 7 7 1/2
- 369 A ditto, 6 ft. 1 by 4 ft. 1 3 1/2
- 370 A ditto, 6 ft. 2 by 3 ft. 2 5 1/2
- 371 A rose-wood and steel piqué écarté box, and a carved pear-wood bust of a Friar, 8 1/2 in. 10 1/2
- 372 A pair of large red lacquer fire bellows, decorated in the Chinese taste in slight relief, with brass nozzle 35 1/2

## Back Gallery.

150. 373 THE CARVED OAK CHIMNEY - PIECE AND PANELLING OF ROOM, originally at Wingfield Castle, circa 1660
- 374 An early Jacobean oak side table, with carved and panelled back, carved frieze, on 6 plain bulb legs and stretcher rails, 9 ft. 2
- 375 A CARVED OAK COURT CUPBOARD, the upper part with 2 panelled doors and cornice, supported by 2 turned columns, the lower part enclosed by 2 arched panelled doors, 6 ft. 4
- 376 AN ELIZABETHAN OAK REFECTORY TABLE, on 6 carved bulbous legs and stout square stretchers, 12 ft. by 3 ft. 3

10 Redo  
merlons  
150 1/2

- 377 A carved oak 3-tier dinner waggon, inlaid frieze, centre tier fitted with long drawer, 4 ft. 3
- 378 A Gothic box chair, high back with carved panels, with roundell heads, the arms with linen-fold panels
- 379 An oak arm chair, panelled back, inlaid vase and flowers, open arms with ends, on balled legs
- 380 A Charles II arm chair, high stuffed-over back and seat upholstered in wool needlework of floral design, open arms, carved acanthus leaves, baluster legs and stretchers
- 381 A James walnut arm chair, high carved back with tapering pilasters, cane-work panel and seat, and carved scroll splat under seat
- 382 A Charles II arm chair, carved scroll frame and baluster pillars, cane-work back and seat
- 383 A walnut spiral frame arm chair, cane-work back and seat
- 384 A set of 6 Derbyshire chairs, turned spindle backs, wood seats, on balled legs and stretchers
- 385 Three high spindle back chairs with rush seats
- 386 A set of 6 Cromwellian chairs, square stuffed-over backs and seats in leather, and brass nails, on turned legs and stretchers
- 387 An oak joint stool, on turned legs and square stretchers, 20 in.
- 388 A ditto, with walnut top, 2 ft.
- 389 An oak stool with 2 drawers, on turned legs and square stretchers, 3 ft.
- 390 A round oak table, on triangular frame with 3 turned legs, 26 in. diam.
- 391 An oak gibbet gate-leg oval table, 3 ft. 2
- 392 A William and Mary walnut oblong table, top inlaid geometrical lines, banded border fitted long drawer, turned legs and serpentine stretcher, 3 ft. 2
- 393 An oak coffer, with carved panelled front, 3 ft. 9
- 394 An inlaid oak Dole cupboard, with mitred mouldings and spindle panel, 31 in. wide



- 395 A William and Mary stool, covered red and green velvet, on inverted cup legs and serpentine stretcher
- 396 AN OAK LONG CASE CLOCK, brass dial, striking and calendar movement, *by J. SPENDLOVE, Thetford*
- 397 A pair of carved altar candlesticks, on triangular bases with caryatide female figures, 28½ in.

BASEMENT FLOOR—*Back Gallery.*

- 398 THE OLD OAK PANELLING OF WALLS, with grooved frieze and fluted pilasters
- 399 *An early Jacobean oak Court cupboard*, open grain, carved cornice on fluted columns, 4 panelled doors, 3 ft.
- 400 AN OAK BUFFET; with carved linen-fold panels, 2 doors and open base, 3 ft. 5
- 401 *A Jacobean chest of 4 long drawers*, applied bevels and spindles and knobs, 3 ft. 4
- 402 *A Cambridgeshire dresser*, applied bevels and spindles, fitted 3 drawers and cupboards with 4 doors, 6 ft.
- 403 *An oak settle*, high panelled back with carved frieze, open arms and box seat, 5 ft.
- 404 A ditto, carved panelled sloping back with open arms, on 6 turned supports and stretchers, 6 ft.
- 405 *A Gothic oak table*, on shaped end standards and stretcher, 7 ft. 4 by 1 ft. 9
- 406 An oak coffer, with linen-fold panelled front, 4 ft.
- 407 *A William and Mary oblong walnut table*, banded border and heart-shape corners, fitted drawer, on turned ball legs and serpentine stretcher, 3 ft.
- 408 A circular oak table, on triangular frame, with turned legs and stretchers, 2 ft. 3
- 409 An oak circular dwarf table, on turned legs and stretchers, 25 in.
- 410 *A monk's carved oak chair*, with circular folding back forming table, open arms, turned legs and stretchers
- 411 A STUART SPIRAL WALNUT FRAME ARM CHAIR, tall square stuffed-over back and seat in leather and brass nails, shaped open arms

- 412 A stuffed-over winged back ~~arm~~ chair, in green figured tapestry, on cabriole legs with club feet
- 414 A set of 8 chairs, similar style and period
- 415 Two ditto chairs, nearly similar
- 416 Six Cromwellian chairs, *odd*
- 417 A ditto arm chair
- 418 An oak joint stool
- 419 A Sheraton circular mirror, in stained frame, on turned pillar support, *concave plate 14 in. diam.*
- 420 An iron basket fire grate, and a pair of iron dogs
- 421 An iron hake, and a gipsy pot
- 422 A brass footman with wood handle, on iron support
- 423 A bordered Persian rug, 9 ft. 3 by 5 ft. 9
- 424 A ditto, 5 ft. 7 by 4 ft. 1, and a square cushion, in wool needlework
- 425 A pair of glass pictures, in colours—A German Print Merchant and A German Ballad Singer

### *Middle Gallery.*

- 426 An embossed iron fire back, a pair of iron dogs, a cross bar on arch supports, and a poker
- 427 AN OAK CHIMNEY PIECE, plain frieze and jambs, with elaborately carved overmantel, triple panels and 4 trusses, with figures supporting the cornice
- 428 The oak panelling of room, with reeded frieze and 10 carved pilasters
- 429 A 4 ft. 3 Jacobean carved oak cupboard, with 2 panelled doors and inlaid flutes
- 430 A WILLIAM AND MARY WALNUT CHINA CABINET, fitted 3 shelves and enclosed by a pair of glazed doors, on table stand, with 2 drawers, on square tapered legs and serpentine stretcher, *width 4 ft. 7, height 6 ft. 4*



- 431 *A Queen Anne walnut bureau bookcase*, upper part fitted shelves and pigeon-holes, folding glass doors, fall-front enclosing pigeon-holes, small drawers and well, and 2 short and 2 long drawers with brass drop handles below 3 ft. 4

*See Illustration.*

- 432 Another, with double arched cornice, a pair of bevelled glass doors with cut stars, fall-front with 4 drawers, cupboard and pigeon-holes, 2 short and 2 long drawers below, with brass drop knobs, 3 ft. 4
- 433 A WILLIAM AND MARY WALNUT SIDE TABLE, fitted long drawer, on 6 spiral legs and serpentine stretcher, 3 ft. 8
- 434 *A Queen Anne walnut side table*, banded border, long drawer, on cabriole legs with club feet, 2 ft. 6
- 435 *An oak refectory table*, inlaid frieze, on baluster legs and stretchers, 5 ft. by 2 ft. 4
- 436 An oak circular table, with fall-flap, on 3 bulk and 1 gate legs, stout square stretcher, 2 ft. 10
- 437 *A Charles II walnut oblong table*, on ball legs and stretchers, 26 in. by 20 in.
- 438 A JAMES II ARM CHAIR, high back, carved top, turned tapered pillars, cane-work panel and seat and carved front stretcher
- 439 Another, with baluster pillars and turned stretchers
- 450 A Charles beech-wood arm chair, scroll top, turned pillars, arms carved acanthus leaves, cane-work back and seat
- 451 A large walnut frame arm chair, high back with arched top and seat covered in floral pattern wool needlework, on tapered turned legs and serpentine stretcher
- 452 A walnut arm chair, with high square stuffed-over back and seat in red and green striped velvet, on shaped legs, with carved front stretcher
- 453 A SET OF 6 WILLIAM AND MARY CARVED WALNUT HIGH-BACK CHAIRS, with scroll and feather top, back and seat covered in Hungarian needlework, on square-shaped legs and stretcher

- 454 *A pair of Cromwellian chairs, seats and backs covered in floral-pattern wool needlework*
- 455 *An oak arm chair, with square carved panelled back, baluster legs and flat stretchers*
- 456 *A set of six James II oak frame chairs, with seats and backs covered in leather and brass nails, baluster legs and stretchers*
- 457 *A Wycombe arm chair, railed back with wheeled splat, cabriole legs and club feet*
- 458 *An oak stool, with 2 drawers, on turned splayed legs, 2 ft. 10*
- 459 *An oak box stool, with carved frieze, 20 in.*
- 460 *A walnut and marqueterie long-case clock, inlaid with flowers and birds, glass bull's-eye in door, brass dial, striking and calendar movement, by HENRY DEYKIN, Worcester*
- 461 *A Queen Anne mirror, in walnut frame, with marqueterie pediment, Vauxhall plate, in 2 parts, 40 in. by 15 in.*
- 462 *A wall mirror, Vauxhall plate, in waved ebony frame, 19 in. by 21 in.*
- 463 *A Dutch blue and white tiled panel—River Scene with sailing barge, in black frame*
- 464 *A Sheraton mahogany and satin-wood oval tea tray, 26 in. by 20 in.*
- 465 *A tortoiseshell tea caddy, with silver tablet engraved G. Lowe, lion mask and ring handles*
- 466 *A tortoiseshell writing desk, a round papier-maché snuff box with transfer of Queen Caroline, and a steel paper knife with enamel handle*

END OF THE SECOND DAY'S SALE.



# The East Anglian Galleries,

19, ORCHARD STREET, W.

MESSRS. KNIGHT, FRANK & RUTLEY'S

## CATALOGUE

OF THE

### Third Day's Sale.

On WEDNESDAY, 22nd SEPTEMBER, 1915,

AT ONE O'CLOCK PRECISELY.

#### Front Gallery.

LOT

20. 467

468

469

470

471

472

473

474

The carved oak panelling of room, with 2 sliding panels  
A mechanical spit movement, an embossed fire back, an  
iron hake, and a cauldron holder

A carved oak cabinet, with inscription on frieze and  
date 1579, pilasters at side with caryatide female  
figures, cupboard in 2 stages, enclosed by 4 doors,  
carved cherubs' heads, on bulbous supports and plat-  
form, 5 ft. 6 high, 3 ft. 5 wide

A Gothic cupboard, with sliding top, pierced door and  
side panels, 3 ft. wide

*See Illustration.*

A Jacobean oak dresser, with 2 deep drawers, applied  
bevels and spindles, on baluster legs, 4 ft.

A Jacobean spice cupboard, fitted with 7 small drawers,  
enclosed by inlaid panelled door, 2 ft. wide

An oak bench cupboard, with front enclosed by 2 panelled  
doors, 4 ft. 4

An oak coffer, with panelled front and sides, on ball  
feet, 3 ft. 8

30.

Merlot

marlin 20

21.

Sliding

25?

8c.

marshall

3 1/2

William

3

Shankis

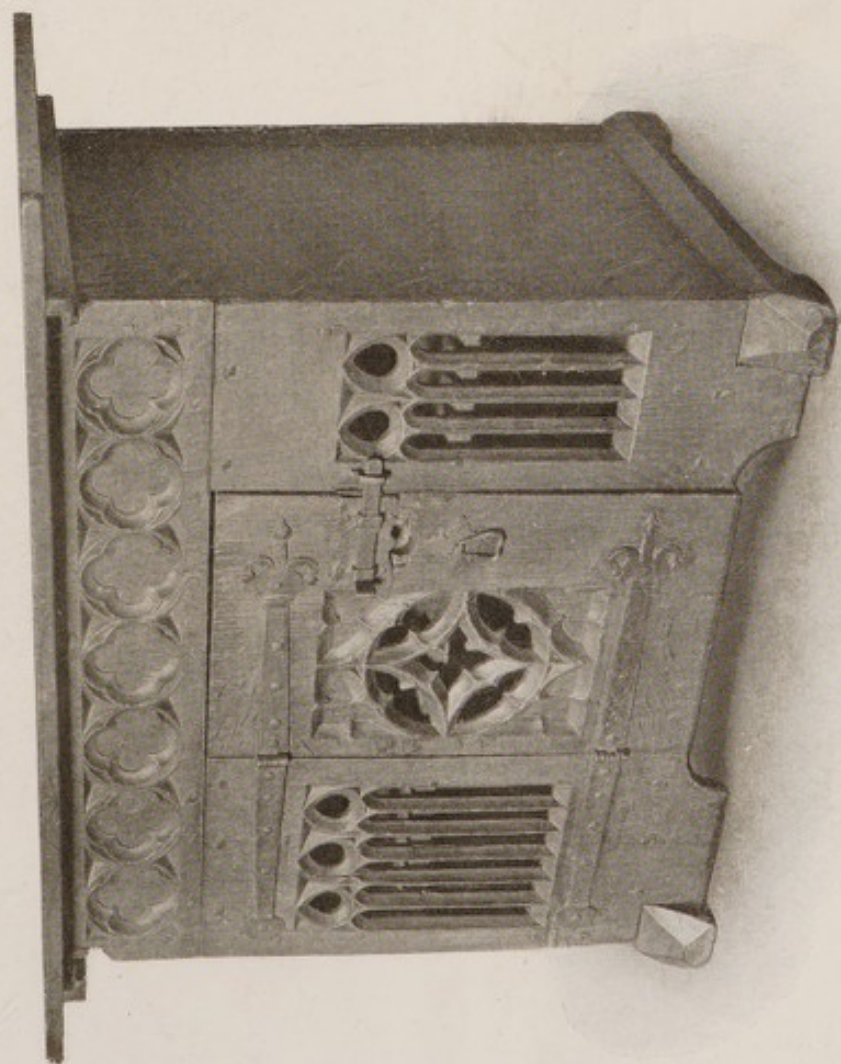
2

London



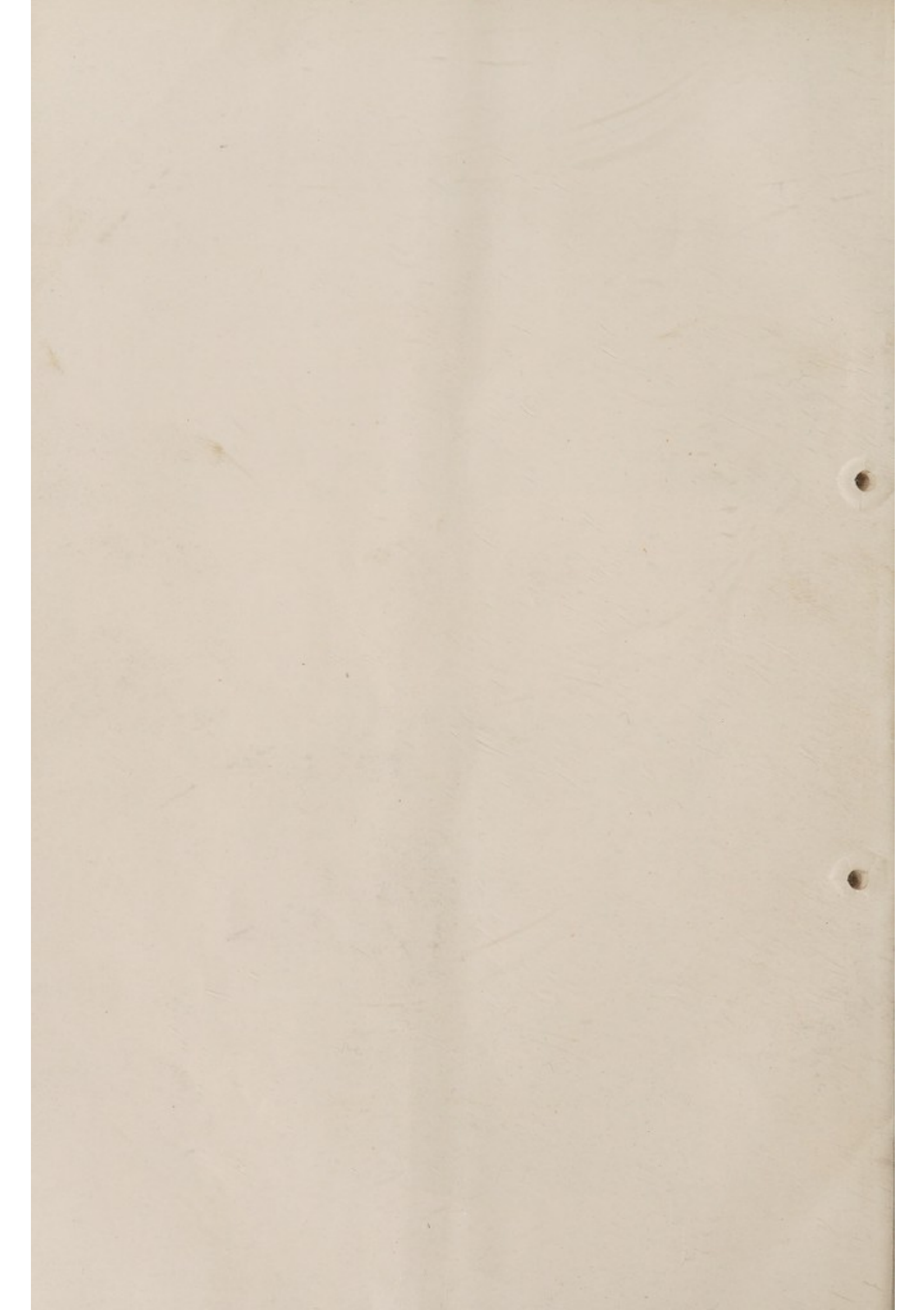


Lot 431.



Lot 470.





- 475 A heavy oak "Miserere" church seat 8 Gs
- 476 An oak draw table, the frieze with applied snake-wood panels, 4 ft. 8 by 2 ft. 8 10 Gs
- 477 An oak oval gate-leg table, on baluster legs and square stretchers, 3 ft. 1 3. Rook
- 478 A wheel-back Windsor arm chair, on cabriole legs and carved understretcher
- 479 A large Glastonbury chair, with turned pillars and triangular seat 10.
- 480 A smaller ditto 7.
- 481 A set of 6 Yorkshire chairs, with ball finials and arched splats, wood seats, on turned legs and stretchers 12/10 Page
- 482 An oak stool, on turned legs and square stretchers, 24 in. 3/6 Blake
- 483 An oak Prayer chair, with panelled back and Bible box seat 25/ Mess

## Lobby.

- 484 A Jacobean oak dresser, with applied bevels and spindles, fitted with 3 drawers, brass drop knobs, on baluster legs with end stretchers, 4 ft. 6 4 1/2 Gs Alexander
- 485 A ditto, 6 ft. 7 Gs Clifford
- 486 An oak oblong table, with inlaid frieze, on square carved tapered legs and square stretchers, 4 ft. 3 by 2 ft. 8 5 1/2 Gs -
- 487 An oak chair, with diamond and star panelled back 1 G.
- 488 Two oak joint stools 2 1/2 Gs Blake
- 489 A Yorkshire carved oak chair } 7 Gs Page
- 490 A ditto }
- 491 A pair of carved trusses, with figures of boys, 20 in., and a pair of ditto, carved acanthus and cherub's head 4 1/2 Gs Lady
- 492 A carved and painted wall bracket, with figures of twin boys 3 1/2 Gs Clifford
- 493 A needlework panel, with floral design, in mahogany frame, 21 in. by 17 in. 2 Gs
- 494 An oval mirror, in gilt frame, 24 in. by 18 in., and a Persian rug, 4 ft. 6 by 3 ft. 9



FIRST FLOOR.—*Front Room.*

- 495 A pierced steel fender, 3 *ft.* 10, and a set of Venetian fire implements, with brass figure handles
- 496 A pair of brass implement standards, and a pair of brass tongs
- 497 A pair of black lac fire bellows, with gilt Chinese decoration
- 498 A bordered Persian rug, 8 *ft.* by 4 *ft.* 9
- 499 A walnut bureau, with cupboard and panelled door, fall front, enclosing 3 small drawers and pigeon-holes, and 4 long drawers beneath, 25 *in.*
- 500 A Jacobean oak chest of 4 long drawers, with mitred moulding and applied spindles, on ball feet, 3 *ft.* 4
- 501 An oak oblong table with drawer, on plain bulb legs and stretchers, 3 *ft.* 11 by 2 *ft.*
- 502 A Sheraton mahogany Pembroke table, banded satin-wood, with holly inlay, on square tapered legs and castors, 27 *in.*
- 503 An oak side table with drawer, shaped frieze, on baluster legs and cross serpentine stretcher, 2 *ft.* 5 *49*
- 504 A Sheraton mahogany card table, banded satin-wood, with square folding top, on straight legs and pierced angle brackets, 2 *ft.* 11 *39*
- 505 A mahogany reading table, hinged top with carved moulding, on turned pillar and claws *34*
- 506 A mahogany circular coffee table, with sunk top, on turned pillar and claws, 20 *in.* *34*
- 507 A ditto, with inlaid string edge, 22 *in.* *25* *Moses*
- 508 An oak oval gate-leg table, on baluster legs and square stretchers, 2 *ft.* 8 *3/5* *Walter*
- 509 A stuffed-over high winged back arm chair, upholstered in wool needlework, on walnut turned legs and stretchers *10*
- 510 A Sheraton writing chair, with circular railed back, on square tapered legs and cross stretcher, and loose velvet cushion *65* *Walter*

- 511 A pair of Charles II walnut chairs, carved crown and scroll, with spiral frame, cane-work back and seat *45/ Brute*
- 512 A Queen Anne wall mirror, in walnut oyster shell frame and pierced scroll pediment, with 3 engraved medallions, 3 ft. 3 high, 2 ft. wide *23/ 2/ 1/2 Haver*
- 513 A wall mirror, in gilt bead frame with open border, 32 in. by 22 in. *3/ 2/ 1/2*
- 514 A pair of brass wall sconces, with branches for 2 lights } *9/ 2/ 1/2*
- 515 An Empire ormolu clock, in pedestal case, with draped female figure holding a wreath and sickle, on oblong plinth, 21 in., and a pair of Campana shaped vases, en suite, on square pedestals, 17 1/2 in. } *Collier*
- 516 Five Nankin blue and white dishes, and 2 circular ditto *5/ 2/ 1/2*
- 517 A bordered Persian rug, 7 ft. by 2 ft. 7 *9/ 10/ 1/2*
- 518 An Oriental bordered corridor rug, 15 ft. by 4 ft. *50/ 2/ 1/2 Gason*
- 519 A pair of red lacquer fire bellows, and a pair of small turned mahogany ditto *15/ 7/ 2/ 1/2*
- 520 A cast-iron fire-back, with a group of figures in relief, shaped top with dolphins and border of flowers, a pair of iron fire dogs, and a pair of tongs *21/ 2/ 1/2 Lee*

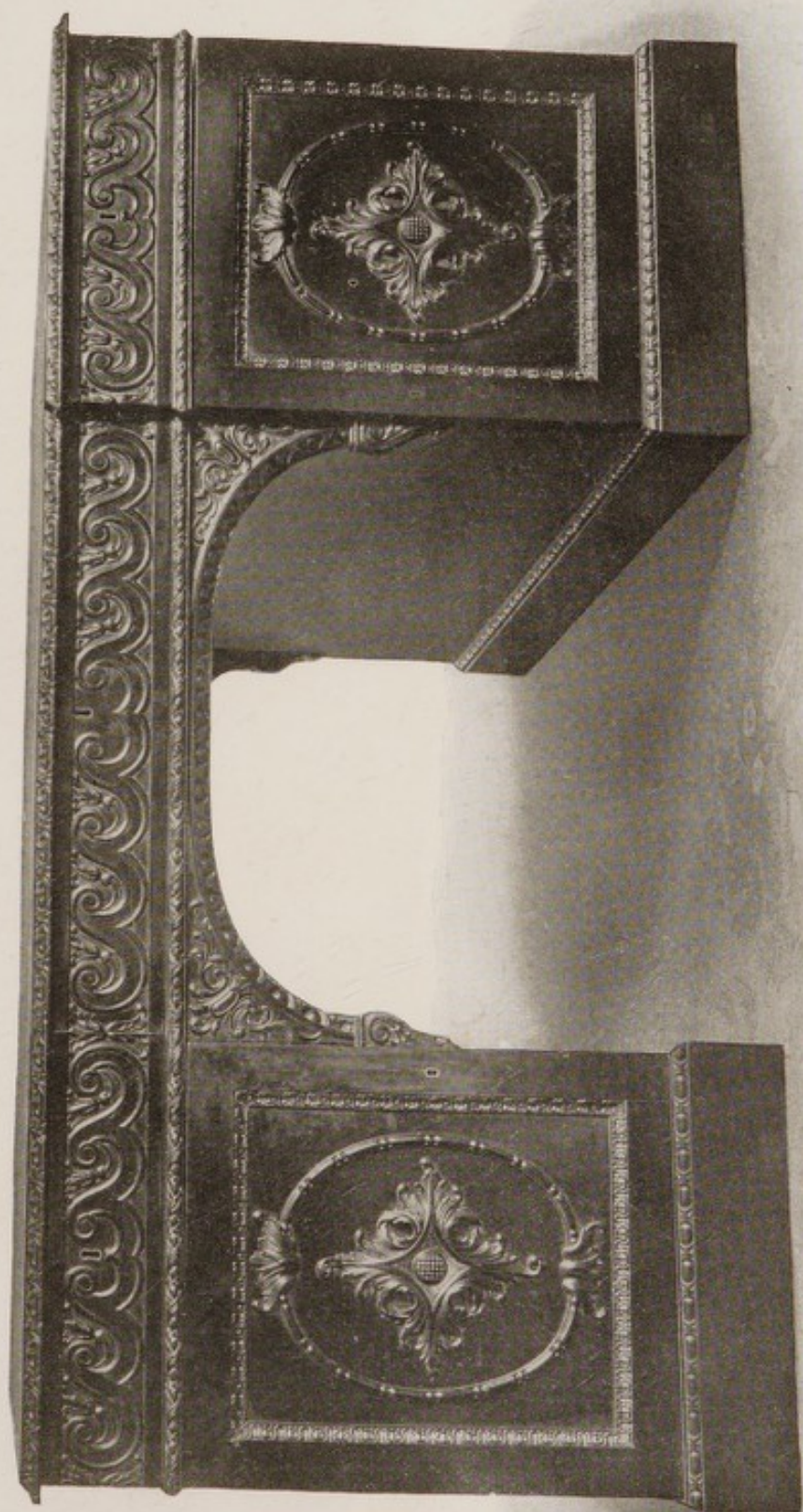
*Back Room.*

- 521 A 5 ft. 6 steel serpentine fender, 5 ft. 6, and an oval steel plate stand *10/ 2/ 1/2*
- 522 A pair of Italian bronze Chenets, composed of cupid figures standing on vases and tripod bases *10/ 2/ 1/2 Gason*
- 523 A bordered Oriental carpet, red ground and coloured figuring, 18 ft. 3 by 14 ft. 5 *4/ 2/ 1/2*
- 524 A bordered Persian rug, 6 ft. 3 by 3 ft. 7 *4/ 2/ 1/2 Gason*
- 525 A ditto, 4 ft. 9 by 4 ft. *4/ 2/ 1/2 Gason*
- 526 Three pairs of crimson figured silk damask window curtains and tasselled holders *3/ 2/ 1/2 Moss*
- 527 A Japanese embroidered silk panel, on roller *3/ 2/ 1/2 Gason*
- 528 A Sheraton mahogany tall corner china cupboard, with bow front, dentil cornice, banded satin-wood, the upper part fitted with 4 shaped shelves and 2 panelled doors under *13/ 2/ 1/2*



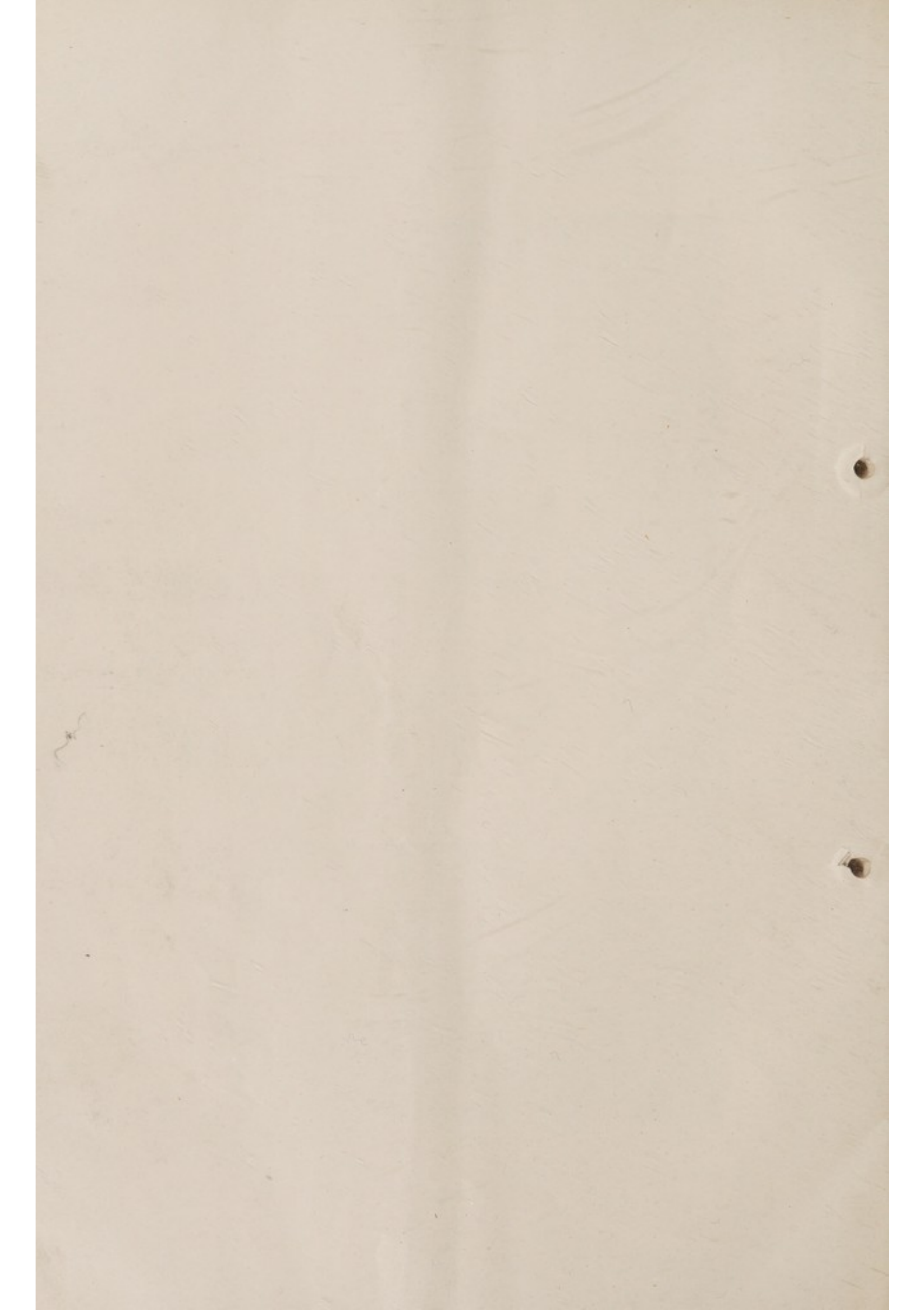
- 529 *A Chippendale mahogany bookcase, with sunk fret cornice, fitted with 4 shelves, enclosed by a pair of glazed doors, 11 1/2 £*  
on stand, with 2 long drawers, brass handles, 3 ft. 8 *Mason*
- 530 *A WILLIAM AND MARY WALNUT CHINA CUPBOARD, 12 £*  
with 3 shelves, enclosed by a pair of glazed doors, on *Mason*  
stand, with spiral legs and stretchers, 4 ft.
- 531 *A walnut bureau bookcase, with shaped cornice, 2 glazed 9 £*  
doors with marqueterie tops, fall front enclosing 9 *Mason*  
small drawers and cupboard beneath with marqueterie  
panelled doors, 3 ft. 3
- 532 *A William and Mary walnut chest of 3 long drawers, 5 £*  
with banded borders, brass handles and escutcheons, *Mason*  
on table stand, with turned tapered supports and  
shaped stretcher, 2 ft. 10
- 533 *A William and Mary walnut chest of 2 short and 3 long 10 £*  
drawers, with banded borders, brass drop handles and  
escutcheons, on stand, with long drawer, on spiral  
supports and shaped flat stretcher, 3 ft. 3
- 534 *A small Chippendale mahogany chest of 4 long drawers 7 1/2 £*  
and sliding tray, with carved acanthus moulding, chased *Mason*  
brass drop handles, 30 in. wide
- 535 *A Queen Anne walnut side table, fitted with 1 long 5 0/ £*  
and 2 short drawers, on cabriole legs with club feet, *Bailey*  
2 ft. 6
- 536 *A Queen Anne walnut side table, with shaped and 5 1/2 £*  
pierced frieze, with 3 drawers, on square tapered legs *Mason*  
and brass castors, 2 ft. 7
- 537 *A Chippendale mahogany 2-flap dining table, with 2 4 1/2 £*  
small drawers, on double-gate legs, 5 ft. by 4 ft.
- 538 *A mahogany tea table, with circular shaped sunk top 3 1/2 £*  
with pie-crust moulding, on turned pillar and carved *Mason*  
claws, 2 ft. 8
- 539 *A similar table, slightly smaller 3 1/2 £* *Davis*
- 540 *A mahogany circular coffee table, on turned pillar and 2 4/ £*  
claws, 17 in.
- 541 *A ditto, 20 in. 2 1/ £* *Mason*





Lot 543.





542 A walnut oblong table, with long drawer, on carved cabriole legs, 27 in.

543 A CHIPPENDALE CARVED MAHOGANY KNEE-HOLE PEDESTAL WRITING TABLE, top lined with green cloth, acanthus moulding, scroll frieze fitted with 3 drawers on either side, pedestals fitted with 6 drawers and 2 cupboards, with 4 panelled doors, large chased brass drop handles at ends, 5 ft. 4 by 3 ft. 9

*See Illustration.*

544 A Chippendale mahogany oblong table, on spider legs and stretchers, 2 ft. 4

545 A Chippendale mahogany tea table, with sunk top with scalloped border, on turned pillar and carved acanthus claws, 2 ft. 7

546 A Hepplewhite mahogany side table, with carved frieze and square tapered legs, 5 ft.

547 A Sheraton mahogany sideboard, with bow-shape front, serpentine frieze with drawer in centre and cellarette drawers at end, on 6 square tapered legs, 4 ft. 6

548 A Chippendale mahogany settee, with high serpentine stuffed-over back, seat and arm pads in crimson figured silk, on carved square legs and plain stretchers, 5 ft.

549 A Queen Anne stuffed-over settee, with high winged back and scroll arms upholstered in wool needlework of floral design, on carved walnut cabriole legs, 4 ft.

550 A set of 6 James II walnut frame chairs, with tall shaped back and seats in leather and brass nails, on baluster legs and stretchers

551 A Chippendale mahogany elbow chair, with carved interlaced scroll back, on straight square legs and stretchers, loose seat in crimson silk damask

552 A Chippendale large mahogany elbow chair, with plain interlaced back, on square legs, seat upholstered in crimson damask

112 Lg

32 Lg  
Maso

2/15

4 Lg  
Vergennes

12 Lg Merlo

7 Lg  
Vergennes

6 Lg

20 Lg  
Hesters

14 Lg

4 Lg

5 1/2 Lg  
Merlo



- 553 A Chippendale chair, in the Chinese taste, on square fret legs and stretchers 10 20

*See Illustration.*

- 554 A pair of Queen Anne walnut elbow chairs, with high backs, and vase-shaped splats, on cabriole legs and curved stretcher, loose seats in wool needlework 18 90

- 555 A Chippendale oblong stool, with sunk fret frame, square legs and cross stretcher, seat in wool needlework 9 90

*See Illustration.*

- 556 A Chippendale mahogany wall bracket of Chinese design, with pagoda pediment, 3 shelves and 2 drawers 7 90

- 557 A mahogany pole fire screen, with needlework panel of basket of flowers 2 90

- 558 A mahogany candlestand, on turned pillar and carved claws, and a mahogany trivet 5 90

- 559 A Charles II mirror, in oyster-shell walnut frame, with carved pediment, royal coat-of-arms, 38 in. by 27 in. 10 90

- 560 A circular convex mirror, in carved gilt frame and eagle surmount 1 1/2 90

- 561 A wall mirror, in carved and gilt open scroll frame, surmounted by basket of fruit, 38 in. by 22 in. 3 90

- 562 A clock, in Sheraton mahogany pedestal case, inlaid steel, 15 in. high 1 90

- 563 A pair of bronze male and female classical figures, on verde antique bases, 15 1/2 in. 6 90

- 564 An ebonized box inkstand with hinged lid and drawer, and a tortoiseshell tea caddy 10 90

## SECOND FLOOR—Front Room.

- 565 A Jacobean carved oak chimney-piece, the overmantel with 4 inlaid panels and applied bevels and spindles, fluted columns at sides 9 1/2 90

- 566 An iron basket grate, a pair of fire dogs, and 2 cast equestrian figures of Napoleon 12 90

- 567 A bordered Persian rug, 6 ft. by 3 ft. 2 3 90

- 568 A ditto, 5 ft. by 3 ft. 10 3 1/2 90



Lot 358.



Lot 316.



Lot 662.

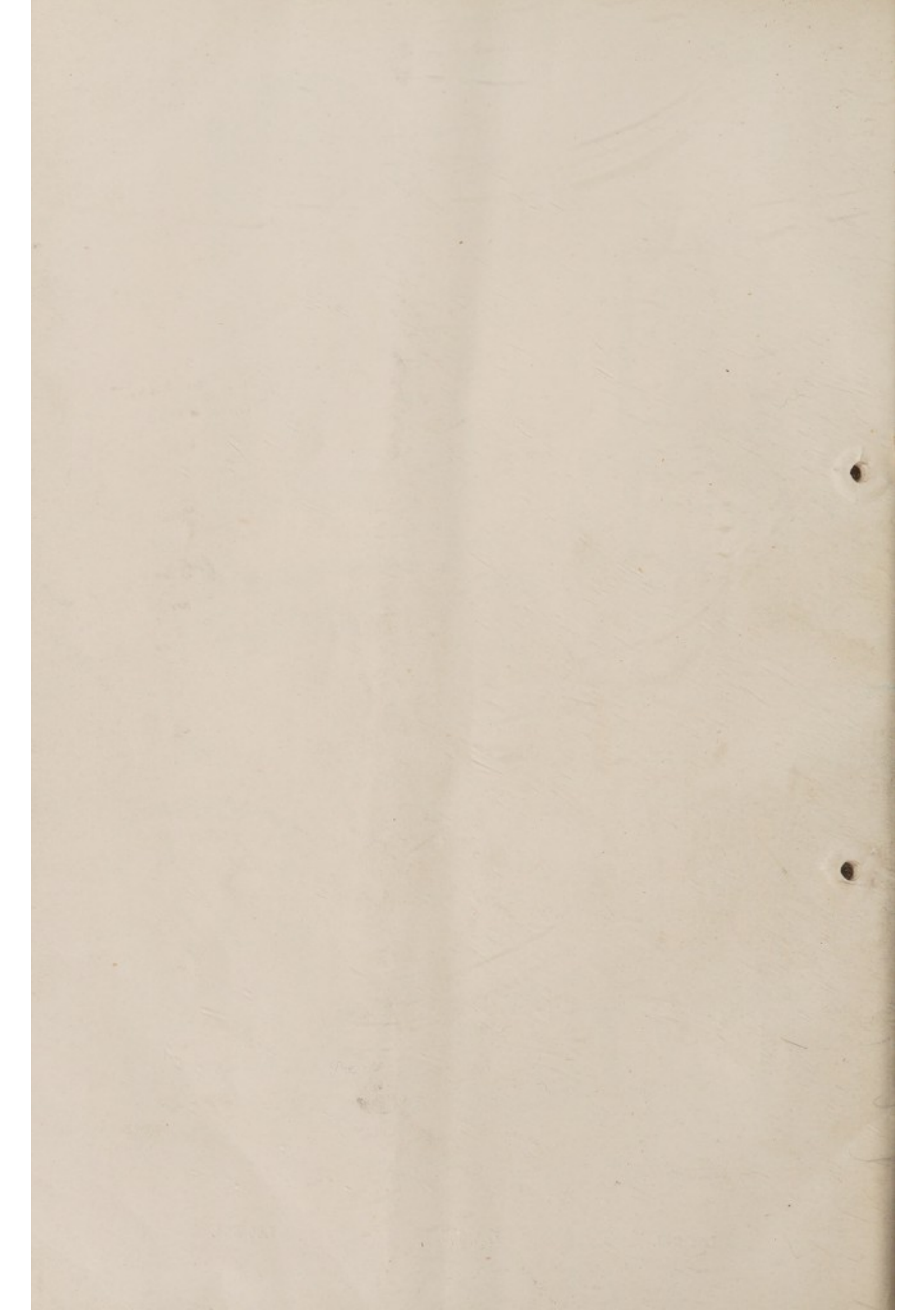


Lot 555.



Lot 553.





- 569 A green felt carpet, about 24 yds., and a brass 3-light  
electrolier and glass shades
- 570 A pair of armour-bright 2-light wall sconces
- 571 An early Jacobean inlaid cabinet, with long drawer in  
centre and cupboards above and beneath, with panelled  
doors, 3 ft.
- 572 AN OAK DRESSER, with 3 drawers, applied bevels and  
spindles, brass drop knobs, on baluster supports and  
long front stretcher, 6 ft.
- 573 Another, 5 ft. 2
- 574 A walnut chest of 4 long drawers, inlaid satin lines  
(without handles), 3 ft. 1
- 575 A monk's bench, with baluster rail back and arms, and  
folding top
- 576 An oak oval gate-leg table, spiral supports and square  
stretchers, 4 ft. 6 by 3 ft. 8
- 577 A smaller ditto, on baluster supports, 3 ft. by 2 ft. 6
- 578 A Chippendale mahogany card table, folding top with  
candle corners, on tapered legs, with club feet, 2 ft. 9
- 579 An oak circular table, on triangular frame, with 3  
baluster legs and stretchers, 28 in.
- 580 A square-back chair, with open arms, on spiral frame,  
upholstered in leather and brass nails
- 581 A Wycombe cedar elbow chair, arched trellis back, on  
cabriole legs, with club feet and curved stretcher
- 582 A ditto, with stick back, on cabriole legs and curved  
stretcher
- 583 A smaller ditto, with pierced splat and turned medal-  
lion, on straight turned legs
- 584 A ditto, with high back and vase-shape splat, on cabriole  
legs, with club feet
- 585 A carved oak joint stool
- 586 A Charles II wall mirror, in boldly carved gilt frame,  
with figures of cherubs, 28 in. by 23 in.
- 587 An oval mirror, in black and gilt frame, 18 in. by 14 in.,  
and a mahogany circular tea tray, with brass handles,  
19 in.

Pass

11 Gs

8 Gs Morris

7 1/2 Gs Morris

3 1/2 Gs

7 Gs

3 1/2 Gs. Mellor

4 1/2 Gs

5 1/2 Gs Inslaw

3 Gs Morris

4 1/2 Gs

2.

3 1/2 Gs Warren

3 Gs Pur

2 1/2 Gs



- 588 An Empire clock, in ormolu pedestal case, with a winged figure of Hope, 19 in. high *4 Co Mark*
- 589 A brass table gong and beater, 7 blue and white tea cups, a Stafford jug, canary ground painted red flowers, and a white ware retriever dog *12/*

*Left Back Room.*

- 590 An iron grate, with serpentine front and brass ball standards, a set of spiral steel implements with brass handles, and a wood fender kerb *51 Co Sinclair*
- 591 THE JACOBEOAN OAK PANELLING, with diamond-shaped bevels (excluding door) *80 ft addition 5 Co*
- 592 A diamond-pattern tapestry rug, 10 ft. by 5 ft. 9 *45/ Dargy*
- 593 A bordered Persian rug, 7 ft. by 3 ft. 8 *2/5 Co*
- 594 A Jacobean oak bedstead, the head and footboards with inlaid panels, 5 ft. *6/2 Co Linton*
- 595 A Jacobean oak chest of 5 long drawers, with applied bevels and spindles and brass pendant knobs, on ball feet, 3 ft. 4 *6*
- 596 A carved oak coffer, with drawer at base, iron drop handles at sides, 2 ft. 10 *3 1/2 Co Sinclair*
- 597 A monk's oak bench, folding top, open arms, on baluster supports, 4 ft. 8 *4 Co Miller*
- 598 An oak oblong table, with carved frieze, on baluster legs and square stretcher bars, 4 ft. 9 by 2 ft. 6 *2 1/2 Co Camp*
- 599 A ditto, 3 ft. by 2 ft. 4 *1 1/2 Co*
- 600 A small oak gate-leg table, 2 ft. 11 by 2 ft. 3 *3 Co Walker*
- 601 A walnut oblong table, inlaid geometrical lines, with long drawer, on spiral legs and serpentine stretcher, 3 ft. *4 Co*
- 602 A William and Mary walnut side table, shaped frieze, with long drawer, on inverted cup legs and serpentine stretcher, 2 ft. 7 *3 1/2 Co*
- 603 A round oak table, on triangular frame and 3 baluster legs and stretchers, 28 in. *58/ Mark*

- 604 A pair of Norfolk elbow chairs, fan-shaped railed backs, on turned legs
- 605 A black ball-frame elbow chair, open railed back and cane seat
- 606 An x-frame chair, stuffed-over back and arms upholstered in green silk
- 607 A ~~walnut oblong footstool, spiral frame, cane top, 20 in., and a small cushion, in Petit-Point needlework~~
- 608 A Sheraton mahogany shield-shape toilet glass, on serpentine plateau, with 3 drawers
- 609 A convex mirror, in painted frame, and a copper coal scuttle
- 610 A pair of gilt medallions of York Minster, in papier maché frame, and an engraved drinking horn with silver rim

*Right Back Room.*

- 611 A bordered Oriental carpet, 9 ft. 2 by 5 ft. 6
- 612 A Tudor oak bedstead, with carved and panelled headboard and fluted foot pillars, 4 ft.
- 613 A Jacobean oak chest of 4 long drawers, with brass pendant knobs
- 614 An oak wardrobe, with carved panelled doors, 3 ft. 6
- 615 A walnut oblong table, on spiral legs and stretchers, 3 ft. 4
- 616 A William and Mary walnut side table, inlaid banded border, shaped frieze with 3 drawers, on inverted cup legs and serpentine stretcher, 2 ft. 4
- 617 A Sheraton mahogany corner washstand, with tray top and drawer and shaped stretcher, 22 in.
- 618 A Chippendale mahogany wig table
- 619 A small oval Sheraton swing mirror, and a silver lustre resist jug, 4 in.



- 620 A pair of Charles II chairs, with spiral frames, cane backs and seats *1 1/2 G*
- 621 A pair of ditto *6. 7 Dishes*
- 622 An embroidered bed-spread, 2 linen ditto, and a blue and white toilet service, 7 pieces *2 1/2 Dishes*

TOP FLOOR.—*Left Front Room.*

- 623 A white enamelled wardrobe, with silvered glass door and long drawer, 3 ft. 6 *2 1/2*
- 624 A spindle back chair, with rush seat, and a Persian rug, 4 ft. by 2 ft. 10 *1 1/2*

*Right Front Room.*

- 625 A wall mirror in gilt frame, with deep cornice and 3 carved shells, 31 in. by 15 in. *2 1/2*
- 626 A ditto, in carved gilt frame, 28 in. by 23 in. *2 1/2*
- 627 A mahogany chest of 2 long deep drawers, with brass drop handles, 3 ft. *3 1/2*
- 628 A mahogany bedside pedestal, with tray top, tambour door and night commode *2 1/2*
- 629 A set of 6 Chippendale chairs, stuffed-over backs and seats upholstered in crimson silk damask, on carved square mahogany legs and stretchers *10 G*
- 630 A pierced brass fender, on lion paw feet, 3 ft. 3 *Pass*

*Back Room.*

- 631 An oak oval gate-leg table, with drawer, on turned legs, 3 ft. 7 by 4 ft. 4 *2 1/2*
- 632 A stuffed-over Grandfather chair, in crimson taffeta, on square mahogany legs and brass castors *4 1/2*
- 633 A carved walnut chair, with open arms, high square back and seat in green figured silk *4 1/2*
- 634 A Cromwellian arm chair, in crimson stamped velvet *2 1/2*

635 A stuffed-over settee, with shaped back and scroll arms  
in red twill, 6 ft. 6

636 Two Norfolk elbow chairs, with square railed backs, on  
turned legs

637 A Wycombe arm chair, with comb top back, on cabriole  
legs and club feet

### Staircase and Landings.

638 Three tapestry panels, in wood frames

639 A bordered Persian rug, 5 ft. by 3 ft. 2

640 An oak dole cupboard, carved panelled door with pear-  
wood spindles, 2 ft. 6

641 A Jacobean oak dresser, fitted with 3 drawers, applied  
bevels and spindle and long under rail, 7 ft.

642 An oak hanging cupboard with panelled door, 2 ft. 6

643 An Italian chair, with carved satyr and boy finials, seat  
and back in brown leather and brass studs

644 A wall mirror, in carved gilt frame, with shell and scroll  
pediment, 45 in. by 23 in.

645 The bordered Brussels carpet, as laid to landing and  
stairs, about 22 yds.

646 A circular convex mirror, in gilt frame

647 A Queen Anne walnut dresser, with inlaid banded  
border, fitted 3 drawers with brass drop handles, on  
cabriole legs with club feet, 6 ft.

648 A mahogany oblong coffee table, on turned pillar and  
claws, 20 in.

649 A Sheraton mahogany long-case clock, inlaid with satin  
lines, brass dial with lunar and chiming movement on  
8 bells

650 A pair of ormolu candelabra, with lily branches, on  
painted porcelain pedestals

651 A Fulham brown ware jug, with figures and hunting  
scene in relief, silver rim and base

10 G. Taylor  
9 1/2 Mrs. Lee  
1 1/2



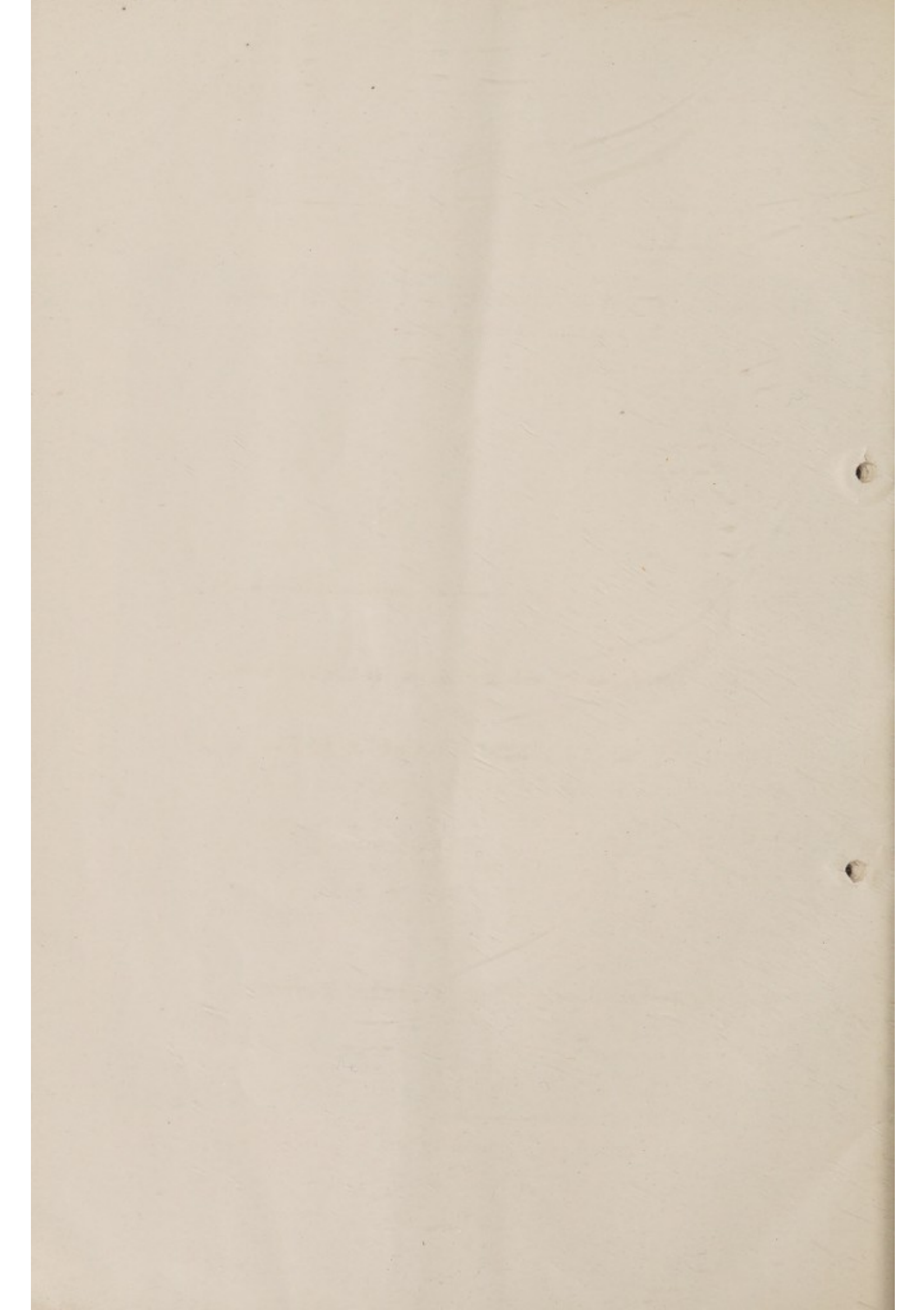
- 652 An Imari plate, 10 in., and a ditto, 11 in.
- 653 The Axminster carpet, as laid to stairs, *about* 11 yds., and 18 brass stair rods
- 654 An oak coffer, with panelled top and sides and linen fold front, 5 ft. 9
- 655 A circular oak gate-leg table, with mahogany top, fitted with 2 drawers, 4 ft.
- 656 An oak Bible box, with carved front, 2 ft.
- 657 An oak dresser with 2 drawers, on baluster legs, 4 ft. 5
- 658 A walnut circular table, on balled folding legs, 3 ft.
- 659 An Astley Cooper chair, with spindle back and cane seat, and a Queen Anne chair with cane seat
- 660 A wall mirror, in carved gilt frame with slip border, 23 in. by 20 in.
- 661 A PANEL OF FLEMISH TAPESTRY—Forest Scene with buildings, stream and birds in a border of flowers, 102 in. by 114 in.  
*See Illustration.*
- 661A A LARGE PANEL OF FLEMISH TAPESTRY, with life-size figures depicting an Eastern tribe offering presents to a king who is seated on a daïs under a canopy, landscape in distance, in a wide border of flowers, female figures, etc., 130 in. by 128 in. (*probable date 1620*)
- 662 A set of 6 Chippendale mahogany chairs, with interlaced backs, carved in ribbons and acanthus foliage, on plain cabriole legs with club feet, loose seats in crimson silk  
*See Illustration.*
- 663 A carved oak pedestal sideboard, panelled front with canted ends, 4 ft. 4
- 664 A set of 3 oak cottage chairs, with sunk seats
- 665 An oak draw table, on carved bulbous legs and flat foot bars, inlaid frieze, *width* 2 ft. 9 *opening to* 7 ft. 10





Lot 661.





- 666 A Cambridgeshire oak dresser, with 3 drawers and cupboards beneath with 2 doors, 5 ft. 3
- 667 A Jacobean oak wardrobe, the cornice with carved frieze, enclosed by a pair of doors with mitred bevelled panels
- 668 A pair of Charles children's chairs, in carved walnut, with scroll and cane panelled backs, on spiral legs
- 669 An oak over-dresser, with shelves and cupboards
- 670 A ditto

FINIS.

---

**MESSRS. KNIGHT, FRANK & RUTLEY'S**  
**SALE ROOMS,**  
**20, HANOVER SQUARE,**

ARE OPEN DAILY FOR THE RECEIPT OF

JEWELS, FAMILY PLATE, FURNITURE, COINS, MEDALS, MINIATURES, PICTURES, PRINTS, ETCHINGS, DRAWINGS, LIBRARIES, CHINA, BRONZES, MUSICAL INSTRUMENTS, OLD LACE, FURS, STATUARY, AUTOGRAPHS, STAMPS, GUNS, CIGARS, WINES, AND OTHER VALUABLES INTENDED FOR  
 EARLY PUBLIC SALE.

**Valuations for Estate Duty and Other Purposes.**

*Messrs. Knight, Frank & Rutley undertake the management of Agricultural Estates, Collection of Town and Country Rents and Tithes. Also Tenant Right Settlements, Umpirage and Arbitration.*

*Timber Sales, Reports and Valuations in all parts of the Kingdom.*



No. 19, ORCHARD STREET,  
OXFORD STREET, W.

---

## THE LEASE

of the above will be Offered for Sale by Auction, by Messrs.  
KNIGHT, FRANK & RUTLEY, immediately preceding the Sale  
of the Contents.

*The Premises are situated a few doors from OXFORD STREET, and  
quite close to Selfridge's important block of buildings.*

The Building has been reconstructed by the present Vendor, and  
is specially adapted for the requirements of the

### ANTIQUE FURNITURE BUSINESS.

An opportunity here offers to acquire an attractive house of moderate  
size suitable for

*Art Dealers, Tea Rooms, Court Dressmakers, Tailors,*

or any concern where a choice West End Location is desired.

*The Principal Show Rooms are panelled in Oak.*

The Premises comprise :

On the GROUND FLOOR,—THREE FINE SPECIMEN ROOMS,  
The Back Show Room being top-lighted and panelled in oak ;  
the Front Show Room has panelled wainscoting, and a chim-  
ney-piece and overmantel of the Tudor period. THREE  
GOOD SHOW ROOMS in the BASEMENT, walls panelled  
throughout in Jacobean and Danish styles.

On the THREE UPPER FLOORS,—EIGHT ROOMS (four of which  
are used as Show Rooms), BATH ROOM, etc.

*Held on Lease from VISCOUNT PORTMAN, for a Term having about  
Fifteen Years unexpired, subject to the Yearly Rent of £180.*

---

*Vacant Possession will be Given on Completion of the Purchase.*

---

Illustrated Particulars will be forwarded on application.

*Auctioneers' Offices—20, Hanover Square, W.*

Date \_\_\_\_\_





76	2.10.0
242	5.10.0
250	1.15.0
334	1.7.6
448	1.15.0
449	8.8.0
480	3.13.6
581	3.0.0
582	2.2.0
584	2.10.0

---

£ 32 11.0

Carl	10.0.0
Chen	22.11.0
	<hr/> 32.11.0



