

Sales catalogues: Knight, Frank & Rutley

Publication/Creation

23rd- 25th May 1911

Persistent URL

<https://wellcomecollection.org/works/yut9ypvp>

License and attribution

This work has been identified as being free of known restrictions under copyright law, including all related and neighbouring rights and is being made available under the Creative Commons, Public Domain Mark.

You can copy, modify, distribute and perform the work, even for commercial purposes, without asking permission.



Wellcome Collection
183 Euston Road
London NW1 2BE UK
T +44 (0)20 7611 8722
E library@wellcomecollection.org
<https://wellcomecollection.org>

WAHMM/CN/501/12/30



20, HANOVER SQUARE.



A
CATALOGUE

OF

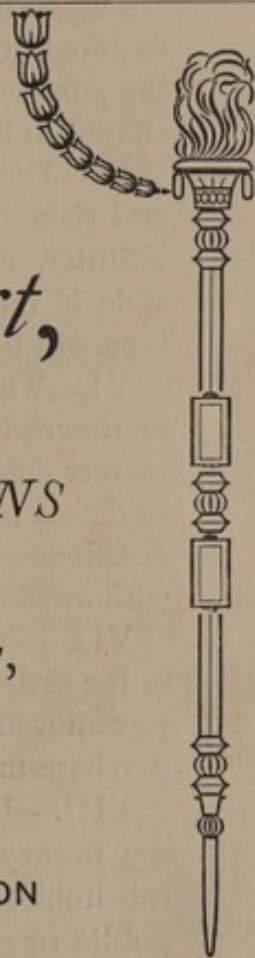
Works of Art,

FORMED BY THE

Rev. JOHN O. STEPHENS

OF

All Saints', Tooting Graveney,
SURREY.



WHICH WILL BE SOLD BY AUCTION

By Messrs.

KNIGHT, FRANK & RUTLEY,

At their Rooms,

ON TUESDAY, WEDNESDAY & THURSDAY, MAY 23, 24 & 25, 1911,

AT ONE O'CLOCK PRECISELY EACH DAY.

On View Saturday and Monday prior, from 10 to 5 o'clock.
Illustrated Catalogues (sixpence each) may be had of the
Auctioneers, at their Offices:

20, Hanover Square, London, W.

TELEPHONE—GERRARD 1942 (3 LINES).

TELEGRAMS: GALLERIES. LONDON.

Conditions of Sale.

I.—The highest bidder to be the purchaser, and if any dispute arise between two or more bidders, the lot in dispute shall immediately be put up again and re-sold.

II.—No person to advance less than one shilling, above Five Pounds 2s. 6d., and so on in proportion.

III.—In the case of lots upon which there is a reserve the auctioneer shall have the right to bid on behalf of the vendor.

IV.—The purchaser to give in name and address, and if required, to pay down 5s. in the £. or more, in part payment of the purchase-money; in default of which the lot or lots so purchased to be immediately put up again and resold.

V.—The lots to be taken away at the purchaser's expense and risk the day after the sale, in default of which Messrs. KNIGHT, FRANK & RUTLEY will not hold themselves responsible if the lots be lost, stolen, damaged or destroyed; but they will be left at the sole risk of the purchaser.

VI.—The lots are sold with all faults, imperfections and errors of description, the Auctioneers not being responsible for the correct description, genuineness, or authenticity of, or any fault or defect in any lot; and making no warranty whatever. The Auctioneers reserve the right of refusing any bidding, or of withdrawing any lot or lots from the sale.

VII.—To prevent inaccuracy in delivery, and inconvenience in the settlement of the purchases, no lot can on any account be removed during the time of sale; and the remainder of the purchase-money must absolutely be paid on the delivery.

VIII.—Upon failure of complying with the above conditions, the money deposited in part payment shall be forfeited; all lots uncleared within the time aforesaid shall be re-sold by public or private sale, and the deficiency (if any) attending such re-sale, together with warehouse and other charges, shall be made good by the defaulter at this sale.

Gentlemen who cannot attend the sale may have their commissions faithfully executed by their obedient Servants,

KNIGHT, FRANK & RUTLEY.

NOTE.—All Lots uncleared, by either Vendors or Purchasers, after a period of three days from day of sale, will be subject to a Warehouse Charge of One Shilling each Lot per Week or portion thereof.

GOODS are received and delivered at the Rear Entrance in DERING YARD (between 67 and 68, New Bond Street) from 9.30 to 11.30 a.m. and 4.30 to 6 p.m.

The Collection of the Rev. JOHN O. STEPHENS.

A CATALOGUE

OF

MESSRS. KNIGHT, FRANK & RUTLEY'S

FIRST DAY'S SALE.

On TUESDAY, the 23rd of MAY, 1911,

AT ONE O'CLOCK PRECISELY.

Oriental Blue and White Porcelain.

LOT

- 1 Five saucers, centres decorated in conventional ornament, borders of lotus flowers, etc.
- 2 Five deep blue and white plates with foliage centre, floral borders and band of diaper ornament, with sacred jewel symbols in panels, $6\frac{1}{2}$ in. diam.
- 3 A ditto deep plate, with basket of flowers in centre, flower border, diaper ornament, lotus in panels, one other similar, and one with waved edge, $6\frac{1}{2}$ in. diam.
- 4 Two $8\frac{3}{4}$ in. plates, with conventional flower and foliage centres, and borders of scroll ornament interspersed with sacred symbols, a 9 in. ditto, the centre painted vase of flowers, a ditto with vase of prunus blossom and utensils, and 2 others
- 5 Twelve 9 in. plates, the centres painted pæonies and flowering branches, with various diaper and trellis borders
- 6 Four plates, with floral centres and sprays of flowers on borders, and 2 plates, with view of rocky river scene, temple and trees, with double diaper pattern border

- 7 Seven 9 in. plates, with pæony and other flower centres, with various borders of diaper and conventional ornament
- 8 Five 9 in. plates, with centres painted man, trees, flowers, etc.
- 9 Four 9 in. blue and white plates, the centres with floral emblems of longevity, in leaf-shaped panels, surrounded by pæony sprays
- 10 Six $8\frac{1}{2}$ in. plates, the centres painted flowering prunus tree, bamboos and rocks, sprays of prunus blossom on border and diaper ornament
- 11 Five 9 in. plates, with palm tree and lotus flower centres, and narrow trellis border, and three $9\frac{1}{4}$ in. ditto, with borders of trellis and conventional ornament
- 12 Eight 9 in. plates, the centres painted rocky river scenes, with boats, trees and buildings, shaped borders of floral and diaper ornament
- 13 Six 9 in. plates, the centres painted rocks, pæonies and bamboos on a scroll, sprays of pæony flowers and narrow diaper borders, and 2 similar, with branches of willow and prunus blossom
- 14 Nine 9 in. plates, with flowering prunus tree and pæonies in the centres and sprays of pæonies on the borders
- 15 A 20 in. oblong octagonal-shaped dish, with view of temple and trees on the rocky banks of a river, trellis ornament, and a pair of $15\frac{1}{2}$ in. oval-shaped dishes, with river scene, temples and trees
- 17 Two 14 in. oblong octagonal-shaped dishes, with views of rocky river scenes
- 18 A pair of $14\frac{1}{2}$ in. oval-shaped dishes, an $11\frac{3}{4}$ in. ditto, and two $14\frac{1}{4}$ in. octagonal-shaped ditto, centres painted peacocks and pæonies in a landscape
- 19 A 15 in. oblong octagonal-shaped dish, a $16\frac{1}{2}$ in. ditto, with rocky river scene, figures, temples and pagodas

- 20 A Nankin beaker, decorated with trees, rocks and birds,
17 in. high
- 21 A pair of old Nankin blue and white plates, 9 in. diam.
- 22 An old Nankin blue and white circular-shaped tureen and
cover, decorated with birds and pæonies and diaper
borders, hare's head handles, 9 in. diam.
- 23 A pair of old Chinese porcelain vases and covers, with lizard
handles in high relief, painted river scenes, buildings
and trees in medallions, the covers surmounted with
kylins, 12 $\frac{1}{4}$ in. high
- 23A A pair of old Chinese blue and white plates, 9 in. diam.

Coloured Oriental Porcelain.

- 24 An old Chinese teapot and cover, decorated in panels with
flowers in red and green, with blue line borders and
silver spout
- 25 A pair of famille-verte 2-handled cups and stands, deco-
rated with flowers, water-fowl, scrolls and foliage, in
enamel colours. *K'ang-hsi*
- 26 A pair of old Chinese rice bowls and covers, decorated
sprays of flowers in coral with leaf handles, 5 in. diam.
Kien-lung
- 28 An old Chinese tureen, cover and stand, decorated with
sprays of flowers in enamelled colours, gold scroll
borders
- 29 An old Chinese turquoise crackle porcelain bottle, 5 $\frac{1}{4}$ in.
high
- 30 An oblong quatre-foil-shaped bowl of old Chinese porce-
lain, enamelled pale green inside, the exterior decorated
birds, flowers, emblems of longevity, in enamel colours,
and borders of scroll ornament
- 31 A pair of *Kanghi* plates, with famille-verte decoration, of
emblems of longevity and borders of flying storks, 8 $\frac{3}{4}$ in.
diam.

- 32 Three famille-rose fluted cups and saucers, encrusted with sprays of flowers and foliage in colours
- 33 A pair of Ming figures of *kylins* on pedestals, decorated in green, yellow and aubergine, 8 in. high
- 34 A Ming figure of a parrot, decorated in green and aubergine, 4 in. high
- 35 A Kien-lung figure of a Chinese Fakir, decorated in enamel colours, $9\frac{1}{2}$ in. high
- 36 A Kien-lung figure of a Chinese Fakir (similar), $8\frac{1}{2}$ in. high
- 37 An old Chinese figure of a stork on a tree trunk, 7 in. high
- 38 A Chinese turquoise crackle vase, 9 in. high
- 39 A ditto gourd-shaped bottle, $5\frac{3}{4}$ in. high
- 40 A ditto square-shaped vase, with relief handles
- 41 An old Chinese turquoise porcelain gourd-shaped bottle, with scroll handles, $7\frac{1}{4}$ in. high
- 42 A PAIR OF CHINESE GROUPS—Lady and Gentleman, the Lady depicted standing, and wearing black, blue and white chequered garment, gentleman kneeling and wearing green coat with circular medallions of pæonies in colours on pale blue ground, *Kien-lung*, $8\frac{1}{2}$ in. high
- 43 Four famille rose plates, decorated pæonies and other flowers in colours, on white ground, *Yung Ching*, 9 in. diam.
- 43A Two ditto, with similar decoration, 9 in. diam.
- 44 Five famille rose plates, with shaped edge, decorated with pæonies in rose pink and scrolls, in over-glaze blue, 9 in. diam.
- 45 Two famille rose bowls, decorated pæonies and persimmon fruit, with scroll and diaper borders, 9 in. diam.
- 46 A famille rose vase, of octagonal form, decorated with pæonies on the body and neck, a deep scroll outlined border on the shoulder, painted flower sprays, on rose-pink ground with diaper border, $11\frac{3}{4}$ in. high

- 47 A Chinese porcelain mug, decorated with flowers and diaper border, intercepted with shaped panels of flowers, *Kien Lung*
- 48 A Chinese Koro, of turquoise crackle porcelain, on tripod, with pierced cover surmounted by figure of a kylin, scroll-shaped handles, $7\frac{1}{2}$ in. high, 17th century; from the Bohn collection
- 49 A pair of Chinese hexagonal plates, decorated with trees, birds and flowers, in green and rouge-de-fer, with borders of pæonies and foliage, on spotted ground, *Kang-hsi*, $9\frac{1}{2}$ in. diam.
- 50 A PAIR OF FAMILLE VERTE CIRCULAR DISHES, the centres decorated with peacocks, pæonies and chrysanthemums, border of prunus blossom, lotus flowers and foliage, $8\frac{1}{2}$ in. diam.
- 51 A famille verte circular dish, decorated with vase of flowers in centre and border of butterflies on green ground, *Kang-hsi*, 9 in. diam.
- 52 A FAMILLE VERTE DISH, decorated figure subjects, borders of diaper ornament, interrupted with shaped panels of symbolic emblems, *Khang-hsi*, 15 in. diam.
- 53 A pair of famille verte circular dishes, decorated with equestrian figures of warriors, trees and rocks, *Khang-hsi*, $10\frac{3}{4}$ in. diam.
- 54 A pair of famille verte sexagonal gourd-shaped vases, decorated in rocks, trees and buildings, with sacred utensils and flowers in panels, the borders of scroll and foliage ornament, $12\frac{1}{2}$ in. high, *Khang-hsi*
- 55 A Japanese Imari dish, decorated with chrysanthemums and pæonies, 11 in. diam.
- 56 An old Japanese *Hizen* dish, the centre painted with basket of pæonies in red, blue and gold, on white ground, foliage in gold, 23 in. diam.
- 57 A pair of old Japanese *Hizen* porcelain beaker-shaped vases, decorated with pæonies and foliage in blue and red, on white ground, $8\frac{1}{4}$ in. high

Chinese White Glazed Porcelain.

- 58 *A pair of Fu-Chien figures of kylins, on oblong pedestals, 13 in. high*
- 59 *A white glazed porcelain figure of Kwan-Yin, seated on rocky base with infant on her lap, two figures in attitude of adoration on either side at base*
- 60 *A pair of old Chinese white glazed figures of lions, with brocaded ball, on oblong pedestals, 13½ in. high*
- 61 *A Chinese Fu-chien white glazed porcelain figure of Kwan-Yin, perched on rock base with figure of infant on her lap, 17 in. high*
- 62 *An old Chinese white glazed porcelain figure of Kwan-Yin perched on a rock pedestal, with attributes and seated figure of infant on her lap, 2 figures at base, 15 in. high*
- 63 *An old Chinese glazed white crackle porcelain figure of the goddess Kwan-yin, on stand, 17½ in. high*
- 64 *A white porcelain figure of Kwan-yin, 10½ in. high*

European Faience.

- 65 *An old green glazed earthenware jug, with raised medallion ornament, 16th century*
- 66 *An ancient Anatolian dish, with shaped edge, decorated with archaic foliage in black, on a turquoise blue ground, 6¼ in. diam., in carved and gilt wood frame*
- 67 *A Rhodian dish, with conventional design of tulips and carnations in blue, green and red, on white ground, the border of foliage ornament, 11½ in. diam.*
- 68 *A Rhodian dish, with conventional design of flowers, foliage and other ornament, in blue and green, outlined with black and heightened with spots of purple on white ground, 10¼ in. diam.*

69

An old Italian faience bottle, decorated with equestrian figure of St. Martin giving alms to a beggar, in yellow, blue and green, with a foliated scroll border in blue, on opaque white enamel ground, $10\frac{1}{4}$ in. diam., 17th century

71

A pair of Italian faience blue and white pharmacy jars and covers, with inscriptions in black

72

A pair of Italian faience pharmacy jars, decorated with male and female heads in oval medallions, on foliage and scroll ground, in blue, yellow and green enamel colours, $9\frac{1}{4}$ in. high

73

A pair of ditto, with decorations in blue and yellow and inscriptions in black

74

A pair of Rouen faience jardinières, decorated with figures in panels with surround of flowers and fruit in polychrome

75

An old Nove faience écuelle, cover and stand, decorated with flowers and fruit in polychrome, the cover surmounted by a pear

76

A pair of old Ginori faience vases, with pierced trellis sides, scroll handles and sprays of fruit and foliage in high relief, $13\frac{1}{2}$ in. high

77

AN OLD NOVE FAIENCE DINNER SERVICE, the centre of each piece painted with groups of fruit and borders of flowers, in polychrome, on white enamelled ground, with shaped edges and chocolate borders, comprising a soup tureen, cover and stand, a 16 in. oval shaped dish, four 13 in. ditto, four 11 in. ditto, ten $9\frac{1}{2}$ in. ditto, three $11\frac{1}{2}$ in. circular ditto, two 9 in. ditto, 2 sauce boats and stands, and twenty-eight $9\frac{1}{4}$ in. plates

78

Ten Rouen faience soup plates, painted in polychrome in the Chinese style, with pæonies and other flowers in centre, floral sprays on border, 9 in. diam.

79

A 16th Century English jar of red earthenware, painted with birds and flowers in polychrome, slightly heightened with gold, on a pale green ground, painted wood cover, $18\frac{1}{2}$ in. high

257-

35/-

357-

47/6

35/-

W L

35/-

- 80 A PAIR OF ANCIENT SARACENIC WATER JUGS with long necks, composed of a reddish earthenware and decorated with applied crescent and star, enriched with small circular bosses of the same clay, entirely covered with a yellow and green mottled enamel glazing, 20 in. high

* * The somewhat crude handles have at the base of each a strip of clay laid crosswise with 3 small studs at the ends, a feature of ancient leather vessels, to give additional strength when carrying, and it was, no doubt, one of the vessels that formed the model for these interesting examples of the art of the potter of mediæval times

- 81 An old Italian Faience bottle, decorated with foliage and flowers in polychrome, surrounding a band with design of double-headed eagle, displayed, foliage scrolls above, and border of foliated scroll below with inscription: "A.D. ARTEMISIA" in blue on white ground, 9 in. high

- 82 A pair of old Italian faience pharmacy jars, with polychrome decoration of flowers and foliage, inscriptions in black on white ground, with borders and lines of blue, 9 in. high

- 83 A pair of old Italian pharmacy jars and covers, with decoration of flowers, foliage and coat-of-arms under the spout, inscription and borders in blue on white enamelled ground, 10 in. high

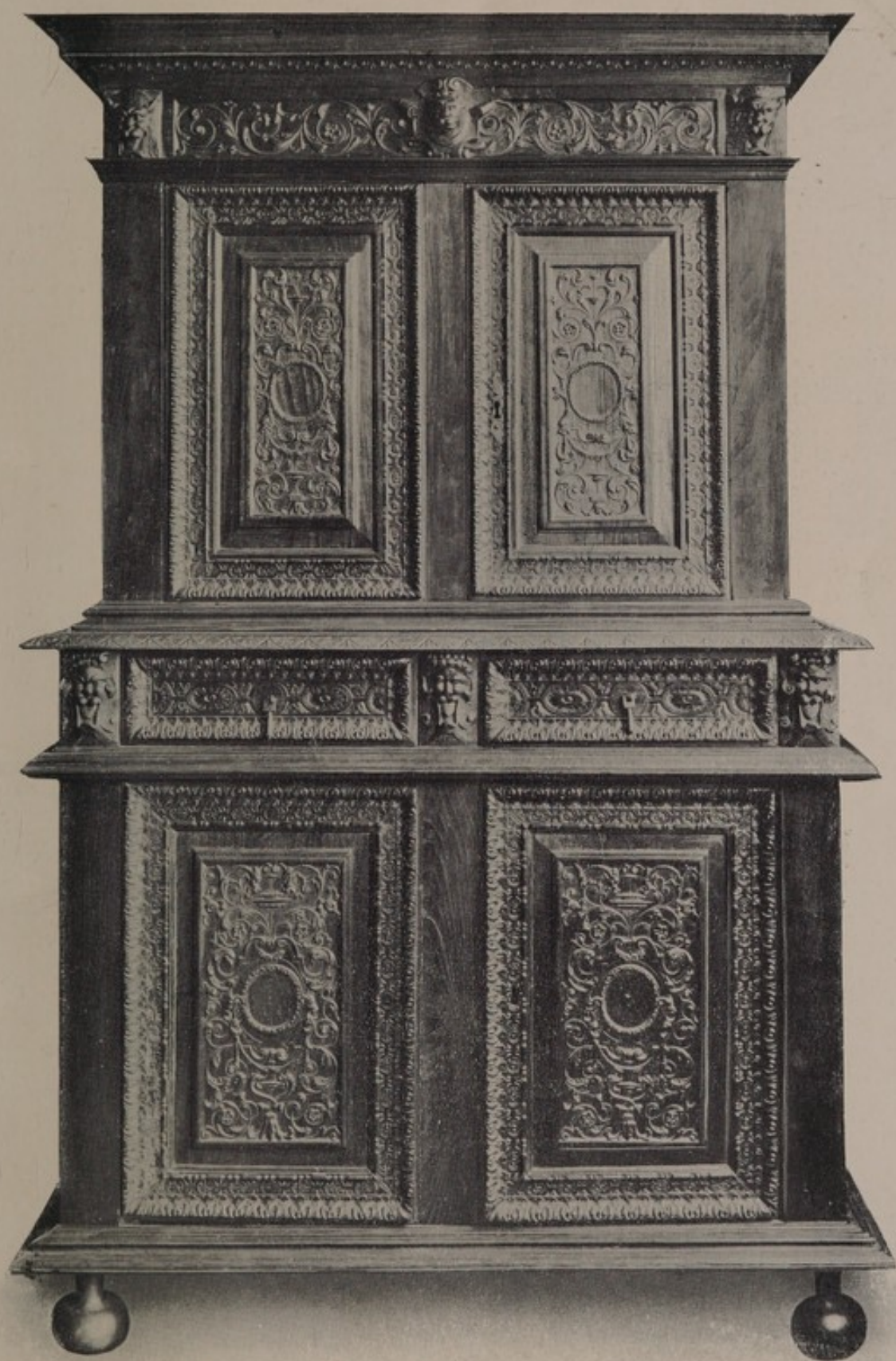
- 84 AN OLD ITALIAN MAJOLICA JAR of globular form, decorated in polychrome with figures in circular medallions, with surround of flowers and scrolls on blue ground, 9½ in. high, carved and gilt wood cover and stand

- 86 A pair of Italian faience plates, decorated with flowers and foliage in polychrome on white ground, 11 in. diam.

- 87 A pair of old Italian faience bottles of globular form, decorated in polychrome with seated figures of cupids playing musical instruments, 11 in. high

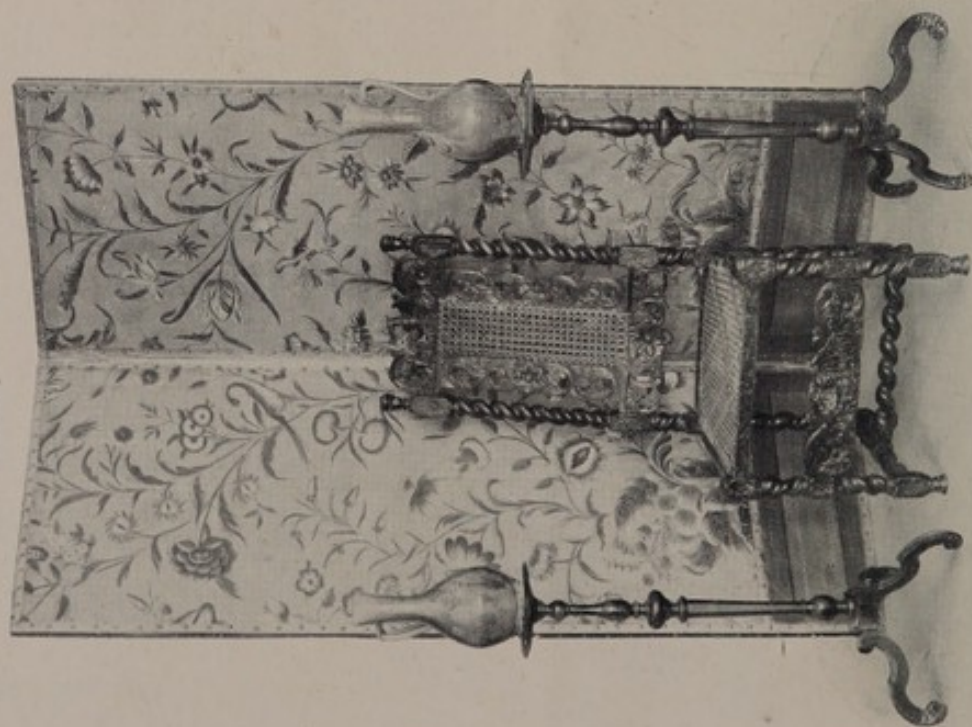
- 88 An old pharmacy jar of Italian faience, decorated in polychrome with figure of a Saint in oval medallion, with surround of fruit, scrolls and foliage ornament, 11 in. high

Please deliver to bearer my
two lots under obligation
J. H. West



Lot 303.

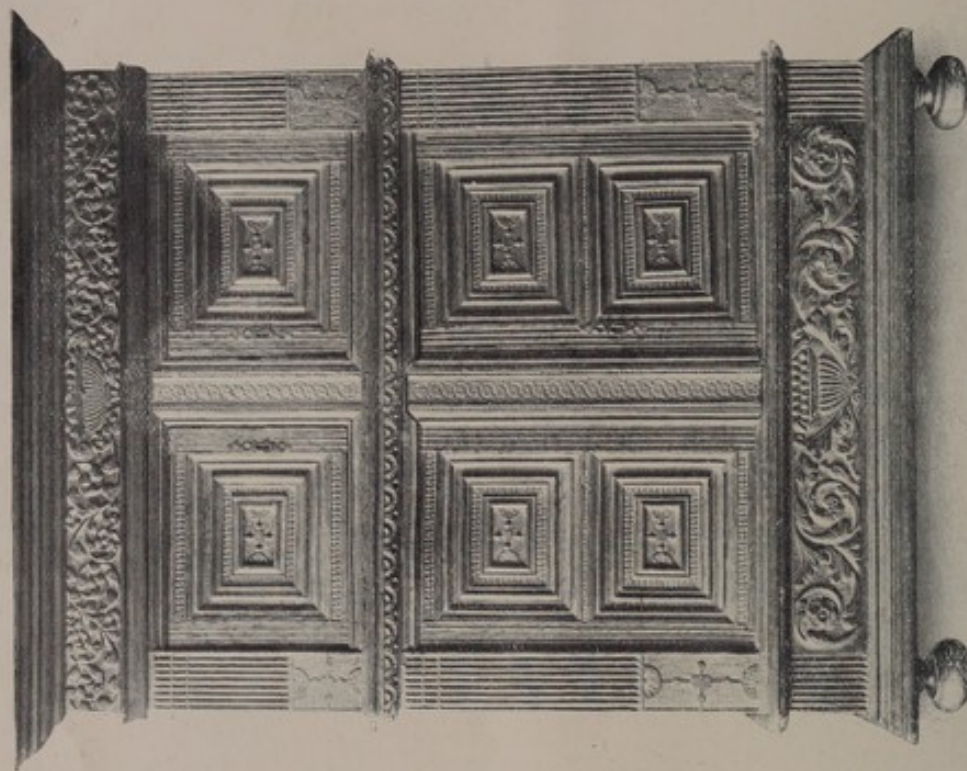
Screen, lot 402A.



Lot 312.

Lot 451.

Lot 312.



Lot 382.

- 89 A pair of Italian majolica pharmacy jars, decorated with heads of warriors in oval medallions and conventional flower and scroll ornament in polychrome, $9\frac{1}{2}$ in. high
- 90 A pair of globular-shaped bottles of old Italian faience, decorated with festoons of flowers suspended by ribbon knots in polychrome, and borders of scroll ornament in yellow on white ground, 10 in. high
- 91 A globular-shaped 2-handled jar of old Italian faience, decorated with conventional flower ornament in blue, heightened with yellow, on white ground, $10\frac{1}{4}$ in. high
- 92 An old Dutch Delft jar, decorated with inscription and border of scroll and diaper ornament in blue on white ground, $12\frac{1}{2}$ in. high, brass cover

37/6

70/-

32
3.8.80

5.10.0

European Porcelain & Pottery.

- 93 A Dresden china figure of an eagle perched on a rock base with foliage in relief, painted in colours, 20 in. high
- 94 Seventeen cups, 13 coffee cups and 22 saucers of old Venetian porcelain, painted sprays of flowers
- 95 A white-glazed figure of a bird on tree stump, white-glazed figure of a greyhound seated, and a small Capo di Monte figure of a boy
- 96 Two white-glazed Frankenthal figures of an Actor and Musician, 5 in. and $5\frac{3}{4}$ in. high
- 97 A pair of old French biscuit porcelain figures of boy musicians, on scroll bases, $3\frac{1}{4}$ in. high
- 98 An Amstel teapot and cover, decorated festoons of flowers in crimson, with ribbons and borders in gold
- 99 Two Ludwigsburg custard cups and covers, decorated cornflower sprays and blue lines
- 100 A Longton Hall plate, with shaped fluted edge, decorated in centre with figure in Chinese taste, 7 in. diam.

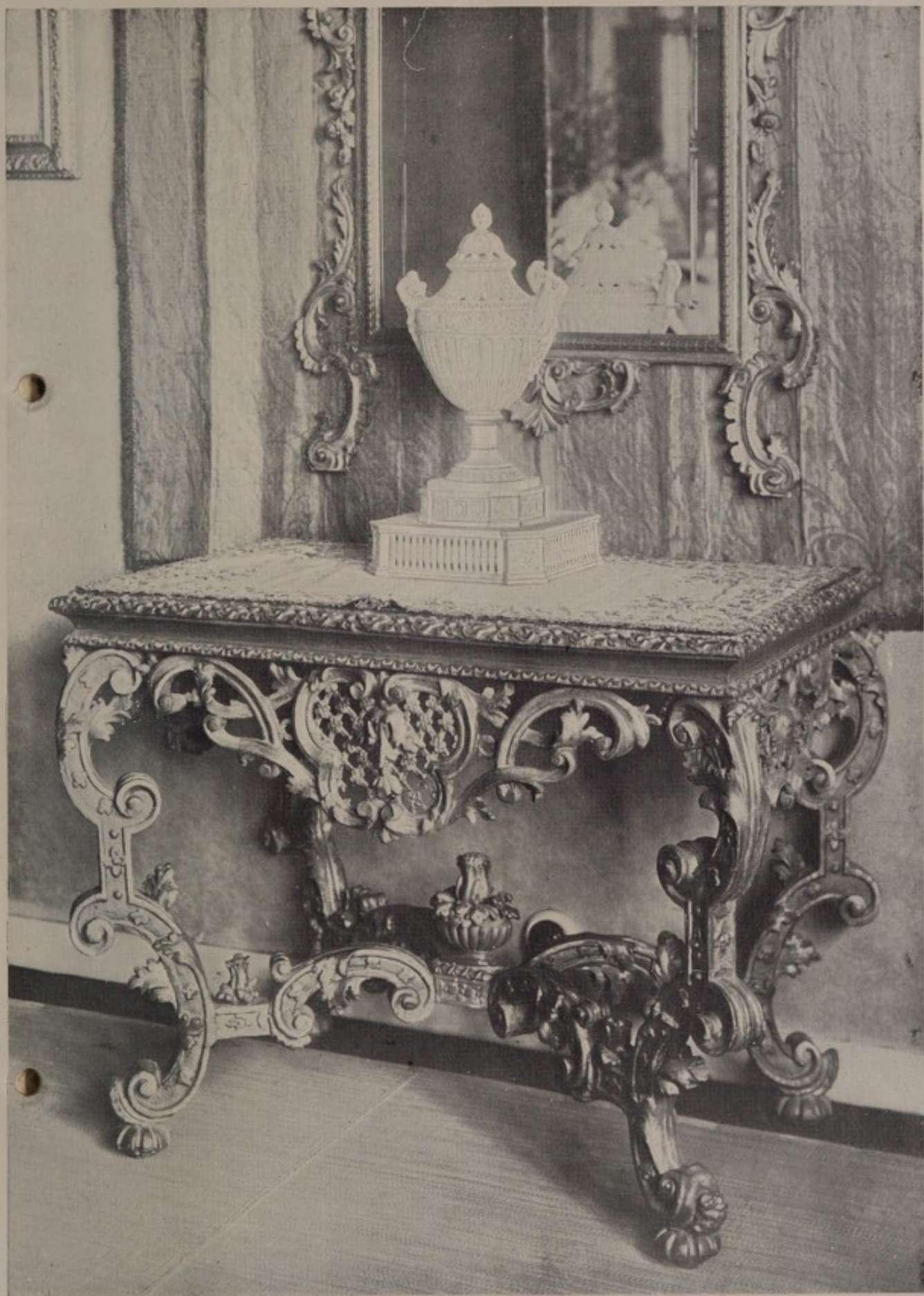
- 101 *An old Leeds cream ware vase*, urn-shaped fluted body, with terminal female figure handles, pierced top with raised acanthus foliage decoration, on square base and circular plinth, decorated with grotesque masks and Greek key border in relief, 21 in. high
- 102 An old Staffordshire pottery group of "Abraham and Isaac," a pair of ditto—Figures of a Man and Woman, "Old Ages," and a pair of Walton figures of a Boy with basket of cakes, and Girl with basket of fruit
- 103 A. NEALE & Co.—Figure of a Man playing a hurdy-gurdy, on square base
- 103A An old Leeds cream ware bottle stand, with draped female figure in centre, supporting a pierced openwork basket, and one with obelisk in centre, decorated with sprays of flowers in blue
- 104 An old Staffordshire pottery group—"Bull-baiting"
- 105 An old painted Staffordshire tea service, scroll borders of pale green, and other ornament, consisting of 12 tea cups and saucers, 2 bread and butter plates, and a basin
- 106 *An Old English china part tea and coffee service*, with gold foliage and gold lined borders, comprising 4 tea cups, 10 coffee cups, 7 saucers, and 2 plates
- 107 A Spode china tea and coffee service, with broad pink bands and gold scroll and foliage borders, comprising sugar bowl and cover, cream jug, basin, 2 bread and butter plates, 6 coffee cups, 9 tea cups, 12 saucers, and 12 cake plates

Old Embroideries and other Textiles.

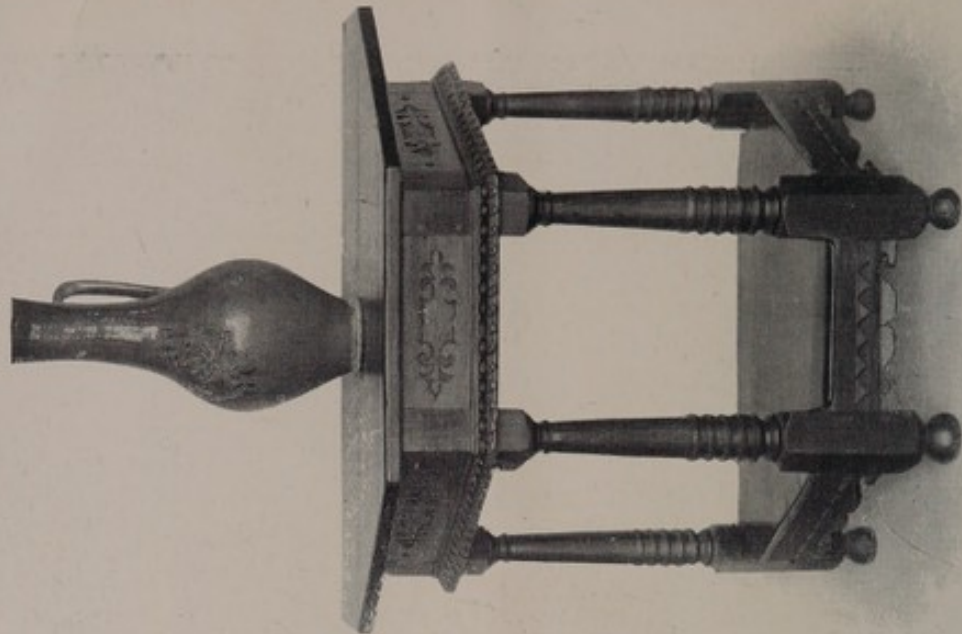
- 108 A 16th Century Italian small circular medallion of embroidery—"The Assumption of the Virgin," executed in coloured silks, the faces tinted with colour, the halo, rays and outlines worked in gold thread, in old Venetian carved and gilt wood frame

- 109. A 16th Century coverlet of Italian brocatelle, with fine connected floral and arabesque scroll design in a silver grey thread on a soft blue ground, 100 *in.* by 53 *in.*
- 110 A narrow strip of 16th Century Italian embroidery, with design of fruit, flowers, ribbons and scrolls, 84 *in.* by 11 *in.*, bordered on the bottom edge with old silk fringe
- 111 A ditto, 13 *in.* by 96 *in.*
- 112 A PANEL OF 16TH CENTURY ITALIAN BROCATELLE, with full design of foliage and scrolls in crimson on an old gold ground, 80 *in.* by 46 *in.*, with border on 3 sides of 2½ *in.* old gold fringe, rare example
- 113 Two shaped panels of 16th Century green velvet, with embroidered centre design and border
- 114 TWO 16TH CENTURY ORPHREYS, each with a full-length figure of a Saint with nimbus and attributes depicted standing under arches, the outer borders of gold galloon of interlaced fret design
- 115 Nine panels of 16th Century Genoese velvet, in raised pile on lighter ground, 23 *in.* by 42 *in.*, rare
- 116 A panel of old white Italian silk brocatelle, with conventional foliage design in crimson, 86 *in.* by 60 *in.*
- 117 A panel of old white Italian silk, each corner embroidered with flowers and foliage in colours, and scrolls in gold thread, with metal lace borders
- 118 A panel of 16th Century Venetian silk brocatelle, 60 *in.* by 75 *in.*
- 119 A panel of 16th Century Italian embroidery, depicting a full-length figure of St. Peter with nimbus and attributes, in coloured silks, 16½ *in.* by 7½ *in.*, in carved and gilt wood frame, with heraldic shield at base
- 120 Two panels of 18th century Italian embroidery, on silk with pilgrim shell centre, with escallop border of gold threads, 18½ *in.* by 28 *in.*

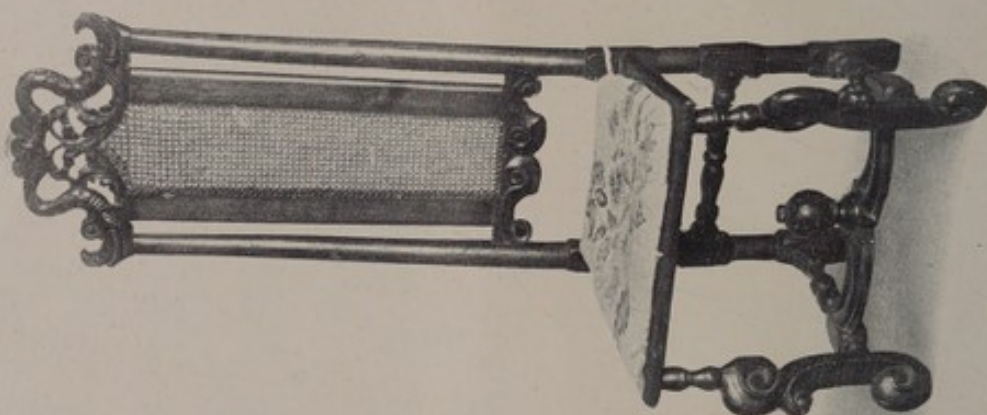
- 121 A pair of 17th Century crimson brocatelle curtains, 8 *yds.*
- 122 An early 18th Century English quilted coverlet, embroidered with scrolls and foliage in shades of green, crimson and old gold, 54 *in.* by 52 *in.*
- 123 A panel, 34 *in.* by 21 *in.*, of 17th Century Italian cream coloured silk damask, appliqué embroidered centre with crest, crowned lion rampant and floral scroll mantling, a ditto strip, 92 *in.* by 21 *in.*, bordered with old silver lace, and some fragments of plain silk and damask
- 124 An old Italian green silk damask coverlet, 60 *in.* by 86 *in.*, bordered with green silk fringe
- 125 An 18th Century Italian antependium of white silk, embroidered in gold threads, a circular centre medallion with I. H. S. and cross
- 126 A strip of 17th Century Italian silk brocade, with running design of scroll foliage in old gold and coloured thread, 54 *in.* by 21 *in.*
- 127 Twelve yards of 17th Century Italian crimson silk damask
- 128 A strip of early 17th Century Italian embroidery, with a cardinal's arms in centre cartouche, from which is a flowing scroll of flowers and foliage, 84 *in.* long, 6 *in.* wide
- 129 A panel of 17th Century Italian silk, with border of embroidery in scrolls and foliage, lace border, 42 *in.* by 22 *in.*
- 130 A panel of 17th Century Italian embroidery, with a gold foliated scroll design in shades of green and yellow silk threads on a white Roman-satin ground, 52 *in.* by 52 *in.*
- 131 A coverlet of 17th Century Italian silk brocatelle, with foliage in old gold on rose pink, 56 *in.* by 38 *in.*
- 132 A panel of 17th Century Italian brocade, with flower sprays in silver grey on a pale blue ground, 60 *in.* by 28 *in.*



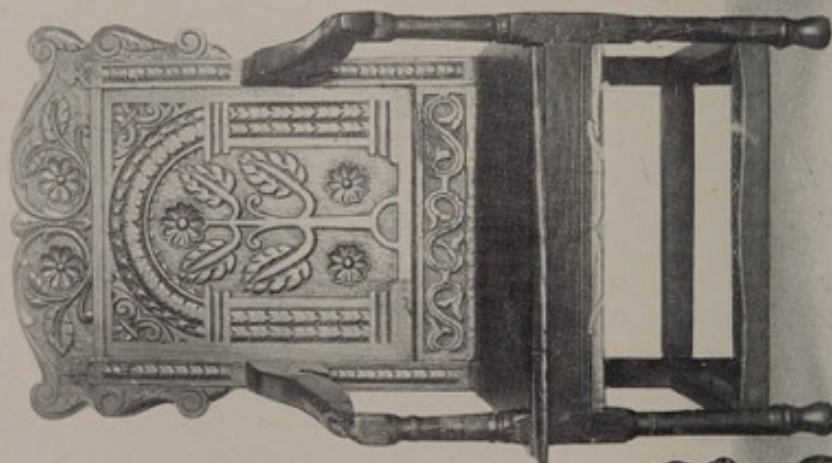
Lot 349



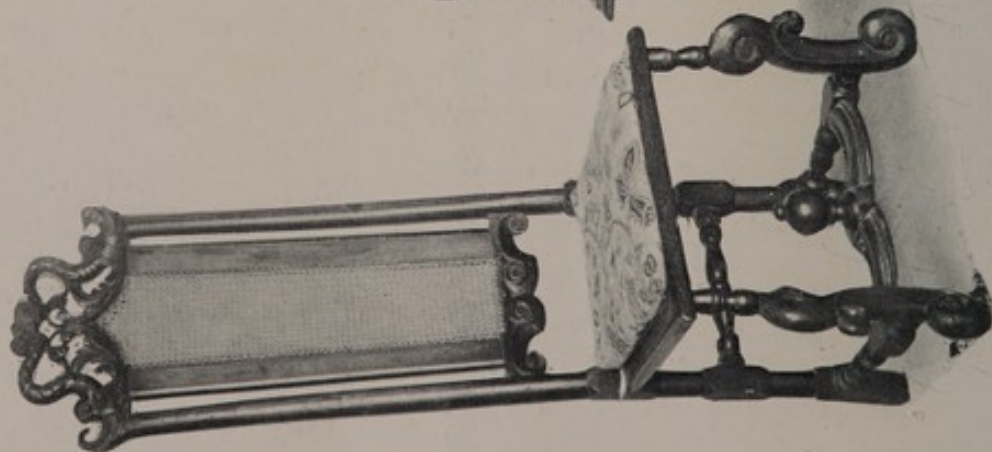
Lot 399



Lot 443.



Lot 446.



Lot 443.

- 133 A coverlet of 17th Century Italian brocatelle, 98 in. by 96 in.
- 134 TWO 16TH CENTURY SPANISH ORPHREYS, each embroidered with three full-length figures of Saints with their attributes, worked in coloured silk threads, 30 in. by 8 in.
- 135 A PANEL OF 16TH CENTURY SPANISH EMBROIDERY—The Madonna and Child, in coloured silk threads, with rays in gold on a pink ground
- 136 A 17th century Spanish embroidered picture of St. Joseph and the Infant Christ, the heads and flesh parts painted, the robes worked in brown, silver and gold thread, 10½ in. and 7½ in., carved gilt and painted frame
- 136A A 17TH CENTURY BROCADE COPE, design of flowers and foliage in colours, interwoven with silver-gilt threads and bound with silver galloon
- 137 A panel of old English needlework, 30 in. by 22 in.
- 141 A Petit Point needle-work panel on stretcher frame—Vase of flowers
- 142 An old panel of white silk, with embroidered floral design for a gentleman's waistcoat, worked in coloured silks, with fronts, collar, and pocket lappels complete, *circa* 1740
- 143 Another, with flowered and spotted ground ditto
- 144 A waistcoat, with embroidered border of flower sprays, the edging and braiding, with the original buttons attached, *circa* 1740
- 145 Two border strips of English 17th Century embroidery, of flowers and scrolls, in coloured silk, chain stitch, and 7 examples of old embroidery
- 146 An Old English needle-work picture, in silk and wool, *oval gold mount and carved gilt frame*
- 147 Four small panels of 17th Century needle-work, of Eastern origin

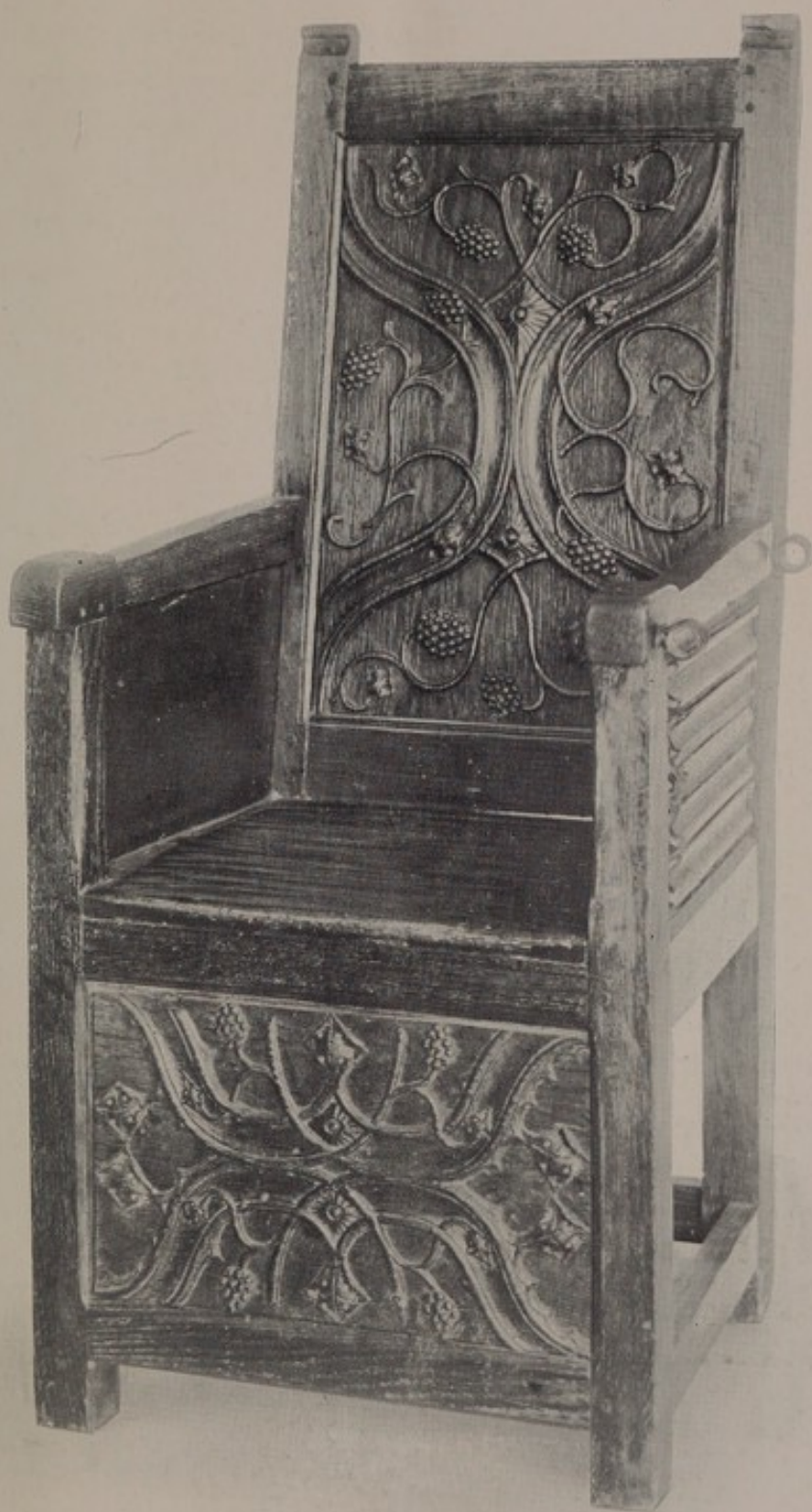
- 148 A panel of old Persian needle-work, with design of alternate diagonal bands of floral ornament, in green, blue, orange and pink, 20 in. by 23 in.
- 149 A piece of 16th Century silk velvet, of coral pink shade, 26 in. by 11 in.
- 150 Twelve small panels of old Persian embroidery
- 151 Three panels, 2 flounces, and 3 narrow bands of old lawn, and a piece of 22 in. by 1½ in. of gold and coloured silk fringe
- 152 Two large, and 2 smaller pieces of old French white silk and rose-pink striped brocade
- 153 AN OLD DESIGN FOR A PANEL OF BRUSSELS TAPESTRY, painted in polychrome on canvas, illustrating Abraham and Isaac, with border to represent frame of carved wood
- 154 *An antique Shumak carpet, red ground, 8 ft. 3 by 7 ft. 3*
- 154A A ditto, 9 ft. by 7 ft.
- 154B A ditto, 8 ft. 9 by 7 ft.
- 154C An old Persian carpet, with conventional design in polychrome on crimson and blue ground, 12 ft. by 10 ft. 6

Objets d'Art.

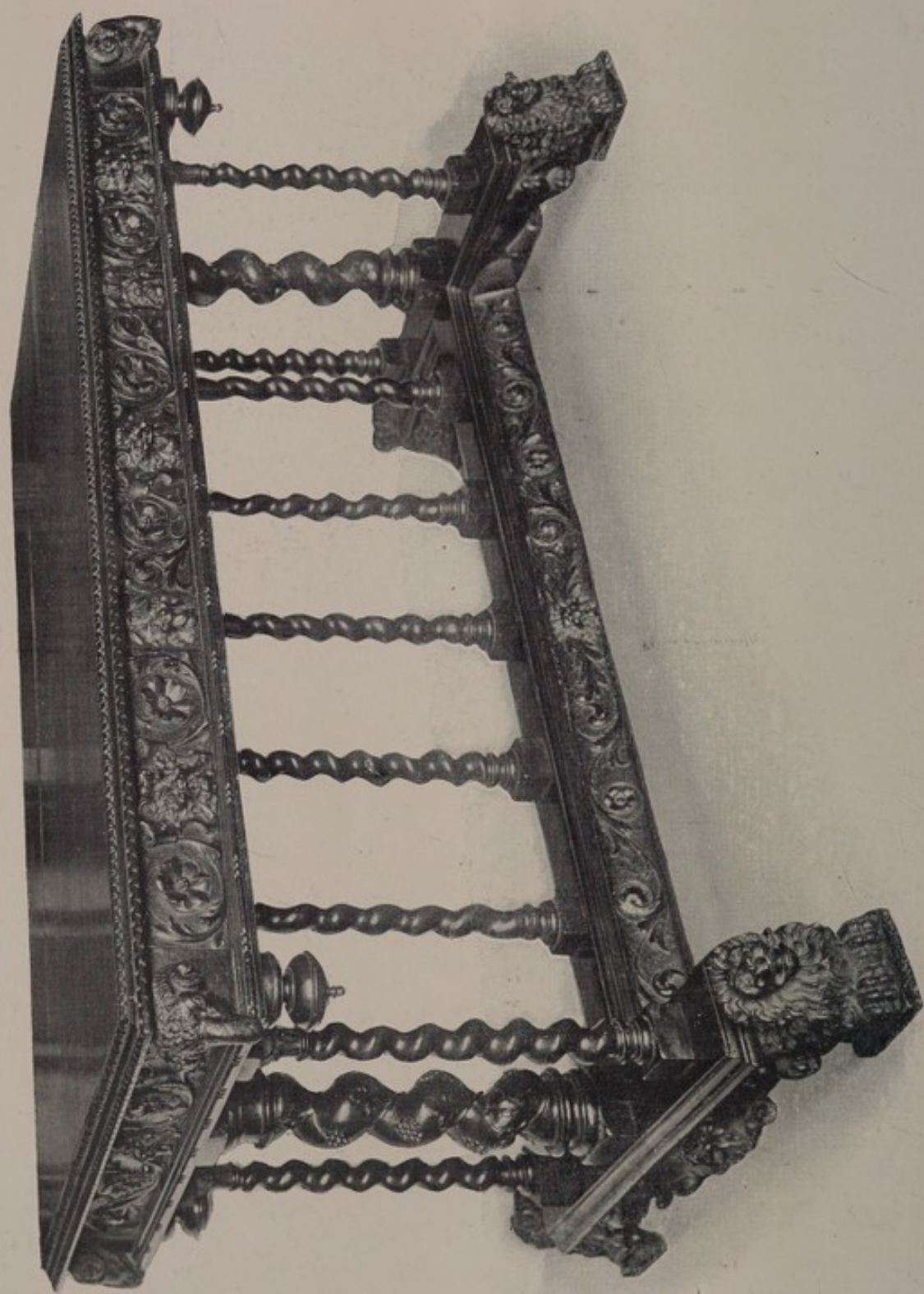
- 156 An upright panel of stained glass, with circular centre medallion illustrating the Adoration of the Magi, and a smaller medallion, with monogram below, 35 in. by 11 in., in stained wood frame (15th century)
- 157 An old Chinese oblong-shaped bronze koro and cover, enriched with lotus leaves and other foliage in slight relief, on a groundwork of incised labyrinth ornament, pierced upright handles and chased feet, the cover surmounted by figure of a lizard, 5 in. high by 4½ in. long (16th century)
- 158 An ancient Egyptian alabastrum, with wide lip

- 159 An old Chinese Cloisonné enamel vase, with cinquefoil lip, on chased metal gilt foot, $4\frac{1}{2}$ in. high
- 160 An old Chinese Cloisonné enamel cup and saucer, with flowers and scrolls on turquoise ground
- 161 A pair of 16th Century Persian hammered brass bowls, chased and engraved, with inscription, $9\frac{1}{2}$ in. diam.
- 162 A 16th Century Italian rose-water ewer of red latten, of classical form, chased with grotesque mask under the spout, scroll handle, chased foliage ornament, 11 in. high
- 167 A pair of 17th Century Venetian carved altar candlesticks of oak, part gilt, on circular bases
- 169 A 17th Century casket, overlaid with plaques of tortoise-shell and ivory, borders of chequer inlay and green ivory, with rising top and fall front, the interior fitted tray and 7 small drawers, with pierced plaques
- 170 Two pairs of old red-latten altar pricket-candlesticks, on high triangular-shaped plinths and ball feet, now fitted with brass nozzles; and a small pair of brass ditto, *Italian 17th Century*
- 171 A pair of Italian altar pricket-candlesticks, of silvered metal, repoussé scrolls, foliage and shell ornament, on triangular-shaped bases, 36 in. high
- 172 A set of 4 vase-shaped altar candlesticks, of latten, on square bases, with pierced and chased coronet tops and scroll-cut handles, chased with foliage, the bases engraved—"Dominico Antonio Mogli, 1754," $9\frac{1}{4}$ in. high
- 176 An old French timepiece, in scroll-shaped case, supported by bronze figure of a horse, on rustic base of chased ormolu
- 180 A pair of chased and gilt metal candelabra mounts for china groups, formed as branching trees, on scroll bases and black-wood plinths
- 181 An 18th Century French writing pad, with folding cover of old russia leather

- 182 An 18th Century French leather-covered box, with tooled bordering, fitted 2 brass hasps with turn catches, and brass handle on top
- 185 A 17th Century French box and cover, in russia leather, with gold-tooled borders and vase ornaments, Cardinal's arms in centre of lid, brass handles, escutcheons and hook fastenings
- 186 An 18th Century French leather-covered box, with brass hook fastenings, the top tooled with floral and foliated scroll centre ornament, corner enrichments and borders
- 187 A 16th Century brass charger, with repoussé centre ornament and four crowned leopards' heads, in low relief, *German*, $12\frac{1}{2}$ in. diam.
- 188 A 16th Century German brass alms dish, repoussé with conventional flower ornament in the centre, band of inscription, and borders of engraved ornament, 16 in. diam.
- 189 A 16th Century German hammered brass jug and cover, with grotesque lion spout and serpent handle, the cover surmounted by copper knob, $10\frac{3}{4}$ in. high
- 190 A pair of 16th Century hammered brass rose-water dishes, high repoussé centres, with engraved border and inscriptions at bases, $17\frac{1}{2}$ in. diam., *German*
- 191 Another, with similar bosses in centre and figures of angels, plain rim, $14\frac{3}{4}$ in. diam.
- 192 A 16th Century German brass rose-water dish, with crowned terminal female figures and lions, plain flat rim, $15\frac{1}{4}$ in. diam.
- 193 An antique bronze cauldron, with 2 handles, standing on 3 feet, 12 in. high, 14 in. diam.
- 194 An old hammered copper cauldron, fitted swing handle, $12\frac{1}{2}$ in. diam.
- 195 Another, with repoussé border of bead ornament, swing handle, $12\frac{1}{2}$ in. diam.



Lot 357.



Lot 302.

- 196 An old hammered brass vase, chased lions' mask and ring handles, 10 *in. high*
- 197 An old hammered copper brazier, with handle and pierced cover
- 198 Another, with pierced conical-shaped cover, on round base
- 199 An old repoussé copper brazier, with upright handle and pierced cover
- 200 An old copper vase-shaped jardinière, with chased brass lions' mask and ring handles and brass base, 13½ *in. diam.*, 12 *in. high*
- 201 An old hammered copper bowl, with rope pattern edge, 15 *in. diam.*, and a smaller ditto, 11½ *in. diam.*
- 202 An old hammered copper pail, with swing handle, 12 *in. diam.*, and one smaller, with beaded edge, 10 *in. diam.*
- 203 An old hammered copper flagon and cover
- 204 A plain hammered copper flagon and cover
- 205 A pair of 17th Century Spanish bronze gilt bowls, with hinged covers, chased, 4¾ *in. high*
- 206 A 17th Century Spanish crucifix, of red latten, standing on half-circular moulded plinth on 3 feet, with engraved fleur-de-lys ornament, scroll tablet with initials above, skull and cross-bones at foot, 15½ *in. high*
- 210 An old Italian bronze figure, on marble column and plinth, 13 *in. high*
- 211 A bright steel back and breast plate, with engraved lines, cable-pattern borders, and raised cross of the Order of the Knights of Malta, and a back-plate with cable-pattern borders, all three pieces engraved with initials G. P.
- 212 Two fish-tail helmets, with hinged and pierced ear pieces and iron studs, and a helmet with high rope-edge combing and barred visor

Old Glass.

- 214 A 6th Century Roman glass ampulla, slightly iridescent, 8½ in. high
- 215 An Old English oval-shaped cut-glass fruit basket, with shaped edges and scroll handles
- 216 A pair of old Venetian glass vase-shaped canisters and covers, slightly ribbed
- 217 An Old English cut-glass water jug, with shaped edge and raised vertical ribbing
- 218 An Old English diamond-cut flower bowl, on stand, with under-cut base
- 219 Three old Spanish glass flower stands, with movable centre vase, 1 engraved with flower sprays, and 2 with scrolls and other ornament
- 221 *An Old English cut-glass epergne*, with tapering centre column support, on domed foot and shaped base, bearing eight scroll-cut and faceted branches, and small hanging baskets in 2 tiers

Engravings.

- 222 A MEZZOTINT PORTRAIT OF LADY ELIZABETH KEPPEL, full length, by Fisher, after Sir Joshua Reynolds, in black and gold frame
- 223 A mezzotint, *proof*—David and Bathsheba, by Richard Earlom, after Van der Werf, in black frame
- 224 A pair of old engravings—Classical Landscapes, by R. Earlom, after Claude Lorraine, in black and gold frames
- 225 A proof line engraving—The Madonna and Child with St. John standing in a landscape, with river scene and rocks in the background, by Pietro Anderloni, after Raffaele D'Urbino, *size of plate 30 in. by 18½ in.*
- 227 A line engraving—The Madonna and Child with St. John and the lamb, and St. Catherine, by J. Felsing, after F. Overbeck, in black and gold frame

- 230 An old French line engraving—"Le Rendezvous pour Marly," by Guttenburg, after Moreau, in black and gold frame
- 231 A pair of old line engravings—Portraits: Hyacinth Rigaud, from a picture by himself, by P. Drevet, and Nicolas de Largillière, by F. Chereau, in old carved black and gold frames
- 232 An old line engraving—"Travelling Musicians," after Dietrich, by J. G. Wille, in carved black and gold frame
- 233 A set of 12 old French line engravings—"The Months," from designs by C. Audran for Gobelin tapestries, in two black reeded frames
- 234 An old French line engraving—"La Lettre Envoyée," by De Launay, after J. B. le Prince, with full margin, in black and gold Hogarth frame
- 235 An old line engraving—Full-length Portrait of Charles I, by Robert Strange, after the picture by Vandyck, *plate size 23 in. by 18 in.*, in carved and gilt frame
- 236 An old line engraving—Full-length Portrait of Isabelle Castille, by Mariette, after Vignon, in carved gilt and painted wood frame
- 237 An old line engraving—Three-quarter length Portrait of Philip Pembroke, wearing dress of a courtier, with sword, by P. Lombart, after Vandyck, in carved and painted frame
- 238 An old Dutch line engraving—"The Rat-catcher," by F. de Wit, after C. Visscher, in black and gold frame
- 239 Old line engravings—"Shooting," Plates II and III, by W. Woollett after G. Stubbs, in black and gold frames
- 240 A pair of old coloured mezzotints—Sheep and Pigs, after Geo. Morland, in gilt frame with black bead
- 241 Four old Italian engravings—Scriptural Subjects, with scroll borders, after G. Zacchi, *hand coloured with titles and lettering in French and English*, in old black and gold carved wood frames

- 242 A Portrait of a Lady, by Parker, after Sir Joshua Reynolds, in 17th Century carved and gilt frame
- 243 A proof—"Meditation," by Parker, after Sir Joshua Reynolds, in carved and gilt frame
- 244 A pair of old French topographical engravings—Mouri and Yvereon, by Alberti, *printed in colours*, in carved and gilt frames
- 246 A pair of old engravings, by Angelein, after Raphael, *printed in red*, in carved and gilt frames
- 247 Three old French etchings, in one frame
- 248 An old French stipple engraving—Adelaide, *printed in colour*, 12 in. diam., in old black and gold frame
- 249 An old colour print, after Wheatley, in carved gilt frame
- 250 An old stipple engraving—Eleanora and Edward I, by G. Wynne Ryland, after Angelica Kauffman, *printed in red, title margin only*, in old black and gilt frame
- 251 An old engraving in stipple—Going to School, after W. Hamilton, *oval, cut close*, in gilt frame and black and gilt glass mount
- 252 An old stipple engraving—"Education," by Madame Bovi, from a drawing by Lavinia Countess Spencer, in black and gold frame
- 253 An old line and stipple engraving—The Children of the Wood, by J. Caldwell, after Sir Joshua Reynolds, in black and gold frame
- 254 An old stipple engraving—An Offering to Love, *printed in colours*, in black and gold frame
- 255 An old stipple engraving—An Illumination for the Recovery of King George III, by F. Bartolozzi, after W. Hamilton, *printed in colours, with full margin*, in black frame
- 256 An old stipple engraving—"The Orange Girl," *in brown, oval*, by J. R. Smith, after Benwell, in black frame, with carved and gilt flat

- 257 An old stipple engraving—Scene from “Two Gentlemen of Verona,” by C. G. Hayter, *printed in colour*, in gilt frame
- 258 A pair of old stipple engravings—A Shepherd and Shepherdess, by and after Wickstead, *ovals, printed in colours*, in oval carved and gilt frames
- 259 A pair of old stipple engravings—“The Parting of Achilles and Briseis” and “Chrysotes restored to her father by Ulysses,” by F. Bartolozzi, *printed in brown, with painted border*, in gilt frames
- 260 An old stipple engraving—Mary Maitland, by J. Walker, after Orme, *printed in brown*
- 261 An old stipple engraving—Palemon and Lavinia, by and after C. White, *printed in brown*, in pear wood frame
- 262 An old stipple engraving—A Lady, with doves in a basket, by Bartolozzi, *printed in brown, slightly tinted in colour, oval, 9¾ in. by 8¼ in.*, in carved and gilt frame
- 263 A mezzotint engraving—George III and Queen Caroline, by Richard Earlom, after A. Zoffany, *title margin only*, in old carved and gilt frame
- 264 A pair of old stipple engravings—“PRIMROSE SELLER” and “MATCH SELLER,” by C. Knight, after J. R. Smith, *ovals, 8¼ in. by 6½ in., printed in brown*, in old black and gold frames, *fine impressions*
- 265 A pair of old stipple engravings, after T. Stothard, *printed in brown, ovals*, in original frames
- 266 A stipple engraving—“Instruction,” after R. Cosway, in gilt frame
- 267 An old engraving—“Simplicity,” from a painting by Sir Joshua Reynolds, engraved by F. Bartolozzi, *printed in colours*, in carved and gilt frame
- 268 An old line and stipple engraving—The Fortune Teller, by J. K. Sherwin, after Sir Joshua Reynolds, *title margin only*, in carved black and gold frame

Water Colour Drawings.

- 273 Miniature Portraits of a Lady and Gentleman, *in oils, painted on copper, ovals, 3 in. by 2¼ in., 17th Century*, in Venetian pierced and carved gilt wood frames
- 274 An Italian Lake Scene, with figures, buildings, boats, etc., *12½ in. by 19½ in.*, in gilt frame

ITALIAN SCHOOL 17TH CENTURY.

- 276 A pair of old drawings in monochrome—Peasant Subjects, in old carved gilt frames

F. TAYLER.

- 277 A water colour drawing—A Shepherdess with dogs in hilly landscape, *9¾ in. by 6¾ in.*, in gilt frame

F. TAYLER.

- 278 A finished sketch—A Highland Lassie with bagpipes, *21 in. by 13 in.*, in carved and gilt frame

J. OAKLEY.

- 279 A water colour drawing—The Musician, a three-quarter length figure of a boy playing a flageolette, *12 in. by 9 in.*, in carved and gilt frame

W. MÜLLER, 1842.

- 280 A water colour drawing—A Rocky Waterfall, *13 in. by 20 in.*, in gilt frame

Oil Paintings.

- 281 A Russian Eikon, *painted on panel on gesso ground, 15th Century*; looted from Sebastopol
- 282 VENETIAN SCHOOL—Portrait of a Divine, *oval*, carved and gilt wood frame, early 17th Century
- 283 Italian 17th Century Portraits of a Lady and Gentleman, *ovals, 3 in. by 2½ in., painted on copper*, in carved and gilt Venetian frames

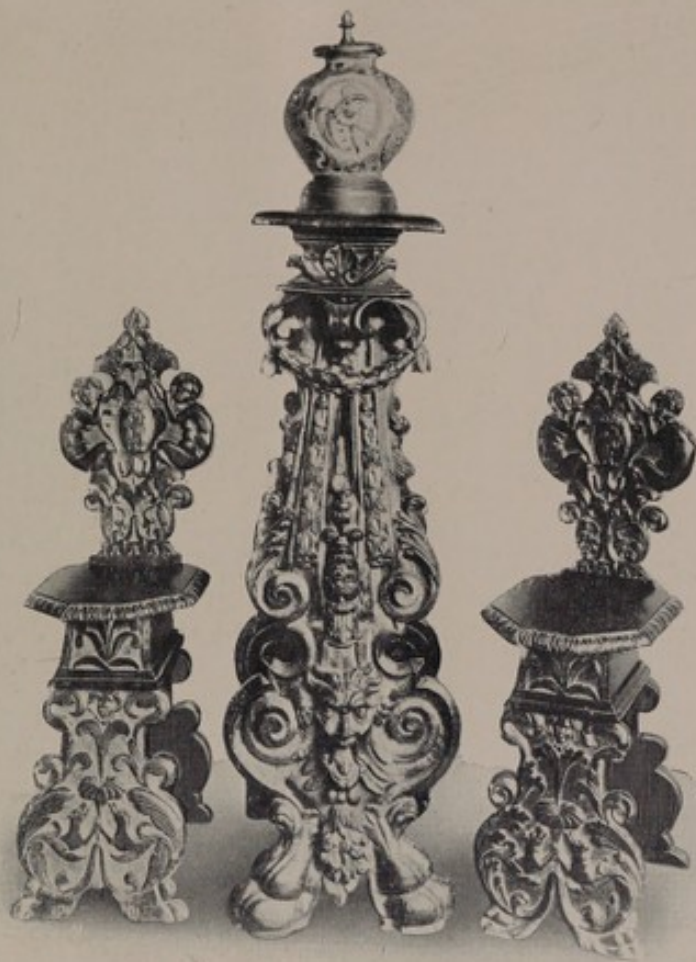
- 284 ITALIAN SCHOOL—Temptation of St. Anthony, *on canvas*, 25 in. by 19 in., in carved and gilt frame
- 285 SCHOOL OF ZUCCHERO—Portrait of the Queen of Bohemia, with lace ruff and pearl necklet, *on panel*, 17½ in. by 12½ in., in old carved and gilt frame
- 286 REMBRANDT SCHOOL—Head of an old man wearing fur collar and cap, *on panel*, in Venetian carved and gilt frame
- 287 DUTCH SCHOOL—A Lake Scene with peasants and cattle, *canvas*, 13½ in. by 17½ in., in black and gold frame
- 288 KAREL DU JARDIN—A River Scene, with cattle and peasants, 13 in. by 16 in., in carved and gilt frame
- 289 EARLY ENGLISH SCHOOL—Portrait of a Child seated, holding a cat, landscape background, *on canvas*, 35 in. by 27 in., in old carved wood frame
- 290 ENGLISH SCHOOL 17TH CENTURY—Portrait of a Lady wearing low-neck dress, trimmed ermine, 29 in. by 24 in., in carved and gilt wood frame
- 291 ENGLISH SCHOOL 17TH CENTURY—Portrait of a Gentleman in blue robes, wearing orders and lace cravat, 29 in. by 24 in., in carved wood gilt frame
- 292 ENGLISH SCHOOL 17TH CENTURY—Portraits of a Lady and Gentleman, *a pair, painted on copper, ovals*, 3 in. by 2½ in., in old Venetian carved and gilt wood frames
- 293 KNELLER SCHOOL—A full-length portrait of a boy in blue tunic and brown cloak, 44 in. by 40 in., in old carved and gilt wood frame
- 294 KNELLER SCHOOL—Portrait of boy in buff-coloured coat holding a staff, with dog by his side, *on canvas*, 29 in. by 24 in., in 17th Century carved and gilt wood frame

A CATALOGUE
OF
MESSRS. KNIGHT, FRANK & RUTLEY'S
SECOND DAY'S SALE
OF THE
Rev. J. O. Stephens' Collection.

On WEDNESDAY, the 24th of MAY, 1911,
AT ONE O'CLOCK PRECISELY.

Old Italian Furniture.

- | | |
|-----|--|
| LOT | |
| 295 | A 15TH CENTURY OBLONG-SHAPED ITALIAN TABLE, of walnut-wood, panelled and moulded with stretcher, 42 <i>in. wide</i> |
| 296 | FOUR VENETIAN CHAIRS, of walnut-wood, with vase-shaped backs carved, a centre shield with lion rampant and coronet above, the supports carved with grotesque masks and foliated scrolls, 16th Century
<i>See Illustration.</i> |
| 297 | AN OLD VENETIAN WROUGHT-IRON TRIPOD BOWL-STAND, with winged figures of sea horses, scrolls and grotesque griffin heads, with twisted ring handles, and supporting a ring of twisted iron, 14 <i>in. diam.</i> , early 16th Century |
| 299 | AN ITALIAN RENAISSANCE TORCHÈRE, the front carved in high relief the back with incised foliage, 51 <i>in. high</i>
<i>See Illustration.</i> |
| 300 | AN ITALIAN RENAISSANCE PRIÉ - DIEU, with carved guilloche and floral ornament in bas-relief, and grotesque masks in high relief, on spiral columns, and lion head feet |



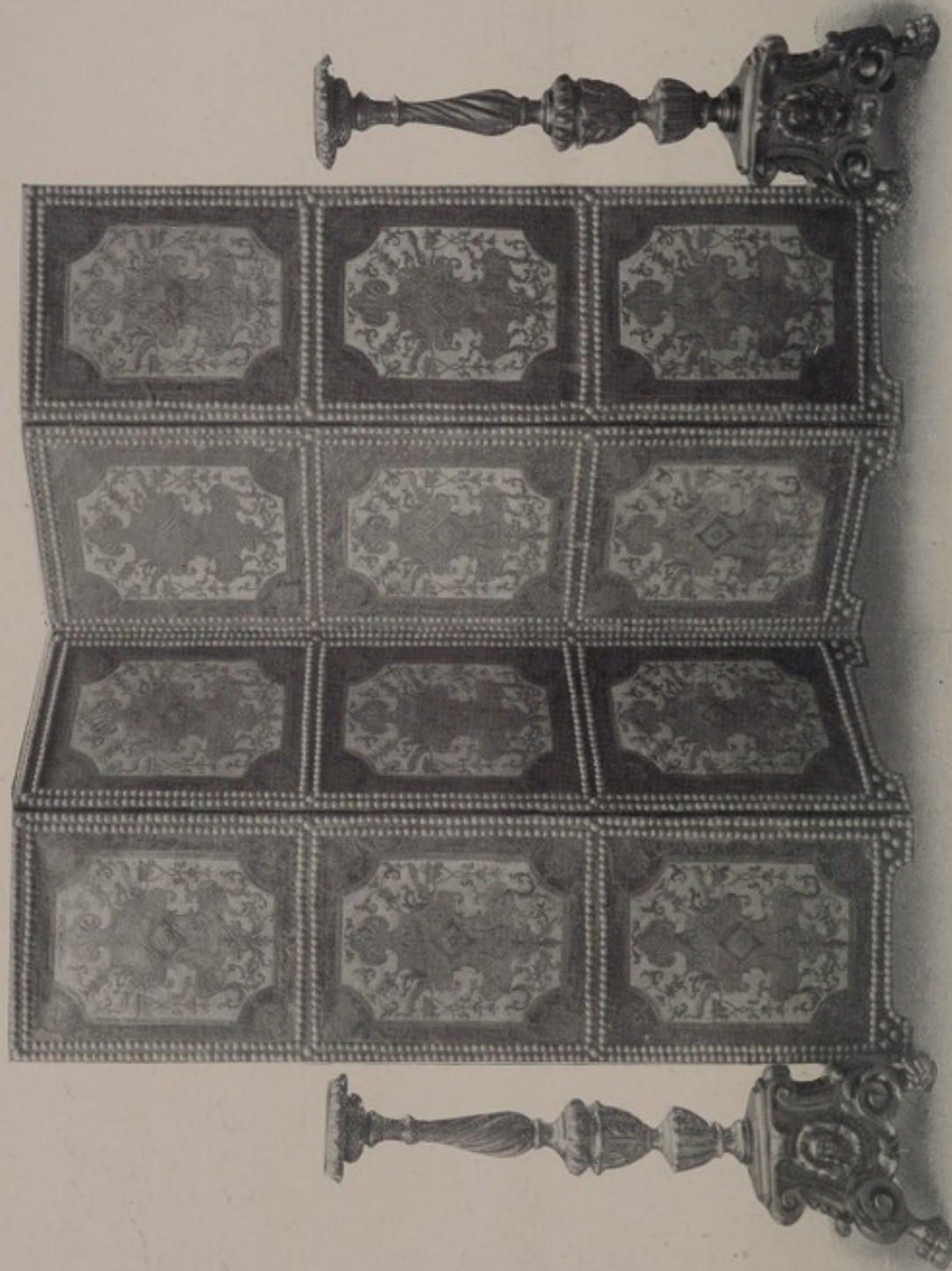
Lot 296.

Lot 299.

Lot 296.



Lot 333.



Lot 313A.

Lot 393A.

Lot 313A.

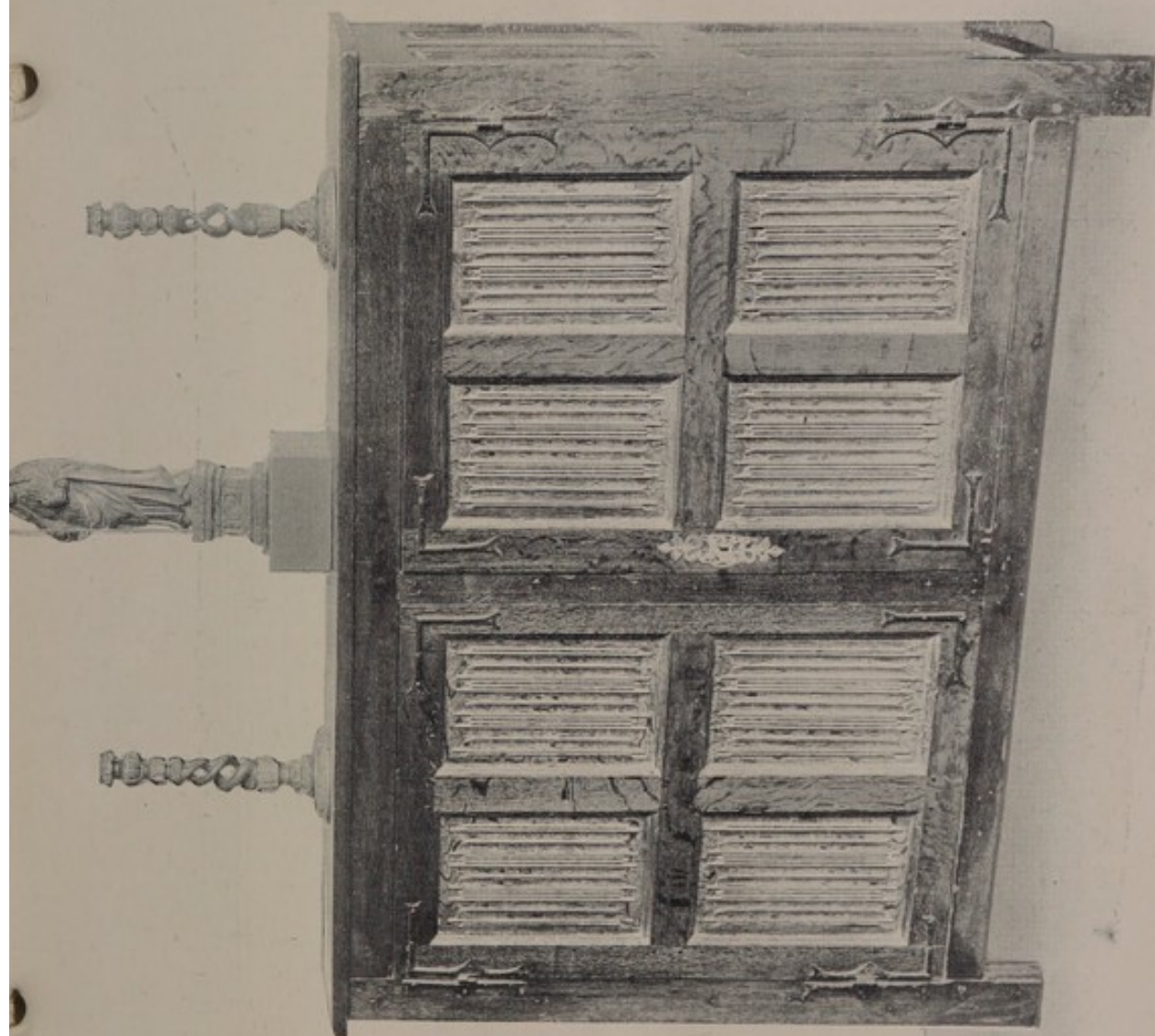
- 302 AN EARLY XVII CENTURY ITALIAN CENTRE TABLE, OF WALNUT-WOOD, with carved border and frieze; the underframing carved and entwined with vines in relief, grotesque masks, etc., the corners supported by lions couchant, 65 *in. long*, 35 *in. wide*
See Illustration.
- 303 AN ITALIAN RENAISSANCE CABINET OF WALNUT-WOOD, in two divisions of cupboard above and below, and 2 drawers in central frieze, with a carved oval and circular connected ornament, and satyr's masks on centre and end pilasters; the doors are fitted with raised panels carved with arabesques and medallions, centre cartouche of frieze carved with leopard's head in relief, and masks at either end, fitted russet-iron handles, locks and escutcheons, on moulded base and ball feet, 48 *in. wide*, 78 *in. high*, 16th Century
See Illustration.
- 304 AN ITALIAN 17TH CENTURY CABINET OF WALNUT WOOD, fitted cupboards, in upper and lower parts, enclosed by pair of doors, carved in fruit ribbon ornament, and masks in relief, surmounted by a frieze, fitted old iron locks and key to doors, and knob handles to drawers, 62 *in. wide*, 73 *in. high*
- 305 A pair of 17th Century hand bellows of walnut wood, with turned ornament, with brass studs, and chased brass nozzle
- 308 A 17th century Venetian wrought iron stand for a bowl, of tripod form
- 309 Another, with shaped supports and scroll enrichments
- 310 An Italian dressing stool, covered in contemporary embroidery, on turned walnut-wood supports
- 311 A pair of old Italian hanging lamps of white enamelled faience, suspended by bead chains, and decorated with festoons, etc., in blue

- 312 Two old Italian gueridons of walnut-wood, on columns with shaped bases, 35 in. high, late 17th Century
See Illustration.
- 313 A pair of 17th Century Venetian termes of lime-wood formed as carved cherubs, with garlands of flowers, supporting Ionic capitals, and standing on panelled and moulded pedestals, 41 in. high
See Illustration.
- 313A A PAIR OF 17TH CENTURY VENETIAN CARVED AND GILT WOOD TORCHÈRES, on tripod bases
See Illustration.
- 314 A 17th Century Italian chair of walnut-wood, covered in old yellow silk damask
- 315 Another with similar back and framing, the seat covered in old decorated leather
- 316 A 17th Century Italian arm chair of walnut wood, the back with turned uprights, carved and shaped rails on turned legs
- 317 A pair of 17th Century Italian arm chairs of walnut wood, scroll arm rests
- 318 Two ditto chairs, covered old crimson silk damask, on turned front legs and square under rails
- 320 A set of four 17th Century chairs of walnut-wood, rush seats, on turned supports
- 321 A 17th Century Italian chair, in old leather
- 322 A pair of 17th Century chairs of walnut-wood, in contemporary leather covering
- 323 A 17th Century chair of walnut-wood, in contemporary figured leather covering
- 324 A 17th Century walnut-wood arm chair
- 325 A SET OF TWELVE 17TH CENTURY CHAIRS OF WALNUT-WOOD, in old figured leather, on turned front supports and under rails

- 326 An Italian chest of walnut-wood, fitted 4 drawers, the top and drawer fronts inlaid in holly and pear-wood, 38 *in. wide*, brass drop handles, and escutcheons
- 327 A 17TH CENTURY CASSONE OF WALNUT-WOOD, on moulded plinth and carved feet, inlaid with the arms of Don Dandolo, medallions of arabesque scrolls, iron handles, 66 *in. wide*
- 328 A 17th Century oblong shaped Italian table, of walnut-wood, on spiral supports, and stretcher rail, 39 *in. wide*
- 329 A 17th Century table of walnut-wood, plain top, 45 *in. wide*
- 330 A 17TH CENTURY WALNUT-WOOD SIDE-TABLE, fitted 3 drawers, panelled and moulded, on 7 carved spiral supports, and shaped stretcher rail with moulded edges, 52 *in. wide*
- * * * Illustrated in Macquoid's *History of English Furniture*,
* * * vol. II, figure 38
See Illustration.
- 331 A 17TH CENTURY ITALIAN PEDESTAL AND KNEE-HOLE WRITING TABLE, the top inlaid floral marqueterie in interlaced scroll design of stained woods, and ivory floral inlay, fitted 3 drawers in frieze, 2 drawers in each pedestal, and cupboard at back of knee-hole recess, on 8 shaped supports, and scroll shaped stretcher rails, 44 *in. wide*
- 331A An Italian walnut table on turned end supports and foot rails, 7 ft. 9 long, 15th Century
- 332 A 17TH CENTURY WALNUT-WOOD SIDE TABLE, with panelled top and moulded edge, fitted drawer in frieze, brass knob handles, 48 *in. wide*
- 333 A 17TH CENTURY WALNUT-WOOD CENTRE TABLE, with panelled top and carved edge, drawer in frieze, with brass knob handles, and centre drop handle of russet iron, on 4 spirally carved columns and turned feet, 37 *in. wide*

See Illustration.

- 334 A 17TH CENTURY CABINET, of walnut wood, the upper part fitted cupboard and shelf, enclosed by pair of panelled doors, with carved mouldings and sunk centre panel, plain frieze and dentil moulded cornice above; lower part fitted drawer in centre, and 3 drawers under, with chased brass handles, original locks and key, with scroll pierced bow, *on carved base and scroll feet*
- 335 A 17TH CENTURY FLORENTINE CABINET of walnut-wood, on inlaid bracket feet, fitted 3 long drawers, with ebonized mouldings to borders and framing, inlaid panels, *58 in. wide*
- 336 A 17TH CENTURY WALNUT-WOOD ARMOIRE of architectural design, with panelled back and ends, on scroll feet, and plinth, from which rise 2 flat fluted column pilasters, supporting entablature of guilloche and foliage ornament, and cornice with carved acanthus and other mouldings, original iron lock and key, and 2 satyr-head handles in high relief in centre of each door panel, *88 in. wide, 90 in. high*
- 337 A small 17th Century walnut-wood cabinet of architectural design, on claw feet, *23 in. wide, 29 in. high*
- 338 A 17TH CENTURY BEDSTEAD of walnut-wood, with an elaborate head-board, surmounted by carved scroll bracket-pediment with draped female figure, square columns on either side supporting 2 figures of cupids, carved and moulded side framing and 2 similar columns at the foot, *78 in. high, 66 in. wide, Italian*
- 339 A bedstead, with 4 carved spiral and turned 17th Century Italian columns of chestnut-wood, the head-board covered in 16th Century Italian brocatelle and banding of gold galloon, in shaped frame covered with green silk damask of the same period, fitted patent box-spring mattress, *60 in. wide*



Lot 403.



Lot 404.

- 340 A Venetian frame, inlaid in mother-o'-pearl and painted foliated scrolls in gold on a lacquered ground, the corners overlaid with shaped plaques painted to simulate agate; fitted carved and gilt inner frame and mirror plate, $31\frac{1}{2}$ in. by 23 in., carved and gilt enrichments on outer edge of frame, 43 in. by 35 in.
- 342 A 17th Century Venetian console mirror, in 2 plates, in shaped and carved frame with scroll feet, the scroll pediment fitted mirror panel, engraved with vase of flowers, 70 in. high
- 343 A pair of old Venetian brackets, with carved cherub head supports in high relief, with flower and foliage pediment
- 345 An 18th century Venetian corner washstand, with shaped back, on scroll supports, painted flowers, 40 in. high
- 346 A pair of 18th century Italian chairs of walnut-wood
- 347 An old Italian walnut side table, with shaped and moulded top, on 3 supports, 36 in. wide, 31 in. high
- 348 An old 18th Century Italian side table of walnut-wood, with shaped top, the edges moulded and ebonized, on 6 turned column supports and shaped stretcher rail, 51 in. wide
- 349 AN EARLY 18TH CENTURY ITALIAN GILT-WOOD CONSOLE TABLE, on 4 scroll-shaped supports and stretcher rails, 3 ft. 4 wide
See Illustration.
- 350 An old Venetian corner table, on carved fluted and tapered legs
- 351 A pair of old Venetian carved and gilt mirror frames, fitted shaped looking glass panel, 30 in. high
- 352 A pair of Venetian carved and gilt wood frames, fitted shaped mirror panels, 22 in. by 12 in.
- 353 A pair of early 18th Century Venetian carved and gilt frames, with shaped mirror panels, engraved with figures dancing, with borders of floral ornament, 32 in. high

- 354 A pair of old Venetian carved and gilt girandoles, $29\frac{1}{2}$ in. high
- 355 An 18th Century Italian armoire, of walnut and marqueterie, on moulded plinth and surmounted with a dentil cornice, enclosed by a pair of panelled doors, with carved scroll ornament, 5 ft. wide

Old French Furniture.

- 357 A 15TH CENTURY GOTHIC, ECCLESIASTICAL PROCESSIONAL HIGH-BACK CHAIR OF OAK, the upright centre panel carved with foliage and grape-vine ornament, the arms panelled and carved with linen scroll, square under-rails at back and sides; *a rare example*
See Illustration.
- 358 A 16TH CENTURY BUFFET OF OAK, long drawer in the frieze carved with cherub's head on background of acanthus foliage, dwarf cupboard recess under and cupboard below, enclosed by 4 doors, fluted pilasters, carved strap ornament, fitted old spring locks and escutcheon plates of russet iron, 55 in. wide, 50 in. high. Circa 1560
- 359 A HENRI II WALNUT-WOOD CABINET, in 2 divisions, the interior fitted shelves, enclosed by 4 raised and moulded panelled doors, 2 drawers in frieze to lower division, supported by quadrangular columns on moulded plinth and turned feet, on carved bracket modillions, decorated in scroll of floral marqueterie, with borders of chequer inlay, the pilasters carved with foliage ornament, old spring locks to doors, and metal ornaments and escutcheons, 44 in. wide, 69 in. high
See Illustration.
- 360 A HENRI II WALNUT AND CHESTNUT-WOOD CABINET, in 2 parts, architecturally designed, carved in hollow fluting, with plain capitals, 2 drawers with raised panel fronts, scroll modillions, the interior fitted shelves,

LOT 360—*continued.*

enclosed by a pair of folding doors, upper part with cherubs' heads; the 4 door panels are overlaid with chestnut-wood and enriched, each, with a floral scroll design of marqueterie, fitted old iron locks and russet-iron handles, 3 ft. 9 wide, 5 ft. 9 high

See Illustration.

- 361 A LOUIS XIV WALNUT-WOOD SIDEBBOARD, on plinth with bracket feet, plain top with moulded edge, 3 drawers, cupboards below, enclosed by 3 doors, 74 in. wide, 39 in. high
- 362 A set of 6 old Normandy chairs of walnut, with cushions covered in old green silk damask
- 363 A PAIR OF LOUIS XIV CARVED FRAME CHAIRS, enamelled white, oval-shaped backs covered in old needlework tapestry, arm rests padded and covered blue velvet
- 364 An 18th Century oak arm chair, with carved rail back and shaped centre splat
- 365 An 18th Century Normandy side table of walnut-wood, on cabriole legs, 43 in. wide
- 366 An early 18th Century cabinet of walnut-wood, fitted 3 drawers, the fronts panelled and carved, each with 5 shaped and raised medallions, wood knob handles
- 367 An old Normandy spinning wheel, with turned framing and carved border to stand
- 368 A pair of French 18th Century medallions of Christ and the Virgin Mary, sculptured in white statuary marble and mounted on oval plaques of verde antique marble, in wood frames

END OF SECOND DAY'S SALE.

A CATALOGUE
OF
MESSRS. KNIGHT, FRANK & RUTLEY'S
THIRD DAY'S SALE
OF THE
Rev. J. O. Stephens' Collection.

On THURSDAY, the 25th of MAY, 1911,

AT ONE O'CLOCK PRECISELY.

Old German Furniture.

LOT

- 369 A 16th Century oak cabinet, enclosed by a pair of doors with shaped raised panels, fitted old iron locks, on open stand, with carved quadrangular supports
- 370 A PAIR OF 16TH CENTURY ANDIRONS of wrought-iron, formed as spirally-twisted columns, with square capitals, surmounted by spherical brass ornaments, on quadrangular pedestals and arched feet
- 371 A similar pair, 28 *in. high*
- 372 A ditto pair, with spherical ornaments of red latten, 28 *in. high*
- 374 An old German wall clock, with arched top brass and pewter dial, with chased and gilt metal enrichments and circular pewter name-plate, engraved with initials C. E. B. E. 1757, fitted with 30-hour movement, chain, weight and pendulum



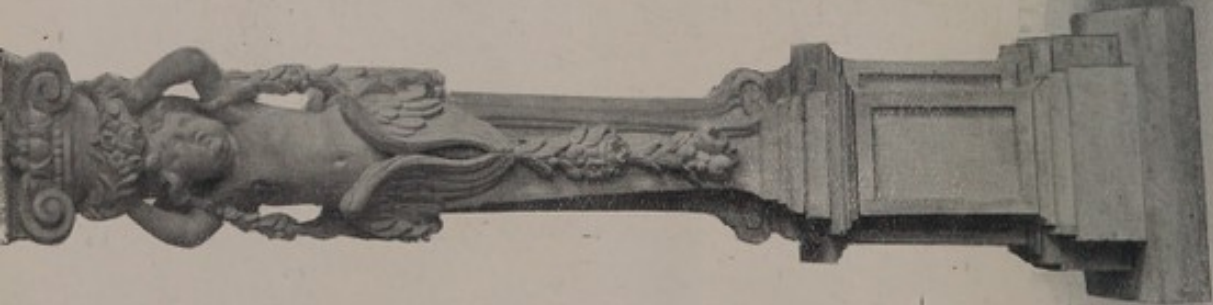
Lot 442.



Lot 313.



Lot 385.



Lot 313.

- 396 A pair of 18th Century arm chairs, pierced interlaced scroll backs, with shaped top rail, scroll arm rests and supports, on cabriole legs and claw and ball feet, in 16th Century Venetian crimson silk brocatelle
- 397 An Indo-Portuguese casket, inlaid square plaques on mother-o'-pearl in panels, and bordered with alternate triangular plaques of pearl and horn, with coloured background, 11 *in. long*
- 398 Another, on raised bracket feet, 11½ *in. long*

Old English Furniture.

- 399 A HENRY VIII OAK SIDE TABLE, of half-sexagonal form, carved in Gothic character, with frieze above, enriched on centre and side angles with sunk strap-work carving, plain top, 35 *in. wide*, 30 *in. high*
See Illustration.
- 400 AN ELIZABETHAN OAK ARM CHAIR, with high panelled back, carved scroll foliage, and diamond-shaped centre tablet
- 401 AN ELIZABETHAN OAK REFECTORY TABLE, framing carved with fluting on front and ends, baluster legs, with square bases and foot-rails, 65 *in. long*, 30 *in. wide*
- 402 AN ENGLISH EARLY 17TH CENTURY 4-FOLD SCREEN of 2 panels, each 78 *in.* by 44 *in.*, with stained and painted design of peacocks, water-fowl, other birds, and flowering trees in polychrome, borders of green velvet, 82 *in. high*
- 402A A 17TH CENTURY 2-FOLD SCREEN, of Old English decorated leather, with design of birds, flowers and foliage in polychrome on a grey ground
See Illustration.
- 403 A 16TH CENTURY OAK SIDE CABINET, enclosed by pair of doors with original hammered iron strap hinges and angle plates, old steel lock and pierced escutcheon plate, fitted with 4 carved linen-fold panels, and moulded framing, 63 *in. wide*, 46 *in. high*
See Illustration.

- 404 AN ELIZABETHAN OAK CABINET, fitted drawer and cupboard, enclosed by fall front, lower part fitted shelf, enclosed by pair of doors, on moulded plinth and spherical feet, 50 in. wide

See Illustration.

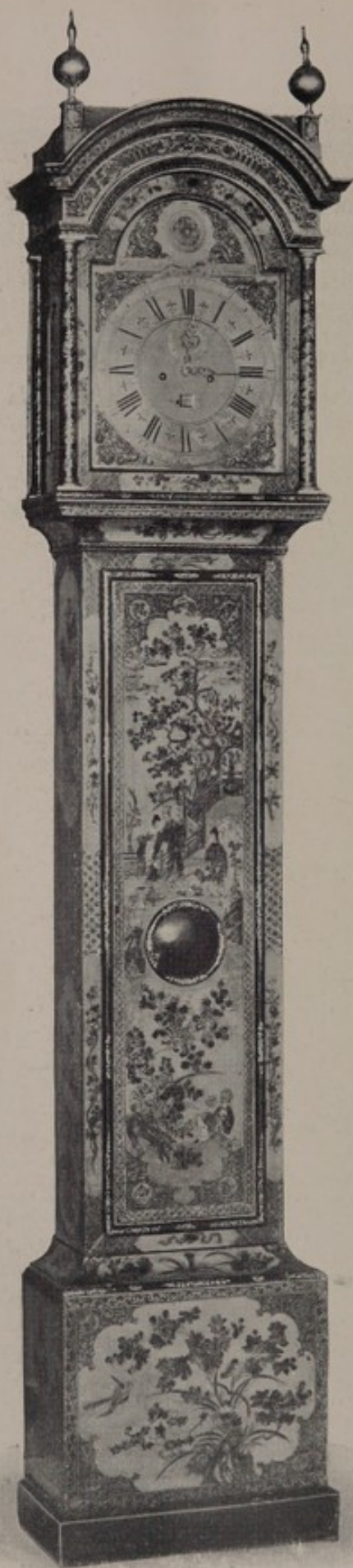
- 406 Two 17th Century English oak stools, with mould-top and framing, on turned supports and square foot-rails
- 407 A WILLIAM AND MARY WALNUT-WOOD STOOL, *circa* 1690
- 408 An old lacquer corner cabinet, enclosed by pair of bow-fronted doors, decorated in the Chinese style, with figures, temples and trees in gold on a red and black lacquer ground, 24 in. wide, 36 in. high
- 410 A 17th Century dressing stool, with upholstered top, covered tapestry, with brass studs, on spiral turned oak supports
- 411 An old oak side table, fitted drawer, with brass drop handles, on plain turned legs and club feet, 31 in. wide
- 412 An old oak gate-leg table, with oval top, 29½ in. by 32 in., on turned supports and square under-framing
- 415 A JAMES I OAK REFECTORY TABLE, plain top, with under-framing carved on all four sides, 6 quadrangular supports, centre portions turned and spirally carved, square foot and stretcher rails, 99 in. long, 34 in. wide

See Illustration.

- 416 A Jacobean oak table, with plain top, frieze carved on one side with foliage ornament, supported by 4 plain turned columns, slightly tapering towards the tops, square foot-rails, 63 in. long, 27 in. wide, *circa* 1600
- 417 A 17th Century oak table, fitted drawer, with brass drop handles, on turned supports and square foot-rails, 34 in. wide
- 418 A 17th Century oak side table, fitted drawer, with brass ring handles, on spiral turned supports and foot-rails, 33 in. wide, *circa* 1660



Lot 260.



Lot 511.

- 419 A 17th Century oak side table, fitted drawer, on turned baluster supports and square foot-rails, 29 *in. wide*
- 420 A Jacobean oak side or carving table, with moulded top edge and panelled ends, fitted 3 drawers, on 5 supports, 62 *in. wide*
- 421 An early 17th Century octagonal shaped oak table, with fold-over top, on shaped framing, carved with guilloche ornament, turned pilasters, 48 *in. wide*
- 422 A 17th Century oak side table, fitted drawer, with brass handle, 35½ *in. wide*
- 423 A 17th Century oak side table, fitted drawer with brass drop handle, on 4 square and part turned supports, and centre stretcher rails, 31 *in. wide*
- 424 A 17th Century oak side table, on turned ball-pattern legs and square under rails, fitted drawer, with carved front and brass drop handle, 31 *in. wide*
- 425 A 17th Century oak table, fitted drawer, with brass handles, on 4 ball-turned supports and square under-rails, 30 *in. wide*
- 426 An old oak table, with triangular-shaped top and framing, on 3 turned supports, with square foot-rails
- 427 An old oak table, rectangular top, with moulded edge, fitted drawers, on turned supports and square under-rails, 24 *in. wide*
- 429 A 17th Century oak Bible box, carved fluting, the ends with lozenge shaped ornament, original iron hinges to lid, fitted old iron lock and hasp
- 430 A 17th Century oak cupboard, with grooved and beaded framing, fitted shelves, enclosed by panelled door
- 432 A 17th Century oak coffer, with panelled front, top and ends, the front with incised carving on frieze and panels
- 433 A Jacobean oak chest, with panelled ends, on moulded plinth and ball feet, fitted 4 drawers, with panels in geometric design, brass drop handles, 35 *ft. wide*

- 434 A Jacobean oak chest, with moulded framing and top, with panelled ends, on turned supports, fitted 2 short drawers and 3 long ditto, with raised moulding and sunk panelled centres, brass handles and escutcheons, 36 *in. wide*, circa 1600
- 435 A Jacobean oak chest, with panelled ends and moulded base, fitted deep drawer, with raised panelled and moulded front in geometric design, 3 shallow drawers, and wrought-iron handles, 41 *in. wide*
- 436 A Jacobean oak chest, with moulded top and base and panelled ends, 4 long drawers, fronts panelled and moulded in geometric design, old lock and brass drop handles, 38 *in. wide*
- 437 A Jacobean oak chest of 4 long drawers, in 2 divisions, with panelled ends, on depressed ball feet, the drawer fronts finely panelled in geometric design, fitted brass drop handles, locks and keys, 39 *in. wide*, 38 *in. high*, circa 1608
- 439 An old walnut high-back arm chair, with turned framing, seat and back panel, covered hide
- 440 A 17th Century oak arm chair, with panelled back, carved with conventional rose and foliage design, in diamond-shaped centre tablet, scroll arm rests on turned supports, and square foot-rails
- 441 A set of 4 Stuart high-back chairs, with turned uprights and finials, and carved scroll top-rail
- 442 A PAIR OF OLD ENGLISH CARVED AND GILT FRAME CHAIRS, high backs, with shaped tops, on shaped and carved front legs, seats and backs stuffed and covered old crimson brocatelle, 17th Century
See Illustration.
- 443 A pair of high-back chairs, cane panelled, carved with dolphins and scroll foliage, fitted loose cushions in contemporary needlework, circa 1695
See Illustration.

- 444 A pair of cane-panelled high-back chairs, with carved fluted uprights, carved baluster fronts, fitted cushions, covered in contemporary English chain stitch needlework, *circa* 1690
- 445 A 17th Century English arm chair, with seat and back, covered in old green silk damask, on turned supports and under-rails, with open arm rests
- 446 AN EARLY 17TH CENTURY OAK ARM CHAIR, with panelled back, carved in relief with foliage, on upright supports, square foot-rails
See Illustration.
- 447 AN EARLY 17TH CENTURY OAK ARM CHAIR, square panelled back, *circa* 1600
- 448 A Charles II high-back walnut-wood chair, with cane-panelled seat, oval panel in back, pierced and carved with scroll foliage, the seat carved with Heraldic Stuart rose, supported by figures of boys
- 449 A Charles II high-back walnut-wood chair, cane panels in back and seat
- 450 A pair of William and Mary walnut-wood chairs, high backs with turned supports and pierced scroll top-rails, cane panelled seats
- 451 A Charles II high-back walnut-wood chair, the centre fitted cane panel, carved with scroll foliage, eagle, etc., cane panelled seat
See Illustration.
- 452 A William and Mary high-back chair
- 453 A Charles II high-back walnut-wood chair, with turned supports and finials, cane panelled centre, with pierced and carved scroll framing
- 454 A pair of chairs (similar), with shaped and carved under stretcher-rails
- 455 A James II high-back walnut-wood chair, carved in floral scroll ornament, cane panelled seat, on shaped front legs

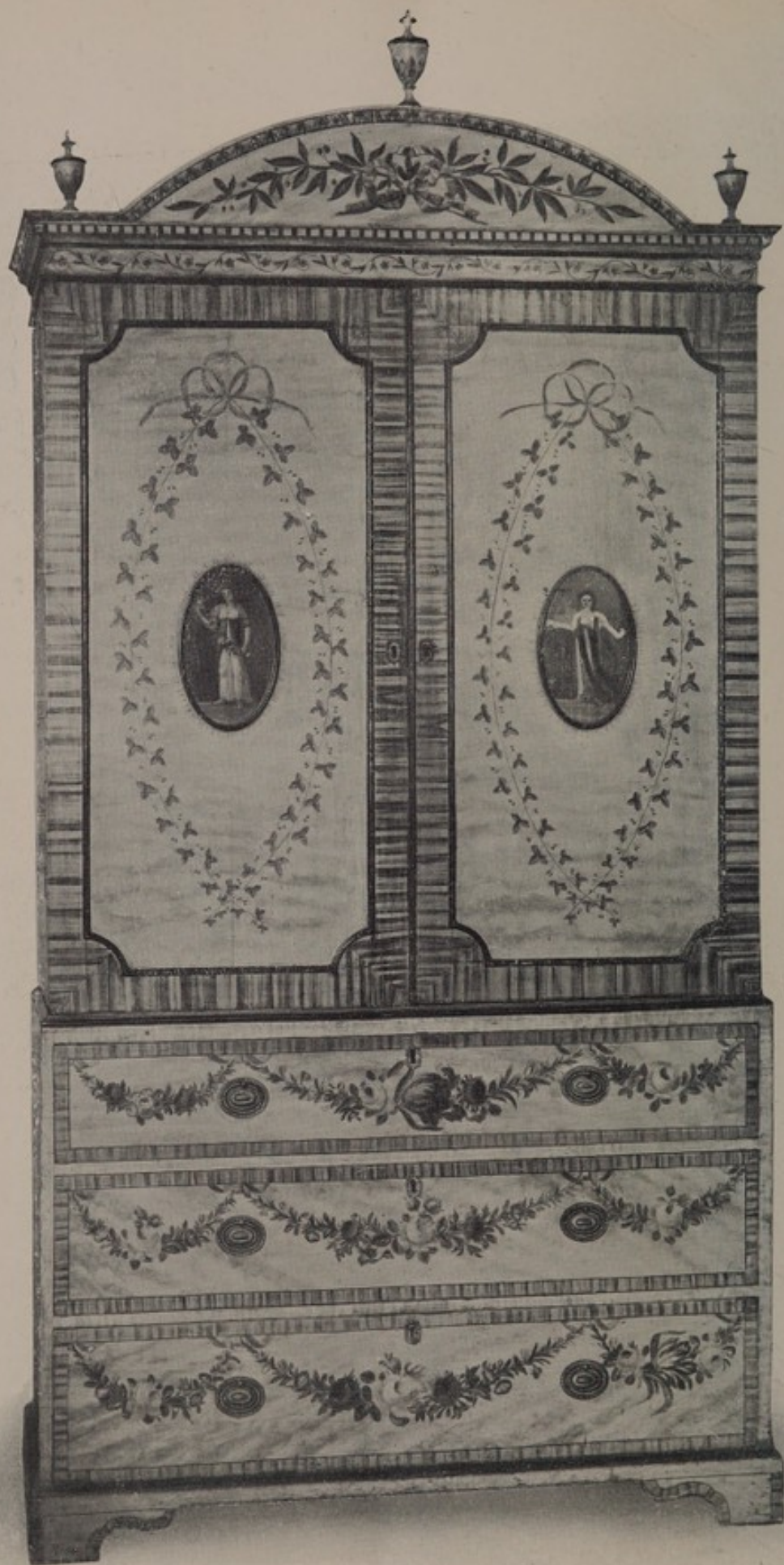
- 456 Three old Yorkshire chairs, with loose squab cushions
- 457 A pair of Stuart chairs, of walnut-wood, high cane panelled carved backs
- 458 A JACOBEOAN OAK CABINET, the interior fitted shelves, enclosed by pair of panelled and moulded doors, dated 1628, carved in high relief with masks and foliage, fitted old iron locks and ring handles, 56 *in. wide*, 44 *in. high*
- 459 A 17th Century oak cabinet with moulded top, enclosed by 2 doors with raised panels and shaped raised tablet centres, old spring lock and key, 40 *in. wide*
- 462 An 8-day striking clock, with square silvered and chased brass dial, by E. HOOPER, *of London*, in English long case of oak, overlaid with veneer of walnut-wood and shaped panels of floral marqueterie
- 463 A Chippendale mahogany urn table, square top with pierced fret-work gallery edge, on 4 square supports, fitted pull-out slide with brass handle
- 464 A PAIR OF OLD ENGLISH PAINTED POLE FIRE SCREENS, fitted with pair of oval needlework pictures, in coloured silk threads
- 465 An 18 in. Spanish mahogany sunk tray-top table, with shaped and moulded gadroon edge, on turned pillar and shaped tripod supports
- 466 A Chippendale circular mahogany table, with shaped top, gadroon edge, on carved fluted pillar and tripod supports and claw and ball feet
- 467 An early 18th Century half-circular mahogany folding-top card table, fitted well recess, on 4 shaped cabriole legs with carved shell ornament and club feet, 30 *in. wide*
- 468 An early 18th Century oak side table, fitted 1 long and 2 short drawers with pierced brass plate and drop handles, 28 *in. wide*, circa 1720



Lot 415.



Lot 330.



Lot 482.

- 469 An early 18th Century oak table, fitted drawers, with brass drop handles, on shaped cabriole legs, 33 *in. wide*
- 470 A Queen Anne walnut-wood dressing stool, in needlework of floral design, on club feet, 21 *in. long*, 18 *in. wide*
- 471 An early 18th Century walnut-wood chair, with high back and vase-shaped centre splat, shell ornament and claw and ball feet, the back and framing overlaid with finely figured walnut veneer
- 472 An early 18th Century wing arm chair, on shaped cabriole front legs, with turned rails, in tapestry, loose squab cushions
- 473 A pair of Queen Anne walnut-wood high shaped back chairs, *circa 1710*
- 474 An early 18th Century easy chair, with scroll arms and side wings, stuffed and covered in old green silk damask, on cabriole legs, with carved lion's paw feet and shell, *circa 1720*
- 477 An 18th Century Spanish mahogany tall chest of drawers, with carved fluted angles and dentelle cornice moulding, the upper part fitted 5 drawers, and the lower part with pull-out slide and 3 drawers, chased handles and escutcheons, 45 *in. wide*
- 478 An 18th Century Spanish mahogany tall chest of 8 drawers, fretwork frieze and angle pilasters to upper part, with dentil moulding cornice, fitted with original chased brass rosette-pattern drop handles and pierced escutcheons, 40 *in. wide*, 72 *in. high*
- 479 A Queen Anne walnut-wood tall chest of drawers, fitted 3 short and 6 long drawers, brass plate drop handles and key-hole escutcheons, 40 *in. wide*, 70 *in. high*
- 482 AN 18TH CENTURY GARDEROBE, the upper part fitted with sliding trays, enclosed by 2 panelled doors, 3 long drawers under with chased brass plate and oval ring

LOT 482—*continued.*

handles, the exterior painted over to simulate satin-wood, with tulip-wood cross banding and a medallion of a full-length draped female figure

* * * Illustrated in Macquoid's "History of English Furniture," vol. IV, figure 138.

See Illustration.

- 483 A Sheraton mahogany spinet case, cross banded with satin and king-wood, enriched with chased and gilt metal mouldings and paterae, on 6 carved fluted legs, converted into a dressing table, with 3 drawers in frieze, fitted brass plate and drop handles, and 2 small drawers under, 66 in. wide, 31 in. high
- 485 An 18th Century English green lacquered hanging corner cabinet, with rounded front, in the Chinese style, with figures, buildings, flowering trees, pæonies and birds in gold in slight relief, pierced brass hinges and escutcheons, 35 in. high
- 486 An 18th Century lacquered hanging corner cabinet, fitted shelves, enclosed by pair of round fronted doors, and surmounted by scroll pediment, decorated with figures, trees and buildings in the Chinese style in gold, in slight relief, on a green lacquered ground, 44 in. high
- 487 An Old English lacquer corner cabinet, decorated in the Chinese taste, the interior fitted shelves
- 488 An old Queen Anne hanging corner cupboard, with shaped moulded and panelled door, inlaid feather edge banding, 34 in. high, 24 in. wide
- 489 AN 18TH CENTURY HANGING CORNER CABINET, with rounded front, enclosed by door with pierced brass hinges, the front decorated with medallions of flowers; *a rare example of English lacquer furniture of the 18th Century*
- 490 An old bevelled edge mirror, in gilt frame, with carved cresting and pediment, plate 19½ in. by 11½ in.

- 493 An old Chippendale carved and gilt mirror frame, of pierced foliage and scroll design, surmounted by figure of a bird (51 in. by 24 in.), fitted looking-glass panel, 27 $\frac{3}{4}$ in. by 15 $\frac{1}{4}$ in.
- 494 An old toilet mirror, in walnut-wood carved and gilt bordered frame, *Queen Anne period*
- 495 A Queen Anne walnut-wood toilet mirror, with shaped top and bevelled edge glass (15 in. by 8 $\frac{3}{4}$ in.), in moulded swing frame, fitted 4 drawers, with brass knob handles
- 496 An early 18th Century mirror, of old Vauxhall bevelled plate, in 2 parts, the top panel shaped and engraved, 49 in. by 22 in.
- 497 A Queen Anne bevelled edge mirror, in moulded and fret-cut walnut-wood frame
- 498 A Queen Anne walnut-wood toilet mirror, in shaped and moulded swing frame, with fret-cut pediment, *plate* 21 $\frac{1}{8}$ in. by 13 in.
- 499 An early 18th Century mirror frame, with carved and gilt inner border, painted decorations of trellis ornaments in black, on a mottled polychrome ground, 30 in. by 18 in., *circa* 1720
- 500 A Queen Anne toilet mirror, with shaped top, in walnut-wood swing frame, with upright supports, on box stand fitted 3 small drawers with brass knobs, lock and key, *plate* 22 in. by 13 in.
- 501 An early 18th Century veneered walnut-wood upright mirror frame, with carved and gilt border mouldings, flower and foliage side ornaments, *plate* 27 $\frac{1}{2}$ in. by 17 $\frac{1}{2}$ in., *circa* 1720
- 502 A bevelled-edge mirror (20 in. by 12 in.), in Queen Anne walnut frame, with carved and gilt inner moulding, on square supports and high box stand, fitted 3 small drawers, long drawers under

- 503 An early 18th Century bevelled-edge mirror (27 in. by 16½ in.), shaped, carved and gilt frame, surmounted by scroll pediment, enriched with foliage and carved cartouche centre ornament, 48 in. high, 26 in. wide
- 504 A Queen Anne walnut-wood mirror frame, with carved and gilt inner beading, fitted old Vauxhall bevelled-edge mirror, plate 27¼ in. by 15½ in., exterior size, 41 in. by 22½ in.
- 505 An early 18th Century gilt mirror frame, carved flowers, fruit, acanthus, foliage and shell ornament (52 in. by 25 in.), fitted shaped looking-glass panel, 37 in. by 16½ in.
- 506 An Old English clock, with arched-top brass dial, fitted 8-day movement and date indicator, by GOLDSBROUGH, of Scarborough, in long case of Spanish mahogany, with fluted columns, 93 in. high, 18th Century
- 510 AN OLD ENGLISH CLOCK, with arched top brass and silvered metal dial and circular name plate, fitted 8-day movement and date indicator, by MARKWICK MARKHAM, London, striking hours on bell, in tall blue lacquered case, the door and panel decorated in gold with Chinese figures, trees and buildings, circa 1720
- * * * Illustrated in "18th Century English Furniture," by Herbert Cescinsky.
- 511 AN OLD ENGLISH CLOCK, by WILLIAM WEBSTER, of Exchange Alley, London, engraved brass and arched-top dial with chased and gilt corner enrichments, fitted 8-day movement, with strike and silent action, date indicator, and scroll pierced steel hands, in English long case, decorated with Chinese lacquer in garden scenes, figures and flowering trees
- * * * Illustrated in Macquoid's "History of English Furniture," vol. II, figure 137, and Cescinsky's "18th Century Furniture," vol. I.

See Illustration.

- 513 An old white statuary bust of John Milton, on socle,
19½ in. high
- 514 An old carved picture frame, with pierced ornament,
33 in. by 28 in., rabbet 23 in. by 18 in.
- 515 An old carved wood portrait frame, 38 in. by 32 in.,
rabbet 29 in. by 24 in.
- 516 A small oak and chestnut urn stand with shaped tray
top, fitted pull-out slide and small drawer under with
brass handles, on cabriole legs, 27 in. high
- 517 An old mahogany table with rectangular top, 34 in. by
29 in., on turned column with carved claw and ball feet
- 518 An old mahogany 2-flap table, on turned gate-leg frame,
34 in. by 33 in.
- 519 A pair of ebonized painted and carved pole fire screens,
with panels painted in oils—Landscapes with peasants
and cattle on river banks, in ebonized frames, circa
1800
- 523 A 16th Century Calabrian silk wall hanging, peacocks,
scrolls and floral ornament in rich blue, on old gold
ground, 126 in. by 63 in., very rare
- 524 Italian 16th Century crimson silk brocatelle, with con-
ventional design of foliage, 12 pieces, 35 yds.
- 525 A strip of 16th Century Italian crimson silk brocatelle,
20 yds., 30 in. wide
- 526 A panel of 17th Century Italian embroidery, crest in
centre, surround of flowers and foliage in coloured silks,
21 in. by 27 in.
- 527 A coverlet of 17th Century Italian silk damask, with
silk fringe border, mounted on canvas, 90 in. by 84 in.
- 528 An altar frontal of 17th Century Italian crimson silk
brocatelle, with vertical bands of gilt galloon and border
of old gold fringe, 39 in. by 80 in.
- 529 Another, similar, 39 in. by 115 in.

- 530 A coverlet of 17th Century Italian crimson silk brocatelle, mounted on canvas, 144 in. by 63 in.
- 531 A panel of 17th Century Italian silk brocatelle, with borders of gold galoon and band of old gold fringe, mounted on canvas, 76 in. by 70 in.
- 532 An Italian 17th Century wall hanging of crimson silk brocatelle, with vertical bands of gold galoon, mounted on canvas, 165 in. by 36 in.
- 533 Another similar, with top band of old gold fringe, 162 in. by 37 in.
- 534 A panel of similar brocatelle, 149 in. by 60 in.
- 535 An old Paisley shawl, 72 in. by 72 in.
- 536 Another shawl with green centre, 72 in. by 75 in., and one with blue centre, 79 in. by 84 in.

FINIS.

MESSRS. KNIGHT, FRANK & RUTLEY'S
SALE ROOMS,

20, HANOVER SQUARE,

ARE OPEN DAILY FOR THE RECEIPT OF

Jewels, Family Plate, Coins, Medals, Collections of Pictures, Prints, Etchings, Drawings, Libraries, China, Bronzes, Musical and Scientific Instruments, Old Lace, Furs, Furniture, Miniatures, Autographs, Stamps, Guns, Cigars, Wines, and other Valuables intended for early Public Sale.

Messrs. KNIGHT, FRANK & RUTLEY UNDERTAKE THE MANAGEMENT OF AGRICULTURAL ESTATES, COLLECTION OF TOWN AND COUNTRY RENTS AND TITHES, VALUATIONS FOR ESTATE DUTY AND OTHER PURPOSES. ALSO TENANT RIGHT SETTLEMENTS, UMPIRAGE AND ARBITRATIONS.

TIMBER SALES & VALUATIONS IN ALL PARTS OF THE KINGDOM.

FORTHCOMING SALES.

By Order of H. P. DEAN, Esq., following the disposal of the Property.

BRIDGEFOOT HOUSE, IVER, BUCKS.

One mile from COWLEY STATION (G.W.R.)

On *TUESDAY, WEDNESDAY and THURSDAY,*
MAY 30th, 31st, and JUNE 1st,

ON THE PREMISES AS ABOVE.

THE COLLECTION OF

OLD ENGLISH FURNITURE,

comprising Jacobean, William and Mary, Queen Anne, Chippendale and Hepplewhite, in Bookcases, Cabinets, Bureaux, Chests, Torchères, Wardrobes, Mirrors, Side Tables, Settees, Chairs, Tall-boy Chests, carved gilt and other Mirrors, Long-case Marqueterie, Regulator and Old English Bracket Clocks, Worcester, Crown Derby, Delft Porcelain in Vases, Figures, Tea and Dinner Services, Bronzes, Statuary Marble Figures, Jacobean Oak Panelling, a Concert Grand Pianoforte, by John Broadwood & Sons, an elaborately carved Mantelpiece with painted flower piece, an antique Leather Cassone, an old Steel War Chest, a few Pictures, Silk Embroidered Curtains, Carpets, Rugs, Bedroom Furniture, &c.

ANTIQUE SILVER,

comprising Queen Anne and Early Georgian Muffineers, Salvers, Salt Cellars, Candelabra, Cake Baskets, 3-prong Forks, Spoons, Tankards, Sauce Boats, Cream Ewers, and Sheffield Plated Ware.

GARDEN ORNAMENTS,

including a pair of Life-size Statuary Marble Lions, a pair of Rampant ditto, carved Marble Benches and Seats, Fountains, Old Stone and Terra Cotta Vases and Pedestals, an Antique Lead Cistern, Old Iron Gates and Balusters, and other Garden Ornaments.

On View Saturday and Monday prior, from 10 to 5 o'clock. Illustrated Catalogues may be obtained of the Auctioneers.

By Order of the Executors of the late Mrs. CHRISTIE.

"RIBSDEN," WINDLESHAM, SURREY.

On *THURSDAY & FRIDAY, JUNE 15th & 16th,*

ON THE PREMISES, AS ABOVE.

The Contents of the Mansion,

Carved Oak, Walnut and Mahogany Cabinets, Bookcases, Writing and Occasional Tables, Mirrors, Chairs, Settees, Oil Paintings, Water-colour Drawings, Old Prints and Engravings, a Collection of Interesting Autographs, English, Continental and Chinese Porcelain, in Figures, Groups, Tea and Dessert Services, Glass, Old Silver and Sheffield Plated Ware, Wines, Bedroom Furniture, Wearing Apparel, Out-door Effects.

A LANDAU, VICTORIA, BROUGHAM,

A DOG CART, A ROAN HORSE, SHORTHORN COW, POULTRY,
HAY, GARDEN TOOLS, &c.

Catalogues may be obtained of Messrs. AUSTIN & AUSTIN, Solicitors, 4, Clement's Inn, Strand, W.C.; or of the Auctioneers.

FORTHCOMING SALES—*continued.*

**At Messrs. Knight, Frank & Rutley's Rooms,
20, Hanover Square, W.**

On THURSDAY, JUNE 1st,

AT ONE O'CLOCK.

By Order of the Executrix of the late W. W. P. CONSETT, Esq.

Removed from No. 39, Bryanston Square, W.

Important Pictures and Works of Art,

A Louis Quinze 6 ft. Writing Table in king and purple wood, with chased ormolu mounts, a Louis XVI 5 ft. Commode in tulip-wood, with heavy gilt mounts and Sèvres plaques, a Set of Six Carved Louis Quinze Chairs and Four Elbow Chairs, ensuite, a remarkably fine Louis Quinze Bracket Clock in tulip-wood, *by Collier*, a Lowestoft Dinner Service of 181 pieces, in rich Oriental design, Encoigneurs and other old French Pieces, Carved and Gilt Italian Mirrors and Decorative Cabinets, Oriental Vases; Important Pictures, including a Garden Scene by Fragonard, Portraits of the old French School, Two Fine Works by Pater, a Landscape by Adrian Van de Velde, a Landscape by Both, a Half-length Portrait by Rembrandt, a Pair of Interiors by Guardi; and other Valuable Effects.

Illustrated Catalogues may be had of the Vendor's Solicitors, Messrs. CORBOULD & RIGBY, 1, Henrietta Street, Cavendish Square, W.; or of the Auctioneers.

*On WEDNESDAY, THURSDAY and FRIDAY,
JUNE 14th, 15th and 16th,*

IMPORTANT COLLECTION OF

Miniatures, Paintings, Porcelain, Bronzes,

AND

18th Century Painted Satin-wood Furniture.

*Formed by ARTHUR SANDERSON, Esq., of 25, Leamouth Terrace,
Edinburgh.*

Illustrated Catalogues now in course of preparation.