

Sales catalogues: Knight, Frank & Rutley

Publication/Creation

9th- 12th March 1925

Persistent URL

<https://wellcomecollection.org/works/mys9eee3>

License and attribution

This work has been identified as being free of known restrictions under copyright law, including all related and neighbouring rights and is being made available under the Creative Commons, Public Domain Mark.

You can copy, modify, distribute and perform the work, even for commercial purposes, without asking permission.



Wellcome Collection
183 Euston Road
London NW1 2BE UK
T +44 (0)20 7611 8722
E library@wellcomecollection.org
<https://wellcomecollection.org>

*Following the Sale of the Estate.
By Direction of the Executors of the late
ROBERT H. C. HARRISON, Esq.*

WA/HMN/CM/Sol/12/153

9.20-1054

9.53-11.10

23 30-5.20

54.22-5.37

5.43-6.53

SHIPLAKE COURT,

Henley-on-Thames.

On Monday, March 9th, 1925,

and

Three following days.





Lot 96

2/3/2

W. J. ...
(1924)

BUYER
AUCTIONEER

308

12. 12.

BUYER *Now*

Date 9/3/25-

BUYER *W. W. W.*
AUCTIONEERS *Shiplake Court (R. & R.)*

STY. MU. 3



*Following the Sale of the Estate.
By Direction of the Executors of the late
ROBERT H. C. HARRISON, Esq.*

A
Catalogue
of the

Contents of the Mansion of

Shiplake Court
Henley-on-Thames

1½ miles from Shiplake Station, G. W. Railway
3 miles from Henley-on-Thames

*TO BE SOLD BY AUCTION
BY MESSRS.*

KNIGHT, FRANK & RUTLEY

(SIR HOWARD FRANK, BART., G.B.E., K.C.B. JOHN FREDERICK KNIGHT, F.A.I.
ALFRED J. BURROWS, F.S.I. and ARTHUR H. KNIGHT, F.A.I.)

On the Premises, as above

On MONDAY, 9th MARCH, 1925, and Three following Days
AT ONE O'CLOCK PRECISELY EACH DAY

Public View Friday and Saturday prior, from 10 to 5 o'clock.

Private View (by Card only) on Thursday, March 5th, 1925.

Solicitors—Messrs. LEMAN, CHAPMAN & HARRISON,
44, Bloomsbury Square, W.C.

Catalogues, Free, Illustrated Copies, price 3/-, of Messrs. SIMMONS
& SONS, Land Agents, Henley-on-Thames; or of Messrs. KNIGHT,
FRANK & RUTLEY,

20, HANOVER SQUARE, LONDON, W. 1.

Telephones—Mayfair 3066 (4 lines)

Telegrams—Galleries. Wesdo. London

ALSO AT
41, Bank Street, Ashford Kent
78, St. Vincent Street, Glasgow
90, Princes Street, Edinburgh

Dryden Press: J. Davy & Sons, Ltd., 8-9, Frith Street, Soho Square, W. 1.

Conditions of Sale.

I.—The highest bidder to be the purchaser ; and, if any dispute arise between two or more bidders, the lot in dispute shall immediately be put up again and re-sold, as the auctioneer may decide.

II.—No person to advance less than 2s. 6d. ; above Five Pounds, 5s., and so on in proportion.

III.—In the case of lots upon which there is a reserve the Auctioneers shall have the right to bid on behalf of the vendor.

IV.—The purchaser to give in name and address, and, if required, to pay down 5s. in the £, or more, in part payment of the purchase-money ; in default of which the lot or lots so purchased to be immediately put up again and resold.

V.—The lots to be taken away at the purchaser's expense and risk on the day following the completion of the sale, in default of which Messrs. KNIGHT, FRANK & RUTLEY, will not hold themselves responsible, if the lots be lost, stolen, damaged, or destroyed ; but they will be left at the sole risk of the purchaser. All damage done to the premises, or to any lots, by the removal of any of the goods shall be made good by the purchaser thereof ; principals being considered responsible for the acts of their servants.

VI.—The lots are sold with all faults, imperfections, and errors of description, the Auctioneers not being responsible for the correct description, genuineness, or authenticity of, or any fault or defect in, any lot ; and making no warranty whatever. The Auctioneers reserve the right of refusing any bidding or of withdrawing any lot or lots from the sale.

VII.—To prevent inaccuracy in delivery and inconvenience in the settlement of the purchases, no lot can on any account be removed during the time of sale ; and the remainder of the purchase-money must absolutely be paid on the delivery.

VIII.—Upon failure of complying with the above conditions, the money deposited in part of payment shall be forfeited ; all lots uncleared within the time aforesaid shall be resold by public or private sale, and the deficiency (if any) attending such resale, together with warehouse and other charges, shall be made good by the defaulter at this sale.

KNIGHT, FRANK & RUTLEY.

SHIPLAKE COURT, HENLEY-ON-THAMES.

ORDER OF SALE,

AT ONE O'CLOCK PRECISELY EACH DAY.

FIRST DAY.—Monday, March 9th.

	LOTS.
ENTRANCE HALL, CLOAK ROOM, INNER HALL, PICTURES, THE GREAT HALL, TAPESTRIES, MINSTREL GALLERY, BILLIARD ROOM - -	1—201

SECOND DAY.—Tuesday, March 10th.

DINING ROOM, MORNING ROOM, LIBRARY, STUDY, PRINCIPAL LANDING - - - - -	202—398
---	---------

THIRD DAY.—Wednesday, March 11th.

BOOKS, PRINCIPAL BED ROOMS AND DRESSING ROOMS, 1 TO 6 - - - - -	399—637
--	---------

FOURTH DAY.—Thursday, March 12th.

PRINCIPAL AND SECONDARY BED ROOMS, DOMESTIC OFFICES, WINE, LINEN, AND GARDEN ORNAMENTS - - - - -	638—876
--	---------

THE HISTORY OF THE
UNITED STATES

OF THE
NATION

FROM THE FIRST SETTLEMENTS TO THE PRESENT TIME

BY
JOHN F. JOHNSON

IN TWO VOLUMES

VOLUME THE FIRST

Messrs. KNIGHT, FRANK & RUTLEY'S Sale at
SHIPLAKE COURT,
on Monday, March 9th, 1925, & 3 following Days.

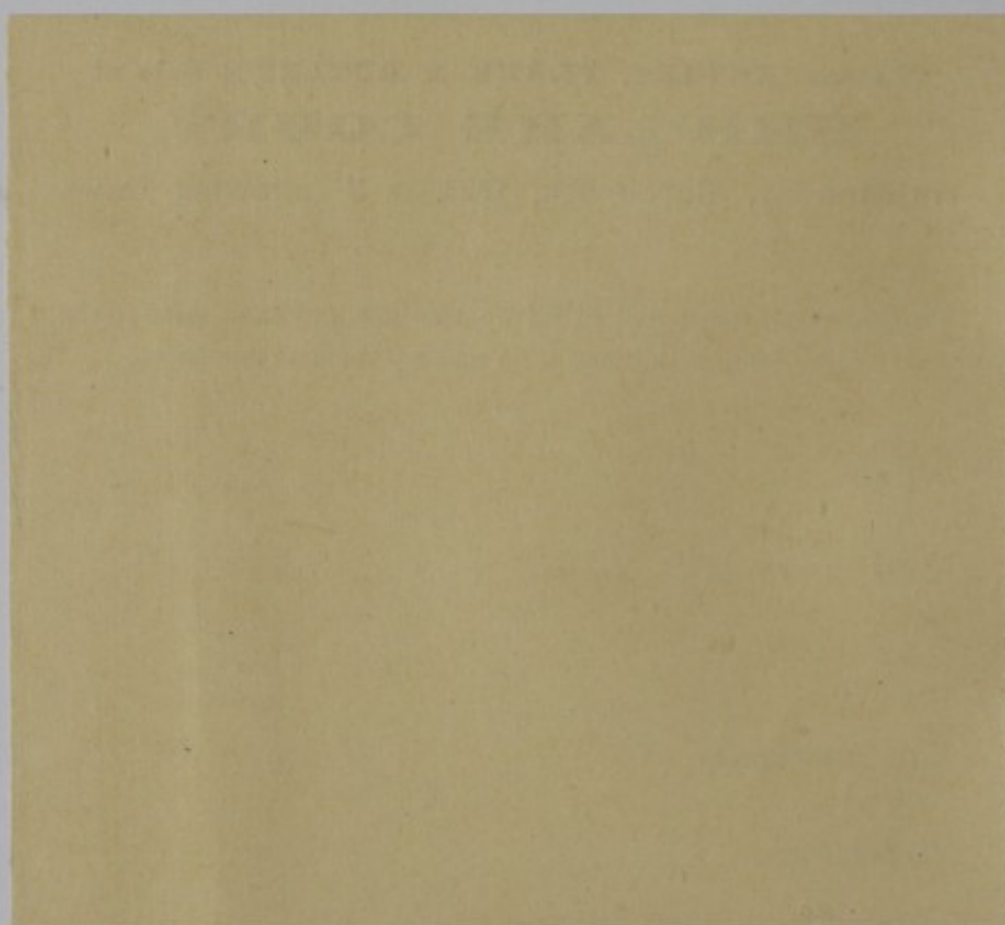
Purchasers are requested to fill up this slip and hand same to the
Sale Clerk, with deposit, on making the first purchase.

Name.....

Address in full.....

Lot purchased, No.

Deposit £.....



CATALOGUE
OF
Messrs. KNIGHT, FRANK & RUTLEY'S
First Day's Sale
AT
SHIPLAKE COURT,
NEAR
HENLEY-ON-THAMES.

On MONDAY, the 9th of MARCH, 1925,

AT ONE O'CLOCK PRECISELY.

ENTRANCE HALL.

LOT

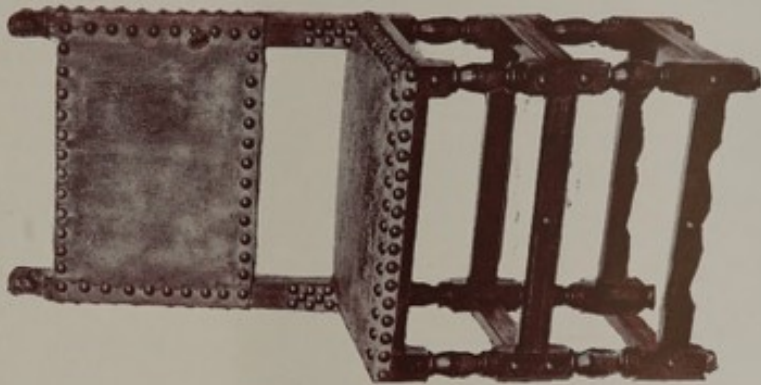
- 1 A pair of Venetian brass processional lanterns, with glazed panels on painted staves, and electric fitting
- 2 A barometer and thermometer, by L. CASELLA, in oak case
- 3 A Jacobean oak arm chair, carved scroll cresting and panelled back with floral spray, baluster legs
See Illustration. Plate I.
- 4 A large bronze vase, with applied embossed panel of coat-of-arms with coronets and motto "*Je maintiendrai*," 13 in. high
- 5 A fibre door mat, 3 ft. 9, and a bamboo umbrella stand

CLOAK ROOM.

- 6 A carved oak rack, with deep cornice, lion masks, rings and cherubs, brass hooks and studs, 7 ft.

INNER HALL.

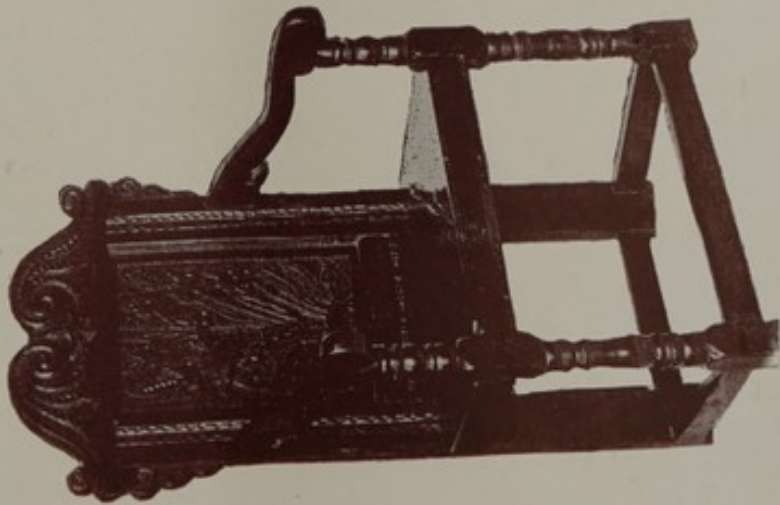
- 7 A PERSIAN CARPET, blue ground and conventional figuring, yellow and blue border, 21 ft. 6 by 7 ft. 2, and underfelt
- 8 A DITTO, camel ground, rosette and leafage figuring with trellis lines, light border with blue margins, 16 ft. 6 by 6 ft. 9, and underfelt
- 9 A *Persian corridor carpet*, blue ground with white angles and crimson border with green margins, 21 ft. by 3 ft. 4, and underfelt
- 10 A 17TH CENTURY OAK STANDING BUFFET, with 4 doors in 2 tiers, carved linen fold panels, the upper tier with a centre panel carved in high relief with a figure of the Virgin and Child, open base with square supports and platform, cut steel lock plates and hinges and embossed rosettes, 6 ft. high, 5 ft. wide
See Illustration. Plate II.
- 11 A walnut linen chest, inlaid banded borders, interior lined green baize, on stand with square supports, 4 ft. 4
- 12 A *chestnut dower chest*, with ebonized mouldings and ball feet, mounted with massive brass clamps and lock plate and bosses and heavy drop handles at sides, 4 ft. 6
- 13 A JACOBEOAN OAK REFECTORY TABLE, incised carving to frieze with added drawer at end, on baluster legs and square foot bars, 8 ft. by 2 ft. 3
- 14 AN OAK REFECTORY TABLE of Elizabethan design, with draw-out flaps at ends, scroll shape frieze, bulbous legs and square foot bars, 9 ft. 2 by 2 ft. 7
- 15 A Queen Anne oval gate-leg table, on turned legs with club feet, 4 ft. 8 by 4 ft. 6
- 16 A Jacobean carved oak arm chair, panelled back with arcaded scroll, baluster legs and flat stretchers
- 17 A walnut chair, square back with carved bust finials, baluster legs and square stretchers, seat in buff leather frame studded large brass nails
- 18 A ditto chair, nearly similar, seat and oblong back in dark hide studded brass nails
- 19 A ditto arm chair, low back with carved lion head finials, seat and back in dark hide, studded brass nails, pierced flat stretchers



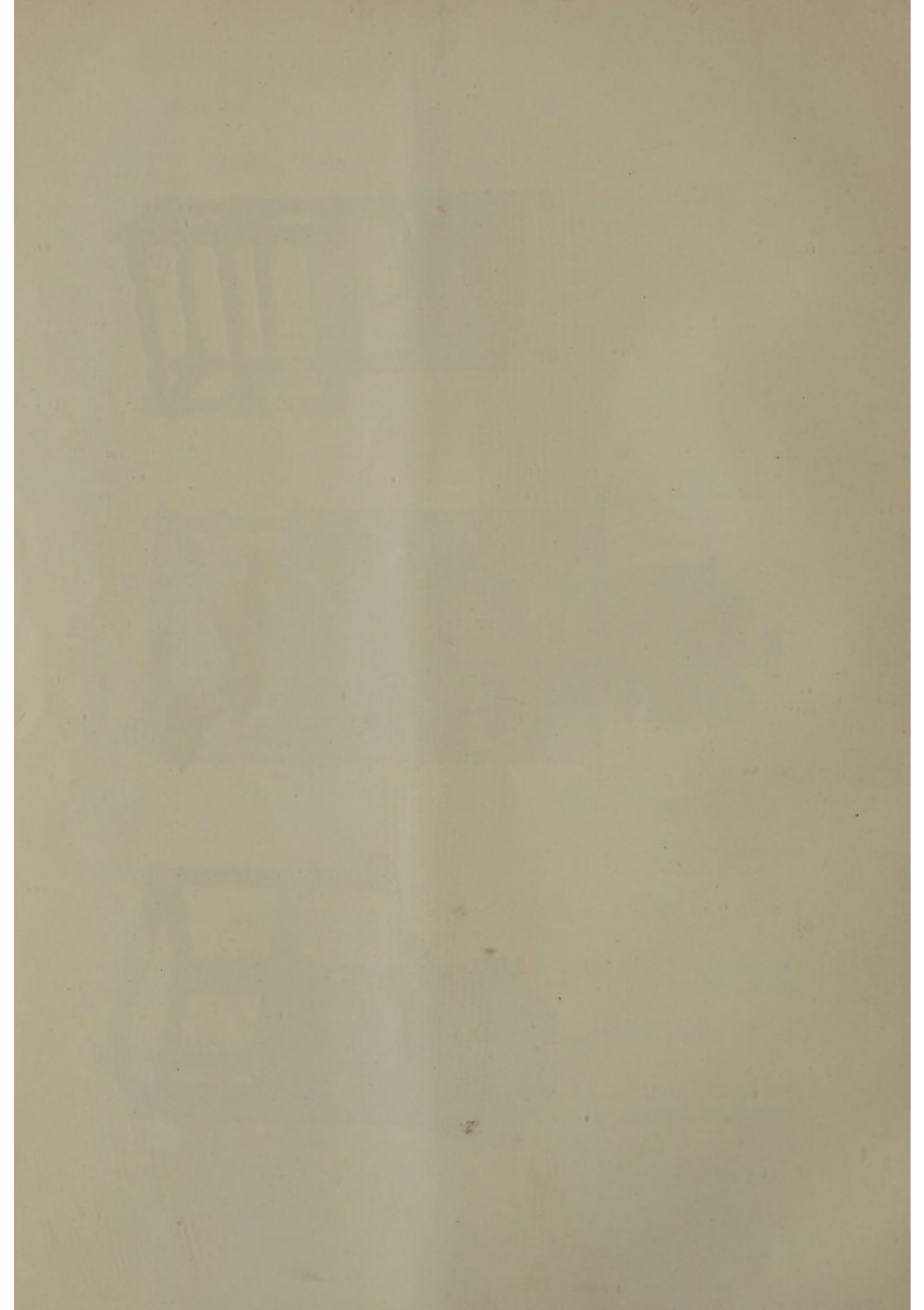
Lot 92



Lot 344



Lot 3



- 20 A mahogany elbow chair, Chippendale design, interlaced back carved honeysuckle and pear drop, acanthus finials to elbows, cabriole legs with claw and ball feet, loose seat in green baize, and an occasional chair, *en suite*
See Illustration. Plate VII.
- 21 A FLEMISH OAK LONG CASE CLOCK, arched pediment carved with floral festoon, open trusses at angles, the base with a cartouche and monogram *J. M. K. S.*, chased metal gilt dial, by JOSEPH OFFERMAN à Liège
See Illustration. Plate III.
- 22 A QUEEN ANNE WALL MIRROR, carved gilt frame with scroll pediment and escutcheon, shell on frieze and base, 58 in. by 31 in.
- 23 A wall mirror, Queen Anne style, in mahogany frame, shaped pediment with gilt rosettes, plate in 2 parts, the upper portion with carved ornament, 45 in. by 18 in.
- 24 A Florentine mirror, in embossed brass frame with faceted borders, 26 in. by 15 in.
- 25 An Oriental dinner gong, on bamboo stand, and beater
- 26 A Sheraton mahogany oval tea tray, inlaid centre, 24 in.
- 27 Two Chippendale mahogany oval tea trays, 21 in. and 18 in.
- 28 Four glazed cases of birds
- 29 A pair of Dutch copper flagons, with hammered decoration and hinged lids with brass knops, 17 in.
- 30 A Cromwellian leather bottel or ale barrel, 9 in.
- 31 A pair of gilt iron door porters, a lion and a hound supporting armorial shields
- 32 A brass square candle lantern, embossed dome top with handle, glazed panels, 13 in.
- 33 A pair of antique brass pricket candlesticks, on triangular bases and ball feet, 10 in.
- 34 A pair of brass candlesticks, square stems and bases, embossed amorini and flowers, 7½ in.
- 35 A brass coffee pot with dome cover, 12 in., a hot-water jug with hinged lid, a brass cup with pierced flat handles, a papier maché snuff box, and a stoneware match holder
- 36 A CARVED WOOD PANEL in bas relief of a Saracen equestrian warrior, painted in colours and gilt, in frame, inscribed "*Jacobi Apostole olus et decus Ispania, Ani 1221, M. E*"
See Illustration. Plate IV.

- 37 A majolica circular salver, painted in figure subject, inscribed on the back "*Quando li Romani tolser le donne ali Sabini*," 18 *in. diam.*, in ebonized and gilt frame
- 38 The companion, inscribed on the back "*La Guerre de Ruenne*," 17 *in. diam.*, in similar frame
- 39 Two Delft blue and white pear shape vases, floral decoration, 9 *in.*
- 40 A famille rose ovoid jardinière, flowering trees on white ground, 9 *in.*, and a blue and white saucer dish, 10 *in.*
- 41 A large Spode blue and white deep oval dish, decorated buildings, trees and balcony, shell handle, 20 *in.*, and a willow pattern meat dish, 20 *in.*
- 42 An Oriental Celadon bamboo shape beaker, 12 *in.*, and a blue and white globular jardinière
- 43 A Leeds ware oval toilet basin, with fluted border, 13 *in.*, and a Wedgwood blue and white octagonal bowl, 9½ *in.*
- 44 A Mason's ironstone toilet ewer, with serpent handle, and an Aix-les-Bains pottery ewer
- 45 A pair of Italian pottery salvers, painted fruit, 16 *in.*, and a ditto basin, 12½ *in.*

PICTURES.

Inner Hall.

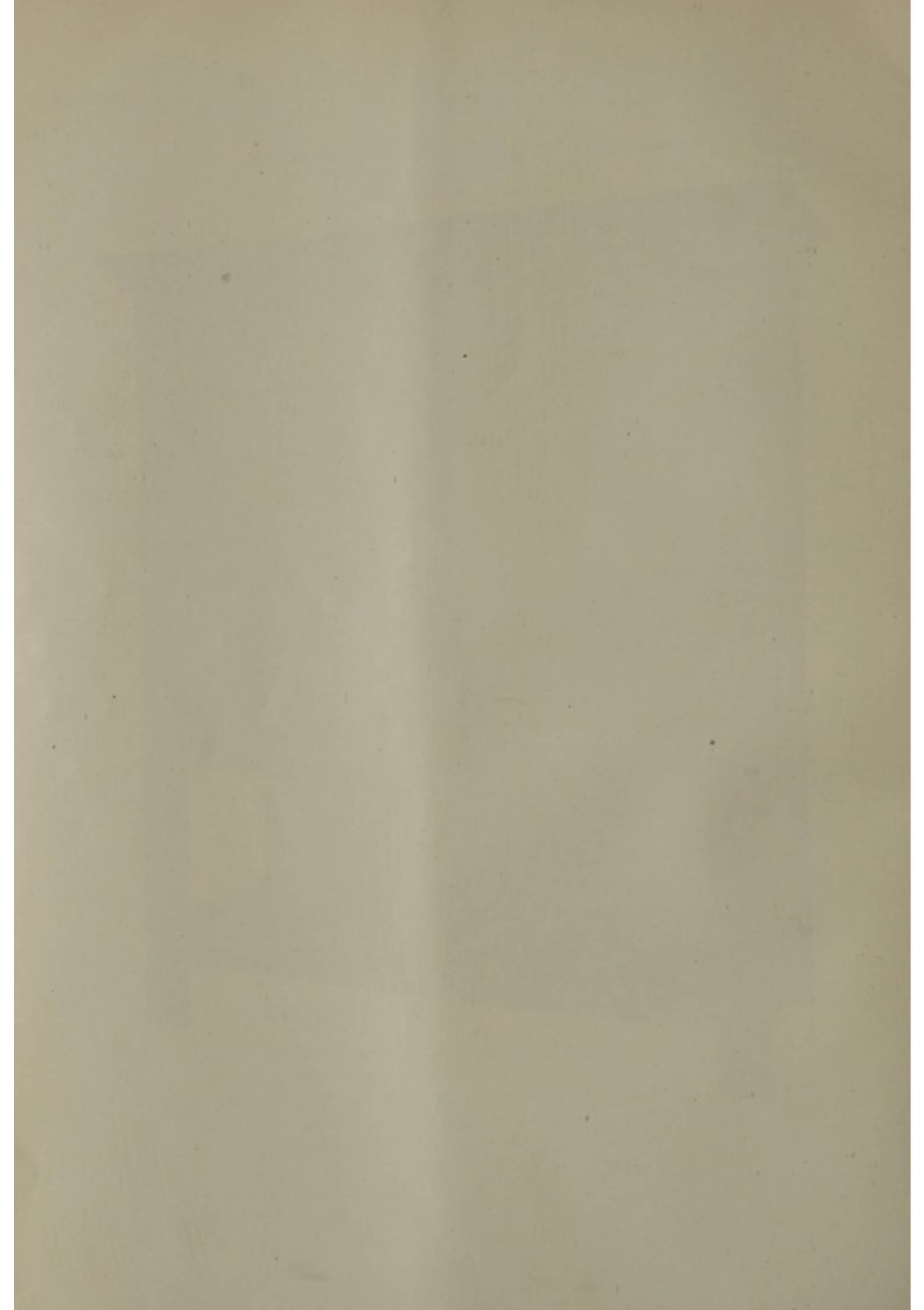
- 46 E. FRYER, 1837—A Classic Landscape with temple ruins, figures and cattle in foreground, 39 *in.* by 48 *in.*
- 47 A Landscape with view of old Shiplake Court, a spaniel dog in the foreground
- 48 A pair of architectural drawings : The Interior and Cloisters of a Cathedral, 23 *in.* by 17 *in.*
- 49 WALTER TUNDALE, 1904—A water-colour drawing : A Residence with garden and sundial, 10 *in.* by 14 *in.*
- 50 H. SIMPSON—Doorway of a Mosque, Cairo, 12 *in.* by 6 *in.*, and a Landscape with bank of foxgloves, 5 *in.* by 11 *in.*

THE GREAT HALL.

- 51 A pair of wrought andirons, square tapered pillars with brass scroll finials surmounted by crowned lions passants, 40 *in.*
- 52 A cast-iron fire-back, with arcaded panel figure of Peace holding a palm branch and draped female figures at sides, dated Ao. 1648, 36 *in.* by 32 *in.*



Lot 10



- 53 An antique steel toaster, with sliding rack and 8 brass forks, on standard and tripod, and a pair of steel tongs
- 54 A pair of antique steel tongs, a log fork, a brass toasting fork, a brass hearth brush, and a pair of fire bellows
- 55 A mahogany sarcophagus wine cooler, adapted as a log bin, on carved lion paw feet
- 56 A PERSIAN CARPET, self crimson with blue figured diamond centre and border with angles, 20 ft. by 16 ft. 8
- 57 A Bokhara carpet, crimson ground, panel design and border, 9 ft. 2 by 7 ft. 3
- 58 A Persian rug, crimson ground, blue and white panel centre and border, 8 ft. 4 by 4 ft. 2
- 59 A ditto, blue ground, green border, key pattern, 4 ft. 9 by 2 ft. 11
- 60 A ditto, red ground, 3 ft. 6 by 2 ft. 1
- 61 A Persian corridor rug, blue ground with anchor figuring and white border with stars, 21 ft. 4 by 2 ft. 11
- 62 A ditto, black ground, red and buff cone pattern, light border with rosettes and diagonal bars, 16 ft. 4 by 3 ft. 4
- 63 AN ELIZABETHAN OAK BUFFET, with cupboards in 3 tiers, the upper tier with 2 doors and centre panel carved with busts in medallions, wrought-iron hinges and drop handles, the middle tier with door in centre carved escutcheon and initials V.L.K., and panels on either side with male and female busts, the lower tier with door in centre carved armorial shields, and linen fold panels at sides, 5 ft. 9 high, 4 ft. wide
See Illustration. Plate V.
- 64 AN EARLY FRENCH OAK ARMOIRE, enclosed by a pair of double folding doors having 16 panels, carved in relief in Gothic design, 6 wrought steel double hinges and lock plate, and 6 linen-fold panels on each side, 6 ft. 8 high, 5 ft. 6 wide
See Illustration. Plate VI.
- 65 AN HISPANO-MAURESQUE CABINET, fall front with pierced brass plaques, wrought-iron hasp and lock plate, handles, bolts and hooks, enclosing 13 drawers and 2 cupboards with painted and gilt architectural fronts with spiral columns and scroll pediments, standing on a chest of long drawer and cupboard with 2 doors, carved and painted to correspond, 3 ft. 5 wide

- 66 A FLEMISH OAK DRAW TABLE, with stout panelled top, the frieze with pierced scroll ornament, on massive plain bulbous legs and square foot bars, 7 ft. 3 by 2 ft. 10, extending to 13 ft. 11

See Illustration. Plate VII.

- 67 A 16TH CENTURY OAK REFECTORY TABLE, carved frieze on tapered column supports with Ionic caps and square foot bars, 9 ft. 3 by 2 ft. 7

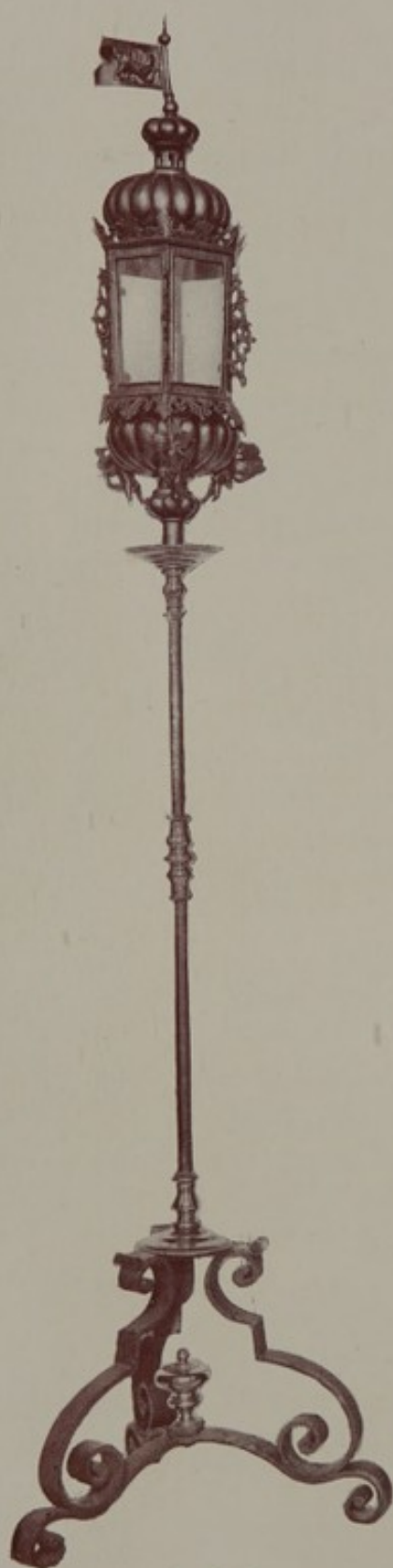
See Illustration. Plate VIII.

- 68 An extra large kingwood DOWER CHEST, with plain pierced brass clamps, chased lock plate and massive drop handles at sides, lined cedarwood, on stand with bracket supports, 6 ft.

* * * *From the collection of Lord Walsingham.*

- 69 An oak oval gate-leg table, with drawer on baluster supports, carved splayed feet and square stretchers, 3 ft. 6 by 3 ft.
- 70 A similar table (without drawer), 3 ft. 2 by 3 ft.
- 71 A similar table with drawer, on baluster supports with ball feet, 3 ft. 11 by 3 ft. 6
- 72 A small oak oval table, on cross folding baluster legs and square stretchers, 28 in. by 19 in.
- 73 A Jacobean oak rectangular table, on spiral legs and square stretchers, 30 in. by 17 in.
- 74 A Jacobean oak joynt bench, with baluster legs and flat stretchers, 5 ft.
- 75 A ditto, 4 ft. 7
- 76 A Jacobean oak joynt stool, baluster legs and square stretchers, 18 in.
- 77 A ditto, 20 in.
- 78 A ditto, on balled legs, 21 in.
- 79 A Queen Anne mahogany card table, square folding top with rounded candle corners, on turned tapered legs with club feet, 32 in.
- 80 A FRENCH OAK SETTLE, high back, with 2 panels of carved figure subjects in high relief, one with Henri IV and Marie de Medici at hymenal altar, and the other depicting them with attendants and a jester, the 2 panels beneath with portrait medallions, the framing carved in trophies, ribbons and flowers, coffer seat with panelled front carved with escutcheons and fleur-de-lys, 5 ft. 2 high, 4 ft wide, fitted with loose squab in Morris velvet and down cushion in green silk rep and serge

See Illustration. Plate IX.



Lot 205



Lot 21



Lot 205

- 81 A PAIR OF 16TH CENTURY SPANISH WALNUT ARM CHAIRS, the backs with carved terminal busts and 2 panelled scroll splats, straight arms and wood seat, with panelled scroll stretcher, and loose cushions in Morris velvet
See Illustration. Plate X.
- 82 A *Queen Anne settee*, stuffed-over back and scroll arms, on walnut cabriole legs, with club feet, 5 ft., 2 loose squab seats in corduroy velvet
- 83 A HEPPLEWHITE SETTEE, stuffed-over arched back and seat upholstered *en suite*, mahogany fluted arms and square tapered legs with brass casters feet, 6 ft. 4
- 84 A Georgian rose-wood frame settee, straight back and scroll arms, loose down squab, 2 bolsters and 3 cushions in brown holland, and loose green rep covers, 6 ft. 10
- 85 A stuffed-over settee, square back and arms with loose squab, upholstered in blue and yellow chequered pattern tapestry, on square tapered mahogany legs and brass casters, 7 ft.
- 86 A Knole pattern settee, square back with drop wings, open arms, on turned oak supports, loose down squab and small cushion, in green figured silk damask crossed with braid and finished fringe
- 87 A stuffed-over arm chair, William and Mary design, high scroll shape winged back and arms, loose down cushion seat, on carved oak legs, scroll front stretcher and turned rails
- 88 A Chippendale mahogany open ARM CHAIR, stuffed-over back, arm pads and seat in green figured silk damask, on straight square sunk fret legs and pierced stretcher rails
- 89 A stuffed-over divan arm chair, in green worsted rep crossed with wool braid
- 90 A CHIPPENDALE MAHOGANY ELBOW CHAIR, carved back with vase shape rail splat, straight square fluted legs and stretchers, seat in corduroy velvet
- 91 A 16th century walnut chair, with square shape open arms, carved lion mask finials, leather back and seat studded brass nails, on turned legs and square stretchers
- 92 A 16th century chair of similar character, with carved bust terminals, leather back and seat studded large brass nails
See Illustration. Plate I.
- 93 A ditto chair, with low back

- 94 A pair of similar chairs, the leather of backs embossed in gold with heraldic shields, with cors-de-chasse and fleur-de-lys

See Illustration. Plate X.

- 95 A BOUDOIR GRAND PIANOLO PIANO, by STECK, no. 48707, in rose-wood case, and the music seat

TAPESTRIES.

- 96 A PANEL OF FLEMISH TAPESTRY, depicting a park scene with château, trees and flowering shrubs and Æsop subject of Fox and Stork in foreground, in a border with vases of fruit and flowers and an escutcheon with crest and coronet in centre of top, the whole mounted on a screen of seven folds, 8 ft. 1 high, about 15 ft. 10 wide

See Illustration. Plate XI.

- 97 A PANEL OF BRUSSELS TAPESTRY : the grounds of a palace, a senator standing in the centre with two attendants, other figures on the right kneeling in supplication and various figures on the left, border at top and sides with fruit and foliage, 7 ft. 8 by 14 ft. 6

- 98 A PANEL OF EARLY SPANISH TAPESTRY : an armoured warrior with axe over shoulder, seated on a dais, a woman standing before him carrying an amphora, wide border with figures and foliage, 11 ft. by 8 ft. 6

- 99 A small panel of Brussels tapestry : park scene and château, 36 in. by 23 in., mounted as a cheval screen

- 100 A tapestry panel : forest scene with deer and wild duck

- 101 A mantel fall of antique crimson velvet crossed with tinselled braid, and 2 lappets, embroidered in heraldic shields

- 102 A pair of Italian wrought-iron floor candlesticks, with brass mounts and nozzles, on scroll tripod supports, 41 in., fitted for electric light and silk shades

- 103 A pair of wrought-iron column floor candlesticks, with brass mounts and pricket nozzles, on quadruple scroll supports, 63 in.

- 104 An embossed and pierced brass globular table lamp, with electric fitting and paper shade

- 105 AN 18TH CENTURY BRACKET CLOCK, with brass dial, chased mounts, calendar movement, by JAMES ELEY, London, in mahogany case, with chased and pierced metal gilt mounts, cone terminals, handles and bracket feet, 20½ in.

See Illustration. Plate XII.



Lot 36

- 106 A Spanish brass circular brazier, on triple claw and ball supports, and liner with serpent and cherub handles, 27 in. diam.
- 107 A ditto, with pierced frieze, on lion mask and claw supports, and pierced dome cover, with swan handle, 30 in. high
- 108 A Spanish copper vineyard pannier
- 109 An Oriental Cloisonné bowl, with handles decorated in animals and storks on turquoise blue ground, on 3 feet, 15 in. diam.
- 110 A Japanese bronze vase, globe shape body, hexagon spreading top, kylin handles, 12 $\frac{1}{4}$ in. high, and carved wood stand
- 111 A bronze sarcophagus inkstand, brass top, with 3 ink wells and covers, and a walnut work box, inlaid figures dancing
- 112 A pewter hanging wall cistern, surmounted by dolphins, brass tap, dated 1788
- 113 A pewter hot water jug, with hinged lid and wood handle, and a smaller ditto, *en suite*
- 114 A pair of beakers, chased in busts of William and Mary, 5 $\frac{3}{4}$ in., and another, 4 $\frac{1}{2}$ in.
- 115 Two pewter porringers, with flat handles, and a circular flat spirit flask
- 116 A flint-lock pistol, by SHERWOOD, with long barrel, inlaid stock and chased brass mounts, 27 in.
- 117 A ditto, with similar mounts, 22 $\frac{1}{2}$ in.
- 118 Two Goorkha kukris, in leather sheaths, one with 2 small knives attached
- 119 A Persian damascened sword, with ivory hilt, in sharkskin case, 30 in., and a ditto dagger, 16 in.
- 120 Two Oriental daggers, in sheaths
- 121 A scarlet morocco leather whist and bridge case, fitted 2 whist markers, 3 books of rules, and scoring blocks, and an Oriental embroidered table centre
- 122 Two rapiers, with cut steel hilts
- 123 A Chinese bronze model of a dragon, with flexible body and legs, 32 in.
- 124 A pair of Oriental blue and white pear shape jars and covers, decorated rock and water scenes, tea houses and figures, raised kylin masks on shoulders, 16 $\frac{1}{2}$ in.
- 125 A ditto ginger jar, rock and water scenes, 8 $\frac{1}{2}$ in.
- 126 A ditto, detached utensils, 8 in.

- 127 A blue and white oval deep dish, lambrequin border, on shell feet, 12 in., and a Lowestoft oblong meat dish, shield centre, with initial K
- 128 An Oriental blue and white circular deep dish, tree and balcony, diaper border, 14½ in.
- 129 An octagon shape ditto, flowering trees, balcony and peacocks, 14 in.

PICTURES.

J. S. SARGENT, R.A.

- 130 A Riverside Sketch, with Lady reclining in punt, 26 in. by 21 in.

ALFRED PARSONS, 1886.

- 131 A Landscape, with meadow and daffodils, *water colour*, 9½ in. by 24 in.
- 132 ——— A Study of Apple Blossom, 14 in. by 10 in.
* * *Exhibition New Gallery*, 1888.
- 133 A mezzotint portrait—Lt. Genl. Sir John Moore, after J. Halls, by C. Turner
- 134 An Engraving—Portrait of Lord Collingwood, 1806
- 135 A glass picture—Portrait of the Hon. Colonel Townshend
- 136 A photo portrait of Charles I, after Vandyck
- 137 Four etchings after Old Masters, in oak and gilt frames, with panelled back boards
- 138 Four ditto
- 139 Four ditto
- 140 Four ditto
- 141 Four ditto
- 142 Four ditto
- 143 Four ditto
- 144 Four ditto
- 145 Four ditto
- 146 Four ditto
- 147 Four ditto
- 148 Four ditto
- 149 Five ditto



MINSTREL GALLERY.

- 150 A FLEMISH OAK CABINET, moulded cornice, with deep frieze, carved in floriated scrolls and lion masks, 2 doors in centre, panels with symbolical female figures and caryatids at angles, on table stand, 2 drawers carved in masks, scrolls and cherubs in centre, Ionic fluted columns, panelled back and platform, 4 ft. 4 wide, 5 ft. 9 high
See Illustration. Plate XIII.
- 151 An oak coffer, with carved frieze and panelled front, 6 ft. 4
- 152 A Flemish walnut BREAD HUTCH, serpentine shape cornice, with vase terminals, spindle railed front and sides, with small door in centre, steel lock plate, carved base, on shaped supports, 32 in. wide, 40 in. high
- 153 A pair of large embossed copper melon shape bowls, 27 in. diam., on wrought iron scroll pattern tripod stands
- 154 An antique drapery, of silk brocade, flowers on cream ground, 40 in. by 90 in.
- 155 A ditto, crimson ground, 82 in. by 57 in.
- 156 A ditto, cream figure and stripes, 35 in. by 108 in.

BILLIARD ROOM.

- 157 A pair of wrought andirons, of scroll design, 27 in., a set of implements, with brass handles, and a pair of rests
- 158 A *Bokhara rug*, conventional pattern on red ground, 10 ft. by 6 ft. 4, and underfelt
- 159 A Persian rug, light blue centre, diamond pattern figuring, light border, 8 ft. 3 by 3 ft. 2
- 160 A set of 4 Oriental rugs as billiard surround, camel ground, coloured figuring and borders, two 12 ft., two 12 ft. 9, 3 ft. 4 wide
- 161 A similar rug, as laid to stairs to cloak room, 6 ft. 2 by 2 ft. 8
- 162 A Persian rug, blue ground and crimson border, with white margins, 5 ft. 6 by 4 ft. 3
- 163 A full size MAHOGANY BILLIARD TABLE, by WRIGHT, of London, with New Century cushions, on 8 turned and reeded legs
- 163A A holland billiard table cover, and a waterproof ditto
- 164 A mahogany billiard and pool marking board, with slate centre, glazed locker for balls and cash tills, resting on dwarf cupboard, with 2 drawers and 2 panelled doors, 3 ft. 9

- 165 A set of ivory billiard balls
- 166 Sixteen ivory pool and pyramid balls, and a wicker pool basket
- 167 A set of crystalate billiard balls, and a set of bonzoline ditto
- 168 Ten ash cues, and a rest, with brass adjustable fitting
- 169 Five cues, with spliced butts, a short ditto, 2 rests, 2 long butts, and a long rest
- 170 Three cues, with spliced butts, in japanned cases, an automatic billiard marker, a brass bound flat rule, a mahogany triangle, a cloth brush, a brass tip fastener, a waterproof billiard cover, and 3 printed rules, framed
-
- 171 A SHERATON MAHOGANY AND MARQUETERIE CABINET, deep frieze inlaid husk festoons, centre fitted 2 shelves and trellis glazed door, the wings with 2 panelled doors inlaid flambeaux and quivers, etc., turned columns, on stand with secretaire drawer, fall front, fitted 3 cupboards, 4 drawers and pigeon holes, brass wreath and plate handles, serpentine frieze, on square tapered legs
See Illustration. Plate XIV.
- 172 A carved oak square table with triangular fall flap, baluster and gate legs, 20 in., and an ebonized dwarf octagonal table, on turned legs, 24 in.
- 173 A *Jacobean oak settle*, high carved and panelled back, balled elbows, legs and stretchers, loose cushion seat in Morris velvet, 4 ft. 6
- 174 An open arm chair, with arched wings and seat in buff rep, wide back in antique tapestry, with figures of a man and woman
- 175 A Knole pattern arm chair, square back with drop wings and loose cushion seat, upholstered in crimson plush crossed with heraldic pattern braid
- 176 A SET OF 3 HEPPLEWHITE MAHOGANY CHAIRS, lyre splats with carved honeysuckle and husk, square fluted tapered legs and stretcher rails, concave seats in brown worsted serge
- 177 A ditto chair, nearly similar, back carved in husks, plain and straight square legs, seat upholstered *en suite*
- 178 A Sheraton mahogany elbow chair, trellis back, square tapered legs, concave seat upholstered *en suite*
- 179 A Chippendale mahogany elbow chair, ladder loop back, square tapered legs, seat in crimson plush
- 180 A walnut circular footstool in green silk rep, and a small 4-fold screen in brocaded silk, 3 ft. 9



Lot 64

- 181 A chestnut and marqueterie stationery case, a cut-glass ink-stand, an olive wood pen tray, a Chinese red lac box, 5 in., a brass ash tray and a ware match holder
- 182 Two model sailing yachts
- 184 A set of 3 Mason's white ironstone square shape flower pots and stands, a pair of white china vegetable dishes, painted in flowers, a white basin, a Wedgwood plate, and a Doulton tobacco jar
- 185 A pair of Italian blue and white pottery pharmacy jars, 11 in.
- 186 An Oriental blue and white pear shape jar, fitted as electric lamp, and paper shade, and a ditto globular jar with kylin masks, 5 in.
- 187 A Worcester embossed white and gilt china TEA AND COFFEE SERVICE : 12 tea cups, 8 coffee cups, 12 saucers, a basin, and 2 cake plates
- 188 A pair of Chinese blue and white tea cups and saucers, a pair of small bowls with pierced sides, a small spill vase, a Lowestoft pear shape vase and cover, painted in flowers, 12 in. (*formerly the property of Princess Augusta at Frogmore*), and 2 Lowestoft saucers
- 189 A Worcester blue and white butter dish, cover and stand, *crescent mark*, a Coalport coffee cup, 2 Venetian glass cups on scroll supports, and a glass paper weight
- 190 A Leeds cream ware globular shape tea kettle, with mask on spout and twisted reed handle, a ditto coffee pot, and a fluted ewer with twisted handle
- 191 A pair of ditto flower vases with 5 necks, an oblong jardinière, embossed military trophy, 3 plates with pierced borders, and a vinegar and oil cruet

PICTURES.

FLEMISH SCHOOL.

- 192 A three-quarter life-size Portrait of a Patriarch, probably an architect, with long grey beard, in black coat and cap, white ruffle and cuffs, standing, holding a pair of compasses in his right hand, inscribed in right hand corner :
"Over muet wel en verstadet in dese evgur swachen on gel stadich mit de creatur daerum Kert ugesicht in Gots ewige licht."
 and on the left :
"Gots licht is munche sicht."
panel 39 in. by 30 in.

- 193 R. HOWE—A Fruit Piece, 24 in. by 34 in.
- 194 VAN DE VELDE SCHOOL—A Coast Scene with man-o'-war, 24 in. by 29 in.
- 195 A water-colour drawing—An Oriental Street Scene with figures and camel
- 196 Three etchings, by A. Legros—Peasants at Church, Gleaners in a storm, and Landscape and trees
- 197 CHARLES KEEN—An original pen-and-ink sketch: The Bus Driver
- 198 E. A. ABBEY, R.A., 1885—A black and white drawing: She Stoops to Conquer
- 199 A mezzotint—Landscape and River Scene with windmill, and a sketch plan—Defences of Lydenburg
- 200 CHARLES ROBERTSON—A Scene from Ali Baba and the Forty Thieves, *water-colours*, 18 in. by 12 in.
- 201 A Portrait of a Peasant Girl, 11½ in. by 9½ in.

END OF THE FIRST DAY'S SALE.

CATALOGUE
OF
Messrs. KNIGHT, FRANK & RUTLEY'S
Second Day's Sale
AT
SHIPLAKE COURT,
NEAR
HENLEY-ON-THAMES.

On TUESDAY, the 10th of MARCH, 1925,

AT ONE O'CLOCK PRECISELY.

DINING ROOM.

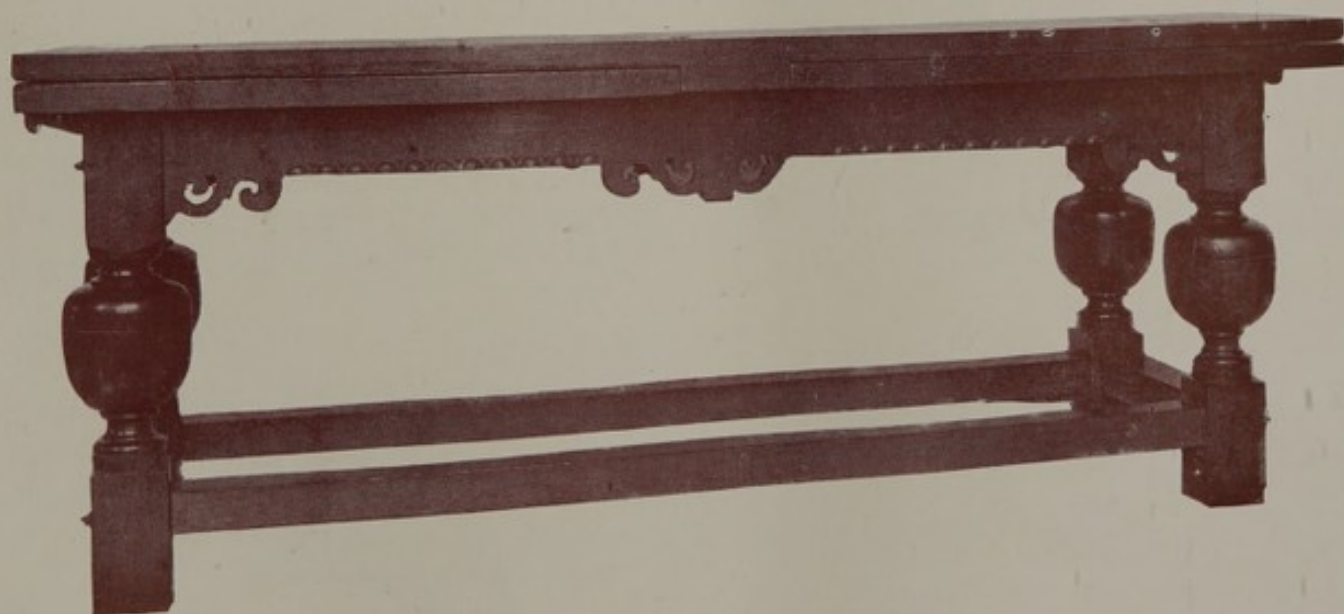
LOT

- | | | |
|-----|---|-------|
| 202 | A pair of curtains, of blue wool figuring on yellow silk ground, with amber plush borders, interlined and lined green twill, 10 ft. by 7 ft., with pelmet and band holders, <i>en suite</i> | 7½ 80 |
| 203 | A pair of green serge curtains, interlined and lined green twill and trimmed fringed gimp, with pelmet and band holders, and a ditto portière | 4 80 |
| 205 | A PAIR OF VENETIAN HEXAGON SHAPE LANTERNS, of gilt metal, with melon shape dome and base, surmounted by banners with winged lions and figures of amorini beneath, on iron standard supports, with tripod scroll bases and brass mounts, 7 ft. 4 high
<div style="text-align: center; margin-top: 5px;"><i>See Illustration. Plate III.</i></div> | 25 80 |
| 206 | A wrought-iron standard and set of 3 fire implements, antique design, and a standard fire guard, <i>en suite</i> | 6½ 80 |
| 207 | A steel circular plate warmer, with hood, pierced borders, swing handle, on 3 supports with club feet | 4 80 |

- 208 A brass footman, with wood handle, on iron stand, and a pair of fire bellows 15/-
- 209 A cheval fire screen, with Flemish tapestry panel of a youth and maiden, 38 in. by 25 in. 15/80
- 210 A Persian carpet, blue ground and conventional figuring, wide border with crimson ground and light margins, 29 ft. 2 by 14 ft., and underfelt, and a square overfelt to centre 50/80
- 211 A HENRI IV WALNUT STANDING BUFFET, deep moulded cornice, 2 doors with carved panels, one with a lion rampant and the other with fleur-de-lys, fluted pilasters and centre division, moulded frieze with 2 drawers, drop metal handles, on baluster front supports, panelled back and platform, 55 in. high, 55 in. wide 50/80
See Illustration. Plate XV.
- 212 A walnut 3-tier dinner waggon, top fitted 2 drawers, plain turned column supports, 4 ft. 9 4/80
- 213 An Italian carved walnut CASSONE, raised panelled top with lobed moulding, the front carved with winged griffins, floriated scrolls and wreath centre, on lion paw feet, iron drop handles at sides, 5 ft. 10 30/80
See Illustration. Plate XV.
- 214 An antique oak REFECTORY TABLE, carved fluted front frieze with scroll angle brackets, on baluster legs and flat foot bars, 7 ft. by 2 ft. 34/80
- 215 A WILLIAM AND MARY LONG CASE CLOCK, the front of satinwood inlaid in seaweed marqueterie, with walnut beadings and plain walnut sides, metal gilt dial with calendar movement and applied angle mounts, with coronets and cherubs, by BROUNKER WATTS, London 68/-1-
See Illustration. Plate XII.
- 216 A walnut circular dining table, extending frame, on turned column legs and square stretchers, 5 ft. wide, and 5 extra leaves and 2 extra column supports 6/80
- 217 A SET OF 18 AND 2 ELBOW DINING CHAIRS, in the style of Louis XIII, walnut frames, carved lion mask finials, on turned legs and square stretcher rails, square backs and seats in buff hide and studded brass bosses 130/-1-
- 218 A Knole pattern settee, high square winged back, loose squab seat, in light blue Arras cloth crossed with braid and fringe, on turned walnut legs and stretcher rails, 7 ft. 32/80



Lot 20



Lot 66

- 219 A 4-fold screen in Spanish leather, embossed gilt scrolls and white flowers on blue ground, the reverse lined blue Arras cloth, 6 ft. 2 2680
- 220 A brass plate warmer, pierced top and frieze, on front cabriole supports and club feet 3 1/2 80
- 221 A Sheraton mahogany spirit case, inlaid shells and stringing, lined blue plush, and fitted with 6 Dutch spirit bottles 1180
- 222 A Spanish carved pearwood figure of John the Baptist, on turned socle, 24 in. 2080 £
- 223 A pair of Oriental blue and white rice bowls and covers, decorated asters in panels, 8 in., on carved wood stands 1380
- 224 A set of 4 antique pewter circular dishes, two 18 in., one 16 1/2 in., one 15 in.; formerly in the possession of the Henley Corporation 28/-
- 225 A pair of French pewter salvers, one embossed lion rampant, coronet and fleur-de-lys, and the other a dragon and coronet, 10 1/2 in. 780
- 226 A pewter one pint tankard, Eton, 1894, and a plated ditto, Wargrave Regatta, 1891 —
- 227 A pair of pewter 2-handled loving cups, Eton, 1894 —
- 228 A plated flagon, with hinged lid, Corpus Christi College, 1860 —
- 229 A set of 3 Sheffield plated oval meat dishes, gadroon edge, one 20 in., two 14 in. 980

PICTURES.

ALFRED PARSONS, 1888.

- 230 A Landscape, with cottages and village green, children gathering daffodils, 31 in. by 43 in. 3280

DAVID COX, 1850.

- 231 "THE COMING STORM": A Mountain Scene with clouded sky, a man on horseback driving cattle through a ravine, 22 in. by 33 in., signed and dated 23080
- * * Exhibited at The Art Treasures Exhibition, Royal Institute, Manchester, 1878.

GARDEN ENTRANCE.

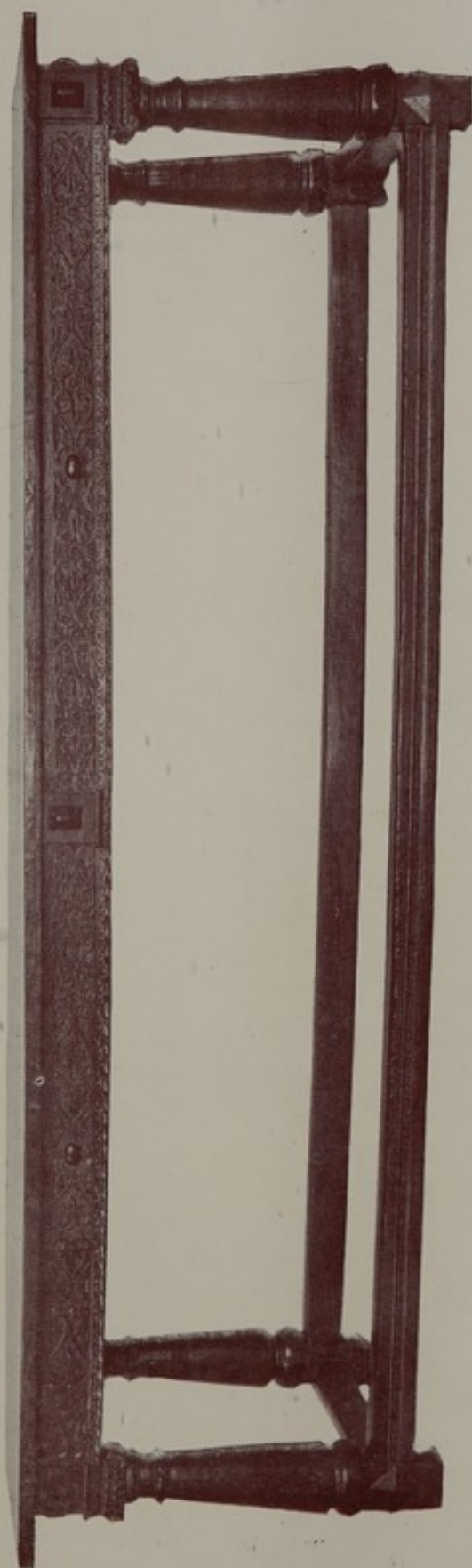
- 234 A Persian carpet, blue ground, crimson border with yellow margins, 18 ft. 6 by 5 ft. 10
- 235 A similar carpet, as laid to stairs to inner hall, 8 ft. by 6 ft. 9
- 237 An oak elbow chair, carved bust finials and pierced front stretcher, back and seat in yellow damask
- 238 A birch camp chair, elbow straps, canvas back and seat, 2 folding garden chairs, and 2 stools
- 239 A croquet set, by AYRES, 4 mallets, 2 stumps, and 4 balls, on walnut stand
- 240 A juvenile croquet set, 4 mallets, 4 balls, stumps and irons, in deal case

3780
2480
680
3 1/280
480
2 1/280

MORNING ROOM.

- 241 A pair of crimson figured silk damask curtains, interlined and lined cream twill and trimmed fringed gimp, and the pelmet of old applique work on crimson silk, 16 in. deep and about 19 ft. in length
- 242 A pair of wrought andirons, with cresset tops on scroll bases, 27 in.
- 243 A wrought iron standard fire guard, trellis panel and scroll supports, a brass hearth brush, and a wicker log basket
- 244 A SAMARKAND CARPET, SELF BLUE, with red and blue centre medallion, buff border with rosettes in key pattern panels, 14 ft. 4 by 7 ft. 3
- 245 An antique Persian prayer rug, green centre with tree branch, striped border, 5 ft. 4 by 4 ft.
- 246 A Persian rug, dark blue ground, red and white figuring and white border, 6 ft. 10 by 2 ft. 10
- 247 A ditto, buff ground and white border, 7 ft. 6 by 2 ft. 8
- 248 A SHERATON MAHOGANY WRITING TABLE, lined yellow velvet and enclosed by tambour shutter, inlaid satin lines and banded mahogany, 2 drawers with chased brass drop handles, square tapered legs, with brass casters feet
See Illustration. Plate XVI.
- 249 A Sheraton satinwood PEMBROKE TABLE, inlaid bands, with key angles and floral sprays, drawer with sliding cover and brass ring handles, on square tapered legs, with pierced cross scroll stretcher and panel centre, 36 in. by 24 in.
See Illustration. Plate XVI.

2580
480
1 1/280
X
11080
2080
1480
680
3880
4480



Lot 67

250 A PAIR OF ADAM CARVED AND GILT CARD TABLES, with fluted friezes and tapered legs, the folding tops of satin-wood and marqueterie, with fan centre, medallions, laurel festoons and floral border of engraved coloured woods, tops lined crimson cloth, 37 in. 2180

251 A PAIR OF SHERATON SATIN-WOOD CARD TABLES, circular folding tops, with inlaid floral borders of coloured woods and banded tulipwood, panelled frieze inlaid paterae, on tapered legs carved acanthus shoulders and green painted flutes, 3 ft. 3 4580

See Illustration. Plate XVI.

252 A pair of satinwood oval occasional tables, inlaid fan medallions, tray tops with chequered band, panelled frieze, square taper legs and cross scroll stretcher, 17 in. 1380

253 A mahogany oval urn table, tray top inlaid satin lines, sliding flaps, on square splayed legs and cross stretcher, 14 in. 1480

254 A Chippendale mahogany wig stand, on triple turned columns, 2 drawers, on tripod support, with splayed feet, and a Lowestoft china bowl 1180

255 A Sheraton satinwood PEMBROKE TABLE, banded mahogany drawer with brass knobs, straight square legs, 42 in. by 22 in. 1580

256 A carved and gilt settee, shaped back and scroll ends, on 7 cabriole legs, with scroll feet, loose down squab, and 5 square cushions, in grey satin striped and watered silk 4180

257 A stuffed over arm chair, high winged back and scroll arms, loose down cushion seat, in crimson figured silk damask, with gimp finish, on carved walnut legs, scroll front stretcher and turned rails 2080

258 A walnut ARM CHAIR, square stuffed over back and seat in purple silk velvet, the back with applied gold braid in scroll design, with heraldic shield in blue silk, on scroll shape legs and stretchers 980

259 A stuffed over winged back arm chair, loose down cushion seat in crimson figured silk damask and tasselled fringe on carved walnut legs and loose red linen cover 2380

260 An Adam carved mahogany frame elbow chair, oval back, seat and armpads in crimson figured silk, on square tapered fluted legs 2280

- 261 A pair of Hepplewhite elbow chairs, black frames and painted decoration, the backs with oval cane-work panel, with a plaque of flowers above, turned tapered legs, seats in green figured silk rep 3480
- 262 A set of three Hepplewhite chairs, painted frames, floral decoration and quiver rail backs, rush seats, square tapered legs and stretcher rails 1580
- 25/ 263 A stained beech Astley Cooper Chair, turned spindle back and cane seat, turned legs 2 1/2 80
- 264 A pair of walnut occasional chairs, carved lion mask finials, plain turned legs and flat stretchers, in green velvet, crossed gimp and fringe 7 1/2 80
- 265 An oak settle, open arms and back, with baluster rails, on turned legs and square stretchers, and loose squab in blue rep 380
- 266 The companion settle 380
- 267 A carved and gilt 4-fold SCREEN, each fold surmounted by an urn and laurel festoons, the panels lined silk brocade, with classic sporting figures, hounds and swans, on pale blue ground, 8 ft. 2080
- 268 A Sheraton mahogany cellarette, inlaid satin lines, on stand, with tapered legs
- 269 A black and gilt lacquer floor candlestick, turned column and circular base, electric fitting and shade 280
- 270 A mahogany pole fire screen, with heart-shape shield 580-
- 271 A bronze winged head of Hypnos, Goddess of Sleep, from the antique, on giallo marble socle, 13 in. 1580
- 272 A pair of carved and gilt wood figures of Ceres and Flora, on shaped plinths, 10 1/2 in. 7 1/2 80
- 273 A black lacquer casket, Chinese gilt decoration, arched lid and 2 drawers, 9 in., a small portfolio, in green silk and silver figuring, a tinted goblet-shape flower vase, 10 in., and a brass electric standard 1 1/2 80
- 274 A German chased metal gilt square-shaped clock case, with pinnacled dome, 10 in. 180
- 275 A Paris china white and richly gilt COFFEE SERVICE, comprising 2 coffee pots, sucrier and cover, milk jug, basin and 11 cups and saucers 57-1-
- 276 A Leeds ware embossed shell pattern oval soup tureen, cover and stand 257-

- 277 A Leeds ware oval soup tureen, with twisted handles and cover, with pomegranate knob 65/-
- 278 A ditto jug and cover, embossed flowers, 10 in., and a pair of flower pots, relief masks and festoons, and stands 18/-
- 279 A ditto oval pierced dessert basket, with cord handles and stand and ladle 16/6
- 280 A ditto circular dessert dish, pierced border, 10 in., and another, 8½ in. 16/6
- 281 A Longport (Warburton, 1710) circular dish, 13 in., and a Sunderland (Sewell) oval game pie dish, with coat-of-arms and cover, with lion knob 2½80
- 282 Two Wedgwood openwork wicker pattern dessert baskets, a Crown Derby coffee cup, a blue and white ditto, and an antique carved wood bust of a bishop, 7 in. } 30/-
- 283 A Dutch glass spirit decanter, a cut lipped finger bowl, a purple glass finger bowl, a decanter stand, and a wicker fruit basket

LIBRARY.

- 284 A PERSIAN CARPET, blue ground centre, crimson ground border, with white margins, 18 ft. 6 by 7 ft. 8, and underfelt X 7580
- 285 ANOTHER, white ground, trellis and rosette design yellow border and crimson side borders, 8 ft. 5 by 6 ft. 2, and underfelt 5580
- 286 A Persian corridor rug, blue ground, white border, with green margins, 12 ft. by 3 ft. 1 1580
- 287 A ditto, blue ground, diamond and rosette figuring, crimson border, 16 ft. 2 by 3 ft. 1480
- 288 A walnut and marqueterie LIBRARY TABLE, the inlay of floral and scroll design in coloured woods, fitted on either side with 3 drawers, on 8 square tapered legs, with brass casters, top lined buff velvet, 8 ft. by 4 ft. 2 1980
- 289 A mahogany Pembroke table, top inlaid ebony lines, fitted drawer, brass handles, square legs, 3 ft. 8 by 3 ft. 780
- 290 A SHERATON MAHOGANY TOILET TABLE, inlaid satin lines, folding top enclosing adjustable mirror and 6 compartments, with covers, drawer in frieze, on square tapered legs, 28 in. 2080
- 291 A Chippendale mahogany circular tea table, sunk top, with carved moulding, on pillar and tripod, with splayed feet 1080

- 292 A Chippendale mahogany Pembroke table, on turned slender gate legs and stretchers, 33 in. by 26 in. 1380
- 293 A Knole pattern settee, high square back, with arched wings, open arms, loose down squab in crimson velvet, crossed with gold braid, on oak framing, with turned legs and stretchers, 4 ft. 2180
- 294 A Chippendale mahogany elbow chair, carved back with husk, railed splat, straight square legs and stretcher rails, seat in green figured silk damask, and studded brass nails 1080
- 295 A ditto chair, interlaced back, seat with serpentine front, *en suite* 1280
- 296 A 3-fold dwarf screen, in carved walnut framing, with shell pediments and scrolls, the panels of embossed Spanish leather, decorated in gold and colours, 3 ft. 3 high 1280
- 297 A FRENCH ORMOLU CLOCK, in the form of an urn, with mask and serpent handles and laurel festoons, on rouge marble plinth, 19 in. 3080
- See Illustration. Plate XII.*
- 298 A PAIR OF LOUIS XVI PORPHYRY URNS AND COVERS, chased ormolu mounts, and ring handles, 14 in. 2580
- See Illustration. Plate XVII.*
- 299 An old Belgian carved wood lion gardant, supporting an escutcheon, 23 in. 580
- 300 A bronze jardinière, with raised figures of spiders and moths, 6 in. high 180
- 301 A BRONZE FEMALE FIGURE—"Diane, Chasseresse," by A. FALGINORI, on rouge marble plinth, 22 in., *from the original in the Luxemburg* 3480
- See Illustration. Plate XVII.*
- 302 A pair of Irish green marble columns, with porphyry caps and bases, 49 in. 1280
- 303 A pair of Chinese Cloisonné bottles, decorated flowers, on turquoise blue ground, 10 in. 680
- 304 A pair of Italian bronze altar pricket candlesticks, baluster stems, on tripod bases, 26 in. 580
- 305 A bronze ovoid vase, with reeded neck and handles, a band round centre, with classical figures in relief, on black marble base. 15½ in. 11280
- 306 A bronze statuette—"The Praying Boy," on square plinth, 28 in. 1280
- 307 A ditto—"The Listening Slave," 24 in. 680



- 308 A bronze bust—Aesculapius, from the original in the Naples Museum, on giallo marble socle, 26 in.
- 309 A bronze horse, from the antique, on scagliola plinth, 19½ in.
- 310 A Russian bronze bell, with relief ornament
- 311 A Chinese bronze trough, incised decorations, mask handles and bracket feet, 8½ in., and a globular shape koro, with dragon handles and cover with bird, 4½ in.
- 312 A pair of Japanese bronze figures of demons, on plinths, and scroll feet, 7 in.
- 313 A Japanese bronze pricket candlestick, 8½ in., and a hand candlestick, in form of a Roman lamp.
- 314 A NUREMBURG SILVER GILT CUP AND COVER, richly chased and embossed in figures and arabesques, on stem, and circular base, the cover surmounted by figure of an armoured knight, 15½ in. 23 ozs.
- 315 A terra-cotta life size bust of a woman, in striped bodice and hood, *French 18th century*, 25 in.
- 316 A similar bust of an Italian student, 22 in.
- 317 A ditto bust of a noble, painted in colours, 18½ in.
- 318 A Delft bowl, painted in colours, with bouquets and butterflies, 13½ in. diam.
- 319 An Oriental blue and white beaker, pear shape base and spreading top decorated landscapes, equestrian and other figures and balconies, 17½ in.
- 320 A ditto pear shape jar and cover, lambrequin decoration, utensils in panels, 18 in.
- 321 A ditto ginger jar and cover, flowering trees and birds, 9 in., and tzu tan wood platform
- 322 A ditto pear shape vase, utensils, fitted as electric lamp and shade
- 323 A large blue and white ewer, with long spout, handle and cover, decorated in foliage, 16 in.
- 324 A pair of Oriental blue and white vases, spreading tops, figures and rock scenes in panels, 11 in.
- 325 A pear shape vase, scrolls and asters, 10½ in., a ditto vase and cover, flowers in leaf shape panels, 11 in., a small ginger jar, foliage decoration, 5 in., and a bowl, with figures in medallions, 8¾ in.

at W. S. 35.

- 326 Six Salopian blue and white willow pattern cups, 7 ditto saucers, and another cup, similar
- 327 Eighteen Salopian blue and white willow pattern tea bowls and saucers, and a basin
- 328 An Imari circular dish, coloured and gilt conventional decoration
- 329 A pair of ditto saucer dishes
- 330 A blanc de Chine figure of a Deity—Content, 8 in.
- 331 A Persian pear shape bottle, blue lines and floral band on white ground, chased metal top, 13 in., and a globular chased ditto, with animal and trees in panels, metal top, 6 in.
- 332 A Persian blue ware coffee pot, metal spout, cover and handle, and another of white ware, with metal spout
- 333 Three Lowestoft tea bowls and saucers, a coffee cup and saucer, a basin, 2 soup plates, and a meat plate
- 334 Five Lowestoft plates, centre painted draped shield and initials, and 2 Spode tureen stands
- 335 Two Oriental blue and white plates, 2 smaller ditto, and 3 saucers
- 336 An Oriental blue and white ovoid vase, lambrequin borders, $5\frac{1}{2}$ in., and a globular bottle, with red flowers and blue foliage, 8 in.
- 337 A Salopian blue and white miniature service, Chinese views and figures, 10 tea bowls, 6 saucers, and a teapot

STUDY.

- 338 A pair of crimson silk curtains, with yellow wool figuring, interlined and lined red twill and trimmed braid, 7 ft. 6 long, 7 ft. 9 wide, the pelmet *en suite*, and band holders
- 339 A pair of andirons, with brass melon shape finials, on scroll bases, 22 in.
- 340 A cast iron fire back, with coat-of-arms
- 341 An Indian carpet, self blue centre, white border, with yellow margin, 12 ft. 3 by 7 ft. 4, and the blue felt as laid to square of room



Lot 81



Lot 94

- 342 A QUEEN ANNE CABINET, of tiger walnut, inlaid banded borders, fitted 1 long and 9 short drawers, brass pendent handles, and enclosed by a pair of doors, with metal gilt pierced and chased lock plates and hinges, long drawer above, standing on a chest of 2 short and 2 long drawers, metal gilt plate handles and escutcheons, 3 ft. 6

See Illustration. Plate XVIII.

- 343 A mahogany knee-hole pedestal writing table, carved mouldings, leather top, fitted 12 drawers and 2 cupboards, brass drop handles, 5 ft. by 3 ft. 3

- 344 A SPANISH 18 CENTURY WALNUT CABINET, fitted 9 drawers, carved sunk panels, a cupboard in the centre, the doors carved with mask and honeysuckle, and enclosing 12 smaller drawers, with a smaller cabinet above, tapered pilasters, on table stand, with drawer, baluster supports and platform, 28 in.

See Illustration. Plate I.

- 345 A Queen Anne oak side table, long drawer, brass ring handles, cabriole legs and club feet, 35 in.
- 346 An oak oval folding table, on baluster supports and square stretchers, 30 in.
- 347 A Sheraton mahogany basin stand, enclosed folding top, platform with drawer, on square supports and cross stretcher, 14 in.
- 348 A Chippendale mahogany table napkin press, with drawer
- 349 A mahogany elbow chair, carved acanthus finials to elbows, reeded legs and turned stretcher rails, square stuffed-over back, seat and arm pads in green striped velvet
- 350 A Chippendale mahogany elbow chair, interlaced back, straight square legs and stretchers, loose seat in red and buff damask
- 351 A ditto chair, nearly similar, seat in red cloth and studded brass nails
- 352 A ditto, with serpentine shape back, fluted railed splat, loose seat in red and buff damask
- 353 A stuffed-over circular winged back arm chair, in Morris amber velvet, on mahogany cabriole legs with claw and ball feet
- 354 A stuffed-over open arm chair, in crimson cloth, on turned walnut legs
- 355 A Jacobean oak joynt stool, on baluster legs

348

- 356 A pair of Italian wall mirrors, in ebony and ivory frames, 15 in. by 12 in. $3\frac{1}{2}80$
- 357 An aneroid barometer, by CALLAGHAN & CO., New Bond Street, in oak case 480
- 358 A pair of wrought-iron floor lamp stands, with spiral columns and tripod supports 480
- 359 A wrought-steel electric standard lamp $3\frac{1}{2}80$
- 360 A barograph, by ROSS, in glazed oak case 580
- 361 An Amboyna cigar cabinet, with folding panelled doors, banded ebony, 16 in. high $2\frac{1}{2}80$
- 362 An Oriental crackle ware gourd shape bottle, with metal top, $8\frac{1}{2}$ in., and another cylindrical shape bottle, 6 in. 180
- 363 A Sunderland "Speed the Plough" jug, 5 in., and a Spanish gourd water bottle
- 364 A Japanese cast metal vase, 12 in., and a pair of Delft blue and white pharmacy jars, 6 in. $10/6$
- 365 FOREIGN SCHOOL—A King in a chariot with white steeds at the head of an army, drawn up at the entrance of a castle; the king is met by a party of four ladies with musical instruments, with whom he is holding converse, panel, 16 in. by 28 in. $2\frac{1}{2}80$
- 366 A mezzotint portrait—Rt. Hon. W. E. Gladstone, after Millais, by T. O. Barlow
- 367 A ditto—Portrait of a Dutch Gentleman, after Rembrandt, 1639 $10/6$
- 368 A pair of aquatints—Views of Temple Harleford, and Fawley Court, after J. Farington, 1793
- 369 A photograph—Governors of the Hospital, after Franz Hals 280
+ 3 others

PRINCIPAL LANDING.

- 370 A PERSIAN CARPET, red ground diamond trellis design and border, 23 ft. by 7 ft. 6, and underfelt
- 371 A Persian carpet, red ground, diagonal border, 8 ft. 8 by 6 ft. 5
- 372 A ditto, 8 ft. 8 by 6 ft. 6
- 373 Green felt carpet, as laid, about 24 square yds.



Lot 215



Bracket Clock	...	Lot 105
Ormolu Clock	...	Lot 297
Commode	...	Lot 378

- 374 A DUTCH MAHOGANY WARDROBE, dentil cornice, fitted shelves and 5 drawers, enclosed by folding panelled doors, carved beadings and laurel festoons, with ribbon and laurel swags inside panels, fluted angles with festoons and acanthus, the lower portion fitted 3 long drawers with metal gilt rosette and ring handles, 6 ft. 2
- 375 A DUTCH MAHOGANY & MARQUETERIE WARDROBE, dentil cornice, fitted shelves and 3 drawers, enclosed by folding doors, carved beadings, panels inlaid with urns and flowers, fluted angles, the lower part with 3 long drawers, ormolu handles and escutcheons with portrait medallions and rams' heads, 5 ft. 6
- 376 A DUTCH MAHOGANY WARDROBE, architectural pediment, carved palm branches, ribbons and laurel festoons, shelves and 5 drawers enclosed by panelled doors with carved beadings, turned columns at angles, ormolu caps, the lower part with 3 long drawers, brass embossed plate handles and escutcheons, 6 ft.
- 377 A DUTCH MAHOGANY COMMODOE of extra width, serpentine shaped front with carved relief, 3 long drawers, ormolu urn and festoon handles and escutcheons, on carved lion paw feet, 6 ft.
- See Illustration. Plate XVII.*
- 378 A WILLIAM AND MARY WALNUT COMMODOE of 4 long drawers, with panels inlaid in seaweed marqueterie, on scroll supports, brass plate handles and escutcheons, 34 in.
- See Illustration. Plate XII.*
- 379 A Sheraton mahogany and marqueterie square cellarette, with canted angles, on square tapered legs
- 380 A *Spanish marriage chest*, covered in leather and studded with brass nails in ornamental designs, on oak stand with cabriole legs, 4 ft.
- 381 A pair of Dutch walnut and marqueterie chairs, high backs with vase shape splats, cabriole legs and club feet, loose seats in crimson plush
- 382 A wall mirror, in inlaid mahogany frame, with pierced arched pediment and carved and gilt floral swags
- 383 A pair of Chippendale mahogany LAMP STANDS, hexagon tops with fret galleries, on reeded columns and tripods with claw and ball feet, 5 ft. 3

- 384 A HEPPLEWHITE SETTEE, stuffed-over arched back and sloping arms in red figured damask, on mahogany square tapered fluted legs
- 385 A Sheraton mahogany and marqueterie oval tea tray, satin-wood centre inlaid urn and festoon drapery in coloured woods, brass handles, 32 *in.*
- 386 An embossed metal covered hexagon shape casket, fitted 13 glass bottles with pewter screw tops
- 387 An Oriental blue and white circular tureen and cover, decorated landscapes, pagodas and balconies, and a pair of powder blue saucer dishes, flowers in white reserves, 8½ *in.*
- 388 A ditto circular deep dish, rock scenes and boy figures, 16 *in.*
- 389 A ditto cylindrical jar, landscape, figures and balconies, 6½ *in. high*, and a ditto meat dish, 18 *in.*
- 390 A pair of ditto aster pattern circular dishes, 10½ *in.*, and a ditto bowl, figures and balconies, 8½ *in.*
- 391 A set of 3 Delft blue and white hexagon-shaped vases, bouquets in panels, 9 *in.*, an octagon-shaped ditto, a Spode toilet ewer, decorated in flowers, and a green glazed pottery kettle
- 392 SCHOOL OF SIR T. LAWRENCE—A half-length Portrait of a Lady and Child, 29 *in. by* 23 *in.*
- 393 ENGLISH SCHOOL—A half-length Portrait of a Gentleman in black coat and stock, 29 *in. by* 24 *in.*
- 394 ——— A half-length Portrait of an old Gentleman, black coat and white neckerchief, 28 *in. by* 23 *in.*
- 395 SIR J. REYNOLDS (*after*)—A half-length Portrait of a Gentleman in periwig, white neckerchief and scarlet coat, 29 *in. by* 24 *in.*
- 396 An etching—The Smoker, after Seymour Lucas, by Rajon
- 397 A photograph—The Thames from Shiplake Court, and another—Portrait, after Holbein
- 398 FRANK HIND—Giralda Tower, Seville, 48 *in. by* 21 *in.*

END OF THE SECOND DAY'S SALE.

CATALOGUE
OF
Messrs. KNIGHT, FRANK & RUTLEY'S
Third Day's Sale
AT
SHIPLAKE COURT,
NEAR
HENLEY-ON-THAMES.

On WEDNESDAY, 11th of MARCH, 1925,

AT ONE O'CLOCK PRECISELY.

BOOKS.

LOT	
399	Spectator (The), portrait and plates, <i>contemporary tree-calf</i> , 1803, 8 ; Universal Library of Modern Knowledge, <i>cloth</i> , 7 ; various, 44 59
400	The Saints, <i>cloth</i> , 1901, 19 ; Newman's Parochial and Plain Sermons, <i>cloth</i> , 7 ; various, 34 60
401	Roadside Songs of Tuscany, edited by John Ruskin, illustrated by Francesca Alexander, 4to, <i>cloth</i> , 1885 ; Wiseman (Cardinal) Fabiola, or The Church of the Catacombs, illustrated, 4to, <i>cloth</i> ; various, 8 10
402	Novels (Modern), <i>cloth</i> 23
403	Parnell (Charles Stewart), by Katharine O'Shea, portraits and illustrations, <i>cloth</i> , 2 ; Younghusband (Sir George) The Tower of London from Within, illustrated, <i>cloth</i> ; various, 27 30
404	Lyte (H. C. M.) History of Eton College, illustrated, <i>russia gilt</i> ; Smith, Leaders of Modern Industry, <i>calf gilt</i> ; various, 8 10

- 405 Dodgson (C. L.) Through the Looking-Glass, illustrated by John Tenniel, FIRST EDITION, *cloth*, 1872 ; Alice's Adventures in Wonderland, illustrated, *cloth*, 1881 ; various, 25 27
- 406 Willmot (E.) English House Design, illustrated, *cloth*, 1911 ; Gardner (G. S.) Armour in England, illustrated, *cloth*, 1898 ; various, 21 23
- 407 Gardner (J. S.) English Ironwork, illustrated, *cloth* ; Holme (C.) The Gardens of England, illustrated, *cloth*, 1907 ; various, 5 7
- 408 Novels (Modern), *cloth* 22
- 409 Novels (Modern), *cloth* 16
- 410 Novels (Modern) 16
- 411 Novels (Modern) 30
- 412 Stevenson (Robert Louis) *Virginibus Puerisque*, FIRST EDITION, *cloth, fine copy*, 1881 ; Treasure Island, illustrated edition, *cloth*, 1886 ; and others, 7 9
- 413 VOLTAIRE (F. M. A. DE) ŒUVRES COMPLÈTES, portrait and plates after Moreau, LARGE PAPER, *half morocco*, 1785-1789 70
- 414 Novels, Poetry, etc., *cloth* 48
- 415 Tennyson (Lord) Poetical Works, *morocco, inlaid centre-pieces*, 1872 10
- 416 Novels (Modern), *cloth* 17
- 417 Novels (Modern) 17
- 418 Trollope (Anthony) He Knew He Was Right, illustrated, 1869, 2 ; Ralph the Heir, illustrated, *half morocco* ; various, 8 11
- 419 Browning (R.) The Ring and the Book, *cloth*, 1872, 4 ; Browning (R.) Poetical Works, *cloth*, 1887, 6 ; Novels, *cloth*, 15 25
- 420 Novels, Poetry, etc. 60
- 421 Borrow (George) The Bible in Spain, Lavengro, etc., illustrated, *half calf gilt, uncut, t. e. g.* 1907 3
- 422 Thackeray (W. M.) Works, illustrated by the Author, *large type library edition, cloth gilt*, 1868 22
- 423 Scott (Sir Walter) Waverley Novels, Poetical Works and Life, Centenary edition, frontispieces, etc., *cloth*, 1872 31

- 424 *Dickens (Charles) Works*, with all the original illustrations by Seymour, Phiz, etc., Library edition, *half morocco, uncut, t. e. g. n. d.* 30
- 425 *The World of Adventure*, illustrated, *cloth*, 3 ; Titian, illustrated, *cloth, n. d.* ; various, 6 10
- 426 Books, various 18
- 427 Brassey, Naval Annual, *cloth*, 7 ; various, 12 19
- 428 Catalogue of the Beckett-Denison Collection, partly priced, *boards*, 1885 ; Catalogue of the Napier Collection, *cloth, Privately printed*, 1865 ; various, 2 4
- 429 Peacock (Thomas Love) Works, *cloth*, 3 ; various, 13 16
- 430 Novels, etc. 21
- 431 Rifle Brigade Chronicle, *cloth*, 1890-1913 24
- 432 Burckhardt, *The Renaissance*, illustrated, *cloth*, 1878, 2 ; various, 19 21
- 433 Robinson (W.) *English Flower Garden*, illustrated, *cloth*, 1906 ; *Autobiography of Sir Harry Smith*, portraits and illustrations, *cloth*, 1902, 2 ; various, 19 22
- 434 Shiplake, *The History of*, by Emily J. Climensson, plates, thick cr. 4to, *cloth*, 1894 ; various, 4 5
- 435 *Cornhill Magazine*, *half morocco*, 8 ; *St. Paul's*, *half morocco*, 7 ; various, 5 20
- 436 Pennell (Joseph) *Pen Drawings and Pen Draughtsmen*, plates and other illustrations, folio, *parchment*, 1889 ; various, 2 3
- 437 Goldsmith (O.) *She Stoops to Conquer*, illustrated by E. A. Abbey, plates on india paper and other illustrations, folio, *calf*, 1887 ; various, 3 4
- 438 *Illustrated London News*, folio, *cloth* 29
- 439 Nash (Joseph) *The Mansions of Old England*, tinted plates, folio, *cloth*, 1871, 4 ; various, 5 9
- 440 *History of the Family of Werge of Northumberland*, by Colonel Ralph E. Carr, illustrated, folio, *half morocco*, 1891
- 441 Ruskin (John) *The Stones of Venice*, illustrated by the Author, thick roy. 8vo, *cloth*, 1886 3
- 442 *English Cathedrals, Abbeys, etc.*, Photographic Views of, neatly mounted on thick cardboard, bound in 2 vols. roy. folio, *half morocco* 2

- 443 Musée National de Naples, illustrated, *half morocco gilt*, 1873 2
- 444 *Holbein's Portraits* of the Court of Henry VIII, with 90 tinted portraits, folio, *half morocco*, 1884 1
- 445 Harrison (F.) *Annals of an Old Manor House, Sutton Place, Guildford*, illustrated, 4to, *cloth*, 1893 (2 copies); various, 6 8
- 446 Beautiful Flowers and How to Grow Them, 100 coloured plates, 4to, *cloth*, 2; and one other 3
- 447 Surtees (R. S.) *Handley Cross*, with coloured and other illustrations by Cecil Aldin, *cloth*, 2; Miller (Capt.) *Modern Polo*, illustrated, *cloth*; various, 8 11
- 448 Selous (F. C.) *Travels and Adventures in South-East Africa*, illustrated, *cloth*; Badminton Library, illustrated, *cloth*, 6; various, 17 24
- 449 Beckford (Peter) *Thoughts on Hunting*, coloured plates by G. D. Armour, ÉDITION DE LUXE, 4to, *calf gilt*; various, 4 5
- 450 Dublin Review, Punch, etc., *sewn* 4 parcels
- 451 Country Life Library of Sport, illustrated, *cloth*, 7; various, 10 17
- 452 Rolland (R.) *Œuvres*, etc., *cloth*, 13; various, 35 48
- 453 Yellow Book (The), An Illustrated Quarterly, small 4to, *cloth* 16
- 454 Symons (A.) Aubrey Beardsley, portraits and illustration, FIRST EDITION, 4to, *half cloth boards*, 1898; Whistler, Memorial Exhibition of the Works of the late James Whistler, portraits and plates, ÉDITION DE LUXE, 4to, *half cloth boards*, 1905; various, 4 6
- 455 Littré (E.) *Dictionnaire de la Langue Française*, 4to, *half morocco*, 5; Grove (George) *Dictionary of Music*, *cloth*, 1874, 4; and one other 10
- 456 Carlyle (Thomas) Works, bound in 18 vols., *half calf gilt*, *n. d.* 18
- 457 Burns (Robert) *Poetical Works*, *calf gilt*, Pickering, 1839, 3; various, 19 22
- 458 Morris (William) *Earthly Paradise*, *cloth*, 1886, 5; *Life and Death of Jason*, *cloth*, 1882; various, 19 25
- 459 Browning (E. B.) *Selections from*, portrait, *calf*; various, 23 24



Lot 150

- 460 Jowett (B.) The Dialogues of Plato, Library edition, *half calf*, 1875 5
- 461 Plutarch Lives, with Notes, etc., by A. Stewart and G. Long, *cloth*, 1880, 4 ; various, 11 15
- 462 Froude (J. A.) History of England, 12 ; Short Studies, 4, in all 16 vols., *large type Library editions, half calf*, 1868-1883 16
- 463 Grote (George) History of Greece, large type Library edition, portrait, *calf gilt*, 1872 8
- 464 Gibbon (E.) Decline and Fall of the Roman Empire, with Notes, etc., by W. Smith, large type Library edition, *polished calf gilt*, 1862 10
- 465 De Quincey (Thomas) Works, portrait, *cloth*, 1878 19
- 466 PUNCH, to 1923, 4to, *cloth* 58
- 467 Eliot (George) Works, *half calf* 20
- 468 Eliot (George) Middlemarch, FIRST EDITION, *half morocco*, 4 ; Daniel Deronda, FIRST EDITION, *half morocco*, 4 ; various, 20 28
- 469 Landor (W. S.) Imaginary Conversations, *cloth*, 1883, 5 ; Emerson (Ralph Waldo) Works, *cloth*, 1880, 5 ; various, 5 15
- 470 Symonds (J. A.) Sketches in Italy and Greece, FIRST EDITION, *cloth*, 1874 ; Pater (Walter) Marius the Epicurean, *cloth*, 1885, 2 ; various, 19 22
- 471 Wilde (Oscar) The Importance of Being Earnest, FIRST EDITION, 4to, *cloth*, 1899 ; and one other 2
- 472 Napier (W. F. P.) History of the War in the Peninsula, *calf*, 1828, 6 ; various, 13 19
- 473 Green (J. R.) Short History of the English People, Library edition, *cloth*, 1881, 4 ; various, 10 14
- 474 Cobden (Richard) Life of, by John Morley, *cloth*, 2 ; Froude (J. A.) Thomas Carlyle (1834-1881), *cloth*, 2 ; various, 13 17
- 475 Rousseau, by John Morley, FIRST EDITION, *cloth*, 1873, 2 ; Gasquet (F. A.) Henry VIII and the English Monasteries, *cloth*, 1895, 2 ; various, 10 14
- 476 French Novels, etc., *sewn* 14
- 477 Highway and Byway Series, illustrated, *cloth*, 19 ; various, 11 30

- 478 Bryce (Lord) *The American Commonwealth*, FIRST EDITION, cloth, 1888, 3 ; various, 6 9
- 479 Shelley (Percy Bysshe) *Poetical Works*, portrait, large type Library edition, cloth, 1876 4
- 480 Rogers (Samuel) *Poems*, portrait and vignette illustrations, after Turner and Stothard, red morocco gilt, 1851 ; Byron (Lord) *Poems*, portrait, red morocco, n. d. ; various, 24 26
- 481 Scott (Sir Walter) *Waverley Novels*, frontispieces and vignette titles, cloth, 22 ; various, 6 28
- 482 *Times' History of the War*, 4to, cloth 22
- 483 Poetry, etc. 45
- 484 Meredith (George) *Novels*, 14 ; various, 3 17
- 485 *Novels*, by Robert Hichens, Maurice Hewlett, etc., cloth 17
- 486 Brontë (Sisters) *Works*, frontispieces, cloth, 1882, 7 ; Austen (Jane) *Works*, Steventon Edition, frontispieces, cloth, 1882, 6 13
- 487 Kipling (Rudyard) *Works*, cloth, 15 ; various, 8 23
- 488 *Letters of Queen Victoria*, Library edition, cloth, 3 ; Morley (John) *Life of Gladstone*, Library edition, cloth, 3 ; various, 5 11
- 489 *Times' History of the War in South Africa*, cloth, 7 ; various, 6 13
- 490 *Portfolio (The)*, edited by P. G. Hamerton, etchings and other illustrations, folio, cloth, 1870-1889 20
- 491 Balzac (H. de) *Œuvres*, cloth, 1882, etc. 55
- 492 *Œuvres de Guy de Maupassant*, Theophile Gautier, etc., half vellum and cloth gilt 47
- 493 *Œuvres de Daudet*, G. Flaubert, E. Zola, etc., cloth 46
- 494 *Œuvres de Dumas*, P. Loti, etc., cloth 54
- 495 *Country Life*, from vol. II, 1897, to vol. XXXIV, 1913, folio, cloth 33
- 496 BIBLE, in Dutch, black letter, bound in original sharkskin, with silver corner pieces, clasps, long chain attached, 1711

FIRST FLOOR.—BED ROOM No. 1.

- 497 Three pairs of buff and blue figured curtains, lined cream serge and band holders, and a yellow damask portière
- 498 A blue felt carpet, as laid to square, about 40 sq. yds.



Lot 171

- 499 A Persian carpet, buff ground, trellis design, white border with red margins, 14 ft. 4 by 7 ft.
- 500 A Bokhara rug, 6 ft. 9 by 5 ft. 3
- 501 A Persian rug, white centre, blue figuring, 3 ft. 6 by 2 ft. 11
- 502 A Persian prayer rug, and 2 pieces
- 503 A console mirror, in walnut frame with gilt beading, 5 ft. 8 by 2 ft. 6
- 504 A FLEMISH ROSE-WOOD BEDSTEAD, panelled head and footboards with carved trusses of female masks, cherubs heads and lion masks, waved ebony mouldings, 5 ft., a chain spring mattress, hair mattress, feather bolster and pillow, 2 blankets and a linen bedspread
- 505 A FLEMISH RENAISSANCE WALNUT CABINET, with elaborate carvings in high relief of scrolls, cherub and grotesque masks and fruit, the upper portion enclosed by a heavily panelled door, a drawer in frieze, and a similar door beneath and a drawer at base, 7 ft. 3 high, 3 ft. 9 wide
- See Illustration. Plate XIX.*
- 506 A Dutch walnut commode, serpentine shape, with 4 long drawers, ormolu handles, base mount and feet, 2 ft. 9
- 507 A similar commode of mahogany, 4 long drawers, ormolu festoon handles and escutcheons, 2 ft. 11
- 508 A Flemish oak refectory table, with fall flaps at ends, on spiral legs and turned stretchers, 5 ft. 4 by 2 ft. 4
- 509 A Mason's ironstone china toilet service : ewer and basin, mouth ewer and basin, sponge bowl and liner, triple soap box, brush vase, chamber and footbath
- 510 A cut decanter, a square spirit bottle, a pair of cut perfume bottles, a water bottle and top, a china puff box and cover, and a Dutch tile
- 511 A FLEMISH OAK DRAW TABLE, deep frieze with ebony panels, long drawer, on bulbous legs and square foot-bars, 7 ft. 6 by 2 ft. 4
- 512 A Flemish oak circular table, folding top, on triangular frame with bulbous and gate legs and cross stretcher, 3 ft. 5
- 513 A Sheraton mahogany Pembroke table, top inlaid urn in satinwood panel, satin lines and fan corners, drawer and square tapered legs, 3 ft. 4 by 2 ft. 8

- 514 A Chippendale mahogany writing desk, lifting top enclosing 6 small drawers and cupboard, on square legs and platform, 22 *in.*
- 515 A Sheraton mahogany swing-frame toilet glass, box plateau with bow front and 3 drawers
- 516 A stuffed-over arm chair, in green watered silk and loose green rep cover
- 517 Three Sheraton mahogany occasional chairs, inlaid satin lines, trellis backs, seats in green serge
- 518 Three Hepplewhite chairs, painted frames with quiver rail backs and rush seats
- 519 A 4-fold screen, in grey and buff figured tapestry, 6 *ft.*
- 520 A mahogany 2-fold towel horse, and a white enamelled 2-tier table
- 521 A Sheraton mahogany miniature chest of 2 short and 3 long drawers, inlaid stringing, ivory knobs, 13 *in.*
- 522 A Flemish copper cauldron, with brass handles and cover
- 523 Two copper flagons, with hinged lids
- 524 Two brass coffee pots, and a charcoal brazier
- 525 A CHUBB'S IRON JEWEL SAFE, 26 *in.* by 20 *in.* by 20 *in.*
- 526 A colour print—Neuve Chapelle, 1915 ; a ditto—Death on the pale horse, a Japanese print and 2 others, and 5 photographs after Old Masters
- 527 A pair of Oriental Cloisonné vases, 4 *in.*, a pair of turquoise blue ware bottles, a willow pattern cup and saucer, a transfer cup and saucer, a dessert dish, a blue and gilt basin, a trumpet shape glass, a plaster figure—Venus de Milo, an iron door stop, and 2 other articles
- 528 Three full-size blankets
- 528A A Kidderminster blue figured bordered carpet, 12 *ft.* by 13 *ft.* 9
- 528B A similar carpet

DRESSING ROOM.

- 529 A pair of crimson figured damask curtains, and a Persian prayer rug
- 530 A Bokhara carpet, 10 *ft.* 8 by 7 *ft.*
- 531 A set of wrought-iron fire implements, and a standard fire-guard

- 532 A Sheraton mahogany oval Pembroke table, inlaid lines, 1 drawer, brass ring handles, square tapered legs
- 533 A pair of painted and decorated elbow chairs, trellis backs and cane seats
- 534 A set of 6 Lowestoft tea bowls and saucers, festoon border
- 535 ALFRED PARSONS—Garden Scene with fountain, 13 in. by 9½ in., and another—Meadow and Stream, 10 in. by 14 in.
- 536 ——— A Coast Scene, *in black and white*, and another—A Portrait of a Lady in a boat
- 537 ——— Church Spires and Trees, and another—Portrait of a Gentleman in skull cap, and a photo study of a Woman
- 538 ——— Six drawings of Flowers for book-plates
- 539 A View of Canal, Venice, and another—Continental Street Scene

BED ROOM No. 2.

- 540 Three pairs of green plush curtains, lined twill and cord holders
- 541 A set of fire implements with brass handles, and a standard fire-guard with trellis panel
- 542 A chimney glass, in gilt frame, 21 in. by 56 in.
- 543 A blue felt carpet, as laid to square, *about 30 sq. yds.*
- 544 A Bokhara carpet, 8 ft. 6 by 6 ft. 7
- 545 An Oriental carpet, light ground and red border, 9 ft. 8 by 7 ft.
- 546 An Indian rug, red ground, green centre, 6 ft. by 3 ft. 6, a slip mat, a rush mat, and a carpet hassock
- 547 A steel bedstead, 3 ft. 6, with pierced scrollwork head and foot, a chain spring mattress on pine frame and canvas cover, a hair mattress, a feather bolster and a down pillow
- 548 A GENTLEMAN'S MAHOGANY WARDROBE, fitted 5 sliding trays, 2 panelled doors inlaid satin lines, 2 short and 2 long drawers, brass plate handles, 4 ft. 2
- 549 A satin-wood dwarf WARDROBE, inlaid ebony lines, fitted 5 sliding trays, 2 short and 1 long drawer, brass plate handles, 4 ft.

- 550 A mahogany tray top dressing table, inlaid satin lines, 2 drawers, brass plate handles, square legs, 4 ft. 1, and a Sheraton mahogany swing frame dressing glass, plateau with 3 drawers, ivory knobs
- 551 A French mahogany pedestal washstand, inlaid satin stringing, lifting top fitted folding brackets, dove marble slab, 2 drawers, brass rosette and ring handles, and cupboard with 2 doors, 3 ft. 7
- 552 A mahogany 2-fold towel horse, 7 pieces of toilet ware, a white toilet pail, a water bottle and 2 tops
- 553 A mahogany bedside cupboard, banded satinwood, tray top, 2 doors and 2 drawers
- 554 An oak kneehole pedestal WRITING TABLE, rising back with shelves, pigeon holes and 4 small drawers, top lined leather with lifting centre, and 10 drawers, 4 ft. 4
- 555 A white enamelled square table, 24 in., and a linen basket
- 556 A Chesterfield settee, in lining and cretonne cover, 6 ft. 6
- 557 A Chippendale mahogany elbow chair, looped ladder back, square tapered fluted legs, in crimson plush, studded brass nails
- 558 A birch Glastonbury chair, pierced back and arms, loose cushion in green plush
- 559 Four beech ladder back chairs, with rush seats
- 560 Two blanc-de-Chine kylins, and a turquoise blue pottery pitcher, with triple handles
- 561 A pair of Oriental blue and white vases and covers, 4½ in., a ditto bottle, 7 in., a ditto sprinkler, with metal neck, 7½ in., a celadon mug and a toilet pot and cover, an alabaster statuette of Hercules, a plaster group of man and lioness, and 5 other articles
- 562 A stuffed-over arm chair, and loose green linen cover
- 563 A pair of engravings—The Black Brunswicker, and The Huguenot, after J. E. Millais
- 564 An etching—Harvest Home, after Mason, by Robert W. Macbeth
- 565 P. DE WINT—A Cavalier, 9 in. by 7¼ in.

DAVID COX, 1846.

- 566 A Hilly Landscape : a shepherd driving a flock of sheep, a storm brewing, 8¼ in. by 11¼ in.



Lot 211



Lot 213

- 567 A water-colour drawing—Landscape and fir trees, $8\frac{3}{4}$ in. by 11 in.
- 568 Two engraved portraits—Rosa Bonheur, and Lord Tennyson, another, and a photograph

BATH ROOM No. 3.

- 569 Two lengths of fibre matting, a felt mat, a white ware foot bath, and a japanned hip bath
- 570 A mirror, in ebonized frame, with decorated oak panels and shelf, 3 ft. 2 wide
- 571 A pair of Dutch painted and decorated ladder back chairs, with rush seats
- 572 A Home self-weighing machine

BED ROOM No. 4.

- 573 A pair of watered and striped silk curtains, valances and band holders, a wicker linen basket, a rush mat, a stationery rack and blotter, and a paper basket
- 574 A Bokhara carpet, crimson ground and panelled centre, and white key border, 8 ft. 10 by 6 ft. 6
- 575 A mahogany BEDSTEAD, 3 ft. 3, railed head and foot, box spring mattress with pink sateen valance, wool and hair mattress, feather bolster, down pillow and down quilt
- 576 Three blankets, a pink sateen bedspread, and a down quilt, in sateen
- 577 A SHERATON MAHOGANY AND MARQUETERIE WARDROBE, banded satinwood, scroll pediment, fitted 4 sliding trays enclosed by 2 doors, the panels inlaid with urns, husk and laurel festoons, 2 short and 2 long drawers, chased metal gilt draped festoon handles, 4 ft.

See Illustration. Plate XX.

- 578 A mahogany dressing table, top banded satinwood, 2 long drawers, brass handles, on square legs, 3 ft.
- 579 A Queen Anne mahogany swing frame toilet glass, carved gilt beading, serpentine shape plateau with 5 drawers
- 580 A stuffed-over easy chair, in lining, down cushion and cretonne covers
- 581 A Hepplewhite painted and decorated elbow chair, with cane seat

- 582 A Sheraton mahogany occasional chair, railed back with inlaid medallions, square tapered legs, seat in grey figured damask
- 583 A mahogany 2-fold towel horse, and a pair of white ware Windsor candlesticks
- 584 A Worcester (crescent mark) blue and white teapot, a ditto basin, an ovoid tea caddy and cover, and a flat shape ditto
- 585 A Lowestoft milk jug and basin
- 586 A Nankin blue and white meat dish, 12 *in.*, a cylindrical jar and cover, and a small Kaga bowl and cover
- 587 Six engravings, after Turner, and a small stipple print—Children

CORRIDOR (from No. 1 to No. 4).

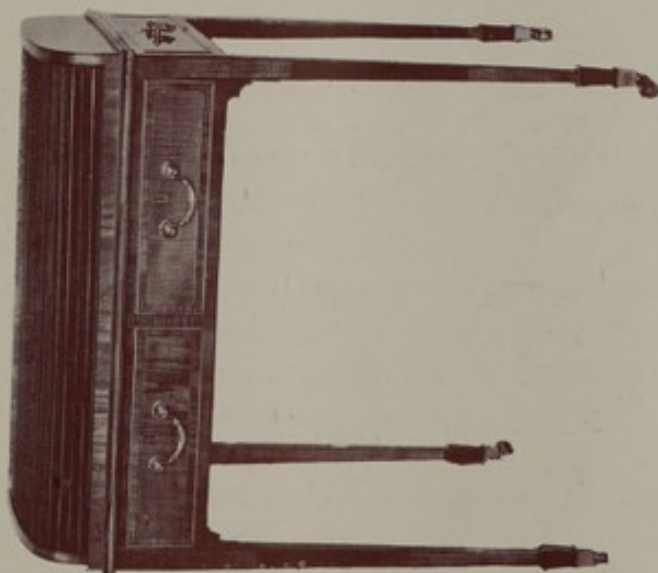
- 588 A Persian pattern crimson ground bordered carpet, 36 *in.* wide, about 15 *yds.*
- 589 An Oriental camel ground trellis pattern bordered carpet, 35 *in.* wide, 29 *ft.* long
- 590 An oak side table, with 2 drawers, on turned standards and stretcher, black marble top, 4 *ft.* 6
- 591 AUGUSTUS JOHN—A pencil Figure Study
- 592 An etching—Nôtre Dame, Paris, by Delauney, 1875
- 593 An engraving—Italian Lake Scene, after Turner
- 594 AXEL H. HAIG, 1882—An etching : Mont St. Michel
- 595 ——— 1886 : The Cathedral of St. George, Limburgh
- 596 ——— A Morning in Seville
- 597 C. E. HALLOWAY—A pair of etchings : River Scenes
- 598 ERNEST GEORGE—Verona and Florence, a pair
- 599 A large photograph—Interior of St. Sophia ; another—Ancient Sculptors, and 4 prints—Portraits, after W. Nicholson

BED ROOM No. 5.

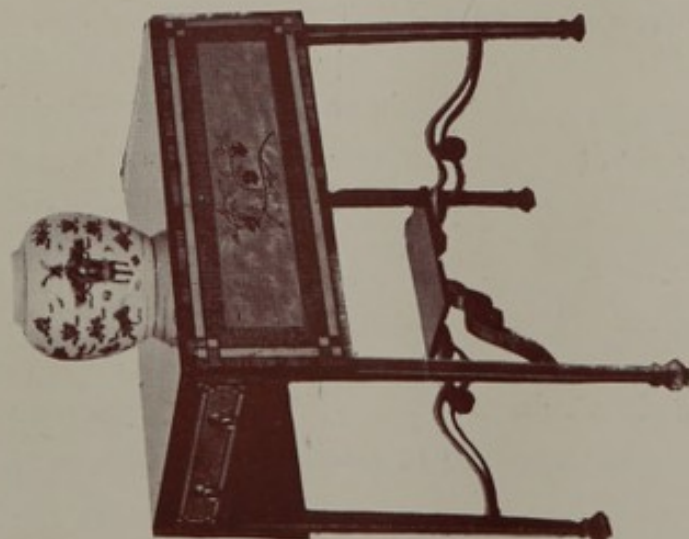
- 600 Two pairs of floral pattern cretonne curtains, with holders, lined twill, valances, *en suite*, and 2 pairs of gimp holders
- 601 A set of antique pattern fire implements and rests, and a standard fire guard with trellis panel



Lot 251



Lot 248



Lot 249

- 602 AN AUBUSSON CARPET, light ground with cream centre and bouquet, scroll and floral borders and crimson margin, 14 ft. by 13 ft. 3, and underfelt
- 603 A MAHOGANY GARDEROBE, with boldly carved scroll cornice, 2 panelled doors, with shell and husk festoons, enclosing brass cloak hooks, on stand with carved supports, 4 ft. 6
- 604 A QUEEN ANNE WALNUT TALLBOY CHEST of 5 short and 4 long drawers in two parts, inlaid banded borders, brass plate handles and escutcheons, 3 ft. 4
- 605 A ditto dressing table, deep kneehole frieze with 3 drawers, brass plate handles and escutcheons, on cabriole legs and club feet, 3 ft. 5
- 606 A ditto writing table, deep shaped frieze with 3 drawers, 2 ft. 6
- 607 A Sheraton mahogany scroll shape swing frame dressing glass, box plateau inlaid satin lines, and fitted 3 drawers with ivory knobs
- 608 A mahogany oval swing frame cheval glass, inlaid satin lines, on fluted square pillars and standards, with brass casters feet
- 609 A walnut washstand, inset dove marble top, and brass curtain rail, fitted long deep drawer, on cabriole supports, 3 ft. 2
- 610 A Minton ware rose pattern toilet service, 11 *pieces*, white toilet pail, water bottle and 2 tops, and a mahogany 2-fold towel horse
- 611 A Queen Anne mahogany rectangular table, long drawer, on tapered legs with club feet, 2 ft. 6
- 612 A mahogany table with fall flap at back, and 2 small extending flaps at side, 2 drawers with brass knobs, on square legs, 21 in.
- 613 A mahogany bedside table with 2 fall flaps, on square legs
- 614 A French carved white enamelled frame bergère with circular cane-work back and seat, and 2 down cushions in cretonne
- 615 A stuffed-over low seat easy chair in arabesque pattern needlework, finished blue cloth, on walnut legs
- 616 A Sheraton mahogany occasional chair, triple rail back with inlaid medallions, square tapered fluted legs, seat in grey figured damask
- 617 A pair of painted elbow chairs with cane seats

- 618 A 4-fold screen in cretonne, *en suite*, with curtains, 5 ft. 3
- 619 A Delft blue and white toilet ewer and basin, a coloured ware inkstand, a chintz stationery rack, blotter and calendar case, a glass pin stand, a match box holder, a lac tray, a Venetian glass finger bowl, and a wicker angle linen basket
- 620 A set of 6 Worcester blue and white tea bowls and saucers, and a blue and white basin, Chinese decoration
- 621 A mezzotint—Orpheus and Eurydice, after G. F. Watts, by F. Short, *artist proof*
- 622 Five small oval prints, in red, after Cipriani, by Bartolozzi, in 3 frames, and another—Cupid, after Cosway
- 623 A print, in red—Study of Figures, after Watteau, and another—Portrait of a Woman, after De Credi
- 624 A pair of photographs—Birth of Venus, and Spring, after Botticelli, and 3 others

BED ROOM No. 6.

- 625 A flowered pattern cretonne curtain and valance, and a wicker linen basket
- 626 A mahogany dressing table, inlaid satin lines, long drawer, brass handles, on square tapered legs, 3 ft.
- 627 A Sheraton mahogany shield shape swing toilet mirror, banded tulipwood and satin lines, serpentine plateau with 3 drawers
- 628 A mahogany tray top washstand with 2 drawers, brass plate handles, on turned legs, a white ware toilet service of 10 pieces, water bottle and 2 tops, and a mahogany 2-fold towel horse
- 629 A mahogany bedside cupboard, with brass handle, on square legs
- 630 A Chippendale mahogany chair, lyre rail splat, straight square legs and stretchers, loose seat in blue damask
- 631 Six prints, in red, after Old Masters in the Louvre
- 632 Six photographs, in 5 frames, after Old Masters

BATH ROOM No. 7.

- 633 A Sheraton mahogany Pembroke table, serpentine shaped top, banded tulipwood and satin lines, drawer, on square tapered legs, 2 ft. 6



Porphyry Urns ... Lot 298

Commode ... Lot 377

Bronze Figure ... Lot 301

- 634 A pair of painted and decorated ladder back chairs with rush seats
- 635 A mahogany 2-fold towel horse, a cork bath mat, a length of cocoa matting, an enamelled foot bath, and a sponge basket
- 636 A wall mirror in walnut and gilt frame, 25 in. by 16 in.
- 637 Three etchings, after A. Dürer

END OF THE THIRD DAY'S SALE.

CATALOGUE
OF
MESSRS. KNIGHT, FRANK & RUTLEY'S
Fourth Day's Sale
AT
SHIPLAKE COURT,
NEAR
HENLEY-ON-THAMES.

On THURSDAY, 12th of MARCH, 1925,

AT ONE O'CLOCK PRECISELY.

BED ROOM No. 8.

LOT

- 638 Two pairs of cretonne curtains, and the red felt carpet as laid, *about 20 sq. yds.*
- 639 A Persian light ground bordered rug, 4 ft. 1 by 2 ft. 7
- 640 A ditto, 4 ft. 1 by 3 ft. 3
- 641 A Persian prayer rug, red centre, 4 ft. 8 by 3 ft. 6
- 642 A mahogany bedstead, 3 ft. 3, with railed head and foot, a box spring mattress, wool mattress, feather bolster and down pillow
- 643 A WILLIAM AND MARY WALNUT CHEST of 2 short and 3 long drawers, inlaid banded borders and circles of satin-wood, on stand, with long drawer, brass drop handles and escutcheons
- 644 An etching—The Bathers, after F. Walker, by R. W. Macbeth
- 645 A ditto—The Garden of Refuge, after F. Walker, by R. W. Macbeth



Lot 342

- 646 An etching—Landscape, with pool, children and geese, by Waltner
- 647 A pair of ditto—Landscape and Church Yard, by W. Heseltine
- 648 A pair of colour prints—The Quarrel and The Reconciliation
- 649 A photograph—Hope, after Watts, and 3 others

BED ROOM No. 9.

- 650 A red felt carpet as laid, *about 14 yds.*, a rush mat, and a pair of damask curtains, valance and holders
- 651 A wrought steel bedstead, *3 ft. 4*, with scroll-work head and foot, a chain spring mattress, on pine frame, canvas cover, a hair mattress, a feather bolster and a down pillow
- 652 Three blankets, and an Indian cotton bedspread
- 653 Two etchings, by Heseltine, another, and an engraving—The Chess Players after Meissonier
- 654 Six engravings after Turner

TOWER BED ROOM No. 1.

- 654A A set of fire implements, with brass knobs, a pair of rests, a wire guard, and a linen basket
- 654B A red felt carpet as laid, *about 12 sq. yds.*, 2 pairs of cretonne curtains, valances and cord holders
- 654C A mahogany bow front chest of 4 long drawers, brass drop handles, *3 ft. 4*
- 654D A mahogany tray top washstand, 2 drawers, brass handles, on carved and turned legs, *3 ft. 6*, and a mahogany 2-fold towel horse
- 654E A Sheraton mahogany tray-top bedside cupboard, door inlaid satin lines, on square legs
- 654F A white enamelled dressing table, fitted swing mirror, 2 drawers, on turned legs, *3 ft.*
- 654G A SHERATON MAHOGANY TOILET TABLE, lifting top enclosing adjustable mirror and 3 compartments with covers, ivory knobs, square tapered legs and platform, *2 ft. 7*
- 654H An ebonized octagonal table, with tray and platform, *21 in.*, a bamboo stool, a bronze electric standard, and a paper basket

- 654i A Hepplewhite mahogany chair, lyre splat and square legs, loose seat in red figured damask, and a Sheraton mahogany chair, trellis back inlaid satin lines, seat in blue serge
- 654j Ten pieces of white toilet ware, water bottle, a pair of red ware candlesticks, a pair of Japanese blue and white vases, a Satsuma jar and cover, and 5 other articles
- 655 THOS. R. MACQUOID, 1876—A Spanish Street Scene and figures, *water colours*, 18 in. by 20 in.
- 656 Five etchings—Cathedrals, a ditto—Cottage Scene, and 7 photographs

TOWER BED ROOM NO. 2.

- 657 A set of fire irons, with brass knobs, a pair of iron rests, a wire guard, a pair of blue taffeta curtains, and a linen basket
- 658 A Bokhara red ground bordered rug, 9 ft. by 6 ft. 11, and underfelt
- 659 A mahogany dressing table, inlaid satin lines, kneehole frieze, with 3 drawers, on square legs
- 660 A Sheraton mahogany oval swing-frame toilet glass, on serpentine plateau, with 3 drawers
- 661 A mahogany tray top washstand, marble slab, platform with drawer, 24 in., and 9 pieces of toilet ware
- 662 A mahogany bedside cupboard, on square legs, and a mahogany towel horse
- 663 A bronze electric standard, a bamboo stool, a pair of china candlesticks, and 3 fern pots
- 664 Four etchings, and 5 photographs
- 665 Green felt carpet, as laid to landing, stairs and passage to first floor, *about 17 yards*

CORRIDOR (by Nos. 5, 6 and 7).

- 666 Green felt carpet, as laid, *about 35 yds.*
- 667 An Axminster Persian pattern red ground bordered rug, 14 ft. by 5 ft. 3
- 668 Two lengths of ditto carpet to match, 31 in. wide, *about 15 yds.*

- 669 A SPANISH WALNUT ARMOIRE, with moulded cornice, enclosed by 2 doors, with raised panels and cupboards at sides, fitted shelves, with panelled doors, long drawer at base, 8 ft. high, 6 ft. wide
- 670 A HEPPLEWHITE MAHOGANY SET OF 4 CHAIRS (two with elbows), lyre shaped splats, square tapered legs, loose seats in green figured damask
- 671 A set of 3 embossed copper amphora
- 672 A Japanese iron tea kettle, with bronze handle and lid, and a bitterne, in glazed case
- 673 A painting—Ships in full Sail, 16 in. by 14 in.
- 674 An engraving—Morning in the Highlands, after Rosa Bonheur, and a large photo—Madonna and child
- 675 A print—Panama Canal, by Joseph Pennell, and 4 large photos of Sutton Place
- 676 Two etchings—Male portraits, by A. Legros, a ditto—Landscape, after J. Both, a photo—Pomona, and another—Jeanne D'Arc
- 677 A crayon drawing—Head of a Lady, and 2 photos—Portraits, after Old Masters

BED ROOM No. 11.

- 678 A red painted washstand, tile back and marble top, and 2 drawers, and a pair of cretonne curtains
- 679 A green painted linen press, in 2 divisions, enclosed by 4 panelled doors, 5 ft. 6
- 680 A blue cork carpet, 13 ft. 9 by 12 ft.
- 681 A Kelim rug, black ground, yellow border, 8 ft. 5 by 6 ft. 10

SCHOOL ROOM No. 12.

- 682 An oak octagon centre table, parqueterie top, on turned legs, and cross stretchers, 4 ft.
- 683 A Chesterfield settee, in canvas and loose cretonne cover, 7 ft. 6
- 684 Five cretonne curtains and band holders
- 685 A Queen Anne chimney glass, with Vauxhall plate, in walnut frame, 16½ in by 53 in.

BATH ROOM No. 13.

- 686 Two rush seat chairs, a length of cocoa matting, and a 2-fold clothes horse

BED ROOM No. 14.

- 687 A set of wrought iron fire implements, a standard fire guard, with trellis panel, and a pair of cretonne curtains, valance and holders
- 688 An Axminster crimson figured and bordered carpet, 12 ft. by 10 ft. 3, and blue underfelt
- 689 Two wool and hair mattresses, 3 ft. 6
- 690 An ash Bedroom Suite, comprising a dwarf wardrobe, fitted 4 sliding trays, 2 panelled doors and 10 short drawers, 6 ft., a dressing table, fitted large swing mirror, 2 drawers and platform, 4 ft., a pedestal washstand, tiled back, marble top, 2 drawers and 2 panelled doors, 3 ft. 6 and a bedside pedestal cupboard
- 691 Twenty-two pieces of odd toilet ware, 3 large japanned water cans, and a linen basket
- 692 A deal work table, 3 ft. 6, a Japanese 4-fold screen, and 7 framed photographs
- 693 A collector's walnut cabinet, with 6 drawers, glass covers, and the collection of birds' eggs

BED ROOM No. 15.

- 694 A pair of green serge curtains and holders, a brass fire guard, iron shovel and tongs, and a wicker linen basket
- 695 A Kelim carpet, panel pattern centre and key border, 11 ft. 3 by 7 ft., and underfelt
- 696 A white enamelled wardrobe, fitted shelves and brass dress hooks, 2 panelled doors, 4 ft. 6
- 697 A ditto washstand, marble top and tile back, and 2 drawers, 9 pieces of toilet ware, water bottle and top, and a 3-fold towel horse
- 698 A Sheraton mahogany bow front dressing table, inlaid satin lines, knee-hole frieze, with 3 drawers, brass rosette and ring handles, on square tapered legs, 3 ft. 2
- 699 A Sheraton mahogany swing frame dressing glass, on turned standards and stretcher
- 700 A scarlet painted 3-tier square whatnot



Lot 505

- 701 A brass electric standard, a pair of bronzed metal candlesticks, and a stained pine book rack
- 702 A pair of small wall mirrors, in ebony frames, inlaid ivory
- 703 An Arundel Society print—"Theology," and 5 photographs

BED ROOM No. 16.

- 704 A green felt carpet, 15 ft. by 8 ft., and 3 cretonne curtains and holders
- 705 A set of wrought-iron fire implements, and a brass standard spark guard
- 706 A scarlet painted suite, of chest of 2 short and 2 long drawers, brass drop handles, a dressing table, fitted swing mirror and 2 drawers, a bedside cupboard and a book rack
- 707 A mahogany circular table, Chippendale design, fret frieze, on cluster column legs and cross stretcher, 21 in.
- 708 A Hepplewhite mahogany elbow chair, lyre railed splat, square legs, loose seat in green cloth
- 709 Four framed photographs

CORRIDOR AND STAIRS TO DOMESTIC OFFICES.

- 710 Two pairs of short green damask curtains, a long serge curtain, and 5 iron coal scuttles
- 711 The granite pattern crimson bordered pile carpet, 36 in. wide, as laid throughout, *about* 30 yds.
- 712 The ditto carpet, as laid to stairs to ground floor, *about* 14 yds., and 19 brass rods
- 713 An engraving—"Luff Boy," after J. C. Hook, and 3 others
- 714 A copper coal scuttle and scoop
- 715 A ditto
- 716 A ditto
- 717 Five brass water ewers
- 718 Five ditto
- 719 Four large brass scroll brackets, with candle nozzles
- 720 A brass censer
- 721 An Oriental blue and white circular dish, 13 in., and 2 ditto, 11 in.
- 722 Four ditto saucer dishes, and a plate

- 723 Two embossed ware salvers, 12 in., and a Ginori faience tazza, with portrait medallion, 9 in.
- 724 Three Dresden tea cups and saucers and a ditto basin, 4 green glazed ware vases, a yellow ditto kettle, and a pair of pillar candlesticks

SERVANTS' DORMITORIES.—BED ROOM NO. 1.

- 725 Brussels carpet, as laid, *about 24 square yds.*
- 726 An Indian light ground bordered rug, 7 ft. 9 by 5 ft.
- 727 A mahogany bedstead, 3 ft. 3, railed head and foot, box spring mattress, wool and hair mattress, feather bolster and down pillow
- 728 A pine wardrobe, fitted shelves and dress hooks, 2 panelled doors, 3 ft. 9
- 729 A deal top table, on painted frame, with drawer, 5 ft.
- 730 A ditto, 2 ft. 11, a wicker chair and table, a deck chair, and 2 pairs of red baize curtains

BED ROOM NO. 2.

- 731 A Brussels carpet, 10 ft. 6 by 6 ft. 6, and 2 cane seat chairs
- 732 An iron bedstead, 3 ft., 2 palliasses, feather bolster and pillow
- 733 A mahogany tray top washstand, marble slab, platform and drawers, and a white toilet pail
- 734 A stained pine tray top dressing table, a swing mirror, a cane seat chair, and a photograph—The Order of Release

BED ROOM NO. 3.

- 735 A Brussels carpet, 8 ft. 6 by 6 ft. 9, 2 cane seat chairs, and a linen basket
- 736 An iron bedstead, 3 ft., palliasse, wool mattress, feather bolster and pillow
- 737 A painted chest of 4 drawers, a swing mirror, and an engraving—The Offer Accepted

BED ROOM NO. 4.

- 738 A blue figured Brussels carpet, *about 15 square yds.*
- 739 A mahogany bedstead, 3 ft. 3, railed head and foot, box spring mattress, wool and hair mattress, feather bolster and down pillow

- 740 A mahogany cabinet, 2 doors with canvas panels
- 741 A circular deal top table, on painted frame, 4 ft. 6, a Manchester cover, a pair of green serge curtains, and a pile rug
- 742 A painted dressing table, with 2 drawers, and an ebonized elbow chair, cane seat and back

BED ROOM No. 5.

- 743 An iron bedstead, 3 ft., palliasse, feather bolster and pillow
- 744 A ditto bedstead, 2 palliasses, feather bolster and pillow
- 745 A brass bound wire nursery fender, 3 ft. 6
- 746 A japanned hip bath, and a standard fire guard
- 747 A mahogany night commode, and a japanned sponge bath
- 748 Two japanned travelling baths, and a treadle stand for sewing machine

BED ROOM No. 6.

- 749 A Brussels carpet, a string mat, and 2 cane seat chairs
- 750 An iron bedstead, 3 ft., palliasse, wool mattress, feather bolster and pillow, 3 blankets and coloured quilt
- 751 An iron bedstead, 2 ft. 6, palliasse, 2 wool mattresses, feather bolster, pillow and coloured quilt
- 752 A painted chest of 2 short and 3 long drawers
- 753 A ditto
- 754 A painted dressing table, a swing mirror, a tray top wash-stand, 6 pieces of toilet ware, a water bottle, enamelled foot pan, and a towel ainer

BED ROOM No. 7.

- 755 A green Kidderminster carpet, a pile rug, and a rush mat
- 756 An iron bedstead, 3 ft., palliasse, wool mattress, feather bolster and pillow and 3 blankets
- 757 A painted chest of 4 drawers
- 758 A painted dressing table, with drawer, a ditto tray top wash-stand, 7 pieces of toilet ware, a water bottle, a japanned foot pan, and a towel ainer
- 759 A wicker easy chair, a bamboo table, a rush seat corner chair, and a mirror, in black and gilt frame

BED ROOM No. 8.

- 760 A Brussels carpet, and 2 string mats
- 761 An iron bedstead, 3 *ft.*, palliasse, 2 wool mattresses, feather bolster and pillow, 3 blankets and coloured quilt
- 762 A similar lot
- 763 A painted chest of 2 short and 3 long drawers
- 764 A painted dressing table, swing mirror, a tray top washstand, 4 pieces of toilet ware, a water bottle and top, a japanned foot bath, and a towel airer
- 765 A painted chest of 4 drawers, a swing mirror, and 2 cane-seat chairs
- 766 A painted chest of 4 drawers, a tray-top washstand, 5 pieces of toilet ware, a japanned footbath, and a towel airer

GALLERY.

- 767 A square back stuffed-over settee in canvas, with loose squab, 3 cushions and a bolster, 7 *ft.*
- 768 A stained frame sofa, with scroll ends, loose squab and 2 bolsters in chintz
- 769 A deal top table, on painted frame, 4 *ft.*
- 770 An invalid's cane carrying chair and bamboo poles
- 771 A box ottoman in tapestry, 4 *ft.* 6
- 772 *Twelve Persian tiles*, in wood frame, and 2 others

GROUND FLOOR.—BUTLER'S BED ROOM.

- 773 Two strips of carpet, a washable rug, and a serge curtain
- 774 An iron bedstead, 3 *ft.*, a palliasse, 2 wool mattresses, a feather bolster and pillow
- 775 A painted chest of 2 short and 3 long drawers
- 776 A ditto
- 777 A painted dressing table with drawer

FOOTMAN'S BED ROOM No. 1.

- 778 Two lengths of pile carpet, a serge curtain, a linen basket, and a cast fender
- 779 An iron bedstead, 3 *ft.*, a palliasse, 2 wool mattresses, feather bolster and pillow, 5 blankets, and a coloured quilt

- 780 A painted chest of 2 short and 3 long drawers
- 781 A grained chest of 4 drawers, and a swing mirror
- 782 A painted tray top washstand, 6 pieces of toilet ware, a japanned foot bath, and a towel airer

FOOTMAN'S BED ROOM No. 2.

- 783 Two lengths of carpet, a dhurrie curtain, and a cast fender
- 784 An iron bedstead, 2 ft. 6, with wire platform, canvas slip, a wool mattress, feather bolster and pillow, and 3 blankets
- 785 A painted chest of 2 short and 3 long drawers
- 786 A grained chest of 4 drawers, and a swing mirror
- 787 A ditto washstand, 5 pieces of toilet ware, a japanned foot bath, an enamelled ewer, a towel airer, and a linen basket

PANTRY.

- 788 A deal table, 5 ft. 6, and a cast fender
- 789 Three fireproof china coffee pots, 2 ditto tea pots, and 5 pieces of odd tea ware
- 790 Two plain claret jugs, a spirit decanter, 13 soda tumblers, an ice tazza, and 18 ice plates
- 791 Thirty plain wines, and 2 liqueurs
- 792 Eighteen green bulb shape hocks, and 10 Venetian ice plates
- 793 Four champagne jugs, 3 bag shape water carafes, 23 flower glasses and globes, and 7 menu holders
- 794 A white and gilt china dessert service, painted floral centres, and 2 dishes
- 795 A Hanley (Shorthouse) cream ware dessert service, pierced borders, 30 pieces
- 796 Eleven cream ware salad plates, and 4 Japanese blue and white dishes
- 797 A silver plated copper casket, embossed in flowers and foliage, 19 in. by 12 in.
- 798 An old Sheffield quart tankard, 2 decanter stands, and 2 drinking horns
- 799 A Sheffield inkstand, with wafer box and 2 cut-glass bottles, a 4-hole cruets stand, a toast rack, and a butter shell
- 800 A pair of plated stands for dessert dish, an octagonal tea caddy with hinged lid, and 2 Bacchanalian figures

- 801 A Japanese tazza, $6\frac{1}{2}$ in., 2 cylindrical moulds, 3 small cups, 2 silver vesta boxes, and an Indian brass match box
- 802 Three cut-glass globular scent bottles with silver tops
- 803 Nine plated fish knives, 2 ditto forks, a pickle fork, 2 lobster picks, marrow spoon, and a bread knife with silver handle and leather sheath
- 804 A prize pewter flagon with hinged lid and ebonized stand, a plated tankard with thread bands, a hunting flask, and a plated wine tap
- 805 A plated oblong waiter, a lemon squeezer, 3 soda bottle stands, and a sparklet flask
- 806 A set of 5 plated dish covers, in sizes

WINE, &c.

- 807 Eleven bottles FINE OLD BURGUNDY, *Chamboyle*, 1898
- 808 Two bottles MARASCHINO, and 2 bottles SHERRY
- 809 Eleven bottles GINGER BRANDY, *Aylward & Sons*, *Winchester*
- 810 Two bottles CHARTREUSE, *L. Garnier*
- 811 Sixteen bottles CLARET, CHÂTEAU MOUTON D'ARMAILHACQ
- 812 Ten bottles HOLLANDS, *J. Kuyper & Son*
- 813 Eighteen bottles MARSALA, 1914
- 814 Six half-bottles YELLOW CHARTREUSE, *L. Garnier*
- 815 Three bottles AMSTERDAM WHITE CURAÇOA

LINEN.

- 816 A linen damask table cloth, 8 yds., and 2 ditto, $4\frac{1}{2}$ yds.
- 817 Two ditto, 4 yds.
- 818 Two ditto
- 819 Two ditto, $3\frac{1}{2}$ yds.
- 820 Three ditto
- 821 Three ditto, 3 yds.
- 822 Three ditto
- 823 Four ditto

HOUSEKEEPER'S ROOM.

- 824 A Brussels carpet, 13 ft. 6 by 11 ft. 3, and a red pile rug, and a pair of tapestry curtains



Lot 577

- 825 A MAHOGANY LINEN PRESS, fitted shelves in 4 divisions, the upper part enclosed by 4 panelled doors, 4 sliding trays in frieze and 4 panelled doors beneath, 9 ft. 2
- 826 A CHIPPENDALE MAHOGANY BUREAU, fall front enclosing 13 small drawers and pigeon-holes, 4 long drawers under with chased brass wreath handles, 3 ft. 8
- 827 A stained pine extending dining table, and extra leaf, 3 ft. 6 wide
- 828 A pair of Dutch brass candlesticks, an oval mirror in white Dresden china frame, 12 in., a pottery ewer, and a glass flower bowl
- 829 An engraving—Egyptian Woman and Child, 2 chromolithographs, and another

GUN CUPBOARD.

- 830 A shooting seat, 3 game carriers, 3 haversacks, a fishing basket, and a landing net
- 831 A golf bag and 11 clubs
- 832 A ditto and 6 clubs
- 833 A ditto and 8 clubs
- 834 Four bandoliers, 3 fencing foils, a mask, 3 gloves and a jacket, and a carriage footwarmer
- 835 A grained chest of 4 drawers, and a floor polisher

PASSAGE.

- 836 Two pairs of serge curtains, and 3 fibre mats
- 837 A pine croquet box-seat and contents
- 838 A deal box, a cricket bat, 8 stumps, 3 balls, 2 leg guards, 9 tennis marking pins, and 5 garden tools
- 839 A bronze tea urn, a tin tea can, 2 palm tubs, a red ware garden vase, and a gilt wicker basket and zinc liner
- 840 Eight green glazed ware flower pots and 15 pans, and 20 red pans

KITCHEN.

- 841 A grained roasting screen, with sliding panelled doors with folding wings, 4 ft. 6
- 842 An elm top kitchen table with drawer, on turned legs, 3 chopping boards, and a chopping block

- 843 Eight wheel-back Windsor chairs
- 844 A coffee mill, and a set of 5 Britannia metal dish covers (in sizes)
- 845 A marble mortar on stand and long-arm pestle
- 846 An 8-day kitchen clock, in mahogany case, by C. F. WASSELL, *London*
- 847 Nine copper stewpans and lids (in sizes)
- 848 Two ditto shallow stewpans, and a mackerel pan
- 849 A bain marie case and liner, and a preserving pan, 15 *in.*
- 850 A preserving pan, 17 *in.*, 2 bombe moulds, and 5 jelly moulds
- 851 Four pipe moulds, 21 fluted darioles, and 23 small moulds
- 852 A tin spoon drip, 2 copper slices, a baster, 3 ladles, and sundry tin culinary utensils
- 853 A deal table, an iron dripping pan and sundries

LARDER.

- 854 A grained box refrigerator, 3 *ft.* 3
- 855 A freezing machine and 2 pewter freezers, and 12 ice cream moulds
- 856 A galvanized bath, 5 canisters, and a quantity of glass preserving jars
- 857 A deal meat safe

SERVANTS' HALL.

- 858 An Indian rug, 12 *ft.* 9, a pair of serge curtains, cast fender, tongs and shovel
- 859 A deal table, on 6 square legs, 8 *ft.*
- 860 Two Windsor chairs and 2 arm ditto
- 861 A convex mirror in painted frame, and 6 pictures
- 862 Forty pieces of odd tea ware, 3 tiles, and a butler's mahogany tray

KNIFE ROOM.

- 863 A Kent's patent 4-hole knife-cleaning machine
- 864 A 3-hole ditto, by HARRODS

VERANDAH AND OUTSIDE.

- 865 An oak settle, with panelled back, open arms and baluster legs, 6 *ft.*
866 A similar settle, on cabriole legs
867 A terra cotta Campana GARDEN VASE, with bearded masks and twisted branch handles, on square pedestal, 27 *in.* diam., 42 *in.* high
868 An old lead CISTERN, moulded in panels with figure subjects, shells and scrolls, and initials and date [16]65, 29 *in.* by 53 *in.* by 19 *in.*
869 A pair of teak garden chairs, railed backs and seats

SUMMER HOUSE.

- 870 An oak settle, with panelled back and open arms, 5 *ft.* 10
871 A pair of oak arm chairs, with lath backs and seats
872 A pair of small ditto
873 An oak gate-leg table, 4 *ft.* 3
874 An oak circular table, on 3 baluster legs, 2 *ft.* 3
875 A pine bench, and 2 wicker chairs
876 A bronze ewer and basin

FINIS.

By Direction of Mrs. NANCY BURRELL.

Following the sale of the Estate.

THE
Contents of the Historic Mansion
OF
HAMPTON COURT,
HEREFORDSHIRE.

4 miles LEOMINSTER ; 9 miles HEREFORD ; FORD BRIDGE and DINMORE
Stations (G.W.R.) upon the Estate,

COMPRISING

RARE EXAMPLES OF JAMES I, CHARLES II,
WILLIAM AND MARY AND QUEEN ANNE
FURNITURE in Refectory Tables, Coffers and
Commodes, Chairs, Settees, Etc.

TWO MAGNIFICENT WILLIAM & MARY STATE BEDSTEADS,
SEVEN PANELS OF BEAUTIFUL OLD BRUSSELS
TAPESTRY in classical subjects with borders of birds,
fruit and flowers,

HISTORICAL FAMILY PORTRAITS,
and a

COLLECTION OF PAINTINGS BY OLD MASTERS,
AN ANTIQUE SIX-FOLD CHINESE INCISED
LACQUER SCREEN,

A full-sized Billiard Table,

Porcelain, Plate, Linen, Books, Carpets, Curtains,
The Equipment of Saloon, Reception and Some Thirty
Bed Rooms.

Messrs. KNIGHT, FRANK & RUTLEY

will Sell by Auction, on the Premises, as above,

On MONDAY, 16th MARCH, 1925, and following Days.

On View Friday and Saturday (March 13th and 14th), from 10 to 5 o'clock.
Private View (by Card only) on Thursday (March 12th), from 10 to 5 o'clock.
Solicitors : Messrs. HORE, PATTISSON & BATHURST, 48, Lincoln's Inn
Fields, W.C. 2. Resident Agent : THOMAS ROBERTS, Esq., Hampton
Court Estate Office, Leominster. Catalogues (illustrated copies price
3s. each, plain copies free) may be obtained of the Auctioneers, at their
Offices, 20, Hanover Square, London, W. 1.

The Live & Dead Farming Stock

at SHIPLAKE COURT FARM,

INCLUDING

11 CART HORSES AND COLTS.

61 HEAD OF CATTLE

viz. : Pedigree Shorthorn Bull, 18 Dairy Cows and Heifers, 10 two-year old Heifers and Steers, 14 Yearling Heifers, 7 Calves.

THE HAMPSHIRE DOWN FLOCK.

comprising 89 Ewes and Lambs, and 25 Teds.

PIGS AND POULTRY.

Together with the valuable and extensive Collection of

AGRICULTURAL DEAD STOCK

including Wagons, Carts, Cattle Cart, Harness, Elevator, Ploughs, Harrows,
2 Water Barrels, Self Binder, Mowing Machines, Dairy Utensils, &c. &c.

Will be Sold by Auction by

KNIGHT, FRANK & RUTLEY

IN CONJUNCTION WITH

MESSRS. SIMMONS & SONS,

On FRIDAY, MARCH 13th, 1925.

Catalogues of the Auctioneers.

CARS may be obtained from the CENTRAL GARAGE,
HENLEY-ON-THAMES.

