

Sales catalogues: Knight, Frank & Rutley

Publication/Creation

12th March 1909

Persistent URL

<https://wellcomecollection.org/works/bu7teh8k>

License and attribution

This work has been identified as being free of known restrictions under copyright law, including all related and neighbouring rights and is being made available under the Creative Commons, Public Domain Mark.

You can copy, modify, distribute and perform the work, even for commercial purposes, without asking permission.



Wellcome Collection
183 Euston Road
London NW1 2BE UK
T +44 (0)20 7611 8722
E library@wellcomecollection.org
<https://wellcomecollection.org>

WALTHAMSTOWN 29/11/21 8

The Conduit Street Galleries.

TELEPHONES (NATIONAL, GERRARD 1942.
P.O. MAYFAIR 497.

TELEGRAMS: GALLERIES. LONDON.

*By Order of Trustees, Executors,
and from various Private Sources.*

A CATALOGUE

OF

Oil Paintings and Drawings,

BY AND ATTRIBUTED TO

J. CALLOW, OLD CROME, C. JANSSEN, NICHOLAS MAES, ROMNEY, SARTORIUS,
SHAYER, VANDER NEER,

Decorative China,

FINE SPECIMENS OF ROYAL WORCESTER INCLUDING A DANTE VASE, STAFFORDSHIRE
FIGURES, AN ORIENTAL POWDER-BLUE BOWL, ORMOLU-MOUNTED.

Furniture,

A PIETRA-DURA CABINET AND TABLE, A SUITE OF CHINESE CARVED AND
INLAID WOOD JARDINIÈRES AND STOOLS, SHOW CABINETS AND CASES,
LARGE PIER GLASSES,

DRAWING and DINING-ROOM and BED-ROOM SUITES.

Miscellaneous Effects,

THREE DRUM-MAJOR'S STAVES OF THE LANCASHIRE FUSILIERS,
NORTHUMBERLAND FUSILIERS AND ROYAL WARWICKSHIRE REGIMENT.
A GOTHIC-PATTERN HARP, PIANOS, LACE, A GENTLEMAN'S COSTLY
FUR COAT, BOOKS, LINEN, GLASS, &c.

WHICH WILL BE SOLD BY AUCTION BY MESSRS.

Knight, Frank & Rutley

AT THEIR GALLERIES,

9, CONDUIT STREET, and 23a, MADDOX STREET, W.

On FRIDAY, the 12th of MARCH, 1909,
AT ONE O'CLOCK PRECISELY.

On View Two Days prior from 10 to 5 o'clock. Catalogues free of JULIUS
BERTRAM, Esq., M.P., Solicitor, 14, Suffolk Street, Pall Mall; GEORGE R. CRAW,
Esq., Solicitor, 5, King's Bench Walk, E.C.; ERNEST JAMES, Esq. (Messrs. Cole,
James & Rozelaar), Chartered Accountants, 1a, Frederick's Place, Old Jewry, and
of the Auctioneers, at their Offices, 9, Conduit Street, W.

DRYDEN PRESS: J. DAVY & SONS, 8-9, FRITH-STREET, SOHO-SQUARE, W.

Conditions of Sale.

I.—The highest bidder to be the purchaser, and if any dispute arise between two or more bidders, the lot in dispute shall immediately be put up again and re-sold.

II.—No person to advance less than one shilling, above Five Pounds 2s. 6d., and so on in proportion.

III.—In the case of lots upon which there is a reserve the auctioneer shall have the right to bid on behalf of the vendor.

IV.—The purchaser to give in name and address, and if required, to pay down 5s. in the £. or more, in part payment of the purchase-money; in default of which the lot or lots so purchased to be immediately put up again and resold.

V.—The lots to be taken away at the purchaser's expense and risk the day after the sale, in default of which Messrs. KNIGHT, FRANK & RUTLEY will not hold themselves responsible if the lots be lost, stolen, damaged or destroyed; but they will be left at the sole risk of the purchaser.

VI.—The lots are sold with all faults, imperfections and errors of description, the Auctioneers not being responsible for the correct description, genuineness, or authenticity of, or any fault or defect in any lot; and making no warranty whatever. The Auctioneers reserve the right of refusing any bidding, or of withdrawing any lot or lots from the sale.

VII.—To prevent inaccuracy in delivery, and inconvenience in the settlement of the purchases, no lot can on any account be removed during the time of sale; and the remainder of the purchase-money must absolutely be paid on the delivery.

VIII.—Upon failure of complying with the above conditions, the money deposited in part payment shall be forfeited; all lots uncleared within the time aforesaid shall be re-sold by public or private sale, and the deficiency (if any) attending such re-sale, together with warehouse and other charges, shall be made good by the defaulter at this sale.

Gentlemen who cannot attend the sale may have their commissions faithfully executed by their obedient Servants,

KNIGHT, FRANK & RUTLEY.

NOTE.—All Lots uncleared, by either Vendors or Purchasers, after a period of three days from day of sale, will be subject to a Warehouse Charge of One Shilling each Lot per Week or portion thereof.

THE CONDUIT STREET AUCTION GALLERIES.

Lots 15- 1 0
Fair Price 1 1
+ Carman
15- 2 1
A CATALOGUE
OF
PICTURES, CHINA, BOOKS
and FURNITURE.

On FRIDAY, the 12th of MARCH, 1909,

At ONE o'Clock precisely.

LOT

- | | | |
|----|--|----------|
| 1 | The Nineteenth Century Magazine, <i>cloth</i> | 21 vols. |
| 2 | The English Illustrated Magazine, <i>cloth</i> , 13, and Pall Mall Magazine, <i>cloth</i> , 6 | 19 vols. |
| 3 | The Wide World Magazine, 4; Scribner's Magazine, 2; Home Notes, 16, and 8 others | 30 vols. |
| 4 | Scott's Waverley Novels, <i>Black</i> , 1841, <i>cloth</i> , 5, and Old and New London, 5 | 10 vols. |
| 5 | Picturesque Europe, <i>cloth</i> | 6 vols. |
| 6 | Switzerland, 2; The Royal River; Celebrated Pictures, and 3 others | 7 vols. |
| 7 | Our Own Country and Countries of the World, 6, and Our Earth and its Stories, 3 | 9 vols. |
| 8 | Great Explorers of Africa, <i>cloth</i> , 2; Bryant's History of the United States, and 4 others | 7 vols. |
| 9 | Kirby's Butterflies of Europe, <i>coloured plates</i> ; Cassell's Gardening, 4, and Wright's Poultry | 6 vols. |
| 10 | Wood's Natural History, 3, and 6 others | 9 vols. |
| 11 | The Royal Gallery, <i>cloth</i> | 6 vols. |
| 12 | <i>The Studio</i> , vols. I to XXXIII and special numbers, 12 vols. <i>publisher's cloth</i> | 45 vols. |
| 13 | Chambers' Encyclopædia, 10; National Encyclopædia, 6, and 6 others | 22 vols. |

- | | | |
|----|---|-----------------|
| 14 | Beattie's Scotland, <i>half calf</i> , 2; Rollin's Ancient History, 2,
and Smollett's History of England, 3 | 7 vols. |
| 15 | Owen and Bell's British Fossils, 1849-1861, <i>4to</i> | 2 vols. |
| 16 | The History of the Stock Exchange, 1900, <i>W. Eden Hooper</i> ,
<i>édition de luxe, whole morocco with clasp, 4to</i> | |
| 17 | Smith's Dictionary of the Bible, 1862, <i>whole calf</i> | 3 vols. |
| 18 | Rollin's Ancient History, 1828, <i>whole calf</i> , 6; Maxwell's
Life of Wellington, 3, and Isaac Disraeli's Life of
Charles I, 1851, 2 | 11 vols. |
| 19 | Life of T. S. Cooper, 2, and 6 others | 8 vols. |
| 20 | Sharpe's London, 3; British Empire in India, 4, and 9
others | 16 vols. |
| 21 | Eliza Cook's Poems, <i>whole morocco</i> , and 9 others, <i>bound</i> | 10 vols. |
| 22 | Shakespeare, <i>whole calf gilt</i> , 16mo, 6, and 13 others | 19 vols. |
| 23 | Novels by various authors, <i>cloth bound</i> | 30 vols. |
| 24 | A similar lot | 30 vols. |
| 25 | Miscellaneous books | <i>a parcel</i> |
| 26 | A similar lot | |
| 27 | Unbound periodicals—The Connoisseur, 23 parts, Punch,
Bystander, Tate Gallery, etc. | |
| 28 | Strand Magazine in publishers' cloth, 12 vols. | |
| 29 | A pocket book containing 320 old stamps, and 9 old lace
bordered painted mats | |

The following 25 Lots the Property of a Gentleman.

Decorative China.

- | | |
|----|--|
| 31 | Two parian china figures—Nymphs bathing, 14½ in. and
16 in. high |
| 32 | A pair of 4-light painted china candelabra, designed as
trees with roses in relief, figures of children at base,
26 in. high |
| 33 | Two pairs of French painted china figures, 16 in. high |

Royal Worcester China.

- 34 A FINELY-MODELLED FEMALE FIGURE OF A WATER CARRIER with a jar and holding an amphora, painted and gilt, 31 in. high
- 35 A pair of cream coloured ewers, painted with sprays of chrysanthemums and cornflowers
- 36 *A pair of slender oviform vases, with birds on a cream ground, with gilt handles, 12 in. high, painted by Baldwin*
- 37 *An oviform vase and cover, with figures of blue tits and flowers, on drum-shaped pedestal, 17½ in. high, painted by Baldwin*
- 38 A PEAR-SHAPED 2-HANDLED VASE AND COVER, with two pierced floral panels, raised floral bands, richly gilt, on scroll pattern stand, 36 in. high
- * * *A companion vase to the above was presented to H.R.H. the Princess May on her marriage*
- 39 A pair of 2-handled oviform vases and covers, on shot-grey ground, painted with sprays of anemones in relief, richly gilt, 14 in. high
- 40 A cream-coloured 2-handled vase and cover, painted with clematis in relief, richly gilt, and 2 smaller vases
- 41 THE DANTE VASE. A choice example of Worcester porcelain, of which only six specimens were produced, the body of the vase is urn-shaped, with handles representing Knowledge and Power; two panels painted by GEO. WHITE depicting Dante borne upon an eagle, the other of Beatrice alighting from her car and addressing the Poet across the stream of Lethe; the cover is surmounted by Jupiter with an eagle; the base is supported by four seated figures of Dante, Beatrice, Poetry and Fame. *The whole being richly gilt, 27½ in. high*
- 42 A pair of oviform vases, painted with anemones and forget-me-nots, gilt
- 43 A pair of small oviform 2-handled vases and covers, with landscapes and flowers on cream ground, with bleu de roi bands gilt

551-

- 22/6 44 A cylindrical Vienna vase, with finely painted figure medallion, and a 2-handled vase
- 7/- 45 A cup and saucer, painted with flowers and gilt initials, and an old Staffordshire milk ewer
- 15/- 46 A pair of Oriental cups and saucers, a small fluted ditto, and 4 others
- 11/- 47 Three old Staffordshire figures—Faith, Hope and Charity (faulty)
- £3 48 A pair of black basalt Wedgwood busts — Mercury and Minerva
- 2/2/- 49 AN ORIENTAL CHINA POWDER BLUE BOWL, 10 in. diam., in Louis XIV ormolu mount, with handles
- 13/- 50 A pair of 2-handled china vases, 16 in. high
- 15/- 51 A 2-handled vase, 20 in. high, and a tall ewer
- 4/10/- 52 A LARGE FINELY MODELLED FIGURE OF AN EAGLE, with outspread wings
- 8/- 53 A gourd-shaped bottle, with encrusted flowers, an old jug, and 2 china ornaments
- 22/- 54 A pair of white china wall brackets, with mirrors, 4 ditto flower troughs, and a ditto frame
- 25/- 55 A pair of bronzed figures—La Nuit, Le Jour
-
- 8/- 56 An old Italian Urbino ware wall plaque
- 2/17/6 57 A pair of old Staffordshire figures—St. Peter and St. Paul
- 3/- 58 A pair of cylindrical Minton vases, decorated in birds and flowers on a brown ground, gilt, signed by W. Mussill, 24 in. high
- 30/- 59 A pair of china figures—Milton and Shakespeare
- 38/- 60 A Sèvres plaque, painted with portraits of Louis XVI and ladies of the Court
- 25/- 61 A pair of painted Dresden china wall mirrors
- 35/- 62 A pair of ormolu candle brackets, with cut glass lustres
- 32/6 63 A pair of Japanese vases, decorated figure subjects, 26 in. high
- 28/- 64 A ditto vase, 25 in. high, and a set of 4 old engravings—
“The Seasons”

- 32/- 65 A pair of oval shaped china plaques, painted in subjects,
after Teniers, in ebonized frames
- 357/- 66 A Dresden china group—Europa with attendants

Lace, etc.

- 9/- 67 A black lace flounce, 14 in. deep, 8 yds. in 2 pieces, and 2
borders of black lace
- 6/- 68 A black lace scarf, a collar, 2 lappets, a veil, and sundry
pieces of black lace
- 20/- 69 A white Chantilly lace scarf, a berthe, and a veil
- 26/- 70 Five borders of white tambour lace
- 8/- 71 A parcel of miscellaneous white lace borderings, etc.
- 5/8s 72 A *finely designed large white Limerick lace shawl*
- 4/8s 73 A *deep white Limerick lace flounce, about 4½ yds.*
- 45/- 74 A lynx shoulderette with stole fronts, by THE INTER-
NATIONAL FUR CO.
- 357/- 75 An Indian square shawl
- 18/8s 75A A GENTLEMAN'S DARK BLUE CLOTH OVERCOAT, LINED
THROUGHOUT WITH BEAVER, with beaver collar and cuffs,
by the *International Fur Co.*
- 37/- 75B A pair of beaver gauntlets to match
- 2/8s 75C A fur-lined coat
- 3/8s 76 Nine pieces of antique silk embroidery

The following Lots by Order of a Trustee.

- 357/- 77 A service of table glass engraved with grapes and foliage,
comprising 14 champagne glasses, 19 claret and hock
ditto, 12 port, 15 sherry, and 1 liqueur glasses
- 28/- 78 A cut glass claret jug and stopper, celery glass, 4 carafes and
3 tumblers, 3 soda and whiskey tumblers, and champagne
jug
- 20/- 79 Two pairs of cut glass scent bottles and a smelling salts
bottle, 3 with silver mounts
- 12/- 80 Five gilt glass flower vases, and 2 others
- 81 A cut glass salad bowl and pair of servers, plated mounts,
cut glass tray, biscuit tray, 2 jelly dishes, and a bon-bon
dish and cover
- 122/-

- 13/- 82 A pair of blue and white shaped spills, and 1 taller ditto
 16/- 83 A pair of ditto sexagonal vases, and 2 others
 75/- 84 A pair of turquoise blue jewelled Sèvres vases and covers,
 ormolu mounts, pair of Davenport bottles and stoppers,
 and a pair of flower holders
 27/6 85 A Davenport broth set on tray, 5 pieces
 27/6 86 Eight blue and white china groups—Figures
 12/6 87 A flower bowl, 2 brown jugs, 2 plates, and 17 ornaments
 20/- 88 A pair of blue and white circular dishes, 14½ in. diameter
 6/- 89 A ditto plaque—The Rath Haus, Cologne
 22/- 90 Six Old English dessert plates, a fruit bowl, and 7 other
 pieces of china
 35/- 91 Four blue and white dishes, and 4 plates
 32/6 92 A pair of turquoise blue and gilt plaques, with figures in
 medallions
 4/10/- 93 AXEL H. HAIG—The Legend of the Bells, a proof etching
 16/- 94 ALBERT MOORE (*after*)—A Midsummer Night
 10/6 95 GRIERSON (*after*)—Peg Woffington
 14/- 96 RUBENS (*after*), by CHAS. HESS—The Artist and his First
 Wife
 10/6 97 LEADER AND MURRAY (*after*)—Etchings, *a pair*, and 4 views
 of Niagara Falls
 9/- 98 Nine pictures, photograph of the Jubilee procession, and
 a plaque
 14/- 99 Canadian figure subjects, *a pair*, and 10 others
 25/- 100 An inlaid olive-wood box, and 179 mother-o'-pearl counters
 101 A Japanese cabinet work-box, set of letter scales and
 weights, brass water can and banner screen frame, 4
 French novels, and 16 frames
 30/- 102 A tool chest and contents, and string box
 30/- 103 A rose-wood stand, gilt footstool, and brass stand
 30/- 103 A French inlaid oval work table, with ormolu gallery and
 mountings, 2 drawers and tray under
 30/- 104 An ebonized oak cabinet, and a 3-tier book-shelf
 13/- 105 Six large Turkish bath towels, and 5 cotton covers

- 12/- 106 A damask table cloth, and 12 ditto table napkins
 13/- 107 A similar lot
 10/- 108 Two hem-stitched sideboard cloths, and 6 tray cloths
 109 Eight chamber towels, 5 serviettes, and 3 pieces of
 21/- damask, Marcella counterpane, and a large ditto trimmed
 with lace
 50/- 110 A remnant of fine linen sheeting, 15 yds., and 2 pairs of
 large linen sheets
 20/- 111 Two pairs of linen sheets
 20/- 112 A pair of ditto, and 9 pillow cases
 28/- 113 Two pairs of linen sheets, and 13 linen pillow cases

Old Walking-Sticks.

- 30/- 114 A walking-stick of rare wood, mounted in gold and silver
 18/- 115 A Malacca cane, mounted in silver, and another
 29/- 116 A fine old ivory walking-stick, carved and inlaid
 30/- 117 An old ivory carved and twisted walking-stick, and a
 plain ivory ditto
 29/- 35/- 118 An old carved ebony walking-stick, and 2 twisted hide
 snake sticks
 35/- 119 An old carved ivory walking-stick, and an ivory bamboo
 model ditto
 28/- 120 An old black twisted whalebone walking-stick
 29/- 121 An old Malacca stick with large ivory knob, and another,
 silver-mounted
 18/- 122 *Two old tall Bath canes*
 20/- 123 A silver-mounted bamboo stick, and 2 black-wood ditto
 18/- 124 A carved ivory stick handle, and a curious hide shield
 125 A DRUM-MAJOR'S STAFF OF THE ROYAL WARWICKSHIRE
 4 1/2 yds REGIMENT, with chased spherical top, surmounted by a
 small crown, gilt, bearing the arms of the regiment,
 monogram V.R., and bars recording prominent en-
 gagements, the stem of Malacca cane is bound with gilt
 chain, height 60 in.
 4 1/2 yds 126 A SIMILAR STAFF OF THE LANCASHIRE FUSILIERS
 3 1/2 yds 127 A SIMILAR STAFF OF THE NORTHUMBERLAND FUSILIERS

Oil Paintings, Drawings and Engravings.

The following 14 Lots the Property of a Nobleman.

- 26gs 128 J. N. SARTORIUS, JUN.—A Landscape with Huntsmen and Hounds on the scent, 16½ in. by 23½ in. (*Signed*)
- 6gs 129 SARTORIUS—A Landscape, with Huntsman and Dog, 25 in. by 30 in.
- 5gs 130 J. N. SARTORIUS, JUN., 1789—Hunting Scenes, a pair, signed and dated (16½ by 20½ in.)
- 20gs 131 W. J. SHAYER—Coaching Scenes, a pair (8¾ by 26 in.)
- 20/- 132 OLD CROME—Near Norwich: stacking hay
* * * *From the Bale collection.*
- 40/- 133 A pair of photogravures, after Marcus Stone—"The Peacemaker" and "In Love"
- 134 Four artist's proof engravings, by C. R. Stock, after E. A. Douglas—Hunting scenes
- 20/- 135 Proof engraving—"The Nest," after Millais, by G. H. Every
- 22/6 136 Proof etching on vellum, after J. E. Millais, by F. A. Laguillermie
- 17/1/2gs 137 J. F. HERRING—four water-colour drawings: Hunting scenes
- 7/- 138 A pair of water-colour drawings—Children playing
- 57/10/- 139 A pair of old paintings on glass—Figure Subject
- 74/- 140 A coloured engraving, after Morland—"Gipsies"
- 10/- 141 An etching of Heywood Hardy—"The Milkmaid"
- 2/5/- 141A SNYDERS—"The Boar Hunt"
- 20/- 141B G. H. HARLOW—A Family Group of three figures in a landscape
- 27/6 141C EARLY ITALIAN SCHOOL—"The Canonization of St. Casimir of Poland"
- 5/- 141D J. ALBRECHT—A Roadside Inn with figures
- 34/- 40/- 141E DUTCH SCHOOL—Tower of Babel, *on panel*
- 6/- 141F VENETIAN SCHOOL—"Return from Egypt"
- 6/- 141G A Landscape, and 2 Figure Subjects
- 4/- 141H T. SPINKS—A Landscape with cattle, and 2 others

- 141J An old piece of needlework — "Jephtha and his Daughter"
- 5/- 141K PAUL SANDBY—An Old Mill, and another—Flower piece
- 141L Five drawings, framed
- £10 142 CORNELIUS JANSSEN—Portrait of a lady in white dress
- 143 VAN DER HELST—A lady in a black dress with pearl necklace
- 144 JAN STEEN—An Interior with figures
- 145 DUTCH SCHOOL—Portrait of a Gentleman with long hair
- 146 S. KONINCK—A Rabbi reading a paper
- 147 A. VAN DER NEER—A Windmill—moonlight
- 148 N. MAES—Portrait of an old lady in rich dress
- 149 S. DE VLIET—A Seapiece with shipping
- 150 G. ROMNEY—Portrait of a Gentleman
- 151 BRONZINO—Portrait of Cosmo de' Medici
- 152 TIEPOLO—A group of figures
- 153 A Mountain Landscape with horseman and figures in foreground
- 154 R. B. McIAN—Covenanters defending a Highland Pass
- 155 BANDAKE—Oil painting: Hayfield with figures
- 156 BEULLIURE—The Bivouac
- 157 STARK—A View near Richmond, and a View at Hurley, a pair
- 158 C. MARIANNECCI, 1866 (after Murillo)—A water-colour drawing: The Marriage of St. Catherine, in carved Florentine frame
- 159 J. W. CARMICHAEL—An oil-painting: The Bay of Valetta with shipping, 43 by 60 in.
- 160 J. CALLOW—Off St. Hilda Head, Whitby Bay, 30 by 49 in.
- 161 UNKNOWN—A Scottish Interior with figures, "The Penny Fee," from Burns' Cottar's Saturday Night
- 162 JOSEPH BOUVIER—"Buenos Tardes Signor"
- * * Exhibited at the Royal Academy, 1859.
- 163 PEILHEST—Fatal News
- 164 R. R. MOUNSEY—Invasion of British Territory

- £19 165 AN UPRIGHT GRAND TRICHORD PIANOFORTE, marqueterie
 panel, by HOLLANA, *Ehrenfels, Hanover*
 3/3/- 166 A GOTHIC PATTERN HARP, with ram's head and scroll
 decoration, black and gilt case, by J. ERAT, *Wardour St.*
 5/10/- 167 A violoncello and bow, in case
 167A A 7-OCTAVE GRAND PIANOFORTE, in rose-wood case, by
John Broadwood & Sons

Furniture and Miscellaneous Effects.

- 6/10/- 168 AN ORMOLU MOUNTED EBONIZED WRITING TABLE, with
 decorative pietra dura panels, fitted 3 drawers, 5 ft.
 wide
 3/6/- 169 A pier glass, in white and gilt ornamental frame
 3/6/- 170 A similar mirror
 19/- 171 An ebonized frame overmantel, with mirror panels and
 china shelves, 5 ft. 10 high, 6 ft. 6 wide
 14/- 172 A wall mirror, in white enamelled frame, 1 ft. 9 by 9 ft.
 40/- 173 A pierced and chased brass chandelier, wired for electric
 light
 46/- 174 A pierced and chased ormolu mounted brass corona shaped
 chandelier, with silk shade
 174A A RICHLY CUT-GLASS ORMOLU MOUNTED
 CHANDELIER, with double row of fluted branches
 for 18 lights, with glass lustre chains and festoons
 * * * Formerly at the Palace of Versailles.
 20/- 175 A 5 ft. pine cupboard, fitted shelves, enclosed by double
 doors
 9/5/- 176 A MAHOGANY WARDROBE, with 2 hanging wings, and
 centre fitted sliding trays and drawers enclosed by
 mirror panelled door, 7 ft. 6 wide
 16/- 177 A 4 ft. mahogany dressing table, fitted 2 drawers
 85/- 178 A 4 ft. mahogany chest of drawers, fitted 2 small sliding
 trays
 22/- 179 A mahogany bookcase, enclosed by glazed doors, 2 ft. 9
 wide
 4/10/- 180 A 7 ft. *Chesterfield Settee*, upholstered in terra-cotta plush
 and tapestry

- 20/- 181 A mahogany frame easy chair
- 24/- 182 A lady's easy chair, upholstered in light blue figured silk, and 2 loose covers
- 24/- 183 Four ebonized frame occasional chairs, seats upholstered in figured tapestry and plush
- 9/- 184 An ebonized 4-tier corner whatnot, a butler's mahogany tray and stand, a linoleum mat, and a brass electrolier (faulty)
- 185 *brist floor* *1/13* *enclosed by door with panels of pietra dura, 4 ft. high, 6 ft. 6 wide*
enclosed by glazed and Boulle inlaid doors, centre enclosed by door with panels of pietra dura, 4 ft. high, 6 ft. 6 wide
 186 *10/-* An antique mahogany card table, with drawers for cards and counters
- 50/- 187 A carved mother-o'-pearl needlework case, containing 4 small mother-o'-pearl boxes
- 188 A pair of old Italian coloured marble work pictures, in walnut frames
- 189 A brass-bound mahogany military chest of drawers
- 190 A pair of antique lac drawing-room chairs, inlaid with mother-o'-pearl
- 191 A pair of antique globes, on Chippendale stands
- 192 A marqueterie inlaid tea tray
- 193 Four mahogany dish stands, and a bronze 2-light candelabrum
- 194 A mahogany Empire cylinder Bureau, 5 drawers and numerous interior fittings, 4 ft. wide
- 195 A white painted cosy corner settee, upholstered in green figured silk tapestry, with pair of green silk curtains, 4 ft. wide
- 196 A carved ebonized Bedroom Suite, comprising wardrobe, 6 ft. wide, fitted 2 hanging and centre cupboards, enclosed by 2 mirror and panelled doors, a duchesse dressing table, with centre and side mirrors, drawers and cupboards, a marble top and back washstand and pedestal cupboard, and 2 chairs

Knowlhill
for repair

- 197 A Chesterfield settee, upholstered in crimson and blue figured plush
- 198 A 4 ft. 6 wide light oak dining table, with an extra leaf
- 199 An inlaid mahogany settee on taper legs, upholstered in figured silk, 4 ft. wide
- 200 An "art nouveau" fumed oak inlaid sideboard, the top fitted with small cupboard, enclosed by glazed doors, with shelf and bevelled mirror, cupboard cellarette and 3 drawers under
- 201 An overmantel, ensuite, 5 ft. 6 wide
- 202 A gilt frame overmantel, with shaped bevelled mirrors, with shelves, 4 ft. 3 wide
- 203 A mahogany overmantel, fitted mirrors and shelves, 4 ft. 9 wide
- 204 A 5 ft. brass kerb fender, a set of 3 implements, and a pair of fire dogs
- 205 A brass kerb fender, a pair of wrought-iron and copper dogs, and an iron fender
- 206 An oak coal box, and a painted bevelled glass brass frame fire screen
- 207 A pair of oak jardinière stands
- 208 A satin-banded mahogany occasional table, on taper legs
- 209 A set of 6 oak frame dining-room chairs, seats and backs in crimson morocco
- 210 Two stained tiled top cabaret tables
- 211 An inlaid mahogany frame arm chair, upholstered in figured silk
- 212 A gentleman's inlaid mahogany frame easy chair, upholstered in green and white figured silk
- 213 Two inlaid mahogany occasional chairs
- 214 An inlaid mahogany writing table, with cylinder front. enclosing nest of drawers, 2 ft. 3 wide
- 215 A mahogany frame easy chair, upholstered in green figured silk
- 216 A majolica pedestal and jardinière, and a mahogany palm stand, with brass liner

- 217 A brass 2-light gasalier, another, a 4-hole knife machine, set of scales and weights, coffee grinder, 2 Windsor chairs, and a roll of lino
- 218 Two painted wicker arm chairs, and a cake stand
- 219 A black marble dining-room clock
- 220 An oak cigar cabinet, small brass gong and beater, and a pair of painted vases, with gilt mounts
- 221 Six Old English mahogany-frame chairs, horsehair seats
- 222 AN INLAID ROSE-WOOD DRAWING-ROOM SUITE, upholstered in velvet and old gold figured silk, comprising a settee, 2 easy and 6 occasional chairs
- 223 Eight carved oak dining-room chairs, seats and backs upholstered in embossed gilt leather
- 224 Eight ditto
- 225 An 8 ft. carved oak sideboard, mirror and carved panelled back, drawers and cupboards under
- 226 A 6 ft. *Sheraton inlaid mahogany Bedroom Suite*, consisting of a wardrobe, enclosed by a pair of bevelled glass doors, marqueterie panel, drawers and cupboards, dressing chest of drawers, bevelled swing glass and wings, and a marble top and tiled back washstand, cupboards and drawers
- 227 A mahogany inlaid marqueterie 3 ft. 6 bureau bookcase, fitted with drawers, fall-down flap and pigeon-holes

Chinese Carved Wood Furniture.

- 228 A settee of *tzu-tan wood*, elaborately carved in foliage and inlaid with mother-o'-pearl, with grey and red polished marble panels, 6 ft. wide
- 229 A pair of arm chairs of similar design
- 230 A ditto 2-tier table
- 231 A pair of jardinière stands (damaged)
- 232 A pair of carved ditto, with marble tops
- 233 A pair of ditto stools, inlaid with mother-o'-pearl
- 234 A ditto pair
- 235 A ditto pair

- 236 AN ELABORATELY CARVED TZU-TAN WOOD CABINET, designed in figure subjects, animals, fruit and foliage, the upper part fitted with 3 open shelves and 2 small drawers, with marble slab, supported by scroll-shape supports, 7 ft. 8 high, 3 ft. 6 wide
- 237 A large circular ditto table, carved in dragons and foliage, with marble top
- 238 An inlaid mother-o'-pearl marble top ditto fancy table
-
- 239 A square Moshkhabad rug, 4 ft. 6 by 3 ft. 4
- 240 An antique oak long case clock, with brass dial
- 241 An invalid's walnut frame chair
- 242 A Persian carpet, red ground, 9 ft. 11 by 5 ft. 11
- 243 A ditto, red and green ground, 9 ft. 9 by 8 ft.
- 244 A green ground ditto, 12 ft. 3 by 9 ft. 3
- 245 A green ground ditto, 12 ft. 5 by 9 ft. 2
- 246 An Indian bordered pink ground carpet, 16 ft. 10 by 10 ft.
- 247 A bordered green ground ditto, 16 ft. 2 by 9 ft. 11
- 248 An Old English mirror, in carved wood frame
- 249 *A set of 6 old mahogany frame chairs*, with carved backs and movable seats, by THOMAS HOPE, English Empire period
- 250 Four similar chairs, Boulle inlaid
- 251 An Old English rose-wood teapoy, fitted with cut glass sugar basin
- 252 *An 8-light ormolu and cut glass candelabrum*, with suspending floral chains of ormolu
- 253 A 24 in. Sheffield tray with border
- 254 An Afternoon Tea service of 3 pieces
- 255 Twelve table spoons and 12 forks, 12 dessert spoons and 12 forks
- 256 A pair of Sheffield plated entrée dishes
- 257 An amethyst necklet, graduated stones
- 258 Ditto
- 259 An antique paste necklet

- 260 Two plated table, 12 dessert and 12 tea spoons, 12 table and 12 dessert forks, and 12 knives
- 261 A Turkey design rug, 69 in. by 35 in., red background
- 262 A Persian design rug, 36 in. by 63 in., green background
- 263 One ditto, 32 in. by 60 in., red background
- 264 *An Italian walnut and plate glass oblong show case, semi-circular ends, mirror flap doors, fitted with 2 sliding trays, on turned supports, 3 ft. high, 5 ft. wide, 1 ft. 9 deep*
- 265 *The companion show case*
- 266 *An Italian walnut and plate glass oblong show case, 2 mirror flap doors, fitted with 2 sliding trays, 2 drawers under, on turned supports, 3 ft. high, 4 ft. wide, 1 ft. 8 deep*
- 267 A SHAPED ITALIAN WALNUT-WOOD AND PLATE GLASS UPRIGHT SHOW CABINET, curved glazed top, carved frame, claw feet, fitted with 2 large glass shelves, extra adjustable metal stands and velvet stages, 4 ft. high, 3 ft. wide, 22 in. deep
- 268 THE COMPANION CABINET, with similar interior fittings
- 269 A pair of brass candlesticks
- 270 A FINELY FIGURED OLIVE-WOOD BEDROOM SUITE, comprising a 6 ft. 6 wardrobe, with centre mirror door, hanging cupboard, etc., a 4 ft. pedestal dressing table, swing mirror and drawers, a 4 ft. washstand with marble top and mirror and tile back, a 3 ft. 6 chest of 5 drawers, a pedestal cupboard, and a towel horse
- 271 A 4 ft. 6 carved black oak pedestal writing table
- 272 A high-back winged arm chair, spring stuffed and covered in tapestry
- 273 A carved black oak buffet, fitted cupboards, drawers and shelves, 6 ft. 10 high, 4 ft. 6 wide
- 274 A white enamelled 3 ft. 6 dressing table, with swing mirror, a 3 ft. 6 washstand, and 2 corner cupboards
- 275 *An ash Bedroom Suite, comprising a 3 ft. 8 wardrobe, mirror door, dressing table, washstand, and a pedestal cupboard*

- 276 A 3 ft. iron bedstead, wire spring and 2 mattresses
- 277 A similar lot
- 278 A painted china double toilet set, gilt, 16 pieces
- 279 A single set, 9 pieces, and a 3-tier ormolu cake stand
- 280 Six brass hot-water cans, a folding towel horse, and 2
hip baths
- 281 A Minton painted dinner service of 3 large dishes and 30
plates
- 282 A Sheffield plated dish cover, a pair of blue and white
vases, and 3 brass inkstands
- 283 A 5 ft. brass *Italian bedstead*, a box spring mattress, and
cretonne hangings
- 284 A 3 ft. brass and iron bedstead, with wire spring mat-
tress
- 285 About 16 yards of red ground figured Turkey stair carpet,
28 in. wide
- 286 Three hearthrugs, 3 slip mats, and a fibre mat
- 287 A lady's Royal Enfield bicycle, fitted pneumatic tyres and
free wheel
- 288 A red ground figured Turkey carpet, 14 ft. by 11 ft. 3
- 289 A blue ground floral pattern bordered Axminster carpet,
13 ft. 3 by 11 ft. 4
- 290 A green ground Axminster pile carpet, bordered, 15 ft.
by 11 ft. 4
- 291 A pair of photogravures—The Coast of North and South
Devon, after R. Smith
- 292 A set of 11 coloured engravings—"Cries of London,"
after F. Wheatley (reprints), framed
- 293 Seven coloured prints, framed
- 294 A pair of coloured etchings, after Dendy Sadler—
"Darby and Joan," and "For Fifty Years"
- 295 Two coloured photogravures, after J. Price and J. C.
Dollman
- 296 A gilt frame, rabbet 50 in. by 28 in.
- 297 Two pairs of crimson velvet curtains, lined and corded,
6 ft. by 4 ft.

- 298 Two pairs of figured brocade pink and green curtains,
lined and ball fringe, 8 ft. 6 by 4 ft., and a portière,
7 ft. 3 by 8 ft.
- 299 Two dozen table knives
- 300 A similar lot
- 301 Three dozen table knives
- 302 A ditto lot
- 304 Four dozen table knives and forks
- 305 Two dozen balance-handle table knives
- 306 A ditto lot
- 307 A Turkey carpet, blue and salmon ground, 9 ft. 9 by
6 ft. 7
- 308 A green bordered buff ground Indian carpet, 14 ft. 11 by
10 ft.
- 309 A bordered green ground ditto, 16 ft. 2 by 10 ft. 2
- 310 A French brass and iron bedstead, wire spring mattress,
hair ditto, and feather bolster
- 311 An old inlaid mahogany dressing table, fitted swing
mirror, with drawer and cupboard under
- 312 *An old parqueterie satin-wood corner cupboard*, the top
part enclosed by glazed doors, with cupboard under,
enclosed by panelled doors, 4 ft. wide
- 313 An embossed brass hall lantern
- 314 A ditto
- 315 *A mahogany inlaid Bedroom Suite*, consisting of a 4 ft.
WARDROBE, glass door and drawer under, a 3 ft. 6
DRESSING TABLE with shaped swing glass, a 3 ft. 6
WASHSTAND with marble and tiled back, and 2 cane
seat CHAIRS
- 316 A stained wood cupboard, enclosed by 3 mirror panelled
mahogany doors, 8 ft. high, 6 ft. wide
- 317 A rose-wood sofa table, a sewing machine, and a large
deal table
- 318 A marble-top console table, 5 ft. 6 wide
- 319 An oak octagonal table, on carved support
- 320 A large pier glass, in gilt frame, 7 ft. 9 high, 5 ft. wide

- 321 A large pier glass, in gilt frame, 8 ft. high, 5 ft. 6 wide
- 322 A ditto, 9 ft. 6 by 5 ft. 6
- 323 A ditto, 9 ft. 6 by 6 ft.
- 324 A ditto, 10 ft. 6 by 6 ft.
- 325 Four dozen knives
- 326 A set of silver-mounted carvers and steel, and a plated
soup ladle, gravy spoon and 2 toddy ladles
- 327 A silver-plated pickle frame, and a ditto teapot
- 328 Twelve silver-mounted table and 12 dessert knives, and
2 pairs of carvers and steel
- 329 Two dozen dessert knives
- 330 Three dozen ditto
- 331 Three dozen ditto
- 332 Two Persian design rugs
- 333 Two ditto
- 334 A red ground figured ditto, 12 ft. 6 by 11 ft. 10
- 335 A Turkey carpet, 13 ft. 3 by 9 ft. 10
- 336 An Indian red and green ground carpet, 36 ft. 3 by 3 ft.

FINIS.

ON PRIVATE OR BUSINESS
COUNTRY, AND COLLECTIONS OF PICTURES, BOOKS, CHINA,
JEWELS, SILVER, FURNITURE, ETC., ARE RECEIVED DAILY BY
MESSRS. KNIGHT, FRANK & RUTLEY, FOR INCLUSION IN
EARLY PUBLIC SALES AT THEIR GREAT ROOMS,
THE CONDUIT STREET AUCTION GALLERIES,
9, CONDUIT STREET & 23A, MADDOX STREET, W.

*Solicitors and Executors may note that Messrs. KNIGHT,
FRANK & RUTLEY, undertake Valuations of all classes of
Property, at short notice, in any part of the Kingdom.*

REPORTS ON TOWN AND AGRICULTURAL PROPERTIES PRE-
PARED FOR MORTGAGEES. FUNDS ALWAYS AVAILABLE FOR
MORTGAGORS ON APPROVED SECURITIES.

AT THE MART, E.C.

On Friday, March 26th, at 2 o'clock.

At a Low Reserve. By Order of the Executors of the late LORD NUNBURNHOLME. (Unless Sold previously by Private Treaty).

**The well-known MANSION,
41. GROSVENOR SQUARE. W.**

The House was erected to suit the requirements of the late Peer, and was designed with a view to entertaining on an extensive scale, it is eminently suitable for a family of distinction. Possessing many notable features, such as the Marble Hall and Staircase, the Lounges, the Louis Quinze Ball Room (88 ft. long, with minstrel gallery), the Georgian Dining and Morning Rooms, adorned with carvings after the manner of Grinling Gibbons, the Old French Double Salon, and the Boudoir with rare Spanish steelwork of the XVI century, all combine to render it one of

THE FINEST HOUSES IN LONDON.

There are 19 Bed Rooms, with 2 Dressing Rooms, 4 Bath Rooms, Passenger Lift, &c. The Service Rooms and Staircases are planned to yield every facility for saving of time and labour, and there is an adequate range of well-lighted Domestic Offices; also Strong Rooms and Menservants' Bed Rooms. In the rear and Communicating is the

GARAGE AND STABLING (41, ADAMS MEWS),

with Coach-house, Harness Room, 4 Stalls, 3 Loose Boxes, 4 Men's Bed Rooms, 2 Living Rooms, Bath Room, &c.

The whole Property is held by direct Lease from the Duke of Westminster at the low Ground Rent of £420, and has an UNEXPIRED TERM of over SIXTY-FOUR YEARS. Possession on Completion.

Particulars may be obtained of the Auctioneers, Messrs. KNIGHT, FRANK & RUTLEY, 9, Conduit Street, W.; and of the Vendors' Solicitors, Messrs. WOODHOUSE & DAVIDSON, 10 and 11, Lime Street, E.C.

FORTHCOMING SALES—*continued.*

“Wyatt's Farm,”

BRENTWOOD, ESSEX,

(3½ miles from INGATESTONE and BRENTWOOD STATIONS on the G.E.R.)

THE WHOLE OF THE VALUABLE

LIVE AND DEAD FARMING STOCK.

By Order of A. E. WAUTHIER, Esq., in consequence of the Sale of the Estate,

Four useful Cart Horses, Nag Mare, Colt, Cob Pony, 7 Short-horn Cows and Heifers, 36 Head of Poultry, Several Ricks of Hay and Wheat Straw, Capital Agricultural Implements in good condition, a Governess Car, English Buggy, Single Brougham, Farm Carts, Brass-mounted Harness, an Ornamental Summer-house, a Punt with sculls, cushions, etc., Household Furniture, and Miscellaneous Effects.

Which Messrs. KNIGHT, FRANK & RUTLEY, having sold the Estate, will Sell by Auction, on the Premises, as above,

On TUESDAY, MARCH 23rd,

AT 11 A.M. PRECISELY.

On View day prior and morning of Sale. Catalogues free on the premises, also at “The Chequers Inn,” Brentwood, or of the Auctioneers, at their Offices, 9, Conduit Street, and 23a, Maddox Street, London, W.

For Occupation or Investment.

AT THE MART, E.C.

On Thursday, April 22nd, at 2 o'clock

(Unless previously Sold privately),

The Leasehold RESIDENCE,

14, ECCLESTON SQUARE,

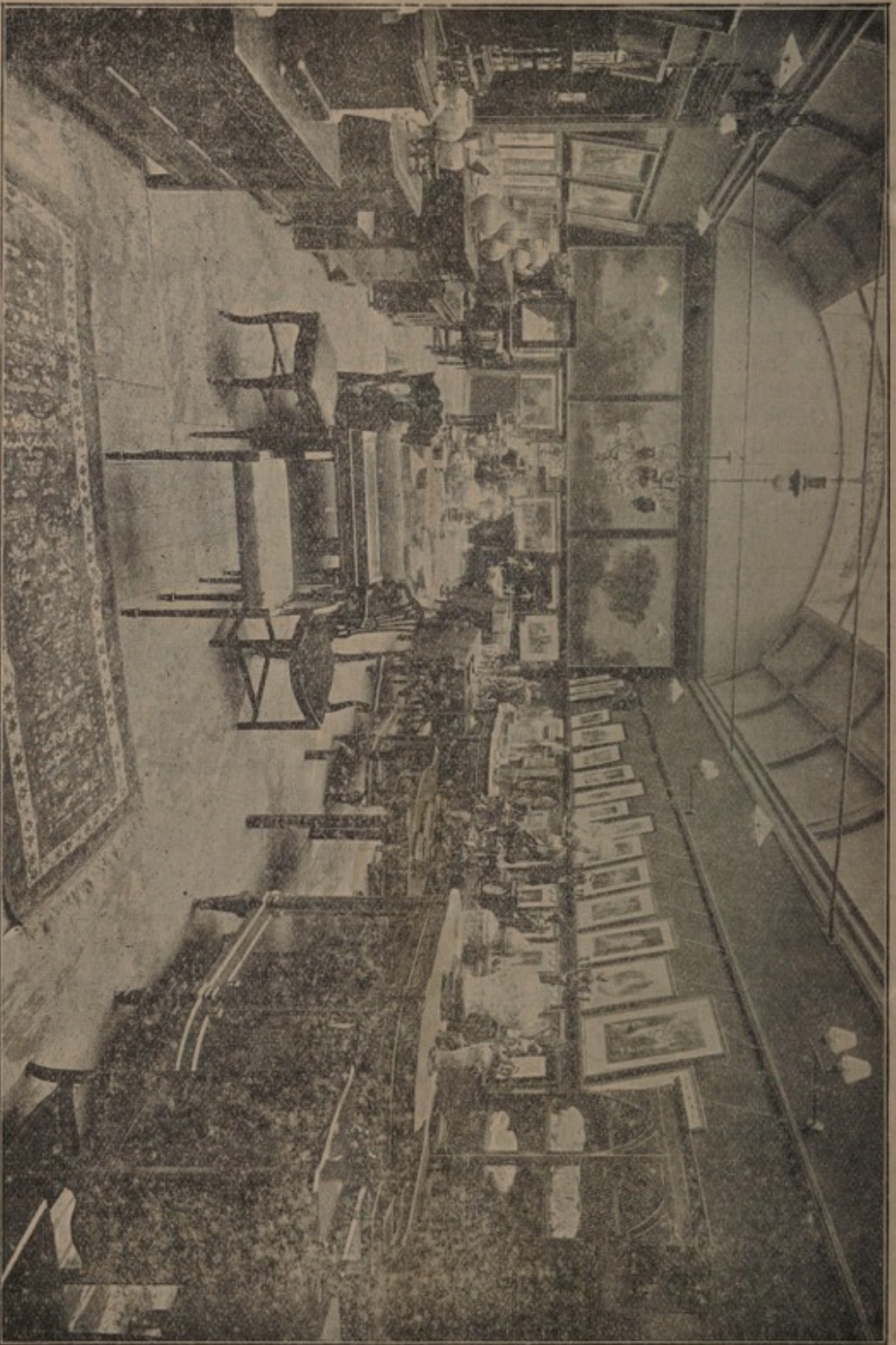
BELGRAVIA, S.W.,

containing Seven Bed Rooms, Bath, Three Reception Rooms and usual Domestic Offices.

Held for about EIGHTEEN YEARS UNEXPIRED, at a Ground Rent of £24 per Annum, and Let upon Lease expiring at Michaelmas next, at the moderate Rental of £170 per Annum.

Particulars may be obtained of the Vendors' Solicitors, Messrs. BIDDLE, THORNE, WELSFORD & SIDGWICK, 22, Aldermanbury, E.C., or of the Auctioneers, Messrs. KNIGHT, FRANK & RUTLEY, 9, Conduit Street, W.

THE CONDUIT STREET GALLERIES.



Messrs. KNIGHT, FRANK & RUTLEY, 9, Conduit Street, W.