

**Programme of proceedings to be observed at the ceremony of opening the new buildings by their royal highnesses the Duke and Duchess of York, on Saturday, March 6th, 1897, at 3.30 p.m. / St. Marylebone Public Baths and Wash-houses.**

**Contributors**

St. Marylebone Public Baths and Wash-houses.

**Publication/Creation**

[London] : St. Marylebone Public Baths and Wash-houses, 1897.

**Persistent URL**

<https://wellcomecollection.org/works/htt8jw5f>

**License and attribution**

This work has been identified as being free of known restrictions under copyright law, including all related and neighbouring rights and is being made available under the Creative Commons, Public Domain Mark.

You can copy, modify, distribute and perform the work, even for commercial purposes, without asking permission.



Wellcome Collection  
183 Euston Road  
London NW1 2BE UK  
T +44 (0)20 7611 8722  
E [library@wellcomecollection.org](mailto:library@wellcomecollection.org)  
<https://wellcomecollection.org>

ST. MARYLEBONE BATHS AND WASH-HOUSES.




View of Marylebone Road, looking east.

ST. MARYLEBONE  
PUBLIC BATHS AND WASH-HOUSES.

---

**P**ROGRAMME . . .

---

Of proceedings to be observed at  
the Ceremony of Opening 



The New Buildings

by     

THEIR ROYAL HIGHNESSES

THE DUKE AND DUCHESS OF YORK,

ON

SATURDAY, MARCH 6th, 1897,

AT 3-30 P.M.



WELLCOME  
LIBRARY

P

9291



22502620599



*The Band of the*  
ST. MARYLEBONE PAROCHIAL SCHOOLS, SOUTHALL,  
*Will play the following Selection of Music.*

---

BANDMASTER - - MR. J. MURPHY.

---

1. OVERTURE	...	...	"Royal Festival"	...	...	...	<i>Jubb</i>
2. VALSE ...	...	..	"Little Sailors"	...	...	...	<i>Crome</i>
3. SELECTION	...	...	"English Melodies"	...	...	...	<i>F. Godfrey</i>
4. MAZURKA	...	...	"Entre Nous"	...	...	...	<i>Faust</i>
5. SELECTION	...	...	"Maritana"	...	...	...	<i>Wallace</i>
6. VALSE ...	...	...	"Morning Breezes"	...	...	..	<i>Allan</i>
7. SELECTION	...	...	"Reminiscences of Scotland"	...	...	...	<i>F. Godfrey</i>
8. SELECTION	...	...	Huntsmen's Chorus from "Der Freischütz"	...	...	...	<i>Weber</i>

---

GOD SAVE THE QUEEN.



THEIR ROYAL HIGHNESSES  
**THE DUKE AND DUCHESS OF YORK**

WILL ARRIVE AT  
THE BATHS, MARYLEBONE ROAD,  
*at 3.30 p.m.*

---

A GUARD OF HONOUR,  
FURNISHED BY  
THE FIFTH (WEST) MIDDLESEX VOLUNTEER  
RIFLE CORPS

(under the command of Captain Cousens), will be mounted at  
the Entrance.

---

*The Band of the Regiment, under the direction of Mr. M. Marks, will play—*

**THE NATIONAL ANTHEM.**

---

The DUKE and DUCHESS will be received at the Entrance by  
SIR HORACE FARQUHAR, Bart., M.P., L.C.C.  
EDMUND BOULNOIS, Esq., M.P., L.C.C.  
VISCOUNT ROYSTON, L.C.C.  
EDWARD WHITE, Esq., L.C.C. (the Chairman), and  
THE COMMISSIONERS.

## A Procession

having been formed, their Royal Highnesses will be conducted to the Board Room.

*The Procession will be composed of:*

CHARLES WALL (the Builder).  
H. NORTHCROFT (the Surveyor).  
A. SAXON SNELL (the Architect).  
O. L. MARCHANT (Clerk to the Commissioners).

*The Commissioners:*

F. F. MILLIS.	A. J. HOPKINS, J.P.
MARTIN MORRIS.	(Chairman of the Vestry.)
J. A. MICHELL.	H. G. SLADE.
	C. R. BUTCHER.

*The Rector of St. Marylebone:*

REV. CANON BARKER, M.A.

*The Chairman of the Commissioners:*

EDWARD WHITE, L.C.C.

-----  
VISCOUNT ROYSTON, L.C.C.

-----  
EDMUND BOULNOIS, M.P., L.C.C.

-----  
SIR HORACE FARQUHAR, Bart., M.P., L.C.C.

T.R.H. THE DUKE AND DUCHESS OF YORK,

attended by the Ladies and Gentlemen in Waiting.

-----  
Their Royal Highnesses will be conducted over the Building, and upon their arrival on the Dais

### THE NATIONAL ANTHEM

will be played by the boys of the St. Marylebone Parochial Schools.

-----  
**PRESENTATION OF BOUQUET BY MISS MABEL MICHELL.**



*The Rector, the Rev. CANON BARKER, M.A., will offer the following Prayers :—*

Let us pray.

Lord, have mercy upon us.

*Christ, have mercy upon us.*

Lord, have mercy upon us.

¶ *Then the Minister and People shall say the Lord's Prayer.*

Our Father, which art in Heaven, Hallowed be Thy Name.  
Thy kingdom come. Thy will be done in earth, As it is in heaven.  
Give us this day our daily bread. And forgive us our trespasses, As  
we forgive them that trespass against us. And lead us not into  
temptation ; But deliver us from evil : For thine is the kingdom,  
The power, and the glory, For ever and ever. *Amen.*

Let us pray.

O Lord, Jesu Christ, Son of the Living God, Who art the  
Brightness of the Father's glory, and the express image of His  
Person : Bless this Institution which is now about to be opened in  
Thy name ; and do Thou, we beseech Thee, Who art the beginning  
and the end, sanctify and cleanse our souls and bodies to the glory  
of Thy Name, Who, with the Father and the Holy Spirit, livest  
and reignest, one God, world without end. *Amen.*

Almighty and merciful God, we humbly beseech Thee to visit  
with Thy presence this Institution and grant that, as Thou art the  
Saviour of the body as well as the soul, all who use it may derive  
increase of health and refreshment of body, and that their souls may  
be washed with pure water and cleansed from all their sins, through  
Jesus Christ, our Lord. *Amen.*

THE FOLLOWING  
ADDRESS TO HIS ROYAL HIGHNESS  
WILL BE READ BY THE CHAIRMAN OF THE  
COMMISSIONERS.

---

*To His Royal Highness George Frederick, Duke of York, K.G.*

MAY IT PLEASE YOUR ROYAL HIGHNESS,

We, the Commissioners of Public Baths and Wash-houses for the Parish of St. Marylebone, desire respectfully to tender to your Royal Highness our hearty thanks for the honour you confer upon the Parish in coming amongst us to-day, accompanied by Her Royal Highness, the Duchess of York, for the purpose of opening the new Baths and Wash-houses.

We embrace this opportunity of expressing the respect and regard which we entertain for your Royal Highness, and gratefully acknowledge the kindness of Her Royal Highness in taking part in the ceremony.

Beneficent laws, giving facilities for the erection of Baths and Wash-houses, passed in the early years of Her Most Gracious Majesty's glorious and happy reign, enabled the Parish of St. Marylebone to be the first in providing an establishment complete with arrangements for Bathing and Washing.

After fifty years, the exacting requirements of the age have demanded an establishment of a more modern character, and to-day your Royal Highness will open these model Baths and Wash-houses, perfect in every detail, a fitting example of sanitary progress, which have been erected at a cost of £50,000.



We feel that the presence of your Royal Highness will tend to strengthen the hands of the local authorities in the administration of their responsible duties, and encourage them in embarking in such undertakings as give occasion to this pleasant ceremony, which we hope may be a forerunner of many good works to which Her Majesty's Diamond Jubilee will doubtless give birth.

Signed on behalf of the Commissioners,

EDWARD WHITE,

*Chairman.*

L.S.

---

---

## HIS ROYAL HIGHNESS

*Will here be pleased to declare the*

**St. Marylebone Public Baths and Wash-houses  
to be Open.**

---

---

*At the conclusion of the Ceremony Visitors are particularly requested to retain their seats until the departure of their Royal Highnesses, after which they are invited to inspect the Building.*

---

**TEA AND COFFEE WILL BE PROVIDED.**

---

A DESCRIPTION OF THE OLD AND THE NEW BUILDINGS.

---







## A Description of the Old and the New Buildings.



It would appear that the idea which gave rise to the erection of Public Baths in the Metropolis was first put into practical shape at a Public Meeting, held at the Mansion House in 1844, when a large sum was raised by subscription to build an establishment to serve as a model for others, which it was anticipated would be erected when it had been proved that the receipts, at the very low rate of charge contemplated, would be sufficient to cover expenses.

The Committee then appointed built a model establishment in Goulston Square, Whitechapel, and opened 40 baths to the public, and such was the attention attracted to the subject that the Government, at the suggestion and instigation of the late Rev. Sir Henry Dukinfield, Bart., the then Rector of St. Martin-in-the-Fields, introduced into Parliament and passed an Act to enable Boroughs and Parishes to raise money on the security of the Rates for the purpose of building Baths and Wash-houses in all parts of the country.

The Vestry of St. Marylebone was the first public body to adopt the Public Baths and Wash-houses Acts in their entirety in the year 1847. The site chosen for the erection of the buildings was situated in the then called New Road, at the end opposite Lisson Grove, and was of a rural character, in strange contrast to its present surroundings. The ground formed part of the Yorkshire Stingo Tavern, and consisted of the bowling green, surrounded by arbours in which people from town took tea and afterwards amused themselves by going to the theatre on the spot, a precursor of Astley's Amphitheatre. Horse performances constituted the first part of the programme, and a screaming farce the



conclusion. Floral fêtes were held and balloon ascents took place. This pleasant suburban resort is now densely populated.

The Foundation Stone of the old Baths was laid on the 3rd of October, 1848, by the Rev. John Hume Spry, Rector of St. Marylebone. The most active Commissioner was the late Mr. Jacob Bell, one of the earliest patrons of Sir Edwin Landseer at his studio (not far from the Baths), whose magnificent collection of pictures by Sir Edwin, presented by him to the South Kensington Museum, forms a fitting memorial of a patriotic spirit worthy of one of the first Commissioners of



The Old Building.

the Baths and Wash-houses. The complete establishment was opened to the public on the 18th December, 1849.

Foremost amongst the many distinguished personages who visited the Baths just after the opening were H.R.H. THE DUCHESS OF CAMBRIDGE and H.R.H. PRINCESS MARY OF CAMBRIDGE (the grandmother and mother of HER ROYAL HIGHNESS THE DUCHESS OF YORK), and their GRAND DUCAL HIGHNESSES THE DUKE and DUCHESS OF MECKLENBURGH-STRELITZ (aunt and uncle to Her Royal Highness).



The old establishment having been in work for nearly 50 years, and having become by constant use and hard wear too dilapidated to endure further restoration, was demolished.

During this period 7,655,694 bathers visited the Institution, and of this number 4,631,040 paid only 2d. or 1d. each. The largest number of bathers who used the establishment in one week was 12,000; in one day 3,429 were accommodated, and of the last number half came at 2d. each. The number of poor women who availed themselves of the benefits of the Wash-houses during the same time was 1,281,295. The



The New Building.

cost for water during the period mentioned was £17,817, the number of gallons used being one thousand millions.

#### THE NEW ESTABLISHMENT.

In 1895, as the result of a public competition (in which upwards of 30 leading Architects took part), the Commissioners ultimately selected the designs of Mr. A. Saxon Snell, F.R.I.B.A., who was accordingly appointed to carry out the erection of the building.



The new buildings comprise four Swimming and 101 Warm Baths, a public Wash-house and Laundry to accommodate 74 women, Establishment Laundry, Boiler House, Engine Room, Administrative Offices, Waiting Rooms, and Superintendent's Apartments.

The attached plans show the arrangements of the various departments, which are more particularly described below.



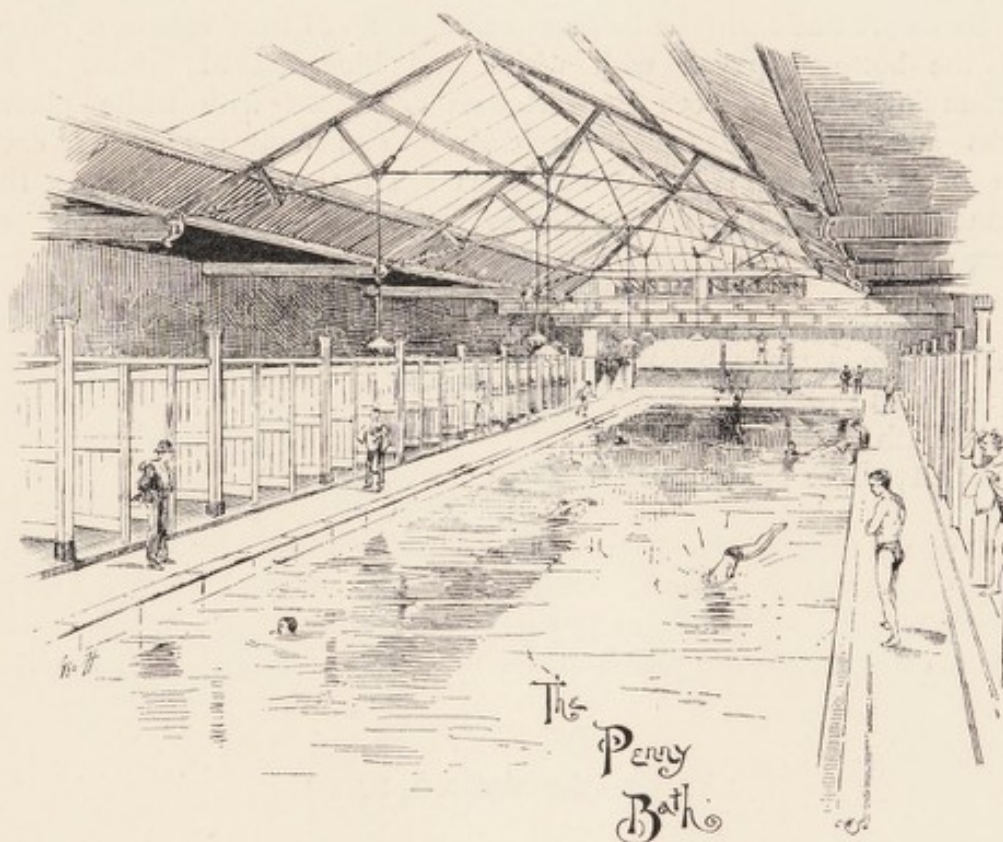
#### **GENTLEMEN'S FIRST CLASS (POMPEIAN) BATH.**

The First Class Swimming Bath, which was erected from the designs and under the superintendence of Mr. H. Saxon Snell, F.R.I.B.A., more than twenty years ago, was found to be in such good condition, and its general character in advance of any Bath as yet erected, that the Commissioners decided only to lengthen and re-decorate it, and add a gallery and other small improvements.

It forms a handsome and lofty hall, well lighted by a wide lantern the whole length of the roof. The recesses formed by the arcading of

the sides contain 42 Dressing Boxes, over which run galleries, and large galleries at either end afford good accommodation for witnessing sports and matches.

The Bath is 100 feet in length, 6 feet 6 inches in depth at one end, and 4 feet at the other, with a water capacity of 83,000 gallons. Specially designed spring and other diving boards, &c., are provided, with



convenient Lavatories and Shower Baths in addition. A spacious Club-room at one end is specially adapted for the use of Public School, Regimental, and other Swimming Clubs.

Arrangements have been made for covering this Bath with a substantial floor during the winter months, to convert it into a Gymnasium for the public use, at popular prices. Access from Marylebone Road is obtained by means of a wide tile-paved corridor. An emergency exit is also provided direct into Seymour Place.



#### **GENTLEMEN'S SECOND AND THIRD CLASS SWIMMING BATHS.**

These Baths are situated in front of the building, facing Marylebone Road, under the forecourt, and are lighted by two large lanterns.

The Second Class Bath has a water area of 70 feet 6 inches by 25 feet, and the Third Class Bath 66 feet by 25 feet, with a depth in each case of 6 feet 6 inches at one end and 3 feet 6 inches at the other. The walls of the Baths are lined with white glazed tiles, relieved with coloured bands, and the bottoms paved with white and blue glazed bricks. The surrounding walls of both Bath Rooms are faced with white glazed bricks and brown glazed brick dado. The footways round each bath are paved with bright red tiles. There are provided in the Second Class Bath 56 Dressing Boxes, and Club Room, and in the 3rd Class, 50 Boxes.

In both rooms are provided soap and shower baths, for which no extra charge is made beyond the exceedingly low prices of admission, viz.:—3d. and 1d. respectively. It may be mentioned that this is the only Public Bath in London providing a Swimming Bath (including towels, &c.) at 1d., which places it within the reach of all.

It was the special aim of the Commissioners that these two baths (which are provided for the use of the poorer classes of the Parish) should be made as bright and cheerful as possible; they bear favourable comparison with many of the higher priced baths in other parts of the Metropolis.

#### **LADIES' SWIMMING BATH.**

In providing this bath the Commissioners have met the growing popularity of athletics among women, who are fast adopting the art of swimming as a necessary part of their education. The Architect has given effect to the desire that the appointments and arrangements shall leave nothing wanting, both as regards comfort and pleasing effect.

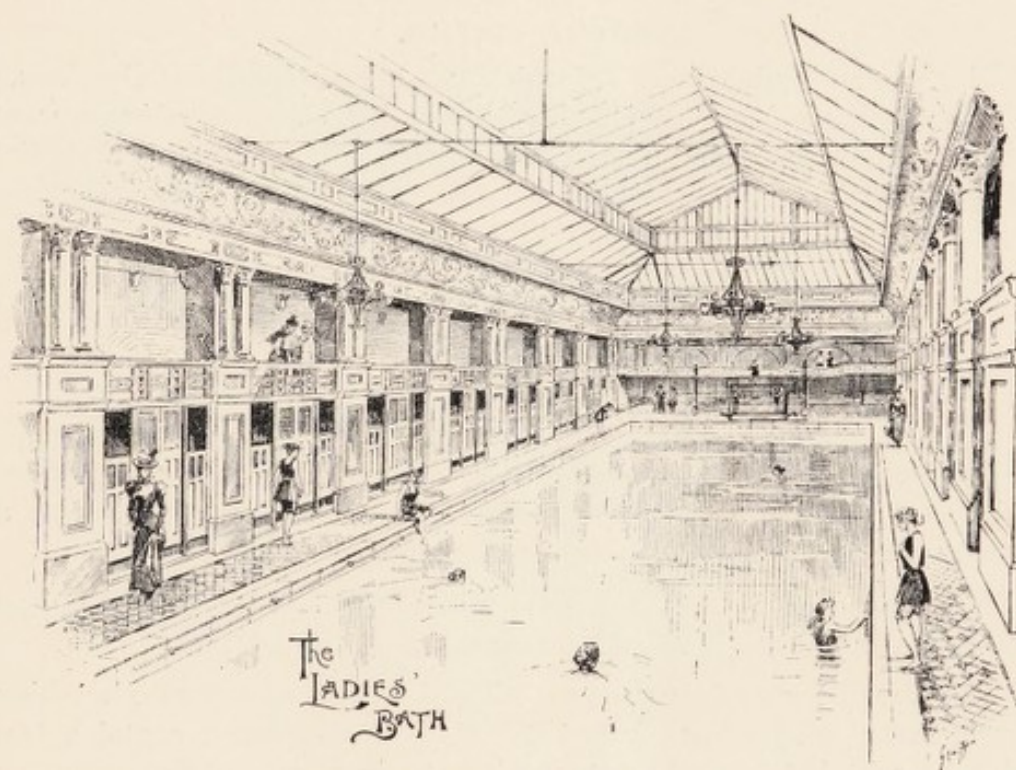
The Bath has a water area of 60 feet by 25 feet, with a capacity of 44,000 gallons. It is 6 feet in depth at one end and 3 feet 6 inches at the other. The floor and walls are lined with white glazed tiles, relieved with Faience tiles and coloured borders and bands. The footways are paved with ornamental coloured tiles, with a wide marble margin.

The Dressing Boxes (of which there are 32) are large and commodious, the walls being lined with white glazed tiles, and the floors paved with red pressed tiles. The fronts are partially glazed with obscured glass in lead lights.

A Gallery is constructed all round the Bath over the Dressing Boxes, for the use of friends or visitors on occasions of public displays.

A Diving Board, &c., are provided.

All the Swimming Baths are ventilated by electrically-driven Fans, which will effect a continuous changing of the air.



#### WARM BATHS.

The Warm Baths are all contained on the first floor of the building, which arrangement is one of the leading features of the design.

The numbers provided comprise the following, viz.:—21 First Class and 48 Second Class (Gentlemen); 10 First Class and 19 Second Class (Ladies).

The bath compartments are arranged in blocks, regularly divided by tile-paved corridors, and each is enclosed with enamelled slate divisions, 7 feet high, and has an area of at least 40 square feet. The enamelled



slate in the First Class Baths is provided by Messrs. E. C. Braby & Co., and in the Second Class by Messrs. E. Matthews & Co., and Bingley, Son & Follit.

Each compartment has an enamelled porcelain bath with American whitewood top and enamelled slate riser, and fitted with Busby's latest pattern full-way gun-metal valves and waste. The rooms generally are amply lighted and ventilated by large and lofty lanterns.

Hot and cold douches and warm showers are also fitted to every First Class, and a large number of the Second Class, Baths.

#### **VAPOUR BATHS.**

The Vapour Bath Rooms (of which two are arranged for Gentlemen and one for Ladies) are provided with the best-constructed and most complete Vapour Bath, and a combined Shower, Needle, Spray and Sitz Bath, supplied and fitted up by Messrs. A. Emanuel & Sons, Ltd. The floors are paved with tiles, and the walls are lined with glazed tiles. These Baths are considered by the medical profession to be of great therapeutic value, and to have all the advantages of a Turkish Bath. The charge of 1/- is calculated to bring them practically within the reach of all.

#### **PUBLIC WASH-HOUSE AND LAUNDRY.**

The Public Wash-house and Laundry are contained in one large area, 76 feet long by 64 feet wide, sub-divided by two partitions into a Wash-house, and Drying, Ironing, and Mangling Rooms.

The entrance is from Seymour Place, through two commodious Waiting Halls, which give direct access to the Wash-house.

The Wash-house is arranged with six rows of separate washing compartments, numbering 74 in all. Each compartment contains two wash-tubs, with hot and cold water and steam supplies, and the necessary pails, scrubbing boards, etc.

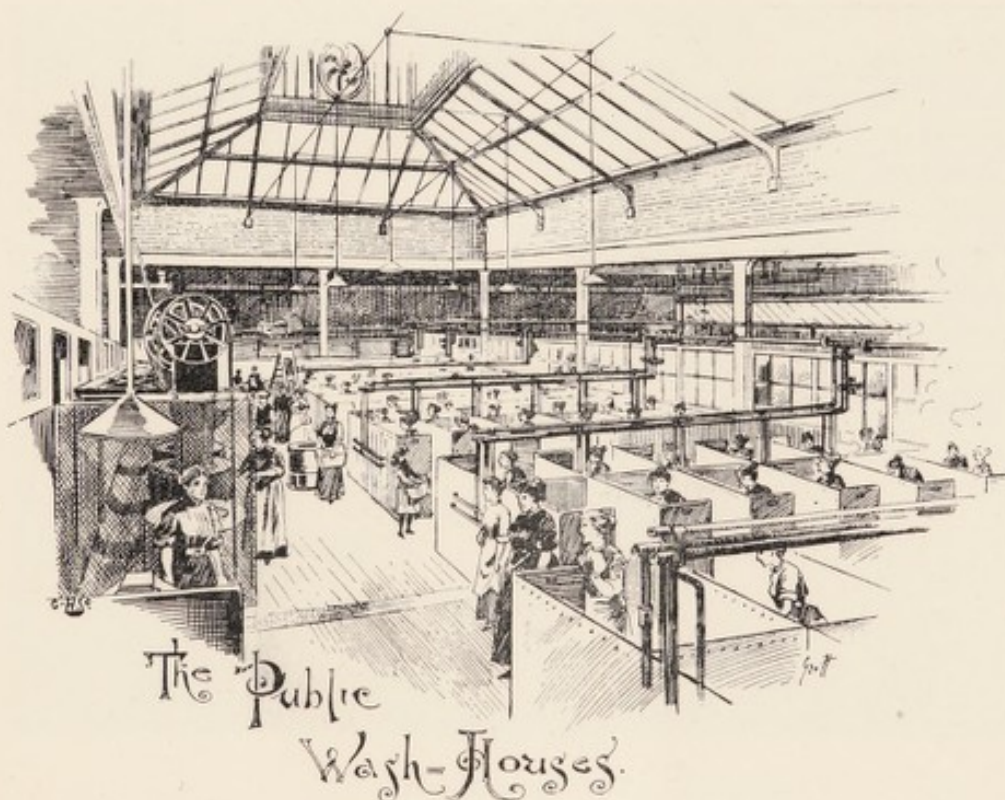
Centrally situated are a set of four steam-driven centrifugal wringing machines, under the control of a special officer. These machines were specially built by Messrs. Watson, Laidlaw & Co., of Glasgow, and the high rate of speed attained (1,200 revolutions per minute) ensures effectual wringing of each load *in three minutes*.

The Drying-room is fitted with two large hot chambers and 74 separate drying-horses. They are heated by flues from two large coke furnaces in the basement, over which air is driven by means of a large blast fan.

The Ironing-room contains two steam-driven mangles, large ironing tables, two radial drying-horses, and two gas-heated ironing stoves.

The Wash-house is lighted by a large lantern roof and the Ironing Room by side windows, and the whole is ventilated by a large Blackman's Air Exhaust Fan.

The whole of this department has been provided for the exclusive benefit of the *working classes*, who, for the low charge of three half-pence an hour, have the full use of the above-described appliances and conveniences, all of the most approved modern style and manufacture.



The painting of the large iron tank, walls and divisions of the washing boxes, the fronts and runners of the drying-horses, and the fronts of the dressing boxes in the Pompeian Bath has been executed by Messrs. Rhus & Co. with their special Japanese Lacquer.

#### ESTABLISHMENT LAUNDRY.

This Laundry is provided for washing and drying the whole of the towels, &c., used in the Establishment. It is fitted with two Rotary

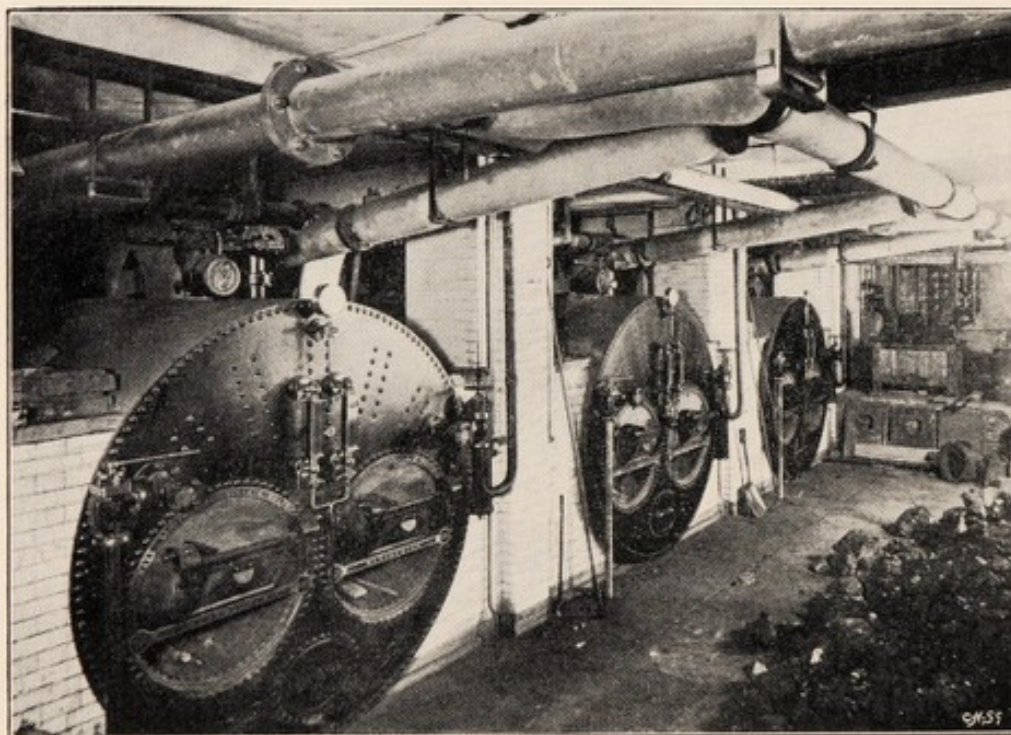


Washing Machines and a Steam Mangle of Messrs. Armstrong & Co.'s manufacture. There are also three steam-driven Wringing Machines, a set of washing tubs, and 12 drying-horses, heated by a separate furnace.

#### **THE BOILER HOUSE AND ENGINE ROOM.**

The Boiler House and Engine Room, situated in the basement, form one of the most interesting portions of the building.

The former is fitted with three large double-flued Galloway's Patent Boilers, each 30 feet long by 7 feet 6 inches in diameter, and having a capacity of 5,000 gallons of water. They are capable of working at a



The Boiler House.

continuous pressure of 100 lbs. to the square inch, and are so connected that they can be used together or independently, either for steam generation or hot-water circulation.

The Engine Room contains two 12-horse power coupled engines, manufactured by Messrs. Marshall, of Gainsborough. Feed Pumps of Picking and Hopkins's manufacture are provided in duplicate.

The whole of the hot and cold water, steam and waste pipes in the



building are *fixed in sight*, the large pipes having flanged joints for easy renewal in case of necessity. All the hot water and steam pipes are covered with Bell's Asbestos Co.'s non-conducting material.

Convenient and easily accessible storage is provided for 100 tons of fuel in close proximity to the boilers and furnaces. A system of tram lines and turntables provides for the speedy distribution of the fuel.

An Engineer's Workshop is provided, fitted with Lathe, Drilling Stock, &c, manufactured by Fenn & Co.

#### **HOT AND COLD WATER AND STEAM SUPPLIES.**

A large tank containing 30,000 gallons of water is placed in the centre of the building, from which supplies are taken to all parts. The Swimming Baths have separate connections to the Water Company's mains.

Hot water is circulated all over the building from the boilers in the basement.

The Swimming Baths generally are heated and the water maintained at a temperature of 72 degrees Fahrenheit by means of 6-inch circulating pipes connected at both ends of each bath, and by steam injectors.

All the valves throughout the building are supplied by Messrs. Dewrance and Co., and are made with renewable seatings, and the cocks are asbestos-packed.

#### **ROOFING.**

The whole of the glazing over the Swimming Baths, Private Baths, Wash-houses and Laundry has been provided and fixed by the British Challenge Glazing Company.

#### **DRAINAGE.**

The Drainage has been carried out according to the latest and best principles, numerous manholes and pits being provided for easy inspection. A separate deep level iron drain is provided from all the Swimming Baths. The various fittings for the sanitary arrangements have been provided by Messrs. A. Emanuel & Sons, Ltd.

#### **ADMINISTRATIVE BLOCK.**

This Block faces the Marylebone Road, and is three stories high above the basement.

The front Administrative Block contains on the ground floor a double entrance for Gentlemen in the centre, a separate entrance for Ladies, and a private entrance. Between the entrances are two handsome and commodious Waiting Halls, for First Class Gentlemen and First Class Ladies respectively. The main entrance leads into a lofty hall, with a central pay office, giving access to all the Gentlemen's Swimming and Warm Baths.

The first floor contains the Board Room and Superintendent's Office, and the top floor the Private Apartments. It may here be mentioned that the whole of the building has been designed with the special view of easy and economical supervision and ready access to all parts, and is furnished with electrical and telephonic communication from every department to the chief office.

#### **LIGHTING.**

The building throughout is lit by Electricity, supplied through meters from the mains of the Metropolitan Supply Company.

#### **ELEVATION AND FINISHINGS.**

In the architectural features and general finishing of the building, no less than in its substantial construction, the Commissioners and their Architect have endeavoured to make the building worthy of the Parish of St. Marylebone. The comparatively small cost of the building is sufficient evidence that these matters have been attained with due regard to economy.

The front of the building is faced with Portland stone up to the first floor level, and above that with red bricks relieved with Portland stone dressings.

The forecourt is paved with bright tile footways, and is surrounded with red brick and stone walls and piers. The railings and gate in front and dividing the entrances are of wrought iron.

The lamps on the piers are constructed with wrought iron scrolls and copper frames glazed with bevelled plate glass, all of which (as well as the greater part of the iron railings) have been made to the Architect's designs by Messrs. A. Emanuel & Sons, Ltd.

The screen and central Pay Office in the Entrance Hall are constructed in polished mahogany. The Mosaic floor was laid by Messrs.



Minton and Co., who also executed the whole of the tile pavings and wall linings, including the Swimming Baths and the hand-painted panels, and of the First Class (Pompeian) Bath.

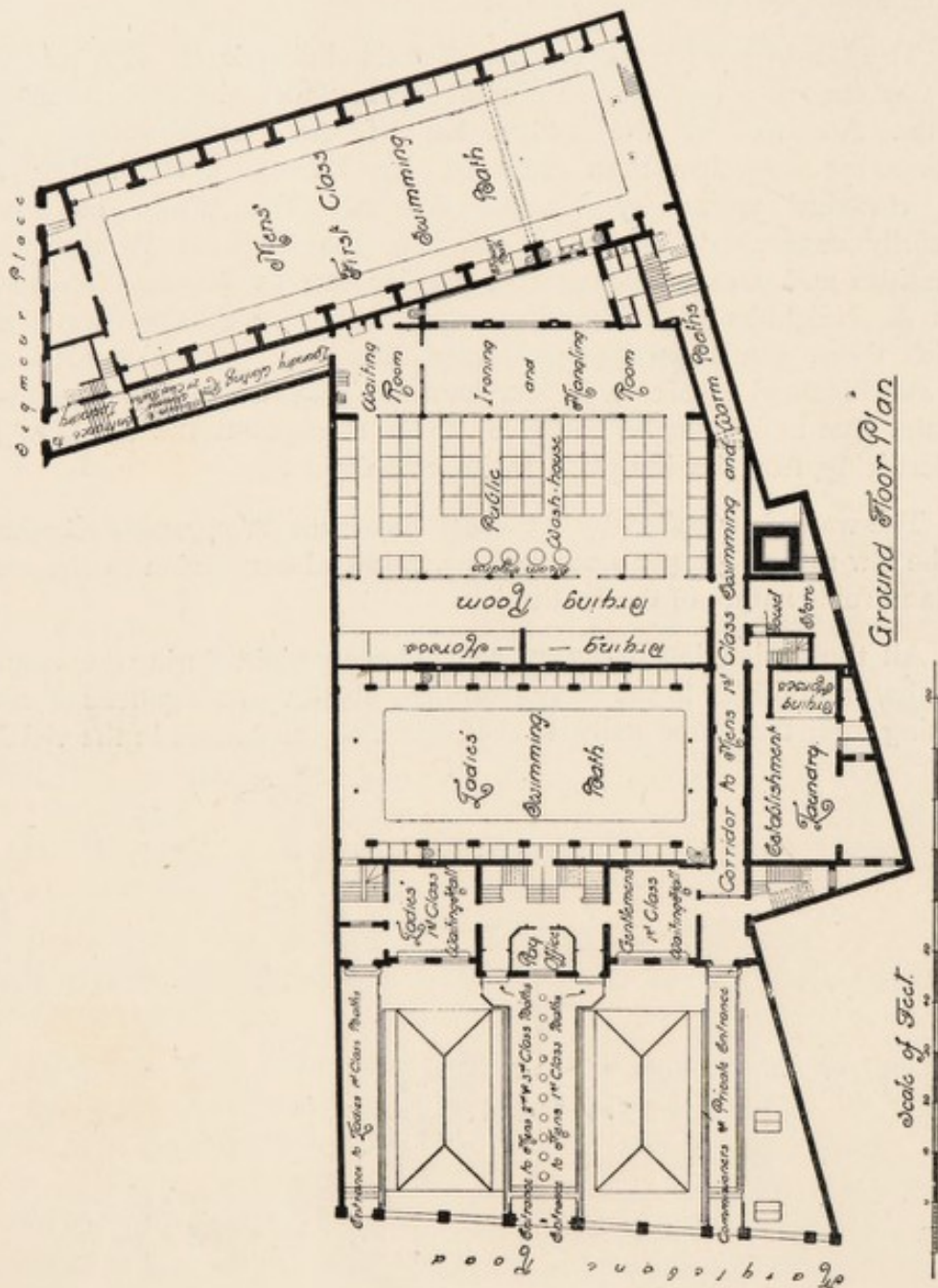
The Contractor for the erection of the building is Mr. Charles Wall, of Chelsea, who has carried out his work, under the superintendence of the Architect, to the satisfaction of the Commissioners. The engineering work has been executed by Messrs. J. & F. May, and the electrical works by Mr. L. Alwyn. The whole has been carefully supervised by Mr. F. W. Lee, the Clerk of Works. The quantities and measurements were carried out by Messrs. Northcroft, Son & Neighbour, the tenders sent in showing the care with which these gentlemen had performed this task. The Commissioners are also indebted to Mr. O. L. Marchant, their Clerk and Superintendent, for the able assistance he has given them throughout the whole of the undertaking, from its inception to its completion.

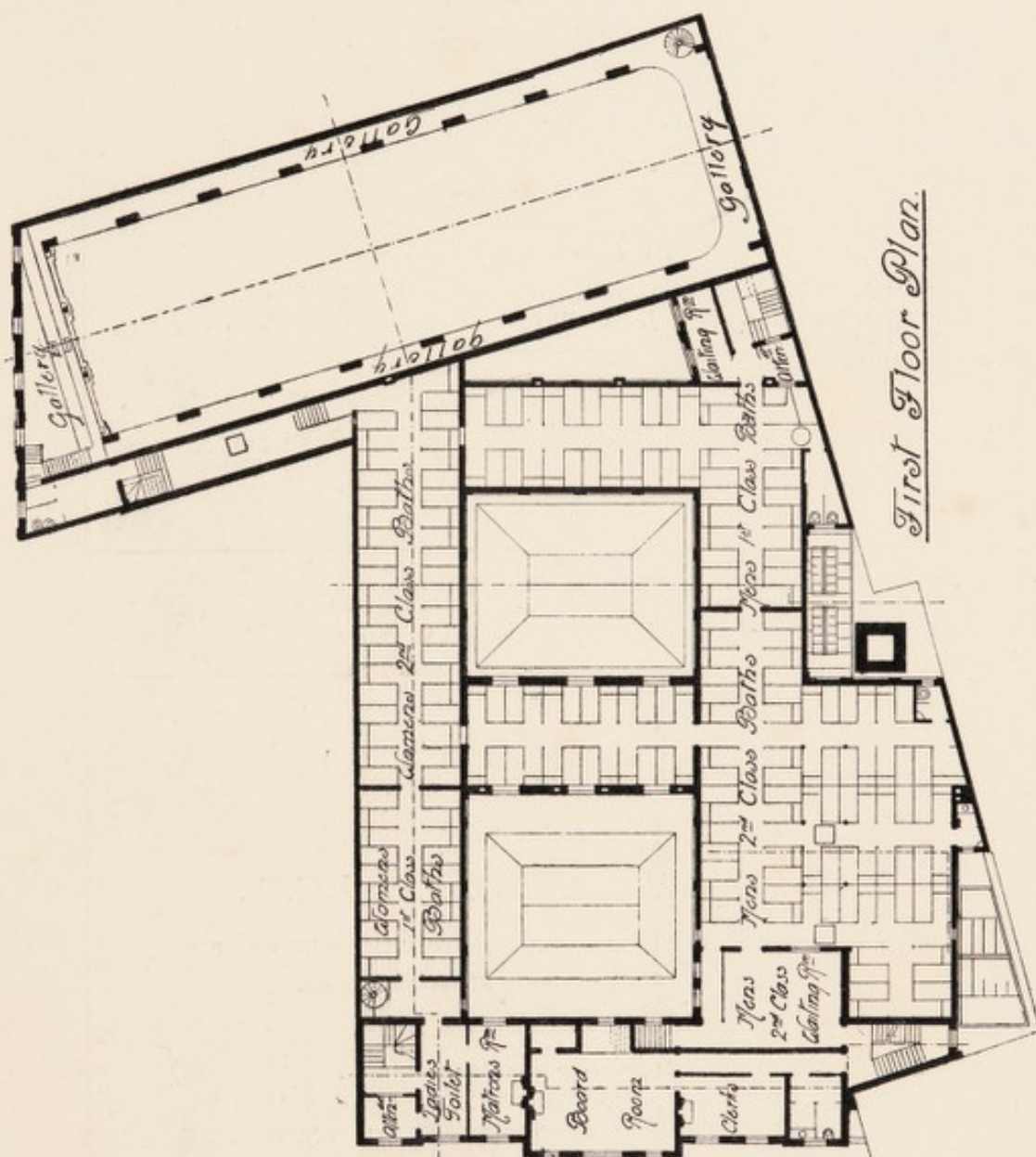
The water is supplied by the West Middlesex Waterworks Company at the low rate of 4d. per 1,000 gallons, a liberal concession to the semi-philanthropic nature of the Institution.

All the Swimming Baths are emptied every night during the summer months, and re-filled in the early morning—about 250,000 gallons of water passing from the Baths daily, to the benefit of the sewers in the vicinity.









*First Floor Plan.*



*Inscription on Stone commemorating the Old Buildings.*

ST. MARYLEBONE PUBLIC BATHS AND WASH-HOUSES.

ERECTED IN 1848.

FIRST COMMISSIONERS—

THE REV. HUME SPRY, D.D.,  
CHAIRMAN.

MEMBERS OF THE BOARD—

J. BELL  
A. DANIELL

G. DANIELL.  
J. McEVILY

J. SODEN  
J. WILLIAMS, M.P.

E. S. FOOT,  
*Clerk & Superintendent.*

SKINNER, HAYNES, & EYERE,  
*Builders,*

CHRISTOPHER EALES,  
*Architect.*

*Inscription on Foundation Stone.*

THIS STONE WAS LAID

ON FEBRUARY 13TH, 1896,

BY

EDWARD WHITE, ESQ., J.P., L.C.C.,

CHAIRMAN OF THE VESTRY AND OF THE COMMISSIONERS FOR PUBLIC  
BATHS AND WASH-HOUSES, ST. MARYLEBONE.

MEMBERS OF THE BOARD—

F. F. MILLIS  
M. MORRIS, J.P.

J. A. MICHELL  
A. J. HOPKINS

H. G. SLADE  
C. R. BUTCHER

O. L. MARCHANT,  
*Clerk and Superintendent.*

CHAS. WALL,  
*Builder.*

A. SAXON SNELL, F.R.I.B.A.,  
*Architect.*