

Drane & Co.'s price list : drugs, patent medicines, herbs, toilet and nursery requisites, perfumery, surgical instruments, teas, &c.;, &c; / Drane & Co.

Contributors

Drane and Company.

Publication/Creation

West Norwood, London : Drane, [1891?]

Persistent URL

<https://wellcomecollection.org/works/bye6mwm2>

License and attribution

This work has been identified as being free of known restrictions under copyright law, including all related and neighbouring rights and is being made available under the Creative Commons, Public Domain Mark.

You can copy, modify, distribute and perform the work, even for commercial purposes, without asking permission.



Wellcome Collection
183 Euston Road
London NW1 2BE UK
T +44 (0)20 7611 8722
E library@wellcomecollection.org
<https://wellcomecollection.org>

DRANE & CO.'S PRICE LIST

Drugs, Patent Medicines, Herbs,
Toilet and Nursery Requisites, Perfumery,
Surgical Instruments, Teas, &c., &c.

FOR CASH ONLY.

Prices are subject to alterations without notice.

DRANE & CO., *Dispensing Chemists,*
56, Knights Hill Road,
WEST NORWOOD, S.E.



Dr. TIBBALD'S BLOOD TONIC
**The Great
Blood & Skin
Medicine.**

**Produces a Clear Skin and a
Healthy Complexion.**

If your Blood is out of order, buy a
bottle to-day. A stitch in time saves
nine. Chemists will procure it. Bottles
1/1½, or will be sent post free by
SMITH & Co., Chemists, Taunton.



The **CONCISE GUIDE**: A useful Treatise of 64 pages, giving the Leading Indications and Treatment of Common Complaints.—Free by Post on application.

WATSON & WATES' **"STRONG"** **HOMŒOPATHIC MEDICINES**

ARE THE BEST, PUREST AND MOST RELIABLE.

They can now be procured from nearly any Chemist or Medicine Vendor. If any difficulty is experienced in procuring them, we undertake to send post free throughout the United Kingdom.

93, LEADENHALL STREET, LONDON, E.C.

SOLE PROPRIETORS
AND
MANUFACTURERS OF

"FEROZONE"

THE CELEBRATED
NERVE
STIMULANT.

TRY IT, AND YOU'LL FIND IT GOOD!

BURN'S EMBROCATION

INVALUABLE FOR THE CURE OF

**RHEUMATISM
STIFFNESS
SPRAINS
BRUISES
CRAMP**

**STRAINED MUSCLES
CHEST COLDS
SCIATICA
LUMBAGO
CHILBLAINS**

JOHN TAYLOR, Trainer Ranger F.C., writes:

"I have given "Burn's Embrocation" a fair trial, and consider it superior to any I have used. It quickly removes that feeling of stiffness which so often troubles Footballers after a hard game—a little rubbed on the chest prevents catching cold. For Sprains it has no equal." Ibrox Park, Glasgow, August 26th, 1891.

Bottles, 1/1½, 2/9 and 4/6;

Of all Chemists, or Carriage Paid to any part of the United Kingdom, on receipt of amount in Stamps or P.O.

**H. P. BURN, Chemist, 7, Gresham Street,
LONDON, E.C. (Opposite General Post Office.)**



22500338202

KEATING'S POWDER.

The PUBLIC are CAUTIONED that packages of the genuine Powder bear the autograph of THOMAS KEATING. Sold in Tins, 6d. & 1s. each, everywhere.

KILLS BUGS,
FLEAS,
MOTHS,
BEETLES,
MOSQUITOES.

HARMLESS TO ANIMALS.
HARMLESS TO ANIMALS.

KILLS BUGS,
FLEAS,
MOTHS,
BEETLES,
MOSQUITOES.

Sold by DRANE & CO., Chemists,
56, Knight's Hill Road,
WEST NORWOOD, S.E.

**Honoured with Two Gold Medals and Two Diplomas, at
Launceston, Tasmania, 1892, and Bronze Medal and
Diploma at Jamaica, West Indies, 1891.**

Recommended by the most Eminent of the Medical Profession in the Isle of Wight,
and established over 50 years.



CLARKSON'S EMBROCATION

—IS A—

"MEDICINE"



Extracted from the "Finest and Choicest" of "Herbs" and "Roots" only, containing
neither *Minerals* or *Poison*, and can be used either "Internally" or "Externally" with
wonderful results. We ask everybody to try this "**Mighty Healer**" as there is
nothing like it in the annals of Physic.

It can be used "*Internally*" for CHOLERA, DIARRHŒA, COLIC, WIND, SPASMS, INDIGESTION,
and all "BOWEL COMPLAINTS."

Externally - Gout, Rheumatism, Sciatica, Lumbago, Neuralgia, Tooth-ache, Cuts,
Bruises and Sprains.

Sold by all Chemists at 1/1½, 2/9, 4/6 and 11/- per Bottle, or
post free from the Extractors,

CLARKSON & Co.,

SURREY HOUSE, WEST COWES, ISLE OF WIGHT.

N.B.—The Embrocation cured thousands of the "Influenza" in the winter of
1891 and '92—names on application. Beware of Spurious Imitations.

See that you get CLARKSON'S.

FOWLER & SHEPPARD'S AMERICAN BAY RUM.



The Best and Most Reliable Article in
the Market.

The "QUEEN" says—"FOWLER & SHEPPARD'S BAY RUM
has an agreeable fragrance, and is one of the most cleanly and pleasant washes we
know of. It improves very materially the feeling and appearance of the Hair, cools
the Head, promotes the growth of Hair, and prevents it from turning Grey. It is
in no sense a dye, and is perfectly free from the mischievous mineral ingredients so
often introduced."

Sold Everywhere, in Bottles, 1/6, 2/6 and 4/6 each.

SOLE PROPRIETOR,

JOHN SELLEY, Earl's Court Road, London.

CURES

Coughs and Colds.

Invaluable for Bronchitis
and Incipient Consumption.

MELLIN'S

EMULSION

OF

Cod Liver Oil and Hypophosphites.

VERY PALATABLE AND MOST EASILY DIGESTED.

FOR CHILDREN AND ADULTS.

The Great Strengthenener of CHEST and LUNGS.

**THE BEST GENERAL TONIC IN WASTING DISEASES, INDIGESTION,
AND WEAKNESS OF ALL KINDS.**

Price 2/6 and 4/6 per Bottle. Sample size, 1/-.

Mellin's Food Works, Peckham, London, S.E.

Cleaver's Juvenia

Marvellous Effect !!

Preserves and
Rejuvenates
the Complexion.

Soap

DR. REDWOOD'S REPORT.

The ingredients are perfectly pure, and WE CANNOT SPEAK TOO HIGHLY OF THEM.
The Soap is PERFECTLY PURE and ABSOLUTELY NEUTRAL.

JUVENIA SOAP is entirely free from any colouring matter, and contains about the smallest proportion possible of water. From careful analysis and a thorough investigation of the whole process of its manufacture, we consider this Soap fully qualified to rank amongst the FIRST OF TOILET SOAPS.—T. REDWOOD, Ph.D., F.I.C., F.C.S.; T. HORNE REDWOOD, F.I.C., F.C.S.; A. J. DE HAILES, F.I.C., F.C.S.

Cleaver's Terebene

Best Antiseptic and
Disinfecting Soap
in Existence.

Soap

DRANE & CO., *Dispensing Chemists,* 56, Knights Hill Road, WEST NORWOOD, S.E.

DRANE & CO., in presenting this Price List, desire to thank their Customers for the very liberal support they have received since opening their business, and further to assure them that renewed efforts will be made in the future to merit a continuance of their esteemed favour and recommendation.

TERMS.

OUR terms are Ready Money only—that is to say, goods must be paid for either when ordered or delivered.

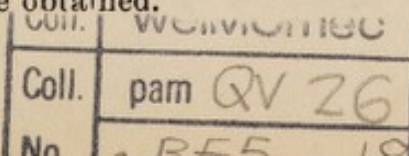
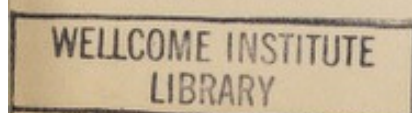
All goods are delivered free within a radius of two miles.

Orders from a distance to the amount of five shillings and upwards are delivered free. This arrangement does not apply to Mineral Waters.

Medicines as a rule not being of great weight can very conveniently be forwarded by Parcel Post. Customers ordering goods by post may rely upon the most careful execution of their orders.

HOURS OF BUSINESS.—We commence business at 8 in the morning and remain open until 9 in the evening daily; on Saturday, until 10.30 in the evening.

Attendance on Sunday for a few hours in the evening, when any necessary medicine can be obtained.



The Dispensing Department

Is fitted with every modern improvement and is under our special personal superintendence. All Drugs and Chemicals are obtained regularly from most reliable sources and the purity and unimpaired activity of our medicines is guaranteed.

The following are the prices usually charged by us for Dispensing Prescriptions:—

Mixtures, 2 oz. and under	6d.
Do. 3 oz.	do.	4 oz....	...	10d.
Do. 6 oz.	do.	8 oz....	10d. or 1/3	
Do. 10 oz.	do.	12 oz....	1/3 or 2/-	
Do. 16 oz.	do.	20 oz....	1/6 or 3/-	
Pills	per doz. 4d. to 8d.
Powders	per half-doz.	6d. or 8d.
Do.	per doz. 9d. or 1/-

It is requested that Prescriptions be left as early in the day as possible, as delivery cannot be guaranteed the same evening unless the order be received before 6 p.m.

YOUR SUPPORT IS RESPECTFULLY SOLICITED.

						Usual Price.	Our Cash Price.
Bravais' Dialysed Iron	3/-	2/1
Bridal Bouquet Bloom	3/6	2/3
Brill's Sea Salt	1/6	1/2
Brillantine (Drane & Co.'s)	—	6d. & 1/-
Brompton Cough Specific	1/1½	10½d.
Brown's Troches...	1/1½	10½d.
„ Chlorodyne	1/1½	10½d.
Bunter's Nervine...	1/1½	1/-
Burn's Embrocation.	(1/1½, 2/9 and 4/6)	—	—
See Inside Front Cover.							
Cadbury's Cocoa	6d. & 1/-	5½d. & 11d.
Calvert's Tooth Powder	6d. & 1/-	4½d. & 8½d.
Carbolic Acid	in bottles	...	—	4½d. & 8½d.
„ „ (Calvert's)	1/-	10d.
„ Disinfecting Powder (Calvert's)	6d. & 1/-	4½d. & 9d.
„ Tooth Powder, strongly recommended	—	6d. & 1/-
Carpet Soap (Procter's)	6d.	4½d.
Carter's Little Liver Pills	1/1½	10½d.
Celandine	1/1½	10½d.
Chemical Food	per ¼-lb.	6d. ; per ½-lb.	bot.	10d.	—
Cherry Blossom Perfume	2/6	1/9
Chilblain Liniment	—	6d.
Clarke's Night Lights	1/-	8d.
„ B-41 Pills	4/6	3/4
„ Blood Mixture...	2/9	2/3
Clarkson's Embrocation and Ointment	2/9, 4/6 and 11/-.	See Advertisement, page 2.	1/1½	1/-
Cleaver's Juvenia Soap.	—	See Advt., page 4.	—	—
„ Terebene Soap.	—	See Advt., page 4.	6d.	4½d.
Cockle's Pills	1/1½	10½d.
Cough Mixture	1/-	6d.
Cod Liver Oil :—
Allen & Hanburys' "Perfected"	1/4, 2/6 & 4/6	1/1, 1/11 & 3/7	1/9
De Jongh's	2/6	—	—
Drane & Co.'s pure	...	half-pint, 10d. ; pint, 1/8	—	—	—
Jensen's	1/-	—	9½d.
Colman's Mustard Oil	1/1½	—	10½d.
Condy's Fluid, Green	6d.	—	5½d.
„ „ „	1/-	—	10d.
„ „ Red	1/-	—	9d.
„ „ „	2/-	—	1/6
„ Ozonised Water	2/-	—	1/6
„ Remedial Fluid	1/1½	—	1/-
„ Disinfecting Powder	1/-	—	9d.
Condensed Milk (Nestlé's)	6d.	—	5½d.
Congreve's Elixir...	1/1½ & 2/9	—	10½d. & 2/3
Corn Cure (Drane & Co.'s)	—	—	7½d.
Corn Flour (Brown & Polson's)	—	—	6d.
Coutts' Acetic Acid	1/3	—	1/2
Cough Linctus (Drane & Co.'s)	—	—	10½d. & 7½d.
„ Lozenges (effective)	—	—	3d.
Cook & Co.'s Preparations.	—	See Advertisement, page 22.	—	—
„ Hygienic Tooth Soap (prescribed by	—	1/-
„ leading Dentists)	per box	—	—	4½d.
„ 'Riviera'	per tab.	—	—	1/-
„ Savon de Luxe	„	—	—	3½d.
„ Cold Cream and Oatmeal	„	—	—	—
„ Gold Medal Antiseptic Soap for	„	—	—	6d.
„ Ringworms	„	—	—	—
„ "Cold Cream"	„	—	—	—
„ "Bouquet of Roses"	„	—	—	—
„ "Eucalyptus"	„	—	—	—
„ "10 per Cent." Toilet Carbolic	„	—	—	—
„ "20 per Cent." Toilet Carbolic	„	—	—	—

	Usual Price.	Our Cash Price.
Crystal Palace John Bond's Gold Medal Marking Ink. See Advt., page 20	6d. & 1/-	4½d. & 8½d.
Dinneford's Magnesia	1/- & 2/6	10d. & 1/9
Dodd's Female Pills. (See Advertisement, Back Cover) 1/1½, 2/9 and 4/6	1/1½	10½d.
" " Tonic 1/9, 2/9 and 4/6	1/9	1/6½
" " Corrective 2/9 and 4/6	—	—
Drane & Co.'s Carbolic Tooth Powder	—	6d.
" " Children's Hair Lotion	—	6d. & 9d.
" " Cod Liver Oil Emulsion	—	1/6
" " Cough Linctus (strongly recommended)	—	7½d. & 10½d.
" " Fluid Magnesia	1/-	8d.
" " Foot Powder	—	6d. & 1/-
" " Glycerine and Cucumber	—	9d. & 4½d.
" " Gripe Mixture	1/1½	10½d.
" " Infants' Food	—	6d. & 10d.
" " Insect Powder	—	4½d. & 5½d.
" " Lavender Water	—	6d. & 10d.
" " Marking Ink	—	4½d. & 8d.
" " Perfumery—all kinds	—	6d. & 1/-
" " Sticky Fly Papers—1d. each, per doz. 9d....	—	—
" " Pills (all sorts)	—	per doz., 4d.
Dutch Drops (genuine)	1/1½	8d.
Eade's Gout and Rheumatic Pills	1/1½	10½d.
See Advertisement, page 23.		
Elliman's Embrocation... ..	1/1½ & 2/-	1/- & 1/9
Eno's Fruit Salt	2/9	1/11
Epps' Glycerine Jujubes	7½d. & 1/1½	7d. & 10½d.
Extract of Malt	—	1/- & 1/9
Eczema Ointment	—	6d. & 1/-
Effervescing Saline	—	10d.
Fellows' Syrup of Hypophosphites	4/- & 7/-	2/11 & 5/3
Fennings' Children's Powders	1/1½	10½d.
" " Lung Healers	6d. & 1/-	4½d. & 8½d.
Field's Ink	6d. & 1/-	4½d. & 8½d.
Floriline Tooth Powder	1/-	9d.
Fraser's Sulphur Tablets	1/1½	10½d.
Freeman's Chlorodyne	1/1½	10d.
Gayetty's Paper	2/6	1/6
Gelatine (Nelson's Opaque)	6d. & 1/-	4½d. & 8d.
Glycerine Jelly	6d.	4½d.
Gout and Rheumatic Mixture	—	1/-
" " Pills	—	6d. & 1/-
Guy's Tonic	2/9	2/4
Golden Hair Wash	1/6	1/-
Gripe Water	1/1½	10½d.
Head, Stomach and Liver Pills	—	6d. & 1/- per box.
Himrod's Cure for Asthma	4/-	2/10
Hinde's Curling Pins	6d.	4½d.
Holloway's Pills and Ointment	1/1½ & 2/9	10½d. & 2/3
Homœopathic Medicines, Watson & Wates'. —See Advertisement, Inside Front Cover.		
Tinctures	1/-	6d.
Pilules	1/-	6d.
External Tinctures	1/-	6d.
Camphor (Rubini)	1/-	6d.
" " Pilules	1/-	6d.
Ferozone	1/1½	10½d.
" "	2/9	2/3
Podophyllum (Liq. Ext.)	1/1½	10½d.
Anthoxanthum	1/1½	10½d.
Fructamar Cough Syrup	1/1½	10½d.
Purifying Elixir	1/1½	10½d.

	Usual Price.	Our Cash Price.
Rowlands' Soaps. —See Advt., Inside Back Cover.		
" Baby Nursery Soap ... 3 tablets in box	1/-	10½d.
" Coal Tar Soap ... " "	1/-	10½d.
" Oatmeal Soap ... " "	1/-	10½d.
" Original Old Brown Windsor 3 tablets in box	1/6	1/4
" " " " in pkts. of 3 & 6 squares	9d. & 1/6	10½d.
" Otto of Rose ... 3 tablets in box	1/6	1/4½
" " " " " "	1/-	10½d.
" Odonto Dentifrice (prepared by A. Rowland & Co.)	2/9	2/3
Rowlands' Macassar Oil ...	3/6	2/6
Sainsbury's Lavender Water ...	1/- & 1/6	10½d. & 1/3
St. Jacob's Oil ...	2/6	2/-
Sanitas Fluid ... gallon	4/6	8d.
" Toilet Fluid ...	1/-	9d.
" Powder ...	1/-	10d.
Saunders' Face Powder ...	6d. & 1/-	4½d. & 9d.
Savory & Moore's Infants' Food ...	1/-	9d.
" " Peptonised Milk and Cocoa ...	1/6	1/4
Scott's Emulsion ...	2/6	1/9
" Pills ...	1/1½ & 2/9	10½d. & 2/3
Seigel's Pills ...	1/1½	10½d.
" Syrup ...	1/1½ & 2/6	1/- & 2/3
Sequah's Oil and Prairie Flower ...	2/-	1/10½
Skin Lotion ...	—	6d. & 1/-
Southall's Towels ...	1/-	10½d.
Steedman's Soothing Powders. —See Advt., page 22	1/1½ & 2/9	10½d. & 2/3
Stephens' Ink ...	6d. & 1/-	4½d. & 8d.
Sulpholine Lotion ...	2/9	2/3
" Soap ...	6d.	5d.
Sulphur Tablets (Fraser's) ...	1/1½	10½d.
" " " " " "	—	6d.
" " " " 2 oz. for 1½d., or 10d. per lb.	—	—
Tamar Indien ...	2/6	1/10
Tibbald's (Dr.) Blood Tonic. —See Advt., Front Cover		
" " " " " "	1/1½	1/-
" " " " " "	2/9	2/6
" " " " " "	4/6	4/-
" " " " " "	11/-	9/6
" Blood Tonic Cream ...	1/1½	1/-
" " " " " "	2/9	2/6
" " Ointment ...	1/1½	1/-
" " " " " "	2/9	2/6
Tic Sano ...	1/1½	10½d.
Tidman's Sea Salt ...	—	6d. & 11d.
Toothache Tincture (prepared by Drane & Co.) ...	—	6d.
Towle's Steel and Pennyroyal Pills ...	1/1½	10½d.
Valentine's Meat Juice ...	4/6	3/-
Van Houten's Cocoa ...	1/4 & 2/-	10d. & 1/7
Vaseline... ...	6d.	4½d.
" Camphor Ice ...	6d.	5d.
" Cold Cream ...	9d.	7½d.
" Soap ...	6d.	4½d.
Violet Powder, (guaranteed pure) ...	6d.	4½d.
Warner's Safe Cure ...	4/6	3/6
" " Pills ...	1/1½	10½d.
Wheeler's Glycerine Jelly ...	6d.	4½d.
Whelpton's Pills ...	7½d. & 1/1½	7d. & 10½d.
Widow Welch's Female Pills ...	2/9	2/3
Winslow's Soothing Syrup ...	1/1½	10½d.
Woods' Tooth Paste ...	6d.	4½d.
Woodcock's Wind Pills ...	1/1½	10½d.
Woodward's Gripe Water ...	1/1½	10½d.
Wooldridge's Tincture ...	1/1½	10½d.
Wright's Coal Tar Soap ... per box of three 1/-	6d.	4½d.

All Patent Medicines not quoted in the above condensed List at equally low prices for cash.

Any Article not in stock procured next day.

PART II. MINERAL WATERS.

Supplied in Syphons. Deposit charged; and it is requested that the Syphons be returned as soon as empty.

Soda Water	4d. each; 3/6 per doz.
Potash Water	4d. „ 3/- „
Seltzer Water	4d. „ 3/- „
Lemonade	5d. „ 4/6 „
<hr/>					
Æsculap Water	Quarts 1/4
Apollinaris Water	„ 7d.
Friedrichshall Water	„ 1/3
Hunyadi Janos Water	„ 1/4

Any Mineral Water not in stock obtained by the next day at same cheap rate.

“MY LADY’S” ✻ HAIR DRESSING. ✻

This Preparation is justly celebrated for its wonderful power in
RESTORING GREY HAIR TO ITS ORIGINAL SHADE,
IRRESPECTIVE OF COLOUR,

AND
IT CURES DANDRUFF OR SCURF.

It is not a Dye, and therefore does not stain the Skin of the head or hands
in using it.—9d. and 1/6 per Bottle.

NEROLINE.

For Chapped Hands, Sore Lips, Sunburns, Bites of Insects, &c.

WHITENS THE HANDS AND KEEPS THE SKIN SOFT.

6d. and 1/-.

DRANE'S EFFERVESCENT GRAPE SALINE.

This effervescing aperient gives quick relief from Headache, Constipation and Giddiness, or taken in smaller doses is a pleasant beverage, cooling to the blood and grateful to the taste.

DRANE'S COD LIVER OIL EMULSION,

WITH THE HYPOPHOSPHITES OF LIME.

A NUTRITIVE CHEMICAL FOOD.

Containing 50 per cent. of the finest Cod Liver Oil. Children like it.—In Bottles, 1/- and 1/6 each.

COMFORT FOR TENDER FEET!

DRANE & CO.'S FOOT POWDER

Keeps the Feet cool and dry, prevents and relieves all Tenderness, Chafing and Blistering, and a source of incalculable comfort to all who are obliged to be much on their Feet.

Sold in perforated Tins at 6d. and 1/- each.

PART III. **DRUGS AND CHEMICALS.**

Prices quoted are for not less quantities than those named. Bottles are charged as follows and are not returnable:—

$\frac{1}{4}$ oz. and $\frac{1}{2}$ oz., $\frac{1}{2}$ d.; 1 oz., 2 oz., 3 oz., 4 oz., 6 oz. and 8 oz., 1d.; 10 oz. and 12 oz., 2d.
16 oz. and 20 oz., 3d.; 40 oz., 4d. Stoppered Bottles—1 oz., $1\frac{1}{2}$ oz. and 2 oz. 4d.;
4 oz., 6 oz. and 8 oz., 6d. Wide Mouth, fitted with boxwood top cork—1 oz., $1\frac{1}{2}$ oz.,
2 oz. and 3 oz., 2d.; 4 oz., 6 oz. and 8 oz., 3d. Covered Pots, Earthenware— $\frac{1}{2}$ oz.
and 1 oz., 2d.; 2 oz., $2\frac{1}{2}$ oz. and 3 oz., 3d.; and 4 oz., $3\frac{1}{2}$ d.

	1 oz.	4 oz.	8 oz.	1 lb.
Acid, Acetic	1d.	3d.	5d.	8d.
„ Boracic	2d.	6d.	10d.	1/6
„ Citric	3d.	10 $\frac{1}{2}$ d.	1/8	3/-
„ Muriatic	1d.	3d.	5d.	8d.
„ Nitric	2d.	6d.	10d.	1/6
„ Oxalic	2d.	6d.	10d.	1/6
„ Pyrogallie	1/2	—	—	—
„ Sulphuric	1d.	2d.	5d.	8d.
„ Tartaric	2d.	6d.	11d.	1/10
Aloes, best	3d.	10 $\frac{1}{2}$ d.	1/8	3/-
Alum, powdered	1d.	2d.	3d.	5d.
Ammonia, Liquid	1d.	3d.	5d.	10d.
„ Rock	1d.	3d.	5d.	10d.
„ 880	1d.	3d.	6d.	10d.
Antimony, black	1d.	3d.	6d.	1/-
Areca Nut Powder	2d.	6d.	10d.	1/6
Balsam, Copaiba	3d.	10d.	1/6	2/9
„ Friars'	4d.	1/-	1/10	3/6
Bark, Cascarilla	2d.	6d.	10d.	1/4
„ Peruvian	4d.	1/2	2/2	4/-
„ „ powdered	4d.	1/-	1/10	3/6
„ Soap	2d.	6d.	10d.	1/6
Bitter Apple Powder	4d.	1/2	2/2	4/-
Borax (lump and powder)	1d.	2d.	3 $\frac{1}{2}$ d.	6d.
„ and Honey	2d.	6d.	10d.	1/4
Camphor	3d.	8d.	1/5	2/6
„ Compound Liniment of	3d.	10 $\frac{1}{2}$ d.	1/8	2/10
„ Spirit of	4d.	1/-	1/10	3/6
Camphorated Chloroform ... dram	2d.	—	—	—
„ Oil	2d.	6d.	10d.	1/6
Castor Oil	2d.	4d.	6d.	10d.
„ „ Tasteless, in bottles, 2 oz. 4 $\frac{1}{2}$ d., 4 oz. 9d.	—	—	—	—
Chalk, Camphorated	2d.	6d.	10d.	1/6
„ Precipitated	1d.	3d.	5d.	9d.
„ Prepared	1d.	3d.	5d.	9d.
Chamomile Flowers	2d.	6d.	10d.	1/9
Charcoal, powdered	2d.	6d.	10d.	1/6
Chemical Food, in $\frac{1}{4}$ -lb. bottles, 6d.; $\frac{1}{2}$ -lb. bottles, 10d.	—	—	—	—
Chloric Ether	4d.	1/-	1/10	3/6
Cinnamon (whole or powdered)	4d.	1/-	1/10	3/6
Cochineal	4d.	1/-	1/10	3/6
Cod Liver Oil (Drane & Co's pure), per 10 oz. bot., 10d.; 20 oz. bot., 1/8.	—	—	—	—
Cold Cream	4d.	1/-	1/10	3/6
Confection of Senna	2d.	6d.	11d.	1/9
Copper, Sulphate of	1d.	3d.	5d.	8d.
Cream of Tartar	1 $\frac{1}{2}$ d.	5d.	9d.	1/6
Creosote	6d.	1/9	3/-	5/6
Dialysed Iron	4d.	1/-	1/10	3/6
Diarrhoea Mixture ... per bottle, 6d. & 1/-	—	—	—	—
Dill Seed Water	1d.	3d.	5d.	9d.
Dragons' Blood	4d.	1/-	1/9	3/-
Elder Flower Water	1d.	3d.	5d.	9d.
Epsom Salts (7 lbs. for 1/-)	—	2d.	3d.	6d.

	1 oz.	4 oz.	8 oz.	1 lb.
Essence of Almonds	6d.	1/9	3/3	6/-
„ Bergamot	1/6	5/-	9/6	18/-
„ Camphor (Rubini's, $\frac{1}{2}$ oz. bot. 6d.)	—	—	—	—
„ Ginger	6d.	1/4	2/9	5/-
„ Lemon	1/-	3/6	6/-	11/6
„ Pennyroyal	6d.	1/6	2/9	5/-
„ Peppermint ... 1 drachm, 1d.	8d.	1/6	2/9	5/-
„ Senna (sweet) “Special,” bottles included, 3 oz. bottle, 10d.; 6 ozs. 1/6	—	—	—	—
„ Vanilla	8d.	2/6	4/6	8/6
Ether	4d.	1/-	1/10	2/-
„ Spirit of	4d.	1/-	1/10	2/6
Friars' Balsam	4d.	1/-	1/10	3/6
Fullers' Earth	—	1d.	3d.	5d.
Gelatine, Sheet	2d.	6d.	10d.	1/7
Ginger Root	2d.	6d.	10d.	1/7
„ Powdered	2d.	6d.	10d.	1/8
Glycerine	2d.	6d.	10d.	1/6
„ and Rose Water	2d.	6d.	10d.	1/6
Goulard Water	1d.	2d.	3d.	5d.
„ Extract	2d.	6d.	10d.	1/7
Gregory's Powder	8d.	1/9	3/3	6/-
Gum Arabic	3d.	10 $\frac{1}{2}$ d.	1/8	3/2
„ Myrrh	4d.	1/2	2/2	4/-
„ Tragacanth (picked)	3d.	10d.	1/6	2/9
Hartshorn, Spirit of	1d.	3d.	5d.	9d.
„ and Oil	1 $\frac{1}{2}$ d.	4 $\frac{1}{2}$ d.	8d.	1/3
Hiera Picra	4d.	1/-	1/10	3/6
Honey	1d.	3d.	5d.	9d.
Hydrogen Peroxide	2d.	6d.	1/-	1/10
Iodoform per drachm, 3d.	1/8	—	—	—
Ipecacuanha Wine	3d.	1/-	1/10	3/6
Iron, Carbonate of	3d.	9d.	1/4	2/6
„ Sulphate of (pure)	1d.	3d.	5d.	9d.
Isinglass, Finest Russian	1/-	3/10	7/10	15/-
Jalap	3d.	10 $\frac{1}{2}$ d.	1/8	3/2
Juniper Berries	2d.	6d.	10d.	1/9
Lanolin	4d.	1/2	2/3	4/4
Laudanum per drachm, 1d.	4d.	1/2	2/4	4/8
Lead, Sugar of	3d.	10 $\frac{1}{2}$ d.	1/8	3/2
Lenitive Electuary	2d.	6d.	11d.	1/9
Liniment, Aconite	3d.	9d.	1/4	2/6
„ Belladonna	3d.	9d.	1/4	2/6
„ Compound Camphor	3d.	9d.	1/4	2/6
„ Iodine	6d.	1/10	3/6	6/9
„ Soap	2d.	6d.	10d.	1/6
„ Turpentine	2d.	7 $\frac{1}{2}$ d.	1/2	2/-
Linseed (crushed) (7 lbs. 1/8)	—	1d.	2d.	4d.
„ (whole)	—	1d.	2d.	4d.
Liquorice, (best Solazzi)	2d.	6d.	11d.	1/8
„ Root	2d.	6d.	10d.	1/6
„ Compound Powder of	3d.	7d.	1/1	2/-
Logwood	—	1/-	2/-	4/-
Magnesia, Calcined	3d.	10d.	1/3	2/-
„ Carbonate	3d.	10d.	1/3	2/-
„ Citrate, Effervescing	2d.	4 $\frac{1}{2}$ d.	8d.	1/2
Manna	5d.	1/6	2/9	5/4
Moss, Iceland	2d.	6d.	10d.	1/6
„ Irish	2d.	6d.	10d.	1/6
Nitre (powdered and lump)	1d.	3d.	5d.	9d.
Oils, Almond	2d.	6d.	1/-	2/-
„ Amber	6d.	1/6	2/4	4/-
„ Aniseed	10d.	3/-	—	—
„ Camphorated	2d.	6d.	10d.	1/6

	1 oz.	4 oz.	8 oz.	1 lb.
Oils, Carbolic (1 in 40)	2d.	6d.	10d.	1/6
„ Castor, <i>see</i> Castor Oil.				
„ Cloves	6d.	2/-	3/6	6/6
„ Cocconut	1d.	3d.	6d.	1/-
„ Hair (scented)	1d.	3d.	6d.	1/-
„ Juniper	6d.	1/8	3/6	6/6
„ Linseed per pint, 6d.	—	2d.	—	6d.
„ Olive	1d.	3d.	6d.	10d.
„ Rosemary	6d.	1/6	2/4	3/6
„ Salad (finest)	2d.	6d.	10d.	1/6
„ Sperm	2d.	6d.	10d.	1/6
„ Thyme	6d.	1/6	2/4	3/6
Ointment, White Elder	2d.	6d.	10d.	1/6
„ of Galls	2d.	6d.	10d.	1/6
„ „ and Opium	4d.	1/2	2/4	4/6
„ of Iodine	4d.	1/3	2/4	4/6
„ Precipitate, Red	3d.	1/-	1/10	3/6
„ „ White	3d.	1/-	1/9	3/8
„ Spermaceti	3d.	9d.	1/4	2/6
„ Zinc	2d.	6d.	10d.	1/6
Opodeldoc	2d.	6d.	10d.	1/6
Opium	1/6	—	—	—
Orris Root	2d.	6d.	10d.	1/6
Orange Peel (Bitter)	3d.	9d.	1/4	2/6
Oxymel of Squills... ..	2d.	6d.	10d.	1/6
Paregoric	4d.	1/-	1/10	3/6
Parrish's Chemical Food—in $\frac{1}{4}$ lb. bottles, 6d. ; $\frac{1}{2}$ lb. bottles, 10d.				
PILLS—Antibilious, Blue, Castor Oil, Digestive, Podophyllin and Steel, per doz. 4d.				
Compound Rhubarb and Pil Cochia	—	—	—	3d.
Female, Gout, and Steel and Pennyroyal	—	—	—	6d.
Quinine—1, 2 and 3 grains	—	—	—	per doz., 4d., 6d. and 9d.
Poppy Heads per doz., 6d.				
Potash, Bicarbonate	2d.	6d.	10d.	1/6
„ Carbonate	2d.	6d.	10d.	1/6
„ Permanganate	3d.	10 $\frac{1}{2}$ d.	1/6	2/6
Potassium, Bromide	4d.	1/2	2/2	4/-
„ Iodide	1/4	4/8	8/3	16/-
Quassia Chips	2d.	6d.	10d.	1/6
Quicksilver	4d.	1/2	2/2	4/-
Quinine, 30 grains, 6d.	2/6	—	—	—
Quinine and Iron, Citrate of 60 grains, 3d.	1/9	—	—	—
„ „ Tonic, per bottle, 1/- and 2/-.				
Resin (Powdered)	1d.	3d.	6d.	1/-
Rhubarb, Turkey $\frac{1}{2}$ oz., 5d.	8d.	2/6	4/6	8/-
„ „ (Powdered)	8d.	2/6	4/6	8/-
Root, Bryony, White	2d.	6d.	10d.	1/6
„ Calumba	2d.	6d.	10d.	1/6
„ Gentian	2d.	6d.	10d.	1/6
„ Liquorice	2d.	6d.	10d.	1/6
„ „ Powdered	2d.	7d.	1/-	1/10
„ Sarsaparilla	3d.	9d.	1/4	2/3
Saffron $\frac{1}{8}$ th oz., 10d.	5/-	—	—	—
Salad Oil (best)	2d.	6d.	10d.	1/6
Sal Ammoniac	1d.	3d.	5d.	10d.
„ „ Powdered	2d.	4d.	7d.	1/-
Salts, Epsom	—	2d.	3d.	6d.
„ Glauber	1d.	3d.	5d.	9d.
„ of Lemon	3d.	10d.	1/6	2/6
„ of Sorrel	3d.	10d.	1/6	2/6
„ of Tartar	2d.	6d.	10d.	1/6
Sal Volatile	4d.	1/- (in Bot.)	1/10	3/6
Saltpetre	1d.	3d.	5d.	9d.
Salprunella Balls... .. (4 for 1d.)	3d.	10 $\frac{1}{2}$ d.	1/6	2/-

	1 oz.	4 oz.	8 oz.	1 lb
Senna Leaves	3d.	9d.	1/3	2/-
Shellac	2d.	6d.	10d.	1/6
Soda, Carbonate	1d.	2½d.	5d.	9d.
" Hyposulphite (7 lbs. 1/4)	—	—	—	2½d.
Spermaceti	3d.	9d.	1/6	2/8
Spirit of Camphor	4d.	1/-	1/10	3/6
" Chloroform	4d.	1/-	1/10	3/6
" Rosemary	4d.	1/-	1/10	3/6
" Sal Volatile	4d.	1/- (in Bot.)	1/10	3/6
" Salts	1d.	3d.	4d.	7d.
" Sweet Nitre	4d.	1/- (in Bot.)	1/10	3/6
Stramonium	2d.	6d.	10d.	1/6
Starch Powder	1d.	3d.	5d.	9d.
Sugar of Milk	3d.	9d.	1/6	2/6
Sulphur, Black	1d.	3d.	4½d.	6d.
" Flowers of	1d.	3d.	4½d.	6d.
" Milk of	1½d.	4d.	7d.	1/-
Syrup of Buckthorn	2d.	5d.	9d.	1/4
" Easton's... ..	4d.	1/1	2/-	3/6
" Poppies	2d.	6d.	9d.	1/4
" Rhubarb... ..	2d.	6d.	10d.	1/6
" Senna	2d.	6d.	10d.	1/6
" Squills	2d.	6d.	10d.	1/4
" Tolu	2d.	6d.	9d.	1/4
Tannin	4d.	1/-	1/10	3/6
Terebene (pure)	6d.	1/9	3/-	5/6
Tincture of Arnica	4d.	1/3	2/2	3/9
" Bark	4d.	1/-	1/11	3/9
" Benzoin	4d.	1/3	2/4	4/6
" Calumba	4d.	1/-	1/10	3/6
" Cantharides	4d.	1/-	1/10	3/6
" Capsicum	4d.	1/-	1/10	3/6
" Gentian	4d.	1/-	1/10	3/6
" Ginger	4d.	1/3	2/2	3/9
" Guaiacum (Ammoniated)	4d.	1/3	2/3	4/3
" Iodine	4d.	1/3	2/3	4/3
" Myrrh	4d.	1/1	2/-	3/6
" Orange Peel	4d.	1/-	1/10	3/6
" Quinine	4d.	1/4	2/6	4/9
" " (Ammoniated)	4d.	1/-	1/10	3/6
" Rhubarb	4d.	1/-	1/9	3/3
" Senna... ..	4d.	1/-	2/-	3/6
" Steel	3d.	11d.	1/8	3/-
Turmeric	2d.	6d.	10d.	1/6
Turpentine per pint 10d.	1d.	—	—	—
Water—Aniseed	1d.	3d.	5d.	9d.
" Dill	1d.	3d.	5d.	9d.
" Elder Flower	1d.	3d.	5d.	9d.
" Goulard	1d.	2d.	3d.	5d.
" Lavender	4d.	1/3	2/6	5/-
" Lime per pint, 3d.	—	1d.	2d.	—
" Peppermint	1d.	3d.	5d.	9d.
" Rose	1d.	3d.	5d.	9d.
Wax, Bees'	2d.	6d.	11d.	1/9
" White	3d.	9d.	1/4	2/6
Wine, Antimonial	4d.	1/-	1/10	3/3
" Colchicum	4d.	1/-	1/10	3/3
" Ipecacuanha	3d.	10d.	1/6	2/9
" Steel	3d.	9d.	1/3	2/3
Zinc Carbonate of	3d.	1/-	1/9	3/4
" Oxide of	2d.	6d.	9d.	1/6
" Sulphate of	2d.	4d.	7d.	10d.

PART IV. SUNDRIES.

Bath Gloves, per pair	from 3½d.
Bed Pans, round	small 3/9, medium 4/3, large 5/-	
„ slipper	4/-, 4/6 & 5/3	
Belts—Ladies', Gentlemen's and Children's—all kinds to order.		
Breast Relievers	1/- size 10d.	
„ Glasses	6d. size 4½d.	
„ Plasters	6d. each.	
Bronchitis Kettles	2/6 size 2/-	
Brushes—							
Feeding Bottle	1d. each.	
Flesh	from 9d. per pair.	
Hair	from 10½d.	
Nail	4d. & 6d.	
Shaving...	6d., 9d. & 1/3	
Throat	6d. size 3d.	
Tooth	3d., 4d. & 6d.	
Catheters	6d., 9d. & 1/-	
Caustic Points	6d. size 4½d.	
Chest Protectors...	from 9d. to 5/-	
Combs, Dressing...	3d., 4½d., 6d., 10d., 1/- & 1/3	
„ Small Tooth	3d., 4½d., 6d., 10d. & 1/-	
Cotton Wool	3d. to 4d. per oz., per lb. 1/- to 2/6	
Curl Papers	4½d. per packet.	
Curling Pins (Hinde's)	6d. size 4½d.	
Cushions, Air. All sizes to order.		
Diapers—Southall's Sanitary	per packet 10½d. & 1/9	
Disinfectants—							
Crimson Fluid (Drane & Co.'s)	4½d. per 6 oz. bottle.	
Dog Powders, for Worms, &c., &c.	per packet of three, 4½d.	
Elastic Hosiery—obtained to order in a day or two direct from Makers.		
Enemas—							
Ball Syringes	9d. & 1/-	
Glass Syringes, male and female	¼ oz. 3d., ½ oz. 6d., 1 oz. 6d.	
Higginson's	3/6	
Ingram's	4/-	
Sea-side	2/3	
Feeding Bottles—							
Green Glass, cork top and black fittings	4½d.	
„ „ screw top and black fittings	6d.	
Maw's Alexandra, screw glass	10d.	
The "Pet," screw glass stopper, white glass	9d.	
Feeding Cups, Earthenware	6d. & 10d.	
Food Regulators	1d. each.	
„ Warmers (Clarke's) and Nursery Lamps	2/9, 3/3 and 3/9	
Goldbeaters' Skin	per packet, 1d.	
Gutta-percha Tissue	per 6d. box, 4½d.	
„ Tooth Stopping	per piece, 1d. and 4d.	
Horse and Cattle Medicines—							
Cattle Drenches—Cleansing, Cough, Diuretic, Fever, Purging	each 6d.	
Horse Balls—Cough, Diuretic, Fever, Physic	each 4d., per doz. 3/-	
„ Condition Powders	per lb. 10d.	
Lint, Surgeons'	per oz., 4d.; ½ lb. 1/-; 1 lb., 2/6	

HEALTH, STRENGTH and RENEWED VIGOUR

Can be obtained by taking

QUININE AND IRON TONIC.

It contains the active principle of Peruvian Bark (the best of Tonics) combined with Iron, one of the most important constituents of the Blood.

8-oz. Bottles, 1/-; 16-oz. Bottles, 1/6.

Lozenges—							1 oz.	$\frac{1}{2}$ lb.	1 lb.
Acid Tablets	1d.	3d.	1/-
Bath Pipe	2d.	6d.	1/9
Bismuth	4d.	9d.	2/9
Black Currant	2 $\frac{1}{2}$ d.	8d.	2/6
Cayenne	2 $\frac{1}{2}$ d.	8d.	2/6
Cachous	4d.	1/2	4/-
Chlorate of Potash	3d.	9d.	2/6
Chlorodyne	3d.	9d.	2/6
Coltsfoot	2d.	6d.	1/9
Cough (Drane & Co.'s)	4d.	1/-	3/6
Digestive	3d.	9d.	2/6
Gelatine	2d.	6d.	1/9
Ginger	2 $\frac{1}{2}$ d.	8d.	2/6
Glycerine	2 $\frac{1}{2}$ d.	8d.	2/6
Ipecacuanha	2 $\frac{1}{2}$ d.	8d.	2/6
Morphia	4d.	1/2	4/-
Musk	3d.	9d.	2/9
Paregoric	2 $\frac{1}{2}$ d.	8d.	2/6
Peppermint	3d.	9d.	2/9
Rose	3d.	9d.	2/9
Tannin	3d.	9d.	2/9
Tolu	3d.	9d.	2/9
Measures, Glass	minim, 9d.; tumblers, 4 $\frac{1}{2}$ d and 6d.		
Mineral Waters.	See Part II.								
Nail Trimmers, Bone, with File, &c.	3 $\frac{1}{2}$ d.		
Night Lights—									
Child's	per 6d. box,	5 $\frac{1}{2}$ d.
Clarke's	per 1/- box,	8 $\frac{1}{2}$ d.
Oiled Silk	per box, 4 $\frac{1}{2}$ d.; 1 yard,	3/9
Pastilles, Fumigating	per oz.,	6d.
Perfumery—all kinds and price, by best Makers.									
Plasters—									
Adhesive	best, $\frac{1}{2}$ yard, 6d.; 1 yard, 8d.		
Belladonna	per yard,	3/6
„ Porous	„	3/6
Breast, Belladonna	each	6d.
„ Diachylon	„	4 $\frac{1}{2}$ d.
Court	in packets, 1d., 3d. and 4 $\frac{1}{2}$ d.		
Corn	2 a penny; per doz., 4d.		
Goldbeaters' Skin	per packet,	1d.
Mustard Leaves	per packet, 4 $\frac{1}{2}$ d. and 8 $\frac{1}{2}$ d.		
Porous (Strengthening)	each	6d.
„ Allcock's	„	8 $\frac{1}{2}$ d.
Soap	$\frac{1}{4}$ yard, 6d.; 1 yard, 10 $\frac{1}{2}$ d.		
Puffs	3d., 4d., 6d. and 8d.		
Puff Boxes—Plain, White Wood, Boxwood, Sycamore, Plaid, &c., &c.							from 4 $\frac{1}{2}$ d.		
Pumice Stone, Prepared	per piece, 1d., 3d. and 4 $\frac{1}{2}$ d.		
Respirators	1/- and upwards.		
Seidlitz Powders. "Genuine" only sold	10d. & 1/3 per box of 1 doz.		
Smelling Bottles—A large assortment, various sizes, patterns and prices							from 4 $\frac{1}{2}$ d.		
Soaps—									
Carbolic...	per tablet 4 $\frac{1}{2}$ d., per box 1/-		
Carpet	„	4 $\frac{1}{2}$ d.	1/-
Castile	„	3d.	3 for 6d.
Cleaver's Terebene	„	4 $\frac{1}{2}$ d., per box	11d.
Curd	1 lb. bar 8d.		
Cuticura	9d.		

Agents for the Noted 2/- TOWER TEA
AND
INDO-CEYLON, 1/8 and 2/-.

Soaps (continued)—									
Dog (Cathery's)	6d. tablet for 4½d.
Glycerine and Almond, Brown Windsor, Honey, Glycerine,	per tablet, 2d. and 4d.
Glycerine and Cucumber, and Oatmeal	per tablet 4d., per box 10½d.
Milk and Sulphur	per tablet 4½d., per box 1/1½
Nichols' Sanitary	6d. tablet for 3½d., per doz. 3/6
Pears'	1/- tablet for 7d.
"	6d. ,, ,, 5d.
Samphire (Field's)	6d. tablet for 4½d., per box 1/-
Wright's Coal Tar	
Spare Bottles—									
For Screw Glass	3d.
„ Cork Tops	2d.
„ Maw's Alexandra	4½d.
Sponge—									
Fine Turkey, for Toilet use	9d. to 5/-
Honeycomb, for Bath	6d. to 7/6
Sponge Bags—all kinds	from 6d. each
Surgical Instruments and Appliances not in stock obtained to order at the shortest notice.									
Teats—									
Black, best quality, polished	1d., 1½d., 2d. & 3d.
„ Maw's Registered	2d. & 2½d.
Teething Pads—All kinds	from 2d. to 6d.
Test Tubes, nested	per nest 9d.
Toilet Requisites—									
Bloom of Ninon	per 6d. packet 4½d.
Carmine	per oz. 3/6
Chalk, prepared lump	per oz., 1d.
„ „ Pink	1d.
Cold Cream	per pot 6d. & 9d.
Cosmetiques	per 6d. box 4½d.
Fullers' Earth...	per packet 1d. and 4½d.
Glycerine and Cucumber	1/- size 9d., 6d. size 4½d.
Glycerine and Rose Water	per bot. 4½d. & 8½d.
Lip Salve, in push-up boxes...	per box 4½d.
Oatmeal (Rimmel's)	per box 5d. & 10d.
Powder Puffs	3d., 4d., 5d., 6d., 8d. & 10d.
Violet Powder (Drane & Co.'s), guaranteed pure	4½d. & 9d.
Zinc Powder	per oz. 2d., ½ lb. 6d.
Thermometers—									
Bath	6d. & 1/-
Blackwood	10½d.
Boxwood	6d.
Toilet Papers, Packets of 500	3d.
„ „ Rolls	4½d. & 9½d.
Tooth Powders, &c.—									
Almond Nut Tooth Paste	per pot 4½d. and 9d.
Carbolic (Drane & Co.'s)	6d. per large box.
Camphorated Chalk	per oz. 3d., per ½ lb. 6d.
Cherry Tooth Paste	per pot 6d.
Floriline	2/6 bottle for 1/11
„ Powder	1/- box 8½d.
Jewsbury and Brown's Oriental Tooth Paste	1/6 pot 1/2
Rose Dentifrice	per oz. 6d., per ½ lb. 1/-
Tincture of Myrrh and Borax	9d. & 1/6
Tubes, glass	1d. each, two for 1½d.

For Summer's Sun and Winter's Wind.

DRANE'S GLYCERINE AND CUCUMBER

Effectually removes and prevents all Roughness, Redness, Sunburn, Tan; allays all Irritation of the Skin, caused by Hard Water, Cold Winds, Frost, Exposure to the Sun, Sea Bathing, Bites and Stings of Insects, &c.

Tube Brushes	1d. each.
Tubing, best black india-rubber	6d. per yard.
Vaccination Shields	6d. size 4½d. ; 1/- size, 9d.	

WATERPROOF GOODS—

Air Proof Cushions (obtained to order and lent on hire).

India-rubber Water Beds and Mattresses (obtained to order and on hire).

Infants' Bibs, Check from 4½d. each

Nursing Aprons, Check 1/8 and 2/6

Pilches 1/2

Sheeting, Single Texture, 36 inches wide per yard 3/-

Sponge Bags 4½d. to 1/2

PRESERVE YOUR TEETH!!!

BY USING

DRANE & CO.'S ROSE DENTIFRICE

Which is strongly recommended for Whitening and Preserving the Teeth from decay. Many genuine Testimonials have been received.

Price 4½d. and 10d. per Bottle.

SOFT AND WHITE SKIN.**DRANE & CO.'S GLYCERINE AND CUCUMBER**

Effectually removes and prevents all Roughness, Redness, Chaps, Sunburn, &c. For producing delicate white Hands it is unrivalled.

Price 6d., 10d. and 1/9 per Bottle.

44 Gold Medals, Grand Diplomas and Royal Appointments awarded

CRYSTAL PALACE JOHN BOND'S

A very neat little mounted Rubber Stamp

GIVEN AWAY

AND ENCLOSED WITH EVERY 6⁰ & 1/- BOTTLE A VOUCHER ENTITLING PURCHASER TO THEIR

RUBBER STAMP

NAME IN FULL OR MONOGRAM FOR MARKING LINEN OR PAPER

Linen for marking or Stamping Paper.

Really well made and astonishingly cheap.

GOLD MEDAL MARKING INK

PREPARED BY THE DAUGHTER OF THE LATE JOHN BOND

Left side medals: AFRICAN INTERNATIONAL EXHIBITION, REPUBLIQUE FRANÇAISE, PARIS 1889.

Right side medals: COLONIAL EXHIBITION, AWARDED TO, CAPE TOWN, PARIS.

Has the largest sale of any Marking Ink in the World.

BAYLEY'S WOOD OILS

Cure HEAD-ACHE (in One Minute).

Mr. J. HARRIS, Stratford, writes —

"At one time I used to suffer with frightful head-ache, but thanks to your Wood Oils, I am now entirely cured."

Cure TOOTH-ACHE instantly.

Clear out food, &c., from the Tooth, and apply a plug of cotton wool saturated with Wood Oils; also rub over the face and temples with cotton wool dampened with Wood Oils.

Cure BRONCHITIS rapidly.

Rob the Chest and Throat thoroughly for ten minutes, take internally twenty drops of Wood Oils (Wood Oils is perfectly pure), repeat the dose and rubbing twice daily until cured.

Mr. JOHN BATES, Griefly Hill, Slough, states:—

"At one time I was a complete invalid and dreaded the winter months coming on, by using and taking the Wood Oils my breathing is now perfectly free, and I am in better health than I have been for years."

Cure CROUP immediately.

Apply the Wood Oils freely and thoroughly to the Chest, Throat and Spine for five minutes, then cover with thick flannel, repeat night and morning if the Cough is hard.

Mrs. WILSON, High Street, Wednesbury, says:—

"All my children suffer at times from Croup, but your Wood Oils give immediate relief. It is the best thing I have ever used, I would not be without it at twice its cost."

BAYLEY'S WOOD OILS

ARE SOLD BY ALL CHEMISTS.

Price 1/- per Bottle.



STEEDMAN'S SOOTHING POWDERS

FOR
CHILDREN CUTTING TEETH.
IN USE OVER FIFTY YEARS.

Relieve FEVERISH HEAT.
Prevent FITS, CONVULSIONS, &c. Preserve
a healthy state of the constitution during the period
of TEETHING.

*Please observe the EE in Steedman, and the address:
Walworth, Surrey.*

COOK'S PURE TOILET SOAPS.

Specialities: COOK'S "RIVIERA" SOAP
(SUPERFATTED).

Specially prepared for delicate and sensitive Skins.

COOK'S "SAVON DE LUXE."—The most luxurious Soap made.

COOK'S "COLD CREAM & OATMEAL."—Invaluable for use in the Nursery.

COOK'S ^{Gold Medal} ANTISEPTIC SOAP

For curing and relieving ECZEMA, RINGWORM, and all
Skin Affections.

SPECIALITIES MADE FOR THE TRADE.

EDWARD COOK & Co., LONDON.

EADE'S GOUT & RHEUMATIC PILLS

Are the Safest and most Effectual Cure for Gout, Rheumatism, Rheumatic Gout, Lumbago, and all Pains in the Head, Face, Limbs, &c.

They require neither confinement nor alteration of diet, and in no case can they prove injurious. In regard to general health they will be found highly salutary and restorative.

Mr. W. LAWSON, of 14, BLUEGATE, GRANTHAM, on DEC. 1, 1890, writes:

"I feel it my duty to acknowledge that your Gout Pills are the best I have ever taken.

I HAVE SUFFERED FOR TWELVE YEARS WITH GOUT in my big toe joint; have tried many remedies without any effect until using your valuable Pills."

Do not be persuaded to take any other Pills for the above distressingly painful disorders, as EADE'S have been proved by thousands to be the best and most effectual remedy.

Prepared only by **GEORGE EADE, 72, Goswell Road, LONDON, E.C.**

And Sold by all Chemists in Bottles, 1/1½ and 2/9.

**THE BEST MEDICINE FOR BILE. THE BEST MEDICINE FOR WIND.
THE BEST MEDICINE FOR INDIGESTION**

IS

EADE'S ANTIBILIOUS PILLS

They quickly remove the irritation and feverish state of the STOMACH, correct the morbid condition of the LIVER, relieve the system of all impurities, which, by circulating in the blood, injuriously affect the action of the KIDNEYS, and by removing the causes of so much discomfort restore the vital energies of body and mind. Sold by all Chemists, in Boxes, 1/1½ and 2/9; or mailed free on receipt of remittance by

GEORGE EADE, 72, Goswell Road, LONDON, E.C.

DR. FOX'S COUGH & VOICE WAFERS

Cure Coughs, Colds, Asthma, Bronchitis, Influenza, Hoarseness, Loss of Voice and all Bronchial Affections. The great remedy for all affections of the Chest and Lungs. Prepared from the choicest Herbs and Fruits. Relieve Phlegm and are a real blessing to Asthmatic sufferers. Render the voice highly melodious and are not to be surpassed for the use of Vocalists, Clergymen, Actors, Public Speakers, &c. Sold everywhere in Tins, at 1/1½ each.

PREPARED ONLY BY

GEORGE EADE, 72, Goswell Road, London, E.C.

A Tin sent on receipt of Stamps or Postal Order.

KING'S WHEATEN FOOD.

(MALTED.)

FOR INFANTS.

BEST and CHEAPEST of all **INFANTS' FOOD**,
*Being rich in Bone and Flesh-forming material, and only HALF
 the USUAL PRICE.*

Thoroughly Cooked by a New Patent Process.
Quickly and easily Prepared. Requires no Boiling or Straining.
In 3d. & 6d. Packets, and 1/- & 2/6 Tins.

KING'S PATENT COOKED OATMEAL.

PERFECTLY COOKED, by a Patent Process, which
 gives it an immense superiority over ordinary
 Oatmeal.

It is Unsurpassed for Children.

It is highly nutritious and easily prepared in a few
 minutes.

An Excellent Substitute for Meat; far superior as a Bone
 and Flesh-former to the white bread of the present
 day.

KING'S PATENT COOKED OATMEAL

Is also prepared Medium for Porridge.

Sold in 3d., 6d., 1/- and 3/- Tins.

PHOSPHANES, OR CHEMICAL FOOD BISCUITS.

A reliable and palatable mode of taking
PARRISH'S CHEMICAL FOOD.

Analysis:—Each Biscuit contains Phosphate of Iron, Phosphate of Lime, Phosphate of Soda, Phosphate of Potash, with Oatmeal, Butter, Eggs, &c.

They are highly recommended by Physicians of repute who are more especially noted in connection with Infantile Diseases and Hygiene.

PREPARED AND PATENTED BY

J. D. MARSHALL, Analytical Chemist.

(Late with SAVORY & MOORE, Chemists to the Queen.)

MANUFACTORY:—5, PIMLICO ROAD, S.W.

In Tins, 1/6, 2/6 & 5/-. A great advantage in the larger sizes.

Rowlands' Old Brown Windsor Soap

THE ORIGINAL AND GENUINE.

ROWLANDS' OTTO OF ROSE SOAP.

A LUXURIOUS SOAP, DELICATELY PERFUMED.

Whitens the Teeth. ODONTO DENTIFRICE. Sweetens the Breath.

Prepared with great care from the finest Ingredients.

1/- per Box.

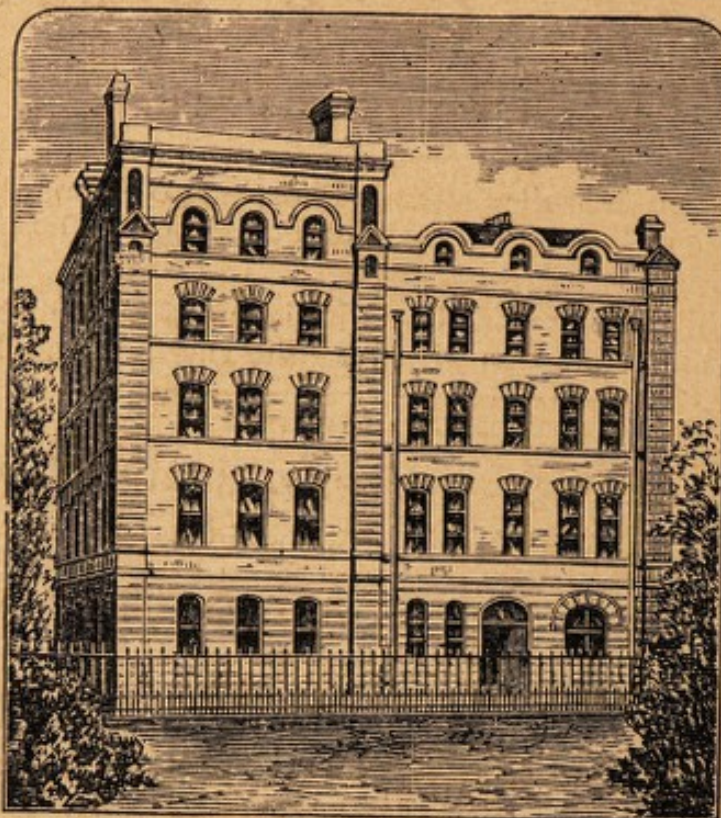
ALL THE ABOVE ARTICLES ARE OBTAINABLE AT THESE STORES.

To the Women of England.
DODD'S FEMALE PILLS.

Prepared by **JEFFERSON DODD**, formerly of
THE HOSPITAL FOR WOMEN, SOHO SQ., LONDON.

TESTIMONIALS FROM HOSPITAL NURSES.

Nurse BEATRICE writes:—"Speaking from five years experience in the treatment of Diseases of Women, I can with confidence recommend your Female Pills in all cases of Irregularities. They are effectual and not injurious to the most delicate. In my opinion they are a boon to womankind." Nurse POWELL writes:—"Your Female Pills have in all cases where recommended by me, proved most satisfactory."



THE HOSPITAL FOR WOMEN, SOHO SQUARE, LONDON.

TESTIMONIALS FROM PATIENTS.

Mrs. PHILLIPS, Bow, writes:—"Your Female Pills are certainly the best I have yet taken for removing Irregularities. I wish I had seen your advertisement before." Mrs. EDWARDS, Stratford, E., writes:—"Kindly forward another box of Female Pills. I have now taken them for two years and have found them most satisfactory." Mrs. SWANN, Walthamstow, writes:—"Your Pills relieved me after the second dose."

The Proprietor, who was for many years at the above world-renowned **HOSPITAL FOR WOMEN** (where thousands of sufferers are treated annually), has never known these **FEMALE PILLS** to fail in relieving the most **Obstinate Cases** of **Irregularities** and **Obstructions**.

He has seen them administered to thousands of Females—both **Young** and **Old**, **Married** and **Single**—with marvellous results; a few doses generally sufficing to produce the most satisfactory results—relieving the sufferer of all unpleasant symptoms and giving tone to the whole system.

They have a World-wide Sale, especially amongst former patients of **The Hospital**, from whom the Proprietor has received the most flattering testimony.

TRY THEM for Head-ache, Pains in the Back or Limbs, Faintness, Sickness, Giddiness, Languor, Constipation, Flushings of Heat, Palpitation, Indigestion, Change of Life, Swollen Limbs and all other **IRREGULARITIES**.

In Boxes, 1/1½, 2/9, 4/6 and 11/-, of all Chemists; or direct from the Sole Proprietor, Post Free.

JEFFERSON DODD, 70, Tottenham Court Road, LONDON.

[To] be obtained of **DRANE & CO.**, Dispensing Chemists, 56, Knights Hill Road, West Norwood, S.E.