

**A collection of engravings tending to illustrate the generation and parturition of animals and of the human species / [Thomas Denman].**

**Contributors**

Denman, Thomas, 1733-1815.

**Publication/Creation**

London : J. Johnson, 1787.

**Persistent URL**

<https://wellcomecollection.org/works/zgyfvfnc>

**License and attribution**

This work has been identified as being free of known restrictions under copyright law, including all related and neighbouring rights and is being made available under the Creative Commons, Public Domain Mark.

You can copy, modify, distribute and perform the work, even for commercial purposes, without asking permission.

**wellcome  
collection**

Wellcome Collection  
183 Euston Road  
London NW1 2BE UK  
T +44 (0)20 7611 8722  
E [library@wellcomecollection.org](mailto:library@wellcomecollection.org)  
<https://wellcomecollection.org>



20117 / D / 3

~~E~~ B 8



20117/D/3

Variant

only 11 plates (copies 1-2 have 1s)

Includes 2 dated 1788 but not the 4 for 1789 & 1790

Dupl.







A

# Collection of Engravings,

TENDING TO ILLUSTRATE THE

GENERATION AND PARTURITION

OF

A N I M A L S,



AND OF THE

*HUMAN SPECIES.*



---

By THOMAS DENMAN, M. D.

LICENTIATE IN MIDWIFERY,

OF THE COLLEGE OF PHYSICIANS.

---

*Naturæ Numen ubique præfens cernitur.*

---

---

L O N D O N :

Sold by J. JOHNSON, Bookseller, No. 72, St. Paul's Churchyard,

M D C C L X X X V I I .

DISCARDED FROM ST. GEORGE'S  
HOSPITAL MEDICAL SCHOOL.

*S. W. Ford* LIBRARIAN.

DATE *12-9-53*



Collection of [illegible]

[illegible]

[illegible]

[illegible]

[illegible]

95400



[illegible]

[illegible]

[illegible]

[illegible]

[illegible]



T O

SIR GEORGE BAKER, BAR.<sup>T</sup>

PHYSICIAN IN ORDINARY TO THEIR MAJESTIES,

A N D

PRESIDENT OF THE COLLEGE OF PHYSICIANS,

T H E S E P L A T E S

ARE DEDICATED,



WITH ALL DEFERENCE AND RESPECT,



BY HIS OBLIGED,

AND MOST HUMBLE SERVANT,

Old Burlington Street, }  
13th Sept. 1787. }

*THOMAS DENMAN.*





---

---

P R E F A C E.

*HAVING* been for more than twenty years almost wholly engaged in giving Lectures, and in the practice of Midwifery, it was highly necessary for me to know all that had been done for its improvement; and in the course of such investigation, it was scarcely possible for me not to discern some errors and deficiencies in the art, or not to entertain a wish to correct and supply them. Among other things worthy of notice, it appeared remarkable, that many useful discoveries, which were well understood in one country, should have been altogether unknown in another, though the means of communication were easy and frequent; and that many things which were well understood at one period of time, should in a course of years, without the intervention of any general calamity, have been entirely forgotten even in that very country, where the discoveries were originally made.

To the production of these events different causes have contributed. Among these may be reckoned the custom, formerly so prevalent with Physicians, of writing books in the learned languages; by which means the knowledge they intended to convey, though spread thereby into various countries, never became so generally diffused in any one country, as to be brought into popular use and practice. The knowledge also acquired by different men is unfortunately dispersed in so great a number of books, some of them bearing perhaps in their titles little analogy to the subjects on which they eventually treat, that the life of a man, aiming at excellence, might be passed in searching for what had been done by those who preceded him in the same pursuit: or, after working through a great variety of things with the most commendable industry, he would have the mortification of finding that much of his labour might have been spared; many of those observations, which he supposed to be new, having been made before, and judiciously explained. Nor are the innumerable variations in the force and meaning of words in every living language, at different periods of time; the different senses given to language by punctuation; and the corruptions of copies of works written or printed; together with the uncertain meaning and disputable explanations of words in the dead languages, evils to be overlooked in this enumeration. All the means hitherto practised for the tradition of medical knowledge have been evidently defective.

Whether all that has been done by human industry, upon this or any other subject, will ever be collected into one work; whether men will in future be induced to join their labours together in such a manner, that their inquiries and experience may converge to one point; or, whether they will ever be able to form a language, intelligible to all, and not liable to change, equal at the same time to a full and precise representation of their ideas, is very much to be doubted, however desirable such things may appear in speculation.

With such a language we are nevertheless supplied to a certain degree by accurate drawings; and from the number and excellence of engravers in this country, there is no difficulty in procuring all the assistance they can afford. Of the advantage to be derived from engraving, which is to drawing what printing is to writing, we have a curious, though negative, example in the architecture of the ancients; the knowledge of which would probably have been lost, or very imperfectly preserved, had not the ruins of their edifices remained to exemplify and explain their writings; and hence we may judge of the great havock which must have been made in all temporary and transitory objects. Yet these arts have their imperfections and bounds. The form, position, and relation of such parts as are the subjects of anatomical enquiry may certainly be more easily represented in drawings, than by words; but the uses, properties, and some other circumstances, can only be explained by words. With the united assistance  
therefore



therefore of printing and engraving we are certainly capable of expressing ourselves better on a variety of occasions, than by either of them separately; and from the first invention of the latter, medical writers have availed themselves of its assistance: many works have accordingly been composed and published, some of them useful, and others of great value, as well from the excellence of the artists as of the design. But none of them come intirely up to my intention. I do not mean to consider human parturition as a part of natural history, or to give a view of morbid parturition as a branch of professional knowledge; or to consider this collection as an auxiliary, or supplement, to any other design; but to begin a work into which should be received all that has hitherto been, or may in future be, observed of the parturition of animals in general, as well as of the human species; so as to reduce into form, and preserve one comprehensive system of the whole subject, as far as it can be done by engravings, subservient to the purposes of practice, and becoming at the same time a source of elegant pleasure.

Some years ago, without any view to this publication, I began to have drawings taken of such subjects as occurred to me relative to utero-gestation or parturition in the human species, or in animals, natural, preternatural, or morbid; whenever they appeared likely to give a more comprehensive view of the science of Midwifery, or to improve the art; to elucidate such things as were obscurely known; or, to exhibit others which could be more clearly understood by this mode of representation. My collection is not large, but they are all taken from nature; and there is so much truth and elegance in the drawings executed by Mr. Rymfdyk, that they may be considered as patterns to all future artists. Some of these being engraved, I am unwilling that they should be lost, and therefore publish this first number as a specimen of the work; or as Lord Bacon has expressed himself, *tanquam tela pertexenda*; for my intention would be poorly answered, if it was to rest upon what it will ever be in my power to do. It is therefore my earnest request, not only to those Gentlemen with whom I have lived in habits of friendship; or to those in whose education I have had a part; but to all the learned and scientific in the practice of Midwifery, who may be in the possession of drawings or engravings connected with the scope of this work, and too few in number for a separate publication, that they would be pleased to communicate them to me. If they comply with my request, and I should be permitted to live to the conclusion of this century, I do not despair of seeing a large and useful collection of engravings, by which the knowledge of many discoveries, facts, and doctrines may be ascertained, promulgated and preserved; and which may serve as a lasting monument of the pursuits and industry of the present time; in the glory of which every one will partake according to the share of help, which they yield towards its construction.

Should I be prevented from continuing this work, it will be conducted by Mr. JOHN CLARK, TEACHER of MIDWIFERY, in Queen-Street, Golden-Square; a Gentleman, from whose abilities and industry the greatest proficiency in his profession is to be expected.

The very moderate price at which these plates are intended to be sold, will free me from the suspicion of aiming at any profit which may arise from their publication. There are no references, as the beauty of the plates would be thereby injured; and I apprehend, the different parts intended to be shewn are so clearly expressed, as not to escape the eye of those who are accustomed to such objects: They are not numbered, for the general convenience of the work, and for that in particular of such Gentlemen as may condescend to join their labours to those of

Their most humble servant,

London, Old Burlington-Street, }  
September 13th, 1787. }

THOMAS DENMAN.







*Reynolds del.*

Published as the Act directs, by D<sup>r</sup> Tho<sup>s</sup> Denman, 23. Feb<sup>r</sup> 1787.

*Miller sculp.*



The *Funis* of a Nut.—The *Chrysalis* of the *Phalæna Atlas*.—The Eggs of the Cuttle Fish.

I HAVE joined these three subjects in one plate on account of their resemblance, though they are taken from such different parts of the creation.

In the representation of the Nut attention is chiefly paid to the *Funis*, which is mentioned by *Linneus*, and probably by many other writers. As the apex of the kernel is by this *Funis* bound to the broad end of the shell, the shell to the husk, or foliaceous cup, and this again by a twig to the tree, the whole manner in which nourishment is conveyed to the kernel appears. The coats of the kernel likewise resemble the membranes of the *ovum* in viviparous animals; and the flocculent lining of the shell, the membrane formed, after conception, over the internal surface of the *uterus*. Mr. *Miller*, who made the drawing of this Nut, thinks that many seeds have a similar *apparatus*.

In some shells, the Apricot for instance, there is no lining to the shell, or connection between it and the kernel. In such, the shells being covered with fruit, or a husk, are more porous, and the nourishment, penetrating the cavity in the form of a dew, is absorbed by the kernel.—See *Amœnitat. Academ. vol. iv.*

THE *Chrysalis* of this Moth was plucked from the tree upon which it hung, on an island in the Straits of *Malacca*, by my worthy friend *Thomas Liell*, Esq. and on the following day a large and beautiful Moth escaped.

I do not know that there is any thing peculiar in this *Chrysalis*; but the largeness of the size serves to shew distinctly the beautiful arrangement of that substance, which is spread like net-work over the surface of the *chrysalis*, and which, being concentrated at the upper end into one cord, is fixed to the twig of a tree as a place of security.—See *Merian's Surinam Insects*, pl. lii.—*Amœnitat. Academ. vol. iv. Bombyx.*

THE Eggs of the Cuttle Fish, which in their form and size resemble a small grape, are fastened in clusters by an animal substance to sea-weed, in a place suited to the state of the Fish when it escapes from the egg.—*Gesner*, in his account of the *sepia*, has quoted the reason assigned by *Aristotle* for these eggs being collected into clusters, "That they may be conveniently imbued with that viscous fluid ejected by the male, by which they are to be nourished and increased." *Gesner* also speaks of their exclusion from the egg in these terms—"Mox ova edita crassitudinem acinorum uvæ minorum intra diem decimum quintum capiunt, quibus abruptis sepiolæ excluduntur; quæ, (si quis prius, prole jam perfectâ, absciderint ovi membranam) sterculus mittunt, suumque præ metu colorem immutant ex candicante in rubiusculum."

See *Amœnitat. Academ. vol. i.*—See also *Aldrovandus*, *Charlton*, and *Gesner*.

La Corde d'une Noix.—La Chrysalide du *Phalæna Atlas*.—Les Oeufs du Poisson nommé Seiche.

J'AI placé ces trois sujets ensemble pour faire une planche à raison de leur ressemblance, quoiqu'ils sont pris de choses si différentes.

Dans la représentation de la Noix une attention particulière a été donnée à la Corde, dont *Linneus* a parlé, et probablement plusieurs autres auteurs. Comme l'amande est attachée à la coquille par la Corde, la coquille à la coiffe, et la coiffe à l'arbre par une petite branche, on voit la manière dont se nourit l'amande. La Corde de l'amande ressemble aux membranes de l'œuf dans les animaux vivipares, et la doublure laineuse de la coquille se rapporte à la membrane formée sur la surface interne de la matrice, après conception. M. *Miller* croit que beaucoup de grains a des apparences semblables.

Dans quelques coquilles, l'abricot par exemple, il n'y a pas de connexion entre l'amande et la coquille. C'est pourquoi les coquilles sont plus ou moins poreuses, et la nourriture, qui, comme une rosée, pénètre la cavité, est absorbé par l'amande.

LA Chrysalide de cette Teigne étoit prise d'une arbre sur laquelle elle pendoit, dans une île dans le Détroit de *Malacca*, par mon ami *Thomas Liell*, Esq. et le lendemain est échappé une superbe teigne.

Je ne connois rien de remarquable à cette Chrysalide; mais de sa grandeur on voit l'arrangement de cette substance, qui couvre, comme un réseau, la surface de la Chrysalide, et se resserre pour former une seule corde, qui s'attache à une petite branche de l'arbre, comme un endroit de sécurité.

LES Oeufs du Poisson la Seiche, qui par leurs grandeurs et formes ressemblent à un petit raisin, sont attachés en peletons par une substance animale aux herbe de mers, dans un endroit approprié à l'état du poisson, lorsqu'il s'échappe de l'œuf.—*Gesner*, dans son histoire du *Seiche*, a cité la raison qui *Aristotle* donne pourquoi les oeufs sont joints en peletons, "Qu'ils peuvent être suffisamment imbues de ce fluid visceux éjaculé par le mâle, lequel fluid doit les servir de nourriture et d'accroissement." *Gesner* parle aussi de l'exclusion de l'œuf dan ces termes—"Mox ova edita crassitudinem acinorum uvæ minorum intra diem decimum quintum capiunt, quibus abruptis sepiolæ excluduntur; quæ (si quis prius, prole jam perfectâ, absciderint ovi membranam) sterculus mittunt, suumque præ metu colorem immutant ex candicante in rubiusculum."











*J. K. Pymstedt delin.*

London Published Decr 22: 1782. by D<sup>r</sup> Thomas Dentman.

*C. Knight sculp.*

A Display of the Internal Parts of a Frog, with the *Ovaria*.

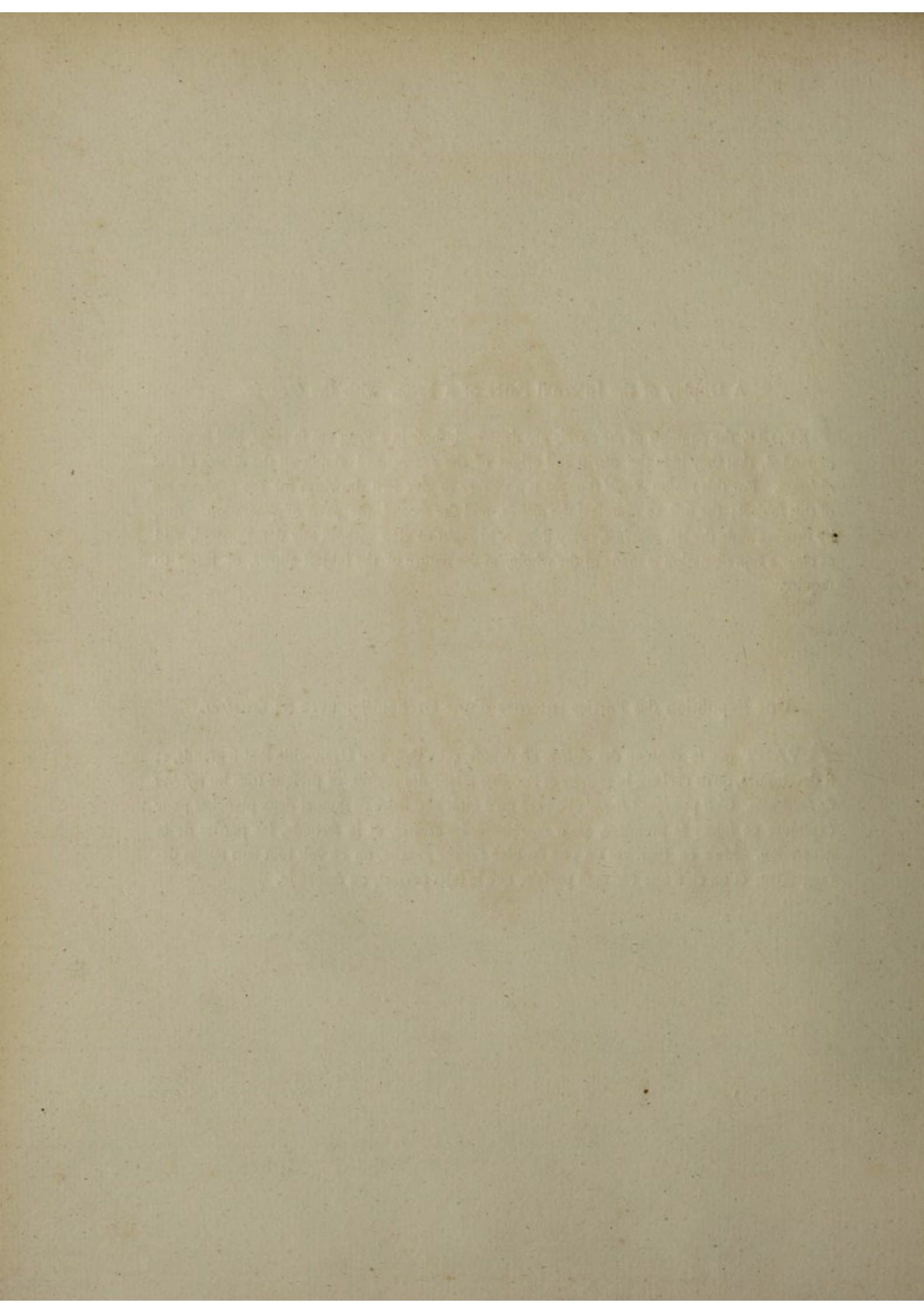
**B**EFORE the contents of the *ovaria* are deposited, those in a Frog are so large, and so much expanded, that they hide the *uterus* and origin of the *ovaria*, and almost all the *viscera* of the *abdomen*. For this reason *Roefel* thought it necessary to give two drawings for the explanation of this subject; the first, to represent the *ovaria*, and the second, the parts of generation. But, by turning aside the left *ovarium*, every thing is brought to view without any derangement, and as clear a representation is made of the whole, as the nature of the subject allows, or seems to require.

---

Une Exposition des Parties Internes d'une Grenouille, avec ses *Ovaires*.

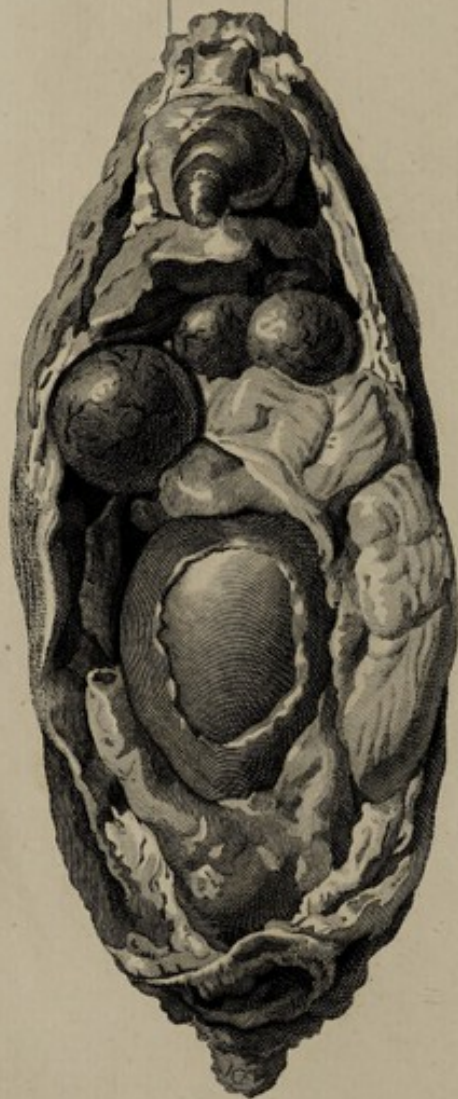
**A**VANT que le contenu des *ovaires* est déposé, ceux dans une Grenouille sont si grands, et si développés, qu'ils cachent la *matrice* et l'origine même des *ovaires*, et presque tous les *viscères* de l'*abdomen*. C'est pourquoi *Roefel* avoit crû qu'il étoit nécessaire de donner deux planches pour expliquer ce sujet; la première, pour représenter les *ovaires*, et la seconde, les parties de la generation. Mais en tournant un peu du côté l'*ovaire* gauche, on en voit tout sans aucun dérangement, et on en a une vûe aussi parfaite que le sujet permet, ou demande.











*J. H. Pynas delin.*

Publiſh'd as the Act directs by D<sup>r</sup> Tho. Denman, 23 Feb. 1787.

*W. Acland sculp.*



A Section of a Hen, shewing the *Ovarium*, with an Egg perfected in the *Infundibulum*.

IN the *ovarium* of a Hen are contained the *primordia* of an infinite number of Eggs, differing in size, and rising towards perfection in regular succession: While these abide in the *ovarium*, they consist of the Yelk only, impregnated with the fecundating principle conveyed in the act of copulation; but in their passage through the *Infundibulum*, which has a membranous expanded orifice fitted for their convenient reception, they collect the White, and other subordinate parts. In the lower part of the *Infundibulum*, which by some writers has been distinguished as the *uterus*, they become invested with the membranes and shell; soon after which they are expelled.

*Harvey* has given as good a description of these parts, as words can convey; but a representation to the eye was wanting, & this plate, by the exertion of the artists, is rendered worthy of supplying that deficiency. *De Graaff* has indeed given a delineation of the *Ovarium* and *Infundibulum*; but they are taken out of the body, by which means their original position, relation, and genuine appearances are lost.

There is yet wanting a delineation of the daily changes made in the Egg during incubation. These might be reduced into one view, and then the subject would be nearly complete.

---

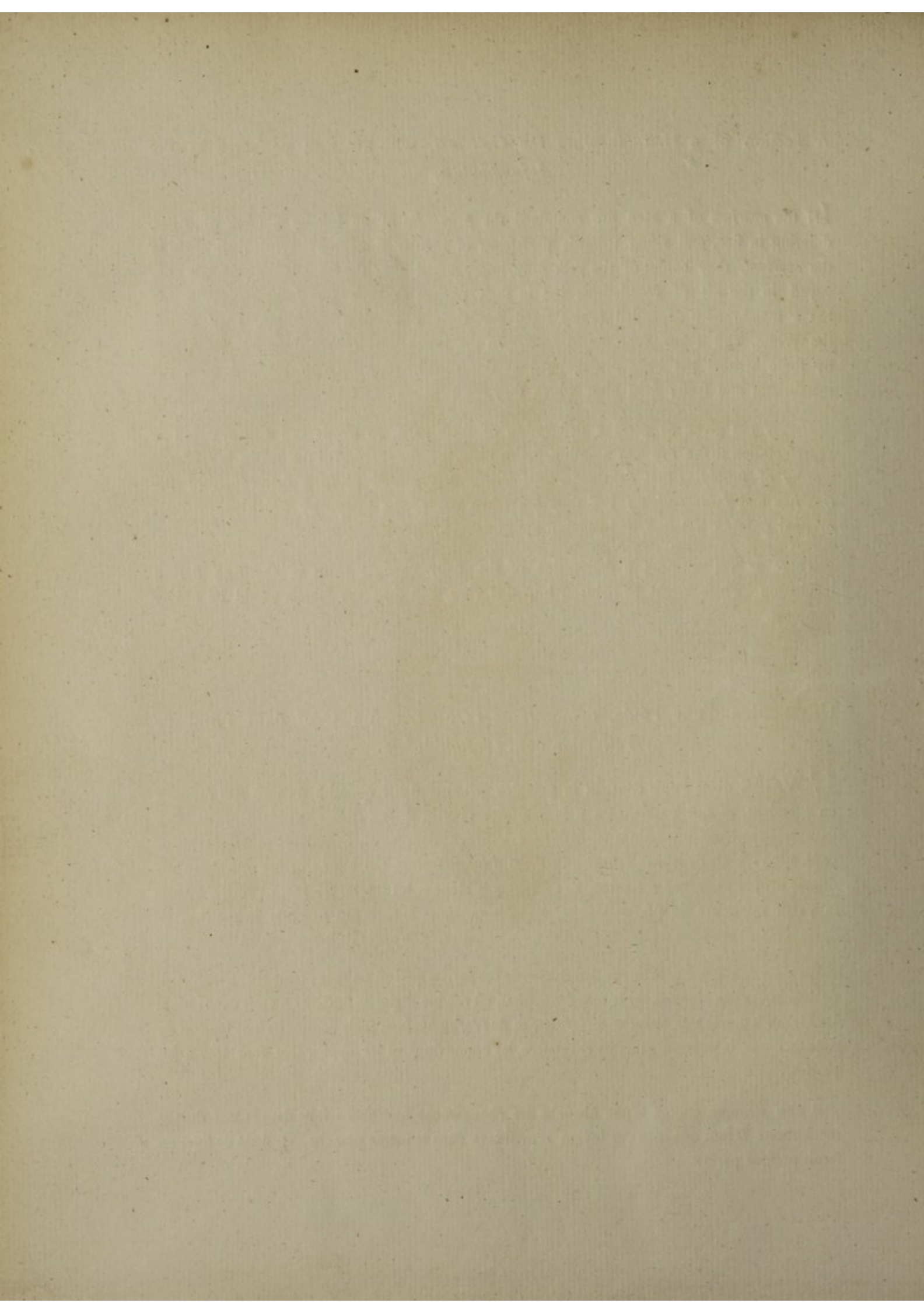
Une Section d'une Poule, demontrante l'*Ovaire*, et un Oeuf dans l'Etat de Perfection dans l'*Infundibulum*.

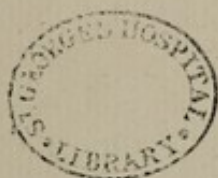
L'*OVAIRE* d'une Poule contient le principe primitif d'une quantité d'Oeufs, qui different en grandeur, et qui parviennent a la maturité chacun a son tour: pendant qu'ils sont dans l'*ovaire* ils sont formés du jaune seulement, impregné de la semence communiquée dans l'act de copulation; mais dans leur passage au travers l'*Infundibulum*, qui à une orifice membraneuse dilatée propre pour leur reception, ils ramassent le blanc et les substances subordonnées. Dans la partie inferieure de l'*Infundibulum*, laquelle quelques auteurs ont nommés la matrice, ils deviennent enveloppés de membranes, et de la coquille; peu après ils sont expulsés.

*Harvey* a donné une aussi bonne description de ces parties qu'il est possible; mais il s'en manquoit de dessein, et cette planche, par le soin des artistes, est rendue digne de suppléer a cette description. *De Graaff* a donné une ébauche de l'*Ovaire* et de l'*Infundibulum*; mais comme ils sont séparés du reste du corps, la position generale et relative, les connexions, et les apparences sont tout-à-fait perdus.

Il s'en manque encore d'une ébauche des changemens quotidiens faits dans l'Oeuf durant incubation; Il faut que tous ces soyent représentés dans la même planche, et donc ce sujet en seroit presque parfait.











*J. V. Reynoldy delens.*

*W. Skelton sculp.*

Published as the Act directs, by D<sup>r</sup> Tho<sup>s</sup> Denman, 23 Feb. 1787.

A Part of the *Uterus* of a Cow, with one of the *Cotyledons*, and a Portion of the Membranes.

**T**HE changes which take place in the *uterus* of a Doe *after conception*, as the softness and tumefaction of its substance, the formation of its membranous lining, and the origin and progress of the caruncles or glandular eminences in its *cornua*, to which the *cotyledons* are afterwards fixed, are all particularly described by *Harvey*.

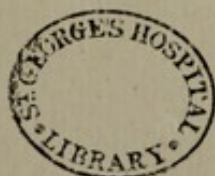
The drawing now before us is from these parts in a Cow, an animal of the same class, which therefore are probably in all respects, except the size both of the caruncles and *cotyledons*, similar to those of the Doe. This *cotyledon* is in part separated and turned from the caruncle, by which means the texture of both is more clearly seen, and additional beauty given to the plate.

---

Une Partie de la *Matrice* d'une Vache, avec une des *Cotyledons*, et une Portion des Membranes.

**L**ES changemens qui ont lieu dans la *matrice* d'une Daine *après la conception*, par exemple, la mollesse et la tumefaction de sa substance, la formation des membranes qui la tapissent, et l'origine et le progrès des caruncules ou éminences glanduleuses, auxquelles les *cotyledons* sont après attachés, sont particulièrement décrites par *Harvey*.

Cette planche nous représente les mêmes parties dans une Vache, un animal de la même espèce que le Daine, ainsi ses parties ne diffèrent probablement que dans la grandeur des caruncules et des *cotyledons*. Ce *cotyledon* est en partie séparé et tourné de la caruncule, en sorte que la structure de tous les deux est plus distinctement vûe, et beaucoup de beauté est ajouté au planche.













*J. V. Rymsdyk delin.*

Publiſh'd as the Act directs, by D<sup>r</sup>. Tho. Denman, 23 Feb. 1787.

*C. Knight sculp.*

### Three Human Abortions, one of which contains Twins.

IF delineations were to be made of every variety observed in abortions, there would be no bounds to the work. Yet in every collection there must be some examples, that we may be able to distinguish the different parts of which an *ovum* is composed, the proportions which they bear to each other at different periods of pregnancy, and sometimes the part of the process of utero-gestation which failed. It must however be allowed, that the generality of these things are preserved for their beauty, or as matters of curiosity, rather than of use. I suspect nevertheless that there are some appearances, besides the *vesicula umbilicalis*, not yet perfectly understood, and therefore recommend the whole subject as worthy of being reviewed by some anatomist, who has time and opportunities of examining it with accuracy. The figure which contains Twins is in itself of rather more value, as it is the first of the kind which has been delineated.

---

### Trois Avortements à différents Periodes, l'une des quelles contient des Jumeaux.

SI on faisoit des desseins de toutes les variétés qu'on remarque dans les avortements, il n'y auroit pas de fin. Cependant il faut dans chaque collection donner quelques exemples, pour nous mettre en état de distinguer les différentes parties dont la conception est composée, les rapports différents qu'elles ont entr'elles dans chaque periode, et quelquefois cette partie de utero-gestation où le progres a été arrêté. Il faut avouer pourtant qu'en general ils sont conservés pour leur beauté ou leur curiosité plus tôt que pour leur utilité. Neantmoins je soupçonne qu'il y a quelques apparences, autre la vesicule ombelicale, qu'on n'entend pas encore parfaitement ; et par consequence je recommande ce sujet comme digne de l'attention de ces anatomistes qui pourront avoir occasion de l'examiner avec plus d'exaëtitude. La figure qui contient les Jumeaux est très curieuse ; et comme c'est la première de ce genre, elle n'en ait que plus estimable.











*R. Linnaeus pinus.*

*C. Knight sculp.*

London, Publish'd Dec<sup>r</sup> 22. 1783. by D<sup>r</sup> Thomas Deeman.



### A Morbid Human *Ovum*.

THE circumstances chiefly deserving attention in this Plate are, the small size of the *Embryo* compared with that of the *placenta*, the dropical state of the *funis umbilicalis*, and the change which has taken place on the internal surface of the *placenta*, which is rising into eminences, and has assumed such an appearance as if it would have been formed into tubercles or hydatids, in the manner suggested by *Ruyfch*, and of which he has given several drawings.

It appears that this *embryo* must have been blighted in the very early part of pregnancy, though it has no marks of decay. But the *placenta* adhered, increased in its size, and remained in the *uterus* to the end of the ninth month, and was then expelled without much pain or difficulty. When brought to me, it was supposed to be a mole, and seemed like a mass of flesh without any particular organization; but when carefully examined, was found to be an *Ovum*, with the appearances so well represented in this plate.

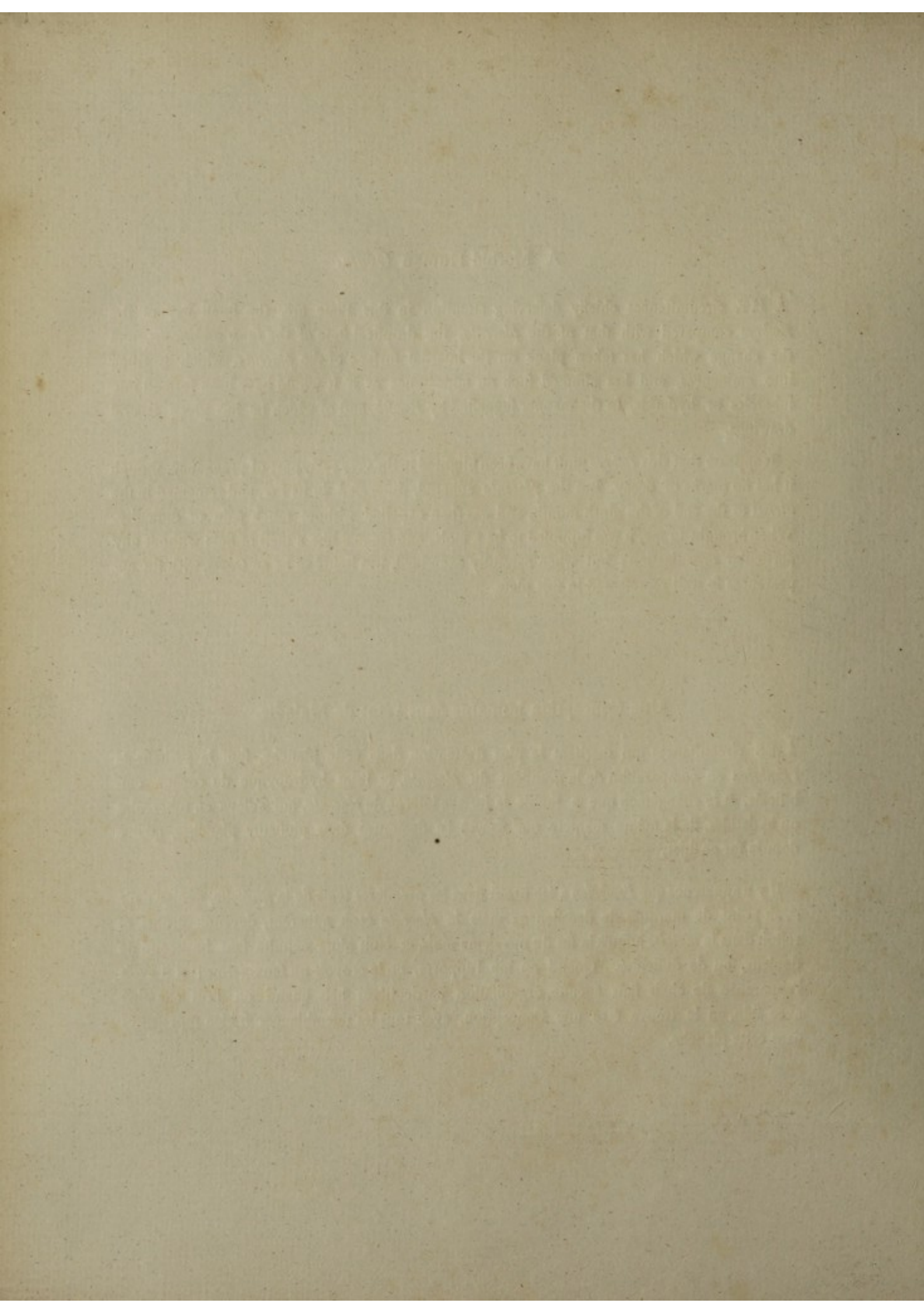
---

### Une Conception humaine dans l'état de Maladie.

LES circonstances qui méritent le plus d'attention dans cette planche, sont la petitesse de l'*Embrion* en comparaison de la grandeur du *placenta*, et l'état hydropyque du cordon ombilical, et le changement que a souffert la surface interne du *placenta*, qui s'élève en tubercules ou hydatides, de la même manière que *Ruyfch* l'a démontré dans plusieurs planches, qu'il a données sur ce sujet.

Il y a apparence que l'*embrion* a été broyé dans les premières tems de la grossesse, quoiqu'il n'y avoit point de marques de decadence; mais la *placenta* étoit adhérent, devenoit grosse, et restoit dans la *matrice* jusqu'à la fin du neuvième mois, et étoit alors expulsé sans beaucoup de douleur, ou de difficulté. Quand on me l'apporta, on le croyoit un faux-germe; et il avoit l'apparence de chair sans aucune organisation particulière: mais quand on l'eût examiné avec soin, on le trouva être une Conception, avec tous les ressemblances si bien représentés dans cette planche.











— — *del.*

London Published Dec<sup>r</sup> 22. 1783 by D. Thomas Denton.

*C. Knight sculp.*



### An Human *Ovum*, about the third Month of Pregnancy.

THIS *Ovum* is rather larger than might be expected from the date, and more perfect than those usually are which are expelled in consequence of the common causes of abortion. No other art was used in preparing it than by soaking it in water, to cleanse it from the adhering blood. The artist who made the drawing was a *German*, whose name was *Nall*: He was so struck with the beauty of the preparation, that he never was satisfied with his work, and took uncommon pains to finish it.

Besides the two proper membranes of the *Ovum*, there is preserved a large portion of that membranous production of the *uterus*, the formation of which *Harvey* has so well described; which many writers have denominated the false or spongy *Chorion*; *Ruyfch*, from its appearance, the *Membrana Villosa*, *illam placentæ partem obducens, quæ uterum respicit*; *Bianchi*, the *Placento-vascularis cortex ad totum ovi ambitum*; *Hunter*, suspecting it to be a *lamella* cast off from the *Uterus* after every conception, *decidua*; and from its duplicature, or transit over the *ovum*, which he discovered, *decidua reflexa*; and which, from its office, I have ventured to call the Connecting Membrane of the *Ovum*. But this will be more fully and perfectly represented in a subsequent plate.

---

### Une Conception, aux Environs de trois Mois.

CETTE Conception est un peu plus grand qu'on devoit s'attendre d'après sa date, et plus parfaite que celles qui sont ordinairement expulsées par les causes communes de l'abortement. Pour préparer cette pièce on n'a fait que la tremper dans de l'eau pour ôter le sang adhérent. L'artiste qui l'a dessiné étoit un Allemand nommé *Nall*, il étoit si frappé de la beauté de la préparation qu'il n'étoit jamais content de son ouvrage et a pris des peines infinies pour la finir.

Outre les deux membranes propres de la conception, on a conservé une grande portion de la production membraneuse de la matrice, la formation de laquelle *Harvey* a si bien décrite; laquelle membrane plusieurs auteurs ont appelés le *Chorion faux* ou spongieux; *Ruyfch*, d'après ses apparences, la *tunica villosa*; *Bianchi*, *placento-vascularis cortex ad totum ovi ambitum*; *Hunter*, supposant qu'il étoit une feuillette de la matrice d'après toute conception, *decidua*; et de sa duplicature, ou transit sur la conception, *decidua reflexa*: et qui, d'après son usage, j'ai appelé la Membrane Unifante de la Conception. Mais ceci sera plus entièrement et parfaitement représenté dans une planche suivante,











*John Van Rymsdyk ad vivam delineavit 1734*

*Will. Holtun sculp. 1736.*

Published November 1<sup>st</sup> 1786, by D<sup>r</sup> Thomas Deiman.



The *Uterus*, containing the Child of a Woman, who died in the Act of Parturition.

THE preparation, from which this drawing was taken, has not been disturbed in any other way than was absolutely necessary to free it from the parts to which it was connected; but, as it has been preserved in spirits, the outline of the limbs and body of the child is rendered somewhat hard. It may however be considered as a just and perfect view of the situation of the *Fœtus in Utero* at the time of birth; and though, perhaps, no two children were ever found exactly in the same position, there is one which may be called the most natural, because its general habitudes are most frequent. This now exhibited corresponds so punctually with that described with such unrivalled elegance by *Harvey*, that his description might be almost suspected to have been taken from the same preparation:—*Infans in utero ut plurimum reperitur, adductis ad abdomen genibus, flexis retrorsum cruribus, pedibus decussatis, manibusque ad caput sublati, quarum alteram circa tempora vel auriculas, alteram ad genam detinet; ubi maculæ albæ, tanquam confricationis vestigia, in cute cernuntur: spina in orbem flectitur, caput ad genua incurvato collo propendet. Tali membrorum situ, qualem in somno per quietem quærimus.* See *HARV. Exercitat. de Partu.*

Than this part of the description nothing can be more just; and we may add, that as it is our position before we are born, it is that also to which we incline in the decrepitude of old age.

---

La Matrice d'une Femme contenant l'Enfant, laqu' elle Femme est morte dans l'Accouchement.

LA preparation d'ou on a pris ce dessin, n'a été nul autrement derangée qu'il étoit nécessaire pour la degager des parties environnantes; mais comme elle a été conservée dans les esprits du vin, ligne extérieure du corps et des membres de l'enfant est devenue, en consequence, un peu dure. Cependant on peut la considerer come une parfaite idée de la situation de l'Enfant dans la Matrice dans le tems de la naissance; et quoique deux enfans ont peut-être jamais été trouvés exactement dans la même position, il y en a une que peut-être appelée naturelle, parcequ'elle est plus commune. Cette planche correspond si exactement avec celle si bien décrite par *Harvey*, qu'on pourroit croire que celle-ci a été prise de la même preparation:—*Infans in utero ut plurimum reperitur, adductis ad abdomen genibus, flexis retrorsum cruribus, pedibus decussatis, manibusque ad caput sublati, quarum alteram circa tempora vel auriculas, alteram ad genam detinet; ubi maculæ albæ, tanquam confricationis vestigia, in cute cernuntur: spina in orbem flectitur, caput ad genua incurvato collo propendet. Tali membrorum situ, qualem in somno per quietem quærimus.* Voyez *HARV. Exercitat. de Partu.*

Rien n'est plus juste que la description de *Harvey*, mais en même tems nous pouvons ajouter, que comme c'est notre position avant d'être né, c'est aussi celle que nous prenons dans les infirmités de l'age.











*F. P. Nodder delin.*

*W. Skelton sculp.*

Publiſh'd as the Act directs, by D<sup>r</sup> Thomas Denton, 25, Feb. 1787.



### A Twin *Placenta* with the Membranes.

AFTER a slight injection of this *Placenta*, the Membranes were distended with horse-hair; and when dried, the subject was placed before the artist. The drawing is therefore somewhat formal, not admitting of so much elegance, either in the design or execution, as is observable in some of the foregoing prints. But the partition of the Membranes into chambers for the accommodation of the two children is preserved distinctly, and that is the great object of the plate.

I do not know, or recollect, that any engravings have hitherto been made or published of *Ova*, in which there were two, three, or more children, either in early pregnancy, or, at the full period of utero-gestation. I therefore recommend this whole subject, in which there may be some peculiarities and certainly are many varieties, to those Gentlemen, who may meet with opportunities of investigating it, as entirely new, and as affording them room for acquiring reputation by attending to a very useful and curious part of natural history.

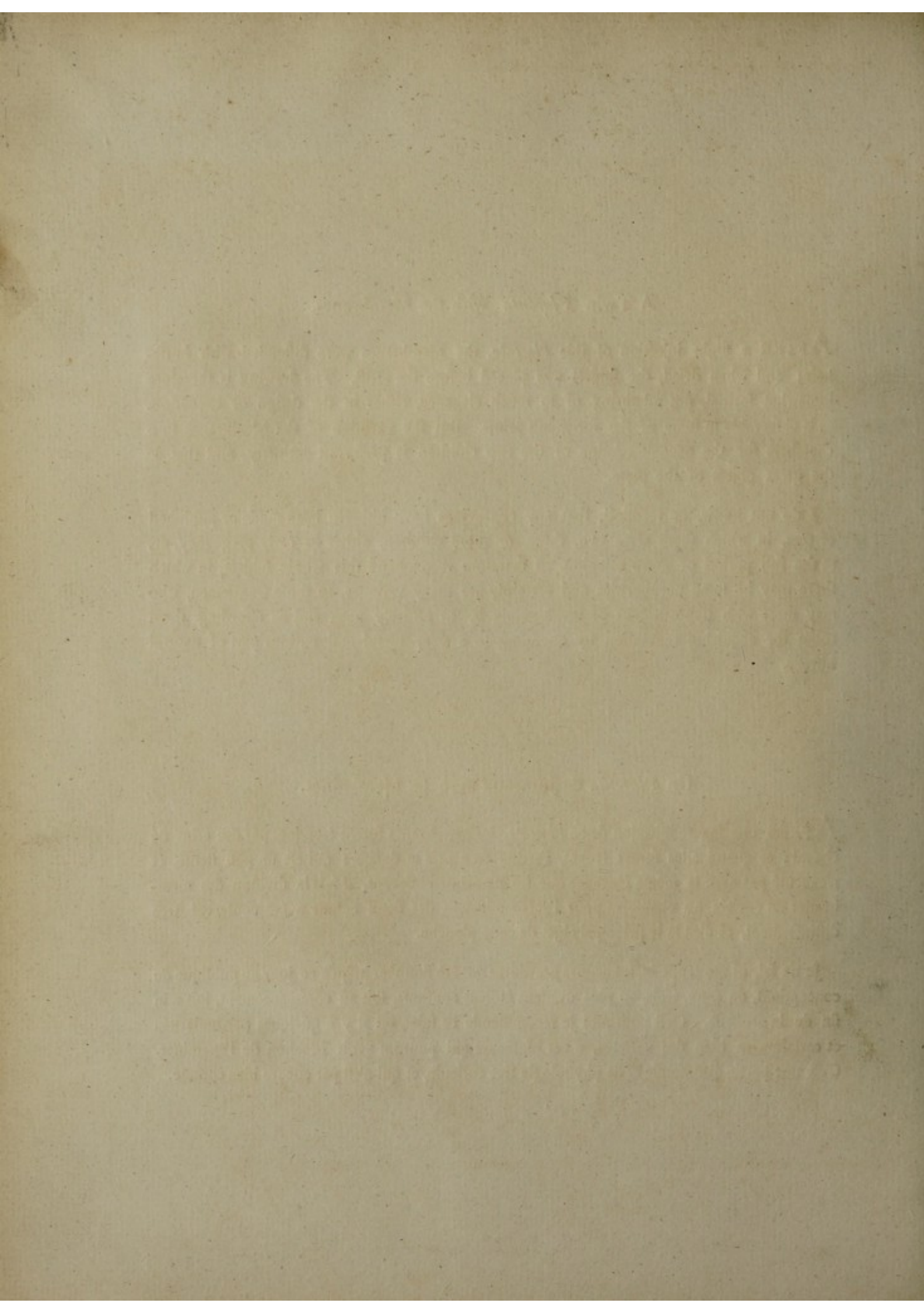
---

### Un *Placenta* de Jumeaux avec les Membranes.

APRES une legere injection de ce *Placenta*, les Membranes furent étendues par des crins de cheval; et quand elles furent sèches, l'artiste en a pris le dessein; qui est un peu flenté, et n'exécuté pas avec la même élégance que les planches ci-devant. Mais la division des membranes en cavités ou chambres pour l'accomodement des deux enfans a été conservée tres distinctement, et c'est là le principal objet de cette planche.

Je ne fai, ni me rappelle, si aucunes graveures ont été données jusqu'à ce jour au publique de conceptions, ou deux, trois, ou plus d'enfans étoient continus, soit au commencement, soit a la fin de la grossesse. C'est pourquoi je recommande ce sujet, ou il y a quelques particularités et certainement bien des variétés, a ces Messieurs qui pourront avoir occasion de l'examiner. C'est une partie d'anatomie et de physiologie tres curieuse, et qui n'est par encore bien connue.











*R. Atkenson ad vivum pinxit.*

*W. Skelton sculpsit.*

Publith'd as the Act directs, by D<sup>r</sup> Thomas Denman, 23 Feb' 1788.



## Rupture of the *Uterus*.

THE person, from whom this drawing was taken, died suddenly in the act of parturition. I saw her a very short time before her death; and, no attempts having been made to extract the child, all the parts are exhibited precisely in the undisturbed state, in which they appeared on making a crucial incision through the integuments of the *abdomen*.

The case was an example of the spontaneous rupture of the *uterus*, at the posterior part, opposite the projection of the *sacrum*. The body of the child escaped into the cavity of the *abdomen*, the head remaining locked in the *pelvis*. The *fundus* and anterior part of the *uterus*, not being diseased or injured, had contracted properly after the exclusion of the child. The casual expansion of the right *Fallopian* tube with its *fimbriæ* upon the body of the child explains the relative situation of the parts, and gives additional beauty to the plate.

Many cases of the rupture of the *uterus* are recorded by different writers, especially by *Bonetus* in his *Sepulchretum*, and by *La Motte*; but I believe no just engraving of the subject hath been published. There is yet wanting a representation of a rupture at the anterior part of the *uterus*; which sometimes happens, though far less frequently than at the posterior part. For the completion of the subject it would also be necessary to delineate some of the varieties, together with the state of the *uterus* at the ruptured part. But of the rupture of the *uterus* the instances are so rare, that what remains to be done must be finished by the labours of different anatomists and practitioners.

For an account of the symptoms which attend the rupture of the *uterus*, and the conduct, which it may be necessary to pursue, see an Essay published by my worthy friend Dr. *Andrew Douglas*.

---

### La Déchirure de la Matrice.

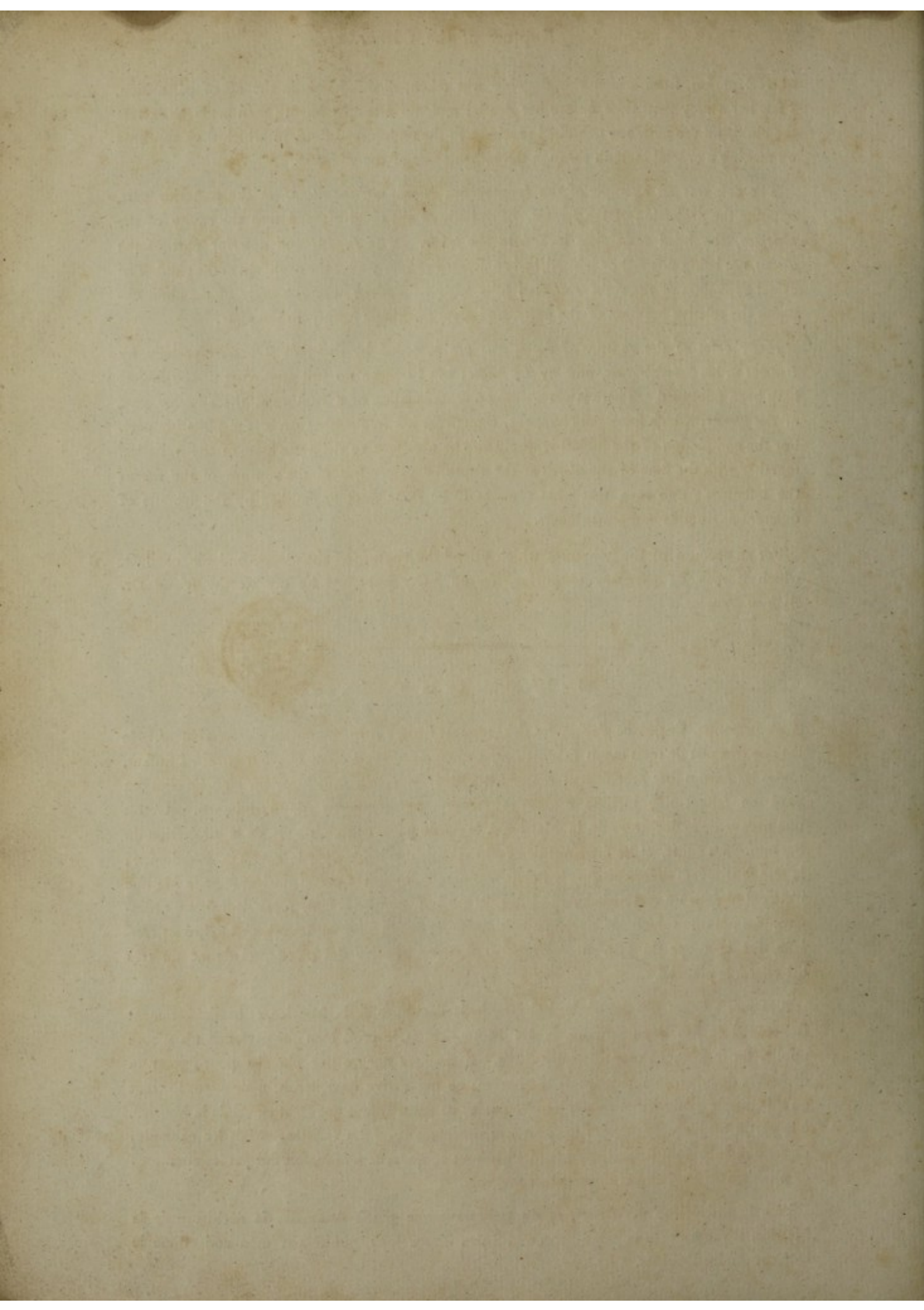


LA personne, de qui ce dessein fut tiré, mourut subitement au moment d'accouchement. Je l'ai vûe très peu de tems avant sa mort; et, comme on n'avoit point essayé d'extraire l'Enfant, toutes les parties sont précisément représentées dans la même situation, dans laquelle elles ont paru en faisant une incision croisée au travers des tegumens de l'Abdomen. C'etoit une preuve de la déchirure de la Matrice à la partie postérieure, vis-à-vis de la projection du *Sacrum*. Le corps, et les membres de l'Enfant s'étoient échappés dans la cavité de l'Abdomen; la tête se trouvant enfermée dans le *Pelvis*. Comme le fond, et la partie antérieure de la Matrice n'étoient ni dans un état malade, ni blessés, ils avoient, comme il faut, repris leur figure ordinaire: La position casuelle de la trompe fallopienne, et de son morceau frangé, c'est à dire ses *Fimbriæ*, sur le corps du l'Enfant explique la situation relative des parties, et donne un très bel effet à la planche.

Plusieurs auteurs ont donné des histoires de la déchirure de la Matrice, et particulièrement *Bonetus* dans son *Sepulchretum*, et *La Motte*. Mais je crois bien que personne n'a encore publié, sur ce sujet, une représentation juste. Il manque encore une planche pour figurer la déchirure de la partie antérieure de la Matrice; ce qui arrive quelquefois, mais moins souvent qu'à la partie postérieure. Pour rendre parfait ce sujet, il faut que l'état actuel de la Matrice, à la partie déchirée soit tracé; et, peut-être, quelques unes des variétés. Mais les exemples de cette maladie sont si rares, qu'il faudra que tout ce qui reste à faire, soit fini par les attentions de plusieurs Anatomistes et d'autres Accoucheurs.

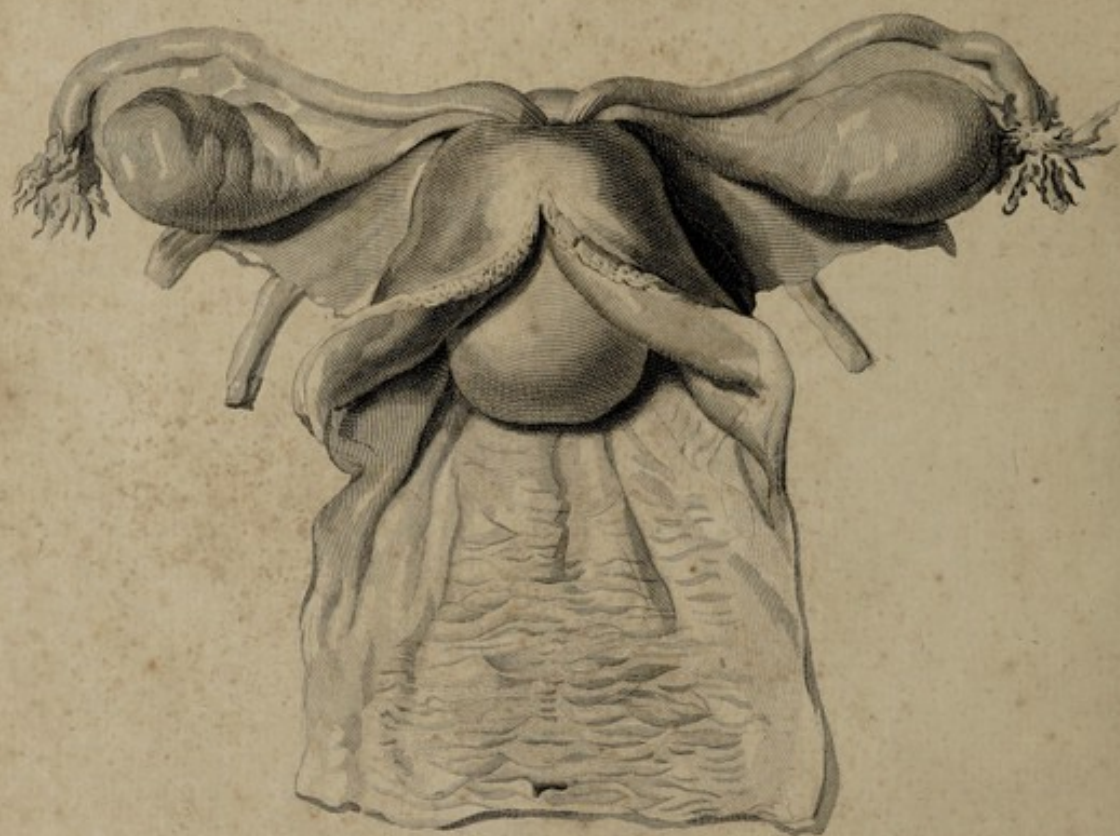
Pour la description des signes, et du traitement que puisse demander la déchirure de la Matrice, il vaudra bien la peine lire un discours sur ce sujet, publié par mon ami estimé le Docteur *André Douglas*.











*F. Barne ad vivum delineavit.*

Publiſh'd as the Act directs, by D<sup>r</sup> Tho<sup>s</sup> Denman, 23. Feb<sup>r</sup> 1788.

*W. Skelton sculp.*



## Inversion of the *Uterus*.

OF the inversion of the *uterus* many accounts have been published, particularly by *Ruyfch*, who has also given a drawing of it soon after the accident; but this is not sufficiently exact to convey much information. There is likewise in that very correct and splendid work of the late Dr. *William Hunter*, the *Anatomia Uteri Humani Gravidi*, a plate, which represents the state of the surface of the *uterus* immediately after its inversion.

I was called to the patient, from whom this drawing was afterwards taken, soon after her delivery, when she was supposed to be in extreme danger from an hemorrhage. I very imprudently neglected to take an examination *per vaginam*, so that the inversion was not discovered till near twenty-four hours after the accident; when the repeated attempts I made, with all the address of which I was master, and all the force I dared to exert, failed to reduce it. The *uterus* continued inverted, but the patient survived, and lived several months; though she was, for the remainder of her life, subject to profuse uterine discharges, by which she was at length exhausted. I have however seen several instances of women, with the *uterus* inverted, living for many years in tolerable health. In this plate the posterior part of the *vagina* is laid open: The *uterus* seems to be diminished in its size, and the *ovaria* to be somewhat enlarged. The altered position and direction of the *Fallopian* tubes is well represented, and by these all the other parts are explained. The inverted surfaces of the *uterus*, though lying in contact, had not adhered.

For permission to take a drawing from this subject I was obliged to Mr. *Hall*, Teacher of Anatomy, in whose collection the preparation is preserved.



---

## La Perversion, ou l'Inversion de la Matrice.

PLUSIEURS Auteurs ont donné des descriptions de l'inversion de la matrice, et, parmi les auteurs, *Ruyfch*; qui en a donné un dessin, qui représente son apparence immédiatement après l'événement; mais il n'est pas assez juste pour bien nous instruire. Dans l'ouvrage exact et splendide de M. *W. Hunter* il y a aussi une planche, qui représente l'état de la surface de la Matrice après son inversion.

Je me suis rendu chez la personne, de qui ensuite fut tiré ce dessin, peu de tems après son accouchement; on crut qu' Elle étoit dangereusement malade à cause de la perte du sang. Je néglois bien imprudemment d'examiner le vagin, de sorte qu'il y avoit vingt-quatre heures avant que l'inversion fût découverte: Je me servis de toute l'art dont j'étois capable, et de toute la force que j'osois employer; tout étoit inutile; je ne pouvois pas réduire la matrice; Elle continua dans la situation inversée: Cependant la malade survécut quelques mois, assujettie pourtant, le reste de sa vie, à des décharges excessives de la matrice; lesquelles étoient la cause de sa mort. Néanmoins j'ai vu plusieurs femmes, dont la matrice étoit inversée, qui ont vécu plusieurs Années en assez bonne santé. Dans cette planche la partie postérieure du vagin est divisé; la matrice y semble d'être un peu diminuée, et les ovaires un peu agrandis. La direction changée des trompes Fallopiennes est bien marquée, et par celles toutes les autres parties sont expliquées.

Je suis obligé à M. *Hall*, anatomiste, dans le cabinet du quel cette préparation est conservée, pour la permission d'en prendre ce dessin.



