

**The unique and splendid effects of Fonthill Abbey : catalogue of the extensive assemblage of costly and interesting property, which adorns this magnificent structure ... which will be sold by auction, by Mr. Phillips, at the Abbey, on Tuesday, the 23d of September, 1823 ... and on Thursday, 16th of October.**

### **Contributors**

Fonthill Abbey (Wiltshire, England)

### **Publication/Creation**

[London] : [J. Davy], [1823]

### **Persistent URL**

<https://wellcomecollection.org/works/dpxktea8>

### **License and attribution**

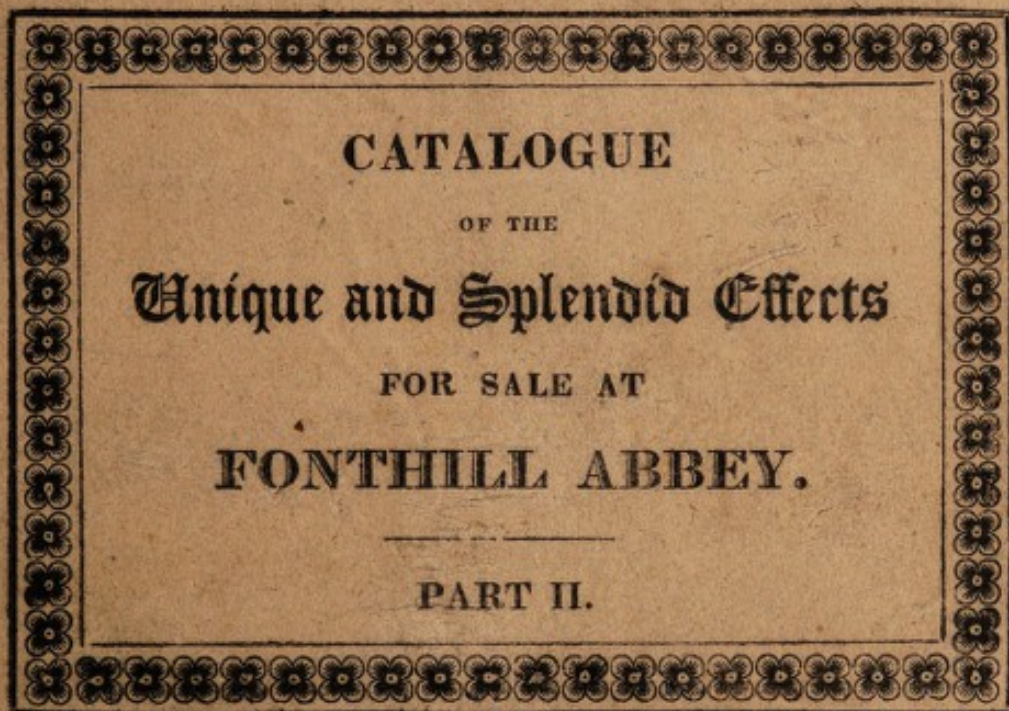
This work has been identified as being free of known restrictions under copyright law, including all related and neighbouring rights and is being made available under the Creative Commons, Public Domain Mark.

You can copy, modify, distribute and perform the work, even for commercial purposes, without asking permission.



Wellcome Collection  
183 Euston Road  
London NW1 2BE UK  
T +44 (0)20 7611 8722  
E [library@wellcomecollection.org](mailto:library@wellcomecollection.org)  
<https://wellcomecollection.org>


CL



Keep this -

Northwick



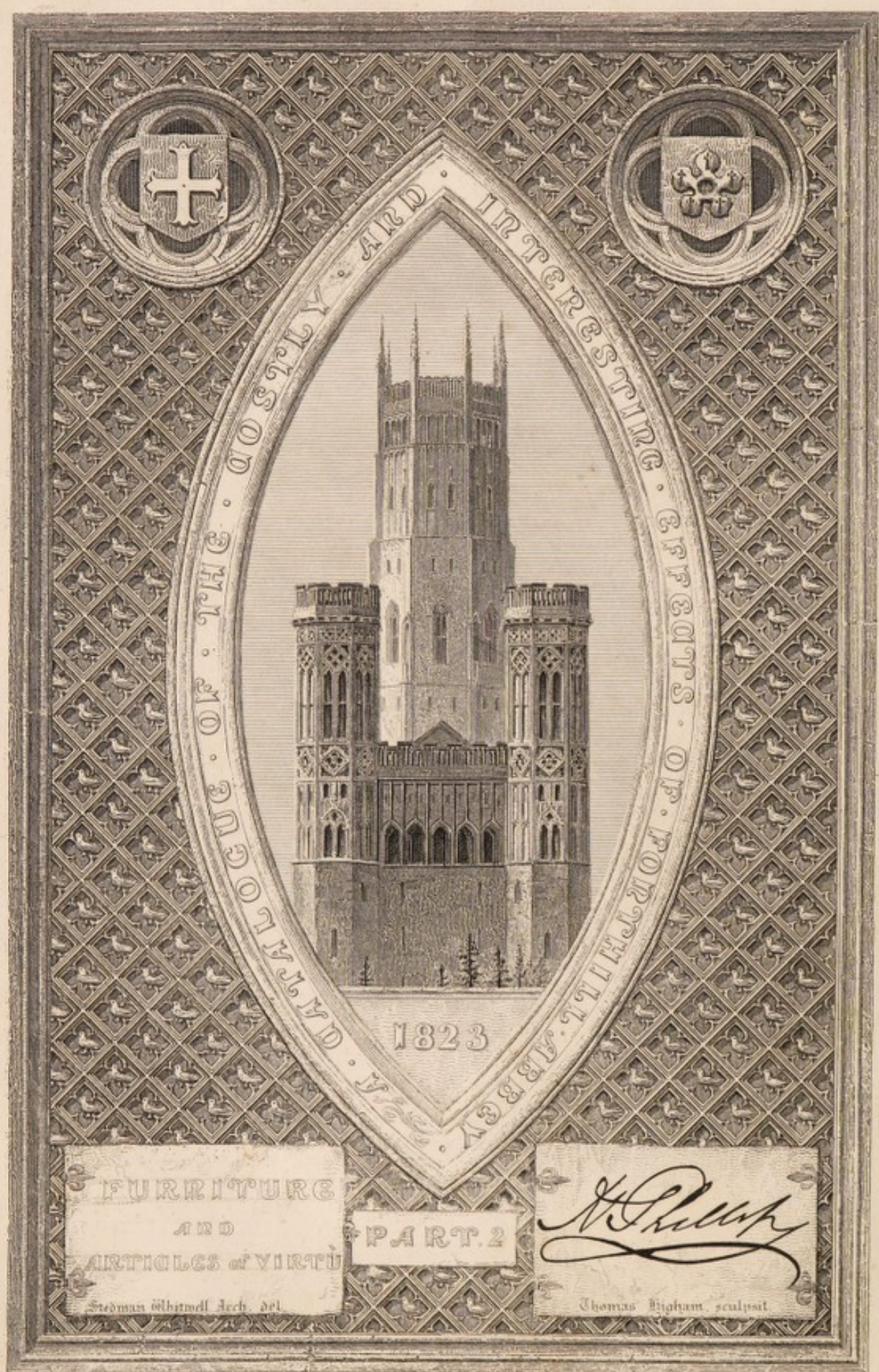


Digitized by the Internet Archive  
in 2018 with funding from  
Wellcome Library

<https://archive.org/details/b30375782>

61453/P





FURNITURE  
AND  
ARTICLES OF VIRTUE

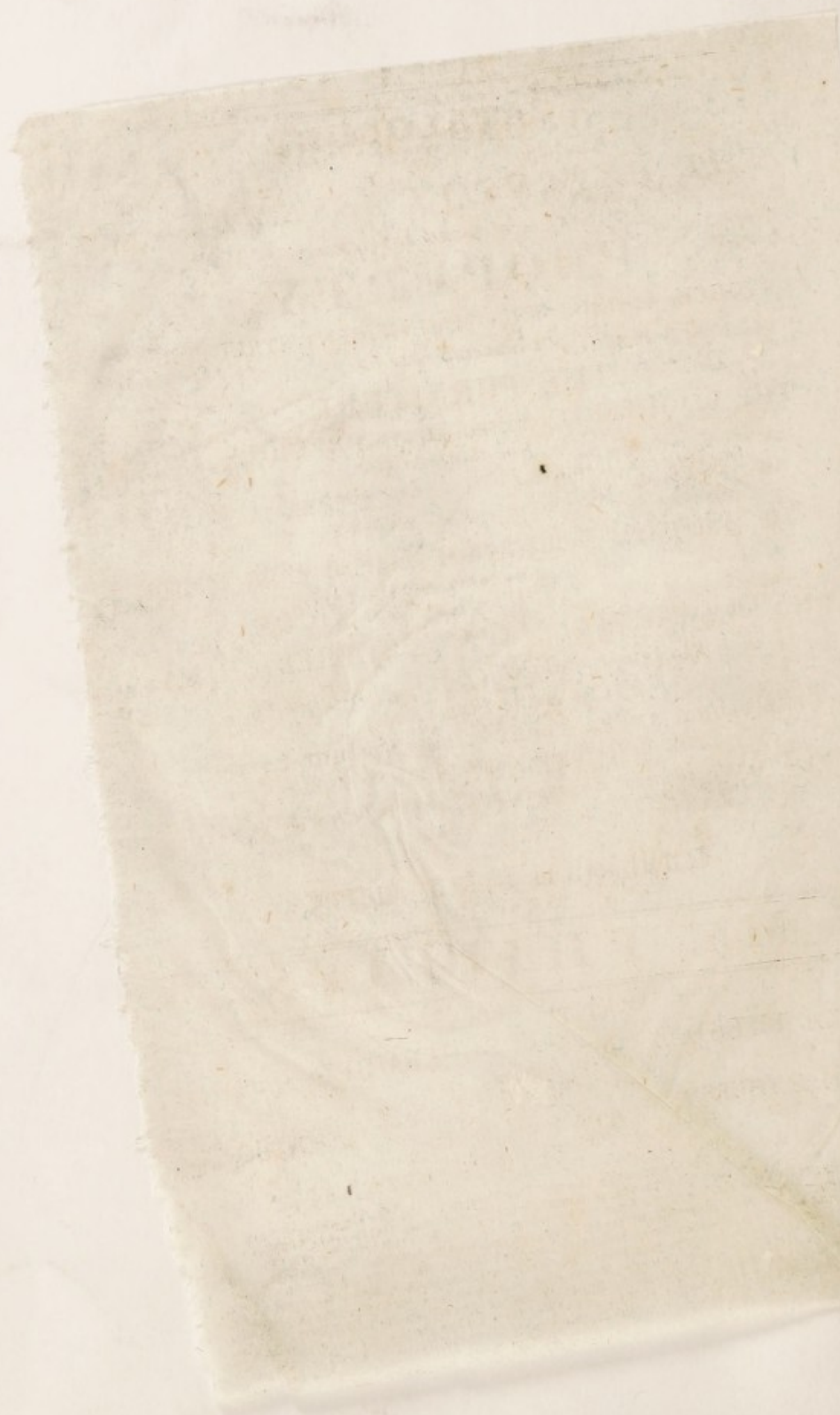
PART 2

Samuel Whitwell Arch. del.

*Thomas Higham*

Thomas Higham, sculptor





THE UNIQUE AND SPLENDID EFFECTS  
OF  
**FONTHILL ABBEY.**

---

**CATALOGUE**  
OF  
**THE EXTENSIVE ASSEMBLAGE**  
*of Costly and Interesting*  
**PROPERTY,**

WHICH ADORNS THIS MAGNIFICENT STRUCTURE;

EMBRACING PART OF

**THE FURNITURE;**

**THE BIJOUTERIE, COMPOSED OF PRECIOUS GEMS;**

THE INIMITABLE

*Carvings in Ivory by Fiamingo and Benvenuto Cellini;*

THE BRONZES AND MARBLES;

**The Matchless Collection of Raised Gold Japan,**  
And elegantly mounted AGATES;

THE

**RARE ORIENTAL, JAPAN & SEVRES CHINA;**

*The sumptuously Gilt and Chased PLATE;*

*The Ancient Stained Glass;*

THE EBONY, AMBER, FLORENTINE AND BUHL CABINETS,

THE MINIATURES, CAMEOS AND INTAGLIOS;

*The Miscellaneous Elegancies, and Objects of Taste and Vertu;*

And also part of the HOUSEHOLD LINEN, and CELLAR of WINES.

~~~~~  
**Which will be Sold by Auction,**

BY

---

**MR. PHILLIPS,**

---

AT THE ABBEY,

On TUESDAY, the 23d of SEPTEMBER, 1823,

And Seven following Days,

And on THURSDAY, 16th of OCTOBER, and Four following Days,

(Sundays and Mondays excepted)

*At HALF-PAST TWELVE each Day precisely.*

TICKETS for VIEWING (at One Guinea each, to admit Two Persons on any two Days except Sundays)—Also, TICKETS with CATALOGUES, to admit Three Persons every Day, except Sundays, during the View and Sale, at FIVE GUINEAS EACH, may be had at THE ABBEY GATES; the Lamb Inn, Hindon; Messrs. Brodie and Dowding, and Mr. Earle's Libraries, Salisbury; Mr. Skelton's Library, Southampton; White Lion and York Hotels, Bath; Mr. Frost's Library, Bristol; Mr. Thomas's Library, Weymouth; Mr. Rutter's Library, Shaftsbury; Bath Arms, Warminster; the Black Horse, Antelope, White Hart, and Lamb Inns, Salisbury; the Gazette Office, Devizes; and at Mr. PHILLIPS's, No. 73, New Bond Street, London, where the THREE CATALOGUES, complete, may be had at 12s.; or the First and Second Parts at 5s. each, and the Third Part at 2s. 6d.



## CONDITIONS OF SALE.

---

*First . .* The highest bidder to be the buyer, and if any dispute shall arise between two or more bidders, the lot so disputed shall be immediately put up again and resold.

*Second . .* No person to advance less than 1s.—above five pounds 5s.—and so on in proportion.

*Third . .* The purchasers to give in their names and places of abode, and to pay down £25. per cent. if required, in part of payment of the purchase money.

*Fourth .* The lots to be absolutely cleared away, with all faults and errors of description, at the purchaser's expence, without reference to the identity of Subject or Master, within three days after the sale.

*Fifth . .* *As this auction is made on condition of prompt payment, the remainder of the purchase-money to be absolutely paid on or before the Delivery, in the manner to be arranged.*

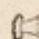
*Sixth . .* Upon failure of complying with the above conditions, the money deposited in part of payment shall be forfeited; all lots uncleared within the time aforesaid, shall be re-sold by public or private sale, and the deficiency (if any) attending such re-sale, shall be made good by the defaulter at this sale.

*Lastly* But should any purchaser or purchasers obtain their lot or lots, and by any neglect or evasion omit paying for the same, such purchaser or purchasers shall pay five per cent. interest on the amount of the said purchase, from the day of sale, until the amount of the said bill shall be discharged, and also all charges for the removal of such lots as may not be cleared within the time aforesaid.

---

Mr. PHILLIPS *will be happy to execute any Commission for Gentlemen unable to attend this sale, upon receiving their written instructions.*

---

 *Approved Bills, at three and six months' date, from the day of sale, WITH INTEREST, will be accepted for two-thirds of the purchase-money.*

---

*N. B.* Mr. PHILLIPS *notifies, that arrangements are made to accommodate purchasers, by PACKING and REMOVING their purchases to London, or any part of the kingdom, should it be required.*

## INVITATION TO VISITORS.

---

Immediately on entering the Barrier Gate commences the Carriage Route of the Grounds of Fonthill Abbey, which the Public are respectfully requested to follow, and ADHERE to, as it will be found to embrace all the most favourite points of

### VIEW OF THE ABBEY, THE AMERICAN GARDENS, THE LAKES,

and the surrounding Country ; and is also the Route especially referred to by Mr. RUTTER, in his work, entitled,

“FONTHILL, and its ABBEY DELINEATED.”

The Public are also entreated not to cut, or admit of the cutting, of any *Trees or Flowers* ; or to digress from the ROUTE, on which they will be directed at every point.

---

The following is submitted as the *best Guide* for passing through the whole of the ABBEY.

---

- I. .... The Eastern Entrance
- II. .... The Southern Entrance Hall
- III. .... The Oak and Tapestry Dining Parlour
- IV. .... Passage—ascend to
- V. .... Nelson's Turret
- VI. .... The Western Corridor
- VII. .... The Oak Library
- VIII. .... The Cedar Boudoir
- IX. .... Anti Room
- X. .... Anti Chamber
- XI. .... The Eastern Corridor



## THE GUIDE.

- XII. ~~~~~The Gallery Cabinet  
(return through XI. Eastern Corridor, and X. Anti Chamber, to)
- XIII. ~~~~~The Vaulted Library
- XIV. ~~~~~The Chintz Boudoir—descend
- XV. ~~~~~Latimer Turret—to
- XVI. ~~~~~The Vestibule of St. Michael's Gallery
- XVII. ~~~~~The Grand Saloon, or Octagon
- XVIII. ~~~~~The Western Vestibule
- XIX. ~~~~~The Great Hall  
(descend upon Lawn, then return through XIX. Great Hall, XVIII. Western Vestibule, XVII. Grand Saloon, to)—
- XX. ~~~~~The Eastern Vestibule
- XXI. ~~~~~Portal beneath the Organ Gallery
- XXII. ~~~~~Great Dining Room
- XXIII. ~~~~~Crimson Drawing Room
- XXIV. ~~~~~The Grand Drawing Room
- XXV. ~~~~~Becket's Passage
- XXVI. ~~~~~Octagon Cabinet  
(return through XXV. Becket's Passage, to)
- XXVII. ~~~~~Northern Passage
- XXVIII. ~~~~~The Crimson Breakfast Parlour  
(return to XXVII. Northern Passage, and proceed to)
- XXIX. ~~~~~The Porcelain Room
- XXX. ~~~~~Lobby
- XXXI. ~~~~~Vestibule of King Edward's Gallery
- XXXII. ~~~~~King Edward's Gallery
- XXXIII. ~~~~~The Vaulted Corridor
- XXXIV. ~~~~~The Sanctuary
- XXXV. ~~~~~The Oratory, back to XXXIV. Sanctuary, and up
- XXXVI. ~~~~~Lancaster Turret—to
- XXXVII. ~~~~~Upper Lancaster Room
- XXXVIII. ~~~~~The Lancaster State Bed Chamber
- XXXIX. ~~~~~The Lancaster Anti Room
- XL. ~~~~~The Lancaster Gallery
- XLI. ~~~~~The Tribune Room—ascend
- XLII. ~~~~~Lancaster Stair Case—to
- XLIII. ~~~~~The Duke's Chamber  
(descend XLII. Stair Case to)
- XLIV. ~~~~~Duchess' Anti Chamber
- XLV. ~~~~~Dressing Room
- XLVI. ~~~~~Passage



## THE GUIDE.

XLVII. ~~~~The Duchess' Chamber

(return through XLVI. Passage, XLV. Dressing Room, XLIV. Anti Chamber—descend XLII. Stair Case to XXX. Lobby, XVII. Grand Saloon, and proceed to XVIII. Western Vestibule to)

XLVIII. ~~~~Lobby

XLIX. ~~~~Great Stair Case Tower

L. ~~~~The North Western Arcade

LI. ~~~~The Western Nunnery

LII. ~~~~The South Western Arcade

LIII. ~~~~The Southern Nunnery

LIV. ~~~~The South Eastern Arcade

LV. ~~~~The Eastern Nunnery

LVI. ~~~~The North Western Arcade

LVII. ~~~~The Northern Nunnery

(pass through L. North Western Arcade, to XLIX. Great Stair Case Tower, to)

LVIII. ~~~~Platform of the Great Stair Case Tower

LIX. ~~~~The Central Tower—ascend to

LX. ~~~~Gazelo, or Star Chamber

LXI. ~~~~The Tower Gallery

(descend LIX. Central Tower, LVIII. Platform, XLIX. Stair Case to Basement, and enter XIX. Hall, and round Foot of Stairs to)

LXII. ~~~~Western Cloisters

LXIII. ~~~~Fountain Court

LXIV. ~~~~Anti Room

LXIX. ~~~~Gothic Cabinet

LXX. ~~~~Lobby

LXXI. ~~~~Terrace

(crossing LXX. Lobby, LXIX. Gothic Cabinet, and LXVIII. Lobby, to)—

LXXII. ~~~~Western Yellow Drawing Room

LXXIII. ~~~~Eastern Ditto

LXXIV. ~~~~St. Michael's Gallery, to

(GRAND SALOON OR OCTAGON, AND REPOSE.)





## ARRANGEMENT OF SALE.

---

|          |                              |                            |
|----------|------------------------------|----------------------------|
| 1st Day  | Books and Books of Prints    | Tuesday, 9th September.    |
| 2d Day   | Ditto Ditto                  | Wednesday, 10th September. |
| 3d Day   | Ditto Ditto                  | Thursday, 11th September.  |
| 4th Day  | Ditto Ditto                  | Friday, 12th September.    |
| 5th Day  | Ditto Ditto                  | Saturday, 13th September.  |
| 6th Day  | Ditto Ditto                  | Tuesday, 16th September.   |
| 7th Day  | Ditto Ditto                  | Wednesday, 17th September. |
| 8th Day  | Ditto Ditto                  | Thursday, 18th September.  |
| 9th Day  | Ditto Ditto                  | Friday, 19th September.    |
| 10th Day | Ditto Ditto                  | Saturday, 20th September.  |
| 11th Day | Unique and Splendid Effects, | Tuesday, 23d September.    |
| 12th Day | Ditto Ditto                  | Wednesday, 24th September. |
| 13th Day | Ditto Ditto                  | Thursday, 25th September.  |
| 14th Day | Ditto Ditto                  | Friday, 26th September.    |
| 15th Day | Ditto Ditto                  | Saturday, 27th September.  |
| 16th Day | Ditto Ditto                  | Tuesday, 30th September.   |
| 17th Day | Ditto Ditto                  | Wednesday, 1st October.    |
| 18th Day | Ditto Ditto                  | Thursday, 2d October.      |
| 19th Day | Books and Books of Prints    | Friday, 3d October.        |
| 20th Day | Ditto Ditto                  | Saturday, 4th October.     |
| 21st Day | Ditto Ditto                  | Tuesday, 7th October.      |
| 22d Day  | Ditto Ditto                  | Wednesday, 8th October.    |
| 23d Day  | Ditto Ditto                  | Thursday, 9th October.     |



# ARRANGEMENT OF SALE.

|          |                                         |       |                          |
|----------|-----------------------------------------|-------|--------------------------|
| 24th Day | ~~~~~ Pictures and Miniatures ~~~~~     | ~~~~~ | Friday, 10th October.    |
| 25th Day | ~~~~~ Ditto      Ditto ~~~~~            | ~~~~~ | Saturday, 11th October.  |
| 26th Day | ~~~~~ Ditto      Ditto ~~~~~            | ~~~~~ | Tuesday, 14th October.   |
| 27th Day | ~~~~~ Ditto      Ditto ~~~~~            | ~~~~~ | Wednesday, 15th October. |
| 28th Day | ~~~~~ Unique and Splendid Effects ~~~~~ | ~~~~~ | Thursday, 16th October.  |
| 29th Day | ~~~~~ Ditto      Ditto ~~~~~            | ~~~~~ | Friday, 17th October.    |
| 30th Day | ~~~~~ Ditto      Ditto ~~~~~            | ~~~~~ | Saturday, 18th October.  |
| 31st Day | ~~~~~ Ditto      Ditto ~~~~~            | ~~~~~ | Tuesday, 21st October.   |
| 32d Day  | ~~~~~ Ditto      Ditto ~~~~~            | ~~~~~ | Wednesday, 22d October.  |
| 33d Day  | ~~~~~ Books and Books of Prints ~~~~~   | ~~~~~ | Thursday, 23d October.   |
| 34th Day | ~~~~~ Ditto      Ditto ~~~~~            | ~~~~~ | Friday, 24th October.    |
| 35th Day | ~~~~~ Ditto      Ditto ~~~~~            | ~~~~~ | Saturday, 25th October.  |
| 36       | D.                                      | D.    | Friday 28                |
| 37.      | D.                                      | D.    | Wednesday 29             |

## *Eleventh Day's Sale,*

TUESDAY, the 23d of SEPTEMBER, 1823,

Commencing at Half-past Twelve precisely.

---

*From Lot 1 to Lot 120, will be Sold this Day,*  
Being the **FIRST DAY** of **FURNITURE.**

---

### *Porcelane Room. No. 29.*

#### CHINA, JAPAN, AND MISCELLANEOUS ELEGANCIES.

- LOT **S**
- 1 **SIX** Japan heron-pattern embossed dishes
  - 2 Twelve burnt-in dishes in compartments, flowered
  - 3 Twelve ditto ditto
  - 4 Sixteen ditto, enamelled with insects and birds
  - 5 Seven embossed soup plates with plants and rich borders
  - 6 Eighteen dishes, various, small
  - 7 A tea and coffee set (French), 9 tea cups and saucers, 5  
coffee ditto, bason and sugar bason
  - 8 Two Japan bottles, burnt-in foliage and blue flowers
  - 9 Nine chocolate cups and saucers of egg-shell China,  
blue lotus pattern
  - 10 Two butter pots on feet, and a bason, cover and stand, of  
Japan—rare and fine
  - 11 A gilt *bronze* of a Warrior
  - 12 A pair of *bronzes* of Cicero and Companion, finely  
draped, on fluted columns
  - 13 Six Japan cups and saucers, red and gold, with land-  
scapes



- 14 Four basons, various
- 15 Two ditto and covers, and 2 cups and saucers
- 16 A tea pot and stand, 7 figured egg shell cups and saucers,  
5 of one pattern, 2 of a different
- 17 Two basons and covers, sea-green mandarin
- 18 A curious specimen of ORIENTAL PORCELANE, formed  
as a SHELL, appropriately mounted on a rock and  
sea shell, in bronze and or-mat
- 19 An ebony Pembroke table with drawer, on castors, with  
solid twisted legs, the top brass bound
- 20 Two Raphael ware plates with historical paintings
- 21 Two fine enamelled dishes scalloped
- 22 Two octagonal burnt-in dishes, blue and gold, with  
flowers
- 23 One large Japan bowl, cover and dish
- 24 Eight egg-shell cups and saucers, and bason
- 25 A pair of superb Japan dishes, with shaped edges
- 26 An inlaid ebony, teak-wood, and ivory chest, with  
or-molu ornaments
- 27 Six melange coffee cans and stands
- 28 Three jars of Cracklin China, blue ground
- 29 Nine enamelled plates
- 30 Fifteen burnt-in plates, viz. 6 and 9, two patterns
- 31 *Two cylindrical China bottles, red enamel, with figures*
- 32 An excellent repeating BRACKET CLOCK, in a rich or-  
molu case
- 33 An ebony Pembroke table on castors, with solid twisted  
legs, the top brass bound
- 34 Five basons, various
- 35 A very curious egg-shell lantern, damaged
- 36 Three fine Japan jars and covers, flowers and birds, with  
rich border, viz. 2 and 1
- 37 Three pairs of Japan plates, of fine quality
- 38 Four dishes various
- 39 A rare blue and gold bowl and stand with enamelled  
border



- 40 Two finely enamelled flat bowls, oval, richly enamelled
- 41 An olive-ground bottle, *mounted with or-molu*
- 42 Two Japan basons with medallions on gilt stands
- 43 Ten burnt-in China plates, very rich in colour
- 44 Two of the scarce *yellow and gold Dresden* two-handled chocolate cups and saucers, painted with medallions, landscapes and gold borders
- 45 Two very rare Japan cups mounted as milk and sugar buckets with silver rims, gilt and chased
- 46 Two matchless Japan dishes (12 inches) richly enamelled and painted with birds, flowers and figures
- 47 A Persian ware tazza and 2 plates
- 48 Twelve burnt-in plates
- 49 Nine enamelled plates, green, with flowers
- 50 Two very fine Japan flasks, 8 inches high
- 51 A gold Japan tray with fans, and mosaic ground
- 52 A *brilliant* CHIMNEY GLASS, 24 by 48, in black and gold frame
- 53 A pair of metal gilt and engraved moresque candlesticks
- 54 A pair of ditto
- 55 A pair, barometer and thermometer, in inlaid rose-wood cases, mounted
- 56 A small landscape in oils, with a figure, sun set, by HAYTER
- 57 A sea port with a multitude of figures—a high-finished drawing in water colours, BAUER, framed and glazed
- 58 A *black and gold* JAPAN colour box, with 17 trays and 24 bottles, filled with CHINESE colours and powders, and 20 hair pencils for an artist
- 59 A ditto box and 6 trays, inlaid with mother-o'pearl
- 60 A bronze bust of Venus, on pedestal of *serpentine* marble
- 61 A pair of satin-wood and ebony pedestals, formed as boxes
- 62 A curious wood coffer, with Antique figures *burnt-in*, lined with satin, and richly gilt ornaments



- 
- 63 A pair of half-fluted *bronze* columns, *elaborately chased and gilt in or-mat*
  - 64 Two extremely rare bottles with chimæras and plants, mounted in *silver*
  - 65 Two sea-green bottles with handles, and black borders
  - 66 *Four fine EGG-SHELL PLATES, red underneath, with flowers and butterflies*
  - 67 Four two-handled cups and saucers, (shaped,) pencilled with gold and flowers
  - 68 Two very delicate sea-green shaped bottles, mounted with or-molu, 11 inches high
  - 69 Two *precious* bottles, blue and gold, with birds and flowers, enamelled, in compartments, mounted with *silver*
  - 70 Two Japan China basons, of a very rare kind, mounted on or-molu stands
  - 71 A suite of three vases of scarce **EGYPTIAN GRANITE**, richly mounted in or-molu
  - 72 A pair of **LIBRARY CANDLESTICKS**, in bronze and or-molu, modelled from B. Cellini
  - 73 An ostrich egg, painted in subject from Teniers, with or-molu mount
  - 74 A set of 32 Oriental **IVORY CHESS MEN**, elaborately carved in a case
  - 75 A *Japan* trunk, inlaid with mother-o'pearl, and 2 small Japan boxes
  - 76 A *rare* and beautiful specimen of *gold japan*, formed as a BIRD, with a glass shade and stand
  - 77 Five circular fruit dishes, of Mandarin porcelane
  - 78 Three ditto, enamelled with figures, with perforated border
  - 79 A *sea green* CISTERN, enamelled in *moths, birds and fishes*
  - 80 A large blue and gold *Oriental* vase, mounted in *or-molu*
  - 81 A wash hand bason and bottle, enamelled with figures



- 
- 82 Two incrustated ware bottles, 2 turquoise-coloured figures,  
and 1 chocolate cup and cover, with gold flowers,  
embossed
  - 83 A curious tea pot and 1 ditto of crackled China
  - 84 A ditto ditto mounted in *silver*, and 1 ditto, blue  
and gold
  - 85 An ebony coffer, mounted in or-moulu, pannelled with  
fine specimens of Florentine mosaic
  - 86 Two rare and fine rose-coloured enamelled jars
  - 87 Sixteen plates of EGG-SHELL CHINA, delicately  
pencilled in landscapes
  - 88 Six very old, green and red enamelled plates
  - 89 A pair of *sexagon* shaped oriental bottles, the *rare tur-*  
*quoise* ground
  - 90 A red tortoiseshell *jewel coffer*, lined with velvet
  - 91 Six black and gold Japan lacquer basons, covers and trays
  - 92 A pair of ditto
  - 93 Six octagonal lacquered cups and trays
  - 94 A fine *bronze* of the *Gladiator Repellens*
  - 95 A rich *Buhl* pedestal to ditto
  - 96 A *Chinese* COMPASS in a case
  - 97 Two fine dishes of RAPHAEL'S ware
  - 98 Four *embossed sea-green* fruit plates, with waved edges
  - 99 Three Japan dishes, finely enamelled within and without
  - 100 Ten gold china cups and saucers, with wreaths of roses
  - 101 Two very fine OLD CHELSEA cups, gold ground,  
with pheasants on boughs, with fruit and flowers,  
on Brocadella plinths, mounted with or-molu
  - 102 Two old Seve butter-tubs and plates
  - 103 A Seve cabinet cup and saucer, 2 ditto and turquoise  
tray, with birds
  - 104 Two shaped trays, curious, and 5 enamelled cups and  
saucers
  - 105 Six plates, imitation of Dresden
  - 106 Two boxes and 3 pieces of modelled red ware and 2  
stone sculptured bottles

- 
- 107 Two Japan octagonal dishes, enamelled in compartments
  - 108 Two figured egg-shell jars
  - 109 Three pairs of (buff ground) enamelled cups and saucers
  - 110 Three noble Japan basons
  - 111 Twelve burnt-in China plates
  - 112 Six plates of red Japan lacquer, on wood, with landscapes on the borders
  - 113 Twenty-four fine OLD SEVE dessert plates
  - 114 A pair of red japan toilette boxes and covers, beautifully carved
  - 115 A dessert service of Japan pattern, viz. 20 plates and 8 compotiers
  - 116 A tea set of Japan pattern, viz. 10 cups and saucers, bason, sugar pot and 4 plates
  - 117 Four egg-shell basons and covers, finely pencilled in figures and landscapes
  - 118 Six choice Japan cups and saucers, 3 pairs
  - 119 Five French cabinet cups and saucers, small
  - 120 A fine bason of old Japan, on or-moulu rim, with feet of foliage of the same

*End of the Eleventh Day.*



## *Twelfth Day's Sale,*

WEDNESDAY, the 24th of SEPTEMBER, 1823,

Commencing at Half-past Twelve precisely.

---

*From Lot 121 to Lot 240, will be Sold this Day,*  
Being the **SECOND DAY** of FURNITURE.

---

*Porcelane Room, No. 29, continued.*

CHINA, JAPAN, AND MISCELLANEOUS  
ELEGANCIES.

- |     |                                                                                                                |
|-----|----------------------------------------------------------------------------------------------------------------|
| LOT |                                                                                                                |
| 121 | <b>A</b> N old and curious sea-green bottle and an inkstand                                                    |
| 122 | Two curious blue and white bottles, and 2 black, and<br>1 two-handled buff cups                                |
| 123 | Two large dragon bowls, enamelled, of old Japan china                                                          |
| 124 | Fourteen burnt-in plates with rich borders                                                                     |
| 125 | A fine enamelled bason and bottle, mounted in or-<br>moulu, engraved                                           |
| 126 | <i>Six most delicate and</i> <b>FINE EGG-SHELL PLATES,</b><br><i>flowered and with rich borders</i>            |
| 127 | <i>Three ditto (lady and children) red underneath</i>                                                          |
| 128 | Two precious enamelled bowl dishes, with <i>silver</i> han-<br>dles                                            |
| 129 | Eight waved enamelled cups and saucers                                                                         |
| 130 | Two cabinet coffee cups and saucers, gold <i>curiously</i><br><i>pencilled</i> by Manteaux of Paris            |
| 131 | Two gold-ground cabinet coffee cups and saucers, 1<br><i>painted in roses, 1 with tulips,</i> by Van Spandonck |
| 132 | An oval concave enamel on copper, representing Pru-<br>dence, from a design of Goltzius, framed                |



- 133 A pair of battles, in chiaro oscuro, enamels on copper, with initials H. P., in black frames, mounted with or-moulu
- 134 Two trays, 2 small cups and saucers, and tea pot, of royal Dresden, in landscapes
- 135 Twelve burnt-in china plates
- 136 Fifteen ditto
- 137 Twelve ditto ditto
- 138 Three old buff crackled bottles
- 139 Two French desert baskets
- 140 Seven burnt-in China dishes, 2, 2, and 3
- 141 Five Japan dishes, 2, 2, and 1
- 142 A Japan sugar pot and stand, and an enamelled bowl with butterflies
- 143 Ten beautiful and rich small Japan plates, handsomely shaped
- 144 A pair of noble Japan dishes

### *Upper Lancaster Room. No. 37*

*(Over Lancaster State Chamber.)*

- 145 A pair of ROSE-WOOD QUOIGNS, inlaid and decorated with bronze gilt, and marble slabs
- 146 A pair of VASES of Swedish porphyry, richly mounted
- 147 A brilliant PIER GLASS (*Vauxhall plate*) in a carved frame, japanned and gilt
- 148 A ditto, the companion
- 149 An excellent CLOCK, in a richly decorated bronze frame, gilt in *or-mat*
- 150 A capital full sized BILLIARD TABLE, carved MAHOGANY frame and standards, with 18 cues, 2 maces, 2 butts, marking board and balls
- 151 An elegant GRECIAN LAMP with a four-light patent burner, glass shade, chains, &c.



## USEFUL GLASS, RICHLY CUT.

- 152 A pair of richly cut water jugs
- 153 Two ditto
- 154 One ditto, and a pair of salts
- 155 *Eleven* ditto tumblers
- 156 A *suite* of TWELVE barrel-shaped finger glasses, with medallion for engraving a cypher
- 157 Six ditto, different pattern
- 158 A *suite* of four quart decanters
- 159 A pair of *diamond*-cut sugar basins, and a ditto cream-pail, with handle
- 160 Four richly cut circular fruit or confitures dishes
- 161 A ditto trifle or cake ditto, on pedestal, rich shell cut border
- 162 A pair of *cream* or *fruit* URNS, with covers and stand
- 163 Four plain finger glasses; a pair of cut *goblets*, and a pair of ditto *salts*
- 164 A *rich* DESERT SERVICE, consisting of fourteen COMPOTIERS in *sizes*, and a CENTRE, *superbly cut*
- 165 A handsome circular ditto FRUIT BOWL
- 166 A ditto diamond cut sugar basin
- 167 A *superbe* LIQUERE CASE, bound with brass, and patent lock, formed of beautiful king wood, containing three rich diamond cut bottles, and four glasses, with engine turned SILVER GILT caps and mountings

*Gothic Cabinet.* No. 69.

- 168 A Diptych, in two parts, separately framed in ebony, and glazed, being a pair of IVORY *carvings*, representing the Nativity and Adoration of the Kings
- 169 A pair of very fine *silver-gilt* bassi relievi scriptural subjects, in *ebony* frames, and or-moulu ornaments
- 170 A curious specimen of perforated *Arabian* work in metal gilt, and 7 small shells of cantharid colour



- 171 A very curious Chinese woodpecker, formed of the root of a tree
- 172 A pair of *ebony* glazed frames, each containing three small pannels of ivory, with plants and flowers, delicately carved out of the solid;—of Chinese workmanship
- 173 An engraved **IVORY COFFER**, mounted with metal gilt, lock and key, lined with purple velvet
- 174 A small Litany, or collection of Saints, exquisitely painted in miniature by *Giulio Clovio*—framed in ebony of Florentine work, inlaid with jaspers
- 175 A Chinese *lusus Naturæ*, mounted on a carved rose-wood stand, and a small figure carved in bamboo
- 176 The **MOUNTINGS** of the **KING** of **CANDY'S SWORD**, *very beautifully carved and chased in massive silver*
- 177 A pair of battles carved in *ivory*, framed and glazed
- 178 A very curious spice grater, finely carved in *box-wood*, with figures, arabesques and masks
- 179 A very curious pounce-box, in the shape of a frog, and a cupid upon a dolphin, *curious cinque cento bronzes*
- 180 Two figures of *Venus* and *Jupiter*, in bronze gilt, on a pedestal mounted with or-moulu
- 181 A pair of *Gothic* carvings in **IVORY**, representing the *Birth and Passion of our Saviour*, in ebony frames, glazed
- 182 An **IVORY cup and cover**, finely carved in relief, with subjects from the Cingalese mythology
- 183 AN **IVORY TANKARD** and **COVER**, *finely sculptured*, representing the Battle of the *Centaurs, Satyrs, &c.* in old mounting of *silver*, chased and gilt
- 184 An engraved ivory coffer, mounted in or-moulu, and lined with purple velvet
- 185 A wafer box of *Lumachello*, mounted in or-moulu
- 186 An hexagonal box of lacquered **Japan**, and another box of carved ivory



- 
- 187 A pair of or-moulu chased seals
  - 188 A *sardonyx* bust of Socrates, mounted on a chased plinth of or-moulu
  - 189 A plinth of *lapis lazuli*, with figure of Bacchus, in bronze gilt
  - 190 A pair of carved *rose-wood* trays, and 2 red and black Japan cups
  - 191 A LOCK and KEY, a very curious piece of mechanism, with a medal of LOUIS XIV. in *steel*, on the scutcheon
  - 192 A pair of carved *rose-wood* Chinese cups and 1 alabaster ditto
  - 193 A bust of Vespasian, in *rosso antico*, on a plinth of agate
  - 194 A double SNUFF BOX made of the *root* of AMETHYST, mounted in silver gilt
  - 195 A *Chinese* bamboo pencil case, carved, and a sitting figure carved in bamboo
  - 196 A curious bronze crab
  - 197 A serre papier of green PORPHYRY, surmounted by a sphynx
  - 198 A black and gold Japan bason, mounted on a rich or-moulu stand
  - 199 An agate cup and saucer
  - 200 A *fine* specimen of LAPIZ LAZULI, formed as an urn
  - 201 A *Chinese* GONDOLA, *exquisitely wrought in fine* GOLD, glass cover and pedestal
  - 202 A *silver gilt* table SNUFF BOX (of oval form) with sharply chased bas relief in top, and case to ditto
  - 203 A suite of four superbly carved and gilt WINDOW SEATS, covered with rich green velvet, fringed, *at per stool*
  - 204 A drawing, the *Interior* of the OCTAGON at *Fonthill Abbey*, by *Cattermole*
  - 205 A ditto, an *Exterior View* of the Abbey, by *Ditto*
  - 206 An oblong COFFER, formed of the *petrification* of the TAMARIND WOOD, richly mounted, with lock and key



- 207 A *rose-wood* TABLE with *porcelane* top, enamelled in *Moths* and *Flowers*, with a *lapiz lazuli* border
- 208 A RICH and HIGHLY ORNAMENTED CASKET of the very rare gold JAPAN, enriched with figures, flowers and landscapes, mounted with hinges and locks in *solid* GOLD, delicately chased, and with a tray of *avanturine* Japan. From the collection of the *Prince Charles of Lorraine*
- 209 FOUR emblematic Figures of the SEASONS, in ivory, and of superior execution
- 210 A Group of Venus and Cupid, in ivory
- 211 A ditto, Virgin and Child
- 212 A pair of *bisquit porcelane*, Groups of Flowers, framed and glazed
- 213 An or-molu fourteen-day repeating BRACKET CLOCK, by LE ROI of Paris, decorated with three Chinese Figures in *bronze*, coloured, *curious and valuable*

### ORIENTAL PORCELANE, &c.

#### *In the Porcelane Room. No. 29.*

- 214 A pair of *Raphael* ware salvers, mythological subjects
- 215 Three fine Japan cabinet tea pots, small
- 216 Five burnt-in and enamelled dessert plates, 4 scalloped and 1 plain
- 217 Two large and scarce buff enamelled basons
- 218 Nine various Japan China dishes, small
- 219 Two Japan jars and covers, with figures and flowers
- 220 Fifteen Japan China soup plates
- 221 A dish of old green enamel, with a matchless enamelled *Japan* bowl
- 222 Six coffee cans and saucers, various
- 223 Four Japan dessert plates
- 224 Two blue and gold-ground dishes with landscape and figures, and animals on the border
- 225 Six burnt-in dishes, 4 and 2
- 226 Five ditto Japan soup plates



- 
- 227 Eleven plates and dishes and a large bowl, enamelled
- 228 *A handsome FRENCH BREAKFAST SERVICE*, consisting of 12 basins and saucers, bowl, sugar urn, ewer for cream, and 12 plates, enamelled in roses and heart's ease
- 229 *An elegant TEA and COFFEE SET*, containing 12 tea cups and 12 saucers, 8 coffee cups, sugar and cream pots, bowl and 2 plates, fancy pattern
- 230 Eleven plates, enamelled very curious and fine, the border exhibiting the 8 lesser Divinities of China
- 231 Eight Japan cups and saucers of very fine quality
- 232 Two octagonal Japan basins, with pomegranates and lotus plants
- 233 Two uncommonly fine dishes, enamelled, and with gold flowers
- 234 Four Japan fruit baskets
- 235 Five *very rare* enamelled plates with horses and figures
- 236 A small ebony coffer with *silver* pannels, engraved with the History of Joseph
- 237 A circular tray with 4 egg cups, beautifully enamelled in blue and gold
- 238 Four japan lacquer basons and covers
- 239 A *fine* GOLD JAPAN TOILETTE BOX, in four compartments, mounted in or-molu
- 240 Two fine Raphael ware medallions, historical

*End of the Twelfth Day.*

## *Thirteenth Day's Sale,*

THURSDAY, the 25th of SEPTEMBER, 1823,

Commencing at Half-past Twelve precisely.

*From Lot 241 to Lot 360, will be Sold this Day,*  
Being the **THIRD DAY** of FURNITURE.

### CHINA, &c.

|         |                                                                                                                        |            |
|---------|------------------------------------------------------------------------------------------------------------------------|------------|
| LOT 241 | SIX unique stork-pattern and sea green shaped dishes                                                                   | 1 . 13     |
| 242     | Six scalloped enamelled fruit dishes                                                                                   | 1 . 7 . 6  |
| 243     | Four burnt-in ditto                                                                                                    | 1          |
| 244     | Ten enamelled carp-pattern, scarce                                                                                     | 1 . 11     |
| 245     | Two Raphael ware plates, with historical paintings                                                                     | 1 . 16     |
| 246     | Two very fine fluted Japan basons with partridges and flowers in gold, on black ground                                 | 1 . 5      |
| 247     | A rose wood liquere case with 7 bottles, <i>silver</i> gilt mountings                                                  | 2 . 4      |
| 248     | Two brown and gold French cabinet cups and saucers                                                                     | 1 . 5      |
| 249     | Two <i>very fine French plates</i> , painted in flowers                                                                | 1 . 11     |
| 250     | Two Japan jars, blue and gold, with rich borders                                                                       | 13 . 2 . 6 |
| 251     | Thirteen burnt-in and enamelled plates                                                                                 | 1 . 16     |
| 252     | Ten burnt-in fruit plates, 6 and 4                                                                                     | 2 . -      |
| 253     | Three EGG-SHELL BASONS and covers, with butterflies and flowers                                                        | . 19 .     |
| 254     | Two Japan bowls, white and gold, <i>rare</i>                                                                           |            |
| 255     | Four <i>Dresden</i> handled cups and saucers, gilt insides, painted with landscapes and figures, and arabesque borders | 7 . 10     |

38 : 14



|     |                                                                                                                                                  |            |
|-----|--------------------------------------------------------------------------------------------------------------------------------------------------|------------|
| 256 | Fourteen burnt-in plates                                                                                                                         | 38 . 14    |
| 257 | Four pair of Japan plates                                                                                                                        | 1 . 17     |
| 258 | One blue and gold tea pot, 2 coffee ditto and 2 basons                                                                                           | 1 . 13     |
| 259 | Two Japan bowls with flowers and borders                                                                                                         | 1 . 7      |
| 260 | Two French cabinet cups and saucers, gold ground, antique borders, painted with flowers by Van Span-<br>donck, in a style of peculiar excellence | 2 . 12 . 6 |
| 261 | Two large Japan dishes                                                                                                                           | 5 . 5      |
| 262 | FIVE of the <b>FINEST EGG-SHELL PLATES</b> ,<br>variously figured, pink underneath                                                               | 2 . 15     |
| 263 | SIX DITTO, representing Chinese fishermen, with<br>flowers on the outside                                                                        | 2 . 0      |
| 264 | Six Japan cups of Imperial manufacture                                                                                                           | 1 . 5      |
| 265 | Four burnt-in blue dragon border fruit dishes                                                                                                    | 1 . 7      |
| 266 | Four Mandarin basons and covers, with plants and<br>figures inside and out                                                                       | 1 . 11 . 6 |

*Oak Library, and Cedar Boudoir.*

Nos. 7 and 8.

PRINTS AND DRAWINGS, FRAMED AND GLAZED,  
CHINA, BRONZES, &c.

|     |                                                                                                                                      |            |
|-----|--------------------------------------------------------------------------------------------------------------------------------------|------------|
| 267 | A <i>fine and spirited</i> BRONZE of <i>Bacchus with the Infant Hercules</i> , antique                                               | 30 . 9     |
| 268 | A curious bottle or flask of <i>blue glass</i> , richly mounted                                                                      | 3 .        |
| 269 | A pair of circular carved and gilt <i>tripods</i>                                                                                    | 2 . 10     |
| 270 | A pair of three-light lily CANDELABRAS, issuing from<br>vases of old <i>Sevres porcelane</i> , rich in or-molu, on<br>marble plynths | 20 . 9 . 6 |
| 271 | A pair of <i>elaborately finished</i> MINIATURE DRAWINGS,<br><i>Claude Lorraine</i>                                                  | 12 . 1 . 6 |
| 272 | A superbe Buhl and Ebony library table, with rich or-<br>molu frieze, sliding secretary drawer and velvet top                        | 25 . 4     |

155 . 7 .



|     |                                                                                                                       |            |
|-----|-----------------------------------------------------------------------------------------------------------------------|------------|
| 273 | A pair of ORIENTAL BEAKERS, of the rich scarlet ground, enamelled with the lotus plant, and green dragon and chimeras | 155 . 7    |
| 274 | A highly finished DRAWING of the Holy Family, on vellum                                                               | 10 . 10    |
| 275 | A ditto with Angels in the fore ground                                                                                | 4          |
| 276 | A pair of India oriental beakers, enamelled in figures and embossed with raised flowers                               | 3          |
| 277 | A pair of highly finished oblong DRAWINGS on vellum, Bacchanalian subjects from Poussin                               | 4 . 12     |
| 278 | A ditto, the Discovery of Achilles                                                                                    | 5 . 5      |
| 279 | A highly finished whole length bronze of FRANKLIN, on a pedestal of Lumachella, with plynth, in or-mat                | 2 . 10     |
| 280 | An oblong drawing, in chalk, and a painting on glass, of Buildings and Figures                                        | 10 . 7 . 6 |
| 281 | A small oval of Flowers, and a miniature of a Magdalen                                                                | 2 . 2      |
| 282 | The MADONNA of Raphael, proof impression                                                                              | 1 . 1      |
| 283 | A whole length of S. Ferdinand, of Spain                                                                              | 5 . 12 . 6 |
| 284 | A pair, Cathedrals of York and Lincoln                                                                                | 1 .        |
| 285 | A curious print by Hollar                                                                                             | 2 .        |
| 286 | A beautiful chalk drawing by Greuze " <i>La Bonne Prise</i> "                                                         | 1 . 9      |
| 287 | A pair of BRONZE EWERS, with bas reliefs from Benvenuto Cellini's Ivory Column Pedestal in this Collection            | 1 . 9      |
| 288 | A costly LIBRARY INKSTAND, formed by bronze serpents, and enriched with or-moulu, on black marble pedestal            | 10 . 10    |
|     |                                                                                                                       | 9 . 19 . 6 |

*Anti Room and Chamber. No. 9 and 10.*

|     |                                                                                                            |            |
|-----|------------------------------------------------------------------------------------------------------------|------------|
| 289 | A Teak-wood COFFER, inlaid with ebony and ivory                                                            | 5 . 15     |
| 290 | A very curious painting by A. Durer, Scriptural subject                                                    | 9 . 9      |
| 291 | A pair of Views of the first Fonthill Mansion                                                              | 3 . 3      |
| 292 | A fine drawing of the Holy Family, in an inlaid frame                                                      | 4 . 4      |
| 293 | A COMMUNE of 2 drawers, inlaid with flowers, mounted in style of Buhl, with a solid slab of Italian marble | 6 . 16 . 6 |

276 . 10 .



- 294 A descriptive print of the *Great Chartreuse*, by HOLLAR, date 1649, in *ebony* frame, *fine impression* 27 6:10  
 295 A ditto of the Encampment of the *English Forces* at Portsmouth, in 1545, framed 4 . 10  
 296 A ditto of the *Champ de Drap d'Or* 3 . 12 . 6  
 297 A small LIBRARY CLOCK, by *Perè Le Roy*, in a richly chased *or-molu* case 4 . 10  
 298 A pair of *bronze* figures of ANTINOUS and COMPANION, on square *Buhl* pedestals 8 . 10 . 6  
 299 A rose-wood and *BUHL* BOOKCASE, top enclosed by doors, filled with glass, and lined with crimson silk, the mouldings, masks and enrichments gilt 0  
 300 A pair of *library* bougeoirs, formed of AGATE, with *silver* mounts and nossels 14 . 14 .  
 301 A DEJUNE TABLE, formed of a *curious* SLAB of the root of a tree from the BRAZILS, encircled by a belt of *or-moulu*, on a tripod of *yew tree* 3 . 13 . 6  
 302 A pair of *French china* urns, enamelled in landscapes and flowers 9 . 5  
 303 A pair of oblong drawings on vellum, Historical subject and companion 1 . 19  
 304 A small pannel of Limoge, framed, and a portrait in wax 3  
 305 A fine Oriental sea green vase, enamelled in colours with the *Kylin* 1 .  
 306 A suite of three octagonal JAPAN JARS and COVERS, and 2 beakers, highly enamelled and gilt, in pannels, and perforated 5 .  
 307 Six ebonized chairs with cane seats, on twisted legs, hair cushions covered with crimson damask 15 . 15  
 308 A sofa table, with drawers, formed of *ebony* and *ivory* ornaments 5 .  
 309 Representation of a Tournament, *curious* 4 .  
 310 A pair of fine prints, the Fathers of the Church 1 . 11 . 6  
 311 A ditto, the Presentation in the Temple and the Companion 2 . 10  
 2 . 11



- 312 A circular head mirror, in an antique frame, *beautifully carved* in flowers, and gilt 375.0  
313 A fine bronze figure of the Hermaphrodite, from the antique, on red greyot plynth 3.13.  
314 A *Sevres Porcelain* VASE, richly gilt on dark blue ground, with 2 highly finished miniature medallions of "*Moliere chez Ninon*," and a landscape 14.14  
315 A bronze bust on column pedestal 10.10  
3.7

*Vaulted Library, and Chintz Boudoir,*  
Nos. 13, & 14.

- 316 A pair of BRONZE MODELS from the BORGHESI VASES 36.18  
317 A large OAK LIBRARY TABLE with drawer, top covered with red leather, on castors 9.9  
318 An elegant PIER COMMUNE, formed by pannels of *raised black and gold JAPAN*, and enriched with or-moulu friezes, &c., with encoigneure angles, marble shelves and galleries; the doors enclose four *tulip wood* drawers, surmounted by a slab of *solid VERD DE MER* 21.10  
319 A BRILLIANT FRENCH PLATE PIER GLASS, in black and gold frame, measuring 55 inches by 52½ 33.12  
320 A large *Japan* china vase and cover, and a pair of beakers, enamelled 9.19  
321 A fine BRONZE of the Piping Boy, on a square plynth, gilt in or-mat 17.17  
322 A pair of *mazarine blue* Oriental basons, in richly chased mountings of Buhl, chimera handles 6.10  
323 A SUPERB OR-MOULU CLOCK, highly gilt and chased, mounted on a HORSE, spiritedly modelled 16.16  
324 Six oak Gothic pattern chairs, with cane seats and morine cushions 4  
325 A curious COFFER of *Amboyne wood*, with 4 drawers, mounted in *silver* 3  
326 An embossed sea green bason, richly mounted, forming a centre to lot 322 4



- 327 An elaborate Italian bronze basso relievo, from the antique, *framed*
- 328 A fine chased bronze of the Guitar Player and Actor, *Preville*
- 239 A fine drawing, south-west View of Fonthill Abbey, by *Smith*
- 330 A bronze bust of NAPOLEON, on a greyot column
- 331 A pair of elegant CHELSEA PORCELANE URNS, enamelled in groups of figures
- 332 An elaborate sculpture of CLEOPATRA, in statuary, on a plynth
- 333 A pair of curious ORIENTAL VASES, shaped and coloured from the *Lotus plant*, richly mounted as pot pouries, on water gilt pedestals, with perforated tops
- 334 A beautiful modern Seve cabinet cup and saucer, rich chocolate ground, highly gilt in relief, and enamelled border, and a ditto *cup* to match
- 335 Two ditto of old Sevres, blue line, with flowers
- 336 A beautiful ditto, pea green ground, enamelled and studded with border of corn flowers, gilt in high relief

571.1.6

5.15

19.19

14.14

6.16

7

32.11

14.3.6

2.15

.18.

1.7.

### Lancaster State Bed Room. No. 38.

- 337 A MAGNIFICENT STATE BEDSTEAD, with solid EBONY pillars, carved head and foot boards, with rich crimson damask hangings, trimmed with silk fringe
- 338 A RICH PURPLE SILK QUILT, beautifully worked in gold.—It formerly belonged to HENRY VII.
- 339 A costly embroidered white satin quilt
- 340 An elegant mahogany pedestal, for minerals and coins, with 8 drawers

63.-

16.16

4.16

6.16.6

767.16.6



*The following three lots were originally the property of*  
**CARDINAL WOLSEY**, and were brought from his  
**PALACE at Esher**, and are arranged in No. 23.

|     |                                                                                                                                                   |       |
|-----|---------------------------------------------------------------------------------------------------------------------------------------------------|-------|
| 341 | Two chairs of solid ebony, carved, on castors, and cushions                                                                                       | 21    |
| 342 | Two ditto, and cushions                                                                                                                           | 22    |
| 343 | Two ditto, and cushions                                                                                                                           | 22    |
| 344 | A pair of engraved and gilt moresque candlesticks                                                                                                 | 5 5   |
| 345 | An expensive mahogany pedestal, with 6 drawers, arranged for minerals and coins                                                                   | 4 4   |
| 346 | Two <i>handsome solid</i> EBONY CHAIRS, on plated castors                                                                                         | 22    |
| 347 | Two ditto, plain, with ivory knobs, on ditto castors                                                                                              | 21    |
| 348 | Two low ditto on ditto, the surface richly carved                                                                                                 | 21    |
| 349 | One ditto of ebony, carved, and one of stained wood made to correspond                                                                            | 19 19 |
| 350 | One ditto with elbows, with morocco stuffed, and an ebony bedside table                                                                           | 7 7   |
| 351 | A <i>matchless and superbly manufactured</i> STATE BED QUILT OF BRUSSELS POINT LACE, the design particularly rich and beautiful, on damask ground | 105   |
| 352 | A BRUXELLES LACE COVER for a <i>toilette table</i>                                                                                                | 30    |

### SILVER GILT TOILETTE PLATE,

AT PER OUNCE.

|     |                                                                  |         |
|-----|------------------------------------------------------------------|---------|
| 353 | A toilette glass, richly chased frame—the glass given            | 31 1    |
| 354 | A ditto JEWEL CASKET, most elaborately chased, lined with velvet | 13/6 13 |
| 355 | A pair of octagonal ditto boxes                                  | 13/6 13 |
| 356 | A ditto ECRETOIRE, en suite                                      | 10/6 8  |
| 357 | A pair of ditto essence vases                                    | 13/6 8  |
| 358 | Two ditto brushes, richly mounted                                | 12/6 8  |
| 359 | Three trinket brushes, rich chased handles                       | 9/6 2   |
| 360 | A pair of ditto weights for embroidering                         | 0/6 8   |

*End of the Thirteenth Day.*



## *Fourteenth Day's Sale,*

FRIDAY, the 26th Day of SEPTEMBER, 1823,

Commencing at Half-past Twelve precisely.

*From Lot 361 to Lot 480, will be Sold this Day,*  
Being the **FOURTH DAY** of FURNITURE.

*Lancaster State Bed Room, No. 38, continued.*

- |         |                                                                                                                                                                                                                                               |          |
|---------|-----------------------------------------------------------------------------------------------------------------------------------------------------------------------------------------------------------------------------------------------|----------|
| LOT 361 | <b>T</b> WO mazarine blue <i>oriental</i> basons, with <i>or-moulu</i> enrichments                                                                                                                                                            | 2 . 15   |
| 362     | A ladies casket, formed by five pannels of <i>Florentine</i> MOSAIC, mounted in <i>ebony</i> and <i>or-moulu</i>                                                                                                                              | 10 . 15  |
| 363     | A carved EBONY ROBE CABINET, enclosed by doors, formed by pannels in <i>bas relief</i> , with two drawers at top, and fine <i>solid</i> slab of BLACK AND GOLD MARBLE                                                                         | 31 . 10  |
| 364     | An <i>antient</i> octagonal GLASS, the frame highly wrought and gilt, and enriched by a foliage and flower border or frame, composed of <i>rock chrystal</i> and coloured glass—A <i>curious specimen of taste in the reign of Francis I.</i> | 15 . 15  |
| 365     | A pair of <i>Japan</i> JARS and covers with figures on the top                                                                                                                                                                                | 8 . 10 . |
| 366     | An elaborately carved <i>Persian</i> casket, enriched with gilt studs, and lined with silk                                                                                                                                                    | 10 . 7 . |
| 367     | A pair of (octagon) JAPAN basons, on <i>or-moulu</i> stands                                                                                                                                                                                   | 5 . 5 .  |
| 368     | A pair of ditto JARS and COVERS, large flower pattern, and rich bordering                                                                                                                                                                     | 10       |

10 3 . 5



|     |                                                                                                                                                                          |               |
|-----|--------------------------------------------------------------------------------------------------------------------------------------------------------------------------|---------------|
| 369 | A <i>superb</i> EBONY PERSIAN CABINET, <i>elaborately carved</i> , and divided into three compartments, the centre enclosed by doors, and the top lined with plate glass | 103 . 5       |
| 370 | A crimson and gold table cover, 6 feet 6 by 7 feet                                                                                                                       | 59 . 1        |
| 371 | A red Malabar chintz bed furniture, and two curtains to match                                                                                                            | <del>23</del> |
| 372 | A rich bed quilt                                                                                                                                                         | 23 . 2        |
| 373 | A ditto, and a roll of <u>chintz</u> border                                                                                                                              | 2 . 11        |
| 374 | A painted satin quilt                                                                                                                                                    | 3 . 5         |
|     |                                                                                                                                                                          | 2 5           |

### RARE AND FINE GOLD JAPAN, &c.

|     |                                                                                                                                                                |        |
|-----|----------------------------------------------------------------------------------------------------------------------------------------------------------------|--------|
| 375 | A <i>sierre papier</i> of a Lion, mounted on a plinth of red marble                                                                                            | 4 . 14 |
| 376 | An ebony and or-moulu temple or shade, pannelled with plate glass, and supported by columns of rock chrystal                                                   | 3 . 10 |
| 377 | A pair of fine old sea green jars, enamelled with the lotus plant                                                                                              | 5 . 10 |
| 378 | A small cabinet of black and gold JAPAN, with treillis door, and a drawer                                                                                      | 2 . 17 |
| 379 | A ditto, the companion                                                                                                                                         | 2 . 2  |
| 380 | A large box and cover of GOLD JAPAN, ornamented with flowers, the inside of <i>avanturine</i>                                                                  | 4      |
| 381 | Two BARRELS, surmounted by <i>bantam fowls</i> of Japan, in which the veins of wood are very curiously imitated                                                | 5 . 10 |
| 382 | A square box of GOLD JAPAN, in compartments, covered with flowers and other ornaments of <i>gold</i> upon <i>avanturine</i> ground                             | 3 . 10 |
| 383 | A <i>fine and brilliant specimen</i> , a square BOX with COVER and TRAY of the finest <i>gold Japan</i> , covered with fans upon a ground of <i>avanturine</i> | 3 . 5  |

229 . 3 .



|     |                                                                                                                                                                        |             |
|-----|------------------------------------------------------------------------------------------------------------------------------------------------------------------------|-------------|
| 384 | A GOLD JAPAN box, covered with birds, and waved ground, the inside <i>avanturine</i> , a very fine specimen                                                            | 229 . 3 . 6 |
| 385 | A small Japan black and gold CABINET, ornamented with pheasants, trees, and flowers                                                                                    | 3 . -       |
| 386 | An ebony and ivory PERSIAN CABINET, beautifully inlaid, inclosed by folding doors, on an <i>ormoulu</i> stand                                                          | 2 . 16      |
| 387 | A rare specimen of the <i>basket-work</i> JAPAN, ornamented with flowers in relief, of the finest kind, the inside <i>gilt</i> , from the DUCHESS of PORTLAND'S MUSEUM | 16 . 10     |
| 388 | A pen case of old Japan, carved with pinks and butterflies                                                                                                             | 1 . 17      |
|     |                                                                                                                                                                        | 2 . 9 .     |

*Rich Oriental China, Raphael Ware, &c.*

|     |                                                                                                  |            |
|-----|--------------------------------------------------------------------------------------------------|------------|
| 389 | Two very rich Japan bowls, fluted                                                                | 1 . 6 .    |
| 390 | Three dozens of plates, Japan pattern, viz. 2 dozens of table plates, and 1 dozen of soup plates | 5 . 5      |
| 391 | Three ditto                                                                                      | 5 .        |
| 392 | Three ditto                                                                                      | 5 . 5      |
| 393 | Three ditto                                                                                      | 4 . 12     |
| 394 | Four small Japan pots and covers                                                                 | 1 . 9      |
| 395 | Six Japan, red, white and gold cups and saucers, scarce                                          | 1 . 9      |
| 396 | Two fine Japan dishes                                                                            | 3 . 13 . 1 |
| 397 | Two Raphael ware plates, painted with historical subjects                                        | 3          |
| 398 | Eight fine Japan enamelled cups and saucers                                                      | 1 . 10     |
| 399 | Twelve <i>rare and curious</i> blue and red burnt-in plates, fine                                | 2 . 17     |
| 400 | Ditto                                                                                            | 1 . 10     |
| 401 | Ditto                                                                                            | 2 . 6      |
| 402 | Four Japan enamelled dishes                                                                      | 1 . 11     |
| 403 | Three pairs of extra fine Japan dishes                                                           | 1 . 10     |
| 404 | Nineteen blue and red burnt-in plates, with <i>flowers and rich border</i>                       | 2 . 12     |
| 405 | Six Dresden cups and saucers, with gold border, fine                                             | 2 . 17     |

297 . 4 .



|     |                                                                                                                                                              |        |
|-----|--------------------------------------------------------------------------------------------------------------------------------------------------------------|--------|
| 406 | Two decagonal Japan dishes, <i>rare</i>                                                                                                                      | 297. 4 |
| 407 | Fifteen enamelled and burnt-in soup plates                                                                                                                   | 2. 16  |
| 408 | Two duodecagonal Japan bowls, of the very finest quality                                                                                                     | 3. 12. |
| 409 | Two round ditto ditto                                                                                                                                        | 3      |
| 410 | Three Dresden cups and saucers and bowl, painted with figures                                                                                                | 2      |
| 411 | Two gold cabinet cups and saucers, French, <i>exquisitely pencilled</i>                                                                                      | 2      |
| 412 | Twelve large Japan plates, <i>richly coloured</i>                                                                                                            | 3. 10  |
| 413 | Thirteen rare enamelled plates                                                                                                                               | 2. 10  |
| 414 | Two narrow jars, blue and gold ground, with labels of figures, flowers, and borders                                                                          | 10.    |
| 415 | Twenty fine burnt-in plates                                                                                                                                  | 3. 00  |
| 416 | Twelve cups and saucers, 6 plates, bason, and sugar ditto, of <i>Japan</i> pattern                                                                           | 6. 10  |
| 417 | Two Japan blue and gold basons                                                                                                                               | 10     |
| 418 | Seven <i>egg-shell</i> cups and saucers, richly and beautifully enamelled in flowers, two egg-shell jars and covers, gold ground, with landscape and figures | 2. 10  |

### King Edward's Gallery. No. 32.

|     |                                                                                                                                                                                   |        |
|-----|-----------------------------------------------------------------------------------------------------------------------------------------------------------------------------------|--------|
| 419 | An EBONY COFFER, enriched by pannels of beautiful <i>French china</i> , enamelled in flowers, mounted with rich <i>or-moulu</i> , chased and gilt                                 | 36. 1  |
| 420 | A ditto, nearly similar                                                                                                                                                           | 41.    |
| 421 | A large ROSEWOOD SECRETAIRE or PIER CABINET, fitted with drawers and partitions, decorated in the style of <i>Buhl</i> , on paw standards, and surmounted by a <i>marble slab</i> | 20. 1  |
| 422 | A ditto                                                                                                                                                                           | 30. 9  |
| 423 | A superb carved and gilt table, with ORIENTAL ALABASTER SLAB                                                                                                                      | 12. 1  |
| 424 | A ditto ditto                                                                                                                                                                     | 13. 13 |
| 425 | A jar of Japan China                                                                                                                                                              | 4. 14  |



- |     |                                                                                                                                                                        |               |
|-----|------------------------------------------------------------------------------------------------------------------------------------------------------------------------|---------------|
| 426 | A ditto, blue ground and white pannels, figures and flowers                                                                                                            | 508.5         |
| 427 | A solid EBONY TABLE, with carved rails and twisted legs                                                                                                                | 3.16          |
| 428 | A ditto                                                                                                                                                                | 9.98          |
| 429 | Two lapis blue and <i>gold ground</i> cylindrical jars, enamelled with birds and flowers                                                                               | 12.12         |
| 430 | A <i>curious</i> JAPAN VASE, in imitation of the Japanese red ware, with wood cover, and a loose interior piece —from the collection of the <i>Duchess of Portland</i> | 6             |
| 431 | A ditto, smaller, in three compartments, the inside of red Japan, ditto ditto                                                                                          | 2.12          |
| 432 | An <i>extra</i> large BOWL of <i>old Japan China</i> , with Xeranthemum, and other flowers and plants                                                                  | 7.7           |
| 433 | A beautiful EBONY TABLE, supported upon twisted legs, with finely chased and gilt mouldings of ormoulu, surmounted by a slab of Verde Antique                          | 18.7          |
| 434 | Two <i>lapis</i> blue and gold ground cylindrical jars, with birds and flowers in compartments                                                                         | 16.           |
| 435 | A pair of large and tall <i>bottles</i> , with domestic figures burnt-in, in <i>pale red</i> , on a white ground                                                       | 18.7          |
| 436 | A pair of <i>massive Gothic</i> SILVER GIRANDOLES, finely chased and gilt, at per ounce                                                                                | 9/9 per oz. 6 |
| 437 | A cylindric jar, old green and red enamel                                                                                                                              | 6             |
| 438 | An old <i>black and enamelled</i> JAPAN POT POURRI and cover                                                                                                           | 16.16         |
| 439 | Two <i>rose ground</i> beakers, richly enamelled                                                                                                                       | 5             |
| 440 | Two Japan beakers                                                                                                                                                      | 4.5           |
| 441 | Three blue and gold Mandarin jars and covers                                                                                                                           | 7.17          |
| 442 | Two lapis lazuli blue cylindrical jars, pannelled with flowers and birds                                                                                               | 9.19          |
| 443 | A <i>matchless</i> suite of five NOBLE JAPAN JARS AND BEAKERS, of the richest colour                                                                                   | 42.-          |
| 444 | A beautifully sculptured model of the <i>Tomb of Scipio</i> , in ROSSO ANTICO                                                                                          | 49.7          |
| 445 | A bronze bust of NAPOLEON, size of life, by Chaudet                                                                                                                    | 10.10         |

---

760.1



- 446 A MAGNIFICENT TABLE of PIETRE COM-  
MESSE, the center being an oval specimen of  
mammillated oriental onyx, surrounded by parterres  
of rare and beautiful *jaspars* and *breccia*, with broad  
border of bold arabesque, of various costly and un-  
common marbles, belted with variegated marble.  
It is mounted on a superbly carved frame of oak,  
about 9 feet long, and 4 feet 6 wide. *This superb  
piece of furniture was formerly in the Borghese  
Palace*
- 447 A CABINET of *carved work*, the design in the  
ancient taste of the reign of QUEEN ELIZABETH,  
with folding doors; an upper shelf with richly carved  
frieze and cornice, rests upon oval carved supports,  
and the cabinet stands on columns of very original  
but handsome design
- 448 A DITTO
- 449 A LARGE and MAGNIFICENT ROBE CHEST,  
formed of *scented wood*, externally carved with the  
rose and thistle, gilt, and coloured in imitation of  
gems, with massive wrought handles, hinges, and  
key, water-gilt, of the time of KING JAMES I.
- 450 A DITTO
- 451 A suite of 6 gallery stools, on ebonized twisted legs,  
stuffed and covered in purple cloth, and fringed
- 452 Six ditto
- 453 A rich ebony and buhl CHINA CABINET, expen-  
sively enriched in bronze and or-moulu, and sides  
enclosed by plate glass doors
- 454 An ebony standard to the preceding lot, with oriental  
alabaster slab
- 455 A circular slab of FLORENTINE MOSAIC, elaborately  
inlaid in birds and fruits, and mounted on a superbe  
BRONZE and OR-MOLU PEDESTAL, with ebony  
plynth, designed from the antique
- 456 A ditto the companion
- 457 A superbly carved GOTHIC EBONY TABLE
- 458 A fine Italian marble bust of HERCULES

760.

1890

147  
157.10187.1  
94.1  
3.10  
4.

7.17

37.1  
12.1

3197.1



- 459 A circular rose-wood table, buhl inlaying, carved standard 3197.4  
15.15
- 460 One Japan beaker, with raised flowers in gold—*fine* 3
- 461 An EBONY GOTHIC TABLE, on twisted column legs, highly carved and decorated 30.17
- 462 A MAGNIFICENT ORIENTAL VASE, *thirty-seven inches high*, finely enamelled and embossed with the *Chrysanthemum* flower, and pannels with landscape and figures 37.16
- 463 A *ditto*, equally fine, 37 inches high 42.-
- 464 A pair of ebonized *tripods*, on twisted column standard 2.-
- 465 A pair of ditto 2.-
- 466 An *elegantly formed* BUHL CABINET, on a frame, and lined with *velvet*, on a standard 42.-
- 467 A rare specimen of SCULPTURE in ROCK-CRYSTAL—a lamp formed as a winged dragon, the tail entwined round the stem, mounted in *fine gold enamelled*, the body engraved in *intaglio*, with a marine subject, the foot of rich design, by VALERIO DI VICENZA 16.5
- 468 A CUP shaped as a SHELL, of ROCK CRYSTAL delicately engraved with *intaglio arabesque foliage*, and handles, massively mounted in *enamelled gold*. From the Garde Meuble of the KING of FRANCE 19.1
- 469 AN IVORY VASE, mounted by Rundell and Bridge, in chased *silver gilt*. It is in alto-relievo, sculptured by *Strous*. The subject, a marine Venus, attended by Tritons and Sirens 47.5
- 470 An antique shaped VASE of ROCK-CRYSTAL, mounted in *fine gold enamelled*, of elaborate workmanship, equal to the preceding 0.10
- 471 A German COFFER, elaborately inlaid with ivory and mother o'pearl, and lined with crimson *satin* 6.
- 472 A superbly carved EBONY PERSIAN JEWEL CABINET, elaborately worked, and mounted in or-moulu, on a standard equally rich and beautiful in point of execution 36.

3509

- 473 Two old cylindrical jars, with *red ground*, richly enamelled in green and blue 8
- 474 A dwarf column of rare Italian marble, with bronze gilt belt on pedestal 6. 6
- 475 Four ebonized tripods, twisted legs, en-suite 3. 0
- 476 Two ditto 1. 5
- 477 A pair of small GOTHIC TABLES, finely carved in oak 16. 5
- 478 A pair of ditto, en-suite 16. 16
- 479 A large ebonized reading desk, on swivel centre, and twisted standards 3
- 480 A ditto 3. 10

*End of the Fourteenth Day.*

£ 3567.19



## *Fifteenth Day's Sale,*

SATURDAY, the 27th of SEPTEMBER, 1823,

Commencing at Half-past Twelve precisely.

---

*From Lot 481 to Lot 600 will be Sold this Day,*  
 Being the **FIFTH DAY** of **FURNITURE**.

---

### PORCELANE, AND MISCELLANEOUS ELEGANCIES.

- LOT  
 481 **N**INE particularly fine *green enamelled* plates, with  
*curious* centers and borders
- 482 Five blue and red *old Japan* fruit plates, with pierced  
 borders
- 483 Fifteen burnt-in and enamelled *soup* plates
- 484 Eleven Japan *soup* plates with plants and birds
- 485 Two *old Seve* butter tubs and plates
- 486 Twelve fine OLD SEVE plates
- 487 Twelve ditto
- 488 Twelve ditto, and five ditto, various patterns
- 489 Two *fine egg-shell* bottles, pencilled in figures
- 490 Two large Japan bowls, rose pattern
- 491 Twelve enamelled and burnt-in plates, with rich border
- 492 Four coffee cans and saucers, of *old Seve*
- 493 Two delicately pencilled *French* coffee cans and saucers
- 494 Fifteen burnt-in plates, very rich in colour and pattern
- 495 Ten burnt-in plates, enamelled, of *willow* pattern
- 496 Eighteen ditto, richly coloured
- 497 Twenty-four ditto
- 498 Two old Japan flat bowls of the finest enamel, and  
 burnt-in

- 499 Three large and *scarce* buff enamelled basons
- 500 A *tea and coffee service*, containing 11 cups and saucers, 2 basons and covers, 6 coffee cans, plate and sugar canister, *of the finest Mosaic and flowered enamel*, with green borders, and a tea pot and stand, and milk ewer, mounted in *silver gilt* to correspond
- 501 Fifteen Japan plates with flower borders
- 502 Two curious *rose border* Japan dishes
- 503 Six Japan fruit plates
- 504 A pair of *black and gold* JAPAN pedestals
- 505 Nine delicate and beautiful egg-shell plates, with double border and flowers
- 506 Seven very ancient blue and white Nankin plates, with the horses of the Tchin
- 507 Two large Japan bowls of fine quality (1 damaged)
- 508 Two ditto with flowers, boldly designed
- 509 One jar of *pomegranate* shape, red and streaked, and 2 *dragon* basons
- 510 Six Japan China basons, small, *very fine*

## SILESIAN AND OTHER DAMASK TABLE LINEN.

### *In Rooms No. 44 and 45.*

- 511 A superbe damask table cloth, rich festoon pattern  $9\frac{1}{2} \times 3$
- 512 Two dozen table napkins, *of two* patterns
- 513 A handsome table cloth  $11\frac{1}{2} \times 3$
- 514 Two dozen table napkins
- 515 A ditto table cloth, lozenge pattern  $8\frac{1}{2} \times 3\frac{1}{2}$
- 516 Two dozen ditto napkins
- 517 A ditto table cloth, festoons of flowers, &c.  $9\frac{1}{2} \times 3$
- 518 Two dozen ditto napkins
- 519 A ditto table cloth, flower sprig  $4 \times 3$
- 520 One dozen ditto
- 521 A ditto table cloth, flower and mosaic border  $4 \times 3$



---

|     |                                              |         |
|-----|----------------------------------------------|---------|
| 522 | One dozen ditto napkins                      |         |
| 523 | A ditto table cloth, flower sprig and border | 5 × 2½  |
| 524 | One dozen ditto napkins                      |         |
| 525 | A ditto table cloth, festoons of flowers     | 4½ × 2½ |
| 526 | One dozen ditto napkins                      |         |
| 527 | A ditto table cloth (sprig)                  | 5 × 2½  |
| 528 | One dozen ditto napkins                      |         |
| 529 | A ditto table cloth, rich bordering          | 5½ + 3  |
| 530 | One dozen ditto napkins                      |         |
| 531 | A ditto table cloth, rich flower sprig       | 4½ × 3  |
| 532 | One dozen ditto napkins                      |         |
| 533 | A ditto table cloth, flower and deep border  | 5 × 3½  |
| 534 | One dozen ditto napkins                      |         |
| 535 | A ditto table cloth, flower sprig            | 4 × 3   |
| 536 | One dozen ditto napkins                      |         |
| 537 | A ditto table cloth, flower sprig            | 4 × 3   |
| 538 | One dozen ditto napkins                      |         |
| 539 | A ditto table cloth                          | 3½ × 2½ |
| 540 | One dozen ditto napkins                      |         |

### *King Edward's Gallery.*

#### MATCHLESS GOLD JAPAN, SCULPTURED IVORIES, AGATES, &c.

- 541 A square box of GOLD JAPAN, with a drawer, ornamented with plants, &c,
- 542 A CANTEEN of Chinese basket work, with boxes of the same design
- 543 A pair of small screens in black and gold, flat Japan, with stands
- 544 A Japan CABINET, covered with matted CANE work, embroidered with silk flowers, folding doors and drawers inside, mounted with *or-moulu*
- 545 An IVORY JEWEL CABINET, elaborately carved in foliage, with doors and drawers, mounted with rich chasings, silver hinges, and lock plate, gilt



- 546 A square Japan box and tray, of GOLD JAPAN upon red basket work, ornamented with the *bamboo plant and flowers*. From the collection of the DUC DE BOUILLON
- 547 A VERY FINE CASKET OF GOLD JAPAN, with stands in two compartments, ornamented with landscapes. From the Collection of the DUCHESS of MAZARIN
- 548 A DITTO, the companion
- 549 A black Japan pearl casolette-shaped basket, with ormoulu ornaments and handle, a *curious* specimen
- 550 A ditto of different shape
- 551 A *chocolate* ground JAPANESE CASKET, in two compartments, and a scroll stand attached, spotted with pearl and gold flowers, the inside red
- 552 An *extraordinary* oblong box, in two divisions, with fans of the *finest raised Japan* upon black ground. From the Collection of the DUC DE BOUILLON
- 553 A *leaf* of the TALIPUT TREE, incrustated with GOLD JAPAN, and embellished with various *insects*, finished with the *utmost delicacy*
- 554 A very rich and brilliant SQUARE BOX of black Japan, with raised flowers and rocks, upon a ground *sprinkled with gold*, the inside enriched with a *gold* landscape upon *avanturine*
- 555 A CANTEEN of *gold Japan*, consisting of a bottle, a tray, and a box with a compartment, and a nest of boxes pencilled in Indian ink, a *silver* handle on the top, *glass shade and tray*. From the Collection of the DUC DE BOUILLON
- 556 A large CUP of ORIENTAL SARDONYX
- 557 An Arabian metal engraved and gilt essence vase
- 558 A Japan china cream ewer, mounted in chased *silver*, and gilt
- 559 A Japan cream ewer and stand, mounted with *silver*, engraved and gilt



- 560 A pair of polished NAUTILUS SHELLS, mounted in *chased silver gilt*
- 561 A *red* AGATE cup and cover, mounted with *silver gilt*, and a small vase at the top
- 562 A shaped PLATEAU, of *white agate*, tinged with brown
- 563 A shallow two-handled cup of *jasper* AGATE, shaped
- 564 A Japan cream bucket, mounted with *silver*, chased and gilt
- 565 An OLD SEVE cup, cover and stand, gold ground, painted with flowers
- 566 A lotus-shaped *agate* cup and foot
- 567 A pair of small and elegant candlesticks of SILVER GILT, of *Parisian* manufacture, by *Oudiot*
- 568 A large cup and saucer of the finest *Mocoa*
- 569 A pair of *silver* candlesticks in CHINESE TASTE
- 570 A *rare* and beautiful NAUTILUS SHELL, richly mounted in SILVER GILT, and boldly chased and engraved, surmounted by NEPTUNE on a DOLPHIN, enriched by *real* GEMS, *garnets*, *vermillions*, *emeralds*, *amethysts*, and a *sapphire*—a splendid ornament
- 571 A MAGNIFICENT IVORY PLYNTH, most elaborately chased in *basso relievo* by B. CELLINI, with or-molu base and top
- 572 A NAUTILUS, richly mounted in *chased silver*
- 573 A MAGNIFICENT CUP, COVER AND STEM, of IVORY, sculptured by the *celebrated Artist* MAGNUS BERG, Medallist to the  
EMPEROR of GERMANY.

The bowl is finely carved with a forest scene, and figures hunting wild animals. On the lid are *Diana* and her *Nymphs* asleep, amidst *animals*, after the fatigues of the chase, and a figure of *DIANA* surmounts the lid; a *finely embellished and sculptured figure* of *Hercules* forms the stem; the CUP is lined with SILVER GILT, and the *socle* is formed of SILVER GILT, and *richly chased*



- 574 A MAGNIFICENT VASE OF CARVED IVORY, with a frieze of *Infants*, carved by the celebrated FIAMINGO, and superbly mounted with *silver gilt*. *It formerly belonged to the famous EARL OF ARUNDEL, and was left by LADY B. GERMAINE to the late MARGRAVINE of ANSPACH, at whose sale it was purchased*
- 575 A DITTO, the companion
- 576 A SUPERB COFFER OF RAISED JAPAN, presumed the largest specimen known of this *superior quality*; the LID, without and within, as also the FRONT and SIDES, are covered with representations of *buildings and landscapes*, of the finest *raised and spangled Japan*, and with animals of *SOLID gold and silver*

*This unique specimen of Japanese art was formerly the property of CARDINAL MAZARIN, and belonged, subsequently, to the DUC de BOUILLON*

#### SEVRES PORCELANE, JAPAN, &c.

- 577 A pair of Sevres PORCELANE URNS, lilac ground, with medallions of flowers, superbly mounted in or-moulu
- 578 A ditto CABINET CUP and SAUCER, enamelled with Chinese pheasants, on rich mazarine blue ground
- 579 A ditto with marine view from *Vernet*
- 580 A pair ditto CABINET PLATES, lilac ground with boquets of flowers
- 581 A SUPERBE SEVRES PORCELANE DEJUNE, elaborately enamelled in pastoral groups, on gold mosaic and pea green ground, containing 2 cups and saucers, sugar urn and cover, cream ewer, tea pot and plateau
- 582 A pair of ditto cake plates, rich gold mosaic and green ground, enamelled in compartments of rose buds, &c.



- 583 A large Berlin fruit bowl, cover and plateau, blue flowers, on gold ground
- 584 A child's Sevres cup and saucer, rich pattern of roses, and blue festoon
- 585 A mazarine blue ditto urn, on fluted pedestal, rich ormoulu plynth
- 586 *Four* DESSERT COMPOTIERS *shaped as leaves*, enamelled green, and embossed with flower branches—  
RARE
- 587 A ditto square pedestal of AMAZONIAN STONE, ormoulu plynth
- 588 A miniature copy in bronze of the Venus *accroupée*, on marble pedestal
- 589 A pair of (low) *rose-wood* LOUNGING CHAIRS, on roller castors, with thick hair backs and seats, cushions covered in *crimson* DAMASK
- 590 A pair of ditto
- 591 A gold dotted JAPAN octagonal box, on stand, with 3 interior boxes and a tray
- 592 A JAPANESE IDOL, a beautiful specimen of Japan lacquer
- 593 A Chinese incense burner, formed of bronze, highly chased
- 594 The Triumph of Bacchus, carved in ivory, and forming a pedestal

### *Store Room.*

- 595 An elegant pattern Brussels carpet, rich crimson ground, 19 feet by 17
- 596 Five rolls of *new* BRUSSELS carpeting, 2 of which are bordering, rich Persia pattern, 2 feet 4 wide, containing about 150 yards, at per yard
- 597 A *capital* MICROSCOPE, by ADAMS, with apparatus, &c. fitted in a mahogany case
- 598 An excellent double barrel fowling piece, in a case
- 599 A large black and gold Japan TRUNK
- 600 Three flower stands, japanned, and brass wire fence

*End of the Fifteenth Day.*



## *Sixteenth Day's Sale,*

TUESDAY, the 30th of SEPTEMBER, 1823,

Commencing at Half-past Twelve precisely.

---

*From Lot 601 to 720, will be Sold this Day,*  
 Being the **SIXTH DAY** of FURNITURE.

---

*In Rooms No. 44 and 45.*

GERMAN, SILESIAN AND OTHER DAMASK  
 LINEN.

|     |                                                 |                                    |  |
|-----|-------------------------------------------------|------------------------------------|--|
| LOT | <b>A</b>                                        |                                    |  |
| 601 | Fine damask table cloth, <i>flower sprig</i>    | $3\frac{1}{4} \times 3$            |  |
| 602 | A ditto, rich pine border and festoons          | $4\frac{1}{2} \times 3$            |  |
| 603 | One dozen ditto napkins                         |                                    |  |
| 604 | A ditto table cloth, festoons of flowers        | $4 \times 3$                       |  |
| 605 | One dozen ditto napkins                         |                                    |  |
| 606 | A ditto table cloth, deep mosaic border         | $3\frac{1}{4} \times 3$            |  |
| 607 | One dozen ditto napkins                         |                                    |  |
| 608 | A ditto table cloth, flower sprig               | $4 \times 3$                       |  |
| 609 | One dozen ditto napkins                         |                                    |  |
| 610 | A ditto table cloth                             | $3\frac{1}{4} \times 2\frac{1}{2}$ |  |
| 611 | One dozen ditto napkins                         |                                    |  |
| 612 | One ditto table cloth and 1 dozen ditto napkins | $3\frac{1}{4} \times 2\frac{1}{2}$ |  |
| 613 | Three damask breakfast cloths                   | $2\frac{1}{2} \times 1\frac{1}{2}$ |  |
| 614 | Two ditto with border, and small lozenge        | $3\frac{1}{2} \times 2\frac{1}{4}$ |  |
| 615 | Two ditto, same pattern                         |                                    |  |
| 616 | Two ditto, ditto                                |                                    |  |
| 617 | Two ditto, ditto                                |                                    |  |
| 618 | Three dozen breakfast ditto napkins             |                                    |  |
| 619 | Three ditto                                     |                                    |  |
| 620 | Three ditto                                     |                                    |  |
| 621 | Three large table ditto, rich patterns          |                                    |  |



|     |                                                                               |                                                                |
|-----|-------------------------------------------------------------------------------|----------------------------------------------------------------|
| 622 | Two breakfast cloths, small lozenge                                           | $3\frac{1}{2} \times 2\frac{1}{4}$                             |
| 623 | Three ditto                                                                   | $3\frac{1}{4} \times 2$                                        |
| 624 | A ditto table cloth, large mosaic pattern,<br>and 1 dozen large table napkins | $3 \times 2.$                                                  |
| 625 | A ditto and 1 dozen ditto                                                     | $4 \times 3$                                                   |
| 626 | A ditto and 1 dozen ditto                                                     | $4 \times 3$                                                   |
| 627 | A large ditto, rich lace pattern, with pannels<br>of flowers                  | $4\frac{1}{2} \times 3$                                        |
| 628 | A ditto, rich flower border and festoons                                      | 3 yds. sqr.                                                    |
| 629 | A handsome damask table cloth, large rose<br>pattern                          | $3\frac{1}{2} \times 2\frac{1}{4}$                             |
| 630 | A ditto, rich flower border, and 1 dozen<br>napkins                           | 3 yds. sqr.                                                    |
| 631 | A ditto                                                                       |                                                                |
| 632 | Two breakfast ditto and 1 dozen breakfast<br>napkins                          | $4\frac{1}{4} \times 2\frac{1}{4}$                             |
| 633 | Two table ditto                                                               | $3\frac{1}{2} \times 2\frac{1}{4}$                             |
| 634 | One ditto                                                                     | $4 \times 2\frac{1}{4}$                                        |
| 635 | Three breakfast ditto, same pattern                                           |                                                                |
| 636 | Three ditto, rich flower pattern with border                                  |                                                                |
| 637 | Four ditto, same pattern, striped                                             |                                                                |
| 638 | Three ditto with border                                                       |                                                                |
| 639 | Three ditto, various patterns                                                 |                                                                |
| 640 | A pair of ditto                                                               |                                                                |
| 641 | Two ditto                                                                     |                                                                |
| 642 | A large table ditto, deep border and small flower                             | $4\frac{1}{2} \times 3$                                        |
| 643 | A ditto, small flower and narrow border<br>and 1 dozen table napkins          | $3\frac{1}{2} \times 3$                                        |
| 644 | A large ditto, flower sprig                                                   | $4\frac{1}{2} \times 3$                                        |
| 645 | One ditto, 4 by $2\frac{1}{4}$ , and a ditto                                  | $3\frac{1}{2} \times 2\frac{1}{4}$                             |
| 646 | A flowered satin counterpane                                                  |                                                                |
| 647 | Two breakfast cloths, rich flower                                             | $2\frac{1}{4}$ square                                          |
| 648 | Two ditto, and bordered                                                       |                                                                |
| 649 | Three ditto, various patterns                                                 |                                                                |
| 650 | Three ditto                                                                   |                                                                |
| 651 | A large table ditto                                                           | $4 \times 2$                                                   |
| 652 | Two ditto, rich patterns                                                      | $2\frac{1}{2} \times 2\frac{1}{4}$ and $3 \times 2\frac{1}{2}$ |
| 653 | Three ditto, various patterns and sizes                                       |                                                                |



- 
- 654 Two ditto  
 655 Four ditto, similar pattern  
 656 Four ditto, various in pattern and size  
 657 A large and fine table ditto, rich pattern  $7 \times 2\frac{1}{2}$   
 658 Six breakfast ditto, various in size and pattern  
 659 Four ditto  
 660 Four ditto  
 661 Six ditto  
 662 Six ditto  
 663 Two large ditto  
 664 Six various in size and pattern  
 665 Six ditto  
 666 A large table ditto  $4\frac{1}{2} \times 2$   
 667 Three dozen breakfast napkins  
 668 Three dozen ditto  
 669 Three dozen ditto  
 670 Three pair large size linen sheets  
 671 Three pair ditto  
 672 Three pair ditto  
 673 Six *new* breakfast cloths,  $1\frac{1}{4}$  yard square  
 674 A handsome *new* dinner cloth, birds and flowers, 4  
         yards by  $2\frac{1}{2}$   
 675 Eighteen calico napkins  
 676 A damask table cloth, 3 yards by  $2\frac{1}{4}$   
 677 A Marseilles quilt  
 678 A rich *damask* TABLE CLOTH,  $3\frac{1}{2}$  yards by  $2\frac{1}{2}$   
 679 A table cloth,  $3\frac{1}{2}$  by 2  
 680 A damask breakfast ditto, 2 yards by 1  
 681 A ditto,  $2\frac{1}{2}$  yards by 2

## STORES

FROM THE HOUSE-KEEPER'S ROOM,

*to be Viewed in the Anti-Chamber and Dressing  
 Room, No. 44, and No. 45.*

- 682 A *beautiful* QUILT, embroidered in moths and  
         flowers  
 683 A ditto with rich fringe



- 
- 684 A *fine* CRIMSON CLOTH suite of hangings for a child's bedstead
- 685 A rich crimson and green silk table cover
- 686 Three pair of crimson morine curtains, finished and bordered with rich silk lace
- 687 Two pair of WINDOW CURTAINS of *fine puce cloth*, with *silk lace*
- 688 A four-post bed furniture of *crimson damask*, and a pair of window curtains to match
- 689 Five crimson damask draperies and sundry remnants of damask
- 690 A four-post bed furniture of scarlet serge
- 691 Five ditto window curtains, 5 yards long
- 692 A suite of bed hangings of *fine puce cloth*, bordered with yellow and crimson silk lace
- 693 Seventeen purple serge stool and chair covers
- 694 A suite of green damask window curtains, for two windows, lined
- 695 A ditto of crimson
- 696 A ditto
- 697 A ditto yellow
- 698 A ditto bed hangings, lined with marone
- 699 A ditto large window curtain

#### MISCELLANIES in the Nunneries.

- 700 A square Gothic table, formed of rose-wood, with drawer
- 701 A ditto, more richly carved, with cloth top
- 702 Eight high Gothic chairs, stuffed backs and seats, covered in scarlet
- 703 A large and curious GOTHIC ARMOIRE, formed of oak, highly and elaborately carved in relief, in friezes, masks, &c.
- 704 Four Gothic chairs, on turned legs, with ivory and gilt studs



- 705 A chimney glass, in black and gold frame  
706 A ditto in ditto  
707 A handsome suite of *five* NOBLE JAPAN JARS and  
COVERS, (with lion tops) and BEAKERS  
708 A pair of fine MEDICI URNS of Raphael ware  
709 A set of 4 window seats, covered with satin damask  
710 A large GOTHIC OAK WARDROBE, richly carved

## TAPESTRY.

- 711 A MAGNIFICENT PANNEL of TAPESTRY for  
a large room, representing THE FEAST OF THE  
GODS, *in fine preservation*, 20 feet 6 inches by  
13 feet  
712 A ditto, The TENT OF DARIUS, 19 feet 6 inches  
by 13 feet  
713 A ditto, The ENTRY OF ALEXANDER into  
BABYLON, 17 feet by 13 feet  
714 A piece of fine tapestry, 9 feet by 5—the Israelites ga-  
thering Manna  
715 A ditto—Moses in the Desert 16 feet by 10  
716 A ditto—from Teniers' celebrated Picture of the Fête  
du Village, 25 feet by 10  
717 A ditto—from one of the Cartoons of Raphael, 15 feet  
by 9  
718 A ditto—Scriptural subject, 10 feet square  
719 A PERSIA carpet, 9 feet by 7  
720 A ditto

*End of the Sixteenth Day.*



## *Seventeenth Day's Sale,*

WEDNESDAY, the 1st of OCTOBER, 1823,

Commencing at Half-past Twelve precisely.

---

*From Lot 721 to Lot 840, will be Sold this Day,*  
 Being the SEVENTH DAY of FURNITURE.

---

### *Duchess of Hamilton's Chamber. No. 47.*

- 721 **A**N ebony bedside cabinet
- 722 A large painting of the *old Fonthill Mansion*
- 723 An embroidered quilt
- 724 A fine drawing as originally planned for *Fonthill Abbey*
- 725 An oval satin wood work table, with secret drawers fitted, and top elaborately inlaid, richly mounted in or-moulu
- 726 A *portable eight-leaved SKREEN*, in a rich carved and gilt frame, and red damask shades
- 727 Two fine JAPAN JARS and covers
- 728 A pair of ORIENTAL VASES, 24 inches high, enamelled in high relief, *one defective*
- 729 A *beautifully ENAMELLED* Oriental toilette FONT and EWER, brush and soap trays and tumbler, en suite
- 730 Two *porcelain* tripod URNS for burning pastiles



- 731 A NOBLE ROSEWOOD ARMOIRE or WARD-ROBE, doors filled with *French* PLATE GLASS, and decorated by large bronze gilt masks and other enrichments, in the bold and splendid style of *Buhl*
- 732 A ditto, the companion
- 733 An ancient dressing table with a drawer, on turned legs of walnut tree, the top inlaid with flowers of various woods
- 734 A modern ditto, of solid King-wood, correspondently inlaid
- 735 A *superbe* COMMODORE, formed of satin and purple woods, with columns in the angles, and doors inclosing nests of drawers, manufactured in a superior manner and surmounted with a *valuable* SLAB of GIALLO ANTICO
- 736 A pair of richly gilt snuffers and tray, of *antique* design
- 737 A pair of *toilette* two-branch OR-MOULU CANDLE-STICKS
- 738 Fourteen dozen and six *mother-o'pearl* mats and counters, in drawer of 735
- 739 An *eider-down* quilt
- 740 A *toilette* GLASS, in an *old* and rich SILVER-GILT frame

### *Oak and Tapestry Dining Parlour.*

#### No. 3.

- 741 An oblong LIBRARY TABLE, with nine drawers, inlaid with flowers, and arabesque scrolls, by the artist *Reisner*
- 742 A SUPERBE eight-leaved carved and gilt FIRE SCREEN, filled with rich crimson damask
- 743 An ebonized two-leaved ditto, with ivory decoration, mounted in crimson silk
- 744 Six ebonized chairs, cane seats and backs, and hair cushions, covered in scarlet cloth



- 745 Six oak ditto, tablet backs and seats, covered with red morocco
- 746 Twelve ebonized ditto, backs and seats, stuffed with hair, and covered with red morocco and silk fringe
- 747 A lofty fine eight-leaved, *India Japan screen*
- 748 A NOBLE BUFFET or CONSOLE, formed of fine mahogany, and enriched with *pilastres and friezes of FRUITS, FLOWERS, &c., exquisitely carved in oak, by Gibbon*, enclosed by folding doors, filled with *plate glass*
- 749 A ditto, the companion
- 750 A pair of MAGNIFICENT bronze GIRANDOLES, elaborately chased and highly gilt, in or-molu, emblematic of the Chase, each for *three lights*
- 751 A ditto
- 752 A brilliant CHIMNEY GLASS, measuring  $72 \times 51$ , in an OAK frame, *highly and elaborately carved in fruits, flowers and birds, by GIBBON*
- 753 An excellent TELESCOPE, on *brass* standard, in mahogany case, by *Dollond*
- 754 A pair of *ancient* Buhl tripods, designed with simple elegance, and enriched with BRONZE gilt
- 755 A pair of ditto
- 756 A pair of richly chased and gilt or-moulu candlesticks, from CELLINI
- 757 A pair of ditto
- 758 A sideboard or pier table, of rare SIENNA MARBLE, on ebonized standard
- 759 A ditto
- 760 A Brussels carpet, 37 feet by 18 feet
- 761 A set of mahogany DINING TABLES, composed of 2 circular ends and 2 shifting centres, measuring 14 feet long by 7 feet wide, on *pillars and claws* and castors



## USEFUL PORCELANE.

- 762 A *matchless and extensive* DINNER and DESSERT SERVICE of the rare OLD DRESDEN PORCELANE, elaborately enamelled in Views of all the principal *Sea Ports and Towns of Holland*, painted expressly for the PRINCE of ORANGE, comprising 3 large tureens, covers and dishes, 3 circular fruit bowls and covers, 5 double-lip sauce boats, 2 sugar urns and covers 5 large circular deep dishes, 24 dishes in sizes, 22 oval ditto, 2 mazarines, or fish drainers, 5 fruit baskets and plateau, perforated, 9 circular compotiers, 5 ditto, leaf shaped, 10 oval ditto, 32 round ditto, 46 cheese plates, 59 soup plates, 72 meat plates and 48 dessert plates—Total of pieces, 363, at per piece
- 763 Twenty-four ditto meat plates, en suite, at per plate
- 764 Twenty-four ditto
- 765 Twenty-four ditto
- 766 Two dozen useful *French* plates, EGYPTIAN pattern, at per plate
- 767 Eight ditto, *blue and gold* borders, enamelled in *flowers, horses, landscapes, &c.* at ditto
- 768 A *splendid and unique* DESSERT SERVICE of modern SEVE porcelane, beautifully painted in all the varieties of Fruit, and finished with a bordering of mazarine blue, relieved by gold arabesque pencilling and medallions of flowers, comprising 8 circular compotiers, 4 square ditto, 2 sugar urns and covers, 30 plates, a suite of *three* superbe central CORBEILLES, supported by female Cariatides, and a pair of *superbe* ICE PAILS, en suite
- 769 An extensive BREAKFAST SERVICE of rich *red* and *gold* JAPAN pattern



A SMALL SERVICE OF  
 SUPERBLY CUT VENETIAN GLASS WARE.

- 770 Twelve double lipped wine coolers
- 771 Twelve ditto
- 772 Twelve champagne glasses
- 773 Twelve goblets
- 774 Eight ditto and 24 claret ditto
- 775 Twelve wine glasses and 10 claret ditto

MAGNIFICENT  
 SILVER AND SILVER-GILT CHASED PLATE,  
 AND  
 ORIENTAL SILVER FILLAGREE.

*At per Ounce, and at per Item where expressed.*

- 776 *A curious old chased silver tea caddy, at per oz.*
- 777 *A suite of four boudoir candlesticks, highly chased in flowers*
- 778 *A pair of ditto vases and covers*
- 779 *A pair of ditto cake baskets*
- 780 *A two-handled gilt cup and cover, chased and gilt*
- 781 *A pair of blue glass sprinklers with fillagree exterior, all at*
- 782 *A beautiful Persian fillagree vase and cover with lizard handles, enriched with gilt flowers and mouldings in relief, all at*
- 783 *A beautiful fan-shaped jewel casket with gilt lining and key, at per oz.*



- 
- 784 An essence vase, cover and stand, shaped as an egg,  
*all at* and two trays
- 785 A small ditto Jewel Casket, with handles and gilt  
lining, at per oz.
- 786 A ditto curiously worked as a basket, with gilt mount-  
ings
- 787 A magnificent PLATEAUX, of MASSIVE SILVER, in  
four parts, *plate glass* lining, and *richly chased alto  
relievo bordering*
- 788 A *superbe and tastefully designed* CORBEILLE,  
supported by Infant Satyrs, *finely chased*, weight  
127 oz. 10 dwts.
- 789 A pair of DITTO, weight 167 oz. 10 dwts.
- 790 An antique oval gilt SALVER, rich bordering of flowers,  
&c.
- 791 A small two-handled gilt cup and cover
- 792 Four gilt finger basons
- 793 A pair of gilt hexagonal waiters, chased border
- 794 A pair of ditto
- 795 A pair of *beautiful Oriental fillagree* SPRINKLERS and  
two circular trays
- 796 A pair of ditto trays, formed as leaves
- 797 A pair of *silver* and *gilt* ditto VASES, on pedestals,  
with tops for essence
- 798 A pair of ditto TOILETTE CASKETS, rich and beau-  
tiful design
- 799 A pair of ditto *toilette trays*
- 800 A silver-gilt and chased tray cruet stand, and 6 cut  
glass ewers, mounted with handles and covers—  
*30s. to be paid for the glasses beyond the sum bid  
for the silver*
- 801 A ditto, ditto, with cut glass sugar and cream vases  
and ladles—glasses given



- 
- 802 An elaborately chased SILVER GILT VASE and cover, ornamented with rich scroll and leaf borders, *from the antique*
- 803 A ditto
- 804 Two pair of wormed column *silver* candlesticks
- 805 A pair of ditto of rich pattern
- 806 A sideboard dish of OLD SILVER, *embossed and gilt*, with *mat* flowers, disposed in burnished flutes
- 807 A ditto
- 808 A ditto
- 809 A ditto
- 810 Two ditto TAZZAS
- 811 A massive silver gilt WAITER on four feet, richly engraved
- 812 A ditto
- 813 An ancient embossed silver gilt EWER and dish, chased in festoons of flowers, *very elegant*
- 814 A silver gilt salver, with chased border, and rose and crown in the centre, and initials of WILLIAM AND MARY
- 815 A ditto
- 816 Two silver gilt and richly engraved cups and covers with onyx knobs
- 817 A SILVER GILT EWER, on tripod goats legs, winged snake and ebony handles, made by Green and Ward, from a design of Boilieu
- 818 A DITTO
- 819 A *magnificent* SIDEBOARD DISH, richly chased and gilt
- 820 A tooth pick tray, formed as an *animal*
- 821 A fine specimen of *antique* chasing in *silver* CAMEO (a Medallion of Neptune and Amphitrite,) by "CARLOS BOLGOOL, FECIT 1677."



- 822 A VERY MASSIVE SILVER GILT JEWEL CASKET, on ten cornelian feet, in Persian taste, *from a drawing by Mr. Beckford*
- 823 A SILVER GILT TEA URN, STAND AND LAMP
- 824 A MAGNIFICENT EMBOSSED DISH, with border of military trophies and masks; within are six compartments, with the Labours of Hercules, finely chased round the rose and crown, which form the centre of the dish. This formerly belonged to KING CHARLES I.
- 825 A SILVER GILT GOTHIC SALVER, RICHLY CHASED AND ENGRAVED
- 826 A DITTO
- 827 A MOST NOBLE and ELEGANT EWER, silver gilt, in the manner of the antique, by Moiette and Auguste; executed with a truth and feeling unexampled
- 828 A DITTO
- 829 A MAGNIFICENT HANDLED TAZZA, modelled after the antique, by the celebrated French sculptor Moiette, and executed by H. Auguste (Paris, 1802), in a style of superior excellence; the borders and masks most exquisitely chased, and worthy the best period of Grecian art
- 830 A DITTO
- 831 A curious antique shaped ewer of or-moulu, made at Grenada, elaborately engraved in the Moorish style, *all at*
- 832 An ancient and very curious *metal* dish of the same workmanship, *all at*
- 833 A silver gilt ewer and cover, of elegant form, finely engraved with masks, scrolls, &c. in the Tuscan style, with ebony handles, *all at*
- 834 An elaborately chased cake tray, gilt, with Figures, &c. Boar Hunting
- 835 A ditto casket with pincushion



- 836 A SILVER GILT CASKET, with bas relief, richly chased  
837 A ditto  
838 A pair of large silver pillar candlesticks, of rich  
pattern  
839 A pair of ditto  
840 A richly chased *silver* gilt casket

*End of the Seventeenth Day.*



# *Eighteenth Day's Sale,*

THURSDAY, the 2d of OCTOBER, 1823,

Commencing at Half-past Twelve precisely.

---

*From Lot 841 to Lot 960, will be Sold this Day,*  
 Being the **EIGHTH DAY** of FURNITURE.

---

## VALUABLE ANCIENT STAINED GLASS.

- LOT  
 841 **A** Pair of small pannels, of Saints at devotion  
 842 A pair of ditto Armorial Bearings, with crests of dog  
 and bird  
 . . 843 *Five* large pannels (imperfect) of the **LAST SUPPER**  
 . . 844 *Five* ditto, forming an entire window subject, *Christ*  
*crowned with Thorns*  
 845 *Three* ditto, of beautiful drawing, and representing  
 the *cypher* and heraldic bearings of *Diane de Poi-*  
*tiers; curious and fine—from the Chateau d'Ecouen*  
 846 *Three* large pannels, very fine and curious, the arms  
 and device of the **MONTMORENCY FAMILY**  
 847 *Two* smaller ditto, (imperfect) the **Betraying of Christ**  
 by Judas  
 848 *Two* pannels, **Christ in the Temple**  
 849 *Two* ditto, of **Moses coming down from Mount Sinai**  
 850 *Three* large pannels, **ARMORIAL BEARINGS**, with rich  
 arabesque scroll and drawing—*from the Chateau*  
*d'Ecouen*  
 851 A **Feast**, rich and beautiful colours, and nearly perfect  
 in one pannel  
 852 A single pannel, **Marriage of the Virgin**  
 853 A pannel with armorial bearings, busts, and a rich  
 antique border

- 854 Soldiers Plundering; very rich in colour; a single pannel
- 855 Four circles, Armorial Bearings of Mr. Beckford
- 856 A pair of small pannels, Scripture subjects.
- 857 A figure of Prudence, and two others
- 858 A pair of pannels, four Armorial Bearings
- 859 A pair of ditto in chiaro-oscuro; Astrology and Companion
- 860 Two pannels containing five fine circular pieces of Saints
- 861 One ditto Scriptural piece, framed
- 862 Three ditto imperfect
- 863 Three large circles, iron hooped; the centre, the Royal Arms of England encircled with the Lancaster Rose
- 864 A large and uncommonly fine window in chiaro oscuro, with figure of *St. Thomas Becket*, by PEARSON, in 1798—in a SOLID mahogany gothic frame

#### RICH CUT VENETIAN GLASS.

- 865 A pair of quart and a pair of pint decanters
- 866 Four liqueur ditto
- 867 Twelve hock glasses and 12 tumblers
- 868 Twelve liqueur ditto
- 869 Nine ditto
- 870 Two pair of salts with plated stands
- 871 A pair of water ewers
- 872 A single ditto
- 873 A pair of cream ditto
- 874 A pair of confituriers, covers and stands

#### *Lancaster Gallery, and Tribune Room.*

##### *No. 40 and 41.*

- 875 A pair of GOTHIC PIER TABLES, on twisted legs, admirably carved and executed in OAK
- 876 A pair of ditto on 6 legs
- 877 A pair of ditto on 8 legs



- 878 A pair of ditto  
 879 A pair of ditto  
 880 A fine ANTIQUE ORIENTAL ALABASTER  
 EWER. *from Pompeii*  
 881 A PIER GLASS in oak frame, with richly carved Gothic  
 top, relieved in gold, 54 inches by 15½  
 882 A ditto  
 883 A pair of richly carved Gothic brackets of oak, relieved  
 with gold  
 884 An INDIAN GONG, of rich and mellow tone  
 885 A pair of *singularly elegant and exquisitely wrought*  
 ORIENTAL SILVER *fillagree* CANDELABRAS,  
 for one light each, the stand *enriched* with the *local*  
 FRUITS of CHINA, and partially gilt

FRENCH AND ORIENTAL CHINA, GOLD  
 JAPAN, BUHL, &c. &c.

- 886 One grand JAPAN JAR and cover, and 2 beakers  
 887 Four carp-pattern Japan dishes  
 888 A small Buhl clock  
 889 A Buhl and tortoiseshell box, lined with green silk  
 velvet, and gold lace  
 890 Two embossed egg-shell jars  
 891 A PIER GLASS in a frame of *Marqueterie*  
 892 Two sea-green and 4 buff dishes, all rare  
 893 Six embossed fine *sea-green* desert dishes  
 894 A Buhl coffer, with drawer, and massive or-moulu or-  
 naments  
 895 A PIER GLASS with frame of *Marqueterie*, the plate  
 24 by 20 inches  
 896 Two beautiful pots pourri and covers, with Squirrels  
 on the tops  
 897 Two flat Japan bowls, finely fluted  
 898 Four ditto

- 
- 899 Two French plates, one painted with birds, the other with landscape and cattle, by De Marne
- 900 Two large Japan basons, with flowers inside, and festoons outside
- 901 Two Raphael ware plates, painted with historic subjects
- 902 Two ditto salvers, ditto
- 903 Two blue and gold ground bottles, with flowers in compartments, and 1 crackle bottle with blue flowers
- 904 A PIER GLASS in massive ebony and tortoise-shell frame
- 905 A ditto
- 906 Six fine EGG-SHELL PLATES, pink ground, with double Mosaic and flowered border, with various conversational subjects, painted in a superior manner
- 907 Five ditto, 3 and 2
- 908 AN EXCEEDINGLY RARE AND BEAUTIFUL SMALL JEWEL CABINET, of raised Japan, the model of a pavilion of Italian architecture, with a double roof, each constructed with hinges to open; at the corners of the building are columns supporting a cornice, in the front a central niche concealing a drawer, and a drawer on each side. The Japan is richly incrustated, also studded with *silver*, and in many parts bordered with mother-of-pearl.
- 909 A PAIR of RICH and CURIOUS SILVER-GILT SCONCES with Royal devices. *Formerly belonged to King William and Queen Mary*
- 910 A PAIR OF DITTO
- 911 Two sets of rich CRIMSON DAMASK WINDOW CURTAINS, with brass rods, &c. as arranged over the window and the recess (not the rods)
- 912 Ditto over doors (not the rods)
- 913 A Mythological subject, in *coloured* LIMOGES, rare, and framed
- 914 A group of Figures in *Dresden*



- 915 A square horizontal ribbed WORK BOX, of black and gold JAPAN, ornamented with fan and 3 leaves, encircled alternate, on 4 legs, strongly mounted in chased or-molu
- 916 Three *highly finished* DRAWINGS of the Fathers of the Church, by HAMILTON, in one frame, glazed
- 917 Three ditto
- 918 Two ditto
- 919 A square *Boule* COFFER or jewel casket
- 920 A pair of small bronze Groups
- 921 A pair of fine gold JAPAN BEAKERS

### SILVER-GILT LIBRARY CANDLESTICKS,

*Beautifully Chased, and of Elegant Design—as arranged in*  
ST. MICHAEL'S GALLERY.

- 922 A pair of silver-gilt LIBRARY CANDLESTICKS, elaborate chased, *at per ounce*
- 923 A pair of ditto
- 924 A pair of ditto
- 925 A pair of ditto
- 926 A pair of ditto
- 927 A pair of ditto
- 928 A pair of ditto
- 929 A pair of ditto
- 930 A pair of ditto
- 931 A pair of ditto
- 932 Two pair of ditto
- 933 A pair of lofty ditto, with pair of BRANCHES for *three lights* each
- 934 A pair of DITTO and ditto
- 935 An elegant (*silver gilt*) CHALICE, richly chased and decorated
- 936 A SUPERBE SILVER chased TEA KETTLE, LAMP and stand, the handle formed by Serpents, highly chased
- 937 A circular bread basket, perforated

## ORIENTAL AND DRESDEN CHINA.

- 938 Twelve burnt-in plates  
939 Twelve ditto  
940 Eight ditto  
941 Eight very rich enamels, Chinese domestic scenery  
942 Five enamelled plates with horses  
943 Fourteen burnt-in blue and red plates  
944 Ten ditto enamelled ditto  
945 Six small basons  
946 Four crimson-ground Dresden coffee cups and a speckled bottle  
947 A Japan jelly pot, mounted in silver gilt  
948 Four fine French plates with flowers of Dohl's manufacture  
949 Two egg-shell jars and covers, gold ground, with landscape and figures  
950 A choice specimen of Persian sculpture, in pale jad, formed as a Lotus, with bas-relief of flowers on the outside  
951 Fourteen burnt-in plates  
952 Four octagon Japan dishes  
953 Six *beautiful* egg china fruit plates, enamelled in boats and figures, and *pink on the reverse*  
954 Eight deep ditto  
955 Six fine *old Japan* china dishes  
956 Eight ditto scalloped fruit plates  
957 A large ditto bowl and dish  
958 A shaped ditto, cover and stand  
959 Twelve ditto cups and saucers and tea pot  
960 Two ditto bowls and covers, and two enamelled butter coolers

*End of the Eighteenth Day.*



## *Twenty-eighth Day's Sale*

THURSDAY, the 16th day of OCTOBER, 1823,

Commencing at Half-past Twelve precisely.

---

*From Lot 961 to Lot 1080, will be Sold this Day,*  
 Being the **NINTH DAY** of **FURNITURE**.

---

*Waiting Room, and Southern Entrance Hall.*  
**No. 2.**

- |     |                                                                             |        |
|-----|-----------------------------------------------------------------------------|--------|
| LOT |                                                                             |        |
| 961 | <b>A</b> Pier or chimney glass, rich gilt frame                             | 9      |
| 962 | A bracket CLOCK, in <i>rich old or-molu</i> case                            | 12 1/4 |
| 963 | Six Gothic chairs, hair seats, covered with red morocco                     | 18     |
| 964 | A mahogany <i>buffet or commode</i> , with bronze busts and marble slab top | 77     |
| 965 | A Gothic shaped cabinet bookcase, with drawers and shelves                  | 9      |
| 966 | Three carved Ivories                                                        | 22     |
| 967 | Three ancient paintings                                                     | 4      |

**THE TWO**  
**YELLOW DAMASK DRAWING ROOMS**  
**No. 72 and 73.**

- |     |                                                                                                    |     |
|-----|----------------------------------------------------------------------------------------------------|-----|
| 968 | The <b>YELLOW SILK CURTAINS</b> for two windows (not the rods)                                     | 7   |
| 969 | The ditto for the three bay windows (not the rods)                                                 | 1/4 |
| 970 | The ditto for the large door and two recesses (not the rods)                                       | 15  |
| 971 | Six window stools, covered in yellow damask, and finished with silk fringe, with loose serge cases | 99  |



- 972 A suite of eight Gothic framed CHAIRS, stuffed backs and seats, covered with *yellow morocco*, finished with large gilt studs and silk fringe, and loose yellow serge cases
- 973 Four black and gold ARM DITTO, covered in yellow velvet, and loose serge cases
- 974 A CHIMNEY GLASS, in richly gilt gothic head frame, 79 inches by 52
- 975 An *oriental* ALABASTER SLAB, mounted on an ebonized frame as a table
- 976 A pair of small turquoise basons, *coloured*, mounted in the taste of *Buhl*
- 977 A pair of black and gold Japan sprinklers
- 978 A beautiful *porcelane* ECRITOIRE, enamelled in flowers and fitted with bronze liners and enrichments, in *or-mat*
- 979 A pair of beautiful AMARANTH WOOD TRIPODS, or TORCHERES, pannelled with *Seve porcelane*, and splendidly mounted and decorated in *or-moulu*
- 980 A *superb* OR-MOULU and SEVRES PORCELANE VASE CLOCK, with horizontal movement and vertical dial, the hour indicated by a Serpent springing from the pedestal with the fang set in brilliants; mounted on a PEDESTAL, richly chased and gilt, and pannelled with *porcelane*; the plinth of *Verd-de-mer*, glass shade and stand
- 981 A curious bronze Japanese incense burner, with masks and perforated top
- 982 A pair of BRILLIANT *French plate* PIER GLASSES, measuring 96 inches by 38, in carved and gilt frames
- 983 A pair of elegant VASES of the SEVRES PORCELANE, mazarine blue ground and gold enrichments, with embossed festoons of flowers, and two MARINE VIEWS, enamelled in colours from designs by *Vernet*, and two allegorical medallions on the reverse, richly mounted in BRONZE GILT

114 . 12

21

12 . -

72 . 9

13 . 13

6 . 0

7 . 17

82 . 19

90 . 6

4 . 8

58 . 16

47 . 5

531 . 14



- 531 . 12
- 984 A SUPERB Buhl and or-moulu PIER CABINET, the door formed by a fine pannel of GOLD JAPAN, framed with Buhl inlaying; the friezes and enrichments highly chased and gilt, surmounted by a slab of Italian marble 89 .
- 985 A ditto; mounted in a correspondent style of decoration and splendour, the pannel of the door being formed of an elaborate specimen of Buhl inlaying 94 .
- 986 A SUPERB circular BOUDOIR TABLE, formed of scarce and beautiful *Brazilian* wood, and sumptuously mounted in or-moulu of exquisite chasing and finish, by *Thomire of Paris*, from a design and counterpart at the palace of ST. CLOUD 59 .
- 987 A pair of SPLENDID CANDELABRAS sumptuously gilt in or-mat and chased in bronze, enriched with drops, &c. in *rock crystal*, on Greyot marble plynths 30 .
- 988 A pair of ditto en suite 26 .

## GOLD JAPAN.

- 989 A pair of small CANTEENS of JAPAN, in imitation of the grain of wood, with trays, compartments, and cassoletes; from the Collection of the DUC DE BOUILLON 8 . 18
- 990 A pair of hexagonal ditto, with four compartments and trays, with birds and plants upon a dead gold ground, and a cassolete on the top of the cover 4 . 15
- 991 A curious red, basket-work, Japan box, with divisions inside, chimeras outside, and a black and gold Japan box, with a tray 2 . 17
- 992 A nest of boxes and a tray, in gold Japan, with cover, black speckled with gold and butterflies 4 . 14
- 993 A pair of round gold JAPAN BOXES and covers, with gold landscapes 5 . 15
- 994 An HEXAGONAL BOX, representing a basket, with tray and *seven apples inside*, embellished with loose flowers 5 . 7
- 864 . 8



- 864 . 0
- 5.
- 4
3. 15
4. 4
- 4
- 7
19. 1
7. 1
- 6.
- 5.
- 13
22. 7
- 2
948. 6.
- 995 A red japan sculptured square box, and a small one in the shape of two plums
- 996 A pair of JAPAN BOXES with trays in the shape of a fruit, ornamented with landscapes upon a black ground, the inside avanturine
- 997 A rare and beautiful GOLD JAPAN BOX, with flowers and fruits in relief upon gold ground. *From the collection of the Duc de Bouillon*
- 998 A pair of black and gold Japan, shaped, boxes, with cottages and Mosaic ornaments upon the ground, avanturine inside, and trays
- 999 A round shaped box of old black Japan, decorated with landscapes and gold ornaments
- 1000 Three small CASKETS, one with a tray, of the flat black and gold japan, birds on the tops
- 1001 A MAGNIFICENT GOLD JAPAN BASON and COVER, spotted with solid gold pins, with landscapes and waved surface, the inside is ornamented with water plants upon avanturine. *This beautiful gem was one of the most esteemed in the collection of the DUC DE BOUILLON*
- 1002 An HEXAGONAL JAPAN BOX, covered with silver wire net work and squirrels, upon black ground, with tray inside, and SEVEN silver APPLES, with gold leaves, raised and studded with silver
- 1003 A pair of small gold Japan cabinets, with trays, and two small boxes in each drawer
- 1004 A pair of black and gold Japan cups and saucers, and a small black Japan box, in three compartments, sprinkled with red and gold flowers
- 1005 A pair of barrel-shaped boxes and stands, the outside imitating the grain of wood: gold chimeras on the tops, and trays with landscapes, and six boxes of gold Japan inside, formerly in the collection of the DUC DE BOUILLON
- 1006 A pair of circular pedestals, on black ground japan, representing bird-traps, pencilled on gold
- 1007 A square Japan box with tray inside



- 1008 An oval black and gold raised Japan toilette box, with tray, the inside avanturine
- 1009 Five small Japan boxes, in the shape of apples, the insides avanturine
- 1010 A cup and cover of the RAISED CARVED JAPAN, with a jad ornament upon the top of the cover
- 1011 A VERY CURIOUS JEWEL CASKET, in the shape of a Japanese musical instrument, ornamented with parasols in different colours. *It formerly belonged to the DUCHESS of KINGSTON*
- 1012 An EXTREMELY CURIOUS CHINESE SCEPTRE, formed of Chinese wood, worked in a kind of rock work, in an upper recess of which is their superior Deity TONFONGSOK, and the *Eight Tchin*, with their symbols on different stages below
- 1013 A pair of superb PERSIAN SILVER FILLAGREE PAGODAS, elaborate in point of execution; at per ounce
- 1014 A pair of HAWKS, beautifully coloured and modelled in china, and mounted on marble and or-molu pedestals
- 1015 A pair of gold JAPAN jars and covers, enamelled in compartments
- 1016 A most elaborate sculpture in ivory, the Rape of the Sabines, superbly mounted in silver gilt, as a tankard
- 1017 A pair of large French porcelain FLOWER POTS and stands, pencilled in figures and decorations from the antique, and gold bordering
- 1018 A pair of SUPERB or-moulu and bronze TRIPODS, on plynths, supporting VASES, (imitative of verd marble) correctly designed from the *Antique*
- 1019 A small PIER TABLE, with twisted legs and Mosaic top, bearing an oriental Alabaster slab, *beautifully inlaid in flowers and insects, of the fine and rare Florentine work*
- 1020 A ditto of lapis lazuli, with shells and pearls



- 1021 An *Italian* bronze GROUP of the LAOCOON, on a rare and fine slab of *Egyptian green granite*
- 1022 A pair of old *Dresden* PORCELAIN Storks, *closely imitative of nature*, and mounted on *gilt* metal plynths
- 1023 A pair of BRONZE LAMPS of Antique character, with handles formed by figures reading, &c. finely chased
- 1024 A pair of octagonal jars and covers, of the finest gold Japan china
- \*1024 *a Nautilus Shell set in Silver*
- 1025 A pair of sea green CRACKLIN vases
- 1026 A pair of ditto
- 1027 A pair of two-light *or-moulu* CANDELABRAS, borne by figures of *Negro Girl and Boy*—on dove marble pedestals
- 1028 A SUPERBE OR-MOULU CLOCK, with figure of Cupid, and movement by CRONIER of *Paris*, glass shade and stand
- 1029 A pair of BRONZE URNS (from the Antique) supported by *Satyr Boys*, and mounted on *red marble* plynths
- 1030 A group formed of AMBER, of the WISE MENS' OFFERING, *rare and curious*, and a case, lined with silk, to protect it
- 1031 An elegant old *Sevres* PORCELANE *dejuné*, richly gilt in arabesque, on mazarine blue ground, pencilled in Military Subjects
- 1032 A COFFER or jewel casket, of tortoiseshell, curiously inlaid with mother-o'pearl, engraved in various figures, and lined with velvet
- pair of* 1033 A beautiful FLORENTINE MOSAIC SLAB, inlaid in birds, fruits and flowers, and mounted as a lady's work table on ebony frame, splendidly decorated in *or-moulu*
- 1034 A highly curious miniature carving, in ivory, of a PEDLAR, on a square silver gilt plynth, set with rubies and emeralds
- sol.* ~~1035 A miniature of the Duchess of Somerset, by Cooper~~
- 1036 A circular mosaic medallion of a Bird, &c.

1132 .  
97 . 1  
8 . 1  
21  
12 . 10  
10 . 10  
9 . 2  
15 . 15  
14 . 14  
30 . 9  
10 . 10  
7 . 7  
10 . 7  
10 . 10  
47 . 5  
14 . 14  
1 . 8  
1462 . 4



1462 .4

1037 A shaped box of LAPIS LAZULI, highly wrought, mounted in gold, and set with rubies

24 .3

1038 A ditto formed of *blood-stone*, finely sculptured, and mounted in gold

118 .7

1039 Two large and fine black JAPAN and PEARL CHINA BOTTLES

33

1040 A NOBLE vase of Swedish PORPHYRY

21

1041 A TRIPLE JEWEL CABINET, of opaque and transparent AMBER, carved with sacred, legendary and other subjects, in relief, separated by *cameos* of WHITE AMBER—The *lower* casket of the three, is ornamented with miniature figures of Saints, of *white amber*, on brackets; the whole supported on feet shaped as bunches of grapes, of yellow amber. *This rare and costly article, was made for the Princess of Bavaria, in 1665.*—Also a glass case for ditto

115 .

1042 An elegant PERSIAN CABINET and STAND of ebony and ivory, richly mounted with or-moulu

47 .

1043 A fine AMBER cabinet, with rich carved devices, and glass shade

36 .1

1044 A CABINET of the GREATEST CURIOSITY, composed of Pear-tree and other woods, from the PALACE at WHITEHALL, and executed from designs of HOLBIEN for KING HENRY the VIIIth

153 .

The four fronts present each an Architectural Façade, with two folding-doors, on the pannels of which is sculptured a Battle, with Figures in high Relief, and spiritedly executed

The doors within are inlaid with designs in the taste of that time. The drawers are separated by beautifully carved Terminal Figures, and the fronts of the drawers with Historical Subjects, in Bas-relief, with moral inscriptions in Latin verse

The whole is supported on a Sculptured Arcade, inlaid with Heraldic Devices

153 .

1911 .1



- 1045 A NOBLE and MAGNIFICENT EBONY CABINET, (architecturally formed), enclosed by folding doors of exquisite workmanship in *basso relievo*, representing the magnanimous example of *Mutius Sævola*; and *Quintus Curtius* leaping into the Gulf, and *friezes* of Bacchanalians and allegorical subjects at the extremity, with three solid ebony columns, most elaborately carved, and supported by SIX VASES, with massive mouldings, caps and bases, finely chased
- 1046 An ORIENTAL CALCEDONY, finely mammillated, with foot and stem, superbly mounted in *silver gilt*, pierced, engraved, and chased
- 1047 A precious Mocoa mammillated CALCEDONY EWER, mounted in *silver gilt*, elaborately and delicately chased and engraved, with fluted lip, tendril handle and figured ornaments
- 1048 An Oriental CUP and COVER of agate, mounted on a pedestal, with *vase of silver chased and gilt*, ornamented with three chimeras, the whole surmounted with a ribband onyx, in the shape of a mitre
- 1049 An ORIENTAL SCULPTURED TAZZA of LAPIS LAZULI, mounted in *silver gilt*, and set with lapis lazuli intaglios (*see the inside*). From the Garde Meuble of the late King of France
- 1050 A ditto
- 1051 Twelve *Royal Dresden* tea cups and saucers, sugar and slop basons, pale green ground, *rich gold* borders and landscapes, inside and out, of a very superior quality
- 1052 A Dresden cream ewer to correspond, *massively* mounted, and richly covered in SILVER GILT, in a gilt glass dish
- 1053 An engraved rock-crystal flower vase, handles, foot, and mouth, attached by enamelled *gold*, of curious shape
- 1054 A small and choice OVAL CUP, cover, stand, and foot, of Mocoa agate, *elegantly mounted*, elaborately engraved, and surmounted by a BACCHANTE, all of *silver gilt*

1911 . 1

572 . 3

28 . 17

24 . 13

48 . 6

61 . 19

24 . 13

14 . 14

7 . 17

14 . 3

2709 . -



- 1055 A large AGATRIZED JASPER TAZZA, sculptured in eight gadroons, mounted in *silver gilt*, and engraved 12 . 1
- 1056 An OVAL CUP of red and yellow JASPAR, scalloped in eight divisions, engraved, the mounting *silver gilt*, incrustated with *sixteen* TURQUOISE and FOUR VERMILLIONS 10 . 7
- 1057 A ROCK-CRYSTAL BASON, mounted on silver gilt vase and foot, most elaborately chased in flowers, masks, &c. 11 --
- 1058 A large *two-handled cup* of ROCK-CRYSTAL, on a foot, mounted in FINE GOLD, enamelled and engraved in *intaglio*, arabesque ornaments, of the finest Italian workmanship 14 . 3
- 1059 An OVAL CUP of ORIENTAL SARDONYX with *crystallizations*, mounted on four stems of double goat's feet and foliage, on a *solid* pedestal of or-moulu 19 . 19
- 1060 A sculptured ONYX CUP and COVER, on a vase, and foot of the same, mounted in fine open work and *enamelled* GOLD, much enriched with RUBY and DIAMONDS, on three tortoise feet formed by *large* PEARLS, surmounted by a *gold* engraved figure of MINERVA, with a *ruby* shield of the finest *cinque* cento workmanship 35 . 14
- 1061 A SILVER CUP, externally engraved, with Noah's sacrifice, by A. Wigbels, a German artist, whose name is engraved upon it; it also bears the engraved name of the original proprietor, with the date 1624. It is lined with *silver gilt*, and mounted upon a chased socle of the same. It belonged to the Margravine of ANSPACH at 1.1.6 per oz. 2709.
- 1062 A LARGE OVAL ENGRAVED ROCK CRYSTAL CUP, with the figure of a Syren, carved from the solid block, and embracing a part of the vessel with her wings, so as to form a handle—from the ROYAL COLLECTION of FRANCE 88 . 118



2829

- 1063 AN IMPERIAL CHINESE SCEPTRE, formed of Jad; a present from KIEN LONG to GEORGE the THIRD; brought over by Lord Macartney; sculptured into symbolic representations of the Elements: of extreme beauty and rarity
- 1064 One very rare Japan cup, mounted as milk and sugar buckets, with *silver* rims, gilt and chased
- 1065 A CRYSTAL FLOWER VASE, of antique form, with handles and spouts engraved, mounted in GOLD, and set with RUBIES: from the *Garde Meuble* of the KING of FRANCE
- 1066 Two oriental white *Mocoa agate* ladles, with long handles of the same, and chased *silver* mountings
- 1067 A *valuable* GOLD BOX, chased and engine turned with three miniatures of the Emperor Napoleon, the Empress Marie Louise, and their Son, the two latter are ingeniously secreted
- 1068 A parti-coloured STRIATED AGATE CUP and COVER, richly mounted in *silver* gilt, engraved
- 1069 An ancient vase, *silver* gilt, and engraved, of German work
- 1070 A PERSIAN VASE and STAND, *silver* gilt, of the finest perforated Shiraz workmanship
- 1071 A pair of ORIENTAL CHINA GARDEN SEATS, highly enamelled in Flowers
- 1072 Five white Lotus cups, mounted as milk pails, and two octagon Japan trays
- 1073 Two flasks, very fine, with raised flowers
- 1074 A matchless Japan bowl and dish
- 1075 A Japan pot pourri and cover
- 1076 Two lapis blue and gold cylindrical jars, enamelled birds and flowers
- 1077 A crimson silk QUILT, lined with purple silk
- 1078 A *fine* EBONY CABINET, supported by columns, the doors elaborately carved, and represent the *Triumph of Bacchus*, rich antique scroll friezes, &c.
- 1079 A four-tier music stand, with black turned balustres
- 1080 A square Buhl coffer, richly mounted

*End of the Twenty-eighth Day.*

O

£ 3047



## *Twenty-ninth Day's Sale,*

FRIDAY, the 17th day of OCTOBER, 1823,

Commencing at Half-past Twelve precisely.

---

*From Lot 1081 to Lot 1200, will be Sold this Day,*  
Being the **TENTH DAY** of FURNITURE.

---

### **CRIMSON BREAKFAST PARLOUR.**

*No. 28.*

- LOT  
1081 **F**IVE dessert dishes of fine old enamel  
1082 Six enamel plates, with landscapes and flowered borders  
1083 Eight extremely rare *embossed Japan dishes*, with scalloped borders  
1084 Ten enamelled plates, viz. 6 octagonal and 4 round ditto, crimson and gold, bird pattern  
1085 A two-handled broth bason, cover and stand, painted with insects  
1086 Two red and pencilled gold egg-shell jars, with figures  
1087 One white and gold ditto, ditto  
1088 Two mazarine blue and gold dishes  
1089 Twelve burnt-in plates with rich borders  
1090 A pair of solid dwarf columns of Italian marble, with belt chased in bronze and or-molu  
1091 A pair of sexagon snuff or herb canisters, formed of *Lava*, and beautifully coloured in pannels of flowers, with or-molu rims and stoppers



- 1092 A fine GOLD JAPAN TRINKET BOX, lined with green velvet and fitted for rings, snuff boxes, &c.
- 1093 A square black and gold japan flower stand
- 1094 A pair of bronze Dogs, finely chased and modelled, on Vienna plynths
- 1095 A grey Oriental china bottle (imperfect) in a rich and massive or-molu mounting

### MISCELLANIES.

- 1096 Six carved oak chairs, with cane seats and cushions
- 1097 A circular rose-wood breakfast table, on stout pillar and claw
- 1098 A cloth cover for ditto
- 1099 An elegantly shaped PIER TABLE, pannelled with cameos in *biscuit porcelane*, expensively decorated with or-moulu, and surmounted by a slab of *Greyôt d'Italié*
- 1100 A brilliant plate CHIMNEY or PIER GLASS, in rich carved and gilt frame, 78 inches by 40
- 1101 A two-flap mahogany framed fire screen, filled with red serge
- 1102 A BUFFET, or CONSOLE, formed of fine mahogany, and enriched with oak carvings, by GIBBON, in *alto relief*, centre enclosed by folding doors, filled with plate glass, and shelf
- 1103 An elegant BREAKFAST SERVICE, painted in roses and heart's-ease, containing 6 dejune basons and saucers, 6 coffee cans and saucers, 6 plates, 6 egg cups, bowl, sugar and cream urns
- 1104 An excellent telescope by *Dollond*, in a mahogany case
- 1105 A pair of beautiful paintings on glass of *Moths*, framed
- 1106 A *pug dog*, beautifully modelled in Dresden porcelane, and coloured from nature



- 1107 A pair of massive bronze and or-moulu candlesticks, supported by chimeras, highly chased
- 1108 A pair of ditto, en suite
- 1109 A superbe FRENCH PORCELANE DESSERT SERVICE, elaborately enamelled in Birds, &c. from *Buffon's Natural History*, and gold border, comprising 4 compotiers and 2 square ditto, and 24 plates
- 1110 Six large oval dishes to match
- 1111 Twelve soup plates, same pattern
- 1112 Twenty-four plates, beautifully painted in Birds
- 1113 A *Dresden* tea set, painted in *Birds*, containing 4 cups and 4 trays, tea pot and bason
- 1114 A CAPITAL LIBRARY CLOCK, by *Le Roy* of Paris, in mahogany case

*In King Edward's Gallery. No. 32.*

RARE AND FINE GOLD JAPAN.

- 1115 A singularly beautiful JAPAN CABINET, the ground *avanturine*, sprinkled with studs of gold, and ornamented throughout with flowers and birds in relief, of SOLID GOLD, SILVER, MOTHER OF PEARL, and CORAL, mounted with *silver*, and having 6 drawers inside—from the Collection of the DUC de BOUTILLON
- 1116 A very curious box of GOLD JAPAN. From the collection of the DUCHESS of PORTLAND. The outside enriched with gold flowers and hexagons in relief, with 4 fan shaped boxes inside. *It was esteemed the most precious specimen of Japan in that celebrated collection*
- 1117 A very curious box, in the shape of a Fowl, of gold Japan, the inside *avanturine*
- 1118 A nest of five small boxes of GOLD JAPAN of *very superior quality*, with tray and cover, ornamented with landscapes



- 1119 A pair of fan-shaped boxes, with tray, and two boxes inside, of gold Japan enriched with landscapes above, from the collection of the DUC DE BOUILLON
- 1120 A stand, with two boxes and a stool shaped cover, of very delicate black and gold Japan, with domestic fowls on the top, and mosaic ground
- 1121 A shaped GOLD JAPAN box, representing the Deux of Diamonds and the King of Hearts, from the Spanish playing cards, in relief upon gold ground: within avanturine
- 1122 A ditto in two compartments, ornamented with gold flowing upon avanturine
- 1123 A fine small square box of gold Japan, with compartments inside, ornamented with flowers in relief, upon piqué ground
- 1124 A triple nest of boxes of gold Japan, in a tray, with a cover of the black, gold, and pearl Japan, of superior quality—from the cabinet of the DUC DE BOUILLON
- 1125 A very small black and gold JAPAN CABINET, with folding doors, ornamented with or-moulu, containing 4 drawers, a tray and a cassolette with a small tray, the inside of the drawers is avanturine
- 1126 An *extremely* CURIOUS specimen of the old GOLD JAPAN, with the five-claw dragon in gold relief, with 4 boxes inside, the centre one bearing the Imperial mark, and the others have mythological figures represented by different animals in gold relief.—*This specimen, of the greatest rarity, belonged to the DUC DE BOUILLON*
- 1127 A pair of black Japan pastile boxes with 4 compartments each, ornamented with birds, chimæras and plants in relief: very *curious* of their kind
- 1128 A very rare shaped gold Japan box, enriched with purses and other devices in gold relief. From the Collection of the DUC DE BOUILLON



**CRIMSON DRAWING ROOM.****No. 23.**

- 1129 The large CRIMSON CLOTH CURTAINS, bordered with rich silk lace, and fitted to the large gothic window (not the rods)
- 1130 A CABINET CUP and SAUCER of the *rare* old Sevres, with two exquisite MINIATURE enamelled MARINE VIEWS, from *Vernet*, rich mazarine *blue ground*, pencilled in gold
- 1131 A ditto, equally *rare*, the enamelled medallions are Landscapes with Turkish Figures
- 1132 AN EBONY COFFER, with mouldings of or-moulu, lined with ivory, *the pannels of rock-crystal, engraved by VALERIO DI VICENZA*
- 1133 A pair of dwarf columns of serpentine marble, richly mounted with or-moulu
- 1134 Two tea-pots of Steatite
- 1135 A carved and gilt toilette table with leather cover
- 1136 Two olive-ground Tartarian blue and red enamelled coffee pots, rare and curious
- 1137 A fine BLACK JAPAN BOTTLE, delicately pencilled in gold, expensively mounted in or-moulu, chased and engraved, surmounted by a Mango
- 1138 AN EBONY COMMODOE, with MOSAIC PANELS, architectural centre and wings, richly ornamented with or-moulu, 5 feet 3 long, with black marble slab
- 1139 A Japan bowl, a rare specimen, on massive or-moulu pedestal, after the antique, by Moiette and Auguste, of PARIS, formed of winged chimeras, and rim, on ebony plynth, *very rare and perfect*



1140 A **SPLENDID SALOON TABLE**, formed of a circular **SLAB** of the *very rare* **BREECHE UNIVERSELLE**, of *extraordinary* size, the diameter being 4 ft. 8, on a *grand and massive* **STANDARD**, formed of **THREE BRONZE DOLPHINS**, *sumptuously* **GILT**, in or-mat, on a corresponding **PLYNTH** and **EBONY PEDESTAL**, and cover to ditto

This *extraordinary* **SLAB** was brought from Egypt by the **EMPEROR BUONAPARTE**, and presented to the Empress Josephine, and was purchased at the sale at Malmaison, in 1816

1141 One pair of black twisted candelabra stands

1142 A **TRANSPARENT CASKET**, the frame of ebony, delicately pencilled in gold to imitate Japan lacquer: the general design architectural, with pannels of the most brilliant and pure rock chrystal, separated by groups of twisted columns of crystal, and gems of crystal, *rose-cut*, interspersed

1143 A **DITTO**. These very curious reliquaries belonged to Pope Paul V. of the Borghese family, and are designed in the style of Camillo Maderno

1144 A **SUPERB CONSOLE** of **EBONY** with carved door, supported on each side by ebony columns with **OR-MOULU** caps, bases and mouldings, and black gold **MARBLE SLAB**

1145 A **DITTO**, the companion

1146 A most curious and beautiful **CANTEEN OF JAPAN**, from the **COLLECTION** of the *Duc de Bouillon*, consisting of a portable frame, within which is a Mandarin seated with a taper in his hand, the flame of which is *silver*:—the figure, being hollow, is to be used as a bottle, the liquor designed to be admitted through the tube of the taper, and the ears of the figure being perforated for the air to escape on filling it:—beside him a nest of four octagonal boxes, alternately ornamented with shell-fish, plants, and the shell of the tortoise of Fohi; also three trays above, and glass shade



- 1147 A gold Japan tray, with musical instruments represented upon it, and flowers on avanturine ground
- 1148 A VERY EXTRAORDINARY LARGE NAUTILUS SHELL, *finely engraved by HILLIKEN*: the subject the *Triumph of Neptune and Amphitrite*, mounted in the most elegant manner in *silver gilt* embossed, and minutely engraved shells, decorated by finely-mounted and chased ornaments, of masks, cupids, and figures, and shell handle; the arms and helmet beautifully pierced and engraved in *gold*; one of the most noble and picturesque objects of this valuable collection
- 1149 A noble Japan bowl, mounted on *massive SILVER GILT* stand, with chimera legs and snakes entwined in bas relief
- 1150 Ditto
- 1151 A MAGNIFICENT EBONY COFFER, the panels of beautiful Florentine mosaic, on the corners are bunches of fruit of raised mosaic, with or-moulu feet and ornaments, exquisitely chased and gilt, fitted up with internal tray, lined with crimson velvet, with chased handles, locks, and hinges silver gilt, *from the Pitti palace*
- 1152 A pair of elegant *Medici Seve* VASES, *rose ground* with medallions, *richly mounted in OR-MAT*, and *designed from the antique*
- 1153 Six cabinet PLATES, enamelled roses and boquets, with lilac and gold border
- 1154 A pair of beautiful SEVRES PORCELAIN VASES (*Medici shape*) with *landscape* medallion on *green*, and rich or-moulu embellishments, and antique masque handles
- 1155 A superbe RED TORTOISESHELL and BUHL ARMOIRE, most exquisitely inlaid, enclosed by folding doors, with hinges, feet and enrichment highly chased in bronze and gilt, in or-moulu; the interior lined with crimson. *This splendid object originally stood in the King's Cabinet at Versailles, and was executed expressly for Louis XV.*



- 1156 A large and *fine blue* INDIA BOWL and COVER, superbly mounted in or-moulu in the style of Buhl
- 1157 A MAGNIFICENT JAPAN COMMODORE, sumptuously mounted and enriched with or-moulu: the pannels presenting specimens of the rarest Japan, and surmounted by a dove marble slab
- 1158 A pair of MEDICI VASES, sculptured in marble from the *solid*, and finely chased in relief in arabesque scrolls, and enrichments from the *Vatican*
- 1159 A ditto URN, forming a centre to the preceding lot
- 1160 A MAGNIFICENT PERSIA CARPET, of elegant pattern, crimson ground and border, with silk fringe, scrolls, and flowers of various colours, 9 yards by 4
- 1161 A two-tier ebony music stand, with or-moulu and gilt mouldings, and green velvet top
- 1162 A GRAND PIANO-FORTE, by *Broadwood*, of superior and brilliant tone, in handsome mahogany frame
- 1163 A pair of rich or-moulu four-light candelabras, borne by a finely modelled Group from Cellini
- 1164 A fine ORIENTAL ALABASTER VASE, enriched with masks and festoons of flowers, in bronze gilt
- 1165 A beautiful Etruscan vase in ROSSO ANTICO, *imperfect*
- 1166 A pair of MEDICI URNS, formed of porcelane of the ROYAL SEVRE MANUFACTORY, embellished by *boquets* in *enamel*, and pencilled with great truth to nature, relieved by *mazarine blue*, and *gold* devices, and *tastefully* and *sumptuously* mounted in RICH OR-MOULU
- 1167 A pair of massive OR-MOULU CANDLESTICKS, supported by chimeras, richly chased and gilt
- 1168 A pair of ditto
- 1169 A trumpet-mouthed China jar, beautifully pencilled in red and gold, very fine
- 1170 A SEVRE PORCELANE VASE, blue mazarine ground, with landscape medallion, richly mounted in or-moulu as an Etruscan lamp



- 1171 TWO BLACK ANTIQUE SHAPED ELBOW CHAIRS, with gilt ornaments, the backs and seats covered with crimson morine, with silk fringe
- 1172 TWO DITTO
- 1173 TWO DITTO
- 1174 TWO DITTO
- 1175 An ebony sofa table, with ivory ornaments, solid legs and frame, and two drawers on silvered castors
- 1176 A SUPERBE JAPAN COMMODORE, richly mounted in ormolu, the top surmounted by a fine slab of ORIENTAL ALABASTER, *formerly in the possession of the late Queen of France*
- 1177 An ivory and sandal wood chess and backgammon board, with chess men, boxes, &c.
- 1178 A PERSIA CARPET of elegant pattern, on crimson ground, bordered and fringed with silk, in colours 9 yards by 4, *finely preserved*
- 1179 A Japan china sugar urn, *silver gilt* mounting
- 1180 A NAUTILUS SHELL in mounting, *silver gilt*, chased and engraved, with a figure of Neptune on the top
- 1181 A ditto
- 1182 A Japan china ewer, mounted in *silver*, engraved, and gilt
- 1183 A pair of marble trays with rose-wood mountings
- 1184 Six small antique shaped chairs with twisted legs
- 1185 Six ditto
- 1186 A PLATEAU of ROCK-CRYSTAL, with border of gold; enamelled on a *silver* frame, with eight scroll ornamental legs
- 1187 A SARDONYX CUP and saucer
- 1188 A two-handled cup of Calcedony, very fine
- 1189 A rare specimen of Japan china, mounted as an ewer, in *silver*, enamelled and gilt
- 1190 An ancient tea kettle, with stand and lamp, covered with engraving of scroll work, and gilt in ormolu



- 1191 Two extra fine Japan jars and covers, blue and gold ground, with labels and flowers
- 1192 A SEVE PORCELANE VASE, enamelled in flowers relieved by gold pencilling, and mounted in bronze and or-mat, *as an Antique lamp*—forming companion to Lot 1170
- 1193 A magnificent ORIENTAL CHINA VASE, highly enamelled in relief with Dragons and large pannels of Interior with Figures, 37 inches high
- 1194 A ditto, equal in height and similar in form, but varied in the enamelling
- 1195 A SUPERBE JEWEL CABINET OF EBONY AND OTHER COSTLY MATERIALS, in imitation of an architectural facade: the niches, in the center, are filled with small groups by BOUCHARDON, being the original models, in miniature, by that distinguished French sculptor, for the embellishment of a Public Fountain, constructed by him in Paris. They are placed within columns of *Rossa-Antico*; the pannels of the drawers are of lapis-lazuli and blood stone, set with 40 RUBIES and EMERALDS; the ornaments are richly chased and gilt, and the stand is in correspondent taste
- 1196 A pair of black and gold INDIA CABINETS, on a frame, for porcelane
- 1197 An UNIQUE VASE, formed of the rare ROSE CHRYSTAL, and mounted in or-moulu
- 1198 A pair of elegant urns, imitative of lapis-lazuli, richly mounted with or-moulu, on pedestals
- 1199 A pair of three-light or-moulu CANDELABRAS, formed as scrolls, issuing from vases of *Sevres porcelane*, of mazarine blue, and mounted on plynths
- 1200 A GROTESQUE INKSTAND, formed of bronze and or-moulu

*End of the Twenty-ninth Day.*



## *Thirtieth Day's Sale,*

SATURDAY, the 18th day of OCTOBER, 1823,

Commencing at Half-past Twelve precisely.

*From Lots 1201 to Lots 1320, will be Sold this Day,*  
Being the ELEVENTH DAY of FURNITURE.

**ST. MICHAEL'S GALLERY. No. 74.**

| LOT  |                                                                                                                                               |         |
|------|-----------------------------------------------------------------------------------------------------------------------------------------------|---------|
| 1201 | <b>A</b> N agate SUGAR BASON, mounted in chased silver gilt                                                                                   | 12 . 1  |
| 1202 | A round cup of BLOODSTONE, with sculptured border, mounted with scroll handles and rims                                                       | 11 . 11 |
| 1203 | Two oriental agate cups and saucers                                                                                                           | 9 . 8   |
| 1204 | A silver gilt fillagree CASKET, on feet, with handles, at per ounce <i>13/ per oz</i>                                                         | 13 . 0  |
| 1205 | A pair of Oriental grey jars, of compressed shape, with the sacred peach in relief; the necks superbly mounted, and the feet also of or-moulu | 23 . 2  |
| 1206 | Two ditto, mounted as ewers, in or-moulu                                                                                                      | 17 . 6  |
| 1207 | A pair of PINK JARS, beautifully enamelled, rare                                                                                              | 17 . 1  |
| 1208 | An oriental sea green CHINA VASE, (25 inches in height) enamelled in high relief with flowers and shrubs                                      | 14 . 1  |
| 1209 | Two ROSE COLOURED JARS and COVERS, fine and rare                                                                                              | 19 . 14 |
| 1210 | Two ditto and ditto                                                                                                                           | 17 . 17 |
| 1211 | Two very ancient buff crackle flasks, green and blue enamel; on or-moulu stands, with feet                                                    | 4 .     |
| 1212 | Two ditto                                                                                                                                     | 4 . 4   |

152 . 10



- |      |                                                                                                                                                     |        |
|------|-----------------------------------------------------------------------------------------------------------------------------------------------------|--------|
| 1213 | A Seve cup and saucer, exquisitely painted                                                                                                          | 152.10 |
| 1214 | A suite of SIX GOTHIC CHAIRS, with <i>ivory</i> studs and mountings, cane seats and loose cushions                                                  | 1.10   |
| 1215 | Two blue and gold china cruets, beautifully shaped, and with costly silver gilt mountings                                                           | 18.18  |
| 1216 | A CHINESE <i>bronze</i> DEITY, seated upon an animal, a choice specimen, and elaborately wrought                                                    | 6.16   |
| 1217 | An AGATE jasper oval CUP, mounted on a <i>silver</i> gilt stem, formed as a KNEELING SLAVE                                                          | 16.16  |
| 1218 | A ditto                                                                                                                                             | 8.8    |
| 1219 | An INKSTAND, formed of <i>Buhl and ebony</i> , with trays and fittings in or-moulu                                                                  | 8.10   |
| 1220 | A cup, cover and foot of oriental WHITE AGATE, sculptured, and mounted with <i>silver gilt</i> , and set with 12 <i>turquoises</i>                  | 7.7    |
| 1221 | An oriental moss agate, mounted in <i>silver</i> , engraved and gilt                                                                                | 10.10  |
| 1222 | An oriental sardonyx round cup, finely mounted with <i>silver</i> , engraved and gilt                                                               | 10.15  |
| 1223 | An OVAL CUP of ribband <i>agate</i> , mounted with <i>silver gilt</i>                                                                               | 12.1   |
| 1224 | A square oriental <i>Mocoa</i> cassollette, mounted in <i>chased silver</i>                                                                         | 8.     |
| 1225 | Two shaped mazarine blue and gold bottles, with birds and flowers in compartments                                                                   | 12.1   |
| 1226 | Two black Japan and pearl bottles, with landscapes and figures, <i>most expensively and elegantly mounted</i> , chased and engraved with apple tops | 5.5    |
| 1227 | Two scalloped Japan basons, mounted on engraved or-moulu stands                                                                                     | 41.9   |
| 1228 | Two PINK JARS AND COVERS, richly enamelled, <i>very rare</i>                                                                                        | 7.17   |
| 1229 | A <i>curious</i> ALARUM CLOCK, the movements transparently mounted in or-moulu, and glass shade                                                     | 17.17  |
| 1230 | A pair of valuable EBONY CANDELABRAS or TRIPODS, <i>elaborately carved</i> in the <i>solid</i>                                                      | 8.18   |
| 1231 | A ditto GOTHIC TABLE, highly carved and enriched                                                                                                    | 52.10  |



- 1232 An oriental metal gilt cup and saucer, chased in high relief 453 . 2 . 2
- 1233 A very fine group, in ivory, by FIAMINGO, representing Youth and Age; an undoubted specimen of this celebrated master's talent 32 . 11
- 1234 Three fine JAPAN jars and covers, flowers and birds with rich border 2 . 2
- 1235 A choice specimen of sea-green CHINA, beautifully tooled in scrolls and flowers, with Mosaic characters round the collar 5 . 5
- 1236 A vase or POT POURIE, enamelled with the lotus plant on sea green ground, and superbly mounted in or-moulu 10 . 1
- 1237 A beautiful Florentine MOSAIC SLAB, on an ebony frame, sumptuously enriched with bronze friezes in or-mat 28 . 17
- 1238 A pair of Italian marble PEDESTALS, with chased oak leaf belts in bronze and or-mat, on plynths of Brocaddella 3 . 2
- 1239 A SARCOPHAGUS of red porphyry, mounted on a block of Sienna, with bronze gilt rim 12 . 1
- 1240 A JAPAN CHINA VASE, embellished with flowers, enamel, and richly mounted in or-moulu, with mask handles, &c. 10 .
- 1241 An EBONY CABINET, mounted with or-moulu, richly gilt, plate glass folding doors, lined with rose coloured watered silk 34 . 1
- 1242 An EBONY TABLE, with carved and twisted legs, ornamented with or-molu, and slab of red porphyry, with black border 18 . 7
- 1243 A NOBLE and MAGNIFICENT CISTERN, 24 inches in diameter, 18 inches high, Mazarine blue and gold ground, with red mosaic border, enamelled with flowers in compartments, and with plants and fish inside, on a japanned pedestal 47 . 5
- 1244 A DITTO, on ditto 47 . 5
- 1245 A pair of fine verde-antique SLABS or plynths, measuring 11½ inches by 6, fitted in chased water-gilt mountings 4 . 15



- 1246 A yellow *jasper* cup, mounted on six feet, chased and engraved in *or-molu*
- 1247 An oval cup of BROWN AGATE, as a font: mounted in *silver gilt*, with mask handles, chased and engraved, and set with 16 oriental garnets
- 1248 A PERSIAN JAD VASE AND COVER, inlaid with flowers and ornaments, composed of *oriental rubies and emeralds, on stems of fine gold*
- 1249 A circular cup of *Egyptian pebble*, with pillar and font, tastefully mounted in *silver*, chased and gilt
- 1250 An oval Sicilian JASPER CUP, with stem and foot mounted in *chased silver*, and watered leaves, gilt
- 1251 Two Japan China basons, of a very rare kind, mounted on *or-moulu stands*
- 1252 Two beautiful blue and gold bottles, in compartments, richly embellished with *silver*, engraved and *gilt*
- 1253 A mammillated ORIENTAL CALCEDONY CUP, with *silver gilt* and engraved mounting, enriched with a circle of 16 *rubies*
- 1254 An EBONY BUHL and TORTOISESHELL CABINET, enclosed by plate glass folding doors, richly mounted in *or-moulu*, lined with crimson silk tabaret, and surmounted by a *black MARBLE SLAB*—same as lot 1304
- 1255 An EBONY TABLE on carved and twisted legs, with *or-moulu* ornaments and *verde antique* slab—same as lot 1305
- 1256 A matchless suite of FINE GOLD JAPAN JARS and BEAKERS
- 1257 An EBONY CABINET, mounted with *or-moulu*, richly *gilt*, plate glass doors and rose silk lining
- 1258 A DITTO
- 1259 An EBONY TABLE, with carved and twisted legs, *or-moulu* mountings, and red porphyry slab, with black border
- 1260 A ditto
- 1261 Two ROSE COLOURED JARS, enamelled
- 1262 Two dove coloured vases, mounted in *or-moulu*

712  
11 11  
24 10  
27  
12 1  
9  
7  
9  
19 8  
54 1  
27  
52  
35  
33  
20  
20  
18 7  
20 9  
11 10



- 1263 A GREEK SHRINE of metal, for containing relics. On one side of it, in compartments, are a Crucifix and various figures of Saints, the heads of metal, gilt and embossed, the draperies of coloured enamel, mounted on two steps of black marble.

*This extremely curious article was brought by St. Louis from Palestine, and had been deposited at St. Denys, whence it was taken during the French Revolution*

- 1264 An ebony, buhl and tortoiseshell CABINET, enclosed by plate glass doors, mounted in or-molu, lined with crimson silk, and surmounted by a black marble slab

- 1265 An EBONY TABLE, on carved legs, with enrichments in or-molu, and verde antique slab

- 1266 A FIGURE of the JAPANESE IDOL AMIDA, standing on the water, and supported on a base of rock-work, with marine plants and reptiles. This figure is of the most exquisite Japan lacquer, on wood of an olive colour, the drapery bordered with arabesques, very freely and delicately pencilled in gold

- 1267 A PAIR OF BEAUTIFUL SILVER GILT CANDLESTICKS, of GOTHIC DESIGN, by the celebrated AUGUSTE, of Paris, expensively chased and gilt

- 1268 A PAIR of DITTO

- 1269 Two curious brown and gold bottles, embellished with birds and plants, mounted with silver gilt

- 1270 Two grey Japan jars, 9 inches high, embossed with water plants and birds, massively mounted in or-molu

- 1271 A VARIEGATED and UNDULATED AGATE CUP, mounted with scrolls, gryphons' heads and claws, upon a SARDONYX PLYNTH, embellished with or-molu



- 1272 Two Japan red ground and enamelled basons, on or-moulu stands, with goats' legs, foliage, and busts
- 1273 A CASSOLETTE of SARDONYX, mounted in foliage, of tripod shape, with cover of *or-moulu*
- 1274 *The Annunciation*, (in metal gilt,) a BASSO RELIEVO, a rich gilt frame
- 1275 An EBONY CABINET, mounted with or-moulu richly gilt, with *plate glass doors*, and lined with rose-coloured watered silk
- 1276 An ebony table for the preceding
- 1277 A small SALVER, of *blood stone*, mounted with *silver gilt* chasing
- 1278 Two puce-colour bottles, elegantly mounted in *Chinese taste*, with rims and handles gilt
- 1279 Two blue and gold enamelled chocolate pots and covers
- 1280 A lady's small enamelled JEWEL COFFER, with moss agate pannels, on agate feet
- 1281 A black and gold Japan pedestal or stand
- 1282 A pair of ebonized reading desks, on swivel
- 1283 A carved EBONY table, of *elaborate workmanship*
- 1284 A ditto
- 1285 An ONYX cup, of very fine colour, and beautifully marked
- 1286 Two *matchless* FLASKS and stoppers, red, blue, and gold borders, and flowered pannels
- 1287 Two blue mandarin bottles, black handles and collars
- 1288 An *ebony* COFFER, with raised FLORENTINE mosaic pannels, and or-moulu mouldings
- 1289 One pair of *metal-gilt* Gothic candlesticks, most elaborately chased
- 1290 A pair of ditto
- 1291 A BEAUTIFUL ORIENTAL LAPIS LAZULI VASE, enriched with *or-mat* mountings



1292 A pair of fluted pillar CANDELABRAS, formed of *petrified wood*, mounted in *or-moulu*

8. 8

1293 A BOTTLE OF PALE SEA GREEN ORIENTAL CHINA, of great antiquity, incrustated with flowers in relief, in compartments, with *silver gilt* spout and handle in the Gothic taste. The cover is embellished with paintings in enamel and the arms of Joan of Arragon, QUEEN of NAPLES, the friend of PETRARCH. The handle, rim and foot bear the legend of the House of Anjou in Gothic characters upon blue enamel

40. 8

N.B. This Vase, besides the value it derives from the historic circumstances connected with it, is further curious being the earliest known specimen of Porcelain introduced from China into Europe, as it refers to a period earlier than the circumnavigation of the Cape of Good Hope by the Portuguese

1294 A MAGNIFICENT silver gilt CASKET, pannelled with 36 of the most beautiful specimens of *Oriental and moss* AGATES, JASPERs, BLOODSTONES, &c. the friezes elaborately chased in *arabesque* devices from the Vatican—the interior lined with crimson velvet

137. 8

1295 Two extremely *rare* and *early* specimens of PORCELAIN, with crackle grounds, richly embossed with white and blue flowers

15. 1/4

1296 Two red and gold ground jars, exquisitely enamelled in compartments, with figures and butterflies

8. 10

1297 A FINE BUHL and TORTOISESHELL CABINET, inclosed by *Plate Glass*, richly mounted in *or-moulu*, and lined with crimson silk tabaret, surmounted by a black marble slab

40. 6

1298 A ditto

42. 8



- 1299 An **EBONY TABLE** with carved and twisted legs, having ornaments of or-moulu, and marble slab of VERDE ANTIQUE
- 1300 A ditto
- 1301 **SIX** carved and gilt **CHAIRS**, covered with **CRIMSON SILK DAMASK**, and with silk fringe, stuffed backs and seats, with loose crimson cloth covers
- 1302 **SIX** gilt stools, covered with **CRIMSON SILK DAMASK**, fringed with silk, and exterior cases
- 1303 **TWO CARVED** and **GILT ELBOW CHAIRS**, covered with **CRIMSON SILK DAMASK**, and exterior cases
- 1304 An **EBONY, BUHL** and **TORTOISESHELL** CABINET, similar to lot 1254
- 1305 An *ebony* TABLE, same as lot 1255
- 1306 An *ebony Buhl and tortoiseshell* CABINET, enclosed by *plate glass* doors, richly mounted with or-moulu, lined with crimson silk tabaret, and surmounted by a black marble slab
- 1307 An **EBONY TABLE**, on carved and twisted legs, with *or-moulu* enrichments, and *verde antique* slab
- 1308 A pair of beautiful Raphael ware plates, Satyr and Cupid and companion
- 1309 An oblong coffer of fine *Limoge enamel*, the friezes most elaborate
- 1310 A Dresden group of two figures, Harlequin and Columbine, glass shade and stand
- 1311 A REMARKABLY FINE striated bottle of oriental china
- 1312 A grey ditto, enamelled with the lotus flower, and a pair of japan china salt stands and covers
- 1313 A carved and gilt eight-leaved screen, filled with crimson damask
- 1314 A large enamelled font and ewer
- 1315 A Sevre porcelane **POT POURIE**, richly mounted in or-molu, with perforated border



- 1316 A square ebonized PEDESTAL or dwarf armoire, richly decorated and mounted in or-moulu, in the style of buhl
- 1317 A ditto
- 1318 Four richly carved and gilt X stools, covered in damask
- 1319 Four ditto
- 1320 Four ditto

*End of the Thirtieth Day.*



## *Thirty-first Day's Sale,*

TUESDAY, the 21st of OCTOBER, 1823,

Commencing at Half-past Twelve precisely.

---

*From Lot 1321 to Lot 1459, will be Sold this Day,*  
**Being the TWELFTH DAY of FURNITURE**

---

### ORIENTAL AND SEVRES PORCELAIN, &c.

- LOT  
 1321 **A** Sevres porcelain cabinet cup and saucer, painted in roses on gold ground  
 1322 **A** ditto ribbed, trellis and vine leaf pattern  
 1323 **A** beautiful cabinet cup and saucer, enamelled in cameo on chocolate ground, and studded with imitative gems  
 1324 **A** tea-pot, sugar urn and cover, cream ewer and bowl, rich blue ground, enamelled in medallions of pheasants, &c.  
 1325 **A** pair of cabinet plates, painted in flowers, &c. on lilac and gold ground  
 1326 **A** pair of ditto, rich green Mosaic  
 1327 **A** bowl, cover, and plateau, rich arabesque scroll on pale-green ground  
 1328 **A** cup and saucer, landscape medallion, blue mazarin ground, richly gilt  
 1329 **An** urn-shaped cup and plateau, in cameos, on jonquil ground, and imitative gems  
 1330 **A** ditto  
 1331 **A** pair of cabinet plates, enamelled in flowers, rich gold and lilac border  
 1332 **A** pair of ditto, rich green and Mosaic



## CRIMSON DRAWING ROOM.

### No. 23.

- 1333 A Superb Italian MOSAIC TABLE, composed of various specimens of marble, on four solid fluted *ebony* columns, raised on a plinth of *solid* SIENNA
- 1334 A fine bowl and cover, of CRACKLIN CHINA, in a rich chased or-moulu, and buhl mounting
- 1335 A suite of three blue vases, richly mounted in bronze, and gilt in ornat
- 1336 A PAIR of ELEGANT GIRANDOLES, vase shaped, of the ROOT of AMETHYST, with female terminal figures beneath the handles, and 3 spiral or-molu branches above for lights.
- 1337 Four X window stools, richly carved and gilt, and covered with damask
- 1338 Four ditto
- 1339 Six *single* CHAIRS, en suite with preceding
- 1340 A pair of ditto superb carved and gilt FAUTEUILS, en suite
- 1341 A pair of ditto
- 1342 A pair of ditto
- 1343 Six ditto chairs, en-suite
- 1344 A capital eight-leaved INDIA JAPAN SCREEN, 11 feet high
- 1345 A SUPERB LIBRARY TABLE, sumptuously decorated with or-moulu mouldings, and foliage angles, containing three drawers, top covered with purple velvet
- 1346 A beautifully chased bronze group, of Shepherdess, &c. gilt in or-moulu, and mounted on solid plinth of Greyot marble
- 1347 A beautiful and costly ARMOIRE, formed of ebony, the centre supported by two fluted columns, with capitals of or-moulu, and enriched with a superb central pannel of FLORENTINE MOSAIC; a vase of flowers, composed of the rarest gems, and a tablet of the same above; 4 small drawers with birds on each



- side: above, is a low glazed repository, and a small door at each end, fronted with Florentine gems; the mouldings are of chased or-molu
- 1348 A pair of massive or-molu candelabras, finely chased after the antique, and supporting four lights each
- 1349 A pair of ditto
- 1350 A pair of massive *or-molu* CANDLESTICKS, supported by chimeras, *richly chased and gilt*
- 1351 A pair of ditto
- 1352 A small *Buhl* PIER CABINET, richly chased mouldings and friezes, and *serpentine* green marble slabs
- 1353 A ditto
- 1354 Eight solid antique shaped CHAIRS of king-wood, cane seats and cushions, covered with chintz
- 1355 Six ditto and cushions, covered with yellow morine
- 1356 Twelve ditto and ditto
- 1357 A SUPERBLY ELEGANT GOLD BOX, *chased and engine turned*, with signal taste, and embellished with a foliage bandeau of *coloured* GOLD, encircling an *enamel* View on the LAKE of COMO, with the mountainous acclivities in perspective; within is *secreted* a BIRD, which mechanically *warbles the notes of the canary*, with the *sweetness and correctness* of nature herself
- 1358 A MAGNIFICENT OR-MOLU CLOCK, with finely modelled Group of Figures, on a plynth, *subject from the Grecian History*
- 1359 A pair of superbe EBONY and BUHL CANDELABRAS, massively mounted with or-molu, finely chased and gilt, surmounted by green marble slabs
- 1360 A pair of boudoir candlesticks, formed of *petrified wood*, mounted in or-molu
- 1361 A SPLENDID BUHL ARMOIRE with figures and ornaments, chased and gilt. *From the collection of the Duc d'Aumont.* This costly and superb piece of furniture was designed by the celebrated Le Brun. 10 feet high by 5 feet wide
- 1362 A DITTO



- 1363 An **IVORY VASE**, mounted in *silver-gilt*. Dance of Bacchantes from *Rubens*; elaborately sculptured in high relief
- 1364 A **DITTO**. The *Triumph of Neptune and Amphitrite*
- 1365 A **LARGE COFFER**, with lid and tray, of the **VERY FINEST JAPAN**, representing, on the top, the Arrival of Ambassadors at a Palace, and various Landscapes on the sides. On the tray is a neatly pencilled Landscape, within a scalloped gilt and enriched border. This rare specimen was made for **MARIA VAN DIEMEN**, the daughter of the celebrated **GOVERNOR of BATAVIA**. Her name is in capitals of gold within the lid. Madame de Pampadour became the possessor of it, and at her death it was purchased by the Duc de Bouillon.
- 1366 A *superlatively elegant* **SALOON COMMODE**, formed of ebony, and pannelled with specimens of the finest *old Japan*, the angles formed by antique trusses, elaborately chased in bronze and gilt, in or-moulu, the feet, scroll enrichments, and mouldings, in the finest taste, and most superior in point of chasing and gilding, with solid slab of Italian marble
- 1367 A **SUPERB OR-MOULU CLOCK**, of classical design, with finely modelled figures of Time and Genius, contemplating the bust of Homer; mounted on a bold and massive plynth, relieved by bas-reliefs, elaborately chased in subjects from the *Iliad*—the movement of a most superior description
- 1368 A fine large **TURKEY CARPET**, 24 feet by 26
- 1369 A **LARGE ORIENTAL VASE** (trumpet-mouthed) enamelled in dragons, on a blue ground
- 1370 A delicate sea-green bottle, embossed with an etruscan bower, and or-moulu mounting
- 1371 An *uncommonly fine* **VASE and COVER**, rich mazarine blue, expensively mounted in chased bronze and or-mat



- 1372 A LADIES *writing table*, the top formed by a *rare and beautiful slab* of MOSS AGATE, *superbly* mounted in OR-MOULU, on an ebony frame, enriched with arabesque friezes and mouldings; top covered with velvet, and drawer fitted with or-moulu pen-tray, ink, and sand-boxes
- 1373 A SUPERB EBONY COFFER, with or-moulu mouldings, the pannels filled with the finest FLO-RENTINE MOSAICS, representing flowers and arabesques
- 1374 A curiously inlaid cabinet of ORIENTAL WOOD, having 9 drawers of ebony and ivory, on a table to correspond, solid ebony legs, and carved mouldings, chased, the mountings very richly gilt
- 1375 A stout BUHL *jewel* TRUNK, formed of ebony and rose-wood
- 1376 An ITALIAN SLAB, most beautifully inlaid with arabesque scroll and fancy devices, and mounted on a carved and enriched frame

## CHINA.

- 1377 Seven enamelled plates
- 1378 Eight ditto
- 1379 A Japan cream ewer and stand, mounted with silver, engraved and gilt
- 1380 One blue, with enamelled plants and birds, and one red streaked bottle
- 1381 Twelve blue and gold Nankin dessert dishes
- 1382 Twelve burnt-in red and blue ditto, *very rich*
- 1383 Three fine old Mandarin dragon basons, enamelled
- 1384 Two most precious and scarce Japan bowls
- 1385 Six old Japan tea cups and saucers
- 1386 A very fine Japan bowl
- 1387 Five shaped Japan fruit plates, with blue border and plants, and brown edge



- 
- 1388 Four Japan tea cups and saucers, sugar and slop bason  
1389 Four ditto basons, 2 with covers and 2 odd ditto  
1390 Four figured egg-shell cups with covers and stands  
1391 Two egg-shell basons, with dragons and plants  
1392 Three pair of cups and saucers and blue basons  
1393 Three Japan flat bowls, very richly enamelled—3 sizes  
1394 Four Mandarin basons and 2 covers, dragons and insects  
1395 A tea pot, jelly pot and cover, and cups and stands, fine Japan  
1396 Six extremely delicate small striped cups and saucers with figures, and 2 rich Japan compotiers  
1397 One pair of large Japan dishes, heptagonal and very curious  
1398 An old Dresden butter tub and plate, with landscape  
1399 An old Seve and a Dresden plate, ditto  
1400 Six egg-shell plates, of the finest quality, with figures, and 2 with flowers  
1401 Eight Japan cups and saucers, and a bason with red ground, curious  
1402 Ten Japan tea cups and covers  
1403 A square rosewood carved tray, one round ditto and one long ditto  
1404 Four very fine small basons and covers  
1405 Two chocolate cups and saucers, two tea cups and saucers, and green bason and stand  
1406 Twelve burnt-in and enamelled plates  
1407 Four very fine flat Japan dishes, 2 and 2  
1408 Five egg-shell bread and butter plates  
1409 Thirteen enamelled plates, 3, 4, and 6  
1410 Two Japan shaped dishes of the finest kind  
1411 A basso relievo, representing a Battle, by Le Brun, in or-moulu, and a circular Bacchanalian bronze basso-relievo  
1412 Two very fine old Japan basons



---

**RICH CUT GLASS AND ORIENTAL CHINA.**

---

- 1413 Four quart decanters
- 1414 Four ditto
- 1415 Four pint ditto
- 1416 A pair of water ewers
- 1417 A handsome centre
- 1418 Two sugar urns, covers and trays
- 1419 Ten dessert dishes and centre
- 1420 A sugar bason and cream pail
- 1421 A pair of handsome water ewers
- 1422 A ditto dessert service, comprising centre and 6 fruit dishes
- 1423 Thirteen wine coolers
- 1424 Twelve finger cups
- 1425 Two pair of salts and trays
- 1426 A small Japan cabinet, with folding doors and drawers, curiously mottled, and ornamented with flowers, with or-moulu mountings, hinges and handles
- 1427 A pair of beautiful VASE TRIPODS of French porcelain, highly gilt in relief, and enamelled in Bacchanalian Figures
- 1428 A Worcester tea and coffee set
- 1429 Four pair of Japan dishes, small
- 1430 Five enamelled large coffee cups and saucers, and 5 blue and gold tea ditto, figured
- 1431 Nine gold-ground French cups and saucers, and a bason, painted with wreaths of roses
- 1432 Seven burnt-in plates, red and blue
- 1433 Twelve ditto
- 1434 Thirteen enamelled ditto, with figures
- 1435 Two jelly pots and covers of Dohl china, white and gold, blue border and gold arabesque
- 1436 Four cups and saucers, tea pot, and cream pot, corresponding with the preceding lot



- 1437 A globular jar with open neck, covered with cherry-tree blossoms in white, raised on a speckled tea-green ground
- 1438 A service of fine OLD DERBY *porcelane*, containing 2 MONTEPHS, blue and gold, with borders of flowers, *equal to Old Seve*, 17 compotiers and 46 plates
- 1439 Six shaped Japan dishes of slate colour, bordered, and with flowers in the centre
- 1440 *Six egg-shell landscape plates*, very fine
- 1441 Four shaped richly enamelled Japan dishes
- 1442 Six shaped old Japan fruit dishes of blue piony pattern
- 1443 Two very *extraordinary* Japan dishes, of matchless quality

### COPPERS.

- 1444 A 23 inch turbot kettle, plate and cover
- 1445 A 22 inch ditto
- 1446 A 17 inch ditto
- 1447 A 21 inch preserving pan and cover
- 1448 A 14 inch ditto
- 1449 A 20 inch stock pot and cover
- 1450 A 12 inch ditto and ditto
- 1451 A 11 inch ditto
- 1452 A suite of 7 stewpans and covers, in sizes
- 1453 Seven ditto
- 1454 Seven ditto
- 1455 A 20 inch fish kettle, plate and cover
- 1456 Twelve cake and jelly moulds, various
- 1457 Twenty-five ditto small
- 1458 A 24 inch fish kettle, plate and cover
- 1459 Sundries

*End of the Thirty-first Day.*



## ***Thirty-second Day's Sale,***

**WEDNESDAY, the 22d of OCTOBER, 1823,**

Commencing at Half-past Twelve precisely.

---

*From Lot 1460 to Lot 1588, will be Sold this Day,*  
**Being the THIRTEENTH DAY of FURNITURE**

---

### **CHINA.**

- LOT** **F**OURTEEN blue and red Japan plates  
 1460  
 1461 Eleven ditto  
 1462 Five scalloped dishes for fruit—of the most rare quality  
 1463 Eleven burnt-in plates, blue and red  
 1464 Two two-handled cups, one dish and cover, Japan china  
 1465 Seven enamelled plates  
 1466 Four old green ditto, with waved borders, scarce  
 1467 Two noble Japan dishes  
 1468 Six fine Japan fruit dishes  
 1469 Fourteen burnt-in blue and red plates  
 1470 Twelve handled cups and saucers, sugar and slop vases of **FRENCH PORCELAIN**, *salmon-coloured ground*, pencilled in gold, in Greek borders of the most elaborate and delicate design, all different; *executed with a precision and truth perhaps not to be equalled—a chef-d'œuvre of its kind*



- 
- 1471 Six Wedgewood cups and saucers, and two cut glass ewers
- 1472 Two large Japan jars, blue and gold ground
- 1473 A very *curious* piece of Japan china, in the form of a TORTOISE, bearing a jar on his back, and a SIPHON, with a *Frog* seated on a water-lily within
- 1474 A pair of Japan jars and covers, large flower pattern, with rich borders
- 1475 Two large Japan jars and covers
- 1476 Six Japan coffee cups and saucers, and six tea ditto, cream, tea, and jelly pots
- 1477 Six ditto breakfast cups and saucers, four tea and four coffee ditto, jelly and cream pots
- 1478 Six very scarce enamelled buff cups and saucers
- 1479 Twelve burnt-in plates, viz. 5, 4 and 3
- 1480 Two very large Japan dishes, flowered
- 1481 Twenty burnt-in plates, with blue and red flowers and red borders
- 1482 Nine burnt-in and enamelled plates, fine
- 1483 One Japan bason and cover, mounted in silver, gilt
- 1484 Nineteen burnt-in blue and red plates
- 1485 Four burnt-in and 4 landscape enamelled ditto
- 1486 Twelve burnt-in ditto
- 1487 Six ditto with embossed borders, and 4 enamelled ditto
- 1488 Two Japan basons
- 1489 Two gold ground French cups and saucers, exquisitely painted in roses and heart's-ease, by *Van Spandonck*
- 1490 Two ditto, wild poppies and anemonies
- 1491 Six pair of red and gold Japan cups and saucers
- 1492 Sixteen delicately pencilled plates, with flowers, shells and insects
- 1493 Eleven burnt-in plates, 5 and 6
- 1494 Nine ditto red carp pattern blue plates, with enamelled border



- 1495 Thirteen ditto square, with painted borders
- 1496 Six very curious pattern enamelled plates, with shells, &c.
- 1497 Four fruit dishes, fine enamelled red, with bats on the border
- 1498 Two Mazarine blue and gold Japan dishes, flowered
- 1499 A Japan bason and cover, mounted in *silver gilt*

### **ANTI-ROOM. No. 59.**

#### *Next Oak Dining Room.*

- 1500 A buhl CHANDELIER for eight lights
- 1501 A square EBONY TABLE, beautifully inlaid in Marqueterie de Buhl, on enriched frame, with chased or-moulu claws, masks and friezes
- 1502 A VERDE ANTIQUE SLAB, on mahogany standard, finely carved in lion's masks, &c.
- 1503 A pair of elegant COLUMN LAMPS, richly decorated in or-moulu, with engraved globe shades
- 1504 A circular rose-wood TABLE, on enriched and decorated standard
- 1505 A cloth cover to ditto

### **GREAT WESTERN ENTRANCE.**

- 1506 A fine MARBLE STATUE of the late ALDERMAN BECKFORD, by *J. F. Moore*
- 1507 A finely sculptured marble figure, *La Baigneuse*
- 1508 A ditto of Antinous
- 1509 A PAIR OF NOBLE BRONZE VASES, *from the Gardens of the Palace of Versailles*



---

*The Gallery Cabinet. No. 12.*

- 1510 *A superbe* CONSOLE or PIER TABLE, formed of satin wood, and sumptuously decorated with or-moulu frieze, PLATE GLASS back, and *marble* slab and shelf
- 1511 Six black twisted frame chairs, cane seats with cushions, covered in red damask
- 1512 Four *Royal Dresden* cups and saucers, slop basin and cream ewer, mounted in *silver gilt*, painted in a *masterly manner*, with landscapes and sea views
- 1513 Four Japan chocolate cups and covers
- 1514 Three old white and gold Japan basons, speckled with flowers, and brown edges
- 1515 *A curious and valuable* CLOCK, which goes *twelve months*, in an or-moulu case, style of Buhl
- 1516 *A superbe* bronze and or-moulu BRACKET to ditto
- 1517 *A valuable* and unique specimen of AMALAKITE, richly decorated in or-mat, and mounted on bronze stand, to form a CLOCK; the movement by Le Seur, of Paris, glass shade and stand
- 1518 An EBONY and BUHL CABINET, of architectural design, pannelled with beautiful specimens of *Florentine mosaics*, of BIRDS, FLOWERS, &c. on stand
- 1519 *A finely marked* onyx cup
- 1520 *A black and gold* INDIA JAPAN CABINET, with finely chased or-moulu mouldings, a fall-down front, covered with green leather, forming a SECRETAIRE, with brass gallery and Brocadella slab
- 1521 *A* DITTO
- 1522 *A lady's* ebony and buhl PIER CABINET, enclosed by glazed doors, lined with silk
- 1523 *A pair of* bronze Cupids, on pedestals of *verde antique*



*St. Michael's and King Edward's Galleries,*

Nos. 32 and 74,

*And the Octagon Cabinet. No. 26.*

- 1524 A rare and fine CIRCULAR SLAB OF AMALAKITE, superbly mounted on an EBONY standard, of antique model, enriched with chased bronze and ormolu, as a *dejuné table*
- 1525 An elegant OR-MOULU LUSTRE for five lights, with bronze figures supporting the branches
- 1526 A pair of elegant X stools, gilt frames, covered in red velvet
- 1527 A pair of ditto
- 1528 A pair of ditto
- 1529 Six gallery stools, on ebonized and twisted legs, stuffed and covered in purple cloth, and fringed
- 1530 Six ditto

*The Grand (Damask) Drawing Room. No. 24.*

- 1531 A MAGNIFICENT BUHL CHANDELIER for twenty-four lights, of elaborate design and workmanship, enriched with masks, arabesque scrolls and foliage, forming a splendid specimen of that sumptuous style of decoration
- 1532 A SUPERB carved and gilt SOFA, designed from the antique, and stuffed and covered in blue damask
- 1533 A superb BUHL AND EBONY CONSOLE, or BOOK-CASE, enriched with mouldings, masks, and friezes in bronze gilt, enclosed by two glazed and one pannelled door, and surmounted by a fine slab of *Verd-de-mer* marble



1534 A *splendid suite of six* SALOON FAUTEUILS, richly carved and gilt, and designed from the ANTIQUE, stuffed and covered in *purple damask, each at*

1535 Six ditto chairs, *en suite, each at*

1536 Six ditto X stools, or window seats, *each at*

1537 A pair of ditto FAUTEUILS, *each at*

1538 A pair of ditto

1539 A pair of ditto

1540 Two pair of ditto

1541 A MATCHLESS SPECIMEN of CARVED JAD STONE, of compressed globular shape, *most superbly mounted in GOLD and SILVER GILT, as an ORIENTAL HOOKAH*, and set with a variety of real and fine GEMS; among which will be found *diamonds, emeralds, opals, avanturine, chrysophas, lapis, &c.*—the pedestal is elaborately chased, and enriched with antique scroll borders and medallions in bas relief. This unique and princely object of luxury formerly belonged to *Tippoo Saib*, and formed a part of the plunder at the taking of Seringapatam

1542 A MAGNIFICENT SILVER GILT BASKET, formed of ears of wheat, of the finest workmanship; *at per oz*

1543 A DITTO

1544 A PAIR of CANDELABRA of SILVER *chased and gilt*, supported on shaped lizard feet

1545 A PAIR of DITTO

These superb pieces of plate are truly in classical taste, being executed from the design of a candelabrum found at HERCULANEUM

1546 A *matchless* and MAGNIFICENT CARPET, of the celebrated *Aubusson Factory*, of beautiful and rich antique pattern—this splendid object was manufactured expressly for the Chateau at St. Cloud, in 1814, previous to the Abdication of Buonaparte



- 1547 A ditto rug
- 1548 A semi-circular PIER TABLE, formed of EUHL, splendidly mounted in or-moulu, with large chimera MASKS, &c.
- 1549 A pair of  
 NOBLE EBONY & BRONZE COLUMNS, correctly modelled from the originals in the *Louvre*, enriched with festoons, and *rich belt* of OAK FOLIAGE, on square plynths
- 1550 A pair of DITTO, *en-suite*
- 1551 A noble BRONZE BUST OF LOUIS XIV.
- 1552 A BRONZE BUST of the GREAT CONDE
- 1553 A ditto of TURENNE
- 1554 An elaborate and fine marble bust of GANCANELLI
- 1555 A handsome AGATE and GOLD BOX
- 1556 A BEAUTIFUL CAMEO of *Cupid and Psyche*, mounted in *gold as a snuff box*, engine turned and chased
- 1557 The MEDICI VENUS, a finely modelled BRONZE, *size of life*
- 1558 A pair of dwarf columns, fluted and gilt, and japanned red porphyry
- 1559 A tortoiseshell and ebony cabinet on frame, enriched with chasings, in silver and alto relief
- 1560 A BRONZE VASE CLOCK, elaborately chased and finished
- 1561 A suite of three MATCHLESS ROYAL SEVRES URNS and COVERS, fluted, pencilled in CAMEOS, on *mazarine blue*, relieved and enriched by gold decorations on plynths of OR-MOULU and Sevres
- 1562 The LAOCOON, modelled from the celebrated original, cast and chased by *Carbonneau* of Paris, and for which the GOLD MEDAL of the INSTITUTE was awarded to him; the elaborate finish, and exquisite moulding of this splendid object of art, stamps it as one of the finest specimens of bronze existing



- 1563 A SUPERBE EBONY and BUHL CONSOLE, enclosed by two glazed and one inlaid door of beautiful design, enriched with bas relief, friezes and mouldings, in chased or-moulu, and surmounted by a marble slab
- 1564 A handsome CHIMNEY GLASS, in a carved OAK FRAME, appropriately designed
- 1565 A satinwood console or pier table, with 3 marble slabs for china, and or-moulu mouldings, &c.
- 1566 A beautiful specimen of Florentine mosaic, in an ebony frame
- 1567 A VASE, *perfectly unique*, formed of the **LARGEST KNOWN BLOCK** of HUNGARIAN TOPAZ, *hollowed out with vast labour, and externally sculptured*, mounted with a Dragon handle of gold enamelled, set with DIAMONDS, and supported on a tripod stand, formed of three small Dragons of green and blue enamel: the feet connected by festoons and scroll-work of rich *cinq-ue-cento* designs, set with DIAMONDS and a variety of *precious stones*
- The whole of the UNDOUBTED EXECUTION OF BEVENUTO CELLINI, and intended as a Marriage Present to CATHARINE CORNARO, whose PORTRAIT is in this COLLECTION
- 1568 A HANDLED TAZZA, and liner of GOLD, on plinths, supported by four winged chimeras, designed by Moiette, and executed by Auguste, 1793, at Paris, ornamented by a border of arabesque figures and Cupids, with mask and snake handles; the whole finished with unrivalled excellence
- 1569 A DITTO
- 1570 A fine OLD SEVRES BASON, cover and PLATEAUX, rich *green Mosaic* ground, with Landscapes and Figures, exquisitely enamelled



- 1571 A pair of **MAGNIFICENT ORIENTAL FILLAGREE PAGODAS**, of matchless and elaborate workmanship; at per ounce, and a pair of glass shades and stands *for ditto*
- 1572 An **UNIQUE VASE**, formed of **PIERRES DES AMAZONES**, mounted in chased or-molu
- 1573 A pair of **MAGNIFICENT JARS**, of **EXTRA-ORDINARY SIZE**, embellished with landscapes, buildings and figures, descriptive of the various processes in the *manufacture of porcelain*, of the most exquisite enamel
- These grand and unique pieces of Porcelain were formerly the property of a **DISTINGUISHED PERSONAGE OF RANK IN PORTUGAL**
- 1574 A **MATCHLESS RIESNER COMMODE**, most elaborately inlaid, and sumptuously decorated with bronze cariatides, friezes and masks, sharply chased and highly gilt in or-mat; top formed by a solid marble slab
- 1575 A *matchless and splendid* **SECRETAIRE**, most elaborately inlaid by **RIESNER** in fanciful designs, sumptuously mounted and enriched in highly chased bronze, gilt in *or-mat*; the interior fitted with a great variety of secret and other drawers and recesses; the whole finished and executed with that degree of elaborate care, for which the Artist was so justly celebrated. The **LOCK** of a superior excellence, the mechanism of which embraces *every part* of this **PRINCELY PIECE** of FURNITURE—from the *Garde Meuble at Paris*
- 1576 A *lady's dejeuner* or **WORK TABLE**, curiously worked in *mother-o'-pearl*, and mounted on ebony stand, most expensively enriched with or-molu, the drawer lined with mahogany, and *secret* spring, on castors
- 1577 A handsome Wilton carpet, 11 feet 6 by 9 feet 6
- 1578 A superb **SILVER GILT LAMP**, beautifully chased in high relief, *as suspended in the SANCTUARY*



- 1579 A lady's Japan SECRETARY and CABINET, superbly mounted and enriched with OR-MOULU, the interior lined and fitted with satin-wood, and surmounted by a marble slab top, formerly in the possession of *Marie Antoinette, Queen of France*
- 1580 Two pair of carved and twisted black Japan tripods, with gilt ornaments
- 1581 An *agate* COFFER, mounted sumptuously
- 1582 A pair of dwarf columns, fluted and gilt, and japanned red porphyry
- 1583 A curious *Persian* Calendar, highly illuminated, in a frame
- 1584 A rose granite column with bronze belt and plynth
- 1585 A pair of mazarine blue POT POURIES, mounted in or-moulu, on antique tripods
- 1586 A pair of octagonal gold japan jars and covers
- 1587 An Ostrich egg, beautifully painted and mounted on an or-moulu plynth
- 1588 A beautifully modelled bust of Scipio, in *rosso-antico*

*End of the Thirty-second Day.*

---

*See SEPARATE CATALOGUE of MISCELLANEOUS ITEMS, of which Descriptive Catalogues will be ready in a few days, and will be given gratis to the Possessor of this Catalogue.—The Catalogue of the PICTURES, the WINES, and also of the LIBRARY, may be had distinctly.*



|                  |     |      |       |
|------------------|-----|------|-------|
| Day              |     |      |       |
| 11 <sup>th</sup> | --- |      |       |
| 12 <sup>th</sup> | --- |      |       |
| 13 <sup>th</sup> | --- | 1100 | :10:6 |
| 14 <sup>th</sup> | --- | 3567 | :19:6 |
| 15 <sup>th</sup> | --- |      |       |
| 16 <sup>th</sup> | --- |      |       |
| 17 <sup>th</sup> | --- |      |       |
| 18 <sup>th</sup> | --- |      |       |
| 19 <sup>th</sup> | --- |      |       |
| 20 <sup>th</sup> | --- |      |       |
| 21 <sup>st</sup> | --- |      |       |
| 22 <sup>nd</sup> | --- |      |       |
| 23 <sup>rd</sup> | --- |      |       |
| 24 <sup>th</sup> | --- |      |       |
| 25 <sup>th</sup> | --- |      |       |
| 26 <sup>th</sup> | --- |      |       |
| 27 <sup>th</sup> | --- |      |       |
| 28 <sup>th</sup> | --- | 3047 | :12:  |



