

Frende. 1593. A new almanacke and prognostication, seruing for the yeere of our Lorde God. M.D. XCIII. : Composed according to lawfull and lawdable art, and referred specially to the meridian and eleuation of the northeren pole of Canterburie, but may serue vniuersally, without any great error, for most partes of Englande. / By Gabriell Frende, practitioner in Astrologie and phisicke.

Contributors

Frende, Gabriel, active 1584-1599.
Bosanquet, Eustace F., 1871-
Potter, William Allen

Publication/Creation

Imprinted at London : By Richarde Watkins and Iames Robertes. Cum priuilegio Regiæ Maiestatis, [1593]

Persistent URL

<https://wellcomecollection.org/works/ev9aetam>

License and attribution

This work has been identified as being free of known restrictions under copyright law, including all related and neighbouring rights and is being made available under the Creative Commons, Public Domain Mark.

You can copy, modify, distribute and perform the work, even for commercial purposes, without asking permission.



Wellcome Collection
183 Euston Road
London NW1 2BE UK
T +44 (0)20 7611 8722
E library@wellcomecollection.org
<https://wellcomecollection.org>

1593

Jacques Wittewrongel

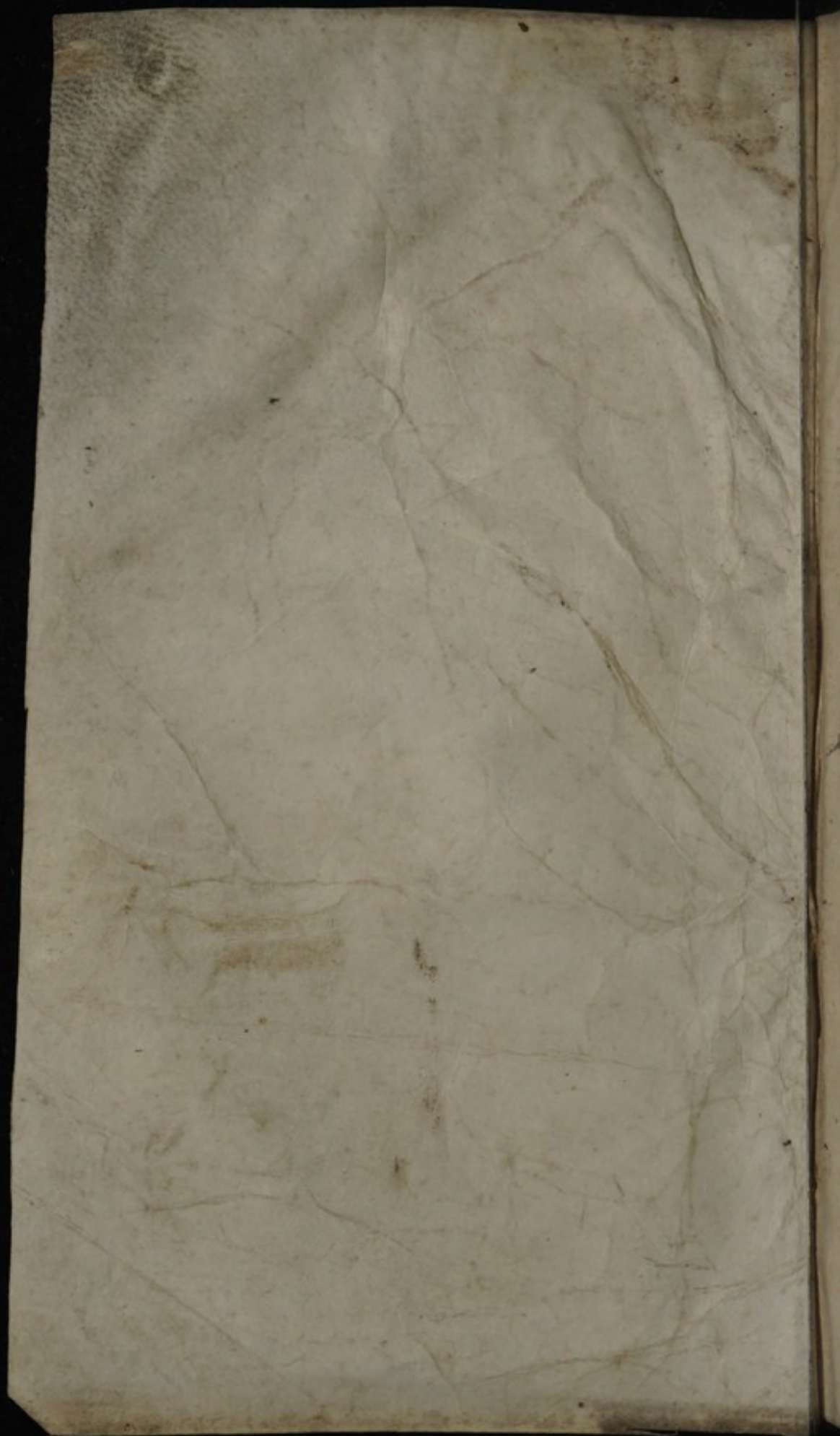
0
2
h=











Julius Caesar in suis commentariis —
Soleat Deus. quo gravius homines ex
committuntur Verum doleant. quos pro
illorum scelere vel scissis vult eis fecun-
diores interdum res et diuturniorem
impunitatem concedere. : ~~SSS~~

[Faint, illegible handwriting]

Bosquet
C. VIII →



Frende. 1593.

A new Almanacke
and Prognostication,
seruing for the yeere
of our Lorde God.

M.D.XCIII.

Composed according to lawfull and laudable art, and referred specially to the meridian and eleuation of the northern pole of *Carterburie*, but may serue vniuersally, without any great error, for most partes of Englande.

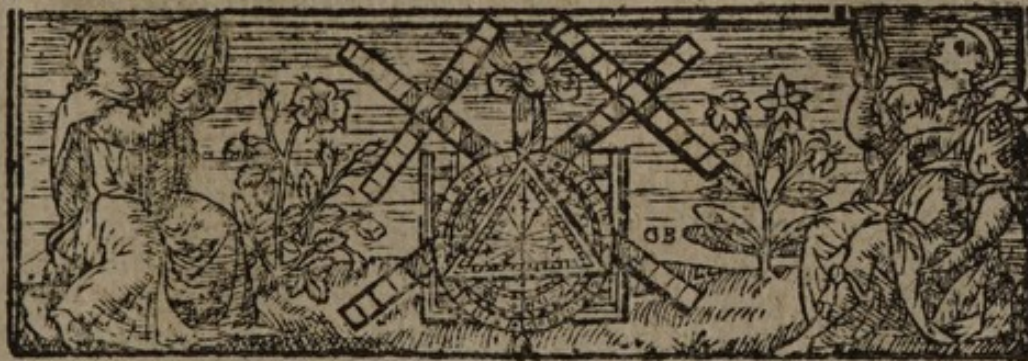
By *Gabriell Frende*, practitioner in Astrologie and Physicke.

Galenus Lib. 7. de Diebus Criticis.

Regimen huius mundi, et viuentium, est à stellis; et maximè a Sole, et Luna.

Imprinted at London by *Richard Watkins* and *Iames Robertes*.

Cum Priuilegio Regiæ Maiestatis.



[The page contains extremely faint, illegible text, likely bleed-through from the reverse side. The text is arranged in several paragraphs and is significantly obscured by a large, irregular water stain in the upper central portion of the page.]



To the **friendly**, and indiffe-
rent **Reader**, salutations.

Some frame new bookes, to please the grauer sort,
And some to pleasure youth, their penne do frame:
Some write of pleasant matters to make sport,
And some touch weightie affayres to purchase fame.
Fame seeke I noone, nor pastimes can deuise
To please, and pleasure, loet this exercise.

I meane, to please such, as peruse such workes:
And pleasure such, as thereof shall haue vse.
Wherein, I hope, there no such matter lurkes,
As may i'olde, or young yeeres, seeme an abuse.
Then take it, as I geue it, with goodwill,
Respect the geuers mynde, accept his skill.

Gabriel Frende.

*The Contentes of this present
Almanacke, made for the pre-
sent yeere of our Lord. 1593.*

The Golden number is. xvii.

The Epact is. vii.

The Circle of the Sunne is. vi.

The Dominicall letter is. G.

The Cycle, commonly called the Indiction Romane. vi.

Septuagesima Sunday is the. xi. of Februarie.

Quadragesima, or the first Sunday in Lent, is the. iiii. day of
March.

Easter day is the. xv. of Apryll.

Rogation Sunday is the. xx. of May.

Whit Sunday is the. iiii. of June.

Aduent Sunday is the. ii. day of December.

Betweene Newyeres day and Septuagesima Sunday, are. v.
weekes and. v. dayes.

Betweene Christmas & Shrovelunday are. viii. weekes and. v.
dayes.

Betweene Septuagesima Sunday & Easter day, are. ix. weekes.

Betweene Easter and Rogation Sunday, are. v. weekes.

Betweene Whit Sunday and Midsummer day, are iust. iiii. weekes.

Sundayes betweene the Trinitie and the Aduent, are. xxiiii.
neyther of them reckoned for any.

Item, in this Almanacke you shall finde the day of the Sunnes
entrance into ech of the. xii. Signes of the Zodiaque.

Item, the signe, and degree of signe, wherein the Moone moueth
euery day at high noone, throughout this yeere.

Item, at the beginning of euery month are set downe certayne
Pitticall verses, conteyning holtsome pceptes for bodyly
health, to be obserued in the same.

Item, the change full, and quarters of the Moone, in eche
Month, with the day and houre, wherein eche of them hap-
neth.

The Contentes.

neth, are briesly manifested in this Kalender: together with the most difinall and dangerous dayes through every Month, to fall sicke in, to take Physicke, to open a wayne, or to make any other incision: which are in ech month noted thus. **D.**

Memorandum, that this yeere of our Lord. 1593 there shall appeare in our Horizon an Eclipse of the Sunne upon the. xx. day of May, at one of the clocke. xxviii. min. in the after noone: whose Eclipticke poyntes shalbe two in number, with. xxxiii. scruples. From the beginning to the ending thereof, there wyll passe an houre and. xx. minutes or thereabout.

This Eclipse shall happen in the. ix. degree of Gemini, a signe by nature hot and moyst, of the avery triplicitie, masculine, diurnall, sanguine, occidentall, commune, rationall, the house of Mercury, the exaltation of the Dragons head, in a mantion that is moyst, and infortunate: whose effectes and euentcs thereby presigified, you shall finde hereafter declared in my Prognostication.

The pleasant **Planet Venus** is occidentall, or our glistering euening star from the beginning of this yeere, vntyll the. xxiij. day of July: but then prouing orientall, she becometh our bryght mornynge star, in which estate she continueth during the residue of this yeere.



A necessarie and perfect rule

to know the beginning and ending of euery Terme, with their Returnes.

Hillarie Terme beginneth the. xxii. day of Ianuarie (If it be not Sunday) which so being, it is then deferred vntyll the day folowynge, and endeth the. xii. of Februarie. Which Terme hath foure Returnes. **That is to say.**

Octabis Hillarij. } } Crastino Purifica.
Quind. Hillarij. } } Octabis Purifica.

Easter Terme beginneth. xvii. dayes after Easter, and endeth the Sunday next after Assention day. And hath siue Returnes. **That is to say.**

Quind. Paschæ. } Mense Paschæ. } Quinq; Paschæ.
Tres Paschæ. } } Crastin. Ascensio.

Trinitie Terme beginneth the Fryday next after Trinitie Sunday, and endeth the Wednesday foxtynight after. And hath foure Returnes. **That is to say.**

Crast. Trinitatis. } } Quind. Trinitatis.
Octab. Trinitatis. } } Tres Trinitatis.

Michaelmas Terme beginneth the. ix. day of October (If it be not Sunday, as is before sayde) and endeth the. xxiii. of November. And hath eyght Returnes. **That is to say.**

Octabis Michael. } } Crast. Animarum.
Quind. Michael. } } Crast. Martini.
Tres Michael. } } Octa. Martini.
Mense Michael. } } Quind. Martini.

Note also that the Exchequer openeth eyght dayes before any Terme beginne, except Trinitie Terme, in which it openeth but thre dayes before.

The

**The Anatomie of man's
body, as the partes thereof are
gouerned by the. xii. Cele-
stiall Signes.**

Aries. The head and face.

Taurus
Necke &
throate.

Cancer.
Breast
Stomacke
& lunges.

Virgo.
Guttes &
belly.

Scorpio.
Secretes
and blad-
der.

**Capri-
cornus.**
The
Knees.



Gemini.
Armes &
Shoulders

Leo:
Hart and
backe.

Libra.
Reynes &
loynes.

**Sagitta-
rius.**
Thighes

Aquari.
The
legges.

Pisces. The feete.

31 *Januarie bath. xxxj. dayes.*

Colde Ianuarie loues hot clothes,
 Warne Meates and Broathes are best:
 Bloodletting is vnholosome: Bathes
 Vse none but warne: fly rest.

i	a	<i>Asperges day.</i>	Taurus. 2	
ii	b	Octa. Stephan.	Taur. 17	
iii	c	Octa. John.	Gemini. 2	D
iiii	d	Octa. Innocent.	Gemini. 16	
v	e	Depo. of Colwa.	Cancer. 1	
vi	f	<i>Welfe day.</i>	Cancer. 16	D
vii	g	Felix & Iama.	Leo. 1	D
viii	a	Lucian priest.	Leo. 15	
ix	b	Joyce virgin.	Leo. 29	
x	c	Agapite virg.	Virgo. 13	
xi	d	Paul hermite.	Virgo. 27	
xii	e	<i>Sun in Aquary</i>	Libra. 10	
xiii	f	Hyllarie bysh.	Libra. 23	D
xiiii	g	Felix priest.	Scorp. 5	
xv	a	Maurice.	Scorpio. 18	
xvi	b	Barcel. bysh.	Sagitt. 1	D
xvii	c	Depo. of Antho.	Sagitt. 12	
xviii	d	Pulca virg.	Sagitt. 24	
xix	e	Wolstane bysh.	Capri. 6	
xx	f	Fabian & Saba	Capri. 18	D
xxi	g	Agnes virg.	Aquari. 1	D
xxii	a	Vincet mart.	Aquari. 12	D
xxiii	b	<i>Perme begins.</i>	Aqua. 24	
xxiiii	c	Timothe discip.	Pisces. 6	
xxv	d	Comer. <i>Pau.</i>	Pisces. 19	
xxvi	e	Dolcarpe bysh.	Aries 1	D
xxvii	f	Agnes s ^e seconde	Aries. 15	
xxviii	g	Valerius bysh.	Aries. 28	D
xxix	a	Theodoze priest.	Taur. 12	
xxx	b	Batilde queene.	Taur. 26	
xxxi	c	Saturdine.	Gemini. 11	D

● Full Moone,
 the. vii. day, at
 v. a clocke. ii. min.
 in the moorning.

C Last quarter,
 the. xiiii. day, at
 viii. a clocke. iiii.
 min. in the fore-
 noone.

● New Moone,
 the. xxii. day, a-
 bout. xviii. minutes
 after high noone.

C First quarter,
 the. xxix. day,
 iiii. minutes before
 high mydnight.

Januarie. 1593.

The Sunne ryseth at. viii. a clocke and. iiii. min.
Setteth at. iii. and. xlvi. minutes.

i
ii
iii
iiii
v
vi
vii
viii
ix
x
xi
xii
xiii
xiv
xv
xvi
xvii
xviii
xix
xx
xxi
xxii
xxiii
xxiv
xxv
xxvi
xxvii
xxviii
xxix
xxx
xxxi
xxxii

a
b
c
d
e
f
g
h
i
k
l
m
n
o
p
q
r
s
t
u
v
w
x
y
z

By the Court booke Court of the
wof. 1593. of the Court of the
our Lady Daye

Henry and of Galia wof. minister
wof. of the Court of the Court
of the Court of the Court of the Court

By the Court booke of the Court of the
of the Court of the Court of the Court

23 outfangen by the Court of the
1000 be part of the Court of the

Jugessa and W^r fying p and
354 d. vore 2 fystant for the
setting out of 450 pounds
future ———— 2-3-4

Februarie hath .xxviii. dayes.

Mylke now and Fennyth foule deny,
As no great holsome messe:
Now Medicines, and Phlebotomy
Are vsde with ill successe.

i	d	Byrget. <i>If all.</i>	Gemini. 25	
ii	e	<i>Full of Ware</i>	Cancer. 10	
iii	f	Blase byshop.	Cancer. 25	☉
iiii	g	Gylbert byshop.	Leo. 9	☉
v	a	Agathe virg.	Leo. 24	☉
vi	b	Redast. & aman	Virgo. 8	
vii	c	Angule bysh.	Virgo. 21	
viii	d	Paul byshop.	Libra. 5	
ix	e	Apoline virg.	Libra. 18	
x	f	<i>Sun in Pisces.</i>	Scorp. 1	
xi	g	<i>Septuagesima.</i>	Scorp. 13	
xii	a	<i>Terme ends.</i>	Scorp. 26	
xiii	b	Colfrane bysh.	Sagit. 8	
xiiii	c	Valentine.	Sagit. 20	☉
xv	d	Fauit. & Jonit.	Capri. 2	☉
xvi	e	Julian bysh.	Capri. 14	☉
xvii	f	Hollicron bysh.	Capri. 26	
xviii	g	<i>Sexagesima.</i>	Aquari. 8	
xix	a	Sabine.	Aquari. 21	
xx	b	Waldred virg.	Pisces. 3	
xxi	c	Lxxix. martyrs.	Pisces. 15	☉
xxii	d	Peters chayne.	Pisces. 28	
xxiii	e	Holicarpe. <i>If all.</i>	Aries. 11	
xxiiii	f	<i>Warrinus apost.</i>	Aries. 25	☉
xxv	g	<i>Quinquagesim</i>	Taurus. 8	
xxvi	a	Reshoz matt.	Taurus. 23	
xxvii	b	Augustine bysh.	Gemini. 7	
xxviii	c	<i>Terme.</i>	Gemini. 21	☉

☉ Full Moone,
the .v. day, at
iii. a clocke. lxxx.
min. in the after
noone.

☾ Last quarter,
the .xiii. day, at
iii. a clocke. xxxi.
min. in the mo-
nyng.

☉ New Moone,
the .xxi. day, at
iii. a clocke. xxxi.
min. in the mo-
nyng.

☾ First quarter,
the .xxviii. day,
at. vii. a clocke,
xliii. min. in the
fozenoone.

Februarie. 1593.

The Sunne ryseth. xiiii. min. after. viii. a clocke.
Setteth. xlvi. min. after. iiiii.

i
ii
iii
iiii
v
vi
vii
viii
ix
x
xi
xii
xiii
xiv
xv
xvi
xvii
xviii
xix
xx
xxi
xxii
xxiii
xxiv
xxv
xxvi
xxvii
xxviii

d
e
f
a
b
c
d
e
f
a
b
c
d
e
f
a
b
c
d
e
f
a
b
c

2^y Inghelwong $\frac{1}{2}$ of the day of
sea robb at 17 1388 for good day
and 1008 remaining 2 - 9 - 1008

By 10^y betw. by the ment group
15 1388 1008 by both 1008

By 13 betw. by the ment group
1008 1008 by both 1008
14 1388 1008

By 4^y betw. by the ment group
1008 1008 by both 1008
4 1388 1008

15^y p to p with by for the ment group
1008 1008 by both 1008
4 1388 1008

By the ment group
1008 1008 by both 1008
2 0 1388

March hath xxxi. dayes.

Such Victualls March requireth
As are both lyght and pure,
Bloodletting somewhat profiteth,
And medicines somewhat cure.

i	d	David bysh.	Cancer. 6	
ii	e	Chadde bysh.	Cancer. 20	
iii	f	Baurice.	Leo. 5	
iiii	☉	<i>Quadragesima</i>	Leo. 19	
v	a	Focas & Euseb.	Virgo. 3	
vi	b	Uict. & Uictor.	Virgo. 16	
vii	c	<i>Ember weeke.</i>	Libra. 1	☉ Full Moone,
viii	d	Felix mart.	Libra. 13	☽ the. vii. day, at
ix	e	Fl. Martyrs.	Libra. 26	☽ ii. a clocke. xlviii.
x	f	Agapite.	Scorpio. 8	☽ min. in the mornyng.
xi	☉	<i>Spring in Aries</i>	Scorp. 21	
xii	a	Gregorie bysh.	Sagitt. 3	
xiii	b	Theodor mart.	Sagitt. 15	
xiiii	c	Candide mart.	Sagitt. 27	☾ Last quarter,
xv	d	Longine mart.	Capri. 10	☽ the. xiiii. day, at
xvi	e	Boniface bysh.	Capri. 22	☽ xi. a clocke. vi. mi-
xvii	f	Gertrude virg.	Aquari. 4	☽ nutes at nyght.
xviii	☉	Edwarde king.	Aqua. 17	
xix	a	Iosep. mar. hulb.	Pisces. 1	
xx	b	Enthert.	Pisces. 13	☉ New Moone,
xxi	c	Benedict.	Pisces. 25	☽ the. xxii. day, at
xxii	d	Afrodise.	Aries. 8	☽ vi. a clocke. xxxiii.
xxiii	e	Theodor.	Aries. 21	☽ min. in the after
xxiiii	f	Botolph. <i>Fast.</i>	Taur. 5	☽ noone.
xxv	☉	<i>Annunt. of Mary</i>	Taur. 19	
xxvi	a	Castor mart.	Gemini. 3	
xxvii	b	Martian.	Gemini. 18	☽ First quarter,
xxviii	c	Dorothe virg.	Cancer. 2	☽ the. xxix. day,
xxix	d	Quintine.	Cancer. 17	☽ at one a clocke
xxx	e	Quirine.	Leo. 1	☽ xviii. min. in the
xxxi	f	Anelme.	Leo. 15	☽ after noone.

March. 1593.

The Sunne ryseth at. vi. a clocke, and. xviii. min.
Setteth at. v. and. xlii. minutes.

i
ii
iii
iiii
v
vi
vii
viii
ix
x
xi
xii
xiii
xiv
xv
xvi
xvii
xviii
xix
xx
xxi
xxii
xxiii
xxiv
xxv
xxvi
xxvii
xxviii
xxix
xxx

D 6^e ontke bay p' day at op'te luy
e Van merder somt 3^e pond 6^l

a 6^e bute 4^e huyfrenten bay nuy
b vouguy so 4^e huyfrenten Christenheit
c wils, 1000 pond 22-0-0
d

e 12^e in Coly 12^e p' day tapy
a woukly voor p'winsten 2^e vor
b dor 10. H. 2^e gollande Cuy 2 134
c

d 9^e jun 2^e gollande bay W
e 1000 bilgants
a

b 12^e bute in july de bay w
c 14 bute voor in part wit 2^e d' 13
d

e 2^e bute godt 4^e in de bolle betahy
a by alle 12^e huyfrenten 1000 in
b

c 22 bute in Cuyt 12^e huyfrenten
d 1000 in 2^e gollande 2^e d' 13
e

Aprill hath xxx. dayes.

Those meates are meete in Apryll,
Which March desyrde to haue:
Bloodletting now doth very well,
Now purging medicines craue,

i	ⓐ	Siluarde.	Leo. 29	
ii	a	Mary Egypt.	Virgo. 13	
iii	b	Richard bysh.	Virgo. 26	
iiii	c	Ambrose bysh.	Libra. 9	☉
v	d	Cicentius.	Libra. 22	Full Moone,
vi	e	Sextus bysh.	Scorpio. 4	the .v. day, at
vii	f	Euphemie virg.	Scorp. 17	v. a clocke. xvi.
viii	ⓐ	Egesippus.	Scorp. 29	min. in the after
ix	a	Perpetuus.	Sagit. 11	noone.
x	b	vii. Virgins.	Sagit. 23	
xi	c	Sun in Taur.	Capri. 5	☾
xii	d	Iustus byshop.	Capri. 17	Last quarter,
xiii	e	Zenoni byshop.	Capri. 29	the .xiii. day, at
xiiii	f	Dyffe.	Aquari. 12	vi. a clocke. xvi.
xv	ⓐ	Easter day.	Aquari. 24	min. in the after
xvi	a	Iudoze bysh.	Pisces. 7	noone.
xvii	b	Antete.	Pisces. 20	
xviii	c	Cluther bysh.	Aries. 3	☉
xix	d	Alphege bysh.	Aries. 16	☾
xx	e	Alceto bysh.	Taurus. 1	Below Moone,
xxi	f	Symeon bysh.	Tauri. 14	the .xxi. day, at
xxii	ⓐ	Socher virg.	Tauri. 29	iiii. a clocke. iii.
xxiii	a	George Mart.	Gemini. 13	min. in the moz-
xxiiii	b	Willie.	Gemini. 28	nyng.
xxv	c	Marke Evang.	Cancer. 12	☉
xxvi	d	Clete bysh.	Cance. 27	☾
xxvii	e	Anastase bysh.	Leo. 12	First quarter,
xxviii	f	Altalis mart.	Leo. 26	the .xxviii. day,
xxix	ⓐ	Peter of Abel.	Virgo. 10	a .vi. a clocke. xvi
xxx	a	Depo. of Ecken	Virgo. 23	min. at nyght.

Apryll. 1593.

The Sunne ryleth at. v. a clocke, and. xx. min:
Setteth at. vi. and. xl. minutes.

t
ff
fff
iiii
v
vi
vii
viii
ix
x
xi
xii
xiii
xiv
xv
xvi
xvii
xviii
xix
xx
xxi
xxii
xxiii
xxiv
xxv
xxvi
xxvii
xxviii
xxix
xxx

a
b
c
d
e
f
a
b
c
d
e
f
a
b
c
d
e
f
a
b
c
d
e
f
a

Day 1. 27. 28. 29. 30. 31. 1. 2. 3. 4. 5. 6. 7. 8. 9. 10. 11. 12. 13. 14. 15. 16. 17. 18. 19. 20. 21. 22. 23. 24. 25. 26. 27. 28. 29. 30. 31.

Day 1. 27. 28. 29. 30. 31. 1. 2. 3. 4. 5. 6. 7. 8. 9. 10. 11. 12. 13. 14. 15. 16. 17. 18. 19. 20. 21. 22. 23. 24. 25. 26. 27. 28. 29. 30. 31.

Day 1. 27. 28. 29. 30. 31. 1. 2. 3. 4. 5. 6. 7. 8. 9. 10. 11. 12. 13. 14. 15. 16. 17. 18. 19. 20. 21. 22. 23. 24. 25. 26. 27. 28. 29. 30. 31.

Day 1. 27. 28. 29. 30. 31. 1. 2. 3. 4. 5. 6. 7. 8. 9. 10. 11. 12. 13. 14. 15. 16. 17. 18. 19. 20. 21. 22. 23. 24. 25. 26. 27. 28. 29. 30. 31.

Day 1. 27. 28. 29. 30. 31. 1. 2. 3. 4. 5. 6. 7. 8. 9. 10. 11. 12. 13. 14. 15. 16. 17. 18. 19. 20. 21. 22. 23. 24. 25. 26. 27. 28. 29. 30. 31.

Day 1. 27. 28. 29. 30. 31. 1. 2. 3. 4. 5. 6. 7. 8. 9. 10. 11. 12. 13. 14. 15. 16. 17. 18. 19. 20. 21. 22. 23. 24. 25. 26. 27. 28. 29. 30. 31.

Day 1. 27. 28. 29. 30. 31. 1. 2. 3. 4. 5. 6. 7. 8. 9. 10. 11. 12. 13. 14. 15. 16. 17. 18. 19. 20. 21. 22. 23. 24. 25. 26. 27. 28. 29. 30. 31.

May bath. xxxij. dayes.

In May thou mayst with safetie,
Both Bath and take Purgation:
Vie Vomyt, and Phlebotomy,
And lyke euacuation.

ii	b	Philip & Jacob.	Libra. 1	
iii	c	Terme begins.	Libra. 16	
iiii	d	Inuent. of s ^t cross	Scorpio. 1	
v	e	Christopher.	Scorpi. 14	
vi	f	Goddarde.	Scorpi. 26	D
vii	g	John port latin.	Sagit. 7	
viii	a	John of Beuer.	Sagit. 19	
ix	b	Apart. Michael.	Capri. 1	
x	c	Trans. Nicho.	Capri. 13	
xi	d	Gordian & Epi.	Capri. 25	D
xii	e	Sun in Gemini	Aquari. 7	
xiii	f	Anthony.	Aquari. 19	D
xiiii	g	Seruatius.	Pisces. 2	
xv	a	Boniface.	Pisces. 15	
xvi	b	Isidore.	Pisces. 28	
xvii	c	Brandon bysh.	Aries. 11	
xviii	d	Trans. Barn.	Artes. 24	
xix	e	Diolcor mart.	Tauru. 9	
xx	f	Dunstane confel.	Taur. 22	D
xxi	g	Purgation lunda	Gemini 8	D
xxii	a	Helene queens.	Gemini 22	
xxiii	b	Iulian virg.	Cancer. 7	
xxiiii	c	Desiderii.	Cancer. 22	D
xxv	d	Ascensio: i day.	Leo. 7	
xxvi	e	Adelme bysh.	Leo. 21	
xxvii	f	Augustine.	Virgo. 6	
xxviii	g	Germine bysh.	Virgo. 19	
xxix	a	Terme endeth.	Libra. 3	
xxx	b	Nichonede.	Libra. 16	
xxxi	c	Petroneil virg.	Libra. 29	D
xxxii	d	Arctius.	Scorpi. 11	

Full Moone,
the. v. day, at
vii. a clocke. lii.
min. in the fore-
noone.

Last quarter,
the. xiii. day, at
v. a clocke. xlviii.
min. in the fore-
noone.

First Moone
Eclipsed the
xx. day, about. xxi.
min. after hygh
noone.

First quarter,
the. xxviii. day,
at two a clocke,
lii. minutes in the
morning.

May. 1593:

Sunne ryseth at. iiii. of the clocke, and. xxii. min.
 Setteth at. vii. and. xxxviii. mins

i	b	Day 4 th outte bay Druen Druen ay wout
ii	c	
iii	d	monger 500 — bilgouty
iiii	e	
v	f	
vi	a	Day 5 th outte 3 gaest regarden zue
vii	b	roky roky 12 p 68 dy gad. 2 p 19 pnd
viii	c	
ix	d	Day 9 th butavel ay Joofruy maffrub
x	e	op R. Kuyngge & Winkel stred 20 p
xi	f	
xii	a	
xiii	b	Day 12 th butaver ay Cakendstgae
xiiii	c	minstherly 15 p 3 p 5 p 5 p
xv	d	
xvi	e	Day 26 th bute ay Noye boude
xvii	f	voor 1/4 voute 2 p 1/2 voute 2 p 1/2 voute
xviii	a	fast past 1/2 p 1/2 voute 2 p 1/2 voute
xix	b	
xx	c	Day 28 th vgeroyt @ Kinn papner 1/2 p 1/2 p
xxi	d	
xxii	e	Day 30 th faste met vnoope 1/2 p 1/2 p
xxiii	f	de butaver 5 p
xxiiii	a	
xxv	b	
xxvi	c	
xxvii	d	
xxviii	e	
xxix	f	
xxx	a	
xxxi	b	

B

June hath xxx. dayes.

Coole hearbes in Iune are very meete:
 But such meates shun chiefly
 And drinckes that shalbe new or sweete:
 Take pleasures medicinally.

i	e	Archonede.	Scorpio. 23	
ii	f	Parcellus.	Sagit. 5	
iii	S	Trinitie Sunday.	Sagit. 17	D
iiii	a	Petrotus.	Sagit. 28	D
v	b	Bonifacius.	Capri. 10	
vi	c	Ember weeke.	Capri. 22	D
vii	d	Wolstane.	Aqua. 4	
viii	e	Bedard & Gild.	Aquari. 16	
ix	f	Tranl. Edmund	Aquar. 28	D
x	S	Trinitie Sunday	Pisces. 10	
xi	a	Barnabe apostle	Pisces. 23	C
xii	b	Sun in Cancer	Aries. 6	
xiii	c	Anthonticonel.	Aries. 19	D
xiiii	d	Basill bysh.	Taurus. 3	
xv	e	Terme begins.	Taur. 17	
xvi	f	Tranl. of Richar	Gemin. 1	
xvii	S	Boculph.	Gemin. 16	
xviii	a	Cruperius.	Cancer. 1	D
xix	b	Servatius.	Cancer. 16	D
xx	c	Tranl. Edward	Leo. 1	D
xxi	d	Malurge.	Leo. 16	
xxii	e	Alban mart.	Virgo. 1	
xxiii	f	Audy. Fast.	Virgo. 15	D
xxiiii	S	John Baptist.	Virgo 28	
xxv	a	Tranl. of Clegl.	Libra. 12	
xxvi	b	John and Paul.	Libra. 25	D
xxvii	c	Crescena	Scorpio. 8	
xxviii	d	Leuis. Fest.	Scorp. 21	
xxix	e	Peter apostle.	Sagit. 2	
xxx	f	Comm. of Paul	Sagit. 14	

Full Moone,
 the .lii. day, at
 x. a clocke. lii mi-
 nutes at nyght.

Last quarter,
 the .xii. day. xx.
 min. after. xii. a
 clocke at nyght.

New Moone,
 the .xviii. day,
 at .vi. a clocke,
 xliii. min. in the
 after noone.

First quarter,
 the .xxv. day,
 xxvi. min. after
 high noone.

508

June. 1593.

Sunne ryfeth at .iiij. of the clocke, and .xliiii. min.
Setteth at .viii. and .xvi. minutes.

i
ii
iii
iij
v
vi
vii
viii
ix
x
xi
xii
xiii
xiv
xv
xvi
xvii
xviii
xix
xx
xxi
xxii
xxiii
xxiv
xxv
xxvi
xxvii
xxviii
xxix
xxx

e
f
a
b
c
d
e
f
a
b
c
d
e
f
a
b
c
d
e
f
a
b
c
d
e
f

18^{de} vuttam 29 buy jagen
2 buy by 29 diij sent bilgout

It - 1000 bilgout

Item by zelung 29 buy 29
lyuwa to be blerky ofid an
funt 18^{de} 29 buy 10. 29. 10. 29.

It 29 buy 29 buy 29 buy
by myny constable was, 29
It 29 buy 1/4 29 buy 29 buy

July hath xxxi. dayes.

Sleepe not too much, to coole bathes go,
 Refuse to vse Phlebotomy:
 This Month abstayne from Venus, woe
 To him, that keepes her company.

i	6	Oct. John Bapt	Sagitt. 26		
ii	a	Visita. of Mary.	Capri. 8		
iii	b	Transl. of Tho.	Capri. 19	D	Full Moone, the. iiii. day, at one a clocke. xliii. min. in the after noone.
iiii	c	<i>Terme riuerty.</i>	Aqua. 1	D	
v	d	Joe vltg.	Aqua. 13		
vi	e	Oct. Pet. & Paul	Aqua. 24		
vii	f	<i>Dogdayes begin</i>	Bilces. 6	D	
viii	6	Depo. of Grise.	Bilces. 19		
ix	a	Cyill bysh.	Artes. 1		
x	b	Uti. Brethren.	Artes. 14		
xi	c	Transl. of Beuet.	Aries. 28	D	Last quarter, the. xi. day, at xi. a clocke. lvi. min. in the fore- noone.
xii	d	<i>Sun in Leo.</i>	Taurus. 11		
xiii	e	Reuel.	Tauru. 25		
xiiii	f	Transl. of Swft.	Gemin. 10		
xv	6	Transl. of Olmo.	Gemin. 25		
xvi	a	Benelme king.	Cancer. 10		
xvii	b	Arnulph.	Cancer. 25	D	New Moone, the. xviii. day, at. iiii. a clocke. ix. min. in the mor- nyng.
xviii	c	Rufine & Just.	Leo. 9	D	
xix	d	Margaret.	Leo. 24	D	
xx	e	Diared.	Virgo. 9		
xxi	f	Mary Magda.	Virgo. 23		
xxii	6	Apolona.	Libra. 7		
xxiii	a	<i>Christie. Fast.</i>	Libra. 20		
xxiiii	b	<i>James apostle.</i>	Scorpio. 3	D	
xxv	c	An mot. of Mary	Scorp. 16		
xxvi	d	Uti. Sheepers.	Scorp. 29		
xxvii	e	Samson bysh.	Sagitt. 11		
xxviii	f	Samson bysh.	Sagitt. 23		
xxix	6	Felic & his fel.	Capri. 5		First quarter, the. xxv. day, at one a clocke. xlviii. min. in the mor- nyng.
xxx	a	Abdon & Sen.	Capri. 17		
xxxi	b	Servus.	Capri. 28	D	

August. 1593.

Sunne ryseth at: iiii. of the clocke, and. xliiii. min.
Setteth at. vii. and. xvi. min.

i
ii
iii
iiii
v
vi
vii
viii
ix
x
xi
xii
xiii
xiv
xv
xvi
xvii
xviii
xix
xx
xxi
xxii
xxiii
xxiv
xxv
xxvi
xxvii
xxviii
xxix
xxx
xxxi

c
d
e
f
a
b
c
d
e
f
a
b
c
d
e
f
a
b
c
d
e
f
a
b

Day 5th bise first day of the year
of the Quere day of the year

Day 15th bise
of the year

Day 20th bise in the year
of the year
Day 24th bise in the year

Day 20th bise in the year
of the year
24 June 4 1593

July hath xxxi. dayes.

Sleepe not too much, to coole bathes go,
 Refuse to vse Phlebotomy:
 This Month abstayne from Venus, woe
 To him, that keepes her company.

i	Ⓞ	Oct. John Bap	Sagit. 26	
ii	a	Visita. of Mary.	Capri. 8	
iii	b	Transl. of Tho.	Capri. 19	☽
iiii	c	<i>Terme endeth.</i>	Aqua. 1	☽
v	d	Joe vreg.	Aqua. 13	
vi	e	Oct. Pet. & Paul	Aqua. 24	
vii	f	<i>Dogdayes begin</i>	Pisces. 6	☽
viii	Ⓞ	Depo. of Greta.	Pisces. 19	
ix	a	Cyill bish.	Aries. 1	
x	b	St. Bithzen.	Aries. 14	
xi	c	Transl. of Benet.	Aries. 28	☽
xii	d	<i>Sun in Leo.</i>	Taurus. 11	
xiii	e		Tauru. 25	
xiiii	f	Reuel.	Gemin. 10	
xv	Ⓞ	Transl. of Swt.	Gemin. 25	
xvi	a	Transl. of Dmo.	Cancer. 10	
xvii	b	Benelme king.	Cancer. 25	☽
xviii	c	Arnulph.	Leo. 9	☽
xix	d	Rufine & Just.	Leo. 24	
xx	e	Margaret.	Virgo. 9	☽
xxi	f	Pyared.	Virgo. 23	
xxii	Ⓞ	Mary Magda.	Libra. 7	
xxiii	a	Apelona.	Libra. 20	
xxiiii	b	Christie. <i>Fast.</i>	Scorpio. 3	☽
xxv	c	<i>James apostle.</i>	Scorpi. 16	
xxvi	d	An mot. of Mary	Scorp. 29	
xxvii	e	St. Shepers.	Sagit. 11	
xxviii	f	Samson bish.	Sagit. 23	
xxix	Ⓞ	Felle & his fel.	Capri. 5	
xxx	a	Abdon & Sen.	Capri. 17	
xxxi	b	Servus.	Capri. 28	☽

☽ Full Moone,
 the. iiii. day, at
 one a clocke. xiii.
 min. in the after
 noone.

☾ Last quarter,
 the. xi. day, at
 xi. a clocke. liiii.
 min. in the fore-
 noone.

☽ New Moone,
 the. xviii. day,
 at. iiii. a clocke. ix.
 min. in the morn-
 yng.

☽ First quarter,
 the. xxv. day, at
 one a clocke. xviii.
 min. in the morn-
 yng.

t
ii
iii
iiii
v
vi
vii
viii
ix
x
xi
xii
xiii
xiv
xv
xvi
xvii
xviii
xix
xx
xxi
xxii
xxiii
xxiiii
xxv
xxvi
xxvii
xxviii
xxix
xxx
xxxi

t
a
b
c
d
e
f
a
b
c
d
e
f
a
b

15 Junij
16 Junij
17 Junij
18 Junij
19 Junij
20 Junij
21 Junij
22 Junij
23 Junij
24 Junij
25 Junij
26 Junij
27 Junij
28 Junij
29 Junij
30 Junij

15 Junij
16 Junij
17 Junij
18 Junij
19 Junij
20 Junij
21 Junij
22 Junij
23 Junij
24 Junij
25 Junij
26 Junij
27 Junij
28 Junij
29 Junij
30 Junij

15 Junij
16 Junij
17 Junij
18 Junij
19 Junij
20 Junij
21 Junij
22 Junij
23 Junij
24 Junij
25 Junij
26 Junij
27 Junij
28 Junij
29 Junij
30 Junij

15 Junij
16 Junij
17 Junij
18 Junij
19 Junij
20 Junij
21 Junij
22 Junij
23 Junij
24 Junij
25 Junij
26 Junij
27 Junij
28 Junij
29 Junij
30 Junij

xxviii	e	Dogsdayes ende.	Virgo. 3
xxvii	f	Agapits mart.	Virgo. 17
xxvi	g	Gagans mart.	Libra. 1
xxv	a	Leues bysh.	Libra. 15
xxiiii	b	Barnarde.	Libra. 28
xxiii	c	Quintus.	Scorpi. 11
xxii	d	Conoche. <i>Fast.</i>	Scorpi. 24
xxi	e	Barthol. apostle.	Sagit. 7
xx	f	Leues King.	Sagit. 19
xix	g	Severine.	Capri. 1
xviii	a	Rufine mart.	Capri. 13
xvii	b	Augustine bysh.	Capri. 25
xvi	c	John beheaded.	Aqua. 7
xv	d	Felic & Adar.	Aqua. 19
xiiii	e	Archiebysch nrg.	Disces 1
			Disces. 13

First Moone, the. xvi. day at x. a clecke. li. min. in the forenoone.

First quarter, the. xxiii. day, at. liii. a clecke li. min. in the afternoone.

Full Moone, the. xxxi. day, at. vii. a clock. xiiii min. in the evening.

August. 1593.

Sunne ryseth at.iiii.of the clocke, and. xliiii. min.
Setteth at. vii. and. xvi. min.

i
ii
iii
iiii
v
vi
vii
viii
ix
x
xi
xii
xiii
xiv
xv
xvi
xvii
xviii
xix
xx
xxi
xxii
xxiii
xxiv
xxv
xxvi
xxvii
xxviii
xxix
xxx
xxxi

c
d
e
f
a
b
c
d
e
f
a
b
c
d
e
f
a
b
c
d
e
f
a
b
c
d
e

De 5^{en} dach van Augustus
is de Quindaghe van
Sint Augustinus

De 15^{en} dach van Augustus
is de Dag van de Heilige
Augustinus

September hath .xxx. dayes.

September yeeldes fruites pleasantly,
 Refrayne, eate not thy fyll:
 Take Medicines: vse Phlebotomy,
 Now Spice in meates not yll:

i	f	Eples abbot	Pisces. 26	
ii	g	Anthony mart.	Aries. 8	
iii	a	Divina. Grego.	Aries. 21	
iiii	b	Tranf. of Luth.	Taur. 4	D
v	c	Bertine.	Taur. 17	
vi	d	Eugenius.	Gemi. 1	
vii	e	Nat. Regi. Eliza	Gemi. 15	
viii	f	Natl. of Mary.	Gemi. 29	
ix	g	Gorgonius.	Cancer. 14	
x	a	Silvius.	Cancer. 29	
xi	b	Proth. & Jac.	Leo. 13	D
xii	c	Marthian.	Leo. 28	D
xiii	d	Sun in Libra.	Virgo. 12	
xiiii	e	Crul. Crucis.	Virgo. 26	D
xv	f	Oct. nati. Mary	Libra. 10	
xvi	g	Edith virg.	Libra. 23	
xvii	a	Lambert.	Scorp. 6	D
xviii	b	Victor & Coron.	Scorp. 19	
xix	c	Ember weeke.	Sagit. 2	
xx	d	Fast.	Sagit. 14	
xxi	e	Barthelmy apost	Sagit. 26	
xxii	f	Mauricins.	Capri. 9	
xxiii	g	Tecla virg.	Capri. 21	
xxiiii	a	Andochens.	Aqua. 3	D
xxv	b	Firmine.	Aqua. 15	
xxvi	c	Cipri. & Just.	Aqua. 27	D
xxvii	d	Cosme. & Dam.	Pisces. 10	
xxviii	e	Cyprian.	Pisces. 22	
xxix	f	Michael archan	Aries. 5	
xxx	g	Jerome prest.	Aries. 18	D

☾ Last quarter,
 the .viii. day,
 at .iiii. a clocke. xliii
 min. in the moor-
 nyng.

☉ New Moone,
 the .xiiii. day,
 at .viii. a clocke,
 xxv. min. at night.

☾ First quarter
 the .xvii. day
 at .viii. a clocke
 xlvi. min. in the
 forenoone.

☉ Full Moone,
 the .xx. day
 at .ix. a clocke. xlii.
 min. in the fore-
 noone.

September. 1593.

The Sunne ryseth at. v. a clocke and. xxxvii. min.
 Setteth at. vi. and. xxiii. minutes.

i	f								
ii	a	2							
iii	b								
iiii	c								
v	d								
vi	e								
vii	f								
viii	a	3							
ix	b								
x	c								
xi	d								
xii	e								
xiii	f								
xiv	a	4							
xv	b								
xvi	c								
xvii	d								
xviii	e								
xix	f								
xx	a	5							
xxi	b								
xxii	c								
xxiii	d								
xxiiii	e								
xxv	f								
xxvi	a								
xxvii	b								
xxviii	c								
xxix	d								
xxx	e								
xxxi	f								
xxxii	a								
xxxiii	b								
xxxiiii	c								
xxxv	d								
xxxvi	e								
xxxvii	f								
xxxviii	a								
xxxix	b								
xl	c								
xli	d								
xlii	e								
xliiii	f								
xliiiii	a								
xlv	b								
xlvi	c								
xlvii	d								
xlviii	e								
xlviiii	f								
l	a								

October hath .xxxix. dayes.

Go hunt, drinke Wine thats olde, and good:
 Use exercise for health:
 Now mayst thou take good stoore of food
 Which hath good store of wealth.

i	a	Remigius bysh.	Taurus. 1	
ii	b	Leodegarie mart.	Taur. 14	D
iii	c	Canthie mart.	Taur. 28	
iiii	d	Fraunces.	Gemin. 12	
v	e	Appolinart.	Gemin. 26	
vi	f	Feyth brig.	Cancer. 10	
vii	G	Barth. & Bar.	Cancer. 25	
viii	a	Pelagius brig.	Leo. 9	D
ix	b	Let us begin.	Leo. 24	D
x	c	Sereon & Tict.	Virgo. 8	D
xi	d	Micahs bysh.	Virgo. 22	
xii	e	Wilfride.	Libra. 5	
xiii	f	Sun in Scorp.	Libra. 19	
xiiii	G		Scorp. 2	D
xv	a	Alfran.	Scorp. 15	D
xvi	b	Mich. of mount.	Scorp. 27	
xvii	c	Tran. of Etb.	Sagit. 10	
xviii	d	Luke Euange.	Sagit. 22	
xix	e	Frydeswyde.	Capri. 4	
xx	f	Austrebert.	Capri. 16	
xxi	G	E. M. virgins.	Capri. 28	
xxii	a	Mary Salom.	Aqua. 11	D
xxiii	b	Romane arch.	Aqua. 23	
xxiiii	c	Baglozie bysh.	Pisces. 5	D
xxv	d	Terle & Crispi.	Pisces. 18	
xxvi	e	Alisa.	Aries. 1	
xxvii	f	Florence. Fest.	Aries. 13	
xxviii	G	Simon & Iud.	Aries. 26	
xxix	a	Narcissus.	Taur. 10	D
xxx	b	Germane.	Taur. 23	
xxxi	c	Dunstun. Fest.	Gemini. 7	

C Last quarter,
 the .vii. day, at
 ix. a clocke. xiii.
 min. in the fore-
 noone.

S New Moone,
 the .xiiii. day,
 at .viii. a clocke,
 xxviii. min. in the
 mornynge.

C First quarter,
 the .xxii. day, at
 v. a clocke. vii. mi-
 nutes in the mor-
 nynge.

F Full Moone,
 the .xxix. day,
 at .x. a clocke. xii.
 min. at nyght.

October. 1593.

The Sunne ryseth. xxviii min. after. vi a clocke.
Setteth at. v. and. xxiii min.

i	a	6			
ii	b				
iii	c				
iiii	d				
v	e				
vi	f				
vii	a	7			
viii	b				
ix	c				
x	d				
xi	e				
xii	f				
xiii	a				
xiiii	b	8			
xv	c				
xvi	d				
xvii	e				
xviii	f				
xix	a	9			
xx	b				
xxi	c				
xxii	d				
xxiii	e				
xxiiii	f				
xxv	a	10			
xxvi	b				
xxvii	c				

November hath .xxx. dayes.

Olde Wines, and sweete, are holsome:
 Let lytle Bathing serue:
 Count Venus now as loathsome,
 If health thou wylt preserue.

i	d	All Sainctes.	Gemin. 22	
ii	e		Cancer. 6	
iii	f	Alerefr. Ide.	Cancer. 21	
iiii	g	Amantius.	Leo. 5	D
v	a	Lete priest.	Leo. 20	
vi	b	Leonarde.	Virgo. 4	
vii	c	Wifhrede.	Virgo. 18	D
viii	d	iii. Crotoned.	Libra. 2	
ix	e	Theodore.	Libra. 15	
x	f	Martin.	Libra. 29	
xi	g	Martin bysh.	Scorpio. 11	
xii	a	Sun in Sagit.	Scorpio. 24	D
xiii	b	Wice.	Sagit. 6	
xiiii	c	Tran. of Erken	Sagit. 18	
xv	d	Wacate.	Capri. 1	
xvi	e	Edmunde arch.	Capri. 13	
xvii	f	Init. Reg. Eliza	Capri. 24	
xviii	g	Oct. Martini.	Aqua. 1	D
xix	a	Elizabeth mart.	Aqua. 18	
xx	b	Edmund king.	Wices. 1	
xxi	c	Present. of Mari	Wices. 13	
xxii	d	Cicely byrg.	Wices. 25	D
xxiii	e	Clement.	Aries. 9	
xxiiii	f	Grillogon.	Aries. 21	
xxv	g	Katherine.	Tauru. 4	D
xxvi	a	Lyue byshop.	Tauru. 18	
xxvii	b	Agricola.	Gemin. 2	
xxviii	c	Terme aneeth.	Gemin. 16	D
xxix	d	Saturne. Fall.	Canc. 1	
xxx	e	Andrew apottle.	Canc. 16	

C Last quarter,
 the .v. day, at
 iii. a clocke .xxviii
 min. in the after
 noone.

D New Moone,
 the .xii. day, at
 xi. a clocke .xxiii.
 min. at nyght.

C First quarter,
 the .xxi. day, at
 ii. a clocke .xxiiii.
 min. in the morn-
 nyng.

D Full Moone,
 the .xxviii. day,
 at .x. a clocke .xxi.
 min. in the fore-
 noone.

November. 1593.

The Sunne ryseth at. vii. a clocke, and. xxxvi. min.
 Setteth at. iiii. and. xxiii. minutes.

i	D				
ii	e				
iii	f				
iiii	g				
v	a	11			
vi	b				
vii	c				
viii	d				
ix	e				
x	f				
xi	g				
xii	a	12			
xiii	b				
xiiii	c				
xv	d				
xvi	e				
xvii	f				
xviii	g				
xix	a	13			
xx	b				
xxi	c				
xxii	d				
xxiii	e				
xxiiii	f				
xxv	g				
xxvi	a	14			
xxvii	b				
xxviii	c				
xxix	d				
xxx	e				

December hath .xxxj. dayes.

Now fire, and hot meates haue thou must:
 December loues warme Potions.
 Drynke Wine, beware of too much lust:
 Goe warme, and vse strong motions.

i	f	Elegi byshop.	Leo. 1		
ii	S	Asueni Friday.	Leo. 16	D	
iii	a	Depo. of Dimo.	Virgo. 1		
iiii	b	Barbara virg.	Virgo. 15		
v	c	Sabbe abbot.	Virgo. 29	D	C Last quarter, the .liii. day, xlv min. after .xii. a clocke at night.
vi	d	Nicholas bysh.	Libra. 12		
vii	e	Oct. of Anselm.	Libra. 26		
viii	f	Concep. of Mar	Scorp. 8		
ix	S	Cyprian abbot.	Scorp. 21		
x	a	Eulali virg.	Sagit. 3		
xi	b	Da mals bysh.	Sagit. 15		
xii	c		Sagit. 27	D	S New Moone, the .xii. day, at v. a clocke. xi. mi- nutes in the eue- nyng.
xiii	d	Sun in Capri.	Capri. 9		
xiiii	e	Otholi virg.	Capri. 21		
xv	f	Valeri bysh.	Aqua. 3		
xvi	S	O Sapientia.	Aqua. 15	D	
xvii	a	Lazarus bysh.	Aqua. 27		
xviii	b	Gratian.	Pisces. 8		
xix	c	Ember weeke.	Pisces. 21		
xx	d	Julian. Fast.	Aries. 3	D	C First quarter, the .xx. day, at v. a clocke. liii. mi- nutes at nyght.
xxi	e	Thomas apost.	Aries. 16		
xxii	f	III. Martyrs.	Aries. 29		
xxiii	S	Victr virg.	Tauru. 12		
xxiiii	a	Carolde. Fast.	Tauru. 26		
xxv	b	Fati. of Christ.	Gemin. 10		
xxvi	c	Stephen mart.	Gemin. 25		
xxvii	d	John Wang.	Cancer. 10		
xxviii	e	Innocentes.	Cancer. 25	D	S Full Moone, the .xxviii. day, at. viii. a clocke xlii. min. at night.
xxix	f		Leo. 10		
xxx	S	Tranl. of James	Leo. 25		
xxxi	a	Blutheke bysh.	Virgo. 9		

December. 1593.

The Sunne ryseth at. viii .a clocke, and. xiii. min:
Setteth at. iiii. and. xlvij. minutes,

i	f	
ii	f	
iii	a	15
iiii	b	
v	c	
vi	d	
vii	e	
viii	f	
ix	f	
x	a	16
xi	b	
xii	c	
xiii	d	
xiiii	e	
xv	f	
xvi	f	
xvii	a	17
xviii	b	
xix	c	
xx	d	
xxi	e	
xxii	f	
xxiii	f	
xxiiii	a	18
xxv	b	
xxvi	c	
xxvii	d	
xxviii	e	
xxix	f	
xxx	f	
xxxi	a	19

December 1797

The sum of ...
... ..

1	...
2	...
3	...
4	...
5	...
6	...
7	...
8	...
9	...
10	...
11	...
12	...
13	...
14	...
15	...
16	...
17	...
18	...
19	...
20	...
21	...
22	...
23	...
24	...
25	...
26	...
27	...
28	...
29	...
30	...
31	...



Frende. 1593.

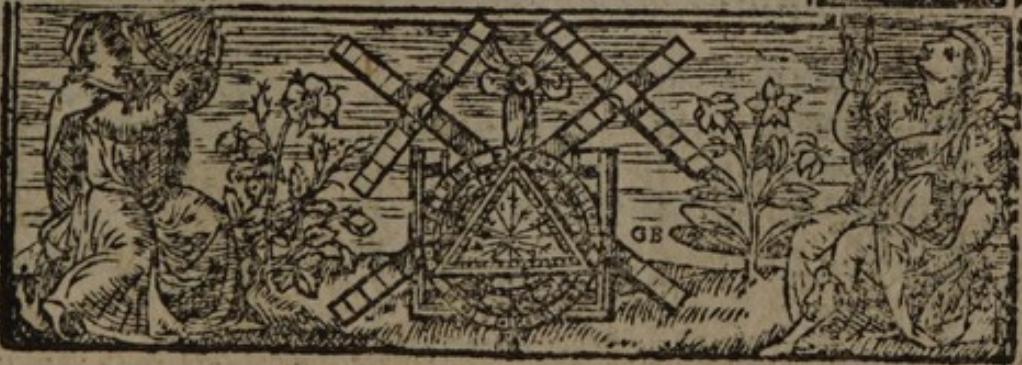
A Prognostication

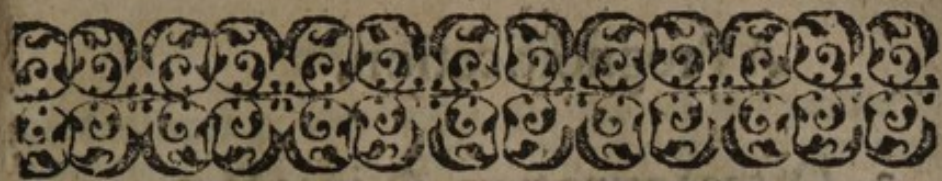
for the yeere of our re-
demption by Christ Iesus
M.D.XCIII.

Wherein the disposition of the ayre the
robout eche Revolution, with sundry
other agreeable notes and remem-
brances meete for such a worke, are
plaineely and briedly set downe accor-
dyng to the groundes and rules of
lawfull art.

By Gabriell Frende, practi-
tioner in Physicke, and
student in Astronomy.

*The Starres are thought to rule the world's,
By auncientes learned sk ill:
But God doth rule, and ouerrule,
And turne them at his vovill.
Yet must vve not the Starres despyse
Vvhich hevv his power so vvdreusly*





*A generall description of the foure
Quarters, or Reuolutions of this
yeere, wherein is briefly expressed
what euentes are for the most part like
to happen vnder eache of them.*

I. Of the Winter quarter. ☉ in ♄. ♀. ♁.

Winter, the first part of this common yeere, according to our accustomed Englyshe reckoning, began Anno. 1592. the. xii. day of December, being Tuesday: and shall continue in this present yeere. 1593. vntyll the. xi. day of March next tolowynge.

The state and condition of the ayre this Quarter, is lyke (according to Astrologicall and other artificiall circumstances) for the most part to proue kinde, and seasonable for the tyme, namely colde and moyst, which are the proper qualities naturally incident to Winter season.

The frostes this Winter shall for the most part be blacke, and foggy, of no long continuance togeather, but of such we are lyke to haue great store. The moysture that falleth shall most commonly be rayne, and slecte, then flakes of snow, whereof we are lyke to haue but small store this Winter. Neyther shall the ayre be inclined to such boysterous wyndes, and thunderyng blastes, as it hath been in some Winters immediately preceding: those which come, shall most what blow South, and South west.

The sicknesses of this Quarter, are most lyke to be singyn and wyndines in the head, ratones and coldnes in the stomacke, stuffyn and stoppyng in the Luyges, Plurisies, Retornes, Paulties, quotidian Agues, Droopies, Consumptions, and such lyke. As for other affayres, I omit to speake of.

A Prognostication.

2. Of the Spring time. ☉. in γ. δ. ii.

The seconde Quarter of this common yeere, called the Spring, which euermore taketh place at the Sunnes entraunce into Aries, begeth this yeere the. xi. day of March being Sunday, betweene. lii. and. liii. a clocke in the mornyng, and holdeth on vntyll the. xii. day of June next ensuing.

The entraunce of this quarter, I meane March, and the beginning of Apryll, wylbe by my collections, vnseasonably inclined to colde Winterlyke and ouermost weather, not without some hayle, snow, fleete, and such stormy blastes, as wyl I feare me turne vs to much hinderance in our Corne and Cattle, vnlesse our good God of his accustomed mercies towards his welbeloued countrey Englande, turne the same from vs: which we are humbly to craue at his heauenly handes with vnfaigned prayers.

The residue, or other partes of this Revolution, are by iudicialles Astrological, lyke to proue more seasonable and kynde, saynyn that now and then sundry variable blastes, and loude whistlyng wyndes shall diuersly alter, and interchangeably affect the ayre, with new and vnylike dispositions, throughout the whole course thereof in a maner.

The most ordinary and common infirmities raignyng this quarter, wylbe wandryng and vncertayne Agues, Scabbes, Itche, Goutyewes, Frennies, swellinges, aches in the Joyntes, paynes in the Eyes, reumes, coughes, beside a new pestilent kinde of Ague, which wyl, I doubt, begeth to be ouer basie in many places, towards the later ende of this Spring tyme.

Touching other matters, Butter and Cheese, wyl (I suppose) be somewhat higher, and heuier of price at the beginning of this Quarter, then they are vsually wont: and so I feare me wyl Flesh and Corne, and all maner of Victualles, for the most part. But after myd Day, I hope we shall enjoy a more plentifull and easie condition of the pmisses. May tyme is lyke to be sayre, and reasonable plentifull: Pastours shall not thriue well in many places

ces this Spring. But finally, the want of any necessary shalbe tollerable, yf we be not intollerably wantyng to our selues. I meane, yf we lyue in good order, euery man in his calling.

3. Of the Sommer quarter. ☉, in ♁. ♀. ♃.

The thyrde part of this common yeere, called the Sommer quarter, beginneth at the tyme of the Sunnes passage into Cancer, which shalbe vpon the. xlii. day of Iune being Tues Day, about. xii. a clocke at nyght; and shall from thence endure vntyll the. xlii. day of September next folowynge.

Touching the generall disposition and constitution of the ayre this Sommer, I perceiue by the rules and maxims of Astrologie, that the same is for the most part vnylike to be vnseasonably distempered with any great drought, or long exceeding heate: but that the ayre most what wylbe temperate, and very coole, partly thorow the breathinges of whyssking wyndes, and partly by meanes of raynyshewers, and stormy moysture, wherof we are lyke to haue great store this quarter: and yet in such sort, I hope, that they shall not be greatly offensive or hurtfull to the good estate and prosperous increase of the frutes of the earth. Thunders, and loude cracking clappes we shall haue often: but as for dry lychtnynges, and flashyng elementes, I finde small lykelyhood of many suche vnder this Reuolution.

The infirmities of the tyme, are hot Agues, as Tertians, Quinsions, and such lyke. Item Frenlies, Sweates, Headache, Ophthalmies, Squinances, hot Apostumes, yellow Jaundies, Vomiting, fluxes of blood, aches in the backe and loynes, the Plague, and such lyke, proceeding for the greatest part of hot blood and cholericke humors.

Concerning other accidentes, there shoulde by my collections, be many reportes of Warre and bloodshed, and much vnbudled behauiour amongst the wicked in many places. Sheepe are not lyke to thyrer well, wher vpon may aryse a penyry of Buttor, and a
 C. iii. great

A Prognostication.

great plenty of Beeres: for such wyllbe also dearely valued this Quarter, in respect of other more plentifull Summers. Corne and Wney are lyke to be reasonable plentifull: and lykewylbe whitemytes halbe somewhat heauie of vice. The residue I leaue to the iudgements of others, seene in this facultie.

4. Of Autumne, or Haruest quarter, otherwise tearmed the Fall of the Lease.

○. iii. m. f.

Autumne, or the Haruest revolution, being the fourth and last Quarter of this common yeere, by our vsuall Englyshe account, maketh his entrance at the moment of the Sunnes ingresse into Libra, which wyllbe this yeere upon the. xiii. day of September being Thursday, a lytle before hygh noone: from which instant, it shall continue wtyll the. xii. day of December, being Wednesday next immediately insuing.

The beginning of this quarter wyllbe disposed to heate, and Sommerlyke weather, namely tyll towards Michaelmas: afterwards it shall proue more coole and moyst, but wyll be very variable and uncertaigne, in such sort, that we shall have heate and cold, moysture and drynes all in a day, and that often tymes so, so diuersely and vncoustantly is the ayre lyke to be affected. But November wyll bying in more certaine weather, for it is lyke to be much inclined to snow, foggy mystes, blacke frostes, fozes, stormes of dayle, and such lyke winterlyke, and humall effectes. But as for loud thundering wyndes, and frosty troublesome foarefall blastes, I suppose we shall not have so many of them now, as are vsuall wont to be styring this season of the yeere: so calme and quiet wyll the ayre be for the most part.

For sickneses, and bodily greifes, this part of the yeere exceedeth all the rest, for what diseases almost may there be named, which are
not

Freude. 1593.

not now trying and vering mens bodies: howbeit the most vni-
all and proper infirmities of this Quarter, are according to the
doctrine of Hypocrates, quartane Agues, Swelling of the Spleene,
Tympanies, Consumptions, the Falling sicknesse, madnesse, Short-
nesse of wynde, Anginaes, and such lyke.

As for other affayres, and euentes, this Revolution seemeth to
Iunpe with the other preceding: wherefore I finde nothing here
worth the noting, which is not already touched in the former quar-
ters, saving this, that we are now lyke to heare of more Shyp-
wreckses and Pyrates, then byfore.

*A prognosticall Iudgement vpon
the Eclipse of the Sunne before mentioned
in the beginning of my Almanacke,
to happen this yeere.*

MEsahalah an ancient Astrologer amongst the Arabians,
sayth: That there neuer hapneth any Eclipse or darkning
of the Sunnes beames, but that there ensue some great, and
fearefull accidents in the worlde after the same. And also other
wyters in this Art are of opinion, that an Eclipse of the Sunne
is much more notable, and of farre greater effect, then any Eclipse
of the Moone, howsoeuer they are notwithstanding of great conse-
quence ostentines, and alwayes thought very worthy the noting.
Touching the present obscuration, so much as it falleth out in
the fyrst decane of the signe Gemini, it sayeth weth according to
the opinion and doctrine of Proclus Lycius, a famous wyter in
this kinde, much discention, Arise, sedition, and sundry hurleburles
amongst many in diuers partes of Christendome. Item, much
wyath, hatred, enuy, and malice: also contempt of lawes, and neg-
lect of Christian pietie and brotherly charitie one towarde an-
other. Which generall iudgement of his seemeth now to be more
spectally confirmed by the place or house of the Heauens it is in,
E lli. wherein

A Prognostication.

wherein the present Eclipse befallerh, namely the. ix. house. &c.
And albeit in respect of the small quantitie thereof, this Eclipse
can presignifie no great matters, according to the iudgements of
some Astrologers: yet the infortunate opposition of Saturne and
Iupiter in the figure at that tyme, Saturne being then also lynked
to Venus, and Mars being withall founde vnluckely dysposed in
the. v. house, cannot, by other as sounde iudicallles, but in rease the
former effectes mentioned by Proclus, and Apyre by somme other
as heauy accidentes, vnles it shal please God of his singuler goodnes
to frustrate the same, which he can, and wyll effectually performe,
yf we call vpon him faythfully.

The conclusion to the Reader.

LO gentle Reader, thus I haue descride
the state of this yeere present, nynty throe:
And haue according to my skyl, applyde
my pen, to write nothing but trueth to thee.
Howbeit, yf ought perchaunce failes out amisse,
The wyfest are deceyued: remember this.

A wyse man by foresight preuentes much yll,
For Prudence greater is then sickell Fate:
The Starres do but inclyne: and greatest skyl
Is daunted in the waueryng aires estate.
If nothing then be of necessity,
In this kinde, how may we write certaynly?

All knowledge of future euentes contingent is:
God altereth all, euen as it lyketh him best.
When we feare least, he soone puttes all amis:
And when we are vexed most, he oft sendes rest.
Seeing then he is oaelly true, and none but hee,
To him alone, all power ascribed be. Amen.

FINIS.



*The principal Fayres of England
and Wales, orderly set foorth with
the moneth, day, and place,
where they be kept.*

Fayres in Ianuarie.

The first day. Twelue day. At Salisburie.
 Thursday after Twelue day. At Banbury.
 The xiv. day. Conuerſion of S. Paul. At Graues end,
 at Biſtoll, at Churchingford, at Northalerton in Yorkſhyre
 eueery Wednesday from Chriſtmas vntyll Iune followinge,
 where is a fayre.

Fayres in Februarie.

The first day. Bridget. At Bromley.
 The. ii. day. Candlemas day. At Wyddone, at Bath, at Luttre,
 at Bicklewooth, at Sudwooth.
 The. xiii. day. Valentine. At Feuerham.
 The. xxiii. day. S. Matthias. At Henley vpon Thames, at Tewkes-
 bury, at Baddoeke.
 On Ashwednesday. At Tamwooth, at Ropstone, at Denstable, at
 Exceter, at Abington, at Ciceter, at Lichfeld.

Fayres in March.

First Thursday in Lent. At Banbury.
 The. xii. day. Gregory. At Stamford, at Sudburie.
 The. xiii. day. Theodore. At Wye, at the Mount, at Bot-
 min in Cornewall.
 The. xx. day. Cuthbert. At Durham.
 On Violent Sunday. At Waston Wadden in Essex, at Durham.

The

The principall Fayres.

The Sunday before the Annuntiation of Mary. At Wilbich, at Key
hall, at Denbigh in Wales.

The. xxiij. day. At Llanerch y meth in the countie of Anglesey.

The. xxv. day. Annuntiation of Marie. At Northampton, at
Walden, at great Chart, at Newcastle, at Ashwell in Hertfordshire.

Generally all the Lady days, fayres at Pruntugton.

Fayres in Apryll.

The. v. Sunday in Lent. At Grantham, at Sudburie, at Perfor.

The. ii. day. At Northstree, at Rochford, at Pichin.

The. iii. day. At Leeke in Staffordshire.

The. v. day. S. Vincent. At Walingforde.

The. vii. day. Euphemie. At Darbie.

On Palmesunday euen. At Dumstret.

On Palmesunday. At Worcester.

The. ix. day. Perpetuus day. At Bicklewoorth, at Billingwoorth
and the Monday next after, at Luesham in Worcestershire.

On Tuesday and Wednesday in Easter weeke. At Sandbach in
Cheshire.

On Fryday in Easter weeke. At Darbie.

The. xvii. day. At Stafford.

The. xxiiij. day. S. George. At Charpug, at Ipswiche, at Tam-
worth, at Ampfil, at Hinningham, at Silford, at S. Pomber in Cogen-
wall, at Bury in Lancashire.

The. xxx. day. S. Marke Euangelist. At Darbie, at Dunmow in
Essex.

The. xxxvi. day. Cleve. At Centurden in Kent.

The. lxxij. Sunday after Easter. At Louth.

Fayres in May.

The first day. Philip and Jacob. At Rippon in Yorkshire, at Pe-
rim in Cornwall, at Ochester in Wales, at Laxfelde in Suffolke, at
Leicester, at Etowe the olde, at Reading, at Wapthone in Kent,

at Chenford in Essex, at Blackbozne in Lancashire, at Congleton in
Cheshire. iii. dayes, viz. the euen, the day, and the day after, at Bickhil.

The. iii. day. Inuention of the Crosse. At Elton, at Wisnyparde, at
Hinnyngham, at Rochdale in Lancashire.

The. vi. day. John post Latine. At the Hay in Brecknoreshire.

The

Frende. 1593.

The. xlii. day. John of Beverley. At Beverley, at Bolton in Lancashire, at Oxforde.

The. xlii. day. Dunstan. At Rochester, at Dunstable.

On Allention day. At Newcastle, at Barne, at Birmicham, at S. Eves, at Bishop Stratforde, at Wlitham in Lancashire, at Whiblewich in Cheshire, at Chappel Frith in Darbithyre.

The. xlv. day. Beese Priest. At Lewnam.

The. xlv. day. Cozon Martir. At Crambrooke.

Fayres in Iune.

On Whitsun Euen. At Skipton on Craven in Yorkshyre.

On Whitsunday. At Ape hill, at Eribbie, at Rattresdale in Lancashire, at Kirbie Stephen in Westmerlande.

Monday in Whitsun weeke. At Darington, at Exeter. at Bradforde, at Rigate, at Burton in Lancashire, at Bailforth in Lancashire, at Whitchurch in Shropshyre, at Cokermonth, at Applebee, at Bickellworth, at Agraundsham in Buckinghamshyre.

Tuesday in Whitsun weeke. At Leboys, at Rochforth, at Anterburie, at Dymesturke in Lancashire, at bygh Barstestford in Cheshire, at Perith in Westmerlande.

Wednesday in Whitsun weeke. At Sandbarre, at Leke in Staffordshyre.

Every Wednesday foynyght, at Kingstone upon Thames.

The. ix. day. Getule martir. At Gypdestone in Kent.

On Trinitie Sunday. At Rensdale in Westmorland, at Rowell.

On Trinitie Sunday. At Watforde.

The. xi. day. S. Barnabee. At Clingham, at Newbopourgh in Lancashire, at Warfelde in Cheshire, at Holt in Wales.

On Wednesday next after Trinitie Sunday, at Aberfro in the countie of Anglesey.

On Thursday next after Trinitie, called Corpus Christi. At Prescote in Lancashire, at Drapforde in Cheshire, at S. Annes, at Metberie, at Couentrie, at S. Eves, at Bishop Stratforde, at Rolle, at Bamburp.

The. xlii. day. Midsummer euen. At St. Ivelburie, at S. Althones.

The. xlii. day. Midsummer day. At Harilham, at Bedel, at Stracklock, at S. Annes, at Wakeheld, at Colcholler, at Pentons, at Reading, at Barnewell beside Cambridg, at Wolmerhampton, at Crambrooke, at
Lincolne

The principall Fayres.

Lincolne, at Gloucestre, at Peterborough, at Windsoze, at Warstone in Suffolke, at Lancaster, at Westchester, at Valisar, at Ashburne in Darbshire. At Barnet thye dayes, that is, the euen, the day, and the day after.

The. xxvii. day. Crescens. At Folkstone.

The. xxviii. day. Leo bishop. At Hefroze, at S. Pombes in Cornwal.

The. xxix. day. S. Peters day. At Woodburk, at Harleborowe, at Hollesworth, at Wolnerhampon, at Peterfeelde, at Lemster, at Sudbury in Suffolke, at Gargrange, at Bromley in Lancashyre, at lower Knotfozde in Cheshyre, at Ashwel in Hertfordshire.

Fayres in Iuly.

The. i. ii. and. iii. dayes. At Congleton in Cheshire.

The. ii. day. Visitation of Marie. At Ashton vnderline in Lancashire.

The. v. day. At Barton vpon Trent in Staffordshire.

The. xi. day. Venet. At Bartney an horse fayre, at Lynde.

The. xv. day. Swithin. At Pynchbacke.

The. xvii. day. Kenelme king. At Wincheombe, at Leeke in Staffordshire.

The. xviii. and. xix. dayes also. At Leeke in Staffordshire.

The. xx. day. Margaret. At Urhinge, at Catesby, at Bolon in Lancashire, at Boulton in the Moores.

The. xxii. day. Marie Magdalen. At Harleborowe, at Winchester, at Colchester, at Tetburie, at Bridgenorth, at Clitherall in Lancashire, at Northwiche in Cheshire, at Chelwicke in Cumberland, at Battlefeelde by Shrewelburie, at Bicklewoorth.

The. xxv. day. S. James Apostle. At S. James nigh London, at Doxer, at Bristowe, at Chylham, at Ipswyche, at Darby, at Northampton, at Dudley in Staffordshire, at Reading, at Louth, at Halmesbury, at Bromley, at Chichester, at Lyuerpoole in Lancashire, at Aldergam in Cheshire, at Rauenglaste in the North.

The. xxvii. day. Seuen sleepers. At Canterburie, at Northham, at Richmond in the North, at Warrington in Lancashire, at Chappelfeith in Darbshire.

Fayres

Frende. 1593.

Fayres in August.

The fyrst day. Lammas day. At Feuerham, at Exceter, at Dunstable, at S. Edes, at Bedforde, at Northam Church, at Wilburch, at Pozke, at Rumney, at Newton in Lancashire, at Pelland in Yorkshire, at the Hay in Brecknockshire.

The .x. day. Laurence. At Waltham, at Blackmore, at Hungerford, at Bedford, at Stroides, at Farnam, at S. Laurence by Bodmin, at Walton, at Croply in Lancashire, at Seddell in Yorkeshyre, at Fredeham in Cheshyre, at Newburgh in the countie of Anglesey, at Banbury.

The .xiiii. day. At Llanerch y meth in the countie of Anglesey.

The .xv. day. Assumption of Marie. At Dunmowe in Essex, at Carlile, at Preston in Lancashire, at Wakefelde the two Lady dayes.

The .xxiii. day. Bartholomew apostle. At London, at Teukelburie, at Beggers bushe beside Rye, at Sudburie, at Norwich, at Northelerton, at Douer, at Rie, at Croply in Lancashire, at Nantwich in Cheshyre, at Pagets in Bromlie.

The Sunday after Bartholomewe day. At Sandhitch in Cheshyre.

The .xxvii. day. Ruspne martir. At Ashford.

The .xxix. day. Beheading of Iohn. At Watford.

Fayres in September.

The first day. Syles. At S. Syles in the hush.

On Thursday and Fryday next before the Natiuitie of our Lady. At Sandbach in Cheshire.

The .vi. day, being the day of the Natiuitie of our gracious Queene Elizabeth: and also the .viii. day, being the Natiuitie of the blessed virgyn Mary, and three dayes after, at Ware in the countie of Hertford.

The .vii. .viii. .ix. and .x. dayes. At Wodbery hyl in Dorset shyre.

The .viii. day. Natiuitie of Marie. At Wakefelde, at Sturbidge, at Southwark nigh London, at Snide, at Reculuer, at Silbozwe both Lady dayes, at Partney the three Lady dayes, at Blackbozne in Lancashire, at Silbozne in Yorkeshire, at Chaulton in Cheshire, at Atceles in Staffordshire.

The .xiiii. day. Holy Roode day. At Richmond in Yorkeshyre, at Rippon an hoyle fayre, at Penhad, at Berseley, at Waltham Abbey, at Woolton vnder hedge, at Chesterfelde in Darbshyre, at Smalbing, at
Dunhigh

The principall Fayres.

Denbigh in Wales, at Newburgh in the countie of Anglesey.

The. xvi. day. S. Patheys. At Parlebozow, at Westozd, at Croydon, at Hulden in Holdernesse, at S. Edmoundesbury, at Walden, at Balsock, at S. Jues, at Shrewesbury, at Lenham, at Sittingbozow, at Wilchal, at Hainetree, at Katheren hyl beside Silford, at new Wapnforde, at Douer, at Wendouer, at Estre, at Cantorbury, at Dauentrey.

The. xxii. S. Michael Archangel. At Wichester, at Blackburne in Lancashire, at Lancaster, at Ashburne in Darbishyre, at Cocker mouth in the north, at Headley, at Walden an horsefayre, at Waz hyl, at Cantorburi, at Keycesier, at Aberberie, at Walingstoke, at Michael Deane.

Thursday after S. Michael, at Banbury.

Fayres in October.

The. iii. day. Candide martir. At Bolton in the Moores.

The. iiii. day. Francis. At Michack.

The. vi. day. Fapth. At Dauent in Hampshyre, at S. Fapthes beside Nozwich, at Maidstone.

The. viii. day. Pelagii. At Haruord, at Harborsow, at Bishop Stratford.

The. xiii. day. Edward. At Graues ende, at Windsoz, at Croystone in Lancashire, at Northfeilde, at Colcheller, at Stropforth, at Charing, at Stanton, at Aberfro in Anglesey.

The. xviii. day. S. Luke Euang. At Ely, at Wickle, at Elyan, at Thirst, at Budgenorth, at Stanton, at Charing, at Burton upon Trent, at Charleton, at Wigan in Lancashire, at Fristoydes in Oxford, at Tiltale in Darbshire, at Middlewich in Cheshire, at Holt in Wales, at Banburie. at Barnet the euen, the day, and the day after, at great Harlow upon Thames.

The. xxi. day. ri. M. virgins. At Daston Walden, at Newmarket, at Hartford, at Ciceter, at Stokeley.

The. xxiii. day. Roman byshop. At Preston, at Richdale in Lancashire, at Bickleworth, at lower Knottelsooth in Cheshire, at Whitechurch in Shropshyre.

The. xxviii. day. S. Simon and Jude. At Richdale in Lancashire.

The. xxxi. day. All Saintes euen. At Wichester in Yorkshyre, at Litchin in Wales.

Fayres

Frende. 1593.

Fayres in Nouember.

The. ii. day. At Blechingly, at Kingstone, at Bayesfeld in Cheshyre,
at Leek in Stafforshyre.

The. vi. day. Leonarde. At Standley, at Newport ponds, at Crig-
ney in Cornwall, at Walsforth, at Leford in Lancashire.

The. x. day. Wener. At Lenton.

The. xi. day. Martin byshop. At Warleborough, at Dounte.

The. xiii. day. Paterne. At. S. Camonwellburie, at Giltforde.

The. xvii. day. Hughes day (and the beginning of the Queenes Ma-
iesties reigne that now is, whom God long p̄serue) at Hartow, at Hyde.

The. xix. day. Elizabeth. At Worsham.

The. xx. day. Cymond. At Hyde, at Ingersstone.

The. xxiii. day. Clement. At Sandwytch.

The. xxx. day. S. Andrew apostle. At Colingborough, at Rachefford,
at Peterfeild, at Haydenhead, at Warrington in Lancashire, at Wimb-
ley, at Batefoord in Dorsetshyre, at Dlesiry in Wales.

Fayres in December.

The. i. day. Nicholas euen. At Pluckle.


The. vi. day. Nicholas day. At Spalding, at Sinoche, at Cretes,
at Arndale, at Northwytch in Cheshyre.

The. vii. day. Detanes of S. Andrew. At Sandburk.

The. viii. day. Conception of Marie. At Cliepsall in Lancashire,
at Malpas in Cheshyre.

The. xix. day. At Canterburie, at Salisburie.

FINIS.

 Imprinted at London, by
Richarde Watkins and
James Robertes.

Cum privilegio Regie Maiestatis.

Trigonometria

liber primus

Faint, illegible text, likely bleed-through from the reverse side of the page.

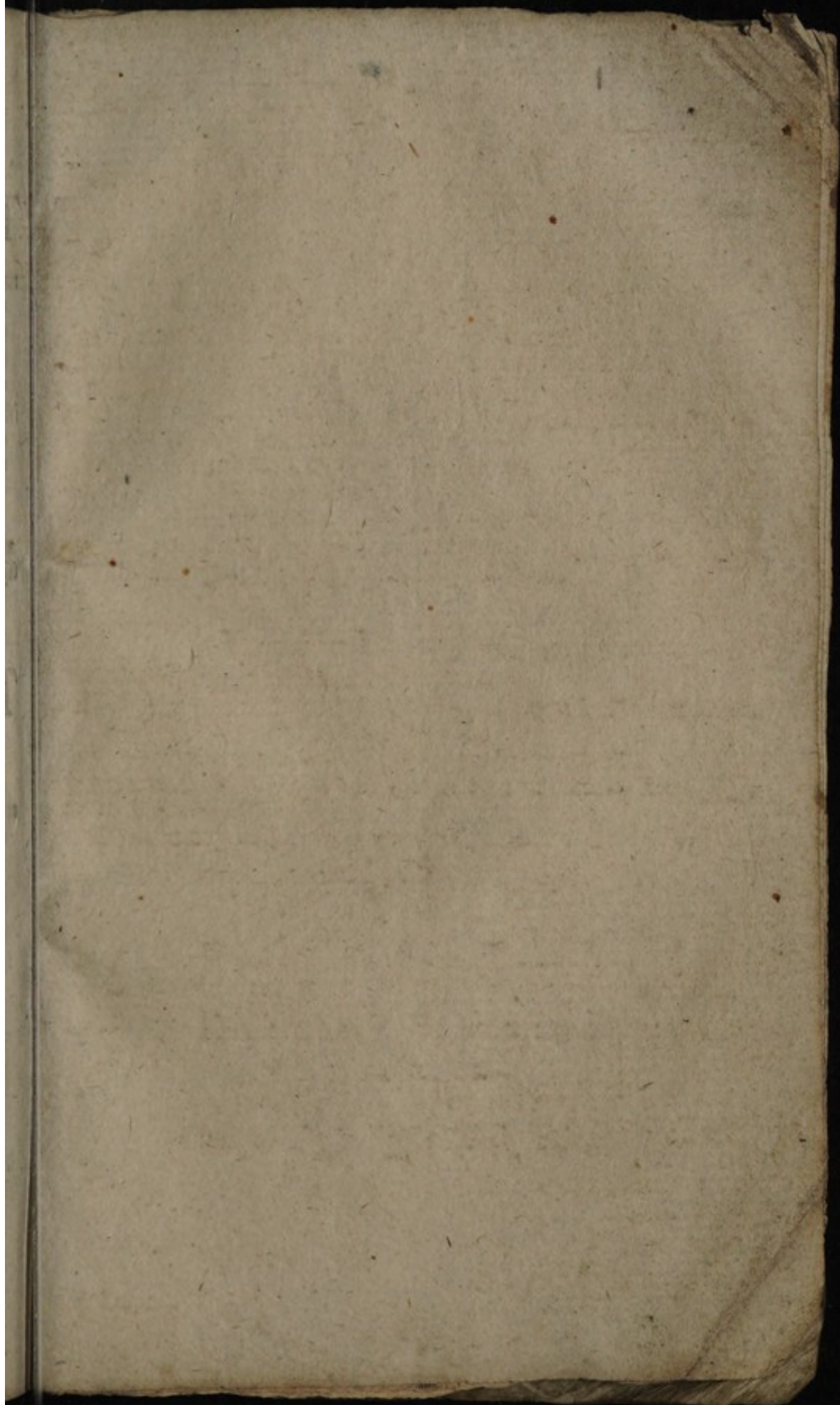
Trigonometria

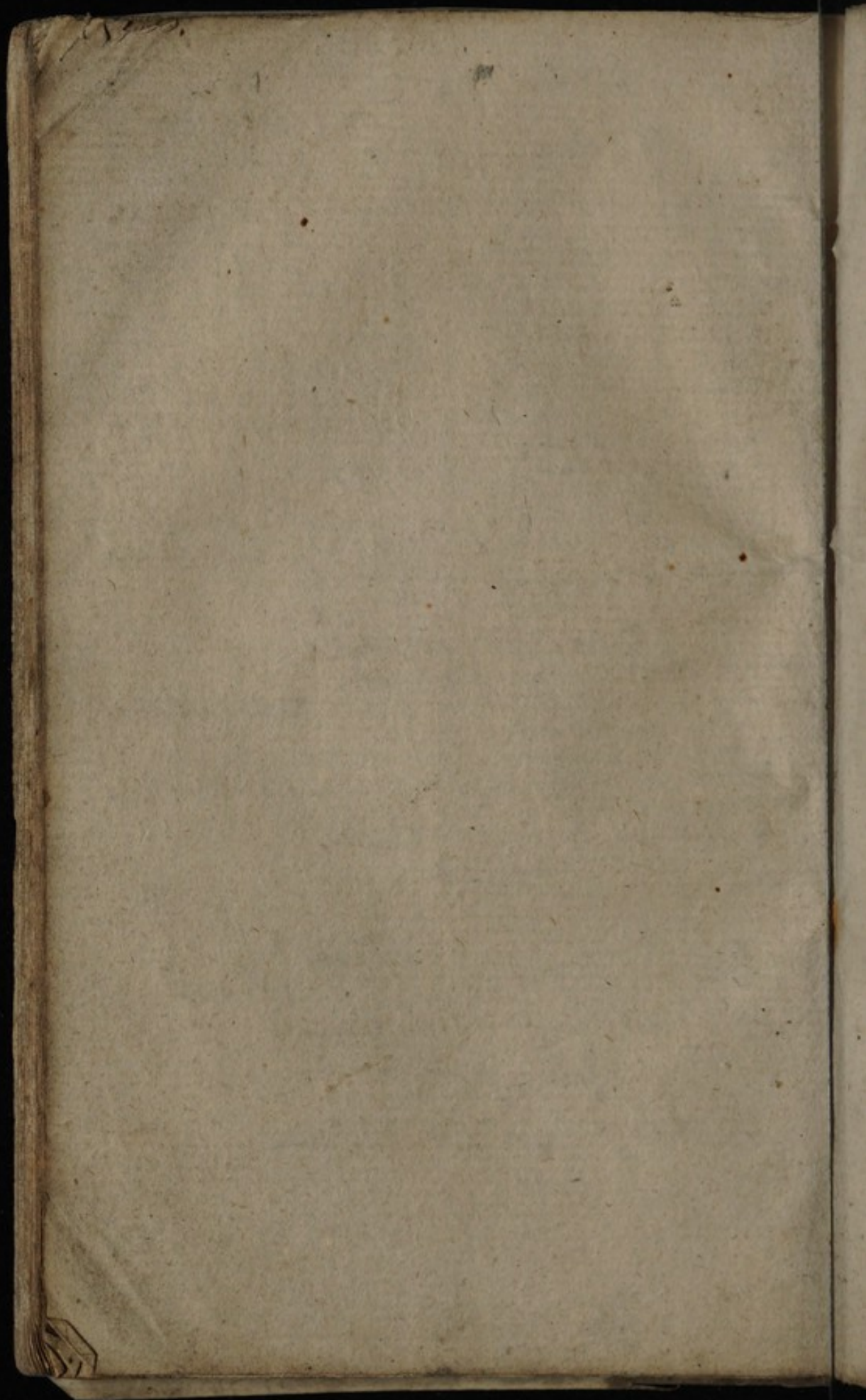
Faint, illegible text, likely bleed-through from the reverse side of the page.

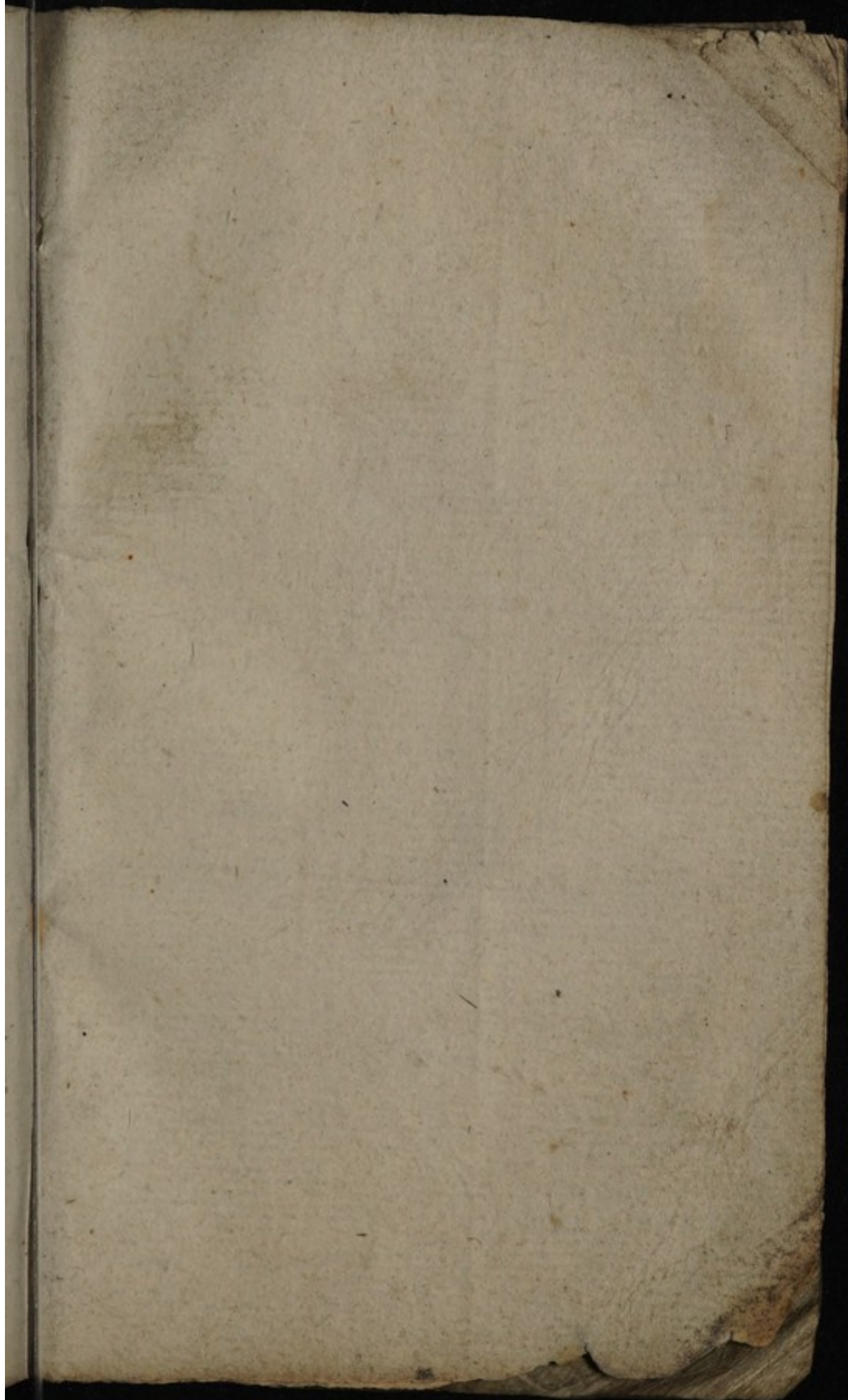
1111

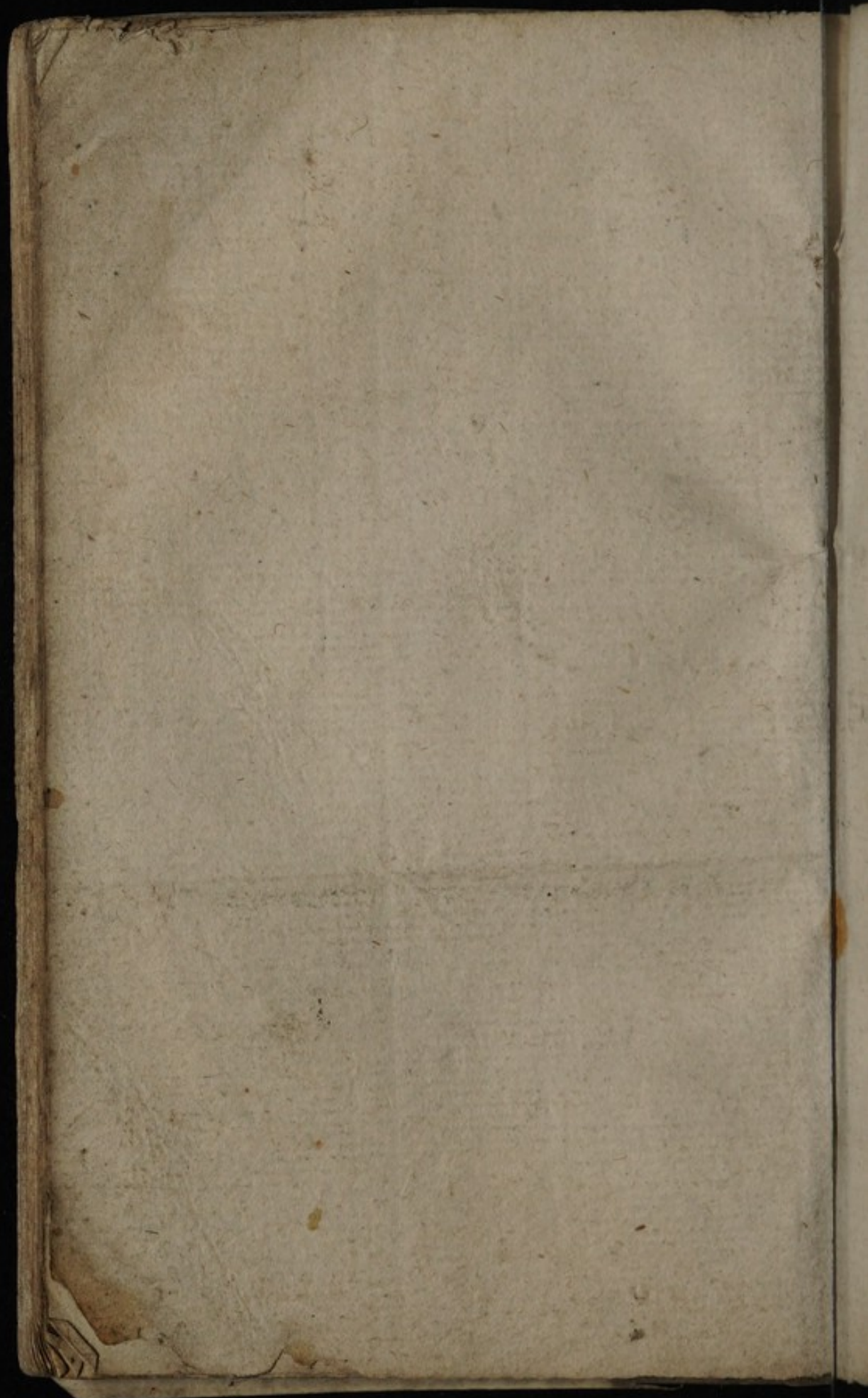
Imprinted at London, by
Richard Watkins and
James Roberts.

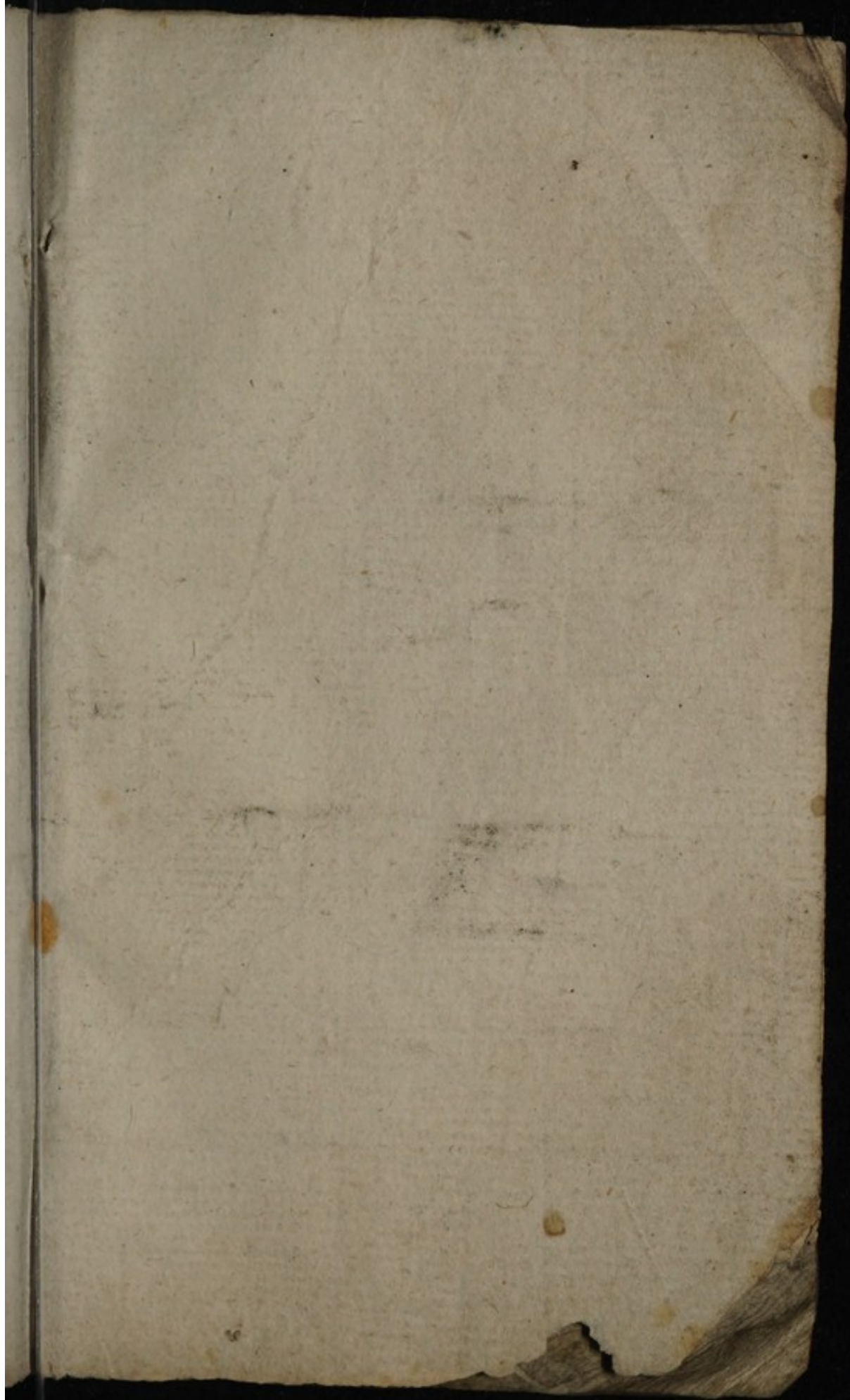
Can print legere legere legere

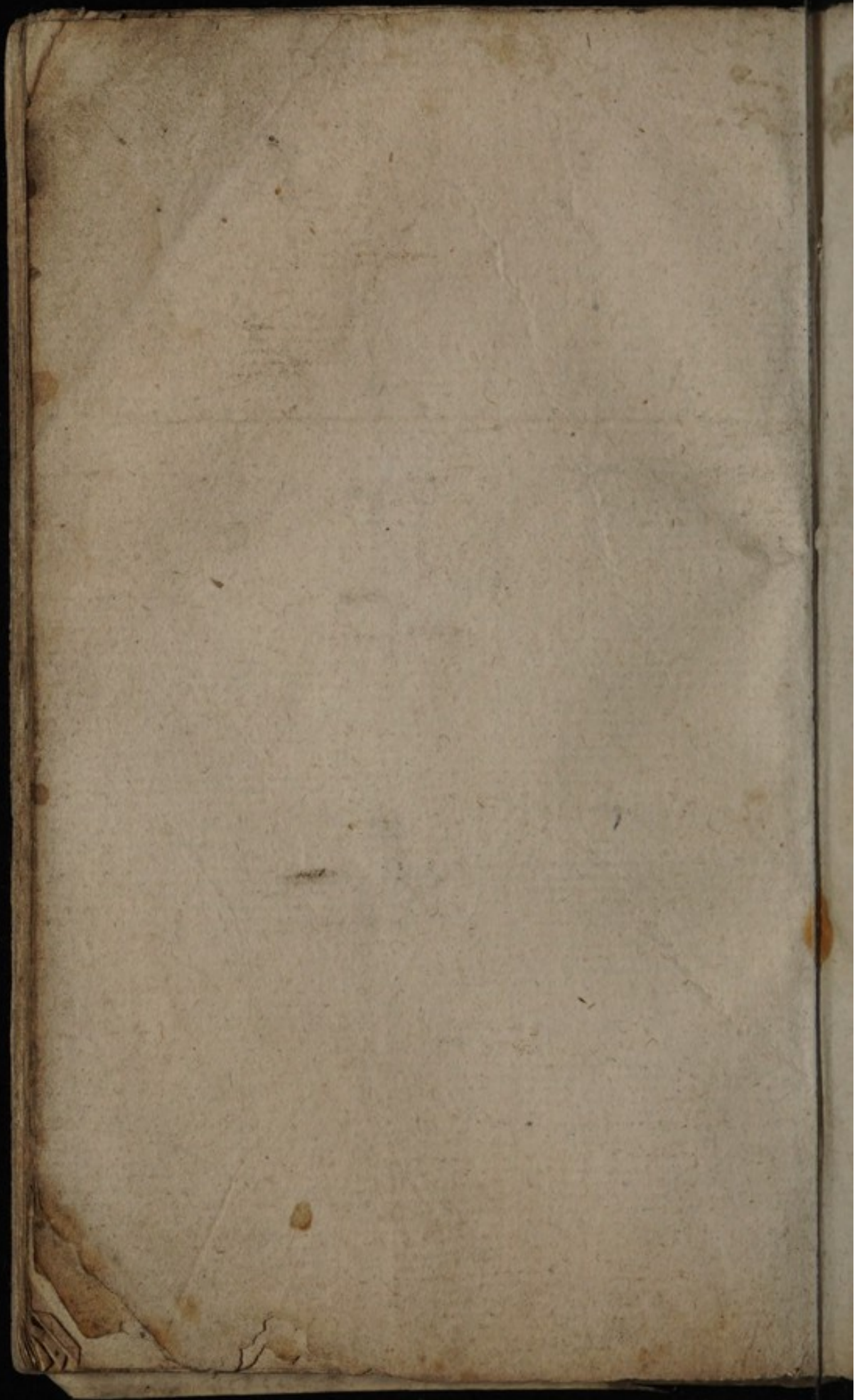












Mentioned in a paper of B³ printed in "The Librarian"
Vol 18 1937/8
Reproductions of MSS notes

These documents belonged to a
Flaming, probably he lived in
Cambridge for which place French
issued his document.

Lot 27 Bosanquets sale Jan 24th 1944 sold to Evelyn for £30
Lot 430 Sothebys May 23rd 1944 to Quaitby £36

[Faint, illegible handwriting]

[Handwritten initials]
T. & S. 1-25
[Handwritten initials]

[Faint, illegible handwriting]

14857

