

Seventeenth annual reports, for 1875 / Sussex County Lunatic Asylum, Haywards Heath.

Contributors

Sussex County Lunatic Asylum (Haywards Heath, England)
Sclater, James H.
Williams, S. W. D.
Mortlock, S. A.
Crallan, Thomas E.
Howard, Greville.
Wilkes, James, 1932-

Publication/Creation

Lewes : printed by Geo. P. Bacon, 1876.

Persistent URL

<https://wellcomecollection.org/works/a6f73byw>

License and attribution

This work has been identified as being free of known restrictions under copyright law, including all related and neighbouring rights and is being made available under the Creative Commons, Public Domain Mark.

You can copy, modify, distribute and perform the work, even for commercial purposes, without asking permission.



Wellcome Collection
183 Euston Road
London NW1 2BE UK
T +44 (0)20 7611 8722
E library@wellcomecollection.org
<https://wellcomecollection.org>

SUSSEX

COUNTY LUNATIC ASYLUM,

HAYWARDS HEATH.



SEVENTEENTH ANNUAL REPORTS,

FOR 1875.

LEWES:
PRINTED BY GEO. P. BACON, HIGH STREET.

1876.

C O N T E N T S .

	PAGE
LIST OF THE COMMITTEE OF VISITORS AND OF THE OFFICERS OF THE ASYLUM	3
SEVENTEENTH ANNUAL REPORT OF THE COMMITTEE OF VISITORS (WITH BALANCE SHEET, &c.)	5
FARM AND GARDEN BALANCE SHEET FOR 1875	10
AN ABSTRACT OF THE ANNUAL RETURN OF PAUPER LUNATICS CHARGEABLE TO THE SEVERAL UNIONS AND PLACES IN THE COUNTY OF SUSSEX	11
THE MEDICAL SUPERINTENDENT'S SEVENTEENTH ANNUAL REPORT.....	12
THE CHAPLAIN'S SEVENTEENTH ANNUAL REPORT.....	22
METEOROLOGICAL REPORT	23
THE REPORT OF THE COMMISSIONERS IN LUNACY	25
APPENDIX.	
(1) THE TABLES OF THE MEDICO-PSYCHOLOGICAL ASSOCIATION, FOR 1875	33
(2) FINANCIAL AND DOMESTIC TABLES	44

COMMITTEE OF VISITORS AND OFFICERS.

1876.

EASTERN DIVISION.

1. Burrell, Walter Wyndham, Esq., Cuckfield.
2. *Campion, William Henry, Esq., Danny, Hurstpierpoint.
3. Darby, George, Esq., Markly, Hawkhurst.
4. Day, John, Esq., Uckfield House.†
5. *Godlee, Burwood, Esq., Leighside, Lewes.
6. Heathcote, John Moyer, jun., Esq., Hove, Brighton.
7. *Hill, The Lord Arthur William, Wakehurst, Haywards Heath.
8. *Laurie, Peter Northall, Esq., Pax Hill, Lindfield.
9. Lewis, Major William Rowe, Hollington, Hastings.
10. *Norman, John Manship, Esq., Dencombe, Crawley.
11. *Pakenham, Captain The Honorable Thomas Alexander, Franklyns, Haywards Heath.
12. *Rose-Holden, Colonel John Rose, The Ferns, Wivelsfield.
13. *Sclater, James Henry, Esq., Newick Park, Lewes, *Chairman*.
14. *Sergison, Warden, Esq., Cuckfield Park.

WESTERN DIVISION.

1. Burrell, Captain Charles Raymond, Knepp Castle, Horsham.
2. *Carr-Lloyd, Colonel George Kirwan, Lancing, Shoreham.
3. *Dickins, Charles Spencer Scrase, Esq., Coolhurst, Horsham.
4. Fitz-Gerald, Wm. Gerald Seymour Vesey, Esq., Holbrook, Horsham.
5. Gibson, George Carew Carew, Esq., Sandgate Lodge, Steyning.
6. Goring, Rev. John, Wiston Park, Steyning.
7. Hall-Hall, Charles Alexander, Esq., Watergate, Emsworth.
8. Wisden, Major Thomas Faulconer, Broadwater, Worthing.

BRIGHTON BOROUGH.

1. Burrows, Sir John Cordy, Brighton.
2. Penton, Colonel Henry, 100, Lansdowne Place, Hove, Brighton.

OFFICERS.

Medical Superintendent.—S. W. D. Williams, Esq., M.D.

Senior Assistant Medical Officer.—Richard Greene, Esq., L.R.C.P.E.

Junior Assistant Medical Officer.—Alfred H. Newth, Esq., M.B.

Chaplain.—Revd. Thomas Edward Crallan, M.A.

Clerk of Asylum.—Mr. S. A. Mortlock.

Storekeeper.—Mr. W. H. Sherman.

Housekeeper.—Mrs. Stroud.

Head Attendants.—Mr. T. W. Buckle (Male Department).

Miss Buckle (Female Department).

Treasurer.—George Whitfeld, Esq., Lewes.

Clerk to the Visitors.—H. Jones, Esq., Lewes.

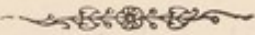
* Member of the House and Farm Committees.

† Since deceased.

February 28th, 1876.

SUSSEX COUNTY LUNATIC ASYLUM,
HAYWARDS HEATH.

SEVENTEENTH ANNUAL REPORT OF THE
COMMITTEE OF VISITORS.



*To Her Majesty's Justices of the Peace for the County of
Sussex, assembled in Quarter Sessions held at Lewes in
and for the Eastern Division of the said County, on
Monday, the 3rd day of January, 1876, and at Petworth,
in and for the Western Division of the said County, on
Thursday, the 6th day of January, 1876.*

THE COMMITTEE OF VISITORS of the Sussex County Lunatic Asylum, appointed at the Epiphany Sessions, 1875, beg to report —

That the Asylum still continues to maintain a high standard of efficiency in its general condition, as well as in its internal organization.

The past year has been marked by the absence of any incident of a grave or eventful character; no inquest has been necessary, no serious accident has occurred, no servant has had to be discharged for misconduct, and the complicated machinery of this large institution has worked harmoniously in all its departments.

At the commencement of the year the number of patients in the Asylum was 773.

There are at present 354 males, 423 females, making a total of 777.

There has been a constant increase of patients within the past two years from boroughs and unions within the County of Sussex, and this increase in August last had assumed such serious proportions that the total number of patients in the Asylum at one time amounted to 826.

This pressure of numbers, however, was subsequently reduced by the discharge of 53 out-county patients from the borough of Maidstone, when the period of their contract had expired.

Since then 20 patients have been admitted from the Liberty of Peterborough, and the Committee are in treaty with the Guardians of Saint Pancras, to receive 20 Lunatics in addition to those they already have from that Workhouse.

The Committee are happy to report that Dr. Williams still continues to recommend a largely-increased number of patients as fit for discharge, and by this course he has sensibly kept in check the number of patients in the Asylum, and the Committee have been spared the necessity of again asking the County for funds to increase the accommodation in the Asylum.

Many minor works have been undertaken and completed during the past year, with a view to increase the comfort of the inmates, and so improve the general efficiency of the Asylum as a curative hospital and not a mere receptacle for the insane.

The weekly rate of maintenance has remained at 9s. 6d. per patient.

The farm continues to improve in cultivation and productiveness, and the accounts, which cannot be made up finally till the end of the year, show a satisfactory balance.

Owing to the presence of iron in the water derived from the Asylum well, the mains throughout the building were found to be choked with the red oxide, and considerable expense has been incurred in replacing them with pipes of a larger bore. The Committee, after a careful consideration of the question of the water supply, which had formed a subject of frequent complaint ever since the opening of the Asylum, determined to call in the assistance of Messrs. Eastons and Anderson, at whose recommendation two large reservoirs have been formed with a view to the aëration of the water, and the consequent precipitation of the iron in solution, before pumping the water up to the main tanks in the towers of the building. Owing to the subsoil (after considerable progress had been made in the works) having proved in places to be of a porous and springy character, great difficulty has been experienced in making these reservoirs watertight, and the new system is consequently not as yet in operation.

Two of the Visiting Commissioners in Lunacy inspected the Asylum minutely during February the fourth and fifth, and left a very favourable report, which is published in the Appendix.

The Committee continue to entertain a high sense of the value of the services rendered to the County by Dr. Williams in his able discharge of the duties devolving upon him as

Medical Superintendent, in which he has received the zealous assistance of Dr. Greene, and also of Dr. Newth, the Reverend T. E. Crallan, Mr. Mortlock, and the other officers and attendants of the Asylum.

JAMES H. SCLATER,

Chairman.

Haywards Heath,
18th December, 1875.

SUSSEX COUNTY LUNATIC ASYLUM, HAYWARDS HEATH.

INCOME and EXPENDITURE for the Year ending December 31st, 1875.


INCOME.						EXPENDITURE.							
HEADS OF INCOME.	QUARTERS ENDING				Year ending 31st Dec.	Total.	HEADS OF EXPENDITURE.	QUARTERS ENDING				Year ending 31st Dec.	Total of General Heads of Expenditure.
	31st March.	30th June.	30th Sept.	31st Dec.				31st March.	30th June.	30th Sept.	31st Dec.		
FROM WEEKLY RATE						FROM WEEKLY RATE							
	£ s. d.	£ s. d.	£ s. d.	£ s. d.	£ s. d.	£ s. d.	£ s. d.	£ s. d.	£ s. d.	£ s. d.	£ s. d.	£ s. d.	
From Unions Contributing to the Asylum, for Maintenance	2607 12 5	2646 17 8	2743 18 3	2645 10 10	10652 19 4	Provisions.							
From Unions not Contributing to the Asylum, for Maintenance	1290 9 6	1289 14 5	1475 11 7	1215 7 2	5281 6 9	By Meat	66 15 7	66 5 7	17 1 4	64 1 7	184 4 1		
From County Treasurers, for Maintenance	50 1 8	49 8 0	49 18 8	49 18 8	204 2 0	Flour	302 14 8	300 7 2	505 1 8	418 15 6	1591 18 2		
Private Patients, for Maintenance	395 11 2	371 14 1	298 6 0	307 14 11	1373 4 2	Butter, Eggs, &c.	9 10 0	11 0 0	25 18 6	15 6 0	66 14 6		
Cash received from the Farms in excess of all cash advances made (from the Asylum) to the Farms	55 16 0	243 11 0	141 9 5	168 13 2	629 10 2	Tea, Coffee, and Cocoa ..	175 12 9	156 0 2	131 1 0	362 18 0	445 13 2		
						Sugar and Treacle	24 1 8	71 10 7	68 11 5	65 7 4	209 11 0		
						Hardy Groceries	29 2 0	16 15 4	17 7 4	52 11 6	115 19 3		
						Tobacco and Snuff	31 2 2	25 19 11	79 0 0	76 4 4	132 7 1		
						Butter	115 18 0	100 19 2	97 2 8	154 18 9	459 1 7		
						Cheese, Eggs, &c.	47 8 8	85 0 0	86 12 6	80 2 0	318 18 2		
						Meat, Hops and Beer	229 11 6	245 0 0	207 10 0	206 11 0	1179 12 6		
						Vegetables	22 3 0	22 3 0		
						Board Wages	1 2 8	4 19 6	11 15 6	4 19 6	37 0 0		
						Fish and Milk	2 4 8	5 9 2	30 14 6	24 11 8	132 1 10		
						Milk from Farms, &c.	960 10 3	654 14 0	800 3 11	1009 19 10	3581 10 9		
						Milk, Eggs, &c. Do.	153 11 8	201 2 4	185 19 4	156 14 2	679 1 4		
						Vegetables	122 18 9	154 14 11	159 17 1	129 12 0	556 16 2		
						Total	2598 1 2	2296 4 2	2369 8 2	2725 1 5	9803 12 0	3803 12 0	
						House and other Expenses.							
						By Coal, Coke, &c.	46 18 2	343 14 1	171 15 1	433 2 9	1439 9 4		
						Gas	143 17 6	32 0 9	39 2 0	134 2 0	349 2 3		
						Soap	25 9 4	46 11 0	26 2 0	49 4 0	132 15 0		
						Search, Soot, &c.	39 17 1	37 8 5	22 19 2	23 2 1	122 17 9		
						Candles	4 0 19	2 3 0	11 4 2	5 12 7	29 1 1		
						Furniture, Bedding, Linen, &c.	129 2 19	108 0 10	246 2 0	271 14 11	784 12 4		
						Ironmongery, &c.	20 2 2	29 19 2	11 11 8	5 13 3	71 7 7		
						Brushes, Brushes, &c.	22 15 9	19 0 0	22 17 3	9 18 6	64 11 0		
						Carpetmen, Glass, &c.	13 15 4	44 12 9	11 16 0	22 6 2	106 9 7		
						Rates and Taxes	0 12 9	16 10 4	4 13 2	34 6 7	56 2 1		
						Stationery, Postage, &c.	26 19 4	21 1 4	18 1 2	42 12 2	129 5 2		
						Printing, Advertisements, &c.	18 19 1	11 18 11	29 10 0	21 17 9	82 6 7		
						Carriage of Goods and Conveyances	19 11 4	19 1 8	20 3 19	17 2 8	76 1 8		
						Funeral Expenses	21 2 18	27 17 0	7 5 3	22 6 2	76 11 3		
						Portulacks, Books, & Amusements	24 2 1	47 15 2	16 1 2	41 0 9	128 18 4		
						Retaking Patients	1 13 8	1 15 7	0 19 0	3 18 7		
						Patients on Trial	11 17 8	19 14 1	19 2 0	18 4 9	49 0 0		
						Outlets	44 4 2	42 2 4	36 19 9	209 6 4		
						Keep of Horse (Green Farm Account) ..	5 17 0	5 17 0	5 17 0	5 17 0	20 8 0		
						Carting .. (Do.)		
						Total	2096 6 7	300 6 1	719 14 8	1289 18 2	3979 5 4	2078 5 6	
						By Clothing	307 9 4	250 1 2	244 2 8	298 2 8	1154 17 0	1154 17 0	
						Salaries and Wages.							
						By Officers	493 12 0	492 12 0	204 5 0	204 5 0	2000 0 0		
						Attendants and Servants	397 5 2	400 13 2	604 10 9	407 1 7	2400 10 9		
						Total	3391 0 2	3394 8 2	1130 15 9	1113 6 7	4409 10 9	4409 10 9	
						Medicine.							
						By Drugs, Instruments, &c.	15 2 2	16 2 7	14 10 9	30 12 11	86 11 4		
						Wines, Spirits, and Porter	32 18 6	80 5 4	43 2 0	49 1 4	264 0 4		
						Total	48 1 8	96 9 1	57 12 9	79 13 5	350 12 0	350 12 0	
						By Incidentals	26 6 1	7 19 2	102 6 6	21 16 2	169 39 5		
						Paid to Capital	280 10 0	280 10 0		
						Total	26 6 7	290 9 2	102 6 6	23 18 2	449 0 5	449 0 5	
						Total from Weekly Rate	3112 5 8	4303 18 0	4607 4 7	5491 12 5	29137 0 8	29137 0 8	
						FROM COUNTY RATE							
Repairs and Alterations, &c.						Repairs and Alterations,							
From County Treasurers, for Repairs and Alterations	749 15 10	537 9 11	373 19 6	643 19 2	2295 18 6	By Labour	225 0 0	219 18 2	241 15 8	229 8 4	915 2 2		
Improvements	Iron, Lead, &c.	37 18 0	15 18 2	5 12 2	41 12 2	99 1 1		
						Bricks, Slates, Cement, &c.	136 9 0	130 15 0	19 19 5	19 1 2	305 4 8		
						99 2 2	94 14 7	55 13 1	208 8 6	428 0 0		
						8 15 4	0 9 5	13 7 0	18 14 2	49 0 2		
						26 11 9	12 15 2	14 0 0	32 4 0	87 13 11		
						62 13 8	44 15 2	35 2 1	41 5 10	176 1 0		
						106 1 3	2 1 0	14 9 2	125 11 5		
						39 13 2	4 19 4	95 19 1	38 15 7	109 18 1		
						Total ..	749 15 10	537 9 11	373 19 6	643 19 2	2295 18 6	2295 18 6	
						By Improvements	
						Total from County Rate	749 15 10	537 9 11	373 19 6	643 19 2	2295 18 6	2295 18 6	
						Total Income from Weekly and County Rate	6113 6 7	6148 9 1	6073 7 11	6134 4 4	24091 7 11	24091 7 11	
						Balance from Dec. 31st, 1874					2499 0 0		
						Total ..					27590 8 1		
						Total Expenditure from Weekly and County Rate	2612 1 0	2463 1 11	4381 4 1	6155 11 8	29137 19 2	29137 19 2	
						Balance					7750 9 2		
						Total ..					30188 8 7		

Examined by the Finance Committee, January 29th, 1876.

(Signed) JAMES H. SCLATER, CHAIRMAN.
JOHN MANSHIP NORMAN,
BURWOOD GODLEE.

(Signed) S. A. MONTLOCK,
Clerk of the Asylum.

	AVERAGE WEEKLY EXPENDITURE for the Year for each Patient, from Weekly Rate.				
	QUARTERS ENDING				Average for the Year 1875.
	March 31st.	June 30th.	Sept. 30th.	Dec. 31st.	
Provisions	4 10½	4 0	4 2½	4 10½	4 2½
House and other Expenses	2 1½	1 6½	1 4½	2 5	1 10½
Clothing	0 2½	0 4½	0 4½	0 4½	0 4½
Salaries and Wages	0 1½	2 3	2 1½	2 1½	2 1½
Medicine, Wine and Spirits	0 2	0 2½	0 1½	0 2½	0 2½
Incidentals	0 4½	0 5½	0 1½	0 4½	0 4½
Net Cost	10 1	8 7½	8 2½	10 1½	9 4
Weekly Rate charged to the Unions contributing to the Asylum	9 4	9 4	9 4	9 4	9 4
Do. Do. Not contributing do.	14 8	14 8	14 8	14 8	14 8
Do. Do. for Private Patients	16 0	16 0	16 0	16 0	16 0



Digitized by the Internet Archive
in 2018 with funding from
Wellcome Library

SUSSEX COUNTY LUNATIC ASYLUM, HAYWARDS HEATH.

BALANCE STATEMENT for the Quarter ending 31st December, 1875.

	£	s.	d.		£	s.	d.
ASSETS.				DEBITS.			
1875.				1875.			
Sept. 30. from Unions, &c., in arrear	58	1	5	Dec. 31. To Amounts due to Sundry Tradesmen, on Account of Maintenance, Repairs, &c., &c.	3005	0	10
Dec. 31. Due from Unions Contributing	3848	10	10	" Ditto on Cheques not paid in	62	9	4
" Ditto not ditto	1306	3	3	" Due to Clerk's Account	131	13	10
" County Treasurers	49	18	8				
" Private Patients' Account	307	14	11				
" for Sale of Farm Produce, Stores, &c.	378	6	1	Surplus Balance	7750	9	5
" Repairs, Alterations, &c.	643	19	3				
" Cottage Rent	1	0	6				
" Cash in Banker's hands	4355	18	6				
					£10949	13	5
					£10949	13	5

Submitted to the Finance Committee, this 29th day of Jan., 1876.

(Signed) JAMES H. SCLATER (Chairman).
JOHN MANSHIP NORMAN.
BURWOOD GODLEE.

(Signed)

S. A. MORTLOCK,
Clerk of the Asylum.

FARM AND GARDEN ACCOUNTS

Dr.

For the Year ending 31st December, 1875.

Cr.

To	£ s. d.	£ s. d.	By Sale of—	£ s. d.	£ s. d.
Estimated Value of Live Stock	1421 16 0		Wool	24 13 0	
Estimated Value of Dead ditto	468 6 0		Calves	10 14 0	
Tenants' Valuation	697 1 3		25 Sheep	74 17 6	
Estimated Value of Provender	684 1 0		1 Horse	16 0 0	
	<hr/>	3271 4 3	Hides and Skins	145 3 1	
By Purchase of—			Rough Fat, &c.	44 12 10	
1 Bull	26 0 0		80 qrs. Wheat	166 14 0	
104 Cows and Beasts	2461 15 9		52 Pigs	164 1 9	
Hay	53 10 0		2 Bulls	57 12 6	
254 Sheep	565 11 3		Vegetables, &c.	7 13 7	
2 Horses	114 11 0		Use of Stock	8 6 0	
3 Pigs	14 11 4		Discount	12 0 0	
Oil Cake	320 0 0			<hr/>	732 8 3
Bran	80 16 2		By Produce Supplied to House:—		
Oats	19 4 0		74,065 lbs. Beef ..@ -/8	2468 16 8	
Barley and Maize	442 4 6		18,053 „ Pork ..@ -/7½	564 3 1	
2391 Straw	125 17 6		15,241 „ Mutton @ -/9	605 5 9	
Seeds and Plants	104 16 7		Bells	43 4 6	
Manure and Lime	117 4 11			<hr/>	3,681 10 0
Implements	44 13 8		14,210 galls. Milk ..@ -/11	651 5 9	
Servants employed on Farm	395 17 8		4,559 No. Eggs ..@ -/1	14 16 7	
Grinding Corn	45 17 3		102 „ Poultry @ 2/-	10 4 0	
Railway Carriage	35 5 6		66 „ Rabbits	2 15 0	
Valuation	7 7 0			<hr/>	679 1 4
Sundries	48 9 7		2,923 bus. Cabbage @ 1/-	146 3 0	
	<hr/>	5023 13 8	101 „ Onions ..@ 2/-	10 2 0	
By Rates and Taxes ..	56 2 1		1,058 „ Potatoes @ 2/8	141 1 4	
Estimated Rent of Land ..	150 0 0		201 „ Peas ..@ 2/-	20 2 0	
	<hr/>	206 2 1	317½ „ Beans ..@ 2/-	31 15 0	
			119¾ „ Carrots ..@ 2/-	11 19 6	
Balance in favour		74 8 1	533 „ Parsnips @ 2/-	53 6 0	
			396 „ Turnips @ /10	16 10 0	
			1,765 No. Cauliflower @ /1	14 14 2	
			Other Vegetables	30 8 5	
			Fruit and Rhubarb	36 8 11	
			Vegetables and fruit supplied to Medical Superintendent	24 5 11	
				<hr/>	536 16 3
			Keep of House Horse ..	23 8 0	
				<hr/>	23 8 0
			By Estimated Value of Live Stock	1362 15 0	
			„ Dead ditto ..	457 15 0	
			„ Tenants' Valuation	595 18 9	
			„ Provender ..	505 15 6	
				<hr/>	2922 4 3
					<hr/>
					£8,575 8 1

ESTIMATED VALUE OF FARM STOCK:—

1874.—December 31:—	£ s. d.	1875.—December 31:—	£ s. d.
30 Cows, Fattening Beasts and Calves	595 0 0	31 Cows, Fattening Beasts, and Calves	580 0 0
96 Sheep	288 0 0	70 Sheep	167 10 0
5 Horses ..	180 0 0	6 Horses	256 0 0
177 Head of Swine	339 15 0	155 Head of Swine	340 7 0
121 Head of Poultry ..	18 3 0	116 Head of Poultry ..	17 8 0
6 Ferrets	0 18 0	10 Ferrets	1 10 0
	<hr/>		<hr/>
	1421 16 0		1,362 15 0
Dead Stock, Implements, &c.	468 6 0	Dead Stock, Implements, &c.	457 15 0
Tenants' Valuation ..	697 1 3	Tenants' Valuation	595 18 9
Provender	684 1 0	Provender	505 15 6
	<hr/>		<hr/>
	£3,271 4 3*		£2,922 4 3*

Examined by the Farm Committee,
January 29th, 1876.

} JAMES H. SCLATER.
W. HENRY CAMPION.
J. R. HOLDEN-ROSE.
JOHN MANSHIP NORMAN.

(Signed) S. A. MORTLOCK, Clerk of the Asylum.

* These Valuations were made by Mr. Thos. Bannister, Haywards Heath.

An Abstract of the Annual Returns of Pauper Lunatics chargeable to the several Unions and places in the County of Sussex, 1st Jan., 1876.

(16 & 17 Vic. cap. 97 s. 64).

CHARGEABLE TO UNIONS AND COUNTY.	In County Asylum.		In Private Asylum.		In Asylums in other Counties.		In Work- houses.		In Lodg- ings or Boarded out.		With Friends.		TOTAL.	
	M.	F.	M.	F.	M.	F.	M.	F.	M.	F.	M.	F.	M.	F.
	Battle	14	12	1	1	4	4	6	20
Brighton	87	85	1	..	1	..	48	50	17	18	154	153
Chailey	13	8	1	2	1	1	2	2	17	13
Chichester (Incorporatn)	9	7	2	2	1	3	12	12
Cuckfield	13	27	2	5	..	2	2	5	17	39
Eastbourne	11	11	1	12	2	12	25
East Grinstead	4	13	1	9	9	4	5	17	28
East Preston	8	18	2	7	3	6	13	31
Hailsham	11	12	1	4	5	4	4	20	21
Hastings	19	30	1	..	2	8	22	38
Horsham	13	20	5	9	1	1	5	13	24	43
Lewes	5	11	1	..	2	1	8	12
Midhurst	7	12	2	3	3	4	12	19
Newhaven	5	4	3	6	8	10
Petworth	7	7	1	..	2	4	1	1	11	12
Rye	9	10	4	4	4	5	17	19
Steving	14	24	1	..	5	7	4	8	24	39
Thakeham	6	10	2	1	2	8	13
Ticehurst	12	15	4	5	1	..	5	2	22	22
Uckfield	9	16	3	2	2	..	5	7	19	25
Westbourne	5	8	3	4	1	2	9	14
Westfrie	2	1	1	1	3
Westhampnett	18	20	1	4	11	4	4	26	36
County-Eastern Division	5	3	5	3
Do. Western do.
TOTALS.....	304	385	3	..	5	2	111	161	5	4	70	100	498	652

SUMMARY.

Years	In Asylums		In Workhouses.		With Friends.		TOTALS.		
	M.	F.	M.	F.	M.	F.	M.	F.	M.&F.
1st January, 1855.	92	127	79	54	45	85	216	266	482
1st January, 1868.	242	301	95	107	62	84	399	492	891
1st January, 1869.	250	318	102	110	67	84	419	512	931
1st January, 1870.	246	326	109	108	72	83	427	517	944
1st January, 1871.	275	348	116	120	79	101	470	569	1039
1st January, 1872.	264	341	111	141	84	120	459	602	1061
1st January, 1873.	284	343	122	140	79	109	485	592	1077
1st January, 1874.	297	351	109	146	67	106	473	603	1076
1st January, 1875.	301	361	108	158	84	118	493	637	1130
1st January, 1876.	312	387	111	161	75	104	498	652	1150

S. A. MORTLOCK,
Clerk of the Asylum.

THE
MEDICAL SUPERINTENDENT'S
SEVENTEENTH ANNUAL REPORT.

- Seventeenth Annual Report. THE Medical Superintendent has the honour to submit the Seventeenth Annual Report to the Committee of Visitors.
- Numbers on the 31st Dec., 1874. On the 31st December, 1874, the numbers in the Asylum were, Male 359, Female 414. Total 773.
- Admissions. The admissions during the year have been, Male, 122, Female 136. Total 258.
- Discharges. The discharges during the year have been, Male 67, Female 72. Total 139.
- Deaths. The deaths during the same period have been, Male 61, Female 59. Total 120.
- Mean Annual Population. The mean population resident during the year has been, Male 364, Female 422. Mean average 786.
- Numbers this day, 31st Dec., 1875. The numbers in the Asylum this day (31st December, 1875) are, Male 353, Female 419. Total 772, being 1 less than last year.
- Numerical results of the year. The several numerical results are summed up in the first Table in Appendix A to this Report.

The Numerical Results of the year 1875 yield the following per centages :— Annual per cent-
ages for 1875.

(a.) The Discharges (including the cases Relieved) are 50 per cent. on the admissions of the year. Excluding those cases Relieved, the per centage of Recoveries on the admissions stands at Male 18·8, Female 25. Average 22·1. On the mean number resident it is Male 6·3, Female 8·3. Average 7·2.

(b.) The mean Annual Mortality is Male 16·7, Female 13·9 Average 15·2. Mean Annual
Mortality.

The above will show that the numbers in the Asylum at the present time are not greater than they were this time last year, although the yearly average has, however, been much higher. Indeed, at one time last autumn, there were 826 patients in the Asylum, which is 10 more than can be properly accommodated. This, was, however, very shortly afterwards remedied by the removal of the cases chargeable to Maidstone to the Barming Heath Asylum, and there is now plenty of room, so much so, indeed, that a contract is about to be entered into with the Hants County Asylum to take 20 of their cases, 10 of each sex, at a remunerative rate of 14s. a week. Numbers in
Asylum.

The numbers in the Asylum on the 31st of December may be conveniently classed as follows :—

	M.	F.	T.
Those chargeable to Unions and Boroughs in Sussex	302	387	689
Those chargeable to out County Unions.....	41	12	53
Private Patients	10	20	30
Total.....	353	419	772

And as the accommodation in the Asylum is for 376 males and 440 females, there are still 74 beds for males and 53 for females available for the requirements of the county. This prospect, although sufficiently favourable, is nevertheless very different from that of last year; then there were only 646 patients in the Asylum chargeable to Sussex. Therefore in one twelvemonths there has been an increase of 43 patients from Sussex—more than during the whole previous 5 years. It is difficult to account for this increase, except on the supposition mentioned by the Medical Superintendent in his Report for 1874, wherein he writes that the “provisions of the Budget allowing to the unions four shillings per week per patient in the Asylum, would tend to a large increase in the admission of chronic and helpless cases, and that exchanges to the Unions would be greatly impeded.”

It will be argued that this large addition to the numbers in the Asylum was due to a relative increase in insanity generally, and such does indeed appear to be the case, for in 1867 returns showed that out of every 450 persons in the county of Sussex one was insane. During the past year the proportion was one in 380. Therefore it would appear that there is just one more insane person in 2,500 sane than there was ten years ago. This increase is somewhat alarming, and can hardly be accounted for by the yearly increasing residuum of old and chronic cases. It would seem to confirm the theories lately brought forward of the great increase of lunacy in recent years—at least in the county of Sussex. Still Sussex compares somewhat favourably with many other parts of England, as to the number of the insane, having about 2·6 per thousand. Berks is the highest county with 3·6, and Durham the lowest with 1·6,

The following table will, however, show that the distribution varies considerably in different parts of the county :—

Table showing the Proportion of Insane Persons per thousand of the population in each Union in Sussex.

Battle 2·6	Midhurst 2·4
Brighton 3·1	Newhaven 2·5
Chailey... .. 2·9	Petworth 2·5
Chichester 2·4	Rye 2·9
Cuckfield 2·3	Steyning 1·6
Eastbourne 1·7	Thakeham 1·5
East Grinstead ... 2·3	Ticehurst 2·3
East Preston 1·7	Uckfield 2·6
Hailsham 3·	Westbourne 2·9
Hastings 1·5	West Firle 2·
Horsham 3·2	Westhampnett ... 3·2
Lewes 2·7	

The Admissions were as follows :—

Admissions.

	M.	F.	T.
Those chargeable to Unions and Boroughs in Sussex	88	108	196
Those chargeable to out County Unions.....	23	17	45
Private Patients	6	11	17
Total.....	122	136	258

The admissions from the county, it will be perceived, continue to be unusually numerous, and were, if possible, of an even more unfavourable nature than last year; 49 were chronic, feeble, helpless, incurable cases from Union Workhouses; 16 were upwards of seventy years of age, and not

more than 50 were curable. Such cases are quite out of place in a hospital for curables. They only fill up beds that might be better and more usefully occupied, and tend most unfavourably to swell the mortality percentages. It is, indeed, difficult to realise the object of sending them to an asylum, except on the proposition stated in the preceding paragraph.

And here it might be well to direct the attention of the Union Officials to the very faulty manner in which the Admission Papers brought with the patients are filled up. At least two out of three are incorrect, and in many cases the incorrections consist of the most trivial and careless omissions. This gives rise to endless trouble and annoyance, and the Medical Superintendent has often stretched a point, and acted illegally in admitting patients brought to the Asylum with papers of admission not properly filled up. When, however, patients, who are often very ill, are brought a long distance, and are manifestly insane, are presented for admission, it seems somewhat hard to turn them from the doors, though, properly speaking, such a course ought to be adopted.

The admissions include 20 cases from Peterborough, a contract having been entered into with this borough to receive all their lunatics. They are charged at the rate of 14s. a week per patient.

As already stated, the numbers deemed curable on admission were very small, and of the whole 800 cases in the Asylum, the Medical Superintendent was only able to report 60 as curable when making his last return to the Commissioners in Lunacy. This is only 10 per cent., and does not hold out much prospect of a more favourable percentage of cures next year.

The percentage of deaths is higher than it was last year, ^{Deaths.} and is still above the average. This was foretold in last year's report, and it is feared will continue to be so next year, if the admissions remain of so unfavourable a nature; especially as there is still a large residuum in the Asylum of paralysed, demented, and aged cases.

The deaths have all been from natural causes, and, as will be seen by a reference to Table X. of the Appendix, were, in the great majority of cases, due to organic incurable disease.

21 were from Progressive Paralysis of the Insane, 21 from Pulmonary Consumption, 20 from Organic Diseases of the Brain, 13 from Epilepsy, and 8 from Decay of Old Age. Thus, 83 out of the total of 120 deaths were due to causes quite beyond the reach of curative agents. 21 deaths from Pulmonary Consumption seem to be a very large proportion, but the majority of the cases were in an advanced stage of the disease when admitted. The deaths from Pneumonia were also unusually numerous. But during the severe weather of the early part of the year, there was quite an epidemic of this disease, and a large number of very severe cases occurred.

The discharges may be classified in the same way as the ^{Discharges.} admissions, and were as follows:—

	M.	F.	T.
Patients chargeable to Sussex	27	36	63
Ditto ditto to out-County Unions	38	31	69
Private Patients.....	2	5	7
Total.....	67	72	139

Out of these the exact numbers cured were—M. 23, F. 34. T. 57. And many of the others were chronic, harmless cases who, following the precedent of former years, were discharged to the care of their friends. This plan continues to work most favourably, and many notable instances of its happy results have occurred during the past year. For it is happy in its results to the Asylum, as it tends to relieve a long-threatened and much-dreaded plethora. It is happy in its results to the patients, inasmuch as it has given them partial liberty and greater freedom of intercourse with their relatives. And it is happy in its results to the public at large, because it has put off the necessity of building for many years, and has tended materially to disabuse the lower classes of the notion they so strongly possess, that when one of their class is unfortunate enough to be sent to an asylum, no power but death is likely to release him.

The following cases thus sent out to the care of their friends may be instanced as being particularly interesting:—

W. D., male, æt. 60, admitted in 1860, a typical chronic lunatic, fond of dressing himself out with any bits of finery he could pick up, and of hoarding all sorts of rubbish as treasures. Was left a little money. His friends applied for his discharge. He left the Asylum in June last, after a sojourn of fifteen years, and is getting on very well.

S. J., female, æt. 26. Had been in Colney Hatch seven years. Was transferred here in September last, and at the suggestion of the Medical Superintendent was transferred to the Union. . Has gone on very well there.

S. H., male, æt. 63. Admitted in June, 1864, with a cut throat, remained very insane for some years; latterly had

improved, but the above-mentioned act rendered removal out of the Asylum very hazardous, especially as he at times showed evidence, though slight, of homicidal impulse. Last June, however, he managed to escape, and not being re-taken within the fourteen days allowed by Act of Parliament, was discharged. He has since frequently been heard of, and is doing very well. This case is instanced, as showing how, even with the best intentions, it may be possible to detain a chronic lunatic unnecessarily in an asylum.

A. G., æt. 42, female. Admitted last November, with strong delusions respecting the property of some of her neighbours; she was, however, quite harmless, and free from excitement, and at the solicitation of her sister, was discharged to her care. She has gone on well.

H. D., male, æt. 24. Strong religious mania. An imbecile by birth. Was taken up by the police for singing psalms in the streets, having wandered from home. He was sent to the Asylum without his father's knowledge, who was much distressed thereat. The lad was a confirmed lunatic, but the father was so anxious to have him at home, that he was allowed to do so, and no ill consequence has accrued.

As a recent article in the "Journal of Mental Science" ^{Schools.} has drawn attention to the subject of Schools in Asylums, it may not be uninteresting to describe the course adopted in this Asylum.

Classes are held three days a week; in the afternoon for women, and in the evening for men. During this last year an average of 50 of each sex attended. The school is under the immediate direction of the Chaplain, who is assisted by a properly qualified schoolmaster, and may be considered to

be, on the whole, very fairly successful. At two of the classes reading, writing, and simple arithmetic are taught, and the third is devoted to readings in the Bible and to elementary divinity.

The majority of the patients able to attend these classes can already read and write, but many of them improve considerably in these respects by their attendance. Moreover, it is a source of innocent amusement and recreation to them, and varies the dull monotony of their lives.

Many patients have, however, come here quite unable to read or write, and, when discharged, have been able to do both. To them the boon of attending these classes has been very great. Three notable instances occurred this year, of which the following are particulars :—

W. C., an imbecile, admitted from Maidstone, æt. 17. He could neither read nor write. When discharged with the rest of the Maidstone cases in August last, he could read and write extremely well, and had moreover learnt tailoring sufficiently well to enable him to make the suit of clothes he was removed in. He, over and over again, expressed great gratitude for having been thus taught.

G. C., æt. 43, a bricklayer by trade, is subject to acute recurrent mania, and has been in the Asylum several times. Was quite illiterate when admitted, but during his convalescence from each attack, has attended the classes, and has learnt not only to read, but also to write sufficiently well to be able to correspond with his wife.

E. M., æt. 48, married woman with several children. Has been here twice. Attended the classes both times. Could read a little when first admitted ; has since learnt to write very

well; was discharged recovered in June last, and expressed herself in most grateful terms for having been taught to write.

This has been a very busy year in the way of alterations and improvements, which, it is hoped, will tend to the benefit of the patients individually, and to the well-being of the establishment generally. Alterations and Improvements.

The chief were as follows :—

(1) Taking up the old 3-inch water main throughout the Asylum, and replacing it by a 4-inch. This was a labour of great difficulty, and was done almost entirely under the direction of our own engineer, who deserves credit for the manner in which the work was executed.

(2) Plastering and re-tiling the Dining Halls.

(3) Plastering the main corridor on the Female side, and painting the one on the Male.

(4) Converting the large 45-bedded Dormitories in the 2-story Building on both sides into Night-wards for Epileptic cases, on the plan urged by the Commissioners in Lunacy, in their Report for 1874.

(5) The erection of two large Reservoirs for aërating the water before it is pumped up to the house.

The history of the Asylum generally has been uneventful. Conclusion.
There have been no inquests; but few escapes; no sudden or violent death; no accident, except of a trivial nature, and few changes but those of an unavoidable nature amongst the members of the staff, who have generally worked with a zeal and discretion deserving of high praise.

S. W. D. WILLIAMS, M.D.,
Medical Superintendent.

31st December, 1875.

THE CHAPLAIN'S SEVENTEENTH ANNUAL REPORT.

Seventeenth Annual Report. THE Chaplain desires to present to the Committee his customary Report for the year.

Sunday and other Services. The Services on the Sundays and on Christmas Day and Good Friday, have been held in the Chapel, Dining Halls, and Female Infirmary, as arranged by the Committee in the beginning of the year.

Daily Prayers. Portions of Holy Scripture and Morning Prayers have been read daily after the patients' breakfasts in the dining halls, except when suspended during the repairs of the halls.

Administration of Holy Communion. Holy Communion has been administered in the Chapel and to the sick from time to time, as in past years.

Library. The Library for the household, and the books in the wards have continued to be appreciated, and to afford much interest to many persons.

Visits, &c. The Chaplain has visited the wards and workshops, &c., on the prescribed days, and on other occasions when it seemed desirable.

Commemoration. The Commemoration Festival falling on a Sunday, the Service was read, and the Sermon preached by the Chaplain.

Burials and Removals. 81 Burials and 38 Removals of the Dead have taken place during the year.

Conclusion. The Chaplain desires to express his sense of the support afforded him by the various members of the Staff in the execution of his duties in the Asylum.

(Signed), THOMAS E. CRALLAN, M.A.,
Chaplain.

Haywards Heath,
Dec. 31st, 1875.

METEOROLOGICAL REPORT.

THE year 1875, in this particular locality, has presented no very remarkable phenomena, though elsewhere it has probably earned the title of the Year of Floods.

The early part of the year was somewhat dry ; then followed heavy rains in June and July, seriously affecting the crops of early potatoes. The dryness, however, of August and September, saved the later ones.

October and November were more rainy than usual, but the month of December was very dry. On the whole the rainfall was 1.36 inches above the average for this place, while the number of rainy days was 15 less than usual.

The least rain fell in March ; the most in October. The greatest rainfall occurred on July 14th, amounting to 1.43 inches.

The greatest heat was recorded on June 3rd, viz., 155°·4. The greatest cold, viz., 13°·0, occurred twice, viz., on Jan. 1st and Dec. 4th.

The usual table is annexed.

(Signed),

THOMAS E. CRALLAN.

REPORT OF THE VISITING COMMISSIONERS IN LUNACY.

SUSSEX COUNTY ASYLUM,
Haywards Heath, Feb. 5th, 1875.

SEVEN hundred and seventy-eight patients are now on the books of this Asylum, showing a total increase of 45 as compared with the numbers here on the 31st of March, 1874, the date of the last visit. The males are 364, and the females 414; of the former there are six private and 56 out county patients, and of the latter 19 private and 34 out-county. In the men's division, 13 beds are vacant, and in the women's 25. The weekly rate remains at 9s. 6d., and the charge for private and out-county patients is the same as last year, viz., 16s. and 14s. respectively. The following have been the admissions, discharges, and deaths:—

	M.	F.	T.
Admissions	104	106	210
Discharges	31	46	77
Deaths	49	39	88

Twenty-four of the men and thirty-three of the women who were discharged, are stated to have recovered. There were more admissions by 40 last year than Dr. Williams has ever known in a similar period, and they took place chiefly after April. They included a number of cases from Workhouses; chronic demented cases, by no means requiring active asylum treatment, but who might have received every necessary care and treatment in a Workhouse.

This increase in the numbers admitted is not to be attributed to an increase of insanity in the county, but to the inducement which the Government allowance of 4s. per head offers to the guardians of the different parishes to crowd the Asylum with the insane of every class. Out of 30 cases which Dr. Williams was able to report last year, as fit for care in a Workhouse, only 13 were accepted by the guardians of the respective parishes. The guardians of Brighton refused to receive any at all. The system of placing a certain number of suitable cases under the care of relations or friends, continues to work well. About 140 have been so located during the last five years. There has not been any case of sudden deaths or fatal casualty, and no inquest has been held. Post-mortem examinations have been made in only 25 instances, a prejudice against them appearing to exist in this county on the part of the relations of patients. The chief assigned causes of death were general paralysis, which was fatal in 14 cases ; other cerebral diseases in 19 ; diseases of the heart and lungs in 31 ; and epilepsy in 6.

The arrangements for the supervision of the epileptics at night are the same as mentioned last year, and though these afford them considerable protection, yet the structural nature of the ward where they sleep, prevents its being so complete as it is very essential that it should be. Another of the large dormitories in each division having single rooms opening out of it, might, with slight alterations, and at small cost, be made very suitable for the occupation of the patients of this class, as well as of those suicidally disposed.

There are a large number of feeble chronic cases here (Dr. Williams thinks he has only about 50 curable ones), many of whom it is most difficult to keep clean, and in satisfactory

personal condition; careful attention is, however, given to this subject. The men have a change of linen twice a week, the women have warm dresses for winter ; all the latter, and most of the men have Sunday suits, and all are bathed twice a week. The Turkish bath is used considerably, and is found beneficial in some instances, and particularly in cases of melancholia. The wards and dormitories were clean and well ventilated, and are unusually well supplied with books, newspapers, decorations, and objects of interest and amusement. The bedding also is in good order. Some of the dormitories in the male division require re-papering, and it would be well if they could be previously plastered.

The rate of wages of the attendants is the same as last year, and the staff appears to be adequate. The system of the wives of married attendants acting themselves as attendants in some of the male, especially the infirmary wards, has been found to be attended with good results in other Asylums, and its introduction here is a matter, we think, worthy of careful consideration. The diet given yesterday seems to be very good; the women had suet pudding with raisins, the men beef, bacon, potatoes, bread and beer, all well cooked and well served. As usual, we find that a large number of the patients are usually employed. The clothing required is made here, and all the furniture, except a few things that can be bought at less cost than they can be made.

We have had a list of the entertainments that have been given since the last visit. They have been both frequent and of various kinds.

The schools are still carried on, and three services (two in the morning and one in the afternoon) are given on Sundays in the Chapel, the first is for the women, and the third for a

certain number of both sexes. On Sunday last the attendance at Chapel on morning prayers was of the men, 219, of the women, 292.

From the Register, it appears that seclusion has been employed with 11 men and 3 women, but for short periods; and with all the women and seven of the men only on one occasion, and with the remaining four men on two occasions each.

Wet packing is still used, and considered by Dr. Williams a valuable means of treatment. The instances of its employment are carefully entered in the Case-book, which shows that it has been applied to 10 men and 9 women. Two of the latter have been packed respectively on 26 and 27 occasions, but the other patients usually for from one to two hours, and on from one to four or five occasions each. We have seen all the patients, and found good order, and absence of excitement throughout the wards. There were five of the men and eleven of the women in bed, and the numbers taking medicine—of the former sex, seven, and of the latter six.

We have again the pleasure of recording our favourable opinion of the condition and management of the Asylum, and we have to note, in addition, the following alterations and improvements that have been made since the last visit:—

(1) The south walls of all the bedrooms in the sleeping gallery (on both sides of the house) have been slated, plastered and painted.

(2) An additional tank, containing 3,000 gallons of water, has been erected in each of the water towers. These will ensure, what there was not previously, a sufficient pressure of water to reach the top of the building in case of fire.

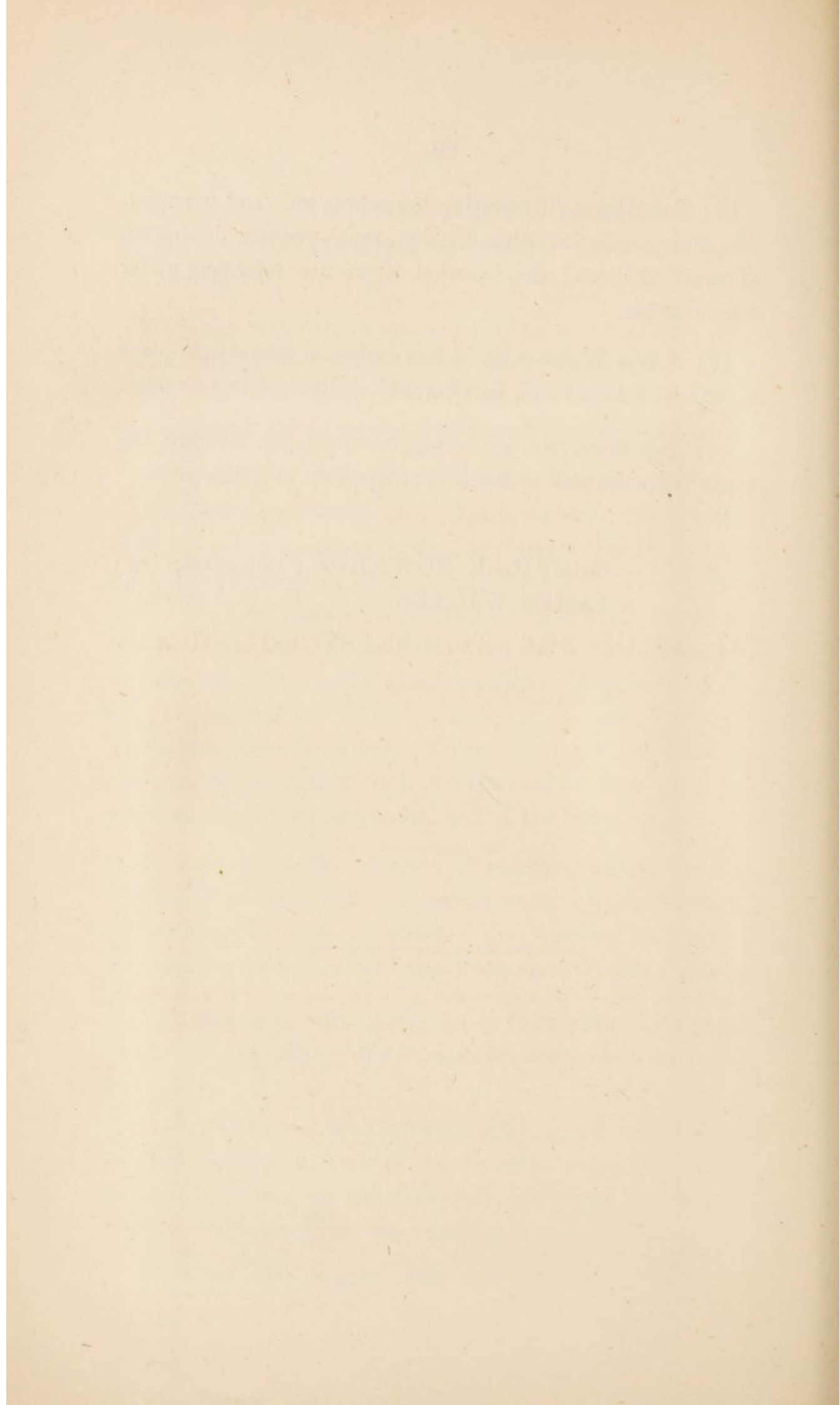
(3) A new Fire Engine House has been built.

(4) Painting and decorating the centre wall and passages. The dining halls in either division much require decoration of some kind, and the question is, we are informed, under consideration.

(5) A new Water-main of four inches in diameter, in place of the old 3-inch main, is being laid all through the Asylum.

(6) Two Reservoirs are being excavated for filtering the water from the well before it is pumped up to the Asylum.

GREVILLE HOWARD, } Commissioners
JAMES WILKES, } in Lunacy.



APPENDIX.

CONTAINING THE

TABLES OF THE MEDICO-PSYCHOLOGICAL ASSOCIATION, &c.

The Medical Superintendent desires to acknowledge the services rendered to him by the Clerk of the Asylum (Mr. S. A. Mortlock) in the compilation of these Tables.

CONTENTS OF APPENDIX.

NO.	PAGE.
I. The Admissions, Discharges, and Deaths	33
II. The Admissions, Discharges, and Deaths since the Opening of the Asylum, 25th July, 1859	34
III. Showing the Admissions, Discharges, and Deaths, with the mean annual Mortality and proportion of Recoveries of each year since the Opening of the Asylum	35
IV. Showing the History of the Annual Admissions since the Opening of the Asylum, and the number of each year remaining on the 31st December, 1875	36
V. Showing the Causes of Death during the year ...	37
VI. Showing the length of Residence in those Discharged, Recovered, and Died during the year	38
VII. Showing the Duration of the Disorder on Admission, Discharges and Deaths during the year ...	39
VIII. Showing the Ages of the Admissions, Discharges, and Deaths during the year	40
IX. Condition as to Marriage in the Admissions, Discharges, and Deaths during the year	41
X. Showing the probable Causes, Apparent or Assigned, of the Disorders in the Admissions, Discharges, and Deaths during the year	42
XI. Patients' Daily State and Employment... ..	43
XII. The Establishment	44
XIII. Provisions Consumed	45
XIV. The Diet Table	46-47

TABLE I.

Showing the Admissions, Re-Admissions, Discharges, and Deaths during the Year 1875.

				Male.	Female.	Total.
In the Asylum, 1st January, 1875 ...				359	414	773
	M.	F.	T.			
Admitted for the first time during the year	109	121	230			
Re-Admitted during the year	13	15	28			
Total Admitted.....				122	136	258
Total under care during the year				481	550	1031
Discharged or Removed :						
	M.	F.	T.			
Recovered.....	23	34	57			
Relieved	35	20	55			
Not Improved	9	18	27			
Died	61	59	120			
Total Discharged and Died during the year				128	131	259
Remaining in the Asylum, Dec. 31st (inclusive of absent on trial), 3 Males				353	419	772
Average numbers resident during the year				364	422	786

TABLE II.

Showing the Admissions, Re-Admissions, and Discharges, from the Opening of the Asylum to the present date, 31st December, 1875.

	Male.	Female.	Total.
Admitted during the Period of 16½ years	1409	1360	2769
Re-Admissions	99	150	249
Total of Cases Admitted	1508	1510	3018
Discharged or Removed :			
	M.	F.	T.
Recovered.....	307	445	752
Relieved	134	130	264
Not Improved	127	62	189
Died	587	454	1041
Total Discharged and Died during the 16½ years	1155	1091	2246
Remaining, December 31, 1875	353	419	772
Average numbers resident during the 16½ years	268	308	576

TABLE III.

Showing the Admissions, Discharges, and Deaths, with the Mean Annual Mortality and proportion of Recoveries per cent. of the Admissions for each Year since the Opening of the Asylum, July 25, 1859.

YEAR.	Admitted.		Discharged.						Died.			Remaining 31st Dec. in each year.			Average No. Resident.			Per centage of Recoveries on Admissions.			Per centage of Deaths on average Nos. Resident				
	Male.	Female.	Recovered.		Relieved.		Not Improved.		Male.	Female.	Total.	Male.	Female.	Total.	Male.	Female.	Total.	Male.	Female.	Total.	Male.	Female.	Total.		
			Male.	Female.	Male.	Female.	Male.	Female.																Male.	Female.
1859.....	143	164	307	2	4	6	1	1	2	4	10	135	150	285	108	124	232	1.4	2.4	1.9	3.7	4.8	4.3
1860.....	80	104	184	12	18	30	6	4	4	5	9	25	34	172	227	399	133	161	294	15.0	17.3	16.3	18.8	5.5	11.5
1861.....	103	66	169	7	22	29	4	10	18	28	19	26	45	228	231	459	192	227	419	6.8	33.3	17.1	13.5	8.3	10.7
1862.....	60	69	129	14	16	30	7	3	3	10	18	23	41	242	258	500	232	249	481	23.3	23.1	23.2	9.9	7.2	8.5
1863.....	59	22	81	13	19	32	11	33	1	34	15	43	43	220	243	463	235	256	491	22.0	86.3	39.5	11.9	5.8	8.7
1864.....	64	70	134	14	10	24	7	4	4	8	36	21	57	225	276	501	223	250	473	21.8	14.2	17.9	16.1	8.4	12.0
1865.....	67	57	124	16	17	33	12	1	4	5	36	29	65	233	277	510	227	281	508	23.8	29.8	26.6	15.8	10.3	12.7
1866.....	70	89	159	17	25	42	13	1	1	1	40	30	70	240	303	543	239	296	535	24.2	28.2	26.4	16.7	10.1	13.0
1867.....	69	93	162	15	27	42	19	4	4	5	35	37	72	252	315	567	244	312	556	21.7	29.0	25.9	14.3	11.8	12.9
1868.....	119	73	192	14	34	48	10	2	3	2	28	24	52	322	325	647	290	326	616	11.7	46.6	25.0	9.6	7.3	8.4
1869.....	60	68	128	21	25	46	10	2	2	5	35	29	64	318	332	650	320	333	653	35.0	36.7	36.0	10.9	8.7	9.8
1870.....	83	83	166	29	32	61	7	...	3	...	28	29	57	339	352	691	332	344	676	34.9	38.5	36.7	8.4	8.5	8.4
1871.....	52	64	116	28	35	63	24	48	1	49	38	31	69	261	341	602	304	345	649	53.8	54.7	54.3	12.5	9.0	10.6
1872.....	138	130	268	23	44	67	18	2	1	3	35	32	67	332	383	715	295	369	664	16.6	33.8	25.0	11.8	8.6	10.1
1873.....	100	104	204	30	43	73	40	1	2	3	45	25	70	342	391	733	337	393	730	30.0	41.0	35.7	13.0	6.6	9.5
1874.....	119	118	237	29	40	69	21	1	1	2	64	41	105	359	414	773	348	405	753	24.4	33.9	29.1	18.3	10.1	13.9
1875.....	122	136	258	23	34	57	55	9	18	27	61	59	120	353	419	772	364	422	786	18.8	25.0	22.0	16.7	13.9	15.2
TOTAL.....	1508	1510	3018	307	445	752	264	127	62	189	587	454	1041	268	308	576

* The apparently low per centage of recoveries in these years is due to the admission of many chronic Lunatics from St. Pancras, Maidstone and Peterborough.

TABLE IV.

Showing the History of the Annual Admissions since the Opening of the Asylum, with the Discharges and Deaths and the Numbers of each year remaining on the 31st December, 1875.

YEAR.	Admitted.			Of each year's Admissions Discharged and Died in 1875.						Total Discharged and Died of each Year's Admissions to 31st Dec., 1874.						Remaining of each year's Admissions Dec. 31, 1875.														
	New Cases.		Relapsed Cases.	Re-covered.		Relieved.		Not Im-proved.		Died.		Re-covered.		Relieved.		Not Im-proved.		Died.		M.	F.	Tot.								
	M.	F.	Tot.	M.	F.	Tot.	M.	F.	Tot.	M.	F.	Tot.	M.	F.	Tot.	M.	F.	Tot.	M.	F.	Tot.	YEAR.								
1859	143	164	307	1	6	12	18	11	16	27	1	10	11	5	2	7	87	86	173	32	44	76	1859		
1860	79	104	184	1	1	2	16	30	46	7	8	15	10	16	26	34	35	69	10	15	25	1860		
1861	102	60	169	10	20	30	...	6	16	...	40	5	45	32	25	57	11	10	21	1861	
1862	58	64	129	16	27	43	...	5	4	9	1	2	3	31	22	53	7	12	19	1862	
1863	58	22	81	11	5	16	...	4	4	8	2	1	3	35	10	45	6	2	8	1863	
1864	56	62	118	1	1	3	4	16	19	35	...	4	3	7	3	5	8	31	23	54	8	17	25	1864	
1865	62	50	112	2	1	3	12	18	30	...	5	6	11	...	2	2	37	18	55	11	12	23	1865	
1866	64	84	148	1	1	3	4	14	26	40	...	5	10	15	1	1	2	37	34	71	11	15	26	1866	
1867	63	80	143	1	2	3	5	21	29	50	...	9	11	20	1	5	6	24	31	55	12	14	26	1867	
1868	116	61	177	1	19	33	52	...	18	5	23	47	...	47	20	24	44	14	11	25	1868	
1869	57	61	118	19	21	40	...	3	7	10	4	1	5	20	24	44	14	12	26	1869	
1870	76	71	147	1	1	2	31	39	70	...	2	6	8	1	...	1	32	15	47	16	22	38	1870	
1871	42	52	94	18	24	42	...	6	7	13	...	1	1	17	14	31	11	17	28	1871	
1872	130	119	249	27	50	77	...	10	11	21	...	2	1	39	16	55	34	24	58	1872	
1873	88	85	173	26	36	62	...	8	8	16	...	1	1	26	9	35	23	38	61	1873	
1874	106	100	206	17	18	35	...	2	4	6	...	1	1	24	9	33	48	56	104	1874	
1875	109	121	230	85	98	183	1875
TOTAL	1409	1360	2769	23	34	57	35	20	55	61	59	120	284	411	695	99	110	209	118	44	162	526	395	921	353	419	772	TOTAL		

Summary of the Total Admissions, 1859-75.

	Male.	Female.	Both Sexes.
Per centage of the Recovered	20.4	29.5	24.9
Relieved	8.9	8.6	8.7
Not Improved	8.4	4.1	6.3
Dead	38.9	30.1	34.5
Remaining	23.4	27.7	25.6
	100.	100.	100.

TABLE V.

Showing the Causes of Death during the Year.

CAUSES OF DEATH.	Male.	Female.	TOTAL.
<i>Cerebral or Spinal Diseases.</i>			
Inflammation and other Diseases of the Brain, Softening, &c. ...	7	13	20
Epilepsy	7	6	13
Progressive Paralysis of the Insane	16	5	21
Maniacal or Melancholic Exhaustion	3	1	4
<i>Thoracic Diseases.</i>			
Inflammation of Lungs, and Pleuræ	5	6	11
Pulmonary Consumption	6	15	21
Disease of the Heart	1	5	6
Pericarditis	3	0	3
<i>Abdominal Diseases.</i>			
Disease of Kidneys	2	0	2
Diarrhœa	1	1	2
Cancer of Uterus	0	2	2
<i>Other Diseases.</i>			
Decay of Old Age	4	4	8
Marasmus	1	0	1
Locomotor Ataxia	1	0	1
Anthrax	1	0	1
Exhaustion from Abscess.....	1	1	2
Erysipelas	2	0	2
TOTAL.....	61	59	120

TABLE VI.

*Showing the length of Residence of those Discharged Recovered,
and in those who have Died during the year 1875.*

Length of Residence.	RECOVERED.			DIED.		
	Males.	Females.	Total.	Males.	Females.	Total.
Under 1 month	„	„	„	8	5	13
From 1 to 3 months	7	8	15	4	4	8
„ 3 „ 6 „	5	11	16	9	6	15
„ 6 „ 9 „	8	7	15	2	2	4
„ 9 „ 12 „	„	3	3	2	5	7
„ 1 „ 2 years	2	2	4	9	6	15
„ 2 „ 3 „	1	2	3	9	5	14
„ 3 „ 5 „	„	1	1	1	5	6
„ 5 „ 7 „	„	„	„	2	3	5
„ 7 „ 10 „	„	„	„	4	7	11
„ 10 „ 13 „	„	„	„	3	5	8
„ 13 „ 16 „	„	„	„	8	6	14
TOTAL	23	34	57	61	59	120

TABLE VII.

Showing the Duration of the Disorder on Admissions, Discharges, and Deaths during the Year 1875.

CLASS.	Duration of Disease on Admission in Four Classes.											
	The Admissions.			The Discharges.						The Deaths.		
	Male.	Female.	Total.	Recovered.			Removed, Relieved or otherwise.			Male.	Female.	Total.
				Male.	Female.	Total.	Male.	Female.	Total.			
FIRST CLASS— First attack, and within three months on admission.....	40	54	94	6	23	29	15	9	24	16	14	30
SECOND CLASS— First attack, above three and within twelve months on admission.....	9	18	27	2	3	5	3	2	5	5	11	16
THIRD CLASS— Not first attack, and within twelve months on admission.....	27	29	56	11	4	15	8	11	19	14	14	28
FOURTH CLASS— First attack or not, but of more than twelve months on admission.....	26	28	54	2	1	3	9	13	22	16	17	33
Not ascertained	20	7	27	2	3	5	9	3	12	10	3	13
TOTAL.....	122	136	258	23	34	57	44	38	82	61	59	120

TABLE IX.

Condition as to Marriage in the Admissions, Discharges, and Deaths in the Year 1875.

Condition in Reference to Marriage.	The Admissions.			The Discharges.				The Deaths.				
	Male.	Female.	Total.	Recovered.		Removed, Relieved, or otherwise.		Male.	Female.	Total.		
				Male.	Female.	Male.	Female.				Male.	Female.
Single.....	50	60	110	5	12	17	22	22	44	30	22	52
Married.....	54	59	113	16	20	36	8	12	20	19	27	46
Widowed.....	12	14	26	1	1	2	8	2	10	6	9	15
Not ascertained.....	6	3	9	1	1	2	6	2	8	6	1	7
TOTAL.....	122	136	258	23	34	57	44	38	82	61	59	120

TABLE X.

Showing the probable Causes, Apparent or Assigned, of the Disorders in the Admissions, Discharges, and Deaths of the year.

CAUSES.	The Admissions.			The Discharges.						The Deaths.		
				Recovered.			Removed, Relieved or otherwise.					
	Male.	Female.	Total.	Male.	Female.	Total.	Male.	Female.	Total.	Male.	Female.	Total.
MORAL.												
Religion	1	3	4	1	..	1	1	..	1	..	1	1
Family Trouble	6	6	12	1	6	7	2	1	3	2	8	10
Love	1	1	..	3	3	1	1
Fright	1	3	4	1	1	..	3	3
PHYSICAL.												
Hysteria	1	1	..	1	1
Weakness.....	..	3	3
Climacteric	1	1	1	1	..	1	1
Intemperance	6	..	6	2	..	2	3	1	4	3	1	4
Paralysis	1	1	1	1	2
Disease of the Brain.....	1	..	1	5	..	5
Injury to Head	1	1	2	2	..	2	1	..	1	2	2	4
Puerperal State	1	1	..	2	2	1	1
Epilepsy	8	3	11	1	1	2	5	3	8
Hereditary Tendency	2	6	8	1	..	1	1	1	2	4	4	8
Overwork.....	1	..	1
Sunstroke.....	4	..	4	2	..	2
Old Age	1	..	1	2	..	2
Over Study	3	..	3
Lead Poisoning	1	..	1
Not ascertained	87	107	194	13	22	35	35	31	66	37	33	70
TOTALS	122	136	258	23	34	57	44	38	82	61	59	120

TABLE XI.

Patients' Daily State and Employment. Average.

(Compiled from the Daily State Book, which is made up from the Ward Returns.)

OCCUPATION OR TRADE.		Daily Average No. of Patients.		
<i>Male Patients.</i>				
Working Party.	{ With the Gardener and out-door Attendants...	61		
	{ With the Farm Attendants.....	14		
	{ With the Cowman.....	4		
With the	Carpenter	3		
„	Bricklayer.....	3		
„	Upholsterer	2		
„	Basketmaker	2		
„	Tailor.....	14		
„	Shoemaker	15		
„	Matmaker.....	16		
„	Painter	5		
„	Engineer	3		
„	Baker	4		
„	House Attendant	5		
„	Bath „	3		
In the Dining Hall	8		
„	Steward's Stores, Brewhouse, &c.....	4		
„	Wards (cleaning)	65		
<i>Daily Average number Employed</i>		231		
<i>Female Patients.</i>				
In Laundry and Wash-house	60		
„	Kitchen	10		
„	Dining Hall	16		
„	Wards, &c. (Cleaning)	60		
„	„ (Needlework)	160		
„	Vegetable Room	8		
<i>Daily Average Number Employed</i>		314		
		DAILY ATTENDANCE.		
ATTENDANCE AT—		M.	F.	TOTAL.
„	Sunday Divine Service.....	300	380	680
„	Weekday „	258	330	588
„	School	50	56	106
„	Weekly Ball	110	100	210
„	Other Entertainments	114	143	257
Walk about Grounds	180	270	450
„	beyond „	80	90	170
„	on Terraces	320	340	660
NIGHT REPORT.				
Number of Wet Cases.....		6	5	11
„	Dirty „	4	1	5
„	Noisy (at Night).....	5	8	13
<i>Average number Resident } (mean Annual Population) }</i>		364	422	786

TABLE XIV.
DIET SCALE.

	BREAKFAST, At 8.0 A.M.										DINNER At 1.0. P.M.										SUPPER, At 6.0 P.M.							
	Males.					Females.					Males.					Females.												
	Bread.	Cocoa.	Bread.	Butter.	Coffee.	Bread.	Beer.	Uncooked Meat.	Meat.	Pudding.	Suet Pudding.	Mutton Broth or Irish Stew.	Plum Dumpling.	Vegetables.	Bread.	Beer.	Uncooked Meat.	Meat.	Pudding.	Mutton Broth.	Meat Stew.	Vegetables.	Bread.	Butter.	Sweet Cake or	Bread.	Butter.	Sweet Cake or
Sunday.....	6	1	5	oz. $\frac{1}{2}$	pt. $\frac{1}{2}$	oz. 4	oz. 6	oz. ...	oz. 12	oz. ...	pt. ...	oz. ...	oz. 16	oz. 2	pt. $\frac{1}{2}$	oz. 8	oz. ...	oz. ...	oz. ...	pt. ...	pt. ...	oz. 12	oz. 6	oz. $\frac{1}{2}$	oz. 5	oz. ...	oz. ...	pt. 1
Monday ...	6	1	5	oz. $\frac{1}{2}$	pt. $\frac{1}{2}$	oz. 4	oz. 4	oz. ...	oz. ...	pt. 1	oz. ...	oz. ...	oz. 8	oz. 2	pt. $\frac{1}{2}$	oz. 4	oz. 8	oz. ...	oz. ...	pt. ...	pt. ...	oz. 12	oz. 6	oz. $\frac{1}{2}$	oz. 5	oz. ...	oz. ...	pt. 1
Tuesday ...	6	1	5	oz. $\frac{1}{2}$	pt. $\frac{1}{2}$	oz. 4	oz. 4	oz. 12	oz. ...	pt. ...	oz. ...	oz. ...	oz. 12	oz. 4	pt. $\frac{1}{2}$	oz. 4	oz. ...	oz. ...	oz. ...	pt. ...	pt. 1	oz. 12	oz. 6	oz. $\frac{1}{2}$	oz. 5	oz. ...	oz. ...	pt. 1
Wednesday	6	1	5	oz. $\frac{1}{2}$	pt. $\frac{1}{2}$	oz. 4	oz. ...	oz. ...	oz. ...	pt. ...	oz. 16	oz. ...	oz. ...	oz. 4	pt. $\frac{1}{2}$	oz. 4	oz. ...	oz. ...	oz. 12	pt. ...	pt. 1	oz. 12	oz. 6	oz. $\frac{1}{2}$	oz. 5	oz. ...	oz. ...	pt. 1
Thursday ...	6	1	5	oz. $\frac{1}{2}$	pt. $\frac{1}{2}$	oz. 4	oz. 8	oz. ...	oz. ...	pt. ...	oz. ...	oz. ...	oz. 12	oz. 2	pt. $\frac{1}{2}$	oz. 4	oz. ...	oz. ...	oz. 12	pt. ...	pt. ...	oz. ...	oz. 6	oz. $\frac{1}{2}$	oz. 5	oz. ...	oz. ...	pt. 1
Friday	6	1	5	oz. $\frac{1}{2}$	pt. $\frac{1}{2}$	oz. 4	oz. 4	oz. ...	oz. ...	pt. ...	oz. ...	oz. ...	oz. 8	oz. 4	pt. $\frac{1}{2}$	oz. 4	oz. ...	oz. ...	oz. ...	pt. 1	pt. ...	oz. 8	oz. 6	oz. $\frac{1}{2}$	oz. 5	oz. ...	oz. ...	pt. 1
Saturday ...	6	1	5	oz. $\frac{1}{2}$	pt. $\frac{1}{2}$	oz. 4	oz. 4	oz. ...	oz. ...	pt. 1	oz. ...	oz. ...	oz. 8	oz. 2	pt. $\frac{1}{2}$	oz. 4	oz. 4	oz. ...	oz. ...	pt. ...	pt. ...	oz. 12	oz. 6	oz. $\frac{1}{2}$	oz. 5	oz. ...	oz. ...	pt. 1
Weekly Tot.	42	7	35	2 $\frac{1}{2}$	7	28	3 $\frac{1}{2}$	24	12	2	16	72	20	3 $\frac{1}{2}$	28	30	24	12	12	1	2	68	42	3 $\frac{1}{2}$	35	2 $\frac{1}{2}$	7	7

TABLE XIV. *Continued.*

DINNER.

	<i>Male Patients.</i>	<i>Female Patients.</i>		<i>Male Patients.</i>	<i>Female Patients.</i>
Sunday	Bacon and Suet Pudding, with Rice and Fruit in season.	Roast Meat, with Rice and Fruit in season.	Thursday	Roast Meat or Pickled Pork.	Plum Pudding and Treacle Sauce.
Monday	Mutton Broth or Bread and Cheese, (3oz).	Meat Pudding.	Friday	Meat Pudding.	Mutton Broth or Irish Stew.
Tuesday	Meat Pudding.	Meat Stew.	Saturday	Irish Stew.	Meat Pudding or Bacon 4oz., with Suet Pudding 8oz.
Wednesday	Plum Dumpling and Treacle Sauce.	Meat Stew.			

Bread, Beer, and Vegetables daily.
When Rice and Fruit Pudding is given on Sunday, 4 oz. less Suet Pudding to Males, and 1 oz. less Meat to Females.

Extra Diet for Sick.—Mince Meat, Steak, Mutton Chop, Fowl, Fish, Eggs, Mutton Broth, Beef Tea, Essence of Beef, Milk, Arrow Root, Rice Pudding, Battered Pudding, Sago, Barley Water, Gruel, Oranges, Biscuits, Calf's Foot Jelly, Porter, Bitter Ale, Port Wine, Sherry, Brandy, Gin, Whisky, Rum, Lemonade, Soda Water.

Extra Diet for Working Patients.— $\frac{1}{2}$ Pint Beer, 2oz. Bread, 1oz. Cheese, at 11 A.M., and $\frac{1}{2}$ Pint Beer at 4 P.M., the Laundry Patients 4oz. Bread with Butter and $\frac{1}{2}$ Pint Tea. Tobacco and snuff given as indulgences.

Attendants' and Servants' Diet.—Men, 1lb. Uncooked Meat; Women, $\frac{3}{4}$ lb. ditto; 1lb. Vegetables, 1lb. Bread, 2 Pints Beer daily. 2oz. Tea, $\frac{3}{4}$ lb. Sugar, $\frac{1}{4}$ lb. Coffee, $\frac{1}{2}$ lb. Butter, 1lb. Cheese weekly. $\frac{1}{4}$ lb. of Meat may be exchanged for Pudding or Pie, at the discretion of the Housekeeper.

Cocoa for One Hundred Patients.— $3\frac{1}{4}$ lb. Cocoa, $6\frac{1}{4}$ lb. Treacle, 3 Gallons Milk, or more, if the Dairy yields it.

Coffee Ditto 1 $\frac{1}{2}$ lb. Coffee, $\frac{1}{4}$ lb. Chicory, 5lb. Treacle, 2 Gallons Milk.

Tea Ditto 1lb. Tea, 4lb. Sugar, and 2 Gallons Milk.

Mutton Broth Ditto { The Liquor of the Cooked Meat, Bones, &c., 2 $\frac{1}{2}$ lb. Meat, 3lb. Scotch Barley, Oatmeal, Rice, 10lb. Turnips, Cabbage, Parsnip, Leek, Onion, Artichokes, or other Vegetables, Herbs, Salt, and Pepper.

Meat Pie Ditto Dripping Crust, 31lb. Flour, 50lb. Potatoes, 13lb. Meat.

Meat Pudding Ditto 25lb. Meat, 25lb. Flour—Boiled or Baked.

Meat Stew Ditto 25lb. Meat, in a Stew with Potatoes and other Vegetables mixed with Rice and Barley.

Plum Pudding 100 lbs. weight. Flour, 46 $\frac{3}{4}$ lbs., Suet, 6 $\frac{1}{4}$ lbs., Raisins, 7 $\frac{3}{4}$ lbs.

(Signed) S. W. D. WILLIAMS, M.D.,
 Medical Superintendent.

HAYWARDS HEATH, 31st Decem ber, 1875.

