

Twenty-fifth annual report of the trustees of the State Lunatic Hospital, at Worcester. December, 1857.

Contributors

State Lunatic Hospital at Worcester.
Child, Linus, 1803-1870.
Woodward, Henry.
Bemis, Merrick.

Publication/Creation

Boston, Ma : Printed by William White, 1858.

Persistent URL

<https://wellcomecollection.org/works/b3wm97sb>

License and attribution

This work has been identified as being free of known restrictions under copyright law, including all related and neighbouring rights and is being made available under the Creative Commons, Public Domain Mark.

You can copy, modify, distribute and perform the work, even for commercial purposes, without asking permission.



Wellcome Collection
183 Euston Road
London NW1 2BE UK
T +44 (0)20 7611 8722
E library@wellcomecollection.org
<https://wellcomecollection.org>

TWENTY-FIFTH

ANNUAL REPORT

OF

THE TRUSTEES

OF THE

STATE LUNATIC HOSPITAL,


AT WORCESTER.

DECEMBER, 1857.

BOSTON:

WILLIAM WHITE, PRINTER TO THE STATE.

1857.



Digitized by the Internet Archive
in 2018 with funding from
Wellcome Library

OFFICERS OF THE HOSPITAL.

TRUSTEES.

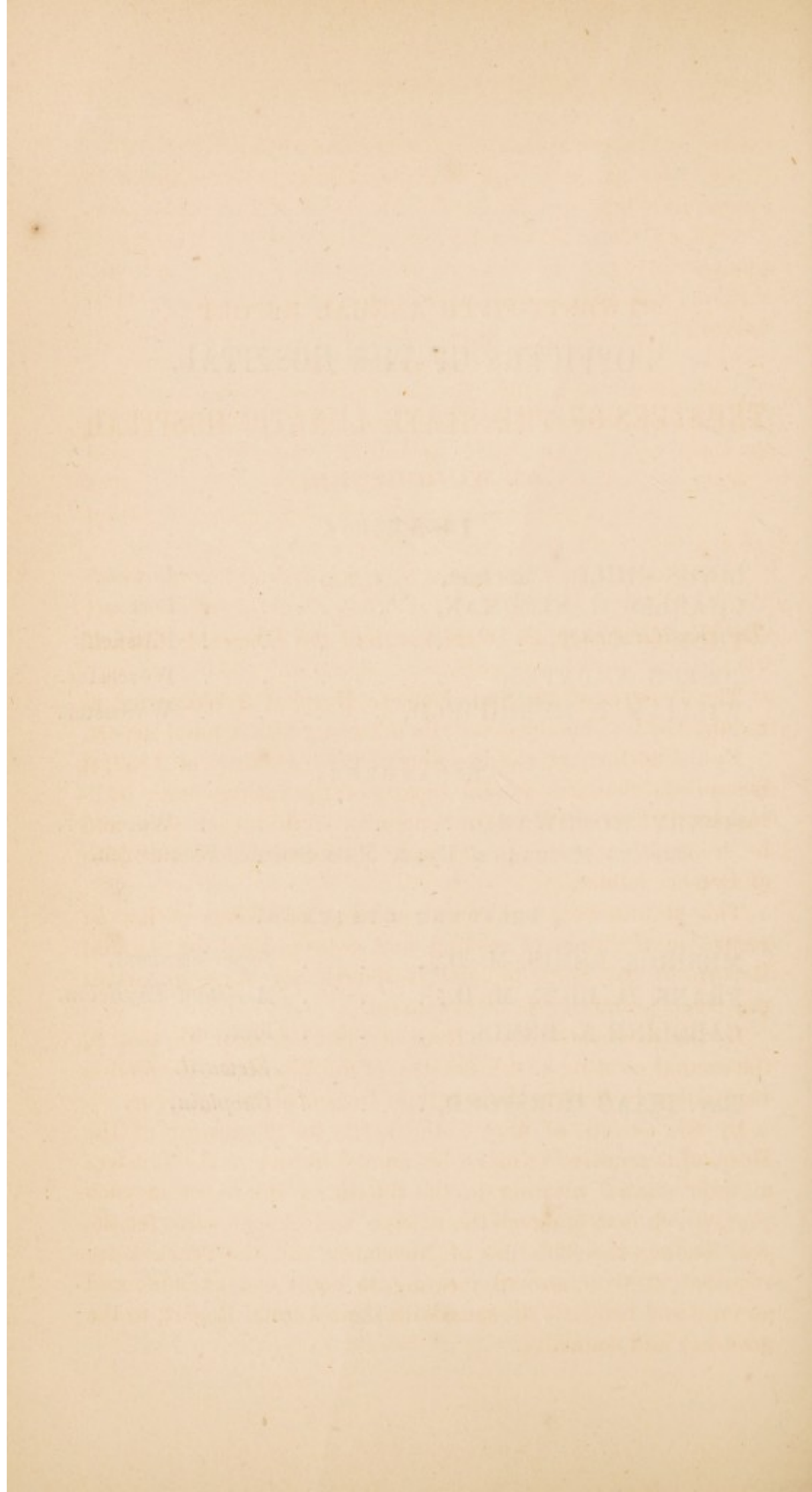
LINUS CHILD, <i>Chairman</i> ,	Lowell.
CHARLES H. STEDMAN,	Boston.
THOMAS COLT,	Pittsfield.
JOSEPH N. BATES,	Worcester.
WILLIAM T. MERRIFIELD,	Worcester.

TREASURER.

HENRY WOODWARD,	Worcester.
OFFICE—MECHANICS' BANK, MAIN STREET, WORCESTER.					

RESIDENT OFFICERS.]

MERRICK BEMIS, M. D.,	.	.	.	<i>Superintendent.</i>
FRANK H. RICE, M. D.,	.	.	.	<i>Assistant-Physician.</i>
CAROLINE A. BEMIS,	.	.	.	<i>Matron.</i>
				<i>Steward.</i>
REV. ISAAC HORSFORD,	.	.	.	<i>Chaplain.</i>



TWENTY-FIFTH ANNUAL REPORT
OF THE
TRUSTEES OF THE STATE LUNATIC HOSPITAL,
AT WORCESTER,
1857.

To His Excellency, the Governor, and the Honorable Council.

The Trustees of the State Lunatic Hospital at Worcester, as required by law, hereby submit their Twenty-fifth Annual Report.

By the 40th chapter of the Acts of the legislature of 1857, it is required that the annual reports of the various state institutions shall be made up to September 30th in each year, and be transmitted to the governor and council before the 15th of October following.

This statute does not repeal existing provisions of law in regard to the time of making and transmitting the Annual Reports of the State Lunatic Hospitals, nor other important provisions pertaining to these reports.

By the provisions of the Revised Statutes, chap. 48, sect. 5, the annual meeting of the Trustees of the Worcester Hospital is required to be held in the month of December in each year.

By the statute of May 20th, 1842, the Treasurer of the Hospital is required to make his annual report to the Trustees at their annual meeting in the month of December in each year, which is to embrace the receipts and expenditures for the year ending the 30th day of November, and the Trustees are required, at their annual meeting, to audit and examine said account and transmit the same with their Annual Report, to the governor and council.

The Act of 1857 contains no provision for changing the time of holding the annual meeting of the Trustees, nor does it change the time at which the Treasurer is to make his annual report to the Trustees. Under the provisions of the Revised Statutes, chap. 48, sect. 5, the Trustees are required to make their report containing a particular statement of the condition of the hospital and all its concerns, to the 30th day of November, inclusive, in each year.

To accommodate the payment of bills due the hospital, as well as to facilitate the duties of the Treasurer, the rule has always existed at the Worcester Hospital, that the contracts with the patients for their board and expenses shall be payable on the first days of June and December in each year.

The Trustees were unwilling to transmit their report to the governor and council unaccompanied with the annual report of the Treasurer of the hospital.

That report could not be made at an earlier date, for the Revised Statutes, chap. 48, sect. 5, and the statute of 1842, now in force, requires the annual report of the Treasurer to be made to the Trustees at their annual meeting in December, to be by them audited and examined at said meeting.

We have therefore taken the responsibility of delaying our Annual Report until we could receive and audit the report of the Treasurer.

If the legislature should change the provisions of existing laws, so as to alter the time of holding the annual meeting of the Trustees from December to October, and require the report of the Treasurer to be made to the annual meeting of the Trustees in October, the Trustees would then change their contracts with the patients for board, so as to make them payable on the first days of April and October, and then there would be no difficulty in carrying out the provisions of the law of 1857.

Upon recurring to the condition of the hospital for the past year, the Trustees find renewed occasion to acknowledge the goodness of a kind Providence in permitting the institution to pursue its course as heretofore in dispensing blessings and comparative comfort to those unfortunate individuals intrusted to its care. The report of the Superintendent, which is herewith submitted, presents in detail the results and condition of the hospital for the past year, which, in the judgment of the Trus-

tees, shows that the management of the institution by Doctor Bemis has been highly satisfactory. They deem it their duty to say that at no period since their connection with the institution has it been better or more successfully conducted, than during the year which has just closed.

As a whole, the patients have been more quiet and orderly than during any other like period which has fallen under their observation.

Since Doctor Bemis entered upon his duties as Superintendent he has not, in a single instance, resorted to the use of the strong rooms for the confinement of patients; and as a consequence, we are constrained to believe that the patients have been more quiet, and their paroxysms of excitement less frequent, and of a shorter duration.

So well are we satisfied with the experience of the last fifteen months in this respect, that we are now prepared, when an opportunity shall offer, to remove the twelve remaining strong rooms, and convert the space occupied by them into apartments in which the patients may be employed in various kinds of labor.

The Trustees most heartily commend the plans of Doctor Bemis for giving employment to the patients, and which when successfully adopted, will, in their opinion, not only be found to be a source of some revenue to the hospital, but also a most important curative instrumentality.

In his laborious and difficult duties, Doctor Bemis has been ably assisted by Doctor Frank H. Rice, as Assistant-Physician, whose fidelity and skill in the duties of his situation has strongly commended him to the most favorable regard of the Trustees, and to him it is due also to say that Doctor Bemis has derived great assistance from his able and valuable services.

In the early part of the past year, Doctor Thomas H. Gage, who had satisfactorily discharged the duties of Assistant-Physician, resigned his situation.

The Trustees have not filled the place of Doctor Gage, as Doctor Bemis proposed that he and Doctor Rice should manage the affairs of the institution without further medical assistance.

The duties of Chaplain have been performed the last year by Rev. Isaac Horsford in a manner entirely satisfactory to the Superintendent, and to the approbation of the Trustees.

At the commencement of the last six months, Samuel Jennison, Esq., who for several years has discharged the duties of Treasurer of the hospital with great fidelity, and to the entire approbation of the Trustees, resigned his situation.

We have appointed Henry Woodward, Esq., in his place, who has entered upon the discharge of the duties of his office.

The Treasurer's report, which is herewith submitted, shows the financial condition of the hospital.

From this, and from the books of the Treasurer, it will appear that on the first day of December, the amount of debts due from the hospital of every description, was about \$19,000. On the same date, there was due to the hospital, most of which had become due on that day for board of patients, the sum of about \$44,000. This sum includes the amount due from the State for the support of State patients for the year ending December 1st, and the amount due from other patients for the six months ending on the same date. These bills are now being collected, so that in a short time the whole debt due from the hospital will be paid, and a balance will remain in the treasury, of about \$25,000 with which to meet the expenses of the next six months.

At the close of the last year the situation of Steward became vacant, and since that time, the duties of that office have been performed by Doctor Bemis.

At the close of the first nine months of the past year, the Matron of the hospital resigned her connection with the institution, since which time the duties of Matron have been performed by Mrs. Bemis.

The Trustees have voted to allow Doctor and Mrs. Bemis the salaries of Steward and Matron for the time which they have respectively performed those duties.

By reference to the report of the Superintendent, it will be seen that the number of patients at the hospital for the last year has been greater than at any time since the number was reduced by the opening of the Taunton Hospital.

At the close of the year 1856 the number in	
the hospital, was	372
Admitted during the year now closed,	271
Discharged during the same period,	275

Whole number of different patients in the	
hospital during the year,	643
Greatest number of patients at any one time,	404
Average number for the whole year,	387

By this statement it will be seen that the number of patients admitted during the year was at the rate of $22\frac{58}{100}$ per month.

This fact shows not only the necessity, but the immense importance of institutions for the care and treatment of the insane. They also show the constant, and as it would seem, increasing liability of our people to be afflicted with this dreadful malady. It should not be inferred that the whole number admitted in any one year are new cases. Many are cases of long standing, some are cases which have been discharged from the hospital in a condition deemed harmless, but who, on leaving the hospital and coming under other and different influences, frequently become dangerous and violent, thus rendering their return a matter of absolute necessity.

There is perhaps no subject connected with the treatment of the insane, in which there is a greater liability to an unwise course of action, than in the premature removal of patients from the hospital.

This course is unwise and unkind both to the patients and to the immediate managers of the institution.

It not unfrequently happens that patients enter the hospital in a violent and excited state, but who soon become comparatively mild, and in regard to whose recovery strong hopes are entertained. The great change in their condition so far encourages their friends, as to render it extremely difficult for the Superintendent and Trustees to resist their importunities to have them removed to their homes. When such patients are thus prematurely discharged, the folly of such a course is speedily demonstrated by a relapse of the patients into a more hopeless state of insanity, rendering their return to the hospital a necessity, with a great probability that their stay may be prolonged almost indefinitely.

It has ever been the policy of the Superintendent and Trustees of the Worcester Hospital to discountenance the premature discharge of patients. As by far the greater number of our patients are committed by order of the courts, thus placing the

question of their discharge at the disposal of the Trustees, we have generally denied the application of friends for their discharge, when in the judgment of the Superintendent, they would be benefited by a longer residence.

It however frequently happens, that in consequence of the crowded state of our wards, and the necessity to make room for patients sent us by the order of the courts, patients are sometimes discharged when a longer residence might have been beneficial to them.

Applications are frequently made to the Trustees for the discharge of patients whose expenses are borne by the Commonwealth, under the idea that they can be sufficiently cared for at the State almshouses, and at a less expense than at a lunatic hospital.

The Trustees have always deemed it proper to discharge such patients when, in the judgment of the Superintendent it was deemed safe so to do.

But our experience has shown that the practice of discharging this class of patients cannot be safely extended beyond what has been the ordinary practice of the Trustees.

It has not unfrequently happened that patients of this class deemed incurable but harmless, have been discharged, and taken to the State almshouses. After a short residence there they are discharged, and on being at large they again become violent and dangerous, and are again committed to the hospital by order of the courts in a condition to make them the most troublesome and expensive patients in the institution. It may therefore well be doubted whether in the matter of economy alone it is wise to discharge patients from the hospital who cannot take care of themselves, with a view of supporting them at the State almshouses.

In their last Annual Report the Trustees submitted a detailed statement of the improvements which had been made in the mode of warming and ventilating the hospital.

This change has now been tested by the experience of the last year, and we feel entirely justified in saying that it has more than realized our expectations. The hospital is much better warmed, than was possible under the old system. The ventilation which before was very imperfect and defective, is now completely successful. In determining to make the change, the

Trustees were of opinion that so great was the necessity for a more safe and complete mode of warming and ventilating the hospital, that they would be justified in making the change, though it should require a material increase in the annual expenditure for fuel. But they are happy to find, that during the past year they have been able to warm the buildings more perfectly, and to secure a more uniform temperature, with a ventilation as nearly perfect as can well be expected, with a less expenditure for fuel than was required under the old system.

On the whole we are prepared to express our conviction that public buildings cannot be so safely and economically warmed and a perfect ventilation secured, as by constantly forcing into them fresh air by a mechanical force, and which in its passage to the various apartments, shall be heated to the requisite temperature by passing over pipes heated by steam.

We are also enabled to report that all the expenses incurred in making these changes, together with sundry improvements in the various wards and apartments of the hospital, have been paid for without asking any appropriation from the State, and leaving the present available means of the hospital with which to meet in part the current expenses of the next six months at about the sum of \$25,000, and *that* after the payment of every debt now due from the hospital.

As the hospital pays cash for all its supplies, and as nothing will become due from the patients for their board until June next, this surplus will all be expended before that time.

The Trustees are of opinion that the price of board can be reduced at the end of the year 1858. The income from patients for the past year has been greater than for two or three years preceding. This has been owing to the greater number of patients. But it is understood that the Northampton Hospital will be opened for the reception of patients during the next spring. When that takes place, the number of patients at the Worcester Hospital will be somewhat reduced, with a consequent addition to cost per patient of maintaining the Worcester Hospital.

We have therefore fixed the price of board per week at the same sum for the next year which was paid the past year, with a confident belief that thereafter it may be reduced.

In concluding this Report, the Trustees ask particular attention to the report of the Superintendent, and to the many interesting details and valuable suggestions that it contains, which will show that the institution is in a highly flourishing and satisfactory condition, under the able superintendence of Doctor Bemis, and to whom it is no more than justice for us to say that he has discharged his numerous and arduous duties with a fidelity, energy and ability which are worthy of all commendation.

LINUS CHILD,
THOMAS COLT,
J. N. BATES,
WILLIAM T. MERRIFIELD,

Trustees.

TREASURER'S REPORT.

To the Trustees of the State Lunatic Hospital:—

The Treasurer submits his Annual Report.

The receipts for the year have been as follows:—

Cash in hands of Steward,	\$140 61
Received from the Commonwealth, and from towns and individuals for support of patients, . . .	49,119 11
John Wright,	500 00
P. Emory Aldrich,	250 00
Interest on Bonds,	30 00
Note due January 11, 1857,	2,000 00
Due Worcester Bank,	8,955 46
Due Mechanics' Bank,	8,273 25
	<hr/>
	\$69,268 43

The disbursements are as follows:—

Steward's orders for Books, Printing, &c., . . .	\$322 65
For Salaries and wages,	11,304 17
Improvements and repairs,	4,417 04
Furniture,	1,684 61
Clothing,	2,351 13
Flour,	4,892 21
Meal,	166 89
Provender,	1,345 38
Biscuit and Rice,	295 61
Coffee,	535 52
Tea,	521 70
Sugar,	1,905 37
Molasses,	403 79

For small Groceries,	\$607 86
Butter,	1,658 87
Cheese,	74 19
Potatoes,	1,209 89
Vegetables,	133 12
Fresh Fruit,	1,068 15
Vinegar,	42 06
Fresh Meat,	1,446 96
Salt Meat,	1,218 59
Fish,	222 50
Fuel,	7,628 24
Light,	777 38
Medical supplies,	771 98
Freight,	2 78
Trustees' expenses,	118 00
Sexton's charges,	397 05
Live stock,	501 97
Heating and ventilating,	7,952 75
Miscellaneous expenses,	772 99
Worcester Bank,	9,882 86
Cash refunded to towns,	41 25
P. Emory Aldrich, (services,)	600 00
Sundry accounts,	504 07
Expense of suit against West Springfield,	66 00
Samuel Jennison, for year 1856,	304 21
Samuel Jennison for year 1857,	475 42
Articles furnished by Steward,	385 77
H. Woodward, salary and expenses,	157 84
Cash on hand,	132 91
	<hr/>
	\$69,268 43

Respectfully,

H. WOODWARD, *Treasurer.*

WORCESTER, December 21, 1857.

Examined and approved by the Auditing Committee.

J. N. BATES,
WM. T. MERRIFIELD.

December 30, 1857.

SUPERINTENDENT'S REPORT.

Twenty-fifth Annual Report of the Superintendent to the Trustees of the State Lunatic Hospital at Worcester.

GENTLEMEN :—In conducting the affairs of the hospital during the past year, it has been our constant endeavor to maintain its reputation, and to add, if possible, to its usefulness.

We have made every effort to retain its highly curative character, and have spared no pains to make it comfortable, cheerful and homelike to those who have been committed to its care.

From your frequent visits and thorough examinations into all departments of the institution, you have been able and ready at all times to give counsel and direction upon which the success of the year has mainly depended.

At the commencement of the year, the whole number of patients in the hospital was—

Males,	184
Females,	192
Total,	<hr/> 376

Admitted during the year—

Males,	126
Females,	145
Total,	<hr/> 271

Whole number under treatment during the year—

Males,	310
Females,	337
Total,	<hr/> 647

Of this number there has been discharged:—

	Males.	Females.	Total.
Recovered,	74	76	150
Improved,	35	40	75
Not improved,	4	2	6
Died,	19	25	44

There were remaining in the hospital, at the close of the year, November 30, 1857—

Males,	177
Females,	195
Total,	372

It will be seen that one hundred and fifty patients have been discharged as recovered in the course of the year. "The cause of their commitment ceased to exist," and they returned to their homes restored to mental and physical health.

Seventy-four have been discharged improved. Although many of this number were quite well when they left the hospital, they cannot be said to have recovered.

Some of them are periodically insane, having long intervals of apparent health, during which they remain with their friends.

Others possess a low grade of intellect, and were never able to take care of themselves, consequently cannot be considered well.

There has been during the year an unusual amount of sickness. In the summer and autumn there were several cases of fever and dysentery. There were also a few cases of pneumonia, and several cases of consumption. But a large proportion of the disease has been of an ill-defined character, afflicting those who have long been feeble and insane.

The standard of health in a hospital for the insane is always low. We look in vain for the signs of vigorous health which might be supposed to exist in a community of such activity.

The constant restlessness and lack of attention to the rules

of health, together with the loss of sleep, will of themselves undermine the best physical health, and reduce a large proportion of the patients in every hospital for the insane to the condition of hopeless invalids.

TABLE 1,

Showing the Admissions and state of the Hospital, from December 1, 1856, to November 30, 1857.

Patients in the Hospital December 1, 1856,	376
Males,	184
Females,	192
Patients admitted in the course of the year,	271
Males,	126
Females,	145
Whole number in the Hospital in the course of the year,	647
Males,	310
Females,	337
Patients remaining in the Hospital November 30, 1857,	372
Males,	177
Females,	195
Of the admissions, there were cases of less duration than one year,	161
Males,	79
Females,	82
Of the admissions, there were cases of one year or more,	110
Males,	52
Females,	58
Cases, the duration of whose insanity before admission not ascertained,	0
Males,	0
Females,	0
Patients committed by Courts,	182
Males,	90
Females,	92
Patients committed by Overseers of the Poor,	46
Males,	19
Females,	27
Patients on bonds,	43
Males,	19
Females,	24
Foreigners, and those who have no settlement in this State, admitted in the course of the year,	76
Males,	34
Females,	42
Foreigners, and those who have no settlement in this State, discharged in the course of the year,	118
Males,	61
Females,	57

TABLE 1—*Continued.*

Foreigners, and those who have no settlement in this State, remaining in the Hospital November 30, 1857,	119
Males,	50
Females,	69

State paupers remaining in the Hospital at the close of each year, as nearly as can be ascertained :—

1842,	34	1850,	181
1843,	38	1851,	208
1844,	38	1852,	241
1845,	57	1853,	216
1846,	52	1854,	151
1847,	121	1855,	115
1848,	150	1856,	155
1849,	167	1857,	119

The preceding table will show that you have discharged from this hospital, in the course of the year, one hundred and eighteen patients who have no settlement in this Commonwealth.

Very few, if any, of these have been supported otherwise than by the charity of the State. They are generally friendless and destitute when they become insane, and if they recover, or so far improve as to come under your consideration for discharge, they have no homes to receive them, and no friends willing to assist them.

Under these circumstances, the Alien Passenger Commissioners have received and placed in the State almshouses a considerable number.

We have procured places for some who are now at service, and receiving wages. Others have been assisted by the Alien Passenger Commissioners with means to return to their friends in other States.

You will remember that none of these patients have been recommended to you for discharge, whose mental and physical health did not make such a step advisable.

Those taken to the almshouses have been visited and carefully observed by the Commissioners themselves previous to their removal from the hospital. So that while the Alien Passenger Commissioners and the Board of Trustees have been equally anxious to relieve the Commonwealth of any unnecessary expenditure, the interests of the patient have always been humanely regarded.

The preceding table will also show that one hundred and nineteen patients remain in the hospital who are supposed to have no settlement in the Commonwealth.

A further reference to the table will show the number of State paupers to have diminished thirty-six in the course of the year.

The number of State paupers discharged exceeded the number admitted by forty-two.

TABLE 2,

Showing the supposed Causes of Insanity of Patients admitted in the course of the year.

CAUSES.	Males.	Females.	Total.
Ill health,	17	41	58
Intemperance,	22	3	25
Domestic affliction,	3	10	13
Religious excitement,	2	2	4
Masturbation,	3	—	3
Disappointed affection,	2	4	6
Disappointed ambition,	2	—	2
Epilepsy,	7	3	10
Puerperal,	—	5	5
Wound on the head,	3	1	4
Hard labor,	3	2	5
Jealousy,	4	2	6
Fright,	1	2	3
Palsy,	4	3	7
Fear of poverty,	2	1	3
Fear of death,	1	—	1
Fatigue and exposure,	1	2	3
Unascertained,	49	64	113
Hereditary cases,	11	18	29
Periodical cases,	9	17	26
Homicidal cases,	7	2	9
Suicidal cases,	6	7	13

The causes of insanity are frequently obscure,—or rather there exists in a great proportion of cases a group of circumstances all of which, taken together, are sufficient to produce an unsound state of mind, while none, not even the most prominent one of the combination, could of itself be considered an adequate cause.

They are also remote, existing not only in former generations, but in periods of life distant from the development of the disease. Thus the parent, while neglecting the moral and physical training of his child, may be laying the foundation of a train of infirmities, both in body and mind, that in the strength and passion of manhood, shall break out in uncontrollable insanity.

Nothing is more difficult, than to give the precise causes of insanity; therefore we are generally content to give in our table those which the friends of the patients suppose to be the true ones.

Fifty-eight patients have been admitted in the course of the year, who had been for a considerable period of time previous to admission afflicted with ill health, and in the absence of other known causes this number is set down against "ill health" in the table.

Ill health, in many of its forms, strongly predisposes to melancholy and monomania. It is likewise generally accompanied by loss of sleep, which is one of the most prominent symptoms of acute mania.

Intemperance has sent to us twenty-five of its victims, and it is shown in another table, that four hundred and thirty-four patients have been in previous years committed to this hospital from this cause, a fact strongly suggestive of the importance of providing in one of the hospitals already in existence more appropriate accommodations for their comfort and recovery.

Seven patients have been admitted, whose insanity was probably caused by development of tubercles in the brain. After the acute stage of mental disease had subsided, they sunk rapidly and died of consumption.

Domestic affliction, sundering of family ties by death, loss of friends, prolonged absence of friends, breaking up of families by loss of property, and other causes disturbing the happiness of the home circle have given us thirteen of the patients under our care during the year.

We have received several patients whose insanity seemed to be caused by disease of the membranes of the brain, commencing and going on without attracting particular attention until the patient violates the public peace, and is brought to us by order of the court of probate. In the beginning the symptoms

are so slight as to escape the notice of the family in which the patient lives, and it is only by reflection and comparison that the friends can fix upon any time as the commencement of insanity.

Digestion is impaired, the bowels are irregular in their action, and there is loss of sleep. The patient is restless, irritable and morose. He cannot attend to his duties, but his mind frequently wanders in vague and extravagant schemes. He cannot stay at home, but goes from place to place, sometimes talking strangely of his extensive business and large possessions. He neglects to take food, loses or gives away his clothing, meets and falls in readily with strange and unnatural associates, and thus goes on from bad to worse, until at length there is a complete breaking up of the mental faculties and the patient sinks to hopeless idiocy.

Five of those admitted during the year were more than eighty years of age, and four were between the ages of seventy and eighty years. In some of these the light of reason is almost entirely obliterated; and it requires more than ordinary care to make them comfortable and decent.

TABLE 3.

Diseases which have proved fatal during the year.

Apoplexy,	1
Cancer,	1
Chronic Meningitis,	2
Consumption,	7
Chronic Dysentery,	1
Diarrhœa,	1
Delirium Tremens,	1
Epilepsy,	6
Erysipelas,	2
Gangrene of Lungs,	2
Maniacal Exhaustion,	5
Marasmus,	4
Pneumonia,	1
Palsy,	4
Old Age,	3
Influenza,	2
Suppurative Phlebitis,	1
Total,	44

Three patients died during the year who were more than eighty years of age. Nine of those who died were between the ages of seventy and eighty years and three were sixty-nine years of age.

One patient died within six hours after his admission. One in three days after admission. One in eleven days after admission. One in thirteen days after admission, and one in seventeen days after admission.

Nineteen of the deaths mentioned in the table occurred to patients admitted during the year.

TABLE 4,

Showing the Ages of Patients admitted during the year.

Less than 15 years of age,	2
Between 15 and 20,	16
20 and 30,	77
30 and 40,	78
40 and 50,	61
50 and 60,	22
60 and 70,	7
70 and 80,	4
More than 80 years of age,	5
Total,	271

TABLE 5,

Showing the Ages of Patients remaining in the Hospital November 30, 1857.

Less than 15 years of age,	2
Between 15 and 20,	5
20 and 30,	71
30 and 40,	119
40 and 50,	97
50 and 60,	48
60 and 70,	17
70 and 80,	6
More than 80 years of age,	7
Total,	372

TABLE 6,

Showing the Duration of Insanity before admission, of those admitted during the year.

Insane less than 1 year,	161
more than 1 and less than 2 years,	29
2 and less than 5 years,	27
5 and less than 10 years,	16
10 and less than 15 years,	11
15 and less than 20 years,	14
20 and less than 25 years,	3
25 and less than 30 years,	1
30 years,	2
Unascertained,	7
Total,	271

TABLE 7,

Showing the Duration of Insanity of those remaining November 30, 1857.

Insane less than 1 year,	46
more than 1 and less than 2 years,	32
2 and less than 5 years,	63
5 and less than 10 years,	112
10 and less than 15 years,	51
15 and less than 20 years,	29
20 and less than 25 years,	10
25 and less than 30 years,	3
30 years,	7
Unascertained,	19
Total,	372

TABLE 8,

Showing the Civil Condition of Patients admitted during the year, and of those remaining at the end of the year.

Unmarried,	124
Married,	119
Widows,	16
Widowers,	10
Unascertained,	2
Total,	271

Civil condition of those remaining, November 30, 1857 :—

Unmarried,	204
Married,	129
Widows,	18
Widowers,	19
Unascertained,	2
Total,	372

TABLE 9,

Showing the Occupation of Patients remaining, November 30, 1857.

Farmers,	30	Sail-makers,	2
Laborers,	38	Rigger,	1
Shoemakers,	22	Peddlers,	2
Manufacturers,	3	Cooper,	1
Tailors,	4	Tinker,	1
Clerks,	9	Painter,	1
Operatives in Mill,	6	Hatter,	1
Sea Captains,	1	Paper-maker,	1
Sailors,	5	Bookkeepers,	2
Machinists,	2	Bookbinder,	1
Stone-masons,	3	Editor,	1
Brick-masons,	2	Lawyer,	1
Blacksmiths,	5	Clergyman,	1
Harness-maker,	1	Teachers,	2
Merchants,	5	Quack Doctor,	1
Stage Drivers,	3	No employment,	14
Carpenters,	3		
Overseers in Mill,	2	Total,	177

TABLE 9—*Continued.*

WOMEN.		
Housekeepers,	62	Straw-sewer, 1
Seamstresses,	28	Midwife, 1
Housemaids,	23	Laundresses, 7
Operatives in Mill,	15	School Girls, 3
Milliners,	4	No employment, 46
Teachers,	5	Total, 195

TABLE 10,

Showing the Occupation of Patients admitted in the course of the year.

Farmers,	24	Peddler,	1
Laborers,	28	Waiter in Hotel,	1
Shoemakers,	15	Teacher,	1
Manufacturers,	4	Editor,	1
Tailors,	3	Unascertained,	14
Clerks,	5	Total,	126
Operatives in Mill,	5		
Sea Captains,	2		
Sailors,	2		
Machinists,	2		
Stone-masons,	2		
Brick-masons,	2		
Blacksmiths,	2		
Harness-makers,	2		
Merchants,	2		
Stage Drivers,	2		
Carpenter,	1		
Overseer in Mill,	1		
Sail-maker,	1		
Rigger,	1		
Plasterer,	1		
Fisherman,	1		

WOMEN.

Housekeepers,	51
Seamstresses,	13
Housemaids,	19
Operatives in Mill,	13
Milliners,	3
Teachers,	2
Straw-sewer,	1
Midwife,	1
School Girls,	5
Laundresses,	3
No employment,	34
Total,	145

TABLE 11.

Showing the number of Admissions and Discharges, and the Whole Number under Treatment for each month in the year.

	Whole Number.	ADMISSIONS.		DISCHARGES.	
		Males.	Females.	Males.	Females.
December, 1856,	400	12	11	18	6
January, 1857,	399	9	14	4	6
February, "	410	11	10	6	12
March, "	416	13	11	5	10
April, "	423	8	14	18	18
May, "	410	13	10	14	12
June, "	413	9	20	6	18
July, "	409	11	9	11	8
August, "	415	10	15	14	10
September, "	405	6	8	11	14
October, "	410	14	16	8	14
November, "	405	10	7	18	15
Total,		126	145	133	143

The following table was prepared from the previous Reports of this hospital, by that eminent statistician, Doctor Edward Jarvis, of Dorchester, and is published by his request.

It embraces all the causes of insanity given by the friends of patients, or discovered by other means, since the opening of the hospital.

It does not, however, include the whole number of admissions, because in all cases where the cause has not been discovered, it has been registered in the table as "unknown."

The following table does not include this large class of cases.

The table is valuable as embracing a period of twenty-five years, and covering about five thousand and five hundred cases.

The value of other tables would be equally increased by extending them through the whole number of years the hospital has been in existence, which they may hereafter be made to do.

TABLE 12.

Supposed Causes of Insanity of Patients admitted into the Hospital from January, 1833, to November 30, 1857.

CAUSES.	Males.	Females.	CAUSES.	Males.	Females.
Apoplexy,	2	—	Miscarriage,	—	1
Asthma,	2	—	Pregnancy,	—	3
Bowels, disease of, . .	1	—	Puerperal,	—	136
Brain, inflammat'n of,	1	5	Turn of life,	—	21
Bronchitis,	2	13	Amputation of leg, . .	1	—
Chorea,	—	2	Bathing in cold water,	2	—
Congenital,	4	—	Cut foot,	1	1
Constipation,	—	1	Dog bite,	1	—
Convulsions,	8	6	Drinking cold water,	1	—
Dysentery,	1	2	Dye-house fumes, . . .	1	—
Dyspepsia,	2	—	Exposure to cold, . . .	6	—
Epilepsy,	73	30	Fall,	—	4
Eruptions,	2	1	Fracture of arm,	—	1
Eyes, disease of, . . .	1	—	Injury,	4	3
Eyes, loss of,	1	—	Injury of head,	43	7
Fever,	25	32	Kick of horse,	1	—
Fever, scarlet,	1	3	Lead, poison of,	2	—
Ill health,	135	467	Lightning,	1	1
Influenza,	1	5	Loss of blood,	1	—
Insolation,	12	—	Malformat'n of head,	1	—
Laryngitis,	—	1	Poison,	1	—
Measles,	3	4	Spinal injury,	1	1
Nervous irritation, . .	—	4	Excess of labor,	28	51
Nymphomania,	—	1	Loss of sleep,	—	3
Old age,	7	3	Fatigue & exposure, . .	1	2
Otitis,	3	—	Study, excessive,	25	6
Palsy,	34	21	Inventions,	1	—
Periodical,	48	56	Excitement,	2	4
Pneumonia,	—	1	Excitem't of politics,	1	2
Rheumatism,	3	1	Anticipation of marriage,	—	1
Satyriosis,	1	—	Fortune being told, . . .	—	1
Scrofula,	—	2	Enthusiasm,	—	1
Sea-sickness,	—	1	Mesmerism,	—	1
Somnambulism,	—	1	Spiritualism,	10	13
Sore finger,	—	1	Light reading, novels, &c.,	—	1
Spinal disease,	—	1	Anxiety,	2	11
Suppressed eruption, . .	5	4	Criminal trial,	2	—
Suppressed ulcer, . . .	1	3	False accusation,	—	1
Tic douloureux,	—	1	Imprisonment,	1	—
Tumor,	—	1	Death of brother,	1	3
Whooping-cough,	—	1	Death of children,	3	19
Amenorrhœa,	—	14	Death of father,	2	1
Lactation,	—	5	Death of friends,	2	3
Menorrhagia,	—	2			
Menorrhagia suppress'd	—	1			

TABLE 12—Continued.

CAUSES.	Males.	Females.	CAUSES.	Males.	Females.
Death of husband, . .	—	19	Religious excite- ment,	13	8
Death of mother, . .	1	6	Religious fanaticism,	13	7
Death of niece, . .	—	1	Religious perplexity,	9	3
Death of sister, . .	—	3	Pathetism,	—	1
Death of wife, . . .	10	—	Infidelity,	1	—
Husband departure, .	—	1	Mormonism,	1	—
Husband sickness, .	—	3	Pecuniary anxiety,	18	5
Husband intemperate,	—	2	Pecuniary difficulty,	55	8
Husband desertion, .	—	2	Pecuniary loss, . .	43	10
Husband abuse, . .	—	7	Strike for wages, .	1	—
Abuse of master, . .	1	—	California fever, .	2	—
Abuse of parent, . .	1	2	Poverty,	—	1
Domestic trouble, .	57	127	Fear of poverty, .	25	11
Domestic grief, . .	56	137	Giving up business,	1	—
Domestic cares, . .	—	1	Change of business,	1	—
Marriage, unfit, . .	4	2	Indulgence of pa- rents,	1	1
Disappointment, . .	4	7	Bad education, . .	2	—
Disappointm't in love,	47	51	Violent temper, and passion,	1	13
Disappointment in ambition,	5	5	Jealousy,	16	20
Home-sickness, . .	1	5	Passion uncontrolled,	—	1
Lost in woods, . .	—	1	Anger,	—	1
Shipwreck,	1	—	Great indignation, .	1	—
Fright,	10	15	Vicious habits, . .	—	1
Fear,	2	—	Irregularities, . .	—	1
Fear of death, . . .	1	—	Intemperance, . .	413	46
Fear of insanity, . .	1	—	Opium,	—	3
Being witness in Court,	—	1	Tobacco,	1	3
Seduction,	—	1	Masturbation, . .	230	22
Millerism,	5	5	Venery, excess of, .	1	—
Religious,	89	142			
Religious anxiety, .	1	4			

TABLE 13,

Showing the Admissions from each County during the last and previous years.

	1857.		Total.	Previously.	Whole No.
	Males.	Females.			
Barnstable,	1	—	1	123	126
Berkshire,	6	4	10	167	177
Bristol,	—	—	—	281	281
Dukes,	—	—	—	19	19
Essex,	28	33	61	331	392
Franklin,	2	3	5	116	121
Hampden,	14	20	34	300	334
Hampshire,	6	5	11	203	214
Middlesex,	31	33	64	654	718
Nantucket,	—	—	—	31	31
Norfolk,	1	2	3	562	565
Plymouth,	1	1	2	227	229
Suffolk,	3	10	13	555	568
Worcester,	32	33	65	1,318	1,383
Other States,	1	1	2	10	12
Totals,	126	145	271	5,197	5,468

TABLE 14,

Showing the whole number of Patients during the year, the number at the end of each year, and the expenses of each of the twenty-five years the Hospital has been in operation.

Year.	Whole No. of Patients during the year.	Average No. each year.	No. at the end of each year.	Current expenses each year.	Annual expense for each patient.
1833, .	153	107	114	\$12,272 91	\$114 67
1834, .	233	117	118	15,840 97	135 38
1835, .	241	120	119	16,576 44	137 30
1836, .	245	127	138	21,395 28	168 44
1837, .	306	163	185	26,027 07	159 64
1838, .	362	211	218	28,739 40	136 20
1839, .	397	223	229	29,474 41	132 16
1840, .	391	229	236	27,844 98	121 59
1841, .	399	233	232	28,847 62	123 81
1842, .	430	238	238	29,546 87	111 12
1843, .	458	244	255	27,914 12	114 40
1844, .	491	261	263	29,278 75	112 17
1845, .	656	316	360	43,888 65	138 88
1846, .	637	359	367	39,870 37	111 06
1847, .	607	377	394	39,444 47	104 62
1848, .	655	404	409	42,860 05	106 09
1849, .	682	420	429	40,870 86	97 31
1850, .	670	440	441	46,776 13	106 40
1851, .	704	462	466	52,485 33	112 61
1852, .	775	515	532	43,878 35	85 20
1853, .	820	537	520	53,636 66	103 14
1854, .	819	430	381	53,221 52	123 77
1855, .	580	349	336	54,895 88	157 29
1856, .	577	357	376	45,631 37	128 64
1857, .	647	387	372	49,004 75	124 04

By referring to the Treasurer's Report, it will be seen that the disbursements for all purposes in the course of the year, were \$69,268 43

Deduct from this amount on account

of heating and ventilation,	\$7,952 75	
Due Worcester Bank,	9,882 86	
Cash refunded to towns,	41 25	
P. Emory Aldrich, (services,)	600 00	
Sundry accounts,	504 07	
Expense of suit,	66 00	
Treasurer's expenses for year 1856,	304 21	
“ “ “ 1857,	779 63	
Cash on the hand,	132 91	
	<hr/>	\$20,263 68

Cost of supporting patients during the year
 1857, \$49,004 75

TABLE 15,
Showing the Statistics of the Hospital from January 18, 1833, to December, 1857.

	1833.	1834.	1835.	1836.	1837.	1838.	1839.	1840.	1841.	1842.	1843.	1844.	1845.	1846.	1847.	1848.	1849.	1850.	1851.	1852.	1853.	1854.	1855.	1856.	1857.
Whole No. admitted, .	153	199	113	125	168	177	179	162	163	198	220	336	293	277	240	261	273	241	263	309	288	299	199	241	271
Whole No. discharged, .	39	115	112	106	121	144	168	155	167	191	203	228	196	270	213	246	253	229	238	243	300	438	244	207	275
Discharged recovered, .	25	64	52	58	69	76	80	82	82	88	116	124	122	154	103	136	138	125	111	103	145	122	109	97	150
Discharged improved, .	7	22	23	17	23	24	29	27	36	25	32	40	25	31	23	32	26	15	38	34	36	53	26	46	75
Discharg'd not improv'd	2	20	28	22	20	28	27	29	37	66	33	49	25	47	57	48	52	32	50	61	78	229	79	23	6
Died,	4	8	8	8	9	16	22	15	12	12	22	15	24	38	30	30	37	57	39	45	41	34	29	35	4
Eloped,	1	1	1	1	—	—	—	—	—	—	—	—	—	—	2	—	—	—	—	—	—	1	3	—	3
Whole No. in Hospital	153	233	241	245	306	362	397	391	399	430	458	491	556	637	607	655	682	670	704	775	820	819	580	577	647
course of the year, .																									
No. remaining at the																									
end of each year, .	114	118	109	138	185	218	229	236	232	238	255	263	360	367	394	409	429	441	466	532	520	381	336	376	372
Males admitted, . . .	96	6	57	66	94	96	80	75	73	107	111	109	164	138	105	128	134	129	125	148	136	125	86	112	126
Females admitted, . .	57	51	62	59	74	81	99	87	90	91	109	127	129	139	135	133	139	112	138	161	152	174	113	129	145
Males discharged, . . .	19	58	57	56	65	74	66	59	71	96	92	108	100	128	116	120	131	120	111	126	133	198	98	97	132
Females discharged, . .	15	48	46	41	47	54	80	81	84	83	89	105	96	142	97	126	122	109	127	117	167	240	119	114	143
Males died,	3	5	4	6	6	10	14	9	7	3	8	9	15	20	18	15	19	29	13	20	20	15	13	18	19
Females died,	1	3	4	2	3	6	8	6	5	9	14	6	9	18	12	15	18	28	26	25	21	19	14	17	25
Sent in by Courts, . . .	109	55	90	119	129	123	123	106	110	157	152	158	167	143	135	166	206	194	184	259	241	220	160	193	182
Sent in by friends and																									
overseers,	44	64	23	8	39	54	56	56	53	41	68	78	126	134	105	95	67	47	79	50	47	57	36	48	89
Sent in by Governor's																									
warrant,	—	—	—	—	—	—	—	—	—	—	—	—	—	—	—	—	—	—	—	—	—	12	3	—	—
Males recovered, . . .	13	33	27	32	37	45	32	28	37	44	53	56	64	72	48	67	70	60	56	55	65	45	50	46	74
Females recovered, . .	12	31	25	26	32	31	48	54	45	44	63	68	58	82	55	69	68	65	55	48	80	77	59	51	76
Av'ge No. in Hospital,	107	117	120	127	163	211	223	229	233	238	244	261	316	359	377	404	420	440	462	515	520	430	349	357	387

TABLE 16.

Per Cent.

	1833.	1834.	1835.	1836.	1837.	1838.	1839.	1840.	1841.	1842.	1843.	1844.	1845.	1846.	1847.	1848.	1849.	1850.	1851.	1852.	1853.	1854.	1855.	1856.	1857.
Per cent. of recovery of recent cases, . .	-	82	82	84	89	86	90	91	91	91	88	93	89½	79	72	86	84	87	82	77	83	80	92	78	76
Per cent. of recovery of all discharged, . .	-	54	46	53	57	52	47	53	49	46	59	54	62½	57	49	55	54	54	46	42	46	52	45	48	65
Per cent. of recovery of old cases, . . .	-	20	18	19	25	15	17	22	21	16	29	24	31½	28	17	19	24	21	18	18	24	29	17	15	30
Per cent. of admissions of the most prominent causes each year:—																									
Ill health,	8	18	21	22	21	28	27	25	23	18	16	15	13	11	17	18	18	7	9	9	7	8	10	19	23
Religious,	9	6	7	7	6	9	5	4	4	9	13	9	7	10	6	1	2	4	2	3	4	3	4	3	1
The affections, . . .	14	12	17	16	16	15	25	17	13	15	9	10	14	1	12	11	10	8	11	6	2	8	5	2	2
Property,	7	11	9	6	6	10	6	5	4	5	7	3	9	5	3	2	4	3	2	3	2	2	1	1	1
Intemperance, . . .	25	24	23	15	10	16	8	12	12	8	6	8	10	10	7	5	4	3	4	2	2	4	2	9	1
Masturbation, . . .	5	6	7	16	21	6	8	7	6	4	3	2	6	3	2	2	4	3	4	2	4	4	3	3	1
Per cent. of deaths of all in the Hospital each year,	2.61	3.43	3.31	3.26	2.94	4.42	5.53	3.83	3.	2.79	4.08	3.05	4.31	5.96	4.94	4.58	5.42	8.05	5.53	5.81	5.	5.58	4.06	6.	7.
Per cent. of deaths of average number of residents each year,	3.07	6.08	6.66	6.03	5.05	7.58	9.86	6.55	5.15	5.	9.	5.74	7.59	10.55	7.95	7.92	9.	12.95	8.	8.73	7.88	7.09	7.07	9.08	11.

TABULAR VIEW

Of the Condition of the Patients in the State Lunatic Hospital from December 1, 1856, to November 30, 1857, inclusive.

No.	Time of Admiss'n.	Age when admitted.	Sex.	Civil condition.	Supposed Cause.	Duration before admission.	By whom committed.	Time spent in the Hospital.	Discharged or Remaining.	In what state.	Suicidal. Hereditary.	Homicidal. Periodical.
1833												
2	Jan. 22 1834	55	Male	Widower	Religious, . . .	17 years	The Court	23 yrs	Remains	Stationary	Hereditary.	Homicidal.
299	Apr. 30 1836	29	do	Single	Unknown, . . .	6 do	do	23 yrs 8 mths	do	do	do	do
431	May 3 1837	29	Female	do	Ill health, . . .	5 do	do	21 yrs 5 mths	Died	Epilepsy	do	
582	May 26 1838	37	do	do	Love affair, . . .	6 months	Friends	20 yrs 7 mths	Remains	Stationary	do	
876	Dec. 28 1839	24	Male	do	Unknown, . . .	3 do	The Court	19 yrs	do	Improved	do	
895	Mar. 1 1840	30	Female	do	Ill health, . . .	2 do	The Overseers	18 yrs 9 mths	do	do	do	
910	Apr. 17 1840	54	do	Widow	Family trouble, . . .	2 do	The Court	18 yrs 8 mths	Died	do	do	
973	Aug. 5 1840	33	Male	Single	Masturbation, . . .	9 years	do	18 yrs 3 mths	Remains	Improved	do	
1078	Mar. 28 1841	29	do	do	Love affair, . . .	4 months	do	17 yrs 8 mths	do	Stationary	Pauper. Indian.	
1092	Apr. 21 1841	26	Female	do	Ill health, . . .	6 years	do	17 yrs 7 mths	do	do	do	
1144	Aug. 12 1841	50	do	do	do	8 do	do	17 yrs 4 mths	do	do	do	
1156	Sept. 4 1841	40	Male	Married	Unknown, . . .	2 do	do	17 yrs 3 mths	do	Improved	do	
1228	Mar. 3 1842	32	do	Single	do	3 do	do	16 yrs 9 mths	do	Stationary	Hereditary.	
1252	Apr. 29 1842	31	Female	Married	Ill health, . . .	2 months	The Friends	16 yrs 8 mths	do	Improved	do	
1319	Sept. 15 1842	23	do	Single	Unknown, . . .	1 year	The Court	16 yrs 3 mths	do	Stationary	do	
1390	Jan. 24 1843	29	Male	do	Masturbation, . . .	6 do	do	15 yrs 11 mths	do	do	do	
1409	Feb. 28 1843	30	do	do	Unknown, . . .	2 do	do	15 yrs 10 mths	do	do	do	
1423	Mar. 30 1843	67	do	do	do	30 do	do	15 yrs 9 mths	do	do	do	
1480	July 14 1843	35	do	Married	do	3 months	do	15 yrs 4 mths	Discharged	Improved	do	
1481	do 15 1843	36	do	do	do	13 years	do	15 yrs 4 mths	Remains	Stationary	do	
1531	Oct. 11 1843	40	do	Single	do	13 do	do	15 yrs 2 mths	do	do	do	
1565	Dec. 7 1843	22	do	do	Masturbation, . . .	3 months	do	15 yrs	do	Improved	do	

1843	1553	Jan.	15	28	Male	Single	Masturbation,	6 years	The Court	14 yrs 11 mths	Remains	Stationary	Pauper from Ireland.
	1655	May	18	50	Female	do	Unknown,	1 do	do	14 yrs 7 mths	do	do	
	1696	July	15	35	do	Married	Ill health,	2 do	do	14 yrs 5 mths	do	do	
	1772	Nov.	16	29	Male	Single	Masturbation,	7 do	do	14 yrs 1 mth	do	do	
1844													
	1846	Apr.	7	44	do	Married	Religious,	1 do	do	13 yrs 8 mths	Discharged	Improved	Pauper from New York.
	1873	May	8	27	do	Single	Hard Study,	2 do	do	13 yrs 7 mths	Remains	Stationary	Periodical.
	1935	Aug.	5	26	Female	do	Unknown,	10 days	do	13 yrs 4 mths	do	do	Pauper from Ireland.
	1955	do	27	38	do	Married	do	6 years	do	13 yrs 4 mths	do	do	
	1981	Oct.	27	36	do	do	do	5 do	do	13 yrs 2 mths	do	do	
	1985	do	12	46	do	do	do	2 do	do	13 yrs 2 mths	do	do	
	2014	Dec.	2	31	Male	Single	do	21 do	The Overseers	13 yrs	do	do	
	2031	do	17	30	do	do	Masturbation,	10 do	The Court	13 yrs 11 mths	Discharged	Improved	
1845													
	2047	Jan.	8	21	do	do	do	6 do	do	12 yrs 11 mths	Remains	Stationary	
	2048	do	9	29	do	do	do	6 do	The Friends	12 yrs 11 mths	do	do	
	2053	do	20	45	do	Married	Intemperance,	6 weeks	The Court	12 yrs 11 mths	do	do	
	2083	Mar.	8	34	do	Single	Hard study,	1 year	do	12 yrs 9 mths	do	do	Periodical.
	2197	July	22	21	do	do	Masturbation,	2 do	The Friends	12 yrs 5 mths	do	do	
	2220	Aug.	29	28	do	do	do	5 weeks	do	12 yrs 4 mths	do	do	
	2229	Sept.	8	27	Female	do	Unknown,	3 years	The Court	12 yrs 3 mths	do	do	Hereditary.
	2248	Oct.	1	25	do	do	Masturbation,	3 do	do	12 yrs 2 mths	do	do	do
	2280	Nov.	3	30	Male	do	Unknown,	5 do	The Friends	12 yrs	do	do	Periodical.
	2310	Dec.	5	23	do	do	Ill health,	2 do	do	12 yrs	do	do	do
1846													
	2412	Apr.	18	26	do	Single	Disappointment,	1 week	do	11 yrs 8 mths	do	do	Periodical.
	2419	May	11	48	do	Married	Unknown,	Unknown	do	11 yrs 7 mths	do	do	do
	2444	June	10	26	Female	Single	do	2 months	The Court	11 yrs 6 mths	do	do	Pauper from Ireland.
	2544	Oct.	5	29	Male	Married	Jealousy,	4 do	do	11 yrs 2 mths	do	do	do
1847													
	2545	Apr.	16	44	Female	do	Unknown,	2 do	The Friends	10 yrs 7 mths	do	do	Hereditary.
	2587	June	8	35	Male	Single	do	9 do	The Court	10 yrs 6 mths	do	do	Periodical.
	2802	Oct.	29	27	Female	do	do	6 do	do	10 yrs 1 mth	do	do	Pauper from Ireland.
	2839	Dec.	21	43	Male	do	Intemperance,	14 months	Sup. J. Court	9 yrs 11 mths	do	Improved	Periodical.
1848													
	2860	Jan.	8	37	Female	do	Hard study,	1 year	The Friends	9 yrs 10 mths	do	do	Hereditary.
	2875	Feb.	2	51	do	do	Disappointed affection,	31 years	do	9 yrs 10 mths	do	Stationary	do
	2890	do	17	45	do	do	Property,	6 months	do	9 yrs 10 mths	Discharged	Improved	
	2945	Jan.	1	28	do	do	Unknown,	10 days	The Court	9 yrs 6 mths	Remains	Stationary	Pauper from Ireland.

TABULAR VIEW—Continued.

No.	Time of Admiss'n.	Age when Admitted.	Sex.	Civil condition.	Supposed Cause.	Duration before admission.	By whom committed.	Time spent in the Hospital.	Discharged or Remaining.	In what state.	Suicidal. Hereditary.	Homicidal. Periodical.
1848												
2981	July 11	24	Female	Single	Ill health,	5 years	The Friends	9 yrs 4 mths	Remains	Stationary	Pauper from Ireland.	
3040	Sept. 18	30	Male	do	Unknown,	3 months	The Court	9 yrs 2 mths	do	Improved		
3065	Oct. 25	30	Female	do	do	28 years	The Friends	9 yrs 1 mth	do	Stationary	Hereditary.	
3076	Nov. 14	64	Male	Married	Ill health,	2 do	do	9 yrs	do	do		
3085	Dec. 1	37	Female	do	do	12 do	The Court	9 yrs	do	do		
1849												
3114	Jan. 23	30	do	Single	Unknown,	2 do	do	8 yrs 10 mths	do	do	Pauper from Ireland.	
3120	Feb. 9	30	Male	do	Epilepsy,	8 do	The Friends	8 yrs 10 mths	Died	Palsy	Periodical.	
3125	do 13	57	Female	Widow	Domestic affliction,	6 do	The Court	8 yrs 10 mths	Remains	Stationary		
3145	Mar. 13	45	Male	Single	Unknown,	15 do	The Friends	8 yrs 8 mths	do	do	Hereditary.	
3191	May 12	28	do	do	do	4 months	The Court	8 yrs 6 mths	do	do		
3192	do 14	20	Female	do	do	3 do	do	8 yrs 6 mths	do	do	Pauper from Ireland.	
3228	June 25	31	do	do	Hard labor,	3 years	do	8 yrs 5 mths	Discharged	Improved	Periodical.	
3242	July 9	30	Male	do	Sun struck,	1 do	do	8 yrs 4 mths	Remains	Stationary	Pauper from Ireland.	
3247	do 16	40	do	Unknown	Unknown,	Unknown	do	8 yrs 4 mths	do	do	do	
3260	do 24	35	Female	do	do	do	do	8 yrs 4 mths	do	do	do	
3290	Aug. 31	60	Male	Married	do	2 years	Overseers	8 yrs 3 mths	do	do	Pauper from Ireland.	
3304	Sept. 20	23	Female	Single	Ill health,	3 months	The Court	8 yrs 2 mths	do	do	Pauper from Ireland.	
3315	Oct. 3	23	do	do	Epilepsy,	9 years	do	8 yrs 2 mths	do	do	do	
3334	Nov. 6	21	do	do	Unknown,	Unknown	The Friends	8 yrs 1 mth	do	do	do	
3357	do 27	49	Male	do	Love affair,	8 years	The Court	8 yrs 1 mth	do	do	Hereditary.	
3365	Dec. 11	55	Female	do	Unknown,	10 do	do	7 yrs 11 mths	Died	Chron. dysen.	do	
3369	do 14	45	Male	Married	do	8 months	do	7 yrs 11 mths	Remains	Stationary	do	
1850												
3380	Jan. 3	23	do	Single	Disappointed affection,	6 do	Probate Court	7 yrs 11 mths	do	do		
3420	Mar. 20	27	do	do	Fright,	6 years	do	7 yrs 8 mths	do	do		
3427	Apr. 2	35	do	Married	Unknown,	5 do	do	7 yrs 8 mths	do	Improved	Hereditary.	Periodical.
3430	do 5	65	do	do	do	15 do	do	7 yrs 8 mths	do	Stationary		
3483	June 28	33	do	Single	do	18 months	do	7 yrs 5 mths	do	do		
3510	July 22	35	do	do	Epilepsy,	15 do	do	6 yrs 7 mths	Died	Epilepsy	Pauper from Ireland.	
3529	Aug. 17	24	do	do	Sun struck,	2 years	do	7 yrs 3 mths	Remains	Stationary	do	
3554	Sept. 14	50	do	Married	Unknown,	10 do	Munic'l Court	7 yrs 2 mths	do	do	do	
3555	do 14	22	do	Single	do	10 do	do	6 yrs 7 mths	Discharged	Improved	do	

3595	Nov.	21	30	Male	Unknown	Unknown	.	.	Unknown	Probate Court	7 yrs	Remains	Stationary	Hereditary.	Periodical.
3605	Dec.	11	35	do	Single	do	.	.	2 years	The Overseers	7 yrs	do	do		
3613	do	23	23	Female	do	Followed fever,	.	.	20 do	The Friends	6 yrs	do	do		
1851															
3623	Jan.	6	45	do	Married	Unknown,	.	.	6 do	The Overseers	6 yrs	do	do		
3737	June	9	60	Male	do	do	.	.	6 weeks	Probate Court	6 yrs	do	do		
3748	do	21	58	Female	Widow	Ill health,	.	.	3 years	do	6 yrs	Discharged	Improved		
3756	do	30	40	Male	Single	Unknown,	.	.	Unknown	do	6 yrs	do	do		
3761	July	3	21	do	do	Masturbation,	.	.	8 years	The Friends	6 yrs	Remains	do		
3781	do	28	31	do	do	Unknown,	.	.	1 week	Probate Court	6 yrs	do	do		
3795	Aug.	19	44	Female	do	do	.	.	5 years	The Friends	6 yrs	do	do		
3798	do	25	30	Male	Unknown	do	.	.	20 days	Probate Court	6 yrs	Discharged	Stationary	Hereditary.	
3815	Sept.	12	24	Female	Single	do	.	.	2 weeks	do	6 yrs	Remains	Improved		
3825	Oct.	9	22	do	do	Unknown,	.	.	3 years	do	6 yrs	do	do		
3833	do	18	67	Male	Widow	Religious,	.	.	8 weeks	The Overseers	6 yrs	Died	do		
3837	do	24	22	Female	Single	Unknown,	.	.	3 do	Probate Court	5 yrs	Discharged	do		
3857	Nov.	25	40	Male	do	do	.	.	6 months	do	6 yrs	Remains	Stationary	Periodical.	
3876	Dec.	15	59	do	do	do	.	.	6 weeks	do	6 yrs	do	Improved	do	
3877	do	16	40	do	Married	do	.	.	2 do	do	5 yrs	do	Stationary	Homicidal.	
1852															
3891	Jan.	2	43	do	Single	do	.	.	Unknown	do	5 yrs	do	do		
3892	do	3	54	Female	Married	do	.	.	14 years	The Friends	5 yrs	do	do		
3902	do	21	22	Male	Single	do	.	.	3 do	Sup. J. Court	5 yrs	Discharged	Improved	Hereditary & Periodical.	
3920	Feb.	12	22	Female	do	do	.	.	2 months	Probate Court	5 yrs	do	do		
3925	do	19	28	Male	Widow	Loss of wife,	.	.	2 do	do	5 yrs	Remains	Stationary	do	
3935	Mar.	3	74	Female	Widow	Unknown,	.	.	2 do	The Overseers	5 yrs	Died	Old age	do	
3936	do	5	37	do	Married	Puerperal,	.	.	2 years	Probate Court	5 yrs	Remains	Improved	do	
3941	do	14	32	do	do	Domestic trouble,	.	.	15 do	do	5 yrs	do	do		
3944	do	15	22	Male	Single	Unknown,	.	.	6 weeks	Munic'l Court	5 yrs	Discharged	do		
3957	do	17	30	do	do	Disappointed affection,	.	.	8 months	Probate Court	5 yrs	Remains	Stationary		
3961	do	30	25	do	do	Unknown,	.	.	1 year	do	5 yrs	Discharged	Improved		
4003	June	7	47	do	Married	Epilepsy,	.	.	12 do	do	5 yrs	Remains	Stationary	do	
4013	do	14	33	Female	Single	Millerism,	.	.	2 do	do	5 yrs	Discharged	Improved		
4075	Aug.	9	38	Male	Married	Unknown,	.	.	2 weeks	Munic'l Court	5 yrs	Remains	do		
4116	Sept.	25	69	do	do	do	.	.	1 month	The Overseers	5 yrs	do	do		
4125	Oct.	5	30	Female	Widow	do	.	.	Unknown	Probate Court	5 yrs	do	do		
4187	Dec.	23	77	do	Married	do	.	.	6 months	The Overseers	4 yrs	do	Stationary	Periodical.	
1853															
4214	Feb.	1	34	Male	Single	Epilepsy,	.	.	years	Probate Court	4 yrs	do	do		
4215	do	2	26	do	do	Love affair,	.	.	months	do	4 yrs	Discharged	Recovered		

TABULAR VIEW—Continued.

No.	Time of Admis's'n.	Age when admitted.	Sex.	Civil condition.	Supposed Cause.	Duration before admission.	By whom committed.	Time spent in the Hospital.	Discharged or Remaining.	In what state.	Suicidal. Hereditary.	Homicidal. Periodical.
1853												
4251	Mar. 28	35	Female	Single	Unknown, 2 years	The Overseers	4 yrs 9 mths	Remains	Improved		Periodical.
4295	Apr. 29	45	do	Unknown	do	. . . Unknown	Probate Court	4 yrs	Discharged	do		
4328	June 3	23	Male	Single	Masturbation, 3 years	do	4 yrs 5 mths	Remains	Stationary		
4349	do 23	38	Female	Married	Unknown, 2 months	do	4 yrs 5 mths	do	Improved		
4388	Aug. 26	56	Male	Widower	Fright, 10 years	The Overseers	3 yrs 4 mths	Discharged	Recovered		
4394	Sept. 1	15	Female	Single	Unknown, 3 months	Probate Court	4 yrs 3 mths	do	Improved		
4395	do 2	39	do	Married	do	. . . Unknown	The Overseers	4 yrs 3 mths	Remains	Stationary		do
4401	do 9	46	Male	do	Injury on head, 1 week	Probate Court	4 yrs 3 mths	do	do		
4405	do 16	19	do	Single	Followed fever, 8 months	do	3 yrs 7 mths	Discharged	do		
4409	do 20	32	Female	Married	Unknown, 10 do	do	4 yrs 2 mths	Remains	do		
4411	do 22	17	do	Single	do	. . . 3 weeks	do	4 yrs 2 mths	Discharged	Improved		
4412	do 22	46	Male	Married	Epilepsy, 1 do	The Overseers	4 yrs 2 mths	Remains	Stationary	Hereditary.	Periodical.
4414	do 23	23	Female	do	Unknown, 4 do	do	4 yrs 2 mths	do	do		
4427	Oct. 11	28	do	Widow	Ill health, 3 do	Probate Court	3 yrs 7 mths	Discharged	Improved		do
4431	do 19	30	do	Married	Over exertion, 15 do	do	4 yrs 2 mths	Remains	Stationary		
4440	Nov. 4	15	Male	Single	Idiocy, 5 months	Munic'l Court	3 yrs	Died	Diarrhea		
4447	do 21	26	Female	Married	Unknown, 1 year	Probate Court	4 yrs	Remains	Stationary	Hereditary.	
4476	Dec. 15	40	Male	Unknown	do	. . . 1 month	do	4 yrs	do	Improved		
4478	do 26	40	Female	Single	do	. . . 12 years	Sup. J. Court	3 yrs 11 mths	do	Stationary		Homicide.
4482	Jan. 3	42	do	Unknown	do	. . . 2 weeks	Probate Court	3 yrs	Discharged	Improved		
4484	do 4	27	do	Single	do	. . . 20 years	The Overseers	3 yrs 11 mths	Remains	do		
4493	do 13	63	Male	Widower	do	. . . 3 do	Probate Court	3 yrs 10 mths	do	Stationary		Periodical.
4497	do 16	59	do	Married	Intemperance, 2 days	The Overseers	3 yrs 4 mths	Died	do		
4500	do 18	45	do	do	Unknown, 1 year	Probate Court	3 yrs 9 mths	Remains	Improved		
4520	Feb. 29	39	Female	Single	do	. . . 16 years	The Overseers	3 yrs 9 mths	do	do		
4532	Mar. 15	40	Male	do	Love affair and religion	. . . 20 do	Probate Court	3 yrs 7 mths	do	Not improved		
4566	Apr. 13	42	Female	do	Unknown, Unknown	do	3 yrs	Discharged	Improved		
4568	do 14	40	do	Unknown	Epilepsy, do	Munic'l Court	3 yrs 7 mths	Remains	do		
4570	do 20	38	do	Single	Unknown, years	Probate Court	3 yrs	Died	Consumption		
4573	do 24	33	do	do	do	. . . Unknown	do	3 yrs	Discharged	Improved		
4578	do 27	30	do	do	do	. . . do	Gov. warrant	3 yrs 9 mths	do	do		
4582	do 28	23	do	do	do	. . . do						

TABULAR VIEW—Continued.

No.	Time of Admiss'n.	Age when admitted.	Sex.	Civil condition.	Supposed Cause.	Duration before admission.	By whom committed.	Time spent in the Hospital.	Discharged or Remaining.	In what state.	Suicidal. Hereditary.	Homicidal. Periodical.
4773	1855 Jan.	19	Male	Single	Unknown,	Unknown	Gov. warrant	2 yrs 11 mths	Remains	Improved		
4788	Feb.	2	do	do	do	do	C. C. Pleas	2 yrs 10 mths	do	do		
4791	do	17	Female	Married	do	4 years	Probate Court	2 yrs 10 mths	do	do		
4795	do	20	Male	do	do	1 week	do	2 yrs 10 mths	do	do		
4798	do	29	Female	Single	do	6 years	do	2 yrs 10 mths	do	do		
4809	Mar.	30	Male	do	Masturbation,	3 weeks	do	1 yr 3 mths	Discharged	Recovered		
4832	Apr.	18	do	Married	do	3 years	do	2 yrs 8 mths	Remains	Improved	Pauper from Ireland.	
4840	do	27	Female	Single	Spiritualism,	4 months	do	2 yrs 7 mths	Discharged	Improved		
4846	May	7	Male	do	Unknown,	6 years	do	2 yrs 7 mths	Remains	do		
4848	do	8	Female	Married	Masturbation,	2 months	do	1 yr 4 mths	Died	Old age		
4851	do	77	Female	do	Unknown,	5 years	do	2 yrs 7 mths	Remains	Improved	Hereditary.	
4853	do	40	Male	do	Spiritualism,	3 months	do	1 yr 12 days	Discharged	Improved		
4854	do	59	Female	Widow	Death of husband,	5 years	do	2 yrs 6 mths	Remains	Improved		
4856	June	7	Male	Single	Masturbation,	6 months	The Overseers	2 yrs 6 mths	Remains	Improved		
4858	do	9	Female	Married	Turn of life,	6 months	Probate Court	2 yrs 6 mths	Remains	Improved	Pauper from Ireland.	
4859	do	11	do	do	Unknown,	Unknown	do	2 yrs 6 mths	Discharged			
4861	do	15	do	Single	do	2 months	do	2 yrs 6 mths	Remains	Epilepsy		
4862	do	18	do	do	do	6 years	do	2 yrs 6 mths	Died			
4865	do	23	do	Married	do	3 do	do	2 yrs 5 mths	Remains		do	do
4873	July	7	Male	do	do	Unknown	do	2 yrs 5 mths	do	do	do	do
4875	do	10	Female	do	do	1 month	do	2 yrs 5 mths	do	do	do	do
4882	do	16	do	Single	do	6 months	do	2 yrs 5 mths	do	do	do	do
4887	do	28	do	do	do	6 years	do	16 mths 4 days	do	do	Hereditary.	
4894	do	24	do	Married	Ill health,	weeks	do	1 yr 6 mths	Discharged	Improved		
4898	Aug.	16	do	do	Spiritualism,	Unknown	do	1 yr 3 mths	Remains	do		
4902	do	30	Male	Married	Domestic trouble,	4 years	do	2 yrs 2 mths	Discharged	do		
4907	do	27	Female	Single	Millerism,	Unknown	do	1 yr 10 mths	do	do		
4909	Sept.	4	do	do	do	2 weeks	do	2 yrs 4 mths	do	do		
4916	do	5	do	Widow	Loss of husband,	Unknown	do	1 yr 4 mths	do	Recovered		
4920	do	22	Male	Married	Unknown,	1 week	do	2 yrs 2 mths	Remains			
4927	do	32	do	Single	do	Unknown	do	2 yrs 2 mths	do			
4928	do	40	do	do	do	Unknown	do	13 yrs 20 days	do			
4929	Oct.	12	Female	Widow	do	do	do	1 yr 1 mth	Discharged	Improved	Pauper from Ireland.	
4930	do	13	Male	Unknown	do	do	do	2 yrs	Remains			
4931	do	30	Female	Married	do	do	do					

4930	do	13	26	Female	Married	Wound on head,	5 months	Probate Court	13 mths	Discharged	Improved	Pauper from R. I., colored
4936	do	25	50	do	do	Opium eating,	5 years	do	2 yrs 1 mth	Remains	do	Pauper from Ireland.
4944	Nov.	16	24	do	Single	Unknown,	2 months	Justice of Quo.	2 yrs 14 days	do	do	do
4946	do	20	40	do	Married	do	3 years	Probate Court	2 yrs 10 days	do	do	do
4948	do	21	28	Male	Single	do	1 year	do	1 yr 25 days	Discharged	do	do
4949	do	21	19	do	do	do	4 years	do	2 yrs	do	do	do
4951	do	23	30	Female	do	do	2 months	do	2 yrs 7 days	Remains	do	Pauper from New York.
4958	Dec.	4	50	Male	Married	Ill health,	2 months	do	1 yr 11 mths	do	do	Periodical.
4959	do	4	39	Female	do	Puerperal,	weeks	do	1 yr 11 mths	do	do	do
4963	do	14	24	Male	Single	Masturbation,	2 years	do	2 yrs 8 days	do	do	do
4965	do	22	30	do	Unknown	Intemperance,	2 days	do	1 yr	Discharged	do	do
4968	do	26	Unk.	Female	Married	Ill health,	6 months	do	1 yr 7 mths	do	do	do
4971	Jan.	2	40	do	do	Uncontrolled passion,	4 years	do	2 yrs	Remains	do	do
4972	do	3	46	Male	do	Loss of property,	5 do	do	1 yr 3 mths	Discharged	do	do
4981	do	29	33	do	do	Epilepsy,	5 do	do	10 mths 14 ds	do	do	do
4985	do	30	33	do	do	Unknown,	4 do	Justice of Quo.	11 mths 11 ds	do	Recovered	do
4987	Feb.	2	30	Female	Single	Loss of mother,	5 do	Probate Court	1 yr 11 mths	Remains	do	do
4988	do	7	22	do	Married	Unknown,	1 do	The Overseers	1 yr 10 mths	do	Improved	do
4990	do	10	Unk.	do	Single	do	7 months	Probate Court	1 yr 10 mths	do	do	do
4995	do	20	46	do	do	do	3 do	do	1 yr 10 mths	do	do	do
4999	do	26	Unk.	Male	Widower	Jealousy,	1½ years	Sup J. Court	1 yr 6 mths	Eloped	do	do
5000	do	27	40	do	do	Loss of wife,	1 year	Probate Court	1 yr 2 mths	Discharged	do	do
5004	Mar.	6	50	do	Married	Unknown,	2 months	do	11 mths	do	do	do
5006	do	7	65	Female	Single	Domestic affliction,	2 years	The Overseers	1 yr 9 mths	Remains	do	do
5007	do	8	30	do	Married	do	1 year	Probate Court	1 yr 5 mths	Discharged	do	do
5009	do	13	40	do	do	do	1 year	Municipal Court	10 mths 28 ds	do	do	do
5013	do	24	24	do	Single	Unknown,	1 day	do	1 yr 9 mths	Remains	do	do
5017	Apr.	1	71	Male	Married	Domestic affliction,	4 weeks	Probate Court	1 yr 9 mths	do	Improved	do
5022	do	5	40	Female	do	Unknown,	3 do	Justice of Quo.	1 yr 7 mths	Discharged	do	do
5028	do	16	26	Male	Single	Masturbation,	2 do	Probate Court	1 yr 3 mths	do	Improved	do
5032	do	18	18	Female	do	do	8 months	Justice of Quo.	1 yr	do	do	do
5033	do	19	40	do	Married	do	5 do	do	1 yr	Remains	do	do
5035	do	24	35	Male	Widower	Intemperance,	Unknown	Probate Court	10 mths	Discharged	do	do
5040	do	29	47	Female	Married	Religious,	2 weeks	do	1 yr 8 mths	Remains	do	do
5042	May	2	20	do	Single	Seduction,	Unknown	do	1 yr 7 mths	do	do	do
5044	do	8	27	do	Married	Intemperance,	do	Police Court	1 yr 7 mths	do	do	do
5046	do	10	50	do	do	Jealousy,	1 week	Probate Court	1 yr 8 mths	Discharged	do	do
5048	do	12	60	Female	Widow	Spiritualism,	1 do	do	7 mths	Died	Exhaustion	do
5049	do	13	42	do	Single	Ill health,	1 years	do	7 mths 27 ds	Discharged	Improved	do

TABULAR VIEW—Continued.

No.	Time of Admiss'n.	Age when admitted.	Sex.	Civil condition.	Supposed Cause.	Duration before admission.	By whom committed.	Time spent in the Hospital.	Discharged or Remaining.	In what state.	Suicidal. Hereditary.	Homicidal. Periodical.
1856												
5050	May 14	18	Male	Single	Ill health, . . .	Unknown	Probate Court	3 mths 15 dys	Discharged	Recovered		
5053	do 17	45	Female	Unknown	Unknown, . . .	do	Police Court	1 yrs 7 mths	Remains	Improved		
5054	do 17	55	do	Married	do . . .	2 years	do	10 mths	Discharged	do		
5055	do 20	55	Male	Widower	Intemperance, . .	5 months	Probate Court	8 mths 22 dys	do	Improved		
5057	do 22	20	Female	Single	Ill health, . . .	4 weeks	Justice of Quo.	10 mths 18 dys	Died	Consumption		
5059	do 22	43	Male	Married	Loss of wife, . .	Unknown	Police Court	1 yr 7 mths	Remains	do	Pauper from Ireland.	do
5061	do 22	Unk.	Female	do	Unknown, . . .	2 weeks	do	1 yr 7 mths	do	Improved	Hereditary.	do
5068	June 2	30	do	do	Loss of property, .	10 days	Munic'l Court	1 yr	Discharged	Improved	do and Periodical.	
5071	do 3	27	do	Single	Disappointment, .	Unknown	Probate Court	1 yr	Remains	Improved	Pauper from Ireland.	
5073	do 5	Unk.	do	Married	Ill health, . . .	2 years	do	4 mths	Discharged	Improved		
5074	do 7	63	Male	do	Unknown, . . .	3 months	C. C. Pleas	1 yr 6 weeks	Remains	Anemia		
5077	do 11	Unk.	Female	do	Ill health, . . .	1 year	The Overseers	10 mths 10 dys	Died			
5079	do 14	31	do	do	Family trouble, .	3 months	Probate Court	1 yr 6 mths	do			
5082	do 18	35	do	Single	Disappointment, .	3 do	do	7 mths 11 dys	Discharged	Recovered	Pauper from Germany.	
5083	do 19	21	do	do	Unknown, . . .	Unknown	do	7 mths	do	Improved	Hereditary. Irish.	
5084	do 20	50	Male	Married	Palsy, . . .	do	do	5 mths 22 dys	do	Recovered	Pauper from Ireland.	
5086	do 20	25	do	Single	Intemperance, . .	do	Munic'l Court	7 mths 9 dys	do			
5087	do 21	55	Female	Married	Religious, . . .	6 months	Probate Court	1 yr 6 mths	Remains			
5088	do 21	53	Male	Widower	Jealousy, . . .	Unknown	C. C. Pleas	1 yr 6 mths	do		do	do
5089	do 21	45	do	Married	Spiritualism, . .	1 week	Probate Court	1 yr 6 mths	do			
5090	do 23	18	do	Single	Fall from building,	2 years	Police Court	1 yr 6 mths	do			
5096	July 3	26	Female	Married	Loss of child, . .	Unknown	Probate Court	5 mths 23 dys	Died	Consumption		
5097	do 7	23	Male	Single	Disappointment, .	2 years	do	1 yr 5 mths	Remains	Improved		
5099	do 15	50	Female	do	Ill health, . . .	5 years	do	7 mths 26 dys	do	Recovered		
5100	do 16	18	do	do	Masturbation, . .	2 weeks	Police Court	1 yr 5 mths	Discharged	Improved	do	do
5102	do 16	18	do	do	Ill health, . . .	6 do	Justice of Quo.	1 yr 5 mths	Remains	do	do	do
5103	do 16	20	do	do	Epilepsy, . . .	3 months	do	1 yr 5 mths	do		do	do
5104	do 16	35	do	Married	Unknown, . . .	3 months	do	8 mths 6 days	Died	Gangr. lungs	do	do
5105	do 21	70	do	Widow	Old age, . . .	3 months	Probate Court	1 yr 2 mths	do	Old age	do	do
5106	do 21	19	Male	Single	Masturbation, . .	7 years	The Overseers	1 yr 3 mths	Discharged	Improved		
5107	do 22	45	do	do	Intemperance, . .	6 months	Probate Court	1 yrs 4 mths	Remains			
5108	do 23	26	Female	do	Ill health, . . .	3 days	do	7 mths 13 dys	Discharged	Recovered	do	do
5109	do 23	50	do	Married	Unknown, . . .	1 month	do	5 mths 6 dys	do	Improved	Periodical.	

5110	do	26	40	Male	do	Single	Intemperance,	do	Unknown	do	4 mths 27 dys	do	do	do
5111	do	26	26	do	do	Married	Masturbation,	do	do	do	9 mths 27 dys	Sup. Phlebitis	do	do
5115	do	30	37	do	do	Unknown	Injury on head,	do	6 weeks	do	1 yr 3 mths	Improved	do	do
5116	do	31	65	Female	do	Unknown	Unknown,	do	Unknown	do	1 yr 5 mths	Remains	do	do
5117	Aug.	2	30	do	do	Single	Masturbation,	do	do	do	8 mths 28 dys	Discharged	do	do
5118	do	2	15	do	do	do	Unknown,	do	6 years	do	1 yr 3 mths	do	do	do
5119	do	4	38	do	do	Married	Puerperal,	do	30 months	do	5 mths 19 dys	do	do	do
5120	do	8	60	Male	do	Widower	Unknown,	do	Unknown	do	1 yr 4 mths	Remains	do	do
5123	do	12	42	do	do	do	do	do	4 years	do	1 yr 4 mths	do	Improved	do
5124	do	12	48	Female	do	Single	Irregular Menstruation	do	do	do	1 yr	do	do	do
5125	do	13	25	do	do	do	Ill health,	do	4 do	do	10 mths	Discharged	do	do
5126	do	15	65	do	do	Widow	do	do	5 months	do	1 yr	Died	Recovered	do
5127	do	15	45	do	do	Married	Intemperance,	do	do	do	4 mths	Discharged	Recovered	do
5129	do	22	57	Male	do	do	Ill health,	do	1 year	do	1 yr	do	Improved	do
5131	Sept.	1	9	Female	do	Single	Epilepsy,	do	Unknown	do	1 yr 4 mths	Remains	do	do
5132	do	1	70	Male	do	Married	Unknown,	do	do	do	1 yr	Discharged	do	do
5133	do	1	25	Female	do	Single	do	do	do	do	5 mths 6 dys	do	Recovered	do
5135	do	5	56	do	do	Married	Palsy,	do	6 months	do	1 mth 10 dys	do	Stationary	do
5137	do	8	46	Male	do	do	Unknown,	do	18 do	do	1 yr 3 mths	Remains	do	do
5140	do	10	24	Female	do	Single	Ill health,	do	2 do	do	1 yr	do	do	do
5141	do	14	19	do	do	Married	Masturbation,	do	2 years	do	1 yr 3 mths	do	Recovered	do
5142	do	15	60	do	do	do	Intemperance,	do	2 do	do	5 mths	Discharged	do	do
5143	do	18	53	Male	do	do	do	do	Unknown	do	1 yr 3 mths	Remains	do	do
5144	do	19	40	Female	do	do	Ill health,	do	do	do	9 mths 20 dys	Discharged	do	do
5145	do	19	29	Male	do	do	Religious,	do	do	do	5 mths 16 dys	do	Improved	do
5148	do	24	55	Female	do	do	Unknown,	do	1 month	do	11 mths	do	Recovered	do
5149	do	25	28	Male	do	Single	Masturbation,	do	Unknown	do	2 mths	do	do	do
5151	do	26	45	Female	do	Married	Ill health,	do	7 years	do	1 yr 3 mths	Remains	do	do
5152	do	26	23	Male	do	Single	Confinement in prison,	do	10 days	do	4 mths 25 dys	Discharged	Improved	do
5153	do	26	25	do	do	do	Intemperance,	do	Unknown	do	11 mths 22 dys	do	do	do
5154	do	27	50	do	do	Married	Jealousy,	do	6 months	do	2 mths 8 dys	do	Recovered	do
5155	do	29	22	Female	do	Single	Masturbation,	do	3 do	do	1 yr 2 mths	Remains	Improved	do
5156	do	30	22	Male	do	do	do	do	4 do	do	7 mths 27 dys	Discharged	do	do
5157	do	30	20	Female	do	do	do	do	Unknown	do	1 yr 2 mths	Remains	do	do
5158	Oct.	1	36	do	do	do	do	do	20 years	do	1 yr 2 mths	do	do	do
5160	do	2	50	Male	do	do	Intemperance,	do	Unknown	do	5 mths 1 day	Discharged	do	do
5161	do	3	50	Female	do	do	Masturbation,	do	do	do	7 mths 6 dys	do	Recovered	do
5162	do	4	32	do	do	do	do	do	do	do	1 yr 2 mths	do	Erysipelas	do
5163	do	10	56	Male	do	Married	Jealousy,	do	7 years	do	5 mths 15 dys	Died	Recovered	do
5164	do	11	30	do	do	Single	Intemperance,	do	2 months	do	4 mths	Discharged	Recovered	do

Pauper from Ireland.

do do do

Hereditary.

Homicide.
Periodical.

do

Hereditary.

Pauper from Ireland.

TABULAR VIEW—Continued.

No.	Time of Admiss'n.	Age when admit- ted.	Sex.	Civil condition.	Supposed Cause.	Duration before admission.	By whom committed.	Time spent in the Hospital.	Discharged or Remaining.	In what state.	Suicidal. Hereditary.	Home- lidal. Periodical.
1856												
5166	Oct. 11	23	Male	Single	Masturbation,	5 years	The Overseers	1 yr 2 mths	Remains	Recovered	Pauper from Ireland.	
5167	do 13		do	do	Unknown,	Unknown	Police Court	2 mths 19 dys	Discharged	do		
5168	do 14	25	do	do	Ill health,	1 week	Justice of Quo.	2 mths 20 dys	do	Improved	do	do
5169	do 15	44	Female	Married	Intemperance,	3 months	do	1 yr 2 mths	Remains	Consumption	do	do
5170	do 15	24	do	do	Unknown,	Unknown	do	10 mths 14 dys	Died	Improved	do	do
5171	do 15	35	do	Single	do	2 years	Probate Court	1 yr 1 mth	Discharged	do	do	do
5172	do 17	40	do	Widow	Loss of husband,	1 do	do	1 yr 2 mths	Remains	do	do	do
5173	do 18	50	Male	Married	Loss of property,	1 do	do	1 yrs 2 mths	do	do	do	do
5174	do 18	45	do	do	Hard work,	1 month	do	3 mths 7 dys	Discharged	do	do	do
5175	do 21	45	do	do	do	Unknown	Justice of Quo.	1 yr 2 mths	Remains	do	do	do
5176	do 22	65	do	Single	Intemperance,	5 weeks	Probate Court	5 mths 2 dys	Discharged	do	do	N. H.
5177	do 22	30	do	do	Millerism,	1 year	Justice of Quo.	8 mths 17 dys	do	Recovered	do	N. H.
5178	do 24	25	Female	do	do	1½ do	Probate Court	1 yr 1 mth	Remains	do	do	Ireland.
5179	do 28	34	do	Married	Jealousy,	2 months	The Overseers	1 yr 1 mth	Discharged	do	Hereditary.	Periodical.
5180	do 29	40	do	Single	Unknown,	years	Probate Court	7 mths 8 dys	do	do	Pauper from Ireland.	
5181	do 30	21	do	Married	do	1 month	do	11 mths 23 dys	do	do		
5182	Nov. 3	67	Male	do	Jealousy,	3 years	do	15 mths	do	do		
5183	do 4	39	do	Single	Intemperance,	1 do	do	1 yr 1 mth	Remains	do		
5184	do 5	25	Female	do	do	1 do	Justice of Quo.	1 yr 1 mth	do	do		
5185	do 7	35	do	Married	Masturbation,	3 do	Probate Court	1 yr 1 mth	do	do		
5186	do 8	82	Male	do	Loss of husband,	5 weeks	The Overseers	1 yr	Discharged	Improved	Hereditary.	Periodical.
5187	do 10	45	Female	do	Old age,	2 do	Probate Court	1 mth 25 dys	do	do		
5188	do 10	83	Male	do	Breaking of arm,	3 months	do	6 mths	do	Recovered		
5189	do 11	45	do	do	Old age,	2 weeks	Justice of Quo.	1 yr 1 mth	Remains	do	Pauper from England.	
5190	do 11	30	do	do	Unknown,	1 year	do	6 mths 4 dys	Discharged	do	Pauper from Ireland.	
5191	do 11	33	Female	do	do	6 months	Probate Court	8 mths	do	do		
5192	do 12	40	do	do	Ill health,	3 years	do	1 yr 1 mth	do	Improved	do	do
5193	do 15	21	Male	Single	Unknown,	2 do	The Overseers	8 mths 6 dys	Remains	do	do	do
5195	do 17	17	do	do	Epilepsy,	2 days	Probate Court	1 yr 1 mth	Discharged	[haustion		
5196	do 24	24	do	Married	Ill health,	Unknown	do	2 mths 3 dys	Died	Maniac' ex-		
5197	do 29	23	Female	do	Intemperance,	3 weeks	do	1 yr	Remains	Improved		
5198	Dec. 3	23	Male	Single	Religious excitement,	3 years	do	8 mths 15 dys	Died	Chron. Men'g		
5199	do 3	55	do	Married	Unknown,	4 do	do					
					Blow on head,							

[illegible]

TABULAR VIEW—Continued.

No.	Time of Admiss'n.	Age when admitted.	Sex.	Civil condition.	Supposed Cause.	Duration before admission.	By whom committed.	Time spent in the Hospital.	Discharged or Remaining.	In what state.	Suicidal. Hereditary.	Homicidal. Periodical.
1857												
5239	Jan. 26	30	Male	Single			Justice P. & Q. Probate Court	2 mths	Discharged	Improved	Pauper from Ireland.	
5240	do 26	40	do	do			The Overseers	8 dys	do	do		
5241	do 27	40	Female	Married	20 years		Justice P. & Q. Probate Court	10 dys	do	Recovered	Hereditary & Periodical.	
5242	do 29		do	do	6 months		do	26 dys	do	do	Pauper from Ireland.	
5243	do 29		do	do	1 year		do	2 dys	Remains	Improved	do	do
5244	do 29		Male				C. C. Pleas Probate Court	2 dys	do	do	do	do
5245	Feb. 2	40	do	Single			do	10 mths	Discharged	do		
5246	do 3	57	Female	Married	Hard labor, .	3 months	do	2 mths	Remains	do		
5247	do 4	64	Male	do	6 weeks		do	10 mths	Discharged	Recovered		
5248	do 4	22	Female	Single	3 years		The Overseers	3 mths	do	do		
5249	do 6	55	Male	Married	11 do		Probate Court	1 mth	do	Improved	Pauper from Canada.	
5250	do 7	44	do	Single			The Overseers	8 mths	do	Recovered		
5251	do 7	18	do	do	3 do		do	22 dys	do	do		
5252	do 9	15	Female	do	3 years		Probate Court	6 mths	Remains	Improved		
5253	do 10	53	Male	Married	15 years		do	14 dys	Discharged	do		
5254	do 13	28	Female	do	2 months		do	12 dys	do	do		
5255	do 13	57	do	Single			The Overseers	5 mths	do	Recovered	Periodical.	
5256	do 13	38	Male	Married	Intemperance, .	18 years	Private Bond	12 dys	do	do	Hereditary.	
5257	do 20	24	Female	Single			The Overseers	3 mths	do	do	Periodical.	
5258	do 21	40	Male	do			Private Bond	18 dys	do	do		
5259	do 24	34	do	Married			Probate Court	9 mths	do	do		
5260	do 25	60	do	do	2 years		do	4 dys	Remains	Stationary		
5261	do 25	45	Female	do	4 do		do	3 dys	do	do		
5262	do 25	60	do	Widow	4 do		Munic'l Court	9 mths	Discharged	Recovered		
5263	do 25	20	do	Single	20 do		The Overseers	8 mths	Remains	Improved	Hereditary & Periodical.	
5264	do 26	25	do	Married			do	2 dys	do	do		
5265	do 26	70	Male	do	do		Justice P. & Q. Probate Court	14 dys	Died	Exhaustion		
5266	Mar. 4	16	Female	Single	2 months		do	6 mths	do	do	Periodical.	
5267	do 5		Male	do	1 do		do	4 mths	Discharged	Recovered		
5268	do 5	40	Female	Married	Religious excitement, .	2 years	Justice P. & Q. Probate Court	2 mths	do	do		
5269	do 5	30	do	do			do	8 mths	Remains	Improved	Pauper from Ireland.	
5270	do 12	35	do	do			The Overseers	26 dys	do	do	do	Scotland.
5271	do 13	35	Male	do	Family trouble, .	1 month	Private Bond	6 mths	Discharged	Recovered		

6272	do	18	Single	do	Female	do	Single	do	2 do	Probate Court	3 mths 16 dys	do	Improved	do	Periodical.	Hereditary.
6273	do	19	do	do	do	do	do	do	3 do	do	8 mths 12 dys	Remains	Recovered	do	do	do
6274	do	19	Married	do	do	do	do	do	6 weeks	do	1 mth 26 dys	Discharged	do	do	do	do
6275	do	20	do	do	Male	do	do	do	1 year	do	8 mths 11 dys	Remains	do	do	do	do
6276	do	20	do	do	Female	do	do	do	4 weeks	do	5 mths 9 dys	Discharged	do	do	do	do
6277	do	20	Single	do	Male	do	do	do	5 years	The Overseers	1 mth	do	Improved	do	do	do
6278	do	21	do	do	do	do	do	do	12 do	C. C. Pleas	8 mths 10 dys	Remains	do	do	do	do
6279	do	23	Married	do	do	do	do	do		Probate Court	3 mths 20 dys	Died	do	do	do	do
6280	do	23	do	do	Female	do	do	do		The Overseers	2 mths 12 dys	Discharged	do	do	do	do
6281	do	24	do	do	Male	do	do	do		Probate Court	5 mths 24 dys	do	Recovered	do	do	do
6282	do	24	Single	do	Female	do	do	do	3 months	do	8 mths 7 dys	Remains	Improved	do	do	do
6283	do	24	Married	do	do	do	do	do		Overseers	1 mth	Discharged	Recovered	do	do	do
6284	do	25	Single	do	Male	do	do	do		Munic'l Court	6 mths	Eloped	do	do	do	do
6285	do	25	Married	do	do	do	do	do		do	4 mths	Discharged	do	do	do	do
6286	do	26	do	do	do	do	do	do	2 years	Justice P. & Q.	7 mths 9 dys	do	do	do	do	do
6287	do	27	Single	do	do	do	do	do	1 month	Police Court	1 mth 27 dys	do	do	do	do	do
6288	do	27	Married	do	do	do	do	do	2 weeks	do	3 mths	do	do	do	do	do
6289	do	28	do	do	Female	do	do	do		Private Bond	4 dys	Died	Typho Mania	do	do	do
6290	do	31	do	do	Male	do	do	do		Overseers	8 mths	Remains	Improved	do	do	do
6291	Apr.	2	do	do	do	do	do	do		Private Bond	4 mths	Discharged	Recovered	do	do	do
6292	do	3	Single	do	Female	do	do	do	Suppression of Menses,	do	7 mths 22 dys	do	do	do	do	do
6293	do	8	Widow	do	do	do	do	do		Overseers	1 mth	do	do	do	do	do
6294	do	10	Married	do	Male	do	do	do	6 months	Probate Court	5 mths	do	do	do	do	do
6295	do	10	do	do	Female	do	do	do	1 month	do	7 mths	do	do	do	do	do
6296	do	13	do	do	do	do	do	do	6 weeks	do	7 mths	do	do	do	do	do
6297	do	13	do	do	Female	do	do	do	3 do	Overseers	1 mth 10 dys	Died	Typho Mania	do	do	do
6298	do	15	do	do	do	do	do	do	3 do	Probate Court	6 mths 18 dys	Discharged	Improved	do	do	do
6299	do	16	do	do	Male	do	do	do	1 month	do	5 mths	do	Recovered	do	do	do
6300	do	17	Single	do	Female	do	do	do	3 years	Police Court	7 mths 12 dys	Remains	Improved	do	do	do
6301	do	17	Married	do	Male	do	do	do		Justice P. & Q.	7 mths	Discharged	Recovered	do	do	do
6302	do	18	do	do	Female	do	do	do		Probate Court	7 mths 11 dys	Remains	Stationary	do	do	do
6303	do	22	Single	do	do	do	do	do	15 years	Private Bond	7 mths 8 dys	do	Improved	do	do	do
6304	do	22	Married	do	Male	do	do	do		Munic'l Court	3 mths 19 dys	Discharged	Recovered	do	do	do
6305	do	22	do	do	do	do	do	do	1 year	Probate Court	7 mths 5 dys	Remains	Improved	do	do	do
6306	do	25	do	do	Female	do	do	do	8 months	Police Court	7 mths 3 dys	do	do	do	do	do
6307	do	27	Widower	do	Male	do	do	do	25 years	Probate Court	7 mths 3 dys	do	do	do	do	do
6308	do	27	Widow	do	Female	do	do	do		do	4 mths 21 dys	Discharged	Recovered	do	do	do
6309	do	27	Single	do	Male	do	do	do	3 do	Private Bond	6 mths 8 dys	do	Improved	do	do	do
6310	do	28	do	do	Female	do	do	do	3 weeks	Probate Court	1 mth 8 dys	do	Recovered	do	do	do
6311	do	28	Married	do	do	do	do	do	2 months	do	7 mths 1 day	Remains	Improved	do	do	do
6312	do	29	Single	do	do	do	do	do	3 weeks	Police Court	7 mths 1 day	do	do	do	do	do

TABULAR VIEW—Continued.

No.	Time of Admiss'n.	Age when admitted.	Sex.	Civil condition.	Supposed Cause.	Duration before admission.	By whom committed.	Time spent in the Hospital.	Discharged or Remaining.	In what state.	Suicidal. Hereditary.	Homicidal. Periodical.
5312	1857 May 1	45	Female	Single		6 years	Probate Court	7 mths	Remains	Improved	Hereditary.	
5313	do 1	30	do	Married		3 months	Munic'l Court	7 mths	do	do		
5314	do 6	20	Male	Single		1 week	Probate Court	7 mths	do	do		
5315	do 7	45	Female	Married		15 years	Overseers	20 dys	Discharged	Recovered		
5316	do 7	25	Male	Single	Epilepsy,	10 do	Private Bond	6 mths 23 dys	Remains	Improved	do	do
5317	do 8	30	do	Married		1 do	Probate Court	3 mths	Discharged	Recovered	do	do
5318	do 9	40	do	do	Ill health,	2 weeks	do	6 mths 21 dys	Remains	Improved	do	do
5319	do 11	18	Female	Single		1 month	do	5 mths 6 dys	Discharged	do	do	do
5320	do 11	26	Male	do	Masturbation,	6 years	Police Court	6 mths 19 dys	Remains	do	do	do
5321	do 12	30	do	Married		1 month	Overseers	6 mths 18 dys	do	do		
5322	do 14	30	do	Single		1 year	do	3 mths	Discharged	Recovered		
5323	do 16	56	Female	Married		1 year	do	1 week	Died	Pneumonia		
5324	do 16	24	do	Single	Love affair,	1 do	Probate Court	6 mths 14 dys	Remains	Improved	do	Germany.
5325	do 18	37	do	Married		1 week	Private Bond	2 weeks 5 dys	Discharged	Recovered	do	Ireland.
5326	do 18	30	do	Single		2 years	Munic'l Court	6 mths 23 dys	Remains	Improved		
5327	do 19	40	Male	Married		3 weeks	Probate Court	2 mths 17 dys	Discharged	do		
5328	do 19	40	Female	Widow		6 months	Munic'l Court	6 mths 11 dys	Remains	do		
5329	do 20	48	Male	Widower		3 years	Police Court	6 mths 10 dys	do	do	do	do
5330	do 22	34	do	Single		3 years	Probate Court	6 mths 8 dys	do	do	do	do
5331	do 23	48	do	do	Intemperance,		do	6 mths 7 dys	do	do		
5332	do 25	52	Female	Married		2 months	Private Bond	3 mths 6 dys	Discharged	Recovered	do	do
5333	do 26	58	Male	do			Probate Court	2 mths 15 dys	do	do		
5334	do 29	25	do	Single	Epilepsy,	3 years	Police Court	6 mths 1 day	Remains	Epilepsy	do	do
5335	June 1	35	Female	do	do	1 week	do	3 mths 12 dys	Died			
5336	do 1	32	Male	Married	Turn of life,	3 weeks	Judge Probate	5 mths 28 dys	Remains			
5337	do 1	48	Female	do		3 months	Probate Court	5 mths 27 dys	do			
5338	do 2	35	do	Single		1 week	Private Bond	5 mths 28 dys	do			
5339	do 3	58	do	do	Unknown,	1 week	Probate Court	1 mth 15 dys	Discharged	Recovered	Hereditary.	
5340	do 9	44	do	Married	Religious,	13 years	Private Bond	2 mths 7 dys	Died			
5341	do 9	50	Male	Single	Unknown,		Probate Court	5 mths 21 dys	Remains			
5342	do 9	25	do	do		10 do	Justice P. & Q.	5 mths 21 dys	do			
5343	do 11		do	do		1 month	Probate Court	5 mths 19 dys	do			
5344	do 12	45	do	Married				1 mth 12 dys	Died	Del. Tremens		

[illegible]

TABULAR VIEW—Continued.

No.	Time of Admiss'n.	Age when admitted.	Sex.	Civil condition.	Supposed Cause.	Duration before admission.	By whom committed.	Time spent in the Hospital.	Discharged or Remaining.	In what state.	Suicidal. Hereditary.	Homicidal. Periodical.
1857												
5385	Aug. 3	25	Female	Widow		4 weeks	Justice P. & Q.	3 mths 27 dys	Remains		Pauper from Ireland.	
5386	do 3	45	do	Married		1 week	Probate Court	14 dys	Died		do	do
5387	do 6	63	do	do		1 year	Private Bond	3 mths 24 dys	Remains			
5388	do 6	55	do	do		3 do	Probate Court	3 mths 24 dys	do			
5389	do 10	48	Male	do	Fall from building,	3 months	Private Bond	3 mths 20 dys	do			
5390	do 10	20	do	Single	Unknown, . . .	1 month	Probate Court	3 mths 20 dys	do			
5391	do 10	36	do	Married		2 do	Overseers	1 mth 21 dys	Discharged	Recovered		
5392	do 15	72	Female	Widow			Private Bond	17 dys	Died	Palsy		
5393	do 15	56	Male	Married		38 years	do	22 dys	Discharged	Recovered		
5394	do 17	24	do	Single		1 week	Overseers	2 mths 22 dys	do			
5395	do 18	37	do	Married		1 year	Probate Court	3 mths 12 dys	Remains		do	do
5396	do 19	40	Female	do		1 week	do	3 mths 11 dys	do		do	do
5397	do 20	33	do	Single		1 year	do	1 mth 10 dys	Discharged	do	do	N. H.
5398	do 20	25	do	do		6 weeks	do	3 mths 10 dys	Remains		do	Ireland.
5399	do 20	35	Male	do		30 years	do	2 mths 23 dys	Discharged	Improved	do	New York.
5400	do 21	50	Female	Married			Overseers	1 mth	do	Recovered		
5401	do 24	81	do	Single		2 weeks	Private Bond	1 mth 21 dys	do			
5402	do 26	48	do	Married		1 month	do	2 mths 14 dys	do			
5403	do 26	18	do	Single			Probate Court	3 mths 4 dys	Remains			
5404	do 26	44	Male	Married		3 years	do	3 mths 4 dys	do			
5405	do 27	45	Female	do			Munic'l Court	1 mth 14 dys	Discharged	do		
5406	do 27	45	Male	do		4 do	Probate Court	1 mth 15 dys	do			
5407	do 29	77	Female	Widow			Private Bond	7 dys	do			
5408	do 31	25	do	Single		1 week	Probate Court	3 mths	Remains		do	Ireland.
5409	Sept. 1	20	Male	do	do . . .	9 days	Overseers	3 mths	do			
5410	do 1	50	Female	do		15 years	Probate Court	1 mth 8 dys	Discharged			
5411	do 1	44	do	do		3 months	Private Bond	2 mths 29 dys	Remains			
5412	do 2		Male	do		1 week	do	2 mths	Discharged			
5413	do 9	33	Female	Widow		1 do	Munic'l Court	2 mths 21 dys	Remains	do	Hereditary.	Periodical.
5414	do 15	42	Male	Married	do . . .	4 years	Private Bond	1 mth 24 dys	Discharged			
5415	do 15	40	Female	Widow	Loss of property,		Overseers	2 mths 15 dys	Remains			
5416	do 18	25	Male	Single		2 months	Probate Court	24 dys	Discharged	do		
5417	do 19	45	Female	do		11 years	Private Bond	2 mths 11 dys	Remains			

TABULAR VIEW—Continued.

No.	Time of Admission.	Age when admitted.	Sex.	Civil condition.	Supposed Cause.	Duration before admission.	By whom committed.	Time spent in the Hospital.	Discharged or Remaining.	In what state.	Suicidal. Hereditary.	Homicidal. Periodical.
5458	1857 Nov. 9	44	Female	Married		4 years	Private Bond	21 dys	Remains			
5459	do 11	28	do	do		4 do	Probate Court	19 dys	do			
5460	do 18	40	Male	do		2 do	Justice P. & Q.	12 dys	do			
5461	do 18	40	do	do		Several yrs	do	12 dys	do			
5462	do 18	50	do	Single		Probate Court	do	12 dys	do			
5463	do 19	52	Female	Married		do	do	11 dys	do			
5464	do 23	65	Male	do	Epilepsy, . . .	2 years	do	7 dys	do			
5465	do 23		do	do		3 days	do	7 dys	do			
5466	do 29	28	Female	do		11 months	Private Bond	1 day	do			
5467	do 30	66	Male	do			do		do			
5468	do 30		do	do			Probate Court		do			
5469	do 30		Female	Single			do		do			

Manual labor is perhaps one of our most reliable curative resources.

Every year's experience gives us additional proof of the value of well directed labor in the care and cure of the insane.

The ordinary work of the farm and gardens is best, and in the warm season these supply a large number of patients with sufficient employment. But the amount of work performed by the patients on the farm and in the gardens, cannot be estimated by the crops grown upon the land, as probably much more labor has been expended in improvements on the farm and grounds of the hospital by laying down drains, filling up old foundations, removing and building walls, grading, reclaiming land, &c. In the winter it is much more difficult to provide suitable and sufficient employment for all who would be benefited thereby.

Some are busied in and about the barn and stables. A few work in the cellars, removing rubbish, &c. Others assist in the carpenter's shop, repairing broken furniture for the house or tools for the farm. We always make and repair our own mattresses. We have on several occasions done some work for upholsterers in the city, and in the early part of the year made some clothing for manufacturers. Still for a great number we have not sufficient employment, and this difficulty is probably not confined to this hospital. We have carefully examined this subject, and thought much of the propriety of establishing for ourselves some kind of business in which many of the patients can engage. During the past year, it has been difficult to procure work from abroad, and of late, owing to the depressed state of business, utterly impossible.

The establishment of any business of our own seems of less consequence since the removal of so many of the State paupers. Ability to labor being one of the chief reasons of their removal. Still it should be remembered that in every hospital for the insane there is a considerable number of patients who must remain for a long time. Some of them while under the control of an institution are not much deranged, but when at large, exhibit propensities dangerous to the community, and therefore require the care and discipline of an asylum.

In every hospital for the insane this class must increase.

Consequently it is the part of a wise and humane economy to provide for them some regular and available employment. Systematic labor is essential to their quiet and comfort, and often to their restoration to mental health.

Nothing so soon interests the visitor at an English asylum as the amount of useful labor performed by the inmates. We have seen the result of a thorough system of employment in an English asylum for the insane, which might shame almost any industrial institution in our country.

We would not impose upon the poor insane the burden of servants, or permit them under any circumstances to perform menial service as such, but by pleasant daily tasks of labor, judiciously chosen and directed, assisted and animated by proper helps, lead them back to correct habits of life, and restore them to the enjoyment of rational beings.

In the application of labor as a remedial measure, we engage the healthy powers of the mind and thereby bring quiet and rest to those that are diseased. If a patient laboring under any particular delusion or diseased impression be persuaded to perform any task, he must give his undivided attention to it if he does it well. While his mind is thus occupied it is necessarily diverted from his disease; and in proportion as cheerful labor is continued will be the freedom from delusion and restoration to health. It will restore regularity to the operations of the mind. It will give health and strength to the body and bring about a new and healthy class of impressions.

Next in importance to manual labor is mental occupation.

You will observe as you visit this or any similar institution a few, comparatively, at work; some engaged in playing games, others reading a newspaper, or perhaps a book. Two or three perhaps studying a picture or map; while a large number will be found sitting about, dull, idle, silent, manifesting no interest in any thing around them, leaning for support on the corners and projections of the apartment, gazing into vacancy—with a listless stare, and if disturbed by another patient, muttering in broken and incoherent phrases, desiring nothing but the hour of surfeit at the table, or that of a more profound forgetfulness in sleep.

When the weather is propitious, they walk or ride, but this soon becomes mechanical and affords no real enjoyment; they

notice but little and converse less during the walk or ride, and are not much refreshed and exhilarated when they return.

This class of patients make but little trouble in an asylum, and are too frequently overlooked and neglected, and if not already fatuous soon become so.

They have apparently good physical health, are quiet in their habits, and unable to command attention by loss of power, or enlist sympathy by absence of visible sufferings, consequently they are forgotten in the pleasanter task of attending to the less needy but more susceptible patients of the ward. We believe this class require much of our attention; they need to be aroused into mental activity. Their minds should be awakened by some daily exercise, opening to them new and varied scenes. Thus assisted in labor and amusement, their minds will regain some strength; their memories improve; their habits become better; and by perseverance many will be rendered capable of a much higher scale of enjoyment, and saved from a state of hopeless fatuity. Controlled by such considerations we take advantage of every method for exercising and improving the minds of our patients. And we have the satisfaction of witnessing in many cases, not only recovery from insanity but the acquisition of an improved state of mind, apparent to the friends, and appreciated by the patients themselves.

There are two classes of patients brought to the hospital worthy of notice, as being apparently improper subjects for our care.

We have received during the year several aged people, suffering simply from mental decay, and whose friends are ready to admit that the patients are brought here to die. All treatment in such cases must be quite unavailing. Proper attention to hygienic rules is all that can be suggested.

The organs of the senses in aged people have suffered such physical changes that impressions are conveyed to the brain in a dim and indistinct manner. So that while the old man judges correctly on the events of his early life, his opinion of the things going on about him must be taken with much allowance. As disease progresses, sensations produced by objects around him are so slight and the ideas connected with them so confused that the individual loses all power of concentration.

So that while the occurrences of to-day are not regarded, the memory of childhood is strong and clear. "The years have now come in which he has no pleasure." "The grasshopper shall be a burden and desire shall fail."

He now contends for the attentions bestowed upon children, and at the same time, feebly endeavors to maintain patriarchal authority. Placed by disease and decay in false relations to their family and friends they become the objects of incessant care and anxiety. There is an obvious impropriety in committing this class to our care. They cannot recover, and but seldom improve. Their waning existence should be made cheerful and attractive, by all the delicate attentions of home. Although, from inability to associate the ideas connected with things going on around them, they may not suffer keenly the loss of home with its accustomed pleasures. Still, a hospital in its best estate is but a poor exchange for the kind offices of love and affection.

The other class are cases of recent disease, assuming very nearly the form of maniacal excitement, occasionally ushered in by slight depression, but more generally quite suddenly without any of the usual premonitory symptoms.

Not unfrequently is there a manifestation of great fear or violence which passes rapidly into delirium, and the patient is brought to us in a peculiarly drooping and sinking condition. The tongue is loaded, the pulse small and frequent, the features contracted and expressive of great anxiety. The mind of the patient seems disturbed by vague and fearful apprehensions which are expressed by low and indistinct muttering.

These cases generally prove fatal in a few days. Death resulting from exhaustion of the vital powers consequent upon prolonged excitement, fasting and absence of sleep.

This disease seems to be aggravated by the agitation of travelling and change of location.

Cathartics have entered somewhat largely into the medical treatment of our patients during the year. Perhaps we do not clearly understand the close relation existing between the brain and the condition of the alimentary canal. Much of the uneasiness and morbid sensibility from which so many of our patients suffer—that condition of mind which cannot be cheered by hope or diverted by pleasure, is frequently nothing more

than the natural result of the sympathy existing between the morbid conditions of the alimentary canal and the brain.

We do not like to admit the frailty of man to such a degree that a slightly overtasked stomach or a constipated condition of the bowels will cloud all his worldly prospects, render him dissatisfied with life and all its blessings, make him suspicious of friends and jealous of his own household; but it cannot be denied; and the cure of that disordered state of the imagination, so often observed in this class of patients, and their restoration to the best estate of manhood, may generally be brought about by the means directed to relieve the diseased state of the stomach and bowels.

The process may be slow; but if perseveringly followed and assisted by pure air, active exercise and cheerful companionship, will be crowned with success.

No class of patients suffer more than those whose insanity is caused by disease of the digestive organs. The lassitude, the sense of oppression, the partial loss of memory, the inability to fix the attention renders them victims to every circumstance, and thus keeps up a mental irritability sufficient to interfere with the healthy action of all the intellectual faculties.

We have received during the year a better class of patients than ever before. If we would have this desirable state of things continue, the wards must be embellished with greater liberality, and many of the apartments must be refurnished with more taste and elegance.

The reason why those able to pay generously do not place their insane relatives here is simply because they find no suitable accommodations for them. It certainly is unwise to pamper the appetite of the insane by highly seasoned and luxurious food; but there can be no reason why they should not be surrounded by books, music, pictures and elegant furniture. To deprive a man at once of all the refinements and luxuries of good society and reduce him to the cheerless simplicity of a pauper institution for the insane, would be any thing but curative in its results. Hence the necessity of greater exertion and more liberal expenditures in this department of the hospital.

A reference to our tables will show that a very small proportion of cases are brought to us in the early stages of

disease. From mistaken views in regard to insanity, and false impressions in relation to the humanity of hospital treatment, months are allowed to pass with the patient at home. No effort is made by the friends to restore his gradually sinking powers, until he wanders away from his family and is exposed to cold and hunger, or perhaps commits some flagrant act and becomes dangerous to the peace and safety of the community.

Thus, the chances of recovery are very much diminished, unjust conclusions are arrived at in regard to the curability of the disease, and all the benefits of judicious medical and moral treatment are lost.

During the year there has been great freedom from mechanical restraint.

We have not however succeeded so well with females as with males. In the early part of the year it was thought necessary, from motives of decency, to apply the *camisole* to two or three women for a short time while suffering from acute mania. In the spring one or two suicidal females wore the *camisole* frequently during a part of the day for several weeks. While two old patients, both of whom refused to wear clothing, often wore the *camisole* several days in succession for a period of six months, having it always removed at night.

Since the first of July, however, there has been no application of mechanical restraint of any kind to any female patient under our care. Nor has any one since that time been secluded in her own or any other room during a whole day.

No male patient has been secluded in his own or any other room a whole day during the year. There have been two applications of mechanical restraint to male patients in the course of the year. In one case the restraint was immediately removed. In the other the patient was suffering from a surgical operation, and wristbands, which he wore for several days in succession, were placed upon him for the purpose of securing dressings.

It is reasonable to suppose that brief periods of seclusion may be necessary in the care and treatment of the insane. It is possible likewise that mechanical restraint may be in rare cases beneficially applied.

But no mistake can be more serious in its effects upon

the patients of a hospital for the insane, than the too frequent resort to the use of restraining apparatus.

The amusements and pastimes of former years have been kept up, and every method has been adopted to relieve the patients of that dull and tedious monotony so often experienced by those who are so unfortunate as to be committed to the care of a hospital for the insane.

As much of every day as can be set apart for that purpose is spent by the patients in the open air, riding, walking, or at work.

The evenings are generally devoted to needle-work, reading, and games among the females, and reading and games among the males.

Magic lantern exhibitions, parties and concerts, occasionally take place and afford great pleasure.

Books and an abundance of newspapers are at all times accessible, which are highly valued.

Maps and pictures are also instrumental in giving relief, while the little decorations of the wards and rooms made and put up by patients beguile them of many weary hours. In fulfilment of your wishes there has been placed in the Trustees' room a portrait of George Chandler, M. D., who was so long at the head of this hospital, and from whose persevering labor so much of its prosperity has resulted. The portrait is by Wight, in the best style of art, and is said to be a correct likeness.

We have made such additions as we could to the patients' libraries, and have also added a little to the embellishment of the wards.

About one hundred volumes of medical books and publications have been collected as the beginning of an office library.

A medical library is a want of the institution, which should be supplied. Small additions, judiciously selected and safely kept, would soon give us a respectable collection of books at a moderate expense.

We can now speak definitely of our method for warming and ventilating the hospital. The plan has been in operation one year and has accomplished its work in the most thorough and successful manner at a reasonable expense.

The following table will show the exact amount of coal consumed in eight consecutive months:—

April,	49,650 pounds.
May,	48,000
June,	42,000
July,	40,980
August,	37,250
September,	36,000
October,	86,800
November,	111,200

The daily average consumption was:—

April,	1,655 pounds.
May,	1,548
June,	1,400
July,	1,321
August,	1,201
September,	1,200
October,	2,800
November,	3,706

It is impossible to give the precise amount consumed in the four months preceding the first of April. The air chamber under the wings for the transmission of air to the wards was for several weeks in an unfinished condition, allowing much of the heated air to escape without performing its office. This state of things made it necessary to consume a large amount of coal for about two months.

As nearly as can be estimated, we consumed three tons daily during the months of December and January. And two tons daily during the months of February and March.

This seems a small quantity of fuel when we consider the extremely cold and windy weather of the winter, and the unfinished condition of the air chamber.

Our accounts show a much greater quantity of coal than the above statement will warrant. But you will remember that we had a small quantity only on hand, and made our first purchase of coal in January. Judging as well as we can from

the experience of the last year, we have now a supply sufficient to last a full year from the present time.

In June we purchased seven hundred and fifty tons of coal, taking the bills of lading at \$7.38 per ton. The coal was delivered in good order and is of first rate quality.

In making this purchase it was supposed that the largest quantity it might be necessary to consume, under any circumstances, would be three tons daily from the 1st of November to the 1st of April, and one ton daily from the 1st of April to the 1st of November. Making a daily average of two tons a day for the year.

The table will show that the result for eight months is considerably within the estimate; and that the whole quantity consumed in a year is not far from five hundred and fifty tons. While the hospital has been comfortably warmed in cold weather, it has been made cool in hot weather, and ventilated at all times.

There is now in all parts of the house a constantly breathable condition of the atmosphere. In the wards assigned to violent and filthy patients the change is quite surprising. Formerly, when no filth offended the eye the air was always loaded with noxious odors. The patients were noisy, filthy and disgusting. Now they are quiet, comfortable and decent.

In a hygienic point of view, the fan is the most important part of our apparatus, and its benefits can hardly be overstated.

As a mechanical contrivance it has no superior, and in its operation it will be found to compare favorably with any thing of its kind. Simple in its construction, effectual in its working, it can readily be adapted to any condition of the weather and requires but little power in its motion.

Some attention has been given to the subject of improvements and repairs. One ward has been almost entirely refitted and refurnished. Some of the others have been painted. The patients' dining-rooms, situated in the centre building, have been given up, and pleasant dining-rooms made in the wards.

In place of the old dining-rooms in the centre building we now have for each side of the hospital—male and female—a room furnished where a patient can be taken care of while sick, by his or her friends, without coming in contact with other

patients. In another story, and contiguous to the wards, we have for each sex a furnished room where patients can receive their friends without being disturbed by other visitors. In the lower story near the entrance and opening into the wards are two sitting-rooms, one on each side of the house, for such patients as may not be strictly confined to the wards. There have also been put into the centre building two bathing-rooms with water closets. These changes have long been desired.

In grading some portion of the grounds more than six thousand ox-cart loads of earth have been removed, besides removing and replacing the soil with a scraper.

About two hundred rods of old wall have been removed and between fifty and sixty rods of heavy faced wall have been built.

All the drains and cess pools of the establishment have been connected with the force pump, and the iron main pipe through which the sewerage is forced has been lengthened five hundred feet.

These are some of the more important items of improvement and repairs which have been accomplished during the year.

Articles made by the female patients in the months of September, October and November, 1857:—

Bed Ticks,	50	Pillow Cases,	282
Chemises,	165	Sheets,	224
Dresses,	57	Spreads,	27
Frocks,	2	Shirts,	67
Hose, pairs of,	32	Table Covers,	5
Napkins,	30	Towels,	109
Pants, pairs of,	2	Window Curtains,	50
Pillows,	85	Vests,	2

The following table will show some of the results of labor performed on the farm and in the gardens:—

Apples,	100 bushels, at \$0 50—	\$50 00
Cherries,	10 “ at 2 00	20 00
Plums,	1 “ at 2 00	2 00
Grapes,	5 “ at 2 00	10 00
Corn, sweet,	120 “ at 0 50	60 00
Beans,	25 “ at 2 00	50 00

Pease,	50 bushels, at \$1 00—	\$50 00
Beets,	50 “ at 0 50	25 00
Onions,	150 “ at 1 00	150 00
Cucumbers,	100 “ at 0 50	50 00
Tomatoes,	100 “ at 0 75	75 00
Parsnips,	30 “ at 0 50	15 00
Squashes,	2,000 pounds, at 0 01	20 00
Cabbages,	2,500 heads, at 0 03	75 00
Milk,	35,000 quarts, at 0 05	1,750 00
Butter,	2,000 pounds, at 0 25	500 00
Beef,	5,000 “ at 0 09	450 00
Pork,	8,550 “ at 0 10	855 00
Hay,	75 tons, at 12 00	800 00
Rowen,	6 “ at 10 00	60 00
Corn fodder,		100 00
Chinese Sugar Cane,		15 00
Carrots,	800 bushels, at 0 25	200 00
Beets,	800 “ at 0 20	160 00
Turnips,	500 “ at 0 15	75 00
Total,		<hr/> \$5,617 00

To the other resident officers of the hospital I am under great obligation for their untiring devotion to the interests of the institution, and the cheerful spirit in which they have performed all their duties.

Miss Elizabeth A. Reid, who was for many years the kind and faithful Matron of the hospital, resigned her office on the 1st of October.

Thomas H. Gage, M. D., who was assistant physician about one year, and who proved himself to be a valuable officer, left in July for private practice in this city.

Thanks are due to Miss Dix for many kind attentions in behalf of the patients.

Editors and publishers in various parts of the State send us their papers free of charge, for which we are truly grateful.

From the Palladium office in this city we receive weekly large bundles of exchange papers, and from the Transcript office in this city, we receive the same daily, affording us a liberal supply of newspapers from all parts of the country.

The Commissioner of Patents and other gentlemen connected with public offices, frequently send us valuable public documents.

In reviewing the events of the year we feel that we have been signally blessed in all our efforts, and with emotions of gratitude to Him who has sustained us in the labors of the past we commence the duties of another year, hoping and trusting that by His direction we may be enabled to discharge them faithfully and well.

MERRICK BEMIS.

STATE LUNATIC HOSPITAL, WORCESTER, }
December 1, 1857. }

METEOROLOGICAL OBSERVATIONS

MADE AT THE

STATE LUNATIC HOSPITAL, WORCESTER, MASS.,

By J. SMITH SARGENT, CLERK.

Lat. 42° 16' 17", Long. 17° 48' 13".—Elevation, 536 feet.

1856-7.

METEOROLOGICAL OBSERVATIONS—DECEMBER, 1856.

Moon's Phases.	Days of the month.	THERMOMETER.				BAROMETER.				CLOUDS.		WIND.			RAIN AND SNOW.				Remarks.
		Corrected and reduced to 32°.				10=quite cov- ered.		Direction and force. 10=hurricane.		Hour began.	Hour ended.	Inches rain.	Melted snow.						
		7 A. M.	2 P. M.	9 P. M.	Mean.	7 A. M.	2 P. M.	9 P. M.	7 A. M.					2 P. M.	9 P. M.				
D	1	23	32	27	27	29.439	29.597	29.599	0	0	N. W.	N. W.	—	—	—	—	—		
	2	20	37	29	25	29.397	29.445	29.285	0	3	N. W.	N. W.	—	—	—	—	—		
	3	26	36	35	32	29.114	29.587	29.672	10	8	N. E.	N. E.	—	—	—	1.67	Snow, 3 inches.		
	4	33	29	22	28	28.945	29.119	29.299	0	1	N. W.	N. W.	—	—	—	—	—		
	5	26	30	35	30	29.376	29.454	29.512	0	2	N. W.	N. W.	—	—	—	—	—		
	6	23	30	33	25	29.589	28.448	29.653	3	0	N. W.	N. W.	—	—	—	—	—		
	7	24	31	21	25	29.512	29.466	29.424	1	0	N. W.	N. W.	—	—	—	—	—		
	8	22	21	15	19	29.419	29.433	29.565	2	2	N. W.	N. W.	—	—	—	—	—		
	9	16	24	20	20	29.661	29.718	29.817	1	2	N. W.	N. W.	—	—	—	—	—		
	10	26	33	32	30	31.994	29.904	29.884	1	1	N. W.	N. W.	—	—	—	—	—		
☺	11	28	36	45	36	29.743	29.502	29.233	10	10	S. W.	S. W.	.51	—	—	—	Rain.		
	12	30	44	36	39	29.253	29.262	29.297	0	1	S. W.	S. W.	—	—	—	—	—		
	13	32	43	35	36	29.009	29.525	29.573	1	0	N. W.	N. W.	—	—	—	—	—		
	14	31	36	44	37	29.367	29.866	29.510	10	5	N. W.	N. W.	1.12	—	—	—	Rain.		
	15	32	31	25	29	28.937	29.270	29.483	2	1	N. W.	N. W.	—	—	—	—	—		
	16	17	21	27	21	29.492	29.458	29.551	2	1	N. W.	N. W.	—	—	—	—	—		
	17	18	17	16	17	29.429	29.537	29.671	2	1	N. W.	N. W.	—	—	—	—	—		
C	18	-8	-1	-4	-4	29.542	29.883	30.979	0	0	N. W.	N. W.	—	—	—	—	—		
	19	-3	17	12	12	31.239	30.507	31.029	10	4	N. E.	N. E.	.78	—	—	—	Rain.		
	20	23	41	47	37	29.179	29.554	29.296	10	10	N. E.	N. E.	—	—	—	—	—		
	21	30	25	33	29	29.356	29.056	29.643	8	10	N. W.	N. W.	—	—	—	—	—		
	22	11	19	19	16	29.596	29.378	29.682	10	10	N. E.	N. E.	—	—	—	—	—		
	23	19	23	25	22	29.193	29.183	29.288	10	2	N. E.	N. E.	—	—	—	—	—		
	24	19	20	12	17	29.796	29.679	29.691	10	10	N. E.	N. W.	—	—	—	—	—		
	25	12	20	27	19	29.946	29.766	29.652	10	4	N. W.	N. W.	—	—	—	—	—		
	26	25	20	27	24	29.172	29.099	29.259	5	5	N. W.	N. W.	—	—	—	—	—		
☾	27	-2	40	20	19	29.230	29.339	29.417	10	2	N. W.	N. W.	—	—	—	—	—		
	28	20	33	32	28	29.396	29.246	29.282	0	0	N. E.	N. E.	—	—	—	—	—		
	29	25	39	32	32	29.477	29.352	29.438	5	5	N. W.	N. W.	—	—	—	—	—		
	30	38	34	25	32	29.693	29.478	29.501	5	4	N. E.	N. W.	—	—	—	—	—		
	31	24	26	25	25	29.759	29.626	29.711	10	10	N. W.	N. W.	—	—	—	—	—		
Means,		22.7	28.6	27.0	25.6	29.034	29.471	29.591	4.7	4.3	Amount of rain and snow water.				2.41	1.67=4.08	Snow, 3 inches.		

METEOROLOGICAL OBSERVATIONS—JANUARY, 1857.

Moons' Phases.	Days of the month.	THERMOMETER.				BAROMETER.		CLOUDS.		WIND.			RAIN AND SNOW.				Remarks.		
						Corrected and reduced to 32°.		10=quite covered.		Direction and force. 10=hurricane.									
		7 A. M.	2 P. M.	9 P. M.	Mean.	7 A. M.	2 P. M.	9 P. M.	7 A. M.	2 P. M.	9 P. M.	7 A. M.	2 P. M.	9 P. M.	Hour began.	Hour ended.		Inches rain.	Melted snow.
☾	1	26	28	24	23	29.679	29.708	29.682	10	5	N. E.	N. E.	N. W.	-	-	-	-	Slight snow.	
	2	20	26	24	23	29.821	29.656	29.953	5	5	N	N. E.	N. W.	-	-	-	-	-	
	3	22	26	24	24	29.445	29.582	28.953	10	10	N. E.	N. E.	N. E.	5 a. m.	-	-	-	1.50	
☼	4	26	28	21	25	29.246	29.254	29.509	5	3	N. E.	N. W.	W.	-	12 a. m.	-	-	-	
	5	18	21	16	18	29.551	29.340	29.411	10	5	N. W.	N. W.	W.	-	-	-	-	-	
	6	10	15	8	11	29.431	29.307	29.394	0	5	W.	N. W.	N. W.	-	-	-	-	-	
☾	7	4	14	11	9	29.432	29.212	29.217	3	2	N. W.	N. W.	N. W.	-	-	-	-	-	
	8	-2	7	5	3	29.302	29.369	29.388	3	3	N.	N.	N.	-	-	-	-	-	
	9	5	19	16	11	29.424	29.256	29.242	5	5	N. W.	N. E.	W.	-	-	-	-	-	
☼	10	20	27	22	23	29.265	29.210	29.057	9	9	S. W.	S. W.	S. W.	2 p. m.	-	-	-	-	
	11	21	16	15	20	29.042	29.036	29.411	10	10	N.	N.	N.	-	3½ p. m.	-	.19	Snow, 3 inches.	
	12	6	20	14	13	29.264	29.343	29.410	3	3	N. W.	N. W.	N. W.	-	-	-	-	-	
☾	13	16	26	18	20	29.468	29.311	29.309	3	3	W.	S. W.	S. W.	-	-	-	-	-	
	14	14	30	24	22	29.289	29.253	29.265	3	0	W.	N. W.	N. W.	-	-	-	-	-	
	15	15	17	3	11	29.311	29.394	29.615	3	6	N. W.	N.	N.	-	-	-	-	-	
☼	16	1	17	16	11	29.773	29.669	29.567	3	3	W.	W.	S. E.	-	-	-	-	-	
	17	17	11	18	22	29.417	29.299	29.406	3	5	S. E.	S. E.	S. W.	-	-	-	-	-	
	18	-9	-5	-1	-5	29.719	29.750	29.734	3	10	N. W.	N. E.	N. E.	9 p. m.	-	p. m.	-	1.50	
☾	19	7	11	9	9	28.936	28.663	28.822	10	10	N. E.	N. E.	N. E.	-	-	-	-	-	
	20	10	20	12	14	29.267	29.383	29.408	0	0	N.	N.	N.	-	-	-	-	-	
	21	20	31	23	24	29.389	29.259	29.251	10	10	S. E.	S.	W.	-	-	-	-	-	
☼	22	15	15	0	10	29.163	28.882	29.450	10	10	N. W.	N. W.	W.	-	-	-	-	-	
	23	-11	-5	-8	-8	29.357	29.543	29.691	0	0	W.	W.	W.	-	-	-	-	-	
	24	-13	7	6	-0	29.853	29.704	29.621	0	0	S. W.	S.	S.	-	-	-	-	-	
☾	25	2	16	7	8	29.797	29.715	29.930	5	4	N. W.	N. W.	N. W.	-	-	-	-	-	
	26	-3	16	14	9	30.2	30.060	29.952	4	5	N. W.	N. W.	N. W.	-	-	-	-	-	
	27	32	38	37	35	29.710	29.579	29.684	10	10	S.	S.	S.	1 p. m.	-	-	.19	Rain.	
☼	28	30	34	28	30	29.907	29.827	29.784	0	0	N.	N.	N. E.	-	a. m.	-	-	-	
	29	26	31	32	33	29.709	29.508	29.548	10	8	N. E.	N. E.	N. E.	-	-	-	-	-	
	30	22	31	23	25	29.654	29.696	29.828	0	0	N.	N.	W.	-	-	-	-	-	
☼	31	17	18	32	22	29.475	29.140	29.475	10	10	N. E.	N. E.	N. E.	Snow, 3 a. m. Rain 5 p. m.	5 p. m.	-	-	1.10	Snow, 6 inches.
	Means,	1.48	20.1	16.1	16.9	29.461	28.996	29.450	5.1	5.4	Amount of rain and snow water,			19	4.29=4.48.	Snow, 29 inches.			

14.8
15.5

METEOROLOGICAL OBSERVATIONS—FEBRUARY, 1857.

Moon's Phases.	Days of the month.	THERMOMETER.				BAROMETER.			CLOUDS.		WIND.			RAIN AND SNOW.			Remarks.		
		Mean.				Corrected and reduced to 32°.			10—quite cov- ered.		Direction and force. 10—hurricane.			Hour began.	Hour ended.	Inches rain.		Melted snow.	
		7 A. M.	2 P. M.	9 P. M.	Mean.	7 A. M.	2 P. M.	9 P. M.	7 A. M.	2 P. M.	9 P. M.	7 A. M.	2 P. M.						9 P. M.
☾	1	33	38	28	33	29.270	29.241	29.234	10	8	5	S.	N. W.	W.	-	7 a. m.	.60	-	Rain.
	2	17	20	12	16	29.255	29.297	29.558	5	5	3	N. W.	N. W.	N. W.	-	-	-	-	-
	3	6	18	11	11	29.796	29.825	29.910	3	3	3	N. W.	N. W.	N. W.	-	-	-	-	-
	4	26	40	37	34	29.683	29.461	29.716	10	10	10	S. W.	S. W.	S. W.	-	-	-	-	-
	5	33	32	26	30	29.924	29.837	29.819	10	10	10	N. E.	N. E.	N. E.	6 a. m.	-	.15	-	Rain.
	6	29	46	42	39	29.911	29.734	29.856	10	10	10	N. E.	S. W.	S. W.	-	6 a. m.	-	-	-
	7	43	54	47	48	29.908	29.805	29.803	10	10	10	S. W.	S. W.	S. W.	-	-	-	-	-
☼	8	50	54	51	51	29.672	29.514	29.339	10	10	10	S. W.	S. W.	S. W.	6 a. m.	-	-	-	Rain—Snow.
	9	29	24	18	23	29.681	29.794	29.966	10	5	3	N. W.	N. W.	N. W.	-	a. m.	.53	-	Snow.
	10	10	29	12	17	29.997	29.607	29.759	3	5	5	N. W.	S. W.	N. W.	-	-	-	-	-
	11	1	10	6	5	29.963	29.872	29.891	5	5	5	N. W.	N. W.	W.	-	-	-	-	-
	12	-4	14	14	8	30.256	30.301	30.249	5	5	6	N.	S. W.	S. W.	-	-	.14	-	Rain.
	13	25	39	37	37	30.499	29.678	29.231	10	10	3	S. W.	S. W.	S. W.	9 a. m.	5 p. m.	-	-	Rain.
	14	34	-	32	33	23.864	-	29.916	5	-	0	W.	-	S. W.	-	-	-	-	Rain.
	15	39	49	43	47	29.670	29.644	29.667	10	5	0	S	W.	W.	5 a. m.	8 a. m.	-	-	-
☾	16	46	50	49	48	29.673	29.522	29.602	10	10	10	W.	N. W.	W.	-	-	-	-	-
	17	47	55	53	51	29.672	29.551	29.562	10	10	7	W.	W.	W.	-	-	-	-	-
	18	51	65	55	57	29.622	29.461	29.456	9	3	10	W.	W.	N. W.	-	-	-	-	-
	19	36	34	29	33	29.305	29.470	29.646	10	10	10	N. E.	N. E.	N. E.	6½ p. m.	-	-	-	Rain, slight.
	20	23	25	28	25	29.827	29.799	29.687	10	10	10	N. E.	N. E.	N. E.	4½ p. m.	a. m.	-	.25	Snow, 1½ inches.
	21	31	40	32	34	29.945	29.215	29.454	10	5	5	N. E.	N.	W.	-	a. m.	-	.37	Snow, 2 inches.
	22	27	-	32	19	29.727	-	29.490	0	-	5	N. W.	-	W.	-	-	-	-	-
	23	30	45	39	38	29.528	29.530	29.697	5	5	5	W.	W.	W.	-	-	-	-	-
	24	32	57	44	44	29.604	29.495	29.357	5	8	8	W.	S. W.	S. W.	-	-	-	-	-
☼	25	54	64	41	59	29.029	29.163	29.186	10	8	8	S.	S. W.	S. W.	-	-	-	-	-
	26	23	28	22	24	29.443	29.531	29.673	10	8	3	W. ²	N. ³	W. ²	-	-	-	-	-
	27	15	24	23	20	27.768	29.652	29.502	5	5	5	N. W.	N. W.	W.	-	-	-	-	-
	28	23	29	23	25	29.158	29.152	29.155	10	3	4	S. W.	W.	W.	-	a. m.	-	-	Snow, 3 inches.
Means,		28.4	37.8	31.5	32.4	29.705	29.582	29.620	7.8	7.1	6.1	Amount of rain and snow water,					1.42	.82=2.24.	Snow, 6.5 inches.

METEOROLOGICAL OBSERVATIONS—MARCH, 1857.

Moon's Phases.	Days of the month.	THERMOMETER.					BAROMETER.			CLOUDS.			WIND.			RAIN AND SNOW.				Remarks.
		Corrected and reduced to 32°.					Direction and force. 10=hurricane.			Hour began.	Hour ended.	Inches rain.	Melted snow.							
		7 A. M.	2 P. M.	9 P. M.	Mean.	7 A. M.	2 P. M.	9 P. M.	7 A. M.					2 P. M.	9 P. M.	7 A. M.	2 P. M.	9 P. M.		
☾	1	19	27	19	19	29.073	29.197	29.232	8	10	W.	N. E.	3½ p. m.	—	—	—	—	—	Snow, 7 inches.	
	2	14	16	14	14	29.163	29.136	29.213	10	10	N. E. ³	N. E. ²	—	—	—	—	.60			
	3	8	21	18	15	29.246	29.395	29.392	5	7	N. W.	W.	—	—	—	—	—			
	4	17	35	28	26	29.585	29.522	29.598	8	8	W.	S.	—	—	—	—	—			
	5	19	41	32	30	29.696	29.584	29.578	6	9	S.	S.	—	—	—	—	.25			
	6	34	38	23	30	29.962	29.962	29.786	10	5	N. E.	W.	a. m.	—	—	—	—			
☺	7	22	23	17	20	29.264	29.438	29.656	6	5	W.	W.	—	—	—	—	—	Snow, 2½ inches.		
	8	34	45	44	41	29.825	29.746	29.778	5	5	W.	W.	—	—	—	—	—			
	9	19	32	30	27	29.680	29.592	29.118	3	10	W.	S.	—	—	—	—	—			
	10	24	26	19	23	29.337	29.374	29.411	6	5	W.	W.	3 a. m.	a. m.	—	—	.35			
	11	5	32	27	21	29.705	29.579	29.446	8	10	W.	N. E.	5½ p. m.	—	—	—	—			
	12	28	24	17	23	29.489	29.503	29.495	8	5	N. W.	W.	—	—	—	—	—			
☾	13	5	30	22	19	29.091	29.468	29.137	3	3	W.	W.	—	—	—	—	—	Rain.		
	14	28	41	36	35	29.484	29.239	29.392	7	5	S. W.	W.	—	—	—	—	—			
	15	30	43	34	35	29.577	29.483	29.665	6	5	W.	S.	—	—	—	—	—			
	16	34	47	43	41	29.615	29.481	29.395	8	10	N. W.	S.	6½ p. m.	—	—	—	—			
	17	34	47	37	39	29.427	29.429	29.625	0	5	S. W.	W.	—	—	—	—	—			
	18	32	49	44	41	29.778	29.595	29.255	9	10	N.	S.	—	—	—	—	—			
☾	19	46	51	42	49	29.211	29.053	29.893	10	10	S. E.	S.	a. m.	—	—	—	—	Rain and snow. Showery.		
	20	36	39	32	35	29.634	29.033	29.368	5	0	W.	N. W.	—	a. m.	1.60	—	—			
	21	29	36	34	33	29.528	29.429	29.476	9	10	N.	W.	—	—	—	—	—			
	22	38	39	32	35	29.639	29.787	29.940	8	8	N.	N.	—	—	—	—	—			
	23	27	34	34	31	29.951	29.798	29.685	9	10	N.	S.	—	—	—	—	—			
	24	38	50	44	44	29.498	29.372	29.232	10	10	S. W.	W.	—	—	—	—	—			
☾	25	41	48	44	44	29.072	29.083	29.143	3	5	W.	N.	—	—	—	—	—	Blackbirds appeared.		
	26	—	45	38	27	—	29.198	29.371	—	5	5	N. W.	N. W.	—	—	—	—			
	27	32	46	41	43	29.274	29.176	29.310	2	8	—	N.	—	—	—	—	—			
	28	—	47	41	26	—	29.277	29.399	—	10	10	N. W.	S.	—	—	—	—			
	29	36	47	41	41	29.376	29.365	29.592	8	10	N. W.	N.	—	—	—	—	—			
	30	36	50	44	43	29.538	29.524	29.700	8	10	N. W.	N. W.	—	—	—	—	—			
Means,	31	43	59	43	48	29.588	29.424	29.464	0	5	N. W.	W.	—	—	—	—	—	Frogs appeared.		
	Means,	27.8	38.9	32.7	32.1	29.444	29.424	29.475	6.4	7.7	Amount of rain and snow water,			1.60	1.20	2.80	Snow, 11.75 inches.			

METEOROLOGICAL OBSERVATIONS—APRIL, 1857.

Moon's Phases.	Days of the month.	THERMOMETER.				BAROMETER.			CLOUDS.			WIND.			RAIN AND SNOW.				Remarks.
		Corrected and reduced to 32°.				10=quite cov- ered.			Direction and force. 10=hurricane.			Hour began.	Hour ended.	Inches rain.	Melted snow.				
		7 A. M.	2 P. M.	9 P. M.	Mean.	7 A. M.	2 P. M.	9 P. M.	7 A. M.	2 P. M.	9 P. M.								
☾	1	42	45	43	43	29.149	29.078	29.101	3	8	10	W.	S. W.	S. W.	-	-	-	Rain, a. m.	
	2	13	21	21	18	29.885	29.424	29.694	3	0	0	N. W.	N.	N.	-	-	-	Snow, a. m.	
	3	22	41	32	31	29.703	29.868	29.894	0	3	0	W.	W.	W.	-	-	-		
	4	32	55	41	42	29.683	29.584	29.733	5	5	0	S. W.	W.	W.	-	-	-	Foggy.	
	5	40	60	52	50	29.635	29.781	29.394	10	10	10	S. W.	S.	S.	-	-	-		
	6	55	56	56	55	29.364	29.005	29.003	10	10	10	S.	W.	W.	p. m.	a. m.	-	Rain.	
	7	30	44	33	35	29.427	29.514	29.897	5	5	5	W.	W.	S. W.	-	-	-		
	8	28	47	39	38	29.762	29.535	29.717	3	5	8	W.	W.	N. E.	9 p. m.	-	-		
☼	9	33	-	43	25	29.544	-	29.939	5	0	10	W.	-	E.	-	-	-		
	10	37	41	41	39	29.310	29.298	29.211	10	10	10	E.	E.	W.	-	-	-		
	11	41	54	46	47	29.226	29.201	29.263	5	10	10	W.	W.	W.	-	a. m.	-	Rain.	
	12	39	47	45	39	29.265	29.361	29.387	10	10	10	W.	S.	S.	12 a. m.	-	-		
	13	41	55	42	49	29.483	29.327	29.364	10	8	10	W.	N. E.	E.	-	-	-		
	14	39	42	40	37	29.048	29.631	29.742	10	10	10	E.	E.	S. W.	-	9½ p. m.	-	Rain.	
	15	39	49	37	41	29.862	29.877	29.317	10	10	10	W.	W.	S. W.	-	-	-	Showers.	
☾	16	32	47	37	38	29.099	29.192	29.315	3	5	10	W.	W.	W.	-	-	-	Snow.	
	17	33	41	38	37	29.144	29.046	29.091	10	10	10	N. W.	N.	N. E.	-	-	-		
	18	40	47	35	40	29.191	29.430	29.445	5	10	5	N. W.	E.	W.	-	-	-		
	19	36	38	35	37	29.568	29.463	29.485	10	10	10	N. E.	N. E.	N. E.	-	-	-	Rain.	
	20	35	37	35	36	29.212	29.052	29.381	10	10	10	E.	E.	E.	a. m.	-	-	Rain.	
	21	33	32	32	32	29.959	29.079	29.215	10	0	5	N. E.	N. E.	W.	-	-	-	Snow.	
	22	30	41	39	37	29.047	29.064	29.186	5	10	10	N.	N.	N.	-	p. m.	-		
	23	39	49	46	44	29.189	29.189	29.253	5	5	3	N.	N. W.	N. W.	-	-	-		
	24	40	52	46	46	29.255	29.260	29.232	3	5	3	N. W.	N. W.	N. W.	-	-	-		
	25	44	49	40	41	29.339	29.259	29.359	3	3	3	W.	N.	N. W.	-	-	-		
	26	40	56	43	46	29.388	29.213	29.399	3	3	5	W.	N. W.	N. W.	-	-	-		
	27	39	46	41	42	29.395	29.071	29.028	10	10	0	N. E.	S. W.	N. W.	a. m.	6 p. m.	-	Rain.	
	28	42	52	-	31	29.296	29.312	-	5	5	0	W.	W.	-	-	-	-		
	29	41	52	41	44	29.573	29.063	29.676	0	5	3	W.	N. W.	N. W.	-	-	-		
☾	30	40	56	45	47	29.738	29.907	29.797	5	0	3	N. W.	N. W.	N. W.	-	-	-		
Means,		36.5	46.6	39.8	39.3	29.421	29.347	29.428	6.2	6.5	6.4	Amount of rain,			8.77				

METEOROLOGICAL OBSERVATIONS—MAY, 1857.

Moon's Phases.	Days of the month.	THERMOMETER.			BAROMETER.			CLOUDS.			WIND.			RAIN AND SNOW.			Remarks.						
		Corrected and reduced to 32°.			10=quite cov- ered.			Direction and force. 10=hurricane.			Hour began.			Hour ended.				Inches rain.			Melted snow.		
		7 A. M.	2 P. M.	9 P. M.	Mean.	7 A. M.	2 P. M.	9 P. M.	7 A. M.	2 P. M.	9 P. M.	7 A. M.	2 P. M.	9 P. M.	7 A. M.	2 P. M.		9 P. M.	7 A. M.	2 P. M.	9 P. M.		
	1	41	55	—	32	29.889	29.474	—	3	—	10	W.	—	S.	p. m.	—	—	—	—	—	—	Rain. Rain.	
	2	45	53	53	50	29.580	29.479	29.255	10	10	10	S.	S. W.	S. W.	4 p. m.	—	—	—	—	—	—	—	
	3	70	62	—	45	29.416	29.492	—	5	10	—	W.	S.	—	—	—	—	—	—	—	—	—	
	4	50	45	45	48	29.544	29.592	29.475	10	10	10	N. W.	N. E.	N. E.	a. m.	—	—	—	—	—	—	—	
	5	45	60	53	52	29.219	29.171	29.264	10	8	10	E.	S. W.	S. W.	—	2 p. m.	—	—	1.40	—	—	Rain. Violets blossomed.	
	6	55	68	57	60	29.282	29.201	29.333	5	0	10	W.	W.	S. W.	—	—	—	—	—	—	—	—	
	7	52	68	60	60	29.459	29.496	29.416	3	8	0	W.	W.	N. W.	—	—	—	—	—	—	—	—	
	8	50	63	44	52	29.482	29.591	29.632	0	0	0	N.	N.	N.	—	—	—	—	—	—	—	Cherry trees blossomed. Rain.	
	9	62	71	63	67	29.672	29.566	29.491	3	0	0	W.	S. W.	S. W.	—	—	—	—	—	—	—	—	
	10	62	72	63	65	29.212	29.191	29.301	4	2	9	W.	S. W.	N. W.	6 p. m.	—	—	—	—	—	—	—	
	11	43	—	39	27	29.301	—	29.501	8	—	5	N.	—	N.	—	—	—	—	—	—	—	—	
	12	42	55	47	48	29.605	29.424	29.594	6	3	0	N.	N.	N.	—	—	—	—	—	—	—	Bloodroot blossomed.	
	13	43	63	49	51	29.608	29.484	29.432	3	5	5	N.	N. W.	N. W.	—	—	—	—	—	—	—	—	
	14	45	61	50	52	29.323	29.214	29.168	10	10	10	N. W.	S. W.	S. E.	5 p. m.	—	—	—	—	—	—	Peach tree blossomed. Creoles appeared.	
	15	51	52	42	48	29.199	29.151	29.211	10	10	10	W.	S. W.	S. E.	—	—	—	—	—	—	—	—	
	16	40	44	42	42	29.137	29.346	29.481	10	5	5	E.	E.	N. W.	—	—	—	—	—	—	—	—	
	17	41	43	43	42	29.484	29.476	29.571	10	5	5	S.	N. W.	N. W.	—	p. m.	—	1.35	—	—	—	Rain.	
	18	41	48	43	44	29.561	29.746	29.673	10	5	5	E.	E.	N. W.	—	—	—	—	—	—	—	—	
	19	39	48	44	73	29.446	29.367	29.298	5	10	10	N. E.	E.	E.	p. m.	—	—	—	—	—	—	Rain. Pear blossomed.	
	20	42	44	43	43	29.149	29.145	29.182	10	10	10	E.	E.	E.	—	p. m.	1.05	—	—	—	—	—	
	21	43	46	47	45	29.215	29.074	29.189	10	10	10	N.	N. W.	E.	—	—	—	—	—	—	—	Narcissus blossomed.	
	22	54	73	58	61	29.273	29.344	29.494	5	8	8	N. W.	N. W.	S. W.	—	—	—	—	—	—	—	—	
	23	57	74	62	64	29.232	29.350	29.451	8	5	5	S.	S. W.	S. W.	—	—	—	—	—	—	—	Chewinks appeared. Lilac blossomed.	
	24	61	79	65	68	29.322	29.450	29.333	3	5	5	W.	W.	S. W.	—	—	—	—	—	—	—	—	
	25	63	84	67	71	29.432	29.412	29.375	5	5	5	W.	W.	S. W.	—	—	—	—	—	—	—	—	
	26	66	85	52	68	29.499	29.467	29.516	8	5	5	W.	W.	N. E.	—	—	—	—	—	—	—	—	
	27	47	71	61	59	29.620	29.474	29.546	10	5	3	E.	E.	S. W.	—	—	—	—	—	—	—	—	
	28	60	66	61	62	29.386	29.291	29.218	10	5	10	S.	S. W.	S. W.	3 a. m.	1 p. m.	.50	—	—	—	—	Rain.	
	29	59	72	59	63	29.198	29.134	29.190	10	5	5	S.	W.	N. W.	p. m.	p. m.	.26	—	—	—	—	Rain.	
	30	58	65	64	62	29.350	29.381	29.464	4	5	3	W.	N. W.	N. W.	—	—	—	—	—	—	—	—	
	31	58	65	59	61	29.612	29.443	29.414	10	5	5	S. W.	S.	S. W.	12½ p. m.	—	—	—	—	—	—	Rain.	
Means,		51.1	61.9	53.1	54.3	29.414	29.378	29.388	7.0	6.6	5.8	Amount of rain,					4	56					

METEOROLOGICAL OBSERVATIONS—JUNE, 1857.

Moon's Phases.	Days of the month.	THERMOMETER.				BAROMETER.			CLOUDS.			WIND.			RAIN AND SNOW.				Remarks.
		9 P. M.		Mean.	Corrected and reduced to 32°.			10=quite cov- ered.			Direction and force. 10=hurricane.			Hour began.	Hour ended.	Inches rain.	Melted snow.		
		7 A. M.	2 P. M.		7 A. M.	2 P. M.	9 P. M.	7 A. M.	2 P. M.	9 P. M.	7 A. M.	2 P. M.	9 P. M.						
	1	62	73	66	29.339	29.253	29.276	10	5	10	S. W.	S. W.	S.	a. m.	-	-	1.	Slight rain.	
	2	64	79	65	29.130	29.037	29.085	10	8	3	S. W.	S. W.	W.	-	-	-	-	Thunder shower.	
	3	59	-	66	29.119	-	29.170	3	-	0	S. W.	-	W.	-	-	-	-	Mountain ash blossomed	
	4	64	68	58	29.136	29.251	29.327	0	0	6	N. W.	N. W.	N. W.	a. m.	-	-	.21	Shower.	
	5	55	65	52	29.264	29.200	29.176	8	3	2	N. W.	W.	S. W.	-	-	-	-	Calicanthus blossomed.	
	6	52	61	55	29.277	29.246	29.197	0	5	8	N. W.	W.	S. W.	-	-	-	-		
	7	52	60	54	29.125	29.123	29.231	10	10	2	S. W.	W.	N. W.	a. m.	p. m.	-	.15	Rain.	
	8	55	68	55	29.387	29.498	29.494	0	5	0	N. W.	N. W.	N. W.	-	-	-	-		
	9	63	70	57	29.429	29.483	29.415	8	10	8	S. W.	S. W.	S. W.	-	-	-	-		
	10	56	70	58	29.464	29.373	29.336	10	8	10	S. W.	S. W.	S. E.	7½ p. m.	-	-	.47	Rain. [in blossom.	
	11	58	60	61	29.083	29.065	29.827	10	10	8	E.	E.	S. W.	-	7 p. m.	-	-	Shower. Russian rose	
	12	64	72	64	29.875	29.118	29.132	8	5	5	W.	W.	S. W.	-	-	-	-		
	13	66	78	69	29.071	29.152	29.090	3	5	5	W.	W.	S. W.	-	-	-	-		
	14	63	72	61	29.296	29.318	29.413	8	3	5	W.	W.	W.	-	-	-	-		
	15	58	73	61	29.492	29.426	29.391	3	10	3	W.	N. W.	N. W.	-	-	-	-	Interrupted rain.	
	16	60	64	53	29.466	29.386	29.372	10	10	10	N. W.	S. W.	S. W.	7 a. m.	-	-	-		
	17	56	58	56	29.497	29.402	29.430	10	10	10	S. W.	S. E.	S. E.	-	-	-	-		
	18	51	53	51	29.412	29.385	29.385	10	10	10	E.	E.	E.	-	-	-	-		
	19	51	55	56	29.389	29.442	29.382	10	10	10	E.	S. W.	E.	-	-	-	-	Shower.	
	20	58	77	66	29.408	29.428	29.388	10	10	10	S. E.	S. W.	S.	-	8 a. m.	1.11	-		
	21	68	77	69	29.426	29.222	29.047	9	8	10	S. W.	S. W.	S. W.	-	-	-	.27	Thunder shower.	
	22	63	75	64	29.245	29.026	29.047	10	8	3	S. W.	S. W.	S. W.	6¼	49	-	-		
	23	60	68	57	29.065	29.298	29.314	8	10	4	W.	W.	W.	-	-	-	-		
	24	56	70	62	29.407	29.238	29.176	8	5	3	W.	N. W.	N. W.	-	-	-	-	Shower.	
	25	65	80	66	29.326	29.210	29.182	5	3	3	W.	W.	W.	p. m.	p. m.	.25	-		
	26	66	76	65	29.274	29.240	29.361	5	3	4	W.	N. W.	N. W.	-	-	-	-	Scotch rose blossomed.	
	27	66	78	67	29.401	29.388	29.378	5	3	3	N. W.	N.	N. W.	-	-	-	-		
	28	63	75	66	29.418	29.375	29.263	5	4	3	N.	N.	S.	-	-	-	-		
	29	65	74	59	29.344	29.295	29.169	3	8	10	W.	N. E.	E.	-	-	-	-		
	30	55	60	54	29.232	29.221	29.357	10	10	10	N. E.	E.	N. E.	-	-	-	-		
Means,	59.8	67.	59.9	62.2	29.326	29.247	29.293	6.9	7.2	5.9	Amount of rain,			3.44					

METEOROLOGICAL OBSERVATIONS—JULY, 1857.

Days of the month.	THERMOMETER.				BAROMETER.		CLOUDS.		WIND.			RAIN AND SNOW.			Remarks.	
	Corrected and reduced to 32°.				10—quite cov- ered.		Direction and force, 10=hurricane.			Hour ended.	Inches rain.	Melted snow.				
	7 A. M.	2 P. M.	9 P. M.	Mean.	7 A. M.	2 P. M.	7 A. M.	2 P. M.	9 P. M.							
1	52	55	—	55	29.332	29.417	—	10	10	N. E.	N.	—	—	a. m.	—	Slight rain.
2	—	—	—	55	—	—	29.436	—	8	—	—	—	—	—	—	—
3	53	65	53	57	29.463	29.496	29.422	10	10	N. E.	N.	—	—	—	—	—
4	51	74	65	63	29.433	29.413	29.455	10	8	N. E.	S.	—	.54	7 a. m.	—	Rain.
5	63	77	65	70	29.536	29.596	29.430	5	7	N. E.	S. E.	—	—	—	—	—
6	61	73	68	67	29.664	29.463	29.696	5	8	N. E.	S. E.	—	—	a. m.	—	Slight rain.
7	63	81	73	74	29.493	29.390	29.241	5	4	N. W.	N. W.	—	—	—	—	—
8	67	73	65	68	29.413	29.443	29.553	3	4	N. W.	N. W.	—	—	a. m.	—	Slight rain.
9	62	—	80	47	29.646	29.658	—	0	3	N. W.	N. W.	—	—	—	—	—
10	65	81	67	71	29.744	29.702	29.730	0	3	S. W.	S. W.	—	—	—	—	—
11	72	—	74	48	29.643	—	29.562	5	3	S.	—	—	—	—	—	—
12	73	88	76	85	29.428	29.511	29.491	5	3	S. W.	N. E.	—	—	—	—	—
13	71	86	69	75	29.558	29.411	29.414	0	3	N. E.	S. E.	—	—	—	—	—
14	73	89	75	79	29.518	29.389	29.379	8	0	S.	S. W.	—	—	—	—	—
15	72	87	73	77	29.478	29.334	29.459	3	3	S. W.	S. W.	—	—	—	—	—
16	70	84	70	74	29.450	29.459	29.514	5	3	S. W.	S. W.	—	—	—	—	—
17	67	78	71	32	29.397	29.448	29.372	8	8	S. W.	S. E.	—	—	a. m. p. m.	—	Showers.
18	69	82	74	78	29.400	29.364	29.302	10	3	E.	E.	—	.17½	a. m.	—	—
19	73	88	75	85	29.278	29.179	29.124	5	5	S. W.	S. W.	—	—	—	—	—
20	72	86	75	84	29.310	29.284	29.199	10	3	S.	S. W.	—	1.37	p. m.	—	Rain and lightning.
21	69	68	69	72	29.040	29.258	29.125	8	10	W.	S.	—	—	—	—	—
22	72	83	73	76	29.217	29.274	29.470	8	5	S. W.	S. W.	—	—	—	—	—
23	56	57	57	56	29.491	29.416	29.469	10	10	E.	E.	—	—	—	—	—
24	59	73	70	74	29.521	29.505	29.241	10	8	E.	N. E.	—	1.12	11½ a. m.	—	Rain.
25	68	79	72	73	29.670	29.612	29.535	10	5	N. E.	N. E.	—	—	a. m.	—	—
26	—	—	76	76	—	—	29.094	10	—	—	—	—	—	—	—	—
27	73	86	74	84	29.628	29.508	29.517	10	5	—	—	—	—	—	—	—
28	74	81	73	76	29.532	29.380	29.358	10	5	S. W.	S. W.	—	.31½	20.3 a. m.	—	Rain.
29	72	76	69	75	29.360	29.346	29.554	10	8	S.	S. W.	—	—	7½ a. m.	—	—
30	63	68	62	64	29.570	29.516	29.529	10	10	N.	N. W.	—	—	—	—	—
31	60	67	64	63	29.466	29.476	29.430	10	10	E.	E.	—	.28½	2 p. m.	a. m.	Rain.
Means,	65.	76.9	69.4	70.8	29.469	29.430	29.417	7.0	6.3	Amount of rain,			3.80½			

METEOROLOGICAL OBSERVATIONS—AUGUST, 1857.

Moon's Phases.	Days of the month.	THERMOMETER.				BAROMETER.			CLOUDS.			WIND.			RAIN AND SNOW.				Remarks.
		Mean.				Corrected and reduced to 32°.			10=quite cov- ered.			Direction and force. 10=hurricane.			Hour began.	Hour ended.	Inches rain.	Melted snow.	
		7 A. M.	2 P. M.	9 P. M.	Mean.	7 A. M.	2 P. M.	9 P. M.	7 A. M.	2 P. M.	9 P. M.	7 A. M.	2 P. M.	9 P. M.					
	1	63	74	69	69	29.358	29.313	29.340	10	5	10	S.	W.	S. W.	9 p. m.	p. m.	.95	-	Thunder shower.
	2	64	78	69	69	29.346	29.526	29.410	3	8	3	W.	N. W.	S. W.	7 p. m.	p. m.	-	-	Slight rain.
	3	65	77	69	70	29.471	29.498	29.425	3	8	3	N. W.	N. W.	N. W.	-	-	-	-	
	4	68	84	69	74	29.511	29.447	29.328	0	8	8	N. W.	S. W.	S. W.	a. m.	8 a. m.	1.31	-	Rain.
☺	5	63	69	66	66	29.235	29.398	29.345	10	10	10	E.	E.	S. E.	-	-	-	-	
	6	65	73	64	67	29.473	29.688	29.606	8	9	3	N. E.	S. E.	S. W.	-	-	-	-	
	7	62	79	68	69	29.571	29.552	29.705	3	8	3	S. W.	S. W.	S. W.	-	-	-	-	
	8	65	80	71	70	29.616	29.570	29.510	8	6	4	S.	S. W.	S. W.	-	-	-	-	
	9	68	77	65	70	29.523	29.572	29.546	5	5	0	N.	N.	S. N.	-	-	-	-	
	10	67	-	66	66	29.591	-	29.262	8	-	10	S. W.	-	S.	8 p. m.	a. m.	.62	-	Rain.
	11	68	77	66	70	29.117	29.122	29.316	3	3	0	N. W.	W.	W.	-	-	-	-	
☾	12	60	77	68	69	29.469	29.498	29.450	3	8	5	W.	W.	W.	a. m. p. m.	p. m.	.40	-	Rain and lightning. Sharp lightning.
	13	64	77	76	72	29.523	29.363	29.286	10	10	5	S.	S. W.	S. W.	-	-	-	-	
	14	76	90	82	82	29.303	29.259	29.091	2	5	7	W.	W.	S. W.	-	-	-	-	
	15	75	78	67	73	29.397	29.330	29.260	8	7	5	N. W.	N. W.	N.	-	-	-	-	
	16	61	71	62	64	29.514	29.351	29.408	5	3	3	N. W.	N.	N.	-	-	-	-	
	17	60	65	61	32	29.682	29.475	29.309	8	10	10	N. E.	S.	S.	a. m.	a. m.	.50	-	Showers.
	18	56	60	57	57	29.380	29.432	29.485	10	10	5	E.	E.	N. E.	-	-	-	-	
●	19	63	70	44	44	29.518	29.496	-	4	5	-	W.	N. W.	-	-	-	-	-	Rain.
	20	-	-	-	-	-	-	-	-	-	-	-	-	-	a. m.	-	-	-	
	21	59	69	61	63	29.722	29.608	29.537	3	7	5	N. W.	E.	S. E.	-	-	-	-	
	22	58	67	58	61	29.604	29.527	29.442	10	8	10	E.	S. W.	E.	-	-	-	-	
	23	60	67	62	63	29.219	29.130	29.189	10	8	3	E.	S. W.	W.	7 p. m.	1½ p. m.	1 15	-	Rain and foggy. Thunder shower.
	24	60	68	57	62	29.216	29.293	29.481	5	4	5	W.	W.	W.	-	-	-	-	
	25	55	75	64	64	29.639	29.640	29.594	0	3	0	W.	W.	W.	-	-	-	-	
	26	61	78	65	68	29.730	29.653	29.678	3	4	3	W.	W.	W.	-	-	-	-	
	27	58	75	65	66	29.646	29.593	29.633	0	5	4	W.	W.	W.	-	-	-	-	
☽	28	65	69	69	68	29.055	29.260	29.271	10	10	10	S.	S.	S. W.	4 a. m.	4 p. m.	.82	-	
	29	69	78	67	71	29.240	29.190	29.418	10	8	10	S. E.	W.	S. W.	-	-	-	-	Foggy, a. m.
	30	-	-	-	-	-	-	-	-	-	-	-	-	-	-	-	-	-	
	31	76	64	-	46	29.468	29.678	-	4	3	-	W.	W.	-	-	-	-	-	
Means,		64.2	73.8	65.8	63.4	29.450	29.766	29.419	5.7	6.7	5.1	Amount of rain,					5.75		

METEOROLOGICAL OBSERVATIONS—SEPTEMBER, 1857.

Moon's Phases.	Days of the month.	THERMOMETER.				BAROMETER.				CLOUDS.			WIND.			RAIN AND SNOW.				Remarks.
		Corrected and reduced to 32°.				Direction and force. 10=hurricane.				7 A. M.	2 P. M.	9 P. M.	Hour began.	Hour ended.	Inches rain.	Melted snow.				
		7 A. M.	2 P. M.	9 P. M.	Mean.	7 A. M.	2 P. M.	9 P. M.	10=quite cov- ered.											
	1	61	75	64	66	29.712	29.662	29.688	5	5	0	N.	S. W.	W.	-	-	-	-	Aurora Borealis appear'd	
	2	62	60	68	70	29.512	29.354	29.793	3	3	3	S. W.	S. W.	S. W.	-	-	-	-		
	3	63	82	69	71	29.784	29.634	29.635	3	4	0	S. W.	S. W.	W.	-	-	-	-		
☉	4	65	-	72	44	29.486	-	29.351	3	-	8	S. W.	S. W.	W.	-	-	-	-		
	5	63	89	71	71	29.661	29.462	29.432	5	5	3	S. W.	S. W.	S. W.	a. m.	a. m.	.58	-	Rain. Frost appeared.	
	6	79	68	55	67	29.415	29.508	29.636	8	0	0	N. W.	N. W.	N. W.	-	-	-	-		
	7	50	63	52	55	29.502	29.724	29.845	0	5	0	N. W.	N. W.	N. W.	-	-	-	-		
	8	49	65	52	55	29.903	29.885	29.772	2	3	0	S. W.	S. W.	S. W.	-	-	-	-		
	9	56	74	61	64	29.667	29.573	29.691	3	3	3	S. W.	S. W.	S. W.	-	-	-	-		
☾	10	58	79	67	68	29.584	29.464	29.591	10	2	3	S. W.	S. W.	W.	-	-	-	-		
	11	65	85	74	75	29.413	29.105	29.432	0	3	3	S. W.	S. W.	W.	-	-	-	-	Slight shower.	
	12	60	65	58	61	29.636	29.613	29.556	5	10	10	N. E.	S. E.	S. E.	12 a. m.	a. m.	-	-		
	13	57	70	68	65	29.615	29.481	29.436	10	10	10	S. E.	S. E.	S. E.	-	-	-	-	Interrupted showers.	
	14	67	75	71	71	29.508	29.397	29.358	10	8	10	S. E.	S. E.	S. W.	a. m. p. m.	a. m.	.62	-		
	15	73	72	58	68	29.393	29.380	29.222	5	3	0	N. W.	N. W.	N. W.	-	-	-	-		
	16	55	65	54	58	29.525	29.594	29.545	5	10	0	N. W.	N. W.	N. W.	8½ a. m.	10 p. m.	1.80	-	Rain.	
	17	56	59	65	60	29.447	29.254	29.185	8	10	10	S. W.	S. W.	S. W.	-	-	-	-		
●	18	62	48	-	36	29.304	29.519	-	3	0	-	S. W.	S. W.	-	-	-	-	-		
	19	41	54	45	46	29.544	29.547	29.497	8	10	10	S. E.	S. E.	S. E.	2 p. m.	-	-	-		
	20	47	54	54	52	29.338	29.337	29.375	10	10	5	N. E.	N. E.	W.	-	-	-	-		
	21	47	57	46	50	29.557	29.599	29.652	10	8	0	N.	N.	W.	-	-	1.10	-	Rain.	
	22	45	56	50	50	29.613	29.492	29.345	5	10	10	N. E.	N. E.	S. E.	-	-	-	-	Rain.	
	23	51	57	45	51	29.091	29.181	29.365	10	5	10	N. E.	W.	S. W.	2 a. m.	8½ a. m.	.82½	-		
	24	49	64	54	55	29.448	29.320	29.522	0	2	0	W.	W.	W.	-	-	-	-		
	25	49	76	56	66	29.385	29.228	29.544	4	8	5	S. W.	S. W.	S. W.	-	-	-	-		
☾	26	51	71	59	60	29.514	29.482	29.576	4	3	0	S. W.	S. W.	S. W.	-	-	-	-		
	27	54	70	68	64	29.632	29.541	29.516	0	0	0	S. W.	W.	W.	-	-	-	-		
	28	61	70	54	61	29.355	29.222	29.307	3	5	0	S. W.	W.	W.	p. m.	p. m.	-	-	Slight rain.	
	29	52	54	47	51	29.327	29.139	29.497	3	5	0	S. W.	W.	W.	-	-	-	-	Frost.	
	30	37	51	39	42	29.359	29.523	29.585	0	8	5	W.	W.	S. W.	-	-	-	-		
Means,		56.2	65.1	58.4	59.1	29.507	29.524	29.515	4.9	5.4	3.7	Amount of rain,					4.92			

METEOROLOGICAL OBSERVATIONS—OCTOBER, 1857.

Moon's Phases.	Days of the month.	THERMOMETER.				BAROMETER.				CLOUDS.			WIND.			RAIN AND SNOW.				Remarks.
		Corrected and reduced to 32°.				10=quite cov- ered.			Direction and force. 10=hurricane.			Hour began.			Inches rain.			Melted snow.		
		7 A. M.	2 P. M.	9 P. M.	Mean.	7 A. M.	2 P. M.	9 P. M.	7 A. M.	2 P. M.	9 P. M.	7 A. M.	2 P. M.	9 P. M.	Hour ended.	Hour began.	Hour ended.	Hour began.		
☾	1	39	59	57	52	29.573	29.610	29.572	0	8	8	W.	S.	S. W.	49 p. m.	-	-	-	Slight rain. Frost.	
	2	54	65	54	71	29.570	29.572	29.684	10	8	10	S. W.	S. W.	S. E.	-	-	-	-		
	3	45	52	44	47	29.764	29.804	29.784	10	10	3	E.	E.	E.	-	-	-	-		
	4	44	57	44	48	29.737	29.678	29.656	3	3	3	N.	S. E.	N. W.	-	-	-	-		
	5	37	60	47	48	29.623	29.563	29.552	10	0	0	N. E.	N. E.	N.	-	-	-	-	Foggy, a. m.	
	6	42	64	33	46	29.571	29.357	29.376	4	3	0	N.	N.	N.	-	-	-	-		
	7	51	61	47	53	29.381	29.401	29.446	0	3	0	N.	N.	N.	-	-	-	-		
	8	45	69	54	56	29.412	29.305	29.316	3	3	0	W.	W.	W.	-	-	-	-		
	9	53	68	51	57	29.360	29.386	29.415	0	3	0	W.	W.	W.	-	-	-	-		
	10	45	56	43	48	29.687	29.712	29.829	0	8	0	W.	E.	E.	-	-	-	-		
	11	38	61	46	48	29.769	29.708	29.685	0	0	0	S.	S. W.	S. W.	-	-	-	-		
	12	44	69	56	59	29.694	29.642	29.604	0	3	0	S. W.	S. W.	S. W.	-	-	-	-		
	13	49	74	65	62	29.632	29.553	29.563	5	8	5	S. W.	S. W.	S. W.	-	-	-	-		
	14	62	69	60	63	29.534	29.676	29.487	10	5	5	S. W.	S.	N. E.	-	-	-	-	Foggy.	
	15	57	61	56	58	29.459	29.141	29.741	10	10	10	E.	E.	E.	-	-	-	-		
	16	59	66	59	61	29.879	28.992	29.563	10	8	8	S. E.	S. W.	S. W.	a. m.	-	-	-		
	17	40	57	45	49	29.098	29.352	29.563	8	3	3	W.	W.	W.	-	-	a. m.	-	Rain and hail.	
	18	58	69	60	62	29.851	29.711	29.764	0	0	0	S. W.	S. W.	S. E.	a. m.	-	a. m.	-	Rain.	
	19	58	65	62	61	29.682	29.472	29.312	8	10	10	S. W.	W.	W.	-	-	p. m.	-	Rain and hail.	
	20	64	65	56	61	29.166	29.184	29.436	6	5	8	W.	W.	W.	9 a. m.	-	a. m.	-	Slight rain.	
	21	54	58	54	55	29.478	29.492	29.523	0	8	3	N. W.	W.	W.	-	-	-	-		
	22	52	59	59	56	29.618	29.718	29.807	0	3	0	W.	W.	N.	-	-	-	-		
	23	55	62	58	58	29.867	29.779	29.781	5	10	4	N. E.	S. W.	S. W.	-	-	-	-	Slight rain.	
	24	60	63	-	61	29.725	29.619	-	10	0	-	S.	S. W.	-	a. m.	-	a. m.	-		
	25	54	64	60	59	29.361	29.216	28.996	10	10	10	S. E.	S. E.	S. E.	-	-	-	-		
	26	61	64	65	62	29.684	29.616	29.712	10	10	10	E.	E.	E.	-	-	-	-		
	27	63	61	55	59	29.847	28.955	28.931	10	10	10	E.	E.	E.	-	-	-	-		
	28	54	59	57	60	28.863	29.230	29.076	10	10	10	E.	E.	N. E.	-	-	9 a. m.	3.2	Rain and snow.	
	29	67	61	50	56	29.225	29.146	29.193	10	10	10	E.	E.	N.	-	-	-	-		
	30	-	61	60	60	-	29.213	29.236	-	10	0	-	N. W.	W.	W.	-	-	-		
	31	55	62	61	56	29.430	29.392	29.410	8	0	10	S. W.	S.	S. W.	-	-	p. m.	-	Slight rain.	
Means,		51.9	62.6	53.9	56.5	29.584	29.456	29.801	5.6	5.8	4.6	Amount of rain,							3.93	

METEOROLOGICAL OBSERVATIONS—NOVEMBER, 1857.

Moon's Phases.	Days of the month.	THERMOMETER.				BAROMETER.			CLOUDS.			WIND.			RAIN AND SNOW.			Remarks.		
						Corrected and reduced to 32°.			10=quite cov- ered.			Direction and force.			Hour				Inches rain.	Melted snow.
		7 A. M.	2 P. M.	9 P. M.	Mean.	7 A. M.	2 P. M.	9 P. M.	7 A. M.	2 P. M.	9 P. M.	7 A. M.	2 P. M.	9 P. M.	began.	ended.				
☺	1	42	52	41	45	29.337	29.258	29.238	8	10	8	N.	W.	W.	-	-	-	-	Slight rain.	
	2	44	-	43	33	29.232	-	29.125	8	-	0	W.	-	W.	-	-	-	-	Slight rain.	
	3	52	47	37	63	29.058	29.214	29.359	0	3	0	W.	W.	W.	-	-	-	-		
	4	33	48	-	39	29.523	29.515	-	0	8	-	W.	W.	W.	-	-	-	-		
	5	33	-	60	46	29.573	-	29.472	10	-	10	N. W.	-	-	7½ p. m.	-	-	-		
	6	59	65	62	62	29.235	29.170	29.228	10	8	8	S. W.	W.	W.	-	a. m.	.70	-	Rain.	
	7	52	62	56	56	29.287	29.362	29.474	4	5	5	S. W.	W.	W.	-	-	-	-	Slight rain.	
	8	50	49	48	49	29.535	29.556	29.572	10	10	10	N.	E.	W.	-	-	-	-		
	9	48	68	63	59	29.516	29.429	29.446	10	8	5	S. W.	W.	W.	-	-	-	-	Rain.	
	10	63	51	40	51	29.368	29.475	29.635	10	0	3	S. W.	N. E.	W.	a. m.	a. m.	.70	-		
	11	33	50	39	40	29.904	29.051	29.789	0	0	0	N.	N.	W.	-	-	-	-		
	12	33	49	44	42	29.815	29.591	29.457	0	6	8	S. W.	W.	W.	-	-	-	-	Rain.	
	13	45	54	44	47	29.287	29.224	29.282	9	5	0	W.	W.	W.	-	p. m.	.30	-		
	14	35	34	33	31	29.332	29.441	29.431	5	8	0	E.	N. E.	W.	-	-	-	-		
	15	21	39	33	31	29.754	29.665	29.677	0	3	0	W.	N. W.	W.	-	-	-	-		
	16	30	42	35	52	29.676	29.551	29.376	0	0	10	N. E.	S. W.	W.	4¼ p. m.	-	-	-	Rain.	
	17	42	47	38	42	29.101	29.152	29.222	19	10	8	S.	W.	W.	-	6 a. m.	.42	-	[der and lightning.	
	18	35	44	42	40	29.058	29.892	29.975	5	10	8	W.	W.	W.	-	-	-	-	Interrupted rain. Thun-	
	19	38	57	55	16	29.071	29.143	29.825	10	8	10	S. W.	S. E.	W.	-	-	-	-	Slight snow.	
	20	35	35	24	31	29.782	29.900	29.020	10	8	0	S.	W.	W.	-	-	-	-		
	21	20	33	27	20	29.106	29.306	29.303	0	3	5	W.	W.	W.	-	-	-	-		
	22	30	-	-	30	29.264	-	-	0	-	-	S. W.	-	-	-	-	-	-		
	23	32	56	57	48	29.397	29.133	29.104	5	8	10	S. W.	S.	W.	5¼ p. m.	-	-	-		
	24	31	34	31	32	29.144	29.273	29.356	3	8	8	N.	W.	W.	-	a. m.	1.00	-	Rain.	
	25	22	26	15	21	29.525	29.640	29.846	3	5	0	W.	N. W.	W.	-	-	-	-		
	26	15	30	25	20	29.381	29.520	29.238	0	8	0	W.	S. W.	W.	-	-	-	-		
	27	23	43	37	34	29.890	29.789	29.722	0	6	0	W.	W.	W.	-	-	-	-		
	28	31	54	46	43	29.733	29.757	29.890	0	5	8	W.	W.	W.	-	-	-	-		
	29	39	50	43	44	29.860	29.864	29.494	3	8	10	W.	S. E.	W.	-	-	-	-		
	30	39	44	41	41	28.976	28.895	29.891	10	10	10	S. E.	S. E.	N. E.	p. m.	-	-	-	Rain.	
Means,		36.8	46.8	42.1	40.4	29.424	29.472	29.483	4.9	6.3	5.1	Amount of rain,					3.12			

Summary of Meteorological Observations, 1856-7.

	December.	January.	February.	March.	April.	May.	June.	July.	August.	September.	October.	November.
Mean of Thermometer, .	22.7	14.8	28.4	27.8	36.5	51.1	59.8	63.	64.2	56.2	51.9	36.8
	28.6	20.1	37.8	38.9	46.6	61.9	67.	76.9	73.8	66.1	62.6	46.8
	27.0	16.1	31.5	32.7	39.8	53.1	59.9	69.4	65.8	58.4	53.9	42.1
Mean of Barometer, .	29.004	29.461	29.705	29.444	29.421	29.414	29.326	29.469	29.450	29.507	29.584	29.424
	29.471	28.996	29.502	29.424	29.347	29.378	29.247	29.430	29.766	29.524	29.456	29.472
	29.591	29.450	29.620	29.475	29.428	29.388	29.293	29.417	29.419	29.515	29.801	29.483
Mean of Cloudiness, .	4.7	5.1	7.8	6.4	6.2	7.0	6.9	7.0	5.7	4.9	5.6	4.9
	4.3	5.4	7.1	7.7	6.5	6.6	7.2	6.3	6.7	5.4	5.8	6.3
	3.7	4.6	6.1	6.8	6.4	5.8	5.9	5.4	5.1	3.7	4.6	5.1
Inches of Rain, . . .	2.41	19.	1.42	1.60	8.77	4.56	3.44	3.80	5.75	4.92	3.93	3.12
Snow Water, . . .	1.67	4.29	.82	1.20	-	-	-	-	-	-	-	-
Snow,	3.	29.	6.5	11.75	-	-	-	-	-	-	-	-

Extremes of Thermometer: January 24, —13°. Aug. 14, 90°.

Weather, Wind and Rain, 1856-7.

Weather, Wind and Rain.	December.	January.	February.	March.	April.	May.	June.	July.	August.	Septemb'r.	October.	November.	Total.
No. days clear, . . .	1	3	-	-	-	1	-	-	3	1	2	1	13
No. days cloudy, . . .	30	28	28	31	30	30	31	31	23	29	29	29	352
No. days rainy, . . .	5	15	10	8	12	10	10	9	9	6	8	9	107
No. inches rain, . . .	4.08	4.48	2.24	2.80	8.77	4.56	3.44	3.89	5.75	4.92	3.93	3.12	51.89
No. days N. wind, . . .	-	3	-	1	1	1	-	1	1	-	2	-	10
No. days N. W. wind, . . .	3	3	2	1	2	-	-	-	-	1	-	-	12
No. days W. wind, . . .	4	-	1	4	4	1	4	-	5	6	5	5	39
No. days S. W. wind, . . .	1	1	3	-	-	-	3	6	-	2	1	1	18
No. days S. wind, . . .	-	1	-	-	1	-	-	-	1	-	-	-	3
No. days S. E. wind, . . .	-	-	-	-	-	-	-	-	-	1	1	-	2
No. days E. wind, . . .	-	-	-	-	1	-	1	1	1	-	4	-	8
No. days N. E. wind, . . .	-	2	1	1	1	-	-	-	-	-	-	-	5

REMARKS.

By clear days is meant entirely clear, *i. e.*, no cloud whatever being visible.

By rainy days, that more or less rain fell, without any reference to quantity.

Amount of Rain and Snow registered at the State Lunatic Hospital, Worcester, Mass., for Sixteen Years.

YEAR.	DECEMBER.		JANUARY.		FEBRUARY.		MARCH.		APRIL.		MAY.		JUNE.		JULY.		AUGUST.		SEPTEMBER.		OCTOBER.		NOVEMBER.		TOTAL.	
	Inches Rain.	Inches Snow.	Inches Rain.	Inches Snow.	Inches Rain.	Inches Snow.	Inches Rain.	Inches Snow.	Inches Rain.	Inches Snow.	Inches Rain.	Inches Snow.	Inches Rain.	Inches Snow.	Inches Rain.	Inches Snow.	Inches Rain.	Inches Snow.	Inches Rain.	Inches Snow.	Inches Rain.	Inches Snow.	Inches Rain.	Inches Snow.	Inches Rain.	Inches Snow.
1841-2, .	4.77	6.	1.35	5.	4.13	3.	2.24	4.	2.82	10.	3.24	1.	4.93	1.	1.96	1.	7.12	1.	3.50	1.	.83	1.	3.36	1.	40.25	18.
1842-3, .	5.30	26.	5.05	2.	4.45	30.	5.23	26.	3.13	10.	1.73	1.	4.16	1.	3.39	1.	9.19	1.	1.25	1.	5.19	1.	3.63	1.	51.69	94.
1843-4, .	2.28	23.	3.14	13.5	1.44	12.	3.80	18.5	.35	1.	3.67	1.	1.92	1.	3.50	1.	3.39	1.	3.68	1.	7.34	1.	3.06	5.	37.57	72.
1844-5, .	2.05	8.	4.17	12.	2.61	20.	3.29	10.	1.61	1.	3.23	1.	3.14	1.	2.91	1.	2.36	1.	2.57	1.	4.44	1.	6.77	4.	39.65	54.
1845-6, .	5.39	13.	2.92	13.	2.50	30.	3.33	1.	1.34	1.	5.85	1.	2.37	1.	3.81	1.	2.44	1.	.90	1.	2.19	1.	4.08	5.	37.12	61.
1846-7, .	2.87	9.	4.66	5.	4.08	17.	3.89	8.	1.67	1.	1.63	1.	5.29	1.	4.86	1.	4.20	1.	7.17	1.	2.87	1.	3.75	1.	46.94	39.
1847-8, .	4.93	10.5	3.08	4.5	1.61	25.	3.89	6.	1.52	5.	6.82	1.	1.31	1.	3.13	1.	3.19	1.	2.36	1.	5.75	1.	1.94	8.	39.53	59.
1848-9, .	3.93	25.	.98	2.	1.30	14.5	3.30	3.	1.95	1.	3.56	1.	1.25	1.	1.60	1.	4.28	1.	2.49	1.	6.45	1.	4.11	1.	38.20	44.5
1849-50, .	3.12	8.5	4.79	15.	3.23	2.	3.67	20.	5.53	13.	7.50	1.	3.35	1.	3.75	1.	6.05	1.	7.92	1.	3.37	1.	2.14	5.	54.42	59.
1850-1, .	4.19	3.5	2.07	2.5	4.01	1.5	1.40	18.	6.76	1.	4.73	1.	3.16	1.	2.17	1.	1.97	1.	2.50	1.	7.04	1.	5.68	5.5	45.68	55.
1851-2, .	2.30	5.5	5.44	15.5	2.46	11.5	3.42	13.5	1.77	23.	3.50	1.	3.53	1.	3.42	1.	11.38	1.	3.36	1.	3.89	1.	5.83	4.	59.65	73.
1852-3, .	4.78	4.	3.02	10.	8.09	11.	3.60	8.	4.92	1.	4.45	1.	1.01	1.	3.29	1.	10.71	1.	5.26	1.	6.20	1.	5.30	1.	59.65	33.
1853-4, .	3.79	20.5	2.82	7.5	6.62	15.5	3.45	1.	6.69	1.	6.78	1.	3.05	1.	5.68	1.	.35	1.	5.53	1.	5.03	1.	9.82	2.5	59.51	46.
1854-5, .	3.43	15.5	8.11	9.	4.48	8.	.23	4.	5.39	1.	1.64	1.	4.19	1.	9.40	1.	4.06	1.	.20	1.	8.17	1.	5.85	2.	55.05	38.5
1855-6, .	6.90	10.5	4.60	27.5	1.35	9.	1.69	10.2	3.34	1.	6.55	1.	1.44	1.	2.68	1.	13.14	1.	3.39	1.	2.65	1.	2.03	2.5	49.76	69.7
1856-7, .	4.08	3.	4.48	29.	2.24	6.5	2.80	11.75	8.87	1.	4.56	1.	3.44	1.	3.80	1.	5.75	1.	4.92	1.	3.93	1.	3.12	1.	51.89	50.25
Sums,	64.12	211.5	60.68	173.	54.60	216.5	52.23	160.95	67.66	51.	70.07	1.	47.53	1.	59.35	1.	89.58	1.	57.10	1.	75.34	1.	4.70	39.	765.92	865.95
Means,	4.00	13.2	3.16	10.8	3.41	13.5	3.26	11.43	4.22	1.0	4.37	1.	2.97	1.	3.70	1.	5.59	1.	3.56	1.	4.70	1.	4.40	2.4	47.87	54.12

The above Table, increasing in value as years are added, exhibits the mean quantity of Rain and Snow for each month, the yearly mean, and the amount fallen in each month and year during the last sixteen years.

Flowering Season on the Hospital Hill for Nineteen Years.

Trees, Shrubs, etc.	1839.	1840.	1841.	1842.	1843.	1844.	1845.	1846.	1847.	1848.
Crocus, . . .	April 8	April 1	April 23	April 7	April 15	-	April 12	April 9	April 24	April 10
Liverwort, . . .	9	10	24	30	30	-	-	15	9	24
Leatherwood, . . .	16	16	May 8	25	25	April 16	21	13	25	-
Bloodroot, . . .	18	19	May 7	May 3	May 3	-	25	12	1	22
Wind Flower, . . .	20	24	15	-	-	18	-	-	9	-
Cherry Tree, . . .	20	25	19	9	9	21	28	24	10	29
Peach Tree, . . .	5	11	24	April 9	14	24	1	25	11	25
Apple Tree, . . .	10	-	April 17	March 27	-	May 14	8	4	22	9
Trailing Arbutus, . . .	-	April 20	May 8	May 1	-	April 10	April 29	May 2	-	6
Fever Bush, . . .	-	April 20	May 16	May 1	8	May 17	April 25	April 2	2	-
Mission Currant, . . .	-	May 2	21	April 5	12	-	May 5	-	12	23
Wild Cherry, . . .	6	12	25	-	25	May 27	May 10	27	-	13
Flowering Almond, . . .	12	16	27	-	24	May 4	May 15	4	25	12
Lilac, . . .	16	13	27	April 14	25	May 4	May 4	May 6	27	17
White Honey-suckle, . . .	13	27	27	April 29	25	-	April 21	8	9	16
Shad Bush, . . .	2	-	-	3	13	April 20	April 21	13	21	-
Red Maple, . . .	-	23	April 25	-	28	April 12	May 20	27	28	-
Calicanthus, . . .	-	30	June 4	-	29	-	May 23	10	29	-
Mountain Ash, . . .	-	April 23	28	April 16	May 9	23	May 23	May 15	10	15
Thunder-bell, . . .	April 23	-	May 1	-	-	8	March 23	April 19	20	3
Daphne Mezereum, . . .	-	-	-	-	-	26	May 3	April 3	11	6
Hyacinth, . . .	-	-	-	-	-	15	May 1	May 23	May 12	14
Blue Violet, . . .	-	-	-	-	1	-	-	22	9	25
Persian Lilac, . . .	18	-	30	-	20	-	19	March 27	-	21
G. Maculatum, . . .	21	18	21	-	28	-	22	May 17	25	19
Rose, Russian, . . .	2	3	-	-	-	15	22	May 17	5	23
Rose, Scotch, . . .	May 27	May 26	-	-	-	-	20	-	-	27
Horse Chestnut, . . .	-	May 20	-	-	-	-	15	-	-	-
Narcissus, . . .	-	10	27	-	21	-	-	-	-	17

Flowering Season, &c.—Continued.

Trees, Shrubs, etc.	1843.	1850.	1851.	1852.	1853.	1854.	1855.	1856.	1857.
Crocus,	April 20	April 10	April 4	April 9	April 7	April 10	April 12	April 6	March 23
Liverwort,	April 30	May 13	April 22	May 12	April 23	May 6	May 2	April -	April 19
Leatherwood,	7	-	April 23	May 3	April 26	May 12	May 10	-	May -
Bloodroot,	-	-	-	1	April 23	April 30	May 3	April 5	May 13
Wind Flower,	-	-	April 24	9	April 30	May 8	May 7	May 10	May 12
Cherry Tree,	-	May 5	May 29	11	May 30	May 14	May 8	May 13	May 14
Peach Tree,	6	18	May 14	17	May 10	April 14	May 15	May 17	May 2
Apple Tree,	7	10	April 10	13	April 9	April 18	April 15	April 23	April 2
Trailing Arbutus,	13	10	April 10	11	April 30	May 8	April 30	May 3	April 2
Fever Bush,	-	-	April 25	12	April 23	May 7	May 11	May 14	May -
Missouri Currant,	19	6	April -	10	May 27	May 16	May 14	May 13	May 31
Wild Cherry,	23	23	May 15	19	May 10	May 20	May 19	May 22	May 25
Flowering Almond,	24	28	May 18	27	May 17	May 22	May 23	May 24	May 26
Lilac,	-	-	-	24	May 15	May 30	May 23	May 25	May 27
Tt. Honeysuckle,	7	7	May 6	28	April 4	April 30	April 26	April 16	April 22
Shad Bush,	11	23	April 3	28	April 11	April 23	April 19	April 20	April 2
Red Maple,	-	3	May 23	25	June 4	June 6	June 4	June 20	June 5
Calicanthus,	-	6	June 1	5	May 22	June 30	June 12	June 31	June 16
Mountain Ash,	3	15	April 22	3	May 22	May 10	April 17	April 2	April 16
Dandelion,	29	6	March 30	14	8	April 20	April 24	April 16	March 31
Daphne Mezereon,	3	6	April 12	9	30	May 10	May 1	May 12	March 15
Pyrus Japonica,	3	18	April 30	4	25	May 6	May 16	April 17	May 5
Hyacinth,	23	8	-	6	24	12	10	May 15	May -
Blue Violet,	2	7	May 25	24	19	26	17	May 31	May -
Persian Lilac,	3	3	May 18	28	22	30	23	June 1	May 29
G. Maculatum,	24	3	May 24	9	June 2	June 16	June 4	June 3	June 12
Rose, Russian,	6	8	June 6	30	June 6	June 10	June 6	May 10	June 27
Rose, Scotch,	14	22	May 19	28	May 17	May 2	May 20	May 24	May 26
Horse Chestnut,	-	27	May 19	29	May 26	May 28	May 30	May 18	May 22
Narcissus,	5	-	-	-	-	-	-	-	-

B Y - L A W S

ESTABLISHED BY THE TRUSTEES OF THE STATE
LUNATIC HOSPITAL IN WORCESTER.

CHAPTER. I.

Organization and Meetings of the Board of Trustees.

SECT. 1. The Board of Trustees shall be organized as soon as may be, after the annual appointment of the members, at a meeting to be called by the Trustee who is first named in the commission of the Governor, at which meeting one of the Trustees shall be appointed Chairman, and another, Secretary of the Board. In case of the death, sickness, or absence of the Chairman, such other Trustee as may be first named in the commission of the Governor, shall perform the duties of Chairman until the Board, at its next following meeting, shall make an appointment.

SECT. 2. The Chairman shall call meetings of the Board as often as he may deem the same expedient, or whenever he shall be requested to do so by any two Trustees. He shall preside at all meetings, shall prepare the Annual Report required to be laid before the Governor and Council, and shall be the organ of the Board in receiving and preparing all official communications in relation to its concerns.

SECT. 3. The Secretary shall keep a record of the proceedings of the Board, and shall prepare, or cause to be prepared, all documents, statements, and notices, which may be directed by the Board or by the Chairman. Whenever directed by the Board or Chairman, he shall give notice, in writing, to each Trustee, of the time and place appointed for a proposed meeting of the Board. He shall promptly communicate to the Treasurer all the proceedings of the Board in relation to the settlement of accounts with patients, and the financial concerns of the institution. To assist him in the performance of his duties, he shall be authorized to employ the Clerk residing at the Hospital.

SECT. 4. The monthly, semi-annual, and annual visitations of the Hospital shall be made, so far as may be, in connection with the meetings of the Board; and, otherwise, in conformity to such arrangement as the Board may, from time to time, adopt.

SECT. 5. The annual meeting of the Board shall always be held in the month of September, for the purpose of receiving the Annual Report of the Superintendent, and also of receiving and auditing the Annual Report of the Treasurer, and of considering and adopting the Annual Report of the Board, as prepared by the chairman, in order that the same may be seasonably forwarded to the office of the Secretary of the Commonwealth.

SECT. 6. The Treasurer's Report shall contain a statement of all receipts and expenditures for the year ending the last day of August in each year; and all bills for board and expenses of patients shall be payable to the Treasurer on the first days of December, March, June and September, in each year.

CHAPTER II.

Officers of the Hospital, Tenure of Office, and Salaries.

SECT. 1. For conducting efficiently and economically the business of the institution, the following officers shall be appointed by the Trustees, viz.: a Superintendent, a Treasurer, one Assistant-Physician, a Steward, a Matron, and a Chaplain.

SECT. 2. The several officers appointed by the Board shall hold their offices during the pleasure of the Board, and shall not resign their offices without giving to the Board at least six months' notice of their intention so to do.

SECT. 3. The salaries of the officers shall be established as follows, viz.:—

The Superintendent shall receive the sum of eighteen hundred dollars per annum, and shall be provided with furnished apartments, and also board and fuel for himself and family, together with the services of one female domestic, and horse-keeping for one horse.

The Treasurer shall receive the sum of six hundred dollars per annum.

The Assistant-Physician shall receive the sum of five hundred dollars for the first year, six hundred dollars for the second year, seven hundred dollars for the third year, and nine hundred dollars for the fourth and each succeeding year, together with board and fuel, and the use of a furnished apartment. The Steward and Matron shall

receive jointly the sum of seven hundred dollars per annum, together with board and fuel, and the use of furnished apartments.

The Chaplain shall receive the sum of six hundred dollars per annum, together with board and fuel, and the use of a furnished apartment.

CHAPTER III.

Duty of Superintendent.

SECT. 1. The Superintendent shall be a physician, and shall constantly reside at the Hospital.

SECT. 2. He shall have the superintendence of the Hospital, and of all the buildings and grounds connected therewith, the oversight and charge of the patients, and the general direction of all the concerns of the institution, subject to such regulations as may be, from time to time, established by the Trustees.

SECT. 3. He shall visit all the patients personally, or learn their condition daily, and as much oftener as may be necessary, and shall direct such medical, moral, and physical treatment as may be best adapted to their relief, giving the fairest trial to kind and moral management.

SECT. 4. He shall cause to be kept, a record showing the name, age, and residence of each patient, the time when received and removed, whether cured or relieved, whether eloped or dead, and if dead, from what cause.

SECT. 5. He shall receive and answer all communications relating to the concerns of the institution, and shall cause a record of his correspondence to be regularly kept.

SECT. 6. Under the general direction of the Trustees, he shall, from time to time, appoint such persons as he may deem qualified to perform the duties of Clerk and Apothecary, Supervisors of Departments, Overseers of the Laundry, Bakery, and Workshops, Watchmen, Farmer, and also all necessary attendants, in the galleries, laundry, bakery, kitchen, workshops, and on the farm, and shall contract with them to perform the services required of them by the by-laws, on such conditions and at such rate of weekly or monthly wages as he shall deem expedient.

He shall see constantly that all persons thus appointed by him, and also all subordinate officers appointed by the Board, perform faithfully the duties required of them, and from time to time, he shall give them such instructions as he may deem necessary to secure the exact and thorough performance of their respective duties.

He shall be authorized to discharge from service any of the persons thus appointed by him, upon their request, or whenever he shall cease to be satisfied in respect to the performance of their duties.

SECT. 7. At each monthly visit of the Trustees, he shall exhibit all the records, and in a verbal or written report shall make known the state of the institution, specifying the cases of patients received or removed during the month, and accompanying the same with such suggestions and remarks as he may deem useful.

SECT. 8. At the annual meeting of the Trustees, he shall submit a report in writing, upon such topics as may have been suggested by the progress of the institution and the experience of the year, including therein a tabular statement comprising all important particulars from the records.

CHAPTER IV.

Duty of Treasurer.

SECT. 1. The Treasurer shall give bonds for the faithful performance of his duties, in the sum of fifteen thousand dollars, with such sureties as shall be approved by the Trustees.

SECT. 2. He shall receive, hold, and disburse all the moneys which may be granted by the legislature or obtained from other sources for the use of the Hospital; and once in each year, and oftener if required by the Trustees, he shall exhibit an account of his receipts and expenditures, with all the vouchers therefor, for the examination of the Board.

CHAPTER V.

Duty of the Assistant-Physician.

SECT. 1. The Assistant-Physician shall always be a physician, and shall constantly reside at the Hospital. He shall exercise a general supervision of all the patients, under the direction of the Superintendent.

SECT. 2. The Assistant-Physician shall visit all the patients in his department daily, and oftener if necessary; carefully observe their condition, wants and treatment, and see that they have food, medicine, exercise, amusements, clothing and bedding, suitable for them; exert what moral influence he can with them, and endeavor in every way to promote their comfort and recovery.

SECT. 3. He shall see that the subordinate officers and attendants

are faithful and kind, attentive to the wants of the patients, and vigilant in the discharge of all their duties; and he shall enter in a book kept for the purpose, all instances of neglect of duty observed by him, or of which he may receive information, which shall be immediately reported to the Superintendent.

SECT. 4. For the due performance of the duties enjoined in the foregoing sections, he shall spend much time in his department, shall be in constant communication with the Supervisors, Overseers, and Attendants, and shall carry out the plans and instructions of the Superintendent in the best manner he is able.

SECT. 5. He shall report to the Superintendent daily, the general condition of his department, and the particular state of such patients as may be sick or greatly excited, requiring restraint or seclusion.

SECT. 6. He shall attend to the warmth, cleanliness, ventilation, and good order of his department, and superintend the use of the bath.

SECT. 7. He shall keep records of the cases of all the patients, describing the symptoms, the changes that may occur, from time to time, the mode of treatment, and all the peculiar circumstances connected therewith.

SECT. 8. He shall attend to visitors when necessary, and shall always be ready to perform whatever services may be required of him by the Superintendent.

CHAPTER VI.

Duty of Steward.

SECT. 1. The Steward, under the direction of the Superintendent, shall purchase furniture, fuel, stores, stock for the workshops, implements and cattle for the farm, and all other necessary articles, and shall be responsible for the economical use of the same.

SECT. 2. He shall keep clear and methodical, and exact accounts of all receipts and expenditures, and of charges against patients, and shall submit the same, together with proper vouchers therefor, to the Treasurer, at least once in three months, and as much oftener as the Treasurer shall require.

SECT. 3. Under the direction of the Superintendent, he shall attend to engaging and discharging the subordinate officers and attendants, and to the settlement of their wages, for which latter purpose he shall keep regular accounts with them.

SECT. 4. He shall constantly observe the conduct of the subordinate officers and attendants, and see that in all respects they do their

duty, and forthwith report to the Superintendent any instance of misconduct or negligence on their part, which he may observe, or of which he may be informed.

SECT. 5. He shall attend particularly to the business of the laundry, bakery, workshops, and farm; shall see to the cleansing of the sewers as often as may be necessary, and that the grounds, yards and roads, the aqueduct, laundry, bakery, workshops, barns, and other out-buildings, and also the chapel and hall, are always kept in good order, in conformity to such directions as he may receive from the Superintendent.

SECT. 6. He shall perform all services that may be required of him in maintaining the police of the establishment; shall see to the opening and closing of the house, and that the attendants rise and commence business immediately after the ringing of the bell, and that they retire in proper season at night; that the bell is rung at proper times, and that the fires are regularly kindled and extinguished. He shall go in search of elopers; shall observe the conduct of inmates at the religious and other meetings; and when in the wings, shall exert all the good influences he can to promote the comfort and recovery of the patients.

SECT. 7. He shall receive visitors, give them all suitable information, and accompany them personally to such parts of the buildings and grounds as, by the permission of the Superintendent, are open for examination.

SECT. 8. He shall be at all times ready to perform whatever extraordinary services shall be required of him by the Superintendent.

CHAPTER VII.

Duty of Matron.

SECT. 1. The Matron shall have the general direction of the domestic concerns of the Hospital.

SECT. 2. She shall attend to the cleanliness and good order of the apartments, have care of the cooking, sewing, clothing, and bedding, and, in connection with the Steward, shall take the general direction of the washing, ironing, and baking.

SECT. 3. She shall see that all the female attendants are faithful and diligent in the discharge of their duties, kind and pleasant to patients wherever they meet them, discreet and regular in their deportment, and that they observe all the regulations of the Hospital.

SECT. 4. She shall be in the way of seeing the patients frequently,

and shall be careful always to exert a good moral influence on them and the attendants, and shall spare no effort to promote the comfort and good order of the household.

SECT. 5. She shall be at all times ready to perform whatever extraordinary services shall be required of her by the Superintendent.

CHAPTER VIII.

Duty of Chaplain.

SECT. 1. The Chaplain shall conduct religious worship in the chapel on the Sabbath, as well as on such other days as may be set apart for religious observance by the authorities of the Commonwealth.

SECT. 2. He shall also attend daily devotional exercises in the chapel, and, whenever he may be requested, shall officiate at funerals.

SECT. 3. He shall perform all such other services relating to moral and religious instruction, as may be authorized and requested by the Superintendent.

CHAPTER IX.

Duty of Clerk and Apothecary.

SECT. 1. The Clerk and Apothecary shall keep the records of the Hospital under the direction of the Superintendent; he shall copy, seal and direct letters, make copies of all documents, and other papers, post the books of the Steward, keep the weather table, and perform all other clerical services which may be required by the Superintendent or by the Secretary of the Board of Trustees.

SECT. 2. He shall also prepare and put up the medicines prescribed by the Superintendent and Assistant-Physician.

SECT. 3. He shall keep the office in order, wait upon visitors, and perform whatever other services shall be required of him by the Superintendent.

CHAPTER X.

Duties of the Supervisors.

SECT. 1. The Supervisors of the respective departments are responsible in a great measure for the order and discipline of the institution.

It is their duty to see that the rules of the Hospital are carried out in every particular, and that every patient is treated with uniform kindness and attention.

SECT. 2. They will administer all medicines prescribed by the Superintendent or Assistant-Physician, and see that their orders are most strictly observed.

SECT. 3. They will pass all their time in the wards of their respective departments and assist the attendants in their efforts to amuse, interest and employ the patients under their care.

SECT. 4. They must prevent in every possible way, any disturbance, noise or confusion among the patients.

SECT. 5. They must report at once all irregularities in the conduct of the attendants, or neglect in the performance of duties, that may come under their notice.

SECT. 6. They will act as mediums or messengers between the attendants and the office, receiving and transmitting all messages and requests between the same.

SECT. 7. They should report to the Superintendent, each day before the regular visit of the Superintendent and Assistant-Physician, the general condition of the patients.

SECT. 8. They must have the general charge and supervision of the clothing of patients, and of the beds and furniture in the wards.

SECT. 9. They shall have the general charge and direction of the sick, and must know that orders of the Superintendent and Assistant-Physician are faithfully executed.

SECT. 10. They shall in every possible way promote the general interests of the Hospital and be at all times in readiness to perform any service required by the Superintendent.

CHAPTER XI.

Duty of Attendants.

SECT. 1. *Treatment of Patients.*—In all their intercourse with the patients, the Attendants shall treat them with marked respect and civility. They shall be kind and gentle in their manner, and avoid violence of every kind. They must answer, as well as they can, every civil question, and attend at once to every reasonable request. They must be quiet and calm under every provocation, and never scold, threaten, or recriminate; and whenever they desire any thing done by a patient, they must request it in a respectful and becoming manner.

SECT. 2. In the care of the insane, sympathy, tact and kindness, should always take the place of force and authority. But if unfortunately force must at any time be resorted to, the manner of its employment should take away its offensiveness.

SECT. 3. A cheerful look, a kind manner, a respectful demeanor, and sympathizing language, will do much towards quieting the most excited patient.

SECT. 4. The opposition patients make, often arises from delusions that lead them to believe they are to be injured in person, property, or character, so that every attempt to control them, to administer food, medicine, or baths, or to do any thing for them, should be done in the most quiet and kind manner.

SECT. 5. Angry looks, cross words, violent actions, will destroy the patient's confidence, and if submitted to such treatment in the commencement of his disease, will destroy all hope of recovery and cause years of suffering to the patient, and anxiety to the friends.

SECT. 6. *Morning Duties.*—The Attendants shall rise in the morning at the ringing of the bell, and at once commence the labors of the day. On opening the doors of the patients' sleeping rooms, they shall greet the patients with expressions of kindness, see that they arise from bed, are neatly dressed, properly washed, and have their hair and clothes well brushed in time for breakfast at the prescribed hour.

SECT. 7. Immediately after the patients have arisen from bed, the Attendants shall remove the chamber vessels, spread open the beds for airing, see that the soiled beds and bedding are removed, and put the rooms in good order.

SECT. 8. The Attendants shall keep the patients' rooms, and every part of the wards, perfectly neat and clean at all times. "Nothing is clean enough if it can be made cleaner." This rule must be most scrupulously observed.

SECT. 9. Whenever any unpleasant odor is discovered, the cause is to be ascertained and removed at all times, day or night.

SECT. 10. Whenever any room, or any part of the ward, or any furniture is soiled, it must be cleaned immediately.

SECT. 11. Whenever any bed, or furniture has been disarranged, it must be put in order promptly and cheerfully.

SECT. 12. The halls, sleeping rooms, parlors, staircases and closets must be swept and brushed as many times each day as may be necessary to keep them perfectly clean.

SECT. 13. The windows, doors and standing work of the halls must be scrubbed as often as may be required.

SECT. 14. The urinals and water closets must be thoroughly watched and frequently rinsed with hot water.

SECT. 15. Bedding if wet only, must be cleansed by pouring hot water through the soiled part, and carefully dried before using.

SECT. 16. Clean linen must be put on each bed once in every week, and oftener if necessary. Spreads are to be sent to the laundry when soiled.

SECT. 17. If old or feeble patients wish to lie down during the day, they will go to their own room for that purpose; and the Attendant must assist them if necessary. When they leave their beds the Attendants will see that they are put in order, and if soiled, that they are cleansed and dried.

SECT. 18. *Meals.*—The Attendants shall cause the tables to be properly laid. They shall see that the furniture of the tables is always neat and clean. And so far as they can, shall make the tables appear cheerful and inviting. The Attendants must always be present at the tables, to prepare and distribute food to such patients as are not able to do it for themselves, and shall see that each one is well served. They shall be careful that no knife, fork or other article is taken from the tables and carried from the dining-rooms by any patient.

SECT. 19. Patients who take their meals in their own rooms, or at a table in the ward, must be carefully served, and the Attendants must see that their food is brought to them warm and in good order. If necessary, one Attendant must remain by them while they are eating.

SECT. 20. Patients are never to be forced to take food, but by the express order, and in the presence of, the Superintendent or Assistant-Physician.

SECT. 21. The conduct of the table shall always be decorous. And for any deviation from the rules of propriety, the Attendant in charge must be held mainly responsible.

SECT. 22. *Baths.*—Every patient must take a warm bath once in a week, unless otherwise directed by the Superintendent or Assistant-Physician.

SECT. 23. The temperature of the bath may be such as is most agreeable to the patient.

SECT. 24. Those who desire to bathe daily must be gratified in this respect, and assisted by the Attendants.

SECT. 25. All hot baths, foot baths, sponge baths and shower baths, directed by the Superintendent or Assistant-Physician, must be scrupulously administered by the Attendant in charge.

SECT. 26. In bathing of patients, the rules of delicacy must be most strictly observed in all cases.

SECT. 27. *Shaving.*—The shaving of patients must be done by the Attendant in each ward at regular intervals, and patients who desire to shave more frequently must be gratified.

SECT. 28. Great care must be taken that no injury is done at the time of shaving. No patient must be allowed to use a razor unless permission has been given by the Superintendent.

SECT. 29. When such permission has been granted, an Attendant must always be present.

SECT. 30. When an Attendant is engaged in shaving a patient, no other patient should be near.

SECT. 31. The shaving must always be neatly and quickly performed. The patient must not be sent from the chair until his face is smooth, clean and dry, and his hair and whiskers properly trimmed and brushed.

SECT. 32. *Patients at work on the Farm.*—Whenever it is thought advisable for patients to work on the farm or in the gardens, some general order to that effect will be given to the Farmer or some other responsible person, and no patient is ever to be taken from the wards and put to labor unless some such order respecting the patient has been given.

SECT. 33. The Farmer or Attendant at work with such patients will be held strictly responsible for their safe keeping until they are returned to the proper ward.

SECT. 34. All farmers, mechanics and attendants are expected to work with the patients, and when thus employed will avoid every appearance of driving or superintending instead of working with and assisting them.

SECT. 35. *Retiring at Night.*—Patients must not retire for the night before 8 o'clock P. M., without permission from the Assistant-Physician, except in cases of sickness and fatigue.

SECT. 36. All those who do not attend chapel service at 8½ o'clock must retire at that time, unless special permission has been given to the contrary.

SECT. 37. After returning from the chapel patients may retire in every part of the house.

SECT. 38. At 9½ o'clock all patients, attendants, and other persons employed must be in their rooms, and no light is to be kept burning unless in case of sickness, always excepting the one light in each ward to be in readiness in case of accident.

SECT. 39. Before closing the door for the night the Attendant

should cheerfully bid the patient a "good night" and be sure that the patient is comfortably in bed. The door is then to be carefully locked.

SECT. 40. No patient's door is ever to be left unlocked without permission from the Superintendent or Assistant-Physician.

SECT. 41. *Discipline.*—No patient is ever to be placed in his room in the daytime, until he is actually unsafe and after all other means of control have failed. If placed in his room his case is to be reported at once. Under no circumstances whatever must it be done rashly or inconsiderately. When secluded in their own rooms they must be frequently observed, and reported if occupied in defacing the walls, injuring furniture, destroying clothing, or any unseemly act.

SECT. 42. No means of restraint is ever to be placed on a patient except by the express order of the Superintendent, and in his presence.

SECT. 43. *Escapes.*—Whenever a patient is missing he is to be reported at once, and all proper means taken to recover him under the direction of the Superintendent or Assistant-Physician.

SECT. 44. *Prohibited Articles.*—Patients are not to have possession of any knife, razor or any other dangerous weapon, and whenever any one is suspected of having any thing of the kind a careful search is to be made for it until it is discovered.

SECT. 45. Patients are not to be supplied with tobacco, cigars, or any stimulating beverage.

SECT. 46. All letters, packages, &c., must pass through the office, and be inspected by the Superintendent or Assistant-Physician.

CHAPTER XII.

Duties of House Clerk.

SECT. 1. It shall be the duty of the House Clerk to receive and mark neatly and legibly, all clothing brought with patients when they enter the hospital. She shall enter in a book kept for the purpose, the name and number of every article, and also take charge of any jewelry, knives, scissors, razors, &c., and all money and papers, and be responsible for their safe keeping until permission is given by the Superintendent for their delivery to the patient.

SECT. 2. She shall also mark and register all clothing provided for patients during their stay in the hospital.

SECT. 3. She shall at all times be ready to assist the female patients in altering and repairing any article of clothing, and in every way make herself generally useful.

SECT. 4. She shall observe all the regulations of the hospital, and be ready at all times to perform any service required by the Superintendent.

CHAPTER XIII.

Duty of the Baker.

SECT. 1. The Baker, under the direction of the Steward and Matron, shall prepare bread, pastry, and other articles pertaining to his department of cooking, and shall supply the kitchen with such quantity as may be required.

SECT. 2. He shall take care of all supplies furnished him for use, and shall be held responsible for the judicious and economical use of them.

SECT. 3. He shall take charge of the house and furniture, and always see personally to the fires and lights, and to the opening and shutting of the house.

SECT. 4. He shall observe all the regulations of the Hospital, and see that they are observed by all persons employed in the bakery, and shall immediately report every instance of remissness or neglect of duty, to the Steward.

SECT. 5. He shall be ready at all times to perform any service which may be required of him by the Superintendent.

CHAPTER XIV.

Duty of Farmer.

SECT. 1. The Farmer, under the direction of the Steward, shall take care of the stock, barn, stables, and piggeries, shall see to the careful use and safe keeping of all implements of labor, and to the feeding and proper treatment of all the animals; and he shall have charge of the teams and of all the work done upon the farm.

SECT. 2. He shall be ready at all times to perform any service which may be required of him by the Superintendent.

CHAPTER XV.

Duty of the Engineer and Fireman.

SECT. 1. It shall be the duty of the Engineer and Fireman to attend to, and take care of the steam apparatus for warming and

ventilating the hospital. He will also supply steam for cooking, bathing and laundry purposes, and also for the stables whenever needed.

SECT. 2. He must attend the force pumps, and see that they are kept in working order, and shall keep them in action so much of the time as may be necessary.

SECT. 3. He must attend to the generation of steam so carefully as to be able to adapt it to all the variations of the temperature.

SECT. 4. He must keep his department in a perfectly neat and orderly manner.

SECT. 5. He will not permit any company or visitor in his department without permission from the Superintendent.

CHAPTER XVI.

Duty of the Overseer of the Kitchen.

SECT. 1. The Overseer of the Kitchen shall have the general charge of all the cooking, under the direction of the Steward and Matron. He shall take care of supplies for the kitchen, and prepare food for the household as may be directed.

SECT. 2. He shall see to the proper distribution and delivery of food to the various wards, and shall be responsible for the cooking of the same.

SECT. 3. He shall personally take care of the fires and lights and see that his department is properly closed for the night.

SECT. 4. He shall be mainly responsible for the conduct of such help as he may require in the performance of his duties.

SECT. 5. He shall at all times be ready to perform any service required of him by the Superintendent.

CHAPTER XVII.

Duty of the Laundress.

SECT. 1. The Laundress, under the direction of the Steward and Matron, shall have the general charge of the laundry. She shall on specified days collect the clothes and soiled linen from the place of their deposit and cause them to be properly washed and ironed and returned to the wards to which they belong.

SECT. 2. The soiled clothes and bed linen belonging in the centre building, shall on specified days, be taken from the rooms to which

they belong, and after washing and ironing in a neat manner shall be returned to the rooms from which they were taken.

SECT. 3. She shall take care of the laundry and its fixtures, keep them in good order, attend personally to the fires and lights, and secure the apartments at night.

SECT. 4. She shall observe all the regulations of the hospital and see that they are observed by those employed in the laundry.

SECT. 5. She will not permit any visitor or any company in the laundry, without permission from the Superintendent, Steward, or Matron.

CHAPTER XVIII.

Duties of the Watch.

SECT. 1. The Watchman will visit the office at half past nine o'clock in the evening to receive his instructions for the night, and immediately commence his duties.

SECT. 2. He shall be constantly awake, faithful, and vigilant. He shall visit each ward in the male department at least every hour during the night. He must avoid any noise, never converse in a loud tone with any one, and open and shut all doors as quietly as possible.

SECT. 3. In treatment of patients he must observe the same rules as the attendants.

SECT. 4. He must always attend to any want expressed by a patient.

SECT. 5. He must notice any unusual noise in a patient's room and ascertain the cause, and if necessary, give notice to the attendant.

SECT. 6. He must give especial attention to the sick, and faithfully execute every order respecting them.

SECT. 7. He must be scrupulously watchful in regard to fire, and if one occurs, must at once give notice to the Superintendent, but in no case make an alarm.

SECT. 8. He must be on service twelve hours of each day.

SECT. 9. He will at all times be in readiness to perform any service required by the Superintendent.

CHAPTER XIX.

Duties of the Watchwoman.

SECT. 1. The Watchwoman will have charge of the female wards during the night, and be governed by the rules laid down for the watchman.

CHAPTER XX.

Duty of Overseers of Workshops.

SECT. 1. The Overseers of Workshops, under the direction of the Steward, shall take care of all stock supplied to them, and see that it is economically used and properly manufactured by the patients under their charge; and they shall keep regular accounts of all stock received and all articles manufactured, sold, or otherwise disposed of.

SECT. 2. They shall exercise a judicious and prudent oversight of all patients under their charge, and shall see them returned to the wards, or placed in the care of their respective attendants, when their labor is done.

SECT. 3. They shall take care of the apartments, and of all stock, tools, and fire therein; shall see to the fires and lights, and that they are properly closed at night.

SECT. 4. They shall be ready at all times to perform any service which may be required of them by the Superintendent.

CHAPTER XXI.

Attendance upon Religious Service.

SECT. 1. All persons employed in the Hospital, who are well and can be spared from their duties in the house or in the wards, shall attend evening prayers, and the religious services on the Sabbath, both morning and evening, unless leave of absence be specially granted.

SECT. 2. Officers and attendants shall take especial care that their demeanor during the services shall be strictly becoming and worthy of imitation; and it shall be considered a noticeable breach of duty, for any one to sleep habitually while present in the chapel.

SECT. 3. The attendance of patients in the chapel shall be under the direction of the Superintendent; and all the arrangements which he may direct concerning them, shall be faithfully carried into effect by the other officers and the attendants.

CHAPTER XXII.

Duty of the Yard Attendant.

SECT. 1. Under the direction of the Steward, he shall take care of the yards and cellars. He shall keep all the walks, avenues, and

courts perfectly clean and neat. He shall remove all rubbish and filth, collect and take off whatever may be thrown from the windows of the wards.

SECT. 2. He shall keep the cellars and attics well swept and whitewashed, and shall remove the dust from the dust holes as often as may be necessary.

SECT. 3. He shall remove all the soiled straw beds, and at the request of the Supervisors shall return fresh and clean ones.

SECT. 4. He shall see that the doors and gates of his department are secured for the night, and shall be ready at all times to perform any service required by the Superintendent.

CHAPTER XXIII.

Duties of Coachman.

SECT. 1. He shall take care of all carriages, horses, harnesses, &c., and see that they are at all times in good order and ready for use.

SECT. 2. He shall drive out with the patients at such times as may be directed by the Superintendent, and shall be careful that no accident occurs, and shall also see that the patients conduct themselves in a becoming manner.

SECT. 3. He shall never stop at any house, shop or store, or do any errands, or carry any messages or packages, without express direction from the Superintendent.

SECT. 4. He will at once report any impropriety that occurs during the ride.

SECT. 5. He will hold himself in readiness to perform any service required by the Superintendent.

CHAPTER XXIV.

Miscellaneous Regulations.

SECT. 1. No officer or attendant, while connected with the Hospital, shall at any time make use of distilled spirits or intoxicating liquor of any kind, at home or abroad; nor shall any one of them make use of tobacco, or smoke a cigar or pipe about the premises.

SECT. 2. No company shall be admitted into the wards occupied by the patients, except by express permission of the Superintendent. All other parts of the Hospital may be exhibited by the Assistant-Physician and the Steward or Matron, at such times and under such restrictions as the Superintendent shall direct.

SECT. 3. The Attendants shall always keep themselves well dressed, in neat and clean apparel.

SECT. 4. All persons employed at the Hospital, shall avoid the use of profane, obscene, or vulgar language, treat each other with uniform civility, never indulge in loud talking or laughing, nor play at any game together, without the permission of the Superintendent. In all respects they shall exhibit a good example to the patients, and shall be held strictly responsible for the bad influence of their conduct.

SECT. 5. All persons employed at the Hospital shall accustom themselves to speak respectfully of the officers and the institution, and shall inculcate these sentiments in their intercourse with the patients; and they shall sustain and carry into operation all directions and prescriptions for the patients in the most ready and faithful manner.

SECT. 6. All persons who have duty to perform in the Hospital, shall rise in the morning at the ringing of the bell.

SECT. 7. Leave of absence will be granted to all persons employed in the various wards, by the Superintendent, and in his absence by the Assistant-Physician.

SECT. 8. Leave of absence will be granted to all persons employed in the kitchen, laundry, bakery and serving rooms, by the Superintendent, and in his absence, by the Matron.

SECT. 9. Leave of absence will be granted to all persons employed on the farm and in the various workshops, by the Superintendent, and in his absence by the Steward.

SECT. 10. All persons who shall agree to perform service at the Hospital shall be considered as engaged for one year, unless a special contract shall be made for a longer or shorter term; and no person employed at the Hospital shall discontinue service at or after the expiration of the year or term agreed for, without giving to the Steward at least thirty days' notice of an intention so to do.

SECT. 11. It is expected that the attendants will devote their whole time to the interests of the Hospital.

SECT. 12. They will never leave their duties without permission, and whenever leave of absence is given, they will always leave their keys at the office until they return.

SECT. 13. When they go out, they will never carry bundles, letters, or any thing for patients, or do any errand for them without permission from the Superintendent.

SECT. 14. The Attendants must on no account, take any friend or visitor into any of the wards, without permission from the Superintendent.

D I E T T A B L E

FOR THE STATE LUNATIC HOSPITAL.

SUNDAY.

Breakfast—Coffee, bread, butter, hash or fish, and potatoes.*Dinner*—Water, bread, butter, cheese, crackers, and pie.*Supper*—Tea or cocoa, bread, butter, cold meat, and warm potatoes.

MONDAY.

Breakfast—Coffee, bread, butter, cold meat, warm potatoes.*Dinner*—Water, boiled dish, vegetables, pudding.*Supper*—Tea or cocoa, warm biscuit, butter, cheese.

TUESDAY.

Breakfast—Coffee, bread, butter, hash of meat and potatoes.*Dinner*—Water, roast meat, vegetables, bread and butter.*Supper*—Tea or cocoa, bread, butter, cheese, and plain cake.

WEDNESDAY.

Breakfast—Coffee, bread, butter, warm or cold roast meat, warm potatoes.*Dinner*—Water, stewed or baked beans, or stewed peas, vegetables, or fish and vegetables, pudding, bread and butter.*Supper*—Tea or cocoa, bread, butter, cheese, gingerbread.

THURSDAY.

Breakfast—Coffee, bread and butter, steak, fish, or warm beans or peas stewed.*Dinner*—Water, soup with meat and vegetables.*Supper*—Tea or cocoa, bread, butter, pie and cheese, and buns or sugar gingerbread.

FRIDAY.

Breakfast—Coffee, bread, butter, fresh meat, cold or warm potatoes.*Dinner*—Water, bread, butter, boiled dish, vegetables and pudding.*Supper*—Tea or cocoa, warm biscuit, butter and cheese.

SATURDAY.

Breakfast—Coffee, bread, butter, hash of meat and potatoes.

Dinner—Water, fish, salt or fresh, vegetables, boiled rice, bread and butter.

Supper—Tea or cocoa, bread and butter, apple sauce or honey.

The condiments provided, are salt, pepper, mustard and vinegar, for such as desire them.

Toast, griddle-cakes, fried pudding or cakes, to be used once or twice a week, as each kitchen can supply all its boarders equally. Milk is used freely. Apples, in the season of them, are served every day at dinner; other fruits occasionally. The sick have a prescribed diet.

Bread and butter, or gingerbread, may be had for luncheon.

