

## **The sixty-first annual report of James Murray's Royal Asylum Perth.**

### **Contributors**

James Murray's Royal Asylum for Lunatics.

Urquhart, A. R.

Mitchell, Arthur.

Sibbald, John.

Findlay, George (Printer).

### **Publication/Creation**

Perth : Printed by J. Young & Sons, 1888.

### **Persistent URL**

<https://wellcomecollection.org/works/m8fw9ue4>

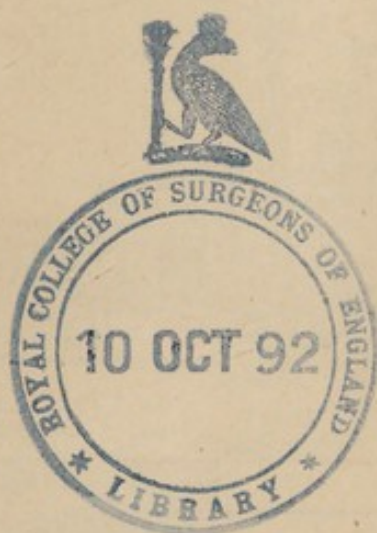
### **License and attribution**

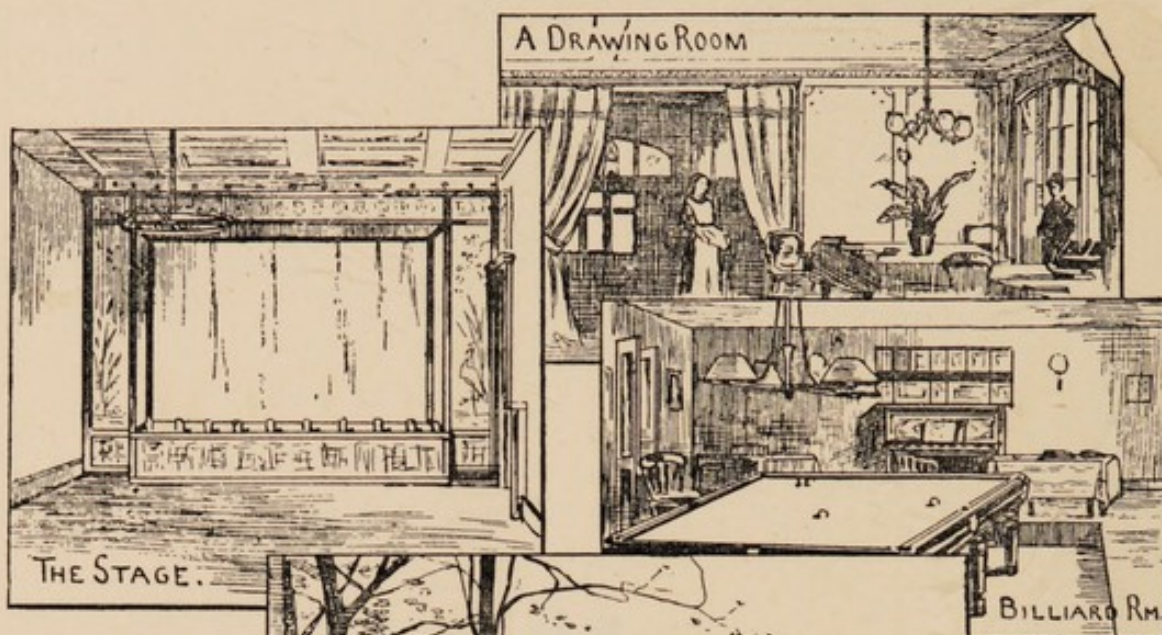
This work has been identified as being free of known restrictions under copyright law, including all related and neighbouring rights and is being made available under the Creative Commons, Public Domain Mark.

You can copy, modify, distribute and perform the work, even for commercial purposes, without asking permission.

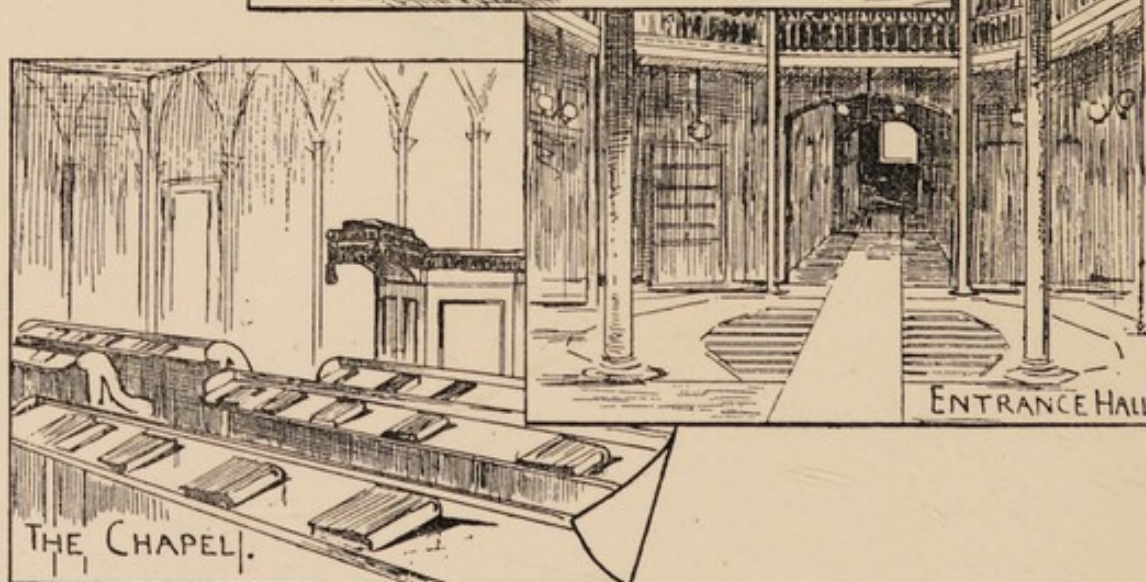
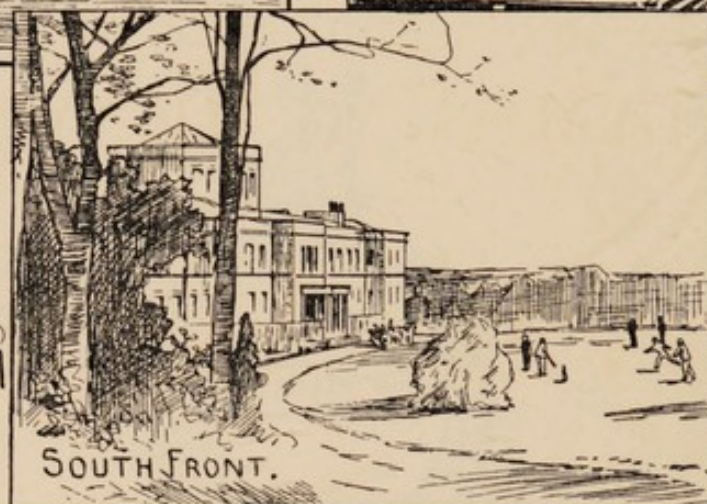


Wellcome Collection  
183 Euston Road  
London NW1 2BE UK  
T +44 (0)20 7611 8722  
E [library@wellcomecollection.org](mailto:library@wellcomecollection.org)  
<https://wellcomecollection.org>





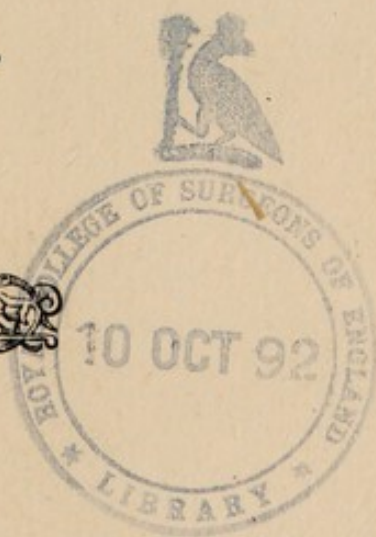
MURRAY'S  
ROYAL  
ASYLUM  
PERTH,



S. Reid - fecit.

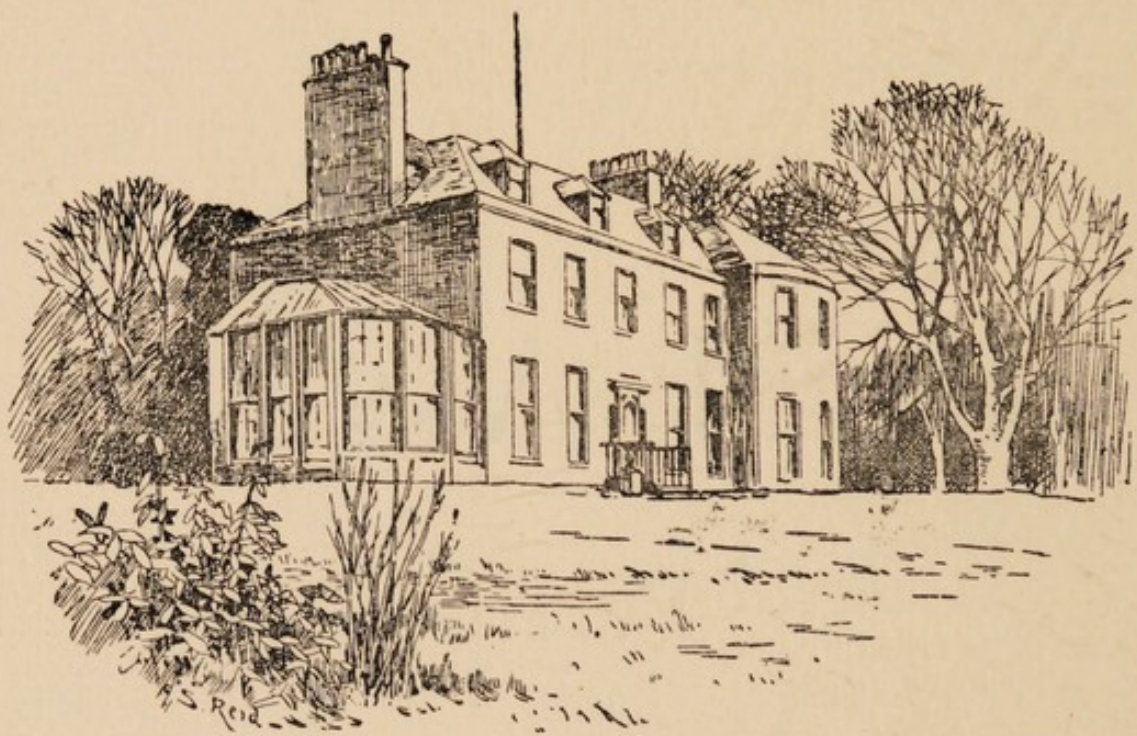


THE  
SIXTY-FIRST  
Annual Report  
OF  
JAMES MURRAY'S  
Royal Asylum  
Perth.



PERTH:  
PRINTED BY J. YOUNG & SONS, 66 WATERGATE.  
1888.





Kincarrathie.



Incorporated by



Royal Charter.

# James Murray's Royal Asylum, Perth.

## Chairman.

The Viscount Stormont.

## Directors Ex-Officio.

His Grace the Duke of Athole, K.T., Lord-Lieutenant of the  
County of Perth.

W. E. Gloag, Esq., Sheriff of the County of Perth.

John Grahame, Esq., Sheriff-Substitute of the County of Perth.

J. P. Whittet, Esq., Lord Provost of Perth.

D. M'Kenzie, Esq., Dean of Guild, Perth.

R. Mitchell, Esq., First Bailie, Perth.

J. Stewart, Esq., Convener of Trades of Perth.

A. G. Reid, Esq., President of the Society of Solicitors, Perthshire.

Rev. R. Milne, D.D., Minister of the West Church, Perth.

## Life Directors.

Wm. Smythe, Esq. of Methven.

H. C. R. Macduff-Duncan, Esq.  
of Damside.

David Mackinlay, Esq. of Cor-  
don.

The Viscount Stormont.

## Annual Directors.

John Bower, Esq., M.D., R.N.,  
Montreal Cottage.

A. Macduff, Esq. of Bonhard.

R. W. R. Mackenzie, Esq., Stor-  
montfield.

D. M. Smythe, Esq., Yr. of Meth-  
ven.

A. Macpherson, Esq., of Blair-  
gowrie.

Capt. Black of Balgowan.

R. Pullar, Esq., Tayside.

Dr. Buchanan White, Annat  
Lodge.

Lieut.-Col. E. R. Stewart Richard-  
son of Ballathie.

Geo. Gray, Esq., Bowerswell.

John Steel, Esq., Blackpark.

John M. Miller, Esq., Mayfield.

## Committee of Management.

The Viscount Stormont.

John M. Miller, Esq.

R. Pullar, Esq.

J. Steel, Esq.

J. Bower, Esq.

J. P. Whittet, Esq.

A. Macduff, Esq.

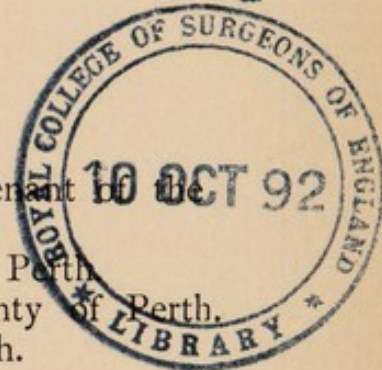
Dr. Buchanan White.

## Joint Secretaries and Treasurers.

Messrs. Mackenzie & Dickson, Solicitors, Perth.

## Auditors.

Messrs. J. & R. Morison, Perth.





## Asylum Staff.

---

Physician Superintendent.

A. R. Urquhart, M.D.

Assistant Medical Officer.

George Findlay, M.A., M.B., C.M.

Chaplain.

Rev. W. D. Knowles, B.A., Lond.

Matrons.

Miss Giddings, at Kincarrathie.

Miss Sharp, at the Asylum.

Housekeeper.

Miss Crichton.

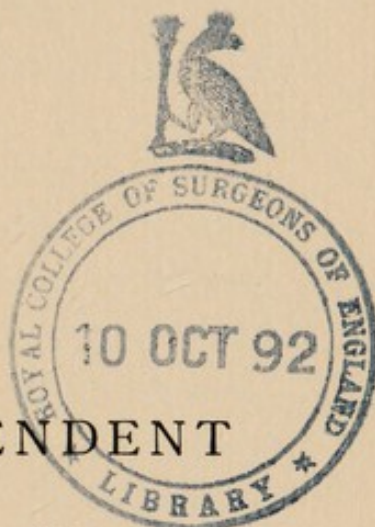
Chief Attendant.

Mr. W. Henry.



REPORT  
OF THE  
PHYSICIAN SUPERINTENDENT

FOR THE YEAR ENDING 31st MAY, 1888.



HAVE the honour to submit the Sixty-  
First Annual Report, together with  
Tables of Medical and General  
Statistics.

General  
Statistics.

On the 1st June, 1887, there were 97 persons on the Registers of the Asylum.

Forty-four were admitted during the year, of whom 19 were men and 25 women.

Thirty-six were discharged, 11 men and 25 women.

The number of deaths was three, two men and one woman.

The total number of patients under treatment was 141, and the average daily number on the books 104.

There now remain 51 men and 51 women—total, 102, being an increase of five during the



year. Four men and three women reside voluntarily in the Institution, eleven are at Kincarrathie, and one is absent on pass.

The Admissions.

The average rate of the admissions for the last twenty-three years is 24 per annum. This year it is 44, three more than in 1887.

Numerous in  
ratio to  
Population.

In proportion to the number of patients resident, the admission rate of this Asylum for the last few years has been considerably greater than in similar Institutions. In consequence, the current of life has been free from stagnation; and, if the labours of the staff have been relatively increased, the interest in the special work of the hospital has not been allowed to flag.

Half of those admitted were considered curable, having been received under favourable circumstances as regards the nature and duration of their malady. The others, for whom no such hope could reasonably be entertained, were cases of old standing, or had suffered serious degenerative changes of the nervous centres. Seven were returned to Asylum care, after trial at home had proved unsuitable, and seven were transferred from other Asylums. Those so transferred included four patients for whom the benefit of change of air and scene had been sought.

The Causes  
of Insanity.

We have received during the past year, out of 44 admissions, 20 who were admittedly hereditarily predisposed to insanity. As many as 15 had previous attacks, of whom one was received into this Asylum for the third time, the former occasions having been in 1837 and 1858.



The usual causes assigned were mostly complicated with heredity or bodily diseases. In no case did mental trouble, without physical basis, appear to cause insanity. Alcoholism was stated to be the origin of the insanity of three persons; but, on enquiry, it was found to be merely an adjuvant, if not a consequence, in two out of these three.

Twenty-nine of those admitted suffered from ailments common among the insane. No fewer than 12 presented grave symptoms of disease of the heart, 9 of disorders of the alimentary canal, 6 of disorders of the genito-urinary organs, 2 of diseases of the skin, 3 of coarse degenerative changes of the nervous centres, and 4 of accidental or self-inflicted injuries. Only 12 were admitted in good bodily health and condition, while 3 were received in an extremely feeble state.

The Ailments  
of those  
Admitted.

The form of mental disorder that predominated was mania. Experience of late years seems to show that melancholia is more common than mania; but, putting aside those suffering from mental disease, the prevailing features of which were dementia or delusions, 18 were found to be suffering from mania and 14 from melancholia.

Form of  
Insanity.

Those admitted came from the following localities :—Four from Perth, 13 from the County of Perth, 2 from Fife, 1 from Forfarshire, 6 from Edinburgh, 5 from Glasgow, 9 from other parts of Scotland, 1 from England, 2 from Ireland, and 1 from the Cape of Good Hope. All applications for admission from Perth were carried into effect.

Former  
Residences of  
Admissions.



## The Recoveries.

The general Recovery Rate of this Asylum, during the years 1865 to 1887 inclusive, is 33·98 per cent. on the number of admissions. The results of the year now ended are:—for men, 35·29; for women, 50; total, 43·90; or, excluding the cases transferred from other Asylums, 53 per cent. Altogether, 18 patients left the Institution restored to health. The list of recoveries is remarkable for having included the cases of two ladies who had been here for eight and seven years respectively. Both were returned to their families, and are reported as continuing “quite well.”

The usual increase in bodily weight was remarked on the discharge of those recovered, the average gain being 17 lb. It should also be recorded that the hereditary predisposition and previous attacks of insanity in those admitted did not prevent recovery, for, out of 18 so discharged, 8 were hereditarily predisposed and 7 had previous attacks.

Removals  
Unrecovered.

Eighteen patients were removed unrecovered. Of that number, nine were returned to the care of relatives and nine were transferred to other Asylums.

During the past year, as heretofore, efforts have been made to return unrecovered patients to the care of their friends, when suitable cases occurred. I cannot report a very successful issue of these trials, for, of the nine so removed, only one has since recovered; one died; one is being nursed by her family through the infirmities of old age; one is living alone, and steadily going from bad to worse; one has been boarded out,



and remains much the same as regards mental and bodily condition; and the remaining four have since been re-admitted. These last were all removed contrary to my advice, and were manifestly unfit for private care. The injudicious course so pursued has had an unfavourable effect in retarding the convalescence of one lady, but the others are apparently unaffected by the change.

I am strongly of opinion that, except in a Restriction on Removals. case absolutely necessitating the intervention of the Procurator-Fiscal under the Lunacy Acts, no obstacle to the discharge of a non-recovered patient should be offered by the Asylum Physician, further than such medical advice as would be proffered in the circumstances of bodily illness—presuming that the responsibility is assumed, in writing, by the friends removing the patient. It must be admitted that the removal of some of the most unpromising cases is followed by improvement, and even by recovery, and the widest experience but serves to illustrate and accentuate the fallibility of medical knowledge. The onerous duty of weighing in the balance the advantages of greater freedom of action, and the tonic encouragement of self-restraint, in a convalescing patient, as against the irritating or enervating restrictions of continued control, must perforce remain with the physician, whose training in problems of mind best fits him to decide. It is his daily task to incur or to obviate risks in the interests of his patients.

The boarding out of pauper lunatics and the Private Care. private care of higher class patients have been



much lauded of late years. The benefits of private care of the insane should be developed by Hospitals such as this as part of their general establishment. I protest against the divorce of methods of treating insanity, and believe that our duty does not stop short at the Asylum walls; but that our experience of lunacy should aid in the treatment of milder cases of mental disease, whether at Kincarrathie, or at Carnoustie, or in such homes in our neighbourhood as may be found suitable. This development of James Murray's Royal Asylum would fulfil the enlightened requirements of the age.

#### The Deaths.

Again I have to report a very low rate of mortality. The percentage of deaths on the average numbers resident was 2·88. For the last three years it has only been 2·71. The average since 1864 is 5·38. This small mortality shows to advantage the sanitary state of the Institution, and the Directors are to be congratulated that their policy of recent years is productive of such results.

The deaths occurred in consequence of degenerative senile changes in persons over 80 years of age. The average age at death was 83. One of these was the oldest patient in the house, having been admitted in 1833. His malady was supposed to have been caused by a blow on the head, received while watching in a country churchyard to prevent the exhumation of a body by the "Resurrectionists." The other cases call for no remark. One had been resident for 28 years, while the other had been but recently admitted in very bad health, old and feeble.



The average daily numbers on the books during the year were—certificated male patients, 46·34; female, 50·26. Voluntary male, 4·11; female, 2·14. Total, 104·13. The average number since 1864 is 78·35. The figures for this year, therefore, show an increase of 25 over that average, and an increase of 10 over last year's return. The lowest number for any one day (98) during the past year occurred on the 2nd June, and the highest (109) on the 25th October. These figures show a considerable increase in the work of the Institution, with a comparatively great admission and discharge rate.

Average  
Numbers  
Resident.

There has been no serious accident during the past year, which has been marked by extensive building operations and many workmen coming and going.

No Accidents.

There was no escape. The arrangements as to parole and locked doors remain unchanged.

No Escapes.

The general health of the establishment has been remarkably good, notwithstanding the inclement and prolonged winter. The sick and feeble were mostly recent cases who rapidly improved under treatment. It should be recorded that the management was conducted under circumstances of unusual difficulty since the various houses were fully occupied by patients, and temporary expedients were found requisite for the housing of the staff.

General Health.

The average attendance at Chapel on Sunday mornings was 51 patients. This is a relatively

The Chapel.



small proportion, in consequence of the limited accommodation ; but it is hoped that space will be found in the new wings to form a temporary Chapel of sufficient size. The Chaplain has regularly conducted the usual services, including the Harvest Thanksgiving and Christmas Festival.

The monthly Episcopalian services are continued, as previously, by the kind offices of the Rev. Dr. Weiss.

#### Occupations.

The Occupations of the patients have been carried on as detailed in former Reports. The work on the grounds of the Asylum and Kincarrathie, the Farm, and the Artisan Shops has been sufficient to employ 22 gentlemen on an average. I have found it a valuable check on the tendency to listlessness and idleness in the galleries to have a daily return from each charge attendant, giving, among other particulars, the names of those unemployed and the reasons for their not being at work. The stimulus to the interest of attendants in the whole work of their department, by thus exacting a daily consideration of the patients under their care, is an important recognition of the higher functions of those who are selected to deal with the very delicate organization of nerves and brains. I am not to indulge in the usual grumble at the faulty material of which attendants are manufactured. While the world is controlled by monetary considerations we can only command the class we have. It is a question hedged about with difficulties, and our present anxiety is to make the most of the men who are available under existing circumstances. Nurses, on the other hand, are less difficult to



procure; but of late in Scotland the tide of emigration, owing to the ever-spreading agricultural depression, seems to be depriving the country of its best men. My experience of attendants leads me to employ the ploughman, with what remains of Scottish characteristics of that class, in preference to the old soldier or the unsuccessful artisan.

One feature of the amusements of the year was The Amusements  
a large pic-nic to the Small Glen, 51 patients having gone out for the day. It was the largest pic-nic we have ever had, and so very successful that it is likely to become an annual institution. Another new departure was the renting of a house at Ballinluig for the month of September, in addition to our house at Carnoustie, which has been held, as in former years. This proved so satisfactory that a house has now been secured at Pitlochrie, to be opened in September.

The usual cricket and curling matches have been played, to the manifest enjoyment of all concerned. I have also to acknowledge the kindness of the Ladies and Gentlemen who have favoured us with various entertainments, especially the members of the new Orchestral Society, who gave their first performance in the Asylum; the Messrs. Pullar, who annually send their band to give an open-air concert; Mr. James Coates, for his annual concert; and Mr. Albert Pullar, for his lecture on Electricity.

There has been no change among the officers The Staff.  
of the Asylum, which continues to be faithfully served by them.

The past year has shown the usual amount of



changing of Attendants and Nurses, chiefly among new-comers and the more unsuitable. Eight out of twenty-two have served for less than twelve months.

The new rooms, prepared for the Attendants and Nurses respectively, will add much to their comfort, and will, I trust, be conducive to more permanent service. They are to be comfortably furnished as dining-rooms, and as places of recreative quiet for those "off duty."

Alterations and  
Improvements.

The alterations and improvements have chiefly been in connection with the New Wings. The erection of these necessitated a removal of the old sheds and workshops, which have been rebuilt around the boiler-house court, and are all under the personal supervision of the Engineer. It has thus been possible to open up the East Terrace, to lay out the workshops' court as a garden, and to carry out the improvements detailed below :—

LAUNDRY.—New receiving and distributing rooms, W.C. for laundresses, and disinfecting chamber. The bleaching-green enlarged, levelled, and fitted with poles and wires.

BOILER-HOUSE.—New workshop and store-room for Engineer. Benches, lathes, and other tools refitted.

JOINER'S SHOP.—New joiner's shop, and shop for amateur carpentry. Heated by steam, with steam apparatus for melting glue instead of open fire.

PAINTER'S SHOP.—New painter's shop, also heated by steam, and fitted with racks and shelves for storage.

SHEDS AND STORES.—Carriage shed for fire-escape, bath-chair, &c.; root-room, firewood-room, and barrow shed, with large loft above.

MORTUARY and POST-MORTEM room fitted as requisite.



DRAINS.—Laundry drain renewed to connect with general sewage of the establishment; new W.C. at Cottage; all old drains abandoned, and new drainage system converged in one outlet with the Corsiehill Burn, for irrigation of north-west field; improved drainage of Murray House.

KITCHEN.—New escape steam-pipes from boilers, and roofs of corridors cemented where decayed.

The separate cost of these improvements will be set forth on completion of the new wings, but in the meantime it may be stated that the expenditure under this head up to the close of the financial year was £3159.

The new wings for the reception of recent and sick cases are now approaching completion. Hospital Wings. Considerable progress was made during the winter months, and the male side is now in the hands of the plasterers, while the joiners are at work on the roof of the female division. The plans have been carried out in their entirety, as approved by the Commissioners in Lunacy. We look forward with impatience to the realization of this project, as there can be no doubt of its success in improving the condition of the patients, in lightening the labours and responsibilities of the staff, in increasing the comforts of the establishment generally, and resulting in an economical gain to the charitable action of the Institution.

There has been a very considerable increase Financial Details. in the income of the Institution for the last year. The sum received from patients' boards amounted to £7645, which exceeds last year's results by £855. The average of other years since 1864 is



£4976. The expenditure was £7392; the income, £8419—thus leaving an excess of income of £1027.

The rates of board for the admissions were—

1	at	...	£250	...	£250
4	"	...	150	...	600
1	"	...	120	...	120
2	"	...	100	...	200
5	"	...	84	...	420
25	"	...	60	...	1500
3	"	...	52	...	156
1	"	...	45	...	45
1	"	...	40	...	40
1	"	...	30	...	30
<hr/>					<hr/>

44, at an average of £76 7s 8d—Total, £3361

The yearly income per patient was £80 19s 2d, the yearly cost £71 1s 7d. The weekly cost per patient on the expenditure was £1 7s 4d. The 102 patients on the Registers on 31st May, 1888, together pay at the rate of £7,967 per annum, being an average board rate of £78 2s 2d.

Thirty-four patients are maintained at lower rates than the ordinary minimum—4 pay £30, 10 pay £40, 4 pay £50, and 16 pay £52 per annum.

Commissioners' Reports.

The Reports of the Visiting Commissioners in Lunacy will be found attached to this, together with the usual statistical and general information.

Conclusion.

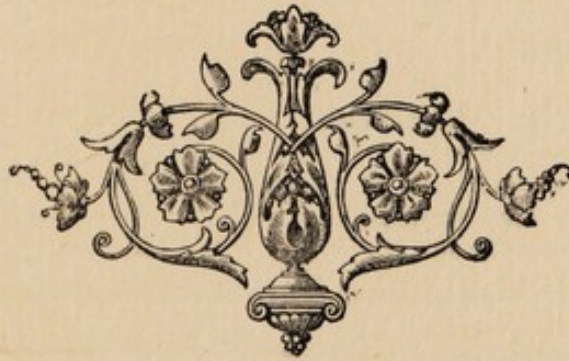
I cannot conclude this Report without referring to the loss which this Asylum has sustained by



the death of the late Chairman, Mr. William Ross, who, for the long period of 29 years, served on the Directorate, and devoted his best energies to its welfare.

I would also renew my expression of thanks to the Directors for their personal kindness during another year of service.

A. R. URQUHART, M.D.,  
Physician Superintendent.





# TABLE

Showing Changes in the Population of the Asylum during the Year ending 31st May, 1888.

						Certificated		Voluntary.		TOTAL.
						M.	F.	M.	F.	
1st June, 1887.	{	Resident in the Asylum, ... ..				38	45	3	1	87
		Remaining on Probation, ... ..				...	1	...	...	1
		Remaining on Pass, ... ..				...	...	...	1	1
		Remaining at Kincarrathie, ... ..				4	4	...	...	8
		Total number on Asylum Books, ... ..				42	50	3	2	97
Cases Admitted—										
		First Admissions, ... ..				13	18	2	...	33
		Not First Admissions, ... ..				4	6	...	1	11
Total Cases under care during the year, ... ..						59	74	5	3	141
						Certificated		Voluntary.		TOTAL.
						M.	F.	M.	F.	
Cases discharged and died—										
		Recovered, ... ..				6	12	...	...	18
		Relieved, ... ..				4	10	...	...	14
		Not Improved, ... ..				...	3	...	...	3
		Voluntary Patients left, ... ..				...	...	1	...	1
		Died, ... ..				2	1	...	...	3
Total Cases Discharged and Died during the year, ... ..						12	26	1	...	39
31st May, 1888.	{	Total number on Asylum Books, ... ..				47	48	4	3	102
		Remaining on Probation, ... ..				...	...	...	...	...
		Remaining on Pass, ... ..				...	...	...	1	1
		Remaining at Kincarrathie, ... ..				5	4	1	1	11
		Resident in the Asylum, ... ..				42	44	3	1	90

						Certificated.		Voluntary.		TOTAL.
						M.	F.	M.	F.	
Average number on Books during the year, ...						46'34	50'26	4'11	2'14	104'13
Lowest number resident on 1st June, 1887, ...						42	51	3	2	98
Highest number resident 25th October, 1887, ...						50	52	5	2	109
Transferred from other Asylums, ... ..						4	3	...	...	7
Transferred to other Asylums, ... ..						3	6	...	...	9
Percentage of Recoveries on Admissions, ... ..						35'29	50	...	...	43'90
Percentage of Deaths on average numbers resident,						3'96	1'90	...	...	2'88





REPORTS  
OF THE  
COMMISSIONERS IN LUNACY  
FOR THE YEAR.

~~~~~

*REPORT BY DR. SIBBALD.*

PERTH ROYAL ASYLUM,  
11th January, 1888.

THERE are 104 patients now in the Asylum. Of these 96 are under certificates and 8 are voluntary inmates. The certificated patients consist of 47 gentlemen and 49 ladies, and the voluntary inmates of 5 gentlemen and 3 ladies. The total number is larger than has been recorded on the occasion of any previous visit since the transfer of the pauper patients to the District Asylum at Murthly; and it is noteworthy that the increase has gone on steadily since the year 1879—that is, during a period which has been distinguished by very important improvements in the administration of the Institution and in the character of the accommodation which is provided. The number



of patients in the year 1879 was 63, so that the increase since that time has been 41. It is gratifying to find that the ability of Dr. Urquhart and the liberality of the Directors have thus received substantial acknowledgment from the public.

Since last visit the following changes have taken place among the certificated patients :—

|                         | Male. | Female. | Totals. |
|-------------------------|-------|---------|---------|
| Admissions, - -         | 12    | 13      | 25      |
| Discharges recovered, - | 4     | 10      | 14      |
| Discharges unrecovered, | 2     | 9       | 11      |
| Death, - - -            | 1     | 0       | 1       |

The changes among the voluntary inmates consist of the admission of two gentlemen and one lady.

The number of entries in the Register of Seclusion and Restraint is three. These refer to the use of the shower-bath in three cases, the longest duration of the bath having been six seconds. Two gentlemen and two ladies are at present confined to bed.

The patients were found comfortably provided for in every way, and very general satisfaction was expressed by them as to the manner in which they are treated. Great efforts are made to make their lives as interesting to themselves as possible. A large number are induced to occupy themselves with gardening and other useful work, and abundant opportunities of recreation are provided. They also enjoy a great amount of liberty. At present 13 gentlemen and 10 ladies go on parole beyond the grounds, and 15 gentlemen and 8 ladies go on parole restricted to the grounds.

The erection of the new Hospital wings has been begun. The mason work of the gentlemen's



wing is already far advanced, and the ground is being prepared for the ladies' wing.

The Mansion-house of Kincarrathie is now fully occupied. It has been found a very valuable addition to the resources of the Institution, inasmuch as it permits of a certain number of the patients, who do not require the discipline and other characteristics of a complete Asylum, living in a way almost exactly similar to what would have been their mode of life had they been of sound mind and free to choose for themselves.

The Books and Registers were examined, and were found regularly and correctly kept.

JOHN SIBBALD,

*Commissioner in Lunacy.*

*REPORT BY SIR ARTHUR MITCHELL, K.C.B.*

PERTH ROYAL ASYLUM,  
20th June, 1888.

There are 49 gentlemen and 48 ladies, or 97 patients in all, on the Register of the Asylum as certificated patients.

In addition to the above, 4 gentlemen and 3 ladies, or 7 persons in all, are on the Register of the Asylum as voluntary inmates.

Of the certificated patients, 1 lady is absent on pass, 4 gentlemen reside at Kincarrathie, and 7 ladies are at the Asylum's seaside house at Carnoustie.

Of the voluntary inmates, 1 lady is absent



on pass, and 1 gentleman and 1 lady reside at Kincarrathie.

Since the date of last visit the following changes have taken place in the population of the Asylum, into which no paupers are received :—

|                        |                           | M. | F. | TOT. |
|------------------------|---------------------------|----|----|------|
| Certificated Patients. | { Admitted, - - -         | 7  | 7  | 14   |
|                        | { Discharged recovered, - | 2  | 2  | 4    |
|                        | { Discharged unrecovered, | 2  | 4  | 6    |
|                        | { Dead, - - - -           | 1  | 2  | 3    |
| Voluntary Patients.    | { Left, - - - -           | 1  | 0  | 1    |

The three deaths were caused by senile decay, heart disease, and carbuncle. One of the three patients who died was 80, another 83, and another 67 years old. In the cases of two of the three who died a *post mortem* examination was made. Great painstaking and ability are shown in the medical treatment of the patients.

There is one entry in the Registry of Restraint and Seclusion, referring to the use of the shower-bath. No escape has taken place. Only one accident, and that not of a serious character, is recorded.

The new buildings are making rapid progress towards completion. They promise to be of a highly satisfactory character, and they will make the Asylum a thoroughly equipped establishment for the treatment and care of insane persons belonging to the upper and middle classes.

The inmates have unusually pleasant surroundings, and much liberality is shown in regard to them. Two houses—one at Carnoustie, on the seaside, and another in the Highlands, at Pitlochry—have been taken by the Directors, and



to these successive groups of patients are sent during the summer months. These changes of residence are a source of happiness to the incurable, and they expedite and confirm recovery in the case of the curable.

A gratifying success has attended the efforts to get the ladies and gentlemen to engage in useful work. Many of the gentlemen work industriously and with interest in the garden, and contentment and the chance of recovery are thereby promoted. The patients enjoy a large amount of liberty, their amusements are well considered, and special tastes are judiciously gratified. A spirit of kindness pervades the management, and there is a complete absence of all irksome discipline. The Asylum prospers greatly, and the public show an increasing confidence in committing their friends to it for care and treatment.

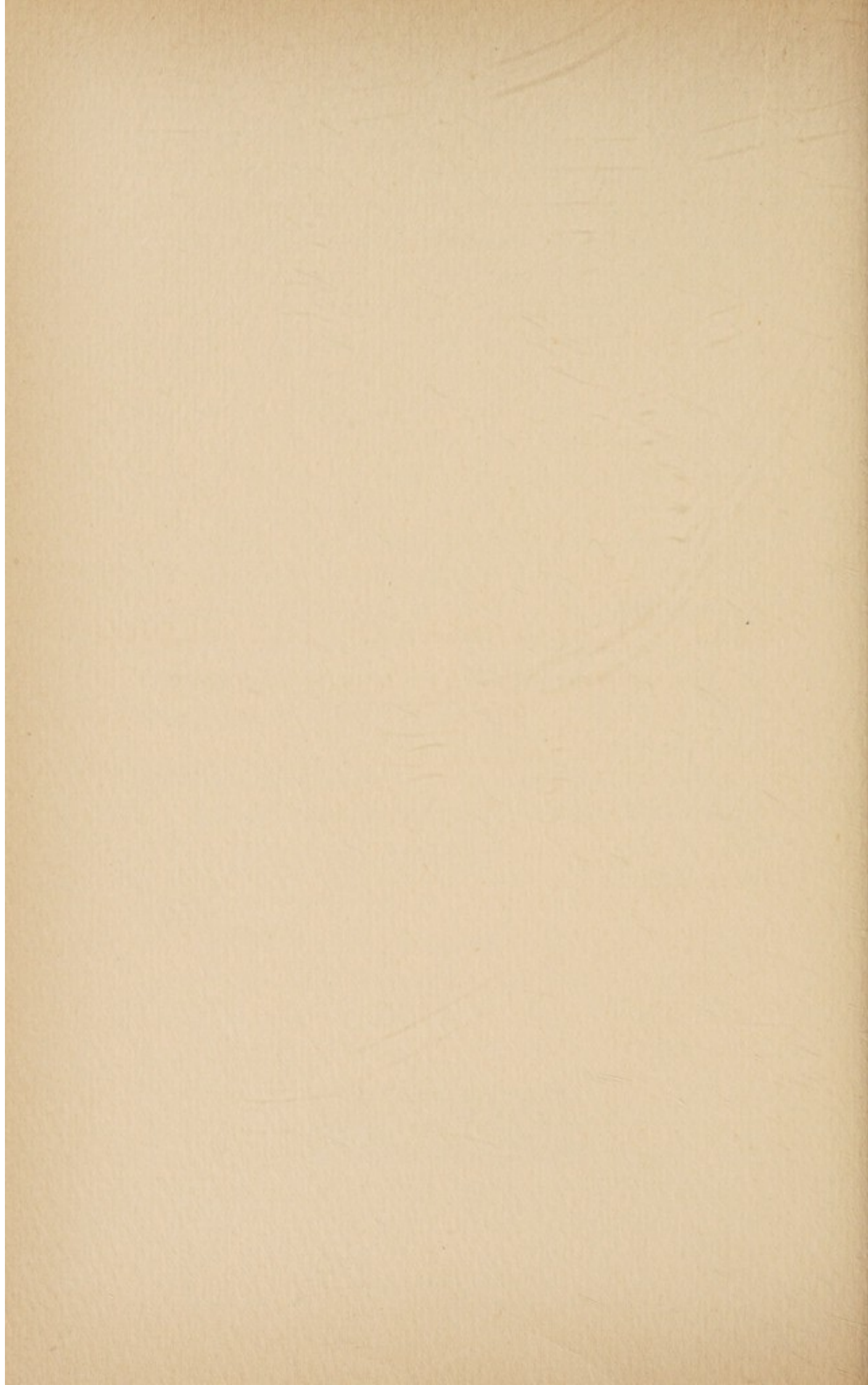
The Books and Registers were examined, and were found to be kept with care and accuracy.

ARTHUR MITCHELL,

*Commissioner in Lunacy.*









STATISTICAL TABLES OF THE MEDICO-  
PSYCHOLOGICAL ASSOCIATION.

PREPARED BY DR. FINDLAY.



TABLE 1,

Showing the Admissions, Re-Admissions, Discharges, and Deaths during the Year ending 31st December, 1887.

|                                                      | M. | F. | T. | M.    | F.    | T.    |
|------------------------------------------------------|----|----|----|-------|-------|-------|
| In the Asylum, 1st January, 1887,                    |    |    |    | 42    | 46    | 88    |
| Cases Admitted—                                      |    |    |    |       |       |       |
| First Admissions, ... ..                             | 14 | 22 | 36 |       |       |       |
| Not First Admissions, ... ..                         | 4  | 6  | 10 |       |       |       |
| Total Cases Admitted, ... ..                         |    |    |    | 18    | 28    | 46    |
| Total Cases under care during the year,              |    |    |    | 60    | 74    | 134   |
| Cases Discharged—                                    |    |    |    |       |       |       |
| Recovered, ... ..                                    | 7  | 11 | 18 |       |       |       |
| Relieved, ... ..                                     | 3  | 10 | 13 |       |       |       |
| Not Improved, ... ..                                 | 0  | 4  | 4  |       |       |       |
| Died, ... ..                                         | 2  | 1  | 3  |       |       |       |
|                                                      |    |    |    | 12    | 26    | 38    |
| Remaining in the Asylum, 31st December, 1887, ... .. |    |    |    | 48    | 48    | 96    |
| Average resident during the year, ... ..             |    |    |    | 44'45 | 50'00 | 94'45 |
| Persons* under care during the year,†                |    |    |    | 58    | 72    | 130   |
| Persons admitted „ ... ..                            |    |    |    | 18    | 28    | 46    |
| Persons recovered „ ... ..                           |    |    |    | 7     | 11    | 18    |
| Transferred‡ to this Asylum, ... ..                  |    |    |    | 4     | 5     | 9     |
| Transferred from this Asylum, ... ..                 |    |    |    | 3     | 5     | 8     |

\* Persons, *i.e.*, separate persons in contradistinction to "cases" which may include the same individual more than once.

† Total cases, minus re-admissions of patients discharged during the current year.

‡ Patients transferred from one Asylum to another, even when re-certified, are to be regarded as transfers.



**TABLE 1a,**

Showing (1) the Previous Attacks among Persons admitted during 1887, and (2) the Number of Times they had previously Recovered in this or any Asylum.

| (1) Number of Previous Attacks. |     |     |     |     |     |     | Persons. |         |        |
|---------------------------------|-----|-----|-----|-----|-----|-----|----------|---------|--------|
|                                 |     |     |     |     |     |     | Male.    | Female. | Total. |
| Have had One Attack,            | ... | ... | ... | ... | ... | ... | 4        | 6       | 10     |
| „ Two Attacks,                  | ... | ... | ... | ... | ... | ... | 1        | 4       | 5      |
| „ Five Attacks,                 | ... | ... | ... | ... | ... | ... | 0        | 1       | 1      |

| (2) Number of Times Patients Recovered. |     |     |     |     |     |     | In this Asylum. |    |    | In any Asylum. |    |    |
|-----------------------------------------|-----|-----|-----|-----|-----|-----|-----------------|----|----|----------------|----|----|
|                                         |     |     |     |     |     |     | M.              | F. | T. | M.             | F. | T. |
| Once,                                   | ... | ... | ... | ... | ... | ... | 1               | 4  | 5  | 1              | 3  | 4  |
| Twice,                                  | ... | ... | ... | ... | ... | ... | 1               | 0  | 1  | 0              | 0  | 0  |



TABLE 2,

Showing the Admissions, Re-admissions, Discharges, and Deaths for the Twenty-three Years from the 1st of January, 1865, to the 31st December, 1887.

|                                                 | M.    | F.    | T.    | M.  | F.  | T.  |
|-------------------------------------------------|-------|-------|-------|-----|-----|-----|
| Number resident, January 1st, 1865, ...         |       |       |       | 37  | 34  | 71  |
| Persons Admitted during the period of 23 years, | 236   | 253   | 489   |     |     |     |
| Re-admissions, ...                              | 28    | 35    | 63    |     |     |     |
| Total Cases Admitted, ...                       |       |       |       | 264 | 288 | 552 |
| Total Cases under care during the 23 years, ... |       |       |       | 301 | 322 | 623 |
| Cases Discharged—                               |       |       |       |     |     |     |
| Recovered, ...                                  | 82    | 98    | 180   |     |     |     |
| Relieved, ...                                   | 74    | 76    | 150   |     |     |     |
| Not Improved, ...                               | 46    | 56    | 102   |     |     |     |
| Died, ...                                       | 51    | 44    | 95    |     |     |     |
| Total Cases Discharged and Died, ...            |       |       |       | 253 | 274 | 527 |
| Remaining 31st December, 1887, ...              |       |       |       | 48  | 48  | 96  |
|                                                 | M.    | F.    | T.    |     |     |     |
| Average resident during the 23 years, ...       | 39·81 | 39·76 | 78·35 |     |     |     |
| Transferred to this Asylum, ...                 | 41    | 36    | 77    |     |     |     |
| Transferred from this Asylum, ...               | 59    | 51    | 110   |     |     |     |



TABLE 2a,

Showing the Admissions and Recoveries of Persons\* from 1st January, 1865, to 31st December, 1887 (a period of Twenty-three Years).

| History of Recoveries of Persons.                                                                       |     |     |     | The same, only omitting all Persons transferred from other Asylums. |     |     |
|---------------------------------------------------------------------------------------------------------|-----|-----|-----|---------------------------------------------------------------------|-----|-----|
|                                                                                                         | M.  | F.  | T.  | M.                                                                  | F.  | T.  |
| Persons Admitted during 23 years, ...                                                                   | 236 | 253 | 489 | 200                                                                 | 222 | 422 |
| Of whom were Discharged Recovered during the same period, being 30·4 per cent. of Persons Admitted, ... | 71  | 78  | 149 | 70                                                                  | 73  | 143 |
| Of whom were Re-admitted Relapsed,† ...                                                                 | 13  | 20  | 33  | 13                                                                  | 18  | 31  |
| Leaving Recovered Persons who have not Relapsed, ...                                                    | 58  | 58  | 116 | 57                                                                  | 55  | 112 |
| Relapsed Persons Discharged Recovered,‡ ...                                                             | 9   | 11  | 20  | 8                                                                   | 11  | 19  |
| Net § Recovered Persons, being 27·8 per cent. of Persons Admitted, ...                                  | 67  | 69  | 136 | 65                                                                  | 66  | 131 |

\* Persons, *i.e.*, separate persons in contradistinction to *cases* which may include the same individual more than once.

*Re-admission* applies only to re-admission into this Asylum.

† *i.e.*, Persons who have relapsed one or more times.

‡ *i.e.*, After last re-admission, if relapsed more than once.

§ *i.e.*, Recovered persons sane at the present time so far as the Asylum statistics show.



TABLE 3,

Showing the Admissions, Discharges, and Deaths, with the mean Annual Mortality and Proportion of Recoveries per cent. of the Admissions, for each Year since the opening of the Asylum, 30th of June, 1827.

| Year.             | Admitted. |      |      | DISCHARGED. |     |     |           |     |     | Died.         |     |     | Remaining 31st December in each year. |     |     | Average Number Resident. |    |    | Percentage of Recoveries on Admissions. |    |    | Percentage of Deaths on Average Number Resident. |     |    |    |    |     |     |    |    |     |     |     |     |     |     |    |   |    |
|-------------------|-----------|------|------|-------------|-----|-----|-----------|-----|-----|---------------|-----|-----|---------------------------------------|-----|-----|--------------------------|----|----|-----------------------------------------|----|----|--------------------------------------------------|-----|----|----|----|-----|-----|----|----|-----|-----|-----|-----|-----|-----|----|---|----|
|                   |           |      |      | Recovered.  |     |     | Relieved. |     |     | Not Improved. |     |     |                                       |     |     |                          |    |    |                                         |    |    |                                                  |     |    |    |    |     |     |    |    |     |     |     |     |     |     |    |   |    |
|                   | M.        | F.   | T.   | M.          | F.  | T.  | M.        | F.  | T.  | M.            | F.  | T.  | M.                                    | F.  | T.  | M.                       | F. | T. | M.                                      | F. | T. | M.                                               | F.  | T. |    |    |     |     |    |    |     |     |     |     |     |     |    |   |    |
| 1827-1864.        | 719       | 752  | 1471 | 255         | 341 | 596 | 92        | 116 | 208 | 180           | 159 | 339 | 155                                   | 102 | 257 | 37                       | 34 | 71 | 73                                      | 13 | 62 | 30                                               | 135 | 4  | 36 | 72 | 45  | 34  | 40 | 52 | 5   | 66  | 4   | 36  | 5   | 05  |    |   |    |
| 1865.....         | 13        | 9    | 22   | 4           | 3   | 7   | 5         | 2   | 7   | 2             | 7   | 9   | 1                                     | 0   | 1   | 38                       | 31 | 69 | 39                                      | 60 | 34 | 00                                               | 73  | 60 | 30 | 77 | 33  | 33  | 31 | 82 | 3   | 21  | ... | 1   | 36  |     |    |   |    |
| 1866.....         | 12        | 6    | 18   | 4           | 6   | 10  | 5         | 4   | 9   | 2             | 1   | 3   | 2                                     | 2   | 4   | 37                       | 21 | 61 | 37                                      | 09 | 24 | 80                                               | 61  | 89 | 33 | 33 | 100 | 00  | 55 | 55 | 5   | 39  | 8   | 02  | 6   | 46  |    |   |    |
| 1867.....         | 15        | 7    | 22   | 3           | 3   | 6   | 5         | 2   | 7   | 0             | 0   | 0   | 5                                     | 1   | 6   | 39                       | 25 | 64 | 39                                      | 67 | 25 | 46                                               | 65  | 13 | 20 | 00 | 42  | 85  | 27 | 27 | 12  | 60  | 3   | 92  | 9   | 21  |    |   |    |
| 1868.....         | 13        | 13   | 26   | 5           | 2   | 7   | 2         | 0   | 2   | 1             | 2   | 3   | 1                                     | 3   | 4   | 43                       | 31 | 74 | 38                                      | 08 | 30 | 09                                               | 68  | 17 | 38 | 46 | 15  | 38  | 26 | 92 | 2   | 62  | 9   | 97  | 5   | 87  |    |   |    |
| 1869.....         | 22        | 18   | 40   | 4           | 4   | 8   | 7         | 2   | 9   | 2             | 2   | 4   | 3                                     | 0   | 3   | 49                       | 41 | 90 | 45                                      | 77 | 40 | 56                                               | 86  | 33 | 18 | 18 | 22  | 22  | 20 | 00 | 6   | 55  | ... | ... | 3   | 47  |    |   |    |
| 1870.....         | 10        | 17   | 27   | 5           | 4   | 9   | 2         | 3   | 5   | 4             | 7   | 11  | 2                                     | 4   | 6   | 46                       | 40 | 86 | 48                                      | 54 | 41 | 75                                               | 90  | 29 | 50 | 00 | 23  | 53  | 33 | 33 | 4   | 12  | 9   | 58  | 6   | 64  |    |   |    |
| 1871.....         | 9         | 25   | 34   | 3           | 6   | 9   | 4         | 6   | 10  | 4             | 4   | 8   | 2                                     | 6   | 8   | 42                       | 43 | 85 | 45                                      | 65 | 41 | 87                                               | 87  | 52 | 33 | 33 | 24  | 00  | 26 | 47 | 4   | 38  | 14  | 27  | 9   | 13  |    |   |    |
| 1872.....         | 13        | 9    | 22   | 4           | 4   | 8   | 2         | 1   | 3   | 3             | 4   | 7   | 1                                     | 2   | 3   | 45                       | 41 | 86 | 42                                      | 92 | 41 | 10                                               | 84  | 02 | 30 | 77 | 44  | 44  | 36 | 36 | 2   | 32  | 4   | 86  | 3   | 57  |    |   |    |
| 1873.....         | 8         | 9    | 17   | 3           | 3   | 6   | 2         | 2   | 4   | 5             | 5   | 10  | 2                                     | 2   | 4   | 41                       | 38 | 79 | 42                                      | 70 | 40 | 64                                               | 83  | 34 | 37 | 50 | 33  | 33  | 35 | 29 | 4   | 68  | 4   | 92  | 4   | 79  |    |   |    |
| 1874.....         | 6         | 13   | 19   | 3           | 2   | 5   | 3         | 6   | 9   | 2             | 2   | 4   | 3                                     | 3   | 5   | 37                       | 37 | 74 | 37                                      | 39 | 41 | 23                                               | 78  | 62 | 50 | 00 | 15  | 38  | 26 | 31 | 5   | 35  | 7   | 27  | 6   | 35  |    |   |    |
| 1875.....         | 5         | 8    | 13   | 2           | 3   | 5   | 1         | 2   | 3   | 1             | 0   | 1   | 4                                     | 3   | 7   | 34                       | 37 | 71 | 36                                      | 36 | 34 | 19                                               | 70  | 55 | 40 | 00 | 37  | 50  | 38 | 46 | 11  | 00  | 8   | 77  | 9   | 92  |    |   |    |
| 1876.....         | 10        | 7    | 17   | 2           | 5   | 7   | 0         | 1   | 1   | 0             | 3   | 3   | 3                                     | 3   | 6   | 39                       | 32 | 71 | 36                                      | 87 | 37 | 16                                               | 74  | 03 | 20 | 00 | 71  | 42  | 41 | 17 | 8   | 14  | 8   | 10  | 8   | 10  |    |   |    |
| 1877.....         | 8         | 6    | 14   | 2           | 0   | 2   | 5         | 3   | 8   | 5             | 1   | 6   | 0                                     | 0   | 0   | 35                       | 34 | 69 | 36                                      | 83 | 34 | 41                                               | 71  | 24 | 25 | 00 | ... | ... | 14 | 28 | ... | ... | ... | ... | ... | ... |    |   |    |
| 1878.....         | 2         | 7    | 9    | 1           | 6   | 7   | 1         | 2   | 3   | 2             | 2   | 4   | 1                                     | 0   | 1   | 32                       | 31 | 63 | 33                                      | 18 | 35 | 74                                               | 68  | 92 | 50 | 00 | 85  | 71  | 77 | 77 | 3   | 01  | ... | ... | 1   | 45  |    |   |    |
| 1879.....         | 9         | 10   | 19   | 2           | 3   | 5   | 0         | 1   | 1   | 1             | 0   | 1   | 2                                     | 2   | 4   | 36                       | 35 | 71 | 34                                      | 13 | 33 | 79                                               | 67  | 73 | 22 | 22 | 30  | 00  | 26 | 31 | 5   | 83  | 5   | 92  | 5   | 88  |    |   |    |
| 1880.....         | 10        | 16   | 26   | 2           | 6   | 8   | 2         | 1   | 3   | 0             | 0   | 0   | 4                                     | 1   | 5   | 38                       | 44 | 82 | 37                                      | 80 | 38 | 93                                               | 76  | 73 | 20 | 00 | 37  | 50  | 30 | 76 | 15  | 82  | 2   | 56  | 6   | 43  |    |   |    |
| 1881.....         | 10        | 7    | 17   | 5           | 5   | 10  | 2         | 7   | 9   | 1             | 0   | 1   | 3                                     | 1   | 4   | 37                       | 38 | 75 | 38                                      | 12 | 40 | 58                                               | 78  | 70 | 50 | 00 | 71  | 42  | 58 | 82 | 7   | 87  | 2   | 46  | 6   | 43  |    |   |    |
| 1882.....         | 6         | 10   | 16   | 1           | 0   | 1   | 3         | 4   | 7   | 2             | 3   | 5   | 4                                     | 1   | 5   | 33                       | 40 | 73 | 31                                      | 58 | 40 | 95                                               | 72  | 54 | 16 | 66 | ... | ... | 6  | 25 | 12  | 60  | 2   | 44  | 6   | 89  |    |   |    |
| 1883.....         | 21        | 14   | 35   | 6           | 8   | 14  | 2         | 2   | 4   | 2             | 3   | 5   | 2                                     | 2   | 4   | 42                       | 39 | 81 | 38                                      | 24 | 42 | 00                                               | 80  | 24 | 28 | 57 | 57  | 14  | 40 | 00 | 5   | 20  | 4   | 76  | 4   | 99  |    |   |    |
| 1884.....         | 11        | 18   | 29   | 3           | 5   | 8   | 4         | 3   | 7   | 3             | 1   | 4   | 4                                     | 3   | 7   | 41                       | 43 | 84 | 41                                      | 88 | 40 | 57                                               | 82  | 45 | 27 | 25 | 27  | 77  | 27 | 58 | 4   | 75  | 12  | 07  | 8   | 48  |    |   |    |
| 1885.....         | 14        | 16   | 30   | 2           | 4   | 6   | 5         | 6   | 11  | 1             | 4   | 5   | 2                                     | 1   | 3   | 45                       | 44 | 89 | 44                                      | 18 | 44 | 93                                               | 89  | 11 | 14 | 28 | 25  | 00  | 20 | 00 | 4   | 52  | 2   | 44  | 3   | 37  |    |   |    |
| 1886.....         | 19        | 15   | 34   | 9           | 5   | 14  | 9         | 6   | 15  | 3             | 1   | 4   | 2                                     | 1   | 2   | 42                       | 46 | 88 | 44                                      | 70 | 44 | 73                                               | 89  | 43 | 47 | 32 | 33  | 33  | 41 | 17 | 2   | 23  | 2   | 23  | 2   | 23  |    |   |    |
| 1887.....         | 18        | 28   | 46   | 7           | 11  | 18  | 3         | 10  | 13  | 0             | 4   | 4   | 4                                     | 2   | 3   | 48                       | 48 | 96 | 44                                      | 45 | 50 | 00                                               | 94  | 45 | 38 | 88 | 39  | 28  | 39 | 13 | 4   | 49  | 2   | 00  | 3   | 17  |    |   |    |
| For 23 yrs.       | 264       | 288  | 552  | 82          | 98  | 180 | 74        | 76  | 150 | 46            | 56  | 102 | 51                                    | 44  | 95  | Average or Percentage.   |    |    | 39                                      | 81 | 39 | 76                                               | 78  | 35 |    |    |     | 32  | 23 | 37 | 41  | 33  | 98  | 5   | 93  | 4   | 62 | 5 | 38 |
| General Totals, } | 983       | 1049 | 2023 | 337         | 439 | 776 | 116       | 192 | 358 | 226           | 215 | 441 | 206                                   | 146 | 352 |                          |    |    | 35                                      | 03 | 42 | 32                                               | 38  | 03 |    |    |     | 5   | 76 | 4  | 45  | 5   | 17  | 4   | 45  | 5   | 17 |   |    |



TABLE 4.

Showing the History of the Annual Admissions since 30th June, 1827, with the Discharges and Deaths, and the Numbers of each Year remaining on the 31st December of the Year reported on.

| Admitted.         |            |     |                 | Of each Year's Admissions Discharged and Died in 1887. |        |     |            |     |           |     |               | Total Discharged and Died of each Year's Admissions to 31st December, 1887. |       |     |            |     |           |     |               | Remaining on 31st December, 1887. |       |     |     |     |     |     |     |    |    |    |
|-------------------|------------|-----|-----------------|--------------------------------------------------------|--------|-----|------------|-----|-----------|-----|---------------|-----------------------------------------------------------------------------|-------|-----|------------|-----|-----------|-----|---------------|-----------------------------------|-------|-----|-----|-----|-----|-----|-----|----|----|----|
| Year.             | New Cases. |     | Relapsed Cases. |                                                        | Total. |     | Recovered. |     | Relieved. |     | Not Improved. |                                                                             | Died. |     | Recovered. |     | Relieved. |     | Not Improved. |                                   | Died. |     | M.  | F.  | T.  |     |     |    |    |    |
|                   | M.         | .   | M.              | F.                                                     |        | M.  | F.         | T.  | M.        | F.  | T.            | M.                                                                          | F.    | T.  | M.         | F.  | T.        | M.  | F.            | T.                                |       |     |     |     |     |     |     |    |    |    |
| 1827 to 1864      | Not Asce   |     | rtain ed.       |                                                        | 1471   | ... | ...        | ... | ...       | ... | ...           | ...                                                                         | ...   | ... | ...        | 256 | 349       | 605 | 97            | 119                               | 216   | 188 | 169 | 357 | 172 | 109 | 280 | 6  | 6  | 12 |
| 1865              | 9          |     | 4               | 0                                                      | 22     | ... | ...        | ... | ...       | ... | ...           | ...                                                                         | ...   | ... | ...        | 4   | 4         | 8   | 6             | 4                                 | 10    | 1   | 1   | 2   | 1   | 0   | 1   | 0  | 1  | 1  |
| 1866              | 11         | 3   | 1               | 3                                                      | 18     | ... | ...        | ... | ...       | ... | ...           | ...                                                                         | ...   | ... | ...        | 3   | 3         | 6   | 5             | 0                                 | 5     | ... | ... | ... | 4   | 1   | 5   | 0  | 1  | 1  |
| 1867              | 12         | 6   | 3               | 1                                                      | 22     | ... | ...        | ... | ...       | ... | ...           | ...                                                                         | ...   | ... | ...        | 4   | 1         | 5   | 4             | 4                                 | 8     | ... | ... | ... | 2   | 0   | 2   | 0  | 1  | 1  |
| 1868              | 11         | 10  | 2               | 3                                                      | 26     | ... | ...        | ... | ...       | ... | ...           | ...                                                                         | ...   | ... | ...        | 6   | 3         | 9   | 4             | 2                                 | 6     | ... | ... | ... | 4   | 4   | 6   | 0  | 0  | 0  |
| 1869              | 21         | 15  | 1               | 3                                                      | 40     | ... | ...        | ... | ...       | ... | ...           | ...                                                                         | ...   | ... | ...        | 4   | 3         | 7   | 6             | 4                                 | 12    | ... | ... | ... | 5   | 4   | 7   | 4  | 0  | 4  |
| 1870              | 7          | 12  | 3               | 5                                                      | 27     | ... | ...        | ... | ...       | ... | ...           | ...                                                                         | ...   | ... | ...        | 2   | 8         | 10  | 3             | 1                                 | 4     | ... | ... | ... | 3   | 1   | 4   | 0  | 4  | 4  |
| 1871              | 8          | 22  | 1               | 3                                                      | 34     | ... | ...        | ... | ...       | ... | ...           | ...                                                                         | ...   | ... | ...        | 4   | 6         | 10  | 1             | 6                                 | 7     | ... | ... | ... | 3   | 1   | 5   | 1  | 0  | 0  |
| 1872              | 13         | 7   | 0               | 2                                                      | 22     | ... | ...        | ... | ...       | ... | ...           | ...                                                                         | ...   | ... | ...        | 4   | 3         | 7   | 3             | 3                                 | 6     | ... | ... | ... | 3   | 1   | 4   | 1  | 0  | 1  |
| 1873              | 5          | 7   | 3               | 2                                                      | 17     | ... | ...        | ... | ...       | ... | ...           | ...                                                                         | ...   | ... | ...        | 2   | 3         | 5   | 2             | 3                                 | 5     | ... | ... | ... | 3   | 1   | 4   | 0  | 0  | 0  |
| 1874              | 5          | 9   | 1               | 4                                                      | 19     | ... | ...        | ... | ...       | ... | ...           | ...                                                                         | ...   | ... | ...        | 3   | 4         | 7   | 2             | 4                                 | 6     | ... | ... | ... | 3   | 1   | 5   | 1  | 0  | 0  |
| 1875              | 3          | 7   | 2               | 1                                                      | 13     | ... | ...        | ... | ...       | ... | ...           | ...                                                                         | ...   | ... | ...        | 1   | 1         | 2   | 1             | 3                                 | 4     | ... | ... | ... | 2   | 1   | 4   | 1  | 1  | 2  |
| 1876              | 10         | 5   | 0               | 2                                                      | 17     | ... | ...        | ... | ...       | ... | ...           | ...                                                                         | ...   | ... | ...        | 3   | 3         | 6   | 4             | 3                                 | 6     | ... | ... | ... | 2   | 1   | 5   | 1  | 1  | 2  |
| 1877              | 7          | 6   | 1               | 0                                                      | 14     | ... | ...        | ... | ...       | ... | ...           | ...                                                                         | ...   | ... | ...        | 2   | 1         | 3   | 1             | 0                                 | 3     | ... | ... | ... | 4   | 1   | 5   | 1  | 1  | 2  |
| 1878              | 2          | 6   | 0               | 1                                                      | 9      | ... | ...        | ... | ...       | ... | ...           | ...                                                                         | ...   | ... | ...        | 1   | 1         | 2   | 0             | 2                                 | 2     | ... | ... | ... | 1   | 1   | 3   | 1  | 1  | 2  |
| 1879              | 9          | 9   | 0               | 1                                                      | 19     | ... | ...        | ... | ...       | ... | ...           | ...                                                                         | ...   | ... | ...        | 1   | 4         | 5   | 2             | 2                                 | 2     | ... | ... | ... | 1   | 1   | 3   | 1  | 1  | 2  |
| 1880              | 9          | 15  | 1               | 1                                                      | 26     | ... | ...        | ... | ...       | ... | ...           | ...                                                                         | ...   | ... | ...        | 3   | 6         | 9   | 3             | 7                                 | 10    | ... | ... | ... | 1   | 1   | 2   | 2  | 2  | 5  |
| 1881              | 9          | 5   | 1               | 2                                                      | 17     | ... | ...        | ... | ...       | ... | ...           | ...                                                                         | ...   | ... | ...        | 1   | 4         | 7   | 3             | 1                                 | 2     | ... | ... | ... | 1   | 1   | 3   | 1  | 1  | 3  |
| 1882              | 6          | 9   | 0               | 1                                                      | 16     | ... | ...        | ... | ...       | ... | ...           | ...                                                                         | ...   | ... | ...        | 2   | 2         | 4   | 2             | 0                                 | 3     | ... | ... | ... | 0   | 0   | 2   | 0  | 0  | 0  |
| 1883              | 20         | 11  | 1               | 3                                                      | 35     | ... | ...        | ... | ...       | ... | ...           | ...                                                                         | ...   | ... | ...        | 5   | 6         | 11  | 6             | 7                                 | 10    | ... | ... | ... | 1   | 1   | 3   | 1  | 1  | 5  |
| 1884              | 9          | 14  | 2               | 4                                                      | 29     | ... | ...        | ... | ...       | ... | ...           | ...                                                                         | ...   | ... | ...        | 4   | 4         | 8   | 2             | 2                                 | 8     | ... | ... | ... | 4   | 4   | 5   | 3  | 3  | 5  |
| 1885              | 12         | 11  | 2               | 5                                                      | 30     | ... | ...        | ... | ...       | ... | ...           | ...                                                                         | ...   | ... | ...        | 6   | 6         | 12  | 5             | 3                                 | 5     | ... | ... | ... | 0   | 4   | 7   | 4  | 4  | 7  |
| 1886              | 17         | 13  | 2               | 2                                                      | 34     | ... | ...        | ... | ...       | ... | ...           | ...                                                                         | ...   | ... | ...        | 9   | 5         | 14  | 6             | 6                                 | 11    | ... | ... | ... | 1   | 0   | 1   | 2  | 4  | 6  |
| 1887              | 14         | 22  | 4               | 6                                                      | 46     | ... | ...        | ... | ...       | ... | ...           | ...                                                                         | ...   | ... | ...        | 4   | 6         | 10  | 0             | 5                                 | 5     | ... | ... | ... | 1   | 0   | 1   | 1  | 15 | 28 |
| Tot. for 23 yrs., | 229        | 233 | 35              | 55                                                     | 552    | 7   | 11         | 18  | 3         | 10  | 13            | 0                                                                           | 4     | 4   | 81         | 90  | 171       | 69  | 73            | 142                               | 38    | 46  | 84  | 34  | 37  | 71  | 42  | 42 | 84 |    |
| General Totals,   | Not Asce   |     | rtain ed.       |                                                        | 2023   | 7   | 11         | 18  | 3         | 10  | 13            | 0                                                                           | 4     | 4   | 337        | 439 | 776       | 166 | 192           | 358                               | 226   | 215 | 441 | 206 | 146 | 352 | 48  | 48 | 96 |    |



TABLE 4 (contd.)

| Summary of Total Admissions.   |     |     |     |     |     | Male. | Female | Total. |
|--------------------------------|-----|-----|-----|-----|-----|-------|--------|--------|
| Percentage of Cases Recovered, | ... | ... | ... | ... | ... | 34'29 | 42'21  | 38'36  |
| „ „ Relieved,                  | ... | ... | ... | ... | ... | 16'89 | 18'46  | 17'70  |
| „ „ Not Improved,              | ... | ... | ... | ... | ... | 22'99 | 20'67  | 21'80  |
| „ „ Died,                      | ... | ... | ... | ... | ... | 20'95 | 14'04  | 17'40  |
| „ „ Remaining,                 | ... | ... | ... | ... | ... | 4'88  | 4'62   | 4'74   |
|                                |     |     |     |     |     | 100   | 100    | 100    |



TABLE 5.

Showing the Causes of Death, with the Ages at Death, during  
the Year 1887.

| Cause of Death.                            | Above 35<br>and<br>under 40. |     |     | Above 60<br>and<br>under 65. |     |     | Above 85<br>and<br>under 90. |     |     | Totals. |   |   |
|--------------------------------------------|------------------------------|-----|-----|------------------------------|-----|-----|------------------------------|-----|-----|---------|---|---|
|                                            | M                            | F   | T   | M                            | F   | T   | M                            | F   | T   | M       | F | T |
| Alcoholism and Bright's Disease, ... ..    | 1                            | 0   | 1   | ...                          | ... | ... | ...                          | ... | ... | 1       | 0 | 1 |
| Apoplexy, ... ..                           | ...                          | ... | ... | 0                            | 1   | 1   | ...                          | ... | ... | 0       | 1 | 1 |
| Inflammation of Prostate and Senile Decay, | ...                          | ... | ... | ...                          | ... | ... | 1                            | 0   | 1   | 1       | 0 | 1 |
|                                            | 1                            | 0   | 1   | 0                            | 1   | 1   | 1                            | 0   | 1   | 2       | 1 | 3 |

TABLE 6,

Showing the Length of Residence in those Discharged Recovered  
and in those who have Died during the Year 1887.

| Length of Residence.            |     |     |     |     |  | Recovered. |     |     | Died. |     |     |
|---------------------------------|-----|-----|-----|-----|--|------------|-----|-----|-------|-----|-----|
|                                 |     |     |     |     |  | M.         | F.  | T.  | M.    | F.  | T.  |
| 1 Month and under 3 Months,     | ... | ... |     |     |  | 2          | 1   | 3   | 1     | 0   | 1   |
| 3     "           6     "       | ... | ... |     |     |  | 3          | 5   | 8   | ...   | ... | ... |
| 6     "           9     "       | ... | ... |     |     |  | 1          | 3   | 4   | ...   | ... | ... |
| 9     "           12    "       | ... | ... |     |     |  | ...        | ... | ... | ...   | ... | ... |
| 1 Year           "     2 Years, | ... | ... |     |     |  | 1          | 0   | 1   | ...   | ... | ... |
| 3 Years                         | ... | ... |     |     |  | ...        | ... | ... | 0     | 1   | 1   |
| 6     "           7     "       | ... | ... |     |     |  | 0          | 1   | 1   | ...   | ... | ... |
| 8     "           9     "       | ... | ... |     |     |  | 0          | 1   | 1   | ...   | ... | ... |
| 54   "           55    "        | ... | ... |     |     |  | ...        | ... | ... | 1     | 0   | 1   |
| Total,                          | ... | ... | ... | ... |  | 7          | 11  | 18  | 2     | 1   | 3   |



TABLE 7,

Showing the Duration of the Disorder on Admission in the Admissions,  
Discharges, and Deaths, during the Year 1887.

| CLASS.                                                        | Admissions. |     |     | Discharges. |     |     |                                      |     |     | Deaths. |     |     |  |  |
|---------------------------------------------------------------|-------------|-----|-----|-------------|-----|-----|--------------------------------------|-----|-----|---------|-----|-----|--|--|
|                                                               |             |     |     | Recovered.  |     |     | Removed<br>Relieved or<br>otherwise. |     |     |         |     |     |  |  |
|                                                               | M.          | F.  | T.  | M.          | F.  | T.  | M.                                   | F.  | T.  | M.      | F.  | T.  |  |  |
| FIRST CLASS.                                                  |             |     |     |             |     |     |                                      |     |     |         |     |     |  |  |
| First attack, and within 3 months on admission,               | 4           | 9   | 13  | 3           | 4   | 7   | 1                                    | 4   | 5   | ...     | ... | ... |  |  |
| SECOND CLASS.                                                 |             |     |     |             |     |     |                                      |     |     |         |     |     |  |  |
| First attack above 3, and within 12 months on admission,      | 2           | 1   | 3   | 3           | 0   | 3   | 1                                    | 1   | 2   | ...     | ... | ... |  |  |
| THIRD CLASS.                                                  |             |     |     |             |     |     |                                      |     |     |         |     |     |  |  |
| Not first attack, and within 12 months on admission,          | 3           | 5   | 8   | 1           | 5   | 6   | 0                                    | 3   | 3   | ...     | ... | ... |  |  |
| FOURTH CLASS.                                                 |             |     |     |             |     |     |                                      |     |     |         |     |     |  |  |
| First attack or not, but of more than 12 months on admission, | 9           | 13  | 22  | 0           | 2   | 2   | 1                                    | 6   | 7   | 2       | 1   | 3   |  |  |
| FIFTH CLASS.                                                  |             |     |     |             |     |     |                                      |     |     |         |     |     |  |  |
| Congenital,                                                   | ...         | ... | ... | ...         | ... | ... | ...                                  | ... | ... | ...     | ... | ... |  |  |
| Total,                                                        | 18          | 28  | 46  | 7           | 11  | 18  | 3                                    | 14  | 17  | 2       | 1   | 3   |  |  |



TABLE 8,

Showing in Quinquennial Periods the Ages of those Admitted, Recovered, and Died, during the Year 1887, and of those remaining on 31st December, 1887.

|                              |      | Admissions. |     |     | Recovered. |     |     | Deaths. |     |     | Resident<br>31st Dec., 1887. |     |     |
|------------------------------|------|-------------|-----|-----|------------|-----|-----|---------|-----|-----|------------------------------|-----|-----|
|                              |      | M.          | F.  | T.  | M.         | F.  | T.  | M.      | F.  | T.  | M.                           | F.  | T.  |
| 15 years and under 20 years, | ...  | 1           | 0   | 1   | 2          | 0   | 2   | ...     | ... | ... | ...                          | ... | ... |
| 20 "                         | 25 " | 2           | 2   | 4   | 1          | 1   | 2   | ...     | ... | ... | 3                            | 2   | 5   |
| 25 "                         | 30 " | 3           | 4   | 7   | 1          | 1   | 2   | ...     | ... | ... | 6                            | 4   | 10  |
| 30 "                         | 35 " | 4           | 4   | 8   | 0          | 1   | 1   | ...     | ... | ... | 7                            | 3   | 10  |
| 35 "                         | 40 " | 1           | 6   | 7   | 0          | 3   | 3   | 1       | 0   | 1   | 4                            | 4   | 8   |
| 40 "                         | 45 " | 1           | 3   | 4   | 0          | 1   | 1   | ...     | ... | ... | 3                            | 1   | 4   |
| 45 "                         | 50 " | 1           | 3   | 4   | 1          | 3   | 4   | ...     | ... | ... | 2                            | 5   | 7   |
| 50 "                         | 55 " | 0           | 3   | 3   | ...        | ... | ... | ...     | ... | ... | 4                            | 10  | 14  |
| 55 "                         | 60 " | 1           | 2   | 3   | 1          | 1   | 2   | ...     | ... | ... | 5                            | 2   | 7   |
| 60 "                         | 65 " | 2           | 0   | 2   | 1          | 0   | 1   | 0       | 1   | 1   | 4                            | 5   | 9   |
| 65 "                         | 70 " | ...         | ... | ... | ...        | ... | ... | ...     | ... | ... | 5                            | 4   | 9   |
| 70 "                         | 75 " | 1           | 1   | 2   | ...        | ... | ... | ...     | ... | ... | 3                            | 4   | 7   |
| 75 "                         | 80 " | 1           | 0   | 1   | ...        | ... | ... | ...     | ... | ... | 2                            | 1   | 3   |
| 80 "                         | 85 " | ...         | ... | ... | ...        | ... | ... | ...     | ... | ... | 0                            | 2   | 2   |
| 85 "                         | 90 " | ...         | ... | ... | ...        | ... | ... | 1       | 0   | 1   | 0                            | 1   | 1   |
| Total,                       | ...  | 18          | 28  | 46  | 7          | 11  | 18  | 2       | 1   | 3   | 48                           | 48  | 96  |



TABLE 9,

Showing the condition as to Marriage in the Admissions, Recoveries, and Deaths, during 1887, and of Patients Resident 31st December, 1887.

| Condition in<br>reference<br>to Marriage. | Admissions. |    |    | Recovered. |     |     | Deaths. |     |     | Patients<br>Resident,<br>Dec. 31st, 1887 |    |    |
|-------------------------------------------|-------------|----|----|------------|-----|-----|---------|-----|-----|------------------------------------------|----|----|
|                                           | M.          | F. | T. | M.         | F.  | T.  | M.      | F.  | T.  | M.                                       | F. | T. |
| Single, ...                               | 13          | 20 | 33 | 6          | 6   | 12  | 1       | 0   | 1   | 38                                       | 36 | 74 |
| Married, ...                              | 3           | 6  | 9  | 1          | 5   | 6   | ...     | ... | ... | 4                                        | 2  | 6  |
| Widowed,                                  | 2           | 2  | 4  | ...        | ... | ... | 1       | 1   | 2   | 6                                        | 10 | 16 |
| Total,                                    | 18          | 28 | 46 | 7          | 11  | 18  | 2       | 1   | 3   | 48                                       | 48 | 96 |



TABLE 10,

Showing the Probable Causes of Insanity in the Patients admitted during the Year 1887.

| Causes of Insanity.                                                                  | Number of instances in which each cause was assigned. |     |     |                    |     |     |                              |     |     |         |    |    |
|--------------------------------------------------------------------------------------|-------------------------------------------------------|-----|-----|--------------------|-----|-----|------------------------------|-----|-----|---------|----|----|
|                                                                                      | Admissions—( M., 18; F., 28; T., 46 )—No. of Cases.   |     |     |                    |     |     |                              |     |     |         |    |    |
|                                                                                      | As Predisposing Cause.*                               |     |     | As Exciting Cause. |     |     | As Predisposing or Exciting. |     |     | Total.† |    |    |
|                                                                                      | M.                                                    | F.  | T.  | M.                 | F.  | T.  | M.                           | F.  | T.  | M.      | F. | T. |
| <b>MORAL.</b>                                                                        |                                                       |     |     |                    |     |     |                              |     |     |         |    |    |
| Domestic troubles (including loss of relatives and friends), ...                     | ...                                                   | ... | ... | ...                | ... | ... | 0                            | 2   | 2   | 0       | 2  | 2  |
| Adverse circumstances (including business anxieties and pecuniary difficulties), ... | 2                                                     | 0   | 2   | ...                | ... | ... | ...                          | ... | ... | 2       | 0  | 2  |
| Mental anxiety and worry (not included under the above two heads) and overwork, ...  | ...                                                   | ... | ... | 0                  | 2   | 2   | 1                            | 1   | 2   | 1       | 3  | 4  |
| Religious excitement, ...                                                            | ...                                                   | ... | ... | 0                  | 2   | 2   | ...                          | ... | ... | 0       | 2  | 2  |
| Fright and Nervous Shock, ...                                                        | ...                                                   | ... | ... | 0                  | 1   | 1   | ...                          | ... | ... | 0       | 1  | 1  |
| Love affairs, ...                                                                    | ...                                                   | ... | ... | 1                  | 1   | 2   | ...                          | ... | ... | 1       | 1  | 2  |
| <b>PHYSICAL.</b>                                                                     |                                                       |     |     |                    |     |     |                              |     |     |         |    |    |
| Intemperance in drink, ...                                                           | ...                                                   | ... | ... | ...                | ... | ... | 4                            | 0   | 4   | 4       | 0  | 4  |
| Venereal disease, ...                                                                | ...                                                   | ... | ... | 1                  | 0   | 1   | ...                          | ... | ... | 1       | 0  | 1  |
| Sunstroke, ...                                                                       | ...                                                   | ... | ... | 0                  | 1   | 1   | ...                          | ... | ... | 0       | 1  | 1  |
| Change of life, ...                                                                  | ...                                                   | ... | ... | ...                | ... | ... | 0                            | 2   | 2   | 0       | 2  | 2  |
| Other bodily diseases, ...                                                           | 2                                                     | 2   | 4   | ...                | ... | ... | ...                          | ... | ... | 2       | 2  | 4  |
| Previous attacks, ...                                                                | ...                                                   | 5   | 5   | ...                | ... | ... | 2                            | 5   | 7   | 2       | 10 | 12 |
| Hereditary influences, ...                                                           | 3                                                     | 12  | 15  | ...                | ... | ... | 0                            | 3   | 3   | 3       | 15 | 18 |
| Unknown, ...                                                                         | ...                                                   | ... | ... | ...                | ... | ... | ...                          | ... | ... | 4       | 4  | 8  |

NOTE.—\* With reference to the distinction between "predisposing" and "exciting" causes, it must be understood that no single cause is enumerated as both predisposing and exciting in the case of any individual patient.

† The figures in Total Column present the entire number of instances in which the several causes (either alone or in combination with others) were stated to have produced the mental disorder. The excess of the aggregate of such causes over the number of patients admitted is owing to combination of causes.



TABLE 11,

Showing the Form of Mental Disorder on Admission in the Admissions, Recoveries, and Deaths of the Year 1887, and the Form of Mental Disorder of the Inmates, 31st December, 1887.

| Form of Mental Disease.       | Admissions. |     |     | Recovered. |     |     | Deaths. |     |     | Remaining<br>31st Dec., 1887. |     |     |
|-------------------------------|-------------|-----|-----|------------|-----|-----|---------|-----|-----|-------------------------------|-----|-----|
|                               | M.          | F.  | T.  | M.         | F.  | T.  | M.      | F.  | T.  | M.                            | F.  | T.  |
| CONGENITAL MENTAL DEFICIENCY, |             |     |     |            |     |     |         |     |     |                               |     |     |
| MANIA.                        |             |     |     |            |     |     |         |     |     |                               |     |     |
| Recent, ...                   | 2           | 5   | 7   | 2          | 5   | 7   | 1       | 0   | 1   | 1                             | 0   | 1   |
| Chronic, ...                  | 4           | 6   | 10  | ...        | ... | ... | ...     | ... | ... | 6                             | 13  | 19  |
| Recurrent, ...                | 1           | 0   | 1   | ...        | ... | ... | ...     | ... | ... | 3                             | 2   | 5   |
| MELANCHOLIA.                  |             |     |     |            |     |     |         |     |     |                               |     |     |
| Recent, ...                   | 5           | 10  | 15  | 5          | 4   | 9   | ...     | ... | ... | 2                             | 7   | 9   |
| Chronic, ...                  | 0           | 1   | 1   | 0          | 1   | 1   | 0       | 1   | 1   | 2                             | 1   | 3   |
| Recurrent, ...                | ...         | ... | ... | ...        | ... | ... | ...     | ... | ... | ...                           | ... | ... |
| DELUSIONAL INSANITY, ...      | 4           | 3   | 7   | 0          | 1   | 1   | ...     | ... | ... | 9                             | 6   | 15  |
| DEMENTIA,                     | 2           | 3   | 5   | ...        | ..  | ... | 1       | 0   | 1   | 24                            | 19  | 43  |



**TABLE 12,**

Showing the Station or Occupation of Patients admitted during the  
Year 1887.

| MALES.                |     |     |    | FEMALES.                    |     |     |    |
|-----------------------|-----|-----|----|-----------------------------|-----|-----|----|
| Architect,            | ... | ... | 1  | Gentlewoman,                | ... | ... | 8  |
| Clergyman,            | ... | ... | 1  | Governess,                  | ... | ... | 1  |
| Clerk,                | ... | ... | 3  | Wives, Widows, or Daughters |     |     |    |
| Druggist,             | ... | ... | 1  | of Professional Men,        | ... |     | 5  |
| Exciseman,            | ... | ... | 1  | Wives, Widows, or Daughters |     |     |    |
| Farmer,               | ... | ... | 3  | of Tradesmen,               | ... |     | 14 |
| Medical Practitioner, |     | ... | 1  |                             |     |     |    |
| Medical Student,      | ... | ... | 2  |                             |     |     |    |
| Postman,              | ... | ... | 1  |                             |     |     |    |
| Shepherd,             | ... | ... | 1  |                             |     |     |    |
| Trader,               | ... | ... | 1  |                             |     |     |    |
| Watchmaker,           | ... | ... | 1  |                             |     |     |    |
| Wine Merchant,        | ... | ... | 1  |                             |     |     |    |
| Total,                | ... | ... | 18 | Total,                      | ... | ... | 28 |

**TABLE 13,**

Showing Bodily Condition of Admissions.

|                               |  |  |  |  |  | Male. | Female | Total. |
|-------------------------------|--|--|--|--|--|-------|--------|--------|
| Good Bodily Condition, ... .. |  |  |  |  |  | 9     | 13     | 22     |
| Fair ,, ,, ... ..             |  |  |  |  |  | 4     | 8      | 12     |
| Bad ,, ,, ... ..              |  |  |  |  |  | 5     | 7      | 12     |
|                               |  |  |  |  |  | 18    | 28     | 46     |



# REVENUE AND EXPENDITURE ACCOUNT

FOR YEAR ENDING 31st MARCH, 1888.

## REVENUE.

|                                            |             |
|--------------------------------------------|-------------|
| I. Board of Patients, ... ..               | £7644 15 11 |
| II. From Patients for use of Carriage, ... | 225 1 0     |
| III. Farm Receipts, ... ..                 | 378 12 0    |
| IV. Garden Receipts, ... ..                | 140 3 0     |
| V. Miscellaneous (Bank Interest, &c.), ... | 31 3 4      |
| Total Revenue, ...                         | £8419 15 3  |

## EXPENDITURE.

|                                                                                   |            |
|-----------------------------------------------------------------------------------|------------|
| I. House Expenses, viz.—                                                          |            |
| Provisions, £2485 11 8                                                            |            |
| Fuel, ... 263 18 10                                                               |            |
| Lighting, ... 88 16 10                                                            |            |
| Furnishings, Fit-<br>tings, &c., 635 0 7                                          |            |
| Amusements and<br>Petty Outlays, 131 2 7                                          |            |
| Sum of House Expenses, £3604 10 6                                                 |            |
| II. Salaries and Wages, ... ..                                                    | 1991 2 3   |
| III. Repairs to Property, &c., ...                                                | 435 2 4½   |
| IV. Rent, Taxes, and Insurance, ...                                               | 419 13 10  |
| V. Stationery, Postages, and Adver-<br>tising, ... ..                             | 72 16 9    |
| VI. Miscellaneous, ... ..                                                         | 135 16 3   |
| VII. Carriage Account, ... ..                                                     | 251 7 10   |
| VIII. Farm Payments, ... ..                                                       | 247 18 5½  |
| IX. Garden Account, ... ..                                                        | 233 14 11  |
| Total Expenditure, ...                                                            | 7392 3 2   |
| Excess of Income, ...                                                             | £1027 12 1 |
| The amount expended on New Hospital Wings, &c.,<br>to 31st March, 1888, is ... .. | £3159 2 5  |



Incorporated by



Royal Charter.

## JAMES MURRAY'S ROYAL ASYLUM, PERTH.

---

THIS Asylum is healthily situated on the Hill of Kinnoull, in the immediate vicinity of Perth, and commands a prospect extending over the valley of the Tay to the Range of the Grampians. It has been from time to time so altered and improved as to render it an efficient Hospital, as well as a comfortable Home, for all classes of Private Patients. Being a Chartered Corporation, under the management of a Statutory Board, who have no pecuniary interest in its prosperity, the profits on each year's transactions have been devoted to modernising and perfecting the original fabric.

The Directors having felt the necessity of procuring additional accommodation to be used as a Convalescent Home, and for patients of the higher classes suffering from the milder forms of mental disease, have taken on lease the Mansion-House of Kincarrathie, in the neighbourhood of, but distinctly separated from, the Asylum. The private and extensive policies afford every facility for exercise and recreation within the grounds.

The arrangements throughout the entire Institution are of a Domestic Character, with ample means of Occupation and Amusement. The above-mentioned Convalescent Home, a Seaside Residence, a Hill Farmhouse, and Carriage Exercise are available, and the utmost Liberty, with due regard to Safety, is accorded.

The Institution contains no Paupers, and no publicity is implied in the proceedings connected with the admission of Patients, nor in the term "Royal Asylum."

The various houses of the Establishment being connected by Telephone, all are within the surveillance of the Physician Superintendent.

Applications for admission should be addressed to Dr. Urquhart, Physician Superintendent, who will give all necessary information regarding Rates of Board, etc., and from whom may be obtained the Statutory Forms, which must be duly filled up before Patients can be received.

---

TELEGRAPHIC ADDRESS—"DR. URQUHART, PERTH."

NATIONAL TELEPHONE No. 104.



