

The sixtieth annual report of James Murray's Royal Asylum Perth.

Contributors

James Murray's Royal Asylum for Lunatics.
Urquhart, A. R.
Mitchell, Arthur.
Sibbald, John.

Publication/Creation

Perth : Printed by J. Young & Sons, 1887.

Persistent URL

<https://wellcomecollection.org/works/d8bjz76b>

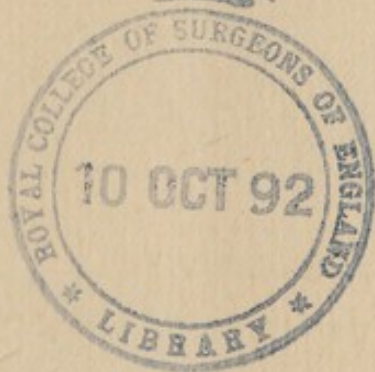
License and attribution

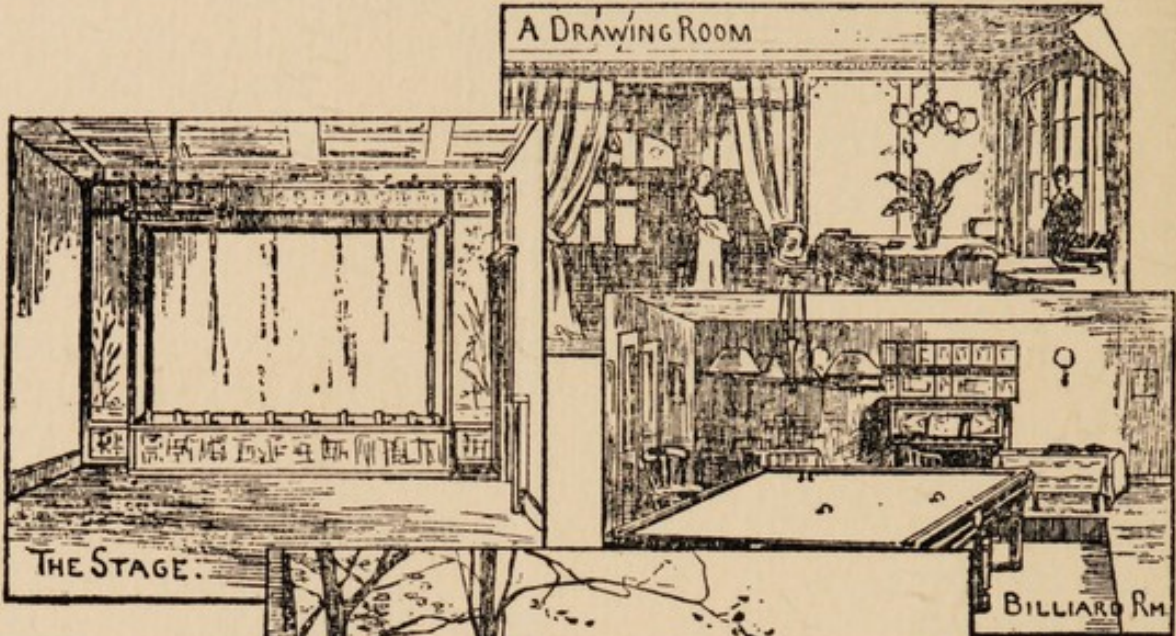
This work has been identified as being free of known restrictions under copyright law, including all related and neighbouring rights and is being made available under the Creative Commons, Public Domain Mark.

You can copy, modify, distribute and perform the work, even for commercial purposes, without asking permission.

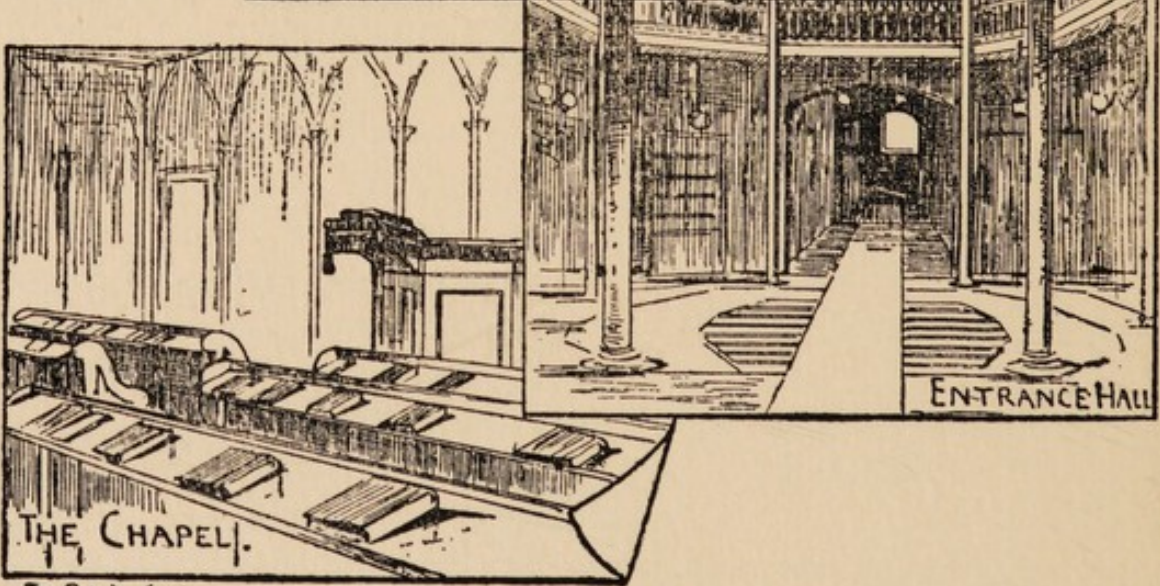
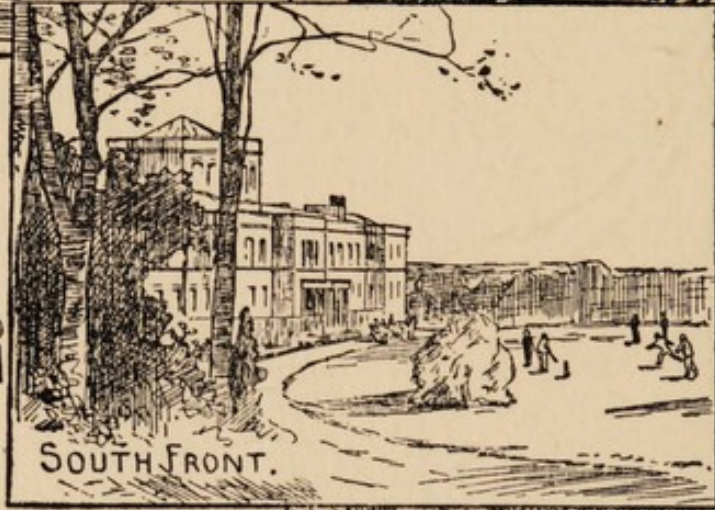
**wellcome
collection**

Wellcome Collection
183 Euston Road
London NW1 2BE UK
T +44 (0)20 7611 8722
E library@wellcomecollection.org
<https://wellcomecollection.org>





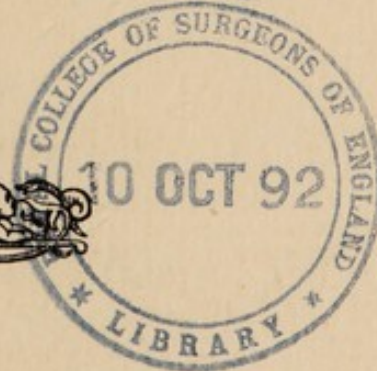
MURRAY'S
ROYAL
ASYLUM
PERTH,



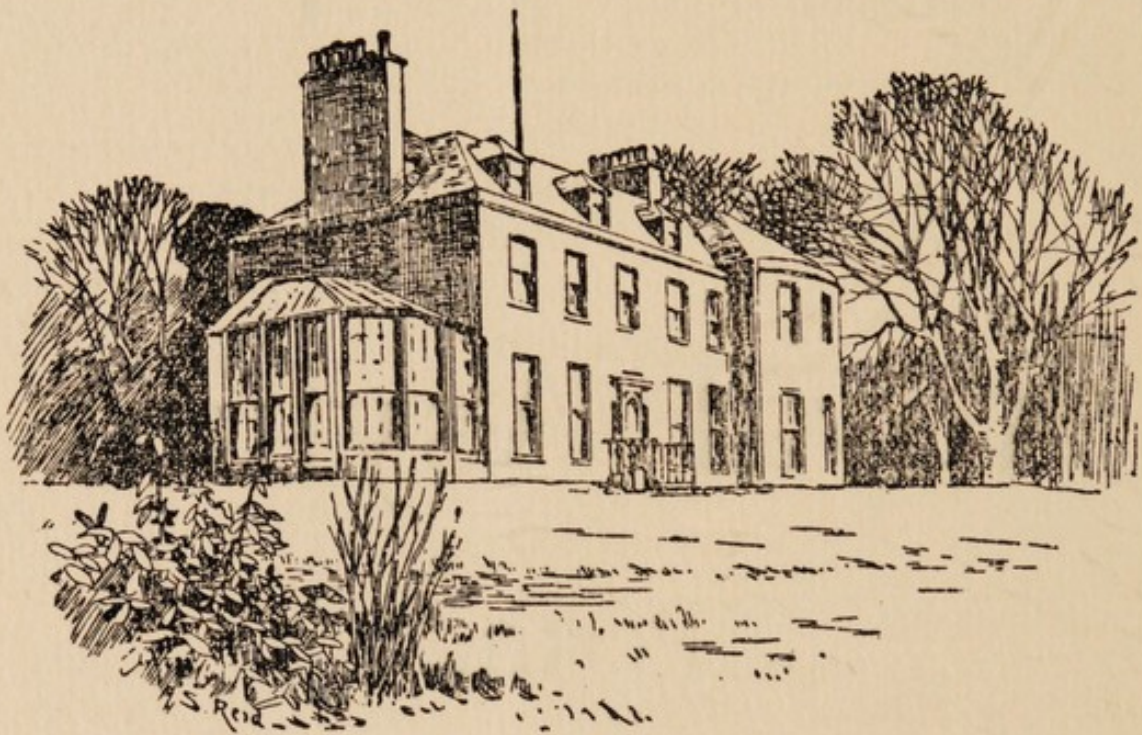
S. Reid. sculp.

THE
SIXTIETH
Annual Report
OF
JAMES MURRAY'S
Royal Asylum

Perth.



PERTH:
PRINTED BY J. YOUNG & SONS, 66 WATERGATE.
1887.



Kincarrathie.



James Murray's Royal Asylum, Perth.

Chairman.

William Ross, Esq., Perth.

Directors Ex-Officio.

His Grace the Duke of Athole, K.T., Lord-Lieutenant of the
County of Perth.

W. E. Gloag, Esq., Sheriff of the County of Perth.

John Grahame, Esq., Sheriff-Substitute of the County of Perth.

Andrew Martin, Esq., Lord Provost of Perth.

D. M'Kenzie, Esq., Dean of Guild, Perth.

R. Mitchell, Esq., First Bailie, Perth.

J. Stewart, Esq., Convener of Trades of Perth.

J. M. Miller, Esq., President of the Society of Solicitors Perthshire.

Rev. R. Milne, D.D., Minister of the West Church, Perth.

Life Directors.

Wm. Smythe, Esq. of Methven.

H. C. R. Macduff-Duncan, Esq.
of Damside.

David Mackinlay, Esq. of Cor-
don.

William Ross, Esq., Perth.

Annual Directors.

E. A. Stuart Gray, Esq. of Gray
and Kinfauns.

T. W. Greig, Esq. of Glencarse.

Albert Butter, Esq., Union Bank,
Perth.

A. Coates, Esq., Pitcullen.

John Bower, Esq., M.D., R.N.,
Montreal Cottage.

A. Macduff, Esq. of Bonhard.

R. W. R. Mackenzie, Esq., Stor-
montfield.

D. Smythe, Esq., Yr. of Methven.

A. Macpherson, Esq. of Blair-
gowrie.

Captain Black of Balgowan.

R. Pullar, Esq., Tayside.

Dr. Buchanan White, Annat
Lodge.

Committee of Management.

Wm. Ross, Esq.

John M. Miller, Esq.

A. Butter, Esq.

A. Coates, Esq.

J. Bower, Esq.

A. Martin, Esq.

A. Macduff, Esq.

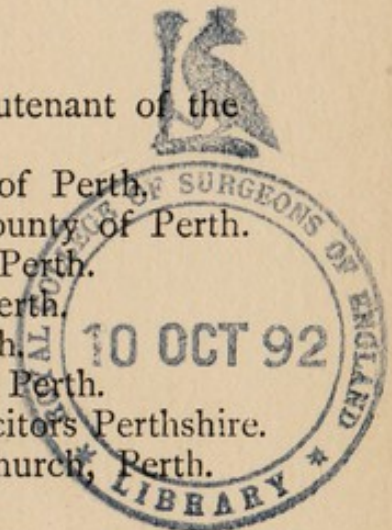
Dr. Buchanan White.

Joint Secretaries and Treasurers.

Messrs. Mackenzie & Dickson, Solicitors, Perth.

Auditors.

Messrs. J. & R. Morison, Perth.



Asylum Staff.

Physician Superintendent.

A. R. Urquhart, M.D.

Assistant Medical Officer.

George Findlay, M.A., M.B., C.M.

Chaplain.

Rev. W. D. Knowles, B.A., Lond.

Matrons.

Miss Giddings, at Kincarrathie.

Miss Sharp, at the Asylum.

Housekeeper.

Miss Crichton.

Chief Attendant.

Mr. W. Henry.



REPORT
OF THE
PHYSICIAN SUPERINTENDENT

FOR THE YEAR ENDING 31st MAY, 1887.



BEG to submit the Sixtieth Annual General
Statistics. Report of the Physician Superintendent, together with tables of general and medical statistics.

On the 1st June, 1886, there were 96 persons on the Registers of the Asylum, and of these 2 males and 2 females were voluntary patients.

Thirty-nine patients were admitted during the year, of whom 14 were males and 25 females.

Thirty-eight were discharged during the year, 18 males and 20 females.

The number of deaths was 3, one male and two females.

The total number of persons under treatment was 135, and the average daily number on the books 94. The lowest number, 91, occurred on

the 27th September; and the highest, 99, on the 13th March, 1887.

There now remain on the Registers 45 males and 52 females—total, 97. Three male and two female patients reside voluntarily in the Institution. Eight are at Kincarrathie. The discharge of two gentlemen and their immediate re-admission as voluntary patients are not taken into account in the foregoing statement of changes.

The Admissions.

The average rate of the admissions for the last 22 years is 23 per annum. This year it is 39, seven more than in 1886.

This increase has been coincident with a larger number of removals, so that the population has been about the same as last year. More than half of the admissions were considered curable on reception, and about the same proportion were still in the acute stage. Inasmuch as 11 were transferred from other Asylums, this more hopeful character of the cases admitted is recorded with some emphasis. It has not been the experience of recent years.

Increased Liberty.

A wholesome competition among the Royal Asylums of Scotland has, without doubt, stimulated officials and benefited patients. That increase of personal liberty, which is to be found in all the best Hospitals for the Insane in the United Kingdom, is surely gaining the confidence of the public, and will as surely result in a true appreciation of the highest aims of the medical care and treatment of lunacy—"the cure of the curable." It is of little moment whether this be ticketed the "open-door system." The main point is that on both sides of the Tweed there is a *system* of

granting liberty on parole, of sending patients out on leaves of varying duration, of minimising irksome and degrading restraints, of encouraging intercourse with the outer world, and of approximating asylum life to the domestic ideal in so far as possible. This is not the fashion of a day, but has been built up in studied evolution since Conolly and his compeers began their labours; and we have to acknowledge and found upon the experience of the men who showed how Asylums could be conducted without mechanical restraint.

The causes and accompaniments of Insanity among the admissions presented the usual characteristics. Eighteen were hereditarily predisposed to mental disease, and ten ladies had had previous attacks. Four of these had left this Asylum recovered: one, having remained at home for two years, came back as a voluntary patient; the others had continued with their families for eleven, ten, and two months respectively.

Coincident with this more hopeful character of the admissions, the general state of health on reception was also better than usual. Although twenty-one were found to be suffering from more or less important bodily maladies, only two patients were admitted in a very feeble and prostrate state. The prevailing type of mental disease was mild mania or melancholia, occurring in the middle period of life.

Those admitted came from the following localities:—Six from Perth, 6 from the County of Perth, 2 from Fife, 2 from Forfarshire, 11 from Edinburgh, 2 from Dundee, 9 from other parts of Scotland, and 1 from England. At no

Former
Residences of
Admissions.

time have the operations of this Asylum been confined to the locality in which it stands. During the past 22 years these patients, to the number of 524, have been received:—57 from Perth, 138 from the County of Perth, 67 from Fife, 10 from Forfarshire, 58 from Edinburgh, 46 from Glasgow, 32 from Dundee, 15 from Inverness, 5 from Aberdeen, 74 from other parts of Scotland, 5 from London, 12 from England, 2 from Ireland, and 3 from the Colonies.

Average
Numbers
resident.

The average daily numbers on the books during the year were—certificated male patients, 42·18; female, 46·33. Voluntary male, 3·49; female, 2·32. Total, 94·34. The average number since 1864 is 77·62. The figures above-mentioned, therefore, show an increase of 16·72 over that average.

General Health.

The general health of the patients has been exceptionally good. There has been a very low death rate, and entire immunity from epidemic disorders. In the summer of last year a gentleman of weakly constitution had an attack of pleurisy, which became purulent, and was operated on with a successful result. Two cases of an erysipelalous nature occurred, consequent on habits of continuously picking or rubbing the head. Both recovered under suitable treatment.

Accidents.

There are three entries in the Accident Book. The most serious were the fracture of an attendant's rib, inflicted in a struggle to obtain his keys by an impulsive and dangerous patient; and an

attempted suicide by cutting the blood vessels of the arm with a fragment of glass, in the presence of other patients and attendants. Otherwise there was no casualty worthy of notice, and I report with deep thankfulness that another year has passed without fatal accident.

There were twenty-one patients of suicidal tendency under care during the year. Seven were admitted, and six discharged recovered. The proportion of violent and dangerous cases was fortunately small, and there are very few of this class at present in the Asylum. Suicidal Cases.

No patient escaped. The general arrangements of the establishment are, that two galleries out of seven are locked, and the doors of the rest of the Asylum and Kincarrathie are furnished with ordinary handles for use in the daytime. The number of patients on parole is 23 within the grounds, and 21 beyond the grounds. Escapes.

The general Recovery Rate of this Asylum during the years 1865 to 1886 inclusive is 33·75 per cent. on the numbers admitted. The result of the year now ended is—for males, 76·92; for females, 17·39; total, 38·88: or, excluding the cases transferred to this Asylum, 56 per cent. Inclusive of voluntary patients, 15 left the Institution restored to health. Two of these cases were received in a state of great excitement, suffering from insanity depending upon organic diseases of the brain; but both returned to their business duties, and were afterwards reported as being entirely competent in the performance The Recoveries.

of them. The recovery list is chiefly remarkable for the number of patients (five) who have recovered after attacks lasting more than a year. Half of those who recovered had suffered from serious bodily diseases on admission, and nearly as many were suicidal. One was the case of attempted suicide referred to above. Two were adolescent youths, of whom one was received with lungs threatening consumption. The other, in a most emaciated condition on arrival, gained three stones in weight during his residence here.

The Removals.

Nineteen patients were removed unrecovered. Of that number 8 returned to their friends, 10 were transferred to other Asylums, and 1 was boarded out. Three of those who went home have now completed their convalescence; two have been placed in other Asylums; one, removed in opposition to my opinion, has died; and two remain with their relatives, being manageable by them. The benefit of change of air and surroundings was sought for seven of those who were transferred to other Asylums. Three were removed in consequence of inability to pay the minimum rate of board charged here, but none of these had any claim on the charity.

The Deaths.

The mortality during the past year was very low. The percentage of deaths on the average numbers resident was 3·17. Last year it was only 2·10. The average for the last 22 years is 5·49. The favourable nature of the admissions, the mild and dry seasons, and the excellent sanitary condition of the Institution have conduced to this result. One death occurred in the case of a

gentleman, whose constitution had been undermined by complication of bodily disorders, within five days after admission. He succumbed to epileptiform seizures, with congestion of important visceral organs. The other deaths occurred in the cases of two aged ladies after several years' residence. The causes were cancer and apoplexy respectively. The average age at death was 58.

The average attendance of the patients at The Chapel. Chapel on Sunday mornings was forty-seven. The limited space prevents a greater number from being present. The general arrangements continue as reported on former occasions, except that the Rev. Dr. Weiss conducts evening service for the Episcopalians in the Institution on the last Thursday of every month. There has been an average attendance of eighteen at these services, which have been highly prized by those who are unable to go to church in Perth, and I beg to thank Dr. Weiss for the kindly interest and trouble he has taken in thus serving the Asylum.

The Occupations have been continued on the The Occupations same lines as in former years, with manifest advantage to the patients. It is of the greatest importance that those labouring under excitement or sinking into dementia should, in so far as consistent with prudence, be led to occupy themselves in useful work. It is an advantage that has been widely recognized in pauper Asylums, and it is now being tried with benefit in Hospitals of this class. I have felt that, however important the amusement of the patients is, it is only subsidiary and complementary to their occupation, and therefore since my appointment here every effort

has been made, from day to day, to induce patients to employ themselves in some useful manner. The quiet and absence of turbulence, remarked by the Commissioners from time to time, is in no small measure due to this. The daily reports of the charge attendants name the patients who are unemployed, and state the reasons. Half are at work in one way or another. It has been said that farm and garden labour is not the best work for the town-bred insane patient. I am strongly of opinion, after an experience of seven years in this Asylum, that it is one of the most valuable aids to recovery. It has been my fortune to have the unanimous approval of my patients' friends in this matter, with one exception—an exception that proves the rule. A young gentleman, suffering from chronic mania, was found wheeling a barrow by his father, who pronounced his occupation degrading, and in consequence removed him to another Asylum; but within a few months the father wrote requesting me to receive his son again, without stipulating for his exemption from the labours that had proved so salutary to him.

The Amusements

The Amusements have been continued as before. The dances, drawing-room parties, entertainments, excursions, and games have proceeded on the lines indicated in former Reports. The following list briefly indicates the chief amusements of the year :—

Ordinary Dances (38).	Fechney Band Open-Air Con-
Drawing-Room Parties (42).	* cert.
Balls (3).	Mr. J. Coates' Concert.
Marionette Entertainment.	Mr. Campbell's Operetta Com-
Messrs. Pullars' Band Open-	pany.
Air Concert,	Mr. Dow's Concert,

Mrs. Hempel's Concert.	Excursions to—
Theatrical Entertainment by Staff.	Murthly.
Lime-Light Exhibitions (3).	Edinburgh.
Curling Matches (4)—	St. Andrews.
Mr. Drummond Hay's Rink.	Shetland.
Dr. Buchanan White's Rink.	London, &c.
Mr. Gray's Rink.	Seaside House at Carnoustie.
Mr. Hutcheson's Rink.	Fishing and Skating Excursions.
Cricket Matches (4)—	Daily Walking Parties beyond the Grounds.
Fechney School.	Carriage Parties (443).
Montrose Asylum.	&c., &c.
Murthly Asylum.	
Fife Asylum.	
With Return Matches at these Asylums.	

The house at Carnoustie, as usual, was a source of pleasure and healthful recreation to the patients. Thirty-five were resident there last year.

A new Cricket Pitch in the south field was levelled and turfed by the patients. It has been found a great improvement on the former contracted situation. The Curling Pond was similarly worked upon, and rendered watertight by puddling a deep circumferential trench with clay.

To the Ladies and Gentlemen who have kindly given their time and talents to the amusement of the patients our best thanks are due.

There have been two changes among the The Staff. officers of the Asylum. Dr. James Murray resigned on entering the Indian Medical Service, and was succeeded by Dr. Findlay, who has given his best efforts to the welfare of the patients since his appointment in January.

Miss Sharp, who had served in the Dundee Royal Infirmary for seven years, was appointed Matron in October. By the courtesy of Drs. Smith and Needham, to whom I am thereby much indebted, she spent two months in the Durham County and Barnwood House Asylums before entering on duty here. This important appointment has been filled by a lady whose proved ability and enthusiasm rendered the task of selection easy, and whose able services and thorough knowledge of hospital nursing will prove of the highest value to the Institution.

By this arrangement the management of the stores, kitchen, and laundry devolves upon Miss Crichton, the Housekeeper, who has served the Institution faithfully and well in this department for seventeen years; while the Matron is entirely occupied with the welfare of the patients and the direction of the nurses.

Miss Giddings has been transferred to Kincarrathie, to the manifest advantage of the patients there, as indicated in the Report for last year.

The Attendants.

The changes among the under Nurses and Attendants continue more numerous than is to be desired. Eight out of twenty-one have served for less than twelve months. These changes have been entirely among the subordinate members of the staff, for all the charge attendants held the same posts at this time last year. Two attendants were discharged for acts of roughness, and four as unsuitable for other reasons.

The Nurses are now furnished with uniforms, and rooms have been set apart for the exclusive use of them and the Attendants respectively.

I feel amply justified in reporting that Kin-^{Additional House.}carrathie has proved successful from a medical as well as a financial point of view—that it has fully realized the expectations formed, and has added materially to the resources of the Institution by developing fresh interests in occupation and amusement. The garden has supplied the wants of Kincarrathie, and has added to the limited space under cultivation at the Asylum, which must be twice cropped every year, and does not yield crops so early in the season.

The whole of the Farm and Grounds of the^{The Farm.} Institution is under the management of James Whittet, and his constant attention to the department allotted to him is worthy of all praise. Last season the amount of small fruit consumed in the establishment amounted to 25 cwt., the quantity of flowers supplied to the wards has been more than doubled, and the vegetables have been grown in greater variety and greater abundance. Vegetables, fresh milk, and eggs are of the first importance in such an Institution as this, and these results are, therefore, much in favour of the patients. Their wants have been duly recognised by the Directors in so fully considering and granting facilities for the home production of these articles of food, and I hope that next year the establishment of a dairy may become an accomplished fact. The beginning made in poultry farming has proved successful, although we can scarcely hope to supply all the eggs required (40 to 50 dozen a-week).

The farm was let for grazing last year, and during the winter the north-east field was prepared for irrigation, and the sewage turned on

by suitable channels. The grass has been considerably improved, and has been let, to be cut twice this season, at £5 an acre. In order to improve the grass on the south field, several lots of sheep have been purchased and are being grazed on it, and killed as required for consumption in the Asylum.

Improvements.

A great many improvements of a minor character have been carried out during the year. Much additional furnishing has been done, and the belt of trees has been extended round the entire estate. The following summary details the extra expenditure on these items:—

Furnishings at Kincarrathie, the North			
Lodge Repaired, &c.,	£140	7	6
Surgery and New Medical Appliances,	52	3	0
Alterations and Furnishings in Asylum,	318	4	6
Henhouse and Garden Seats,	27	15	1
Improvements in Low Cross Galleries,	64	13	11
Horses and Harness purchased,	136	8	5
New Billiard Table and Repairs to Room,	72	13	1
Servants' W.C. built,	25	18	9
Page's Room formed and furnished,	9	3	10
Speaking Tubes laid down,	4	3	8
New Entrance Gate, &c.,	12	10	9
Planting Trees, Gratings, &c., on Farm,	39	18	0
		<hr/>	
		£904	0 6

This statement includes the wages of the artisans on the staff (engineer, joiner, and painter) and the materials used by them.

Infirmery Wings.

The question of proceeding with the new Infirmaries has now so far advanced that the specifications are in course of preparation. As this has formed the subject of a special report, I need not further advert to it on this occasion.

Suffice it to say that the additions now contemplated will place this Asylum in the first rank of Hospitals for the Insane of the upper and middle classes.

The financial results show a progressive increase on former years. The sum received from patients' boards amounted to £6790, which exceeds last year's results by £146. The average of other years since 1864 is £4865. The ordinary expenditure was £5784; the total expenditure, £7092; the total income, £7127—thus leaving an excess of income of £35.

Financial
Details.

The rates of board for the admissions were—

1	at	...	£365	...	£365
1	"	...	300	...	300
1	"	...	200	...	200
2	"	...	150	...	300
2	"	...	100	...	200
6	"	...	84	...	504
1	"	...	80	...	80
1	"	...	75	...	75
14	"	...	60	...	840
6	"	...	52	...	312
2	"	...	45	...	90
2	"	...	40	...	80

— 39, at an average of £85 15s 11d—Total, £3346

The rates of those discharged and died amounted to £2951. The yearly income per patient was £72 4s 9d. The cost, excluding extra expenditure, £61 10s 7d, and including the total expenditure, £75 8s 10d. The weekly cost per patient on the ordinary expenditure was £1 3s 8d—1s 3d more than last year. The 97 patients

on the Registers on 31st May, 1887, together pay at the rate of £7391 per annum, being an average board rate of £76 3s 11d.

Thirty-six patients are maintained at lower rates than the ordinary minimum—5 pay £30, 11 pay £40, 6 pay £50, and 14 pay £52 per annum.

Commissioners' Reports.

The Reports of the Visiting Commissioners in Lunacy will be found attached to this, together with the usual statistical, financial, and other information.

Conclusion.

In conclusion, I beg to thank the Directors for their constant kindness and support.

A. R. URQUHART, M.D.,
Physician Superintendent.



TABLE

Showing Changes in the Population of the Asylum during the Year
ending 31st May, 1887.

						Certificated		Voluntary.		TOTAL.
						M.	F.	M.	F.	
1st June, 1886.	{	Resident in the Asylum,	42	40	2	1	85			
		Remaining on Pass,	2	1	3			
		Remaining at Kincarrathie,	3	3	6			
		Remaining at Carnoustie,	2	2			
		Total number on Asylum Books,	47	45	2	2	96			
Cases Admitted—										
		First Admissions,	13	21	1	...	35			
		Not First Admissions,	2	2	2	6			
Total Cases under care during the year,						60	68	5	4	137
						Certificated		Voluntary.		TOTAL.
						M.	F.	M.	F.	
Cases discharged and died—										
		Recovered,	10	4	14			
		Relieved,	5	10	15			
		Not Improved,	2	2	4			
		Voluntary Patients left,	2	2	4			
		Died,	1	2	3			
Total Cases Discharged and Died during the year,						18	18	2	2	40
31st May, 1887.	{	Total number on Asylum Books,	42	50	3	2	97			
		Remaining on Probation,	1	1			
		Remaining on Pass,	1	1			
		Remaining at Kincarrathie,	4	4	8			
		Resident in the Asylum,	38	45	3	1	87			

		Certificated.		Voluntary.		TOTAL.
		M.	F.	M.	F.	
Average numbers on Books during the year,	42·18	46·33	3·49	2·32	94·34
Lowest number resident on 27th Sept., 1886,	81	45	3	2	91
Highest number resident 13th March, 1887,	42	49	5	3	99
Transferred from other Asylums,	4	7	11
Transferred to other Asylums,	4	6	10
Percentage of Recoveries on admissions,	76·92	17·39	38·88
Percentage of Deaths on average numbers resident,	...	2·36	4·31	3·17

FINANCIAL RESULTS SINCE 1873.

1	2	3	4	5	6	7	8	9	10	11	12
Year.	Average No. of Patients.	Revenue from Patients' Board.	Ordinary Expenditure.	Total Revenue.	Total Expenditure.	Excess of Receipts.	Excess of Payments.	Yearly Income per Patient on Column 3.	Yearly Cost per Patient on Column 4.	Yearly Cost per Patient on Column 6.	Expenditure on Alterations and Improvements.
	£ s. d.	£ s. d.	£ s. d.	£ s. d.	£ s. d.	£ s. d.	£ s. d.	£ s. d.	£ s. d.	£ s. d.	£ s. d.
1876	72	4818 18 4	5269 3 7	5011 1 6	5427 16 11	416 15 5	66 18 7	73 3 8	75 7 8	550 19 11
1877	72	5080 15 11	5172 5 4	5263 13 9	5334 17 9	71 4 0	70 11 4	71 16 9	74 1 10	721 7 8
1878	69	4958 3 0	4988 15 3	5142 0 3	5163 11 6	21 11 3	71 17 1	72 6 0	74 16 7	491 19 11
1879	66	4604 9 9	4262 18 1	4785 5 11	5369 19 10	584 13 1	69 15 3	64 11 9	81 7 3	935 5 0
1880	71	4672 3 11	4222 19 1	4853 0 1	5060 3 6	207 3 5	65 16 1	59 9 6	71 5 4	511 10 8
1881	81	5385 12 7	4372 12 1	5546 5 11	4719 12 8	826 13 3	66 19 9	53 19 7	58 5 4	54 11 0
1882	80	5660 17 9	4770 0 1	5817 1 5	5287 4 2	529 17 3	70 15 2	59 12 6	66 1 9	290 4 11
1883	79	5356 17 0	4680 2 10	5527 3 8	5521 4 1	5 19 7	67 18 8	59 4 10	69 17 7	503 15 1
1884	86	5981 6 3	4755 17 10	6127 12 8	5080 19 2	1046 13 6	69 11 0	55 6 0	59 1 7	27 4 11
1885	89	6272 18 1	5313 17 2	6525 8 6	7079 16 11	554 8 5	70 9 7	59 14 1	79 10 11	1509 5 5
1886	95	6643 15 7	5549 18 5	6966 19 0	6865 1 0	101 18 0	69 18 8	58 8 4	72 5 3	1020 5 8
1887	94	6790 7 5	5783 17 2	7127 6 0	7091 12 10	35 13 2	72 4 9	61 10 7	75 8 10	904 0 6



REPORTS
OF THE
COMMISSIONERS IN LUNACY
FOR THE YEAR.

REPORT BY DR. SIBBALD.

PERTH ROYAL ASYLUM,
14th January, 1887.

THERE are 45 gentlemen and 51 ladies at present in the Institution. Of the total—96, 40 gentlemen and 48 ladies are under certificates, and 5 gentlemen and 3 ladies are voluntary boarders.

Since last visit the following changes have taken place among the certificated patients:—7 gentlemen and 13 ladies have been admitted, 8 gentlemen and 2 ladies have been discharged recovered, 6 gentlemen and 7 ladies have been discharged unrecovered, and 1 lady has died. The changes among the voluntary boarders have been the admission of 3 gentlemen and 2 ladies, and the discharge of 1 lady. Among the changes here referred to, the discharge of 1 gentleman

from the list of certificated patients, and his re-admission as a voluntary boarder, is included.

There are two entries which have been made since last visit in the Register of Restraint and Seclusion: they refer to the use of the shower-bath on two occasions. Two accidents are recorded, neither of which, however, was attended with serious consequences. One was the opening of several of the brachial veins by the patient himself, with suicidal intent. The other was an accident to an attendant—fracture of a rib in a struggle with an excited patient. There has been no escape.

The patients were found in a very satisfactory state. The occasions on which patients made unsolicited recognition of being treated with kindness and provided with all reasonable comforts were exceptionally frequent, and there was no complaint of any ill-treatment. Besides the comfortable dwelling and suitable food with which they are provided, the general arrangements are well adapted to secure contentment. Those which concern their occupation and amusement continue to be specially good. There has been gratifying success in dealing with a difficulty well known in Asylums—the employment of male private patients. It has been an advantage which the insane of the working classes have had over those in more affluent circumstances, that they naturally take their places in the industrial system of a District Asylum when their condition renders them capable of work and likely to be benefited by it; and it is in many cases too easily assumed that at least the male patients of the richer class must for the most part be suffered to remain idle.

It does not admit of doubt, indeed, that many such patients sink into a state of permanent insanity who might have been restored to health had it been thought possible, when the mental disturbance was still recent, to engage them in healthy occupation. At present the Register in this Institution shows that 13 of the gentlemen assist in household duties; 2 act as messengers, 1 is a painter, 1 is a joiner, 1 is a stoker, and 16 work in the garden. Besides those who do regular work, 15 occupy their time pretty fully with reading, amusements, and out-door exercise; one is unfit by his mental condition at present to engage in any occupation; 5 are physically incapable; and only 1 is idle through refusing to comply with the recommendation that he should engage in some occupation.

The main Asylum was found in admirable order. Several minor alterations and improvements, which add to the efficiency and cheerfulness of the establishment, have been made since last visit; but the erection of the hospital sections is still postponed. The main Asylum, the Medical Superintendent's house, Kincarrathie, and the city of Perth are all now connected by telephone.

The Mansion of Kincarrathie is occupied by 4 gentlemen and 5 ladies, one of each sex being voluntary boarders. The arrangements found here present in an admirable form accommodation suitable for patients accustomed to the life of the higher social classes. There is nothing to distinguish the course of life from that to be found in a well-managed private mansion; and it has the advantage of being under the charge of Miss Giddings, who has been so long the efficient

Matron of the Asylum, and who has well earned her relief from the heavier duties of her office.

It is to be hoped that the Directors may see it to be consistent with prudence to proceed at an early date with the erection of the hospital sections of the Asylum. They are necessary for the completion of the organisation of the Institution; and the proposed expenditure does not seem to be more than the annually improving financial position would justify.

The Books and Registers of the Asylum were examined, and were found regularly and correctly kept.

JOHN SIBBALD,
Commissioner in Lunacy.

REPORT BY SIR ARTHUR MITCHELL, K.C.B.

PERTH ROYAL ASYLUM,
15th June, 1887.

THERE are 42 gentlemen and 55 ladies at present on the Register of the Asylum as certificated patients, and 3 gentlemen and 2 ladies reside in the house as voluntary inmates. These figures show an increase of 6 in the total number of persons on the Registers of the Institution.

The changes among the certificated patients since last visit are the admission of 6 gentlemen and 15 ladies; the discharge of 2 gentlemen and 2 ladies as recovered; the discharge of 1 gentle-

man and 5 ladies as unrecovered; and the death of 1 gentleman and 1 lady. Two gentlemen and 1 lady, who were voluntary inmates, have left since last visit, and there has been no admission and no death among this class of inmates.

The death rate in the Asylum continues to be low. For the year 1885-6 it was 2·1 per cent. of the average number resident, and for the year 1886-7 it was 3·2 per cent.

There are nine entries in the Register of Restraint and Seclusion, referring to the use of the shower-bath for medical treatment in the case of a patient labouring under chronic mania. No escape is registered; and only one accident—of a slight character—is recorded. The changes among the attendants and servants are not numerous, and are chiefly among those occupying a subordinate rank. Of 21 attendants, 13 have been more than a year in the service of the Asylum.

There are 7 ladies at present at Carnoustie, and 4 gentlemen and 3 ladies at Kincarrathie. The possession of the sea-side residence at Carnoustie, and of the separate home-like establishment at Kincarrathie, is a manifest advantage in the care and treatment of the patients.

There are 8 patients who go occasionally to Church in town. This fact shows the spirit in which the Asylum is managed. Each inmate has all the liberty which his or her condition makes safe. There are at present 13 gentlemen and 8 ladies on parole beyond the grounds, and 13 gentlemen and 9 ladies on parole within the grounds.

It is hoped that at no distant date the Direc-

tors may be able to erect a small separate Chapel somewhere in the grounds. This would set free the room now used as a Chapel, which is much needed for a dining-room; but, in addition to this, the possession of a separate Chapel would make the Asylum more complete.

It is understood that detailed plans and specifications of the new Hospital wings are being prepared. The scheme has been very carefully considered by the Directors, the Architect, and the Superintendent.

Two carriages are now kept, and a large number of the patients have drives. Altogether there were about five hundred drives during the past year.

The plan of sending patients for a short residence at some other Asylum, in the hope that the change of surroundings, &c., might prove beneficial, has been in operation; and it has been found that the patients sent from this Asylum to other Asylums, and the patients sent from other Asylums to this Asylum, have nearly always gained in weight. In some instances the gain has been large.

Dr. Urquhart attaches much importance to the occupation of the patients; and that he succeeds beyond what is usual in getting them to work is shown by the fact that 18 of the gentlemen are actively engaged in garden or field work.

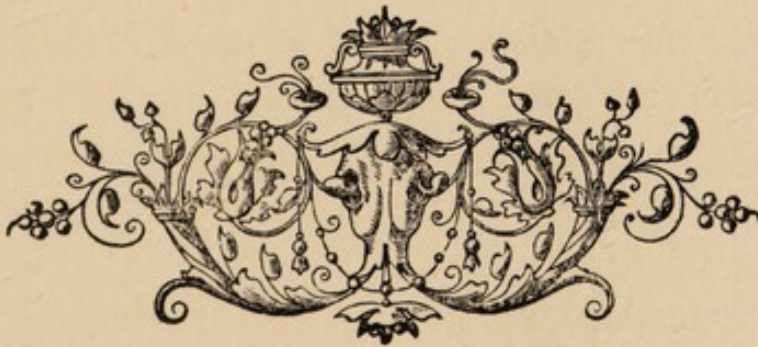
This Institution is prospering in every sense. It increasingly commands the confidence of the public as the result of being increasingly useful and efficient in the care and treatment of the Insane. Ability, earnestness, and good sense are shown both in the medical and administrative

management of the Institution, and in the treatment of the inmates there is much liberality and kindness.

The Books and Registers were examined and were found to be kept with care and accuracy.

ARTHUR MITCHELI,

Commissioner in Lunacy.



STATISTICAL TABLES OF THE MEDICO- PSYCHOLOGICAL ASSOCIATION.

PREPARED BY DR. FINDLAY.

TABLE 1,

Showing the Admissions, Re-Admissions, Discharges, and Deaths
during the Year ending 31st December, 1886.

	M.	F.	T.	M.	F.	T.
In the Asylum, 1st January, 1886,				45	44	89
Cases Admitted—						
First Admissions,	17	13	30			
Not First Admissions,	2	2	4			
Total Cases Admitted,				19	15	34
Total Cases under care during the year,				64	59	123
Cases Discharged--						
Recovered,	9	5	14			
Relieved,	9	6	15			
Not Improved,	3	1	4			
Died,	1	1	2			
Remaining in the Asylum, 31st Decem- ber, 1886,				22	13	35
				42	46	88
Average resident during the year,				44'70	44'73	89'43
Persons under care ,, 				64	58	122
Persons admitted ,, 				19	15	34
Persons recovered ,, 				9	5	14
Transferred to this Asylum, 				5	4	9
Transferred from this Asylum, 				8	4	12

TABLE 2,

Showing the Admissions, Re-admissions, Discharges, and Deaths, for the Twenty-two Years from the 1st of January, 1865, to the 31st December, 1886.

	M.	F.	T.	M.	F.	T.
Number resident, January 1st, 1865,				37	34	71
Persons Admitted during 22 years,	215	211	426			
Re-admissions,	31	49	80			
Total Cases Admitted,				246	260	506
Total Cases under care during 22 years, ...				283	294	577
Cases Discharged—						
Recovered,	75	87	162			
Relieved,	71	66	137			
Not Improved,	46	52	98			
Died,	49	43	92			
Total Cases Discharged and Died,				241	248	489
Remaining 31st December, 1886,				42	46	88
				M.	F.	T.
Average resident during 22 years,				39.60	37.70	77.62
Transferred to this Asylum,				37	31	68
Transferred from this Asylum,				56	46	102

TABLE 1a,

Showing (1) the Previous Attacks among Persons admitted during 1886, and (2) the Number of Times they had Previously Recovered in this or any Asylum.

1) Number of Previous Attacks.	Persons.		
	Male.	Female.	Total.
Have had One Attack,	1	3	4
„ Two Attacks,	0	1	1

(2) Number of Times Patients Recovered.	In this Asylum.			In any Asylum.		
	M.	F.	T.	M.	F.	T.
Once,	1	1	2	0	0	0

TABLE 2a,

Showing the Admissions and Recoveries of Persons from 1st January, 1865, to 31st December, 1886 (a period of Twenty-two Years).

History of Recoveries of Persons.	Omitting those transferred from other Asylums.					
	M.	F.	T.	M.	F.	T.
Persons Admitted during 22 years,	215	211	426	178	180	358
Of whom were Discharged Recovered during } the same period, being 38'03 per cent. of } Persons Admitted,	75	87	162	73	86	159
Of whom were Re-admitted Relapsed, ...	13	21	34	12	19	31
Leaving Recovered Persons who have not } Relapsed,	62	66	128	61	67	128
Relapsed Persons Discharged Recovered, ...	5	12	17	5	12	17
Net Recovered Persons, being 34'03 per cent. } of Persons Admitted,	67	78	145	66	79	145

TABLE 3,

Showing the Admissions, Discharges, and Deaths, with the mean Annual Mortality and Proportion of Recoveries per cent. of the Admissions, for each Year since the opening of the Asylum, 30th of June, 1827.

Year.	Admitted.			DISCHARGED.									Died.			Remaining 31st December in each year.			Average Number Resident.			Percentage of Recoveries on Admissions.			Percentage of Deaths on Average Number Resident.												
	M.	F.	T.	Recovered.			Relieved.			Not Improved.			M.	F.	T.	M.	F.	T.	M.	F.	T.	M.	F.	T.	M.	F.	T.										
				M.	F.	T.	M.	F.	T.	M.	F.	T.																									
				M.	F.	T.	M.	F.	T.	M.	F.	T.																									
1827-1864.	719	752	1471	255	341	596	92	116	208	180	159	339	155	102	257	37	34	71	73	13	62	30	135	4	36	72	45	34	40	52	5	66	4	36	5	05	
1865.....	13	9	22	4	3	7	5	2	7	2	7	9	1	0	1	38	31	69	39	60	34	00	73	60	30	77	33	33	31	82	3	21	...	1	36		
1866.....	12	6	18	4	6	10	5	4	9	2	1	3	2	2	4	37	21	61	37	09	24	80	61	89	33	33	33	100	00	55	55	5	39	8	02	6	46
1867.....	15	7	22	3	3	6	5	2	7	0	0	0	5	1	6	39	25	64	39	67	25	46	65	13	20	00	42	85	27	27	12	60	3	92	9	21	
1868.....	13	13	26	5	2	7	2	0	2	1	2	3	1	3	4	43	31	74	38	08	30	09	68	17	38	46	15	38	26	92	2	62	9	97	5	87	
1869.....	22	18	40	4	4	8	7	2	9	2	4	4	3	0	3	49	41	90	45	77	40	56	86	33	18	18	22	22	20	00	6	55	...	3	47		
1870.....	10	17	27	5	4	9	2	3	5	4	7	11	2	4	6	46	40	86	48	54	41	75	90	29	50	00	23	53	33	33	4	12	9	58	6	64	
1871.....	9	25	34	3	6	9	4	6	10	4	4	8	2	6	8	42	43	85	45	65	41	87	87	52	33	33	24	00	26	47	4	38	14	27	9	13	
1872.....	13	9	22	4	4	8	2	1	3	3	4	7	1	2	3	45	41	86	42	92	41	10	84	02	42	92	41	00	26	47	4	38	14	27	9	13	
1873.....	8	9	17	3	3	6	2	2	4	5	5	10	2	2	4	41	38	79	42	70	40	64	83	34	37	50	33	33	35	29	4	68	4	92	4	79	
1874.....	6	13	19	3	2	5	3	6	9	2	2	4	2	3	5	37	37	74	37	39	41	23	78	62	50	00	15	38	26	31	5	35	7	27	6	35	
1875.....	5	8	13	2	3	5	1	2	3	1	0	1	1	4	3	34	37	71	36	36	34	19	70	55	40	00	37	50	38	46	11	00	8	77	9	92	
1876.....	10	7	17	2	5	7	0	1	1	0	3	3	3	3	6	39	32	71	36	87	37	16	74	03	20	00	71	42	41	17	8	14	8	10	8	10	
1877.....	8	6	14	2	0	2	5	3	8	5	1	6	0	0	0	35	34	69	36	83	34	41	71	24	25	00	
1878.....	2	7	9	1	6	7	1	2	3	2	2	4	1	0	1	32	31	63	33	18	35	74	68	92	50	00	85	71	77	77	3	01
1879.....	9	10	19	2	3	5	0	1	1	1	0	1	2	2	4	36	35	71	34	13	33	79	67	73	22	22	30	00	26	31	5	83	5	92	5	88	
1880.....	10	16	26	2	6	8	2	1	3	0	0	0	4	1	5	38	44	82	37	80	38	93	76	73	20	00	37	50	30	76	15	82	2	56	6	43	
1881.....	10	7	17	5	5	10	2	7	9	1	0	1	3	1	4	37	38	75	38	12	40	58	78	70	50	00	71	42	58	82	7	87	2	46	6	43	
1882.....	6	10	16	1	0	1	3	4	7	2	3	5	4	1	5	33	40	73	31	58	40	95	72	54	16	66	
1883.....	21	14	35	6	8	14	2	2	4	2	3	5	2	2	4	42	39	81	38	24	42	00	80	24	28	57	57	14	40	00	5	20	4	76	4	99	
1884.....	11	18	29	3	5	8	4	3	7	3	1	4	2	5	7	41	43	84	41	88	40	57	82	45	27	25	27	77	27	58	4	75	12	07	8	48	
1885.....	14	16	30	2	4	6	5	6	11	1	4	5	2	1	3	45	44	89	44	18	44	93	89	11	14	28	25	00	20	00	4	52	2	44	3	37	
1886.....	19	15	34	9	5	14	9	6	15	3	1	4	2	1	2	42	46	88	44	70	44	73	89	43	47	32	33	33	41	17	2	23	2	23	2	23	
For 22 yrs.	246	260	506	75	87	162	71	66	137	46	52	98	49	43	92	Average or Percentage.			39	60	37	70	77	62	31	98	37	33	33	75	6	00	5	20	5	49	
General Totals,	965	1012	1977	330	428	758	163	182	345	226	211	437	204	145	349				34	19	42	29	38	33	5	78	4	67	5	21	5	78	4	67	5	21	

TABLE 4,

Showing the History of the Annual Admissions since 30th June, 1827, with the Discharges, Deaths, and the Numbers each Year remaining on the 31st December of the Year reported on.

Year	Admitted.			Of each Year's Admissions Discharged and Died in 1886.						Total Discharged and Died of each Year's Admissions to 31st December, 1886.						Remaining on 31st December, 1886.									
	New Cases.		Relapsed Cases.	Recovered.		Relieved.		Not Improved.		Died.	Recovered.		Relieved.		Not Improved.		Died.	M.	F.	T.					
	M.	F.		M.	F.	M.	F.	M.	F.		M.	F.	M.	F.	M.	F.					T.				
1827 to 1864	Not Ascertained		retain ed.		256	349	605	97	119	216	188	169	357	171	109	280	7	6	13
1865	9	3	4	0	4	3	8	6	4	10	1	1	2	1	0	1	1	0	1
1866	11	6	1	3	3	1	6	5	0	5	0	1	1	4	4	1	0	1	1
1867	12	3	2	1	4	3	5	4	4	8	3	2	5	2	2	2	0	0	2
1868	11	10	3	3	6	3	9	4	2	6	1	4	5	2	2	4	0	0	0
1869	21	15	1	3	4	3	7	6	6	12	5	5	10	3	4	7	4	0	4
1870	7	12	3	5	2	8	10	3	1	4	2	3	5	3	3	4	0	4	4
1871	8	22	1	3	4	6	10	1	6	7	3	6	9	1	1	6	0	4	4
1872	13	7	0	2	4	3	7	3	3	6	2	1	3	3	1	5	0	2	2
1873	5	7	3	2	2	3	5	2	3	5	3	3	6	1	2	5	1	0	1
1874	5	9	1	4	3	4	7	2	4	6	0	2	1	1	0	4	0	0	0
1875	3	7	2	1	1	1	2	1	3	4	2	1	1	4	0	2	1	1	1
1876	10	5	0	2	3	1	7	2	4	6	0	2	1	1	1	4	0	0	0
1877	7	6	1	0	1	3	2	1	3	4	4	2	4	2	1	3	1	1	1
1878	2	6	0	1	2	1	4	0	2	2	0	1	1	0	1	0	0	0	0
1879	9	9	0	1	1	5	6	2	0	2	2	2	1	1	1	5	1	1	2
1880	9	15	1	1	1	4	5	0	7	9	2	1	3	1	2	3	3	3	3
1881	9	5	1	2	3	3	7	1	1	2	0	0	1	1	1	4	0	0	6
1882	6	9	0	1	5	2	8	2	1	2	2	3	1	4	1	5	0	2	4
1883	20	11	1	3	2	6	10	6	3	5	3	0	1	1	0	1	2	3	5
1884	9	14	2	4	4	4	8	2	1	7	3	1	4	4	0	3	4	3	7
1885	12	11	2	5	4	6	12	5	3	5	2	3	5	0	4	4	3	4	7
1886	17	13	2	2	6	6	12	4	4	9	1	0	1	1	0	0	2	6	8
Tot. for 22 yrs.,	215	211	31	49	5	14	9	6	15	2	74	79	153	66	63	129	38	42	80	33	36	69	35	40	75
General Totals,	Not Ascertained		retain ed.		5	14	9	6	15	3	330	428	758	163	182	345	226	211	437	204	145	349	42	46	88

TABLE 4 (contd.)

Summary of Total Admissions.

						Male.	Female	Total.
Percentage of Cases Recovered,	34·19	42·29	38·34
„ „ Relieved,	16·88	17·98	17·45
„ „ Not Improved,	23·42	20·85	22·10
„ „ Died,	21·15	14·33	17·66
„ „ Remaining,	4·36	4·55	4·45
						100	100	100

TABLE 5,

Showing the Causes of Death, with the Ages at Death, during the Year 1886.

Cause of Death.	25-30.			30-70.			70-75.			Totals.			
	M	F	T	M	F	T	M	F	T	M	F	T	
Exhaustion of Acute Mania and Double Pneumonia, }	1	0	1	1	0	1	
Scirrhus Cancer of Mamma, }	0	1	1	0	1	1	
											1	1	2

TABLE 6,

Showing the Length of Residence in those Discharged Recovered
and in those who have Died during the Year 1886.

Length of Residence.						Recovered.			Died.		
						M.	F.	T.	M.	F.	T.
1	Month and under	3	Months,	3	0	3	1	0	1
3	„	„	6	„	3	4	7
6	„	„	9	„	1	1	2
9	„	„	12	„	1	0	1
1	Year	„	2	Years,	1	0	1
4	Years	„	5	Years,	0	1
Total,						9	5	14
									1	1	2

TABLE 7,

Showing the Duration of the Disorder on Admission in the Admissions, Discharges, and Deaths, during the Year 1886.

CLASS.	Admissions.			Discharges.						Deaths.		
				Recovered.			Removed Relieved or otherwise.					
	M.	F.	T.	M.	F.	T.	M.	F.	T.	M.	F.	T.
FIRST CLASS.												
First attack, and within 3 months on admission,	6	4	10	5	3	8	1	1	2	1	0	1
SECOND CLASS.												
First attack, above 3, and within 12 months on admission,	5	2	7	4	0	4
THIRD CLASS.												
Not first attack, and within 12 months on admission,	1	1	2	1	1	2
FOURTH CLASS.												
First attack or not, but of more than 12 months on admission,	7	8	15	3	1	4	7	6	13	0	1	1
FIFTH CLASS.												
Congenital,
Total,	19	15	34	9	5	14	12	7	19	1	1	2

TABLE 8,

Showing in Quinquennial Periods the Ages of those Admitted, Recovered, and Died, during the Year 1886, and of those remaining on 31st December, 1886.

	Admissions.			Recovered.			Deaths.			Resident 31st Dec., 1885.		
	M.	F.	T.	M.	F.	T.	M.	F.	T.	M.	F.	T.
15 years and under 20 years,
20 "	2	0	2	0	1	1	2	0	2
25 "	2	0	2	0	1	1	2	1	3
30 "	5	2	7	3	1	4	1	4	2	6
35 "	3	4	7	1	1	2	4	4	8
40 "	2	3	5	1	0	1	5	3	8
45 "	1	0	1	2	0	2	3	2	5
50 "	1	5	6	1	11	12
55 "	6	4	10
60 "	2	1	3	1	0	1	3	2	5
65 "	4	5	9
70 "	1	0	1	1	2	3	5	3	8
75 "	0	2	5	7
80 "	1	2	2	2
85 "	1	1	2
90 "	0	1	1
Total,	19	15	34	9	5	14	1	1	2	42	46	88

TABLE 9,

Showing the condition as to Marriage, in the Admissions, Recoveries, and Deaths, during 1886, and of Patients Resident 31st December, 1886.

Condition in reference to Marriage.	Admissions.			Recovered.			Deaths.			Patients Resident, Dec. 31st, 1886		
	M.	F.	T.	M.	F.	T.	M.	F.	T.	M.	F.	T.
Single, ...	16	7	23	7	2	9	1	1	2	36	30	66
Married, ...	3	7	10	2	2	4	0	0	0	3	8	11
Widowed,	0	1	1	0	1	1	0	0	0	3	8	11
Total,	19	15	34	9	5	14	1	1	2	42	46	88

TABLE 10,
 Showing the Probable Causes of Insanity in the Patients admitted during
 the Year 1886.

Causes of Insanity.		Number of instances in which each cause was assigned.										
		Admissions { M., 19; F., 15; T., 34 } No. of Cases.										
		As Predisposing Cause.			As Exciting Cause.			As Predisposing or Exciting.			Total.	
M.	F.	T.	M.	F.	T.	M.	F.	T.	M.	F.	T.	
...	
1	0	1	0	1	1	2	1	3	3	2	5	
...	3	2	5	3	2	5	
...	1	0	1	1	0	1	
...	0	1	1	0	1	1	0	2	2	
...	4	0	4	4	0	4	
...	3	0	3	3	0	3	
...	2	0	2	2	0	2	
...	2	1	3	2	1	3	
...	1	0	1	1	0	1	
...	0	1	1	0	1	1	
...	0	2	2	0	2	2	
...	2	0	2	2	0	2	
1	4	5	1	4	5	
9	6	15	9	6	15	
...	0	0	0	

MORAL.

Domestic troubles (including loss of relatives and friends, Adverse circumstances (including business anxieties and pecuniary difficulties), Mental anxiety and worry (not included under the above two heads) and overwork, Religious excitement, ... Fright and Nervous Shock, ...

PHYSICAL.

Intemperance in drink, ... Venereal disease, ... Self-abuse, ... Over-exertion, ... Sunstroke, ... Pregnancy, ... Parturition, ... Change of life, ... Other bodily diseases, ... Previous attacks, ... Hereditary influences, ... Unknown, ...

TABLE 11,

Showing the Form of Mental Disorder on Admission in the Admissions, Recoveries, and Deaths of the Year 1886; and the Form of Mental Disorder of the Inmates, December, 1886.

Form of Mental Disease.	Admissions.			Recovered.			Deaths.			Remaining, 31st Dec., 1886.		
	M.	F.	T.	M.	F.	T.	M.	F.	T.	M.	F.	T.
CONGENITAL MENTAL DEFICIENCY,												
MANIA.												
Recent, ...	6	3	9	2	2	4	1	0	1	2	3	5
Chronic, ...	2	2	4	1	0	1	0	1	1	4	7	11
Recurrent, ...	1	0	1	1	0	1	3	3	6
MELANCHOLIA.												
Recent, ...	5	5	10	5	1	6	3	3	6
Chronic, ...	0	1	1	0	1	1	1	1	2
Recurrent,
DELUSIONAL INSANITY, ...												
...	3	3	6	0	1	1	5	8	13
DEMENTIA.												
Primary, ...	2	...	2
Secondary, ...	0	1	1	23	21	44

TABLE 12,

Showing the Station or Occupation of Patients admitted during the Year 1886.

MALES.				FEMALES.			
Clergyman,	1	Gentlewomen,	4
Clerk,	4	Governess,	1
Coachbuilder,	1	Lady's Companion,	1
Coachman,	1	Wives, Widows, or Daughters			
Druggist,	1	of Professional Men,	1
Exciseman,	1	Wives, Widows, or Daughters			
Farmer's Son,	1	of Tradesmen,	8
Maltster,	1				
Mason,	1				
Master Mason,	1				
Medical Student,	1				
Retired Schoolmaster,	1				
Shepherd,	1				
Solicitor,	1				
Tea Planter,	1				
Traveller,	1				
Total,	19	Total,	15

TABLE 13,

Showing Bodily Condition of Admissions.

	Male.	Female	Total.
Good Bodily Condition,	7	3	10
Fair " "	7	8	15
Bad " "	5	4	9
	19	15	34

Incorporated by



Royal Charter.

JAMES MURRAY'S ROYAL ASYLUM, PERTH.

THIS Asylum is healthily situated on the Hill of Kinnoull, in the immediate vicinity of Perth, and commands a prospect extending over the valley of the Tay to the Range of the Grampians. It has been from time to time so altered and improved as to render it an efficient Hospital, as well as a comfortable Home, for all classes of Private Patients. Being a Chartered Corporation under the management of a Statutory Board, who have no pecuniary interest in its prosperity, the profits on each year's transactions have been devoted to modernising and perfecting the original fabric.

The Directors having felt the necessity of procuring additional accommodation to be used as a convalescent home, and for patients of the higher classes suffering from the milder forms of mental disease, have taken on lease the Mansion-House of Kincarrathie, in the neighbourhood of, but distinctly separated from, the Asylum. The private and extensive policies afford every facility for exercise and recreation within the grounds.

The arrangements throughout the entire Institution are of a Domestic Character, with ample means of Occupation and Amusement. The above-mentioned Convalescent Home, a Seaside Residence, and Carriage Exercise are available, and the utmost Liberty, with due regard to Safety, is accorded.

The Institution contains no Paupers, and no publicity is implied in the proceedings connected with the admission of Patients, nor in the term "Royal Asylum."

The various houses of the Establishment being connected by Telephone, all are within the surveillance of the Physician Superintendent.

Applications for admission should be addressed to Dr. Urquhart, Physician Superintendent, who will give all necessary information regarding Rates of Board, etc., and from whom may be obtained the Statutory Forms, which must be duly filled up before Patients can be received.

TELEGRAPHIC ADDRESS—"DR. URQUHART, PERTH."

NATIONAL TELEPHONE No. 104.



ROYAL COLLEGE OF SURGEONS OF ENGLAND
* LIBRARY *
10 OCT 92