

The twelfth annual report of the Committee of Visitors of the joint lunatic asylum, at Abergavenny, for the counties of Monmouth, Hereford, Brecon, Radnor, and city of Hereford, for the year 1864.

Contributors

United Counties' Lunatic Asylum (Abergavenny, Wales)
Clive, Archer.
McCullough, David M.
Davies, William G.
Browning, Samuel.
Campbell, W. G.
Gaskell, S.

Publication/Creation

Abergavenny : Printed by J.S. Meredith, 1865.

Persistent URL

<https://wellcomecollection.org/works/tpyqn9z4>

License and attribution

This work has been identified as being free of known restrictions under copyright law, including all related and neighbouring rights and is being made available under the Creative Commons, Public Domain Mark.

You can copy, modify, distribute and perform the work, even for commercial purposes, without asking permission.



Wellcome Collection
183 Euston Road
London NW1 2BE UK
T +44 (0)20 7611 8722
E library@wellcomecollection.org
<https://wellcomecollection.org>

THE TWELFTH ANNUAL REPORT

OF THE

Committee of Visitors

OF THE



JOINT LUNATIC ASYLUM,

AT ABERGAVENNY,

FOR THE COUNTIES OF

Monmouth, Hereford, Brecon, Radnor,

AND

CITY OF HEREFORD,

For the Year 1864.

ABERGAVENNY :

PRINTED BY J. S. MEREDITH, BOOKSELLER, BOOKBINDER, AND STATIONER,
STAMP OFFICE, CROSS STREET.

1865.

THE LITTLE LITTLE LITTLE

THE LITTLE LITTLE LITTLE

THE LITTLE LITTLE LITTLE

THE LITTLE LITTLE LITTLE

THE LITTLE LITTLE LITTLE

THE LITTLE LITTLE LITTLE

THE LITTLE LITTLE LITTLE

THE LITTLE LITTLE LITTLE

THE LITTLE LITTLE LITTLE

THE LITTLE LITTLE LITTLE

THE LITTLE LITTLE LITTLE

CONTENTS.

	PAGE.
Committee of Visitors and Officers	4
Visiting Rota	5
Committee of Visitors' Report	7 to 9
Commissioners' Report	10 to 12
Medical Superintendent's Report	13 to 17
Chaplain's Report	18 to 21
Statistical Tables	23 to 29
Table of Lunatics and Idiots not in the Asylum for the last 11 years	30
Table of Patients in the Asylum for the last 11 years.....	31
Table of Patients in the Asylum on the 1st January, 1864.....	32
Table of Patients in the Asylum on the 1st January, 1865	33
Table of Lunatics and Idiots not in the Asylum on the 1st January, 1865 ...	34
Summary of Lunatics and Idiots chargeable to Counties and City of Hereford	35
Dietary Table	36
Needlework done by Female Patients	37
Salaries and Wages	38
Contract Prices, 1863 and 1864	39
Valuation of Farming Stock, 1863 and 1864	40 to 41
General Farm Account	42 to 43
Financial Accounts	44 to 49
Balance Sheet of General Account—1863 and 1864	50 to 51
Summary Cost per Head per Week—1863 and 1864	52 to 53
Abstract of Maintenance Account—1863 and 1864	54
Financial Position of Maintenance Account—1863 and 1864.....	55
Abstract of Building Account—1863 and 1864	56
Estimated Value of Stock in Store, &c.	57
Tailors and Shoemakers' Work, &c.	58 to 59

Committee of Visitors and Officers

FOR THE YEAR 1865.

The Rev. ARCHER CLIVE, CHAIRMAN.
S. R. BOSANQUET, Esq., DEPUTY CHAIRMAN.

COUNTY OF MONMOUTH.

S. R. Bosanquet, Esq.	The Ven. Archdeacon Crawley
Sir Thomas Phillips.	The Rev. James Farquhar.
J. A. Herbert, Esq.	Colonel Byrde.
Samuel Homfray, Esq.	S. Courthope Bosanquet, Esq.
G. R. Greenhow Relph, Esq.	The Hon. J. F. Clifford Butler.
G. G. Tyler, Esq.	John Thompson, Esq.

COUNTY OF HEREFORD.

John Freeman, Esq.	The Rev. C. L. Eagles.
The Rev. Archer Clive.	J. H. Griffiths, Esq.
The Rev. D. J. George.	C. T. Bodenham, Esq.
The Rev. G. H. Cornewall.	Thomas Freke Lewis, Esq.
R. M. Lingwood, Esq.	George Percival Smith, Esq.

COUNTY OF BRECON.

Colonel L. V. Watkins, M.P.	Henry Allen, Esq.
Sir J. R. Bailey, Bart.	C. A. Parkinson, Esq.
Penry Williams, Esq.	Martyn J. Roberts, Esq.
Thomas Davies, Esq.	Robert Raikes, Esq.

COUNTY OF RADNOR.

Sir John Walsh, Bart.	R. B. R. Mynors, Esq.
Sir Harford J. J. Brydges, Bart.	The Rev. James Davies.
The Rev. Sir G. F. Lewis, Bart.	The Rev. W. Jones Thomas.
The Rev. R. Lister Venables.	

CITY OF HEREFORD.

Thomas Evans, Esq. | Richard Hereford, Esq. | John Prince, Esq.

CRAWSHAY BAILEY, Esq., Treasurer.

OFFICERS.

D. M. M'CULLOUGH, M.D., Superintendent.
T. ALGERNON CHAPMAN, M.D., Assistant Medical Officer.
The Rev. W. G. DAVIES, Chaplain.
ALEXANDER WADDINGTON, Esq., Auditor.
SAMUEL BROWNING, Clerk to the Visitors and Clerk and Steward.
EMMA MITCHELL, Housekeeper.

House Committee Visiting Rota.

FEBRUARY, 1865.

The Rev. ARCHER CLIVE, Whitfield, near Hereford.
The Rev. C. L. EAGLES, Vicarage, Longtown, near Abergavenny.
JOHN POWELL, Esq., Clydach, Abergavenny.

* MARCH.

The Rev. C. L. EAGLES, Vicarage, Longtown, near Abergavenny.
The Rev. J. FARQUHAR, Llanthewy Rectory, near Abergavenny.
J. H. GRIFFITHS, Esq., The Weir, Hereford.

APRIL.

The Rev. ARCHER CLIVE, Whitfield, near Hereford.
R. M. LINGWOOD, Esq., Lyston, near Ross, Herefordshire.
G. R. G. RELPH, Esq., Beech Hill, Uske.

MAY.

S. R. BOSANQUET, Esq., Dingestow Court, near Monmouth.
MARTYN J. ROBERTS, Esq., Pendarren, Crickhowell.
THOMAS EVANS, Esq., Sufton Court, Hereford.

* JUNE.

MARTYN J. ROBERTS, Esq., Pendarren, Crickhowell.
The Rev. JAMES DAVIES, Moor Court, Kington.
J. H. GRIFFITHS, Esq., The Weir, Hereford.

JULY.

R. M. LINGWOOD, Esq., Lyston, near Ross, Herefordshire.
The Rev. J. FARQUHAR, Llanthewy Rectory, near Abergavenny.
G. R. G. RELPH, Esq., Beech Hill, Uske.

AUGUST.

S. R. BOSANQUET, Esq., Dingestow Court, Monmouth.
R. M. LINGWOOD, Esq., Lyston, near Ross, Herefordshire.
SAMUEL HOMFRAY, Esq., Glenuske, Newport.

SEPTEMBER.

G. R. G. RELPH, Esq., Beech Hill, Uske.
SAMUEL HOMFRAY, Esq., Glenuske, Newport.
The Rev. JAMES DAVIES, Moor Court, Kington.

* OCTOBER.

J. H. GRIFFITHS, Esq., The Weir, Hereford.
THOMAS EVANS, Esq., Sufton Court, Hereford.
C. A. PARKINSON, Esq., Sunny Bank, Crickhowell.

NOVEMBER.

S. R. BOSANQUET, Esq., Dingestow Court, Monmouth.
The Rev. J. FARQUHAR, Llanthewy Rectory, near Abergavenny.
The Rev. JAMES DAVIES, Moor Court, Kington.


* DECEMBER.

The Rev. ARCHER CLIVE, Whitfield, near Hereford.
SAMUEL HOMFRAY, Esq., Glenuske, Newport.
THOMAS EVANS, Esq., Sufton Court, Hereford.

* JANUARY, 1866.

C. A. PARKINSON, Esq., Sunny Bank, Crickhowell.
The Rev. C. L. EAGLES, Vicarage, Longtown, near Abergavenny.
MARTYN J. ROBERTS, Esq., Pendarren, Crickhowell.

* General Meetings are held in these Months.



Digitized by the Internet Archive
in 2018 with funding from
Wellcome Library

<https://archive.org/details/b30314653>

THE TWELFTH ANNUAL REPORT
OF
The Visiting Justices
OF THE
LUNATIC ASYLUM, AT ABERGAVENNY,
To the several Courts of Quarter Sessions
FOR THE
UNITED COUNTIES AND CITY OF HEREFORD.

The Committee of Visiting Justices of the United Asylum, at Abergavenny, in making their Annual Report to the Quarter Sessions of the four Counties and City of Hereford, have to report that during the past year the management of the Asylum, under the able superintendence of Dr. M'Cullough, has been perfectly satisfactory to the Visiting Justices and to the Commissioners in Lunacy, who have inspected it and given favourable reports on the state of the patients and general management.

The number of patients at the date of the last Annual Report was—

Males.....	214	
Females.....	241	— 455

Admitted in 1864—

Males.....	54	
Females.....	63	— 117 — 572

Discharged in 1864—

Recovered or relieved	69	
Escaped.....	1	
Transferred to other Asylums ..	3	
Out on trial	3	
Died	49	— 125
		—

Leaving in the Asylum at present	447
--	-----

In addition to these there are 30 female patients in the Asylum at Worcester, the extra cost of whom, beyond their maintenance and clothing, or one-fourth of their total expense, is charged to the four counties and City of Hereford.

It will thus be seen that the total number of patients has decreased by eight during the past year.

The number, including those at Worcester, amounting in all to 477, exceeds, by about 20, the number that can be accommodated in the Asylum, and renders some increase necessary at no very distant time.

In consequence of the great and rapid increase in the number of patients during the years ending December, 1863, the Committee of Visiting Justices ordered plans and estimates to be prepared by their Architect, for the reception of 220 additional patients, if it should be required.

These plans having been submitted to the Commissioners in Lunacy, were not approved of by them, and consequently have been abandoned.

On the question of increasing the present Asylum, or dissolving the Union and building another Asylum in some other place, the several Quarter Sessions were consulted, and it appeared that all except Monmouth were favourable to an increase on the present site, and opposed to a dissolution of the Union.

It was suggested that an increase of accommodation on a much smaller scale, sufficient to receive the patients now in the Worcester Asylum, might be made at a low cost, and Dr. M'Cullough was desired to report on the expediency of it at the first meeting in the next year.

A call on the four counties and city for the past year was ordered to be made for £400, viz. :—

One-fourth of the cost of the patients at	
Worcester	245
For furniture	36
For law expenses caused by opposing an application to Parliament of the Merthyr Tydfil, Tredegar, and Abergavenny Rail- way Direction, to purchase part of the garden	119
	<hr/>
	£ 400

To be levied according to their respective proportions.

The weekly charge for patients during the ensuing year will be 9s. 9d. per head per week.

(Signed)

ARCHER CLIVE,
Chairman of Committee of Visiting Justices.

Joint Counties' Asylum,
22nd December, 1864.

COMMISSIONERS' REPORT.

JOINT COUNTIES' ASYLUM,
1st November, 1864.

Yesterday and this day we have visited this Asylum and inspected all the wards and offices. The patients, all of whom we saw and examined, are now 466 in number; there are, besides, two females, who are absent on trial, and one male criminal, who has escaped, is still retained on the books.

The admissions since our Colleagues visit, about fourteen months ago, have been 149. There have been 79 discharges of patients recovered or improved, 2 patients were liberated, being found not insane on admission, 2 patients escaped and have not been retaken, and 33 have been transferred to other Asylums. Of these last, 30 are at the Worcester Asylum, under a contract, at 12s. 6d. per week.

There have been 50 deaths within the above period, generally from ordinary causes, but in two instances the patients died from burns. We are informed that full particulars of these cases were forwarded to our office, but the records of them in the case book and journal are meagre, and we would suggest that in future more detailed accounts of such accidents should be entered.

Although there are many cases of paralysis now in the Asylum, the general health is good, and only a small number of the patients were in bed. We found the inmates, on the

whole, in a very quiet and orderly state, and their clothing and personal condition quite satisfactory. The bedding was clean and of good quality, and the wards well ventilated. We learn that the arrangements for occupation and amusement remain the same as before reported, the average number of patients employed being about the same also. Divine service is performed in the Chapel as usual.

The Asylum continues to be much crowded, and it has been found necessary to place beds in some of the day rooms, but no patients have as yet been refused admission, and we doubt not that the Committee of Visitors will take the necessary steps to provide temporary accommodation to meet the pressure.

We have made all the enquiries required by the 110th section of the 8th and 9th Vic., cap. 100, and have received satisfactory replies. The visitation and management of the Asylum is very carefully carried out by the Committee, and the officers appear to be most zealous in the performance of their duties. The patients are evidently very kindly treated, and we had no complaints of harshness on the part of the attendants and nurses, who are, on the whole, sufficiently numerous, although the engagement of a supernumerary nurse would, we think, prove advantageous.

We observe that fenders have been introduced in some of the rooms, so constructed as to guard against accidents from fire. We are also glad to learn that the Committee have under consideration the subject of an increased water supply, and the provision of means for the prevention of fire.

We beg to suggest that an addition of ordinary domestic furniture should be made in the day rooms, more especially in the male division, and that efforts should be made to render these rooms more cheerful and attractive.

The stock of entertaining books seems to be small.

We saw the patients dinners to-day ; they consisted of apple pudding, which we tasted and found very good. This dinner is only given occasionally for a change, but the ordinary dietary remains the same as before. On the whole, we consider the dietary a good one, but we think it would be improved by the substitution of meat pies for the soup now given on one day in the week, as it is stated that 45 women and 14 men refuse to eat it.

This change might be made without necessitating any increase in the weekly allowance of meat.

With respect to the recommendations and suggestions made by our Colleagues at the last visit, we may state generally that they have been substantially attended to.

In conclusion, we have again to express our satisfaction at the general good order and management of the Asylum, which is very creditable to Dr. M'Cullough.

(Signed)

W. G. CAMPBELL,	} Commissioners
S. GASKELL,	

REPORT
OF
THE MEDICAL SUPERINTENDENT
FOR THE YEAR 1864.

The Medical Superintendent has the honour of submitting to the Committee of Visitors his report for the year 1864, together with the usual Statistical Tables.

On the 1st of January last there remained under treatment 450 patients—209 males and 241 females. During the year there have been admitted 117, viz., 57 males and 60 females, being 42 less than in the previous year, and 24 less than the average of the five preceding years.

The total number under treatment during the year was 567, and the average number resident was 455·9, viz., 215·9 males and 240 females. The highest number resident at one time was 471 in August, and the lowest, 447 in April and December.

The number discharged recovered was 59—23 males and 36 females, being in the high proportion of 50·4 per cent. to the admissions. Twelve patients were discharged relieved, and 3, not improved.

During the year 45 deaths have occurred—23 of males and 22 of females, being in the proportion of 9·9 per cent. of the average number resident. The number of deaths is 5 less than in the previous year, the average number resident being about the same in both years, and the mortality was

below the average which, in this Asylum, has hitherto been over 11 per cent.

There has been no disease of an epidemic or contagious character, and the health of the patients generally has been good.

Three female patients have been sent to the Worcester Asylum during the year to fill up vacancies caused by death. Including the 30 female patients boarded in that Asylum, there remained at the end of 1864, 478 patients—212 males and 266 females. The males are thus 3 more, and the females 5 less than on the 1st of January, being a decrease of 2 in the total number during the year.

In only one previous year, viz., 1855, was the number of patients less at the end of the year than at the beginning.

The number of admissions was smaller than in any year since 1856. The falling off has been remarkable, though it was, to some extent, anticipated. In my last annual report, judging from past experience of an influx of patients being followed by a corresponding falling off, I ventured to predict that the admissions would not be very numerous. In 1863, the admissions were increased by a considerable number of chronic cases of insanity and idiots being sent in, largely, I believe, owing to the visitation of the Workhouses by the Commissioners in Lunacy. This diminished the stock of chronic cases from which the admissions of 1864 would, to some extent, be drawn, while, during the latter year also, instead of there being a pressure from without, there was some pressure from within, arising from the endeavour to diminish our numbers by selecting suitable patients to send to the Workhouses or to board with friends. The admissions, therefore, fell below what can probably be expected as an average.

During the year 13 patients of a quiet class, and in most of whom the mental impairment was slight, were selected and removed either to Workhouses or to live with friends. Two of these have returned to the Asylum, and it is probable that some of the others may be sent back, but in most of the cases I have reason to believe that the removal has not been attended by any disadvantage.

The number of patients discharged recovered has been remarkably uniform of late years. In six of the last seven years the number of recoveries has only varied from 58 to 60 per annum, although the number admitted has varied greatly. This is partly because the patients discharged recovered in any year are drawn to some extent from the admissions of previous years, but still more, because the number of curable patients admitted every year does not alter greatly. The difference in the number of admissions arises chiefly from particular causes, which lead to a greater or less number of imbecile and idiotic patients being sent in from time to time. It fortunately happens that generally speaking the most curable patients are those whom it is most difficult to manage out of an Asylum, so that they are usually placed under treatment at an early period.

The number of re-admissions of patients who had been previously in the Asylum was 22 during the past year. Only 1 of these was re-admitted within three months of leaving the Asylum. During the four previous years the average of re-admissions was 26 per annum.

As, in the previous year, the admissions were much the most numerous in the summer months. During the four months ending in August, 55 were admitted, and in the four months ending December, only 23.

At the beginning of the present year the male patients

were 4 in excess of the accommodation, while twenty beds were vacant on the female side of the house. With reference to the request of the Committee at the meeting in December, that I should report on the increase of accommodation, I am of opinion that in the present state of the Asylum, increased accommodation for a limited number of patients, say 20 or 30 of each sex, need not partake of the usual character of Asylum buildings. Indeed, for such numbers, I would much prefer simple domestic dwellings. To keep up the domestic character as much as possible in such buildings, it is not desirable that a large number of patients should be together, and a suitable staff could not be kept up for a very small number. I think that such a house should be in charge of two attendants at the least, so that one would be always on the spot, and I estimate the number of patients that should be placed under two attendants in such circumstances, at from 20 to 25. There are several suitable sites for a house of this kind for male patients in the neighbourhood of the farm buildings. It might be of the simplest and plainest character, and the cost need not, I think, exceed £30 per head, and probably would be less.

I have carefully considered the suggestion for raising an additional story over No. 4 Female Ward. I do not think there is any serious structural difficulty, and the additional ward, thus provided, would be quite convenient. A considerable number of beds would be temporarily lost during the alteration, so that it might be necessary to provide elsewhere for a number of patients for a time. The inconvenience would be very great, as building operations would be carried on both in the front and back female airing courts. I fear that the cost would be out of pro-

portion to the accommodation obtained, which would be twenty beds, eighteen in associated sleeping-rooms, and two single rooms.

The ground near the female side of the Asylum is not very suitable for a detached house, such as I have spoken of for males. An addition might probably be made to the laundry buildings at a moderate cost. Owing to the number of beds at present vacant, I do not anticipate any pressure on the accommodation for females during the present year, and as the contract for patients at Worcester has still twenty-one months to run, the question of providing for females is less urgent than for males.

During the past year continued efforts have been made to improve the condition of the Asylum generally. A great deal of work has been done, especially in painting and providing additional articles of furniture, and otherwise endeavouring to increase the comfort of the wards. In the coming year, I hope, by continuing the papering of the wards, and by increasing the objects of interest in them, and by other means, to add to those humanizing influences which have proved so beneficial in the management of the insane. I thank the Committee of Visitors for the kind support they continue to give me in the performance of my duties, and I have pleasure in stating that I continue to receive from the various officers that kind co-operation which conduces so much to the harmony and consequent good working of such an institution.

D. M. M'CULLOUGH.

REPORT OF CHAPLAIN,

1864.

*Joint Counties' Asylum, Abergavenny,
January 12th, 1865.*

Mr. Chairman and Gentlemen,

That religion occupies the leading place in the minds of the majority of the patients in an Asylum, is clearly evident to one who is familiarly conversant with their habits and modes of thought, and who is, at the same time, looking out for all the evidence bearing on this point. I feel assured that no other subject attracts so many patients, and that so forcibly, as religion does. There are several, indeed, whose religious sentiments are of the severe order, and who keep aloof from all the amusements, deeming them sinful; while, many more, although they enter heartily into these amusements, are still of a religious turn of mind, and would not participate in them did they not think them innocent and intended for their benefit. Putting these two classes together, I think I can safely say that they out-number any other class of patients in the house. And this is to be expected, seeing that the affliction to which they are subject, when it leaves the mind

in a fit condition, conduces more than prosperity does, to the promotion of religion in the heart.

The average attendance at Chapel during the year has been 234 on Sundays, 111 on week-days. The highest number on a Sunday has been 279. The behaviour has been, as usual, excellent, far better than those, who do not constantly witness it, are apt to suppose.

The Holy Communion, on the last occasion of its being administered, was partaken of by twenty-five communicants, who, in their behaviour, seemed all that is proper and devout. One poor woman was in tears, and was almost overcome by her emotion.

The wards have been weekly visited, and attention has been paid to those patients who do not repel my advances. The great grievance is, of course, being kept from going home, and my chief occupation is to endeavour to reconcile the complaining to their lot, to induce them to submit with resignation to the visitation of Providence, to encourage them with the hope, if there be one, of soon getting well and obtaining their discharge, and to urge them to adopt, with cordiality, all the measures prescribed for their benefit.

The classes are continued, for the most part, for four evenings during the week in the winter months. The principal object which experience points out as most proper to be sought in these classes, is the recreation of the patients after their day's work. The number that could be gathered together, of an evening, for pure instruction, while amusements were going on, and that could be induced to take a continued interest in the same, would be too small to repay the trouble taken. A school carried on during the day would, no doubt, like the carpenter's shop and the tailor's, provide salutary occupation for several, especially

for those who are not accustomed to manual labour, or for those who either are not able, or who feel disinclined, to engage in it. Of an evening, the patients naturally look for some recreation to while away the dreariness of the time, after the useful occupations of the day; otherwise, they prefer retiring to rest at an early hour. Indeed, when there is a movement throughout the country, the result of years of experience, to give to Mechanics' Institutes and Literary Associations a more attractive character to the working man, by assimilating them as much as possible to the nature of clubs, it will be easily inferred that the same principle should operate in the selection of suitable evening occupations for the suffering inmates of an Asylum. Readings, after the fashion of Popular Readings, have been given this winter, the readers being selected both from among the patients and from others connected with the establishment. The Medical Superintendent and the Assistant Medical Officer have both rendered their services, to the great gratification of the audience.

With regard to the library, it is found to be a difficulty to keep books in a ward for the sole use of those who can read and set a value upon them. The mischievous and the destructive, who either cannot read or do not care to do so, appropriate the books, tear, secrete, or carry them into other wards than their own. To prevent this, and still to allow those who have a desire for books the easiest possible access to them, it is proposed to supply the wards with a small glazed book-case, fitted with a simple lock, and to provide each patient who desires it, and is able to take charge of it, with a key, thus enabling one to take a book out for perusal when wanted, and to put it back again when done with.

I have to thank the Committee for a grant of £6 odd for the purchase of Bibles, Testaments, and Prayer Books.

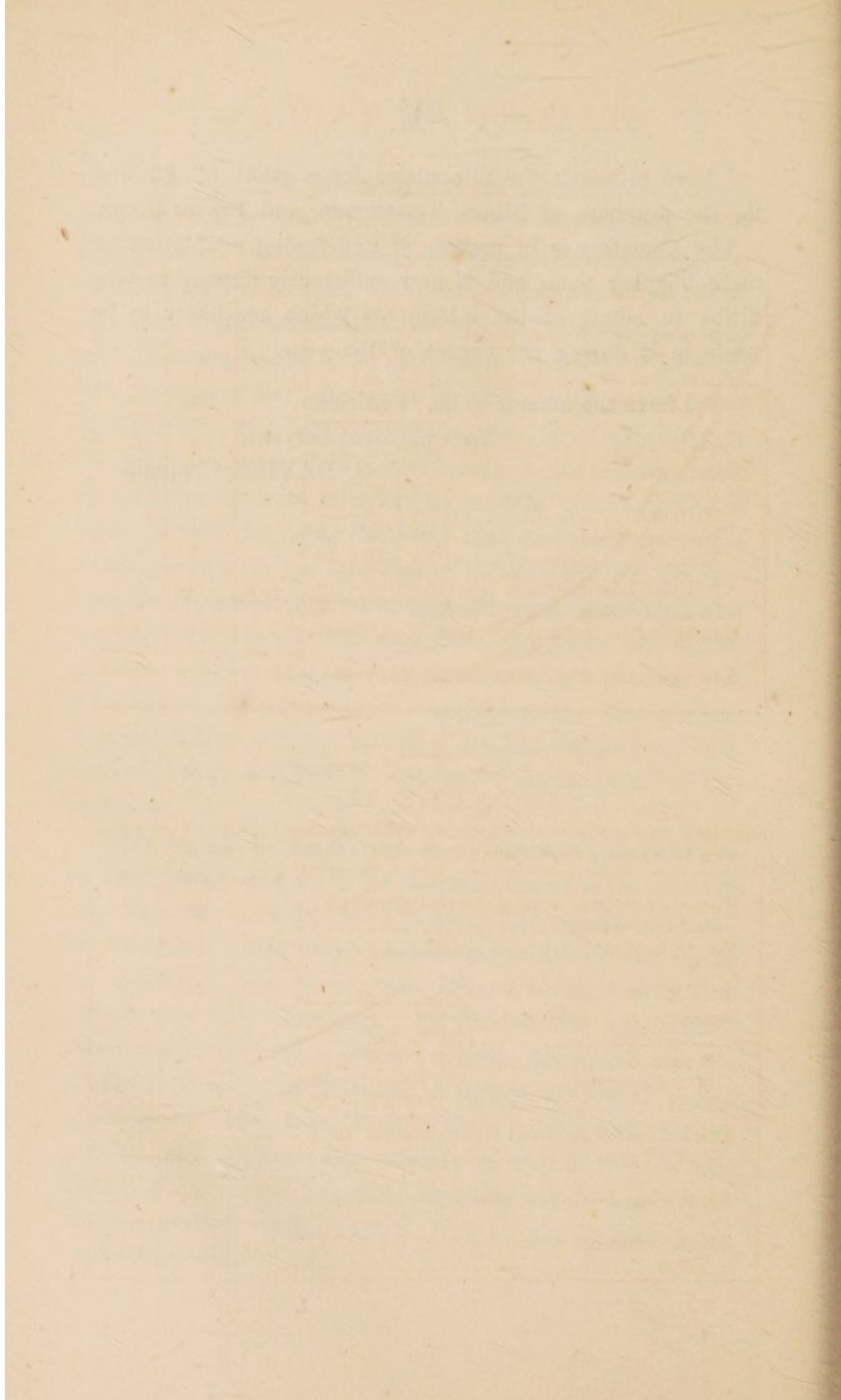
The Cemetery is in process of undergoing adaptation for more burying room, and is now sufficiently forward in condition to admit of the interments which are likely to be made in it during the course of the year.

I have the honour to be, Gentlemen,

Your obedient Servant,

W. G. DAVIES, Chaplain.

To the Committee of Visitors.



STATISTICAL TABLES.

TABLE I.

SHEWING THE ADMISSIONS, READMISSIONS, DISCHARGES, AND DEATHS
DURING THE YEAR 1864.

	Male.	Female.	Total.
In the Asylum January 1st, 1864	209	241	450
Admitted for the first time } during the year	Male.	Fem.	Total
	44	51	95
Readmitted during the year..	13	9	22
Total admissions.....	57	60	117
Total under care during the year	266	301	567
Discharged and Removed :—			
Recovered	23	36	59
Relieved	8	4	12
Not Improved.....	0	3	3
Died	23	22	45
Total Discharged & Died	54	65	119
Remaining in the Asylum Dec. 31st, 1864..	212	236	448
Average number resident during the year ..	215·9	240·0	455·9

TABLE II.

SHEWING THE ADMISSIONS, READMISSIONS, DISCHARGES, AND DEATHS FOR
THE 13 YEARS AND 4 WEEKS FROM DEC. 1, 1851, TO DEC. 31, 1864.

	Male.	Female.	Total.
Persons admitted during the thirteen years } and four weeks	743	785	1528
Readmissions.....	113	126	239
Total of cases admitted	856	911	1767
Removed or Discharged :—	Male.	Fem.	Total
Recovered	309	348	657
Relieved	57	55	112
Not Improved.....	20	52	72
Died	258	220	478
Total Discharged and Died during the } 13·08 Years	644	675	1319
Remaining Dec. 31st, 1864.....	212	236	448
Average number resident during the 13·08 } Years	143	181·6	324·6

TABLE III.

Summary of Admissions, Discharges, and Deaths since the opening of the Asylum.

From the 1st Dec, 1851, till	Admitted.			DISCHARGED.												Died.			Remained at End of Year.			Average number Resident.			Percentage of Deaths on average Numbers Resident.			Percentage of Recoveries on Admissions.		
	Males	Females	Total.	Recovered.			Relieved.			Not improved.			Males.	Females	Total.	Males.	Females	Total.	Males.	Females	Total.	Males.	Females	Mean.	Males.	Females	Mean.			
				Males.	Females	Total.	Males.	Females	Total.	Males.	Females	Total.																Males.	Females	Total.
31st Dec. 1852 ...	113	139	252	10	15	25	3	1	4	1	0	1	11	4	15	88	119	207	60.5	69.8	130.3	18.2	5.7	11.5	0.0	0.0	0.0			
1853	46	47	93	18	13	31	5	5	10	0	1	1	10	14	24	101	133	234	98.2	128.9	227.1	10.2	10.8	10.7	39.1	27.7	33.8			
1854	44	62	106	13	18	31	0	6	6	2	4	6	20	17	37	110	150	260	105.1	140.4	245.5	19.0	12.1	15.1	29.5	29.0	29.2			
1855	57	43	100	28	29	57	0	4	4	1	2	3	24	15	39	114	143	257	112.7	149.1	261.8	21.3	10.0	14.9	49.1	67.4	57.0			
1856	62	54	116	25	14	39	11	8	19	0	3	3	20	14	34	120	158	278	123.5	150.0	273.5	16.2	9.3	12.4	40.3	29.9	33.6			
1857	74	63	137	25	28	53	4	5	9	3	2	5	24	10	34	138	176	314	128.2	163.5	291.7	18.1	6.1	11.6	33.8	44.4	38.7			
1858	70	70	140	34	25	59	5	5	10	2	5	7	16	18	34	151	193	344	147.4	187.4	334.8	10.8	9.6	10.1	48.6	35.7	42.1			
1859	60	62	122	31	27	58	4	2	6	2	0	2	21	18	39	153	208	361	150.4	199.9	350.3	13.9	9.0	11.1	51.7	43.5	47.5			
1860	64	82	146	26	32	58	3	3	6	3	1	4	20	19	39	165	235	400	168.0	220.9	388.9	11.9	8.6	10.0	40.6	39.0	39.7			
1861	74	79	153	28	41	69	9	3	12	0	0	0	21	28	49	181	242	423	172.6	241.3	414.3	12.2	11.6	11.8	37.8	51.9	45.1			
1862	58	68	126	24	36	60	1	6	7	0	1	1	17	22	39	197	245	442	184.8	240.2	425.1	9.2	9.2	9.2	41.3	52.9	47.6			
1863	77	82	159	24	34	58	4	3	7	6	30	36	31	19	50	209	241	450	204.6	254.2	458.8	15.1	7.5	10.9	31.2	41.5	36.5			
1864	57	60	117	23	36	59	8	4	12	0	3	3	23	22	45	212	236	448	215.9	240.0	455.9	10.6	9.0	9.87	40.4	60.0	50.4			
	856	911	1767	309	348	657	57	55	112	20	52	72	258	220	478				143.0	181.6	324.6	13.8	9.2	11.2	40.2	43.1	41.7			

TABLE IV.

SHEWING THE LENGTH OF TIME AFTER DISCHARGE AT THE TIME OF
READMISSION.

Length of time after Discharge.	Discharged Recovered.			Discharged Not Recovered.		
	Males.	Females	Total.	Males.	Females	Total.
Under 1 month	0	1	1	0	0	0
From 3 to 6 months..	2	0	2	1	0	1
" 6 to 9 " ..	1	2	3	0	1	1
" 9 to 12 " ..	1	0	1	2	0	2
" 1 to 2 years ..	0	1	1	0	0	0
" 2 to 3 " ..	2	1	3	0	0	0
" 3 to 4 " ..	0	2	2	1	0	1
" 5 to 6 " ..	1	0	1	0	0	0
" 6 to 7 " ..	0	1	1	0	0	0
" 8 to 9 " ..	1	0	1	0	0	0
" 9 to 10 " ..	0	0	0	1	0	1
Total	8	8	16	5	1	6

TABLE V.

SHEWING THE NUMBER ADMITTED EACH MONTH.

MONTHS.	Males.	Females	Total.
January	5	3	8
February	5	4	9
March	7	3	10
April	7	5	12
May	8	5	13
June	4	10	14
July	7	8	15
August	6	7	13
September	1	5	6
October	2	7	9
November	2	2	4
December	3	1	4
Total	57	60	117

TABLE VI.

SHEWING THE OCCUPATIONS OF THOSE ADMITTED FOR THE
FIRST TIME.

OCCUPATIONS.	Males.	Females	Total.
Beer-house Keeper	0	1	1
Blacksmith	2	0	2
Carpenters	5	0	5
Charwoman	0	1	1
Clerk	1	0	1
Coachman's Wife	0	1	1
Colliers, and Wives of	2	3	5
Compositor	1	0	1
Drainer	1	0	1
Farmers' Wives	0	2	2
Gardener	1	0	1
Hawker's Wife	0	1	1
Hoopshaver's Wife	0	1	1
Housekeeper	0	1	1
Labourers, Wives, Widows, and Daughters	12	22	34
Master of Merchant Vessel	1	0	1
Mason	1	0	1
Miners	2	0	2
Musician	1	0	1
Pattern Maker	1	0	1
Pensioner's Wife	0	1	1
Railman	1	0	1
Roller of Iron	1	0	1
Schoolmistress	0	1	1
Sempstresses	0	2	2
Servants	0	8	8
Shoemakers' Wives	0	2	2
Surveyor	1	0	1
Tailors	4	0	4
Tinman and Brazier	1	0	1
Wheelwright	1	0	1
Wiredrawer	1	0	1
None, or unknown	3	4	7
Total	44	51	95

TABLE VII.

SHEWING THE CAUSES OF INSANITY OF THOSE ADMITTED
FOR THE FIRST TIME.

CAUSES.	Males.	Females	Total.
Congenital Weakness of Mind	5	2	7
Disease of Brain	6	4	10
Injury of Head	1	0	1
Epilepsy	3	5	8
Ill Health	5	5	10
Intemperance	3	0	3
Childbirth	0	1	1
Prolonged Lactation	0	4	4
Amenorrhoea	0	1	1
Climacteric Period	0	3	3
Old Age	1	2	3
Anxiety	3	0	3
Disappointed Affection	1	0	1
Domestic Affliction	1	1	2
Fright	1	0	1
Pecuniary Difficulties	0	1	1
Unknown	14	22	36
Total	44	51	95

TABLE VIII.

SHEWING THE CONDITION IN REFERENCE TO MARRIAGE.

Condition in Reference to Marriage.	Males.	Females	Total.
Married	20	33	53
Unmarried	32	21	53
Widowed	5	6	11
Total	57	60	117

TABLE IX.

SHEWING THE AGE AT THE TIME OF ADMISSION.

AGE.	Males.	Females	Total.
From 5 to 10 years	1	0	1
„ 10 to 15 „	1	0	1
„ 15 to 20 „	1	2	3
„ 20 to 30 „	14	6	20
„ 30 to 40 „	15	21	36
„ 40 to 50 „	11	12	23
„ 50 to 60 „	6	9	15
„ 60 to 70 „	5	10	15
„ 70 to 80 „	3	0	3
Total	57	60	117

TABLE X.

SHEWING THE DURATION OF DISEASE PREVIOUS TO
ADMISSION, AND CURABILITY OF THOSE ADMITTED.

DURATION.	CURABLE.			INCURABLE.		
	Males.	Females	Total.	Males.	Females	Total.
Under 1 month.....	20	22	42	1	0	1
„ 3 „	6	9	15	1	3	4
„ 6 „	4	5	9	1	1	2
„ 9 „	1	3	4	2	0	2
„ 12 „	1	0	1	1	1	2
„ 18 „	0	1	1	4	2	6
„ 2 years	0	0	0	2	2	4
„ 3 „	0	0	0	1	4	5
„ 4 „	0	0	0	0	2	2
„ 5 „	0	0	0	2	1	3
„ 8 „	0	0	0	1	0	1
„ 11 „	0	0	0	1	1	2
„ 20 „	0	0	0	0	1	1
Congenital	0	0	0	8	2	10
Total.....	32	40	72	25	20	45

TABLE XI.

SHEWING THE FORM OF MENTAL DISORDER.

FORMS OF DISORDER.	Males.	Females	Total.
Mania :—			
Recent and Acute	24	33	57
Chronic	4	6	10
Epileptic	4	5	9
Hysterical	0	1	1
Puerperal	0	1	1
Recurrent	0	2	2
Melancholia	7	4	11
Monomania	2	2	4
General Paralysis	5	1	6
Dementia	2	2	4
Imbecility (Congenital).....	7	2	9
Idiocy	1	0	1
Senile Dementia	1	1	2
Total	57	60	117

TABLE XII.

SHEWING THE NUMBER OF PREVIOUS ATTACKS OF THOSE
ADMITTED.

ATTACKS.	Males.	Females	Total.
Have had one attack	11	7	18
" two " 	3	1	4
" three " 	1	1	2
" four " 	0	1	1
" eight " 	0	1	1
Total.....	15	11	26

TABLE XIII.

SHEWING THE CAUSES OF DEATH.

CAUSES OF DEATH.	Males.	Females	Total.
Acute Cerebritis	1	0	1
Burn	1	1	2
Cancer of Liver	0	1	1
Chronic Bronchitis	1	0	1
Chronic Pleuritis, &c.....	1	0	1
Disease of Brain	3	2	5
Disease of Heart	1	2	3
Exhaustion	4	7	11
General Dropsy	0	1	1
General Paralysis	7	2	9
Pelvic Abscess.....	0	1	1
Phthisis	3	3	6
Pneumonia	1	1	2
Congestion of Lungs, &c.	0	1	1
Total.....	23	22	45

TABLE XIV.

SHEWING THE AGES OF PATIENTS WHO HAVE DIED.

AGES.	Males.	Females	Total.
Under 10 years.....	1	0	1
From 10 to 20 years	0	2	2
" 20 to 30 " 	1	1	2
" 30 to 40 " 	4	2	6
" 40 to 50 " 	7	5	12
" 50 to 60 " 	2	3	5
" 60 to 70 " 	4	8	12
" 70 to 80 " 	4	0	4
" 80 to 90 " 	0	1	1
Total.....	23	22	45

TABLE OF LUNATICS AND IDIOTS NOT IN THE ASYLUM,

And chargeable to the undermention places in the United Counties on the 1st day of January in each year, for the last 11 years.

WHERE CHARGEABLE.	Year 1855	Year 1856	Year 1857	Year 1858	Year 1859	Year 1860	Year 1861	Year 1862	Year 1863	Year 1864	Year 1865
	M & F	M & F	M & F	M & F	M & F	M & F	M & F	M & F	M & F	M & F	M & F
Abergavenny..	21	25	15	31	30	17	32	26	38	41	43
Bromyard	22	22	21	20	21	14	21	22	15	18	21
Bedwellty	11	10	10	6	7	20	10	12	11	10	10
Brecon	15	18	14	17	18	18	18	15	20	15	15
Builth	22	22	25	24	19	22	21	23	24	23	22
Chepstow	13	12	..	22	9	14	16	14	18	9	15
Crickhowell ..	6	9	9	11	12	13	13	10	13	14	17
Dore	7	8	8	8	8	3	6	5	7	6	12
Hay	14	18	17	16	14	14	15	20	18	19	12
Hereford	32	31	29	23	21	12	21	16	41	35	35
Kington	12	9	14	14	19	20	18	19	18	14	14
Knighton	14	8	6	6	9	10	13	10	11	10	8
Ledbury	23	23	21	20	22	10	19	14	20	20	18
Leominster.. .	10	10	11	11	15	12	13	17	25	26	25
Ludlow	3	3	3	4	3
Monmouth	17	17	21	26	26	28	24	31	29	27	21
Merthyr Tydvil	2	2	..	2
Newent	4	5	3	4	3	3	1
Newport	9	9	9	8	6	1	..	8	8	3	5
Pontypool	8	..	11	13	3	12	25	22	29	26	25
Presteign	7	4	9	2	1	1	2	4	4	4
Rhayader	6	..	8	8	8	8	6	6	6	6	7
Ross	13	7	9	..	11	10	11	13	7	7	22
Tenbury	1	1	1	1	..	2	3	3	4	5	4
Weobley.. .	11	7	10	3	2	7	5	5	6	16	15
Totals	291	278	276	301	285	273	316	316	377	358	374

TABLE OF PATIENTS in the Asylum (including 30 at Worcester) on the 1st of January, for the last 11 years,

Showing to what Unions or Counties they were chargeable.

WHERE CHARGEABLE.	Year 1855	Year 1856	Year 1857	Year 1858	Year 1859	Year 1860	Year 1861	Year 1862	Year 1863	Year 1864	Year 1865
	<i>m & f</i>	<i>m & f</i>	<i>m & f</i>	<i>m & f</i>	<i>m & f</i>	<i>m & f</i>	<i>m & f</i>	<i>m & f</i>	<i>m & f</i>	<i>m & f</i>	<i>m & f</i>
Abergavenny ..	29	29	29	29	27	30	29	36	37	32	34
Bromyard	4	5	3	6	6	8	10	9	9	13	10
Bedwellty	9	12	13	17	20	17	24	26	27	31	30
Brecon	8	8	11	13	12	16	16	16	12	11	13
Brecon County	1	1	1	1	1	1	1	1
Builth	4	5	4	5	7	7	7	7	8	7	7
Chepstow	15	16	17	14	16	18	19	19	22	21	16
Crickhowell ..	14	14	14	16	18	17	27	24	27	30	32
Dore	8	8	8	8	7	12	11	17	13	13	15
Hay	4	5	4	5	5	5	6	7	8	8	7
Hereford	28	21	27	32	33	36	41	40	41	49	49
Hereford County	5	5	4	8	5	5	6	6	8	7	7
Kington	5	6	5	6	8	9	11	9	12	12	12
Knighton	4	4	5	5	4	4	4	3	2	3	5
Ledbury	8	7	10	11	12	11	8	13	13	19	18
Leominster....	10	11	14	17	19	19	18	18	20	25	26
Ludlow	2	..	2	1	1	3	3	5	6
Monmouth	19	16	20	20	25	22	25	28	28	29	31
Ditto County..	11	10	10	10	10	14	15	14	13	14	13
Merthyr Tydvil	3	2	3	5	4	4	4	4
Newent	2
Newport	40	40	40	42	52	49	51	59	65	70	69
Pontypool	17	15	14	15	22	22	24	23	27	30	28
Presteign	4	5	6	5	6	4	3	3	3
Rhayader	1	1	2	2	3	3	4	4	5
Radnor County	1
Ross	7	11	11	16	12	16	19	20	19	22	22
Tenbury	1	2	1	1
Weobley	4	6	7	5	8	8	10	9	10	12	5
Out Counties ..	2	2	1	4	6	3	3	2	5	5	8
Totals ..	260	257	278	314	344	361	400	422	441	480	478

TABLE of PATIENTS in the Asylum (including 30 at Worcester) on the 1st of January, 1864,
Showing the numbers chargeable to each of the United Counties and City of Hereford respectively, also those belonging to non-contributing Counties.

WHERE CHARGEABLE.	County of Monmouth.		County of Hereford.		County of Brecon.		County of Radnor.		City of Hereford.		Total of each sex.		Total.
	M.	F.	M.	F.	M.	F.	M.	F.	M.	F.	M.	F.	
Abergavenny	13	19	13	19	32
Bromyard	7	6	7	6	13
Bedwellty	18	13	18	13	31
Brecon	4	7	4	7	11
Brecon County	1	1	...	1
Builth	2	3	1	1	3	4	7
Chepstow.....	7	14	7	14	21
Crickhowell	12	18	12	18	30
Dore	1	...	5	7	6	7	13
Hay	1	4	1	2	2	6	8
Hereford	13	17	5	14	18	31	49
Hereford County	5	2	5	2	7
Kington	2	8	1	1	3	9	12
Knighton.....	1	1	1	2	1	3
Ledbury	10	9	10	9	19
Leominster.....	10	15	10	15	25
Ludlow	1	4	1	4	5
Monmouth	11	13	2	3	13	16	29
Monmouth County	9	5	9	5	14
Merthyr Tydvil.....	2	2	2	2	4
Newport	32	38	32	38	70
Pontypool	14	16	14	16	30
Presteign.....	1	2	1	2	3
Rhayader.....	2	2	2	2	4
Ross	8	14	8	14	22
Weobley	5	7	5	7	12
Out Counties	1	4	5
	105	118	69	92	22	34	7	9	5	14	209	271	480
Total to each county	223		161		56		16		19				
Proportion as to } Population } ...	1 in 783		1 in 671		1 in 1100		1 in 1587		1 in 822				

TABLE OF PATIENTS in the Asylum (including 30 at Worcester) on the 1st of January, 1865,
Showing the numbers chargeable to each of the United Counties and City of Hereford respectively, also those belonging to non-contributing Counties.

WHERE CHARGEABLE.	County of Monmouth.		County of Hereford.		County of Brecon.		County of Radnor.		City of Hereford.		Total of each sex		Total.
	M.	F.	M.	F.	M.	F.	M.	F.	M.	F.	M.	F.	
Abergavenny	12	22	12	22	34
Bromyard	4	6	4	6	10
Bedwellty	22	8	22	8	30
Brecon	5	8	5	8	13
Brecon County	1	0	1	0	1
Builth	2	3	1	1	3	4	7
Chepstow.....	6	10	6	10	16
Crickhowell	13	19	13	19	32
Dore	1	...	6	8	7	8	15
Hay	1	3	1	2	2	5	7
Hereford	14	11	8	16	22	27	49
Hereford County	5	2	5	2	7
Kington	2	8	1	1	3	9	12
Knighton.....	1	1	3	2	3	5
Ledbury	9	9	9	9	18
Leominster.....	9	17	9	17	26
Ludlow	1	5	1	5	6
Monmouth	13	13	2	3	15	16	31
Monmouth County	7	6	7	6	13
Merthyr Tydvil	2	2	2	2	4
Newent.....	1	1	1	1	2
Newport	30	39	30	39	69
Pontypool	14	14	14	14	28
Presteign.....	1	2	1	2	3
Rhayader	2	3	2	3	5
Ross	8	14	8	14	22
Weobley	4	4	4	4	8
Out Counties	2	3	5
	105	112	66	88	24	35	7	12	8	16	212	266	478
Total for each County	217		154		59		19		24				
Proportion as to } Population }	1 in 804		1 in 701		1 in 1044		1 in 1337		1 in 650				

TABLE OF LUNATICS AND IDIOTS NOT IN THE ASYLUM,

Showing the numbers charged to each of the United Counties and City of Hereford respectively, on the 1st day of January, 1865.

WHERE CHARGEABLE.	County of Monmouth		County of Hereford.		County of Brecon.		County of Radnor.		City of Hereford.		Total of each sex.		TOTAL.
	m.	f.	m.	f.	m.	f.	m.	f.	m.	f.	m.	f.	
Abergavenny.....	21	22	21	22	43
Bromyard	12	9	12	9	21
Bedwellty	3	7	3	7	10
Brecon	4	11	4	11	15
Builth	4	8	3	7	7	15	22
Chepstow	5	10	5	10	15
Crickhowell	9	8	9	8	17
Dore	7	5	7	5	12
Hay	1	3	2	1	3	2	6	6	12
Hereford.....	8	15	7	5	15	20	35
Kington	4	6	2	2	6	8	14
Knighton	2	6	2	6	8
Ledbury	4	14	4	14	18
Leominster.....	8	17	8	17	25
Ludlow	3	3	..	3
Monmouth.....	10	9	..	2	10	11	21
Merthyr Tydvil..
Newent	1	1	1
Newport.....	1	4	1	4	5
Pontypool	9	16	9	16	25
Presteign	1	1	2	2	2	4
Rhayader	1	3	3	3	4	7
Ross	9	13	9	13	22
Tenbury	1	3	1	3	4
Weobley.....	7	8	7	8	15
	49	68	65	96	19	29	14	22	7	5	154	220	374
Total for each } County	117		161		48		36		12				
Proportion as to } Population. . }	1 in 1492		1 in 671		1 in 1283		1 in 705		1 in 1302				

S U M M A R Y .

LUNATICS and IDIOTS chargeable to the respective Counties and City of Hereford, on the 1st day of January, 1865.

	County of Monmouth. Population, 1861, 174,670.	County of Hereford. Population, 1861, 108,034.	County of Brecon. Population, 1861, 61,627.	County of Radnor. Population, 1861, 25,403.	City of Hereford. Population, 1861, 15,625.	TOTAL.
In the Asylum	M. & F. 217	M. & F. 154	M. & F. 59	M. & F. 19	M. & F. 24	473
Out of the Asylum ..	117	161	48	36	12	374
Total in and out of the Asylum	334	315	107	55	36	847
Proportion as to the Population conjointly }	1 in 522	1 in 342	1 in 575	1 in 461	1 in 434	1 in 454

DIETARY TABLE.

	BREAKFAST.				DINNER.				SUPPER.				Additional Allowance to Working Patients.									
	Bread.		Butter.		Coffee		Eggs		Uncooked Meat, 20 per Cent. allowed for Bone.		Bread.		Vege- tables.		Beer or Cider.		Bread.		Cheese.		Beer or Cider.	
	M. F.	oz.	M. F.	ozs.	M. F.	pts.	M. F.	pts.	M. F.	ozs.	M. F.	lb.	M. F.	ozs.	M. F.	pts.	M. F.	ozs.	M. F.	ozs.	M. F.	pts.
Sunday	8..7	$\frac{1}{2}$.. $\frac{1}{2}$	1..1	1..1	5..5	5..5	1..1	1..1	$\frac{3}{4}$.. $\frac{1}{2}$	8..7	$\frac{1}{2}$.. $\frac{1}{2}$	1..1	8..7	$\frac{1}{2}$.. $\frac{1}{2}$	1..1	1..1
Monday	8..7	$\frac{1}{2}$.. $\frac{1}{2}$	1..1	1..1	5..5	5..5	1..1	1..1	$\frac{3}{4}$.. $\frac{1}{2}$	8..7	$\frac{1}{2}$.. $\frac{1}{2}$	1..1	8..7	$\frac{1}{2}$.. $\frac{1}{2}$	1..1	1..1	2..2	1..1	1..1	1..1	1..1
Tuesday	8..7	$\frac{1}{2}$.. $\frac{1}{2}$	1..1	1..1	3..3	3..3	1..1	1..1	$\frac{3}{4}$.. $\frac{1}{2}$	8..7	$\frac{1}{2}$.. $\frac{1}{2}$	1..1	8..7	$\frac{1}{2}$.. $\frac{1}{2}$	1..1	1..1	2..2	1..1	1..1	1..1	1..1
Wednesday	8..7	$\frac{1}{2}$.. $\frac{1}{2}$	1..1	1..1	5..5	5..5	1..1	1..1	$\frac{3}{4}$.. $\frac{1}{2}$	8..7	$\frac{1}{2}$.. $\frac{1}{2}$	1..1	8..7	$\frac{1}{2}$.. $\frac{1}{2}$	1..1	1..1	2..2	1..1	1..1	1..1	1..1
Thursday	8..7	$\frac{1}{2}$.. $\frac{1}{2}$	1..1	1..1	5..5	5..5	1..1	1..1	$\frac{3}{4}$.. $\frac{1}{2}$	8..7	$\frac{1}{2}$.. $\frac{1}{2}$	1..1	8..7	$\frac{1}{2}$.. $\frac{1}{2}$	1..1	1..1	2..2	1..1	1..1	1..1	1..1
Friday	8..7	$\frac{1}{2}$.. $\frac{1}{2}$	1..1	1..1	5..5	5..5	1..1	1..1	$\frac{3}{4}$.. $\frac{1}{2}$	8..7	$\frac{1}{2}$.. $\frac{1}{2}$	1..1	8..7	$\frac{1}{2}$.. $\frac{1}{2}$	1..1	1..1	2..2	1..1	1..1	1..1	1..1
Saturday	8..7	$\frac{1}{2}$.. $\frac{1}{2}$	1..1	1..1	3..3	3..3	$\frac{1}{4}$.. $\frac{1}{4}$	$\frac{1}{4}$.. $\frac{1}{4}$	2..2	$\frac{3}{4}$.. $\frac{1}{2}$	8..7	$\frac{1}{2}$.. $\frac{1}{2}$	1..1	8..7	$\frac{1}{2}$.. $\frac{1}{2}$	1..1	1..1	2..2	1..1	1..1	1..1	1..1

The additional Allowance to Working Patients is thus divided;—Bread and Cheese, with half a pint of Beer or Cider in the morning, and half a pint of Beer or Cider in the afternoon.

On Tuesdays the Meat and Vegetables are made into an Irish Stew, and occasionally Rhubarb, Suet, or Meat Puddings are substituted.

On Saturdays the Meat is made into a Vegetable Soup, consisting of Scotch Barley, Turnips, Carrots, Leeks, and Parsley, with a little Oatmeal to thicken it.

The Female Patients in the Refractory Wards and those resident in the Laundry Building, are each allowed half a pound of Bread weekly extra. The Rations are sent to each Ward in bulk, and are there divided by the Attendant amongst the Patients resident according to their respective requirements; by this practice very little (if any) waste occurs.

The Tea and Coffee is made by the Attendant in each Ward—each Female Patient being allowed 1½oz. Tea, ¼lb. Sugar, and 1pt. milk weekly; each Male Patient being allowed 2oz. Coffee, ¼oz. Tea, ¼lb. Sugar, and one pint of milk weekly.

Five days in the week the Patients have two kinds of Vegetables—Potatoes always; the second Vegetable consisting of whatever may be in season, such as Cabbage, Brocoli, Beans, Peas, Turnips, Carrots, Parsnips, &c.

An equivalent in Cheese is often given in lieu of Butter for Supper.

LIST OF NEEDLE WORK
DONE BY FEMALE PATIENTS
FOR THE YEAR 1864.

Aprons	476
Bonnets, trimmed Straw	47
Bonnets, made Cotton	123
Boots and Shoes bound	28
Chemises, Dowlais	340
Chemises, Flannel	24
Carpets bound	89
Caps, Women's, made	216
Caps, Women's, trimmed	95
Cushions covered	89
Gowns, Night	30
Gowns, Day	412
Holland Blinds	34
Handkerchiefs	787
Mattress Cases	99
Men and Women's Drawers	33
Muslin Curtains	76
Pudding Cloths	34
Pillow Ticks ..	33
Pillow Cases	58
Petticoats, Linsey and Twillett	183
Petticoats, Flannel	74
Rugs	6
Stays	48
Stockings, Pairs	140
Shirts, Dowlais	487
Shirts, Flannel	73
Sofa Covers	6
Sheets	462
Towels, Hand	245
Towels, Chamber	34
Table Cloths	36
Window Valances	13

Also the weekly repair of Patients' Clothing.

SALARIES AND WAGES

TO

OFFICERS, ATTENDANTS, & SERVANTS,

FOR THE YEAR 1864.

	£	s.	d.
†* Medical Superintendent	550	0	0
*§ Assistant Medical Officer	97	4	5
† Chaplain	200	0	0
* Clerk and Steward and Clerk to Visitors	200	0	0
† Auditor	10	0	0
Housekeeper	35	0	0
† Engineer	99	18	0
†† Gardner§	45	0	0
Farm Bailiff and Wife§	31	0	0
† Baker and Brewer	62	8	0
† Labourers	58	10	0
13 Male Attendants	342	14	10
18 Female Attendants	255	4	5
Laundress	20	0	0
Cook	22	0	0
Housemaid	12	10	0
Two Kitchen Maids	21	10	0
Porter	22	15	0
† Stoker	41	12	0
	£2127	6	8

†* Has furnished house, gas, and use of gardens.

*§ Has partial board, furnished apartments, attendance, light, firing, and washing.

§ Of the above sums £76. is carried to Farm Account. and omitted under the head of "Salaries and Wages" in Financial Account.

* Has a cottage furnished, firing, lights, washing, brushes, and use of gardens.

+ Have neither board nor lodging.

†† Have cottage, garden, and coals.

Without a mark have board, washing, and lodging.

Each of the Female Attendants and Servants, except the Cook and Kitchen Maids, are provided with an Uniform, in addition to their Salary

Each of the Male Attendants, Gardener, Baker and Brewer, Farm Bailiff, and Porter have an Uniform allowed them, one Suit annually.

VALUATION
OF
STOCK, IMPLEMENTS, AND CROPS,
The 31st December, 1863.

LIVE STOCK.

	£	s.	d.	£	s.	d.
10 Dairy Cows	156	10	0			
1 Horse	15	0	0			
7 Fat Pigs.....	40	0	0			
11 Porkers	22	10	0			
3 Sows in Farrow.....	18	10	0			
1 Boar and one young Hilt	9	10	0			
34 Store Pigs	30	19	0			
	<hr/>			292	19	0

DEAD STOCK.

Manure	9	10	0			
10 Tons Hay	30	0	0			
23 Tons Mangold and Swedes	17	5	0			
3½ Tons Potatoes	17	10	0			
10 Cwt. Parsnips	2	0	0			
Wheelbarrows and Garden Tools ..	8	0	0			
2 Carts	16	0	0			
Harness	5	0	0			
Chaff Machine	4	0	0			
Turnip Cutter	3	10	0			
Haymaking Tools	3	10	0			
Rick Cloth, complete	8	0	0			
	<hr/>			124	5	0

GROWING CROPS.

Savoy and Drumhead Cabbage,)			
Borecole, and Brocoli.....)			
Cabbage Plants, Turnips, Parsley)	29	5 0
Vetches, &.....)			

£446 9 0

VALUATION
OF
STOCK, IMPLEMENTS, AND CROPS,
The 31st December, 1864.

LIVE STOCK.

	£	s.	d.	£	s.	d.
6 Dairy Cows	110	0	0			
2 Barren ditto	30	0	0			
1 Horse (aged)	15	0	0			
38 Porkers	124	8	0			
	<hr/>			279	8	0

DEAD STOCK.

Corn.....	1	5	0			
Manure	12	0	0			
6 Tons Hay	33	0	0			
11 Tons Mangold and Swedes	14	10	0			
1 $\frac{3}{4}$ Tons Potatoes	8	15	0			
6 Cwt. Carrots and Parsnips	1	10	0			
15 Bushels Apples	1	10	0			
Wheelbarrows and Garden Tools ..	17	0	0			
2 Carts.....	16	0	0			
Harness	5	0	0			
Chaff Machine.....	4	0	0			
Turnip Cutter	3	10	0			
Haymaking Tools	3	10	0			
Rick Cloth, complete	8	0	0			
	<hr/>			129	10	0

GROWING CROPS.

Savoy, Cabbage, Greens, Borecole	}			
Brocoli, Cabbage Plants, Onions				
Turnips, Pot Herbs, Seeds, Vetches				
&c., &c.				
		26	7 0

£435 5 0

ABSTRACT OF THE

FOR THE YEAR

DR.	£	s.	d.	£	s.	d.
To value of Live Stock, 31st Dec., 1863	292	19	0			
To value of Dead Stock, 31st Dec., 1863	124	5	0			
To value of Growing Crops, 31st Dec., 1863..	29	5	0			
	<hr/>			446	9	0
<i>To Cash paid for Labour—</i>						
Gardener	45	0	0			
Bailiff and Wife	31	0	0			
	<hr/>			76	0	0
<i>To Cash paid for Stock—</i>						
5 Cows and Calves	90	0	0			
93 Pigs	145	13	0			
	<hr/>			235	13	0
<i>To other Payments—</i>						
Corn and Meal	50	7	6			
Seeds, Trees, Shrubs, &c.	24	10	9			
Artificial Manure, and Guano	53	1	9			
Implements and Repairs	28	12	9			
Straw	45	6	9			
Potatoes for Seed	18	18	9			
Tinet and Sticks for Garden	10	7	10			
Saddlery, Veterinary, and Shoeing	6	5	3			
Tolls and Sundries	6	4	6			
	<hr/>			243	15	10
To Balance in favour of the year's transactions	428	14	8			
	<hr/>			£1430	12	6

GENERAL FARM ACCOUNT,

ENDING DEC. 31, 1864.

CR.	£	s.	d.	£	s.	d.
<i>By Vegetables, &c., supplied to Asylum, and valued at Market Price—</i>						
Potatoes	160	14	0			
Cabbage, &c.	100	2	0			
Carrots, Parsnips, Beans, and Peas	17	14	6			
Turnips	9	16	6			
Pot Herbs, Fruit, &c.	38	4	6			
				326	11	6
<i>By Milk and Butter supplied—</i>						
Butter, 988lbs.	57	12	8			
Milk, 4983 gallons	166	2	0			
				223	14	8
<i>By Meat, &c., supplied—</i>						
Beef, 1910lbs.	55	0	10			
Pork and Bacon, 12886lbs.....	322	3	0			
Veal, 263lbs.	7	12	10			
				384	16	8
<i>By Sale of Stock, &c.—</i>						
Cash for Live Stock	51	4	9			
Cash for Tallow and Skins	4	10	11			
Cash for Vetches and Grass	4	9	0			
				60	4	8
<i>By value of Live Stock on Farm, as per Schedule</i>	279	8	0			
<i>By value of Dead Stock</i>	129	10	0			
<i>By value of Growing Crops.....</i>	26	7	0			
				435	5	0
				£1430	12	6

FINANCIAL ACCOUNTS.

Abstract of RECEIPTS and EXPENDITURE from the 1st day of January
to the 31st day of December, 1864.

RECEIPTS.

1.— <i>From Sales :</i>	£	s.	d.	£	s.	d.
Live Stock	51	4	9			
Tallow and Skins	4	10	11			
Dripping and Grease	24	13	4			
Barm	4	12	6			
Old Stores, Bones, Gas Tar, &c.	26	1	5			
Vetches and Grass	4	9	0			
Repayment to Maintenance Account, by County Treasurers—(See items of Expen- diture at page 48)	462	15	4			
				578	7	3
2.— <i>Maintenance Account from Unions & Counties contributing to the Asylum for Pauper Patients, at 9s. per week :</i>						
Abergavenny	812	9	4			
Bromyard	266	2	11			
Bedwellty	766	4	6			
Brecon	291	16	8			
Brecon County	23	8	0			
Builth	163	16	0			
Chepstow	449	15	3			
Crickhowell	738	11	9			
Dore	333	18	1			
Hereford	1193	19	0			
Hereford County	163	16	0			
Hay	180	10	4			
Kington	285	6	11			
Knighton	85	6	8			
Ledbury	465	19	10			
Leominster	614	11	2			
Ludlow	131	3	4			
Monmouth	698	12	0			
Monmouth County	293	15	0			
Newport	1665	2	1			
	£9624	4	10			
Carried forward	£578	7	3			

RECEIPTS CONTINUED.

	£	s.	d.	£	s.	d.
2.— <i>Maintenance Account continued.</i>						
Brought forward.....	6924	4	10	578	7	3
Newent.....	32	15	9			
Pontypool, and Arrears of last year	860	6	0			
Presteign	70	4	0			
Rhayader	108	12	11			
Ross	518	16	3			
Weobley	226	2	9			
Mrs. Temperance Evans	23	8	0			
Merthyr Tydvil	118	9	3			
				11582	19	9
3.— <i>From Unions which have not contributed towards the Building of the Asylum, for Maintenance, &c. of Patients, at 12s. 6d. per week :</i>						
Lampeter.....	32	10	0			
Neath	32	10	0			
Bath	3	3	11			
Landilo Fawr, Arrears from Visiting Justices } Monmouth County Gaol }	15	4	9			
				83	8	8
4.— <i>From Treasurer of United Counties & City, for Repayment of Ordinary Repairs and Additions :</i>						
Monmouthshire	181	5	0			
Herefordshire	112	1	8			
Breconshire	64	3	4			
City of Hereford.....	16	5	0			
<i>Arrears due.</i>						
Radnorshire	26	5	0			
				400	0	0
Total Received.....	£12644	15	8			

PAYMENTS.

1.— <i>Salaries and Wages :</i>	£	s.	d.	£	s.	d.
Officers	1192	2	5			
Attendants and Servants	859	4	3			
				2051	6	8

[For number and description of Officers, &c., and their respective Salaries and Allowances, see page 38.]

2.— <i>Provisions :</i>	£	s.	d.	£	s.	d.
Barley, Scotch—4cwt. 3qrs. 3lbs.	4	9	2			
Butter—63cwt. 0qrs. 5lbs.	304	10	5½			
Cheese—100cwt. 2qrs. 24lbs.	297	2	3			
Coffee—1350lbs.	78	15	0			
Cider and Perry	14	12	1			
Currants—320lbs.	4	13	4			
Flour—547 sacks	720	6	0			
Hops—1228 lbs.	78	1	7			
Malt—1560 bushels	585	0	0			
Meat—502cwt. 0qrs. 2lbs.	1563	19	0			
Oatmeal—84lbs.	0	12	6			
Carrots—1ton 14cwt.	5	19	0			
Potatoes—43 tons	160	10	0			
Raisins—120lbs.	2	5	0			
Rice—7cwt. 3qrs.	7	15	0			
Sugar, Loaf—15cwt.	41	5	0			
Sugar, Raw—120cwt.	275	0	0			
Tea—2197lbs.	256	6	4			
Tobacco and Snuff—766lbs.	140	4	8			
Vinegar, Salt, Mustard, &c.	16	10	2			
Spices and Pepper	8	3	6			
Bacon—62cwt. 2qrs. 20lbs.	137	11	9			
Treacle—32lbs.	0	7	2			
Eggs	20	7	8			
Onions and Apples	2	5	0			
				4726	11	7½

3.— <i>Surgery, Dispensary and Wine :</i>	£	s.	d.	£	s.	d.
Drugs, &c.	62	4	9			
Wine and Spirits	29	15	0			
Arrowroot, &c.—64lbs.	3	4	0			
				95	3	9

4.— <i>Necessaries :</i>	£	s.	d.	£	s.	d.
Candles	9	3	6			
Coals—1146 tons 14 cwt.	486	7	9			
				495	11	3
Carried forward	£6873	2	0½			

PAYMENTS CONTINUED.

<i>Necessaries continued.</i>	£	s.	d.	£	s.	d.
Brought forward.....	495	11	3	6873	2	0 $\frac{1}{2}$
Soap—100cwt.....	163	15	0			
Starch and Blue	12	19	0			
Brushes, Mops, and Mats.....	63	1	5			
Soda—141cwt. 0qrs. 5lbs.....	45	17	11 $\frac{1}{2}$			
				781	4	7 $\frac{1}{2}$

5.—*Clothing:*

Grogam	28	12	5			
Materials for Females' Dresses	230	13	1 $\frac{1}{2}$			
Bonnets.....	3	0	5			
Ribbon	12	4	4 $\frac{3}{4}$			
Calico	60	17	8			
Shoes and Slippers.....	109	4	0			
Muslin for Caps and Curtains	7	13	9			
Hats and Caps	4	5	3			
Leather and Shoemakers' Tools	68	2	0			
Flannel	25	8	11			
Linen Check	3	1	4 $\frac{1}{2}$			
Dowlas for Garments.....	132	15	8			
Dowlas for Sheets	80	5	9			
Handkerchiefs.....	25	17	1			
Hose	40	6	0			
Thread, Worsted, Cotton, Tapes, &c.....	40	12	3			
Cloth for Patients' Jackets, &c.	124	11	3 $\frac{1}{2}$			
Jean	18	10	9 $\frac{1}{2}$			
Duck Frocks	18	18	0			
Tailors' Materials	33	18	10			
Needles and Thread, &c. for Sewing Machine	8	15	9			
Towelling	16	18	4 $\frac{1}{4}$			
Cotton Cord	61	9	4			
Shawls	28	1	0			
Men's Coats, Trousers, and Vests	63	1	6			
Oil Coats and Leggings.....	2	8	0			
				1250	6	11

6.—*Furniture and Bedding.*

Ironing Blankets.....	5	3	9 $\frac{3}{4}$			
Carpets	34	2	9			
Blankets	62	10	0			
Brown Holland	10	17	8			
Curled Hair	43	6	8			
Counterpanes	51	13	4			
Chintz and Damask	18	9	6 $\frac{3}{4}$			
				226	3	9 $\frac{1}{2}$

7.—*Fittings, Repairs, &c., paid for by*

<i>Maintenance Account:</i>						
Fire Clay, Brick, Stone, Timber, &c.....	107	10	3			
Lime	6	5	8			
Carried forward.....	113	15	11	9130	17	4 $\frac{1}{2}$

PAYMENTS CONTINUED.

7.— <i>Fittings, &c. continued :</i>	£	s.	d.	£	s.	d.
Brought forward	113	15	11	91	30	17 $\frac{1}{2}$
Encaustic Tiles	17	18	6			
Chimney Cowls	6	9	9			
Patent Injector	12	19	6			
Glass	22	14	11			
Repairing Steam Boiler	2	2	6			
Plumbing, &c.	9	1	11			
Oils, Colours, Varnish, &c.	54	19	8			
Ironmongers' Sundries	35	2	3			
Ladders and Tools	13	11	11			
Turning	0	9	4			
Thatching Summer House	0	19	3			
Carpenters' Wages	99	0	0			
Masons' do.	92	19	2			
Glue Pieces	1	5	0			
Materials for Artisans	165	5	9			
Insurance	24	11	3			
Fenders and Fire Guards	33	0	0			
Baths	24	19	6			
Expenses—Report &c. on Water Supply for } Extinguishing Fires	60	18	0			
Law Expenses	119	7	2			
Chairs, Table, and Bookcase	37	8	0			
				948	19	3
8.— <i>Additions, Repairs, & Furnishing repaid by County Treasurers :</i>						
One-fourth part of £980 8s. 11d.—Main- tenance of Thirty Female Patients at } Worcester County Asylum	245	2	2			
Expenses—Report &c. on Water Supply for } Extinguishing Fires	60	18	0			
Law Expenses	119	7	2			
Chairs, Table, and Bookcase	37	8	0			
				462	15	4
9.— <i>Farm and Garden :</i>						
Gardener	45	0	0			
Bailiff and Wife	31	0	0			
Five Cows and Calves	90	0	0			
Ninety-three Pigs	145	13	0			
Corn and Meal	50	7	6			
Seeds, Trees, Shrubs, &c.	24	10	9			
Artificial Manure and Guano	53	1	9			
Implements and Repairs	28	12	9			
Straw	45	6	9			
Potatoes for Seed	18	18	9			
Tinet and Sticks for Garden	10	7	10			
Saddlery, Veterinary and Shoeing	6	5	3			
Tolls and Sundries	6	4	6			
				555	8	10
Carried forward	£11098	0	9 $\frac{1}{2}$			

PAYMENTS CONTINUED.

	£	s.	d.	£	s.	d.
Brought forward.....	11	0	9	8	0	9 $\frac{1}{2}$
Maintenance of Thirty Females Patients at } Worcester County Asylum.....	9	8	11			
10.— <i>Miscellaneous</i> :						
Transfer of two Patients to Worcester	1	10	0			
Property Tax, Tithes, Rates, &c.....	61	3	5			
Advertising, Printing, Periodicals, Sta- } tionery, Postage, Stamps, &c.	132	11	7			
Earthenware, Pipes, &c.....	54	14	5			
Cord Wood	15	4	3			
Musical Assistance.....	6	0	3			
Coffin Furniture and Boards	19	5	7			
Shrouds	2	8	0			
Gutta Percha Utensils	4	8	6			
Coopering.....	6	14	11			
Thermometers	1	16	0			
Repairing and Cleaning Clocks	2	14	0			
Birch Brooms	1	17	6			
Baskets, &c.....	9	15	6			
Tins, and Repairs of the same	15	6	6			
Carriage of Goods	10	14	0			
Disbursed per Steward—repaid by Unions } and Counties.....	28	7	6			
Sundries, per Steward	9	13	9 $\frac{1}{2}$			
Sweeping Chimnies	6	9	4			
Recapturing Escaped Patients.....	4	8	4 $\frac{1}{2}$			
Letter Bag	1	1	0			
Wheelbarrows	19	7	6			
Bankers' Charges	32	11	8			
Blacking and Black Lead.....	3	19	4			
Beer Finings	0	16	3			
Male Attendants' Uniform	49	10	0			
Pictures and Plaster Figures	2	4	6			
Female Attendants' Uniform	47	15	7 $\frac{1}{2}$			
Canvas and Ropes	5	5	0			
Do. for Tent	3	5	9			
Needles, Combs, Hair Brushes, and Sundries	53	2	9			
Zinc for Aquarium	0	11	4			
Cricket Bats, Skittles, &c.....	3	0	4			
Foot Oil	2	11	0			
Paper and Paper Bags	6	17	11			
Wax Bougies	0	11	4			
Travelling Expenses of Assistant Medical } Officer	3	3	5			
				629	8	1 $\frac{1}{2}$
Total Payments.....	£12	7	0	7	17	10

Balance Sheet of the General Account for the Year ending 31st December, 1863.

RECEIPTS.		PAYMENTS.	
	£ s. d.		£ s. d.
Balance in hand, 1st January	1953 17 2	Salaries and Wages	1998 1 3
From Sales of Produce, &c.	561 1 4	Provisions	4770 6 9½
<i>Maintenance Account, viz.:</i>		Surgery, Dispensary, and Wine	180 17 2
1st, from Counties & Unions	10344 10 0	Necessaries	642 9 4
to which Asylum belongs		Clothing	857 9 6½
2nd, from other Counties and Unions	92 1 4	Bedding and Furniture	414 10 4½
From Treasurers of United Counties and City of Hereford, for Additions, Repairs, and Furniture	600 0 0	Repairs, &c. (Maintenance Account) ..	678 18 9½
		Repairs, &c., repaid by County & City Treasurers	420 15 0
		Garden and Farm Expenses	372 11 4
		Miscellaneous	588 4 1¾
		Maintenance—30 Female Patients at Worcester County Asylum	218 3 0
		Balance per Treasurer	2195 6 10
		Ditto per Steward	21 17 4½
		Arrears due	184 18 11
	£13551 9 10		£13551 9 10
S. BROWNING, Clerk and Steward.		Examined and found correct, A. WADDINGTON, Auditor.	

Balance Sheet of the General Account for the Year ending 31st December, 1864.

RECEIPTS.		PAYMENTS.	
£	s. d.	£	s. d.
Balance in hand, 1st January	2217 4 2½	Salaries and Wages	2051 6 8
From Sales of Produce and Repayment } of Maintenance Account	578 7 3	Provisions ..	4726 11 7½
<i>Maintenance Account, viz:—</i>		Surgery, Dispensary, and Wine	95 3 9
1st, from Counties & Unions } to which Asylum belongs } including Arrears	11582 19 9	Necessaries	781 4 7½
Pauper Patients } 2nd, from other Counties and } Unions, including Arrears } From Treasurers of United Counties and } City of Hereford, for Additions, Re- } pairs and Furniture, including Ar- } rears now due	83 8 8 400 0 0	Clothing	1250 6 11
		Bedding and Furniture	226 3 9½
		Repairs, &c. (Maintenance Account) ..	948 19 3
		Repairs, &c., repaid by County & City } Treasurers	462 15 4
		Garden and Farm Expenses	555 8 10
		Maintenance—30 Female Patients at } Worcester County Asylum	980 8 11
		Miscellaneous	629 8 1½
		Balance per Treasurer	2092 16 7
		Ditto per Steward	35 0 5½
		Arrears due from County Radnor	26 5 0
	£14861 19 10½		£14861 19 10½

S. BROWNING,
Clerk and Steward.

Examined and found correct,
A. WADDINGTON, Auditor.

AVERAGE WEEKLY COST
FOR
Maintenance, Clothing, Care, &c., of Patients,
DURING THE YEAR 1863.

	s.	d.
Provisions	4	0
Clothing	0	8 ⁵ / ₈
Salaries and Wages	1	8 ¹ / ₈
Necessaries	0	6 ⁴ / ₈
Surgery, Dispensary, and Wine	0	1 ⁶ / ₈
Repairs, Fittings, and Furnishing	0	6 ⁶ / ₈
Bedding and Furniture	0	4 ¹ / ₈
Garden Farm	0	3 ⁶ / ₈
Miscellaneous	0	5 ⁷ / ₈
	<hr/>	
	8	9 ⁴ / ₈
Less Receipts from Sales, &c.	0	5 ⁵ / ₈
	<hr/>	
Total Average Cost per Head	8	3 ⁷ / ₈

Weekly Average Number of Patients resident—459

Weekly Charge for Patients from Counties and Unions to which this Asylum belongs	} 8	6
From other Counties and Unions		
	12	6

AVERAGE WEEKLY COST

FOR

Maintenance, Clothing, Care, &c., of Patients,

FOR THE YEAR 1864.

	s.	d.
Provisions	3	10 ² / ₈
Clothing	1	0 ⁵ / ₈
Salaries and Wages	1	8 ⁷ / ₈
Necessaries	0	8
Surgery, Dispensary, and Wine	0	0 ⁷ / ₈
Repairs and Fittings ..	0	9 ⁵ / ₈
Bedding and Furniture	0	2 ² / ₈
Garden and Farm	0	5 ⁵ / ₈
Miscellaneous	0	6 ³ / ₈
	9	4 ⁴ / ₈
Less Receipts from Sales, &c.	0	3 ³ / ₈
Total average Cost per Head.....	9	1 ¹ / ₈

Weekly Average Number of Patients resident..455

Weekly Charge for Patients from Counties & Unions } to which this Asylum belongs	9	0
From other Counties and Unions	12	6

Abstract of Maintenance Account, for the Year ending 31st December, 1863.

RECEIPTS.		PAYMENTS	
	£ s. d.		£ s. d.
To Unions & Counties for Patients only as per pages 52 and 53	10436 11 4	By Payments, as per pages 54 to 57 ..	10728 11 8 $\frac{1}{2}$
To Cash Sundries	140 6 4	To Balance in favour of Asylum	269 0 11 $\frac{1}{2}$
To Repayment—Building Account	420 15 0		
	<u>£10997 12 8</u>		<u>£10997 12 8</u>

Abstract of Maintenance Account for the Year ending 31st December, 1864.

RECEIPTS.		PAYMENTS.	
	£ s. d.		£ s. d.
To Unions & Counties for Patients only, as per pages 44 and 45	11481 9 6	By Payments as per pages 46 to 49....	12245 2 6
To Cash for Sundries, page 48	115 11 11		
To Repayment by Counties for Sundries as per page 48.....	462 15 4		
Balance against the Year's transactions	185 5 9		
	<u>£12245 2 6</u>		<u>£12245 2 6</u>

Financial Position of Maintenance Account, 31st December, 1863.

	£	s.	d.		£	s.	d.
Balance per Treasurer's Account, 31st December, 1862	1818	14	5	Balance per Treasurer's Account, 31st December, 1863	2016	1	10
Balances per Steward's Petty Cash and Farm Account	135	2	9	Arrears due	184	18	11
Balance in favour of the year's transactions	269	0	11½	Balances per Steward's Petty Cash and Farm Account	21	17	4½
	£2222	18	1½		£2222	18	1½

Financial Position of Maintenance Account, 31st December, 1864.

	£	s.	d.		£	s.	d.
Balance per Treasurer's Account, 31st December, 1863	2016	1	10	Balance per Treasurer's Account, 31st December, 1863	2002	11	11
Arrears due 31st December, 1863, since paid	184	18	11	Balance per Steward's Petty Cash Account, 31st December, 1864	35	0	5½
Balance per Steward's Petty Cash Account, 31st December, 1863	21	17	4½	Balance against the year's transactions	185	5	9
	£2222	18	1½		£2222	18	1½

Abstract of Building Account for the Year ending 31st December, 1863.

RECEIPTS.		PAYMENTS.	
	£ s. d.		£ s. d.
To Cash from County Treasurers, as per page 53	600 0 0	By Payments, as per page 56	420 15 0
		Balance in hands of Treasurer	179 5 0
	<u>£600 0 0</u>		<u>£600 0 0</u>

Abstract of Building Account for the Year ending 31st December, 1864.

RECEIPTS.		PAYMENTS.	
	£ s. d.		£ s. d.
Balance in hands of Treasurer	179 5 0	Payments as per page 48	462 15 4
To Cash from County Treasurers, as per page 45	373 15 0	Balance in hands of Treasurer	90 4 8
	<u>£553 0 0</u>		<u>£553 0 0</u>

ESTIMATED VALUE
OF
STOCK ON FARM AND STOCK IN STORE

The 31st DECEMBER, 1863.

	£	s.	d.
Live and Dead Stock on Farm	446	9	0
Materials and Clothing in Store	558	13	0
Provisions in Store	228	16	7
Necessaries in Store	178	7	4
	<hr/>		
	£1412	5	11

ESTIMATED VALUE
OF
STOCK ON FARM AND STOCK IN STORE

The 31st DECEMBER, 1864.

	£	s.	d.
Live and Dead Stock on Farm	435	5	0
Materials and Clothing in Store	561	19	3
Provisions in Store	296	11	2
Necessaries in Store	285	13	2
	<hr/>		
	£1579	8	7

WORK DONE IN TAILORS' SHOP

During the Year, 1863.

ARTICLES MADE.

Coats and Jackets	110
Trousers	100
Waistcoats	80
Bracers	235
Canvas Dresses and Rugs	16
Baskets	20
Bird Cages	2
Caps.....	309
Hair Beds	22
Ditto Bolsters	13

ARTICLES REPAIRED.

Trousers	849
Waistcoats	454
Jackets	451
Frocks	182
Baskets	27
Hair Beds re-made.....	432
Ditto Bolsters	185
Ditto Cushions	5

SHOEMAKERS' SHOP.

Pairs of Boots and Shoes made.....	134
Pairs of Boots and Shoes repaired	584

WORK DONE IN TAILORS' SHOP.

During the Year 1864.

ARTICLES MADE.

Coats and Jackets	169
Trousers	225
Waistcoats	133
Canvas Dresses and Rugs	10
Bracers ..	196
Caps.....	391
Bed Ticks	20
Hair Beds	4
Baskets	8
Mat	1

ARTICLES REPAIRED.

Jackets	327
Trousers	571
Waistcoats	372
Canvas Dresses	8
Men's Frocks	45
Caps.....	12
Bed Ticks	9
Hair Beds re-made.....	356
Ditto Bolsters	103
Ditto Cushions	24
Baskets	13
Mats	8

SHOEMAKERS' SHOP.

Pairs of Boots and shoes made	103
Pairs of Boots and Shoes repaired	446

THE HISTORY OF THE

REIGN OF

CHARLES THE FIRST

By JOHN BURNET
BISHOP OF SALISBURY
AND
OF THE CHURCH OF ENGLAND
IN THE REIGN OF
CHARLES THE FIRST
IN TWO VOLUMES.
THE SECOND VOLUME.
LONDON, Printed by J. Streater, at the Sign of the Gun, in St. Dunstons Church-yard, 1680.

THE HISTORY OF THE

REIGN OF
CHARLES THE FIRST
IN TWO VOLUMES.
THE SECOND VOLUME.
LONDON, Printed by J. Streater, at the Sign of the Gun, in St. Dunstons Church-yard, 1680.

THE HISTORY OF THE

REIGN OF
CHARLES THE FIRST
IN TWO VOLUMES.
THE SECOND VOLUME.
LONDON, Printed by J. Streater, at the Sign of the Gun, in St. Dunstons Church-yard, 1680.