

Fortieth report of the resident physician of the Belfast District Hospital for the Insane of the county of Antrim, and the county of the town of Carrickfergus : from 1st April to 31st December, 1869.

Contributors

Belfast District Hospital for the Insane.
Stewart, Robert.

Publication/Creation

Belfast : Printed by W. & G. Baird, 1869.

Persistent URL

<https://wellcomecollection.org/works/m25yfknk>

License and attribution

This work has been identified as being free of known restrictions under copyright law, including all related and neighbouring rights and is being made available under the Creative Commons, Public Domain Mark.

You can copy, modify, distribute and perform the work, even for commercial purposes, without asking permission.



Wellcome Collection
183 Euston Road
London NW1 2BE UK
T +44 (0)20 7611 8722
E library@wellcomecollection.org
<https://wellcomecollection.org>

FORTIETH REPORT
OF
THE RESIDENT PHYSICIAN,
OF THE
BELFAST DISTRICT
HOSPITAL FOR THE INSANE,
OF THE
COUNTY OF ANTRIM, AND THE COUNTY OF THE TOWN
OF CARRICKFERGUS,

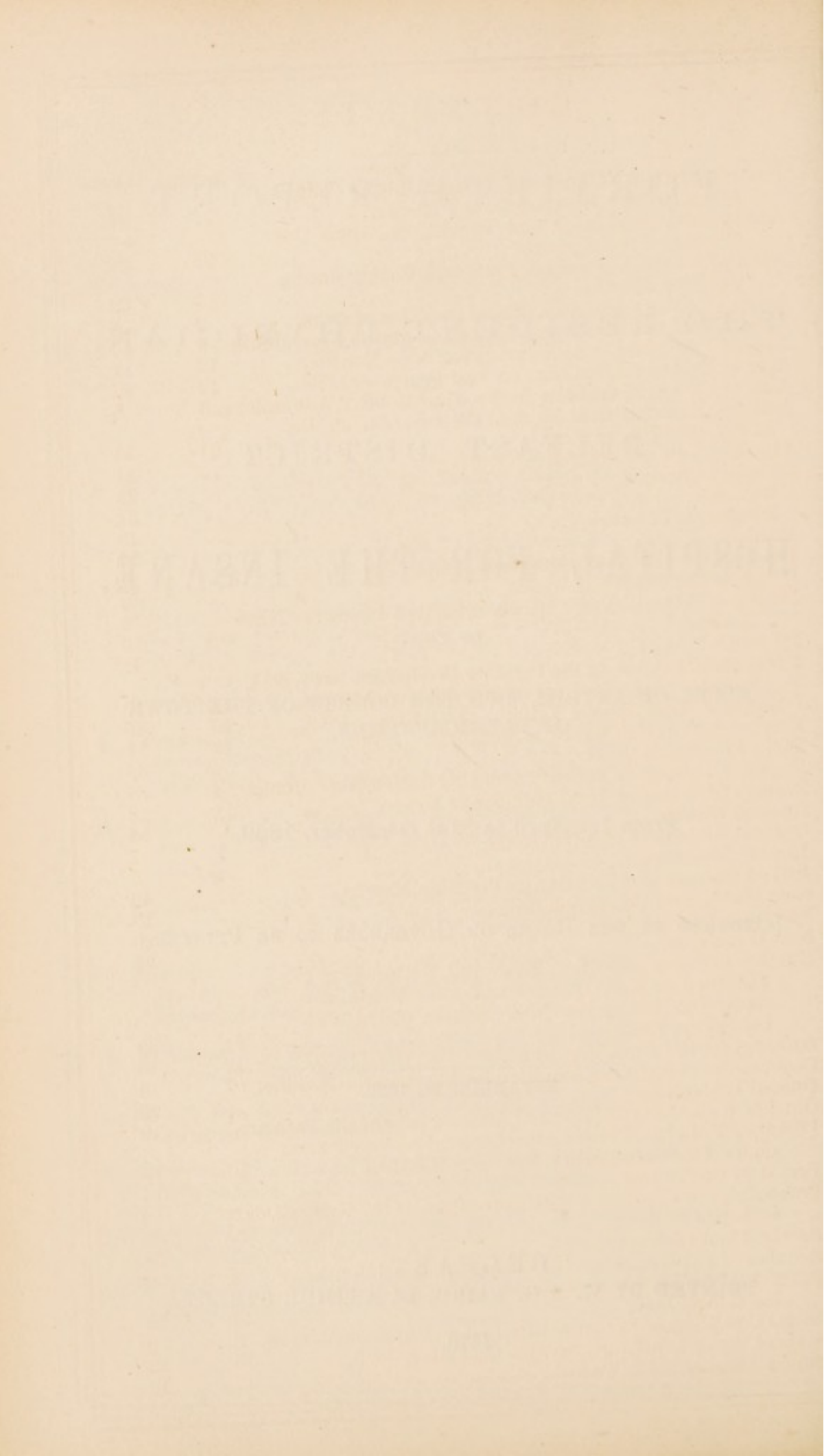
From 1st April to 31st December, 1869.

[ORDERED BY THE BOARD OF GOVERNORS TO BE PRINTED.]

~~~~~  
ESTABLISHED 1829.  
~~~~~


BELFAST:
PRINTED BY W. & G. BAIRD, 12, ARTHUR STREET.

1870.



CONTENTS.

	TABLE	PAGE
Accommodation—Transfer of Patients to the County		
Down District Hospital for the Insane,	16
Admissions, Discharges, and Deaths, &c., since the opening of the Asylum,	22	34
Admissions and Discharges from each County during the Nine Months,	18	32
Ages of Patients Admitted during the Nine Months, ..	2	8
Ages of Patients Discharged Recovered during Nine Months, ..	9	10
Ages of Patients who died during the Nine Months, ..	12	11
Ages of Patients Remaining on 31st December, 1869, ..	19	32
Alleged Causes of Insanity in the Nine Months' Admissions, ..	3	8
Articles Manufactured by the Patients during the Nine Months,	23	33
Attendance of Governors,	21
Chaplain Question,	24
Conclusion,	31
"Dangerous Lunatics,"	18
Deaths,	14
Death of the late C. B. Grimshaw, Esq.,	21
Deficiency in Supply of Water,	23
Degree of Education of Patients Admitted during the Nine Months,	8	10
Dietary,	37
Duration of Disease in the Patients Discharged Recovered, Relieved, and who Died during the Nine Months, ..	11	10
Duration of Residence of Patients to 31st Dec., 1869, ..	23	36
Employment during the Nine Months,	13	11
Farm Produce Account,	39
Forms of Disease in Patients admitted during Nine Months, ..	4	8
Forms of Disease of Total Number in House, ..	14	12
General Health,	14
General Statement of Admissions,	1	7
List of Governors,	5
List of Reports Received during the Nine Months,	40
New Dining and Recreation Hall,	19
New Domestic Offices,	20
New Governors,	21
Number of Cases Admitted, Recovered, Relieved, and who Died in each Quarter and each Month, respectively, during the Nine Months ended 31st December, 1869,	21	33
Obituary for the Nine Months ending 31st Dec., 1869, ..	17	13
Occupations of Patients Admitted during the Nine Months, ..	7	9
Official Inspections,	29
Outside Walks, Excursions, and Amusements of the Patients,	19
Period of Time the Patients Discharged Recovered were under Treatment during the Nine Months, ..	10	10
Period of this Report,	14
Proceedings in Connexion with Separation of the County Down from this District,	22
Receipts and Disbursements,	38
Religion of Patients Admitted during the Nine Months, ..	5	9
Religious Persuasions of Patients Remaining on 31st December, 1869,	16	12
Social Condition of Patients Admitted during Nine Months, ..	6	9
State of Cases Remaining on 31st December, 1869, ..	15	12
Suicidal and Homical Cases,	15



Digitized by the Internet Archive
in 2018 with funding from
Wellcome Library

<https://archive.org/details/b30314562>

GOVERNORS

OF THE

Belfast District Hospital for the Insane,

APPOINTED BY

THE LORD LIEUTENANT AND PRIVY COUNCIL OF IRELAND.

No.	NAME.	RESIDENCE.	DATE OF APPOINTMENT.
1	The Marquis of Donegall, ..	London,	March, 1829
2	The Mayor of Belfast. ..	Belfast,	March, 1829
2	The Ven. Archd. Hincks, A.M.,	Archdeaconry, Bushmills, ..	March, 1829
4	Robt. J. Tennent, Esq., J.P., D.L.	Rushpark, Belfast, ..	Jan., 1836
5	The Very Rev. Dean Stannus, ..	Lisburn,	April, 1842
6	The Rev. J. S. B. Monsell, A.M.,	July, 1842
7	John S. Crawford, Esq., J.P., D.L.	Crawfordsburn,	Nov., 1847
8	The Lord Bishop of Down and }	The Palace, Holywood, ..	April, 1850
9	Connor and Dromore, .. }		
	William Dunville, Esq., J.P., ..	Richmond Lodge, Co. Down,	May, 1851
10	The Rev. T. F. Miller, D.D., ..	The Vicarage, Belfast, ..	Dec., 1851
11	Adam J. Macrory, Esq., ..	Duncairn, Belfast, ..	June, 1852
12	Lord Dufferin,	Clandeboyne, Belfast, ..	Dec., 1855
13	Thomas M'Clure, Esq., M.P., ..	Belmont, County Down, ..	Jan., 1856
14	Lieut.-Colonel Forde, M.P., ..	Seaforde, County Down, ..	March, 1862
15	The Right Rev. P. Dorrian, D.D.	Belfast,	Sept., 1866
16	Sir E. C. W. M'Naghten, Bart., D.L.	Bushmills,	Oct., 1866
17	Sir Edward Coey, J.P., D.L., ..	Merville, Belfast, ..	Oct., 1866
18	John Young, Esq., J.P., D.L., ..	Galgorm Castle, Ballymena,	Oct., 1866
19	H. H. M'Neile, Esq., J.P., ..	Parkmount, Belfast, ..	Oct., 1866
20	J. B. Houston, Esq., J.P., D.L.,	Orangefield, Belfast, ..	Oct., 1866
21	Viscount Templetown, ..	Castle Upton, Templepatrick	Oct., 1865
22	Sir R. A. Shafto Adair, Bart. ..	The Castle, Ballymena, ..	Oct., 1866
23	Captain Gray, J.P., D.L., ..	Graymount, Belfast, ..	March, 1867
24	Sir Thomas Bateson, Bart., M.P.,	Belvoir Park, Belfast, ..	March, 1867
25	Dr. M'Gee, J.P.,	Belfast,	April, 1867
26	David Taylor, Esq., J.P., ..	Bertha House, Belfast, ..	Feb., 1868
27	T. Hamilton-Jones, Esq., J.P., D.L.	Moneyglass House, Toome, ..	Feb., 1868
28	Wm. Ewart, jun., Esq., J.P., ..	Albertville, Belfast, ..	March, 1868
29	The Rev. James Morgan, D.D.,	Belfast,	March, 1869
30	Professor Cuming, M.D., ..	Belfast,	March, 1869
31	M. R. Dalway, Esq., M.P., ..	Carrickfergus,	March, 1869
32	James Mehan, Esq., J.P. ..	Belfast,	March, 1869
33	The Rev. John Macnaughtan, ..	Belfast,
34	William Coates, Esq., J.P. ..	Glentoran, Belfast, ..	April, 1869

Resident Physician-Superintendent, .. ROBERT STEWART, M.D.
 Visiting and Consulting Physician, .. HENRY MAC CORMAC, M.D.
 Visiting Surgeon, &c., JAMES MOORE, M.D.

Stated Meetings of Governors are held on the first Monday of each month, at Two o'clock, p.m.

REPORT
OF THE
COMMISSIONER OF THE
BUREAU OF THE
LAND OFFICE

FOR THE YEAR 1887

WASHINGTON:
GOVERNMENT PRINTING OFFICE:
1888.

REPORT

OF THE

Belfast District Hospital for the Insane,

FOR NINE MONTHS ENDED 31ST DECEMBER, 1869.

Table I.—General Statement of Admissions.

	Males	Females	Total	Males	Females	Total
In House on 1st April, 1869,	225	164	389
Admitted since, New Cases,	67	51	118			
Relapses,	20	5	25			
	—	—	—	87	56	143
Total under Treatment during the nine months,				312	220	532
Discharged Recovered, ..	42	30	72			
Do. Relieved, ..	28	18	46			
Do. to Co. Down Establishment	94	65	159			
Died,	13	8	21			
	—	—	—	177	121	298
Remaining under Treatment on 31st December, 1869,				135	99	234
Total Admissions during the nine months, ..						143
Daily Average Number of Patients during the nine months,						362.91
Per-centage of Recoveries and Relieved on the						
Average Daily Number under Treatment, ..						22.22
Do. on the nine months total Admissions, ..						25.25
Average per-centage of Deaths on the total Number						
under Treatment during nine months,						2.65
Do. on the Average Daily Number during the nine months,						1.81
“Dangerous Lunatics” admitted, by Magistrates’ Warrants during the 9 months (as embraced in the 9 months’ total Admissions), viz.,				Males	Females	Total
				74	27	101
Average Expense of each Patient for the nine months, including every charge,						£15 6 2½
Total Expenditure for the nine months ended 31st December, 1869,						5,555 16 11
Net Profit on Farm and Garden,						£290 12 11½

Table II.—Ages of the 143 Patients during admitted the 9 months ended 31st December, 1869.

	Males.	Females	Total.
Under 20 years,	8	4	12
20 to 30 years,	28	16	44
30 to 40 „	19	20	39
40 to 50 „	16	6	22
50 to 60 „	11	4	15
60 to 70 „	5	6	11
TOTALS,	87	56	143

Table III.—Alleged Causes of Insanity in the 143 Cases admitted during the nine months ended 31st December, 1869.

	Males.	Females	Total.
MORAL CAUSES.			
Disappointments, Grief, and Anxiety, ..	14	11	25
Fright,	0	1	1
Jealousy,	3	2	5
Love of Money,	1	0	1
Religious Excitement,	2	5	7
Total Moral Causes,	20	19	39
PHYSICAL CAUSES.			
Bodily Ailments,	14	3	17
Fever,	1	1	2
Intemperance,	15	2	17
Puerperal Condition,	0	3	3
Sunstroke,	1	0	1
Total Physical Causes,.. .. .	31	9	40
Hereditary,	7	2	9
Unascertained,	28	26	54
Idiotic,	1	0	1
Total,	87	56	143

Table IV.—Forms of Disease in the 143 Patients admitted during the nine months ended 31st December, 1869.

	Males.	Females	Total.
Dementia,	5	1	6
Mania,	66	44	110
Melancholia,	8	3	11
Monomania,	8	8	16
TOTALS,	87	56	143

Table V.—Religion of the 143 Patients admitted during the nine months ended 31st December, 1869.

	Males.	Females	Total.
Presbyterian and Protestant Dissenters, ..	32	25	57
Roman Catholics,	27	20	47
Unitarians,	2	0	2
United Church of England and Ireland, ..	26	11	37
TOTALS,	87	56	143

Table IV.—Social Condition of the 143 Patients admitted during the nine months ended 31st December, 1869.

	Males.	Females	Total.
Married,	29	20	49
Single,	55	34	89
Widows and Widowers,	3	2	5
TOTALS,	87	56	143

Table VII.—Occupations of the 143 cases admitted during the nine months ended 31st December, 1869.

	Males.	Females	Total.
Carpenters,	2	0	2
Clerk,	1	0	1
Dealers,	5	1	6
Dressmakers,	0	6	6
Farmers,	12	0	12
Housekeepers,	0	11	11
Mechanics,	22	0	22
Millworker,	1	3	4
Paper Worker,	1	0	1
Pensioner,	1	0	1
Policemen,	3	0	3
Saddler,	1	0	1
Servants,	24	10	34
Soldier,	1	0	1
Teachers,	3	0	3
Weavers,	3	4	7
Without any Occupation,	8	20	28
TOTALS,	87	56	143

Table VIII.—Degree of Education in the 143 cases admitted during the nine months ended 31st December, 1869.

				Males.	Females	Total.
No Education,	4	6	10
Read only,	4	3	7
Read and Write,	73	31	104
Well Educated,	1	2	3
Unknown,	5	14	19
TOTALS,	87	56	143

Table IX.—Ages of the 187 Patients Discharged Recovered during the nine months ended 31st December, 1869.

				Males.	Females	Total.
Under 20 years,	5	3	8
From 20 to 30 years,	23	12	35
„ 30 to 40 „	23	20	43
„ 40 to 50 „	25	20	45
„ 50 to 60 „	22	11	33
„ 60 to 70 „	10	13	23
TOTALS,	108	79	187

Tables X.—Shewing the period of time the 187 Patients Discharged Recovered were under treatment during the nine months ended 31st Dec., 1869.

				Males.	Females	Total.
Under 3 months,	17	14	31
From 3 to 6 months	17	11	28
„ 6 to 12 „	14	5	19
„ 1 to 2 years,	18	17	35
„ 2 to 5 „	12	15	27
„ 5 to 10 „	30	17	47
TOTALS,	108	79	187

Table XI.—Shewing the Duration of Disease in the 298 Patients Discharged Recovered, Relieved, Removed, and who Died, during the nine months ended 31st December, 1869.

DURATION OF DISEASE.	RECOVERED AND RELIEVED.			DIED.		
	Males.	Females	Total.	Males.	Females	Total.
Under 3 months, ..	14	3	17	2	1	3
From 3 to 6 months,	27	14	41	1	0	1
„ 6 to 12 months,	29	24	53	3	1	4
„ 1 to 2 years, ..	20	15	35	1	2	3
„ 2 to 5 „ ..	12	20	32	2	0	2
„ 5 to 12 „ ..	15	12	27	2	1	3
„ 10 to 20 „ ..	27	15	42	1	3	4
„ 20 to 30 „ ..	20	10	30	1	0	1
TOTALS, ..	164	113	277	13	8	21

Table XII.—Ages of the 21 Patients who Died during the nine months ended 31st December, 1869.

	Males.	Females	Total.
From 20 to 30 years, ..	1	0	1
„ 30 to 40 „ ..	4	4	8
„ 40 to 50 „ ..	2	3	5
„ 50 to 60 „ ..	4	0	4
„ 60 to 70 „ ..	1	1	2
„ 70 to 80 „ ..	1	0	1
TOTALS, ..	13	8	21

Table XIII.—Employment during the nine months ended 31st Dec., 1869.

	Males.	Females	Total.
Assisting Servants, ..	14	14	28
Basket Making, ..	1	0	1
Breaking Freestone, ..	2	0	2
Cultivating the Farm, ..	30	0	30
Embroidering, ..	0	1	1
Gardening Labour, ..	4	0	4
Knitting, ..	0	18	18
Making and Repairing Clothing, Bedding, &c.,	0	20	20
Pumping Water, ..	18	0	18
Smith Work, ..	1	0	1
Spinning, ..	0	9	9
Sweeping Yards, Carrying Coals, &c. ..	15	0	15
Tailoring, ..	2	0	2
Washing in Laundry, ..	0	20	20
Warping, Weaving, and Winding, ..	7	0	7
TOTALS, ..	94	82	176

Table XIV.—Forms of Disease of the Total Number of Patients remaining on 31st December, 1869.

	Males.	Females	Total.
Dementia,	12	4	16
Mania,	73	55	128
Do. complicated with Epilepsy, ..	8	8	16
Melancholia,	22	16	38
Monomania,	20	16	36
TOTALS,	135	99	234

Table XV.—Shewing the State of the Cases remaining on 31st Dec., 1869.

	Males.	Females	Total.
Chronic Cases,	79	52	131
Probably Curable Cases,	56	47	103
TOTALS,	135	99	234

Table XVI.—Shewing the Religious Persuasions of the 234 Patients remaining on 31st December, 1869.

	Males.	Females	Total.
Baptist,	0	1	1
Covenanters,	1	0	1
Methodists,	3	1	4
Presbyterians,	54	32	86
Roman Catholics,	39	33	72
Unitarians,	2	0	2
United Church of England and Ireland, ..	36	32	68
TOTALS,	135	99	234

Table XVII.—Obituary for the nine months ended 31st December, 1869.

No.	Sex.	Age.	Form of Insanity and alleged Exiting Cause.	Social State.	Occupation.	Period an Inmate.			Cause of Death.
						Yrs.	Mos.	Wks. Dys.	
1	M.	39	Mania—Remorse.	Single.	Dealer.	0	6	0	Chronic diarrhoea.
2	F.	25	Mania—Overwork.	Single.	Sewer.	0	6	1	Convulsive fits and diarrhoea
3	F.	41	Disappointed affections.	Single.	Servant.	14	5	1	Maniacal exhaustion.
4	F.	43	Dementia—General debility.	Single.	Millworker.	11	4	0	Unknown, Mania.
5	F.	45	Mania—Hereditary.	Single.	Sewer.	7	8	1	Pulmonary disease.
6	F.	66	Mania—Unknown.	Married.	Weaver.	0	1	2	Diarrhoea.
7	M.	25	Dementia—Unknown.	Single.	Fish-hawker.	5	1	3	Mental and physical decay.
8	F.	37	Mania—Disappointments.	Single.	Servant.	4	3	2	Chronic bronchitis.
9	F.	45	Dementia—"The Revival."	Married.	Flowerer.	0	6	0	General debility.
10	F.	33	Mania—Unknown.	Single.	Servant.	0	1	2	Dysentery.
11	M.	62	Mania—Intemperance.	Married.	Clerk.	1	2	0	Paralysis.
12	M.	38	Mania—Pecuniary.	Single.	Labourer.	7	7	2	Strumous disease, compli- cated with diarrhoea.
13	M.	55	Mania—Fright.	Married.	Pensioner.	5	0	0	General dropsy.
14	M.	54	Melancholy—Unknown.	Widower.	Labourer.	0	1	3	General debility, compli- cated with diarrhoea.
15	M.	51	Mania—Unknown.	Single.	Labourer.	1	3	0	General debility.
16	M.	56	Mania—Long residence in India.	Single.	Pensioner.	0	3	0	Maniacal exhaustion.
17	M.	29	Mania—Unknown.	Single.	Weaver.	0	0	2	Cerebral effusion.
18	M.	32	Mania—Religious excitement.	Single.	Turner.	7	9	2	Epilepsy.
19	F.	35	Melancholy—Grief.	Married.	Housewife.	0	0	0	Mania, complicated with refusal to take food.
20	M.	70	Mania—Hereditary.	Married,	Labourer.	0	5	0	General debility.
21	M.	36	Mania—Intemperance.	Single.	Millworker.	0	0	2	Maniacal exhaustion.

PERIOD OF THIS REPORT.

In last Annual Report, up to 31st March, 1869, it was stated that a change had been made by the Act 30 & 31 Vic., c. 118, in the auditing of the accounts of these Institutions—namely, from the 1st of January to the 31st of December, instead of from the 1st of April to the 31st March, as formerly, and, accordingly, that for the future the Reports would correspond with the financial year, which will account for this one being only for nine months—viz., from 1st April last to the 31st December—in order to enable the new arrangement as to time being carried into effect, and as it will from the commencement of the ensuing year to its termination, and so on for the future.

GENERAL HEALTH.

During the nine months which have elapsed since last Report, the health and condition of the patients have been quite satisfactory in all respects, no illness of any serious kind having prevailed—any deviation from the usual standard having been mild and tractable.

DEATHS.

The number of death casualties was comparatively small, and pretty much in the same proportion as hitherto. These amounted to twenty-one (thirteen males and eight females), and all from natural causes, viz.:—General Debility, six (four males, two females); Maniacal Exhaustion, four (two males, two females); Pulmonary disease, and Bronchitis, three (one male, two females); Diarrhœa, three, one male, two females); one each of Epilepsy (male), Paralysis (male), Cerebral effusion (male), General Dropsy (male), and Strumous disease (male).

The periods of inmateship of the deceased were, viz.:—For fourteen years and upwards, one (female); eleven years and upwards, one (female); seven years and upwards, three (two

males, one female); five years and upwards, two (males); four years and upwards, one (female); two years and upwards, one (male); one year and upwards, two (males); six months, two (one male, one female); five months, one (male); three months, one (male); under two months, three (one male, two females); under one month, two (males); under three days, one (female). The oldest male was 70, the youngest 25—being an average of $47\frac{1}{2}$; the oldest female was 66, the youngest 33—being an average of $49\frac{1}{2}$; and the total average was $43\frac{1}{2}$ years; the gross total of the twenty-one deceased being 915 years.

One of the females in the above list, when admitted, was in the highest state of maniacal furor, the immediately exciting cause of her condition being attributed to a "Revival" in the locality whence she came—and two other females also from the same place, and from a similar cause, both being in a deplorable state of mental prostration, imagining that never-ending torments were to be their doom. Both, however, ultimately recovered; but the former one never rallied, and gradually sank from mental and physical prostration.

Amongst the deceased males, was a "ticket-of-leave" convict from Pentonville Prison, who, whilst temporarily with his relatives in Belfast, became the subject of mania, the cause assigned being "Remorse," arising from the offence which he had committed in London, and of which he had been found guilty, and sentenced to penal servitude,—his insanity continuing till death supervened.

SUICIDAL AND HOMICIDAL CASES.

A large number, as usual, of the above class of patients was admitted during the period of this Report, thus adding seriously to the heavy responsibilities and constant anxiety inseparable from their care, and which are sufficiently great in the charge of those whose malady is not thus complicated.

The number of those who actually attempted suicide before admission was seventeen (nine males, eight females); and

the cases of determined homicidal attempts were thirty-four (twenty-one males, thirteen females). Happily no homicidal casualty occurred during the period of this Report, notwithstanding all the difficulties and complications in the safe conduct of so overcrowded a house as had to be contended with; nor did any of the seventeen suicidally disposed inmates effect any injury on themselves, the supervision exercised upon them being so unremitting, though this with such cases is not always successful, so extremely difficult is it to guard against their surprising ingenuity and unceasing determination to accomplish the one object of their morbid propensity.

The protection to patients themselves of the above class, and society at large, is much greater than is generally supposed; and it is not the amount of recoveries or improvements only in these Institutions, but the amount of absolute suffering that is relieved, as well as the removal of the most anxious and wearisome care to friends—a care which makes life a burden to the latter—by which their value and importance are to be judged.

ACCOMMODATION—TRANSFER OF PATIENTS TO THE COUNTY DOWN DISTRICT HOSPITAL FOR THE INSANE.

The extreme and unprecedented pressure on the House, referred to in the Report to the 31st of March last, when the aggregate number on the books was three hundred and eighty-nine—the normal accommodation being but three hundred and thirty—continued not only undiminished, but to increase to such an extent as to become most embarrassing and dangerous in every respect, both as to the safe restraint of the patients and their sanatory condition,—the admissions having reached to the extent of four hundred and eighteen. Happily and thankfully, however, notwithstanding this trying condition of domestic affairs, it was brought to a close without any serious detriment resulting therefrom, and which from time to time was not without being apprehended would have been the issue. The long looked-for and

anxiously desired deliverance from this state of things at last came, but not until the month of October, when fifty patients—the first contingent of those who were natives of the County Down—were enabled to be transferred to the new and well-planned establishment at Downpatrick, thus giving all in charge here a measure of relief which was most acceptable, and afforded no small satisfaction, as may be well conceived. A second contingent, to the same amount, was similarly disposed of—and a third also, after the lapse of two or three weeks; and, lastly, a fourth, of nine only, making altogether one hundred and fifty-nine (ninety-four males, sixty-five females) thus finally domiciled in their new quarters, and there located, without a single accident or misadventure of any kind occurring in their transit by railway and 'bus,—a circumstance which is deserving of special note, considering that there were not a few of a very turbulent and refractory character, and who required the exercise of the greatest vigilance and tact in effecting their removal safely, and without recourse to even apparent coercive measures. It was trying to the last degree, when the hour of separation came, with a large portion of those transferred to Downpatrick, many of whom had been inmates here thirty-five, thirty, and twenty-five years and upwards, respectively, and who considered this to be their natural home; and that it was a great hardship, after spending a lifetime under the same roof, and where all were known to each other, to be thus turned out against their own will, or any fault of their own, as they earnestly pleaded. Some, in order to escape, as they fondly hoped, the contemplated change of quarters, endeavoured to make it appear that they had been entered on the books in a wrong name, and from a wrong locality; others hid themselves, when the day of removal came, in secluded portions of the grounds; in fact, the expedients were innumerable which were had recourse to, in order to continue under “the old yew-tree;” but, alas! the decree had gone forth, and in the compulsory obeying of which “lamentations, and mourning, and woe,” were written upon many a countenance.

It should here be observed, that much credit is due

to Mr. Haines, the very accommodating Manager of the Belfast and County Down Railway, for the excellent arrangements made by him in the transfer of the Patients, and the great attention of his Assistants ; also for a free pass having been given to the Band of the Institution to accompany the several parties,—its presence and occasional playing being a matter of much importance, by keeping up the spirits of this trying exodus, and enabling the inevitable separation to be effected more satisfactorily than otherwise would have been the case.

“DANGEROUS LUNATICS.”

The admissions for the last nine months under the above legal designation amounted to the large number of one hundred and one, being at the rate of eleven and upwards each month—in fact, all but superseding the ordinary or House form of admission, and, as was stated in a former Report, would likely prove to be the rule, and not the exception, in sending patients to these Institutions ; a great temptation to not a few in freeing themselves of troublesome members of their family being the circumstance of no obligation being imposed on any party for the removal of patients so admitted, on their becoming convalescent or harmless. This is a most serious omission in the form under which the above denominated patients are transmitted here ; and, again, no matter how loosely or insufficiently filled up, the form in question may be, admission must be given,—the consequence of which is, that the Registry of the patients is rendered very imperfect, and hereafter those data which are so essential for correct statistics, in regard to these Institutions, will be found fraught with great inconvenience, and interfere altogether with anything like correct conclusions being gathered therefrom. The manner, too, in which such patients are conveyed here (on an *outside* car, or walking), is very objectionable,—in the *custody* invariably of two of the constabulary force, sometimes with their firelocks, and the patient besides handcuffed in not a few instances, thus attracting a disorderly and unfeeling crowd of

wayside attendants, exciting the patients so guarded and surrounded,—and, what should not be omitted, strongly to protest against, as giving too much occasion to the ignorant and thoughtless to consider as a disease of degradation, or something criminal, what is as much a bodily malady, in the catalogue of the afflictive dispensations of Providence, as any other to which “flesh is heir to.”

OUTSIDE WALKS, EXCURSIONS, AND AMUSEMENTS OF THE PATIENTS.

On several occasions during the period of this Report, the patients, as usual, enjoyed the variety of being taken walks outside the boundaries of the Institution, always accompanied by their band—(besides their far-famed attendants, “the Sylom Dogs,” Neptune and Pluto)—and, in addition, were on excursions to Shane’s Castle and Whitehead, and to the Flower Shows at Comber and Newtownards, as also a Bazaar at the Ulster Hall, they always conducting themselves with the utmost propriety, and in no wise abusing the indulgence thus afforded them, or the confidence placed in them. Indeed these mixings with the outside world cannot be too highly estimated or largely encouraged, both for the patient’s own benefit, and the removing of that prejudice and morbid apprehension which too commonly prevail in regard to the mentally afflicted portion of the community.

NEW DINING AND RECREATION HALL.

This most important addition to the Establishment has been in progress of erection since September last, and is expected to be completed in March, 1870. Its dimensions are as follow:—

Length,	77 feet.
Breadth,	45 „
Height,	43 „

The contract accepted for its erection amounted to £1,047. The room, it will be seen, is a well proportioned one, with an orchestra, and will prove a cheerful and handsome structure,

together with being so useful in various respects, and greatly simplify inspection in regard to the patients at their meals, which could be only partial with fourteen different day-rooms to be visited in this matter of daily detail in the operations of the house. Besides, having the inmates collected together in one hall—at least the major portion of them—will enable their food to be more comfortably and expeditiously served, and is one of the improved means of their treatment in the present day, and which has been found productive of the best results. And not only for the above primary object in view, but also for their amusement, this much needed building will be found both desirable and valuable; as in an Institution of this kind, where the lives of its inmates are necessarily so monotonous, every possible facility should be provided for their indulgence and innocent amusement—and this in the most varied manner possible—as helping to the mitigation, if not the removal, of their afflictive dispensation.

NEW DOMESTIC OFFICES.

In last year's Report, it was stated the necessity which had arisen for the erection of new Bath-rooms, Lavatories, Water-closets, &c. Since then, these absolutely requisite improvements have been under the special consideration of the Board, and, after much attention having been given to the subject, a plan and specification (prepared by Messrs. Jackson & Son) have just been agreed upon, and for which tenders are to be submitted immediately, in order that the contemplated works may be commenced with the least possible delay, and as it is hoped will be the case.

DEFICIENCY IN SUPPLY OF WATER.

Since last Report, the subject of the supply of water by a steam-engine from the wells on the grounds, has been frequently under the consideration of the Board, the supply being at times both uncertain and deficient, which, in an Institution like this, is of grave importance,—an abundant

supply of that element being so absolutely requisite for its domestic and general sanitary purposes. A committee has been appointed to consider and report upon the matter, and it is hoped means will be enabled to be devised to remedy effectively this deficiency.

ATTENDANCE OF GOVERNORS.

Annexed are the names and attendance of the Governors who were present at the regular monthly and two special Board meetings during the last nine months, such being irrespective of committee meetings, of which there were several, viz.:—Mr. Macrory (10); Mr. Crawford (9); Sir Edward Coey (8); Mr. Blakiston Houston (8); Lord Templetown (8); Dr. M'Gee (7); Mr. Taylor (7); Mr. H. H. M'Neile (7); Dr. Cuming (7); the Rev. J. Macnaughtan (7); Mr. Grimshaw (the late) (6); the Right Rev. Dr. Dorrian (6); Mr. Young (6); Mr. Hamilton-Jones (6); the Bishop of Down (5); Captain Gray (5); Mr. M'Clure, M.P. (4); Lieut.-Colonel Forde, M.P. (3); Mr. Wm. Ewart, jun. (2); the Mayor of Belfast (Dr. Browne, R.N.) (1); Mr. Dunville (1); Mr. Mehan (1).

NEW GOVERNORS.

Since last Report, the following additions have been made to the Board of Governors by order of the Lord Lieutenant in Council, viz.:—

THE REV. J. MORGAN, D.D.

M. R. DALWAY, ESQ., M.P.

JAMES MEHAN, ESQ., J.P.

PROFESSOR JAMES CUMING, M.D.

THE REV. JOHN MACNAUGHTAN.

DEATH OF C. B. GRIMSHAW, ESQ.

It is with much concern and sincere regret the removal by death of another of the oldest and most respected members

of the Board has to be recorded in these pages—that of the late Conway B. Grimshaw, Esq., which took place this month (December), after a short illness. Mr. Grimshaw had been a Governor since 1846, a period of twenty-three years, and up to the last meeting nearly, he was as usual in his place, continuing throughout most regular in his attendance even in his advanced period of life. Both personally and officially the Resident Physician deeply feels his death, having always found him a warm friend, and one who was ever ready to give the benefit of his valuable and practical services in support of the best interests of the Institution. His loss has been felt by the whole establishment as one much to be deplored, and his memory will long be held in respectful regard.

The following resolution was recorded on the proceedings of the Board in connexion with his death:—

“Moved by A. J. Macrory, Esq., seconded by the Bishop of Down, &c., and unanimously

“Resolved—That the Board has learned with the deepest regret of the death of the late Conway B. Grimshaw, Esq., who from the time of his appointment, in 1846, till immediately before his removal, attended its meetings most regularly, thereby affording valuable assistance in the general conduct of the Institution, and in furtherance of its important duties in which he always evinced the liveliest interest.

“That a copy of this resolution be transmitted to the family of the lamented deceased, communicating to them also this Board's sympathy with them in their afflictive bereavement.”

PROCEEDINGS IN CONNEXION WITH SEPARATION OF THE COUNTY
DOWN FROM THIS DISTRICT.

A special meeting was held here last month (November) of the Governors, together with Committees of the Grand Juries embraced in the district—viz., of the Counties of Antrim and Down, and the County of the Town of Carrick-

fergus, together with other officials, for the purpose of conferring with Mr. Wilkinson, who had been appointed by the Lord Lieutenant as Commissioner and Valuator, for ascertaining the equitable amount to be repaid, under the provisions of the Act 18 & 19 Vict., c. 109, to the County Down, on its separation from this District, by the County of Antrim and the County of the Town of Carrickfergus. The Governors present were, viz.:—

Lord Templetown.
The Mayor of Belfast (F. Lewis, Esq)
John Young, Esq.
C. B. Grimshaw, Esq. (late)
John Sharman Crawford, Esq.

Colonel Forde, M.P.
Dr. M'Gee.
Sir Edward Coey.
Adam J. Macrory, Esq.

And also the following:—

Conway B. Dobbs, Esq.
W. T. B. Lyons, Esq.
Sir Charles Lanyon.
William Keown, Esq., M.P.
Major Nugent.
Captain Despard.
S. Murland, Esq.
Robert Heron, Esq.
George M'Auliffe, Esq.

John Coates, Esq., Sec. Co. Antrim
Grand Jury.
Robert Gordon, Esq., Secretary
County Down Grand Jury.
S. Bruce, Esq., Town Solicitor.
William R. Bruce, Esq., Barrister-
at-Law.
Henry Smith, Esq., County Sur-
veyor, County Down.

Mr. Wilkinson presided as Chairman, having previously, together with Sir Charles Lanyon, inspected the buildings, and checked the Abstract of Expenditure on buildings, improvements, &c., which had been prepared here, agreeably to his instructions.

The Commissioner having entered into the particulars of his official visit, and laid before the meeting, Parliamentary, official, and other returns and statements in detail, relating to the expenditure incurred on the original building as erected in 1829, together with permanent improvements and additions made since that time, and having heard at large the views of the meeting thereon, he in conclusion stated that he would in due course make his report to the Lord Lieutenant of his award, copies of which would afterwards be furnished to the Governors and the several Grand Juries in the District, for any observations they might see fit to make thereon; and

having expressed himself much gratified with the spirit in which the discussion had been conducted on all sides, and the great interest taken in the important subject which had been under consideration, as evidenced by the large and influential attendance of Governors, Grand Jurors, &c., he left the chair, and the meeting separated.

THE CHAPLAIN QUESTION.

The following are the proceedings which have taken place since April last to the end of 1869, in regard to the appointment of Chaplains:—

SPECIAL MONTHLY BOARD OF GOVERNORS,

Held on Monday, 1st November, 1869.

Present:

SIR EDWARD COEY, J.P., D.L., in the Chair.

A. J. MACRORY, Esq.

MAJOR CRAWFORD, J.P., D.L.

D. TAYLOR, Esq., J.P., (Ex-Mayor.)

C. B. GRIMSHAW, Esq., (late)

THE BISHOP OF DOWN, &c.

H. H. M'NEILE, Esq., J.P.

J. B. HOUSTON, Esq., J.P., D.L.

DOCTOR M'GEE, J.P.

CAPTAIN GRAY, J.P., D.L.

WILLIAM EWART, JUN., Esq., J.P.

THE RIGHT REV. DOCTOR DORRIAN.

LORD VISCOUNT TEMPLETOWN.

PROFESSOR CUMING, M.D.

REV. J. MACNAUGHTAN.

T. M. HAMILTON-JONES, J.P., Esq., D.L.

JOHN YOUNG, Esq., D.L.

THOMAS M'CLURE, Esq., J.P., M.P.

DR. STEWART, the Resident-Physician, also present.

Read letter from Inspector Dr. Nugent, dated Dublin Castle, 15th October, stating, that observing from the esti-

mates of this Institution for the current quarter that the salaries of Chaplains, as directed by order of the Lord Lieutenant in Council, dated 11th August, 1868, had not been provided for, it became the duty of the Inspectors to direct the attention of his Excellency to the omission, in order that it might be supplied; and that he had now, in conformity to the fifth clause of the Act 30 & 31 Vic., c. 118, to call upon the Board to appoint a Protestant chaplain, a Roman Catholic chaplain, and a Presbyterian Chaplain.

Some discussion ensuing upon the reading of the above communication, it was

1. Moved by the BISHOP OF DOWN, seconded by the Right Rev. DR. DORRIAN—

“That the Board do proceed to appoint Chaplains to this Institution at the next Monthly Meeting,”

Amendment moved by Dr. M'GEE, seconded by Mr. MACRORY—

“That warned by former experience as to the very injurious effects arising from the appointment of Chaplains, and satisfied that under our present system the patients in this Hospital have not experienced any want of religious ministrations, we regret that we cannot concur in the order of 15th October, 1869, for the appointment of permanent Chaplains and hereby affirm the Resolution passed by the Board in June, 1868.”

For the Amendment, 12—viz.:

SIR EDWARD COEY.
MR. MACRORY.
MR. TAYLOR.
DR. M'GEE.
MR. GRIMSHAW (late).
MR. HAMILTON-JONES.

MR. YOUNG.
MR. HOUSTON.
MR. M'NEILE.
REV. J. MACNAUGHTAN.
LORD TEMPLETOWN.
MAJOR CRAWFORD.

Against the Amendment, 5—viz.:

THE BISHOP OF DOWN.
THE RIGHT REV. DR.
DORRIAN.

MR. WILLIAM EWART, JUN.
CAPTAIN GRAY.
DR. CUMING.

For Resolution, 5 (same names as above); against, 12 (same names as above).

Mr. M'CLURE left the Board before the division took place.

2. Moved by Mr. M'NEILE, seconded by Mr. HOUSTON—

“That we most respectfully but firmly represent to the Government that, under the peculiar circumstances of strong religious excitement prevailing in this District, the appointment of Chaplains for this Asylum is more likely to be injurious in the treatment of the patients than might be the case, were the inmates less subject to the exciting causes mentioned, and the Board, therefore, earnestly implore the Government to abstain from exercising the power invested in them in making such appointments.”

Amendment moved by the BISHOP OF DOWN, seconded by the Right Rev. Dr. DORRIAN—

“That having regard to the religious condition of the inmates of this Asylum, we think it most desirable that regular and permanent Chaplains be appointed.”

For the Amendment, 3—viz. :

THE BISHOP OF DOWN.

THE RIGHT REV. DR. DORRIAN.

DR. CUMING.

Against the Amendment, 14—viz. :

SIR EDWARD COEY.

MR. MACRORY.

MR. TAYLOR.

DR. M'GEE.

MR. GRIMSHAW (late).

MR. HAMILTON-JONES.

MR. YOUNG.

MR. HOUSTON.

MR. M'NEILE.

REV. J. MACNAUGHTAN.

LORD TEMPLETOWN.

MAJOR CRAWFORD.

MR. WILLIAM EWART, JUN.

CAPTAIN GRAY.

For Resolution, 14; against, 3 (same names, respectively, as above).

3. Moved by Mr. YOUNG, seconded by Mr. GRIMSHAW—

“That in order that the Government may be made fully aware of the feelings and judgment of the Governors on the subject of Chaplains, the following deputation be now appointed to wait upon his Excellency

the Lord Lieutenant, and lay before him the resolutions that have been adopted this day, viz. :—

LORD TEMPLETOWN.
MR. MACRORY.
MR. TAYLOR.
THE REV. J. MACNAUGHTAN.
MAJOR CRAWFORD.
COLONEL FORDE, M.P.

For Resolution, 15—viz. :

SIR EDWARD COEY.	MR. M'NEILE.
MR. MACRORY.	REV. J. MACNAUGHTAN.
MR. TAYLOR.	LORD TEMPLETOWN.
DR. M'GEE.	MAJOR CRAWFORD.
MR. GRIMSHAW (late).	MR. WM. EWART, JUN.
MR. HAMILTON-JONES.	CAPTAIN GRAY.
MR. YOUNG.	DR. CUMING.
MR. HOUSTON.	

Against, 2—viz. :

THE BISHOP OF DOWN.
THE RIGHT REV. DR. DORRIAN.

4. Ordered—That copies of the foregoing Resolutions, Amendments, and Divisions be transmitted to the Under Secretary, with a view to his submitting them to the Lord Lieutenant, and a day being appointed by his Excellency to receive the above-named Deputation.

(Signed),

EDWARD COEY, CHAIRMAN.

BOARD ROOM, 6th December, 1869.

Read a letter from Mr. Under Secretary Burke, dated 5th ult., stating that the Lord Lieutenant would be happy to receive the Deputation appointed last month, at the Viceregal Lodge, on Thursday, 11th ult., at one o'clock.

Read the following Report of the above Deputation :—

“In conformity with the resolutions adopted at the meeting of the Governors last month, your Deputation requested an interview with his Excellency the Lord Lieutenant, forwarding to him the resolutions, and the names of the Governors who voted for and against them.

“Believing that by an oversight the name of Sir Edward Coey, Chairman last Board day, and that of Dr. M'Gee, who moved the first resolution, had been omitted, your Deputation invited those gentlemen to accompany them to Dublin, and are happy to say that Dr. M'Gee was enabled to go with them, and rendered very effective service.

“The Deputation consisted of Lord Templetown, Major Crawford, Dr. M'Gee, Mr. Macrory, Mr. Taylor, and the Rev. J. Macnaughtan.

“Lord Templetown introduced the Deputation, and briefly stated the object of their mission, assuring his Excellency that the Governors were not opposed to the affording of religious consolation to any inmate capable of receiving it, but of the introduction of three chaplains into the House.

“The other members testified to the effects that had followed the introduction of Chaplains to the Asylum in former years—to the difference between the order and the curative results during the years of chaplains, as contrasted with similar periods before and since—to the peculiarity of religio-politico feeling that characterizes a large section of the community in and around Belfast—to the marked unity of sentiment among the Governors of all shades of political faith—and to the grave responsibility that must be undertaken by his Excellency if he forced Chaplains into the Institution, earnestly entreating that he would not exercise the permissive power entrusted to him by the Act of Parliament.

“His Excellency replied, in substance, that he would consider all the statements addressed to him, but that he did not see any reason why Belfast should, in the matter of Chaplains, be an exception to the other Asylums in the kingdom. He thought that prudent, judicious Chaplains could surely be found, that thereby the evil said to have arisen from their visitations formerly might be avoided.

“His Excellency, in conclusion, said that a reply should be sent.

“For self and others on the Deputation,

(Signed)

“TEMPLETOWN.

“6th December, 1869.”

OFFICIAL INSPECTIONS.

The following are the Reports made by the Government Inspectors of their official visits to the Establishment during the past nine months :—

“I find the House exceedingly overcrowded by no less than eighty patients. I shall endeavour to have from sixty to eighty removed before the Assizes, to Downpatrick. It will be advisable to have each patient decently clad, prior to removal, with a change of inner dress generally. The most useful and tranquil of the inmates belonging to Down should, in the first instance, be selected for transference. The Establishment is in good order. With reference to the report of the Auditors, as to the irregularity about meal and tea, I would suggest that any explanation after the inquiry by the Committee should be communicated to the Grand Juries of Down and Antrim by the Board of Governors.

(Signed)

“J. NUGENT.

“24th June, 1869.”

“On inspecting the Belfast District Asylum this day, the general state of the House, in regard to the cleanliness and order of the various departments, is highly satisfactory,—the patients themselves being carefully attended to, well clad, and their sleeping rooms well ventilated. The beds and bedding, on the whole, good, and very neat. There are only seven of the inmates—numbering altogether 413—in the Infirmary, and none of these affected with any serious illness.

“The average employment in and out of doors is not at present as large as could be desired,—there being, in fact, little means of occupation on the farm. Within a month, I anticipate the Downpatrick patients will be removed, in great part, to their own County Asylum,—an arrangement which will afford much relief to this most overcrowded Institution. The Daily Statement Book, as prescribed by Privy Council rules, is not kept with due regularity. I would call the attention of the Board to the fact, that as yet no Chaplains have been appointed, as directed by the statute. It is my duty to make this observation, in order that the provisions of the Act regulating the staff of officers and attendants in District Asylums may not be overlooked.

(Signed)

“J. NUGENT.

“August 16th, 1869.”

"On my inspection of the Belfast District Asylum this day, I find it contains two hundred and forty-two males and one hundred and sixty-two females, making a total of four hundred and four,—being about seventy over the number that there is fair accommodation for. This overcrowded state, I am happy to be able to say, will soon be remedied, by the opening of the Down Asylum. The Institution is in every respect in its usual order, being in its several departments in most satisfactory condition as to cleanliness and ventilation, reflecting great credit on Dr. Stewart and the other officers under his supervision and control.

"I, however, must observe that painting is much required on the building externally, not only for appearance sake, but, what is of more importance, the preservation of the wood-work.

(Signed)

"J. HATCHELL.

24th Sept., 1869."

"Visited and inspected those patients belonging to the County Down, with a view of having a portion of them removed to the Downpatrick Asylum in the course of the week. Doctor Tyner, the Resident Physician-Superintendent of the latter Institution, attended with me.

(Signed)

"J. HATCHELL.

"October 4th, 1869."

"On my last visit in August, there were four hundred and thirteen patients in this Asylum; since then, the Down patients being removed, there are at this date two hundred and thirty-seven, or little more than one-half. It is to be presumed, then, that with a little discretion on the part of Magistrates, in not heedlessly sending in "lunatics" as "dangerous," who really are not so, that the house will be fully ample for the insane of the County of Antrim and Borough of Belfast without any overcrowding. I find, as hitherto, the Establishment in good order, and due attention paid to the inmates, who as a body are remarkably healthy. On going through the dining and recreation hall, I notice the want of an orchestra, or raised dais, for musical and other purposes: I would suggest to the Board of Governors the utility of such accommodation. Nothing final has as yet been done in regard to the lavatories and water-closets. The new building has much darkened the residence of the Medical Superintendent. I think the architect might devise some plan to obviate this inconvenience.

(Signed)

"J. NUGENT.

"29th Dec., 1869."

CONCLUSION.

The several occurrences of any moment which have taken place during the period embraced in this Report having been now referred to, it only remains for the Resident Physician to record his thankfulness to the Board of Governors for their continued kindness towards himself in discharging the duties devolving upon him in his ever-anxious and trying office, and his great satisfaction in being enabled to state, that the manner in which the whole staff acquitted themselves in their respective places, was unexceptionably good, and deserving of much commendation.

ROBERT STEWART, M.D.,
Resident Physician.



GENERAL TABLES OF STATISTICS.

Table XVIII.—Shewing the Admissions, Discharges, &c., from each County in the District, during the nine months ended 31st Dec., 1869.

ADMITTED FROM EACH COUNTY.						
					Males.	Females Total.
Antrim,	56	42 98
County of the Town of Carrickfergus,	1	1 2
Down,	30	13 43
TOTAL,	87	56 143

DISCHARGED, &c., TO EACH COUNTY.						
					Males.	Females Total.
Antrim,	43	23 66
County of the Town of Carrickfergus,	3	0 3
Down,	131	98 229
TOTALS,	177	121 298

REMAINING IN THE HOUSE, 31ST DECEMBER, 1869.						
					Males.	Females Total.
Antrim,	132	95 227
County of the Town of Carrickfergus,	3	4 7
Down,	0	0 0
TOTALS,	135	99 234

Table XIX.—Ages of the Patients remaining on 31st December, 1869.

					Males.	Females Total.
Under 20 years,	8	2 10
From 20 to 30 years,	26	20 46
„ 30 to 40 „	34	26 60
„ 40 to 50 „	37	26 63
„ 50 to 60 „	20	16 36
„ 60 to 70 „	10	9 19
TOTALS,	135	99 234

Table XX.—Shewing the Articles Manufactured and made by the Patients during the year ended 31st Dec., 1869.

1,210 Hanks Linen Yarn.	20 Wrappers.
950 Yards Plain Linen.	112 Day Caps.
600 Pairs Stockings and Socks.	40 Bolsters.
212 Sheets.	34 Bed Ticks.
220 Shirts.	57 Gowns.
64 Shifts.	250 Pillow Slips.
150 Aprons.	37 Towels.
62 Petticoats.	

Table XXI.—Shewing the Number of Cases Admitted, Recovered, Relieved, and who Died in each Quarter and each Month, respectively, during the nine months ended 31st Dec., 1869.

	ADMITTED.			DISCHARGED.						DIED.		
				RECOVERED.			RELIEVED.					
	Males.	Females.	Total.	Males.	Females.	Total.	Males.	Females.	Total.	Males.	Females.	Total.
April,	8	4	12	6	2	8	0	0	0	1	0	1
May,.....	13	9	22	6	5	11	0	0	0	0	2	2
June,.....	14	9	23	9	6	15	0	1	1	1	2	3
July,.....	10	6	16	4	5	9	0	1	1	0	4	4
August,	12	8	20	3	3	6	1	0	1	1	0	1
September,	9	6	15	11	10	21	4	1	5	3	0	3
October,....	9	8	17	40	19	59	49	23	72	3	0	3
November,..	6	2	8	29	29	58	0	0	0	2	0	2
December,,	6	4	10	0	0	0	2	8	10	2	0	2
	87	56	143	108	79	187	56	34	90	13	8	21

TABLE XXII.—Shewing the Admissions, Discharges, and Deaths, with the mean Annual Mortality, and Proportion of Recoveries, per cent. of the Admissions for each Year, ending 31st March, and for the nine months ending 31st December, 1869, since the Opening of the Asylum.

Year.	ADMITTED.			DISCHARGED.						DIED.		Remaining 31st March each year.			Average Number Resident.	Per centage of Recoveries on Admissions.	Per centage of Deaths on average numbers Resident.	
				Recovered.			Relieved.											
	Male	Fmle	Total.	Male	Fmle	Total.	Male	Fmle	Total.	Male	Fmle	Total.	Male.	Female.				Total.
1831	94	80	174	25	12	44	5	3	8	6	3	9	58	55	113	103.68	32.79	8.68
1832	51	49	100	29	22	51	2	3	5	10	5	15	68	74	142	132.65	38.44	11.30
1833	41	32	73	21	24	45	16	6	22	15	8	23	57	68	125	131.45	34.23	17.49
1834	32	44	76	18	29	47	1	2	3	5	6	11	65	75	140	136.78	34.26	8.04
1835	43	42	85	23	25	48	7	7	14	78	85	163	151.50	31.59	9.21
1836	37	36	73	32	30	62	7	9	16	78	83	161	163.49	57.91	9.78
1837	42	39	81	31	22	53	16	15	31	78	88	166	166.75	31.78	18.58
1838	36	56	92	19	39	58	10	12	22	85	93	178	178.75	27.95	12.30
1839	52	55	107	25	40	65	5	10	15	107	98	205	194.00	29.87	8.24
1840	56	58	114	30	33	63	10	19	29	123	104	227	217.35	25.30	12.88
1841	62	53	115	34	31	65	5	3	8	14	10	24	132	113	245	244.67	26.15	9.80
1842	56	59	115	35	37	72	6	5	11	9	18	27	138	112	250	246.80	29.17	10.94
1843	72	51	123	59	37	96	3	4	7	8	10	18	140	112	252	249.44	36.08	7.21
1844	64	50	114	43	26	69	4	8	12	13	8	21	144	120	264	253.15	27.25	8.29
1845	60	53	113	33	35	68	14	26	40	142	106	248	258.83	26.36	15.50
1846	53	54	107	32	29	61	10	14	14	9	15	24	144	112	256	252.18	24.19	9.51
1847	50	63	113	26	35	61	7	21	21	15	12	27	146	114	260	254.96	23.53	10.58

1848	60	80	140	31	50	81	12	3	15	18	29	47	145	112	257	262.56	30.85	17.90
1849	61	59	120	27	42	69	8	6	14	21	9	30	150	114	264	271.32	25.23	11.05
1850	57	63	120	24	28	52	11	10	21	25	18	43	147	121	268	267.51	18.68	16.07
1851	69	71	140	33	40	81	11	18	29	22	7	29	150	119	269	271.12	29.87	10.69
1852	54	70	124	32	30	62	9	15	24	11	16	27	152	128	280	275.71	22.48	9.79
1853	50	65	115	26	41	67	9	12	21	14	11	25	153	129	282	280.01	23.92	8.92
1854	34	46	80	19	29	48	14	5	19	8	11	19	146	130	276	272.11	16.83	6.80
1855	37	59	96	13	25	38	11	8	19	18	21	39	141	135	276	266.48	13.50	14.63
1856	65	49	114	20	30	50	5	9	14	12	7	19	169	138	307	291.96	17.12	6.50
1857	78	64	142	27	39	66	9	6	15	23	26	48	188	142	330	323.25	20.41	11.75
1858	71	76	147	38	44	82	14	12	26	14	11	25	193	151	344	342.59	23.93	7.29
1859	57	57	114	33	32	65	7	11	18	12	6	18	198	159	357	347.21	18.17	5.18
1860	51	69	120	35	41	76	9	13	22	17	8	25	188	166	354	358.97	20.89	6.96
1861	51	51	102	18	29	47	14	17	31	14	8	22	193	163	356	356.98	13.16	6.16
1862	55	64	119	35	38	73	5	16	21	11	8	19	197	165	362	359.50	23.05	5.02
1863	38	44	82	24	35	59	4	6	10	7	7	14	200	161	361	362.90	29.59	3.85
1864	45	47	92	29	23	52	8	11	19	8	4	12	200	170	370	366.02	25.13	3.27
1865	33	40	73	15	21	36	7	16	23	10	12	22	201	161	362	364.51	20.26	6.03
1866	38	49	87	26	30	56	10	9	19	7	7	14	196	164	340	365.75	23.85	3.83
1867	45	43	88	30	25	55	13	9	22	6	7	13	192	166	358	362.91	24.24	3.58
1868	65	69	134	30	32	62	11	21	32	9	9	18	207	177	380	369.55	27.27	4.87
1869	115	69	184	71	62	133	12	6	18	14	10	24	225	164	389	384.43	21.24	1.60
9 months	87	56	143	108	79	187	56	34	90	13	8	21	135	99	234	363.91	52.06	1.11
Total, ..	2217	2234	4451	1252	1366	2625	328	325	625	487	452	939						

Table XXIII.—Shewing the Duration of the Residence of the 234 Patient remaining under Treatment, 31st Dec., 1869.

						Males.	Females	Total.
From	1 to 2 months,		6	4	10
"	2 to 3 "		7	6	13
"	3 to 6 "		6	5	11
"	6 to 9 "		10	9	19
"	9 months to 1 year,		11	11	22
"	1 year to 18 months,		9	10	19
"	18 months to 2 years,		12	9	21
"	2 years to 4 "		12	6	18
"	4 " to 6 "		8	8	16
"	6 " to 10 "		9	6	15
"	10 " to 15 "		10	7	17
"	15 " to 20 "		11	5	16
"	20 " to 25 "		6	3	9
"	25 " to 30 "		8	6	14
"	30 " and upwards,		10	4	14
TOTALS,						135	99	234



DIETARY.

OF THE

Belfast District Hospital for the Insane.

BREAKFAST.

One quart stirabout (made with 7oz. coarse meal), and three-fourths of a pint of mixed milk (equal parts of new milk and buttermilk),	Males.	Every Morning.
One-and-half-pint stirabout and one-half pint mixed milk,	Females.	

DINNER.

One half-pound loaf bread (or 3lbs. potatoes), 6oz. solid meat, and one pint soup,	Males & Females.	3 days a-week.
One half-pound loaf bread (or 3lbs. potatoes and one quart soup (made with ox heads and bones cut out of meat, vegetables, oatmeal, barley, peas, &c.,	Males.	
One half-pound loaf bread (or 3lbs. potatoes), and one-and-half-pint soup,	Females.	3 days a-week.
Three-fourths of a pound of loaf bread (or 3½lbs. potatoes), and one pint mixed milk,	Males.	1 day a-week.
One half-pound loaf bread (or 3lbs. potatoes), and one pint mixed milk,	Females.	

SUPPER.

One half-pound loaf bread, and three-fourths of a pint of new milk,	Males.	Summer 6 months.
One half-pound loaf bread, and one-half pint new milk,	Females.	
One quart stirabout, and three-fourths pint and new milk,	Males.	Winter 6 months.
One-and-half-pint stirabout and one half-pint new milk,	Females.	

* * Patients who are actively employed are allowed a portion of flesh meat in addition to the soup, five instead of three days in the week. When the state of the patient's health requires it, the diet is changed accordingly, and any other substituted that may be considered requisite by the Medical Officers.

**AN ACCOUNT OF THE RECEIPTS & DISBURSEMENTS OF THE BELFAST DISTRICT HOSPITAL FOR THE INSANE FOR NINE MONTHS,
BEING FROM 1ST APRIL TILL 31ST DECEMBER, 1869.**

THE CHARGE.			THE DISCHARGE.		
Balance of last Account in favour of the Public,	£254	0 1	Paid for Provisions,	...	£2,529 4 11
Received from the Lords Commissioners of her Majesty's Treasury,	Do. Clothing,	...	867 17 5
Do. for Farm and Garden Produce,	£56 5 7	5,826 9 6	Do. Bedding,	...	184 9 9
Do. for Bones, &c.,	20 3 11		Do. Furniture,	...	21 19 4
Do. for Interest,	6 18 0		Do. Fuel and Light,	...	382 15 8
	—	83 7 6	Do. Soap and Candles,	...	100 6 5
			Do. Stationery, Periodicals, Printing, and Advertising,	50 12 11	
			Do. Medicines,	...	25 2 0
			Do. Repairs and Alterations,	...	231 13 1
			Do. Farm and Garden Expenses,	...	20 16 7
			Do. Insurance,	...	25 1 6
			Do. Incidental Expenses,	...	150 15 9
			Do. Salaries and Wages,	...	961 4 8
			Do. Postage,	...	3 16 10
			Balance on hand,	...	£5,555 16 11
					608 0 2
Balance in favour of the Public,	...	£6,163 17 1			£6,163 17 1
		...			
		£608 0 2			

AN ACCOUNT OF THE EXPENDITURE ON AND PRODUCE OF THE LAND OF THE BELFAST DISTRICT HOSPITAL FOR THE INSANE

FOR NINE MONTHS,

BEING FROM 1ST APRIL TILL 31ST DECEMBER, 1869.

Dr.		EXPENDITURE.		PRODUCE.		Cr.
To Seeds and Plants,	£3 11 9	By 18 tons Potatoes used in the Establishment at 3s. per cwt.,	..	£54 0 0
" Spades, Shovels, Hooks, &c.,	2 10 6	" Do. sold at various prices,	..	3 13 8
" New Cart,	9 19 6	" 5 tons Oats used in the Establishment, at 8s. 4d. per cwt.	..	£57 13 8
" Shoeing Farm Horse,	1 6 0	" 4 cwt. 2 qrs. 19 lbs. Wheat sold at various prices,	£18 8 8	41 13 4
" Seed Potatoes,	14 0 0	" Do. used in the Establishment,	4 10 0
To Balance,	£31 7 9	" 7 tons Hay used in the Establishment, at 3s. 6d. per cwt.	..	22 18 8
			328 9 4	" Do. sold,	£24 10 0
				" 14 tons Straw used in the Establishment,	10 18 6
				" Vegetables and Fruit sold,	40 10 0
				" Do. used in the Establishment,	14 2 11
				" Manure, valued at	51 0 0
				" Osiers made into Baskets,	105 12 11
				" Grazing on Ground,	30 0 0
				" Value of Farm Implements,	1 10 0
					..	15 0 0
					..	50 0 0
						£359 17 1
				By Balance,	£328 9 4

LIST OF REPORTS, & c.,

RECEIVED FROM 1ST APRIL TO 31ST DECEMBER, 1869.

Irish.

1. *Armagh District Hospital for the Insane*, Annual Report, 1868, pp. 27.
By Robert M'Kinstry, M.D., Resident Medical Superintendent.
2. *Carlow District Hospital for the Insane*, Thirty-sixth Annual Report, 1868, pp. 23. By Michael P. Howlett, F.R.C.P., Ed., Resident Medical Superintendent.
3. *Castlebar District Hospital for the Insane*, Annual Report, 1868, pp. 12. By Joseph Edmondson, M.D., Resident Medical Superintendent.
4. *Cork District Hospital for the Insane*, Annual Report, 1868, pp. 30.
By Thomas Power, M.D., Resident Medical Superintendent.
5. *District, Criminal, and Private Hospitals for the Insane in Ireland*, Report on (eighteenth) for the year 1868, (Blue Book), pp. 114.
By John Nugent, M.D., and G. W. Hatchell, M.D., Government Commissioners and Inspectors. Presented to both Houses of Parliament by command of her Majesty.
6. *Ennis District Hospital for the Insane*, Annual Report, 1868, pp. 24.
By William Daxon, M.D., Resident Medical Superintendent.
7. *Letterkenny do.*, Annual Report, 1868, pp. 29. By James A. Eames, M.D., F.R.C.S.I., Resident Medical Superintendent.
8. *Mullingar do.*, Annual Report, 1868, pp. 28. By H. Berkeley, M.D., Resident Medical Superintendent.
9. *Sligo do.*, Annual Report, 1868, pp. 39. By John M'Munn, M.D., Resident Medical Superintendent.