

Twenty-fifth annual report / Moultsford Lunatic Asylum.

Contributors

Moultsford Lunatic Asylum.
Tull, Albert R.
Frere, W. E.
Wallis, John A.
Murdoch, J. William A.
Farrar, Augustus E.
Nicholls, Moses.

Publication/Creation

[Place of publication not identified] : [publisher not identified], [1896?]

Persistent URL

<https://wellcomecollection.org/works/u3nr9wz6>

License and attribution

This work has been identified as being free of known restrictions under copyright law, including all related and neighbouring rights and is being made available under the Creative Commons, Public Domain Mark.

You can copy, modify, distribute and perform the work, even for commercial purposes, without asking permission.



Wellcome Collection
183 Euston Road
London NW1 2BE UK
T +44 (0)20 7611 8722
E library@wellcomecollection.org
<https://wellcomecollection.org>


1895—1896.



MOULSFORD LUNATIC ASYLUM.



Twenty-fifth Annual Report.



Digitized by the Internet Archive
in 2018 with funding from
Wellcome Library

<https://archive.org/details/b30310180>

Committee of Visitors.

Appointed for the Year 1896-97.

-
- *† TULL, ALBERT RICHARD (CHAIRMAN),
CROOKHAM HOUSE, NEWBURY.
- *† DUNN, WILLIAM HEW (VICE-CHAIRMAN),
WALLINGTONS, HUNGERFORD.
- † ARCHER-HOUBLON, GEORGE BRAMSTON,
HALLINGBURY PLACE, BISHOP'S STORTFORD.
- † BURBIDGE, JAMES,
STREATLEY FARM, READING.
- † DE VITRÉ, HENRY DENIS,
CHARLTON HOUSE, WANTAGE.
- *† GARDNER, ERNEST,
SPENCERS, MAIDENHEAD.
- * HARRIS, EDWARD JOHN,
THE PARK, ABINGDON.
- * MAJOR, DR. HARRY PIKE,
HUNGERFORD.
- SLADE, GEORGE FREDERICK,
WALLINGFORD.
- † WROUGHTON, PHILIP,
WOOLLEY PARK, WANTAGE.
- YOUNG, CAPTAIN OLIVER, R.N.,
HARE HATCH HOUSE, TWYFORD, READING.
Visitors for the County of Berks.
- BLANDY, HENRY BILSON,
MERTONFORD, WOKINGHAM.
- * RIDLEY, OWEN,
ORWELL HOUSE, READING.
Visitors for the Borough of Reading.
- * JACKSON, JAMES PORTEUS,
NEWBURY.
Visitor for the Borough of Newbury.

* Members of the Finance and Repairs Sub-Committee.

† Members of the Farm Sub-Committee.

OFFICERS.

Medical Superintendent.

J. WM. A. MURDOCH, M.B.

*First Assistant Medical Officer and Deputy
Superintendent.*

EDWIN LINDSAY DUNN, M.A., M.B.

Second Assistant Medical Officer.

THOMAS LEONARD JOHNSTON, L.R.C.P., & S.Ed.

Chaplain.

REV. F. T. STEWART DYER, B.A.

Clerk to the Committee of Visitors.

JOHN THORNHILL MORLAND, M.A.

30, THE FORBURY, READING.

Steward and Clerk of the Asylum.

MOSES NICHOLLS.

Housekeeper.

MISS S. E. BROWNE.

Head Male Attendant.

ALFRED LOCKIE.

Head Female Attendant.

MISS EDITH M. BEARPARK.

REPORT

OF THE

COMMITTEE OF VISITORS.

REVISTA DE HISTORIA

MOULSFORD LUNATIC ASYLUM.

REPORT

OF THE

COMMITTEE OF VISITORS.

To

The Berkshire County Council,

The Council of the Borough of Reading, and

The Council of the Borough of Newbury.

THE COMMITTEE OF VISITORS OF THE MOULSFORD
PAUPER LUNATIC ASYLUM REPORT :—

That during the year the ordinary monthly meetings have been held at the Asylum, and several special meetings have taken place at Reading. The Wards and Dormitories were regularly visited and every opportunity given to the patients for personal intercourse with individual members of the Committee ; the statutory records and certificates of admission of patients have been severally

examined ; they have entered into contracts for the necessary supplies and have discharged those patients who had sufficiently recovered to leave the Asylum. Your Committee can speak most favourably of the cleanliness and order which everywhere prevail, and to the care and kindness bestowed upon the unfortunate patients to make them contented and comfortable. The general fabric has been maintained in its usual good state of repair.

Favoured with the exceptionally mild winter, the Contractors, Messrs. Collier & Catley, of Reading, have made satisfactory progress with the new drainage and sanitary operations as sanctioned by the Council. Professor Corfield is responsible for the plans, and the work is carried out under his supervision. It is to be hoped that this necessary work will prove beneficial to the general health of the inmates and eradicate the constantly recurring epidemics of typhoid fever from which the Asylum has suffered for some years.

During the year there were 8 patients and 2 nurses affected with this disease. With this exception the general health has been on the whole satisfactory considering the rapidly increasing accumulation of aged and feeble patients.

The available accommodation is rapidly diminishing, and as there appears little disposition on the part of the Union Authorities in this County

to afford relief by retaining suitable patients in the Workhouse, your Committee would call the attention of those responsible to send only such patients for whom it is necessary to provide Asylum care and treatment.

Subject to confirmation by the Councils the Visitors have allowed under sec. 280 of the Lunacy Act, 1890, a pension of £26 per annum to Clara Hibberd, who for 13 years has been a nurse in your Asylum. She is wholly incapacitated by physical infirmity from performing her duties.

The Commissioners in Lunacy visited the Asylum on June 12th and made their report in the Visitors' Book, a copy of which is herewith appended. Their recommendations have been considered by your Committee.

Your former Chaplain, the Rev. A. E. Farrar, has been appointed to the Chester County Asylum, and has been succeeded by the Rev. F. Stewart Dyer. This is the only change amongst the officers.

Much additional responsibility has been incurred by the Staff during the extensive sanitary operations going on in their midst, and the Superintendent reports very favourably of the manner in which they have performed their trying duties under exceptional difficulties and inconvenience.

The Committee have to deplore the loss of one of their colleagues, Mr. Andrewes, who for many

years had been one of the representatives of the Borough of Reading, and had always taken the greatest interest in the welfare of the Asylum.

The cost of repairs has been £815 11s. 7d., and of the Additions, Alterations, and Improvements £222 12s. 5d., for the year ended 31st of March, 1896, of this latter sum £204 19s. 11d. has been spent on the re-arrangement of the drains, &c., at the Farm and Dairy, and in improving the W.C. accommodation at the cottages occupied by some of the attendants and artizans. The amount spent on the general drainage and sanitary works, out of the sum voted by the Bodies in Union is, so far, £2,000.

Lodging-money has been earned for the same period from the Boroughs of Reading and Newbury to the amount of £306 16s. 0d. This, with the amount of profit on out-county, private and criminal patients, viz. :—£346 16s. 2d., has been applied in aid of the Repairs Fund.

The principal Repairs, Renewals, and Improvements carried out during the year have been :—

The cleaning, painting, and decorating of Male Wards Nos. 1, 4 and 5, and Female Wards Nos. 4, 5 and 7.

Painting outside wood and ironwork of Farm Buildings and the completion of the external painting of the Asylum.

Additional W.C. accommodation and improving existing W.C.'s. at the Star Cottages.

Several of the wooden floors in W.C.'s. replaced by tiles.

Re-pointing of the Airing-Court Walls.

Building new oven and bench of five retorts at Gas Works.

Fixing new coil to furnace of Female Extension Heating Chamber.

Altering suction pipes between steam pumps and well-borings.

Fixing new coil in feed-water tank of steam boilers.

Re-laying drains of Farm Buildings, the Dairy, and Bailiff's and Gasman's Cottages.

The patients on the books of the Asylum on the 31st March, 1896, were :—

	M.	F.	TOTAL.
From Unions in Berkshire	164	217	381
„ County of Berks	4	1	5
„ Parishes in the Borough of Reading	53	66	119
„ „ „ „ Newbury	25	15	40
„ Unions not in the County of Berks	3	2	5
Private Patients	5	5	10
Criminal Patients	2	0	2
Totals ..	256	306	562

Since the 1st of April 1896, there have been admitted Pauper Patients 54 Males and 65

Females, total 119; and Non-pauper Patients, 4 Males and 4 Females, total 8. Of the Pauper Patients 3 Males and 4 Females were received from other Asylums.

The discharges have been:—

	M.	F.	TOTAL.
Of Patients recovered	23	22	45
„ relieved	1	6	7
„ not improved	6	11	17
Totals ..	30	39	69

Of these discharges 4 Males and 5 Females were removed to other Asylums.

22 Males and 22 Females have died, total 44.

Of the number of Pauper Patients belonging to the Bodies in Union there has been an increase of 5 Males and 7 Females, total 12.

The weekly charge for maintenance of Pauper Patients has been 7s. 10½d. throughout the year.

The Establishment consists of:—

A Medical Superintendent	1
Two Assistant Medical Officers	2
A Chaplain... .. .	1
A Clerk to the Visitors	1
A Steward and Clerk of the Asylum	1
A Housekeeper	1
A Head Male Attendant	1
A Head Female Attendant	1
A Superintendent's Clerk and Organist	1
A Stores Assistant	1

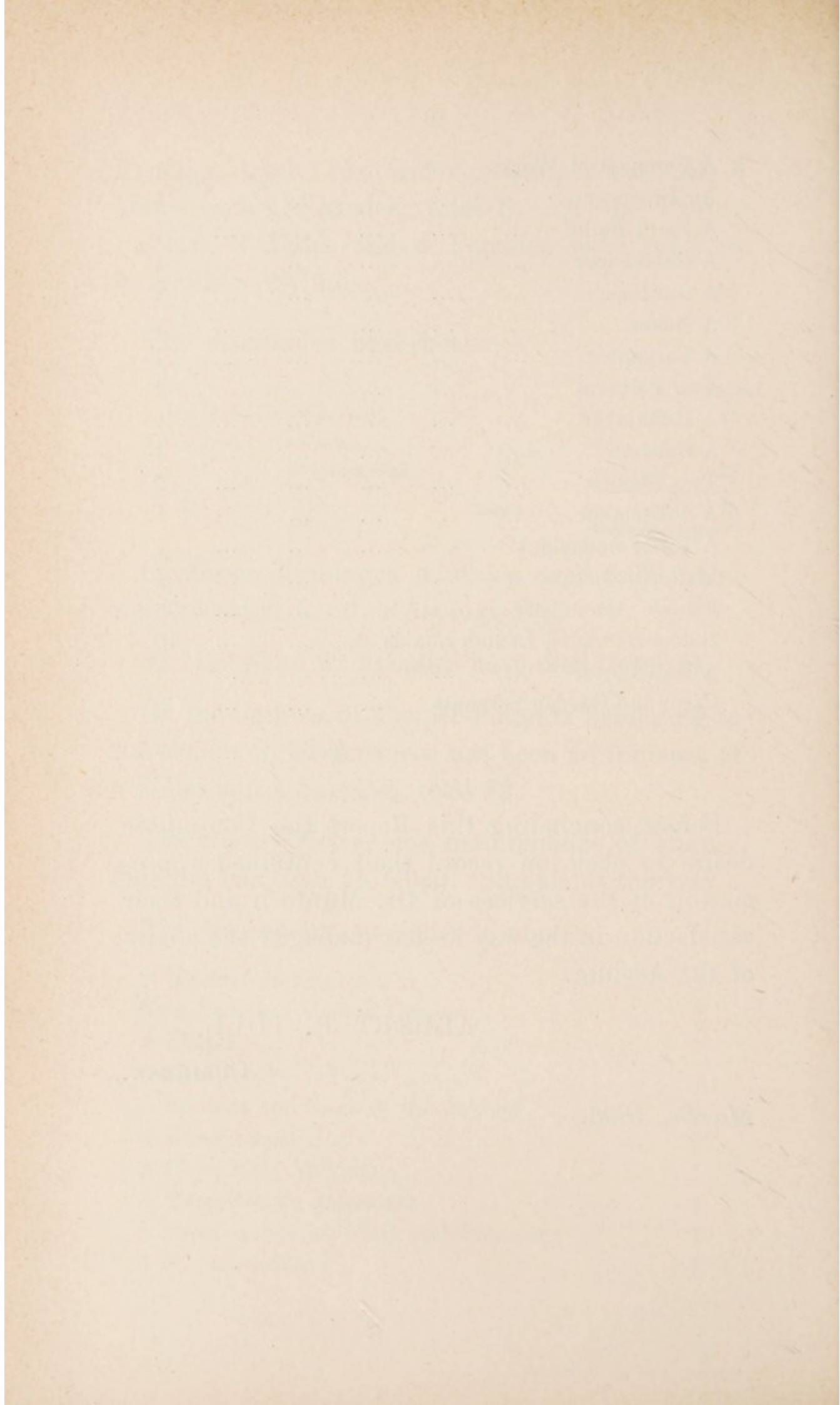
A Foreman of Works	1
An Engineer	1
A Farm Bailiff	1
A Gatekeeper	1
A Gardener	1
A Baker	1
A Carpenter	1
Two Painters	2
A Bricklayer	1
A Gasman	1
Two Stokers	2
A Shoemaker	1
A Tailor Attendant	1
Male Attendants	24
Female Attendants	28
Indoor Servants, Laundrymaids, &c.	10
A Hall Porter	1
Farm and Garden Servants	8
					—
			Total	...	97
					—

Before concluding this Report the Committee desire to place on record their continued appreciation of the services of Dr. Murdoch and their satisfaction in the way he has managed the affairs of the Asylum.

ALBERT R. TULL,

CHAIRMAN.

March, 1896.



REPORT

OF

TWO COMMISSIONERS IN LUNACY,

12TH JUNE, 1895.

REPORT

TWO COMMISSIONERS IN LIAISON

1900

REPORT
OF
COMMISSIONERS IN LUNACY.

BERKS ASYLUM,

June 12th, 1895.

Since our Colleagues were here last September the changes as follows have occurred:—

	M.	F.	TOTAL.
Admitted	41	46	87
Discharged	20	20	40
,, of whom 'recovered'	15	15	30
Died	19	21	40

There are to-day on the books of the Asylum 562 patients, of whom 251 are males, 6 men and 3 women are private patients, one of the male paupers has recently been removed here from Virginia Water. He was once a large farmer, but he has been, owing to agricultural depression, obliged to sell most of his land, and being unable to pay two guineas a week for his maintenance at that Hospital he was brought here. He much feels his present surroundings, and we regret that no reduction was able to be made in the cost for his maintenance at the above named Hospital, as he appears to us to be a fitting case to be looked after at a reduced rate in a charitable Institution. There are also 6 patients chargeable to out counties. The charge per head for Berkshire patients is weekly $7/10\frac{1}{2}$, for private patients

17/6, and for out county patients 14/-. The per centage of recoveries upon admissions for the past year was 40·1, and for the same period the per centage of deaths calculated upon the average number resident was 9·6. One man was absent on trial, but we saw all the rest of the patients and gave to all opportunity of telling us their wishes and complaints. It is satisfactory to state that except the usual complaints of undue detention none were made to us, and we referred all those who complained of their detention to the Committee, telling them that with the Committee rested the power of discharge. The dormitories, beds and bedding were in excellent order. The day rooms were clean, bright and cheerful. The means of amusement seemed sufficient. The dress of the patients was neat and clean, in a word the general state of the Asylum was creditable to those in charge. We saw the dinner served in the dining hall. It was substantial and liked. Water is the beverage served to all at that meal, but beer is given at lunch time to the workers. We hope before long that the stunted forks so likely to prove a dangerous weapon in the hands of violent patients will be done away with, and ordinary forks of white metal substituted. There are 82 patients suffering from epilepsy, 6 from general paralysis, and 28 are considered to be actively suicidal. Eleven wet beds were reported last night as against 27 reported to our Colleagues last year. Only one patient was seen by us wearing a strong exceptional dress. No mechanical restraint has been recorded. Seclusion has been employed in the case of 3 men and 2 women on 15 and 12 occasions, and for 123 and 150 hours respectively. The staff of attendants returned to us are in the numbers as follow :—21 attendants on day duty, and 4 on night duty on the male side, and 23 nurses on day and 4 at night on the female side. There are to-day, however, 20 men and 21 women on duty in the wards, that is one attendant for $12\frac{1}{2}$ male patients, and one nurse for about $14\frac{3}{4}$ female patients. This staff is in our opinion too weak, especially

so in the epileptic and infirmary wards on each side. Twenty-four of the attendants have not seen much service in the Asylum. Their mess rooms, which serve also as sitting rooms, might, we think, be made more comfortable. Keys are given to 4 of the artisans admitting them to the female wards. This is in our opinion a practice fraught with danger, and is now almost universally disallowed. Dr. MURDOCH and the Committee do not share our opinion, but were we not to mention the subject with strong disapprobation, we should feel that if what is politely termed an accident did occur, we were greatly to blame for not having remonstrated urgently on the matter. One male and 2 female attendants have been discharged for misconduct. The buzzer has now been connected to the female side so as to avoid the necessity of nurses having to go on the male side by night in case of fire. In the main building 9 men and 14 women were in bed, and 1 man and 2 women suffering from Typhoid in the Isolation Hospital, which has recently been finished and brought into use. There are here so many old and feeble cases who are in bed solely from old age, that it seems to us to be a question whether an Infirmary should not be arranged for the feeble and infirm on each side, and the Infirmary proper be used only by the patients acutely and seriously ill. No bed sore at present exists, and only one was observed at *post mortem* examination, which examination was made in all but 5 instances. There were 2 cases of Typhoid Fever where Dr. MURDOCH deemed it prudent that autopsy should not be made. The cases of Typhoid Fever and dysentery arising here from time to time during the past 10 years have occurred more frequently of late, there having been no less than 12 cases since the last visit. Ten occurred in patients (4 males and 6 females), and 2 nurses who contracted it whilst nursing the patients. Many serious leakages and defects were discovered in the sewers, and the Committee thereupon consulted Professor CORFIELD as to the cause of this disorder. He made an

exhaustive report, which in fact amounted to a recommendation to renew the entire drainage system. This is about to be carried out by the Committee, at a cost of £4000. The water which had been suspected before and tested, was again tested last March by Dr. CORFIELD and Mr. FISHER the Analyst for this County. This water was drawn from the 80-foot well, and the analyses were widely different. Dr. CORFIELD concluded that the water was polluted, whilst Mr. FISHER considered the water to be perfectly good. In these circumstances a further analysis is proposed to be made by Dr. FRANKLAND. We think that as these analyses were made in March much valuable time has already been lost, and the question as to the water should have been long ago decided, and we hope no further delay will be permitted. It is a matter of great regret that the water supply from the 2 wells cannot be furnished to the Asylum separately, and we hope some arrangement may be speedily made whereby the pumps can work from either well.

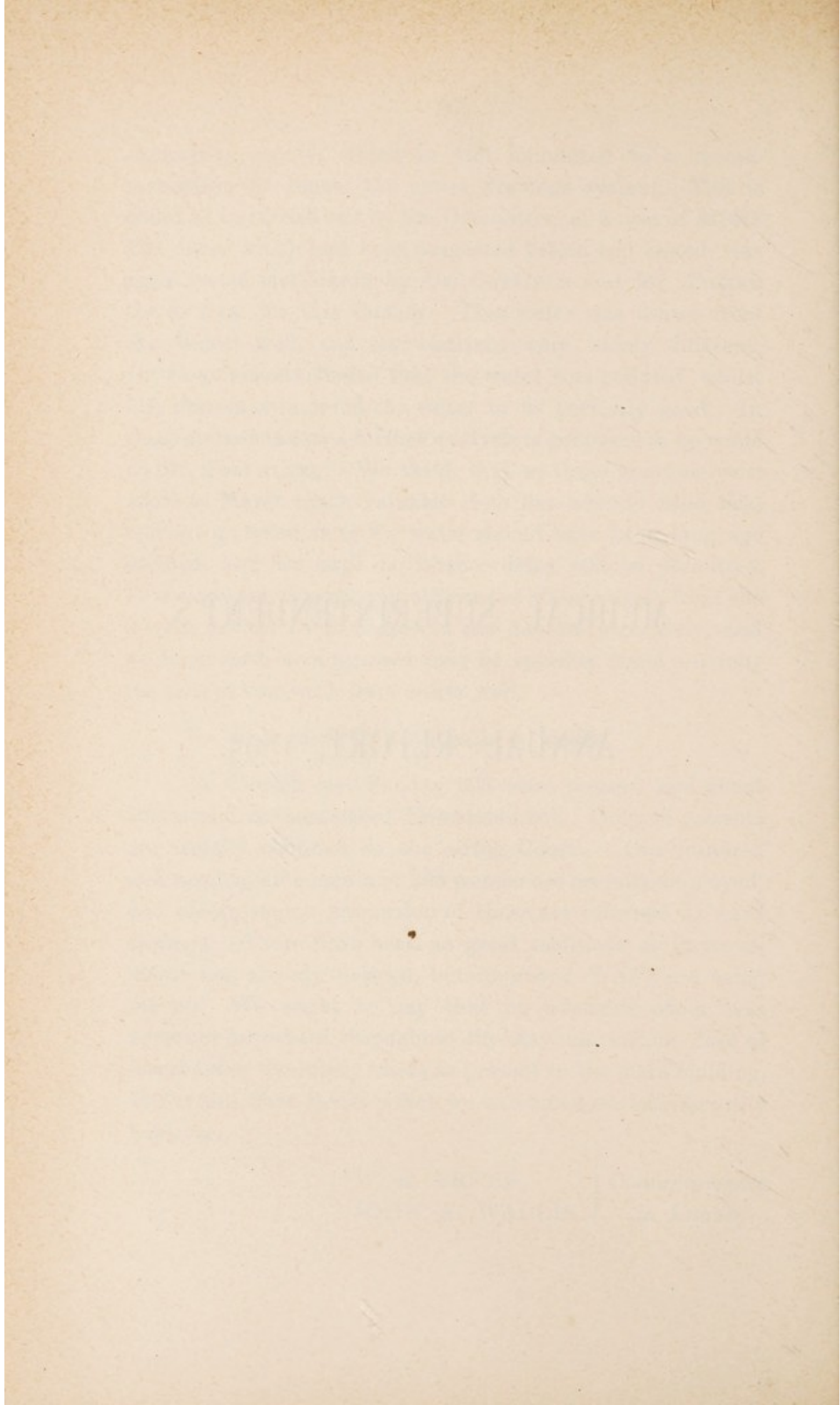
No other cause of death calls for notice.

At Church last Sunday 328 were present, and about 286 attend the associated Entertainment. Only 46 patients are usually confined to the airing Courts. One hundred and seventy-nine men and 228 women are usefully employed, and not an undue proportion of these are returned as ward cleaners. There have been no great additions or improvements not already noticed, but improved W.C.'s are being set up. We ought to say that no offensive odour was apparent anywhere throughout the Asylum, and no case of diarrhœa or dysentery exists at present in the main building. The recent Case Books which we examined are satisfactorily kept up.

W. E. FRERE, } Commissioners
JOHN A. WALLIS, } in Lunacy.

MEDICAL SUPERINTENDENT'S

ANNUAL REPORT, 1895.



TWENTY-FIFTH ANNUAL REPORT
OF THE
MEDICAL SUPERINTENDENT.

To the Committee of Visitors of the Berks Reading and
Newbury Lunatic Asylum.

GENTLEMEN,

I have the honour of laying before you my Annual Report on the condition and general management of your Asylum for the year 1895, together with the customary Statistics.

The following table will show the admissions, discharges and deaths :

	Males.	Females	Total.
In Asylum January 1st, 1895	257	297	554
Admitted	52	66	118
Total cases under treatment	309	363	672
Discharged	29	37	66
Died	25	23	48
Average daily number resident during } the year }	252	305	557
Remaining December 31st, 1895	255	303	558

The above figures show an increase of 4 at the end of the year ; there is, however, a decrease of 1 in those patients

chargeable to the Bodies in Union. There are 11 private, 1 criminal and 5 out-patients remaining in the Asylum. Although the average daily number resident during the year was 557, yet during the whole of November the daily average was 567 and the patients resident reached the high number of 570. The total number under treatment for the year was 672, giving an increase of 21 as compared with last year's figures.

Admissions.

The number of Admissions was again unusually high, being in fact the highest reached in the history of the Asylum. Four patients were transferred from the private or criminal class to the pauper class, and one female was discharged and formally re-admitted owing to the lapse of her retention order under the provisions of that most uncalled for and vexatious Section 38 of the 1890 Lunacy Act. There were seven patients transferred to this Asylum from other Asylums, these having become adjudicated to Unions in this County.

Admissions from relapse were unusually numerous, no less than 20 having been previously inmates of this Asylum, and discharged one or more times recovered; eleven have been twice so discharged and seven many times. The cases are still of an unfavourable type both as to bodily health and anticipation of ultimate recovery. No less than 31 were in a very feeble and exhausted condition on admission and 62 were in poor health. Of the 118 cases the prospect of recovery in 31 (26 per cent.) was good, doubtful in 11 and in 74 (62 per cent.) no reasonable hope could be entertained. The latter number consisted of 8 epileptics, 18 idiots and imbeciles, 8 general paralytics, with the usual senile cases and other forms of mental unsoundness unlikely to yield to treatment. We begin the current year with 19 possibly curable out of a total of 558 patients.

Causation.

There is nothing new to record in the way of causation. Heredity as usual stands out most prominently. In 47

patients or 40 per cent. of the admissions, this solely or in combination was the ascertained factor. In my Report of last year this cause was assigned in only 29 per cent., and I then stated that I felt sure that this figure was far below the real state of matters in this County. It is most in evidence amongst the females, no less than 50 per cent. being tainted by family neuroses. This is a serious and far-reaching state of affairs, as although many of them temporarily recover they invariably return to the Asylum (see Table 1A), frequently in the intervals giving birth to those who will doubtless swell the prospective returns of insanity. Some authorities recommend strong measures to be adopted by framing a law to prevent the marriage of people so tainted. Such an idea is, I conceive, somewhat Utopian, but there is little doubt that much good could be effected by the judicious and systematic education of our villages, where this evil is chiefly propagated. Intemperance in drink accounts for 8 cases only; this is not so prolific a cause directly of insanity as it is indirectly, being responsible for many of the mental disorders in the offspring of such parents, and thus handed down to posterity as a hereditary transmission. As evidence of this seven patients were admitted with a history of intemperance in one or other of the parents.

Of the 66 Discharges 42 were recovered and 24 relieved or not improved; of the latter six were removed to the Reading Union, under Sec. 24 of the Lunacy Act, for detention as unrecovered harmless lunatics. Had it not been for the relief thus afforded we would have ended the year with an increase of ten patients, which is our average annual increase for the past ten years. The percentage of recoveries calculated on the admissions but excluding all transfers is 39·6, the proportion of males being 51 per cent. and 31 per cent. for females. This is a most unusual result in that the hope of recovery in women is much higher than in men and is accounted for by the addition of 13 male patients who had

Discharges.

recovered this year but who were admitted during the later months of 1894 and were then considered to be curable.

Deaths.

The deaths numbered 48 and were all from natural causes. This gives a percentage on the daily average resident number of 8.6, which is below the average of County Asylums. As is usual the death rate amongst the men is higher than in women. The average age at death was 55 years, and 28 died over 60 years of age.

Casualties.

The year passed, I am pleased to report, without any serious casualty. There was no suicide, neither was there any escape, which is unusual. The Coroner held one inquest only, and that on the body of G. B., a healthy middle-aged female who worked in the kitchen, where she fell and fractured the bones of her leg. Eight days after the accident she had an apoplexy and quickly succumbed. The verdict was according to the medical evidence, viz. "death from natural causes." Besides the above there were three cases of fractured bones of the forearm, one of the clavicle and a dislocation at the shoulder; all were accidentally sustained and without implication of a second person and all made good recoveries. Considering the unusually large number of epileptics congregated here (78), and the crowded state of the Hospital Wards with frail senile cases, together with numerous suicidal cases requiring constant supervision, this immunity from serious accident is gratifying, and is evidence of the care and vigilance exercised on the part of the Nursing staff in the management of the patients.

Operations.

There were two major operations performed by the Medical staff for the relief of strangulated hernia; both were cured of their ruptures. In one of these, and that the only case in which mechanical restraint was used during the year, the patient's arms were restrained by sleeves for 48 hours to prevent his interfering with the dressings after the operation.

The health of the patients has been generally satisfactory, but as was to be expected during the severe winter, there were many cases of sickness, chiefly pulmonary, amongst the frail and aged patients who are rapidly accumulating here. Many of the hospital beds on both sides of the Asylum are constantly occupied by the aged and feeble for whom no special treatment is required to the disadvantage of the medically sick. If this state of matters continues it will shortly be an urgent question how we are to provide sufficient nursing accommodation for such as require medical attention. In these Wards the staff has been of necessity increased to cope with the excessive strain in attending to this mass of helpless humanity who can do little or nothing for themselves but in many cases only resist everything that is being done for them.

General
Health.

There was only one case of erysipelas, and that but a slight one. This affection is now seldom seen here, which is in great contrast with the state of matters some years ago, and may be accounted for by the more efficient ventilation and heating of the Wards and Dormitories. I cannot say as much in the case of typhoid fever, which is becoming more in evidence. There were 3 male and 5 female patients, also 2 nurses, who became affected during the year. All, I am glad to say, made good recoveries under the care of our own nurses. The epidemic extended over a period of four months, during which time every case was isolated in the new Infectious Hospital which was used for the first time. It proved of the utmost convenience as may be supposed when I state that 3 females, 2 males and the 2 nurses were under treatment at one and the same time. Without such a building, which has proved to be an absolute necessity, it would have been impossible in our present crowded state to have provided isolation in the Asylum for such a number without very grave risk to the other inmates.

Infectious
Disease.

Water Supply.

The source of the typhoid infection, which is not confined to any one part of the Asylum, is still a matter of conjecture. The drains are leaky and polluting the subsoil, and the more they are exposed as the work of relaying new ones progresses the greater the defects become apparent. Suspicion has been cast upon our water supply by Professor Corfield after chemical analysis, but the Bacteriological examination was negative. The County Analyst, after examination of samples drawn at the same time, pronounced both waters to be of excellent quality and fit for all purposes of household use. This opinion was strengthened by Professor Frankland, who although stating that the waters were of excellent quality and free from evidence of sewage pollution drew attention to the fact that the water from the newer and deeper boring is of a softer and purer character and recommends its use solely. Accordingly, in the Autumn the connections of the borings with the pumps were rearranged, and by the introduction of additional valves we are now able to draw upon either or both borings at will. The old boring is in connection with the Fire Engine, which, however, can also draw from either or both wells. It is too early to form any opinion as to what effect this alteration in the water supply will have upon the continuance of the typhoid fever, but it is almost inconceivable that contamination could arise from our drains by percolating the several strata of solid stone through which the borings pass. It is worth noting that after pumping from the deeper boring for 4 hours the level of the water in the old boring falls 2 inches and remains at this level irrespective of further prolonged pumping. This may suggest a possible communication in the sources of the water, although the borings tap different strata. Further analysis, which I hope will shortly be made, will probably determine the matter.

New Drains,
&c

Professor Corfield completed his examination of the drains and sanitary appliances of the building upon the

condition of which he made an exhaustive report. As a result of his recommendations a contract was entered into for the carrying out of the work under his supervision. The following is a resumé of the work contracted for:—New drains laid on and embedded in concrete with inspection chambers at junctions and change of direction. Where it is absolutely necessary to go under the building, heavy cast-iron pipes, $\frac{3}{4}$ of an inch thick, with special joints, are provided also to be laid on and partially embedded in concrete. New wash-down pedestal closets of the “column” pattern with lead traps which have an inspection cap for purpose of removing obstructions which are so frequent in the Female Wards of Asylums generally. New lead soil and ventilating pipes to be erected where necessary, and existing soil pipes to be lengthened so as to stand 3 feet above the ridge of the roof. Sink, lavatory and bath wastes to be ventilated and anti-syphoned and to discharge over syphon gullies. The present grease traps to be replaced by grease gullies with automatic flushing cisterns. All urinals to be wholly removed, and balanced seats provided to the closets where necessary; this will be of great benefit and will avoid the annoying odour associated with urinals, no matter what attention be given to them.

Each length of drain and inspection chamber has been submitted not less than three times to the water test, and such testing is carried out in my presence and that of your foreman of works, so that the utmost care is taken to have severe tests and sound work, the final testing is to be made under Dr. Corfield's supervision. The lead wastes and soil pipes are similarly tested by water. The drain from the Farm Cottages and Dairy has been laid under a separate contract. Messrs. Collier & Catley, of Reading, are the contractors, and so far as progress has been made I can speak favourably of the high character of their work and to the evident desire to leave a thoroughly sound job. They

have been ever ready to arrange the operations to suit the exigencies of the management, and thus to lessen the anxieties and difficulties consequent on such extensive works being in progress in our midst.

Treatment.

There is no relaxation in our efforts to promote recovery by every possible means, and for those unfortunate patients who can only hope for release by removal or death, all our exertions are devoted to make their existence as happy and little burdensome as their surroundings will permit. Good food, appropriate occupation, recreation and amusement, and cheerful surroundings with kind attention and encouragement are our chief resources. After all, the result must very largely depend upon the character and efficiency of the Nursing staff, whose influence upon the patients individually and collectively is of the greatest importance. Every effort is made to obtain the services of cheerful, reliable and intelligent attendants and nurses, but the inducements are far below those of more agreeable or less exacting and trying work. Each member of the Nursing staff is trained by ourselves, being engaged without any nursing experience, and it must be our aim to retain those who after probation prove suitable. This can only be done by studying their comfort and offering inducements commensurate with the nature of their work. Only those who come into contact with the patients, as you do monthly, can appreciate the constant mental and physical strain, worry, and even personal danger inherent to their surroundings, and the great want of diversity in their lives. It is to the interests of the insane that changes should be less frequent than they generally are, and that attendants should have a position compatible with the importance of their calling. To effect this and as an incentive for suitable persons to enter and remain in the service, there could be no better inducement than the *fact of being certain of obtaining a pension* when they are no longer able to bear the incessant

strain of their work. On account of the nature of their calling the longevity of attendants on the insane is comparatively short, and the number of mental and physical break-downs is high, and I consider such people are entitled to at least the same consideration as is meted out to servants of other public services. This principle is now being generally accepted and acted upon by County Councils on the recommendation of their Asylum Sub-Committees.

There have been the usual changes amongst the Subordinate staff. Some left to be married, others resigned tired of the work or on account of break-downs in health, and some were called upon to resign as being unsuitable. Two only were dismissed.

Junior Staff.

The Commissioners in Lunacy visited the Asylum on 12th June, 1895, and left a Report in the Visitors' Book, a copy of which is herewith appended.

Commissioners in Lunacy.

The working of the several departments has gone on smoothly and satisfactorily. During the severe winter constant attention was necessary to keep our sanitary arrangements in working order; frozen pipes were the order of the day and kept our artizans fully employed in thawing and repairing, still, on the whole, we escaped with but trifling damage. The most serious was the bursting up of the soft water pumps which are placed under ground in an exposed position.

The usual painting, cleaning, and decorating of the Wards and dormitories has been undertaken by the staff, and in the summer the outside woodwork of the farm buildings, gas house and north west front of the Asylum has been attended to. The inside drains of the cowhouse and stalls have been removed and replaced by surface drainage. Several wood floors of W.C. blocks have been replaced by tiles. A new oven and a bed of 5 retorts has been built in

the gas house. The closet cesspools at the Star Cottages have been removed, earth closets having been adapted to the existing buildings and three new blocks constructed.

Amongst the Officers I am pleased to say that there has been no change, and I desire to acknowledge with grateful thanks the hearty co-operation received from one and all. The Rev. A. E. Farrar, who for the past 6 years has been your chaplain leaves us in a few days on his appointment to the Chester County Asylum. He carries with him the good wishes of all the officers and staff with whom he has worked in complete harmony and accord. Personally I tender my sincere thanks for his invaluable assistance, freely given and highly appreciated, at our weekly and dramatic entertainments.

It is with regret I record an accident to Mr. Welch, who has been your head gardener since the opening of the Asylum. Whilst attending to the propagating frames in October he fell and sustained a fracture of the thigh close to the knee; the bone has made an excellent union but it will be some weeks before he is able to resume duty.

I beg to conclude this Report with a respectful expression of my best thanks for your continued support and confidence, which assists me so much in promoting the welfare of your Asylum and in carrying out the duties of my office.

I am,

Mr. Chairman and Gentlemen,

Your obedient servant,

J. WM. A. MURDOCH.

January 17th, 1896.

APPENDIX
TO THE
MEDICAL SUPERINTENDENT'S REPORT
FOR 1895.

APPENDIX

MEDICAL SUPERINTENDENT'S REPORT

FOR 1898

ASYLUM MEDICAL STATISTICS, 1895.

TABLE I.

Showing the Admissions, Re-admissions, Discharges and Deaths during the year ending 31st December, 1895.

				Males.	Females.	Total.
In the Asylum, 1st January, 1895				257	297	554
Cases admitted :				M.	F.	T.
First Admissions	40	49	89			
Re-admissions owing to relapse	7	13	20			
Re-admissions not owing to relapse	5	4	9			
Total cases admitted during the year ..				52	66	118
Total cases under care during the year ..				309	363	672
Cases Discharged and Died :				M.	F.	T.
Recovered	23	19	42			
Relieved	1	8	9			
Not Improved	5	10	15			
Died.. ..	25	23	48			
Total cases Discharged and Died during the year				54	60	114
Remaining in the Asylum, December 31st, 1895				255	303	558
Average numbers resident during the year				252	305	557
Persons* under care during the year† ..				306	359	665
Persons admitted				50	64	114
Persons recovered				23	19	42
Transferred from other Asylums				4	3	7
" to "				3	5	8

* Persons, *i.e.*, separate persons in contradistinction to "cases" which may include the same individual more than once.

† Total cases, minus re-admissions of patients discharged during the current year.

TABLE IA.

Showing (1) the Previous Attacks among Persons admitted during the year 1895 and (2) the number of Times they had previously recovered in this or any Asylum.

1. Number of Previous Attacks.	PERSONS.		
	Males.	Females.	Total.
Have had 1 Previous Attack	7	15	22
.. .. 2 Previous Attacks	4	7	11
.. .. Many Previous Attacks.. ..	3	4	7

2. Number of Times Patients Recovered.	In this Asylum.			In other Asylums.		
	M.	F.	TOT.	M.	F.	TOT.
Once	2	9	11	1	5	6
Twice	1	3	4	1	..	1
Several Times	4	1	5	..	2	2

TABLE IIa.

Showing the Admissions and Recoveries of Persons from the 30th of September, 1870, to the present date, December 31st, 1895. (Twenty-five years and three months).

	Males.	Females.	Total.
Persons admitted during the twenty-five years and three months	1136	1262	2398
*Persons discharged recovered during the same period, being 31.02 per cent. of persons admitted	321	423	744
Of whom were re-admitted relapsed ..	57	109	166
Recovered persons who have not relapsed	264	314	578
Relapsed persons discharged recovered ..	22	60	82
Net † recovered persons being 27.5 per cent. of persons admitted	286	374	660

* Persons *i.e.*, separate persons in contradistinction to "cases" which may include the same individual more than once.

Re-admission applies only to re-admission into this Asylum.

† *i.e.*, Recovered persons sane at the present time so far as the Asylum statistics show.

TABLE III.—Showing the Admissions, Discharges, and Deaths, with the mean Annual Mortality and proportion of Recoveries per cent. of the Admissions for each Year since the opening of the Asylum on the 30th September, 1870.

YEAR.	Admitted.			Discharged.						Died.			Remaining on 31st of December, each year.			Average numbers resident.			Percentage of Recoveries on Admissions including all transfers.			Percentage of Deaths on average numbers resident.					
	M.	F.	Tot.	Recovered.			Relieved.			Not Improved.			M.	F.	Tot.	M.	F.	Tot.	M.	F.	Tot.	M.	F.	Tot.			
				M.	F.	Tot.	M.	F.	Tot.	M.	F.	Tot.															
3 Mos. 1870...	50	62	112	1	..	1	49	62	111	42	53	95	2.3	..	1.0	
1871...	85	85	170	1	13	7	20	116	132	248	80	95	175	4.7	8.2	6.4	16.2	7.3	11.4	
1872...	47	42	82	3	1	4	3	..	3	..	3	14	17	31	124	139	263	120	138	258	40.4	40.4	40.4	11.6	12.3	12.0	
1873...	35	42	77	13	1	26	8	..	7	15	7	14	14	28	123	145	268	129	143	272	37.2	30.9	33.7	10.8	9.0	10.2	
1874...	42	59	101	7	4	31	4	7	11	7	23	25	48	73	127	145	272	122	146	268	16.6	40.6	30.6	18.8	17.1	17.9	
1875...	32	39	71	8	1	24	2	5	7	7	18	11	29	48	130	150	280	128	155	283	25.0	41.0	33.8	14.4	7.0	10.2	
1876...	43	56	99	11	1	33	1	4	9	9	12	19	31	42	145	159	304	134	157	291	25.5	39.2	33.3	8.2	12.1	10.6	
1877...	43	46	89	15	1	32	4	3	7	16	29	14	13	27	139	159	298	148	158	306	34.8	36.9	35.9	9.4	8.2	8.8	
1878...	40	47	87	11	2	31	2	3	5	6	12	14	17	31	146	160	306	145	157	302	27.5	42.5	35.6	9.6	10.8	10.2	
1879...	40	45	85	20	1	41	1	3	4	3	8	22	9	31	140	167	307	143	163	306	50.0	46.7	48.2	15.3	5.5	10.1	
1880...	89	105	194	14	20	34	6	4	10	1	2	16	19	35	192	228	420	157	180	337	15.7	19.0	17.5	10.1	10.5	10.3	
1881...	46	65	111	17	18	35	2	23	17	40	196	256	452	196	244	440	36.9	27.6	31.5	11.7	6.9	9.0	
1882...	70	68	138	13	17	30	1	2	4	2	4	23	26	55	222	278	500	201	264	465	18.5	25.0	21.7	14.4	9.8	11.8	
1883...	46	54	100	17	18	35	4	4	8	1	1	28	24	52	218	286	504	221	283	504	36.9	33.3	35.2	12.6	8.4	10.3	
1884...	45	43	88	19	31	50	2	2	4	21	11	32	21	52	190	264	454	204	280	484	42.2	72.0	56.8	15.1	7.5	10.7	
1885...	45	51	96	15	20	35	6	3	9	2	4	16	20	36	196	270	466	200	266	466	33.3	39.2	36.4	8.0	7.5	7.7	
1886...	45	54	99	8	16	24	3	1	4	2	1	14	14	28	214	292	506	207	283	490	17.7	29.6	24.2	6.7	4.9	5.7	
1887...	53	44	97	11	23	34	9	12	21	2	3	36	27	63	209	273	482	207	284	491	20.7	52.3	35.4	17.3	9.5	12.8	
1888...	43	59	102	12	23	35	3	7	10	1	2	27	14	41	209	287	496	210	280	490	27.9	39.0	34.2	12.8	5.0	8.3	
1889...	37	60	97	18	31	49	6	6	12	1	1	9	19	28	212	290	502	214	294	508	48.6	51.6	50.5	4.2	6.4	5.5	
1890...	43	56	99	11	20	31	1	7	8	5	3	20	20	40	218	296	514	218	295	513	25.5	35.7	31.3	9.2	6.7	7.7	
1891...	48	40	88	13	11	24	2	10	12	3	1	22	18	40	226	296	522	225	299	524	27.1	27.5	27.3	9.7	6.0	7.6	
1892...	49	65	114	19	22	41	..	2	8	2	10	14	24	38	234	311	545	234	303	537	38.7	33.8	35.9	5.9	7.9	7.0	
1893...	44	62	106	14	24	38	3	8	11	3	8	18	31	49	240	305	545	237	304	541	31.8	38.7	35.8	7.6	10.2	9.0	
1894...	60	57	117	14	29	43	2	4	6	8	1	19	31	50	257	297	554	247	604	551	23.3	50.8	36.7	7.6	10.2	9.0	
1895...	52	66	118	23	19	42	1	8	9	5	10	25	23	48	255	303	558	252	305	557	44.2	28.6	35.6	9.9	7.5	8.6	
	1272	1472	2744	346	499	845	66	99	165	113	91	492	480	972													

NOTE.—The Admissions of 1880 include 92 Patients belonging to Unions in the County of Berks who had previously been maintained in other Asylums, and the Admissions of 1882 include 31 Patients belonging to the County of Surrey.

The percentage of Recoveries upon the Admissions, deducting transfers from other Asylums and from Class to Class, is 39.6 per cent.

TABLE IV.—Showing the History of the Annual Admissions since the opening of the Asylum on the 30th Sept., 1870, with the Discharges and Deaths, and the Numbers of each Year remaining on December 31st, 1895.

YEAR.	Admitted.			Of each Year's Admissions, Discharged and Died in 1895.						Total Discharged and Died of each Year's Admissions to December 31st, 1895.						Remaining of each Year's Admissions on Dec. 31, 1895															
	New Cases.		Re-lapsed Cases.	Recovered.		Not Improved.		Died.		Recovered.		Not Improved.		Died.		M.	F.														
	M.	F.	M. F.	M.	F.	M.	F.	M.	F.	M.	F.	M.	F.	M.	F.	M.	F.														
1870	50	62	1	1	2	3	5	1	1	2	8	15	23	28	33	61	11	10	21								
1871	85	84	15	27	2	5	7	22	16	38	38	37	75	11	12	23								
1872	44	38	16	22	3	3	1	5	1	6	19	18	37	4	..	4								
1873	35	40	11	15	2	6	4	2	1	8	16	12	28	4	..	7								
1874	39	49	8	23	4	4	4	3	4	7	25	26	51	2	6	8								
1875	29	36	11	16	27	5	5	2	1	3	19	14	33	..	6	3								
1876	41	52	13	28	41	2	2	8	4	12	13	20	33	6	2	8								
1877	41	41	14	19	33	7	3	1	4	5	21	16	37	..	4	4								
1878	37	39	16	17	33	3	5	1	1	2	16	20	36	4	4	8								
1879	37	40	16	22	38	3	2	15	15	30	6	6	12								
1880	86	98	15	26	41	1	7	2	53	51	18	21	39								
1881	43	55	17	19	36	2	2	3	6	21	31	52	3	10	13									
1882	66	61	14	20	34	1	3	4	20	10	30	27	24	8	11	19								
1883	43	47	17	21	37	2	4	3	1	4	22	16	38	5	10	15								
1884	43	39	10	14	24	4	2	1	1	2	16	11	27	7	8	15								
1885	40	55	17	21	38	4	2	5	18	11	29	11	17								
1886	43	47	10	14	24	5	5	10	1	4	5	18	11	29	11	17								
1887	51	39	17	21	38	4	2	6	1	10	17	27	14	13								
1888	41	49	9	20	29	6	5	11	6	14	9	33	8	10								
1889	34	54	20	20	40	2	7	15	14	29	16	12	28								
1890	42	52	14	15	29	3	3	4	5	10	13	23	4	16								
1891	42	34	11	14	25	2	1	3	4	3	7	11	17	28	14	18								
1892	41	57	18	27	45	2	4	6	3	4	7	16	13	29	13	11								
1893	37	52	12	23	35	2	6	8	2	4	7	12	14	26	14	16								
1894	49	48	21	19	40	2	3	5	6	1	7	10	15	27	16	14								
1895	40	49	9	13	22	..	6	6	3	2	5	5	8	20	21	24								
Total	1179	1307	93	165	2744	23	19	42	1	8	9	5	10	15	23	48	346	499	845	66	99	165	113	91	204	492	480	972	255	303	558

Summary of the Total Admissions from September 30th, 1870, to December 31st, 1895.

Males.		Females.		Total.
27.2	33.9	30.8		
5.2	6.7	6.0		
8.9	6.2	7.5		
38.7	32.6	35.4		
20.0	20.6	20.3		
100.	100.	100.		

Percentage of Cases Recovered 27.2
 " " Relieved 33.9
 " " Not Improved 6.0
 " " Died 6.2
 " " Remaining 7.5
 " " 35.4
 " " 32.6
 " " 20.6
 " " 20.3
 " " 100.

The Admissions of 1830 include 92 Patients belonging to Unions in the County of Berks who had previously been maintained in other Asylums, and the Admissions of 1882 include 31 Patients belonging to the County of Surrey.

TABLE V.—Showing the Causes of Death during the Year 1895, together with the Ages at Death.

CAUSE OF DEATH.	5 to 15		20 to 25		25 to 30		30 to 35		35 to 40		40 to 45		45 to 50		50 to 55		55 to 60		60 to 65		65 to 70		70 to 75		75 to 80		80 to 85		
	M.	F.	M.	F.	M.	F.	M.	F.	M.	F.	M.	F.	M.	F.	M.	F.	M.	F.	M.	F.	M.	F.	M.	F.	M.	F.	M.	F.	
<i>Cerebral or Spinal Diseases:</i>																													
General Paralysis ..	3	1
Cerebral Atrophy ..	3	4
Exhaustion from Mania ..	1	2
Cerebral Hemorrhage	2
<i>Thoracic Diseases:</i>																													
Phthisis ..	4	4
Pneumonia ..	3	1
Bronchitis ..	1
Valvular Disease of Heart ..	2	1
Fatty Heart	1
Acute Endocarditis ..	1
<i>Abdominal Diseases:</i>																													
Pyelitis ..	1
Chronic Bright's Disease ..	1	1
Cancer of Rectum	1
Colitis	1
<i>General Diseases:</i>																													
Senile Decay ..	5	2
Influenza	1
Enteric Fever	1
Totals ..	25	23	48	48	25	23	48	48	25	23	48	48	25	23	48	48	25	23	48	48	25	23	48	48	25	23	48	48	25

Post Mortem Examinations—Males, 24; Females, 20; Total, 44

TABLE VI.

Showing length of Residence in those Discharged Recovered, and in those who have Died during the year, 1895.

LENGTH OF RESIDENCE.						Reeovered.			Died.		
						Males.	Females.	Total.	Males.	Females.	Total.
Under 1 month	2	2	4	
From 1 to 3 months	4	..	4	2	1	3	
" 3 " 6 "	10	7	17	2	..	2	
" 6 " 9 "	3	3	6	1	..	1	
" 9 " 12 "	6	6	2	2	4	
" 1 " 2 years	5	2	7	3	3	6	
" 2 " 3 "	2	4	6	
" 3 " 5 "	1	1	2	1	3	4	
" 5 " 7 "	1	..	1	
" 7 " 10 "	1	..	1	
" 10 " 12 "	
" 12 " 15 "	6	3	9	
" 15 " 20 "	2	2	
" 20 " 25 "	2	3	5	
Total						23	19	42	25	23	48

TABLE VII.
Showing the Duration of the Disorder on Admissions, Discharges, and Deaths, during the Year 1895.

Class.	DURATION OF DISEASE ON ADMISSION IN FIVE CLASSES.											
	The Admissions.			Recovered.			Removed, Relieved, or otherwise.			The Deaths.		
	Males.	Females.	Total.	Males.	Females.	Total.	Males.	Females.	Total.	Males.	Females.	Total.
FIRST CLASS: First Attack, and within three months on admission	14	16	30	10	7	17	1	3	4	6	7	13
SECOND CLASS: First Attack, and above three and within twelve months on admission	13	6	19	7	3	10	4	2	6	5	4	9
THIRD CLASS: Not First Attack, and within twelve months on admission	11	25	36	5	9	14	1	5	6	4	4	8
FOURTH CLASS: First Attack or not, but of more than twelve months duration on admission	9	9	18	1	..	1	..	4	4	9	7	16
FIFTH CLASS: Congenital	5	10	15	4	4	1	1	2
TOTAL	52	66	118	23	19	42	6	18	24	25	23	48

TABLE VIII.

Showing in Quinquennial Periods the Ages of those Admitted, Recovered, and Died during the Year 1895, and of those Remaining on 31st December, 1895.

AGES.	The Admissions.			Recovered.			The Deaths.			Patients Resident 31st December, 1895.		
	Males.	Females.	Total.	Males.	Females.	Total.	Males.	Females.	Total.	Males.	Females.	Total.
From 5 to 10 years	1	..	1
" 10 to 15 "	3	2	5	..	1	1	..	1	1	6	2	8
" 15 to 20 "	1	7	8	1	1	2	2	5	13	18
" 20 to 25 "	1	8	9	2	3	5	1	1	2	10	18	28
" 25 to 30 "	4	10	14	1	3	4	2	1	3	20	17	37
" 30 to 35 "	5	4	9	2	1	3	2	..	2	33	31	64
" 35 to 40 "	10	5	15	4	1	5	1	..	1	27	36	63
" 40 to 45 "	3	7	10	3	2	5	1	2	3	18	25	43
" 45 to 50 "	4	2	6	1	1	2	3	3	6	24	31	55
" 50 to 55 "	3	7	10	3	2	5	..	2	2	29	36	65
" 55 to 60 "	6	1	7	3	2	5	1	2	3	27	23	50
" 60 to 65 "	5	6	11	2	1	3	5	4	9	23	28	51
" 65 to 70 "	5	1	6	1	..	1	1	2	3	15	18	33
" 70 to 75 "	1	2	3	..	1	1	4	3	7	11	14	25
" 75 to 80 "	..	2	2	..	1	1	4	..	4	3	7	10
" 80 to 85 "	..	2	2	2	2	2	4	6
" 85 to 90 "	1	..	1	1	..	1
TOTAL	52	66	118	23	19	42	25	23	48	255	303	558
Mean Age	44.7	39.4	41.7	42.8	39	41.1	55.3	55	55

TABLE IX.

Showing the condition as to Marriage in the Admissions, Discharges, and Deaths, during the Year 1895, and of the Patients resident on December 31st, 1895.

Condition in reference to Marriage.	The Admissions.			THE DISCHARGES.						The Deaths.			Patients Resident December 31st, 1895.		
	Males.	Females.	Total.	Recovered.			Removed, Relieved, or otherwise.			Males.	Females.	Total.	Males.	Females.	Total.
				Males.	Females.	Total.	Males.	Females.	Total.						
Single ..	23	36	59	11	11	22	3	10	13	11	3	14	164	168	332
Married ..	26	22	48	11	8	19	3	5	8	12	14	26	74	94	168
Widowed ..	3	8	11	1	..	1	..	3	3	2	5	7	15	36	51
Unknown	1	2	5	7
TOTAL ..	52	66	118	23	19	42	6	18	24	25	24	48	255	303	558

TABLE X.

Showing the probable Causes, Apparent or Assigned, of the Disorder in the Admissions of the Year 1895.

	Males.	Females.	Total.
MORAL CAUSES :			
Fright	3	3
Love Affair	1	1
PHYSICAL CAUSES :			
Heredity	7	4	11
" and Alcoholism	2	2	4
" and Change of Life	1	1
" and Congenital Defect.. .. .	1	5	6
" and General Paralysis.. .. .	1	..	1
" and Influenza	2	1	3
" and Miscarriage..	1	1
" and Pecuniary Difficulties	1	..	1
" and Puerperal State	2	2
" and Previous Attacks	1	12	13
" and Seduction	1	1
" and Senility	1	2	3
Previous Attacks	4	6	10
" and Injury to Head	1	..	1
" and Love Affair	1	1
" and Masturbation	1	..	1
" and Privation	3	..	3
" and Senility	1	1
" and Worry	1	..	1
Adolescence	1	1
Alcoholism	4	..	4
Change of Life	1	1
Congenital Defect	4	9	13
Epilepsy	1	..	1
General Paralysis	1	..	1
" and Alcoholism	2	..	2
" and Syphilis	1	..	1
Heart Disease	1	..	1
Hysteria	2	2
Injury to Head	1	..	1
" Alcoholism	1	..	1
Lactation	1	1
" and Worry	1	1
Privation	2	..	2
Senility	2	3	5
" and Influenza	1	1
Sunstroke and Influenza	1	..	1
Uterine Disorder	1	1
Unknown	5	3	8
Total	51	66	118

SUPPLEMENTARY TABLES.

TABLE XI.

Showing the Form of Insanity in the Admissions, Discharges, and Deaths during the Year 1895.

FORM OF INSANITY.	The Admissions.			THE DISCHARGES.				The Deaths.				
	Males.	Females.	Total.	Recovered.		Removed, Relieved, or otherwise.		Total.	Males.	Females.	Total.	
				Males.	Females.	Males.	Females.					
Mania	24	35	59	12	12	24	5	13	18	10	12	22
Melancholia	13	11	24	8	5	13	..	1	1	2	1	3
Dementia	10	8	18	2	2	4	1	..	1	10	8	18
Idiocy	5	6	11	2	2	1	1	2
Congenital Imbecility	6	6	1	..	1	..	2	2	2	1	3
Total	52	66	118	23	19	42	6	18	24	25	23	48

TABLE XII.

*Showing the Occupation or Station in Life of the Patients
admitted in 1895.*

Males.	Total.	Females.	Total.
Agricultural Labourer	7	Bookseller	1
Blacksmith	1	Charwomen	2
Brewer's Clerk.. ..	1	Domestic Servant	16
Bricklayer	1	Fancy Basketmaker	1
Butcher	1	Farmer's Daughter	1
Coachman	1	Field Labourer.. ..	1
Commercial Clerk	1	Housewife	26
Farmer	2	Innkeeper	1
Farm Bailiff	1	Laundress	1
Gardener	1	Needlewoman	1
General Labourer	9	Nursery Governess	1
Groom	1	Seampstress	1
Horse Dealer	3	None	13
Hurdlemaker	1		
Joiner	1		
Moulder'.. ..	1		
Navvy	1		
Packer	1		
Painter	2		
Retired Caterer	1		
Sailor	1		
Ship's Cook	1		
Shoeing Smith.. ..	1		
Soldier	2		
Stableman	1		
Watchmaker	1		
None	7		
Total	52	Total	66

TABLE XIII.

Showing the Admissions, Discharges and Deaths during each month in the Year and the Daily Average Numbers for each month.

1895. Months.	Admissions.			Discharges and Removals.			Deaths.			Daily Average.		
	Males.	Females.	Total.	Males.	Females.	Total.	Males.	Females.	Total.	Males.	Females.	Total.
January ..	3	2	5	1	..	1	1	5	6	257	296	553
February	4	4	2	1	3	4	1	5	255	295	550
March ..	5	6	11	7	4	11	248	296	554
April ..	2	7	9	3	2	5	1	3	4	248	298	546
May ..	7	12	19	4	1	5	248	306	554
June ..	7	5	12	2	..	2	3	5	8	251	310	561
July ..	6	7	13	1	9	10	3	1	4	253	305	558
August ..	4	6	10	3	6	9	1	..	1	253	307	560
September	2	7	9	2	1	3	..	1	1	252	311	563
October ..	6	4	10	5	3	8	2	1	3	251	311	562
November	6	4	10	3	3	6	2	2	4	256	311	567
December	4	2	6	3	11	14	1	..	1	255	308	563
Total ..	52	66	118	29	37	66	25	23	48	252	305	557

TABLE XIV.

	On December 31st, 1894.			Admitted in 1895.			Discharged or Removed in 1895.			Died in 1895.			Remaining on December 31st, 1895.		
	M.	F.	Total.	M.	F.	Total.	M.	F.	Total.	M.	F.	Total.	M.	F.	Total.
	Abingdon Union ..	19	27	46	10	5	15	5	3	8	2	5	7	22	24
Bradfield ..	16	21	37	2	4	6	3	3	6	3	..	3	12	22	34
Cookham ..	17	32	49	6	7	13	6	5	11	17	34	51
Easthampstead Union ..	16	20	36	4	9	13	1	3	4	2	17	23	40
Faringdon ..	10	18	28	1	3	4	1	1	2	10	19	29
Hungerford ..	9	8	17	..	2	2	9	10	19
Newbury ..	16	17	33	3	2	5	1	1	2	16	16	32
" Borough ..	27	13	40	1	3	4	2	1	3	24	15	39
Reading Union ..	53	68	121	8	12	20	4	4	15	4	6	10	53	63	116
Wallingford ..	13	13	26	2	..	2	1	..	1	1	13	11	24
Wantage ..	17	15	32	3	4	7	..	1	1	1	3	6	17	15	32
Windsor ..	17	10	27	2	4	6	3	3	6	1	15	11	26
Wokingham ..	17	29	46	4	5	9	2	2	4	3	1	4	16	31	47
County of Berks ..	3	1	4	3	..	3	1	5	1	6
Other Counties ..	1	2	3	2	6	8	1	5	6	2	3	5
Criminals ..	1	..	1	1	1	2	1	1	2	1	..	1
Private Patients ..	5	3	8	3	3	6	1	1	2	1	6	5	11
Totals ..	257	297	554	55	70	125	32	41	73	25	23	48	255	303	558

TABLE XV.

State of Bodily Health of the Admissions of 1895.

	Males.	Females	Total.
In Good Bodily Health	8	17	25
In Indifferent Health	26	36	62
In Bad Health	18	13	31
Total	52	66	118

TABLE XVI.

Showing the number of Patients in the Asylum on the 31st of December, 1895, affected with Idiocy or Congenital Imbecility, Epilepsy, General Paralysis, or other forms of Paralysis.

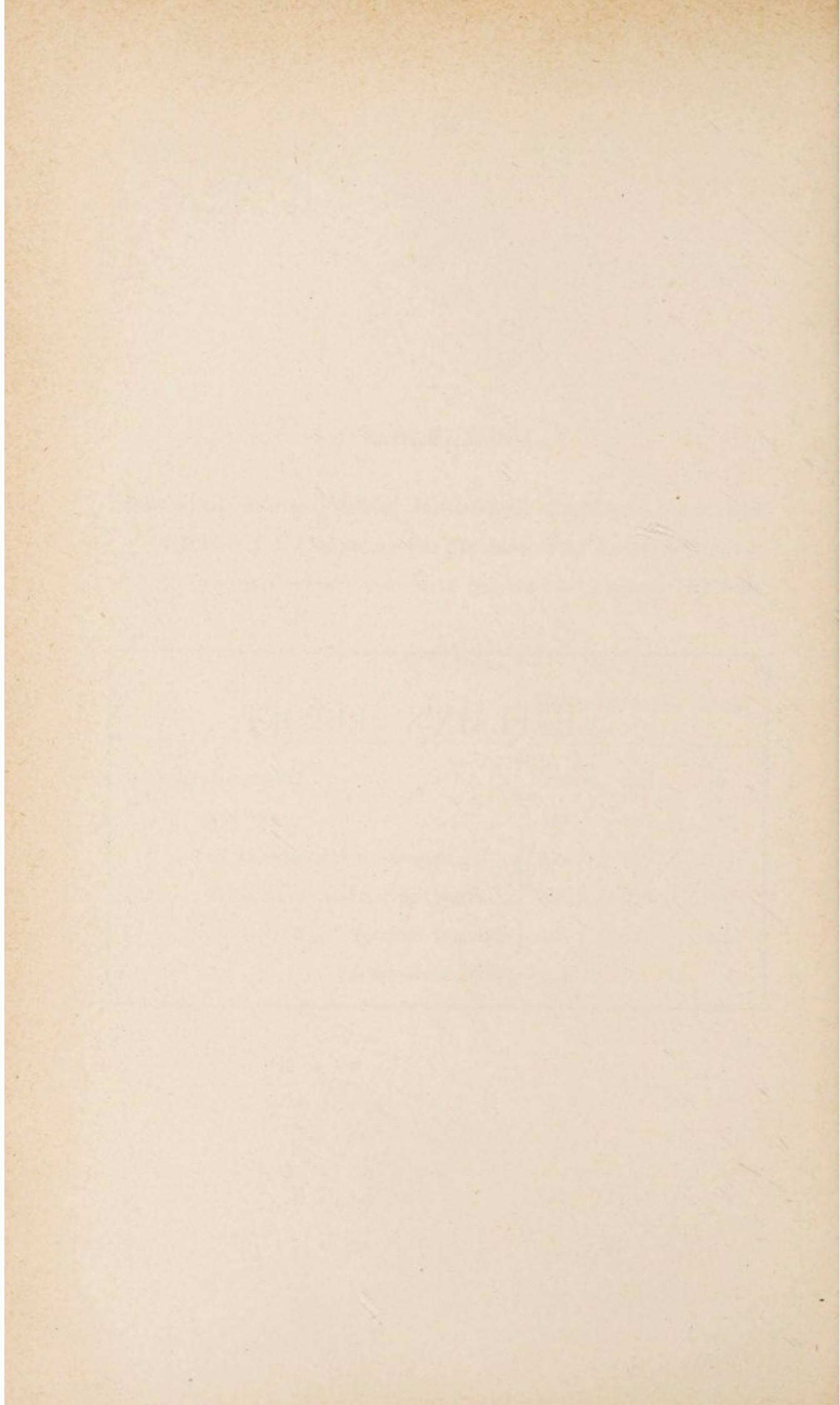
	Males.	Females	Total.
Congenital Imbecility	33	26	59
Idiocy	29	21	50
Epilepsy	46	32	78
Paralysis	5	8	13
General Paralysis	5	3	8

TABLE XVII.

Showing the average number Industrially Employed, the average attendance at Chapel and at the Associated Amusements, and the average number who walk beyond the Asylum Grounds.

	Males.	Females	Total.
Average Employed	176	222	398
„ at Chapel	152	184	336
„ at Associated Amusements ..	119	157	276
„ Walking beyond Airing Courts ..	222	278	500
„ „ „ Asylum Grounds	108	141	249
„ „ „ Grounds on Parole	4	..	4

CHAPLAIN'S REPORT.



CHAPLAIN'S REPORT.

To the Committee of Visitors, Berks Asylum.

MR. CHAIRMAN AND GENTLEMEN,

It is again my pleasing duty to submit to you my Annual Report for the year now closing.

Services in Chapel have been duly performed—Sundays, morning and afternoon; on Christmas Day, Good Friday, Ascension Day, and every Wednesday throughout the year. The average attendance of patients at Divine Service has been 341.

The Patients exhibit reverent demeanour and earnest attention during the services, which have been of a bright and cheerful nature.

The Holy Communion has been celebrated in Chapel once each month, and on Christmas Day, Easter and Whitsunday.

It has been my privilege to conduct short and simple services in the Infirmary Wards for those Patients who have been unable through physical or other causes to attend the Chapel. As explained in detail in the Chaplain's Journal, I have visited all the departments of your Asylum regularly throughout the year.

After some six years of work amongst the mentally afflicted I still find that this personal contact with the Patients in Ward Visiting holds a very important place in a Chaplain's work. The Patients are always ready and wishful to speak to me on many of their personal difficulties

and troubles, and I venture to hope that their lives may have thus been made brighter and some of their spiritual difficulties made less by this individual contact.

I have attended Members of the Household and Staff who have required my ministrations, and I have administered the Sacrament of Holy Communion to Patients and Staff who in illness have required and requested it.

The Wards are well supplied with Bibles, Prayer Books, and Hymn Books.

The Library is greatly appreciated and books are regularly issued to the Wards.

Since my last Report (December 21st, 1894) there have been 51 deaths among the Patients; of these 27 have been interred in the Parish Churchyard at Cholsey.

I have assisted the Medical Superintendent in the various entertainments promoted for the Patients.

As this is my last Report to you before I leave your Asylum to take over the duties of Chaplain of Chester County Asylum, may I express my sincere thanks to you for your kindness to me in the past, and I would also venture to record my deep appreciation of the uniform courtesy extended to me and my Office by the Officers and Staff.

It is with feelings of great regret that I sever my connection with your Institution.

I am, Mr. Chairman and Gentlemen,

Your obedient Servant,

AUGUSTUS E. FARRAR.

MOULSFORD ASYLUM.



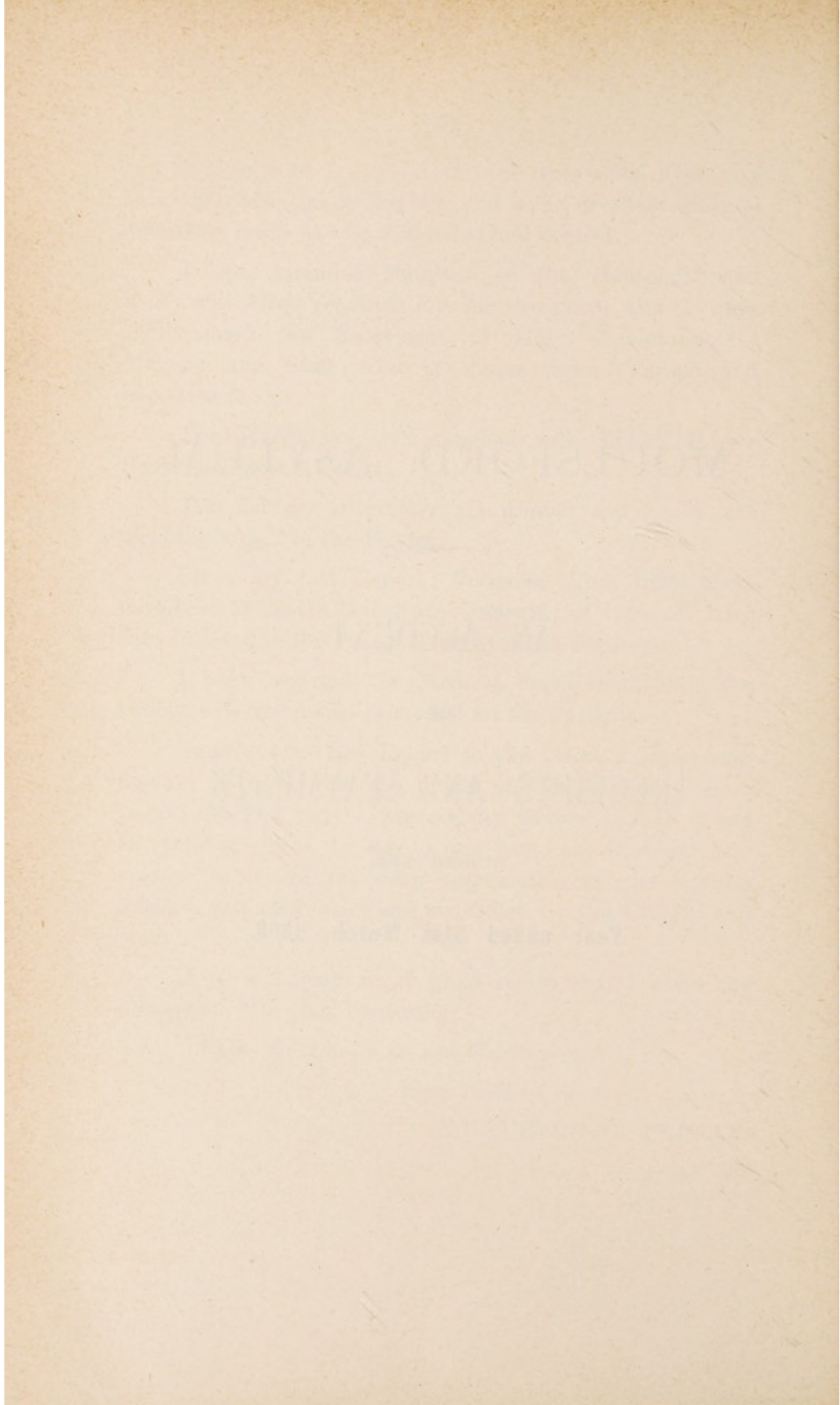
AN ACCOUNT

OF

RECEIPTS AND PAYMENTS

DURING THE

Year ended 31st March, 1896.



MOULSFORD ASYLUM.

*An Account of Receipts and Payments for the Year
ended 31st March, 1896.*

RECEIPTS.

	£	s.	d.	£	s.	d.
To balance with Treasurer 1st April, 1895	2102	7	5			
„ Ditto with Steward	112	5	7			
				2214	13	0
1. MAINTENANCE ACCOUNT.						
From Unions, &c., in the County.						
Abingdon	907	6	3			
Bradfield	743	19	4			
Cookham	1077	9	5			
Easthampstead	791	18	11			
Faringdon	575	10	0			
Hungerford	365	18	2			
Newbury	1453	3	4			
Reading	2399	8	1			
Wallingford	507	7	7			
Wantage	667	6	0			
Windsor	586	1	5			
Wokingham	943	7	5			
				11018	15	11
County of Berks	111	7	7			
				111	7	7
Commissioners of H.M. Treasury for Maintenance, &c., of Criminal Lunatics	15	9	6			
				15	9	6
From Unions, &c., in other Counties.						
Aston... .. .	4	3	3			
Henley	21	0	10			
Paddington	4	17	11			
St. Mary Abbots, Kensington	9	1	2			
Southampton	20	10	9			
Steyning	20	10	9			
Stroud	3	5	3			
				83	9	11
Carried forward	13,443	15	11

RECEIPTS.

	£	s.	d.	£	s.	d.
Brought forward	13,443	15	11
2. EXTRA CHARGES ACCOUNT.						
Abingdon	9	1	5			
Bradfield	2	9	0			
Cookham	1	0	0			
Easthampstead	1	4	6			
Faringdon	1	0	0			
Newbury	4	18	0			
Reading	6	2	6			
Wallingford	1	4	6			
Wantage	3	13	6			
Windsor	1	4	6			
Wokingham	3	13	6			
County of Berks	1	4	6			
				36	15	11
3. FARM ACCOUNT.						
Sale of Stock	459	12	6			
„ Hides and Skins	0	19	0			
„ Wool	13	1	10			
„ Barley	38	19	0			
„ Wheat	107	7	0			
Rents of Allotments	2	0	0			
				621	19	4
4. SALES & OLD STORES ACCOUNT.						
Sale of Meat	33	19	0			
„ Rags, Bones, &c.	7	8	10			
„ Gas Tar	4	12	2			
Value of Goods broken on rail	0	4	10			
				46	4	10
5. RENT OF COTTAGES						
...	63	14	0
Carried forward	14,212	10	0

RECEIPTS.

	£	s.	d.	£	s.	d.
Brought forward	14,212	10	0
6. REPAIRS ACCOUNT.						
County of Berks	318	9	5			
County Borough of Reading	75	11	6			
Borough of Newbury ...	28	19	1			
Excess of weekly charge for Maintenance of Out County and Criminal Patients over rate charged for County and Borough Patients... ..	102	18	4			
The like for Private Patients	243	17	10			
				769	16	2
7. ADDITIONS, &c., ACCOUNT.						
County of Berks	195	8	0			
County Borough of Reading	42	2	1			
Borough of Newbury ...	18	14	4			
				256	4	5
8. ISOLATION HOSPITAL ACCOUNT.						
County of Berks	463	7	3			
County Borough of Reading	94	15	7			
Borough of Newbury ...	42	2	6			
				600	5	4
9. LODGING ACCOUNT.						
County Borough of Reading	298	11	6			
Borough of Newbury ...	8	4	6			
				306	16	0
10. PRIVATE PATIENTS' ACCOUNT.						
Maintenance, &c.	257	2	2			
				257	2	2
Total	£16,402	14	1

Farm and Garden Supplies to House.

FARM SUPPLIES.	£	s.	d.	£	s.	d.
Milk, New, 3368 galls. at 9d. and 10d.	132	12	1			
„ Skim, 7554 galls. @ 4d. and 5d.	141	10	0			
Cream, 194 $\frac{3}{4}$ pts. @ 10d. and 1/- ..	8	18	6			
Butter, 1673 lbs. @ 1/2, 1/3, and 1/3 $\frac{1}{2}$	101	13	11			
Eggs, 9372 @ $\frac{1}{2}$ d. and $\frac{3}{4}$ d.	20	9	7			
Pork, 8720 lbs. @ 4 $\frac{3}{4}$ d. and 5d.	178	2	4			
Mutton, 460 lbs. @ 5d., 5 $\frac{1}{4}$ d. and 6d.	10	13	10			
Beef, 2848 lbs. @ 5 $\frac{1}{2}$ d. and 6d.	69	15	2			
Veal, 260 lbs. @ 7d. and 8d. ..	7	17	3			
Suet, 275 lbs. @ 3d.	3	8	9			
Poultry, 82 @ 2/- and 2/6	8	14	0			
Potatoes, 591 sacks @ 3/-, 4/-, 5/-, and 6/- per sack	137	5	0			
Other Vegetables	2	16	2			
				823	16	7
GARDEN SUPPLIES.						
Potatoes, 128 sacks @ 4/3 and 5/-	27	10	9			
„ New, 1326 lbs. @ $\frac{3}{4}$ d. and 1d.	4	3	11			
Other Vegetables, Fruit, &c.	207	9	10			
				239	4	6
				<u>£1063</u>	<u>1</u>	<u>1</u>

PAYMENTS.

		TOTALS FOR THE YEAR.			GRAND TOTALS.		
		£	s.	d.	£	s.	d.
Brought forward	3559	10	9
2. Provisions Account.							
Ale	48	brls.	70	8	0	
Beer	210	„	213	0	0	
Bacon	14484	lbs.	271	11	2	
Butter	8103	„	157	8	10	
Cheese	6823	lb. 14o.	118	1	11	
Coffee	294	lbs.	18	16	3	
Currants	461	„	3	1	1	
Eggs	10080		38	12	0	
Fish	4	15	0	
Flour	665	sks.	627	2	6	
Beef	46933	lbs.	1151	14	3	
Mutton	14377	„	355	5	3	
Prime Joints	11	9	7	
Poultry	4	9	0	
Preserved Meat	12672	lbs.	211	14	6	
Extract of Beef	133	„	27	18	3	
Plums	273	„	3	3	0	
Loaf Sugar	1568	„	11	4	9	
Moist Sugar	18592	„	103	10	6	
Tea, No. 1	3113	„	168	12	5	
„ „ 2	686	„	45	14	8	
Arrowroot, Rice, Peas, &c.	52	2	1	
Salt and Spices	21	5	8	
Allowance in lieu of Beer	137	2	8	
					3828 3 4		
Carried forward	7387	14 1

PAYMENTS.

				TOTALS FOR THE YEAR.	GRAND TOTALS.
				£ s. d.	£ s. d.
Brought forward	7387 14 1
 3. Necessaries Account.					
Bath Bricks	1 gross	0 7 0
Black Lead..	72 lbs.	2 2 3
Blacking	14 gross	1 12 2
Emery Cloth, &c...		3 9 4
Hearth Stones	2082	3 19 7
House Flannel	1665 yds.	19 1 6
Blue..	70 lbs.	2 15 5
Yellow Soap	16128 lbs.	105 1 0
Soft	43 $\frac{38}{64}$ fir.	17 8 7
Carbolic Soap	1120 lbs.	13 15 0
Toilet	56 lbs.	0 18 0
Soda	8053 lbs.	10 12 2
Starch	616 lbs.	8 5 0
Disinfectants (Powder & Fluid)		2 11 0
Candles	187 lbs.	2 13 3
Colza Oil, Wick, &c.		3 11 6
				Tons. Cwts.	
Coal (House)	312 1	237 1 11
.. (Steam)	459 14	383 16 10
.. (Gas)	156 10	141 14 6
Coke	383 12	294 17 6
Lime		19 1 4
Matches	30 gross.	5 5 0
Fire Lighters	96 ..	11 4 0
					1291 3 10
Carried forward					8678 17 11

PAYMENTS.

	TOTALS FOR THE YEAR.			GRAND TOTALS.		
	£	s.	d.	£	s.	d.
Brought forward	8678	17	11
4. Wines and Spirits Account.						
Wines and Spirits	19	15	9			
Porter	4	7	0			
				24	2	9
5. Surgery Account.						
♦ Drugs, Instruments, &c.	144	1	11			
				144	1	11
6. Furniture and Bedding Account.						
Baskets and Repairs	7	10	0			
Blankets	22	10	10			
Blind Cord, Hoiland, Cretonne, &c.	19	13	1			
Brushes and Combs	13	6	0			
Carpet, Hearth Rugs, &c.	24	0	7			
Chairs	2	10	0			
Counterpanes	19	11	8			
Curtains and Dyeing Curtains, &c.	3	18	8			
Earthenware, Glass, &c.	39	5	11			
Gutta Percha Chambers	5	12	0			
Ironmongery, &c.	10	5	7			
Linoleum, &c.	13	10	1			
Palliasses and Ticken	19	18	8			
Picture Frame Moulding	6	0	9			
Sheeting	41	14	1			
Table Linen and Towelling	12	5	0			
Thermometers	2	2	0			
Waterproof Sheetting	40	14	6			
				304	9	5
Carried forward	9151	12	0

PAYMENTS.

	TOTALS FOR THE YEAR.			GRAND TOTALS.		
	£	s.	d.	£	s.	d.
Brought forward..	9151	12	0
 7. Farm Account.						
Wages, Bailiff	58	12	0			
„ Cowman.. .. .	44	12	0			
„ Carters	81	9	6			
„ Labourers	83	3	0			
Seeds and Plants.. .. .	71	16	4			
Cotton Cake	75	2	10			
Beans, Oats, Pollard, &c.	46	12	6			
Threshing, Grinding, Drilling, &c.	21	12	3			
Purchase of Stock	487	9	0			
Killing Stock	2	0	6			
Tools and Repairs	19	1	4			
Veterinary Surgeon and Shoeing Smith	16	11	5			
Proportion of Rectorial Tithe	30	19	2			
„ Vicarial Tithe	7	12	2			
„ Poor Rate	24	12	6			
Rent of Land	203	18	8			
Insurance	3	0	0			
Repairing Harness, &c.	5	4	3			
Hurdles and Stakes	4	1	0			
Hire of Mower and Reaper	8	11	3			
Cart, and Repairs to Carts	14	5	8			
Shearing Sheep and use of Stock	4	6	0			
Gun License	0	10	0			
Analysis of Cotton Cake	1	1	0			
				1316	4	4
Carried forward	10467	16	4

PAYMENTS.

	TOTALS FOR THE YEAR.			GRAND TOTALS.		
	£	s.	d.	£	s.	d.
Brought forward	10467	16	4
8. Garden Account.						
Wages—Gardener	59	16	0			
„ Labourers	127	14	9			
Seeds and Plants	12	11	6			
Tools and Repairs	14	0	9			
Pea Sticks	1	15	0			
Flower Pots	2	10	6			
Proportion of Rectorial Tithe	1	8	0			
„ Vicarial Tithe	0	7	9			
„ Poor Rate	1	10	0			
				221	14	3
9. Rates, Taxes & Insurance Account.						
Proportion of Poor Rate	166	10	3			
„ Rectorial Tithe	4	7	6			
„ Vicarial Tithe	1	4	3			
Insurance (Cottages)	1	0	0			
Income Tax (Cottage Rents)	2	19	4			
				176	1	4
Carried forward	10865	11	11

PAYMENTS.

				TOTALS FOR THE YEAR.			GRAND TOTALS.		
				£	s.	d.	£	s.	d.
Brought forward	10865	11	11
 10. Clothing Account.									
Shirting	2282 $\frac{1}{2}$	yards	44	12	2	
Calico	1010 $\frac{1}{2}$	"	12	7	4	
Flannel	1152	"	42	0	0	
Handkerchiefs and Neckerchiefs				48 $\frac{1}{2}$	doz.	5	8	10	
Men's Hats	18 $\frac{1}{2}$	doz.	8	1	3	
Men's Stockings	27	"	7	11	6	
Women's ditto	36	"	9	18	0	
Shrouding	301	yards	2	10	2	
Print	1018	"	20	9	8	
Corduroy	900	"	45	18	9	
Stays	143	pairs	7	9	0	
Jean	640 $\frac{1}{2}$	yards	12	0	2	
Canvas	239	"	2	17	3	
Forfar	411	"	8	11	3	
Blue Check	340 $\frac{1}{2}$	"	9	11	6	
Tweed	328 $\frac{1}{2}$	"	23	5	0	
Serge and Tartan	910 $\frac{1}{2}$	"	37	2	11	
Braces	24	doz.	3	18	0	
Shawls	132		13	1	6	
Women's Capes			3	19	4	
Boot Locks, &c.			1	10	6	
Leather, Grindery, &c.			116	13	0	
Uniforms for Attendants and Servants			79	6	8	
Haberdashery, &c.			38	8	9	
									556 12 6
Carried forward	11422	4	5

PAYMENTS.

	TOTALS FOR THE YEAR.			GRAND TOTALS.		
	£	s.	d.	£	s.	d.
Brought forward..	11835	13	9
 12. Repairs Account.						
Wages—Engineer	51	18	6			
„ Stokers	53	7	3			
„ Painters	152	5	0			
„ Carpenter	85	10	6			
„ Bricklayer	61	8	1			
„ Foreman of Works	117	0	0			
Oils, Colours, Paints, &c.	18	2	3			
Timber, Cement, Slates, &c.	35	18	1			
Iron and Brass Fittings, Castings, &c.	89	18	0			
Nails, Screws, &c.	1	10	6			
Tools, &c.	2	13	0			
Carriage of Goods	6	0	9			
Cotton Waste, Glue, &c.	7	7	8			
Insurance	75	19	1			
Wall Paper and Glass	1	3	4			
Insertion, Sheeting, Packing, &c.	6	3	3			
Gravel	8	17	0			
Locks and Keys	4	11	11			
Boiler for Heating Apparatus	7	8	8			
Mouthpieces for Retorts, Retorts, &c. (Gas- house)	19	4	9			
Fittings for Washing Machine	3	7	0			
W.C. Pans	5	17	0			
				815	11	7
Carried forward	12651	5	4

PAYMENTS.

	TOTALS FOR THE YEAR.			GRAND TOTALS.		
	£	s.	d.	£	s.	d.
Brought forward	12651	5	4
13. Additions, &c., Account.						
Alterations to W.C.'s (Star Cottages) ..	55	10	6			
Additional Furniture, Ward F. 8	4	11	0			
Alterations to Connections of Well Borings..	8	19	6			
Alterations to Drains, &c., at Farm and Dairy	149	9	5			
Trees for New Avenue	4	2	0			
				222	12	5
14. Isolation Hospital.						
Contractor (Balance)	187	0	0			
Telephone to Main Building	6	2	8			
				193	2	8
16. Re-arrangement of Drainage and Sanitary Appliances.						
Contractor (on Account)	1800	0	0			
Professor Corfield	200	0	0			
				2000	0	0
17. Funerals and Removals Account.						
Coffins and Burial Fees.. .. .	33	1	6			
Allowances to Patients on discharge and Removal Expenses	3	14	5			
				36	15	11
Total				£15103	16	4

COMPARATIVE PRICES OF PROVISIONS, &c.

	1894.				1895.				1896.	
	4th Quarter	1st Quarter	2nd Quarter	3rd Quarter	4th Quarter	1st Quarter	2nd Quarter	3rd Quarter	4th Quarter	1st Quarter.
Bacon, per cwt. ..	53/8	46/-	42/-	42/-	46/-	42/-	42/-	42/-	46/-	39/-
Butter, per cwt. ..	54/-	53/-	44/6	44/-	53/-	44/6	44/-	44/-	43/-	42/-
Beer, per barrel ..	22/- & 32/-	22/- & 32/-	22/- & 32/-	18/- & 32/-	22/- & 32/-	22/- & 32/-	18/- & 32/-	18/- & 32/-	18/- & 32/-	18/- & 32/-
Cheese, per cwt. ..	39/- & 58/-	39/- & 50/-	40/- & 47/-	29/- & 49/-	39/- & 50/-	40/- & 47/-	29/- & 49/-	32/- & 42/-	32/- & 42/-	33/6 & 48/-
Flour, per sack ..	15/9	17/3	16/6	21/-	15/9	16/6	21/-	18/6	18/6	19/6
Meat, per lb. ..	5½d.	5½d.	6d.	5½d.	5½d.	6d.	5½d.	6½d.	6½d.	5½d.
Sugar, per cwt. ..	12/- & 17/6	11/3 & 13/9	10/9 & 14/-	14/- & 18/-	12/- & 17/6	10/9 & 14/-	14/- & 18/-	13/- & 14/3	13/- & 14/3	11/9 & 13/6
Tea, per lb. ..	1/1 & 1/4	1/1 & 1/4	1/1 & 1/4	1/1 & 1/4	1/1 & 1/4	1/1 & 1/4	1/1 & 1/4	1/1 & 1/4	1/1 & 1/4	1/1 & 1/4
Coal, per ton ..	16/-, 16/2, & 20/11	16/-, 16/2, & 20/11	14/6, 16/3½, & 18/-	14/6, 16/3½, & 18/-	16/-, 16/2, & 20/11	14/6, 16/3½, & 18/-	14/6, 16/3½, & 18/-	14/6, 16/3½, & 18/-	14/6, 16/3½, & 18/-	14/6, 16/3½, & 18/-

BALANCE

GENERAL STATEMENT OF RECEIPTS AND PAYMENTS
RECEIPTS.

Dr.	£	s.	d.	£	s.	d.
To Balance with Treasurer, 1st April, 1895	2102	7	5			
„ Balance with Steward, ditto...	112	5	7			
				2214	13	0
„ Sales of Farm Produce, &c. ...	621	19	4			
„ Sales and Old Stores Account ...	46	4	10			
				668	4	2
From Unions and Counties	11229	2	11			
„ Extra Charges	36	15	11			
„ Rents of Cottages	63	14	0			
„ Repairs Account	769	16	2			
„ Additions, &c., Account	256	4	5			
„ Isolation Hospital Account	600	5	4			
„ Lodging Account	306	16	0			
„ Private Patients' Account	257	2	2			
				13519	16	11
				£	16402	14 1

SUMMARY OF COST PER HEAD PER WEEK.

	June Quarter, 1895.		September Quarter, 1895.		December Quarter, 1895.		March Quarter, 1896.		Average for the Year.	
	s.	d.	s.	d.	s.	d.	s.	d.	s.	d.
Salaries and Wages	2	5.55	2	5.11	2	4.73	2	5.25	2	5.16
Provisions	2	6.53	2	10.2	2	6.52	2	6.41	2	7.41
Necessaries		6.52		8.21		10.07	1	0.9		9.42
Wines and Spirits73				.03		.03		.2
Surgery		1.35		1.46		.7		1.21		1.18
Furniture and Bedding		2.64		2.77		1.78		1.2		2.1
Farm	1	3.64		4.77		10.78		11.88		10.76
Garden		1.95		1.72		1.64		1.87		1.79
Rates, Taxes, and Insurance		3.13		.07		2.59		.03		1.45
Clothing		3.02		4.77		1.3		6.66		3.94
Miscellaneous		3.82		3.32		4.1		2.05		3.32
	8	2.88	7	6.4	7	8.24	8	1.49	7	10.73
Less Farm and other Sales										5.47
Cost per head per week									7	5.26
Average number of Patients daily		553		561		564		563		560
Total Days of Residence		50,372		51,610		51,927		51,202		205,111

FARM ACCOUNT, 1895-96.

Dr.		£ s. d.		£ s. d.		Cr.		£ s. d.		£ s. d.				
To value of Produce in Store, 31st March, 1895 ...	386	9	6			By sale of Stock ...	459	12	6					
Value of Live Stock do.	721	4	0			Hides and Skins	19	0						
Labour (exclusive of Patients) ...				1107	13	6	13	1	10					
Proportion of Tithes ...	276	7	9			Wool ...	38	19	0					
" Rates ...	38	11	4			Barley ...	107	7	0					
" Insurance ...	24	12	6			Wheat ...	2	0	0					
" Implements, Tools, &c....	3	0	0			Rents of Allotments ...				621	19	4		
" Seeds, &c. ...	42	12	3			Supplies to House		823	16	7		
" Stock ...	71	16	4			Value of Produce in Store	359	17	0					
" Threshing, Grinding, Drilling, &c. ...	493	15	6			31st March, 1896 ...	771	10	0					
" Cotton Cake, Beans, &c. ...	21	12	3			Value of Live Stock do.				1131	7	0		
" Veterinary Surgeon and Shoeing Smith ...	17	1	5											
Rent of Land ...	203	18	8											
Estimated Rent of Free- hold ...	94	0	0											
Balance											
				1112	5	8								
				297	18	8								
				59	5	1								
				£2577	2	11						£2577	2	11

M. NICHOLLS,

Clerk and Steward.

GARDEN ACCOUNT, 1895-96.

Dr.	£ s. d.	Cr.	£ s. d.	£ s. d.
To value of Produce in Store, 31st March, 1895	By Supplies to House ...	38 11 0	239 4 6
„ Labour (exclusive of Patients) ...	187 10 9	„ Value of Produce in Store, 31st March, 1896	32 10 0
„ Proportion of Rates and Tithes ...	3 5 9			
„ Seeds and Plants ...	12 11 6			
„ Tools and Repairs ...	14 0 9			
„ Pea Sticks, &c. ...	4 5 6			
	<hr/>		221 14 3	
Balance ...			16 9 3	
			<hr/>	<hr/>
			£271 14 6	£271 14 6

M. NICHOLLS,

Clerk and Steward.

