

## **Twenty-fourth annual report / Mouldsford Lunatic Asylum.**

### **Contributors**

Mouldsford Lunatic Asylum.  
Tull, Albert R.  
Palmer Phillips, Charles.  
Needham, F.  
Murdoch, J. William A.  
Farrar, Augustus E.  
Nicholls, Moses.

### **Publication/Creation**

[Place of publication not identified] : [publisher not identified], [1895?]

### **Persistent URL**

<https://wellcomecollection.org/works/knj7z4p>

### **License and attribution**

This work has been identified as being free of known restrictions under copyright law, including all related and neighbouring rights and is being made available under the Creative Commons, Public Domain Mark.

You can copy, modify, distribute and perform the work, even for commercial purposes, without asking permission.



Wellcome Collection  
183 Euston Road  
London NW1 2BE UK  
T +44 (0)20 7611 8722  
E [library@wellcomecollection.org](mailto:library@wellcomecollection.org)  
<https://wellcomecollection.org>

1894—1895.



MOULSFORD LUNATIC ASYLUM.

---

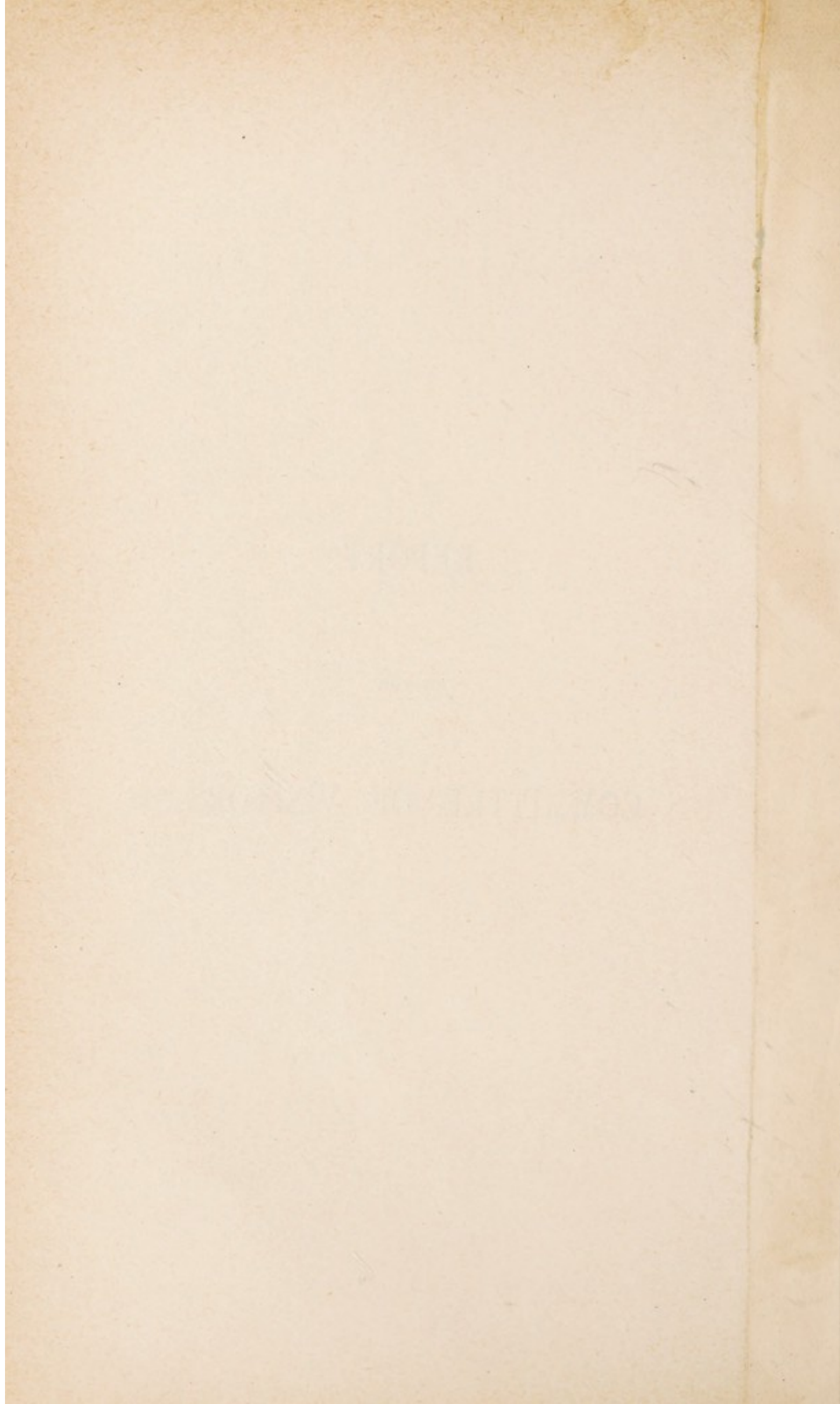
Twenty-fourth Annual Report.



Digitized by the Internet Archive  
in 2018 with funding from  
Wellcome Library

REPORT  
OF THE  
COMMITTEE OF VISITORS.





# MOULSFORD LUNATIC ASYLUM.

---

## REPORT

OF THE

## COMMITTEE OF VISITORS.

---

*To*

*The Berkshire County Council,  
The Council of the Borough of Reading, and  
The Council of the Borough of Newbury.*

THE COMMITTEE OF VISITORS OF THE MOULSFORD  
LUNATIC ASYLUM REPORT :—

That the Asylum building is in a good state  
of repair.

On September 21st the Commissioners in  
Lunacy made their annual visit of inspection.  
They report in the Visitors' Book that the  
“Institution in all its departments is well  
“worked,” and express themselves as having  
“found the Asylum in admirable order and the



“Wards bright and comfortable ;” and they speak very favourably of the patients’ condition in regard to cleanliness and tidyness.

The Medical Superintendent reports favourably of the character and general condition of the staff.

The Isolated Infectious Hospital has been completed and suitably furnished, at a total cost of £2,879 19s. 10d., being £120 0s. 2d. under the amount sanctioned by the Bodies in Union. It provides accommodation for 12 patients with the requisite staff of nurses and servants, and is supplied with the necessary day rooms, single rooms, kitchen, laundry and sanitary arrangements. The 2 dormitories of 60 beds in the main building thus liberated have been furnished and will shortly be made available for use.

The general health of the patients has not been satisfactory. Diarrhœa was very prevalent during the spring and summer months, and there were four cases of Dysentery, resulting in 1 death. There were also 8 cases of Typhoid Fever amongst the patients, and at the present time a nurse is suffering from this dire malady. She however most probably contracted the fever whilst nursing a patient three weeks previously.

On account of the above constantly recurring diseases arising from insanitary conditions, a



thorough examination of the sanitary appliances throughout the Asylum was undertaken. The Medical Superintendent applied the water test to every drain, and found serious defects and leakages in all of them. The Visitors thereupon availed themselves of the experience of Professor Corfield, the eminent sanitary expert, who made an exhaustive examination, and his report and recommendations have been fully considered in detail and on the spot.

Fully alive to the urgent importance of placing the Asylum in as sanitary a condition as possible the Visitors have decided to carry out the major portion of his recommendations. It will therefore be imperative to ask the several bodies in Union for the necessary funds to carry out this object.

The water supplied to the Asylum from the two deep borings has been analysed by Mr. Fisher, the County Analyst, who reports it to be free from sewage pollution, and of excellent quality. It has also been subjected to bacteriological examination with an equally favourable result.

During the past month the patients and staff have suffered severely from the prevailing epidemic of influenza, and to it must be attributed an unusual number of deaths amongst the feeble and aged.

The cost of Repairs has been £1,141 8s. 2d. and of the Additions and Improvements £275 7s. 3d.



for the year ended 31st March, 1894; of this latter sum £264 11s. 0d. has been spent on bedsteads and other furniture necessary for the occupation of the two dormitories set free by the erection of the detached Infectious Hospital.

Lodging money has been earned for the same period from the Boroughs of Reading and Newbury to the amount of £353 19s. 6d. ; this, with the amount of profit on out-county, private and criminal patients, viz.: £264 17s. 10d. has been applied in aid of the Repairs Fund.

The principal Repairs, Renewals and Improvements carried out during the year have been :—

New W.C. pans with waste preventing cisterns fixed in Wards F. 3, F. 4, F. 7, M. 2, and M. 4, and the floors of these sanitary annexes tiled.

New crank shaft to small Steam Engine, and the large Engine thoroughly repaired.

New coil to Heating Apparatus in Female extension.

New Boiler to Conservatory.

New cover to large purifier at Gas Works.

Boundary walls and door and window frames re-painted.

New cast iron soil pipe to W.C. of Female Ward No. 3 Dormitory.



M. Ward No. 6, Recreation Hall, F. 5 Ward painted and decorated. Dormitories in F. 1, F. 6, and M. 1 cleaned and painted also main corridor in Male division, corridor leading to Wards M. 4 and 6 and Sculleries in Wards F. 2 and 3. The Female Messroom has also been whitened and papered.

The Senior Assistant Medical Officer's sitting room has been papered and varnished.

External painting of the West front of the Asylum.

The patients on the books of the Asylum on the 31st March, 1895, were :—

	M.	F.	TOTAL.
From Unions in Berkshire .. ..	161	209	370
„ The County of Berks .. ..	4	1	5
„ Parishes in the Borough of Reading..	51	69	120
„ „ „ „ Newbury	25	13	38
„ Unions not in the County of Berks ..	3	3	6
Private patients .. ..	6	3	9
Criminal patients .. ..		none	
Totals .. ..	250	298	548

Since the 1st April, 1894, there have been admitted Pauper Patients, 55 Males and 45 Females, total 100; and Non-pauper Patients, 2 Males and 2 Females; total 4. Of the Pauper Patients, 3 Males and 1 Female were received from other Asylums.

The discharges have been :—

				M.	F.	TOTAL.
Of Patients recovered	..	..	..	15	25	40
„ relieved	..	..	..	4	4	8
„ not improved	..	..	..	7	0	7
Totals	..	..	..	26	29	55

Of these discharges 2 Males were removed to other Asylums.

28 Males and 28 Females have died, total 56.

Of the number of Pauper Patients belonging to the Bodies in Union there has been a decrease of 9, the Males having increased by 2 persons, whilst the Females have decreased by 11.

The weekly charge for maintenance of pauper patients has been 7s. 10½d. throughout the year.

The Establishment consists of :—

A Medical Superintendent...	...	...	...	1
Two Assistant Medical Officers	...	...	...	2
A Chaplain ...	...	...	...	1
A Clerk to the Visitors	...	...	...	1
A Steward and Clerk of the Asylum	...	...	...	1
A Housekeeper	...	...	...	1
A Head Male Attendant	...	...	...	1
A Head Female Attendant	...	...	...	1
A Superintendent's Clerk and Organist	...	...	...	1
A Stores Assistant	...	...	...	1
A Foreman of Works	...	...	...	1
An Engineer...	...	...	...	1
A Farm Bailiff	...	...	...	1
A Gatekeeper	...	...	...	1
A Gardener	...	...	...	1
A Baker	...	...	...	1



A Carpenter ...	...	...	...	...	...	1
Two Painters	...	...	...	...	...	2
A Bricklayer	...	...	...	...	...	1
A Gasman ...	...	...	...	...	...	1
Two Stokers...	...	...	...	...	...	2
A Shoemaker	...	...	...	...	..	1
A Tailor Attendant...	...	...	...	...	...	1
Male Attendants	..	...	...	...	...	23
Nurses	...	...	...	...	...	26
Indoor Servants, Laundrymaids, &c.	...	...	...	...	...	10
A Hall Porter	...	...	...	...	...	1
Farm and Garden Servants	...	...	...	...	..	8
					—	
						94

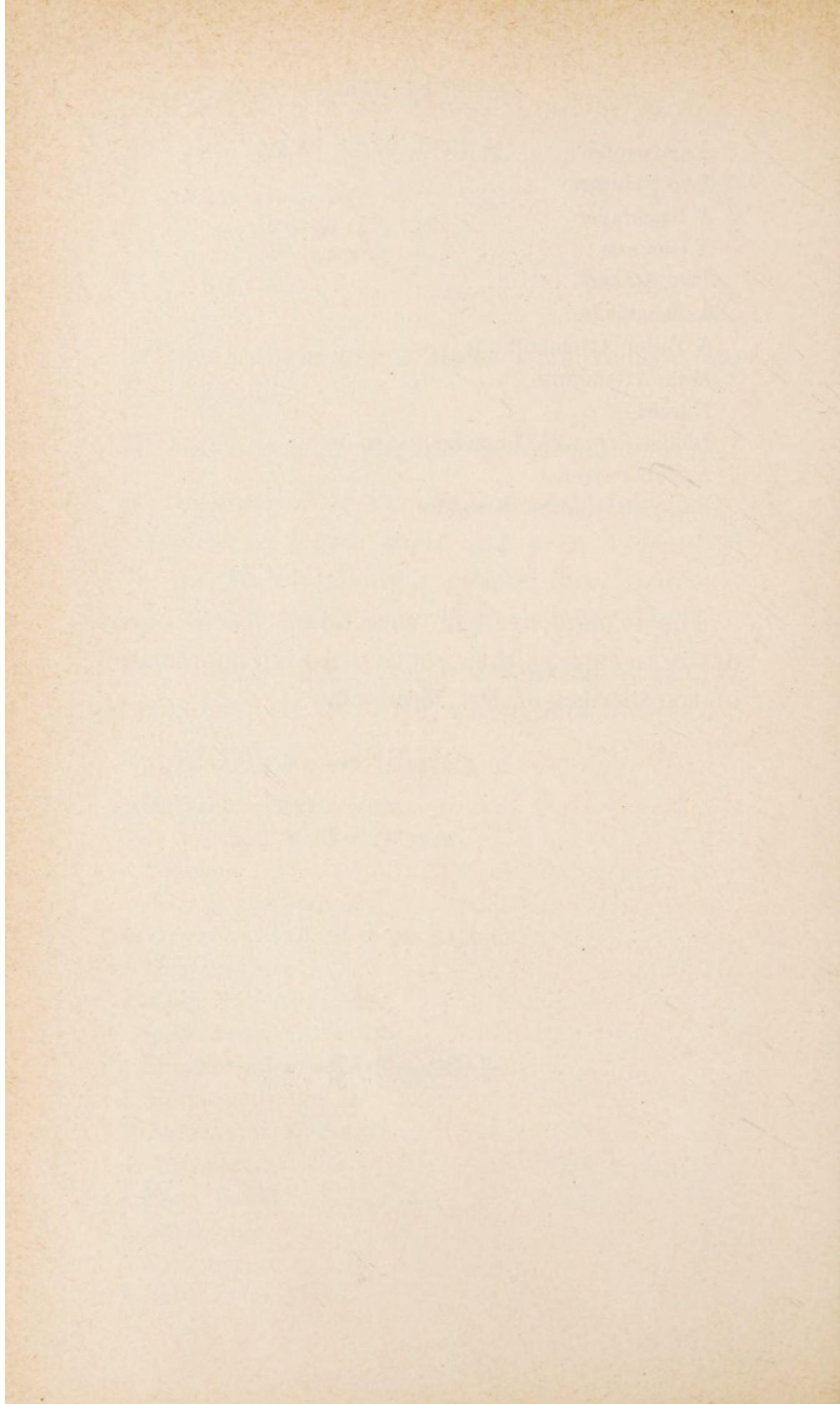
The Committee, in concluding their report, desire to express their continued high appreciation of the services of Dr. Murdoch.

ALBERT R. TULL,

CHAIRMAN.







REPORT  
OF  
TWO COMMISSIONERS IN LUNACY,

21st SEPTEMBER, 1894.

17070

THE CONSTITUTION OF THE UNITED STATES

OF THE STATE OF NEW YORK



REPORT  
OF  
COMMISSIONERS IN LUNACY.

(Entered in Visitors' Book.)

---

BERKS ASYLUM,

*September 21st, 1894.*

To-day this Asylum was visited by ourselves, as well as by the Committee. The Institution being of moderate size can be, and is, well worked in all its departments. The patients have risen in number from 536 at the date of our Colleagues' visit (28th October, 1893) to 555 on the books to-day; of these 249 are males and 306 are females, of whom 5 are out on trial. The private cases are 7. The paupers are, with 4 exceptions, chargeable to the County or Unions in the County.

The vacant beds are 27 for males, 36 for females, including those obtained in the main building by provision of a detached hospital for infectious cases; that hospital will be fit for occupation so soon as furnished, and seems very suitable for its purpose.

The changes among the patients since 28th October, 1893, have been effected by 104 admissions, 40 discharges, and 45 deaths. According to the returns made to us the recoveries have been 28.

The per-centage of recoveries on admission in 1893 was 35·8. The deaths were all from natural causes with the exception of one which formed the subject of an inquest and was due to the accidental fracture of the thigh in an old woman.



Death resulted in the cases of 1 man and 2 women from Typhoid Fever, of which there have been 5 cases since our Colleagues' visit, the origin, Dr. Murdoch has failed to discover. Autopsies have been made in nearly 90 per cent.

We found the Asylum in admirable order, the wards bright and comfortable and a good supply of flowers in them, especially in the Infirmarys, to cheer the sick and afflicted. We can also speak very favourably of the patients' condition in regard to personal cleanliness and tidyness. Their clothing is good, and that of the women is noticeable for variety of colour. We saw 9 of each sex in bed, no one had a bed-sore, and no bed-sore, we are informed, existed at the death of any of the deceased.

The bedding is good and in excellent order, so far as our inspection extended, but it is removed during the day from the padded rooms where we prefer that it should be for our inspection.

The floors of day rooms and dormitories and single rooms are kept scrupulously clean, but we recommend that to a certain extent staining and varnishing should be introduced as a sanitary precaution.

We can speak very well of the behaviour of the patients during our stay in the wards, and can report their general contentment. We saw them in their wards and a large number of them at the dinner in the hall. The fare was a nutritious soup, which we ourselves tasted. The beverage at dinner is water, but the working men have beer twice a day.

The employed patients are 171 in the male and 225 in the female division, about 70 per cent. of each sex, including 42 men and 67 women doing housework. These figures are good.

Walking exercise beyond the courts daily is given to 216 men and 268 women ; also good figures. The associated entertainments, weekly and varied, are attended by 272



patients or thereabouts, and 210 go weekly beyond the Asylum grounds.

Prayers are read in the Infirmaries and 344 is the average congregation of patients at the Chapel Services.

The present number of epileptics under care and treatment is 81; there are 6 general paralytics; 24 actively suicidal cases under very careful instructions in print for their special supervision, besides a considerable number of idiots and imbeciles.

Forty-seven patients are registered as being under medical treatment. In addition to the cases of Typhoid already referred to there have been 2 cases of dysentery, 35 of influenza, and 2 of slight facial erysipelas, but no other epidemic or zymotic disease, and the general health appears to have been good.

The serious but non-fatal casualties have been limited to the accidental fracture of bones of one patient of each sex.

There has been no resort to restraint in the treatment of the patients, but 1 of each sex has been secluded; these in all upon 12 occasions and for a total period of 109 hours, and 1 patient was in seclusion when we visited the wards.

The staff of attendants, who appear to be of a respectable class, is not too strong, being in the proportions of 1 to 12 for men, 1 to 14 for women. There has been only one change among the charge attendants during the year, but 8 men and 10 women, or 35 per cent. of the whole, have been less than a year in the service of this Asylum.

We understand that the Head Attendant in each division is generally present at the weekly bathing of the patients of the division, but we think that they, or duly appointed deputies, should invariably be present to examine the persons of the patients in view to the detection of bruises or other injuries.



We learn that 27 wet beds were reported last night, a number which we think might be reduced by greater care on the part of the attendants.

The appliances for combating an outbreak of fire appear to be satisfactory in many, but not all, respects. We gave an alarm and the water was playing upon the building in  $5\frac{1}{2}$  minutes, but there are no means of communication, as we think should be, other than by messenger, between the several wards and the central fire alarm, and the internal hydrants are said to be useless from deficient water pressure, and the attendants and nurses are consequently not exercised in their use. Internal hydrants and hose maintained in good order, and in the hands of persons trained in their use, are valuable in the beginning of a fire because ready of application.

No important structural work has been undertaken since the last visit beyond the completion of the Hospital already referred to, but further progress has been made in the improvement of the W.C. fittings and the removal of the soil pipes to the outside.

We visited the Chapel, Farm, Stores, and Offices. We have nothing to report in these directions. The piano in the entertainment room might with advantage be replaced by a new one.

The weekly maintenance charge for home paupers is now 7s. 10 $\frac{1}{2}$ d., for private patients 17s. 6d., and for out-county paupers 14s.

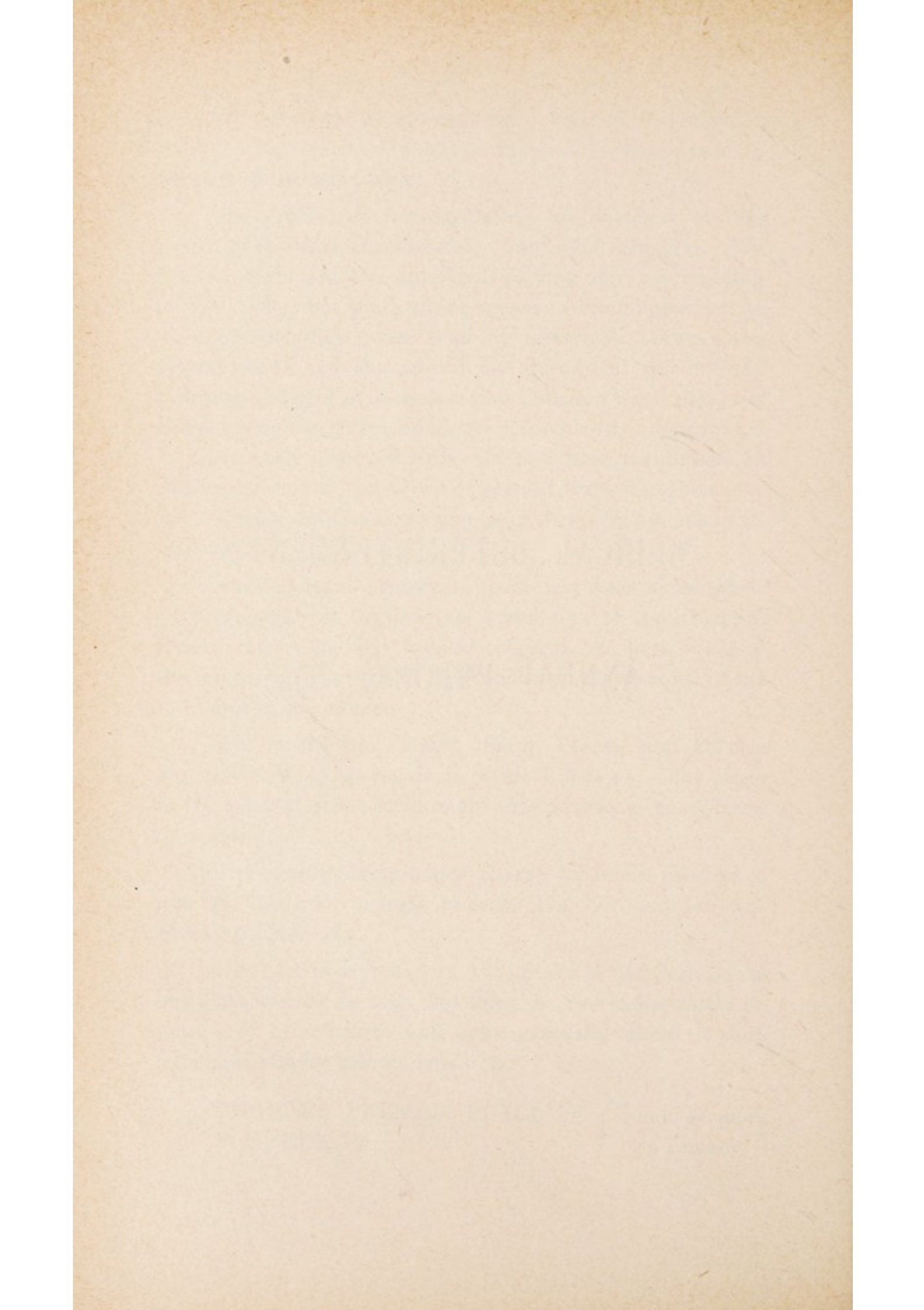
Due care is exercised in the entries in the Case Books and Pathological Records, but those in the latter would be more easy of reference and more generally useful if they were made under printed headings.

CHARLES PALMER PHILLIPS,	} Commissioners	
F. NEEDHAM,		
		in Lunacy.

MEDICAL SUPERINTENDENT'S

ANNUAL REPORT, 1894.





# TWENTY-FOURTH ANNUAL REPORT

## OF THE

### MEDICAL SUPERINTENDENT.

To the Committee of Visitors of the Berks (Reading and  
Newbury) Lunatic Asylum.

GENTLEMEN,

I beg to submit my Annual Report upon the general management of your Asylum and its Medical history for the year ending December 31st, 1894, to which is appended the usual statistical tables.

The following table shows the changes which have occurred during the year.

	Males.	Females	Total.
Patients in the Asylum on Jan. 1st ..	240	305	545
Admissions .. .. .	60	57	117
Total cases under treatment .. ..	300	362	662
Discharged—			
Recovered .. .. .	14	29	43
Removed .. .. .	10	5	15
Deaths .. .. .	19	31	50
Remaining in the Asylum on Dec. 31st..	257	297	554

From the above it will be seen that the movements amongst the patients have resulted in an increase of 9 remaining under treatment. The males have increased by 17 and the females are less by 8.



The past year has given us the highest number of normal admissions since the opening of the Asylum in 1870. It is also exceptional in that the male admissions have been in excess of the females.

Of the 117 admissions 20 did not come under care for the first time. Fifteen of these were due to relapse, *i.e.*, at some time or other they had been under treatment in this Asylum and had been discharged recovered.

#### Admissions.

The character of the admissions was far from favourable. Several were in a very feeble condition from bodily disease, and many were far advanced in senility, a class which occasions the greatest anxiety in Asylums. Twenty-six were returned as in bad health, and 61 as in feeble health. We had also more than the usual number of epileptic admissions, of whom we now have a total of 80, all of whom are under constant supervision. No less than one-fifth of the male population consists of this class, which is an unusually high proportion. They are, as a rule, extremely troublesome to deal with, and require the greatest tact on the part of those entrusted with their care on account of their fractious, discontented and scheming disposition, and their tendency to sudden dangerous outbreaks of acute excitement.

#### Curability.

The prognosis as to recovery in 34 of the admissions (29 per cent.) was good, doubtful in 11, and next to hopeless in 72 (61 per cent.) Of the 554 patients remaining in the Asylum at the end of the year 10 are looked upon as curable and 13 as doubtfully curable.

#### Causes of insanity.

Of the causes of insanity in the admissions, hereditary influence is, as usual, credited with the highest number, namely 34. This, I feel sure, is far below the real state of matters in this County. Relatives, as a rule, are slow to admit hereditary family taint, and the fact only comes accidentally to our knowledge and after some considerable period has elapsed subsequent to the patient's admission.



Epilepsy is responsible for 12, senility for 10, and in only 4 can drink be assigned as a factor.

The discharges number 58, of these 43 were recovered. Excluding transfers from class to class (5) and patients from other Asylums (5) this gives a recovery rate of 40 per cent. on the admissions, a result slightly above that of last year. Several patients were discharged on trial after a prolonged convalescence, but whether their unfavourable surroundings or the freedom from Asylum care and discipline, or probably both, were the cause of their relapse, they, after a short period of trial, had to be brought back. Occasionally it has been a matter of serious consideration whether it would be advisable to hand over certain patients to the care of friends upon their urgent application. There are those of the public who seem most intolerant of having in their midst a discharged unrecovered harmless patient, and who are ever ready to cast reflections on Asylum Authorities in the event of the patient again showing any untoward peculiarities. These seem unmindful of the fact that insanity is not a stigma but a disease, requiring for its successful treatment cheerful social surroundings, which, in some cases, can best be had by association with the members of the patient's own family. Their lives are, at least, thereby made happier and brighter, and the expense to the already over-burdened ratepayer is considerably diminished. In spite of these unwarrantable reflections, the discharge of chronic patients considered suitable and of those likely to benefit by a removal from Asylum surroundings should, in my opinion, be encouraged whenever the circumstances are at all favourable.

Discharges.

The deaths numbered 50—19 males and 31 females,—giving a death rate on the average daily number resident of 9 per cent. This is exactly the same as last year, and is below the average death rate of Asylums. Only two patients died under one month's residence, which is most gratifying considering the exhausted and critical state in which some

Deaths.



of the patients were admitted. Brain disease was the cause in 10 cases, phthisis in 7, senility in 15, whilst 5 were due to typhoid fever and 1 to dysentery. The average age at death was 53, and 18 were over 70 years of age.

Escapes and  
Inquest.

There were three escapes, which are few in number considering the large proportion of patients usefully employed (72 per cent.) Two were absent from the Asylum but a few hours, the third remained at large for the statutory period of 14 days, at the end of which his name was removed from the Asylum books. I am thankful to be able to record that no suicide has occurred in the Asylum. The Coroner considered it necessary to hold an inquest in one case only, that of a female patient suffering from the restlessness of senility, who slipped and fell sustaining a fracture of the neck of the thigh bone. She lingered for a period of four weeks after the accident. The verdict was "one of natural causes accelerated by a fracture of the thigh." This case exemplifies the previous remark as to the anxiety attending the care of the senile insane, who, when up and about, are so feeble and tottery, and yet when confined to bed are so restless and troublesome that there is constant fear of accident which almost invariably terminates fatally.

Accidents.

The other serious but non-fatal accidents were a fractured arm and an impacted fracture of the thigh in aged females, and two cases of fracture of both bones of the leg. All were accidentally produced by the patient falling on the floor.

General  
Health.

The general health of the patients has not been satisfactory. During the Spring and Autumn diarrhœa was unusually prevalent, many of the cases being very intractable, and four assumed the dysenteric type, causing one death. There have been nine cases of enteric fever of a virulent form, causing five deaths. These cases of fever were solely confined to the patients, which has invariably been the case in former years, and is a point to be noted.



They occur at intervals and are spread over every Ward in the Asylum, whether in the lower or upper floors. The milk and water supplies are beyond suspicion, otherwise a regular outbreak would be the result. For the past ten years we have been troubled with these scattered cases, recrudescent however, in certain years. A great deal of time and thought have been spent in endeavouring to account for the presence amongst us of this scourge of modern civilization. The sanitary appliances are being gradually overhauled so as to bring them up to modern sanitary ideas ; a distant sewage irrigation farm has been made at some distance from the building, and an additional water supply which has been pronounced to be of excellent quality has been obtained, but all without any benefit.

Early in December I undertook an examination of the drains, which are practically external to the building, submitting every one to the water test, a matter of considerable difficulty owing to entire absence of inspection-chambers. Many serious leakages and defects were discovered in all the drains. The matter was promptly considered and you decided to obtain the assistance of Professor Corfield, the eminent sanitary expert, who is at present making a thorough examination, and who will shortly be able to report to you on the condition of the sanitary appliances generally and what steps must be undertaken to put the Asylum in a thorough sanitary condition. There are many who cast suspicion upon the vegetables grown upon the sewage land as being the source of the trouble. One cannot be but struck by the fact that the staff and patients live under exactly the same sanitary conditions, use the same water, and practically have the same food ; the chief difference being that the food is cooked separately and the vegetables being in smaller quantity are therefore more likely to be thoroughly boiled, and so the poison rendered innocuous. The evacuations from patients suffering from this disease are carefully cremated, although up to the time of their first coming under



notice the stools are discharged into the general sewage system, thence to the irrigation beds, and we must therefore presume that for a period, however short, the enteric germ exists there. This mode of propagating enteric fever has not been accepted by competent authorities who believe that the enteric bacillus cannot exist, far less multiply, upon properly managed sewage ground. This belief has lately been further strengthened by the remarkable conclusions based upon the investigations of Mr. Law and Dr. Andrews, which were conducted at the instigation of the Main Drainage Committee of the London County Council, to which body their report was made a few weeks ago.

#### Isolated Hospital.

In September the Isolated Infectious Hospital for 12 patients and the necessary staff was finished by the contractor and has since been furnished and made available for immediate use. It seems well suited for its purpose, and the total cost, I am pleased to say, has been well under the sum granted by the bodies in union. Trees and shrubs have been freely planted as a protection from the east winds, and the roads have been made up. The drainage is entirely distinct from that of the main building. One of the dormitories in the main building for 30 patients set at liberty by the erection of this Hospital has been furnished, and the other will shortly be completed. With this addition the accommodation for the patients for whom you are compelled to provide will be sufficient for several years.

#### Recreations,

The usual summer and winter recreations and entertainments have taken place, consisting of cricket, football, sports, dancing, and dramatic performances. These are much appreciated by the patients, many of whom are able to take an active part in such pastimes. To those of the Staff who so freely and willingly contributed to our amusements my best thanks are due.



Two Members of the Board in Lunacy made their annual visit of inspection on September 21st. Their report is appended.

Visit of Commissioners in Lunacy.

The usual work of keeping the building in thorough repair has been executed by the Asylum Staff. The Recreation Hall has been painted and decorated, as also the whole of Male 6 Ward. Female 1 Block of Dormitories has been cleaned and painted; also various other parts of the Asylum. The external wood and iron work of the west front of the female extensions and central block has been painted. The brickwork round the window and door-frames has been pointed; as also have been several of the boundary walls. New pedestal w.c. pans, with waste-preventing cisterns, have been placed in F.3, F.4, F.7, M.2, and M.4 Sanitary annexes, and the floors tiled.

The Building.

I have again to thank the Medical Officers and the Heads of the various Departments for much valuable and willing assistance. The only change amongst the Officers is the appointment of Miss Brown as housekeeper.

To you, Gentlemen, I tender my most sincere thanks for your continued confidence and support.

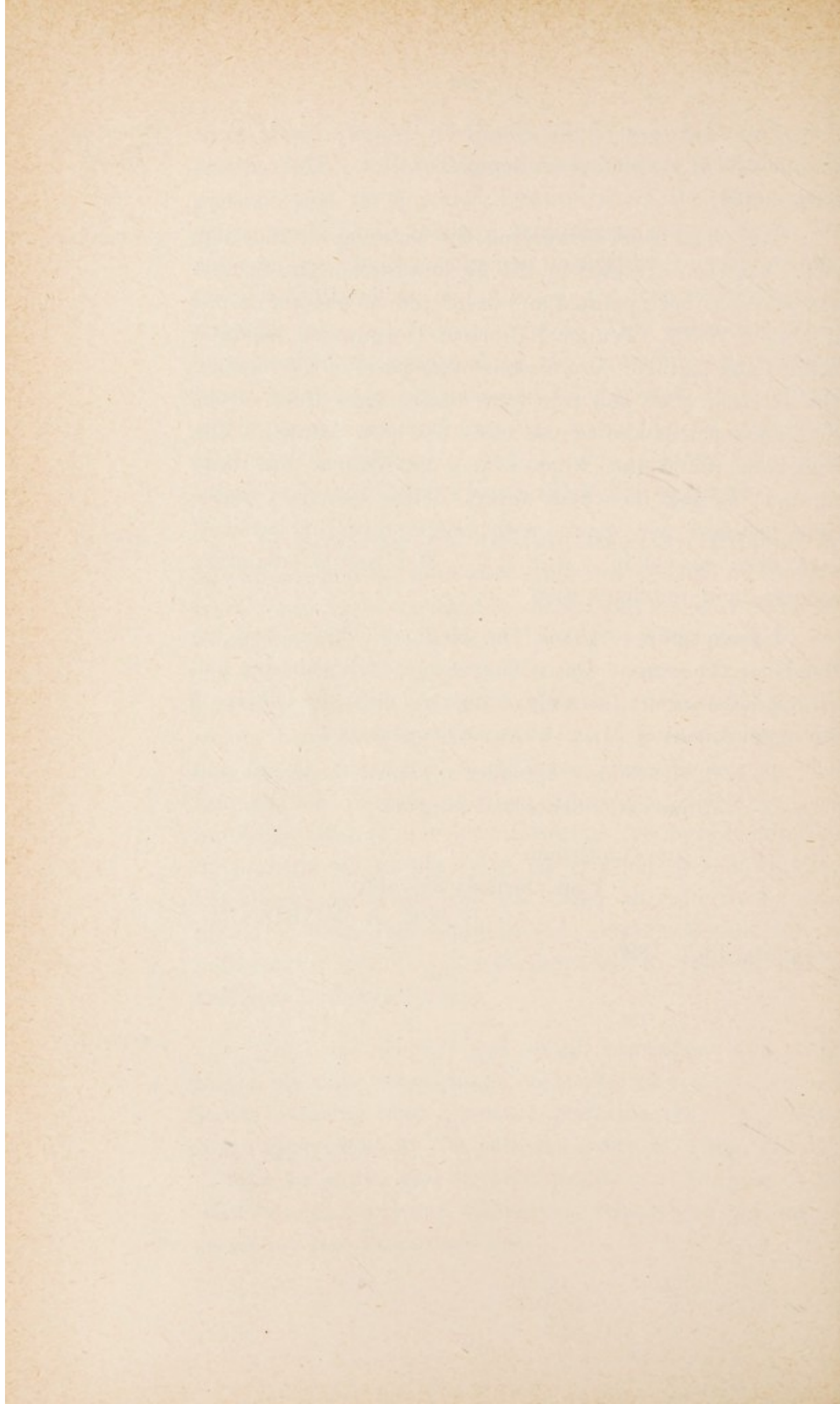
I am, Gentlemen,

Your obedient Servant,

J. WM. A. MURDOCH.

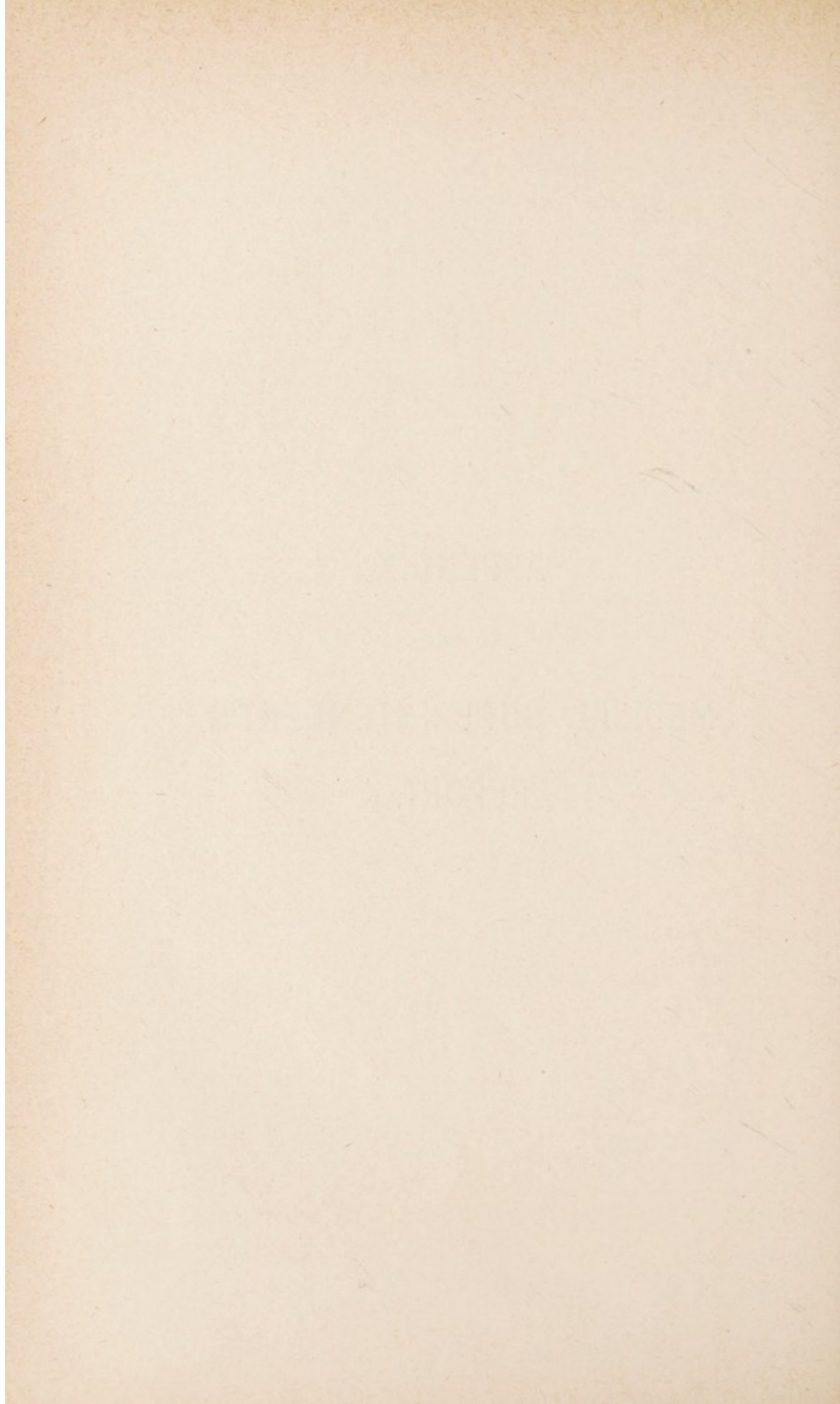
*January 18th, 1895.*





APPENDIX  
TO THE  
MEDICAL SUPERINTENDENT'S  
REPORT.





# ASYLUM MEDICAL STATISTICS, 1894.

TABLE I.

*Showing the Admissions, Re-admissions, Discharges, and Deaths during the year ending 31st December, 1894.*

					Males.	Females.	Total.
In the Asylum, 31st December, 1893 ..					240	305	545
Cases admitted :							
		M.	F.	T.			
First admissions ..	..	49	48	97			
Not first admissions ..	..	11	9	20			
Total cases admitted during the year ..					60	57	117
Total cases under care during the year ..					300	362	662
Cases Discharged and Died :							
		M.	F.	T.			
Recovered ..	..	14	29	43			
Relieved ..	..	2	4	6			
Not Improved ..	..	8	1	9			
Died ..	..	19	31	50			
Total cases Discharged and Died during the year ..					43	65	108
Remaining in the Asylum, December 31st, 1894 ..					257	297	554
Average numbers resident during the year..					247	304	551
Persons* under care during the year† ..					297	359	656
Persons admitted ..					57	54	111
Persons recovered ..					14	29	43
Transferred from other Asylums ..					2	3	5
" to " " " ..					2	..	2

\* Persons, *i.e.*, separate persons in contradistinction to "cases" which may include the same individual more than once.

† Total cases, minus re-admissions of patients discharged during the current year.



TABLE IA.

*Showing (1) the Previous Attacks among Persons admitted during the year 1894 and (2) the number of Times they had previously recovered in this or any Asylum.*

1. Number of Previous Attacks.	PERSONS.		
	Males.	Females.	Totals.
Have had 1 Previous Attack .. ..	6	9	15
„ „ 2 Previous Attacks .. ..	3	1	4
„ „ Many Previous Attacks .. ..	3	4	7

2. Number of Times Patients Recovered.	In this Asylum.			In other Asylums.		
	M.	F.	TOT.	M.	F.	TOT.
Once .. .. .	6	3	9	2	4	6
Twice .. .. .	1	..	1	..	..	..
Several Times .. .. .	2	3	5	1	1	2





TABLE II<sub>A</sub>.

*Showing the Admissions and Recoveries of Persons from the 30th of September, 1870, to the present date, December 31st, 1894. (Twenty-four years and three months).*

	Males.	Females.	Totals.
Persons admitted during the twenty-four years and three months .. .. .	1096	1213	2309
*Persons discharged recovered during the same period being 30·7 per cent. of persons admitted .. .. .	301	409	710
Of whom were re-admitted relapsed ..	50	96	146
Recovered persons who have not relapsed..	249	313	562
Relapsed persons discharged recovered ..	19	55	74
Net † recovered persons being 27·5 per cent. of persons admitted.. .. .	268	368	636

\* Persons *i.e.*, separate persons in contradistinction to "cases" which may include the same individual more than once.

*Re-admission* applies only to re-admission into this Asylum.

† *i.e.*, Recovered persons sane at the present time so far as the Asylum statistics show.



TABLE III.

*Showing the Admissions, Discharges, and Deaths, with the mean Annual Mortality and proportion of Recoveries per cent. of the Admissions for each Year since the opening of the Asylum on the 30th September, 1870.*

YEAR.	Admitted.			Discharged.						Died.			Remaining on December 31st of each year.			Average numbers resident.			Percentage of Recoveries on Admissions including all transfers.			Percentage of Deaths on average numbers resident.					
	Admitted.			Recovered.			Relieved.			Not Improved.			Died.			Remaining on December 31st of each year.			Average numbers resident.			Percentage of Recoveries on Admissions including all transfers.			Percentage of Deaths on average numbers resident.		
	M.	F.	Tot.	M.	F.	Tot.	M.	F.	Tot.	M.	F.	Tot.	M.	F.	Tot.	M.	F.	Tot.	M.	F.	Tot.	M.	F.	Tot.			
3 Mos. 1870..	50	62	112	..	..	..	..	..	..	..	..	1	49	62	111	42	53	95	..	..	..	2.3	..	1.0			
1871..	85	85	170	4	7	11	..	1	1	..	1	13	116	132	248	80	95	175	4.7	8.2	6.4	16.2	7.3	11.4			
1872..	47	42	89	19	17	36	3	1	4	..	..	3	124	139	263	120	138	258	40.4	40.4	40.	11.6	12.3	12.0			
1873..	35	42	77	13	3	26	1	2	3	7	15	14	123	145	268	129	143	272	37.2	30.9	33.7	10.8	9.0	10.2			
1874..	42	59	101	7	24	31	4	3	7	4	7	11	23	127	145	272	122	146	268	16.6	40.6	30.4	18.8	17.1	17.9		
1875..	32	39	71	8	16	24	1	2	3	2	5	7	18	130	150	280	128	155	283	25.0	41.0	33.8	14.4	7.0	10.2		
1876..	43	56	99	11	22	33	1	1	2	4	5	9	12	145	159	304	134	157	291	25.5	39.2	33.3	8.2	12.1	10.6		
1877..	43	46	89	15	17	32	4	3	7	16	13	29	14	139	159	298	148	158	306	34.8	35.9	35.4	9.4	8.2	8.8		
1878..	40	47	87	11	20	31	2	3	5	6	6	12	14	146	160	306	145	157	302	27.5	42.5	35.4	9.6	10.8	10.2		
1879..	40	45	85	20	21	41	1	3	4	3	5	8	22	140	167	307	143	163	306	50.0	46.7	48.2	15.3	5.5	10.1		
1880..	89	105	194	14	20	34	6	4	10	1	1	2	16	192	228	420	157	180	337	15.7	19.0	17.5	10.1	10.5	10.3		
1881..	46	65	111	17	18	35	..	..	..	2	2	4	23	196	256	452	196	244	440	36.9	27.6	31.5	11.7	6.9	9.0		
1882..	70	68	138	13	17	30	1	1	2	1	1	2	29	222	278	500	201	264	465	18.5	25.0	21.7	14.4	9.8	11.8		
1883..	46	54	100	17	18	35	4	4	8	1	..	1	28	218	286	504	221	283	504	36.9	33.3	35.2	12.6	8.4	10.3		
1884..	45	43	88	19	31	50	2	2	4	21	11	32	31	190	264	454	204	280	484	42.2	72.0	56.8	15.1	7.5	10.7		
1885..	45	51	96	15	20	35	6	3	9	2	2	4	16	196	270	466	200	266	466	33.3	39.2	36.4	8.0	7.5	7.7		
1886..	45	54	99	8	16	24	3	1	4	2	1	3	14	214	292	506	207	283	490	17.7	29.6	24.2	6.7	4.9	5.7		
1887..	53	44	97	11	23	34	9	12	21	2	1	3	36	209	273	482	207	284	491	20.7	52.3	35.4	17.3	9.5	12.8		
1888..	43	59	102	12	23	35	3	7	10	1	1	2	27	209	287	496	210	280	490	27.9	39.0	34.2	12.8	5.0	8.3		
1889..	37	60	97	18	31	49	6	6	12	1	1	2	9	212	290	502	214	294	508	48.6	51.6	50.5	4.2	6.4	5.5		
1890..	43	56	99	11	20	31	1	7	8	5	3	8	20	218	296	514	218	295	513	25.5	35.7	31.5	9.2	6.7	7.7		
1891..	48	40	88	13	11	24	2	10	12	3	1	4	22	226	296	522	225	299	524	27.1	27.5	27.3	9.7	6.0	7.6		
1892..	49	65	114	19	22	41	..	2	2	8	2	10	14	234	311	545	234	303	537	38.7	33.8	35.9	5.9	7.9	7.0		
1893..	44	62	106	14	24	38	3	8	11	3	5	8	18	240	305	545	237	304	541	31.8	38.7	35.8	7.6	10.2	9.0		
1894..	60	57	117	14	29	43	2	4	6	8	1	9	19	257	297	554	247	304	551	23.3	50.8	36.7	7.69	10.19	9.07		

NOTE.—The Admissions of 1880 include 92 Patients belonging to Unions in the County of Berks who had previously been maintained in other Asylums, and the Admissions of 1882 include 31 Patients belonging to the County of Surrey.

The percentage of Recoveries upon the Admissions, deducting transfers from other Asylums and from Class to Class, is 40 per cent.



TABLE IV.

*Showing the History of the Annual Admissions since the opening of the Asylum on the 30th September, 1870, with the Discharges and Deaths, and the Numbers of each Year remaining on December 31st, 1894.*

Admitted.			Of each Year's Admissions, Discharged and Died in 1894.										Total Discharged and Died of each Year's Admissions to 31st December, 1894.										Remaining of each Year's Admissions on Dec. 31, 1894.		
YEAR.	New Cases.		Re-lapsed Cases.	Recovered.		Relieved.		Not Improved.		Died.		Recovered.		Relieved.		Not Improved.		Died.		M.	F.	Tot.			
	M.	F.		M.	F.	M.	F.	M.	F.	M.	F.	M.	F.	M.	F.	M.	F.	M.	F.				Tot.		
1870	50	62	..	..	..	..	..	1	..	1	..	2	3	5	1	5	2	7	2	12	10	22			
1871	85	84	..	..	..	..	..	1	..	1	..	12	15	27	2	5	7	4	38	36	74	26			
1872	41	38	3	..	..	..	..	..	..	..	..	16	22	38	3	1	4	6	19	17	36	4			
1873	35	40	2	..	..	..	..	..	1	..	1	11	15	26	2	6	8	2	16	12	28	7			
1874	39	49	3	..	..	..	..	..	..	..	..	8	31	31	4	3	4	7	24	25	49	3			
1875	29	36	3	..	..	..	..	..	..	..	..	11	16	27	..	2	1	3	19	14	33	3			
1876	41	52	2	..	..	..	..	..	..	..	..	13	28	41	3	2	5	3	13	20	33	6			
1877	41	41	5	..	..	..	..	1	..	1	..	14	19	33	7	3	10	1	21	16	37	4			
1878	37	39	3	..	..	..	..	..	1	..	1	16	17	33	3	3	5	8	16	20	36	4			
1879	37	40	3	..	..	..	..	..	..	..	..	16	22	38	3	3	2	5	15	13	28	6			
1880	86	98	7	..	..	..	..	..	4	..	4	15	26	41	1	7	8	2	49	50	99	22			
1881	43	55	3	..	..	..	..	..	1	1	2	17	19	36	2	2	4	3	20	31	51	11			
1882	66	61	4	..	..	..	..	..	1	2	3	14	23	37	1	3	4	4	26	32	58	9			
1883	43	47	3	..	..	..	..	..	..	..	..	17	21	38	2	4	6	3	4	22	16	38	5		
1884	43	39	2	..	..	..	..	..	..	..	..	10	14	24	4	2	6	1	16	11	27	7			
1885	40	45	6	..	..	..	..	..	3	..	..	17	21	38	4	5	10	1	18	11	29	11			
1886	43	47	7	..	..	..	..	..	1	3	4	17	21	38	4	5	2	6	10	17	27	14			
1887	51	39	2	..	..	..	..	..	..	..	..	9	20	29	6	5	11	6	23	9	32	9			
1888	41	49	2	..	1	1	..	..	..	1	1	9	24	33	3	3	9	12	14	14	28	17			
1889	34	54	3	..	..	..	..	..	1	1	2	20	20	40	2	7	9	1	3	10	13	23			
1890	42	52	1	..	..	..	..	..	1	1	1	14	15	29	3	3	3	4	7	10	16	26			
1891	45	34	3	..	..	..	..	1	..	1	4	10	14	24	2	1	3	6	11	27	14	13			
1892	44	58	5	..	1	1	..	..	1	1	2	18	26	44	2	4	6	4	11	10	21	15			
1893	40	55	4	..	12	17	1	1	1	6	7	12	23	35	2	2	8	2	8	13	21	18			
1894	51	51	6	8	14	22	1	1	1	6	7	8	14	22	1	1	2	4	6	7	13	41			
TOTAL.	1150	1265	70	14	29	43	2	4	4	1	5	323	480	893	65	91	156	108	181	467	457	924	257		
																							297		
																							554		

Summary of the Total Admissions from September 30th, 1870, to December 31st, 1894.									
					Males.		Females.		Total.
Percentage of Cases Recovered					..	..	..	34.14	30.58
"	"	"	Relieved	..	..	..	..	6.48	5.95
"	"	"	Not Improved	..	..	..	..	5.76	7.19
"	"	"	Died	..	..	..	..	32.50	35.19
"	"	"	Remaining	..	..	..	..	21.12	21.09
								100	100

The Admissions of 1880 include 92 Patients belonging to Unions in the County of Berks who had previously been maintained in other Asylums; and the Admissions of 1882 include 31 Patients belonging to the County of Surrey.



TABLE V.—Showing the Causes of Death during the Year 1894, together with the Ages at Death.

CAUSE OF DEATH.	5 to 15		15 to 20		20 to 25		25 to 30		30 to 35		35 to 40		40 to 45		45 to 50		50 to 55		55 to 60		60 to 65		65 to 70		70 to 75		75 to 80		80 to 85	
	M.	F.	M.	F.	M.	F.	M.	F.	M.	F.	M.	F.	M.	F.	M.	F.	M.	F.	M.	F.	M.	F.	M.	F.	M.	F.	M.	F.	M.	F.
<i>Cerebral or Spinal Diseases:</i>																														
General Paralysis ..	1	1	2																											
Epilepsy ..	3		1		1																									
Cerebral Hemorrhage ..	1																													
Cerebral Softening ..		1																												
Exhaustion from ..																														
Melancholia ..	1	1																												
Exhaustion from Mania ..	1	1																												
<i>Thoracic Diseases:</i>																														
Heart Disease ..	2	1	3																											
Phthisis ..	3	4	7																											
Pneumonia ..		1	1																											
Cancer of Lung ..		1	1																											
<i>Abdominal Diseases:</i>																														
Cancer of Pylorus and Liver ..		1	1																											
Acute Gastritis ..		1	1																											
Enteric Fever ..	1	4	5																											
Dysentery ..	1		1																											
Peritonitis ..	1		1																											
Uremia ..	1		1																											
<i>General Diseases:</i>																														
Senile Decay ..	4	11	15																											
Marasmus ..	1		1																											
Cancer of Mamma ..		1	1																											
General Tuberculosis ..		1	1																											
Totals ..	19	31	50	1	1	1	1	1	1	2	1	1	1	1	1	2	1	7	..	3	2	2	1	1	4	9	1	1	2	1

Post-Mortem Examinations, Males 16.—Females 27.—Total 43.



TABLE VI.

*Showing length of Residence in those Discharged Recovered, and in those who have Died during the year 1894.*

LENGTH OF RESIDENCE.							Recovered.			Died.		
							Males.	Females.	Total.	Males.	Females.	Total.
Under 1 month	..	..	..	..	..	..	..	..	..	1	1	2
From 1 to 3 months	..	..	..	..	..	..	5	2	7	3	5	8
" 3 " 6	"	..	..	..	..	..	4	13	17	2	4	6
" 6 " 9	"	..	..	..	..	..	4	4	8	1	1	2
" 9 " 12	"	..	..	..	..	..	..	4	4	..	1	1
" 1 " 2 years	..	..	..	..	..	..	..	4	4	1	1	2
" 2 " 3	"	..	..	..	..	..	..	1	1	2	1	3
" 3 " 5	"	..	..	..	..	..	1	..	1	2	3	5
" 5 " 7	"	..	..	..	..	..	..	1	1	1	1	2
" 7 " 10	"	..	..	..	..	..	..	..	..	1	3	4
" 10 " 12	"	..	..	..	..	..	..	..	..	1	1	2
" 12 " 15	"	..	..	..	..	..	..	..	..	1	6	7
" 15 " 20	"	..	..	..	..	..	..	..	..	1	1	2
" 20 " 25	"	..	..	..	..	..	..	..	..	2	2	4
Total .. ..							14	29	43	19	31	50

TABLE VII.

*Showing the Duration of the Disorder on Admissions, Discharges, and Deaths, during the Year 1894.*

DURATION OF DISEASE ON ADMISSION IN FIVE CLASSES.												
CLASS.	The Admissions.			Recovered.			Removed, Relieved, or otherwise.			The Deaths.		
	Males.	Females.	Total.	Males.	Females.	Total.	Males.	Females.	Total.	Males.	Females.	Total.
FIRST CLASS: First Attack, and within three months on admission .. .. .	18	27	45	6	13	19	3	2	5	4	12	16
SECOND CLASS: First Attack, and above three, and within twelve months on admission	12	9	21	..	3	3	1	..	1	2	5	7
THIRD CLASS: Not First Attack, and within twelve months on admission .. .. .	12	9	21	8	12	20	1	1	2	2	4	6
FOURTH CLASS: First Attack or not, but of more than twelve months duration on admis- sion .. .. .	12	11	23	..	1	1	5	2	7	8	7	15
FIFTH CLASS: Congenital .. .. .	6	1	7	..	..	..	..	..	..	3	3	6
TOTAL .. .. .	60	57	117	14	29	43	10	5	15	19	31	50



TABLE VIII.

*Showing in Quinquennial Periods the Ages of those Admitted, Recovered, and Died during the Year 1894, and of those Remaining on 31st December, 1894.*

AGES.	The Admissions.			Recovered.			The Deaths.			Patients Resident 31st December, 1894.		
	Males.	Females.	Total.	Males.	Females.	Total.	Males.	Females.	Total.	Males.	Females.	Total.
From 5 to 10 years	..	..	..	..	..	..	..	1	1	2	1	3
" 10 to 15 "	1	1	2	..	..	..	1	..	1	3	3	6
" 15 to 20 "	4	1	5	..	1	1	1	..	1	6	11	17
" 20 to 25 "	11	9	20	1	5	6	1	..	1	12	14	26
" 25 to 30 "	8	4	12	2	2	4	1	1	2	25	16	41
" 30 to 35 "	9	9	18	2	4	6	1	1	1	32	27	59
" 35 to 40 "	4	7	11	..	4	4	..	1	1	22	33	55
" 40 to 45 "	3	2	5	1	4	5	1	1	2	22	31	53
" 45 to 50 "	1	3	4	..	3	3	1	2	3	22	31	53
" 50 to 55 "	3	9	12	1	1	2	1	7	8	33	33	66
" 55 to 60 "	2	2	4	3	1	4	..	3	3	29	24	53
" 60 to 65 "	4	7	11	2	4	6	2	2	4	21	31	52
" 65 to 70 "	4	..	4	1	..	1	1	1	2	13	18	31
" 70 to 75 "	3	2	5	1	..	1	4	9	13	8	14	22
" 75 to 80 "	3	1	4	..	..	..	1	1	2	5	7	12
" 80 to 85 "	..	..	..	..	..	..	2	1	3	2	3	5
" 85 to 90 "	..	..	..	..	..	..	..	..	..	..	..	..
" 90 to 95 "	..	..	..	..	..	..	..	..	..	..	..	..
TOTAL	60	57	117	14	29	43	19	31	40	257	297	554
Mean Age	39.1	41.1	40.1	47.2	38.3	42.7	52.5	57.4	54.9			

TABLE IX.

*Showing the condition as to Marriage in the Admissions, Discharges, and Deaths, during the Year 1894, and of the Patients resident on December 31st, 1894.*

Condition in reference to Marriage.	The Admissions.			THE DISCHARGES.						The Deaths.			Patients Resident December 31st, 1894.		
	Males.	Females.	Total.	Recovered.			Removed, Relieved, or otherwise.			Males.	Females.	Total.	Males.	Females.	Total.
				Males.	Females.	Total.	Males.	Females.	Total.						
Single ..	31	26	57	5	13	18	5	3	8	11	15	26	166	156	322
Married ..	23	23	46	5	13	18	4	2	6	5	8	13	74	99	173
Widowed ..	6	8	14	4	3	7	..	..	..	3	8	11	15	36	51
Unknown ..	..	..	..	..	..	..	1	..	1	..	..	..	2	6	8
TOTAL..	60	57	117	14	29	43	10	5	15	19	31	50	257	297	554



TABLE X.

*Showing the probable Causes, Apparent or Assigned, of the Disorder  
in the Admissions of the Year 1894.*

	Males.	Females.	Total.
MORAL CAUSES:			
Adverse Circumstances .. .. .	2	..	2
Domestic Trouble, including Bereavement .. ..	..	3	3
Love Affair, including Seduction .. .. .	..	1	1
Mental Anxiety and Worry .. .. .	..	3	3
PHYSICAL CAUSES:			
Heredity .. .. .	10	6	16
„ and Congenital Arrest of Development ..	3	1	4
„ „ Epilepsy .. .. .	1	1	2
„ „ Fright .. .. .	..	1	1
„ „ Lactation .. .. .	..	1	1
„ „ Intemperance in Drink .. .. .	1	..	1
„ „ Previous Attacks .. .. .	3	3	6
„ „ Senile Decay .. .. .	1	2	3
Previous Attacks .. .. .	3	4	7
„ „ and Intemperance in Drink .. ..	..	1	1
„ „ „ Hyperlactation .. .. .	..	1	1
„ „ „ Senility .. .. .	2	..	2
Congenital Arrest of Development .. .. .	3	1	4
Change of Life .. .. .	..	3	3
Epilepsy .. .. .	7	3	10
General Paralysis .. .. .	2	1	3
Injury to Head .. .. .	1	..	1
Intemperance in Drink .. .. .	2	..	2
Lactation .. .. .	..	2	2
Puerperal State .. .. .	..	2	2
Masturbation .. .. .	1	..	1
Privation .. .. .	2	..	2
Sunstroke .. .. .	2	..	2
Senile Decay .. .. .	2	3	5
Other Bodily Diseases or Disorders .. .. .	4	9	13
Unknown .. .. .	8	5	13
Total .. .. .	60	57	117

## SUPPLEMENTARY TABLES.

TABLE XI.

*Showing the Form of Insanity in the Admissions, Discharges, and Deaths during the Year 1894.*

FORM OF INSANITY.	The Admissions.			THE DISCHARGES.				The Deaths.		
	Males.	Females.	Total.	Recovered.		Removed, Relieved, or otherwise.		Males.	Females.	Total.
				Males.	Females.	Total.	Males.	Females.	Total.	
Mania .. .. .	24	21	45	7	14	21	4	4	8	15
Melancholia .. .. .	13	17	30	6	14	20	..	..	..	8
Dementia .. .. .	17	16	33	1	1	2	3	..	3	20
Idiocy .. .. .	3	..	3	..	..	..	1	1	2	7
Congenital Imbecility .. .. .	3	3	6	..	..	..	2	..	2	..
Total .. .. .	60	57	117	14	29	43	10	5	15	50



TABLE XII.

*Showing the Occupation or Station in Life of the Patients  
admitted in 1894.*

Males.	Total.	Females.	Total.
Antique Dealer.. ..	1	Charwoman .. ..	1
Agricultural Labourer	16	Domestic Servant ..	9
Blacksmith .. ..	2	Draper's Assistant ..	1
Bookstall Clerk .. ..	1	Hawker .. ..	1
Bootmaker .. ..	1	Housewife .. ..	23
Brass Finisher.. ..	1	Labourer—Agricultural	1
Brewer .. ..	1	Ladies' Maid .. ..	1
Butcher .. ..	1	Needlewoman .. ..	7
Cotton Spinner .. ..	1	School Teacher .. ..	1
Coachman .. ..	2	Of no occupation ..	12
Dramatic Author .. ..	1		
Engine Fitter .. ..	1		
Fish Hawker .. ..	1		
Florist .. ..	1		
Gardener .. ..	1		
General Labourer .. ..	6		
Grocer .. ..	1		
Joiner .. ..	3		
Painter .. ..	1		
Policeman .. ..	1		
Soldier .. ..	8		
Ship's Cook .. ..	1		
Tailor .. ..	2		
Of no occupation .. ..	5		
Total .. ..	60		57

TABLE XIII.

*Showing the Admissions, Discharges, and Deaths during each month in the Year, and the Daily Average Numbers for each month.*

1894 Months.	Admissions.			Discharges and Removals.			Deaths.			Daily Average.		
	Males.	Females.	Total.	Males.	Females.	Total.	Males.	Females.	Total.	Males.	Females.	Total.
January ..	4	8	12	..	..	..	2	2	4	241	307	548
February ..	3	6	9	1	..	1	..	7	7	242	310	552
March ..	4	8	12	..	6	6	1	4	5	244	305	549
April ..	6	5	11	4	2	6	1	3	4	246	303	549
May .. ..	5	4	9	..	4	4	5	2	7	246	304	550
June .. ..	5	4	9	5	..	5	..	1	1	246	307	553
July .. ..	4	4	8	3	3	6	2	3	5	247	306	553
August ..	2	5	7	2	3	5	1	1	2	244	303	547
September	7	..	7	..	5	5	1	2	3	248	301	549
October ..	6	7	13	3	3	6	1	1	2	253	299	552
November	7	2	9	2	3	5	2	2	4	254	300	554
December	7	4	11	4	5	9	3	3	6	257	299	556
Total ..	60	57	117	24	34	58	19	31	50	247	304	551



TABLE XIV.

	On December 31st, 1894.			Admitted in 1894.			Discharged or Removed in 1894.			Died in 1894.			Remaining on December 31st, 1894.		
	M.	F.	Total.	M.	F.	Total.	M.	F.	Total.	M.	F.	Total.	M.	F.	Total.
Abingdon Union ..	21	26	47	6	8	14	5	3	8	3	4	7	19	27	46
Bradfield ..	16	23	39	3	3	6	3	5	8	..	..	..	16	21	37
Cookham ..	13	33	46	6	8	14	1	4	5	1	5	6	17	32	49
Easthampstead Union ..	13	17	30	3	7	10	..	3	3	..	1	1	16	20	36
Faringdon ..	10	19	29	1	1	2	1	..	1	..	2	2	10	18	28
Hungerford ..	12	9	21	..	1	1	1	1	2	2	1	3	9	8	17
Newbury ..	15	20	35	2	3	5	..	3	3	1	3	4	16	17	33
" Borough ..	26	13	39	3	..	3	..	..	..	2	..	2	27	13	40
Reading Union ..	53	67	120	10	13	23	5	8	13	5	4	9	53	68	121
Wallingford ..	10	11	21	6	4	10	2	1	3	1	1	2	13	13	26
Wantage ..	14	16	30	5	3	8	..	2	2	2	2	4	17	15	32
Windsor ..	13	10	23	5	3	8	1	..	1	..	3	3	17	10	27
Wokingham ..	16	35	51	4	..	4	1	1	2	2	5	7	17	29	46
County of Berks ..	3	1	4	1	..	1	1	..	1	..	..	..	3	1	4
Other Counties ..	1	2	3	2	..	2	2	..	2	..	..	..	1	2	3
Criminals ..	..	..	..	3	..	3	2	..	2	..	..	..	1	..	1
Private Patients ..	4	3	7	1	3	4	..	3	3	..	..	..	5	3	8
Total ..	240	305	545	61	57	118	25	34	59	19	31	50	257	297	554

TABLE XV.

*State of Bodily Health of the Admissions of 1894.*

					Males.	Females	Total.
In Good Bodily Health	..	..	..	..	15	15	30
In Indifferent Health..	..	..	..	..	33	28	61
In Bad Health..	..	..	..	..	12	14	26

TABLE XVI.

*Showing the number of Patients in the Asylum on the 31st of December, 1894, affected with Idiocy or Congenital Imbecility, Epilepsy, General Paralysis, or other forms of Paralysis.*

						Males.	Females	Total.
Congenital Imbecility	..	..	..	..	..	34	21	55
Idiocy	..	..	..	..	..	28	19	47
Epilepsy	..	..	..	..	..	50	30	80
Paralysis	..	..	..	..	..	7	7	14
General Paralysis	..	..	..	..	..	4	4	8



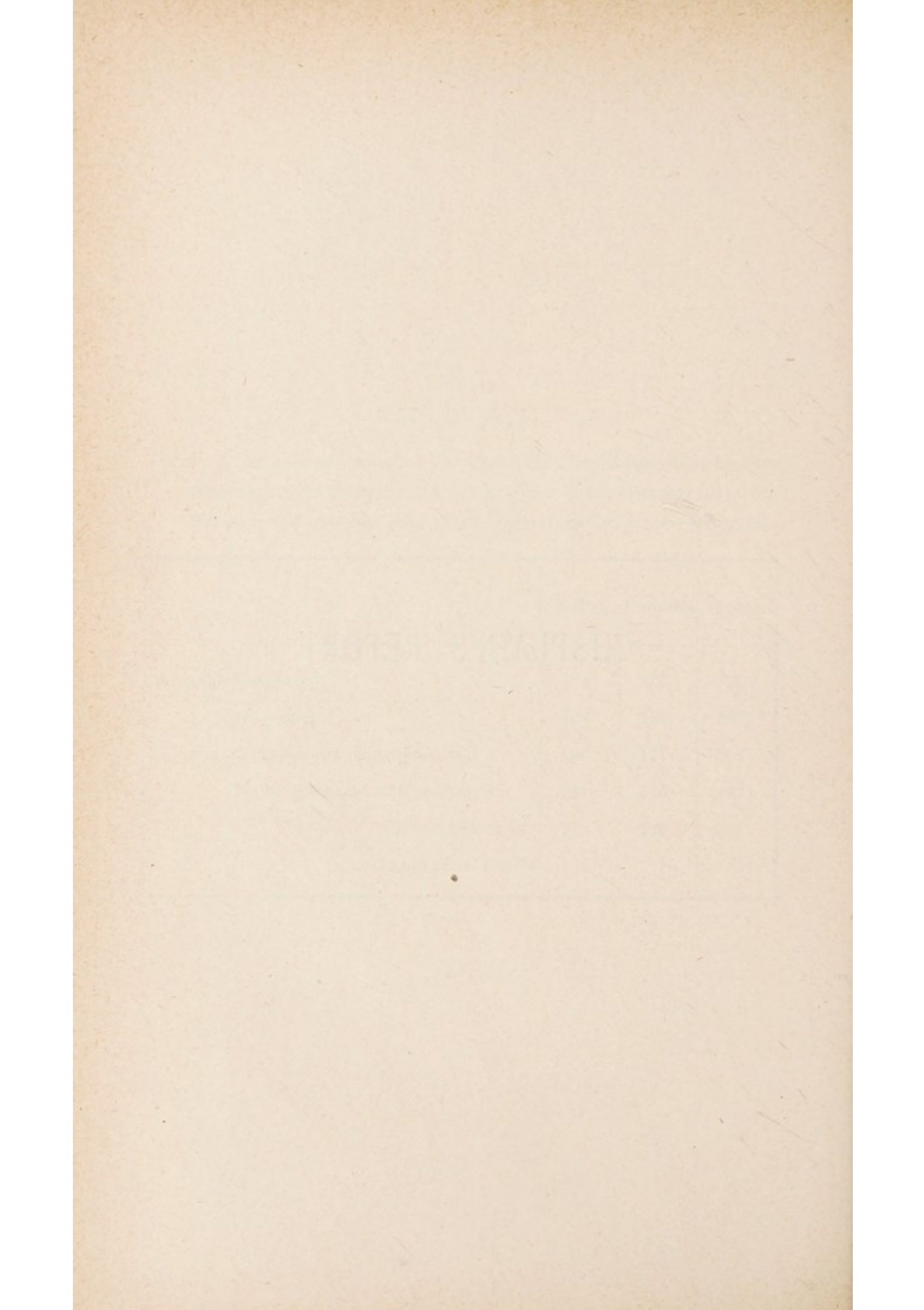
TABLE XVII.

*Showing the average number Industrially Employed, the average attendance at Chapel and at the Associated Amusements, and the average number who walk beyond the Asylum Grounds.*

	Males.	Females	Total.
Average Employed .. .. .	171	228	399
„ at Chapel .. .. .	158	189	347
„ at Associated Amusements.. ..	120	171	291
„ Walking beyond Airing Courts ..	211	276	487
„ „ „ Asylum Grounds	113	134	247
„ „ „ Grounds on Parole	4	..	4

CHAPLAIN'S REPORT.





## CHAPLAIN'S REPORT.

---

*To the Committee of Visitors, Berks Asylum.*

GENTLEMEN,

As Chaplain of your Asylum I beg to submit to you my Annual Report for the year now closing.

Services in the Asylum Chapel have been duly held on Sundays—morning and afternoon—on Christmas Day, Good Friday, Ascension Day, and every Wednesday throughout the year.

My grateful thanks are due to the Medical Superintendent and other Members of your Staff for their kind interest and help in the musical portions of the Services. I venture to think that the Services are appreciated by the Patients generally, whose conduct in Chapel is attentive and devout.

The average attendance of Patients at Divine Service has been 334, and at the monthly Celebration of Holy Communion 28.

As chronologically detailed in the Chaplain's Journal, I have regularly visited the Wards and other departments of your Asylum during the year, and have endeavoured to minister instruction, consolation and help to the Patients.

Short and simple Services have been held for those who, by reason of old age or other physical infirmities, have been unable to attend the Chapel Services.



I have attended Members of the Household and Staff who in sickness have required religious ministrations.

The Patients are well supplied with Bibles, Prayer Books and Hymn Books, and the Library of general literature, containing 850 volumes, is regularly used and very greatly appreciated.

Since my last Annual Report (December 15th, 1893), there have been 50 deaths amongst the Patients. Of these 34 have been buried by me in the Parish Churchyard at Cholsey, whilst the remaining 16 have been removed to their respective Parishes.

It has been my privilege to assist in the various recreative sports and indoor entertainments promoted by your Medical Superintendent for the Patients.

I beg respectfully and sincerely to tender my thanks to you, Gentlemen, for your courtesy and kindness extended to me during this and previous years.

I am,

Your obedient Servant,

AUGUSTUS E. FARRAR,  
CHAPLAIN.

*Moulsford, December 21st, 1894.*

MOULSFORD ASYLUM.



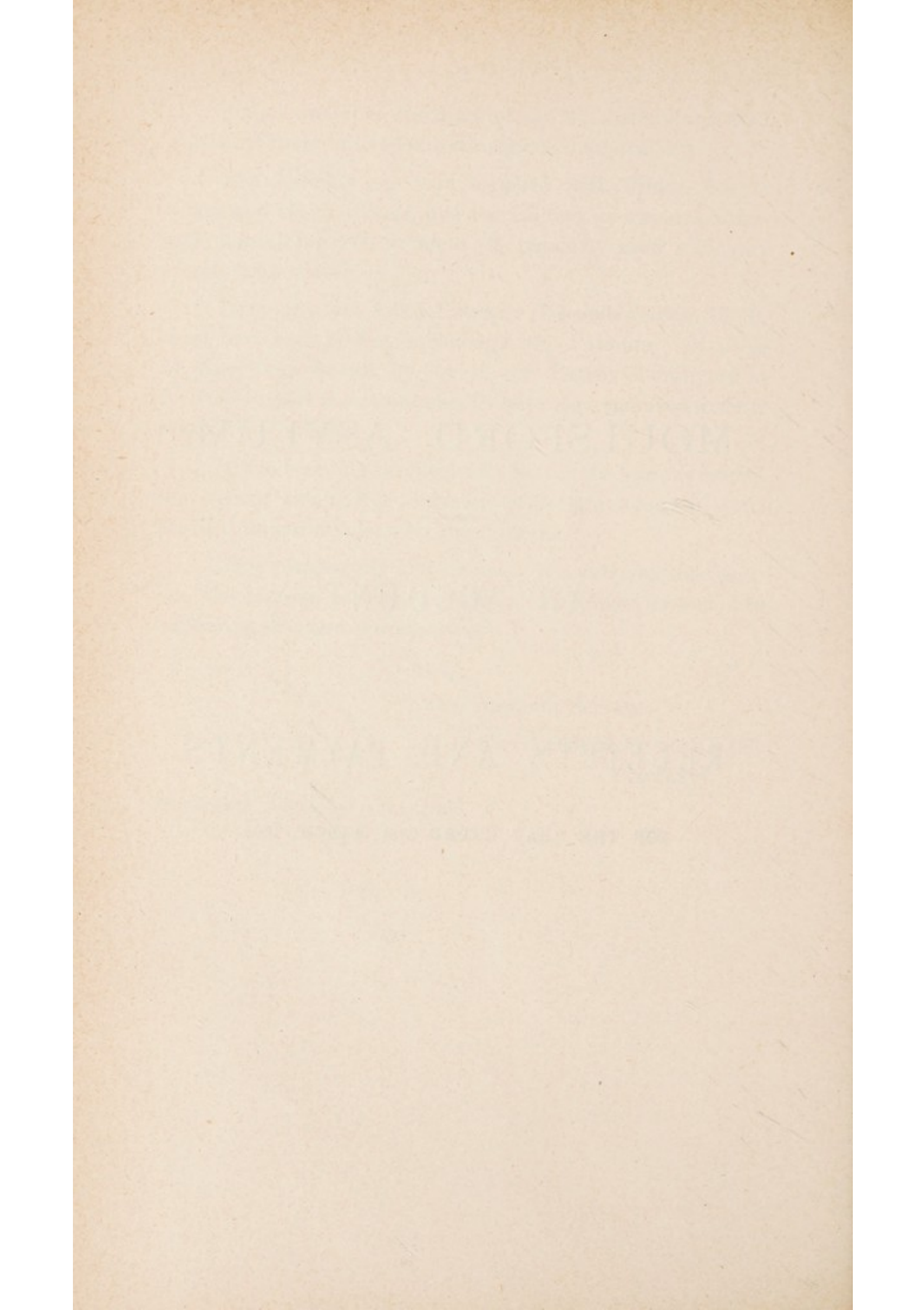
AN ACCOUNT

OF

RECEIPTS AND PAYMENTS

FOR THE YEAR ENDED 31st MARCH, 1895.





## MOULSFORD ASYLUM.

*An Account of Receipts and Payments during the year  
ended 31st March, 1895.*

## RECEIPTS.

	£	s.	d.	£	s.	d.
To Balance with Treasurer...	3287	11	10			
„ Ditto with Steward ...	110	5	5			
				3397	17	3
1. MAINTENANCE ACCOUNT.						
From Unions, &c., in the County.						
Abingdon ...	964	16	6			
Bradfield ...	784	14	6			
Cookham ...	964	6	4			
Easthampstead ...	669	14	2			
Faringdon ...	584	6	6			
Hungerford ...	403	19	4			
Newbury ...	1514	19	5			
Reading ...	2517	8	9			
Wallingford ...	485	6	5			
Wantage ...	680	15	9			
Windsor ...	546	7	11			
Wokingham ...	964	0	0			
				11080	15	7
County of Berks ...	97	17	0			
				97	17	0
Commissioners of H.M. Treasury for Maintenance, &c., of Criminal Lunatics ...	22	14	9			
				22	14	9
From Unions, &c., in other Counties.						
Henley ...	20	14	6			
Paddington ...	10	8	3			
Sevenoaks ...	5	1	6			
Southampton ...	20	14	6			
Wolverhampton ...	1	2	6			
Wycombe ...	0	15	9			
				58	17	0
Carried forward ...	...	...		14,658	1	7



RECEIPTS.				£	s.	d.	£	s.	d.
Brought forward ...	...	...	...	...	...	...	14,658	1	7
2. EXTRA CHARGES ACCOUNT.									
Abingdon ...	...	...	...	6	2	6			
Cookham ...	...	...	...	4	18	0			
Easthampstead ...	...	...	...	1	4	6			
Faringdon ...	...	...	...	2	9	0			
Hungerford ...	...	...	...	2	9	0			
Newbury ...	...	...	...	7	7	0			
Reading ...	...	...	...	6	2	6			
Wallingford ...	...	...	...	1	4	6			
Wantage ...	...	...	...	2	9	0			
Windsor ...	...	...	...	1	4	6			
Wokingham ...	...	...	...	3	13	6			
County of Berks ...	...	...	...	0	2	5			
							39	6	5
3. FARM ACCOUNT.									
Sale of Stock ...	...	...	...	377	4	0			
„ Hides and Skins ...	...	...	...	2	3	6			
„ Wool ...	...	...	...	12	7	7			
„ Barley ...	...	...	...	149	17	6			
„ Wheat ...	...	...	...	91	0	6			
Rents of Allotments ...	...	...	...	2	0	0			
Compensation for Pigs slaughtered ...	...	...	...	51	15	0			
							686	8	1
4. SALES AND OLD STORES ACCOUNT.									
Sale of Meat ...	...	...	...	32	13	3			
„ Rags, Bones, &c. ...	...	...	...	19	2	4			
„ Gas Tar ...	...	...	...	1	19	3			
Value of Goods broken on Railway ...	...	...	...	1	6	8			
							55	1	6
5. RENTS OF COTTAGES ...				63	14	0			
							63	14	0
Carried Forward ...	...	...	...	...	...	...	15,502	11	7

RECEIPTS.			£	s.	d.	£	s.	d.
Brought forward ...	...	...	...	...		15,502	11	7
6. REPAIRS ACCOUNT.								
County of Berks ...	...	...	242	10	4			
County Borough of Reading			49	12	1			
Borough of Newbury ...			22	0	11			
Excess of weekly charge for Maintenance, &c., of Out- County and Criminal Patients over rate charged for County and Borough Patients ...	...	...	79	1	3			
The like for Private Patients			185	16	7			
Value of Goods broken on Railway ...	...	...	1	2	6			
						580	3	8
7. ADDITIONS, &c., ACCOUNT.								
County of Berks ...	...	...	126	9	8			
County Borough of Reading			25	17	5			
Borough of Newbury ...			11	10	0			
						163	17	1
8. LODGING ACCOUNT.								
County Borough of Reading			341	15	0			
Borough of Newbury ...			12	4	6			
						353	19	6
9. PRIVATE PATIENTS' ACCOUNT.								
Maintenance, &c. ...	...	...	159	13	5			
						159	13	5
Total ...	...	...	...	...		<u>£16760</u>	<u>5</u>	<u>3</u>



*Farm and Garden Supplies to House.*

	£	s.	d.	£	s.	d.
<b>FARM SUPPLIES.</b>						
Milk, New, 3642½ galls. @ 9d. and 10d. ... ..	140	3	8			
„ Skim, 7740½ galls. @ 4d. and 5d. ... ..	136	18	0			
Cream, 212¾ pints @ 10d. and 1/-	9	14	0			
Butter, 1685½ lbs. @ 1/2, 1/3 and 1/4 ... ..	105	8	11			
Eggs, 8855 @ ½d., ¾d. and 1d. ...	25	3	0			
Pork, 4744 lbs. @ 5½d. and 5¾d. ...	110	6	8			
Mutton, 215 lbs. @ 5½d. and 5¾d.	5	0	10			
Beef, 931 lbs. @ 5½d. ... ..	21	6	8			
Veal, 102 lbs. at 7d. ... ..	2	19	6			
Suet, 144 lbs. @ 2d. and 3d. ...	1	15	9			
Poultry ... ..	10	11	2			
Potatoes, 735 sks. @ 5/-, 6/-, & 7/6	224	8	9			
Other Vegetables ... ..	1	12	2			
				795	9	1
<b>GARDEN SUPPLIES.</b>						
Potatoes, 20 sks. @ 7/6 ... ..	7	10	0			
„ New, 1780 lbs. @ ¾d. and 1d. ... ..	5	13	6			
Other Vegetables, Fruit, &c. ...	208	2	8			
				221	6	2
				<u>£1016</u>	<u>15</u>	<u>3</u>

## PAYMENTS.

						TOTALS FOR THE YEAR.	GRAND TOTALS.
						£ s. d.	£ s. d.
<b>1. Salaries and Wages.</b>							
Medical Superintendent	..	..	..	..	..	582 19 9	
1st Assistant Medical Officer	..	..	..	..	..	151 11 3	
2nd " " "	..	..	..	..	..	114 0 2	
Chaplain	..	..	..	..	..	200 0 0	
Clerk to the Visitors	..	..	..	..	..	110 0 0	
Clerk and Steward	..	..	..	..	..	222 10 0	
Housekeeper	..	..	..	..	..	40 1 9	
							1421 2 11
Head Attendant (Male)	..	..	..	..	..	70 0 0	
Male Attendants	..	..	..	..	..	723 4 0	
Head Attendant (Female)	..	..	..	..	..	42 8 4	
Female Attendants	..	..	..	..	..	540 17 8	
							1376 10 0
Superintendent's Clerk and Organist	..	..	..	..	..	37 8 6	
Stores Assistant	..	..	..	..	..	37 9 5	
Hall Porter	..	..	..	..	..	31 18 2	
Cook	..	..	..	..	..	25 15 1	
Housemaid	..	..	..	..	..	17 10 4	
Kitchenmaids	..	..	..	..	..	46 14 11	
Laundress	..	..	..	..	..	28 4 3	
Laundrymaids	..	..	..	..	..	54 14 4	
Needlewoman	..	..	..	..	..	20 16 0	
							300 11 0
Engineer	..	..	..	..	..	51 16 0	
Gasman	..	..	..	..	..	47 19 0	
Baker	..	..	..	..	..	52 0 0	
Stoker	..	..	..	..	..	22 8 6	
Shoemaker	..	..	..	..	..	66 5 6	
Night Attendant	..	..	..	..	..	62 8 6	
Gatekeeper	..	..	..	..	..	54 0 0	
							356 17 6
Carried forward	..	..	..	..	..	.. ..	3455 1 5



## PAYMENTS.

					TOTALS FOR THE YEAR.			GRAND TOTALS.		
					£	s.	d.	£	s.	d.
Brought forward ..	..	..	..	..	..	..	..	3455	1	5
<b>2. Provisions Account.</b>										
Ale ..	..	..	..	..	54½ brls.	87	4	0		
Beer ..	..	..	..	..	228 "	250	16	0		
Bacon ..	..	..	..	..	13652 lbs.	289	4	0		
Butter ..	..	..	..	..	7840 "	184	0	0		
Cheese ..	..	..	..	..	8403½ "	167	5	9		
Coffee ..	..	..	..	..	316 "	19	11	1		
Currants ..	..	..	..	..	785 "	5	8	5		
Eggs ..	..	..	..	..	10504 "	39	4	8		
Fish ..	..	..	..	..	.. ..	5	6	5		
Flour ..	..	..	..	..	650 sks.	552	7	6		
Beef ..	..	..	..	..	50203½ lbs.	1142	16	2		
Mutton ..	..	..	..	..	13085½ "	301	1	2		
Prime Joints ..	..	..	..	..	.. ..	22	4	4		
Poultry ..	..	..	..	..	.. ..	1	9	11		
Preserved Meat ..	..	..	..	..	13392 lbs.	224	3	3		
Essence of Beef ..	..	..	..	..	140 "	28	0	0		
Plums ..	..	..	..	..	341 "	4	7	8		
Potatoes ..	..	..	..	..	6 tons	33	0	0		
Sugar (Loaf) ..	..	..	..	..	1344 lbs.	10	16	9		
„ (Moist) ..	..	..	..	..	18144 "	107	6	0		
Tea (No. 1) ..	..	..	..	..	3246 "	174	19	6		
„ (No. 2) ..	..	..	..	..	700 "	46	13	4		
Arrowroot, Rice, Peas, &c. ..	..	..	..	..	.. ..	63	15	4		
Salt and Spices ..	..	..	..	..	.. ..	31	8	2		
Allowances in lieu of Beer ..	..	..	..	..	.. ..	125	2	4		
								3917	11	9
Carried forward ..	..	..	..	..	..	..	..	7372	13	2

## PAYMENTS.

				TOTALS FOR THE YEAR.	GRAND TOTALS.
				£ s. d.	£ s. d.
Brought forward ..	..			.. ..	7372 13 2
 <b>3. Necessaries Account.</b>					
Bath Bricks .. ..	2 gross			0 14 0	
Black Lead .. ..	96 lbs.			2 18 11	
Blacking .. ..	18 gross			2 0 3	
Emery Cloth, &c. ....	.. ..			4 17 0	
Hearth Stones .. ..	936			1 15 9	
House Flannel .. ..	1575 yds.			18 1 0	
Blue .. ..	77 lbs.			3 4 2	
Yellow Soap .. ..	15792 lbs.			116 8 3	
Toilet „ .. ..	28 lbs.			0 9 0	
Soft „ .. ..	66 firkins			24 0 2	
Carbolic „ .. ..	1120 lbs.			15 0 0	
Soda .. ..	7355 lbs.			10 7 0	
Starch .. ..	784 lbs.			10 9 9	
Disinfectants (Powder & Fluid)	.. ..			6 4 9	
Candles .. ..	228 lbs.			3 4 6	
Colza Oil, Wick, &c. ..	.. ..			3 19 7	
	Tons. Cwts.				
Coal (House) .. ..	282 13			225 3 11	
„ (Steam) .. ..	498 4 $\frac{3}{4}$			390 2 11	
„ (Gas) .. ..	147 15			154 0 9	
Coke .. ..	304 12 $\frac{1}{2}$			223 2 0	
Lime .. ..	.. ..			21 17 4	
Matches .. ..	30 gross			5 4 0	
Fire Lighters .. ..	96 „			11 4 0	
					1254 9 0
Carried forward .. ..	.. ..			.. ..	8627 2 2



## PAYMENTS.

					TOTALS FOR THE YEAR.	GRAND TOTALS.
					£ s. d.	£ s. d.
Brought forward.. .. .					.. ..	8627 2 2
<b>4. Wines and Spirits Account.</b>						
Wines and Spirits .. .. .					35 1 0	
Porter .. .. .					4 14 6	
						39 15 6
<b>5. Surgery Account.</b>						
Drugs, Instruments, &c. .. ..					143 10 5	
						143 10 5
<b>6. Furniture and Bedding Account.</b>						
Baskets and Repairs .. .. .					7 12 0	
Blankets .. .. .					30 14 2	
Blind Cord, Holland, Cretonne, &c. ..					21 8 2	
Brushes and Combs .. .. .					36 10 5	
Carpet, Hearth Rugs, &c. .. ..					7 12 7	
Chairs .. .. .					4 4 0	
Counterpanes .. .. .					10 8 4	
Curtains, &c. .. .. .					2 3 6	
Earthenware, Glass, &c. .. ..					37 7 8	
Forfar .. .. .					3 2 4	
Horsehair .. .. .					15 17 4	
Ironmongery, &c. .. .. .					26 12 5	
Linoleum, &c. .. .. .					10 5 5	
Re-covering Billiard Table, &c. .. ..					8 3 4	
Sheeting .. .. .					55 15 9	
Table Linen, &c. .. .. .					12 5 4	
Ticken and Towelling .. .. .					16 9 7	
Waterproof Sheetting .. .. .					28 8 6	
Wire Mattresses .. .. .					19 19 0	
						354 19 10
Carried forward .. .. .					.. ..	9165 7 11

## PAYMENTS.

						TOTALS FOR THE YEAR.	GRAND TOTALS.
						£ s. d.	£ s. d.
Brought forward..	..	..	..	..	..	..	9165 7 11
 <b>7. Farm Account.</b>							
Wages, Bailiff	..	..	..	..	..	58 12 0	
" Cowman	..	..	..	..	..	44 12 0	
" Carters	..	..	..	..	..	83 5 7	
" Labourers	..	..	..	..	..	81 0 4	
Seeds and Plants..	..	..	..	..	..	14 6 8	
Cotton Cake	..	..	..	..	..	93 12 1	
Beans, Oats, Pollard, &c.	..	..	..	..	..	64 12 6	
Threshing, Grinding, Drilling, &c.	..	..	..	..	..	21 16 8	
Purchase of Stock	..	..	..	..	..	529 5 0	
Killing Stock	..	..	..	..	..	4 19 6	
Tools and Repairs	..	..	..	..	..	11 12 9	
Veterinary Surgeon and Shoeing Smith	..	..	..	..	..	10 9 5	
Proportion of Rectorial Tithe..	..	..	..	..	..	31 2 6	
" Vicarial Tithe	..	..	..	..	..	9 5 9	
" Poor Rate	..	..	..	..	..	20 16 9	
" Highway Rate	..	..	..	..	..	3 6 2	
Rent of Land	..	..	..	..	..	199 7 5	
Insurance	..	..	..	..	..	3 0 0	
Repairing Carts, Harness, &c...	..	..	..	..	..	7 7 5	
Hurdles and Stakes	..	..	..	..	..	2 14 2	
Hire of Mower and Reaper	..	..	..	..	..	7 4 0	
Shearing Sheep and use of Stock	..	..	..	..	..	4 9 3	
Sewage Cart	..	..	..	..	..	21 12 0	
Gun License	..	..	..	..	..	0 10 0	
Analysis of Cotton Cake	..	..	..	..	..	1 1 0	
							1330 0 11
Carried forward	..	..	..	..	..	..	10495 8 10



## PAYMENTS.

					TOTALS FOR THE YEAR.	GRAND TOTALS.
					£ s. d.	£ s. d.
Brought forward.. .. .						10495 8 10
<b>8. Garden Account.</b>						
Wages—Gardener .. .. .					59 16 0	
„ Labourers .. .. .					127 4 4	
Seeds and Plants.. .. .					9 10 0	
Tools and Repairs .. .. .					13 10 1	
Pea Sticks.. .. .					0 16 8	
Flower Pots .. .. .					2 0 0	
Proportion of Rectorial Tithe .. .. .					1 8 8	
„ Vicarial Tithe .. .. .					.. ..	
„ Highway Rate .. .. .					0 4 0	
„ Poor Rate .. .. .					0 18 6	
						215 8 3
<b>9. Rates, Taxes &amp; Insurance Account.</b>						
Proportion of Rectorial Tithe .. .. .					4 8 11	
„ Poor Rate .. .. .					126 18 7	
„ Highway Rate .. .. .					22 14 3	
Insurance (Cottages and Organ) .. .. .					1 9 0	
Income Tax (Cottage Rents) .. .. .					2 19 4	
						158 10 1
Carried forward .. .. .					.. ..	10869 7 2

## PAYMENTS.

				TOTALS FOR THE YEAR.	GRAND TOTALS.
				£ s. d.	£ s. d.
Brought forward	..	..	..	..	10869 7 2
 <b>10. Clothing Account.</b>					
Shirting	..	..	2105 yards	46 7 7	
Calico	..	..	1209½ "	16 7 7	
Flannel	..	..	900 "	29 10 8	
Handkerchiefs and Neckerchiefs	..	..	90 8/12 doz.	11 9 3	
Hats and Ribbon	..	..	..	8 12 5	
Men's Stockings	..	..	30 doz.	7 17 6	
Women's ditto	..	..	31 "	9 2 9	
Shrouding	..	..	136 yards	1 2 8	
Print	..	..	1614½ "	33 4 1	
Corduroy	..	..	599½ "	32 9 6	
Stays	..	..	433	31 11 5	
Jean	..	..	600 yards	10 18 9	
Canvas	..	..	250 "	2 19 11	
Forfar	..	..	297 "	6 16 1	
Blue Check	..	..	575¾ "	18 19 5	
Tweed	..	..	416 "	25 11 4	
Linsey, &c., for Dresses	..	..	622½ "	20 11 4	
Braces	..	..	24 doz.	3 18 0	
Shawls	..	..	72	3 16 6	
Boot Locks, &c.	..	..	..	0 18 4	
Sewing Machine	..	..	..	7 10 6	
Blue Striped Linen	..	..	200 yards	5 12 6	
Leather, Grindery, &c.	..	..	..	93 5 8	
Uniforms for Attendants, &c.	..	..	..	99 15 3	
Haberdashery, &c.	..	..	..	52 0 10	
					580 9 10
Carried forward	..	..	..	..	11449 17 0



## PAYMENTS.

					TOTALS FOR THE YEAR.	GRAND TOTALS.
					£ s. d.	£ s. d.
Brought forward..	..	..	..	..	..	11449 17 0
 <b>11. Miscellaneous Account.</b>						
Printing and Stationery	..	..	..	..	81 19 8	
Advertising	..	..	..	..	24 11 2	
Books and Periodicals	..	..	..	..	32 17 6	
Postages and Letter Bag	..	..	..	..	36 0 9	
Travelling Expenses—Candidates and others	..	..	..	..	7 1 4	
Tobacco and Snuff	..	..	..	..	60 13 7	
Music and Entertainments	..	..	..	..	23 15 0	
Carriage of Goods	..	..	..	..	13 6 4	
Attendance at Funerals and Fees for Grave	..	..	..	..		
Marks	..	..	..	..	4 16 6	
Marking Ink and Stamps	..	..	..	..	2 12 6	
Chimney Sweeping	..	..	..	..	8 6 2	
Proportion of expense keeping Graveyard	..	..	..	..		
in order	..	..	..	..	4 9 6	
Bird Seed, Paper, &c.	..	..	..	..	2 10 4	
Cricket Bats, Balls, &c.	..	..	..	..	4 1 9	
Binding Library Books	..	..	..	..	4 12 6	
Audit Stamp	..	..	..	..	15 0 0	
Spectacles	..	..	..	..	0 1 2	
Emptying Vaults (Cottages)	..	..	..	..	4 0 0	
Analyses of Well Waters	..	..	..	..	2 2 0	
						332 17 9
Carried forward	..	..	..	..	..	11782 14 9

## PAYMENTS.

					TOTALS FOR THE YEAR.	GRAND TOTALS.
					£ s. d.	£ s. d.
Brought forward..	..	..	..	..	.. ..	11782 14 9
 <b>12. Repairs Account.</b>						
Wages—Engineer	..	..	..	..	51 17 0	
„ Carpenter	..	..	..	..	85 5 6	
„ Painters	..	..	..	..	156 3 6	
„ Stokers ..	..	..	..	..	52 9 5	
„ Bricklayers	..	..	..	..	86 19 4	
„ Foreman of Works	..	..	..	..	117 0 0	
Oils, Colours, Paints, &c.	..	..	..	..	69 19 6	
Timber, Cement, Slates, &c.	..	..	..	..	96 17 9	
Iron and Brass Fittings, Castings, &c.	..	..	..	..	85 16 1	
Nails, Screws, &c.	..	..	..	..	12 11 8	
Tools, &c. ..	..	..	..	..	17 18 2	
Carriage of Goods	..	..	..	..	8 6 1	
Cotton Waste, Glue, &c.	..	..	..	..	7 16 6	
Fire Bricks, Clay, &c.	..	..	..	..	8 8 6	
Insurance ..	..	..	..	..	57 17 4	
Wall Paper, Glass, &c.	..	..	..	..	4 9 1	
Repairs to Steam Engine	..	..	..	..	5 3 0	
Insertion Sheetting, Packing, &c.	..	..	..	..	7 12 7	
Pans and Cisterns for W.C's.	..	..	..	..	31 11 4	
Bands and Laces for Engines	..	..	..	..	2 15 0	
Sheet Lead and Piping	..	..	..	..	6 4 1	
Fire Bars for Steam Boilers	..	..	..	..	7 5 6	
Lubricating Oil ..	..	..	..	..	3 16 9	
Lid for Purifier (Gas Works)	..	..	..	..	9 15 0	
Locks, &c...	..	..	..	..	3 3 6	
Drains and Sanitary Arrangements (Fee for Inspection and Report)	..	..	..	..	144 6 0	1141 8 2
Carried forward	..	..	..	..	.. ..	12924 2 11



## PAYMENTS.

	TOTALS FOR THE YEAR.			GRAND TOTALS.		
	£	s.	d.	£	s.	d.
Brought forward .. .. .	..	..	..	12924	2	11
<b>13. Additions and Improvements Account.</b>						
Alterations to Airing Court Wall—						
Cement, Bricks, Lime .. .. .	7	7	3			
Labour .. .. .	2	9	0			
Additional Furniture, Bedding, &c., for M. and F. Wards, No. 8 .. .. .	264	11	0			
Trees for New Orchard .. .. .	1	0	0			
				275	7	3
<b>14. Isolation Hospital Account.</b>						
Contractor.. .. .	851	15	0			
Architect .. .. .	157	18	3			
Clerk of the Works .. .. .	15	0	0			
Furniture and Bedding.. .. .	210	12	5			
Locks and other Fittings .. .. .	64	7	0			
Postages .. .. .	1	4	3			
Quicks, Trees, and Shrubs .. .. .	6	1	2			
				1306	18	1
<b>15. Funerals and Removals Account.</b>						
Coffins, &c. .. .. .	39	4	0			
				39	4	0
Total .. .. .	..	..	..	£14545	12	3

# COMPARATIVE PRICES OF PROVISIONS, &c.

	1893.	1894.				1895.
	4th Quarter	1st Quarter	2nd Quarter	3rd Quarter	4th Quarter	1st Quarter
Bacon, per cwt. ..	64/-	54/-	49/-	46/8	53/8	46/-
Butter, per cwt. ..	55/-	55/-	52/-	51/-	54/-	53/-
Beer, per barrel ..	22/- & 32/-	22/- & 32/-	22/- & 32/-	22/- & 32/-	22/- & 32/-	22/- & 32/-
Cheese, per cwt. ..	35/- & 56/-	48/- & 56/-	46/- & 50/-	39/- & 58/-	39/- & 58/-	39/- & 50/-
Flour, per sack ..	21/-	20/-	18/-	15/9	15/9	17/3
Meat, per lb. ..	5d.	5d.	5gd.	5¾d.	5½d.	5½d.
Sugar, per cwt. ..	15/9 & 20/6	14/- & 18/6	13/6 & 18/6	12/- & 17/6	12/- & 17/6	11/3 & 13/9
Tea, per lb. ..	1/1 & 1/4	1/1 & 1/4	1/1 & 1/4	1/1 & 1/4	1/1 & 1/4	1/1 & 1/4
Coal, per ton ..	15/7, 14/9, & 19/11	16/2, 16/-, & 20/11	16/2, 16/-, & 20/11	16/2, 16/-, & 20/11	16/2, 16/-, & 20/11	16/2, 16/-, & 20/11



## BALANCE

GENERAL STATEMENT OF RECEIPTS AND PAYMENTS

RECEIPTS.

Dr.		£   s.   d.	£   s.   d.
To Balance with Treasurer, 1st April, 1894 ... ..		3287 11 10	
„ Balance with Steward, ditto...		110 5 5	
		<hr/>	3397 17 3
„ Sales of Farm Produce, &c. ...		686 8 1	
„ Sales and Old Stores Account ...		55 1 6	
		<hr/>	741 9 7
From Unions and Counties ... ..		11260 4 4	
„ Extra Charges... ..		39 6 5	
„ Rents of Cottages ... ..		63 14 0	
„ Repairs Account ... ..		580 3 8	
„ Additions, &c., Account ... ..		163 17 1	
„ Infectious Hospital Account ...		.. „ „	
„ Lodging Account ... ..		353 19 6	
„ Private Patients Account ... ..		159 13 5	
		<hr/>	12620 18 5
			<hr/>
		£	16760 5 3

## SHEET.

DURING THE YEAR ENDED 31st MARCH, 1895.

## PAYMENTS.

Dr.	£	s.	d.	£	s.	d.
By Salaries and Wages ... ..	3455	1	5			
„ Provisions ... ..	3917	11	9			
„ Necessaries ... ..	1254	9	0			
„ Wines, Spirits, and Porter ...	39	15	6			
„ Surgery ... ..	143	10	5			
„ Furniture and Bedding ... ..	354	19	10			
„ Farm ... ..	1330	0	11			
„ Garden ... ..	215	8	3			
„ Rates, Taxes, and Insurance ...	158	10	1			
„ Clothing ... ..	580	9	10			
„ Miscellaneous ... ..	332	17	9			
„ Repairs ... ..	1141	8	2			
„ Additions, &c. ... ..	275	7	3			
„ Infectious Hospital ... ..	1306	18	1			
„ Funerals and Removals... ..	39	4	0			
				14545	12	3
„ Balance with Treasurer, 31st March, 1895 ... ..	2102	7	5			
„ Balance with Steward, ditto...	112	5	7			
				2214	13	0
				£	16760	5 3

	£	s.	d.
Amount due from Unions, &c., on 31st March, 1895	3816	3	3
„ „ to Tradesmen and others „ „	921	16	2
	£2894	7	1

M. NICHOLLS, *Clerk and Steward.*





## GARDEN ACCOUNT, 1894-95.

Dr.	£	s.	d.	£	s.	d.	Cr.	£	s.	d.	£	s.	d.
To Value of Produce in Store, 31st March, 1894 ...	...	...	...	34	0	0	By Supplies to House ...	...	...	...	221	6	2
„ Labour (exclusive of Patients) ...	187	0	4				„ Value of Produce in Store, 31st March, 1895 ...	...	...	...	33	11	0
„ Proportion of Rates, &c.	2	11	2										
„ Seeds and Plants ...	9	10	0										
„ Tools and Repairs ...	13	10	1										
„ Pea Sticks, &c. ...	2	16	8										
				215	8	3							
Balance ...	...	...	...	5	8	11							
											£254	17	2

M. NICHOLLS,

*Clerk and Steward.*



