

Twenty-third annual report / Moultsford Lunatic Asylum.

Contributors

Moultsford Lunatic Asylum.

Tull, Albert R.

Bagot, C. S.

Southey, Reginald.

Murdoch, J. William A.

Farrar, Augustus E.

Nicholls, Moses.

Publication/Creation

[Place of publication not identified] : [publisher not identified], [1894?]

Persistent URL

<https://wellcomecollection.org/works/exrchr4w>

License and attribution

This work has been identified as being free of known restrictions under copyright law, including all related and neighbouring rights and is being made available under the Creative Commons, Public Domain Mark.

You can copy, modify, distribute and perform the work, even for commercial purposes, without asking permission.



Wellcome Collection
183 Euston Road
London NW1 2BE UK
T +44 (0)20 7611 8722
E library@wellcomecollection.org
<https://wellcomecollection.org>


1893—1894.



MOULSFORD LUNATIC ASYLUM.



Twenty-third Annual Report.



Digitized by the Internet Archive
in 2018 with funding from
Wellcome Library

<https://archive.org/details/b30310155>

Committee of Visitors.

(Appointed for the Year 1893—94).

TULL, ALBERT RICHARD (CHAIRMAN),
CROOKHAM HOUSE, NEWBURY.

DUNN, WILLIAM HEW (VICE-CHAIRMAN),
WALLINGTONS, HUNGERFORD.

ARCHER-HOUBLON, GEORGE BRAMSTON,
WELFORD PARK, NEWBURY.

BURBIDGE, JAMES,
STREATLEY FARM, READING.

COZENS, STEPHEN WELLESLEY,
BLACKALL'S FARM, CHOLSEY, WALLINGFORD.

CROWDY, GEORGE FREDERICK,
THE GROVE, FARINGDON.

DE VITRÉ, HENRY DENIS,
CHARLTON HOUSE, WANTAGE.

GARDNER, ERNEST,
SPENCERS, MAIDENHEAD.

TOMKINS, JOHN,
ABINGDON.

WROUGHTON, PHILIP, M.P.,
WOOLLEY PARK, WANTAGE.

YOUNG, CAPTAIN OLIVER, R.N.,
HARE HATCH, TWYFORD, READING.

Visitors for the County of Berks.

ANDREWES, CHARLES JAMES,
BROAD OAK, READING.

BLANDY, HENRY BILSON,
MERTONFORD, WOKINGHAM.

Visitors for the Borough of Reading.

JACKSON, JAMES PORTEUS,
NEWBURY,

Visitor for the Borough of Newbury.

OFFICERS.

Medical Superintendent.

J. WM. A. MURDOCH, M.B.

First Assistant Medical Officer and Deputy
Superintendent.

EDWIN LINDSAY DUNN, M.A., M.B.

Second Assistant Medical Officer.

THOMAS LEONARD JOHNSTON, L.R.C.P. & S.Ed.

Chaplain.

REV. AUGUSTUS E. FARRAR.

Clerk to the Committee of Visitors.

JOHN THORNHILL MORLAND, M.A.

ABINGDON.

Steward, and Clerk of the Asylum.

MOSES NICHOLLS.

Housekeeper.

MISS S. G. BROWNE.

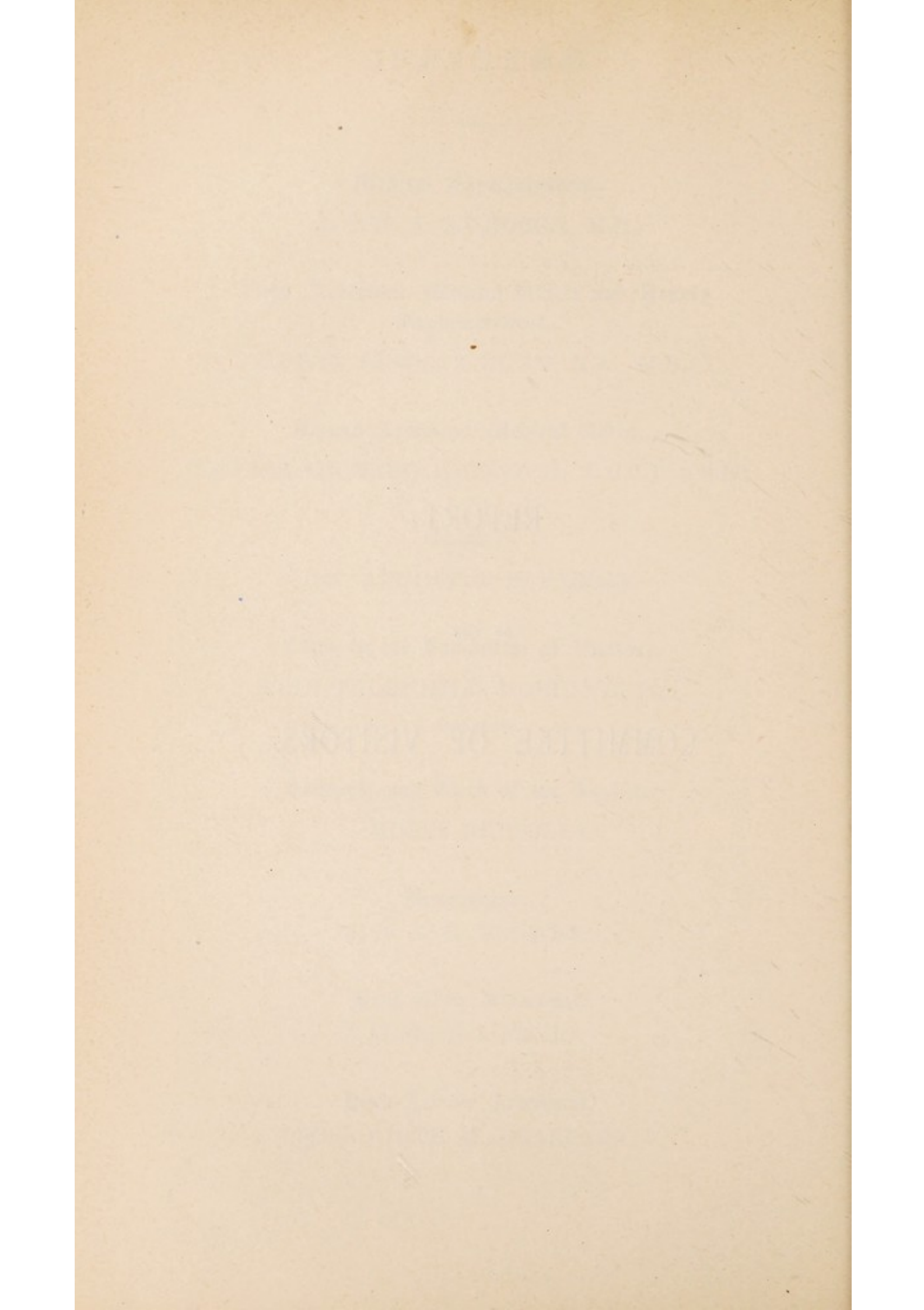
Head Male Attendant.

ALFRED LOCKIE.

Head Female Attendant.

MISS EDITH M. BEARPARK.

REPORT
OF THE
COMMITTEE OF VISITORS.



MOULSFORD PAUPER LUNATIC ASYLUM.

REPORT

OF THE

COMMITTEE OF VISITORS.

To

*The Berkshire County Council,
The Council of the Borough of Reading, and
The Council of the Borough of Newbury.*

THE COMMITTEE OF VISITORS OF THE MOULSFORD
LUNATIC ASYLUM REPORT WITH MUCH PLEASURE :—

That the condition of the Asylum is thoroughly satisfactory in every respect, and that the fabric has been kept in a proper state of repair.

The Commissioners in Lunacy visited the Asylum in October, and recorded in the Visitors' Book their high appreciation of the condition and efficiency of the Asylum. A Copy of their Report is appended.

The conduct of the Staff has been very good, and great credit is due to all for the manner in which the work was performed under the great strain caused by the epidemic of influenza, which raged with virulent effect during the months of March and April. Besides being indirectly responsible for many deaths, it left the general health of the inmates in a very low condition.

There were three cases of Typhoid Fever, one of which proved fatal. The greatest attention is devoted to the Sanitary arrangements so as to render them as perfect as possible, and every endeavour to find the source of these recurring cases is made, but hitherto without success.

The Infectious Hospital was begun in September, by Mr. Simonds, of Reading. The contract price being £2495, exclusive of the requisite furnishing.

During the autumn the re-arrangement of the heating apparatus was completed by Messrs. Haden, and a separate main was extended to the Female Hospital Ward with great benefit to the comfort of the old and feeble patients placed therein.

The only change amongst the Officers is the appointment of Miss Browne as Housekeeper, in succession to Miss Chance, who resigned to fill a more important post.

The Committee of Visitors refer with much regret to the death of Mr. Goodlake, who had been

one of the Visitors ever since the erection of the Asylum, and who took the greatest interest in everything connected with it. They also have to deplore the death of Dr. Ryott, who had been a constant Visitor for some years.

The cost of Repairs has been £1,007 11s. 11d., and of the Additions and Improvements £111 16s. 0d. for the year ending 31st March, 1894; of this latter sum £102 14s. 0d. has been spent in the re-arrangement and improvement of the Heating Apparatus in the original building. The Contractor has been paid £1,380 on account of the Infectious Hospital.

Lodging-money has been earned for the same period from the Boroughs of Reading and Newbury to the amount of £345 12s. 6d. This, with the amount of profit on out-county, private and criminal patients, viz.:—£253 4s. 9d., has been applied in aid of the Repairs Fund.

The principal Repairs, Renewals, and Improvements carried out during the year have been:—

New boarded Floor to Visiting Room in the Female Division.

Six new Retorts set at Gas Works.

Garden Walls repaired and pointed.

New Steam Cooking Pan in Kitchen.

New Cast Iron Soil Pipes to No. 1 Ward; new Apparatus to W.C.'s in Male Wards 1 and 7; Wooden Floors re-placed with Tiles.

Painting, Whitewashing, Colouring, Varnishing, &c., in Male Wards 5, 7, and Infectious Dormitory; Female Wards 2, 3, 4, and Infectious Dormitory; also Male Messroom, Gardener's and Gasman's Cottages, Corridor of Officers' Quarters, and those leading to Female Wards 4 and 6.

Painting of external woodwork on south front of female side and greenhouse.

Water pipes in Wards Male 3 and Female 3 covered with felt and cased in.

Chimney stacks of some of the cottages re-built and repaired.

The patients on the books of the Asylum on the 31st March, 1894, were:—

	M.	F.	TOTAL.
From Unions in Berkshire	155	220	375
„ The County of Berks	4	1	5
„ Parishes in the Borough of Reading..	54	69	123
„ „ „ Newbury	26	13	39
„ Unions not in the County of Berks ..	1	2	3
Private Patients.. ..	5	3	8
Criminal Patients	2	0	2
Totals	247	308	555

Since the 1st of April, 1893, there have been admitted Pauper Patients, 39 Males and 60 Females, total 99; and Non-pauper Patients, 3 Males and 3 Females, total 6. Of the Pauper Patients 1 Male and 2 Females were received from other Asylums.

The Discharges have been :—

			M.	F.	TOTAL.
Of Patients recovered	14	22	36
„ relieved	1	9	10
„ not improved	3	3	6
Total	18	34	52

Of these Discharges 2 Males and 3 Females were removed to other Asylums.

19 Males and 31 Females have died ; total 50.

Of the number of Pauper Patients belonging to the Bodies in Union there has been an increase of 1 Patient only.

The Establishment consists of:—

A Medical Superintendent	1
Two Assistant Medical Officers	2
A Chaplain	1
A Clerk to the Visitors	1
A Steward and Clerk of the Asylum	1
A Housekeeper	1
A Head Male Attendant	1
A Head Female Attendant	1
A Superintendent's Clerk and Organist	1
A Stores Assistant	1
A Foreman of Works	1
An Engineer	1
A Farm Bailiff	1
A Gatekeeper	1
A Gardener	1
A Baker	1
A Carpenter	1
Two Painters	2
A Bricklayer	1

A Gasman	1
Two Stokers	2
A Shoemaker	1
A Tailor Attendant	1
Male Attendants	22
Nurses	26
Indoor Servants, Laundrymaids, &c.	10
A Hall Porter	1
Farm and Garden Servants	8
						<hr/> 93

The weekly charge for maintenance of pauper patients has been 8s. 2d. throughout the year.

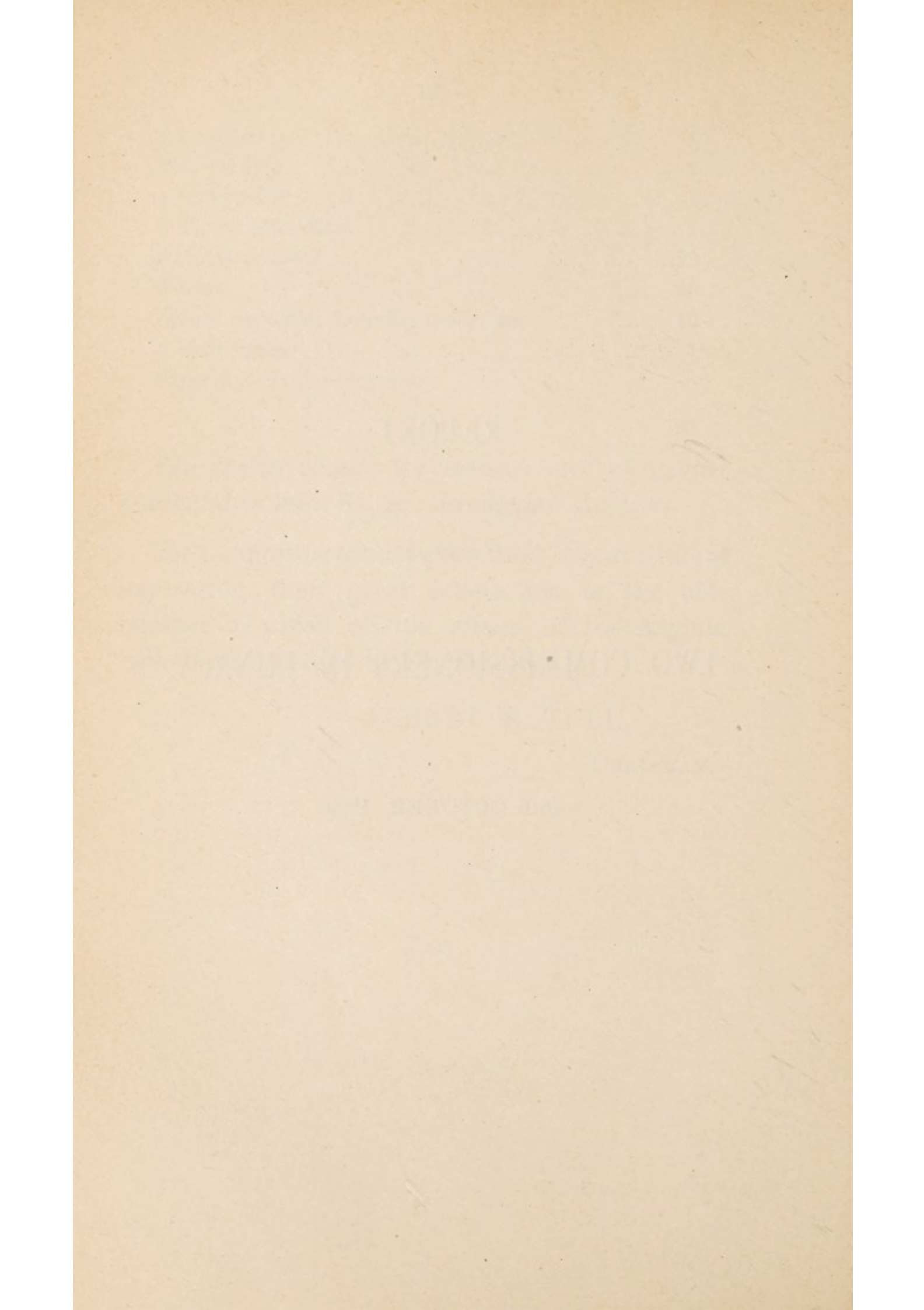
The Committee cannot close their Report without expressing their great satisfaction at the able manner in which all the affairs of the Asylum have been managed by Dr. Murdoch.

ALBERT R. TULL,

CHAIRMAN.

REPORT
OF
TWO COMMISSIONERS IN LUNACY,

28th OCTOBER, 1893.



REPORT
OF
COMMISSIONERS IN LUNACY.

(Entered in Visitors' Book.)

BERKSHIRE LUNATIC ASYLUM,

Moulsford, Oct. 28th, 1893.

This Asylum continues to be maintained in excellent order.

We have visited all the Wards and every department, and have found all the former clean and comfortable. Some have been painted recently, and in the older portion of the Asylum the warming apparatus has been extended, and to the Female Hospital a new and separate hot water main has been laid. The means of maintaining an adequate temperature appear to be now sufficient. Further progress has been made in improving the arrangements of the W.C.'s by removing soil pipes to the exterior of the building and providing better pans and flushing apparatus, at the same time replacing the wooden floors by tiles.

We are glad to observe that the erection of a Detached Isolation Hospital has been begun in conformity with plans approved by the Secretary of State after examination in our office. The site is not that first suggested, but over to the N.E. of the Male Side, and those to leeward of the Asylum having regard to the prevailing winds.

This building will set free for ordinary accommodation the Wards hitherto reserved for the treatment of infectious disorder, and for some of which they were used this year.

The patients on the books to-day are 536 in number, 234 being males and 302 females. No patient is absent on leave or trial, and all have been seen by us. The vacant beds, including those in the reserved Wards, are 57 on the male side, and 49 on the female side.

Since the visit of the Commissioners on November 23rd, 1892, 97 patients have been admitted, 60 discharged, of whom 41 had recovered, and 49 have died. In all but one of these deaths post-mortem examination was made. Except that five were due to lung disease resulting from Influenza, there was nothing in the causes of the above deaths that calls for special notice. In no case did the Coroner hold an Inquest. The death-rate in 1892 was 7 per cent. of the average number of patients resident, in the interval since the last visit it has been about 10 per cent. An outbreak of Influenza occurred in March and April, and 146 patients and 42 of the Staff were attacked by it. There have also been 2 cases of Typhoid, and 7 cases of Scarlet Fever among the patients, the latter also attacking five of the Staff, but no death resulted from either of these complaints.

There are at present 74 patients under Medical treatment, 22 being confined to bed. Many are old and feeble cases. The epileptics now here number 77, the actively Suicidal 22, and the General Paralytics 7.

There is only one case of the use of Mechanical Restraint recorded since the last visit, that of a woman, twice, for 16 hours; and two women on 23 occasions, and for a total of 230 hours, have been secluded.

The patients during our inspection have been quiet and orderly. They are clean and tidy in person and dress,

and as regards the latter, in the female division, we are pleased to learn that some variety in the materials for the women's gowns is about to be introduced.

The returns relative to the employment of the patients are again satisfactory, shewing that 71 per cent. of the males and 76 per cent. of the females are employed. So also are those shewing the attendance at Divine Worship, and the Associated Entertainments, and the numbers having extended exercise. At Chapel last Sunday morning were 328 patients, about 260 attend the entertainments; 300 walk daily in the grounds outside the Airing Courts, and 230 weekly beyond the estate, while 46 only are stated to be confined wholly to the Airing Courts.

The Staff of Attendants remains at about the same proportionate strength as at the last visit, and appears to be adequate. Nineteen out of 56 have not yet completed 12 months' service. Some of the changes were due to the resignation of attendants to take service in other Asylums. Three men were dismissed.

The present weekly maintenance charge is 8s. 2d.

There are still two Assistant Medical Officers. We are glad to report that the Medical records are properly kept.

C. S. BAGOT,	} Commissioners
REGINALD SOUTHEY,	
	in Lunacy.

MEDICAL SUPERINTENDENT'S

ANNUAL REPORT, 1893.

MEDICAL SUPERINTENDENT'S

ANNUAL REPORT, 1897

TWENTY-THIRD ANNUAL REPORT

OF THE

MEDICAL SUPERINTENDENT.

*To the Committee of Visitors of the Berks, Reading, and
Newbury Lunatic Asylum.*

MR. CHAIRMAN AND GENTLEMEN,

I beg to present to you my Report upon the general management of your Asylum and its Medical History for the year ending December 31st, 1893, to which is appended the usual Statistical Tables.

The changes amongst the patients have been as shewn in the following table :—

	Males.	Females	Total.
Patients in the Asylum on January 1st	234	311	545
Admissions	44	62	106
Total Cases under treatment	278	373	651
Discharges—Recovered	14	24	38
Relieved	3	8	11
Not Improved	3	5	8
Deaths	18	31	49
Remaining in Asylum on Dec. 31st ..	240	305	545

It will be seen from the above that we ended the year with exactly the same number as we began, viz. :—545. This result of the year's working compares favourably with that of the previous year, when a net increase of 23 had to be recorded.

There were 2 private and 1 criminal female patients admitted, and the same number were discharged. The criminal became chargeable to the rates on the expiry of her sentence. The number of private patients in the Asylum remains the same, viz.:—7.

Admissions

Excluding all patients admitted during the year who had at one period or another been inmates of this Asylum and also those transferred from class to class we are left with a total number of 89 new cases, which number is a marked decrease to that of last year, and is only on an average with that of the past 8 years. So far therefore as your County is concerned insanity cannot be said to be on the increase. The call for further accommodation is made chiefly on account of the accumulation in the Asylum of cases in whom there is not the slightest hope of recovery and whose longevity is materially lengthened as a result of careful housing, feeding, and nursing. As an example of the unfavourable nature of the admissions we have had no less than 20 brought from Workhouses where each had been resident for some prolonged period. In not one of those 20 can there be said to be the slightest chance of recovery, consisting as they chiefly do of idiots and aged broken-down people. Those had been retained in the Workhouses so long as the limited nursing capacity of these institutions would permit, and were brought here only to permanently swell the population.

Not an
Increase of
Insanity.

Unfavourable
Nature.

Curability.

No less than 27 of the admissions were over 60 years of age, and of these 16 were over 70. Out of a total of 106 cases 31 were on admission prognosed as being curable, 15 as only doubtfully curable, and no less than 60 were recorded as hopelessly incurable. During the year the anticipation of recovery amongst those noted as curables has been realised to the extent of 18. Of those remaining in the Asylum 8 are deemed to be possibly curable and 17 doubtfully curable, leaving the large number of 520 to be carried to the account

of the permanent population, only to be reduced by removal to the care of friends or by death.

The health and bodily condition of the admissions were also very unfavourable, as shewn by Supplementary Table 6. 32 were returned as in bad health, 52 as in indifferent health, and in only 16 could the health be said to be good. As already mentioned many were advanced in years, and only fit for care in the Hospital Wards. They are usually very frail yet are in a continued state of restless activity, sleepless and noisy at night, very destructive and oftentimes of filthy habits. Those patients, of whom we are yearly getting an increasing number, cause the nurses the greatest anxiety lest an injury to life or limb, either accidentally or intentionally by other patients, should befall them.

Health and
Condition of
the
Admissions

Of the causes of insanity in the admissions Hereditary Influence ranks highest with a total of 34, next in order comes Predisposition from previous attacks, which is responsible for 20. There was a total of 8 due to Intemperance in Drink, 10 to Congenital Defect, 7 to Epilepsy, and 3 to Syphilis causing General Paralysis.

Causes of
Insanity.

The discharges numbered 57, of these 38 were recovered and 19 were removed. Excluding those cases which were transferred from other Asylums (3), and those transferred from class to class (2), the recovery rate on the admissions is 37·6, a fraction less than that of last year. Nine of those removed were so far relieved as to be able to be taken care of by their relatives. Every encouragement is given in suitable cases to induce the friends to take over the care of patients so as to reduce our numbers, but I am sorry to say it is not taken advantage of so fully as it might be, probably on account of the general poverty* of the agricultural class from whom we largely draw our patients.

Discharges.

The deaths numbered 49—18 males and 31 females, giving a death rate of 9 per cent. on the average resident number. This is higher than last year but is still below the

Deaths.

Influenza.

average death rate of County and Borough Asylums. The increase is mainly attributable to the epidemic of Influenza which raged with most fatal effect upon the aged and feeble in the months of March and April. During these months the day temperature was high and the nights very cold, producing an atmospheric condition which had a most disastrous effect upon the course of the disease. With few exceptions every one affected had pulmonary complications, in fact the tendency of the epidemic seemed to be to exert its greatest effect upon the respiratory tract. In some of the fatal cases death ensued within 48 hours of the case being reported. Within a period of 9 days there were 78 cases, and during the two months that it was in our midst 136 of the patients and 42 of the staff were laid down. What were the exertions devolving upon the nursing staff and the pressure upon the Hospital accommodation can readily be imagined, yet the necessary work was willingly and well performed, and I have nothing but praise to bestow upon those who had to stand the brunt of the battle. In several instances many weeks elapsed before those members of the staff who had been affected could resume their ordinary duties.

General
Paralysis in an
Adolescent.

Cerebral diseases account for the large number of 21 deaths, of which 9 were due to General Paralysis and 4 from Epilepsy. Pulmonary diseases and Senile Decay each account for 10. A boy died of an epileptic attack whilst at home on trial and is therefore reckoned amongst the number. One of the deaths may be specially mentioned as being that of a female adult aged 21, who died of that most fatal brain disease designated General Paralysis. Until very recently this disease was considered to be essentially one of middle adult life, but lately attention has been drawn to the fact of its having occurred in a few adolescents from 16 to 20 years of age, and now it is my privilege to record another which was verified by post-mortem examination.

There has been no escape neither has there been any suicide or Coroner's Inquest. Several Suicidal attempts have been made but fortunately were frustrated by the vigilance of the nurses. The only criminal patient admitted this year was tried at Quarter Sessions for having attempted suicide by cutting her throat. She was found insane and sent here, where for the first two months she was a constant source of anxiety. She was ever on the alert to effect her purpose by any possible means, even going so far as to make violent attacks upon the nurses to obtain their scissors or hairpins, happily without success, and now although not considered quite fit for discharge she has recovered her reason and makes herself an agreeable and useful member of the Ward in which she is placed.

Inquests,
Suicides, and
Escapes.

There have been very few accidents, the most important being in the cases of two old patients who each sustained fractures of the neck of the thigh bone by falling, and a man received fractures of two ribs through being struck with a broom by an impulsive epileptic. All made good recoveries.

Accidents.

There have been several important operations performed by the Medical Officers, all with satisfactory results, the chief being :—

Operations.

For cataract in a female.

For strangulated femoral hernia in a female aged 78.

Amputation of the breast for cancer.

Amputation at the thigh in a male necessitated by gangrene as a sequel of typhoid fever.

Extirpation of suppurating cervical glands in a female.

I regret to say that the general health has not been quite satisfactory, and on several occasions it has been my duty so to report to you. As a legacy of last year we had a continuance of Scarlet Fever on both sides of the house, which only ended after 7 patients and 5 members of the staff had been affected. Isolation, so far as we could command,

General
Health.
Scarlatina.

was immediately resorted to as each case arose. On the top of this we had a visit of the most serious epidemic of Influenza it has been our fortune to suffer from, followed in the summer by an epidemic of Ophthalmia and of Diarrhœa consequent upon the excessive dryness and heat of the past summer. The cases of Diarrhœa were slight but numerous, causing constant surveillance of our sanitary arrangements. One case assumed the dysenteric form and proved fatal. In the autumn we had 3 patients suffering from Typhoid Fever. All made good recoveries except one, in whom gangrene of the foot and leg supervened, necessitating amputation.

Typhoid
Fever.

Infectious
Hospital.

Surrounded as we are by numerous small villages which are seldom if ever free from one or other of the Zymotic diseases it is no wonder that we are frequently having them imported into our midst by patients, friends, or others. In the spring you decided to erect a detached Infectious Hospital, thinking it no longer wise to expose the main building with its increasing population to the risks and worries of such repeated outbreaks; further, by so doing, sleeping accommodation for over 60 patients besides increased day space, which on the female side is badly wanted, will be liberated for ordinary use. Plans were devised for the accommodation of 6 of each sex with the necessary offices, and were duly sanctioned by the Commissioners in Lunacy. After competition the tender of Mr. Simonds, of Reading, was accepted to erect the Hospital at a cost of £2,495. Work began in the early part of September, and favoured by the open autumn it has progressed so rapidly that at the present time the building is being roofed in.

Treatment.

The treatment continues on the same lines as hitherto. Every means, moral and physical, that can assist us in curing the patient or in making happier the life of the incurable is called into requisition. Exercise on the farm and garden, entertainments and out-door games have their turn with due care and discretion.

Much has been done to improve the sanitary condition of the Asylum and to keep the fabric in good order and repair. Besides the usual painting, &c., new w.c. pans and flushing cisterns have been introduced into male ward No. 7. The pans are the wash down hoppers and the cisterns are of the 'Tower' pattern with a 3-gallon flush. Both are a great improvement on the old cisterns and wash-out pans. All the w.c.'s of male 1 have been renewed, the floors tiled, and the soil pipes carried outside. The drainage of the farm buildings has been re-arranged, and where possible carried in open gutters. A separate main has been added to the heating apparatus for the female Hospital which can be heated separately from the other wards and to a higher temperature. At the present time the heating apparatus of the original building, all of which has been recently re-laid, works very satisfactorily, but necessitates an increase in the consumption of fuel which, considering the great benefit and comfort derived therefrom, is well expended. Situated as we are, far from the coal fields, we suffered severely by the recent prolonged strike. It was only by the most exacting and oft times disagreeable surveillance that we were able, in spite of our usual stored supply for emergency, to keep ourselves going from day to day. It will probably be a question should such a repetition occur whether it would not be wise to provide further storage accommodation.

New Work.

Two members of the Board of Commissioners in Lunacy made their annual visit of inspection on October 28th, and left a gratifying report which is appended as to the state of your Asylum.

Visit of Commissioners in Lunacy.

In future the Maintenance Account, by order of the Local Government Board, has to be saddled with the rates of the Asylum instead of being added to the Repairs Account as hitherto.

Asylum Rates.

With few exceptions, which have been reported to you, I can again report favourably of the staff. The past year

Staff.

has been a trying one for the responsible heads in the wards, and to them I freely tender my deep obligation and thanks for the excellent work that has been done. The only change amongst the officers is the appointment of Miss Chance to the post of housekeeper in succession to Miss Morgan, who left to assume a more responsible post in the new London County Asylum at Claybury. To my colleagues, Drs. Dunn and Johnston, I thankfully acknowledge much ready and willing assistance, and to Mr. Nicholls, the Clerk and Steward, much praise is due for the conscientious manner in which he discharges the duties of his office.

Deaths of
Two Visitors.

I cannot conclude this Report without referring to the great loss your Committee has sustained by the deaths of Mr. Goodlake and Dr. Ryott. Both were men of ripe and wide experience, which was constantly devoted to the best interests of your Asylum.

To you, Gentlemen, it is my duty to gratefully acknowledge much consideration and support in the performance of the many duties appertaining to my office.

I have the honor to be, Mr. Chairman and Gentlemen,
Your obedient Servant,

J. WM. A. MURDOCH.

January 19th, 1894.

APPENDIX
TO THE
MEDICAL SUPERINTENDENT'S
REPORT.

APPENDIX

MEDICAL SUPERINTENDENT'S

REPORT

ASYLUM MEDICAL STATISTICS, 1893.

TABLE I.

Showing the Admissions, Re-admissions, Discharges, and Deaths during the year ending 31st December, 1893.

				Males.	Females.	Total.
In the Asylum 31st December, 1893.. ..				234	311	545
Cases admitted :						
	M.	F.	T.			
First Admissions	37	52	89			
Not First Admissions ..	7	10	17			
Total cases admitted during the year ..				44	62	106
Total cases under care during the year ..				278	373	651
Cases Discharged and Died :						
	M.	F.	T.			
Recovered	14	24	38			
Relieved	3	8	11			
Not Improved	3	5	8			
Died	18	31	49			
Total cases Discharged and Died during the year				38	68	106
Remaining in the Asylum, December 31st, 1893				240	305	545
Average numbers resident during the year..				237	304	541
Persons* under care during the year† ..				276	370	646
Persons admitted				44	59	103
Persons recovered				14	24	38
Transferred from other Asylums				2	1	3
" to " " " " "				1	4	5

* Persons, *i.e.*, separate persons in contradistinction to "cases" which may include the same individual more than once.

† Total cases, minus re-admissions of patients discharged during the current year.

TABLE IA.

Showing (1) the Previous Attacks among Persons admitted during the year 1893 and (2) the Number of Times they had previously recovered in this or any Asylum.

1. No. of Previous Attacks.							PERSONS.					
							Males.		Females.		Totals	
Have had 1 Previous Attack					5		10		15	
„ „ 2 Previous Attacks					2		6		8	
„ „ Many Previous Attacks..					4		1		5	
2. Number of Times Patients Recovered.							In this Asylum.			In other Asylums.		
							M.	F.	TOT.	M.	F.	TOT.
Once	3	5	8	1	4	5
Twice	1	2	3	1	1	2
Several Times				3		3

TABLE IIa.

Showing the Admissions and Recoveries of Persons from the 30th of September, 1870, to the present date, December 31st, 1893. (Twenty-three years and three months).

	Males.	Females.	Total.
<i>Persons</i> admitted during the twenty-three years and three months	1047	1165	2212
* <i>Persons</i> discharged recovered during the same period being 30·5 per cent. of persons admitted	290	386	676
Of whom were re-admitted relapsed ..	47	93	140
Recovered persons who have not relapsed..	243	293	536
Relapsed persons discharged recovered ..	17	49	66
Net † recovered persons being 27·2 per cent. of persons admitted	260	342	602

* *Persons*, *i.e.*, separate persons in contradistinction to "cases," which may include the same individual more than once.

Re-admission applies only to re-admission into this Asylum.

† *i.e.*, Recovered persons sane at the present time so far as the Asylum statistics show.

TABLE III.

Showing the Admissions, Discharges, and Deaths, with the mean Annual Mortality and proportion of Recoveries per cent. of the Admissions for each Year since the opening of the Asylum on the 30th September, 1870.

YEARS.	Admitted.			Discharged.						Died.			Remaining on December 31st of each year.			Average numbers resident.			Percentage of Recoveries on Admissions including all transfers.			Percentage of Deaths on average numbers resident.		
				Recovered.			Relieved.			Not Improved.														
	M.	F.	Tot.	M.	F.	Tot.	M.	F.	Tot.	M.	F.	Tot.	M.	F.	Tot.	M.	F.	Tot.	M.	F.	Tot.	M.	F.	Tot.
3 Mos. 1870..	50	62	112	49	62	111	42	53	95	2.3	..	1.0
1871..	85	85	170	4	7	11	..	1	1	1	1	1	116	132	248	80	95	175	4.7	8.2	6.4	16.2	7.3	11.4
1872..	47	42	89	19	17	36	3	1	4	3	..	3	124	139	263	120	138	258	40.4	40.4	40.4	11.6	12.3	12.0
1873..	35	42	77	13	13	26	1	2	3	8	7	15	123	145	268	129	143	272	37.2	30.9	33.7	10.8	9.0	10.2
1874..	42	59	101	7	24	31	4	3	7	4	7	11	127	145	272	122	146	268	16.6	40.6	30.6	18.8	17.1	17.9
1875..	32	39	71	8	16	24	1	2	3	2	5	7	130	150	280	128	155	283	25.0	41.0	33.8	14.4	7.0	10.2
1876..	43	56	99	11	22	33	1	1	2	4	5	9	145	159	304	134	157	291	25.5	39.2	33.3	8.2	12.1	10.6
1877..	43	46	89	15	17	32	4	3	7	16	13	29	139	159	298	148	158	306	34.8	36.9	35.9	9.4	8.2	8.8
1878..	40	47	87	11	20	31	2	3	5	6	6	12	146	160	306	145	157	302	27.5	42.5	35.6	9.6	10.8	10.2
1879..	40	45	85	20	21	41	1	3	4	3	5	8	140	167	307	143	163	306	50.0	46.7	48.2	15.3	5.5	10.1
1880..	89	105	194	14	20	34	6	4	10	1	1	2	192	228	420	157	180	337	15.7	19.0	17.5	10.1	10.5	10.3
1881..	46	65	111	17	18	35	2	2	4	196	256	452	196	244	440	36.9	27.6	31.5	11.7	6.9	9.0
1882..	70	68	138	13	17	30	1	2	3	1	1	2	222	278	500	201	264	465	18.5	25.0	21.7	14.4	9.8	11.8
1883..	46	54	100	17	18	35	4	4	8	1	..	1	218	286	504	221	283	504	36.9	33.3	35.0	12.6	8.4	10.3
1884..	45	43	88	19	31	50	2	2	4	21	11	32	190	264	454	204	280	484	42.2	72.0	56.8	15.1	7.5	10.7
1885..	45	51	96	15	20	35	6	3	9	2	2	4	196	270	466	200	266	466	33.3	39.2	36.4	8.0	7.5	7.7
1886..	45	54	99	8	16	24	3	1	4	2	1	3	214	292	506	207	283	490	17.7	29.6	24.2	6.7	4.9	5.7
1887..	53	44	97	11	23	34	9	12	21	2	1	3	209	273	482	207	284	491	20.7	52.3	35.0	17.3	9.5	12.8
1888..	43	59	102	12	23	35	3	7	10	1	1	2	212	290	502	214	294	508	27.9	39.0	34.2	12.8	5.0	8.3
1889..	37	60	97	18	31	49	6	6	12	1	1	2	218	296	514	218	295	513	48.6	51.6	50.5	4.2	6.4	5.5
1890..	43	56	99	11	20	31	1	7	8	5	3	8	218	296	514	218	295	513	25.5	35.7	31.3	9.2	6.7	7.7
1891..	48	40	88	13	11	24	2	10	12	3	1	4	226	296	522	225	299	524	27.1	27.5	27.3	9.7	6.0	7.6
1892..	49	65	114	19	22	41	..	2	2	8	2	10	234	311	545	234	303	537	38.7	33.8	35.9	5.9	7.9	7.0
1893..	44	62	106	14	24	38	3	8	11	3	5	8	240	305	545	237	304	541	31.8	38.7	35.8	7.6	10.2	9.0
	1160	1349	2509	309	451	760	63	87	150	100	80	180	448	426	874									

NOTE.—The Admissions of 1880 include 92 Patients belonging to Unions in the County of Berks who had previously been maintained in other Asylums, and the Admissions of 1882 include 31 Patients belonging to the County of Surrey.

The percentage of Recoveries upon the Admissions, deducting transfers from other Asylums and from Class to Class, is 37.6 per cent.

TABLE IV.

Showing the History of the Annual Admissions since the opening of the Asylum on the 30th September, 1870, with the Discharges and Deaths, and the Numbers of each Year remaining on December 31st, 1893.

YEAR.	Admitted.			Of each Year's Admissions, Discharged and Died in 1893.										Total Discharged and Died of each Year's Admissions to 31st December, 1893.										Remaining of each Year's Admissions on Dec. 31, 1893																																																																																																																																																																																																																																																																																																																																																																																																																																																																																																																																																																																																																																																																																																																																																																																																																																																																																																																																																																																																																																																																																																																
	New Cases.		Re-lapsed Cases.	Recovered.		Relieved.		Not Improved.		Died.		Recovered.		Relieved.		Not Improved.		Died.																																																																																																																																																																																																																																																																																																																																																																																																																																																																																																																																																																																																																																																																																																																																																																																																																																																																																																																																																																																																																																																																																																																						
	M.	F.		M.	F.	Tot.	M.	F.	Tot.	M.	F.	Tot.	M.	F.	Tot.	M.	F.	Tot.	M.	F.	Tot.																																																																																																																																																																																																																																																																																																																																																																																																																																																																																																																																																																																																																																																																																																																																																																																																																																																																																																																																																																																																																																																																																																																			
	M.	F.	Tot.	M.	F.	Tot.	M.	F.	Tot.	M.	F.	Tot.	M.	F.	Tot.	M.	F.	Tot.	M.	F.	Tot.																																																																																																																																																																																																																																																																																																																																																																																																																																																																																																																																																																																																																																																																																																																																																																																																																																																																																																																																																																																																																																																																																																																			
1870.....	50	62	112

Summary of the Total Admissions from September 30th, 1870, to December 31st, 1893.												Males.		Females.		Total.	
Percentage of Cases Recovered												26.64		38.43		30.28	
" " " " " " " " " " " " " "												5.43		6.44		5.96	
" " " " " " " " " " " " " "												8.62		5.94		7.21	
" " " " " " " " " " " " " "												38.62		31.58		34.83	
" " " " " " " " " " " " " "												20.69		22.61		21.72	
" " " " " " " " " " " " " "												100		100		100	

The Admissions of 1880 include 92 Patients belonging to Unions in the County of Berks, who had previously been maintained in other Asylums; and the Admissions of 1882 include 31 Patients belonging to the County of Surrey.

TABLE V.—Showing the Causes of Death during the Year 1893, together with the ages at Death.

CAUSE OF DEATH.	5 to 10		15 to 20		20 to 25		25 to 30		30 to 35		35 to 40		40 to 45		45 to 50		50 to 55		55 to 60		60 to 65		65 to 70		70 to 75		75 to 80		80 to 85		85 to 90	
	M.	F.	M.	F.	M.	F.	M.	F.	M.	F.	M.	F.	M.	F.	M.	F.	M.	F.	M.	F.	M.	F.	M.	F.	M.	F.	M.	F.	M.	F.	M.	F.
<i>Cerebral or Spinal Diseases:</i>																																
Congestive Apoplexy	1	1	1	1	1	1	1	1	1
General Paralysis	5	9
Cerebral Hemorrhage	2	3	1	1	1
Cerebral Softening	1	3	1
Exhaustion from	2	4	1	1	1
Epilepsy	..	1	1
Exhaustion from	..	1
Mania	..	1
<i>Thoracic Disease:</i>																																
Heart Disease	3	2	1	..	1	1	1
Pneumonia	1	5	1	1	1	1	1
Phthisis	2	2	1	..	1	1	1
<i>Abdominal Disease:</i>																																
Tubercular Peritonitis	1	1
Acute Nephritis	..	1	1
Dysenteric Diarrhoea	..	1	1
<i>General Diseases:</i>																																
Senile Decay	..	9	1	4	..	1
Senile Decay and Erysipelas	..	1	1
Totals	18	31	49	1	1	2	2	3	1	2	1	1	1	1	1	..	3	1	1	4	2	5	3	5	..	4	1	2

Post-Mortem Examinations, Males 17.—Females 28.—Total 45.

TABLE VI.

Showing the Length of Residence in those Discharged, Recovered, and in those who have Died during the year 1893.

LENGTH OF RESIDENCE.							Recovered.			Died.		
							Males.	Females.	Total.	Males.	Females.	Total.
Under 1 month	1	3	4
From 1 to 3 months	3	2	5	..	3	3
" 3 " 6 "	4	13	17	5	3	8
" 6 " 9 "	4	1	5	2	1	3
" 9 " 12 "	1	6	7	1	1	2
" 1 " 2 years	1	1	2	3	3	6
" 2 " 3 "	1	1	2
" 3 " 5 "	1	1	2	1	4	5
" 5 " 7 "	1	3	4
" 7 " 10 "	1	1
" 10 " 12 "
" 12 " 15 "	1	6	7
" 15 " 20 "	1	1
" 20 " 25 "	2	1	3
TOTAL							14	24	38	18	31	49

TABLE VII.

Showing the Duration of the Disorder on Admissions, Discharges and Deaths, during the Year 1893.

DURATION OF DISEASE ON ADMISSION IN FIVE CLASSES.													
CLASS.	The Admissions.			Recovered.			Removed, Relieved, or otherwise.			The Deaths.			
	Males.	Females.	Total.	Males.	Females.	Total.	Males.	Females.	Total.	Males.	Females.	Total.	
FIRST CLASS: First Attack, and within three months on admission	10	25	35	7	13	20	2	5	7	3	11	14	
SECOND CLASS: First Attack, and above three, and within twelve months on admission	10	9	19	3	3	6	1	3	4	6	4	10	
THIRD CLASS: Not First Attack, and within twelve months on admission	9	16	25	4	8	12	1	3	4	2	6	8	
FOURTH CLASS: First Attack or not, but of more than twelve months duration on admis- sion	8	5	13	1	2	3	7	8	15	
FIFTH CLASS: Congenital	7	7	14	1	..	1	..	2	2	
TOTAL	44	62	106	14	24	38	6	13	19	18	31	49	

TABLE VIII.

Showing in Quinquennial Periods the Ages of those Admitted, Recovered, and Died during the Year 1893, and of those Remaining on 31st December, 1893.

Ages.	The Admissions.			Recovered.			The Deaths.			Patients Resident, 31st December, 1893.		
	Males.	Females.	Total.	Males.	Females.	Total.	Males.	Females.	Total.	Males.	Females.	Total.
From 5 to 10 years	1	1	2	1	..	1	2	1	3
" 10 to 15 "	..	1	1	2	5	7
" 15 to 20 "	2	6	8	..	1	1	5	9	14
" 20 to 25 "	1	2	4	1	2	3	1	..	1	9	11	20
" 25 to 30 "	2	2	4	2	5	7	16	15	31
" 30 to 35 "	6	9	15	2	4	6	1	2	3	24	23	47
" 35 to 40 "	4	4	8	1	3	4	1	1	2	24	32	56
" 40 to 45 "	1	7	8	3	2	5	1	..	1	21	32	53
" 45 to 50 "	4	6	10	1	6	7	1	1	2	19	38	57
" 50 to 55 "	3	2	5	1	1	2	1	..	1	36	36	72
" 55 to 60 "	6	2	8	1	2	3	2	2	4	27	28	55
" 60 to 65 "	4	4	8	1	..	1	1	3	4	20	26	46
" 65 to 70 "	2	1	3	2	6	8	12	22	34
" 70 to 75 "	4	8	12	1	1	2	3	5	8	11	16	27
" 75 to 80 "	..	1	1	4	4	8	9	8	17
" 80 to 85 "	..	3	3	1	2	3	2	3	5
" 85 to 90 "
" 90 to 95 "	1	..	1
Total ..	44	62	106	14	24	38	18	31	49	240	305	545
Mean Age ..	44.6	44.2	44.4	42.3	39.7	40.7	50.0	57.7	54.9			

TABLE IX.

*Showing the Condition as to Marriage, in the Admissions, Discharges, and Deaths during the Year 1893,
and of the Patients Resident on December 31st, 1893.*

Condition in reference to Marriage.	The Admissions.			THE DISCHARGES.			The Deaths.			Patients Resident December 31st, 1893.		
	The Admissions.			Recovered.			Removed, Relieved, or otherwise.			Patients Resident December 31st, 1893.		
				Males.	Females.	Total.	Males.	Females.	Total.			
Single ..	22	32	54	5	9	14	5	10	15	156	161	317
Married ..	17	17	34	9	15	24	1	3	4	65	99	164
Widowed ..	5	13	18	16	39	55
Unknown	3	6	9
TOTAL ..	44	62	106	14	24	38	6	13	19	240	305	545

TABLE IXA.

Showing the condition as to Marriage on Admission in the Admissions, Discharges, and Deaths since the opening of the Asylum on the 30th of September, 1870, and of the Patients remaining on December 31st, 1893.

Condition in reference to Marriage.	The Admissions.			THE DISCHARGES.				The Deaths.			Patients Resident December 31st, 1893.		
				Recovered.		Removed, Relieved, or otherwise.		Males.	Females.	Total.	Males.	Females.	Total.
				Males.	Females.	Total.	Males.	Females.	Total.				
Single ..	532	560	1092	129	156	285	94	95	189	153	148	161	317
Married ..	495	572	1067	157	262	419	56	48	104	217	163	99	164
Widowed ..	104	195	299	19	33	52	5	20	25	64	103	39	55
Unknown ..	29	22	51	4	..	4	8	4	12	14	12	6	9
TOTAL ..	1160	1349	2509	309	551	760	163	167	300	448	426	305	545

TABLE X.

*Showing the probable Causes, Apparent or Assigned, of the Disorder
in the Admissions of the Year 1893.*

	M.	F.	Total.
MORAL CAUSES :			
Adverse Circumstances	1	..	1
Domestic Trouble	1	4	5
Love Affair	1	1
Seduction	1	1
PHYSICAL CAUSES :			
Hereditv	2	5	7
" and Congenital Defect	1	2	3
" " Cerebral Hæmorrhage	1	..	1
" " Domestic Trouble	2	2
" " Influenza	1	..	1
" " Intemperance	3	..	3
" " Menopause	1	1
" " Previous Attacks	3	2	5
" " Puerperal State	1	1
" " Senile Decay	2	..	2
Previous Attacks	2	6	8
" " Domestic Trouble	1	1
" " Intemperance in Drink	3	2	5
" " Masturbation	1	..	1
" " Privation	1	2	3
" " Puerperal State	1	1
" " Senile Decay	1	..	1
Cerebral Softening	2	2
" Tumour	1	1
" " and Bright's Disease	1	..	1
Congenital Arrest of Development	4	3	7
" " " with Epilepsy	1	2	3
Epilepsy	3	2	5
Erysipelas	1	1
Heart Disease	1	..	1
Hysteria	1	1
Injury to Head	1	..	1
Intemperance in Drink	1	1
Masturbation	2	..	2
Menopause	1	1
Phthisis	1	2	3
Privation	1	..	1
Puerperal State	1	1
Senile Decay.. .. .	1	8	9
Syphilis with General Paralysis.. .. .	3	..	3
Unknown	2	6	8
Total	44	62	106

TABLE No. 2.

Showing the Religious Denomination of the Patients admitted during the Year 1893.

	M.	F.	Total.
Church of England	35	50	85
Wesleyans	1	4	5
Roman Catholics	2	2	4
Congregationalists	2	1	3
Baptists	2	..	2
Protestant (German)	1	..	1
Idiots	1	5	6
Total	44	62	106

TABLE No. 3

*Showing the Occupation or Station in Life of the Patients
admitted in 1893.*

Males.	Total.	Females.	Total.
Baker	1	Barmaid	1
Bricklayer	2	Book-keeper	1
Blacksmith	2	Charwoman	2
Carman	1	Cook	1
Cab Proprietor	1	Domestic Servant	10
Chimney Sweep	1	Governess	1
Engraver	1	Housekeeper	3
Gardener	2	Housewife	23
Grocer	1	Laundress	1
Gunner in Army	1	Labourer—Agricultural	1
Joiner	2	Milliner	1
Labourer—Agricultural	8	Scholar	1
" General	10	Of no occupation	16
Painter	1		
Petty Officer in Navy	1		
Postman	1		
Shepherd	1		
Shoemaker	2		
Tailor	1		
Of no occupation	4		
Total	44	Total	62

TABLE No. 4.

Showing the Admissions, Discharges, and Deaths during each month in the Year, and the Daily Average Numbers for each month.

1893 Months.	Admissions.			Discharges and Removals.			Deaths.			Daily Average.		
	Males.	Females.	Total.	Males.	Females.	Total.	Males.	Females.	Total.	Males.	Females.	Total.
January ..	4	6	10	..	1	1	..	2	2	235	313	548
February ..	5	6	11	1	..	1	1	4	5	240	313	553
March ..	4	9	13	2	7	9	2	8	10	241	314	555
April ..	4	2	6	3	4	7	3	4	7	241	303	544
May ..	2	4	6	2	3	5	1	2	3	236	302	538
June ..	2	5	7	..	3	3	4	1	5	235	301	536
July ..	2	4	6	3	3	6	..	4	4	233	301	534
August ..	5	6	11	2	4	6	2	2	4	235	298	533
September	4	3	7	2	2	4	..	1	1	236	299	535
October	7	7	3	4	7	1	..	1	234	300	534
November	6	5	11	..	2	2	4	1	5	235	303	538
December	6	5	11	2	4	6	..	2	2	240	306	546
Total ..	44	62	106	20	37	57	18	31	49	237	304	541

TABLE No. 5.

Showing the number of Patients in the Asylum chargeable to each Union on December 31st, 1893.

	On December 31st, 1892.			Admitted in 1893.			Discharged or Removed in 1893.			Died in 1893.			Remaining on December 31st, 1893.		
	M.	F.	Total.	M.	F.	Total.	M.	F.	Total.	M.	F.	Total.	M.	F.	Total.
Abingdon Union ..	19	27	46	5	4	9	1	2	3	2	3	5	21	26	47
Bradfield ..	18	23	41	2	4	6	1	2	3	3	2	5	16	23	39
Cookham ..	12	31	43	6	7	13	4	5	9	1	..	1	13	33	46
Easthamstead Union ..	9	15	24	6	8	14	2	2	4	..	4	4	13	17	30
Faringdon ..	11	21	32	1	3	4	1	1	2	1	4	5	10	19	29
Hungerford ..	13	9	22	1	2	3	1	1	2	1	1	2	12	9	21
Newbury ..	15	23	38	2	4	6	1	2	3	1	5	6	15	20	35
" Borough ..	26	12	38	1	4	5	..	2	2	1	1	2	26	13	39
Reading Union ..	52	70	122	11	12	23	5	11	16	5	4	9	53	67	120
Wallingford ..	11	12	23	1	3	4	1	..	1	1	4	5	10	11	21
Wantage ..	14	15	29	1	3	4	1	..	1	..	2	2	14	16	30
Windsor ..	11	12	23	5	1	6	3	2	5	..	1	1	13	10	23
Wokingham ..	15	35	50	3	3	6	1	3	4	1	..	1	16	35	51
County of Berks ..	3	1	4	3	1	4
Other Counties ..	1	2	3	3	4	7	2	4	6	1	..	1	1	2	3
Criminals	1	1	..	1	1
Private Patients ..	4	3	7	..	2	2	..	2	2	4	3	7
Total ..	234	311	545	48	65	113	24	40	64	18	31	49	240	305	545

TABLE No. 6.

State of Bodily Health of the Admissions of 1893.

	Males.	Females	Total.
In Good Bodily Health	7	9	16
In Indifferent Health.. .. .	23	29	52
In Bad Health.. .. .	14	24	38
TOTAL	44	62	106

TABLE No. 7.

Showing the number of Patients in the Asylum on the 31st of December, 1893, affected with Idiocy or Congenital Imbecility, Epilepsy, General Paralysis, or other forms of Paralysis.

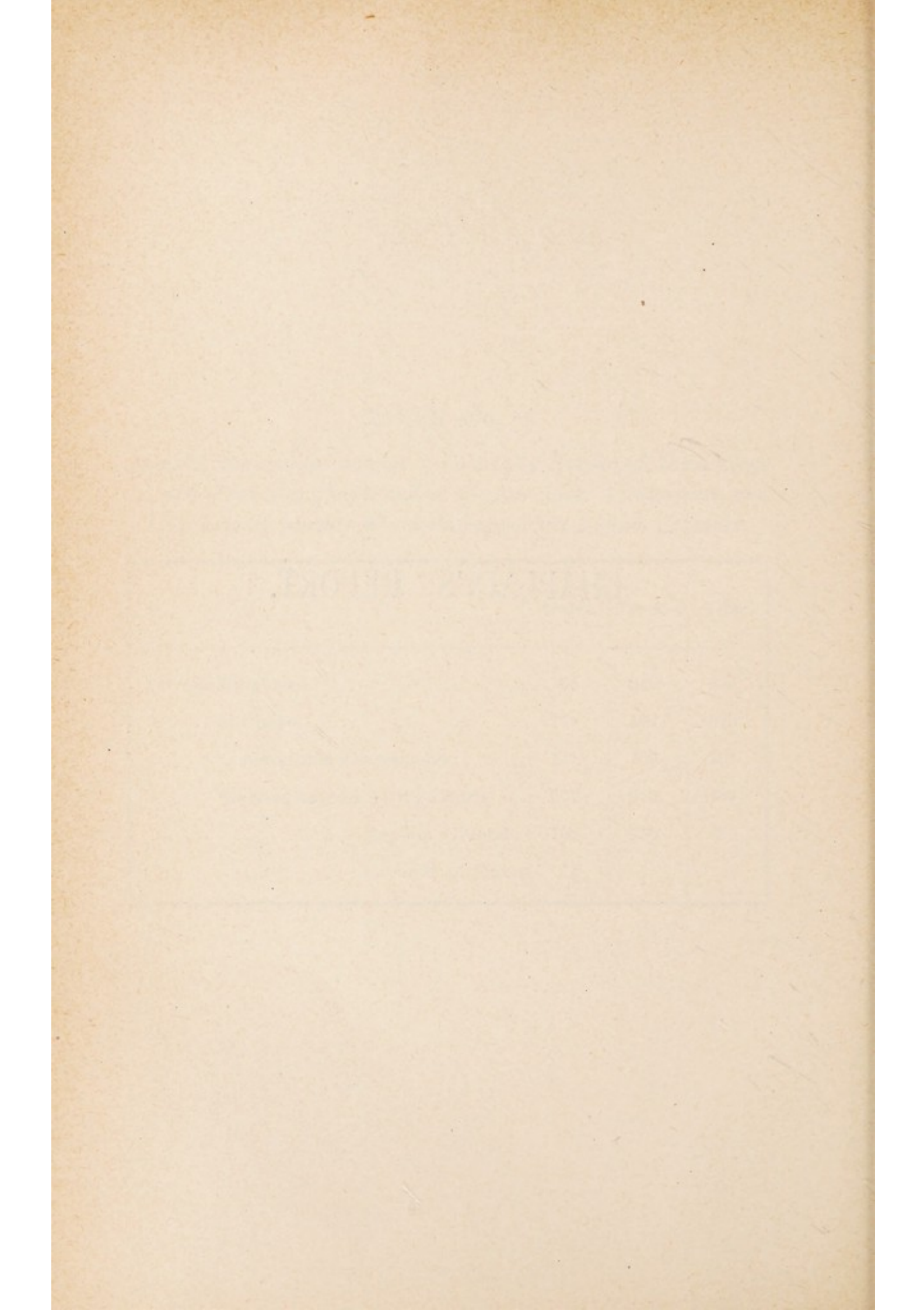
	Males.	Females	Total.
Congenital Imbecility.. .. .	30	18	48
Idiocy	31	23	54
Epilepsy	46	32	78
Paralysis	9	7	16
General Paralysis	4	3	7

TABLE No. 8.

Showing the average number Industrially Employed, the average attendances at Chapel and at the Associated Amusements, and the average number who walk beyond the Asylum Grounds.

	Males.	Females	Total.
Average Employed	165	230	395
„ at Chapel	144	184	328
„ „ Associated Amusements.. ..	111	150	261
„ Walking beyond Airing Courts ..	217	270	487
„ „ „ Asylum Grounds	109	130	239
„ „ „ Grounds on Parole	4	..	4

CHAPLAIN'S REPORT.



CHAPLAIN'S REPORT.

To the Committee of Visitors, Berks Asylum.

GENTLEMEN,

I have pleasure in submitting to you my Annual Report for the year now closing.

The Chapel Services have been performed twice each Sunday—with a sermon at each service—also on Christmas Day, Good Friday, Ascension Day, and every Wednesday throughout the year. The services have been generally appreciated, and the behaviour of Patients and Staff in Chapel has been devout and attentive. The average attendance of Patients at Divine Service on Sundays has been 330, and the average number of Communicants at the celebration of Holy Communion each month has been 27.

I would again express my thanks, and I feel sure the thanks of the Patients also, to Dr. Murdoch for his kind interest in our Services, and to those of the Officers and Staff who form the Choir, and who so very ably render the musical portions of the services.

As the Chaplain's Journal explains in detail, I have regularly visited all departments of the Asylum throughout the year. As I ventured to point out in my last Report, a very great deal can be done by this *personal* contact with the Patients. I have always endeavoured by practical and friendly conversation to render such spiritual direction, consolation and sympathy as the case required, and I believe many are made happier and more hopeful by this means.

I have attended members of the Household and Staff, who have required my ministrations, and I have administered the Sacrament of Holy Communion to Patients and Staff who in illness have required and requested it.

Bibles and Prayer Books are fairly distributed in the Wards.

The Library is still greatly appreciated, and books are regularly issued. We have some 750 volumes, but could do well with some new ones.

Since my last Report—Dec. 16th, 1892—there have been 48 deaths among the Patients. Of these 32 have been buried in the parish churchyard at Cholsey.

I have assisted regularly in musical and other entertainments for the Patients.

With expressions of grateful thanks for all the kindness which you have extended to me in the past.

I am, Gentlemen,

Your faithful and obedient Servant,

AUGUSTUS E. FARRAR,

CHAPLAIN.

Moulsford, Dec. 15, 1893.

MOULSFORD ASYLUM.

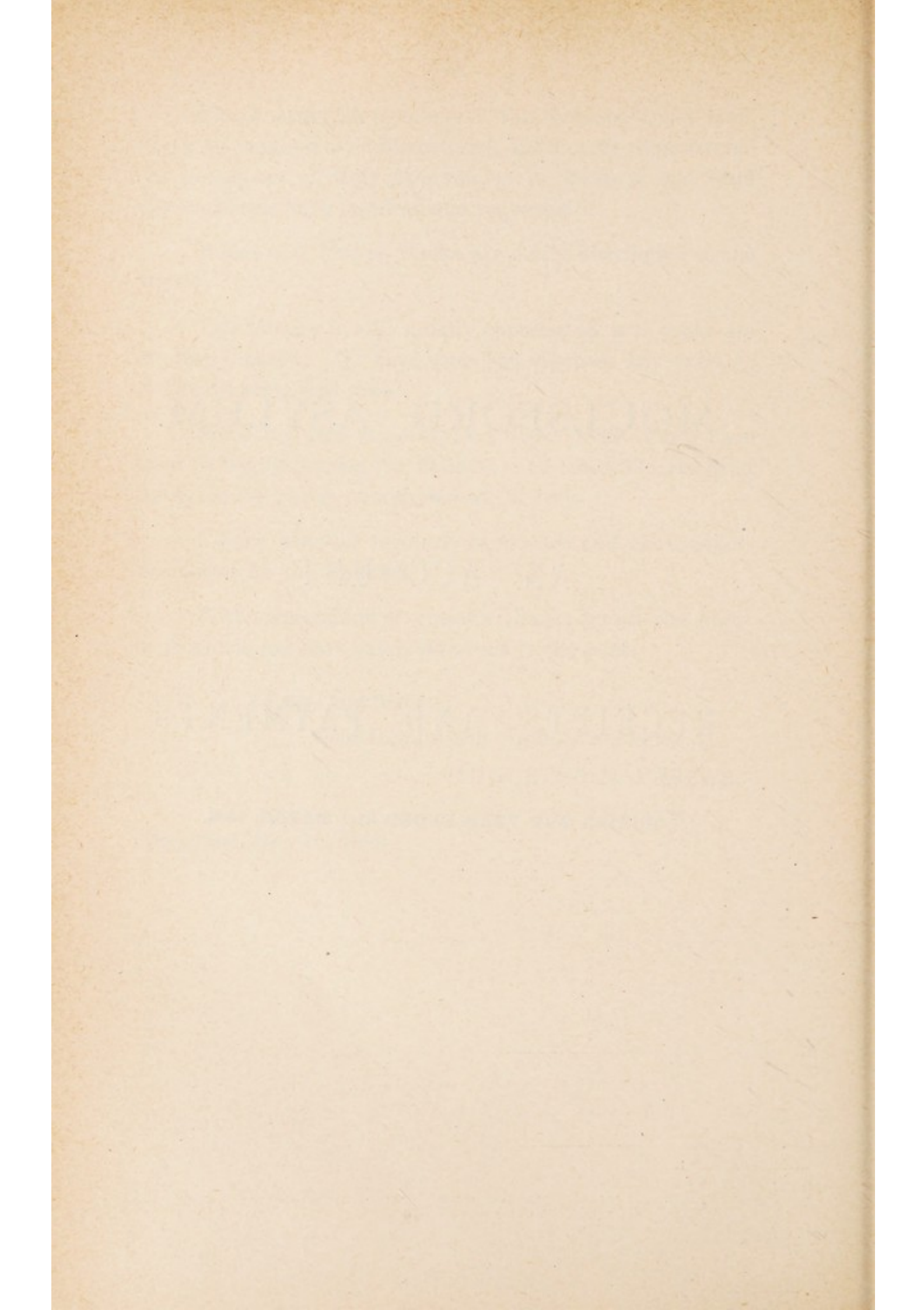


AN ACCOUNT

OF

RECEIPTS AND PAYMENTS

DURING THE YEAR ENDED 31st MARCH, 1894.



MOULSFORD ASYLUM.

*An Account of Receipts and Payments during the year
ended 31st March, 1894.*

RECEIPTS.

	£	s.	d.	£	s.	d.
To Balance with Treasurer ...	1280	14	9			
„ Ditto with Steward ...	88	3	5			
				1368	18	2
<hr/>						
1. MAINTENANCE ACCOUNT.						
From Unions, &c., in the County.						
Abingdon ...	958	7	6			
Bradfield ...	836	1	1			
Cookham ...	918	11	11			
Easthampstead ...	612	3	8			
Faringdon ...	675	0	10			
Hungerford ...	434	13	3			
Newbury ...	1616	8	10			
Reading ...	2599	17	10			
Wallingford ..	455	6	10			
Wantage ...	627	4	5			
Windsor ...	494	1	0			
Wokingham ...	1065	9	9			
County of Berks ...	86	0	6			
				11379	7	5
Commissioners of H.M. Treasury for Maintenance, &c., of Criminal Lunatics ...	6	9	6			
				6	9	6
From Unions in other Counties.						
Brentford ...	7	17	6			
Cardiff ...	1	4	6			
Chelsea ...	5	3	3			
Epsom ...	1	13	3			
Fulham ...	7	2	9			
Henley ...	21	10	2			
Southampton ...	5	1	6			
St. Giles, Bloomsbury ...	17	9	8			
St. Marylebone ...	5	11	9			
Wandsworth ...	5	5	0			
Westminster ...	8	13	10			
				86	13	2
Carried forward	12841	8	3

RECEIPTS.				£	s.	d.	£	s.	d.
Brought forward	12841	8	3
2. EXTRA CHARGES ACCOUNT.									
Abingdon	4	18	0			
Bradfield	2	9	0			
Cookham	1	4	6			
Easthampstead	1	4	6			
Faringdon	6	2	6			
Hungerford	2	9	0			
Newbury	8	11	6			
Reading	4	18	0			
Wallingford	2	9	0			
Wantage	2	9	0			
Wokingham	1	4	6			
							37	19	6
3. FARM ACCOUNT.									
Sale of Stock	337	9	6			
„ Hides and Skins	4	19	1			
„ Wool	18	12	3			
„ Barley	43	10	6			
„ Wheat	208	11	0			
„ Straw	26	0	0			
Rents of Allotments	2	0	0			
Compensation for Pigs Slaughtered	6	6	0			
							647	8	4
4. SALES AND OLD STORES ACCOUNT.									
Sale of Meat...	36	14	4			
„ Rags, Bones, &c.	14	6	3			
„ Gas Tar	0	5	10			
„ Pigs' Wash...	1	3	9			
Forfeited Wages	5	8	4			
Value of Eggs broken on Railway	0	7	8			
							58	6	2
5. RENTS OF COTTAGES				63	14	0			
							63	14	0
Carried forward	13648	16	3

RECEIPTS.			£	s.	d.	£	s.	d.
Brought forward	13648	16	3
6. REPAIRS ACCOUNT.								
County of Berks	389	5	9			
County Borough of Reading			79	12	7			
Borough of Newbury ...			35	7	9			
Excess of weekly charge for maintenance of Out- County and Criminal Patients over rate charged for County and Borough Patients ...			67	2	4			
The like for Private Patients			186	2	5			
						757	10	10
7. ADDITIONS, &c., ACCOUNT.								
County of Berks	248	11	5			
County Borough of Reading			50	16	10			
Borough of Newbury ...			22	11	11			
						322	0	2
8. INFECTIOUS HOSPITAL ACCOUNT.								
County of Berks	1760	0	0			
County Borough of Reading			360	0	0			
Borough of Newbury ...			160	0	0			
						2280	0	0
9. LODGING ACCOUNT.								
County Borough of Reading			335	10	6			
Borough of Newbury ...			4	7	6			
						339	18	0
10. PRIVATE PATIENTS' ACCOUNT.								
Maintenance, &c.	159	7	7			
						159	7	7
Total	£17507	12	10

Farm and Garden Supplies to House.

	£	s.	d.	£	s.	d.
FARM SUPPLIES.						
Milk, New, 4039½ galls. @ 11d. ...	185	2	10			
„ Skim, 7163½ galls. @ 7d. ...	208	18	8			
Cream, 158¾ pints @ 7d. ...	4	12	7			
Butter, 1792 lbs. @ 1/3 and 1/5 ...	117	3	1			
Eggs, 8400 @ ¾d. ...	26	5	0			
Pork, 2879 lbs. @ 6d. ...	71	19	6			
Mutton, 279 lbs. @ 5d. and 5¼d. ...	5	19	5			
Beef, 3463 lbs. @ 5d. and 5¼d. ...	73	13	1			
Veal, 152 lbs. @ 7d. ...	4	8	8			
Suet, 285 lbs. @ 2½d. and 3d. ...	3	5	3			
Poultry, 71 @ 2/- and 2/6 ...	7	10	6			
Potatoes, 714 sacks @ 3/9 and 5/6 ...	153	3	3			
Other Vegetables ...	1	17	6			
				863	19	4
GARDEN SUPPLIES.						
Potatoes, 40 sacks @ 5/6 ...	11	0	0			
„ New, 6221 lbs. @ 1½d. and 1d. ...	13	13	3			
Other Vegetables, Fruit, &c. ...	204	18	2			
				229	11	5
				1093	10	9

PAYMENTS.

						TOTALS FOR THE YEAR.	GRAND TOTALS.
						£ s. d.	£ s. d.
1. SALARIES AND WAGES.							
Medical Superintendent	532 19 9	
1st Assistant Medical Officer	141 11 3	
2nd " " "	104 0 1	
Chaplain	200 0 0	
Ditto (<i>locum tenens</i>)	36 6 0	
Clerk to the Visitors	110 0 0	
Clerk and Steward	205 0 0	
Housekeeper	38 8 7	
							1368 5 8
Head Attendant (Male)	70 0 0	
Male Attendants	684 15 10	
Head Attendant (Female)	40 8 4	
Female Attendants	544 15 11	
							1340 0 1
Superintendent's Clerk and Organist	37 12 1	
Stores Assistant	34 3 9	
Hall Porter	30 18 2	
Cook	22 14 3	
Housemaid	17 14 2	
Kitchenmaids	47 8 0	
Laundress	27 11 8	
Laundrymaids	51 11 2	
Needlewoman	19 2 8	
							288 15 11
Engineer	51 18 6	
Gasman	53 19 0	
Baker	52 0 0	
Stoker	21 2 0	
Shoemaker	63 10 7	
Night Attendant	61 16 0	
Gatekeeper	54 0 0	
							358 6 1
Carried forward	3355 7 9

PAYMENTS.

					TOTALS FOR THE YEAR.	GRAND TOTALS.
					£ s. d.	£ s. d.
Brought forward						3355 7 9
2. PROVISIONS ACCOUNT.						
Ale	49	brls.	78	8	0	
Beer	220	„	242	0	0	
Bacon	16707	lbs.	452	7	0	
Butter	7728	„	189	15	0	
Cheese	8194½	„	171	13	5	
Coffee	308	„	19	12	0	
Currants	659	„	6	12	4	
Eggs	7153	„	28	3	10	
Fish	5	2	2	
Flour	625	sk.	652	12	6	
Beef	48079	lbs.	1032	5	5	
Mutton	12721	„	276	2	8	
Prime Joints	22	18	10	
Poultry	4	9	4	
Preserved Meat	15120	lbs.	239	12	6	
Potatoes	4	tons	16	0	0	
Essence of Beef	84	lbs.	16	16	0	
Plums	302	„	3	8	0	
Sugar (Loaf)	1232	„	12	0	3	
„ (Moist)	16352	„	118	8	6	
Tea (No. 1)	3196	„	173	2	4	
„ (No. 2)	660	„	44	0	0	
Arrowroot, Rice, Peas, Sago, &c.	52	16	1	
Salt and Spices	30	0	11	
Allowances in lieu of Beer	123	9	7	
Carried forward	4011 16 8
						7367 4 5

PAYMENTS.

				TOTAL FOR THE YEAR.	GRAND TOTALS.
				£ s. d.	£ s. d.
Brought forward		7367 4 5
 3. NECESSARIES ACCOUNT					
Bath Bricks	2 gross	0 14 0	
Black Lead	90 lbs.	2 13 5	
Blacking	19 gross	2 0 3	
Emery Cloth, &c.	4 17 0	
Hearth Stones	3 gross	0 16 6	
House Flannel	1620 yds.	20 5 0	
Blue	77 lbs.	3 4 2	
Yellow Soap	20272 lbs.	150 6 3	
Toilet	16 lbs.	0 6 0	
Soft	51 firkins	19 2 6	
Carbolic	1120 lbs.	15 0 0	
Soda	8792 lbs.	14 17 6	
Starch	616 lbs.	8 4 3	
Disinfectants (Powder & Fluid)	6 4 9	
Candles	72 lbs.	1 0 0	
Colza Oil, Wick, &c.	4 9 8	
			Tons. Cwt.		
Coal (House)	210 14	181 6 0	
„ (Steam)	352 17	282 2 7	
„ (Gas)	208 3	217 10 10	
Coke	332 6	237 14 0	
Lime	23 14 8	
Matches	24 gross	4 5 6	
Fire Lighters	96 gross	11 4 0	
					1211 18 10
Carried forward	8579 3 3

PAYMENTS.

	TOTALS FOR THE YEAR.	GRAND TOTALS.
	£ s. d.	£ s. d.
Brought forward	8579 3 3
 4. WINES AND SPIRITS ACCOUNT.	 24 9 6	 24 9 6
 5. SURGERY ACCOUNT.		
Drugs, Instruments, &c.	139 14 11	139 14 11
 6. FURNITURE AND BEDDING ACCOUNT.		
Baskets and Repairs	6 16 6	
Blankets	28 19 2	
Blind Cord, Holland, Cretonne, &c. ..	14 17 7	
Brushes and Combs	20 12 1	
Carpet, Hearth Rugs, &c.	11 16 3	
Chairs, &c.	2 14 3	
Counterpanes	12 19 7	
Earthenware, Glass, &c.	31 17 5	
Forfar	20 5 11	
Horse Hair	15 17 4	
Ironmongery, &c... .. .	15 15 10	
Matting and Mats	0 7 7	
Sheeting	50 5 0	
Table Linen	11 15 6	
Ticken and Towelling	31 15 6	
Waterproof Sheetting and Water Beds ..	33 19 9	
		310 15 3
Carried forward	9054 2 11

PAYMENTS.

	TOTAL FOR THE YEAR.			GRAND TOTALS.		
	£	s.	d.	£	s.	d.
Brought forward	9054	2	11
 7. FARM ACCOUNT. 						
Wages, Bailiff	58	12	0			
„ Cowman	44	12	0			
„ Carters	83	6	0			
„ Labourers	81	18	8			
Seeds and Plants.. .. .	68	4	8			
Cotton Cake	96	11	3			
Beans, Brans, Oats, Pollard, &c.	46	8	0			
Threshing, Grinding, Drilling, &c.	20	2	4			
Purchase of Stock	388	8	0			
Killing Stock	3	18	0			
Tools and Repairs	10	18	2			
Veterinary Surgeon and Shoeing Smith	16	2	7			
Proportion of Rectorial Tithe	34	17	10			
„ Vicarial Tithe	8	16	7			
„ Poor Rate	16	10	10			
„ Highway Rate	4	8	3			
Rent of Land	203	2	5			
Income Tax on Rent	4	16	3			
Insurance	3	0	0			
Repairing Carts, Harness, &c... .. .	7	16	9			
Shearing Sheep and use of Stock	7	1	4			
Hurdles and Stakes	1	16	0			
Hire of Mower and Reaper	3	18	9			
				1215	6	8
Carried forward	10269	9	7

PAYMENTS.

					TOTALS FOR THE YEAR.	GRAND TOTAL.
					£ s. d.	£ s. d.
Brought forward	10269 9 7
8. GARDEN ACCOUNT.						
Wages—Gardener					59 16 0	
,, Labourers					125 0 0	
Seeds and Plants.. .. .					24 18 7	
Tools and Repairs					7 9 4	
Pea Sticks.. .. .					1 9 2	
Flower Pots					1 5 0	
Proportion of Rectorial Tithe..	
,, Vicarial Tithe	
,, Poor Rate					0 6 0	
,, Highway Rate	
Manure					1 15 0	
						221 19 1
9. TAXES AND INSURANCE ACCOUNT.						
Proportion of Poor Rate					47 8 0	
,, Highway Rate					0 16 10	
Insurance (Star Cottages)					1 0 0	
Income Tax (Cottage Rents)					2 17 8	
						52 2 6
Carried forward	10543 11 2

PAYMENTS.

				TOTALS FOR THE YEAR.	GRAND TOTALS.
				£ s. d.	£ s. d.
Brought forward	10543 11 2
10. CLOTHING ACCOUNT.					
Shirting	1784½ yds.	38 14 7
Calico	1192½ "	16 15 5
Flannel	706 "	24 0 3
Handkerchiefs & Neckerchiefs	48 dozen	4 8 0
Felt & Straw Hats, Ribbon, &c.	8 16 3
Men's Stockings	30 dozen	8 5 0
Women's	30 "	7 16 3
Shrouding	200 yards	1 11 3
Print	1827 "	35 4 5
Corduroy	416½ "	22 19 11
Stays	24 dozen	17 12 0
Jean	671 yds.	13 6 6
Canvas	484 "	10 10 9
Forfar
Blue Check	337½ "	10 3 11
Tweed	333½ "	20 3 0
Linsey	987½ "	23 17 3
Braces
Shawls	111	10 6 7
Shoes and Making Shoes	51 1 3
Boot Locks	0 15 4
Leather, Grindery, &c.	184 12 4
Uniforms for Attendants, &c.	108 2 4
Haberdashery, &c.	51 0 3
					670 2 10
Carried forward		11213 14 0

PAYMENTS.

					TOTALS FOR THE YEAR.	GRAND TOTALS.
					£ s. d.	£ s. d.
Brought forward	11213 14 0
 11. MISCELLANEOUS ACCOUNT.						
Printing and Stationery	72 9 6	
Advertising	42 6 9	
Books and Periodicals	28 8 7	
Postages and Letter Bag	33 18 1	
Travelling Expenses—Candidates and others	16 3 1	
Tobacco and Snuff	57 8 8	
Music and Entertainments	38 5 11	
Carriage of Goods	12 6 0	
Attendance at Funerals and Fees for Grave Marks	6 5 0	
Marking Ink and Stamps	2 0 0	
Chimney Sweeping	10 14 3	
Proportion of expense of keeping Graveyard in order	4 9 6	
Bird Seed, Paper, &c.	0 15 0	
Cricket Bats, Balls, Playing Cards, &c.	6 8 3	
Binding Library Books	7 10 9	
Refund of overpayment (Maintenance)	1 12 6	
Spectacles, &c.	2 5 4	
Audit Stamp	15 0 0	
						358 7 2
Carried forward		11572 1 2

PAYMENTS.

	TOTALS FOR THE YEAR.		GRAND TOTALS.	
Brought forward	11572	1 2
12. REPAIRS ACCOUNT.				
Wages—Engineer	51	19 0		
„ Carpenters	85	14 6		
„ Painters.. .. .	155	3 6		
„ Stokers	51	9 8		
„ Bricklayers	79	17 8		
„ Foreman of Works	117	0 0		
Oils, Colours, Paints, &c.	46	5 10		
Timber, Cement, Slates, &c.	31	15 0		
Iron and Brass Fittings, Castings, &c.	58	2 9		
Nails, Screws, &c.	2	7 1		
Tools, &c.	6	13 2		
Carriage of Goods	4	13 4		
Glue, Cotton Waste, &c.	2	6 6		
Retorts, Fire Bricks, Clay, &c. (Gashouse)	17	6 0		
Insurance	73	16 10		
Wall Paper, Glass, &c.	9	18 5		
Repairs to Steam Engine	12	15 0		
Insertion Sheetting, Packing, &c.	1	19 0		
Tanks for Earth Closets	10	1 0		
Pans & Cisterns for W.C.'s, Urinal Pans, &c.	52	6 11		
Bands and Laces for Engines	3	3 6		
Cooking Pan, &c. (Kitchen)	19	5 0		
Proportion of Poor Rate	66	17 0		
„ Highway Rate	29	14 3		
Repairing Fire Engine, Hose, &c.	5	10 0		
Boiler Covering Composition	5	17 0		
Fittings for Washing Machine	5	14 0		
			1007	11 11
Carried forward			12579	13 1

PAYMENTS.

	TOTALS FOR THE YEAR.			GRAND TOTALS.		
	£	s.	d.	£	s.	d.
Brought forward		12579	13	1
13. ADDITIONS AND IMPROVEMENTS ACCOUNT.						
Alterations to Heating Apparatus:—						
Bricklayers, Stone, &c.	18	5	6			
Pipes, Gratings, &c.	7	8	6			
Contractor (balance)	77	0	0			
Trees for New Orchard	9	2	0	111	16	0
14. INFECTIOUS HOSPITAL ACCOUNT.						
Contractor (on account).. ..	1380	0	0			
Postages, &c.	0	4	7	1380	4	7
15. FUNERALS & REMOVALS ACCOUNT.						
Coffins and Burial Fees.. ..	38	1	11	38	1	11
Total		£14109	15	7

COMPARATIVE PRICES OF PROVISIONS, &c.

	1892.		1893.				1894.
	4th Quarter	1st Quarter	2nd Quarter	3rd Quarter	4th Quarter	1st Quarter	
Bacon, per cwt.	56/-	62/6	64/-	54/-	49/-	
Butter, per cwt.	60/-	55/-	55/-	55/-	52/-	
Beer, per barrel	22/- & 32/-	22/- & 32/-	22/- & 32/-	22/- & 32/-	22/- & 32/-	
Cheese, per cwt.	42/- & 52/-	50/-	42/- & 50/-	48/- & 56/-	46/- & 50/-	
Flour, per sack	22/6	21/-	21/6	21/-	18/-	
Meat, per lb.	5½d.	5½d.	5½d.	5d.	5½d.	
Sugar, per cwt.	14/- & 19/-	14/9 & 19/-	16/6 & 22/9	15/9 & 20/6	13/6 & 18/6	
Tea, per lb...	1/1 & 1/6	1/1 & 1/4	1/1 & 1/4	1/1 & 1/4	1/1 & 1/4	
Coal, per ton	17/3, 17/3 & 20/1	17/3, 17/3 & 20/1	15/7, 14/9 & 19/11	15/7, 14/9 & 19/11	15/7, 14/9 & 19/11	

BALANCE

GENERAL STATEMENT OF RECEIPTS AND PAYMENTS
RECEIPTS.

Dr.							
To Balance with Treasurer, 1st April, 1893	1280	14	9
„ Balance with Steward			88	3	5
					<hr/>		
					1368	18	2
„ Sale of Farm Produce, &c.	...				647	8	4
„ Sales and Old Stores			58	6	2
					<hr/>		
					705	14	6
From Unions and Counties			11472	10	1
„ Extra Charges		37	19	6
„ Rents of Cottages			63	14	0
„ Repairs Account			757	10	10
„ Additions, &c., Account	...				322	0	2
„ Infectious Hospital Account	...				2280	0	0
„ Lodging Account			339	18	0
„ Private Patients' Account	...				159	7	7
					<hr/>		
					15433	0	2
					<hr/>		
					<hr/>		
					£17507	12	10

SHEET,
DURING THE YEAR ENDED 31ST MARCH, 1894.
PAYMENTS.

Cr.			£	s.	d.	£	s.	d.
	By Salaries and Wages	...	3355	7	9			
	„ Provisions	4011	16	8			
	„ Necessaries	...	1211	18	10			
	„ Wines and Spirits	...	24	9	6			
	„ Surgery	139	14	11			
	„ Furniture and bedding	...	310	15	3			
	„ Farm	1215	6	8			
	„ Garden	221	19	1			
	„ Taxes, Rates, and Insurance	...	52	2	6			
	„ Clothing	670	2	10			
	„ Miscellaneous	...	358	7	2			
	„ Repairs	1007	11	11			
	„ Additions, &c.	...	111	16	0			
	„ Infectious Hospital	...	1380	4	7			
	„ Funerals and Removals	...	38	1	11			
	„ Balance with Treasurer, 1st April, 1894	...	3287	11	10	14109	15	7
	„ Balance with Steward	..	110	5	5	3397	17	3
						<u>£17507</u>	<u>12</u>	<u>10</u>
Amount due from Unions, &c., 31st March, 1894			£2974	5	4			
„ due to Tradesmen and others „ „			1074	4	3			
			<u>1900</u>	<u>1</u>	<u>1</u>			

M. NICHOLLS, *Clerk and Steward.*

SUMMARY OF COST PER HEAD PER WEEK.

	June Quarter, 1893.		September Quarter, 1893.		December Quarter, 1893.		March Quarter, 1894.		Average for the Year.	
	s.	d.	s.	d.	s.	d.	s.	d.	s.	d.
Salaries and Wages ..	2	4.29	2	5.46	2	4.1	2	4.36	2	4.55
Provisions ..	2	10.27	2	10.24	2	9.7	2	5.15	2	8.85
Necessaries	10.63	..	4.27	1	2.87	1	2.84	..	11.15
Wines and Spirits23	..	.15	..	.38	..	.06	..	.21
Surgery	1.39	..	.87	..	1.44	..	1.05	..	1.19
Furniture and Bedding	4.96	..	2.56	..	1.25	..	2.53	..	2.82
Farm	3.33	1	6.08	..	7.83	..	7.13	..	9.1
Garden	1.76	..	1.79	..	1.7	..	2.25	..	1.87
Rates, Taxes and Insurance2	—	—	..	1.64	..	.03	..	.47
Clothing	10.12	..	3.7	..	3.44	..	9.31	..	6.64
Miscellaneous	4.31	..	2.42	..	2.68	..	2.72	..	3.03
	8	3.49	8	1.54	8	1.03	8	1.43	8	1.88
Less Farm and other Sales	6.
Cost per head per week	7	7.88
Average number of Patients daily	539	..	534	..	539	..	550	..	541
Total Days of Residence	49,109	..	49,173	..	49,631	..	49,493	..	197,406

DIETARY FOR PATIENTS.

	BREAKFAST.				DINNER.												SUPPER.			
	MALES.		FEMALES.		MALES.						FEMALES.						MALES.		FEMALES.	
	Bread	Butter	Tea	Bread	Uncooked Meat	Bread	Potatoes	Soup	Meat Pie	Irish Stew	Suet or Plum Pudding	Bread	Potatoes	Soup	Meat Pie	Irish Stew	Suet or Plum Pudding	Bread	Butter	Tea
Sunday ..	Oz. 8	Oz. 1	Pnt. 1	Oz. 3	Oz. 7	Oz. 2	Oz. 12	Pnt. :	Oz. :	Pnt. :	Oz. :	Oz. 2	Oz. 12	Pnt. :	Oz. :	Pnt. :	Oz. :	Oz. 8	Oz. 1	Pnt. 1
Monday ..	Oz. 8	Oz. 1	Pnt. 1	Oz. 4	Oz. 3	Oz. 4	Oz. :	Pnt. 1	Oz. :	Pnt. :	Oz. :	Oz. 4	Oz. :	Pnt. 1	Oz. :	Pnt. :	Oz. :	Oz. 8	Oz. 1	Pnt. 1
Tuesday ..	Oz. 8	Oz. 1	Pnt. 1	Oz. 3	Oz. 6	Oz. 3	Oz. 12	Pnt. :	Oz. 12	Pnt. :	Oz. :	Oz. 2	Oz. 12	Pnt. :	Oz. 12	Pnt. :	Oz. :	Oz. 8	Oz. 1	Pnt. 1
Wednesday ..	Oz. 8	Oz. 1	Pnt. 1	Oz. :	Oz. 4	Oz. :	Oz. 12	Pnt. :	Oz. 12	Pnt. :	Oz. :	Oz. :	Oz. 12	Pnt. :	Oz. :	Pnt. :	Oz. :	Oz. 8	Oz. 1	Pnt. 1
Thursday ..	Oz. 8	Oz. 1	Pnt. 1	Oz. 3	Oz. 7	Oz. 3	Oz. 12	Pnt. :	Oz. :	Pnt. 1	Oz. :	Oz. 2	Oz. 12	Pnt. :	Oz. :	Pnt. 1	Oz. :	Oz. 8	Oz. 1	Pnt. 1
Friday ..	Oz. 8	Oz. 1	Pnt. 1	Oz. 3	Oz. 4	Oz. 3	Oz. :	Pnt. :	Oz. :	Pnt. :	Oz. 8	Oz. 2	Oz. 8	Pnt. :	Oz. :	Pnt. :	Oz. :	Oz. 8	Oz. 1	Pnt. 1
Saturday ..	Oz. 56	Oz. 2½	Pnt. 7	Oz. 16	Oz. 35	Oz. 12	Oz. 44	Pnt. 1	Oz. 12	Pnt. 1	Oz. 8	Oz. 12	Oz. 44	Pnt. 1	Oz. 12	Pnt. 1	Oz. 7	Oz. 56	Oz. 2½	Pnt. 7

N.B.—Scale per gallon for Tea, 1 oz. Tea, 4 oz. Sugar, 1 pt. Milk.

" lb. for Plum Pudding—8 oz. Flour, 1 oz. Raisins, 1 oz. Treacle, 1 oz. Suet

On the days when a second Vegetable is given the quantity of Potatoes is diminished.

Other Patients employed on the land, in Workshops and Laundry, have 2 oz. Bread, ¾ oz. Cheese, and ½ pt. Beer at 10 a.m. and 4 p.m.

The Sick are dieted at the discretion of the Medical Superintendent.

ARTICLES MADE UP, REPAIRED OR MARKED, AND OTHER WORK
DONE BY THE FEMALES IN THE ASYLUM, UNDER THE SUPER-
VISION OF THE HOUSEKEEPER, DURING THE YEAR ENDED 31st
MARCH, 1894.

ARTICLES.	MADE.	MARKED.	REPAIRED.
Aprons, Check and Print	256	397	97
„ Black	30	39	13
„ Harden	134	126	130
„ Ticken	39
Bagatelle Covers	4	4	15
Bedgowns, Linen	48	70	203
„ Canvas
Blankets	134	170
Caps, Day and Night	14	9
Chemises, Linen	242	297	709
„ Flannel	55	90	270
„ Canvas
„ Ticken	4	5
Counterpanes	50	70
Drawers, Flannel	143	147	914
„ Ticken	4	7
Dresses, Print	161	143	713
„ Check	14	54	132
„ Linsey	99	100	227
„ Canvas
Dusters and Cloths	450	456	..
Handkerchiefs	313	601	..
Hoods	29	70	24
House Flannels	4078
Ironing Cloths	5	7	..
Iron Holders	126
Jackets, Flannel
Mangling Cloths	2	4	..
Mattress Cases	139	141	34
„ „ Canvas
Neckerchiefs
Petticoats, Jean	13	19	232
„ Linsey and Flannel	210	200	290
„ Ticken	7	4
Pillow Cases	243	190	570
„ Ticks	33	39	..
Pinafores	49	70	90
Pudding Cloths	46
Rugs, Strong	3	..
Sheets	326	401	911
Shirts, Blue	325	390	2594
„ Ticken	13	4	19
„ Flannel	194	209	601
Shrouds	53
Stays	194	..
Stockings and Socks	19	576	9414
Smocks	5	40
Shawls	97	60
Table Cloths	17	70	74
Towels, Huckaback	53	57	64
„ Tea, Round, and Bath	143	217	217
Waterproofs	103	..
Window Blinds	59	..	97
Dresses, Uniform	74
Aprons	90	92	..
Caps	130
Collars	140	..
Cuffs, pairs	103	..
Totals	8457	6138	19019

FARM ACCOUNT, 1893-94.

[illegible]

M. NICHOLLS,

Clerk and Steward.

GARDEN ACCOUNT, 1893-94.

Dr.	£	s.	d.	£	s.	d.	Cr.	£	s.	d.
To Value of Produce in Store, 31st March, 1893 ...				26	10	0	By Supplies to House ...			
„ Labour (exclusive of Patients) ...	184	16	0				„ Value of Produce in Store, 31st March, 1894 ...	34	0	0
„ Proportion of Rates ...	0	6	0							
„ Seeds and Plants ...	24	18	7							
„ Tools and Repairs ...	7	9	4							
„ Pea Sticks, &c. ...	2	14	2							
„ Manure ...	1	15	0							
				221	19	1				
Balance ...				15	2	4				
				263	11	5				
								263	11	5

M. NICHOLLS,

Clerk and Steward.

