

Fifteenth annual report of the Committee of Visitors, Medical Superintendent, and Chaplain, with an account of receipts and expenditure, for the year ended 31st December, 1885 / Moultsford Lunatic Asylum.

Contributors

Moultsford Lunatic Asylum.
Cherry, George C.
Gilland, Robert B.
Circuit, R. W. Perry.
Nicholls, Moses.

Publication/Creation

[Place of publication not identified] : [publisher not identified], [1886?]

Persistent URL

<https://wellcomecollection.org/works/g585p7r7>

License and attribution

This work has been identified as being free of known restrictions under copyright law, including all related and neighbouring rights and is being made available under the Creative Commons, Public Domain Mark.

You can copy, modify, distribute and perform the work, even for commercial purposes, without asking permission.



Wellcome Collection
183 Euston Road
London NW1 2BE UK
T +44 (0)20 7611 8722
E library@wellcomecollection.org
<https://wellcomecollection.org>

1885.



MOULSFORD LUNATIC ASYLUM.

Fifteenth Annual Report

OF THE


COMMITTEE OF VISITORS,
MEDICAL SUPERINTENDENT,
AND CHAPLAIN,

WITH AN ACCOUNT OF

RECEIPTS AND EXPENDITURE

FOR THE

YEAR ENDED 31ST DECEMBER, 1885.



Digitized by the Internet Archive
in 2018 with funding from
Wellcome Library

<https://archive.org/details/b30310106>

Committee of Visitors

(APPOINTED FOR THE YEAR 1886).

*†GEORGE CHARLES CHERRY, Esq. (CHAIRMAN),
DENFORD HOUSE, HUNGERFORD.

*†ALBERT RICHARD TULL, Esq. (VICE-CHAIRMAN),
CROOKHAM HOUSE, NEWBURY.

†DANIEL BENNETT, Esq.,
FARINGDON HOUSE, FARINGDON.

†GEORGE BRAMSTON EYRE, Esq.,
73 UPPER BERKELEY STREET, W.

*†THOMAS LEINSTER GOODLAKE, Esq.,
WADLEY HOUSE, FARINGDON.

*†JOHN KIRBY HEDGES, Esq.,
THE CASTLE, WALLINGFORD.

*THOMAS JOSEPH HERCY, Esq.,
CRUCHFIELD HOUSE, BRACKNELL.

HENRY GEORGE AUGUSTUS KNOX, Esq.,
SONNING GROVE, READING.

WILLIAM GEORGE MOUNT, Esq., M.P.,
WASING PLACE, READING.

JOHN WALTER, Esq.,
BEAR WOOD, WOKINGHAM.

PHILIP WROUGHTON, Esq., M.P.,
WOOLLEY PARK, WANTAGE.

Visitors for the County of Berks.

*CHARLES JAMES ANDREWES, Esq.,
READING.

HENRY BILSON BLANDY, Esq.,
READING.

Visitors for the Borough of Reading.

*JAMES PORTEOUS JACKSON, Esq.,
NEWBURY.

Visitor for the Borough of Newbury.

J. T. MORLAND, ABINGDON,
Clerk to the Visitors.

* Members of the Finance and Repairs Sub-Committee.

† Members of the Farm Sub-Committee.

OFFICERS.

Medical Superintendent.

ROBERT BRYCE GILLAND, M.D.

Assistant Medical Officer.

JAMES WILLIAM AITKIN MURDOCH, M.B.

Chaplain.

REV. RICHARD WM. PERRY CIRCUITT, A.K.C.

Clerk to the Committee of Visitors.

JOHN THORNHILL MORLAND, M.A.

Steward, and Clerk of the Asylum.

MOSES NICHOLLS.

Housekeeper.

MISS MARTHA ELEANOR WATTON,

REPORT
OF THE
COMMITTEE OF VISITORS.

To the Justices of the County of Berks in Quarter Sessions : the Council of the Borough of Reading: and the Justices of the Borough of Newbury.

THE COMMITTEE of VISITORS of the MOULSFORD
LUNATIC ASYLUM

R E P O R T

That the state and condition of the Asylum are believed to be good, although, in the course of the year now expiring, a case of typhoid fever (not fatal nor severe), and some cases of erysipelas (none fatal) have occurred. The Sanitary works allowed in October 1884 have been in progress continuously during the year, and are now nearly completed; they have been carried on as quickly as was possible consistently with retaining all the inmates in the Asylum during the operations. The estimated expenditure, for which a vote of £600 was taken, will, on the completion of the works, be found to have been exceeded; the excess however will probably have been met out of the annual amount allowed to the Committee for expenditure upon improvements. The whole of the expenditure under this head has been made out of

Income, and not by any increase of the Capital Debt.

The Asylum is amply sufficient for the proper accommodation of those for whose wants it is necessary to provide. There are in it 4 private patients, and the Committee is ready to receive others of the same class at a reasonable charge; but before any are sent full information must be supplied to the Medical Superintendent, and an answer and instructions received from him. There are also in the Asylum 4 criminal lunatics who are technically classed as private patients.

The Committee is well satisfied with the management of the Asylum, and in general with the conduct of its Officers and Servants, and the care of the patients under their charge. Some complaints have been made by patients or by their friends, and the visitors have not neglected to make the requisite investigations into them. They have not found, as regards the present staff, any instance of serious misconduct.

The health of Mrs Horton, the late House-keeper of the Asylum, which has for a long time been failing, has quite broken down. She had faithfully served the Institution for many years, and a superannuation allowance of £50 a-year has been granted to her, and confirmed by the Bodies in Union. Miss Watton—her assistant, and in fact, deputy since January 1883—has been chosen to fill her place.

In July last Dr Barron, for 8 years the Assistant Medical Officer of the Asylum, found himself com-

pelled through ill-health to resign his appointment. The visitors have a high opinion of his excellent qualities and of the manner in which he performed his duties. They have appointed Dr J. A. W. Murdoch in his place.

Mr Circuit—Vicar of Cholsey—being about to leave the neighbourhood, has resigned the Chaplaincy of the Asylum. It will not be easy to meet with an equally competent successor.

The Bodies in Union are aware that in order to obtain employment for the male patients, most of them agriculturists, 84 acres of land were, in 1879, taken on hire. The Committee, considering that a further step in this direction would be desirable, has agreed (subject to the approval of the Bodies in Union), to rent 24a. 0r. 12p. more arable land. This is adjacent to the land already occupied, and is situate conveniently near to the Farm buildings. The Rent is fixed at £40 per annum, the tenants to pay the tithe rent-charges. The sanction of the Bodies in Union to this agreement is requested.

With this addition the Farm will comprise:

				A.	R.	P.
Own land	54	2 35
Land rented of Mr Morrison	84	1 3
„ „ Mr Cooper	24	0 12
					163	0 10

of which about 22 acres are meadow land, and the remainder arable.

The cost of “Repairs, Renewals, and Improvements” has been for the year to 1st October, 1885,

£1,515 12s. 7d.; this includes an item of £265 13s. 2d. for laying down a new 4-inch gas main, and other repairs to the plant at the gas works, and also a sum of £200 paid to the Contractor on account of work done in connection with the drain ventilation. The Repairs and Renewals cost £1,104 3s. 2d., and the Improvements £411 9s. 5d.

Lodging-money has been earned for the year to 1st October from the Borough of Reading to the amount of £99 12s. 6d. This, with a part of the receipts from out-county and private patients,—viz., £222 18s. 4d., appropriated as Lodging-money, has been applied in aid of the Repairs and Improvements Fund.

The Alterations, Additions, and Improvements during the year (including repairs in white-washing, but exclusive of Sanitary works recommended and approved in October 1884), have been:—

Alteration of Suction pipe from well boring to pumps, and building 9-inch brick Subway 6 ft. high by 3 ft. wide, in cement over it.

New cement concrete Floor laid at Gardener's Tool-house, and centre way of vegetable stores.

Entrance Lodge gates cleaned and repaired.

Assistant Medical Officer's and Housekeeper's rooms cleaned and repaired.

Male and Female Wards cleaned and lime-whited throughout.

New Indiarubber Rollers put in Wringing machine, and a Soap Boiler fixed in the Laundry.

The Patients now (18th December), on the Books of the Asylum are:—

			M.	F.	TOTAL.
From Unions in Berkshire	131	193	324
„ the County of Berks	3	1	4
„ Parishes in the Boro' of Reading	41	62	103
„ „ Newbury	19	14	33
Private Criminal Patients	3	1	4
Private Patients	3	1	4
TOTALS	200	272	472

Since the date of the last Report (21st December, 1884), there have been admitted Pauper Patients, 40 Males and 47 Females, total 87; and non-Pauper Patients, 6 Males and 3 Females, total 9, including 3 Male and 1 Female Criminal Lunatics, transferred from the Pauper to the Private Class. Of the Pauper Patients 3 Males and 2 Females were received from other Asylums.

The discharges have been:—

			M.	F.	TOTAL.
Of Patients recovered...	14	24	38
„ „ relieved	6	3	9
„ „ not improved	2	2	4
TOTALS	22	29	51

Of these 3 Males were removed to other Asylums.

Fifteen Males and 20 Females have died, total 35.

Upon the aggregate number of Pauper Patients in the Asylum, under the care of the Visitors, there has been an increase of 6 Males and 2 Females, total 8.

On the number of Pauper Patients belonging to the Bodies in Union, there has been an increase of 6 Males and 2 Females, total 8.

The Establishment consists of:—

	M.	F.	TOTAL.
† A Medical Superintendent	5	1	6
* An Assistant Medical Officer			
A Chaplain			
A Clerk to the Visitors			
A Steward and Clerk of the Asylum			
* A Housekeeper	12	0	12
† A Farm Bailiff			
† A Gatekeeper			
An Engineer			
Two Carpenters			
† A Gardener			
A Baker and Storekeeper			
An Assistant Baker			
† A Gasman	22	25	47
Two Stokers			
A Shoemaker			
* Attendants			
* In-door Servants	1	7	8
Out-door ditto	8	0	8
TOTAL	48	33	81

* Resident with board (except one night attendant).

† Resident only.

The weekly charge for Paupers has been:—

March Quarter	£0	8	6
June Quarter	0	8	6
September Quarter	0	8	6
December Quarter	0	8	6
Average	£0	8	6

For the Committee,

GEORGE C. CHERRY,

CHAIRMAN.

December 18th, 1885.

REPORT
OF THE
RESIDENT PHYSICIAN AND MEDICAL SUPERINTENDENT.

*To the Committee of Visitors of the Berks, Reading,
and Newbury Lunatic Asylum.*

GENTLEMEN,

The Medical Superintendent has the honour to present his Fifteenth Annual Report, which relates to the usual mutations amongst the inmates, the salient features of the admissions, the hygienic condition of the asylum and the various notable circumstances that have transpired during the progress of the year 1885, while to it will be appended the customary series of Medical Statistical Tables.

On the 1st of January, 1885, the total number of patients resident in the asylum amounted to 454, of whom 190 were males and 264 females, during the course of the year, 96 were admitted, 35 discharged recovered, 9 relieved, 4 not improved and 36 died, so that there remained on the 31st of December, 466 patients, of whom 196 were males and 270 females, the numerical result of the year's proceedings being a net increase of 12 in the insane population of the asylum, the numbers according

to sex being exactly equal. As an unusual coincidence it may also be observed that the average number resident during the year, viz., 466, is identical with the total number of inmates recorded as its close.

In regard to the chargeability of the patients, there has been an increase of 2 in the number of those chargeable to Unions in the county of Berks, likewise of 2 belonging to the Borough of Newbury, 6 to the Borough of Reading and 4 criminal lunatics, formerly chargeable to various Unions in the county, are now in accordance with the provisions of the Criminal Lunatics Act of 1884, technically classified as private patients and paid for at the out-county rate of fourteen shillings per week by H. M. Prison Commissioners.

During the year, 5 private patients were admitted, whose maintenance at the rate of 17s. 6d. per week, is defrayed from private sources or by relatives, 4 were discharged relieved, 2 not improved, and one died from organic brain disease with which he was affected on admission. One of those discharged relieved, who was ultimately discharged recovered, and the two cases discharged not improved, were transferred to the Pauper Register on account of pecuniary reasons.

Six of the patients admitted were transferred from various other asylums, four of whom through becoming chargeable to Unions in this county, one as being unsuitable for Bethlem Hospital and one who had been detained over twenty years as a criminal lunatic at Broadmoor Asylum, was sent here by order of a Justice of the Peace in accordance with the provisions of the Criminal Lunatics Act of 1884.

Nineteen of the admissions had been previously resident in a Union Workhouse for various periods extending from a few days to 14 or 15 years and amongst the number

were comprised about the usual proportion of senile cases, one-third having attained the age of 70 or upwards and two of them were aged respectively 80 and 84.

Among the admissions, 11 relapsed cases were included, the majority of whom had been absent from the asylum for several years, and only two were re-admissions of the same year.

In regard to the general characteristics of the admissions, the most remarkable feature was their very unfavourable nature as regards prospect of recovery, as of the whole, only 24 were considered to be curable, and the prognosis formed on admission in respect of 13, was of a doubtful nature. The male admissions of whom only 8 could be notified as curable, were upon the whole a very unfavourable class, either on account of being affected with Chronic Dementia, Idiocy, General Paralysis, Epilepsy, or Senile Debility, resulting from advanced age, which entirely precluded the possibility of their recovery.

The number of patients who had manifested suicidal impulse prior to admission was, strange to state, identical with that of the previous year, and amounted to 33, of whom 18 had made actual attempts, 3 by precipitation from windows, 4 by strangulation, 4 by cutting the throat, 1 by placing himself on a railway to be run over by a train, and another by thrusting a pin into the ears. Several attempts at suicide fortunately frustrated by the attendants, were also made by patients subsequently to their admission, by strangulation, dashing themselves against the walls or floor, thrusting the head into a water-closet pan, and by precipitation from the roof of the chapel. In the latter instance, the patient who was at work adjoining the chapel under the charge of an attendant, suddenly climbed up one of the iron stacks

pipes, with the agility of a cat, on to the roof of the chapel, with the intention of throwing himself down again. The attendant, however, who displayed much tact and presence of mind, succeeded in breaking the patient's fall, so that beyond some bruises and a partial dislocation of one ankle joint, he sustained no further injury from his perilous leap.

The persistent refusal of food, either with a suicidal intent, or as the result of mental delusion, to the extent of necessitating artificial alimentation by means of the stomach-pump, was manifested by 27 of the admissions, a number slightly in excess of that recorded during the previous year, and of the cases so treated, 5 were discharged recovered, one relieved, five died, and the remainder continue under treatment. The total number of inmates who required to have their food artificially administered during the year amounted to 34, of whom several took no nourishment, except in this manner, for many weeks, and the feeding apparatus had to be brought into requisition on no fewer than 521 occasions in the course of the year.

About the same proportion of cases were admitted whose habits were discovered to be faulty, and 48 were recorded as being wet and filthy, or destructive.

The bodily health and condition of the patients noted on admission, present but little contrast to the recorded experience of recent years, and as hitherto been observed, the proportion of those admitted in good bodily health has been small, only 18 out of the whole number being so classified, while 41 were in indifferent health, 21 in bad or feeble health, more or less reduced in bodily condition, and 16 in very feeble and precarious health, allied with various degrees of emaciation. Many of the latter were suffering from long continued refusal of

food, while others were affected with various forms of serious bodily disease, including 7 cases of cardiac and 17 of pulmonary disease. Special diseases of the nervous system were represented by 8 cases of Paralysis, 5 of General Paralysis, and 12 of Epilepsy.

In regard to the form of insanity existing on admission, 26 were affected with Mania, 19 with Melancholia, 12 with Monomania, 33 with Dementia, 3 with Idiocy, and an equal number with Congenital Imbecility. Compared with the corresponding numbers for the previous year, these figures shew a slight decrease in the first three forms of mental disease enumerated, which are also the varieties of the disorder most amenable to curative treatment, and a great increase amounting to nearly double the number, of cases of Dementia, nearly all of which were of a type hopeless as regards prospect of recovery. This fact has likewise an important causative bearing upon the recovery rate for the year, and in great measure accounts for the marked decrease in the actual number, as well as in the relative proportion of those discharged recovered during the past year.

Among the admissions there was one male patient, who, according to a strict diagnosis, was not insane, although recently he had been the subject of an acute mental attack, during which he had, by means of a razor, inflicted a severe wound upon his throat with the intention of committing suicide. However, as he still suffered from insomnia, and his nervous system being in an unstable condition, it was resolved to retain him under treatment in the asylum for a time, which was accordingly done, and in the course of a month, he was discharged thoroughly well, and to use his own expression, "altogether a different man."

As regards the apparent or assigned causes of mental disorder noted on admission, 13, or rather more than the usual proportion of causes of a moral nature are recorded, and the most prolific cause under this category, has been some disappointment in connection with the tender passion, although nearly an equal number are attributable to domestic trouble, fright, over-work, and poverty. Among the physical causes which comprise about two-thirds of the whole number, hereditary predisposition stands first in order of frequency, followed next by Epilepsy, of which the number was unusually high, while about an equal number were attributable to predisposition from previous attacks and intemperance in the use of alcoholic beverages, but it may be remarked that the cases of intemperance were less than one-half of the number recorded during 1884. Hereditary predisposition as a rule, coincident with some exciting cause, was found to exist in 26 cases, 37 were stated to inherit no predisposition to insanity, and in regard to the remainder, 33, the fact could not be elucidated.

At the end of the year, the result of treatment upon the year's admissions was as follows, 14 were discharged recovered, 5 relieved and one not improved; 9 had died and 67 remained inmates of the asylum.

With respect to the discharges the most notable feature was the marked reduction both in the actual number and in the relative proportions of those discharged recovered, but after the preceding remarks regarding the nature of the admissions showing the incurable form of insanity with which so large a proportion of them were affected this diminution in the rate of recovery need not excite surprise. It is, however, satisfactory to observe that notwithstanding this reduction of 20 per cent. in the

rate of recovery for last year in this asylum the actual rate is still 3 per cent. over the average corresponding rate of the English County and Borough Asylums, as given by the Commissioners in Lunacy in their last published report.

The total number of patients discharged recovered from this asylum during the past year was 35, of whom only 15 were derived from the admissions of the same year, which calculated upon the admissions yields a ratio of 36·4, but if transfers are excluded, of 42·1, the average rate for the analogous English Asylums being 39·7, also excluding transfers from other asylums. Another gratifying fact in regard to the discharges on recovery likewise deserves to be mentioned, viz., that ten of their number had been resident in the asylum for various periods, extending from two to seven years before they were sufficiently recovered to regain their liberty and return to their homes and former occupations.

In addition to those patients discharged recovered, 9, who had improved to a certain degree, were discharged relieved and of these 4 were private patients, of whom one was removed by request, for special reasons, to an asylum for private patients, another was taken out by his relatives contrary to the advice of the Medical Superintendent, who considered him unfit to be at large. This patient shortly after his discharge, having committed two acts of theft, was tried for the offence at the assizes, where a plea of insanity was set up on his behalf, which the Judge declined to entertain and sentenced him to three months' hard labour but added that the certificate from the Medical Superintendent, who had no doubt regarding the man's insanity, would be forwarded to the Home Office and the case made the subject of special inquiry. One of the female patients who had been for

years in an apparently hopeless condition, had improved so much that her parents were anxious to give her a trial at home and from recent accounts she continues to improve and entertains a grateful remembrance of her sojourn in the asylum. Four cases, although they appear as discharged not improved, still remain inmates of the asylum, two of them being criminal lunatics, who according to the terms of the recent Act, have been transferred to the Private Register and the remaining two females being private patients transferred to the pauper class through the inability of their relatives to pay the private rate of maintenance.

The deaths that occurred during the course of the year, amounting to a total of 36, were 16 less than the number recorded during the previous year, and in consequence there has been a considerable diminution in the ratio of mortality for the past year, which was 7·7 on the average number resident, and 6·54 on the total number under treatment, being the lowest recorded death-rate of any year since the opening of the asylum. This ratio of mortality calculated upon the average number resident, may be considered as three per cent. within a fraction, under the average of other English Asylums of the same class; the corresponding rate yielded by them during the last decade, according to the table issued by the Commissioners in Lunacy, being 10·20, but the difference is not so much between the ratios calculated upon the total number under treatment which for other asylums of the class referred to was 7·95. As regards the causes of death, the chief factors of mortality were the common forms of cerebro-spinal disease, to which nearly two-thirds of the deaths were assigned, including 4 cases of General Paralysis, 4 of Epilepsy, 5 of Exhaustion from Mania or Melancholia, 2

of Apoplexy, and 6 from ordinary Paralysis. Thoracic disease only comprised 3 cases of Phthisis, and 2 of disease of the Heart; while of abdominal disease there was one case of Cancer of the Liver, and one of Internal Intestinal Strangulation. Two cases of Cancer of the Breast were likewise recorded, while in 5 instances death was the result of natural decay, at from 80 to 85 years of age. The remaining case of death was one of Asphyxia, from accidental choking with a piece of bread, which became the subject of the only coroner's inquest held upon a patient during the year, at which a verdict was returned in accordance with the facts already mentioned. The physical condition of this unfortunate female greatly tended to preclude her chance of recovery from such an accident, as her abdomen was enormously distended with an ovarian tumour.

Another inquest was held upon a male attendant who died suddenly after a short illness, without any person being present, while his fellow attendant, with the patients occupying the ward, had gone to the hall for dinner. The cause of his death was a sharp attack of pneumonia, complicated with disease of the heart.

The hygienic condition of the asylum was not so satisfactory as could have been desired, especially during the first half of the year, on account of the occurrence of an undue proportion of cases of diarrhoea, some of which were of a protracted type. The appearance likewise of occasional sporadic cases of erysipelas, with but few exceptions of a mild form, one of r  theln and one of typhoid fever, neither of which proved fatal, likewise tended to show the necessity that existed for the execution of the recent sanitary works, and it is satisfactory to observe that since their completion there has

been a decided improvement in the general health of the inmates, as indicated by a marked diminution in the prevalent amount of zymotic disease.

Accidents chiefly of a trivial nature, have occurred amongst the patients with rather more than the usual frequency, and during no year since the establishment of the institution, have certain patients displayed so much violence towards their companions in affliction or to the attendants, many of the latter, especially among the females, having suffered very severely from acts of violence on the part of patients. One of those female patients while in a paroxysmal frenzy of indiscriminate violence, in her violent efforts to kill herself or fatally injure the attendants, so exhausted the physical powers of all those available that the Medical Superintendent, who perceived that some different means would require to be adopted, ordered her to be packed in a wet sheet. Four hours of this treatment produced a marvellous effect in subduing her violent excitement and was succeeded by considerable mental improvement and freedom from violence for several months.

Four old female patients, all in a feeble state of health and in whom it was probable that the bones were in an abnormally fragile condition, sustained fractures of the limbs from simple falls, two of which were intra-capsular fractures of the femur.

The medical and general treatment of the patients have been assiduously pursued upon the same lines which have hitherto yielded such gratifying results. Industrial occupation has been further developed in accordance with the system detailed in last year's report. Much useful work varying according to the season, has been accomplished in the garden and farm department; while many unpromising, troublesome, chronic cases, have improved in

certain aspects and settled down into fairly industrious workers. The average number usefully employed during the year was 285, the numbers according to sex being 125 males and 160 females, the whole giving a percentage of 61.1 upon the average number resident.

In the way of improvements the principal work effected during the year by the aid of patients' labour was the levelling, cleaning and sowing down with grass seed of the paddock adjoining the chapel, likewise the edging of the paths with turf and the formation of a ha-ha and path along the south-west front of the female extension, the boundary wall of which has been planted with fruit trees, while a few more ornamental trees for the purpose of affording additional shade during Summer, were planted in both the male and female airing-courts.

The various recreations and entertainments for the amusement of the inmates were well maintained throughout the year, and the periodical dances were held weekly on the lawn in front of the Asylum during the summer months whenever the weather was fine enough to permit the patients to be out of doors. These fortnightly or weekly meetings for music and dancing were likewise pleasantly diversified by a "Negro Concert," a popular lecture by Mr Goodacre upon Egypt and the late war in the Soudan, profusely illustrated by magnificent dioramic dissolving views, illuminated by the oxy-hydrogen apparatus, and several dramatic performances, either got up by members of the staff, or given by strangers. For two of those entertainments the inmates were indebted to members of the Wallingford Amateur Dramatic Company, and it was with feelings of poignant and sincere regret that very many of the patients and all ranks of the Staff

deplored the recent sudden and untimely death of their Secretary, the late Mr J. J. Merrett, through whose kindly influence those enjoyable performances were organised.

Extensive and important sanitary improvements have been effected during the year, which no doubt, in future, will exercise a potent and salutary influence upon the hygienic condition of the asylum and the general health of the inmates, which, as already stated, have become manifest to a certain extent. These alterations comprised the removal of all the original water-closets in the old building, which have been replaced by Doulton's closets, with two-gallon flushing tanks attached to each, the disconnection of waste pipes which now discharge upon open grids, and the ventilation of soil-pipes by means of ventilating pipes carried up above the eaves and finished with a patent cowl. The construction of intercepting sewage pits located near the out-fall of the main sewers, and of fresh-air inlets nearer the building for the better ventilation of the main drains. Also, the provision of three of Doulton's patent automatic galvanised-iron flushing tanks, each containing 150 gallons, and with syphons large enough to flush 9 in-drains. The old lead soil-pipes which had become more or less blocked with a calcareous encrustation, had likewise to be renewed, which gave rise to a considerable increase in the estimated expenditure for executing the sanitary works. Among the minor improvements effected, an alteration was made in the direction of the main-pipe leading from the pumps to the tube-well, and a brick culvert constructed to afford free access to it at any part. Likewise the erection of a new soap-boiler in the laundry, which has effected considerable economy in the amount of soap consumed.

Early in August a letter of instructions for the guidance of patients' relatives and friends, drawn up by the Medical Superintendent, and sanctioned by the Committee, was printed and issued to the nearest known relative of every patient upon the register and a copy is now either given or forwarded, in the case of every admission. In addition to the visiting regulations, it comprises an intimation that in the event of death the remains will be examined, unless previous written notice to the contrary has been sent to the Medical Superintendent, likewise an opinion in regard to the probable length of time which must elapse before recovery may be anticipated, and that it is requisite for patients recovering from mental disease to remain in the asylum for some considerable time after they may appear to their friends to be quite sane, in order to ensure their remaining well after being discharged.

Two of the Commissioners in Lunacy made their annual visit and inspection of the asylum on the 23rd of November, and expressed themselves in terms of approbation, in their Report, concerning the diet, clothing, and personal condition of the patients and the general state of the asylum.

The past year has also been remarkable, so far as concerns this asylum, for the unusual number of changes that occurred amongst the staff of officials, and it is greatly to be regretted that many of them were due to failure of health, induced by serious illness, which in two instances terminated fatally. In addition to the sudden death of a male attendant, to which reference has previously been made, a female attendant who had been over seven years in the service of the asylum, and had acted as night attendant in the female

epileptic dormitory since it was first opened, died after a lingering illness, borne with Christian patience and resignation.

Mrs Horton, Housekeeper, or Chief Female Officer of the asylum, who had been connected with the Institution from the time it was prepared for the reception of patients, in whose welfare she always evinced a lively interest, after a prolonged illness which confined her to bed, was obliged to resign, and in consideration of her valuable services was awarded a liberal superannuation by the Committee.

Her assistant, Miss M. E. Watton, who during Mrs Horton's long-continued illness performed the entire duties devolving upon the Housekeeper and Female Head Attendant, was deservedly elected to the vacant office, and by the efficient manner in which she has since performed the duties of the situation has fully justified her selection for promotion.

It is likewise with sincere regret that the Medical Superintendent alludes to the resignation, through ill-health, of the late Assistant Medical Officer, Dr Barron, with whom he had been associated for over eight years, and to whose valuable qualifications he had pleasure in making frequent reference in previous Reports.

For some time after his departure the duties of the office were ably discharged by Mr James Murray, who had been engaged as locum tenens, until the appointment of a permanent successor. Dr J. W. A. Murdoch, who was selected for the office of Assistant Medical Officer, has had some experience in a Scotch asylum, and during his short term of service has manifested both ability and readiness to afford the Medical Superintendent efficient assistance in every respect.

In concluding this somewhat lengthy Report the Medical Superintendent desires to tender his respectful acknowledgments to the Committee of Visitors for the continued courtesy and consideration extended towards him in the discharge of his unusually arduous and responsible duties.

I have the honour to be,

Gentlemen,

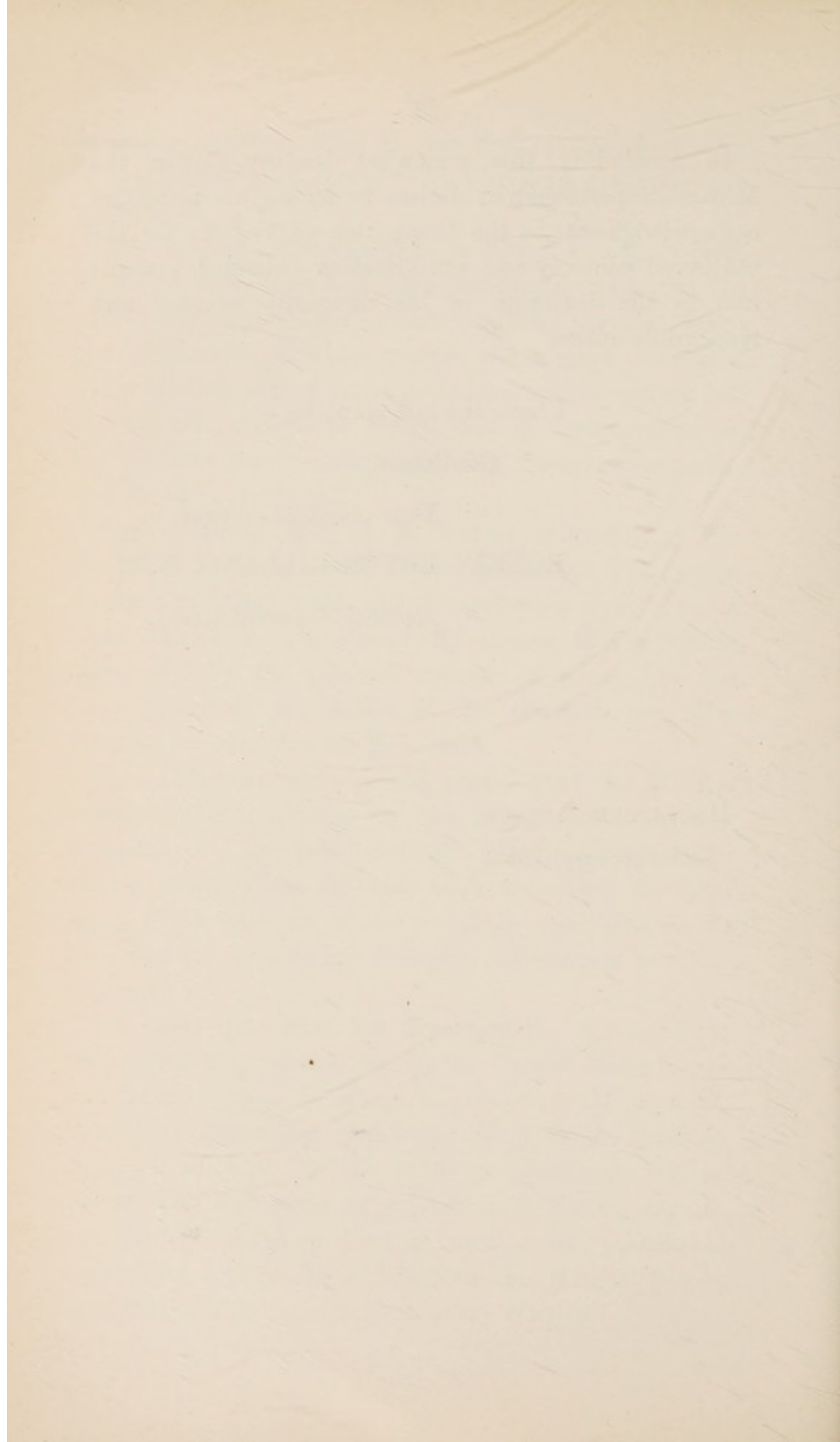
Your obedient servant,

ROBERT BRYCE GILLAND, M.D.,

Medical Superintendent.

MOULSFORD ASYLUM,

19th February, 1886.



A P P E N D I X

TO THE

MEDICAL SUPERINTENDENT'S

REPORT.



ASYLUM MEDICAL STATISTICS.

TABLE I.

*Showing the Admissions, Re-admissions, Discharges, and Deaths
during the year ending 31st December, 1885.*

	Males.	Females.	Total.
In the Asylum January 1st, 1885.	190	264	454
Cases admitted :			
	M.	F.	T.
First admissions	37	41	78
Not first admissions	8	10	18
Total cases admitted during the year	45	51	96
Total cases under care during the year	235	315	550
Cases Discharged and Died :			
	M.	F.	T.
Recovered	15	20	35
Relieved	6	3	9
Not Improved	2	2	4
Died.....	16	20	36
Total Cases Discharged and Died during the year	39	45	84
Remaining in the Asylum 31st December, 1885	196	270	466
Average numbers resident during the year...	200	266	466
Persons* under care during the year†	231	311	542
Persons admitted " " " "	41	47	88
Persons recovered " " " "	15	20	35
Transferred from other Asylums	3	3	6
" to " " " "	3	...	3

* Persons, *i.e.*, separate persons in contradistinction to "cases" which may include the same individual more than once.

† Total cases, minus re-admissions of patients discharged during the current year.

TABLE 1A.

Showing (1) the Previous Attacks among Persons admitted during the year 1885, and (2) the Number of Times they had previously recovered in this or any Asylum.

1. Number of Previous Attacks.				PERSONS.		
				Males.	Females.	Total.
Have had 1 Previous Attack				5	9	14
„ „ 2 Previous Attacks				2	1	3
„ „ Many Previous Attacks	3	3

2. Number of Times Patients Recovered.	In this Asylum.			In another Asylum.			In any Asylum.		
	M.	F.	Tot.	M.	F.	Tot.	M.	F.	Tot.
Once	1	2	3	2	3	5
Twice	1	1	3	1	4
Several Times	1	1

TABLE II.

*Showing the Admissions, Re-admissions, Discharges, and Deaths,
from the Opening of the Asylum on the 30th of September,
1870, to December 31st, 1885.*

	Males.	Females.	Total.
<i>Persons</i> admitted into the Asylum during the Period of fifteen years and three months	728	789	1517
Re-admissions owing to Relapse.....	39	83	122
*Re-admissions not owing to Relapse ...	31	37	68
Total <i>Cases</i> admitted.....	798	909	1707
<i>Cases</i> Discharged and Died :			
	M.	F.	T.
Recovered	203	281	484
Relieved	36	34	70
Not Improved	75	65	140
Died	288	259	547
Total <i>cases</i> Discharged and Died since the opening of the Asylum	602	639	1241
Remaining on December 31st, 1885	196	270	466
Average numbers resident during the fifteen years and three months	155	189	344
Transferred from other Asylums	213	226	439
" to " " 	86	69	155

*Re-admissions of Patients who had been inmates of other Asylums, and of Patients transferred from Private to Pauper Class or vice versa.

TABLE IIA.

*Showing the Admissions and Recoveries of Persons from the
30th of September, 1870, to the present date Dec. 31st, 1885.*

(Fifteen years and three months.)

	Males.	Females.	Total.
<i>Persons</i> admitted during the fifteen years and three months	728	789	1517
* <i>Persons</i> discharged recovered during the same period being 28·34 per cent. of <i>persons</i> admitted	190	240	430
Of whom were re-admitted relapsed	29	53	82
Recovered persons who have not relapsed	161	187	348
Relapsed persons discharged recovered ...	13	26	39
Net† recovered persons, being 25·5 per cent. of persons admitted.....	174	213	387

* *Persons*, *i.e.*, separate persons in contradistinction to cases which may include the same individual more than once.

Re-admission applies only to re-admission into this Asylum.

† *i.e.*, Recovered persons sane at the present time so far as the Asylum statistics show.

TABLE III.

Showing the Admissions, Discharges, and Deaths, with the mean Annual Mortality and Proportion of Recoveries per cent. of the Admissions for each Year since the Opening of the Asylum on the 30th of September, 1870.

YEARS.	Admitted.			Discharged.						Died.			Remaining on December 31st of each year.			Average numbers resident.			Percentage of Recoveries on Admissions.			Percentage of Deaths on Average numbers Resident.		
				Recovered.			Relieved.			Not Improved.														
	Males.	Fem.	Total.	Males.	Fem.	Total.	Males.	Fem.	Total.	Males.	Fem.	Total.	Males.	Fem.	Total.	Males.	Fem.	Total.	Males.	Fem.	Total.	Males.	Fem.	Total.
3 Mos. 1870 ..	50	62	112	1	62	111	42	53	95	2.3	..	1
1871 ..	85	85	170	4	7	11	..	1	1	1	13	132	248	80	95	175	4.7	8.2	6.4	16.2	7.3	11.4
1872 ..	47	42	89	19	17	36	3	..	3	3	14	139	263	120	138	258	40.4	40.4	40.4	11.6	12.3	12.0
1873 ..	35	42	77	13	13	26	1	2	3	7	15	14	14	145	268	129	143	272	37.2	30.9	33.7	10.8	9.0	10.2
1874 ..	42	59	101	7	24	31	4	3	7	4	7	11	23	145	272	122	146	268	16.6	40.6	30.6	18.8	17.1	17.9
1875 ..	32	39	71	8	16	24	1	2	3	2	5	7	18	150	280	128	155	283	25.0	41.0	33.8	14.4	7.0	10.2
1876 ..	43	56	99	11	22	33	1	1	2	4	5	9	12	159	304	134	157	291	25.5	39.2	33.3	8.2	12.1	10.6
1877 ..	43	46	89	15	17	32	4	3	7	16	13	29	14	159	298	148	158	306	34.8	36.9	35.9	9.4	8.2	8.8
1878 ..	40	47	87	11	20	31	2	3	5	6	6	12	14	160	306	145	157	302	27.5	42.5	35.6	9.6	10.8	10.2
1879 ..	40	45	85	20	21	41	1	3	4	3	5	8	22	167	307	143	163	306	50.0	46.7	48.2	15.3	5.5	10.1
1880 ..	89	105	194	14	20	34	6	4	10	1	1	2	16	228	420	157	180	337	15.7	19.0	17.5	10.1	10.5	10.3
1881 ..	46	65	111	17	18	35	2	2	4	23	256	452	196	244	440	36.9	27.6	31.5	11.7	6.9	9.0
1882 ..	70	68	138	13	17	30	1	1	2	1	1	2	29	278	500	201	264	465	18.5	25.0	21.7	14.4	9.8	11.8
1883 ..	46	54	100	17	18	35	4	4	8	1	..	1	28	286	504	221	283	504	36.9	33.3	35.0	12.6	8.4	10.3
1884 ..	45	43	88	19	31	50	2	2	4	21	11	32	31	264	454	204	280	484	42.2	72.0	56.8	15.1	7.5	10.7
1885 ..	45	51	96	15	20	35	6	3	9	2	2	4	16	270	467	200	266	466	33.3	39.2	36.4	8.0	7.5	7.7
	798	909	1707	203	281	484	36	34	70	75	65	140	288	259	547

NOTE.—The Admissions of 1880 include 92 Patients belonging to Unions in the County of Berks who had previously been maintained in other Asylums, and the Admissions of 1882 include 31 Patients belonging to the County of Surrey.

TABLE IV.

Showing the History of the Annual Admissions since the Opening of the Asylum on the 30th of September, 1870, with the Discharges and Deaths, and the Numbers of each Year remaining on December 31st, 1885.

Admitted.				Of each Year's Admissions, Discharged and Died in 1885.										Total Discharged and Died of each Year's Admissions to 31st December, 1885.										Remaining of each Year's Admissions on Dec. 31, 1885.			
YEAR.	New Cases.		Re-lapsed Cases.		Recovered.		Relieved.		Not Im-proved.		Died.		Recovered.		Relieved.		Not Im-proved.		Died.		M.	F.	Tot.				
	M.	F.	M.	F.	M.	F.	M.	F.	M.	F.	M.	F.	M.	F.	M.	F.	M.	F.	M.	F.				Tot.			
1870	50	62	...	112	2	2	3	5	...	7	15	22	23	26	49	18	36			
1871	85	84	...	170	1	3	14	26	...	21	14	35	32	33	65	19	41			
1872	44	38	3	4	89	16	22	38	3	5	1	6	18	14	32	5			
1873	35	40	...	77	15	26	...	2	6	8	16	11	27	4				
1874	39	49	3	10	101	8	31	3	3	4	7	22	22	44	6				
1875	29	36	3	3	71	11	16	27	...	2	1	3	18	12	30	1			
1876	41	52	2	4	99	13	28	41	3	3	10	13	16	29	7				
1877	41	41	2	5	89	14	19	33	6	4	4	18	15	33	5				
1878	37	39	3	8	87	16	21	37	3	4	2	13	17	30	7				
1879	37	40	3	5	85	16	16	32	3	1	2	13	17	30	7				
1880	86	98	3	7	194	16	21	37	2	13	13	26	9				
1881	43	55	3	10	111	15	24	39	1	2	35	24	59				
1882	66	61	4	7	138	17	17	34	2	2	4	16	20	36	9				
1883	43	47	3	7	100	14	20	34	1	20	10	30	20	14	34				
1884	43	39	2	4	88	14	19	33	2	4	2	1	11	26	13				
1885	37	41	8	10	96	17	16	33	3	1	1	2	12	6	18				
						7	8	15	4	...	2	4	5	9	30				
TOTAL...	756	822	42	87	1707	15	20	35	6	3	9	2	2	203	281	484	36	34	75	65	140	288	259	547			
																					196	270	466				

Summary of the Total Admissions from September 30th, 1870, to December 31st, 1885.

	Males.	Females.	Total.
Percentage of Cases Recovered	25.44	30.92	28.36
" " Relieved	4.51	3.74	4.10
" " Not Improved	9.40	7.15	8.20
" " Dead	36.09	28.49	32.04
" " Remaining	24.56	29.70	27.30
	100	100	100

The Admissions of 1880 include 92 Patients belonging to Unions in the County of Berks, who had previously been maintained in other Asylums; and the admissions of 1882 include 31 Patients belonging to the County of Surrey.

CAUSE OF DEATH.	Under 15 Years.			15 to 20		20 to 25		25 to 30		30 to 35		35 to 40		40 to 45		45 to 50		50 to 55		55 to 60		60 to 65		65 to 70		70 to 75		75 to 80		80 to 85		85 to 100	
	M. F.		Tot.	M. F.		M. F.		M. F.		M. F.		M. F.		M. F.		M. F.		M. F.		M. F.		M. F.		M. F.		M. F.		M. F.		M. F.		M. F.	
	M.	F.		M.	F.	M.	F.	M.	F.	M.	F.	M.	F.	M.	F.	M.	F.	M.	F.	M.	F.	M.	F.	M.	F.	M.	F.	M.	F.	M.	F.		
<i>Cerebral or Spinal Disease:</i>																																	
Epilepsy ...	2	2	4	1	1	
General Paralysis ...	2	2	4	1	2	
Mania, Exhaustion } from ... }	2	1	3	1	
Melancholia, do. do.	1	1	2	
Apoplexy ...	2	...	2	
Paralysis ...	1	5	6	
<i>Thoracic Disease:</i>																																	
Phthisis ...	2	1	3	1	1	
Heart Disease ...	1	1	2	
<i>Abdominal Disease:</i>																																	
Cancer of Liver ...	1	...	1	
Internal Intestinal } Strangulation ... }	1	...	1	
<i>General.</i>																																	
Senile Decay ...	1	4	5	
Cancer of the Breast	2	2	1	
Asphyxia from } Accidental } Choking }	...	1	1	1	
TOTAL ...	16	20	36	3	1	1	...	5	

Post-Mortem Examinations, Males 9—Females 11.—Total 20.

NOTE.—A Post-Mortem Examination is made in every case when permission from the nearest relative can be obtained.

TABLE VI.

*Showing the Length of Residence in those Discharged Recovered,
and in those who have Died during the Year 1885.*

LENGTH OF RESIDENCE.					Recovered.			Died.		
					Males.	Females.	Total.	Males.	Females.	Total.
Under 1 month	1	...	1	1	1	2
From 1 to 3 months	3	3	6	3	4	7
" 3 to 6 "	2	6	8
" 6 to 9 "	1	2	3	...	2	2
" 9 to 12 "	4	1	5	3	1	4
" 1 to 2 years	1	1	2	1	1	2
" 2 to 3 "	1	4	5	1	2	3
" 3 to 5 "	2	2	3	4	7
" 5 to 7 "	1	1	2	...	1	1
" 7 to 10 "	1	...	1	1	1	2
" 10 to 12 "	1	...	1
" 12 to 15 "	2	3	5
TOTAL ...					15	20	35	16	20	36

TABLE VII.

Showing the Duration of the Disorder on Admission, in the Admissions, Discharges, and Deaths, during the Year 1885.

Duration of Disease on Admission in Five Classes.												
CLASS.	The Admissions.			Recovered.			Removed, Relieved, or otherwise.			The Deaths.		
	Males.	Females.	Total.	Males.	Females.	Total.	Males.	Females.	Total.	Males.	Females.	Total.
FIRST CLASS: First attack, and within three months on admission	11	16	27	7	10	17	1	1	2	5	8	13
SECOND CLASS: First attack, and above three, and within twelve months on admission	8	11	19	2	3	5	1	1	2	3	1	4
THIRD CLASS: Not first attack, and within twelve months on admission	7	13	20	4	5	9	...	1	1	1	3	4
FOURTH CLASS: First attack or not, but of more than twelve months' duration on admission	16	9	25	2	2	4	6	2	8	7	8	15
FIFTH CLASS: Congenital	3	2	5
Total...	45	51	96	15	20	35	8	5	13	16	20	36

TABLE VIII.
*Showing in Quinquennial Periods the Ages of those Admitted, Recovered, and Died during the Year 1885,
 and of those Remaining on 31st December, 1885.*

AGES.	The Admissions.			Discharges.			Patients Resident, 31st December, 1885.		
	The Admissions.			Recovered.			The Deaths.		
	Males.	Females.	Total.	Males.	Females.	Total.	Males.	Females.	Total.
From 5 to 10 years	1	...	1
" 10 to 15 "	...	1	1	1	1	2
" 15 to 20 "	3	5	8	8	7	15
" 20 to 25 "	1	7	8	1	2	3	1	11	18
" 25 to 30 "	7	8	15	2	2	4	20	24	44
" 30 to 35 "	4	9	13	1	2	3	18	23	41
" 35 to 40 "	5	2	7	2	...	2	16	30	46
" 40 to 45 "	6	5	11	2	3	5	27	30	57
" 45 to 50 "	3	3	6	...	3	3	28	22	50
" 50 to 55 "	3	3	6	...	1	1	22	33	55
" 55 to 60 "	2	1	3	2	2	4	8	26	34
" 60 to 65 "	4	1	5	2	3	5	14	27	41
" 65 to 70 "	4	3	7	1	1	2	9	15	24
" 70 to 75 "	2	2	4	11	12	23
" 75 to 80 "	1	...	1	2	2	4
" 80 to 85 "	...	1	1	2	2	4
" 85 to 90 "	1	1
Unknown	2	4	6
Total ...	45	51	96	15	20	35	196	270	466
Mean Age ...	45.4	38.1	41.5	41.5	44.2	43	44.4	47.4	46.1

TABLE IX.

*Showing the Condition as to Marriage in the Admissions, Discharges, and Deaths during the Year 1885,
and of the Patients Resident on December 31st, 1885.*

Condition in Reference to Marriage.	The Admissions.			The Discharges.						The Deaths.			Patients Resident, December 31st, 1885.		
	The Admissions.			Recovered.			Removed, Relieved, or otherwise.			The Deaths.			Patients Resident, December 31st, 1885.		
	Males.	Females.	Total.	Males.	Females.	Total.	Males.	Females.	Total.						
Single ...	18	26	44	5	7	12	5	4	9	9	5	14	126	156	282
Married ...	23	18	41	10	13	23	3	1	4	5	8	13	54	75	129
Widowed ..	4	7	11	2	7	9	10	31	41
Unknown	6	8	14
Total ...	45	51	96	15	20	35	8	5	13	16	20	36	196	270	466

TABLE IXA.

Showing the Condition as to Marriage, on Admission, in the Admissions, Discharges, and Deaths since the Opening of the Asylum on the 30th of September, 1870, and of the Patients remaining on December 31st, 1885.

Condition in Reference to Marriage.	The Admissions.			The Discharges.						The Deaths.			Patients Resident, December 31st, 1885.		
	The Admissions.			Recovered.			Removed, Relieved, or otherwise.			The Deaths.			Patients Resident, December 31st, 1885.		
	Males.	Females.	Total.	Males.	Females.	Total.	Males.	Females.	Total.						
Single ...	354	386	740	77	97	174	64	52	116	87	81	168	126	156	282
Married ...	350	372	722	108	166	274	38	27	65	150	104	254	54	75	129
Widowed ...	66	129	195	14	18	32	3	16	19	39	64	103	10	31	41
Unknown ...	28	22	50	4	...	4	6	4	10	12	10	22	6	8	14
Total ...	798	909	1707	203	281	484	111	99	210	288	259	547	196	270	466

TABLE X.

*Showing the probable Causes, Apparent or Assigned, of the Disorder,
in the Admissions, Discharges, and Deaths of the Year 1885.*

CAUSES.	The Admissions.			The Discharges.						The Deaths.		
				Recovered.			Removed, Relieved, or otherwise.					
	Males.	Females.	Total.	Males.	Females.	Total.	Males.	Females.	Total.	Males.	Females.	Total.
MORAL:												
A Quarrel	1	...	1
Domestic Trouble...	...	2	2	...	1	1
Fright ...	1	1	2	1	...	1	1	1
Jealousy ...	1	...	1	1	...	1
Love Affairs	3	3	1	1
Over-Work ...	2	...	2	1	...	1
Pecuniary Loss ...	1	...	1
Poverty ...	1	1	2
PHYSICAL:												
Bodily Disease ...	2	...	2	1	...	1
Brain Disease	2	2	...	1	1	1	1
Congenital ...	3	3	6	1	...	1
Epilepsy ...	4	7	11	1	2	3
Fall on Head ...	1	...	1	1	...	1	1	...	1
Hereditary Pre-disposition	4	11	15	1	6	7	...	2	2	3	1	4
Injury to Head ...	1	...	1	1	...	1
Intemperance ...	6	1	7	5	1	6	1	...	1	1	2	3
Masturbation ...	1	...	1
Old Age ...	3	2	5	1	...	1
Ovarian Disturbance	...	1	1	...	2	2
Predisposition from previous Attacks	4	4	8	1	2	3	1	1	2
Privation	1	1
Puerperal State	2	2	...	2	2	1	1
Rheumatic Fever	1	1
Sun-stroke ...	2	...	2	2	...	2
Hyper-lactation	1	1
Unknown ...	8	8	16	3	5	8	5	3	8	5	10	15
Total ...	45	51	96	15	20	35	8	5	13	16	20	36

TABLE No. 2.

Showing the Religious Denomination of the Patients admitted during the Year 1885.

Religious Denomination.						Males.	Females.	Total.
Church of England	33	44	77
Baptist	1	3	4
Congregationalist	1	1	2
Methodist	2	1	3
Primitive Methodist	1	1
Roman Catholic	3	1	4
Dissenter	1	...	1
Protestant (German)	1	...	1
Unknown	3	...	3
Total						45	51	96

TABLE No. 3.

*Showing the Occupation or Station in Life of the Patients
admitted in 1885.*

Males.	Total.	Females.	Total.
Baker	1	Baker's Wife	1
Bricklayer	1	Carpenter's Wife	1
Blacksmith	1	Charwoman	4
Brewer's Assistant	1	Companion	1
Brewer's Traveller	1	Cook	1
Carpenter	2	Domestic Servant	8
Clerk	2	Field Worker	3
Coachman	1	Housekeeper	1
Currier	1	Housewife	8
Engine Driver	1	Iron Driller's Wife	1
Farm Bailiff	1	Labourer's Wife	2
Farm Labourer...	4	Labourer's Widow	2
Fish Salesman	1	Laundress	2
Foreman Biscuit Baker	1	Shepherd's Wife	1
Gardener	1	Of no Occupation	15
Groom	1		
Harness Maker	1		
Hawker	1		
Labourer	7		
Painter	1		
Plasterer	1		
Porter in Biscuit Factory	1		
Schoolboy	1		
Shoe Maker	1		
Station Master	1		
Tailor	1		
Upholsterer	2		
Wheelwright	1		
Of no Occupation	5		
Total	45	Total	51

TABLE No. 4.

Showing the Admissions, Discharges, and Deaths during each month in the Year, and the Daily Average Numbers for each Month.

1885. Months.	Admissions.			Discharges and Removals.			Deaths.			Daily Average.		
	Males.	Females.	Total.	Males.	Females.	Total.	Males.	Females.	Total.	Males.	Females.	Total.
January ...	6	7	13	...	1	1	1	3	4	193	265	458
February ...	5	3	8	4	4	197	268	465
March ...	4	...	4	1	2	3	1	2	3	201	264	465
April ...	2	3	5	3	2	5	4	1	5	200	262	462
May ...	2	1	3	2	1	3	198	262	460
June ...	5	6	11	2	4	6	1	2	3	198	262	460
July ...	11	9	20	4	1	5	2	3	5	200	264	464
August ..	2	3	5	4	1	5	203	268	471
September	3	4	7	...	3	3	2	2	4	202	269	471
October ...	3	7	10	4	3	7	2	2	4	202	269	471
November...	...	3	3	1	4	5	1	...	1	199	270	469
December...	2	5	7	2	3	5	2	1	3	198	271	469
Total	45	51	96	23	25	48	16	20	36	200	266	466

TABLE No. 5.

Showing the number of Patients in the Asylum, chargeable to each Union, on Dec. 31st, 1885.

	On Dec. 31st, 1884.			Admitted in 1885.			Discharged or Removed in 1885.			Died in 1885.			Remaining on Dec. 31st, 1885		
	M.	F.	Tot.	M.	F.	Tot.	M.	F.	Tot.	M.	F.	Tot.	M.	F.	Total.
Abingdon Union	9	19	28	...	2	2	...	3	3	1	1	2	8	17	25
Bradfield	18	26	44	4	3	7	4	1	5	2	4	6	16	24	40
Cookham	13	19	32	5	4	9	...	1	1	1	1	3	16	21	37
Easthampstead Union	7	10	17	1	2	3	...	2	2	1	1	1	8	9	17
Faringdon	12	14	27	3	3	6	3	1	4	2	2	2	13	14	27
Henley	1	...	1	1	...	1
Hungerford	4	12	16	1	...	1	...	2	2	...	1	1	5	9	14
Newbury	16	26	42	3	5	8	3	...	3	1	2	3	15	29	44
" Borough	19	12	31	3	3	6	3	1	4	19	14	33
Reading Union	39	54	93	9	17	26	5	8	13	4	3	7	39	60	99
Wallingford	8	12	20	2	4	6	1	1	2	...	1	1	9	14	23
Wantage	13	23	36	3	1	4	...	1	1	1	...	1	15	23	38
Windsor	11	6	17	1	1	2	2	1	3	10	6	16
Wokingham	13	27	40	6	4	10	4	1	5	2	3	5	13	27	40
County of Berks	3	1	4	3	1	4
Other Counties	4	1	5	4	1	5
Chargeability not decided	1	...	1	1	...	1
Prison Commissioners	3	1	4	3	1	4
Private Patients	3	3	6	3	2	5	2	4	6	1	...	1	3	1	4
Totals	190	264	454	52	53	105	30	27	57	16	20	36	196	270	466

TABLE No. 6.

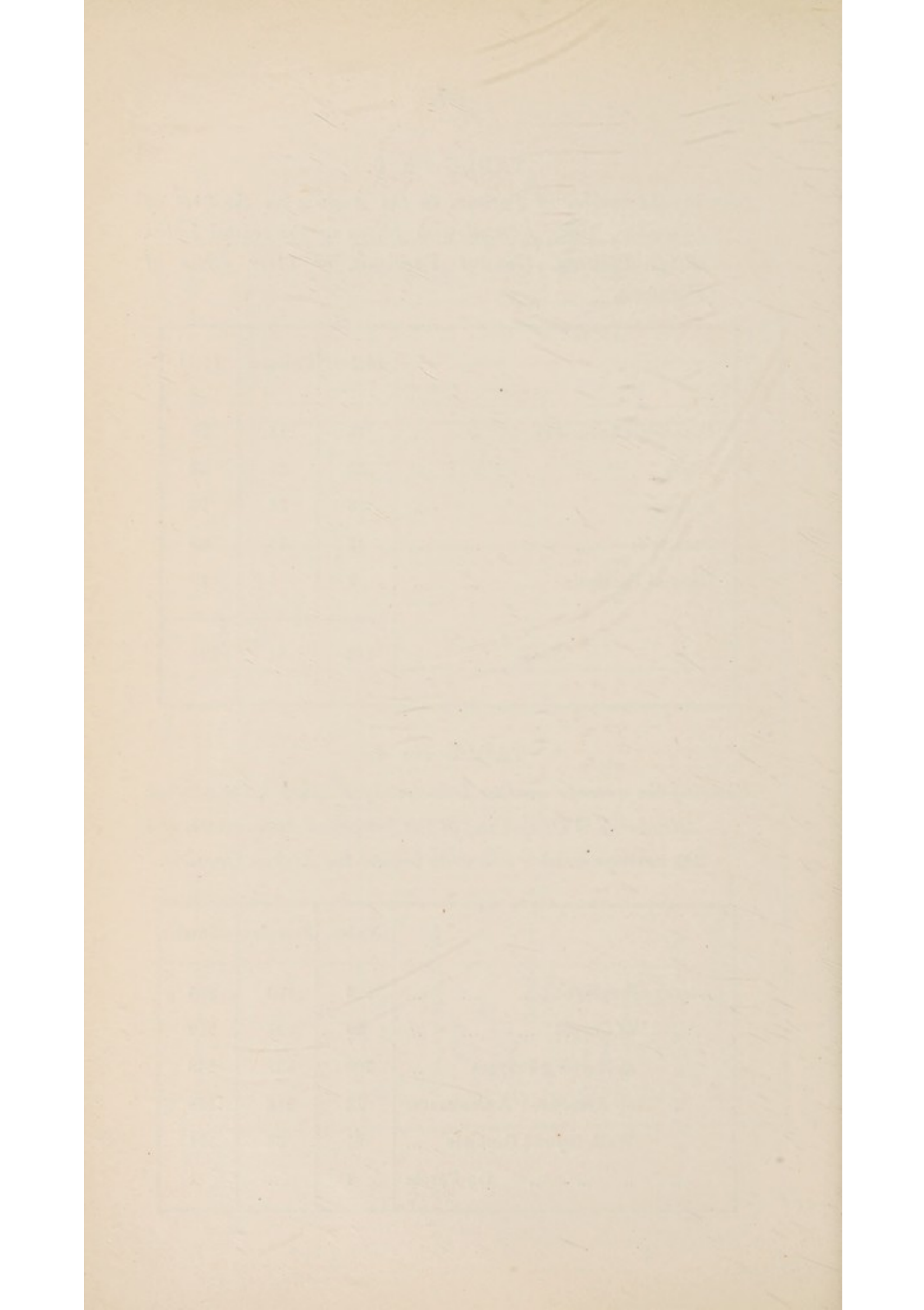
Showing the number of Patients in the Asylum on the 31st of December, 1885, affected with Idiocy or Congenital Imbecility, Epilepsy, General Paralysis, or other forms of Paralysis.

	Males.	Females.	Total.
Congenital Imbecility	15	13	28
Idiocy	30	23	53
Epilepsy	36	34	70
Paralysis	12	13	25
General Paralysis	9	1	10
Total	102	84	186

TABLE No. 7.

Showing the average number Industrially Employed, the average Attendance at Chapel and at the Associated Amusements, and the average number who walk beyond the Asylum Grounds.

	Males.	Females.	Total.
Average Employed	125	160	285
„ at Chapel	89	123	212
„ at Morning Prayers ...	109	137	246
„ at Associated Amusements	72	116	188
„ Walk beyond Grounds ...	61	63	124
„ „ „ „ On Parole	1	..	1



CHAPLAIN'S REPORT.

*To the Committee of Visitors of the Moultsford
Lunatic Asylum.*

GENTLEMEN,

In accordance with your regulations I beg to lay before you my Seventh Annual Report as Chaplain of this Institution, and in doing so I have, with many regrets, to say that it will be also the last Report I shall have the pleasure of making to you—as I have been appointed to the living of S. Luke's, Heywood, Lancashire. To use the word regret—at leaving a work of this kind—apart from any feeling of personal friendship which one may have formed towards those with whom, in the daily management of this Asylum, I have been connected, may at first sight seem strange to many who look upon the work of a Chaplain in such Institutions as one, if not entirely, yet almost devoid of anything like interest, or as a sphere in which one could not possibly hope for anything like encouragement or success. And yet after seven years' experience I can truthfully say that nowhere by the people amongst whom it has been my lot to work, have I ever been more kindly welcomed or received more kindly expressions of esteem than from the patients within the walls of this Asylum. A few kindly words showing the interest you feel in them and a desire to do all you can to lessen the terrible affliction under which they suffer, bring with them many an expression of heartfelt thankfulness which cannot do aught but gladden and cheer the heart of him to whom the spiritual care of the inmates is entrusted. Year after year I have been

able to bear testimony to the kindly manner in which my visits have been received, and in after years I shall look back with pleasure to the many kind welcomes I have received in the wards of this Asylum.

During the past year the prayers have been duly said every morning, and I am confident that this opportunity of prayer and praise is fully appreciated by the Patients. My Journal will tell you that the Wards have been regularly visited week by week.

The Services on the Sundays and other Holy-days have been duly performed. The attendances of the Male Patients have for some cause or another certainly fallen off of late, about 90 being the average out of nearly 200 Male Patients at present in the House. The average of Female Patients is nearly the same as last year. The Holy Communion has been administered on the Second Sunday in every month—the number of patients attending continues about the same. Perhaps the very frequent changes which occur amongst the attendants account for the fact that out of the present staff only one or two ever come to the Blessed Sacrament.

I find that 33 deaths have been reported to me, of whom 26 have been buried in Cholsey Churchyard.

I have so many times brought before your notice the great want which we all experience of a small Organ or some other instrument instead of the worn-out Harmonium which we at present possess, that I feel sure you would be quite disappointed if I did not bring the matter once more forward, and make one more request in this, my last Report. May I most earnestly ask you to consider the need there is of this. The presence of any one of you at our Sunday Services would do far more than any words of mine to convince you of this.

By the resignation of Dr Barron I venture to say that the whole Asylum suffered a great loss; personally I was deprived of a good and a true friend, and as Chaplain I lost one who was ready and willing to help as far as he possibly could in the musical portions of Divine Service, and who by his constant attendance at Chapel set a good example to all.

To the Officers and Attendants I beg to offer my sincere thanks for the kindness they have shown me during my term of office.

To the Patients let me say a few words. I beg to assure them that if I have been able to lighten in any way their heavy trials—if I have, by God's blessing, been able to make their time here happier and their hope hereafter brighter, my work has been more than amply repaid, and I shall take with me to my new sphere of work, and I trust leave behind, a happy recollection of the past seven years.

To the Members of the Committee I beg to tender my most sincere thanks for the unvaried kindness and cordiality they have always shown me, and with every good wish,

I am, Gentlemen,

Obediently yours,

R. W. PERRY CIRCUITT, *Chaplain.*

CHOLSEY VICARAGE, *December 17th, 1885.*

THE
JOURNAL
OF
THE
AMERICAN
MEDICAL
ASSOCIATION
PUBLISHED WEEKLY
CHICAGO, ILL.
1914

Vol. 15, No. 1
January 3, 1914
Price, Five Cents
Subscription Price, \$5.00 per Annum in Advance
Entered as Second-Class Matter, October 3, 1911
Postoffice at Chicago, Ill., Paid Postage
Acceptance for mailing at special rate of postage provided for in Act of October 3, 1917
Authorized by Act of Congress, October 3, 1917
Copyright, 1914, by American Medical Association
Printed by The American Medical Association, Chicago, Ill.

MOULSFORD ASYLUM.



AN ACCOUNT

OF

RECEIPTS AND PAYMENTS

DURING THE YEAR 1835.

HOUSTON ASSYLUM

AN ACCOUNT

RECEIPTS AND PAYMENTS

FROM THE YEAR 1840

MOULSFORD ASYLUM.

*An Account of Receipts and Payments during the
year 1885.*

RECEIPTS.

	£	s.	d.	£	s.	d.
To Balance with the Treasurer, 1st January, 1885	4,450	0	1			
„ Do. with House Steward ...	27	10	6			
„ Due from Unions, &c. (since received)	232	9	10			
				4,710	0	5
1. MAINTENANCE ACCOUNT.						
From Unions, &c., in the County.						
Abingdon	577	1	6			
Bradfield	978	5	9			
Cookham	757	16	8			
Easthampstead	362	7	2			
Faringdon	569	14	3			
Henley	18	4	2			
Hungerford	311	7	4			
Newbury	1,649	15	7			
Reading	2,138	4	11			
Wallingford	497	19	0			
Wantage	822	13	7			
Windsor	364	17	0			
Wokingham	903	3	8			
County of Berks	88	13	0			
				10,040	3	7
Commissioners of H.M. Treasury for Criminal Lunatics	88	12	11	88	12	11
From Unions in other Counties.						
Andover	6	13	6			
Hackney	19	13	5			
Kingsclere	3	15	3			
St Marylebone	3	8	0			
Uxbridge	3	16	6	37	6	8
Carried forward		£14,876	3	7

RECEIPTS.				£	s.	d.	£	s.	d.
Brought forward		14,876	3	7
2. EXTRA CHARGES ACCOUNT.									
Abingdon	2	9	0			
Bradfield	6	16	6			
Cookham	3	13	6			
Easthampstead	1	4	6			
Faringdon	1	4	6			
Hungerford	1	4	6			
Newbury	2	9	0			
Reading	5	12	0			
Wallingford	1	4	6			
Wantage	2	4	6			
Windsor	2	9	0			
Wokingham	3	9	0			
							34	0	6
3. FARM ACCOUNT.									
Sale of Stock	165	9	6			
„ Hides and Skins				21	19	4			
„ Wool	15	16	7			
„ Barley	139	10	0			
							342	15	5
4. OLD STORES ACCOUNT.									
Sale of Gas Tar	13	11	5			
„ Rags, Bones, &c.	19	5	11			
Forfeited Wages	2	5	0			
Value of Goods broken on Railway	0	17	8			
							36	0	0
5. RENT OF COTTAGES	60	16	4	60	16	4
6. REPAIRS ACCOUNT.									
County of Berks	627	18	5			
Reading	128	8	9			
Newbury	57	1	8			
Excess of charge made for Out-County and Criminal Patients over rate of maintenance charged for In-County Patients				90	3	2			
The like for Private Patients	140	10	7	1,044	2	7
Carried forward		£16,393	18	5

RECEIPTS.					£	s.	d.	£	s.	d.
Brought forward		16,393	18	5
7. ADDITIONS AND IMPROVEMENTS ACCOUNT.										
County of Berks		317	12	7			
Reading		64	19	4			
Newbury		28	17	6			
								411	9	5
8. LODGING ACCOUNT.										
Reading		114	12	6			
								114	12	6
9. PRIVATE PATIENTS' ACCOUNT.										
Maintenance, &c.		133	0	8			
								133	0	8
Total Receipts					£17,053	1	0

Farm and Garden Supplies to House, 1885.

FARM SUPPLIES.					£	s.	d.	£	s.	d.
Milk, New, 8,335 gals. at 1s.	...				416	15	0			
„ Skim, 3,554 gals. at 8d.	...				118	9	4			
Butter, 1,255½ lbs. at 1s. 6d.	...				94	2	10			
Fowls and Ducks, 16 at 2s. 6d.	...				2	0	0			
Pork, 10,661 lbs. at 6½d. and 6½d.	...				283	13	8			
Beef, 792 lbs. at 6d.	...				19	16	0			
Mutton, 9,344 lbs. at 8d. and 8½d.	...				316	12	0			
Veal, 501 lbs., at 7½d. and 8d.	...				16	0	10			
Suet, 483 lbs. at 3d. and 4d.	...				7	14	0			
Eggs, 9,633 at 1d.	...				40	2	9			
Flour, 135½ sks. at 24s. and 25s.	...				164	18	6			
Potatoes, 633 sks. at 4s. 6d. and 6s.	...				169	7	6			
Other Vegetables	...				4	7	0			
Sheep's Heads, &c.	...				7	11	6			
								1,661	10	11
GARDEN SUPPLIES.										
Potatoes, 143 sks. at 8s. 6d.	...				60	15	6			
„ New, 526 lbs. at 1d. per lb., and 6s. per cwt.	...				1	10	3			
Other Vegetables, Fruit, &c.	...				185	11	7			
								247	17	4
Total	...							£1,909	8	3

PAYMENTS.

	1st Quarter.	2nd Quarter.
1. Salaries and Wages.		
<i>Officers :</i>		
	£ s. d.	£ s. d.
Medical Superintendent - -	150 0 0	150 0 0
Assistant Medical Officer - -	43 15 0	43 15 0
" " " (locum tenens)	0 0 0	0 0 0
Chaplain - - - -	50 0 0	50 0 0
Clerk to the Visitors - - -	27 10 0	27 10 0
Clerk and Steward - - -	40 0 0	40 0 0
Housekeeper - - - -	15 0 0	15 0 0
<i>Attendants :</i>		
Head Attendant (Male) - -	13 15 0	13 15 0
Attendants " - -	145 15 9	157 4 5
Head Attendant (Female) - -	8 15 0	8 15 0
" " " (Gratuity)	0 0 0	0 0 0
Attendants " - -	119 8 4	122 16 5
<i>Servants :</i>		
<i>In-door :</i>		
Hall Porter - - - -	7 0 0	7 3 5
Cook - - - -	6 5 0	6 5 0
Housemaid - - - -	4 10 0	4 10 0
Kitchenmaids - - - -	8 10 10	8 10 0
Laundress - - - -	6 5 0	6 5 0
Laundrymaids - - - -	13 15 0	13 15 0
<i>Out-door :</i>		
Engineer - - - -	13 0 0	13 0 0
Gasman - - - -	14 6 0	14 6 0
Bakers - - - -	24 14 0	24 14 0
Stokers - - - -	15 3 1	14 15 5
Shoemaker - - - -	10 8 0	11 12 0
Tailor - - - -	0 0 0	0 10 0
Night Attendant - - - -	14 19 0	4 2 2
Gatekeeper - - - -	13 2 9	13 0 0
Totals - - -	£765 17 9	£771 3 9

PAYMENTS.

3rd Quarter.	4th Quarter.	TOTAL FOR THE YEAR.	GRAND TOTALS.
<p>£ s. d.</p> <p>150 0 0</p> <p>27 6 6</p> <p>0 0 0</p> <p>50 0 0</p> <p>27 10 0</p> <p>40 0 0</p> <p>5 9 7</p>	<p>£ s. d.</p> <p>150 0 0</p> <p>29 7 0</p> <p>33 14 0</p> <p>50 0 0</p> <p>27 10 0</p> <p>40 0 0</p> <p>12 10 0</p>	<p>£ s. d.</p> <p>600 0 0</p> <p>144 3 6</p> <p>33 14 0</p> <p>200 0 0</p> <p>110 0 0</p> <p>160 0 0</p> <p>47 19 7</p>	<p>£ s. d.</p> <p>1295 17 1</p>
<p>13 15 0</p> <p>153 5 8</p> <p>4 19 8</p> <p>10 0 0</p> <p>122 15 5</p>	<p>14 3 4</p> <p>148 13 3</p> <p>4 4 6</p> <p>0 0 0</p> <p>125 6 0</p>	<p>55 8 4</p> <p>604 19 1</p> <p>26 14 2</p> <p>10 0 0</p> <p>490 6 2</p>	<p>1187 7 9</p>
<p>7 10 0</p> <p>6 5 0</p> <p>4 10 0</p> <p>9 2 10</p> <p>6 5 0</p> <p>15 3 0</p>	<p>7 10 0</p> <p>5 15 11</p> <p>4 10 0</p> <p>7 15 6</p> <p>6 5 0</p> <p>16 15 0</p>	<p>29 3 4</p> <p>24 10 11</p> <p>18 0 0</p> <p>33 19 2</p> <p>25 0 0</p> <p>59 8 0</p>	<p>190 1 5</p>
<p>13 0 0</p> <p>14 6 0</p> <p>24 14 0</p> <p>14 10 0</p> <p>11 0 0</p> <p>0 0 0</p> <p>0 0 0</p> <p>13 0 0</p>	<p>14 0 0</p> <p>15 8 0</p> <p>26 12 0</p> <p>18 9 10</p> <p>16 11 0</p> <p>0 0 0</p> <p>6 5 0</p> <p>14 10 0</p>	<p>53 0 0</p> <p>58 6 0</p> <p>100 14 0</p> <p>62 18 4</p> <p>49 11 0</p> <p>0 10 0</p> <p>25 6 2</p> <p>53 12 9</p>	<p>403 18 3</p>
£744 7 8	£795 15 4	Carried forward ...	£3,077 4 6

PAYMENTS.

					1st Quarter.			2nd Quarter.				
						£	s.	d.		£	s.	d.
Brought forward - - -				
2. Provisions Account:												
Ale	-	-	-	-	41 brls.	65	12	0	44 brls.	70	8	0
Beer	-	-	-	-	130 "	143	0	0	113 "	124	6	0
Bacon	-	-	-	-	1,758 lbs.	40	16	3	3,473 lbs.	74	8	5
Butter	-	-	-	-	1,586 "	69	11	10	1,388 "	62	5	4
Cheese	-	-	-	-	2,130 "	50	4	4	2,230 "	50	16	3
Coffee	-	-	-	-	112 "	5	12	0
Currants	-	-	-	-	239 "	3	8	4	238 "	3	1	8
Eggs	-	-	-	-	2880	16	4	0
Flour	-	-	-	-	101 sks.	121	8	0	101 sks.	126	8	0
Beef	-	-	-	-	7,799 lbs.	211	4	5	8,814 lbs.	247	17	11
Mutton	-	-	-	-	311 "	7	15	6	772 "	21	14	2
Prime Joints	-	-	-	-	221½ "	6	18	6
Poultry, &c.	-	-	-	-
Preserved Meat	-	-	-	-	3,298 lbs.	75	14	5	1,440 "	31	10	0
Essence of Beef	-	-	-	-	55¼ "	14	10	1	44½ "	11	13	8
Plums	-	-	-	-	56 lbs.	0	18	0
Sugar (loaf)	-	-	-	-	224 lbs.	2	3	6
„ (moist)	-	-	-	-	2,912 "	16	17	0	4,032 "	22	14	6
Tea (No. 1)	-	-	-	-	150 lbs.	13	2	6	170 lbs.	15	11	8
„ (No. 2)	-	-	-	-	650 "	39	5	5	650 "	39	5	5
Arrowroot, Rice, Pease, Sago, &c.	-	-	-	-	...	17	9	11	...	16	9	4
Salt and Spices	-	-	-	-	...	4	13	1	...	7	3	8
Totals - - -						£917	7	1		£934	16	0

PAYMENTS.

3rd Quarter.			4th Quarter.			TOTAL FOR THE YEAR.			GRAND TOTAL		
	£	s. d.		£	s. d.		£	s. d.	£	s. d.	
...	3,077	4 6	
½ brls.	82	8 0	40 brls.	64	0 0	176½ brls.	282	8 0			
"	145	4 0	128 "	140	16 0	503 "	553	6 0			
lbs.	75	12 0	2,538 lbs.	54	6 0	11,408 lbs.	245	2 8			
"	67	10 4	1,960 "	83	2 11	6,421 "	282	10 5			
½ "	33	16 0	1,752½ "	32	15 5	7,946 "	167	12 0			
"	2	6 8	56 lbs.	2	18 4	224 "	10	17 0			
...	221 "	2	11 3	698 "	9	1 3			
40	5	8 0	5040	22	4 0	9,360	43	16 0			
sks.	165	6 0	126 sks.	151	6 0	460 sks.	564	8 0			
lbs.	260	16 8	8,269 lbs.	232	11 4	34,156 lbs.	952	10 4			
½ "	22	17 0	267 "	7	4 8	2,162½ "	59	11 4			
¾ "	7	10 6	79¾ "	2	6 6	542 "	16	15 6			
...	1	8 0	...	1	8 0			
"	47	18 9	2,664 "	58	13 0	9,644 lbs.	213	16 2			
"	35	19 3	236¾ "	62	3 0			
"	1	0 4	85 lbs.	1	8 1	201 lbs.	3	6 5			
lbs.	4	14 0	672 lbs.	6	17 6			
"	35	14 0	3,584 lbs.	27	7 6	14,784 "	102	13 0			
lbs.	15	15 0	160 lbs.	14	0 0	660 lbs.	58	9 2			
"	38	18 6	864 "	57	12 0	2,856 "	175	1 4			
...	15	14 0	...	22	15 2	...	72	8 5			
...	6	3 3	...	4	19 9	...	22	19 9	3,907	1 3	
£1070 12 3			£984 5 11								

Carried forward £6,984 5 9

PAYMENTS.

	1st Quarter.			2nd Quarter.		
		£	s. d.		£	s. d.
Brought forward - - -
3. Necessaries Account.						
<i>Cleaning :</i>						
Blacking - - -	12 gross	1	13 0
Black Lead - - -	12 gross	3	4
Emery Cloth, &c. -	0	11
House Flannel - -	1,440 yds.	27	0 0
Hearth Stones - -
<i>Washing :</i>						
Blue - - - -	56 lbs.	1	3
Soap - - - -	3,920 lbs.	42	0 0	3,920 lbs.	42	0
„ (soft) - - -	10 frks.	4	10 0	10 frks.	4	10
„ (carbolic) - -	560 lbs.	7	10 0
Soda - - - -	2,541 „	5	2 1	2,306 lbs.	4	2
Starch - - - -	224 „	2	19 0
<i>Fuel and Light :</i>						
Candles - - -	164 lbs.	4	0 2	72 lbs.	1	5
Colza Oil, Wick, &c. -	0	15 0	0	6
Coal (house) - -	129 tons	104	10 6	95 tons	75	9
„ (steam) - - -	133 „	114	12 6	109 „	88	15
„ (gas) - - - -	139 „	129	0 2
Coke - - - -	78 „	57	18 6	27 „	20	0
Lime - - - -	10	10 8	5	6
Matches - - - -	4	1
Wood - - - -	11	7 6
Totals - - -		£523	9 1		£250	16

PAYMENTS.

3rd Quarter.			4th Quarter.			TOTALS FOR THE YEAR.			GRAND TOTAL.		
	£	s.	d.		£	s.	d.		£	s.	d.
...	6,984 5 9
...	12 gross	1	13	0
...	12 „	3	4	6
...	3	5	9	...	1	16	8	...	5	13	6
...	1,440 yds.	27	0	0
...	3 gross	1	5	6	3 gross	1	5	6
...
...	56 lbs.	1	17	4	112 lbs.	3	0	8
0 lbs.	36	0	0	3,360 „	36	0	0	14,560 „	156	0	0
frks.	5	8	0	10 frks.	4	10	0	42 frks.	18	18	0
0 lbs.	7	10	0	1,120 lbs.	15	0	0
32 „	3	19	8	1,330 lbs.	2	9	0	8,339 „	15	13	2
24 „	2	19	0	112 „	1	9	6	560 „	7	7	6
...
8 lbs.	2	11	0	72 lbs.	1	2	0	416 lbs.	8	18	8
...	5	3	0	...	0	13	0	...	6	17	6
tons	41	5	4	97 tons	75	19	2	373 tons	297	4	7
„	132	0	7	140 „	109	8	7	550 „	444	17	3
„	61	1	0	153 „	141	6	11	358 „	331	18	1
„	25	5	7	25 „	16	18	11	167 „	120	3	0
...	8	10	8	...	16	0	0	...	40	8	0
...	4	1	0
...	16	5	0	...	9	15	0	...	37	7	6
£351 4 7			£420 11 7			Carried forward ...			£8,530 7 2		

PAYMENTS.

	1st Quarter.	2nd Quarter.
	£ s. d.	£ s. d.
Brought forward - - - - -
4. Wines and Spirits Account:	34 4 0	9 12 0
5. Surgery Account:		
Drugs, &c. - - - - -	59 3 4	38 16 1
Surgical Instruments, &c. - -	3 17 2	13 0 11
Totals	63 0 6	51 17 0
6. Furniture and Bedding Account:		
Baskets and Repairs - - - - -	5 0 6	1 16 0
Blankets - - - - -	7 14 2
Brushes, &c. - - - - -	6 12 6
Canvas - - - - -	15 10 5
Carpet and Hearth Rugs - - - -
Counterpanes - - - - -
Earthenware - - - - -	12 15 2
Forfar - - - - -	6 2 7
Ironmongery - - - - -	4 3 0	0 19 0
Matting and Mats - - - - -	21 6 8
Sheeting - - - - -	60 9 7
Tammy, &c. - - - - -	0 19 0
Waterproof Sheeting - - - - -	21 12 3
Totals - - -	£44 10 8	£120 10 2

PAYMENTS.

3rd Quarter.	4th Quarter.	TOTALS FOR THE YEAR,	GRAND TOTALS.
£ s. d.	£ s. d.	£ s. d.	£ s. d. 8,530 7 2
... ..	20 2 0	63 18 0	63 18 0
52 0 6 0 10 0	39 3 7 0 7 9	189 3 6 17 15 10	
52 10 6	39 11 4	206 19 4	206 19 4
3 6 0 5 12 6 5 13 6 5 2 9	3 13 3 8 9 0 0 18 9 47 10 0 11 15 6 6 1 10 22 0 0 10 11 3 1 6 9	13 15 9 7 14 2 20 14 0 15 10 5 6 12 3 47 10 0 24 10 8 12 4 5 32 4 9 31 17 11 60 9 7 2 5 9 21 12 3	297 1 11
£19 14 9	£112 6 4		

Carried forward ... £9,098 6 5

PAYMENTS.

	1st Quarter.	2nd Quarter.
	£ s. d.	£ s. d.
Brought forward - - - - -
7. Farm Account:		
Wages, Bailiff - - - - -	16 5 0	16 5 0
„ Cowman - - - - -	9 13 6	10 8 0
„ Carter - - - - -	9 16 0	10 8 0
„ Labourers - - - - -	25 8 0	37 0 6
Beans - - - - -	25 14 6	12 18 6
Seeds and Plants - - - - -	16 2 7	18 4 4
Cotton Cake - - - - -	33 13 10
Threshing, Grinding, Drilling, &c. -	12 9 9	3 3 0
Purchase of Stock - - - - -	159 18 6	50 3 9
Killing Stock - - - - -	3 16 6	2 14 0
Tools and Repairs - - - - -	3 10 11	1 9 3
Veterinary Surgeon & Shoeing Smith	2 4 0	2 3 7
Proportion of Rectorial Tithe - -	15 17 0
„ Vicarial Tithe - - - - -	5 5 8
„ Poor Rates - - - - -	5 13 11	7 11 10
„ Highway Rate - - - - -
Rent of Land - - - - -	82 10 0
Income Tax on Rent - - - - -
Hurdles and Stakes - - - - -	2 14 2
Repairing Carts - - - - -	0 11 10	1 3 0
„ Harness, &c. - - - - -
Cutting Grass, Wheat and Barley -
Washing and Shearing Sheep and use of Stock - - - - -	2 5 6	1 8 10
Insurance - - - - -
Totals - - -	£329 18 6	£278 14 3

PAYMENTS.

3rd Quarter.	4th Quarter.	TOTALS FOR THE YEAR.	GRAND TOTALS.
£ s. d.	£ s. d.	£ s. d.	£ s. d. 9,098 6 5
16 5 0	20 13 0	69 8 0	
10 8 0	12 8 6	42 18 0	
10 8 0	13 11 0	44 3 0	
35 14 0	37 15 4	135 17 10	
... ..	16 16 0	55 9 0	
12 15 1	15 11 0	62 13 0	
... ..	32 4 2	65 18 0	
2 11 2	15 5 7	33 9 6	
127 18 4	104 12 0	442 12 7	
1 19 6	4 15 0	13 5 0	
5 10 3	10 10 5	
6 0 1	2 7 11	12 15 7	
... ..	16 5 9	32 2 9	
... ..	5 5 8	10 11 4	
... ..	11 2 3	24 8 0	
... ..	6 3 7	6 3 7	
... ..	77 0 0	159 10 0	
... ..	5 10 0	5 10 0	
...	2 14 2	
1 14 6	3 9 4	
... ..	6 15 0	6 15 0	
13 1 5	13 1 5	
... ..	2 19 6	6 13 10	
... ..	2 11 0	2 11 0	1,262 10 4
£244 5 4	£409 12 3	£1,262 10 4	
	Carried forward	£10,360 16 9

PAYMENTS.

	1st Quarter.	2nd Quarter.
	£ s. d.	£ s. d.
Brought forward - - - -
8. Garden Account:		
Wages, Gardener - - - -	14 6 0	14 6 0
„ Labourers - - - -	30 7 7	31 17 0
Seeds and Plants - - - -	5 7 0
Tools and Repairs - - - -	0 8 4	0 19 6
Pea Sticks - - - -	1 17 6
Flower Pots - - - -	1 7 0
Proportion of Rectorial Tithe - -	0 19 4
„ Vicarial Tithe - -	0 6 5
„ Poor Rates - -	0 6 10	0 9 2
„ Highway Rate - -
Totals - -	52 13 3	50 4 5
9. Taxes and Insurance Account:		
Proportion of Rectorial Tithe - -	3 0 7
„ Vicarial Tithe - -	1 0 2
„ Poor Rates - -	1 19 4	2 12 6
„ Highway Rate - -
Insurance - - - -
Income Tax (Cottages) - - - -
Totals -	£1 19 4	£6 13 3

PAYMENTS.

3rd Quarter.	4th Quarter.	TOTALS FOR THE YEAR.	GRAND TOTALS.
£ s. d.	£ s. d.	£ s. d.	£ s. d. 10,360 16 9
14 6 0 31 9 9 12 1 0 3 8 2 1 5 0 1 7 0	15 8 0 38 17 8 1 10 0 1 16 8 1 16 0 0 19 9 0 6 4 0 11 6 0 6 10	58 6 0 132 12 0 18 18 0 6 12 8 3 2 6 4 10 0 1 19 1 0 12 9 1 7 6 0 6 10	
63 16 11	61 12 9	228 7 4	228 7 4
...	3 1 8 1 0 2 3 5 7 1 19 5 7 19 7 2 2 7	6 2 3 2 0 4 7 17 5 1 19 5 7 19 7 2 2 7	
... ..	19 9 0	28 1 7	28 1 7
Carried forward		£10,617 5 8

PAYMENTS.

	1st Quarter.			2nd Quarter.		
			£ s. d.			£ s. d.
Brought forward - - -
10. Clothing Account :						
Men's Cord Suits - -	100		68 15 0
Shirting - - -	2685 yds.	73 9 7	...
Calico, Unbleached -	300½ yds.		4 13 10
Flannel - - -	768 „		28 16 0
Braces - - -	12 doz.		2 5 0
Handkerchiefs and Neck- erchiefs - - - }	707	10 9 7	...
Felt and Straw Hats -	144		6 6 0
Bonnet Ribbon - -
Women's Stockings -	24 doz.	9 18 0	...
Men's ditto - -	24 doz.		11 2 0
Shrouding - - -	80 yds.		0 15 0	240 yds.	2 5 0	...
Print - - -	374 „		7 15 10	766½ „	18 17 3	...
Corduroy - - -	195 „		15 4 8
Pilot Cloth - - -	74½ „		11 15 11	146½ yds.	23 3 11	...
Winsey - - -	310½ „	8 1 9	...
Stays - - -	6 doz.	4 2 6	...
Jean - - -	239 yds.		5 9 7
Boot Locks - - -
Shawls - - -	9		2 8 4
Leather Boots - -	72 pairs	18 18 0	...
Blue Check - - -	232½ yds.	13 6 5	...
Haberdashery, &c. -	0 1 0	...	6 13 9	...
Uniforms for Attendants } and Servants - - }	14 8 3	...	25 17 0	...
Leather, &c. - - -	43 10 9
Totals - - -			£223 7 2		£ 215 2 9	

PAYMENTS.

3rd Quarter.				4th Quarter.				TOTALS FOR THE YEAR.				GRAND TOTALS.			
...	...	£	s. d.	£	s. d.	£	s. d.	£	s. d.
...	10,617	5	8	
...	100	68	15	0				
...	2685 yds.	73	9	7				
...	300½ "	4	13	10				
...	768 "	28	16	0				
...	12 doz.	2	5	0				
...	707	10	9	7				
...	257	10	15	11				
113	4	9	11	432 yds.	8	1	11				
432 yds.	8	1	11	24 doz.	9	18	0				
...	12 doz.	5	11	0	36 "	16	13	0				
...	320 yds.	3	0	0				
...	1140½ "	26	13	1				
...	131 yds.	10	1	11	326 "	25	6	7				
...	221 "	34	19	10				
...	310½ "	8	1	9				
...	6 doz.	4	2	6				
...	239 yds.	5	9	7				
...	0	14	0	...	0	14	0			
...	9	2	8	4				
...	72 pairs	18	18	0				
...	101 yds.	2	12	7	343½ yds.	15	19	0				
...	52	4	3	8	9	1	...	67	8	1			
...	14	17	0	10	1	9	...	65	4	0			
...	45	4	8	3	2	7	...	91	18	0			
£124	17	9		£40	12	11		£604	0	7		604	0	7	
Carried forward							£11,221 6 3			

PAYMENTS.

	1st Quarter.	2nd Quarter.
	£ s. d.	£ s. d.
Brought forward - - - -
11. Miscellaneous Account:		
Printing and Advertising - -	19 10 6	20 9 9
Stationery - - - -	1 12 7	2 2 0
Books and Periodicals - - -	8 19 9	10 10 3
Postages and Letter Bag - -	4 3 11	6 7 11
Travelling Expenses - - -	2 10 3	6 12 9
Tobacco and Snuff - - - -	17 9 10	15 2 2
Music and Entertainments - -	0 16 7	4 8 0
Carriage of Goods - - - -	2 15 1	1 18 10
Attendance at Funerals - - -	1 4 0	0 16 0
Marking Ink and Pads - - -
Chimney Sweeping - - - -	3 11 0	7 5 6
Subscriptions to Cholsey Church -	2 4 6
Bird Seed, Paper, &c. - - -	1 4 6	0 9 9
Cricket Bats, Tennis Balls, &c. -	3 15 0
Re-taking Escaped Patient - -
Binding Library Books - - -
Totals - - - -	£66 2 6	£79 17 11

PAYMENTS.

3rd Quarter.	4th Quarter.	TOTALS FOR THE YEAR.	GRAND TOTALS.
£ s. d.	£ s. d.	£ s. d.	£ s. d. 11,221 6 3
22 3 1 17 1 10 8 0 9 7 4 6 5 3 0 16 4 11 4 10 9 2 10 7 0 19 6 3 4 0 1 16 0 0 1 2 0 3 6	13 16 10 1 13 10 11 4 4 7 0 10 4 13 8 20 12 5 10 17 6 3 8 3 0 15 0 4 4 6 0 2 8 3 4 6	76 0 2 22 10 3 38 15 1 24 17 2 18 19 8 69 9 4 20 12 10 10 12 9 3 14 6 3 4 0 16 17 0 2 4 6 1 18 1 3 15 0 0 3 6 3 4 6	
£89 3 7	£81 14 4	£316 18 4	£316 18 4
		Carried forward£11,538 4 7

PAYMENTS.

	1st Quarter.			2nd Quarter.		
	£	s	d.	£	s	d.
Brought forward - - - -	
12. Repairs Account:						
Wages—Engineer - - - -	13	0	0	13	0	0
" Carpenters - - - -	20	4	11	30	13	6
" Stokers - - - -	15	3	2	14	15	6
" Painters - - - -	19	0	3	33	3	3
" Bricklayers - - - -	17	16	0	20	16	9
Clerk of the Works - - - -	34	2	6	34	2	6
Oils, Colours, Paints, &c. - - - -	9	7	3	15	14	7
Timber, Cement, &c. - - - -	7	12	6	
Iron and Brass Fittings, Castings, &c. - - - -	5	5	10	4	14	6
Nails, Screws, &c. - - - -	0	8	0	3	15	7
Tools - - - -	2	18	0	3	19	1
Glue - - - -	
Insertion Sheeting, Packing, &c. - - - -	2	19	4	
Insurance - - - -		10	15	0
Carriage of Goods, Postages, &c. - - - -	0	18	1	2	1	8
Cotton Waste - - - -		2	16	0
Wall Paper, Glass, &c. - - - -	0	9	0	0	4	6
Sheet Lead and Tin - - - -	7	19	10	1	13	0
Cleaning out Well (Star Cottages) - - - -	2	0	0	
Repairing Cooking Apparatus - - - -	13	4	6	
Soap Boiler and Fittings for Washing Machine - - - -		5	15	9
Fittings for Wringing Machine - - - -		10	18	6
Furnace Bars - - - -		4	13	0
Trees and Shrubs - - - -	
Hot-Water Boiler - - - -	
Valve, Pipes, &c., for Wells - - - -	
Superannuation to late Housekeeper (half-year) - - - -	
Totals - - -	£172	9	2	£213	12	8

PAYMENTS.

3rd Quarter.	4th Quarter.	YEARLY TOTAL.	GRAND TOTALS.
£ s. d.	£ s. d.	£ s. d.	£ s. d.
...	11,538 4 7
13 0 0	14 0 0	53 0 0	
42 18 1	46 11 2	140 7 8	
14 10 1	18 10 1	62 18 10	
73 12 7	66 14 10	192 10 11	
4 0 0	41 14 4	84 7 1	
34 2 6	34 2 6	136 10 0	
1 17 6	1 2 6	28 1 10	
28 17 2	11 6 0	47 15 8	
14 10 9	11 10 0	36 1 1	
4 17 1	10 6 8	19 7 4	
3 13 7	2 19 0	13 9 8	
3 8 2	3 8 9	6 6 11	
0 18 0	0 7 0	4 4 4	
...	45 13 8	56 8 8	
1 7 8	5 8 8	9 16 1	
2 16 0	...	5 12 0	
5 8 3	1 19 2	8 0 11	
...	...	9 12 10	
...	...	2 0 0	
...	3 4 0	16 8 6	
...	21 3 3	26 19 0	
...	...	10 18 6	
...	...	4 13 0	
...	12 14 3	12 14 3	
...	20 16 9	20 16 9	
...	17 13 8	17 13 8	
...	25 0 0	25 0 0	1,052 5 6
£249 17 5	£416 6 3	£1,052 5 6	
	Carried forward	-	£12,590 10 1

PAYMENTS.

	1st Quarter.	2nd Quarter.
	£ s. d.	£ s. d.
Brought forward - - - - -
13. Additions and Improvements Account.		
Ventilation of Drains and W.C.'s, viz.:—		
Bricks, Drain Pipes, &c. - -	32 18 10
Bricklayer and Labourer - -	9 12 0
Carriage of Bricks, &c. - -	6 12 6
Contractor - - - - -	200 0 0
Fitting up Sample W.C.'s. - -	25 1 7
Flushing Tanks - - - - -
Totals - -	274 4 11
14. Funerals and Removals Account.		
Coffins and Burial Fees - - -	11 0 6	6 6 0
Removal Expenses - - - - -
Totals - - -	11 0 6	£6 6 0

PAYMENTS.

3rd Quarter.	4th Quarter.	TOTALS FOR THE YEAR.	GRAND TOTALS.
£ s. d.	£ s. d.	£ s. d.	£ s. d.
...	12,590 10 1
35 14 8	0 13 0	69 6 6	
£1 11 0	41 3 0	
2 8 10	9 1 4	
... ..	405 4 7	605 4 7	
...	25 1 7	
43 10 0	43 10 0	
113 4 6	405 17 7	793 7 0	793 7 0
8 11 6	6 2 6	32 0 6	
... ..	2 0 0	2 0 0	
£8 11 6	£8 2 6	£34 0 6	£34 0 6

Total Payments - - £13,417 17 7

BALANCE

GENERAL STATEMENT OF RECEIPTS AND PAYMENTS

RECEIPTS.

Dr		£	s.	d.	£	s.	d.
To Balance with Treasurer, 1st January, 1885	- -	4450	0	1			
„ „ House Steward	-	27	10	6			
„ Due from Unions, &c.	- -	232	9	10	4710	0	5
„ Sale of Farm Produce	- -	342	15	5			
„ „ Old Stores, &c.	- -	36	0	0	378	15	5
„ From Unions and Counties	-	10166	3	2			
„ Extra charges	- - -	34	0	6			
„ Rents of Cottages	- - -	60	16	4			
„ Repairs Account	- - -	1044	2	7			
„ Additions, &c., Account	- -	411	9	5			
„ Lodging Account	- - -	114	12	6			
„ Private Patients' Account	-	133	0	8			
					11964	5	2
					<u>£17053</u>	<u>1</u>	<u>0</u>

SHEET.

DURING THE YEAR ENDED 31ST DECEMBER, 1885.

PAYMENTS.

Cr.	£	s.	d.	£	s.	d.
By Salaries and Wages - -	3077	4	6			
„ Provisions - - - -	3907	1	3			
„ Necessaries - - - -	1546	1	5			
„ Wines and Spirits - -	63	18	0			
„ Surgery - - - -	206	19	4			
„ Furniture and Bedding - -	297	1	11			
„ Farm - - - -	1262	10	4			
„ Garden - - - -	228	7	4			
„ Taxes and Insurance - -	28	1	7			
„ Clothing - - - -	604	0	7			
„ Miscellaneous - - - -	316	18	4			
„ Repairs - - - -	1052	5	6			
„ Additions and Improvements -	793	7	0			
„ Funerals and Removals - -	34	0	6			
				13417	17	7
„ Balance with Treasurer - -	3220	4	9			
„ „ „ House Steward - -	26	19	3			
„ Due from Unions, &c. £2477 17 8						
„ Less Liabilities - £2089 18 3	387	19	5	3635	3	5
				£17053	1	0

M. NICHOLLS,

*Clerk and Steward.**Examined, 8th March, 1886.*

G. C. CHERRY, CHAIRMAN.

ALBERT R. TULL.

COMPARATIVE PRICES OF PROVISIONS, &c.

	1884.		1885.				1886.
	4th Quarter.		1st Quarter.	2nd Quarter.	3rd Quarter.	4th Quarter.	1st Quarter.
Bacon, per cwt.	-	-	59/-	52/-	48/-	48/-	42/-
Butter, per cwt.	-	-	94/-	96/-	105/-	94/-	95/-
Beer, per barrel	-	-	22/- & 32/-	22/- & 32/-	22/- & 32/-	22/- & 32/-	22/- & 32/-
Cheese, per cwt.	-	-	55/-	48/- & 63/-	44/- & 63/-	38/- & 48/-	38/- & 47/-
Flour, per sack	-	-	26/-	24/-	25/-	24/-	23/3
Meat, per lb.	-	-	6½d.	6¼d.	6¾d.	6½d.	6d.
Sugar, per cwt.	-	-	14/6 & 19/-	12/6 & 14/6	18/- & 21/6	16/6 & 19/9	19/- & 19/6
Tea, per lb.	-	-	1/2 & 1/9	1/2½ & 1/9	1/1½ & 1/9	1/2½ & 1/10	1/2½ & 1/7
Coal, per ton	-	-	17/3, 16/3, & 18/6	17/3, 16/3, & 18/6	15/9, 15/8, & 18/6	15/9, 15/8, & 18/6	15/9, 15/8, & 18/6

SUMMARY OF COST PER HEAD PER WEEK.

	1st Quarter.	2nd Quarter.	3rd Quarter.	4th Quarter.	Average for the Year.
Salaries and Wages	s. 2 d. 6.91	s. 2 d. 6.91	s. 2 d. 5	s. 2 d. 6.73	s. 2 d. 6.5
Provisions	3 1.02	3 1.48	3 5.71	3 2.26	3 2.61
Necessaries	1 9.13	... 10.06	1 1.68	1 4.34	1 3.3
Wines and Spirits	... 1.38387863
Surgery	... 2.54	... 2.07	... 2.04	... 1.54	... 2.04
Furniture	... 1.8	... 4.83	... 0.77	... 4.37	... 2.94
Farm	1 1.32	... 11.17	... 9.51	1 3.92	1 0.48
Garden	... 2.13	... 2.02	... 2.48	... 2.39	... 2.25
Taxes and Insurance08267527
Clothing	... 9.01	... 8.6	... 4.86	... 1.57	... 6.
Miscellaneous	... 2.66	... 3.23	... 3.48	... 3.17	... 3.13
Less Farm and other Sales	10 1.98	9 3.01	8 11.53	9 7.82	9 6.15
Cost per head per week 3.74
Average number of Patients daily	463	461	469	470	466
Total Days of Residence	41633	41908	43117	43230	169888

DIETARY FOR PATIENTS.

	BREAKFAST.						DINNER.												SUPPER.										
	MALES.			FEMALES.			MALES.						FEMALES.						MALES.			FEMALES.							
	Bread.	Butter.	Tea.	Bread.	Butter.	Tea.	Uncooked Meat.	Bread.	Beer.	Potatoes.	Soup.	Meat Pie.	Irish Stew.	Suet or Plum Pudding.	Uncooked Meat.	Bread.	Beer.	Potatoes.	Soup.	Meat Pie.	Irish Stew.	Suet or Plum Pudding.	Bread.	Butter.	Tea.	Bread.	Butter.	Tea.	
Sunday -	8 Oz	1 Pnt	1 Pnt	6 Oz	1 Pnt	1 Pnt	7 Oz	3 Oz	1 Pnt	12 Oz	1 1/2 Pnt	7 Oz	2 Oz	1 Pnt	12 Oz	8 Oz	1 Pnt	1 Pnt	6 Oz	1 Pnt	1 Pnt
Monday -	8 Oz	1 Pnt	1 Pnt	6 Oz	1 Pnt	1 Pnt	3 Oz	4 Oz	1 Pnt	...	1 1/2 Pnt	3 Oz	4 Oz	1 Pnt	...	1	8 Oz	1 Pnt	1 Pnt	6 Oz	1 Pnt	1 Pnt
Tuesday -	8 Oz	1 Pnt	1 Pnt	6 Oz	1 Pnt	1 Pnt	7 Oz	3 Oz	1 Pnt	12 Oz	7 Oz	2 Oz	1 Pnt	12 Oz	8 Oz	1 Pnt	1 Pnt	6 Oz	1 Pnt	1 Pnt
Wednesday	8 Oz	1 Pnt	1 Pnt	6 Oz	1 Pnt	1 Pnt	4 Oz	3 Oz	1 Pnt	12 Oz	...	12	4 Oz	2 Oz	1 Pnt	12 Oz	...	12	8 Oz	1 Pnt	1 Pnt	6 Oz	1 Pnt	1 Pnt
Thursday	8 Oz	1 Pnt	1 Pnt	6 Oz	1 Pnt	1 Pnt	7 Oz	3 Oz	1 Pnt	12 Oz	1	...	7 Oz	2 Oz	1 Pnt	12 Oz	8 Oz	1 Pnt	1 Pnt	6 Oz	1 Pnt	1 Pnt
Friday -	8 Oz	1 Pnt	1 Pnt	6 Oz	1 Pnt	1 Pnt	4 Oz	3 Oz	1 Pnt	8	4 Oz	2 Oz	1 Pnt	8	1	...	7	8 Oz	1 Pnt	1 Pnt	6 Oz	1 Pnt	1 Pnt
Saturday -	56	2 1/2	7	42	2 1/2	7	36	22	3 1/2	44	1 1/2	12	1	8	36	21	3 1/2	44	1	12	1	7	56	2 1/2	7	42	2 1/2	7	7

N.B. — Scale per gall. for Tea, — 1 oz Tea, 4 oz. Sugar, 1 pt Milk.

" lb. for Plum Pudding, — 8 oz. Flour, 1 oz. Raisins, 1 oz. Treacle, 1 oz. Suet.

The Soup is made from Legs of Beef, Fresh Beef Bones, New Zealand Mutton, Peas, Carrots, Turnips, Onions, &c.

Patients employed on the land, in Workshops and Laundry, have 2 oz. Bread, 1 oz. Cheese, and 1/4 pt. of Beer, at 10 a.m., and 4 p.m.

Other Patients employed in the Wards, the same at 10 a.m., only.

Bacon is occasionally substituted for fresh Meat for Dinner.

The Sick are dieted at the discretion of the Medical Superintendent.

ARTICLES MADE UP, REPAIRED OR MARKED, AND OTHER
WORK DONE BY THE FEMALES IN THE ASYLUM, UNDER
THE SUPERVISION OF THE HOUSEKEEPER, DURING
THE YEAR 1885.

ARTICLES.				Made.	Marked.	Repaired.
Aprons.	Check and Print	-	-	208	320	66
"	Black	-	-	...	25	...
"	Harden	-	-	...	120	226
Bedgowns	-	-	-	124	117	211
Bibbs	-	-	-	...	14	47
Blankets	-	-	-	...	47	128
Bagatelle Covers	-	-	-	1	1	...
Butter Cloths.	Dairy	-	-	2	2	...
Caps.	Day and Night	-	-	43	68	42
Carpets	-	-	-	1
Chemises.	Linen	-	-	289	231	675
"	Flannel	-	-	26	58	206
"	Ticken	-	-	38	18	59
Counterpanes	-	-	-	...	54	90
Canvas Beds	-	-	-	4	4	...
"	Chemises	-	-	2	2	...
Drawers.	Flannel	-	-	85	136	756
"	Ticken	-	-	30
Dresses.	Print and Gingham	-	-	168	190	689
"	Check	-	-	13	30	86
"	Linsey	-	-	95	134	77
Dusters and Cloths	-	-	-	178	373	...
Handkerchiefs	-	-	-	384	419	8
Hoods	-	-	-	45	57	75
House Flannels	-	-	-	3,061
Iron-holders	-	-	-	124
Ironing Cloths	-	-	-	1	...	20
Jackets	-	-	-	...	170	...
Mangling Cloths	-	-	-	5	4	30
Mattress Cases and Ticks	-	-	-	26
Neckerchiefs	-	-	-	240
Petticoats, Jean	-	-	-	...	52	101
"	Linsey and Flannel	-	-	136	164	300
Pillow Cases	-	-	-	292	192	316
Pinafores	-	-	-	57	66	91
Pudding Cloths	-	-	-	58
Rugs, strong	-	-	-	40
Sheets	-	-	-	250	298	650
Shirts	-	-	-	306	314	1,577
"	Ticken	-	-	26
Shrouds	-	-	-	28
Stays.	Jean	-	-	...	160	112
Stockings & Socks.	Knitted (prs.)	-	-	61	300	6,784
Smocks	-	-	-	29
Table Cloths	-	-	-	40	52	87
Towels.	Huckaback	-	-	...	71	83
"	Tea, Round and Bath	-	-	214	260	161
Trousers	-	-	-	...	267	...
Vests.	Flannel	-	-	49	137	382
Waistcoats	-	-	-	...	131	...
Waterproofs	-	-	-	...	34	...
Window Blinds	-	-	-	29
Dresses.	Uniform	-	-	39	39	...
Aprons	-	-	-	39
Cuffs.	Pairs	-	-	...	75	...
Collars	-	-	-	...	92	...
TOTAL				6,705	5,298	14,316

GARDEN ACCOUNT, 1885.

Dr.	£	s.	d.	Cr.	£	s.	d.
To Value of Produce in Store, December, 1884 - -				By Supplies to House - -	68	11	10
" Labour (exclusive of Patients')	190	18	0	" Value of Produce in Store, December, 1885 - -	247	17	4
" Proportion of Tithes-	2	11	10		60	15	0
" Rates	1	14	4				
" Seeds and Plants - -	18	18	0				
" Tools and Repairs - -	6	12	8				
" Pea Sticks - -	3	2	6				
" Flower Pots - -	4	10	0				
Balance - -					11	13	2
					£308	12	4
					£308	12	4

M. NICHOLLS,
Clerk and Steward.

Examined, 8th March, 1886.
G. C. CHERRY, CHAIRMAN.
ALBERT R. TULL.

242