

The seventh annual report of the committee of management of the Metropolitan Imbecile Asylum, Caterham, Surrey : 1876-7.

Contributors

Metropolitan District Asylum at Caterham.

Cortis, William S.

Adam, James.

Ground, Joshua.

White, George.

Moseley, E. Emma.

Crickmay, William.

Publication/Creation

[London] : [Printed by Harrison & Sons], [1877]

Persistent URL

<https://wellcomecollection.org/works/f38vtuj8>

License and attribution

This work has been identified as being free of known restrictions under copyright law, including all related and neighbouring rights and is being made available under the Creative Commons, Public Domain Mark.

You can copy, modify, distribute and perform the work, even for commercial purposes, without asking permission.



Wellcome Collection
183 Euston Road
London NW1 2BE UK
T +44 (0)20 7611 8722
E library@wellcomecollection.org
<https://wellcomecollection.org>

Metropolitan Asylum District.

THE
SEVENTH ANNUAL REPORT
OF THE
COMMITTEE OF MANAGEMENT
OF THE
METROPOLITAN IMBECILE ASYLUM,
CATERHAM,
SURREY.

1876—7.

LONDON:
HARRISON & SONS, ST. MARTIN'S LANE
Printers in Ordinary to Her Majesty.

1877.

INDEX TO CONTENTS.

	PAGE
List of Committee of Management	3
Report of Committee	4—8
Statement showing—	
Cost per head of Maintenance of Patients during the Half-year ended 29th Sept., 1877, and the thirteen previous Half-years	} 9
Daily average number of Patients during same periods ..	
Prices of principal Articles of Provisions and Necessaries dur- ing same periods	
Diet Scale	10
Maintenance Account for the Half-year ended Lady Day, 1877 ..	11
Maintenance Account for the Half-year ended Michaelmas, 1877..	12
Medical Superintendent's Report	13—37
Steward's Report	38—42
Matron's Report.. .. .	43—48
Resident Engineer's Report	49—54
Statement Showing Staff at end of year	55

CATERHAM IMBECILE ASYLUM.

COMMITTEE OF MANAGEMENT.

*Appointed by the Board of Managers for one year from the
25th March, 1877.*

- WM. S. CORTIS, Esq., M.D., *Chairman*, 141, Kennington Park Road, S.E.
- J. W. BUTTERWORTH, Esq., 7, Fleet Street, E.C.
- J. HOBBS, Esq., The Limes, Canning Road, Addiscombe, Surrey.
- G. LOCKYER, Esq., 208, High Street, Deptford, S.E.
- J. OASTLER, Esq., J.P., Market Street, Bermondsey, S.E.
- J. OUTHWAITE, Esq., Tenby Lodge, Goulton Road, Clapton, N.E.
- B. POULTER, Esq., J.P., 30, Lee Park, Blackheath, S.E.
- M. SARSON, Esq., The Elms, Wandsworth Common, S.W.
- W. P. SMITHETT, Esq., 6, Highbury Crescent, N.
- S. STANDRING, Esq., 8 and 9, Finsbury Street, E.C.
- T. SYMONS, Esq., 169, King's Road, Chelsea, S.W.
- G. WARD, Esq., 18, Loughborough Park Road, Brixton, S.W.
-

- Ex-Officio.* { W. BREWER, Esq., M.D., J.P., *Chairman of the Board*,
21, George Street, Hanover Square, W.
- { E. H. GALSWORTHY, Esq., J.P., *Vice-Chairman of the Board*,
18, Upper Wimpole Street, W.
-

Clerk to the Board of Management—W. F. JEBB, Esq.

Clerk to the Committee of Management—Mr. W. R. FREETHY.

OFFICES OF THE MANAGERS,

No. 37, Norfolk Street, Strand, W.C.

SEVENTH ANNUAL REPORT
OF THE
COMMITTEE OF MANAGEMENT
FOR
CATERHAM IMBECILE ASYLUM.

26th October, 1877.

TO THE MANAGERS OF THE METROPOLITAN ASYLUM DISTRICT.

GENTLEMEN,

Your Committee now bring up the Annual Reports of the Officers of the Caterham Asylum, with the usual Statistical Tables. Those attached to the Report of the Medical Superintendent are :—

1. The number of Admissions, Discharges, and Deaths since the opening of the Asylum.
2. The number of Patients discharged recovered and improved during the same period.
3. Admissions, Discharges, and Deaths during the past year.
4. Number of Patients in the Asylum on the 30th September, 1877, with the Unions and Parishes to which they are chargeable.
5. The forms of the Mental Disease of the Patients admitted during the year, and
- 5*a*. Their Physical Condition.

6. Causes of Deaths.
 7. The Ages of Patients admitted, discharged, or died during the year.
 8. Length of Residence of Patients recovered or died during the year.
 - 9 and 10. Station in Life or Occupation of Male and Female Patients admitted.
 11. Summary of One Day's Reports.
- The meteorological observations have been continued.

The total number of Patients treated during the year is 2,286, and of fresh Admissions 371; 23 were discharged cured, and 4 improved, while 24 were removed to County Lunatic Asylums. The Deaths numbered 245, being a mortality of 10·7 per cent. on the number under treatment. The first paragraph of the Medical Superintendent's Report draws attention to the aged and extremely feeble condition of a large number of the cases admitted during the year. Your Committee have so often, in former Reports, dwelt upon this characteristic, that they feel it unnecessary on this occasion to do more than call attention to the facts as shown in Tables 5, 5*a*, and 7.

The highest number of Patients resident during the past year was 2,096, the lowest 1,988. The sudden admission of 167 Females from Hampstead, caused us to have at one time 1,255 Females, being an excess of 200 beyond our certified maximum. Although the Patients from Hampstead were admitted in the course of a week, they were received without much inconvenience. Fifty were accommodated in the detached Infirmary, which, fortunately, has not been required for its special purpose. The day-rooms added to the ordinary Infirmaries, were not taken into account by the Local Government Board in fixing the number of Patients to be received into this Institution, which permitted 60

to be received into this block without encroaching upon the cubic space officially allowed to each of these Patients. The remaining 90 were distributed among the other six blocks, to whose Inmates they made an addition of only 9 per cent. beyond the number recognised by the Local Government Board. The numbers on the Male side are still 90 below that for which the building is certified, notwithstanding the various Boards of Guardians have several times been invited to fill up the vacancies. This would seem to indicate that the accommodation required in the Metropolis for this class has been overtaken.

Of the 245 deaths, 121, or about 50 per cent., were of Patients over 60 years of age, 65 were over 70 years, whilst 13 were over 80 years of age. In one case only was an inquest necessary; the details are given in the Report of the Medical Superintendent. Again has neither mechanical restraint nor seclusion been used during the year, nor has there been any visitation of epidemic or contagious disease. To prevent the introduction of Smallpox during the recent epidemic, your Committee deemed it necessary for some time to restrict visiting to the friends of those Patients who were seriously ill. This restriction was removed some weeks ago; and during its continuance, additional amusements were provided for the Inmates, with more frequent country walks, and an occasional pic-nic. By these means the monotony of Asylum life was considerably alleviated. By discharges and deaths, the Females in the wards are now reduced to the normal numbers, most of the extra Patients being accommodated in the detached Infirmary.

The Medical Superintendent reports very favourably as to the good effects on both the mental and physical condition of Patients produced by the use of the Turkish bath, which has now been in daily use for some weeks. Upon the Female portion of the Staff

chiefly fell the additional labour entailed by the extra Patients. Besides the clothing required for these, they, in the month of January last, made up the clothing and bedding for the Deptford Hospital. Exclusive of this, the Female Patients and Attendants made for our own Institution 16,700 new articles of clothing, and repaired 206,212. Details are given in the interesting Report of the Matron, who also points out the additional expense in clothing the Patients, caused by their destructive habits. On the Female side alone no less than 1,712 articles of clothing, and 22 blankets were torn up and destroyed, notwithstanding all the vigilance of the attendants; 80,135 dozen articles have been washed during the year, which, at 6*d.* per dozen, would realise over £2,000. If to this be added the value of making and repairing the clothing, the total money value of the labour of the Female Patients will amount to £2,826 for the year.

From the Tables attached to the Steward's Report, it will be seen that in the Tailor's, Upholsterer's, and Shoemaker's Shops, work has been executed by the Male Patients to the value of £560, and the Farm has left a profit of £200 over and above the large quantity of work annually done for the Establishment.

In the Engineer's Department, a large amount of structural repairs and improvements has been carried out. The Turkish bath has been completed, as also has the substitution of water for earth closets in all the Female blocks. For details of the various works, the Managers are referred to the Engineer's Report.

Your Committee regret the loss of a useful Officer during the year in Inspector Stone, who, as reported at the time, died suddenly from Diseased Heart. He had occupied the post most satisfactorily from the first opening of the Asylum. The vacancy was filled by the promotion of the Head Attendant, who also had

held his position, to the satisfaction of your Committee, for the same period, while the post he vacated was also filled by promotion in the Establishment. These are the only changes during the year of any consequence in the Staff, who continue to discharge their duties to the satisfaction of your Committee.

Your Committee trust that the year which has just passed has not been without a fair share of that improvement in the Institution at which they are constantly aiming, and desire to thank the Managers for the support given them in carrying out their duties.

Signed, on behalf of the Committee,

WILLIAM S. CORTIS, M.D.,

Chairman.

STATEMENT showing the Cost per Head of the Maintenance of Patients, the Daily Average Number of Patients, and the Prices of the Principal Articles of Provisions and Necessaries, during the several Half-Years from the opening of the Asylum, on the 1st October, 1871, to the 29th September, 1877.

Description of Charge.	Half-Year ended 25 Mar., 1871.	Half-Year ended 30 Sept., 1871.	Half-Year ended 30 Mar., 1872.	Half-Year ended 5 Oct., 1872.	Half-Year ended 29 Mar., 1873.	Half-Year ended 4 Oct., 1873.	Half-Year ended 28 Mar., 1874.	Half-Year ended 3 Oct., 1874.	Half-Year ended 27 Mar., 1875.	Half-Year ended 2 Oct., 1875.	Half-Year ended 25 Mar., 1876.	Half-Year ended 30 Sept., 1876.	Half-Year ended 31 Mar., 1877.	Half-Year ended 29 Sept., 1877.
	s. d.	s. d.	s. d.	s. d.	s. d.	s. d.	s. d.	s. d.	s. d.	s. d.	s. d.	s. d.	s. d.	s. d.
For the Maintenance of Patients—Including Provisions and Clothing, Gas, Warming, Water, and other Necessaries ...	0 11½	0 9½	0 9	0 9½	0 9½	0 10	0 10	0 9	0 7½	0 7½	0 8½	0 8	0 7½	0 7½
For Salaries, Maintenance, and Uniforms of Officers ...	0 9	0 3½	0 3	0 3	0 3	0 2½	0 2½	0 2½	0 2½	0 2½	0 3½	0 3	0 3	0 3
For Medicines and other Charges (except Repayments of Principal of Loans with Interest, Furnitures, and Additions and Repairs to Buildings)...	0 1½	0 0½	0 0½	0 0½	0 0½	0 0½	0 0½	0 0½	0 0½	0 0½	0 0½	0 0½	0 0½	0 0½
Total Daily Rate ...	1 10	1 1½	1 0½	1 0½	1 1	1 1	1 1	1 0	1 0	1 0	1 1½	1 0½	1 0½	1 0½
Weekly Rate... ..	12 10	7 10½	7 1½	7 5½	7 7	7 7	7 7	7 0	7 0	7 0	8 0	7 5½	7 3½	7 3½
Daily Average Number of Patients	476½	1,461½	1,596½	1,644½	1,666½	1,667½	1,752½	1,846½	1,863½	1,831½	1,834½	1,868½	2,035½	1,999½
Description of Article.	£ s. d.	£ s. d.	£ s. d.	£ s. d.	£ s. d.	£ s. d.	£ s. d.	£ s. d.	£ s. d.	£ s. d.	£ s. d.	£ s. d.	£ s. d.	£ s. d.
Ox Beef } per lb. ...	0 0 7½	0 0 7½	0 0 7½	0 0 8	0 0 9	0 0 7½	0 0 7	0 0 7½	0 0 7	0 0 7	0 0 6½	0 0 6½	0 0 6½	0 0 6½
Mutton } per lb. ...	0 0 7½	0 0 7½	0 0 7½	0 0 8	0 0 9	0 0 7½	0 0 7	0 0 7½	0 0 7	0 0 7	0 0 6½	0 0 6½	0 0 6½	0 0 6½
Flour, Best Household, at per sack.	2 8 0	2 1 0	1 19 6*	2 0 0	2 4 6	2 5 0	2 6 0	2 4 9	1 12 9	1 10 0	1 15 6	1 13 3	1 13 6	1 16 0
Butter, at per cwt. ...	5 10 0	5 10 0	6 8 0	5 16 0	5 6 0	5 16 0	5 12 0	5 15 0	6 0 0	5 14 0	5 16 0	5 17 4	5 12 0	76/ & 96/
Cheese, at per cwt. ...	3 8 0	3 8 0	3 16 0	2 18 0	3 6 0	3 8 0	3 4 0	3 8 0	3 7 7	3 12 0	3 1 0	2 5 5	2 18 6	54/ & 81/ & 60/
Tea, at per lb. ...	0 1 6½	0 1 6½	0 1 7½	0 1 7½	0 1 7½	0 1 7½	0 1 7½	0 1 7½	0 1 7½	0 1 6½	0 1 6	0 1 5½	0 1 5½	1/3, 1/4, & 1/6
Sugar, Raw, at per cwt. ...	1 11 0	1 11 0	1 12 6	1 12 6	1 12 6	1 12 6	1 5 0	1 4 0	1 4 0	1 4 0	1 3 0	1 2 9	1 8 0	25, 3, 27, 6, 28, 6
Cocoa, at per cwt. ...	2 16 0	2 16 0	2 16 0	2 16 0	2 8 0	2 4 0	2 3 6	2 3 6	2 1 0	2 1 0	2 0 6	1 19 8	2 0 0	40/
Rice, at per cwt. ...	0 18 0	0 18 0	0 17 0	0 17 0	0 16 0	0 16 0	0 18 0	0 18 0	0 13 9	0 13 9	0 12 3	0 10 5	0 11 8	12/
Potatoes, at per ton ...	3 5 0	3 5 0	4 10 0	6 10 0	5 0 0	5 10 0	4 5 0	4 5 0	4 11 6	3 16 0	4 7 0	5 0 0	4 16 0	£5 10 & £7
Eggs, at per 100 of 120	0 7 6	0 7 6	0 6 9	0 6 9	0 10 6	0 9 6	0 8 6	0 8 6	0 8 6	0 8 6	0 8 6	0 8 6	0 8 6	8/6
Porter, at per barrel ...	1 6 0	1 6 0	1 5 6	1 5 6	1 5 6	1 5 6	1 5 6	1 5 6	1 5 6	1 5 6	1 5 6	1 5 6	1 5 6	25/6
Ale, at per barrel ...	1 12 0	1 12 0	1 9 0	1 9 0	1 9 0	1 9 0	1 9 0	1 9 0	1 9 0	1 9 0	1 9 0	1 9 0	1 9 0	29/
Soap, Yellow, at per ton	23 10 0	23 10 0	32 10 0	32 10 0	28 0 0	29 0 0	27 0 0	27 0 0	25 0 0	25 0 0	23 0 0	23 0 0	23 0 0	£29
House Coal, at per ton	0 18 7	0 18 7	0 19 3	0 19 3	1 13 3	1 7 9	1 7 9	1 7 9	1 7 9	23/8 & 23/11	23/8 & 23/11	22/5 & 22/7	22/7	21/8
Steam Coal, at per ton	0 17 0	0 17 0	1 12 3	1 5 6	1 5 6	1 5 6	1 5 6	1 3 8	1 3 8	22/4 & 22/7	22/7	20/11
Gas Coal, at per ton ...	0 17 5	0 17 5	0 18 6	0 18 6	1 15 0	1 3 9	1 3 9	1 3 9	23/9 and 25/	21/2 & 21/4	21/2 & 21/4	20/9	20/9	19/11

* From Michaelmas to Christmas.

† From Christmas to Lady Day.

CATERHAM ASYLUM.—DIETARY TABLE FOR THE PATIENTS.

	BREAKFAST.						DINNER.														TEA.							
	MALES.			FEMALES.			MALES.							FEMALES.							MALES.			FEMALES.				
	Bread.	Butter.	Tea or Cocoa.	Bread.	Butter.	Tea or Cocoa.	Pie (containing 4 ozs. of Meat). Meat (cooked, and free from Bone). Fish, cooked, free from heads, with 2 ozs. of melted butter. * Irish Stew. Vegetables or Rice.							Pie (containing 4 ozs. of Meat). Meat (cooked and free from bone). Fish, cooked, free from heads, with 2 ozs. of melted butter. † Soup. Currant Dumpling. Irish Stew. Vegetables or Rice.							Bread.	Butter.	Cheese.	Beer.	Tea.	Bread.	Butter.	Tea.
ozs.	oz.	pt.	ozs.	oz.	pt.	ozs.	ozs.	ozs.	pt.	ozs.	ozs.	pt.	ozs.	ozs.	ozs.	pt.	ozs.	ozs.	pt.	ozs.	ozs.	pt.	ozs.	ozs.	pt.	ozs.	ozs.	pt.
MONDAY	6	½	1	5	½	1	13	9	...	½	13	8	...	½	6	5	½	1	
TUESDAY	6	½	1	5	½	1	...	5	...	10	4	½	...	4	9	4	½	6	5	½	1	
WEDNESDAY	6	½	1	5	½	1	9	...	10	4	½	...	8	9	4	½	6	5	½	1	
THURSDAY	6	½	1	5	½	1	...	5	...	10	4	½	...	4	9	4	½	6	5	½	1	
FRIDAY	6	½	1	5	½	1	...	5	...	10	4	½	...	4	9	4	½	6	5	½	1	
SATURDAY	6	½	1	5	½	1	1	...	4	½	1	...	4	½	6	5	½	1
SUNDAY	6	½	1	5	½	1	...	5	...	10	4	½	...	4	9	4	½	6	5	½	1	

Male and Female Patients laboriously employed are allowed Bread and Cheese, and half-pint Beer at 11 A.M., and half-pint Beer at 4 P.M.
 * The Irish Stew is to be made with 3 ozs. Meat and the Liquor from the Meat of the previous day, 12 ozs. Potatoes and other vegetables, and 4 ozs. Dumpling for the Males, and 3 ozs. for the Females.
 † The Soup is to be made with 4 ozs. Meat and the Liquor from the Meat of the previous day. Peas, Rice, Scotch Barley, Herbs, &c.
 * In lieu of the ½ oz. of Butter daily, the Female Patients may be given an extra ounce of cooked Meat on each of the four meat days.

CATERHAM ASYLUM.

Statement showing the Cost of Maintenance of Patients during the Half-year ended Lady-day, 1877.

	£ s. d.		PARISH OR UNION.	No. of Days.	Maintenance in- cluding Clothing at 7½d. per day.		Funerals	TOTAL.
					£ s. d.	£ s. d.		
			Balance from Michaelmas	£ s. d. 140 11 8
Amount of Provisions consumed by Inmates as per Steward's Books—			City of London Union	6,163	199 0 3	1 1 0		
			Fullham	9,407	303 15 4	4 4 0		
			Greenwich	13,572	438 5 3	5 5 0		
			Hackney	520	16 15 10	..		
First Quarter	5,168	1 8	Holborn	62,881	2,030 10 8	15 15 0		
Second ditto	5,225	17 2	Lewisham	2,708	87 8 11	1 1 0		
			Mile End Old Town, Hamlet	1,915	61 16 10	..		
		10,393 18 10	Poplar Union	1,039	33 11 0	..		
Amount of Necessaries consumed by Inmates as per Steward's Books—			St. George's Union	27,161	877 1 6	7 7 0		
			St. Giles and St. George, Bloomsbury, Parish	13,636	440 6 7	5 5 0		
			St. Giles, Camberwell, Parish	20,825	672 9 6	6 6 0		
First Quarter	119	2 6	St. John, Hampstead	764	24 13 5	1 1 0		
Second ditto	117	16 5	St. Leonard, Shoreditch	1,753	56 12 2	1 1 0		
			St. Luke, Chelsea	16,323	527 1 11	4 4 0		
		236 18 11	St. Mary, Paddington	311	10 0 10	..		
			St. Marylebone	4,151	134 0 10	6 6 0		
From Cash Account			St. Mary, Lambeth	47,805	1,543 14 1	13 13 0		
		4 14 3	St. Mary, Islington	2,649	85 10 10	2 2 0		
			St. Mary Abbots, Kensington, Parish ..	891	28 17 5	..		
Value of Clothing expended			St. Matthew, Bethnal Green	703	22 14 0	..		
		1,567 1 1	St. Pancras	1,437	46 8 1	..		
			St. Olave's Union	33,141	1,070 3 7	7 7 0		
Cost of Funerals			St. Saviour's	42,967	1,387 9 7	11 11 0		
		112 7 0	Strand	12,820	413 19 7	6 6 0		
			Stepney	465	15 0 4	..		
			Wandsworth and Clapham Union	18,836	608 4 11	5 5 0		
			Whitechapel Union	1,838	59 7 1	1 1 0		
			Woolwich	10,869	350 19 7	2 2 0		
			Westminster	12,943	417 19 0	4 4 0		
			Balance	370,496	11,963 18 8	112 7 0		12,076 5 8
					98 2 9
TOTAL		£12,315 0 1	Total		£12,315 0 1

CATERHAM ASYLUM.

Statement showing the Cost of Maintenance of Patients during the Half-year ended 29th September, 1877.

	£ s. d.	£ s. d.	PARISH OR UNION.	No. of Days.	Maintenance including Clothing, at 7 ¹ / ₂ d. per day.	Funerals.	TOTAL.
To Balance brought forward	98 2 9					
Amount of Provisions consumed by Inmates, as per Steward's Books—			By amount received by sale of Kitchen Stuff	..	£ s. d.	£ s. d.	£ s. d.
First Quarter	4,906 15 2		Profit on Farm for the year	21 7 7
Second ditto	5,067 3 2			200 5 0
		9,973 18 4	City of London Union	5,788	186 18 1	2 2 0	
Amount of Necessaries consumed by Inmates, as per Steward's Books—			Fulham	8,728	281 16 10	5 5 0	
First Quarter	121 7 7		Greenwich	13,612	439 11 1	3 3 0	
Second ditto	123 10 2		Hackney	846	27 6 4	..	
		244 17 9	Holborn	61,802	1,995 13 10	9 9 0	
From Cash Account	1 5 3	Lewisham	2,619	84 11 5	1 1 0	
Value of Clothing expended	1,577 4 7	Mile End Old Town, Hamlet	2,002	64 13 0	..	
Cost of Funerals	97 13 0	Poplar Union	947	30 11 8	1 1 0	
Balance	77 5 11	St. George's Union	26,465	854 11 11	6 6 0	
			St. Giles and St. George, Bloomsbury, Parish	12,521	404 6 6	6 6 0	
			St. Giles, Camberwell, Parish	20,571	664 5 5	3 3 0	
			St. John, Hampstead	728	23 10 2	..	
			St. Leonard, Shoreditch	2,186	70 11 10	..	
			St. Luke, Chelsea	16,137	521 1 10	5 5 0	
			St. Mary, Paddington	364	11 15 1	..	
			St. Marylebone	3,369	108 15 10	1 1 0	
			St. Mary, Lambeth	48,951	1,580 14 2	10 10 0	
			St. Mary, Islington	2,319	74 17 8	2 2 0	
			St. Mary Abbots, Kensington, Parish	1,096	35 7 10	..	
			St. Matthew, Bethnal Green	728	23 10 2	..	
			St. Pancras	2,547	82 5 0	2 2 0	
			St. Olave's Union	32,237	1,040 19 8	3 3 0	
			St. Saviour's	42,107	1,359 14 1	11 11 0	
			Strand	11,876	383 9 11	4 4 0	
			Stepney	546	17 12 7	..	
			Wandsworth and Clapham Union	17,891	577 14 8	7 7 0	
			Whitechapel Union	1,689	54 10 10	1 1 0	
			Woolwich	10,350	334 4 4	6 6 0	
			Westminster	12,883	416 0 3	5 5 0	
				363,905	11,751 2 0	97 13 0	11,848 15 0
Total	£12,070 7 7	Total	£12,070 7 7

R E P O R T
OF THE
MEDICAL SUPERINTENDENT.

TO THE CHAIRMAN AND MANAGERS OF THE METROPOLITAN
DISTRICT ASYLUM, CATERHAM.

Caterham Asylum,
October 1, 1877.

GENTLEMEN,

I have the honour to present a Medical Report of the Asylum for the year ending September 30th, with statistics similar to those furnished in former Annual Reports.

It appears to me desirable to draw attention to the physical and bodily condition of the Patients admitted during this period, as well as to their mental state, and as a means of showing these clearly and concisely, I have endeavoured to tabulate the results I have arrived at after close investigation. *See Table No. 5a.* I may add that the Infirmaries, although supplemented by three ordinary Blocks for the sick and feeble, are wholly inadequate to the demands made upon them by the mass of debility continuously received. An impression seems unfortunately to prevail amongst many of those entrusted with the duty of remitting Patients from Workhouses to the Asylum, that worn-out old age, debility, and helplessness of all kinds, are "Imbecility;" persons in those conditions are accordingly sent; that this practice leads to much

hardship, I may almost say cruelty, I need hardly observe, for a lengthened journey is necessary to reach the Asylum, and there is consequent removal from friends; it would certainly appear more humane to leave such cases as those alluded to to die in the Workhouse.

Insanity, whether in its acute or chronic stage, Idiocy, or Imbecility, are diseases not difficult to recognise; and I would remark that there is as much necessity for an accurate diagnosis being made before consigning a Patient to a chronic Asylum, as to any other, for the inmates of these are, to all intents and purposes, considered as of unsound mind, and their treatment differs in no essential respect from that of County Asylums.

It will be gathered from the foregoing remarks, that the mental symptoms in many cases admitted, are such as cannot, with strict accuracy, admit of their being classified under the usual headings of mental disease; they are accordingly classed with those to which they are most nearly allied, in Table No. 5.

TABLE 1.—Showing number of Patients discharged Recovered and Improved since Opening of Asylum.

Periods.	Recovered.			Improved.		
	Males.	Females.	Total.	Males.	Females.	Total.
	From 29th Sept., 1870, to 30th Sept., 1871 ..	4	7	11	6	6
From 1st Oct., 1871, to 30th Sept., 1872 ..	19	13	32	29	22	51
" " " " 1872 ..	9	7	16	2	4	6
" " " " 1873 ..	31	30	61	5	0	5
" " " " 1874 ..	19	9	28	3	2	5
" " " " 1875 ..	13	9	22	2	2	4
" " " " 1876 ..	7	16	23	1	0	1
	102	91	193	48	36	84
	48	36	84			
Total Recovered and Improved ..	150	127	277			

TABLE 2.—Showing the Admissions, Discharges, and Deaths, from 29th September, 1870, to 30th September, 1877.

Periods.	Admissions.			Discharges.			Deaths.		
	Males.	Females.	Total.	Males.	Females.	Total.	Males.	Females.	Total.
From 29 Sept., 1870, to 30 Sept., 1871	775	1,027	1,802	23	19	42	81	79	160
" 1 Oct., 1871	271	177	448	70	43	113	146	123	269
" 1 " 1872	145	95	240	37	21	58	113	74	187
" 1 " 1873	265	239	504	69	39	108	98	94	192
" 1 " 1874	260	226	486	126	64	190	133	161	294
" 1 " 1875	196	188	384	57	41	98	128	110	238
" 1 " 1876	191	180	371	24	29	53	134	111	245
	<u>2,103</u>	<u>2,132</u>	<u>4,235</u>	<u>406</u>	<u>256</u>	<u>662</u>	<u>833</u>	<u>752</u>	<u>1,585</u>
Total under treatment on September 30, 1877				..	Males ..	864			
" " " "					Females ..	1,124			
						<u>1,988</u>			
Total admissions..	..	Males.	Females.	Total.					
Deduct discharges and deaths	1,239	1,008	2,247	4,235					
		<u>864</u>	<u>1,124</u>	<u>1,988</u>					

On the 1st October, 1876, the number of Patients in the Asylum was—

Males.		Females.		Total.
831	..	1,084	..	1,915

Since that time there have been admitted—

Males.		Females.		Total.
191	..	180	..	371

Giving a total under treatment of—

Males.		Females.		Total.
1,022	..	1,264	..	2,286

Of this number, 19, viz., 9 Males and 10 Females, have been discharged by direction of the Medical Superintendent, for removal to County Asylums, the nature of their malady leading to, or threatening such violent acts as rendered them unfit cases for this Asylum; five others also, 4 Men and 1 Woman, were removed at the suggestion of the Commissioners in Lunacy, to the County Asylums.

Seven Men and 16 Women recovered, being one more than last year; and four, 3 Men and 1 Woman, were sufficiently improved to be taken care of by their friends.

One Man and one Woman escaped, and were not retaken.

134 Men, and 111 Women died, making a total of 245 deaths, 7 more than last year, or 10·7 per cent. on the total number under treatment.

The causes of death will be found enumerated in Table 6,

by which it will be seen that death was due to the natural decay of old age in 36 cases; to cerebral disease in 102 cases; to cardiac in 4; to pulmonary in 74; to abdominal in 20; to diseases primarily affecting the integuments in 8 cases, and in 1 case an inquest was held, under the following circumstances, which are taken from the official diary.

W. L——, a paralysed Patient, admitted on the 1st August, 1876, was found at dinner time on the 18th December, to have a piece of pork tightly impacted in the glottis; the Assistant Medical Officer of the male side, and the Medical Superintendent, at once rendered such assistance as was possible under the circumstances, removing the impacted food, performing tracheotomy and the other usual remedies, which were persevered in for a considerable period, but the Patient had become so much exhausted that he soon afterwards sank.

The inquest was held before the Coroner for East Surrey, on the 22nd December, and a verdict of "Accidental death from impaction of meat in the throat," returned.

Deducting the discharges and deaths from the numbers under treatment during the year, the numbers left on the books of the Asylum last night were:—

Males.		Females.		Total.
864	..	1,124	..	1,988

The daily average number resident has been 2,012, compared with 1,840 last year.

The highest number resident on any one day was 2,096, the lowest 1,908.

TABLE 3.—*Showing the Admissions, Discharges, and Deaths, from 1st October, 1876, to 30th September, 1877.*

	Males.	Females.	Total.	Males.	Females.	Total.	Males.	Females.	Total.
Number of Patients in Asylum on 1st Oct., 1876	831	1,084	1,915			
Admitted since	191	180	371			
Total under treatment	1,022	1,264	2,286			
Discharged—Not fit cases	9	10	19						
" " at the suggestion of	4	1	5						
the Lunacy Commis-									
sioners	7	16	23						
" Recovered	3	1	4						
" Improved, to care of friends	1	1	2						
" Escaped	24	29	53						
Died	134	111	245	158	140	298			
Number resident on 30th September, 1877	864	1,124	1,988			
Average number resident
		2,012							

TABLE 4.—Showing the number of Patients in the Asylum on the 30th of September, 1877, with the Unions and Parishes to which they are chargeable.

UNION OR PARISH.	Number of Patients.			Total.
	Males.	Females.		
City of London Union ..	14	18		32
Fulham Union ..	20	26		46
Greenwich Union ..	30	42		72
Hackney Union ..	5	1		6
Holborn Union ..	165	177		342
Lewisham Union ..	5	8		13
Poplar Union ..	2	3		5
Stepney Union	3		3
Strand Union ..	20	44		64
St. George's Union ..	56	86		142
St. Olave's Union ..	72	104		176
St. Saviour's Union ..	101	137		238
Wandsworth and Clapham Union ..	44	50		94
Westminster Union ..	48	26		69
Whitechapel Union ..	3	6		9
Woolwich Union ..	23	31		54
St. Giles, Camberwell ..	56	61		117
St. Giles and St. George, Bloomsbury ..	24	45		69
St. John, Hampstead ..	1	3		4
St. Leonard, Shoreditch ..	4	9		13
St. Luke, Chelsea ..	35	51		86
St. Mary, Islington ..	7	5		12
St. Mary Abbots, Kensington ..	2	5		7
St. Mary, Lambeth ..	111	152		263
St. Marylebone ..	7	11		18
St. Matthew, Bethnal Green ..	3	1		4
St. Pancras ..	10	7		17
Hamlet of Mile End, Old Town ..	1	10		11
St. Mary, Paddington	2		2
Totals	864	1,124		1,988

TABLE 5.—Classifying, as nearly as possible under the usual denominations, the Mental Condition of the Patients admitted from 1st October, 1876, to 30th September, 1877.

	Males.	Females.	Total.
Mania	0	0	0
Mania, Chronic.. .. .	28	28	56
Mania and General Paresis	27	0	27
Mania and Epilepsy	16	5	21
Melancholia	0	2	2
Melancholia (Chronic).. .. .	3	0	3
Dementia	17	59	76
Dementia and General Paresis	25	5	30
Dementia and Epilepsy	13	22	35
Senile Dementia	35	33	68
Idiotcy	5	0	5
Imbecility	19	26	45
Totals	188	180	368

TABLÉ 5a. — Showing the Physical and Bodily Condition of Patients, Male and Female, admitted from the 1st October, 1876, to the 30th September, 1877.

Physical and Bodily Condition.	Males.	Females.	Total.
Senile	24	18	42
Senile with Extreme Debility	25	20	45
Paralysed	27	7	34
Paralysed with Extreme Debility	68	4	72
Epileptic	24	27	51
Epileptic with Debility	10	102	112
Labouring under serious Chest Disease	6	1	7
Labouring under serious Abdominal Disease	4	1	5
Totals	188	180	368

TABLE 6.—Showing the Causes of Death from the 1st October, 1876, to the 30th of September, 1877.

Cause of Death.		Males.	Females.	Total.
Senile Decay	20	16	36
CEREBRAL.				
Paralytic Exhaustion	40	14	54
General Paresis of Insane	13	..	13
Epilepsy	1	2	3
" with Exhaustion	16	13	29
Melancholia, with Exhaustion	1	0	1
Dementia, Marasmus, Exhaustion	2	2
		71	31	102
CARDIAC.				
Syncope with Dementia	1	1	2
Morbus Cordis with Senility	1	1
Aortic Valvular Disease (Embolism and Syncope)	1	0	1
		2	2	4

TABLE 6 (continued).—Showing the Causes of Death, from the 1st October, 1876, to the 30th September, 1877.

Cause of Death.		Males.	Females.	Total.
PULMONARY.				
Phthisis-pulmonalis with Exhaustion	..	13	8	21
"	Hæmoptysis ..	1	1	2
"	Hæmorrhag. Alvi ..	1	..	1
"	Emesis and Exhaustion ..	1	..	1
"	Diarrhoea ..	2	2	4
"	Epilepsy and Exhaustion ..	1	2	3
"	Mania and Exhaustion ..	1	..	1
Bronchitis, Exhaustion	..	4	16	20
"	with Epilepsy	2	2
"	Senility ..	2	8	10
"	Chronic, with Emphysæma ..	1	1	2
Broncho-pneumonia with Exhaustion	..	2	3	5
Pleuro-pneumonia	1	1
Gangrene, Pulmonary, with Epilepsy	1	1
		29	45	74

TABLE 6 (continued).—Showing the Causes of Death, from the 1st October, 1876, to the 30th September, 1877.

Cause of Death.		Males.	Females.	Total.
ABDOMINAL.				
Diarrhoea, Exhaustion	2	3	5
" with Syncope	1	1	2
" Epileptic Exhaustion	1	..	1
" Marasmus	1	..	1
" Senility	1	1
" Mania and Exhaustion	1	1
" Paralysis	1	..	1
Cancer, Ventric	1	..	1
" Uteri	1	..	1
" Epithelial, Exhaustion	1	1	2
Morbus Brightii	1	..	1
" Hepatic	1	1
Icterus with Senility	1	1
Nephritis with Anasarca	1	1
Ascites	1	1
		8	12	20

TABLE 6 (continued).—Showing the Causes of Death, from the 1st October, 1876, to the 30th September, 1877,

Cause of Death.	Males.	Females.	Total.
TEGUMENTARY,			
Erysipelas with Dementia	1	1
" Mania ..	1	1	2
" Senility	1	1
Carbuncle with Mania ..	1	1	2
Abscess, Senility, Exhaustion ..	1	1	2
	3	5	8
Inquest. Impaction of Food in Throat ..	1	..	1
<i>Summary of Table No. 6, showing that Death has been due to—</i>			
Senile Decay ..	20	16	36
Cerebral Disease ..	71	31	102
Cardiac ..	2	2	4
Pulmonary ..	29	45	74
Abdominal ..	8	12	20
Tegumentary ..	3	5	8
Inquest. Impaction of Food in Throat ..	1	..	1
TOTAL ..	134	111	245

TABLE 7.—Showing the Ages of Patients Admitted, Discharged, and who have Died, from 1st October, 1876, to the 30th September, 1877.

Ages.	Admissions.			Discharges.						Deaths.							
	Males.	Females.	Total.	Recovered.			Other Causes.			Males.	Females.	Total.					
				Males.	Females.	Total.	Males.	Females.	Total.								
Under 5 years
From 5 to 10 years
" 10 " 15
" 15 " 20	26	13	39	3	2	5	4	2	4	1	6	3	3	6	3	6	6
" 20 " 30	32	24	56	2	4	6	4	1	4	1	5	1	7	5	7	24	7
" 30 " 40	37	30	67	..	2	2	5	5	10	3	10	9	19	19	9	28	19
" 40 " 50	16	32	48	..	4	4	1	3	4	3	4	16	19	19	16	35	19
" 50 " 60	36	39	75	..	3	3	3	1	4	1	4	7	24	24	7	31	24
" 60 " 70	26	23	49	1	1	2	..	1	1	1	1	30	26	26	30	56	26
" 70 " 80	18	14	32	1	..	1	28	24	24	28	52	24
" 80 " 90	..	3	3	11	2	2	11	13	2
" 90 upwards	..	2	2
Ages unknown
	191	180	371	7	16	23	17	13	30	134	111	245					

TABLE 8.—Showing the length of residence of Patients discharged recovered, and of those who have died between the 1st October, 1876, and the 30th September, 1877.

Length of Residence.		Discharged Recovered.			Died.		
		Males.	Females.	Total.	Males.	Females.	Total.
Under 1 month	5	1	6
From 1 to 3 months	..	3	1	4	12	5	17
" " 6	..	1	..	1	17	13	30
" " 9	2	2	9	11	20
" " 12	..	1	3	5	10	15	25
" " 18	4	4	11	5	16
" " 24	..	1	..	1	11	6	17
" " 30	2	2	11	7	18
" " 36	7	4	11
" " 42	1	1	6	4	10
" " 48	3	3	9
" " 54	2	2	3	2	5
" " 60	1	1	3	3	6
" " 66	4	2	6
" " 72	9	10	19
" " 78	..	1	..	1	11	18	29
" " 84	2	2	4
TOTALS	..	7	16	24	134	111	245

TABLE 9.—Showing the Occupation of the Male Patients admitted from the 1st October, 1876, to the 30th September, 1877.

Occupation.	No.	Occupation.	No.
No Occupation	49	Lecturer	1
Artist	1	Leather Dresser	1
Baker	2	Merchant	1
Bookbinder	1	Perfumer	1
Boot Closer	1	Printer	2
Bricklayer	1	Plasterer	2
Birdcage Maker	1	Plumber	1
Barman	1	Potman	2
Clerk	12	Porter	5
Cook	1	Shoebblack	1
Chair Maker	2	Street Musician	1
Cabinet Maker	3	Singer	1
Cabman	3	Shoemaker	8
Carpenter	4	Soldier (discharged)	4
Coachman	2	Servant	1
Comb Maker	1	Seaman	2
Compositor	2	Shipping Agent	1
Carman	1	Sign Writer	1
Coach Maker	2	Skinner	1
Dentist	1	Surgeon	1
Fisherman	1	Tailor	6
French Polisher	1	Upholsterer	1
Groom	1	Wheelwright	1
Gardener	1	Waterman	1
Hair Dresser	1		
Labourer	44		
Licensed Victualler	1	Total ..	188

TABLE 10.—Showing the Occupation of the Female Patients admitted from the 1st October, 1876, to the 30th September, 1877.

Occupation.	No.	Occupation.	No.
No Occupation	130	Governess	2
Domestic Servant	16	Housekeeper	1
Book Folder	3	Silk Winder	1
Hawker	2	Bonnet Maker	2
Charwoman	6	Laundrywoman	1
Seamstress	2	Hat Trimmer	1
Washerwoman	1	Comb Maker	1
Needlewoman	4	Paste Worker	1
Mangler	1	Pianist	1
Dressmaker	3		
Pocket Book Maker	1	Total	180

CATERHAM ASYLUM.

SUMMARY OF DAY REPORTS.

To the Medical Superintendent,
Male Side.

(TABLE 11.)

29th September, 1877.

Block.	No. of Patients.	At Chapel.		No. Employed.	Sick and taking Medicine.	Wet and Dirty.		Admitted.	Discharged.	Dead.	Breakfast Time.	Time of Dinner, and what issued.	Tea Time.
		A.M.	P.M.			6 A.M. to 8 P.M.	8 P.M. to 6 A.M.						
A 1	32			6	9	7	11	A.M. 8.30	1 P.M. { Roast Mutton and Cabbage.	P.M. } 5.30
A 2	32			6	19	4	10	do.	..
A 3	33			6	19	16	8	do.	..
B	160			83	..	4	6	{ Meat Pie and Cabbage.	..
C 1	53			11	24	9	8	do.	..
C 2	53			9	10	8	9	do.	..
C 3	154			8	15	13	8	do.	..
D	157			58	..	3	10	do.	..
E	148			57	4	1	12	do.	..
F	143			96	4	1	5	do.	..
R H	do.	..
TOTALS..	865	340	104	66	87

Departments where Patients are Employed.	Nos. Employed.	Block.	Special Incidents during the Day.
Blocks ..	115	..	One Attendant on Annual Leave.
Centre and Hall ..	6	..	One Attendant on leave of Absence—Day out.
Coaling ..	5	..	Tailor Attendant at work with Patients.
Stores ..	4	..	8 Attendants at Football with Patients in the afternoon.
Kitchen ..	15	..	36 Patients out walking from 2 to 4.30 p.m., in care of Artisans.
Bakehouse ..	4	..	
Mess Room ..	2	..	<i>Attendants' Dinners—</i>
Tailor's Shop ..	13	..	Roast Beef and Potatoes.
Shoemaker's Shop ..	15	..	
Upholsterer's Shop ..	37	..	
Painter's Shop ..	4	..	
Grounds ..	79	..	12 Patients sleeping in Single Rooms.
Laundry ..	11	..	Barley Water issued in lieu of Arrowroot.
Gashouse ..	4	..	Patients in F. Bathed and Examined.
Enginehouse ..	2	..	
Attending to Earth Closets ..	8	..	<i>Night Attendants, on Duty—</i>
With Tailor Attendant ..	12	..	1st Division, Infirmary, Epileptic Patients.
Clerk's Office, Lunches ..	4	..	2nd " " Senile do.
		..	3rd " " Ordinary.
	340		
	30	Left in.	
TOTAL ..	370	Capable of Employment.	

CATERHAM ASYLUM.

SUMMARY OF DAY REPORTS.

To the Medical Superintendent,
Female Side.

(TABLE 11.)

Saturday, 29th September, 1877.

Block.	No. of Patients.		At Chapel.		Nos. Employed.	Sick and taking Medicine.	Wet and Dirty.		Admitted.	Discharged.	Dead.	Breakfast Time.	Time of Dinner, and what Issued.	Tea Time.
	A.M.	P.M.	A.M.	P.M.			6 A.M. to 8 P.M.	8 P.M. to 6 A.M.						
A 1	41				37	15	66	8	A.M. 8.15	P.M. 1.30	P.M. 5.15
A 2	42				9	"	"	"
A 3	42				14	"	"	"
B ..	159				79	2	20	15	"	"	"
C ..	160				64	3	20	7	"	"	"
D 1	160				39	40	60	8	"	"	"
D 2	12	"	"	"
D 3	12	"	"	"
E ..	156				53	2	49	15	"	"	"
F 1	159				30	40	90	10	"	"	"
F 2	12	"	"	"
F 3	14	"	"	"
G ..	155				97	4	16	14	"	"	"
Detached Block	50				23	4	5	"	"	"
TOTALS	1,124				422	110	336	149

Departments where Patients are Employed.	Nos. Employed.	Block.	Special Incidents during the day.
Laundry	66	..	Twelve Patients sleeping in single rooms.
Work Room	32	..	Patient, Mason, sleeping in ticken dress.
Helpers in Blocks	194	..	Twenty-seven Patients out walking in charge of Nurses.
Needlework in do.	106	..	One Nurse left the Asylum this day.
Centre	3	..	One Nurse, off duty, sick.
Mess Room	8	..	Three Nurses on leave for the day.
Kitchen	6	..	One Nurse on annual leave.
Medical Superintendent's Residence	2	..	<i>Attendants' Dinners</i> —
Steward's Residence.. .. .	1	..	Baked Beef with Potatoes.
Chaplain's	1	..	<i>Night Attendants</i> —
Matron's	1	..	1st Division, for Infirmary.
Engineer's	2	..	2nd .. Epileptic Patients.
TOTAL	422	..	3rd .. Senile and Ordinary Patients
			4th

In October, 1876, the Smallpox Epidemic in the Metropolis had acquired such dimensions, that it became necessary to remove from the Hampstead Asylum its Insane Inmates, in order to make room for Smallpox Patients. Accordingly it was arranged by the Managers, that one half of them should be sent to the Leavesden Asylum, and the remainder into this. Although this unexpected influx of Patients, who were mostly Females, caused the Female side to considerably exceed its nominal numbers, yet the available space in the Blocks was such that they were all accommodated without undue crowding; and a small addition to the Female Staff served to meet the additional nursing requirements.

The effect of that reception, however, has been to stop the admission of Female Patients from other places, throughout the remainder of the year, the Managers having decided to admit no more until the standard numbers were once more attained by the deaths and discharges of those already resident.

Another effect of the outbreak of the Epidemic, was the necessity it incurred of stopping all visiting to Patients in the Asylum, the only exception being made in cases of extreme illness; this necessary restriction was after a time severely felt by the Patients and their relatives, and discontent began to prevail on all sides; but it is now happily over, for the late great diminution in the number of cases of Smallpox has admitted of visiting being resumed, and visitors once more flock in in unusually large numbers.

Everything possible was done during this period to make things cheerful within the Asylum, and entertainments of various kinds were being constantly organised to relieve depression and monotony; the result was that once or twice in each week the

Patients had a dance or theatricals or concerts, or out-door sports, or punch and judy shows, or Christy minstrel entertainments, or other and various amusements to look forward to and enjoy.

Sympathy, for which we were grateful, was also shown for our isolated condition by our neighbours, who with much labour and self-sacrifice got up amateur theatricals on several occasions, and presented them on the Asylum stage when ready; and with the variety thus given to their entertainments, the Patients were much delighted; to another neighbour, a gentleman of great artistic ability, we were indebted for elaborately painted scenery, which added much to the effect of the pieces produced.

On the 22nd March, the Inspector of the Male side, Mr. Henry Stone, who had been ailing from time to time for a considerable period, died suddenly; his illness commenced some years ago in an attack of Acute Rheumatism, which left behind various organic complications; he had held the same office in the Asylum from its opening, and the Managers showed their appreciation of the manner in which he had performed his duties, by liberality to his widow after his death.

Mr. John Cawthorne, who had been Head Attendant during the same period, succeeded him in the office of Inspector.

The Asylum was visited by the Commissioners in Lunacy, on October 10th and 11th, 1876. They spent those days in a minute examination of every department, and their report of the inspection was a very favourable one. The Local Government Inspectors have also visited several times throughout the year, expressing satisfaction on each occasion.

On the 12th January, the Ball annually given by the Managers to the Attendants and Servants took place, and passed off successfully.

For some time past the Turkish Bath has been in daily use, Male and Female Patients going on alternate days; good results have already followed its application; several Patients have had their symptoms much ameliorated, the habits of others have, improved, whilst some have undergone decided mental and physical improvement; with a more extended operation still better results are looked for.

With infectious diseases of various kinds around, we have happily escaped their visitation, no epidemic or contagious disease having found its way amongst us.

Neither seclusion nor mechanical restraint have been used in the treatment of the Patients.

An uneventful year in the history of the Asylum, prevents the opportunity of extending my report to a greater length at this time. I have received in the performance of my own duties much cordial help from the Asylum Staff generally. My earnest desire continues to promote good feeling throughout this large Institution, and with it a loyal, sincere and faithful performance of duty.

I have the honour to be,

GENTLEMEN,

Your obedient Servant,

(Signed) JAMES ADAM, M.D.,

Medical Superintendent.

STEWARD'S REPORT.

1st October, 1877.

MR. CHAIRMAN AND GENTLEMEN,

There is very little fresh to report in the Administrative Department during the past year.

The wet winter and spring (though to a certain extent damaging the crops throughout the country) on these hills had a beneficial effect, in supplying us with a good supply of grass and fodder, articles much needed for our stock, straw having become during the winter as high as 58s. per load.

The number of inmates employed in the grounds, and for work, has not been so great as in previous years. This, though a subject of remark in my last year's Report, is still more applicable during the past year, there having been scarcely half-a-dozen persons recently admitted found suitable for employment in any of the branches of work open to them in the Asylum.

The various accounts are laid before you, and will be found somewhat similar to previous years.

In many instances prices remain the same, and in those where variations have occurred, these are so slight as not to call for any special remark.

Coal has now nearly got to the price we formerly obtained it when we first opened the Institution, seven years ago.

The Smallpox epidemic in London having prevented the inmates receiving visits from their friends, a larger supply of games and other sources of recreation has been provided them during the past year, which, to a certain extent, has compensated for this deprivation. It is a source of great pleasure to those who are in any way instrumental in providing amusement for the poor people, to witness the gratification they exhibit at the smallest matter that is arranged for their enjoyment.

The whole of the Officers and Servants in the Administrative Department have conducted themselves with propriety, and I have to thank the Committee for their continued approval of my conduct.

I am, MR. CHAIRMAN AND GENTLEMEN,

Your obedient Servant,

(Signed) GEORGE WHITE,
Steward.

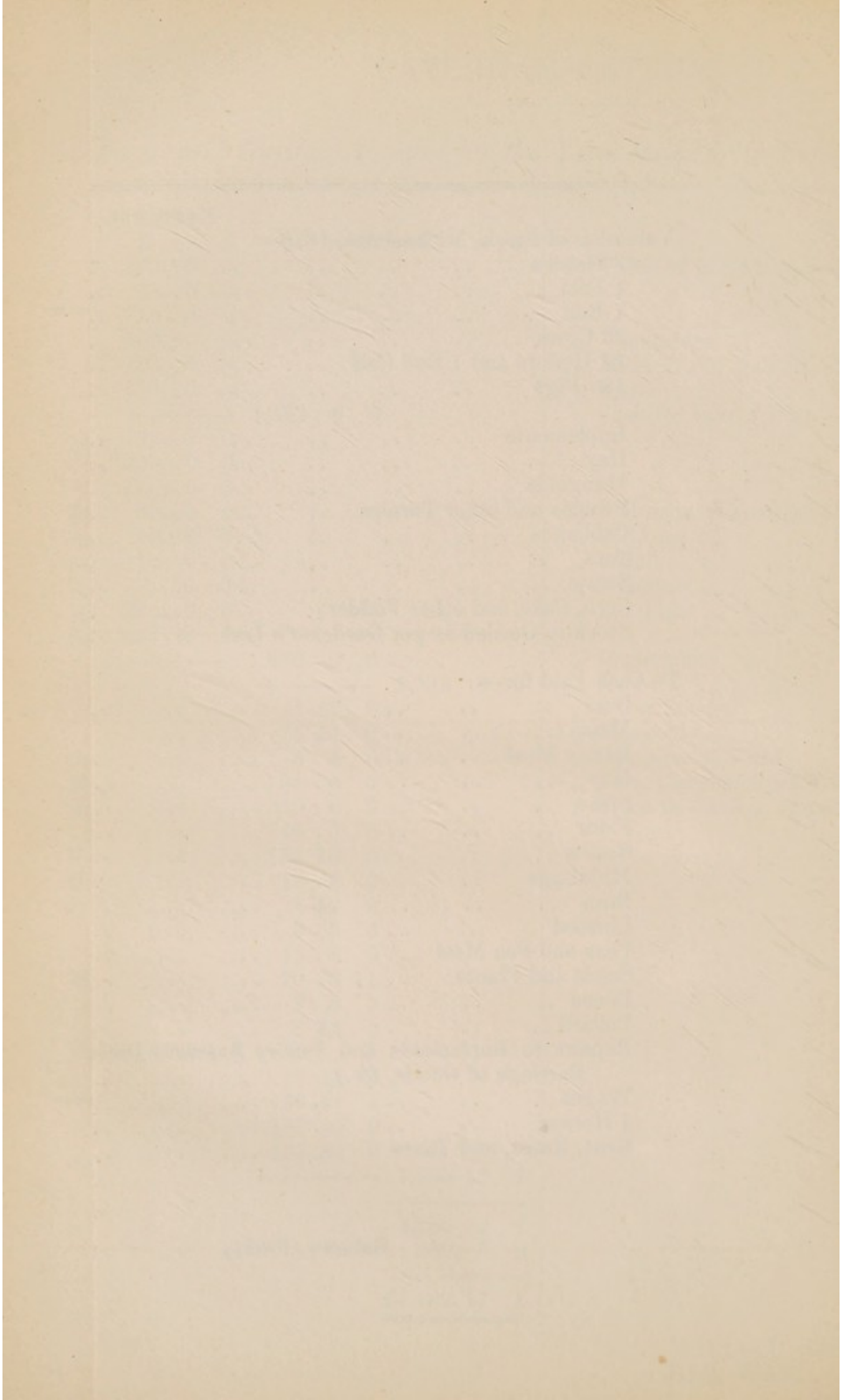
To the Committee of the Asylum.

*Work executed at Caterham Asylum during the Year ended
Michaelmas, 1877.*

UPHOLSTERY.

ARTICLES.	No.	Price.	Value.
		£ s. d.	£ s. d.
Matrasses, made in threes ..	246	0 1 9	21 10 6
" full length ..	16	0 1 6	1 4 0
" re-made ..	416	0 1 9	36 8 0
Pillows, made ..	760	0 0 3	9 10 0
Bolsters, made ..	110	0 0 3	1 7 6
Pillows, re-made ..	587	0 0 3	7 6 9
Pillow Cases ..	130	0 0 1	0 10 10
Matrass Cases, in threes ..	98	0 0 8	3 5 4
Bed Sackings, made ..	246	0 1 4	16 8 0
" changed and cleaned ..	1,102	0 0 1	4 11 10
" repaired ..	506	0 0 4	8 8 8
" tightened ..	408	0 0 0 $\frac{1}{2}$	0 17 0
Coffin Pillows ..	116	0 0 0 $\frac{1}{4}$	0 2 5
Matrass Cases, repaired ..	117	0 0 4	1 19 0
Holland Blinds, new ..	200	0 0 4	3 6 8
" repaired ..	50	0 0 3	0 12 6
Venetian Blinds, repaired ..	14	0 1 0	0 14 0
Hair, picked, 237 cwt. at	0 15 0	177 15 0
Fibre ,, 500 lbs. at	0 0 1	2 1 8
			297 19 8
Wages and small Expenses } deduct }	144 5 0
Value of Labour of Inmates	*153 14 8

* At least £40 of this might be included in the Tailor's, but it is difficult to divide it.



Work executed during the Year ended Michaelmas, 1877.

SHOEMAKING.

ARTICLES.	No. Pairs.	Price.		Entire Value.		
		s.	d.	£	s.	d.
Made	18	4	0	3	12	0
Repaired	4,806	1	6	360	0	0
"	1,702	0	6	42	11	0
"	420	0	2	3	10	0
				409 13 0		
Deduct for Wages and other Expenses	120	10	0
Value of Labour of Inmates	289	3	0

TAILORING.

ARTICLES.	Number	Price.			Entire Value.		
		£	s.	d.	£	s.	d.
Made Jackets	434	0	3	0	65	2	0
" Trousers	439	0	2	9	60	7	3
" Vests	137	0	1	6	10	5	6
Repaired Jackets	1,088	0	1	0	54	8	0
" Vests	756	0	0	6	18	18	0
" Trousers	2,046	0	1	0	102	6	0
Machining Work, 1,707 yards at	..	0	0	0 $\frac{1}{4}$	1	15	6 $\frac{3}{4}$
Matrasses	115	0	1	0	10	15	0
Bolsters and Pillows	491	0	0	1	2	0	11
				325 18 2 $\frac{3}{4}$			
Deduct Expenses and Wages	208	12	0	
Value of Inmates' Labour	117	6	2 $\frac{3}{4}$	

MATRON'S REPORT.

Caterham Asylum, Caterham, Surrey,

October 10th, 1877.

GENTLEMEN,

At the end of the seventh year it has become my pleasing duty to lay before you the usual Annual Report.

The past year has been one of unusual toil and anxiety, yet I cannot help expressing my deep thankfulness that, at its close, I have nothing to record that in any way tends to mar it as being one of the most successful years in our history.

During the month of October, 1876, 167 Female Patients were transferred to this Asylum. In order to meet this sudden and large increase, the new day-space in A Infirmary was converted into a dormitory, thus giving accommodation to 60 additional Patients, the rest were distributed in Blocks B, C, E, G, and the Detached Infirmary. On the 28th of October in that year the total number of Female Patients was 1,255; this large increase in numbers made our winter's work very heavy; the sick, who would otherwise have been removed to the Infirmary, were obliged to be treated in their own Wards, thus throwing a large amount of extra work on the Nurses.

At the end of December we commenced making a supply of Clothing and Bedding for the Deptford Hospital, which was completed early in the new year.

The Asylum has been thoroughly inspected during the year by the Local Government Inspectors, and the Commissioners in Lunacy, who state in their Report that having "Passed two days in the inspection of the Asylum, during which we saw all the Inmates, and visited the Wards and Offices, our report of the general condition of the Establishment is a favourable one, and everything was in excellent order, and the clothing was neat and good."

The reports made by Deputations from the various Metropolitan Boards of Guardians continue as favourable as they have been in previous years.

Very few changes have taken place this year among the Female Servants and Attendants; of the 16 who have left, 8 have done so to be married, 2 to attend on sick relatives, 1 at the end of her probation, as I could not advise her being permanently appointed; the remaining 5 from a love of change; vacancies as heretofore continue to be readily filled up as they occur.

I am pleased to bear testimony to the general good conduct of the Staff. The work they have to do is really "woman's work," hence, perhaps, this is why, after a little training, they invariably adapt themselves to Ward duties, and I am led to hope that, whilst the patients receive the benefit of their kindly care, they too, acquire habits of industry, and attention to duty, which will have an abiding influence for good on their future life.

One continual source of anxiety to us is the clothing. First we have to deal with the large amount of clothing torn up by destructive Patients. During the past year, no less than 762 dresses, 365 pairs of hose, 143 petticoats, 121 aprons, 100 bonnets, 120 hoods, 53 nightgowns, 29 chemises, 22 blankets, and 18 shawls, have been so destroyed. This number does not

include the ordinary wearing out of clothing and bedding. Again, owing to the extreme cold—the result of our position—during the winter months, which are unusually long, we require much thicker clothing than they do in Institutions situated at a less elevation; these two circumstances render it very difficult, and almost impossible, to keep the cost of the clothing within the prescribed limit.

The Staff of Female Attendants numbers at the present time, 2 Head Attendants, 8 Charge Nurses, 30 Ordinary or 2nd Class Nurses, and 4 Night Attendants; in addition to these, we have 2 Scrubbers. When the additional Patients were received from Hampstead, 4 extra Nurses were given; as our numbers are now decreased, we have reduced our Staff to the original number.

In the Industrial departments, the Laundry and Workroom, the Staff remains the same.

The new drying closets, used first in the early part of the year, are well adapted for their purpose, and facilitate the work of the Laundry very considerably; 80,135 dozen articles have been washed during the year; these, valued at 6*d.* per dozen, realise the sum of £2,003 17*s.* 6*d.*

In the Workroom and Blocks, the making and repairs done are shown by the appended tables.

Another Ward has, through your liberality, been fitted up with brackets and statuettes; each Ward has now also an aviary, which will, in course of time, no doubt, add materially to the cheerfulness of the place; thus, year by year, we get a step nearer to “perfection.”

The Annual Staff Ball was, if possible, more enjoyable this year, and the kindly forethought which had anticipated every

reasonable want, and provided for the same, called forth, as it deserved, praise from all.

Although only three entertainments have been given by the Staff, still, thanks to outside friends, many very pleasant evenings have been spent.

The Weekly Ball continues to give general pleasure, although perhaps, the change from Wednesday to Monday is a slight drawback, as it leaves the rest of the week without a break.

The people generally felt very much being debarred from seeing their friends during the prevalence of Smallpox, but the abundance of good things provided for them on Christmas and New Year's Days, produced great cheerfulness, and called forth strong expressions of gratitude. Whit-Monday was quite a red-letter day, a large number of Patients were assembled on the Cricket-field, and amused with various sports, including the exhibition of "Punch and Judy." They were also plentifully supplied with oranges, apples, nuts, &c.; and late in the afternoon regaled with tea and plum cake. The pleasure of the day was greatly enhanced by the presence of several of the Managers, who devoted themselves to the amusement of the Patients. A similar entertainment was provided on Bank Holiday in August. On this occasion, those Patients who were unable to leave the Wards, were abundantly supplied with cake and fruit.

In conclusion, I beg to tender my sincere thanks for your unvarying kindness and support.

I am, GENTLEMEN,

Your obedient Servant,

(Signed) E. E. MOSELY,

Matron.

To the Chairman and Committee
of the Caterham Asylum.

Table of Articles made during the Year.

No.	Articles	Value of Work.	Value.		
			£	s.	d.
268	Shrouds	at $2\frac{1}{2}d.$ each	2	15	10
162	Bed Curtains	„ $3d.$ „	2	0	6
1,566	Pillow Cases	„ $2d.$ „	13	1	0
1,169	Nightgowns	„ $2\frac{1}{2}d.$ „	12	3	$6\frac{1}{2}$
2,150	Sheets	„ $2d.$ „	17	18	4
1,231	Chemises	„ $2\frac{1}{2}d.$ „	12	16	$5\frac{1}{2}$
1,049	Shirts	„ $3\frac{1}{2}d.$ „	15	5	$11\frac{1}{2}$
591	Pairs Drawers	„ $3d.$ „	7	7	9
163	Flannel Chemises	„ $2d.$ „	1	7	2
106	Curtains	„ $6d.$ „	2	13	0
{106	Merino Dresses	„ $1s. 6d.$ „	7	19	0
401	Flannel Petticoats	„ $2\frac{1}{2}d.$ „	4	13	$6\frac{1}{2}$
1,835	Aprons	„ $1\frac{1}{2}d.$ „	11	9	$4\frac{1}{2}$
65	Serge Dresses	„ $1s. 6d.$ „	4	17	6
100	Serge Capes	„ $3d.$ „	1	5	0
188	Table Cloths	„ $1\frac{1}{2}d.$ „	1	3	6
1,359	Print Dresses	„ $1s.$ „	67	19	0
337	Pairs Stays	„ $1\frac{1}{2}d.$ „	2	2	$1\frac{1}{2}$
1,488	Towels	„ $1d.$ „	6	4	0
63	Serge Petticoats	„ $3d.$ „	0	15	9
291	Caps	„ $2\frac{1}{2}d.$ „	3	0	$7\frac{1}{2}$
45	Dressing Gowns	„ $1s. 6d.$ „	3	7	6
294	Jean Petticoats	„ $2d.$ „	2	9	0
581	Handkerchiefs	„ $\frac{1}{2}d.$ „	1	4	$2\frac{1}{2}$
96	Neckerchiefs	„ $\frac{1}{2}d.$ „	0	4	0
44	Frocks	„ $6d.$ „	1	2	0
88	Pinafores	„ $1\frac{1}{2}d.$ „	0	11	0
80	Dusters	„ $\frac{1}{2}d.$ „	0	3	4
200	Bath Sheets	„ $1\frac{1}{2}d.$ „	1	5	0
160	Flannel Sheets	„ $2d.$ „	1	6	8
424	Bonnets Trimmed	„ $1d.$ „	1	15	4
<hr/>			<hr/>		
<u>16,700</u>			<u>£211 17 0</u>		

Table of Articles repaired during the Year.

No.	Articles.	Value.	Entire Value.		
			£	s.	d.
50,930	Hose	at $\frac{1}{2}d.$ each	106	2	1
13,440	Chemises	„ 1d. „	56	0	0
26,880	Dresses	„ 1d. „	112	0	0
27,852	Aprons	„ $\frac{1}{2}d.$ „	58	0	6
13,440	Nightgowns	„ 1d. „	56	0	0
3,360	Stays	„ $\frac{1}{2}d.$ „	7	0	0
3,100	Caps	„ $\frac{1}{2}d.$ „	6	9	2
20,460	Petticoats	„ $\frac{1}{2}d.$ „	42	12	6
453	Drawers	„ $\frac{1}{2}d.$ „	0	18	10 $\frac{1}{2}$
212	Flannel Chemises	„ $\frac{1}{2}d.$ „	0	8	10
16,252	Sheets	„ 1d. „	67	14	4
11,900	Pillow Cases	„ $\frac{1}{2}d.$ „	24	15	10
8,519	Shirts	„ 1d. „	35	9	11
515	Flannel Shirts.. ..	„ 1d. „	2	2	11
4,304	Counterpanes	„ 1d. „	17	18	8
1,826	Blankets	„ 1d. „	7	12	2
1,653	Tea Cloths	„ 1d. „	6	17	9
1,126	Towels	„ $\frac{1}{2}d.$ „	2	6	11
<hr/>			<hr/>		
206,212			£610	10	5 $\frac{1}{2}$
<hr/>			<hr/>		
	Total of Making		211	17	0
	„ Repairs		610	10	5 $\frac{1}{2}$
	Estimated Value of Laundry Work		2,003	17	6
<hr/>			<hr/>		
			£2,826	4	11 $\frac{1}{2}$
			<hr/>		

RESIDENT ENGINEER'S REPORT.

TO THE CHAIRMAN AND COMMITTEE OF THE METROPOLITAN
DISTRICT ASYLUM, CATERHAM.

16th October, 1877.

GENTLEMEN,

I have much pleasure in laying before you my Report for the past year, giving an account of the principal work executed in connection with the buildings and machinery, also some statistics showing the consumption of gas and water.

The Turkish Bath, which I referred to in my last Report as in course of construction, is now finished, and has been in use some little time; the heat generated by one of Constantine's Convolute Stoves, is quite sufficient, and with the jets of various forms, shower bath, &c., to each of which hot and cold water is laid on, the result appears to be a satisfactory one.

A Drying Closet of fifteen horses in connection with the above heating apparatus, erected by Messrs. Bradford and Co., is a most useful adjunct to the Laundry Department.

The whole of the Earth Closets on the Female side, and some of those in the Administrative Block, have been replaced by water closets, G. Stidder and Co.'s Patent Regulating Valves, with seat action, are those used, and so far work economically and satisfactorily.

The Single Rooms in the Female Infirmary have been fitted with zinc extraction flues, the quality of the air being much improved thereby.

A Skittle Ground has been laid down, and covered with corrugated iron, an addition which, judging from the constant practice, is very popular among the Patients.

The wood floors to the slop sink rooms have been removed, in five cases, and concrete introduced instead; they are laid with a good fall, and the sink is fixed level with the floor, which arrangement is most successful.

In consequence of the frequent stoppages in the Kitchen Drains (owing to the grease becoming coagulated in them), a few catch pits, easily accessible, have been constructed from which the accumulations at intervals are removed.

The whole of the corrugated iron partitions in the Dormitories in Female B C and D Blocks, and Male B and C Blocks, have been removed, which makes supervision more perfect, and gives a cheerful appearance.

The Store Rooms in the new Male Block have been fitted up with shelves, &c.; also the lavatories with towel rollers and shelves; the rooms in the basement of this Block have now timber racks, shelves, &c., so as to fit them for the Engineer's stores.

As it has been arranged to have another steam boiler, which Messrs. Prachitt and Brothers, of Carlisle, are constructing, an extension of the boiler house became necessary; this work was

let to Messrs. Wagner, of London, who are far advanced with its erection.

Some trouble has been caused by a leak in one of the gas tanks; this has been discovered and remedied, so that the tank is now to all appearances water-tight.

A further portion of the external surface of the Male Blocks, and a part of the Centre Block, and detached Earth Closets in Airing Courts, have been raked out, and pointed with Portland cement; it was intended to complete it this year, but is postponed, owing to the high price of labour in the neighbourhood, which it is hoped may not be permanent.

The slating to the whole of the Male and Administrative Blocks was thoroughly repaired.

A considerable quantity of painting has been done. The Female G Block, part of Administrative Block, Detached Infirmary, Farm Buildings, Gas Works, Greenhouses, and Chaplain's and Resident Engineer's Houses were painted externally; and the interior of Female A, and Male E Blocks, Corridors of Administrative Block, the Female and part of the Male Corridors, Inspector's and Male and Female Attendants' Bedrooms, the Laundry, Ironing Room, and Washhouses, and Steward's House have been washed down, distempered, and painted. The sashes and doors in Male Corridor, and doors of Male F Block have been grained oak and varnished. The whole of the furniture and the tin goods were repaired by the Staff.

A considerable quantity of work has been thrown upon the Staff, in cleaning lime deposits out of the boilers, hot water pipes, surface condensers, &c., owing to the hardness of water.

The quantity of water in the well was greater during the past winter than at any former period, it having reached 199 feet on January 26th, or 11 feet higher than it had been before; the minimum depth was 94 feet 6 inches, on December 4th; 30,146,000 gallons were pumped in all, 4,389,000 of which were supplied to the Caterham Spring Water Company, and 252,000 to the Barracks, leaving a daily average of nearly 70,000 gallons as the consumption of this Asylum, in addition to the whole of the rain water.

The total quantity of Gas manufactured was 7,906,820 cubic feet, at a cost of £751 7s. 10d., or 1s. 10 $\frac{3}{4}$ d. per thousand cubic feet. The daily average consumption during the winter, was 28,427 cubic feet, and the summer 14,934 cubic feet. The maximum daily consumption was 35,980 cubic feet, and the minimum 10,705 cubic feet.

A detailed account of the cost of the manufacture of gas is appended.

The Engines, Pumps, Fire Extinguishing Appliances, Cooking Apparatus and Gas Works are in good working order.

The workmen of this Department have executed their very variable duties in an intelligent and satisfactory manner.

Thanking you for your unvarying kindness and support, which it has been my pleasure to receive for the last nine years,

I am, GENTLEMEN,

Your obedient Servant,

(Signed) WM. CRICKMAY

GAS ACCOUNT FOR TWELVE MONTHS ENDING SEPTEMBER 29, 1877.

DR.

	£	s.	d.	£	s.	d.
Coals in stock, September 29, 1876, 12 tons	12	16	0			
Coals delivered from September 29, 1876 to March 25, 1877, 794 tons 16 cwt. 3 qrs. at 20s. 9d.	824	12	10			
Ditto March 25 to September 29, 1877, 270 tons 15 cwt. at 19s. 11d.	269	12	5			
				<hr/>		
In stock, September 29, 1877, 210 tons, at 19s. 11d.	1,107	1	3			
	209	2	6			
				<hr/>		
35 Yards of Lime				897	18	9
Labour				19	5	0
Wear and tear on Gas Works, 7,906,820 cubic feet, at 1d. per foot				132	3	3
				32	18	9
				<hr/>		
				£1,082	5	9

410 Chaldrons of Coke ..	at 12s. ..	246 0 0
287 Gallons of Tar, sold at 4d.	£4 15 8
285 " " 3d.	3 11 3
979 " " 2d.	8 3 2
7,109 " " 2d.	59 4 10
<hr/>		
96 Loads of Lime, from Purifiers, at 2s. per load ..		75 14 11
		9 12 0

331 6 11

£750 18 10

Net cost of producing the Gas, 1s. 10 $\frac{3}{4}$ d. per thousand cubic feet

.. .. .

.. .. .

.. .. .

.. .. .

.. .. .

.. .. .

(Signed)

WM. CRICKMAY,

Resident Engineer.

CATERHAM ASYLUM.

Statement showing the Staff on the 1st October, 1877.

OFFICERS.

	£	s.	d.
(a) Dr. J. Adam, Medical Superintendent	500	0	0
(b) The Rev. J. Ground, M.A., Chaplain	250	0	0
(a) Mr. G. White, Steward	325	0	0
(c) Mrs. E. E. Mosely, Matron	200	0	0
(e) Mr. W. H. Pratten, Clerk of the Asylum ..	200	0	0
(b) Mr. W. Crickmay, Resident Engineer	200	0	0
(d) Mr. G. S. Seccombe, 1st Assistant Medical Officer	150	0	0
(d) Mr. H. B. Harrison, 2nd ditto ditto ..	140	0	0

SUBORDINATE OFFICERS AND SERVANTS.

(e) 1 Assistant Clerk	at £64 per annum	64	0	0
(d) 1 Steward's Clerk	.. 74 ..	74	0	0
(f) 1 Inspector	.. 60 ..	60	0	0
(f) 1 Male Head Attendant	.. 40 ..	40	0	0
(d) 1 Assistant Matron	.. 60 ..	60	0	0
(f) 2 Female Head Attendants	.. 33 ..	66	0	0
(d) 1 Laundry Superintendent	.. 41 ..	41	0	0
(d) 1 Workmistress	.. 32 ..	32	0	0
(f) 1 Cook	.. 40 ..	40	0	0
(b) 1 Gate Porter	.. 23s. per week	59	16	0
(f) 1 Hall Porter	.. 34 per annum	34	0	0
(f) 3 First Class Attendants and } their wives	.. 56 ..	168	0	0

(a) Unfurnished House, Coals, Gas, Vegetables, and Milk. (b) Unfurnished House, Coals and Gas. (c) Furnished House, Vegetables, Milk, Coals, and Gas. (d) Furnished Apartments and Rations. (e) Dinner daily. (f) Lodging, Rations, and Uniform.

			£	s.	d.
(f) 1 First Class Male Attendant	at	£33 per annum	33	0	0
(f) 1 First Class Male Attendant	„	32	32	0	0
(f) 1 First Class Male Attendant	„	31	31	0	0
(f) 1 First Class Male Attendant	„	30	30	0	0
(f) 1 Tailor Attendant	„	35	35	0	0
(f) 1 Second Class Male Attendant	„	29	29	0	0
(f) 3 Second Class Male Attendants	„	27	81	0	0
(f) 4 Second Class Male Attendants	„	26	104	0	0
(f) 12 Second Class Male Attendants	„	25	300	0	0
(f) 1 First Class Female Attendant	„	24	24	0	0
(f) 1 First Class Female Attendant	„	22	22	0	0
(f) 1 First Class Female Attendant	„	21	21	0	0
(f) 1 First Class Female Attendant	„	20	20	0	0
(f) 1 First Class Female Attendant	„	19	19	0	0
(f) 3 First Class Female Attendant	„	18	54	0	0
(f) 3 Second Class Female Attendants	„	18	54	0	0
(f) 1 Second Class Female Attendants	„	19	19	0	0
(f) 3 Second Class Female Attendants	„	17	51	0	0
(f) 6 Second Class Female Attendants	„	16	96	0	0
(f) 19 Second Class Female Attendants	„	15	285	0	0
(f) 2 Scrubbers	„	10	20	0	0
(f) 1 Mess Woman	„	21	21	0	0
(f) 1 Assistant Cook	„	18	18	0	0
(f) 1 Assistant Cook	„	16	16	0	0
(f) 2 Kitchen Maids	„	6	12	0	0
(f) 1 Head Laundry Maid	„	22	22	0	0
(f) 1 Head Laundry Maid	„	20	20	0	0
(f) 1 Laundry Maid	„	16	16	0	0
(f) 1 Laundry Maid	„	15	15	0	0
(f) 3 Laundry Maids	„	13	39	0	0
1 Laundry Man	„	20s. per week	52	0	0

(f) Lodging, Rations, and Uniform.

			£	s.	d.
(g) 1 Store Porter	at	15s. per week	39	0	0
(g) 1 Store Porter	,,	12s. 6d. ,,	32	10	0
(g) 1 Baker	,,	23s. per week	59	16	0
(g) 1 Baker	,,	10s. ,,	26	0	0
1 Scullery Man	,,	18s. ,,	46	16	0
1 Coal Man	,,	20s. ,,	52	0	0
(b) 1 Cowman	,,	25s. ,,	65	0	0
1 Farm Man	,,	17s. ,,	44	4	0
2 Farm Men	,,	16s. ,,	83	4	0
1 Farm Man	,,	18s. ,,	46	16	0
1 Farm Man	,,	20s. ,,	52	0	0
1 Night Watchman	,,	20s. ,,	52	0	0
1 Coachman	,,	20s. ,,	52	0	0
(r) 1 Fireman	,,	15s. ,,	39	0	0

WORKMEN.

1 Engine Driver	at	£2 5 0 per week	117	0	0
1 Engine Fitter	,,	1 16 0 ,,	93	12	0
1 Stoker	,,	1 2 0 ,,	57	4	0
1 Engine Cleaner	,,	1 0 0 ,,	52	0	0
(b) 1 Gasman	,,	1 2 0 ,,	57	4	0
1 Gasman	,,	1 4 0 ,,	62	8	0
1 Smith	,,	1 15 0 ,,	91	0	0
1 Tinman	,,	1 10 0 ,,	78	0	0
2 Carpenters	,,	1 15 0 ,,	182	0	0
2 Bricklayers	,,	1 15 0 ,,	182	0	0
1 Plumber	,,	1 15 0 ,,	91	0	0
1 Painter	,,	1 15 0 ,,	91	0	0
1 Gardener	,,	1 11 0 ,,	80	12	0
5 Gardeners	,,	1 0 0 ,,	260	0	0
1 Gardener	,,	0 19 0 ,,	49	18	0

(b) Unfurnished House, Coals, and Gas. (f) Lodgings, Rations, and Uniform. (g) Rations.

0 21-56	0 24 02 10	1 10 10	1 10 10
0 21-57	0 24 02 10	1 10 10	1 10 10
0 21-58	0 24 02 10	1 10 10	1 10 10
0 21-59	0 24 02 10	1 10 10	1 10 10
0 21-60	0 24 02 10	1 10 10	1 10 10
0 21-61	0 24 02 10	1 10 10	1 10 10
0 21-62	0 24 02 10	1 10 10	1 10 10
0 21-63	0 24 02 10	1 10 10	1 10 10
0 21-64	0 24 02 10	1 10 10	1 10 10
0 21-65	0 24 02 10	1 10 10	1 10 10
0 21-66	0 24 02 10	1 10 10	1 10 10
0 21-67	0 24 02 10	1 10 10	1 10 10
0 21-68	0 24 02 10	1 10 10	1 10 10
0 21-69	0 24 02 10	1 10 10	1 10 10
0 21-70	0 24 02 10	1 10 10	1 10 10
0 21-71	0 24 02 10	1 10 10	1 10 10
0 21-72	0 24 02 10	1 10 10	1 10 10
0 21-73	0 24 02 10	1 10 10	1 10 10
0 21-74	0 24 02 10	1 10 10	1 10 10
0 21-75	0 24 02 10	1 10 10	1 10 10
0 21-76	0 24 02 10	1 10 10	1 10 10
0 21-77	0 24 02 10	1 10 10	1 10 10
0 21-78	0 24 02 10	1 10 10	1 10 10
0 21-79	0 24 02 10	1 10 10	1 10 10
0 21-80	0 24 02 10	1 10 10	1 10 10

0 21-81

0 21-82

...

...

...

HARRISON AND SONS,
PRINTERS IN ORDINARY TO HER MAJESTY,
ST. MARTIN'S LANE.

THE UNIVERSITY OF CHICAGO
LIBRARY OF THE DIVISION OF THE PHYSICAL SCIENCES
575 EAST 58TH STREET, CHICAGO, ILL. 60637