

## **Reports for the year 1862 / St. Luke's Hospital for Lunatics.**

### **Contributors**

Saint Luke's Hospital for Lunatics (London, England)  
Lefevre, Henry Francis Shaw.  
Monro, Henry, 1817-1891.  
Toller, Ebenezer.  
Wood, William (Screenwriter)

### **Publication/Creation**

[London] : [publisher not identified], [1863]

### **Persistent URL**

<https://wellcomecollection.org/works/gwvuz44x>

### **License and attribution**

This work has been identified as being free of known restrictions under copyright law, including all related and neighbouring rights and is being made available under the Creative Commons, Public Domain Mark.

You can copy, modify, distribute and perform the work, even for commercial purposes, without asking permission.



Wellcome Collection  
183 Euston Road  
London NW1 2BE UK  
T +44 (0)20 7611 8722  
E [library@wellcomecollection.org](mailto:library@wellcomecollection.org)  
<https://wellcomecollection.org>

St. John's Hospital, New York

March 23, 1884

Dear Sir,

I have the honor to acknowledge the receipt of your letter of the 18th inst.

and in reply to inform you that the same has been forwarded to the proper authorities.

I am, Sir, very respectfully,  
Your obedient servant,

John A. McLaughlin

Secretary

St. John's Hospital, New York

James A. McLaughlin

Secretary

St. John's Hospital, New York

John A. McLaughlin

*Donations of whatever amount will be most thankfully received by the undersigned.*

*30 Guineas and upwards constituting a Governor of the Hospital, or a Subscriber of 10 Guineas may at any future period complete his qualification by additions of not less than 10 Guineas at one time.*

*James Fuller Whiskin,  
Secretary,*

*St. Luke's Hospital, Old Street,  
London, E.C.*

4

# St. Luke's Hospital for Lunatics.

Established A.D. 1751.

---



## REPORTS


FOR THE YEAR

1862.

---

London:

—  
1863.



Digitized by the Internet Archive  
in 2018 with funding from  
Wellcome Library

A LIST  
OF THE  
GENERAL COMMITTEE  
FOR THE YEAR 1863.

---

PRESIDENT.

THE LORD OVERSTONE.

VICE-PRESIDENTS.

THE RIGHT HON. THE EARL OF ABINGDON, D.C.L.

THE LORD AVELAND.

THE RIGHT HON. THE VISCOUNT EVERSLEY, P.C.

SIR EDMUND WILLIAM ANTROBUS, BART.

JAMES BENTLEY, Esq.

WILLIAM HENRY WHITBREAD, Esq.

TREASURER.

HENRY FRANCIS SHAW LEFEVRE, Esq.

COMMITTEE.

J. D. ALLCROFT, Esq.	RICHARD MARTINEAU, Esq.
RICHARD EDWARD ARDEN, Esq.	J. LYSTER O'BEIRNE, Esq.
HENRY FORD BARCLAY, Esq.	JOHN PHILPOTT, Esq.
FREDERICK BARRON, Esq.	HON. P. SYDNEY PIERREPONT.
GEORGE BISHOP, Esq.	ARTHUR POWELL, Esq.
SIR PERCY BURRELL, BART., M.P.	SIR FREDERIC ROGERS, BART.
B. B. CABBELL, Esq., F.R.S., F.S.A.	GEORGE JOHN STEER, Esq.
PHILIP CAZENOVE, Esq.	A.J.SUTHERLAND, Esq., M.D.F.R.S.
LEONARD CURRIE, Esq.	GEO. SMITH THORNTON, Esq.
COLONEL DE BATHE.	JAMES SIDNEY WALKER, Esq.
SIR H. DES VŒUX, BART.	T. PICKARD WARREN, Esq.
CHARLES FEW, Esq.	S. C. WHITBREAD, Esq., F.R.S.
JOHN MOYER HEATHCOTE, Esq.	FRANCIS WIGG, JUN., Esq.
MARK HUNTER, Esq.	JOHN WILLIAMS, Esq.
COLONEL BROWNLÖW KNOX, M.P.	C. WOODWARD, Esq., F.R.S.

ESTABLISHMENT  
OF  
ST. LUKE'S HOSPITAL  
FOR  
LUNATICS,  
1863.

---

CONSULTING PHYSICIAN.

ALEX. J. SUTHERLAND, Esq., M.D., F.R.S., F.G.S., 6, *Richmond Terrace.*

---

PHYSICIANS.

HENRY MONRO, Esq., M.B., F.R.C.P., 13, *Cavendish Square.*

WILLIAM WOOD, Esq., M.D., 54, *Upper Harley Street.*

---

SURGEON.

JAMES LUKE, Esq., F.R.S., F.R.C.S., 37, *Broad Street Buildings.*

---

CHAPLAIN.

REV. EDMUND LEACHMAN, M.A.

---

RESIDENT MEDICAL SUPERINTENDENT.

EBENEZER TOLLER, Esq., M.R.C.S., &c.

---

SECRETARY.

MR. JAMES FULLER WHISKIN.

---

STEWARD.

MR. THOMAS COLLIER WALKER.

---

MATRON.

MRS. CHARLOTTE ELIZA WALKER.

A LIST OF THE GOVERNORS  
OF  
ST. LUKES HOSPITAL FOR LUNATICS.

---

**PRESIDENT.**

THE LORD OVERSTONE.

**VICE-PRESIDENTS.**

THE RIGHT HON. EARL OF ABINGDON, D.C.L.

THE LORD AVELAND.

THE RIGHT. HON. THE VISCOUNT EVERSLEY, P.C.

SIR EDMUND WILLIAM ANTROBUS, BART.

JAMES BENTLEY, ESQ.

WILLIAM HENRY WHITBREAD, ESQ.

**TREASURER.**

HENRY FRANCIS SHAW LEFEVRE, ESQ.

---

*Those marked (C) are on the Committee.*

**A**

ABINGDON, The Right Hon. The Earl of, D.C.L., *Wytham Abbey, Oxford*,  
(A Vice President.)

AVELAND, The Lord, *Normanton Hall, Oakham*, (A Vice President.)

Allcroft, J. D. Esq., 97, *Wood-street, City*, (C.)

Anderdon, John Lavicount, Esq., *Chiselhurst, Kent*.

Antrobus, Sir Edmund William, Bart., 59, *Strand*, (A Vice President.)

Arden, Richard E. Esq., *Sunbury Park, Middlesex*, (C.)

Aston, George Henry, Esq., 42, *Russell-square*.

**B**

BANK OF ENGLAND, The Governor and Company of the

BATHURST, The Lady Emily, *Great Ilford*.

- BROUGHTON, The Lord, F.R.S., 42, *Berkeley-square*.  
 BACON, Huntley, Esq., 108, *Gloucester-terrace, Hyde-park*.  
 B. I. C. D., *London*.  
 Baggallay, Richard, Esq., *St. Thomas's Hospital*.  
 Baird, Walter, Esq., 11, *Copthall-court, Throgmorton-street*, (Auditor.)  
 Baker, Rev. Robert George, M.A., *Fulham Vicarage, Middlesex*.  
 Banbury, Wm., Esq., 77, *Lombard-street*.  
 Barclay, Arthur Kett, Esq., *Bury Hill, Dorking*.  
 Barclay, Henry Ford, Esq., *Leytonstone, Essex*, (C.)  
 Barclay, Mr. Hugh Gurney, *ditto*  
 Barclay, Miss Edith R., *ditto*  
 Barclay, Jos. Gurney, Esq., 54, *Lombard-street*.  
 Baron, Rev. J. S., M.A., *Brill Parsonage, near Thame, Oxon*.  
 Barron, Frederick, Esq., *Bush-lane, Cannon-street*, (C.)  
 Batard, Thomas Matthias Bearda, Esq., *The Ashes, Ramsden Crays, near Billericay*.  
 Baxendale, Joseph, Esq., *Woodside, Whetstone, Herts*.  
 Baxendale, Richard Birley, Esq., *ditto*  
 Bentley, Jas., Esq., *Wood Green Park, Cheshunt, Herts*, (A Vice President.)  
 Bevan, Robert C. L., Esq., 54, *Lombard-street*.  
 Bishop, George, Esq., *The Meadows, Twickenham*, (C.)  
 Bockett, John, Esq., *Clapham-common*.  
 Botfield, Beriah, Esq., M.P., F.R.S., F.S.A., *Norton Hall, Daventry*.  
 Booty, John Gillam, Esq., 12, *York-place, Portman-square*.  
 Bradney, Rev. John Hopkins, M.A., *Leigh House, Bradford, Wilts*.  
 Bridges, Thomas, Esq., 33, *St. James's-place*.  
 Burrell, Sir Percy, Bart., M.P., *Carlton Club, Pall Mall*, (C.)  
 Buxton, Thomas Fowell, Esq., *Brick-lane, Spitalfields*.

## C

- Cabbell, Benjamin Bond, Esq., F.R.S., F.S.A., 1, *Brick-court, Temple*, (C.)  
 Carthew, Peter, Esq., 15A, *Kensington Palace Gardens*.  
 Catherwood, George, Esq., 1, *Warnford-court, Throgmorton-street*.  
 Cazenove, P., Esq., 52, *Threadneedle-street*, (C.)  
 Clark, Nathaniel, Esq., 28, *Gloucester-terrace, St. George's-rd., Pimlico*.  
 Coles, William, Esq., 7, *Mincing-lane*.  
 Coope, Octavius Edward, Esq., *Rochetts, near Brentwood, Essex*.  
 Cotton, William, Esq., F.R.S., F.S.A., D.C.L., *Leytonstone, Essex*, (Auditor.)  
 Crake, The Rev. E. N., 10, *Stanhope-street, Hyde-park*.  
 Currie, Leonard, Esq., *Bromley, Middlesex*, (C.)  
 Cutler, George Henry, Esq., 17, *Pall Mall, and Upton Lodge, near Brixham, Devon*.

## D

- Davis, John, Esq., 113, *Leman-street, Goodman's-fields.*  
 Deacon, James H., Esq., *Holwell House, Tavistock.*  
 De Bathe, Colonel Henry Percival, *Scots Fusileer Guards, Guards' Club, (C.)*  
 Des Vœux, Sir Henry, Bart., 25, *Berkeley-square, (C.)*  
 Drewett, John, Esq. *The Cedars, Tottenham.*  
 Durant, Richard, Jun., Esq., 11, *Copthall-court, Throgmorton-street.*

## E

- EVERSLEY, The Right Hon. Viscount, 69, *Eaton-place (A Vice President)*

## F

- Fenn, Rev. Joseph, *Blackheath-park, Kent.*  
 Few, Charles, Esq., *Covent-garden, (C.)*  
 Fishmongers, The Master of the Worshipful Company of.  
 Flower, Mrs., *Pine House, Camberwell-green.*  
 Foster, James, Esq., *Mark House-lane, Walthamstow.*  
 Francis, Thomas Charles, Esq., 23, *Cloudesley-street, Islington.*  
 Fuller, George Arthur, Esq., 77, *Lombard-street.*

## G

- Gardiner, Rawson Boddam, Esq., 22, *Gordon-street, Gordon-square.*  
 Garnier, William, Esq.  
 Gay, George, Esq., 6, *Lawrence Pountney-hill.*  
 Giles, Edward, Esq., *Clapham-common.*  
 Gipps, George, Esq., *Howletts, near Canterbury.*  
 Godman, Capt. Temple, *5th Dragoon Guards.*  
 Godman, Joseph, Esq., *Park-hatch, Godalming, Surrey.*  
 Goldsmiths, The Prime Warden of the Worshipful Company of.  
 Gordon, Robert, Esq., 32, *Hill-street, Berkeley-square.*  
 Gosling, Robert, Esq., 5, *Portland-place.*  
 Griffith, Thomas, Esq., *Hill-house, Norwood, Surrey.*  
 Grocers, The Master of the Worshipful Company of.

## H

- HARDWICKE, Vice-Admiral, The Right Hon. the Earl of, P.C., D.C.L.,  
 F.R.S., 44, *Portman-square.*  
 Hambro, The Baron Charles Joachim, 70, *Old Broad-street.*

- Hanbury, Robert, Esq., *Brewery, Brick-lane, Spitalfields.*  
 Hanbury, Robert, Esq., M.P., *ditto.*  
 Hawkins, John Heywood, Esq., F.R.S., F.G.S., *Bignor-park, Arundel.*  
 Heathcote, John Moyer, Esq., *Conington Castle, near Stilton, Hunts, (C.)*  
 Heathcote, John Moyer, Jun., Esq., *ditto.*  
 Heathcote, Rev. Geo., M.A., *Conington Rectory, near Stilton, Hunts.*  
 Heathcote, Rev. Robert Boothby, B.A., *Chingford, Essex.*  
 Henderson, George William Mercer, Esq., 103, *Eaton-place.*  
 Hilton, Rev. John, M.A., *Sarre, near Canterbury.*  
 Hine, William, Esq., 1, *Notting Hill-terrace.*  
 Hoare, Sir Henry Ainslie, Bart., *Stour-head, Wilts.*  
 Hoare, Jno. Gurney, Esq., 62, *Lombard-street.*  
 Hobson, William, Esq., 43, *Harley-street, Cavendish-square.*  
 Hodgson, William, Esq., *Gilston-park, Herts.*  
 Hodgkinson, Sir George Edmund, 63, *Cornhill.*  
 Hoffman, Augustus Frederick, Esq., *Ballards, near Croydon, Surrey.*  
 Hopkins, John, Esq., *Tidmarsh House, near Pangbourne, Berks.*  
 Hornby, Mrs., *Hook House, near Titchfield, Hants.*  
 Hunt, Mrs. James, *Sydenham-hill, Kent.*  
 Hunter, Mark, Esq., *Stonebridge House, Tottenham, Middlesex, (C.)*  
 Hunter, Richard, Esq., 9, *New-square, Lincoln's-inn.*  
 Huth, Henry, Esq., 10, *Moorgate-street.*

## I

- INGILBY, Sir William A., Bart.  
 Irwin, A. W., Esq., 5, *Gray's Inn-square.*

## J

- Johnson, David, Esq., 11, *Great Tower-street.*  
 Jortin, Mrs. Ann Catharine, 7, *Charlotte-street, Bedford-square.*

## K

- Kemp, John, Esq., 12, *North-street, Brighton.*  
 King, William, Esq., 16, *Sussex-square, Hyde-park.*  
 Knox, Colonel Brownlow William, M.P., 28, *Wilton-crescent, Belgrave-square, (C.)*

## L

- LECONFIELD, The Lord, *Petworth House, Sussex, and 4, Grosvenor-place.*  
 LONDON, The Right Hon. and Right Rev. the Lord Bishop of, *London House, S.W.*

- Langston, James Haughton, Esq., M.P., 143, *Piccadilly, and Sarsden House, Oxfordshire.*  
 Lefevre, Sir John George Shaw, K.C.B., F.R.S., 8, *Spring-gardens.*  
 Lefevre, Henry Francis Shaw, Esq., 6, *Warnford-court Throgmorton-street, and 29, Green-street, Grosvenor-square, (Treasurer.)*  
 Lewis, William Stone, Esq., *Woodhall Shenley, Herts.*  
 Loxley, John, Esq., 80, *Cheapside.*  
 Loyd Lewis, Esq., 43, *Lothbury.*

## M

- MORAY and ROSS, The Right Rev. the Lord Bishop of, *Inverness, N.B.*  
 M'TAGGART, Sir John, Bart., M.P., 1, *Stratford Place, and Ardwell House, near Wigtown, N.B.*  
 Maitland, Ebenezer Fuller, Esq., F.R.S., F.S.A., *Park-place, Henley.*  
 Marsh, Rev. William, B.D., *Beckenham, Kent.*  
 Martineau, Richard, Esq., *Brewery, Chiswell-street, (C.)*  
 Martineau, John, Esq., 17, *Westbourne-street, Hyde-park, (Auditor.)*  
 Martineau, Joseph, Esq., *Basing-park, Alton, Hants.*  
 Merchant Tailors, The Master of the Worshipful Company of  
 Mercers, The Master of the Worshipful Company of  
 Mills, John Remington, Esq., M.P., *Kingswood-lodge, Englefield-green.*  
 Mitchell, Wm. Robert, Esq., 14, *North-terrace, Camberwell.*  
 Morton, John Thomas, Esq., 105, *Leadenhall-street.*  
 Moyser, Thomas, Esq., *Orpington, Kent.*

## N

- Nash, William, Esq., 1, *Lansdowne-terrace, West Brixton.*  
 Needham, John Manning, Esq., *The Brewery, Chiswell-street, (Auditor.)*  
 Nicholl, Rev. John Richard, M.A., *Streatham Rectory, Surrey.*  
 Nicholl, Charrington, Esq., *Colchester, Essex.*  
 Nicholl, Harry, Esq., *Lewisham, Kent.*  
 Noble, John, Esq., 50, *Westbourne-terrace, and Taplow, Maidenhead.*  
 Nockells, William, Esq., 84, *Jermyn-street, St. James's.*

## O

- OVERSTONE, The Lord, 2, *Carlton-gardens, and Overstone-hall, Northampton, (President.)*  
 Orlebar, William Augustus, Esq., *Hinwich-hall, near Wellingborough.*  
 Osborne, Rev. George, M.A., *Rector of Stainby, Coltersworth, Grantham.*  
 O. C. W., *London.*  
 O'Beirne, Jas. Lyster, Esq., 60, *Piccadilly. (C.)*

## P

- PIERREPONT, The Hon. Philip Sydney, *Evenly-hall, Brackley, (C.)*  
 Page, Charles, Esq.  
 Peacock, Joseph, Esq., *Ayott St. Peter, Hertford.*  
 Pearse, Brice, Esq., 8, *Finsbury-place, South.*  
 Peel, Captain William Yates, *Guards' Club, Pall Mall.*  
 Peel, Miss Octavia, 23, *Craven-hill, Hyde-park.*  
 Peek, Henry William, Esq., *Wimbledon House.*  
 Pegus, Rev. P. William, M.A., *Uffington House, near Stamford, Lincolnshire.*  
 Philips, Sir G. R. Bart., 12, *Hill-street, Berkeley-square.*  
 Philp, F. R., Esq., M.D., *Kensington.*  
 Philpott, John, Esq., *Stamford-hill, (C.)*  
 Philpott, Mrs., *ditto.*  
 Platt, Rev. George, M.A., *Vicarage, Sedbergh, near Kendal.*  
 Pott, Charles, Esq., *Bridge-street, Southwark.*  
 Potter, Mr. Thomas, 44, *South Molton-street.*  
 Powell, Arthur, Esq., 16, *Temple-street, Whitefriars, (C.)*  
 Pownall, William, Esq., *Reigate.*  
 Prodgers, The Rev. Edwin, *Ayott, Welwyn.*  
 Pryor, John, Esq., 17, *Bedford-square.*

## R

- Richards, John, Esq., *The Lodge, Cookham, Berks.*  
 Robinson, George, Esq., 59, *Strand.*  
 Rogers, Thomas Arnold, Esq., 23, *Endsleigh-street, Tavistock-square.*  
 Rogers, Sir Frederic, Bart., 18, *Radnor-place, Gloucester-square, (C.)*  
 Russell, Jesse Watts, Esq., F.R.S., F.S.A., D.C.L., *Biggin House, Oundle.*

## S

- Salt, John, Esq., 20, *Lombard-street.*  
 Salt, William, Esq., 23, *Park-square, Regent's-park.*  
 Seear, Mr. James William, 5, *Prospect-place, Kingsland-road.*  
 Shaw, William, Esq., *Hampstead.*  
 Sills, Francis John, Esq., 29, *Cornhill.*  
 Smith, Benjamin, Esq., 5, *Blandford-square.*  
 Smith, George Chamberlain, Esq.  
 Smith, Sebastian, Esq., 1, *Connaught-place, West, Hyde-park.*  
 Smith, Oswald Augustus, Esq., 44, *Rutland-gate, Kensington.*  
 Smith, Eric Carrington, Esq., 1, *Lombard-street.*  
 Smith, Robert, Esq., 1, *Lombard-street.*  
 Stagg, George, Esq., 1, *Leicester-square.*

Steer, George John, Esq., 12, *Old Broad-street*, (C.)  
 Stilwell, Thomas, Esq., 22, *Arundel-street, Strand*.  
 Sutherland, Alexander John, Esq., M.D., F.R.S., 6, *Richmond-terrace*, (C.)  
 (Consulting Physician.)  
 Sutton, Sir Richard, Bart.

## T

Teape, Tobiah, Esq., *George-street, Tower-hill*.  
 Teape, Arthur Stanley, Esq., *George-street, Tower-hill*.  
 Teape, Charles Ashley, Esq., *George-street, Tower-hill*.  
 Thornton, Claude George, Esq., *Marden-hill, Hertford*.  
 Thornton, George Smith, Esq., 55, *Moorgate-street*, (C.)  
 Tilson, Thomas, Esq., *South Road-house, Clapham-park*.  
 Trimmer, James Thomas, Esq., 18, *New City Chambers, Bishopsgate-street*.  
 Tyler, Sir James, Knt., *Pine-house, Holloway*.

## W

WESTMINSTER, The Most Hon. The Marquis of, K.G., P.C., 33, *Upper Grosvenor-street*.  
 Wadeson, William, Esq., 76, *Old Broad-street*, (Auditor.)  
 Walker, James Sidney, Esq., *The Bury, Hunsdon, Ware, Herts*, (C.)  
 Warburton, Miss.  
 Warner, Edward, Esq., M.P., 49, *Grosvenor-place, and Higham-hall, Woodford, Essex*.  
 Warren, Thomas Pickard, Esq., *Highbury-house, Highbury-park*, (C.)  
 Watts, Henry, Esq., 76, *Little Britain*.  
 West, Francis George, Esq., *Horham-hall, Thaxted, Essex*.  
 Weyland, Richard, Esq., *Woodeaton, near Oxford*.  
 Whitbread, William Henry, Esq., 19, *Lowndes-square, and Southill, near Biggleswade*, (A Vice President.)  
 Whitbread, Samuel Charles, Esq., F.R.S., 49, *St. George's-square*, (C.)  
 White, Miss Ann, *Belgrave-place, Brighton*.  
 White, Henry John, Esq., 15, *Lombard-street*.  
 White, Thomas Henry, Esq., 213, *Shoreditch*.  
 White, John Warburg, Esq., *ditto*.  
 Wigg, Francis, Esq., 7, *Bedford-row*.  
 Wigg, Francis, Jun., Esq., *ditto*, (C.)  
 Wigram, Edward, Esq., 2, *Connaught-place, West*.  
 Williams, John, Esq., *Debden-hall, Loughton, Essex*, (C.)  
 Winn, William, Esq., 6, *Mercers'-terrace, Limehouse*.  
 Woodward, Charles, Esq., F.R.S., 10, *Compton-terrace, Islington*, (C.)

Wortley, The Right Hon. James Stuart, M.P., 29, *Berkeley-square*.  
 Wright, Rev. John, M.A., F.R.S., F.S.A.

## Z

ZETLAND, The Right Hon. The Earl of, 19, *Arlington-street*.

\*.\* Any inaccuracies in the above List will be corrected on  
 notice of the same being given to the Secretary,  
 Mr. JAMES FULLER WHISKIN,  
 at the Hospital,  
 Old Street, London,  
 E.C.

REPORT,  
OF THE  
GENERAL COMMITTEE OF GOVERNORS  
OF  
**ST. LUKE'S HOSPITAL,**  
FOR THE YEAR 1862.

---

*To the Court of Governors of St. Luke's Hospital.*

YOUR Committee, in presenting their Report for the past year, have great pleasure in announcing that the Annual Subscriptions amounted to £71. 17s., against £43. in 1861; and the Benefactions to £1,119. 2s. 2d., against £976. 4s. 3d. in 1861. Among the Benefactions are a second Donation of £50. from the Trustees of the Cholmondeley Charities; an additional Donation of £50. from Philip Cazenove, Esq., (a Member of the Committee); similar amounts from The Right Hon. The Earl of Zetland, and R. C. Lee Bevan, Esq.

Your Committee have also received a Legacy of £100. from the Executors of the late Miss Warren, the sister of a Member of the Committee.

Your Committee regret to record the death of one of the Auditors, John Hunter, Esq., late of Stamford Hill.

Your Committee have the gratification to announce that 15 names have been added to the List of Governors.

There has been a small increase in the Income accruing from Patients admitted at £1. 1s. per week; the amounts received for their maintenance having been £467. 5s. against £290. 9s. in 1861, for Curable cases, and £831. 12s. against £732. 18s. in 1861, for Chronic cases.

Your Committee stated in their last Report, that they were renewing their endeavours to increase the Airing Court on the Male side of the Building, and were in communication with the Parish Authorities on the subject. Your Committee have now

the pleasure to announce that the terms have been agreed upon with the Parish,—that they have obtained from the Governors of Saint Bartholomew's Hospital, permission to set back the Wall in Bath Street; and that they are preparing to Memorialise the Committee of Dulwich College, for a Grant of a small piece of land whereon to rebuild the Alleyne's Alms Houses, in order that the ground which they now occupy may be added to the Male Airing Court.

Your Committee have deemed it expedient to fill up the vacancy in the office of Second Physician, and have elected Dr. William Wood, who has had much experience in the treatment of insanity.

Your Committee recommend the following addition to the Rules, viz.:—

That after the word "Occasions," in Regulation 2, shall follow—

"Which same privileges shall belong to any person who has contributed, or may contribute, to the Funds of this Hospital the sum of Five Guineas or more Annually; and in the case of a Firm having contributed, or contributing such sum, they shall be at liberty to select one of their Members for Admission as a Governor, the office of Governor in each case continuing so long only as the said Annual Subscription shall be paid."

The Commissioners in Lunacy made their usual Official Visit to the Hospital, pursuant to sec. 61 of the Act 8 & 9 Vict., cap. 100, on the 22nd March last, and reported that "the general health of the inmates is good"; that "we heard no complaints from the Patients of any harshness or ill-treatment, indeed many of them spoke very gratefully of the kindness they had received."

The amount charged to House Expenses, in 1862, was £5,235. 13s. 11d., against £5,515. 18s. 4d. in 1861. The decrease may be accounted for by the decrease in the number of cases of "Acute Bodily Disease," referred to in the Report of the Medical Officers for 1861, which always require a very expensive dietary.

Your Committee contracted for the Best Wheaten Bread,—

For the 4 lbs. Loaf.

From 1st April to 31st December, at ..... 6 $\frac{3}{4}$ d.

And for the usual kinds of Butchers' Meat,—

Per Stone of 8 lbs.

From 1st April ..... to 30th September, at 4/6

„ 1st October ... to 31st December, „ 4/5

Your Committee report that there have been received into the Hospital between the 1st January and 31st December 1862, 137 Patients deemed Curable.

During the same period, there have been discharged cured 68, uncured 41, as unfit 16, at the request of their friends 5; and there have died 9. Since the 30th July, 1751, the day on which the Hospital was first opened for the reception of Patients, and up to the 31st December, 1862, inclusive, there have been admitted into the Hospital 20,009 Patients, DEEMED CURABLE ON THEIR ADMISSION; of whom there have been discharged,—

Cured	... ..	8,974
Uncured	... ..	6,808
As Idiots, diseased or unfit	... ..	1,929
By the desire of friends	... ..	585
From having (after admission) appeared to have been with child at the time of admission	... ..	62
Having proved to have been Insane more than twelve calendar months before the application to be admitted	... ..	14
The friends not complying with the Rules of the Hospital	... ..	57
Having been found to be, in point of circumstances, improper objects for this charity	... ..	2
Having been found to have been previously discharged, uncured, from another Hospital for Lunatics	... ..	5
From not being Lunatics	... ..	2
There have died in the Hospital since its first opening		1,505
There remain on the books of the Hospital on the 31st December, 1862, deemed curable	... ..	64

---

TOTAL... .. 20,009

Since the opening of the Hospital in 1751, and up to the 31st December, 1862, there have been admitted 845 Patients DEEMED INCURABLE, who had been previously discharged *uncured*, *exclusive* of those Patients (nine in number) who have, from time to time, been re-admitted, by virtue of an Annuity Deed (dated 11th June, 1788) of the late Samuel Whitbread, Esq.; and since the 31st December, 1861, and up to the 31st December, 1862, 4 Patients, *deemed incurable*, have been discharged at the request of friends; 10 upon trial; 2 died; 4 unfit; 2 cured.

Of the said 845 Patients (admitted as Boarders) *exclusive* of the Whitbread Patients,—

132 have been discharged by the desire of friends.

49 have been discharged cured.

28 upon trial.

19 uncured.

11 by order of the Committee, being paupers.

33 in consequence of the friends not complying with the Rules of the Hospital.

15 being deemed, in point of circumstances, improper objects of the Charity.

473 have died, and

85 were in the Hospital on the 31st December last,

— *exclusive* of Mr. Whitbread's patient.

Total 845

—  
The average weekly number of Patients in the Hospital during the year has been 158.

The total number of Patients remaining on the books on the 31st December, 1862 was 150; namely, 64 Patients deemed curable, and 86 Boarders, including Mr. Whitbread's Patient.

Your Committee recommend that The Lord OVERSTONE be re-elected President of this Corporation.

That the Right Honorable the Earl of ABINGDON, the Lord AVELAND; the Right Honorable the Viscount EVERSLEY; Sir EDMUND ANTROBUS, Baronet; JAMES BENTLEY, Esq.; and WILLIAM HENRY WHITBREAD, Esq., be re-elected Vice-Presidents of this Corporation.

That Messrs. FULLER & Co. be re-elected Bankers of this Hospital.

That HENRY FRANCIS SHAW LEFEVRE, Esq., be re-elected Treasurer.

Your Committee have prepared a List of Governors, whom they submit to the Court as fit and proper persons to act as the General Committee for the year ensuing.

And finally, your Committee recommend that the remaining Honorary Officers of this Corporation be severally re-elected, pursuant to the regulations.

All of which is nevertheless submitted.

## ANNUAL SUBSCRIPTIONS.

	£.	s.	d.
Bank of England, The Governors and Company of ...	21	0	0
Baker, Sir E. Baker, Bart. ... ..	1	0	0
Bishop, George, Esq. (two years) to be expended in Books	21	0	0
Cruttenden, Rev. W. C. ... ..	1	1	0
Drummonds & Co., Messrs. ... ..	10	0	0
Gosselin, Miss (two years) ... ..	6	6	0
Hough, Lieut.-Colonel ... ..	1	1	0
Jaffray, J. R., Esq. ... ..	3	3	0
Jaffray, A. W., Esq. ... ..	3	3	0
Keist, T., Esq. ... ..	1	1	0
Mountgarret, The Lord ... ..	5	0	0
Tapson, A. J., Esq. ... ..	3	3	0
Whitbread & Co., Messrs., being a Rent Charge on their Brewery in Chiswell Street ... ..	105	0	0

## DONATIONS.

Allcroft, J. D., Esq. ... ..	31	10	0
Anonymous ... ..	5	0	0
Ardesoif, Miss ... ..	20	0	0
Aston, George H., Esq. ... ..	31	10	0
Banbury, William, Esq. ... ..	31	10	0
Barclay, J. Gurney, Esq. ... ..	31	10	0
Barrett, Mrs. W. ... ..	10	0	0
Bathurst, The Lady Emily ... ..	31	10	0
Bessborough, The Rt. Hon. The Earl of ... ..	5	0	0
Bevan, R. C. Lee, Esq. ... ..	50	0	0
Bouverie, The Hon. P. P. ... .. (additional)	10	10	0
C. C. ... .. (additional)	1	0	0
Canning, William, Esq. ... ..	2	2	0
Cazenove, P., Esq. ... .. (additional)	50	0	0
Cazenove, H., Esq. ... ..	10	10	0
Cholmondeley Charities, The Trustees of the ... .. (additional)	50	0	0
Champion, Miss ... ..	20	0	0
Collins, Mrs. ... ..	5	0	0
Cumming, R. D., Esq. ... ..	2	2	0
Dacre, The Lord ... ..	10	10	0
Digby, G. D. W., Esq. ... ..	10	0	0
Dodwell, Miss ... ..	10	0	0
Dynevor, The Lord ... ..	5	0	0

	£.	s.	d.
E. H. T. D. ... ..	5	0	0
Etough, Miss ... ..	1	1	0
From the Charity Box in hands of George Bishop, Esq....	4	3	8
Fuller, G. A., Esq. ... ..	31	10	0
Gibbs, Messrs. D. and W. ... ..	5	0	0
Gipps, George, Esq. ... .. (additional)	21	0	0
Godman, Captain Temple ... ..	31	10	0
Gordon, Charles, Esq. ... ..	10	10	0
H. E. C. ... ..	2	2	0
Harrison, H. T., Esq.... ... ..	1	1	0
Hudson, Miss ... ..	10	0	0
Hunt, James, Esq. ... .. (additional)	21	0	0
Kinahan & Co., Messrs. ... ..	5	5	0
Lister, J. I., Esq. ... ..	10	0	0
Marriott, Mr. Robert... .. (additional)	3	0	0
Orlebar, W. A., Esq. ... ..	5	0	0
Pierrepoint, The Hon. P. S. ... .. (additional)	42	0	0
Randolph, Rev. J. H. ... ..	5	0	0
Sherwood, T., Esq. ... ..	10	10	0
Teape and Son, Messrs. ... ..	5	5	0
Tilson, Thomas, Esq. ... ..	10	10	0
Tite, William, Esq., M.P. ... ..	10	10	0
Tradesmen, on paying them ... ..	11	13	6
Wadson, William, Esq., and others, being part of the residue of the Estate of the late P. Van de Wall, Esq...	200	0	0
Wadlington, Lieut.-Colonel ... ..	1	0	0
Wartnaby, William, Esq. ... ..	5	5	0
Webb, William, Esq. ... .. (additional)	5	5	0
Welch, H. Esq. ... ..	2	0	0
White, T. H., Esq. ... .. (additional)	5	0	0
Williams, John, Esq. ... .. (additional)	10	10	0
Winn, William, Esq. ... ..	31	10	0
Yates, J., Esq.... ... ..	1	1	0
Zetland, The Rt. Hon. The Earl of... ..	50	0	0

# AN ACCOUNT OF RECEIPTS AND PAYMENTS, BY

*From 1st January*

Dr.	RECEIPTS.	£. s. d.		
To Balance of Cash at Messrs. Fuller & Co.'s Bank on				
31st December, 1861 ... ..		2,834	7	4
„ Board of Uncured Patients ... ..		1,590	15	0
„ do. Patients at One Guinea per week...		467	5	0
„ do. do. Chronic, at do. ... ..		831	12	0
„ Dividends on Stock ... ..		4,389	14	10

## DONATIONS, LEGACIES, &c., viz. :—

Messrs. Whitbread & Co., One Year's				
Rent Charge on their Brewery ... ..	£105	0	0	
The Bank of England (annual) ... ..	21	0	0	
Other Annual Subscriptions, as per List	54	17	0	
Governors' Qualifications and Benefac-				
tions, as per List... ..	998	5	0	
Donations from Tradesmen on paying				
them ... ..	11	13	6	
From Charity boxes ... ..	4	3	8	
Legacy ... ..	100	0	0	
				1,294 19 2

£11,408 13 4

# ENRY FRANCIS SHAW LEFEVRE, Esq., TREASURER.

to 31st December, 1862.

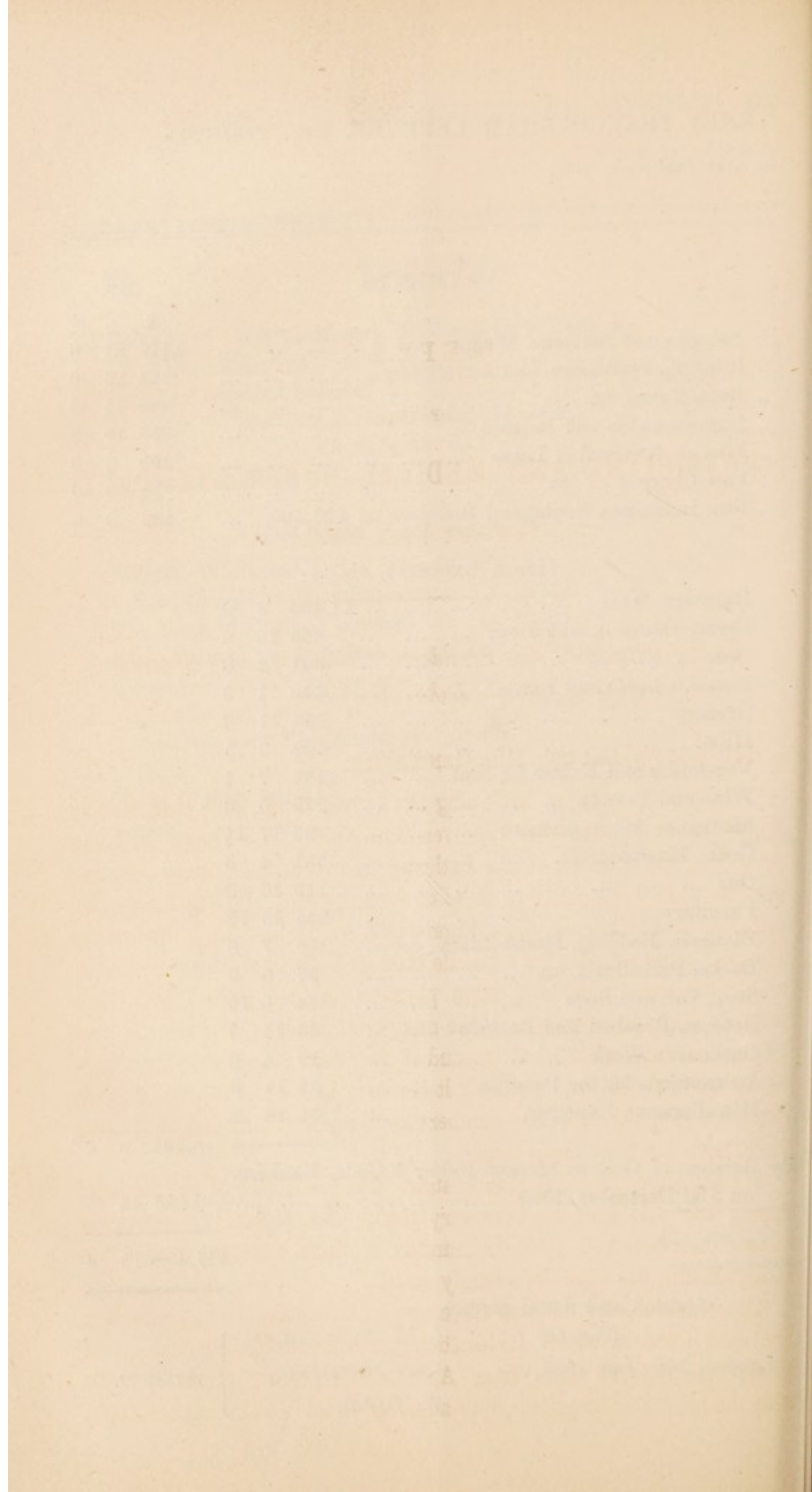
PAYMENTS.						Cr.		
						£.	s.	d.
By Salaries and Servants' Wages	...	...	...	...	...	2,176	11	6
„ Printing, Stationery, and Advertising	...	...	...	...	...	304	19	6
„ Rent, Taxes, &c.	...	...	...	...	...	236	11	0
„ Improvements and Repairs	...	...	...	...	...	955	10	9
„ Fine on Renewal of Lease	...	...	...	...	...	200	0	0
„ Law Charges do.	...	...	...	...	...	18	19	0
„ Fire Insurance, Septennial Premium on £21,500.	...	...	...	...	...	129	0	0

## HOUSE EXPENSES, viz.:—

Butchers' Meat	...	...	...	...	...	£1,492	9	9
Bread, Oatmeal, and Flour	...	...	...	...	...	469	10	0
Beer	...	...	...	...	...	521	2	0
Butter, Cheese and Bacon	...	...	...	...	...	445	11	0
Grocery	...	...	...	...	...	352	11	0
Milk	...	...	...	...	...	162	9	0
Vegetables and Extras for Sick	...	...	...	...	...	235	7	4
Wine and Brandy	...	...	...	...	...	275	5	3
Medicines and Appliances	...	...	...	...	...	86	17	11
Coals, Firewood, &c.	...	...	...	...	...	351	4	3
Gas	...	...	...	...	...	119	10	2
Furniture	...	...	...	...	...	235	15	10
Blankets, Bedding, House Linen, &c.	...	...	...	...	...	158	7	8
Books, Periodicals, &c.	...	...	...	...	...	53	6	9
Soap, Oil, and Soda	...	...	...	...	...	184	6	10
Brooms, Brushes, and Baskets	...	...	...	...	...	33	15	0
Gardener's Work	...	...	...	...	...	19	4	0
Amusements for the Patients	...	...	...	...	...	32	14	3
Miscellaneous Expenses	...	...	...	...	...	61	18	2
						5,291 6 2		
By Balance of Cash at Messrs. Fuller & Co.'s, Bankers, on 31st December, 1862	...	...	...	...	...	2,095	15	5
						£11,408 13 4		

Audited and found correct,

(Signed)	J. M. NEEDHAM,	} Auditors.
London, 29th Jan. 1863.	JOHN MARTINEAU,	
	W. BAIRD.	



REPORT  
OF THE  
PHYSICIANS AND MEDICAL SUPERINTENDENT  
FOR THE YEAR 1862.

---

*To the President, Vice-Presidents, Treasurer, and Governors  
of St. Luke's Hospital.*

MY LORDS, LADIES, AND GENTLEMEN,

UPON reviewing the events of the past year, we are happy to find, that the improvements which have been made in promoting the comforts of the Patients, and thus facilitating Curative results, have been equal to those of former years. We feel a special interest in alluding to these improvements, because they render the Hospital more suitable for a middle class of Patients, who are received, under the new regulation, upon payment of One Guinea per week towards their maintenance. The number resident of this class is now 37, as compared with 30 at the end of last year: thus shewing a tendency to increase; and we think it can only be for the want of a more extended publicity, that the numbers applying for admission under this Rule, have not been much larger.

We are happy in being able to state, that the health of the Patients during the past year has been very good. No epidemic or contagious disease has occurred, and the number of those suffering from acute bodily disease has been exceedingly small.

The deaths during the year have again reached the average number. Six died from Maniacal Exhaustion; one from Phthisis, two from Heart disease, and three from Apoplectic seizures. Four of those who died from exhaustion, were admitted in such a sinking condition,

that but little opportunity was afforded for rallying their remaining vital powers.

The proportionate number of recoveries have been

Males ... ..	61.53 per cent.
Females ... ..	55.84 „

making a total of males and females together, 57.75 per cent. of those whose treatment has been completed. This per centage is rather lower than that of former years, and is accounted for by the circumstance, that a large number of those who were admitted in 1861, had been mentally afflicted during an unusually long period before they came under our treatment. This fact we mentioned in our last Report.

There has been no escape, suicide, or casualty of any importance during the past year.

The male and female attendants generally have performed their duties with great credit, and may be fairly said to have been actuated by feelings of consideration, sympathy, and kindness towards the Patients. It has resulted that there has been but little seclusion, and the wards have presented an air of quietude and a degree of comfort sufficient to attract the notice of several visitors to the Hospital.

Great improvement has been effected in the Services of the Chapel, by the addition of one of Evans' Patent Harmoniums. This was obtained at a cost of Forty Guineas, half this sum being raised by subscription. A handsome set of Church Music Books was also given by Mr. WILLIAM HORNE, of 33, Russell Square. One of the Female Patients during the first four months, undertook the duties of playing the musical portions of the daily Chapel Service. This Patient (though once deemed incurable) has since been discharged cured. These duties are now undertaken by one of the Male Patients, who takes great pleasure in them. This manner of engaging the Patients ensures an amount of direct attention, which proves very beneficial in promoting an improved condition of the mind. The Patients have met at the Chapel, in the evening, during the winter months, once a fortnight, for the purpose of practising Sacred Music, under the direction of the Medical Superintendent.

Gatherings of the Patients once a fortnight, for dancing and other amusements, have this winter been substituted for the miscellaneous "Series of Entertainments" of last year.

During the summer months an increased number have been allowed

to make excursions into the country, and to visit public places of amusement. About 200 Patients, with their attendants, at different times have availed themselves of these opportunities; all who were suitable visited the International Exhibition. It need scarcely be mentioned, that the Patients at such times much enjoyed themselves, and many expressed much gratitude for such privileges. We hope that the Governors will continue the same liberality during the ensuing summer months.

The increased space of ground on the Male side, which, we believe, is about to be rented of the Authorities of St. Luke's Parish, will afford greater opportunities for the recreation and exercise of the Patients.

Four new Windows have been ordered for the Male and Female Wings, to be placed in the room of the heavy wooden framed ones now existing. We hope, as soon as the funds will allow, that this commencement will lead to a similar improvement, extending over the entire frontage of the Hospital; as much unnecessary prejudice still exists in the minds of the Public, owing to an absence of cheerfulness in the external structure of the building.

Since our last Report the Galleries, Wings, Ball Room, and some other parts of the Hospital, have been thoroughly renovated, by white-washing and re-papering; new carpets have been laid down in two of the Female Galleries.

Correspondence between the Patients and their relatives and friends has become very general, and it is very seldom found necessary to interfere with it; when it is, any letter which it has been thought prudent to retain has been laid before the Committee of Visitors at their next ensuing visit, according to the requirement of the recent Act.

We cannot conclude our Report without acknowledging the valuable assistance we have derived from Mr. and Mrs. Walker, the Steward and Matron, in carrying out the recent improvements, and in maintaining the general good order of the Hospital.

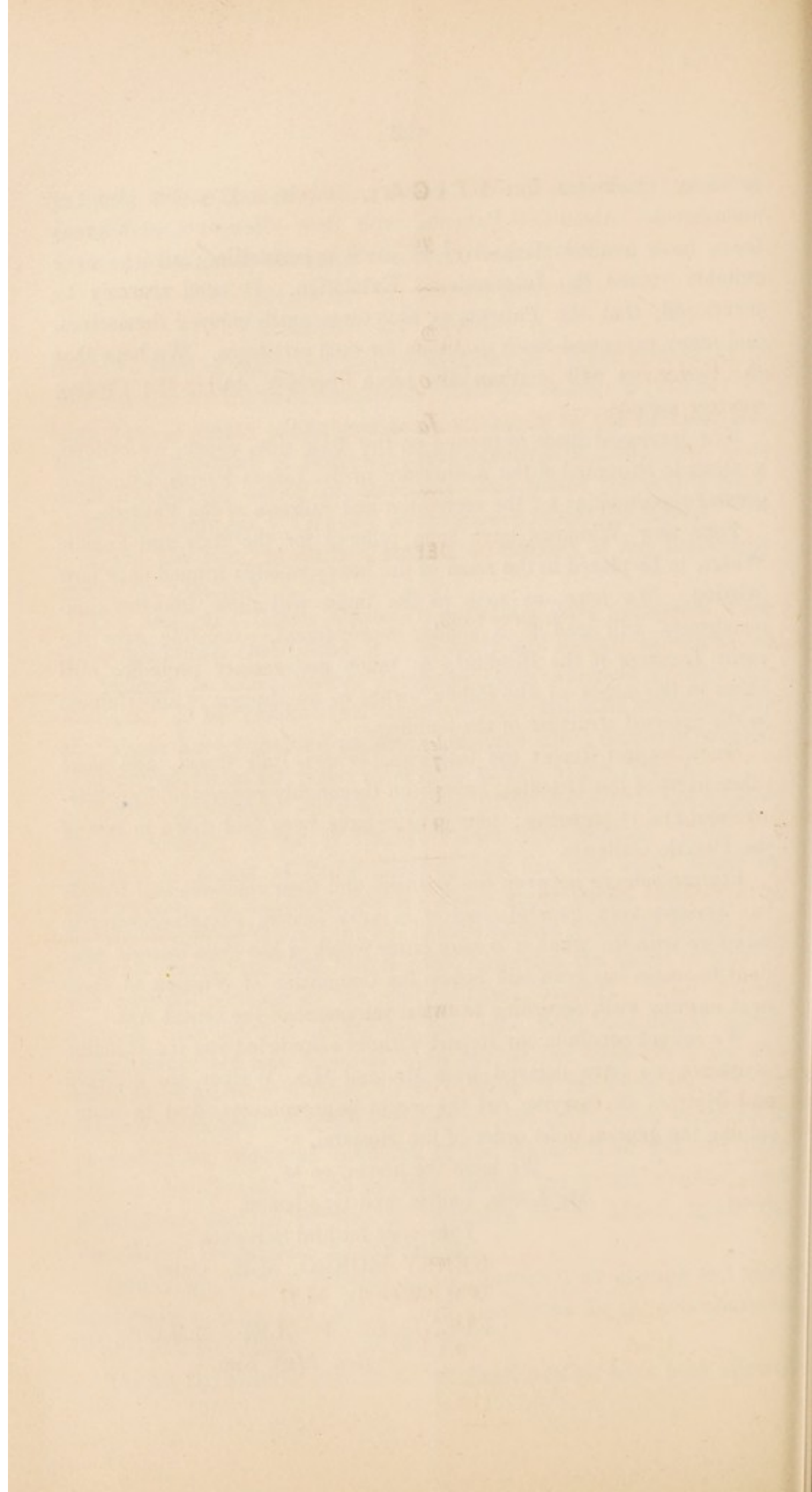
We have the honour to be,  
My Lords, Ladies, and Gentlemen,

Your very faithful Servants,  
HENRY MONRO, M.B., Oxon.

WM. WOOD, M.D.

EBENEZER TOLLER, M.R.C.S., &c.

*Res. Med. Sup.*



## STATISTICAL TABLES

*For the year 1862.*N<sup>o</sup>. II.

STATEMENT of the Number of PATIENTS ADMITTED and  
DISCHARGED from 1st January to 31st December, 1862.

## (I) PATIENTS DEEMED CURABLE.

	<i>Males.</i>	<i>Females.</i>	<i>Total.</i>
In the Hospital on 1st January, 1862. . . . .	21	45	66
Admitted during the year . . . . .	57	80	137
	78	125	203
Discharged—Unfit . . . . .	7	9	
—————By desire of Friends . . . . .	1	4	
Remaining in the Hospital . . . . .	29	35	
	37	48	85
Treatment completed . . . . .	41	77	118

## STATEMENT shewing the per centage.

<i>Males.</i>				<i>Females.</i>			
Cured..	24	equal to	58.53 per cent.	Cured..	44	equal to	57.14 per cent.
Uncured	14	„	34.14 „	Uncured	27	„	35.06 „
Died ..	3	„	7.31 „	Died ..	6	„	7.79 „
	41				77		

*Males and Females together.*

Cured..	68	equal to	57.62 per cent.
Uncured	41	„	34.74 „
Died ..	9	„	7.62 „
	118		

## TABLES FOR 1862—continued.—Admissions and Discharges—continued.

## (II.) PATIENTS DEEMED INCURABLE.

			Males.	Females.	Total.
In the Hospital on 1st January, 1862.. .. .			31	38	69
Admitted during the year . . . . .			4	8	12
	Males	Fem.	35	46	81
Unfit .. .. .	2	—			
On trial .. .. .	1	3			
Died .. .. .	1	1			
			4	4	8
Remaining in the Hospital .. ..			31	42	73

## (III.) PATIENTS DEEMED CHRONIC INCURABLE.

			Males.	Females.	Total.
In the Hospital on 1st January, 1862.. .. .			4	10	14
Admitted during the year .. .. .			4	9	13
	Males	Fem.	8	19	27
Discharged at request of Friends .. .. .	—	4			
Unfit .. .. .	1	1			
Cured .. .. .	—	2			
On trial .. .. .	3	3			
			4	10	14
Remaining in the Hospital .. ..			4	9	13

## (IV.) SYNOPSIS OF THE THREE CLASSES.

	Curable.	Incurable	Total.
On the Books on 1st January, 1862. .. .. .	66	83	153
Admitted in 1862. .. .. .	137	25	173
	203	108	311
Discharged in 1862. .. .. .	139	22	151
Remaining in the Hospital .. ..	64	86	150

Average Weekly number of Patients in the Hospital .. .. . 158

Average number of Patients attending Divine Service within the Hospital .. 127

TABLES FOR 1862—*continued.*N<sup>o</sup>. II.MONTHLY ADMISSIONS, CURES, *and* DEATHS of  
CURABLE PATIENTS *during* 1862.

MONTH.	ADMITTED.			CURED.			DIED.		
	<i>Males.</i>	<i>Females.</i>	<i>Total.</i>	<i>Males.</i>	<i>Females.</i>	<i>Total.</i>	<i>Males.</i>	<i>Females.</i>	<i>Total.</i>
January ..	3	9	12	4	2	6	1	1	2
February ..	4	6	10	2	5	7	—	—	—
March ..	4	5	9	2	3	5	—	1	1
April .. ..	4	7	11	—	1	1	1	—	1
May .. ..	4	9	13	4	3	7	—	—	—
June .. ..	6	7	13	—	2	2	1	2	3
July .. ..	8	10	18	—	9	9	1	—	1
August. ..	9	3	12	1	2	3	—	—	—
September..	3	5	8	1	9	10	—	1	1
October. ..	3	4	7	9	1	10	—	—	—
November ..	5	7	12	—	4	4	1	—	1
December ..	4	8	12	1	3	4	—	2	2
Total ..	57	80	137	24	44	68	5	7	12

TABLES FOR 1862—*continued.*N<sup>o</sup>. III.PERIOD *of* RESIDENCE *in the Hospital of* PATIENTS  
DISCHARGED CURED *in* 1862.

	<i>Males.</i>	<i>Females.</i>	<i>Total.</i>
4 Weeks .. .. .	10	19	29
2 Months and upwards .. .. .	7	3	10
3   "   "   "   .   .   .	1	5	6
4   "   "   "   .   .   .	3	—	3
5   "   "   "   .   .   .	2	4	6
6   "   "   "   .   .   .	1	1	2
7   "   "   "   .   .   .	—	4	4
8   "   "   "   .   .   .	—	4	4
10   "   "   "   .   .   .	—	2	2
11   "   "   "   .   .   .	—	2	2
Total .. .. .	24	44	68

N<sup>o</sup>. IV.DOMESTIC CONDITION *of* CURABLE PATIENTS  
*admitted during* 1862.

	<i>Males.</i>	<i>Females.</i>	<i>Total.</i>
Married . . . . .	31	27	58
Single .. .. .	20	44	64
Widowed. . . . .	6	9	15
Total .. .. .	57	80	137

TABLES FOR 1862—*continued.*N<sup>o</sup>. V.HEREDITARY PREDISPOSITION *of* CURABLE  
PATIENTS *admitted during* 1862.

	<i>Males.</i>	<i>Females.</i>	<i>Total.</i>
Hereditary .. .. .	8	11	19
Not Hereditary .. .. .	38	52	90
Not ascertained .. .. .	11	17	28
Total .. .. .	57	80	137

N<sup>o</sup>. VI.AGES *of* CURABLE PATIENTS *admitt deduring* 1862.

	<i>Males.</i>	<i>Females.</i>	<i>Total.</i>
From 16 to 20 Years .. .. .	4	5	9
" 21 to 25 " .. .. .	6	9	15
" 26 to 30 " .. .. .	11	12	23
" 31 to 35 " .. .. .	16	11	27
" 36 to 40 " .. .. .	2	14	16
" 41 to 45 " .. .. .	3	9	12
" 46 to 50 " .. .. .	5	5	10
" 51 to 55 " .. .. .	2	9	11
" 56 to 60 " .. .. .	1	4	5
" 61 to 65 " .. .. .	4	—	4
" 66 to 70 " .. .. .	3	2	5
Total . . . . .	57	80	137

TABLES FOR 1862—*continued.*N<sup>o</sup>. VII.DURATION *of* EXISTING ATTACKS *of* CURABLE  
PATIENTS *at the time of admission in* 1862.

	<i>Males.</i>	<i>Females.</i>	<i>Total.</i>
1 Week .. .. .	4	8	12
2 Weeks .. .. .	7	11	18
3 " .. .. .	3	5	8
4 " .. .. .	4	11	15
5 " .. .. .	—	5	5
6 " .. .. .	1	10	11
2 Months .. .. .	—	7	7
3 " .. .. .	6	3	9
4 " .. .. .	6	4	10
5 " .. .. .	—	10	10
6 " .. .. .	3	—	3
7 " .. .. .	5	1	6
8 " .. .. .	4	1	5
9 " .. .. .	3	—	3
10 " .. .. .	1	—	1
11 " .. .. .	4	—	4
1 Year .. .. .	1	—	1
2 " .. .. .	2	2	4
Total .. .. .	57	80	137

N<sup>o</sup>. VIII.NUMBER *of* ATTACKS *of* CURABLE PATIENTS  
*admitted during* 1862.

	<i>Males.</i>	<i>Females.</i>	<i>Total.</i>
First .. .. .	30	41	71
Second .. .. .	14	15	29
Third .. .. .	2	10	12
Fourth .. .. .	4	5	9
Fifth .. .. .	3	6	9
Sixth .. .. .	4	3	7
Total .. .. .	57	80	137

TABLES FOR 1862—*continued.*

N<sup>o</sup>. IX.  
 RESIDENCE *of* CURABLE PATIENTS  
*prior to admission in 1862.*

	<i>Males.</i>	<i>Females.</i>	<i>Total.</i>
Metropolis .. .. .	30	61	91
Provinces .. .. .	27	19	46
Total .. .. .	57	80	137

N<sup>o</sup>. X.  
 RELIGIOUS PERSUASION *of* CURABLE PATIENTS  
*admitted during 1862.*

	<i>Males.</i>	<i>Females.</i>	<i>Total.</i>
Baptist.. .. .	3	5	8
Church of England .. .. .	47	50	97
Independent . .. .	—	6	6
Irvingite .. .. .	1	1	2
Primitive Methodist .. .. .	—	5	5
Roman Catholic .. .. .	3	4	7
Wesleyan Methodist .. .. .	—	6	6
Unitarian .. .. .	—	1	1
Jewish.. .. .	—	1	1
Nonconformist .. .. .	2	1	3
Plymouth Brethren .. .. .	1	—	1
Total .. .. .	57	80	137



TABLES FOR 1862—*continued.*

## No. XIII.

NUMBER of DEATHS of CURABLE and INCURABLE  
PATIENTS during the year 1862, shewing the assigned causes  
thereof.

	<i>Males.</i>	<i>Females.</i>	<i>Total.</i>
Apoplexy .. .. .	1	2	4
Heart Disease .. .. .	2	1	2
Maniacal Exhaustion .. .. .	2	3	5
Phthisis .. .. .	—	1	1
Total .. .. .	5	7	12

TABLE of the relative WEIGHTS of Patients on their admission and discharge.  
1862.]

NAME.	Age.	Sex.	Form of Malady.	Period of Residence.	Weight on Admission.		Weight on Discharge.		Increase.		Decrease.		How discharged
				weeks.	st.	lbs.	st.	lbs.	st.	lbs.	st.	lbs.	
E. C. ...	56	Female	Mania	52	7	8	7	1	...	...	...	7	Uncured
W. S. ...	36	Male	Melancholia	52	10	1	10	8	...	7	...	...	Uncured
M. G. ...	38	Female	Melancholia	52	7	7	9	0	1	7	...	...	Uncured
J. E. P.	17	Male	Mania	52	11	10	12	8	...	12	...	...	Uncured
J. P. ...	64	Female	Melancholia	51	8	9	8	10	...	1	...	...	Cured
C. D. ...	30	Female	Mania	52	7	4	7	8	...	4	..	...	Uncured
L. L. ...	36	Female	Mania	52	7	3	9	9	2	6	...	...	Uncured
J. C. ...	40	Male	Mania	52	12	13	11	10	...	...	1	3	Uncured
G. A. ...	26	Female	Mania	52	7	4	8	10	1	6	...	...	Uncured
H. N. ...	22	Female	Imbecility	52	7	9	8	11	1	2	...	...	Uncured
D. P. ...	33	Male	Mania	52	10	2	11	1	...	13	...	...	Uncured
M. A. E.	28	Female	Mania	52	7	2	9	0	1	12	...	...	Uncured
E. L. ...	37	Female	Mania	52	6	12	7	1	...	3	...	..	Uncured
C. C. ...	14	Female	Mania	52	5	9	6	1	...	6	...	...	Uncured
M. A. E. A.	34	Female	Mania	52	7	0	7	0	...	...	...	...	Uncured
H. C. C.	45	Female	Dementia	52	8	1	8	1	...	...	...	...	Uncured
M. H. ...	40	Female	Mania	52	9	10	11	0	1	2	...	...	Uncured
F. P. ...	20	Male	Mania	52	8	4	9	1	...	11	...	...	Uncured
C. G. ...	33	Male	Mania	52	7	5	8	5	1	0	...	...	Uncured
S. W. A.	19	Male	Mania	21	8	2	10	12	2	10	...	...	Cured
C. A. A.	41	Female	Mania	52	13	5	12	5	...	...	1	...	Uncured
H. C. A. E. B.	32	Male	Mania	52	9	3	11	0	1	11	...	...	Uncured
E. B. ...	33	Female	Mania	52	8	2	9	4	1	2	...	...	Uncured
F. F. ...	41	Male	Melancholia	52	8	8	9	11	1	3	...	...	Uncured
A. D. ...	64	Female	Melancholia	52	6	6	7	1	...	9	...	...	Uncured
M. A. W.	26	Female	Imbecility	24	8	6	9	3	...	11	...	...	Cured
S. L. ...	28	Female	Mania	52	6	11	8	4	1	7	...	...	Uncured
A. D. ...	52	Female	Mania	30	6	0	6	13	...	13	...	..	Cured
J. S. ...	35	Female	Mania	52	7	4	7	10	...	6	...	...	Uncured
A. M. S.	24	Female	Mania	52	10	10	9	7	...	...	1	3	Uncured

TABLE of WEIGHTS—*continued.*

NAME	Age.	Sex.	Form of Malady.	Period of Residence.	Weight on Admission.		Weight on Discharge.		Increase.		Decrease.		How discharged
				weeks.	st.	lbs.	st.	lbs.	st.	lbs.	st.	lbs.	
W. H. S.	39	Male	Melancholia	52	13	7	16	11	3	4	...	...	Uncured
E. E. W.	18	Male	Imbecility	52	10	10	10	13	...	3	...	...	Uncured
F. C. S.	25	Female	Mania	40	7	6	7	8	...	2	...	...	Cured
M. T. ...	14	Female	Mania	18	6	7	7	7	1	0	...	...	Cured
E. F. F.	28	Female	Mania	17	6	3	6	13	...	10	...	...	Cured
M. B. ...	19	Female	Mania	19	7	1	7	11	...	10	...	...	Cured
D. W. R.	22	Male	Mania	32	10	10	11	6	...	10	...	...	Cured
A. S. ...	31	Female	Mania	52	8	4	8	12	...	8	...	...	Uncured
R. W. ....	53	Male	Melancholia	52	11	7	11	5	...	...	...	2	Uncured
M. A. M.	49	Female	Mania	8	9	1	8	8	...	...	...	7	Cured
L. B. ...	23	Female	Mania	52	7	4	7	11	...	7	...	...	Uncured
C. W. ...	28	Female	Mania	7	8	9	8	13	...	4	...	...	Cured
E. B. ...	26	Female	Mania	8	8	7	9	3	...	10	...	...	Cured
H. S. ...	19	Male	Mania	33	8	3	9	2	...	13	...	...	Cured
E. M. G.	26	Female	Melancholia	21	8	7	9	0	...	7	...	...	Cured
M. A. P.	37	Female	Mania	10	8	7	8	7	...	...	...	...	Cured
S. H. ...	29	Female	Imbecility	52	9	8	8	13	...	...	...	9	Uncured
F. H. ...	26	Female	Mania	52	7	5	7	4	...	...	...	1	Uncured
M. R. ...	51	Female	Melancholia	52	9	3	8	1	...	...	1	2	Uncured
F. W. ....	53	Female	Melancholia	52	7	13	8	2	...	3	...	..	Uncured
A. R. ...	48	Female	Mania	52	7	3	8	12	1	9	...	..	Uncured
H. K. ...	40	Male	Melancholia	26	7	9	9	5	1	10	...	...	Cured
T. W. G.	38	Male	Mania	12	9	13	10	5	..	6	...	..	Cured
J. P. ..	15	Male	Mania	7	8	..	8	11	...	11	...	...	Cured
S. E. D.	30	Female	Melancholia	4	10	2	10	4	...	2	...	...	Cured
C. B. ...	48	Female	Melancholia	26	7	9	7	7	...	...	...	2	Cured
A. P. ...	24	Male	Mania	48	9	3	10	4	1	1	...	...	Cured
L. J. ...	27	Male	Mania	4	10	7	11	0	...	7	...	...	Cured
J. T. F.	40	Male	Melancholia	34	10	8	12	0	1	6	...	...	Cured
J. B. ....	17	Male	Mania	10	8	0	8	2	...	2	...	...	Cured

TABLE of WEIGHTS—*continued.*

NAME.	Age.	Sex.	Form of Malady.	Period of Residence.	Weight on Admission.		Weight on Discharge.		Increase.		Decrease.		How discharged
				weeks.	st.	lbs.	st.	lbs.	st.	lbs.	st.	lbs.	
T. H. ...	64	Male	Melancholia	18	7	9	7	9	...	...	...	...	Cured
M. T. ...	45	Female	Melancholia	7	7	12	8	4	...	6	...	...	Cured
E. S. P..	25	Female	Mania	11	6	6	6	...	...	...	...	...	Cured
A. S. ...	36	Female	Mania	20	7	1	7	8	...	7	...	...	Cured
C. T. ..	25	Female	Mania	28	8	9	7	11	...	...	...	12	Cured
M. B. ...	21	Female	Mania	22	7	6	8	7	1	1	...	...	Cured
A. W. ...	22	Female	Mania	4	8	8	8	12	...	4	...	...	Cured
R. T. ...	52	Male	Mania	15	11	5	11	7	...	2	...	...	Cured
E. W. ....	34	Female	Melancholia	30	9	8	9	8	...	...	...	...	Cured
H. M. ....	17	Female	Melancholia	13	8	10	8	12	...	2	...	...	Cured
A. S. ...	27	Female	Mania	5	7	5	7	8	...	3	...	...	Cured
J. F. V.	31	Male	Mania	4	8	8	8	13	...	5	...	...	Cured
J. A. ...	60	Male	Melancholia	6	8	5	8	9	...	4	...	...	Cured
R. T. P.	17	Male	Mania	5	9	7	10	2	...	9	..	...	Cured
M. E. F.	27	Female	Mania	11	7	1	8	6	1	5	...	..	Cured
E. H. ...	33	Female	Mania	15	6	11	7	11	1	...	...	...	Cured
C. C. R..	35	Female	Melancholia	24	8	...	8	2	...	2	...	...	Cured
S. G. ...	43	Female	Mania	6	8	12	9	1	...	3	...	...	Cured
C. G. ...	37	Male	Mania	8	8	3	9	2	...	13	...	...	Cured
M. P. ...	28	Female	Mania	9	8	1	8	2	...	1	...	...	Cured
J. J. ...	42	Female	Mania	6	7	11	8	4	...	7	...	...	Cured
A. A. ...	36	Female	Mania	21	7	13	8	13	1	...	...	...	Cured
E. J. ...	42	Female	Melancholia	22	7	2	8	4	1	2	...	...	Cured
S. A. ...	57	Female	Mania	8	8	9	9	2	...	7	...	...	Cured
G. L. ...	32	Male	Melancholia	4	12	7	12	12	...	5	...	...	Cured
M. A. P.	39	Female	Mania	17	8	1	8	5	...	4	...	...	Cured
E. J. C.	25	Female	Mania	13	8	...	10	10	2	10	...	...	Cured
J. P. W.	21	Male	Mania	15	7	9	10	4	2	9	..	...	Cured
J. W. ...	23	Male	Mania	3	8	13	10	8	1	9	...	...	Cured
M. C. ...	56	Female	Melancholia	12	7	9	7	8	...	...	...	1	Cured



TABLE OF POST-MORTEM APPEARANCES.

Name.	Age.	Sex and Domestic Condition.	Mental Malady.	Duration of Malady.	Concomitant Bodily Affections.	Mode of Death.	Date of Post Mortem Examination.	General External Appearance.	Scalp.	Cranium.	Weight and specific gravity of Brain.	C E R E B R A L.		Thorax.	Abdomen.
												Membranes.	Substance.		
J. W.	51	Male. — Single.	Melan- cholia, with de- lusions and suicidal tendency	Twelve Months.	Disease of Heart.	Syncope.	24th Mar.	Very atrophied. Chronic Hydrocele.	Thin and adherent.	Thick and dense.	48 ozs.	Dura Mater thin and congested. Arachnoid opaque. Pachionia bodies very small.	Very anæmic. Softened. Bleeding puncta on section. Fluid in ventricles. Choroid plexus empty.	Right lung slightly adherent to costal pleura. Posterior portions of middle, & lower lobes of right lung carnified. Small quantity of fluid in pericardium. Wall of right ventricle thin. Valves opa- que. Mitral valves ossified.	All the viscera exsanguineous. Stomach, intestines and liver, healthy. Left kidney very small with a cyst weighing 2lbs. at- tached to it. Gall bladder distended, with a small cyst attached to the outer surface.
E. L.	70	Female. — Single.	Chronic Demen- tia.	25 Years.	Brain soften- ing.	Coma.	14th May.	Very obese. Fat 3in. in thickness. Rigor mortis not well developed.	Thin and non- adherent.	Symmetri- cal; of normal thickness. Internal table dense.	45½ ozs.	Non - congested. Dura Mater firmly adherent to cra- nium. Arachnoid opaque.	Anæmic. Very much softened. Convulsions small. Grey matter pale. Left hemisphere containing a large cavity filled with fluid blood. Left corpus stratum partly absorbed.	Viscera overlaid by large quantities of fat. Lungs partly adherent to costal pleura. Mus- cular tissue of heart pale and flabby.	Large quantities of fat overlying the viscera. Sto- mach and intes- tines healthy. Liver congested. Specks of inspissated bile scattered through- out its tissue. Gall- bladder twice its natural size, con- taining 3 ozs. of gall-stones. Duc- tus communis choledochus ¾-inch in diameter and filled with gall- stones. Kidneys wasted. Cortices very thin. Cavity of uterus contained the remains of a small polypus.

Name.	Age.	Sex and Domestic Condition	Mental Malady.	Duration of Malady.	Concomitant Bodily Affections	Mode of Death.	Post Mortem Examination.	General External Appearance.	Scalp.	Cranium.	Weight and specific gravity of Brain.	C E R E B R A L.		Thorax.	Abdomen.
												Membranes.	Substance.		
B. B.	63	Male. — Married.	Senile Imbecility.	18 Months.	Brain softening.	Coma.	21st July	Very obese. Rigor mortis not well developed.	Tough and firmly adherent. The occipital portion double the thickness of the Frontal.	Unsymmetrical, the left half being much the larger. Structure soft, thin, translucent, non-congested, and with very little diploe. A depression 1-6 in. square, about 1½ in. over centre of left orbit.	48 ozs.	Dura Mater thin and non-congested. Firmly adherent to the anterior and posterior fossæ of the base of the cranium. Five spiculae of osseous substance the size of peas attached to falx major. Arachnoid opaque on the left side. Pia Mater with several portions of organized lymph in its meshes.	Convolutions small. Grey matter well developed. Left hemisphere firmer than the right. No bleeding puncta on section. In the anterior portion of the left hemisphere, & corresponding to the depression on the cranium, there is a small cavity, the form of half a walnut, lined by a layer of lymph, and filled with serous fluid. Walls of both ventricles softened. Sero-sanguineous fluid in both ventricles.	Viscera all healthy.	Viscera all healthy, except the kidneys, the commencement of motility in their co-tices.
A. A. F.	62	Female. — Married.	Mania.	Six Months	Disease of Heart.	Syncope	13th Sept.	Atrophied. Cystic tumor the size of a walnut in right Mamma.	Thin and non-adherent.	Very unequal in thickness. Congested. A small bony excrescence, size of a pea, over the centre of left orbit, externally.	42 ozs.	Dura Mater thin; extensively adherent to Cranium. Arachnoid opaque. Pia Mater congested.	Generally softened. Anomic. Convolutions compressed and flattened; small. Cerebellum very softened.	Lungs congested. Right lung adherent to pleura costalis. Rings of trachea rigid. Wall of left ventricle eccentrically hypertrophied. Mitral and tricuspid valves much thickened. Aortic a little thickened.	Viscera all healthy.

TABLE OF POST-MORTEM APPEARANCES—continued.

Name.	Age.	Sex and Domestic Condition	Mental Malady.	Duration of Malady.	Concomitant Bodily Affections.	Mode of Death.	Date of Post Mortem Examination.	General External Appearance.	Scalp.	Cranium.	Weight and specific gravity of Brain.	C E R E B R A L .		Thorax.	Abdomen.
												Membranes.	Substance.		
L.S.M.	41	Male. — Married.	Mania.	Two Months.	Fatty degeneration of Heart, & Kidneys.	Asthenia.	10th Dec.	Well formed well nourished.	Thick, and tough, and firmly adherent.	Symmetrical. Very dense. Anteriorly, (corresponding to the Anterior Fontanelle) translucent. Internal table thick.	53½ ozs.	Dura Mater congested. Arachnoid opaque. Pia Mater congested.	Convolutions well developed; furrows deep. White substance very firm. Bleeding puncta on section. Corpora striata large. Ventricles shallow. Choroid plexus empty.	Very capacious. Lungs healthy. Bands of adhesion between pleura of right lung, and pleura-costalis. Pericardium healthy. Muscular tissue of heart softened, pale, and in a state of fatty degeneration.	Stomach and bowels healthy. Liver externally of a leaden hue appearance. Structure pale, firm, and lardaceous. Spleen pale and bloodless. Kidneys pale and flabby, with intertubular deposits of fat. Gall-bladder small.